

10 April 2008

Coverage
United Kingdom

Theme
The Economy



UK Trade February 2008

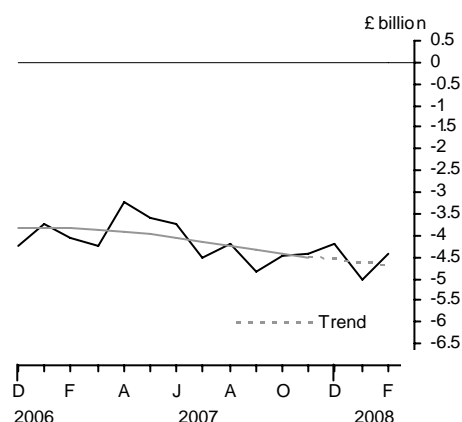
The UK's deficit on trade in goods and services is provisionally estimated to have narrowed in February to £4.4 billion from a deficit of £5.0 billion in January.

In the three months ended February, the deficit on trade in goods and services narrowed to £13.6 billion, from a £13.7 billion deficit in the previous three months.

The latest estimate of the trend suggests that the UK trade deficit is fairly flat in recent months.

The notes discuss a number of factors which mean that the initial estimates of the data are less reliable than previously, and which make interpretation of short term movements difficult.

Balance of trade



Issued by

Office for National Statistics
Government Buildings
Cardiff Road
Newport
NP10 8XG

Contact

Media Office 0845 601 3034

Statistician – Trade in Goods
Caroline Lakin 020 7014 2018/2020

Statistician – Trade in Services
Tom Orford 020 7014 2027/2028

E-mail – bop@ons.gov.uk

www.statistics.gov.uk

Next publication date
12 May 2008

		Balance on trade in goods			Balance on trade in services	Total balance
		EU	Non-EU	World		
<i>Seasonally adjusted: £ billion</i>						
2007	Sep	-3.5	-4.6	-8.1	3.3	-4.8
	Oct	-3.4	-4.4	-7.8	3.3	-4.5
	Nov	-3.5	-4.4	-7.9	3.5	-4.4
	Dec	-3.4	-4.1	-7.5	3.3	-4.2
2008	Jan	-3.7	-4.3	-7.9	2.9	-5.0
	Feb	-3.5	-4.0	-7.5	3.0	-4.4

NOTE: Trade in services estimates are included to give a more complete picture of UK trade. These estimates have been derived from a number of sources, and some components are based on recent trends. They should be used with appropriate caution.

TRADE IN GOODS - FEBRUARY

Value of total trade in goods

The UK's deficit on trade in goods in February is provisionally estimated at £7.5 billion, compared with £7.9 billion in January. The deficit with EU countries in February was £3.5 billion, compared with £3.7 billion in January. The deficit with non-EU countries in February was £4.0 billion, compared with £4.3 billion in January.

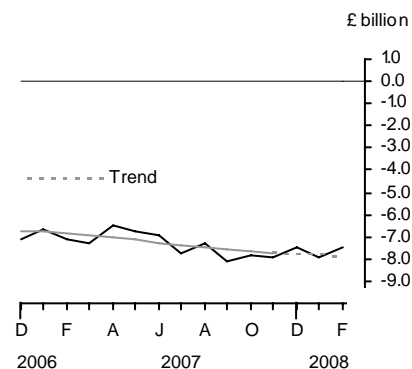
In February, total exports of goods fell marginally to £20.5 billion and total imports of goods fell by one and a half per cent to £28.0 billion. Exports to EU countries fell four per cent while exports to non-EU countries rose five and a half per cent. Imports from EU countries fell four per cent while imports from non-EU countries rose by one and a half per cent.

In the three months ended February, the deficit on trade in goods narrowed by £0.9 billion to £22.9 billion. The deficit with EU countries widened by £0.1 billion to £10.5 billion, and the deficit with non-EU countries narrowed by £1.0 billion to £12.4 billion.

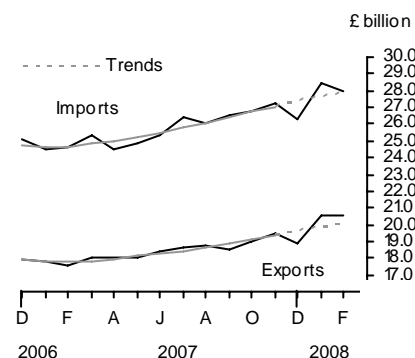
In the three months ended February, exports of goods rose by five and a half per cent and imports of goods rose by two and a half per cent. Exports to EU countries rose by seven per cent and exports to non-EU countries rose by three per cent. Imports from EU countries rose by five and a half per cent and those from non-EU countries fell by one per cent.

The latest estimate of the trend suggests that the whole world goods deficit is fairly flat. The trends in the value of trade show both exports and imports rising slightly in recent months.

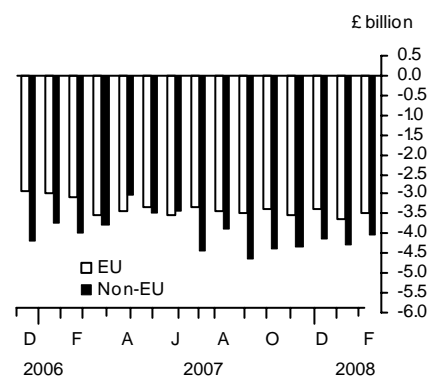
Balance on trade in goods



Value of trade in goods



Balance on trade in goods



Volume of total trade in goods (excluding oil and erratics)

Provisional estimates show that the volume of exports and of imports both fell by two per cent from that in January.

In the three months ended February, exports rose two per cent while imports fell marginally compared with the previous three months.

Changes in trade associated with VAT MTIC fraud mean that comparisons of volume and prices (both including and excluding trade associated with VAT MTIC fraud) should be treated with a great deal of caution.

Latest estimates of volume trends show both exports and imports fairly flat in recent months.

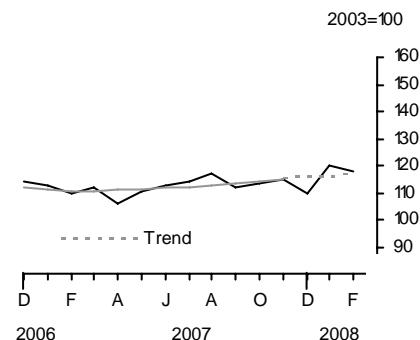
		EU		Non-EU		World	
		Exports	Imports	Exports	Imports	Exports	Imports
<i>Seasonally adjusted: 2003 = 100</i>							
2007	Sep	109.7	119.7	115.8	134.4	112.1	125.3
	Oct	111.3	119.7	116.0	136.7	113.1	126.0
	Nov	112.0	120.5	119.8	136.2	115.1	126.4
	Dec	108.8	117.9	110.7	131.0	109.4	122.8
2008	Jan	118.8	128.1	121.4	129.5	119.7	128.6
	Feb	111.6	122.1	126.4	132.5	117.5	126.1

Export and import prices (trade in goods)

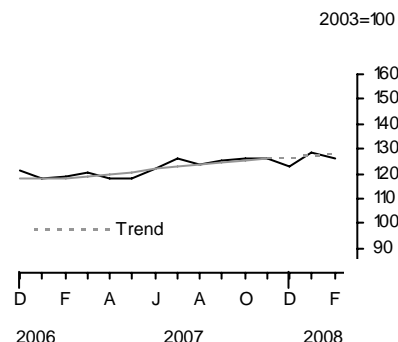
February's provisional estimates show that export prices rose a half per cent and import prices rose one per cent compared with January.

In the three months ended February, export and import prices both rose four and a half per cent. This led to an increase in terms of trade.

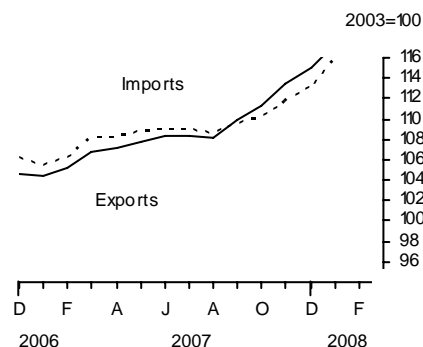
Volume of exports (goods) excluding oil and erratic items



Volume of imports (goods) excluding oil and erratic items



Export and import prices (goods)



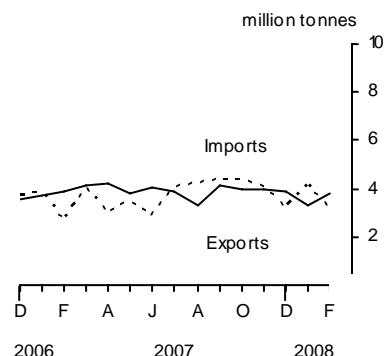
COMMODITY ANALYSIS OF TRADE IN GOODS

Trade in oil

In February, the balance on trade in oil was in surplus by less than £0.1 billion, compared with a deficit of £0.5 billion in January.

In the three months ended February, the deficit on trade in oil was £0.5 billion, compared with a deficit of £1.6 billion in the previous three months.

Trade in crude oil

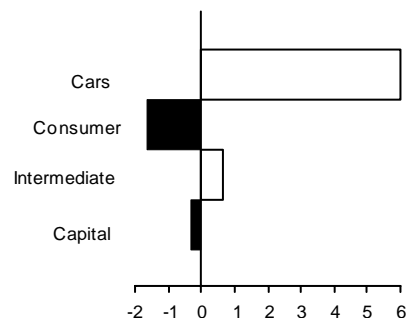


Trade in other commodities in the three months ended February 2008

For exports, all the main commodity groups showed a rise in volume, except fuels and basic materials. Within finished manufactures, exports of cars rose by six per cent. Exports of consumer goods other than cars fell by one and a half per cent. Exports of chemicals rose by five per cent, and exports of other semi-manufactured goods rose by two and a half per cent.

Volume of exports of goods (finished manufactures)

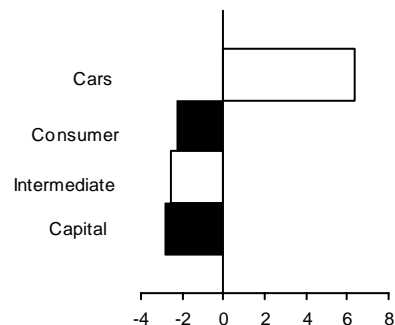
3 month percentage changes



For imports, all the main commodity groups showed a fall in volume, except basic materials, food, drink and tobacco, and semi manufactures. Within finished manufactures, imports of capital goods fell three per cent. Imports of consumer goods other than cars and of intermediate goods both fell by two and a half per cent. Imports of cars rose by six and a half per cent. Imports of chemicals rose one and a half per cent and imports of other semi-manufactured goods were unchanged.

Volume of imports of goods (finished manufactures)

3 month percentage changes



GEOGRAPHICAL ANALYSIS OF TRADE IN GOODS: in the three months ended February 2008

Exports by country

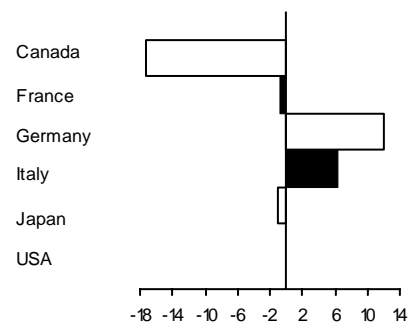
Within the G7 group of countries, exports to Germany rose by £0.8 billion, and to Italy by £0.2 billion. Exports to Canada fell by £0.1 billion. Among other countries, exports to the Netherlands rose by £0.8 billion. Exports to Spain rose by £0.4 billion, and to the Irish Republic, Hong Kong and Russia all rose by £0.2 billion. Exports to China rose by £0.1 billion. Exports to Belgium and Luxembourg, and to Norway both fell by £0.1 billion.

Imports by country

Within the G7 group of countries, imports from the USA fell by £0.5 billion. Imports from France and Germany both rose by £0.4 billion. Among our other trading partners, imports from the Netherlands rose by £0.8 billion, and from Norway rose by £0.5 billion. Imports from Sweden rose by £0.3 billion, and from China, Belgium and Luxembourg, and Hungary all rose by £0.2 billion. Imports from Hong Kong, India, Finland, and from Spain all rose by £0.1 billion. Imports from Russia, and from Australia fell by £0.2 billion. Imports from Poland fell by £0.1 billion.

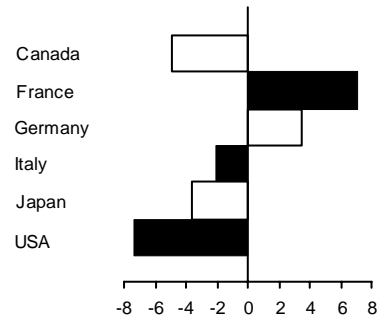
Value of exports of goods by country

3 month percentage changes



Value of imports of goods by country

3 month percentage changes



TRADE IN SERVICES – FEBRUARY

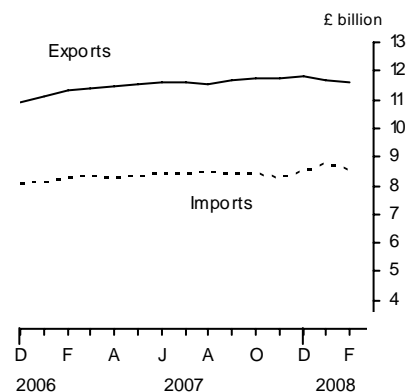
The UK's surplus on trade in services was £3.0 billion, compared with £2.9 billion in January.

In the three months ended February, the surplus on trade in services was £9.3 billion, compared with £10.1 billion in the previous three months. Exports of services fell marginally by less than £0.1 billion to £35.0 billion while imports of services rose by £0.7 billion to £25.8 billion.

REVISIONS

Table 13R shows revisions to the main aggregates since the last Trade First Release of 12 March 2008. The revisions to trade in goods data from January 2008 onwards reflect revised data from Her Majesty's Revenue and Customs and other data suppliers, revised estimates of trading associated with VAT MTIC fraud, later survey data on trade prices and a re-assessment of seasonal factors. Revisions to trade in services data, from January 2006 onwards, bring the monthly data into line with the quarterly National Accounts First Release published on 28 March 2008.

Value of trade in services



SPECIAL NOTES

VAT missing trader intra-community (MTIC) fraud

1. Import figures for trade in goods include adjustments to allow for the impact of VAT MTIC fraud. The adjustments were introduced for the first time in the UK trade May 2003 First Release published on 9 July 2003. An article explaining the fraud and the impact on the trade figures was also published on 9 July 2003 (<http://www.statistics.gov.uk/CCI/article.asp?ID=402>). A follow-up report was published on 17 February 2005 which summarises the work carried out since July 2003 to review the estimates of the impact on the trade figures (<http://www.statistics.gov.uk/CCI/article.asp?ID=1066>).

Changes to the pattern of trading associated with MTIC fraud can make it difficult to analyse trade by commodity group and by country as changes in the impact of activity associated with this fraud affect both imports and exports. Originally, most carousel chains only involved EU member states. From 2004 in particular, some carousel chains have included non-EU countries, for example, Dubai and Switzerland. However, the MTIC trade adjustments are added to the EU import estimates derived from Intrastat returns as it is this part of the trading chain that is not generally recorded. In particular, adjustments affect trade in capital goods and intermediate goods - these categories include mobile phones and computer components.

HMRC are completing a project to review the methodology for producing the estimates of the impact on the trade statistics. The level of such trading has reduced in recent months.

International convention determines that the treatment of the impact is to adjust imports upwards by the relevant amounts. However, users may wish to interpret short-term movements in exports and imports excluding that part of the fraudulent activity that is not included in the import estimates, and for this purpose an analysis of the export and import figures with the VAT MTIC adjustments excluded has been produced.

The following tables show quarterly values of imports and exports of goods for both current price estimates and chained volume measures excluding the VAT MTIC fraud adjustment, and a breakdown for current price estimates into trade with the EU and non-EU separately. Also, it includes the estimated monthly data for the adjustment for trade associated with VAT MTIC fraud, and for total trade excluding the adjustment for trade associated with VAT MTIC fraud, at current prices from January 2006.

Trade in goods excluding adjustments to trade associated with MTIC fraud

Quarter/ Year	MTIC fraud trade adj'ment	£ billion			
		Current price	Current price	Chained volume measure	Chained volume measure
		Total exports less MTIC adj'ment	Total imports less MTIC adj'ment	Total exports less MTIC adj'ment	Total imports less MTIC adj'ment
		OFNN BQHP	BQHQ	BQHR	BQHS
2000	3.0	185.0	218.1	184.9	208.8
2001	7.1	182.0	223.2	184.9	215.8
2002	11.5	175.0	222.7	178.1	221.9
2003	4.5	183.8	232.5	183.7	232.3
2004	2.6	188.2	249.1	188.5	250.8
2005	11.2	200.5	269.1	197.8	260.6
2006	22.9	220.8	298.3	213.3	280.6
2007	1.0	219.8	307.5	206.5	287.6
2006 Q1	10.0	54.8	74.1	53.5	69.4
Q2	10.7	57.0	75.7	55.3	71.6
Q3	1.7	54.8	74.2	51.9	69.3
Q4	0.5	54.2	74.3	52.7	70.4
2007 Q1	0.3	53.0	74.1	51.0	70.5
Q2	0.2	54.3	74.4	51.2	70.0
Q3	0.2	55.6	78.7	52.3	73.8
Q4	0.2	57.0	80.2	51.9	73.4
2006 Aug	0.9	18.2	24.9		
Sep	0.3	18.2	24.6		
Oct	0.2	18.2	24.5		
Nov	0.1	18.2	24.8		
Dec	0.1	17.8	24.9		
2007 Jan	0.1	17.7	24.4		
Feb	0.1	17.4	24.5		
Mar	0.1	17.9	25.2		
Apr	0.1	18.0	24.5		
May	0.1	18.0	24.8		
Jun	0.1	18.3	25.2		
Jul	0.1	18.6	26.3		
Aug	0.1	18.6	25.9		
Sep	0.1	18.4	26.5		
Oct	0.1	18.9	26.7		
Nov	0.1	19.3	27.2		
Dec	0.1	18.8	26.3		
2008 Jan	0.0	20.5	28.4		
Feb	0.1	20.4	27.9		
Percentage change, latest 3 months compared with:					
Previous 3 months					
	-33.3	5.5	2.7		
Same 3 months last year					
	-33.3	12.9	11.9		
Percentage latest quarter compared with:					
Previous quarter					
	0.0	2.5	1.9	-0.8	-0.5
Same quarter last year					
	-60.0	5.2	7.9	-1.5	4.3

Trade with EU and non-EU countries excluding MTIC fraud adjustments

£ billion				
Quarter/ Year	Current price	Current price	Current price	Current price
	Total EU exports less MTIC adj'ment	Total non-EU exports less MTIC adj'ment	Total EU imports less MTIC adj'ment	Total non-EU imports less MTIC adj'ment
	CLAQ	CLAR	CLAS	CLAT
2000	109.1	76.0	114.5	103.7
2001	106.9	75.2	119.3	103.9
2002	102.7	72.4	124.8	97.9
2003	106.1	77.6	132.2	100.3
2004	109.0	79.3	138.9	110.2
2005	116.3	84.0	147.1	122.0
2006	132.5	88.3	161.6	136.7
2007	127.2	92.7	167.2	140.3
2004 Q1	26.4	19.2	33.8	25.7
Q2	26.6	19.8	34.6	27.0
Q3	27.6	20.0	34.6	28.5
Q4	28.4	20.3	35.9	29.0
2005 Q1	28.0	19.6	35.8	28.0
Q2	27.6	21.0	35.6	29.3
Q3	29.6	21.5	37.1	31.9
Q4	31.1	21.9	38.6	32.8
2006 Q1	32.8	22.0	40.0	34.1
Q2	34.1	22.9	41.4	34.3
Q3	33.2	21.5	40.1	34.1
Q4	32.3	21.8	40.0	34.3
2007 Q1	30.9	22.1	40.4	33.8
Q2	30.6	23.6	40.8	33.6
Q3	32.3	23.3	42.4	36.3
Q4	33.3	23.7	43.6	36.6
Percentage change, latest quarter on previous quarter:				
	3.1	1.7	2.8	0.8
Percentage change, latest quarter on same quarter last year:				
	3.1	8.7	9.0	6.7

The adjustments to trade in goods relate only to part of the carousel version of VAT MTIC fraud. This fraud leads to under recording of imports as fraudsters import goods from the EU, which they then sell on before disappearing without paying VAT on that sale. The goods are eventually exported. Such exports are declared and are therefore already reflected in the UK's trade in goods statistics.

HM Revenue & Customs New Export System

2. HM Revenue & Customs New Export System (NES), which replaced manual (paper) Customs declarations with electronic submissions from the beginning of 2003, requires electronic messages from the trade once the goods have been exported in order to provide the departure date. In the absence of those messages being input initially, some non-EU exports had been allocated to the incorrect month. This was addressed by HMRC implementing a change to the processing rules. Because of these problems, ONS made adjustments to the trade statistics to better reflect the flow of exports to non-EU countries during the period January-September 2003.

Hurricane Katrina

3. The August 2005 estimate was affected by a downward adjustment to services data of £1.9 billion to account for the estimated payment of claims by Lloyd's of London arising from the effects of Hurricane Katrina.

Exports of insurance services are measured as total actual premiums earned plus total premium supplements minus the total claims due minus the change in the equalisation reserves. This means that claims for catastrophic events such as Hurricane Katrina should be recorded when the event to which they relate occurs rather than when cash is actually paid to the claimant. Most insurers have equalisation reserves which are drawn on when these types of claims occur so the effects of large claims due are offset by the changes in these reserves. However a large proportion of the claims for damages caused by Hurricane Katrina on UK insurers are on Lloyd's of London which does not have any equalisation reserves. This means that the effect of these large claims is to reduce significantly UK exports of insurance services in August 2005, when Hurricane Katrina occurred.

Price Indices

4. The implied price deflators derived by comparing current to cvm data are not the same as the price indices published in this release because the former are current weighted while the latter are base (2003) weighted.

EU enlargement

5. Two more countries joined the EU from 1 January 2007. These countries are Bulgaria and Romania. In addition, the coverage of EMU countries was extended to include Slovenia. In order to enable users to make long-run comparisons, data for the new definition EU and non-EU have been produced from January 1998 onwards for value, and from January 1999 onwards for volume and price indices. At the same time data for the old definitions will no longer be maintained. There are additional series for country groupings on the old definitions.

From January 2008, the coverage of EMU countries has been extended to cover Cyprus and Malta.

Some EU and non EU breakdowns of commodity data for Chained Volume Measures which are available from the Statbase service may be less reliable than the current price data. Please consult Caroline Lakin on 020 7014 2020 if you are considering using them.

Classifications and definitions

6. The Overseas Trade Statistics (OTS), on which the trade data are based, have been compiled under the United Nations Standard International Trade Classification Revision 4 (SITC R4) from January 2007 but the data have been converted back to SITC R3 for this release and the Monthly Review of External Trade Statistics (MRETS) publication in order to help users to compare data over time. There are some discontinuities at detailed levels, particularly between capital and intermediate goods where some products are allocated from January 2007 to intermediate goods rather than capital goods as done previously. It is also possible that volume and price changes between 2006 and 2007 may be less reliable than usual.

BACKGROUND NOTES

1. A Summary Quality Report for this First Release and associated data can be found on the National Statistics website at:
<http://www.statistics.gov.uk/CCI/article.asp?ID=1723>.

A paper entitled *Statistics on Trade in Goods* (GSS Methodological Series No. 36) describing the basis on which trade in goods statistics are compiled and the methodology employed to derive volume and price indices is available on the National Statistics website:
<http://www.statistics.gov.uk/StatBase/Product.asp?vlnk=14943>.

2. **Status of figures and planned future revisions**

Trade in goods figures for the most recent months are provisional and subject to revision in the light of (a) late data from HM Revenue & Customs, revisions to trade prices and revised estimates of trading associated with VAT MTIC fraud, and (b) revisions to seasonal adjustment factors which are re-estimated every month.

Trade in services estimates have been derived from a number of monthly and quarterly sources. For components where no monthly data are available, estimates have been derived on the basis of recent trends. The results should be used with appropriate caution, as they are therefore likely to be less reliable than those for trade in goods. More details of the data sources, estimation methodology and reliability of the monthly estimates of trade in services were set out in *Economic Trends* (November 1996 and September 1997).

3. Revisions to data provide one indication of the reliability of key indicators. The table below show summary information on the size and direction of the revisions which have been made to the data covering a five year period. A statistical test has been applied to the average revision to find out if it is statistically significantly different from zero. An asterisk (*) shows that the test is significant. An article explaining the past revisions performance for UK Trade statistics and what is being done to improve the first published estimates was published on 9 February 2005 at <http://www.statistics.gov.uk/cci/article.asp?id=1063>.

The table covers estimates of UK trade first published from March 2002 (for January 2002) to February 2007 (December 2006). A spreadsheet giving these estimates and the calculations behind the averages in the table is available on the National Statistics website at <http://www.statistics.gov.uk/StatBase/Product.asp?vlnk=1119>.

£ million

	Value in latest period	Revisions between first publication and estimates twelve months later	
		Average over the last 5 years (mean revision)	Average over the last 5 years without regard to sign (average absolute revision)
Total trade exports (IKBH)	32090	1036*	1061
Total trade imports (IKBI)	36529	1164*	1188
Total trade balance (IKBJ)	-4439	-128	456

An article analysing past revisions to quarterly balance of payments current account data was published in the May 2007 edition of *Economic & Labour Market Review*. It is available on the National Statistics website at:

http://www.statistics.gov.uk/elmr/05_07/downloads/ELMR_May07.pdf.

4. More information about revisions material in First Releases can be found on the National Statistics website:
<http://www.statistics.gov.uk/cci/article.asp?ID=793>.
5. Complete runs of series in this Release are available to download free of charge at <http://www.statistics.gov.uk/timeseries>. Alternatively, for low-cost tailored data call Online Services on 020 7533 5675 or email tailored@statistics.gov.uk. The Time Series Data service provides access to additional data via the following electronic publications:
 - supplementary data for this First Release – *Monthly Review of External Trade Statistics – Business Monitor MM24*;
 - quarterly data analysed by industry according to the *Standard Industrial Classification - UK Trade in Goods analysed in terms of industries - Business Monitor MQ10*.
6. *MM24* and *MQ10* are also available free of charge as PDF files on the National Statistics website (www.statistics.gov.uk/bop). Details of the policy governing the release of new data are available from the press office. Also available is a list of the names of those given pre-publication access to the contents of this release.
7. ONS delivered Q4 2007 current account estimates at the end of February 2008 to Eurostat solely for them to estimate aggregate euro-indicators. These estimates included the trade in goods figures in the February First Release and modelled estimates for the other components of the current account. The same approach will be followed for each quarterly euro-indicator delivery.
8. Details of the policy governing the release of new data are available from the press office. Also available is a list of the names of those given pre-publication access to the contents of this release. Additionally, in the light of the timing of this month's meeting of the Bank of England's Monetary Policy Committee, members of the Committee have had pre-publication access.
9. **National Statistics** are produced to high professional standards set out in the National Statistics Code of Practice. They undergo regular quality assurance reviews to ensure that they meet customer needs. They are produced free from any political interference. © Crown Copyright 2008.

Index to tables

Contents

- 1 Value of UK trade in goods and services
- 2 UK trade in goods by area
- 3 Volume and price indices (trade in goods)
- 4 Growth rates for volume and price indices
- 5 Volume indices with countries inside and outside the EU (trade in goods)
- 6 Price indices with countries inside and outside the EU (trade in goods)
- 7 Trade in oil
- 8 Value of trade in goods by commodity
- 9 Volume indices (trade in goods) by commodity
- 10 Price indices (trade in goods) by commodity
- 11 Trade in goods with selected EU trading partners
- 12 Trade in goods with countries outside the EU
- 13R Summary of revisions

1 VALUE OF UK TRADE IN GOODS AND SERVICES

Balance of Payments basis

£ million seasonally adjusted

	Total trade			Trade in goods			Oil			Trade in goods excluding oil		
	Exports	Imports	Balance	Exports	Imports	Balance	Exports	Imports	Balance	Exports	Imports	Balance
	IKBH	IKBI	IKBJ	BOKG	BOKH	BOKI	ELBL	ENXO	ENXQ	ELBM	ENXP	BQKH
2005	326 790	370 968	-44 178	211 608	280 397	-68 789	19 794	21 989	-2 195	191 814	258 408	-66 594
2006	370 788	417 320	-46 532	243 631	321 186	-77 555	23 274	26 706	-3 432	220 357	294 480	-74 123
2007	359 281	408 480	-49 199	220 857	308 506	-87 649	22 812	26 114	-3 302	198 045	282 392	-84 347
2006 Q2	98 953	110 323	-11 370	67 748	86 442	-18 694	6 438	6 781	-343	61 310	79 661	-18 351
Q3	88 394	100 206	-11 812	56 498	75 963	-19 465	5 915	7 225	-1 310	50 583	68 738	-18 155
Q4	87 208	98 752	-11 544	54 651	74 771	-20 120	5 126	5 876	-750	49 525	68 895	-19 370
2007 Q1	87 165	99 193	-12 028	53 364	74 480	-21 116	4 868	5 473	-605	48 496	69 007	-20 511
Q2	89 055	99 597	-10 542	54 508	74 681	-20 173	5 618	5 753	-135	48 890	68 928	-20 038
Q3	90 584	104 161	-13 577	55 779	78 948	-23 169	5 659	6 925	-1 266	50 120	72 023	-21 903
Q4	92 477	105 529	-13 052	57 206	80 397	-23 191	6 667	7 963	-1 296	50 539	72 434	-21 895
2007 Sep	30 127	34 966	-4 839	18 459	26 569	-8 110	2 027	2 494	-467	16 432	24 075	-7 643
Oct	30 727	35 183	-4 456	18 979	26 775	-7 796	2 109	2 568	-459	16 870	24 207	-7 337
Nov	31 130	35 555	-4 425	19 415	27 297	-7 882	2 178	2 887	-709	17 237	24 410	-7 173
Dec	30 620	34 791	-4 171	18 812	26 325	-7 513	2 380	2 508	-128	16 432	23 817	-7 385
2008 Jan	32 179	37 198	-5 019	20 539	28 463	-7 924	2 197	2 679	-482	18 342	25 784	-7 442
Feb	32 090	36 529	-4 439	20 489	27 976	-7 487	2 487	2 405	82	18 002	25 571	-7 569
Percentage change, latest month compared with:												
Previous month	-0.3	-1.8		-0.2	-1.7		13.2	-10.2		-1.9	-0.8	
3 months ended:												
2007 Feb	86 602	98 622	-12 020	53 305	74 210	-20 905	4 833	5 276	-443	48 472	68 934	-20 462
2007 Nov	91 984	105 704	-13 720	56 853	80 641	-23 788	6 314	7 949	-1 635	50 539	72 692	-22 153
2008 Feb	94 889	108 518	-13 629	59 840	82 764	-22 924	7 064	7 592	-528	52 776	75 172	-22 396
Percentage change, latest 3 months compared with:												
Previous 3 months	3.2	2.7		5.3	2.6		11.9	-4.5		4.4	3.4	
Same 3 months last year	9.6	10.0		12.3	11.5		46.2	43.9		8.9	9.0	

	Erratics ¹			Trade in goods excluding erratics			Trade in goods excluding oil and erratics			Trade in services		
	Exports	Imports	Balance	Exports	Imports	Balance	Exports	Imports	Balance	Exports	Imports	Balance
	BPAL	BQBB	BQKW	BPAO	BQBE	BPBM	BPBL	BQBG	BPAP	IKBB	IKBC	IKBD
2005	12 458	13 009	-551	199 150	267 388	-68 238	179 356	245 399	-66 043	115 182	90 571	24 611
2006	12 310	15 400	-3 090	231 321	305 786	-74 465	208 047	279 080	-71 033	127 157	96 134	31 023
2007	13 001	14 324	-1 323	207 856	294 182	-86 326	185 044	268 068	-83 024	138 424	99 974	38 450
2006 Q2	3 385	3 856	-471	64 363	82 586	-18 223	57 925	75 805	-17 880	31 205	23 881	7 324
Q3	2 733	3 885	-1 152	53 765	72 078	-18 313	47 850	64 853	-17 003	31 896	24 243	7 653
Q4	3 315	3 923	-608	51 336	70 848	-19 512	46 210	64 972	-18 762	32 557	23 981	8 576
2007 Q1	2 952	3 980	-1 028	50 412	70 500	-20 088	45 544	65 027	-19 483	33 801	24 713	9 088
Q2	3 714	3 463	251	50 794	71 218	-20 424	45 176	65 465	-20 289	34 547	24 916	9 631
Q3	3 113	3 647	-534	52 666	75 301	-22 635	47 007	68 376	-21 369	34 805	25 213	9 592
Q4	3 222	3 234	-12	53 984	77 163	-23 179	47 317	69 200	-21 883	35 271	25 132	10 139
2007 Sep	954	1 212	-258	17 505	25 357	-7 852	15 478	22 863	-7 385	11 668	8 397	3 271
Oct	1 126	1 163	-37	17 853	25 612	-7 759	15 744	23 044	-7 300	11 748	8 408	3 340
Nov	1 101	1 166	-65	18 314	26 131	-7 817	16 136	23 244	-7 108	11 715	8 258	3 457
Dec	995	905	90	17 817	25 420	-7 603	15 437	22 912	-7 475	11 808	8 466	3 342
2008 Jan	1 122	1 266	-144	19 417	27 197	-7 780	17 220	24 518	-7 298	11 640	8 735	2 905
Feb	1 113	1 467	-354	19 376	26 509	-7 133	16 889	24 104	-7 215	11 601	8 553	3 048
Percentage change, latest month compared with:												
Previous month	-0.8	15.9		-0.2	-2.5		-1.9	-1.7		-0.3	-2.1	
3 months ended:												
2007 Feb	2 937	4 055	-1 118	50 368	70 155	-19 787	45 535	64 879	-19 344	33 297	24 412	8 885
2007 Nov	3 181	3 541	-360	53 672	77 100	-23 428	47 358	69 151	-21 793	35 131	25 063	10 068
2008 Feb	3 230	3 638	-408	56 610	79 126	-22 516	49 546	71 534	-21 988	35 049	25 754	9 295
Percentage change, latest 3 months compared with:												
Previous 3 months	1.5	2.7		5.5	2.6		4.6	3.4		-0.2	2.8	
Same 3 months last year	10.0	-10.3		12.4	12.8		8.8	10.3		5.3	5.5	

¹ These are defined as ships, aircraft, precious stones and silver

[†] Earliest date for revisions to trade in goods is January 2008 and to trade in services is January 2006.

2 UK TRADE IN GOODS BY AREA

Balance of Payments basis

£ million seasonally adjusted

	EMU members ¹			Total EU (25) ²			Total EU (27) ³			Non-EU ⁴			Total		
	Exports	Imports	Balance	Exports	Imports	Balance	Exports	Imports	Balance	Exports	Imports	Balance	Exports	Imports	Balance
	QAKW	QAKX	QAKY	EGAE	EGAF	EGAG	LGCK	LGDC	LGCG	LGDY	LGER	LGDT	BOKG	BOKH	BOKI
2005	109 506	139 741	-30 235	120 619	157 391	-36 772	121 486	158 363	-36 877	90 122	122 034	-31 912	211 608	280 397	-68 789
2006	134 778	156 338	-21 560	151 479	183 370	-31 891	152 353	184 440	-32 087	91 278	136 746	-45 468	243 631	321 186	-77 555
2007	113 452	146 772	-33 320	127 019	167 115	-40 096	127 886	168 250	-40 364	92 971	140 256	-47 285	220 857	308 506	-87 649
2005 Q3	28 010	35 735	-7 725	30 835	40 347	-9 512	31 100	40 583	-9 483	23 532	31 927	-8 395	54 632	72 510	-17 878
Q4	30 014	37 996	-7 982	33 185	42 751	-9 566	33 400	43 000	-9 600	24 014	32 792	-8 778	57 414	75 792	-18 378
2006 Q1	36 240	42 271	-6 031	40 754	49 682	-8 928	40 960	49 942	-8 982	23 774	34 068	-10 294	64 734	84 010	-19 276
Q2	38 317	42 930	-4 613	43 783	51 905	-8 122	43 990	52 152	-8 162	23 758	34 290	-10 532	67 748	86 442	-18 694
Q3	31 078	36 072	-4 994	34 477	41 593	-7 116	34 709	41 859	-7 150	21 789	34 104	-12 315	56 498	75 963	-19 465
Q4	29 143	35 065	-5 922	32 465	40 190	-7 725	32 694	40 487	-7 793	21 957	34 284	-12 327	54 651	74 771	-20 120
2007 Q1	27 626	35 595	-7 969	30 951	40 470	-9 519	31 160	40 730	-9 570	22 204	33 750	-11 546	53 364	74 480	-21 116
Q2	27 360	35 926	-8 566	30 606	40 740	-10 134	30 809	41 060	-10 251	23 699	33 621	-9 922	54 508	74 681	-20 173
Q3	28 776	37 269	-8 493	32 227	42 383	-10 156	32 448	42 669	-10 221	23 331	36 279	-12 948	55 779	78 948	-23 169
Q4	29 690	37 982	-8 292	33 235	43 522	-10 287	33 469	43 791	-10 322	23 737	36 606	-12 869	57 206	80 397	-23 191
2006 Aug	10 618	12 180	-1 562	11 729	14 086	-2 357	11 800	14 170	-2 370	7 324	11 610	-4 286	19 124	25 780	-6 656
Sep	9 898	11 791	-1 893	10 953	13 564	-2 611	11 039	13 662	-2 623	7 389	11 187	-3 798	18 428	24 849	-6 421
Oct	9 879	11 577	-1 698	10 985	13 353	-2 368	11 061	13 437	-2 376	7 332	11 299	-3 967	18 393	24 736	-6 343
Nov	9 556	11 497	-1 941	10 710	13 208	-2 498	10 790	13 292	-2 502	7 533	11 695	-4 162	18 323	24 987	-6 664
Dec	9 708	11 991	-2 283	10 770	13 629	-2 859	10 843	13 758	-2 915	7 092	11 290	-4 198	17 935	25 048	-7 113
2007 Jan	9 487	11 890	-2 403	10 573	13 540	-2 967	10 632	13 601	-2 969	7 214	10 945	-3 731	17 846	24 546	-6 700
Feb	9 139	11 735	-2 596	10 276	13 335	-3 059	10 344	13 428	-3 084	7 180	11 188	-4 008	17 524	24 616	-7 092
Mar	9 000	11 970	-2 970	10 102	13 595	-3 493	10 184	13 701	-3 517	7 810	11 617	-3 807	17 994	25 318	-7 324
Apr	8 959	11 898	-2 939	9 976	13 372	-3 396	10 043	13 473	-3 430	8 045	11 073	-3 028	18 088	24 546	-6 458
May	9 346	12 089	-2 743	10 482	13 755	-3 273	10 550	13 858	-3 308	7 487	10 973	-3 486	18 037	24 831	-6 794
Jun	9 055	11 939	-2 884	10 148	13 613	-3 465	10 216	13 729	-3 513	8 167	11 575	-3 408	18 383	25 304	-6 921
Jul	9 594	12 346	-2 752	10 716	13 995	-3 279	10 785	14 097	-3 312	7 834	12 257	-4 423	18 619	26 354	-7 735
Aug	9 571	12 482	-2 911	10 742	14 152	-3 410	10 821	14 246	-3 425	7 880	11 779	-3 899	18 701	26 025	-7 324
Sep	9 611	12 441	-2 830	10 769	14 236	-3 467	10 842	14 326	-3 484	7 617	12 243	-4 626	18 459	26 569	-8 110
Oct	9 658	12 462	-2 804	10 904	14 288	-3 384	10 987	14 380	-3 393	7 992	12 395	-4 403	18 979	26 775	-7 796
Nov	10 023	12 825	-2 802	11 188	14 712	-3 524	11 276	14 804	-3 528	8 139	12 493	-4 354	19 415	27 297	-7 882
Dec	10 009	12 695	-2 686	11 143	14 522	-3 379	11 206	14 607	-3 401	7 606	11 718	-4 112	18 812	26 325	-7 513
2008 Jan	11 056	13 827	-2 771	12 248	15 911	-3 663	12 346	15 996	-3 650	8 193	12 467	-4 274	20 539	28 463	-7 924
Feb	10 615	13 212	-2 597	11 769	15 226	-3 457	11 853	15 317	-3 464	8 636	12 659	-4 023	20 489	27 976	-7 487
Percentage change on previous month:															
2008 Feb	-4.0	-4.4		-3.9	-4.3		-4.0	-4.2		5.4	1.5		-0.2	-1.7	
3 months ended:															
2007 Feb	28 334	35 616	-7 282	31 619	40 504	-8 885	31 819	40 787	-8 968	21 486	33 423	-11 937	53 305	74 210	-20 905
2007 Nov	29 292	37 728	-8 436	32 861	43 236	-10 375	33 105	43 510	-10 405	23 748	37 131	-13 383	56 853	80 641	-23 788
2008 Feb	31 680	39 734	-8 054	35 160	45 659	-10 499	35 405	45 920	-10 515	24 435	36 844	-12 409	59 840	82 764	-22 924
Percentage change, latest 3 months compared with:															
Previous 3 months	8.2	5.3		7.0	5.6		6.9	5.5		2.9	-0.8		5.3	2.6	
Same 3 months last year	11.8	11.6		11.2	12.7		11.3	12.6		13.7	10.2		12.3	11.5	

1 Austria, Belgium, Cyprus, Finland, France, Germany, Greece, Irish Republic, Italy, Luxembourg, Malta, Netherlands, Portugal, Slovenia and Spain

† Earliest date for revisions to trade in goods is January 2008.

2 EMU Members plus Czech Republic, Denmark, Estonia, Hungary, Latvia, Lithuania, Poland, Slovakia and Sweden

3 EU (25) plus Bulgaria and Romania

4 Total less EU (27)

3 VOLUME AND PRICE INDICES (TRADE IN GOODS) ¹

Balance of Payments basis

Indices 2003=100

	Volume (seasonally adjusted)						Price index (not seasonally adjusted)								
	Total		Total excluding oil		Total excluding oil and erratics ²		Total		Total excluding oil			Total excluding oil & erratics ²			
	Exports	Imports	Exports	Imports	Exports	Imports	Exports	Imports	Terms of trade ³			Exports	Imports	Exports	Imports
									BQKU	BQKV	BQKI				
2005	111.0	114.7	112.5	114.5	113.1	115.3	104.3	103.7	100.6	99.9	100.7	99.2	100.1	100.8	
2006	125.2	127.9	127.8	128.3	129.7	129.0	107.5	107.5	100.0	101.2	103.1	98.2	101.4	103.2	
2007	110.1	121.8	111.8	121.7	112.0	122.0	108.8	109.0	99.8	102.1	104.2	98.0	102.5	104.7	
2005 Q3	114.3	117.3	116.7	117.0	117.1	117.6	105.8	105.2	100.6	99.7	101.0	98.7	100.0	101.1	
Q4	120.2	121.8	122.5	121.8	123.8	122.9	106.3	105.9	100.4	100.6	102.1	98.5	100.9	102.1	
2006 Q1	134.6	133.8	137.9	134.2	141.4	135.7	108.0	107.3	100.7	102.0	103.0	99.0	102.1	102.9	
Q2	139.7	138.6	143.2	139.7	145.6	141.3	109.1	108.2	100.8	101.8	103.1	98.7	102.0	103.1	
Q3	113.7	119.8	115.6	119.6	117.5	119.6	108.2	108.1	100.1	100.9	103.1	97.9	101.3	103.3	
Q4	112.9	119.6	114.5	119.5	114.5	119.3	104.8	106.5	98.4	100.0	103.1	97.0	100.3	103.4	
2007 Q1	109.1	119.5	110.5	119.2	111.3	118.9	105.5	106.6	99.0	101.2	103.6	97.7	101.5	104.0	
Q2	109.3	118.5	110.7	118.7	109.7	119.1	107.8	108.6	99.3	101.5	104.3	97.3	101.8	104.7	
Q3	111.6	124.9	113.6	124.9	114.3	125.1	108.8	109.0	99.8	101.6	103.9	97.8	102.0	104.4	
Q4	110.6	124.2	112.2	124.0	112.5	125.1	113.3	111.7	101.4	104.0	105.0	99.0	104.6	105.5	
2006 Sep	112.9	118.6	114.7	118.1	116.4	118.1	106.4	106.9	99.5	100.5	103.0	97.6	100.8	103.2	
Oct	113.0	118.7	114.3	118.3	114.3	118.4	105.1	106.7	98.5	100.3	103.4	97.0	100.6	103.7	
Nov	113.8	119.3	115.6	118.8	115.1	118.3	104.7	106.5	98.3	100.1	103.4	96.8	100.4	103.6	
Dec	112.0	120.8	113.5	121.5	114.1	121.2	104.6	106.2	98.5	99.6	102.6	97.1	99.9	102.9	
2007 Jan	110.2	118.7	111.6	117.6	112.4	117.9	104.4	105.4	99.1	100.8	103.0	97.9	101.0	103.4	
Feb	107.3	119.2	108.8	119.6	110.0	118.4	105.2	106.2	99.1	101.1	103.3	97.9	101.4	103.7	
Mar	109.8	120.5	111.1	120.3	111.6	120.3	106.8	108.2	98.7	101.8	104.6	97.3	102.1	105.0	
Apr	109.1	117.0	110.2	116.6	106.0	117.6	107.2	108.1	99.2	101.4	104.0	97.5	101.7	104.4	
May	108.5	117.7	110.2	118.3	110.7	118.0	107.8	108.7	99.2	101.7	104.6	97.2	102.0	105.0	
Jun	110.3	120.8	111.8	121.1	112.4	121.7	108.3	109.0	99.4	101.4	104.2	97.3	101.8	104.7	
Jul	112.0	125.4	113.7	125.9	113.8	126.0	108.3	108.9	99.4	100.9	103.6	97.4	101.3	104.1	
Aug	113.3	123.7	116.3	123.6	117.1	123.9	108.1	108.5	99.6	101.2	103.7	97.6	101.6	104.2	
Sep	109.5	125.7	110.9	125.1	112.1	125.3	110.0	109.5	100.5	102.7	104.3	98.5	103.2	104.8	
Oct	111.5	125.7	113.0	125.4	113.1	126.0	111.3	110.2	101.0	103.1	104.3	98.8	103.7	104.8	
Nov	112.7	126.3	114.9	125.8	115.1	126.4	113.4	111.7	101.5	103.8	104.8	99.0	104.4	105.4	
Dec	107.5	120.7	108.8	120.8	109.4	122.8	115.1	113.1	101.8	105.1	105.9	99.2	105.7	106.4	
2008 Jan	116.4	127.4	119.2	128.2	119.7	128.6	117.4	115.8	101.4	106.9	108.3	98.7	107.5	108.9	
Feb	115.0	125.9	117.1	126.7	117.5	126.1	117.9	117.2	100.6	107.1	109.4	97.9	107.7	109.9	
Percentage change, latest month compared with:															
Previous month	-1.2	-1.2	-1.8	-1.2	-1.8	-1.9	0.4	1.2		0.2	1.0		0.2	0.9	
3 months ended:															
2007 Feb	109.8	119.6	111.3	119.6	112.2	119.2	104.7	105.9	98.9	100.5	103.0	97.6	100.8	103.3	
2007 Nov	111.2	125.9	112.9	125.4	113.4	125.9	111.6	110.5	101.0	103.2	104.5	98.8	103.8	105.0	
2008 Feb	113.0	124.7	115.0	125.2	115.5	125.8	116.8	115.4	101.3	106.4	107.9	98.6	107.0	108.4	
Percentage change, latest 3 months compared with:															
Previous 3 months	1.6	-1.0	1.9	-0.2	1.9	-0.1	4.7	4.4		3.1	3.3		3.1	3.2	
Same 3 months last year	2.9	4.3	3.4	4.7	3.0	5.6	11.5	8.9		5.8	4.8		6.2	4.9	

¹ These are provisional estimates subject to fluctuations when new or amended data become available.

² These are defined as ships, aircraft, precious stones and silver.

³ Export price index as a percentage of the import price index.

[†] Earliest date for revisions to trade in goods is January 2008.

4 GROWTH RATES FOR VOLUME AND PRICE INDICES ¹ (TRADE IN GOODS)

Balance of Payments basis

Indices 2003=100

	Volume (seasonally adjusted)						Price index (not seasonally adjusted)					
	Total		Total excluding oil		Total excluding oil and erratics ²		Total		Total excluding oil		Total excluding oil and erratics ²	
	Exports	Imports	Exports	Imports	Exports	Imports	Exports	Imports	Exports	Imports	Exports	Imports
2001	2.2	5.3	2.0	4.7	2.3	4.4	-1.6	-0.9	-1.0	-0.5	-0.9	-0.6
2002	-1.2	4.7	-0.9	5.5	-1.5	5.5	-0.1	-2.5	-0.1	-3.2	0.4	-2.9
2003	-0.3	1.8	0.1	1.4	-1.8	1.8	1.8	-0.7	1.3	-1.1	2.4	-0.9
2004	1.5	6.9	2.0	6.3	2.0	6.8	0.3	-0.5	-1.1	-1.3	-1.0	-1.0
2005	9.4	7.3	10.3	7.7	10.9	8.0	4.0	4.2	1.0	2.0	1.1	1.8
2006	12.8	11.5	13.6	12.1	14.7	11.9	3.1	3.7	1.3	2.4	1.3	2.4
2007	-12.1	-4.8	-12.5	-5.1	-13.6	-5.4	1.2	1.4	0.9	1.1	1.1	1.5
2005 Q3	6.3	5.1	7.4	5.2	6.9	4.7	2.8	2.9	0.4	1.2	0.5	1.2
Q4	5.2	3.8	5.0	4.1	5.7	4.5	0.5	0.7	0.9	1.1	0.9	1.0
2006 Q1	12.0	9.9	12.6	10.2	14.2	10.4	1.6	1.3	1.4	0.9	1.2	0.8
Q2	3.8	3.6	3.8	4.1	3.0	4.1	1.0	0.8	-0.2	0.1	-0.1	0.2
Q3	-18.6	-13.6	-19.3	-14.4	-19.3	-15.4	-0.8	-0.1	-0.9	-	-0.7	0.2
Q4	-0.7	-0.2	-1.0	-0.1	-2.6	-0.3	-3.1	-1.5	-0.9	-	-1.0	0.1
2007 Q1	-3.4	-0.1	-3.5	-0.3	-2.8	-0.3	0.7	0.1	1.2	0.5	1.2	0.6
Q2	0.2	-0.8	0.2	-0.4	-1.4	0.2	2.2	1.9	0.3	0.7	0.3	0.7
Q3	2.1	5.4	2.6	5.2	4.2	5.0	0.9	0.4	0.1	-0.4	0.2	-0.3
Q4	-0.9	-0.6	-1.2	-0.7	-1.6	-	4.1	2.5	2.4	1.1	2.5	1.1
Monthly:												
2006 Sep	-2.8	-2.4	-3.4	-2.7	-3.8	-2.8	-1.8	-1.0	-	0.4	-0.1	0.4
Oct	0.1	0.1	-0.3	0.2	-1.8	0.3	-1.2	-0.2	-0.2	0.4	-0.2	0.5
Nov	0.7	0.5	1.1	0.4	0.7	-0.1	-0.4	-0.2	-0.2	-	-0.2	-0.1
Dec	-1.6	1.3	-1.8	2.3	-0.9	2.5	-0.1	-0.3	-0.5	-0.8	-0.5	-0.7
2007 Jan	-1.6	-1.7	-1.7	-3.2	-1.5	-2.7	-0.2	-0.8	1.2	0.4	1.1	0.5
Feb	-2.6	0.4	-2.5	1.7	-2.1	0.4	0.8	0.8	0.3	0.3	0.4	0.3
Mar	2.3	1.1	2.1	0.6	1.5	1.6	1.5	1.9	0.7	1.3	0.7	1.3
Apr	-0.6	-2.9	-0.8	-3.1	-5.0	-2.2	0.4	-0.1	-0.4	-0.6	-0.4	-0.6
May	-0.5	0.6	-	1.5	4.4	0.3	0.6	0.6	0.3	0.6	0.3	0.6
Jun	1.7	2.6	1.5	2.4	1.5	3.1	0.5	0.3	-0.3	-0.4	-0.2	-0.3
Jul	1.5	3.8	1.7	4.0	1.2	3.5	-	-0.1	-0.5	-0.6	-0.5	-0.6
Aug	1.2	-1.4	2.3	-1.8	2.9	-1.7	-0.2	-0.4	0.3	0.1	0.3	0.1
Sep	-3.4	1.6	-4.6	1.2	-4.3	1.1	1.8	0.9	1.5	0.6	1.6	0.6
Oct	1.8	-	1.9	0.2	0.9	0.6	1.2	0.6	0.4	-	0.5	-
Nov	1.1	0.5	1.7	0.3	1.8	0.3	1.9	1.4	0.7	0.5	0.7	0.6
Dec	-4.6	-4.4	-5.3	-4.0	-5.0	-2.8	1.5	1.3	1.3	1.0	1.2	0.9
2008 Jan	8.3	5.6	9.6	6.1	9.4	4.7	2.0	2.4	1.7	2.3	1.7	2.3
Feb	-1.2	-1.2	-1.8	-1.2	-1.8	-1.9	0.4	1.2	0.2	1.0	0.2	0.9
3 month on 3 month comparison:												
2006 Sep	-18.6	-13.6	-19.3	-14.4	-19.3	-15.4	-0.9	-0.1	-0.9	-	-0.8	0.1
Oct	-12.1	-9.1	-12.4	-9.7	-12.7	-10.1	-2.2	-1.0	-1.1	-0.1	-1.0	-
Nov	-6.1	-4.3	-6.4	-4.7	-7.4	-5.2	-3.2	-1.6	-1.0	0.1	-1.0	0.2
Dec	-0.7	-0.1	-1.0	-	-2.6	-0.2	-3.1	-1.5	-0.9	-	-1.0	0.1
2007 Jan	-1.8	-	-2.0	-	-2.9	-0.2	-1.9	-1.1	-0.3	-	-0.3	0.1
Feb	-3.0	0.6	-3.1	1.0	-2.7	0.8	-0.6	-0.7	0.2	-0.3	0.2	-0.2
Mar	-3.4	-0.1	-3.5	-0.3	-2.8	-0.4	0.6	0.1	1.2	0.5	1.2	0.6
Apr	-2.9	-0.6	-3.1	-0.4	-4.1	-0.3	1.8	1.4	1.3	0.9	1.3	1.0
May	-0.6	-1.0	-0.7	-1.0	-2.4	-0.4	2.4	2.3	1.1	1.4	1.2	1.4
Jun	0.2	-0.8	0.2	-0.4	-1.5	0.2	2.2	1.9	0.3	0.6	0.3	0.6
Jul	1.4	2.0	1.7	2.5	2.8	2.6	1.6	1.3	-0.1	0.2	-	0.2
Aug	2.5	4.1	3.1	4.3	4.6	4.4	0.9	0.4	-0.5	-0.5	-0.4	-0.4
Sep	2.1	5.4	2.6	5.2	4.2	5.0	1.0	0.3	0.1	-0.4	0.2	-0.3
Oct	1.1	3.1	1.3	2.4	1.6	2.6	1.5	0.5	1.0	-	1.1	-
Nov	-0.6	2.1	-0.9	1.5	-0.9	1.6	3.1	1.5	2.0	0.6	2.2	0.6
Dec	-0.9	-0.6	-1.2	-0.7	-1.6	-	4.1	2.5	2.4	1.1	2.5	1.1
2008 Jan	0.7	-0.2	0.8	0.2	0.6	0.7	5.0	3.8	2.9	2.1	2.9	2.2
Feb	1.6	-1.0	1.9	-0.2	1.9	-0.1	4.7	4.4	3.1	3.3	3.1	3.2

¹ These are provisional estimates subject to fluctuations when new or amended data become available.

² These are defined as ships, aircraft, precious stones and silver.

5 VOLUME INDICES WITH COUNTRIES INSIDE AND OUTSIDE THE EU (TRADE IN GOODS)¹

Balance of Payments basis

Indices 2003=100 seasonally adjusted

	Trade in goods with EU countries ³						Trade in goods with Non-EU countries					
	Total		Total excluding oil		Total excluding oil and erratics ²		Total		Total excluding oil		Total excluding oil & erratics ²	
	Exports	Imports	Exports	Imports	Exports	Imports	Exports	Imports	Exports	Imports	Exports	Imports
	LGCT	LGDL	LKUL	LKVD	SHBS	SHCO	LGEH	LGFA	LKVZ	LKWS	SHDJ	SHED
2005	107.3	115.1	108.6	115.3	108.8	114.8	116.6	114.8	118.2	114.1	119.8	116.8
2006	132.8	132.5	135.6	132.7	137.2	132.6	114.0	123.0	116.3	123.1	118.0	124.5
2007	107.8	116.5	108.9	116.3	109.1	116.3	113.8	129.0	116.2	129.7	116.5	131.6
2005 Q3	109.9	118.5	112.6	118.8	112.3	118.7	121.1	116.5	123.0	115.1	124.6	116.8
Q4	118.4	124.6	120.4	124.9	121.3	125.0	123.0	119.1	125.6	118.5	127.7	120.7
2006 Q1	143.9	144.1	147.4	144.4	150.0	144.3	120.8	121.4	124.0	121.2	127.9	123.6
Q2	154.7	152.1	159.8	152.8	162.1	153.4	116.9	122.4	118.4	122.8	119.4	124.2
Q3	118.0	118.9	120.1	119.2	121.5	118.5	107.5	121.7	109.0	121.0	111.3	122.3
Q4	114.4	114.7	115.0	114.4	115.2	114.4	110.8	126.5	113.6	127.3	113.4	127.7
2007 Q1	108.2	114.4	108.9	113.9	108.7	113.8	110.9	126.6	113.1	127.2	115.3	127.4
Q2	104.3	113.7	105.2	113.4	105.8	113.3	116.6	125.0	118.8	126.5	115.9	128.8
Q3	109.6	118.7	110.9	118.7	111.2	118.8	114.9	133.5	117.7	134.0	119.2	135.5
Q4	109.1	119.4	110.6	119.0	110.7	119.4	112.9	130.9	115.0	131.3	115.5	134.6
2006 Aug	121.2	120.3	124.2	120.7	125.8	120.5	108.8	124.1	110.7	123.3	113.6	124.3
Sep	114.7	116.9	116.8	117.0	118.6	116.6	110.3	121.7	111.5	120.5	112.8	121.5
Oct	115.2	114.6	115.7	114.2	115.9	114.0	109.7	124.5	112.1	124.7	111.9	125.9
Nov	113.3	112.7	114.2	112.6	114.4	112.5	114.3	128.7	117.4	128.3	115.9	128.5
Dec	114.6	116.8	115.2	116.5	115.3	116.7	108.5	126.4	111.4	128.8	112.4	128.7
2007 Jan	111.3	115.2	111.7	114.5	111.4	115.0	109.1	123.7	111.8	122.5	113.9	123.0
Feb	107.5	113.6	108.0	113.3	108.1	113.1	107.6	127.0	110.3	129.1	112.9	127.2
Mar	105.7	114.3	107.0	113.9	106.6	113.4	115.9	129.0	117.2	129.9	119.2	132.0
Apr	102.0	112.0	102.3	111.4	102.9	111.2	119.2	124.0	121.2	124.7	111.0	128.7
May	107.3	114.6	108.2	114.4	108.7	114.2	110.6	122.0	113.5	124.1	114.1	124.3
Jun	103.6	114.6	105.0	114.4	105.8	114.5	120.0	129.1	121.7	130.7	122.6	133.4
Jul	109.7	117.6	110.8	117.8	111.2	117.8	115.7	136.0	118.0	137.8	117.9	139.5
Aug	110.3	118.9	112.3	118.8	112.7	118.8	118.1	130.2	122.3	130.8	123.9	132.5
Sep	108.9	119.5	109.7	119.4	109.7	119.7	110.8	134.2	112.9	133.3	115.8	134.4
Oct	109.4	119.3	111.3	119.2	111.3	119.7	114.8	134.7	116.0	134.6	116.0	136.7
Nov	110.2	120.8	112.1	120.2	112.0	120.5	116.4	133.8	119.0	133.9	119.8	136.2
Dec	107.7	118.2	108.3	117.7	108.8	117.9	107.6	124.3	109.9	125.4	110.7	131.0
2008 Jan	117.0	127.0	119.7	127.4	118.8	128.1	116.0	127.8	119.1	129.4	121.4	129.5
Feb	110.1	121.0	111.1	121.4	111.6	122.1	122.0	132.2	125.5	134.2	126.4	132.5
Percentage change on previous month:												
2008 Feb	-5.9	-4.7	-7.2	-4.7	-6.1	-4.7	5.2	3.4	5.4	3.7	4.1	2.3
3 months ended:												
2007 Feb	111.1	115.2	111.6	114.8	111.6	114.9	108.4	125.7	111.2	126.8	113.1	126.3
2007 Nov	109.5	119.9	111.0	119.6	111.0	120.0	114.0	134.2	116.0	133.9	117.2	135.8
2008 Feb	111.6	122.1	113.0	122.2	113.1	122.7	115.2	128.1	118.2	129.7	119.5	131.0
Percentage change, latest 3 months compared with:												
Previous 3 months	1.9	1.8	1.8	2.1	1.9	2.3	1.1	-4.6	1.9	-3.2	2.0	-3.5
Same 3 months last year	0.4	6.0	1.3	6.4	1.3	6.8	6.3	1.9	6.3	2.3	5.7	3.7

1 These are provisional estimates subject to fluctuations when new or amended data become available.

2 These are defined as ships, aircraft, precious stones and silver.

3 Includes trade with the Canary Islands, French Guiana, Guadeloupe, Martinique and Reunion.

† Earliest date for revisions to trade in goods is January 2008.

	Trade in goods with EU countries ³						Trade in goods with Non-EU countries					
	Total		Total excluding oil		Total excluding oil and erratics ²		Total		Total excluding oil		Total excluding oil & erratics ²	
	Exports	Imports	Exports	Imports	Exports	Imports	Exports	Imports	Exports	Imports	Exports	Imports
	LGCR	LGDJ	LKUJ	LKVB	SHBQ	SHCM	LGEF	LGEY	LKVX	LKWQ	SHDH	SHEB
2005	104.6	101.4	99.6	100.3	99.8	100.3	103.7	107.0	100.1	101.2	100.3	101.5
2006	107.9	104.0	100.8	102.5	101.1	102.5	106.7	112.3	101.5	103.9	101.5	104.4
2007	109.2	105.7	101.6	104.1	102.2	104.1	108.1	113.2	102.5	104.2	102.5	105.6
2005 Q3	105.9	101.6	99.0	100.2	99.2	100.2	105.4	110.2	100.4	102.2	100.7	102.5
Q4	106.4	102.3	100.0	101.0	100.2	101.0	106.0	110.7	101.4	103.6	101.6	103.8
2006 Q1	108.4	103.1	101.6	101.6	101.8	101.6	107.3	113.0	102.3	104.9	102.2	104.9
Q2	109.6	104.2	101.4	102.4	101.7	102.4	108.2	113.9	102.1	104.2	102.2	104.6
Q3	108.6	104.6	100.6	102.9	100.9	102.9	107.2	112.8	101.2	103.4	101.3	104.0
Q4	105.0	104.2	99.6	103.1	100.1	103.1	104.2	109.6	100.2	103.2	100.3	104.0
2007 Q1	105.4	103.9	100.7	102.9	101.2	102.8	105.3	110.1	101.9	104.6	101.7	105.8
Q2	108.1	105.5	101.0	104.0	101.6	103.9	107.1	112.7	101.9	104.5	101.8	105.9
Q3	109.1	105.8	101.0	104.1	101.6	104.0	108.2	113.2	102.2	103.5	102.2	104.9
Q4	114.1	107.8	103.8	105.5	104.5	105.5	111.8	116.9	104.0	104.1	104.2	105.7
2006 Aug	108.8	104.4	100.1	102.6	100.5	102.6	107.2	112.9	100.7	102.6	100.9	103.3
Sep	106.7	104.2	100.1	102.9	100.5	102.9	105.6	110.6	100.8	103.2	100.9	103.8
Oct	105.1	104.2	99.7	103.1	100.1	103.1	104.8	110.1	100.9	104.0	101.0	104.7
Nov	104.9	104.3	99.7	103.2	100.2	103.2	104.1	109.6	100.3	103.5	100.4	104.3
Dec	105.1	104.2	99.5	103.0	99.9	102.9	103.6	109.0	99.4	102.1	99.5	103.0
2007 Jan	104.4	103.1	100.3	102.3	100.8	102.3	104.1	108.4	101.3	104.0	101.1	105.1
Feb	105.1	103.5	100.5	102.5	101.0	102.5	105.1	109.7	101.9	104.3	101.7	105.5
Mar	106.8	105.0	101.2	103.8	101.7	103.7	106.6	112.3	102.5	105.6	102.3	106.9
Apr	107.4	105.0	100.8	103.6	101.4	103.5	106.7	112.2	101.9	104.5	101.8	106.0
May	108.1	105.8	101.2	104.4	101.8	104.3	107.1	112.6	102.0	104.8	101.9	106.2
Jun	108.7	105.7	100.9	104.1	101.5	104.0	107.5	113.3	101.8	104.2	101.7	105.6
Jul	108.8	105.6	100.4	103.8	101.1	103.7	107.4	113.2	101.2	103.1	101.1	104.6
Aug	108.4	105.5	100.7	103.9	101.3	103.8	107.4	112.5	101.7	103.4	101.7	104.7
Sep	110.0	106.3	101.8	104.6	102.4	104.5	109.7	113.8	103.6	103.9	103.8	105.3
Oct	111.7	106.7	102.6	104.7	103.3	104.6	110.3	114.9	103.5	103.5	103.7	105.1
Nov	114.3	107.9	103.7	105.5	104.5	105.5	111.7	116.9	103.6	103.6	103.8	105.3
Dec	116.2	108.8	105.0	106.3	105.8	106.3	113.3	118.9	104.8	105.1	105.0	106.7
2008 Jan	119.1	111.0	107.6	108.4	108.3	108.4	114.4	122.4	105.5	108.0	105.6	109.6
Feb	119.5	111.9	107.7	109.2	108.4	109.1	115.0	124.3	105.8	109.5	105.9	111.2
Percentage change on previous month:												
2008 Feb	0.3	0.8	0.1	0.7	0.1	0.6	0.5	1.6	0.3	1.4	0.3	1.5
3 months ended:												
2007 Feb	104.9	103.6	100.1	102.6	100.6	102.6	104.3	109.0	100.9	103.5	100.8	104.5
2007 Nov	112.0	107.0	102.7	104.9	103.4	104.9	110.6	115.2	103.6	103.7	103.8	105.2
2008 Feb	118.3	110.6	106.8	108.0	107.5	107.9	114.2	121.9	105.4	107.5	105.5	109.2
Percentage change, latest 3 months compared with:												
Previous 3 months	5.6	3.4	4.0	2.9	4.0	2.9	3.3	5.8	1.7	3.7	1.7	3.7
Same 3 months last year	12.8	6.7	6.7	5.2	6.9	5.2	9.6	11.8	4.5	3.9	4.7	4.4

1 These are provisional estimates subject to fluctuations when new or amended data become available.

2 These are defined as ships, aircraft, precious stones and silver.

3 Includes trade with the Canary Islands, French Guiana, Guadeloupe, Martinique and Reunion.

† Earliest date for revisions to trade in goods is January 2008.

7 TRADE IN OIL¹

Balance of Payments basis

Seasonally adjusted

	Exports						Imports					
	Balance of Trade in Oil £ million	Crude oil (SITC 333)				Rest of SITC 33 £ million	Total £ million	Crude oil (SITC 333)				Rest of SITC 33 £ million
		Total £ million	£ million	million tonnes	Avg value per tonne £			£ million	million tonnes	Avg value per tonne £		
	ENXQ	ELBL	BQNI	BOQM	BPBN	BOQN	ENXO	BQNJ	BQBH	BQAX	BQAY	
2005	-2 195	19 794	10 948	50.48	217	8 846	21 989	11 212	54.05	207	10 777	
2006	-3 432	23 274	12 890	47.69	270	10 384	26 706	14 272	55.72	256	12 434	
2007	-3 302	22 812	12 635	46.97	269	10 177	26 114	11 418	44.20	258	14 696	
2005 Q3	-1 528	5 127	2 673	10.70	250	2 454	6 655	3 557	15.09	236	3 098	
Q4	-715	5 475	2 919	11.49	254	2 556	6 190	3 097	13.16	235	3 093	
2006 Q1	-1 029	5 795	3 409	12.87	265	2 386	6 824	3 439	13.77	250	3 385	
Q2	-343	6 438	3 572	12.61	283	2 866	6 781	3 744	13.95	268	3 037	
Q3	-1 310	5 915	3 111	10.80	288	2 804	7 225	4 175	15.11	276	3 050	
Q4	-750	5 126	2 798	11.41	245	2 328	5 876	2 914	12.89	226	2 962	
2007 Q1	-605	4 868	2 685	11.77	228	2 183	5 473	2 192	10.59	207	3 281	
Q2	-135	5 618	3 107	12.12	256	2 511	5 753	2 265	9.32	243	3 488	
Q3	-1 266	5 659	3 125	11.26	278	2 534	6 925	3 313	12.67	261	3 612	
Q4	-1 296	6 667	3 718	11.82	315	2 949	7 963	3 648	11.62	314	4 315	
2007 Sep	-467	2 027	1 160	4.10	283	867	2 494	1 175	4.39	268	1 319	
Oct	-459	2 109	1 193	3.98	300	916	2 568	1 281	4.34	295	1 287	
Nov	-709	2 178	1 241	3.93	316	937	2 887	1 311	4.03	325	1 576	
Dec	-128	2 380	1 284	3.91	328	1 096	2 508	1 056	3.25	325	1 452	
2008 Jan	-482	2 197	1 153	3.31	348	1 044	2 679	1 391	4.12	338	1 288	
Feb	82	2 487	1 421	3.83	371	1 066	2 405	1 085	3.11	349	1 320	
3 months ended:												
2007 Feb	-443	4 833	2 589	11.24	231	2 244	5 276	2 159	10.20	211	3 117	
2007 Nov	-1 635	6 314	3 594	12.01	300	2 720	7 949	3 767	12.76	296	4 182	
2008 Feb	-528	7 064	3 858	11.05	349	3 206	7 592	3 532	10.48	337	4 060	
Percentage change, latest 3 months compared with:												
Previous 3 months		11.9	7.3	-8.0	16.5	17.9	-4.5	-6.2	-17.9	14.0	-2.9	
Same 3 months last year		46.2	49.0	-1.7	51.3	42.9	43.9	63.6	2.7	60.1	30.3	

1 Trade in petroleum and petroleum products. These figures differ from those published by the Department of Business Enterprise and Regulatory Reform from different sources and are on a time of shipment basis.

2 The average value per tonne may reflect not only changes in price but also changes in the commodity mix.

† Earliest date for revisions to trade in goods is January 2008.



VALUE OF TRADE IN GOODS BY COMMODITY

Balance of Payments basis

£ million seasonally adjusted

	Food, beverages and tobacco (SITC 0 + 1)			Basic materials (SITC 2 + 4)			Fuels (SITC 3)		
	Exports	Imports	Balance	Exports	Imports	Balance	Exports	Imports	Balance
	BOPL	BQAR	ELBE	BOPM	BQAS	ELBF	BOPN	BQAT	ELBG
2005	10 647	23 695	-13 048	3 981	6 770	-2 789	21 496	25 921	-4 425
2006	10 940	25 013	-14 073	4 890	7 887	-2 997	25 400	31 627	-6 227
2007	11 785	26 725	-14 940	5 507	9 563	-4 056	24 767	31 262	-6 495
2005 Q4	2 620	6 034	-3 414	1 007	1 738	-731	5 874	7 792	-1 918
2006 Q1	2 629	6 188	-3 559	1 103	1 871	-768	6 289	8 447	-2 158
Q2	2 723	6 159	-3 436	1 198	1 886	-688	7 045	7 799	-754
Q3	2 758	6 255	-3 497	1 218	1 926	-708	6 541	8 378	-1 837
Q4	2 830	6 411	-3 581	1 371	2 204	-833	5 525	7 003	-1 478
2007 Q1	2 900	6 445	-3 545	1 292	2 149	-857	5 188	6 667	-1 479
Q2	2 892	6 584	-3 692	1 463	2 412	-949	6 116	6 760	-644
Q3	2 994	6 774	-3 780	1 308	2 563	-1 255	6 115	8 020	-1 905
Q4	2 999	6 922	-3 923	1 444	2 439	-995	7 348	9 815	-2 467
2007 Sep	978	2 283	-1 305	414	805	-391	2 153	2 862	-709
Oct	993	2 334	-1 341	454	812	-358	2 352	3 062	-710
Nov	1 020	2 333	-1 313	527	818	-291	2 419	3 504	-1 085
Dec	986	2 255	-1 269	463	809	-346	2 577	3 249	-672
2008 Jan	1 188	2 577	-1 389	460	935	-475	2 432	3 468	-1 036
Feb	1 071	2 483	-1 412	574	946	-372	2 672	3 043	-371
3 months ended:									
2007 Feb	2 878	6 437	-3 559	1 264	2 165	-901	5 167	6 372	-1 205
2007 Nov	2 991	6 950	-3 959	1 395	2 435	-1 040	6 924	9 428	-2 504
2008 Feb	3 245	7 315	-4 070	1 497	2 690	-1 193	7 681	9 760	-2 079
Percentage change, latest 3 months compared with:									
Previous 3 months	8.5	5.3		7.3	10.5		10.9	3.5	
Same 3 months last year	12.8	13.6		18.4	24.2		48.7	53.2	

	Semi-manufactures (SITC 5 + 6)			Finished manufactures (SITC 7 + 8)			Total manufactures (SITC 5 to 8)			Miscellaneous (SITC 9)		
	Exports	Imports	Balance	Exports	Imports	Balance	Exports	Imports	Balance	Exports	Imports	Balance
	BOPO	BQAU	ELBH	BOPP	BQAV	ELBI	BPAN	BQBD	ELBJ	BOQL	BQAW	BQKX
2005	59 880	62 677	-2 797	114 484	159 493	-45 009	174 364	222 170	-47 806	1 120	1 841	-721
2006	64 811	69 342	-4 531	136 304	185 247	-48 943	201 115	254 589	-53 474	1 286	2 070	-784
2007	68 310	74 598	-6 288	109 319	164 069	-54 750	177 629	238 667	-61 038	1 169	2 289	-1 120
2005 Q4	15 230	15 968	-738	32 268	43 785	-11 517	47 498	59 753	-12 255	415	475	-60
2006 Q1	15 780	16 730	-950	38 556	50 228	-11 672	54 336	66 958	-12 622	377	546	-169
Q2	16 317	16 973	-656	40 153	53 116	-12 963	56 470	70 089	-13 619	312	509	-197
Q3	16 094	17 399	-1 305	29 580	41 542	-11 962	45 674	58 941	-13 267	307	463	-156
Q4	16 620	18 240	-1 620	28 015	40 361	-12 346	44 635	58 601	-13 966	290	552	-262
2007 Q1	16 824	18 173	-1 349	26 803	40 518	-13 715	43 627	58 691	-15 064	357	528	-171
Q2	16 968	18 435	-1 467	26 817	39 945	-13 128	43 785	58 380	-14 595	252	545	-293
Q3	17 423	19 239	-1 816	27 672	41 820	-14 148	45 095	61 059	-15 964	267	532	-265
Q4	17 095	18 751	-1 656	28 027	41 786	-13 759	45 122	60 537	-15 415	293	684	-391
2007 Sep	5 734	6 388	-654	9 092	14 055	-4 963	14 826	20 443	-5 617	88	176	-88
Oct	5 750	6 216	-466	9 338	14 117	-4 779	15 088	20 333	-5 245	92	234	-142
Nov	5 825	6 259	-434	9 518	14 161	-4 643	15 343	20 420	-5 077	106	222	-116
Dec	5 520	6 276	-756	9 171	13 508	-4 337	14 691	19 784	-5 093	95	228	-133
2008 Jan	6 347	6 559	-212	9 996	14 712	-4 716	16 343	21 271	-4 928	116	212	-96
Feb	6 304	6 713	-409	9 771	14 597	-4 826	16 075	21 310	-5 235	97	194	-97
3 months ended:												
2007 Feb	16 648	18 120	-1 472	27 022	40 577	-13 555	43 670	58 697	-15 027	326	539	-213
2007 Nov	17 309	18 863	-1 554	27 948	42 333	-14 385	45 257	61 196	-15 939	286	632	-346
2008 Feb	18 171	19 548	-1 377	28 938	42 817	-13 879	47 109	62 365	-15 256	308	634	-326
Percentage change, latest 3 months compared with:												
Previous 3 months	5.0	3.6		3.5	1.1		4.1	1.9		7.7	0.3	
Same 3 months last year	9.1	7.9		7.1	5.5		7.9	6.2		-5.5	17.6	
EXCLUDING ERRATICS¹												
Previous 3 months	6.0	3.8		3.2	1.0		4.3	1.9				
Same 3 months last year	10.2	9.3		6.2	6.7		7.7	7.5				

¹ These are defined as precious stones and silver in semi-manufactures, and as ships and aircraft in finished manufactures.

[†] Earliest date for revisions to trade in goods is January 2008.

9 VOLUME INDICES (TRADE IN GOODS) BY COMMODITY ¹

Balance of Payments basis

Indices 2003=100 seasonally adjusted

	Food, beverages and tobacco (SITC 0 + 1)		Basic materials (SITC 2 + 4)		Fuels (SITC 3)		Semi-manufactures (SITC 5 + 6)		Finished manufactures (SITC 7 + 8)		Total manufactures (SITC 5 to 8)	
	Exports	Imports	Exports	Imports	Exports	Imports	Exports	Imports	Exports	Imports	Exports	Imports
<i>Weights²</i> <i>(total trade = 1000)</i>	58	89	18	26	88	52	289	237	543	589	832	826
	BPEM	BQBK	BAFB	BQBL	BAFC	BQBM	BAHA	BQBN	BAHY	ELAB	BOGT	ELAJ
2005	98	110	107	102	90	131	108	106	117	118	114	115
2006	99	114	121	110	92	135	116	112	139	137	131	130
2007	103	117	135	121	88	143	122	118	108	122	113	121
2005 Q3	98	109	109	106	83	133	111	106	123	122	119	118
Q4	96	111	107	100	88	142	110	107	134	129	125	122
2006 Q1	95	114	112	106	91	143	113	109	158	147	143	137
Q2	98	112	117	107	96	126	117	110	165	157	148	144
Q3	99	112	120	107	90	139	115	111	118	123	117	120
Q4	102	116	134	118	89	132	120	116	113	120	116	119
2007 Q1	103	115	127	115	87	142	121	115	106	120	111	119
Q2	102	117	138	121	90	131	122	116	106	118	111	118
Q3	103	118	132	129	85	140	124	123	109	125	115	124
Q4	102	116	142	119	89	157	120	118	109	125	113	123
2007 Sep	100	118	129	120	88	150	122	123	107	126	112	125
Oct	101	119	139	121	92	154	122	118	109	127	114	124
Nov	104	118	154	119	87	163	123	118	111	128	115	125
Dec	100	112	132	117	89	155	115	117	107	120	110	119
2008 Jan	115	125	126	130	82	148	133	120	113	128	120	126
Feb	106	119	155	128	87	137	131	123	111	127	118	126
3 months ended:												
2007 Feb	103	116	126	117	87	133	120	115	108	121	112	119
2007 Nov	102	118	141	120	89	156	122	120	109	127	114	125
2008 Feb	107	119	138	125	86	147	126	120	110	125	116	124
Percentage change, latest 3 months compared with:												
Previous 3 months	5.2	0.3	-2.1	4.2	-3.4	-5.8	3.3	0.3	1.2	-1.6	2.1	-0.8
Same 3 months last year	3.9	2.6	9.5	6.8	-1.5	10.0	5.3	4.3	1.8	3.6	3.3	3.9
EXCLUDING ERRATICS³												
Previous 3 months							3.8	0.8	0.6	-1.3	2.0	-1.1
Same 3 months last year							5.5	5.0	0.9	4.7	2.6	4.8

1 These are provisional estimates subject to fluctuations when new or amended data become available.

2 The weights shown are in proportion to the total value of trade in 2003 and are used to combine the volume indices to calculate the totals for 2004 onwards. For 2003 and earlier, totals are calculated using the equivalent weights for the previous year (eg totals for 2003 use 2002 weights).

3 These are defined as precious stones and silver in semi-manufactures, and as ships and aircraft in finished manufactures.

[†] Earliest date for revisions to trade in goods is January 2008.

10 PRICE INDICES (TRADE IN GOODS) BY COMMODITY¹

Balance of Payments Consistent basis

Indices 2003=100 not seasonally adjusted

	Food, beverages and tobacco (SITC 0 + 1)		Basic materials (SITC 2 + 4)		Fuels (SITC 3)		Semi-manufactures (SITC 5 + 6)		Finished manufactures (SITC 7 + 8)		Total manufactures (SITC 5 to 8)	
	Exports	Imports	Exports	Imports	Exports	Imports	Exports	Imports	Exports	Imports	Exports	Imports
<i>Weights²</i> <i>(total trade = 1000)</i>	58	89	18	26	88	52	289	237	543	589	832	826
	BPAI	ELAN	BPAW	ELAO	BPDU	ELAP	BQAA	ELAQ	BQAB	ELAR	BQAI	ELAY
2005	100	102	115	108	156	168	101	107	98	97	99	100
2006	102	105	122	117	182	200	102	112	99	97	100	102
2007	105	110	126	127	186	207	102	115	100	97	101	102
2005 Q3	100	103	115	108	175	192	101	106	98	97	99	100
Q4	100	103	118	110	175	187	101	108	98	98	99	101
2006 Q1	102	102	120	114	182	200	103	110	99	98	100	102
Q2	103	105	124	115	193	213	103	112	99	97	100	102
Q3	102	106	123	118	191	208	102	114	98	97	99	102
Q4	101	107	122	121	162	179	101	114	97	97	99	102
2007 Q1	103	107	124	122	155	171	101	114	99	97	100	102
Q2	104	108	129	129	179	197	102	116	99	97	100	102
Q3	105	109	125	126	190	213	102	115	99	96	100	102
Q4	108	115	127	131	219	246	104	115	101	97	102	102
2007 Sep	106	111	126	128	193	216	103	115	100	97	101	102
Oct	107	113	125	129	204	230	103	115	101	97	102	102
Nov	108	115	125	131	223	250	104	115	101	97	102	102
Dec	110	117	130	133	231	257	105	116	102	98	103	103
2008 Jan	113	120	135	139	237	267	106	119	104	100	105	105
Feb	114	122	138	142	240	273	106	120	104	100	105	106
3 months ended:												
2007 Feb	102	106	122	121	155	170	101	113	98	97	99	102
2007 Nov	107	113	125	129	207	232	103	115	101	97	102	102
2008 Feb	112	120	134	138	236	266	106	118	103	99	104	105
Percentage change, latest 3 months compared with:												
Previous 3 months	5.0	5.9	7.2	6.7	14.2	14.5	2.3	2.9	2.6	2.4	2.6	2.6
Same 3 months last year	9.8	12.9	10.1	14.4	51.9	56.0	4.6	4.7	5.1	2.8	5.0	3.0
EXCLUDING ERRATICS³												
Previous 3 months							2.2	2.8	3.0	2.8	2.6	2.6
Same 3 months last year							5.2	5.5	5.8	2.1	5.4	3.3

1 These are provisional estimates subject to fluctuations when new or amended data become available.

2 The weights shown are in proportion to the total value of trade in 2003 and are used to combine the volume indices to calculate the totals for 2004 onwards. For 2003 and earlier, totals are calculated using the equivalent weights for the previous year (eg totals for 2003 use 2002 weights).

3 These are defined as precious stones and silver in semi-manufactures, and as ships and aircraft in finished manufactures.

[†] Earliest date for revisions to trade in goods is January 2008.

11 TRADE IN GOODS WITH SELECTED EU TRADING PARTNERS

Balance of Payments Consistent basis

£ million seasonally adjusted

	Belgium & Luxembourg			France			Germany			Irish Republic		
	Exports	Imports	Balance	Exports	Imports	Balance	Exports	Imports	Balance	Exports	Imports	Balance
	CHNQ	CHNY	CHNF	ENYL	ENYP	ENYT	ENYO	ENYS	ENYW	CHNS	CHOA	CHNH
2005	11 394	15 155	-3 761	19 931	22 184	-2 253	23 025	39 169	-16 144	16 294	10 411	5 883
2006	15 081	18 202	-3 121	28 692	26 902	1 790	27 601	42 709	-15 108	17 479	10 779	6 700
2007	12 150	15 716	-3 566	18 110	21 823	-3 713	24 701	43 944	-19 243	17 793	11 390	6 403
2005 Q3	2 944	3 761	-817	5 025	5 568	-543	5 675	9 775	-4 100	4 131	2 711	1 420
Q4	3 131	4 291	-1 160	5 748	6 313	-565	6 071	10 182	-4 111	4 295	2 731	1 564
2006 Q1	3 927	5 154	-1 227	8 297	7 755	542	6 820	10 904	-4 084	4 478	2 754	1 724
Q2	4 107	4 932	-825	9 243	7 967	1 276	7 656	10 918	-3 262	4 318	2 812	1 506
Q3	3 784	4 388	-604	5 795	5 751	44	6 690	10 445	-3 755	4 354	2 481	1 873
Q4	3 263	3 728	-465	5 357	5 429	-72	6 435	10 442	-4 007	4 329	2 732	1 597
2007 Q1	2 944	3 625	-681	4 549	5 391	-842	6 058	10 934	-4 876	4 328	2 761	1 567
Q2	2 834	3 603	-769	4 229	5 264	-1 035	6 080	11 194	-5 114	4 432	2 777	1 655
Q3	3 119	4 145	-1 026	4 568	5 534	-966	6 167	10 983	-4 816	4 471	2 969	1 502
Q4	3 253	4 343	-1 090	4 764	5 634	-870	6 396	10 833	-4 437	4 562	2 883	1 679
2007 Sep	1 032	1 388	-356	1 578	1 897	-319	2 069	3 623	-1 554	1 478	972	506
Oct	1 096	1 418	-322	1 557	1 780	-223	2 106	3 668	-1 562	1 513	1 009	504
Nov	1 108	1 391	-283	1 642	1 901	-259	2 155	3 709	-1 554	1 495	946	549
Dec	1 049	1 534	-485	1 565	1 953	-388	2 135	3 456	-1 321	1 554	928	626
2008 Jan	1 179	1 444	-265	1 620	2 014	-394	2 516	4 039	-1 523	1 577	1 089	488
Feb	891	1 410	-519	1 556	2 010	-454	2 440	3 887	-1 447	1 600	878	722
3 months ended:												
2007 Feb	3 051	3 628	-577	4 875	5 410	-535	6 299	10 920	-4 621	4 267	2 764	1 503
2007 Nov	3 236	4 197	-961	4 777	5 578	-801	6 330	11 000	-4 670	4 486	2 927	1 559
2008 Feb	3 119	4 388	-1 269	4 741	5 977	-1 236	7 091	11 382	-4 291	4 731	2 895	1 836
Percentage change, latest 3 months compared with:												
Previous 3 months	-3.6	4.6		-0.8	7.2		12.0	3.5		5.5	-1.1	
Same 3 months last year	2.2	20.9		-2.7	10.5		12.6	4.2		10.9	4.7	
	Italy			Netherlands			Spain			Sweden		
	Exports	Imports	Balance	Exports	Imports	Balance	Exports	Imports	Balance	Exports	Imports	Balance
	CHNO	CHNW	CHOE	CHNP	CHNX	CHNE	CHNV	CHOD	CHNM	CHNA	CHND	CHVI
2005	8 790	12 673	-3 883	12 716	20 436	-7 720	10 677	11 450	-773	4 588	5 463	-875
2006	9 494	12 790	-3 296	16 521	22 301	-5 780	12 295	12 156	139	5 246	5 992	-746
2007	9 170	13 054	-3 884	15 150	22 960	-7 810	10 000	10 445	-445	4 887	5 257	-370
2005 Q3	2 178	3 209	-1 031	3 425	5 495	-2 070	2 950	3 176	-226	1 103	1 327	-224
Q4	2 358	3 274	-916	3 624	5 503	-1 879	2 938	3 392	-454	1 217	1 304	-87
2006 Q1	2 538	3 369	-831	4 636	6 008	-1 372	3 490	3 543	-53	1 328	1 493	-165
Q2	2 407	3 322	-915	4 691	5 928	-1 237	3 744	3 693	51	1 464	1 599	-135
Q3	2 332	2 988	-656	3 699	5 195	-1 496	2 605	2 486	119	1 254	1 482	-228
Q4	2 217	3 111	-894	3 495	5 170	-1 675	2 456	2 434	22	1 200	1 418	-218
2007 Q1	2 253	3 201	-948	3 303	5 306	-2 003	2 598	2 481	117	1 218	1 328	-110
Q2	2 199	3 193	-994	3 592	5 575	-1 983	2 394	2 493	-99	1 204	1 270	-66
Q3	2 323	3 311	-988	4 070	5 719	-1 649	2 518	2 748	-230	1 209	1 303	-94
Q4	2 395	3 349	-954	4 185	6 360	-2 175	2 490	2 723	-233	1 256	1 356	-100
2007 Sep	769	1 109	-340	1 371	1 936	-565	812	900	-88	414	419	-5
Oct	779	1 129	-350	1 280	1 891	-611	770	924	-154	424	451	-27
Nov	813	1 118	-305	1 446	2 237	-791	833	898	-65	415	458	-43
Dec	803	1 102	-299	1 459	2 232	-773	887	901	-14	417	447	-30
2008 Jan	858	1 141	-283	1 669	2 357	-688	1 003	973	30	478	579	-101
Feb	850	1 044	-194	1 720	2 322	-602	948	956	-8	419	600	-181
3 months ended:												
2007 Feb	2 260	3 233	-973	3 351	5 222	-1 871	2 643	2 497	146	1 208	1 367	-159
2007 Nov	2 361	3 356	-995	4 097	6 064	-1 967	2 415	2 722	-307	1 253	1 328	-75
2008 Feb	2 511	3 287	-776	4 848	6 911	-2 063	2 838	2 830	8	1 314	1 626	-312
Percentage change, latest 3 months compared with:												
Previous 3 months	6.4	-2.1		18.3	14.0		17.5	4.0		4.9	22.4	
Same 3 months last year	11.1	1.7		44.7	32.3		7.4	13.3		8.8	18.9	

† Earliest date for revisions to trade in goods is January 2008.

12 TRADE IN GOODS WITH SELECTED NON-EU TRADING PARTNERS

Balance of Payments Consistent basis

£ million seasonally adjusted

	Canada			China			Hong Kong			Japan		
	Exports	Imports	Balance	Exports	Imports	Balance	Exports	Imports	Balance	Exports	Imports	Balance
	EOBC	EOBW	EOCQ	ERDN	ERDZ	EREL	ERDG	ERDS	EREE	EOBD	EOBX	EOCR
2005	3 277	4 155	-878	2 811	12 963	-10 152	3 088	6 601	-3 513	3 900	8 670	-4 770
2006	3 895	4 987	-1 092	3 265	15 292	-12 027	2 864	7 366	-4 502	4 109	7 902	-3 793
2007	3 259	5 737	-2 478	3 823	18 613	-14 790	2 700	6 896	-4 196	3 832	7 824	-3 992
2005 Q3	780	1 100	-320	723	3 412	-2 689	820	1 725	-905	984	2 082	-1 098
Q4	929	1 056	-127	839	3 426	-2 587	851	1 772	-921	1 006	2 167	-1 161
2006 Q1	1 019	1 339	-320	728	3 719	-2 991	734	1 852	-1 118	1 095	2 067	-972
Q2	1 094	1 178	-84	818	3 792	-2 974	752	1 919	-1 167	1 023	1 970	-947
Q3	870	1 174	-304	815	3 752	-2 937	669	1 796	-1 127	999	1 957	-958
Q4	912	1 296	-384	904	4 029	-3 125	709	1 799	-1 090	992	1 908	-916
2007 Q1	923	1 251	-328	786	4 699	-3 913	574	1 734	-1 160	947	2 020	-1 073
Q2	832	1 516	-684	940	4 393	-3 453	647	1 599	-952	973	1 929	-956
Q3	760	1 660	-900	976	4 597	-3 621	709	1 746	-1 037	952	1 942	-990
Q4	744	1 310	-566	1 121	4 924	-3 803	770	1 817	-1 047	960	1 933	-973
2007 Aug	246	427	-181	334	1 497	-1 163	249	579	-330	320	645	-325
Sep	259	478	-219	302	1 585	-1 283	206	590	-384	307	659	-352
Oct	244	422	-178	362	1 582	-1 220	270	591	-321	322	666	-344
Nov	280	448	-168	403	1 677	-1 274	257	607	-350	339	649	-310
Dec	220	440	-220	356	1 665	-1 309	243	619	-376	299	618	-319
2008 Jan	212	450	-238	381	1 615	-1 234	411	609	-198	323	622	-299
Feb	216	392	-176	461	1 787	-1 326	315	698	-383	336	663	-327
3 months ended:												
2007 Feb	955	1 244	-289	776	4 264	-3 488	586	1 725	-1 139	956	1 974	-1 018
2007 Nov	783	1 348	-565	1 067	4 844	-3 777	733	1 788	-1 055	968	1 974	-1 006
2008 Feb	648	1 282	-634	1 198	5 067	-3 869	969	1 926	-957	958	1 903	-945
Percentage change, latest 3 months compared with:												
Previous 3 months	-17.2	-4.9		12.3	4.6		32.2	7.7		-1.0	-3.6	
Same 3 months last year	-32.1	3.1		54.4	18.8		65.4	11.7		0.2	-3.6	
	Norway			South Korea			Switzerland			USA		
	Exports	Imports	Balance	Exports	Imports	Balance	Exports	Imports	Balance	Exports	Imports	Balance
	EPLX	EPMX	EPNX	ERDM	ERDY	EREK	EPLV	EPMV	EPNV	EOBB	EOBV	EOCP
2005	2 211	12 078	-9 867	1 677	3 064	-1 387	4 985	3 882	1 103	30 913	22 184	8 729
2006	2 125	14 472	-12 347	1 746	3 085	-1 339	4 190	4 376	-186	32 103	25 723	6 380
2007	2 671	14 264	-11 593	1 897	3 048	-1 151	3 768	4 726	-958	32 109	25 626	6 483
2005 Q3	550	3 309	-2 759	432	808	-376	1 425	975	450	7 697	5 833	1 864
Q4	629	3 492	-2 863	422	766	-344	1 524	1 064	460	8 069	5 816	2 253
2006 Q1	508	3 707	-3 199	372	787	-415	1 355	1 061	294	8 061	6 384	1 677
Q2	583	3 754	-3 171	429	798	-369	1 099	1 149	-50	8 493	6 562	1 931
Q3	504	4 025	-3 521	466	744	-278	814	1 063	-249	7 988	6 042	1 946
Q4	530	2 986	-2 456	479	756	-277	922	1 103	-181	7 561	6 735	826
2007 Q1	558	3 107	-2 549	427	745	-318	821	1 188	-367	7 887	6 341	1 546
Q2	715	3 206	-2 491	492	705	-213	967	1 118	-151	8 127	6 403	1 724
Q3	609	3 587	-2 978	493	808	-315	979	1 245	-266	8 032	6 526	1 506
Q4	789	4 364	-3 575	485	790	-305	1 001	1 175	-174	8 063	6 356	1 707
2007 Aug	194	1 105	-911	180	262	-82	350	383	-33	2 734	2 146	588
Sep	218	1 404	-1 186	128	278	-150	275	412	-137	2 765	2 216	549
Oct	267	1 402	-1 135	157	260	-103	332	392	-60	2 700	2 211	489
Nov	266	1 512	-1 246	169	273	-104	340	388	-48	2 773	2 105	668
Dec	256	1 450	-1 194	159	257	-98	329	395	-66	2 590	2 040	550
2008 Jan	162	1 852	-1 690	177	277	-100	312	381	-69	2 780	2 015	765
Feb	220	1 513	-1 293	182	292	-110	263	420	-157	2 860	1 996	864
3 months ended:												
2007 Feb	486	3 047	-2 561	377	746	-369	820	1 143	-323	7 602	6 710	892
2007 Nov	751	4 318	-3 567	454	811	-357	947	1 192	-245	8 238	6 532	1 706
2008 Feb	638	4 815	-4 177	518	826	-308	904	1 196	-292	8 230	6 051	2 179
Percentage change, latest 3 months compared with:												
Previous 3 months	-15.0	11.5		14.1	1.8		-4.5	0.3		-0.1	-7.4	
Same 3 months last year	31.3	58.0		37.4	10.7		10.2	4.6		8.3	-9.8	

† Earliest date for revisions to trade in goods is January 2008.

13R SUMMARY OF REVISIONS

Balance of Payments Basis

£ million

	Trade in goods ¹			Trade in services (seasonally adjusted) ²			Trade in goods & services (seasonally adjusted)			Growth rates for volume and price indices (2003=100)			
	Value (seasonally adjusted) £ million			£ Million			£ Million			Volume excluding oil and erratics		Prices	
	Exports	Imports	Balance	Exports	Imports	Balance	Exports	Imports	Balance	Exports	Imports	Exports	Imports
	BOKG	BOKH	BOKI	IKBB	IKBC	IKBD	IKBH	IKBI	IKBJ				
2005	-	-	-	-	-	-	-	-	-	-	-	-	-
2006	-	-	-	18	-	18	18	-	18	-	-	-	-
2007	-	-	-	-189	123	-312	-189	123	-312	-	-	-	-
2005 Q2	-	-	-	-	-	-	-	-	-	-	-	-	-
Q3	-	-	-	-	-	-	-	-	-	-	-	-	-
Q4	-	-	-	-	-	-	-	-	-	-	-	-	-
2006 Q1	-	-	-	-4	15	-19	-4	15	-19	-	-	-	-
Q2	-	-	-	12	-7	19	12	-7	19	-	-	-	-
Q3	-	-	-	-10	-11	1	-10	-11	1	-	-	-	-
Q4	-	-	-	20	3	17	20	3	17	-	-	-	-
2007 Q1	-	-	-	-75	-66	-9	-75	-66	-9	-	-	-	-
Q2	-	-	-	17	-197	214	17	-197	214	-	-	-	-
Q3	-	-	-	-205	62	-267	-205	62	-267	-	-	-	-
Q4	-	-	-	74	324	-250	74	324	-250	-	-	-	-
2005 Jun	-	-	-	-	-	-	-	-	-	-	-	-	-
Jul	-	-	-	-	-	-	-	-	-	-	-	-	-
Aug	-	-	-	-	-	-	-	-	-	-	-	-	-
Sep	-	-	-	-	-	-	-	-	-	-	-	-	-
Oct	-	-	-	-	-	-	-	-	-	-	-	-	-
Nov	-	-	-	-	-	-	-	-	-	-	-	-	-
Dec	-	-	-	-	-	-	-	-	-	-	-	-	-
2006 Jan	-	-	-	-1	4	-5	-1	4	-5	-	-	-	-
Feb	-	-	-	-3	5	-8	-3	5	-8	-	-	-	-
Mar	-	-	-	-	6	-6	-	6	-6	-	-	-	-
Apr	-	-	-	3	1	2	3	1	2	-	-	-	-
May	-	-	-	4	-2	6	4	-2	6	-	-	-	-
Jun	-	-	-	5	-6	11	5	-6	11	-	-	-	-
Jul	-	-	-	-2	-4	2	-2	-4	2	-	-	-	-
Aug	-	-	-	-5	-3	-2	-5	-3	-2	-	-	-	-
Sep	-	-	-	-3	-4	1	-3	-4	1	-	-	-	-
Oct	-	-	-	1	-	1	1	-	1	-	-	-	-
Nov	-	-	-	9	-	9	9	-	9	-	-	-	-
Dec	-	-	-	10	3	7	10	3	7	-	-	-	-
2007 Jan	-	-	-	-17	-6	-11	-17	-6	-11	-	-	-	-
Feb	-	-	-	-31	-19	-12	-31	-19	-12	-	-	-	-
Mar	-	-	-	-27	-41	14	-27	-41	14	-	-	-	-
Apr	-	-	-	4	-66	70	4	-66	70	-	-	-	-
May	-	-	-	16	-73	89	16	-73	89	-	-	-	-
Jun	-	-	-	-3	-58	55	-3	-58	55	-	-	-	-
Jul	-	-	-	-43	-17	-26	-43	-17	-26	-	-	-	-
Aug	-	-	-	-78	23	-101	-78	23	-101	-	-	-	-
Sep	-	-	-	-84	56	-140	-84	56	-140	-	-	-	-
Oct	-	-	-	-	100	-100	-	100	-100	-	-	-	-
Nov	-	-	-	35	108	-73	35	108	-73	-	-	-	-
Dec	-	-	-	39	116	-77	39	116	-77	-	-	-	-
2008 Jan	546	967	-421	-72	424	-496	474	1 391	-917	3.5	3.9	-0.1	-0.1
Feb
3 month on 3 month comparison:													
2006 Sep										-	-	-	-
Oct										-	-	-	-
Nov										-	-	-	-
Dec										-	-	-	-
2007 Jan										-	-	-	-
Feb										-	-	-	-
Mar										-	-	-	-
Apr										-	-	-	-
May										-	-	-	-
Jun										-	-	-	-
Jul										-	-	-	-
Aug										-	-	-	-
Sep										-	-	-	-
Oct										-	-	-	-
Nov										-	-	-	-
Dec										-	-	-	-
2008 Jan										1.2	1.3	-	-
Feb									

¹Earliest date for revisions to trade in goods is January 2008.

²Earliest data for revisions to trade in services is January 2008.