

11 November 2008

Coverage  
United Kingdom

Theme  
The Economy



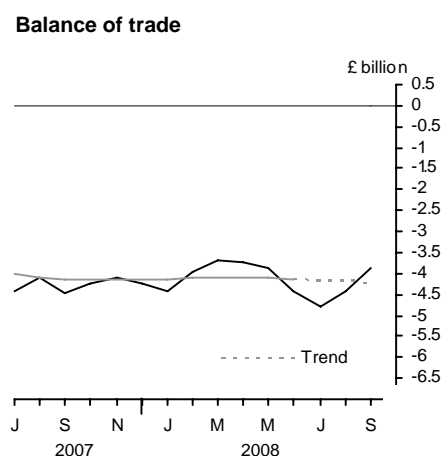
## UK trade September 2008

The UK's deficit on trade in goods and services is provisionally estimated to have narrowed in September to £3.9 billion from a deficit of £4.4 billion in August.

In the third quarter, the deficit on trade in goods and services widened to £13.1 billion, from a £12.0 billion deficit in the previous quarter.

The latest estimate of the trend suggests that the UK trade deficit is fairly flat in recent months.

The notes discuss a number of factors which mean that the initial estimates of the data are less reliable than previously, and which make interpretation of short term movements difficult.



### Issued by

Office for National Statistics  
Government Buildings  
Cardiff Road  
Newport  
NP10 8XG

### Contact

Media Office 0845 604 1858

Statistician – Trade in Goods  
Caroline Lakin 020 7014 2018/2020

Statistician – Trade in Services  
Tom Orford 020 7014 2027/2028

E-mail – bop@ons.gov.uk

[www.statistics.gov.uk](http://www.statistics.gov.uk)

Next publication date  
9 December 2008

		Balance on trade in goods			Balance on trade in services	Total balance
		EU	Non-EU	World		
<i>Seasonally adjusted: £ billion</i>						
<b>2008</b>	Apr	-3.4	-4.2	-7.6	3.9	-3.7
	May	-3.4	-4.2	-7.5	3.7	-3.9
	Jun	-3.2	-4.8	-8.0	3.6	-4.4
	Jul	-3.4	-4.8	-8.2	3.4	-4.8
	Aug	-2.8	-5.2	-8.0	3.6	-4.4
	Sep	-3.0	-4.5	-7.5	3.6	-3.9

*NOTE: Trade in services estimates are included to give a more complete picture of UK trade. These estimates have been derived from a number of sources, and some components are based on recent trends. They should be used with appropriate caution.*

**TRADE IN GOODS - SEPTEMBER**

**Value of total trade in goods**

The UK's deficit on trade in goods in September is provisionally estimated at £7.5 billion, compared with £8.0 billion in August. The deficit with EU countries in September was £3.0 billion, compared with £2.8 billion in August. The deficit with non-EU countries in September was £4.5 billion, compared with £5.2 billion in August.

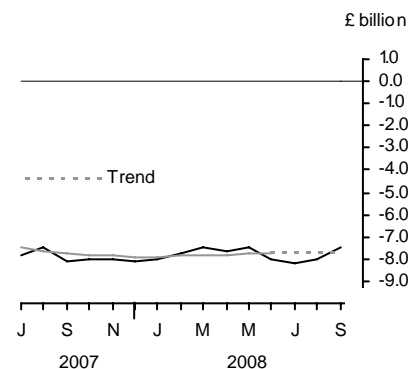
In September, total exports of goods rose by three per cent to £21.9 billion and total imports of goods rose by a half per cent to £29.3 billion. Exports to EU countries rose by two and a half per cent and exports to non-EU countries rose by three per cent. Imports from EU countries rose by three and a half per cent while imports from non-EU countries fell by three per cent.

In the third quarter, the deficit on trade in goods widened by £0.6 billion to £23.7 billion. The deficit with EU countries narrowed by £0.8 billion to £9.2 billion, and the deficit with non-EU countries widened by £1.4 billion to £14.5 billion.

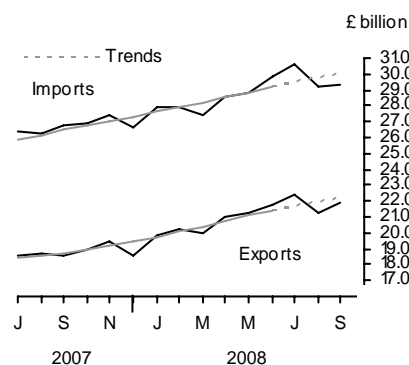
In the third quarter, exports of goods rose by two per cent and imports of goods rose by two and a half per cent. Exports to EU countries rose by three per cent and exports to non-EU countries rose by one and a half per cent. Imports from EU countries rose by a half per cent and those from non-EU countries rose by four per cent.

The latest estimate of the trend suggests that the whole world goods deficit is fairly flat. The trends in the value of trade show both exports and imports rising in recent months.

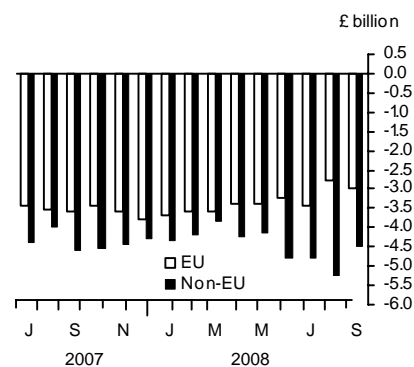
**Balance on trade in goods**



**Value of trade in goods**



**Balance on trade in goods**



**Volume of total trade in goods (excluding oil and erratics)**

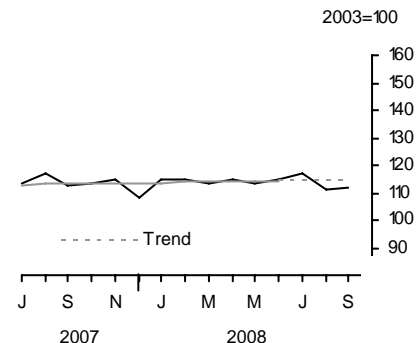
Provisional estimates show that the volume of exports rose by one per cent while the volume of imports fell by one and a half per cent compared with August.

In the third quarter, exports fell by a half per cent while imports rose a half per cent compared with the previous quarter.

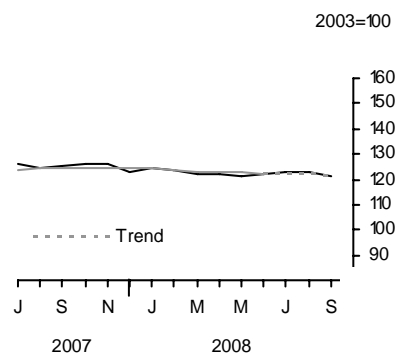
Changes in trade associated with VAT MTIC fraud mean that comparisons of volume and prices (both including and excluding trade associated with VAT MTIC fraud) should be treated with a great deal of caution.

Latest estimates of volume trends show both exports and imports fairly flat in recent months.

**Volume of exports (goods) excluding oil and erratic items**



**Volume of imports (goods) excluding oil and erratic items**



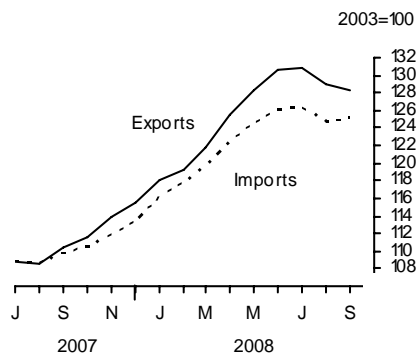
		EU		Non-EU		World	
		Exports	Imports	Exports	Imports	Exports	Imports
<i>Seasonally adjusted: 2003 = 100</i>							
<b>2008</b>	Apr	106.5	116.7	127.2	131.1	114.8	122.2
	May	101.6	114.3	131.1	133.4	113.6	121.5
	Jun	107.7	115.8	125.0	132.6	114.6	122.3
	Jul	106.9	116.5	132.3	134.4	117.1	123.0
	Aug	104.1	115.4	122.2	136.9	111.3	123.0
	Sep	105.3	117.1	122.9	129.0	112.2	121.4

**Export and import prices (trade in goods)**

September's provisional estimates show that export prices fell a half per cent while import prices rose a half per cent compared with August.

In the third quarter, both export and import prices rose one per cent. This led to an increase in terms of trade.

**Export and import prices (goods)**



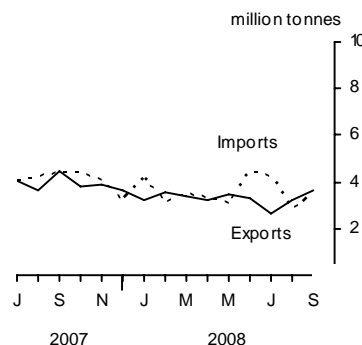
**COMMODITY ANALYSIS OF TRADE IN GOODS**

**Trade in oil**

In September, the balance on trade in oil was in deficit by less than £0.1 billion, compared with a deficit of £0.2 billion in August.

In the third quarter, the deficit on trade in oil was £1.8 billion, compared with a deficit of £1.7 billion in the previous quarter.

**Trade in crude oil**

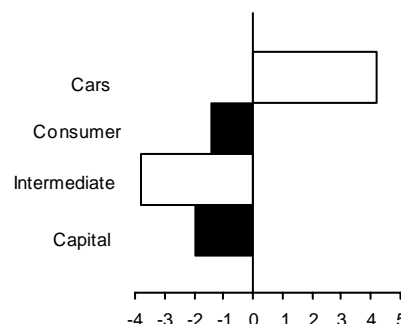


**Trade in other commodities in the third quarter 2008**

For exports, all the main commodity groups showed a rise in volume, except finished manufactures and basic materials. Within finished manufactures, exports of intermediate goods fell by four per cent, and of capital goods fell by two per cent. Exports of consumer goods other than cars fell by one and a half per cent. Exports of cars rose by four per cent. Exports of chemicals rose by four and a half per cent while exports of other semi-manufactured goods fell by eight per cent.

**Volume of exports of goods (finished manufactures)**

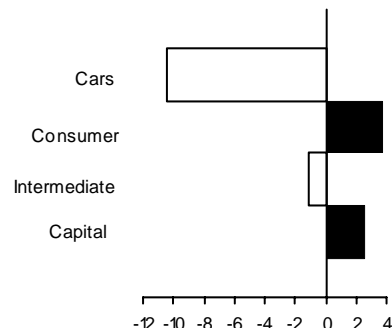
3 month percentage changes



For imports, all the main commodity groups showed a rise in volume, except food, drink and tobacco. Within finished manufactures, imports of cars fell by 10 per cent. Imports of consumer goods other than cars rose by three and a half per cent, and of capital goods by two and a half per cent. Imports of chemicals rose by three per cent while imports of other semi-manufactured goods fell a half per cent.

**Volume of imports of goods (finished manufactures)**

3 month percentage changes



## GEOGRAPHICAL ANALYSIS OF TRADE IN GOODS: in the third quarter 2008

### Exports by country

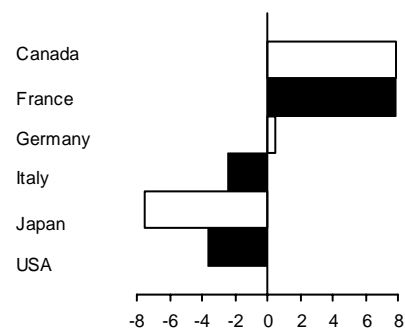
Within the G7 group of countries, exports to France rose by £0.3 billion. Exports to the USA fell by £0.3 billion. Among other countries, exports to the Netherlands and Belgium and Luxembourg both rose by £0.4 billion. Exports to India rose by £0.2 billion. Exports to Dubai, Russia and Poland all rose by £0.1 billion. Exports to Switzerland and the Irish Republic both fell by £0.3 billion, and to South Korea fell by £0.2 billion.

### Imports by country

Within the G7 group of countries, imports from the USA rose by £0.4 billion, and from Germany rose by £0.1 billion. Imports from France fell by £0.4 billion, and from Italy by £0.3 billion. Imports from Japan fell by £0.2 billion. Among our other trading partners, imports from China rose by £0.5 billion, and from Nigeria by £0.3 billion. Imports from Russia, the Netherlands, Spain and Hong Kong all rose by £0.2 billion. Imports from Portugal rose by £0.1 billion. Imports from Norway fell by £0.7 billion.

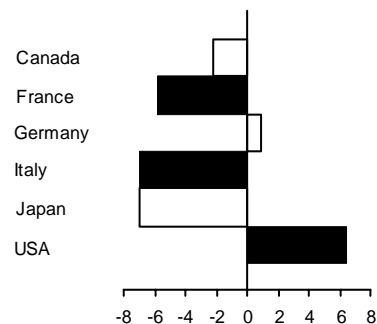
### Value of exports of goods by country

3 month percentage changes



### Value of imports of goods by country

3 month percentage changes



## TRADE IN SERVICES – SEPTEMBER

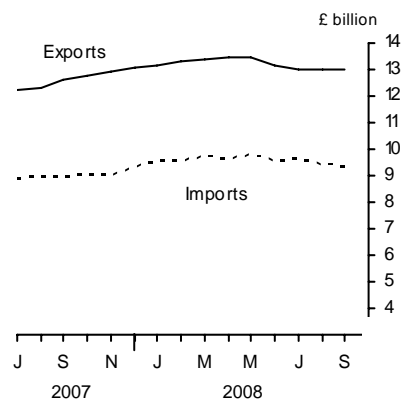
The UK's surplus on trade in services was £3.6 billion, unchanged compared with August.

In the third quarter, the surplus on trade in services was £10.6 billion, compared with £11.1 billion in the previous quarter. Exports of services fell by £1.1 billion to £38.9 billion and imports of services fell by £0.6 billion to £28.3 billion.

## REVISIONS

Table 13R shows revisions to the main aggregates since the last Trade First Release of 9 October 2008. The revisions to trade in goods from July 2008 onwards reflect revised data from Her Majesty's Revenue and Customs and other data suppliers, revised estimates of trading associated with VAT MTIC fraud, later survey data on trade prices and a re-assessment of seasonal factors.

Value of trade in services



## BACKGROUND NOTES

### BASIC QUALITY INFORMATION

#### 1. Key Issues specific to this release

Estimates of missing trade declarations associated with VAT MTIC fraud were revised in the last First Release. There are similarly small revisions to data for earlier periods which have not been incorporated yet as a result of National Accounts revision policy. This is the case for all revisions to earlier data from HMRC, not just trade associated with fraud. For general issues regarding the interpretation of the series, please see the "Common pitfalls in interpreting series" section below.

#### 2. Link to Summary Quality Report

A Summary Quality Report for this First Release and associated data can be found on the National Statistics website at:  
<http://www.statistics.gov.uk/CCI/article.asp?ID=1723>.

#### Relevance to users

3. A paper entitled *Statistics on Trade in Goods* (GSS Methodological Series No. 36) describing the basis on which trade in goods statistics are compiled and the methodology employed to derive volume and price indices is available on the National Statistics website:  
<http://www.statistics.gov.uk/StatBase/Product.asp?vlnk=14943>.
4. The Overseas Trade Statistics (OTS) data used as inputs to the release are collected and published by Her Majesty's Revenue and Customs (HMRC) on an International Merchandise Trade Statistics (IMTS) basis.
5. The implied price deflators derived by comparing current to chained volume measures data are not the same as the price indices published in this release because the former are current weighted while the latter are base (2003) weighted.

#### Common pitfalls in interpreting series

6. Very few statistical revisions arise as a result of 'errors' in the popular sense of the word. All estimates, by definition, are subject to statistical 'error' but, in this context, the word refers to the uncertainty in any process or calculation that uses sampling, estimation or modelling. Most revisions reflect either the adoption of new statistical techniques or the incorporation of new information which allows the statistical error of previous estimates to be reduced. Only rarely are there avoidable 'errors' such as human or system failures and such mistakes are made quite clear when they are discovered and corrected.
7. Import figures for trade in goods include adjustments to allow for the impact of VAT Missing Trader Intra Community (MTIC) fraud. The adjustments were introduced for the first time in the UK trade May 2003 First Release published on 9 July 2003 and accompanied by an article explaining the fraud and the impact on the trade figures (<http://www.statistics.gov.uk/CCI/article.asp?ID=402>). A follow-up report was published on 17 February 2005 which summarises the work carried out to review the estimates of the impact on the trade figures (<http://www.statistics.gov.uk/CCI/article.asp?ID=1066>).

The adjustments to trade in goods relate only to part of the carousel version of VAT MTIC fraud. This fraud leads to under recording of imports as fraudsters import goods from the EU, which they then sell on before disappearing without paying VAT on that sale. The goods are eventually exported. Such exports are declared and are therefore already reflected in the UK's trade in goods statistics.

Changes to the pattern of trading associated with MTIC fraud can make it difficult to analyse trade by commodity group and by country as changes in the impact of activity associated with this fraud affect both imports and exports. Originally, most carousel chains only involved EU member states. From 2004 in particular, some carousel chains included non-EU countries, for example, Dubai and Switzerland. However, the MTIC trade adjustments are added to the EU import estimates derived from Intrastat returns as it is this part of the trading chain that is not generally recorded. In particular, adjustments affect trade in capital goods and intermediate goods - these categories include mobile phones and computer components, which are still the most widely affected goods.

International convention determines that the treatment of the impact is to adjust imports upwards by the relevant amounts of missing declarations (non-response). However, users may wish to interpret short term movements in exports and imports excluding that part of the fraudulent activity that is not included in the import estimates, and for this purpose an analysis of the export and import figures with the VAT MTIC adjustments excluded has been produced.

The following tables show quarterly values of imports and exports of goods for both current price estimates and chained volume measures excluding the VAT MTIC fraud adjustment, and a breakdown for current price estimates into trade with the EU and non-EU separately. Also, it includes the estimated monthly data for the adjustment for trade associated with VAT MTIC fraud, and for total trade excluding the adjustment for trade associated with VAT MTIC fraud, at current prices from 2006.

**Trade in goods excluding adjustments to trade associated with MTIC fraud<sup>1</sup>**

Quarter/ Year	MTIC fraud trade adj'ment	£ billion			
		Current price	Current price	Chained volume measure	Chained volume measure
		Total exports less MTIC adj'ment	Total imports less MTIC adj'ment	Total exports less MTIC adj'ment	Total imports less MTIC adj'ment
	Value of trade  OFNN	BQHP	BQHQ	BQHR	BQHS
2000	3.0	185.0	218.1	184.9	208.8
2001	7.1	182.0	223.2	184.9	215.8
2002	11.5	175.0	222.7	178.1	221.9
2003	4.5	183.8	232.5	183.7	232.3
2004	2.7	188.2	249.1	188.5	250.6
2005	11.1	200.5	269.1	197.8	260.6
2006	22.4	221.3	297.6	213.7	280.3
2007	1.2	219.5	308.8	206.5	288.2
2007 Q1	0.4	52.9	74.4	50.9	70.7
Q2	0.3	54.4	74.6	51.6	70.2
Q3	0.3	55.6	79.1	52.4	74.0
Q4	0.3	56.6	80.7	51.6	73.3
2008 Q1	0.2	59.8	83.0	52.3	72.2
Q2	0.3	63.8	86.9	52.8	71.8
Q3	0.7	64.8	88.5	52.6	71.9
2007 Mar	0.1	17.9	25.5		
Apr	0.1	18.0	24.4		
May	0.1	18.0	24.9		
Jun	0.1	18.4	25.3		
Jul	0.1	18.5	26.3		
Aug	0.1	18.6	26.1		
Sep	0.1	18.5	26.6		
Oct	0.1	18.8	26.8		
Nov	0.1	19.3	27.3		
Dec	0.1	18.4	26.5		
2008 Jan	0.1	19.8	27.8		
Feb	0.1	20.1	27.8		
Mar	0.1	19.9	27.4		
Apr	0.1	20.8	28.5		
May	0.1	21.2	28.7		
Jun	0.1	21.7	29.7		
Jul	0.3	22.1	30.3		
Aug	0.2	21.1	29.1		
Sep	0.2	21.6	29.1		

**Percentage change, latest 3 months compared with:**

Previous 3 months

133.3      1.7      1.8

Same 3 months last year

133.3      16.5      12.0

**Percentage latest quarter compared with:**

Previous quarter

133.3      1.6      1.8      -0.4      0.1

Same quarter last year

133.3      16.5      11.9      0.4      -2.8

<sup>1</sup> The adjustments are for the missing declarations (non response) and do not reflect the overall level of MTIC-related trade

**Trade with EU and non-EU countries excluding MTIC fraud adjustments<sup>1</sup>**

Quarter/ Year	£ billion			
	Current price	Current price	Current price	Current price
	Total EU exports less MTIC adj'ment	Total non-EU exports less MTIC adj'ment	Total EU imports less MTIC adj'ment	Total non-EU imports less MTIC adj'ment
	CLAQ	CLAR	CLAS	CLAT
2000	109.1	76.0	114.5	103.7
2001	106.9	75.2	119.3	103.9
2002	102.7	72.4	124.8	97.9
2003	106.1	77.6	132.2	100.3
2004	109.8	78.4	139.8	109.3
2005	116.5	84.0	147.1	122.1
2006	133.0	88.2	161.4	136.2
2007	126.9	92.7	167.9	140.8
2004 Q1	26.3	18.9	33.9	25.4
Q2	26.6	19.2	34.4	26.8
Q3	28.0	20.1	34.9	28.4
Q4	28.9	20.2	36.6	28.7
2005 Q1	28.2	19.6	36.1	28.1
Q2	28.1	21.0	35.6	29.2
Q3	29.6	21.4	37.1	31.9
Q4	30.6	22.0	38.3	32.9
2006 Q1	34.3	21.9	40.3	33.7
Q2	34.4	22.9	41.0	34.2
Q3	32.7	21.6	40.1	34.0
Q4	31.6	21.8	40.0	34.3
2007 Q1	30.9	22.1	40.6	33.8
Q2	30.8	23.6	40.9	33.7
Q3	32.3	23.3	42.8	36.3
Q4	32.9	23.7	43.6	37.0
2008 Q1	34.1	25.8	44.8	38.2
Q2	36.0	27.7	45.9	41.0
Q3	37.0	27.8	45.8	42.7

**Percentage change, latest quarter on previous quarter:**

2.8      0.4      -0.2      4.1

**Percentage change, latest quarter on same quarter last year:**

14.6      19.3      7.0      17.6

<sup>1</sup> The adjustments are for the missing declarations (non response) and do not reflect the overall level of MTIC-related trade

### Accuracy

8. Trade in goods figures for the most recent months are provisional and subject to revision in the light of (a) late trader data, revisions to trade prices and revised estimates of trading associated with VAT MTIC fraud, and (b) revisions to seasonal adjustment factors which are re-estimated every month.

Trade in services estimates have been derived from a number of monthly and quarterly sources. For components where no monthly data are available, estimates have been derived on the basis of recent trends. The results should be used with appropriate caution, as they are therefore likely to be less reliable than those for trade in goods. More details of the data sources, estimation methodology and reliability of the monthly estimates of trade in services were set out in *Economic Trends* (November 1996 and September 1997).

### Reliability

9. Revisions to data provide one indication of the reliability of key indicators. The table below show summary information on the size and direction of the revisions which have been made to the data covering a five year period. A statistical test has been applied to the average revision to find out if it is statistically significantly different from zero. An asterisk (\*) shows that the test is significant. An article explaining the past revisions performance for UK Trade statistics and what is being done to improve the first published estimates was published on 9 February 2005 at <http://www.statistics.gov.uk/cci/article.asp?id=1063>.

The table covers estimates of UK trade first published from March 2002 (for January 2002) to February 2007 (December 2006). A spreadsheet giving these estimates and the calculations behind the averages in the table is available on the National Statistics website at <http://www.statistics.gov.uk/StatBase/Product.asp?vlnk=1119>.

£million

	Value in latest period	Revisions between first publication and estimates twelve months later	
		Average over the last 5 years (mean revision)	Average over the last 5 years without regard to sign (average absolute revision)
Total trade exports (IKBH)	34830	978*	1007
Total trade imports (IKBI)	38693	1079*	1127
Total trade balance (IKBJ)	-3863	-101	437

An article analysing past revisions to quarterly balance of payments current account data was published in the May 2007 edition of *Economic & Labour Market Review*. It is available on the National Statistics website at:

[http://www.statistics.gov.uk/elmr/05\\_07/downloads/ELMR\\_May07.pdf](http://www.statistics.gov.uk/elmr/05_07/downloads/ELMR_May07.pdf)

More information about revisions material in First Releases can be found on the National Statistics website:

<http://www.statistics.gov.uk/cci/article.asp?ID=793>.

### Coherence

10. **EU enlargement.** Two more countries joined the EU from 1 January 2007. These countries are Bulgaria and Romania. In addition, the coverage of EMU countries was extended to include Slovenia. In order to enable users to make long-run comparisons, data for the new definition EU and non-EU have been produced from January 1998 onwards for value, and from January 1999 onwards for volume and price indices. At the same time data for the old definitions will no longer be maintained. There are additional series for country groupings on the old definitions. From January 2008, the coverage of EMU countries has been extended to cover Cyprus and Malta. Some EU and non EU breakdowns of commodity data for Chained Volume Measures which are available from the Statbase® service may be less reliable than the current price data. Please consult Caroline Lakin on 020 7014 2020 if you are considering using them.
11. **Classifications and Definitions.** The Overseas Trade Statistics (OTS), on which the BoP trade data are based, have been compiled under the United Nations Standard International Trade Classification Revision 4 (SITC R4) from January 2007 but the data have been converted back to SITC R3 for this release and the Monthly Review of External Trade Statistics (MRETS) publication in order to help users to compare data over time. There are some discontinuities at detailed levels, particularly between capital and intermediate goods where some products are allocated from January 2007 to intermediate goods rather than capital goods as done previously. It is also possible that volume and price changes between 2006 and 2007 may be less reliable than usual.

### Notes on tables

12. **Rounding** The sum of constituent items in tables may not always agree exactly with the totals shown due to rounding.
13. **Symbols**
  - .. Not applicable
  - Nil or less than half the final digit shown.

### PUBLICATION POLICY

14. Supplementary data for this First Release – Monthly Review of External Trade Statistics – Business Monitor MM24; and quarterly data analysed by industry according to the Standard Industrial Classification - UK Trade in Goods analysed in terms of industries - Business Monitor MQ10 are also available free of charge as PDF files on the National Statistics website ([www.statistics.gov.uk/bop](http://www.statistics.gov.uk/bop)).

The complete run of data in the tables of this First Release is also available to view and download in other electronic formats free of charge using the ONS Time Series Data website service. Users can download the complete release in a choice of zipped formats, or view and download their own selections of individual series. The Time Series Data service can be accessed at <http://www.statistics.gov.uk/timeseries>.

15. Details of the policy governing the release of new data are available from the press office. Also available is a list of the names of those given pre-publication access to the contents of this release.
16. **National Statistics** are produced to high professional standards set out in the National Statistics Code of Practice. They undergo regular quality assurance reviews to ensure that they meet customer needs. They are produced free from political interference. © Crown Copyright 2008.

# Index to tables

## Contents

- 1 Value of UK trade in goods and services
- 2 UK trade in goods by area
- 3 Volume and price indices (trade in goods)
- 4 Growth rates for volume and price indices
- 5 Volume indices with countries inside and outside the EU (trade in goods)
- 6 Price indices with countries inside and outside the EU (trade in goods)
- 7 Trade in oil
- 8 Value of trade in goods by commodity
- 9 Volume indices (trade in goods) by commodity
- 10 Price indices (trade in goods) by commodity
- 11 Trade in goods with selected EU trading partners
- 12 Trade in goods with countries outside the EU
- 13R Summary of revisions

# 1 VALUE OF UK TRADE IN GOODS AND SERVICES

Balance of Payments basis

£ million seasonally adjusted

	Total trade			Trade in goods			Oil			Trade in goods excluding oil		
	Exports	Imports	Balance	Exports	Imports	Balance	Exports	Imports	Balance	Exports	Imports	Balance
	IKBH	IKBI	IKBJ	BOKG	BOKH	BOKI	ELBL	ENXO	ENXQ	ELBM	ENXP	BQKH
2005	331 028	373 742	-42 714	211 608	280 197	-68 589	19 794	21 989	-2 195	191 814	258 208	-66 394
2006	376 384	419 588	-43 204	243 635	319 947	-76 312	23 173	25 967	-2 794	220 462	293 980	-73 518
2007	368 337	415 817	-47 480	220 703	309 955	-89 252	22 749	26 796	-4 047	197 954	283 159	-85 205
2007 Q1	88 893	100 443	-11 550	53 294	74 762	-21 468	4 758	5 578	-820	48 536	69 184	-20 648
Q2	90 719	101 106	-10 387	54 653	74 939	-20 286	5 617	5 925	-308	49 036	69 014	-19 978
Q3	93 085	106 051	-12 966	55 883	79 331	-23 448	5 894	7 122	-1 228	49 989	72 209	-22 220
Q4	95 640	108 217	-12 577	56 873	80 923	-24 050	6 480	8 171	-1 691	50 393	72 752	-22 359
2008 Q1	99 870	111 973	-12 103	60 042	83 239	-23 197	6 955	8 316	-1 361	53 087	74 923	-21 836
Q2	104 100	116 127	-12 027	64 035	87 175	-23 140	8 786	10 486	-1 700	55 249	76 689	-21 440
Q3	104 415	117 494	-13 079	65 473	89 186	-23 713	9 060	10 888	-1 828	56 413	78 298	-21 885
2008 Apr	34 411	38 159	-3 748	20 942	28 570	-7 628	2 541	3 009	-468	18 401	25 561	-7 160
May	34 720	38 579	-3 859	21 260	28 779	-7 519	2 951	3 436	-485	18 309	25 343	-7 034
Jun	34 969	39 389	-4 420	21 833	29 826	-7 993	3 294	4 041	-747	18 539	25 785	-7 246
Jul	35 366	40 154	-4 788	22 364	30 569	-8 205	3 032	4 556	-1 524	19 332	26 013	-6 681
Aug	34 219	38 647	-4 428	21 242	29 268	-8 026	2 887	3 123	-236	18 355	26 145	-7 790
Sep	34 830	38 693	-3 863	21 867	29 349	-7 482	3 141	3 209	-68	18 726	26 140	-7 414
<b>Percentage change, latest month compared with:</b>												
Previous month	1.8	0.1		2.9	0.3		8.8	2.8		2.0	0.0	
<b>3 months ended:</b>												
2007 Sep	93 085	106 051	-12 966	55 883	79 331	-23 448	5 894	7 122	-1 228	49 989	72 209	-22 220
2008 Jun	104 100	116 127	-12 027	64 035	87 175	-23 140	8 786	10 486	-1 700	55 249	76 689	-21 440
2008 Sep	104 415	117 494	-13 079	65 473	89 186	-23 713	9 060	10 888	-1 828	56 413	78 298	-21 885
<b>Percentage change, latest 3 months compared with:</b>												
Previous 3 months	0.3	1.2		2.2	2.3		3.1	3.8		2.1	2.1	
Same 3 months last year	12.2	10.8		17.2	12.4		53.7	52.9		12.9	8.4	

	Erratics <sup>1</sup>			Trade in goods excluding erratics			Trade in goods excluding oil and erratics			Trade in services		
	Exports	Imports	Balance	Exports	Imports	Balance	Exports	Imports	Balance	Exports	Imports	Balance
	BPAL	BQBB	BQKW	BPAO	BQBE	BPBM	BPBL	BQBG	BPAP	IKBB	IKBC	IKBD
2005	12 458	13 009	-551	199 150	267 188	-68 038	179 356	245 199	-65 843	119 420	93 545	25 875
2006	12 314	15 400	-3 086	231 321	304 547	-73 226	208 148	278 580	-70 432	132 749	99 641	33 108
2007	13 059	14 359	-1 300	207 644	295 596	-87 952	184 895	268 800	-83 905	147 634	105 862	41 772
2007 Q1	3 011	3 923	-912	50 283	70 839	-20 556	45 525	65 261	-19 736	35 599	25 681	9 918
Q2	3 717	3 500	217	50 936	71 439	-20 503	45 319	65 514	-20 195	36 066	26 167	9 899
Q3	3 116	3 654	-538	52 767	75 677	-22 910	46 873	68 555	-21 682	37 202	26 720	10 482
Q4	3 215	3 282	-67	53 658	77 641	-23 983	47 178	69 470	-22 292	38 767	27 294	11 473
2008 Q1	3 246	3 637	-391	56 796	79 602	-22 806	49 841	71 286	-21 445	39 828	28 734	11 094
Q2	3 643	4 022	-379	60 392	83 153	-22 761	51 606	72 667	-21 061	40 065	28 952	11 113
Q3	4 295	4 158	137	61 178	85 028	-23 850	52 118	74 140	-22 022	38 942	28 308	10 634
2008 Apr	1 187	1 426	-239	19 755	27 144	-7 389	17 214	24 135	-6 921	13 469	9 589	3 880
May	1 228	1 275	-47	20 032	27 504	-7 472	17 081	24 068	-6 987	13 460	9 800	3 660
Jun	1 228	1 321	-93	20 605	28 505	-7 900	17 311	24 464	-7 153	13 136	9 563	3 573
Jul	1 531	1 391	140	20 833	29 178	-8 345	17 801	24 622	-6 821	13 002	9 585	3 417
Aug	1 315	1 469	-154	19 927	27 799	-7 872	17 040	24 676	-7 636	12 977	9 379	3 598
Sep	1 449	1 298	151	20 418	28 051	-7 633	17 277	24 842	-7 565	12 963	9 344	3 619
<b>Percentage change, latest month compared with:</b>												
Previous month	10.2	-11.6		2.5	0.9		1.4	0.7		-0.1	-0.4	
<b>3 months ended:</b>												
2007 Sep	3 116	3 654	-538	52 767	75 677	-22 910	46 873	68 555	-21 682	37 202	26 720	10 482
2008 Jun	3 643	4 022	-379	60 392	83 153	-22 761	51 606	72 667	-21 061	40 065	28 952	11 113
2008 Sep	4 295	4 158	137	61 178	85 028	-23 850	52 118	74 140	-22 022	38 942	28 308	10 634
<b>Percentage change, latest 3 months compared with:</b>												
Previous 3 months	17.9	3.4		1.3	2.3		1.0	2.0		-2.8	-2.2	
Same 3 months last year	37.8	13.8		15.9	12.4		11.2	8.1		4.7	5.9	

<sup>1</sup> These are defined as ships, aircraft, precious stones and silver

<sup>†</sup> Earliest date for revisions to both trade in goods and to trade in services is July 2008.

# 2 UK TRADE IN GOODS BY AREA

Balance of Payments basis

£ million seasonally adjusted

	EMU members <sup>1</sup>			Total EU (25) <sup>2</sup>			Total EU (27) <sup>3</sup>			Non-EU <sup>4</sup>			Total		
	Exports	Imports	Balance	Exports	Imports	Balance	Exports	Imports	Balance	Exports	Imports	Balance	Exports	Imports	Balance
	QAKW	QAKX	QAKY	EGAE	EGAF	EGAG	LGCK	LGDC	LGCJ	LGDY	LGER	LGDT	BOKG	BOKH	BOKI
2005	109 506	139 541	-30 035	120 619	157 191	-36 572	121 486	158 163	-36 677	90 122	122 034	-31 912	211 608	280 197	-68 589
2006	136 061	157 276	-21 215	151 483	182 679	-31 196	152 357	183 748	-31 391	91 278	136 199	-44 921	243 635	319 947	-76 312
2007	114 034	147 854	-33 820	126 810	167 967	-41 157	127 678	169 142	-41 464	93 025	140 813	-47 788	220 703	309 955	-89 252
2006 Q2	39 240	43 611	-4 371	44 069	51 459	-7 390	44 281	51 704	-7 423	23 813	34 180	-10 367	68 094	85 884	-17 790
Q3	30 772	36 087	-5 315	33 962	41 508	-7 546	34 187	41 777	-7 590	21 848	34 045	-12 197	56 035	75 822	-19 787
Q4	28 658	35 095	-6 437	31 732	40 176	-8 444	31 954	40 475	-8 521	21 946	34 274	-12 328	53 900	74 749	-20 849
2007 Q1	27 762	35 917	-8 155	30 888	40 708	-9 820	31 103	40 968	-9 865	22 191	33 794	-11 603	53 294	74 762	-21 468
Q2	27 722	36 125	-8 403	30 771	40 882	-10 111	30 979	41 215	-10 236	23 674	33 724	-10 050	54 653	74 939	-20 286
Q3	29 038	37 642	-8 604	32 308	42 752	-10 444	32 525	43 047	-10 522	23 358	36 284	-12 926	55 883	79 331	-23 448
Q4	29 512	38 170	-8 658	32 843	43 625	-10 782	33 071	43 912	-10 841	23 802	37 011	-13 209	56 873	80 923	-24 050
2008 Q1	30 544	38 944	-8 400	33 933	44 768	-10 835	34 197	45 033	-10 836	25 845	38 206	-12 361	60 042	83 239	-23 197
Q2	32 297	39 981	-7 684	35 931	45 932	-10 001	36 216	46 191	-9 975	27 819	40 984	-13 165	64 035	87 175	-23 140
Q3	33 139	40 059	-6 920	37 033	46 220	-9 187	37 276	46 467	-9 191	28 197	42 719	-14 522	65 473	89 186	-23 713
2007 Mar	9 083	12 158	-3 075	10 105	13 752	-3 647	10 186	13 860	-3 674	7 836	11 734	-3 898	18 022	25 594	-7 572
Apr	9 026	11 915	-2 889	9 993	13 332	-3 339	10 063	13 435	-3 372	7 989	11 055	-3 066	18 052	24 490	-6 438
May	9 506	12 229	-2 723	10 577	13 887	-3 310	10 646	13 994	-3 348	7 464	11 024	-3 560	18 110	25 018	-6 908
Jun	9 190	11 981	-2 791	10 201	13 663	-3 462	10 270	13 786	-3 516	8 221	11 645	-3 424	18 491	25 431	-6 940
Jul	9 655	12 454	-2 799	10 707	14 102	-3 395	10 775	14 208	-3 433	7 783	12 152	-4 369	18 558	26 360	-7 802
Aug	9 669	12 606	-2 937	10 787	14 273	-3 486	10 863	14 372	-3 509	7 869	11 856	-3 987	18 732	26 228	-7 496
Sep	9 714	12 582	-2 868	10 814	14 377	-3 563	10 887	14 467	-3 580	7 706	12 276	-4 570	18 593	26 743	-8 150
Oct	9 648	12 416	-2 768	10 813	14 241	-3 428	10 890	14 340	-3 450	8 029	12 552	-4 523	18 919	26 892	-7 973
Nov	10 055	12 870	-2 815	11 156	14 736	-3 580	11 237	14 834	-3 597	8 186	12 599	-4 413	19 423	27 433	-8 010
Dec	9 809	12 884	-3 075	10 874	14 648	-3 774	10 944	14 738	-3 794	7 587	11 860	-4 273	18 531	26 598	-8 067
2008 Jan	10 302	13 156	-2 854	11 414	15 098	-3 684	11 505	15 187	-3 682	8 341	12 686	-4 345	19 846	27 873	-8 027
Feb	10 184	12 921	-2 737	11 307	14 866	-3 559	11 391	14 957	-3 566	8 799	12 960	-4 161	20 190	27 917	-7 727
Mar	10 058	12 867	-2 809	11 212	14 804	-3 592	11 301	14 889	-3 588	8 705	12 560	-3 855	20 006	27 449	-7 443
Apr	10 742	13 285	-2 543	11 923	15 317	-3 394	12 016	15 408	-3 392	8 926	13 162	-4 236	20 942	28 570	-7 628
May	10 573	13 126	-2 553	11 763	15 129	-3 366	11 852	15 216	-3 364	9 408	13 563	-4 155	21 260	28 779	-7 519
Jun	10 982	13 570	-2 588	12 245	15 486	-3 241	12 348	15 567	-3 219	9 485	14 259	-4 774	21 833	29 826	-7 993
Jul	10 927	13 500	-2 573	12 176	15 577	-3 401	12 258	15 685	-3 427	10 106	14 884	-4 778	22 364	30 569	-8 205
Aug	10 973	13 151	-2 178	12 265	15 064	-2 799	12 341	15 131	-2 790	8 901	14 137	-5 236	21 242	29 268	-8 026
Sep	11 239	13 408	-2 169	12 592	15 579	-2 987	12 677	15 651	-2 974	9 190	13 698	-4 508	21 867	29 349	-7 482
<b>Percentage change on previous month:</b>															
2008 Sep	2.4	2.0		2.7	3.4		2.7	3.4		3.2	-3.1		2.9	0.3	
<b>3 months ended:</b>															
2007 Sep	29 038	37 642	-8 604	32 308	42 752	-10 444	32 525	43 047	-10 522	23 358	36 284	-12 926	55 883	79 331	-23 448
2008 Jun	32 297	39 981	-7 684	35 931	45 932	-10 001	36 216	46 191	-9 975	27 819	40 984	-13 165	64 035	87 175	-23 140
2008 Sep	33 139	40 059	-6 920	37 033	46 220	-9 187	37 276	46 467	-9 191	28 197	42 719	-14 522	65 473	89 186	-23 713
<b>Percentage change, latest 3 months compared with:</b>															
Previous 3 months	2.6	0.2		3.1	0.6		2.9	0.6		1.4	4.2		2.2	2.3	
Same 3 months last year	14.1	6.4		14.6	8.1		14.6	7.9		20.7	17.7		17.2	12.4	

1 Austria, Belgium, Cyprus, Finland, France, Germany, Greece, Irish Republic, Italy, Luxembourg, Malta, Netherlands, Portugal, Slovenia and Spain

† Earliest date for revisions to trade in goods is July 2008.

2 EMU Members plus Czech Republic, Denmark, Estonia, Hungary, Latvia, Lithuania, Poland, Slovakia and Sweden

3 EU (25) plus Bulgaria and Romania

4 Total less EU (27)

# 3 VOLUME AND PRICE INDICES (TRADE IN GOODS)<sup>1</sup>

Balance of Payments basis

Indices 2003=100

	Volume (seasonally adjusted)						Price index (not seasonally adjusted)								
	Total		Total excluding oil		Total excluding oil and erratics <sup>2</sup>		Total			Total excluding oil			Total excluding oil & erratics <sup>2</sup>		
	Exports	Imports	Exports	Imports	Exports	Imports	Exports	Imports	Terms of trade <sup>3</sup>	Exports	Imports	Terms of trade <sup>3</sup>	Exports	Imports	
	BQKU	BQKV	BQKI	BQKJ	BOMA	ELAL	BQKR	BQKS	BQKT	BQKK	BQKL	BQKM	BQAK	ELBA	
2005	111.0	114.6	112.5	114.5	113.1	115.2	104.6	103.7	100.9	100.2	100.7	99.5	100.4	100.8	
2006	125.2	127.5	127.8	128.0	129.7	128.7	107.8	107.5	100.3	101.5	103.1	98.4	101.7	103.2	
2007	110.2	122.1	111.9	121.9	112.1	122.3	109.2	109.0	100.2	102.4	104.2	98.3	102.8	104.7	
2006 Q2	141.3	138.1	144.8	139.3	147.4	140.9	109.4	108.2	101.1	102.2	103.1	99.1	102.4	103.1	
Q3	112.5	119.6	114.0	119.5	115.8	119.5	108.5	108.1	100.4	101.2	103.1	98.2	101.6	103.3	
Q4	110.9	119.1	112.6	119.1	112.5	118.8	105.1	106.5	98.7	100.3	103.1	97.3	100.6	103.4	
2007 Q1	108.8	119.9	110.5	119.4	111.1	119.2	105.8	106.6	99.2	101.5	103.7	97.9	101.8	104.0	
Q2	110.1	118.9	111.6	119.1	110.6	119.5	108.1	108.6	99.5	101.8	104.3	97.6	102.1	104.7	
Q3	111.9	125.3	113.6	125.2	114.3	125.5	109.2	109.0	100.2	101.9	103.9	98.1	102.4	104.4	
Q4	110.1	124.2	112.0	124.0	112.3	125.1	113.7	111.7	101.8	104.4	105.0	99.4	105.0	105.5	
2008 Q1	111.5	122.2	113.8	122.8	114.2	123.4	119.8	117.8	101.7	108.6	109.8	98.9	109.3	110.3	
Q2	112.6	121.7	114.6	122.1	114.3	122.0	128.1	124.3	103.1	112.5	113.0	99.6	113.3	113.7	
Q3	112.9	122.4	114.7	122.4	113.5	122.5	129.4	125.2	103.4	114.1	114.3	99.8	114.7	114.8	
2007 Apr	109.7	116.5	110.7	116.1	106.8	117.2	107.5	108.1	99.4	101.7	104.0	97.8	102.0	104.4	
May	109.4	118.6	111.2	119.1	111.5	118.7	108.1	108.7	99.4	102.0	104.6	97.5	102.3	105.1	
Jun	111.3	121.6	112.8	122.0	113.6	122.6	108.7	109.0	99.7	101.7	104.2	97.6	102.1	104.7	
Jul	112.1	125.6	113.6	126.0	113.6	126.3	108.7	108.9	99.8	101.2	103.6	97.7	101.6	104.1	
Aug	113.6	124.5	116.1	124.4	116.9	124.7	108.5	108.5	100.0	101.6	103.8	97.9	102.0	104.2	
Sep	109.9	125.9	111.0	125.3	112.3	125.4	110.4	109.6	100.7	103.0	104.3	98.8	103.5	104.8	
Oct	111.4	125.5	113.2	125.2	113.3	125.7	111.6	110.3	101.2	103.5	104.3	99.2	104.0	104.8	
Nov	112.6	126.1	114.9	125.7	115.1	126.3	113.8	111.7	101.9	104.2	104.8	99.4	104.7	105.3	
Dec	106.3	120.9	107.9	121.2	108.4	123.2	115.6	113.2	102.1	105.5	106.0	99.5	106.2	106.5	
2008 Jan	111.6	123.6	113.9	124.2	114.9	124.5	118.1	116.2	101.6	107.6	108.6	99.1	108.3	109.1	
Feb	112.4	123.6	114.7	124.3	114.7	123.7	119.3	117.7	101.4	108.4	109.9	98.6	109.1	110.4	
Mar	110.4	119.5	112.7	120.0	113.1	121.9	121.9	119.5	102.0	109.9	110.8	99.2	110.6	111.4	
Apr	112.8	122.0	115.1	122.7	114.8	122.2	125.4	122.2	102.6	112.1	112.5	99.6	112.9	113.2	
May	111.8	120.8	113.8	121.2	113.6	121.5	128.4	124.6	103.0	112.6	113.2	99.5	113.3	113.8	
Jun	113.1	122.2	114.8	122.3	114.6	122.3	130.6	126.0	103.7	112.9	113.3	99.6	113.6	114.0	
Jul	116.5	124.0	119.0	123.4	117.1	123.0	130.9	126.1	103.8	113.1	113.3	99.8	113.9	114.0	
Aug	110.1	122.6	111.9	123.3	111.3	123.0	128.9	124.5	103.5	114.0	113.9	100.1	114.5	114.3	
Sep	112.0	120.5	113.1	120.6	112.2	121.4	128.3	125.0	102.6	115.1	115.8	99.4	115.6	116.1	
<b>Percentage change, latest month compared with:</b>															
Previous month	1.7	-1.7	1.1	-2.2	0.8	-1.3	-0.5	0.4		1.0	1.7		1.0	1.6	
<b>3 months ended:</b>															
2007 Sep	111.9	125.3	113.6	125.2	114.3	125.5	109.2	109.0	100.2	101.9	103.9	98.1	102.4	104.4	
2008 Jun	112.6	121.7	114.6	122.1	114.3	122.0	128.1	124.3	103.1	112.5	113.0	99.6	113.3	113.7	
2008 Sep	112.9	122.4	114.7	122.4	113.5	122.5	129.4	125.2	103.3	114.1	114.3	99.8	114.7	114.8	
<b>Percentage change, latest 3 months compared with:</b>															
Previous 3 months	0.3	0.6	0.1	0.3	-0.7	0.4	1.0	0.8		1.4	1.2		1.2	1.0	
Same 3 months last year	0.9	-2.4	1.0	-2.2	-0.6	-2.4	18.5	14.9		11.9	10.0		12.0	10.0	

<sup>1</sup> These are provisional estimates subject to fluctuations when new or amended data become available.

<sup>2</sup> These are defined as ships, aircraft, precious stones and silver.

<sup>3</sup> Export price index as a percentage of the import price index.

<sup>†</sup> Earliest date for revisions to trade in goods is July 2008.

# 4 GROWTH RATES FOR VOLUME AND PRICE INDICES <sup>1</sup> (TRADE IN GOODS)

Balance of Payments basis

Indices 2003=100

	Volume (seasonally adjusted)						Price index (not seasonally adjusted)					
	Total		Total excluding oil		Total excluding oil and erratics <sup>2</sup>		Total		Total excluding oil		Total excluding oil and erratics <sup>2</sup>	
	Exports	Imports	Exports	Imports	Exports	Imports	Exports	Imports	Exports	Imports	Exports	Imports
2001	2.2	5.3	2.0	4.7	2.3	4.4	-1.6	-0.9	-1.0	-0.5	-0.9	-0.6
2002	-1.2	4.7	-0.9	5.5	-1.5	5.5	-0.1	-2.5	-0.1	-3.2	0.4	-2.9
2003	-0.3	1.8	0.1	1.4	-1.8	1.8	1.8	-0.7	1.3	-1.1	2.4	-0.9
2004	1.5	6.9	2.1	6.3	2.1	6.8	-	-0.6	-1.3	-1.3	-1.2	-1.1
2005	9.4	7.2	10.2	7.7	10.8	7.9	4.6	4.3	1.5	2.0	1.6	1.9
2006	12.8	11.3	13.6	11.8	14.7	11.7	3.1	3.7	1.3	2.4	1.3	2.4
2007	-12.0	-4.2	-12.4	-4.8	-13.6	-5.0	1.3	1.4	0.9	1.1	1.1	1.5
2006 Q2	3.8	3.5	3.6	3.9	2.9	3.8	1.0	0.8	-0.1	0.1	-	0.2
Q3	-20.4	-13.4	-21.3	-14.2	-21.4	-15.2	-0.8	-0.1	-1.0	-	-0.8	0.2
Q4	-1.4	-0.4	-1.2	-0.3	-2.8	-0.6	-3.1	-1.5	-0.9	-	-1.0	0.1
2007 Q1	-1.9	0.7	-1.9	0.3	-1.2	0.3	0.7	0.1	1.2	0.6	1.2	0.6
Q2	1.2	-0.8	1.0	-0.3	-0.5	0.3	2.2	1.9	0.3	0.6	0.3	0.7
Q3	1.6	5.4	1.8	5.1	3.3	5.0	1.0	0.4	0.1	-0.4	0.3	-0.3
Q4	-1.6	-0.9	-1.4	-1.0	-1.7	-0.3	4.1	2.5	2.5	1.1	2.5	1.1
2008 Q1	1.3	-1.6	1.6	-1.0	1.7	-1.4	5.4	5.5	4.0	4.6	4.1	4.5
Q2	1.0	-0.4	0.7	-0.6	0.1	-1.1	6.9	5.5	3.6	2.9	3.7	3.1
Q3	0.3	0.6	0.1	0.2	-0.7	0.4	1.0	0.7	1.4	1.2	1.2	1.0
<b>Monthly:</b>												
2007 Apr	-0.5	-4.4	-1.2	-4.6	-4.9	-3.5	0.3	-0.1	-0.4	-0.6	-0.4	-0.6
May	-0.3	1.8	0.5	2.6	4.4	1.3	0.6	0.6	0.3	0.6	0.3	0.7
Jun	1.7	2.5	1.4	2.4	1.9	3.3	0.6	0.3	-0.3	-0.4	-0.2	-0.4
Jul	0.7	3.3	0.7	3.3	-	3.0	-	-0.1	-0.5	-0.6	-0.5	-0.6
Aug	1.3	-0.9	2.2	-1.3	2.9	-1.3	-0.2	-0.4	0.4	0.2	0.4	0.1
Sep	-3.3	1.1	-4.4	0.7	-3.9	0.6	1.8	1.0	1.4	0.5	1.5	0.6
Oct	1.4	-0.3	2.0	-0.1	0.9	0.2	1.1	0.6	0.5	-	0.5	-
Nov	1.1	0.5	1.5	0.4	1.6	0.5	2.0	1.3	0.7	0.5	0.7	0.5
Dec	-5.6	-4.1	-6.1	-3.6	-5.8	-2.5	1.6	1.3	1.2	1.1	1.4	1.1
2008 Jan	5.0	2.2	5.6	2.5	6.0	1.1	2.2	2.7	2.0	2.5	2.0	2.4
Feb	0.7	-	0.7	0.1	-0.2	-0.6	1.0	1.3	0.7	1.2	0.7	1.2
Mar	-1.8	-3.3	-1.7	-3.5	-1.4	-1.5	2.2	1.5	1.4	0.8	1.4	0.9
Apr	2.2	2.1	2.1	2.2	1.5	0.2	2.9	2.3	2.0	1.5	2.1	1.6
May	-0.9	-1.0	-1.1	-1.2	-1.0	-0.6	2.4	2.0	0.4	0.6	0.4	0.5
Jun	1.2	1.2	0.9	0.9	0.9	0.7	1.7	1.1	0.3	0.1	0.3	0.2
Jul	3.0	1.5	3.7	0.9	2.2	0.6	0.2	0.1	0.2	-	0.3	-
Aug	-5.5	-1.1	-6.0	-0.1	-5.0	-	-1.5	-1.3	0.8	0.5	0.5	0.3
Sep	1.7	-1.7	1.1	-2.2	0.8	-1.3	-0.5	0.4	1.0	1.7	1.0	1.6
<b>3 month on 3 month comparison:</b>												
2007 Apr	-1.4	-	-1.8	0.2	-2.6	0.3	1.8	1.4	1.3	0.9	1.3	1.0
May	1.0	-0.3	0.8	-0.2	-0.9	0.2	2.4	2.3	1.1	1.4	1.2	1.5
Jun	1.2	-0.8	1.0	-0.3	-0.4	0.3	2.2	1.9	0.3	0.6	0.3	0.7
Jul	1.9	2.3	2.1	2.8	3.2	2.9	1.7	1.3	-0.1	0.2	-	0.3
Aug	2.3	4.1	2.6	4.3	4.1	4.5	1.0	0.4	-0.4	-0.5	-0.3	-0.5
Sep	1.6	5.4	1.8	5.2	3.3	5.0	1.0	0.4	0.1	-0.4	0.2	-0.4
Oct	0.6	2.8	0.8	2.1	1.1	2.2	1.5	0.6	1.0	-	1.1	-
Nov	-0.9	1.6	-1.0	1.0	-1.0	1.0	3.0	1.6	2.0	0.6	2.1	0.6
Dec	-1.6	-0.9	-1.4	-1.0	-1.8	-0.3	4.1	2.5	2.4	1.1	2.5	1.1
2008 Jan	-1.3	-1.4	-1.1	-1.0	-1.2	-0.5	5.1	3.9	3.0	2.2	3.1	2.3
Feb	-1.1	-2.5	-0.8	-1.7	-0.8	-1.6	5.1	4.7	3.5	3.5	3.7	3.5
Mar	1.2	-1.6	1.6	-1.0	1.8	-1.4	5.4	5.4	4.1	4.5	4.2	4.5
Apr	1.5	-1.5	1.7	-1.1	1.2	-1.7	5.5	5.4	4.1	4.3	4.2	4.4
May	1.4	-1.6	1.5	-1.6	1.0	-1.6	6.4	5.5	4.1	3.7	4.1	3.8
Jun	1.0	-0.5	0.7	-0.6	0.1	-1.1	7.0	5.5	3.6	2.9	3.6	3.1
Jul	1.7	0.5	1.5	-	0.8	-0.3	6.4	4.8	2.5	2.0	2.5	2.0
Aug	1.4	1.8	1.2	1.4	0.4	0.7	3.9	2.8	1.6	1.2	1.5	1.2
Sep	0.3	0.6	0.1	0.3	-0.7	0.4	1.0	0.8	1.4	1.2	1.2	1.0

<sup>1</sup> These are provisional estimates subject to fluctuations when new or amended data become available.

<sup>2</sup> These are defined as ships, aircraft, precious stones and silver.

# 5 VOLUME INDICES WITH COUNTRIES INSIDE AND OUTSIDE THE EU (TRADE IN GOODS)<sup>1</sup>

Balance of Payments basis

Indices 2003=100 seasonally adjusted

	Trade in goods with EU countries <sup>3</sup>						Trade in goods with Non-EU countries					
	Total		Total excluding oil		Total excluding oil and erratics <sup>2</sup>		Total		Total excluding oil		Total excluding oil & erratics <sup>2</sup>	
	Exports	Imports	Exports	Imports	Exports	Imports	Exports	Imports	Exports	Imports	Exports	Imports
	LGCT	LGDL	LKUL	LKVD	SHBS	SHCO	LGEH	LGFA	LKVZ	LKWS	SHDJ	SHED
2005	107.5	115.0	108.9	115.2	109.0	114.7	116.6	114.7	118.2	114.1	119.8	116.8
2006	132.8	132.0	135.7	132.3	137.3	132.2	114.0	122.7	116.3	123.1	118.0	124.4
2007	107.9	117.0	109.0	116.7	109.3	116.8	113.9	129.1	116.3	129.8	116.5	131.6
2006 Q2	157.6	151.0	162.7	151.8	165.4	152.3	116.6	122.6	118.1	123.4	119.1	124.7
Q3	115.8	118.8	117.2	119.1	118.4	118.4	108.0	121.5	109.5	121.0	111.8	122.2
Q4	110.8	114.4	111.7	114.2	111.7	114.2	111.2	125.8	114.1	126.7	113.9	126.9
2007 Q1	107.9	115.1	109.1	114.5	108.8	114.3	110.6	126.7	112.9	127.0	114.9	127.7
Q2	105.9	114.2	106.7	113.8	107.5	113.8	116.4	125.5	118.6	127.0	115.5	129.1
Q3	110.0	119.7	110.8	119.6	111.1	119.8	114.9	133.0	117.8	133.5	119.3	134.9
Q4	107.9	119.2	109.5	118.9	109.7	119.2	113.6	131.0	115.8	131.6	116.4	134.8
2008 Q1	104.9	116.9	106.2	116.8	106.5	117.4	120.9	129.3	124.5	131.4	125.7	133.0
Q2	104.4	115.5	105.7	115.4	105.3	115.6	124.5	130.0	127.3	131.7	127.8	132.4
Q3	104.9	116.1	105.9	116.1	105.4	116.3	124.6	131.5	127.3	132.5	125.8	133.4
2007 Mar	106.3	115.8	108.4	115.4	107.9	114.8	116.2	130.5	117.5	131.3	119.1	132.9
Apr	103.5	111.5	103.8	110.8	104.7	110.7	118.5	123.6	120.4	124.2	110.1	128.3
May	109.0	115.6	110.0	115.4	110.6	115.1	110.4	122.9	113.2	124.8	113.2	124.9
Jun	105.1	115.4	106.3	115.3	107.2	115.5	120.4	130.0	122.1	131.9	123.2	134.2
Jul	110.4	118.7	111.2	118.8	111.6	118.9	114.8	135.0	117.2	136.6	117.0	138.5
Aug	110.8	120.1	112.2	119.9	112.6	120.0	117.9	130.5	122.1	131.1	123.6	132.5
Sep	108.8	120.3	109.1	120.2	109.1	120.6	111.9	133.5	114.2	132.7	117.2	133.6
Oct	108.8	118.5	110.8	118.5	111.0	118.9	115.6	135.1	116.9	135.2	117.0	137.1
Nov	109.6	120.6	111.5	120.1	111.6	120.4	117.0	133.5	119.7	133.9	120.6	136.0
Dec	105.2	118.5	106.2	118.1	106.5	118.3	108.2	124.3	110.8	125.8	111.6	131.3
2008 Jan	107.8	119.9	109.6	120.1	109.7	120.7	117.2	128.7	120.3	130.1	122.7	130.6
Feb	104.3	116.3	105.2	116.2	105.5	116.8	123.9	133.2	128.0	135.8	128.4	134.8
Mar	102.5	114.6	103.8	114.2	104.4	114.6	121.6	126.0	125.1	128.3	126.1	133.7
Apr	106.0	116.7	107.2	116.6	106.5	116.7	122.8	129.0	126.5	131.4	127.2	131.1
May	101.2	114.0	102.1	113.7	101.6	114.3	126.9	130.0	130.2	132.0	131.1	133.4
Jun	105.9	115.7	107.7	115.8	107.7	115.8	123.7	130.9	125.2	131.6	125.0	132.6
Jul	104.6	116.6	106.7	116.4	106.9	116.5	133.4	134.6	136.3	134.3	132.3	134.4
Aug	104.1	114.8	104.9	114.9	104.1	115.4	119.0	134.1	122.1	136.8	122.2	136.9
Sep	105.9	117.0	106.2	116.9	105.3	117.1	121.3	125.7	123.5	126.4	122.9	129.0
<b>Percentage change on previous month:</b>												
2008 Sep	1.7	1.9	1.2	1.7	1.2	1.5	1.9	-6.3	1.1	-7.6	0.6	-5.8
<b>3 months ended:</b>												
2007 Sep	110.0	119.7	110.8	119.6	111.1	119.8	114.9	133.0	117.8	133.5	119.3	134.9
2008 Jun	104.4	115.5	105.7	115.4	105.3	115.6	124.5	130.0	127.3	131.7	127.8	132.4
2008 Sep	104.9	116.1	105.9	116.1	105.4	116.3	124.6	131.5	127.3	132.5	125.8	133.4
<b>Percentage change, latest 3 months compared with:</b>												
Previous 3 months	0.5	0.6	0.3	0.6	0.2	0.6	0.1	1.2	0.0	0.6	-1.5	0.8
Same 3 months last year	-4.7	-3.0	-4.4	-3.0	-5.1	-2.9	8.4	-1.2	8.0	-0.7	5.5	-1.1

1 These are provisional estimates subject to fluctuations when new or amended data become available.

2 These are defined as ships, aircraft, precious stones and silver.

3 Includes trade with the Canary Islands, French Guiana, Guadeloupe, Martinique and Reunion.

† Earliest date for revisions to trade in goods is July 2008.

# 6 PRICE INDICES WITH COUNTRIES INSIDE AND OUTSIDE THE EU (TRADE IN GOODS)<sup>1</sup>

Balance of Payments basis

Indices 2003=100 not seasonally adjusted

	Trade in goods with EU countries <sup>3</sup>						Trade in goods with Non-EU countries					
	Total		Total excluding oil		Total excluding oil and erratics <sup>2</sup>		Total		Total excluding oil		Total excluding oil & erratics <sup>2</sup>	
	Exports	Imports	Exports	Imports	Exports	Imports	Exports	Imports	Exports	Imports	Exports	Imports
	LGCR	LGDJ	LKUJ	LKVB	SHBQ	SHCM	LGEF	LGEY	LKVX	LKWQ	SHDH	SHEB
2005	105.2	101.4	100.1	100.3	100.3	100.3	103.7	107.0	100.1	101.2	100.3	101.5
2006	108.5	104.0	101.3	102.5	101.7	102.5	106.7	112.3	101.5	103.9	101.5	104.4
2007	109.8	105.8	102.2	104.1	102.8	104.1	108.1	113.3	102.5	104.2	102.5	105.6
2006 Q2	110.1	104.2	101.9	102.4	102.2	102.4	108.2	113.9	102.1	104.2	102.2	104.6
Q3	109.2	104.6	101.1	102.9	101.5	102.9	107.2	112.8	101.2	103.4	101.3	104.0
Q4	105.6	104.2	100.1	103.1	100.6	103.1	104.2	109.6	100.2	103.2	100.3	104.0
2007 Q1	106.0	103.9	101.2	102.9	101.7	102.8	105.3	110.1	101.9	104.6	101.7	105.8
Q2	108.6	105.5	101.5	104.0	102.1	104.0	107.1	112.7	101.9	104.5	101.8	105.9
Q3	109.7	105.8	101.5	104.1	102.1	104.0	108.2	113.2	102.2	103.4	102.2	104.9
Q4	114.8	107.8	104.4	105.5	105.2	105.4	111.8	117.0	104.0	104.1	104.2	105.7
2008 Q1	122.1	112.4	109.9	109.6	110.8	109.5	115.9	125.1	106.4	109.9	106.6	111.7
Q2	132.2	116.6	115.2	112.7	116.0	112.7	121.6	134.7	108.1	113.4	108.4	115.4
Q3	133.3	117.2	116.6	113.4	117.4	113.4	123.0	136.2	109.8	115.7	109.9	117.2
2007 Mar	107.4	105.0	101.7	103.8	102.2	103.7	106.6	112.3	102.5	105.6	102.3	106.9
Apr	107.9	105.0	101.4	103.6	101.9	103.5	106.7	112.2	101.9	104.5	101.8	105.9
May	108.7	105.8	101.7	104.4	102.3	104.3	107.1	112.6	102.0	104.8	101.9	106.2
Jun	109.3	105.8	101.5	104.1	102.0	104.1	107.5	113.3	101.8	104.2	101.7	105.6
Jul	109.4	105.6	101.0	103.8	101.6	103.8	107.4	113.2	101.2	103.1	101.1	104.6
Aug	109.0	105.5	101.3	103.9	101.8	103.8	107.4	112.5	101.7	103.4	101.7	104.8
Sep	110.6	106.4	102.3	104.6	102.9	104.5	109.7	113.8	103.6	103.8	103.8	105.3
Oct	112.3	106.8	103.2	104.7	103.9	104.6	110.3	115.0	103.5	103.5	103.7	105.1
Nov	115.0	107.8	104.3	105.4	105.0	105.3	111.7	117.0	103.6	103.7	103.8	105.3
Dec	117.0	108.9	105.8	106.4	106.6	106.3	113.3	119.0	104.8	105.2	105.1	106.7
2008 Jan	120.0	111.1	108.4	108.5	109.2	108.4	115.0	123.1	106.1	108.7	106.3	110.4
Feb	121.5	112.4	109.6	109.6	110.4	109.5	115.7	125.1	106.4	110.1	106.6	111.8
Mar	124.9	113.8	111.8	110.8	112.7	110.7	117.0	127.2	106.8	110.9	106.8	112.8
Apr	129.3	115.7	114.8	112.4	115.7	112.4	119.2	130.9	107.7	112.6	108.0	114.7
May	132.4	116.8	115.2	112.8	116.0	112.8	122.0	135.3	108.3	113.7	108.5	115.7
Jun	134.9	117.3	115.5	112.9	116.4	112.8	123.7	138.0	108.4	113.9	108.6	115.9
Jul	135.4	117.5	116.1	113.0	117.0	113.0	123.6	137.9	108.2	113.7	108.5	115.8
Aug	132.7	116.5	116.3	112.8	117.1	112.8	122.8	135.5	109.9	115.5	110.0	116.8
Sep	131.9	117.5	117.4	114.4	118.0	114.3	122.6	135.3	111.3	118.0	111.3	119.0
<b>Percentage change on previous month:</b>												
2008 Sep	-0.6	0.9	0.9	1.4	0.8	1.3	-0.2	-0.1	1.3	2.2	1.2	1.9
<b>3 months ended:</b>												
2007 Sep	109.7	105.8	101.5	104.1	102.1	104.0	108.2	113.2	102.2	103.4	102.2	104.9
2008 Jun	132.2	116.6	115.2	112.7	116.0	112.7	121.6	134.7	108.1	113.4	108.4	115.4
2008 Sep	133.3	117.2	116.6	113.4	117.4	113.4	123.0	136.2	109.8	115.7	109.9	117.2
<b>Percentage change, latest 3 months compared with:</b>												
Previous 3 months	0.9	0.5	1.2	0.6	1.1	0.6	1.1	1.1	1.5	2.1	1.4	1.5
Same 3 months last year	21.6	10.7	14.8	8.9	15.0	9.0	13.7	20.4	7.5	11.9	7.6	11.7

1 These are provisional estimates subject to fluctuations when new or amended data become available.

2 These are defined as ships, aircraft, precious stones and silver.

3 Includes trade with the Canary Islands, French Guiana, Guadeloupe, Martinique and Reunion.

<sup>†</sup>Earliest date for revisions to trade in goods is July 2008.

# 7 TRADE IN OIL<sup>1</sup>

Balance of Payments basis

Seasonally adjusted

	Exports						Imports					
	Balance of Trade in Oil £ million	Crude oil (SITC 333)				Rest of SITC 33 £ million	Total £ million	Crude oil (SITC 333)				Rest of SITC 33 £ million
		Total £ million	£ million	million tonnes	Avg value per tonne £			£ million	million tonnes	Avg value per tonne £		
	ENXQ	ELBL	BQNI	BOQM	BPBN	BOQN	ENXO	BQNJ	BQBH	BQAX	BQAY	
2005	-2 195	19 794	10 948	50.03	223	8 846	21 989	11 212	54.21	205	10 777	
2006	-2 794	23 173	12 784	47.24	270	10 389	25 967	14 272	55.71	255	11 695	
2007	-4 047	22 749	12 634	46.94	269	10 115	26 796	11 418	44.20	258	15 378	
2006 Q2	-107	6 512	3 646	12.90	283	2 866	6 619	3 744	13.95	268	2 875	
Q3	-984	6 098	3 294	11.48	287	2 804	7 082	4 175	15.11	276	2 907	
Q4	-840	4 904	2 572	10.50	245	2 332	5 744	2 915	12.89	226	2 829	
2007 Q1	-820	4 758	2 581	11.34	228	2 177	5 578	2 192	10.59	207	3 386	
Q2	-308	5 617	3 114	12.14	257	2 503	5 925	2 265	9.32	243	3 660	
Q3	-1 228	5 894	3 360	12.12	277	2 534	7 122	3 313	12.66	262	3 809	
Q4	-1 691	6 480	3 579	11.34	316	2 901	8 171	3 648	11.63	314	4 523	
2008 Q1	-1 361	6 955	3 767	10.24	368	3 188	8 316	3 832	10.72	357	4 484	
Q2	-1 700	8 786	4 510	10.04	449	4 276	10 486	4 906	10.82	453	5 580	
Q3	-1 828	9 060	4 376	9.44	464	4 684	10 888	4 968	10.54	471	5 920	
2008 Apr	-468	2 541	1 282	3.24	396	1 259	3 009	1 461	3.34	437	1 548	
May	-485	2 951	1 534	3.46	443	1 417	3 436	1 328	3.04	437	2 108	
Jun	-747	3 294	1 694	3.34	507	1 600	4 041	2 117	4.44	477	1 924	
Jul	-1 524	3 032	1 328	2.61	509	1 704	4 556	2 152	4.22	510	2 404	
Aug	-236	2 887	1 498	3.23	464	1 389	3 123	1 323	2.85	464	1 800	
Sep	-68	3 141	1 550	3.60	431	1 591	3 209	1 493	3.47	430	1 716	
<b>3 months ended:</b>												
2007 Sep	-1 228	5 894	3 360	12.12	277	2 534	7 122	3 313	12.66	262	3 809	
2008 Jun	-1 700	8 786	4 510	10.04	449	4 276	10 486	4 906	10.82	450	5 580	
2008 Sep	-1 828	9 060	4 376	9.44	468	4 684	10 888	4 968	10.54	468	5 920	
<b>Percentage change, latest 3 months compared with:</b>												
Previous 3 months		3.1	-3.0	-6.0	4.3	9.5	3.8	1.3	-2.6	3.9	6.1	
Same 3 months last year		53.7	30.2	-22.1	69.0	84.8	52.9	50.0	-16.7	78.9	55.4	

1 Trade in petroleum and petroleum products. These figures differ from those published by the Department of Energy and Climate Change which are compiled from different sources and are on a time of shipment basis.

2 The average value per tonne may reflect not only changes in price but also changes in the commodity mix.

† Earliest date for revisions to trade in goods is July 2008.



# VALUE OF TRADE IN GOODS BY COMMODITY

Balance of Payments basis

£ million seasonally adjusted

	Food, beverages and tobacco (SITC 0 + 1)			Basic materials (SITC 2 + 4)			Fuels (SITC 3)		
	Exports	Imports	Balance	Exports	Imports	Balance	Exports	Imports	Balance
	BOPL	BQAR	ELBE	BOPM	BQAS	ELBF	BOPN	BQAT	ELBG
2005	10 647	23 695	-13 048	3 981	6 770	-2 789	21 496	25 921	-4 425
2006	10 945	25 013	-14 068	4 892	7 887	-2 995	25 301	30 888	-5 587
2007	11 759	26 777	-15 018	5 519	9 571	-4 052	24 691	31 940	-7 249
2006 Q3	2 758	6 255	-3 497	1 212	1 927	-715	6 724	8 234	-1 510
Q4	2 836	6 435	-3 599	1 379	2 204	-825	5 305	6 877	-1 572
2007 Q1	2 910	6 464	-3 554	1 304	2 165	-861	5 076	6 814	-1 738
Q2	2 875	6 561	-3 686	1 446	2 401	-955	6 112	6 864	-752
Q3	2 980	6 798	-3 818	1 300	2 542	-1 242	6 353	8 207	-1 854
Q4	2 994	6 954	-3 960	1 469	2 463	-994	7 150	10 055	-2 905
2008 Q1	3 246	7 434	-4 188	1 550	2 747	-1 197	7 560	10 596	-3 036
Q2	3 390	7 812	-4 422	1 928	2 870	-942	9 592	12 736	-3 144
Q3	3 542	7 865	-4 323	1 851	2 964	-1 113	9 926	13 716	-3 790
2008 Apr	1 137	2 563	-1 426	621	873	-252	2 785	3 843	-1 058
May	1 128	2 594	-1 466	682	986	-304	3 251	4 144	-893
Jun	1 125	2 655	-1 530	625	1 011	-386	3 556	4 749	-1 193
Jul	1 180	2 655	-1 475	708	998	-290	3 317	5 363	-2 046
Aug	1 160	2 567	-1 407	552	953	-401	3 161	4 399	-1 238
Sep	1 202	2 643	-1 441	591	1 013	-422	3 448	3 954	-506
<b>3 months ended:</b>									
2007 Sep	2 980	6 798	-3 818	1 300	2 542	-1 242	6 353	8 207	-1 854
2008 Jun	3 390	7 812	-4 422	1 928	2 870	-942	9 592	12 736	-3 144
2008 Sep	3 542	7 865	-4 323	1 851	2 964	-1 113	9 926	13 716	-3 790
<b>Percentage change, latest 3 months compared with:</b>									
Previous 3 months	4.5	0.7		-4.0	3.3		3.5	7.7	
Same 3 months last year	18.9	15.7		42.4	16.6		56.2	67.1	

	Semi-manufactures (SITC 5 + 6)			Finished manufactures (SITC 7 + 8)			Total manufactures (SITC 5 to 8)			Miscellaneous (SITC 9)		
	Exports	Imports	Balance	Exports	Imports	Balance	Exports	Imports	Balance	Exports	Imports	Balance
	BOPO	BQAU	ELBH	BOPP	BQAV	ELBI	BPAN	BQBD	ELBJ	BOQL	BQAW	BQKX
2005	59 880	62 677	-2 797	114 484	159 293	-44 809	174 364	221 970	-47 606	1 120	1 841	-721
2006	64 843	69 342	-4 499	136 368	184 748	-48 380	201 211	254 090	-52 879	1 286	2 070	-784
2007	68 222	74 517	-6 295	109 343	164 876	-55 533	177 565	239 393	-61 828	1 169	2 274	-1 105
2006 Q3	16 117	17 368	-1 251	28 917	41 575	-12 658	45 034	58 943	-13 909	307	463	-156
Q4	16 642	18 268	-1 626	27 448	40 414	-12 966	44 090	58 682	-14 592	290	552	-262
2007 Q1	16 878	18 175	-1 297	26 769	40 616	-13 847	43 647	58 791	-15 144	357	528	-171
Q2	16 936	18 469	-1 533	27 032	40 100	-13 068	43 968	58 569	-14 601	252	544	-292
Q3	17 379	19 234	-1 855	27 603	42 017	-14 414	44 982	61 251	-16 269	268	533	-265
Q4	17 029	18 639	-1 610	27 939	42 143	-14 204	44 968	60 782	-15 814	292	669	-377
2008 Q1	18 359	19 493	-1 134	29 004	42 344	-13 340	47 363	61 837	-14 474	323	625	-302
Q2	19 357	20 315	-958	29 390	42 850	-13 460	48 747	63 165	-14 418	378	592	-214
Q3	20 078	20 722	-644	29 597	43 381	-13 784	49 675	64 103	-14 428	479	538	-59
2008 Apr	6 287	6 715	-428	9 982	14 377	-4 395	16 269	21 092	-4 823	130	199	-69
May	6 403	6 741	-338	9 682	14 125	-4 443	16 085	20 866	-4 781	114	189	-75
Jun	6 667	6 859	-192	9 726	14 348	-4 622	16 393	21 207	-4 814	134	204	-70
Jul	6 768	6 921	-153	10 248	14 453	-4 205	17 016	21 374	-4 358	143	179	-36
Aug	6 579	6 870	-291	9 642	14 282	-4 640	16 221	21 152	-4 931	148	197	-49
Sep	6 731	6 931	-200	9 707	14 646	-4 939	16 438	21 577	-5 139	188	162	26
<b>3 months ended:</b>												
2007 Sep	17 379	19 234	-1 855	27 603	42 017	-14 414	44 982	61 251	-16 269	268	533	-265
2008 Jun	19 357	20 315	-958	29 390	42 850	-13 460	48 747	63 165	-14 418	378	592	-214
2008 Sep	20 078	20 722	-644	29 597	43 381	-13 784	49 675	64 103	-14 428	479	538	-59
<b>Percentage change, latest 3 months compared with:</b>												
Previous 3 months	3.7	2.0		0.7	1.2		1.9	1.5		26.7	-9.1	
Same 3 months last year	15.5	7.7		7.2	3.2		10.4	4.7		78.7	0.9	
<b>EXCLUDING ERRATICS<sup>1</sup></b>												
Previous 3 months	2.0	2.5		-0.3	0.8		0.6	1.4				
Same 3 months last year	13.2	7.8		5.4	2.4		8.4	4.1				

<sup>1</sup> These are defined as precious stones and silver in semi-manufactures, and as ships and aircraft in finished manufactures.

<sup>†</sup> Earliest date for revisions to trade in goods is July 2008.

# 9 VOLUME INDICES (TRADE IN GOODS) BY COMMODITY <sup>1</sup>

Balance of Payments basis

Indices 2003=100 seasonally adjusted

	Food, beverages and tobacco (SITC 0 + 1)		Basic materials (SITC 2 + 4)		Fuels (SITC 3)		Semi-manufactures (SITC 5 + 6)		Finished manufactures (SITC 7 + 8)		Total manufactures (SITC 5 to 8)	
	Exports	Imports	Exports	Imports	Exports	Imports	Exports	Imports	Exports	Imports	Exports	Imports
<i>Weights<sup>2</sup></i> <i>(total trade = 1000)</i>	58	89	18	26	88	52	289	237	543	589	832	826
	BPEM	BQBK	BAFB	BQBL	BAFC	BQBM	BAHA	BQBN	BAHY	ELAB	BOGT	ELAJ
2005	98	110	107	102	90	131	108	106	117	118	114	115
2006	99	114	121	110	91	132	116	112	139	137	131	130
2007	102	117	135	121	88	143	122	118	108	123	113	121
2006 Q2	98	112	117	108	97	124	117	110	167	156	149	143
Q3	100	112	119	107	94	136	115	111	115	124	115	120
Q4	102	116	134	117	86	130	121	116	110	120	114	119
2007 Q1	103	115	127	115	84	147	121	115	106	121	111	119
Q2	101	117	138	121	91	130	122	117	107	119	112	118
Q3	103	119	131	129	88	141	124	122	110	126	114	125
Q4	101	116	143	120	87	154	120	116	109	125	113	123
2008 Q1	105	118	138	122	81	144	125	117	109	123	114	121
Q2	106	119	153	123	86	141	128	118	108	122	115	121
Q3	108	116	152	124	89	154	129	119	107	122	115	121
2008 Apr	107	119	151	115	83	141	125	118	110	123	115	121
May	106	118	154	126	87	140	127	118	107	121	114	120
Jun	105	119	154	129	89	142	131	119	107	122	115	121
Jul	109	119	169	128	84	159	133	121	112	123	119	122
Aug	107	114	137	121	87	167	127	120	104	121	112	121
Sep	109	115	150	124	96	136	127	116	105	122	113	120
<b>3 months ended:</b>												
2007 Sep	103	119	131	129	88	141	124	122	110	126	114	125
2008 Jun	106	119	153	123	86	141	128	118	108	122	115	121
2008 Sep	108	116	152	124	89	154	129	119	107	122	115	121
<b>Percentage change, latest 3 months compared with:</b>												
Previous 3 months	2.2	-2.2	-0.7	0.8	3.1	9.2	1.0	0.6	-0.9	0.0	0.0	0.3
Same 3 months last year	4.8	-2.5	15.7	-3.4	0.8	9.5	3.8	-2.7	-2.4	-3.2	0.3	-3.2
<b>EXCLUDING ERRATICS<sup>3</sup></b>												
Previous 3 months							0.0	1.4	-1.9	0.3	-1.2	0.3
Same 3 months last year							1.9	-2.2	-4.2	-3.4	-1.7	-3.5

1 These are provisional estimates subject to fluctuations when new or amended data become available.

2 The weights shown are in proportion to the total value of trade in 2003 and are used to combine the volume indices to calculate the totals for 2004 onwards. For 2003 and earlier, totals are calculated using the equivalent weights for the previous year (eg totals for 2003 use 2002 weights).

3 These are defined as precious stones and silver in semi-manufactures, and as ships and aircraft in finished manufactures.

<sup>†</sup> Earliest date for revisions to trade in goods is July 2008.

# 10 PRICE INDICES (TRADE IN GOODS) BY COMMODITY<sup>1</sup>

Balance of Payments Consistent basis

Indices 2003=100 not seasonally adjusted

	Food, beverages and tobacco (SITC 0 + 1)		Basic materials (SITC 2 + 4)		Fuels (SITC 3)		Semi-manufactures (SITC 5 + 6)		Finished manufactures (SITC 7 + 8)		Total manufactures (SITC 5 to 8)	
	Exports	Imports	Exports	Imports	Exports	Imports	Exports	Imports	Exports	Imports	Exports	Imports
<i>Weights<sup>2</sup></i> <i>(total trade = 1000)</i>	58	89	18	26	88	52	289	237	543	589	832	826
	BPAI	ELAN	BPAW	ELAO	BPDU	ELAP	BQAA	ELAQ	BQAB	ELAR	BQAI	ELAY
2005	100	102	115	108	157	168	101	107	98	97	100	100
2006	102	105	122	117	183	200	103	112	99	97	100	102
2007	106	110	127	127	186	207	103	115	100	97	101	102
2006 Q2	103	105	124	115	194	213	103	112	99	97	101	102
Q3	102	106	123	118	191	208	102	114	98	97	100	102
Q4	102	107	122	121	163	179	102	114	98	97	99	102
2007 Q1	104	107	125	122	156	170	102	114	99	97	100	102
Q2	105	108	129	129	179	198	102	116	99	97	100	102
Q3	106	109	126	127	191	213	102	115	100	96	101	102
Q4	109	115	127	131	220	246	104	115	102	97	102	102
2008 Q1	115	122	140	143	246	281	108	121	105	101	106	106
Q2	120	129	154	151	305	349	113	126	108	102	110	109
Q3	121	132	153	150	304	344	116	128	109	103	111	110
2008 Apr	119	126	152	150	277	315	112	125	108	102	109	109
May	120	129	155	151	308	352	113	126	108	102	110	109
Jun	120	131	155	151	331	379	113	126	108	102	110	109
Jul	121	132	156	150	333	379	114	127	108	102	110	109
Aug	120	131	153	148	299	339	116	127	109	103	111	110
Sep	121	134	149	151	281	313	117	129	110	104	112	111
<b>3 months ended:</b>												
2007 Sep	106	109	126	127	191	213	102	115	100	96	101	102
2008 Jun	120	129	154	151	305	349	113	126	108	102	110	109
2008 Sep	121	132	153	150	304	344	116	128	109	103	111	110
<b>Percentage change, latest 3 months compared with:</b>												
Previous 3 months	0.8	2.8	-0.9	-0.7	-0.3	-1.4	2.7	1.6	0.9	1.0	1.2	0.9
Same 3 months last year	13.8	21.0	21.2	18.2	59.6	61.6	13.4	11.0	9.4	6.9	10.3	7.8
<b>EXCLUDING ERRATICS<sup>3</sup></b>												
Previous 3 months							1.7	1.0	0.9	0.7	1.5	0.9
Same 3 months last year							12.5	10.2	9.4	6.6	10.9	7.8

1 These are provisional estimates subject to fluctuations when new or amended data become available.

2 The weights shown are in proportion to the total value of trade in 2003 and are used to combine the volume indices to calculate the totals for 2004 onwards. For 2003 and earlier, totals are calculated using the equivalent weights for the previous year (eg totals for 2003 use 2002 weights).

3 These are defined as precious stones and silver in semi-manufactures, and as ships and aircraft in finished manufactures.

† Earliest date for revisions to trade in goods is July 2008.

# 11 TRADE IN GOODS WITH SELECTED EU TRADING PARTNERS

Balance of Payments Consistent basis

£ million seasonally adjusted

	Belgium & Luxembourg			France			Germany			Irish Republic		
	Exports	Imports	Balance	Exports	Imports	Balance	Exports	Imports	Balance	Exports	Imports	Balance
	CHNQ	CHNY	CHNF	ENYL	ENYP	ENYT	ENYO	ENYS	ENYW	CHNS	CHOA	CHNH
2005	11 394	15 155	-3 761	19 931	21 984	-2 053	23 025	39 169	-16 144	16 294	10 411	5 883
2006	15 082	18 183	-3 101	28 693	26 376	2 317	27 602	42 660	-15 058	17 480	10 770	6 710
2007	12 111	15 765	-3 654	18 086	21 821	-3 735	24 672	44 428	-19 756	17 782	11 313	6 469
2006 Q2	4 162	4 883	-721	9 310	7 856	1 454	7 607	10 868	-3 261	4 364	2 797	1 567
Q3	3 730	4 365	-635	5 714	5 727	-13	6 588	10 437	-3 849	4 296	2 458	1 838
Q4	3 167	3 722	-555	5 183	5 408	-225	6 369	10 419	-4 050	4 246	2 730	1 516
2007 Q1	2 955	3 679	-724	4 550	5 446	-896	6 033	10 980	-4 947	4 288	2 790	1 498
Q2	2 863	3 590	-727	4 312	5 250	-938	6 056	11 242	-5 186	4 445	2 779	1 666
Q3	3 115	4 193	-1 078	4 545	5 540	-995	6 187	11 078	-4 891	4 519	2 945	1 574
Q4	3 178	4 303	-1 125	4 679	5 585	-906	6 396	11 128	-4 732	4 530	2 799	1 731
2008 Q1	3 175	4 110	-935	4 369	5 654	-1 285	6 879	11 381	-4 502	4 814	2 983	1 831
Q2	3 179	4 487	-1 308	4 428	6 057	-1 629	7 229	11 569	-4 340	5 070	3 066	2 004
Q3	3 539	4 568	-1 029	4 777	5 704	-927	7 266	11 672	-4 406	4 800	3 095	1 705
2008 Apr	1 063	1 473	-410	1 481	1 962	-481	2 375	3 857	-1 482	1 703	1 019	684
May	975	1 503	-528	1 442	1 921	-479	2 417	3 771	-1 354	1 667	1 012	655
Jun	1 141	1 511	-370	1 505	2 174	-669	2 437	3 941	-1 504	1 700	1 035	665
Jul	1 106	1 505	-399	1 566	1 926	-360	2 433	3 876	-1 443	1 651	1 081	570
Aug	1 164	1 475	-311	1 560	1 902	-342	2 414	3 817	-1 403	1 608	974	634
Sep	1 269	1 588	-319	1 651	1 876	-225	2 419	3 979	-1 560	1 541	1 040	501
<b>3 months ended:</b>												
2007 Sep	3 115	4 193	-1 078	4 545	5 540	-995	6 187	11 078	-4 891	4 519	2 945	1 574
2008 Jun	3 179	4 487	-1 308	4 428	6 057	-1 629	7 229	11 569	-4 340	5 070	3 066	2 004
2008 Sep	3 539	4 568	-1 029	4 777	5 704	-927	7 266	11 672	-4 406	4 800	3 095	1 705
<b>Percentage change, latest 3 months compared with:</b>												
Previous 3 months	11.3	1.8		7.9	-5.8		0.5	0.9		-5.3	0.9	
Same 3 months last year	13.6	8.9		5.1	3.0		17.4	5.4		6.2	5.1	
	Italy			Netherlands			Spain			Sweden		
	Exports	Imports	Balance	Exports	Imports	Balance	Exports	Imports	Balance	Exports	Imports	Balance
	CHNO	CHNW	CHOE	CHNP	CHNX	CHNE	CHNV	CHOD	CHNM	CHNA	CHND	CHVI
2005	8 790	12 673	-3 883	12 716	20 436	-7 720	10 677	11 450	-773	4 588	5 463	-875
2006	9 494	12 775	-3 281	16 522	22 275	-5 753	12 295	12 144	151	5 246	5 985	-739
2007	9 178	13 271	-4 093	15 098	23 010	-7 912	9 970	10 380	-410	4 899	5 256	-357
2006 Q2	2 434	3 302	-868	4 733	5 878	-1 145	3 784	3 647	137	1 484	1 566	-82
Q3	2 307	2 996	-689	3 603	5 184	-1 581	2 580	2 489	91	1 233	1 491	-258
Q4	2 153	3 107	-954	3 397	5 168	-1 771	2 413	2 451	-38	1 169	1 435	-266
2007 Q1	2 242	3 194	-952	3 339	5 335	-1 996	2 565	2 462	103	1 222	1 336	-114
Q2	2 214	3 249	-1 035	3 607	5 608	-2 001	2 438	2 466	-28	1 224	1 257	-33
Q3	2 349	3 386	-1 037	4 059	5 787	-1 728	2 528	2 736	-208	1 210	1 311	-101
Q4	2 373	3 442	-1 069	4 093	6 280	-2 187	2 439	2 716	-277	1 243	1 352	-109
2008 Q1	2 303	3 507	-1 204	4 480	6 542	-2 062	2 628	2 751	-123	1 298	1 657	-359
Q2	2 488	3 615	-1 127	5 139	6 605	-1 466	2 618	2 638	-20	1 354	1 772	-418
Q3	2 427	3 361	-934	5 569	6 765	-1 196	2 623	2 794	-171	1 432	1 803	-371
2008 Apr	912	1 253	-341	1 600	2 158	-558	882	908	-26	435	602	-167
May	779	1 157	-378	1 746	2 232	-486	836	884	-48	444	568	-124
Jun	797	1 205	-408	1 793	2 215	-422	900	846	54	475	602	-127
Jul	795	1 180	-385	1 804	2 338	-534	861	919	-58	462	656	-194
Aug	797	1 145	-348	1 838	2 219	-381	873	920	-47	497	580	-83
Sep	835	1 036	-201	1 927	2 208	-281	889	955	-66	473	567	-94
<b>3 months ended:</b>												
2007 Sep	2 349	3 386	-1 037	4 059	5 787	-1 728	2 528	2 736	-208	1 210	1 311	-101
2008 Jun	2 488	3 615	-1 127	5 139	6 605	-1 466	2 618	2 638	-20	1 354	1 772	-418
2008 Sep	2 427	3 361	-934	5 569	6 765	-1 196	2 623	2 794	-171	1 432	1 803	-371
<b>Percentage change, latest 3 months compared with:</b>												
Previous 3 months	-2.5	-7.0		8.4	2.4		0.2	5.9		5.8	1.7	
Same 3 months last year	3.3	-0.7		37.2	16.9		3.8	2.1		18.3	37.5	

† Earliest date for revisions to trade in goods is July 2008.

# 12 TRADE IN GOODS WITH SELECTED NON-EU TRADING PARTNERS

Balance of Payments Consistent basis

£ million seasonally adjusted

	Canada			China			Hong Kong			Japan		
	Exports	Imports	Balance	Exports	Imports	Balance	Exports	Imports	Balance	Exports	Imports	Balance
	EOBC	EOBW	EOCQ	ERDN	ERDZ	EREL	ERDG	ERDS	EREE	EOBD	EOBX	EOCR
2005	3 277	4 157	-880	2 811	12 962	-10 151	3 087	6 602	-3 515	3 900	8 669	-4 769
2006	3 894	4 954	-1 060	3 264	15 237	-11 973	2 864	7 338	-4 474	4 109	7 857	-3 748
2007	3 261	5 775	-2 514	3 826	18 681	-14 855	2 702	6 922	-4 220	3 836	7 863	-4 027
2006 Q2	1 097	1 284	-187	789	3 789	-3 000	753	1 878	-1 125	1 035	1 938	-903
Q3	875	1 143	-268	828	3 754	-2 926	641	1 808	-1 167	994	1 941	-947
Q4	907	1 245	-338	848	4 010	-3 162	681	1 833	-1 152	986	1 908	-922
2007 Q1	942	1 215	-273	861	4 692	-3 831	595	1 724	-1 129	951	2 041	-1 090
Q2	822	1 657	-835	923	4 436	-3 513	655	1 610	-955	981	1 911	-930
Q3	757	1 626	-869	980	4 596	-3 616	710	1 760	-1 050	941	1 948	-1 007
Q4	740	1 277	-537	1 062	4 957	-3 895	742	1 828	-1 086	963	1 963	-1 000
2008 Q1	666	1 263	-597	1 274	5 251	-3 977	1 088	1 900	-812	995	1 994	-999
Q2	790	1 533	-743	1 318	5 362	-4 044	896	1 951	-1 055	1 031	2 217	-1 186
Q3	852	1 499	-647	1 296	5 897	-4 601	840	2 104	-1 264	953	2 063	-1 110
2008 Mar	225	389	-164	411	1 745	-1 334	353	581	-228	326	674	-348
Apr	229	505	-276	450	1 749	-1 299	306	651	-345	325	798	-473
May	286	516	-230	433	1 771	-1 338	290	653	-363	380	722	-342
Jun	275	512	-237	435	1 842	-1 407	300	647	-347	326	697	-371
Jul	306	541	-235	475	1 925	-1 450	299	674	-375	381	711	-330
Aug	271	462	-191	373	1 928	-1 555	262	703	-441	315	650	-335
Sep	275	496	-221	448	2 044	-1 596	279	727	-448	257	702	-445
<b>3 months ended:</b>												
2007 Sep	757	1 626	-869	980	4 596	-3 616	710	1 760	-1 050	941	1 948	-1 007
2008 Jun	790	1 533	-743	1 318	5 362	-4 044	896	1 951	-1 055	1 031	2 217	-1 186
2008 Sep	852	1 499	-647	1 296	5 897	-4 601	840	2 104	-1 264	953	2 063	-1 110
<b>Percentage change, latest 3 months compared with:</b>												
Previous 3 months	7.8	-2.2		-1.7	10.0		-6.2	7.8		-7.6	-6.9	
Same 3 months last year	12.5	-7.8		32.2	28.3		18.3	19.5		1.3	5.9	
	Norway			South Korea			Switzerland			USA		
	Exports	Imports	Balance	Exports	Imports	Balance	Exports	Imports	Balance	Exports	Imports	Balance
	EPLX	EPMX	EPNX	ERDM	ERDY	EREK	EPLV	EPMV	EPNV	EOBB	EOBV	EOCP
2005	2 211	12 077	-9 866	1 677	3 063	-1 386	4 985	3 884	1 101	30 916	22 187	8 729
2006	2 125	14 453	-12 328	1 746	3 069	-1 323	4 189	4 372	-183	32 098	25 551	6 547
2007	2 675	14 278	-11 603	1 898	3 063	-1 165	3 774	4 731	-957	32 113	25 803	6 310
2006 Q2	583	3 750	-3 167	429	798	-369	1 087	1 145	-58	8 419	6 508	1 911
Q3	504	3 988	-3 484	466	731	-265	825	1 075	-250	8 050	6 056	1 994
Q4	530	2 908	-2 378	479	756	-277	875	1 100	-225	7 600	6 616	984
2007 Q1	558	3 236	-2 678	427	748	-321	862	1 182	-320	7 954	6 421	1 533
Q2	717	3 169	-2 452	492	717	-225	936	1 132	-196	7 954	6 433	1 521
Q3	611	3 541	-2 930	494	796	-302	997	1 228	-231	8 092	6 572	1 520
Q4	789	4 332	-3 543	485	802	-317	979	1 189	-210	8 113	6 377	1 736
2008 Q1	659	5 296	-4 637	526	877	-351	942	1 263	-321	8 578	6 159	2 419
Q2	719	6 032	-5 313	829	903	-74	1 379	1 298	81	9 106	6 179	2 927
Q3	640	5 370	-4 730	628	822	-194	1 050	1 331	-281	8 779	6 577	2 202
2008 Mar	267	1 869	-1 602	166	297	-131	339	442	-103	2 859	2 023	836
Apr	247	1 850	-1 603	167	292	-125	482	436	46	2 906	2 036	870
May	254	1 933	-1 679	151	327	-176	480	460	20	3 040	1 982	1 058
Jun	218	2 249	-2 031	511	284	227	417	402	15	3 160	2 161	999
Jul	272	2 219	-1 947	193	306	-113	434	548	-114	3 093	2 203	890
Aug	169	1 556	-1 387	193	280	-87	298	405	-107	2 945	2 185	760
Sep	199	1 595	-1 396	242	236	6	318	378	-60	2 741	2 189	552
<b>3 months ended:</b>												
2007 Sep	611	3 541	-2 930	494	796	-302	997	1 228	-231	8 092	6 572	1 520
2008 Jun	719	6 032	-5 313	829	903	-74	1 379	1 298	81	9 106	6 179	2 927
2008 Sep	640	5 370	-4 730	628	822	-194	1 050	1 331	-281	8 779	6 577	2 202
<b>Percentage change, latest 3 months compared with:</b>												
Previous 3 months	-11.0	-11.0		-24.2	-9.0		-23.9	2.5		-3.6	6.4	
Same 3 months last year	4.7	51.7		27.1	3.3		5.3	8.4		8.5	0.1	

† Earliest date for revisions to trade in goods is July 2008.

# 13R SUMMARY OF REVISIONS

Balance of Payments Basis

£ million

	Trade in goods <sup>1</sup>			Trade in services (seasonally adjusted) <sup>2</sup>			Trade in goods & services (seasonally adjusted)			Growth rates for volume and price indices (2003=100)			
	Value (seasonally adjusted) £ million			£ Million			£ Million			Volume excluding oil and erratics		Prices	
	Exports	Imports	Balance	Exports	Imports	Balance	Exports	Imports	Balance	Exports	Imports	Exports	Imports
	BOKG	BOKH	BOKI	IKBB	IKBC	IKBD	IKBH	IKBI	IKBJ				
2005	-	-	-	-	-	-	-	-	-	-	-	-	-
2006	-	-	-	-	-	-	-	-	-	-	-	-	-
2007	-	-	-	-	-	-	-	-	-	-	-	-	-
2006 Q1	-	-	-	-	-	-	-	-	-	-	-	-	-
Q2	-	-	-	-	-	-	-	-	-	-	-	-	-
Q3	-	-	-	-	-	-	-	-	-	-	-	-	-
Q4	-	-	-	-	-	-	-	-	-	-	-	-	-
2007 Q1	-	-	-	-	-	-	-	-	-	-	-	-	-
Q2	-	-	-	-	-	-	-	-	-	-	-	-	-
Q3	-	-	-	-	-	-	-	-	-	-	-	-	-
Q4	-	-	-	-	-	-	-	-	-	-	-	-	-
2008 Q1	-	-	-	-	-	-	-	-	-	-	-	-	-
Q2	-	-	-	-	-	-	-	-	-	-	-	-	-
Q3	..	..	..	..	..	..	..	..	..	..	..	..	..
2006 Jan	-	-	-	-	-	-	-	-	-	-	-	-	-
Feb	-	-	-	-	-	-	-	-	-	-	-	-	-
Mar	-	-	-	-	-	-	-	-	-	-	-	-	-
Apr	-	-	-	-	-	-	-	-	-	-	-	-	-
May	-	-	-	-	-	-	-	-	-	-	-	-	-
Jun	-	-	-	-	-	-	-	-	-	-	-	-	-
Jul	-	-	-	-	-	-	-	-	-	-	-	-	-
Aug	-	-	-	-	-	-	-	-	-	-	-	-	-
Sep	-	-	-	-	-	-	-	-	-	-	-	-	-
Oct	-	-	-	-	-	-	-	-	-	-	-	-	-
Nov	-	-	-	-	-	-	-	-	-	-	-	-	-
Dec	-	-	-	-	-	-	-	-	-	-	-	-	-
2007 Jan	-	-	-	-	-	-	-	-	-	-	-	-	-
Feb	-	-	-	-	-	-	-	-	-	-	-	-	-
Mar	-	-	-	-	-	-	-	-	-	-	-	-	-
Apr	-	-	-	-	-	-	-	-	-	-	-	-	-
May	-	-	-	-	-	-	-	-	-	-	-	-	-
Jun	-	-	-	-	-	-	-	-	-	-	-	-	-
Jul	-	-	-	-	-	-	-	-	-	-	-	-	-
Aug	-	-	-	-	-	-	-	-	-	-	-	-	-
Sep	-	-	-	-	-	-	-	-	-	-	-	-	-
Oct	-	-	-	-	-	-	-	-	-	-	-	-	-
Nov	-	-	-	-	-	-	-	-	-	-	-	-	-
Dec	-	-	-	-	-	-	-	-	-	-	-	-	-
2008 Jan	-	-	-	-	-	-	-	-	-	-	-	-	-
Feb	-	-	-	-	-	-	-	-	-	-	-	-	-
Mar	-	-	-	-	-	-	-	-	-	-	-	-	-
Apr	-	-	-	-	-	-	-	-	-	-	-	-	-
May	-	-	-	-	-	-	-	-	-	-	-	-	-
Jun	-	-	-	-	-	-	-	-	-	-	-	-	-
Jul	24	-9	33	-12	46	-58	12	37	-25	-0.2	-0.1	-	-
Aug	-88	-260	172	41	-96	137	-47	-356	309	-	-1.1	-	0.1
Sep	..	..	..	..	..	..	..	..	..	..	..	..	..
<b>3 month on 3 month comparison:</b>													
2007 Apr	-	-	-	-	-	-	-	-	-	-	-	-	-
May	-	-	-	-	-	-	-	-	-	-	-	-	-
Jun	-	-	-	-	-	-	-	-	-	-	-	-	-
Jul	-	-	-	-	-	-	-	-	-	-	-	-	-
Aug	-	-	-	-	-	-	-	-	-	-	-	-	-
Sep	-	-	-	-	-	-	-	-	-	-	-	-	-
Oct	-	-	-	-	-	-	-	-	-	-	-	-	-
Nov	-	-	-	-	-	-	-	-	-	-	-	-	-
Dec	-	-	-	-	-	-	-	-	-	-	-	-	-
2008 Jan	-	-	-	-	-	-	-	-	-	-	-	-	-
Feb	-	-	-	-	-	-	-	-	-	-	-	-	-
Mar	-	-	-	-	-	-	-	-	-	-	-	-	-
Apr	-	-	-	-	-	-	-	-	-	-	-	-	-
May	-	-	-	-	-	-	-	-	-	-	-	-	-
Jun	-	-	-	-	-	-	-	-	-	-	-	-	-
Jul	-	-	-	-	-	-	-	-	-	-0.1	-0.1	-	-
Aug	-	-	-	-	-	-	-	-	-	-0.2	-0.4	-	-
Sep	-	-	-	-	-	-	-	-	-	..	..	..	..

<sup>1</sup>Earliest date for revisions to trade in goods is July 2008.

<sup>2</sup>Earliest date for revisions to trade in services is July 2008.