

9 November 2007

Coverage
United Kingdom
Theme
The Economy

UK trade

September 2007

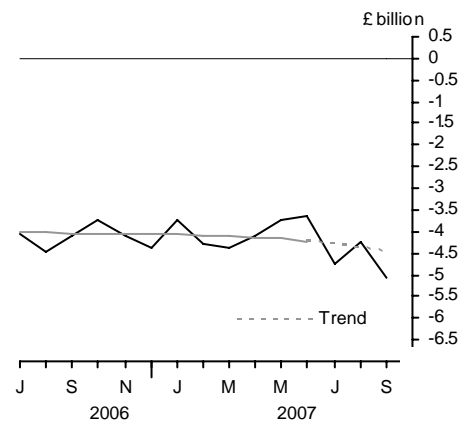
The UK's deficit on trade in goods and services is provisionally estimated to have widened in September to £5.1 billion, from a deficit of £4.2 billion in August.

In the third quarter, the deficit on trade in goods and services widened to £14.0 billion, from an £11.5 billion deficit in the previous quarter.

The latest estimate of the trend suggests that the UK trade deficit is fairly flat in recent months.

The notes discuss a number of factors which mean that the initial estimates of the data are less reliable than previously, and which make interpretation of short term movements difficult.

Balance of trade



Issued by
National Statistics
1 Drummond Gate
London SW1V 2QQ

Telephone
Press Office 020 7533 5725
Public Enquiries 0845 601 3034

Statistician - Trade in Goods
Caroline Lakin 020 7533 6004/6072

Statistician - Trade in Services
Tom Orford 020 7533 6095/6097

E-mail - bop@ons.gov.uk

Internet
www.statistics.gov.uk

Next publication date
11 December 2007

		Balance on trade in goods			Balance on trade in services	Total balance
		EU	Non-EU	World		
2007	Apr	-3.3	-3.8	-7.1	3.0	-4.1
	May	-3.2	-3.5	-6.7	3.0	-3.7
	Jun	-3.1	-3.4	-6.5	2.9	-3.6
	Jul	-3.1	-4.4	-7.6	2.8	-4.8
	Aug	-3.0	-4.0	-6.9	2.7	-4.2
	Sep	-3.0	-4.7	-7.8	2.7	-5.1

Seasonally adjusted: £ billion

NOTE: Trade in services estimates are included to give a more complete picture of UK trade. These estimates have been derived from a number of sources, and some components are based on recent trends. They should be used with appropriate caution.



TRADE IN GOODS – SEPTEMBER

Value of total trade in goods

The UK's deficit on trade in goods in September is provisionally estimated at £7.8 billion, compared with £6.9 billion in August. The deficit with EU countries in September was £3.0 billion, unchanged compared with August. The deficit with non-EU countries in September was £4.7 billion, compared with £4.0 billion in August.

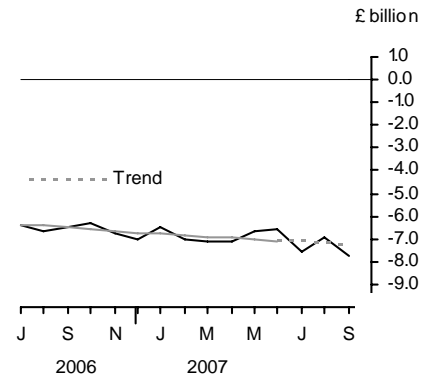
In September, total exports of goods fell by one per cent to £18.9 billion while total imports of goods rose two and a half per cent to £26.6 billion. Exports to EU countries rose one per cent while exports to non-EU countries fell four per cent. Imports from EU countries rose one per cent and imports from non-EU countries rose four per cent.

In the third quarter, the deficit on trade in goods widened by £1.9 billion to £22.3 billion. The deficit with EU countries narrowed by £0.5 billion to £9.1 billion and the deficit with non-EU countries widened by £2.4 billion to £13.1 billion.

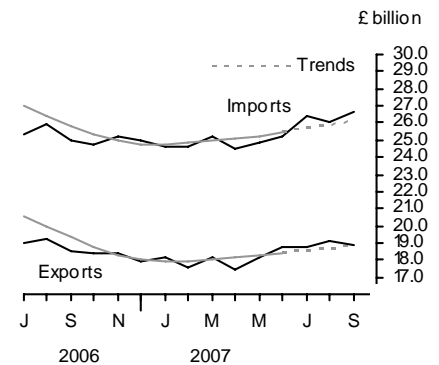
In the third quarter, exports of goods rose by four and a half per cent and imports of goods rose six per cent. Exports to EU countries rose by seven and a half per cent and exports to non-EU countries rose by a half per cent. Imports from EU countries rose by four and a half per cent and those from non-EU countries rose by seven and a half per cent.

The latest estimate of the trend suggests that the whole world goods deficit is fairly flat. The trends in the value of trade show both exports and imports fairly flat in recent months.

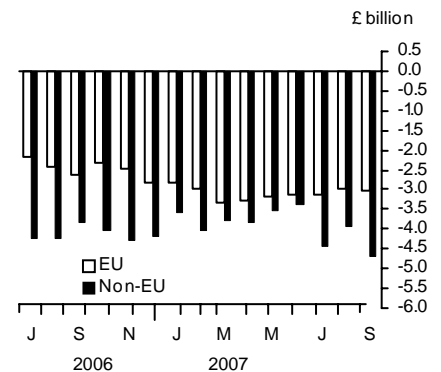
Balance on trade in goods



Value of trade in goods



Balance on trade in goods





Volume of total trade in goods (excluding oil and erratics)

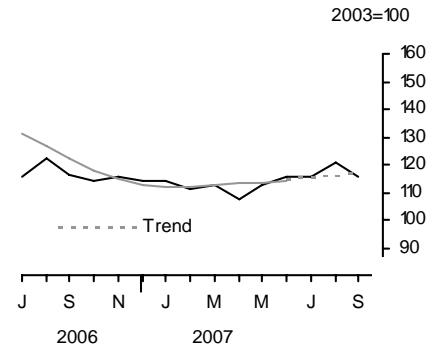
Provisional estimates show that the volume of exports fell four per cent while the volume of imports rose one per cent from that in August.

In the third quarter, exports and imports both rose five per cent compared with the previous quarter.

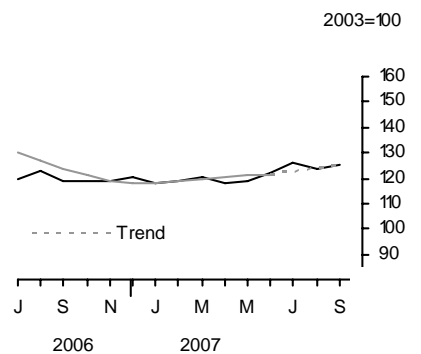
Changes in trade associated with VAT MTIC fraud mean that comparisons of volume and prices (both including and excluding trade associated with VAT MTIC fraud) should be treated with a great deal of caution.

Latest estimates of volume trends show both exports and imports fairly flat in recent months.

Volume of exports (goods) excluding oil and erratic items



Volume of imports (goods) excluding oil and erratic items



		EU		Non-EU		World	
		Exports	Imports	Exports	Imports	Exports	Imports
<i>Seasonally adjusted: 2003 = 100</i>							
2007	Apr	105.9	111.3	109.8	128.3	107.4	117.6
	May	111.7	115.1	113.8	123.8	112.5	118.4
	Jun	111.5	115.1	122.2	132.9	115.8	121.9
	Jul	115.9	119.2	115.9	138.4	115.8	126.4
	Aug	119.6	119.5	121.9	131.4	120.5	123.9
	Sep	116.8	120.0	114.2	133.6	115.8	125.2

Export and import prices (trade in goods)

September's provisional estimates show that export prices rose one and a half per cent and import prices rose one per cent compared with August.

In the third quarter, export prices rose one per cent and import prices rose a half per cent. This led to an increase in terms of trade.

Export and import prices (goods)





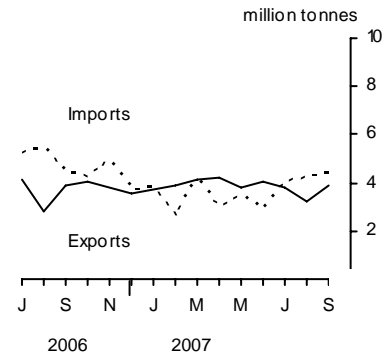
COMMODITY ANALYSIS OF TRADE IN GOODS

Trade in oil

In September, the balance on trade in oil was in deficit by £0.6 billion, compared with a deficit of £0.7 billion in August.

In the third quarter, the deficit on trade in oil was £1.5 billion, compared with a deficit of £0.2 billion in the previous quarter.

Trade in crude oil

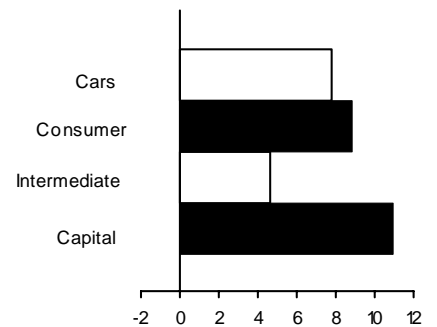


Trade in other commodities in the third quarter 2007

For exports, all the main commodity groups showed a rise in volume, except fuels and basic materials. Within finished manufactures, exports of capital goods rose 11 per cent, and of consumer goods other than cars rose nine per cent. Exports of cars rose eight per cent. Exports of chemicals rose two per cent, and exports of other semi-manufactured goods rose one and a half per cent.

Volume of exports of goods (finished manufactures)

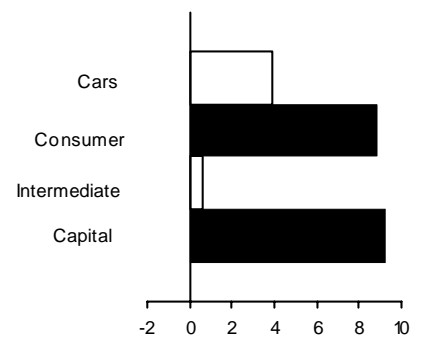
3 month percentage changes



For imports, all the main commodity groups showed a rise in volume. Within finished manufactures, imports of consumer goods other than cars, and of capital goods both rose nine per cent. Imports of cars rose four per cent. Imports of chemicals rose six and a half per cent and imports of other semi-manufactured goods rose two per cent.

Volume of imports of goods (finished manufactures)

3 month percentage changes



GEOGRAPHICAL ANALYSIS OF TRADE IN GOODS: in the third quarter 2007

Exports by country

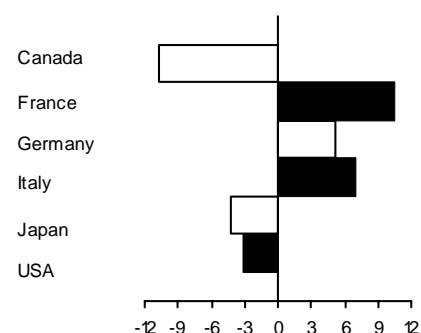
Within the G7 group of countries, exports to France rose by £0.5 billion, to Germany by £0.3 billion, and to Italy by £0.2 billion. Exports to the USA fell by £0.2 billion. Among other countries, exports to both the Netherlands, and Belgium and Luxembourg rose by £0.4 billion. Exports to Spain rose by £0.2 billion, and to both South Africa and Poland by £0.1 billion. Exports to Norway and Finland both fell by £0.1 billion.

Imports by country

Within the G7 group of countries, imports from Germany fell by £0.5 billion. Imports from France rose by £0.4 billion. Imports from the USA and Italy both rose by £0.1 billion. Among our other trading partners, imports from Belgium and Luxembourg rose by £0.7 billion, and from Spain rose by £0.4 billion. Imports from Norway rose by £0.3 billion, and from the Netherlands, the Irish Republic, China, and Denmark all rose by £0.2 billion. Imports from Hong Kong, Switzerland, Saudi Arabia, Singapore and South Korea all rose by £0.1 billion.

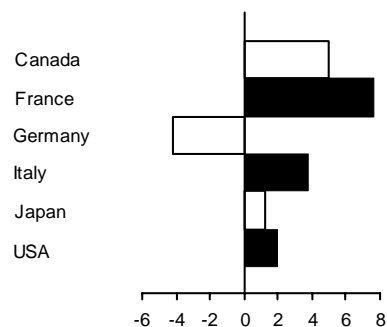
Value of exports of goods by country

3 month percentage changes



Value of imports of goods by country

3 month percentage changes



TRADE IN SERVICES – SEPTEMBER

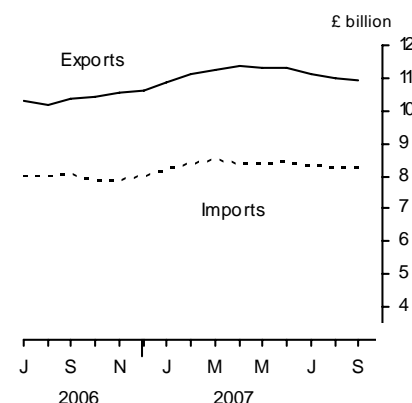
The UK's surplus on trade in services was £2.7 billion, unchanged compared with August.

In the third quarter, the surplus on trade in services was £8.2 billion, compared with £8.9 billion in the previous three months. Exports of services fell £1.0 billion to £33.0 billion and imports of services fell £0.3 billion to £24.8 billion.

REVISIONS

Table 13R shows revisions to the main aggregates since the last Trade First Release of 9 October 2007. The revisions to trade in goods data from July 2007 onwards reflect revised data from Her Majesty's Revenue and Customs and other data suppliers, revised estimates of trading associated with VAT MTIC fraud, later survey data on trade prices and a re-assessment of seasonal factors.

Value of trade in services



SPECIAL NOTES

VAT missing trader intra-community (MTIC) fraud

1. Import figures for trade in goods include adjustments to allow for the impact of VAT MTIC fraud. The adjustments were introduced for the first time in the UK trade May 2003 First Release published on 9 July 2003. An article explaining the fraud and the impact on the trade figures was also published on 9 July 2003 (<http://www.statistics.gov.uk/CCI/article.asp?ID=402>). A follow-up report was published on 17 February 2005 which summarises the work carried out since July 2003 to review the estimates of the impact on the trade figures (<http://www.statistics.gov.uk/CCI/article.asp?ID=1066>).

Changes to the pattern of trading associated with MTIC fraud can make it difficult to analyse trade by commodity group and by country as changes in the impact of activity associated with this fraud affect both imports and exports. Originally, most carousel chains only involved EU member states. From 2004 in particular, some carousel chains have included non-EU countries, for example, Dubai and Switzerland. However, the MTIC trade adjustments are added to the EU import estimates derived from Intrastat returns as it is this part of the trading chain that is not generally recorded. In particular, adjustments affect trade in capital goods and intermediate goods - these categories include mobile phones and computer components.

HMRC are completing a project to review the methodology for producing the estimates of the impact on the trade statistics. The level of such trading has reduced in recent months.

International convention determines that the treatment of the impact is to adjust imports upwards by the relevant amounts. However, users may wish to interpret short-term movements in exports and imports excluding that part of the fraudulent activity that is not included in the import estimates, and for this purpose an analysis of the export and import figures with the VAT MTIC adjustments excluded has been produced.

The following tables show quarterly values of imports and exports of goods for both current price estimates and chained volume measures excluding the VAT MTIC fraud adjustment, and a breakdown for current price estimates into trade with the EU and non-EU separately. Also, it includes the estimated monthly data for the adjustment for trade associated with VAT MTIC fraud, and for total trade excluding the adjustment for trade associated with VAT MTIC fraud, at current prices from January 2006.

Trade in goods excluding adjustments to trade associated with MTIC fraud

Quarter/ Year	MTIC fraud trade adj'ment	£ billion			
		Current price	Current price	Chained volume measure	Chained volume measure
		Total exports less MTIC adj'ment	Total imports less MTIC adj'ment	Total exports less MTIC adj'ment	Total imports less MTIC adj'ment
	OFNN	BQHP	BQHQ	BQHR	BQHS
1999	1.7	164.5	193.5	165.6	191.8
2000	3.0	185.0	218.1	184.9	208.8
2001	7.1	182.0	223.2	184.9	215.8
2002	11.5	175.0	222.7	178.1	221.9
2003	4.5	183.8	232.5	183.7	232.3
2004	2.6	188.2	249.1	188.5	250.8
2005	11.2	200.5	269.1	197.8	260.6
2006	22.9	221.8	299.3	214.5	281.5
2006 Q2	10.7	57.4	76.0	55.9	71.8
Q3	1.7	55.0	74.5	52.1	69.7
Q4	0.5	54.3	74.5	52.7	70.5
2007 Q1	0.3	53.6	74.2	51.6	70.5
Q2	0.2	54.1	74.5	51.3	70.1
Q3	0.2	56.6	78.8	53.6	73.9
2006 Jan	2.1	18.5	25.0		
Feb	3.1	18.5	25.1		
Mar	4.8	18.2	24.2		
Apr	4.3	18.5	24.9		
May	3.8	19.4	26.0		
Jun	2.6	19.4	25.0		
Jul	0.6	18.4	24.8		
Aug	0.9	18.3	25.0		
Sep	0.3	18.2	24.7		
Oct	0.2	18.2	24.5		
Nov	0.1	18.3	25.0		
Dec	0.1	17.8	24.9		
2007 Jan	0.1	18.1	24.5		
Feb	0.1	17.5	24.5		
Mar	0.1	18.0	25.2		
Apr	0.1	17.3	24.5		
May	0.1	18.1	24.8		
Jun	0.1	18.7	25.2		
Jul	0.1	18.7	26.3		
Aug	0.1	19.0	26.0		
Sep	0.1	18.8	26.6		

Percentage change, latest 3 months compared with:

Previous 3 months

0.0 4.6 5.8

Same 3 months last year

-88.2 2.9 5.8

Percentage latest quarter compared with:

Previous quarter

0.0 4.6 5.8 4.5 5.4

Same quarter last year

-88.2 2.9 5.8 2.9 6.0

Trade with EU and non-EU countries excluding MTIC fraud adjustments

Quarter/ Year	£ billion			
	Current price	Current price	Current price	Current price
	Total EU exports less MTIC adj'ment	Total non-EU exports less MTIC adj'ment	Total EU imports less MTIC adj'ment	Total non-EU imports less MTIC adj'ment
	CLAQ	CLAR	CLAS	CLAT
1999	99.6	65.0	107.5	86.0
2000	109.1	76.0	114.5	103.7
2001	106.9	75.2	119.3	103.9
2002	102.7	72.4	124.8	97.9
2003	106.1	77.6	132.2	100.3
2004	109.0	79.3	138.9	110.2
2005	116.3	84.0	147.1	122.0
2006	133.5	88.3	162.5	136.9
2004 Q1	26.4	19.2	33.8	25.7
Q2	26.6	19.8	34.6	27.0
Q3	27.6	20.0	34.6	28.5
Q4	28.4	20.3	35.9	29.0
2005 Q1	28.0	19.6	35.8	28.0
Q2	27.6	21.0	35.6	29.3
Q3	29.6	21.5	37.1	31.9
Q4	31.1	21.9	38.6	32.8
2006 Q1	33.1	22.1	40.3	34.1
Q2	34.5	22.9	41.7	34.3
Q3	33.3	21.6	40.3	34.2
Q4	32.6	21.7	40.1	34.3
2007 Q1	31.5	22.1	40.5	33.7
Q2	31.4	22.7	41.0	33.5
Q3	33.7	22.9	42.8	36.0
Percentage change, latest quarter on previous quarter:				
	7.3	0.9	4.4	7.5
Percentage change, latest quarter on same quarter last year:				
	1.2	6.0	6.2	5.3

The adjustments to trade in goods relate only to part of the carousel version of VAT MTIC fraud. This fraud leads to under recording of imports as fraudsters import goods from the EU, which they then sell on before disappearing without paying VAT on that sale. The goods are eventually exported. Such exports are declared and are therefore already reflected in the UK's trade in goods statistics.

HM Revenue & Customs New Export System

2. HM Revenue & Customs New Export System (NES), which replaced manual (paper) Customs declarations with electronic submissions from the beginning of 2003, requires electronic messages from the trade once the goods have been exported in order to provide the departure date. In the absence of those messages being input initially, some non-EU exports had been allocated to the incorrect month. This was addressed by HMRC implementing a change to the processing rules. Because of these problems, ONS made adjustments to the trade statistics to better reflect the flow of exports to non-EU countries during the period January-September 2003.

Hurricane Katrina

3. The August 2005 estimate was affected by a downward adjustment to services data of £1.9 billion to account for the estimated payment of claims by Lloyd's of London arising from the effects of Hurricane Katrina.

Exports of insurance services are measured as total actual premiums earned plus total premium supplements minus the total claims due minus the change in the equalisation reserves. This means that claims for catastrophic events such as Hurricane Katrina should be recorded when the event to which they relate occurs rather than when cash is actually paid to the claimant. Most insurers have equalisation reserves which are drawn on when these types of claims occur so the effects of large claims due are offset by the changes in these reserves. However a large proportion of the claims for damages caused by Hurricane Katrina on UK insurers are on Lloyd's of London which does not have any equalisation reserves. This means that the effect of these large claims is to reduce significantly UK exports of insurance services in August 2005, when Hurricane Katrina occurred.

Price Indices

4. The implied price deflators derived by comparing current to cvm data are not the same as the price indices published in this release because the former are current weighted while the latter are base (2003) weighted.

EU enlargement

5. Two more countries joined the EU from 1 January 2007. These countries are Bulgaria and Romania. In addition, the coverage of EMU countries was extended to include Slovenia. In order to enable users to make long-run comparisons, data for the new definition EU and non-EU have been produced from January 1998 onwards for value, and from January 1999 onwards for volume and price indices. At the same time data for the old definitions will no longer be maintained. There are additional series for country groupings on the old definitions.

Some EU and non EU breakdowns of commodity data for Chained Volume Measures which are available from the Statbase service may be less reliable than the current price data. Please consult Caroline Lakin on 020 7533 6070 if you are considering using them.

Classifications and definitions

6. The Overseas Trade Statistics (OTS), on which the trade data are based, have been compiled under the United Nations Standard International Trade Classification Revision 4 (SITC R4) from January 2007 but the data have been converted back to SITC R3 for this release and the Monthly Review of External Trade Statistics (MRETS) publication in order to help users to compare data over time. There are some discontinuities at detailed levels, particularly between capital and intermediate goods where some products are allocated from January 2007 to intermediate goods rather than capital goods as done previously. It is also possible that volume and price changes between 2006 and 2007 may be less reliable than usual.

BACKGROUND NOTES

1. Quality Information

A Summary Quality Report for this First Release and associated data can be found on the National Statistics website at:
<http://www.statistics.gov.uk/CCI/article.asp?ID=1723>.

A paper entitled *Statistics on Trade in Goods* (GSS Methodological Series No. 36) describing the basis on which trade in goods statistics are compiled and the methodology employed to derive volume and price indices is available on the National Statistics website:
<http://www.statistics.gov.uk/StatBase/Product.asp?vlnk=14943>.

2. Status of figures and planned future revisions

Trade in goods figures for the most recent months are provisional and subject to revision in the light of (a) late data from HM Revenue & Customs, revisions to trade prices and revised estimates of trading associated with VAT MTIC fraud, and (b) revisions to seasonal adjustment factors which are re-estimated every month.

Trade in services estimates have been derived from a number of monthly and quarterly sources. For components where no monthly data are available, estimates have been derived on the basis of recent trends. The results should be used with appropriate caution, as they are therefore likely to be less reliable than those for trade in goods. More details of the data sources, estimation methodology and reliability of the monthly estimates of trade in services were set out in *Economic Trends* (November 1996 and September 1997).

3. Revisions to data provide one indication of the reliability of key indicators. The table below show summary information on the size and direction of the revisions which have been made to the data covering a five year period. A statistical test has been applied to the average revision to find out if it is statistically significantly different from zero. An asterisk (*) shows that the test is significant. An article explaining the past revisions performance for UK Trade statistics and what is being done to improve the first published estimates was published on 9 February 2005 at <http://www.statistics.gov.uk/cci/article.asp?id=1063>.

The table covers estimates of UK trade first published from December 2000 (for October 2000) to November 2005 (September 2005). A spreadsheet giving these estimates and the calculations behind the averages in the table is available on the National Statistics website at <http://www.statistics.gov.uk/StatBase/Product.asp?vlnk=1119>.

£ million

	Value in latest period	Revisions between first publication and estimates twelve months later	
		Average over the last 5 years (mean revision)	Average over the last 5 years without regard to sign (average absolute revision)
Total trade exports (IKBH)	29802	1018*	1084
Total trade imports (IKBI)	34853	1210*	1210
Total trade balance (IKBJ)	-5051	-191	470

An article analysing past revisions to quarterly balance of payments current account data was published in the May 2007 edition of *Economic & Labour Market Review*. It is available on the National Statistics website at:

http://www.statistics.gov.uk/elmr/05_07/downloads/ELMR_May07.pdf.

4. More information about revisions material in First Releases can be found on the National Statistics website:
<http://www.statistics.gov.uk/cci/article.asp?ID=793>.
5. Complete runs of series in this Release are available to download free of charge at <http://www.statistics.gov.uk/timeseries>. Alternatively, for low-cost tailored data call Online Services on 020 7533 5675 or email tailored@statistics.gov.uk. The Time Series Data service provides access to additional data via the following electronic publications:
 - supplementary data for this First Release – *Monthly Review of External Trade Statistics – Business Monitor MM24*;
 - quarterly data analysed by industry according to the *Standard Industrial Classification - UK Trade in Goods analysed in terms of industries - Business Monitor MQ10*.
6. *MM24* and *MQ10* are also available free of charge as PDF files on the National Statistics website (www.statistics.gov.uk/bop). Details of the policy governing the release of new data are available from the press office. Also available is a list of the names of those given pre-publication access to the contents of this release.
7. ONS delivered Q2 2007 current account estimates at the end of August 2007 to Eurostat solely for them to estimate aggregate euro-indicators. These estimates included the trade in goods figures in the August First Release and modelled estimates for the other components of the current account. The same approach will be followed for each quarterly euro-indicator delivery.
8. Details of the policy governing the release of new data are available from the press office. Also available is a list of the names of those given pre-publication access to the contents of this release. Additionally, in the light of the timing of this month's meeting of the Bank of England's Monetary Policy Committee, members of the Committee have had pre-publication access.
9. **National Statistics** are produced to high professional standards set out in the National Statistics Code of Practice. They undergo regular quality assurance reviews to ensure that they meet customer needs. They are produced free from any political interference. © Crown Copyright 2007.

Index to tables

Contents

- 1 Value of UK trade in goods and services
- 2 UK trade in goods by area
- 3 Volume and price indices (trade in goods)
- 4 Growth rates for volume and price indices
- 5 Volume indices with countries inside and outside the EU (trade in goods)
- 6 Price indices with countries inside and outside the EU (trade in goods)
- 7 Trade in oil
- 8 Value of trade in goods by commodity
- 9 Volume indices (trade in goods) by commodity
- 10 Price indices (trade in goods) by commodity
- 11 Trade in goods with selected EU trading partners
- 12 Trade in goods with countries outside the EU
- 13R Summary of revisions

1 VALUE OF UK TRADE IN GOODS AND SERVICES

Balance of Payments basis

£ million seasonally adjusted

	Total trade			Trade in goods			Oil			Trade in goods excluding oil		
	Exports	Imports	Balance	Exports	Imports	Balance	Exports	Imports	Balance	Exports	Imports	Balance
	IKBH	IKBI	IKBJ	BOKG	BOKH	BOKI	ELBL	ENXO	ENXQ	ELBM	ENXP	BQKH
2004	298 694	333 669	-34 975	190 877	251 770	-60 893	16 200	15 307	893	174 677	236 463	-61 786
2005	326 790	370 968	-44 178	211 608	280 397	-68 789	19 794	21 989	-2 195	191 814	258 408	-66 594
2006	369 247	417 616	-48 369	244 661	322 224	-77 563	23 304	26 889	-3 585	221 357	295 335	-73 978
2006 Q1	96 299	108 270	-11 971	65 094	84 318	-19 224	5 802	6 862	-1 060	59 292	77 456	-18 164
Q2	99 000	110 496	-11 496	68 114	86 727	-18 613	6 444	6 829	-385	61 670	79 898	-18 228
Q3	87 572	100 202	-12 630	56 673	76 228	-19 555	5 924	7 278	-1 354	50 749	68 950	-18 201
Q4	86 376	98 648	-12 272	54 780	74 951	-20 171	5 134	5 920	-786	49 646	69 031	-19 385
2007 Q1	87 113	99 470	-12 357	53 882	74 487	-20 605	4 873	5 536	-663	49 009	68 951	-19 942
Q2	88 292	99 750	-11 458	54 306	74 652	-20 346	5 621	5 806	-185	48 685	68 846	-20 161
Q3	89 741	103 764	-14 023	56 739	78 996	-22 257	5 545	7 063	-1 518	51 194	71 933	-20 739
2007 Apr	28 759	32 878	-4 119	17 403	24 530	-7 127	1 895	2 009	-114	15 508	22 521	-7 013
May	29 505	33 221	-3 716	18 172	24 856	-6 684	1 788	1 845	-57	16 384	23 011	-6 627
Jun	30 028	33 651	-3 623	18 731	25 266	-6 535	1 938	1 952	-14	16 793	23 314	-6 521
Jul	29 900	34 654	-4 754	18 796	26 351	-7 555	1 962	2 206	-244	16 834	24 145	-7 311
Aug	30 039	34 257	-4 218	19 063	26 011	-6 948	1 620	2 285	-665	17 443	23 726	-6 283
Sep	29 802	34 853	-5 051	18 880	26 634	-7 754	1 963	2 572	-609	16 917	24 062	-7 145
Percentage change, latest month compared with:												
Previous month	-0.8	1.7		-1.0	2.4		21.2	12.6		-3.0	1.4	
3 months ended:												
2006 Sep	87 572	100 202	-12 630	56 673	76 228	-19 555	5 924	7 278	-1 354	50 749	68 950	-18 201
2007 Jun	88 292	99 750	-11 458	54 306	74 652	-20 346	5 621	5 806	-185	48 685	68 846	-20 161
2007 Sep	89 741	103 764	-14 023	56 739	78 996	-22 257	5 545	7 063	-1 518	51 194	71 933	-20 739
Percentage change, latest 3 months compared with:												
Previous 3 months	1.6	4.0		4.5	5.8		-1.4	21.7		5.2	4.5	
Same 3 months last year	2.5	3.6		0.1	3.6		-6.4	-3.0		0.9	4.3	

	Erratics ¹			Trade in goods excluding erratics			Trade in goods excluding oil and erratics			Trade in services		
	Exports	Imports	Balance	Exports	Imports	Balance	Exports	Imports	Balance	Exports	Imports	Balance
	BPAL	BQBB	BQKW	BPAO	BQBE	BPBM	BPBL	BQBG	BPAP	IKBB	IKBC	IKBD
2004	12 210	12 212	-2	178 667	239 558	-60 891	162 467	224 251	-61 784	107 817	81 899	25 918
2005	12 458	13 009	-551	199 150	267 388	-68 238	179 356	245 399	-66 043	115 182	90 571	24 611
2006	12 351	15 413	-3 062	232 310	306 811	-74 501	209 006	279 922	-70 916	124 586	95 392	29 194
2006 Q1	2 891	3 725	-834	62 203	80 593	-18 390	56 401	73 731	-17 330	31 205	23 952	7 253
Q2	3 373	3 874	-501	64 741	82 853	-18 112	58 297	76 024	-17 727	30 886	23 769	7 117
Q3	2 770	3 885	-1 115	53 903	72 343	-18 440	47 979	65 065	-17 086	30 899	23 974	6 925
Q4	3 317	3 929	-612	51 463	71 022	-19 559	46 329	65 102	-18 773	31 596	23 697	7 899
2007 Q1	2 933	3 966	-1 033	50 949	70 521	-19 572	46 076	64 985	-18 909	33 231	24 983	8 248
Q2	2 817	3 416	-599	51 489	71 236	-19 747	45 868	65 430	-19 562	33 986	25 098	8 888
Q3	3 148	3 625	-477	53 591	75 371	-21 780	48 046	68 308	-20 262	33 002	24 768	8 234
2007 Apr	838	1 067	-229	16 565	23 463	-6 898	14 670	21 454	-6 784	11 356	8 348	3 008
May	997	1 240	-243	17 175	23 616	-6 441	15 387	21 771	-6 384	11 333	8 365	2 968
Jun	982	1 109	-127	17 749	24 157	-6 408	15 811	22 205	-6 394	11 297	8 385	2 912
Jul	1 099	1 203	-104	17 697	25 148	-7 451	15 735	22 942	-7 207	11 104	8 303	2 801
Aug	1 037	1 210	-173	18 026	24 801	-6 775	16 406	22 516	-6 110	10 976	8 246	2 730
Sep	1 012	1 212	-200	17 868	25 422	-7 554	15 905	22 850	-6 945	10 922	8 219	2 703
Percentage change, latest month compared with:												
Previous month	-2.4	0.2		-0.9	2.5		-3.1	1.5		-0.5	-0.3	
3 months ended:												
2006 Sep	2 770	3 885	-1 115	53 903	72 343	-18 440	47 979	65 065	-17 086	30 899	23 974	6 925
2007 Jun	2 817	3 416	-599	51 489	71 236	-19 747	45 868	65 430	-19 562	33 986	25 098	8 888
2007 Sep	3 148	3 625	-477	53 591	75 371	-21 780	48 046	68 308	-20 262	33 002	24 768	8 234
Percentage change, latest 3 months compared with:												
Previous 3 months	11.8	6.1		4.1	5.8		4.7	4.4		-2.9	-1.3	
Same 3 months last year	13.6	-6.7		-0.6	4.2		0.1	5.0		6.8	3.3	

¹ These are defined as ships, aircraft, precious stones and silver

[†] Earliest date for revisions to trade in goods is July 2007 and to trade in services is August 2007.

2 UK TRADE IN GOODS BY AREA

Balance of Payments basis

£ million seasonally adjusted

	EMU members ¹			Total EU (25) ²			Total EU (27) ³			Non-EU ⁴			Total		
	Exports	Imports	Balance	Exports	Imports	Balance	Exports	Imports	Balance	Exports	Imports	Balance	Exports	Imports	Balance
	QAKW	QAKX	QAKY	EGAE	EGAF	EGAG	LGCK	LGDC	LGCG	LGDY	LGER	LGDT	BOKG	BOKH	BOKI
2004	100 021	126 403	-26 382	110 883	141 576	-30 693	111 653	142 512	-30 859	79 224	109 258	-30 034	190 877	251 770	-60 893
2005	108 907	139 292	-30 385	120 619	157 391	-36 772	121 486	158 363	-36 877	90 122	122 034	-31 912	211 608	280 397	-68 789
2006	135 694	157 127	-21 433	152 503	184 284	-31 781	153 384	185 360	-31 976	91 277	136 864	-45 587	244 661	322 224	-77 563
2005 Q2	25 592	33 261	-7 669	28 331	37 707	-9 376	28 537	37 952	-9 415	22 451	29 341	-6 890	50 988	67 293	-16 305
Q3	27 849	35 621	-7 772	30 835	40 347	-9 512	31 100	40 583	-9 483	23 532	31 927	-8 395	54 632	72 510	-17 878
Q4	29 848	37 878	-8 030	33 185	42 751	-9 566	33 400	43 000	-9 600	24 014	32 792	-8 778	57 414	75 792	-18 378
2006 Q1	36 519	42 521	-6 002	41 050	50 001	-8 951	41 257	50 258	-9 001	23 837	34 060	-10 223	65 094	84 318	-19 224
Q2	38 637	43 176	-4 539	44 132	52 183	-8 051	44 340	52 434	-8 094	23 774	34 293	-10 519	68 114	86 727	-18 613
Q3	31 149	36 260	-5 111	34 574	41 774	-7 200	34 804	42 043	-7 239	21 869	34 185	-12 316	56 673	76 228	-19 555
Q4	29 389	35 170	-5 781	32 747	40 326	-7 579	32 983	40 625	-7 642	21 797	34 326	-12 529	54 780	74 951	-20 171
2007 Q1	28 090	35 629	-7 539	31 458	40 565	-9 107	31 668	40 822	-9 154	22 214	33 665	-11 451	53 882	74 487	-20 605
Q2	27 995	36 005	-8 010	31 315	40 828	-9 513	31 519	41 141	-9 622	22 787	33 511	-10 724	54 306	74 652	-20 346
Q3	30 095	37 595	-7 500	33 636	42 728	-9 092	33 840	42 989	-9 149	22 899	36 007	-13 108	56 739	78 996	-22 257
2006 Mar	13 019	14 539	-1 520	14 687	17 579	-2 892	14 764	17 659	-2 895	8 175	11 344	-3 169	22 939	29 003	-6 064
Apr	13 073	14 957	-1 884	14 982	17 762	-2 780	15 041	17 843	-2 802	7 827	11 414	-3 587	22 868	29 257	-6 389
May	13 337	14 705	-1 368	15 174	18 122	-2 948	15 253	18 206	-2 953	7 962	11 606	-3 644	23 215	29 812	-6 597
Jun	12 227	13 514	-1 287	13 976	16 299	-2 323	14 046	16 385	-2 339	7 985	11 273	-3 288	22 031	27 658	-5 627
Jul	10 580	12 130	-1 550	11 799	13 964	-2 165	11 874	14 052	-2 178	7 073	11 318	-4 245	18 947	25 370	-6 423
Aug	10 626	12 277	-1 651	11 767	14 190	-2 423	11 839	14 275	-2 436	7 377	11 604	-4 227	19 216	25 879	-6 663
Sep	9 943	11 853	-1 910	11 008	13 620	-2 612	11 091	13 716	-2 625	7 419	11 263	-3 844	18 510	24 979	-6 469
Oct	9 923	11 583	-1 660	11 056	13 360	-2 304	11 135	13 446	-2 311	7 277	11 312	-4 035	18 412	24 758	-6 346
Nov	9 647	11 558	-1 911	10 802	13 282	-2 480	10 884	13 368	-2 484	7 513	11 805	-4 292	18 397	25 173	-6 776
Dec	9 819	12 029	-2 210	10 889	13 684	-2 795	10 964	13 811	-2 847	7 007	11 209	-4 202	17 971	25 020	-7 049
2007 Jan	9 677	11 935	-2 258	10 790	13 635	-2 845	10 852	13 694	-2 842	7 297	10 903	-3 606	18 149	24 597	-6 448
Feb	9 251	11 731	-2 480	10 392	13 350	-2 958	10 459	13 443	-2 984	7 133	11 176	-4 043	17 592	24 619	-7 027
Mar	9 162	11 963	-2 801	10 276	13 580	-3 304	10 357	13 685	-3 328	7 784	11 586	-3 802	18 141	25 271	-7 130
Apr	9 071	11 902	-2 831	10 106	13 372	-3 266	10 175	13 472	-3 297	7 228	11 058	-3 830	17 403	24 530	-7 127
May	9 510	12 136	-2 626	10 677	13 820	-3 143	10 744	13 921	-3 177	7 428	10 935	-3 507	18 172	24 856	-6 684
Jun	9 414	11 967	-2 553	10 532	13 636	-3 104	10 600	13 748	-3 148	8 131	11 518	-3 387	18 731	25 266	-6 535
Jul	9 889	12 433	-2 544	11 033	14 110	-3 077	11 101	14 212	-3 111	7 695	12 139	-4 444	18 796	26 351	-7 555
Aug	10 013	12 593	-2 580	11 235	14 213	-2 978	11 311	14 306	-2 995	7 752	11 705	-3 953	19 063	26 011	-6 948
Sep	10 193	12 569	-2 376	11 368	14 405	-3 037	11 428	14 471	-3 043	7 452	12 163	-4 711	18 880	26 634	-7 754
Percentage change on previous month:															
2007 Sep	1.8	-0.2		1.2	1.4		1.0	1.2		-3.9	3.9		-1.0	2.4	
3 months ended:															
2006 Sep	31 149	36 260	-5 111	34 574	41 774	-7 200	34 804	42 043	-7 239	21 869	34 185	-12 316	56 673	76 228	-19 555
2007 Jun	27 995	36 005	-8 010	31 315	40 828	-9 513	31 519	41 141	-9 622	22 787	33 511	-10 724	54 306	74 652	-20 346
2007 Sep	30 095	37 595	-7 500	33 636	42 728	-9 092	33 840	42 989	-9 149	22 899	36 007	-13 108	56 739	78 996	-22 257
Percentage change, latest 3 months compared with:															
Previous 3 months	7.5	4.4		7.4	4.7		7.4	4.5		0.5	7.4		4.5	5.8	
Same 3 months last year	-3.4	3.7		-2.7	2.3		-2.8	2.3		4.7	5.3		0.1	3.6	

1 Austria, Belgium, Finland, France, Germany, Greece, Irish Republic, Italy, Luxembourg, Netherlands, Portugal, Slovenia and Spain

† Earliest date for revisions to trade in goods is July 2007.

2 EMU Members plus Cyprus, Czech Republic, Denmark, Estonia, Hungary, Latvia, Lithuania, Malta, Poland, Slovakia and Sweden

3 EU (25) plus Bulgaria and Romania

4 Total less EU (27)

3 VOLUME AND PRICE INDICES (TRADE IN GOODS)¹

Balance of Payments basis

Indices 2003=100

	Volume (seasonally adjusted)						Price index (not seasonally adjusted)								
	Total		Total excluding oil		Total excluding oil and erratics ²		Total			Total excluding oil			Total excluding oil & erratics ²		
	Exports	Imports	Exports	Imports	Exports	Imports	Exports	Imports	Terms of trade ³	Exports	Imports	Terms of trade ³	Exports	Imports	
	BQKU	BQKV	BQKI	BQKJ	BOMA	ELAL	BQKR	BQKS	BQKT	BQKK	BQKL	BQKM	BQAK	ELBA	
2004	101.5	106.9	102.0	106.3	102.0	106.8	100.3	99.5	100.8	98.9	98.7	100.2	99.0	99.0	
2005	111.0	114.7	112.5	114.5	113.1	115.3	104.3	103.7	100.6	99.9	100.7	99.2	100.1	100.8	
2006	125.9	128.3	128.5	128.6	130.5	129.3	107.5	107.5	100.0	101.2	103.1	98.2	101.4	103.2	
2005 Q2	107.5	111.6	108.7	111.2	109.5	112.3	102.9	102.2	100.7	99.3	99.8	99.5	99.5	99.9	
Q3	114.3	117.3	116.7	117.0	117.1	117.6	105.8	105.2	100.6	99.7	101.0	98.7	100.0	101.1	
Q4	120.2	121.8	122.5	121.8	123.8	122.9	106.3	105.9	100.4	100.6	102.1	98.5	100.9	102.1	
2006 Q1	135.3	134.0	138.6	134.4	142.1	135.9	108.0	107.3	100.7	102.0	103.0	99.0	102.1	102.9	
Q2	141.0	139.0	144.6	140.2	147.1	141.8	109.1	108.2	100.8	101.8	103.1	98.7	102.0	103.1	
Q3	114.3	120.5	116.2	120.2	118.1	120.3	108.2	108.1	100.1	100.9	103.1	97.9	101.3	103.3	
Q4	113.0	119.8	114.6	119.7	114.6	119.4	104.8	106.5	98.4	100.0	103.1	97.0	100.3	103.4	
2007 Q1	110.3	119.4	111.7	119.1	112.7	118.7	105.5	106.5	99.1	101.2	103.5	97.8	101.5	103.9	
Q2	109.3	118.6	110.7	118.7	111.9	119.3	107.8	108.6	99.3	101.5	104.3	97.3	101.8	104.7	
Q3	114.2	125.1	116.6	124.9	117.4	125.2	108.9	109.0	99.9	101.6	103.9	97.8	102.0	104.4	
2006 Apr	142.9	141.0	146.8	143.0	149.7	145.5	110.2	109.1	101.0	102.6	103.6	99.0	102.8	103.5	
May	145.2	144.0	149.3	145.0	152.5	146.1	108.5	107.4	101.0	101.3	102.5	98.8	101.5	102.6	
Jun	135.0	132.1	137.8	132.5	139.1	133.7	108.7	108.1	100.6	101.6	103.2	98.4	101.8	103.3	
Jul	112.5	119.4	113.8	119.3	115.6	119.2	109.8	109.3	100.5	101.8	103.7	98.2	102.1	103.8	
Aug	117.3	122.6	120.0	122.4	122.2	122.6	108.3	108.0	100.3	100.5	102.6	98.0	100.9	102.8	
Sep	113.1	119.4	114.9	118.9	116.6	119.0	106.4	106.9	99.5	100.5	103.0	97.6	100.8	103.2	
Oct	113.3	119.1	114.6	118.7	114.3	118.7	105.1	106.7	98.5	100.3	103.4	97.0	100.6	103.7	
Nov	114.0	120.2	115.9	119.6	115.6	119.0	104.7	106.5	98.3	100.1	103.4	96.8	100.4	103.6	
Dec	111.7	120.1	113.2	120.7	113.9	120.6	104.6	106.2	98.5	99.6	102.6	97.1	99.9	102.9	
2007 Jan	112.0	118.6	113.5	117.4	114.3	117.6	104.4	105.3	99.1	100.8	103.0	97.9	101.0	103.3	
Feb	108.0	119.2	109.5	119.6	111.0	118.4	105.2	106.1	99.2	101.1	103.2	98.0	101.4	103.6	
Mar	110.8	120.4	112.2	120.2	112.9	120.2	106.8	108.0	98.9	101.8	104.4	97.5	102.1	104.8	
Apr	105.1	116.9	105.8	116.5	107.4	117.6	107.2	108.0	99.3	101.4	104.0	97.5	101.7	104.4	
May	109.9	118.0	111.7	118.5	112.5	118.4	107.8	108.7	99.2	101.7	104.5	97.3	102.0	105.0	
Jun	112.8	120.8	114.6	121.1	115.8	121.9	108.3	109.0	99.4	101.4	104.3	97.2	101.8	104.7	
Jul	113.5	125.7	115.5	126.1	115.8	126.4	108.4	108.9	99.5	100.9	103.6	97.4	101.3	104.1	
Aug	116.1	123.8	119.4	123.6	120.5	123.9	108.2	108.5	99.7	101.3	103.8	97.6	101.7	104.2	
Sep	113.0	125.8	114.9	124.9	115.8	125.2	110.0	109.7	100.3	102.6	104.4	98.3	103.1	104.9	
Percentage change, latest month compared with:															
Previous month	-2.7	1.6	-3.8	1.1	-3.9	1.0	1.7	1.1		1.3	0.6		1.4	0.7	
3 months ended:															
2006 Sep	114.3	120.5	116.2	120.2	118.1	120.3	108.2	108.1	100.1	100.9	103.1	97.9	101.3	103.3	
2007 Jun	109.3	118.6	110.7	118.7	111.9	119.3	107.8	108.6	99.3	101.5	104.3	97.3	101.8	104.7	
2007 Sep	114.2	125.1	116.6	124.9	117.4	125.2	108.9	109.0	99.8	101.6	103.9	97.8	102.0	104.4	
Percentage change, latest 3 months compared with:															
Previous 3 months	4.5	5.5	5.3	5.2	4.9	4.9	1.0	0.4		0.1	-0.3		0.2	-0.3	
Same 3 months last year	-0.1	3.8	0.3	3.9	-0.6	4.1	0.6	0.9		0.7	0.8		0.8	1.1	

1 These are provisional estimates subject to fluctuations when new or amended data become available.

2 These are defined as ships, aircraft, precious stones and silver.

3 Export price index as a percentage of the import price index.

† Earliest date for revisions to trade in goods is July 2007.

4 GROWTH RATES FOR VOLUME AND PRICE INDICES ¹ (TRADE IN GOODS)

Balance of Payments basis

Indices 2003=100

	Volume (seasonally adjusted)						Price index (not seasonally adjusted)					
	Total		Total excluding oil		Total excluding oil and erratics ²		Total		Total excluding oil		Total excluding oil and erratics ²	
	Exports	Imports	Exports	Imports	Exports	Imports	Exports	Imports	Exports	Imports	Exports	Imports
2000	12.1	9.3	11.9	9.3	10.9	9.3	1.1	3.4	-2.0	1.6	-2.2	1.2
2001	2.2	5.3	2.0	4.7	2.3	4.4	-1.6	-0.9	-1.0	-0.5	-0.9	-0.6
2002	-1.2	4.7	-0.9	5.5	-1.5	5.5	-0.1	-2.5	-0.1	-3.2	0.4	-2.9
2003	-0.3	1.8	0.1	1.4	-1.8	1.8	1.8	-0.7	1.3	-1.1	2.4	-0.9
2004	1.5	6.9	2.0	6.3	2.0	6.8	0.3	-0.5	-1.1	-1.3	-1.0	-1.0
2005	9.4	7.3	10.3	7.7	10.9	8.0	4.0	4.2	1.0	2.0	1.1	1.8
2006	13.4	11.9	14.2	12.3	15.4	12.1	3.1	3.7	1.3	2.4	1.3	2.4
2005 Q2	5.5	3.1	6.7	2.8	7.4	3.5	0.7	0.7	-0.6	-	-0.5	-0.1
Q3	6.3	5.1	7.4	5.2	6.9	4.7	2.8	2.9	0.4	1.2	0.5	1.2
Q4	5.2	3.8	5.0	4.1	5.7	4.5	0.5	0.7	0.9	1.1	0.9	1.0
2006 Q1	12.6	10.0	13.1	10.3	14.8	10.6	1.6	1.3	1.4	0.9	1.2	0.8
Q2	4.2	3.7	4.3	4.3	3.5	4.3	1.0	0.8	-0.2	0.1	-0.1	0.2
Q3	-18.9	-13.3	-19.6	-14.3	-19.7	-15.2	-0.8	-0.1	-0.9	-	-0.7	0.2
Q4	-1.1	-0.6	-1.4	-0.4	-3.0	-0.7	-3.1	-1.5	-0.9	-	-1.0	0.1
2007 Q1	-2.4	-0.3	-2.5	-0.5	-1.7	-0.6	0.7	-	1.2	0.4	1.2	0.5
Q2	-0.9	-0.7	-0.9	-0.3	-0.7	0.5	2.2	2.0	0.3	0.8	0.3	0.8
Q3	4.5	5.5	5.3	5.2	4.9	4.9	1.0	0.4	0.1	-0.4	0.2	-0.3
Monthly:												
2006 Apr	0.3	2.0	0.9	3.1	-0.2	3.7	1.4	1.3	-	0.2	0.1	0.2
May	1.6	2.1	1.7	1.4	1.9	0.4	-1.5	-1.6	-1.3	-1.1	-1.3	-0.9
Jun	-7.0	-8.3	-7.7	-8.6	-8.8	-8.5	0.2	0.7	0.3	0.7	0.3	0.7
Jul	-16.7	-9.6	-17.4	-10.0	-16.9	-10.8	1.0	1.1	0.2	0.5	0.3	0.5
Aug	4.3	2.7	5.4	2.6	5.7	2.9	-1.4	-1.2	-1.3	-1.1	-1.2	-1.0
Sep	-3.6	-2.6	-4.2	-2.9	-4.6	-2.9	-1.8	-1.0	-	0.4	-0.1	0.4
Oct	0.2	-0.3	-0.3	-0.2	-2.0	-0.3	-1.2	-0.2	-0.2	0.4	-0.2	0.5
Nov	0.6	0.9	1.1	0.8	1.1	0.3	-0.4	-0.2	-0.2	-	-0.2	-0.1
Dec	-2.0	-0.1	-2.3	0.9	-1.5	1.3	-0.1	-0.3	-0.5	-0.8	-0.5	-0.7
2007 Jan	0.3	-1.2	0.3	-2.7	0.4	-2.5	-0.2	-0.8	1.2	0.4	1.1	0.4
Feb	-3.6	0.5	-3.5	1.9	-2.9	0.7	0.8	0.8	0.3	0.2	0.4	0.3
Mar	2.6	1.0	2.5	0.5	1.7	1.5	1.5	1.8	0.7	1.2	0.7	1.2
Apr	-5.1	-2.9	-5.7	-3.1	-4.9	-2.2	0.4	-	-0.4	-0.4	-0.4	-0.4
May	4.6	0.9	5.6	1.7	4.7	0.7	0.6	0.6	0.3	0.5	0.3	0.6
Jun	2.6	2.4	2.6	2.2	2.9	3.0	0.5	0.3	-0.3	-0.2	-0.2	-0.3
Jul	0.6	4.1	0.8	4.1	-	3.7	0.1	-0.1	-0.5	-0.7	-0.5	-0.6
Aug	2.3	-1.5	3.4	-2.0	4.1	-2.0	-0.2	-0.4	0.4	0.2	0.4	0.1
Sep	-2.7	1.6	-3.8	1.1	-3.9	1.0	1.7	1.1	1.3	0.6	1.4	0.7
3 month on 3 month comparison:												
2006 Apr	14.1	10.5	14.5	11.4	15.7	12.6	2.2	1.7	1.4	1.0	1.3	1.0
May	11.9	9.3	12.1	9.7	12.7	10.0	1.8	1.2	0.8	0.6	0.8	0.6
Jun	4.2	3.7	4.3	4.3	3.5	4.3	1.0	0.8	-0.1	0.1	-	0.2
Jul	-6.7	-4.5	-7.2	-5.0	-7.9	-5.9	0.1	0.2	-0.8	-0.2	-0.7	-
Aug	-15.3	-11.6	-15.9	-12.3	-16.7	-13.1	-0.2	0.4	-0.8	-	-0.7	0.2
Sep	-19.0	-13.4	-19.6	-14.2	-19.7	-15.2	-0.9	-0.1	-0.9	-	-0.8	0.1
Oct	-12.5	-8.7	-12.8	-9.3	-13.3	-9.7	-2.2	-1.0	-1.1	-0.1	-1.0	-
Nov	-6.7	-4.1	-7.1	-4.5	-8.1	-5.0	-3.2	-1.6	-1.0	0.1	-1.0	0.2
Dec	-1.1	-0.6	-1.4	-0.4	-3.0	-0.7	-3.1	-1.5	-0.9	-	-1.0	0.1
2007 Jan	-1.7	-0.6	-2.0	-0.6	-2.6	-0.9	-1.9	-1.1	-0.3	-	-0.3	-
Feb	-2.6	-0.2	-2.7	0.1	-2.1	-	-0.6	-0.8	0.2	-0.3	0.2	-0.2
Mar	-2.4	-0.3	-2.5	-0.5	-1.6	-0.6	0.6	-	1.2	0.4	1.2	0.5
Apr	-4.1	-0.7	-4.4	-0.4	-3.6	-0.3	1.8	1.3	1.3	0.8	1.3	1.0
May	-1.8	-0.7	-1.9	-0.7	-1.9	-0.1	2.4	2.2	1.1	1.3	1.2	1.4
Jun	-0.9	-0.7	-0.9	-0.3	-0.7	0.5	2.2	2.0	0.3	0.7	0.3	0.8
Jul	3.8	2.2	4.4	2.6	3.9	2.9	1.7	1.4	-0.1	0.3	-	0.3
Aug	5.1	4.2	6.0	4.4	5.8	4.5	1.0	0.5	-0.4	-0.4	-0.3	-0.4
Sep	4.5	5.5	5.3	5.2	4.9	4.9	1.0	0.4	0.1	-0.3	0.2	-0.3

¹ These are provisional estimates subject to fluctuations when new or amended data become available.

² These are defined as ships, aircraft, precious stones and silver.

5 VOLUME INDICES WITH COUNTRIES INSIDE AND OUTSIDE THE EU (TRADE IN GOODS)¹

Balance of Payments basis

Indices 2003=100 seasonally adjusted

	Trade in goods with EU countries ³						Trade in goods with Non-EU countries					
	Total		Total excluding oil		Total excluding oil and erratics ²		Total		Total excluding oil		Total excluding oil & erratics ²	
	Exports	Imports	Exports	Imports	Exports	Imports	Exports	Imports	Exports	Imports	Exports	Imports
	LGCT	LGDL	LKUL	LKVD	SHBS	SHCO	LGEH	LGFA	LKVZ	LKWS	SHDJ	SHED
2004	100.1	104.4	100.6	104.2	100.3	103.9	103.5	110.4	104.0	109.4	104.6	111.5
2005	107.3	115.1	108.6	115.3	108.8	114.8	116.6	114.8	118.2	114.1	119.8	116.8
2006	133.9	133.1	136.9	133.3	138.5	133.3	114.0	123.1	116.3	123.1	118.0	124.4
2005 Q2	100.7	110.9	101.4	110.8	101.6	109.7	117.6	112.9	119.4	112.2	121.6	116.9
Q3	109.9	118.5	112.6	118.8	112.3	118.7	121.1	116.5	123.0	115.1	124.6	116.8
Q4	118.4	124.6	120.4	124.9	121.3	125.0	123.0	119.1	125.6	118.5	127.7	120.7
2006 Q1	145.0	144.8	148.5	145.0	151.1	144.9	121.1	121.2	124.3	120.9	128.1	123.2
Q2	156.7	152.9	162.0	153.7	164.5	154.2	117.1	122.3	118.7	122.7	119.7	124.0
Q3	118.9	119.8	121.1	120.0	122.4	119.3	107.8	122.1	109.3	121.3	111.6	122.8
Q4	115.1	114.9	115.8	114.7	115.9	114.6	110.1	126.7	112.8	127.4	112.6	127.7
2007 Q1	110.1	114.7	111.0	114.2	111.1	114.2	110.7	126.0	112.9	126.5	115.2	126.5
Q2	107.3	114.2	108.4	113.8	109.7	113.8	112.3	124.6	114.1	126.0	115.3	128.3
Q3	115.3	119.6	117.2	119.5	117.4	119.6	112.9	132.4	116.0	132.8	117.3	134.5
2006 Mar	155.6	152.7	159.0	152.7	163.2	153.0	122.8	121.1	125.5	120.9	129.2	122.5
Apr	161.2	156.8	167.1	157.6	168.9	158.4	115.4	121.6	116.9	124.0	119.5	127.0
May	163.3	160.3	169.5	161.4	173.1	161.7	117.7	124.3	119.2	123.6	120.3	123.3
Jun	145.7	141.6	149.4	142.0	151.4	142.4	118.3	121.0	120.1	120.5	119.4	121.8
Jul	118.8	119.7	120.2	119.9	120.9	118.3	103.6	119.6	104.9	119.3	107.5	121.4
Aug	122.7	122.3	125.9	122.7	127.5	122.4	109.5	123.9	111.5	123.0	114.2	123.9
Sep	115.1	117.4	117.2	117.5	118.7	117.1	110.3	122.8	111.5	121.7	113.1	123.0
Oct	116.2	114.8	116.7	114.4	116.5	114.4	109.3	125.1	111.7	125.3	111.1	126.2
Nov	114.1	113.3	115.1	113.2	115.3	113.0	113.8	130.0	116.9	129.7	115.9	129.5
Dec	115.1	116.7	115.7	116.4	116.0	116.5	107.2	125.0	109.9	127.2	110.9	127.5
2007 Jan	113.5	115.8	114.1	114.9	113.8	115.7	110.0	122.8	112.8	121.4	114.9	121.3
Feb	109.0	113.9	109.7	113.5	110.1	113.4	106.9	126.6	109.6	128.6	112.4	126.8
Mar	107.9	114.5	109.3	114.1	109.3	113.6	115.1	128.6	116.4	129.4	118.3	131.4
Apr	103.9	112.1	104.4	111.4	105.9	111.3	107.1	123.7	108.2	124.3	109.8	128.3
May	109.8	115.5	110.8	115.3	111.7	115.1	110.2	121.6	113.0	123.5	113.8	123.8
Jun	108.2	114.9	110.0	114.7	111.5	115.1	119.5	128.6	121.1	130.2	122.2	132.9
Jul	113.5	118.9	115.1	119.0	115.9	119.2	113.7	134.8	116.3	136.4	115.9	138.4
Aug	116.3	119.9	118.8	119.6	119.6	119.5	116.1	129.2	120.4	129.7	121.9	131.4
Sep	116.1	120.1	117.6	119.8	116.8	120.0	108.8	133.3	111.4	132.4	114.2	133.6
Percentage change on previous month:												
2007 Sep	-0.2	0.2	-1.0	0.2	-2.3	0.4	-6.3	3.2	-7.5	2.1	-6.3	1.7
3 months ended:												
2006 Sep	118.9	119.8	121.1	120.0	122.4	119.3	107.8	122.1	109.3	121.3	111.6	122.8
2007 Jun	107.3	114.2	108.4	113.8	109.7	113.8	112.3	124.6	114.1	126.0	115.3	128.3
2007 Sep	115.3	119.6	117.2	119.5	117.4	119.6	112.9	132.4	116.0	132.8	117.3	134.5
Percentage change, latest 3 months compared with:												
Previous 3 months	7.5	4.8	8.1	5.0	7.0	5.0	0.5	6.3	1.7	5.4	1.8	4.8
Same 3 months last year	-3.0	-0.1	-3.2	-0.5	-4.0	0.3	4.7	8.5	6.2	9.5	5.1	9.5

1 These are provisional estimates subject to fluctuations when new or amended data become available.

2 These are defined as ships, aircraft, precious stones and silver.

3 Includes trade with the Canary Islands, French Guiana, Guadeloupe, Martinique and Reunion.

† Earliest date for revisions to trade in goods is July 2007.

	Trade in goods with EU countries ³						Trade in goods with Non-EU countries					
	Total		Total excluding oil		Total excluding oil and erratics ²		Total		Total excluding oil		Total excluding oil & erratics ²	
	Exports	Imports	Exports	Imports	Exports	Imports	Exports	Imports	Exports	Imports	Exports	Imports
	LGCR	LGDJ	LKUJ	LKVB	SHBQ	SHCM	LGEF	LGEY	LKVX	LKWQ	SHDH	SHEB
2004	100.2	99.7	98.9	99.5	99.1	99.5	100.2	99.3	98.9	97.7	98.8	98.2
2005	104.6	101.4	99.6	100.3	99.8	100.3	103.7	107.0	100.1	101.2	100.3	101.5
2006	107.9	104.0	100.8	102.5	101.1	102.5	106.7	112.3	101.5	103.9	101.5	104.4
2005 Q2	103.1	100.5	99.0	99.6	99.3	99.6	102.5	104.6	99.6	100.1	99.8	100.5
Q3	105.9	101.6	99.0	100.2	99.2	100.2	105.4	110.2	100.4	102.2	100.7	102.5
Q4	106.4	102.3	100.0	101.0	100.2	101.0	106.0	110.7	101.4	103.6	101.6	103.8
2006 Q1	108.4	103.1	101.6	101.6	101.8	101.6	107.3	113.0	102.3	104.9	102.2	104.9
Q2	109.6	104.2	101.4	102.4	101.7	102.4	108.2	113.9	102.1	104.2	102.2	104.6
Q3	108.6	104.6	100.6	102.9	100.9	102.9	107.2	112.8	101.2	103.4	101.3	104.0
Q4	105.0	104.2	99.6	103.1	100.1	103.1	104.2	109.6	100.2	103.2	100.3	104.0
2007 Q1	105.4	103.7	100.7	102.7	101.2	102.7	105.3	110.1	101.9	104.6	101.7	105.8
Q2	108.1	105.5	101.0	104.0	101.6	103.9	107.1	112.7	101.9	104.5	101.8	105.9
Q3	109.1	105.9	101.0	104.2	101.6	104.1	108.2	113.1	102.2	103.4	102.3	104.8
2006 Mar	109.1	103.4	102.3	101.9	102.5	101.9	107.8	113.6	102.8	105.5	102.7	105.4
Apr	110.7	104.2	102.3	102.2	102.5	102.2	109.2	116.0	102.9	105.6	102.9	105.7
May	108.9	103.9	100.8	102.2	101.2	102.2	107.6	112.4	101.6	103.0	101.7	103.5
Jun	109.1	104.4	101.1	102.7	101.5	102.7	107.8	113.2	101.9	104.0	102.0	104.5
Jul	110.4	105.2	101.5	103.3	101.8	103.2	108.7	114.9	102.0	104.3	102.1	104.9
Aug	108.8	104.4	100.1	102.6	100.5	102.6	107.2	112.9	100.7	102.6	100.9	103.3
Sep	106.7	104.2	100.1	102.9	100.5	102.9	105.6	110.6	100.8	103.2	100.9	103.8
Oct	105.1	104.2	99.7	103.1	100.1	103.1	104.8	110.1	100.9	104.0	101.0	104.7
Nov	104.9	104.3	99.7	103.2	100.2	103.2	104.1	109.6	100.3	103.5	100.4	104.3
Dec	105.1	104.2	99.5	103.0	99.9	102.9	103.6	109.0	99.4	102.1	99.5	103.0
2007 Jan	104.4	103.0	100.3	102.2	100.8	102.2	104.1	108.3	101.3	103.9	101.1	105.1
Feb	105.1	103.4	100.5	102.4	101.0	102.4	105.1	109.7	101.9	104.3	101.7	105.5
Mar	106.8	104.7	101.2	103.5	101.7	103.4	106.6	112.3	102.5	105.6	102.3	106.9
Apr	107.4	105.0	100.8	103.5	101.4	103.5	106.7	112.1	101.9	104.4	101.8	105.9
May	108.1	105.7	101.2	104.3	101.8	104.2	107.1	112.5	102.0	104.7	101.9	106.1
Jun	108.7	105.7	100.9	104.1	101.5	104.0	107.6	113.4	101.9	104.4	101.7	105.7
Jul	108.8	105.7	100.5	103.9	101.1	103.8	107.4	113.1	101.2	103.0	101.2	104.6
Aug	108.5	105.5	100.8	103.9	101.4	103.8	107.4	112.5	101.8	103.5	101.7	104.8
Sep	109.9	106.6	101.6	104.8	102.3	104.7	109.7	113.8	103.7	103.7	103.9	105.1
Percentage change on previous month:												
2007 Sep	1.3	1.0	0.8	0.9	0.9	0.9	2.1	1.2	1.9	0.2	2.2	0.3
3 months ended:												
2006 Sep	108.6	104.6	100.6	102.9	100.9	102.9	107.2	112.8	101.2	103.4	101.3	104.0
2007 Jun	108.1	105.5	101.0	104.0	101.6	103.9	107.1	112.7	101.9	104.5	101.8	105.9
2007 Sep	109.1	105.9	101.0	104.2	101.6	104.1	108.2	113.1	102.2	103.4	102.3	104.8
Percentage change, latest 3 months compared with:												
Previous 3 months	0.9	0.4	0.0	0.2	0.0	0.2	1.0	0.4	0.3	-1.1	0.5	-1.0
Same 3 months last year	0.4	1.3	0.4	1.2	0.7	1.2	0.9	0.3	1.1	0.0	1.0	0.8

1 These are provisional estimates subject to fluctuations when new or amended data become available.

2 These are defined as ships, aircraft, precious stones and silver.

3 Includes trade with the Canary Islands, French Guiana, Guadeloupe, Martinique and Reunion.

[†] Earliest date for revisions to trade in goods is July 2007.

7 TRADE IN OIL¹

Balance of Payments basis

Seasonally adjusted

	Exports						Imports					
	Balance of Trade in Oil £ million	Crude oil (SITC 333)				Rest of SITC 33 £ million	Total £ million	Crude oil (SITC 333)				Rest of SITC 33 £ million
		Total £ million	£ million	million tonnes	Avg value per tonne £			£ million	million tonnes	Avg value per tonne £		
	ENXQ	ELBL	BQNI	BOQM	BPBN	BOQN	ENXO	BQNJ	BQBH	BQAX	BQAY	
2004	893	16 200	9 338	60.51	155	6 862	15 307	8 191	56.15	145	7 116	
2005	-2 195	19 794	10 948	50.48	217	8 846	21 989	11 212	54.05	207	10 777	
2006	-3 585	23 304	12 890	47.69	270	10 414	26 889	14 273	55.72	256	12 616	
2005 Q2	-303	4 689	2 789	13.91	201	1 900	4 992	2 513	13.52	186	2 479	
Q3	-1 528	5 127	2 673	10.70	250	2 454	6 655	3 557	15.09	236	3 098	
Q4	-715	5 475	2 919	11.49	254	2 556	6 190	3 097	13.16	235	3 093	
2006 Q1	-1 060	5 802	3 409	12.87	265	2 393	6 862	3 440	13.78	250	3 422	
Q2	-385	6 444	3 572	12.61	283	2 872	6 829	3 744	13.95	268	3 085	
Q3	-1 354	5 924	3 111	10.80	288	2 813	7 278	4 176	15.11	276	3 102	
Q4	-786	5 134	2 798	11.41	245	2 336	5 920	2 913	12.88	226	3 007	
2007 Q1	-663	4 873	2 687	11.78	228	2 186	5 536	2 193	10.60	207	3 343	
Q2	-185	5 621	3 101	12.09	256	2 520	5 806	2 265	9.32	243	3 541	
Q3	-1 518	5 545	3 032	10.96	277	2 513	7 063	3 322	12.70	262	3 741	
2007 Apr	-114	1 895	1 048	4.22	248	847	2 009	719	2.98	241	1 290	
May	-57	1 788	970	3.81	255	818	1 845	813	3.46	235	1 032	
Jun	-14	1 938	1 083	4.06	267	855	1 952	733	2.88	255	1 219	
Jul	-244	1 962	1 051	3.84	274	911	2 206	1 045	4.06	257	1 161	
Aug	-665	1 620	885	3.22	275	735	2 285	1 102	4.25	259	1 183	
Sep	-609	1 963	1 096	3.90	281	867	2 572	1 175	4.39	268	1 397	
3 months ended:												
2006 Sep	-1 354	5 924	3 111	10.80	289	2 813	7 278	4 176	15.11	275	3 102	
2007 Jun	-185	5 621	3 101	12.09	257	2 520	5 806	2 265	9.32	244	3 541	
2007 Sep	-1 518	5 545	3 032	10.96	277	2 513	7 063	3 322	12.70	261	3 741	
Percentage change, latest 3 months compared with:												
Previous 3 months		-1.4	-2.2	-9.3	7.8	-0.3	21.7	46.7	36.3	7.3	5.6	
Same 3 months last year		-6.4	-2.5	1.5	-4.2	-10.7	-3.0	-20.5	-15.9	-5.1	20.6	

1 Trade in petroleum and petroleum products. These figures differ from those published by the Department of Business Enterprise and Regulatory Reform from different sources and are on a time of shipment basis.

2 The average value per tonne may reflect not only changes in price but also changes in the commodity mix.

† Earliest date for revisions to trade in goods is July 2007.



VALUE OF TRADE IN GOODS BY COMMODITY

Balance of Payments basis

£ million seasonally adjusted

	Food, beverages and tobacco (SITC 0 + 1)			Basic materials (SITC 2 + 4)			Fuels (SITC 3)		
	Exports	Imports	Balance	Exports	Imports	Balance	Exports	Imports	Balance
	BOPL	BQAR	ELBE	BOPM	BQAS	ELBF	BOPN	BQAT	ELBG
2004	10 578	22 147	-11 569	3 771	6 340	-2 569	17 885	17 547	338
2005	10 647	23 695	-13 048	3 981	6 770	-2 789	21 496	25 921	-4 425
2006	10 997	25 105	-14 108	4 910	7 907	-2 997	25 445	31 817	-6 372
2005 Q3	2 667	5 918	-3 251	1 031	1 769	-738	5 558	7 524	-1 966
Q4	2 620	6 034	-3 414	1 007	1 738	-731	5 874	7 792	-1 918
2006 Q1	2 662	6 241	-3 579	1 113	1 893	-780	6 299	8 496	-2 197
Q2	2 731	6 191	-3 460	1 205	1 903	-698	7 054	7 835	-781
Q3	2 775	6 260	-3 485	1 222	1 935	-713	6 555	8 393	-1 838
Q4	2 829	6 413	-3 584	1 370	2 176	-806	5 537	7 093	-1 556
2007 Q1	2 893	6 435	-3 542	1 289	2 157	-868	5 197	6 752	-1 555
Q2	2 906	6 529	-3 623	1 465	2 422	-957	6 118	6 803	-685
Q3	2 989	6 680	-3 691	1 319	2 553	-1 234	6 017	8 095	-2 078
2007 Apr	926	2 200	-1 274	472	786	-314	2 062	2 470	-408
May	1 013	2 189	-1 176	499	807	-308	1 977	2 130	-153
Jun	967	2 140	-1 173	494	829	-335	2 079	2 203	-124
Jul	1 004	2 198	-1 194	462	886	-424	2 167	2 544	-377
Aug	1 019	2 223	-1 204	433	855	-422	1 763	2 612	-849
Sep	966	2 259	-1 293	424	812	-388	2 087	2 939	-852
3 months ended:									
2006 Sep	2 775	6 260	-3 485	1 222	1 935	-713	6 555	8 393	-1 838
2007 Jun	2 906	6 529	-3 623	1 465	2 422	-957	6 118	6 803	-685
2007 Sep	2 989	6 680	-3 691	1 319	2 553	-1 234	6 017	8 095	-2 078
Percentage change, latest 3 months compared with:									
Previous 3 months	2.9	2.3		-10.0	5.4		-1.7	19.0	
Same 3 months last year	7.7	6.7		7.9	31.9		-8.2	-3.6	

	Semi-manufactures (SITC 5 + 6)			Finished manufactures (SITC 7 + 8)			Total manufactures (SITC 5 to 8)			Miscellaneous (SITC 9)		
	Exports	Imports	Balance	Exports	Imports	Balance	Exports	Imports	Balance	Exports	Imports	Balance
	BOPO	BQAU	ELBH	BOPP	BQAV	ELBI	BPAN	BQBD	ELBJ	BOQL	BQAW	BQKX
2004	56 466	60 226	-3 760	101 296	143 703	-42 407	157 762	203 929	-46 167	881	1 807	-926
2005	59 880	62 677	-2 797	114 484	159 493	-45 009	174 364	222 170	-47 806	1 120	1 841	-721
2006	65 103	69 573	-4 470	136 906	185 751	-48 845	202 009	255 324	-53 315	1 300	2 071	-771
2005 Q3	15 323	15 572	-249	29 772	41 303	-11 531	45 095	56 875	-11 780	281	424	-143
Q4	15 230	15 968	-738	32 268	43 785	-11 517	47 498	59 753	-12 255	415	475	-60
2006 Q1	15 922	16 841	-919	38 720	50 301	-11 581	54 642	67 142	-12 500	378	546	-168
Q2	16 436	17 051	-615	40 376	53 238	-12 862	56 812	70 289	-13 477	312	509	-197
Q3	16 198	17 466	-1 268	29 614	41 711	-12 097	45 812	59 177	-13 365	309	463	-154
Q4	16 547	18 215	-1 668	28 196	40 501	-12 305	44 743	58 716	-13 973	301	553	-252
2007 Q1	16 768	17 977	-1 209	27 377	40 638	-13 261	44 145	58 615	-14 470	358	528	-170
Q2	16 838	18 272	-1 434	26 727	40 081	-13 354	43 565	58 353	-14 788	252	545	-293
Q3	17 449	19 267	-1 818	28 704	41 885	-13 181	46 153	61 152	-14 999	261	516	-255
2007 Apr	5 353	5 829	-476	8 504	13 043	-4 539	13 857	18 872	-5 015	86	202	-116
May	5 802	6 151	-349	8 798	13 409	-4 611	14 600	19 560	-4 960	83	170	-87
Jun	5 683	6 292	-609	9 425	13 629	-4 204	15 108	19 921	-4 813	83	173	-90
Jul	5 717	6 517	-800	9 359	14 027	-4 668	15 076	20 544	-5 468	87	179	-92
Aug	5 944	6 353	-409	9 815	13 797	-3 982	15 759	20 150	-4 391	89	171	-82
Sep	5 788	6 397	-609	9 530	14 061	-4 531	15 318	20 458	-5 140	85	166	-81
3 months ended:												
2006 Sep	16 198	17 466	-1 268	29 614	41 711	-12 097	45 812	59 177	-13 365	309	463	-154
2007 Jun	16 838	18 272	-1 434	26 727	40 081	-13 354	43 565	58 353	-14 788	252	545	-293
2007 Sep	17 449	19 267	-1 818	28 704	41 885	-13 181	46 153	61 152	-14 999	261	516	-255
Percentage change, latest 3 months compared with:												
Previous 3 months	3.6	5.4		7.4	4.5		5.9	4.8		3.6	-5.3	
Same 3 months last year	7.7	10.3		-3.1	0.4		0.7	3.3		-15.5	11.4	
EXCLUDING ERRATICS¹												
Previous 3 months	2.4	4.4		7.5	4.9		5.5	4.7				
Same 3 months last year	6.4	11.8		-3.6	0.9		-0.1	4.0				

¹ These are defined as precious stones and silver in semi-manufactures, and as ships and aircraft in finished manufactures.

[†] Earliest date for revisions to trade in goods is July 2007.

9 VOLUME INDICES (TRADE IN GOODS) BY COMMODITY ¹

Balance of Payments basis

Indices 2003=100 seasonally adjusted

	Food, beverages and tobacco (SITC 0 + 1)		Basic materials (SITC 2 + 4)		Fuels (SITC 3)		Semi-manufactures (SITC 5 + 6)		Finished manufactures (SITC 7 + 8)		Total manufactures (SITC 5 to 8)	
	Exports	Imports	Exports	Imports	Exports	Imports	Exports	Imports	Exports	Imports	Exports	Imports
<i>Weights²</i> <i>(total trade = 1000)</i>	58	89	18	26	88	52	289	237	543	589	832	826
	BPEM	BQBK	BAFB	BQBL	BAFC	BQBM	BAHA	BQBN	BAHY	ELAB	BOGT	ELAJ
2004	99	106	105	100	93	123	104	106	101	106	102	106
2005	98	110	107	102	90	131	108	106	117	118	114	115
2006	99	114	121	110	92	136	117	112	139	137	132	130
2005 Q2	101	110	108	100	92	127	107	105	111	113	110	111
Q3	98	109	109	106	83	133	111	106	123	122	119	118
Q4	96	111	107	100	88	142	110	107	134	129	125	122
2006 Q1	96	115	113	107	91	143	113	110	159	147	143	137
Q2	98	113	117	108	96	126	118	110	166	157	149	144
Q3	100	113	120	107	91	139	116	112	119	124	118	121
Q4	102	116	135	116	90	134	120	116	114	121	116	119
2007 Q1	103	115	126	115	87	144	121	114	108	120	113	118
Q2	102	116	138	121	90	130	121	115	106	119	111	118
Q3	104	118	132	129	84	142	125	123	114	126	118	125
2007 Apr	99	117	134	119	94	150	115	110	101	116	106	114
May	106	116	139	121	88	118	125	117	105	118	112	118
Jun	102	115	142	124	88	123	122	119	112	122	116	121
Jul	105	117	135	136	90	131	123	124	113	127	116	126
Aug	107	118	132	131	75	139	128	122	117	124	121	123
Sep	100	118	130	121	86	155	124	122	113	126	117	125
3 months ended:												
2006 Sep	100	113	120	107	91	139	116	112	119	124	118	121
2007 Jun	102	116	138	121	90	130	121	115	106	119	111	118
2007 Sep	104	118	132	129	84	142	125	123	114	126	118	125
Percentage change, latest 3 months compared with:												
Previous 3 months	1.6	1.4	-4.3	6.6	-7.0	8.7	3.6	6.4	7.9	5.9	6.0	5.9
Same 3 months last year	4.0	4.4	10.3	20.5	-7.7	2.2	7.8	9.9	-3.7	1.3	0.3	3.3
EXCLUDING ERRATICS³												
Previous 3 months							1.6	4.7	8.1	5.8	5.6	5.3
Same 3 months last year							5.0	10.1	-4.1	1.6	-0.8	3.6

1 These are provisional estimates subject to fluctuations when new or amended data become available.

2 The weights shown are in proportion to the total value of trade in 2003 and are used to combine the volume indices to calculate the totals for 2004 onwards. For 2003 and earlier, totals are calculated using the equivalent weights for the previous year (eg totals for 2003 use 2002 weights).

3 These are defined as precious stones and silver in semi-manufactures, and as ships and aircraft in finished manufactures.

[†] Earliest date for revisions to trade in goods is July 2007.

10 PRICE INDICES (TRADE IN GOODS) BY COMMODITY¹

Balance of Payments Consistent basis

Indices 2003=100 not seasonally adjusted

	Food, beverages and tobacco (SITC 0 + 1)		Basic materials (SITC 2 + 4)		Fuels (SITC 3)		Semi-manufactures (SITC 5 + 6)		Finished manufactures (SITC 7 + 8)		Total manufactures (SITC 5 to 8)	
	Exports	Imports	Exports	Imports	Exports	Imports	Exports	Imports	Exports	Imports	Exports	Imports
<i>Weights²</i> <i>(total trade = 1000)</i>	58	89	18	26	88	52	289	237	543	589	832	826
	BPAI	ELAN	BPAW	ELAO	BPDU	ELAP	BQAA	ELAQ	BQAB	ELAR	BQAI	ELAY
2004	99	98	108	103	117	118	99	102	98	97	99	98
2005	100	102	115	108	156	168	101	107	98	97	99	100
2006	102	105	122	117	182	200	102	112	99	97	100	102
2005 Q2	99	102	114	108	144	153	100	106	98	96	99	99
Q3	100	103	115	108	175	192	101	106	98	97	99	100
Q4	100	103	118	110	175	187	101	108	98	98	99	101
2006 Q1	102	102	120	114	182	200	103	110	99	98	100	102
Q2	103	105	124	115	193	213	103	112	99	97	100	102
Q3	102	106	123	118	191	208	102	114	98	97	99	102
Q4	101	107	122	121	162	179	101	114	97	97	99	102
2007 Q1	103	107	124	122	155	171	101	114	99	97	100	102
Q2	104	108	129	129	179	198	102	116	99	97	100	102
Q3	105	110	126	127	190	212	102	115	99	97	100	102
2007 Apr	104	108	129	128	173	193	102	115	99	97	100	102
May	104	109	129	130	177	194	102	116	99	97	100	103
Jun	105	108	129	129	186	206	102	116	99	97	100	102
Jul	105	109	125	126	192	215	101	115	99	96	99	102
Aug	105	109	126	126	186	205	102	115	99	97	100	102
Sep	106	112	127	128	192	217	103	115	100	97	101	102
3 months ended:												
2006 Sep	102	106	123	118	191	208	102	114	98	97	99	102
2007 Jun	104	108	129	129	179	198	102	116	99	97	100	102
2007 Sep	105	110	126	127	190	212	102	115	99	97	100	102
Percentage change, latest 3 months compared with:												
Previous 3 months	1.0	1.5	-2.3	-1.8	6.3	7.4	0.0	-0.6	0.3	-0.3	0.0	-0.3
Same 3 months last year	3.3	3.4	2.2	7.6	-0.5	2.2	0.0	1.2	1.0	-0.3	0.7	0.3
EXCLUDING ERRATICS³												
Previous 3 months							0.0	-0.6	-0.3	-0.3	0.3	-0.3
Same 3 months last year							0.6	2.6	0.3	-0.3	0.7	0.7

1 These are provisional estimates subject to fluctuations when new or amended data become available.

2 The weights shown are in proportion to the total value of trade in 2003 and are used to combine the volume indices to calculate the totals for 2004 onwards. For 2003 and earlier, totals are calculated using the equivalent weights for the previous year (eg totals for 2003 use 2002 weights).

3 These are defined as precious stones and silver in semi-manufactures, and as ships and aircraft in finished manufactures.

† Earliest date for revisions to trade in goods is July 2007.

11 TRADE IN GOODS WITH SELECTED EU TRADING PARTNERS

Balance of Payments Consistent basis

£ million seasonally adjusted

	Belgium & Luxembourg			France			Germany			Irish Republic		
	Exports	Imports	Balance	Exports	Imports	Balance	Exports	Imports	Balance	Exports	Imports	Balance
	CHNQ	CHNY	CHNF	ENYL	ENYP	ENYT	ENYO	ENYS	ENYW	CHNS	CHOA	CHNH
2004	10 511	13 845	-3 334	18 564	20 132	-1 568	21 671	35 380	-13 709	14 133	10 133	4 000
2005	11 394	15 155	-3 761	19 931	22 184	-2 253	23 025	39 169	-16 144	16 294	10 411	5 883
2006	15 183	18 290	-3 107	28 881	27 024	1 857	27 790	42 936	-15 146	17 602	10 839	6 763
2005 Q2	2 641	3 535	-894	4 399	5 180	-781	5 630	9 661	-4 031	3 937	2 523	1 414
Q3	2 944	3 761	-817	5 025	5 568	-543	5 675	9 775	-4 100	4 131	2 711	1 420
Q4	3 131	4 291	-1 160	5 748	6 313	-565	6 071	10 182	-4 111	4 295	2 731	1 564
2006 Q1	3 956	5 171	-1 215	8 320	7 766	554	6 871	11 014	-4 143	4 485	2 758	1 727
Q2	4 174	4 960	-786	9 284	8 033	1 251	7 710	11 049	-3 339	4 337	2 826	1 511
Q3	3 748	4 407	-659	5 837	5 743	94	6 729	10 500	-3 771	4 398	2 529	1 869
Q4	3 305	3 752	-447	5 440	5 482	-42	6 480	10 373	-3 893	4 382	2 726	1 656
2007 Q1	3 007	3 620	-613	4 681	5 449	-768	6 137	10 904	-4 767	4 328	2 748	1 580
Q2	2 938	3 688	-750	4 454	5 266	-812	6 102	11 179	-5 077	4 473	2 766	1 707
Q3	3 370	4 348	-978	4 925	5 666	-741	6 417	10 705	-4 288	4 548	2 987	1 561
2007 Apr	989	1 195	-206	1 366	1 775	-409	2 032	3 682	-1 650	1 456	970	486
May	1 018	1 219	-201	1 515	1 761	-246	2 039	3 799	-1 760	1 540	953	587
Jun	931	1 274	-343	1 573	1 730	-157	2 031	3 698	-1 667	1 477	843	634
Jul	1 198	1 423	-225	1 550	1 854	-304	2 092	3 639	-1 547	1 526	1 029	497
Aug	973	1 450	-477	1 676	1 809	-133	2 111	3 603	-1 492	1 540	957	583
Sep	1 199	1 475	-276	1 699	2 003	-304	2 214	3 463	-1 249	1 482	1 001	481
3 months ended:												
2006 Sep	3 748	4 407	-659	5 837	5 743	94	6 729	10 500	-3 771	4 398	2 529	1 869
2007 Jun	2 938	3 688	-750	4 454	5 266	-812	6 102	11 179	-5 077	4 473	2 766	1 707
2007 Sep	3 370	4 348	-978	4 925	5 666	-741	6 417	10 705	-4 288	4 548	2 987	1 561
Percentage change, latest 3 months compared with:												
Previous 3 months	14.7	17.9		10.6	7.6		5.2	-4.2		1.7	8.0	
Same 3 months last year	-10.1	-1.3		-15.6	-1.3		-4.6	2.0		3.4	18.1	
	Italy			Netherlands			Spain			Sweden		
	Exports	Imports	Balance	Exports	Imports	Balance	Exports	Imports	Balance	Exports	Imports	Balance
	CHNO	CHNW	CHOE	CHNP	CHNX	CHNE	CHNV	CHOD	CHNM	CHNA	CHND	CHVI
2004	8 401	12 186	-3 785	12 030	18 195	-6 165	9 100	9 120	-20	4 355	5 118	-763
2005	8 790	12 673	-3 883	12 716	20 436	-7 720	10 677	11 450	-773	4 588	5 463	-875
2006	9 561	12 861	-3 300	16 632	22 417	-5 785	12 379	12 217	162	5 279	6 025	-746
2005 Q2	2 156	3 089	-933	2 898	4 891	-1 993	2 513	2 541	-28	1 120	1 390	-270
Q3	2 178	3 209	-1 031	3 425	5 495	-2 070	2 950	3 176	-226	1 103	1 327	-224
Q4	2 358	3 274	-916	3 624	5 503	-1 879	2 938	3 392	-454	1 217	1 304	-87
2006 Q1	2 556	3 391	-835	4 709	6 076	-1 367	3 549	3 552	-3	1 333	1 535	-202
Q2	2 429	3 326	-897	4 716	5 959	-1 243	3 819	3 700	119	1 478	1 608	-130
Q3	2 341	3 039	-698	3 688	5 166	-1 478	2 597	2 512	85	1 263	1 475	-212
Q4	2 235	3 105	-870	3 519	5 216	-1 697	2 414	2 453	-39	1 205	1 407	-202
2007 Q1	2 296	3 148	-852	3 407	5 311	-1 904	2 611	2 516	95	1 227	1 343	-116
Q2	2 244	3 125	-881	3 748	5 541	-1 793	2 393	2 557	-164	1 192	1 264	-72
Q3	2 402	3 244	-842	4 193	5 783	-1 590	2 620	2 917	-297	1 189	1 283	-94
2007 Apr	726	1 038	-312	1 160	1 841	-681	793	775	18	394	397	-3
May	748	1 067	-319	1 291	1 829	-538	812	873	-61	431	442	-11
Jun	770	1 020	-250	1 297	1 871	-574	788	909	-121	367	425	-58
Jul	791	1 048	-257	1 359	1 868	-509	835	927	-92	382	437	-55
Aug	810	1 130	-320	1 425	1 956	-531	934	1 025	-91	405	419	-14
Sep	801	1 066	-265	1 409	1 959	-550	851	965	-114	402	427	-25
3 months ended:												
2006 Sep	2 341	3 039	-698	3 688	5 166	-1 478	2 597	2 512	85	1 263	1 475	-212
2007 Jun	2 244	3 125	-881	3 748	5 541	-1 793	2 393	2 557	-164	1 192	1 264	-72
2007 Sep	2 402	3 244	-842	4 193	5 783	-1 590	2 620	2 917	-297	1 189	1 283	-94
Percentage change, latest 3 months compared with:												
Previous 3 months	7.0	3.8		11.9	4.4		9.5	14.1		-0.3	1.5	
Same 3 months last year	2.6	6.7		13.7	11.9		0.9	16.1		-5.9	-13.0	

† Earliest date for revisions to trade in goods is July 2007.

12 TRADE IN GOODS WITH SELECTED NON-EU TRADING PARTNERS

Balance of Payments Consistent basis

£ million seasonally adjusted

	Canada			China			Hong Kong			Japan		
	Exports	Imports	Balance	Exports	Imports	Balance	Exports	Imports	Balance	Exports	Imports	Balance
	EOBC	EOBW	EOCQ	ERDN	ERDZ	EREL	ERDG	ERDS	EREE	EOBD	EOBX	EOCR
2004	3 339	4 187	-848	2 372	10 405	-8 033	2 632	5 771	-3 139	3 862	8 106	-4 244
2005	3 277	4 155	-878	2 811	12 963	-10 152	3 088	6 601	-3 513	3 900	8 670	-4 770
2006	3 893	4 996	-1 103	3 265	15 303	-12 038	2 863	7 373	-4 510	4 109	7 910	-3 801
2005 Q2	813	1 017	-204	711	3 145	-2 434	836	1 563	-727	1 000	2 313	-1 313
Q3	780	1 100	-320	723	3 412	-2 689	820	1 725	-905	984	2 082	-1 098
Q4	929	1 056	-127	839	3 426	-2 587	851	1 772	-921	1 006	2 167	-1 161
2006 Q1	1 018	1 346	-328	728	3 715	-2 987	733	1 856	-1 123	1 096	2 064	-968
Q2	1 119	1 217	-98	818	3 798	-2 980	752	1 912	-1 160	1 036	1 971	-935
Q3	858	1 173	-315	815	3 734	-2 919	669	1 787	-1 118	982	1 960	-978
Q4	898	1 260	-362	904	4 056	-3 152	709	1 818	-1 109	995	1 915	-920
2007 Q1	922	1 255	-333	786	4 702	-3 916	574	1 725	-1 151	948	2 014	-1 066
Q2	864	1 568	-704	938	4 402	-3 464	647	1 575	-928	986	1 930	-944
Q3	771	1 647	-876	974	4 584	-3 610	708	1 721	-1 013	944	1 953	-1 009
2007 Mar	288	437	-149	304	1 807	-1 503	236	579	-343	327	694	-367
Apr	296	565	-269	307	1 489	-1 182	182	491	-309	326	684	-358
May	275	500	-225	320	1 401	-1 081	229	535	-306	313	599	-286
Jun	293	503	-210	311	1 512	-1 201	236	549	-313	347	647	-300
Jul	258	759	-501	340	1 514	-1 174	254	569	-315	322	640	-318
Aug	253	405	-152	333	1 490	-1 157	249	571	-322	319	650	-331
Sep	260	483	-223	301	1 580	-1 279	205	581	-376	303	663	-360
3 months ended:												
2006 Sep	858	1 173	-315	815	3 734	-2 919	669	1 787	-1 118	982	1 960	-978
2007 Jun	864	1 568	-704	938	4 402	-3 464	647	1 575	-928	986	1 930	-944
2007 Sep	771	1 647	-876	974	4 584	-3 610	708	1 721	-1 013	944	1 953	-1 009
Percentage change, latest 3 months compared with:												
Previous 3 months	-10.8	5.0		3.8	4.1		9.4	9.3		-4.3	1.2	
Same 3 months last year	-10.1	40.4		19.5	22.8		5.8	-3.7		-3.9	-0.4	
	Norway			South Korea			Switzerland			USA		
	Exports	Imports	Balance	Exports	Imports	Balance	Exports	Imports	Balance	Exports	Imports	Balance
	EPLX	EPMX	EPNX	ERDM	ERDY	EREK	EPLV	EPMV	EPNV	EOBB	EOBV	EOCP
2004	1 937	8 479	-6 542	1 482	3 083	-1 601	2 840	3 439	-599	28 576	22 067	6 509
2005	2 211	12 078	-9 867	1 677	3 064	-1 387	4 985	3 882	1 103	30 913	22 184	8 729
2006	2 125	14 474	-12 349	1 746	3 086	-1 340	4 190	4 376	-186	32 099	25 763	6 336
2005 Q2	595	2 762	-2 167	449	799	-350	1 171	892	279	7 650	5 374	2 276
Q3	550	3 309	-2 759	432	808	-376	1 425	975	450	7 697	5 833	1 864
Q4	629	3 492	-2 863	422	766	-344	1 524	1 064	460	8 069	5 816	2 253
2006 Q1	508	3 785	-3 277	372	780	-408	1 355	1 060	295	8 067	6 365	1 702
Q2	583	3 752	-3 169	429	797	-368	1 099	1 141	-42	8 480	6 566	1 914
Q3	504	3 937	-3 433	466	751	-285	814	1 068	-254	8 026	6 129	1 897
Q4	530	3 000	-2 470	479	758	-279	922	1 107	-185	7 526	6 703	823
2007 Q1	557	3 173	-2 616	426	739	-313	806	1 190	-384	7 870	6 312	1 558
Q2	714	3 162	-2 448	491	702	-211	967	1 109	-142	8 079	6 414	1 665
Q3	565	3 469	-2 904	493	812	-319	944	1 238	-294	7 830	6 538	1 292
2007 Mar	239	1 134	-895	176	267	-91	289	360	-71	2 787	1 976	811
Apr	215	1 071	-856	139	222	-83	290	279	11	2 425	2 071	354
May	214	1 060	-846	178	225	-47	279	354	-75	2 486	2 121	365
Jun	285	1 031	-746	174	255	-81	398	476	-78	3 168	2 222	946
Jul	190	1 032	-842	185	269	-84	343	443	-100	2 479	2 156	323
Aug	186	1 041	-855	180	264	-84	337	380	-43	2 669	2 164	505
Sep	189	1 396	-1 207	128	279	-151	264	415	-151	2 682	2 218	464
3 months ended:												
2006 Sep	504	3 937	-3 433	466	751	-285	814	1 068	-254	8 026	6 129	1 897
2007 Jun	714	3 162	-2 448	491	702	-211	967	1 109	-142	8 079	6 414	1 665
2007 Sep	565	3 469	-2 904	493	812	-319	944	1 238	-294	7 830	6 538	1 292
Percentage change, latest 3 months compared with:												
Previous 3 months	-20.9	9.7		0.4	15.7		-2.4	11.6		-3.1	1.9	
Same 3 months last year	12.1	-11.9		5.8	8.1		16.0	15.9		-2.4	6.7	

† Earliest date for revisions to trade in goods is July 2007.

13R SUMMARY OF REVISIONS

Balance of Payments Basis

£ million

	Trade in goods ¹			Trade in services (seasonally adjusted) ²			Trade in goods & services (seasonally adjusted)			Growth rates for volume and price indices (2003=100)			
	Value (seasonally adjusted) £ million			£ Million			£ Million			Volume excluding oil and erratics		Prices	
	Exports	Imports	Balance	Exports	Imports	Balance	Exports	Imports	Balance	Exports	Imports	Exports	Imports
	BOKG	BOKH	BOKI	IKBB	IKBC	IKBD	IKBH	IKBI	IKBJ				
2004	-	-	-	-	-	-	-	-	-	-	-	-	-
2005	-	-	-	-	-	-	-	-	-	-	-	-	-
2006	-	-	-	-	-	-	-	-	-	-	-	-	-
2005 Q1	-	-	-	-	-	-	-	-	-	-	-	-	-
Q2	-	-	-	-	-	-	-	-	-	-	-	-	-
Q3	-	-	-	-	-	-	-	-	-	-	-	-	-
Q4	-	-	-	-	-	-	-	-	-	-	-	-	-
2006 Q1	-	-	-	-	-	-	-	-	-	-	-	-	-
Q2	-	-	-	-	-	-	-	-	-	-	-	-	-
Q3	-	-	-	-	-	-	-	-	-	-	-	-	-
Q4	-	-	-	-	-	-	-	-	-	-	-	-	-
2007 Q1	-	-	-	-	-	-	-	-	-	-	-	-	-
Q2	-	-	-	-	-	-	-	-	-	-	-	-	-
Q3
2005 Jan	-	-	-	-	-	-	-	-	-	-	-	-	-
Feb	-	-	-	-	-	-	-	-	-	-	-	-	-
Mar	-	-	-	-	-	-	-	-	-	-	-	-	-
Apr	-	-	-	-	-	-	-	-	-	-	-	-	-
May	-	-	-	-	-	-	-	-	-	-	-	-	-
Jun	-	-	-	-	-	-	-	-	-	-	-	-	-
Jul	-	-	-	-	-	-	-	-	-	-	-	-	-
Aug	-	-	-	-	-	-	-	-	-	-	-	-	-
Sep	-	-	-	-	-	-	-	-	-	-	-	-	-
Oct	-	-	-	-	-	-	-	-	-	-	-	-	-
Nov	-	-	-	-	-	-	-	-	-	-	-	-	-
Dec	-	-	-	-	-	-	-	-	-	-	-	-	-
2006 Jan	-	-	-	-	-	-	-	-	-	-	-	-	-
Feb	-	-	-	-	-	-	-	-	-	-	-	-	-
Mar	-	-	-	-	-	-	-	-	-	-	-	-	-
Apr	-	-	-	-	-	-	-	-	-	-	-	-	-
May	-	-	-	-	-	-	-	-	-	-	-	-	-
Jun	-	-	-	-	-	-	-	-	-	-	-	-	-
Jul	-	-	-	-	-	-	-	-	-	-	-	-	-
Aug	-	-	-	-	-	-	-	-	-	-	-	-	-
Sep	-	-	-	-	-	-	-	-	-	-	-	-	-
Oct	-	-	-	-	-	-	-	-	-	-	-	-	-
Nov	-	-	-	-	-	-	-	-	-	-	-	-	-
Dec	-	-	-	-	-	-	-	-	-	-	-	-	-
2007 Jan	-	-	-	-	-	-	-	-	-	-	-	-	-
Feb	-	-	-	-	-	-	-	-	-	-	-	-	-
Mar	-	-	-	-	-	-	-	-	-	-	-	-	-
Apr	-	-	-	-	-	-	-	-	-	-	-	-	-
May	-	-	-	-	-	-	-	-	-	-	-	-	-
Jun	-	-	-	-	-	-	-	-	-	-	-	-	-
Jul	-80	60	-140	-	-	-	-80	60	-140	-0.7	0.3	-	0.1
Aug	88	183	-95	11	27	-16	99	210	-111	0.6	0.1	0.1	-0.1
Sep
3 month on 3 month comparison:													
2006 Apr	-	-	-	-	-	-	-	-	-	-	-	-	-
May	-	-	-	-	-	-	-	-	-	-	-	-	-
Jun	-	-	-	-	-	-	-	-	-	-	-	-	-
Jul	-	-	-	-	-	-	-	-	-	-	-	-	-
Aug	-	-	-	-	-	-	-	-	-	-	-	-	-
Sep	-	-	-	-	-	-	-	-	-	-	-	-	-
Oct	-	-	-	-	-	-	-	-	-	-	-	-	-
Nov	-	-	-	-	-	-	-	-	-	-	-	-	-
Dec	-	-	-	-	-	-	-	-	-	-	-	-	-
2007 Jan	-	-	-	-	-	-	-	-	-	-	-	-	-
Feb	-	-	-	-	-	-	-	-	-	-	-	-	-
Mar	-	-	-	-	-	-	-	-	-	-	-	-	-
Apr	-	-	-	-	-	-	-	-	-	-	-	-	-
May	-	-	-	-	-	-	-	-	-	-	-	-	-
Jun	-	-	-	-	-	-	-	-	-	-	-	-	-
Jul	-	-	-	-	-	-	-	-	-	-0.2	-	-	-
Aug	-	-	-	-	-	-	-	-	-	-0.3	0.2	0.1	-
Sep	-	-	-	-	-	-	-	-	-

¹Earliest date for revisions to trade in goods is July 2007.

²Earliest data for revisions to trade in services is August 2007.