

9 November 2005

Coverage
United Kingdom
Theme
The Economy

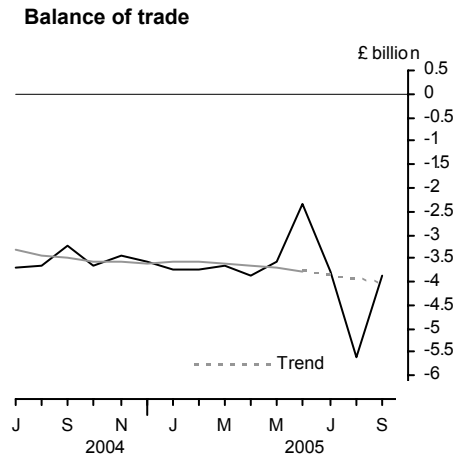
UK trade September 2005

The UK's deficit on trade in goods and services is provisionally estimated to have narrowed in September to £3.9 billion from a deficit of £5.6 billion in August. The August estimate was affected by a downward adjustment to services data of £1.4 billion to account for the estimated payment of claims by Lloyd's of London arising from the effects of Hurricane Katrina. The deficit in July was £3.8 billion.

In third quarter, the deficit on trade in goods and services widened to £13.3 billion from a £9.8 billion deficit in the previous quarter.

The latest estimate of the trend suggests that the UK trade deficit is fairly flat in recent months.

The notes discuss a number of factors which make interpretation of short term movements difficult.



Issued by
National Statistics
1 Drummond Gate
London SW1V 2QQ

Telephone
Press Office 020 7533 5725
Public Enquiries 0845 601 3034

Statistician - Trade in Goods
Caroline Lakin 020 7533 6064/6072

Statistician - Trade in Services
Tom Orford 020 7533 6095/6097

E-mail - bop@ons.gov.uk

Internet
www.statistics.gov.uk

Next publication date
9 December 2005

		Balance on trade in goods			Balance on trade in services	Total balance
		EU	Non-EU	World		
<i>Seasonally adjusted: £ billion</i>						
2005	Apr	-2.8	-2.5	-5.3	1.5	-3.9
	May	-2.7	-2.4	-5.1	1.5	-3.6
	Jun	-2.8	-1.4	-4.2	1.8	-2.3
	Jul	-2.8	-2.6	-5.4	1.6	-3.8
	Aug	-2.8	-3.1	-5.9	0.3	-5.6
	Sep	-3.1	-2.3	-5.4	1.6	-3.9

NOTE: Trade in services estimates are included to give a more complete picture of UK trade. These estimates have been derived from a number of sources, and some components are based on recent trends. They should be used with appropriate caution.



TRADE IN GOODS – SEPTEMBER

Value of total trade in goods

The UK's deficit on trade in goods in September is provisionally estimated at £5.4 billion compared with a deficit of £5.9 billion in August. Following a change in the pattern of trading associated with Missing Trader Intra-Community (MTIC) fraud, identified by HMRC, interpretation of the breakdown between EU and non-EU trade is more difficult. This trading is affecting data on exports to both EU and non-EU countries from the beginning of 2004. However, the import adjustment is applied only to EU imports as the goods return to the UK via the EU and it is this part of the trading chain that is not recorded. The deficit with EU countries in September was £3.1 billion compared with £2.8 billion in August. The deficit with non-EU countries in September was £2.3 billion compared with £3.1 billion in August.

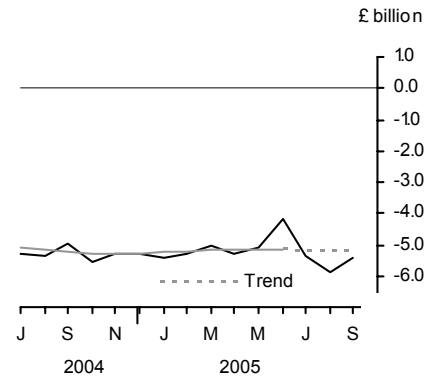
In September, total exports of goods rose two per cent to £18.1 billion and total imports of goods fell a half per cent to £23.5 billion. Exports to EU countries fell three per cent and exports to non-EU countries rose nine per cent. Imports from EU countries were little changed and imports from non-EU countries fell one per cent.

In third quarter, the deficit on trade in goods widened by £2.1 billion to £16.7 billion. The deficit with EU countries widened by £0.5 billion to £8.8 billion and the deficit with non-EU countries widened by £1.7 billion to £8.0 billion.

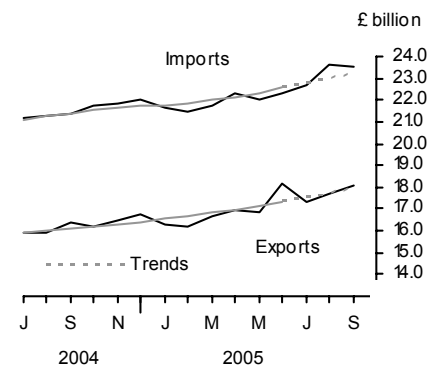
In third quarter, exports of goods rose two per cent and imports of goods rose five per cent. Exports to EU countries rose three per cent and exports to non-EU countries rose by one and a half per cent. Imports from EU countries rose three and a half per cent and those from non-EU countries rose seven per cent.

The latest estimate of the trend suggests that the whole world goods deficit is fairly flat. The trends in the value of trade show both exports and imports rising in recent months.

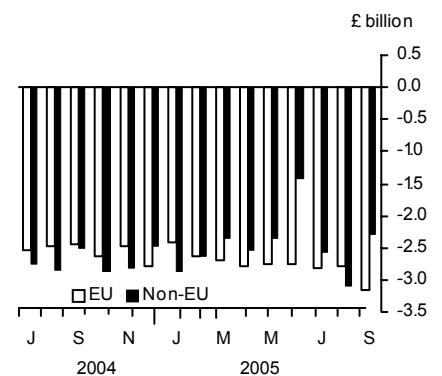
Balance on trade in goods



Value of trade in goods



Balance on trade in goods





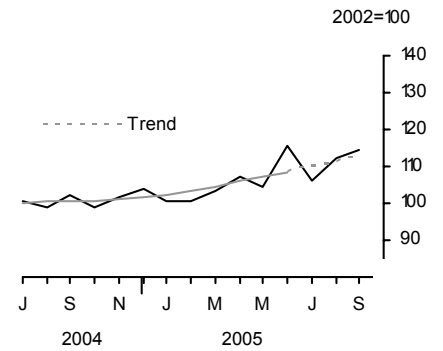
Volume of total trade in goods (excluding oil and erratics)

Provisional estimates show the volume of exports rose two per cent compared with August and imports rose one per cent compared with the previous month.

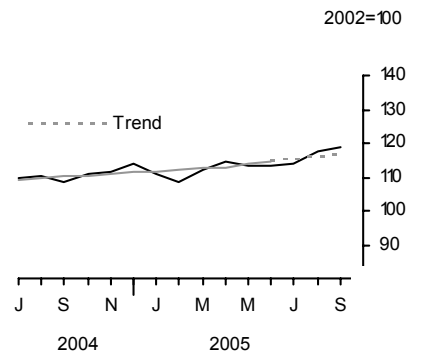
In third quarter, exports rose one and a half per cent and imports rose two and a half per cent compared with the previous quarter.

Latest estimates of volume trends show both exports and imports rising in recent months.

Volume of exports (goods)
excluding oil and erratic items



Volume of imports (goods)
excluding oil and erratic items



		EU		Non-EU		World	
		Exports	Imports	Exports	Imports	Exports	Imports
<i>Seasonally adjusted: 2002 = 100</i>							
2005	Apr	94.4	107.9	129.5	125.7	107.5	114.7
	May	93.7	109.1	123.1	120.5	104.7	113.5
	Jun	96.2	110.5	147.5	117.8	115.3	113.3
	Jul	96.1	111.3	123.5	117.3	106.3	113.7
	Aug	100.3	114.3	132.7	122.4	112.3	117.4
	Sep	98.2	115.8	142.0	122.9	114.5	118.6

Export and import prices (trade in goods)

September's provisional estimates show both export and import prices fell a half per cent.

In third quarter, export prices rose two and a half per cent and import prices rose three per cent. This led to a decrease in terms of trade.

Export and import prices (goods)



COMMODITY ANALYSIS OF TRADE IN GOODS

Trade in oil

In September, the balance on trade in oil was in deficit by £0.2 billion, compared with a deficit of £0.5 billion in August.

In third quarter, the deficit on trade in oil was £0.7 billion, compared with a surplus of £0.5 billion in the previous quarter.

Trade in crude oil



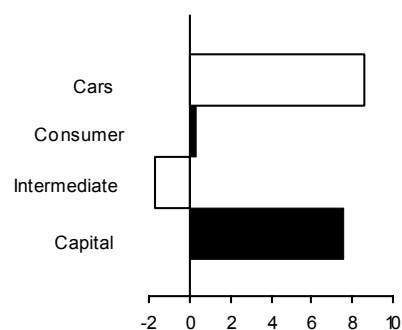
Trade in other commodities in third quarter 2005

Changes to the scale of trade associated with VAT MTIC fraud can distort the pattern of trade by commodity group and by country as increases inflate both imports and exports.

For exports, among the main commodity groups, only fuels, and food, beverages and tobacco showed a fall in volume. Within finished manufactures, exports of cars rose eight and a half per cent and capital goods rose seven and a half per cent. Imports of intermediate goods fell one and a half per cent. Exports of chemicals rose a half per cent while exports of other semi-manufactures fell by two and a half per cent.

Volume of exports of goods (finished manufactures)

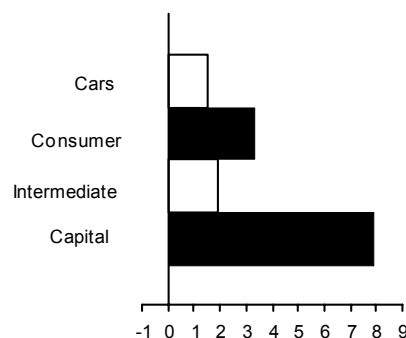
3 month percentage changes



For imports, among the main commodity groups, only fuels showed a fall in volume. Within finished manufactures, imports of capital goods rose by eight per cent and of consumer goods other than cars rose by three and a half per cent. Imports of chemicals were unchanged while those of other semi-manufactured goods fell one per cent.

Volume of imports of goods (finished manufactures)

3 month percentage changes



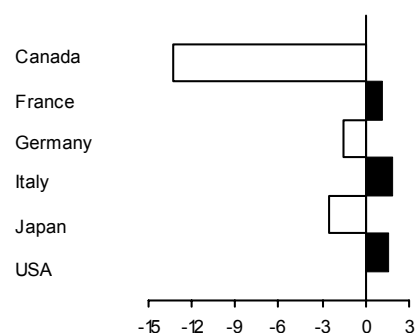
GEOGRAPHICAL ANALYSIS OF TRADE IN GOODS: in third quarter 2005

Exports by country

Within the G7 group of countries, exports to the USA rose by £0.1 billion while exports to Canada fell by £0.1 billion. Among other countries, exports to Dubai, Switzerland and the Netherlands all rose by £0.3 billion and to both Belgium and Luxembourg and the Irish Republic by £0.2 billion. Also, exports to India rose by £0.1 billion.

Value of exports of goods by country

3 month percentage changes

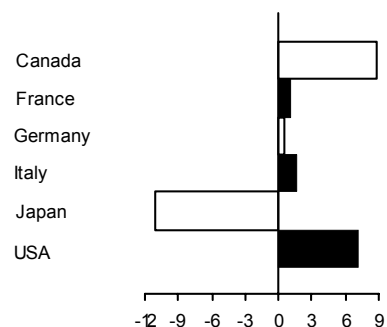


Imports by country

Within the G7 group of countries, imports from the USA rose by £0.4 billion while imports from Japan fell by £0.3 billion. Among our other trading partners, imports from Norway rose by £0.6 billion and from the Netherlands by £0.4 billion. Also, imports from China, Spain, Saudi Arabia, the Irish Republic, and Belgium and Luxembourg all rose by £0.2 billion and imports from Hong Kong rose by £0.1 billion. Imports from South Africa fell by £0.2 billion.

Value of imports of goods by country

3 month percentage changes



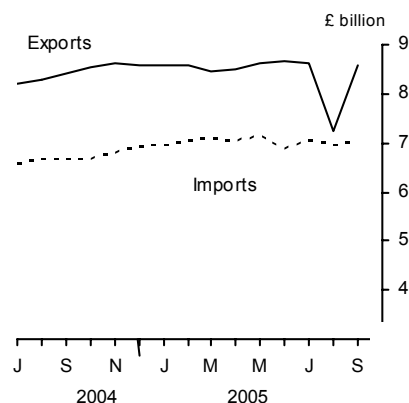


TRADE IN SERVICES - SEPTEMBER

The UK's surplus on trade in services was £1.6 billion compared with £0.3 billion in August but virtually the same as in July. The August estimate was affected by a downward adjustment to services data of £1.4 billion to account for the estimated payment of claims by Lloyd's of London arising from the effects of Hurricane Katrina.

In third quarter, the surplus on trade in services was £3.4 billion compared with £4.8 billion in the previous three months. Exports of services fell by £1.3 billion to £24.4 billion while imports of services were virtually unchanged at £21.0 billion.

Value of trade in services



REVISIONS

Table 12R shows revisions to the main aggregates since the last Trade First Release of 11 October. The revisions to trade in goods data from July 2005 onwards reflect revised data from Her Majesty's Revenue and Customs, later survey data on trade prices and a re-assessment of seasonal factors.

SPECIAL NOTES

VAT missing trader intra-community (MTIC) fraud

1. Import figures for trade in goods include adjustments to allow for the impact of VAT MTIC fraud. The adjustments were introduced for the first time in the UK trade May 2003 First Release published on 9 July 2003. An article explaining the fraud and the impact on the trade figures was also published on 9 July 2003 (<http://www.statistics.gov.uk/CCI/article.asp?ID=402>). A follow-up report was published on 17 February 2005 which summarises the work carried out since July 2003 to review the estimates of the impact on the trade figures (<http://www.statistics.gov.uk/CCI/article.asp?ID=1066>).

Following a change in the pattern of trading associated with Missing Trader Intra-Community (MTIC) fraud, identified by HMRC, interpretation of the breakdown between EU and non-EU trade is more difficult. ONS and HMRC statisticians are investigating the impact on the trade in goods estimates. HMRC have set up a new project to review the methodology for producing the estimates of the impact on the trade statistics. Estimates may change as the analysis of the fraud continues. Fraud, by its very nature, is difficult to measure reliably.

Some trade associated with VAT MTIC fraud is currently affecting non-EU exports. However, the MTIC trade adjustments are added to the EU import estimates derived from Intrastat returns as it is this part of the trading chain that is not recorded. Changes to the pattern of trading associated with MTIC fraud can therefore make it difficult to analyse trade by commodity group and by country as increases inflate both imports and exports. In particular, adjustments affect trade in capital goods and intermediate goods - these categories include mobile phones and computer components.

International convention determines that the treatment of the impact is to adjust imports upwards by the relevant amounts. However, users may wish to interpret short-term movements in exports and imports excluding completely this fraudulent activity, and for this purpose an analysis of the export and import figures with the VAT MTIC adjustments excluded has been produced.

The following tables show quarterly values of imports and exports of goods for both current price estimates and chained volume measures excluding the impact of VAT MTIC fraud, and a breakdown for current price estimates into trade with the EU and non-EU separately:

Trade excluding MTIC fraud

Quarter/ Year	£ billion			
	Current price	Current price	Chained volume measure	Chained volume measure
	Total exports less MTIC	Total imports less MTIC	Total exports less MTIC	Total imports less MTIC
1999 Q1	38.8	46.7	38.4	46.7
Q2	40.0	46.6	39.7	46.8
Q3	43.1	49.7	42.8	49.4
Q4	42.6	50.5	42.2	49.8
2000 Q1	43.9	51.4	43.7	50.4
Q2	46.4	53.8	45.9	52.2
Q3	46.6	55.5	45.5	53.0
Q4	48.1	57.4	46.9	54.1
2001 Q1	48.1	57.4	47.2	54.5
Q2	46.7	57.1	45.8	54.2
Q3	44.7	55.0	45.2	53.6
Q4	43.6	54.1	44.4	53.9
2002 Q1	43.3	54.6	43.2	53.6
Q2	45.5	56.1	45.0	55.1
Q3	44.2	56.1	44.2	56.0
Q4	42.0	55.4	42.2	55.5
2003 Q1	46.5	57.1	45.6	56.8
Q2	46.0	57.0	45.3	57.1
Q3	45.8	58.1	45.0	58.2
Q4	45.9	59.8	45.5	60.3
2004 Q1	45.6	59.2	45.9	60.7
Q2	46.2	61.3	46.1	62.1
Q3	47.5	63.1	47.0	63.4
Q4	48.6	64.7	47.2	64.4
2005 Q1	48.2	64.0	46.7	63.2
Q2	50.1	64.7	48.8	63.5
Q3	50.7	67.4	49.0	64.9

Trade with EU and non-EU countries excluding MTIC fraud

Quarter/ Year	£ billion			
	Current price	Current price	Current price	Current price
	Total EU exports less MTIC	Total non-EU exports less MTIC	Total EU imports less MTIC	Total non-EU imports less MTIC
1999 Q1	23.7	15.1	26.5	20.2
Q2	24.2	15.9	26.1	20.5
Q3	25.7	17.4	27.2	22.5
Q4	26.0	16.6	27.7	22.8
2000 Q1	26.3	17.7	27.6	23.8
Q2	27.4	19.0	28.6	25.3
Q3	27.7	18.9	28.9	26.6
Q4	27.7	20.4	29.4	28.0
2001 Q1	27.9	20.2	30.0	27.4
Q2	27.4	19.3	30.2	26.9
Q3	26.4	18.2	29.4	25.6
Q4	25.1	18.4	29.4	24.2
2002 Q1	25.4	17.9	30.3	25.0
Q2	26.3	19.2	31.1	24.2
Q3	25.8	18.4	31.9	24.1
Q4	25.1	16.9	31.3	24.0
2003 Q1	26.5	20.0	32.4	24.7
Q2	26.4	19.5	32.5	24.5
Q3	26.4	19.3	32.9	25.1
Q4	26.8	19.2	34.1	25.7
2004 Q1	26.4	19.2	33.7	25.4
Q2	26.7	19.5	34.4	26.8
Q3	27.6	20.0	34.7	28.4
Q4	28.3	20.2	35.7	28.9
2005 Q1	28.4	19.9	35.6	28.4
Q2	28.5	21.7	35.4	29.3
Q3	29.2	21.5	36.1	31.3

These estimates are liable to further revision as later information becomes available. The tables will be revised and updated as necessary in future Special Notes.

The adjustments to trade in goods relate only to part of the carousel version of VAT MTIC fraud. This fraud leads to under recording of imports as fraudsters import goods from the EU, which they then sell on before disappearing without paying VAT on that sale. The goods are eventually exported. Such exports are declared and are therefore already reflected in the UK's trade in goods statistics.

HM Revenue & Customs New Export System

2. HM Revenue & Customs New Export System (NES), which replaced manual (paper) Customs declarations with electronic submissions from the beginning of 2003, requires electronic messages from the trade once the goods have been exported in order to provide the departure date. In the absence of those messages being input initially, some non-EU exports had been allocated to the incorrect month. This was addressed by Customs implementing a change to the processing rules. Because of these problems, ONS made adjustments to the trade statistics to better reflect the flow of exports to non-EU countries during the period January-September 2003.

In addition, the increased level of recorded non-EU exports in December 2003 followed by a lower than usual level in January 2004, and similarly in December 2004 and January 2005, was partially driven by the introduction of the New Exports System. The new system led to greater efficiency; improving processing and thereby speeding up the flow of information but led to a change in the seasonal pattern. Three years of data are needed to estimate the new seasonal factors with confidence. In the meantime, the quality of the seasonal adjustment is the best that can be constructed from the available data. However, it is more uncertain than usual and the seasonally adjusted series is particularly prone to revision when further observations become known. In these circumstances users may wish to focus more on the change between the latest three months and the previous three months rather than the month-on-month changes.

3. **Hurricane Katrina**

Exports of insurance services are measured as total actual premiums earned plus total premium supplements minus the total claims due minus the change in the equalisation reserves. This means that claims for catastrophic events such as Hurricane Katrina should be recorded when the event to which they relate occurs rather than when cash is actually paid to the claimant. Most insurers have equalisation reserves which are drawn on when these types of claims occur so the effects of large claims due are offset by the changes in these reserves. However a large proportion of the claims for damages caused by Hurricane Katrina on UK insurers are on Lloyd's of London which does not have any equalisation reserves. This means that the effect of these large claims is to reduce significantly UK exports of insurance services in August, when Hurricane Katrina occurred.

BACKGROUND NOTES

1. A paper entitled *Statistics on Trade in Goods* (GSS Methodological Series No. 10) describing the basis on which trade in goods statistics are compiled and the methodology employed to derive volume and price indices is available on the National Statistics website:
<http://www.statistics.gov.uk/StatBase/Product.asp?vlnk=3134>.

2. **Status of figures and planned future revisions**

Trade in goods figures for the most recent months are provisional and subject to revision in the light of (a) late data from HM Revenue & Customs, revisions to trade prices and revised estimates of trading associated with VAT MTIC fraud, and (b) revisions to seasonal adjustment factors which are re-estimated every month.

Trade in services estimates have been derived from a number of monthly and quarterly sources. For components where no monthly data are available, estimates have been derived on the basis of recent trends. The results should be used with appropriate caution, as they are therefore likely to be less reliable than those for trade in goods. More details of the data sources, estimation methodology and reliability of the monthly estimates of trade in services were set out in *Economic Trends* (November 1996 and September 1997).

3. Revisions to data provide one indication of the reliability of key indicators. The table below show summary information on the size and direction of the revisions which have been made to the data covering a five year period. A statistical test has been applied to the average revision to find out if it is statistically significantly different from zero. An asterisk (*) shows that the test is significant. An article explaining the past revisions performance for UK Trade statistics and what is being done to improve the first published estimates was published on 9 February 2005 (<http://www.statistics.gov.uk/cci/article.asp?id=1063>).

The table covers estimates of UK trade first published from September 1999 (for July 1999) to August 2004 (June 2004). A spreadsheet giving these estimates and the calculations behind the averages in the table is available on the National Statistics website at <http://www.statistics.gov.uk/StatBase/Product.asp?vlnk=1119>.

£ million

	Value in latest period	Revisions between first publication and estimates twelve months later	
		Average over the last 5 years (mean revision)	Average over the last 5 years without regard to sign (average absolute revision)
Total trade exports (IKBH)	26678	768*	833
Total trade imports (IKBI)	30554	772*	772
Total trade balance (IKBJ)	-3876	-4	367

An article analysing past revisions to quarterly balance of payments current account data was published on 11 May 2005. This includes analysis of revisions made to the trade in goods and trade in services components of the current account (<http://www.statistics.gov.uk/cci/article.asp?ID=1125>).

4. More information about revisions material in First Releases can be found on the National Statistics website: <http://www.statistics.gov.uk/cci/article.asp?ID=793>.
5. Complete runs of series in this Release are available to download free of charge at <http://www.statistics.gov.uk/timeseries>. Alternatively, for low-cost tailored data call Online Services on 020 7533 5675 or email tailored@statistics.gov.uk. The Time Series Data service provides access to additional data via the following electronic publications:
 - supplementary data for this First Release – *Monthly Review of External Trade Statistics – Business Monitor MM24*;
 - quarterly data analysed by industry according to the *Standard Industrial Classification - UK Trade in Goods analysed in terms of industries - Business Monitor MQ10*; and
 - annual detailed information on services components - *UK Trade in Services - Business Monitor UKA1*.
6. *MM24*, *MQ10* and *UKA1* are also available free of charge as PDF files on the National Statistics website (www.statistics.gov.uk/bop).
7. Details of the policy governing the release of new data are available from the press office. Also available is a list of the names of those given pre-publication access to the contents of this release.
8. **National Statistics** are produced to high professional standards set out in the National Statistics Code of Practice. They undergo regular quality assurance reviews to ensure that they meet customer needs. They are produced free from any political interference. © Crown Copyright 2005.

Index to tables

Contents

- 1 Value of UK trade in goods and services
- 2 UK trade in goods by area
- 3 Volume and price indices (trade in goods)
- 4 Volume indices with countries inside and outside the EU (trade in goods)
- 5 Price indices with countries inside and outside the EU (trade in goods)
- 6 Trade in oil
- 7 Value of trade in goods by commodity
- 8 Volume indices (trade in goods) by commodity
- 9 Price indices (trade in goods) by commodity
- 10 Trade in goods with selected EU trading partners
- 11 Trade in goods with countries outside the EU
- 12R Summary of revisions

1 VALUE OF UK TRADE IN GOODS AND SERVICES

Balance of Payments basis

£ million seasonally adjusted

	Total trade			Trade in goods			Oil			Trade in goods excluding oil		
	Exports	Imports	Balance	Exports	Imports	Balance	Exports	Imports	Balance	Exports	Imports	Balance
	IKBH	IKBI	IKBJ	BOKG	BOKH	BOKI	ELBL	ENXO	ENXQ	ELBM	ENXP	BQKH
2002	274 945	306 496	-31 551	186 511	233 598	-47 087	14 318	8 579	5 739	172 193	225 019	-52 826
2003	282 231	313 213	-30 982	188 615	236 479	-47 864	14 608	10 484	4 124	174 007	225 995	-51 988
2004	291 106	330 134	-39 028	190 950	251 210	-60 260	16 259	14 528	1 731	174 691	236 682	-61 991
2004 Q1	70 797	78 831	-8 034	46 184	59 700	-13 516	3 656	2 777	879	42 528	56 923	-14 395
Q2	71 949	81 675	-9 726	47 044	62 092	-15 048	3 937	3 573	364	43 107	58 519	-15 412
Q3	73 112	83 698	-10 586	48 228	63 823	-15 595	4 080	3 844	236	44 148	59 979	-15 831
Q4	75 248	85 930	-10 682	49 494	65 595	-16 101	4 586	4 334	252	44 908	61 261	-16 353
2005 Q1	74 756	85 876	-11 120	49 129	64 864	-15 735	4 496	3 986	510	44 633	60 878	-16 245
Q2	77 845	87 623	-9 778	52 056	66 646	-14 590	4 981	4 527	454	47 075	62 119	-15 044
Q3	77 618	90 895	-13 277	53 176	69 883	-16 707	5 130	5 813	-683	48 046	64 070	-16 024
2005 Apr	25 471	29 323	-3 852	16 992	22 315	-5 323	1 562	1 527	35	15 430	20 788	-5 358
May	25 533	29 115	-3 582	16 895	21 995	-5 100	1 695	1 489	206	15 200	20 506	-5 306
Jun	26 841	29 185	-2 344	18 169	22 336	-4 167	1 724	1 511	213	16 445	20 825	-4 380
Jul	25 971	29 756	-3 785	17 350	22 716	-5 366	1 826	1 801	25	15 524	20 915	-5 391
Aug	24 969	30 585	-5 616	17 734	23 634	-5 900	1 501	2 008	-507	16 233	21 626	-5 393
Sep	26 678	30 554	-3 876	18 092	23 533	-5 441	1 803	2 004	-201	16 289	21 529	-5 240
Percentage change, latest month compared with:												
Previous month	6.8	-0.1		2.0	-0.4		20.1	-0.2		0.3	-0.4	
3 months ended:												
2004 Sep	73 112	83 698	-10 586	48 228	63 823	-15 595	4 080	3 844	236	44 148	59 979	-15 831
2005 Jun	77 845	87 623	-9 778	52 056	66 646	-14 590	4 981	4 527	454	47 075	62 119	-15 044
2005 Sep	77 618	90 895	-13 277	53 176	69 883	-16 707	5 130	5 813	-683	48 046	64 070	-16 024
Percentage change, latest 3 months compared with:												
Previous 3 months	-0.3	3.7		2.2	4.9		3.0	28.4		2.1	3.1	
Same 3 months last year	6.2	8.6		10.3	9.5		25.7	51.2		8.8	6.8	

	Erratics ¹			Trade in goods excluding erratics			Trade in goods excluding oil and erratics			Trade in services		
	Exports	Imports	Balance	Exports	Imports	Balance	Exports	Imports	Balance	Exports	Imports	Balance
	BPAL	BQBB	BQKW	BPAO	BQBE	BPBM	BPBL	BQBG	BPAP	IKBB	IKBC	IKBD
2002	11 235	14 176	-2 941	175 276	219 422	-44 146	160 958	210 843	-49 885	88 434	72 898	15 536
2003	12 281	12 992	-711	176 334	223 487	-47 153	161 726	213 003	-51 277	93 616	76 734	16 882
2004	12 210	12 158	52	178 740	239 052	-60 312	162 481	224 524	-62 043	100 156	78 924	21 232
2004 Q1	2 903	2 883	20	43 281	56 817	-13 536	39 625	54 040	-14 415	24 613	19 131	5 482
Q2	2 882	3 015	-133	44 162	59 077	-14 915	40 225	55 504	-15 279	24 905	19 583	5 322
Q3	3 248	3 240	8	44 980	60 583	-15 603	40 900	56 739	-15 839	24 884	19 875	5 009
Q4	3 177	3 020	157	46 317	62 575	-16 258	41 731	58 241	-16 510	25 754	20 335	5 419
2005 Q1	3 020	3 168	-148	46 109	61 696	-15 587	41 613	57 710	-16 097	25 627	21 012	4 615
Q2	2 901	2 927	-26	49 155	63 719	-14 564	44 174	59 192	-15 018	25 789	20 977	4 812
Q3	3 083	3 525	-442	50 093	66 358	-16 265	44 963	60 545	-15 582	24 442	21 012	3 430
2005 Apr	881	978	-97	16 111	21 337	-5 226	14 549	19 810	-5 261	8 479	7 008	1 471
May	1 014	878	136	15 881	21 117	-5 236	14 186	19 628	-5 442	8 638	7 120	1 518
Jun	1 006	1 071	-65	17 163	21 265	-4 102	15 439	19 754	-4 315	8 672	6 849	1 823
Jul	1 088	1 115	-27	16 262	21 601	-5 339	14 436	19 800	-5 364	8 621	7 040	1 581
Aug	1 053	1 300	-247	16 681	22 334	-5 653	15 180	20 326	-5 146	7 235	6 951	284
Sep	942	1 110	-168	17 150	22 423	-5 273	15 347	20 419	-5 072	8 586	7 021	1 565
Percentage change, latest month compared with:												
Previous month	-10.5	-14.6		2.8	0.4		1.1	0.5		18.7	1.0	
3 months ended:												
2004 Sep	3 248	3 240	8	44 980	60 583	-15 603	40 900	56 739	-15 839	24 884	19 875	5 009
2005 Jun	2 901	2 927	-26	49 155	63 719	-14 564	44 174	59 192	-15 018	25 789	20 977	4 812
2005 Sep	3 083	3 525	-442	50 093	66 358	-16 265	44 963	60 545	-15 582	24 442	21 012	3 430
Percentage change, latest 3 months compared with:												
Previous 3 months	6.3	20.4		1.9	4.1		1.8	2.3		-5.2	0.2	
Same 3 months last year	-5.1	8.8		11.4	9.5		9.9	6.7		-1.8	5.7	

¹ These are defined as ships, aircraft, precious stones and silver

[†] Earliest date for revisions to trade in goods is July 2005

2 UK TRADE IN GOODS BY AREA

Balance of Payments basis

£ million seasonally adjusted

	EMU members ¹			Total EU (15) ²			Total EU (25) ³			Non-EU ⁴			Total		
	Exports	Imports	Balance	Exports	Imports	Balance	Exports	Imports	Balance	Exports	Imports	Balance	Exports	Imports	Balance
	QAKW	QAKX	QAKY	ENOF	ENOS	ENPF	LGCK	LGDC	LGCG	LGDY	LGER	LGDT	BOKG	BOKH	BOKI
2002	103 215	122 992	-19 777	109 815	130 906	-21 091	114 123	136 140	-22 017	72 388	97 458	-25 070	186 511	233 598	-47 087
2003	99 893	122 452	-22 559	105 896	130 411	-24 515	110 589	136 417	-25 828	78 026	100 062	-22 036	188 615	236 479	-47 864
2004	99 875	126 300	-26 425	106 274	134 783	-28 509	110 904	141 641	-30 737	80 046	109 569	-29 523	190 950	251 210	-60 260
2003 Q2	24 686	29 866	-5 180	26 165	31 830	-5 665	27 266	33 343	-6 077	19 547	24 513	-4 966	46 813	57 856	-11 043
Q3	24 351	29 959	-5 608	25 757	31 923	-6 166	26 991	33 471	-6 480	19 311	25 131	-5 820	46 302	58 602	-12 300
Q4	24 546	31 044	-6 498	26 058	33 019	-6 961	27 316	34 620	-7 304	19 150	25 715	-6 565	46 466	60 335	-13 869
2004 Q1	24 149	30 472	-6 323	25 702	32 537	-6 835	26 860	34 273	-7 413	19 324	25 427	-6 103	46 184	59 700	-13 516
Q2	24 529	31 462	-6 933	26 082	33 572	-7 490	27 337	35 278	-7 941	19 707	26 814	-7 107	47 044	62 092	-15 048
Q3	25 214	31 688	-6 474	26 840	33 792	-6 952	27 959	35 438	-7 479	20 269	28 385	-8 116	48 228	63 823	-15 595
Q4	25 983	32 678	-6 695	27 650	34 882	-7 232	28 748	36 652	-7 904	20 746	28 943	-8 197	49 494	65 595	-16 101
2005 Q1	25 971	32 488	-6 517	27 629	34 757	-7 128	28 752	36 504	-7 752	20 377	28 360	-7 983	49 129	64 864	-15 735
Q2	26 162	32 974	-6 812	27 857	35 307	-7 450	29 054	37 349	-8 295	23 002	29 297	-6 295	52 056	66 646	-14 590
Q3	26 924	34 104	-7 180	28 613	36 459	-7 846	29 854	38 608	-8 754	23 322	31 275	-7 953	53 176	69 883	-16 707
2004 Mar	8 101	10 184	-2 083	8 622	10 880	-2 258	9 036	11 494	-2 458	6 817	8 468	-1 651	15 853	19 962	-4 109
Apr	8 210	10 421	-2 211	8 715	11 131	-2 416	9 236	11 897	-2 661	6 484	8 840	-2 356	15 720	20 737	-5 017
May	8 077	10 582	-2 505	8 596	11 266	-2 670	8 955	11 656	-2 701	6 500	8 806	-2 306	15 455	20 462	-5 007
Jun	8 242	10 459	-2 217	8 771	11 175	-2 404	9 146	11 725	-2 579	6 723	9 168	-2 445	15 869	20 893	-5 024
Jul	8 308	10 543	-2 235	8 854	11 212	-2 358	9 202	11 753	-2 551	6 694	9 452	-2 758	15 896	21 205	-5 309
Aug	8 495	10 660	-2 165	9 028	11 358	-2 330	9 395	11 864	-2 469	6 506	9 369	-2 863	15 901	21 233	-5 332
Sep	8 411	10 485	-2 074	8 958	11 222	-2 264	9 362	11 821	-2 459	7 069	9 564	-2 495	16 431	21 385	-4 954
Oct	8 648	10 871	-2 223	9 186	11 576	-2 390	9 557	12 182	-2 625	6 645	9 559	-2 914	16 202	21 741	-5 539
Nov	8 586	10 706	-2 120	9 151	11 432	-2 281	9 535	12 013	-2 478	6 982	9 792	-2 810	16 517	21 805	-5 288
Dec	8 749	11 101	-2 352	9 313	11 874	-2 561	9 656	12 457	-2 801	7 119	9 592	-2 473	16 775	22 049	-5 274
2005 Jan	8 641	10 788	-2 147	9 242	11 516	-2 274	9 637	12 047	-2 410	6 633	9 628	-2 995	16 270	21 675	-5 405
Feb	8 612	10 808	-2 196	9 158	11 577	-2 419	9 519	12 162	-2 643	6 634	9 280	-2 646	16 153	21 442	-5 289
Mar	8 718	10 892	-2 174	9 229	11 664	-2 435	9 596	12 295	-2 699	7 110	9 452	-2 342	16 706	21 747	-5 041
Apr	8 661	11 034	-2 373	9 258	11 791	-2 533	9 660	12 457	-2 797	7 332	9 858	-2 526	16 992	22 315	-5 323
May	8 715	10 933	-2 218	9 276	11 729	-2 453	9 658	12 399	-2 741	7 237	9 596	-2 359	16 895	21 995	-5 100
Jun	8 786	11 007	-2 221	9 323	11 787	-2 464	9 736	12 493	-2 757	8 433	9 843	-1 410	18 169	22 336	-4 167
Jul	8 847	11 141	-2 294	9 396	11 936	-2 540	9 790	12 601	-2 811	7 560	10 115	-2 555	17 350	22 716	-5 366
Aug	9 204	11 438	-2 234	9 791	12 254	-2 463	10 193	12 988	-2 795	7 541	10 646	-3 105	17 734	23 634	-5 900
Sep	8 873	11 525	-2 652	9 426	12 269	-2 843	9 871	13 019	-3 148	8 221	10 514	-2 293	18 092	23 533	-5 441
Percentage change on previous month:															
2005 Sep	-3.6	0.8		-3.7	0.1		-3.2	0.2		9.0	-1.2		2.0	-0.4	
3 months ended:															
2004 Sep	25 214	31 688	-6 474	26 840	33 792	-6 952	27 959	35 438	-7 479	20 269	28 385	-8 116	48 228	63 823	-15 595
2005 Jun	26 162	32 974	-6 812	27 857	35 307	-7 450	29 054	37 349	-8 295	23 002	29 297	-6 295	52 056	66 646	-14 590
2005 Sep	26 924	34 104	-7 180	28 613	36 459	-7 846	29 854	38 608	-8 754	23 322	31 275	-7 953	53 176	69 883	-16 707
Percentage change, latest 3 months compared with:															
Previous 3 months	2.9	3.4		2.7	3.3		2.8	3.4		1.4	6.8		2.2	4.9	
Same 3 months last year	6.8	7.6		6.6	7.9		6.8	8.9		15.1	10.2		10.3	9.5	

1 Austria, Belgium, Finland, France, Germany, Greece, Irish Republic, Italy, Luxembourg, Netherlands, Portugal, Spain.

† Earliest date for revisions to trade in goods is July 2005

2 EMU Members plus Denmark and Sweden

3 EU (15) plus Cyprus, Czech Republic, Estonia, Hungary, Latvia, Lithuania, Malta, Poland, Slovakia and Slovenia

4 Total less EU (25)

3 VOLUME AND PRICE INDICES (TRADE IN GOODS) ¹

Balance of Payments basis

Indices 2002=100

	Volume (seasonally adjusted)						Price index (not seasonally adjusted)								
	Total		Total excluding oil		Total excluding oil and erratics ²		Total			Total excluding oil			Total excluding oil & erratics ²		
	Exports	Imports	Exports	Imports	Exports	Imports	Exports	Imports	Terms of trade ³	Exports	Imports	Terms of trade ³	Exports	Imports	
	BQKU	BQKV	BQKI	BQKJ	BOMA	ELAL	BQKR	BQKS	BQKT	BQKK	BQKL	BQKM	BQAK	ELBA	
2002	100.0	100.0	100.0	100.0	100.0	100.0	100.0	100.0	100.0	100.0	100.0	100.0	100.0	100.0	
2003	99.7	102.0	100.1	101.6	98.2	102.0	101.8	99.3	102.5	101.3	98.9	102.4	102.3	99.0	
2004	101.5	108.9	102.0	107.9	100.1	108.7	101.6	98.6	103.0	100.0	97.6	102.5	101.1	98.0	
2003 Q2	99.0	99.7	99.2	99.2	97.9	99.7	102.2	99.2	103.0	102.4	99.2	103.2	103.4	99.4	
Q3	97.6	100.9	98.0	100.2	95.9	100.0	102.2	99.6	102.6	101.9	99.3	102.6	102.9	99.3	
Q4	98.9	104.4	99.7	103.9	96.8	104.7	101.1	98.8	102.3	100.7	98.6	102.1	101.8	98.8	
2004 Q1	99.7	105.2	100.0	104.4	98.3	105.3	99.6	96.9	102.8	99.1	96.6	102.6	100.2	97.1	
Q2	100.7	108.2	101.3	107.0	99.8	107.8	100.9	98.2	102.7	99.7	97.5	102.3	100.7	97.9	
Q3	102.4	110.0	103.2	109.2	100.7	109.7	102.2	99.4	102.8	99.9	98.0	101.9	101.0	98.4	
Q4	103.2	112.2	103.5	111.0	101.5	112.2	103.6	99.8	103.8	101.2	98.2	103.1	102.3	98.6	
2005 Q1	102.1	110.2	102.8	109.6	101.3	110.5	104.2	100.6	103.6	101.3	98.7	102.6	102.4	99.1	
Q2	109.0	112.9	110.1	112.3	109.2	113.8	104.6	101.1	103.5	100.8	98.7	102.1	101.9	99.0	
Q3	110.5	116.3	112.3	116.0	111.0	116.6	107.4	103.9	103.4	100.9	99.6	101.3	102.1	99.9	
2004 Apr	101.1	108.7	101.7	107.2	100.1	108.1	100.7	97.8	103.0	99.9	97.3	102.7	101.0	97.6	
May	99.0	106.5	99.3	105.6	98.1	106.8	101.7	98.9	102.8	100.1	97.9	102.2	101.1	98.3	
Jun	102.1	109.4	102.9	108.1	101.1	108.6	100.3	98.0	102.3	99.1	97.3	101.8	100.1	97.7	
Jul	102.4	110.8	102.9	109.3	100.8	110.0	100.6	98.3	102.3	99.1	97.4	101.7	100.2	97.8	
Aug	101.1	110.0	101.6	110.0	99.1	110.3	102.3	99.6	102.7	99.6	97.9	101.7	100.7	98.3	
Sep	103.7	109.3	105.0	108.2	102.3	108.7	103.7	100.4	103.3	101.0	98.7	102.3	102.1	99.0	
Oct	100.3	110.9	100.9	110.4	98.9	111.1	105.3	101.1	104.2	101.7	98.8	102.9	102.9	99.1	
Nov	102.7	111.3	103.1	109.5	101.4	111.4	103.9	99.9	104.0	101.6	98.5	103.1	102.6	98.8	
Dec	106.5	114.4	106.5	113.0	104.1	114.1	101.7	98.3	103.5	100.2	97.4	102.9	101.3	97.8	
2005 Jan	101.5	111.0	102.0	110.2	100.4	110.7	103.6	100.2	103.4	101.3	98.7	102.6	102.3	99.1	
Feb	101.0	108.4	102.2	107.5	100.4	108.5	103.7	100.4	103.3	101.1	98.7	102.4	102.2	99.1	
Mar	103.8	111.3	104.3	111.2	103.2	112.3	105.4	101.1	104.3	101.6	98.6	103.0	102.8	99.0	
Apr	106.4	113.7	107.8	113.0	107.5	114.7	104.5	100.6	103.9	100.9	98.3	102.6	102.0	98.6	
May	105.7	112.1	106.2	111.3	104.7	113.5	104.8	101.0	103.8	101.4	98.9	102.5	102.5	99.2	
Jun	114.9	112.8	116.4	112.5	115.3	113.3	104.6	101.8	102.8	100.0	99.0	101.0	101.2	99.3	
Jul	107.3	113.1	108.4	112.9	106.3	113.7	107.3	104.2	103.0	101.4	100.3	101.1	102.6	100.5	
Aug	110.9	117.8	113.7	117.6	112.3	117.4	107.7	104.0	103.6	101.0	99.4	101.6	102.2	99.7	
Sep	113.4	117.9	114.9	117.5	114.5	118.6	107.1	103.6	103.4	100.4	99.2	101.2	101.6	99.5	
Percentage change, latest month compared with:															
Previous month	2.3	0.1	1.1	-0.1	2.0	1.0	-0.6	-0.4		-0.6	-0.2		-0.6	-0.2	
3 months ended:															
2004 Sep	102.4	110.0	103.2	109.2	100.7	109.7	102.2	99.4	102.8	99.9	98.0	101.9	101.0	98.4	
2005 Jun	109.0	112.9	110.1	112.3	109.2	113.8	104.6	101.1	103.5	100.8	98.7	102.0	101.9	99.0	
2005 Sep	110.5	116.3	112.3	116.0	111.0	116.6	107.4	103.9	103.3	100.9	99.6	101.3	102.1	99.9	
Percentage change, latest 3 months compared with:															
Previous 3 months	1.4	3.0	2.0	3.3	1.7	2.4	2.6	2.8		0.2	0.9		0.2	0.9	
Same 3 months last year	7.9	5.7	8.9	6.3	10.2	6.3	5.1	4.5		1.0	1.7		1.1	1.6	

¹ These are provisional estimates subject to fluctuations when new or amended data become available.

² These are defined as ships, aircraft, precious stones and silver.

³ Export price index as a percentage of the import price index.

[†] Earliest date for revisions to trade in goods is July 2005

4 VOLUME INDICES WITH COUNTRIES INSIDE AND OUTSIDE THE EU (TRADE IN GOODS)¹

Balance of Payments basis

Indices 2002=100 seasonally adjusted

	Trade in goods with EU countries ³						Trade in goods with Non-EU countries					
	Total		Total excluding oil		Total excluding oil and erratics ²		Total		Total excluding oil		Total excluding oil & erratics ²	
	Exports	Imports	Exports	Imports	Exports	Imports	Exports	Imports	Exports	Imports	Exports	Imports
	LGCT	LGDL	LKUL	LKVD	SHBS	SHCO	LGEH	LGFA	LKVZ	LKWS	SHDJ	SHED
2002	100.0	100.0	100.0	100.0	100.0	100.0	100.0	100.0	100.0	100.0	100.0	100.0
2003	93.0	99.3	92.8	99.3	91.9	99.9	110.7	105.5	111.8	104.7	108.7	105.1
2004	93.5	103.8	93.5	103.5	92.2	103.9	114.4	115.8	115.6	114.0	113.2	116.5
2003 Q2	91.1	96.6	90.9	96.6	90.6	97.2	111.7	103.8	112.6	102.9	110.1	103.5
Q3	90.5	97.4	90.7	97.3	89.7	97.7	109.1	105.6	109.5	104.2	106.2	103.6
Q4	92.3	100.7	92.1	100.5	90.2	101.3	109.6	109.4	111.9	108.6	107.8	110.1
2004 Q1	92.1	101.0	91.9	100.5	91.0	101.1	112.0	110.7	113.0	110.0	110.4	111.9
Q2	93.3	103.6	93.6	103.2	92.3	103.5	112.9	114.3	113.7	112.2	112.4	114.7
Q3	94.3	103.6	94.5	103.4	92.8	103.8	115.5	118.7	117.2	117.4	114.1	119.1
Q4	94.5	106.9	93.9	107.1	92.8	107.2	117.2	119.4	118.7	116.5	115.9	120.3
2005 Q1	94.4	106.1	94.5	106.2	93.2	106.0	114.6	115.8	116.1	114.5	114.9	117.8
Q2	95.5	109.3	95.5	109.4	94.8	109.2	130.8	117.6	133.7	116.3	133.4	121.3
Q3	98.1	113.1	99.1	113.4	98.2	113.8	130.8	120.3	133.7	119.5	132.7	120.9
2004 Mar	93.0	101.3	92.9	101.0	92.0	101.8	118.0	109.5	118.4	109.7	114.6	109.9
Apr	94.9	104.6	95.1	104.0	93.3	104.4	111.3	114.2	112.3	111.9	111.6	114.1
May	91.7	102.8	92.5	102.6	92.0	102.8	110.7	111.3	110.3	109.5	108.5	113.1
Jun	93.2	103.3	93.1	103.1	91.7	103.3	116.6	117.5	118.5	115.3	117.1	116.9
Jul	94.4	103.6	94.8	103.3	93.5	103.9	115.3	120.6	116.0	117.9	113.1	119.8
Aug	94.9	104.1	94.6	104.0	93.0	104.2	111.2	117.8	112.9	118.5	109.4	120.1
Sep	93.5	103.1	94.0	102.9	91.8	103.2	120.1	117.6	122.7	115.8	119.8	117.4
Oct	93.7	106.3	93.2	106.7	91.4	106.7	111.2	117.0	113.2	115.7	111.4	118.0
Nov	93.2	105.2	93.2	105.5	92.4	105.9	118.0	119.8	118.8	115.3	116.5	120.4
Dec	96.5	109.1	95.4	109.1	94.7	109.0	122.5	121.4	124.1	118.6	119.7	122.4
2005 Jan	95.1	105.4	94.8	105.4	93.1	105.0	111.9	118.6	113.5	117.0	112.7	120.0
Feb	94.1	105.4	95.1	105.5	94.0	105.5	112.0	112.6	113.4	110.6	111.1	113.6
Mar	93.9	107.6	93.6	107.8	92.6	107.5	119.9	116.1	121.4	115.9	120.8	119.7
Apr	94.6	108.7	94.8	108.6	94.4	107.9	125.6	120.4	128.7	119.2	129.5	125.7
May	95.2	109.2	94.8	109.2	93.7	109.1	122.6	115.9	124.6	114.3	123.1	120.5
Jun	96.8	110.0	96.8	110.3	96.2	110.5	144.2	116.4	147.9	115.5	147.5	117.8
Jul	96.4	110.4	97.1	110.7	96.1	111.3	125.3	116.6	126.7	115.8	123.5	117.3
Aug	100.3	114.0	101.8	114.1	100.3	114.3	128.2	122.9	132.9	122.4	132.7	122.4
Sep	97.7	115.0	98.5	115.4	98.2	115.8	139.0	121.5	141.5	120.4	142.0	122.9
Percentage change on previous month:												
2005 Sep	-2.6	0.9	-3.2	1.1	-2.1	1.3	8.4	-1.1	6.5	-1.6	7.0	0.4
3 months ended:												
2004 Sep	94.3	103.6	94.5	103.4	92.8	103.8	115.5	118.7	117.2	117.4	114.1	119.1
2005 Jun	95.5	109.3	95.5	109.4	94.8	109.2	130.8	117.6	133.7	116.3	133.4	121.3
2005 Sep	98.1	113.1	99.1	113.4	98.2	113.8	130.8	120.3	133.7	119.5	132.7	120.9
Percentage change, latest 3 months compared with:												
Previous 3 months	2.7	3.5	3.8	3.7	3.6	4.2	0.0	2.4	0.0	2.8	-0.5	-0.4
Same 3 months last year	4.1	9.2	4.9	9.7	5.9	9.7	13.2	1.4	14.1	1.8	16.3	1.5

1 These are provisional estimates subject to fluctuations when new or amended data become available.

2 These are defined as ships, aircraft, precious stones and silver.

3 Includes trade with the Canary Islands, French Guiana, Guadeloupe, Martinique and Reunion.

† Earliest date for revisions to trade in goods is July 2005

5 PRICE INDICES WITH COUNTRIES INSIDE AND OUTSIDE THE EU (TRADE IN GOODS)¹

Balance of Payments basis

Indices 2002=100 not seasonally adjusted

	Trade in goods with EU countries ³						Trade in goods with Non-EU countries					
	Total		Total excluding oil		Total excluding oil and erratics ²		Total		Total excluding oil		Total excluding oil & erratics ²	
	Exports	Imports	Exports	Imports	Exports	Imports	Exports	Imports	Exports	Imports	Exports	Imports
	LGCR	LGDJ	LKUJ	LKVB	SHBQ	SHCM	LGEF	LGEY	LKVX	LKWQ	SHDH	SHEB
2002	100.0	100.0	100.0	100.0	100.0	100.0	100.0	100.0	100.0	100.0	100.0	100.0
2003	104.1	100.7	103.8	100.6	104.0	100.6	98.4	97.6	97.7	96.8	99.6	97.0
2004	103.8	100.3	102.4	100.0	102.7	100.0	98.2	96.8	96.3	94.7	98.3	95.5
2003 Q2	104.9	100.8	105.3	100.8	105.6	100.8	98.2	97.3	98.0	97.2	99.9	97.5
Q3	104.3	100.6	104.2	100.5	104.4	100.5	99.0	98.3	98.4	97.6	100.3	97.6
Q4	103.4	101.0	103.3	100.9	103.6	100.9	97.4	96.3	96.8	95.7	98.8	96.0
2004 Q1	102.2	99.5	101.9	99.5	102.2	99.4	95.8	93.9	95.1	93.1	97.0	94.0
Q2	102.8	99.9	101.7	99.6	102.1	99.6	98.0	96.5	96.6	94.8	98.5	95.7
Q3	104.2	100.6	102.0	100.1	102.4	100.1	99.2	98.4	96.7	95.5	98.7	96.3
Q4	106.2	101.2	103.9	100.7	104.2	100.7	99.7	98.4	97.0	95.3	99.0	96.0
2005 Q1	106.8	101.7	104.1	101.0	104.4	101.0	100.2	99.6	97.1	95.9	99.1	96.6
Q2	106.5	100.9	102.7	100.0	103.0	100.0	101.5	101.8	97.6	97.2	99.7	97.9
Q3	108.7	101.9	102.3	100.3	102.7	100.2	104.6	107.1	98.3	99.0	100.5	99.6
2004 Mar	102.8	99.7	102.2	99.5	102.5	99.5	96.9	95.3	95.9	94.1	97.8	95.1
Apr	102.6	99.6	101.9	99.4	102.3	99.4	97.8	95.8	96.8	94.6	98.7	95.4
May	103.6	100.3	102.1	100.0	102.5	100.0	98.7	97.4	96.9	95.3	98.9	96.2
Jun	102.2	99.7	101.1	99.5	101.4	99.5	97.4	96.3	96.0	94.6	97.9	95.6
Jul	102.5	100.0	101.1	99.7	101.5	99.7	97.7	96.4	96.0	94.6	98.0	95.4
Aug	104.1	100.5	101.5	99.9	101.9	99.9	99.5	99.0	96.6	95.6	98.6	96.4
Sep	105.9	101.3	103.4	100.7	103.7	100.7	100.4	99.8	97.5	96.4	99.5	97.0
Oct	107.7	101.8	104.3	101.0	104.7	101.0	101.6	100.7	97.9	96.2	99.9	96.8
Nov	106.4	101.2	104.3	100.7	104.6	100.7	99.9	98.8	97.4	95.9	99.3	96.5
Dec	104.4	100.6	103.1	100.3	103.4	100.3	97.6	95.8	95.8	93.9	97.7	94.7
2005 Jan	106.1	101.6	104.0	101.1	104.3	101.1	99.6	98.9	97.1	95.9	99.0	96.6
Feb	106.1	101.8	103.7	101.2	104.0	101.2	99.9	99.1	97.1	95.8	99.1	96.5
Mar	108.1	101.7	104.6	100.8	105.0	100.8	101.0	100.8	97.1	96.0	99.1	96.8
Apr	106.8	100.9	103.3	100.1	103.6	100.0	100.8	100.6	97.0	96.2	99.1	96.9
May	106.9	100.9	103.7	100.1	104.0	100.1	101.2	101.5	97.7	97.5	99.7	98.1
Jun	105.7	100.9	101.0	99.9	101.4	99.9	102.6	103.4	98.0	97.9	100.3	98.7
Jul	108.6	101.9	102.8	100.5	103.1	100.5	104.6	107.5	98.8	100.2	101.0	100.8
Aug	109.2	101.9	102.4	100.2	102.8	100.1	104.8	107.2	98.1	98.6	100.4	99.3
Sep	108.4	101.8	101.7	100.1	102.1	100.1	104.5	106.5	97.9	98.2	100.1	98.8
Percentage change on previous month:												
2005 Sep	-0.7	-0.1	-0.7	-0.1	-0.7	0.0	-0.3	-0.7	-0.2	-0.4	-0.3	-0.5
3 months ended:												
2004 Sep	104.2	100.6	102.0	100.1	102.4	100.1	99.2	98.4	96.7	95.5	98.7	96.3
2005 Jun	106.5	100.9	102.7	100.0	103.0	100.0	101.5	101.8	97.6	97.2	99.7	97.9
2005 Sep	108.7	101.9	102.3	100.3	102.7	100.2	104.6	107.1	98.3	99.0	100.5	99.6
Percentage change, latest 3 months compared with:												
Previous 3 months	2.1	1.0	-0.4	0.2	-0.3	0.2	3.1	5.1	0.7	1.9	0.8	1.8
Same 3 months last year	4.4	1.3	0.3	0.2	0.3	0.1	5.5	8.8	1.6	3.6	1.8	3.5

1 These are provisional estimates subject to fluctuations when new or amended data become available.

2 These are defined as ships, aircraft, precious stones and silver.

3 Includes trade with the Canary Islands, French Guiana, Guadeloupe, Martinique and Reunion.

† Earliest date for revisions to trade in goods is July 2005

6 TRADE IN OIL¹

Balance of Payments basis

Seasonally adjusted

	Exports						Imports					
	Balance of Trade in Oil £ million	Crude oil (SITC 333)				Rest of SITC 33 £ million	Total £ million	Crude oil (SITC 333)				Rest of SITC 33 £ million
		Total £ million	£ million	million tonnes	Avg value per tonne £			£ million	million tonnes	Avg value per tonne £		
	ENXQ	ELBL	BQNI	BOQM	BPBN	BOQN	ENXO	BQNJ	BQBH	BQAX	BQAY	
2002	5 739	14 318	9 802	79.67	123	4 516	8 579	4 752	40.97	116	3 827	
2003	4 124	14 608	9 241	69.49	133	5 367	10 484	5 705	44.52	128	4 779	
2004	1 731	16 259	9 339	60.51	154	6 920	14 528	8 191	56.15	146	6 337	
2003 Q2	1 176	3 542	2 183	17.22	127	1 359	2 366	1 287	10.67	121	1 079	
Q3	793	3 539	2 300	17.48	132	1 239	2 746	1 466	11.73	125	1 280	
Q4	634	3 334	2 178	16.71	130	1 156	2 700	1 419	11.35	125	1 281	
2004 Q1	879	3 656	2 205	16.48	134	1 451	2 777	1 475	12.04	123	1 302	
Q2	364	3 937	2 281	15.53	147	1 656	3 573	2 060	15.20	136	1 513	
Q3	236	4 080	2 266	13.86	163	1 814	3 844	2 046	13.55	151	1 798	
Q4	252	4 586	2 587	14.64	177	1 999	4 334	2 610	15.36	170	1 724	
2005 Q1	510	4 496	2 535	14.22	178	1 961	3 986	2 182	13.13	166	1 804	
Q2	454	4 981	2 949	14.66	201	2 032	4 527	2 458	13.24	186	2 069	
Q3	-683	5 130	2 796	11.17	250	2 334	5 813	3 190	13.68	233	2 623	
2005 Apr	35	1 562	891	4.55	196	671	1 527	818	4.33	189	709	
May	206	1 695	1 110	5.57	199	585	1 489	952	5.41	176	537	
Jun	213	1 724	948	4.54	209	776	1 511	688	3.50	197	823	
Jul	25	1 826	1 080	4.61	234	746	1 801	1 024	4.81	213	777	
Aug	-507	1 501	797	3.09	258	704	2 008	1 153	4.72	244	855	
Sep	-201	1 803	919	3.47	265	884	2 004	1 013	4.15	244	991	
3 months ended:												
2004 Sep	236	4 080	2 266	13.86	165	1 814	3 844	2 046	13.55	152	1 798	
2005 Jun	454	4 981	2 949	14.66	201	2 032	4 527	2 458	13.24	187	2 069	
2005 Sep	-683	5 130	2 796	11.17	252	2 334	5 813	3 190	13.68	234	2 623	
Percentage change, latest 3 months compared with:												
Previous 3 months		3.0	-5.2	-23.8	25.3	14.9	28.4	29.8	3.3	24.7	26.8	
Same 3 months last year		25.7	23.4	-19.4	53.2	28.7	51.2	55.9	1.0	54.1	45.9	

1 Trade in petroleum and petroleum products. These figures differ from those published by the Department of Trade and Industry which are compiled from different sources and are on a time of shipment basis.

2 The average value per tonne may reflect not only changes in price but also changes in the commodity mix.

† Earliest date for revisions to trade in goods is July 2005

7 VALUE OF TRADE IN GOODS BY COMMODITY

Balance of Payments basis

£ million seasonally adjusted

	Food, beverages and tobacco (SITC 0 + 1)			Basic materials (SITC 2 + 4)			Fuels (SITC 3)		
	Exports	Imports	Balance	Exports	Imports	Balance	Exports	Imports	Balance
	BOPL	BQAR	ELBE	BOPM	BQAS	ELBF	BOPN	BQAT	ELBG
2002	9 992	19 372	-9 380	2 855	5 959	-3 104	15 997	9 646	6 351
2003	10 886	21 195	-10 309	3 337	6 144	-2 807	16 558	11 563	4 995
2004	10 578	22 145	-11 567	3 771	6 340	-2 569	17 944	16 768	1 176
2003 Q3	2 756	5 315	-2 559	846	1 488	-642	4 020	2 996	1 024
Q4	2 652	5 458	-2 806	830	1 641	-811	3 755	3 049	706
2004 Q1	2 577	5 392	-2 815	871	1 578	-707	4 025	3 236	789
Q2	2 737	5 547	-2 810	923	1 547	-624	4 360	4 053	307
Q3	2 613	5 570	-2 957	993	1 599	-606	4 567	4 462	105
Q4	2 651	5 636	-2 985	984	1 616	-632	4 992	5 017	-25
2005 Q1	2 649	5 755	-3 106	965	1 610	-645	4 902	4 840	62
Q2	2 778	5 912	-3 134	985	1 663	-678	5 399	5 334	65
Q3	2 686	5 970	-3 284	1 072	1 764	-692	5 497	6 519	-1 022
2005 Apr	903	2 017	-1 114	326	542	-216	1 709	1 752	-43
May	885	1 963	-1 078	324	550	-226	1 842	1 743	99
Jun	990	1 932	-942	335	571	-236	1 848	1 839	9
Jul	870	1 964	-1 094	322	550	-228	1 949	1 988	-39
Aug	898	2 016	-1 118	379	612	-233	1 616	2 223	-607
Sep	918	1 990	-1 072	371	602	-231	1 932	2 308	-376
3 months ended:									
2004 Sep	2 613	5 570	-2 957	993	1 599	-606	4 567	4 462	105
2005 Jun	2 778	5 912	-3 134	985	1 663	-678	5 399	5 334	65
2005 Sep	2 686	5 970	-3 284	1 072	1 764	-692	5 497	6 519	-1 022
Percentage change, latest 3 months compared with:									
Previous 3 months	-3.3	1.0		8.8	6.1		1.8	22.2	
Same 3 months last year	2.8	7.2		8.0	10.3		20.4	46.1	

	Semi-manufactures (SITC 5 + 6)			Finished manufactures (SITC 7 + 8)			Total manufactures (SITC 5 to 8)			Miscellaneous (SITC 9)		
	Exports	Imports	Balance	Exports	Imports	Balance	Exports	Imports	Balance	Exports	Imports	Balance
	BOPO	BQAU	ELBH	BOPP	BQAV	ELBI	BPAN	BQBD	ELBJ	BOQL	BQAW	BQKX
2002	50 221	52 720	-2 499	106 373	144 451	-38 078	156 594	197 171	-40 577	1 073	1 450	-377
2003	54 539	56 089	-1 550	102 427	139 880	-37 453	156 966	195 969	-39 003	868	1 608	-740
2004	56 470	60 219	-3 749	101 306	143 931	-42 625	157 776	204 150	-46 374	881	1 807	-926
2003 Q3	13 608	14 186	-578	24 880	34 221	-9 341	38 488	48 407	-9 919	192	396	-204
Q4	13 928	14 174	-246	25 087	35 565	-10 478	39 015	49 739	-10 724	214	448	-234
2004 Q1	13 861	14 389	-528	24 640	34 664	-10 024	38 501	49 053	-10 552	210	441	-231
Q2	13 765	14 508	-743	25 063	35 985	-10 922	38 828	50 493	-11 665	196	452	-256
Q3	14 250	15 479	-1 229	25 598	36 287	-10 689	39 848	51 766	-11 918	207	426	-219
Q4	14 594	15 843	-1 249	26 005	36 995	-10 990	40 599	52 838	-12 239	268	488	-220
2005 Q1	14 537	15 578	-1 041	25 865	36 618	-10 753	40 402	52 196	-11 794	211	463	-252
Q2	14 848	15 283	-435	27 836	37 947	-10 111	42 684	53 230	-10 546	210	507	-297
Q3	15 088	15 610	-522	28 553	39 589	-11 036	43 641	55 199	-11 558	280	431	-151
2005 Apr	4 854	5 115	-261	9 128	12 728	-3 600	13 982	17 843	-3 861	72	161	-89
May	4 865	5 003	-138	8 917	12 543	-3 626	13 782	17 546	-3 764	62	193	-131
Jun	5 129	5 165	-36	9 791	12 676	-2 885	14 920	17 841	-2 921	76	153	-77
Jul	4 837	5 236	-399	9 293	12 818	-3 525	14 130	18 054	-3 924	79	160	-81
Aug	5 149	5 288	-139	9 593	13 346	-3 753	14 742	18 634	-3 892	99	149	-50
Sep	5 102	5 086	16	9 667	13 425	-3 758	14 769	18 511	-3 742	102	122	-20
3 months ended:												
2004 Sep	14 250	15 479	-1 229	25 598	36 287	-10 689	39 848	51 766	-11 918	207	426	-219
2005 Jun	14 848	15 283	-435	27 836	37 947	-10 111	42 684	53 230	-10 546	210	507	-297
2005 Sep	15 088	15 610	-522	28 553	39 589	-11 036	43 641	55 199	-11 558	280	431	-151
Percentage change, latest 3 months compared with:												
Previous 3 months	1.6	2.1		2.6	4.3		2.2	3.7		33.3	-15.0	
Same 3 months last year	5.9	0.8		11.5	9.1		9.5	6.6		35.3	1.2	
EXCLUDING ERRATICS¹												
Previous 3 months	-0.7	-0.2		3.3	3.9		1.9	2.7				
Same 3 months last year	5.2	-0.1		13.9	9.2		10.8	6.5				

¹ These are defined as precious stones and silver in semi-manufactures, and as ships and aircraft in finished manufactures.

[†] Earliest date for revisions to trade in goods is July 2005

	Food, beverages and tobacco (SITC 0 + 1)		Basic materials (SITC 2 + 4)		Fuels (SITC 3)		Semi-manufactures (SITC 5 + 6)		Finished manufactures (SITC 7 + 8)		Total manufactures (SITC 5 to 8)	
	Exports	Imports	Exports	Imports	Exports	Imports	Exports	Imports	Exports	Imports	Exports	Imports
<i>Weights²</i> <i>(total trade = 1000)</i>	54	83	15	26	86	41	269	226	570	618	840	844
	BPEM	BQBK	BAFB	BQBL	BAFC	BQBM	BAHA	BQBN	BAHY	ELAB	BOGT	ELAJ
2002	100	100	100	100	100	100	100	100	100	100	100	100
2003	105	107	111	99	97	110	106	105	97	100	100	101
2004	103	114	117	99	95	135	111	112	98	106	102	107
2003 Q2	102	107	108	97	100	109	107	105	95	96	99	99
Q3	105	107	111	96	95	116	106	107	93	97	97	100
Q4	101	110	111	103	90	116	109	106	95	102	100	103
2004 Q1	101	111	111	99	94	125	110	109	95	102	100	104
Q2	108	114	114	97	94	138	109	110	97	105	101	106
Q3	102	114	121	99	94	134	112	114	99	107	103	109
Q4	103	116	121	100	97	144	112	115	99	109	103	110
2005 Q1	102	116	114	99	92	131	111	112	99	108	103	109
Q2	108	117	120	99	94	130	114	110	109	112	111	112
Q3	103	118	126	104	87	121	116	113	111	117	113	116
2005 Apr	106	121	120	99	89	132	112	110	106	113	108	112
May	104	117	117	99	98	133	112	108	104	112	107	111
Jun	115	114	122	100	94	126	119	112	116	112	117	112
Jul	99	115	116	98	92	114	111	113	108	113	109	113
Aug	104	120	132	108	76	122	119	115	112	119	115	118
Sep	107	119	131	107	92	128	119	110	114	120	116	118
3 months ended:												
2004 Sep	102	114	121	99	94	134	112	114	99	107	103	109
2005 Jun	108	117	120	99	94	130	114	110	109	112	111	112
2005 Sep	103	118	126	104	87	121	116	113	111	117	113	116
Percentage change, latest 3 months compared with:												
Previous 3 months	-4.6	0.6	5.6	5.0	-7.5	-6.9	1.7	2.4	2.5	4.5	2.4	4.2
Same 3 months last year	1.3	3.2	4.4	5.0	-7.5	-9.5	3.9	-1.5	12.5	10.0	10.0	7.1
EXCLUDING ERRATICS³												
Previous 3 months							-0.9	-0.3	3.7	4.0	1.8	3.2
Same 3 months last year							3.0	-2.4	15.9	10.8	11.3	7.3

1 These are provisional estimates subject to fluctuations when new or amended data become available.

2 The weights shown are in proportion to the total value of trade in 2002 and are used to combine the volume indices to calculate the totals for 2003 onwards. For 2002 and earlier, totals are calculated using the equivalent weights for the previous year (eg totals for 2002 use 2001 weights).

3 These are defined as precious stones and silver in semi-manufactures, and as ships and aircraft in finished manufactures.

[†] Earliest date for revisions to trade in goods is July 2005

9 PRICE INDICES (TRADE IN GOODS) BY COMMODITY ¹

Balance of Payments basis

Indices 2002=100 not seasonally adjusted

	Food, beverages and tobacco (SITC 0 + 1)		Basic materials (SITC 2 + 4)		Fuels (SITC 3)		Semi-manufactures (SITC 5 + 6)		Finished manufactures (SITC 7 + 8)		Total manufactures (SITC 5 to 8)	
	Exports	Imports	Exports	Imports	Exports	Imports	Exports	Imports	Exports	Imports	Exports	Imports
<i>Weights²</i> <i>(total trade = 1000)</i>	54	83	15	26	86	41	269	226	570	618	840	844
	BPAI	ELAN	BPAW	ELAO	BPDU	ELAP	BQAA	ELAQ	BQAB	ELAR	BQAI	ELAY
2002	100	100	100	100	100	100	100	100	100	100	100	100
2003	104	103	105	104	107	109	103	101	100	97	101	98
2004	103	101	113	108	120	129	102	103	98	94	100	97
2003 Q2	105	103	105	104	101	99	104	102	101	97	102	99
Q3	104	104	105	104	106	107	103	102	101	98	102	99
Q4	104	104	106	107	105	107	102	101	99	97	100	98
2004 Q1	102	101	109	107	105	109	101	100	98	94	99	96
Q2	102	102	113	109	115	122	101	102	99	94	99	96
Q3	102	101	113	108	128	140	102	104	98	94	100	97
Q4	103	102	117	108	132	145	104	105	99	94	101	97
2005 Q1	103	104	119	109	136	154	105	108	99	94	101	97
Q2	103	106	120	113	148	166	104	108	98	93	100	97
Q3	104	105	120	114	179	208	104	108	98	94	100	98
2005 Apr	103	105	122	112	146	162	104	108	98	93	100	97
May	103	106	119	113	143	159	105	108	99	93	101	97
Jun	103	106	118	114	156	177	103	108	98	93	99	97
Jul	105	107	119	115	172	200	105	108	99	95	101	99
Aug	104	105	121	114	182	214	104	108	98	94	100	98
Sep	103	104	121	113	182	210	103	108	98	94	100	98
3 months ended:												
2004 Sep	102	101	113	108	128	140	102	104	98	94	100	97
2005 Jun	103	106	120	113	148	166	104	108	98	93	100	97
2005 Sep	104	105	120	114	179	208	104	108	98	94	100	98
Percentage change, latest 3 months compared with:												
Previous 3 months	1.0	-0.3	0.6	0.9	20.4	25.3	0.0	0.0	0.0	1.4	0.3	1.4
Same 3 months last year	2.0	3.9	6.2	5.9	39.2	48.9	2.0	3.8	0.0	0.0	0.7	1.4
EXCLUDING ERRATICS³												
Previous 3 months							0.3	0.0	0.0	1.8	0.0	1.0
Same 3 months last year							1.9	3.8	0.0	0.0	0.7	1.0

1 These are provisional estimates subject to fluctuations when new or amended data become available.

2 The weights shown are in proportion to the total value of trade in 2002 and are used to combine the volume indices to calculate the totals for 2003 onwards. For 2002 and earlier, totals are calculated using the equivalent weights for the previous year (eg totals for 2002 use 2001 weights).

3 These are defined as precious stones and silver in semi-manufactures, and as ships and aircraft in finished manufactures.

[†] Earliest date for revisions to trade in goods is July 2005

10 TRADE IN GOODS WITH SELECTED EU TRADING PARTNERS

Balance of Payments Consistent basis

£ million seasonally adjusted

	Belgium & Luxembourg			France			Germany			Irish Republic		
	Exports	Imports	Balance	Exports	Imports	Balance	Exports	Imports	Balance	Exports	Imports	Balance
	CHNQ	CHNY	CHNF	ENYL	ENYP	ENYT	ENYO	ENYS	ENYW	CHNS	CHOA	CHNH
2002	10 553	13 204	-2 651	18 756	20 776	-2 020	22 062	32 407	-10 345	15 419	13 164	2 255
2003	11 373	13 169	-1 796	18 885	20 360	-1 475	20 805	33 620	-12 815	12 224	9 908	2 316
2004	10 513	13 858	-3 345	18 567	20 148	-1 581	21 675	35 356	-13 681	14 137	10 142	3 995
2003 Q2	2 919	3 328	-409	4 528	5 079	-551	5 125	8 137	-3 012	2 912	2 358	554
Q3	2 786	3 194	-408	4 676	5 036	-360	4 983	8 167	-3 184	3 129	2 487	642
Q4	2 857	3 371	-514	4 614	5 029	-415	5 167	8 608	-3 441	3 239	2 564	675
2004 Q1	2 694	3 338	-644	4 454	4 913	-459	5 170	8 333	-3 163	3 328	2 491	837
Q2	2 481	3 307	-826	4 578	5 065	-487	5 387	8 993	-3 606	3 410	2 368	1 042
Q3	2 700	3 388	-688	4 820	5 101	-281	5 426	8 753	-3 327	3 616	2 728	888
Q4	2 638	3 825	-1 187	4 715	5 069	-354	5 692	9 277	-3 585	3 783	2 555	1 228
2005 Q1	2 713	3 599	-886	4 963	5 258	-295	5 649	9 300	-3 651	3 907	2 393	1 514
Q2	2 700	3 600	-900	4 624	5 304	-680	5 844	9 682	-3 838	3 935	2 421	1 514
Q3	2 938	3 753	-815	4 679	5 360	-681	5 758	9 732	-3 974	4 113	2 583	1 530
2005 Apr	885	1 178	-293	1 531	1 735	-204	1 925	3 353	-1 428	1 330	796	534
May	930	1 197	-267	1 540	1 775	-235	1 913	3 141	-1 228	1 311	820	491
Jun	885	1 225	-340	1 553	1 794	-241	2 006	3 188	-1 182	1 294	805	489
Jul	914	1 201	-287	1 533	1 786	-253	1 888	3 134	-1 246	1 306	866	440
Aug	953	1 230	-277	1 663	1 775	-112	1 978	3 259	-1 281	1 403	887	516
Sep	1 071	1 322	-251	1 483	1 799	-316	1 892	3 339	-1 447	1 404	830	574
3 months ended:												
2004 Sep	2 700	3 388	-688	4 820	5 101	-281	5 426	8 753	-3 327	3 616	2 728	888
2005 Jun	2 700	3 600	-900	4 624	5 304	-680	5 844	9 682	-3 838	3 935	2 421	1 514
2005 Sep	2 938	3 753	-815	4 679	5 360	-681	5 758	9 732	-3 974	4 113	2 583	1 530
Percentage change, latest 3 months compared with:												
Previous 3 months	8.8	4.3		1.2	1.1		-1.5	0.5		4.5	6.7	
Same 3 months last year	8.8	10.8		-2.9	5.1		6.1	11.2		13.7	-5.3	
	Italy			Netherlands			Spain			Sweden		
	Exports	Imports	Balance	Exports	Imports	Balance	Exports	Imports	Balance	Exports	Imports	Balance
	CHNO	CHNW	CHOE	CHNP	CHNX	CHNE	CHNV	CHOD	CHNM	CHNA	CHND	CHVI
2002	8 506	10 663	-2 157	14 009	16 123	-2 114	8 489	9 180	-691	3 872	4 324	-452
2003	8 603	11 466	-2 863	13 597	16 672	-3 075	8 943	9 236	-293	3 823	4 565	-742
2004	8 402	12 195	-3 793	12 032	18 209	-6 177	9 103	9 127	-24	4 356	5 123	-767
2003 Q2	2 230	2 843	-613	3 433	3 929	-496	2 195	2 139	56	965	1 152	-187
Q3	2 150	2 860	-710	3 090	4 031	-941	2 187	2 214	-27	915	1 148	-233
Q4	2 100	2 918	-818	3 068	4 198	-1 130	2 127	2 381	-254	1 002	1 125	-123
2004 Q1	2 099	2 941	-842	2 867	4 308	-1 441	2 187	2 266	-79	1 043	1 245	-202
Q2	2 038	3 086	-1 048	3 017	4 569	-1 552	2 242	2 275	-33	1 055	1 269	-214
Q3	2 058	3 062	-1 004	2 923	4 585	-1 662	2 322	2 266	56	1 134	1 273	-139
Q4	2 207	3 106	-899	3 225	4 747	-1 522	2 352	2 320	32	1 124	1 336	-212
2005 Q1	2 135	3 109	-974	2 851	4 621	-1 770	2 285	2 409	-124	1 137	1 357	-220
Q2	2 172	3 018	-846	2 935	4 702	-1 767	2 549	2 473	76	1 168	1 314	-146
Q3	2 212	3 065	-853	3 215	5 105	-1 890	2 562	2 665	-103	1 099	1 360	-261
2005 Apr	716	1 012	-296	968	1 546	-578	823	814	9	424	439	-15
May	742	1 012	-270	978	1 569	-591	851	823	28	375	440	-65
Jun	714	994	-280	989	1 587	-598	875	836	39	369	435	-66
Jul	746	1 024	-278	1 101	1 703	-602	898	862	36	338	427	-89
Aug	763	1 041	-278	1 062	1 790	-728	893	851	42	387	474	-87
Sep	703	1 000	-297	1 052	1 612	-560	771	952	-181	374	459	-85
3 months ended:												
2004 Sep	2 058	3 062	-1 004	2 923	4 585	-1 662	2 322	2 266	56	1 134	1 273	-139
2005 Jun	2 172	3 018	-846	2 935	4 702	-1 767	2 549	2 473	76	1 168	1 314	-146
2005 Sep	2 212	3 065	-853	3 215	5 105	-1 890	2 562	2 665	-103	1 099	1 360	-261
Percentage change, latest 3 months compared with:												
Previous 3 months	1.8	1.6		9.5	8.6		0.5	7.8		-5.9	3.5	
Same 3 months last year	7.5	0.1		10.0	11.3		10.3	17.6		-3.1	6.8	

† Earliest date for revisions to trade in goods is July 2005

11 TRADE IN GOODS WITH SELECTED NON-EU TRADING PARTNERS

Balance of Payments Consistent basis

£ million seasonally adjusted

	Canada			China			Hong Kong			Japan		
	Exports	Imports	Balance	Exports	Imports	Balance	Exports	Imports	Balance	Exports	Imports	Balance
	EOBC	EOBW	EOCQ	ERDN	ERDZ	EREL	ERDG	ERDS	EREE	EOBD	EOBX	EOCR
2002	3 107	3 537	-430	1 493	6 693	-5 200	2 411	5 535	-3 124	3 583	8 040	-4 457
2003	3 249	3 645	-396	1 931	8 321	-6 390	2 490	5 486	-2 996	3 723	8 062	-4 339
2004	3 340	4 153	-813	2 374	10 354	-7 980	2 636	5 742	-3 106	3 865	8 060	-4 195
2003 Q2	905	900	5	529	2 021	-1 492	624	1 329	-705	959	1 982	-1 023
Q3	784	941	-157	454	2 121	-1 667	606	1 334	-728	976	2 019	-1 043
Q4	826	976	-150	521	2 312	-1 791	655	1 427	-772	981	2 080	-1 099
2004 Q1	861	1 022	-161	500	2 275	-1 775	573	1 310	-737	955	2 055	-1 100
Q2	794	1 101	-307	611	2 532	-1 921	586	1 411	-825	934	1 932	-998
Q3	865	1 032	-167	599	2 725	-2 126	706	1 500	-794	994	2 048	-1 054
Q4	820	998	-178	664	2 822	-2 158	771	1 521	-750	982	2 025	-1 043
2005 Q1	780	980	-200	539	2 997	-2 458	581	1 539	-958	908	2 118	-1 210
Q2	862	1 007	-145	711	3 146	-2 435	842	1 546	-704	1 016	2 314	-1 298
Q3	747	1 096	-349	721	3 374	-2 653	818	1 674	-856	991	2 058	-1 067
2005 Mar	283	405	-122	216	1 018	-802	243	523	-280	299	710	-411
Apr	286	359	-73	244	1 053	-809	283	525	-242	332	808	-476
May	264	328	-64	221	1 058	-837	246	481	-235	296	763	-467
Jun	312	320	-8	246	1 035	-789	313	540	-227	388	743	-355
Jul	257	344	-87	220	1 079	-859	252	530	-278	307	709	-402
Aug	192	356	-164	245	1 129	-884	251	593	-342	341	678	-337
Sep	298	396	-98	256	1 166	-910	315	551	-236	343	671	-328
3 months ended:												
2004 Sep	865	1 032	-167	599	2 725	-2 126	706	1 500	-794	994	2 048	-1 054
2005 Jun	862	1 007	-145	711	3 146	-2 435	842	1 546	-704	1 016	2 314	-1 298
2005 Sep	747	1 096	-349	721	3 374	-2 653	818	1 674	-856	991	2 058	-1 067
Percentage change, latest 3 months compared with:												
Previous 3 months	-13.3	8.8		1.4	7.2		-2.9	8.3		-2.5	-11.1	
Same 3 months last year	-13.6	6.2		20.4	23.8		15.9	11.6		-0.3	0.5	
	Norway			South Korea			Switzerland			USA		
	Exports	Imports	Balance	Exports	Imports	Balance	Exports	Imports	Balance	Exports	Imports	Balance
	EPLX	EPMX	EPNX	ERDM	ERDY	EREK	EPLV	EPMV	EPNV	EOBB	EOBV	EOCP
2002	1 696	5 251	-3 555	1 461	2 716	-1 255	3 080	4 590	-1 510	28 197	24 986	3 211
2003	1 894	6 441	-4 547	1 475	2 556	-1 081	2 798	3 768	-970	28 780	22 746	6 034
2004	1 937	8 470	-6 533	1 482	3 063	-1 581	2 841	3 436	-595	28 592	21 874	6 718
2003 Q2	473	1 490	-1 017	355	592	-237	678	898	-220	7 327	5 834	1 493
Q3	428	1 593	-1 165	349	669	-320	654	986	-332	7 276	5 601	1 675
Q4	478	1 662	-1 184	377	668	-291	749	916	-167	6 909	5 274	1 635
2004 Q1	404	1 668	-1 264	346	715	-369	676	837	-161	6 934	5 414	1 520
Q2	483	1 975	-1 492	346	785	-439	746	819	-73	7 209	5 449	1 760
Q3	525	2 230	-1 705	385	782	-397	703	792	-89	7 107	5 493	1 614
Q4	525	2 597	-2 072	405	781	-376	716	988	-272	7 342	5 518	1 824
2005 Q1	437	2 449	-2 012	374	663	-289	866	958	-92	7 358	5 157	2 201
Q2	593	2 750	-2 157	450	789	-339	1 134	901	233	7 698	5 231	2 467
Q3	533	3 338	-2 805	430	792	-362	1 423	930	493	7 816	5 604	2 212
2005 Mar	151	810	-659	157	220	-63	344	332	12	2 478	1 786	692
Apr	186	880	-694	151	302	-151	331	306	25	2 498	1 711	787
May	157	929	-772	141	247	-106	336	217	119	2 490	1 806	684
Jun	250	941	-691	158	240	-82	467	378	89	2 710	1 714	996
Jul	142	1 023	-881	134	236	-102	380	253	127	2 585	1 852	733
Aug	153	1 162	-1 009	159	276	-117	476	318	158	2 434	1 920	514
Sep	238	1 153	-915	137	280	-143	567	359	208	2 797	1 832	965
3 months ended:												
2004 Sep	525	2 230	-1 705	385	782	-397	703	792	-89	7 107	5 493	1 614
2005 Jun	593	2 750	-2 157	450	789	-339	1 134	901	233	7 698	5 231	2 467
2005 Sep	533	3 338	-2 805	430	792	-362	1 423	930	493	7 816	5 604	2 212
Percentage change, latest 3 months compared with:												
Previous 3 months	-10.1	21.4		-4.4	0.4		25.5	3.2		1.5	7.1	
Same 3 months last year	1.5	49.7		11.7	1.3		+	17.4		10.0	2.0	

† Earliest date for revisions to trade in goods is July 2005

12R SUMMARY OF REVISIONS

Balance of Payments Basis

£ million

	Trade in goods ¹							Trade in services (seasonally adjusted)			Trade in good & services (seasonally adjusted)		
	Value (seasonally adjusted) £ million			Volume (seasonally adjusted) excluding oil & erratics (2002=100)		Price index (2002=100)		£ Million			£ Million		
	Exports	Imports	Balance	Exports	Imports	Exports	Imports	Exports	Imports	Balance	Exports	Imports	Balance
	BOKG	BOKH	BOKI	BOMA	ELAL	BQKR	BQKS	IKBB	IKBC	IKBD	IKBH	IKBI	IKBJ
2002	-	-	-	-	-	-	-	-	-	-	-	-	-
2003	-	-	-	-	-	-	-	-	-	-	-	-	-
2004	-	-	-	-	-	-	-	-	-	-	-	-	-
2003 Q1	-	-	-	-	-	-	-	-	-	-	-	-	-
Q2	-	-	-	-	-	-	-	-	-	-	-	-	-
Q3	-	-	-	-	-	-	-	-	-	-	-	-	-
Q4	-	-	-	-	-	-	-	-	-	-	-	-	-
2004 Q1	-	-	-	-	-	-	-	-	-	-	-	-	-
Q2	-	-	-	-	-	-	-	-	-	-	-	-	-
Q3	-	-	-	-	-	-	-	-	-	-	-	-	-
Q4	-	-	-	-	-	-	-	-	-	-	-	-	-
2005 Q1	-	-	-	-	-	-	-	-	-	-	-	-	-
Q2	-	-	-	-	-	-	-	-	-	-	-	-	-
Q3
2003 Jan	-	-	-	-	-	-	-	-	-	-	-	-	-
Feb	-	-	-	-	-	-	-	-	-	-	-	-	-
Mar	-	-	-	-	-	-	-	-	-	-	-	-	-
Apr	-	-	-	-	-	-	-	-	-	-	-	-	-
May	-	-	-	-	-	-	-	-	-	-	-	-	-
Jun	-	-	-	-	-	-	-	-	-	-	-	-	-
Jul	-	-	-	-	-	-	-	-	-	-	-	-	-
Aug	-	-	-	-	-	-	-	-	-	-	-	-	-
Sep	-	-	-	-	-	-	-	-	-	-	-	-	-
Oct	-	-	-	-	-	-	-	-	-	-	-	-	-
Nov	-	-	-	-	-	-	-	-	-	-	-	-	-
Dec	-	-	-	-	-	-	-	-	-	-	-	-	-
2004 Jan	-	-	-	-	-	-	-	-	-	-	-	-	-
Feb	-	-	-	-	-	-	-	-	-	-	-	-	-
Mar	-	-	-	-	-	-	-	-	-	-	-	-	-
Apr	-	-	-	-	-	-	-	-	-	-	-	-	-
May	-	-	-	-	-	-	-	-	-	-	-	-	-
Jun	-	-	-	-	-	-	-	-	-	-	-	-	-
Jul	-	-	-	-	-	-	-	-	-	-	-	-	-
Aug	-	-	-	-	-	-	-	-	-	-	-	-	-
Sep	-	-	-	-	-	-	-	-	-	-	-	-	-
Oct	-	-	-	-	-	-	-	-	-	-	-	-	-
Nov	-	-	-	-	-	-	-	-	-	-	-	-	-
Dec	-	-	-	-	-	-	-	-	-	-	-	-	-
2005 Jan	-	-	-	-	-	-	-	-	-	-	-	-	-
Feb	-	-	-	-	-	-	-	-	-	-	-	-	-
Mar	-	-	-	-	-	-	-	-	-	-	-	-	-
Apr	-	-	-	-	-	-	-	-	-	-	-	-	-
May	-	-	-	-	-	-	-	-	-	-	-	-	-
Jun	-	-	-	-	-	-	-	-	-	-	-	-	-
Jul	179	24	155	1.4	0.2	-	0.5	-	-	-	-	-	-
Aug	-78	201	-279	-	1.0	0.1	0.3	-	-	-	-	-	-
Sep

¹ Earliest date for revisions to trade in goods is July 2005