

11 June 2008

Coverage
United Kingdom

Theme
The Economy



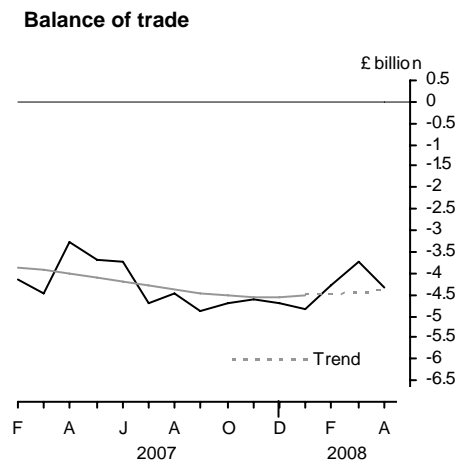
UK trade April 2008

The UK's deficit on trade in goods and services is provisionally estimated to have widened in April to £4.3 billion from a deficit of £3.8 billion in March.

In the three months ended April, the deficit on trade in goods and services narrowed to £12.4 billion, from a £14.1 billion deficit in the previous three months.

The latest estimate of the trend suggests that the UK trade deficit is fairly flat in recent months.

The notes discuss a number of factors which mean that the initial estimates of the data are less reliable than previously, and which make interpretation of short term movements difficult.



Issued by

Office for National Statistics
Government Buildings
Cardiff Road
Newport
NP10 8XG

Contact

Media Office 0845 604 1858

Statistician – Trade in Goods
Caroline Lakin 020 7014 2018/2020

Statistician – Trade in Services
Tom Orford 020 7014 2027/2028

E-mail – bop@ons.gov.uk

www.statistics.gov.uk

Next publication date
9 July 2008

		Balance on trade in goods			Balance on trade in services	Total balance
		EU	Non-EU	World		
<i>Seasonally adjusted: £ billion</i>						
2007	Nov	-3.7	-4.4	-8.1	3.5	-4.6
	Dec	-3.8	-4.2	-8.1	3.3	-4.7
2008	Jan	-3.6	-4.3	-7.9	3.1	-4.8
	Feb	-3.6	-4.1	-7.7	3.4	-4.3
	Mar	-3.4	-3.8	-7.1	3.4	-3.8
	Apr	-3.4	-4.2	-7.6	3.3	-4.3

NOTE: Trade in services estimates are included to give a more complete picture of UK trade. These estimates have been derived from a number of sources, and some components are based on recent trends. They should be used with appropriate caution.

TRADE IN GOODS - APRIL

Value of total trade in goods

The UK's deficit on trade in goods in April is provisionally estimated at £7.6 billion, compared with £7.1 billion in March. The deficit with EU countries in April was £3.4 billion, unchanged compared with March. The deficit with non-EU countries in April was £4.2 billion, compared with £3.8 billion in March.

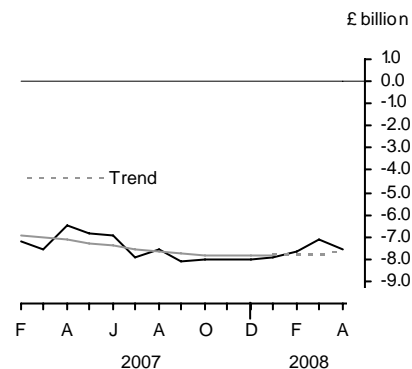
In April, total exports of goods rose by three and a half per cent to £20.8 billion and total imports of goods rose by four and a half per cent to £28.4 billion. Exports to EU countries rose by five and a half per cent and exports to non-EU countries rose by one per cent. Imports from EU countries rose four and a half per cent and imports from non-EU countries rose by four per cent.

In the three months ended April, the deficit on trade in goods narrowed by £1.6 billion to £22.4 billion. The deficit with EU countries narrowed by £0.8 billion to £10.4 billion, and the deficit with non-EU countries narrowed by £0.8 billion to £12.0 billion.

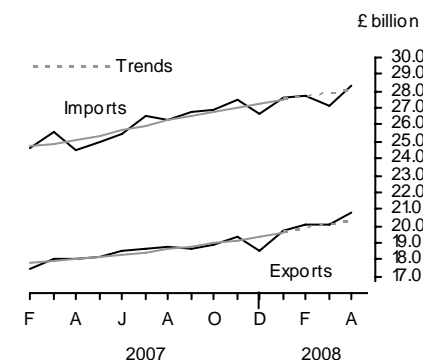
In the three months ended April, exports of goods rose by five and a half per cent and imports of goods rose by two per cent. Exports to EU countries rose by four per cent and exports to non-EU countries rose by eight per cent. Imports from EU countries rose by one per cent and those from non-EU countries rose by three per cent.

The latest estimate of the trend suggests that the whole world goods deficit is fairly flat. The trends in the value of trade show both exports and imports rising slightly in recent months.

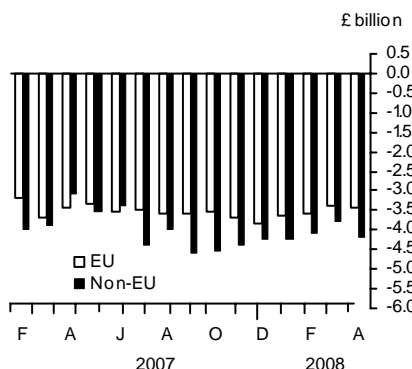
Balance on trade in goods



Value of trade in goods



Balance on trade in goods



Volume of total trade in goods (excluding oil and erratics)

Provisional estimates show that the volume of exports rose by a half per cent and the volume of imports rose by one and a half per cent from that in March.

In the three months ended April, exports rose a half per cent while imports fell two per cent compared with the previous three months.

Changes in trade associated with VAT MTIC fraud mean that comparisons of volume and prices (both including and excluding trade associated with VAT MTIC fraud) should be treated with a great deal of caution.

Latest estimates of volume trends show both exports and imports fairly flat in recent months.

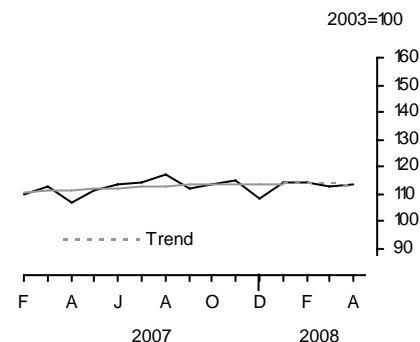
		EU		Non-EU		World	
		Exports	Imports	Exports	Imports	Exports	Imports
<i>Seasonally adjusted: 2003 = 100</i>							
2007	Nov	111.2	120.8	120.1	135.5	114.7	126.3
	Dec	106.9	118.8	111.4	131.0	108.5	123.3
2008	Jan	109.9	121.7	119.6	128.8	113.8	124.3
	Feb	106.0	117.7	125.4	132.2	113.8	123.2
	Mar	105.5	114.3	123.1	131.9	112.5	121.0
	Apr	106.8	118.5	123.4	129.3	113.2	122.6

Export and import prices (trade in goods)

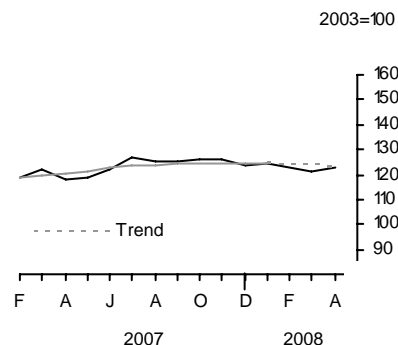
April's provisional estimates show that both export and import prices rose two per cent compared with March.

In the three months ended April, export prices rose five and a half per cent and import prices rose five per cent. This led to an increase in terms of trade.

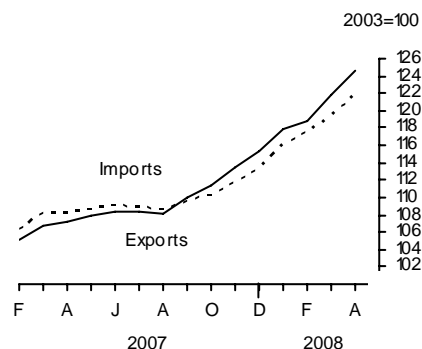
Volume of exports (goods) excluding oil and erratic items



Volume of imports (goods) excluding oil and erratic items



Export and import prices (goods)



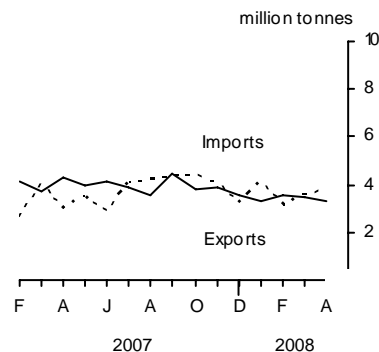
COMMODITY ANALYSIS OF TRADE IN GOODS

Trade in oil

In April, the balance on trade in oil was in deficit by £0.4 billion, virtually unchanged compared with March.

In the three months ended April, the deficit on trade in oil was £1.0 billion, compared with a deficit of £1.6 billion in the previous three months.

Trade in crude oil

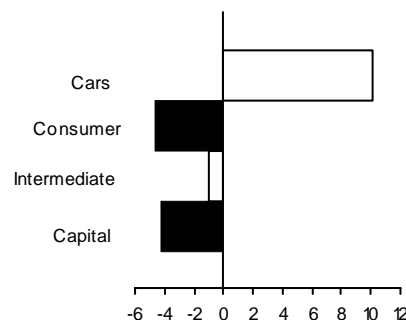


Trade in other commodities in the three months ended April 2008

For exports, all the main commodity groups showed a rise in volume, except fuels. Within finished manufactures, exports of cars rose by 10 per cent. Exports of both consumer goods other than cars, and of capital goods fell by four and a half per cent. Exports of chemicals rose by three and a half per cent, and exports of other semi-manufactured goods rose by two and a half per cent.

Volume of exports of goods (finished manufactures)

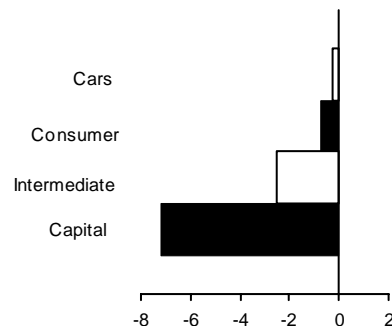
3 month percentage changes



For imports, all the main commodity groups showed a fall in volume, except food, beverages and tobacco, and semi manufactures. Within finished manufactures, imports of capital goods fell by seven per cent. Imports of intermediate goods fell by two and a half per cent. Imports of chemicals rose a half per cent and imports of other semi-manufactured goods fell a half per cent.

Volume of imports of goods (finished manufactures)

3 month percentage changes



GEOGRAPHICAL ANALYSIS OF TRADE IN GOODS: in the three months ended April 2008

Exports by country

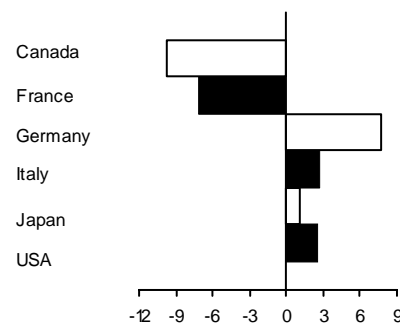
Within the G7 group of countries, exports to Germany rose by £0.5 billion, and to the USA by £0.2 billion. Exports to France fell by £0.3 billion. Among other countries, exports to the Irish Republic and the Netherlands both rose by £0.3 billion. Exports to China and Russia both rose by £0.2 billion. Exports to South Africa rose by £0.1 billion.

Imports by country

Within the G7 group of countries, imports from the USA fell by £0.3 billion, and imports from France fell by £0.1 billion. Imports from Germany and Japan both rose by £0.2 billion. Among our other trading partners, imports from Norway rose by £0.5 billion. Imports from Russia, Sweden and China all rose by £0.3 billion, and from the Irish Republic rose by £0.2 billion. Imports from Switzerland rose by £0.1 billion. Imports from Singapore fell by £0.2 billion.

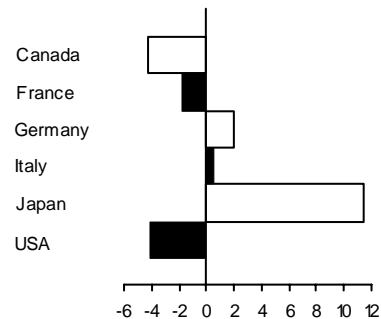
Value of exports of goods by country

3 month percentage changes



Value of imports of goods by country

3 month percentage changes



TRADE IN SERVICES – APRIL

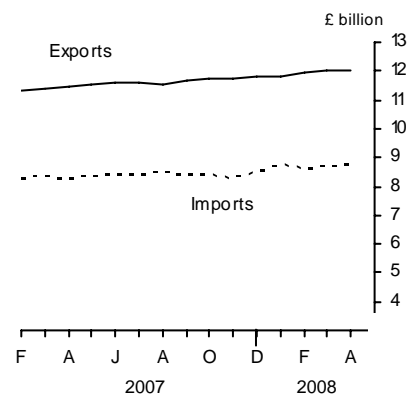
The UK's surplus on trade in services was £3.3 billion, compared with £3.4 billion in March.

In the three months ended April, the surplus on trade in services was £10.0 billion, compared with £9.9 billion in the previous three months. Exports of services rose by £0.7 billion to £36.0 billion and imports of services rose by £0.5 billion to £26.0 billion.

REVISIONS

Table 13R shows revisions to the main aggregates since the last Trade First Release of 12 May 2008. The revisions to trade in goods data from January 2007 onwards reflect revised data from Her Majesty's Revenue and Customs and other data suppliers, revised estimates of trading associated with VAT MTIC fraud, later survey data on trade prices and a re-assessment of seasonal factors.

Value of trade in services



SPECIAL NOTES

VAT missing trader intra-community (MTIC) fraud

1. Import figures for trade in goods include adjustments to allow for the impact of VAT MTIC fraud. The adjustments were introduced for the first time in the UK trade May 2003 First Release published on 9 July 2003. An article explaining the fraud and the impact on the trade figures was also published on 9 July 2003 (<http://www.statistics.gov.uk/CCI/article.asp?ID=402>). A follow-up report was published on 17 February 2005 which summarises the work carried out since July 2003 to review the estimates of the impact on the trade figures (<http://www.statistics.gov.uk/CCI/article.asp?ID=1066>).

Changes to the pattern of trading associated with MTIC fraud can make it difficult to analyse trade by commodity group and by country as changes in the impact of activity associated with this fraud affect both imports and exports. Originally, most carousel chains only involved EU member states. From 2004 in particular, some carousel chains have included non-EU countries, for example, Dubai and Switzerland. However, the MTIC trade adjustments are added to the EU import estimates derived from Intrastat returns as it is this part of the trading chain that is not generally recorded. In particular, adjustments affect trade in capital goods and intermediate goods - these categories include mobile phones and computer components.

HMRC are completing a project to review the methodology for producing the estimates of the impact on the trade statistics. The level of such trading has reduced over the last year.

International convention determines that the treatment of the impact is to adjust imports upwards by the relevant amounts. However, users may wish to interpret short-term movements in exports and imports excluding that part of the fraudulent activity that is not included in the import estimates, and for this purpose an analysis of the export and import figures with the VAT MTIC adjustments excluded has been produced.

The following tables show quarterly values of imports and exports of goods for both current price estimates and chained volume measures excluding the VAT MTIC fraud adjustment, and a breakdown for current price estimates into trade with the EU and non-EU separately. Also, it includes the estimated monthly data for the adjustment for trade associated with VAT MTIC fraud, and for total trade excluding the adjustment for trade associated with VAT MTIC fraud, at current prices from 2006.

Trade in goods excluding adjustments to trade associated with MTIC fraud

Quarter/ Year	MTIC fraud trade adj'ment	£ billion			
		Current price	Current price	Chained volume measure	Chained volume measure
		Total exports less MTIC adj'ment	Total imports less MTIC adj'ment	Total exports less MTIC adj'ment	Total imports less MTIC adj'ment
	Value of trade	BQHP	BQHQ	BQHR	BQHS
2000	3.0	185.0	218.1	184.9	208.8
2001	7.1	182.0	223.2	184.9	215.8
2002	11.5	175.0	222.7	178.1	221.9
2003	4.5	183.8	232.5	183.7	232.3
2004	2.6	188.2	249.1	188.5	250.8
2005	11.2	200.5	269.1	197.8	260.6
2006	22.9	220.8	298.3	213.3	280.6
2007	1.5	219.3	308.9	206.1	288.3
2006 Q1	10.0	54.8	74.1	53.5	69.4
Q2	10.7	57.0	75.7	55.3	71.6
Q3	1.7	54.8	74.2	51.9	69.3
Q4	0.5	54.2	74.3	52.7	70.4
2007 Q1	0.4	52.9	74.3	50.9	70.8
Q2	0.4	54.3	74.6	51.4	70.1
Q3	0.3	55.6	79.3	52.3	74.1
Q4	0.3	56.5	80.7	51.5	73.3
2008 Q1	0.3	59.6	82.3	52.0	71.9
2006 Nov	0.1	18.2	24.8		
Dec	0.1	17.8	24.9		
2007 Jan	0.1	17.7	24.4		
Feb	0.1	17.3	24.5		
Mar	0.2	17.9	25.4		
Apr	0.1	17.9	24.4		
May	0.1	18.0	24.9		
Jun	0.1	18.4	25.3		
Jul	0.1	18.6	26.4		
Aug	0.1	18.6	26.2		
Sep	0.1	18.5	26.6		
Oct	0.1	18.8	26.8		
Nov	0.1	19.3	27.3		
Dec	0.1	18.5	26.5		
2008 Jan	0.1	19.6	27.6		
Feb	0.1	20.0	27.6		
Mar	0.1	19.9	27.1		
Apr	0.1	20.7	28.3		
Percentage change, latest 3 months compared with:					
Previous 3 months					
	0.0	5.6	2.1		
Same 3 months last year					
	-25.0	14.1	11.7		
Percentage latest quarter compared with:					
Previous quarter					
	0.0	5.5	2.0	1.0	-1.9
Same quarter last year					
	-25.0	12.7	10.8	2.2	1.6

Trade with EU and non-EU countries excluding MTIC fraud adjustments

Quarter/ Year	£ billion			
	Current price	Current price	Current price	Current price
	Total EU exports less MTIC adj'ment	Total non-EU exports less MTIC adj'ment	Total EU imports less MTIC adj'ment	Total non-EU imports less MTIC adj'ment
	CLAQ	CLAR	CLAS	CLAT
2000	109.1	76.0	114.5	103.7
2001	106.9	75.2	119.3	103.9
2002	102.7	72.4	124.8	97.9
2003	106.1	77.6	132.2	100.3
2004	109.0	79.3	138.9	110.2
2005	116.3	84.0	147.1	122.0
2006	132.5	88.3	161.6	136.7
2007	126.6	92.7	168.2	140.7
2004 Q1	26.4	19.2	33.8	25.7
Q2	26.6	19.8	34.6	27.0
Q3	27.6	20.0	34.6	28.5
Q4	28.4	20.3	35.9	29.0
2005 Q1	28.0	19.6	35.8	28.0
Q2	27.6	21.0	35.6	29.3
Q3	29.6	21.5	37.1	31.9
Q4	31.1	21.9	38.6	32.8
2006 Q1	32.8	22.0	40.0	34.1
Q2	34.1	22.9	41.4	34.3
Q3	33.2	21.5	40.1	34.1
Q4	32.3	21.8	40.0	34.3
2007 Q1	30.7	22.1	40.6	33.8
Q2	30.7	23.6	40.9	33.7
Q3	32.3	23.3	42.9	36.4
Q4	32.8	23.7	43.8	36.9
2008 Q1	34.3	25.3	44.8	37.5
Percentage change, latest quarter on previous quarter:				
	4.6	6.8	2.3	1.6
Percentage change, latest quarter on same quarter last year:				
	11.7	14.5	10.3	10.9

The adjustments to trade in goods relate only to part of the carousel version of VAT MTIC fraud. This fraud leads to under recording of imports as fraudsters import goods from the EU, which they then sell on before disappearing without paying VAT on that sale. The goods are eventually exported. Such exports are declared and are therefore already reflected in the UK's trade in goods statistics.

HM Revenue & Customs New Export System

2. HM Revenue & Customs New Export System (NES), which replaced manual (paper) Customs declarations with electronic submissions from the beginning of 2003, requires electronic messages from the trade once the goods have been exported in order to provide the departure date. In the absence of those messages being input initially, some non-EU exports had been allocated to the incorrect month. This was addressed by HMRC implementing a change to the processing rules. Because of these problems, ONS made adjustments to the trade statistics to better reflect the flow of exports to non-EU countries during the period January-September 2003.

Hurricane Katrina

3. The August 2005 estimate was affected by a downward adjustment to services data of £1.9 billion to account for the estimated payment of claims by Lloyd's of London arising from the effects of Hurricane Katrina.

Exports of insurance services are measured as total actual premiums earned plus total premium supplements minus the total claims due minus the change in the equalisation reserves. This means that claims for catastrophic events such as Hurricane Katrina should be recorded when the event to which they relate occurs rather than when cash is actually paid to the claimant. Most insurers have equalisation reserves which are drawn on when these types of claims occur so the effects of large claims due are offset by the changes in these reserves. However a large proportion of the claims for damages caused by Hurricane Katrina on UK insurers are on Lloyd's of London which does not have any equalisation reserves. This means that the effect of these large claims is to reduce significantly UK exports of insurance services in August 2005, when Hurricane Katrina occurred.

Price Indices

4. The implied price deflators derived by comparing current to cvm data are not the same as the price indices published in this release because the former are current weighted while the latter are base (2003) weighted.

EU enlargement

5. Two more countries joined the EU from 1 January 2007. These countries are Bulgaria and Romania. In addition, the coverage of EMU countries was extended to include Slovenia. In order to enable users to make long-run comparisons, data for the new definition EU and non-EU have been produced from January 1998 onwards for value, and from January 1999 onwards for volume and price indices. At the same time data for the old definitions will no longer be maintained. There are additional series for country groupings on the old definitions.

From January 2008, the coverage of EMU countries has been extended to cover Cyprus and Malta.

Some EU and non EU breakdowns of commodity data for Chained Volume Measures which are available from the Statbase service may be less reliable than the current price data. Please consult Caroline Lakin on 020 7014 2020 if you are considering using them.

Classifications and definitions

6. The Overseas Trade Statistics (OTS), on which the trade data are based, have been compiled under the United Nations Standard International Trade Classification Revision 4 (SITC R4) from January 2007 but the data have been converted back to SITC R3 for this release and the Monthly Review of External Trade Statistics (MRETS) publication in order to help users to compare data over time. There are some discontinuities at detailed levels, particularly between capital and intermediate goods where some products are allocated from January 2007 to intermediate goods rather than capital goods as done previously. It is also possible that volume and price changes between 2006 and 2007 may be less reliable than usual.

BACKGROUND NOTES

1. A Summary Quality Report for this First Release and associated data can be found on the National Statistics website at:
<http://www.statistics.gov.uk/CCI/article.asp?ID=1723>.

A paper entitled *Statistics on Trade in Goods* (GSS Methodological Series No. 36) describing the basis on which trade in goods statistics are compiled and the methodology employed to derive volume and price indices is available on the National Statistics website:
<http://www.statistics.gov.uk/StatBase/Product.asp?vlnk=14943>.

2. **Status of figures and planned future revisions**

Trade in goods figures for the most recent months are provisional and subject to revision in the light of (a) late data from HM Revenue & Customs, revisions to trade prices and revised estimates of trading associated with VAT MTIC fraud, and (b) revisions to seasonal adjustment factors which are re-estimated every month.

Trade in services estimates have been derived from a number of monthly and quarterly sources. For components where no monthly data are available, estimates have been derived on the basis of recent trends. The results should be used with appropriate caution, as they are therefore likely to be less reliable than those for trade in goods. More details of the data sources, estimation methodology and reliability of the monthly estimates of trade in services were set out in *Economic Trends* (November 1996 and September 1997).

3. Revisions to data provide one indication of the reliability of key indicators. The table below show summary information on the size and direction of the revisions which have been made to the data covering a five year period. A statistical test has been applied to the average revision to find out if it is statistically significantly different from zero. An asterisk (*) shows that the test is significant. An article explaining the past revisions performance for UK Trade statistics and what is being done to improve the first published estimates was published on 9 February 2005 at <http://www.statistics.gov.uk/cci/article.asp?id=1063>.

The table covers estimates of UK trade first published from March 2002 (for January 2002) to February 2007 (December 2006). A spreadsheet giving these estimates and the calculations behind the averages in the table is available on the National Statistics website at <http://www.statistics.gov.uk/StatBase/Product.asp?vlnk=1119>.

£ million

	Value in latest period	Revisions between first publication and estimates twelve months later	
		Average over the last 5 years (mean revision)	Average over the last 5 years without regard to sign (average absolute revision)
Total trade exports (IKBH)	32769	1000*	1030
Total trade imports (IKBI)	37094	1128*	1176
Total trade balance (IKBJ)	-4325	-128	457

An article analysing past revisions to quarterly balance of payments current account data was published in the May 2007 edition of *Economic & Labour Market Review*. It is available on the National Statistics website at:

http://www.statistics.gov.uk/elmr/05_07/downloads/ELMR_May07.pdf.

4. More information about revisions material in First Releases can be found on the National Statistics website:
<http://www.statistics.gov.uk/cci/article.asp?ID=793>.
5. Complete runs of series in this Release are available to download free of charge at <http://www.statistics.gov.uk/timeseries>. Alternatively, for low-cost tailored data call Online Services on 01329 444366 or email statbase@statistics.gov.uk. The Time Series Data service provides access to additional data via the following electronic publications:
 - supplementary data for this First Release – *Monthly Review of External Trade Statistics – Business Monitor MM24*;
 - quarterly data analysed by industry according to the *Standard Industrial Classification - UK Trade in Goods analysed in terms of industries - Business Monitor MQ10*.
6. *MM24* and *MQ10* are also available free of charge as PDF files on the National Statistics website (www.statistics.gov.uk/bop). Details of the policy governing the release of new data are available from the press office. Also available is a list of the names of those given pre-publication access to the contents of this release.
7. ONS delivered Q1 2008 current account estimates at the end of May 2008 to Eurostat solely for them to estimate aggregate euro-indicators. These estimates included the trade in goods figures in the previous First Release and modelled estimates for the other components of the current account. The same approach will be followed for each quarterly euro-indicator delivery.
8. Details of the policy governing the release of new data are available from the press office. Also available is a list of the names of those given pre-publication access to the contents of this release.
9. **National Statistics** are produced to high professional standards set out in the National Statistics Code of Practice. They undergo regular quality assurance reviews to ensure that they meet customer needs. They are produced free from any political interference. © Crown Copyright 2008.

Index to tables

Contents

- 1 Value of UK trade in goods and services
- 2 UK trade in goods by area
- 3 Volume and price indices (trade in goods)
- 4 Growth rates for volume and price indices
- 5 Volume indices with countries inside and outside the EU (trade in goods)
- 6 Price indices with countries inside and outside the EU (trade in goods)
- 7 Trade in oil
- 8 Value of trade in goods by commodity
- 9 Volume indices (trade in goods) by commodity
- 10 Price indices (trade in goods) by commodity
- 11 Trade in goods with selected EU trading partners
- 12 Trade in goods with countries outside the EU
- 13R Summary of revisions

1 VALUE OF UK TRADE IN GOODS AND SERVICES

Balance of Payments basis

£ million seasonally adjusted

	Total trade			Trade in goods			Oil			Trade in goods excluding oil		
	Exports	Imports	Balance	Exports	Imports	Balance	Exports	Imports	Balance	Exports	Imports	Balance
	IKBH	IKBI	IKBJ	BOKG	BOKH	BOKI	ELBL	ENXO	ENXQ	ELBM	ENXP	BQKH
2005	326 790	370 968	-44 178	211 608	280 397	-68 789	19 794	21 989	-2 195	191 814	258 408	-66 594
2006	370 788	417 320	-46 532	243 631	321 186	-77 555	23 274	26 706	-3 432	220 357	294 480	-74 123
2007	359 221	410 286	-51 065	220 797	310 312	-89 515	22 764	26 689	-3 925	198 033	283 623	-85 590
2006 Q3	88 394	100 206	-11 812	56 498	75 963	-19 465	5 915	7 225	-1 310	50 583	68 738	-18 155
Q4	87 208	98 752	-11 544	54 651	74 771	-20 120	5 126	5 876	-750	49 525	68 895	-19 370
2007 Q1	87 107	99 465	-12 358	53 306	74 752	-21 446	4 774	5 560	-786	48 532	69 192	-20 660
Q2	89 228	99 905	-10 677	54 681	74 989	-20 308	5 669	5 906	-237	49 012	69 083	-20 071
Q3	90 765	104 791	-14 026	55 960	79 578	-23 618	5 850	7 101	-1 251	50 110	72 477	-22 367
Q4	92 121	106 125	-14 004	56 850	80 993	-24 143	6 471	8 122	-1 651	50 379	72 871	-22 492
2008 Q1	95 590	108 471	-12 881	59 807	82 527	-22 720	7 041	8 146	-1 105	52 766	74 381	-21 615
2007 Nov	31 104	35 698	-4 594	19 389	27 440	-8 051	2 163	2 939	-776	17 226	24 501	-7 275
Dec	30 369	35 083	-4 714	18 561	26 617	-8 056	2 252	2 549	-297	16 309	24 068	-7 759
2008 Jan	31 515	36 337	-4 822	19 721	27 629	-7 908	2 221	2 705	-484	17 500	24 924	-7 424
Feb	31 983	36 289	-4 306	20 046	27 711	-7 665	2 365	2 553	-188	17 681	25 158	-7 477
Mar	32 092	35 845	-3 753	20 040	27 187	-7 147	2 455	2 888	-433	17 585	24 299	-6 714
Apr	32 769	37 094	-4 325	20 779	28 373	-7 594	2 492	2 851	-359	18 287	25 522	-7 235
Percentage change, latest month compared with:												
Previous month	2.1	3.5		3.7	4.4		1.5	-1.3		4.0	5.0	
3 months ended:												
2007 Apr	87 696	99 554	-11 858	53 493	74 705	-21 212	5 155	5 657	-502	48 338	69 048	-20 710
2008 Jan	92 988	107 118	-14 130	57 671	81 686	-24 015	6 636	8 193	-1 557	51 035	73 493	-22 458
2008 Apr	96 844	109 228	-12 384	60 865	83 271	-22 406	7 312	8 292	-980	53 553	74 979	-21 426
Percentage change, latest 3 months compared with:												
Previous 3 months	4.1	2.0		5.5	1.9		10.2	1.2		4.9	2.0	
Same 3 months last year	10.4	9.7		13.8	11.5		41.8	46.6		10.8	8.6	
	Erratics ¹			Trade in goods excluding erratics			Trade in goods excluding oil and erratics			Trade in services		
	Exports	Imports	Balance	Exports	Imports	Balance	Exports	Imports	Balance	Exports	Imports	Balance
	BPAL	BQBB	BQKW	BPAO	BQBE	BPBM	BPBL	BQBG	BPAP	IKBB	IKBC	IKBD
2005	12 458	13 009	-551	199 150	267 388	-68 238	179 356	245 399	-66 043	115 182	90 571	24 611
2006	12 310	15 400	-3 090	231 321	305 786	-74 465	208 047	279 080	-71 033	127 157	96 134	31 023
2007	13 031	14 357	-1 326	207 766	295 955	-88 189	185 002	269 266	-84 264	138 424	99 974	38 450
2006 Q3	2 733	3 885	-1 152	53 765	72 078	-18 313	47 850	64 853	-17 003	31 896	24 243	7 653
Q4	3 315	3 923	-608	51 336	70 848	-19 512	46 210	64 972	-18 762	32 557	23 981	8 576
2007 Q1	3 000	3 895	-895	50 306	70 857	-20 551	45 532	65 297	-19 765	33 801	24 713	9 088
Q2	3 686	3 466	220	50 995	71 523	-20 528	45 326	65 617	-20 291	34 547	24 916	9 631
Q3	3 136	3 703	-567	52 824	75 875	-23 051	46 974	68 774	-21 800	34 805	25 213	9 592
Q4	3 209	3 293	-84	53 641	77 700	-24 059	47 170	69 578	-22 408	35 271	25 132	10 139
2008 Q1	3 250	3 637	-387	56 557	78 890	-22 333	49 516	70 744	-21 228	35 783	25 944	9 839
2007 Nov	1 096	1 188	-92	18 293	26 252	-7 959	16 130	23 313	-7 183	11 715	8 258	3 457
Dec	997	913	84	17 564	25 704	-8 140	15 312	23 155	-7 843	11 808	8 466	3 342
2008 Jan	999	1 239	-240	18 722	26 390	-7 668	16 501	23 685	-7 184	11 794	8 708	3 086
Feb	1 154	1 432	-278	18 892	26 279	-7 387	16 527	23 726	-7 199	11 937	8 578	3 359
Mar	1 097	966	131	18 943	26 221	-7 278	16 488	23 333	-6 845	12 052	8 658	3 394
Apr	1 177	1 425	-248	19 602	26 948	-7 346	17 110	24 097	-6 987	11 990	8 721	3 269
Percentage change, latest month compared with:												
Previous month	7.3	47.5		3.5	2.8		3.8	3.3		-0.5	0.7	
3 months ended:												
2007 Apr	3 596	3 764	-168	49 897	70 941	-21 044	44 742	65 284	-20 542	34 203	24 849	9 354
2008 Jan	3 092	3 340	-248	54 579	78 346	-23 767	47 943	70 153	-22 210	35 317	25 432	9 885
2008 Apr	3 428	3 823	-395	57 437	79 448	-22 011	50 125	71 156	-21 031	35 979	25 957	10 022
Percentage change, latest 3 months compared with:												
Previous 3 months	10.9	14.5		5.2	1.4		4.6	1.4		1.9	2.1	
Same 3 months last year	-4.7	1.6		15.1	12.0		12.0	9.0		5.2	4.5	

1 These are defined as ships, aircraft, precious stones and silver

† Earliest date for revisions to trade in goods is January 2007 and to trade in services is January 2008.

2 UK TRADE IN GOODS BY AREA

Balance of Payments basis

£ million seasonally adjusted

	EMU members ¹			Total EU (25) ²			Total EU (27) ³			Non-EU ⁴			Total		
	Exports	Imports	Balance	Exports	Imports	Balance	Exports	Imports	Balance	Exports	Imports	Balance	Exports	Imports	Balance
	QAKW	QAKX	QAKY	EGAE	EGAF	EGAG	LGCK	LGDC	LGCG	LGDY	LGER	LGDT	BOKG	BOKH	BOKI
2005	109 506	139 741	-30 235	120 619	157 391	-36 772	121 486	158 363	-36 877	90 122	122 034	-31 912	211 608	280 397	-68 789
2006	136 057	157 944	-21 887	151 479	183 370	-31 891	152 353	184 440	-32 087	91 278	136 746	-45 468	243 631	321 186	-77 555
2007	114 140	148 219	-34 079	126 917	168 440	-41 523	127 788	169 612	-41 824	93 009	140 700	-47 691	220 797	310 312	-89 515
2005 Q4	30 014	37 996	-7 982	33 185	42 751	-9 566	33 400	43 000	-9 600	24 014	32 792	-8 778	57 414	75 792	-18 378
2006 Q1	36 506	42 654	-6 148	40 754	49 682	-8 928	40 960	49 942	-8 982	23 774	34 068	-10 294	64 734	84 010	-19 276
Q2	38 978	43 976	-4 998	43 783	51 905	-8 122	43 990	52 152	-8 162	23 758	34 290	-10 532	67 748	86 442	-18 694
Q3	31 253	36 175	-4 922	34 477	41 593	-7 116	34 709	41 859	-7 150	21 789	34 104	-12 315	56 498	75 963	-19 465
Q4	29 320	35 139	-5 819	32 465	40 190	-7 725	32 694	40 487	-7 793	21 957	34 284	-12 327	54 651	74 771	-20 120
2007 Q1	27 789	35 930	-8 141	30 885	40 734	-9 849	31 099	40 996	-9 897	22 207	33 756	-11 549	53 306	74 752	-21 446
Q2	27 724	36 211	-8 487	30 801	40 963	-10 162	31 015	41 290	-10 275	23 666	33 699	-10 033	54 681	74 989	-20 308
Q3	29 075	37 775	-8 700	32 355	42 907	-10 552	32 574	43 204	-10 630	23 386	36 374	-12 988	55 960	79 578	-23 618
Q4	29 552	38 303	-8 751	32 876	43 836	-10 960	33 100	44 122	-11 022	23 750	36 871	-13 121	56 850	80 993	-24 143
2008 Q1	30 797	38 942	-8 145	34 195	44 809	-10 614	34 462	45 071	-10 609	25 345	37 456	-12 111	59 807	82 527	-22 720
2006 Oct	9 962	11 604	-1 642	10 985	13 353	-2 368	11 061	13 437	-2 376	7 332	11 299	-3 967	18 393	24 736	-6 343
Nov	9 608	11 523	-1 915	10 710	13 208	-2 498	10 790	13 292	-2 502	7 533	11 695	-4 162	18 323	24 987	-6 664
Dec	9 750	12 012	-2 262	10 770	13 629	-2 859	10 843	13 758	-2 915	7 092	11 290	-4 198	17 935	25 048	-7 113
2007 Jan	9 489	11 920	-2 431	10 510	13 536	-3 026	10 571	13 596	-3 025	7 270	10 975	-3 705	17 841	24 571	-6 730
Feb	9 229	11 876	-2 647	10 294	13 462	-3 168	10 366	13 555	-3 189	7 075	11 050	-3 975	17 441	24 605	-7 164
Mar	9 071	12 134	-3 063	10 081	13 736	-3 655	10 162	13 845	-3 683	7 862	11 731	-3 869	18 024	25 576	-7 552
Apr	9 023	11 950	-2 927	9 995	13 378	-3 383	10 067	13 481	-3 414	7 961	11 043	-3 082	18 028	24 524	-6 496
May	9 482	12 199	-2 717	10 553	13 856	-3 303	10 623	13 962	-3 339	7 496	11 042	-3 546	18 119	25 004	-6 885
Jun	9 219	12 062	-2 843	10 253	13 729	-3 476	10 325	13 847	-3 522	8 209	11 614	-3 405	18 534	25 461	-6 927
Jul	9 670	12 521	-2 851	10 731	14 172	-3 441	10 800	14 278	-3 478	7 850	12 262	-4 412	18 650	26 540	-7 890
Aug	9 671	12 681	-3 010	10 787	14 355	-3 568	10 863	14 455	-3 592	7 857	11 853	-3 996	18 720	26 308	-7 588
Sep	9 734	12 573	-2 839	10 837	14 380	-3 543	10 911	14 471	-3 560	7 679	12 259	-4 580	18 590	26 730	-8 140
Oct	9 656	12 466	-2 810	10 824	14 321	-3 497	10 901	14 422	-3 521	7 999	12 514	-4 515	18 900	26 936	-8 036
Nov	10 052	12 909	-2 857	11 147	14 797	-3 650	11 228	14 894	-3 666	8 161	12 546	-4 385	19 389	27 440	-8 051
Dec	9 844	12 928	-3 084	10 905	14 718	-3 813	10 971	14 806	-3 835	7 590	11 811	-4 221	18 561	26 617	-8 056
2008 Jan	10 325	13 113	-2 788	11 437	15 085	-3 648	11 528	15 175	-3 647	8 193	12 454	-4 261	19 721	27 629	-7 908
Feb	10 242	13 012	-2 770	11 367	14 948	-3 581	11 451	15 037	-3 586	8 595	12 674	-4 079	20 046	27 711	-7 665
Mar	10 230	12 817	-2 587	11 391	14 776	-3 385	11 483	14 859	-3 376	8 557	12 328	-3 771	20 040	27 187	-7 147
Apr	10 906	13 362	-2 456	12 038	15 447	-3 409	12 127	15 536	-3 409	8 652	12 837	-4 185	20 779	28 373	-7 594
Percentage change on previous month:															
2008 Apr	6.6	4.3		5.7	4.5		5.6	4.6		1.1	4.1		3.7	4.4	
3 months ended:															
2007 Apr	27 323	35 960	-8 637	30 370	40 576	-10 206	30 595	40 881	-10 286	22 898	33 824	-10 926	53 493	74 705	-21 212
2008 Jan	30 221	38 950	-8 729	33 489	44 600	-11 111	33 727	44 875	-11 148	23 944	36 811	-12 867	57 671	81 686	-24 015
2008 Apr	31 378	39 191	-7 813	34 796	45 171	-10 375	35 061	45 432	-10 371	25 804	37 839	-12 035	60 865	83 271	-22 406
Percentage change, latest 3 months compared with:															
Previous 3 months	3.8	0.6		3.9	1.3		4.0	1.2		7.8	2.8		5.5	1.9	
Same 3 months last year	14.8	9.0		14.6	11.3		14.6	11.1		12.7	11.9		13.8	11.5	

1 Austria, Belgium, Cyprus, Finland, France, Germany, Greece, Irish Republic, Italy, Luxembourg, Malta, Netherlands, Portugal, Slovenia and Spain

† Earliest date for revisions to trade in goods is January 2007.

2 EMU Members plus Czech Republic, Denmark, Estonia, Hungary, Latvia, Lithuania, Poland, Slovakia and Sweden

3 EU (25) plus Bulgaria and Romania

4 Total less EU (27)

3 VOLUME AND PRICE INDICES (TRADE IN GOODS)¹

Balance of Payments basis

Indices 2003=100

	Volume (seasonally adjusted)						Price index (not seasonally adjusted)								
	Total		Total excluding oil		Total excluding oil and erratics ²		Total			Total excluding oil			Total excluding oil & erratics ²		
	Exports	Imports	Exports	Imports	Exports	Imports	Exports	Imports	Terms of trade ³	Exports	Imports	Terms of trade ³	Exports	Imports	
															BQKU
2005	111.0	114.7	112.5	114.5	113.1	115.3	104.3	103.7	100.6	99.9	100.7	99.2	100.1	100.8	
2006	125.2	127.9	127.8	128.3	129.7	129.0	107.5	107.5	100.0	101.2	103.1	98.2	101.4	103.2	
2007	110.1	122.2	111.8	122.1	112.0	122.5	108.8	109.0	99.8	102.1	104.2	98.0	102.5	104.7	
2005 Q4	120.2	121.8	122.5	121.8	123.8	122.9	106.3	105.9	100.4	100.6	102.1	98.5	100.9	102.1	
2006 Q1	134.6	133.8	137.9	134.2	141.4	135.7	108.0	107.3	100.7	102.0	103.0	99.0	102.1	102.9	
Q2	139.7	138.6	143.2	139.7	145.6	141.3	109.1	108.2	100.8	101.8	103.1	98.7	102.0	103.1	
Q3	113.7	119.8	115.6	119.6	117.5	119.6	108.2	108.1	100.1	100.9	103.1	97.9	101.3	103.3	
Q4	112.9	119.6	114.5	119.5	114.5	119.3	104.8	106.5	98.4	100.0	103.1	97.0	100.3	103.4	
2007 Q1	108.9	120.1	110.5	119.7	111.2	119.6	105.5	106.6	99.0	101.2	103.7	97.6	101.5	104.0	
Q2	109.9	118.8	111.3	119.0	110.4	119.5	107.8	108.6	99.3	101.5	104.3	97.3	101.8	104.7	
Q3	111.8	125.6	113.6	125.5	114.2	125.7	108.8	109.0	99.8	101.6	103.9	97.8	102.0	104.4	
Q4	109.9	124.3	111.8	124.2	112.1	125.2	113.3	111.8	101.3	104.0	105.0	99.0	104.6	105.6	
2008 Q1	110.8	121.8	113.0	122.3	113.4	122.8	119.5	117.6	101.6	108.5	109.7	98.9	109.2	110.2	
2006 Nov	113.8	119.3	115.6	118.8	115.1	118.3	104.7	106.5	98.3	100.1	103.4	96.8	100.4	103.6	
Dec	112.0	120.8	113.5	121.5	114.1	121.2	104.6	106.2	98.5	99.6	102.6	97.1	99.9	102.9	
2007 Jan	109.7	118.9	111.4	117.5	112.0	117.9	104.4	105.4	99.1	100.8	103.1	97.8	101.0	103.4	
Feb	106.9	119.4	108.3	119.6	109.4	118.9	105.2	106.2	99.1	101.1	103.3	97.9	101.4	103.7	
Mar	110.2	122.1	111.9	122.0	112.3	121.9	106.8	108.2	98.7	101.8	104.6	97.3	102.1	105.0	
Apr	109.6	116.7	110.6	116.4	106.8	117.6	107.2	108.1	99.2	101.4	104.0	97.5	101.7	104.4	
May	109.1	118.4	110.7	119.0	111.1	118.6	107.8	108.7	99.2	101.7	104.6	97.2	102.0	105.0	
Jun	111.1	121.3	112.7	121.7	113.3	122.3	108.3	109.0	99.4	101.4	104.2	97.3	101.8	104.7	
Jul	112.3	125.9	113.9	126.4	113.8	126.5	108.3	108.9	99.4	100.9	103.6	97.4	101.3	104.1	
Aug	113.3	124.9	116.0	124.9	116.7	125.2	108.1	108.5	99.6	101.2	103.8	97.5	101.6	104.2	
Sep	109.7	125.9	110.8	125.3	112.0	125.4	110.0	109.5	100.5	102.7	104.3	98.5	103.2	104.8	
Oct	111.2	125.7	112.9	125.4	113.0	125.9	111.3	110.3	100.9	103.1	104.3	98.8	103.7	104.8	
Nov	112.2	126.2	114.4	125.8	114.7	126.3	113.4	111.8	101.4	103.8	104.8	99.0	104.4	105.4	
Dec	106.3	121.0	108.0	121.3	108.5	123.3	115.3	113.2	101.9	105.2	105.9	99.3	105.8	106.5	
2008 Jan	110.6	123.4	112.9	124.0	113.8	124.3	117.8	116.1	101.5	107.3	108.5	98.9	108.0	109.1	
Feb	111.8	123.1	113.9	123.7	113.8	123.2	118.8	117.4	101.2	108.3	109.8	98.6	109.0	110.3	
Mar	110.1	118.8	112.2	119.3	112.5	121.0	121.8	119.3	102.1	109.8	110.7	99.2	110.5	111.3	
Apr	111.6	122.1	113.8	123.1	113.2	122.6	124.5	121.8	102.2	111.6	112.3	99.4	112.3	113.0	
Percentage change, latest month compared with:															
Previous month	1.4	2.8	1.4	3.2	0.6	1.3	2.2	2.1		1.6	1.4		1.6	1.5	
3 months ended:															
2007 Apr	108.9	119.4	110.3	119.3	109.5	119.5	106.4	107.5	99.0	101.4	104.0	97.6	101.7	104.4	
2008 Jan	109.7	123.5	111.8	123.7	112.3	124.6	115.5	113.7	101.6	105.4	106.4	99.1	106.1	107.0	
2008 Apr	111.2	121.3	113.3	122.0	113.2	122.3	121.7	119.5	101.8	109.9	110.9	99.1	110.6	111.5	
Percentage change, latest 3 months compared with:															
Previous 3 months	1.3	-1.8	1.4	-1.3	0.7	-1.9	5.4	5.1		4.2	4.3		4.3	4.2	
Same 3 months last year	2.1	1.6	2.8	2.3	3.3	2.3	14.4	11.2		8.3	6.7		8.7	6.9	

1 These are provisional estimates subject to fluctuations when new or amended data become available.

2 These are defined as ships, aircraft, precious stones and silver.

3 Export price index as a percentage of the import price index.

† Earliest date for revisions to trade in goods is January 2007.

4 GROWTH RATES FOR VOLUME AND PRICE INDICES ¹ (TRADE IN GOODS)

Balance of Payments basis

Indices 2003=100

	Volume (seasonally adjusted)						Price index (not seasonally adjusted)					
	Total		Total excluding oil		Total excluding oil and erratics ²		Total		Total excluding oil		Total excluding oil and erratics ²	
	Exports	Imports	Exports	Imports	Exports	Imports	Exports	Imports	Exports	Imports	Exports	Imports
2001	2.2	5.3	2.0	4.7	2.3	4.4	-1.6	-0.9	-1.0	-0.5	-0.9	-0.6
2002	-1.2	4.7	-0.9	5.5	-1.5	5.5	-0.1	-2.5	-0.1	-3.2	0.4	-2.9
2003	-0.3	1.8	0.1	1.4	-1.8	1.8	1.8	-0.7	1.3	-1.1	2.4	-0.9
2004	1.5	6.9	2.0	6.3	2.0	6.8	0.3	-0.5	-1.1	-1.3	-1.0	-1.0
2005	9.4	7.3	10.3	7.7	10.9	8.0	4.0	4.2	1.0	2.0	1.1	1.8
2006	12.8	11.5	13.6	12.1	14.7	11.9	3.1	3.7	1.3	2.4	1.3	2.4
2007	-12.1	-4.5	-12.5	-4.8	-13.6	-5.0	1.2	1.4	0.9	1.1	1.1	1.5
2005 Q4	5.2	3.8	5.0	4.1	5.7	4.5	0.5	0.7	0.9	1.1	0.9	1.0
2006 Q1	12.0	9.9	12.6	10.2	14.2	10.4	1.6	1.3	1.4	0.9	1.2	0.8
Q2	3.8	3.6	3.8	4.1	3.0	4.1	1.0	0.8	-0.2	0.1	-0.1	0.2
Q3	-18.6	-13.6	-19.3	-14.4	-19.3	-15.4	-0.8	-0.1	-0.9	-	-0.7	0.2
Q4	-0.7	-0.2	-1.0	-0.1	-2.6	-0.3	-3.1	-1.5	-0.9	-	-1.0	0.1
2007 Q1	-3.5	0.4	-3.5	0.2	-2.9	0.3	0.7	0.1	1.2	0.6	1.2	0.6
Q2	0.9	-1.1	0.7	-0.6	-0.7	-0.1	2.2	1.9	0.3	0.6	0.3	0.7
Q3	1.7	5.7	2.1	5.5	3.4	5.2	0.9	0.4	0.1	-0.4	0.2	-0.3
Q4	-1.7	-1.0	-1.6	-1.0	-1.8	-0.4	4.1	2.6	2.4	1.1	2.5	1.1
2008 Q1	0.8	-2.0	1.1	-1.5	1.2	-1.9	5.5	5.2	4.3	4.5	4.4	4.4
Monthly:												
2006 Nov	0.7	0.5	1.1	0.4	0.7	-0.1	-0.4	-0.2	-0.2	-	-0.2	-0.1
Dec	-1.6	1.3	-1.8	2.3	-0.9	2.5	-0.1	-0.3	-0.5	-0.8	-0.5	-0.7
2007 Jan	-2.1	-1.6	-1.9	-3.3	-1.8	-2.7	-0.2	-0.8	1.2	0.5	1.1	0.5
Feb	-2.6	0.4	-2.8	1.8	-2.3	0.8	0.8	0.8	0.3	0.2	0.4	0.3
Mar	3.1	2.3	3.3	2.0	2.7	2.5	1.5	1.9	0.7	1.3	0.7	1.3
Apr	-0.5	-4.4	-1.2	-4.6	-4.9	-3.5	0.4	-0.1	-0.4	-0.6	-0.4	-0.6
May	-0.5	1.5	0.1	2.2	4.0	0.9	0.6	0.6	0.3	0.6	0.3	0.6
Jun	1.8	2.4	1.8	2.3	2.0	3.1	0.5	0.3	-0.3	-0.4	-0.2	-0.3
Jul	1.1	3.8	1.1	3.9	0.4	3.4	-	-0.1	-0.5	-0.6	-0.5	-0.6
Aug	0.9	-0.8	1.8	-1.2	2.5	-1.0	-0.2	-0.4	0.3	0.2	0.3	0.1
Sep	-3.2	0.8	-4.5	0.3	-4.0	0.2	1.8	0.9	1.5	0.5	1.6	0.6
Oct	1.4	-0.2	1.9	0.1	0.9	0.4	1.2	0.7	0.4	-	0.5	-
Nov	0.9	0.4	1.3	0.3	1.5	0.3	1.9	1.4	0.7	0.5	0.7	0.6
Dec	-5.3	-4.1	-5.6	-3.6	-5.4	-2.4	1.7	1.3	1.3	1.0	1.3	1.0
2008 Jan	4.0	2.0	4.5	2.2	4.9	0.8	2.2	2.6	2.0	2.5	2.1	2.4
Feb	1.1	-0.2	0.9	-0.2	-	-0.9	0.8	1.1	0.9	1.2	0.9	1.1
Mar	-1.5	-3.5	-1.5	-3.6	-1.1	-1.8	2.5	1.6	1.4	0.8	1.4	0.9
Apr	1.4	2.8	1.4	3.2	0.6	1.3	2.2	2.1	1.6	1.4	1.6	1.5
3 month on 3 month comparison:												
2006 Nov	-6.1	-4.3	-6.4	-4.7	-7.4	-5.2	-3.2	-1.6	-1.0	0.1	-1.0	0.2
Dec	-0.7	-0.1	-1.0	-	-2.6	-0.2	-3.1	-1.5	-0.9	-	-1.0	0.1
2007 Jan	-1.9	0.1	-2.1	-	-3.0	-0.2	-1.9	-1.1	-0.3	-	-0.3	0.1
Feb	-3.3	0.7	-3.3	1.0	-3.0	0.9	-0.6	-0.7	0.2	-0.3	0.2	-0.2
Mar	-3.5	0.4	-3.4	0.1	-2.9	0.2	0.6	0.1	1.2	0.5	1.2	0.6
Apr	-2.6	-0.2	-2.8	0.1	-3.7	0.3	1.8	1.4	1.3	0.9	1.3	1.0
May	0.1	-0.5	-	-0.3	-1.6	-	2.4	2.3	1.1	1.4	1.2	1.4
Jun	0.9	-1.1	0.7	-0.6	-0.7	-0.1	2.2	1.9	0.3	0.6	0.3	0.6
Jul	1.8	2.1	2.0	2.5	3.0	2.5	1.6	1.3	-0.1	0.2	-	0.2
Aug	2.4	4.2	2.8	4.4	4.1	4.4	0.9	0.4	-0.5	-0.5	-0.4	-0.4
Sep	1.7	5.7	2.0	5.5	3.4	5.2	1.0	0.3	0.1	-0.4	0.2	-0.3
Oct	0.5	3.0	0.7	2.3	1.0	2.5	1.5	0.5	1.0	-	1.1	-
Nov	-1.1	1.5	-1.3	0.9	-1.2	1.0	3.1	1.6	2.0	0.6	2.2	0.6
Dec	-1.7	-1.0	-1.6	-1.1	-1.8	-0.4	4.2	2.6	2.4	1.1	2.5	1.1
2008 Jan	-1.5	-1.6	-1.3	-1.2	-1.4	-0.7	5.2	3.9	3.0	2.2	3.1	2.3
Feb	-1.3	-2.7	-1.0	-2.0	-1.1	-1.8	5.1	4.6	3.6	3.4	3.7	3.5
Mar	0.8	-2.0	1.1	-1.5	1.2	-1.9	5.4	5.2	4.3	4.4	4.3	4.4
Apr	1.3	-1.8	1.4	-1.3	0.7	-1.9	5.4	5.1	4.2	4.3	4.3	4.2

1 These are provisional estimates subject to fluctuations when new or amended data become available.

2 These are defined as ships, aircraft, precious stones and silver.

5 VOLUME INDICES WITH COUNTRIES INSIDE AND OUTSIDE THE EU (TRADE IN GOODS)¹

Balance of Payments basis

Indices 2003=100 seasonally adjusted

	Trade in goods with EU countries ³						Trade in goods with Non-EU countries					
	Total		Total excluding oil		Total excluding oil and erratics ²		Total		Total excluding oil		Total excluding oil & erratics ²	
	Exports	Imports	Exports	Imports	Exports	Imports	Exports	Imports	Exports	Imports	Exports	Imports
	LGCT	LGDL	LKUL	LKVD	SHBS	SHCO	LGEH	LGFA	LKVZ	LKWS	SHDJ	SHED
2005	107.3	115.1	108.6	115.3	108.8	114.8	116.6	114.8	118.2	114.1	119.8	116.8
2006	132.8	132.5	135.6	132.7	137.2	132.6	114.0	123.0	116.3	123.1	118.0	124.5
2007	107.8	117.4	108.9	117.0	109.1	117.1	113.8	129.0	116.2	129.7	116.5	131.6
2005 Q4	118.4	124.6	120.4	124.9	121.3	125.0	123.0	119.1	125.6	118.5	127.7	120.7
2006 Q1	143.9	144.1	147.4	144.4	150.0	144.3	120.8	121.4	124.0	121.2	127.9	123.6
Q2	154.7	152.1	159.8	152.8	162.1	153.4	116.9	122.4	118.4	122.8	119.4	124.2
Q3	118.0	118.9	120.1	119.2	121.5	118.5	107.5	121.7	109.0	121.0	111.3	122.3
Q4	114.4	114.7	115.0	114.4	115.2	114.4	110.8	126.5	113.6	127.3	113.4	127.7
2007 Q1	108.0	115.4	109.1	114.9	108.7	114.7	110.8	126.9	113.0	127.2	115.1	128.1
Q2	105.5	114.2	106.3	113.9	107.1	113.9	116.4	125.3	118.6	126.7	115.6	128.9
Q3	109.9	120.1	110.7	120.0	111.0	120.2	114.9	133.1	117.9	133.7	119.2	134.9
Q4	107.8	119.8	109.4	119.4	109.6	119.7	113.3	130.6	115.4	131.3	116.0	134.4
2008 Q1	105.6	117.5	106.8	117.4	107.1	117.9	118.4	127.4	121.6	129.5	122.7	131.0
2006 Oct	115.2	114.6	115.7	114.2	115.9	114.0	109.7	124.5	112.1	124.7	111.9	125.9
Nov	113.3	112.7	114.2	112.6	114.4	112.5	114.3	128.7	117.4	128.3	115.9	128.5
Dec	114.6	116.8	115.2	116.5	115.3	116.7	108.5	126.4	111.4	128.8	112.4	128.7
2007 Jan	110.1	115.3	111.0	114.4	110.4	115.0	109.6	124.2	112.4	122.6	114.5	123.3
Feb	107.7	114.9	108.2	114.6	108.2	113.9	106.3	125.8	108.9	127.4	111.4	127.5
Mar	106.1	116.0	108.1	115.6	107.6	115.1	116.4	130.8	117.7	131.7	119.5	133.4
Apr	103.5	111.7	103.7	111.0	104.8	111.0	118.3	123.9	120.2	124.5	110.1	128.8
May	108.1	115.4	108.8	115.2	109.3	115.1	110.8	122.8	113.7	124.8	114.1	124.7
Jun	105.0	115.5	106.3	115.4	107.2	115.5	120.1	129.1	121.8	130.9	122.7	133.3
Jul	110.2	119.1	111.2	119.2	111.6	119.2	115.6	135.4	118.0	137.1	117.4	138.7
Aug	110.6	120.8	112.0	120.6	112.4	120.7	117.7	130.5	121.9	131.2	123.4	132.6
Sep	108.8	120.4	109.0	120.3	109.0	120.6	111.5	133.4	113.7	132.7	116.7	133.5
Oct	108.7	119.2	110.7	119.1	110.8	119.6	115.3	134.7	116.6	134.9	116.6	136.7
Nov	109.2	121.1	111.1	120.6	111.2	120.8	116.6	133.1	119.2	133.6	120.1	135.5
Dec	105.5	119.0	106.5	118.6	106.9	118.8	108.0	124.0	110.5	125.5	111.4	131.0
2008 Jan	108.0	120.8	109.8	121.0	109.9	121.7	114.6	127.0	117.4	128.5	119.6	128.8
Feb	105.1	117.2	105.8	117.1	106.0	117.7	121.3	130.9	125.1	133.3	125.4	132.2
Mar	103.7	114.6	104.9	114.1	105.5	114.3	119.2	124.4	122.3	126.7	123.1	131.9
Apr	106.7	118.5	108.0	118.5	106.8	118.5	119.1	127.1	122.7	129.7	123.4	129.3
Percentage change on previous month:												
2008 Apr	2.9	3.4	3.0	3.9	1.2	3.7	-0.1	2.2	0.3	2.4	0.2	-2.0
3 months ended:												
2007 Apr	105.8	114.2	106.7	113.7	106.9	113.3	113.7	126.8	115.6	127.9	113.7	129.9
2008 Jan	107.6	120.3	109.1	120.1	109.3	120.4	113.1	128.0	115.7	129.2	117.0	131.8
2008 Apr	105.2	116.8	106.2	116.6	106.1	116.8	119.9	127.5	123.4	129.9	124.0	131.1
Percentage change, latest 3 months compared with:												
Previous 3 months	-2.2	-2.9	-2.7	-2.9	-3.0	-3.0	6.0	-0.4	6.6	0.5	5.9	-0.5
Same 3 months last year	-0.6	2.2	-0.4	2.5	-0.7	3.1	5.5	0.5	6.7	1.6	9.1	0.9

1 These are provisional estimates subject to fluctuations when new or amended data become available.

† Earliest date for revisions to trade in goods is January 2007.

2 These are defined as ships, aircraft, precious stones and silver.

3 Includes trade with the Canary Islands, French Guiana, Guadeloupe, Martinique and Reunion.

6 PRICE INDICES WITH COUNTRIES INSIDE AND OUTSIDE THE EU (TRADE IN GOODS)¹

Balance of Payments basis

Indices 2003=100 not seasonally adjusted

	Trade in goods with EU countries ³						Trade in goods with Non-EU countries					
	Total		Total excluding oil		Total excluding oil and erratics ²		Total		Total excluding oil		Total excluding oil & erratics ²	
	Exports	Imports	Exports	Imports	Exports	Imports	Exports	Imports	Exports	Imports	Exports	Imports
2005	LGCR	LGDJ	LKUJ	LKVB	SHBQ	SHCM	LGEF	LGEY	LKVX	LKWQ	SHDH	SHEB
	104.6	101.4	99.6	100.3	99.8	100.3	103.7	107.0	100.1	101.2	100.3	101.5
2006	107.9	104.0	100.8	102.5	101.1	102.5	106.7	112.3	101.5	103.9	101.5	104.4
2007	109.2	105.8	101.6	104.1	102.2	104.1	108.1	113.2	102.5	104.2	102.5	105.6
2005 Q4	106.4	102.3	100.0	101.0	100.2	101.0	106.0	110.7	101.4	103.6	101.6	103.8
2006 Q1	108.4	103.1	101.6	101.6	101.8	101.6	107.3	113.0	102.3	104.9	102.2	104.9
Q2	109.6	104.2	101.4	102.4	101.7	102.4	108.2	113.9	102.1	104.2	102.2	104.6
Q3	108.6	104.6	100.6	102.9	100.9	102.9	107.2	112.8	101.2	103.4	101.3	104.0
Q4	105.0	104.2	99.6	103.1	100.1	103.1	104.2	109.6	100.2	103.2	100.3	104.0
2007 Q1	105.4	103.9	100.7	102.9	101.2	102.8	105.3	110.1	101.9	104.6	101.7	105.8
Q2	108.1	105.5	101.0	104.0	101.6	104.0	107.1	112.7	101.9	104.5	101.8	105.9
Q3	109.1	105.8	101.0	104.1	101.6	104.0	108.2	113.2	102.2	103.5	102.2	104.9
Q4	114.2	107.8	103.8	105.5	104.6	105.5	111.8	117.0	104.0	104.1	104.2	105.7
2008 Q1	121.6	112.4	109.5	109.7	110.3	109.6	116.0	124.7	106.6	109.6	106.7	111.3
2006 Oct	105.1	104.2	99.7	103.1	100.1	103.1	104.8	110.1	100.9	104.0	101.0	104.7
Nov	104.9	104.3	99.7	103.2	100.2	103.2	104.1	109.6	100.3	103.5	100.4	104.3
Dec	105.1	104.2	99.5	103.0	99.9	102.9	103.6	109.0	99.4	102.1	99.5	103.0
2007 Jan	104.4	103.1	100.3	102.3	100.8	102.3	104.1	108.3	101.3	104.0	101.1	105.1
Feb	105.1	103.5	100.5	102.5	101.0	102.5	105.1	109.7	101.9	104.3	101.7	105.5
Mar	106.8	105.0	101.2	103.8	101.7	103.7	106.6	112.3	102.5	105.6	102.3	106.9
Apr	107.4	105.0	100.8	103.6	101.4	103.5	106.7	112.2	101.9	104.5	101.8	106.0
May	108.1	105.8	101.2	104.4	101.8	104.3	107.1	112.6	102.0	104.8	101.9	106.2
Jun	108.7	105.8	100.9	104.1	101.5	104.1	107.5	113.3	101.8	104.2	101.7	105.6
Jul	108.8	105.6	100.4	103.8	101.1	103.7	107.4	113.2	101.2	103.1	101.1	104.6
Aug	108.4	105.5	100.7	103.9	101.3	103.8	107.4	112.5	101.7	103.4	101.7	104.7
Sep	110.0	106.4	101.8	104.6	102.4	104.5	109.7	113.8	103.6	103.9	103.8	105.3
Oct	111.7	106.8	102.6	104.7	103.3	104.6	110.3	115.0	103.5	103.5	103.7	105.1
Nov	114.4	107.9	103.7	105.5	104.5	105.5	111.7	116.9	103.6	103.6	103.8	105.3
Dec	116.4	108.8	105.2	106.3	106.0	106.3	113.3	119.0	104.8	105.1	105.1	106.7
2008 Jan	119.3	111.1	107.8	108.5	108.6	108.5	115.1	122.8	106.2	108.5	106.4	110.2
Feb	120.8	112.3	109.2	109.7	110.0	109.6	115.6	124.3	106.6	109.9	106.8	111.6
Mar	124.6	113.8	111.5	110.8	112.3	110.7	117.3	126.9	106.9	110.4	107.0	112.2
Apr	127.9	115.7	113.8	112.4	114.7	112.4	119.0	130.1	107.8	112.1	108.0	114.1
Percentage change on previous month:												
2008 Apr	2.6	1.7	2.1	1.4	2.1	1.5	1.4	2.5	0.8	1.5	0.9	1.7
3 months ended:												
2007 Apr	106.4	104.5	100.8	103.3	101.4	103.2	106.1	111.4	102.1	104.8	101.9	106.1
2008 Jan	116.7	109.3	105.6	106.8	106.4	106.8	113.4	119.6	104.9	105.7	105.1	107.4
2008 Apr	124.4	113.9	111.5	111.0	112.3	110.9	117.3	127.1	107.1	110.8	107.3	112.6
Percentage change, latest 3 months compared with:												
Previous 3 months	6.6	4.3	5.6	3.9	5.6	3.9	3.5	6.3	2.1	4.8	2.1	4.9
Same 3 months last year	16.9	9.0	10.6	7.4	10.8	7.4	10.5	14.1	4.9	5.7	5.2	6.1

1 These are provisional estimates subject to fluctuations when new or amended data become available.

† Earliest date for revisions to trade in goods is January 2007.

2 These are defined as ships, aircraft, precious stones and silver.

3 Includes trade with the Canary Islands, French Guiana, Guadeloupe, Martinique and Reunion.

7 TRADE IN OIL¹

Balance of Payments basis

Seasonally adjusted

	Exports						Imports					
	Balance of Trade in Oil £ million	Crude oil (SITC 333)				Rest of SITC 33 £ million	Total £ million	Crude oil (SITC 333)				Rest of SITC 33 £ million
		Total £ million	£ million	million tonnes	Avg value per tonne £			£ million	million tonnes	Avg value per tonne £		
	ENXQ	ELBL	BQNI	BOQM	BPBN	BOQN	ENXO	BQNJ	BQBH	BQAX	BQAY	
2005	-2 195	19 794	10 948	50.48	217	8 846	21 989	11 212	54.05	207	10 777	
2006	-3 432	23 274	12 890	47.69	270	10 384	26 706	14 272	55.72	256	12 434	
2007	-3 925	22 764	12 634	46.94	269	10 130	26 689	11 419	44.21	258	15 270	
2005 Q4	-715	5 475	2 919	11.49	254	2 556	6 190	3 097	13.16	235	3 093	
2006 Q1	-1 029	5 795	3 409	12.87	265	2 386	6 824	3 439	13.77	250	3 385	
Q2	-343	6 438	3 572	12.61	283	2 866	6 781	3 744	13.95	268	3 037	
Q3	-1 310	5 915	3 111	10.80	288	2 804	7 225	4 175	15.11	276	3 050	
Q4	-750	5 126	2 798	11.41	245	2 328	5 876	2 914	12.89	226	2 962	
2007 Q1	-786	4 774	2 585	11.35	228	2 189	5 560	2 192	10.59	207	3 368	
Q2	-237	5 669	3 164	12.35	256	2 505	5 906	2 265	9.32	243	3 641	
Q3	-1 251	5 850	3 315	11.95	277	2 535	7 101	3 313	12.67	261	3 788	
Q4	-1 651	6 471	3 570	11.29	316	2 901	8 122	3 649	11.63	314	4 473	
2008 Q1	-1 105	7 041	3 808	10.35	368	3 233	8 146	3 860	10.79	358	4 286	
2007 Nov	-776	2 163	1 242	3.92	317	921	2 939	1 313	4.04	325	1 626	
Dec	-297	2 252	1 185	3.56	333	1 067	2 549	1 055	3.25	325	1 494	
2008 Jan	-484	2 221	1 133	3.29	344	1 088	2 705	1 391	4.12	338	1 314	
Feb	-188	2 365	1 329	3.58	371	1 036	2 553	1 090	3.11	350	1 463	
Mar	-433	2 455	1 346	3.48	387	1 109	2 888	1 379	3.56	387	1 509	
Apr	-359	2 492	1 312	3.32	395	1 180	2 851	1 451	3.78	384	1 400	
3 months ended:												
2007 Apr	-502	5 155	2 853	12.09	236	2 302	5 657	2 123	9.75	218	3 534	
2008 Jan	-1 557	6 636	3 560	10.77	331	3 076	8 193	3 759	11.41	329	4 434	
2008 Apr	-980	7 312	3 987	10.38	384	3 325	8 292	3 920	10.45	374	4 372	
Percentage change, latest 3 months compared with:												
Previous 3 months		10.2	12.0	-3.6	16.0	8.1	1.2	4.3	-8.4	13.5	-1.4	
Same 3 months last year		41.8	39.7	-14.1	62.9	44.4	46.6	84.6	7.2	71.4	23.7	

1 Trade in petroleum and petroleum products. These figures differ from those published by the Department of Business Enterprise and Regulatory Reform from different sources and are on a time of shipment basis.

2 The average value per tonne may reflect not only changes in price but also changes in the commodity mix.

† Earliest date for revisions to trade in goods is January 2007.



VALUE OF TRADE IN GOODS BY COMMODITY

Balance of Payments basis

£ million seasonally adjusted

	Food, beverages and tobacco (SITC 0 + 1)			Basic materials (SITC 2 + 4)			Fuels (SITC 3)		
	Exports	Imports	Balance	Exports	Imports	Balance	Exports	Imports	Balance
	BOPL	BQAR	ELBE	BOPM	BQAS	ELBF	BOPN	BQAT	ELBG
2005	10 647	23 695	-13 048	3 981	6 770	-2 789	21 496	25 921	-4 425
2006	10 940	25 013	-14 073	4 890	7 887	-2 997	25 400	31 627	-6 227
2007	11 755	26 727	-14 972	5 516	9 564	-4 048	24 706	31 826	-7 120
2006 Q1	2 629	6 188	-3 559	1 103	1 871	-768	6 289	8 447	-2 158
Q2	2 723	6 159	-3 436	1 198	1 886	-688	7 045	7 799	-754
Q3	2 758	6 255	-3 497	1 218	1 926	-708	6 541	8 378	-1 837
Q4	2 830	6 411	-3 581	1 371	2 204	-833	5 525	7 003	-1 478
2007 Q1	2 912	6 427	-3 515	1 297	2 152	-855	5 092	6 802	-1 710
Q2	2 865	6 569	-3 704	1 453	2 422	-969	6 164	6 822	-658
Q3	2 992	6 794	-3 802	1 299	2 556	-1 257	6 309	8 192	-1 883
Q4	2 986	6 937	-3 951	1 467	2 434	-967	7 141	10 010	-2 869
2008 Q1	3 251	7 463	-4 212	1 556	2 682	-1 126	7 650	10 414	-2 764
2007 Nov	1 013	2 338	-1 325	546	812	-266	2 400	3 549	-1 149
Dec	986	2 260	-1 274	467	813	-346	2 443	3 343	-900
2008 Jan	1 109	2 446	-1 337	452	900	-448	2 451	3 496	-1 045
Feb	1 087	2 482	-1 395	570	937	-367	2 541	3 201	-660
Mar	1 055	2 535	-1 480	534	845	-311	2 658	3 717	-1 059
Apr	1 148	2 561	-1 413	613	852	-239	2 736	3 695	-959
3 months ended:									
2007 Apr	2 868	6 439	-3 571	1 364	2 272	-908	5 520	6 912	-1 392
2008 Jan	3 108	7 044	-3 936	1 465	2 525	-1 060	7 294	10 388	-3 094
2008 Apr	3 290	7 578	-4 288	1 717	2 634	-917	7 935	10 613	-2 678
Percentage change, latest 3 months compared with:									
Previous 3 months	5.9	7.6		17.2	4.3		8.8	2.2	
Same 3 months last year	14.7	17.7		25.9	15.9		43.8	53.5	

	Semi-manufactures (SITC 5 + 6)			Finished manufactures (SITC 7 + 8)			Total manufactures (SITC 5 to 8)			Miscellaneous (SITC 9)		
	Exports	Imports	Balance	Exports	Imports	Balance	Exports	Imports	Balance	Exports	Imports	Balance
	BOPO	BQAU	ELBH	BOPP	BQAV	ELBI	BPAN	BQBD	ELBJ	BOQL	BQAW	BQKX
2005	59 880	62 677	-2 797	114 484	159 493	-45 009	174 364	222 170	-47 806	1 120	1 841	-721
2006	64 811	69 342	-4 531	136 304	185 247	-48 943	201 115	254 589	-53 474	1 286	2 070	-784
2007	68 306	74 606	-6 300	109 345	165 298	-55 953	177 651	239 904	-62 253	1 169	2 291	-1 122
2006 Q1	15 780	16 730	-950	38 556	50 228	-11 672	54 336	66 958	-12 622	377	546	-169
Q2	16 317	16 973	-656	40 153	53 116	-12 963	56 470	70 089	-13 619	312	509	-197
Q3	16 094	17 399	-1 305	29 580	41 542	-11 962	45 674	58 941	-13 267	307	463	-156
Q4	16 620	18 240	-1 620	28 015	40 361	-12 346	44 635	58 601	-13 966	290	552	-262
2007 Q1	16 778	18 184	-1 406	26 870	40 659	-13 789	43 648	58 843	-15 195	357	528	-171
Q2	17 019	18 497	-1 478	26 928	40 135	-13 207	43 947	58 632	-14 685	252	544	-292
Q3	17 474	19 238	-1 764	27 618	42 266	-14 648	45 092	61 504	-16 412	268	532	-264
Q4	17 035	18 687	-1 652	27 929	42 238	-14 309	44 964	60 925	-15 961	292	687	-395
2008 Q1	18 302	19 620	-1 318	28 729	41 702	-12 973	47 031	61 322	-14 291	319	646	-327
2007 Nov	5 822	6 238	-416	9 501	14 279	-4 778	15 323	20 517	-5 194	107	224	-117
Dec	5 435	6 214	-779	9 136	13 758	-4 622	14 571	19 972	-5 401	94	229	-135
2008 Jan	6 132	6 316	-184	9 487	14 253	-4 766	15 619	20 569	-4 950	90	218	-128
Feb	6 155	6 668	-513	9 587	14 218	-4 631	15 742	20 886	-5 144	106	205	-99
Mar	6 015	6 636	-621	9 655	13 231	-3 576	15 670	19 867	-4 197	123	223	-100
Apr	6 294	6 655	-361	9 860	14 407	-4 547	16 154	21 062	-4 908	128	203	-75
3 months ended:												
2007 Apr	16 517	18 153	-1 636	26 895	40 384	-13 489	43 412	58 537	-15 125	329	545	-216
2008 Jan	17 389	18 768	-1 379	28 124	42 290	-14 166	45 513	61 058	-15 545	291	671	-380
2008 Apr	18 464	19 959	-1 495	29 102	41 856	-12 754	47 566	61 815	-14 249	357	631	-274
Percentage change, latest 3 months compared with:												
Previous 3 months	6.2	6.3		3.5	-1.0		4.5	1.2		22.7	-6.0	
Same 3 months last year	11.8	9.9		8.2	3.6		9.6	5.6		8.5	15.8	
EXCLUDING ERRATICS¹												
Previous 3 months	5.9	4.6		2.9	-1.4		4.0	0.5				
Same 3 months last year	11.3	9.0		10.5	4.5		10.9	5.9				

¹ These are defined as precious stones and silver in semi-manufactures, and as ships and aircraft in finished manufactures.

[†] Earliest date for revisions to trade in goods is January 2007.

9 VOLUME INDICES (TRADE IN GOODS) BY COMMODITY ¹

Balance of Payments basis

Indices 2003=100 seasonally adjusted

	Food, beverages and tobacco (SITC 0 + 1)		Basic materials (SITC 2 + 4)		Fuels (SITC 3)		Semi-manufactures (SITC 5 + 6)		Finished manufactures (SITC 7 + 8)		Total manufactures (SITC 5 to 8)	
	Exports	Imports	Exports	Imports	Exports	Imports	Exports	Imports	Exports	Imports	Exports	Imports
<i>Weights²</i> <i>(total trade = 1000)</i>	58	89	18	26	88	52	289	237	543	589	832	826
	BPEM	BQBK	BAFB	BQBL	BAFC	BQBM	BAHA	BQBN	BAHY	ELAB	BOGT	ELAJ
2005	98	110	107	102	90	131	108	106	117	118	114	115
2006	99	114	121	110	92	135	116	112	139	137	131	130
2007	102	117	135	121	88	142	122	118	108	123	113	121
2005 Q4	96	111	107	100	88	142	110	107	134	129	125	122
2006 Q1	95	114	112	106	91	143	113	109	158	147	143	137
Q2	98	112	117	107	96	126	117	110	165	157	148	144
Q3	99	112	120	107	90	139	115	111	118	123	117	120
Q4	102	116	134	118	89	132	120	116	113	120	116	119
2007 Q1	104	115	127	114	85	147	121	115	106	121	111	119
Q2	101	117	138	122	91	130	122	117	107	119	112	118
Q3	103	119	131	129	88	140	125	122	109	127	115	125
Q4	101	116	143	118	87	153	120	117	108	126	113	123
2008 Q1	105	118	139	121	83	143	125	118	108	122	114	121
2007 Nov	103	117	157	118	85	158	123	118	110	128	115	125
Dec	100	112	132	117	84	152	113	116	106	122	109	120
2008 Jan	107	118	122	123	83	146	127	115	107	125	114	122
Feb	106	117	151	127	83	136	127	120	108	124	114	123
Mar	102	119	144	114	82	146	121	118	108	117	113	117
Apr	107	119	152	114	83	140	127	116	107	124	114	122
3 months ended:												
2007 Apr	102	115	132	119	88	142	120	115	107	120	111	118
2008 Jan	103	116	137	119	84	152	121	116	108	125	113	122
2008 Apr	105	118	149	118	83	141	125	118	108	122	114	121
Percentage change, latest 3 months compared with:												
Previous 3 months	1.6	2.3	8.8	-0.8	-1.6	-7.5	3.3	1.4	0.0	-2.7	0.9	-1.4
Same 3 months last year	2.6	2.6	12.9	-0.3	-6.4	-0.7	4.5	2.9	0.9	1.4	2.4	2.0
EXCLUDING ERRATICS³												
Previous 3 months							2.7	0.0	-0.9	-3.2	0.3	-2.4
Same 3 months last year							3.6	0.9	2.9	1.7	3.0	1.7

1 These are provisional estimates subject to fluctuations when new or amended data become available.

2 The weights shown are in proportion to the total value of trade in 2003 and are used to combine the volume indices to calculate the totals for 2004 onwards. For 2003 and earlier, totals are calculated using the equivalent weights for the previous year (eg totals for 2003 use 2002 weights).

3 These are defined as precious stones and silver in semi-manufactures, and as ships and aircraft in finished manufactures.

[†] Earliest date for revisions to trade in goods is January 2007.

10 PRICE INDICES (TRADE IN GOODS) BY COMMODITY¹

Balance of Payments Consistent basis

Indices 2003=100 not seasonally adjusted

	Food, beverages and tobacco (SITC 0 + 1)		Basic materials (SITC 2 + 4)		Fuels (SITC 3)		Semi-manufactures (SITC 5 + 6)		Finished manufactures (SITC 7 + 8)		Total manufactures (SITC 5 to 8)	
	Exports	Imports	Exports	Imports	Exports	Imports	Exports	Imports	Exports	Imports	Exports	Imports
<i>Weights²</i> <i>(total trade = 1000)</i>	58	89	18	26	88	52	289	237	543	589	832	826
	BPAI	ELAN	BPAW	ELAO	BPDU	ELAP	BQAA	ELAQ	BQAB	ELAR	BQAI	ELAY
2005	100	102	115	108	156	168	101	107	98	97	99	100
2006	102	105	122	117	182	200	102	112	99	97	100	102
2007	105	110	126	127	186	207	102	115	100	97	101	102
2005 Q4	100	103	118	110	175	187	101	108	98	98	99	101
2006 Q1	102	102	120	114	182	200	103	110	99	98	100	102
Q2	103	105	124	115	193	213	103	112	99	97	100	102
Q3	102	106	123	118	191	208	102	114	98	97	99	102
Q4	101	107	122	121	162	179	101	114	97	97	99	102
2007 Q1	103	107	124	122	155	170	101	114	99	97	100	102
Q2	104	108	129	129	179	198	102	116	99	97	100	102
Q3	105	109	125	127	190	213	102	115	99	96	100	102
Q4	108	115	127	131	219	246	104	115	101	97	102	102
2008 Q1	115	123	139	141	245	278	108	122	105	100	106	106
2007 Nov	108	115	125	131	223	251	104	115	101	97	102	102
Dec	110	117	130	132	231	258	105	116	102	98	103	103
2008 Jan	113	120	136	137	237	270	107	120	104	99	105	105
Feb	115	123	139	141	239	272	107	121	105	100	106	106
Mar	117	125	143	145	258	293	110	124	106	100	107	107
Apr	119	127	146	145	271	309	111	126	108	102	109	109
3 months ended:												
2007 Apr	104	108	127	125	164	182	102	114	99	97	100	102
2008 Jan	110	117	130	133	230	260	105	117	102	98	103	103
2008 Apr	117	125	143	144	256	291	109	124	106	101	107	107
Percentage change, latest 3 months compared with:												
Previous 3 months	6.0	6.5	9.5	7.8	11.1	12.2	3.8	5.7	3.9	2.7	3.9	3.9
Same 3 months last year	12.9	16.1	12.6	14.9	56.4	60.1	7.5	8.2	7.0	3.4	7.3	4.9
EXCLUDING ERRATICS³												
Previous 3 months							4.3	5.6	3.6	3.1	4.2	3.8
Same 3 months last year							8.0	8.6	7.1	3.4	8.0	5.5

1 These are provisional estimates subject to fluctuations when new or amended data become available.

2 The weights shown are in proportion to the total value of trade in 2003 and are used to combine the volume indices to calculate the totals for 2004 onwards. For 2003 and earlier, totals are calculated using the equivalent weights for the previous year (eg totals for 2003 use 2002 weights).

3 These are defined as precious stones and silver in semi-manufactures, and as ships and aircraft in finished manufactures.

[†] Earliest date for revisions to trade in goods is January 2007.

11 TRADE IN GOODS WITH SELECTED EU TRADING PARTNERS

Balance of Payments Consistent basis

£ million seasonally adjusted

	Belgium & Luxembourg			France			Germany			Irish Republic		
	Exports	Imports	Balance	Exports	Imports	Balance	Exports	Imports	Balance	Exports	Imports	Balance
	CHNQ	CHNY	CHNF	ENYL	ENYP	ENYT	ENYO	ENYS	ENYW	CHNS	CHOA	CHNH
2005	11 394	15 155	-3 761	19 931	22 184	-2 253	23 025	39 169	-16 144	16 294	10 411	5 883
2006	15 081	18 202	-3 121	28 692	26 902	1 790	27 601	42 709	-15 108	17 479	10 779	6 700
2007	12 126	15 764	-3 638	18 093	21 878	-3 785	24 670	44 502	-19 832	17 821	11 341	6 480
2005 Q4	3 131	4 291	-1 160	5 748	6 313	-565	6 071	10 182	-4 111	4 295	2 731	1 564
2006 Q1	3 927	5 154	-1 227	8 297	7 755	542	6 820	10 904	-4 084	4 478	2 754	1 724
Q2	4 107	4 932	-825	9 243	7 967	1 276	7 656	10 918	-3 262	4 318	2 812	1 506
Q3	3 784	4 388	-604	5 795	5 751	44	6 690	10 445	-3 755	4 354	2 481	1 873
Q4	3 263	3 728	-465	5 357	5 429	-72	6 435	10 442	-4 007	4 329	2 732	1 597
2007 Q1	2 949	3 659	-710	4 553	5 403	-850	6 042	10 990	-4 948	4 295	2 781	1 514
Q2	2 863	3 599	-736	4 276	5 285	-1 009	6 024	11 223	-5 199	4 484	2 772	1 712
Q3	3 121	4 197	-1 076	4 579	5 577	-998	6 201	11 122	-4 921	4 501	2 975	1 526
Q4	3 193	4 309	-1 116	4 685	5 613	-928	6 403	11 167	-4 764	4 541	2 813	1 728
2008 Q1	3 192	4 093	-901	4 406	5 632	-1 226	6 930	11 421	-4 491	4 836	3 001	1 835
2007 Nov	1 092	1 392	-300	1 627	1 901	-274	2 177	3 733	-1 556	1 494	935	559
Dec	1 018	1 511	-493	1 512	1 938	-426	2 116	3 736	-1 620	1 531	911	620
2008 Jan	1 126	1 388	-262	1 547	1 902	-355	2 281	3 869	-1 588	1 574	990	584
Feb	1 039	1 348	-309	1 430	1 898	-468	2 283	3 803	-1 520	1 586	952	634
Mar	1 027	1 357	-330	1 429	1 832	-403	2 366	3 749	-1 383	1 676	1 059	617
Apr	1 104	1 493	-389	1 489	1 910	-421	2 436	4 014	-1 578	1 679	1 020	659
3 months ended:												
2007 Apr	2 931	3 627	-696	4 270	5 409	-1 139	6 025	11 039	-5 014	4 327	2 837	1 490
2008 Jan	3 236	4 291	-1 055	4 686	5 741	-1 055	6 574	11 338	-4 764	4 599	2 836	1 763
2008 Apr	3 170	4 198	-1 028	4 348	5 640	-1 292	7 085	11 566	-4 481	4 941	3 031	1 910
Percentage change, latest 3 months compared with:												
Previous 3 months	-2.0	-2.2		-7.2	-1.8		7.8	2.0		7.4	6.9	
Same 3 months last year	8.2	15.7		1.8	4.3		17.6	4.8		14.2	6.8	
	Italy			Netherlands			Spain			Sweden		
	Exports	Imports	Balance	Exports	Imports	Balance	Exports	Imports	Balance	Exports	Imports	Balance
	CHNO	CHNW	CHOE	CHNP	CHNX	CHNE	CHNV	CHOD	CHNM	CHNA	CHND	CHVI
2005	8 790	12 673	-3 883	12 716	20 436	-7 720	10 677	11 450	-773	4 588	5 463	-875
2006	9 494	12 790	-3 296	16 521	22 301	-5 780	12 295	12 156	139	5 246	5 992	-746
2007	9 184	13 290	-4 106	15 121	23 135	-8 014	9 979	10 437	-458	4 900	5 271	-371
2005 Q4	2 358	3 274	-916	3 624	5 503	-1 879	2 938	3 392	-454	1 217	1 304	-87
2006 Q1	2 538	3 369	-831	4 636	6 008	-1 372	3 490	3 543	-53	1 328	1 493	-165
Q2	2 407	3 322	-915	4 691	5 928	-1 237	3 744	3 693	51	1 464	1 599	-135
Q3	2 332	2 988	-656	3 699	5 195	-1 496	2 605	2 486	119	1 254	1 482	-228
Q4	2 217	3 111	-894	3 495	5 170	-1 675	2 456	2 434	22	1 200	1 418	-218
2007 Q1	2 260	3 216	-956	3 314	5 355	-2 041	2 590	2 491	99	1 209	1 334	-125
Q2	2 216	3 269	-1 053	3 637	5 655	-2 018	2 415	2 455	-40	1 233	1 257	-24
Q3	2 331	3 375	-1 044	4 071	5 807	-1 736	2 526	2 764	-238	1 220	1 322	-102
Q4	2 377	3 430	-1 053	4 099	6 318	-2 219	2 448	2 727	-279	1 238	1 358	-120
2008 Q1	2 344	3 442	-1 098	4 502	6 599	-2 097	2 684	2 765	-81	1 301	1 660	-359
2007 Nov	811	1 158	-347	1 424	2 225	-801	828	906	-78	413	463	-50
Dec	789	1 110	-321	1 415	2 210	-795	877	906	-29	404	442	-38
2008 Jan	811	1 160	-349	1 461	2 182	-721	907	959	-52	433	535	-102
Feb	819	1 157	-338	1 549	2 245	-696	896	922	-26	424	578	-154
Mar	714	1 125	-411	1 492	2 172	-680	881	884	-3	444	547	-103
Apr	943	1 166	-223	1 594	2 235	-641	926	950	-24	413	611	-198
3 months ended:												
2007 Apr	2 194	3 203	-1 009	3 326	5 412	-2 086	2 510	2 457	53	1 243	1 259	-16
2008 Jan	2 411	3 428	-1 017	4 300	6 617	-2 317	2 612	2 771	-159	1 250	1 440	-190
2008 Apr	2 476	3 448	-972	4 635	6 652	-2 017	2 703	2 756	-53	1 281	1 736	-455
Percentage change, latest 3 months compared with:												
Previous 3 months	2.7	0.6		7.8	0.5		3.5	-0.5		2.5	20.6	
Same 3 months last year	12.9	7.6		39.4	22.9		7.7	12.2		3.1	37.9	

† Earliest date for revisions to trade in goods is January 2007.

12 TRADE IN GOODS WITH SELECTED NON-EU TRADING PARTNERS

Balance of Payments Consistent basis

£ million seasonally adjusted

	Canada			China			Hong Kong			Japan		
	Exports	Imports	Balance	Exports	Imports	Balance	Exports	Imports	Balance	Exports	Imports	Balance
	EOBC	EOBW	EOCQ	ERDN	ERDZ	EREL	ERDG	ERDS	EREE	EOBD	EOBX	EOCR
2005	3 277	4 155	-878	2 811	12 963	-10 152	3 088	6 601	-3 513	3 900	8 670	-4 770
2006	3 895	4 987	-1 092	3 265	15 292	-12 027	2 864	7 366	-4 502	4 109	7 902	-3 793
2007	3 248	5 765	-2 517	3 856	18 680	-14 824	2 721	6 919	-4 198	3 817	7 852	-4 035
2005 Q4	929	1 056	-127	839	3 426	-2 587	851	1 772	-921	1 006	2 167	-1 161
2006 Q1	1 019	1 339	-320	728	3 719	-2 991	734	1 852	-1 118	1 095	2 067	-972
Q2	1 094	1 178	-84	818	3 792	-2 974	752	1 919	-1 167	1 023	1 970	-947
Q3	870	1 174	-304	815	3 752	-2 937	669	1 796	-1 127	999	1 957	-958
Q4	912	1 296	-384	904	4 029	-3 125	709	1 799	-1 090	992	1 908	-916
2007 Q1	919	1 214	-295	873	4 700	-3 827	605	1 730	-1 125	936	2 045	-1 109
Q2	831	1 654	-823	916	4 422	-3 506	654	1 606	-952	983	1 907	-924
Q3	761	1 625	-864	998	4 610	-3 612	713	1 758	-1 045	945	1 943	-998
Q4	737	1 272	-535	1 069	4 948	-3 879	749	1 825	-1 076	953	1 957	-1 004
2008 Q1	638	1 220	-582	1 263	5 179	-3 916	1 084	1 879	-795	975	1 975	-1 000
2007 Oct	246	422	-176	352	1 604	-1 252	249	589	-340	319	671	-352
Nov	274	465	-191	379	1 696	-1 317	254	614	-360	337	657	-320
Dec	217	385	-168	338	1 648	-1 310	246	622	-376	297	629	-332
2008 Jan	212	451	-239	385	1 630	-1 245	412	609	-197	322	629	-307
Feb	215	392	-177	472	1 827	-1 355	321	697	-376	334	676	-342
Mar	211	377	-166	406	1 722	-1 316	351	573	-222	319	670	-351
Apr	208	476	-268	443	1 721	-1 278	308	639	-331	314	788	-474
3 months ended:												
2007 Apr	873	1 414	-541	862	4 738	-3 876	603	1 647	-1 044	951	2 067	-1 116
2008 Jan	703	1 301	-598	1 102	4 974	-3 872	912	1 845	-933	956	1 915	-959
2008 Apr	634	1 245	-611	1 321	5 270	-3 949	980	1 909	-929	967	2 134	-1 167
Percentage change, latest 3 months compared with:												
Previous 3 months	-9.8	-4.3		19.9	6.0		7.5	3.5		1.2	11.4	
Same 3 months last year	-27.4	-12.0		53.2	11.2		62.5	15.9		1.7	3.2	
	Norway			South Korea			Switzerland			USA		
	Exports	Imports	Balance	Exports	Imports	Balance	Exports	Imports	Balance	Exports	Imports	Balance
	EPLX	EPMX	EPNX	ERDM	ERDY	EREK	EPLV	EPMV	EPNV	EOBB	EOBV	EOCP
2005	2 211	12 078	-9 867	1 677	3 064	-1 387	4 985	3 882	1 103	30 913	22 184	8 729
2006	2 125	14 472	-12 347	1 746	3 085	-1 339	4 190	4 376	-186	32 103	25 723	6 380
2007	2 661	14 267	-11 606	1 890	3 060	-1 170	3 758	4 727	-969	31 984	25 755	6 229
2005 Q4	629	3 492	-2 863	422	766	-344	1 524	1 064	460	8 069	5 816	2 253
2006 Q1	508	3 707	-3 199	372	787	-415	1 355	1 061	294	8 061	6 384	1 677
Q2	583	3 754	-3 171	429	798	-369	1 099	1 149	-50	8 493	6 562	1 931
Q3	504	4 025	-3 521	466	744	-278	814	1 063	-249	7 988	6 042	1 946
Q4	530	2 986	-2 456	479	756	-277	922	1 103	-181	7 561	6 735	826
2007 Q1	555	3 234	-2 679	425	746	-321	854	1 176	-322	7 855	6 413	1 442
Q2	713	3 166	-2 453	489	714	-225	941	1 110	-169	8 046	6 415	1 631
Q3	607	3 540	-2 933	493	801	-308	992	1 255	-263	8 046	6 601	1 445
Q4	786	4 327	-3 541	483	799	-316	971	1 186	-215	8 037	6 326	1 711
2008 Q1	638	5 245	-4 607	524	860	-336	904	1 242	-338	8 306	5 937	2 369
2007 Oct	266	1 448	-1 182	156	264	-108	311	396	-85	2 700	2 219	481
Nov	265	1 568	-1 303	168	275	-107	317	392	-75	2 782	2 108	674
Dec	255	1 311	-1 056	159	260	-101	343	398	-55	2 555	1 999	556
2008 Jan	161	1 850	-1 689	176	276	-100	316	383	-67	2 761	2 010	751
Feb	217	1 538	-1 321	182	293	-111	262	425	-163	2 807	1 987	820
Mar	260	1 857	-1 597	166	291	-125	326	434	-108	2 738	1 940	798
Apr	234	1 813	-1 579	162	284	-122	457	426	31	2 763	1 935	828
3 months ended:												
2007 Apr	610	3 268	-2 658	453	739	-286	877	1 047	-170	7 740	6 336	1 404
2008 Jan	681	4 729	-4 048	503	811	-308	976	1 173	-197	8 098	6 117	1 981
2008 Apr	711	5 208	-4 497	510	868	-358	1 045	1 285	-240	8 308	5 862	2 446
Percentage change, latest 3 months compared with:												
Previous 3 months	4.4	10.1		1.4	7.0		7.1	9.5		2.6	-4.2	
Same 3 months last year	16.6	59.4		12.6	17.5		19.2	22.7		7.3	-7.5	

† Earliest date for revisions to trade in goods is January 2007.

13R SUMMARY OF REVISIONS

Balance of Payments Basis

£ million

	Trade in goods ¹			Trade in services (seasonally adjusted) ²			Trade in goods & services (seasonally adjusted)			Growth rates for volume and price indices (2003=100)			
	Value (seasonally adjusted) £ million			£ Million			£ Million			Volume excluding oil and erratics		Prices	
	Exports	Imports	Balance	Exports	Imports	Balance	Exports	Imports	Balance	Exports	Imports	Exports	Imports
	BOKG	BOKH	BOKI	IKBB	IKBC	IKBD	IKBH	IKBI	IKBJ				
2005	-	-	-	-	-	-	-	-	-	-	-	-	-
2006	-	-	-	-	-	-	-	-	-	-	-	-	-
2007	-60	1 806	-1 866	-	-	-	-60	1 806	-1 866	-	0.4	-	-
2005 Q3	-	-	-	-	-	-	-	-	-	-	-	-	-
Q4	-	-	-	-	-	-	-	-	-	-	-	-	-
2006 Q1	-	-	-	-	-	-	-	-	-	-	-	-	-
Q2	-	-	-	-	-	-	-	-	-	-	-	-	-
Q3	-	-	-	-	-	-	-	-	-	-	-	-	-
Q4	-	-	-	-	-	-	-	-	-	-	-	-	-
2007 Q1	-58	272	-330	-	-	-	-58	272	-330	-0.1	0.6	-	-
Q2	173	308	-135	-	-	-	173	308	-135	0.7	-0.3	-	-
Q3	181	630	-449	-	-	-	181	630	-449	-0.8	0.2	-	-
Q4	-356	596	-952	-	-	-	-356	596	-952	-0.2	-0.4	-	0.1
2008 Q1	-89	-307	218	435	160	275	346	-147	493	-0.1	-1.0	0.1	0.1
2005 Aug	-	-	-	-	-	-	-	-	-	-	-	-	-
Sep	-	-	-	-	-	-	-	-	-	-	-	-	-
Oct	-	-	-	-	-	-	-	-	-	-	-	-	-
Nov	-	-	-	-	-	-	-	-	-	-	-	-	-
Dec	-	-	-	-	-	-	-	-	-	-	-	-	-
2006 Jan	-	-	-	-	-	-	-	-	-	-	-	-	-
Feb	-	-	-	-	-	-	-	-	-	-	-	-	-
Mar	-	-	-	-	-	-	-	-	-	-	-	-	-
Apr	-	-	-	-	-	-	-	-	-	-	-	-	-
May	-	-	-	-	-	-	-	-	-	-	-	-	-
Jun	-	-	-	-	-	-	-	-	-	-	-	-	-
Jul	-	-	-	-	-	-	-	-	-	-	-	-	-
Aug	-	-	-	-	-	-	-	-	-	-	-	-	-
Sep	-	-	-	-	-	-	-	-	-	-	-	-	-
Oct	-	-	-	-	-	-	-	-	-	-	-	-	-
Nov	-	-	-	-	-	-	-	-	-	-	-	-	-
Dec	-	-	-	-	-	-	-	-	-	-	-	-	-
2007 Jan	-5	25	-30	-	-	-	-5	25	-30	-0.3	-	-	-
Feb	-83	-11	-72	-	-	-	-83	-11	-72	-0.2	0.4	-	-
Mar	30	258	-228	-	-	-	30	258	-228	1.2	0.9	-	-
Apr	-60	-22	-38	-	-	-	-60	-22	-38	0.1	-1.3	-	-
May	82	173	-91	-	-	-	82	173	-91	-0.4	0.6	-	-
Jun	151	157	-6	-	-	-	151	157	-6	0.5	-	-	-
Jul	31	186	-155	-	-	-	31	186	-155	-0.8	-0.1	-	-
Aug	19	283	-264	-	-	-	19	283	-264	-0.4	0.7	-	-
Sep	131	161	-30	-	-	-	131	161	-30	0.3	-0.9	-	-
Oct	-79	161	-240	-	-	-	-79	161	-240	-	-0.2	-	0.1
Nov	-26	143	-169	-	-	-	-26	143	-169	-0.3	-	-	-
Dec	-251	292	-543	-	-	-	-251	292	-543	-0.4	0.4	0.2	-
2008 Jan	5	-1	6	154	-27	181	159	-28	187	0.6	-0.6	-0.1	0.1
Feb	-5	73	-78	156	50	106	151	123	28	-0.3	-0.3	-0.1	0.1
Mar	-89	-379	290	125	137	-12	36	-242	278	-0.3	-1.6	0.1	-0.3
Apr
3 month on 3 month comparison:													
2006 Nov										-	-	-	-
Dec										-	-	-	-
2007 Jan										-0.1	-	-	-
Feb										-0.3	0.1	-	-
Mar										-0.1	0.6	-	-
Apr										0.4	0.6	-	-
May										0.8	0.4	-	-
Jun										0.8	-0.3	-	-
Jul										0.2	-0.1	-	-
Aug										-0.5	-	-	-
Sep										-0.8	0.2	-	-
Oct										-0.6	-0.1	-	-
Nov										-0.3	-0.6	-	0.1
Dec										-0.2	-0.4	0.1	0.1
2008 Jan										-0.3	-0.3	0.1	0.1
Feb										-0.4	-0.1	0.1	0.2
Mar										-0.1	-1.0	-	-
Apr									

¹Earliest date for revisions to trade in goods is January 2007.

²Earliest data for revisions to trade in services is January 2008.

1 VALUE OF TRADE (WHOLE WORLD)

£ million seasonally adjusted

	Total trade			Trade in goods			Oil			Trade in goods excluding oil		
	Exports	Imports	Balance	Exports	Imports	Balance	Exports	Imports	Balance	Exports	Imports	Balance
	IKBH	IKBI	IKBJ	BOKG	BOKH	BOKI	ELBL	ENXO	ENXQ	ELBM	ENXP	BQKH
2004	298 694	333 669	-34 975	190 877	251 770	-60 893	16 200	15 307	893	174 677	236 463	-61 786
2005	326 790	370 968	-44 178	211 608	280 397	-68 789	19 794	21 989	-2 195	191 814	258 408	-66 594
2006	370 788	417 320	-46 532	243 631	321 186	-77 555	23 274	26 706	-3 432	220 357	294 480	-74 123
2007	359 221	410 286	-51 065	220 797	310 312	-89 515	22 764	26 689	-3 925	198 033	283 623	-85 590
2005 Q1	77 010	87 062	-10 052	48 574	64 802	-16 228	4 503	4 152	351	44 071	60 650	-16 579
Q2	80 304	89 670	-9 366	50 988	67 293	-16 305	4 689	4 992	-303	46 299	62 301	-16 002
Q3	81 884	95 307	-13 423	54 632	72 510	-17 878	5 127	6 655	-1 528	49 505	65 855	-16 350
Q4	87 592	98 929	-11 337	57 414	75 792	-18 378	5 475	6 190	-715	51 939	69 602	-17 663
2006 Q1	96 233	108 039	-11 806	64 734	84 010	-19 276	5 795	6 824	-1 029	58 939	77 186	-18 247
Q2	98 953	110 323	-11 370	67 748	86 442	-18 694	6 438	6 781	-343	61 310	79 661	-18 351
Q3	88 394	100 206	-11 812	56 498	75 963	-19 465	5 915	7 225	-1 310	50 583	68 738	-18 155
Q4	87 208	98 752	-11 544	54 651	74 771	-20 120	5 126	5 876	-750	49 525	68 895	-19 370
2007 Q1	87 107	99 465	-12 358	53 306	74 752	-21 446	4 774	5 560	-786	48 532	69 192	-20 660
Q2	89 228	99 905	-10 677	54 681	74 989	-20 308	5 669	5 906	-237	49 012	69 083	-20 071
Q3	90 765	104 791	-14 026	55 960	79 578	-23 618	5 850	7 101	-1 251	50 110	72 477	-22 367
Q4	92 121	106 125	-14 004	56 850	80 993	-24 143	6 471	8 122	-1 651	50 379	72 871	-22 492
2008 Q1	95 590	108 471	-12 881	59 807	82 527	-22 720	7 041	8 146	-1 105	52 766	74 381	-21 615
2005 Apr	26 424	30 074	-3 650	16 674	22 638	-5 964	1 530	1 704	-174	15 144	20 934	-5 790
May	26 417	29 580	-3 163	16 525	22 024	-5 499	1 544	1 604	-60	14 981	20 420	-5 439
Jun	27 463	30 016	-2 553	17 789	22 631	-4 842	1 615	1 684	-69	16 174	20 947	-4 773
Jul	27 436	30 829	-3 393	17 623	23 274	-5 651	1 855	1 950	-95	15 768	21 324	-5 556
Aug	25 994	31 993	-5 999	18 205	24 445	-6 240	1 493	2 209	-716	16 712	22 236	-5 524
Sep	28 454	32 485	-4 031	18 804	24 791	-5 987	1 779	2 496	-717	17 025	22 295	-5 270
Oct	28 901	32 251	-3 350	19 023	24 628	-5 605	1 987	2 252	-265	17 036	22 376	-5 340
Nov	28 965	33 168	-4 203	18 975	25 389	-6 414	1 676	2 106	-430	17 299	23 283	-5 984
Dec	29 726	33 510	-3 784	19 416	25 775	-6 359	1 812	1 832	-20	17 604	23 943	-6 339
2006 Jan	30 921	34 981	-4 060	20 323	26 990	-6 667	1 831	2 490	-659	18 492	24 500	-6 008
Feb	31 994	36 098	-4 104	21 537	28 123	-6 586	1 757	1 986	-229	19 780	26 137	-6 357
Mar	33 318	36 960	-3 642	22 874	28 897	-6 023	2 207	2 348	-141	20 667	26 549	-5 882
Apr	33 306	37 096	-3 790	22 880	29 054	-6 174	2 129	2 026	103	20 751	27 028	-6 277
May	33 398	37 671	-4 273	23 009	29 784	-6 775	2 095	2 407	-312	20 914	27 377	-6 463
Jun	32 249	35 556	-3 307	21 859	27 604	-5 745	2 214	2 348	-134	19 645	25 256	-5 611
Jul	29 536	33 360	-3 824	18 946	25 334	-6 388	2 212	2 472	-260	16 734	22 862	-6 128
Aug	29 666	33 866	-4 200	19 124	25 780	-6 656	1 871	2 526	-655	17 253	23 254	-6 001
Sep	29 192	32 980	-3 788	18 428	24 849	-6 421	1 832	2 227	-395	16 596	22 622	-6 026
Oct	29 193	32 708	-3 515	18 393	24 736	-6 343	1 789	2 018	-229	16 604	22 718	-6 114
Nov	29 166	32 951	-3 785	18 323	24 987	-6 664	1 635	2 077	-442	16 688	22 910	-6 222
Dec	28 849	33 093	-4 244	17 935	25 048	-7 113	1 702	1 781	-79	16 233	23 267	-7 034
2007 Jan	28 918	32 668	-3 750	17 841	24 571	-6 730	1 520	1 945	-425	16 321	22 626	-6 305
Feb	28 747	32 875	-4 128	17 441	24 605	-7 164	1 604	1 610	-6	15 837	22 995	-7 158
Mar	29 442	33 922	-4 480	18 024	25 576	-7 552	1 650	2 005	-355	16 374	23 571	-7 197
Apr	29 507	32 757	-3 250	18 028	24 524	-6 496	1 901	2 042	-141	16 127	22 482	-6 355
May	29 619	33 296	-3 677	18 119	25 004	-6 885	1 812	1 869	-57	16 307	23 135	-6 828
Jun	30 102	33 852	-3 750	18 534	25 461	-6 927	1 956	1 995	-39	16 578	23 466	-6 888
Jul	30 241	34 922	-4 681	18 650	26 540	-7 890	2 005	2 249	-244	16 645	24 291	-7 646
Aug	30 266	34 742	-4 476	18 720	26 308	-7 588	1 719	2 302	-583	17 001	24 006	-7 005
Sep	30 258	35 127	-4 869	18 590	26 730	-8 140	2 126	2 550	-424	16 464	24 180	-7 716
Oct	30 648	35 344	-4 696	18 900	26 936	-8 036	2 056	2 634	-578	16 844	24 302	-7 458
Nov	31 104	35 698	-4 594	19 389	27 440	-8 051	2 163	2 939	-776	17 226	24 501	-7 275
Dec	30 369	35 083	-4 714	18 556	26 617	-8 056	2 252	2 549	-297	16 309	24 068	-7 759
2008 Jan	31 515	36 337	-4 822	19 721	27 629	-7 908	2 221	2 705	-484	17 500	24 924	-7 424
Feb	31 983	36 289	-4 306	20 046	27 711	-7 665	2 365	2 553	-188	17 681	25 158	-7 477
Mar	32 092	35 845	-3 753	20 040	27 187	-7 147	2 455	2 888	-433	17 585	24 299	-6 714
Apr	32 769	37 094	-4 325	20 779	28 373	-7 594	2 492	2 851	-359	18 287	25 522	-7 235

1 These are defined as ships, aircraft, precious stones and silver

1 VALUE OF TRADE (WHOLE WORLD)

continued

£ million seasonally adjusted

	Erratics ¹			Trade in goods excluding erratics			Trade in goods excluding oil and erratics			Trade in services		
	Exports	Imports	Balance	Exports	Imports	Balance	Exports	Imports	Balance	Exports	Imports	Balance
	BPAL	BQBB	BQKW	BPAO	BQBE	BPBM	BPBL	BQBG	BPAP	IKBB	IKBC	IKBD
2004	12 210	12 212	-2	178 667	239 558	-60 891	162 467	224 251	-61 784	107 817	81 899	25 918
2005	12 458	13 009	-551	199 150	267 388	-68 238	179 356	245 399	-66 043	115 182	90 571	24 611
2006	12 310	15 400	-3 090	231 321	305 786	-74 465	208 047	279 080	-71 033	127 157	96 134	31 023
2007	13 031	14 357	-1 326	207 766	295 955	-88 189	185 002	269 266	-84 264	138 424	99 974	38 450
2005 Q1	3 084	3 227	-143	45 490	61 575	-16 085	40 987	57 423	-16 436	28 436	22 260	6 176
Q2	2 892	2 967	-75	48 096	64 326	-16 230	43 407	59 334	-15 927	29 316	22 377	6 939
Q3	3 310	3 380	-70	51 322	69 130	-17 808	46 195	62 475	-16 280	27 252	22 797	4 455
Q4	3 172	3 435	-263	54 242	72 357	-18 115	48 767	66 167	-17 400	30 178	23 137	7 041
2006 Q1	2 877	3 736	-859	61 857	80 274	-18 417	56 062	73 450	-17 388	31 499	24 029	7 470
Q2	3 385	3 856	-471	64 363	82 586	-18 223	57 925	75 805	-17 880	31 205	23 881	7 324
Q3	2 733	3 885	-1 152	53 765	72 078	-18 313	47 850	64 853	-17 003	31 896	24 243	7 653
Q4	3 315	3 923	-608	51 336	70 848	-19 512	46 210	64 972	-18 762	32 557	23 981	8 576
2007 Q1	3 000	3 895	-895	50 306	70 857	-20 551	45 532	65 297	-19 765	33 801	24 713	9 088
Q2	3 686	3 466	220	50 995	71 523	-20 528	45 326	65 617	-20 291	34 547	24 916	9 631
Q3	3 136	3 703	-567	52 824	75 875	-23 051	46 974	68 774	-21 800	34 805	25 213	9 592
Q4	3 209	3 293	-84	53 641	77 700	-24 059	47 170	69 578	-22 408	35 271	25 132	10 139
2008 Q1	3 250	3 637	-387	56 557	78 890	-22 333	49 516	70 744	-21 228	35 783	25 944	9 839
2005 Apr	848	1 020	-172	15 826	21 618	-5 792	14 296	19 914	-5 618	9 750	7 436	2 314
May	1 008	843	165	15 517	21 181	-5 664	13 973	19 577	-5 604	9 892	7 556	2 336
Jun	1 036	1 104	-68	16 753	21 527	-4 774	15 138	19 843	-4 705	9 674	7 385	2 289
Jul	1 131	1 101	30	16 492	22 173	-5 681	14 637	20 223	-5 586	9 813	7 555	2 258
Aug	1 102	1 220	-118	17 103	23 225	-6 122	15 610	21 016	-5 406	7 789	7 548	241
Sep	1 077	1 059	18	17 727	23 732	-6 005	15 948	21 236	-5 288	9 650	7 694	1 956
Oct	1 027	890	137	17 996	23 738	-5 742	16 009	21 486	-5 477	9 878	7 623	2 255
Nov	1 079	1 344	-265	17 896	24 045	-6 149	16 220	21 939	-5 719	9 990	7 779	2 211
Dec	1 066	1 201	-135	18 350	24 574	-6 224	16 538	22 742	-6 204	10 310	7 735	2 575
2006 Jan	933	1 290	-357	19 390	25 700	-6 310	17 559	23 210	-5 651	10 598	7 991	2 607
Feb	1 040	1 167	-127	20 497	26 956	-6 459	18 740	24 970	-6 230	10 457	7 975	2 482
Mar	904	1 279	-375	21 970	27 618	-5 648	19 763	25 270	-5 507	10 444	8 063	2 381
Apr	1 114	1 185	-71	21 766	27 869	-6 103	19 637	25 843	-6 206	10 426	8 042	2 384
May	1 056	1 426	-370	21 953	28 358	-6 405	19 858	25 951	-6 093	10 389	7 887	2 502
Jun	1 215	1 245	-30	20 644	26 359	-5 715	18 430	24 011	-5 581	10 390	7 952	2 438
Jul	916	1 346	-430	18 030	23 988	-5 958	15 818	21 516	-5 698	10 590	8 026	2 564
Aug	883	1 272	-389	18 241	24 508	-6 267	16 370	21 982	-5 612	10 542	8 086	2 456
Sep	934	1 267	-333	17 494	23 582	-6 088	15 662	21 355	-5 693	10 764	8 131	2 633
Oct	1 109	1 253	-144	17 284	23 483	-6 199	15 495	21 465	-5 970	10 800	7 972	2 828
Nov	1 194	1 321	-127	17 129	23 666	-6 537	15 494	21 589	-6 095	10 843	7 964	2 879
Dec	1 012	1 349	-337	16 923	23 699	-6 776	15 221	21 918	-6 697	10 914	8 045	2 869
2007 Jan	1 028	1 163	-135	16 813	23 408	-6 595	15 293	21 463	-6 170	11 077	8 097	2 980
Feb	925	1 423	-498	16 516	23 182	-6 666	14 912	21 572	-6 660	11 306	8 270	3 036
Mar	1 047	1 309	-262	16 977	24 267	-7 290	15 327	22 262	-6 935	11 418	8 346	3 072
Apr	1 624	1 032	592	16 404	23 492	-7 088	14 503	21 450	-6 947	11 479	8 233	3 246
May	1 035	1 278	-243	17 084	23 726	-6 642	15 272	21 857	-6 585	11 500	8 292	3 208
Jun	1 027	1 156	-129	17 507	24 305	-6 798	15 551	22 310	-6 759	11 568	8 391	3 177
Jul	1 132	1 253	-121	17 518	25 287	-7 769	15 513	23 038	-7 525	11 591	8 382	3 209
Aug	1 046	1 222	-176	17 674	25 086	-7 412	15 955	22 784	-6 829	11 546	8 434	3 112
Sep	958	1 228	-270	17 632	25 502	-7 870	15 506	22 952	-7 446	11 668	8 397	3 271
Oct	1 116	1 192	-76	17 784	25 744	-7 960	15 728	23 110	-7 382	11 748	8 408	3 340
Nov	1 096	1 188	-92	18 293	26 252	-7 959	16 130	23 313	-7 183	11 715	8 258	3 457
Dec	997	913	84	17 564	25 704	-8 140	15 312	23 155	-7 843	11 808	8 466	3 342
2008 Jan	999	1 239	-240	18 722	26 390	-7 668	16 501	23 685	-7 184	11 794	8 708	3 086
Feb	1 154	1 432	-278	18 892	26 279	-7 387	16 527	23 726	-7 199	11 937	8 578	3 359
Mar	1 097	966	131	18 943	26 221	-7 278	16 488	23 333	-6 845	12 052	8 658	3 394
Apr	1 177	1 425	-248	19 602	26 948	-7 346	17 110	24 097	-6 987	11 990	8 721	3 269

1 These are defined as ships, aircraft, precious stones and silver

2 UK TRADE IN GOODS BY AREA

Balance of Payments basis

£ million seasonally adjusted

	EMU members ¹			EU(25) ²			Total EU(27)			Non-EU			Total		
	Exports	Imports	Balance	Exports	Imports	Balance	Exports	Imports	Balance	Exports	Imports	Balance	Exports	Imports	Balance
	QAKW	QAKX	QAKY	EGAE	EGAF	EGAG	LGCK	LGDC	LGCG	LGDY	LGER	LGDT	BOKG	BOKH	BOKI
2004	100 601	126 792	-26 191	110 883	141 576	-30 693	111 653	142 512	-30 859	79 224	109 258	-30 034	190 877	251 770	-60 893
2005	109 506	139 741	-30 235	120 619	157 391	-36 772	121 486	158 363	-36 877	90 122	122 034	-31 912	211 608	280 397	-68 789
2006	136 057	157 944	-21 887	151 479	183 370	-31 891	152 353	184 440	-32 087	91 278	136 746	-45 468	243 631	321 186	-77 555
2007	114 140	148 219	-34 079	126 917	168 440	-41 523	127 788	169 612	-41 824	93 009	140 700	-47 691	220 797	310 312	-89 515
2005 Q1	25 742	32 632	-6 890	28 268	36 586	-8 318	28 449	36 828	-8 379	20 125	27 974	-7 849	48 574	64 802	-16 228
Q2	25 740	33 378	-7 638	28 331	37 707	-9 376	28 537	37 952	-9 415	22 451	29 341	-6 890	50 988	67 293	-16 305
Q3	28 010	35 735	-7 725	30 835	40 347	-9 512	31 100	40 583	-9 483	23 532	31 927	-8 395	54 632	72 510	-17 878
Q4	30 014	37 996	-7 982	33 185	42 751	-9 566	33 400	43 000	-9 600	24 014	32 792	-8 778	57 414	75 792	-18 378
2006 Q1	36 506	42 654	-6 148	40 754	49 682	-8 928	40 960	49 942	-8 982	23 774	34 068	-10 294	64 734	84 010	-19 276
Q2	38 978	43 976	-4 998	43 783	51 905	-8 122	43 990	52 152	-8 162	23 758	34 290	-10 532	67 748	86 442	-18 694
Q3	31 253	36 175	-4 922	34 477	41 593	-7 116	34 709	41 859	-7 150	21 789	34 104	-12 315	56 498	75 963	-19 465
Q4	29 320	35 139	-5 819	32 465	40 190	-7 725	32 694	40 487	-7 793	21 957	34 284	-12 327	54 651	74 771	-20 120
2007 Q1	27 789	35 930	-8 141	30 885	40 734	-9 849	31 099	40 996	-9 897	22 207	33 756	-11 549	53 306	74 752	-21 446
Q2	27 724	36 211	-8 487	30 801	40 963	-10 162	31 015	41 290	-10 275	23 666	33 699	-10 033	54 681	74 989	-20 308
Q3	29 075	37 775	-8 700	32 355	42 907	-10 552	32 574	43 204	-10 630	23 386	36 374	-12 988	55 960	79 578	-23 618
Q4	29 552	38 303	-8 751	32 876	43 836	-10 960	33 100	44 122	-11 022	23 750	36 871	-13 121	56 850	80 993	-24 143
2008 Q1	30 797	38 942	-8 145	34 195	44 809	-10 614	34 462	45 071	-10 609	25 345	37 456	-12 111	59 807	82 527	-22 720
2005 Apr	8 492	11 168	-2 676	9 370	12 584	-3 214	9 445	12 668	-3 223	7 229	9 970	-2 741	16 674	22 638	-5 964
May	8 408	10 936	-2 528	9 252	12 373	-3 121	9 312	12 456	-3 144	7 213	9 568	-2 355	16 525	22 024	-5 499
Jun	8 840	11 274	-2 434	9 709	12 750	-3 041	9 780	12 828	-3 048	8 009	9 803	-1 794	17 789	22 631	-4 842
Jul	8 998	11 489	-2 491	9 854	12 949	-3 095	9 972	13 030	-3 058	7 651	10 244	-2 593	17 623	23 274	-5 651
Aug	9 495	12 050	-2 555	10 467	13 633	-3 166	10 541	13 714	-3 173	7 664	10 731	-3 067	18 205	24 445	-6 240
Sep	9 517	12 196	-2 679	10 514	13 765	-3 251	10 587	13 839	-3 252	8 217	10 952	-2 735	18 804	24 791	-5 987
Oct	9 742	12 367	-2 625	10 781	13 925	-3 144	10 851	14 006	-3 155	8 172	10 622	-2 450	19 023	24 628	-5 605
Nov	9 969	12 702	-2 733	11 026	14 355	-3 329	11 099	14 439	-3 340	7 876	10 950	-3 074	18 975	25 389	-6 414
Dec	10 303	12 927	-2 624	11 378	14 471	-3 093	11 450	14 555	-3 105	7 966	11 220	-3 254	19 416	25 775	-6 359
2006 Jan	11 355	13 520	-2 165	12 714	15 464	-2 750	12 775	15 554	-2 779	7 548	11 436	-3 888	20 323	26 990	-6 667
Feb	12 088	14 423	-2 335	13 420	16 744	-3 324	13 488	16 833	-3 345	8 049	11 290	-3 241	21 537	28 123	-6 586
Mar	13 063	14 711	-1 648	14 620	17 474	-2 854	14 697	17 555	-2 858	8 177	11 342	-3 165	22 874	28 897	-6 023
Apr	13 241	14 959	-1 718	15 011	17 586	-2 575	15 070	17 667	-2 597	7 810	11 387	-3 577	22 880	29 054	-6 174
May	13 438	15 147	-1 709	14 971	18 076	-3 105	15 050	18 158	-3 108	7 959	11 626	-3 667	23 009	29 784	-6 775
Jun	12 299	13 870	-1 571	13 801	16 243	-2 442	13 870	16 327	-2 457	7 989	11 277	-3 288	21 859	27 604	-5 745
Jul	10 624	12 148	-1 524	11 795	13 943	-2 148	11 870	14 027	-2 157	7 076	11 307	-4 231	18 946	25 334	-6 388
Aug	10 684	12 204	-1 520	11 729	14 086	-2 357	11 800	14 170	-2 370	7 324	11 610	-4 286	19 124	25 780	-6 656
Sep	9 945	11 823	-1 878	10 953	13 564	-2 611	11 039	13 662	-2 623	7 389	11 187	-3 798	18 428	24 849	-6 421
Oct	9 962	11 604	-1 642	10 985	13 353	-2 368	11 061	13 437	-2 376	7 332	11 299	-3 967	18 393	24 736	-6 343
Nov	9 608	11 523	-1 915	10 710	13 208	-2 498	10 790	13 292	-2 502	7 533	11 695	-4 162	18 323	24 987	-6 664
Dec	9 750	12 012	-2 262	10 770	13 629	-2 859	10 843	13 758	-2 915	7 092	11 290	-4 198	17 935	25 048	-7 113
2007 Jan	9 489	11 920	-2 431	10 510	13 536	-3 026	10 571	13 596	-3 025	7 270	10 975	-3 705	17 841	24 571	-6 730
Feb	9 229	11 876	-2 647	10 294	13 462	-3 168	10 366	13 555	-3 189	7 075	11 050	-3 975	17 441	24 605	-7 164
Mar	9 071	12 134	-3 063	10 081	13 736	-3 655	10 162	13 845	-3 683	7 862	11 731	-3 869	18 024	25 576	-7 552
Apr	9 023	11 950	-2 927	9 995	13 378	-3 383	10 067	13 481	-3 414	7 961	11 043	-3 082	18 028	24 524	-6 496
May	9 482	12 199	-2 717	10 553	13 856	-3 303	10 623	13 962	-3 339	7 496	11 042	-3 546	18 119	25 004	-6 885
Jun	9 219	12 062	-2 843	10 253	13 729	-3 476	10 325	13 847	-3 522	8 209	11 614	-3 405	18 534	25 461	-6 927
Jul	9 670	12 521	-2 851	10 731	14 172	-3 441	10 800	14 278	-3 478	7 850	12 262	-4 412	18 650	26 540	-7 890
Aug	9 671	12 681	-3 010	10 787	14 355	-3 568	10 863	14 455	-3 592	7 857	11 853	-3 996	18 720	26 308	-7 588
Sep	9 734	12 573	-2 839	10 837	14 380	-3 543	10 911	14 471	-3 560	7 679	12 259	-4 580	18 590	26 730	-8 140
Oct	9 656	12 466	-2 810	10 824	14 321	-3 497	10 901	14 422	-3 521	7 999	12 514	-4 515	18 900	26 936	-8 036
Nov	10 052	12 909	-2 857	11 147	14 797	-3 650	11 228	14 894	-3 666	8 161	12 546	-4 385	19 389	27 440	-8 051
Dec	9 844	12 928	-3 084	10 905	14 718	-3 813	10 971	14 806	-3 835	7 590	11 811	-4 221	18 561	26 617	-8 056
2008 Jan	10 325	13 113	-2 788	11 437	15 085	-3 648	11 528	15 175	-3 647	8 193	12 454	-4 261	19 721	27 629	-7 908
Feb	10 242	13 012	-2 770	11 367	14 948	-3 581	11 451	15 037	-3 586	8 595	12 674	-4 079	20 046	27 711	-7 665
Mar	10 230	12 817	-2 587	11 391	14 776	-3 385	11 483	14 859	-3 376	8 557	12 328	-3 771	20 040	27 187	-7 147
Apr	10 906	13 362	-2 456	12 038	15 447	-3 409	12 127	15 536	-3 409	8 652	12 837	-4 185	20 779	28 373	-7 594

1 Austria, Belgium, Cyprus, Finland, France, Germany, Greece, Irish Republic, Italy, Luxembourg, Malta, Netherlands, Portugal, Slovenia, and Spain

2 EMU plus Czech Republic, Denmark, Estonia, Hungary, Latvia, Lithuania, Poland, Slovakia and Sweden

3 VOLUME AND PRICE INDICES (WHOLE WORLD)

Balance of Payments basis

Indices 2003=100

	Volume (seasonally adjusted)						Price index (not seasonally adjusted)								
	Total		Total excluding oil		Total excluding oil and erratics ¹		Total			Total excluding oil			Total excluding oil & erratics ¹		
	Exports	Imports	Exports	Imports	Exports	Imports	Exports	Imports	Terms of trade ²	Exports	Imports	Terms of trade ²	Exports	Imports	
	BQKU	BQKV	BQKI	BQKJ	BOMA	ELAL	BQKR	BQKS	BQKT	BQKK	BQKL	BQKM	BQAK	ELBA	
2004	101.5	106.9	102.0	106.3	102.0	106.8	100.3	99.5	100.8	98.9	98.7	100.2	99.0	99.0	
2005	111.0	114.7	112.5	114.5	113.1	115.3	104.3	103.7	100.6	99.9	100.7	99.2	100.1	100.8	
2006	125.2	127.9	127.8	128.3	129.7	129.0	107.5	107.5	100.0	101.2	103.1	98.2	101.4	103.2	
2007	110.1	122.2	111.8	122.1	112.0	122.5	108.8	109.0	99.8	102.1	104.2	98.0	102.5	104.7	
2005 Q1	101.9	108.2	101.9	108.2	102.0	108.5	102.2	101.5	100.7	99.9	99.8	100.1	100.0	100.0	
Q2	107.5	111.6	108.7	111.2	109.5	112.3	102.9	102.2	100.7	99.3	99.8	99.5	99.5	99.9	
Q3	114.3	117.3	116.7	117.0	117.1	117.6	105.8	105.2	100.6	99.7	101.0	98.7	100.0	101.1	
Q4	120.2	121.8	122.5	121.8	123.8	122.9	106.3	105.9	100.4	100.6	102.1	98.5	100.9	102.1	
2006 Q1	134.6	133.8	137.9	134.2	141.4	135.7	108.0	107.3	100.7	102.0	103.0	99.0	102.1	102.9	
Q2	139.7	138.6	143.2	139.7	145.6	141.3	109.1	108.2	100.8	101.8	103.1	98.7	102.0	103.1	
Q3	113.7	119.8	115.6	119.6	117.5	119.6	108.2	108.1	100.1	100.9	103.1	97.9	101.3	103.3	
Q4	112.9	119.6	114.5	119.5	114.5	119.3	104.8	106.5	98.4	100.0	103.1	97.0	100.3	103.4	
2007 Q1	108.9	120.1	110.5	119.7	111.2	119.6	105.5	106.6	99.0	101.2	103.7	97.6	101.5	104.0	
Q2	109.9	118.8	111.3	119.0	110.4	119.5	107.8	108.6	99.3	101.5	104.3	97.3	101.8	104.7	
Q3	111.8	125.6	113.6	125.5	114.2	125.7	108.8	109.0	99.8	101.6	103.9	97.8	102.0	104.4	
Q4	109.9	124.3	111.8	124.2	112.1	125.2	113.3	111.8	101.3	104.0	105.0	99.0	104.6	105.6	
2008 Q1	110.8	121.8	113.0	122.3	113.4	122.8	119.5	117.6	101.6	108.5	109.7	98.9	109.2	110.2	
2005 Apr	105.0	113.1	106.1	112.5	107.7	113.5	102.9	101.7	101.2	99.5	99.5	100.0	99.7	99.7	
May	104.3	109.7	105.1	109.2	105.4	111.1	103.0	102.1	100.9	99.9	100.0	99.9	100.0	100.1	
Jun	113.2	112.0	114.9	112.0	115.5	112.3	102.9	102.8	100.1	98.6	99.8	98.8	98.9	100.0	
Jul	109.5	113.1	110.7	113.0	110.5	113.6	105.6	105.4	100.2	100.1	101.5	98.6	100.3	101.6	
Aug	114.7	118.6	118.1	118.6	118.7	118.7	106.1	105.3	100.8	99.7	100.7	99.0	100.0	100.8	
Sep	118.7	120.3	121.3	119.3	122.1	120.4	105.8	105.0	100.8	99.3	100.7	98.6	99.6	100.8	
Oct	119.5	119.4	121.4	118.8	123.0	121.0	106.6	105.6	100.9	100.4	101.7	98.7	100.7	101.8	
Nov	119.7	122.6	122.4	122.5	123.5	122.5	106.2	106.1	100.1	100.7	102.3	98.4	100.9	102.3	
Dec	121.4	123.5	123.7	124.2	125.0	125.2	106.1	105.9	100.2	100.8	102.2	98.6	101.0	102.1	
2006 Jan	126.6	128.7	129.6	128.4	132.5	129.0	107.5	106.9	100.6	101.4	102.4	99.0	101.6	102.4	
Feb	135.1	134.5	139.0	135.8	142.0	137.8	107.9	107.4	100.5	101.9	103.1	98.8	101.9	103.0	
Mar	142.1	138.1	145.1	138.5	149.6	140.2	108.7	107.7	100.9	102.6	103.4	99.2	102.7	103.3	
Apr	142.3	140.2	146.1	142.3	148.9	144.8	110.2	109.1	101.0	102.6	103.6	99.0	102.8	103.5	
May	143.4	143.7	147.4	144.6	150.5	145.7	108.5	107.4	101.0	101.3	102.5	98.8	101.5	102.6	
Jun	133.5	131.8	136.2	132.3	137.3	133.5	108.7	108.1	100.6	101.6	103.2	98.4	101.8	103.3	
Jul	112.1	119.2	113.3	119.2	115.2	119.1	109.8	109.3	100.5	101.8	103.7	98.2	102.1	103.8	
Aug	116.1	121.5	118.7	121.4	121.0	121.5	108.3	108.0	100.3	100.5	102.6	98.0	100.9	102.8	
Sep	112.9	118.6	114.7	118.1	116.4	118.1	106.4	106.9	99.5	100.5	103.0	97.6	100.8	103.2	
Oct	113.0	118.7	114.3	118.3	114.3	118.4	105.1	106.7	98.5	100.3	103.4	97.0	100.6	103.7	
Nov	113.8	119.3	115.6	118.8	115.1	118.3	104.7	106.5	98.3	100.1	103.4	96.8	100.4	103.6	
Dec	112.0	120.8	113.5	121.5	114.1	121.2	104.6	106.2	98.5	99.6	102.6	97.1	99.9	102.9	
2007 Jan	109.7	118.9	111.4	117.5	112.0	117.9	104.4	105.4	99.1	100.8	103.1	97.8	101.0	103.4	
Feb	106.9	119.4	108.3	119.6	109.4	118.9	105.2	106.2	99.1	101.1	103.3	97.9	101.4	103.7	
Mar	110.2	122.1	111.9	122.0	112.3	121.9	106.8	108.2	98.7	101.8	104.6	97.3	102.1	105.0	
Apr	109.6	116.7	110.6	116.4	106.8	117.6	107.2	108.1	99.2	101.4	104.0	97.5	101.7	104.4	
May	109.1	118.4	110.7	119.0	111.1	118.6	107.8	108.7	99.2	101.7	104.6	97.2	102.0	105.0	
Jun	111.1	121.3	112.7	121.7	113.3	122.3	108.3	109.0	99.4	101.4	104.2	97.3	101.8	104.7	
Jul	112.3	125.9	113.9	126.4	113.8	126.5	108.3	108.9	99.4	100.9	103.6	97.4	101.3	104.1	
Aug	113.3	124.9	116.0	124.9	116.7	125.2	108.1	108.5	99.6	101.2	103.8	97.5	101.6	104.2	
Sep	109.7	125.9	110.8	125.3	112.0	125.4	110.0	109.5	100.5	102.7	104.3	98.5	103.2	104.8	
Oct	111.2	125.7	112.9	125.4	113.0	125.9	111.3	110.3	100.9	103.1	104.3	98.8	103.7	104.8	
Nov	112.2	126.2	114.4	125.8	114.7	126.3	113.4	111.8	101.4	103.8	104.8	99.0	104.4	105.4	
Dec	106.3	121.0	108.0	121.3	108.5	123.3	115.3	113.2	101.9	105.2	105.9	99.3	105.8	106.5	
2008 Jan	110.6	123.4	112.9	124.0	113.8	124.3	117.8	116.1	101.5	107.3	108.5	98.9	108.0	109.1	
Feb	111.8	123.1	113.9	123.7	113.8	123.2	118.8	117.4	101.2	108.3	109.8	98.6	109.0	110.3	
Mar	110.1	118.8	112.2	119.3	112.5	121.0	121.8	119.3	102.1	109.8	110.7	99.2	110.5	111.3	
Apr	111.6	122.1	113.8	123.1	113.2	122.6	124.5	121.8	102.2	111.6	112.3	99.4	112.3	113.0	

1 These are defined as ships, aircraft, precious stones and silver

2 Export price index as a percentage of the import price index

4 VOLUME INDICES WITH COUNTRIES INSIDE AND OUTSIDE THE EU

Balance of Payments basis

Indices 2003=100

	Trade with EU countries						Trade with Non-EU countries					
	Total		Total excluding oil		Total excluding oil and erratics ¹		Total		Total excluding oil		Total excluding oil & erratics ¹	
	Exports	Imports	Exports	Imports	Exports	Imports	Exports	Imports	Exports	Imports	Exports	Imports
VOLUME (seasonally adjusted)	LGCT	LGDL	LKUL	LKVD	SHBS	SHCO	LGEH	LGFA	LKVZ	LKWS	SHDJ	SHED
2004	100.1	104.4	100.6	104.2	100.3	103.9	103.5	110.4	104.0	109.4	104.6	111.5
2005	107.3	115.1	108.6	115.3	108.8	114.8	116.6	114.8	118.2	114.1	119.8	116.8
2006	132.8	132.5	135.6	132.7	137.2	132.6	114.0	123.0	116.3	123.1	118.0	124.5
2007	107.8	117.4	108.9	117.0	109.1	117.1	113.8	129.0	116.2	129.7	116.5	131.6
2005 Q1	100.2	106.6	100.1	106.7	99.8	105.9	104.7	110.5	104.9	110.4	105.5	112.8
Q2	100.7	110.9	101.4	110.8	101.6	109.7	117.6	112.9	119.4	112.2	121.6	116.9
Q3	109.9	118.5	112.6	118.8	112.3	118.7	121.1	116.5	123.0	115.1	124.6	116.8
Q4	118.4	124.6	120.4	124.9	121.3	125.0	123.0	119.1	125.6	118.5	127.7	120.7
2006 Q1	143.9	144.1	147.4	144.4	150.0	144.3	120.8	121.4	124.0	121.2	127.9	123.6
Q2	154.7	152.1	159.8	152.8	162.1	153.4	116.9	122.4	118.4	122.8	119.4	124.2
Q3	118.0	118.9	120.1	119.2	121.5	118.5	107.5	121.7	109.0	121.0	111.3	122.3
Q4	114.4	114.7	115.0	114.4	115.2	114.4	110.8	126.5	113.6	127.3	113.4	127.7
2007 Q1	108.0	115.4	109.1	114.9	108.7	114.7	110.8	126.9	113.0	127.2	115.1	128.1
Q2	105.5	114.2	106.3	113.9	107.1	113.9	116.4	125.3	118.6	126.7	115.6	128.9
Q3	109.9	120.1	110.7	120.0	111.0	120.2	114.9	133.1	117.9	133.7	119.2	134.9
Q4	107.8	119.8	109.4	119.4	109.6	119.7	113.3	130.6	115.4	131.3	116.0	134.4
2008 Q1	105.6	117.5	106.8	117.4	107.1	117.9	118.4	127.4	121.6	129.5	122.7	131.0
2005 Apr	99.4	110.6	99.7	110.2	100.3	108.5	113.7	116.8	115.6	116.2	119.2	121.9
May	98.6	109.2	99.0	109.1	98.7	108.4	112.8	110.6	114.0	109.4	115.6	115.8
Jun	104.2	112.8	105.4	113.0	105.9	112.2	126.3	111.4	128.5	111.1	130.1	113.1
Jul	104.9	114.0	106.5	114.3	105.8	114.3	116.5	112.5	117.1	111.8	117.8	113.3
Aug	111.6	119.8	114.8	120.0	114.7	119.6	119.7	117.8	123.4	117.3	125.0	118.2
Sep	113.2	121.8	116.4	122.1	116.4	122.1	127.0	119.1	128.6	116.1	130.9	118.8
Oct	115.4	122.9	117.4	123.2	117.9	123.6	125.9	116.1	127.6	114.0	130.8	118.7
Nov	118.8	125.1	121.9	125.3	122.8	125.5	121.2	119.9	123.4	119.1	124.8	118.4
Dec	121.1	125.8	122.0	126.2	123.2	126.0	121.8	121.3	125.9	122.4	127.4	125.0
2006 Jan	133.7	134.6	136.5	135.0	138.2	134.5	116.6	121.8	120.1	119.9	123.9	121.3
Feb	143.2	145.6	147.6	145.9	149.4	145.8	122.9	121.1	126.3	122.7	130.3	126.7
Mar	154.8	152.2	158.2	152.2	162.4	152.5	123.0	121.3	125.6	121.1	129.4	122.9
Apr	160.2	155.5	166.0	156.3	167.7	157.2	115.3	121.6	116.8	124.0	119.4	127.1
May	160.5	159.4	166.5	160.5	169.9	160.9	117.6	124.6	119.0	123.9	120.1	123.6
Jun	143.5	141.3	147.0	141.7	148.8	142.1	117.8	120.9	119.5	120.5	118.8	121.8
Jul	118.1	119.6	119.4	119.8	120.2	118.4	103.4	119.4	104.7	119.1	107.4	121.1
Aug	121.2	120.3	124.2	120.7	125.8	120.5	108.8	124.1	110.7	123.3	113.6	124.3
Sep	114.7	116.9	116.8	117.0	118.6	116.6	110.3	121.7	111.5	120.5	112.8	121.5
Oct	115.2	114.6	115.7	114.2	115.9	114.0	109.7	124.5	112.1	124.7	111.9	125.9
Nov	113.3	112.7	114.2	112.6	114.4	112.5	114.3	128.7	117.4	128.3	115.9	128.5
Dec	114.6	116.8	115.2	116.5	115.3	116.7	108.5	126.4	111.4	128.8	112.4	128.7
2007 Jan	110.1	115.3	111.0	114.4	110.4	115.0	109.6	124.2	112.4	122.6	114.5	123.3
Feb	107.7	114.9	108.2	114.6	108.2	113.9	106.3	125.8	108.9	127.4	111.4	127.5
Mar	106.1	116.0	108.1	115.6	107.6	115.1	116.4	130.8	117.7	131.7	119.5	133.4
Apr	103.5	111.7	103.7	111.0	104.8	111.0	118.3	123.9	120.2	124.5	110.1	128.8
May	108.1	115.4	108.8	115.2	109.3	115.1	110.8	122.8	113.7	124.8	114.1	124.7
Jun	105.0	115.5	106.3	115.4	107.2	115.5	120.1	129.1	121.8	130.9	122.7	133.3
Jul	110.2	119.1	111.2	119.2	111.6	119.2	115.6	135.4	118.0	137.1	117.4	138.7
Aug	110.6	120.8	112.0	120.6	112.4	120.7	117.7	130.5	121.9	131.2	123.4	132.6
Sep	108.8	120.4	109.0	120.3	109.0	120.6	111.5	133.4	113.7	132.7	116.7	133.5
Oct	108.7	119.2	110.7	119.1	110.8	119.6	115.3	134.7	116.6	134.9	116.6	136.7
Nov	109.2	121.1	111.1	120.6	111.2	120.8	116.6	133.1	119.2	133.6	120.1	135.5
Dec	105.5	119.0	106.5	118.6	106.9	118.8	108.0	124.0	110.5	125.5	111.4	131.0
2008 Jan	108.0	120.8	109.8	121.0	109.9	121.7	114.6	127.0	117.4	128.5	119.6	128.8
Feb	105.1	117.2	105.8	117.1	106.0	117.7	121.3	130.9	125.1	133.3	125.4	132.2
Mar	103.7	114.6	104.9	114.1	105.5	114.3	119.2	124.4	122.3	126.7	123.1	131.9
Apr	106.7	118.5	108.0	118.5	106.8	118.5	119.1	127.1	122.7	129.7	123.4	129.3

1 These are defined as ships, aircraft, precious stones and silver

5 PRICE INDICES WITH COUNTRIES INSIDE AND OUTSIDE THE EU

Balance of Payments basis

Indices 2003=100

	Trade with EU countries						Trade with Non-EU countries					
	Total		Total excluding oil		Total excluding oil and erratics ¹		Total		Total excluding oil		Total excluding oil & erratics ¹	
	Exports	Imports	Exports	Imports	Exports	Imports	Exports	Imports	Exports	Imports	Exports	Imports
PRICE INDEX (not seasonally adjusted)												
	LGCR	LGDJ	LKUJ	LKVB	SHBQ	SHCM	LGEF	LGEY	LKVX	LKWQ	SHDH	SHEB
2004	100.2	99.7	98.9	99.5	99.1	99.5	100.2	99.3	98.9	97.7	98.8	98.2
2005	104.6	101.4	99.6	100.3	99.8	100.3	103.7	107.0	100.1	101.2	100.3	101.5
2006	107.9	104.0	100.8	102.5	101.1	102.5	106.7	112.3	101.5	103.9	101.5	104.4
2007	109.2	105.8	101.6	104.1	102.2	104.1	108.1	113.2	102.5	104.2	102.5	105.6
2005 Q1	103.0	101.1	100.4	100.6	100.6	100.6	101.0	102.3	99.1	98.9	99.1	99.3
Q2	103.1	100.5	99.0	99.6	99.3	99.6	102.5	104.6	99.6	100.1	99.8	100.5
Q3	105.9	101.6	99.0	100.2	99.2	100.2	105.4	110.2	100.4	102.2	100.7	102.5
Q4	106.4	102.3	100.0	101.0	100.2	101.0	106.0	110.7	101.4	103.6	101.6	103.8
2006 Q1	108.4	103.1	101.6	101.6	101.8	101.6	107.3	113.0	102.3	104.9	102.2	104.9
Q2	109.6	104.2	101.4	102.4	101.7	102.4	108.2	113.9	102.1	104.2	102.2	104.6
Q3	108.6	104.6	100.6	102.9	100.9	102.9	107.2	112.8	101.2	103.4	101.3	104.0
Q4	105.0	104.2	99.6	103.1	100.1	103.1	104.2	109.6	100.2	103.2	100.3	104.0
2007 Q1	105.4	103.9	100.7	102.9	101.2	102.8	105.3	110.1	101.9	104.6	101.7	105.8
Q2	108.1	105.5	101.0	104.0	101.6	104.0	107.1	112.7	101.9	104.5	101.8	105.9
Q3	109.1	105.8	101.0	104.1	101.6	104.0	108.2	113.2	102.2	103.5	102.2	104.9
Q4	114.2	107.8	103.8	105.5	104.6	105.5	111.8	117.0	104.0	104.1	104.2	105.7
2008 Q1	121.6	112.4	109.5	109.7	110.3	109.6	116.0	124.7	106.6	109.6	106.7	111.3
2005 Apr	103.5	100.6	99.7	99.8	99.9	99.8	101.9	103.4	99.1	99.1	99.2	99.6
May	103.5	100.5	99.9	99.8	100.1	99.8	102.2	104.3	99.7	100.4	99.8	100.7
Jun	102.4	100.3	97.5	99.3	97.8	99.3	103.4	106.2	100.1	100.7	100.4	101.2
Jul	105.6	101.7	99.3	100.4	99.5	100.4	105.4	110.4	100.9	103.2	101.2	103.5
Aug	106.3	101.6	99.1	100.0	99.4	100.0	105.5	110.4	100.2	101.7	100.5	102.1
Sep	105.8	101.5	98.5	100.1	98.8	100.1	105.4	109.7	100.1	101.6	100.5	102.0
Oct	106.7	102.2	99.8	100.8	100.0	100.8	106.2	110.4	101.2	103.1	101.5	103.4
Nov	106.3	102.4	100.0	101.1	100.3	101.1	105.9	111.0	101.4	104.0	101.6	104.2
Dec	106.2	102.4	100.2	101.1	100.4	101.0	105.8	110.8	101.5	103.7	101.6	103.9
2006 Jan	107.9	102.9	101.1	101.3	101.4	101.3	106.7	112.3	101.7	103.9	101.7	104.2
Feb	108.1	103.1	101.4	101.6	101.6	101.6	107.4	113.2	102.4	105.2	102.3	105.1
Mar	109.1	103.4	102.3	101.9	102.5	101.9	107.8	113.6	102.8	105.5	102.7	105.4
Apr	110.7	104.2	102.3	102.2	102.5	102.2	109.2	116.0	102.9	105.6	102.9	105.7
May	108.9	103.9	100.8	102.2	101.2	102.2	107.6	112.4	101.6	103.0	101.7	103.5
Jun	109.1	104.4	101.1	102.7	101.5	102.7	107.8	113.2	101.9	104.0	102.0	104.5
Jul	110.4	105.2	101.5	103.3	101.8	103.2	108.7	114.9	102.0	104.3	102.1	104.9
Aug	108.8	104.4	100.1	102.6	100.5	102.6	107.2	112.9	100.7	102.6	100.9	103.3
Sep	106.7	104.2	100.1	102.9	100.5	102.9	105.6	110.6	100.8	103.2	100.9	103.8
Oct	105.1	104.2	99.7	103.1	100.1	103.1	104.8	110.1	100.9	104.0	101.0	104.7
Nov	104.9	104.3	99.7	103.2	100.2	103.2	104.1	109.6	100.3	103.5	100.4	104.3
Dec	105.1	104.2	99.5	103.0	99.9	102.9	103.6	109.0	99.4	102.1	99.5	103.0
2007 Jan	104.4	103.1	100.3	102.3	100.8	102.3	104.1	108.3	101.3	104.0	101.1	105.1
Feb	105.1	103.5	100.5	102.5	101.0	102.5	105.1	109.7	101.9	104.3	101.7	105.5
Mar	106.8	105.0	101.2	103.8	101.7	103.7	106.6	112.3	102.5	105.6	102.3	106.9
Apr	107.4	105.0	100.8	103.6	101.4	103.5	106.7	112.2	101.9	104.5	101.8	106.0
May	108.1	105.8	101.2	104.4	101.8	104.3	107.1	112.6	102.0	104.8	101.9	106.2
Jun	108.7	105.8	100.9	104.1	101.5	104.1	107.5	113.3	101.8	104.2	101.7	105.6
Jul	108.8	105.6	100.4	103.8	101.1	103.7	107.4	113.2	101.2	103.1	101.1	104.6
Aug	108.4	105.5	100.7	103.9	101.3	103.8	107.4	112.5	101.7	103.4	101.7	104.7
Sep	110.0	106.4	101.8	104.6	102.4	104.5	109.7	113.8	103.6	103.9	103.8	105.3
Oct	111.7	106.8	102.6	104.7	103.3	104.6	110.3	115.0	103.5	103.5	103.7	105.1
Nov	114.4	107.9	103.7	105.5	104.5	105.5	111.7	116.9	103.6	103.6	103.8	105.3
Dec	116.4	108.8	105.2	106.3	106.0	106.3	113.3	119.0	104.8	105.1	105.1	106.7
2008 Jan	119.3	111.1	107.8	108.5	108.6	108.5	115.1	122.8	106.2	108.5	106.4	110.2
Feb	120.8	112.3	109.2	109.7	110.0	109.6	115.6	124.3	106.6	109.9	106.8	111.6
Mar	124.6	113.8	111.5	110.8	112.3	110.7	117.3	126.9	106.9	110.4	107.0	112.2
Apr	127.9	115.7	113.8	112.4	114.7	112.4	119.0	130.1	107.8	112.1	108.0	114.1

¹ These are defined as ships, aircraft, precious stones and silver

6 TRADE IN OIL¹ (WHOLE WORLD)

Balance of Payments basis

Seasonally adjusted

	Exports						Imports					
	Balance of Trade in Oil £ million	Crude oil (SITC 333)				Rest of SITC 33 £ million	Total £ million	Crude oil (SITC 333)				Rest of SITC 33 £ million
		Total £ million	million £ million	million tonnes	Avg value per tonne £			million £ million	million tonnes	Avg value per tonne £		
	ENXQ	ELBL	BQNI	BOQM	BPBN	BOQN	ENXO	BQNJ	BQBH	BQAX	BQAY	
2004	893	16 200	9 338	60.51	155	6 862	15 307	8 191	56.15	145	7 116	
2005	-2 195	19 794	10 948	50.48	217	8 846	21 989	11 212	54.05	207	10 777	
2006	-3 432	23 274	12 890	47.69	270	10 384	26 706	14 272	55.72	256	12 434	
2007	-3 925	22 764	12 634	46.94	269	10 130	26 689	11 419	44.21	258	15 270	
2005 Q1	351	4 503	2 567	14.38	179	1 936	4 152	2 045	12.28	167	2 107	
Q2	-303	4 689	2 789	13.91	201	1 900	4 992	2 513	13.52	186	2 479	
Q3	-1 528	5 127	2 673	10.70	250	2 454	6 655	3 557	15.09	236	3 098	
Q4	-715	5 475	2 919	11.49	254	2 556	6 190	3 097	13.16	235	3 093	
2006 Q1	-1 029	5 795	3 409	12.87	265	2 386	6 824	3 439	13.77	250	3 385	
Q2	-343	6 438	3 572	12.61	283	2 866	6 781	3 744	13.95	268	3 037	
Q3	-1 310	5 915	3 111	10.80	288	2 804	7 225	4 175	15.11	276	3 050	
Q4	-750	5 126	2 798	11.41	245	2 328	5 876	2 914	12.89	226	2 962	
2007 Q1	-786	4 774	2 585	11.35	228	2 189	5 560	2 192	10.59	207	3 368	
Q2	-237	5 669	3 164	12.35	256	2 505	5 906	2 265	9.32	243	3 641	
Q3	-1 251	5 850	3 315	11.95	277	2 535	7 101	3 313	12.67	261	3 788	
Q4	-1 651	6 471	3 570	11.29	316	2 901	8 122	3 649	11.63	314	4 473	
2008 Q1	-1 105	7 041	3 808	10.35	368	3 233	8 146	3 860	10.79	358	4 286	
2005 Apr	-174	1 530	914	4.68	195	616	1 704	819	4.34	189	885	
May	-60	1 544	990	4.99	198	554	1 604	956	5.44	176	648	
Jun	-69	1 615	885	4.24	209	730	1 684	738	3.74	197	946	
Jul	-95	1 855	1 070	4.57	234	785	1 950	1 028	4.83	213	922	
Aug	-716	1 493	777	3.00	259	716	2 209	1 195	4.84	247	1 014	
Sep	-717	1 779	826	3.13	264	953	2 496	1 334	5.42	246	1 162	
Oct	-265	1 987	1 094	4.23	259	893	2 252	1 175	4.97	236	1 077	
Nov	-430	1 676	859	3.43	250	817	2 106	1 055	4.47	236	1 051	
Dec	-20	1 812	966	3.83	252	846	1 832	867	3.72	233	965	
2006 Jan	-659	1 831	1 090	4.13	264	741	2 490	1 369	5.55	247	1 121	
Feb	-229	1 757	933	3.54	264	824	1 986	940	3.71	253	1 046	
Mar	-141	2 207	1 386	5.20	267	821	2 348	1 130	4.51	251	1 218	
Apr	103	2 129	1 192	4.23	282	937	2 026	1 045	3.91	267	981	
May	-312	2 095	1 168	4.08	286	927	2 407	1 395	5.06	276	1 012	
Jun	-134	2 214	1 212	4.30	282	1 002	2 348	1 304	4.98	262	1 044	
Jul	-260	2 212	1 242	4.11	302	970	2 472	1 461	5.22	280	1 011	
Aug	-655	1 871	832	2.80	297	1 039	2 526	1 572	5.44	289	954	
Sep	-395	1 832	1 037	3.89	267	795	2 227	1 142	4.45	257	1 085	
Oct	-229	1 789	999	4.03	248	790	2 018	990	4.24	233	1 028	
Nov	-442	1 635	919	3.79	242	716	2 077	1 090	4.95	220	987	
Dec	-79	1 702	880	3.59	245	822	1 781	834	3.70	225	947	
2007 Jan	-425	1 520	793	3.54	224	727	1 945	788	3.82	206	1 157	
Feb	-6	1 604	913	4.10	223	691	1 610	538	2.68	201	1 072	
Mar	-355	1 650	879	3.71	237	771	2 005	866	4.09	212	1 139	
Apr	-141	1 901	1 061	4.28	248	840	2 042	719	2.98	241	1 323	
May	-57	1 812	1 001	3.93	255	811	1 869	813	3.46	235	1 056	
Jun	-39	1 956	1 102	4.14	266	854	1 995	733	2.88	255	1 262	
Jul	-244	2 005	1 073	3.92	274	932	2 249	1 045	4.06	257	1 204	
Aug	-583	1 719	982	3.57	275	737	2 302	1 093	4.22	259	1 209	
Sep	-424	2 126	1 260	4.46	283	866	2 550	1 175	4.39	268	1 375	
Oct	-578	2 056	1 143	3.81	300	913	2 634	1 281	4.34	295	1 353	
Nov	-776	2 163	1 242	3.92	317	921	2 939	1 313	4.04	325	1 626	
Dec	-297	2 252	1 185	3.56	333	1 067	2 549	1 055	3.25	325	1 494	
2008 Jan	-484	2 221	1 133	3.29	344	1 088	2 705	1 391	4.12	338	1 314	
Feb	-188	2 365	1 329	3.58	371	1 036	2 553	1 090	3.11	350	1 463	
Mar	-433	2 455	1 346	3.48	387	1 109	2 888	1 379	3.56	387	1 509	
Apr	-359	2 492	1 312	3.32	395	1 180	2 851	1 451	3.78	384	1 400	

¹ Trade in petroleum and petroleum products. These figures differ from those published by the Department of Trade and Industry which are on a time of shipment basis (see standard notes).

7 VALUE OF TRADE, BY COMMODITY (WHOLE WORLD)

Balance of Payments basis

£ million seasonally adjusted

	Food, beverages and tobacco (SITC 0 + 1)			Basic materials (SITC 2 + 4)			Fuels (SITC 3)		
	Exports	Imports	Balance	Exports	Imports	Balance	Exports	Imports	Balance
	BOPL	BQAR	ELBE	BOPM	BQAS	ELBF	BOPN	BQAT	ELBG
2004	10 578	22 147	-11 569	3 771	6 340	-2 569	17 885	17 547	338
2005	10 647	23 695	-13 048	3 981	6 770	-2 789	21 496	25 921	-4 425
2006	10 940	25 013	-14 073	4 890	7 887	-2 997	25 400	31 627	-6 227
2007	11 755	26 727	-14 972	5 516	9 564	-4 048	24 706	31 826	-7 120
2005 Q1	2 650	5 792	-3 142	960	1 608	-648	4 865	4 942	-77
Q2	2 710	5 951	-3 241	983	1 655	-672	5 199	5 663	-464
Q3	2 667	5 918	-3 251	1 031	1 769	-738	5 558	7 524	-1 966
Q4	2 620	6 034	-3 414	1 007	1 738	-731	5 874	7 792	-1 918
2006 Q1	2 629	6 188	-3 559	1 103	1 871	-768	6 289	8 447	-2 158
Q2	2 723	6 159	-3 436	1 198	1 886	-688	7 045	7 799	-754
Q3	2 758	6 255	-3 497	1 218	1 926	-708	6 541	8 378	-1 837
Q4	2 830	6 411	-3 581	1 371	2 204	-833	5 525	7 003	-1 478
2007 Q1	2 912	6 427	-3 515	1 297	2 152	-855	5 092	6 802	-1 710
Q2	2 865	6 569	-3 704	1 453	2 422	-969	6 164	6 822	-658
Q3	2 992	6 794	-3 802	1 299	2 556	-1 257	6 309	8 192	-1 883
Q4	2 986	6 937	-3 951	1 467	2 434	-967	7 141	10 010	-2 869
2008 Q1	3 251	7 463	-4 212	1 556	2 682	-1 126	7 650	10 414	-2 764
2005 Apr	892	2 049	-1 157	332	542	-210	1 681	1 934	-253
May	889	1 957	-1 068	324	544	-220	1 750	1 816	-66
Jun	929	1 945	-1 016	327	569	-242	1 768	1 913	-145
Jul	873	1 965	-1 092	313	569	-256	1 986	2 206	-220
Aug	885	1 992	-1 107	368	598	-230	1 612	2 514	-902
Sep	909	1 961	-1 052	350	602	-252	1 960	2 804	-844
Oct	866	2 026	-1 160	321	574	-253	2 123	2 721	-598
Nov	850	1 971	-1 121	319	583	-264	1 787	2 553	-766
Dec	904	2 037	-1 133	367	581	-214	1 964	2 518	-554
2006 Jan	870	2 091	-1 221	323	612	-289	1 985	2 965	-980
Feb	878	2 034	-1 156	373	615	-242	1 912	2 528	-616
Mar	881	2 063	-1 182	407	644	-237	2 392	2 954	-562
Apr	909	2 044	-1 135	380	587	-207	2 312	2 371	-59
May	897	2 044	-1 147	397	647	-250	2 335	2 740	-405
Jun	917	2 071	-1 154	421	652	-231	2 398	2 688	-290
Jul	898	2 065	-1 167	409	610	-201	2 462	2 816	-354
Aug	929	2 106	-1 177	401	656	-255	2 049	2 922	-873
Sep	931	2 084	-1 153	408	660	-252	2 030	2 640	-610
Oct	916	2 121	-1 205	465	723	-258	1 932	2 348	-416
Nov	968	2 150	-1 182	496	706	-210	1 764	2 555	-791
Dec	946	2 140	-1 194	410	775	-365	1 829	2 100	-271
2007 Jan	964	2 178	-1 214	404	668	-264	1 640	2 349	-709
Feb	966	2 126	-1 160	450	719	-269	1 691	2 025	-334
Mar	982	2 123	-1 141	443	765	-322	1 761	2 428	-667
Apr	920	2 190	-1 270	471	788	-317	2 068	2 459	-391
May	997	2 210	-1 213	498	810	-312	2 011	2 124	-113
Jun	948	2 169	-1 221	484	824	-340	2 085	2 239	-154
Jul	994	2 216	-1 222	460	898	-438	2 203	2 610	-407
Aug	1 019	2 296	-1 277	427	857	-430	1 855	2 658	-803
Sep	979	2 282	-1 303	412	801	-389	2 251	2 924	-673
Oct	987	2 339	-1 352	454	809	-355	2 298	3 118	-820
Nov	1 013	2 338	-1 325	546	812	-266	2 400	3 549	-1 149
Dec	986	2 260	-1 274	467	813	-346	2 443	3 343	-900
2008 Jan	1 109	2 446	-1 337	452	900	-448	2 451	3 496	-1 045
Feb	1 087	2 482	-1 395	570	937	-367	2 541	3 201	-660
Mar	1 055	2 535	-1 480	534	845	-311	2 658	3 717	-1 059
Apr	1 148	2 561	-1 413	613	852	-239	2 736	3 695	-959

7 VALUE OF TRADE, BY COMMODITY (WHOLE WORLD)

Balance of Payments basis

continued

£ million seasonally adjusted

	Semi-manufactures (SITC 5 + 6)			Finished manufactures (SITC 7 + 8)			Total manufactures (SITC 5 to 8)			Miscellaneous (SITC 9)		
	Exports	Imports	Balance	Exports	Imports	Balance	Exports	Imports	Balance	Exports	Imports	Balance
	BOPO	BQAU	ELBH	BOPP	BQAV	ELBI	BPAN	BQBD	ELBJ	BOQL	BQAW	BQKX
2004	56 466	60 226	-3 760	101 296	143 703	-42 407	157 762	203 929	-46 167	881	1 807	-926
2005	59 880	62 677	-2 797	114 484	159 493	-45 009	174 364	222 170	-47 806	1 120	1 841	-721
2006	64 811	69 342	-4 531	136 304	185 247	-48 943	201 115	254 589	-53 474	1 286	2 070	-784
2007	68 306	74 606	-6 300	109 345	165 298	-55 953	177 651	239 904	-62 253	1 169	2 291	-1 122
2005 Q1	14 649	15 661	-1 012	25 237	36 365	-11 128	39 886	52 026	-12 140	213	434	-221
Q2	14 678	15 476	-798	27 207	38 040	-10 833	41 885	53 516	-11 631	211	508	-297
Q3	15 323	15 572	-249	29 772	41 303	-11 531	45 095	56 875	-11 780	281	424	-143
Q4	15 230	15 968	-738	32 268	43 785	-11 517	47 498	59 753	-12 255	415	475	-60
2006 Q1	15 780	16 730	-950	38 556	50 228	-11 672	54 336	66 958	-12 622	377	546	-169
Q2	16 317	16 973	-656	40 153	53 116	-12 963	56 470	70 089	-13 619	312	509	-197
Q3	16 094	17 399	-1 305	29 580	41 542	-11 962	45 674	58 941	-13 267	307	463	-156
Q4	16 620	18 240	-1 620	28 015	40 361	-12 346	44 635	58 601	-13 966	290	552	-262
2007 Q1	16 778	18 184	-1 406	26 870	40 659	-13 789	43 648	58 843	-15 195	357	528	-171
Q2	17 019	18 497	-1 478	26 928	40 135	-13 207	43 947	58 632	-14 685	252	544	-292
Q3	17 474	19 238	-1 764	27 618	42 266	-14 648	45 092	61 504	-16 412	268	532	-264
Q4	17 035	18 687	-1 652	27 929	42 238	-14 309	44 964	60 925	-15 961	292	687	-395
2008 Q1	18 302	19 620	-1 318	28 729	41 702	-12 973	47 031	61 322	-14 291	319	646	-327
2005 Apr	4 772	5 208	-436	8 924	12 744	-3 820	13 696	17 952	-4 256	73	161	-88
May	4 842	5 050	-208	8 658	12 463	-3 805	13 500	17 513	-4 013	62	194	-132
Jun	5 064	5 218	-154	9 625	12 833	-3 208	14 689	18 051	-3 362	76	153	-77
Jul	4 919	5 257	-338	9 453	13 115	-3 662	14 372	18 372	-4 000	79	162	-83
Aug	5 273	5 289	-16	9 969	13 916	-3 947	15 242	19 205	-3 963	98	136	-38
Sep	5 131	5 026	105	10 350	14 272	-3 922	15 481	19 298	-3 817	104	126	-22
Oct	4 950	5 059	-109	10 591	14 100	-3 509	15 541	19 159	-3 618	172	148	24
Nov	5 140	5 224	-84	10 777	14 884	-4 107	15 917	20 108	-4 191	102	174	-72
Dec	5 140	5 685	-545	10 900	14 801	-3 901	16 040	20 486	-4 446	141	153	-12
2006 Jan	5 147	5 554	-407	11 895	15 596	-3 701	17 042	21 150	-4 108	103	172	-69
Feb	5 349	5 718	-369	12 904	17 049	-4 145	18 253	22 767	-4 514	121	179	-58
Mar	5 284	5 458	-174	13 757	17 583	-3 826	19 041	23 041	-4 000	153	195	-42
Apr	5 481	5 707	-226	13 701	18 166	-4 465	19 182	23 873	-4 691	97	179	-82
May	5 457	5 674	-217	13 808	18 517	-4 709	19 265	24 191	-4 926	115	162	-47
Jun	5 379	5 592	-213	12 644	16 433	-3 789	18 023	22 025	-4 002	100	168	-68
Jul	5 054	5 713	-659	10 025	13 968	-3 943	15 079	19 681	-4 602	98	162	-64
Aug	5 576	5 821	-245	10 071	14 119	-4 048	15 647	19 940	-4 293	98	156	-58
Sep	5 464	5 865	-401	9 484	13 455	-3 971	14 948	19 320	-4 372	111	145	-34
Oct	5 557	5 894	-337	9 425	13 465	-4 040	14 982	19 359	-4 377	98	185	-87
Nov	5 597	6 205	-608	9 396	13 189	-3 793	14 993	19 394	-4 401	102	182	-80
Dec	5 466	6 141	-675	9 194	13 707	-4 513	14 660	19 848	-5 188	90	185	-95
2007 Jan	5 690	5 948	-258	9 029	13 243	-4 214	14 719	19 191	-4 472	114	185	-71
Feb	5 387	6 036	-649	8 826	13 530	-4 704	14 213	19 566	-5 353	121	169	-48
Mar	5 701	6 200	-499	9 015	13 886	-4 871	14 716	20 086	-5 370	122	174	-52
Apr	5 429	5 917	-488	9 054	12 968	-3 914	14 483	18 885	-4 402	86	202	-116
May	5 837	6 230	-393	8 693	13 461	-4 768	14 530	19 691	-5 161	83	169	-86
Jun	5 753	6 350	-597	9 181	13 706	-4 525	14 934	20 056	-5 122	83	173	-90
Jul	5 743	6 549	-806	9 162	14 085	-4 923	14 905	20 634	-5 729	88	182	-94
Aug	5 928	6 310	-382	9 400	14 013	-4 613	15 328	20 323	-4 995	91	174	-83
Sep	5 803	6 379	-576	9 056	14 168	-5 112	14 859	20 547	-5 688	89	176	-87
Oct	5 778	6 235	-457	9 292	14 201	-4 909	15 070	20 436	-5 366	91	234	-143
Nov	5 822	6 238	-416	9 501	14 279	-4 778	15 323	20 517	-5 194	107	224	-117
Dec	5 435	6 214	-779	9 136	13 758	-4 622	14 571	19 972	-5 401	94	229	-135
2008 Jan	6 132	6 316	-184	9 487	14 253	-4 766	15 619	20 569	-4 950	90	218	-128
Feb	6 155	6 668	-513	9 587	14 218	-4 631	15 742	20 886	-5 144	106	205	-99
Mar	6 015	6 636	-621	9 655	13 231	-3 576	15 670	19 867	-4 197	123	223	-100
Apr	6 294	6 655	-361	9 860	14 407	-4 547	16 154	21 062	-4 908	128	203	-75

8

VOLUME INDICES, BY COMMODITY (WHOLE WORLD)

Balance of Payments basis

Indices 2003=100 seasonally adjusted

	Food, beverages and tobacco (SITC 0 + 1)		Basic materials (SITC 2 + 4)		Fuels (SITC 3)		Semi-manufactures (SITC 5 + 6)		Finished manufactures (SITC 7 + 8)		Total manufactures (SITC 5 to 8)	
	Exports	Imports	Exports	Imports	Exports	Imports	Exports	Imports	Exports	Imports	Exports	Imports
	BPEM	BQBK	BAFB	BQBL	BAFC	BQBM	BAHA	BQBN	BAHY	ELAB	BOGT	ELAJ
2004	99	106	105	100	93	123	104	106	101	106	102	106
2005	98	110	107	102	90	131	108	106	117	118	114	115
2006	99	114	121	110	92	135	116	112	139	137	131	130
2007	102	117	135	121	88	142	122	118	108	123	113	121
2005 Q1	98	108	102	100	96	121	106	107	101	108	103	107
Q2	101	110	108	100	92	127	107	105	111	113	110	111
Q3	98	109	109	106	83	133	111	106	123	122	119	118
Q4	96	111	107	100	88	142	110	107	134	129	125	122
2006 Q1	95	114	112	106	91	143	113	109	158	147	143	137
Q2	98	112	117	107	96	126	117	110	165	157	148	144
Q3	99	112	120	107	90	139	115	111	118	123	117	120
Q4	102	116	134	118	89	132	120	116	113	120	116	119
2007 Q1	104	115	127	114	85	147	121	115	106	121	111	119
Q2	101	117	138	122	91	130	122	117	107	119	112	118
Q3	103	119	131	129	88	140	125	122	109	127	115	125
Q4	101	116	143	118	87	153	120	117	108	126	113	123
2008 Q1	105	118	139	121	83	143	125	118	108	122	114	121
2005 Apr	100	115	108	100	90	133	104	106	109	115	107	112
May	99	109	105	99	96	127	105	103	106	111	106	109
Jun	103	107	110	101	91	120	111	107	119	114	116	112
Jul	96	107	101	101	91	120	107	107	116	116	113	114
Aug	98	111	114	108	72	130	114	108	124	124	120	119
Sep	100	110	113	108	87	148	112	103	129	127	123	120
Oct	96	113	104	102	92	156	107	101	133	125	124	118
Nov	93	109	103	102	82	140	111	105	134	131	126	124
Dec	98	112	114	97	90	131	111	114	134	130	126	125
2006 Jan	95	115	101	106	86	148	110	111	146	137	134	130
Feb	95	112	113	104	85	128	115	111	159	149	144	139
Mar	96	115	121	109	101	153	113	106	170	154	150	141
Apr	98	112	110	101	93	109	117	111	170	161	151	147
May	97	112	118	111	96	134	118	110	171	165	152	149
Jun	99	112	122	110	98	135	115	108	153	145	140	135
Jul	96	111	119	102	96	132	108	109	118	124	115	120
Aug	101	113	119	109	84	140	120	112	121	125	121	122
Sep	101	113	121	109	91	144	118	112	115	120	116	118
Oct	100	114	134	115	93	133	120	113	113	120	116	118
Nov	105	116	142	113	86	147	122	118	114	118	117	118
Dec	102	117	127	125	89	117	119	117	113	123	115	121
2007 Jan	104	117	120	109	85	161	123	113	107	118	112	117
Feb	103	114	131	114	85	134	117	115	105	121	109	119
Mar	104	114	131	120	85	145	124	118	107	123	113	122
Apr	100	118	134	122	95	146	118	111	108	116	111	114
May	104	117	139	121	90	119	126	119	103	118	111	118
Jun	100	115	142	123	88	124	123	120	109	122	114	122
Jul	104	117	135	136	92	134	124	124	110	127	115	126
Aug	106	121	130	131	79	138	128	121	112	126	117	124
Sep	99	118	129	120	92	148	123	122	106	127	112	125
Oct	101	118	139	120	91	150	123	118	109	127	114	125
Nov	103	117	157	118	85	158	123	118	110	128	115	125
Dec	100	112	132	117	84	152	113	116	106	122	109	120
2008 Jan	107	118	122	123	83	146	127	115	107	125	114	122
Feb	106	117	151	127	83	136	127	120	108	124	114	123
Mar	102	119	144	114	82	146	121	118	108	117	113	117
Apr	107	119	152	114	83	140	127	116	107	124	114	122

9 PRICE INDICES, BY COMMODITY (WHOLE WORLD)

Balance of Payments basis

Indices 2003=100 not seasonally adjusted

	Food, beverages and tobacco (SITC 0 + 1)		Basic materials (SITC 2 + 4)		Fuels (SITC 3)		Semi-manufactures (SITC 5 + 6)		Finished manufactures (SITC 7 + 8)		Total manufactures (SITC 5 to 8)	
	Exports	Imports	Exports	Imports	Exports	Imports	Exports	Imports	Exports	Imports	Exports	Imports
	BPAI	ELAN	BPAW	ELAO	BPDU	ELAP	BQAA	ELAQ	BQAB	ELAR	BQAI	ELAY
2004	99	98	108	103	117	118	99	102	98	97	99	98
2005	100	102	115	108	156	168	101	107	98	97	99	100
2006	102	105	122	117	182	200	102	112	99	97	100	102
2007	105	110	126	127	186	207	102	115	100	97	101	102
2005 Q1	99	101	113	104	130	140	101	106	98	96	99	99
Q2	99	102	114	108	144	153	100	106	98	96	99	99
Q3	100	103	115	108	175	192	101	106	98	97	99	100
Q4	100	103	118	110	175	187	101	108	98	98	99	101
2006 Q1	102	102	120	114	182	200	103	110	99	98	100	102
Q2	103	105	124	115	193	213	103	112	99	97	100	102
Q3	102	106	123	118	191	208	102	114	98	97	99	102
Q4	101	107	122	121	162	179	101	114	97	97	99	102
2007 Q1	103	107	124	122	155	170	101	114	99	97	100	102
Q2	104	108	129	129	179	198	102	116	99	97	100	102
Q3	105	109	125	127	190	213	102	115	99	96	100	102
Q4	108	115	127	131	219	246	104	115	101	97	102	102
2008 Q1	115	123	139	141	245	278	108	122	105	100	106	106
2005 Apr	99	102	116	107	142	149	101	106	98	95	99	99
May	99	102	113	108	139	146	101	107	98	96	99	99
Jun	99	103	112	108	151	165	99	105	97	96	98	99
Jul	101	105	113	110	168	185	101	107	98	98	99	100
Aug	100	102	115	108	178	199	101	106	98	97	99	100
Sep	99	102	117	107	179	193	100	106	97	97	98	100
Oct	100	102	119	109	177	187	102	108	98	98	99	101
Nov	100	103	117	111	174	186	101	108	98	98	99	101
Dec	101	104	117	111	173	188	101	108	98	98	99	101
2006 Jan	102	102	118	113	182	202	102	109	99	98	100	101
Feb	101	102	120	114	181	199	103	111	99	98	100	102
Mar	102	103	122	115	182	199	103	111	100	99	101	102
Apr	103	104	124	115	197	222	104	112	100	98	101	102
May	103	104	123	115	191	208	102	112	99	97	100	101
Jun	103	106	125	116	190	208	103	112	99	97	100	102
Jul	103	107	125	118	201	220	103	114	99	98	100	102
Aug	102	106	122	117	198	216	101	113	98	96	99	101
Sep	101	106	123	118	174	187	102	114	98	97	99	102
Oct	101	107	123	121	161	177	102	114	98	97	99	102
Nov	101	107	122	121	160	176	101	114	97	97	99	102
Dec	102	106	121	120	165	183	101	113	97	96	98	101
2007 Jan	102	105	122	120	148	158	101	113	99	97	100	102
Feb	103	107	123	122	153	169	101	113	99	97	100	102
Mar	104	108	128	125	165	184	102	115	100	98	100	103
Apr	104	108	129	128	173	193	102	115	99	97	100	102
May	104	109	130	130	177	195	102	116	99	97	100	103
Jun	105	108	128	129	186	205	102	116	99	97	100	102
Jul	105	108	125	126	192	216	101	115	99	96	99	102
Aug	105	109	125	126	186	206	102	115	99	96	100	102
Sep	106	111	126	128	193	216	103	115	100	97	101	102
Oct	107	113	125	129	204	230	103	115	101	97	102	102
Nov	108	115	125	131	223	251	104	115	101	97	102	102
Dec	110	117	130	132	231	258	105	116	102	98	103	103
2008 Jan	113	120	136	137	237	270	107	120	104	99	105	105
Feb	115	123	139	141	239	272	107	121	105	100	106	106
Mar	117	125	143	145	258	293	110	124	106	100	107	107
Apr	119	127	146	145	271	309	111	126	108	102	109	109

10 TRADE IN GOODS WITH SELECTED EU TRADING PARTNERS

Balance of Payments Consistent basis

£ million seasonally adjusted

	Belgium & Luxembourg			France			Germany			Irish Republic		
	Exports	Imports	Balance	Exports	Imports	Balance	Exports	Imports	Balance	Exports	Imports	Balance
	CHNQ	CHNY	CHNF	ENYL	ENYP	ENYT	ENYO	ENYS	ENYW	CHNS	CHOA	CHNH
2004	10 511	13 845	-3 334	18 564	20 132	-1 568	21 671	35 380	-13 709	14 133	10 133	4 000
2005	11 394	15 155	-3 761	19 931	22 184	-2 253	23 025	39 169	-16 144	16 294	10 411	5 883
2006	15 081	18 202	-3 121	28 692	26 902	1 790	27 601	42 709	-15 108	17 479	10 779	6 700
2007	12 126	15 764	-3 638	18 093	21 878	-3 785	24 670	44 502	-19 832	17 821	11 341	6 480
2005 Q1	2 678	3 568	-890	4 759	5 123	-364	5 649	9 551	-3 902	3 931	2 446	1 485
Q2	2 641	3 535	-894	4 399	5 180	-781	5 630	9 661	-4 031	3 937	2 523	1 414
Q3	2 944	3 761	-817	5 025	5 568	-543	5 675	9 775	-4 100	4 131	2 711	1 420
Q4	3 131	4 291	-1 160	5 748	6 313	-565	6 071	10 182	-4 111	4 295	2 731	1 564
2006 Q1	3 927	5 154	-1 227	8 297	7 755	542	6 820	10 904	-4 084	4 478	2 754	1 724
Q2	4 107	4 932	-825	9 243	7 967	1 276	7 656	10 918	-3 262	4 318	2 812	1 506
Q3	3 784	4 388	-604	5 795	5 751	44	6 690	10 445	-3 755	4 354	2 481	1 873
Q4	3 263	3 728	-465	5 357	5 429	-72	6 435	10 442	-4 007	4 329	2 732	1 597
2007 Q1	2 949	3 659	-710	4 553	5 403	-850	6 042	10 990	-4 948	4 295	2 781	1 514
Q2	2 863	3 599	-736	4 276	5 285	-1 009	6 024	11 223	-5 199	4 484	2 772	1 712
Q3	3 121	4 197	-1 076	4 579	5 577	-998	6 201	11 122	-4 921	4 501	2 975	1 526
Q4	3 193	4 309	-1 116	4 685	5 613	-928	6 403	11 167	-4 764	4 541	2 813	1 728
2008 Q1	3 192	4 093	-901	4 406	5 632	-1 226	6 930	11 421	-4 491	4 836	3 001	1 835
2005 Apr	860	1 159	-299	1 429	1 701	-272	1 916	3 309	-1 393	1 309	834	475
May	893	1 155	-262	1 449	1 718	-269	1 796	3 135	-1 339	1 298	860	438
Jun	888	1 221	-333	1 521	1 761	-240	1 918	3 217	-1 299	1 330	829	501
Jul	905	1 190	-285	1 567	1 791	-224	1 818	3 186	-1 368	1 334	886	448
Aug	917	1 241	-324	1 770	1 916	-146	1 966	3 266	-1 300	1 382	919	463
Sep	1 122	1 330	-208	1 688	1 861	-173	1 891	3 323	-1 432	1 415	906	509
Oct	963	1 257	-294	1 840	1 985	-145	2 004	3 321	-1 317	1 429	889	540
Nov	1 070	1 463	-393	2 021	2 070	-49	1 957	3 443	-1 486	1 378	937	441
Dec	1 098	1 571	-473	1 887	2 258	-371	2 110	3 418	-1 308	1 488	905	583
2006 Jan	1 211	1 524	-313	2 416	2 433	-17	2 159	3 473	-1 314	1 510	896	614
Feb	1 330	1 737	-407	2 774	2 656	118	2 214	3 748	-1 534	1 476	917	559
Mar	1 386	1 893	-507	3 107	2 666	441	2 447	3 683	-1 236	1 492	941	551
Apr	1 433	1 782	-349	3 153	2 804	349	2 345	3 641	-1 296	1 437	904	533
May	1 390	1 713	-323	3 364	2 815	549	2 597	3 782	-1 185	1 430	931	499
Jun	1 284	1 437	-153	2 726	2 348	378	2 714	3 495	-781	1 451	977	474
Jul	1 133	1 426	-293	1 941	1 885	56	2 383	3 431	-1 048	1 445	804	641
Aug	1 501	1 629	-128	1 988	1 891	97	2 120	3 495	-1 375	1 520	879	641
Sep	1 150	1 333	-183	1 866	1 975	-109	2 187	3 519	-1 332	1 389	798	591
Oct	1 135	1 286	-151	1 904	1 830	74	2 088	3 309	-1 221	1 453	897	556
Nov	1 043	1 219	-176	1 723	1 794	-71	2 083	3 428	-1 345	1 467	893	574
Dec	1 085	1 223	-138	1 730	1 805	-75	2 264	3 705	-1 441	1 409	942	467
2007 Jan	975	1 194	-219	1 600	1 788	-188	2 056	3 648	-1 592	1 432	914	518
Feb	985	1 231	-246	1 533	1 816	-283	2 005	3 616	-1 611	1 405	933	472
Mar	989	1 234	-245	1 420	1 799	-379	1 981	3 726	-1 745	1 458	934	524
Apr	957	1 162	-205	1 317	1 794	-477	2 039	3 697	-1 658	1 464	970	494
May	1 003	1 190	-187	1 466	1 755	-289	2 023	3 813	-1 790	1 546	956	590
Jun	903	1 247	-344	1 493	1 736	-243	1 962	3 713	-1 751	1 474	846	628
Jul	1 127	1 414	-287	1 457	1 847	-390	2 074	3 718	-1 644	1 509	1 016	493
Aug	968	1 389	-421	1 547	1 826	-279	2 034	3 739	-1 705	1 505	990	515
Sep	1 026	1 394	-368	1 575	1 904	-329	2 093	3 665	-1 572	1 487	969	518
Oct	1 083	1 406	-323	1 546	1 774	-228	2 110	3 698	-1 588	1 516	967	549
Nov	1 092	1 392	-300	1 627	1 901	-274	2 177	3 733	-1 556	1 494	935	559
Dec	1 018	1 511	-493	1 512	1 938	-426	2 116	3 736	-1 620	1 531	911	620
2008 Jan	1 126	1 388	-262	1 547	1 902	-355	2 281	3 869	-1 588	1 574	990	584
Feb	1 039	1 348	-309	1 430	1 898	-468	2 283	3 803	-1 520	1 586	952	634
Mar	1 027	1 357	-330	1 429	1 832	-403	2 366	3 749	-1 383	1 676	1 059	617
Apr	1 104	1 493	-389	1 489	1 910	-421	2 436	4 014	-1 578	1 679	1 020	659

10 TRADE IN GOODS WITH SELECTED EU TRADING PARTNERS

Balance of Payments Consistent basis

continued

£ million seasonally adjusted

	Italy			Netherlands			Spain			Sweden		
	Exports	Imports	Balance	Exports	Imports	Balance	Exports	Imports	Balance	Exports	Imports	Balance
	CHNO	CHNW	CHOE	CHNP	CHNX	CHNE	CHNV	CHOD	CHNM	CHNA	CHND	CHVI
2004	8 401	12 186	-3 785	12 030	18 195	-6 165	9 100	9 120	-20	4 355	5 118	-763
2005	8 790	12 673	-3 883	12 716	20 436	-7 720	10 677	11 450	-773	4 588	5 463	-875
2006	9 494	12 790	-3 296	16 521	22 301	-5 780	12 295	12 156	139	5 246	5 992	-746
2007	9 184	13 290	-4 106	15 121	23 135	-8 014	9 979	10 437	-458	4 900	5 271	-371
2005 Q1	2 098	3 101	-1 003	2 769	4 547	-1 778	2 276	2 341	-65	1 148	1 442	-294
Q2	2 156	3 089	-933	2 898	4 891	-1 993	2 513	2 541	-28	1 120	1 390	-270
Q3	2 178	3 209	-1 031	3 425	5 495	-2 070	2 950	3 176	-226	1 103	1 327	-224
Q4	2 358	3 274	-916	3 624	5 503	-1 879	2 938	3 392	-454	1 217	1 304	-87
2006 Q1	2 538	3 369	-831	4 636	6 008	-1 372	3 490	3 543	-53	1 328	1 493	-165
Q2	2 407	3 322	-915	4 691	5 928	-1 237	3 744	3 693	51	1 464	1 599	-135
Q3	2 332	2 988	-656	3 699	5 195	-1 496	2 605	2 486	119	1 254	1 482	-228
Q4	2 217	3 111	-894	3 495	5 170	-1 675	2 456	2 434	22	1 200	1 418	-218
2007 Q1	2 260	3 216	-956	3 314	5 355	-2 041	2 590	2 491	99	1 209	1 334	-125
Q2	2 216	3 269	-1 053	3 637	5 655	-2 018	2 415	2 455	-40	1 233	1 257	-24
Q3	2 331	3 375	-1 044	4 071	5 807	-1 736	2 526	2 764	-238	1 220	1 322	-102
Q4	2 377	3 430	-1 053	4 099	6 318	-2 219	2 448	2 727	-279	1 238	1 358	-120
2008 Q1	2 344	3 442	-1 098	4 502	6 599	-2 097	2 684	2 765	-81	1 301	1 660	-359
2005 Apr	702	1 052	-350	973	1 608	-635	775	823	-48	390	475	-85
May	720	1 020	-300	932	1 596	-664	833	817	16	370	468	-98
Jun	734	1 017	-283	993	1 687	-694	905	901	4	360	447	-87
Jul	728	1 043	-315	1 168	1 769	-601	959	997	-38	315	426	-111
Aug	752	1 103	-351	1 122	1 879	-757	1 006	1 033	-27	390	470	-80
Sep	698	1 063	-365	1 135	1 847	-712	985	1 146	-161	398	431	-33
Oct	774	1 073	-299	1 170	1 888	-718	983	1 237	-254	395	446	-51
Nov	790	1 067	-277	1 111	1 818	-707	998	1 102	-104	417	461	-44
Dec	794	1 134	-340	1 343	1 797	-454	957	1 053	-96	405	397	8
2006 Jan	767	1 094	-327	1 505	1 932	-427	1 072	1 197	-125	455	493	-38
Feb	834	1 121	-287	1 542	2 051	-509	1 141	1 173	-32	431	508	-77
Mar	937	1 154	-217	1 589	2 025	-436	1 277	1 173	104	442	492	-50
Apr	834	1 115	-281	1 798	2 128	-330	1 342	1 331	11	568	602	-34
May	825	1 134	-309	1 527	2 001	-474	1 281	1 238	43	408	508	-100
Jun	748	1 073	-325	1 366	1 799	-433	1 121	1 124	-3	488	489	-1
Jul	802	1 039	-237	1 312	1 763	-451	899	863	36	476	494	-18
Aug	776	1 015	-239	1 238	1 743	-505	913	785	128	379	485	-106
Sep	754	934	-180	1 149	1 689	-540	793	838	-45	399	503	-104
Oct	741	1 006	-265	1 204	1 734	-530	819	812	7	392	464	-72
Nov	727	1 011	-284	1 143	1 721	-578	801	770	31	410	478	-68
Dec	749	1 094	-345	1 148	1 715	-567	836	852	-16	398	476	-78
2007 Jan	774	1 083	-309	1 122	1 796	-674	891	791	100	371	458	-87
Feb	731	1 046	-315	1 085	1 737	-652	884	851	33	442	434	8
Mar	755	1 087	-332	1 107	1 822	-715	815	849	-34	396	442	-46
Apr	708	1 070	-362	1 134	1 853	-719	811	757	54	405	383	22
May	755	1 109	-354	1 265	1 881	-616	813	836	-23	436	442	-6
Jun	753	1 090	-337	1 238	1 921	-683	791	862	-71	392	432	-40
Jul	775	1 087	-312	1 310	1 892	-582	823	887	-64	396	441	-45
Aug	787	1 155	-368	1 391	1 951	-560	864	971	-107	407	455	-48
Sep	769	1 133	-364	1 370	1 964	-594	839	906	-67	417	426	-9
Oct	777	1 162	-385	1 260	1 883	-623	743	915	-172	421	453	-32
Nov	811	1 158	-347	1 424	2 225	-801	828	906	-78	413	463	-50
Dec	789	1 110	-321	1 415	2 210	-795	877	906	-29	404	442	-38
2008 Jan	811	1 160	-349	1 461	2 182	-721	907	959	-52	433	535	-102
Feb	819	1 157	-338	1 549	2 245	-696	896	922	-26	424	578	-154
Mar	714	1 125	-411	1 492	2 172	-680	881	884	-3	444	547	-103
Apr	943	1 166	-223	1 594	2 235	-641	926	950	-24	413	611	-198

11 TRADE IN GOODS WITH SELECTED NON-EU TRADING PARTNERS

Balance of Payments Consistent basis

£ million seasonally adjusted

	Canada			China			Hong Kong			Japan		
	Exports	Imports	Balance	Exports	Imports	Balance	Exports	Imports	Balance	Exports	Imports	Balance
2004	EOBC	EOBW	EOCQ	ERDN	ERDZ	EREL	ERDG	ERDS	EREE	EOBD	EOBX	EOCR
2004	3 339	4 187	-848	2 372	10 405	-8 033	2 632	5 771	-3 139	3 862	8 106	-4 244
2005	3 277	4 155	-878	2 811	12 963	-10 152	3 088	6 601	-3 513	3 900	8 670	-4 770
2006	3 895	4 987	-1 092	3 265	15 292	-12 027	2 864	7 366	-4 502	4 109	7 902	-3 793
2007	3 248	5 765	-2 517	3 856	18 680	-14 824	2 721	6 919	-4 198	3 817	7 852	-4 035
2005 Q1	755	982	-227	538	2 980	-2 442	581	1 541	-960	910	2 108	-1 198
Q2	813	1 017	-204	711	3 145	-2 434	836	1 563	-727	1 000	2 313	-1 313
Q3	780	1 100	-320	723	3 412	-2 689	820	1 725	-905	984	2 082	-1 098
Q4	929	1 056	-127	839	3 426	-2 587	851	1 772	-921	1 006	2 167	-1 161
2006 Q1	1 019	1 339	-320	728	3 719	-2 991	734	1 852	-1 118	1 095	2 067	-972
Q2	1 094	1 178	-84	818	3 792	-2 974	752	1 919	-1 167	1 023	1 970	-947
Q3	870	1 174	-304	815	3 752	-2 937	669	1 796	-1 127	999	1 957	-958
Q4	912	1 296	-384	904	4 029	-3 125	709	1 799	-1 090	992	1 908	-916
2007 Q1	919	1 214	-295	873	4 700	-3 827	605	1 730	-1 125	936	2 045	-1 109
Q2	831	1 654	-823	916	4 422	-3 506	654	1 606	-952	983	1 907	-924
Q3	761	1 625	-864	998	4 610	-3 612	713	1 758	-1 045	945	1 943	-998
Q4	737	1 272	-535	1 069	4 948	-3 879	749	1 825	-1 076	953	1 957	-1 004
2008 Q1	638	1 220	-582	1 263	5 179	-3 916	1 084	1 879	-795	975	1 975	-1 000
2005 Apr	259	365	-106	244	1 029	-785	282	540	-258	332	814	-482
May	269	321	-52	221	1 061	-840	241	473	-232	295	768	-473
Jun	285	331	-46	246	1 055	-809	313	550	-237	373	731	-358
Jul	273	353	-80	221	1 086	-865	253	542	-289	310	714	-404
Aug	213	364	-151	245	1 153	-908	252	618	-366	344	690	-346
Sep	294	383	-89	257	1 173	-916	315	565	-250	330	678	-348
Oct	353	324	29	251	1 065	-814	291	541	-250	340	677	-337
Nov	287	343	-56	273	1 143	-870	306	602	-296	325	797	-472
Dec	289	389	-100	315	1 218	-903	254	629	-375	341	693	-352
2006 Jan	284	407	-123	211	1 217	-1 006	207	621	-414	326	696	-370
Feb	371	507	-136	220	1 272	-1 052	240	622	-382	366	690	-324
Mar	364	425	-61	297	1 230	-933	287	609	-322	403	681	-278
Apr	356	364	-8	279	1 305	-1 026	255	620	-365	318	645	-327
May	318	424	-106	253	1 257	-1 004	247	667	-420	372	658	-286
Jun	420	390	30	286	1 230	-944	250	632	-382	333	667	-334
Jul	223	363	-140	277	1 253	-976	222	607	-385	309	669	-360
Aug	326	405	-79	279	1 238	-959	200	590	-390	315	643	-328
Sep	321	406	-85	259	1 261	-1 002	247	599	-352	375	645	-270
Oct	304	443	-139	308	1 334	-1 026	232	609	-377	311	638	-327
Nov	294	429	-135	302	1 341	-1 039	229	613	-384	346	626	-280
Dec	314	424	-110	294	1 354	-1 060	248	577	-329	335	644	-309
2007 Jan	337	355	-18	295	1 432	-1 137	198	579	-381	314	648	-334
Feb	301	434	-133	285	1 487	-1 202	194	565	-371	294	688	-394
Mar	281	425	-144	293	1 781	-1 488	213	586	-373	328	709	-381
Apr	291	555	-264	284	1 470	-1 186	196	496	-300	329	670	-341
May	267	568	-301	329	1 428	-1 099	229	545	-316	314	594	-280
Jun	273	531	-258	303	1 524	-1 221	229	565	-336	340	643	-303
Jul	257	752	-495	338	1 515	-1 177	250	577	-327	319	636	-317
Aug	249	434	-185	336	1 526	-1 190	269	579	-310	320	645	-325
Sep	255	439	-184	324	1 569	-1 245	194	602	-408	306	662	-356
Oct	246	422	-176	352	1 604	-1 252	249	589	-340	319	671	-352
Nov	274	465	-191	379	1 696	-1 317	254	614	-360	337	657	-320
Dec	217	385	-168	338	1 648	-1 310	246	622	-376	297	629	-332
2008 Jan	212	451	-239	385	1 630	-1 245	412	609	-197	322	629	-307
Feb	215	392	-177	472	1 827	-1 355	321	697	-376	334	676	-342
Mar	211	377	-166	406	1 722	-1 316	351	573	-222	319	670	-351
Apr	208	476	-268	443	1 721	-1 278	308	639	-331	314	788	-474

	Norway			South Korea			Switzerland			USA		
	Exports	Imports	Balance	Exports	Imports	Balance	Exports	Imports	Balance	Exports	Imports	Balance
	EPLX	EPMX	EPNX	ERDM	ERDY	EREK	EPLV	EPMV	EPNV	EOBB	EOBV	EOCP
2004	1 937	8 479	-6 542	1 482	3 083	-1 601	2 840	3 439	-599	28 576	22 067	6 509
2005	2 211	12 078	-9 867	1 677	3 064	-1 387	4 985	3 882	1 103	30 913	22 184	8 729
2006	2 125	14 472	-12 347	1 746	3 085	-1 339	4 190	4 376	-186	32 103	25 723	6 380
2007	2 661	14 267	-11 606	1 890	3 060	-1 170	3 758	4 727	-969	31 984	25 755	6 229
2005 Q1	437	2 515	-2 078	374	691	-317	865	951	-86	7 497	5 161	2 336
Q2	595	2 762	-2 167	449	799	-350	1 171	892	279	7 650	5 374	2 276
Q3	550	3 309	-2 759	432	808	-376	1 425	975	450	7 697	5 833	1 864
Q4	629	3 492	-2 863	422	766	-344	1 524	1 064	460	8 069	5 816	2 253
2006 Q1	508	3 707	-3 199	372	787	-415	1 355	1 061	294	8 061	6 384	1 677
Q2	583	3 754	-3 171	429	798	-369	1 099	1 149	-50	8 493	6 562	1 931
Q3	504	4 025	-3 521	466	744	-278	814	1 063	-249	7 988	6 042	1 946
Q4	530	2 986	-2 456	479	756	-277	922	1 103	-181	7 561	6 735	826
2007 Q1	555	3 234	-2 679	425	746	-321	854	1 176	-322	7 855	6 413	1 442
Q2	713	3 166	-2 453	489	714	-225	941	1 110	-169	8 046	6 415	1 631
Q3	607	3 540	-2 933	493	801	-308	992	1 255	-263	8 046	6 601	1 445
Q4	786	4 327	-3 541	483	799	-316	971	1 186	-215	8 037	6 326	1 711
2008 Q1	638	5 245	-4 607	524	860	-336	904	1 242	-338	8 306	5 937	2 369
2005 Apr	186	913	-727	150	298	-148	330	315	15	2 511	1 753	758
May	157	930	-773	141	258	-117	336	223	113	2 516	1 865	651
Jun	252	919	-667	158	243	-85	505	354	151	2 623	1 756	867
Jul	141	999	-858	134	230	-96	381	255	126	2 558	1 916	642
Aug	153	1 120	-967	159	288	-129	476	314	162	2 444	2 020	424
Sep	256	1 190	-934	139	290	-151	568	406	162	2 695	1 897	798
Oct	200	1 146	-946	131	258	-127	530	318	212	2 716	1 917	799
Nov	208	1 101	-893	145	263	-118	578	342	236	2 591	1 936	655
Dec	221	1 245	-1 024	146	245	-99	416	404	12	2 762	1 963	799
2006 Jan	143	1 220	-1 077	123	299	-176	387	389	-2	2 555	2 040	515
Feb	171	1 212	-1 041	110	246	-136	473	308	165	2 777	2 174	603
Mar	194	1 275	-1 081	139	242	-103	495	364	131	2 729	2 170	559
Apr	155	1 114	-959	163	258	-95	317	383	-66	2 739	2 335	404
May	212	1 287	-1 075	130	245	-115	397	357	40	2 704	2 124	580
Jun	216	1 353	-1 137	136	295	-159	385	409	-24	3 050	2 103	947
Jul	181	1 298	-1 117	134	270	-136	282	332	-50	2 520	1 891	629
Aug	144	1 648	-1 504	154	232	-78	277	396	-119	2 725	2 060	665
Sep	179	1 079	-900	178	242	-64	255	335	-80	2 743	2 091	652
Oct	169	865	-696	168	238	-70	356	398	-42	2 488	2 152	336
Nov	194	1 060	-866	185	249	-64	278	391	-113	2 560	2 238	322
Dec	167	1 061	-894	126	269	-143	288	314	-26	2 513	2 345	168
2007 Jan	160	1 073	-913	110	234	-124	281	404	-123	2 583	2 142	441
Feb	157	961	-804	140	249	-109	280	415	-135	2 483	2 223	260
Mar	238	1 200	-962	175	263	-88	293	357	-64	2 789	2 048	741
Apr	215	1 107	-892	138	227	-89	304	275	29	2 468	2 065	403
May	214	1 005	-791	178	230	-52	298	360	-62	2 543	2 130	413
Jun	284	1 054	-770	173	257	-84	339	475	-136	3 035	2 220	815
Jul	197	1 074	-877	185	262	-77	341	461	-120	2 605	2 205	400
Aug	193	999	-806	180	264	-84	354	380	-26	2 727	2 167	560
Sep	217	1 467	-1 250	128	275	-147	297	414	-117	2 714	2 229	485
Oct	266	1 448	-1 182	156	264	-108	311	396	-85	2 700	2 219	481
Nov	265	1 568	-1 303	168	275	-107	317	392	-75	2 782	2 108	674
Dec	255	1 311	-1 056	159	260	-101	343	398	-55	2 555	1 999	556
2008 Jan	161	1 850	-1 689	176	276	-100	316	383	-67	2 761	2 010	751
Feb	217	1 538	-1 321	182	293	-111	262	425	-163	2 807	1 987	820
Mar	260	1 857	-1 597	166	291	-125	326	434	-108	2 738	1 940	798
Apr	234	1 813	-1 579	162	284	-122	457	426	31	2 763	1 935	828

12 VALUE OF TRADE WITH NON-EMU & EMU TRADING PARTNERS

Balance of Payments Consistent basis

£ million seasonally adjusted

	EMU			NON-EMU		
	Exports	Imports	Balance	Exports	Imports	Balance
	QAKW	QAKX	QAKY	BQIA	BQIB	BQQZ
2004	100 601	126 792	-26 191	11 052	15 720	-4 668
2005	109 506	139 741	-30 235	11 980	18 622	-6 642
2006	136 057	157 944	-21 887	17 575	28 102	-10 527
2007	114 140	148 219	-34 079	13 648	21 393	-7 745
2005 Q1	25 742	32 632	-6 890	2 707	4 196	-1 489
Q2	25 740	33 378	-7 638	2 797	4 574	-1 777
Q3	28 010	35 735	-7 725	3 090	4 848	-1 758
Q4	30 014	37 996	-7 982	3 386	5 004	-1 618
2006 Q1	36 506	42 654	-6 148	4 720	7 671	-2 951
Q2	38 978	43 976	-4 998	5 673	9 222	-3 549
Q3	31 253	36 175	-4 922	3 631	5 787	-2 156
Q4	29 320	35 139	-5 819	3 551	5 422	-1 871
2007 Q1	27 789	35 930	-8 141	3 310	5 066	-1 756
Q2	27 724	36 211	-8 487	3 291	5 079	-1 788
Q3	29 075	37 775	-8 700	3 499	5 429	-1 930
Q4	29 552	38 303	-8 751	3 548	5 819	-2 271
2008 Q1	30 797	38 942	-8 145	3 665	6 129	-2 464
2005 Apr	8 492	11 168	-2 676	953	1 500	-547
May	8 408	10 936	-2 528	904	1 520	-616
Jun	8 840	11 274	-2 434	940	1 554	-614
Jul	8 998	11 489	-2 491	974	1 541	-567
Aug	9 495	12 050	-2 555	1 046	1 664	-618
Sep	9 517	12 196	-2 679	1 070	1 643	-573
Oct	9 742	12 367	-2 625	1 109	1 639	-530
Nov	9 969	12 702	-2 733	1 130	1 737	-607
Dec	10 303	12 927	-2 624	1 147	1 628	-481
2006 Jan	11 355	13 520	-2 165	1 479	2 079	-600
Feb	12 088	14 423	-2 335	1 500	2 489	-989
Mar	13 063	14 711	-1 648	1 741	3 103	-1 362
Apr	13 241	14 959	-1 718	1 987	2 882	-895
May	13 438	15 147	-1 709	1 889	3 481	-1 592
Jun	12 299	13 870	-1 571	1 797	2 859	-1 062
Jul	10 624	12 148	-1 524	1 308	1 926	-618
Aug	10 684	12 204	-1 520	1 182	1 990	-808
Sep	9 945	11 823	-1 878	1 141	1 871	-730
Oct	9 962	11 604	-1 642	1 182	1 860	-678
Nov	9 608	11 523	-1 915	1 234	1 795	-561
Dec	9 750	12 012	-2 262	1 135	1 767	-632
2007 Jan	9 489	11 920	-2 431	1 082	1 676	-594
Feb	9 229	11 876	-2 647	1 137	1 679	-542
Mar	9 071	12 134	-3 063	1 091	1 711	-620
Apr	9 023	11 950	-2 927	1 044	1 531	-487
May	9 482	12 199	-2 717	1 141	1 763	-622
Jun	9 219	12 062	-2 843	1 106	1 785	-679
Jul	9 670	12 521	-2 851	1 130	1 757	-627
Aug	9 671	12 681	-3 010	1 192	1 774	-582
Sep	9 734	12 573	-2 839	1 177	1 898	-721
Oct	9 656	12 466	-2 810	1 245	1 956	-711
Nov	10 052	12 909	-2 857	1 176	1 985	-809
Dec	9 844	12 928	-3 084	1 127	1 878	-751
2008 Jan	10 325	13 113	-2 788	1 203	2 062	-859
Feb	10 242	13 012	-2 770	1 209	2 025	-816
Mar	10 230	12 817	-2 587	1 253	2 042	-789
Apr	10 906	13 362	-2 456	1 221	2 174	-953

13 VALUE OF TRADE, Finished Manufactures less Erratics (BEC breakdown)

Balance of Payments consistent basis

£ million seasonally adjusted

	Passenger Motor cars			Other Consumer goods			Intermediate goods			Capital goods		
	Exports	Imports	Balance	Exports	Imports	Balance	Exports	Imports	Balance	Exports	Imports	Balance
	ENDJ	ENGD		ENDK	ENGE		ENDL	ENGF		ENDM	ENGG	
2004	12 107	18 723	-6 616	15 782	35 096	-19 314	36 672	42 124	-5 452	29 434	40 221	-10 787
2005	13 074	18 928	-5 854	17 726	37 684	-19 958	38 636	45 877	-7 241	38 131	49 233	-11 102
2006	12 551	19 105	-6 554	18 646	40 690	-22 044	42 203	53 153	-10 950	55 568	63 030	-7 462
2007	14 394	21 653	-7 259	19 073	43 794	-24 721	37 796	49 327	-11 531	29 819	41 341	-11 522
2005 Q1	3 141	4 602	-1 461	4 090	8 924	-4 834	9 041	10 688	-1 647	7 352	10 300	-2 948
Q2	3 197	4 753	-1 556	4 308	9 250	-4 942	9 537	11 040	-1 503	8 383	11 134	-2 751
Q3	3 422	4 686	-1 264	4 560	9 667	-5 107	9 776	11 861	-2 085	10 375	13 182	-2 807
Q4	3 314	4 887	-1 573	4 768	9 843	-5 075	10 282	12 288	-2 006	12 021	14 617	-2 596
2006 Q1	3 380	4 827	-1 447	4 744	10 165	-5 421	11 301	14 375	-3 074	17 381	18 563	-1 182
Q2	3 225	4 808	-1 583	4 847	10 309	-5 462	11 193	14 828	-3 635	18 929	21 037	-2 108
Q3	2 953	4 780	-1 827	4 341	9 960	-5 619	10 042	12 141	-2 099	10 520	12 283	-1 763
Q4	2 993	4 690	-1 697	4 714	10 256	-5 542	9 667	11 809	-2 142	8 738	11 147	-2 409
2007 Q1	3 337	5 204	-1 867	4 660	10 710	-6 050	9 653	12 275	-2 622	7 391	9 998	-2 607
Q2	3 416	5 256	-1 840	4 588	10 550	-5 962	9 131	12 269	-3 138	7 209	9 761	-2 552
Q3	3 745	5 676	-1 931	5 037	11 350	-6 313	9 476	12 303	-2 827	7 497	10 651	-3 154
Q4	3 896	5 517	-1 621	4 788	11 184	-6 396	9 536	12 480	-2 944	7 722	10 931	-3 209
2008 Q1	4 156	5 414	-1 258	4 673	11 077	-6 404	9 899	12 428	-2 529	7 948	10 532	-2 584
2005 Apr	1 152	1 649	-497	1 381	3 098	-1 717	3 153	3 645	-492	2 667	3 638	-971
May	973	1 539	-566	1 394	3 050	-1 656	3 028	3 651	-623	2 668	3 702	-1 034
Jun	1 072	1 565	-493	1 533	3 102	-1 569	3 356	3 744	-388	3 048	3 794	-746
Jul	1 038	1 511	-473	1 465	3 055	-1 590	3 145	3 797	-652	3 180	4 168	-988
Aug	1 215	1 526	-311	1 492	3 269	-1 777	3 244	4 013	-769	3 468	4 427	-959
Sep	1 169	1 649	-480	1 603	3 343	-1 740	3 387	4 051	-664	3 727	4 587	-860
Oct	1 094	1 585	-491	1 487	3 150	-1 663	3 387	3 987	-600	3 974	4 833	-859
Nov	1 107	1 655	-548	1 541	3 288	-1 747	3 382	4 165	-783	4 158	4 902	-744
Dec	1 113	1 647	-534	1 740	3 405	-1 665	3 513	4 136	-623	3 889	4 882	-993
2006 Jan	1 064	1 617	-553	1 565	3 345	-1 780	3 573	4 355	-782	5 181	5 516	-335
Feb	1 126	1 678	-552	1 544	3 408	-1 864	3 686	4 773	-1 087	5 908	6 435	-527
Mar	1 190	1 532	-342	1 635	3 412	-1 777	4 042	5 247	-1 205	6 292	6 612	-320
Apr	1 075	1 408	-333	1 624	3 539	-1 915	3 750	4 980	-1 230	6 693	7 593	-900
May	1 106	1 642	-536	1 654	3 412	-1 758	3 811	5 164	-1 353	6 633	7 497	-864
Jun	1 044	1 758	-714	1 569	3 358	-1 789	3 632	4 684	-1 052	5 603	5 947	-344
Jul	1 028	1 602	-574	1 444	3 332	-1 888	3 353	4 048	-695	3 614	4 216	-602
Aug	980	1 640	-660	1 488	3 287	-1 799	3 343	4 214	-871	3 710	4 186	-476
Sep	945	1 538	-593	1 409	3 341	-1 932	3 346	3 879	-533	3 196	3 881	-685
Oct	954	1 553	-599	1 598	3 467	-1 869	3 197	3 902	-705	3 035	3 734	-699
Nov	989	1 559	-570	1 571	3 300	-1 729	3 268	3 954	-686	2 875	3 602	-727
Dec	1 050	1 578	-528	1 545	3 489	-1 944	3 202	3 953	-751	2 828	3 811	-983
2007 Jan	1 145	1 662	-517	1 531	3 418	-1 887	3 249	4 097	-848	2 493	3 366	-873
Feb	1 092	1 695	-603	1 486	3 481	-1 995	3 230	4 074	-844	2 468	3 325	-857
Mar	1 100	1 847	-747	1 643	3 811	-2 168	3 174	4 104	-930	2 430	3 307	-877
Apr	1 091	1 635	-544	1 421	3 376	-1 955	2 893	3 983	-1 090	2 337	3 233	-896
May	1 132	1 741	-609	1 519	3 515	-1 996	3 034	4 210	-1 176	2 404	3 209	-805
Jun	1 193	1 880	-687	1 648	3 659	-2 011	3 204	4 076	-872	2 468	3 319	-851
Jul	1 186	1 936	-750	1 699	3 820	-2 121	3 140	4 085	-945	2 443	3 470	-1 027
Aug	1 309	1 905	-596	1 663	3 693	-2 030	3 257	4 091	-834	2 538	3 537	-999
Sep	1 250	1 835	-585	1 675	3 837	-2 162	3 079	4 127	-1 048	2 516	3 644	-1 128
Oct	1 399	1 867	-468	1 512	3 782	-2 270	3 228	4 164	-936	2 527	3 600	-1 073
Nov	1 298	1 759	-461	1 612	3 754	-2 142	3 228	4 272	-1 044	2 648	3 668	-1 020
Dec	1 199	1 891	-692	1 664	3 648	-1 984	3 080	4 044	-964	2 547	3 663	-1 116
2008 Jan	1 357	1 977	-620	1 519	3 705	-2 186	3 346	4 178	-832	2 674	3 559	-885
Feb	1 435	1 824	-389	1 507	3 779	-2 272	3 233	4 179	-946	2 677	3 478	-801
Mar	1 364	1 613	-249	1 647	3 593	-1 946	3 320	4 071	-751	2 597	3 495	-898
Apr	1 496	2 289	-793	1 625	3 760	-2 135	3 377	4 218	-841	2 656	3 275	-619

14 VOLUME INDICES

Finished Manufactures less Erratics (BEC breakdown)

Balance of Payments consistent basis

Indices 2003=100 seasonally adjusted

	Passenger Motor cars		Other Consumer goods		Intermediate goods		Capital goods	
	Exports	Imports	Exports	Imports	Exports	Imports	Exports	Imports
	ENEV	ENHJ	ENEW	ENHK	ENEX	ENHL	ENEY	ENHM
2004	110	104	107	109	101	106	98	108
2005	117	105	119	118	107	112	133	137
2006	110	107	123	128	120	127	187	178
2007	124	121	124	138	105	118	98	121
2005 Q1	111	102	110	113	100	106	98	114
Q2	113	106	117	117	106	109	116	125
Q3	123	104	123	121	109	116	147	148
Q4	120	109	128	123	114	118	171	162
2006 Q1	120	108	127	126	129	136	237	206
Q2	114	108	127	131	130	139	255	237
Q3	102	107	113	125	113	116	138	141
Q4	104	105	123	130	109	114	119	129
2007 Q1	116	117	123	134	107	117	97	117
Q2	120	117	119	132	102	118	95	113
Q3	129	126	130	143	106	119	99	125
Q4	132	122	123	142	104	119	101	127
2008 Q1	139	120	114	139	103	116	99	120
2005 Apr	122	111	112	118	105	108	110	124
May	104	103	113	115	101	108	110	125
Jun	114	105	125	117	112	110	129	127
Jul	112	101	118	115	104	111	133	139
Aug	129	101	120	123	109	117	148	150
Sep	127	110	130	126	114	119	159	155
Oct	119	106	121	119	113	115	172	162
Nov	120	111	124	123	113	121	176	163
Dec	120	110	138	127	117	118	165	162
2006 Jan	114	109	126	125	121	125	212	183
Feb	121	113	124	127	126	135	242	214
Mar	126	103	130	127	140	149	256	220
Apr	113	97	130	134	131	140	273	256
May	118	111	128	131	134	146	270	253
Jun	110	117	123	127	126	132	221	201
Jul	108	109	112	125	112	116	139	144
Aug	101	108	116	124	114	121	146	144
Sep	98	104	112	127	113	112	129	134
Oct	99	104	124	132	108	113	122	129
Nov	103	106	124	125	111	114	117	125
Dec	109	106	122	132	108	115	119	133
2007 Jan	119	113	122	128	107	116	97	119
Feb	114	114	117	131	108	118	97	117
Mar	115	125	129	142	106	118	96	115
Apr	115	108	111	129	97	116	93	112
May	119	117	119	131	101	119	94	110
Jun	125	126	128	137	107	118	98	116
Jul	124	130	132	144	107	119	98	123
Aug	134	126	130	141	110	118	100	125
Sep	128	122	127	145	102	120	100	128
Oct	144	124	118	145	106	120	99	126
Nov	131	117	124	144	105	123	103	129
Dec	121	125	126	137	101	114	100	126
2008 Jan	136	133	113	139	105	117	100	121
Feb	144	120	110	142	101	116	100	118
Mar	136	108	118	135	104	114	97	121
Apr	147	146	118	140	103	115	93	110