

10 June 2003

**Coverage**  
United Kingdom  
**Theme**  
The Economy

# UK trade

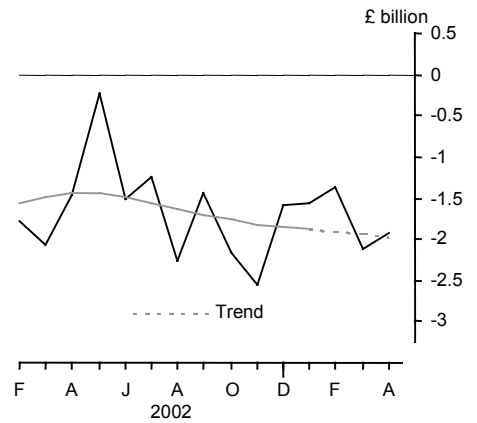
## April 2003

The UK's balance on trade in goods and services in April is provisionally estimated as a deficit of £1.9 billion. This compares with the revised £2.1 billion deficit for March.

In the three months ended April the balance on trade in goods and services was £5.4 billion in deficit. This compares with a £5.7 billion deficit in the previous three months.

The latest estimate of the trend suggests that the UK trade deficit is widening.

Balance of trade



Issued by  
National Statistics  
1 Drummond Gate  
London SW1V 2QQ

Telephone  
Press Office 020-7533 5725  
Public Enquiries 0845 601 3034

Statistician - Trade in Goods  
David Ruffles 020-7533 6064/6072

Statistician - Trade in Services  
Jennie Tse 020-7533 6095/6098

E-mail - [bop@ons.gov.uk](mailto:bop@ons.gov.uk)

Internet  
[www.statistics.gov.uk](http://www.statistics.gov.uk)

Next publication date  
9 July 2003

		Balance on trade in goods			Balance on trade in services	Total balance
		EU	Non-EU	World		
<i>Seasonally adjusted: £ billion</i>						
2002	Nov	-1.2	-3.2	-4.4	1.8	-2.6
	Dec	-1.3	-2.0	-3.3	1.7	-1.6
2003	Jan	-1.2	-1.8	-3.0	1.4	-1.6
	Feb	-1.2	-1.4	-2.6	1.3	-1.4
	Mar	-1.0	-2.3	-3.4	1.3	-2.1
	Apr	-1.7	-1.4	-3.1	1.2	-1.9

*NOTE: Trade in services estimates are included to give a more complete picture of UK trade. These estimates have been derived from a number of sources, and some components are based on recent trends. They should be used with appropriate caution.*

**TRADE IN GOODS - APRIL**

**Value of total trade in goods**

The UK's deficit on trade in goods in April is provisionally estimated at £3.1 billion compared with a revised deficit of £3.4 billion in March. The deficit with EU countries in April was £1.7 billion compared with a deficit of £1.0 billion in March. The deficit with non-EU countries in April was £1.4 billion compared with a deficit of £2.3 in March.

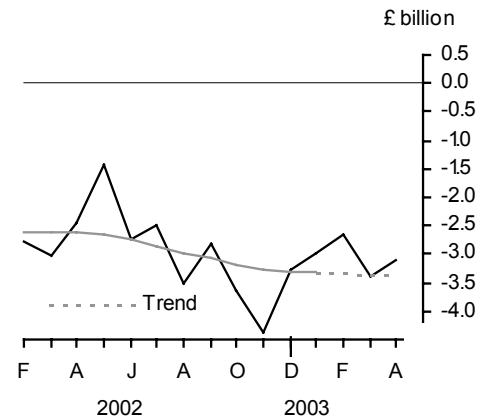
In April total exports of goods rose one per cent to £15.4 billion and total imports of goods fell a half per cent to £18.5 billion. Exports to EU countries fell six per cent and exports to non-EU countries rose 11 per cent. Imports from EU countries rose one per cent while imports from non-EU countries fell two and a half per cent.

In the three months ended April the deficit on trade in goods was £9.1 billion. This compares with the deficit of £10.6 billion in the previous three months. The deficit with EU countries was £3.9 billion compared with £3.7 billion in the previous three months while the deficit with non-EU countries narrowed from £6.9 billion to £5.2 billion.

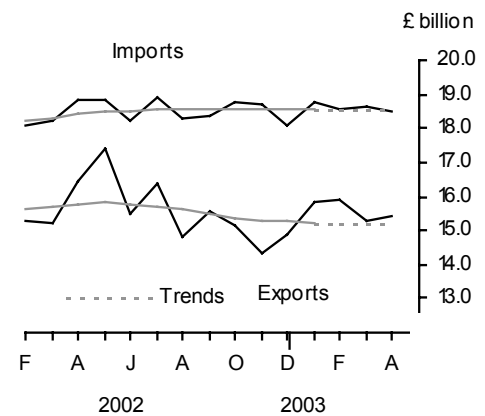
In the three months ended April exports of goods rose three and a half per cent while imports of goods were little changed. Exports to EU countries were little changed while those to non-EU countries rose eight and a half per cent. Imports from EU countries rose one per cent while those to non-EU countries fell a half per cent.

The latest estimate of the trend suggests that the whole world goods deficit is widening. The trends in the value of trade show exports falling and imports flat in recent months.

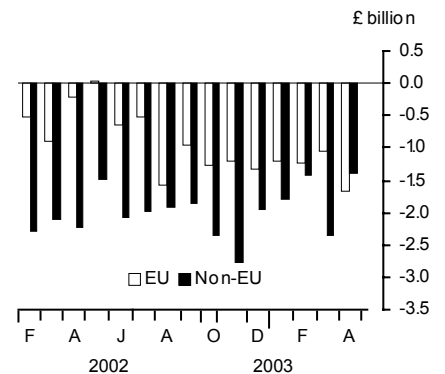
**Balance on trade in goods**



**Value of trade in goods**



**Balance on trade in goods**





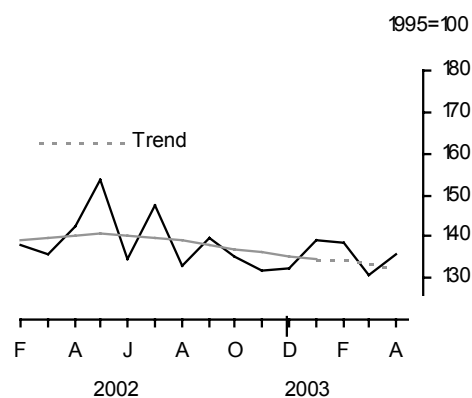
**Volume of total trade in goods (excluding oil and erratics)**

April's provisional estimates show the volume of exports rose four per cent compared with March while the volume of imports were little changed on the previous month.

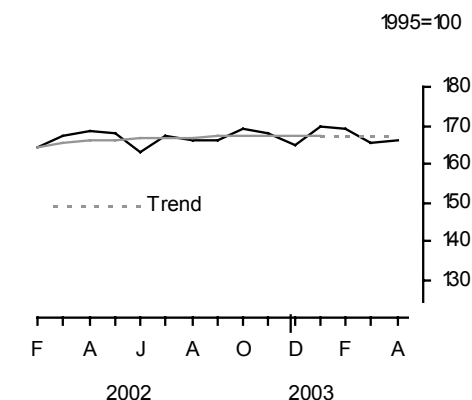
In the three months ended April exports rose a half per cent while imports were little changed compared with the previous three months.

Latest estimate of volume trends show exports falling and imports flat in recent months.

**Volume of exports (goods)**  
excluding oil and erratic items



**Volume of imports (goods)**  
excluding oil and erratic items



		EU		Non-EU		World	
		Exports	Imports	Exports	Imports	Exports	Imports
<i>Seasonally adjusted: 1995 = 100</i>							
<b>2002</b>	Nov	144.7	162.3	113.2	176.1	131.8	167.9
	Dec	134.2	157.7	129.1	174.9	132.1	164.7
<b>2003</b>	Jan	140.0	164.1	138.0	177.2	139.2	169.4
	Feb	136.9	164.9	141.2	175.6	138.7	169.2
	Mar	135.4	159.6	123.1	174.8	130.4	165.7
	Apr	128.6	160.4	145.7	174.3	135.6	166.0

**Export and import prices (trade in goods)**

April's provisional estimates show both export and import prices fell a half per cent compared with March, reflecting lower crude oil prices.

In the three months ended April export prices rose three per cent and import prices rose one and a half per cent. This led to an increase in terms of trade.

**Export and import prices (goods)**



**COMMODITY ANALYSIS OF TRADE IN GOODS**

**Trade in oil**

The April surplus on trade in oil was £0.3 billion compared with £0.5 billion in March.

In the three months ended April the surplus on trade in oil was £1.5 billion compared with £1.2 billion in the previous three months.

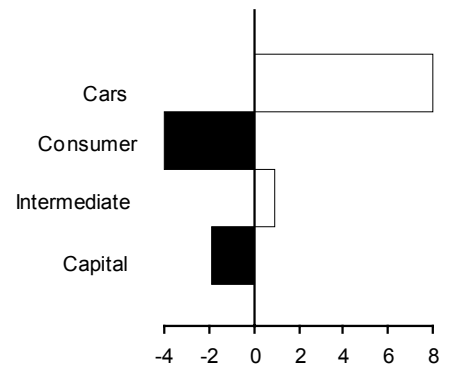
**Trade in crude oil**



**Trade in other commodities in the three months ended April 2003**

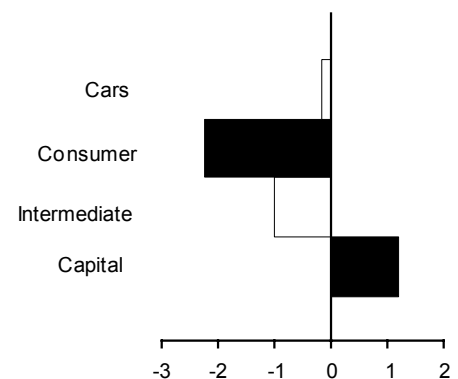
For exports, among the main commodity groups only food, beverages and tobacco and finished manufactures showed a fall in volume. Within finished manufactures, exports of consumer goods other than cars fell four per cent and capital goods fell two per cent while cars rose eight per cent. Within semi-manufactured goods, exports of semi-manufactures other than chemicals fell by five and a half per cent while chemicals rose five and a half per cent.

**Volume of exports of goods (finished manufactures)**  
3 month percentage changes



For imports, within the main commodity groups only food, beverages and tobacco and basic materials did not show a fall in volume. Within finished manufactures, imports of consumer goods other than cars fell two per cent and intermediate goods fell one per cent while capital goods rose one per cent. Within semi-manufactured goods, imports of chemicals rose one and a half per cent.

**Volume of imports of goods (finished manufactures)**  
3 month percentage changes



**GEOGRAPHICAL ANALYSIS OF TRADE IN GOODS: in the three months ended April 2003**

**Exports by country**

Within the G7 group of countries exports fell to Germany by £0.1 billion while exports rose to USA by £0.3 billion. Among our other major trading partners exports fell to Irish Republic by £0.2 billion, while exports to Belgium rose by £0.2 billion and to both Netherlands and Switzerland rose by £0.1 billion.

**Imports by country**

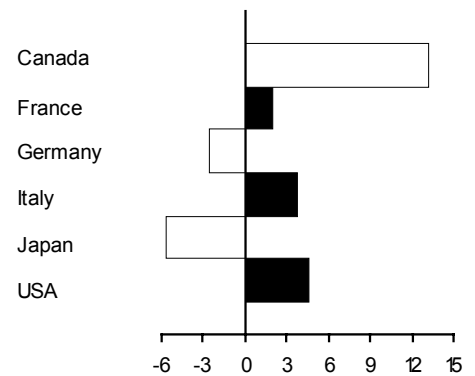
Within the G7 group of countries imports rose from Germany by £0.2 billion and from USA by £0.1 billion. Among our other major trading partners, imports rose from Russia by £0.2 billion and from Norway by £0.1 billion, while imports fell from South Africa by £0.2 billion and from South Korea by £0.1 billion.

**Trade with EMU members**

In the three months ended April trade with EMU members showed a deficit of £3.7 billion while trade with other EU countries showed a deficit of £0.2 billion. Exports to EMU members rose a half per cent and exports to other EU countries fell four per cent. Imports from EMU members rose one per cent and from other EU countries fell four per cent.

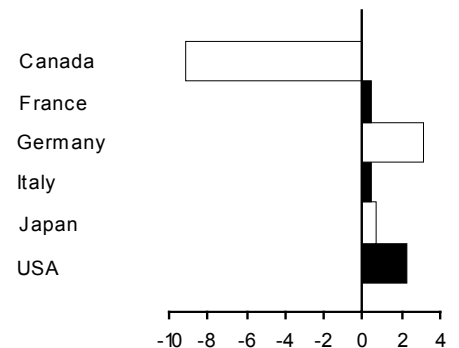
**Value of exports of goods by country**

3 month percentage changes

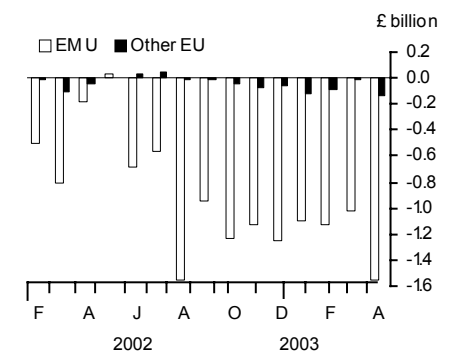


**Value of imports of goods by country**

3 month percentage changes



**Balances with EMU members and other EU countries**

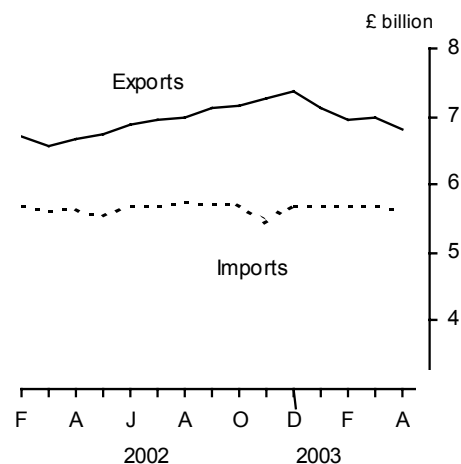


**TRADE IN SERVICES - APRIL**

The UK's surplus on trade in services in April is provisionally estimated at £1.2 billion compared with £1.3 billion in March.

In the three months ended April, the surplus on trade in services was £3.7 billion compared with £4.9 billion in the previous three months. Exports of services totalled £20.7 billion compared with £21.8 billion in the previous three months. Imports of services totalled £17.0 billion compared with £16.9 billion in the previous three months.

Value of trade in services



## BACKGROUND NOTES

1. A paper entitled *Statistics on Trade in Goods* (GSS Methodological Series No. 10) describing the bases on which trade in goods statistics are compiled and the methodology employed to derive volume and price indices is available on The Stationery Office website ([www.clicktso.co.uk](http://www.clicktso.co.uk)).
2. Trade in services estimates have been derived from a number of monthly and quarterly sources. For components where no monthly data are available, estimates have been derived on the basis of recent trends. The results should be used with appropriate caution, as they are therefore likely to be less reliable than those for trade in goods. More details of the data sources, estimation methodology and reliability of the monthly estimates of trade in services were set out in *Economic Trends* (November 1996 and October 1997).
3. Table 12 summarises the main revisions to the figures published on 12 May. There was a particular problem with data for exports to Non-EU countries in 2003. HM Customs and Excise's New Export System (NES), which replaces manual (paper) Customs declarations with electronic submissions, had a problem with the read across from the NES computer system to the Trade Statistics computer system that has now been resolved. Revisions to data in 2002 chiefly result from late Intrastat declarations for trade with EU countries.
4. The complete run of data in the tables of this First Release are available to view and download in other electronic formats free of charge using the ONS Time Series Data website service. Users can download the complete release in a choice of zipped formats, or view and download their own selections of individual series. The Time Series Data service can be accessed at [www.statistics.gov.uk/timeseries](http://www.statistics.gov.uk/timeseries). The Time Series Data service provides access to additional data via the following electronic publications:
  - supplementary data for this First Release – *Monthly Review of External Trade Statistics – Business Monitor MM24*;
  - quarterly data analysed by industry according to the *Standard Industrial Classification - UK Trade in Goods analysed in terms of industries - Business Monitor MQ10*; and
  - annual detailed information on services components - *UK Trade in Services - Business Monitor UKA1*.
5. *MM24*, *MQ10* and *UKA1* are also available free of charge as PDF files on the National Statistics website ([www.statistics.gov.uk/bop](http://www.statistics.gov.uk/bop)).
6. Details of the policy governing the release of new data are available from the press office. Also available is a list of the names of those given pre-publication access to the contents of this release.
7. **National Statistics** are produced to high professional standards set out in the National Statistics Code of Practice. They undergo regular quality assurance reviews to ensure that they meet customer needs. They are produced free from any political interference. © Crown Copyright 2003.

# Index to tables

## Contents

- 1 Value of UK trade in goods and services
- 2 UK trade in goods by area
- 3 Volume and price indices (trade in goods)
- 4 Volume indices with countries inside and outside the EU (trade in goods)
- 5 Price indices with countries inside and outside the EU (trade in goods)
- 6 Trade in oil
- 7 Value of trade in goods by commodity
- 8 Volume indices (trade in goods) by commodity
- 9 Price indices (trade in goods) by commodity
- 10 Trade in goods with selected EU trading partners
- 11 Trade in goods with countries outside the EU
- 12 Summary of revisions

# 1 VALUE OF UK TRADE IN GOODS AND SERVICES

Balance of Payments basis

£ million seasonally adjusted

	Total trade			Trade in goods			Oil			Trade in goods excluding oil		
	Exports	Imports	Balance	Exports	Imports	Balance	Exports	Imports	Balance	Exports	Imports	Balance
	IKBH	IKBI	IKBJ	BOKG	BOKH	BOKI	ELBL	ENXO	ENXQ	ELBM	ENXP	BQKH
2000	265 135	283 623	-18 488	187 936	218 262	-30 326	15 584	9 048	6 536	172 352	209 214	-36 862
2001	267 733	289 943	-22 210	190 050	223 560	-33 510	14 809	9 231	5 578	175 241	214 329	-39 088
2002	269 518	289 178	-19 660	186 170	221 352	-35 182	14 330	8 838	5 492	171 840	212 514	-40 674
2001 Q3	63 947	71 133	-7 186	46 466	54 620	-8 154	3 776	1 987	1 789	42 690	52 633	-9 943
Q4	65 530	70 540	-5 010	45 621	54 324	-8 703	3 209	2 275	934	42 412	52 049	-9 637
2002 Q1	65 960	71 118	-5 158	45 803	54 289	-8 486	3 235	2 003	1 232	42 568	52 286	-9 718
Q2	69 616	72 840	-3 224	49 307	55 916	-6 609	4 137	2 275	1 862	45 170	53 641	-8 471
Q3	67 809	72 758	-4 949	46 733	55 563	-8 830	3 382	2 308	1 074	43 351	53 255	-9 904
Q4	66 133	72 462	-6 329	44 327	55 584	-11 257	3 576	2 252	1 324	40 751	53 332	-12 581
2003 Q1	68 047	73 090	-5 043	46 969	55 983	-9 014	4 212	2 656	1 556	42 757	53 327	-10 570
2002 Nov	21 593	24 154	-2 561	14 333	18 691	-4 358	1 024	814	210	13 309	17 877	-4 568
Dec	22 208	23 801	-1 593	14 840	18 108	-3 268	1 323	677	646	13 517	17 431	-3 914
2003 Jan	22 931	24 494	-1 563	15 796	18 793	-2 997	1 314	943	371	14 482	17 850	-3 368
Feb	22 879	24 251	-1 372	15 914	18 551	-2 637	1 434	773	661	14 480	17 778	-3 298
Mar	22 237	24 345	-2 108	15 259	18 639	-3 380	1 464	940	524	13 795	17 699	-3 904
Apr	22 228	24 147	-1 919	15 432	18 521	-3 089	1 141	816	325	14 291	17 705	-3 414
<b>Percentage change, latest month compared with:</b>												
Previous month	0.0	-0.8		1.1	-0.6		-22.1	-13.2		3.6	0.0	
<b>3 months ended:</b>												
2002 Apr	66 803	72 119	-5 316	46 886	55 154	-8 268	3 689	2 186	1 503	43 197	52 968	-9 771
2003 Jan	66 732	72 449	-5 717	44 969	55 592	-10 623	3 661	2 434	1 227	41 308	53 158	-11 850
2003 Apr	67 344	72 743	-5 399	46 605	55 711	-9 106	4 039	2 529	1 510	42 566	53 182	-10 616
<b>Percentage change, latest 3 months compared with:</b>												
Previous 3 months	0.9	0.4		3.6	0.2		10.3	3.9		3.0	0.0	
Same 3 months last year	0.8	0.9		-0.6	1.0		9.5	15.7		-1.5	0.4	

	Erratics <sup>1</sup>			Trade in goods excluding erratics			Trade in goods excluding oil and erratics			Trade in services		
	Exports	Imports	Balance	Exports	Imports	Balance	Exports	Imports	Balance	Exports	Imports	Balance
	BPAL	BQBB	BQKW	BPAO	BQBE	BPBM	BPBL	BQBG	BPAP	IKBB	IKBC	IKBD
2000	12 005	12 859	-854	175 931	205 403	-29 472	160 347	196 355	-36 008	77 199	65 361	11 838
2001	11 683	14 166	-2 483	178 367	209 394	-31 027	163 558	200 163	-36 605	77 683	66 383	11 300
2002	11 168	13 689	-2 521	175 002	207 663	-32 661	160 672	198 825	-38 153	83 348	67 826	15 522
2001 Q3	2 844	3 709	-865	43 622	50 911	-7 289	39 846	48 924	-9 078	17 481	16 513	968
Q4	2 702	3 233	-531	42 919	51 091	-8 172	39 710	48 816	-9 106	19 909	16 216	3 693
2002 Q1	2 694	2 866	-172	43 109	51 423	-8 314	39 874	49 420	-9 546	20 157	16 829	3 328
Q2	3 219	3 676	-457	46 088	52 240	-6 152	41 951	49 965	-8 014	20 309	16 924	3 385
Q3	2 877	3 405	-528	43 856	52 158	-8 302	40 474	49 850	-9 376	21 076	17 195	3 881
Q4	2 378	3 742	-1 364	41 949	51 842	-9 893	38 373	49 590	-11 217	21 806	16 878	4 928
2003 Q1	2 881	3 206	-325	44 088	52 777	-8 689	39 876	50 121	-10 245	21 078	17 107	3 971
2002 Nov	707	1 240	-533	13 626	17 451	-3 825	12 602	16 637	-4 035	7 260	5 463	1 797
Dec	761	1 123	-362	14 079	16 985	-2 906	12 756	16 308	-3 552	7 368	5 693	1 675
2003 Jan	1 035	1 186	-151	14 761	17 607	-2 846	13 447	16 664	-3 217	7 135	5 701	1 434
Feb	958	992	-34	14 956	17 559	-2 603	13 522	16 786	-3 264	6 965	5 700	1 265
Mar	888	1 028	-140	14 371	17 611	-3 240	12 907	16 671	-3 764	6 978	5 706	1 272
Apr	948	951	-3	14 484	17 570	-3 086	13 343	16 754	-3 411	6 796	5 626	1 170
<b>Percentage change, latest month compared with:</b>												
Previous month	6.8	-7.5		0.8	-0.2		3.4	0.5		-2.6	-1.4	
<b>3 months ended:</b>												
2002 Apr	2 906	3 142	-236	43 980	52 012	-8 032	40 291	49 826	-9 535	19 917	16 965	2 952
2003 Jan	2 503	3 549	-1 046	42 466	52 043	-9 577	38 805	49 609	-10 804	21 763	16 857	4 906
2003 Apr	2 794	2 971	-177	43 811	52 740	-8 929	39 772	50 211	-10 439	20 739	17 032	3 707
<b>Percentage change, latest 3 months compared with:</b>												
Previous 3 months	11.6	-16.3		3.2	1.3		2.5	1.2		-4.7	1.0	
Same 3 months last year	-3.9	-5.4		-0.4	1.4		-1.3	0.8		4.1	0.4	

<sup>1</sup> These are defined as ships, aircraft, precious stones and silver

# 2 UK TRADE IN GOODS BY AREA

Balance of Payments basis

£ million seasonally adjusted

	EMU members <sup>1</sup>			Other EU countries <sup>2</sup>			Total EU			Non-EU			Total		
	Exports	Imports	Balance	Exports	Imports	Balance	Exports	Imports	Balance	Exports	Imports	Balance	Exports	Imports	Balance
	QAKW	QAKX	QAKY	QAKZ	QALA	QALB	ENOF	ENOS	ENPF	ENQX	ENRK	ENRX	BOKG	BOKH	BOKI
2000	101 465	103 976	-2 511	6 525	7 285	-760	107 990	111 261	-3 271	79 946	107 001	-27 055	187 936	218 262	-30 326
2001	103 495	107 811	-4 316	6 215	7 285	-1 070	109 710	115 096	-5 386	80 340	108 464	-28 124	190 050	223 560	-33 510
2002	102 952	112 283	-9 331	6 586	6 997	-411	109 538	119 280	-9 742	76 632	102 072	-25 440	186 170	221 352	-35 182
2000 Q4	26 212	26 631	-419	1 685	1 882	-197	27 897	28 513	-616	21 447	28 939	-7 492	49 344	57 452	-8 108
2001 Q1	26 773	27 132	-359	1 701	1 844	-143	28 474	28 976	-502	21 279	28 472	-7 193	49 753	57 448	-7 695
Q2	26 238	27 383	-1 145	1 601	1 870	-269	27 839	29 253	-1 414	20 371	27 915	-7 544	48 210	57 168	-8 958
Q3	25 749	26 486	-737	1 486	1 735	-249	27 235	28 221	-986	19 231	26 399	-7 168	46 466	54 620	-8 154
Q4	24 735	26 810	-2 075	1 427	1 836	-409	26 162	28 646	-2 484	19 459	25 678	-6 219	45 621	54 324	-8 703
2002 Q1	25 596	27 434	-1 838	1 555	1 793	-238	27 151	29 227	-2 076	18 652	25 062	-6 410	45 803	54 289	-8 486
Q2	27 089	27 913	-824	1 778	1 778	-	28 867	29 691	-824	20 440	26 225	-5 785	49 307	55 916	-6 609
Q3	25 440	28 499	-3 059	1 709	1 701	8	27 149	30 200	-3 051	19 584	25 363	-5 779	46 733	55 563	-8 830
Q4	24 827	28 437	-3 610	1 544	1 725	-181	26 371	30 162	-3 791	17 956	25 422	-7 466	44 327	55 584	-11 257
2003 Q1	25 416	28 668	-3 252	1 555	1 779	-224	26 971	30 447	-3 476	19 998	25 536	-5 538	46 969	55 983	-9 014
2001 Oct	8 438	8 915	-477	490	602	-112	8 928	9 517	-589	6 867	8 548	-1 681	15 795	18 065	-2 270
Nov	8 177	9 005	-828	493	591	-98	8 670	9 596	-926	6 518	8 548	-2 030	15 188	18 144	-2 956
Dec	8 120	8 890	-770	444	643	-199	8 564	9 533	-969	6 074	8 582	-2 508	14 638	18 115	-3 477
2002 Jan	8 465	8 997	-532	494	609	-115	8 959	9 606	-647	6 372	8 400	-2 028	15 331	18 006	-2 675
Feb	8 609	9 108	-499	558	578	-20	9 167	9 686	-519	6 100	8 378	-2 278	15 267	18 064	-2 797
Mar	8 522	9 329	-807	503	606	-103	9 025	9 935	-910	6 180	8 284	-2 104	15 205	18 219	-3 014
Apr	9 250	9 424	-174	577	625	-48	9 827	10 049	-222	6 587	8 822	-2 235	16 414	18 871	-2 457
May	9 249	9 213	36	593	584	9	9 842	9 797	45	7 533	9 010	-1 477	17 375	18 807	-1 432
Jun	8 590	9 276	-686	608	569	39	9 198	9 845	-647	6 320	8 393	-2 073	15 518	18 238	-2 720
Jul	8 973	9 543	-570	614	572	42	9 587	10 115	-528	6 812	8 794	-1 982	16 399	18 909	-2 510
Aug	7 936	9 488	-1 552	529	547	-18	8 465	10 035	-1 570	6 347	8 277	-1 930	14 812	18 312	-3 500
Sep	8 531	9 468	-937	566	582	-16	9 097	10 050	-953	6 425	8 292	-1 867	15 522	18 342	-2 820
Oct	8 329	9 557	-1 228	535	580	-45	8 864	10 137	-1 273	6 290	8 648	-2 358	15 154	18 785	-3 631
Nov	8 420	9 550	-1 130	503	575	-72	8 923	10 125	-1 202	5 410	8 566	-3 156	14 333	18 691	-4 358
Dec	8 078	9 330	-1 252	506	570	-64	8 584	9 900	-1 316	6 256	8 208	-1 952	14 840	18 108	-3 268
2003 Jan	8 438	9 537	-1 099	525	642	-117	8 963	10 179	-1 216	6 833	8 614	-1 781	15 796	18 793	-2 997
Feb	8 498	9 627	-1 129	487	580	-93	8 985	10 207	-1 222	6 929	8 344	-1 415	15 914	18 551	-2 637
Mar	8 480	9 504	-1 024	543	557	-14	9 023	10 061	-1 038	6 236	8 578	-2 342	15 259	18 639	-3 380
Apr	8 050	9 597	-1 547	444	581	-137	8 494	10 178	-1 684	6 938	8 343	-1 405	15 432	18 521	-3 089
<b>Percentage change on previous month:</b>															
2003 Apr	-5.1	1.0		-18.2	4.3		-5.9	1.2		11.3	-2.7		1.1	-0.6	
<b>3 months ended:</b>															
2002 Apr	26 381	27 861	-1 480	1 638	1 809	-171	28 019	29 670	-1 651	18 867	25 484	-6 617	46 886	55 154	-8 268
2003 Jan	24 936	28 417	-3 481	1 534	1 787	-253	26 470	30 204	-3 734	18 499	25 388	-6 889	44 969	55 592	-10 623
2003 Apr	25 028	28 728	-3 700	1 474	1 718	-244	26 502	30 446	-3 944	20 103	25 265	-5 162	46 605	55 711	-9 106
<b>Percentage change, latest 3 months compared with:</b>															
Previous 3 months	0.4	1.1		-3.9	-3.9		0.1	0.8		8.7	-0.5		3.6	0.2	
Same 3 months last year	-5.1	3.1		-10.0	-5.0		-5.4	2.6		6.6	-0.9		-0.6	1.0	

1 Austria, Belgium, Finland, France, Germany, Greece, Irish Republic, Italy, Luxembourg, Netherlands, Portugal, Spain.

2 Denmark, Sweden.

# 3 VOLUME AND PRICE INDICES (TRADE IN GOODS) <sup>1</sup>

Balance of Payments basis

Indices 1995=100

	Volume (seasonally adjusted)						Price index (not seasonally adjusted)								
	Total		Total excluding oil		Total excluding oil and erratics <sup>2</sup>		Total			Total excluding oil			Total excluding oil & erratics <sup>2</sup>		
	Exports	Imports	Exports	Imports	Exports	Imports	Exports	Imports	Terms of trade <sup>3</sup>	Exports	Imports	Terms of trade <sup>3</sup>	Exports	Imports	
	BQKU	BQKV	BQKI	BQKJ	BOMA	ELAL	BQKR	BQKS	BQKT	BQKK	BQKL	BQKM	BQAK	ELBA	
2000	137.5	158.3	139.8	159.8	138.5	159.1	92.9	90.1	103.1	88.0	87.8	100.2	87.6	86.9	
2001	139.4	163.3	141.5	164.6	141.0	163.6	93.1	89.8	103.7	88.9	87.9	101.1	88.3	87.0	
2002	137.0	165.9	138.9	167.3	138.4	166.3	93.1	87.2	106.8	88.7	85.4	103.9	88.2	84.6	
2000 Q4	143.1	165.5	146.0	167.0	144.8	166.7	94.9	92.0	103.2	88.8	89.2	99.6	88.3	88.2	
2001 Q1	145.0	166.4	147.7	167.9	146.9	167.7	94.0	91.6	102.6	89.4	89.5	99.9	88.8	88.5	
Q2	140.3	164.4	142.7	165.6	141.9	164.4	94.0	91.5	102.7	89.0	89.1	99.9	88.4	88.0	
Q3	137.0	160.1	138.8	161.9	138.3	160.2	93.1	89.0	104.6	88.8	86.9	102.2	88.1	86.1	
Q4	135.2	162.3	136.9	163.0	136.8	162.0	91.3	87.2	104.7	88.5	86.0	102.9	87.8	85.3	
2002 Q1	135.1	163.7	137.2	164.9	137.1	165.2	92.2	86.9	106.1	89.1	85.6	104.1	88.5	84.8	
Q2	143.3	166.7	144.9	168.0	143.5	166.4	94.0	87.4	107.6	89.5	85.6	104.6	88.9	84.8	
Q3	138.8	165.9	140.7	167.2	140.0	166.4	93.0	87.4	106.4	88.4	85.4	103.5	87.9	84.7	
Q4	130.9	167.4	132.8	168.9	133.0	167.2	93.0	86.9	107.0	87.9	84.9	103.5	87.5	84.1	
2003 Q1	135.9	167.2	137.1	168.4	136.1	168.1	95.5	88.0	108.5	89.9	85.5	105.1	89.6	84.7	
2001 Nov	135.3	163.0	137.1	163.7	136.7	162.2	90.7	87.4	103.8	88.2	86.3	102.2	87.5	85.5	
Dec	129.6	163.3	131.5	165.0	132.3	162.6	91.4	86.7	105.4	89.0	85.6	104.0	88.3	84.8	
2002 Jan	135.8	162.6	138.5	163.7	138.1	163.9	91.3	86.8	105.2	88.6	85.7	103.4	88.0	84.9	
Feb	135.8	163.3	137.2	164.2	137.7	164.3	91.8	86.8	105.8	89.0	85.5	104.1	88.4	84.7	
Mar	133.8	165.1	135.8	166.8	135.6	167.3	93.6	87.1	107.5	89.7	85.6	104.8	89.1	84.8	
Apr	142.8	168.9	144.6	169.9	142.3	168.5	94.2	87.3	107.9	89.5	85.3	104.9	88.9	84.5	
May	152.5	168.8	154.4	170.1	153.6	167.9	93.9	87.3	107.6	89.3	85.5	104.4	88.7	84.7	
Jun	134.6	162.5	135.6	164.1	134.6	162.8	93.8	87.7	107.0	89.6	85.9	104.3	89.0	85.2	
Jul	146.1	169.1	149.1	170.2	147.2	167.1	93.1	87.1	106.9	88.6	85.4	103.7	88.1	84.7	
Aug	131.2	164.3	133.1	166.2	133.1	165.9	92.9	87.6	106.1	88.8	85.6	103.7	88.2	84.8	
Sep	139.1	164.3	139.9	165.3	139.6	166.1	93.1	87.5	106.4	87.9	85.3	103.0	87.4	84.5	
Oct	133.9	170.0	135.8	171.6	135.1	169.0	93.0	87.1	106.8	87.8	85.0	103.3	87.3	84.2	
Nov	128.2	168.5	130.9	169.4	131.8	167.9	93.0	86.7	107.3	87.9	85.0	103.4	87.5	84.2	
Dec	130.5	163.8	131.8	165.7	132.1	164.7	93.1	86.9	107.1	88.1	84.7	104.0	87.6	83.9	
2003 Jan	139.1	169.5	140.6	170.5	139.2	169.4	94.2	87.3	107.9	88.8	84.8	104.7	88.5	84.0	
Feb	138.3	167.3	139.7	169.1	138.7	169.2	95.5	87.9	108.6	89.7	85.3	105.2	89.4	84.6	
Mar	130.4	164.7	131.1	165.7	130.4	165.7	96.9	88.9	109.0	91.3	86.3	105.8	90.9	85.6	
Apr	133.8	164.7	136.7	165.6	135.6	166.0	96.4	88.3	109.2	91.6	86.5	105.9	91.2	85.7	
<b>Percentage change, latest month compared with:</b>															
Previous month	2.6	0.0	4.3	-0.1	4.0	0.2	-0.5	-0.7		0.3	0.2		0.3	0.1	
<b>3 months ended:</b>															
2002 Apr	137.5	165.8	139.2	167.0	138.5	166.7	93.2	87.1	107.1	89.4	85.5	104.6	88.8	84.7	
2003 Jan	132.6	167.3	134.4	168.5	134.4	167.3	93.4	87.0	107.4	88.3	84.8	104.0	87.9	84.0	
2003 Apr	134.2	165.6	135.8	166.8	134.9	167.0	96.3	88.4	108.9	90.9	86.0	105.6	90.5	85.3	
<b>Percentage change, latest 3 months compared with:</b>															
Previous 3 months	1.2	-1.0	1.0	-1.0	0.4	-0.2	3.0	1.6		2.9	1.4		3.0	1.5	
Same 3 months last year	-2.4	-0.1	-2.4	-0.1	-2.6	0.2	3.3	1.5		1.6	0.7		1.9	0.7	

1 These are provisional estimates subject to fluctuations when new or amended data become available.

2 These are defined as ships, aircraft, precious stones and silver.

3 Export price index as a percentage of the import price index

# 4 VOLUME INDICES WITH COUNTRIES INSIDE AND OUTSIDE THE EU (TRADE IN GOODS) <sup>1</sup>

Balance of Payments basis

Indices 1995=100 seasonally adjusted

	Trade in goods with EU countries <sup>3</sup>						Trade in goods with Non-EU countries					
	Total		Total excluding oil		Total excluding oil and erratics <sup>2</sup>		Total		Total excluding oil		Total excluding oil & erratics <sup>2</sup>	
	Exports	Imports	Exports	Imports	Exports	Imports	Exports	Imports	Exports	Imports	Exports	Imports
	ENYB	ENXT	ENYC	ENXU	ENYE	ENXW	ENTX	ENTP	ENTY	ENTQ	ENUA	ENTS
2000	142.5	144.3	145.3	144.6	143.9	144.6	130.5	176.7	132.2	180.8	130.8	180.2
2001	145.5	151.3	147.5	151.4	147.0	151.8	130.8	179.1	133.2	182.8	132.2	180.7
2002	145.1	158.7	146.9	159.0	146.4	159.9	125.7	175.4	127.8	178.6	126.8	175.7
2000 Q4	147.1	149.2	150.5	149.5	149.7	150.3	137.5	186.9	139.7	191.3	137.6	190.7
2001 Q1	149.6	150.6	152.4	150.9	151.4	151.1	138.6	187.1	141.2	191.3	140.4	191.9
Q2	146.6	152.9	149.2	152.7	149.1	152.5	131.5	179.5	133.6	183.5	131.4	181.8
Q3	145.5	149.0	147.0	149.3	146.6	150.1	125.0	174.7	127.4	179.3	126.4	174.9
Q4	140.3	152.8	141.5	152.9	141.0	153.8	128.0	174.9	130.4	177.0	130.6	174.0
2002 Q1	145.1	157.4	147.2	157.8	147.3	158.3	121.2	171.8	123.3	174.7	122.5	175.2
Q2	151.8	157.6	153.3	157.9	152.6	158.7	131.5	178.7	133.2	182.0	130.3	177.6
Q3	144.9	159.8	146.3	160.1	145.3	161.2	130.2	174.0	133.0	177.1	132.3	173.9
Q4	138.8	160.2	140.8	160.4	140.4	161.2	119.7	177.0	121.7	180.7	122.3	175.9
2003 Q1	138.0	161.4	138.6	161.5	137.4	162.9	133.1	174.7	135.3	177.9	134.1	175.9
2001 Oct	144.5	151.4	144.7	151.4	143.7	152.8	135.4	173.0	138.5	172.8	137.9	173.5
Nov	139.8	154.0	140.8	154.1	140.3	154.0	129.0	174.9	131.8	176.9	131.4	174.2
Dec	136.7	153.0	139.0	153.2	138.9	154.5	119.6	176.9	120.9	181.3	122.6	174.4
2002 Jan	143.1	154.8	145.2	155.3	145.2	156.5	125.6	172.9	129.2	175.3	127.9	174.8
Feb	147.8	156.6	149.8	156.8	149.8	157.6	119.0	172.0	119.7	174.5	120.2	174.0
Mar	144.4	160.9	146.5	161.4	146.9	160.7	118.9	170.6	121.0	174.2	119.4	176.9
Apr	154.4	161.2	155.6	161.5	154.5	162.1	126.7	179.0	129.4	181.6	124.8	177.9
May	157.2	156.6	159.5	156.7	159.2	157.7	146.0	184.8	147.4	188.5	145.4	182.7
Jun	143.7	155.0	144.8	155.4	144.2	156.4	121.9	172.3	122.9	176.0	120.7	172.2
Jul	153.7	160.0	157.6	160.6	156.0	161.0	135.4	181.1	137.3	183.5	134.5	176.1
Aug	134.5	159.2	135.8	159.5	134.8	161.0	126.5	171.0	129.4	175.4	130.6	173.0
Sep	146.4	160.1	145.4	160.2	145.1	161.7	128.8	169.8	132.2	172.4	131.7	172.7
Oct	140.8	162.7	143.0	163.0	142.3	163.7	124.2	179.5	125.8	183.4	124.7	176.7
Nov	141.4	161.1	144.3	161.3	144.7	162.3	109.7	178.2	112.1	180.7	113.2	176.1
Dec	134.2	156.7	135.2	156.8	134.2	157.7	125.3	173.3	127.2	177.9	129.1	174.9
2003 Jan	140.7	163.0	141.8	162.8	140.0	164.1	137.0	178.1	139.1	181.2	138.0	177.2
Feb	137.5	163.2	138.2	163.4	136.9	164.9	139.4	172.6	141.9	176.9	141.2	175.6
Mar	135.7	158.1	135.7	158.4	135.4	159.6	123.0	173.3	124.9	175.7	123.1	174.8
Apr	128.4	159.3	130.9	159.4	128.6	160.4	141.3	171.8	144.6	174.2	145.7	174.3
<b>Percentage change on previous month:</b>												
2003 Apr	-5.4	0.8	-3.5	0.6	-5.0	0.5	14.9	-0.9	15.8	-0.9	18.4	-0.3
<b>3 months ended:</b>												
2002 Apr	148.9	159.6	150.6	159.9	150.4	160.1	121.5	173.9	123.4	176.8	121.5	176.3
2003 Jan	138.8	160.3	140.4	160.3	139.6	161.4	124.0	176.5	126.1	179.9	126.8	176.1
2003 Apr	133.9	160.2	134.9	160.4	133.6	161.6	134.6	172.6	137.1	175.6	136.7	174.9
<b>Percentage change, latest 3 months compared with:</b>												
Previous 3 months	-3.5	0.0	-3.9	0.1	-4.3	0.2	8.5	-2.2	8.7	-2.4	7.8	-0.7
Same 3 months last year	-10.1	0.4	-10.4	0.3	-11.1	0.9	10.7	-0.7	11.2	-0.7	12.5	-0.8

<sup>1</sup> These are provisional estimates subject to fluctuations when new or amended data become available.

<sup>2</sup> These are defined as ships, aircraft, precious stones and silver.

<sup>3</sup> Includes trade with the Canary Islands, French Guiana, Guadeloupe, Martinique and Reunion.

# 5 PRICE INDICES WITH COUNTRIES INSIDE AND OUTSIDE THE EU (TRADE IN GOODS) <sup>1</sup>

Balance of Payments basis

Indices 1995=100 not seasonally adjusted

	Trade in goods with EU countries <sup>3</sup>						Trade in goods with Non-EU countries					
	Total		Total excluding oil		Total excluding oil and erratics <sup>2</sup>		Total		Total excluding oil		Total excluding oil & erratics <sup>2</sup>	
	Exports	Imports	Exports	Imports	Exports	Imports	Exports	Imports	Exports	Imports	Exports	Imports
	ENYF	ENXX	ENYG	ENXY	ENYI	ENYA	ENUN	ENUF	ENUO	ENUG	ENUQ	ENUI
2000	88.9	87.3	83.3	86.7	83.1	86.3	98.4	93.8	94.6	89.4	94.0	87.8
2001	88.5	87.5	83.5	86.9	83.2	86.5	99.5	92.9	96.5	89.3	95.7	87.7
2002	88.9	86.0	84.1	85.5	83.8	85.1	98.8	88.7	95.2	85.3	94.5	83.9
2000 Q4	90.5	88.3	83.5	87.6	83.2	87.1	101.0	96.8	96.1	91.5	95.6	89.7
2001 Q1	89.7	88.8	84.4	88.2	84.2	87.7	99.9	95.2	96.4	91.4	95.6	89.6
Q2	89.3	88.1	83.4	87.4	83.1	86.9	100.5	95.9	96.9	91.5	96.2	89.5
Q3	88.3	86.9	83.2	86.2	82.8	85.9	99.8	91.9	96.5	87.9	95.7	86.5
Q4	86.6	86.3	83.0	85.7	82.6	85.4	97.8	88.6	96.1	86.3	95.3	85.0
2002 Q1	87.2	85.4	83.7	85.0	83.4	84.6	99.3	88.9	96.6	86.5	95.8	85.1
Q2	89.5	85.7	84.4	85.2	84.1	84.9	100.1	89.6	96.5	86.1	95.8	84.7
Q3	89.6	86.5	84.4	86.0	84.1	85.6	97.8	88.5	94.1	84.7	93.4	83.3
Q4	89.5	86.2	84.0	85.6	83.8	85.2	98.0	87.9	93.5	84.0	92.9	82.6
2003 Q1	93.8	87.1	87.3	86.5	87.1	86.1	97.9	89.3	93.7	84.1	93.1	82.7
2001 Oct	87.2	86.6	83.1	86.0	82.7	85.7	97.9	89.0	95.7	86.4	94.9	85.1
Nov	85.7	86.4	82.5	85.9	82.1	85.5	97.7	88.9	96.2	86.7	95.4	85.4
Dec	86.9	85.8	83.5	85.3	83.1	85.0	97.8	87.9	96.5	85.9	95.7	84.5
2002 Jan	86.3	85.5	83.5	85.1	83.1	84.7	98.4	88.6	95.8	86.5	95.0	85.1
Feb	86.8	85.4	83.6	84.9	83.2	84.6	98.8	88.6	96.6	86.4	95.8	85.0
Mar	88.4	85.4	84.1	85.0	83.8	84.6	100.8	89.4	97.5	86.5	96.7	85.1
Apr	89.5	85.2	84.1	84.7	83.7	84.3	100.8	90.0	97.1	86.2	96.4	84.8
May	89.2	85.6	84.1	85.1	83.8	84.7	100.5	89.6	96.5	86.0	95.9	84.6
Jun	89.9	86.4	85.0	85.9	84.7	85.6	99.1	89.3	95.9	86.0	95.2	84.6
Jul	89.8	86.6	84.8	86.1	84.6	85.8	97.6	87.8	94.0	84.4	93.3	83.2
Aug	89.6	86.6	84.7	86.1	84.5	85.7	97.5	88.9	94.4	85.0	93.7	83.6
Sep	89.3	86.4	83.6	85.8	83.3	85.4	98.4	88.9	93.9	84.6	93.2	83.2
Oct	89.4	86.1	83.6	85.5	83.4	85.1	98.1	88.4	93.7	84.3	93.1	82.9
Nov	89.1	86.3	83.9	85.7	83.7	85.3	98.4	87.3	93.5	84.0	92.9	82.7
Dec	90.0	86.1	84.4	85.5	84.2	85.1	97.4	87.9	93.2	83.6	92.6	82.3
2003 Jan	92.3	86.3	86.0	85.7	85.8	85.3	96.9	88.5	92.8	83.5	92.3	82.1
Feb	93.9	87.0	87.1	86.4	86.9	86.0	97.7	89.2	93.4	83.9	92.8	82.5
Mar	95.3	87.9	88.7	87.3	88.6	86.9	99.2	90.1	94.8	85.0	94.3	83.6
Apr	94.4	88.0	89.1	87.4	88.9	87.0	99.1	88.7	95.0	85.2	94.5	83.8
<b>Percentage change on previous month:</b>												
2003 Apr	-0.9	0.1	0.5	0.1	0.3	0.1	-0.1	-1.6	0.2	0.2	0.2	0.2
<b>3 months ended:</b>												
2002 Apr	88.2	85.3	83.9	84.9	83.6	84.5	100.1	89.3	97.1	86.4	96.3	85.0
2003 Jan	90.5	86.2	84.8	85.6	84.6	85.2	97.6	87.9	93.2	83.7	92.6	82.4
2003 Apr	94.5	87.6	88.3	87.0	88.1	86.6	98.7	89.3	94.4	84.7	93.9	83.3
<b>Percentage change, latest 3 months compared with:</b>												
Previous 3 months	4.5	1.6	4.2	1.6	4.2	1.6	1.1	1.6	1.3	1.2	1.4	1.1
Same 3 months last year	7.1	2.7	5.2	2.6	5.5	2.5	-1.5	0.0	-2.7	-1.9	-2.5	-2.0

<sup>1</sup> These are provisional estimates subject to fluctuations when new or amended data become available.

<sup>2</sup> These are defined as ships, aircraft, precious stones and silver

<sup>3</sup> Includes trade with the Canary Islands, French Guiana, Guadeloupe, Martinique and Reunion.

# 6 TRADE IN OIL<sup>1</sup>

Balance of Payments basis

Seasonally adjusted

	Exports						Imports					
	Balance of Trade in Oil £ million	Crude oil (SITC 333)				Rest of SITC 33 £ million	Total £ million	Crude oil (SITC 333)				Rest of SITC 33 £ million
		Total £ million	£ million	million tonnes	Avg value per tonne £			£ million	million tonnes	Avg value per tonne £		
	ENXQ	ELBL	BQNI	BOQM	BPBN	BOQN	ENXO	BQNJ	BQBH	BQAX	BQAY	
2000	6 536	15 584	10 522	77.90	135	5 062	9 048	4 825	36.57	132	4 223	
2001	5 578	14 809	10 486	82.00	128	4 323	9 231	4 877	39.57	123	4 354	
2002	5 492	14 330	9 798	79.63	123	4 532	8 838	4 752	40.92	116	4 086	
2000 Q4	1 477	4 111	2 685	17.53	153	1 426	2 634	1 322	8.83	150	1 312	
2001 Q1	1 478	3 835	2 634	19.78	133	1 201	2 357	1 336	10.53	127	1 021	
Q2	1 377	3 989	2 970	21.32	139	1 019	2 612	1 282	9.86	130	1 330	
Q3	1 789	3 776	2 655	20.28	131	1 121	1 987	967	7.63	127	1 020	
Q4	934	3 209	2 227	20.62	108	982	2 275	1 292	11.55	112	983	
2002 Q1	1 232	3 235	2 258	21.27	106	977	2 003	1 130	10.99	103	873	
Q2	1 862	4 137	2 887	22.46	129	1 250	2 275	1 221	10.15	120	1 054	
Q3	1 074	3 382	2 211	17.09	129	1 171	2 308	1 292	10.59	122	1 015	
Q4	1 324	3 576	2 442	18.81	130	1 134	2 252	1 109	9.19	121	1 144	
2003 Q1	1 556	4 212	2 599	18.23	143	1 613	2 656	1 539	10.81	142	1 117	
2002 Nov	210	1 024	704	5.75	122	320	814	440	3.73	118	374	
Dec	646	1 323	892	6.84	130	431	677	336	2.86	117	342	
2003 Jan	371	1 314	821	5.83	141	493	943	552	4.11	134	391	
Feb	661	1 434	884	6.08	145	550	773	442	3.06	144	331	
Mar	524	1 464	894	6.32	141	570	940	545	3.64	150	395	
Apr	325	1 141	678	5.21	130	463	816	390	3.04	128	426	
<b>3 months ended:</b>												
2002 Apr	1 503	3 689	2 612	22.42	117	1 077	2 186	1 291	11.69	110	895	
2003 Jan	1 227	3 661	2 417	18.42	131	1 244	2 434	1 328	10.70	123	1 107	
2003 Apr	1 510	4 039	2 456	17.61	139	1 583	2 529	1 377	9.74	141	1 152	
<b>Percentage change, latest 3 months compared with:</b>												
Previous 3 months		10.3	1.6	-4.4	5.9	27.3	3.9	3.7	-9.0	14.4	4.1	
Same 3 months last year		9.5	-6.0	-21.5	18.9	47.0	15.7	6.7	-16.7	27.5	28.7	

1 Trade in petroleum and petroleum products. These figures differ from those published by the Department of Trade and Industry which are compiled from different sources and are on a time of shipment basis.

2 The average value per tonne may reflect not only changes in price but also changes in the commodity mix.

# 7 VALUE OF TRADE IN GOODS BY COMMODITY

Balance of Payments basis

£ million seasonally adjusted

	Food, beverages and tobacco (SITC 0 + 1)			Basic materials (SITC 2 + 4)			Fuels (SITC 3)		
	Exports	Imports	Balance	Exports	Imports	Balance	Exports	Imports	Balance
	BOPL	BQAR	ELBE	BOPM	BQAS	ELBF	BOPN	BQAT	ELBG
2000	9 908	17 805	-7 897	2 603	6 307	-3 704	17 057	10 016	7 041
2001	9 650	18 517	-8 867	2 579	6 454	-3 875	16 379	10 501	5 878
2002	9 977	19 313	-9 336	2 851	5 951	-3 100	16 003	9 836	6 167
2001 Q1	2 517	4 566	-2 049	652	1 732	-1 080	4 274	2 674	1 600
Q2	2 363	4 630	-2 267	661	1 659	-998	4 365	2 976	1 389
Q3	2 373	4 595	-2 222	628	1 576	-948	4 179	2 292	1 887
Q4	2 397	4 726	-2 329	638	1 487	-849	3 561	2 559	1 002
2002 Q1	2 319	4 786	-2 467	654	1 494	-840	3 597	2 246	1 351
Q2	2 510	4 750	-2 240	709	1 494	-785	4 537	2 563	1 974
Q3	2 638	4 843	-2 205	728	1 464	-736	3 766	2 537	1 229
Q4	2 510	4 934	-2 424	760	1 499	-739	4 103	2 490	1 613
2003 Q1	2 726	5 063	-2 337	821	1 514	-693	4 642	2 829	1 813
2002 Nov	802	1 629	-827	257	513	-256	1 214	904	310
Dec	867	1 691	-824	264	487	-223	1 487	746	741
2003 Jan	930	1 710	-780	245	509	-264	1 424	1 014	410
Feb	897	1 690	-793	302	492	-190	1 585	822	763
Mar	899	1 663	-764	274	513	-239	1 633	993	640
Apr	813	1 718	-905	261	517	-256	1 295	902	393
<b>3 months ended:</b>									
2002 Apr	2 410	4 805	-2 395	662	1 512	-850	4 048	2 452	1 596
2003 Jan	2 599	5 030	-2 431	766	1 509	-743	4 125	2 664	1 461
2003 Apr	2 609	5 071	-2 462	837	1 522	-685	4 513	2 717	1 796
<b>Percentage change, latest 3 months compared with:</b>									
Previous 3 months	0.4	0.8		9.3	0.9		9.4	2.0	
Same 3 months last year	8.3	5.5		26.4	0.7		11.5	10.8	

	Semi-manufactures (SITC 5 + 6)			Finished manufactures (SITC 7 + 8)			Total manufactures (SITC 5 to 8)			Miscellaneous (SITC 9)		
	Exports	Imports	Balance	Exports	Imports	Balance	Exports	Imports	Balance	Exports	Imports	Balance
	BOPO	BQAU	ELBH	BOPP	BQAV	ELBI	BPAN	BQBD	ELBJ	BOQL	BQAW	BQKX
2000	47 665	49 864	-2 199	109 018	132 424	-23 406	156 683	182 288	-25 605	1 685	1 846	-161
2001	50 444	53 061	-2 617	109 959	133 747	-23 788	160 403	186 808	-26 405	1 039	1 280	-241
2002	50 184	52 569	-2 385	106 082	132 232	-26 150	156 266	184 801	-28 535	1 073	1 451	-378
2001 Q1	13 094	13 222	-128	28 944	34 971	-6 027	42 038	48 193	-6 155	272	283	-11
Q2	12 997	13 457	-460	27 583	34 128	-6 545	40 580	47 585	-7 005	241	318	-77
Q3	12 239	13 253	-1 014	26 778	32 563	-5 785	39 017	45 816	-6 799	269	341	-72
Q4	12 114	13 129	-1 015	26 654	32 085	-5 431	38 768	45 214	-6 446	257	338	-81
2002 Q1	12 349	12 911	-562	26 669	32 463	-5 794	39 018	45 374	-6 356	215	389	-174
Q2	12 927	13 283	-356	28 306	33 472	-5 166	41 233	46 755	-5 522	318	354	-36
Q3	12 576	12 966	-390	26 714	33 401	-6 687	39 290	46 367	-7 077	311	352	-41
Q4	12 332	13 409	-1 077	24 393	32 896	-8 503	36 725	46 305	-9 580	229	356	-127
2003 Q1	12 659	13 314	-655	25 876	32 894	-7 018	38 535	46 208	-7 673	245	369	-124
2002 Nov	3 854	4 432	-578	8 132	11 093	-2 961	11 986	15 525	-3 539	74	120	-46
Dec	4 254	4 424	-170	7 907	10 643	-2 736	12 161	15 067	-2 906	61	117	-56
2003 Jan	4 143	4 403	-260	8 974	11 034	-2 060	13 117	15 437	-2 320	80	123	-43
Feb	4 250	4 568	-318	8 800	10 860	-2 060	13 050	15 428	-2 378	80	119	-39
Mar	4 266	4 343	-77	8 102	11 000	-2 898	12 368	15 343	-2 975	85	127	-42
Apr	4 473	4 447	26	8 534	10 824	-2 290	13 007	15 271	-2 264	56	113	-57
<b>3 months ended:</b>												
2002 Apr	12 353	13 011	-658	27 200	32 988	-5 788	39 553	45 999	-6 446	213	386	-173
2003 Jan	12 251	13 259	-1 008	25 013	32 770	-7 757	37 264	46 029	-8 765	215	360	-145
2003 Apr	12 989	13 358	-369	25 436	32 684	-7 248	38 425	46 042	-7 617	221	359	-138
<b>Percentage change, latest 3 months compared with:</b>												
Previous 3 months	6.0	0.7		1.7	-0.3		3.1	0.0		2.8	-0.3	
Same 3 months last year	5.1	2.7		-6.5	-0.9		-2.9	0.1		3.8	-7.0	
<b>EXCLUDING ERRATICS<sup>1</sup></b>												
Previous 3 months	4.1	2.9		1.7	0.8		2.5	1.4				
Same 3 months last year	5.1	4.5		-6.2	-1.1		-2.8	0.5				

<sup>1</sup> These are defined as precious stones and silver in semi-manufactures, and as ships and aircraft in finished manufactures.

	Food, beverages and tobacco (SITC 0 + 1)		Basic materials (SITC 2 + 4)		Fuels (SITC 3)		Semi-manufactures (SITC 5 + 6)		Finished manufactures (SITC 7 + 8)		Total manufactures (SITC 5 to 8)	
	Exports	Imports	Exports	Imports	Exports	Imports	Exports	Imports	Exports	Imports	Exports	Imports
<i>Weights (total trade = 1000)</i>	73	94	19	39	65	37	283	273	548	547	831	820
	BPEM	BQBK	BAFB	BQBL	BAFC	BQBM	BAHA	BQBN	BAHY	ELAB	BOGT	ELAJ
2000	103	137	115	107	107	115	126	129	154	185	145	166
2001	98	142	112	108	111	126	133	138	155	188	147	172
2002	101	151	125	101	114	124	135	144	149	189	144	174
2000 Q4	105	142	114	111	102	121	133	131	161	195	151	174
2001 Q1	103	139	112	112	109	126	136	132	163	197	154	176
Q2	97	142	115	111	107	132	136	137	155	190	149	172
Q3	97	142	111	107	114	108	130	140	152	183	144	168
Q4	97	146	112	102	113	138	130	143	149	183	142	170
2002 Q1	94	148	113	101	108	123	133	141	148	186	143	171
Q2	101	148	123	102	123	127	138	145	157	190	151	175
Q3	108	152	129	100	115	123	136	141	150	190	145	174
Q4	102	155	135	101	109	122	132	147	139	189	137	175
2003 Q1	109	157	143	101	122	123	133	144	145	190	141	175
2002 Nov	98	154	134	101	97	137	124	146	140	191	135	176
Dec	106	160	147	99	116	108	137	145	134	184	135	171
2003 Jan	112	158	129	102	120	133	132	144	152	193	145	177
Feb	110	156	158	100	120	107	134	148	148	190	143	176
Mar	105	156	143	100	125	128	134	140	134	188	134	172
Apr	97	160	134	102	96	137	139	141	143	186	142	171
<b>3 months ended:</b>												
2002 Apr	98	148	115	104	115	127	133	143	151	189	145	174
2003 Jan	105	157	137	101	111	126	131	145	142	189	138	175
2003 Apr	104	157	145	101	114	124	136	143	142	188	140	173
<b>Percentage change, latest 3 months compared with:</b>												
Previous 3 months	-1.3	0.0	6.1	0.0	2.4	-1.6	3.6	-1.4	-0.2	-0.7	1.0	-1.0
Same 3 months last year	6.5	6.1	26.5	-2.9	-0.9	-2.4	1.8	0.0	-6.4	-0.4	-3.5	-0.4
<b>EXCLUDING ERRATICS<sup>2</sup></b>												
Previous 3 months							1.8	0.7	-0.2	-0.4	0.2	-0.2
Same 3 months last year							1.5	1.6	-6.1	-0.9	-4.1	-0.2

1 These are provisional estimates subject to fluctuations when new or amended data become available.

2 These are defined as precious stones and silver in semi-manufactures, and as ships and aircraft in finished manufactures.

# 9 PRICE INDICES (TRADE IN GOODS) BY COMMODITY <sup>1</sup>

Balance of Payments basis

Indices 1995=100 not seasonally adjusted

	Food, beverages and tobacco (SITC 0 + 1)		Basic materials (SITC 2 + 4)		Fuels (SITC 3)		Semi-manufactures (SITC 5 + 6)		Finished manufactures (SITC 7 + 8)		Total manufactures (SITC 5 to 8)	
	Exports	Imports	Exports	Imports	Exports	Imports	Exports	Imports	Exports	Imports	Exports	Imports
<i>Weights (total trade = 1000)</i>	73	94	19	39	65	37	283	273	548	547	831	820
	BPAI	ELAN	BPAW	ELAO	BPDU	ELAP	BQAA	ELAQ	BQAB	ELAR	BQAI	ELAY
2000	92	87	84	94	167	147	89	87	87	88	87	88
2001	94	88	86	93	156	138	90	86	88	88	88	88
2002	95	88	85	91	158	131	89	83	88	86	88	85
2000 Q4	92	88	85	96	188	162	90	89	87	89	88	89
2001 Q1	94	89	86	95	164	142	90	89	88	89	89	89
Q2	93	89	86	94	168	150	89	88	88	89	88	89
Q3	94	87	86	92	158	142	90	85	87	87	88	87
Q4	94	88	84	91	133	118	89	83	87	87	88	86
2002 Q1	95	88	85	91	139	118	88	82	89	86	88	85
Q2	96	88	86	92	160	133	89	82	88	86	89	85
Q3	95	87	85	91	162	135	89	83	87	86	88	85
Q4	95	87	85	91	169	136	88	82	86	85	87	84
2003 Q1	100	88	86	94	180	151	91	83	88	85	89	85
2002 Nov	95	87	85	94	169	128	88	82	86	85	87	84
Dec	96	87	85	90	168	140	89	82	86	85	87	84
2003 Jan	99	87	85	91	175	150	90	83	87	85	88	84
Feb	100	88	86	92	183	153	91	83	87	85	89	85
Mar	102	89	88	98	183	151	92	84	89	86	90	86
Apr	103	89	87	96	168	133	93	85	89	86	90	86
<b>3 months ended:</b>												
2002 Apr	95	88	86	92	150	125	89	82	89	86	89	85
2003 Jan	97	87	85	92	171	139	89	82	86	85	87	84
2003 Apr	102	89	87	95	178	146	92	84	88	86	90	86
<b>Percentage change, latest 3 months compared with:</b>												
Previous 3 months	5.2	1.9	2.4	4.0	4.3	4.5	3.4	2.0	2.3	0.8	2.7	2.0
Same 3 months last year	7.0	0.4	1.6	4.0	18.9	16.5	3.8	2.4	-0.7	-0.4	1.1	0.8
<b>EXCLUDING ERRATICS<sup>2</sup></b>												
Previous 3 months							3.4	2.4	2.7	0.8	2.7	2.0
Same 3 months last year							4.1	2.4	0.0	0.0	1.5	0.8

1 These are provisional estimates subject to fluctuations when new or amended data become available.

2 These are defined as precious stones and silver in semi-manufactures, and as ships and aircraft in finished manufactures.

# 10 TRADE IN GOODS WITH SELECTED EU TRADING PARTNERS

Balance of Payments Consistent basis

£ million seasonally adjusted

	Belgium & Luxembourg			France			Germany			Irish Republic		
	Exports	Imports	Balance	Exports	Imports	Balance	Exports	Imports	Balance	Exports	Imports	Balance
	CHNQ	CHNY	CHNF	ENYL	ENYP	ENYT	ENYO	ENYS	ENYW	CHNS	CHOA	CHNH
2000	10 321	11 411	-1 090	18 575	18 274	301	22 790	27 800	-5 010	12 374	9 538	2 836
2001	9 896	12 527	-2 631	19 232	19 150	82	23 644	28 319	-4 675	13 855	9 341	4 514
2002	10 530	13 075	-2 545	18 707	18 886	-179	22 010	30 371	-8 361	15 363	9 215	6 148
2000 Q4	2 623	2 961	-338	4 835	4 821	14	5 961	6 976	-1 015	3 352	2 507	845
2001 Q1	2 609	3 219	-610	4 994	4 804	190	6 386	7 131	-745	3 342	2 393	949
Q2	2 505	3 178	-673	4 930	4 999	-69	6 089	7 050	-961	3 240	2 378	862
Q3	2 362	3 061	-699	4 782	4 650	132	5 707	6 951	-1 244	3 657	2 329	1 328
Q4	2 420	3 069	-649	4 526	4 697	-171	5 462	7 187	-1 725	3 616	2 241	1 375
2002 Q1	2 503	3 278	-775	4 476	4 684	-208	5 392	7 262	-1 870	4 274	2 273	2 001
Q2	2 658	3 161	-503	4 957	4 616	341	5 648	7 520	-1 872	4 562	2 311	2 251
Q3	2 647	3 309	-662	4 629	4 804	-175	5 603	7 863	-2 260	3 512	2 320	1 192
Q4	2 722	3 327	-605	4 645	4 782	-137	5 367	7 726	-2 359	3 015	2 311	704
2003 Q1	2 687	3 190	-503	4 991	4 837	154	5 393	8 097	-2 704	2 830	2 357	473
2002 Nov	902	1 137	-235	1 576	1 586	-10	1 886	2 591	-705	1 017	783	234
Dec	895	1 061	-166	1 511	1 597	-86	1 697	2 509	-812	1 009	759	250
2003 Jan	873	1 055	-182	1 625	1 658	-33	1 819	2 689	-870	957	763	194
Feb	930	1 056	-126	1 631	1 560	71	1 808	2 740	-932	947	802	145
Mar	884	1 079	-195	1 735	1 619	116	1 766	2 668	-902	926	792	134
Apr	1 013	1 080	-67	1 440	1 683	-243	1 692	2 621	-929	868	759	109
<b>3 months ended:</b>												
2002 Apr	2 639	3 285	-646	4 752	4 703	49	5 480	7 440	-1 960	4 302	2 319	1 983
2003 Jan	2 670	3 253	-583	4 712	4 841	-129	5 402	7 789	-2 387	2 983	2 305	678
2003 Apr	2 827	3 215	-388	4 806	4 862	-56	5 266	8 029	-2 763	2 741	2 353	388
<b>Percentage change, latest 3 months compared with:</b>												
Previous 3 months	5.9	-1.2		2.0	0.4		-2.5	3.1		-8.1	2.1	
Same 3 months last year	7.1	-2.1		1.1	3.4		-3.9	7.9		-36.3	1.5	
	Italy			Netherlands			Spain			Sweden		
	Exports	Imports	Balance	Exports	Imports	Balance	Exports	Imports	Balance	Exports	Imports	Balance
	CHNO	CHNW	CHOE	CHNP	CHNX	CHNE	CHNV	CHOD	CHNM	CHNA	CHND	CHVI
2000	8 428	9 467	-1 039	15 163	15 169	-6	8 302	6 010	2 292	4 210	4 921	-711
2001	8 400	9 762	-1 362	14 585	14 930	-345	8 361	6 947	1 414	3 948	4 631	-683
2002	8 489	10 378	-1 889	13 979	14 979	-1 000	8 468	8 122	346	3 863	4 256	-393
2000 Q4	2 069	2 355	-286	3 865	3 918	-53	2 093	1 470	623	1 059	1 254	-195
2001 Q1	2 203	2 444	-241	3 763	3 845	-82	2 038	1 714	324	1 065	1 190	-125
Q2	2 194	2 445	-251	3 696	3 872	-176	2 201	1 701	500	1 029	1 209	-180
Q3	2 045	2 422	-377	3 712	3 604	108	2 124	1 724	400	979	1 133	-154
Q4	1 958	2 451	-493	3 414	3 609	-195	1 998	1 808	190	875	1 099	-224
2002 Q1	2 170	2 553	-383	3 461	3 734	-273	1 998	1 908	90	960	1 101	-141
Q2	2 104	2 625	-521	3 635	3 843	-208	2 140	2 037	103	981	1 105	-124
Q3	2 145	2 600	-455	3 439	3 741	-302	2 142	2 057	85	953	1 035	-82
Q4	2 070	2 600	-530	3 444	3 661	-217	2 188	2 120	68	969	1 015	-46
2003 Q1	2 074	2 590	-516	3 843	3 596	247	2 299	2 063	236	932	1 103	-171
2002 Nov	694	873	-179	1 130	1 213	-83	769	733	36	315	340	-25
Dec	668	851	-183	1 186	1 204	-18	668	700	-32	316	332	-16
2003 Jan	661	846	-185	1 294	1 197	97	779	701	78	307	397	-90
Feb	739	901	-162	1 265	1 210	55	736	692	44	286	349	-63
Mar	674	843	-169	1 284	1 189	95	784	670	114	339	357	-18
Apr	686	836	-150	1 181	1 204	-23	743	722	21	297	334	-37
<b>3 months ended:</b>												
2002 Apr	2 167	2 585	-418	3 620	3 780	-160	2 076	1 966	110	987	1 108	-121
2003 Jan	2 023	2 570	-547	3 610	3 614	-4	2 216	2 134	82	938	1 069	-131
2003 Apr	2 099	2 580	-481	3 730	3 603	127	2 263	2 084	179	922	1 040	-118
<b>Percentage change, latest 3 months compared with:</b>												
Previous 3 months	3.8	0.4		3.3	-0.3		2.1	-2.3		-1.7	-2.7	
Same 3 months last year	-3.1	-0.2		3.0	-4.7		9.0	6.0		-6.6	-6.1	

# 11 TRADE IN GOODS WITH SELECTED NON-EU TRADING PARTNERS

Balance of Payments Consistent basis

£ million seasonally adjusted

	Canada			China			Hong Kong			Japan		
	Exports	Imports	Balance	Exports	Imports	Balance	Exports	Imports	Balance	Exports	Imports	Balance
	EOBC	EOBW	EOCQ	ERDN	ERDZ	EREL	ERDG	ERDS	EREE	EOBD	EOBX	EOCR
2000	3 488	4 007	-519	1 469	4 824	-3 355	2 673	5 915	-3 242	3 671	10 212	-6 541
2001	3 239	3 693	-454	1 735	5 773	-4 038	2 717	5 786	-3 069	3 743	9 124	-5 381
2002	3 106	3 537	-431	1 493	6 695	-5 202	2 410	5 533	-3 123	3 587	8 247	-4 660
2000 Q4	951	1 079	-128	391	1 373	-982	639	1 515	-876	1 015	2 617	-1 602
2001 Q1	916	1 089	-173	376	1 412	-1 036	659	1 529	-870	1 088	2 531	-1 443
Q2	857	936	-79	486	1 422	-936	637	1 485	-848	925	2 343	-1 418
Q3	699	888	-189	480	1 433	-953	634	1 408	-774	831	2 168	-1 337
Q4	767	780	-13	393	1 506	-1 113	787	1 364	-577	899	2 082	-1 183
2002 Q1	784	875	-91	458	1 560	-1 102	583	1 388	-805	812	2 145	-1 333
Q2	793	842	-49	350	1 683	-1 333	588	1 436	-848	943	2 043	-1 100
Q3	804	932	-128	333	1 664	-1 331	633	1 344	-711	939	2 088	-1 149
Q4	725	888	-163	352	1 788	-1 436	606	1 365	-759	893	1 971	-1 078
2003 Q1	672	830	-158	412	1 817	-1 405	623	1 374	-751	768	1 940	-1 172
2002 Oct	254	316	-62	115	586	-471	203	448	-245	280	666	-386
Nov	241	296	-55	121	621	-500	202	454	-252	273	654	-381
Dec	230	276	-46	116	581	-465	201	463	-262	340	651	-311
2003 Jan	225	309	-84	122	595	-473	210	435	-225	276	649	-373
Feb	242	258	-16	149	599	-450	232	452	-220	259	589	-330
Mar	205	263	-58	141	623	-482	181	487	-306	233	702	-469
Apr	341	280	61	167	652	-485	262	436	-174	346	676	-330
<b>3 months ended:</b>												
2002 Apr	687	872	-185	455	1 576	-1 121	591	1 409	-818	821	2 126	-1 305
2003 Jan	696	881	-185	359	1 797	-1 438	613	1 352	-739	889	1 954	-1 065
2003 Apr	788	801	-13	457	1 874	-1 417	675	1 375	-700	838	1 967	-1 129
<b>Percentage change, latest 3 months compared with:</b>												
Previous 3 months	13.2	-9.1		27.3	4.3		10.1	1.7		-5.7	0.7	
Same 3 months last year	14.7	-8.1		0.4	18.9		14.2	-2.4		2.1	-7.5	
	Norway			South Korea			Switzerland			USA		
	Exports	Imports	Balance	Exports	Imports	Balance	Exports	Imports	Balance	Exports	Imports	Balance
	EPLX	EPMX	EPNX	ERDM	ERDY	EREK	EPLV	EPMV	EPNV	EOBB	EOBV	EOCP
2000	2 017	5 562	-3 545	1 350	3 414	-2 064	3 062	5 484	-2 422	29 276	28 404	872
2001	1 862	5 597	-3 735	1 284	2 768	-1 484	3 578	4 603	-1 025	29 561	29 588	-27
2002	1 691	5 175	-3 484	1 462	2 790	-1 328	3 075	4 576	-1 501	28 192	24 973	3 219
2000 Q4	502	1 393	-891	320	891	-571	982	1 127	-145	7 826	7 889	-63
2001 Q1	495	1 437	-942	313	799	-486	931	1 137	-206	8 164	7 652	512
Q2	498	1 454	-956	331	700	-369	909	1 119	-210	7 329	7 962	-633
Q3	432	1 300	-868	316	631	-315	968	1 178	-210	6 963	7 420	-457
Q4	437	1 406	-969	324	638	-314	770	1 169	-399	7 105	6 554	551
2002 Q1	393	1 281	-888	327	704	-377	788	1 051	-263	6 759	6 210	549
Q2	426	1 303	-877	407	717	-310	785	1 268	-483	7 672	6 756	916
Q3	436	1 343	-907	379	696	-317	844	1 189	-345	7 194	6 207	987
Q4	436	1 248	-812	349	673	-324	658	1 068	-410	6 567	5 800	767
2003 Q1	499	1 700	-1 201	396	618	-222	699	978	-279	7 226	6 011	1 215
2002 Oct	148	364	-216	125	201	-76	240	407	-167	2 250	2 094	156
Nov	140	493	-353	91	249	-158	196	328	-132	1 854	1 856	-2
Dec	148	391	-243	133	223	-90	222	333	-111	2 463	1 850	613
2003 Jan	189	594	-405	129	218	-89	211	342	-131	2 518	2 014	504
Feb	164	516	-352	137	197	-60	275	317	-42	2 446	1 977	469
Mar	146	590	-444	130	203	-73	213	319	-106	2 262	2 020	242
Apr	155	494	-339	120	186	-66	244	328	-84	2 438	1 855	583
<b>3 months ended:</b>												
2002 Apr	366	1 397	-1 031	357	726	-369	731	1 063	-332	6 888	6 330	558
2003 Jan	477	1 478	-1 001	353	690	-337	629	1 003	-374	6 835	5 720	1 115
2003 Apr	465	1 600	-1 135	387	586	-199	732	964	-232	7 146	5 852	1 294
<b>Percentage change, latest 3 months compared with:</b>												
Previous 3 months	-2.5	8.3		9.6	-15.1		16.4	-3.9		4.6	2.3	
Same 3 months last year	27.0	14.5		8.4	-19.3		0.1	-9.3		3.7	-7.6	

# 12 SUMMARY OF REVISIONS

Balance of Payments Basis

£ million

	Trade in goods						Trade in services (seasonally adjusted)			
	Value (seasonally adjusted) £ million			Volume (seasonally adjusted) excluding oil & erratics (1995=100)		Price index (1995=100)		£ Million		
	Exports	Imports	Balance	Exports	Imports	Exports	Imports	Exports	Imports	Balance
	BOKG	BOKH	BOKI	BOMA	ELAL	BQKR	BQKS	IKBB	IKBC	IKBD
2000	-	-	-	-	-	-	-	-	-	-
2001	-	-	-	-	-	-	-	-	-	-
2002	322	1 110	-788	0.3	0.5	-	-	-	-	-
2000 Q4	-	-	-	-	-	-	-	-	-	-
2001 Q1	-	-	-	-	-	-	-	-	-	-
Q2	-	-	-	-	-	-	-	-	-	-
Q3	-	-	-	-	-	-	-	-	-	-
Q4	-	-	-	-	-	-	-	-	-	-
2002 Q1	-124	231	-355	-	0.4	-	-	-	-	-
Q2	119	226	-107	0.6	0.5	-	-	-	-	-
Q3	146	86	60	0.2	0.6	-	-	-	-	-
Q4	181	567	-386	0.3	0.6	-	-	-	-	-
2003 Q1	1 361	163	1 198	3.3	0.6	-	-	-	-	-
2001 Jul	-	-	-	-	-	-	-	-	-	-
Aug	-	-	-	-	-	-	-	-	-	-
Sep	-	-	-	-	-	-	-	-	-	-
Oct	-	-	-	-	-	-	-	-	-	-
Nov	-	-	-	-	-	-	-	-	-	-
Dec	-	-	-	-	-	-	-	-	-	-
2002 Jan	15	50	-35	-	-0.2	-	-	-	-	-
Feb	-116	93	-209	-0.4	-0.1	-	-	-	-	-
Mar	-23	88	-111	0.6	1.3	-	-	-	-	-
Apr	-14	122	-136	0.6	0.8	-0.1	-	-	-	-
May	82	68	14	0.7	0.4	-	-	-	-	-
Jun	51	36	15	0.4	0.2	-	0.1	-	-	-
Jul	4	29	-25	-	0.6	0.1	-	-	-	-
Aug	47	6	41	-0.1	0.3	-	-	-	-	-
Sep	95	51	44	0.6	0.7	-0.1	-	-	-	-
Oct	82	99	-17	0.5	0.4	-	-	-	-	-
Nov	48	193	-145	0.4	0.6	-	-	-	-	-
Dec	51	275	-224	0.1	0.9	-	-	-	-	-
2003 Jan	165	8	157	1.9	0.4	-	-	-	-	-
Feb	966	110	856	7.6	0.9	-	-0.1	-	-	-
Mar	230	45	185	0.4	0.4	-	0.2	-	-	-
Apr	..	..	..	..	..	..	..	..	..	..