

10 February 2004

Coverage
United Kingdom
Theme
The Economy

UK trade

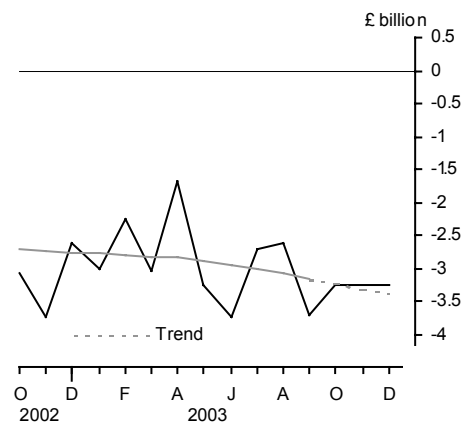
December 2003

The UK's balance on trade in goods and services in December is provisionally estimated as a deficit of £3.3 billion, compared with £3.2 billion in November.

In fourth quarter the balance on trade in goods and services was a record £9.8 billion in deficit. This compares with a £9.1 billion deficit in the previous quarter.

The latest estimate of the trend suggests that the UK trade deficit is widening.

Balance of trade



The deficit on goods and services in 2003 as a whole is provisionally estimated at a record £35.8 billion. This compares with the £31.4 billion deficit in 2002.

Issued by
National Statistics
1 Drummond Gate
London SW1V 2QQ

Telephone
Press Office 020 7533 5725
Public Enquiries 0845 601 3034

Statistician - Trade in Goods
David Ruffles 020 7533 6064/6072

Statistician - Trade in Services
Tom Orford 020 7533 6095/6097

E-mail - bop@ons.gov.uk

Internet
www.statistics.gov.uk

Next publication date
9 March 2004

		Balance on trade in goods			Balance on trade in services	Total balance
		EU	Non-EU	World		
<i>Seasonally adjusted: £ billion</i>						
2003	Jul	-1.8	-1.7	-3.4	0.7	-2.7
	Aug	-1.9	-1.6	-3.5	0.9	-2.6
	Sep	-2.2	-2.5	-4.7	1.0	-3.7
	Oct	-2.0	-2.2	-4.2	1.0	-3.2
	Nov	-2.2	-2.2	-4.4	1.1	-3.2
	Dec	-2.8	-1.4	-4.2	0.9	-3.3

NOTE: Trade in services estimates are included to give a more complete picture of UK trade. These estimates have been derived from a number of sources, and some components are based on recent trends. They should be used with appropriate caution.

TRADE IN GOODS - DECEMBER

Value of total trade in goods

The UK's deficit on trade in goods in December is provisionally estimated at £4.2 billion compared with a revised deficit of £4.4 billion in November. The deficit with EU countries in December was a record £2.8 billion compared with a deficit of £2.2 billion in November. The deficit with non-EU countries in December was £1.4 billion compared with a deficit of £2.2 billion in November.

In December total exports of goods rose four per cent to £16.1 billion and total imports of goods rose two per cent to £20.3 billion. Exports to EU countries were little changed and exports to non-EU countries rose nine and a half per cent. Imports from EU countries rose five per cent while imports from non-EU countries fell one and a half per cent.

In fourth quarter the deficit on trade in goods was £12.7 billion compared with £11.7 billion in the previous quarter. The deficit with EU countries was a record £6.9 billion compared with £5.9 billion in the previous quarter while the deficit with non-EU countries was unchanged from £5.8 billion.

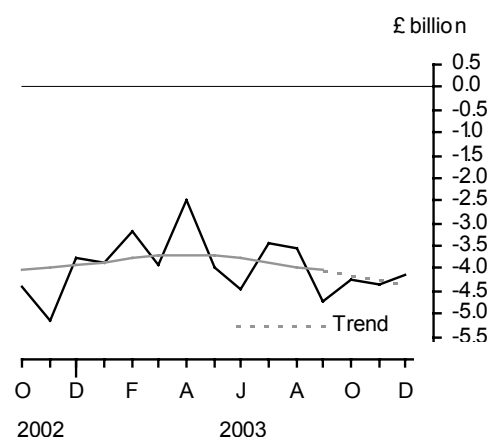
In fourth quarter exports of goods rose two per cent and imports of goods rose three and a half per cent. Exports to EU countries rose one per cent and exports to non-EU countries rose three and a half per cent. Imports from EU countries rose four per cent and those from non-EU countries rose two and a half per cent.

The latest estimate of the trend suggests that the whole world goods deficit is widening. The trends in the value of trade show exports broadly flat and imports rising.

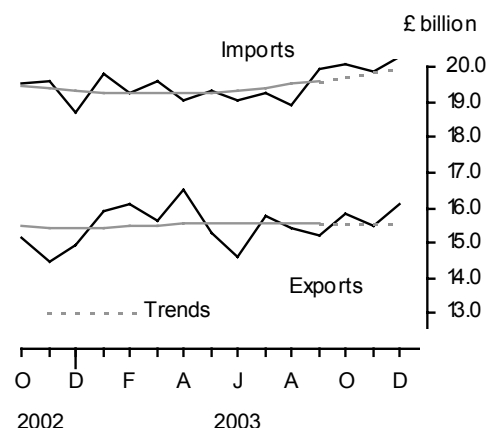
The deficit in 2003 as a whole is provisionally estimated at £46.4 billion. This compares with the £46.6 billion deficit in 2002. The deficit with EU countries widened to a record £23.8 billion and the deficit with non-EU narrowed to £22.6 billion.

The 2003 total exports rose a half per cent to £187.8 billion and total imports rose a half per cent to a record £234.2 billion. Exports to EU countries fell four and a half per cent while those to non-EU countries rose eight per cent. Imports from EU countries fell one and a half per cent while those from non-EU countries rose three per cent.

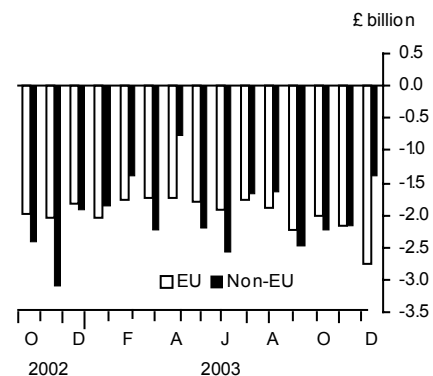
Balance on trade in goods



Value of trade in goods



Balance on trade in goods





Volume of total trade in goods (excluding oil and erratics)

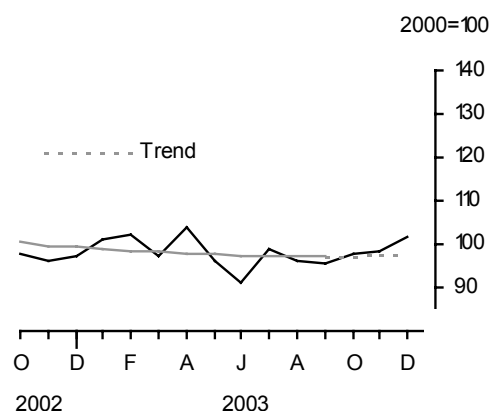
December's provisional estimates show the volume of exports rose three and a half per cent compared with November and the volume of imports rose two per cent on the previous month to reach a record monthly level.

In fourth quarter exports rose two and a half per cent and imports rose five per cent on the previous quarter to a record quarterly level.

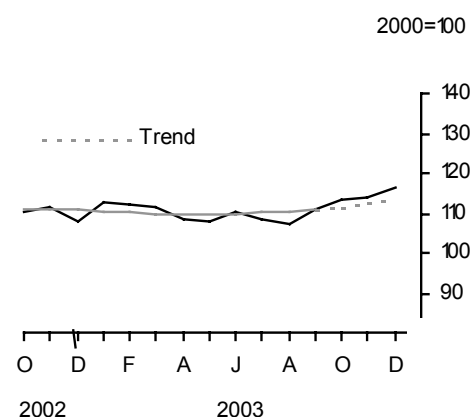
Latest estimate of volume trends show exports flat and imports rising slightly in recent months.

In 2003 as a whole the volume of exports fell two and a half per cent while imports rose one per cent to reach a record annual level.

Volume of exports (goods)
excluding oil and erratic items



Volume of imports (goods)
excluding oil and erratic items



		EU		Non-EU		World	
		Exports	Imports	Exports	Imports	Exports	Imports
<i>Seasonally adjusted: 2000 = 100</i>							
2003	Jul	94.0	114.8	105.7	101.3	98.9	108.7
	Aug	90.5	111.6	104.3	102.6	96.3	107.5
	Sep	90.5	114.9	102.5	106.7	95.6	111.2
	Oct	90.2	115.5	108.0	110.5	97.7	113.2
	Nov	91.2	115.6	108.1	112.1	98.3	114.0
	Dec	90.8	121.9	117.1	109.8	101.8	116.5

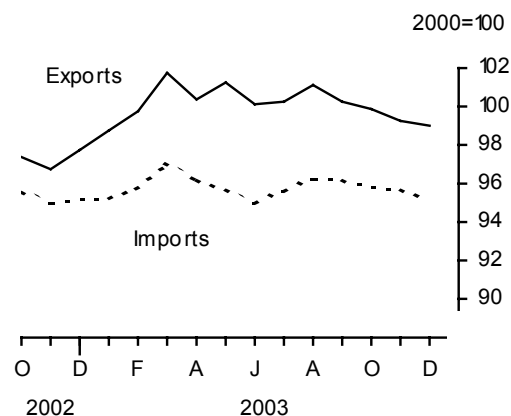
Export and import prices (trade in goods)

December's provisional estimates show both export and import prices fell a half per cent compared with November.

In fourth quarter export prices fell one per cent and import prices fell a half per cent. This led to a decrease in terms of trade.

Between December 2002 and December 2003 export prices rose one per cent while import prices were unchanged.

Export and import prices (goods)





COMMODITY ANALYSIS OF TRADE IN GOODS

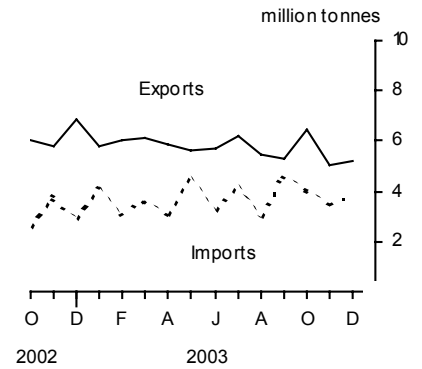
Trade in oil

The December surplus on trade in oil was £0.3 billion unchanged compared with November.

In fourth quarter the surplus on trade in oil was £0.8 billion unchanged compared with the previous quarter.

In 2003 the surplus on trade in oil was £4.4 billion compared with £5.7 billion in 2002.

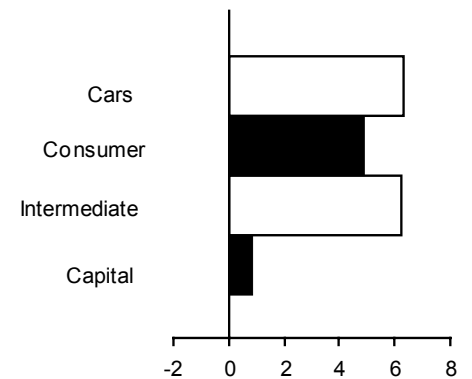
Trade in crude oil



Trade in other commodities in the three months ending December 2003

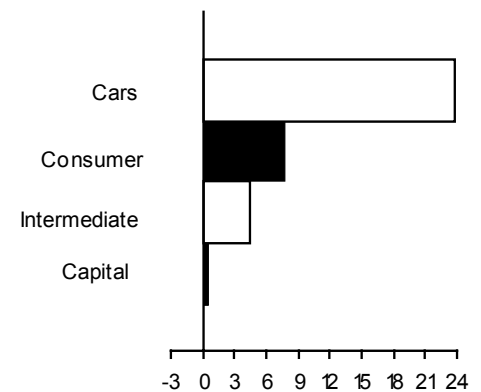
For exports, within the main commodity groups only fuels showed a fall in volume. Within finished manufactures, exports of cars rose six and a half per cent, intermediate goods rose six per cent and other consumer goods rose five per cent. Within semi-manufactured goods, exports of chemicals fell one and a half per cent while other semi-manufactures rose three per cent.

Volume of exports of goods (finished manufactures) 3 month percentage changes



For imports, within the main commodity groups only semi manufactures and fuels showed a fall in volume. Within finished manufactures, imports of cars rose 24 per cent, other consumer goods rose seven and a half per cent and intermediate goods rose four and a half per cent. Within semi-manufactured goods, imports of chemicals rose two and a half per cent.

Volume of imports of goods (finished manufactures) 3 month percentage changes

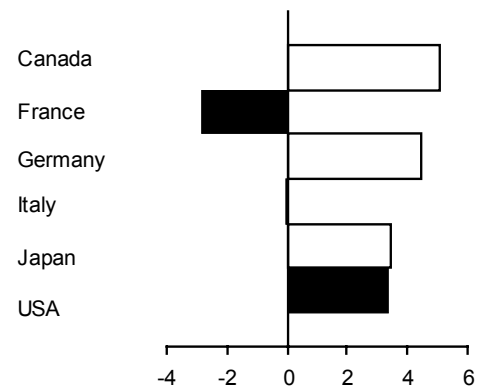


GEOGRAPHICAL ANALYSIS OF TRADE IN GOODS: in the three months ending December 2003

Exports by country

Within the G7 group of countries exports rose to both USA and Germany by £0.2 billion while exports fell to France by £0.1 billion. Among our other major trading partners exports rose to Irish Republic by £0.1 billion.

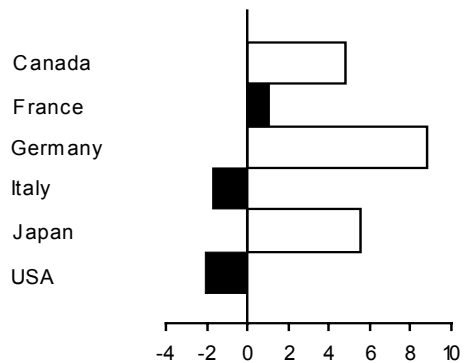
Value of exports of goods by country
3 month percentage changes



Imports by country

Within the G7 group of countries imports rose from Germany by £0.7 billion and from Japan by £0.1 billion, while imports fell from USA by £0.1 billion. Among our other major trading partners, imports from Belgium rose by £0.3 billion and from China by £0.2 billion. Imports rose from Netherlands, Spain, Dubai and Singapore by £0.1 billion while imports from Irish Republic fell by £0.1 billion.

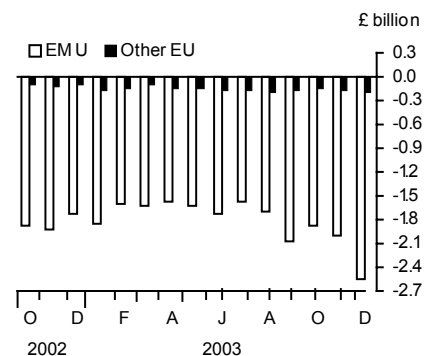
Value of imports of goods by country
3 month percentage changes



Trade with EMU members

In fourth quarter trade with EMU members showed a deficit of £6.4 billion and trade with other EU countries showed a deficit of £0.5 billion. Exports to EMU members rose one per cent and exports to other EU countries rose three and a half per cent. Imports from EMU members rose four and a half per cent and imports from other EU countries rose one per cent.

Balances with EMU members and other EU countries



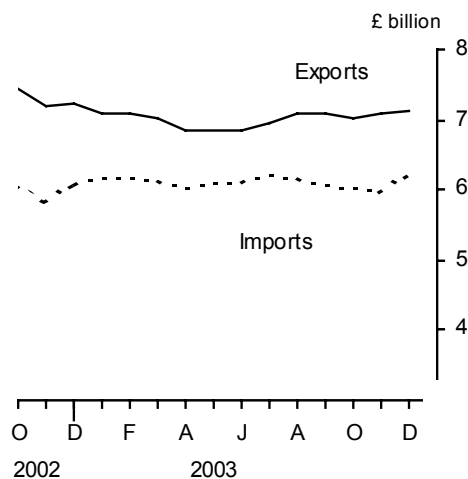
TRADE IN SERVICES - DECEMBER

The UK's surplus on trade in services in December is provisionally estimated at £0.9 billion compared with £1.1 billion in November.

In fourth quarter, the surplus on trade in services was £3.0 billion compared with £2.6 billion in the previous quarter. Exports of services totalled £21.2 billion compared with £21.1 billion in the previous three months. Imports of services totalled £18.2 billion compared with £18.5 billion the previous quarter.

The surplus on services in 2003 as a whole is estimated at £10.6 billion compared with the £15.2 billion surplus in 2002. This is the lowest annual surplus in trade in services since 1996.

Value of trade in services



SPECIAL NOTES

VAT missing trader intra-community (MTIC) fraud

1. Import figures for trade in goods now include adjustments to allow for the impact of VAT MTIC fraud. The adjustments were introduced for the first time in the UK trade May 2003 First Release published on 9 July. The adjustments are added to the EU import estimates derived from Intrastat returns. An article explaining the fraud and the impact on the trade figures was also published on 9 July (www.statistics.gov.uk/articles/economic_trends/ETAug03Ruffles.pdf).

International convention determines that the treatment of the impact is to adjust imports upwards by the relevant amounts. However users may wish to interpret short-term movements in exports and imports excluding completely this fraudulent activity, and for this purpose an analysis of the export and import figures with the VAT MTIC adjustments excluded has been produced.

The following table shows the quarterly values of imports and exports of goods for both current price estimates and chained volume measures excluding the impact of VAT MTIC fraud:

Quarter/ Year	£ billion			
	Current price	Current price	Chained volume measure	Chained volume measure
	Total exports less MITC	Total imports less MTIC	Total exports less MTIC	Total imports less MTIC
1999 Q1	38.8	46.7	39.0	48.6
Q2	40.0	46.6	40.4	48.7
Q3	43.1	49.7	43.5	51.4
Q4	42.6	50.5	43.0	51.8
2000 Q1	43.9	51.4	44.4	52.4
Q2	46.4	53.8	46.7	54.3
Q3	46.6	55.5	46.3	55.1
Q4	48.1	57.4	47.7	56.3
2001 Q1	48.1	57.4	47.9	56.6
Q2	46.6	57.2	46.6	56.6
Q3	44.6	54.8	45.8	55.6
Q4	43.6	54.2	45.2	56.3
2002 Q1	42.9	54.2	43.6	55.5
Q2	45.6	55.9	46.0	57.3
Q3	44.2	56.0	44.9	58.2
Q4	42.3	55.5	42.8	58.0
2003 Q1	45.1	56.1	45.0	58.2
Q2	45.7	56.6	45.7	58.8
Q3	46.0	57.7	46.0	60.0
Q4	47.0	59.8	47.1	62.4

These estimates are liable to further revision as later information becomes available. The table will be revised and updated as necessary in future Special Notes.

The adjustments to trade in goods relate only to part of the carousel version of VAT MTIC fraud. This fraud leads to under recording of imports as fraudsters import goods, which they then sell on before disappearing without paying VAT on that sale. The goods are eventually

exported back to the EU. Such exports are declared so VAT can be claimed back. Because intra-EU trade statistics are collected using the VAT system, these exports are therefore already reflected in the UK's trade in goods statistics.

HM Customs & Excise's New Export System

2. HM Customs & Excise's New Export System (NES), which replaces manual (paper) Customs declarations with electronic submissions, requires electronic messages from the trade once the goods have been exported in order to provide the departure date. In the absence of those messages being input, some non-EU exports had been allocated to the incorrect month. This has now been addressed by Customs implementing a change to the processing rules. Because of these problems ONS made adjustments to the trade statistics to better reflect the flow of exports to non-EU countries during the period January-September 2003.

BACKGROUND NOTES

1. A paper entitled *Statistics on Trade in Goods* (GSS Methodological Series No. 10) describing the bases on which trade in goods statistics are compiled and the methodology employed to derive volume and price indices is available on The Stationery Office website (www.clicktso.co.uk).
2. Trade in services estimates have been derived from a number of monthly and quarterly sources. For components where no monthly data are available, estimates have been derived on the basis of recent trends. The results should be used with appropriate caution, as they are therefore likely to be less reliable than those for trade in goods. More details of the data sources, estimation methodology and reliability of the monthly estimates of trade in services were set out in *Economic Trends* (November 1996 and October 1997).
3. Table 12R summarises the main revisions to the figures published on 9 January. The revisions to Jan-Nov 2003 reflect revised Customs data, later survey data on trade prices and a re-assessment of seasonal factors.
4. Complete runs of series in this Release are available to download free of charge at <http://www.statistics.gov.uk/timeseries>. Alternatively, for low-cost tailored data call Online Services on 020 7533 5675 or email tailored@statistics.gov.uk. The Time Series Data service provides access to additional data via the following electronic publications:
 - supplementary data for this First Release – *Monthly Review of External Trade Statistics – Business Monitor MM24*;
 - quarterly data analysed by industry according to the *Standard Industrial Classification - UK Trade in Goods analysed in terms of industries - Business Monitor MQ10*; and
 - annual detailed information on services components - *UK Trade in Services - Business Monitor UKA1*.
5. *MM24*, *MQ10* and *UKA1* are also available free of charge as PDF files on the National Statistics website (www.statistics.gov.uk/bop).
6. Details of the policy governing the release of new data are available from the press office. Also available is a list of the names of those given pre-publication access to the contents of this release.
7. **National Statistics** are produced to high professional standards set out in the National Statistics Code of Practice. They undergo regular quality assurance reviews to ensure that they meet customer needs. They are produced free from any political interference. © Crown Copyright 2004.

Index to tables

Contents

- 1 Value of UK trade in goods and services
- 2 UK trade in goods by area
- 3 Volume and price indices (trade in goods)
- 4 Volume indices with countries inside and outside the EU (trade in goods)
- 5 Price indices with countries inside and outside the EU (trade in goods)
- 6 Trade in oil
- 7 Value of trade in goods by commodity
- 8 Volume indices (trade in goods) by commodity
- 9 Price indices (trade in goods) by commodity
- 10 Trade in goods with selected EU trading partners
- 11 Trade in goods with countries outside the EU
- 12R Summary of revisions

1 VALUE OF UK TRADE IN GOODS AND SERVICES

Balance of Payments basis

£ million seasonally adjusted

	Total trade			Trade in goods			Oil			Trade in goods excluding oil		
	Exports	Imports	Balance	Exports	Imports	Balance	Exports	Imports	Balance	Exports	Imports	Balance
	IKBH	IKBI	IKBJ	BOKG	BOKH	BOKI	ELBL	ENXO	ENXQ	ELBM	ENXP	BQKH
2001	271 708	299 328	-27 620	190 050	230 670	-40 620	14 809	9 232	5 577	175 241	221 438	-46 197
2002	273 270	304 719	-31 449	186 517	233 147	-46 630	14 318	8 580	5 738	172 199	224 567	-52 368
2003	271 937	307 751	-35 814	187 844	234 229	-46 385	14 562	10 173	4 389	173 282	224 056	-50 774
2002 Q2	70 305	77 460	-7 155	49 380	59 657	-10 277	4 139	2 218	1 921	45 241	57 439	-12 198
Q3	69 577	76 851	-7 274	46 816	58 641	-11 825	3 399	2 263	1 136	43 417	56 378	-12 961
Q4	66 379	75 788	-9 409	44 521	57 798	-13 277	3 562	2 173	1 389	40 959	55 625	-14 666
2003 Q1	68 794	77 110	-8 316	47 580	58 583	-11 003	4 139	2 597	1 542	43 441	55 986	-12 545
Q2	66 981	75 654	-8 673	46 453	57 387	-10 934	3 509	2 290	1 219	42 944	55 097	-12 153
Q3	67 559	76 619	-9 060	46 426	58 126	-11 700	3 494	2 663	831	42 932	55 463	-12 531
Q4	68 603	78 368	-9 765	47 385	60 133	-12 748	3 420	2 623	797	43 965	57 510	-13 545
2003 Jul	22 731	25 451	-2 720	15 792	19 237	-3 445	1 224	920	304	14 568	18 317	-3 749
Aug	22 495	25 122	-2 627	15 388	18 926	-3 538	1 181	714	467	14 207	18 212	-4 005
Sep	22 333	26 046	-3 713	15 246	19 963	-4 717	1 089	1 029	60	14 157	18 934	-4 777
Oct	22 842	26 091	-3 249	15 814	20 047	-4 233	1 237	1 006	231	14 577	19 041	-4 464
Nov	22 550	25 799	-3 249	15 474	19 830	-4 356	1 035	761	274	14 439	19 069	-4 630
Dec	23 211	26 478	-3 267	16 097	20 256	-4 159	1 148	856	292	14 949	19 400	-4 451
Percentage change, latest month compared with:												
Previous month	2.9	2.6		4.0	2.1		10.9	12.5		3.5	1.7	
3 months ended:												
2002 Dec	66 379	75 788	-9 409	44 521	57 798	-13 277	3 562	2 173	1 389	40 959	55 625	-14 666
2003 Sep	67 559	76 619	-9 060	46 426	58 126	-11 700	3 494	2 663	831	42 932	55 463	-12 531
2003 Dec	68 603	78 368	-9 765	47 385	60 133	-12 748	3 420	2 623	797	43 965	57 510	-13 545
Percentage change, latest 3 months compared with:												
Previous 3 months	1.5	2.3		2.1	3.5		-2.1	-1.5		2.4	3.7	
Same 3 months last year	3.4	3.4		6.4	4.0		-4.0	20.7		7.3	3.4	

	Erratics ¹			Trade in goods excluding erratics			Trade in goods excluding oil and erratics			Trade in services		
	Exports	Imports	Balance	Exports	Imports	Balance	Exports	Imports	Balance	Exports	Imports	Balance
	BPAL	BQBB	BQKW	BPAO	BQBE	BPBM	BPBL	BQBG	BPAP	IKBB	IKBC	IKBD
2001	11 683	14 216	-2 533	178 367	216 454	-38 087	163 558	207 222	-43 664	81 658	68 658	13 000
2002	11 236	13 788	-2 552	175 281	219 359	-44 078	160 963	210 779	-49 816	86 753	71 572	15 181
2003	12 285	12 516	-231	175 559	221 713	-46 154	160 997	211 540	-50 543	84 093	73 522	10 571
2002 Q2	3 300	3 713	-413	46 080	55 944	-9 864	41 941	53 726	-11 785	20 925	17 803	3 122
Q3	2 841	3 497	-656	43 975	55 144	-11 169	40 576	52 881	-12 305	22 761	18 210	4 551
Q4	2 400	3 720	-1 320	42 121	54 078	-11 957	38 559	51 905	-13 346	21 858	17 990	3 868
2003 Q1	2 929	3 192	-263	44 651	55 391	-10 740	40 512	52 794	-12 282	21 214	18 527	2 687
Q2	3 049	3 029	20	43 404	54 358	-10 954	39 895	52 068	-12 173	20 528	18 267	2 261
Q3	3 094	3 365	-271	43 332	54 761	-11 429	39 838	52 098	-12 260	21 133	18 493	2 640
Q4	3 213	2 930	283	44 172	57 203	-13 031	40 752	54 580	-13 828	21 218	18 235	2 983
2003 Jul	1 088	1 052	36	14 704	18 185	-3 481	13 480	17 265	-3 785	6 939	6 214	725
Aug	1 012	1 107	-95	14 376	17 819	-3 443	13 195	17 105	-3 910	7 107	6 196	911
Sep	994	1 206	-212	14 252	18 757	-4 505	13 163	17 728	-4 565	7 087	6 083	1 004
Oct	1 147	1 041	106	14 667	19 006	-4 339	13 430	18 000	-4 570	7 028	6 044	984
Nov	991	936	55	14 483	18 894	-4 411	13 448	18 133	-4 685	7 076	5 969	1 107
Dec	1 075	953	122	15 022	19 303	-4 281	13 874	18 447	-4 573	7 114	6 222	892
Percentage change, latest month compared with:												
Previous month	8.5	1.8		3.7	2.2		3.2	1.7		0.5	4.2	
3 months ended:												
2002 Dec	2 400	3 720	-1 320	42 121	54 078	-11 957	38 559	51 905	-13 346	21 858	17 990	3 868
2003 Sep	3 094	3 365	-271	43 332	54 761	-11 429	39 838	52 098	-12 260	21 133	18 493	2 640
2003 Dec	3 213	2 930	283	44 172	57 203	-13 031	40 752	54 580	-13 828	21 218	18 235	2 983
Percentage change, latest 3 months compared with:												
Previous 3 months	3.8	-12.9		1.9	4.5		2.3	4.8		0.4	-1.4	
Same 3 months last year	33.9	-21.2		4.9	5.8		5.7	5.2		-2.9	1.4	

¹ These are defined as ships, aircraft, precious stones and silver

2 UK TRADE IN GOODS BY AREA

Balance of Payments basis

£ million seasonally adjusted

	EMU members ¹			Other EU countries ²			Total EU			Non-EU			Total		
	Exports	Imports	Balance	Exports	Imports	Balance	Exports	Imports	Balance	Exports	Imports	Balance	Exports	Imports	Balance
2001	QAKW	QAKX	QAKY	QAKZ	QALA	QALB	ENOF	ENOS	ENPF	ENQX	ENRK	ENRX	BOKG	BOKH	BOKI
2001	103 493	113 799	-10 306	6 217	7 586	-1 369	109 710	121 385	-11 675	80 340	109 285	-28 945	190 050	230 670	-40 620
2002	103 250	122 635	-19 385	6 605	7 915	-1 310	109 855	130 550	-20 695	76 662	102 597	-25 935	186 517	233 147	-46 630
2003	99 009	120 790	-21 781	5 860	7 838	-1 978	104 869	128 628	-23 759	82 975	105 601	-22 626	187 844	234 229	-46 385
2001 Q3	25 797	28 299	-2 502	1 482	1 793	-311	27 279	30 092	-2 813	19 260	26 623	-7 363	46 539	56 715	-10 176
2001 Q4	24 751	28 472	-3 721	1 419	1 926	-507	26 170	30 398	-4 228	19 531	25 843	-6 312	45 701	56 241	-10 540
2002 Q1	25 593	29 895	-4 302	1 546	1 947	-401	27 139	31 842	-4 703	18 661	25 209	-6 548	45 800	57 051	-11 251
2002 Q2	27 162	31 218	-4 056	1 760	2 078	-318	28 922	33 296	-4 374	20 458	26 361	-5 903	49 380	59 657	-10 277
2002 Q3	25 523	31 044	-5 521	1 725	1 988	-263	27 248	33 032	-5 784	19 568	25 609	-6 041	46 816	58 641	-11 825
2002 Q4	24 972	30 478	-5 506	1 574	1 902	-328	26 546	32 380	-5 834	17 975	25 418	-7 443	44 521	57 798	-13 277
2003 Q1	25 737	30 809	-5 072	1 606	2 050	-444	27 343	32 859	-5 516	20 237	25 724	-5 487	47 580	58 583	-11 003
2003 Q2	24 611	29 552	-4 941	1 473	1 954	-481	26 084	31 506	-5 422	20 369	25 881	-5 512	46 453	57 387	-10 934
2003 Q3	24 220	29 562	-5 342	1 368	1 908	-540	25 588	31 470	-5 882	20 838	26 656	-5 818	46 426	58 126	-11 700
2003 Q4	24 441	30 867	-6 426	1 413	1 926	-513	25 854	32 793	-6 939	21 531	27 340	-5 809	47 385	60 133	-12 748
2002 Jun	8 645	10 051	-1 406	607	685	-78	9 252	10 736	-1 484	6 463	8 532	-2 069	15 715	19 268	-3 553
2002 Jul	8 911	10 743	-1 832	622	688	-66	9 533	11 431	-1 898	6 786	8 930	-2 144	16 319	20 361	-4 042
2002 Aug	8 032	10 048	-2 016	538	613	-75	8 570	10 661	-2 091	6 301	8 364	-2 063	14 871	19 025	-4 154
2002 Sep	8 580	10 253	-1 673	565	687	-122	9 145	10 940	-1 795	6 481	8 315	-1 834	15 626	19 255	-3 629
2002 Oct	8 343	10 209	-1 866	549	652	-103	8 892	10 861	-1 969	6 229	8 656	-2 427	15 121	19 517	-4 396
2002 Nov	8 487	10 402	-1 915	508	623	-115	8 995	11 025	-2 030	5 460	8 552	-3 092	14 455	19 577	-5 122
2002 Dec	8 142	9 867	-1 725	517	627	-110	8 659	10 494	-1 835	6 286	8 210	-1 924	14 945	18 704	-3 759
2003 Jan	8 495	10 345	-1 850	532	713	-181	9 027	11 058	-2 031	6 846	8 703	-1 857	15 873	19 761	-3 888
2003 Feb	8 589	10 194	-1 605	499	658	-159	9 088	10 852	-1 764	6 986	8 390	-1 404	16 074	19 242	-3 168
2003 Mar	8 653	10 270	-1 617	575	679	-104	9 228	10 949	-1 721	6 405	8 631	-2 226	15 633	19 580	-3 947
2003 Apr	8 429	10 003	-1 574	517	662	-145	8 946	10 665	-1 719	7 595	8 353	-758	16 541	19 018	-2 477
2003 May	8 057	9 688	-1 631	493	648	-155	8 550	10 336	-1 786	6 766	8 958	-2 192	15 316	19 294	-3 978
2003 Jun	8 125	9 861	-1 736	463	644	-181	8 588	10 505	-1 917	6 008	8 570	-2 562	14 596	19 075	-4 479
2003 Jul	8 305	9 882	-1 577	459	641	-182	8 764	10 523	-1 759	7 028	8 714	-1 686	15 792	19 237	-3 445
2003 Aug	7 975	9 672	-1 697	448	643	-195	8 423	10 315	-1 892	6 965	8 611	-1 646	15 388	18 926	-3 538
2003 Sep	7 940	10 008	-2 068	461	624	-163	8 401	10 632	-2 231	6 845	9 331	-2 486	15 246	19 963	-4 717
2003 Oct	8 234	10 100	-1 866	476	617	-141	8 710	10 717	-2 007	7 104	9 330	-2 226	15 814	20 047	-4 233
2003 Nov	8 115	10 115	-2 000	467	646	-179	8 582	10 761	-2 179	6 892	9 069	-2 177	15 474	19 830	-4 356
2003 Dec	8 092	10 652	-2 560	470	663	-193	8 562	11 315	-2 753	7 535	8 941	-1 406	16 097	20 256	-4 159
Percentage change on previous month:															
2003 Dec	-0.3	5.3		0.6	2.6		-0.2	5.1		9.3	-1.4		4.0	2.1	
3 months ended:															
2002 Dec	24 972	30 478	-5 506	1 574	1 902	-328	26 546	32 380	-5 834	17 975	25 418	-7 443	44 521	57 798	-13 277
2003 Sep	24 220	29 562	-5 342	1 368	1 908	-540	25 588	31 470	-5 882	20 838	26 656	-5 818	46 426	58 126	-11 700
2003 Dec	24 441	30 867	-6 426	1 413	1 926	-513	25 854	32 793	-6 939	21 531	27 340	-5 809	47 385	60 133	-12 748
Percentage change, latest 3 months compared with:															
Previous 3 months	0.9	4.4		3.3	0.9		1.0	4.2		3.3	2.6		2.1	3.5	
Same 3 months last year	-2.1	1.3		-10.2	1.3		-2.6	1.3		19.8	7.6		6.4	4.0	

1 Austria, Belgium, Finland, France, Germany, Greece, Irish Republic, Italy, Luxembourg, Netherlands, Portugal, Spain.

2 Denmark, Sweden.

3 VOLUME AND PRICE INDICES (TRADE IN GOODS) ¹

Balance of Payments basis

Indices 2000=100

	Volume (seasonally adjusted)						Price index (not seasonally adjusted)								
	Total		Total excluding oil		Total excluding oil and erratics ²		Total			Total excluding oil			Total excluding oil & erratics ²		
	Exports	Imports	Exports	Imports	Exports	Imports	Exports	Imports	Terms of trade ³	Exports	Imports	Terms of trade ³	Exports	Imports	
	BQKU	BQKV	BQKI	BQKJ	BOMA	ELAL	BQKR	BQKS	BQKT	BQKK	BQKL	BQKM	BQAK	ELBA	
2001	102.7	105.4	102.5	105.1	102.8	104.9	98.3	99.1	99.2	99.0	99.5	99.5	99.1	99.3	
2002	100.9	109.7	101.1	110.3	100.7	110.1	98.4	96.4	102.1	99.0	96.2	102.9	99.5	96.4	
2003	100.2	110.8	100.8	111.0	98.4	111.2	100.2	95.8	104.6	100.2	95.3	105.1	101.8	95.5	
2001 Q3	101.7	104.4	101.3	104.9	101.2	104.2	97.6	98.2	99.4	97.9	98.4	99.5	98.3	98.4	
Q4	101.1	106.2	100.6	105.0	100.7	105.1	95.8	96.0	99.8	97.5	97.0	100.5	97.9	97.0	
2002 Q1	99.3	106.2	99.4	106.4	99.5	107.5	98.6	97.4	101.2	99.9	97.8	102.1	100.4	97.8	
Q2	106.5	111.6	106.1	112.2	104.6	111.7	99.5	97.2	102.4	99.9	96.9	103.1	100.5	97.0	
Q3	101.5	111.0	102.1	111.6	101.8	111.4	98.4	95.8	102.7	98.5	95.4	103.2	99.2	95.6	
Q4	96.4	110.1	96.6	110.8	97.0	109.9	97.3	95.3	102.1	97.5	94.9	102.7	98.1	95.1	
2003 Q1	101.5	111.2	102.0	111.9	100.2	112.2	100.1	96.1	104.2	99.3	94.9	104.6	100.8	95.1	
Q2	99.2	108.4	99.6	108.6	97.1	108.8	100.6	95.6	105.2	101.3	95.5	106.1	102.9	95.8	
Q3	98.9	109.7	99.5	109.6	96.9	109.1	100.5	96.1	104.6	100.8	95.6	105.4	102.3	95.7	
Q4	101.1	113.8	102.3	114.0	99.3	114.6	99.4	95.6	104.0	99.6	95.1	104.7	101.2	95.5	
2002 Jul	106.2	116.3	107.4	116.6	106.1	114.8	98.6	95.7	103.0	99.0	95.5	103.7	99.7	95.8	
Aug	95.9	107.3	96.8	108.5	97.1	108.5	98.8	95.9	103.0	99.1	95.5	103.8	99.7	95.7	
Sep	102.3	109.3	102.2	109.7	102.1	111.0	97.7	95.8	102.0	97.5	95.2	102.4	98.1	95.4	
Oct	98.2	111.1	98.3	112.1	97.9	110.3	97.4	95.6	101.9	97.4	95.0	102.5	97.9	95.2	
Nov	94.3	112.4	95.0	112.5	96.1	111.8	96.8	95.0	101.9	97.5	95.0	102.6	98.1	95.2	
Dec	96.8	106.7	96.5	107.9	97.0	107.6	97.8	95.2	102.7	97.7	94.6	103.3	98.3	94.8	
2003 Jan	102.9	113.0	103.6	113.3	101.2	112.6	98.7	95.3	103.6	98.0	94.2	104.0	99.5	94.4	
Feb	103.0	110.2	103.4	111.5	102.0	112.3	99.8	95.8	104.2	98.8	94.5	104.6	100.3	94.7	
Mar	98.7	110.4	98.9	110.8	97.4	111.7	101.7	97.1	104.7	101.1	96.0	105.3	102.7	96.2	
Apr	105.9	107.4	106.7	107.5	103.9	108.3	100.4	96.2	104.4	100.9	96.1	105.0	102.5	96.3	
May	97.6	109.0	97.9	108.4	96.2	107.8	101.3	95.7	105.9	102.2	95.7	106.8	103.9	96.0	
Jun	94.1	108.8	94.1	109.8	91.3	110.3	100.1	95.0	105.4	100.7	94.8	106.2	102.3	95.1	
Jul	101.4	109.0	101.8	108.8	98.9	108.7	100.2	95.6	104.8	100.5	95.1	105.7	102.1	95.3	
Aug	98.0	106.9	98.7	107.8	96.3	107.5	101.1	96.3	105.0	101.0	95.6	105.6	102.6	95.7	
Sep	97.3	113.1	97.9	112.1	95.6	111.2	100.3	96.3	104.2	100.8	96.0	105.0	102.3	96.1	
Oct	101.3	113.5	101.4	113.0	97.7	113.2	99.9	95.9	104.2	100.1	95.3	105.0	101.7	95.6	
Nov	98.6	112.3	100.5	113.0	98.3	114.0	99.3	95.8	103.7	99.5	95.4	104.3	101.1	95.7	
Dec	103.3	115.6	104.9	116.0	101.8	116.5	99.0	95.2	104.0	99.1	94.7	104.6	100.7	95.2	
Percentage change, latest month compared with:															
Previous month	4.8	2.9	4.4	2.7	3.6	2.2	-0.3	-0.6		-0.4	-0.7		-0.4	-0.5	
3 months ended:															
2002 Dec	96.4	110.1	96.6	110.8	97.0	109.9	97.3	95.3	102.2	97.5	94.9	102.8	98.1	95.1	
2003 Sep	98.9	109.7	99.5	109.6	96.9	109.1	100.5	96.1	104.7	100.8	95.6	105.4	102.3	95.7	
2003 Dec	101.1	113.8	102.3	114.0	99.3	114.6	99.4	95.6	104.0	99.6	95.1	104.6	101.2	95.5	
Percentage change, latest 3 months compared with:															
Previous 3 months	2.2	3.8	2.8	4.0	2.4	5.0	-1.1	-0.5		-1.2	-0.5		-1.1	-0.2	
Same 3 months last year	4.8	3.4	5.9	2.9	2.3	4.2	2.1	0.4		2.1	0.3		3.1	0.5	

1 These are provisional estimates subject to fluctuations when new or amended data become available.

2 These are defined as ships, aircraft, precious stones and silver.

3 Export price index as a percentage of the import price index.

4 VOLUME INDICES WITH COUNTRIES INSIDE AND OUTSIDE THE EU (TRADE IN GOODS) ¹

Balance of Payments basis

Indices 2000=100 seasonally adjusted

	Trade in goods with EU countries ³						Trade in goods with Non-EU countries					
	Total		Total excluding oil		Total excluding oil and erratics ²		Total		Total excluding oil		Total excluding oil & erratics ²	
	Exports	Imports	Exports	Imports	Exports	Imports	Exports	Imports	Exports	Imports	Exports	Imports
	ENYB	ENXT	ENYC	ENXU	ENYE	ENXW	ENTX	ENTP	ENTY	ENTQ	ENUA	ENTS
2001	103.9	108.6	103.0	108.4	103.3	108.8	101.0	102.0	102.0	101.4	102.1	100.2
2002	103.9	118.4	104.0	118.9	104.0	119.8	96.9	100.6	97.1	100.6	96.2	98.5
2003	95.1	114.9	95.0	115.4	93.6	116.6	107.0	106.4	108.5	106.1	105.0	104.6
2001 Q3	104.6	108.4	103.0	108.4	103.3	109.3	97.8	100.2	99.1	100.9	98.5	98.1
Q4	101.4	110.6	99.6	110.3	99.4	111.2	100.8	101.6	102.0	99.1	102.6	97.7
2002 Q1	103.2	115.0	103.1	115.5	103.6	116.0	94.1	96.9	94.4	96.4	93.8	97.2
Q2	109.4	121.0	109.1	121.5	108.4	122.6	102.5	101.7	102.2	101.9	99.5	98.7
Q3	103.0	119.8	103.4	120.4	103.2	121.3	99.5	101.7	100.4	101.8	99.8	99.4
Q4	100.0	117.8	100.5	118.4	100.7	119.1	91.6	102.0	91.5	102.5	91.8	98.8
2003 Q1	99.6	119.5	99.5	120.0	98.8	121.4	104.1	102.4	105.3	102.8	102.1	101.0
Q2	94.2	112.0	94.0	112.6	93.1	113.5	105.9	104.5	107.0	104.1	102.8	103.0
Q3	92.9	112.2	93.3	112.5	91.7	113.8	107.0	107.0	107.7	106.2	104.2	103.5
Q4	93.6	115.9	93.2	116.3	90.7	117.7	111.1	111.5	114.2	111.4	111.1	110.8
2002 Jun	104.6	116.4	103.8	116.9	103.4	118.0	98.0	99.2	97.2	99.8	95.4	96.4
Jul	107.5	124.9	110.1	125.7	109.6	126.1	104.5	107.2	103.9	106.4	101.1	101.1
Aug	96.7	114.7	97.1	115.2	96.7	116.5	94.9	99.6	96.5	101.0	97.7	98.8
Sep	104.8	119.8	103.1	120.3	103.3	121.4	99.0	98.3	100.9	98.0	100.5	98.4
Oct	100.8	118.5	101.6	119.1	101.8	119.8	94.7	103.4	93.9	104.4	92.6	98.9
Nov	102.1	120.8	103.1	121.4	104.0	122.3	83.8	103.6	84.3	102.6	85.0	99.2
Dec	97.2	114.0	96.8	114.6	96.3	115.2	96.2	99.0	96.2	100.5	97.9	98.4
2003 Jan	100.0	121.3	100.4	121.5	99.2	123.0	106.7	104.2	107.8	104.3	103.9	100.1
Feb	99.4	118.6	99.0	119.2	98.3	120.7	107.9	101.4	109.3	102.9	107.2	102.1
Mar	99.4	118.7	99.0	119.3	98.9	120.5	97.8	101.7	98.7	101.3	95.2	100.9
Apr	97.2	114.2	97.4	114.6	95.8	115.4	117.5	100.1	119.1	99.6	115.2	99.6
May	91.8	109.0	91.5	109.3	90.9	110.2	105.3	109.0	106.5	107.4	103.5	104.8
Jun	93.5	112.9	93.1	113.8	92.6	114.8	94.8	104.5	95.4	105.3	89.7	104.7
Jul	96.0	112.8	96.0	113.3	94.0	114.8	108.7	105.1	109.6	103.7	105.7	101.3
Aug	91.4	110.6	91.9	110.9	90.5	111.6	106.8	103.0	107.7	104.4	104.3	102.6
Sep	91.2	113.3	91.9	113.4	90.5	114.9	105.4	112.9	105.8	110.6	102.5	106.7
Oct	94.9	114.2	92.6	114.7	90.2	115.5	109.9	112.7	113.1	111.2	108.0	110.5
Nov	92.8	113.6	93.6	114.1	91.2	115.6	106.4	110.9	109.7	111.7	108.1	112.1
Dec	93.1	120.0	93.5	120.2	90.8	121.9	117.1	110.9	119.9	111.2	117.1	109.8
Percentage change on previous month:												
2003 Dec	0.3	5.6	-0.1	5.3	-0.4	5.4	10.1	0.0	9.3	-0.4	8.3	-2.1
3 months ended:												
2002 Dec	100.0	117.8	100.5	118.4	100.7	119.1	91.6	102.0	91.5	102.5	91.8	98.8
2003 Sep	92.9	112.2	93.3	112.5	91.7	113.8	107.0	107.0	107.7	106.2	104.2	103.5
2003 Dec	93.6	115.9	93.2	116.3	90.7	117.7	111.1	111.5	114.2	111.4	111.1	110.8
Percentage change, latest 3 months compared with:												
Previous 3 months	0.8	3.3	0.0	3.4	-1.0	3.4	3.9	4.2	6.1	4.8	6.6	7.0
Same 3 months last year	-6.4	-1.6	-7.2	-1.7	-9.9	-1.2	21.4	9.3	24.9	8.7	20.9	12.1

1 These are provisional estimates subject to fluctuations when new or amended data become available.

2 These are defined as ships, aircraft, precious stones and silver.

3 Includes trade with the Canary Islands, French Guiana, Guadeloupe, Martinique and Reunion.

5 PRICE INDICES WITH COUNTRIES INSIDE AND OUTSIDE THE EU (TRADE IN GOODS) ¹

Balance of Payments basis

Indices 2000=100 not seasonally adjusted

	Trade in goods with EU countries ³						Trade in goods with Non-EU countries					
	Total		Total excluding oil		Total excluding oil and erratics ²		Total		Total excluding oil		Total excluding oil & erratics ²	
	Exports	Imports	Exports	Imports	Exports	Imports	Exports	Imports	Exports	Imports	Exports	Imports
	ENYF	ENXX	ENYG	ENXY	ENYI	ENYA	ENUN	ENUF	ENUO	ENUG	ENUQ	ENUI
2001	97.6	99.1	98.2	99.2	98.3	99.1	99.4	99.2	100.1	99.8	100.1	99.7
2002	97.6	98.5	98.0	98.2	98.6	98.1	99.7	94.2	100.3	94.0	100.8	94.3
2003	101.8	99.6	101.9	99.2	102.8	99.0	98.0	91.9	97.9	90.9	100.5	91.3
2001 Q3	96.8	98.5	97.1	98.6	97.5	98.5	98.7	97.9	99.1	98.2	99.3	98.4
Q4	95.3	97.6	97.0	98.0	97.4	97.9	96.6	94.3	98.2	95.9	98.5	96.0
2002 Q1	97.3	98.6	98.5	98.5	99.1	98.4	100.4	96.1	101.7	96.9	102.3	97.0
Q2	98.1	98.6	98.4	98.2	99.0	98.1	101.3	95.8	101.9	95.5	102.6	95.7
Q3	98.0	98.6	98.1	98.2	98.8	98.1	98.9	92.9	99.1	92.2	99.7	92.6
Q4	96.8	98.3	96.9	97.9	97.6	97.8	98.1	92.1	98.4	91.5	98.9	91.8
2003 Q1	101.3	99.2	100.5	98.6	101.3	98.4	98.4	92.8	97.6	90.8	100.1	91.2
Q2	102.6	99.5	103.5	99.3	104.3	99.1	97.9	91.5	98.4	91.2	101.0	91.7
Q3	101.9	99.4	102.3	99.0	103.1	98.8	98.6	92.6	98.7	91.7	101.3	92.0
Q4	101.2	100.2	101.5	99.9	102.4	99.7	97.0	90.8	96.9	89.9	99.5	90.5
2002 Jun	98.4	99.1	98.9	98.8	99.5	98.7	99.9	95.0	100.6	94.9	101.2	95.2
Jul	98.5	98.6	99.0	98.3	99.7	98.2	98.6	92.7	99.1	92.4	99.7	92.8
Aug	98.6	98.6	98.8	98.2	99.4	98.1	99.2	93.1	99.4	92.4	100.0	92.7
Sep	96.9	98.5	96.6	98.1	97.3	97.9	98.8	93.0	98.7	91.9	99.3	92.3
Oct	96.7	98.3	96.5	97.9	97.1	97.8	98.4	92.7	98.5	91.8	99.0	92.1
Nov	96.2	98.2	96.8	98.0	97.5	97.9	97.6	91.6	98.4	91.6	98.9	92.0
Dec	97.6	98.3	97.4	97.9	98.1	97.7	98.2	92.0	98.2	91.0	98.7	91.4
2003 Jan	99.8	98.4	99.1	97.8	99.9	97.6	97.2	92.1	96.5	90.2	98.9	90.6
Feb	101.1	98.9	100.2	98.3	101.0	98.1	98.0	92.5	97.0	90.3	99.5	90.7
Mar	103.0	100.2	102.3	99.6	103.1	99.4	100.1	93.9	99.4	92.0	102.0	92.4
Apr	101.8	99.8	102.5	99.6	103.3	99.4	98.5	92.4	98.9	92.2	101.5	92.5
May	103.7	99.8	104.9	99.6	105.8	99.5	98.0	91.3	98.6	91.2	101.2	91.7
Jun	102.3	99.0	103.0	98.7	103.8	98.5	97.3	90.9	97.6	90.3	100.2	90.9
Jul	101.7	99.1	102.1	98.7	102.9	98.5	98.2	91.9	98.3	91.0	100.9	91.4
Aug	102.4	99.1	102.5	98.7	103.3	98.5	99.2	93.3	99.0	92.1	101.6	92.3
Sep	101.7	99.9	102.2	99.6	103.0	99.4	98.5	92.5	98.8	91.9	101.4	92.2
Oct	101.7	99.8	101.9	99.4	102.8	99.2	97.6	91.7	97.5	90.8	100.1	91.3
Nov	100.9	100.4	101.2	100.1	102.0	99.9	97.2	91.0	97.3	90.2	99.8	90.7
Dec	101.1	100.4	101.4	100.1	102.3	100.0	96.1	89.7	96.0	88.7	98.6	89.4
Percentage change on previous month:												
2003 Dec	0.2	0.0	0.2	0.0	0.3	0.1	-1.1	-1.4	-1.3	-1.7	-1.2	-1.4
3 months ended:												
2002 Dec	96.8	98.3	96.9	97.9	97.6	97.8	98.1	92.1	98.4	91.5	98.9	91.8
2003 Sep	101.9	99.4	102.3	99.0	103.1	98.8	98.6	92.6	98.7	91.7	101.3	92.0
2003 Dec	101.2	100.2	101.5	99.9	102.4	99.7	97.0	90.8	96.9	89.9	99.5	90.5
Percentage change, latest 3 months compared with:												
Previous 3 months	-0.7	0.8	-0.7	0.9	-0.7	0.9	-1.7	-1.9	-1.8	-1.9	-1.8	-1.6
Same 3 months last year	4.5	2.0	4.7	2.0	4.9	1.9	-1.1	-1.4	-1.5	-1.7	0.6	-1.5

1 These are provisional estimates subject to fluctuations when new or amended data become available.

2 These are defined as ships, aircraft, precious stones and silver.

3 Includes trade with the Canary Islands, French Guiana, Guadeloupe, Martinique and Reunion.

6 TRADE IN OIL¹

Balance of Payments basis

Seasonally adjusted

	Exports						Imports					
	Balance of Trade in Oil £ million	Crude oil (SITC 333)				Rest of SITC 33 £ million	Total £ million	Crude oil (SITC 333)				Rest of SITC 33 £ million
		Total £ million	£ million	million tonnes	Avg value per tonne £			£ million	million tonnes	Avg value per tonne £		
	ENXQ	ELBL	BQNI	BOQM	BPBN	BOQN	ENXO	BQNJ	BQBH	BQAX	BQAY	
2001	5 577	14 809	10 486	82.00	128	4 323	9 232	4 877	39.57	123	4 355	
2002	5 738	14 318	9 802	79.67	123	4 516	8 580	4 752	40.92	116	3 828	
2003	4 389	14 562	9 156	68.85	133	5 406	10 173	5 714	44.55	128	4 459	
2001 Q3	1 821	3 806	2 680	20.49	131	1 126	1 985	967	7.63	127	1 018	
Q4	953	3 215	2 219	20.55	108	996	2 262	1 292	11.55	112	970	
2002 Q1	1 292	3 218	2 253	21.22	106	965	1 926	1 130	10.99	103	796	
Q2	1 921	4 139	2 904	22.60	128	1 235	2 218	1 221	10.15	120	997	
Q3	1 136	3 399	2 222	17.17	129	1 177	2 263	1 293	10.58	122	970	
Q4	1 389	3 562	2 423	18.68	130	1 139	2 173	1 108	9.20	120	1 065	
2003 Q1	1 542	4 139	2 565	17.97	143	1 574	2 597	1 534	10.77	142	1 063	
Q2	1 219	3 509	2 184	17.24	127	1 325	2 290	1 288	10.68	121	1 002	
Q3	831	3 494	2 226	16.90	132	1 268	2 663	1 467	11.74	125	1 196	
Q4	797	3 420	2 181	16.74	130	1 239	2 623	1 425	11.36	125	1 198	
2003 Jul	304	1 224	803	6.17	130	421	920	484	4.13	117	436	
Aug	467	1 181	734	5.44	135	447	714	389	3.00	130	325	
Sep	60	1 089	689	5.29	130	400	1 029	594	4.61	129	435	
Oct	231	1 237	855	6.48	132	382	1 006	522	4.07	128	484	
Nov	274	1 035	651	5.02	130	384	761	426	3.44	124	335	
Dec	292	1 148	675	5.24	129	473	856	477	3.85	124	379	
3 months ended:												
2002 Dec	1 389	3 562	2 423	18.68	129	1 139	2 173	1 108	9.20	121	1 065	
2003 Sep	831	3 494	2 226	16.90	132	1 268	2 663	1 467	11.74	125	1 196	
2003 Dec	797	3 420	2 181	16.74	130	1 239	2 623	1 425	11.36	125	1 198	
Percentage change, latest 3 months compared with:												
Previous 3 months		-2.1	-2.0	-0.9	-1.0	-2.3	-1.5	-2.9	-3.2	0.0	0.2	
Same 3 months last year		-4.0	-10.0	-10.4	0.8	8.8	20.7	28.6	23.5	3.6	12.5	

1 Trade in petroleum and petroleum products. These figures differ from those published by the Department of Trade and Industry which are compiled from different sources and are on a time of shipment basis.

2 The average value per tonne may reflect not only changes in price but also changes in the commodity mix.

7 VALUE OF TRADE IN GOODS BY COMMODITY

Balance of Payments basis

£ million seasonally adjusted

	Food, beverages and tobacco (SITC 0 + 1)			Basic materials (SITC 2 + 4)			Fuels (SITC 3)		
	Exports	Imports	Balance	Exports	Imports	Balance	Exports	Imports	Balance
	BOPL	BQAR	ELBE	BOPM	BQAS	ELBF	BOPN	BQAT	ELBG
2001	9 650	18 517	-8 867	2 579	6 454	-3 875	16 379	10 502	5 877
2002	9 991	19 347	-9 356	2 856	5 958	-3 102	15 997	9 588	6 409
2003	10 809	21 042	-10 233	3 333	6 121	-2 788	16 417	11 105	5 312
2001 Q4	2 403	4 739	-2 336	638	1 489	-851	3 572	2 546	1 026
2002 Q1	2 315	4 785	-2 470	649	1 494	-845	3 581	2 171	1 410
Q2	2 506	4 760	-2 254	715	1 506	-791	4 530	2 510	2 020
Q3	2 651	4 849	-2 198	729	1 469	-740	3 777	2 493	1 284
Q4	2 519	4 953	-2 434	763	1 489	-726	4 109	2 414	1 695
2003 Q1	2 761	5 121	-2 360	840	1 490	-650	4 570	2 777	1 793
Q2	2 649	5 206	-2 557	817	1 510	-693	4 035	2 537	1 498
Q3	2 690	5 304	-2 614	838	1 491	-653	3 983	2 886	1 097
Q4	2 709	5 411	-2 702	838	1 630	-792	3 829	2 905	924
2003 Jul	877	1 744	-867	271	466	-195	1 403	991	412
Aug	936	1 762	-826	290	513	-223	1 336	787	549
Sep	877	1 798	-921	277	512	-235	1 244	1 108	136
Oct	915	1 801	-886	284	538	-254	1 363	1 111	252
Nov	891	1 803	-912	267	552	-285	1 164	830	334
Dec	903	1 807	-904	287	540	-253	1 302	964	338
3 months ended:									
2002 Dec	2 519	4 953	-2 434	763	1 489	-726	4 109	2 414	1 695
2003 Sep	2 690	5 304	-2 614	838	1 491	-653	3 983	2 886	1 097
2003 Dec	2 709	5 411	-2 702	838	1 630	-792	3 829	2 905	924
Percentage change, latest 3 months compared with:									
Previous 3 months	0.7	2.0		0.0	9.3		-3.9	0.7	
Same 3 months last year	7.5	9.2		9.8	9.5		-6.8	20.3	

	Semi-manufactures (SITC 5 + 6)			Finished manufactures (SITC 7 + 8)			Total manufactures (SITC 5 to 8)			Miscellaneous (SITC 9)		
	Exports	Imports	Balance	Exports	Imports	Balance	Exports	Imports	Balance	Exports	Imports	Balance
	BOPO	BQAU	ELBH	BOPP	BQAV	ELBI	BPAN	BQBD	ELBJ	BOQL	BQAW	BQKX
2001	50 444	53 061	-2 617	109 959	140 856	-30 897	160 403	193 917	-33 514	1 039	1 280	-241
2002	50 223	52 720	-2 497	106 377	144 084	-37 707	156 600	196 804	-40 204	1 073	1 450	-377
2003	54 280	55 902	-1 622	102 137	138 462	-36 325	156 417	194 364	-37 947	868	1 597	-729
2001 Q4	12 162	13 146	-984	26 669	33 983	-7 314	38 831	47 129	-8 298	257	338	-81
2002 Q1	12 376	12 933	-557	26 664	35 279	-8 615	39 040	48 212	-9 172	215	389	-174
Q2	12 912	13 267	-355	28 399	37 260	-8 861	41 311	50 527	-9 216	318	354	-36
Q3	12 573	13 013	-440	26 775	36 465	-9 690	39 348	49 478	-10 130	311	352	-41
Q4	12 362	13 507	-1 145	24 539	35 080	-10 541	36 901	48 587	-11 686	229	355	-126
2003 Q1	12 986	13 546	-560	26 182	35 270	-9 088	39 168	48 816	-9 648	241	379	-138
Q2	13 640	14 035	-395	25 090	33 712	-8 622	38 730	47 747	-9 017	222	387	-165
Q3	13 783	14 094	-311	24 942	33 954	-9 012	38 725	48 048	-9 323	190	397	-207
Q4	13 871	14 227	-356	25 923	35 526	-9 603	39 794	49 753	-9 959	215	434	-219
2003 Jul	4 724	4 706	18	8 436	11 198	-2 762	13 160	15 904	-2 744	81	132	-51
Aug	4 523	4 623	-100	8 258	11 124	-2 866	12 781	15 747	-2 966	45	117	-72
Sep	4 536	4 765	-229	8 248	11 632	-3 384	12 784	16 397	-3 613	64	148	-84
Oct	4 679	4 697	-18	8 503	11 759	-3 256	13 182	16 456	-3 274	70	141	-71
Nov	4 586	4 754	-168	8 496	11 750	-3 254	13 082	16 504	-3 422	70	141	-71
Dec	4 606	4 776	-170	8 924	12 017	-3 093	13 530	16 793	-3 263	75	152	-77
3 months ended:												
2002 Dec	12 362	13 507	-1 145	24 539	35 080	-10 541	36 901	48 587	-11 686	229	355	-126
2003 Sep	13 783	14 094	-311	24 942	33 954	-9 012	38 725	48 048	-9 323	190	397	-207
2003 Dec	13 871	14 227	-356	25 923	35 526	-9 603	39 794	49 753	-9 959	215	434	-219
Percentage change, latest 3 months compared with:												
Previous 3 months	0.6	0.9		3.9	4.6		2.8	3.5		13.2	9.3	
Same 3 months last year	12.2	5.3		5.6	1.3		7.8	2.4		-6.1	22.3	
EXCLUDING ERRATICS¹												
Previous 3 months	0.2	2.2		4.0	5.8		2.7	4.8				
Same 3 months last year	10.5	6.4		3.8	3.6		6.0	4.4				

¹ These are defined as precious stones and silver in semi-manufactures, and as ships and aircraft in finished manufactures.

	Food, beverages and tobacco (SITC 0 + 1)		Basic materials (SITC 2 + 4)		Fuels (SITC 3)		Semi-manufactures (SITC 5 + 6)		Finished manufactures (SITC 7 + 8)		Total manufactures (SITC 5 to 8)	
	Exports	Imports	Exports	Imports	Exports	Imports	Exports	Imports	Exports	Imports	Exports	Imports
<i>Weights²</i> <i>(total trade = 1000)</i>	53	80	14	29	91	45	254	226	580	612	834	838
	BPEM	BQBK	BAFB	BQBL	BAFC	BQBM	BAHA	BQBN	BAHY	ELAB	BOGT	ELAJ
2001	96	104	98	104	105	112	107	107	102	105	103	106
2002	99	108	108	96	102	97	110	112	97	111	101	111
2003	103	115	121	95	96	103	117	117	93	110	101	112
2001 Q3	95	105	96	103	107	93	106	109	101	104	102	105
Q4	95	106	98	99	107	130	106	110	100	104	101	105
2002 Q1	92	106	98	98	99	100	109	109	97	107	100	107
Q2	100	108	108	97	111	98	114	112	104	114	106	114
Q3	105	109	111	95	96	97	111	109	98	114	102	113
Q4	99	111	115	95	100	94	108	115	91	110	96	112
2003 Q1	107	114	123	94	98	93	113	115	97	112	102	113
Q2	100	113	117	94	99	103	117	117	91	106	99	109
Q3	102	115	121	92	97	109	118	119	91	107	99	110
Q4	103	117	121	100	90	107	120	118	95	113	102	115
2003 Jul	100	114	118	87	102	112	122	119	93	106	102	109
Aug	107	114	126	96	94	84	116	116	90	105	98	108
Sep	100	116	118	94	94	131	117	121	89	110	98	113
Oct	104	116	123	98	100	120	121	118	93	112	101	114
Nov	102	118	116	101	80	95	119	117	93	112	101	113
Dec	103	117	124	100	90	107	120	120	98	115	105	117
3 months ended:												
2002 Dec	99	111	115	95	100	94	108	115	91	110	96	112
2003 Sep	102	115	121	92	97	109	118	119	91	107	99	110
2003 Dec	103	117	121	100	90	107	120	118	95	113	102	115
Percentage change, latest 3 months compared with:												
Previous 3 months	0.7	2.0	0.3	7.9	-6.9	-1.5	1.4	-0.3	4.4	5.6	3.0	4.2
Same 3 months last year	4.4	5.4	5.5	4.9	-10.0	14.6	10.8	2.6	4.4	2.4	6.6	2.7
EXCLUDING ERRATICS³												
Previous 3 months							0.0	0.9	4.1	6.9	3.1	4.9
Same 3 months last year							7.2	2.9	0.4	4.3	2.8	3.9

1 These are provisional estimates subject to fluctuations when new or amended data become available.

2 The weights shown are in proportion to the total value of trade in 2000 and are used to combine the volume indices to calculate the totals for 2001 onwards. For 2000 and earlier, totals are calculated using the equivalent weights for the previous year (eg totals for 2000 use 1999 weights).

3 These are defined as precious stones and silver in semi-manufactures, and as ships and aircraft in finished manufactures.

9 PRICE INDICES (TRADE IN GOODS) BY COMMODITY ¹

Balance of Payments basis

Indices 2000=100 not seasonally adjusted

	Food, beverages and tobacco (SITC 0 + 1)		Basic materials (SITC 2 + 4)		Fuels (SITC 3)		Semi-manufactures (SITC 5 + 6)		Finished manufactures (SITC 7 + 8)		Total manufactures (SITC 5 to 8)	
	Exports	Imports	Exports	Imports	Exports	Imports	Exports	Imports	Exports	Imports	Exports	Imports
<i>Weights²</i> <i>(total trade = 1000)</i>	53	80	14	29	91	45	254	226	580	612	834	838
	BPAI	ELAN	BPAW	ELAO	BPDU	ELAP	BQAA	ELAQ	BQAB	ELAR	BQAI	ELAY
2001	103	101	101	99	91	93	99	100	99	99	99	99
2002	103	101	102	99	93	101	96	95	100	96	99	96
2003	107	104	107	103	99	109	99	97	100	93	100	94
2001 Q3	103	99	101	97	94	96	97	98	98	98	98	98
Q4	103	101	100	96	79	76	96	96	98	97	97	97
2002 Q1	103	103	101	97	85	90	95	95	102	98	100	97
Q2	102	100	103	99	94	104	97	95	101	97	99	96
Q3	102	100	103	98	96	105	96	95	99	95	98	95
Q4	103	101	103	100	95	103	96	94	98	94	97	94
2003 Q1	105	102	105	101	107	122	98	95	99	93	99	94
Q2	108	104	107	103	93	99	100	97	101	93	101	95
Q3	107	105	107	102	98	107	99	97	101	93	100	94
Q4	107	106	108	105	97	107	98	97	99	93	99	94
2003 Jul	107	104	106	102	97	106	99	96	101	93	100	94
Aug	107	105	107	102	101	113	99	97	101	93	101	94
Sep	106	106	108	103	95	103	99	97	101	94	100	95
Oct	107	107	108	105	98	110	99	96	100	93	100	94
Nov	107	106	108	106	97	105	98	98	99	93	99	94
Dec	107	106	108	104	97	107	98	98	99	92	98	93
3 months ended:												
2002 Dec	103	101	103	100	95	103	96	94	98	94	97	94
2003 Sep	107	105	107	102	98	107	99	97	101	93	100	94
2003 Dec	107	106	108	105	97	107	98	97	99	93	99	94
Percentage change, latest 3 months compared with:												
Previous 3 months	0.3	1.3	0.9	2.6	-0.3	0.0	-0.7	0.7	-1.7	-0.7	-1.3	-0.7
Same 3 months last year	4.2	4.9	5.2	5.0	2.1	3.9	2.8	3.2	1.4	-1.4	2.1	-0.4
EXCLUDING ERRATICS³												
Previous 3 months							0.0	1.3	-1.6	-0.7	-1.3	-0.4
Same 3 months last year							4.1	4.5	3.1	-1.8	2.7	0.0

1 These are provisional estimates subject to fluctuations when new or amended data become available.

2 The weights shown are in proportion to the total value of trade in 2000 and are used to combine the volume indices to calculate the totals for 2001 onwards. For 2000 and earlier, totals are calculated using the equivalent weights for the previous year (eg totals for 2000 use 1999 weights).

3 These are defined as precious stones and silver in semi-manufactures, and as ships and aircraft in finished manufactures.

10 TRADE IN GOODS WITH SELECTED EU TRADING PARTNERS

Balance of Payments Consistent basis

£ million seasonally adjusted

	Belgium & Luxembourg			France			Germany			Irish Republic		
	Exports	Imports	Balance	Exports	Imports	Balance	Exports	Imports	Balance	Exports	Imports	Balance
	CHNQ	CHNY	CHNF	ENYL	ENYP	ENYT	ENYO	ENYS	ENYW	CHNS	CHOA	CHNH
2001	9 893	12 131	-2 238	19 243	20 114	-871	23 647	29 882	-6 235	13 829	12 135	1 694
2002	10 555	13 148	-2 593	18 763	20 426	-1 663	22 068	32 418	-10 350	15 424	13 167	2 257
2003	11 316	13 076	-1 760	18 718	20 072	-1 354	20 709	33 532	-12 823	12 091	9 456	2 635
2001 Q3	2 383	2 959	-576	4 762	4 942	-180	5 725	7 277	-1 552	3 697	3 243	454
Q4	2 406	2 939	-533	4 583	4 830	-247	5 450	7 460	-2 010	3 575	3 223	352
2002 Q1	2 496	3 264	-768	4 491	5 006	-515	5 364	7 626	-2 262	4 298	3 742	556
Q2	2 679	3 145	-466	4 955	5 070	-115	5 715	8 051	-2 336	4 591	3 953	638
Q3	2 639	3 355	-716	4 612	5 170	-558	5 654	8 483	-2 829	3 474	2 970	504
Q4	2 741	3 384	-643	4 705	5 180	-475	5 335	8 258	-2 923	3 061	2 502	559
2003 Q1	2 726	3 202	-476	5 005	5 010	-5	5 390	8 544	-3 154	2 908	2 452	456
Q2	2 901	3 252	-351	4 507	4 977	-470	5 118	8 111	-2 993	2 886	2 317	569
Q3	2 809	3 143	-334	4 669	5 015	-346	4 990	8 082	-3 092	3 086	2 404	682
Q4	2 880	3 479	-599	4 537	5 070	-533	5 211	8 795	-3 584	3 211	2 283	928
2003 Jul	951	1 043	-92	1 578	1 638	-60	1 694	2 755	-1 061	1 028	801	227
Aug	947	1 035	-88	1 577	1 697	-120	1 652	2 574	-922	1 012	814	198
Sep	911	1 065	-154	1 514	1 680	-166	1 644	2 753	-1 109	1 046	789	257
Oct	967	1 099	-132	1 596	1 692	-96	1 736	2 760	-1 024	1 027	787	240
Nov	967	1 142	-175	1 458	1 661	-203	1 733	2 879	-1 146	1 096	757	339
Dec	946	1 238	-292	1 483	1 717	-234	1 742	3 156	-1 414	1 088	739	349
3 months ended:												
2002 Dec	2 741	3 384	-643	4 705	5 180	-475	5 335	8 258	-2 923	3 061	2 502	559
2003 Sep	2 809	3 143	-334	4 669	5 015	-346	4 990	8 082	-3 092	3 086	2 404	682
2003 Dec	2 880	3 479	-599	4 537	5 070	-533	5 211	8 795	-3 584	3 211	2 283	928
Percentage change, latest 3 months compared with:												
Previous 3 months	2.5	10.7		-2.8	1.1		4.4	8.8		4.1	-5.0	
Same 3 months last year	5.1	2.8		-3.6	-2.1		-2.3	6.5		4.9	-8.8	
	Italy			Netherlands			Spain			Sweden		
	Exports	Imports	Balance	Exports	Imports	Balance	Exports	Imports	Balance	Exports	Imports	Balance
	CHNO	CHNW	CHOE	CHNP	CHNX	CHNE	CHNV	CHOD	CHNM	CHNA	CHND	CHVI
2001	8 400	9 852	-1 452	14 596	15 384	-788	8 361	7 347	1 014	3 950	4 665	-715
2002	8 511	10 666	-2 155	14 014	16 128	-2 114	8 491	9 152	-661	3 875	4 324	-449
2003	8 529	11 167	-2 638	13 465	16 470	-3 005	8 778	9 010	-232	3 718	4 525	-807
2001 Q3	2 042	2 454	-412	3 710	3 759	-49	2 108	1 859	249	968	1 143	-175
Q4	1 980	2 498	-518	3 428	3 858	-430	2 011	1 894	117	875	1 112	-237
2002 Q1	2 180	2 590	-410	3 455	3 873	-418	1 985	2 016	-31	959	1 122	-163
Q2	2 092	2 650	-558	3 582	4 152	-570	2 148	2 308	-160	969	1 101	-132
Q3	2 152	2 705	-553	3 500	4 097	-597	2 155	2 380	-225	959	1 053	-94
Q4	2 087	2 721	-634	3 477	4 006	-529	2 203	2 448	-245	988	1 048	-60
2003 Q1	2 103	2 769	-666	3 864	4 406	-542	2 371	2 425	-54	943	1 140	-197
Q2	2 223	2 831	-608	3 435	3 926	-491	2 194	2 099	95	962	1 150	-188
Q3	2 102	2 808	-706	3 091	3 988	-897	2 132	2 178	-46	897	1 120	-223
Q4	2 101	2 759	-658	3 075	4 150	-1 075	2 081	2 308	-227	916	1 115	-199
2003 Jul	786	914	-128	1 115	1 337	-222	698	730	-32	299	374	-75
Aug	652	954	-302	987	1 298	-311	714	688	26	292	379	-87
Sep	664	940	-276	989	1 353	-364	720	760	-40	306	367	-61
Oct	697	934	-237	1 031	1 392	-361	720	753	-33	313	351	-38
Nov	711	909	-198	1 021	1 366	-345	673	737	-64	299	378	-79
Dec	693	916	-223	1 023	1 392	-369	688	818	-130	304	386	-82
3 months ended:												
2002 Dec	2 087	2 721	-634	3 477	4 006	-529	2 203	2 448	-245	988	1 048	-60
2003 Sep	2 102	2 808	-706	3 091	3 988	-897	2 132	2 178	-46	897	1 120	-223
2003 Dec	2 101	2 759	-658	3 075	4 150	-1 075	2 081	2 308	-227	916	1 115	-199
Percentage change, latest 3 months compared with:												
Previous 3 months	0.0	-1.7		-0.5	4.1		-2.4	6.0		2.1	-0.4	
Same 3 months last year	0.7	1.4		-11.6	3.6		-5.5	-5.7		-7.3	6.4	

11 TRADE IN GOODS WITH SELECTED NON-EU TRADING PARTNERS

Balance of Payments Consistent basis

£ million seasonally adjusted

	Canada			China			Hong Kong			Japan		
	Exports	Imports	Balance	Exports	Imports	Balance	Exports	Imports	Balance	Exports	Imports	Balance
	EOBC	EOBW	EOCQ	ERDN	ERDZ	EREL	ERDG	ERDS	EREE	EOBD	EOBX	EOCR
2001	3 239	3 693	-454	1 735	5 773	-4 038	2 717	5 787	-3 070	3 743	9 146	-5 403
2002	3 106	3 527	-421	1 493	6 687	-5 194	2 411	5 527	-3 116	3 588	8 184	-4 596
2003	3 254	3 651	-397	1 929	8 275	-6 346	2 494	5 457	-2 963	3 738	8 011	-4 273
2001 Q3	715	892	-177	480	1 433	-953	642	1 417	-775	829	2 178	-1 349
Q4	754	769	-15	393	1 521	-1 128	753	1 364	-611	879	2 066	-1 187
2002 Q1	782	878	-96	458	1 565	-1 107	582	1 389	-807	821	2 130	-1 309
Q2	816	834	-18	350	1 681	-1 331	591	1 427	-836	941	2 040	-1 099
Q3	791	925	-134	333	1 662	-1 329	625	1 353	-728	927	2 089	-1 162
Q4	717	890	-173	352	1 779	-1 427	613	1 358	-745	899	1 925	-1 026
2003 Q1	675	834	-159	418	1 826	-1 408	632	1 374	-742	792	1 938	-1 146
Q2	875	910	-35	528	2 015	-1 487	629	1 324	-695	950	1 957	-1 007
Q3	831	931	-100	454	2 096	-1 642	596	1 344	-748	981	2 003	-1 022
Q4	873	976	-103	529	2 338	-1 809	637	1 415	-778	1 015	2 113	-1 098
2003 Jun	257	312	-55	157	682	-525	164	435	-271	250	604	-354
Jul	286	288	-2	154	627	-473	210	439	-229	321	668	-347
Aug	254	336	-82	165	723	-558	197	450	-253	313	659	-346
Sep	291	307	-16	135	746	-611	189	455	-266	347	676	-329
Oct	281	303	-22	183	754	-571	187	475	-288	335	714	-379
Nov	268	344	-76	152	780	-628	210	461	-251	333	695	-362
Dec	324	329	-5	194	804	-610	240	479	-239	347	704	-357
3 months ended:												
2002 Dec	717	890	-173	352	1 779	-1 427	613	1 358	-745	899	1 925	-1 026
2003 Sep	831	931	-100	454	2 096	-1 642	596	1 344	-748	981	2 003	-1 022
2003 Dec	873	976	-103	529	2 338	-1 809	637	1 415	-778	1 015	2 113	-1 098
Percentage change, latest 3 months compared with:												
Previous 3 months	5.1	4.8		16.5	11.5		6.9	5.3		3.5	5.5	
Same 3 months last year	21.8	9.7		50.3	31.4		3.9	4.2		12.9	9.8	
	Norway			South Korea			Switzerland			USA		
	Exports	Imports	Balance	Exports	Imports	Balance	Exports	Imports	Balance	Exports	Imports	Balance
	EPLX	EPMX	EPNX	ERDM	ERDY	EREK	EPLV	EPMV	EPNV	EOBB	EOBV	EOCP
2001	1 862	5 596	-3 734	1 284	2 776	-1 492	3 578	4 604	-1 026	29 561	29 588	-27
2002	1 695	5 182	-3 487	1 462	2 765	-1 303	3 079	4 582	-1 503	28 192	24 903	3 289
2003	1 854	6 318	-4 464	1 476	2 542	-1 066	2 788	3 759	-971	28 942	22 698	6 244
2001 Q3	441	1 299	-858	329	632	-303	961	1 129	-168	6 990	7 439	-449
Q4	437	1 406	-969	320	632	-312	814	1 316	-502	7 094	6 624	470
2002 Q1	396	1 280	-884	327	705	-378	786	1 040	-254	6 727	6 184	543
Q2	422	1 303	-881	401	707	-306	784	1 276	-492	7 743	6 722	1 021
Q3	440	1 351	-911	384	695	-311	849	1 200	-351	7 192	6 186	1 006
Q4	437	1 248	-811	350	658	-308	660	1 066	-406	6 530	5 811	719
2003 Q1	516	1 717	-1 201	396	619	-223	726	968	-242	7 222	6 005	1 217
Q2	448	1 483	-1 035	336	603	-267	678	905	-227	6 985	5 662	1 323
Q3	431	1 529	-1 098	366	649	-283	662	951	-289	7 246	5 572	1 674
Q4	459	1 589	-1 130	378	671	-293	722	935	-213	7 489	5 459	2 030
2003 Jun	144	461	-317	88	207	-119	214	272	-58	2 030	1 809	221
Jul	150	469	-319	106	208	-102	232	328	-96	2 467	1 867	600
Aug	141	443	-302	139	222	-83	221	273	-52	2 300	1 800	500
Sep	140	617	-477	121	219	-98	209	350	-141	2 479	1 905	574
Oct	143	522	-379	123	217	-94	228	319	-91	2 528	1 829	699
Nov	155	544	-389	110	233	-123	237	324	-87	2 309	1 834	475
Dec	161	523	-362	145	221	-76	257	292	-35	2 652	1 796	856
3 months ended:												
2002 Dec	437	1 248	-811	350	658	-308	660	1 066	-406	6 530	5 811	719
2003 Sep	431	1 529	-1 098	366	649	-283	662	951	-289	7 246	5 572	1 674
2003 Dec	459	1 589	-1 130	378	671	-293	722	935	-213	7 489	5 459	2 030
Percentage change, latest 3 months compared with:												
Previous 3 months	6.5	3.9		3.3	3.4		9.1	-1.7		3.4	-2.0	
Same 3 months last year	5.0	27.3		8.0	2.0		9.4	-12.3		14.7	-6.1	

12R SUMMARY OF REVISIONS

Balance of Payments Basis

£ million

	Trade in goods ¹						Trade in services (seasonally adjusted) ²			
	Value (seasonally adjusted) £ million			Volume (seasonally adjusted) excluding oil & erratics (2000=100)		Price index (2000=100)		£ Million		
	Exports	Imports	Balance	Exports	Imports	Exports	Imports	Exports	Imports	Balance
	BOKG	BOKH	BOKI	BOMA	ELAL	BQKR	BQKS	IKBB	IKBC	IKBD
2001	-	-	-	-	-	-	-	-	-	-
2002	-	-	-	-	-	-	-	-	-	-
2003
2001 Q2	-	-	-	-	-	-	-	-	-	-
Q3	-	-	-	-	-	-	-	-	-	-
Q4	-	-	-	-	-	-	-	-	-	-
2002 Q1	-	-	-	-	-	-	-	-	-	-
Q2	-	-	-	-	-	-	-	-	-	-
Q3	-	-	-	-	-	-	-	-	-	-
Q4	-	-	-	-	-	-	-	-	-	-
2003 Q1	18	-80	98	0.1	-0.2	-	-	-	-	-
Q2	123	-99	222	0.3	-0.2	-0.1	0.1	-	-	-
Q3	161	206	-45	0.4	0.5	-0.1	0.2	-	-	-
Q4
2001 Apr	-	-	-	-	-	-	-	-	-	-
May	-	-	-	-	-	-	-	-	-	-
Jun	-	-	-	-	-	-	-	-	-	-
Jul	-	-	-	-	-	-	-	-	-	-
Aug	-	-	-	-	-	-	-	-	-	-
Sep	-	-	-	-	-	-	-	-	-	-
Oct	-	-	-	-	-	-	-	-	-	-
Nov	-	-	-	-	-	-	-	-	-	-
Dec	-	-	-	-	-	-	-	-	-	-
2002 Jan	-	-	-	-	-	-	-	-	-	-
Feb	-	-	-	-	-	-	-	-	-	-
Mar	-	-	-	-	-	-	-	-	-	-
Apr	-	-	-	-	-	-	-	-	-	-
May	-	-	-	-	-	-	-	-	-	-
Jun	-	-	-	-	-	-	-	-	-	-
Jul	-	-	-	-	-	-	-	-	-	-
Aug	-	-	-	-	-	-	-	-	-	-
Sep	-	-	-	-	-	-	-	-	-	-
Oct	-	-	-	-	-	-	-	-	-	-
Nov	-	-	-	-	-	-	-	-	-	-
Dec	-	-	-	-	-	-	-	-	-	-
2003 Jan	-14	-21	7	-	-0.1	-	-	-	-	-
Feb	20	-43	63	0.1	-0.2	-	-	-	-	-
Mar	12	-16	28	0.2	-0.2	-	-	-	-	-
Apr	46	9	37	0.5	0.2	-0.1	0.1	-	-	-
May	17	-59	76	0.3	-0.6	-0.1	0.1	-	-	-
Jun	60	-49	109	0.1	-0.2	-0.1	0.1	-	-	-
Jul	44	19	25	0.6	0.3	-0.1	0.1	-	-	-
Aug	18	44	-26	0.1	0.2	-	0.1	-	-	-
Sep	99	143	-44	0.7	1.0	-0.1	0.2	-	-	-
Oct	14	-2	16	0.2	-	-0.1	0.3	-	-	-
Nov	-3	-58	55	0.3	-0.2	-0.3	0.2	-	-	-
Dec

1 Earliest date for revisions to trade in goods is October 2003

2 Earliest date for revisions to trade in services is January 2002