

20 December 2007

Coverage
United Kingdom
Theme
The Economy

Quarterly national accounts 3rd quarter 2007

The UK gross domestic product (GDP) in volume terms rose by 0.7 per cent between the second and third quarter of 2007 (unrevised from the previous estimate). The level of GDP is 3.3 per cent higher than the third quarter of 2006.

Between the second and third quarter of 2007:

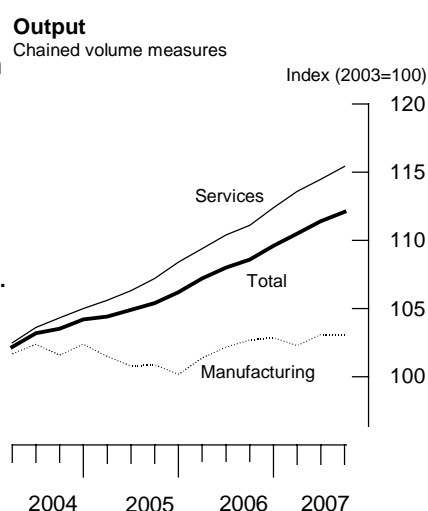
There was no growth in the total volume of output in the production industries, within which there was no growth in manufacturing output.

Construction output rose by 0.8 per cent over the quarter and the output of the service industries increased by 0.8 per cent (Table B1).

In the sector accounts:

The household saving ratio was 3.4 per cent in the latest quarter compared with 4.0 per cent in the previous quarter (Table J3).

Private non-financial corporations showed net lending of £1.1 billion in the latest quarter, down from £5.3 billion in the previous quarter (Table K2).



Issued by
National Statistics
1 Drummond Gate
London SW1V 2QQ

Telephone
Press Office 020 7533 5725
Public Enquiries 0845 601 3034

Statistician
Geoff Tily 020 7533 5919

Email
gdp@ons.gov.uk

Internet
www.statistics.gov.uk

Next publication date
23 January 2008

		Household saving ratio	Net lending/ borrowing (-) of private non-financial corporations	Gross domestic product		
				current market prices	chained volume measure	chained volume measure
		per cent	£bn	2003=100	2003=100	per cent change
<i>Seasonally adjusted</i>						
2006	Q1	6.0	2.4	114.0	107.0	0.9
	Q2	4.8	3.5	115.2	107.8	0.7
	Q3	4.9	0.8	117.7	108.5	0.6
	Q4	3.4	2.7	119.4	109.5	1.0
2007	Q1	2.4	1.4	121.2	110.4	0.8
	Q2	4.0	5.3	123.5	111.3	0.8
	Q3	3.4	1.1	125.1	112.0	0.7



Gross domestic product (GDP) rose by 0.7 per cent (unrevised from the estimate published last month) in the third quarter of 2007. The level of GDP is 3.3 per cent higher than the third quarter of 2006 (revised up from 3.2 per cent published last month).

GDP analysed by output categories, chained volume measures (Tables B1 and B2)

The output of the agriculture, forestry and fishing sector fell by 0.6 per cent compared with the previous quarter.

There was no growth in the output of production industries in the third quarter, within which manufacturing output was also flat.

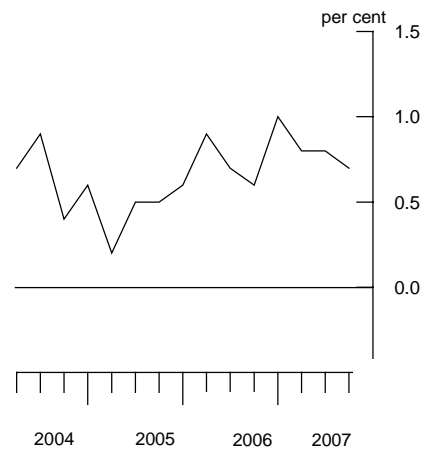
Within manufacturing output rose in eight industries and fell in the other five.

The output of the mining and quarrying sector fell by 1.1 per cent in the latest quarter. Electricity, gas and water supply rose by 0.8 in the third quarter.

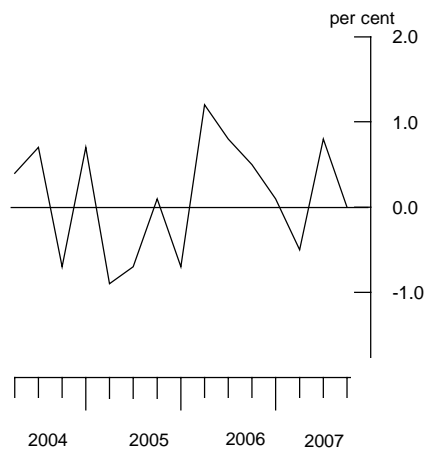
Construction output is estimated to have risen by 0.8 per cent in the latest quarter.

Services output grew by 0.8 per cent in the latest quarter, the same as in quarter two. Within services, business services and finance output grew by 1.3 per cent in quarter three, compared with 1.4 per cent in quarter two; financial intermediation made the largest contribution to growth with the financial services adjustment more than offsetting this effect; outside financial services, other business services remains the largest contributor to growth in the current quarter. Distribution, hotels and catering rose by 0.8 per cent, the same as in the previous quarter. Transport, storage and communication rose by 0.5 per cent, down from 1.0 per cent in the second quarter of 2007. Government and other services showed 0.3 per cent growth in quarter three, compared with the growth of 0.1 per cent in quarter two.

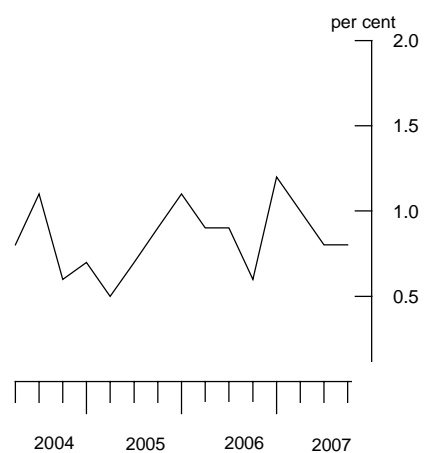
Gross domestic product
quarter on quarter growth



Manufacturing
quarter on quarter growth



Services
quarter on quarter growth





GDP analysed by expenditure categories, chained volume measures (Tables C2, E3, E4, F, G, and H2)

Gross domestic expenditure rose by 1.5 per cent in the third quarter of 2007.

Household expenditure grew by 1.1 per cent in the latest quarter compared with a growth of 0.7 per cent in the previous quarter. The increase in growth in expenditure is the result of strength in spending on recreation and culture, housing and food and drink (non-alcoholic).

General government expenditure rose by 0.3 per cent in the latest quarter. The volume of spending is now 1.9 per cent above the level in 2006 quarter three.

Gross fixed capital formation is estimated to have risen by 2.4 per cent, compared with a fall of 0.8 per cent in the previous quarter. Business investment grew by 2.0 per cent in the latest quarter and is now 6.6 per cent above the same quarter of last year. General government investment rose by 10.2 per cent on the quarter and 14.8 per cent on the same quarter of 2006.

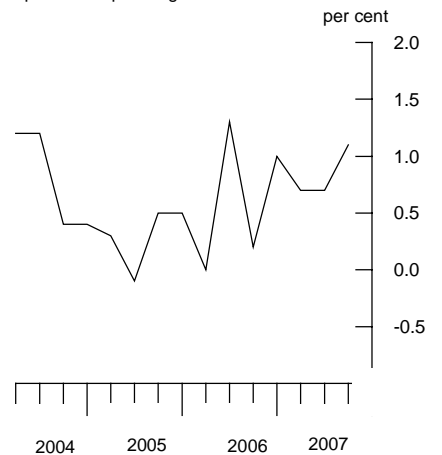
The level of inventories including the alignment adjustment rose by £2.1 billion in the latest quarter, reflecting a rise in stockholdings by all industries except suppliers of electricity, gas and water.

The deficit in net trade rose to £12.0 billion from £9.3 billion in the previous quarter.

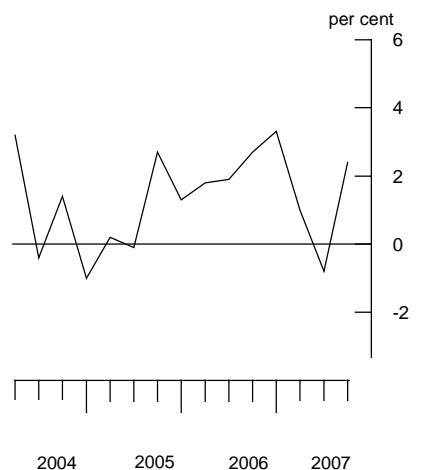
Exports of goods rose by 2.8 per cent and imports of goods rose by 6.0 per cent.

Exports of services rose by 0.6 per cent and imports of services also rose by 0.6 per cent.

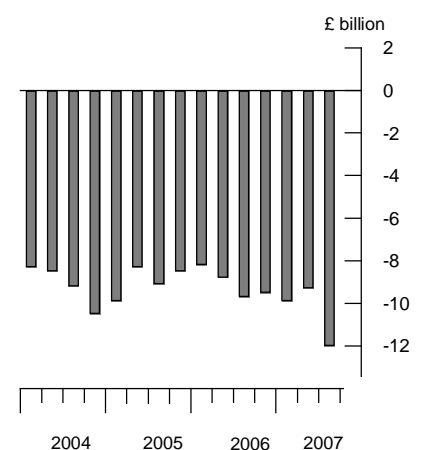
Household final expenditure
quarter on quarter growth



Gross fixed capital formation
quarter on quarter growth



Net trade
Chained volume measures



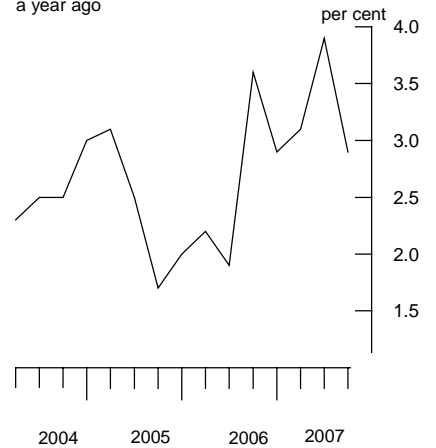


GDP deflator

The gross domestic product deflator based upon expenditure at market prices grew by 0.6 per cent in 2007 quarter three and is now 2.9 per cent above the same quarter in 2006.

GDP deflator

quarter on same quarter a year ago



GDP analysed by income categories at current prices (Table D)

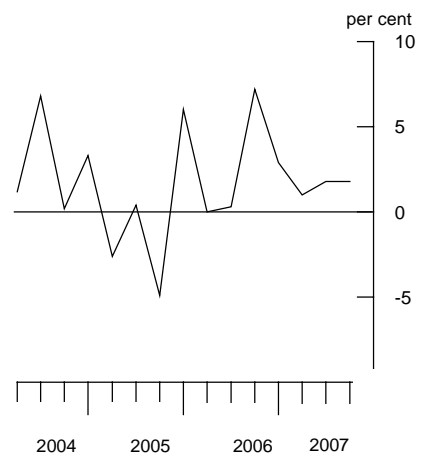
GDP at current market prices rose by 1.2 per cent over the quarter, and by 6.2 per cent compared to the third quarter of 2006.

Compensation of employees grew by 1.2 per cent in the latest quarter compared with a growth of 1.3 per cent in the previous quarter.

The gross operating surplus of corporations increased by 1.8 per cent, and was 7.7 per cent above the third quarter of 2006.

Gross operating surplus of corporations

quarter on quarter growth



Taxes on products and production less subsidies fell by 1.5 per cent.

SECTOR ACCOUNTS

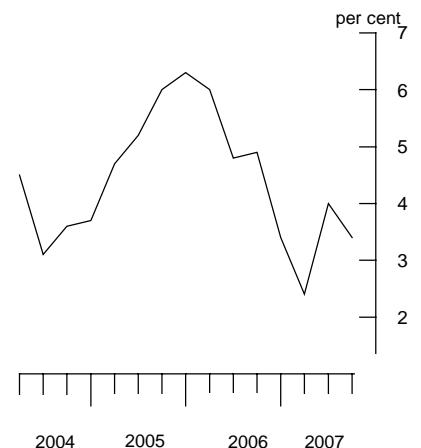
Sector Accounts (Tables I, J1, J2, J3, K1 and K2)

Summary

The household saving ratio was 3.4 per cent in 2007 quarter three compared with 4.0 per cent in the previous quarter.

Household saving ratio

seasonally adjusted



In 2007 quarter three, the central government, local government and household sectors were net borrowers. The public corporations, financial corporations, private non-financial corporations and the rest of the world sectors were net lenders.

Net lending/borrowing by sector (Table I)

The household and non-profit institutions serving households sector borrowed £12.0 billion. This is the twenty third consecutive quarter of net borrowing. More detail can be found in Tables J1, J2 and J3.



Central government reported net borrowing of £9.9 billion in 2007 quarter three.

Local government sector reported net borrowing of £0.5 billion compared with net lending of £1.6 billion in 2007 quarter two.

Public corporations sector reported net lending of £0.2 billion.

Financial corporations sector reported net lending of £1.2 billion.

Private non-financial corporations sector reported net lending of £1.1 billion. This is the twenty third consecutive quarter of net lending. More detail can be found in Tables K1 and K2.

The rest of the world sector reported net lending of £19.5 billion up from £13.3 billion in 2007 quarter two. This implies a UK current account deficit. More detail on this can be found in the Balance of Payments First Release.

Both private non-financial corporations and rest of the world figures have been affected by large revisions following from a re-assessment of foreign direct investment, see revisions section below.

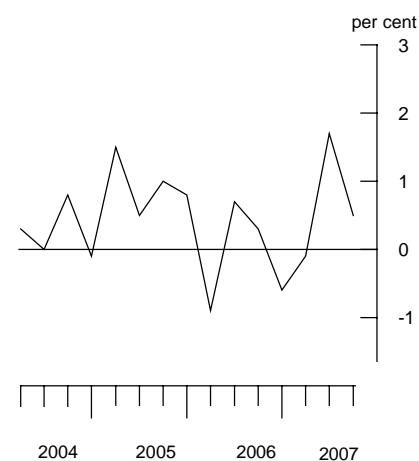
The household and non profit institutions serving households (NPISH) sector (Tables J1, J2 and J3)

The saving ratio in 2007 quarter three was 3.4 per cent compared to 4.0 per cent in the previous quarter. This fall reflects reduced growth in disposable income following a sharp increase in 2007 quarter two.

Real household disposable income grew by 0.5 per cent in the latest quarter following 1.7 per cent growth in 2007 quarter two.

Household gross disposable income rose by 0.8 per cent in the latest quarter compared to a rise of 2.4 per cent in the previous quarter, and by 3.7 per cent when compared with the corresponding quarter of 2006.

Real household disposable income
quarter on quarter growth





Private non-financial corporations sector (Tables K1 and K2)

Net lending of private non-financial corporations was £1.1 billion in the latest quarter, compared with £5.3 billion in the previous quarter. This fall followed reductions in gross operating surplus growth, a fall in net property income and increased assets.

**REVISIONS
(Table R)**

GDP and components (previously published on 23 November 2007)

Output in chained volume measures (Tables B1 and B2)

In 2007 quarter three total production and construction growth is unrevised. Total services growth has been revised down to 0.8 per cent from 0.9 per cent. Downward revisions to most private sector service categories were partially offset by upward revisions to government output. The former followed weaker data on later inquiry responses.

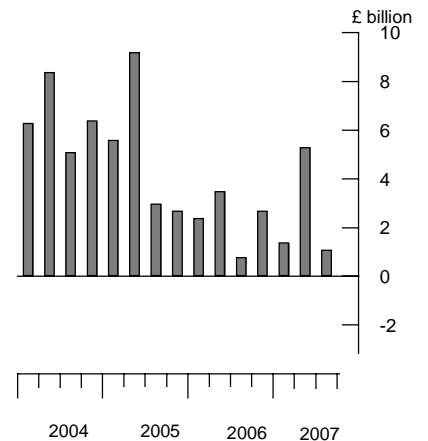
Between 2006 quarter one and 2007 quarter two there have been revisions to most output categories, which have changed the quarterly profile of headline GDP. These changes follow from the inclusion of late returns and a re-assessment of seasonal adjustment; the latter having a particularly significant impact on financial intermediation.

Expenditure in chained volume measures (Tables C1, C2)

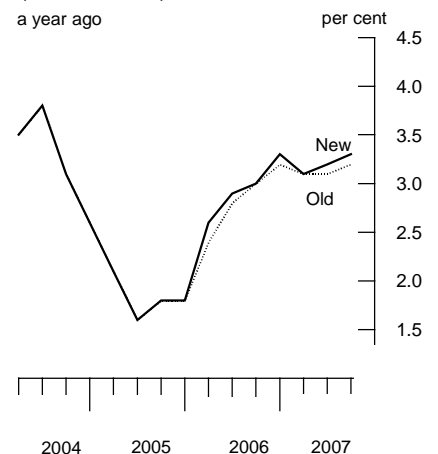
In 2006 household expenditure annual growth was revised down to 1.9 per cent from 2.0 per cent. Household expenditure in the third quarter of 2007 was revised up to 1.1 per cent from 1.0 per cent.

Government expenditure in 2006 was revised down to 1.9 per cent from 2.1 per cent.

Net lending/borrowing of private non-financial corporations



**Gross domestic product
quarter on same quarter
a year ago**



Gross fixed capital formation in 2006 was revised down to 7.9 per cent from 8.2 per cent. Gross fixed capital formation in the third quarter of 2007 has been revised up, to 2.4 per cent from 1.6 per cent.

Growth in exports of goods and services in 2006 was revised up to 11.0 per cent from 10.3 per cent. The revision is driven by exports of services for which growth has been revised up to 6.7 per cent from 4.5 per cent. Growth in imports has been revised up to 10.0 per cent from 9.8 per cent. The revisions are driven by growth in imports of services which has been revised up to 4.4 per cent from 3.4 per cent.

Income in current market prices (Table D)

The annual growth in GDP at current market prices in 2006 is revised up to 5.6 per cent from 5.5 per cent. In 2007 quarter three GDP growth at current market prices is unrevised at 1.2 per cent.

Growth in compensation of employees in 2006 has been revised up to 5.3 per cent from 5.2 per cent. Quarterly growth in compensation of employees in 2007 quarter three has been revised down to 1.2 per cent from 1.4 per cent.

Growth in the gross operating surplus of corporations in 2007 quarter three has been revised down to 1.8 per cent from 1.9 per cent due to lower estimates of the profits of non-financial corporations. Growth in the gross operating surplus of corporations in 2006 has been revised up to 6.6 per cent from 5.5 per cent, driven by revised estimates for financial corporations from later survey data for the insurance industry.

Growth in the gross operating surplus of private non-financial corporations in 2006 has been revised down to 5.1 per cent from 5.3 per cent.

GDP deflator

In the third quarter of 2007, growth in the GDP deflator stands at 0.6 per cent, compared to 0.5 per cent previously published; four quarter growth has been revised up to 2.9 per cent from 2.6 per cent.

Sector accounts (previously published on 26 September 2007)

Revisions have been taken back to 2005 quarter one in this release.

As noted below, there are large revisions to the net lending positions of both the rest of the world and private non-financial corporations sectors that follow from the incorporation of annual inquiry results and a re-assessment of foreign direct investment information.

The annual foreign direct information exercise involves incorporating benchmark data and making changes arising from a reassessment of the country ownership of companies. For the 2006 exercise, the impact was very large, so that foreign earnings from UK-based companies have increased greatly, compounded by a reduction in the estimate of UK earnings from its companies abroad. These changes impact on receipts and payments of property income, more specifically distributed income of corporations and reinvested earnings on foreign direct investment, for both PNFC and the rest of the world sectors.

The changes are explained more fully in the Balance of Payments First Release.

<http://www.statistics.gov.uk/statbase/Product.asp?vlnk=1118>

Household and non-profit institutions serving households (NPISH) sector

The household saving ratio was revised up in 2007 quarter two from 3.1 per cent to 4.0 per cent, and in 2007 quarter one from 2.0 per cent to 2.4 per cent. These changes mainly reflect upward revisions to social benefits. In 2006 the saving ratio was revised down from 5.0 per cent to 4.8 per cent.

Private non-financial corporations sector

In 2007 quarter two net lending was revised down from £11.0 billion as previously published to £5.3 billion and in 2007 quarter one down from £9.5 billion to £1.4 billion. In 2006 net lending was revised down from £20.0 billion to £9.3 billion.

The main source of revisions to private non-financial corporations follows the reassessment of foreign direct investment information, as discussed above.

Rest of the world sector

In 2007 quarter two net lending was revised up from £8.7 billion as previously published to £13.3 billion and in 2007 quarter one up from £10.3 billion to £16.1 billion. In 2006 net lending was revised up from £41.2 billion to £49.4 billion.

This revision follows the reassessment of foreign direct investment information data, as discussed above.

BACKGROUND NOTES

Release policy

1. This release includes data available up to 10 December 2007.
2. The preliminary estimate of GDP for the fourth quarter of 2007 will be published on 23 January 2008, followed by provisional estimates of output, income and expenditure on 27 February 2008. The next full set of quarterly national accounts will be published on 28 March 2008.

Basic quality information for GDP First Release

Summary quality report

3. A Summary Quality Report for this First Release can now be found on the National Statistics website at:

<http://www.statistics.gov.uk/cci/article.asp?ID=1180>

Key quality issues

4. *Common pitfalls in interpreting series:* Expectations of accuracy and reliability in early estimates are often too high. Revisions are an inevitable consequence of the trade off between timeliness and accuracy. Early estimates are based on incomplete data.

Very few statistical revisions arise as a result of 'errors' in the popular sense of the word. All estimates, by definition, are subject to statistical 'error' but in this context the word refers to the uncertainty inherent in any process or calculation that uses sampling, estimation or modelling. Most revisions reflect either the adoption of new statistical techniques, or the incorporation of new information which allows the statistical error of previous estimates to be reduced. Only rarely are there avoidable 'errors' such as human or system failures, and such mistakes are made quite clear when they do occur.

Reliability

5. Estimates for the most recent quarters are provisional and, as usual, are subject to revision in light of updated source information. ONS currently provides an analysis of past revisions in the GDP and other First Releases which present time series. Details can be found at:

<http://www.statistics.gov.uk/cci/article.asp?ID=793>

ONS has a webpage dedicated to revisions to economic statistics which brings together ONS work on revisions analysis, linking to articles, analysis and key documentation from the Statistics Commission's report on revisions.

The webpage can be found at:

http://www.statistics.gov.uk/about_ns/economic_revisions.asp

6. Revisions to data provide one indication of the reliability of key indicators. The tables below show summary information on the size and direction of the revisions which have been made to data covering a five-year period. A statistical test has been applied to the average revision to find out if it is statistically significantly different from zero. An asterisk (*) shows that the test is significant. The data used are consistent with that used in more detailed analysis published in *Economic Trends*. The most recent article was published on the National Statistics website on 11 December 2006 at:

<http://www.statistics.gov.uk/cci/article.asp?ID=1694>

7. Table 1 below shows the revisions between the early estimates of GDP. The analysis of revisions between month 1 and month 2 uses month 2 estimates published from February 2003 (2002q4) to November 2007 (2007q3). The analysis of revisions between month 2 and month 3 uses month 3 estimates published from December 2002 (2002q3) to September 2007 (2007q2).

Table 1: Revisions to early estimates of GDP growth

Revisions to GDP growth	GDP Growth in latest period (per cent)	Revisions between early estimates of GDP growth (quarterly, CVM)	
		Average over the last five years	Average over the last five years without regard to sign (average absolute revision)
Between M1 and M2	0.7	0.00	0.02
Between M2 and M3	0.7	0.02	0.06

Table 2 shows revisions to GDP growth and the household saving ratio between the estimate published three months after the end of the quarter and the equivalent estimate three years later. For GDP and Household saving ratio, the analysis uses month 3 estimates first published from December 1999 (1999q3) to September 2004 (2004q2).

Table 2: Revisions to month 3 estimates of GDP growth and the household saving ratio

	Value in latest period (per cent)	Revisions between first publication and estimates three years later	
		Average over the last five years ¹	Average over the last five years ¹ without regard to sign (average absolute revision)
GDP growth (quarterly, CVM)	0.7	0.10	0.18
Household saving ratio	3.4	0.28	1.31

Spreadsheets giving revisions triangles (real time databases) of estimates from 1992 to date, and the calculations behind the averages in both tables are available on the National Statistics website at:

<http://www.statistics.gov.uk/statbase/Product.asp?vlnk=13560>

Revisions triangles for the main components of GDP from expenditure, output and income approaches are also available at the link above.

An article by E George and D Obuwa 'National Accounts' Revisions Analyses: A summary to April 2005' is available on the National Statistics website at:

<http://www.statistics.gov.uk/cci/article.asp?ID=1140>

This article presents a summary of revisions analyses published to date in ONS First Releases, including some more detailed analysis of revisions to GDP.

Missing Trader Intra-Community (MTIC) Fraud

8. Erratic and large movements in the level of trade associated with VAT Missing Trader Intra-Community (MTIC) fraud, particularly during the first six months of 2006, have made it difficult to interpret movements in imports and exports of goods and to incorporate the trade data into the National Accounts. The impact on 2007 quarter three and associated estimates of growth are however estimated to be minimal.

Further information

9. Latest copies of this and other ONS releases as well as additional briefing are available under *Press Releases* on the National Statistics website:

http://www.statistics.gov.uk/press_Release/CurrentReleases.asp

More information on household expenditure can be found at:

<http://www.statistics.gov.uk/statbase/product.asp?vlnk=242>

More information underlying the National Accounts can be found at:

<http://www.statistics.gov.uk/CCI/nscl.asp?ID=5871>

10. Details of the policy governing the release of new data are available from the Press office. Also available is a list of the names of those given pre-publication access to the contents of this release.
11. **National Statistics** are produced to high professional standards set out in the National Statistics Code of Practice. They undergo regular quality assurance reviews to ensure that they meet customer needs. They are produced free from any political interference. © Crown copyright 2007.

INDEX TO TABLES

Gross domestic product tables

National accounts aggregates (index numbers)	A1
National accounts aggregates	A2
Gross value added chained volume measures at basic prices, by category of output	B1
Gross value added chained volume measures at basic prices, by category of output: service industries	B2
Gross domestic product: expenditure	
Current market prices	C1
Gross domestic product: expenditure	
Chained volume measures	C2
Gross domestic product: by category of income	
Current market prices	D
Household final consumption expenditure by purpose	
Current market prices	E1
Household final consumption expenditure (goods and services)	
Current market prices	E2
Household final consumption expenditure by purpose	
Chained volume measures	E3
Household final consumption expenditure (goods and services)	
Chained volume measures	E4
Gross fixed capital formation by sector and type of asset	
Chained volume measures	F
Changes in inventories	
Chained volume measures	G
Exports and imports of goods and services	
Current market prices	H1
Exports and imports of goods and services	
Chained volume measures	H2

Sector accounts tables

Net lending/borrowing by sector	I
Households sector: allocation of primary income account	J1
Households sector: secondary distribution of income account	J2



Households sector: use of disposable income account	J3
Private non-financial corporations sector: allocation of primary income account	K1
Private non-financial corporations sector: secondary distribution of income account and capital account	K2

Other analysis

Gross value added at basic prices: individual measures	L
Alignment adjustments	M

Revisions tables

Revisions analysis: revisions against previously published estimates	R
--	---

A1 National accounts aggregates¹

2003 = 100

	Value indices at current prices		Chained volume indices			Implied deflators ²		
	Gross domestic product at market prices	Gross value added at basic prices	Gross domestic product at market prices	Gross value added at basic prices	Gross national disposable income at market prices	Gross domestic expenditure	Gross domestic product at market prices	Gross value added at basic prices
2004	YBEU 105.9	YBEX 105.9	YBEZ 103.3	CGCE 103.3	YBFP 103.4	YBFV 102.4	YBGB 102.6	CGBV 102.5
2005	110.3	110.4	105.2	105.2	104.2	105.5	104.9	104.9
2006	116.6	116.6	108.2	108.3	105.8	108.3	107.7	107.7
Seasonally adjusted								
2006 Q1	114.0	114.2	107.0	107.2	104.7	107.5	106.5	106.5
Q2	115.2	115.2	107.8	108.0	105.9	107.5	106.9	106.7
Q3	117.7	117.7	108.5	108.6	106.1	108.8	108.5	108.4
Q4	119.4	119.4	109.5	109.6	106.3	109.4	109.0	109.0
2007 Q1	121.2	121.1	110.4	110.5	106.8	110.0	109.8	109.6
Q2	123.5	123.6	111.3	111.4	108.5	111.1	111.0	111.0
Q3	125.1	125.4	112.0	112.1	108.1	111.6	111.6	111.8
Percentage change, latest year on previous year								
2006	5.6	5.7	2.9	3.0	1.4	2.7	2.7	2.6
Percentage change, latest quarter on previous quarter								
2007 Q3	1.2	1.4	0.7	0.7	-0.3	0.5	0.6	0.8
Percentage change, latest quarter on corresponding quarter of previous year								
2007 Q3	6.2	6.5	3.3	3.2	1.9	2.5	2.9	3.1

1 Estimates cannot be regarded as accurate to the last digit shown.

2 Based on the sum of expenditure components of GDP at current prices and in chained volume terms.

A2 National accounts aggregates¹

£ million

	Current prices				Chained Volume Measures (Reference year 2003)				
	Gross national income at market prices	Net income from abroad ²	Gross domestic product at market prices	less Basic price adjustment ³	Gross value added at basic prices	Gross domestic product at market prices	less Basic price adjustment ³	Gross value added at basic prices	Gross value added excluding oil & gas
2004	ABMZ 1 209 844	CAES 25 548	YBHA 1 184 296	NTAP 132 362	ABML 1 051 934	ABMI 1 154 685	NTAO 128 660	ABMM 1 026 025	UIZY 1 007 984
2005	1 258 192	24 216	1 233 976	137 347	1 096 629	1 175 916	130 432	1 045 484	1 029 324
2006	1 310 415	6 842	1 303 573	144 702	1 158 871	1 210 122	133 748	1 076 374	1 061 712
Seasonally adjusted									
2006 Q1	322 233	3 577	318 656	35 099	283 557	299 211	32 929	266 282	262 406
Q2	325 342	3 199	322 143	35 911	286 232	301 439	33 285	268 154	264 485
Q3	329 519	467	329 052	36 614	292 438	303 290	33 618	269 672	266 072
Q4	333 321	-401	333 722	37 078	296 644	306 182	33 916	272 266	268 749
2007 Q1	336 388	-2 320	338 708	37 964	300 744	308 532	34 139	274 393	270 822
Q2	344 868	-516	345 384	38 360	307 024	311 126	34 517	276 609	273 009
Q3	345 414	-4 186	349 600	38 237	311 363	313 190	34 783	278 407	274 876
Percentage change, latest year on previous year									
2006	4.2		5.6		5.7	2.9		3.0	3.1
Percentage change, latest quarter on previous quarter									
2007 Q3	0.2		1.2		1.4	0.7		0.7	0.7
Percentage change, latest quarter on corresponding quarter of previous year									
2007 Q3	4.8		6.2		6.5	3.3		3.2	3.3

1 Estimates are given to the nearest £ million but cannot be regarded as accurate to this degree.

2 Includes employment, entrepreneurial and property income.

3 Taxes on products less subsidies.

B1 Gross value added chained volume measures at basic prices, by category of output^{1,2}

2003 = 100

	Production					Service industries							Gross value added at basic prices	Gross value added excluding oil & gas
	Agriculture, forestry, and fishing	Mining & quarrying inc oil & gas extraction	Manufacturing	Electricity gas and water supply	Total	Construction	Distribution hotels and catering; repairs	Transport storage and communication	Business services and finance	Government and other services	Total			
2003 Weights³	10	22	147	17	186	61	153	78	277	235	744	1000	980	
2004	GDQA	CKYX	CKYY	CKYZ	CKYW	GDQB	GDQE	GDQH	GDQN	GDQU	GDQS	CGCE	JUNT	
2005	99.0	92.1	102.0	101.1	100.8	104.0	105.2	102.5	105.1	102.0	103.9	103.3	103.5	
2006	103.3	83.7	100.8	100.7	98.8	105.6	106.4	106.9	109.7	103.8	106.9	105.2	105.7	
2006	106.0	76.7	102.3	98.2	98.9	106.7	110.0	111.2	115.6	105.6	110.8	108.3	109.0	
Seasonally adjusted														
2006 Q1	105.6	80.7	101.4	100.7	98.9	106.0	108.5	109.0	113.7	105.0	109.4	107.2	107.8	
Q2	105.9	77.1	102.2	98.1	98.8	106.0	109.7	110.7	115.0	105.3	110.4	108.0	108.6	
Q3	106.7	75.3	102.7	97.9	99.0	107.0	109.9	111.4	116.1	105.8	111.1	108.6	109.3	
Q4	105.8	73.9	102.9	96.0	98.8	108.0	111.8	113.7	117.6	106.3	112.4	109.6	110.4	
2007 Q1	107.0	75.3	102.3	97.3	98.7	109.0	112.9	116.0	118.8	107.0	113.6	110.5	111.2	
Q2	107.0	76.1	103.1	97.2	99.4	109.8	113.8	117.1	120.4	107.1	114.5	111.4	112.1	
Q3	106.3	75.3	103.1	98.0	99.4	110.7	114.7	117.7	122.0	107.4	115.4	112.1	112.9	
Percentage change, latest year on previous year														
2006	2.6	-8.3	1.4	-2.5	0.1	1.1	3.3	4.0	5.3	1.8	3.7	3.0	3.1	
Percentage change, latest quarter on previous quarter														
2007 Q3	-0.6	-1.1	0.0	0.8	0.0	0.8	0.8	0.5	1.3	0.3	0.8	0.7	0.7	
Percentage change, latest quarter on corresponding quarter of previous year														
2007 Q3	-0.4	-0.1	0.4	0.1	0.3	3.5	4.4	5.7	5.1	1.5	3.9	3.2	3.3	

B2 Gross value added chained volume measures at basic prices, by category of output: Service industries^{1,2}

2003 = 100

	Service industries												
	Wholesale and retail trade; repairs	Hotels and restaurants	Transport and storage	Post and telecommunication	Financial intermediation	Real estate, renting and business activities	Ownership of dwellings	Public administration, national defence, social security	Education	Health and social work	Other services ⁴	Adjustment for financial services	Total services
2003 Weights³	122	31	48	30	79	165	79	52	59	72	53	-46	744
2004	GDQC	GDQD	GDQF	GDQG	GDQI	GDQK	GDQL	GDQO	GDQP	GDQQ	GDQR	GDQJ	GDQS
2005	105.3	104.5	103.4	101.2	107.6	107.7	101.5	101.9	100.4	103.9	101.3	113.0	103.9
2006	106.7	105.6	108.4	104.6	113.8	114.8	102.9	102.8	101.5	107.0	103.0	123.3	106.9
2006	109.4	112.1	113.8	107.0	123.7	123.0	105.3	103.4	101.8	110.2	105.8	138.3	110.8
Seasonally adjusted													
2006 Q1	108.2	109.7	111.8	104.6	121.7	119.8	104.6	103.0	102.0	109.5	104.2	134.1	109.4
Q2	109.3	111.2	114.2	105.0	122.9	121.8	105.2	103.2	101.9	109.6	105.4	136.4	110.4
Q3	109.1	113.0	113.8	107.4	124.0	123.8	105.6	103.7	101.7	110.5	106.2	139.5	111.1
Q4	111.1	114.5	115.4	111.1	126.2	126.3	105.6	103.7	101.7	111.4	107.4	143.0	112.4
2007 Q1	112.1	116.1	117.3	113.9	132.4	128.2	106.0	103.6	101.6	112.8	108.5	154.0	113.6
Q2	113.0	117.1	117.6	116.4	135.0	130.7	106.3	103.6	101.4	113.6	108.2	157.8	114.5
Q3	114.1	117.1	118.7	116.1	140.3	133.3	106.4	103.7	101.9	114.0	108.5	167.3	115.4
Percentage change, latest year on previous year													
2006	2.6	6.2	5.0	2.4	8.6	7.1	2.3	0.6	0.3	3.0	2.7	12.1	3.7
Percentage change, latest quarter on previous quarter													
2007 Q3	1.0	0.0	0.9	-0.3	3.9	2.0	0.1	0.0	0.5	0.3	0.2	6.0	0.8
Percentage change, latest quarter on corresponding quarter of the previous year													
2007 Q3	4.6	3.6	4.3	8.1	13.1	7.7	0.7	-0.1	0.2	3.2	2.2	19.9	3.9

1 Estimates cannot be regarded as accurate to the last digit shown.

3 Weights may not sum to the totals due to rounding.

2 Components of output are valued at basic prices, which excludes taxes less subsidies on products.

4 Comprising sections O, P and Q of the SIC(92).

C1 Gross domestic product: expenditure at current market prices¹

£ million

Domestic expenditure on goods and services at market prices												
Final consumption expenditure				Gross capital formation							Statistical discrepancy (expenditure)	Gross domestic product at market prices
Households	Non-profit institutions ²	General government	Gross fixed capital formation	Changes in inventories ³	Acquisitions less disposals of valuables	Total	Total exports	Gross final expenditure	Less Total imports			
2004	ABPB 732 531	ABNV 28 953	NMRK 250 708	NPQX 202 260	ABMP 4 856	NPJO -37	YBIJ 1 219 271	KTMW 298 694	ABMD 1 517 965	KTMX 333 669	GIXM -	YBHA 1 184 296
2005	760 869	31 585	268 901	211 862	4 071	-377	1 276 911	326 790	1 603 701	370 968	1 243	1 233 976
2006	794 042	33 966	286 256	232 819	1 259	285	1 348 627	371 805	1 720 432	418 199	1 340	1 303 573
Seasonally adjusted												
2006 Q1	ABJQ 194 190	HAYE 8 292	NMRP 71 169	NPQS 55 876	CAEX 316	NPJQ 90	YBIL 329 933	IKBH 96 583	ABMF 426 516	IKBI 108 262	402	318 656
Q2	197 438	8 429	70 167	56 975	14	250	333 273	99 113	432 386	110 618	375	322 143
Q3	199 685	8 550	72 032	58 960	1 173	-45	340 355	88 694	429 049	100 320	323	329 052
Q4	202 729	8 695	72 888	61 008	-244	-10	345 066	87 415	432 481	98 999	240	333 722
2007 Q1	205 564	8 858	73 672	61 629	426	70	350 219	87 698	437 917	99 190	-19	338 708
Q2	208 277	9 097	75 128	62 188	909	355	355 954	89 245	445 199	99 706	-109	345 384
Q3	211 102	9 248	76 231	64 047	2 388	47	363 063	91 080	454 143	104 372	-171	349 600
Percentage change, latest year on previous year												
2006	4.4	7.5	6.5	9.9			5.6	13.8	7.3	12.7		5.6
Percentage change, latest quarter on previous quarter												
2007 Q3	1.4	1.7	1.5	3.0			2.0	2.1	2.0	4.7		1.2
Percentage change, latest quarter on corresponding quarter of previous year												
2007 Q3	5.7	8.2	5.8	8.6			6.7	2.7	5.8	4.0		6.2

C2 Gross domestic product by category of expenditure: chained volume measures¹

Reference year 2003, £ million

Domestic expenditure on goods and services at market prices												
Final consumption expenditure				Gross capital formation							Statistical discrepancy (expenditure)	Gross domestic product at market prices
Households	Non-profit institutions ²	General government	Gross fixed capital formation	Changes in inventories ³	Acquisitions less disposals of valuables	Total	Total exports	Gross final expenditure	Less Total imports			
2004	ABPF 721 434	ABNU 27 327	NMRU 240 129	NPQR 197 655	ABMQ 4 597	NPJP -42	YBIK 1 191 099	KTMZ 299 289	ABME 1 490 388	KTNB 335 703	GIXS -	ABMI 1 154 685
2005	732 005	28 167	246 527	200 654	3 611	-354	1 210 610	323 749	1 534 359	359 626	1 183	1 175 916
2006	746 097	29 868	251 134	216 465	1 237	290	1 245 091	359 413	1 604 504	395 626	1 246	1 210 122
Seasonally adjusted												
2006 Q1	ABJR 184 076	HAYO 7 355	NMRY 62 842	NPQT 52 200	CAFU 483	NPJR 101	YBIM 307 056	IKBK 93 877	ABMG 400 933	IKBL 102 099	377	299 211
Q2	186 465	7 436	62 502	53 184	76	229	309 892	96 051	405 943	104 855	351	301 439
Q3	186 828	7 509	62 718	54 636	1 037	-28	312 700	84 680	397 379	94 387	298	303 290
Q4	188 728	7 568	63 072	56 445	-360	-12	315 442	84 805	400 248	94 285	220	306 182
2007 Q1	190 114	7 628	63 424	57 013	233	69	318 481	84 607	403 087	94 538	-17	308 532
Q2	191 491	7 698	63 740	56 582	663	322	320 498	84 813	405 312	94 088	-98	311 126
Q3	193 591	7 757	63 932	57 919	2 095	52	325 343	86 472	411 815	98 472	-153	313 190
Percentage change, latest year on previous year												
2006	1.9	6.0	1.9	7.9			2.8	11.0	4.6	10.0		2.9
Percentage change, latest quarter on previous quarter												
2007 Q3	1.1	0.8	0.3	2.4			1.5	2.0	1.6	4.7		0.7
Percentage change, latest quarter on corresponding quarter of previous year												
2007 Q3	3.6	3.3	1.9	6.0			4.0	2.1	3.6	4.3		3.3

1 Estimates are given to the nearest £ million but cannot be regarded as accurate to this degree.

2 Non-profit making institutions serving households.

3 Quarterly alignment adjustment included in this series.

D Gross domestic product: by category of income¹

£ million

	Gross operating surplus of corporations						Gross value added at factor cost	Taxes on products & production /less subsidies	Statistical discrepancy (income)	Gross domestic product at market prices
	Compen-sation of employees	Private non-financial corporations ²	Private financial corporations	Public corporations	Total	Other income ³				
	HAEA	NRJK	NQNV	NRJT	CGBY	CGBW	CGCA	GCSC	GIXQ	YBHA
2004	648 717	226 203	47 324	6 653	280 180	106 183	1 035 080	149 216	–	1 184 296
2005	686 805	234 129	39 697	8 494	282 320	114 149	1 083 274	151 618	–916	1 233 976
2006	723 143	246 168	44 995	9 930	301 093	121 304	1 145 540	159 377	–1 344	1 303 573
Seasonally adjusted										
	DTWM	CAER	NHCZ	CAEQ	CGBZ	CGBX	CGCB	CMVL		
2006 Q1	178 375	59 396	9 533	3 049	71 978	30 589	280 942	38 093	–379	318 656
Q2	179 527	59 369	10 736	2 057	72 162	30 858	282 547	39 971	–375	322 143
Q3	181 507	62 042	12 888	2 426	77 356	30 047	288 910	40 478	–336	329 052
Q4	183 734	65 361	11 838	2 398	79 597	29 810	293 141	40 835	–254	333 722
2007 Q1	185 406	63 679	13 622	3 059	80 360	31 720	297 486	41 165	57	338 708
Q2	187 792	68 183	11 620	1 977	81 780	33 103	302 675	42 552	157	345 384
Q3	190 031	68 350	12 594	2 338	83 282	34 142	307 455	41 919	226	349 600
Percentage change, latest year on previous year										
2006	5.3	5.1	13.3	16.9	6.6	6.3	5.7	5.1		5.6
Percentage change, latest quarter on previous quarter										
2007 Q3	1.2	0.2	8.4	18.3	1.8	3.1	1.6	–1.5		1.2
Percentage change, latest quarter on corresponding quarter of previous year										
2007 Q3	4.7	10.2	–2.3	–3.6	7.7	13.6	6.4	3.6		6.2

1 Estimates are given to the nearest £ million but cannot be regarded as accurate to this degree.

2 Quarterly alignment adjustment included in this series.

3 Includes mixed income and the operating surplus of the non-corporate sector less the adjustment for financial intermediation services indirectly measured (FISIM).

E1 Household final consumption expenditure by purpose

Current prices

£ million

UK NATIONAL ²																	
UK DOMESTIC ³																	
	Net tourism		Food & drink		Alcohol & tobacco		Clothing & footwear		Household goods & services		Health	Transport	Communication	Recreation & culture	Education	Restaurants & hotels	Miscellaneous
COICOP ¹	Total		Total	01	02	03	04	05	06	07	08	09	10	11	12		
	ABPB	ABTE	ABQI	ABZV	ADFL	ADFP	ADFS	ADFY	ADGP	ADGT	ADGX	ADGY	ADIE	ADIF	ADII		
2004	732 531	12 041	720 490	65 521	27 713	42 792	138 040	44 029	11 932	109 213	16 448	91 057	9 990	83 595	80 160		
2005	760 869	12 049	748 820	67 539	28 073	44 013	146 925	43 645	12 102	112 938	16 772	94 119	10 409	88 934	83 351		
2006	794 042	11 959	782 083	70 927	28 519	46 150	158 378	45 287	12 474	116 185	17 056	97 744	10 998	92 035	86 330		
Seasonally adjusted																	
	ABJQ	ABTF	ZAKV	ZWUM	ZAKX	ZAKZ	ZAVN	ZAVV	ZAWB	ZAWL	ZAWV	ZAWZ	ZWUS	ZAXR	ZAYF		
2006 Q1	194 190	3 079	191 111	17 025	6 961	11 163	38 356	11 077	3 091	28 870	4 264	23 802	2 677	22 588	21 237		
Q2	197 438	3 067	194 371	17 506	7 117	11 467	39 320	11 320	3 116	29 023	4 250	24 447	2 713	22 831	21 261		
Q3	199 685	2 767	196 918	17 934	7 209	11 676	39 908	11 455	3 111	29 152	4 249	24 736	2 771	23 312	21 405		
Q4	202 729	3 046	199 683	18 462	7 232	11 844	40 794	11 435	3 156	29 140	4 293	24 759	2 837	23 304	22 427		
2007 Q1	205 564	3 165	202 399	18 713	7 411	11 890	41 478	11 591	3 295	29 586	4 366	24 946	2 969	23 664	22 490		
Q2	208 277	3 248	205 029	18 987	7 483	12 115	42 071	11 894	3 355	29 929	4 430	25 119	2 997	23 913	22 736		
Q3	211 102	3 415	207 687	19 301	7 517	12 203	43 262	11 906	3 427	30 169	4 508	25 489	3 020	23 763	23 122		
Percentage change, latest year on previous year																	
2006	4.4		4.4	5.0	1.6	4.9	7.8	3.8	3.1	2.9	1.7	3.9	5.7	3.5	3.6		
Percentage change, quarter on previous quarter																	
2007 Q3	1.4		1.3	1.7	0.5	0.7	2.8	0.1	2.1	0.8	1.8	1.5	0.8	-0.6	1.7		
Percentage change, quarter on corresponding quarter of previous year																	
2007 Q3	5.7		5.5	7.6	4.3	4.5	8.4	3.9	10.2	3.5	6.1	3.0	9.0	1.9	8.0		

1 ESA 95 Classification of Individual Consumption by Purpose.
2 Final Consumption by UK Households in the UK & abroad.

3 Final consumption expenditure in the UK by UK & foreign households.

E2 Household final consumption expenditure (goods and services)

Current prices

£ million

UK NATIONAL ²									
UK DOMESTIC ³									
Goods									
	Total	Net tourism	Total	Total	Durable goods	Semi-durable goods	Non-durable goods	Services	
COICOP ¹					D	SD	ND	S	
	ABPB	ABTE	ABQI	UTIE	UTIA	UTIQ	UTII	UTIM	
2004	732 531	12 041	720 490	357 152	88 653	91 831	176 668	363 338	
2005	760 869	12 049	748 820	363 896	88 472	92 472	182 952	384 924	
2006	794 042	11 959	782 083	379 142	90 686	96 417	192 039	402 941	
Seasonally adjusted									
	ABJQ	ABTF	ZAKV	UTIF	UTIB	UTIR	UTIJ	UTIN	
2006 Q1	194 190	3 079	191 111	92 282	22 429	23 407	46 446	98 829	
Q2	197 438	3 067	194 371	94 500	22 738	23 989	47 773	99 871	
Q3	199 685	2 767	196 918	95 617	22 678	24 376	48 563	101 301	
Q4	202 729	3 046	199 683	96 743	22 841	24 645	49 257	102 940	
2007 Q1	205 564	3 165	202 399	97 561	23 000	24 778	49 783	104 838	
Q2	208 277	3 248	205 029	98 489	23 273	25 045	50 171	106 540	
Q3	211 102	3 415	207 687	99 829	23 404	25 260	51 165	107 858	
Percentage change, latest year on previous year									
2006	4.4		4.4	4.2	2.5	4.3	5.0	4.7	
Percentage change, quarter on previous quarter									
2007 Q3	1.4		1.3	1.4	0.6	0.9	2.0	1.2	
Percentage change, quarter on corresponding quarter of previous year									
2007 Q3	5.7		5.5	4.4	3.2	3.6	5.4	6.5	

1 ESA 95 Classification of Individual Consumption by Purpose.
2 Final Consumption by UK Households in the UK & abroad

3 Final consumption expenditure in the UK by UK & foreign households

E3 Household final consumption expenditure by purpose

Chained volume measures

Reference year 2003, £ million

UK NATIONAL ²																	
UK DOMESTIC ³																	
COICOP ¹	Net tourism		Food & drink			Clothing & footwear		Household goods & services			Health	Transport	Communication	Recreation & culture	Education	Restaurants & hotels	Miscellaneous
	Total		Total	01	02	03	04	05	06	07	08	09	10	11	12		
2004	ABPF	ABTG	ABQJ	ADIP	ADIS	ADIW	ADIZ	ADJF	ADJM	ADJQ	ADJU	ADJV	ADMJ	ADMK	ADMN		
2005	721 434	12 770	708 664	65 181	27 444	44 087	131 490	43 577	11 609	106 610	16 361	92 889	9 541	81 796	78 079		
2006	732 005	11 598	720 407	66 231	27 325	46 410	131 756	42 931	11 636	107 316	17 120	98 594	9 476	83 893	77 719		
2006	746 097	11 463	734 634	67 969	26 895	49 108	133 410	44 078	11 988	107 936	17 484	104 221	9 480	83 658	78 407		
Seasonally adjusted																	
2006 Q1	ABJR	ABTH	ZAKW	ZWUN	ZAKY	ZALA	ZAVO	ZAVW	ZAWC	ZAWM	ZAWW	ZAXA	ZWUT	ZAXS	ZAYG		
2006 Q2	184 076	2 772	181 304	16 623	6 663	11 862	33 180	10 833	2 990	26 927	4 327	25 172	2 367	20 817	19 543		
2006 Q3	186 465	2 877	183 588	16 978	6 721	12 187	33 398	11 100	3 004	26 858	4 347	26 144	2 369	20 840	19 642		
2006 Q4	186 828	2 689	184 139	17 065	6 765	12 421	33 405	11 118	2 985	26 914	4 387	26 367	2 382	21 107	19 223		
2007 Q1	188 728	3 125	185 603	17 303	6 746	12 638	33 427	11 027	3 009	27 237	4 423	26 538	2 362	20 894	19 999		
2007 Q2	190 114	3 323	186 791	17 487	6 843	12 754	33 406	11 082	3 116	27 340	4 587	26 809	2 438	21 038	19 891		
2007 Q3	191 491	3 283	188 208	17 492	6 873	12 913	33 579	11 217	3 152	27 281	4 743	27 524	2 433	21 062	19 939		
2007 Q3	193 591	3 503	190 088	17 765	6 883	13 074	34 002	11 271	3 206	27 391	4 841	28 394	2 416	20 794	20 051		
Percentage change, latest year on previous year																	
2006	1.9		2.0	2.6	-1.6	5.8	1.3	2.7	3.0	0.6	2.1	5.7	0.0	-0.3	0.9		
Percentage change, quarter on previous quarter																	
2007 Q3	1.1		1.0	1.6	0.1	1.2	1.3	0.5	1.7	0.4	2.1	3.2	-0.7	-1.3	0.6		
Percentage change, quarter on corresponding quarter of previous year																	
2007 Q3	3.6		3.2	4.1	1.7	5.3	1.8	1.4	7.4	1.8	10.3	7.7	1.4	-1.5	4.3		

1 ESA 95 Classification of Individual Consumption by Purpose:
2 Final consumption expenditure by UK households in the UK & abroad.

3 Final consumption expenditure in the UK by UK & foreign households.

E4 Household final consumption expenditure (goods and services)

Chained volume measures

Reference year 2003, £ million

UK NATIONAL ²									
UK DOMESTIC ³									
COICOP ¹	Goods								
	Total	Net tourism	Total	Total	Semi-durable goods		Non-durable goods	Services	
					Durable goods	D			
2004	ABPF	ABTG	ABQJ	UTIG	UTIC	UTIS	UTIK	UTIO	
2005	721 434	12 770	708 664	358 145	90 458	93 952	173 735	350 519	
2006	732 005	11 598	720 407	365 044	94 243	96 401	174 400	355 363	
2006	746 097	11 463	734 634	376 585	99 768	101 464	175 353	358 049	
Seasonally adjusted									
2006 Q1	ABJR	ABTH	ZAKW	UTIH	UTID	UTIT	UTIL	UTIP	
2006 Q2	184 076	2 772	181 304	92 239	24 385	24 521	43 333	89 065	
2006 Q3	186 465	2 877	183 588	94 303	25 129	25 238	43 936	89 285	
2006 Q4	186 828	2 689	184 139	94 412	24 906	25 705	43 801	89 727	
2007 Q1	188 728	3 125	185 603	95 631	25 348	26 000	44 283	89 972	
2007 Q2	190 114	3 323	186 791	96 164	25 694	26 106	44 364	90 627	
2007 Q3	191 491	3 283	188 208	97 119	26 371	26 302	44 446	91 089	
2007 Q3	193 591	3 503	190 088	98 856	27 206	26 538	45 112	91 232	
Percentage change, year on previous year									
2006	1.9		2.0	3.2	5.9	5.3	0.5	0.8	
Percentage change, quarter on previous quarter									
2007 Q3	1.1		1.0	1.8	3.2	0.9	1.5	0.2	
Percentage change, quarter on corresponding quarter of previous year									
2007 Q3	3.6		3.2	4.7	9.2	3.2	3.0	1.7	

1 ESA 95 Classification of Individual Consumption by Purpose:
2 Final consumption expenditure by UK households in the UK & abroad

3 Final consumption expenditure in the UK by UK & foreign households

F Gross fixed capital formation by sector and type of asset

Chained volume measures

Reference year 2003, £ million

	Analysis by sector								Analysis by asset					Total
	Business investment ¹	General government	Public corporations ²		Private sector				Transport equipment	Other machinery and equipment	Dwellings ³	Other buildings and structures ⁴	Intangible fixed assets	
			Dwellings ³	Existing buildings and dwellings ⁴	Dwellings ³	Existing buildings and dwellings ⁴	Total	NPQR						
2004	NPEN	EQDN	DEEW	EQDF	DFDP	EQCY	NPQR	DLWJ	DLWM	DFDV	DLWQ	EQDT	NPQR	
2005	119 928	22 266	3 161	-5 561	38 245	19 616	197 655	14 706	58 817	41 541	68 135	14 457	197 655	
2006	138 768	5 658	3 423	-2 813	38 845	16 773	200 654	14 908	58 839	42 337	70 493	14 077	200 654	
2006	132 303	21 543	3 772	-1 864	42 246	18 465	216 465	15 316	62 849	46 026	77 319	14 956	216 465	
Seasonally adjusted														
2006 Q1	NPEL	DLWF	DKQH	DLWH	DFEA	DLWI	NPQT	DLWL	DLWO	DFEG	DLWT	EQDO	NPQT	
2006 Q2	31 541	5 312	1 014	-284	10 096	4 521	52 200	3 463	15 162	11 112	18 736	3 726	52 200	
2006 Q3	32 417	5 351	833	-581	10 644	4 520	53 184	3 887	15 156	11 475	19 016	3 650	53 184	
2006 Q4	33 418	5 304	999	-562	10 861	4 616	54 636	3 802	16 015	11 865	19 191	3 763	54 636	
2007 Q1	34 927	5 576	926	-437	10 645	4 808	56 445	4 164	16 516	11 574	20 376	3 817	56 445	
2007 Q2	34 750	5 972	954	-278	10 961	4 654	57 013	3 974	17 404	11 913	19 838	3 884	57 013	
2007 Q3	34 941	5 525	911	-506	11 093	4 618	56 582	3 922	16 871	12 009	19 913	3 867	56 582	
2007 Q4	35 639	6 087	994	-593	11 180	4 612	57 919	3 968	17 198	12 180	20 648	3 926	57 919	
Percentage change, latest year on previous year														
2006	-4.7	+	10.2	-33.7	8.8	10.1	7.9	2.7	6.8	8.7	9.7	6.2	7.9	
Percentage change, latest quarter on previous quarter														
2007 Q3	2.0	10.2	9.1	17.2	0.8	-0.1	2.4	1.2	1.9	1.4	3.7	1.5	2.4	
Percentage change, latest quarter on corresponding quarter of previous year														
2007 Q3	6.6	14.8	-0.5	5.5	2.9	-0.1	6.0	4.4	7.4	2.7	7.6	4.3	6.0	

1 Not including expenditure on dwellings, land and existing buildings and costs associated with the transfer of ownership of non-produced assets.

2 Remaining investment by public non-financial corporations included within business investment.

3 Includes new dwellings and improvements to dwellings.

4 Including costs associated with the transfer of ownership of buildings, dwellings and non-produced assets.

G Changes in inventories Chained volume measures¹

Reference year 2003, £ million

	Mining and quarrying	Manufacturing industries				Electricity, gas and water supply	Distributive trades			Changes in inventories
		Materials and fuel	Work in progress	Finished goods	Total		Wholesale ²	Retail ²	Other industries	
Level of inventories held at end-December 2006	938	15 905	16 659	19 536	52 100	2 030	28 393	25 462	57 039	165 962
2004	FADO -46	FBID 7	FBIE -614	FBIF -296	DHBH -903	FADP 8	FAJM 304	FBYH 1 000	DLWV 4 234	ABMQ 4 597
2005	-47	-179	863	56	740	586	978	-412	1 766	3 611
2006	-67	-289	588	-321	-22	197	510	673	-55	1 237
Seasonally adjusted										
2006 Q1	FAEA -69	FBNF -189	FBNG 368	FBNH 66	DHBM 245	FAEB -263	FAJX -333	FBYN 373	DLWX 530	CAFU 483
Q2	16	22	127	-178	-29	191	937	67	-1 106	76
Q3	-20	7	-56	-420	-469	185	112	533	696	1 037
Q4	6	-129	149	211	231	84	-206	-300	-175	-360
2007 Q1	-7	284	158	-79	363	-54	-17	484	-536	233
Q2	-10	80	-203	-40	-163	-52	-347	199	1 036	663
Q3	-61	206	-214	304	296	-12	367	119	1 386	2 095

1 Estimates are given to the nearest £ million but cannot be regarded as accurate to this degree.

2 Wholesaling and retailing estimates exclude the motor trades.

H1 Exports and imports of goods and services

Current market prices

£ million

	Exports			Imports			Balance		
	Goods	Services	Total	Goods	Services	Total	Goods	Services	Total
	LQAD	KTMQ	KTMW	LQBL	KTMR	KTMX	LQCT	KTMS	KTMV
2004	190 877	107 817	298 694	251 770	81 899	333 669	-60 893	25 918	-34 975
2005	211 608	115 182	326 790	280 397	90 571	370 968	-68 789	24 611	-44 178
2006	244 666	127 139	371 805	322 065	96 134	418 199	-77 399	31 005	-46 394
Seasonally adjusted									
	BOKG	IKBB	IKBH	BOKH	IKBC	IKBI	BOKI	IKBD	IKBJ
2006 Q1	65 080	31 503	96 583	84 248	24 014	108 262	-19 168	7 489	-11 679
Q2	67 920	31 193	99 113	86 730	23 888	110 618	-18 810	7 305	-11 505
Q3	56 788	31 906	88 694	76 066	24 254	100 320	-19 278	7 652	-11 626
Q4	54 878	32 537	87 415	75 021	23 978	98 999	-20 143	8 559	-11 584
2007 Q1	54 026	33 672	87 698	74 474	24 716	99 190	-20 448	8 956	-11 492
Q2	55 092	34 153	89 245	74 665	25 041	99 706	-19 573	9 112	-10 461
Q3	56 644	34 436	91 080	79 281	25 091	104 372	-22 637	9 345	-13 292
Percentage change, latest year on previous year									
2006	15.6	10.4	13.8	14.9	6.1	12.7			
Percentage change, latest quarter on previous quarter									
2007 Q3	2.8	0.8	2.1	6.2	0.2	4.7			
Percentage change, latest quarter on corresponding quarter of previous year									
2007 Q3	-0.3	7.9	2.7	4.2	3.5	4.0			

H2 Exports and imports of goods and services

Chained volume measures

Reference year 2003, £ million

	Exports			Imports			Balance
	Goods	Services	Total	Goods	Services	Total	Total
	BQKP	KTMT	KTMZ	BQKN	KTMU	KTNB	KTNC
2004	191 191	108 098	299 289	253 262	82 441	335 703	-36 414
2005	208 943	114 806	323 749	271 823	87 803	359 626	-35 877
2006	236 873	122 540	359 413	303 944	91 682	395 626	-36 213
Seasonally adjusted							
	BQKQ	IKBE	IKBK	BQKO	IKBF	IKBL	IKBM
2006 Q1	63 690	30 187	93 877	79 342	22 757	102 099	-8 222
Q2	66 081	29 970	96 051	82 269	22 586	104 855	-8 804
Q3	53 858	30 822	84 680	71 200	23 187	94 387	-9 707
Q4	53 244	31 561	84 805	71 133	23 152	94 285	-9 480
2007 Q1	52 024	32 583	84 607	70 752	23 786	94 538	-9 931
Q2	52 109	32 704	84 813	70 261	23 827	94 088	-9 275
Q3	53 587	32 885	86 472	74 511	23 961	98 472	-12 000
Percentage change, latest year on previous year							
2006	13.4	6.7	11.0	11.8	4.4	10.0	
Percentage change, latest quarter on previous quarter							
2007 Q3	2.8	0.6	2.0	6.0	0.6	4.7	
Percentage change, latest quarter on corresponding quarter of previous year							
2007 Q3	-0.5	6.7	2.1	4.7	3.3	4.3	

Net Lending by Sector

£ million

	Net lending (+)/Net borrowing (-) by sector ¹							
	Government		Corporations				Household & NPISH	Rest of the World
	Central	Local	Public	Financial	Private non-financial			
	NMFJ	NMOE	CPCM	NHCQ	DTAL	NSSZ	NHRB	
2004	-37 232	-526	21	26 479	26 234	-32 241	17 265	
2005	-37 423	-4 828	567	7 830	20 473	-13 954	29 494	
2006	-34 834	34	4 646	4 037	9 325	-29 907	49 383	
Seasonally adjusted								
	RPYH	RQAJ	RQBN	RPYN	RQBV	RPZT	RQCH	
2006 Q1	-8 837	-1 432	1 976	-421	2 416	-3 320	10 399	
Q2	-11 463	2 619	579	1 478	3 468	-7 278	11 347	
Q3	-7 006	-1	929	1 020	768	-7 869	12 818	
Q4	-7 528	-1 152	1 162	1 960	2 673	-11 440	14 819	
2007 Q1	-7 409	-3 345	1 594	5 359	1 388	-13 793	16 130	
Q2	-11 818	1 640	167	2 195	5 323	-11 041	13 268	
Q3	-9 871	-482	159	1 185	1 083	-12 003	19 532	

¹ The sum of net lending by sector is equal (but opposite sign) to the residual error between the expenditure and income based estimates of GDP

J1 Households Sector¹: Allocation of Primary Income Account

£ million

	RESOURCES					USES				Households' share of gross national income (per cent)
	Gross operating surplus including gross mixed income	Wages and salaries	Employers' social contributions	Property income received	Total resources	Property income paid	Balance of primary incomes, gross	Total uses		
	NRJN	ROYJ	ROYK	ROYL	ROYR	ROYT	ROYS	ROYR	NRJH	
2004	144 667	550 654	98 134	127 180	920 635	62 901	857 734	920 635	70.9	
2005	153 466	578 300	107 895	146 885	986 546	69 721	916 825	986 546	72.9	
2006	161 015	606 720	115 688	149 171	1 032 594	73 759	958 835	1 032 594	73.2	
Seasonally adjusted										
2006 Q1	39 539	148 892	29 387	37 027	254 845	17 689	237 156	254 845	73.6	
Q2	40 188	151 112	28 201	36 880	256 381	17 941	238 440	256 381	73.3	
Q3	40 570	152 397	28 873	37 456	259 296	18 600	240 696	259 296	73.0	
Q4	40 718	154 319	29 227	37 808	262 072	19 529	242 543	262 072	72.8	
2007 Q1	41 769	156 423	28 898	39 312	266 402	20 584	245 818	266 402	73.1	
Q2	42 684	157 354	30 240	40 422	270 700	21 290	249 410	270 700	72.3	
Q3	43 347	159 494	30 377	40 404	273 622	22 329	251 293	273 622	72.8	
Percentage change, latest year on previous year										
2006	4.9	4.9	7.2	1.6	4.7	5.8	4.6	4.7		
Percentage change, latest quarter on previous quarter										
2007 Q3	1.6	1.4	0.5	0.0	1.1	4.9	0.8	1.1		
Percentage change, latest quarter on corresponding quarter of previous year										
2007 Q3	6.8	4.7	5.2	7.9	5.5	20.0	4.4	5.5		

¹ This sector includes households and non-profit institutions serving households.

J2 Households Sector¹: Secondary Distribution of Income Account

£ million

	RESOURCES					USES						Real households disposable income: at chained volume measures
	Gross balance of primary incomes	Social contributions	Social benefits other than social transfers in kind	Other current transfers	Total resources	Current taxes on income, wealth, etc.	Social contributions	Social benefits other than social transfers in kind	Other current transfers	Households' gross disposable income	Total uses	
	ROYS	RVFH	RPHL	RPHM	RPHP	RPHR	RPHU	RPIA	RPIB	RPHQ	RPHP	NRJR
2004	857 734	495	202 074	51 778	1 112 081	147 134	170 437	984	27 843	765 683	1 112 081	752 890
2005	916 825	500	213 858	55 661	1 186 844	158 598	188 753	994	30 512	807 987	1 186 844	775 072
2006	958 835	508	223 237	58 346	1 240 926	169 845	202 030	1 004	33 529	834 518	1 240 926	782 066
Seasonally adjusted												
2006 Q1	237 156	127	54 455	14 021	305 759	41 119	50 407	251	8 299	205 683	305 759	194 448
Q2	238 440	127	55 502	14 524	308 593	42 360	49 582	251	8 451	207 949	308 593	195 853
Q3	240 696	127	56 915	14 864	312 602	43 066	50 517	251	8 191	210 577	312 602	196 513
Q4	242 543	127	56 365	14 937	313 972	43 300	51 524	251	8 588	210 309	313 972	195 252
2007 Q1	245 818	129	56 694	12 540	315 181	45 772	50 970	253	6 659	211 527	315 181	195 072
Q2	249 410	129	58 383	13 406	321 328	44 733	52 580	253	7 217	216 545	321 328	198 431
Q3	251 293	129	59 583	13 899	324 904	45 891	53 267	253	7 201	218 292	324 904	199 465
Percentage change, latest year on previous year												
2006	4.6		4.4	4.8	4.6	7.1	7.0		9.9	3.3	4.6	0.9
Percentage change, latest quarter on previous quarter												
2007 Q3	0.8		2.1	3.7	1.1	2.6	1.3		-0.2	0.8	1.1	0.5
Percentage change, latest quarter on corresponding quarter of previous year												
2007 Q3	4.4		4.7	-6.5	3.9	6.6	5.4		-12.1	3.7	3.9	1.5

¹ This sector includes households and non-profit institutions serving households.

J3 Households Sector¹: Use of Disposable Income Account

£ million

	RESOURCES			USES			Households ² saving ratio (per cent)
	Gross households' disposable income	Adjustment for the change in net equity of households in pension funds	Total available households' resources	Final consumption expenditure	Gross saving	Total uses	
	RPHQ	RPQJ	RPQK	RPQM	RPQL	RPQK	NRJS
2004	765 683	25 108	790 791	761 484	29 307	790 791	3.7
2005	807 987	31 210	839 197	792 454	46 743	839 197	5.6
2006	834 518	35 043	869 561	828 008	41 553	869 561	4.8
Seasonally adjusted							
2006 Q1	205 683	9 666	215 349	202 482	12 867	215 349	6.0
Q2	207 949	8 297	216 246	205 867	10 379	216 246	4.8
Q3	210 577	8 467	219 044	208 235	10 809	219 044	4.9
Q4	210 309	8 613	218 922	211 424	7 498	218 922	3.4
2007 Q1	211 527	8 069	219 596	214 422	5 174	219 596	2.4
Q2	216 545	9 939	226 484	217 374	9 110	226 484	4.0
Q3	218 292	9 800	228 092	220 350	7 742	228 092	3.4
Percentage change, latest year on previous year							
2006	3.3		3.6	4.5		3.6	
Percentage change, latest quarter on previous quarter							
2007 Q3	0.8		0.7	1.4		0.7	
Percentage change, latest quarter on corresponding quarter of previous year							
2007 Q3	3.7		4.1	5.8		4.1	

1 This sector includes households and non-profit institutions serving households.

2 Households' saving as a percentage of total available households' resources

K1 Private Non-Financial Corporations Sector: Allocation of Primary Income Account

£ million

	Gross operating surplus						Property income payments						Share of gross national income ¹ (%)
	Gross trading profits		Rental of buildings	less Inventory holding gains	Gross operating surplus ¹	Property income receipts	Total resources ^{1,2}	Total payments	of which Dividends	of which Interest	Gross balance of primary incomes ¹		
	Continental shelf companies	Others ¹											
	CAGD	CAED	DTWR	-DLRA	CAER	RPBM	RPBN	RPBP	RVFT	ROCG	RPBO	NRJL	
2004	18 225	199 272	14 864	-6 158	226 203	78 885	305 088	142 694	72 509	41 352	162 394	13.4	
2005	22 645	202 699	15 404	-6 619	234 129	93 505	327 634	161 789	82 890	48 700	165 845	13.2	
2006	26 123	210 125	16 005	-6 085	246 168	98 710	344 878	181 747	83 356	58 044	163 131	12.4	
Seasonally adjusted													
2006 Q1	7 250	49 900	3 928	-1 682	59 396	21 413	80 809	41 323	18 919	13 028	39 486	12.3	
Q2	7 230	49 955	3 974	-1 790	59 369	23 968	83 337	43 262	18 656	13 951	40 075	12.3	
Q3	6 069	53 283	4 024	-1 334	62 042	25 598	87 640	47 481	20 220	14 846	40 159	12.2	
Q4	5 574	56 987	4 079	-1 279	65 361	27 731	93 092	49 681	25 561	16 219	43 411	13.0	
2007 Q1	4 550	56 347	4 112	-1 330	63 679	26 195	89 874	50 436	21 145	17 679	39 438	11.7	
Q2	5 129	60 380	4 155	-1 481	68 183	26 867	95 050	47 780	19 713	18 260	47 270	13.7	
Q3	5 419	60 213	4 236	-1 518	68 350	25 256	93 606	47 810	18 781	19 676	45 796	13.3	
Percentage change, latest year on previous year													
2006	15.4	3.7			5.1	5.6	5.3	12.3	0.6	19.2	-1.6		
Percentage change, latest quarter on previous quarter													
2007 Q3	5.7	-0.3			0.2	-6.0	-1.5	0.1	-4.7	7.8	-3.1		
Percentage change, latest quarter on corresponding quarter of previous year													
2007 Q3	-10.7	13.0			10.2	-1.3	6.8	0.7	-7.1	32.5	14.0		

1 Quarterly alignment adjustment included in this series.

2 Total resources equals total uses.

K2 Private Non-financial Corporations Sector: Secondary Distribution of Income Account and Capital Account

£ million

	Secondary Distribution of Income Account						Capital Account					
	Resources			Uses			Changes in liabilities & net worth		Changes in assets			
	Gross balance of primary incomes ¹	Other resources ²	Total ^{1,3}	Taxes on income	Other uses ⁴	Gross disposable income ^{1,5}	Net capital transfer receipts	Total ¹	Gross fixed capital formation	Changes in inventories ¹	Other changes in assets ⁶	Net lending or borrowing (-) ^{1,7}
	RPBO	NROQ	RPKY	RPLA	NROO	RPKZ	NROP	RPXH	ROAW	DLQY	NRON	RQBV
2004	162 394	10 327	172 721	27 287	10 773	134 661	4 615	139 276	107 249	4 566	1 227	26 234
2005	165 845	10 728	176 573	33 488	11 216	131 869	5 092	136 961	110 949	4 354	1 185	20 473
2006	163 131	11 930	175 061	36 820	12 407	125 834	5 618	131 452	119 861	1 356	910	9 325
Seasonally adjusted												
2006 Q1	39 486	2 991	42 477	9 285	3 108	30 084	2 119	32 203	29 206	392	189	2 416
Q2	40 075	2 992	43 067	8 202	3 111	31 754	1 047	32 801	29 086	-16	263	3 468
Q3	40 159	2 868	43 027	9 340	2 988	30 699	1 076	31 775	29 809	977	221	768
Q4	43 411	3 079	46 490	9 993	3 200	33 297	1 376	34 673	31 760	3	237	2 673
2007 Q1	39 438	2 253	41 691	9 664	2 375	29 652	3 467	33 119	31 140	239	352	1 388
Q2	47 270	2 465	49 735	10 144	2 587	37 004	886	37 890	31 551	764	252	5 323
Q3	45 796	2 454	48 250	10 723	2 576	34 951	1 141	36 092	32 566	2 127	316	1 083
Percentage change, latest year on previous year												
2006	-1.6	11.2	-0.9	9.9	10.6	-4.6	10.3	-4.0	8.0			
Percentage change, latest quarter on previous quarter												
2007 Q3	-3.1	-0.4	-3.0	5.7	-0.4	-5.5	28.8	-4.7	3.2			
Percentage change, latest quarter on corresponding quarter of previous year												
2007 Q3	14.0	-14.4	12.1	14.8	-13.8	13.9	6.0	13.6	9.2			

1 Quarterly alignment adjustment included in this series.

2 Social contributions and other current transfers.

3 Total resources equals total uses.

4 Social benefits and other current transfers.

5 Also known as gross saving.

6 Acquisitions less disposals of valuables and non-produced non-financial assets.

7 Gross of fixed capital consumption.

Gross value added at basic prices: individual measures

	£ million				Index numbers (2003 = 100)				
	Expenditure-based estimate at chained volume measures	At current prices			Value indices at current prices		Chained volume indices		
		Expenditure-based estimate	Income-based estimate	Residual error ¹	Expenditure-based estimate	Income-based estimate	Expenditure-based estimate	Income-based estimate ²	Output-based estimate
	CAGR	CAGQ	CAGS	DJDS	IHYA	IHYB	IHYC	IHYD	YBFR
2004	1 026 025	1 051 934	1 051 934	–	105.9	105.9	103.3	103.3	103.2
2005	1 044 301	1 095 386	1 097 545	–2 159	110.3	110.5	105.1	105.3	105.3
2006	1 075 128	1 157 531	1 160 215	–2 684	116.5	116.8	108.2	108.5	108.3
Seasonally adjusted									
2006 Q1	265 905	283 155	283 936	–781	114.0	114.3	107.1	107.4	107.2
Q2	267 803	285 857	286 607	–750	115.1	115.4	107.8	108.1	107.9
Q3	269 374	292 115	292 774	–659	117.6	117.9	108.5	108.7	108.5
Q4	272 046	296 404	296 898	–494	119.3	119.5	109.5	109.7	109.6
2007 Q1	274 410	300 763	300 687	76	121.1	121.1	110.5	110.5	110.5
Q2	276 707	307 133	306 867	266	123.7	123.5	111.4	111.3	111.3
Q3	278 560	311 534	311 137	397	125.4	125.3	112.2	112.0	112.1
Percentage change, latest year on previous year									
2006	3.0	5.7	5.7		5.7	5.7	3.0	3.0	2.9
Percentage change, latest quarter on previous quarter									
2007 Q3	0.7	1.4	1.4		1.4	1.4	0.7	0.6	0.7
Percentage change, latest quarter on corresponding quarter of previous year									
2007 Q3	3.4	6.6	6.3		6.6	6.3	3.4	3.0	3.3

1 The residual error is, by convention, the amount by which the expenditure-based approach to measuring GDP exceeds the income-based estimate. It is also the sum of two components: the statistical discrepancy (expenditure) with sign reversed, and the statistical discrepancy (income) with natural sign.

2 Income data deflated by the implied GDP deflator, based on expenditure data.

M Alignment adjustments

£ million

	Changes in inventories		Gross operating surplus of non-financial corporations at current prices
	At current prices	Chained volume measures (Reference year 2003)	
Seasonally adjusted			
	DMUN	DMUM	DMUQ
2006 Q1	1 710	1 600	43
Q2	-553	-523	-2 049
Q3	-1 024	-949	858
Q4	-133	-128	1 148
2007 Q1	-1 352	-1 232	-847
Q2	453	408	1 500
Q3	445	399	-305

R Revisions Analysis^{1,2}

Revisions since previously published estimates

£ million

	2005	2006
Latest less previously published levels of GDP at current market prices		
<i>Previous estimates published on 23rd November 2007</i>		
National accounts aggregates at current prices (Table A2)		
Gross domestic product at market prices	–	1 659
less Basic price adjustment	–	–76
Gross value added at basic prices	–	1 735
Gross domestic product: expenditure at current prices (Table C1)		
Domestic expenditure on goods and services at market prices		
Households	–	–683
Non-profit institutions serving households	–	–
General government	–	331
Gross fixed capital formation	–	–691
Changes in inventories	–	–
Acquisitions less disposals of valuables	–	240
Total	–	–803
Total exports	–	2 558
Total imports	–	583
Statistical discrepancy (expenditure)	–	487
Gross domestic product: income at current prices (Table D)		
Compensation of employees	–	729
Gross operating surplus of corporations	–	3 329
Other income	–	–526
Gross value added at factor cost	–	3 532
Taxes on products & production less Subsidies	–	–77
Statistical discrepancy (income)	–	–1 796

1 Estimates are given to the nearest £ million but cannot be regarded as accurate to this degree.

	2005	2006
Latest less previously published growth rates for GDP in chained volume terms		
<i>Previous estimates published on 23rd November 2007</i>		
Percentage changes in volume of GDP (Table A2)		
Gross domestic product chained volume measures		
Year on year growth	–	0.1
Percentage changes in volume of GVA output components (Table B1)		
GVA at basic prices		
Agriculture, forestry and fishing	–	–0.2
Manufacturing	–	0.1
Total Production	–	0.1
Construction	–	–
Distribution, hotels and catering; repairs	–	–0.2
Transport, storage and communication	–	0.1
Business services and finance	–	–
Government and other services	–	–
Total Services	–	–
Total GVA	–	0.2
Total GVA excluding Oil	–	0.1
Percentage changes in volume of GDP expenditure components (Table C2)		
Domestic expenditure on goods and services at market prices		
Households	–	–0.1
Non-profit institutions serving households	–	–0.1
General government	–	–0.2
Gross fixed capital formation	–	–0.3
Total	–	–0.2
Total exports	–	0.7
Total imports	–	0.2

	2005	2006
Latest less previously published household saving ratio		
<i>Previous estimates published on 26th September 2007</i>		
Households' sector: Use of Disposable Income Account (TABLE J3)		
Saving ratio (per cent)	–	–0.2

2 Estimates are given to one decimal place but cannot be regarded as accurate to this degree.

R Revisions Analysis^{1,2}

Revisions since previously published estimates

continued

£ million

	2006 Q1	2006 Q2	2006 Q3	2006 Q4	2007 Q1	2007 Q2	2007 Q3
Latest less previously published levels of GDP							
at current market prices							
<i>Previous estimates published on 23rd November 2007</i>							
National accounts aggregates							
at current prices (Table A2)							
Gross domestic product at market prices	485	283	43	848	831	1 063	1 091
less Basic price adjustment	-25	-12	-36	-3	-46	-24	19
Gross value added at basic prices	510	295	79	851	877	1 087	1 072
Gross domestic product:							
expenditure at current prices (Table C1)							
Domestic expenditure on goods and services							
at market prices							
Households	-132	-208	-159	-184	26	180	436
Non-profit institutions serving households	-	-	-	-	-	2	-3
General government	88	55	63	125	229	685	737
Gross fixed capital formation	-225	-1	-261	-204	-	-256	117
Changes in inventories	54	291	-726	381	-44	-207	328
Acquisitions less disposals of valuables	245	-4	1	-2	-4	-3	-
Total	30	133	-1 082	116	207	401	1 615
Total exports	284	113	1 122	1 039	585	953	348
Total imports	-8	122	118	351	-280	-44	473
Statistical discrepancy (expenditure)	163	159	121	44	-241	-335	-399
Gross domestic product:							
income at current prices (Table D)							
Compensation of employees	111	277	121	220	-197	990	538
Gross operating surplus of corporations	161	763	771	1 634	1 257	-164	-224
Other income	641	-212	-378	-577	-158	199	725
Gross value added at factor cost	913	828	514	1 277	902	1 025	1 039
Taxes on products & production less Subsidies	-8	-69	9	-9	-11	1	-53
Statistical discrepancy (income)	-420	-476	-480	-420	-60	37	105

1 Estimates are given to the nearest £ million but cannot be regarded as accurate to this degree.

	2006 Q1	2006 Q2	2006 Q3	2006 Q4	2007 Q1	2007 Q2	2007 Q3
Latest less previously published growth rates							
for GDP in chained volume terms							
<i>Previous estimates published on 23rd November 2007</i>							
Percentage changes in volume of GDP (Table A2)							
Gross domestic product chained volume measures							
Quarter on quarter growth	0.1	-0.1	-0.1	0.2	-	-	-
Quarter on same quarter a year earlier	0.2	0.1	-	0.1	-	0.1	0.1
Percentage changes in volume							
of GVA output components (Table B1)							
GVA at basic prices quarter on quarter growth							
Agriculture, forestry and fishing	0.1	-0.1	0.2	-0.8	-	-0.2	-0.3
Manufacturing	0.1	0.1	-0.2	-	-	-	-
Total Production	0.1	0.1	-	-0.1	-	-	-
Construction	-	-	-	-	0.1	-	-
Distribution, hotels and catering; repairs	-0.1	-	-0.2	0.4	-	0.2	-0.1
Transport, storage and communication	0.2	-0.1	-	0.2	0.1	0.2	-0.2
Business services and finance	0.3	-0.2	-0.2	0.2	-	-0.3	-0.2
Government and other services	-0.1	-	-	-	0.1	-	0.1
Total Services	0.1	-0.1	-0.2	0.1	-	-0.1	-0.1
Total GVA	0.2	-0.1	-0.1	0.1	-	-	-
Total GVA excluding Oil	0.2	-0.1	-0.1	0.1	-	-	-
Percentage changes in volume of GDP							
expenditure components (Table C2)							
Domestic expenditure on goods and services							
at market prices quarter on quarter growth							
Households	-0.1	0.1	-	-0.1	-	-0.1	0.1
Non-profit institutions serving households	-	-	-	-	-	-	0.1
General government	-	-0.1	-0.2	-0.1	0.1	0.2	-
Gross fixed capital formation	-0.5	0.3	-	-	-0.1	0.1	0.8
Total	-	-	-0.4	0.3	-	-	0.3
Total exports	0.3	-0.4	1.2	-0.1	-0.4	-	-0.7
Total imports	-	-	0.1	0.4	-0.8	-0.1	0.8

	2006 Q1	2006 Q2	2006 Q3	2006 Q4	2007 Q1	2007 Q2	2007 Q3
Latest less previously published household saving ratio							
<i>Previous estimates published on 26th September 2007</i>							
Households' sector:							
Use of Disposable Income Account (TABLE J3)							
Saving ratio (per cent)	0.1	-0.2	-0.1	-0.8	0.4	0.9	..

2 Estimates are given to one decimal place but cannot be regarded as accurate to this degree.