

Quarterly national accounts 2nd quarter 2009



Date: 29 September 2009

Coverage: United Kingdom **Theme:** The Economy

UK gross domestic product (GDP) in volume terms fell by 0.6 per cent compared with the previous quarter, revised from a fall of 0.7 per cent published last month. The level of GDP is now 5.5 per cent lower than the second quarter of 2008.

Between the first and second quarter of 2009:

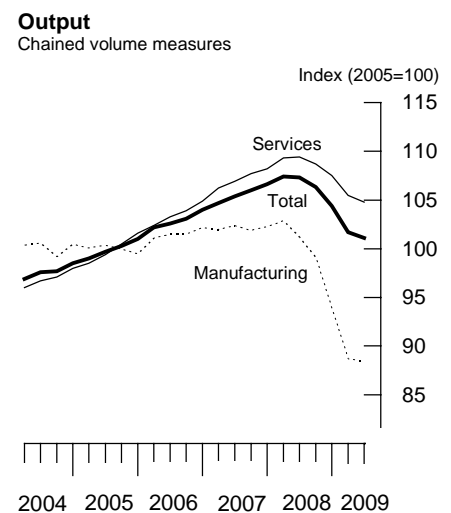
The total volume of output in the production industries fell by 0.5 per cent, within which manufacturing output fell by 0.1 per cent.

Construction output fell by 0.8 per cent over the quarter.

The output of the service industries decreased by 0.6 per cent (Table B1).

The household saving ratio was 5.6 per cent in the latest quarter compared with 3.9 per cent in the previous quarter (Table J3).

Real households' disposable income rose by 0.9 per cent in the latest quarter following a 1.0 per cent fall in 2009 quarter one (Table K2).



		Household saving ratio	Real households' disposable income	Gross domestic product		
				current market prices	chained volume measure	chained volume measure
		per cent	per cent	2005=100	2005=100	per cent change
<i>Seasonally adjusted</i>						
2008	Q2	2.3	2.9	115.9	106.9	-0.1
	Q3	1.7	-0.4	115.5	106.1	-0.7
	Q4	3.4	1.2	114.7	104.2	-1.8
2009	Q1	3.9	-1.0	111.3	101.6	-2.5
	Q2	5.6	0.9	110.7	101.0	-0.6

**GDP analysed by output categories, chained volume measures
(Tables B1 and B2)**

The output of the agriculture, forestry and fishing sector fell by 2.9 per cent compared with the previous quarter.

The output of the production industries decreased by 0.5 per cent in the second quarter, within which manufacturing output fell by 0.1 per cent. The output of the mining and quarrying sector fell by 0.6 per cent in the latest quarter. Electricity, gas and water supply fell by 3.6 per cent.

Construction output fell by 0.8 per cent in the latest quarter to a level 13.4 per cent below the same quarter of last year.

Services output fell by 0.6 per cent, in comparison with the record fall of 1.9 per cent in the previous quarter. Services output is down 4.2 per cent compared with the same quarter of 2008.

Output of the distribution, hotels and catering industries decreased by 0.4 per cent in 2009 quarter two. There were falls in motor vehicle distribution, hotels and restaurants and wholesaling; retail spending remained buoyant.

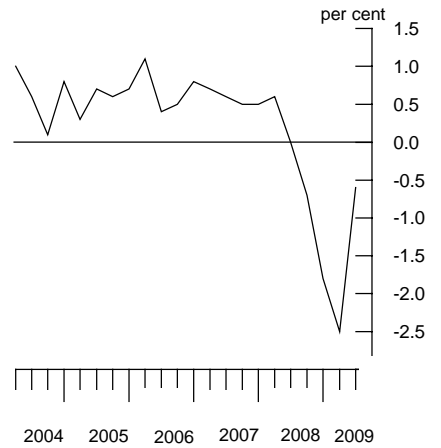
The transport, storage and communication sector fell by 1.8 per cent in 2009 quarter two. There were continued declines in land transport, communication services and transport support activities.

The business services and finance sector fell by 0.7 per cent, compared with a fall of 2.9 per cent in 2009 quarter one. This reduction in output was most significant in computing services, architectural services, management consultancy, legal services and advertising. Output of financial intermediation services increased.

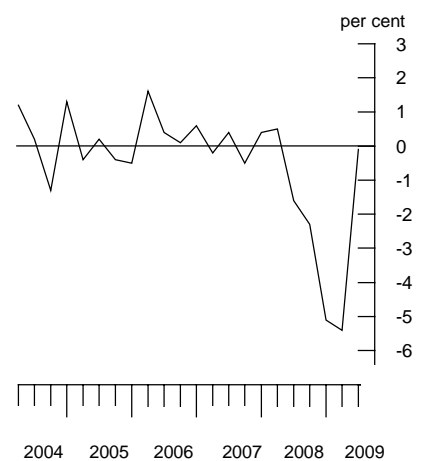
There were decreases in output of public administration and defence down by 0.9 per cent, and education down 0.3 per cent. Health and social work increased by 0.8 per cent.

Other services decreased by 1.2 per cent in the quarter as output of recreational and other personal services declined.

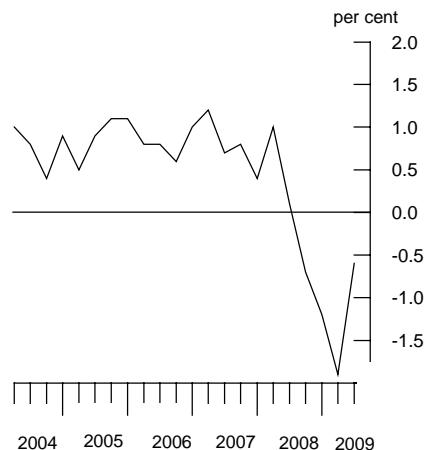
Gross domestic product ABMI
quarter on quarter growth



Manufacturing CKYY
quarter on quarter growth



Services GDQS
quarter on quarter growth



GDP analysed by expenditure categories, chained volume measures (Tables C2, E3, E4, F, G, and H2)

Gross domestic expenditure fell by 0.8 per cent in the second quarter of 2009.

Household final consumption expenditure fell by 0.6 per cent in the latest quarter compared to a fall of 1.5 per cent in the previous quarter. The volume of spending is now 3.6 per cent lower than the level in 2008 quarter two.

Government final consumption expenditure rose by 0.6 per cent in the latest quarter, up from a 0.1 per cent rise in the previous quarter.

Gross fixed capital formation fell by 5.2 per cent, compared with a fall of 7.3 per cent in the previous quarter. Business investment and spending related to housing fell in the latest quarter.

The level of inventories, including the alignment adjustment, fell by £4.1 billion (table G) in the latest quarter.

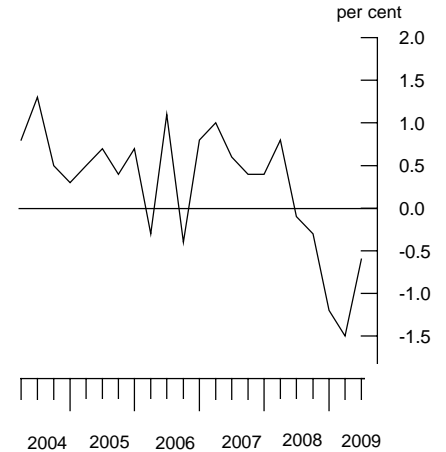
Exports of goods decreased by 0.7 per cent while imports of goods decreased by 2.6 per cent.

Exports of services fell by 2.4 per cent while imports of services fell by 1.0 per cent.

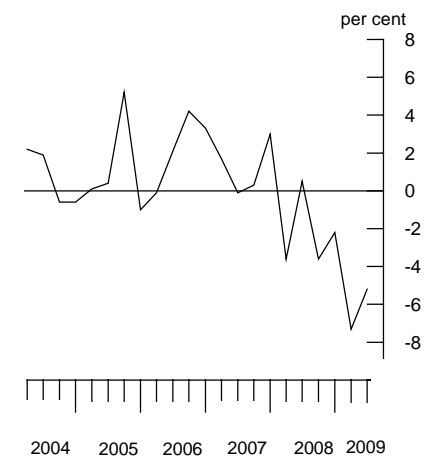
GDP deflator

The gross domestic product deflator at market prices showed that overall prices were unchanged in the second quarter of 2009 and are 1.1 per cent above the same quarter of 2008.

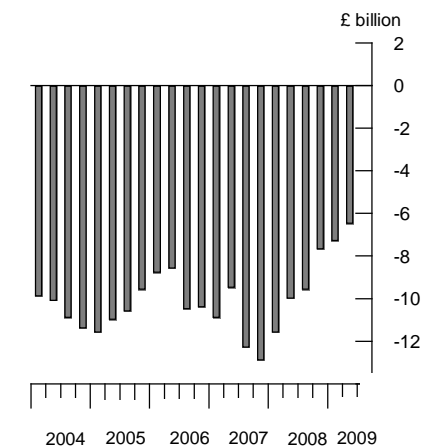
Household final expenditure ABRJ
quarter on quarter growth



Gross fixed capital formation NPQT
quarter on quarter growth



Net trade IKBM
Chained volume measures



GDP analysed by income categories at current prices (Table D)

GDP at current market prices fell by 0.6 per cent over the quarter, compared with a decline of 3.0 per cent in 2009 quarter one.

Compensation of employees rose by 0.8 per cent, compared with a decline of 0.4 per cent in the previous quarter.

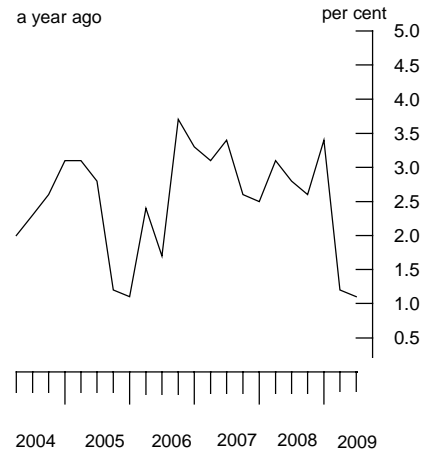
The gross operating surplus of corporations decreased by 5.3 per cent, compared with a decline of 5.4 per cent in 2009 quarter one. Private non-financial corporations' operating surplus declined by 3.5 per cent.

Financial corporations operating surplus fell by 9.1 per cent.

Taxes on production less subsidies rose by 3.1 per cent.

GDP deflator YBGB

quarter on same quarter
a year ago



SECTOR ACCOUNTS

Sector Accounts (Tables I, J1, J2, J3, K1 and K2)

Summary

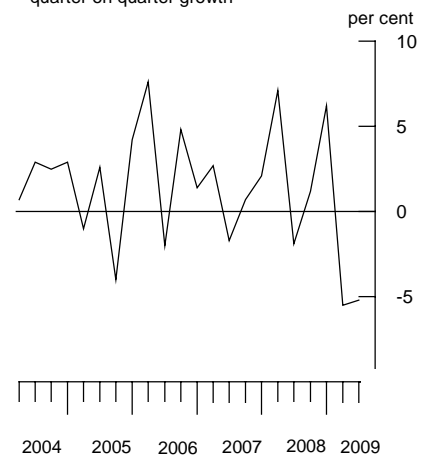
The household saving ratio was 5.6 per cent in 2009 quarter two compared with 3.9 per cent in the previous quarter. For the year 2008 the saving ratio was 1.7 per cent.

In 2009 quarter two, the central government and public corporations sectors were net borrowers. Households, financial corporations, private non-financial corporations, local government and the rest of the world sectors were net lenders.

This is the first time households have been net lenders since 2001 quarter two.

Gross operating surplus of corporations CGBZ

quarter on quarter growth



The household and non profit institutions serving households (NPISH) sector (Tables J1, J2 and J3)

The saving ratio in 2009 quarter two was 5.6 per cent compared with 3.9 per cent in 2009 quarter one. The 2008 saving ratio was 1.7 per cent, a fall from 2.2 per cent in 2007.

Real household disposable income rose by 0.9 per cent in the latest quarter following a 1.0 per cent fall in 2009 quarter one. Real disposable income rose by 0.7 per cent when compared with the corresponding quarter of 2008.

Household gross disposable income rose by 1.3 per cent in the latest quarter. Gross disposable income rose by 1.8 per cent when compared with the corresponding quarter of 2008.

Private non-financial corporations sector (Tables K1 and K2)

Net lending of private non-financial corporations was £9.1 billion in the latest quarter, compared with net lending of £19.8 billion in the previous quarter. Net lending was £31.7 billion in 2008.

**REVISIONS
(Table R)**

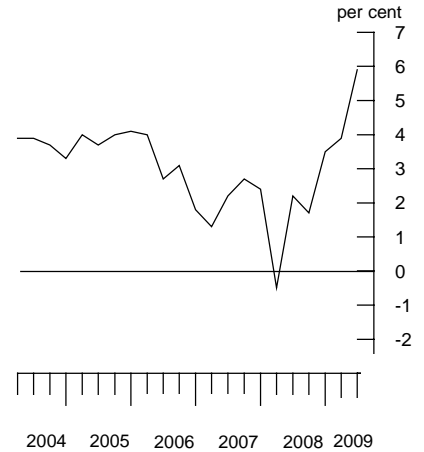
GDP and components (previously published on 28 August 2009)

Revisions resulting from the incorporation of new data and replacement of forecasts and estimates based on earlier data, have been taken back to the first quarter of 2008.

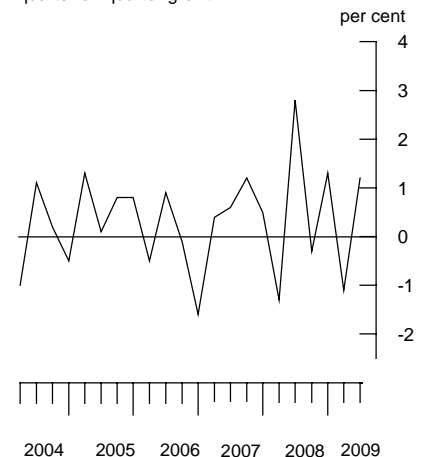
The movement in GDP in 2009 quarter two has been revised up to show a fall of 0.6 per cent from a fall of 0.7 per cent. In 2009 quarter one, the figure has been revised down to show a fall of 2.5 per cent, from -2.4 per cent.

For 2008 as a whole, the GDP growth rate has been revised down to 0.6 per cent from 0.7 per cent.

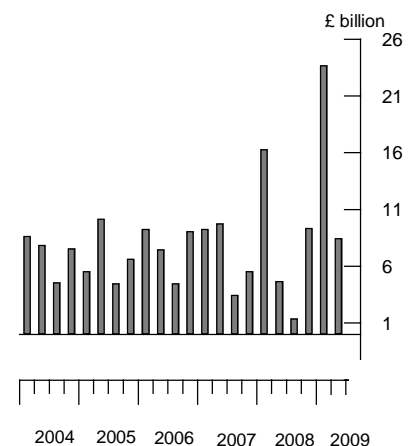
Household saving ratio NRJS
seasonally adjusted



Real household disposable income NRJR
quarter on quarter growth



Net lending/borrowing of private non-financial corporations RQBV



Output revisions

In the latest quarter, output of the production industries was revised up slightly to show a fall of 0.5 per cent. This was as a result of upward revisions to mining and quarrying, manufacturing and electricity, gas and water supply.

The output of the construction industry was revised upwards to show a fall of 0.8 per cent in the latest quarter, compared to the fall of 2.2 per cent previously published.

The movement in services output was unrevised, still showing a fall of 0.6 per cent in the latest quarter. Services output was revised further downwards in the previous two quarters. In 2008 quarter four, output declined by 1.2 per cent (revised from -1.0 per cent), in 2009 quarter one output declined by 1.9 per cent (revised from -1.6 per cent).

Expenditure components

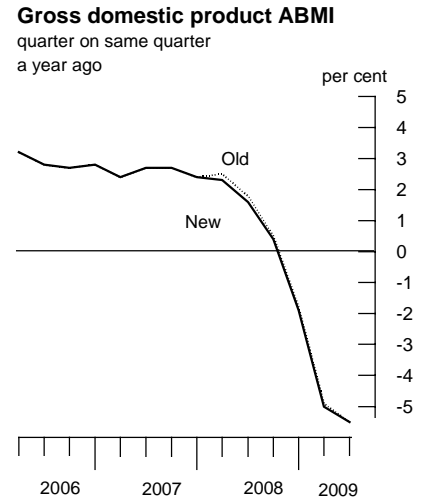
Household final consumption expenditure declined by 0.6 per cent in the period revised up from a fall of 0.7 per cent in the previous estimate.

Government expenditure was revised down to show growth of 0.6 per cent (from 0.8 per cent).

Gross fixed capital formation was revised down to a fall of 5.2 per cent (from a fall of 4.5 per cent), driven by revisions to investment in machinery and equipment.

The unaligned estimate of changes in inventories was revised down by £1.1bn in the latest quarter, mainly as a result of lower estimates of stocks held by manufacturing industry.

Exports were revised up to show a decline of 1.4 per cent compared with a fall of 2.7 per cent as previously published. Imports were revised up to show a decline of 2.2 per cent, compared with a fall of 3.2 per cent as previously published.



Income components

In the latest quarter compensation of employees was revised downwards to show growth of 0.8 per cent, compared with 1.0 per cent previously published.

The gross operating surplus of corporations was revised down to show a fall of 5.3 per cent from a fall of 3.7 per cent.

Sector accounts (previously published on 30 June 2009)

Revisions have been taken back to 2008 quarter one in this bulletin.

Household and non-profit institutions serving households (NPISH) sector

The household saving ratio was revised up in 2009 quarter one from 3.0 per cent to 3.9 per cent. These changes mainly reflect upward revisions to wages and salaries and downward revisions to property income payments. For 2008 the saving ratio was unrevised at 1.7 per cent.

The household net borrowing in 2009 quarter one was revised from £3.8 billion to £1.1 billion. For 2008 the net borrowing was revised from £43.8 billion previously published, to £45.0 billion.

Private non-financial corporations

For 2009 quarter one, net lending was revised from £15.5 billion to £19.8 billion. For 2008, net lending was revised from £29.5 billion to £31.7 billion.

BACKGROUND NOTES

Release policy

1. This bulletin includes data available up to 14 September 2009.
2. The preliminary estimate of GDP for the third quarter of 2009 will be published on 23 October 2009, followed by provisional estimates of output, income and expenditure on 25 November 2009. The next full set of quarterly national accounts will be published on 22 December 2009.

Basic quality information for GDP Statistical Bulletin

Summary quality report

3. A Summary Quality Report for this Statistical Bulletin can now be found on the National Statistics website at:

<http://www.statistics.gov.uk/cci/article.asp?ID=1180>

Key quality issues

4. *Common pitfalls in interpreting series:* Expectations of accuracy and reliability in early estimates are often too high. Revisions are an inevitable consequence of the trade off between timeliness and accuracy. Early estimates are based on incomplete data. Revisions to GDP are larger than usual in this bulletin, reflecting uncertainty in forecasting and measurement during a period of rapid change in economic activity.

Very few statistical revisions arise as a result of 'errors' in the popular sense of the word. All estimates, by definition, are subject to statistical 'error' but in this context the word refers to the uncertainty inherent in any process or calculation that uses sampling, estimation or modelling. Most revisions reflect either the adoption of new statistical techniques, or the incorporation of new information which allows the statistical error of previous estimates to be reduced. Only rarely are there avoidable 'errors' such as human or system failures and such mistakes are made quite clear when they do occur.

Reliability

5. Estimates for the most recent quarters are provisional and, as usual, are subject to revision in light of updated source information. ONS currently provides an analysis of past revisions in the GDP and other Statistical Bulletins which present time series. Details can be found at:

<http://www.statistics.gov.uk/cci/article.asp?ID=793>

ONS has a webpage dedicated to revisions to economic statistics which brings together ONS work on revisions analysis, link to articles, analysis and key documentation from the Statistics Commission's report on revisions. The webpage can be found at:

http://www.statistics.gov.uk/about_ns/economic_revisions.asp

6. Revisions to data provide one indication of the reliability of key indicators. The tables below show summary information on the size and direction of the revisions which have been made to data covering a five-year period. A statistical test has been applied to the average revision to find out if it is statistically significantly different from zero. An asterisk (*) shows that the test is significant. The data used are consistent with that used in more detailed analysis published in *Economic Trends*. The most recent article was published on the National Statistics website on 12 November 2007 at:

<http://www.statistics.gov.uk/cci/article.asp?ID=1888>

7. Table 1 below shows the revisions between the early estimates of GDP. The analysis of revisions between month 1 and month 2 uses month 2 estimates published from November 2004 (2004q3) to August 2009 (2009q2). The analysis of revisions between month 2 and month 3 uses month 3 estimates published from September 2004 (2004q2) to June 2009 (2009q1).

Table 1: Revisions to early estimates of GDP growth

Revisions to GDP growth	GDP Growth in latest period (per cent)	Revisions between early estimates of GDP growth (quarterly, CVM)	
		Average over the last five years	Average over the last five years without regard to sign (average absolute revision)
Between M1 and M2	-0.6	-0.01	0.03
Between M2 and M3	-0.6	-0.01	0.07

Table 2 shows revisions to GDP growth and the household saving ratio between the estimate published three months after the end of the quarter and the equivalent estimate three years later. For GDP and Household saving ratio, the analysis uses month 3 estimates first published from September 2001 (2001q2) to June 2006 (2006q1).

Table 2: Revisions to month 3 estimates of GDP growth and the household saving ratio

	Value in latest period (per cent)	Revisions between first publication and estimates three years later	
		Average over the last five years ¹	Average over the last five years ¹ without regard to sign (average absolute revision)
GDP growth (quarterly, CVM)	-0.6	0.07	0.16
Household saving ratio	5.6	-0.49	1.15

Spreadsheets giving revisions triangles (real time databases) of estimates from 1992 to date and the calculations behind the averages in both tables are available on the National Statistics website at:

<http://www.statistics.gov.uk/statbase/Product.asp?vlnk=13560>

Revisions triangles for the main components of GDP from expenditure, output and income approaches are also available at the link above.

Coherence

- As announced in 'Monitoring the quality of the National Accounts', by Ross Meader and Geoff Tily, an assessment of the coherence of the three measures of GDP is now published as part of the quarterly national accounts statistical bulletin:

<http://www.statistics.gov.uk/cci/article.asp?ID=1948>

Historic experience shows that the output measure provides the best timely measure of GDP growth. Growth according to the expenditure and income measures are therefore brought into line with that recorded by output.

In 2008, growth of the output measure was weaker than the expenditure and income measures.

In 2009 quarter one the expenditure measure has fallen less sharply than output but has been brought in line with negative alignment adjustments.

Missing Trader Intra-Community (MTIC) Fraud

9. Erratic and large movements in the level of trade associated with VAT Missing Trader Intra-Community (MTIC) fraud, particularly during the first six months of 2006, have made it difficult to interpret movements in imports and exports of goods and to incorporate the trade data into the National Accounts. The impact on 2009 quarter two data, is however, estimated to be minimal.

Further information

10. Latest copies of this and other ONS bulletins as well as additional briefing are available under *Press Releases* on the National Statistics website:

http://www.statistics.gov.uk/press_Release/CurrentReleases.asp

More information on household expenditure can be found at:

<http://www.statistics.gov.uk/statbase/product.asp?vlnk=242>

More information underlying the National Accounts can be found at:

<http://www.statistics.gov.uk/CCI/nscl.asp?ID=5871>

Further Quarterly national accounts, Quarterly Sector Accounts and Financial Accounts tables are available in the *United Kingdom Economic Accounts* at:

<http://www.statistics.gov.uk/StatBase/Product.asp?vlnk=1904>

11. Details of the policy governing the release of new data are available from the Press office. Also available is a list of the names of those given pre-publication access to the contents of this bulletin.
12. **National Statistics** are produced to high professional standards set out in the UK Statistics Authority's Code of Practice for Official Statistics. They undergo regular quality assurance reviews to ensure that they meet customer needs. They are produced free from any political interference © Crown copyright 2009.

Next publication: Friday 23 October 2009

Issued by: Office for National Statistics, Government Buildings, Cardiff
Road, Newport NP10 8XG

Media contact:

Tel **Media Relations Office 0845 604 1858**
 Emergency on-call 07867 906553
Email **press.office@ons.gsi.gov.uk**

Statistical contact:

Tel **Jon Beadle 020 7014 2053**
Email **gdp@ons.gov.uk**

Website:

www.statistics.gov.uk

INDEX TO TABLES

Gross domestic product tables

National accounts aggregates (index numbers)	A1
National accounts aggregates	A2
Gross value added chained volume measures at basic prices, by category of output	B1
Gross value added chained volume measures at basic prices, by category of output: service industries	B2
Gross domestic product: expenditure	
Current market prices	C1
Gross domestic product: expenditure	
Chained volume measures	C2
Gross domestic product: by category of income	
Current market prices	D
Household final consumption expenditure by purpose	
Current market prices	E1
Household final consumption expenditure (goods and services)	
Current market prices	E2
Household final consumption expenditure by purpose	
Chained volume measures	E3
Household final consumption expenditure (goods and services)	
Chained volume measures	E4
Gross fixed capital formation by sector and type of asset	
Chained volume measures	F
Changes in inventories	
Chained volume measures	G
Exports and imports of goods and services	
Current market prices	H1
Exports and imports of goods and services	
Chained volume measures	H2

Sector accounts tables

Net lending/borrowing by sector	I
Households sector: allocation of primary income account	J1
Households sector: secondary distribution of income account	J2

Households sector: use of disposable income account	J3
Private non-financial corporations sector: allocation of primary income account	K1
Private non-financial corporations sector: secondary distribution of income account and capital account	K2

Other analysis

Gross value added at basic prices: individual measures	L
Alignment adjustments	M

Revisions tables

Revisions analysis: revisions against previously published estimates	R
--	---

A1 National accounts aggregates¹

2005 = 100

	Value indices at current prices		Chained volume indices				Implied deflators ²		
	Gross domestic product at market prices	Gross value added at basic prices	Gross domestic product at market prices	Gross value added at basic prices	Gross national disposable income at market prices	Market sector gross value added	Gross domestic expenditure	Gross domestic product at market prices	Gross value added at basic prices
2007	YBEU	YBEX	YBEZ	CGCE	YBFP	CL2G	YBFV	YBGB	CGBV
2008	111.5	111.6	105.5	105.7	105.4	106.8	105.5	105.7	105.6
	115.5	116.3	106.1	106.3	106.7	107.3	108.5	108.9	109.4
Seasonally adjusted									
2007 Q1	109.8	109.7	104.6	104.7	103.6	105.6	104.7	105.0	104.7
Q2	111.0	110.9	105.2	105.4	104.7	106.5	105.4	105.5	105.2
Q3	112.2	112.2	105.8	106.0	105.1	107.3	105.9	106.0	105.8
Q4	113.2	113.5	106.3	106.6	108.0	107.8	106.0	106.5	106.5
2008 Q1	115.8	116.1	107.0	107.4	109.0	108.8	107.9	108.3	108.1
Q2	115.9	116.0	106.9	107.3	107.9	108.5	108.0	108.4	108.1
Q3	115.5	116.6	106.1	106.3	106.4	107.3	108.9	108.8	109.7
Q4	114.7	116.4	104.2	104.3	103.7	104.7	109.2	110.1	111.6
2009 Q1	111.3	113.3	101.6	101.7	102.1	101.5	109.3	109.5	111.4
Q2	110.7	112.6	101.0	101.1	99.2	100.6	110.0	109.5	111.4
Percentage change, latest year on previous year									
2008	IHYM		IHYP			CL2H		IHYS	
	3.5	4.2	0.6	0.6	1.3	0.5	2.8	2.9	3.6
Percentage change, latest quarter on previous quarter									
2009 Q2	-0.6	-0.6	-0.6	-0.6	-2.9	-0.8	0.6	0.0	-0.1
Percentage change, latest quarter on corresponding quarter of previous year									
2009 Q2	-4.5	-3.0	-5.5	-5.8	-8.1	-7.3	1.8	1.1	3.0

1 Estimates cannot be regarded as accurate to the last digit shown.

2 Based on the sum of expenditure components of GDP at current prices and in chained volume terms.

A2 National accounts aggregates¹

£ million

	Current prices					Chained Volume Measures (Reference year 2005)			
	Gross national income at market prices	Net income from abroad ²	Gross domestic product at market prices	less Basic price adjustment ³	Gross value added at basic prices	Gross domestic product at market prices	less Basic price adjustment ³	Gross value added at basic prices	Gross value added excluding oil & gas
2007	ABMZ	CAES	YBHA	NTAP	ABML	ABMI	NTAO	ABMM	UIZY
2008	1 417 878	18 996	1 398 882	153 147	1 245 735	1 322 842	142 684	1 180 158	1 157 941
	1 473 578	25 524	1 448 054	149 557	1 298 497	1 330 118	142 874	1 187 244	1 166 152
Seasonally adjusted									
2007 Q1	345 925	1 685	344 238	38 084	306 154	327 872	35 596	292 276	286 691
Q2	351 719	3 709	348 010	38 425	309 585	329 967	35 703	294 264	288 660
Q3	354 656	3 021	351 635	38 476	313 159	331 609	35 620	295 989	290 485
Q4	365 578	10 581	354 999	38 162	316 837	333 394	35 765	297 629	292 105
2008 Q1	374 897	11 806	363 091	38 960	324 131	335 412	35 676	299 736	294 394
Q2	370 561	7 333	363 228	39 330	323 898	335 163	35 638	299 525	294 202
Q3	368 369	6 308	362 061	36 656	325 405	332 733	35 972	296 761	291 507
Q4	359 751	77	359 674	34 611	325 063	326 810	35 588	291 222	286 049
2009 Q1	355 168	6 197	348 971	32 626	316 345	318 659	34 735	283 924	278 845
Q2	348 305	1 354	346 951	32 621	314 330	316 790	34 505	282 285	277 243
Percentage change, latest year on previous year									
2008	3.9		IHYM		4.2	0.6		0.6	0.7
			3.5						
Percentage change, latest quarter on previous quarter									
2009 Q2	-1.9		IHYN		-0.6	-0.6		-0.6	-0.6
			-0.6						
Percentage change, latest quarter on corresponding quarter of previous year									
2009 Q2	-6.0		IHYO		-3.0	-5.5		-5.8	-5.8
			-4.5						

1 Estimates are given to the nearest £ million but cannot be regarded as accurate to this degree.

2 Includes employment, entrepreneurial and property income.

3 Taxes on products less subsidies.

B1 Gross value added chained volume measures at basic prices, by category of output^{1,2}

2005 = 100

	Production					Service industries						Gross value added at basic prices	Gross value added excluding oil & gas
	Agri-culture, forestry, and fishing	Mining & quarrying inc oil & gas extraction	Manu-facturing	Elec-tricity gas and water supply	Total	Construc-tion	Distri-bution hotels and catering; repairs	Trans-port storage and commu-nication	Busi-ness services and finance	Govern-ment and other services	Total		
2005 Weights³	7	25	133	15	172	63	146	72	304	236	759	1000	978
2007	GDQA 95.9	CKYX 90.7	CKYY 102.2	CKYZ 99.7	CKYW 100.3	GDQB 103.8	GDQE 106.7	GDQH 106.0	GDQN 111.9	GDQU 102.0	GDQS 107.2	CGCE 105.7	JUNT 106.1
2008	96.0	84.7	99.2	99.7	97.2	103.4	105.5	107.8	114.7	103.3	108.7	106.3	106.8
Seasonally adjusted													
2007 Q1	96.8	91.0	102.0	98.4	100.1	102.6	105.6	105.9	109.8	102.0	106.2	104.7	105.0
Q2	96.2	91.6	102.4	98.2	100.5	103.7	106.3	106.4	111.2	101.8	106.9	105.4	105.8
Q3	95.0	90.4	101.9	99.7	100.1	104.1	107.2	105.3	113.2	101.7	107.7	106.0	106.4
Q4	95.6	90.0	102.3	102.3	100.6	104.8	107.5	106.2	113.5	102.3	108.2	106.6	107.0
2008 Q1	95.0	86.3	102.9	100.8	100.3	105.8	108.2	108.0	114.8	103.2	109.3	107.4	107.9
Q2	97.1	85.9	101.3	100.9	99.0	105.4	107.4	108.7	115.4	103.2	109.4	107.3	107.8
Q3	96.7	84.4	98.9	99.6	96.9	103.8	104.7	108.0	114.7	103.7	108.7	106.3	106.8
Q4	95.2	82.3	93.8	97.7	92.5	98.8	101.8	106.3	113.9	103.0	107.5	104.3	104.8
2009 Q1	94.4	79.2	88.8	94.0	87.9	92.0	100.6	102.9	110.6	102.6	105.5	101.7	102.2
Q2	91.7	78.8	88.7	90.6	87.4	91.3	100.2	101.1	109.7	102.4	104.8	101.1	101.6
Percentage change, year on previous year													
2008	GDQV 0.1	ERIB -6.6	ERIT -2.9	ERJJ 0.1	ERID -3.1	GDQW -0.4	GDQZ -1.1	GDRC 1.7	GDRJ 2.5	GDRP 1.3	GDRN 1.4	0.6	JUNW 0.9
Percentage change, latest quarter on previous quarter													
2009 Q2	-2.9	ERIJ -0.6	ERJA -0.1	ERJL -3.6	ERIH -0.5	-0.8	-0.4	-1.8	-0.7	-0.2	-0.6	-0.6	JUNU -0.7
Percentage change, latest quarter on corresponding quarter of previous year													
2009 Q2	GDRQ -5.6	ERIC -8.3	ERIU -12.4	ERJK -10.1	ERIE -11.7	GDRR -13.4	GDRU -6.7	GDRX -7.0	GDSD -4.9	GDSK -0.8	GDSI -4.2	-5.8	JUNV -5.8

B2 Gross value added chained volume measures at basic prices, by category of output: Service industries^{1,2}

2005 = 100

	Service industries											
	Wholesale and retail trade; repairs	Hotels and restaurants	Transport and storage	Post and telecommu-nication	Financial intermedia-tion	Real estate, renting and business activities	Ownership of dwellings	Public administration, national defence, social security	Education	Health and social work	Other services ⁴	Total services
2005 Weights³	116	29	45	27	71	164	69	54	59	72	52	759
2007	GDQC 106.4	GDQD 107.5	GDQF 105.0	GDQG 107.6	GDQI 114.9	GDQK 114.7	GDQL 102.2	GDQO 100.4	GDQP 99.5	GDQQ 105.5	GDQR 101.4	GDQS 107.2
2008	105.0	107.7	106.4	110.0	121.9	116.4	103.2	98.8	100.2	108.8	103.8	108.7
Seasonally adjusted												
2007 Q1	105.4	106.3	104.3	108.4	112.1	111.9	102.2	100.7	99.6	105.2	101.7	106.2
Q2	105.8	108.4	104.6	109.2	114.1	113.8	102.2	100.6	99.3	105.2	101.3	106.9
Q3	107.0	107.8	104.5	106.8	116.4	116.5	102.1	100.2	99.6	105.3	100.8	107.7
Q4	107.5	107.5	106.5	105.9	117.1	116.5	102.5	100.2	99.7	106.5	101.9	108.2
2008 Q1	107.9	109.4	108.2	107.7	120.1	117.4	103.1	99.3	99.8	107.3	105.5	109.3
Q2	107.4	107.6	108.5	109.0	121.6	117.9	103.1	98.8	99.7	108.1	105.1	109.4
Q3	103.9	107.7	106.1	111.1	122.9	116.0	103.2	98.5	100.6	109.3	104.6	108.7
Q4	100.7	106.1	102.7	112.3	123.0	114.3	103.5	98.8	100.7	110.3	100.0	107.5
2009 Q1	99.9	103.4	98.2	110.6	120.4	109.2	103.9	98.5	101.2	110.4	97.9	105.5
Q2	99.7	102.2	96.2	109.1	120.6	107.5	104.1	97.6	100.9	111.4	96.8	104.8
Percentage change, latest year on previous year												
2008	-1.4	0.2	1.3	2.3	6.1	1.5	1.0	-1.6	0.7	3.1	2.3	1.4
Percentage change, latest quarter on previous quarter												
2009 Q2	-0.3	-1.2	-2.0	-1.4	0.2	-1.5	0.2	-0.9	-0.3	0.8	-1.2	-0.6
Percentage change, latest quarter on corresponding quarter of previous year												
2009 Q2	-7.2	-5.0	-11.3	0.1	-0.7	-8.8	0.9	-1.3	1.2	3.0	-7.9	-4.2

1 Estimates cannot be regarded as accurate to the last digit shown.

3 Weights may not sum to the totals due to rounding.

2 Components of output are valued at basic prices, which excludes taxes /less subsidies on products.

4 Comprising sections O, P and Q of the SIC(92).

C1 Gross domestic product: expenditure at current market prices¹

£ million

Domestic expenditure on goods and services at market prices												
	Final consumption expenditure			Gross capital formation				Total exports	Gross final expenditure	less Total imports	Statistical discrepancy (expenditure)	Gross domestic product at market prices
	Households	Non-profit institutions ²	General government	Gross fixed capital formation	Changes in inventories ³	Acquisitions less disposals of valuables	Total					
2007	ABPB	ABNV	NMRK	NPQX	ABMP	NPJO	YBIJ	KTMW	ABMD	KTMX	GIXM	YBHA
2008	859 268	33 722	294 713	248 766	6 986	374	1 443 829	371 503	1 815 332	416 450	-	1 398 882
	891 290	37 120	313 251	243 140	1 432	614	1 486 847	422 225	1 909 072	459 461	-1 556	1 448 054
Seasonally adjusted												
2007 Q1	ABJQ	HAYE	NMRP	NPQS	CAEX	NPJQ	YBIL	IKBH	ABMF	IKBI	-	344 238
Q2	211 657	8 177	72 808	61 279	874	74	354 869	89 833	444 702	100 464	-	348 010
Q3	214 554	8 317	73 228	61 395	20	363	357 877	91 211	449 088	101 078	-	351 635
Q4	215 437	8 478	74 433	62 363	3 428	38	364 177	93 588	457 765	106 130	-	354 999
2008 Q1	217 620	8 750	74 244	63 729	2 664	-101	366 906	96 871	463 777	108 778	-	363 091
Q2	221 567	9 112	77 912	62 320	3 784	27	374 722	101 373	476 095	112 737	-267	363 228
Q3	223 029	9 359	77 625	62 144	701	276	373 134	107 395	480 529	116 946	-355	362 061
Q4	225 064	9 375	77 967	59 797	887	197	373 287	107 365	480 652	118 158	-433	359 674
2009 Q1	221 629	9 274	79 747	58 879	-3 940	114	365 703	106 092	471 795	111 620	-501	348 971
Q2	217 737	9 000	80 371	55 031	-5 378	114	356 875	98 083	454 958	105 432	-555	346 951
	217 304	8 970	81 501	52 081	-3 844	114	356 126	94 336	450 462	102 916	-595	
Percentage change, latest year on previous year												
2008	3.7	10.1	6.3	-2.3			3.0	13.7	5.2	10.3		3.5
Percentage change, latest quarter on previous quarter												
2009 Q2	-0.2	-0.3	1.4	-5.4			-0.2	-3.8	-1.0	-2.4		-0.6
Percentage change, latest quarter on corresponding quarter of previous year												
2009 Q2	-2.6	-4.2	5.0	-16.2			-4.6	-12.2	-6.3	-12.0		-4.5

C2 Gross domestic product by category of expenditure: chained volume measures¹

Reference year 2005, £ million

Domestic expenditure on goods and services at market prices												
	Final consumption expenditure			Gross capital formation				Total exports	Gross final expenditure	less Total imports	Statistical discrepancy (expenditure)	Gross domestic product at market prices
	Households	Non-profit institutions ²	General government	Gross fixed capital formation	Changes in inventories ³	Acquisitions less disposals of valuables	Total					
2007	ABPF	ABNU	NMRU	NPQR	ABMQ	NPJP	YBIK	KTMZ	ABME	KTNB	GIXS	ABMI
2008	815 157	30 040	275 488	240 613	6 646	562	1 368 506	357 677	1 726 183	403 341	-	1 322 842
	822 335	30 941	282 333	232 660	866	1 295	1 370 430	361 149	1 731 578	400 033	-1 428	1 330 118
Seasonally adjusted												
2007 Q1	ABJR	HAYO	NMRY	NPQT	CAFU	NPJR	YBIM	IKBK	ABMG	IKBL	-	327 872
Q2	202 299	7 447	68 394	59 659	928	76	338 804	88 279	427 083	99 211	-	329 967
Q3	203 492	7 413	68 650	59 620	-12	348	339 510	88 650	428 160	98 193	-	331 609
Q4	204 321	7 471	69 165	59 777	3 130	45	343 909	90 348	434 256	102 647	-	333 394
2008 Q1	205 045	7 709	69 279	61 557	2 600	93	346 283	90 400	436 684	103 290	-	335 412
Q2	206 760	7 721	69 838	59 347	3 390	212	347 268	91 126	438 394	102 734	-247	335 163
Q3	206 485	7 815	70 365	59 635	725	436	345 462	91 839	437 302	101 811	-328	332 733
Q4	205 766	7 752	70 714	57 462	640	366	342 701	90 933	433 635	100 503	-398	326 810
2009 Q1	203 324	7 653	71 416	56 216	-3 889	281	334 999	87 251	422 247	94 985	-455	
Q2	200 326	7 411	71 470	52 105	-5 171	279	326 421	81 065	407 485	88 320	-507	318 659
	199 128	7 223	71 896	49 378	-4 110	280	323 796	79 935	403 731	86 398	-543	316 790
Percentage change, latest year on previous year												
2008	0.9	3.0	2.5	-3.3			0.1	1.0	0.3	-0.8		0.6
Percentage change, latest quarter on previous quarter												
2009 Q2	-0.6	-2.5	0.6	-5.2			-0.8	-1.4	-0.9	-2.2		-0.6
Percentage change, latest quarter on corresponding quarter of previous year												
2009 Q2	-3.6	-7.6	2.2	-17.2			-6.3	-13.0	-7.7	-15.1		-5.5

1 Estimates are given to the nearest £ million but cannot be regarded as accurate to this degree.

2 Non-profit making institutions serving households.

3 Quarterly alignment adjustment included in this series.

D Gross domestic product: by category of income¹

£ million

	Gross operating surplus of corporations					Other income ³	Gross value added at factor cost	Taxes on products & production less subsidies	Statistical discrepancy (income)	Gross domestic product at market prices
	Compensation of employees	Private non-financial corporations ²	Private financial corporations	Public corporations	Total					
	HAEA	NRJK	NQNV	NRJT	CGBY	CGBW	CGCA	GCSC	GIXQ	YBHA
2007	746 384	254 243	46 377	10 167	310 787	173 443	1 230 614	168 268	–	1 398 882
2008	769 935	264 807	65 978	8 269	339 054	172 515	1 281 504	165 884	666	1 448 054
Seasonally adjusted										
	DTWM	CAER	NHCZ	CAEQ	CGBZ	CGBX	CGCB	CMVL		
2007 Q1	182 564	62 934	11 910	3 201	78 045	42 405	303 014	41 224	–	344 238
Q2	185 675	64 125	10 384	2 171	76 680	43 145	305 500	42 510	–	348 010
Q3	188 242	63 503	11 272	2 435	77 210	43 881	309 333	42 302	–	351 635
Q4	189 903	63 681	12 811	2 360	78 852	44 012	312 767	42 232	–	354 999
2008 Q1	192 293	67 120	14 467	2 682	84 269	43 935	320 497	42 369	225	363 091
Q2	192 893	65 038	15 759	1 719	82 516	44 028	319 437	43 573	218	363 228
Q3	193 190	66 529	15 303	1 708	83 540	44 019	320 749	41 149	163	362 061
Q4	191 559	66 120	20 449	2 160	88 729	40 533	320 821	38 793	60	359 674
2009 Q1	190 731	62 092	19 192	2 625	83 909	38 646	313 286	35 978	–293	348 971
Q2	192 215	59 940	17 438	2 102	79 480	38 545	310 240	37 110	–399	346 951
Percentage change, latest year on previous year										
2008	3.2	4.2	42.3	–18.7	9.1	–0.5	4.1	–1.4		3.5
Percentage change, latest quarter on previous quarter										
2009 Q2	0.8	–3.5	–9.1	–19.9	–5.3	–0.3	–1.0	3.1		–0.6
Percentage change, latest quarter on corresponding quarter on corresponding										
2009 Q2	–0.4	–7.8	10.7	22.3	–3.7	–12.5	–2.9	–14.8		–4.5

1 Estimates are given to the nearest £ million but cannot be regarded as accurate to this degree. 3 Includes mixed income and the operating surplus of the non-corporate sector.

2 Quarterly alignment adjustment included in this series.

E1 Household final consumption expenditure by purpose

Current prices

£ million

UK NATIONAL ²															
UK DOMESTIC ³															
COICOP ¹	Total	Net tourism	Food & drink	Alcohol & tobacco	Clothing & footwear	Housing	Household goods & services	Health	Transport	Communication	Recreation & culture	Education	Restaurants & hotels	Miscellaneous	
	01	02	03	04	05	06	07	08	09	10	11	12			
2007	859 268	12 209	847 059	72 313	29 845	45 597	171 757	46 212	13 775	130 463	18 496	99 060	12 443	90 816	116 282
2008	891 290	13 535	877 755	78 680	30 276	46 120	184 473	45 848	13 991	135 336	18 758	102 027	12 642	94 181	115 423
Seasonally adjusted															
2007 Q1	ABJQ	ABTF	ZAKV	ZWUM	ZAKX	ZAKZ	ZAVN	ZAVV	ZAWB	ZAWL	ZAWV	ZAWZ	ZWUS	ZAXR	ZAYF
Q2	211 657	2 870	208 787	18 366	7 584	11 131	42 314	11 364	3 323	31 476	4 606	24 370	3 042	22 501	28 710
Q3	214 554	3 241	211 313	17 856	7 373	11 619	42 573	11 697	3 407	32 457	4 552	24 783	3 108	22 905	28 983
Q4	215 437	3 071	212 366	17 936	7 444	11 525	43 058	11 598	3 473	32 592	4 638	24 966	3 130	22 600	29 406
2008 Q1	217 620	3 027	214 593	18 155	7 444	11 322	43 812	11 553	3 572	33 938	4 700	24 941	3 163	22 810	29 183
Q2	221 567	3 754	217 813	18 643	7 348	11 486	43 986	11 676	3 593	35 457	4 697	25 557	3 189	23 193	28 988
Q3	223 029	3 143	219 886	19 704	7 726	11 599	45 396	11 479	3 536	34 333	4 701	25 447	3 160	23 555	29 250
Q4	225 064	3 503	221 561	20 248	7 565	11 591	46 808	11 416	3 438	33 439	4 687	26 042	3 192	23 778	29 357
2009 Q1	221 629	3 134	218 495	20 085	7 637	11 444	48 283	11 277	3 424	32 107	4 673	24 981	3 101	23 655	27 828
Q2	217 737	2 497	215 240	20 079	7 722	11 733	48 331	11 055	3 464	30 861	4 610	24 431	3 089	23 102	26 763
Q3	217 304	2 003	215 301	20 161	7 562	11 721	48 638	11 042	3 485	31 747	4 756	24 260	3 100	22 609	26 220
Percentage change, latest year on previous year															
2008	3.7	3.6	8.8	1.4	1.1	7.4	-0.8	1.6	3.7	1.4	3.0	1.6	3.7	-0.7	
Percentage change, quarter on previous quarter															
2009 Q2	-0.2	0.0	0.4	-2.1	-0.1	0.6	-0.1	0.6	2.9	3.2	-0.7	0.4	-2.1	-2.0	
Percentage change, quarter on corresponding quarter of previous year															
2009 Q2	-2.6	-2.1	2.3	-2.1	1.1	7.1	-3.8	-1.4	-7.5	1.2	-4.7	-1.9	-4.0	-10.4	

1 ESA 95 Classification of Individual Consumption by Purpose.
2 Final Consumption by UK Households in the UK & abroad.

3 Final consumption expenditure in the UK by UK & foreign households.

E2 Household final consumption expenditure (goods and services)

Current prices

£ million

UK NATIONAL ²									
UK DOMESTIC ³									
Goods									
COICOP ¹	Total	Net tourism	Total	Total	Durable goods	Semi-durable goods	Non-durable goods	Services	
				D	SD	ND	S		
2007	ABPB	ABTE	ABQI	UTIE	UTIA	UTIQ	UTII	UTIM	
2007	859 268	12 209	847 059	397 562	95 354	95 990	206 218	449 497	
2008	891 290	13 535	877 755	413 289	93 109	96 638	223 542	464 466	
Seasonally adjusted									
2007 Q1	ABJQ	ABTF	ZAKV	UTIF	UTIB	UTIR	UTIJ	UTIN	
Q2	211 657	2 870	208 787	98 222	23 192	23 502	51 528	110 565	
Q3	214 554	3 241	211 313	98 622	23 887	24 234	50 501	112 691	
Q4	215 437	3 071	212 366	99 799	23 984	24 170	51 645	112 567	
2008 Q1	217 620	3 027	214 593	100 919	24 291	24 084	52 544	113 674	
Q2	221 567	3 754	217 813	102 697	24 698	24 219	53 780	115 116	
Q3	223 029	3 143	219 886	104 022	23 658	24 289	56 075	115 864	
Q4	225 064	3 503	221 561	103 831	22 749	24 287	56 795	117 730	
2009 Q1	221 629	3 134	218 495	102 739	22 004	23 843	56 892	115 756	
Q2	217 737	2 497	215 240	101 722	21 725	24 209	55 788	113 518	
Q3	217 304	2 003	215 301	102 156	22 330	24 140	55 686	113 145	
Percentage change, latest year on previous year									
2008	3.7	3.6	8.8	4.0	-2.4	0.7	8.4	3.3	
Percentage change, quarter on previous quarter									
2009 Q2	-0.2	0.0	0.4	2.8	-0.3	-0.2	-0.3		
Percentage change, quarter on corresponding quarter of previous year									
2009 Q2	-2.6	-2.1	2.3	-1.8	-5.6	-0.6	-0.7	-2.3	

1 ESA 95 Classification of Individual Consumption by Purpose.
2 Final Consumption by UK Households in the UK & abroad

3 Final consumption expenditure in the UK by UK & foreign households

E3 Household final consumption expenditure by purpose

Chained volume measures

Reference year 2005, £ million

UK NATIONAL ²															
UK DOMESTIC ³															
COICOP ¹	Total	Net tourism	Food & drink	Alcohol & tobacco	Clothing & footwear	Housing	Household goods & services	Health	Transport	Communication	Recreation & culture	Education	Restaurants & hotels	Miscellaneous	
	01	02	03	04	05	06	07	08	09	10	11	12			
	ABPF	ABTG	ABQJ	ADIP	ADIS	ADIW	ADIZ	ADJF	ADJM	ADJQ	ADJU	ADJV	ADMJ	ADMK	ADMN
2007	815 157	12 901	802 256	67 557	28 745	46 382	150 835	44 584	13 272	125 111	19 363	102 493	10 966	84 469	108 479
2008	822 335	13 004	809 331	67 482	27 957	48 760	150 893	42 962	13 303	124 216	20 284	108 918	10 429	84 189	109 938
Seasonally adjusted															
	ABJR	ABTH	ZAKW	ZWUN	ZAKY	ZALA	ZAVO	ZAVW	ZAWC	ZAWM	ZAWW	ZAXA	ZWUT	ZAXS	ZAYG
2007 Q1	202 299	3 222	199 077	17 522	7 287	11 295	37 606	11 054	3 220	30 567	4 728	24 747	2 749	21 206	27 096
Q2	203 492	3 453	200 038	16 703	7 125	11 719	37 626	11 249	3 285	30 782	4 781	25 505	2 774	21 399	27 090
Q3	204 321	3 211	201 110	16 804	7 164	11 745	37 535	11 203	3 344	31 550	4 883	26 151	2 743	20 917	27 071
Q4	205 045	3 015	202 031	16 528	7 169	11 623	38 068	11 078	3 423	32 212	4 971	26 090	2 700	20 947	27 222
2008 Q1	206 760	3 710	203 050	16 789	7 120	11 893	37 484	11 058	3 429	32 574	5 036	26 846	2 687	21 051	27 083
Q2	206 485	3 268	203 217	17 117	7 097	12 207	37 845	10 788	3 367	31 308	5 055	27 135	2 622	21 102	27 574
Q3	205 766	3 338	202 428	16 963	6 898	12 297	37 721	10 635	3 264	30 475	5 078	27 748	2 615	21 122	27 612
Q4	203 324	2 688	200 636	16 613	6 842	12 363	37 843	10 481	3 243	29 859	5 115	27 189	2 505	20 914	27 669
2009 Q1	200 326	1 817	198 509	16 367	6 768	12 987	37 699	10 111	3 257	29 258	5 036	26 839	2 461	20 327	27 399
Q2	199 128	1 487	197 641	16 328	6 638	12 993	37 980	10 005	3 256	29 686	5 116	26 400	2 436	19 782	27 021
Percentage change, latest year on previous year															
2008	0.9	0.9	-0.1	-2.7	5.1	0.0	-3.6	0.2	-0.7	4.8	6.3	-4.9	-0.3	1.3	
Percentage change, quarter on previous quarter															
2009 Q2	-0.6	-0.4	-0.2	-1.9	0.0	0.7	-1.0	0.0	1.5	1.6	-1.6	-1.0	-2.7	-1.4	
Percentage change, quarter on corresponding quarter of previous year															
2009 Q2	-3.6	-2.7	-4.6	-6.5	6.4	0.4	-7.3	-3.3	-5.2	1.2	-2.7	-7.1	-6.3	-2.0	

1 ESA 95 Classification of Individual Consumption by Purpose:
2 Final consumption expenditure by UK households in the UK & abroad.

3 Final consumption expenditure in the UK by UK & foreign households.

E4 Household final consumption expenditure (goods and services)

Chained volume measures

Reference year 2005, £ million

UK NATIONAL ²									
UK DOMESTIC ³									
Goods									
COICOP ¹	Total	Net tourism	Total	Total	Durable goods	Semi-durable goods	Non-durable goods	Services	
				D	SD	ND	S		
	ABPF	ABTG	ABQJ	UTIG	UTIC	UTIS	UTIK	UTIO	
2007	815 157	12 901	802 256	387 801	101 486	96 773	189 542	414 455	
2008	822 335	13 004	809 331	391 816	104 205	99 292	188 319	417 515	
Seasonally adjusted									
	ABJR	ABTH	ZAKW	UTIH	UTID	UTIT	UTIL	UTIP	
2007 Q1	202 299	3 222	199 077	95 710	24 179	23 676	47 855	103 367	
Q2	203 492	3 453	200 038	96 179	25 130	24 381	46 668	103 859	
Q3	204 321	3 211	201 110	97 836	25 808	24 380	47 648	103 274	
Q4	205 045	3 015	202 031	98 076	26 369	24 336	47 371	103 955	
2008 Q1	206 760	3 710	203 050	98 755	26 844	24 576	47 335	104 295	
Q2	206 485	3 268	203 217	98 815	26 192	24 892	47 731	104 402	
Q3	205 766	3 338	202 428	97 322	25 631	24 985	46 706	105 106	
Q4	203 324	2 688	200 636	96 924	25 538	24 839	46 547	103 712	
2009 Q1	200 326	1 817	198 509	96 371	25 379	25 523	45 469	102 138	
Q2	199 128	1 487	197 641	96 345	25 569	25 406	45 370	101 296	
Percentage change, year on previous year									
2008	0.9	0.9	0.9	1.0	2.7	2.6	-0.6	0.7	
Percentage change, quarter on previous quarter									
2009 Q2	-0.6	-0.4	-0.4	0.0	0.7	-0.5	-0.2	-0.8	
Percentage change, quarter on corresponding quarter of previous year									
2009 Q2	-3.6	-2.7	-2.7	-2.5	-2.4	2.1	-4.9	-3.0	

1 ESA 95 Classification of Individual Consumption by Purpose:
2 Final consumption expenditure by UK households in the UK & abroad

3 Final consumption expenditure in the UK by UK & foreign households

F Gross fixed capital formation by sector and type of asset

Chained volume measures

Reference year 2005, £ million

	Analysis by sector								Analysis by asset					Total
	Public corporations ²				Private sector				Transport equipment	Other machinery and equipment	Dwellings ³	Other buildings and structures ⁴	Intangible fixed assets	
	Business investment ¹	General government	Dwellings ³	Existing buildings and dwellings ⁴	Dwellings ³	Existing buildings and dwellings ⁴	NPQR	DFDV						
2007	NPEN	EQDN	DEEW	EQDF	DFDP	EQCY	NPQR	DLWJ	DLWM	DFDV	DLWQ	EQDT	NPQR	
2008	143 664	24 351	3 633	-1 760	49 113	21 612	240 613	15 284	71 255	52 749	85 872	15 452	240 613	
	145 617	29 684	3 590	-934	43 486	11 217	232 660	13 958	69 768	47 089	86 053	15 792	232 660	
Seasonally adjusted														
2007 Q1	NPEL	DLWF	DKQH	DLWH	DFEA	DLWI	NPQT	DLWL	DLWO	DFEG	DLWT	EQDO	NPQT	
Q2	35 226	5 779	954	-401	12 529	5 573	59 659	4 056	17 882	13 481	20 326	3 914	59 659	
Q3	35 372	6 076	849	-502	12 367	5 458	59 620	3 714	17 292	13 217	21 581	3 817	59 620	
Q4	36 023	5 430	928	-464	12 230	5 630	59 777	3 877	17 605	13 160	21 294	3 841	59 777	
	37 043	7 066	902	-393	11 987	4 951	61 557	3 637	18 476	12 891	22 671	3 880	61 557	
2008 Q1	36 135	7 047	944	-272	11 809	3 684	59 347	3 623	16 783	12 760	22 208	3 973	59 347	
Q2	37 419	7 002	880	-270	11 276	3 328	59 635	3 779	18 047	12 158	21 747	3 904	59 635	
Q3	36 275	7 725	870	-244	10 557	2 279	57 462	3 306	17 763	11 428	21 035	3 929	57 462	
Q4	35 788	7 910	896	-148	9 844	1 926	56 216	3 250	17 175	10 743	21 063	3 986	56 216	
2009 Q1	32 598	8 462	878	-13	8 845	1 335	52 105	2 688	15 354	9 725	20 253	4 085	52 105	
Q2	29 278	8 887	981	-250	8 210	2 272	49 378	2 585	12 703	9 193	20 954	3 943	49 378	
Percentage change, latest year on previous year														
2008	1.4	21.9	-1.2	-46.9	-11.5	-48.1	-3.3	-8.7	-2.1	-10.7	0.2	2.2	-3.3	
Percentage change, latest quarter on previous quarter														
2009 Q2	-10.2	5.0	11.7	+	-7.2	70.2	-5.2	-3.8	-17.3	-5.5	3.5	-3.5	-5.2	
Percentage change, latest quarter on corresponding quarter of previous year														
2009 Q2	-21.8	26.9	11.5	-7.4	-27.2	-31.7	-17.2	-31.6	-29.6	-24.4	-3.6	1.0	-17.2	

1 Not including expenditure on dwellings, land and existing buildings and costs associated with the transfer of ownership of non-produced assets.

2 Remaining investment by public non-financial corporations included within business investment.

3 Includes new dwellings and improvements to dwellings.

4 Including costs associated with the transfer of ownership of buildings, dwellings and non-produced assets.

G Changes in inventories Chained volume measures¹

Reference year 2005, £ million

	Mining and quarrying	Manufacturing industries				Electricity, gas and water supply	Distributive trades			Changes in inventories
		Materials and fuel	Work in progress	Finished goods	Total		Wholesale ²	Retail ²	Other industries	
Level of inventories held at end-December 2008	718	15 998	16 011	20 302	52 311	2 317	28 734	26 152	69 466	179 697
	FADO	FBID	FBIE	FBIF	DHBH	FADP	FAJM	FBYH	DLWV	ABMQ
2004	-40	294	-541	-106	-345	2	300	995	3 769	4 843
2005	-16	385	938	357	1 679	656	931	-447	1 668	4 472
2006	-22	293	1 319	567	2 179	380	947	685	620	4 789
2007	-97	374	-357	402	419	-284	-70	1 724	4 954	6 646
2008	-47	-864	-723	-378	-1 965	936	967	-223	1 198	866
Seasonally adjusted	FAEA	FBNF	FBNG	FBNH	DHBM	FAEB	FAJX	FBYN	DLWX	CAFU
2007 Q1	-4	375	247	342	964	-39	-36	243	-200	928
Q2	-13	-27	-259	-230	-516	-165	416	291	-25	-12
Q3	-60	233	-207	180	206	-12	346	578	2 072	3 130
Q4	-20	-207	-138	110	-235	-68	-796	612	3 107	2 600
2008 Q1	-6	-185	507	-17	305	32	230	514	2 315	3 390
Q2	-13	51	-308	623	366	374	237	263	-502	725
Q3	15	-355	-452	-189	-996	316	275	86	944	640
Q4	-43	-375	-470	-795	-1 640	214	225	-1 086	-1 559	-3 889
2009 Q1	-34	-623	-436	-735	-1 794	-88	-1 072	111	-2 294	-5 171
Q2	-5	-485	-260	-744	-1 489	-1	-874	463	-2 204	-4 110

1 Estimates are given to the nearest £ million but cannot be regarded as accurate to this degree.

2 Wholesaling and retailing estimates exclude the motor trades.

H1 Exports and imports of goods and services

Current market prices

£ million

	Exports			Imports			Balance		
	Goods	Services	Total	Goods	Services	Total	Goods	Services	Total
2007	LQAD 220 858	KTMQ 150 645	KTMW 371 503	LQBL 310 612	KTMR 105 838	KTMX 416 450	LQCT -89 754	KTMS 44 807	KTMY -44 947
2008	251 372	170 853	422 225	344 818	114 643	459 461	-93 446	56 210	-37 236
Seasonally adjusted									
2007 Q1	BOKG 53 516	IKBB 36 317	IKBH 89 833	BOKH 75 133	IKBC 25 331	IKBI 100 464	BOKI -21 617	IKBD 10 986	IKBJ -10 631
Q2	54 580	36 631	91 211	74 985	26 093	101 078	-20 405	10 538	-9 867
Q3	55 524	38 064	93 588	79 290	26 840	106 130	-23 766	11 224	-12 542
Q4	57 238	39 633	96 871	81 204	27 574	108 778	-23 966	12 059	-11 907
2008 Q1	60 661	40 712	101 373	84 272	28 465	112 737	-23 611	12 247	-11 364
Q2	64 832	42 563	107 395	88 476	28 470	116 946	-23 644	14 093	-9 551
Q3	65 585	41 780	107 365	89 404	28 754	118 158	-23 819	13 026	-10 793
Q4	60 294	45 798	106 092	82 666	28 954	111 620	-22 372	16 844	-5 528
2009 Q1	55 754	42 329	98 083	76 550	28 882	105 432	-20 796	13 447	-7 349
Q2	54 949	39 387	94 336	74 835	28 081	102 916	-19 886	11 306	-8 580
Percentage change, latest year on previous year									
2008	13.8	13.4	13.7	11.0	8.3	10.3			
Percentage change, latest quarter on previous quarter									
2009 Q2	-1.4	-7.0	-3.8	-2.2	-2.8	-2.4			
Percentage change, latest quarter on corresponding quarter of previous year									
2009 Q2	-15.2	-7.5	-12.2	-15.4	-1.4	-12.0			

H2 Exports and imports of goods and services

Chained volume measures

Reference year 2005, £ million

	Exports			Imports			Balance
	Goods	Services	Total	Goods	Services	Total	Total
2007	BQKP 212 477	KTMT 145 200	KTMZ 357 677	BQKN 300 370	KTMU 102 971	KTNB 403 341	KTNC -45 664
2008	213 035	148 114	361 149	294 555	105 478	400 033	-38 884
Seasonally adjusted							
2007 Q1	BQKQ 52 599	IKBE 35 680	IKBK 88 279	BQKO 74 173	IKBF 25 038	IKBL 99 211	IKBM -10 932
Q2	53 032	35 618	88 650	72 871	25 322	98 193	-9 543
Q3	53 558	36 790	90 348	76 651	25 996	102 647	-12 299
Q4	53 288	37 112	90 400	76 675	26 615	103 290	-12 890
2008 Q1	54 202	36 924	91 126	75 848	26 887	102 734	-11 608
Q2	54 398	37 441	91 839	75 120	26 691	101 811	-9 972
Q3	54 120	36 813	90 933	74 222	26 281	100 503	-9 570
Q4	50 315	36 936	87 251	69 365	25 619	94 985	-7 734
2009 Q1	46 381	34 684	81 065	63 828	24 492	88 320	-7 255
Q2	46 074	33 861	79 935	62 154	24 243	86 398	-6 463
Percentage change, latest year on previous year							
2008	0.3	2.0	1.0	-1.9	2.4	-0.8	
Percentage change, latest quarter on previous quarter							
2009 Q2	-0.7	-2.4	-1.4	-2.6	-1.0	-2.2	
Percentage change, latest quarter on corresponding quarter of previous year							
2009 Q2	-15.3	-9.6	-13.0	-17.3	-9.2	-15.1	

Net Lending by Sector

£ million

	Net lending (+)/Net borrowing (-) by sector ¹						
	Government		Corporations			Household & NPISH	Rest of the World
	Central	Local	Public	Financial	Private non-financial		
	NMFJ	NMOE	CPCM	NHCQ	DTAL	NSSZ	NHRB
2004	-37 269	-4 620	3 644	18 702	28 820	-32 130	22 853
2005	-35 736	-4 420	203	9 017	26 907	-27 310	31 338
2006	-34 449	-273	4 072	3 124	30 458	-45 799	42 867
2007	-37 104	157	3 219	27 249	28 280	-56 945	35 144
2008	-71 017	-4 053	1 406	64 466	31 707	-44 963	20 231
Seasonally adjusted							
	RPYH	RQAJ	RQBN	RPYN	RQBV	RPZT	RQCH
2007 Q1	-8 488	-3 094	1 827	4 820	9 301	-15 602	11 238
Q2	-8 096	1 376	387	3 408	9 821	-15 349	8 453
Q3	-9 813	1 166	450	5 886	3 512	-12 613	11 412
Q4	-10 707	709	555	13 135	5 646	-13 381	4 041
2008 Q1	-10 094	-2 210	2 669	11 415	13 882	-18 026	1 872
Q2	-14 581	301	-488	16 897	4 406	-11 269	4 161
Q3	-20 297	-1 189	-510	22 031	3 747	-11 294	6 916
Q4	-26 045	-955	-265	14 123	9 672	-4 373	7 282
2009 Q1	-35 843	-3 303	1 114	15 790	19 771	-1 051	3 260
Q2	-34 019	352	-608	11 922	9 118	2 521	10 518

¹ The sum of net lending by sector is equal (but opposite sign) to the residual error between the expenditure and income based estimates of GDP

J1 Households Sector¹: Allocation of Primary Income Account

£ million

	RESOURCES					USES				Households' share of gross national income (per cent)
	Gross operating surplus including gross mixed income	Wages and salaries	Employers' social contributions	Property income received	Total resources	Property income paid	Balance of primary incomes, gross	Total uses		
	NRJN	ROYJ	ROYK	ROYL	ROYR	ROYT	ROYS	ROYR	NRJH	
2007	160 272	629 100	116 550	175 856	1 081 778	73 063	1 008 715	1 081 778	71.2	
2008	158 766	652 510	116 711	171 772	1 099 759	61 242	1 038 517	1 099 759	70.5	
Seasonally adjusted										
2007 Q1	39 155	153 286	29 109	43 171	264 721	16 962	247 759	264 721	71.6	
Q2	39 868	155 831	29 680	43 909	269 288	17 870	251 418	269 288	71.5	
Q3	40 577	158 908	29 127	44 405	273 017	19 119	253 898	273 017	71.6	
Q4	40 672	161 075	28 634	44 371	274 752	19 112	255 640	274 752	69.9	
2008 Q1	40 559	162 610	29 559	44 725	277 453	18 284	259 169	277 453	69.1	
Q2	40 613	163 179	29 509	43 795	277 096	16 871	260 225	277 096	70.2	
Q3	40 558	163 820	29 208	42 734	276 320	16 055	260 265	276 320	70.7	
Q4	37 036	162 901	28 435	40 518	268 890	10 032	258 858	268 890	72.0	
2009 Q1	35 107	161 132	29 481	33 568	259 288	3 038	256 250	259 288	72.1	
Q2	34 973	162 436	29 590	32 573	259 572	1 517	258 055	259 572	74.1	
Percentage change, latest year on previous year										
2008	-0.9	3.7	0.1	-2.3	1.7	-16.2	3.0	1.7		
Percentage change, latest quarter on previous quarter										
2009 Q2	-0.4	0.8	0.4	-3.0	0.1	-50.1	0.7	0.1		
Percentage change, latest quarter on corresponding quarter of previous year										
2009 Q2	-13.9	-0.5	0.3	-25.6	-6.3	-91.0	-0.8	-6.3		

¹ This sector includes households and non-profit institutions serving households.

J2 Households Sector¹: Secondary Distribution of Income Account

£ million

	RESOURCES					USES						Real households disposable income: at chained volume measures
	Gross balance of primary incomes	Social contributions	Social benefits other than social transfers in kind	Other current transfers	Total resources	Current taxes on income, wealth, etc.	Social contributions	Social benefits other than social transfers in kind	Other current transfers	Households' gross disposable income	Total uses	
	ROYS	RVFH	RPHL	RPHM	RPHP	RPHR	RPHU	RPIA	RPIB	RPHQ	RPHP	NRJR
2007	1 008 715	518	227 520	55 360	1 292 113	183 499	204 470	1 014	29 247	873 883	1 292 113	827 113
2008	1 038 517	524	250 436	56 424	1 345 901	187 970	208 294	1 020	29 865	918 752	1 345 901	844 400
Seasonally adjusted												
2007 Q1	247 759	129	56 110	12 023	316 021	44 769	50 873	253	5 917	214 209	316 021	204 382
Q2	251 418	131	56 556	13 577	321 682	45 493	51 246	255	7 444	217 244	321 682	205 583
Q3	253 898	129	56 927	13 513	324 467	46 190	51 203	253	6 859	219 962	324 467	208 056
Q4	255 640	129	57 927	16 247	329 943	47 047	51 148	253	9 027	222 468	329 943	209 092
2008 Q1	259 169	131	59 483	13 954	332 737	49 875	53 053	255	7 650	221 904	332 737	206 348
Q2	260 225	131	62 586	13 867	336 809	46 066	52 629	255	7 596	230 263	336 809	212 367
Q3	260 265	131	63 898	14 149	338 443	46 682	51 897	255	7 380	232 229	338 443	211 531
Q4	258 858	131	64 469	14 454	337 912	45 347	50 715	255	7 239	234 356	337 912	214 154
2009 Q1	256 250	131	66 362	13 682	336 425	46 524	50 548	255	7 660	231 438	336 425	212 045
Q2	258 055	131	65 459	14 381	338 026	43 659	51 420	255	8 183	234 509	338 026	213 862
Percentage change, latest year on previous year												
2008	3.0		10.1	1.9	4.2	2.4	1.9		2.1	5.1	4.2	2.1
Percentage change, latest quarter on previous quarter												
2009 Q2	0.7		-1.4	5.1	0.5	-6.2	1.7		6.8	1.3	0.5	0.9
Percentage change, latest quarter on corresponding quarter of previous year												
2009 Q2	-0.8		4.6	3.7	0.4	-5.2	-2.3		7.7	1.8	0.4	0.7

¹ This sector includes households and non-profit institutions serving households.

J3 Households Sector¹: Use of Disposable Income Account

£ million

	RESOURCES			USES			Households ² saving ratio (per cent)
	Gross households' disposable income	Adjustment for the change in net equity of households in pension funds	Total available households' resources	Final consumption expenditure	Gross saving	Total uses	
	RPHQ	RPQJ	RPQK	RPQM	RPQL	RPQK	NRJS
2007	873 883	38 766	912 649	892 990	19 659	912 649	2.2
2008	918 752	26 191	944 943	928 409	16 534	944 943	1.7
Seasonally adjusted							
2007 Q1	214 209	8 552	222 761	219 834	2 927	222 761	1.3
Q2	217 244	10 611	227 855	222 871	4 984	227 855	2.2
Q3	219 962	10 234	230 196	223 915	6 281	230 196	2.7
Q4	222 468	9 369	231 837	226 370	5 467	231 837	2.4
2008 Q1	221 904	7 684	229 588	230 679	-1 091	229 588	-0.5
Q2	230 263	7 571	237 834	232 388	5 446	237 834	2.3
Q3	232 229	6 208	238 437	234 439	3 998	238 437	1.7
Q4	234 356	4 728	239 084	230 903	8 181	239 084	3.4
2009 Q1	231 438	4 464	235 902	226 737	9 165	235 902	3.9
Q2	234 509	5 169	239 678	226 274	13 404	239 678	5.6
Percentage change, latest year on previous year							
2008	5.1		3.5	4.0		3.5	
Percentage change, latest quarter on previous quarter							
2009 Q2	1.3		1.6	-0.2		1.6	
Percentage change, latest quarter on corresponding quarter of previous year							
2009 Q2	1.8		0.8	-2.6		0.8	

1 This sector includes households and non-profit institutions serving households.

2 Households' saving as a percentage of total available households' resources

K1 Private Non-Financial Corporations Sector: Allocation of Primary Income Account

£ million

	Gross operating surplus						Property income payments					Gross balance of primary incomes ¹	Share of gross national income ¹ (%)
	Gross trading profits		Rental of buildings	less Inventory holding gains	Gross operating surplus ¹	Property income receipts	Total resources ^{1,2}	Total payments	of which Dividends	of which Interest			
	Continental shelf companies	Others ¹											
2007	CAGD	CAED	DTWR	-DLRA	CAER	RPBM	RPBN	RPBP	RVFT	ROCG	RPBO	NRJL	
2008	26 871	217 179	16 592	-6 399	254 243	117 435	371 678	175 167	83 344	53 404	196 511	13.9	
	37 092	218 168	17 511	-7 964	264 807	102 555	367 362	170 534	82 595	47 944	196 828	13.4	
Seasonally adjusted													
2007 Q1	5 457	54 674	4 081	-1 278	62 934	28 177	91 111	43 104	19 814	13 004	48 007	13.9	
Q2	5 973	55 478	4 113	-1 439	64 125	28 974	93 099	42 661	20 562	13 126	50 438	14.3	
Q3	6 481	54 552	4 180	-1 710	63 503	29 010	92 513	44 473	21 793	13 640	48 040	13.5	
Q4	8 960	52 475	4 218	-1 972	63 681	31 274	94 955	44 929	21 175	13 634	50 026	13.7	
2008 Q1	9 532	56 182	4 297	-2 891	67 120	31 130	98 250	42 185	18 774	13 418	56 065	15.0	
Q2	10 098	54 267	4 373	-3 700	65 038	30 523	95 561	47 167	23 914	13 095	48 394	13.1	
Q3	10 302	53 433	4 431	-1 637	66 529	25 101	91 630	45 326	23 777	12 134	46 304	12.6	
Q4	7 160	54 286	4 410	264	66 120	15 801	81 921	35 856	16 130	9 297	46 065	12.8	
2009 Q1	6 102	52 993	4 385	-1 388	62 092	18 894	80 986	33 943	16 968	7 739	47 043	13.2	
Q2	5 539	50 715	4 403	-717	59 940	17 297	77 237	37 597	23 784	6 649	39 640	11.4	
Percentage change, latest year on previous year													
2008	38.0	0.5			4.2	-12.7	-1.2	-2.6	-0.9	-10.2	0.2		
Percentage change, latest quarter on previous quarter													
2009 Q2	-9.2	-4.3			-3.5	-8.5	-4.6	10.8	40.2	-14.1	-15.7		
Percentage change, latest quarter on corresponding quarter of previous year													
2009 Q2	-45.1	-6.5			-7.8	-43.3	-19.2	-20.3	-0.5	-49.2	-18.1		

1 Quarterly alignment adjustment included in this series.

2 Total resources equals total uses.

K2 Private Non-financial Corporations Sector: Secondary Distribution of Income Account and Capital Account

£ million

	Secondary Distribution of Income Account						Capital Account					
	Resources			Uses			Changes in liabilities & net worth		Changes in assets			
	Gross balance of primary incomes ¹	Other resources ²	Total ^{1,3}	Taxes on income	Other uses ⁴	Gross disposable income ^{1,5}	Net capital transfer receipts	Total ¹	Gross fixed capital formation	Changes in inventories ¹	Other changes in assets ⁶	Net lending or borrowing (-) ^{1,7}
	RPBO	NROQ	RPKY	RPLA	NROO	RPKZ	NROP	RPXH	ROAW	DLQY	NRON	RQBV
2007	196 511	8 429	204 940	38 133	8 917	157 890	7 062	164 952	127 561	6 644	2 467	28 280
2008	196 828	8 556	205 384	41 012	9 044	155 328	5 907	161 235	127 785	1 219	524	31 707
Seasonally adjusted												
2007 Q1	48 007	1 976	49 983	9 643	2 098	38 242	3 391	41 633	31 150	689	493	9 301
Q2	50 438	2 170	52 608	9 221	2 292	41 095	925	42 020	30 933	-103	1 369	9 821
Q3	48 040	2 051	50 091	9 587	2 173	38 331	1 203	39 534	33 264	3 242	-484	3 512
Q4	50 026	2 232	52 258	9 682	2 354	40 222	1 543	41 765	32 214	2 816	1 089	5 646
2008 Q1	56 065	2 091	58 156	9 948	2 213	45 995	3 449	49 444	32 072	3 450	40	13 882
Q2	48 394	2 080	50 474	10 615	2 202	37 657	896	38 553	33 234	749	164	4 406
Q3	46 304	2 136	48 440	10 241	2 258	35 941	552	36 493	31 851	736	159	3 747
Q4	46 065	2 249	48 314	10 208	2 371	35 735	1 010	36 745	30 628	-3 716	161	9 672
2009 Q1	47 043	2 535	49 578	9 528	2 657	37 393	5 335	42 728	28 152	-5 315	120	19 771
Q2	39 640	2 631	42 271	8 526	2 753	30 992	1 534	32 526	27 167	-3 780	21	9 118
Percentage change, latest year on previous year												
2008	0.2	1.5	0.2	7.5	1.4	-1.6	-16.4	-2.3	0.2			
Percentage change, latest quarter on previous quarter												
2009 Q2	-15.7	3.8	-14.7	-10.5	3.6	-17.1	-71.2	-23.9	-3.5			
Percentage change, latest quarter on corresponding quarter of previous year												
2009 Q2	-18.1	26.5	-16.3	-19.7	25.0	-17.7	71.2	-15.6	-18.3			

1 Quarterly alignment adjustment included in this series.

2 Social contributions and other current transfers.

3 Total resources equals total uses.

4 Social benefits and other current transfers.

5 Also known as gross saving.

6 Acquisitions less disposals of valuables and non-produced non-financial assets.

7 Gross of fixed capital consumption.

Gross value added at basic prices: individual measures

	£ million				Index numbers (2005 = 100)				
	Expenditure-based estimate at chained volume measures	At current prices		Residual error ¹	Value indices at current prices		Chained volume indices		
		Expenditure-based estimate	Income-based estimate		Expenditure-based estimate	Income-based estimate	Expenditure-based estimate	Income-based estimate ²	Output-based estimate
	CAGR	CAGQ	CAGS	DJDS	IHYA	IHYB	IHYC	IHYD	YBFR
2007	1 180 158	1 245 735	1 245 735	–	111.6	111.6	105.7	105.7	105.8
2008	1 188 672	1 300 053	1 297 831	2 222	116.4	116.2	106.5	106.3	106.3
Seasonally adjusted									
2007 Q1	292 276	306 154	306 154	–	109.7	109.7	104.7	104.7	104.8
Q2	294 264	309 585	309 585	–	110.9	110.9	105.4	105.4	105.5
Q3	295 989	313 159	313 159	–	112.2	112.2	106.0	106.0	106.1
Q4	297 629	316 837	316 837	–	113.5	113.5	106.6	106.6	106.6
2008 Q1	299 983	324 398	323 906	492	116.2	116.0	107.5	107.3	107.4
Q2	299 853	324 253	323 680	573	116.2	115.9	107.4	107.2	107.3
Q3	297 159	325 838	325 242	596	116.7	116.5	106.4	106.2	106.3
Q4	291 677	325 564	325 003	561	116.6	116.4	104.5	104.3	104.3
2009 Q1	284 431	316 900	316 638	262	113.5	113.4	101.9	101.8	101.5
Q2	282 828	314 925	314 729	196	112.8	112.7	101.3	101.2	100.9
Percentage change, latest year on previous year									
2008	0.7	4.4	4.2		4.4	4.2	0.7	0.5	0.5
Percentage change, latest quarter on previous quarter									
2009 Q2	–0.6	–0.6	–0.6		–0.6	–0.6	–0.6	–0.6	–0.6
Percentage change, latest quarter on corresponding quarter of previous year									
2009 Q2	–5.7	–2.9	–2.8		–2.9	–2.8	–5.7	–5.6	–6.0

¹ The residual error is, by convention, the amount by which the expenditure-based approach to measuring GDP exceeds the income-based estimate. It is also the sum of two components: the statistical discrepancy (expenditure) with sign reversed, and the statistical discrepancy (income) with natural sign.

² Income data deflated by the implied GDP deflator, based on expenditure data.

M Alignment adjustments

£ million

	Changes in inventories		Gross operating surplus of non-financial corporations at current prices
	At current prices	Chained volume measures (Reference year 2005)	
Seasonally adjusted			
	DMUN	DMUM	DMUQ
2004 Q1	-580	-593	-2 097
Q2	-762	-773	-415
Q3	219	230	879
Q4	1 123	1 136	1 633
2005 Q1	1 384	1 388	329
Q2	771	766	354
Q3	-656	-661	-99
Q4	-1 499	-1 494	-584
2006 Q1	2 724	2 665	1 107
Q2	-392	-394	-1 583
Q3	-1 259	-1 228	-43
Q4	-1 073	-1 043	519
2007 Q1	-1 627	-1 543	1 825
Q2	-1 213	-1 143	1 366
Q3	1 429	1 354	-510
Q4	1 411	1 332	-2 681
2008 Q1	287	267	413
Q2	-1 881	-1 734	-1 456
Q3	1 595	1 467	-557
Q4	-1	-	1 600
2009 Q1	-571	-521	924
Q2	-298	-272	-382

R Revisions Analysis^{1,2}

Revisions since previously published estimates

£ million

	2005	2006	2007	2008
Latest less previously published levels of GDP at current market prices				
<i>Previous estimates published on 28th August 2009</i>				
National accounts aggregates at current prices (Table A2)				
Gross domestic product at market prices	–	–	–	1 941
less Basic price adjustment	–	–	–	–224
Gross value added at basic prices	–	–	–	2 165
Gross domestic product: expenditure at current prices (Table C1)				
Domestic expenditure on goods and services at market prices				
Households	–	–	–	761
Non-profit institutions serving households	–	–	–	250
General government	–	–	–	232
Gross fixed capital formation	–	–	–	–1 083
Changes in inventories	–	–	–	–166
Acquisitions less disposals of valuables	–	–	–	–
Total	1	–	–	–6
Total exports	–	–	–	724
Total imports	–	–	–	–438
Statistical discrepancy (expenditure)	–1	–	–	785
Gross domestic product: income at current prices (Table D)				
Compensation of employees	–	–	–	273
Gross operating surplus of corporations	–	–	–	–809
Other income	–	–	–	6
Gross value added at factor cost	–	–	–	–530
Taxes on products & production less Subsidies	–	–	–	38
Statistical discrepancy (income)	–	–	–	2 433

1 Estimates are given to the nearest £ million but cannot be regarded as accurate to this degree.

	2005	2006	2007	2008
Latest less previously published growth rates for GDP in chained volume terms				
<i>Previous estimates published on 28th August 2009</i>				
Percentage changes in volume of GDP (Table A2)				
Gross domestic product chained volume measures				
Year on year growth	–	–	–	–0.1
Percentage changes in volume of GVA output components (Table B1)				
GVA at basic prices				
Agriculture, forestry and fishing	–	–	–	1.4
Mining, quarrying inc oil & gas extraction	–	–	–	–
Manufacturing	–	–	–	–
Electricity gas and water supply	–	–	–	0.1
Total Production	–	–	–	–
Construction	–	–	–	–0.6
Distribution, hotels and catering; repairs	–	–	–	–
Transport, storage and communication	–	–	–	–0.2
Business services and finance	–	–	–	0.1
Government and other services	–	–	–	0.2
Total Services	–	–	–	0.1
Total GVA	–	–	–	–0.2
Total GVA excluding Oil	–	–	–	–0.2
Percentage changes in volume of GDP expenditure components (Table C2)				
Domestic expenditure on goods and services at market prices				
Households	–	–	–	–
Non-profit institutions serving households	–	–	–	–6.8
General government	–	–	–	–0.3
Gross fixed capital formation	–	–	–	–0.5
Total	–	–	–	–0.4
Total exports	–	–	–	0.2
Total imports	–	–	–	–0.2

	2005	2006	2007	2008
Latest less previously published household saving ratio				
<i>Previous estimates published on 30th June 2009</i>				
Households' sector: Use of Disposable Income Account (TABLE J3)				
Saving ratio (per cent)	–	–	–	–

2 Estimates are given to one decimal place but cannot be regarded as accurate to this degree.

R Revisions Analysis^{1,2}

Revisions since previously published estimates

continued

£ million

	2007 Q1	2007 Q2	2007 Q3	2007 Q4	2008 Q1	2008 Q2	2008 Q3	2008 Q4	2009 Q1	2009 Q2
Latest less previously published levels of GDP at current market prices										
<i>Previous estimates published on 28th August 2009</i>										
National accounts aggregates at current prices (Table A2)										
Gross domestic product at market prices	-	-	-	-	907	-125	-118	1 277	1 253	-935
less Basic price adjustment	-	-	-	-	-6	-101	153	-270	5	-131
Gross value added at basic prices	-	-	-	-	913	-24	-271	1 547	1 248	-804
Gross domestic product: expenditure at current prices (Table C1)										
Domestic expenditure on goods and services at market prices										
Households	-	-	-	-	-21	320	315	147	63	-616
Non-profit institutions serving households	-	-	-	-	54	57	64	75	-4	135
General government	-	-	-	-	372	-73	-94	27	330	-811
Gross fixed capital formation	-	-	-	-	-1 330	441	-291	97	-400	-330
Changes in inventories	-	-	-	-	1 744	-1 514	-600	204	338	1 557
Acquisitions less disposals of valuables	-	-	-	-	-	-	-	-	-	-
Total	-	-	-	-	819	-769	-606	550	327	-65
Total exports	-	-	-	-	-430	786	139	229	8	-668
Total imports	-	-	-	-	-327	357	-140	-328	-910	170
Statistical discrepancy (expenditure)	-	-	-	-	191	215	209	170	8	-32
Gross domestic product: income at current prices (Table D)										
Compensation of employees	-	-	-	-	124	-35	99	85	1 907	1 558
Gross operating surplus of corporations	-	-	-	-	-72	-195	-1 231	689	-203	-1 581
Other income	-	-	-	-	260	-501	136	111	-687	-890
Gross value added at factor cost	-	-	-	-	312	-731	-996	885	1 017	-913
Taxes on products & production less Subsidies	-	-	-	-	24	-42	231	-175	104	-48
Statistical discrepancy (income)	-	-	-	-	571	648	647	567	132	26

1 Estimates are given to the nearest £ million but cannot be regarded as accurate to this degree.

	2007 Q1	2007 Q2	2007 Q3	2007 Q4	2008 Q1	2008 Q2	2008 Q3	2008 Q4	2009 Q1	2009 Q2
Latest less previously published growth rates for GDP in chained volume terms										
<i>Previous estimates published on 28th August 2009</i>										
Percentage changes in volume of GDP (Table A2)										
Gross domestic product chained volume measures										
Quarter on quarter growth	-	-	-	-	-0.2	-	-	-	-0.1	0.1
Quarter on same quarter a year earlier	-	-	-	-	-0.2	-0.2	-0.2	-0.2	-0.1	-
Percentage changes in volume of GVA output components (Table B1)										
GVA at basic prices quarter on quarter growth										
Agriculture, forestry and fishing	-	-	-	-	0.2	1.9	-	-1.3	-0.7	-0.1
Mining, quarrying inc oil & gas extraction	-	-	-	-	-	-	-0.2	0.2	-0.1	0.1
Manufacturing	-	-	-	-	-	-	-0.2	0.2	0.1	0.1
Electricity gas and water supply	-	-	-	-	-	0.2	-0.1	-	-0.1	0.1
Total Production	-	-	-	-	0.1	-	-0.2	0.2	-	0.1
Construction	-	-	-	-	-0.7	0.1	-0.3	0.2	-	1.4
Distribution, hotels and catering; repairs	-	-	-	-	0.1	-	-0.1	-	0.4	-0.4
Transport, storage and communication	-	-	-	-	-0.3	0.1	-	-0.1	-0.2	-0.2
Business services and finance	-	-	-	-	-	0.1	0.1	-0.2	-0.4	0.1
Government and other services	-	-	-	-	0.3	-0.1	-	-0.3	-0.6	0.1
Total Services	-	-	-	-	0.1	-	-	-0.2	-0.3	-
Total GVA	-	-	-	-	-0.2	-	-	-0.1	-	0.1
Total GVA excluding Oil	-	-	-	-	-	-	-	-	-	-
Percentage changes in volume of GDP expenditure components (Table C2)										
Domestic expenditure on goods and services at market prices quarter on quarter growth										
Households	-	-	-	-	-0.3	0.3	0.1	-0.1	-0.2	0.1
Non-profit institutions serving households	-	-	-	-	-3.7	-2.7	-1.4	-0.1	-	1.6
General government	-	-	-	-	-0.2	-0.2	-	-0.1	-0.1	-0.2
Gross fixed capital formation	-	-	-	-	-1.9	2.8	-0.8	-1.0	0.2	-0.7
Total	-	-	-	-	-0.2	-0.2	-	0.1	-0.1	0.1
Total exports	-	-	-	-	-0.5	1.3	-0.6	0.1	-0.2	1.3
Total imports	-	-	-	-	-0.2	0.5	-0.6	-	-0.3	1.0
	2007 Q1	2007 Q2	2007 Q3	2007 Q4	2008 Q1	2008 Q2	2008 Q3	2008 Q4	2009 Q1	2009 Q2
Latest less previously published household saving ratio										
<i>Previous estimates published on 30th June 2009</i>										
Households' sector:										
Use of Disposable Income Account (TABLE J3)										
Saving ratio (per cent)	-	-	-	-	0.3	-0.1	0.4	-0.6	0.9	..

2 Estimates are given to one decimal place but cannot be regarded as accurate to this degree.

Next publication: Friday 23 October 2009

Issued by: Office for National Statistics, Government Buildings, Cardiff
Road, Newport NP10 8XG

Media contact:

Tel **Media Relations Office 0845 604 1858**
 Emergency on-call 07867 906553
Email **press.office@ons.gsi.gov.uk**

Statistical contact:

Tel **Jon Beadle 020 7014 2053**
Email **gdp@ons.gov.uk**

Website:

www.statistics.gov.uk