

Quarterly national accounts 1st quarter 2009



Date: 30 June 2009

Coverage: United Kingdom **Theme:** The Economy

UK gross domestic product (GDP) in volume terms fell by 2.4 per cent compared with the previous quarter, revised down from last month's estimate of 1.9 per cent. The level of GDP is now 4.9 per cent lower than the first quarter of 2008. The estimates in this bulletin release are consistent with the dataset to be published in this year's *United Kingdom National Accounts, The Blue Book 2009*.

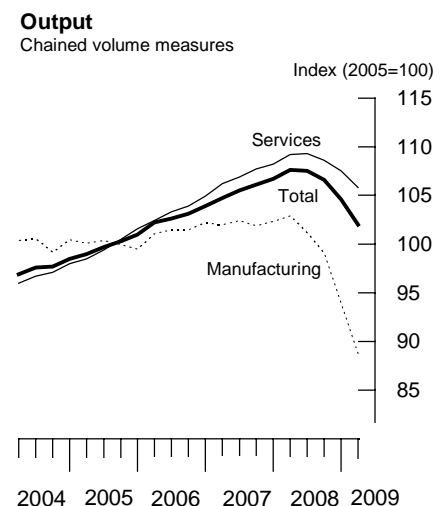
Between the fourth quarter of 2008 and first quarter of 2009:

The total volume of output in the production industries fell by 5.1 per cent, including manufacturing output which fell by 5.5 per cent.

Construction output fell by 6.9 per cent over the quarter. The output of the service industries decreased by 1.6 per cent (Table B1).

The household saving ratio was 3.0 per cent in the latest quarter compared with 4.0 per cent in the previous quarter (Table J3).

Real households' disposable income fell by 2.4 per cent in the latest quarter following 2.4 per cent rise in 2008 quarter four (Table K2).



		Household saving ratio	Real households' disposable income	Gross domestic product		
				current market prices	chained volume measure	chained volume measure
		per cent	per cent	2005=100	2005=100	per cent change
<i>Seasonally adjusted</i>						
2008	Q1	-0.8	-1.9	115.5	107.2	0.8
	Q2	2.4	3.4	115.9	107.1	-0.1
	Q3	1.3	-0.7	115.5	106.3	-0.7
	Q4	4.0	2.4	114.3	104.4	-1.8
2009	Q1	3.0	-2.4	110.9	101.9	-2.4

Gross domestic product (GDP) decreased by 2.4 per cent (revised down from a fall of 1.9 per cent published last month) in the first quarter of 2009. GDP is 4.9 per cent lower than the first quarter of 2008 (revised down from a fall of 4.1 per cent published last month).

GDP analysed by output categories, chained volume measures (Tables B1 and B2)

The output of the agriculture, forestry and fishing sector fell by 0.1 per cent compared with the previous quarter.

The output of the production industries decreased by 5.1 per cent in the first quarter, within which manufacturing output fell by 5.5 per cent. The output of the mining and quarrying sector fell by 3.7 per cent in the latest quarter. Electricity, gas and water supply fell by 3.6 per cent.

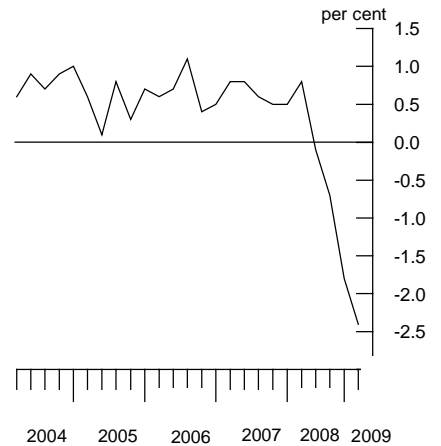
Construction output fell by 6.9 per cent in the latest quarter and to a level 13.2 per cent below the same quarter of last year.

Services output fell by 1.6 per cent, compared with the previous quarter to a level 3.1 per cent below 2008 quarter one. Over the quarter, distribution, hotels and catering sector fell by 1.5 per cent; business services and finance sector output fell by 2.5 per cent, from a decline of 0.6 per cent in 2008 quarter four; the transport, storage and communications sector fell by 3.0 per cent.

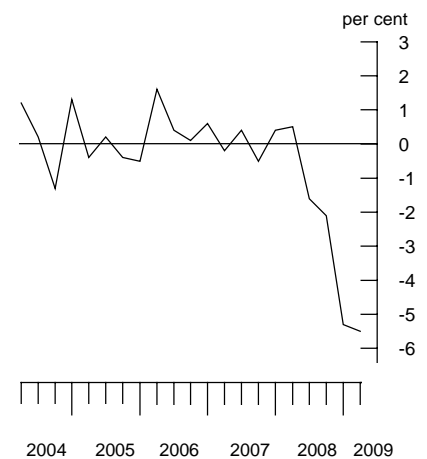
Public administration and defence output decreased by 0.4 per cent, while there were increases in the output of education of 0.2 per cent and health and social work of 0.7 per cent.

Other services decreased by 0.2 per cent in the quarter, compared with a fall of 3.5 per cent in 2008 quarter four.

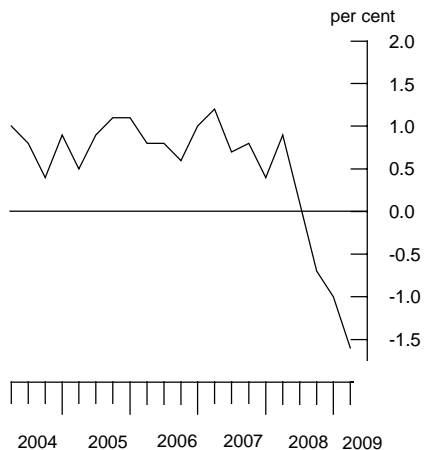
Gross domestic product ABMI
quarter on quarter growth



Manufacturing CKYY
quarter on quarter growth



Services GDQS
quarter on quarter growth



GDP analysed by expenditure categories, chained volume measures (Tables C2, E3, E4, F, G, and H2)

Gross domestic expenditure fell by 2.5 per cent in the first quarter of 2009.

Household final consumption expenditure fell by 1.3 per cent in the latest quarter compared to a fall of 1.1 per cent in the previous quarter. The volume of spending is now 3.1 per cent lower than the level in 2008 quarter one.

Government final consumption expenditure rose by 0.2 per cent in the latest quarter, down from 1.1 per cent in the previous quarter.

Gross fixed capital formation fell by 7.5 per cent, compared with a fall of 1.2 per cent in the previous quarter. Business investment and spending related to housing fell in the quarter.

The level of inventories, including the alignment adjustment, fell by £5.4 billion (table G) in the latest quarter.

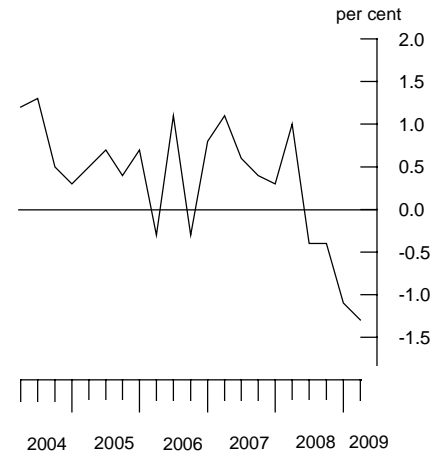
Exports of goods decreased by 7.5 per cent while imports of goods decreased by 7.8 per cent.

Exports of services fell by 6.1 per cent while imports of services fell by 3.7 per cent.

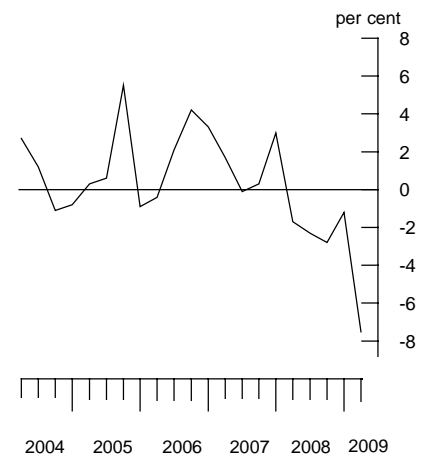
GDP deflator

The gross domestic product deflator at market prices fell by 0.6 per cent in the first quarter of 2009 and is now 1.0 per cent above the same quarter of 2008.

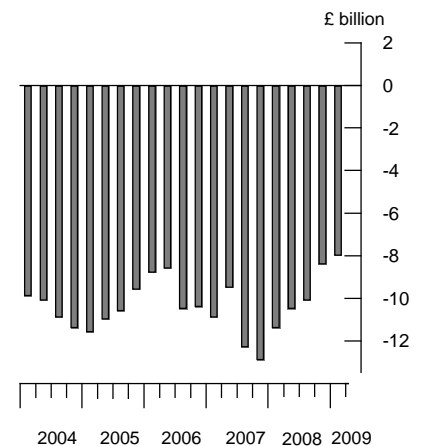
Household final expenditure ABJR
quarter on quarter growth



Gross fixed capital formation NPQT
quarter on quarter growth



Net trade IKBM
Chained volume measures



GDP analysed by income categories at current prices (Table D)

GDP at current market prices fell by 3.0 per cent over the quarter, compared with a decline of 1.0 per cent in 2008 quarter four.

Compensation of employees fell by 1.4 per cent, compared with a decline of 0.8 per cent in the previous quarter.

The gross operating surplus of corporations decreased by 4.5 per cent, compared with a rise of 3.9 per cent in 2008 quarter four. Private non-financial corporations' operating surplus declined by 2.5 per cent with a significant fall in profits earned by continental shelf companies. Financial corporations operating surplus fell by 14.8 per cent.

Taxes on production less subsidies fell by 7.9 per cent.

SECTOR ACCOUNTS

Sector Accounts (Tables I, J1, J2, J3, K1 and K2)

Summary

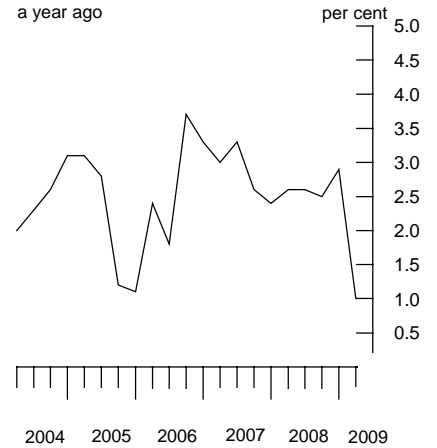
The household saving ratio was 3.0 per cent in 2009 quarter one, compared with 4.0 per cent in the previous quarter. For the year 2008 the household saving ratio was 1.7 per cent.

Net lending/borrowing by sector (Table I)

In 2009 quarter one, the central government, local government, and households sectors were net borrowers. Financial corporations, private non-financial corporations, public corporations and the rest of the world sectors were net lenders.

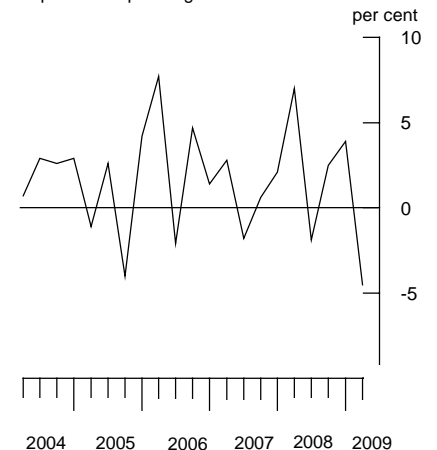
GDP deflator YBGB

quarter on same quarter
a year ago



Gross operating surplus of corporations CGBZ

quarter on quarter growth



The household and non profit institutions serving households (NPISH) sector (Tables J1, J2 and J3)

The household saving ratio was 3.0 per cent in 2009 quarter one compared with 4.0 per cent in the previous quarter. Households' gross disposable income fell by 2.7 per cent in the latest quarter compared to a rise of 2.0 per cent in the previous quarter. Real households' disposable income fell by 2.4 per cent in the latest quarter following 2.4 per cent rise in 2008 quarter four.

The fall in the saving ratio and disposable income in the latest quarter reflects decreases in wages and salaries.

Household final expenditure fell by 1.7 per cent in the latest quarter. Real disposable income increased by 2.7 per cent when compared with the corresponding quarter of 2008.

The household and NPISH sector showed net borrowing of £3.8 billion in the latest quarter.

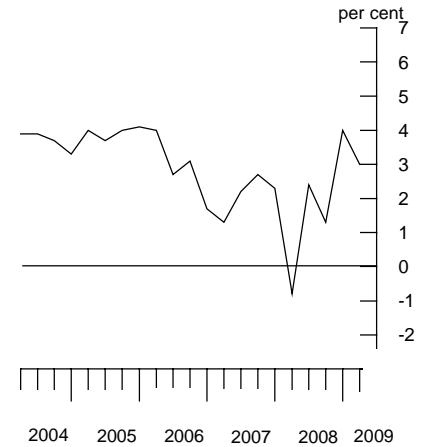
For the year 2008 the saving ratio was 1.7 per cent compared to 2.2 per cent in 2007, with real disposable income growing by 2.0 per cent compared to 0.5 per cent in 2007. Net borrowing for the year was £43.8 billion compared to £56.9 billion in 2007.

Private non-financial corporations sector (Tables K1 and K2)

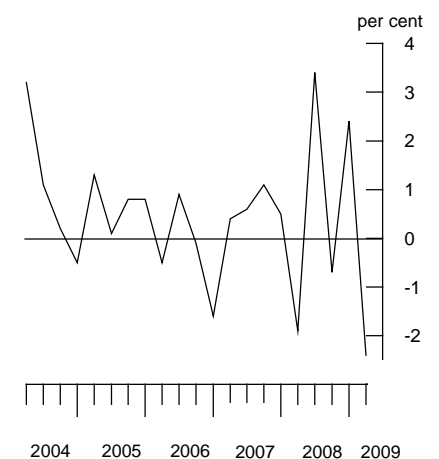
Private non-financial corporations reported net lending of £15.5 billion in the latest quarter, compared with net lending of £5.8 billion in 2008 quarter four. This was mainly driven by reduced investment and holdings of inventories.

Net lending for the year 2008 was £29.5 billion compared to £28.3 billion in 2007. The increase in net lending in 2008 reflects reduced stock building, and increased gross operating surplus due to increased profits of oil and gas companies.

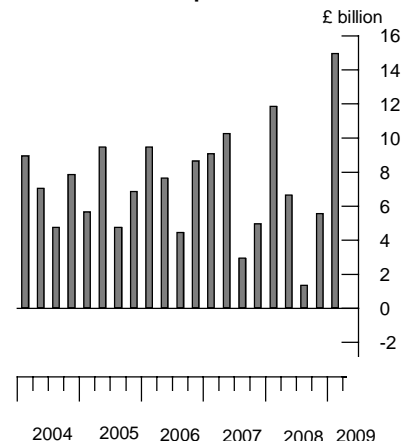
Household saving ratio NRJS
seasonally adjusted



Real household disposable income NRJR
quarter on quarter growth



Net lending/borrowing of private RQBV non-financial corporations



REVISIONS

(Table R)

GDP and components (previously published on 22 May 2009)

The Blue Book round is the major annual update of the UK National Accounts and generally coincides with introduction of new methodology, benchmark data and updates to the reference year and annual chainlinking.

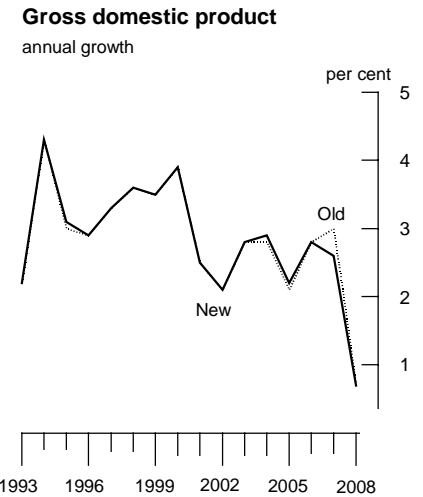
The scope of the 2009 Blue Book was set out in the April edition of the Economic and Labour Market Review as follows:

- Annual benchmark data from the Annual Business Inquiry and HM Revenue and Customs with supply and use balancing used to determine the level of GDP for 2004, 2005, 2006 and, for the first time 2007
- Volume estimates have been updated to be based on price structures from 2005, from 2003 as used previously. In addition, industry weights have been updated to those derived from the 2005 balance
- Improved methods have been introduced in the short-term Index of Service (IoS) industry measures
- Improvements to the measurement of bank interest payments and receipts have also been incorporated

The changes listed above have no impact on current price GDP, volume growth rates and sector accounts components prior to 2004.

Annual expenditure components

For 2004 to 2006, the allocation of expenditure has been rebalanced from investment spending in GFCF to household expenditure.



In 2007 and 2008 this allocation is reversed, with growth in household expenditure revised downwards partially offset in net trade in services and GFCF.

In terms of revisions to volume growth, HHFCE is revised downwards by 0.5 percentage points in each of the years 2006 through to 2008, with lower upward revisions in 2004 and 2005. GFCF growth is revised upwards in all years from 2005, the largest revision being 1.0 per cent in 2007.

Annual income components

The allocation of income has been rebalanced from compensation of employees to the gross operating surplus of corporations and household mixed income. The situation is reversed in 2007 and 2008 with increases in compensation of employees and weaker growth of corporate operating surpluses.

Sector accounts (previously published on 27 March 2009)

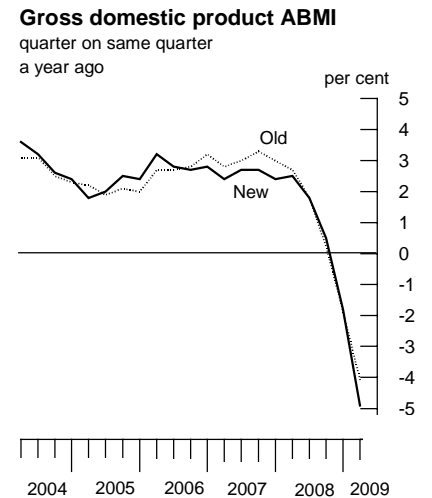
Revisions have been taken back to 2004 quarter one in this bulletin.

Household and non-profit institutions serving households (NPISH) sector

The saving ratio has been revised down to 3.7 per cent from 4.0 per cent in 2004, down to 3.9 per cent from 5.1 per cent in 2005, down to 2.9 per cent from 4.2 per cent in 2006, unrevised at 2.2 per cent in 2007, and revised down to 1.7 per cent from 2.0 per cent.

Downward revisions to the saving ratio are driven by downward revisions to compensation of employees and upward revisions to household expenditure for 2004 to 2006, and upward revisions to interest payments from 2005 onwards.

The household saving ratio was revised up in 2008 quarter one and quarter two and revised down in 2008 quarter three and quarter four. This largely reflects the revisions to wages and salaries.



Private non-financial corporations

Net borrowing for private non-financial corporations has been revised up in 2004, 2005 and 2006 and revised down in 2007 and 2008. The upward revisions in 2004 to 2006 are upward revisions to private non-financial corporations' profits. The downward revisions in 2007 and 2008 are driven by downward revisions to income from foreign investments and upward revisions to dividend and tax payments and capital investment.

BACKGROUND NOTES

Release policy

1. This bulletin includes data available up to 15 June 2009, and is consistent with the ONS publications *United Kingdom National Accounts - The Blue Book* and *UK Balance of Payments - The Pink Book* which will be published on the National Statistics website on 31 July 2009; the books will be published on 28 August.
2. The preliminary estimate of GDP for the second quarter of 2009 will be published on 24 July 2009, followed by provisional estimates of output, income and expenditure on 28 August 2009. The next full set of quarterly national accounts will be published on 29 September 2009.

Basic quality information for GDP Statistical Bulletin

Summary quality report

3. A Summary Quality Report for this Statistical Bulletin can now be found on the National Statistics website at:

<http://www.statistics.gov.uk/cci/article.asp?ID=1180>

Key quality issues

4. *Common pitfalls in interpreting series:* Expectations of accuracy and reliability in early estimates are often too high. Revisions are an inevitable consequence of the trade off between timeliness and accuracy. Early estimates are based on incomplete data. Revisions to GDP are larger than usual in this bulletin, reflecting uncertainty in forecasting and measurement during a period of rapid change in economic activity.

Very few statistical revisions arise as a result of 'errors' in the popular sense of the word. All estimates, by definition, are subject to statistical 'error' but in this context the word refers to the uncertainty inherent in any process or calculation that uses sampling, estimation or modelling. Most revisions reflect either the adoption of new statistical techniques, or the incorporation of new information which allows the statistical error of previous estimates to be reduced. Only rarely are there avoidable 'errors' such as human or system failures, and such mistakes are made quite clear when they do occur.

Reliability

5. Estimates for the most recent quarters are provisional and, as usual, are subject to revision in light of updated source information. ONS currently provides an analysis of past revisions in the GDP and other Statistical Bulletins which present time series. Details can be found at:

<http://www.statistics.gov.uk/cci/article.asp?ID=793>

ONS has a webpage dedicated to revisions to economic statistics which brings together ONS work on revisions analysis, linking to articles, analysis and key documentation from the Statistics Commission's report on revisions. The webpage can be found at:

http://www.statistics.gov.uk/about_ns/economic_revisions.asp

6. Revisions to data provide one indication of the reliability of key indicators. The tables below show summary information on the size and direction of the revisions which have been made to data covering a five-year period. A statistical test has been applied to the average revision to find out if it is statistically significantly different from zero. An asterisk (*) shows that the test is significant. The data used are consistent with that used in more detailed analysis published in *Economic Trends*. The most recent article was published on the National Statistics website on 12 November 2007 at:

<http://www.statistics.gov.uk/cci/article.asp?ID=1888>

7. Table 1 below shows the revisions between the early estimates of GDP. The analysis of revisions between month 1 and month 2 uses month 2 estimates published from August 2004 (2004q2) to May 2009 (2009q1). The analysis of revisions between month 2 and month 3 uses month 3 estimates published from June 2004 (2004q1) to March 2009 (2008q4).

Table 1: Revisions to early estimates of GDP growth

Revisions to GDP growth	GDP Growth in latest period (per cent)	Revisions between early estimates of GDP growth (quarterly, CVM)	
		Average over the last five years	Average over the last five years without regard to sign (average absolute revision)
Between M1 and M2	-2.4	-0.02	0.03
Between M2 and M3	-2.4	-0.02	0.05

Table 2 shows revisions to GDP growth and the household saving ratio between the estimate published three months after the end of the quarter and the equivalent estimate three years later. For GDP and Household saving ratio, the analysis uses month 3 estimates first published from June 2001 (2001q1) to March 2006 (2005q4).

Table 2: Revisions to month 3 estimates of GDP growth and the household saving ratio

	Value in latest period (per cent)	Revisions between first publication and estimates three years later	
		Average over the last five years ¹	Average over the last five years ¹ without regard to sign (average absolute revision)
GDP growth (quarterly, CVM)	-2.4	0.07	0.16
Household saving ratio	3.0	-0.20	1.23

Spreadsheets giving revisions triangles (real time databases) of estimates from 1992 to date, and the calculations behind the averages in both tables are available on the National Statistics website at:

<http://www.statistics.gov.uk/statbase/Product.asp?vlnk=13560>

Revisions triangles for the main components of GDP from expenditure, output and income approaches are also available at the link above.

Coherence

- As announced in 'Monitoring the quality of the National Accounts', by Ross Meader and Geoff Tily, an assessment of the coherence of the three measures of GDP is now published as part of the quarterly national accounts statistical bulletin:

<http://www.statistics.gov.uk/cci/article.asp?ID=1948>

Historic experience shows that the output measure provides the best timely measure of GDP growth. Growth according to the expenditure and income measures, are therefore brought into line with that recorded by output.

In 2008, growth of the output measure was weaker than the expenditure and income measures.

In 2009 quarter one the expenditure measure has fallen less sharply than output but has been brought in line with negative alignment adjustments.

Missing Trader Intra-Community (MTIC) Fraud

9. Erratic and large movements in the level of trade associated with VAT Missing Trader Intra-Community (MTIC) fraud, particularly during the first six months of 2006, have made it difficult to interpret movements in imports and exports of goods and to incorporate the trade data into the National Accounts. The impact on 2009 quarter one data is however estimated to be minimal.

Further information

10. Latest copies of this and other ONS bulletins as well as additional briefing are available under *Press Releases* on the National Statistics website:

http://www.statistics.gov.uk/press_Release/CurrentReleases.asp

More information on household expenditure can be found at:

<http://www.statistics.gov.uk/statbase/product.asp?vlnk=242>

More information underlying the National Accounts can be found at:

<http://www.statistics.gov.uk/CCI/nscl.asp?ID=5871>

Further Quarterly national accounts, Quarterly Sector Accounts and Financial Accounts tables are available in the *United Kingdom Economic Accounts* at:

<http://www.statistics.gov.uk/StatBase/Product.asp?vlnk=1904>

11. Details of the policy governing the release of new data are available from the Press office. Also available is a list of the names of those given pre-publication access to the contents of this bulletin.
12. **National Statistics** are produced to high professional standards set out in the UK Statistics Authority's Code of Practice for Official Statistics. They undergo regular quality assurance reviews to ensure that they meet customer needs. They are produced free from any political interference © Crown copyright 2009.

Next publication: Friday 24 July 2009

Issued by: Office for National Statistics, Government Buildings, Cardiff
Road, Newport NP10 8XG

Media contact:

Tel **Media Relations Office 0845 604 1858**
 Emergency on-call 07867 906553
Email **press.office@ons.gsi.gov.uk**

Statistical contact:

Tel **Jon Beadle 020 7014 2053**
Email **gdp@ons.gov.uk**

Website:

www.statistics.gov.uk

INDEX TO TABLES

Gross domestic product tables

National accounts aggregates (index numbers)	A1
National accounts aggregates	A2
Gross value added chained volume measures at basic prices, by category of output	B1
Gross value added chained volume measures at basic prices, by category of output: service industries	B2
Gross domestic product: expenditure	
Current market prices	C1
Gross domestic product: expenditure	
Chained volume measures	C2
Gross domestic product: by category of income	
Current market prices	D
Household final consumption expenditure by purpose	
Current market prices	E1
Household final consumption expenditure (goods and services)	
Current market prices	E2
Household final consumption expenditure by purpose	
Chained volume measures	E3
Household final consumption expenditure (goods and services)	
Chained volume measures	E4
Gross fixed capital formation by sector and type of asset	
Chained volume measures	F
Changes in inventories	
Chained volume measures	G
Exports and imports of goods and services	
Current market prices	H1
Exports and imports of goods and services	
Chained volume measures	H2

Sector accounts tables

Net lending/borrowing by sector	I
Households sector: allocation of primary income account	J1
Households sector: secondary distribution of income account	J2

Households sector: use of disposable income account	J3
Private non-financial corporations sector: allocation of primary income account	K1
Private non-financial corporations sector: secondary distribution of income account and capital account	K2

Other analysis

Gross value added at basic prices: individual measures	L
Alignment adjustments	M

Revisions tables

Revisions analysis: revisions against previously published estimates	R
--	---

A1 National accounts aggregates¹

2005 = 100

	Value indices at current prices		Chained volume indices				Implied deflators ²		
	Gross domestic product at market prices	Gross value added at basic prices	Gross domestic product at market prices	Gross value added at basic prices	Gross national disposable income at market prices	Market sector gross value added	Gross domestic expenditure	Gross domestic product at market prices	Gross value added at basic prices
2007	YBEU	YBEX	YBEZ	CGCE	YBFP	CL2G	YBFV	YBGB	CGBV
2008	111.5	111.6	105.5	105.7	105.4	106.8	105.5	105.7	105.6
	115.3	116.1	106.3	106.5	107.0	107.3	108.1	108.5	109.0
Seasonally adjusted									
2007 Q1	109.8	109.7	104.6	104.7	103.6	105.6	104.7	105.0	104.7
Q2	111.0	110.9	105.2	105.4	104.7	106.5	105.4	105.5	105.2
Q3	112.2	112.2	105.8	106.0	105.1	107.3	105.9	106.0	105.8
Q4	113.2	113.5	106.3	106.6	108.0	107.8	106.0	106.5	106.5
2008 Q1	115.5	115.8	107.2	107.6	109.3	108.8	107.5	107.8	107.6
Q2	115.9	116.0	107.1	107.5	108.0	108.5	107.8	108.2	108.0
Q3	115.5	116.7	106.3	106.5	106.7	107.3	108.7	108.6	109.5
Q4	114.3	115.9	104.4	104.6	103.8	104.7	108.6	109.5	110.8
2009 Q1	110.9	112.9	101.9	102.0	101.4	101.5	108.7	108.8	110.7
Percentage change, latest year on previous year									
2008	IHYM		IHYP			CL2H		IHYS	
	3.4	4.1	0.7	0.8	1.5	0.5	2.5	2.6	3.2
Percentage change, latest quarter on previous quarter									
2009 Q1	-3.0	-2.6	-2.4	-2.5	-2.4	-3.1	0.1	-0.6	-0.1
Percentage change, latest quarter on corresponding quarter of previous year									
2009 Q1	-4.0	-2.5	-4.9	-5.2	-7.2	-6.8	1.1	1.0	2.8

1 Estimates cannot be regarded as accurate to the last digit shown.

2 Based on the sum of expenditure components of GDP at current prices and in chained volume terms.

A2 National accounts aggregates¹

£ million

	Current prices					Chained Volume Measures (Reference year 2005)				
	Gross national income at market prices	Net income from abroad ²	Gross domestic product at market prices	less Basic price adjustment ³	Gross value added at basic prices	Gross domestic product at market prices	less Basic price adjustment ³	Gross value added at basic prices	Gross value added excluding oil & gas	
2007	ABMZ	CAES	YBHA	NTAP	ABML	ABMI	NTAO	ABMM	UIZY	
2008	1 417 878	18 996	1 398 882	153 147	1 245 735	1 322 842	142 684	1 180 158	1 157 941	
	1 471 255	25 142	1 446 113	149 781	1 296 332	1 332 652	142 935	1 189 717	1 168 625	
Seasonally adjusted										
2007 Q1	345 925	1 685	344 238	38 084	306 154	327 872	35 596	292 276	286 691	
Q2	351 719	3 709	348 010	38 425	309 585	329 967	35 703	294 264	288 660	
Q3	354 656	3 021	351 635	38 476	313 159	331 609	35 620	295 989	290 485	
Q4	365 578	10 581	354 999	38 162	316 837	333 394	35 765	297 629	292 105	
2008 Q1	374 199	12 015	362 184	38 966	323 218	336 042	35 674	300 368	295 026	
Q2	370 222	6 869	363 353	39 431	323 922	335 868	35 870	299 998	294 669	
Q3	368 545	6 366	362 179	36 503	325 676	333 377	36 003	297 374	292 120	
Q4	358 289	-108	358 397	34 881	323 516	327 365	35 388	291 977	286 810	
2009 Q1	350 467	2 749	347 718	32 621	315 097	319 512	34 793	284 719	279 640	
Percentage change, latest year on previous year										
2008	3.8		IHYM		4.1	0.7		0.8	0.9	
			3.4							
Percentage change, latest quarter on previous quarter										
2009 Q1	-2.2		IHYN		-2.6	-2.4		-2.5	-2.5	
			-3.0							
Percentage change, latest quarter on corresponding quarter of previous year										
2009 Q1	-6.3		IHYO		-2.5	-4.9		-5.2	-5.2	
			-4.0							

1 Estimates are given to the nearest £ million but cannot be regarded as accurate to this degree.

2 Includes employment, entrepreneurial and property income.

3 Taxes on products less subsidies.

B1 Gross value added chained volume measures at basic prices, by category of output^{1,2}

2005 = 100

	Production					Service industries						Gross value added at basic prices	Gross value added excluding oil & gas
	Agri-culture, forestry, and fishing	Mining & quarrying inc oil & gas extraction	Manu-facturing	Elec-tricity gas and water supply	Total	Construc-tion	Distri-bution hotels and catering; repairs	Transpor-tation and commu-nication	Business services and finance	Govern-ment and other services	Total		
2005 Weights³	7	25	133	15	172	63	146	72	304	236	759	1000	978
2007	GDQA 95.9	CKYX 90.7	CKYY 102.2	CKYZ 99.7	CKYW 100.3	GDQB 103.8	GDQE 106.7	GDQH 106.0	GDQN 111.9	GDQU 102.0	GDQS 107.2	CGCE 105.7	JUNT 106.1
2008	94.7	84.7	99.3	99.7	97.2	104.0	105.5	108.0	114.6	103.1	108.6	106.5	107.1
Seasonally adjusted													
2007 Q1	96.8	91.0	102.0	98.4	100.1	102.6	105.6	105.9	109.8	102.0	106.2	104.7	105.0
Q2	96.2	91.6	102.4	98.2	100.5	103.7	106.3	106.4	111.2	101.8	106.9	105.4	105.8
Q3	95.0	90.4	101.9	99.7	100.1	104.1	107.2	105.3	113.2	101.7	107.7	106.0	106.4
Q4	95.6	90.0	102.3	102.3	100.6	104.8	107.5	106.2	113.5	102.3	108.2	106.6	107.0
2008 Q1	94.8	86.2	102.9	100.9	100.3	106.5	108.2	108.3	114.8	102.8	109.2	107.6	108.1
Q2	95.1	85.9	101.2	100.7	99.0	105.9	107.3	108.9	115.3	103.0	109.3	107.5	108.0
Q3	94.6	84.5	99.1	99.5	97.0	104.5	104.7	108.2	114.5	103.4	108.6	106.5	107.0
Q4	94.3	82.2	93.9	97.6	92.5	99.3	101.7	106.7	113.8	103.1	107.5	104.6	105.1
2009 Q1	94.2	79.2	88.7	94.1	87.8	92.4	100.2	103.4	110.9	103.2	105.8	102.0	102.5
Percentage change, year on previous year													
2008	GDQV -1.3	ERIB -6.6	ERIT -2.9	ERJJ -	ERID -3.1	GDQW 0.2	GDQZ -1.1	GDRC 1.9	GDRJ 2.4	GDRP 1.1	GDRN 1.3	0.8	JUNW 0.9
Percentage change, latest quarter on previous quarter													
2009 Q1	-0.1	ERIJ -3.7	ERJA -5.5	ERJL -3.6	ERIH -5.1	-6.9	-1.5	-3.0	-2.5	0.2	-1.6	-2.5	JUNU -2.5
Percentage change, latest quarter on corresponding quarter of previous year													
2009 Q1	GDRQ -0.6	ERIC -8.2	ERIU -13.8	ERJK -6.8	ERIE -12.5	GDRR -13.2	GDRU -7.4	GDRX -4.5	GDSJ -3.4	GDSK 0.4	GDSI -3.1	-5.2	JUNV -5.2

B2 Gross value added chained volume measures at basic prices, by category of output: Service industries^{1,2}

2005 = 100

	Service industries											
	Wholesale and retail trade; repairs	Hotels and restaurants	Transport and storage	Post and telecommu-nication	Financial intermedia-tion	Real estate, renting and business activities	Ownership of dwellings	Public adminis-tration, national defence, social security	Health and Education	Other social work services ⁴	Total services	
2005 Weights³	116	29	45	27	71	164	69	54	59	72	52	759
2007	GDQC 106.4	GDQD 107.5	GDQF 105.0	GDQG 107.6	GDQI 114.9	GDQK 114.7	GDQL 102.2	GDQO 100.4	GDQP 99.5	GDQQ 105.5	GDQR 101.4	GDQS 107.2
2008	105.0	107.6	106.7	110.2	122.1	116.2	102.9	98.9	100.5	108.8	102.4	108.6
Seasonally adjusted												
2007 Q1	105.4	106.3	104.3	108.4	112.1	111.9	102.2	100.7	99.6	105.2	101.7	106.2
Q2	105.8	108.4	104.6	109.2	114.1	113.8	102.2	100.6	99.3	105.2	101.3	106.9
Q3	107.0	107.8	104.5	106.8	116.4	116.5	102.1	100.2	99.6	105.3	100.8	107.7
Q4	107.5	107.5	106.5	105.9	117.1	116.5	102.5	100.2	99.7	106.5	101.9	108.2
2008 Q1	107.9	109.2	108.7	107.8	120.4	117.5	102.8	99.3	99.9	107.2	103.8	109.2
Q2	107.3	107.5	108.6	109.3	121.5	117.7	102.9	98.9	100.0	108.1	103.3	109.3
Q3	104.0	107.6	106.5	111.0	122.9	115.7	103.0	98.6	100.8	109.3	103.0	108.6
Q4	100.7	106.0	102.9	112.8	123.6	114.0	103.1	98.9	101.1	110.5	99.4	107.5
2009 Q1	99.9	101.3	98.5	111.4	121.6	109.6	103.4	98.5	101.4	111.3	99.2	105.8
Percentage change, latest year on previous year												
2008	-1.4	0.0	1.6	2.4	6.3	1.4	0.7	-1.5	0.9	3.1	0.9	1.3
Percentage change, latest quarter on previous quarter												
2009 Q1	-0.7	-4.4	-4.2	-1.2	-1.6	-3.9	0.4	-0.4	0.2	0.7	-0.2	-1.6
Percentage change, latest quarter on corresponding quarter of previous year												
2009 Q1	-7.4	-7.2	-9.3	3.4	1.0	-6.7	0.6	-0.8	1.5	3.8	-4.4	-3.1

1 Estimates cannot be regarded as accurate to the last digit shown.

2 Components of output are valued at basic prices, which excludes taxes /less subsidies on products.

3 Weights may not sum to the totals due to rounding.

4 Comprising sections O, P and Q of the SIC(92).

C1 Gross domestic product: expenditure at current market prices¹

£ million

Domestic expenditure on goods and services at market prices												
	Final consumption expenditure			Gross capital formation				Total exports	Gross final expenditure	less Total imports	Statistical discrepancy (expenditure)	Gross domestic product at market prices
	Households	Non-profit institutions ²	General government	Gross fixed capital formation	Changes in inventories ³	Acquisitions less disposals of valuables	Total					
2007	ABPB	ABNV	NMRK	NPQX	ABMP	NPJO	YBIJ	KTMW	ABMD	KTMX	GIXM	YBHA
2008	859 268	33 722	294 713	248 766	6 986	374	1 443 829	371 503	1 815 332	416 450	-	1 398 882
	890 528	36 870	313 019	244 223	1 598	614	1 486 852	421 501	1 908 353	459 899	-2 341	1 446 113
Seasonally adjusted												
2007 Q1	ABJQ	HAYE	NMRP	NPQS	CAEX	NPJQ	YBIL	IKBH	ABMF	IKBI	-	344 238
Q2	211 657	8 177	72 808	61 279	874	74	354 869	89 833	444 702	100 464	-	348 010
Q3	214 554	8 317	73 228	61 395	20	363	357 877	91 211	449 088	101 078	-	351 635
Q4	215 437	8 478	74 433	62 363	3 428	38	364 177	93 588	457 765	106 130	-	354 999
2008 Q1	217 620	8 750	74 244	63 729	2 664	-101	366 906	96 871	463 777	108 778	-	362 184
Q2	221 588	9 058	77 540	63 650	2 040	27	373 903	101 803	475 706	113 064	-458	363 353
Q3	222 709	9 302	77 698	61 703	2 215	276	373 903	106 609	480 512	116 589	-570	362 179
Q4	224 749	9 311	78 061	60 088	1 487	197	373 893	107 226	481 119	118 298	-642	358 397
2009 Q1	221 482	9 199	79 720	58 782	-4 144	114	365 153	105 863	471 016	111 948	-671	347 718
Percentage change, latest year on previous year												
2008	3.6	9.3	6.2	-1.8			3.0	13.5	5.1	10.4		3.4
Percentage change, latest quarter on previous quarter												
2009 Q1	-1.7	-2.1	0.4	-5.7			-2.4	-7.4	-3.5	-5.0		-3.0
Percentage change, latest quarter on corresponding quarter of previous year												
2009 Q1	-1.8	-0.6	3.2	-12.9			-4.6	-3.7	-4.4	-5.9		-4.0

C2 Gross domestic product by category of expenditure: chained volume measures¹

Reference year 2005, £ million

Domestic expenditure on goods and services at market prices												
	Final consumption expenditure			Gross capital formation				Total exports	Gross final expenditure	less Total imports	Statistical discrepancy (expenditure)	Gross domestic product at market prices
	Households	Non-profit institutions ²	General government	Gross fixed capital formation	Changes in inventories ³	Acquisitions less disposals of valuables	Total					
2007	ABPF	ABNU	NMRU	NPQR	ABMQ	NPJP	YBIK	KTMZ	ABME	KTNB	GIXS	ABMI
2008	815 157	30 040	275 488	240 613	6 646	562	1 368 506	357 677	1 726 183	403 341	-	1 322 842
	822 689	32 984	283 262	233 846	1 112	1 296	1 375 189	360 517	1 735 706	400 898	-2 156	1 332 652
Seasonally adjusted												
2007 Q1	ABJR	HAYO	NMRY	NPQT	CAFU	NPJR	YBIM	IKBK	ABMG	IKBL	-	327 872
Q2	202 299	7 447	68 394	59 659	928	76	338 804	88 279	427 083	99 211	-	329 967
Q3	203 492	7 413	68 650	59 620	-12	348	339 510	88 650	428 160	98 193	-	331 609
Q4	204 321	7 471	69 165	59 777	3 130	45	343 909	90 348	434 256	102 647	-	333 394
2008 Q1	205 045	7 709	69 279	61 557	2 600	93	346 283	90 400	436 684	103 290	-	336 042
Q2	207 200	8 007	69 944	60 495	2 034	211	347 891	91 581	439 472	103 004	-425	335 868
Q3	206 416	8 322	70 631	59 115	1 926	438	346 848	91 158	438 005	101 611	-527	333 377
Q4	205 655	8 376	70 970	57 459	1 276	367	344 103	90 769	434 872	100 904	-591	327 365
2009 Q1	203 418	8 279	71 717	56 777	-4 124	280	336 347	87 009	423 357	95 379	-613	319 512
Percentage change, latest year on previous year												
2008	0.9	9.8	2.8	-2.8			0.5	0.8	0.6	-0.6		0.7
Percentage change, latest quarter on previous quarter												
2009 Q1	-1.3	-3.2	0.2	-7.5			-2.5	-6.9	-3.4	-6.7		-2.4
Percentage change, latest quarter on corresponding quarter of previous year												
2009 Q1	-3.1	0.1	2.8	-13.2			-5.7	-11.6	-6.9	-13.6		-4.9

1 Estimates are given to the nearest £ million but cannot be regarded as accurate to this degree.

2 Non-profit making institutions serving households.

3 Quarterly alignment adjustment included in this series.

D Gross domestic product: by category of income¹

£ million

	Gross operating surplus of corporations					Other income ³	Gross value added at factor cost	Taxes on products & production less subsidies	Statistical discrepancy (income)	Gross domestic product at market prices
	Compensation of employees	Private non-financial corporations ²	Private financial corporations	Public corporations	Total					
	HAEA	NRJK	NQNV	NRJT	CGBY	CGBW	CGCA	GCSC	GIXQ	YBHA
2007	746 384	254 243	46 377	10 167	310 787	173 443	1 230 614	168 268	–	1 398 882
2008	769 662	264 700	66 466	8 697	339 863	172 509	1 282 034	165 846	–1 767	1 446 113
Seasonally adjusted										
	DTWM	CAER	NHCZ	CAEQ	CGBZ	CGBX	CGCB	CMVL		
2007 Q1	182 564	62 934	11 910	3 201	78 045	42 405	303 014	41 224	–	344 238
Q2	185 675	64 125	10 384	2 171	76 680	43 145	305 500	42 510	–	348 010
Q3	188 242	63 503	11 272	2 435	77 210	43 881	309 333	42 302	–	351 635
Q4	189 903	63 681	12 811	2 360	78 852	44 012	312 767	42 232	–	354 999
2008 Q1	192 169	67 611	13 899	2 831	84 341	43 675	320 185	42 345	–346	362 184
Q2	192 928	65 481	15 436	1 794	82 711	44 529	320 168	43 615	–430	363 353
Q3	193 091	66 584	16 393	1 794	84 771	43 883	321 745	40 918	–484	362 179
Q4	191 474	65 024	20 738	2 278	88 040	40 422	319 936	38 968	–507	358 397
2009 Q1	188 824	63 400	17 673	3 039	84 112	39 333	312 269	35 874	–425	347 718
Percentage change, latest year on previous year										
2008	3.1	4.1	43.3	–14.5	9.4	–0.5	4.2	–1.4		3.4
Percentage change, latest quarter on previous quarter										
2009 Q1	–1.4	–2.5	–14.8	33.4	–4.5	–2.7	–2.4	–7.9		–3.0
Percentage change, latest quarter on corresponding quarter on corresponding										
2009 Q1	–1.7	–6.2	27.2	7.3	–0.3	–9.9	–2.5	–15.3		–4.0

1 Estimates are given to the nearest £ million but cannot be regarded as accurate to this degree. 3 Includes mixed income and the operating surplus of the non-corporate sector.

2 Quarterly alignment adjustment included in this series.

E1 Household final consumption expenditure by purpose

Current prices

£ million

UK NATIONAL ²															
UK DOMESTIC ³															
COICOP ¹	Total	Net tourism	Food & drink	Alcohol & tobacco	Clothing & footwear	Housing	Household goods & services	Health	Transport	Communication	Recreation & culture	Education	Restaurants & hotels	Miscellaneous	
	0	01	02	03	04	05	06	07	08	09	10	11	12		
	ABPB	ABTE	ABQI	ABZV	ADFL	ADFP	ADFS	ADFY	ADGP	ADGT	ADGX	ADGY	ADIE	ADIF	ADII
2007	859 268	12 209	847 059	72 313	29 845	45 597	171 757	46 212	13 775	130 463	18 496	99 060	12 443	90 816	116 282
2008	890 528	13 526	877 002	78 182	30 267	46 119	184 987	45 811	13 704	134 994	18 651	101 999	12 643	93 970	115 675
Seasonally adjusted															
	ABJQ	ABTF	ZAKV	ZWUM	ZAKX	ZAKZ	ZAVN	ZAVV	ZAWB	ZAWL	ZAWV	ZAWZ	ZWUS	ZAXR	ZAYF
2007 Q1	211 657	2 870	208 787	18 366	7 584	11 131	42 314	11 364	3 323	31 476	4 606	24 370	3 042	22 501	28 710
Q2	214 554	3 241	211 313	17 856	7 373	11 619	42 573	11 697	3 407	32 457	4 552	24 783	3 108	22 905	28 983
Q3	215 437	3 071	212 366	17 936	7 444	11 525	43 058	11 598	3 473	32 592	4 638	24 966	3 130	22 600	29 406
Q4	217 620	3 027	214 593	18 155	7 444	11 322	43 812	11 553	3 572	33 938	4 700	24 941	3 163	22 810	29 183
2008 Q1	221 588	3 754	217 834	18 611	7 334	11 492	44 155	11 681	3 530	35 205	4 680	25 580	3 185	23 271	29 110
Q2	222 709	3 143	219 566	19 642	7 693	11 603	45 397	11 506	3 447	34 285	4 676	25 396	3 157	23 507	29 257
Q3	224 749	3 503	221 246	20 069	7 570	11 588	46 882	11 415	3 369	33 372	4 663	25 995	3 192	23 668	29 463
Q4	221 482	3 126	218 356	19 860	7 670	11 436	48 553	11 209	3 358	32 132	4 632	25 028	3 109	23 524	27 845
2009 Q1	217 674	2 908	214 766	19 580	7 628	11 682	48 381	11 012	3 357	30 947	4 582	24 634	3 105	23 064	26 794
Percentage change, latest year on previous year															
2008	3.6		3.5	8.1	1.4	1.1	7.7	-0.9	-0.5	3.5	0.8	3.0	1.6	3.5	-0.5
Percentage change, quarter on previous quarter															
2009 Q1	-1.7		-1.6	-1.4	-0.5	2.2	-0.4	-1.8	0.0	-3.7	-1.1	-1.6	-0.1	-2.0	-3.8
Percentage change, quarter on corresponding quarter of previous year															
2009 Q1	-1.8		-1.4	5.2	4.0	1.7	9.6	-5.7	-4.9	-12.1	-2.1	-3.7	-2.5	-0.9	-8.0

1 ESA 95 Classification of Individual Consumption by Purpose.
2 Final Consumption by UK Households in the UK & abroad.

3 Final consumption expenditure in the UK by UK & foreign households.

E2 Household final consumption expenditure (goods and services)

Current prices

£ million

UK NATIONAL ²									
UK DOMESTIC ³									
Goods									
COICOP ¹	Total	Net tourism	Total	Total	Durable goods	Semi-durable goods	Non-durable goods	Services	
				D	SD	ND	S		
	ABPB	ABTE	ABQI	UTIE	UTIA	UTIQ	UTII	UTIM	
2007	859 268	12 209	847 059	397 562	95 354	95 990	206 218	449 497	
2008	890 528	13 526	877 002	412 574	92 953	96 726	222 895	464 428	
Seasonally adjusted									
	ABJQ	ABTF	ZAKV	UTIF	UTIB	UTIR	UTIJ	UTIN	
2007 Q1	211 657	2 870	208 787	98 222	23 192	23 502	51 528	110 565	
Q2	214 554	3 241	211 313	98 622	23 887	24 234	50 501	112 691	
Q3	215 437	3 071	212 366	99 799	23 984	24 170	51 645	112 567	
Q4	217 620	3 027	214 593	100 919	24 291	24 084	52 544	113 674	
2008 Q1	221 588	3 754	217 834	102 683	24 619	24 279	53 785	115 151	
Q2	222 709	3 143	219 566	103 793	23 690	24 295	55 808	115 773	
Q3	224 749	3 503	221 246	103 606	22 753	24 289	56 564	117 640	
Q4	221 482	3 126	218 356	102 492	21 891	23 863	56 738	115 864	
2009 Q1	217 674	2 908	214 766	101 013	21 658	24 240	55 115	113 753	
Percentage change, latest year on previous year									
2008	3.6		3.5	3.8	-2.5	0.8	8.1	3.3	
Percentage change, quarter on previous quarter									
2009 Q1	-1.7		-1.6	-1.4	-1.1	1.6	-2.9	-1.8	
Percentage change, quarter on corresponding quarter of previous year									
2009 Q1	-1.8		-1.4	-1.6	-12.0	-0.2	2.5	-1.2	

1 ESA 95 Classification of Individual Consumption by Purpose.
2 Final Consumption by UK Households in the UK & abroad

3 Final consumption expenditure in the UK by UK & foreign households

E3 Household final consumption expenditure by purpose

Chained volume measures

Reference year 2005, £ million

UK NATIONAL ²															
UK DOMESTIC ³															
COICOP ¹	Total	Net tourism	Total	Food & drink	Alcohol & tobacco	Clothing & footwear	Housing	Household goods & services	Health	Transport	Communication	Recreation & culture	Education	Restaurants & hotels	Miscellaneous
	0	01	02	03	04	05	06	07	08	09	10	11	12		
	ABPF	ABTG	ABQJ	ADIP	ADIS	ADIW	ADIZ	ADJF	ADJM	ADJQ	ADJU	ADJV	ADMJ	ADMK	ADMN
2007	815 157	12 901	802 256	67 557	28 745	46 382	150 835	44 584	13 272	125 111	19 363	102 493	10 966	84 469	108 479
2008	822 689	12 998	809 691	67 050	28 353	48 762	151 169	42 921	13 030	123 915	20 171	108 996	10 450	84 002	110 872
Seasonally adjusted															
	ABJR	ABTH	ZAKW	ZWUN	ZAKY	ZALA	ZAVO	ZAVW	ZAWC	ZAWM	ZAWW	ZAXA	ZWUT	ZAXS	ZAYG
2007 Q1	202 299	3 222	199 077	17 522	7 287	11 295	37 606	11 054	3 220	30 567	4 728	24 747	2 749	21 206	27 096
Q2	203 492	3 453	200 038	16 703	7 125	11 719	37 626	11 249	3 285	30 782	4 781	25 505	2 774	21 399	27 090
Q3	204 321	3 211	201 110	16 804	7 164	11 745	37 535	11 203	3 344	31 550	4 883	26 151	2 743	20 917	27 071
Q4	205 045	3 015	202 031	16 528	7 169	11 623	38 068	11 078	3 423	32 212	4 971	26 090	2 700	20 947	27 222
2008 Q1	207 200	3 711	203 489	16 790	7 197	11 874	37 631	11 090	3 368	32 298	5 021	26 912	2 684	21 118	27 506
Q2	206 416	3 268	203 148	17 015	7 185	12 194	37 872	10 772	3 290	31 355	5 030	27 056	2 619	21 077	27 682
Q3	205 655	3 338	202 317	16 822	7 003	12 290	37 746	10 621	3 200	30 381	5 050	27 746	2 617	21 020	27 821
Q4	203 418	2 681	200 737	16 423	6 968	12 404	37 920	10 438	3 172	29 881	5 070	27 282	2 530	20 787	27 863
2009 Q1	200 830	2 108	198 722	15 990	6 788	12 904	37 752	10 093	3 152	29 370	5 013	27 058	2 501	20 283	27 818
Percentage change, latest year on previous year															
2008	0.9		0.9	-0.8	-1.4	5.1	0.2	-3.7	-1.8	-1.0	4.2	6.3	-4.7	-0.6	2.2
Percentage change, quarter on previous quarter															
2009 Q1	-1.3		-1.0	-2.6	-2.6	4.0	-0.4	-3.3	-0.6	-1.7	-1.1	-0.8	-1.1	-2.4	-0.2
Percentage change, quarter on corresponding quarter of previous year															
2009 Q1	-3.1		-2.3	-4.8	-5.7	8.7	0.3	-9.0	-6.4	-9.1	-0.2	0.5	-6.8	-4.0	1.1

1 ESA 95 Classification of Individual Consumption by Purpose:
2 Final consumption expenditure by UK households in the UK & abroad.

3 Final consumption expenditure in the UK by UK & foreign households.

E4 Household final consumption expenditure (goods and services)

Chained volume measures

Reference year 2005, £ million

UK NATIONAL ²									
UK DOMESTIC ³									
Goods									
COICOP ¹	Total	Net tourism	Total	Total	Durable goods	Semi-durable goods	Non-durable goods	Services	
				D	SD	ND	S		
	ABPF	ABTG	ABQJ	UTIG	UTIC	UTIS	UTIK	UTIO	
2007	815 157	12 901	802 256	387 801	101 486	96 773	189 542	414 455	
2008	822 689	12 998	809 691	391 653	104 155	99 377	188 121	418 038	
Seasonally adjusted									
	ABJR	ABTH	ZAKW	UTIH	UTID	UTIT	UTIL	UTIP	
2007 Q1	202 299	3 222	199 077	95 710	24 179	23 676	47 855	103 367	
Q2	203 492	3 453	200 038	96 179	25 130	24 381	46 668	103 859	
Q3	204 321	3 211	201 110	97 836	25 808	24 380	47 648	103 274	
Q4	205 045	3 015	202 031	98 076	26 369	24 336	47 371	103 955	
2008 Q1	207 200	3 711	203 489	98 852	26 789	24 586	47 477	104 637	
Q2	206 416	3 268	203 148	98 683	26 193	24 860	47 630	104 464	
Q3	205 655	3 338	202 317	97 253	25 645	24 988	46 620	105 064	
Q4	203 418	2 681	200 737	96 865	25 528	24 943	46 394	103 873	
2009 Q1	200 830	2 108	198 722	96 020	25 385	25 509	45 126	102 702	
Percentage change, year on previous year									
2008	0.9		0.9	1.0	2.6	2.7	-0.7	0.9	
Percentage change, quarter on previous quarter									
2009 Q1	-1.3		-1.0	-0.9	-0.6	2.3	-2.7	-1.1	
Percentage change, quarter on corresponding quarter of previous year									
2009 Q1	-3.1		-2.3	-2.9	-5.2	3.8	-5.0	-1.8	

1 ESA 95 Classification of Individual Consumption by Purpose:
2 Final consumption expenditure by UK households in the UK & abroad

3 Final consumption expenditure in the UK by UK & foreign households

F Gross fixed capital formation by sector and type of asset

Chained volume measures

Reference year 2005, £ million

	Analysis by sector								Analysis by asset					
	Public corporations ²				Private sector									
	Business investment ¹	General government	Dwellings ³	Existing buildings and dwellings ⁴	Dwellings ³	Existing buildings and dwellings ⁴	NPQR	Total	Transport equipment	Other machinery and equipment	Dwellings ³	Other buildings and structures ⁴	Intangible fixed assets	Total
2007	NPEN	EQDN	DEEW	EQDF	DFDP	EQCY	NPQR	DLWJ	DLWM	DFDV	DLWQ	EQDT	NPQR	
2008	143 664	24 351	3 633	-1 760	49 113	21 612	240 613	15 284	71 255	52 749	85 872	15 452	240 613	
	146 078	30 488	3 701	-941	43 263	11 256	233 846	14 063	69 910	46 977	87 021	15 876	233 846	
Seasonally adjusted														
2007 Q1	NPEL	DLWF	DKQH	DLWH	DFEA	DLWI	NPQT	DLWL	DLWO	DFEG	DLWT	EQDO	NPQT	
Q2	35 226	5 779	954	-401	12 529	5 573	59 659	4 056	17 882	13 481	20 326	3 914	59 659	
Q3	35 372	6 076	849	-502	12 367	5 458	59 620	3 714	17 292	13 217	21 581	3 817	59 620	
Q4	36 023	5 430	928	-464	12 230	5 630	59 777	3 877	17 605	13 160	21 294	3 841	59 777	
2008 Q1	37 043	7 066	902	-393	11 987	4 951	61 557	3 637	18 476	12 891	22 671	3 880	61 557	
2008 Q2	36 952	7 441	914	-248	11 925	3 511	60 495	3 683	17 360	12 846	22 667	3 939	60 495	
Q3	36 622	7 287	939	-299	11 134	3 432	59 115	3 689	17 603	12 075	21 820	3 928	59 115	
Q4	36 370	7 784	791	-264	10 423	2 355	57 459	3 403	17 614	11 215	21 235	3 992	57 459	
2009 Q1	36 134	7 976	1 057	-130	9 781	1 958	56 777	3 288	17 333	10 841	21 299	4 017	56 777	
Percentage change, latest year on previous year														
2008	1.7	25.2	1.9	-46.5	-11.9	-47.9	-2.8	-8.0	-1.9	-10.9	1.3	2.7	-2.8	
Percentage change, latest quarter on previous quarter														
2009 Q1	-7.6	-5.1	9.6	-15.4	-14.9	11.3	-7.5	-19.2	-8.0	-12.5	-4.2	-0.3	-7.5	
Percentage change, latest quarter on corresponding quarter of previous year														
2009 Q1	-9.7	1.8	26.7	-55.6	-30.2	-37.9	-13.2	-27.9	-8.1	-26.2	-10.0	1.7	-13.2	

1 Not including expenditure on dwellings, land and existing buildings and costs associated with the transfer of ownership of non-produced assets.

2 Remaining investment by public non-financial corporations included within business investment.

3 Includes new dwellings and improvements to dwellings.

4 Including costs associated with the transfer of ownership of buildings, dwellings and non-produced assets.

G Changes in inventories Chained volume measures¹

Reference year 2005, £ million

	Mining and quarrying	Manufacturing industries				Elect- ricity, gas and water supply	Distributive trades			Changes in inventories
		Materials and fuel	Work in progress	Finished goods	Total		Wholesale ²	Retail ²	Other industries	
Level of inventories held at end-December 2008	718	15 998	16 011	20 302	52 311	2 317	28 734	26 152	69 466	179 697
2004	FADO -40	FBID 294	FBIE -541	FBIF -106	DHBH -345	FADP 2	FAJM 300	FBYH 995	DLWV 3 769	ABMQ 4 843
2005	-16	385	938	357	1 679	656	931	-447	1 668	4 472
2006	-22	293	1 319	567	2 179	380	947	685	620	4 789
2007	-97	374	-357	402	419	-284	-70	1 724	4 954	6 646
2008	-67	-924	-618	-371	-1 913	935	998	-223	1 382	1 112
Seasonally adjusted										
2007 Q1	FAEA -4	FBNF 375	FBNG 247	FBNH 342	DHBM 964	FAEB -39	FAJX -36	FBYN 243	DLWX -200	CAFU 928
Q2	-13	-27	-259	-230	-516	-165	416	291	-25	-12
Q3	-60	233	-207	180	206	-12	346	578	2 072	3 130
Q4	-20	-207	-138	110	-235	-68	-796	612	3 107	2 600
2008 Q1	-10	-276	414	120	258	34	319	498	935	2 034
Q2	-15	49	-312	488	225	353	75	279	1 009	1 926
Q3	9	-229	-293	-202	-724	303	249	153	1 286	1 276
Q4	-51	-468	-427	-777	-1 672	245	355	-1 153	-1 848	-4 124
2009 Q1	-32	-159	23	-490	-626	-86	-1 308	42	-3 416	-5 426

1 Estimates are given to the nearest £ million but cannot be regarded as accurate to this degree.

2 Wholesaling and retailing estimates exclude the motor trades.

H1 Exports and imports of goods and services

Current market prices

£ million

	Exports			Imports			Balance		
	Goods	Services	Total	Goods	Services	Total	Goods	Services	Total
2007	LQAD	KTMQ	KTMW	LQBL	KTMR	KTMX	LQCT	KTMS	KTMY
2008	220 858	150 645	371 503	310 612	105 838	416 450	-89 754	44 807	-44 947
	251 102	170 399	421 501	343 979	115 920	459 899	-92 877	54 479	-38 398
Seasonally adjusted									
	BOKG	IKBB	IKBH	BOKH	IKBC	IKBI	BOKI	IKBD	IKBJ
2007 Q1	53 516	36 317	89 833	75 133	25 331	100 464	-21 617	10 986	-10 631
Q2	54 580	36 631	91 211	74 985	26 093	101 078	-20 405	10 538	-9 867
Q3	55 524	38 064	93 588	79 290	26 840	106 130	-23 766	11 224	-12 542
Q4	57 238	39 633	96 871	81 204	27 574	108 778	-23 966	12 059	-11 907
2008 Q1	60 674	41 129	101 803	84 345	28 719	113 064	-23 671	12 410	-11 261
Q2	64 428	42 181	106 609	87 833	28 756	116 589	-23 405	13 425	-9 980
Q3	65 660	41 566	107 226	89 167	29 131	118 298	-23 507	12 435	-11 072
Q4	60 340	45 523	105 863	82 634	29 314	111 948	-22 294	16 209	-6 085
2009 Q1	56 193	41 882	98 075	77 014	29 328	106 342	-20 821	12 554	-8 267
Percentage change, latest year on previous year									
2008	13.7	13.1	13.5	10.7	9.5	10.4			
Percentage change, latest quarter on previous quarter									
2009 Q1	-6.9	-8.0	-7.4	-6.8	0.0	-5.0			
Percentage change, latest quarter on corresponding quarter of previous year									
2009 Q1	-7.4	1.8	-3.7	-8.7	2.1	-5.9			

H2 Exports and imports of goods and services

Chained volume measures

Reference year 2005, £ million

	Exports			Imports			Balance
	Goods	Services	Total	Goods	Services	Total	Total
2007	BQKP	KTMT	KTMZ	BQKN	KTMU	KTNB	KTNC
2008	212 477	145 200	357 677	300 370	102 971	403 341	-45 664
	212 799	147 718	360 517	294 004	106 894	400 898	-40 381
Seasonally adjusted							
	BQKQ	IKBE	IKBK	BQKO	IKBF	IKBL	IKBM
2007 Q1	52 599	35 680	88 279	74 173	25 038	99 211	-10 932
Q2	53 032	35 618	88 650	72 871	25 322	98 193	-9 543
Q3	53 558	36 790	90 348	76 651	25 996	102 647	-12 299
Q4	53 288	37 112	90 400	76 675	26 615	103 290	-12 890
2008 Q1	54 144	37 437	91 581	75 864	27 141	103 004	-11 423
Q2	54 094	37 064	91 158	74 569	27 042	101 611	-10 453
Q3	54 182	36 587	90 769	74 241	26 663	100 904	-10 135
Q4	50 379	36 630	87 009	69 330	26 048	95 379	-8 370
2009 Q1	46 590	34 381	80 971	63 940	25 074	89 014	-8 043
Percentage change, latest year on previous year							
2008	0.2	1.7	0.8	-2.1	3.8	-0.6	
Percentage change, latest quarter on previous quarter							
2009 Q1	-7.5	-6.1	-6.9	-7.8	-3.7	-6.7	
Percentage change, latest quarter on corresponding quarter of previous year							
2009 Q1	-14.0	-8.2	-11.6	-15.7	-7.6	-13.6	

Net Lending by Sector

£ million

	Net lending (+)/Net borrowing (-) by sector ¹						
	Government		Corporations			Household & NPISH	Rest of the World
	Central	Local	Public	Financial	Private non-financial		
	NMFJ	NMOE	CPCM	NHCQ	DTAL	NSSZ	NHRB
2004	-37 269	-4 620	3 644	18 702	28 820	-32 130	22 853
2005	-35 736	-4 420	203	9 017	26 907	-27 310	31 338
2006	-34 449	-273	4 072	3 124	30 458	-45 799	42 867
2007	-37 104	157	3 219	27 249	28 280	-56 945	35 144
2008	-71 692	-3 122	1 842	65 030	29 490	-43 797	21 675
Seasonally adjusted							
	RPYH	RQAJ	RQBN	RPYN	RQBV	RPZT	RQCH
2007 Q1	-8 488	-3 094	1 827	4 820	9 301	-15 602	11 238
Q2	-8 096	1 376	387	3 408	9 821	-15 349	8 453
Q3	-9 813	1 166	450	5 886	3 512	-12 613	11 412
Q4	-10 707	709	555	13 135	5 646	-13 381	4 041
2008 Q1	-9 847	-2 199	2 859	13 933	12 561	-18 962	1 543
Q2	-15 643	709	-371	12 724	8 565	-11 242	5 118
Q3	-19 975	-1 239	-298	24 017	2 555	-12 244	7 026
Q4	-26 227	-393	-348	14 356	5 809	-1 349	7 988
2009 Q1	-34 512	-2 449	1 520	15 790	15 527	-3 755	7 741

¹ The sum of net lending by sector is equal (but opposite sign) to the residual error between the expenditure and income based estimates of GDP

J1 Households Sector¹: Allocation of Primary Income Account

£ million

	RESOURCES					USES				Households' share of gross national income (per cent)
	Gross operating surplus including gross mixed income	Wages and salaries	Employers' social contributions	Property income received	Total resources	Property income paid	Balance of primary incomes, gross	Total uses		
	NRJN	ROYJ	ROYK	ROYL	ROYR	ROYT	ROYS	ROYR	NRJH	
2007	160 272	629 100	116 550	175 856	1 081 778	73 063	1 008 715	1 081 778	71.2	
2008	158 760	652 168	116 788	172 936	1 100 652	61 328	1 039 324	1 100 652	70.7	
Seasonally adjusted										
2007 Q1	39 155	153 286	29 109	43 171	264 721	16 962	247 759	264 721	71.6	
Q2	39 868	155 831	29 680	43 909	269 288	17 870	251 418	269 288	71.5	
Q3	40 577	158 908	29 127	44 405	273 017	19 119	253 898	273 017	71.6	
Q4	40 672	161 075	28 634	44 371	274 752	19 112	255 640	274 752	69.9	
2008 Q1	40 299	162 409	29 633	45 100	277 441	18 772	258 669	277 441	69.1	
Q2	41 114	163 106	29 623	43 783	277 626	17 135	260 491	277 626	70.4	
Q3	40 422	163 730	29 201	42 586	275 939	16 099	259 840	275 939	70.5	
Q4	36 925	162 923	28 331	41 467	269 646	9 322	260 324	269 646	72.7	
2009 Q1	35 782	159 637	28 966	33 346	257 731	4 060	253 671	257 731	72.4	
Percentage change, latest year on previous year										
2008	-0.9	3.7	0.2	-1.7	1.7	-16.1	3.0	1.7		
Percentage change, latest quarter on previous quarter										
2009 Q1	-3.1	-2.0	2.2	-19.6	-4.4	-56.4	-2.6	-4.4		
Percentage change, latest quarter on corresponding quarter of previous year										
2009 Q1	-11.2	-1.7	-2.3	-26.1	-7.1	-78.4	-1.9	-7.1		

1 This sector includes households and non-profit institutions serving households.

J2 Households Sector¹: Secondary Distribution of Income Account

£ million

	RESOURCES					USES						Real households disposable income: at chained volume measures
	Gross balance of primary incomes	Social contributions	Social benefits other than social transfers in kind	Other current transfers	Total resources	Current taxes on income, wealth, etc.	Social contributions	Social benefits other than social transfers in kind	Other current transfers	Households' gross disposable income	Total uses	
	ROYS	RVFH	RPHL	RPHM	RPHP	RPHR	RPHU	RPIA	RPIB	RPHQ	RPHP	NRJR
2007	1 008 715	518	227 520	55 360	1 292 113	183 499	204 470	1 014	29 247	873 883	1 292 113	827 113
2008	1 039 324	524	246 886	56 334	1 343 068	187 840	210 355	1 020	29 889	913 964	1 343 068	843 278
Seasonally adjusted												
2007 Q1	247 759	129	56 110	12 023	316 021	44 769	50 873	253	5 917	214 209	316 021	204 382
Q2	251 418	131	56 556	13 577	321 682	45 493	51 246	255	7 444	217 244	321 682	205 583
Q3	253 898	129	56 927	13 513	324 467	46 190	51 203	253	6 859	219 962	324 467	208 056
Q4	255 640	129	57 927	16 247	329 943	47 047	51 148	253	9 027	222 468	329 943	209 092
2008 Q1	258 669	131	58 115	13 973	330 888	49 744	53 519	255	7 669	219 701	330 888	205 022
Q2	260 491	131	61 715	13 895	336 232	45 926	53 304	255	7 626	229 121	336 232	212 091
Q3	259 840	131	63 307	13 973	337 251	46 945	52 447	255	7 343	230 261	337 251	210 586
Q4	260 324	131	63 749	14 493	338 697	45 225	51 085	255	7 251	234 881	338 697	215 579
2009 Q1	253 671	131	65 657	13 748	333 207	46 577	50 553	255	7 386	228 436	333 207	210 467
Percentage change, latest year on previous year												
2008	3.0		8.5	1.8	3.9	2.4	2.9		2.2	4.6	3.9	2.0
Percentage change, latest quarter on previous quarter												
2009 Q1	-2.6		3.0	-5.1	-1.6	3.0	-1.0		1.9	-2.7	-1.6	-2.4
Percentage change, latest quarter on corresponding quarter of previous year												
2009 Q1	-1.9		13.0	-1.6	0.7	-6.4	-5.5		-3.7	4.0	0.7	2.7

1 This sector includes households and non-profit institutions serving households.

J3 Households Sector¹: Use of Disposable Income Account

£ million

	RESOURCES			USES			Households ² saving ratio (per cent)
	Gross households' disposable income	Adjustment for the change in net equity of households in pension funds	Total available households' resources	Final consumption expenditure	Gross saving	Total uses	
	RPHQ	RPQJ	RPQK	RPQM	RPQL	RPQK	NRJS
2007	873 883	38 766	912 649	892 990	19 659	912 649	2.2
2008	913 964	29 942	943 906	927 398	16 508	943 906	1.7
Seasonally adjusted							
2007 Q1	214 209	8 552	222 761	219 834	2 927	222 761	1.3
Q2	217 244	10 611	227 855	222 871	4 984	227 855	2.2
Q3	219 962	10 234	230 196	223 915	6 281	230 196	2.7
Q4	222 468	9 369	231 837	226 370	5 467	231 837	2.4
2008 Q1	219 701	9 134	228 835	230 646	-1 811	228 835	-0.8
Q2	229 121	8 625	237 746	232 011	5 735	237 746	2.4
Q3	230 261	6 835	237 096	234 060	3 036	237 096	1.3
Q4	234 881	5 348	240 229	230 681	9 548	240 229	4.0
2009 Q1	228 436	5 307	233 743	226 678	7 065	233 743	3.0
Percentage change, latest year on previous year							
2008	4.6		3.4	3.9		3.4	
Percentage change, latest quarter on previous quarter							
2009 Q1	-2.7		-2.7	-1.7		-2.7	
Percentage change, latest quarter on corresponding quarter of previous year							
2009 Q1	4.0		2.1	-1.7		2.1	

1 This sector includes households and non-profit institutions serving households.

2 Households' saving as a percentage of total available households' resources

K1 Private Non-Financial Corporations Sector: Allocation of Primary Income Account

£ million

	Gross operating surplus						Property income payments						Share of gross national income ¹ (%)
	Gross trading profits		Rental of buildings	Inventory holding gains	Gross operating surplus ¹	Property income receipts	Total resources ^{1,2}	Total payments	of which Dividends	of which Interest	Gross balance of primary incomes ¹		
	Continental shelf companies	Others ¹											
2007	CAGD	CAED	DTWR	-DLRA	CAER	RPBM	RPBN	RPBP	RVFT	ROCG	RPBO	NRJL	
2007	26 871	217 179	16 592	-6 399	254 243	117 435	371 678	175 167	83 344	53 404	196 511	13.9	
2008	37 188	218 096	17 511	-8 095	264 700	103 063	367 763	172 163	82 595	48 619	195 600	13.3	
Seasonally adjusted													
2007 Q1	5 457	54 674	4 081	-1 278	62 934	28 177	91 111	43 104	19 814	13 004	48 007	13.9	
Q2	5 973	55 478	4 113	-1 439	64 125	28 974	93 099	42 661	20 562	13 126	50 438	14.3	
Q3	6 481	54 552	4 180	-1 710	63 503	29 010	92 513	44 473	21 793	13 640	48 040	13.5	
Q4	8 960	52 475	4 218	-1 972	63 681	31 274	94 955	44 929	21 175	13 634	50 026	13.7	
2008 Q1	9 533	56 239	4 297	-2 458	67 611	30 920	98 531	45 022	20 830	13 659	53 509	14.3	
Q2	10 084	53 897	4 373	-2 873	65 481	31 137	96 618	43 734	20 724	13 237	52 884	14.3	
Q3	10 367	54 634	4 431	-2 848	66 584	25 433	92 017	46 209	24 457	12 377	45 808	12.4	
Q4	7 204	53 326	4 410	84	65 024	15 573	80 597	37 198	16 584	9 346	43 399	12.1	
2009 Q1	6 152	52 536	4 385	327	63 400	16 864	80 264	35 653	18 341	7 923	44 611	12.7	
Percentage change, latest year on previous year													
2008	38.4	0.4			4.1	-12.2	-1.1	-1.7	-0.9	-9.0	-0.5		
Percentage change, latest quarter on previous quarter													
2009 Q1	-14.6	-1.5			-2.5	8.3	-0.4	-4.2	10.6	-15.2	2.8		
Percentage change, latest quarter on corresponding quarter of previous year													
2009 Q1	-35.5	-6.6			-6.2	-45.5	-18.5	-20.8	-11.9	-42.0	-16.6		

1 Quarterly alignment adjustment included in this series.

2 Total resources equals total uses.

K2 Private Non-financial Corporations Sector: Secondary Distribution of Income Account and Capital Account

£ million

	Secondary Distribution of Income Account						Capital Account					
	Resources			Uses			Changes in liabilities & net worth		Changes in assets			
	Gross balance of primary incomes ¹	Other resources ²	Total ^{1,3}	Taxes on income	Other uses ⁴	Gross disposable income ^{1,5}	Net capital transfer receipts	Total ¹	Gross fixed capital formation	Changes in inventories ¹	Other changes in assets ⁶	Net lending or borrowing (-) ^{1,7}
	RPBO	NROQ	RPKY	RPLA	NROO	RPKZ	NROP	RPXH	ROAW	DLQY	NRON	RQBV
2007	196 511	8 429	204 940	38 133	8 917	157 890	7 062	164 952	127 561	6 644	2 467	28 280
2008	195 600	8 563	204 163	41 012	9 051	154 100	7 057	161 157	129 759	1 384	524	29 490
Seasonally adjusted												
2007 Q1	48 007	1 976	49 983	9 643	2 098	38 242	3 391	41 633	31 150	689	493	9 301
Q2	50 438	2 170	52 608	9 221	2 292	41 095	925	42 020	30 933	-103	1 369	9 821
Q3	48 040	2 051	50 091	9 587	2 173	38 331	1 203	39 534	33 264	3 242	-484	3 512
Q4	50 026	2 232	52 258	9 682	2 354	40 222	1 543	41 765	32 214	2 816	1 089	5 646
2008 Q1	53 509	2 093	55 602	10 060	2 215	43 327	3 609	46 936	32 714	1 597	64	12 561
Q2	52 884	2 089	54 973	10 474	2 211	42 288	1 190	43 478	32 642	2 139	132	8 565
Q3	45 808	2 126	47 934	10 188	2 248	35 498	925	36 423	32 183	1 520	165	2 555
Q4	43 399	2 255	45 654	10 290	2 377	32 987	1 333	34 320	32 220	-3 872	163	5 809
2009 Q1	44 611	2 455	47 066	9 873	2 577	34 616	4 567	39 183	29 317	-5 901	240	15 527
Percentage change, latest year on previous year												
2008	-0.5	1.6	-0.4	7.5	1.5	-2.4	-0.1	-2.3	1.7			
Percentage change, latest quarter on previous quarter												
2009 Q1	2.8	8.9	3.1	-4.1	8.4	4.9	+	14.2	-9.0			
Percentage change, latest quarter on corresponding quarter of previous year												
2009 Q1	-16.6	17.3	-15.4	-1.9	16.3	-20.1	26.5	-16.5	-10.4			

1 Quarterly alignment adjustment included in this series.

2 Social contributions and other current transfers.

3 Total resources equals total uses.

4 Social benefits and other current transfers.

5 Also known as gross saving.

6 Acquisitions less disposals of valuables and non-produced non-financial assets.

7 Gross of fixed capital consumption.

Gross value added at basic prices: individual measures

	£ million				Index numbers (2005 = 100)				
	Expenditure-based estimate at chained volume measures	At current prices		Residual error ¹	Value indices at current prices		Chained volume indices		
		Expenditure-based estimate	Income-based estimate		Expenditure-based estimate	Income-based estimate	Expenditure-based estimate	Income-based estimate ²	Output-based estimate
	CAGR	CAGQ	CAGS	DJDS	IHYA	IHYB	IHYC	IHYD	YBFR
2007	1 180 158	1 245 735	1 245 735	–	111.6	111.6	105.7	105.7	105.8
2008	1 191 873	1 298 673	1 298 099	574	116.3	116.2	106.7	106.7	106.3
Seasonally adjusted									
2007 Q1	292 276	306 154	306 154	–	109.7	109.7	104.7	104.7	104.8
Q2	294 264	309 585	309 585	–	110.9	110.9	105.4	105.4	105.5
Q3	295 989	313 159	313 159	–	112.2	112.2	106.0	106.0	106.1
Q4	297 629	316 837	316 837	–	113.5	113.5	106.6	106.6	106.6
2008 Q1	300 793	323 676	323 564	112	115.9	115.9	107.7	107.7	107.4
Q2	300 525	324 492	324 352	140	116.2	116.2	107.7	107.6	107.2
Q3	297 965	326 318	326 160	158	116.9	116.8	106.7	106.7	106.2
Q4	292 590	324 187	324 023	164	116.1	116.1	104.8	104.8	104.3
2009 Q1	285 236	315 660	315 522	138	113.1	113.0	102.2	102.1	101.8
Percentage change, latest year on previous year									
2008	1.0	4.2	4.2		4.2	4.2	1.0	0.9	0.5
Percentage change, latest quarter on previous quarter									
2009 Q1	–2.5	–2.6	–2.6		–2.6	–2.6	–2.5	–2.5	–2.4
Percentage change, latest quarter on corresponding quarter of previous year									
2009 Q1	–5.2	–2.5	–2.5		–2.5	–2.5	–5.2	–5.2	–5.3

¹ The residual error is, by convention, the amount by which the expenditure-based approach to measuring GDP exceeds the income-based estimate. It is also the sum of two components: the statistical discrepancy (expenditure) with sign reversed, and the statistical discrepancy (income) with natural sign.

² Income data deflated by the implied GDP deflator, based on expenditure data.

M Alignment adjustments

£ million

	Changes in inventories		Gross operating surplus of non-financial corporations at current prices
	At current prices	Chained volume measures (Reference year 2005)	
Seasonally adjusted			
	DMUN	DMUM	DMUQ
2004 Q1	-578	-592	-2 095
Q2	-762	-773	-415
Q3	220	231	880
Q4	1 120	1 134	1 630
2005 Q1	1 385	1 389	330
Q2	771	766	354
Q3	-656	-661	-100
Q4	-1 500	-1 494	-584
2006 Q1	2 724	2 665	1 107
Q2	-392	-394	-1 583
Q3	-1 259	-1 228	-43
Q4	-1 073	-1 043	519
2007 Q1	-1 627	-1 543	1 825
Q2	-1 213	-1 143	1 366
Q3	1 429	1 354	-510
Q4	1 411	1 332	-2 681
2008 Q1	-1 264	-1 171	378
Q2	158	147	-1 614
Q3	1 573	1 449	627
Q4	-467	-425	609
2009 Q1	-1 391	-1 278	930

R Revisions Analysis^{1,2}

Revisions since previously published estimates

£ million

	2004	2005	2006	2007	2008
Latest less previously published levels of GDP at current market prices					
<i>Previous estimates published on 22nd May 2009</i>					
National accounts aggregates at current prices (Table A2)					
Gross domestic product at market prices	2 361	1 553	3 935	-1 644	3 192
less Basic price adjustment	-16	26	26	-	1 139
Gross value added at basic prices	2 377	1 527	3 909	-1 644	2 053
Gross domestic product: expenditure at current prices (Table C1)					
Domestic expenditure on goods and services at market prices					
Households	2 365	3 875	2 377	-712	-474
Non-profit institutions serving households	449	422	230	-687	-680
General government	-655	-550	-482	-1 328	-2 595
Gross fixed capital formation	-257	-1 560	-550	943	3 501
Changes in inventories	191	-501	686	-393	176
Acquisitions less disposals of valuables	-	1	-	-	-
Total	2 093	1 686	2 261	-2 177	-72
Total exports	404	-234	1 495	1 454	4 469
Total imports	136	-101	-179	-896	-1 131
Statistical discrepancy (expenditure)	-	-	-	-1 817	-2 336
Gross domestic product: income at current prices (Table D)					
Compensation of employees	-1 748	-4 727	-7 082	979	-868
Gross operating surplus of corporations	2 203	3 433	12 006	493	9 658
Other income	1 922	2 821	-1 016	-4 537	-4 997
Gross value added at factor cost	2 377	1 527	3 908	-3 065	3 793
Taxes on products & production less Subsidies	-16	26	27	-	1 375
Statistical discrepancy (income)	-	-	-	1 421	-1 976

1 Estimates are given to the nearest £ million but cannot be regarded as accurate to this degree.

	2004	2005	2006	2007	2008
Latest less previously published growth rates for GDP in chained volume terms					
<i>Previous estimates published on 22nd May 2009</i>					
Percentage changes in volume of GDP (Table A2)					
Gross domestic product chained volume measures					
Year on year growth	0.2	0.1	0.1	-0.4	-
Percentage changes in volume of GVA output components (Table B1)					
GVA at basic prices					
Agriculture, forestry and fishing	0.2	2.3	-2.0	-0.4	-1.4
Mining, quarrying inc oil & gas extraction	0.3	-0.4	-0.5	-0.1	-
Manufacturing	-	-	-0.2	0.4	-0.3
Electricity gas and water supply	-	-	-	-0.8	0.2
Total Production	0.2	-0.2	-0.7	0.2	-0.4
Construction	-0.1	0.1	0.1	0.2	-0.1
Distribution, hotels and catering; repairs	1.8	0.3	0.2	0.2	-0.6
Transport, storage and communication	1.0	-0.7	-	0.2	0.4
Business services and finance	-0.3	0.3	0.1	-	-
Government and other services	-0.2	0.2	-0.1	-0.1	-0.5
Total Services	0.3	0.1	-	-	-0.2
Total GVA	0.2	0.3	0.1	-0.3	0.1
Total GVA excluding Oil	0.2	0.3	0.2	-0.2	0.1
Percentage changes in volume of GDP expenditure components (Table C2)					
Domestic expenditure on goods and services at market prices					
Households	0.1	0.3	-0.5	-0.5	-0.5
Non-profit institutions serving households	1.6	-0.1	-0.6	-9.9	8.7
General government	-0.4	0.3	-	-0.3	-0.6
Gross fixed capital formation	-0.1	0.2	0.5	1.0	0.3
Total	0.1	0.2	-0.2	-0.5	-0.1
Total exports	0.2	-0.2	0.3	1.3	0.7
Total imports	0.1	0.1	-0.8	0.8	-

	2004	2005	2006	2007	2008
Latest less previously published household saving ratio					
<i>Previous estimates published on 27th March 2009</i>					
Households' sector: Use of Disposable Income Account (TABLE J3)					
Saving ratio (per cent)	-0.3	-1.2	-1.3	-	-0.3

2 Estimates are given to one decimal place but cannot be regarded as accurate to this degree.

R Revisions Analysis^{1,2}

Revisions since previously published estimates

continued

£ million

	2007 Q1	2007 Q2	2007 Q3	2007 Q4	2008 Q1	2008 Q2	2008 Q3	2008 Q4	2009 Q1
Latest less previously published levels of GDP at current market prices									
<i>Previous estimates published on 22nd May 2009</i>									
National accounts aggregates at current prices (Table A2)									
Gross domestic product at market prices	1 230	205	-499	-2 580	1 184	231	932	845	-4 458
less Basic price adjustment	14	256	-41	-229	255	139	-2	747	245
Gross value added at basic prices	1 216	-51	-458	-2 351	929	92	934	98	-4 703
Gross domestic product: expenditure at current prices (Table C1)									
Domestic expenditure on goods and services at market prices									
Households	1 502	485	-1 174	-1 525	-515	-295	31	305	-1 234
Non-profit institutions serving households	-165	-169	-173	-180	-6	-7	-206	-461	-450
General government	-79	-320	14	-943	395	-742	-1 094	-1 154	-2 298
Gross fixed capital formation	513	423	368	-361	1 384	538	731	848	-442
Changes in inventories	-778	-291	301	375	-11	-37	219	5	659
Acquisitions less disposals of valuables	-	-	-	-	-	-	-	-	-
Total	993	128	-664	-2 634	1 247	-543	-319	-457	-3 765
Total exports	341	401	329	383	612	1 495	1 346	1 016	-1 362
Total imports	-314	-156	-322	-104	116	138	-502	-883	-1 230
Statistical discrepancy (expenditure)	-418	-480	-486	-433	-559	-583	-597	-597	-561
Gross domestic product: income at current prices (Table D)									
Compensation of employees	-1 267	337	972	937	475	521	-46	-1 818	-2 341
Gross operating surplus of corporations	3 118	412	-629	-2 408	2 190	1 067	3 006	3 395	-692
Other income	-974	-1 182	-1 179	-1 202	-1 465	-1 085	-1 512	-935	-1 280
Gross value added at factor cost	877	-433	-836	-2 673	1 200	503	1 448	642	-4 313
Taxes on products & production less Subsidies	19	258	-41	-236	292	198	60	825	331
Statistical discrepancy (income)	334	380	378	329	-308	-470	-576	-622	-476

1 Estimates are given to the nearest £ million but cannot be regarded as accurate to this degree.

	2007 Q1	2007 Q2	2007 Q3	2007 Q4	2008 Q1	2008 Q2	2008 Q3	2008 Q4	2009 Q1
Latest less previously published growth rates for GDP in chained volume terms									
<i>Previous estimates published on 22nd May 2009</i>									
Percentage changes in volume of GDP (Table A2)									
Gross domestic product chained volume measures									
Quarter on quarter growth	-0.1	-0.2	-0.1	-0.4	0.5	-0.1	-	-0.2	-0.5
Quarter on same quarter a year earlier	-0.4	-0.3	-0.4	-0.8	-0.1	-	0.1	0.2	-0.8
Percentage changes in volume of GVA output components (Table B1)									
GVA at basic prices quarter on quarter growth									
Agriculture, forestry and fishing	1.0	-0.1	-0.3	-0.5	-0.2	-0.6	-0.2	-	-0.4
Mining, quarrying inc oil & gas extraction	0.3	-	-0.2	-	0.1	-	-0.4	0.5	0.9
Manufacturing	0.4	-0.2	0.1	-0.2	0.3	-0.3	-0.2	-0.4	-
Electricity gas and water supply	-0.4	-0.3	-	-0.1	0.5	0.3	-0.3	-0.6	-0.1
Total Production	0.4	-0.2	0.1	-0.2	0.1	-0.2	-0.2	-0.2	0.2
Construction	0.6	0.5	-0.2	-0.8	0.8	-	-0.2	-0.1	-4.5
Distribution, hotels and catering; repairs	-	0.2	-0.2	-0.2	0.2	-0.4	-0.3	-0.8	-0.3
Transport, storage and communication	-0.3	0.3	-0.4	-0.3	1.4	-	-0.7	-0.4	-0.7
Business services and finance	0.5	-0.2	-	-0.6	0.7	-0.1	-0.1	-0.1	-0.3
Government and other services	0.3	-0.1	-0.4	-0.1	-	-	-0.3	-	-0.5
Total Services	0.3	-	-0.2	-0.4	0.4	-0.1	-0.2	-0.2	-0.4
Total GVA	-0.1	-	-0.1	-0.2	0.5	-0.1	-0.2	-0.2	-0.6
Total GVA excluding Oil	-0.1	-	-0.1	-0.2	0.6	-0.1	-0.2	-0.2	-0.6
Percentage changes in volume of GDP expenditure components (Table C2)									
Domestic expenditure on goods and services at market prices quarter on quarter growth									
Households	0.1	-0.5	-0.8	-0.1	0.3	-	-0.2	-0.1	-0.1
Non-profit institutions serving households	-7.0	-1.0	-0.1	1.9	5.0	3.7	-	-2.3	-0.5
General government	-0.2	-	-	-	-0.2	-0.1	-0.2	-0.2	-0.1
Gross fixed capital formation	0.6	0.3	-	-0.4	1.7	-1.7	-	0.2	-3.7
Total	-0.1	-0.1	-0.1	-0.2	0.4	-0.3	-	-0.1	-0.5
Total exports	0.1	-0.1	-0.2	-	0.4	1.0	-0.6	-0.2	-0.8
Total imports	-	-0.1	-0.2	0.3	-0.1	-	-0.5	0.4	-0.8
Latest less previously published household saving ratio									
<i>Previous estimates published on 27th March 2009</i>									
Households' sector:									
Use of Disposable Income Account (TABLE J3)									
Saving ratio (per cent)	-1.1	-0.5	0.5	0.8	0.4	0.1	-0.4	-0.8	..

2 Estimates are given to one decimal place but cannot be regarded as accurate to this degree.

Next publication: Friday 24 July 2009

Issued by: Office for National Statistics, Government Buildings, Cardiff
Road, Newport NP10 8XG

Media contact:

Tel **Media Relations Office 0845 604 1858**
 Emergency on-call 07867 906553
Email **press.office@ons.gsi.gov.uk**

Statistical contact:

Tel **Jon Beadle 020 7014 2053**
Email **gdp@ons.gov.uk**

Website:

www.statistics.gov.uk