

12 September 2007

Coverage

United Kingdom
unless otherwise stated

Theme

Labour Market

Public sector employment

Quarter 2 2007

Public sector employment decreased by 11,000 (seasonally adjusted) in the second quarter of 2007 to 5.781 million.

In central government employment decreased by 14,000 in the second quarter 2007 and in local government it increased by 3,000. Employment by public corporations was unchanged from the previous quarter.

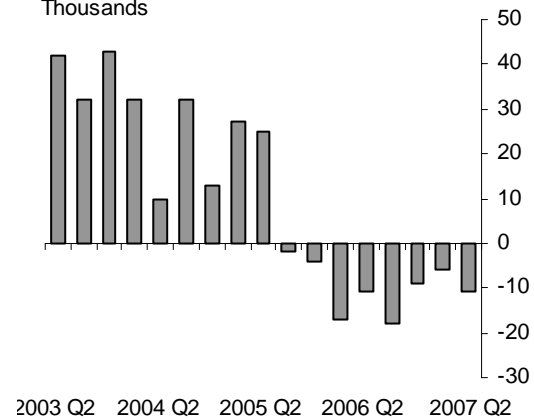
The number of employees in the Civil Service decreased by 4,000.

The largest decrease in the second quarter was in the NHS (7,000^e). The largest increase was in education (5,000).

Employment in the private sector increased by 95,000 in the second quarter. This compares with the decrease of 11,000 in the public sector.

Compared with the same quarter the previous year, there was a decrease of 44,000* in public sector employment. This fall was mainly in the NHS (21,000*) and the Civil Service (19,000).

Quarterly growth in public sector employment; United Kingdom; headcount; seasonally adjusted
Thousands



Issued by
National Statistics
1 Drummond Gate
London SW1V 2QQ

Telephone
Press Office 020 7533 5725
Public enquiries 0845 601 3034

Statistician
Donna Livesey 01633 812865
Email
donna.livesey@ons.gov.uk

Internet
www.statistics.gov.uk

Next publication date
12 December 2007

Public sector employment; United Kingdom (thousands), seasonally adjusted, headcount

	Central government (incl. NHS)	Local government	Public corporations	Total public sector	Of which: Civil Service
<i>Levels</i>					
2006 Q2	2,537	2,940	348	5,825	558
2006 Q3	2,512	2,949	346	5,807	554
2006 Q4	2,513 ^e	2,940	345	5,798 ^e	550
2007 Q1	2,505 ^e	2,945	342	5,792 ^e	543
2007 Q2	2,491^e	2,948^e	342	5,781^e	539
<i>Change on latest quarter</i>	-14	3	-	-11	-4
<i>Change %</i>	-0.6	0.1	0.0	-0.2	-0.7
<i>Change on year</i>	-46*	8	-6	-44*	-19
<i>Change %</i>	-1.8	0.3	-1.7	-0.8	-3.4

Civil Service estimates are home civil service and therefore exclude Northern Ireland Civil Service which is included in Central Government.

^e Statistics for 2006 Q4 onwards are partly based on projections. Please see background note 2.

*Annual decrease partly reflects removal of 10,000 duplicate records from NHS in Q3 2006.

Public sector employment by sector classification; headcount; (Table 1)

Total public sector employment was 5.781 million (seasonally adjusted) in the second quarter (June) 2007, a decrease of 11,000 (0.2 per cent) since the first quarter 2007.

Central government employment decreased by 14,000 (0.6 per cent) in the latest quarter while local government increased by 3,000 (0.1 per cent).

Employment in public corporations was unchanged from the previous quarter.

The number of employees in the Civil Service in Great Britain decreased by 4,000 (0.7 per cent) compared with the previous quarter.

Compared with the same quarter the previous year, there was a decrease of 44,000* in public sector employment. This fall was mainly in central government (46,000) and reflects decreases in the Civil Service and NHS.

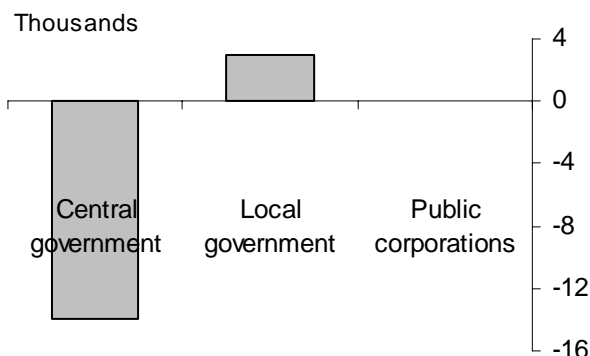
Public sector employment by industry; headcount (Table 2)

When public sector employment is analysed by industry (Standard Industrial Classification), the largest decrease (seasonally adjusted) in the second quarter (June) 2007 compared to the first quarter 2007 was in the NHS (7,000^e, 0.5 per cent). There were also decreases in HM Forces (3,000), public administration (3,000), other public sector (3,000), and construction (2,000).

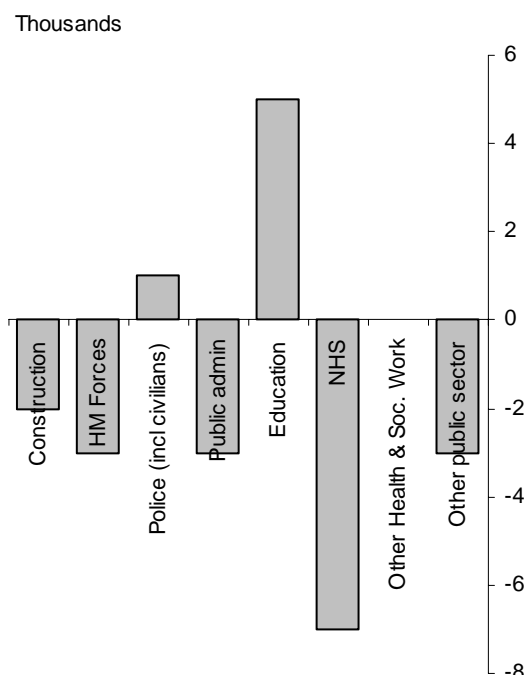
The largest increase in the latest quarter was in education (5,000, 0.4 per cent). There was also an increase of 1,000 in police (including civilians).

Compared with the same quarter the previous year, the largest decreases were in the NHS (21,000, 1.4 per cent) and other public sector (16,000, 2.2 per cent).

Public sector employment growth by sector in the latest quarter - 2007Q2; United Kingdom; headcount; seasonally adjusted



Public sector employment growth by industry in the latest quarter - 2007Q2; United Kingdom; headcount; seasonally adjusted



The year-on-year decrease in the NHS includes an adjustment in Q3 2006 of approximately 10,000 to remove duplicate records identified by the Information Centre for non-medical staff. Before this adjustment, the reduction in NHS employment would have been approximately 11,000.

Public sector employment by sector classification and Industry; Full-time equivalents (Tables 3 and 4)

Table 3 provides full-time equivalent (FTE) by sector classification while table 4 provides estimates by industry. The picture is similar on an FTE basis to that of the headcount estimates provided in tables 1 and 2.

Total public sector employment on an FTE basis was 4.665 million (seasonally adjusted) in the second quarter (June) 2007, a decrease of 12,000 (0.3 per cent) since the first quarter 2007. Public sector employment on an FTE basis in the three months to June 2007 decreased in central government by 12,000 (0.6 per cent) and increased in local government by 1,000 (0.0 per cent).

Employment in public corporations decreased by 1,000 (0.3 per cent).

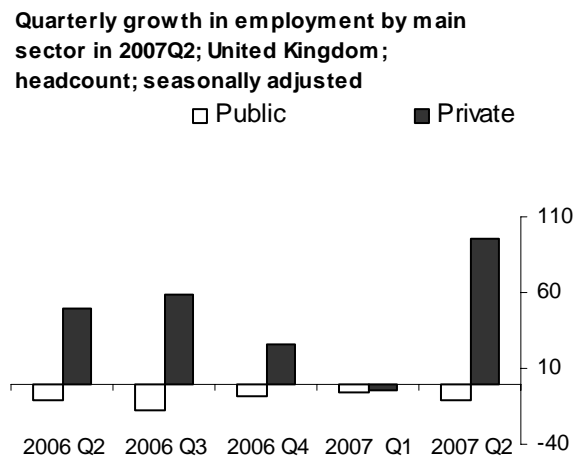
The number of FTE employees in the Civil Service in Great Britain fell by 4,000 in the three months to June 2007, a 0.8 per cent decrease.

The largest decrease in the three months to June 2007 was in the NHS (6,000^e, 0.5 per cent).

Public and private sector employment; headcount (Table 5)

Private sector employment totals are derived as the difference between Labour Force Survey employment estimates for the whole economy (seasonally adjusted) and the public sector estimates collected from public sector organisations.

In the three months to June 2007, employment in the



private sector (seasonally adjusted) increased by 95,000 (0.4 per cent). This compared with the decrease of 11,000 (0.2 per cent) in the public sector.

In the second quarter (June) 2007, the public sector accounted for 19.9 per cent of total employment in the United Kingdom.

Civil Service employment by department (Table 6)

The number of employees in the Civil Service in Great Britain decreased by 4,000 (0.7 per cent) compared with the previous quarter and, on a full-time equivalent basis, by 4,000 (0.8 per cent).

There were a number of machinery of government changes in the second quarter of 2007. The most notable being the creation of the Ministry of Justice (formerly the Department for Constitutional Affairs) and the transfer of a large number of employees from the Home Office. The departmental breakdown in Table 6 reflects these changes. For more information on machinery of government changes that have led to movements within departments please see background note 20.

At the departmental level, the largest decreases in the second quarter (June) 2007 (on a full-time equivalent basis and excluding those linked to machinery of government changes) were recorded by HM Revenue and Customs (approximately 2,100), Department for Work and Pensions (approximately 1,500), and Ministry of Defence (approximately 800).

BACKGROUND NOTES

1. This regular quarterly Public Sector Employment First Release results from the work of a cross-departmental project, led by ONS, to improve the quality and timeliness of public sector employment statistics. The latest report setting out the full details of the improvements being made to estimates of public sector employment was published on 23 November 2006 and is accessible on the National Statistics website at the following address: <http://www.statistics.gov.uk/cci/article.asp?ID=1686>

Results for quarter 4 2006 to quarter 2 2007

2. Estimates of public sector employment for quarter 4 2006 to quarter 2 2007 are based partly on projections for some sources. As part of the development programme to improve the quality of public sector employment estimates, government departments are working towards the production of timely quarterly estimates. Until this development programme is completed, there remains a requirement to include estimates for certain sources:
 - i) NHS workforce statistics for England and Scotland are currently published annually for the year ending 30 September by the Information Centre for Health and Care and the Scottish Government. The statistics are available approximately six to seven months after the end of the reference period. NHS workforce numbers for Wales are now available quarterly.
 - ii) Police (including civilians) workforce estimates for England and Wales are published every six months (for two quarters) by the Home Office.
3. In the absence of statistics for the latest periods, the Information Centre and the Scottish Government have supplied estimates for the NHS. The Home Office has provided estimates for the Police in England and Wales.
4. These estimates are based on projections and are subject to revision. Notes 26 to 28 provide further information.

Concepts, sources and definitions

5. The public sector comprises central government, local government and public corporations as defined for the UK National Accounts. The Sector Classifications Guide (MA23) provides information on the classification of organisations and institutions in the National Accounts.
<http://www.statistics.gov.uk/CCI/SearchRes.asp?term=ma23>
6. Central government includes all administrative departments of government and other central agencies and non-departmental public bodies. This sector also includes HM Forces and the National Health Service. Within education, Academies are also classified to central government. From 1 April 2005, central government includes the former Magistrates' Courts Service which has been brought together with the Court Service to form Her Majesty's Courts Service. The Magistrates' Courts Service was previously classified to local government.

7. Local government covers those types of public administration that only cover a locality and any bodies controlled and mainly financed by them. The sub-sector includes all areas of administrative authorities including parish councils, though these units are not covered by the current estimates for local authorities. It includes police forces and their civilian staff. All functions of local authorities are classified to the sub-sector, although trading activities that produce market output (for example, housing and municipally owned markets) are regarded as quasi-corporations and appear under public corporations. Local education authorities are part of local government, as are voluntary aided schools, county schools and, from September 1999, foundation schools (formerly grant-maintained).
8. Public corporations are companies or quasi-corporations controlled by government. Examples include British Nuclear Fuels plc and Royal Mail. These companies receive more than half their income from sales of goods or services into the market place.
9. The estimates of Civil Service employees count all home Civil Service employees (including from 1 April 2005 the employees of the former Magistrates' Courts Service). Civil Service employees can be classified to central government or public corporations. Examples of public corporations include the UK Intellectual Property Office and the Driving Standards Agency. Civil Service estimates exclude the Northern Ireland Civil Service, the Diplomatic Service and other Crown servants. Employees in these groups, though, are included in estimates of central government employment.
10. Headcount estimates are based on the number of employees with an employment contract who are being paid by the organisation. Employees can be permanent, on a fixed-term contract or employed on a casual basis. Self-employed, contract workers and agency workers are excluded. Permanent employees, as defined in Table 6, are employees with a contract with no agreed expiry date or a fixed term contract of more than twelve months. Temporary/casual employees are those with a fixed term contract of twelve months or less or employed on a casual basis.
11. The public sector employment estimates relate to the number of people employed according to returns from the relevant organisations, but they include a number of workers with a second job in the public sector whose main job is in the private sector or in a separate public sector organisation. The private sector estimate, which is obtained by taking the difference between the Labour Force Survey estimate of people employed in the whole economy and the public sector total, will thus tend to be correspondingly understated by a small percentage.
12. As well as the headcount estimates, estimates have also been produced for the number of employees in full-time equivalents (FTE) back to 1999. This is based on converting part-time employees' hours into a full-time employees' equivalent and provides a better indicator of total labour input than a simple headcount.
13. Estimates of public sector employment broken down by industry are

based on the Standard Industrial Classifications (SIC 2003) and not on the Classification of the Functions of Government (COFOG).

14. The estimates of public sector employment in education (SIC division 80) differ from the school workforce estimates published by the Department for Education and Skills (DfES) mainly as a result of differences in coverage and data sources. DfES estimates focus on the number of FTE teachers and support staff in the maintained school sector for England only. By comparison, the ONS estimates are derived by allocating local authority employees to education using the Inter-Departmental Business Register and the Quarterly Public Sector Employees Survey in England and Wales. Estimates include all employees reported by local authorities as working in primary, secondary and adult education establishments including some groups who are not covered by the DfES statistics, such as adult education staff and certain categories of support staff. Employment in education in Scotland and Northern Ireland are also included to give a wider UK coverage. For further information on the differences between DfES and ONS data on education please see pages 44 to 46 of the Public Sector Employment Trends 2005 article published in October 2005:

<http://www.statistics.gov.uk/articles/nojournal/PublicSectorEmploymentTrends2005.pdf>

15. In order to make a fairer comparison between DfES and ONS estimates, ONS FTE estimates for England only should be compared against DfES estimates. The table below provides published DfES figures for January each year compared to ONS estimates for Q4 (December) each year (not seasonally adjusted). It shows that the difference on this basis between ONS and DfES estimates for quarter 4 2006/January 2007 (provisional) was 51,000 full-time equivalents.

Comparison of DfES school workforce and ONS public sector education estimates; England only; full-time equivalents, not seasonally adjusted

Date	ONS	DfES			Difference
	Education (SIC div. 80)	All regular teachers ¹	Total support staff ²	Total (regular teachers + support staff)	ONS - DfES totals
01Q4/Jan02	692	420	213	633	59
02Q4/Jan03	721	424	223	647	74
03Q4/Jan04	745	428	241	668	77
04Q4/Jan05	751	432	265	697	54
05Q4/Jan06	776	436	288	723	53
06Q4/Jan07(p)	791	435	306	740	51

(p) Provisional

¹ DfES annual 618G survey, excludes occasional teachers

² Annual Schools' census

16. The different coverage of the ONS and DfES education statistics serves the needs of different users. Those who require information on the workforce in England who are directly involved in pupils' teaching and learning should use DfES published statistics. Users should also refer to DfES published statistics to gauge trends in education employment.

Those who seek data on UK public sector employment in education, in its widest sense, should use the ONS data in this release.

17. ONS estimates for the NHS also differ from the headline figure produced by the Information Centre. Again, this reflects the wider UK coverage (Information Centre figures are for England only) plus the exclusion by ONS of general practitioners (GPs). ONS, in accordance with National Accounts practice, classifies GPs as part of the private sector. ONS also include 'hospital practitioners and clinical assistants' who work in hospitals on a salaried payscale but generally work as GPs leading the Information Centre to exclude them from their totals to avoid double counting. When these factors are allowed for, ONS and NHS data can be shown to be identical (see table below).

Comparison of Information Centre estimates and ONS public sector NHS estimates; England only; headcount, not seasonally adjusted¹

Date	ONS	Information Centre			Comparable Total
	NHS estimates	NHS and GP workforce	GPs & practice staff	Hospital practitioners and clinical assistants	
		A	B	C	A - B + C
Q3 (Sep) 2001	1,036	1,167	136	5	1,036
Q3 (Sep) 2002	1,090	1,225	140	5	1,090
Q3 (Sep) 2003	1,145	1,284	144	4	1,145
Q3 (Sep) 2004	1,189	1,332	147	4	1,189
Q3 (Sep) 2005	1,222	1,366	148	4	1,222
Q3 (Sep) 2006	1,186	1,339	156	3	1,186

¹ small difference may occur due to rounding.

18. The statistics published in this release are derived from the relevant departments and devolved governments plus comprehensive ONS quarterly surveys of the home Civil Service, local authorities in England and Wales and Non-Departmental Public Bodies and Public Corporations. The following table shows the data sources used to calculate total public sector employment for Q2 2007.

19.

Sources for Public Sector Employment estimates

	Geographic coverage	Source
Central government		
HM Forces	UK	MoD: DASA
National Health Service	England	Information Centre for Health and Social Care
	Wales	National Assembly for Wales
	Scotland	Scottish Government
	Northern Ireland	DETINI
Other central government	GB	Quarterly Public Sector Employees Survey (ONS) Home Office (National Probation Service and Police Service Strength)

	NI	DETINI
Local government		
Local authorities	England and Wales	Quarterly Public Sector Employees Survey (ONS)
	Scotland	Joint Staffing Watch: Scottish Government
	Northern Ireland	DETINI
Police (including civilians)	England and Wales	Home Office
	Scotland	Joint Staffing Watch: Scottish Government
	Northern Ireland	DETINI
Public corporations		
	GB	Quarterly Public Sector Employees Survey (ONS)
	Northern Ireland	DETINI

Comparisons over time

20. Machinery of Government changes in the 12 Month period to June 2007 are listed here:

Machinery of government changes affecting the Civil Service	
Wine Standards Board	This former NDPB merged with the Food Standards Agency on 1 July 2006.
Office of Climate Change	The Office of Climate Change was established in September 2006 and employees were reported by DEFRA from Q4 2006.
Natural England	Natural England was established on 1 October 2006 as a Non-Departmental Public Body and the environmental land management functions transferred out of DEFRA.
Tir Gofal	The administration of Tir Gofal transferred from the Countryside Council for Wales to the National Assembly for Wales on 16 October 2006.
Office of Public Sector Information	The Office of Public Sector Information merged with the National Archives in October 2006.
National School of Government	Recorded under "Other Cabinet Office Agencies" from Q1 2007 onwards. Previously included in Cabinet Office figures.
Ofsted	The new Ofsted – the Office for Standards in Education, Children's Services and Skills - came into being on 1 April 2007.
Privy Council Office	The functions of the Privy Council (PCO) were split between the Ministry of Justice and the Cabinet Office in April 2007
Assembly Parliamentary Service	The Assembly Parliamentary Service transferred to the National Assembly for Wales Commission in May 2007.
Ministry of Justice	The Ministry of Justice was launched on 9 May 2007, taking over responsibilities from the Department for Constitutional Affairs, the National Offender Management Service and the Office for Criminal Justice Reform.
Department for Education and Skills and Department for Trade and Industry	On 28 June 2007 three new departments were established in place of the Department for Education and Skills and Department for Trade and Industry. These were the Department for Children, Schools and Families, the Department for Innovation, Universities and Skills and the Department for Business, Enterprise and Regulatory Reform.
	Due to the timing of this change it has not been

	wholly possible to reflect the reorganisation in Table 6. A single entry is presented for Department for Education and Skills (former). This will be addressed for Quarter 3 2007.
--	--

When examining trends in Civil Service employment over time in the context of the 2004 Spending Review efficiency programme workforce reduction targets, these machinery of government changes should be accounted for. Also, the ONS statistics are for Great Britain whereas the efficiency programme covers the English Civil Service only. The coverage of Departments, and parts of departments, that are required to make workforce reductions under the efficiency programme does not equate to the total Civil Service. For example, Prison Officers are included in the total Civil Service but are not included in the workforce reduction programme. Due to these reasons the change in the size of the Civil Service since the start of the efficiency programme will not equate to the number of reductions made in the programme. Any questions relating to the efficiency programme should be directed to HM Treasury.

21. Consistent time series are available from the National Statistics website back to 1999 on a seasonally adjusted basis and back to 1991 on a non-seasonally adjusted basis. For earlier estimates (which are on a different basis) users should consult the *Labour Market Trends* (vol 112, no 7) article "Jobs in the public sector mid-2003".
http://www.statistics.gov.uk/articles/labour_market_trends/public_sector_j_obs.pdf

Revisions

22. Public sector employment statistics have previously been published for periods up to and including Q1 2007. In line with the published revisions policy for public sector employment statistics (http://www.statistics.gov.uk/downloads/theme_labour/PSERevisionsPolicy.PDF) the statistics for Q1 2007 and Q2 2006 have been revised to take account of late information for respondents and seasonal adjustment updates. There were also revisions back to Q2 2005 to take account of the latest published police workforce statistics for England and Wales.
23. Revisions for Q1 2007 (+5k) were mainly to local government and reflect revisions to the police (including civilians) series following the publication of the latest Home Office statistics.
24. Tables 1R to 5R illustrate the size of the revisions in each category.

Planned future revisions

25. In the Q3 2007 First Release, the annual re-referencing of estimates of Local Authority employment in England and Wales will be implemented, bringing the historical time series in line with the latest survey levels.
26. Statistics for the NHS for England and Scotland for Q4 2006 onwards are based on projections and informed modelled estimates have been supplied by the Information Centre and the Scottish Government. These estimates may be revised following the publication of the annual NHS

workforce statistics for the period up to September 2007.

27. Statistics for the Police (including civilians) for Q2 2007 for England and Wales are also based partly on projections supplied by the Home Office. These estimates may be revised following the publication of the latest Home Office statistics.
28. As part of the cross-departmental development project, both Home Office and the NHS are making improvements to enable them to produce timelier public sector employment statistics. In the short term, however, NHS statistics will continue to be available on an annual basis and Police service workforce statistics every six months, with those departments making estimates for more recent periods.
29. Due to the introduction of a new Personnel Administration System for the RAF, statistics for HM Forces for Q4 2006 onwards are provisional and may be subject to revision.

Future publications

30. The next Public Sector Employment First Release, for Q3 (September) 2007 will be published on 12 December 2007.

General

31. Details of the policy governing the release of new data are available from the press office. Also available is a list of the names of those given pre-publication access to the contents of this release.
32. **National Statistics** are produced to high professional standards set out in the National Statistics Code of Practice. They undergo regular quality assurance reviews to ensure that they meet customer needs. They are produced free from any political interference. © Crown Copyright 2007.

INDEX OF TABLES

Public sector employment by sector classification; Headcount	1
Public sector employment by industry; Headcount	2
Public sector employment by sector classification; Full-time equivalent	3
Public sector employment by industry; Full-time equivalent	4
Public and private sector employment; Headcount	5
Civil Service employment by department	6
Public sector employment by sector classification; Headcount - Revisions	1R
Public sector employment by industry; Headcount - Revisions	2R
Public sector employment by sector classification; Full-time equivalent - Revisions	3R
Public sector employment by industry; Full-time equivalent - Revisions	4R
Public and private sector employment; Headcount - Revisions	5R

1 Public sector employment by sector classification; Headcount¹

United Kingdom (Thousands)

General government						
	Central government ^{2 3 4 5}	Local government ^{3 4 5 7}	Total general government ³	Total public corporations	Total public sector ³	Of which: Civil Service ^{2 5 8}
Not seasonally adjusted						
	C9K9	C9KA	C9KB	C9KC	C9KD	C9KE
1992	2 352	3 025	5 377	532	5 909	609
1993	2 301	2 795	5 096	502	5 598	601
1994	2 241	2 760	5 001	434	5 435	578
1995	2 185	2 765	4 950	422	5 372	555
1996	2 148	2 740	4 888	385	5 273	538
1997	2 107	2 734	4 841	338	5 179	516
1998	2 111	2 716	4 827	341	5 168	505
1999	2 115	2 746	4 861	350	5 211	504
General government						
	Central government ^{2 3 4 5 6}	Local government ^{3 4 5 7}	Total general government ^{3 6}	Total public corporations	Total public sector ^{3 6}	Of which: Civil Service ^{2 5 8}
Seasonally adjusted						
	G6NQ	G6NT	G6NW	G7AR	G7AU	G7D6
1999	2 115	2 741	4 856	352	5 208	504
2000	2 154	2 776	4 930	359	5 289	516
2001	2 232	2 778	5 010	373	5 383	522
2002	2 324	2 796	5 120	370	5 490	538
2003	2 434	2 838	5 272	373	5 645	560
2004	2 506	2 893	5 399	363	5 762	570
2005	2 563	2 930 [†]	5 492	367	5 859	570
2006	2 537	2 940	5 477 [†]	348	5 825 [†]	558
2007	2 491	2 948	5 439	342	5 781	539
2003 Q2	2 434	2 838	5 272	373	5 645	560
Q3	2 454	2 848	5 302	375	5 677	562
Q4	2 478	2 872	5 350	370	5 720	564
2004 Q1	2 503	2 882	5 385	367	5 752	569
Q2	2 506	2 893	5 399	363	5 762	570
Q3	2 523	2 909	5 432	362	5 794	570
Q4	2 530	2 914	5 444	363	5 807	565
2005 Q1	2 542	2 927	5 469	365	5 834	562
Q2	2 563	2 930 [†]	5 492	367	5 859	570
Q3	2 556	2 936	5 491	366	5 857	567
Q4	2 556	2 938	5 494	359	5 853	563
2006 Q1	2 547	2 937	5 484	352	5 836	560
Q2	2 537	2 940	5 477 [†]	348	5 825 [†]	558
Q3	2 512	2 949	5 461	346	5 807	554
Q4	2 513 ³	2 940	5 453 ³	345	5 798 ³	550
2007 Q1	2 505 ³	2 945 ³	5 450 ³	342 [†]	5 792 ³	543
Q2	2 491 ³	2 948 ³	5 439 ³	342	5 781 ³	539
Change on quarter to:						
2006 Q2	-10	3 [†]	-7 [†]	-4	-11 [†]	-2
Q3	-25	9	-16	-2	-18	-4
Q4	1	-9	-8	-1	-9	-4
2007 Q1	-8	5	-3	-3 [†]	-6	-7
Q2	-14	3	-11	-	-11	-4
% change on quarter to:						
2006 Q2	-0.4	0.1 [†]	-0.1	-1.1	-0.2	-0.4
Q3	-1.0	0.3	-0.3 [†]	-0.6	-0.3 [†]	-0.7
Q4	0.0	-0.3	-0.1	-0.3	-0.2	-0.7
2007 Q1	-0.3	0.2	-0.1	-0.9 [†]	-0.1	-1.3
Q2	-0.6	0.1	-0.2	0.0	-0.2	-0.7
Change on year to:						
2006 Q2	-26	10 [†]	-15 [†]	-19	-34 [†]	-12
Q3	-44	13	-30	-20	-50	-13
Q4	-43	2	-41	-14	-55	-13
2007 Q1	-42	8	-34	-10 [†]	-44	-17
Q2	-46	8	-38	-6	-44	-19
% change on year to:						
2006 Q2	-1.0	0.3 [†]	-0.3	-5.2	-0.6	-2.1
Q3	-1.7	0.4	-0.5	-5.5	-0.9	-2.3
Q4	-1.7	0.1	-0.7	-3.9	-0.9	-2.3
2007 Q1	-1.6	0.3	-0.6 [†]	-2.8 [†]	-0.8 [†]	-3.0
Q2	-1.8	0.3	-0.7	-1.7	-0.8	-3.4

1 Annual figures relate to June quarter (Q2)

2 Series does not display seasonality, Seasonal=Not Seasonal

3 NHS & Police (England & Wales) based on projections

4 National Probation Service (England & Wales) re-classified from Local Government to Central Government from April 2001

5 Magistrates' Courts Service transferred from LG to CG (&CS) Apr 2005

6 10,000 duplicate NHS records removed from Q3 2006 onwards.

7 Further education & 6th form college transferred to private sector Apr 1993

8 Home Civil Service (excludes NI Civil Service which is included in CG)

[†] Indicates earliest revision

2 Public sector employment by industry; Headcount

United Kingdom (Thousands)

	Public admin,defence,compulsory social security					Health and social work			
	Construction	HM Forces ^{1 2}	Police (including civilians) ³	Public administration	Education	National Health Service ⁴	Other health and social work	Other public sector	
Not seasonally adjusted									
	C9LA	C9LB	C9LC	C9LD	C9LF	C9LG	C9LH	C9LJ	
1992	168	304	226	1 276	1 293	1 225	443	973	
1993	156	285	228	1 239	1 131	1 204	428	928	
1994	149	262	228	1 206	1 105	1 189	438	858	
1995	142	241	227	1 174	1 126	1 193	440	828	
1996	131	230	230	1 163	1 127	1 197	436	759	
1997	124	220	230	1 139	1 131	1 190	436	708	
1998	118	219	229	1 124	1 141	1 202	424	710	
1999	115	218	227	1 138	1 162	1 212	420	719	
Seasonally adjusted									
	G7ER	G7EU	G7EX	G7F2	G7F5	G7FG	G7FJ	G7FM	
1999	112	218	227	1 138	1 163	1 212	417	720	
2000	109	217	225	1 143	1 219	1 239	414	723	
2001	98	214	229	1 150	1 247	1 285	400	758	
2002	83	214	238	1 177	1 256	1 348	392	778	
2003	77	223	248	1 219	1 312	1 417	374	774	
2004	77	218	264	1 232	1 349	1 475	388	758	
2005	71	210	272 [†]	1 249	1 371	1 528	393	764	
2006	65	204	274 [†]	1 245	1 397	1 522	385	733	
2007	57	197	283	1 233	1 407	1 501	386	717	
2003 Q2	77	223	248	1 219	1 312	1 417	374	774	
Q3	81	221	252	1 224	1 316	1 437	379	772	
Q4	80	222	255	1 222	1 338	1 452	388	764	
2004 Q1	78	220	260	1 230	1 341	1 471	389	761	
Q2	77	218	264	1 232	1 349	1 475	388	758	
Q3	76	215	265	1 242	1 356	1 490	393	758	
Q4	74	215	267	1 242	1 357	1 501	391	758	
2005 Q1	73	213	271	1 243	1 367	1 514	394	759	
Q2	71	210	272	1 249	1 372	1 528	393	763	
Q3	70	207	271 [†]	1 246	1 382	1 532	390	761	
Q4	69	206	274 [†]	1 247	1 386	1 532	389	750	
2006 Q1	65	206	273	1 246	1 390	1 528	386	743 [†]	
Q2	65	204 ²	274	1 245 [†]	1 397 [†]	1 522	385 [†]	733 [†]	
Q3	62	202 ²	276	1 246	1 399	1 506	391	726	
Q4	60	202 ²	278	1 242	1 398	1 507 ⁴	386	724	
2007 Q1	59	200 ²	282	1 236	1 402	1 508 ^{4†}	386	720	
Q2	57	197 ²	283 ³	1 233	1 407	1 501 ⁴	386	717	
Change on quarter to:									
2006 Q2	-	-2	1 [†]	-1 [†]	7 [†]	-6	-1 [†]	-10 [†]	
Q3	-3	-2	2 [†]	1	2	-16	6	-7	
Q4	-2	-	2	-4	-1	1	-5	-2	
2007 Q1	-1	-2	4	-6	4	1 [†]	-	-4	
Q2	-2	-3	1	-3	5	-7	-	-3	
% change on quarter to:									
2006 Q2	0.0	-1.0	0.4 ⁺	-0.1 [†]	0.5 [†]	-0.4	-0.3 [†]	-1.3 [†]	
Q3	-4.6	-1.0	0.7 [†]	0.1	0.1	-1.1	1.6	-1.0	
Q4	-3.2	0.0	0.7	-0.3	-0.1	0.1	-1.3	-0.3	
2007 Q1	-1.7	-1.0	1.4	-0.5	0.3	0.1 [†]	0.0	-0.6	
Q2	-3.4	-1.5	0.4	-0.2	0.4	-0.5	0.0	-0.4	
Change on year to:									
2006 Q2	-6	-6	2 [†]	-4 [†]	25 [†]	-6	-8 [†]	-30 [†]	
Q3	-8	-5	5	-	17	-26	1	-35	
Q4	-9	-4	4	-5	12	-25	-3	-26	
2007 Q1	-6	-6	9	-10	12	-20 [†]	-	-23	
Q2	-8	-7	9	-12	10	-21	1	-16	
% change on year to:									
2006 Q2	-8.5	-2.9	0.7 [†]	-0.3 [†]	1.8 [†]	-0.4	-2.0 [†]	-3.9 [†]	
Q3	-11.4	-2.4	1.8	0.0	1.2	-1.7	0.3	-4.6	
Q4	-13.0	-1.9	1.5	-0.4	0.9	-1.6	-0.8	-3.5	
2007 Q1	-9.2	-2.9	3.3	-0.8	0.9	-1.3 [†]	0.0	-3.1	
Q2	-12.3	-3.4	3.3	-1.0	0.7	-1.4	0.3	-2.2	

1 HM Forces series exclude locally engaged staff. The series also excludes mobilised reservists prior to 1996 as statistics are not available.

2 Estimates subject to revision - new RAF Personnel Administration System

3 Police (Eng and Wales) based on projections and subject to revision.

4 Data for the NHS are based on projections and subject to revision.

5 10,000 duplicate NHS records removed from q3 2006 onwards.

[†] Indicates earliest revision.

3 Public sector employment by sector classification; Full-time equivalent¹

United Kingdom (Thousands), seasonally adjusted

	General government			Total general government ³	Total public corporations	Total public sector ³	Of which: Civil Service ^{2 5 7}
	Central government ^{2 3 4 5}	Local government ^{2 3 4 5 6}					
	G7FP	G7FS	G7FV	G7FY	G7G3	G7G6	
1999	1 836	2 010	3 846	332	4 178	481	
2000	1 867	2 024	3 891	339	4 230	492	
2001	1 928	2 019	3 947	350	4 297	497	
2002	2 002	2 038	4 040	349	4 389	510	
2003	2 090	2 075	4 165	351	4 516	529	
2004	2 159	2 118	4 277	342	4 619	538	
2005	2 202	2 153 [†]	4 355	345	4 700 [†]	537	
2006	2 184	2 184 [†]	4 368 [†]	325	4 693 [†]	524	
2007	2 153	2 194	4 347	318	4 665	505	
2003 Q2	2 090	2 075	4 165	351	4 516	529	
Q3	2 112	2 082	4 194	354	4 548	531	
Q4	2 128	2 100	4 228	347	4 575	534	
2004 Q1	2 155	2 108	4 263	345	4 608	538	
Q2	2 159	2 118	4 277	342	4 619	538	
Q3	2 174	2 128	4 302	340	4 642	538	
Q4	2 176	2 131	4 307	343	4 650	533	
2005 Q1	2 185	2 151	4 336	344	4 680	530	
Q2	2 202	2 153	4 355	345	4 700	537	
Q3	2 201	2 169	4 370	344	4 714	534	
Q4	2 200	2 171	4 371	337	4 708	529	
2006 Q1	2 189	2 178 [†]	4 367	330	4 697 [†]	526	
Q2	2 184	2 184 [†]	4 368 [†]	325	4 693 [†]	524	
Q3	2 175	2 191	4 366	324	4 690	520	
Q4	2 174 ³	2 188	4 362 ³	322	4 684 ³	515	
2007 Q1	2 165 ³	2 193	4 358 ³	319	4 677 ³	509	
Q2	2 153 ³	2 194 ³	4 347 ³	318	4 665 ³	505	
Change on quarter to:							
2006 Q2	-5	6 [†]	1 [†]	-5	-4 [†]	-2	
Q3	-9	7	-2	-1	-3	-4	
Q4	-1	-3	-4	-2	-6	-5	
2007 Q1	-9	5	-4	-3	-7	-6	
Q2	-12	1	-11	-1	-12	-4	
% change on quarter to:							
2006 Q2	-0.2	0.3	0.0	-1.5	-0.1	-0.4	
Q3	-0.4	0.3	0.0	-0.3	-0.1	-0.8	
Q4	0.0	-0.1	-0.1	-0.6	-0.1	-1.0	
2007 Q1	-0.4	0.2 [†]	-0.1	-0.9	-0.1	-1.2	
Q2	-0.6	0.0	-0.3	-0.3	-0.3	-0.8	
Change on year to:							
2006 Q2	-18	31 [†]	13 [†]	-20	-7 [†]	-13	
Q3	-26	22	-4	-20	-24	-14	
Q4	-26	17	-9	-15	-24	-14	
2007 Q1	-24	15	-9	-11	-20	-17	
Q2	-31	10	-21	-7	-28	-19	
% change on year to:							
2006 Q2	-0.8	1.4	0.3	-5.8	-0.1	-2.4	
Q3	-1.2	1.0	-0.1	-5.8	-0.5	-2.6	
Q4	-1.2	0.8	-0.2	-4.5	-0.5	-2.6	
2007 Q1	-1.1	0.7 [†]	-0.2 [†]	-3.3	-0.4 [†]	-3.2	
Q2	-1.4	0.5	-0.5	-2.2	-0.6	-3.6	

1 Annual figures relate to June quarter (Q2)

2 Series does not display seasonality, Seasonal=Not Seasonal

3 NHS & Police (England & Wales) are based on projections

4 National Probation Service (England & Wales) reclassified from Local Government to Central Government from April 2001

5 Magistrates' Courts Service transferred from Local Government to Central Government (and Civil Service) from April 2005

6 Further education & 6th form colleges transferred to the private sector from April 1993.

7 Home Civil Service (excludes NI Civil Service which is included in Central Government)

[†] Indicates earliest revision.

Source: Office for National Statistics

4 Public sector employment by industry; Full-time equivalent

United Kingdom (Thousands), seasonally adjusted

	Public administration and defence; compulsory social security					Health and social work			
	Construction ¹	HM Forces ^{2 3}	Police (including civilians) ⁴	Public administration	Education	National Health Service ⁵	Other health and social work	Other public sector	
	G9BC	G7G9	G7GC	G7GF	G7GI	G7GL	G7GR	G7K2	
1999	..	218	220	974	809	982	294	599	
2000	..	217	218	978	843	1 001	290	601	
2001	..	214	222	982	859	1 037	281	629	
2002	..	214	230	1 005	869	1 088	277	644	
2003	..	223	240	1 038	912	1 139	266	641	
2004	..	218	254	1 051	938	1 192	277	631	
2005	..	210	262	1 063	956	1 236	282	639	
2006	..	204	264	1 059	986	1 238	280	611	
2007	..	197	273	1 045	994	1 233	282	598	
2003 Q2	..	223	240	1 038	912	1 139	266	641	
Q3	..	221	243	1 044	914	1 159	268	640	
Q4	..	222	247	1 044	927	1 167	277	634	
2004 Q1	..	220	251	1 050	931	1 188	276	633	
Q2	..	218	254	1 051	938	1 192	277	631	
Q3	..	215	256	1 060	940	1 207	280	630	
Q4	..	215	258	1 057	940	1 214	280	634	
2005 Q1	..	213	261	1 058	951	1 225	282	635	
Q2	..	210	262	1 062	956	1 236	282	639	
Q3	..	207	261	1 062	971	1 244	281	636	
Q4	..	206	264	1 062	974	1 244	282	626	
2006 Q1	..	206	263 [†]	1 061 [†]	980	1 238	281 [†]	620	
Q2	..	204 ³	264	1 060 [†]	987	1 238	280 [†]	611	
Q3	..	202 ³	266	1 060	989	1 236	285	606	
Q4	..	202 ³	268	1 056	990	1 238 ⁵	281	604	
2007 Q1	..	200 ³	271	1 050	993	1 239 ⁵	281	600	
Q2	..	197 ³	273 ⁴	1 045	994	1 233 ⁵	282	598	
Change on quarter to:									
2006 Q2		-2	1 [†]	-1 [†]	7	-	-1 [†]	-9	
Q3		-2	2	-	2	-2	5	-5	
Q4		-	2	-4	1	2	-4	-2	
2007 Q1		-2	3	-6	3	1	-	-4	
Q2		-3	2	-5	1	-6	1	-2	
% change on quarter to:									
2006 Q2		-1.0	0.4 [†]	-0.1 [†]	0.7	0.0	-0.4 [†]	-1.5	
Q3		-1.0	0.8	0.0	0.2	-0.2	1.8	-0.8	
Q4		0.0	0.8	-0.4	0.1	0.2	-1.4	-0.3	
2007 Q1		-1.0	1.1	-0.6	0.3	0.1	0.0	-0.7	
Q2		-1.5	0.7	-0.5	0.1	-0.5	0.4	-0.3	
Change on year to:									
2006 Q2		-6	2	-2 [†]	31	2	-2 [†]	-28	
Q3		-5	5 [†]	-2	18	-8	4	-30	
Q4		-4	4	-6	16	-6	-1	-22	
2007 Q1		-6	8	-11	13	1	-	-20	
Q2		-7	9	-15	7	-5	2	-13	
% change on year to:									
2006 Q2		-2.9	0.8	-0.2 [†]	3.2	0.2	-0.7 [†]	-4.4	
Q3		-2.4	1.9 [†]	-0.2	1.9	-0.6	1.4	-4.7	
Q4		-1.9	1.5	-0.6	1.6	-0.5	-0.4	-3.5	
2007 Q1		-2.9	3.0	-1.0	1.3	0.1	0.0	-3.2	
Q2		-3.4	3.4	-1.4	0.7	-0.4	0.7	-2.1	

1 Construction estimates for full-time equivalents have not been published as they are of insufficient quality

2 HM Forces series exclude locally engaged staff. The series also excludes mobilised reservists prior to 1996 as statistics are not available.

3 Due to the introduction of a new Personnel Administration System for RAF, figures are estimates and therefore subject to revision.

4 Data for the Police (including civilians) for England and Wales are based on projections and are therefore subject to revision. See background note 2.

5 Data for the NHS are projections and subject to revision. See note 2.

[†] Indicates earliest revision.

Source: Office for National Statistics

5 Public and private sector employment; Headcount¹

United Kingdom

	Public sector		Private sector		Total employment ⁷
	Headcount(thousands) ²	Percentage ⁴	Headcount(thousands) ⁵	Percentage ⁶	
Not seasonally adjusted					
	C9KD	DB36	CZG8	DB37	CZG9
1992	5 909	23.1	19 650	76.9	25 559
1993	5 598	22.1	19 711	77.9	25 309
1994	5 435	21.3	20 099	78.7	25 534
1995	5 372	20.8	20 439	79.2	25 811
1996	5 273	20.3	20 753	79.7	26 026
1997	5 179	19.5	21 331	80.5	26 510
1998	5 168	19.3	21 624	80.7	26 792
1999	5 211	19.2	21 910	80.8	27 121

	Public sector		Private sector		Total employment ⁷
	Headcount(thousands) ^{2 3}	Percentage ⁴	Headcount(thousands) ⁵	Percentage ⁶	
Seasonally adjusted					
	G7AU	G9BZ	G7K5	G9C2	G7GO
1999	5 208	19.2	21 900	80.8	27 108
2000	5 289	19.2	22 232	80.8	27 521
2001	5 383	19.4	22 307	80.6	27 690
2002	5 490	19.7	22 394	80.3	27 884
2003	5 645	20.0	22 556	80.0	28 201
2004	5 762	20.3	22 648	79.7	28 410
2005	5 859	20.4	22 881	79.6	28 740
2006	5 825 [†]	20.1	23 139 [†]	79.9	28 964
2007	5 781	19.9	23 315	80.1	29 096
2003 Q2	5 645	20.0	22 556	80.0	28 201
Q3	5 677	20.1	22 565	79.9	28 242
Q4	5 720	20.2	22 633	79.8	28 353
2004 Q1	5 752	20.3	22 633	79.7	28 385
Q2	5 762	20.3	22 648	79.7	28 410
Q3	5 794	20.3	22 683	79.7	28 477
Q4	5 807	20.3	22 830	79.7	28 637
2005 Q1	5 834	20.4	22 815	79.6	28 649
Q2	5 859	20.4	22 881	79.6	28 740
Q3	5 857	20.3	22 931	79.7	28 788
Q4	5 853	20.3	22 948	79.7	28 801
2006 Q1	5 836	20.2	23 089	79.8	28 925
Q2	5 825 [†]	20.1	23 139 [†]	79.9	28 964
Q3	5 807	20.0	23 198	80.0	29 005
Q4	5 798 ²	20.0	23 224 ²	80.0	29 022
2007 Q1	5 792 ²	20.0 [†]	23 220 ²	80.0 [†]	29 012
Q2	5 781 ²	19.9	23 315 ²	80.1	29 096
Change on quarter to:					
2006 Q2	-11 [†]	-0.1	50 [†]	0.1	39
Q3	-18	-0.1	59	0.1	41
Q4	-9	-	26	-	17
2007 Q1	-6	- [†]	-4	- [†]	-10
Q2	-11	-0.1	95	0.1	84
% change on quarter to:					
2006 Q2	-0.2		0.2		0.1
Q3	-0.3 [†]		0.3		0.1
Q4	-0.2		0.1		0.1
2007 Q1	-0.1		0.0		0.0
Q2	-0.2		0.4		0.3
Change on year to:					
2006 Q2	-34 [†]	-0.3	258 [†]	0.3	224
Q3	-50	-0.3	267	0.3	217
Q4	-55	-0.3	276	0.3	221
2007 Q1	-44	-0.2 [†]	131	0.2 [†]	87
Q2	-44	-0.2	176	0.2	132
% change on year to:					
2006 Q2	-0.6		1.1		0.8
Q3	-0.9		1.2		0.8
Q4	-0.9		1.2		0.8
2007 Q1	-0.8 [†]		0.6		0.3
Q2	-0.8		0.8		0.5

1 Annual figures relate to June quarter (Q2)

2 Estimates for 2006 Q2 to 2007 Q1 are based partly on projections

3 10,000 duplicate NHS records removed from Q3 2006 onwards.

4 Represents C9KD/CZG9*100

5 Estimated as the difference between LFS total employment and the data from public sector organisations

6 Represents CZG8/CZG9*100

7 Labour Force Survey - All in Employment aged 16 and over. Data refer to May-July for annual data from 1992-2004, for Q1 to Feb-Apr, Q2 to May-July, Q3 to Aug-Oct and Q4 to Nov-Jan. Quarterly and annual changes may differ slightly from those published elsewhere due to rounding conventions.

[†] Indicates earliest revision.

Sources: Labour Force Survey and estimates from public sector organisations; Office for National Statistics

6 Civil Service employment by department ¹

Headcount, Great Britain, not seasonally adjusted

	2007 Q2						2007 Q1		Change
	Male			Female			Total	Total	Total
	Full-time	Part-time	Total	Full-time	Part-time	Total			
Permanent employees									
Attorney General's departments	3300	140	3450	4780	1880	6660	10110	10130	-20
Cabinet Office ²	720	10	730	600	100	710	1440	1420	20
Other Cabinet Office agencies ²	410	10	420	430	110	530	960	1040	-80
HM Treasury	610	10	610	440	60	500	1110	1080	30
Chancellor's other departments	2270	80	2360	1740	720	2460	4820	4930	-110
Charity Commission	220	20	240	190	90	290	520	530	-10
Communities and Local Government	3020	190	3200	1820	510	2330	5530	5540	-10
Culture, Media and Sport	330	10	330	260	30	290	620	620	0
Defence	53290	1230	54520	22820	6280	29100	83620	84370	-750
Education and Skills (former) ³	1670	60	1730	1740	570	2310	4040	4040	0
Ofsted ⁴	730	20	750	1560	360	1920	2660	2290	370
Environment, Food and Rural Affairs	5630	300	5930	4860	1520	6380	12310	12120	190
Export Credits Guarantee Department	170	..	170	70	20	90	260	260	0
Foreign and Commonwealth Office	3610	20	3630	2380	170	2550	6170	6110	70
Health ⁵	1550	30	1580	1720	330	2050	3640	3610	20
Food Standards Agency ⁵	340	10	360	370	60	430	790	790	0
Meat Hygiene Service ⁵	1110	10	1110	230	20	250	1360	1380	-20
HM Revenue and Customs	39260	2400	41660	35230	21200	56430	98090	99980	-1890
Home Office ⁶	11500	840	12330	11590	3920	15510	27850	75810	-47960
International Development	870	20	890	760	120	880	1770	1760	10
Justice ^{2,6}	41560	2390	43950	30420	10390	40810	84750	36100	48660
Northern Ireland Office	80	..	80	50	20	70	140	140	0
Security and Intelligence Services	3320	110	3430	1210	580	1790	5220	5170	50
Business, Enterprise and Regulatory Reform	4830	180	5010	3770	1130	4890	9900	10110	-210
Transport	10650	470	11110	6080	1960	8040	19150	19340	-190
Work and Pensions	35130	3620	38740	45410	37670	83080	121820	122820	-1000
Central Government Departments Total	226160	12160	238320	180500	89830	270320	508640	511480	-2840
Scottish Government	8680	270	8950	5670	1660	7330	16280	16330	-40
Welsh Assembly ⁷	2450	90	2540	2610	730	3340	5880	6220	-340
TOTAL	237290	12520	249810	188780	92220	281000	530810	534030	-3220

	2007 Q2						2007 Q1		Change
	Male			Female			Total	Total	Total
	Full-time	Part-time	Total	Full-time	Part-time	Total			
Temporary/Casual Employees									
Attorney General's departments	10	..	10	10	..	10	20	20	..
Cabinet Office ²	10	0	10	20	..	20	30	20	10
Other Cabinet Office agencies ²	10	..	10	20	..	20	30	30	0
HM Treasury	50	..	50	40	..	40	90	70	20
Chancellor's other departments	190	30	220	180	40	220	440	440	10
Charity Commission	..	0	..	10	0	10	10	10	0
Communities and Local Government	50	10	50	30	..	30	80	80	..
Culture, Media and Sport	10	..	10	10	0	10	10	10	10
Defence	520	60	580	400	120	520	1100	1120	-20
Education and Skills (former) ³	..	0	..	10	0	10	10	10	0
Ofsted ⁴	0	0	0	0	0	0	0	0	0
Environment, Food and Rural Affairs	210	40	250	250	30	280	520	590	-60
Export Credits Guarantee Department	0	0	0	0	0	0	0	0	0
Foreign and Commonwealth Office	10	..	10	10	..	10	20	40	-20
Health ⁵	40	..	40	60	10	70	110	110	-10
Food Standards Agency ⁵	20	..	20	20	..	20	50	50	0
Meat Hygiene Service ⁵	10	0	10	..	0	..	10	10	0
HM Revenue and Customs	250	170	420	190	150	340	760	1120	-360
Home Office ⁶	190	40	230	190	80	270	500	1710	-1210
International Development	..	0	0	..	10	10	0
Justice ^{2,6}	810	50	860	930	160	1090	1950	800	1140
Northern Ireland Office	..	0	..	0	0	0	0
Security and Intelligence Services	10	0	0	0	10	10	0
Business, Enterprise and Regulatory Reform	90	..	90	80	10	90	180	190	-10
Transport	270	30	300	300	50	350	640	410	230
Work and Pensions	410	20	440	470	60	530	960	1520	-560
Central Government Departments Total	3170	460	3630	3200	710	3920	7550	8380	-830
Scottish Government	150	50	190	200	60	270	460	340	120
Welsh Assembly ⁷	130	..	130	200	20	220	350	330	20
TOTAL	3440	510	3960	3610	800	4400	8360	9050	-690

	2007 Q2						2007 Q1		Change
	Male			Female			Total	Total	Total
	Full-time	Part-time	Total	Full-time	Part-time	Total			
All employees	240730	13040	253770	192390	93020	285400	539170	543080	-3910

Source: Office for National Statistics

¹ Numbers are rounded to the nearest ten, and numbers less than five are represented by "..". Data not available are represented by "-".

² The functions of the Privy Council (PCO) were split between the Cabinet Office and Ministry of Justice in April 2007

³ Unable to report on the basis of the machinery of government changes announced by the Prime Minister until Q3 2007

⁴ The new Office for Standards in Education, Children's Services and Skills came into being on 1 April 2007

⁵ The Food Standards Agency and Meat Hygiene Service are presented separately from DH for the first time.

⁶ Movements between the Home Office and Ministry of Justice represent the machinery of government changes announced by the Prime Minister on 9 May 2007.

⁷ Employees of the Assembly Parliamentary Service transferred out to the National Assembly for Wales Commission.

6 ..continued Civil Service employment by department ¹

Full-time equivalents, Great Britain, not seasonally adjusted

	2007 Q2			2007 Q1	Change on Quarter
	Male	Female	Total	Total	Total
Permanent employees					
Attorney General's departments	3410	6050	9460	9500	-40
Cabinet Office ²	730	670	1400	1380	20
Other Cabinet Office agencies ²	420	490	910	990	-80
HM Treasury	610	480	1090	1060	30
Chancellor's other departments	2330	2220	4550	4660	-100
Charity Commission	230	250	480	490	-10
Communities and Local Government	3130	2170	5290	5330	-30
Culture, Media and Sport	330	280	610	610	0
Defence	54160	27110	81270	82070	-800
Education and Skills (former) ³	1710	2120	3830	3840	-10
Ofsted ⁴	740	1810	2550	2190	360
Environment, Food and Rural Affairs	5860	5880	11740	11560	180
Export Credits Guarantee Department	170	90	260	260	0
Foreign and Commonwealth Office	3620	2480	6100	6030	70
Health ⁵	1570	1950	3520	3500	30
Food Standards Agency ⁵	350	410	770	770	0
Meat Hygiene Service ⁵	1110	240	1350	1370	-20
HM Revenue and Customs	40950	49640	90590	92380	-1790
Home Office ⁶	12030	14200	26230	72690	-46450
International Development	880	840	1720	1710	10
Justice ^{2,6}	42970	36940	79920	32810	47110
Northern Ireland Office	80	60	140	140	0
Security and Intelligence Services	3400	1600	4990	4960	40
Business, Enterprise and Regulatory Reform	4950	4540	9490	9680	-190
Transport	10940	7300	18240	18410	-170
Work and Pensions	37840	71790	109640	110600	-970
Central Government Departments Total	234510	241610	476130	478970	-2840
Scottish Government	8850	6740	15580	15630	-40
Welsh Assembly ⁷	2510	3110	5620	6060	-450
TOTAL	245870	251460	497330	500650	-3330

	2007 Q2			2007 Q1	Change on Quarter
	Male	Female	Total	Total	Total
Temporary/Casual employees					
Attorney General's departments	10	10	20	20	..
Cabinet Office ²	10	20	30	20	10
Other Cabinet Office agencies ²	10	20	30	30	0
HM Treasury	50	40	90	70	20
Chancellor's other departments	220	200	420	390	20
Charity Commission	..	10	10	10	0
Communities and Local Government	50	30	80	80	..
Culture, Media and Sport	10	10	10	10	10
Defence	560	470	1030	1050	-20
Education and Skills (former) ³	..	10	10	10	0
Ofsted ⁴	0	0	0	0	0
Environment, Food and Rural Affairs	230	270	500	560	-60
Export Credits Guarantee Department	0	0	0	0	0
Foreign and Commonwealth Office	10	10	20	40	-20
Health ⁵	40	70	100	110	-10
Food Standards Agency ⁵	20	20	50	50	0
Meat Hygiene Service ⁵	10	..	10	10	0
HM Revenue and Customs	360	290	640	940	-300
Home Office ⁶	210	230	440	1590	-1150
International Development	10	..	10	10	..
Justice ^{2,6}	850	1020	1870	740	1130
Northern Ireland Office	..	0	0
Security and Intelligence Services	..	0	..	10	0
Business, Enterprise and Regulatory Reform	90	90	180	190	-10
Transport	280	320	610	380	230
Work and Pensions	430	510	930	1470	-540
Central Government Departments Total	3460	3620	7090	7770	-690
Scottish Government	170	240	410	300	110
Welsh Assembly ⁷	130	210	340	320	20
TOTAL	3760	4070	7840	8400	-560

	2007 Q2			2007 Q1	Change on Quarter
	Male	Female	Total	Total	Total
All employees	249630	255530	505160	509050	-3890

Source: Office for National Statistics

1 Numbers are rounded to the nearest ten, and numbers less than five are represented by "..". Data not available are represented by "-".

2 The functions of the Privy Council (PCO) were split between the Cabinet Office and Ministry of Justice in April 2007

3 Unable to report on the basis of the machinery of government changes announced by the Prime Minister until Q3 2007

4 The new Office for Standards in Education, Children's Services and Skills came into being on 1 April 2007

5 The Food Standards Agency and Meat Hygiene Service are presented separately from DH for the first time.

6 Movements between the Home Office and Ministry of Justice represent the machinery of government changes announced by the Prime Minister on 9 May 2007.

7 Employees of the Assembly Parliamentary Service transferred out to the National Assembly for Wales Commission.

1R Public sector employment by sector classification; Headcount - Revisions

United Kingdom (Thousands)

	General government						Of which: Civil Service ^{2 5 8}
	Central government ^{2 3 4 5}	Local government ^{3 4 5 7}	Total general government ³	Total public corporations	Total public sector ³		
Not seasonally adjusted							
	C9K9	C9KA	C9KB	C9KC		C9KD	C9KE
1992	-	-	-	-	-	-	-
1993	-	-	-	-	-	-	-
1994	-	-	-	-	-	-	-
1995	-	-	-	-	-	-	-
1996	-	-	-	-	-	-	-
1997	-	-	-	-	-	-	-
1998	-	-	-	-	-	-	-
1999	-	-	-	-	-	-	-
General government							
	Central government ^{2 3 4 5 6}	Local government ^{3 4 5 7}	Total general government ^{3 6}	Total public corporations	Total public sector ^{3 6}	Of which: Civil Service ^{2 5 8}	
Seasonally adjusted							
	G6NQ	G6NT	G6NW	G7AR		G7AU	G7D6
1999	-	-	-	-	-	-	-
2000	-	-	-	-	-	-	-
2001	-	-	-	-	-	-	-
2002	-	-	-	-	-	-	-
2003	-	-	-	-	-	-	-
2004	-	-	-	-	-	-	-
2005	-	1	-	-	-	-	-
2006	-	-1	-2	-	-	-2	-
2007
2003 Q2	-	-	-	-	-	-	-
Q3	-	-	-	-	-	-	-
Q4	-	-	-	-	-	-	-
2004 Q1	-	-	-	-	-	-	-
Q2	-	-	-	-	-	-	-
Q3	-	-	-	-	-	-	-
Q4	-	-	-	-	-	-	-
2005 Q1	-	-	-	-	-	-	-
Q2	-	1	-	-	-	-	-
Q3	-	1	-	-	-	-	-
Q4	-	-	-	-	-	-	-
2006 Q1	-	-	-	-	-	-	-
Q2	-	-2	-2	-	-	-2	-
Q3	-	1	1	-	-	1	-
Q4	-3	1	1 ³	-	-	1 ³	-
2007 Q1	-3	4 ³	4 ³	1	-	5 ³	-
Q2	.. ³	.. ³	.. ³	..	-	.. ³	..
Change on quarter to:							
2006 Q2	-	-2	-2	-	-	-2	-
Q3	-	3	3	-	-	3	-
Q4	-	-	-	-	-	-	-
2007 Q1	-	3	3	1	-	4	-
Q2	-
% change on quarter to:							
2006 Q2	0.0	-0.1	0.0	0.0	-	0.0	0.0
Q3	0.0	0.1	0.1	0.0	-	0.1	0.0
Q4	0.0	0.0	0.0	0.0	-	0.0	0.0
2007 Q1	0.0	0.1	0.1	0.3	-	0.1	0.0
Q2	-
Change on year to:							
2006 Q2	-	-3	-2	-	-	-2	-
Q3	-	-	1	-	-	1	-
Q4	-	1	1	-	-	1	-
2007 Q1	-	4	4	1	-	5	-
Q2	-
% change on year to:							
2006 Q2	0.0	-0.1	0.0	0.0	-	0.0	0.0
Q3	0.0	0.0	0.0	0.0	-	0.0	0.0
Q4	0.0	0.0	0.0	0.0	-	0.0	0.0
2007 Q1	0.0	0.1	0.1	0.3	-	0.1	0.0
Q2	-

1 Annual figures relate to June quarter (Q2)

2 Series does not display seasonality, Seasonal=Not Seasonal

3 NHS & Police (England & Wales) based on projections

4 National Probation Service (England & Wales) re-classified from Local Government to Central Government from April 2001

5 Magistrates' Courts Service transferred from LG to CG (&CS) Apr 2005

6 10,000 duplicate NHS records removed from Q3 2006 onwards.

7 Further education & 6th form college transferred to private sector Apr 1993

8 Home Civil Service (excludes NI Civil Service which is included in CG)

† Indicates earliest revision

2R Public sector employment by industry; Headcount - Revisions

United Kingdom (Thousands)

	Public admin,defence,compulsory social security					Health and social work		
	Construction	HM Forces ^{1 2}	Police (including civilians) ³	Public administration	Education	National Health Service ⁴	Other health and social work	Other public sector
Not seasonally adjusted								
	C9LA	C9LB	C9LC	C9LD	C9LF	C9LG	C9LH	C9LJ
1992	-	-	-	-	-	-	-	-
1993	-	-	-	-	-	-	-	-
1994	-	-	-	-	-	-	-	-
1995	-	-	-	-	-	-	-	-
1996	-	-	-	-	-	-	-	-
1997	-	-	-	-	-	-	-	-
1998	-	-	-	-	-	-	-	-
1999	-	-	-	-	-	-	-	-
Seasonally adjusted								
	G7ER	G7EU	G7EX	G7F2	G7F5	G7FG	G7FJ	G7FM
1999	-	-	-	-	-	-	-	-
2000	-	-	-	-	-	-	-	-
2001	-	-	-	-	-	-	-	-
2002	-	-	-	-	-	-	-	-
2003	-	-	-	-	-	-	-	-
2004	-	-	-	-	-	-	-	-
2005	-	-	-	-	-	-	-	-
2006	-	-	-1	-	-	-	-	-
2007
2003 Q2	-	-	-	-	-	-	-	-
Q3	-	-	-	-	-	-	-	-
Q4	-	-	-	-	-	-	-	-
2004 Q1	-	-	-	-	-	-	-	-
Q2	-	-	-	-	-	-	-	-
Q3	-	-	-	-	-	-	-	-
Q4	-	-	-	-	-	-	-	-
2005 Q1	-	-	-	-	-	-	-	-
Q2	-	-	-	-	-	-	-	-
Q3	-	-	-	-	-	-	-	-
Q4	-	-	1	-	-	-	-	-
2006 Q1	-	-	-1	-	-	-	-	-
Q2	-	-2	-1	1	-1	-	-1	1
Q3	-	-2	1	-	-	-	-	-
Q4	-	-2	1	-	-	-4	-	-
2007 Q1	-	-2	4 ³	-1	1	-1 ⁴	-	-
Q2 ²	.. ³ ⁴
Change on quarter to:								
2006 Q2	-	-	-	1	-1	-	-1	1
Q3	-	-	2	-1	1	-	1	-1
Q4	-	-	-	-	-	-	-	-
2007 Q1	-	-	3	-1	1	-1	-	-
Q2
% change on quarter to:								
2006 Q2	0.0	0.0	0.0	0.1	-0.1	0.0	-0.3	0.1
Q3	0.0	0.0	0.7	-0.1	0.1	0.0	0.3	-0.1
Q4	0.0	0.0	0.0	0.0	0.0	0.0	0.0	0.0
2007 Q1	0.0	0.0	1.1	-0.1	0.1	-0.1	0.0	0.0
Q2
Change on year to:								
2006 Q2	-	-	-1	1	-1	-	-1	1
Q3	-	-	1	-	-	-	-	-
Q4	-	-	-	-	-	-	-	-
2007 Q1	-	-	5	-1	1	-1	-	-
Q2
% change on year to:								
2006 Q2	0.0	0.0	-0.4	0.1	-0.1	0.0	-0.3	0.1
Q3	0.0	0.0	0.4	0.0	0.0	0.0	0.0	0.0
Q4	0.0	0.0	0.0	0.0	0.0	0.0	0.0	0.0
2007 Q1	0.0	0.0	1.8	-0.1	0.1	-0.1	0.0	0.0
Q2

1 HM Forces series exclude locally engaged staff. The series also excludes mobilised reservists prior to 1996 as statistics are not available.

2 Estimates subject to revision - new RAF Personnel Administration System

3 Police (Eng and Wales) based on projections and subject to revision.

4 Data for the NHS are based on projections and subject to revision.

5 10,000 duplicate NHS records removed from Q3 2006 onwards.

† Indicates earliest revision.

3R Public sector employment by sector classification; Full-time equivalent - Revisions

United Kingdom (Thousands), seasonally adjusted

	General government						Of which: Civil Service ^{2 5 7}
	Central government ^{2 3 4 5}	Local government ^{2 3 4 5 6}	Total general government ³	Total public corporations	Total public sector ³		
	G7FP	G7FS	G7FV	G7FY	G7G3	G7G6	
1999	-	-	-	-	-	-	
2000	-	-	-	-	-	-	
2001	-	-	-	-	-	-	
2002	-	-	-	-	-	-	
2003	-	-	-	-	-	-	
2004	-	-	-	-	-	-	
2005	-	-	-	-	-	-	
2006	-	1	1	-	1	-	
2007	
2003 Q2	-	-	-	-	-	-	
Q3	-	-	-	-	-	-	
Q4	-	-	-	-	-	-	
2004 Q1	-	-	-	-	-	-	
Q2	-	-	-	-	-	-	
Q3	-	-	-	-	-	-	
Q4	-	-	-	-	-	-	
2005 Q1	-	-	-	-	-	-	
Q2	-	-	-	-	-	-	
Q3	-	-	-	-	-	-	
Q4	-	-	-	-	-	-	
2006 Q1	-	-	-	-	-	-	
Q2	-	1	1	-	1	-	
Q3	-	1	1	-	1	-	
Q4	- ³	1	1 ³	-	1 ³	-	
2007 Q1	- ³	3 ³	3 ³	-	3 ³	-	
Q2	.. ³	.. ³	.. ³ ³	..	
Change on quarter to:							
2006 Q2	-	1	1	-	1	-	
Q3	-	-1	-1	-	-1	-	
Q4	-	1	1	-	1	-	
2007 Q1	-	2	2	-	2	-	
Q2	
% change on quarter to:							
2006 Q2	0.0	0.0	0.0	0.0	0.0	0.0	
Q3	0.0	0.0	0.0	0.0	0.0	0.0	
Q4	0.0	0.0	0.0	0.0	0.0	0.0	
2007 Q1	0.0	0.1	0.0	0.0	0.0	0.0	
Q2	
Change on year to:							
2006 Q2	-	1	1	-	1	-	
Q3	-	-	-	-	-	-	
Q4	-	1	1	-	1	-	
2007 Q1	-	3	3	-	3	-	
Q2	
% change on year to:							
2006 Q2	0.0	0.0	0.0	0.0	0.0	0.0	
Q3	0.0	0.0	0.0	0.0	0.0	0.0	
Q4	0.0	0.0	0.0	0.0	0.0	0.0	
2007 Q1	0.0	0.1	0.1	0.0	0.1	0.0	
Q2	

1 Annual figures relate to June quarter (Q2)

2 Series does not display seasonality, Seasonal=Not Seasonal

3 NHS & Police (England & Wales) are based on projections

4 National Probation Service (England & Wales) reclassified from Local Government to Central Government from April 2001

5 Magistrates' Courts Service transferred from Local Government to Central Government (and Civil Service) from April 2005

6 Further education & 6th form colleges transferred to the private sector from April 1993.

7 Home Civil Service (excludes NI Civil Service which is included in Central Government)

† Indicates earliest revision.

Source: Office for National Statistics

4R Public sector employment by industry; Full-time equivalent - Revisions

United Kingdom (Thousands), seasonally adjusted

	Public administration and defence; compulsory social security					Health and social work		
	Construction ¹	HM Forces ^{2 3}	Police (including civilians) ⁴	Public administration	Education	National Health Service ⁵	Other health and social work	Other public sector
	G9BC	G7G9	G7GC	G7GF	G7GI	G7GL	G7GR	G7K2
1999								
2000								
2001								
2002								
2003								
2004								
2005								
2006								
2007	
2003 Q2								
Q3								
Q4								
2004 Q1								
Q2								
Q3								
Q4								
2005 Q1								
Q2								
Q3								
Q4								
2006 Q1		-3	-1	-	-	-	-	-
Q2		-3	-	1	-	-	-1	-
Q3		-3	2	-	-	-	-	-
Q4		-3	2	-	-	-5	-	-
2007 Q1		-3	4	-1	-	-5	-	-
Q2		..3	..45
Change on quarter to:								
2006 Q2		-	1	1	-	-	-1	-
Q3		-	2	-1	-	-	1	-
Q4		-	-	-	-	-	-	-
2007 Q1		-	2	-1	-	-	-	-
Q2	
% change on quarter to:								
2006 Q2		0.0	0.4	0.1	0.0	0.0	-0.4	0.0
Q3		0.0	0.8	-0.1	0.0	0.0	0.4	0.0
Q4		0.0	0.0	0.0	0.0	0.0	0.0	0.0
2007 Q1		0.0	0.7	-0.1	0.0	0.0	0.0	0.0
Q2	
Change on year to:								
2006 Q2		-	-	1	-	-	-1	-
Q3		-	2	-	-	-	-	-
Q4		-	2	-	-	-	-	-
2007 Q1		-	5	-1	-	-	-	-
Q2	
% change on year to:								
2006 Q2		0.0	0.0	0.1	0.0	0.0	-0.4	0.0
Q3		0.0	0.8	0.0	0.0	0.0	0.0	0.0
Q4		0.0	0.8	0.0	0.0	0.0	0.0	0.0
2007 Q1		0.0	1.9	-0.1	0.0	0.0	0.0	0.0
Q2	

1 Construction estimates for full-time equivalents have not been published as they are of insufficient quality

2 HM Forces series exclude locally engaged staff. The series also excludes mobilised reservists prior to 1996 as statistics are not available.

3 Due to the introduction of a new Personnel Administration System for RAF, figures are estimates and therefore subject to revision.

4 Data for the Police (including civilians) for England and Wales are based on projections and are therefore subject to revision. See background note 2.

5 Data for the NHS are projections and subject to revision. See note 2.

† Indicates earliest revision.

Source: Office for National Statistics

5R Public and private sector employment; Headcount - Revisions

United Kingdom

	Public sector		Private sector		Total employment ⁷
	Headcount(thousands) ²	Percentage ⁴	Headcount(thousands) ⁵	Percentage ⁶	
Not seasonally adjusted					
	C9KD	DB36	CZG8	DB37	CZG9
1992	-	-	-	-	-
1993	-	-	-	-	-
1994	-	-	-	-	-
1995	-	-	-	-	-
1996	-	-	-	-	-
1997	-	-	-	-	-
1998	-	-	-	-	-
1999	-	-	-	-	-

	Public sector		Private sector		Total employment ⁷
	Headcount(thousands) ^{2 3}	Percentage ⁴	Headcount(thousands) ⁵	Percentage ⁶	
Seasonally adjusted					
	G7AU	G9BZ	G7K5	G9C2	G7GO
1999	-	-	-	-	-
2000	-	-	-	-	-
2001	-	-	-	-	-
2002	-	-	-	-	-
2003	-	-	-	-	-
2004	-	-	-	-	-
2005	-	-	-	-	-
2006	-2	-	2	-	-
2007
2003 Q2	-	-	-	-	-
Q3	-	-	-	-	-
Q4	-	-	-	-	-
2004 Q1	-	-	-	-	-
Q2	-	-	-	-	-
Q3	-	-	-	-	-
Q4	-	-	-	-	-
2005 Q1	-	-	-	-	-
Q2	-	-	-	-	-
Q3	-	-	-	-	-
Q4	-	-	-	-	-
2006 Q1	-	-	-	-	-
Q2	-2 ²	-	2 ²	-	-
Q3	1 ²	-	-1 ²	-	-
Q4	1 ²	-	-1 ²	-	-
2007 Q1	5 ²	0.1	-5 ²	-0.1	-
Q2
Change on quarter to:					
2006 Q2	-2	-	2	-	-
Q3	3	-	-3	-	-
Q4	-	-	-	-	-
2007 Q1	4	0.1	-4	-0.1	-
Q2
% change on quarter to:					
2006 Q2	0.0		0.0		0.0
Q3	0.1		0.0		0.0
Q4	0.0		0.0		0.0
2007 Q1	0.1		0.0		0.0
Q2
Change on year to:					
2006 Q2	-2	-	2	-	-
Q3	1	-	-1	-	-
Q4	1	-	-1	-	-
2007 Q1	5	0.1	-5	-0.1	-
Q2
% change on year to:					
2006 Q2	0.0		0.0		0.0
Q3	0.0		0.0		0.0
Q4	0.0		0.0		0.0
2007 Q1	0.1		0.0		0.0
Q2

1 Annual figures relate to June quarter (Q2)

2 Estimates for 2006 Q2 to 2007 Q1 are based partly on projections

3 10,000 duplicate NHS records removed from Q3 2006 onwards.

4 Represents C9KD/CZG9*100

5 Estimated as the difference between LFS total employment and the data from public sector organisations

6 Represents CZG8/CZG9*100

7 Labour Force Survey - All in Employment aged 16 and over. Data refer to May-July for annual data from 1992-2004, for Q1 to Feb-Apr, Q2 to May-July, Q3 to Aug-Oct and Q4 to Nov-Jan. Quarterly and annual changes may differ slightly from those published elsewhere due to rounding conventions.

[†] Indicates earliest revision.

Sources: Labour Force Survey and estimates from public sector organisations; Office for National Statistics