

19 March 2008

Coverage
United Kingdom
unless otherwise stated
Theme
Labour Market

Public sector employment

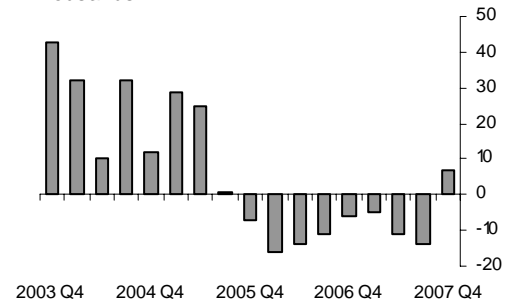
Quarter 4 2007

Public sector employment increased by 7,000 (seasonally adjusted) in the fourth quarter of 2007 to 5.778 million. This includes employment in Northern Rock following its reclassification to the public sector effective from 9 October 2007 (see background note 2).

In central government employment decreased by 1,000 in the fourth quarter 2007 and in local government it decreased by 9,000. Employment by public corporations increased by 17,000, again partly influenced by the reclassification of Northern Rock.

The number of employees in the Civil Service decreased by 3,000.

Quarterly growth in public sector employment; United Kingdom; headcount; seasonally adjusted
Thousands



Employment in the private sector increased by 159,000 in the fourth quarter. This compares with the increase of 7,000 in the public sector.

Public sector employment; United Kingdom (thousands), seasonally adjusted, headcount

	Central government (incl. NHS)	Local government	Public corporations	Total public sector	Of which: Civil Service
<i>Levels</i>					
2006 Q4	2,525 ^e	2,935	341	5,801 ^e	549
2007 Q1	2,518 ^e	2,938	340	5,796 ^e	543
2007 Q2	2,505 ^e	2,941 ^e	339	5,785 ^e	539
2007 Q3	2,497 ^e	2,936 ^e	338	5,771 ^e	533
2007 Q4	2,496^e	2,927^e	355	5,778^e	530
<i>Change on latest quarter</i>	-1	-9	17*	7*	-3
<i>Change %</i>	0.0	-0.3	5.0*	0.1*	-0.6
<i>Change on year</i>	-29	-8	14*	-23*	-19
<i>Change %</i>	-1.1	-0.3	4.1*	-0.4*	-3.5

Civil Service estimates are home civil service and therefore exclude Northern Ireland Civil Service which is included in Central Government.

^e Statistics for 2006 Q4 onwards are partly based on projections. Please see background note 3.

* Changes partly reflect the reclassification of Northern Rock plc for statistical purposes effective from 9 October 2007. Please see note 2.

Issued by
National Statistics
1 Drummond Gate
London SW1V 2QQ

Telephone
Press Office 020 7533 5725
Public enquiries 0845 601 3034

Statistician
Donna Livesey 01633 456756
Email
donna.livesey@ons.gov.uk

Internet
www.statistics.gov.uk

Next publication date

11 June 2008

Public sector employment by sector classification; headcount; (Table 1)

Total public sector employment was 5.778 million (seasonally adjusted) in the fourth quarter 2007, an increase of 7,000 (0.1 per cent) since the third quarter 2007. This includes the reclassification of Northern Rock plc from the private sector to the public sector effective from 9 October 2007 (see background note 2).

Central government employment decreased by 1,000 (0.0 per cent) in the latest quarter while local government decreased by 9,000 (0.3 per cent).

Employment in public corporations increased by 17,000 (5.0 per cent), again partly influenced by Northern Rock plc, which has been reclassified as a public financial corporation.

The number of employees in the Civil Service in Great Britain decreased by 3,000 (0.6 per cent) compared with the previous quarter.

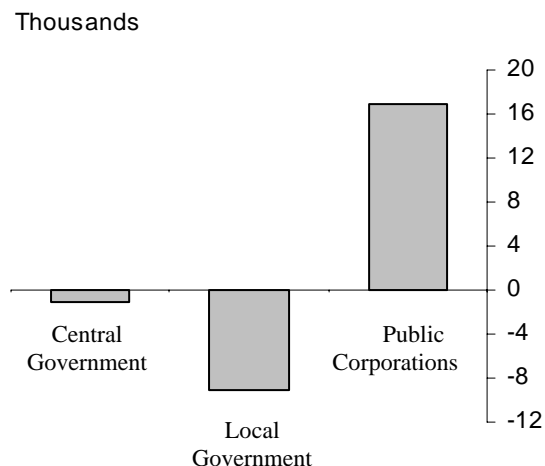
Compared with the same quarter the previous year, there was a decrease of 23,000 in public sector employment. The largest decrease was in central government (29,000). This mainly reflects decreases in the Civil Service and HM Forces.

Public sector employment by industry; headcount (Table 2)

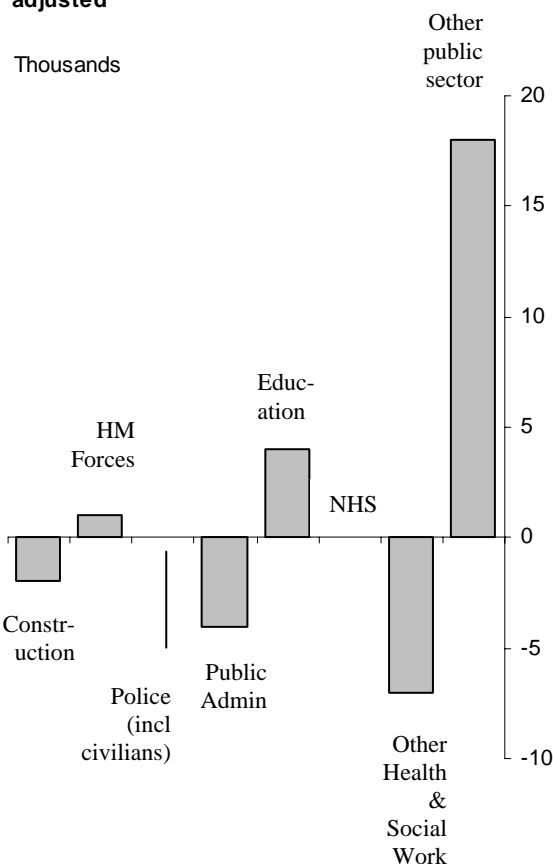
When public sector employment is analysed by industry (Standard Industrial Classification), the largest decrease (seasonally adjusted) in the fourth quarter 2007 compared to the third quarter 2007 was in other health and social work (7,000, 1.8 per cent). There were also decreases in Public Administration (4,000) and construction (2,000).

The largest increase in the latest quarter was in other

Public sector employment growth by sector in the latest quarter - 2007Q4; United Kingdom; headcount; seasonally adjusted



Public sector employment growth by industry in the latest quarter - 2007Q4; United Kingdom; headcount; seasonally adjusted



public sector (18,000, 2.6 per cent), partly reflecting the Northern Rock reclassification.

Compared with the same quarter the previous year, the largest decreases were in public administration (16,000, 1.3 per cent) and other health and social work (12,000, 3.1 per cent).

Public sector employment by sector classification and Industry; Full-time equivalents (Tables 3 and 4)

Table 3 provides full-time equivalent (FTE) estimates by sector classification while table 4 provides estimates by industry. The Northern Rock reclassification impacts these series in a similar way as the headcounts.

Total public sector employment on an FTE basis was 4.662 million (seasonally adjusted) in the fourth quarter 2007, an increase of 15,000 (0.3 per cent) since the third quarter 2007. Public sector employment on an FTE basis in the three months to December 2007 decreased in local government by 5,000 (0.2 per cent) and increased in central government by 2,000 (0.1 per cent).

Employment in public corporations increased by 18,000 (5.7 per cent).

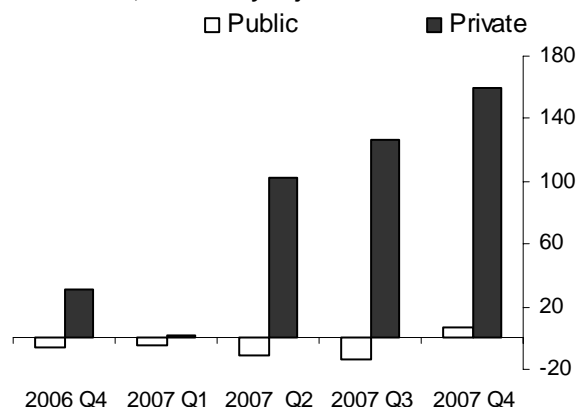
The number of FTE employees in the Civil Service in Great Britain fell by 4,000 in the three months to December 2007, a 0.8 per cent decrease.

By industry, the largest decreases in the three months to December 2007 were in public administration and other health and social work (4,000 each). The largest increase was in other public sector (19,000).

Public and private sector employment; headcount (Table 5)

Private sector employment totals are derived as the difference between Labour Force Survey employment estimates for the whole economy (seasonally adjusted) and the public sector estimates collected from public

Quarterly growth in employment by main sector in 2007Q4; United Kingdom; headcount; seasonally adjusted



sector organisations.

In the three months to December 2007, employment in the private sector (seasonally adjusted) increased by 159,000 (0.7 per cent). This compared with the increase of 7,000 (0.1 per cent) in the public sector.

In the fourth quarter 2007, the public sector accounted for 19.6 per cent of total employment in the United Kingdom.

Civil Service employment by department (Table 6)

The number of employees in the Civil Service in Great Britain decreased by 3,030 (0.6 per cent) compared with the previous quarter and, on a full-time equivalent basis, by 3,190 (0.6 per cent).

At the departmental level, the largest decreases in the fourth quarter 2007 (on a full-time equivalent basis) were recorded by Department for Work and Pensions (approximately 1,000), Ministry of Defence (approximately 900) and HM Revenue and Customs (approximately 800).

For more information on machinery of government changes that have led to movements within departments please see background note 20.

BACKGROUND NOTES

1. This regular quarterly Public Sector Employment First Release results from the work of a cross-departmental project, led by ONS, to improve the quality and timeliness of public sector employment statistics. The latest report setting out the full details of the improvements being made to estimates of public sector employment was published on 23 November 2006 and is accessible on the National Statistics website at the following address: <http://www.statistics.gov.uk/cci/article.asp?ID=1686>

2. Northern Rock plc has been reclassified from the private sector to the public sector for statistical purposes. This reclassification took effect from 9 October 2007 and it is therefore reflected in the public sector employment estimates for December 2007 published in this release. An article explaining this reclassification decision is available on the National Statistics website at:

<http://www.statistics.gov.uk/CCI/article.asp?ID=1938&Pos=1&ColRank=1&Rank=224>

The decision has also been taken to include the Bank of England in public sector statistics. An article explaining this decision is available on the National Statistics website at:

<http://www.statistics.gov.uk/CCI/article.asp?ID=1939&Pos=2&ColRank=1&Rank=224>

The decision to include the Bank of England in public sector statistics necessitates revisions to public sector employment estimates published in this release back to the start of the series in 1991. In line with the revisions policy, these revisions will be implemented in the September 2008 First Release. Based on published accounts, it is expected that the upward revisions to public sector employment will be approximately two thousand.

Results for quarter 4 2006 to quarter 4 2007

3. Estimates of public sector employment for quarter 4 2006 to quarter 4 2007 are based partly on projections for some sources. As part of the development programme to improve the quality of public sector employment estimates, government departments are working towards the production of timely quarterly estimates. Until this development programme is completed, there remains a requirement to include estimates for certain sources:

- i) NHS workforce statistics for England and Scotland are currently published annually for the year ending 30 September by the Information Centre for Health and Care and the Scottish Government. The statistics are available approximately six to seven months after the end of the reference period. NHS workforce numbers for Wales are now available quarterly.
- ii) Police (including civilians) workforce estimates for England and Wales are published every six months (for two quarters) by the

Home Office.

In the absence of statistics for the latest periods, the Information Centre and the Scottish Government have supplied estimates for the NHS. The Home Office has provided estimates for the Police in England and Wales.

4. These estimates are based on projections and are subject to revision.

Notes 24 to 26 provide further information.

Concepts, sources and definitions

5. The public sector comprises central government, local government and public corporations as defined for the UK National Accounts. The Sector Classifications Guide (MA23) provides information on the classification of organisations and institutions in the National Accounts.

<http://www.statistics.gov.uk/CCI/SearchRes.asp?term=ma23>

6. Central government includes all administrative departments of government and other central agencies and non-departmental public bodies. This sector also includes HM Forces and the National Health Service. Within education, Academies are also classified to central government. From 1 April 2005, central government includes the former Magistrates' Courts Service which has been brought together with the Court Service to form Her Majesty's Courts Service. The Magistrates' Courts Service was previously classified to local government.

7. Local government covers those types of public administration that only cover a locality and any bodies controlled and mainly financed by them. The sub-sector includes all areas of administrative authorities including parish councils, though these units are not covered by the current estimates for local authorities. It includes police forces and their civilian staff. All functions of local authorities are classified to the sub-sector, although trading activities that produce market output (for example, housing and municipally owned markets) are regarded as quasi-corporations and appear under public corporations. Local education authorities are part of local government, as are voluntary aided schools, county schools and, from September 1999, foundation schools (formerly grant-maintained).

8. Public corporations are companies or quasi-corporations controlled by government. Examples include British Nuclear Fuels plc and Royal Mail. These companies receive more than half their income from sales of goods or services into the market place.

9. The estimates of Civil Service employees count all home Civil Service employees (including from 1 April 2005 the employees of the former Magistrates' Courts Service). Civil Service employees can be classified to central government or public corporations. Examples of public corporations include the UK Intellectual Property Office and the Driving Standards Agency. Civil Service estimates exclude the Northern Ireland Civil Service and other Crown servants. Employees in these groups, though, are included in estimates of central government employment.

10. Headcount estimates are based on the number of employees with an

employment contract who are being paid by the organisation. Employees can be permanent, on a fixed-term contract or employed on a casual basis. Self-employed, contract workers and agency workers are excluded. Permanent employees, as defined in Table 6, are employees with a contract with no agreed expiry date or a fixed term contract of more than twelve months. Temporary/casual employees are those with a fixed term contract of twelve months or less or employed on a casual basis.

11. The public sector employment estimates relate to the number of people employed according to returns from the relevant organisations, but they include a number of workers with a second job in the public sector whose main job is in the private sector or in a separate public sector organisation. The private sector estimate, which is obtained by taking the difference between the Labour Force Survey estimate of people employed in the whole economy and the public sector total, will thus tend to be correspondingly understated by a small percentage.
12. As well as the headcount estimates, estimates have also been produced for the number of employees in full-time equivalents (FTE) back to 1999. This is based on converting part-time employees' hours into a full-time employees' equivalent and provides a better indicator of total labour input than a simple headcount.
13. Estimates of public sector employment broken down by industry are based on the Standard Industrial Classifications (SIC 2003) and not on the Classification of the Functions of Government (COFOG).
14. The estimates of public sector employment in education (SIC division 80) differ from the school workforce estimates published by the Department for Children, Schools and Families (DCSF) mainly as a result of differences in coverage and data sources. DCSF estimates focus on the number of FTE teachers and support staff in the maintained school sector for England only. By comparison, the ONS estimates are derived by allocating local authority employees to education using the Inter-Departmental Business Register and the Quarterly Public Sector Employees Survey in England and Wales. Estimates include all employees reported by local authorities as working in primary, secondary and adult education establishments including some groups who are not covered by the DCSF statistics, such as adult education staff and certain categories of support staff. Employment in education in Scotland and Northern Ireland are also included to give a wider UK coverage. For further information on the differences between DCSF and ONS data on education please see pages 44 to 46 of the Public Sector Employment Trends 2005 article published in October 2005:
<http://www.statistics.gov.uk/articles/nojournal/PublicSectorEmploymentTrends2005.pdf>
15. In order to make a fairer comparison between DCSF and ONS estimates, ONS FTE estimates for England only should be compared against DCSF estimates. The table below provides published DCSF figures for January each year compared to ONS estimates for Q4 (December) each year (not seasonally adjusted). It shows that the difference on this basis between ONS and DCSF estimates for quarter 4 2006/January 2007 (provisional)

was 48,000 full-time equivalents.

**Comparison of DCSF school workforce and ONS public sector education estimates;
England only; full-time equivalents, not seasonally adjusted**

Date	ONS	DCSF			Difference
	Education (SIC div. 80)	All regular teachers ¹	Total support staff ²	Total (regular teachers + support staff)	ONS – DCSF totals
01Q4/Jan02	687	420	213	633	54
02Q4/Jan03	715	424	223	647	68
03Q4/Jan04	740	428	241	668	72
04Q4/Jan05	746	432	265	697	49
05Q4/Jan06	771	436	288	723	48
06Q4/Jan07	788	435	306	740	48

1 DCSF annual 618G survey, excludes occasional teachers

2 Annual Schools' census

16. The different coverage of the ONS and DCSF education statistics serves the needs of different users. Those who require information on the workforce in England who are directly involved in pupils' teaching and learning should use DCSF published statistics. Users should also refer to DCSF published statistics to gauge trends in education employment. Those who seek data on UK public sector employment in education, in its widest sense, should use the ONS data in this release.

17. ONS estimates for the NHS also differ from the headline figure produced by the Information Centre. Again, this reflects the wider UK coverage (Information Centre figures are for England only) plus the exclusion by ONS of general practitioners (GPs). ONS, in accordance with National Accounts practice, classifies GPs as part of the private sector. ONS also include 'hospital practitioners and clinical assistants' who work in hospitals on a salaried payscale but generally work as GPs leading the Information Centre to exclude them from their totals to avoid double counting. When these factors are allowed for, ONS and NHS data can be shown to be identical (see table below).

**Comparison of Information Centre estimates and ONS public sector NHS estimates;
England only; headcount, not seasonally adjusted¹**

Date	ONS	Information Centre			Comparable Total
	NHS estimates	NHS and GP workforce	GPs & practice staff	Hospital practitioners and clinical assistants	
		A	B	C	A - B + C
Q3 (Sep) 2001	1,036	1,167	136	5	1,036
Q3 (Sep) 2002	1,090	1,225	140	5	1,090
Q3 (Sep) 2003	1,145	1,284	144	4	1,145
Q3 (Sep) 2004	1,189	1,332	147	4	1,189
Q3 (Sep) 2005	1,222	1,366	148	4	1,222
Q3 (Sep) 2006	1,186	1,339	156	3	1,186

1 small difference may occur due to rounding.

18. The statistics published in this release are derived from the relevant departments and devolved governments plus comprehensive ONS quarterly surveys of the home Civil Service, local authorities in England and Wales and Non-Departmental Public Bodies and Public Corporations. The following table shows the data sources used to calculate total public sector employment for Q4 2007.

19.

Sources for Public Sector Employment estimates

	Geographic coverage	Source
Central government		
HM Forces	UK	MoD: DASA
National Health Service	England	Information Centre for Health and Social Care
	Wales	National Assembly for Wales
	Scotland	Scottish Government
	Northern Ireland	DETINI
Other central government	GB	Quarterly Public Sector Employees Survey (ONS) Home Office (National Probation Service and Police Service Strength)
	NI	DETINI
Local government		
Local authorities	England and Wales	Quarterly Public Sector Employees Survey (ONS)
	Scotland	Joint Staffing Watch: Scottish Government
	Northern Ireland	DETINI
Police (including civilians)	England and Wales	Home Office
	Scotland	Joint Staffing Watch: Scottish Government
	Northern Ireland	DETINI
Public corporations		
	GB	Quarterly Public Sector Employees Survey (ONS)
	Northern Ireland	DETINI

Comparisons over time

20. Machinery of Government changes in the 12 month period to December 2007 are listed here:

Machinery of government changes affecting the Civil Service	
National School of Government	Recorded under "Other Cabinet Office Agencies" from Q1 2007 onwards. Previously included in Cabinet Office figures.
Ofsted	The new Ofsted – the Office for Standards in Education, Children’s Services and Skills - came into being on 1 April 2007.
Scottish Police Services Authority	Established as a Non-Departmental Public Body on 1 April 2007

Privy Council Office	The functions of the Privy Council (PCO) were split between the Ministry of Justice and the Cabinet Office in April 2007
Assembly Parliamentary Service	The Assembly Parliamentary Service transferred to the National Assembly for Wales Commission in May 2007.
Ministry of Justice	The Ministry of Justice was launched on 9 May 2007, taking over responsibilities from the Department for Constitutional Affairs, the National Offender Management Service and the Office for Criminal Justice Reform.
Department for Education and Skills and Department for Trade and Industry	On 28 June 2007 three new departments were established in place of the Department for Education and Skills and Department for Trade and Industry. These were the Department for Children, Schools and Families, the Department for Innovation, Universities and Skills and the Department for Business, Enterprise and Regulatory Reform.
Technology Strategy Board	Established as a Non-Departmental Public Body on 1 July 2007. Functions previously covered by BERR.
Government Equalities Office	Established on 26 July 2007. Employment information is not yet available for this new department and continues to be reported as per the previous organisational structure.

When examining trends in Civil Service employment over time in the context of the 2004 Spending Review efficiency programme workforce reduction targets, these machinery of government changes should be accounted for. Also, the ONS statistics are for Great Britain whereas the efficiency programme covers the English Civil Service only. The coverage of Departments, and parts of departments, that are required to make workforce reductions under the efficiency programme does not equate to the total Civil Service. For example, Prison Officers are included in the total Civil Service but are not included in the workforce reduction programme. Due to these reasons the change in the size of the Civil Service since the start of the efficiency programme will not equate to the number of reductions made in the programme. Any questions relating to the efficiency programme should be directed to HM Treasury.

21. Consistent time series are available from the National Statistics website back to 1999 on a seasonally adjusted basis and back to 1991 on a non-seasonally adjusted basis. For earlier estimates (which are on a different basis) users should consult the *Labour Market Trends* (vol 112, no 7) article "Jobs in the public sector mid-2003".
http://www.statistics.gov.uk/articles/labour_market_trends/public_sector_j_obs.pdf

Revisions

22. Public sector employment statistics have previously been published for periods up to and including Q3 2007. In line with the published revisions policy for public sector employment statistics (http://www.statistics.gov.uk/downloads/theme_labour/PSERevisionsPolicy.PDF) the statistics have been revised to take account of late information for respondents and seasonal adjustment updates. These revisions were minimal (+1k).

23. Tables 1R to 5R illustrate the size of the revisions in each category.

Planned future revisions

24. Statistics for the NHS for England and Scotland for Q4 2006 onwards are based on projections and informed modelled estimates have been supplied by the Information Centre and the Scottish Government. These estimates may be revised following the publication of the annual NHS workforce statistics for the period up to September 2007.
25. Statistics for the Police (including civilians) for Q2 2007 onwards for England and Wales are also based partly on projections supplied by the Home Office. These estimates may be revised following the publication of the latest Home Office statistics.
26. As part of the cross-departmental development project, both Home Office and the NHS are making improvements to enable them to produce timelier public sector employment statistics. In the short term, however, NHS statistics will continue to be available on an annual basis and Police service workforce statistics every six months, with those departments making estimates for more recent periods.
27. Due to ongoing validation of data from the new HM Forces Personnel Administration System, figures for 2007 Q2 onwards are provisional and subject to review.

Future publications

28. The next Public Sector Employment First Release, for Q1 (March) 2008 will be published on 11 June 2008.

General

29. Details of the policy governing the release of new data are available from the press office. Also available is a list of the names of those given pre-publication access to the contents of this release.
30. **National Statistics** are produced to high professional standards set out in the National Statistics Code of Practice. They undergo regular quality assurance reviews to ensure that they meet customer needs. They are produced free from any political interference. © Crown Copyright 2008.

INDEX OF TABLES

Public sector employment by sector classification; Headcount	1
Public sector employment by industry; Headcount	2
Public sector employment by sector classification; Full-time equivalent	3
Public sector employment by industry; Full-time equivalent	4
Public and private sector employment; Headcount	5
Civil Service employment by department	6
Public sector employment by sector classification; Headcount - Revisions	1R
Public sector employment by industry; Headcount - Revisions	2R
Public sector employment by sector classification; Full-time equivalent - Revisions	3R
Public sector employment by industry; Full-time equivalent - Revisions	4R
Public and private sector employment; Headcount - Revisions	5R

1 Public sector employment by sector classification; Headcount¹

United Kingdom (Thousands), seasonally adjusted

	General government						Of which: Civil Service ^{2 5 9}
	Central government ^{2 3 4 5 6}	Local government ^{3 4 5 7}	Total general government ^{3 6}	Total public corporations ⁸	Total public sector ^{3 6 8}		
	G6NQ	G6NT	G6NW	G7AR	G7AU	G7D6	
1999	2 115	2 735	4 850	352	5 202	504	
2000	2 154	2 770	4 924	359	5 283	516	
2001	2 232	2 771	5 003	373	5 376	522	
2002	2 324	2 790	5 114	370	5 484	538	
2003	2 434	2 832	5 266	373	5 639	560	
2004	2 506	2 886	5 392	364	5 756	570	
2005	2 564	2 923	5 487	367	5 854	570	
2006	2 539	2 933	5 472	346	5 818	558	
2007	2 505	2 941	5 446	339	5 785	539	
2003 Q4	2 478	2 866	5 344	370	5 714	564	
2004 Q1	2 503	2 876	5 379	367	5 746	569	
Q2	2 506	2 886	5 392	364	5 756	570	
Q3	2 523	2 903	5 426	362	5 788	570	
Q4	2 530	2 908	5 438	362	5 800	565	
2005 Q1	2 543	2 921	5 464	365	5 829	562	
Q2	2 564	2 923	5 487	367	5 854	570	
Q3	2 558	2 931	5 489	366	5 855	567	
Q4	2 557	2 932	5 489	359	5 848	563	
2006 Q1	2 549	2 931	5 480	352	5 832	560	
Q2	2 539	2 933	5 472	346	5 818	558	
Q3	2 521	2 943	5 464	343	5 807	553	
Q4	2 525 ^{3†}	2 935 [†]	5 460 ^{3†}	341 [†]	5 801 ^{3†}	549	
2007 Q1	2 518 ³	2 938	5 456 ³	340	5 796 ³	543	
Q2	2 505 ³	2 941 ³	5 446 ³	339	5 785 ³	539	
Q3	2 497 ³	2 936 ³	5 433 ³	338	5 771 ³	533	
Q4	2 496 ³	2 927 ³	5 423 ³	355 ⁸	5 778 ³	530	
Change on quarter to:							
2006 Q4	4 [†]	-8 [†]	-4 [†]	-2 [†]	-6 [†]	-4	
2007 Q1	-7	3	-4	-1	-5	-6	
Q2	-13	3	-10	-1	-11	-4	
Q3	-8	-5	-13	-1	-14	-6	
Q4	-1	-9	-10	17	7	-3	
% change on quarter to:							
2006 Q4	0.2	-0.3	-0.1	-0.6 [†]	-0.1	-0.7	
2007 Q1	-0.3	0.1	-0.1	-0.3	-0.1	-1.1	
Q2	-0.5	0.1	-0.2	-0.3	-0.2	-0.7	
Q3	-0.3 [†]	-0.2 [†]	-0.2	-0.3	-0.2	-1.1	
Q4	0.0	-0.3	-0.2	5.0	0.1	-0.6	
Change on year to:							
2006 Q4	-32 [†]	3 [†]	-29 [†]	-18 [†]	-47 [†]	-14	
2007 Q1	-31	7	-24	-12	-36	-17	
Q2	-34	8	-26	-7	-33	-19	
Q3	-24	-7	-31	-5	-36	-20	
Q4	-29	-8	-37	14	-23	-19	
% change on year to:							
2006 Q4	-1.3	0.1	-0.5	-5.0 [†]	-0.8	-2.5	
2007 Q1	-1.2	0.2	-0.4	-3.4	-0.6	-3.0	
Q2	-1.3	0.3	-0.5	-2.0	-0.6	-3.4	
Q3	-1.0 [†]	-0.2 [†]	-0.6	-1.5	-0.6	-3.6	
Q4	-1.1	-0.3	-0.7	4.1	-0.4	-3.5	

1 Annual figures relate to June quarter (Q2)

2 Series does not display seasonality, Seasonal=Not Seasonal

3 NHS & Police (England & Wales) based on projections

4 National Probation Service (England & Wales) re-classified from Local Government to Central Government from April 2001

5 Magistrates' Courts Service transferred from Local Government to Central Government (and Civil Service) from April 2005

6 10,000 duplicate NHS records removed from Q3 2006 onwards. This

is partly offset by the inclusion of bank staff for the NHS in Wales from this point on. Earlier figures are not available.

7 Further education & 6th form college transferred to private sector Apr 1993

8 Northern Rock reclassified to public sector from 9 October 2007

9 Home Civil Service (excludes NI Civil Service which is included in CG)

[†] Indicates earliest revision

Source: Office for National Statistics

2 Public sector employment by industry; Headcount

United Kingdom (Thousands), seasonally adjusted

	Public admin, defence, compulsory social security					Health and social work			
	Construction	HM Forces ^{1 2}	Police (including civilians) ³	Public administration	Education	National Health Service ^{4 5}	Other health and social work	Other public sector ⁶	
	G7ER	G7EU	G7EX	G7F2	G7F5	G7FG	G7FJ	G7FM	
1999	111	218	227	1 136	1 159	1 212	415	721	
2000	108	217	225	1 142	1 214	1 239	412	725	
2001	97	214	229	1 149	1 242	1 285	398	759	
2002	84	214	238	1 177	1 250	1 348	390	779	
2003	76	223	248	1 219	1 308	1 417	371	775	
2004	77	218	264	1 232	1 345	1 475	385	758	
2005	71	210	272	1 248	1 367	1 528	392	765	
2006	64	204	274	1 245	1 393	1 522	384	731	
2007	57	197	283	1 231	1 404	1 512	383	715	
2003 Q4	80	222	255	1 222	1 334	1 452	386	765	
2004 Q1	78	220	260	1 230	1 338	1 471	387	763	
Q2	77	218	264	1 232	1 345	1 475	385	758	
Q3	75	215	265	1 241	1 351	1 490	391	760	
Q4	74	215	267	1 242	1 354	1 501	391	759	
2005 Q1	72	213	271	1 243	1 363	1 514	392	761	
Q2	71	210	272	1 248	1 367	1 528	392	765	
Q3	69	207	271	1 244	1 378	1 532	388	763	
Q4	68	206	274	1 245	1 381	1 532	388	752	
2006 Q1	64	206	273	1 245	1 387	1 528	385	744	
Q2	64	204	274	1 245	1 393	1 522	384	731	
Q3	61 [†]	202	276	1 245	1 396 [†]	1 513	390	726 [†]	
Q4	60 [†]	202	278	1 241	1 394 [†]	1 517 [†]	385	723 [†]	
2007 Q1	58	200	282	1 236	1 399	1 519 [†]	384	719	
Q2	57	197 ²	283 ³	1 231	1 404	1 512 [†]	383	715	
Q3	59	194 ²	283 ^{3†}	1 229 [†]	1 406	1 517 [†]	380	702	
Q4	57	195 ²	283 ³	1 225	1 410	1 517 [†]	373	720 ⁶	
Change on quarter to:									
2006 Q4	-1 [†]	-	2	-4	-2 [†]	4	-5	-3 [†]	
2007 Q1	-2	-2	4	-5	5	2	-1	-4	
Q2	-1	-3	1	-5	5	-7	-1	-4	
Q3	2	-3	- [†]	-2 [†]	2	5 [†]	-3	-13	
Q4	-2	1	-	-4	4	-	-7	18	
% change on quarter to:									
2006 Q4	-1.6 [†]	0.0	0.7	-0.3	-0.1 [†]	0.3	-1.3	-0.4 [†]	
2007 Q1	-3.3	-1.0	1.4	-0.4	0.4	0.1	-0.3	-0.6	
Q2	-1.7	-1.5	0.4	-0.4	0.4	-0.5	-0.3	-0.6	
Q3	3.5	-1.5	0.0 [†]	-0.2 [†]	0.1	0.3 [†]	-0.8	-1.8	
Q4	-3.4	0.5	0.0	-0.3	0.3	0.0	-1.8	2.6	
Change on year to:									
2006 Q4	-8 [†]	-4	4	-4	13 [†]	-15	-3	-29 [†]	
2007 Q1	-6	-6	9	-9	12	-9	-1	-25	
Q2	-7	-7	9 [†]	-14	11	-10	-1	-16	
Q3	-2	-8	7 [†]	-16 [†]	10	4 [†]	-10	-24	
Q4	-3	-7	5	-16	16	-	-12	-3	
% change on year to:									
2006 Q4	-11.8 [†]	-1.9	1.5	-0.3	0.9 [†]	-1.0	-0.8	-3.9 [†]	
2007 Q1	-9.4	-2.9	3.3	-0.7	0.9	-0.6	-0.3	-3.4	
Q2	-10.9	-3.4	3.3 [†]	-1.1	0.8	-0.7 [†]	-0.3	-2.2	
Q3	-3.3	-4.0	2.5 [†]	-1.3 [†]	0.7	0.3 [†]	-2.6	-3.3	
Q4	-5.0	-3.5	1.8	-1.3	1.1	0.0	-3.1	-0.4	

1 HM Forces series exclude locally engaged staff. The series also excludes mobilised reservists prior to 1996 as statistics are not available. Q1=1 March, Q2=1 June, Q3=1 September, Q4=1 December

2 Due to ongoing validation of data from the new HM Forces Personnel Administration System, figures for 2007 Q2 onwards are provisional and subject to review.

3 Police (Eng and Wales) based on projections and subject to revision.

4 Data for the NHS are based on projections and subject to revision.

5 10,000 duplicate NHS records removed from q3 2006 onwards. This is partly offset by the inclusion of bank staff for the NHS in Wales from this point. Earlier figures are not available.

6 Northern Rock reclassified to public sector from 9 October 2007

[†] Indicates earliest revision.

Source: Office for National Statistics

3 Public sector employment by sector classification; Full-time equivalent¹

United Kingdom (Thousands), seasonally adjusted

	General government				Total public corporations ⁷	Total public sector ^{3 7}	Of which: Civil Service ^{2 5 8}
	Central government ^{2 3 4 5}	Local government ^{2 3 4 5 6}	Total general government ³				
	G7FP	G7FS	G7FV	G7FY	G7G3	G7G6	
1999	1 836	1 999	3 835	332	4 167	481	
2000	1 867	2 013	3 880	339	4 219	492	
2001	1 928	2 008	3 936	350	4 286	497	
2002	2 002	2 027	4 029	350	4 379	510	
2003	2 090	2 063	4 153	351	4 504	529	
2004	2 159	2 106	4 265	342	4 607	538	
2005	2 203	2 142	4 345	346	4 691	537	
2006	2 185	2 172	4 357	323	4 680	524	
2007	2 156	2 183	4 339	316	4 655	505	
2003 Q4	2 128	2 088	4 216	347	4 563	534	
2004 Q1	2 155	2 097	4 252	345	4 597	538	
Q2	2 159	2 106	4 265	342	4 607	538	
Q3	2 174	2 117	4 291	341	4 632	538	
Q4	2 177	2 120	4 297	342	4 639	533	
2005 Q1	2 185	2 139	4 324	344	4 668	530	
Q2	2 203	2 142	4 345	346	4 691	537	
Q3	2 202	2 158	4 360	344	4 704	534	
Q4	2 201	2 159	4 360	336	4 696	529	
2006 Q1	2 190	2 166	4 356	330	4 686	525	
Q2	2 185	2 172	4 357	323	4 680	524	
Q3	2 177	2 178	4 355	321	4 676	519	
Q4	2 176 ³	2 182 [†]	4 358 ^{3†}	319 [†]	4 677 ³	515	
2007 Q1	2 167 ³	2 183	4 350 ³	316	4 666 ³	509	
Q2	2 156 ³	2 183 ³	4 339 ³	316	4 655 ³	505 [†]	
Q3	2 149 ^{3†}	2 183 ³	4 332 ³	315	4 647 ^{3†}	500 [†]	
Q4	2 151 ³	2 178 ³	4 329 ³	333 ⁷	4 662 ³	496	
Change on quarter to:							
2006 Q4	-1	4 [†]	3 [†]	-2 [†]	1	-4	
2007 Q1	-9	1	-8	-3	-11	-6	
Q2	-11	-	-11	-	-11	-4	
Q3	-7 [†]	-	-7	-1	-8 [†]	-5 [†]	
Q4	2	-5	-3	18	15	-4	
% change on quarter to:							
2006 Q4	0.0	0.2	0.1	-0.6 [†]	0.0	-0.8	
2007 Q1	-0.4	0.0	-0.2	-0.9	-0.2	-1.2	
Q2	-0.5	0.0	-0.3	0.0	-0.2	-0.8	
Q3	-0.3	0.0	-0.2	-0.3	-0.2	-1.0 [†]	
Q4	0.1	-0.2	-0.1	5.7	0.3	-0.8	
Change on year to:							
2006 Q4	-25	23 [†]	-2 [†]	-17 [†]	-19	-14	
2007 Q1	-23	17	-6	-14	-20	-16	
Q2	-29	11	-18	-7	-25	-19	
Q3	-28 [†]	5	-23	-6	-29 [†]	-19 [†]	
Q4	-25	-4	-29	14	-15	-19	
% change on year to:							
2006 Q4	-1.1	1.1	0.0	-5.1 [†]	-0.4	-2.6	
2007 Q1	-1.1	0.8	-0.1	-4.2	-0.4	-3.0	
Q2	-1.3	0.5	-0.4	-2.2	-0.5	-3.6	
Q3	-1.3	0.2	-0.5	-1.9	-0.6	-3.7 [†]	
Q4	-1.1	-0.2	-0.7	4.4	-0.3	-3.7	

1 Annual figures relate to June quarter (Q2)

2 Series does not display seasonality, Seasonal=Not Seasonal

3 NHS & Police (England & Wales) are based on projections

4 National Probation Service (England & Wales) reclassified from Local Government to Central Government from April 2001

5 Magistrates' Courts Service transferred from Local Government to Central Government (and Civil Service) from April 2005

6 Further education & 6th form colleges transferred to the private sector from April 1993.

7 Northern Rock reclassified to public sector from 9 October 2007

8 Home Civil Service (excludes NI Civil Service which is included in Central Government)

[†] Indicates earliest revision.

Source: Office for National Statistics

4 Public sector employment by industry; Full-time equivalent

United Kingdom (Thousands), seasonally adjusted

	Public administration and defence; compulsory social security					Health and social work			
	Construction ¹	HM Forces ^{2 3}	Police (including civilians) ⁴	Public administration	Education	National Health Service ⁵	Other health and social work	Other public sector ⁶	
	G9BC	G7G9	G7GC	G7GF	G7GI	G7GL	G7GR	G7K2	
1999	..	218	220	971	802	982	292	599	
2000	..	217	218	976	836	1 001	288	601	
2001	..	214	222	981	852	1 037	279	629	
2002	..	214	230	1 004	863	1 088	275	644	
2003	..	223	240	1 037	905	1 139	263	641	
2004	..	218	254	1 050	931	1 192	274	630	
2005	..	210	262	1 061	950	1 236	281	638	
2006	..	204	264	1 058	981	1 238	279	608	
2007	..	197	273	1 042	990	1 234	279	596	
2003 Q4	..	222	247	1 042	920	1 167	274	634	
2004 Q1	..	220	251	1 048	925	1 188	274	632	
Q2	..	218	254	1 050	931	1 192	274	630	
Q3	..	215	256	1 057	933	1 207	277	631	
Q4	..	215	258	1 055	933	1 214	278	633	
2005 Q1	..	213	261	1 056	944	1 225	281	635	
Q2	..	210	262	1 061	950	1 236	281	638	
Q3	..	207	261	1 060	964	1 244	280	637	
Q4	..	206	264	1 059	967	1 244	280	626	
2006 Q1	..	206	263	1 058	974	1 238	279	619	
Q2	..	204	264	1 058	981	1 238	279	608	
Q3	..	202	266	1 056	981	1 237	283	604 [†]	
Q4	..	202	268	1 054	986	1 238 ⁵	280	602 [†]	
2007 Q1	..	200	271	1 048	988	1 239 ⁵	280	597	
Q2	..	197 ³	273 ⁴	1 042	990	1 234 ⁵	279 [†]	596	
Q3	..	194 ³	272 ^{4†}	1 042	994	1 238 ^{5†}	276 [†]	586	
Q4	..	195 ³	273 ⁴	1 038	995	1 241 ⁵	272	605 ⁶	
Change on quarter to:									
2006 Q4	..	-	2	-2	5	1	-3	-2 [†]	
2007 Q1	..	-2	3	-6	2	1	-	-5	
Q2	..	-3	2 [†]	-6	2	-5 [†]	-1 [†]	-1	
Q3	..	-3	-1 [†]	-	4	4 [†]	-3 [†]	-10	
Q4	..	1	1	-4	1	3	-4	19	
% change on quarter to:									
2006 Q4	..	0.0	0.8	-0.2	0.5	0.1	-1.1	-0.3 [†]	
2007 Q1	..	-1.0	1.1	-0.6	0.2	0.1	0.0	-0.8	
Q2	..	-1.5	0.7 [†]	-0.6	0.2	-0.4 [†]	-0.4 [†]	-0.2	
Q3	..	-1.5	-0.4 [†]	0.0	0.4	0.3 [†]	-1.1 [†]	-1.7	
Q4	..	0.5	0.4	-0.4	0.1	0.2	-1.4	3.2	
Change on year to:									
2006 Q4	..	-4	4	-5	19	-6	-	-24 [†]	
2007 Q1	..	-6	8	-10	14	1	1	-22	
Q2	..	-7	9 [†]	-16	9	-4 [†]	-	-12	
Q3	..	-8	6 [†]	-14	13	1 [†]	-7 [†]	-18	
Q4	..	-7	5	-16	9	3	-8	3	
% change on year to:									
2006 Q4	..	-1.9	1.5	-0.5	2.0	-0.5	0.0	-3.8 [†]	
2007 Q1	..	-2.9	3.0	-0.9	1.4	0.1	0.4	-3.6	
Q2	..	-3.4	3.4 [†]	-1.5	0.9	-0.3 [†]	0.0	-2.0	
Q3	..	-4.0	2.3 [†]	-1.3	1.3	0.1 [†]	-2.5 [†]	-3.0	
Q4	..	-3.5	1.9	-1.5	0.9	0.2	-2.9	0.5	

1 Construction estimates for full-time equivalents have not been published as they are of insufficient quality

2 HM Forces series exclude locally engaged staff. The series also excludes mobilised reservists prior to 1996 as statistics are not available. Q1=1 March, Q2=1 June, Q3=1 September, Q4=1 December

3 Due to ongoing validation of data from the new HM Forces Personnel Administration System, figures for 2007 Q2 onwards are provisional and subject to review.

4 Data for the Police (including civilians) for England and Wales are based on projections and are therefore subject to revision. See background note 2.

5 Data for the NHS are projections and subject to revision. See note 2.

6 Northern Rock reclassified to public sector from 9 October 2007

[†] Indicates earliest revision.

Source: Office for National Statistics

5 Public and private sector employment; Headcount¹

United Kingdom, seasonally adjusted

	Public sector		Private sector		Total employment ⁸
	Headcount(thousands) ^{2 3 4}	Percentage ⁵	Headcount(thousands) ⁶	Percentage ⁷	
	G7AU	G9BZ	G7K5	G9C2	G7G0
1999	5 202	19.2	21 906	80.8	27 108
2000	5 283	19.2	22 238	80.8	27 521
2001	5 376	19.4	22 314	80.6	27 690
2002	5 484	19.7	22 401	80.3	27 885
2003	5 639	20.0	22 562	80.0	28 201
2004	5 756	20.3	22 667	79.7	28 423
2005	5 854	20.3	22 923	79.7	28 777
2006	5 818	20.0	23 201	80.0	29 019
2007	5 785	19.8	23 393	80.2	29 178
2003 Q4	5 714	20.1	22 645	79.9	28 359
2004 Q1	5 746	20.2	22 648	79.8	28 394
Q2	5 756	20.3	22 667	79.7	28 423
Q3	5 788	20.3	22 707	79.7	28 495
Q4	5 800	20.2	22 861	79.8	28 661
2005 Q1	5 829	20.3	22 850	79.7	28 679
Q2	5 854	20.3	22 923	79.7	28 777
Q3	5 855	20.3	22 975	79.7	28 830
Q4	5 848	20.3	23 000	79.7	28 848
2006 Q1	5 832	20.1	23 144	79.9	28 976
Q2	5 818	20.0	23 201	80.0	29 019
Q3	5 807	20.0	23 258	80.0	29 065
Q4	5 801 ^{2†}	19.9	23 289 ^{2†}	80.1	29 090
2007 Q1	5 796 ²	19.9	23 291 ²	80.1	29 087
Q2	5 785 ²	19.8	23 393 ²	80.2	29 178
Q3	5 771 ²	19.7	23 520 ²	80.3	29 291
Q4	5 778 ²	19.6	23 679 ²	80.4	29 457
Change on quarter to:					
2006 Q4	-6 [†]	-0.1	31 [†]	0.1	25
2007 Q1	-5	-	2	-	-3
Q2	-11	-0.1	102	0.1	91
Q3	-14	-0.1	127	0.1	113
Q4	7	-0.1	159	0.1	166
% change on quarter to:					
2006 Q4	-0.1		0.1		0.1
2007 Q1	-0.1		0.0		0.0
Q2	-0.2		0.4		0.3
Q3	-0.2		0.5		0.4
Q4	0.1		0.7		0.6
Change on year to:					
2006 Q4	-47 [†]	-0.4	289 [†]	0.4	242
2007 Q1	-36	-0.2	147	0.2	111
Q2	-33	-0.2	192	0.2	159
Q3	-36	-0.3	262	0.3	226
Q4	-23	-0.3	390	0.3	367
% change on year to:					
2006 Q4	-0.8		1.3		0.8
2007 Q1	-0.6		0.6		0.4
Q2	-0.6		0.8		0.5
Q3	-0.6		1.1		0.8
Q4	-0.4		1.7		1.3

1 Annual figures relate to June quarter (Q2)

2 Estimates for Q4 2006 onwards are based partly on projections

3 10,000 duplicate NHS records removed from Q3 2006 onwards. This is partly offset by the inclusion of bank staff for the NHS in Wales from this point. Earlier figures are not available.

4 Northern Rock reclassified to public sector from 9 October 2007

5 Represents C9KD/CZG9*100

6 Estimated as the difference between LFS total employment and the data from public sector organisations

7 Represents CZG8/CZG9*100

8 Labour Force Survey - All in Employment aged 16 and over. Data refer to May-July for annual data from 1992-2004, for Q1 to Feb-Apr, Q2 to May-July, Q3 to Aug-Oct and Q4 to Nov-Jan. Quarterly and annual changes may differ slightly from those published elsewhere due to rounding conventions.

[†] Indicates earliest revision.

Sources: Labour Force Survey and estimates from public sector organisations; Office for National Statistics

6 Civil Service employment by department ¹

Headcount, Great Britain, not seasonally adjusted

	2007 Q4						2007 Q3		Change on Quarter
	Male			Female			Total	Total	
	Full-time	Part-time	Total	Full-time	Part-time	Total			
Permanent employees									
Attorney General's departments	3330	130	3450	4700	1790	6490	9940	9930	20
Cabinet Office	620	10	620	570	100	660	1290	1290	-10
Other Cabinet Office agencies	400	10	410	410	110	520	930	930	-10
HM Treasury	590	10	600	420	60	480	1080	1110	-30
Chancellor's other departments	2210	90	2310	1670	730	2400	4710	4700	10
Charity Commission	210	20	230	180	90	270	490	500	-10
Communities and Local Government	3000	200	3200	1800	510	2310	5510	5520	0
Culture, Media and Sport	320	10	320	240	40	280	600	610	-10
Defence	52050	1180	53230	22180	6130	28310	81540	82480	-940
Children, Schools and Families	930	40	970	670	250	920	1900	1810	90
Innovation, Universities and Skills	1410	50	1450	1510	490	2000	3450	3480	-30
Ofsted	690	20	700	1430	340	1770	2470	2530	-60
Environment, Food and Rural Affairs	5430	250	5680	4700	1500	6200	11880	12080	-210
Export Credits Guarantee Department	160	..	160	70	20	90	250	260	-10
Foreign and Commonwealth Office	3550	20	3580	2350	160	2520	6090	6120	-30
Health	1520	40	1560	1690	320	2010	3570	3520	50
Food Standards Agency	340	20	360	360	70	430	790	790	0
Meat Hygiene Service	1030	10	1040	210	20	230	1270	1330	-60
HM Revenue and Customs	37980	2370	40350	33730	20740	54470	94810	96150	-1340
Home Office	10670	850	11520	10690	3920	14610	26120	26210	-90
International Development	840	10	850	740	120	860	1710	1720	-10
Justice	42190	2530	44720	31310	10470	41780	86500	86260	240
Northern Ireland Office	70	0	70	50	20	70	130	140	-10
Security and Intelligence Services	3370	110	3480	1230	590	1820	5300	5280	20
Business, Enterprise and Regulatory Reform	4050	170	4220	3380	1020	4410	8630	8590	40
Transport	10640	430	11080	6040	1970	8010	19090	19070	20
Work and Pensions	33940	3690	37630	43600	36980	80590	118220	119230	-1010
Central Government Departments Total	221520	12250	233770	175930	88550	264480	498250	501630	-3370
Scottish Government	8560	320	8880	5710	1660	7370	16250	16320	-70
Welsh Assembly	2320	90	2410	2530	700	3230	5650	5780	-140
TOTAL	232410	12660	245060	184180	90910	275090	520150	523730	-3580

	2007 Q4						2007 Q3		Change on Quarter
	Male			Female			Total	Total	
	Full-time	Part-time	Total	Full-time	Part-time	Total			
Temporary/Casual Employees									
Attorney General's departments	150	10	160	260	30	290	450	470	-20
Cabinet Office	10	0	10	10	0	10	10	20	0
Other Cabinet Office agencies	10	..	10	10	..	10	30	30	0
HM Treasury	50	..	50	30	..	30	80	80	0
Chancellor's other departments	170	30	200	150	40	190	390	360	30
Charity Commission	..	0	0	..	10
Communities and Local Government	40	10	50	30	..	30	80	110	-30
Culture, Media and Sport	10	10	-10
Defence	500	60	550	380	100	480	1030	1040	-10
Children, Schools and Families	10	0	10	10	..	10	20	20	..
Innovation, Universities and Skills	30	0	30	10	0	10	40	40	0
Ofsted	30	..	30	90	..	90	120	100	20
Environment, Food and Rural Affairs	120	10	130	150	10	160	290	370	-80
Export Credits Guarantee Department	0	0	0	0	0	0	0	0	0
Foreign and Commonwealth Office	10	0	10	10	..	10	20	20	-10
Health	30	..	30	40	..	50	70	80	-10
Food Standards Agency	10	..	10	10	..	10	20	30	-10
Meat Hygiene Service	10	0	10	10	0	10	10	10	0
HM Revenue and Customs	280	240	520	300	270	560	1080	430	650
Home Office	130	40	170	100	50	160	330	400	-70
International Development	0	0	0	..	0	0
Justice	970	80	1050	1130	220	1350	2400	2260	140
Northern Ireland Office	..	0	..	0	0	0	0
Security and Intelligence Services	0	0	0	0	0	0	0	0	0
Business, Enterprise and Regulatory Reform	100	10	100	80	10	90	200	190	10
Transport	290	60	350	360	90	450	800	800	..
Work and Pensions	700	50	750	910	130	1040	1790	1810	-20
Central Government Departments Total	3620	600	4220	4070	960	5040	9250	8670	590
Scottish Government	130	30	160	120	50	170	330	360	-30
Welsh Assembly	130	10	140	190	20	210	350	350	0
TOTAL	3880	630	4510	4380	1030	5420	9930	9380	550

	2007 Q4						2007 Q3		Change on Quarter
	Male			Female			Total	Total	
	Full-time	Part-time	Total	Full-time	Part-time	Total			
All employees	236280	13290	249580	188560	91940	280500	530080	533110	-3030

Source: Office for National Statistics

¹ Numbers are rounded to the nearest ten, and numbers less than five are represented by "..". Data not available are represented by "-".

6 ..continued Civil Service employment by department ¹

Full-time equivalents, Great Britain, not seasonally adjusted

	2007 Q4			2007 Q3	Change on Quarter
	Male	Female	Total	Total	Total
Permanent employees					
Attorney General's departments	3420	5890	9310	9310	10
Cabinet Office	620	630	1250	1260	-10
Other Cabinet Office agencies	400	490	890	900	-10
HM Treasury	600	470	1060	1090	-30
Chancellor's other departments	2280	2160	4440	4430	10
Charity Commission	220	230	450	450	0
Communities and Local Government	3120	2160	5280	5280	0
Culture, Media and Sport	320	270	590	600	-10
Defence	52900	26390	79280	80170	-890
Children, Schools and Families	960	850	1810	1720	90
Innovation, Universities and Skills	1440	1840	3270	3300	-30
Ofsted	700	1670	2370	2430	-60
Environment, Food and Rural Affairs	5600	5700	11300	11510	-210
Export Credits Guarantee Department	160	80	240	250	-10
Foreign and Commonwealth Office	3570	2450	6010	6050	-40
Health	1540	1910	3450	3410	40
Food Standards Agency	360	410	770	770	0
Meat Hygiene Service	1040	220	1260	1320	-60
HM Revenue and Customs	39650	47890	87540	88800	-1260
Home Office	11210	13270	24490	24580	-90
International Development	850	820	1660	1670	-10
Justice	43690	37930	81620	81420	200
Northern Ireland Office	70	60	130	130	-10
Security and Intelligence Services	3440	1630	5070	5060	20
Business, Enterprise and Regulatory Reform	4170	4070	8240	8200	50
Transport	10910	7280	18190	18170	20
Work and Pensions	36710	69540	106250	107240	-990
Central Government Departments Total	229930	236290	466220	469520	-3300
Scottish Government	8740	6760	15490	15620	-130
Welsh Assembly	2380	3010	5390	5510	-120
TOTAL	241050	246050	487100	490650	-3550

	2007 Q4			2007 Q3	Change on Quarter
	Male	Female	Total	Total	Total
Temporary/Casual employees					
Attorney General's departments	160	280	430	460	-30
Cabinet Office	10	10	10	20	0
Other Cabinet Office agencies	10	10	30	30	0
HM Treasury	50	30	80	80	0
Chancellor's other departments	190	180	360	320	40
Charity Commission	10
Communities and Local Government	50	30	70	100	-30
Culture, Media and Sport	10	10	-10
Defence	530	440	970	980	-10
Children, Schools and Families	10	10	20	20	..
Innovation, Universities and Skills	30	10	40	40	0
Ofsted	30	90	120	90	20
Environment, Food and Rural Affairs	120	160	280	360	-80
Export Credits Guarantee Department	0	0	0	0	0
Foreign and Commonwealth Office	10	10	20	20	-10
Health	30	50	70	80	0
Food Standards Agency	10	10	20	30	-10
Meat Hygiene Service	10	10	10	10	0
HM Revenue and Customs	420	460	880	410	480
Home Office	150	130	280	340	-70
International Development	0	0
Justice	1020	1250	2270	2150	120
Northern Ireland Office	..	0	0
Security and Intelligence Services	0	0	0	0	0
Business, Enterprise and Regulatory Reform	100	90	200	190	10
Transport	310	410	720	710	..
Work and Pensions	730	980	1720	1760	-50
Central Government Departments Total	3960	4630	8590	8210	380
Scottish Government	140	140	290	320	-30
Welsh Assembly	140	200	340	330	..
TOTAL	4240	4980	9220	8860	360

	2007 Q4			2007 Q3	Change on Quarter
	Male	Female	Total	Total	Total
All employees	245290	251030	496320	499510	-3190

Source: Office for National Statistics

¹ Numbers are rounded to the nearest ten, and numbers less than five are represented by "..". Data not available are represented by "-".

1R Public sector employment by sector classification; Headcount - Revisions

United Kingdom (Thousands), seasonally adjusted

	General government						Of which: Civil Service ^{2 5 9}
	Central government ^{2 3 4 5 6}	Local government ^{3 4 5 7}	Total general government ^{3 6}	Total public corporations ⁸	Total public sector ^{3 6 8}		
	G6NQ	G6NT	G6NW	G7AR	G7AU	G7D6	
1999	-	-	-	-	-	-	
2000	-	-	-	-	-	-	
2001	-	-	-	-	-	-	
2002	-	-	-	-	-	-	
2003	-	-	-	-	-	-	
2004	-	-	-	-	-	-	
2005	-	-	-	-	-	-	
2006	-	-	-	-	-	-	
2007	-	-	-	-	-	-	
2003 Q4	-	-	-	-	-	-	
2004 Q1	-	-	-	-	-	-	
Q2	-	-	-	-	-	-	
Q3	-	-	-	-	-	-	
Q4	-	-	-	-	-	-	
2005 Q1	-	-	-	-	-	-	
Q2	-	-	-	-	-	-	
Q3	-	-	-	-	-	-	
Q4	-	-	-	-	-	-	
2006 Q1	-	-	-	-	-	-	
Q2	-	-	-	-	-	-	
Q3	-	-	-	-	-	-	
Q4	1 ³	1	2 ³	-1	1 ³	-	
2007 Q1	- ³	-	- ³	-	- ³	-	
Q2	- ³	- ³	- ³	-	- ³	-	
Q3	2 ³	-2 ³	- ³	1	1 ³	-	
Q4	.. ³	.. ³	.. ³	.. ⁸	.. ³	..	
Change on quarter to:							
2006 Q4	1	1	2	-1	1	-	
2007 Q1	-1	-1	-2	1	-1	-	
Q2	-	-	-	-	-	-	
Q3	2	-2	-	1	1	-	
Q4	
% change on quarter to:							
2006 Q4	0.0	0.0	0.0	-0.3	0.0	0.0	
2007 Q1	0.0	0.0	0.0	0.3	0.0	0.0	
Q2	0.0	0.0	0.0	0.0	0.0	0.0	
Q3	0.1	-0.1	0.0	0.3	0.0	0.0	
Q4	
Change on year to:							
2006 Q4	1	1	2	-1	1	-	
2007 Q1	-	-	-	-	-	-	
Q2	-	-	-	-	-	-	
Q3	2	-2	-	1	1	-	
Q4	
% change on year to:							
2006 Q4	0.0	0.0	0.0	-0.3	0.0	0.0	
2007 Q1	0.0	0.0	0.0	0.0	0.0	0.0	
Q2	0.0	0.0	0.0	0.0	0.0	0.0	
Q3	0.1	-0.1	0.0	0.3	0.0	0.0	
Q4	

1 Annual figures relate to June quarter (Q2)

2 Series does not display seasonality, Seasonal=Not Seasonal

3 NHS & Police (England & Wales) based on projections

4 National Probation Service (England & Wales) re-classified from Local Government to Central Government from April 2001

5 Magistrates' Courts Service transferred from Local Government to Central Government (and Civil Service) in April 2005

6 10,000 duplicate NHS records removed from Q3 2006 onwards. This is partly offset by the inclusion of bank staff for the NHS in Wales from this point on. Earlier figures are not available.

7 Further education & 6th form college transferred to private sector Apr 1993

8 Northern Rock reclassified to public sector from 9 October 2007

9 Home Civil Service (excludes NI Civil Service which is included in CG)

† Indicates earliest revision

Source: Office for National Statistics

2R Public sector employment by industry; Headcount - Revisions

United Kingdom (Thousands), seasonally adjusted

	Public admin,defence,compulsory social security					Health and social work			
	Construction	HM Forces ^{1 2}	Police (including civilians) ³	Public administration	Education	National Health Service ^{4 5}	Other health and social work	Other public sector ⁶	
	G7ER	G7EU	G7EX	G7F2	G7F5	G7FG	G7FJ	G7FM	
1999	-	-	-	-	-	-	-	-	
2000	-	-	-	-	-	-	-	-	
2001	-	-	-	-	-	-	-	-	
2002	-	-	-	-	-	-	-	-	
2003	-	-	-	-	-	-	-	-	
2004	-	-	-	-	-	-	-	-	
2005	-	-	-	-	-	-	-	-	
2006	-	-	-	-	-	-	-	-	
2007	-	-	-	-	-	-	-	-	
2003 Q4	-	-	-	-	-	-	-	-	
2004 Q1	-	-	-	-	-	-	-	-	
Q2	-	-	-	-	-	-	-	-	
Q3	-	-	-	-	-	-	-	-	
Q4	-	-	-	-	-	-	-	-	
2005 Q1	-	-	-	-	-	-	-	-	
Q2	-	-	-	-	-	-	-	-	
Q3	-	-	-	-	-	-	-	-	
Q4	-	-	-	-	-	-	-	-	
2006 Q1	-	-	-	-	-	-	-	-	
Q2	-	-	-	-	-	-	-	-	
Q3	-	-	-	-	-	-	-	-	
Q4	1	-	-	-	-1	-4	-	-1	
2007 Q1	-	-	-	-	-	-4	-	-	
Q2	-	-2	-3	-	-	-4	-	-	
Q3	-	-2	-1 ³	-2	1	1 ⁴	-	1 ⁶	
Q4 ²	.. ³ ⁴ ⁶	
Change on quarter to:									
2006 Q4	1	-	-	-	-1	-	-	-1	
2007 Q1	-1	-	-	-	1	-	-	1	
Q2	-	-	-	-	-	-	-	-	
Q3	-	-	-1	-2	1	1	-	1	
Q4	
% change on quarter to:									
2006 Q4	1.6	0.0	0.0	0.0	-0.1	0.0	0.0	-0.1	
2007 Q1	-1.6	0.0	0.0	0.0	0.1	0.0	0.0	0.1	
Q2	0.0	0.0	0.0	0.0	0.0	0.0	0.0	0.0	
Q3	0.0	0.0	-0.4	-0.2	0.1	0.1	0.0	0.1	
Q4	
Change on year to:									
2006 Q4	1	-	-	-	-1	-	-	-1	
2007 Q1	-	-	-	-	-	-	-	-	
Q2	-	-	-	-	-	-	-	-	
Q3	-	-	-1	-2	1	1	-	1	
Q4	
% change on year to:									
2006 Q4	1.5	0.0	0.0	0.0	-0.1	0.0	0.0	-0.1	
2007 Q1	0.0	0.0	0.0	0.0	0.0	0.0	0.0	0.0	
Q2	0.0	0.0	0.0	0.0	0.0	0.0	0.0	0.0	
Q3	0.0	0.0	-0.4	-0.2	0.1	0.1	0.0	0.1	
Q4	

1 HM Forces series exclude locally engaged staff. The series also excludes mobilised reservists prior to 1996 as statistics are not available.

2 Due to ongoing validation of data from the new HM Forces Personnel Administration System, figures for 2007 Q2 onwards are provisional and subject to review.

3 Police (Eng and Wales) based on projections and subject to revision.

4 Data for the NHS are based on projections and subject to revision.

5 10,000 duplicate NHS records removed from Q3 2006 onwards. This is partly offset by the inclusion of bank staff for the NHS in Wales from this point. Earlier figures are not available.

6 Northern Rock reclassified to public sector from 9 October 2007

† Indicates earliest revision.

Source: Office for National Statistics

3R Public sector employment by sector classification; Full-time equivalent - Revisions

United Kingdom (Thousands), seasonally adjusted

	General government						Of which: Civil Service ^{2 5 8}
	Central government ^{2 3 4 5}		Local government ^{2 3 4 5 6}		Total general government ³	Total public corporations ⁷	
	G7FP	G7FS	G7FV	G7FY	G7G3	G7G6	
1999	-	-	-	-	-	-	-
2000	-	-	-	-	-	-	-
2001	-	-	-	-	-	-	-
2002	-	-	-	-	-	-	-
2003	-	-	-	-	-	-	-
2004	-	-	-	-	-	-	-
2005	-	-	-	-	-	-	-
2006	-	-	-	-	-	-	-
2007	-	-	-	-	-	-	-
2003 Q4	-	-	-	-	-	-	-
2004 Q1	-	-	-	-	-	-	-
Q2	-	-	-	-	-	-	-
Q3	-	-	-	-	-	-	-
Q4	-	-	-	-	-	-	-
2005 Q1	-	-	-	-	-	-	-
Q2	-	-	-	-	-	-	-
Q3	-	-	-	-	-	-	-
Q4	-	-	-	-	-	-	-
2006 Q1	-	-	-	-	-	-	-
Q2	-	-	-	-	-	-	-
Q3	-	-	-	-	-	-	-
Q4	-3	1	1 ³	-1	-3	-	-
2007 Q1	-3	-	-3	-	-3	-	-
Q2	-3	-3	-3	-	-3	-	-
Q3	1 ³	-1 ³	-3	1	1 ³	1	1
Q4	-3	-3	-3	7	-3	-	-
Change on quarter to:							
2006 Q4	-	1	1	-1	-	-	-
2007 Q1	-	-1	-1	1	-	-	-
Q2	-	-	-	-	-	-	-
Q3	1	-1	-	1	1	1	1
Q4
% change on quarter to:							
2006 Q4	0.0	0.0	0.0	-0.3	0.0	0.0	0.0
2007 Q1	0.0	0.0	0.0	0.3	0.0	0.0	0.0
Q2	0.0	0.0	0.0	0.0	0.0	0.0	0.0
Q3	0.0	0.0	0.0	0.3	0.0	0.0	0.2
Q4
Change on year to:							
2006 Q4	-	1	1	-1	-	-	-
2007 Q1	-	-	-	-	-	-	-
Q2	-	-	-	-	-	-	-
Q3	1	-1	-	1	1	1	1
Q4
% change on year to:							
2006 Q4	0.0	0.0	0.0	-0.3	0.0	0.0	0.0
2007 Q1	0.0	0.0	0.0	0.0	0.0	0.0	0.0
Q2	0.0	0.0	0.0	0.0	0.0	0.0	0.0
Q3	0.0	0.0	0.0	0.3	0.0	0.0	0.2
Q4

1 Annual figures relate to June quarter (Q2)

2 Series does not display seasonality, Seasonal=Not Seasonal

3 NHS & Police (England & Wales) are based on projections

4 National Probation Service (England & Wales) reclassified from Local Government to Central Government from April 2001

5 Magistrates' Courts Service transferred from Local Government to Central Government (and Civil Service) from April 2005

6 Further education & 6th form colleges transferred to the private sector from April 1993.

7 Northern Rock reclassified to public sector from 9 October 2007

8 Home Civil Service (excludes NI Civil Service which is included in Central Government)

† Indicates earliest revision.

Source: Office for National Statistics

4R Public sector employment by industry; Full-time equivalent - Revisions

United Kingdom (Thousands), seasonally adjusted

	Public administration and defence; compulsory social security					Health and social work		
	Construction ¹	HM Forces ^{2 3}	Police (including civilians) ⁴	Public administration	Education	National Health Service ⁵	Other health and social work	Other public sector ⁶
	G9BC	G7G9	G7GC	G7GF	G7GI	G7GL	G7GR	G7K2
1999								
2000								
2001								
2002								
2003								
2004								
2005								
2006								
2007								
2003 Q4								
2004 Q1								
Q2								
Q3								
Q4								
2005 Q1								
Q2								
Q3								
Q4								
2006 Q1								
Q2								
Q3								
Q4						-5		-1
2007 Q1						-5		
Q2		-3	-4			-5		
Q3		-3	-2 ⁴			1 ⁵	-1	1 ⁶
Q4		.. ³	.. ⁴ ⁵ ⁶
Change on quarter to:								
2006 Q4								-1
2007 Q1								1
Q2								
Q3			-2			1	-1	1
Q4	
% change on quarter to:								
2006 Q4		0.0	0.0	0.0	0.0	0.0	0.0	-0.2
2007 Q1		0.0	0.0	0.0	0.0	0.0	0.0	0.2
Q2		0.0	0.0	0.0	0.0	0.0	0.0	0.0
Q3		0.0	-0.7	0.0	0.0	0.0	-0.4	0.2
Q4	
Change on year to:								
2006 Q4								-1
2007 Q1								
Q2								
Q3			-2			1	-1	1
Q4	
% change on year to:								
2006 Q4		0.0	0.0	0.0	0.0	0.0	0.0	-0.2
2007 Q1		0.0	0.0	0.0	0.0	0.0	0.0	0.0
Q2		0.0	0.0	0.0	0.0	0.0	0.0	0.0
Q3		0.0	-0.8	0.0	0.0	0.1	-0.4	0.2
Q4	

1 Construction estimates for full-time equivalents have not been published as they are of insufficient quality

2 HM Forces series exclude locally engaged staff. The series also excludes mobilised reservists prior to 1996 as statistics are not available.

3 Due to ongoing validation of data from the new HM Forces Personnel Administration System, figures for 2007 Q2 onwards are provisional and subject to review.

4 Data for the Police (including civilians) for England and Wales are based on projections and are therefore subject to revision. See background note 2.

5 Data for the NHS are projections and subject to revision. See note 2.

6 Northern Rock reclassified to public sector from 9 October 2007

† Indicates earliest revision.

Source: Office for National Statistics

5R Public and private sector employment; Headcount - Revisions

United Kingdom, seasonally adjusted

	Public sector		Private sector		Total employment ⁸
	Headcount(thousands) ^{2 3 4}	Percentage ⁵	Headcount(thousands) ⁶	Percentage ⁷	
	G7AU	G9BZ	G7K5	G9C2	G7GO
1999	-	-	-	-	-
2000	-	-	-	-	-
2001	-	-	-	-	-
2002	-	-	-	-	-
2003	-	-	-	-	-
2004	-	-	-	-	-
2005	-	-	-	-	-
2006	-	-	-	-	-
2007	-	-	-	-	-
2003 Q4	-	-	-	-	-
2004 Q1	-	-	-	-	-
Q2	-	-	-	-	-
Q3	-	-	-	-	-
Q4	-	-	-	-	-
2005 Q1	-	-	-	-	-
Q2	-	-	-	-	-
Q3	-	-	-	-	-
Q4	-	-	-	-	-
2006 Q1	-	-	-	-	-
Q2	-	-	-	-	-
Q3	-	-	-	-	-
Q4	1 ²	-	-1 ²	-	-
2007 Q1	-2	-	-2	-	-
Q2	-2	-	-2	-	-
Q3	1 ²	-	-1 ²	-	-
Q4	.. ² ²
Change on quarter to:					
2006 Q4	1	-	-1	-	-
2007 Q1	-1	-	1	-	-
Q2	-	-	-	-	-
Q3	1	-	-1	-	-
Q4
% change on quarter to:					
2006 Q4	0.0		0.0		0.0
2007 Q1	0.0		0.0		0.0
Q2	0.0		0.0		0.0
Q3	0.0		0.0		0.0
Q4
Change on year to:					
2006 Q4	1	-	-1	-	-
2007 Q1	-	-	-	-	-
Q2	-	-	-	-	-
Q3	1	-	-1	-	-
Q4
% change on year to:					
2006 Q4	0.0		0.0		0.0
2007 Q1	0.0		0.0		0.0
Q2	0.0		0.0		0.0
Q3	0.0		0.0		0.0
Q4

1 Annual figures relate to June quarter (Q2)

2 Estimates for Q4 2006 onwards are based partly on projections

3 10,000 duplicate NHS records removed from Q3 2006 onwards. This is partly offset by the inclusion of bank staff for the NHS in Wales from this point. Earlier figures are not available.

4 Northern Rock reclassified to public sector from 9 October 2007

5 Represents C9KD/CZG9*100

6 Estimated as the difference between LFS total employment and the data from public sector organisations

7 Represents CZG8/CZG9*100

8 Labour Force Survey - All in Employment aged 16 and over. Data refer to May-July for annual data from 1992-2004, for Q1 to Feb-Apr, Q2 to May-July, Q3 to Aug-Oct and Q4 to Nov-Jan. Quarterly and annual changes may differ slightly from those published elsewhere due to rounding conventions.

† Indicates earliest revision.

Sources: Labour Force Survey and estimates from public sector organisations; Office for National Statistics