

Producer prices

October 2009



Date: 6 November 2009

Coverage: United Kingdom **Theme:** The Economy

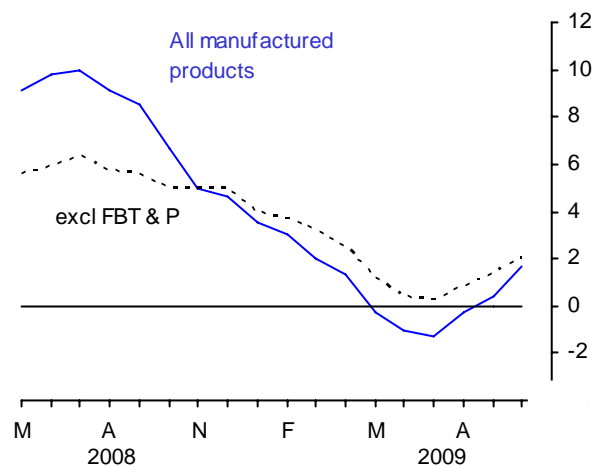
The output price index for home sales of manufactured products rose 1.7 per cent in the year to October, compared with a rise of 0.4 per cent in the year to September. The index rose 0.2 per cent between September and October, mainly reflecting price rises in electrical products, transport equipment, alcohol and tobacco, and petroleum products.

The output price index excluding excise duties rose 0.8 per cent in the year to October. The index rose 0.2 per cent between September and October.

The output price index excluding food, beverages, tobacco and petroleum rose 2.0 per cent in the year to October. The index rose 0.3 per cent between September and October.

Output prices

12 months percentage change



Output prices (home sales)

Not seasonally adjusted

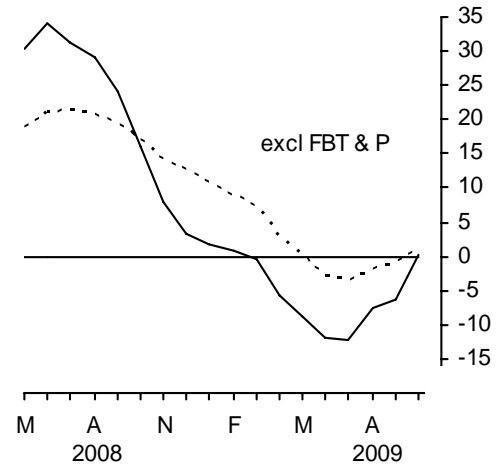
		All manufactured products		Excluding food, beverages, tobacco and petroleum		All manufactured products excluding duty	
		12 months	1 month	12 months	1 month	12 months	1 month
<i>Percentage change</i>							
2009	May	-0.3	0.4	1.2	0.2	-0.9	0.3
	Jun	-1.0	0.1	0.3	-0.6	-1.7	0.0
	Jul	-1.3	0.2	0.2	0.5	-2.0	0.3
	Aug	-0.3	0.3	0.8	0.2	-1.0	0.3
	Sep	0.4	0.5	1.3	0.5	-0.6	0.4
	Oct	1.7	0.2	2.0	0.3	0.8	0.2

Input prices: summary

The input price index for materials and fuels purchased by manufacturing industry rose 0.1 per cent in the year to October, and rose 2.6 per cent between September and October. The rise in the input index between September and October mainly reflected a rise in the price of crude oil. Prices of imported materials as a whole (including imported crude oil) rose 2.5 per cent between September and October.

The input price index for manufacturing industry excluding the food, beverages, tobacco and petroleum industries rose 0.8 per cent in the year to October. Seasonally adjusted, the index rose 1.2 per cent between September and October.

**Input prices (materials & fuel)
manufacturing industry**
12 months percentage change



Input prices^{1,2}

		Materials and fuels purchased		Excluding food, beverages, tobacco and petroleum industries		
		12 months (NSA)	1 month (NSA)	12 months (NSA)	1 month (NSA)	1 month (SA)
Percentage change						
2009	May	-8.8	1.1	0.2	0.2	-0.2
	Jun	-12.0	0.5	-2.9	-1.0	-0.6
	Jul	-12.2	-1.1	-3.4	-0.3	-0.1
	Aug	-7.7	2.0	-2.1	0.7	1.3
	Sep	-6.2	-0.2	-1.2	0.9	1.0
	Oct	0.1	2.6	0.8	1.7	1.2

NSA/SA not/seasonally adjusted

1 These indices include the Climate Change Levy which was introduced in May 2001

2 These indices include the Aggregates Levy which was introduced in May 2002

Revisions

For this bulletin Tables 8R and 9R highlight revisions to movements in price indices previously published in last month's Statistical Bulletin. These are mainly caused by changes to the most recent estimates as more price quotes are received and also revisions to seasonal adjustment factors, which are re-estimated every month.

Correction

There have been corrections to two of the input price series in this Statistical Bulletin. The affected series are the Input Materials including Climate Change Levy series (PLKX) shown in table 2 and the Imported Materials series (PVNN) shown in table 7. These series now incorporate corrected weights following errors introduced during the rebasing process onto 2005=100. Longer runs of corrections for these series are shown within time series data on the National Statistics website. **The headline input series is unaffected by this correction.**

The corrected weights also impact on a further two series in table 6 of this Statistical Bulletin. These are the Manufacture of coke, refined petroleum products and nuclear fuel (RBBV) and Manufacture of chemical products (RBBW) series. Data for these series have been suppressed from Table 6 of the release. Corrected data will be placed on time series on the National Statistics website when they are available.

This error does not affect any other data in this Statistical Bulletin or the accompanying tables.

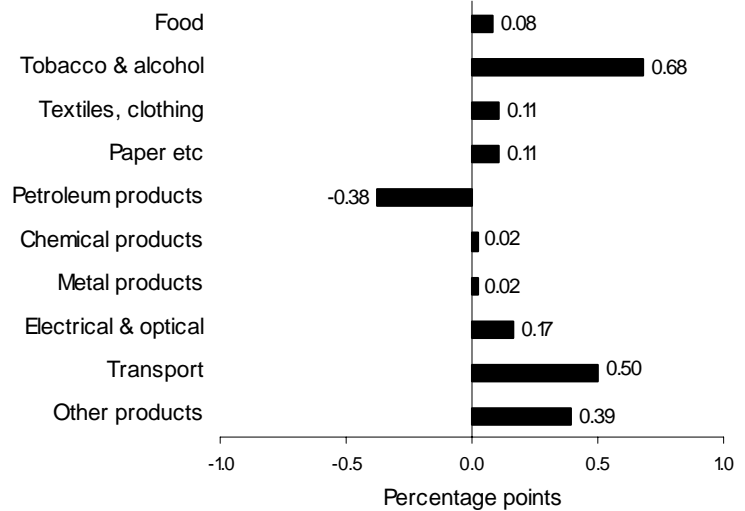
Output prices: detail

The contributions to movements in the total output index by the main product groups over the last year and month (not seasonally adjusted) are:

12 month change to October

Product group	Percentage change
Food	0.6
Tobacco & alcohol	7.2
Textiles, clothing	1.1
Paper etc	1.6
Petroleum products	-3.7
Chemical products	0.2
Metal products	0.4
Electrical & optical	2.2
Transport	4.6
Other products	2.4
All manufacturing	1.7

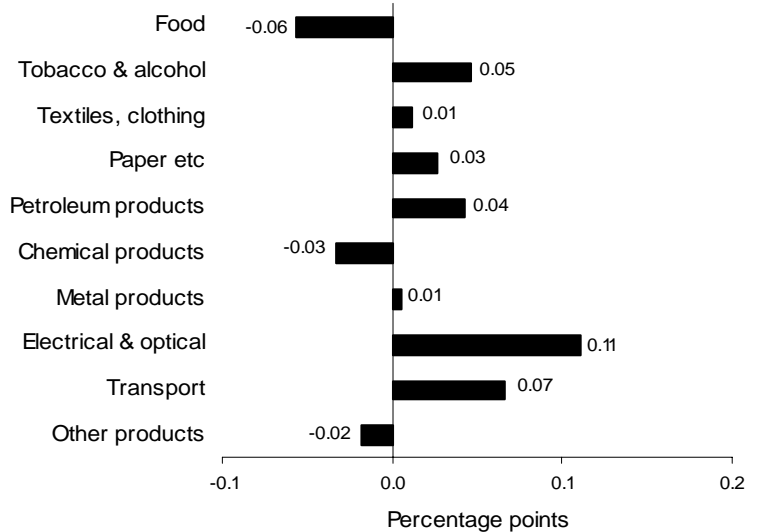
Contribution to 12 months percentage change in total (1.7%)



1 month change to October

Product group	Percentage change
Food	-0.3
Tobacco & alcohol	0.5
Textiles, clothing	0.2
Paper etc	0.4
Petroleum products	0.5
Chemical products	-0.4
Metal products	0.1
Electrical & optical	1.4
Transport	0.6
Other products	-0.1
All manufacturing	0.2

Contribution to 1 month percentage change in total (0.2%)



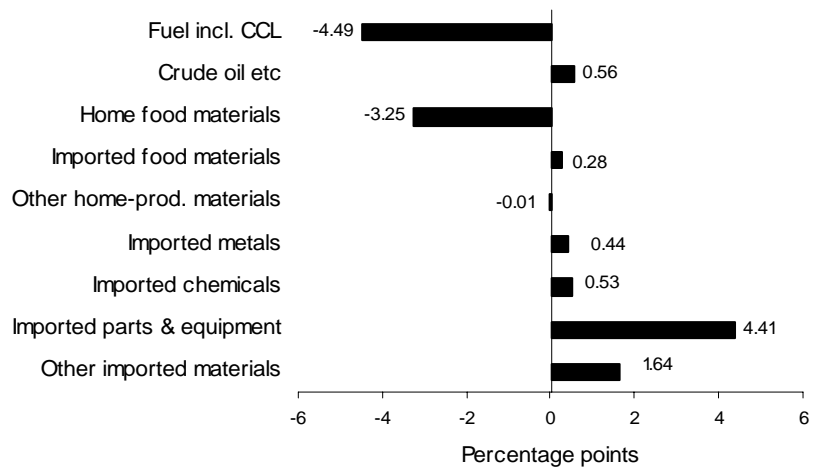
Input prices: detail

The contributions to movements in the total input index by the main commodities over the year and month (not seasonally adjusted) are:

12 month change to October

Product group	Percentage change
Fuel incl. CCL	-11.3
Crude oil etc	0.8
Home food materials	-8.4
Imported food materials	1.4
Other home-prod. materials	-0.2
Imported metals	2.0
Imported chemicals	1.5
Imported parts & equipment	6.4
Other imported materials	5.0
All manufacturing	0.1

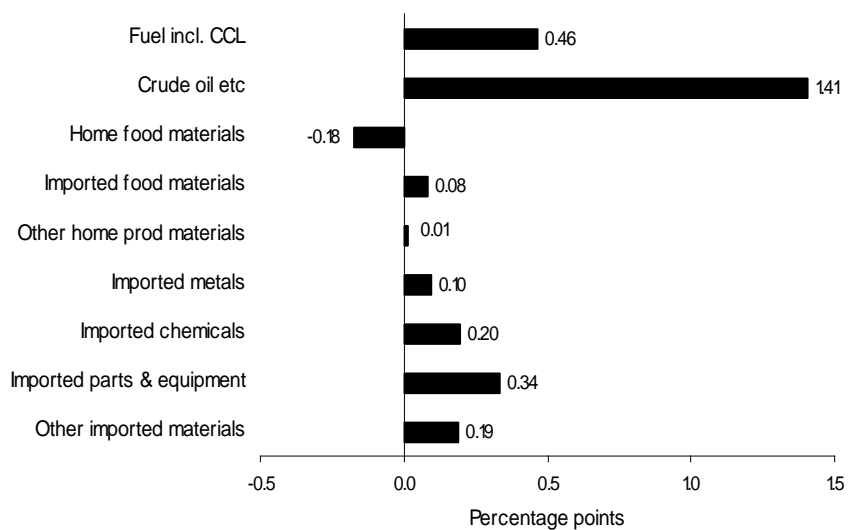
Contribution to 12 months percentage change in total (0.1%)



1 month change to October

Product group	Percentage change
Fuel incl. CCL	4.4
Crude oil etc	6.8
Home food materials	-1.6
Imported food materials	1.4
Other home-prod. materials	0.4
Imported metals	1.4
Imported chemicals	1.7
Imported parts & equipment	1.5
Other imported materials	1.8
All manufacturing	2.6

Contribution to 1 month percentage change in total (2.6%)



Summary of statistics for producer prices – October 2009

Output prices

The overall output price index rose 1.7 per cent in the year to October, compared with a rise of 0.4 per cent in the year to September. This is the highest annual rate since March 2009, when the index rose 2.0 per cent. The index rose by 0.2 per cent between September and October, compared with a fall of 1.0 per cent between September and October 2008.

The rise in the index of 0.2 per cent between September and October was mainly due to price rises in electrical products, transport equipment, alcohol and tobacco, and petroleum products.

Electrical and optical product prices rose by 1.4 per cent between September and October, and rose by 2.2 per cent in the year to October. Within this product group, computers and other information processing equipment rose by 9.2 per cent between September and October.

Transport equipment product prices rose by 0.6 per cent between September and October and rose 4.6 per cent in the year to October. This monthly rise was mainly due to parts and accessories of motor vehicle prices, which rose by 1.5 per cent between September and October.

Tobacco and alcohol product prices rose by 0.5 per cent between September and October and rose 7.2 per cent in the year to October.

Petroleum product prices rose 0.5 per cent between September and October but fell 3.7 per cent in the year to October.

Apart from food, chemicals and all other manufactured products all other product groups recorded price increases in the month of October.

The output price index for manufactured products excluding food, beverages, tobacco and petroleum rose 2.0 per cent in the year to October, compared with a rise of 1.3 per cent in the year to September. This is the highest annual rate since April 2009, when it rose 2.5 per cent. This index is not affected by changes in excise duty. The index rose 0.3 per cent between September and October compared with a fall of 0.5 per cent between September and October 2008.

The output price index for all manufactured products excluding excise duties is shown in Table 3 of the Statistical Bulletin. This index rose 0.8 per cent in the year to October, compared with a fall of 0.6 per cent in the year to September. The index excluding excise duties rose 0.2 per cent between September and October, compared with a fall of 1.2 per cent between September and October 2008.

Input prices

The overall input index rose 0.1 per cent in the year to October, compared with a fall of 6.2 per cent in the year to September (Table 5). This is the highest annual rate since February 2009 when it rose by 0.8 per cent.

The input index for all manufacturing rose 2.6 per cent between September and October compared with a fall of 3.9 per cent between September and October 2008. This is the highest monthly rate since June 2008, when the index rose 4.2 per cent.

The monthly rise in the input index mainly reflected price rises in crude oil, and to a lesser extent fuels (incl CCL) and other imported parts and equipment. Apart from home produced food, all other product groups recorded price increases in the month of October.

Crude oil prices rose by 6.8 per cent in the month to October and rose by 0.8 per cent in the year to October. This is the largest annual rise since October 2008, when prices rose 9.2 per cent. Towards the end of July 2008, crude oil prices started to fall, primarily due to the expectation that many developed countries would experience a period of poor economic performance which would reduce demand for oil and its products. The price fall continued throughout the period August to December 2008 with some daily fluctuations but showing a general downwards trend. Prices since December 2008 have been broadly similar to those over the same period in 2007.

Fuels (incl CCL) prices rose 4.4 per cent in the month to October and fell 11.3 per cent in the year to October. This is the largest annual fall since June 1996 when it fell 11.7 per cent. The rise in the month to October was mainly due to a seasonal rise of 18.2 per cent in gas (incl CCL) prices.

The index for materials and fuels purchased by manufacturing industry excluding the food, beverages, tobacco and petroleum industries rose 1.2 per cent in seasonally adjusted terms between September and October. The unadjusted index rose 0.8 per cent in the year to October, compared with a fall of 1.2 per cent in the year to September (Table 5).

More information on producer prices can be found at: www.statistics.gov.uk/ppi.

October records – Output prices

All manufactured products	Annual rate 1.7%, up from 0.4% last month. Last higher in March 2009 (2.0%). Monthly rate 0.2% down from 0.5% last month.
Excluding food, beverages, tobacco and petroleum	Annual rate 2.0%, up from 1.3% last month. Last higher in April 2009 (2.5%).
All manufactured products excluding duty	Annual rate 0.8%, up from -0.6% last month. Last higher in April 2009 (1.0%).
Food	Annual rate 0.6%, up from 0.4% last month. Last higher in July 2009 (1.4%). Monthly rate -0.3% down from 0.4% last month. Last lower in July 2009 (-0.5%).
Tobacco and alcohol	Annual rate 7.2%, up from 7.0% last month. Last higher in July 2009 (7.6%). Monthly rate 0.5% up from -0.2% last month. Last higher in July 2009 (0.7%).
Textiles, clothing	Annual rate 1.1%, up from 0.9% last month. Last higher in August 2009 (1.2%). Monthly rate 0.2% up from 0.0% last month. Last higher in March 2009 (0.5%).
Paper etc	Annual rate 1.6%, up from 1.5% last month. Last higher in August 2009 (2.1%). Monthly rate 0.4% up from -0.1% last month. Also 0.4% in March 2009. Last higher in December 2008 (0.5%).
Petroleum products	Annual rate -3.7%, up from -11.1% last month. Last higher in November 2008 (-1.5%). Monthly rate 0.5% down from 2.0% last month.
Chemical products	Annual rate 0.2%, down from 0.7% last month. Last lower in May 2004 (0.1%).
Metal products	Annual rate 0.4%, up from 0.0% last month. Also 0.4% in August 2009. Last higher in July 2009 (1.2%).
Electrical and optical	Annual rate 2.2%, up from 0.9% last month. This is the highest annual rate since records began (October 1998) Monthly rate 1.4% up from 0.6 % last month. This is the highest monthly increase since records began.
Transport	Annual rate 4.6%, up from 4.2% last month. Last higher in July 2009 (5.2%). Monthly rate 0.6% up from 0.3 % last month. Last higher in April 2009 (1.3%).
Other products	Annual rate 2.4%, up from 0.3% last month. Last higher in January 2009 (2.8%). Monthly rate -0.1% down from 0.9 % last month. Last lower in June 2009 (-1.3%).

October records – Input prices

Materials and fuels purchased	Annual rate 0.1%, up from -6.2% last month. Last higher in February 2009 (0.8%). Monthly rate 2.6% up from -0.2% last month. Last higher in June 2008 (4.2%).
Excluding food, beverages, tobacco and petroleum industries	Annual rate 0.8%, up from -1.2% last month. Last higher in April 2009 (2.6%). Monthly rate 1.7% up from 0.9% last month. Last higher in June 2008 (2.1%).
Fuel including climate change levy	Annual rate -11.3%, down from -3.3% last month. Last lower in June 1996 (-11.7%). Monthly rate 4.4% up from 0.4% last month. Last higher in November 2008 (8.1%).
Crude oil etc	Annual rate 0.8%, up from -24.3% last month. Last higher in October 2008 (9.2%). Monthly rate 6.8% up from -4.7% last month. Last higher in August 2009 (9.8%).
Home food materials	Annual rate -8.4%, down from -7.9% last month. Last lower in June 2009 (-11.9%). Monthly rate -1.6% down from -0.5% last month. Last lower in August 2009 (-2.4%)
Imported food materials	Annual rate 1.4%, down from 1.5% last month. Last lower in December 2006 (0.8%). Monthly rate 1.4% up from 0.5% last month. Last higher in November 2008 (1.7%).
Other home-produced materials	Annual rate -0.2%, down from 0.2% last month. Last lower in December 2003 (-0.8%).
Imported metals	Annual rate 2.0%, up from -3.8% last month. Last higher in December 2008 (2.2%).
Imported chemicals	Annual rate 1.5%, up from 0.8% last month. Last higher in June 2009 (2.8%). Monthly rate 1.7% up from 1.5 % last month. Last higher in December 2008 (2.9%).
Imported parts and equipment	Annual rate 6.4%, up from 5.6% last month. Last higher in May 2009 (8.3%).
Other imported materials	Annual rate 5.0%, up from 1.8% last month. Last higher in March 2009 (7.5%). Monthly rate 1.8% up from 0.8% last month. Also 1.8% in January 2008 and July 2005. Last higher in May 2000 (2.2%).

Background Notes

BASIC QUALITY INFORMATION

Link to Summary Quality Report

1. A Summary Quality Report for the PPI can be found at:
<http://www.ons.gov.uk/about-statistics/methodology-and-quality/quality/qual-info-economic-social-and-bus-stats/quality-reports-for-business-statistics/summary-quality-report-for-producer-price-indices.pdf>

This report describes, in detail, the intended uses of the statistics presented in this publication, their general quality and the methods used to produce them.

Relevance to users

2. Producer prices published in the summer of 2010 will have implemented the United Kingdom Standard Industrial Classification of All Economic Activities 2007 (UK SIC 2007). It is used to classify business establishments and other standard units by the type of economic activity in which they are engaged. Further details of how this classification review will impact on producer prices, including their availability, will be published in this section over the next few months. More general information on UK SIC 2007 can be found following this link <http://www.statistics.gov.uk/statbase/Product.asp?vlnk=14012>
3. Index numbers shown in the main text of this Statistical Bulletin are on a net sector basis. The index for any sector relates only to transactions between that sector and other sectors: sales and purchases within sectors are excluded. However, the more detailed figures shown in Tables 4 and 6 are on a gross basis; that is, intra Industry sales and purchases are included in each of these indices.
4. Indices relate to average prices for a month. The full effect of a price change occurring partway through any month will only be reflected in the following month's index.
5. All index numbers exclude VAT. Excise duties (on cigarettes, manufactured tobacco, alcoholic liquor and petroleum products) are included, except where labelled otherwise. Since PPIs exclude VAT, they are not affected by the reduction in the standard rate of VAT to 15 per cent from 1 December 2008. However, offsetting increases in excise duties on petroleum, alcohol and tobacco are included in the relevant PPI output indices from December 2008 (with the exception of the excluding duty series).

6. Following a regular review, it has been determined that the output price indices and the main input index for materials and fuel (all manufacturing) no longer display a significant seasonal pattern; therefore these series will no longer be published in seasonally adjusted form. The series for material and fuel (excluding food beverages, tobacco and petroleum) will continue to be seasonally adjusted.
7. The detailed input indices of prices of materials and fuels purchased by industry (Table 6) do not include the Climate Change Levy (CCL). This is because each industry can, in practice, pay its own rate for the various forms of energy, depending on the various negotiated discounts and exemptions that apply.

Common pitfalls in interpreting series

8. Expectations of accuracy and reliability in sample surveys are often too high. Revisions and sampling variability are inevitable consequences of the trade between timeliness, accuracy and the burden on respondents. Details of sampling variability are included elsewhere in this bulletin.
9. Very few statistical revisions arise as a result of 'errors' in the popular sense of the word. All estimates, by definition, are subject to statistical 'error' but, in this context, the word refers to the uncertainty in any process or calculation that uses sampling, estimation or modelling. Most revisions reflect either the adoption of new statistical techniques or the incorporation of new information which allows the statistical error of previous estimates to be reduced. Only rarely are there avoidable 'errors' such as human or system failures, and such mistakes are made quite clear when they are discovered and corrected.

Accuracy

10. Figures for the latest two months are provisional and the latest five months are subject to revisions in light of (a) late and revised respondent data and (b), for the seasonally adjusted series, revisions to seasonal adjustment factors which are re-estimated every month. Producer prices published in the summer of 2010 will have implemented the United Kingdom Standard Industrial Classification of All Economic Activities 2007 (UK SIC 2007). There are no other planned methodological changes in the next 12 months. A routine seasonal adjustment review is conducted in the autumn annually, but for 2009 this review will be incorporated as part of the SIC 2007 re-classification project.

Revisions

11. Revisions to data provide one indication of the reliability of key indicators. The tables below show summary information on the size and direction of the revisions which have been made to the data covering a five year period. A statistical test has been applied to the average revision to find out if it is statistically significantly different from zero. An asterisk (*) shows that the test is significant.
12. The table below presents a summary of the differences between the first estimates published between October 2003 and September 2008 and the estimates published 12 months later. These numbers include the effect of rebasing onto 2005=100 in October 2008. For more information see:
http://www.statistics.gov.uk/articles/economic_trends/ETAugMorris.pdf

Revisions between first publication and estimates twelve months later

	Value in latest period	Revisions between first publication and estimates twelve months later	
		Average over the last 5 years	Average over the last 5 years without regard to sign (average absolute revision)
Total output (PLLU) 12 months %	1.7	0.00	0.07
Total output (PLLU) 1 months %	0.2	0.05*	0.08*
Total input (RNNK) 12 months %	0.1	0.49*	0.68*
Total input (RNNK) 1 months %	2.6	0.18*	0.43*

13. Spreadsheets giving revisions triangles of estimates for all months from January 1998 through to September 2009 and the calculations behind the averages in the table is available on the National Statistics website at:
<http://www.statistics.gov.uk/StatBase/Product.asp?vlnk=790>

PUBLICATION POLICY

14. The complete run of data in the tables of this Statistical Bulletin are also available to view and download in other electronic formats free of charge using the National Statistics Time Series Data website service. Users can download the complete release in a choice of zipped formats or view and download their own selections of individual series. The Time Series Data service can be accessed at: <http://www.statistics.gov.uk/statbase/tsdintro.asp>
15. Details of the policy governing the release of new data are available from the press office. Also available is a list of the names of those given pre-publication access to the contents of this Statistical Bulletin. In the light of the timing of the MPC meeting, the PPI was provided to the Bank of England at 8am on Thursday in line with release protocols. For more information see: <http://www.statistics.gov.uk/StatBase/Product.asp?vlnk=790>
16. **National Statistics** are produced to high professional standards set out in the Code of Practice for Official Statistics. They undergo regular quality assurance reviews to ensure that they meet customer needs. They are produced free from any political interference.
© Crown Copyright 2009.

.....
Next publication: 11 December 2009

Issued by: Office for National Statistics, Government Buildings, Cardiff Road, Newport NP10 8XG

Media contact:

Tel **Media Relations Office 0845 6041858**
 Emergency on-call 07867 906553
E-mail **press.office@ons.gsi.gov.uk**

Statistical contact:

Tel **Simon Woodsford +44 (0)1633 455917**
E-mail **ppi@ons.gov.uk**

Website:

www.statistics.gov.uk/default.asp

1 Output prices: summary (not seasonally adjusted)

2005=100

	Manufactured products			Manufacturing other than food, beverages, tobacco and petroleum products			Food, beverages and tobacco products			Petroleum products		
	Index (2005 = 100)	percentage change over		Index (2005 = 100)	percentage change over		Index (2005 = 100)	percentage change over		Index (2005 = 100)	percentage change over	
		1 mth	12 mths		1 mth	12 mths		1 mth	12 mths		1 mth	12 mths
	PLLU			PLLV			RBGA			RPVU		
2009 Apr	113.1	0.7	1.3	110.5	0.5	2.5	120.9	0.2	5.4	111.8	4.1	-16.4
May	113.6	0.4	-0.3	110.7	0.2	1.2	121.3	0.3	3.9	113.9	1.9	-19.6
Jun	113.7	0.1	-1.0	110.0	-0.6	0.3	121.6	0.2	3.3	118.6	4.1	-19.6
Jul	113.9	0.2	-1.3	110.5	0.5	0.2	121.1	-0.4	2.6	118.9	0.3	-20.1
Aug	114.2	0.3	-0.3	110.7	0.2	0.8	120.9	-0.2	1.9	120.9	1.7	-14.9
Sep	114.8p	0.5	0.4	111.2p	0.5	1.3	121.2p	0.2	1.8	123.3p	2.0	-11.1
Oct	115.0p	0.2	1.7	111.5p	0.3	2.0	121.0p	-0.2	1.9	123.9p	0.5	-3.7

p = provisional
r = revised

2 Input prices: including Climate Change Levy summary (not seasonally adjusted)¹

2005=100

	All manufacturing industry								
	Materials and fuel purchased			Materials purchased ²			Fuel purchased		
	Index (2005 = 100)	percentage change over		Index (2005 = 100)	percentage change over		Index (2005 = 100)	percentage change over	
1 mth		12 mths	1 mth		12 mths	1 mth		12 mths	
	RNNK			PLKX			RNNL		
2009 Apr	129.4	-1.8	-5.8	125.9r	-0.4	-8.0	165.9	-11.8	15.5
May	130.8	1.1	-8.8	127.7r	1.4	-10.7	162.5	-2.0	11.2
Jun	131.5	0.5	-12.0	129.3r	1.3	-13.1	155.1	-4.6	-
Jul	130.0	-1.1	-12.2	127.8r	-1.2	-13.2	153.9	-0.8	-2.0
Aug	132.6	2.0	-7.7	130.7	2.3	-8.3	152.4	-1.0	-2.2
Sep	132.4p	-0.2	-6.2	130.4p	-0.2	-6.5	153.0p	0.4	-3.3
Oct	135.8p	2.6	0.1	133.5p	2.4	1.6	159.8p	4.4	-11.3

¹ The Climate Change Levy was introduced in April 2001. See Background Notes for more details.

p = provisional
r = revised

² See Revisions note on page 3 of this Statistical Bulletin

3 Output prices

2005=100

	All manufactured products			Excluding food, beverages, tobacco and petroleum products			All manufactured products (excluding excise duties)		
	not seasonally adjusted			not seasonally adjusted			not seasonally adjusted		
	Index	percent change over		Index	percent change over		Index	Percentage change over	
	(2005 = 100)	1 month	12 months	(2005 = 100)	1 month	12 months	(2005 = 100)	1 month	12 months
	PLLU			PLLV			PVNP		
2006 Apr	102.2	0.7	2.3	101.8	0.4	1.9	102.1	0.5	2.3
May	102.5	0.3	2.9	101.7	-0.1	2.0	102.4	0.3	2.8
Jun	102.6	0.1	3.1	101.9	0.2	2.5	102.5	0.1	3.1
Jul	102.8	0.2	2.6	102.0	0.1	2.1	102.8	0.3	2.6
Aug	102.8	-	2.3	101.9	-0.1	1.7	102.8	-	2.3
Sep	102.6	-0.2	1.6	102.1	0.2	1.7	102.6	-0.2	1.6
Oct	102.3	-0.3	1.3	102.3	0.2	2.0	102.3	-0.3	1.4
Nov	102.2	-0.1	1.4	102.3	-	1.9	102.2	-0.1	1.4
Dec	102.4	0.2	1.7	102.2	-0.1	1.6	102.3	0.1	1.6
2007 Jan	102.6	0.2	1.5	102.6	0.4	1.6	102.5	0.2	1.4
Feb	103.0	0.4	1.9	103.1	0.5	2.0	103.0	0.5	1.8
Mar	103.7	0.7	2.2	103.6	0.5	2.2	103.7	0.7	2.1
Apr	104.0	0.3	1.8	103.6	-	1.8	103.9	0.2	1.8
May	104.4	0.4	1.9	103.6	-	1.9	104.2	0.3	1.8
Jun	104.6	0.2	1.9	103.6	-	1.7	104.4	0.2	1.9
Jul	104.9	0.3	2.0	103.8	0.2	1.8	104.7	0.3	1.8
Aug	105.0	0.1	2.1	103.9	0.1	2.0	104.8	0.1	1.9
Sep	105.3	0.3	2.6	104.0	0.1	1.9	105.2	0.4	2.5
Oct	106.0	0.7	3.6	104.1	0.1	1.8	105.7	0.5	3.3
Nov	106.8	0.8	4.5	104.2	0.1	1.9	106.5	0.8	4.2
Dec	107.2	0.4	4.7	104.4	0.2	2.2	106.9	0.4	4.5
2008 Jan	108.4	1.1	5.7	105.7	1.2	3.0	108.2	1.2	5.6
Feb	108.9	0.5	5.7	106.0	0.3	2.8	108.7	0.5	5.5
Mar	110.1	1.1	6.2	106.6	0.6	2.9	109.8	1.0	5.9
Apr	111.7	1.5	7.4	107.8	1.1	4.1	111.3	1.4	7.1
May	113.9	2.0	9.1	109.4	1.5	5.6	113.7	2.2	9.1
Jun	114.8	0.8	9.8	109.7	0.3	5.9	114.7	0.9	9.9
Jul	115.4	0.5	10.0	110.3	0.5	6.3	115.3	0.5	10.1
Aug	114.6	-0.7	9.1	109.8	-0.5	5.7	114.5	-0.7	9.3
Sep	114.3	-0.3	8.5	109.8	-	5.6	114.4	-0.1	8.7
Oct	113.1	-1.0	6.7	109.3	-0.5	5.0	113.0	-1.2	6.9
Nov	112.1	-0.9	5.0	109.4	0.1	5.0	112.1	-0.8	5.3
Dec	112.1	-	4.6	109.6	0.2	5.0	111.5	-0.5	4.3
2009 Jan	112.2	0.1	3.5	109.9	0.3	4.0	111.7	0.2	3.2
Feb	112.2	-	3.0	109.9	-	3.7	111.7	-	2.8
Mar	112.3	0.1	2.0	110.0	0.1	3.2	111.8	0.1	1.8
Apr	113.1	0.7	1.3	110.5	0.5	2.5	112.4	0.5	1.0
May	113.6	0.4	-0.3	110.7	0.2	1.2	112.7	0.3	-0.9
Jun	113.7	0.1	-1.0	110.0	-0.6	0.3	112.7	-	-1.7
Jul	113.9	0.2	-1.3	110.5	0.5	0.2	113.0	0.3	-2.0
Aug	114.2	0.3	-0.3	110.7	0.2	0.8	113.3	0.3	-1.0
Sep	114.8p	0.5	0.4	111.2p	0.5	1.3	113.7p	0.4	-0.6
Oct	115.0p	0.2	1.7	111.5p	0.3	2.0	113.9p	0.2	0.8

p provisional

r revised

PVNP series excludes excise duties payable on tobacco products, alcoholic liquor and petroleum products.

4 Output prices: detailed by product (not seasonally adjusted) all manufactured and selected products

2005=100

							% change 1 month		% change 12 months	
		2009	2009	2009	2009	2009	2009	2009	2009	2009
		Jun	Jul	Aug	Sep	Oct				
Net sector										
Output of manufactured products	PLLU	113.7	113.9	114.2	114.8p	115.0p	0.5	0.2	0.4	1.7
All manufacturing excl. duty	PVNP	112.7	113.0	113.3	113.7p	113.9p	0.4	0.2	-0.6	0.8
Products of manufacturing industries other than food, beverages, petroleum and tobacco -unadjusted	PLLV	110.0	110.5	110.7	111.2p	111.5p	0.5	0.3	1.3	2.0
Gross Sector										
Food products, beverages & tobacco including duty	RBGA	121.6	121.1	120.9	121.2p	121.0p	0.2	-0.2	1.8	1.9
Food products & beverages including duty	RPUN	121.7	121.2	120.9	121.2p	121.0p	0.2	-0.2	1.3	1.5
Food products excluding beverages	RBGD	121.9	121.3	121.0	121.5p	121.1p	0.4	-0.3	0.4	0.6
Tobacco products including duty	RPUS	120.9	120.9	120.9	120.9p	120.9p	-	-	5.9	5.9
Textiles	POKZ	106.9	106.8	106.8	106.7p	106.9p	-0.1	0.2	1.3	1.2
Wearing apparel	POLA	102.8	102.8	102.8	102.8p	102.8p	-	-	1.0	1.0
Leather & leather products	POKJ	103.9	102.9	103.9	104.1p	104.4p	0.2	0.3	0.2	0.7
Wood & wood products	POKK	118.3	118.2	118.2	119.0p	119.0p	0.7	-	0.7	1.3
Pulp, paper & paper products	POLD	110.9	110.3	109.5	109.5p	110.6p	-	1.0	0.2	0.8
Printed matter & recorded media	POLE	109.4	109.3	109.4	109.2p	109.4p	-0.2	0.2	1.9	1.9
Petroleum products including duty	RPVU	118.6	118.9	120.9	123.3p	123.9p	2.0	0.5	-11.1	-3.7
Chemicals, chemical, products & manmade fibres	POKN	119.9r	121.2r	122.5	122.9p	122.4p	0.3	-0.4	0.7	0.2
Rubber & plastic products	POKO	110.1	110.4	110.7	111.0p	111.2p	0.3	0.2	-0.6	-0.9
Other non metallic mineral products	POKP	117.7r	117.6r	117.7	118.2p	118.2p	0.4	-	2.7	2.8
Fabricated metal products, except machinery and equipment	POLK	113.6	113.1	113.1	113.3p	113.4p	0.2	0.1	-3.9	-3.5
Machinery and equipment n.e.c.	POKR	113.2	113.3	113.4	113.9p	113.9p	0.4	-	3.8	3.9
Office machinery and computers	POLM	80.4	81.0	81.8	84.3p	91.6p	3.1	8.7	-0.4	9.0
Electrical machinery and apparatus n.e.c.	POLN	112.1	112.2	112.7	113.6p	113.8p	0.8	0.2	1.7	1.8
Radio, television and communication equipment and apparatus	POLO	92.8	93.6	92.5	92.7p	92.8p	0.2	0.1	1.6	0.8
Medical precision and optical instruments, watches and clocks	POLP	105.6	105.4	105.3	105.4p	105.7p	0.1	0.3	0.4	0.8
Motor vehicles, trailers and semi-trailers	POLQ	109.9	110.1	110.6	110.7p	111.5p	0.1	0.7	4.0	4.8
Other transport	POLR	118.8	118.9	115.3	116.7p	116.7p	1.2	-	4.8	3.7
Furniture: other manufactured goods n.e.c.	POLS	109.9	109.9r	109.9	110.1p	110.6p	0.2	0.5	2.4	2.2
Recovered secondary raw materials	QTBM	137.3	147.4	154.0	163.2p	159.4p	6.0	-2.3	-8.1	7.6

p=provisional
r=revised

5 Input prices: including Climate Change Levy¹ materials and fuels purchased

2005=100

	All manufacturing industries			Excluding food, beverages, tobacco and petroleum industries					
	not seasonally adjusted			not seasonally adjusted			seasonally adjusted		
	Index	percent change over		Index	percentage change over		Index	percentage change over	
	(2005 = 100)	1 month	12 months	(2005 = 100)	1 month	12 months	(2005 = 100)	1 month	12 months
	RNNK			RNNQ			RNPF		
2006 Apr	111.4	1.5	15.6	107.3	0.2	9.8	107.1	0.6	9.7
May	109.4	-1.8	13.7	106.0	-1.2	8.4	106.1	-0.9	8.4
Jun	109.5	0.1	11.3	106.0	-	8.1	106.4	0.3	7.9
Jul	112.4	2.6	10.6	107.7	1.6	7.7	107.4	0.9	7.5
Aug	111.5	-0.8	8.4	106.9	-0.7	6.7	107.7	0.3	6.8
Sep	107.4	-3.7	5.4	105.5	-1.3	5.5	106.9	-0.7	5.6
Oct	106.9	-0.5	3.9	106.5	0.9	4.5	107.2	0.3	4.6
Nov	108.3	1.3	2.3	107.9	1.3	2.8	107.4	0.2	2.9
Dec	109.4	1.0	1.7	108.2	0.3	1.5	107.4	-	1.6
2007 Jan	105.6	-3.5	-3.4	106.5	-1.6	-0.5	106.0	-1.3	-0.5
Feb	106.9	1.2	-2.1	107.0	0.5	-0.2	106.8	0.8	-0.2
Mar	109.5	2.4	-0.3	108.2	1.1	1.0	107.7	0.8	1.1
Apr	109.7	0.2	-1.5	107.3	-0.8	-	107.1	-0.6	-
May	110.1	0.4	0.6	108.0	0.7	1.9	107.9	0.7	1.7
Jun	111.4	1.2	1.7	108.3	0.3	2.2	108.5	0.6	2.0
Jul	112.7	1.2	0.3	108.3	-	0.6	108.0	-0.5	0.6
Aug	111.3	-1.2	-0.2	108.0	-0.3	1.0	108.8	0.7	1.0
Sep	113.8	2.2	6.0	109.3	1.2	3.6	110.8	1.8	3.6
Oct	117.0	2.8	9.4	111.4	1.9	4.6	112.3	1.4	4.8
Nov	121.4	3.8	12.1	113.9	2.2	5.6	113.7	1.2	5.9
Dec	123.8	2.0	13.2	115.7	1.6	6.9	115.3	1.4	7.4
2008 Jan	127.1	2.7	20.4	118.2	2.2	11.0	117.9	2.3	11.2
Feb	129.2	1.7	20.9	119.7	1.3	11.9	119.8	1.6	12.2
Mar	132.3	2.4	20.8	121.9	1.8	12.7	121.8	1.7	13.1
Apr	137.4	3.9	25.3	125.1	2.6	16.6	125.3	2.9	17.0
May	143.4	4.4	30.2	128.4	2.6	18.9	128.4	2.5	19.0
Jun	149.4	4.2	34.1	131.1	2.1	21.1	131.1	2.1	20.8
Jul	148.0	-0.9	31.3	131.4	0.2	21.3	131.2	0.1	21.5
Aug	143.6	-3.0	29.0	130.5	-0.7	20.8	131.3	0.1	20.7
Sep	141.2	-1.7	24.1	130.6	0.1	19.5	131.7	0.3	18.9
Oct	135.7	-3.9	16.0	130.2	-0.3	16.9	130.8r	-0.7	16.5
Nov	131.2	-3.3	8.1	130.0	-0.2	14.1	129.6	-0.9	14.0
Dec	127.8	-2.6	3.2	130.3	0.2	12.6	129.8	0.2	12.6
2009 Jan	129.2	1.1	1.7	131.0	0.5	10.8	130.2	0.3	10.4
Feb	130.2	0.8	0.8	130.4	-0.5	8.9	130.2	-	8.7
Mar	131.8	1.2	-0.4	131.1	0.5	7.5	130.0	-0.2	6.7
Apr	129.4	-1.8	-5.8	128.4	-2.1	2.6	128.5	-1.2	2.6
May	130.8	1.1	-8.8	128.6	0.2	0.2	128.2	-0.2	-0.2
Jun	131.5	0.5	-12.0	127.3	-1.0	-2.9	127.4	-0.6	-2.8
Jul	130.0	-1.1	-12.2	126.9	-0.3	-3.4	127.3r	-0.1	-3.0
Aug	132.6	2.0	-7.7	127.8	0.7	-2.1	128.9	1.3	-1.8
Sep	132.4p	-0.2	-6.2	129.0p	0.9	-1.2	130.2p	1.0	-1.1
Oct	135.8p	2.6	0.1	131.2p	1.7	0.8	131.7p	1.2	0.7

¹ The Climate Change Levy was introduced in April 2001.

See Background Notes for more details.

p = provisional

r = revised

6 Input prices: excluding Climate Change Levy¹ materials and fuels purchased by selected industries (not seasonally adjusted)

2005=100

							% change 1 month		% change 12 months	
		2009	2009	2009	2009	2009	2009 Sep	2009 Oct	2009 Sep	2009 Oct
		Jun	Jul	Aug	Sep	Oct				
Gross sector										
Other mining & quarrying products	RABE	128.0r	131.5r	129.6	129.8p	130.4p	0.2	0.5	3.3	1.5
Manufacture of food products	RBBQ	128.7	126.5	125.4	125.7p	125.6p	0.2	-0.1	-2.5	-2.8
Food products and beverages	RABF	126.5r	126.3r	125.0	126.4p	126.5p	1.1	0.1	0.7	-
Tobacco products	RABG	129.6r	126.8	125.8	125.5p	126.1p	-0.2	0.5	-3.3	-3.7
Manufacture of textiles	RBBR	113.9	113.7	113.9	114.6p	115.8p	0.6	1.0	1.6	1.5
Textiles	RABH	115.3	114.9	115.3	115.9p	117.3p	0.5	1.2	1.8	1.1
Wearing apparel	RABI	111.7	111.7	111.8	112.5p	113.3p	0.6	0.7	1.2	2.0
Manufacture of leather	RBBS	118.8	117.5	117.6	118.5p	119.2p	0.8	0.6	0.5	0.8
Manufacture of wood and wood products	RBBT	120.1	120.6	120.9	122.1p	123.3p	1.0	1.0	0.6	0.9
Manufacture of pulp paper & paper products, publishing and printing	RBBU	117.5	117.1	116.7	116.9p	119.1p	0.2	1.9	1.3	1.5
Pulp and paper products	RABL	120.9r	120.4	119.8	120.0p	123.4p	0.2	2.8	0.8	1.3
Printed matter and recording material	RABM	115.1	114.8	114.6	114.8p	116.2p	0.2	1.2	1.6	1.8
Manufacture of coke, refined petroleum products and nuclear fuel ²	RBEV
Manufacture of chemical prods ²	RBBW
Manufacture of rubber and plastic products	RBBX	117.1	118.9	119.8	122.2p	123.3p	2.0	0.9	-1.2	-1.0
Manufacture of other non-metallic mineral products	RBBY	126.5r	126.6r	126.5	126.9p	129.0p	0.3	1.7	-0.8	-2.2
Manufacture of basic metals and fabricated metal products	RBBZ	123.3r	124.4r	125.9	127.8p	129.0p	1.5	0.9	-8.3	-4.9
Basic metals	RABV	128.2	130.3r	132.2	134.8p	135.9p	2.0	0.8	-7.6	-3.8
Fabricated metal products	RABW	122.6	122.8r	123.5	124.7p	126.3p	1.0	1.3	-7.8	-6.4
Manufacture of machinery and equipment n.e.c.	RBCA	119.1	119.2r	119.4	120.3p	121.4p	0.8	0.9	-1.5	-0.9
Manufacture of electrical and optical equipment	RBCB	110.6	111.4	110.6	111.9p	113.1p	1.2	1.1	2.7	2.6
Office machinery and computers	RABY	103.4	104.6	104.0	105.7p	108.3p	1.6	2.5	3.1	4.2
Electrical machinery and apparatus n.e.c.	RACB	116.5r	117.0	116.8	118.1p	119.1p	1.1	0.8	0.9	1.2
Radio, television and communication equipment	RACC	109.5	110.3	109.2	110.1p	110.8p	0.8	0.6	3.6	2.9
Medical, precision, optical instruments and clocks	RACD	111.8	112.7	111.4	112.4p	113.4p	0.9	0.9	2.9	2.7
Manufacturing of transport equipment	RBCC	115.2	115.5r	115.4	116.6p	117.7p	1.0	0.9	0.9	1.7
Motor vehicles, trailers and semi trailers	RACE	115.0	115.3	115.7	116.9p	118.0p	1.0	0.9	0.9	2.0
Other transport equipment	RACF	115.5	115.7r	114.4	115.8p	116.7p	1.2	0.8	0.9	1.2
Manufacturing n.e.c.	RBCD	117.8	118.2	118.9	119.9p	120.8p	0.8	0.8	-0.6	0.2

¹ The Climate Change Levy cannot be included in this table.

p = provisional

r = revised

See Background Notes for more details.

² Please see revisions note on page 3 of this Statistical Bulletin

7 Input prices: detailed by commodity (not seasonally adjusted)

2005=100

		2009 Jun	2009 Jul	2009 Aug	2009 Sep	2009 Oct	% change 1 month		% change 12 months	
							2009 Sep	2009 Oct	2009 Sep	2009 Oct
Fuel inc. CCL ¹	RNNL	155.1	153.9	152.4	153.0p	159.8p	0.4	4.4	-3.3	-11.3
Electricity inc. CCL	RCVR	180.7	190.1	182.1	187.8p	187.3p	3.1	-0.3	13.5	-0.4
Gas inc. CCL	RCVW	115.8	98.9	107.5	99.8p	118.0p	-7.2	18.2	-32.0	-29.7
Crude petroleum oils and crude oils obtained from bituminous minerals	QWYK	139.5	135.4	148.7	141.7p	151.3p	-4.7	6.8	-24.3	0.8
HOME PRODUCED MATERIALS										
Home produced food materials	YZYM	140.3r	134.3r	131.1	130.5p	128.4p	-0.5	-1.6	-7.9	-8.4
Animals for slaughter	PNDE	157.1	152.1	154.5	151.7p	151.9p	-1.8	0.1	1.5	3.8
Other home produced materials	PVEV	128.2r	132.3r	130.5	129.3p	129.8p	-0.9	0.4	0.2	-0.2
IMPORTED MATERIALS										
Imported materials - total (Incl Crude Oil) ²	PVNN	126.7r	126.0r	129.1	129.7p	133.0p	0.5	2.5	-4.3	3.3
Imported food materials	PTUS	141.1	138.9	137.9	138.6p	140.5p	0.5	1.4	1.5	1.4
All meat and meat preparations	PVNY	147.5rB	139.7rB	133.7 B	132.6pB	132.4pB	-0.8	-0.2	-2.1	-5.4
Cereals and cereal preparations	PVOG	195.2 B	191.4 B	189.9 B	190.2pB	193.6pB	0.2	1.8	-5.5	-2.6
Imported metals	PVEW	125.4	126.7	131.4	136.9p	138.8p	4.2	1.4	-3.8	2.0
Iron and steel	PSTZ	114.8 B	118.3 B	121.5 B	127.3pB	126.0pB	4.8	-1.0	-8.3	-9.2
Non-ferrous metals	PSVH	143.3 B	141.3 B	149.3 B	156.1pB	162.3pB	4.6	4.0	3.2	15.6
Imported chemicals	PVEX	125.1	124.1	125.8	127.7p	129.9p	1.5	1.7	0.8	1.5
Organic chemicals	PSIV	138.1 B	134.1rB	133.3 B	136.6pB	137.4pB	2.5	0.6	3.3	2.0
Medicinal and pharmaceutical products	PSLX	103.1 B	103.2 B	103.3 B	104.4pB	105.4pB	1.1	1.0	-0.6	0.8
Plastics in primary forms	PSNV	106.2 B	108.5 B	113.2 B	116.2pB	119.7pB	2.7	3.0	-8.9	-5.7
Imported parts and equipment	YZYU	121.4	121.7	121.8	123.8p	125.6p	1.6	1.5	5.6	6.4
Office machinery and computer parts	RDAI	103.2	105.4	104.4	105.9p	106.9p	1.4	0.9	15.2	6.2
Electronic components	RDAM	111.1 B	111.5 B	108.5 B	111.4pB	113.6pB	2.7	2.0	10.0	8.4
Motor vehicles and parts	RDBV	120.7 B	121.5 B	122.4 B	125.1pB	127.3pB	2.2	1.8	4.7	7.5
Other imported	YZYT	118.4	118.6	119.4	120.3p	122.5p	0.8	1.8	1.8	5.0
Rubber products	RBIA	108.3	108.9	109.1	110.0p	110.4p	0.8	0.4	6.0	8.0
Wood and wood products	RBHK	119.1 B	122.6 B	124.2 B	127.3pB	130.3pB	2.5	2.4	8.8	10.1
Pulp, paper, and paperboard	RBHL	120.0 B	119.5 B	118.3 B	118.7pB	120.6pB	0.3	1.6	3.4	4.1
Man-made fibres	RBHZ	122.7 B	122.1 B	123.9 B	126.4pB	129.0pB	2.0	2.1	10.6	11.4
Preparation of spinning of textile fibres	RBHC	126.5 B	125.9 B	127.7 B	131.4pB	134.5pB	2.9	2.4	13.4	14.5
Other textiles	RBHG	115.5	116.4	116.9	119.7p	123.0p	2.4	2.8	4.5	5.9

1 The Climate Change Levy was introduced in April 2001.

B The values with 'B' are considered less reliable than the remainder currently published mainly due to the lack of market coverage

p = provisional

r = revised

2 See Revisions note on page 3 of this Statistical Bulletin

8R Output prices Revisions

2005=100

	All manufactured products			Excluding food, beverages, tobacco and petroleum products		
	not seasonally adjusted			not seasonally adjusted		
	Index	percent change over		Index	percent change over	
	(2005 = 100)	1 month	12 months	(2005 = 100)	1 month	12 months
	PLLU			PLLV		
2006 Apr	-	-	-	-	-	-
May	-	-	-	-	-	-
Jun	-	-	-	-	-	-
Jul	-	-	-	-	-	-
Aug	-	-	-	-	-	-
Sep	-	-	-	-	-	-
Oct	-	-	-	-	-	-
Nov	-	-	-	-	-	-
Dec	-	-	-	-	-	-
2007 Jan	-	-	-	-	-	-
Feb	-	-	-	-	-	-
Mar	-	-	-	-	-	-
Apr	-	-	-	-	-	-
May	-	-	-	-	-	-
Jun	-	-	-	-	-	-
Jul	-	-	-	-	-	-
Aug	-	-	-	-	-	-
Sep	-	-	-	-	-	-
Oct	-	-	-	-	-	-
Nov	-	-	-	-	-	-
Dec	-	-	-	-	-	-
2008 Jan	-	-	-	-	-	-
Feb	-	-	-	-	-	-
Mar	-	-	-	-	-	-
Apr	-	-	-	-	-	-
May	-	-	-	-	-	-
Jun	-	-	-	-	-	-
Jul	-	-	-	-	-	-
Aug	-	-	-	-	-	-
Sep	-	-	-	-	-	-
Oct	-	-	-	-	-	-
Nov	-	-	-	-	-	-
Dec	-	-	-	-	-	-
2009 Jan	-	-	-	-	-	-
Feb	-	-	-	-	-	-
Mar	-	-	-	-	-	-
Apr	-	-	-	-	-	-
May	-	-	-	-	-	-
Jun	-	-	-	-	-	-
Jul	-	-	-	-	-	-
Aug	-	-	-	-	-	-
Sep	-	-	-	-0.1	-0.1	-0.1
Oct

.....
Next publication: 11 December 2009

Issued by: Office for National Statistics, Government Buildings, Cardiff Road, Newport NP10 8XG

Media contact:

Tel **Media Relations Office 0845 6041858**

Emergency on-call 07867 906553

E-mail **press.office@ons.gsi.gov.uk**

Statistical contact:

Tel **Simon Woodsford +44 (0)1633 455917**

E-mail **ppi@ons.gov.uk`**

Website:

www.statistics.gov.uk/default.asp