

12 November 2007

Coverage
United Kingdom
Theme
The Economy

Producer prices

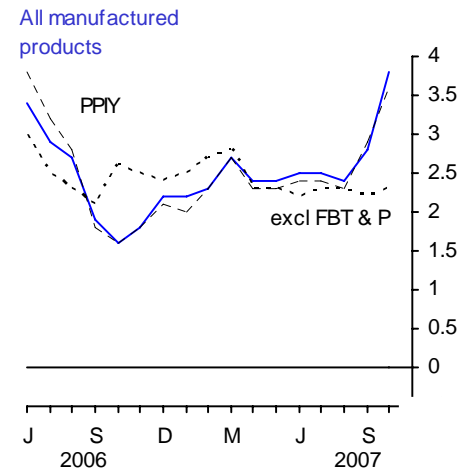
October 2007

The output price index for home sales of manufactured products rose 3.8 per cent in the year to October, compared with a rise of 2.8 per cent in the year to September. Unadjusted, the index rose 0.6 per cent between September and October, mainly reflecting rises in petrol and food product prices.

If passed on in full, the increase in excise duty on petroleum products in October would have increased the index by 0.2 per cent in October.

The output price index excluding excise duties (PPIY) rose 3.6 per cent in the year to October. Seasonally adjusted, the index rose 0.4 per cent between September and October.

The output price index excluding food, beverages, tobacco and petroleum rose 2.3 per cent in the year to October. In seasonally adjusted terms, the index rose 0.3 per cent between September and October.



Issued by
National Statistics
1 Drummond Gate
London SW1V 2QQ

Telephone
Press Office 020 7533 5725
Public Enquiries 0845 601 3034

Statistician
Ian Richardson 01633 455780
ian.richardson@ons.gsi.gov.uk

Internet
www.statistics.gov.uk

Next publication date
10 December 2007

Output prices (home sales)

		All manufactured Products		Excluding food, beverages, tobacco and petroleum		All manufactured products excl. duty	
		12 months (NSA)	1 month (NSA)	12 months (NSA)	1 month (SA)	12 months (NSA)	1 month (SA)
<i>Percentage change</i>							
2007	May	2.4	0.4	2.3	0.1	2.3	0.4
	Jun	2.5	0.3	2.2	0.2	2.4	0.3
	Jul	2.5	0.3	2.3	0.2	2.4	0.1
	Aug	2.4	0.0	2.3	0.2	2.3	0.3
	Sep	2.8	0.3	2.2	0.1	2.9	0.4
	Oct	3.8	0.6	2.3	0.3	3.6	0.4

NSA/SA not/seasonally adjusted

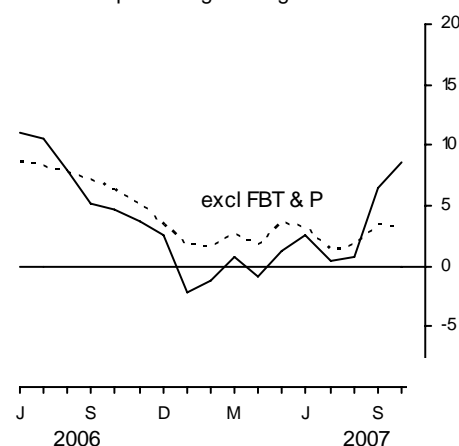
Input prices: summary

The input price index for materials and fuels purchased by manufacturing industry rose 8.6 per cent in the year to October and rose 2.5 per cent between September and October. The rise in the input index between September and October mainly reflected rises in the prices of crude oil and fuel. Prices of imported materials as a whole (including imported crude oil) rose 1.2 per cent between September and October.

Seasonally adjusted, the input price index rose 1.8 per cent between September and October.

The input price index for manufacturing industry excluding the food, beverages, tobacco and petroleum industries rose 3.0 per cent in the year to October. Seasonally adjusted, the index rose 0.6 per cent between September and October.

**Input prices (materials & fuel)
manufacturing industry**
12 months percentage change



Input prices^{1,2}

		Materials and fuels purchased			Excluding food, beverages, tobacco and petroleum industries		
		12 months (NSA)	1 month (NSA)	1 month (SA)	12 months (NSA)	1 month (NSA)	1 month (SA)
<i>Percentage change</i>							
2007	May	1.3	0.6	1.4	3.6	0.8	0.9
	Jun	2.5	1.1	0.9	3.2	-0.4	0.5
	Jul	0.5	0.7	-0.1	1.3	-0.5	-0.6
	Aug	0.7	-1.1	-1.4	1.8	-0.2	0.3
	Sep	6.5	2.3	3.9	3.4	1.0	0.5
	Oct	8.6	2.5	1.8	3.0	1.5	0.6

NSA/SA not/seasonally adjusted

1 These indices include the Climate Change Levy which was introduced in April 2001

2 These indices include the Aggregates Levy which was introduced in April 2002

Revisions (Tables 9R and 10R)

For this release Tables 9R and 10R highlight revisions to price indices previously published in last month's First Release.

The revisions to headline price indices highlighted in Tables 9R and 10R were caused by changes to latest estimates as more price quotes are received and also revisions to seasonal adjustment factors, which this month have been re-estimated back to 2004 as part of the annual seasonal adjustment review.

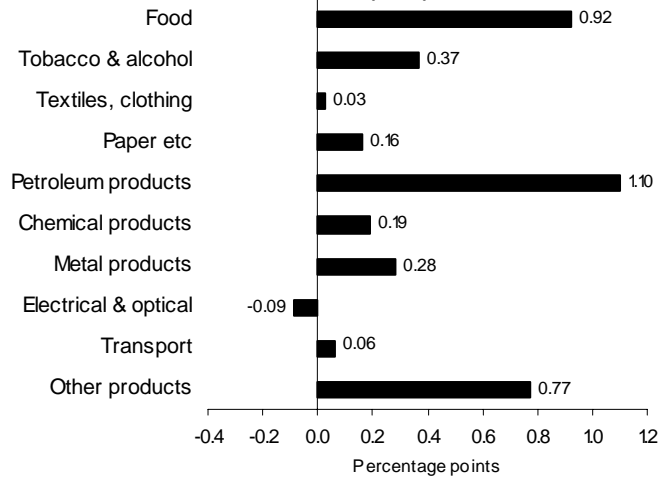
Output prices: detail

The contributions to movements in the total output index by the main product groups over the last year and month (not seasonally adjusted) are:

12 month change to October

Product group	Percentage change
Food	6.0
Tobacco & alcohol	2.8
Textiles, clothing	0.4
Paper etc	1.7
Petroleum products	12.0
Chemical products	3.0
Metal products	3.3
Electrical & optical	-1.4
Transport	0.8
Other products	4.7
All manufacturing	3.8

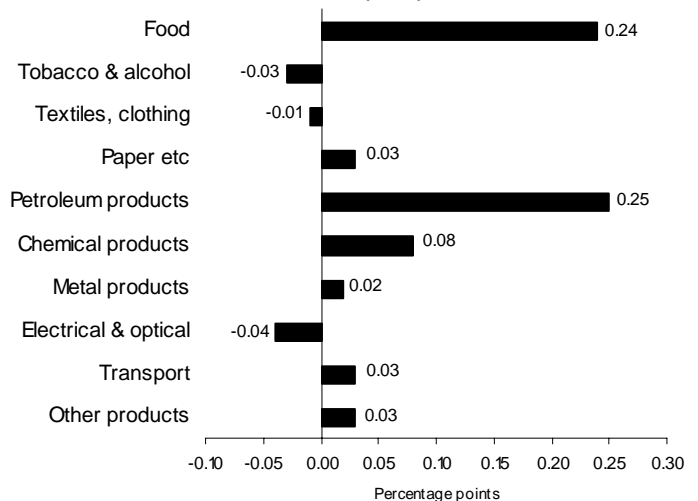
Contribution to 12 months percentage change in total (3.8%)



1 month change to October

Product group	Percentage change
Food	1.4
Tobacco & alcohol	-0.2
Textiles, clothing	0.0
Paper etc	0.4
Petroleum products	2.4
Chemical products	1.2
Metal products	0.3
Electrical & optical	-0.6
Transport	0.4
Other products	0.2
All manufacturing	0.6

Contribution to 1 month percentage change in total (0.6%)



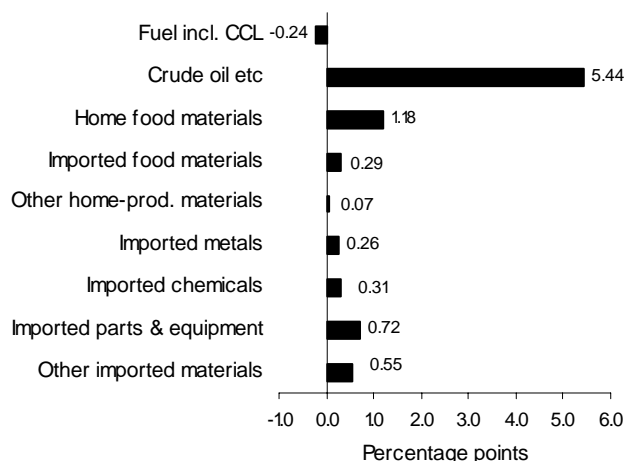
Input prices (materials and fuels): detail

The contributions to movements in the total input index by the main commodities over the year and month (not seasonally adjusted) are:

12 month change to October¹

Commodity group	Percentage change
Fuel incl. CCL	-2.1
Crude oil etc	32.1
Home food materials	14.8
Imported food materials	6.9
Other home-prod. materials	4.2
Imported metals	2.8
Imported chemicals	2.4
Imported parts & equipment	2.8
Other imported materials	5.0
All manufacturing	8.6

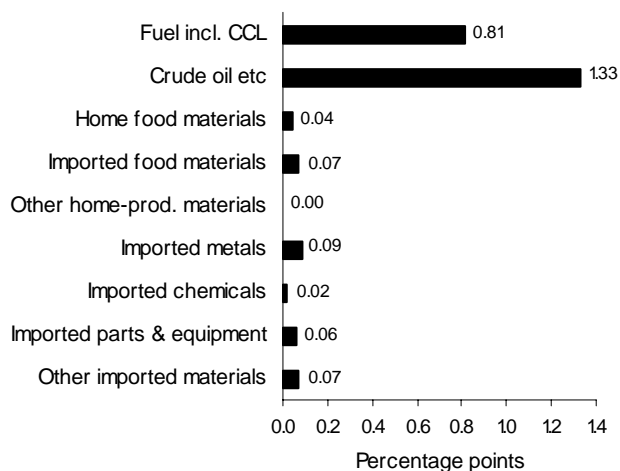
Contribution to 12 months percentage change in total (8.6%)



1 month change to October¹

Commodity group	Percentage change
Fuel incl. CCL	8.4
Crude oil etc	6.7
Home food materials	0.5
Imported food materials	1.7
Other home-prod. materials	0.2
Imported metals	1.0
Imported chemicals	0.2
Imported parts & equipment	0.2
Other imported materials	0.6
All manufacturing	2.5

Contribution to 1 month percentage change in total (2.5%)



1. Including Aggregates Levy

BACKGROUND NOTES

BASIC QUALITY INFORMATION

1. **Link to Summary Quality Report** A Summary Quality Report for the PPI can be found at:
http://www.statistics.gov.uk/about/data/methodology/quality/information_business_statistics.asp This report describes, in detail, the intended uses of the statistics presented in this publication, their general quality and the methods used to produce them.

Relevance to users

2. The output PPI was affected by Budget increases in fuel duties which came into effect on 1 October. If passed on in full, the Budget measures are estimated to add 0.2 per cent to the overall output index in October.
3. Index numbers shown in the main text of this First Release are on a net sector basis. The index for any sector relates only to transactions between that sector and other sectors: sales and purchases within sectors are excluded. However, the more detailed figures shown in Tables 5 and 7 are on a gross basis; that is, intra industry sales and purchases are included in each of these indices.
4. Indices relate to average prices for a month. The full effect of a price change occurring partway through any month will only be reflected in the following month's index.
5. All index numbers exclude VAT. Excise duties (on cigarettes, manufactured tobacco, alcoholic liquor and petroleum products) are included, except where labelled otherwise.
6. The detailed input indices of prices of materials and fuels purchased by industry (table 7) do not include the Climate Change Levy. This is because each industry can in practise pay its own rate for the various forms of energy, depending on the various negotiated discounts (and exemptions) that apply.

Status of figures

7. A routine seasonal adjustment review has introduced some changes to the estimation of the seasonal factors in this month's release. Revisions have been made to the seasonally adjusted estimates from January 2004.
8. The data in this release are based on sample surveys and are therefore subject to sampling variability. The table below shows standard errors for the growth rates in the main output PPIs. The units for the standard errors are percentage points of growth (that is, commensurate with the accompanying growth rates) and the standard errors themselves are estimates. An article explaining how the standard errors data for the PPI are derived is available in the October issue of Economic and Labour Market

Review and on the National Statistics website at:
<http://www.statistics.gov.uk/cci/article.asp?id=1878>

Standard errors of the growth rates of the main output PPIs

		Month on month growth June 2006	Standard error of month on month growth 12 month average	12 month growth June 2006	Standard error of twelve month growth 12 month average
Net Sector					
Output of manufactured products	PLLU	0.2%	0.1	3.4%	0.5
All manufacturing excluding duty	PVNP	0.2%	0.1	3.8%	0.3
Products of manufacturing industries other than food, beverages, petroleum and tobacco	PLLV	0.2%	0.1	3.0%	0.3

Common pitfalls in interpreting series

9. Expectations of accuracy and reliability in sample surveys are often too high. Revisions and sampling variability are inevitable consequences of the trade off between timeliness, accuracy and the burden on respondents. Details of sampling variability are included elsewhere in this release.
10. Very few statistical revisions arise as a result of 'errors' in the popular sense of the word. All estimates, by definition, are subject to statistical 'error' but, in this context, the word refers to the uncertainty in any process or calculation that uses sampling, estimation or modelling. Most revisions reflect either the adoption of new statistical techniques or the incorporation of new information which allows the statistical error of previous estimates to be reduced. Only rarely are there avoidable 'errors' such as human or system failures, and such mistakes are made quite clear when they are discovered and corrected.

Accuracy

11. Figures for the latest two months are provisional and the latest five months are subject to revisions in light of (a) late and revised respondent data and (b) revisions to seasonal adjustment factors which are re-estimated every month. A routine seasonal adjustment review is conducted in the autumn annually. There are no other planned methodological changes in the next 12 months. PPIs rebased onto 2005=100 will be published in October 2008.

Revisions

12. Revisions to data provide one indication of the reliability of key indicators. The tables below show summary information on the size and direction of the revisions which have been made to the data covering a five year period. A statistical test has been applied to the average revision to find out if it is statistically significantly different from zero. An asterisk (*) shows that the test is significant.
13. The table on page 8 presents a summary of the differences between the first estimates published between September 2001 and June 2006 and the estimates published 12 months later. These numbers include revisions as a result of methodological changes made when the series were rebased to 2000=100 in October 2003. For more information see http://www.statistics.gov.uk/articles/economic_trends/ETAugMorris.pdf

	Value in latest period	Revisions between first publication and estimates twelve months later	
		Average over the last 5 years	Average over the last 5 years without regard to sign (average absolute revision)
Total output (PLLU) 12 months %	3.8	0.00	0.08
Total output (PLLU) 1 months %	0.6	0.02	0.06
Total input (RNNK) 12 months %	8.6	-0.22	0.72
Total input (RNNK) 1 months %	2.5	0.07	0.36

14. Spreadsheets giving revisions triangles of estimates for all months from January 1998 through to September 2007, and the calculations behind the averages in the table is available on the National Statistics website at <http://www.statistics.gov.uk/StatBase/Product.asp?vlnk=790>

PUBLICATION POLICY

15. The complete run of data in the tables of this First Release are also available to view and download in other electronic formats free of charge using the ONS Time Series Data website service. Users can download the complete release in a choice of zipped formats, or view and download their own selections of individual series. The Time Series Data service can be accessed at <http://www.statistics.gov.uk/timeseries>

16. Details of the policy governing the release of new data are available from the press office. Also available is a list of the names of those given pre-publication access to the contents of this release.

17. **National Statistics** are produced to high professional standards set out in the National Statistics Code of Practice. They undergo regular quality assurance reviews to ensure that they meet customer needs. They are produced free from any political interference. © Crown Copyright 2007.

1 Output prices: summary (not seasonally adjusted)

2000=100

	Manufactured products			Manufacturing other than food, beverages, tobacco and petroleum products			Food, beverages and tobacco products			Petroleum products		
	Index (2000 = 100)	percentage change over		Index (2000 = 100)	percentage change over		Index (2000 = 100)	percentage change over		Index (2000 = 100)	percentage change over	
		1 mth	12 mths		1 mth	12 mths		1 mth	12 mths		1 mth	12 mths
	PLLU			PLLV			RBGA			RPVU		
2007 Apr	111.8	0.4	2.4	109.4	0.1	2.3	114.8	0.3	4.0	120.1	3.0	-2.3
May	112.2	0.4	2.4	109.4	-	2.3	115.2	0.3	3.9	123.3	2.7	-2.1
Jun	112.5	0.3	2.5	109.5	0.1	2.2	115.4	0.2	3.8	125.3	1.6	-0.3
Jul	112.8	0.3	2.5	109.7	0.2	2.3	115.9r	0.4	3.9	125.6	0.2	-1.3
Aug	112.8	-	2.4	109.8	0.1	2.3	116.1	0.2	3.8	125.2	-0.3	-1.5
Sep	113.1p	0.3	2.8	110.0p	0.2	2.2	116.7p	0.5	4.3	126.2p	0.8	4.0
Oct	113.8p	0.6	3.8	110.3p	0.3	2.3	117.7p	0.9	5.1	129.2p	2.4	12.0

p = provisional
r = revised

2 Input prices: including Climate Change Levy summary (not seasonally adjusted)¹

2000=100

	All manufacturing industry								
	Materials and fuel purchased			Materials purchased			Fuel purchased		
	Index (2000 = 100)	percentage change over		Index (2000 = 100)	percentage change over		Index (2000 = 100)	percentage change over	
1 mth		12 mths	1 mth		12 mths	1 mth		12 mths	
	RNNK			PLKX			RNNL		
2007 Apr	122.4	-0.1	-0.8	118.5	1.4	0.2	175.2	-11.9	-8.7
May	123.1	0.6	1.3	119.5	0.8	2.0	172.0	-1.8	-5.0
Jun	124.4	1.1	2.5	120.9	1.2	2.9	171.4	-0.3	-2.0
Jul	125.3	0.7	0.5	121.8r	0.7	1.1	172.2	0.5	-5.2
Aug	123.9	-1.1	0.7	120.2	-1.3	1.3	173.4	0.7	-4.6
Sep	126.8p	2.3	6.5	123.1p	2.4	7.2	177.8p	2.5	0.7
Oct	130.0p	2.5	8.6	125.4p	1.9	10.0	192.7p	8.4	-2.1

¹ The Climate Change Levy was introduced in April 2001. See Background Notes for more details.

p = provisional
r = revised

3 Output prices

2000=100

	All manufactured products			Excluding food, beverages, tobacco and petroleum products					
	not seasonally adjusted			not seasonally adjusted			seasonally adjusted		
	Index (2000 = 100)	percent change over		Index (2000 = 100)	percent change over		Index (2000 = 100)	percent change over	
		1 month	12 months		1 month	12 months		1 month	12 months
	PLLU			PLLV			PLLW		
2004 Apr	103.1	0.3	1.8	101.8	-0.1	1.3	101.7	-0.1	1.3
May	103.5	0.4	2.5	101.9	0.1	1.4	101.9	0.2	1.4
Jun	103.6	0.1	2.6	101.8	-0.1	1.4	102.0	0.1	1.4
Jul	103.8	0.2	2.6	102.3	0.5	1.7	102.4	0.4	1.7
Aug	104.2	0.4	2.8	102.9	0.6	2.2	102.9	0.5	2.2
Sep	104.5	0.3	3.1	103.2	0.3	2.3	103.1	0.2	2.3
Oct	105.2	0.7	3.5	103.7	0.5	2.9	103.7	0.6	2.9
Nov	105.3	0.1	3.5	103.9	0.2	3.0	104.0r	0.3	3.0
Dec	104.9	-0.4	2.9	103.6	-0.3	2.4	103.7	-0.3	2.5
2005 Jan	104.8	-0.1	2.6	104.0	0.4	2.6	104.0r	0.3	2.6
Feb	105.1	0.3	2.7	104.1	0.1	2.5	104.1	0.1	2.5
Mar	105.8	0.7	2.9	104.3	0.2	2.4	104.2	0.1	2.4
Apr	106.5	0.7	3.3	104.5	0.2	2.7	104.3	0.1	2.6
May	106.3	-0.2	2.7	104.4	-0.1	2.5	104.4	0.1	2.5
Jun	106.2	-0.1	2.5	104.0	-0.4	2.2	104.2r	-0.2	2.2
Jul	107.0	0.8	3.1	104.6	0.6	2.2	104.7	0.5	2.2
Aug	107.3	0.3	3.0	104.9	0.3	1.9	104.9	0.2	1.9
Sep	108.0	0.7	3.3	105.4	0.5	2.1	105.3	0.4	2.1
Oct	107.9	-0.1	2.6	105.1	-0.3	1.4	105.1	-0.2	1.4
Nov	107.7	-0.2	2.3	105.3	0.2	1.3	105.4r	0.3	1.3
Dec	107.4	-0.3	2.4	105.4	0.1	1.7	105.6r	0.2	1.8
2006 Jan	107.8	0.4	2.9	105.8	0.4	1.7	105.8	0.2	1.7
Feb	108.1	0.3	2.9	106.0	0.2	1.8	105.9r	0.1	1.7
Mar	108.4	0.3	2.5	106.3	0.3	1.9	106.2	0.3	1.9
Apr	109.2	0.7	2.5	106.9	0.6	2.3	106.6	0.4	2.2
May	109.6	0.4	3.1	106.9	-	2.4	106.9	0.3	2.4
Jun	109.8	0.2	3.4	107.1	0.2	3.0	107.2	0.3	2.9
Jul	110.1	0.3	2.9	107.2	0.1	2.5	107.3	0.1	2.5
Aug	110.2	0.1	2.7	107.3	0.1	2.3	107.3	-	2.3
Sep	110.0	-0.2	1.9	107.6	0.3	2.1	107.6	0.3	2.2
Oct	109.6	-0.4	1.6	107.8	0.2	2.6	107.8	0.2	2.6
Nov	109.6	-	1.8	107.9	0.1	2.5	108.0	0.2	2.5
Dec	109.8	0.2	2.2	107.9	-	2.4	108.1	0.1	2.4
2007 Jan	110.2	0.4	2.2	108.4	0.5	2.5	108.4	0.3	2.5
Feb	110.6	0.4	2.3	108.9	0.5	2.7	108.8	0.4	2.7
Mar	111.3	0.6	2.7	109.3	0.4	2.8	109.2r	0.4	2.8
Apr	111.8	0.4	2.4	109.4	0.1	2.3	109.2	-	2.4
May	112.2	0.4	2.4	109.4	-	2.3	109.3r	0.1	2.2
Jun	112.5	0.3	2.5	109.5	0.1	2.2	109.5	0.2	2.1
Jul	112.8	0.3	2.5	109.7	0.2	2.3	109.7	0.2	2.2
Aug	112.8	-	2.4	109.8	0.1	2.3	109.9r	0.2	2.4
Sep	113.1p	0.3	2.8	110.0p	0.2	2.2	110.0p	0.1	2.2
Oct	113.8p	0.6	3.8	110.3p	0.3	2.3	110.3p	0.3	2.3

p provisional
r revised

4 Output prices excluding excise duties (PPIY)

2000=100

All manufactured products (excluding excise duties)

	Not seasonally adjusted			Seasonally adjusted		
	Index (2000 = 100)	Percentage change over		Index (2000 = 100)	Percentage change over	
		1 month	12 months		1 month	12 months
	PVNP			PVNQ		
2004 Apr	102.9	0.3	1.5	102.8	0.2	1.6
May	103.4	0.5	2.4	103.3	0.5	2.4
Jun	103.5	0.1	2.6	103.4r	0.1	2.5
Jul	103.7	0.2	2.6	103.6	0.2	2.5
Aug	104.1	0.4	2.8	104.0	0.4	2.8
Sep	104.5	0.4	3.1	104.4	0.4	3.1
Oct	105.3	0.8	3.8	105.1r	0.7	4.0
Nov	105.5	0.2	3.8	105.6	0.5	3.8
Dec	105.0	-0.5	3.1	105.4r	-0.2	3.2
2005 Jan	104.8	-0.2	2.7	105.1	-0.3	2.8
Feb	105.2	0.4	2.9	105.6	0.5	3.0
Mar	105.8	0.6	3.1	105.9	0.3	3.2
Apr	106.6	0.8	3.6	106.5	0.6	3.6
May	106.3	-0.3	2.8	106.1r	-0.4	2.7
Jun	106.2	-0.1	2.6	106.1r	-	2.6
Jul	107.1	0.8	3.3	106.9	0.8	3.2
Aug	107.6	0.5	3.4	107.4r	0.5	3.3
Sep	108.4	0.7	3.7	108.2r	0.7	3.6
Oct	108.2	-0.2	2.8	108.0r	-0.2	2.8
Nov	108.0	-0.2	2.4	108.1	0.1	2.4
Dec	107.6	-0.4	2.5	108.2r	0.1	2.7
2006 Jan	108.2	0.6	3.2	108.5	0.3	3.2
Feb	108.4	0.2	3.0	108.7	0.2	2.9
Mar	108.8	0.4	2.8	108.8r	0.1	2.7
Apr	109.5	0.6	2.7	109.4r	0.6	2.7
May	110.0	0.5	3.5	109.8	0.4	3.5
Jun	110.2	0.2	3.8	110.0	0.2	3.7
Jul	110.5	0.3	3.2	110.2r	0.2	3.1
Aug	110.6	0.1	2.8	110.4r	0.2	2.8
Sep	110.3	-0.3	1.8	110.1r	-0.3	1.8
Oct	109.9	-0.4	1.6	109.7r	-0.4	1.6
Nov	109.9	-	1.8	110.1	0.4	1.9
Dec	109.9	-	2.1	110.5	0.4	2.1
2007 Jan	110.4	0.5	2.0	110.9	0.4	2.2
Feb	110.9	0.5	2.3	111.3	0.4	2.4
Mar	111.7	0.7	2.7	111.8	0.4	2.8
Apr	112.0	0.3	2.3	111.8r	-	2.2
May	112.5	0.4	2.3	112.2	0.4	2.2
Jun	112.8	0.3	2.4	112.5	0.3	2.3
Jul	113.1r	0.3	2.4	112.6r	0.1	2.2
Aug	113.1	-	2.3	112.9	0.3	2.3
Sep	113.5p	0.4	2.9	113.3p	0.4	2.9
Oct	113.9p	0.4	3.6	113.8p	0.4	3.7

This series excludes excise duties payable on tobacco products, alcoholic liquor and petroleum products.

5 Output prices: detailed by product (not seasonally adjusted) all manufactured and selected products

2000=100

		2007 Jun	2007 Jul	2007 Aug	2007 Sep	2007 Oct	% change 1 month		% change 12 months	
							2007 Sep	2007 Oct	2007 Sep	2007 Oct
Net sector										
Output of manufactured products	PLLU	112.5	112.8	112.8	113.1p	113.8p	0.3	0.6	2.8	3.8
All manufacturing excl. duty	PVNP	112.8	113.1r	113.1	113.5p	113.9p	0.4	0.4	2.9	3.6
All manufacturing excl. duty - seasonally adjusted	PVNQ	112.5	112.6r	112.9	113.3p	113.8p	0.4	0.4	2.9	3.7
Products of manufacturing industries other than food, beverages, petroleum and tobacco -unadjusted	PLLV	109.5	109.7	109.8	110.0p	110.3p	0.2	0.3	2.2	2.3
All manufacturing excl. food, beverages, tobacco & petroleum - seasonally adjusted	PLLW	109.5	109.7	109.9r	110.0p	110.3p	0.1	0.3	2.2	2.3
Gross Sector										
Food products, beverages & tobacco including duty	RBGA	115.4	115.9r	116.1	116.7p	117.7p	0.5	0.9	4.3	5.1
Food products & beverages including duty	RPUN	112.8	113.4	113.6	114.2P	115.4p	0.5	1.1	4.2	5.2
Food products excluding beverages	RBGD	112.6	113.3	113.7	114.6p	116.2p	0.8	1.4	4.7	6.0
Tobacco products including duty	RPUS	131.4 F	131.4 F	131.4 F	131.4pF	131.4pF	-	-	4.2	4.2
Textiles	POKZ	104.4r	104.6	104.7	104.8p	104.9p	0.1	0.1	1.7	1.5
Wearing apparel	POLA	98.5	98.5	98.5	98.5p	98.3p	-	-0.2	0.3	0.1
Leather & leather products	POKJ	107.3	107.1	106.8	106.7p	107.1p	-0.1	0.4	0.5	0.1
Wood & wood products	POKK	123.7	125.0	125.3	125.7p	127.2p	0.3	1.2	10.4	10.9
Pulp, paper & paper products	POLD	104.4r	104.7r	104.7	104.8p	105.9p	0.1	1.0	3.5	3.8
Printed matter & recorded media	POLE	115.7	116.1	116.1	116.4p	116.6p	0.3	0.2	1.5	1.3
Petroleum products including duty	RPVU	125.3	125.6	125.2	126.2p	129.2p	0.8	2.4	4.0	12.0
Chemicals, chemical, products & manmade fibres	POKN	117.8	118.5	118.5	118.4p	119.8p	-0.1	1.2	1.5	3.0
Rubber & plastic products	POKO	110.7	111.1	111.2	111.3p	111.7p	0.1	0.4	1.0	1.0
Other non metallic mineral products	POKP	123.3	123.6	123.8	123.6p	123.7p	-0.2	0.1	3.8	3.5
Base metals	POLJ	155.4	158.2	160.5	160.1p	159.5p	-0.2	-0.4	9.2	7.2
Fabricated metal products, except machinery and equipment	POLK	122.4	122.7	123.0	122.9p	123.3p	-0.1	0.3	2.8	2.8
Machinery and equipment n.e.c.	POKR	112.3r	112.6	112.8	113.3p	113.6p	0.4	0.3	3.3	3.6
Office machinery and computers	POLM	41.8	41.1	40.7	40.7p	40.6p	-	-0.2	-6.9	-8.6
Electrical machinery and apparatus n.e.c.	POLN	115.2	115.4	115.9	115.9p	115.9p	-	-	1.8	2.6
Radio, television and communication equipment and apparatus	POLO	76.8	76.5	76.8	77.0p	75.7p	0.3	-1.7	-2.5	-4.1
Medical precision and optical instruments, watches and clocks	POLP	105.0	104.9	104.9	105.1p	105.2p	0.2	0.1	0.5	0.4
Motor vehicles, trailers and semi-trailers	POLQ	98.8	98.9	99.1	99.3p	100.0p	0.2	0.7	-0.2	0.4
Other transport	POLR	117.4	117.5	118.3	118.2p	117.4p	-0.1	-0.7	3.7	1.8
Furniture: other manufactured goods n.e.c.	POLS	107.8	108.1	108.6	108.6p	109.1p	-	0.5	2.5	2.7
Recovered secondary raw materials	QTBM	262.5 F	263.3 F	262.5 F	265.8p	262.6p	1.3	-1.2	22.5	20.3

6 Input prices: including Climate Change Levy¹ materials and fuels purchased

2000=100

	All manufacturing industries						Excluding food, beverages, tobacco and petroleum industries					
	not seasonally adjusted			seasonally adjusted			not seasonally adjusted			seasonally adjusted		
	Index	percent change over		Index	percent change over		Index	percentage change over		Index	percentage change over	
	(2000 = 100)	1 month	12 months	(2000 = 100)	1 month	12 months	(2000 = 100)	1 month	12 months	(2000 = 100)	1 month	12 months
	RNNK			RNPE			RNNQ			RNPF		
2004 Apr	97.3	0.1	2.9	97.2	0.8	2.9	94.0	0.1	-0.2	93.9r	0.5	-0.1
May	99.6	2.4	5.4	100.2	3.1	5.6	94.7	0.7	0.6	94.7r	0.9	0.6
Jun	97.7	-1.9	3.5	98.4r	-1.8	3.8	94.0	-0.7	1.1	94.8	0.1	1.3
Jul	98.7	1.0	4.0	98.7r	0.3	3.9	94.4	0.4	1.5	95.3r	0.5	1.8
Aug	100.8	2.1	4.9	100.3	1.6	4.6	95.3	1.0	2.1	96.3r	1.0	2.4
Sep	102.5	1.7	7.8	103.1	2.8	8.1	96.9	1.7	3.6	97.6r	1.3	3.6
Oct	105.0	2.4	9.0	105.6r	2.4	9.0	98.2	1.3	4.7	98.4r	0.8	4.6
Nov	103.4	-1.5	6.8	103.0r	-2.5	6.4	99.1	0.9	4.9	98.2r	-0.2	4.5
Dec	101.3	-2.0	4.4	100.6r	-2.3	4.0	98.5	-0.6	4.2	97.2r	-1.0	4.0
2005 Jan	104.9	3.6	9.7	104.7r	4.1	9.7	100.4	1.9	7.6	99.8	2.7	7.5
Feb	105.5	0.6	10.8	105.7r	1.0	11.0	100.5	0.1	8.3	100.0r	0.2	8.2
Mar	107.9	2.3	11.0	107.1r	1.3	11.1	101.0	0.5	7.6	100.3	0.3	7.4
Apr	107.1	-0.7	10.1	107.0r	-0.1	10.1	100.6	-0.4	7.0	100.5r	0.2	7.0
May	107.0	-0.1	7.4	107.8	0.7	7.6	100.9	0.3	6.5	101.0	0.5	6.7
Jun	109.3	2.1	11.9	110.0r	2.0	11.8	100.8	-0.1	7.2	101.8	0.8	7.4
Jul	112.7	3.1	14.2	112.6r	2.4	14.1	102.5	1.7	8.6	103.6r	1.8	8.7
Aug	113.9	1.1	13.0	113.3r	0.6	13.0	102.3	-0.2	7.3	103.6r	-	7.6
Sep	113.2	-0.6	10.4	114.0r	0.6	10.6	102.2	-0.1	5.5	103.1r	-0.5	5.6
Oct	114.4	1.1	9.0	114.9r	0.8	8.8	105.1	2.8	7.0	105.3r	2.1	7.0
Nov	117.5	2.7	13.6	116.9r	1.7	13.5	108.8	3.5	9.8	107.6r	2.2	9.6
Dec	119.6	1.8	18.1	118.6r	1.5	17.9	110.5	1.6	12.2	108.9r	1.2	12.0
2006 Jan	121.4	1.5	15.7	121.2r	2.2	15.8	110.8	0.3	10.4	110.0r	1.0	10.2
Feb	121.3	-0.1	15.0	121.6r	0.3	15.0	111.2	0.4	10.6	110.6	0.5	10.6
Mar	121.7	0.3	12.8	121.0	-0.5	13.0	111.1	-0.1	10.0	110.3r	-0.3	10.0
Apr	123.4	1.4	15.2	123.4r	2.0	15.3	110.5	-0.5	9.8	110.6r	0.3	10.0
May	121.5	-1.5	13.6	122.5r	-0.7	13.6	109.5	-0.9	8.5	109.7r	-0.8	8.6
Jun	121.4	-0.1	11.1	122.2r	-0.2	11.1	109.5	-	8.6	110.7r	0.9	8.7
Jul	124.7	2.7	10.6	124.5r	1.9	10.6	111.0	1.4	8.3	112.2r	1.4	8.3
Aug	123.0	-1.4	8.0	122.4r	-1.7	8.0	110.2	-0.7	7.7	111.8r	-0.4	7.9
Sep	119.1	-3.2	5.2	120.1r	-1.9	5.4	109.6	-0.5	7.2	110.7	-1.0	7.4
Oct	119.7	0.5	4.6	120.2r	0.1	4.6	111.7	1.9	6.3	111.9	1.1	6.3
Nov	121.8	1.8	3.7	121.1r	0.7	3.6	114.3	2.3	5.1	112.9r	0.9	4.9
Dec	122.6	0.7	2.5	121.6	0.4	2.5	114.1	-0.2	3.3	112.3	-0.5	3.1
2007 Jan	118.9	-3.0	-2.1	118.6	-2.5	-2.1	112.7	-1.2	1.7	111.7r	-0.5	1.5
Feb	119.9	0.8	-1.2	120.3r	1.4	-1.1	112.9	0.2	1.5	112.1r	0.4	1.4
Mar	122.5	2.2	0.7	121.9r	1.3	0.7	113.9	0.9	2.5	113.0	0.8	2.4
Apr	122.4	-0.1	-0.8	122.3r	0.3	-0.9	112.5	-1.2	1.8	112.7	-0.3	1.9
May	123.1	0.6	1.3	124.0r	1.4	1.2	113.4	0.8	3.6	113.7	0.9	3.6
Jun	124.4	1.1	2.5	125.1	0.9	2.4	113.0	-0.4	3.2	114.3	0.5	3.3
Jul	125.3	0.7	0.5	125.0r	-0.1	0.4	112.4	-0.5	1.3	113.6	-0.6	1.2
Aug	123.9	-1.1	0.7	123.3	-1.4	0.7	112.2	-0.2	1.8	113.9	0.3	1.9
Sep	126.8p	2.3	6.5	128.1p	3.9	6.7	113.3p	1.0	3.4	114.5p	0.5	3.4
Oct	130.0p	2.5	8.6	130.4p	1.8	8.5	115.0p	1.5	3.0	115.2p	0.6	2.9

¹ The Climate Change Levy was introduced in April 2001.

See Background Notes for more details.

p = provisional

r = revised

7 Input prices: excluding Climate Change Levy¹ materials and fuels purchased by selected industries (not seasonally adjusted)

2000=100

		2007 Jun	2007 Jul	2007 Aug	2007 Sep	2007 Oct	% change 1 month		% change 12 months	
							2007 Sep	2007 Oct	2007 Sep	2007 Oct
Gross sector										
Other mining & quarrying products	RABE	116.5	118.2	115.8	119.0p	121.8p	2.8	2.4	6.5	10.3
Manufacture of food products	RBBQ	117.0	118.1r	119.4	121.8p	123.5p	2.0	1.4	6.4	8.7
Food products and beverages	RABF	117.1	118.3	119.5	121.9p	123.8p	2.0	1.6	6.4	9.0
Tobacco products	RABG	111.0r	111.3r	111.6	112.7p	110.9p	1.0	-1.6	1.8	0.1
Manufacture of textiles	RBBR	106.6	106.7	106.8	107.4p	108.4p	0.6	0.9	1.7	1.9
Textiles	RABH	109.1	109.2	109.5	110.1p	111.2p	0.5	1.0	1.6	1.6
Wearing apparel	RABI	102.2	102.3	102.3	102.9p	103.5p	0.6	0.6	2.2	2.4
Manufacture of leather	RBBS	111.4r	111.8	111.8	112.2p	113.3p	0.4	1.0	2.3	2.8
Manufacture of wood and wood products	RBBT	116.7	117.5	118.0	118.5p	119.5p	0.4	0.8	8.4	7.1
Manufacture of pulp paper & paper products, publishing and printing	RBBU	109.8	110.0r	110.1	110.6p	111.6p	0.5	0.9	2.7	2.8
Pulp and paper products	RABL	107.9r	108.3r	108.5	109.2p	110.8p	0.6	1.5	3.6	3.7
Printed matter and recording material	RABM	110.6	110.9	110.9	111.3p	112.0p	0.4	0.6	2.3	2.4
Manufacture of coke, refined petroleum products and nuclear fuel	RBBV	180.3	188.5	177.7	189.9p	201.8p	6.9	6.3	15.7	28.6
Manufacture of chemical products	RBBW	120.8	121.1	121.2	122.2p	124.2p	0.8	1.6	2.3	3.4
Manufacture of rubber and plastic products	RBBX	117.5	118.1	118.4	119.2p	120.1p	0.7	0.8	2.7	2.6
Manufacture of other non-metallic mineral products	RBBY	119.4	119.5	120.0	120.8p	122.8p	0.7	1.7	2.8	2.6
Manufacture of basic metals and fabricated metal products	RBBZ	148.3	148.2r	148.2	149.1p	150.1p	0.6	0.7	6.7	5.5
Basic metals	RABV	157.7	157.1r	157.2	159.1p	160.4p	1.2	0.8	8.1	6.8
Fabricated metal products	RABW	140.1	140.4r	140.5	140.4p	141.2p	-0.1	0.6	5.3	4.2
Manufacture of machinery and equipment n.e.c.	RBCA	122.2	122.3r	122.5	122.7p	123.5p	0.2	0.7	4.1	3.8
Manufacture of electrical and optical equipment	RBCB	95.3	95.0	95.3	95.3p	95.5p	-	0.2	2.0	0.7
Office machinery and computers	RABY	78.4	77.7	78.0	77.6p	77.6p	-0.5	-	-3.6	-5.0
Electrical machinery and apparatus n.e.c.	RACB	111.8	111.8	112.2	112.4p	113.1p	0.2	0.6	2.6	2.4
Radio, television and communication equipment	RACC	107.1	107.0	107.4	107.6p	108.1p	0.2	0.5	4.0	2.9
Medical, precision, optical instruments and clocks	RACD	97.2	97.0	97.3	97.5p	97.9p	0.2	0.4	0.7	0.6
Manufacturing of transport equipment	RBCC	115.0	115.1	115.2	115.6p	116.4p	0.3	0.7	4.4	4.3
Motor vehicles, trailers and semi trailers	RACE	116.7	116.8	116.9	117.4p	118.0p	0.4	0.5	4.6	4.5
Other transport equipment	RACF	111.2	111.2	111.2	111.7p	112.7p	0.4	0.9	4.0	3.8
Manufacturing n.e.c.	RBCD	123.0	123.4r	123.7	124.1p	124.9p	0.3	0.6	5.6	5.3

¹ The Climate Change Levy cannot be included in this table.

See Background Notes for more details.

p = provisional

r = revised

8 Input prices: detailed by commodity (not seasonally adjusted)

2000=100

		2007 Jun	2007 Jul	2007 Aug	2007 Sep	2007 Oct	% change 1 month		% change 12 months	
							2007 Sep	2007 Oct	2007 Sep	2007 Oct
							Fuel inc. CCL ¹	RNNL	171.4	172.2
Electricity inc. CCL	RCVR	168.5	166.6	167.6	168.5p	177.3p	0.5	5.2	3.7	-2.7
Gas inc. CCL	RCVW	184.1	192.4	194.0	209.6p	245.7p	8.0	17.2	-7.1	-1.3
Crude petroleum oils and crude oils obtained from bituminous minerals	QWYK	191.9	201.3	188.7	202.6p	216.2p	7.4	6.7	17.3	32.1
HOME PRODUCED MATERIALS										
Home produced food materials	YZYM	128.8	132.4r	134.4	138.8p	139.5p	3.3	0.5	11.1	14.8
Animals for slaughter	PNDE	135.5	135.1r	130.9	134.4p	133.5p	2.7	-0.7	-1.8	-0.3
Other home produced materials	PVEV	134.8	134.4	134.6	134.3p	134.6p	-0.2	0.2	5.5	4.2
IMPORTED MATERIALS										
Imported materials - total	PVNN	112.5	112.3r	111.5	112.9p	114.2p	1.3	1.2	4.9	6.0
Imported food materials	PTUS	114.8	115.0	115.7	118.1p	120.1p	2.1	1.7	5.8	6.9
All meat and meat preparations	PVNY	117.0 B	118.1 B	118.5 B	119.0pB	122.8pB	0.4	3.2	-0.5	3.9
Cereals and cereal preparations	PVOG	116.9 B	122.6 B	130.0 B	142.8pB	141.8pB	9.8	-0.7	41.1	34.2
Imported metals	PVEW	169.6	164.5r	160.7	160.7p	162.3p	-	1.0	3.4	2.8
Iron and steel	PSTZ	167.7 B	166.1rB	162.1 B	158.5pB	156.6pB	-2.2	-1.2	7.3	3.7
Non-ferrous metals	PSVH	177.4 B	173.8 B	170.0 B	169.7pB	172.3pB	-0.2	1.5	0.9	1.5
Imported chemicals	PVEX	117.7	117.2	117.7	118.6p	118.8p	0.8	0.2	2.3	2.4
Organic chemicals	PSIV	114.8 B	112.8 B	113.3 B	113.9pB	114.2pB	0.5	0.3	-0.1	-0.4
Medicinal and pharmaceutical products	PSLX	88.7 B	87.9 B	87.9 B	88.0pB	87.8pB	0.1	-0.2	-1.0	-0.6
Plastics in primary forms	PSNV	114.8 B	115.0 B	115.9 B	117.0pB	116.2pB	0.9	-0.7	1.8	2.1
Imported parts and equipment	YZYU	91.0	90.6r	90.8	91.2p	91.4p	0.4	0.2	4.1	2.8
Office machinery and computer parts	RDAI	56.2	54.5	55.0	53.7p	53.3p	-2.4	-0.7	-14.5	-19.7
Electronic components	RDAM	60.7 B	59.7 B	60.3 B	60.3pB	59.8pB	-	-0.8	-5.2	-6.1
Motor vehicles and parts	RDBV	114.0	113.8	114.1	115.2p	115.9p	1.0	0.6	7.4	8.4
Other imported	YZYT	103.8	103.8	103.6	105.5p	106.1p	1.8	0.6	4.5	5.0
Rubber products	RBIA	105.8	106.8	107.0	107.6p	108.0p	0.6	0.4	-4.4	-3.9
Wood and wood products	RBHK	124.4	125.6	127.1	127.5p	126.8p	0.3	-0.5	11.0	9.1
Pulp, paper, and paperboard	RBHL	95.3	95.6	95.8	95.9p	96.5p	0.1	0.6	3.5	4.0
Man-made fibres	RBHZ	105.3 B	105.0 B	106.0 B	106.4pB	105.6pB	0.4	-0.8	3.6	1.5
Preparation of spinning of textile fibres	RBHC	102.7	102.4	103.2	103.7p	104.1p	0.5	0.4	1.4	1.3
Other textiles	RBHG	86.5 B	86.4 B	86.7 B	87.4pB	88.0pB	0.8	0.7	2.2	3.0

¹ The Climate Change Levy was introduced in April 2001.

B The values with 'B' are considered less reliable than the remainder currently published mainly due to the lack of market coverage
p = provisional
r = revised

