

13 August 2007

**Coverage**  
United Kingdom  
**Theme**  
The Economy

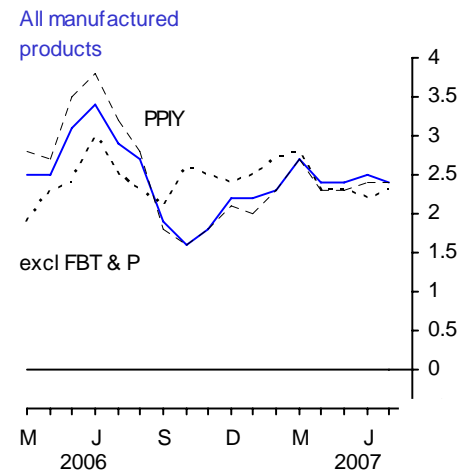
## Producer prices

### July 2007

The output price index for home sales of manufactured products rose 2.4 per cent in the year to July, compared with a rise of 2.5 per cent in the year to June. Unadjusted, the index rose 0.2 per cent between June and July, mainly reflecting rises in food and other manufactured product prices.

The output price index excluding excise duties (PPIY) rose 2.4 per cent in the year to July. Seasonally adjusted, the index rose 0.1 per cent between June and July.

The output price index excluding food, beverages, tobacco and petroleum rose 2.3 per cent in the year to July. In seasonally adjusted terms, the index rose 0.2 per cent between June and July.



#### Output prices (home sales)

		All manufactured Products		Excluding food, beverages, tobacco and petroleum		All manufactured products excl. duty	
		12 months (NSA)	1 month (NSA)	12 months (NSA)	1 month (SA)	12 months (NSA)	1 month (SA)
<i>Percentage change</i>							
<b>2007</b>	Feb	2.3	0.4	2.7	0.4	2.3	0.4
	Mar	2.7	0.6	2.8	0.3	2.7	0.4
	Apr	2.4	0.4	2.3	0.1	2.3	0.1
	May	2.4	0.4	2.3	0.2	2.3	0.2
	June	2.5	0.3	2.2	0.1	2.4	0.3
	July	2.4	0.2	2.3	0.2	2.4	0.1

NSA/SA not/seasonally adjusted

Issued by  
National Statistics  
1 Drummond Gate  
London SW1V 2QQ

Telephone  
Press Office 020 7533 5725  
Public Enquiries 0845 601 3034

Statistician  
Ian Richardson 01633 655780  
ian.richardson@ons.gsi.gov.uk

Internet  
www.statistics.gov.uk

Next publication date  
10 September 2007

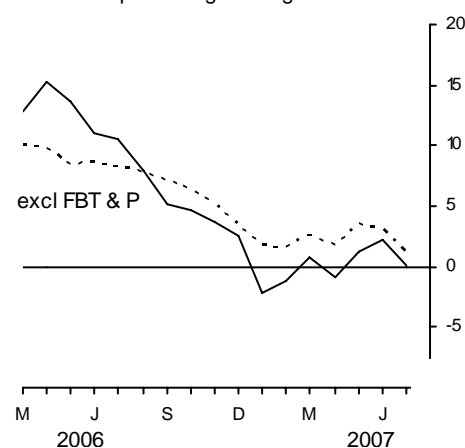
## Input prices: summary

The input price index for materials and fuels purchased by manufacturing industry rose 0.1 per cent in the year to July and rose 0.5 per cent between June and July. The rise in the input index between June and July mainly reflected a rise in the price of crude oil, partly offset by a fall in metal prices. Prices of imported materials as a whole (including imported crude oil) fell 0.3 per cent between June and July.

Seasonally adjusted, the input price index fell 0.5 per cent between June and July.

The input price index for manufacturing industry excluding the food, beverages, tobacco and petroleum industries rose 1.1 per cent in the year to July. Seasonally adjusted, the index fell 0.4 per cent between June and July.

**Input prices (materials & fuel)  
manufacturing industry**  
12 months percentage change



## Input prices<sup>1,2</sup>

		Materials and fuels purchased			Excluding food, beverages, tobacco and petroleum industries		
		12 months (NSA)	1 month (NSA)	1 month (SA)	12 months (NSA)	1 month (NSA)	1 month (SA)
<i>Percentage change</i>							
<b>2007</b>	Feb	-1.2	0.8	1.5	1.5	0.2	0.2
	Mar	0.7	2.2	1.3	2.5	0.9	0.7
	Apr	-0.8	-0.1	0.2	1.8	-1.2	-0.3
	May	1.3	0.6	1.3	3.6	0.8	0.8
	Jun	2.3	0.9	0.6	3.0	-0.5	0.4
	Jul	0.1	0.5	-0.5	1.1	-0.5	-0.4

NSA/SA not/seasonally adjusted

1 These indices include the Climate Change Levy which was introduced in April 2001

2 These indices include the Aggregates Levy which was introduced in April 2002

### **Revisions (Tables 9R and 10R)**

For this release Tables 9R and 10R highlight revisions to price indices previously published in last month's First Release.

The revisions to headline price indices highlighted in Tables 9R and 10R were caused by changes to latest estimates as more price quotes are received and also revisions to seasonal adjustment factors which are re-estimated every month.

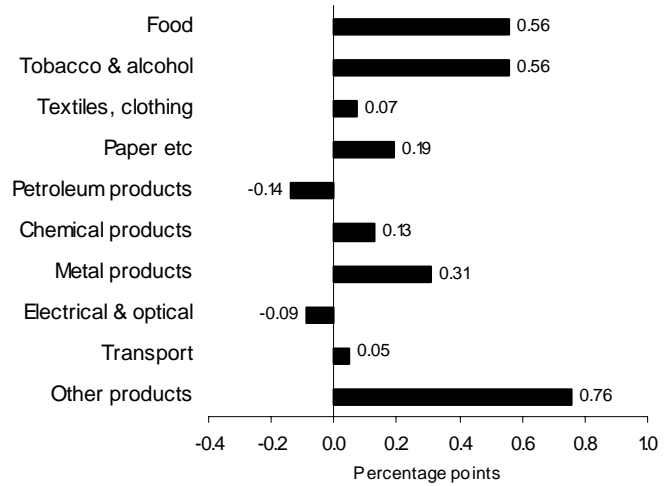
**Output prices: detail**

The contributions to movements in the total output index by the main product groups over the last year and month (not seasonally adjusted) are:

**12 month change to July**

Product group	Percentage change
Food	3.7
Tobacco & alcohol	4.1
Textiles, clothing	0.9
Paper etc	2.1
Petroleum products	-1.3
Chemical products	2.1
Metal products	3.6
Electrical & optical	-1.5
Transport	0.7
Other products	4.5
<b>All manufacturing</b>	<b>2.4</b>

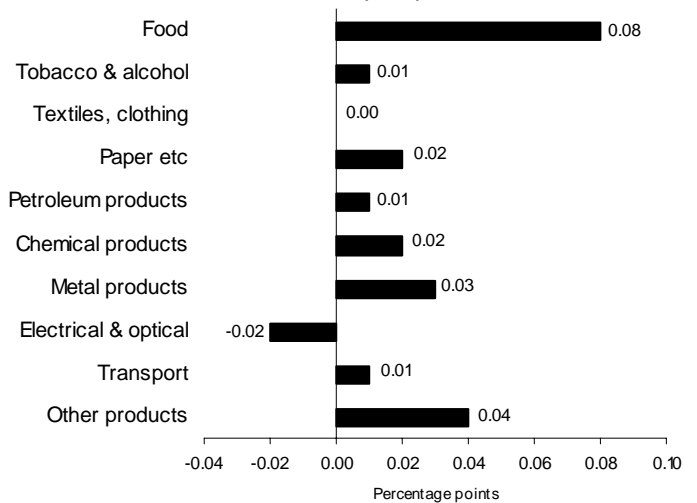
**Contribution to 12 months percentage change in total (2.4%)**



**1 month change to July**

Product group	Percentage change
Food	0.5
Tobacco & alcohol	0.1
Textiles, clothing	0.0
Paper etc	0.2
Petroleum products	0.2
Chemical products	0.3
Metal products	0.3
Electrical & optical	-0.4
Transport	0.1
Other products	0.2
<b>All manufacturing</b>	<b>0.2</b>

**Contribution to 1 month percentage change in total (0.2%)**



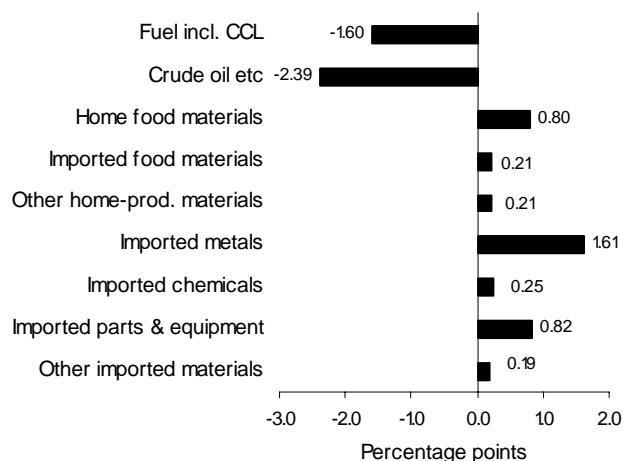
**Input prices (materials and fuels): detail**

The contributions to movements in the total input index by the main commodities over the year and month (not seasonally adjusted) are:

**12 month change to July<sup>1</sup>**

Commodity group	Percentage change
Fuel incl. CCL	-6.7
Crude oil etc	-4.7
Home food materials	4.3
Imported food materials	2.2
Other home-prod. materials	5.6
Imported metals	7.9
Imported chemicals	0.9
Imported parts & equipment	1.5
Other imported materials	0.8
<b>All manufacturing</b>	<b>0.1</b>

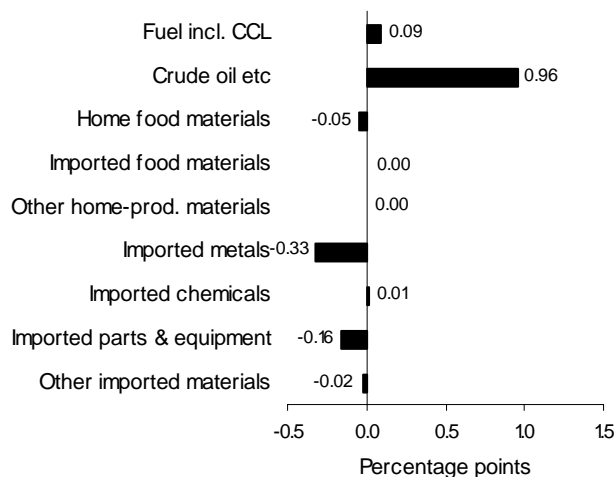
**Contribution to 12 months percentage change in total (0.1%)**



**1 month change to July<sup>1</sup>**

Commodity group	Percentage change
Fuel incl. CCL	0.8
Crude oil etc	4.6
Home food materials	-0.5
Imported food materials	0.0
Other home-prod. materials	0.1
Imported metals	-3.1
Imported chemicals	0.1
Imported parts & equipment	-0.5
Other imported materials	-0.2
<b>All manufacturing</b>	<b>0.5</b>

**Contribution to 1 month percentage change in total (0.5%)**



1. Including Aggregates Levy

## BACKGROUND NOTES

### BASIC QUALITY INFORMATION

1. **Link to Summary Quality Report** A Summary Quality Report for the PPI can be found at:  
[http://www.statistics.gov.uk/about/data/methodology/quality/information\\_business\\_statistics.asp](http://www.statistics.gov.uk/about/data/methodology/quality/information_business_statistics.asp) This report describes, in detail, the intended uses of the statistics presented in this publication, their general quality and the methods used to produce them.

### Relevance to users

2. Index numbers shown in the main text of this First Release are on a net sector basis. The index for any sector relates only to transactions between that sector and other sectors: sales and purchases within sectors are excluded. However, the more detailed figures shown in Tables 5 and 7 are on a gross basis; that is, intra industry sales and purchases are included in each of these indices.
3. Indices relate to average prices for a month. The full effect of a price change occurring partway through any month will only be reflected in the following month's index.
4. All index numbers exclude VAT. Excise duties (on cigarettes, manufactured tobacco, alcoholic liquor and petroleum products) are included, except where labelled otherwise.
5. The detailed input indices of prices of materials and fuels purchased by industry (table 7) do not include the Climate Change Levy. This is because each industry can in practise pay its own rate for the various forms of energy, depending on the various negotiated discounts (and exemptions) that apply.

### Common pitfalls in interpreting series

6. Expectations of accuracy and reliability in sample surveys are often too high. Revisions and sampling variability are inevitable consequences of the trade off between timeliness, accuracy and the burden on respondents. Details of sampling variability are included elsewhere in this release.
7. Very few statistical revisions arise as a result of 'errors' in the popular sense of the word. All estimates, by definition, are subject to statistical 'error' but, in this context, the word refers to the uncertainty in any process or calculation that uses sampling, estimation or modelling. Most revisions reflect either the adoption of new statistical techniques or the incorporation of new information which allows the statistical error of previous estimates to be reduced. Only rarely are there avoidable 'errors' such as human or system failures, and such mistakes are made quite clear when they are discovered and corrected.

**Accuracy**

- 8. Figures for the latest two months are provisional and the latest five months are subject to revisions in light of (a) late and revised respondent data and (b) revisions to seasonal adjustment factors which are re-estimated every month. A routine seasonal adjustment review is conducted in the autumn annually. There are no other planned methodological changes in the next 12 months.

**Revisions**

- 9. Revisions to data provide one indication of the reliability of key indicators. The tables below show summary information on the size and direction of the revisions which have been made to the data covering a five year period. A statistical test has been applied to the average revision to find out if it is statistically significantly different from zero. An asterisk (\*) shows that the test is significant.
- 10. The table below presents a summary of the differences between the first estimates published between July 2001 and June 2006 and the estimates published 12 months later. These numbers include revisions as a result of methodological changes made when the series were rebased to 2000=100 in October 2003. For more information see [http://www.statistics.gov.uk/articles/economic\\_trends/ETAugMorris.pdf](http://www.statistics.gov.uk/articles/economic_trends/ETAugMorris.pdf)

	Value in latest period	Revisions between first publication and estimates twelve months later	
		Average over the last 5 years	Average over the last 5 years without regard to sign (average absolute revision)
Total output (PLLU) 12 months %	2.4	-0.02	0.08
Total output (PLLU) 1 months %	0.2	0.01	0.06
Total input (RNNK) 12 months %	0.1	-0.23	0.71
Total input (RNNK) 1 months %	0.5	0.03	0.36

- 11. Spreadsheets giving revisions triangles of estimates for all months from January 1998 through to June 2007, and the calculations behind the averages in the table is available on the National Statistics website at <http://www.statistics.gov.uk/StatBase/Product.asp?vlnk=790>

## PUBLICATION POLICY

12. The complete run of data in the tables of this First Release are also available to view and download in other electronic formats free of charge using the ONS Time Series Data website service. Users can download the complete release in a choice of zipped formats, or view and download their own selections of individual series. The Time Series Data service can be accessed at <http://www.statistics.gov.uk/timeseries>
13. Details of the policy governing the release of new data are available from the press office. Also available is a list of the names of those given pre-publication access to the contents of this release.
14. **National Statistics** are produced to high professional standards set out in the National Statistics Code of Practice. They undergo regular quality assurance reviews to ensure that they meet customer needs. They are produced free from any political interference. © Crown Copyright 2007.

# 1 Output prices: summary (not seasonally adjusted)

2000=100

	Manufactured products			Manufacturing other than food, beverages, tobacco and petroleum products			Food, beverages and tobacco products			Petroleum products		
	Index (2000 = 100)	percentage change over		Index (2000 = 100)	percentage change over		Index (2000 = 100)	percentage change over		Index (2000 = 100)	percentage change over	
		1 mth	12 mths		1 mth	12 mths		1 mth	12 mths		1 mth	12 mths
	PLLU			PLLV			RBGA			RPVU		
2007 Jan	110.2	0.4	2.2	108.4	0.5	2.5	113.2	0.4	3.3	114.7	-0.4	-2.7
Feb	110.6	0.4	2.3	108.9	0.5	2.7	113.6	0.4	3.6	113.8	-0.8	-4.2
Mar	111.3	0.6	2.7	109.3	0.4	2.8	114.4	0.7	4.2	116.6	2.5	-2.6
Apr	111.8	0.4	2.4	109.4	0.1	2.3	114.8r	0.3	4.0	120.1	3.0	-2.3
May	112.2	0.4	2.4	109.4	-	2.3	115.2	0.3	3.9	123.3	2.7	-2.1
Jun	112.5p	0.3	2.5	109.5p	0.1	2.2	115.4p	0.2	3.8	125.3p	1.6	-0.3
Jul	112.7p	0.2	2.4	109.7p	0.2	2.3	115.8p	0.3	3.8	125.5p	0.2	-1.3

p = provisional  
r = revised

# 2 Input prices: including Climate Change Levy summary (not seasonally adjusted)<sup>1</sup>

2000=100

	All manufacturing industry								
	Materials and fuel purchased			Materials purchased			Fuel purchased		
	Index (2000 = 100)	percentage change over		Index (2000 = 100)	percentage change over		Index (2000 = 100)	percentage change over	
1 mth		12 mths	1 mth		12 mths	1 mth		12 mths	
	RNNK			PLKX			RNNL		
2007 Jan	118.9	-3.0	-2.1	112.1	-2.6	-1.4	210.2	-5.8	-6.9
Feb	119.9	0.8	-1.2	113.5	1.2	-0.4	206.4	-1.8	-6.1
Mar	122.5	2.2	0.7	116.9	3.0	1.6	198.8	-3.7	-6.1
Apr	122.4	-0.1	-0.8	118.5	1.4	0.2	175.2r	-11.9	-8.7
May	123.1	0.6	1.3	119.5	0.8	2.0	172.0	-1.8	-5.0
Jun	124.2p	0.9	2.3	120.9p	1.2	2.9	168.2p	-2.2	-3.8
Jul	124.8p	0.5	0.1	121.4p	0.4	0.7	169.6p	0.8	-6.7

<sup>1</sup> The Climate Change Levy was introduced in April 2001. See Background Notes for more details.  
p = provisional  
r = revised

# 3 Output prices

2000=100

	All manufactured products			Excluding food, beverages, tobacco and petroleum products					
	not seasonally adjusted			not seasonally adjusted			seasonally adjusted		
	Index (2000 = 100)	percent change over		Index (2000 = 100)	percent change over		Index (2000 = 100)	percent change over	
		1 month	12 months		1 month	12 months		1 month	12 months
	PLLU			PLLV			PLLW		
2004 Jan	102.1	0.2	1.6	101.4	0.2	1.4	101.4	0.2	1.4
Feb	102.3	0.2	1.6	101.6	0.2	1.4	101.6	0.2	1.5
Mar	102.8	0.5	1.4	101.9	0.3	1.5	101.8	0.2	1.5
Apr	103.1	0.3	1.8	101.8	-0.1	1.3	101.7	-0.1	1.3
May	103.5	0.4	2.5	101.9	0.1	1.4	101.9	0.2	1.4
Jun	103.6	0.1	2.6	101.8	-0.1	1.4	102.0	0.1	1.4
Jul	103.8	0.2	2.6	102.3	0.5	1.7	102.4	0.4	1.7
Aug	104.2	0.4	2.8	102.9	0.6	2.2	102.9	0.5	2.2
Sep	104.5	0.3	3.1	103.2	0.3	2.3	103.1	0.2	2.3
Oct	105.2	0.7	3.5	103.7	0.5	2.9	103.7	0.6	2.9
Nov	105.3	0.1	3.5	103.9	0.2	3.0	103.9	0.2	2.9
Dec	104.9	-0.4	2.9	103.6	-0.3	2.4	103.7	-0.2	2.5
2005 Jan	104.8	-0.1	2.6	104.0	0.4	2.6	103.9	0.2	2.5
Feb	105.1	0.3	2.7	104.1	0.1	2.5	104.1	0.2	2.5
Mar	105.8	0.7	2.9	104.3	0.2	2.4	104.2	0.1	2.4
Apr	106.5	0.7	3.3	104.5	0.2	2.7	104.3	0.1	2.6
May	106.3	-0.2	2.7	104.4	-0.1	2.5	104.4	0.1	2.5
Jun	106.2	-0.1	2.5	104.0	-0.4	2.2	104.3	-0.1	2.3
Jul	107.0	0.8	3.1	104.6	0.6	2.2	104.7	0.4	2.2
Aug	107.3	0.3	3.0	104.9	0.3	1.9	104.9	0.2	1.9
Sep	108.0	0.7	3.3	105.4	0.5	2.1	105.3	0.4	2.1
Oct	107.9	-0.1	2.6	105.1	-0.3	1.4	105.1	-0.2	1.4
Nov	107.7	-0.2	2.3	105.3	0.2	1.3	105.3	0.2	1.3
Dec	107.4	-0.3	2.4	105.4	0.1	1.7	105.5	0.2	1.7
2006 Jan	107.8	0.4	2.9	105.8	0.4	1.7	105.8	0.3	1.8
Feb	108.1	0.3	2.9	106.0	0.2	1.8	106.0	0.2	1.8
Mar	108.4	0.3	2.5	106.3	0.3	1.9	106.2	0.2	1.9
Apr	109.2	0.7	2.5	106.9	0.6	2.3	106.6	0.4	2.2
May	109.6	0.4	3.1	106.9	-	2.4	106.9	0.3	2.4
Jun	109.8	0.2	3.4	107.1	0.2	3.0	107.2	0.3	2.8
Jul	110.1	0.3	2.9	107.2	0.1	2.5	107.3	0.1	2.5
Aug	110.2	0.1	2.7	107.3	0.1	2.3	107.3	-	2.3
Sep	110.0	-0.2	1.9	107.6	0.3	2.1	107.5	0.2	2.1
Oct	109.6	-0.4	1.6	107.8	0.2	2.6	107.8	0.3	2.6
Nov	109.6	-	1.8	107.9	0.1	2.5	108.0	0.2	2.6
Dec	109.8	0.2	2.2	107.9	-	2.4	108.1	0.1	2.5
2007 Jan	110.2	0.4	2.2	108.4	0.5	2.5	108.4	0.3	2.5
Feb	110.6	0.4	2.3	108.9	0.5	2.7	108.8	0.4	2.6
Mar	111.3	0.6	2.7	109.3	0.4	2.8	109.1	0.3	2.7
Apr	111.8	0.4	2.4	109.4	0.1	2.3	109.2	0.1	2.4
May	112.2	0.4	2.4	109.4	-	2.3	109.4	0.2	2.3
Jun	112.5p	0.3	2.5	109.5p	0.1	2.2	109.5p	0.1	2.1
Jul	112.7p	0.2	2.4	109.7p	0.2	2.3	109.7p	0.2	2.2

p provisional  
r revised

# 4 Output prices excluding excise duties (PPIY)

2000=100

All manufactured products (excluding excise duties)

	Not seasonally adjusted			Seasonally adjusted		
	Index (2000 = 100)	Percentage change over		Index (2000 = 100)	Percentage change over	
		1 month	12 months		1 month	12 months
	PVNP			PVNQ		
2004 Jan	102.0	0.2	1.5	102.2	0.1	1.5
Feb	102.2	0.2	1.4	102.5	0.3	1.5
Mar	102.6	0.4	1.0	102.7	0.2	1.1
Apr	102.9	0.3	1.5	102.8	0.1	1.6
May	103.4	0.5	2.4	103.3	0.5	2.4
Jun	103.5	0.1	2.6	103.5	0.2	2.6
Jul	103.7	0.2	2.6	103.6	0.1	2.5
Aug	104.1	0.4	2.8	104.0	0.4	2.8
Sep	104.5	0.4	3.1	104.4	0.4	3.1
Oct	105.3	0.8	3.8	105.0	0.6	3.9
Nov	105.5	0.2	3.8	105.6	0.6	3.8
Dec	105.0	-0.5	3.1	105.3	-0.3	3.1
2005 Jan	104.8	-0.2	2.7	105.1	-0.2	2.8
Feb	105.2	0.4	2.9	105.6	0.5	3.0
Mar	105.8	0.6	3.1	105.9	0.3	3.1
Apr	106.6	0.8	3.6	106.5	0.6	3.6
May	106.3	-0.3	2.8	106.2	-0.3	2.8
Jun	106.2	-0.1	2.6	106.2	-	2.6
Jul	107.1	0.8	3.3	106.9	0.7	3.2
Aug	107.6	0.5	3.4	107.3	0.4	3.2
Sep	108.4	0.7	3.7	108.1	0.7	3.5
Oct	108.2	-0.2	2.8	107.9	-0.2	2.8
Nov	108.0	-0.2	2.4	108.1	0.2	2.4
Dec	107.6	-0.4	2.5	108.1	-	2.7
2006 Jan	108.2	0.6	3.2	108.5	0.4	3.2
Feb	108.4	0.2	3.0	108.7	0.2	2.9
Mar	108.8	0.4	2.8	108.9	0.2	2.8
Apr	109.5	0.6	2.7	109.3	0.4	2.6
May	110.0	0.5	3.5	109.8	0.5	3.4
Jun	110.2	0.2	3.8	110.0	0.2	3.6
Jul	110.5	0.3	3.2	110.1r	0.1	3.0
Aug	110.6	0.1	2.8	110.3	0.2	2.8
Sep	110.3	-0.3	1.8	109.9	-0.4	1.7
Oct	109.9	-0.4	1.6	109.8	-0.1	1.8
Nov	109.9	-	1.8	110.1	0.3	1.9
Dec	109.9	-	2.1	110.5	0.4	2.2
2007 Jan	110.4	0.5	2.0	110.9	0.4	2.2
Feb	110.9	0.5	2.3	111.3	0.4	2.4
Mar	111.7	0.7	2.7	111.8	0.4	2.7
Apr	112.0	0.3	2.3	111.9	0.1	2.4
May	112.5	0.4	2.3	112.1	0.2	2.1
Jun	112.8p	0.3	2.4	112.4p	0.3	2.2
Jul	113.1p	0.3	2.4	112.5p	0.1	2.2

This series excludes excise duties payable on tobacco products, alcoholic liquor and petroleum products.

## 5 Output prices: detailed by product (not seasonally adjusted) all manufactured and selected products

2000=100

		2007 Mar	2007 Apr	2007 May	2007 Jun	2007 Jul	% change 1 month		% change 12 months	
							2007 Jun	2007 Jul	2007 Jun	2007 Jul
<b>Net sector</b>										
Output of manufactured products	PLLU	111.3	111.8	112.2	112.5p	112.7p	0.3	0.2	2.5	2.4
All manufacturing excl. duty	PVNP	111.7	112.0	112.5	112.8p	113.1p	0.3	0.3	2.4	2.4
All manufacturing excl. duty - seasonally adjusted	PVNQ	111.8	111.9	112.1	112.4p	112.5p	0.3	0.1	2.2	2.2
Products of manufacturing industries other than food, beverages, petroleum and tobacco -unadjusted	PLLV	109.3	109.4	109.4	109.5p	109.7p	0.1	0.2	2.2	2.3
All manufacturing excl. food, beverages, tobacco & petroleum - seasonally adjusted	PLLW	109.1	109.2	109.4	109.5p	109.7p	0.1	0.2	2.1	2.2
<b>Gross Sector</b>										
Food products, beverages & tobacco including duty	RBGA	114.4	114.8r	115.2	115.4p	115.8p	0.2	0.3	3.8	3.8
Food products & beverages including duty	RPUN	111.9	112.0	112.5	112.8p	113.3p	0.3	0.4	3.7	3.8
Food products excluding beverages	RBGD	111.7	111.7r	112.2	112.5p	113.1p	0.3	0.5	3.5	3.7
Tobacco products including duty	RPUS	129.4	131.4	131.4	131.4p	131.4p	-	-	4.2	4.2
Textiles	POKZ	104.1	104.2	104.3	104.4p	104.5p	0.1	0.1	1.8	1.8
Wearing apparel	POLA	98.4	98.5	98.5	98.5p	98.5p	-	-	0.3	0.3
Leather & leather products	POKJ	107.3	107.6	107.2	107.5p	107.3p	0.3	-0.2	1.1	0.8
Wood & wood products	POKK	121.0	121.8	122.5	123.7p	124.8p	1.0	0.9	10.2	10.7
Pulp, paper & paper products	POLD	103.0	103.6	104.3	104.5p	104.8p	0.2	0.3	4.0	4.2
Printed matter & recorded media	POLE	115.7	115.8	115.8	115.7p	116.0p	-0.1	0.3	1.4	1.6
Petroleum products including duty	RPVU	116.6	120.1	123.3	125.3p	125.5p	1.6	0.2	-0.3	-1.3
Chemicals, chemical, products & manmade fibres	POKN	116.5	117.4	117.6	117.8p	118.1p	0.2	0.3	1.6	2.1
Rubber & plastic products	POKO	110.6	110.7	110.8	110.7p	111.0p	-0.1	0.3	1.0	1.0
Other non metallic mineral products	POKP	123.3	124.4	123.4	123.3p	123.4p	-0.1	0.1	4.5	4.2
Base metals	POLJ	149.7	153.6r	155.5	155.3p	158.3p	-0.1	1.9	9.5	9.1
Fabricated metal products, except machinery and equipment	POLK	122.6	121.8	121.6	122.3p	122.8p	0.6	0.4	4.5	4.2
Machinery and equipment n.e.c.	POKR	111.5	112.3	112.4	112.5p	112.8p	0.1	0.3	3.0	3.0
Office machinery and computers	POLM	42.1	42.1	41.9	41.8p	41.1p	-0.2	-1.7	-5.0	-6.4
Electrical machinery and apparatus n.e.c.	POLN	113.9	113.8	114.9	114.9p	115.1p	-	0.2	1.5	1.3
Radio, television and communication equipment and apparatus	POLO	78.2	78.0	77.9	76.8p	76.4p	-1.4	-0.5	-3.2	-3.8
Medical precision and optical instruments, watches and clocks	POLP	105.2	105.1	105.2	104.9p	104.8p	-0.3	-0.1	0.3	0.2
Motor vehicles, trailers and semi-trailers	POLQ	100.1	98.9	98.9	98.8p	98.9p	-0.1	0.1	-0.7	-0.7
Other transport	POLR	116.8	116.8	117.1	117.5p	117.4p	0.3	-0.1	4.8	4.4
Furniture: other manufactured goods n.e.c.	POLS	107.3	107.6	107.7	107.8p	108.1p	0.1	0.3	2.6	2.7
Recovered secondary raw materials	QTEB	266.8	263.6r	260.5	262.5p	263.3p	0.8	0.3	16.3	17.2

# 6 Input prices: including Climate Change Levy<sup>1</sup> materials and fuels purchased

2000=100

	All manufacturing industries						Excluding food, beverages, tobacco and petroleum industries					
	not seasonally adjusted			seasonally adjusted			not seasonally adjusted			seasonally adjusted		
	Index	percent change over		Index	percent change over		Index	percentage change over		Index	percentage change over	
	(2000 = 100)	1 month	12 months	(2000 = 100)	1 month	12 months	(2000 = 100)	1 month	12 months	(2000 = 100)	1 month	12 months
	RNNK			RNPE			RNNQ			RNPF		
2004 Jan	95.6	-1.4	-0.2	95.4	-1.3	-0.3	93.3	-1.3	0.2	92.8	-0.7	-
Feb	95.2	-0.4	-1.3	94.8	-0.6	-1.2	92.8	-0.5	-0.5	92.3	-0.5	-0.5
Mar	97.2	2.1	0.9	96.5	1.8	0.9	93.9	1.2	-	93.4	1.2	-0.1
Apr	97.3	0.1	2.9	97.2	0.7	2.9	94.0	0.1	-0.2	93.8	0.4	-0.2
May	99.6	2.4	5.4	100.2	3.1	5.6	94.7	0.7	0.6	94.8	1.1	0.7
Jun	97.7	-1.9	3.5	98.3	-1.9	3.7	94.0	-0.7	1.1	94.8	-	1.3
Jul	98.7	1.0	4.0	98.5	0.2	3.7	94.4	0.4	1.5	94.9	0.1	1.4
Aug	100.8	2.1	4.9	100.3	1.8	4.6	95.3	1.0	2.1	96.2	1.4	2.3
Sep	102.5	1.7	7.8	103.1	2.8	8.1	96.9	1.7	3.6	97.8	1.7	3.8
Oct	105.0	2.4	9.0	105.8	2.6	9.2	98.2	1.3	4.7	98.6	0.8	4.8
Nov	103.4	-1.5	6.8	103.3	-2.4	6.7	99.1	0.9	4.9	98.3	-0.3	4.6
Dec	101.3	-2.0	4.4	101.0	-2.2	4.4	98.5	-0.6	4.2	97.4	-0.9	4.2
2005 Jan	104.9	3.6	9.7	104.6	3.6	9.6	100.4	1.9	7.6	99.8	2.5	7.5
Feb	105.5	0.6	10.8	105.2	0.6	11.0	100.5	0.1	8.3	99.9	0.1	8.2
Mar	107.9	2.3	11.0	107.2	1.9	11.1	101.0	0.5	7.6	100.3	0.4	7.4
Apr	107.1	-0.7	10.1	106.9	-0.3	10.0	100.6	-0.4	7.0	100.4	0.1	7.0
May	107.0	-0.1	7.4	107.8	0.8	7.6	100.9	0.3	6.5	101.0	0.6	6.5
Jun	109.3	2.1	11.9	110.1	2.1	12.0	100.8	-0.1	7.2	101.8	0.8	7.4
Jul	112.7	3.1	14.2	112.2	1.9	13.9	102.5	1.7	8.6	103.1	1.3	8.6
Aug	113.9	1.1	13.0	113.1	0.8	12.8	102.3	-0.2	7.3	103.4	0.3	7.5
Sep	113.2	-0.6	10.4	113.9	0.7	10.5	102.2	-0.1	5.5	103.4	-	5.7
Oct	114.4	1.1	9.0	115.2	1.1	8.9	105.1	2.8	7.0	105.5	2.0	7.0
Nov	117.5	2.7	13.6	117.4	1.9	13.6	108.8	3.5	9.8	107.7	2.1	9.6
Dec	119.6	1.8	18.1	119.1	1.4	17.9	110.5	1.6	12.2	109.2	1.4	12.1
2006 Jan	121.4	1.5	15.7	121.1	1.7	15.8	110.8	0.3	10.4	110.1	0.8	10.3
Feb	121.3	-0.1	15.0	121.4	0.2	15.4	111.2	0.4	10.6	110.6	0.5	10.7
Mar	121.7	0.3	12.8	121.0	-0.3	12.9	111.1	-0.1	10.0	110.4	-0.2	10.1
Apr	123.4	1.4	15.2	123.1	1.7	15.2	110.5	-0.5	9.8	110.5	0.1	10.1
May	121.5	-1.5	13.6	122.4	-0.6	13.5	109.5	-0.9	8.5	110.0	-0.5	8.9
Jun	121.4	-0.1	11.1	122.1	-0.2	10.9	109.5	-	8.6	110.8	0.7	8.8
Jul	124.7	2.7	10.6	124.1r	1.6	10.6	111.0	1.4	8.3	112.3r	1.4	8.9
Aug	123.0	-1.4	8.0	122.2	-1.5	8.0	110.2	-0.7	7.7	111.5	-0.7	7.8
Sep	119.1	-3.2	5.2	119.7	-2.0	5.1	109.6	-0.5	7.2	110.6	-0.8	7.0
Oct	119.7	0.5	4.6	120.6	0.8	4.7	111.7	1.9	6.3	111.9	1.2	6.1
Nov	121.8	1.8	3.7	121.3	0.6	3.3	114.3	2.3	5.1	112.8	0.8	4.7
Dec	122.6	0.7	2.5	121.6	0.2	2.1	114.1	-0.2	3.3	112.3	-0.4	2.8
2007 Jan	118.9	-3.0	-2.1	118.6	-2.5	-2.1	112.7	-1.2	1.7	112.0	-0.3	1.7
Feb	119.9	0.8	-1.2	120.4	1.5	-0.8	112.9	0.2	1.5	112.2	0.2	1.4
Mar	122.5	2.2	0.7	122.0	1.3	0.8	113.9	0.9	2.5	113.0r	0.7	2.4
Apr	122.4	-0.1	-0.8	122.3	0.2	-0.6	112.5	-1.2	1.8	112.7	-0.3	2.0
May	123.1	0.6	1.3	123.9	1.3	1.2	113.4	0.8	3.6	113.6	0.8	3.3
Jun	124.2p	0.9	2.3	124.7p	0.6	2.1	112.8p	-0.5	3.0	114.0p	0.4	2.9
Jul	124.8p	0.5	0.1	124.1p	-0.5	-	112.2p	-0.5	1.1	113.5p	-0.4	1.1

<sup>1</sup> The Climate Change Levy was introduced in April 2001.

See Background Notes for more details.

p = provisional

r = revised

# 7 Input prices: excluding Climate Change Levy<sup>1</sup> materials and fuels purchased by selected industries (not seasonally adjusted)

2000=100

		2007 Mar	2007 Apr	2007 May	2007 Jun	2007 Jul	% change 1 month		% change 12 months	
							2007 Jun	2007 Jul	2007 Jun	2007 Jul
<b>Gross sector</b>										
Other mining & quarrying products	RABE	112.2	113.6	113.9	116.6p	118.2p	2.4	1.4	0.2	-1.3
Manufacture of food products	RBBQ	116.1	116.0	117.0	117.1p	117.4p	0.1	0.3	3.0	2.5
Food products and beverages	RABF	116.1	116.1r	117.1	117.2p	117.5p	0.1	0.3	3.1	2.6
Tobacco products	RABG	112.7	112.7r	112.9	111.3p	111.4p	-1.4	0.1	-0.2	-
Manufacture of textiles	RBBR	107.6	106.5	106.6	106.6p	106.8p	-	0.2	1.1	0.8
Textiles	RABH	110.5	109.1	109.1	109.2p	109.4p	0.1	0.2	1.4	0.9
Wearing apparel	RABI	102.5	102.0	102.1	102.2p	102.3p	0.1	0.1	0.9	0.6
Manufacture of leather	RBBS	111.3	110.9	111.4	111.4p	111.8p	-	0.4	1.9	1.6
Manufacture of wood and wood products	RBBT	115.0	115.0	116.0	116.6p	117.3p	0.5	0.6	7.9	7.9
Manufacture of pulp paper & paper products, publishing and printing	RBBU	109.7	109.4	109.7	109.8p	110.0p	0.1	0.2	2.4	2.1
Pulp and paper products	RABL	108.1	107.4	107.8	108.1p	108.2p	0.3	0.1	3.1	2.3
Printed matter and recording material	RABM	110.4	110.4	110.6	110.7p	110.8p	0.1	0.1	2.2	1.9
Manufacture of coke, refined petroleum products and nuclear fuel	RBBV	161.8r	169.2	169.0	180.3p	187.8p	6.7	4.2	-1.3	-4.4
Manufacture of chemical products	RBBW	120.8	120.1	120.4	120.8p	121.1p	0.3	0.2	1.0	0.3
Manufacture of rubber and plastic products	RBBX	117.9r	117.2	117.6	117.5p	118.0p	-0.1	0.4	1.8	1.5
Manufacture of other non-metallic mineral products	RBBY	122.0	119.7	119.4	119.6p	119.8p	0.2	0.2	2.0	0.8
Manufacture of basic metals and fabricated metal products	RBBZ	146.8	147.7	148.8	148.4p	148.4p	-0.3	-	8.5	6.5
Basic metals	RABV	156.6	157.6r	158.6	158.0p	157.5p	-0.4	-0.3	8.9	6.9
Fabricated metal products	RABW	138.3	139.2	140.2	140.2p	140.6p	-	0.3	8.2	6.1
Manufacture of machinery and equipment n.e.c.	RBCA	121.1	121.5	122.3	122.3p	122.4p	-	0.1	5.2	3.9
Manufacture of electrical and optical equipment	RBCB	95.5	94.9	95.4	95.2p	94.9p	-0.2	-0.3	1.9	0.9
Office machinery and computers	RABY	79.6	78.7	78.8	78.4p	77.7p	-0.5	-0.9	-3.4	-4.9
Electrical machinery and apparatus n.e.c.	RACB	111.1	111.0	111.8	111.8p	111.8p	-	-	2.9	1.8
Radio, television and communication equipment	RACC	106.6	106.5	107.2	107.1p	106.9p	-0.1	-0.2	4.0	3.0
Medical, precision, optical instruments and clocks	RACD	97.3	96.8	97.2	97.2p	97.0p	-	-0.2	0.5	-0.4
Manufacturing of transport equipment	RBCC	113.8	113.9	115.1	115.0p	115.1p	-0.1	0.1	4.5	3.6
Motor vehicles, trailers and semi trailers	RACE	115.2	115.4	116.9	116.7p	116.8p	-0.2	0.1	4.9	4.0
Other transport equipment	RACF	110.7	110.3	111.1	111.3p	111.3p	0.2	-	3.9	2.8
Manufacturing n.e.c.	RBCD	121.4	121.9	122.8	123.0p	123.4p	0.2	0.3	6.0	5.3

<sup>1</sup> The Climate Change Levy cannot be included in this table.

See Background Notes for more details.

p = provisional

r = revised

## 8 Input prices: detailed by commodity (not seasonally adjusted)

2000=100

		2007 Mar	2007 Apr	2007 May	2007 Jun	2007 Jul	% change 1 month		% change 12 months	
							2007 Jun	2007 Jul	2007 Jun	2007 Jul
Fuel inc. CCL <sup>1</sup>	<b>RNNL</b>	198.8	175.2r	172.0	168.2p	169.6p	-2.2	0.8	-3.8	-6.7
Electricity inc. CCL	<b>RCVR</b>	185.9	169.8	168.4	162.7p	161.3p	-3.4	-0.9	2.1	-0.2
Gas inc. CCL	<b>RCVW</b>	246.9	194.8r	186.1	188.1p	198.3p	1.1	5.4	-18.0	-20.9
Crude petroleum oils and crude oils obtained from bituminous minerals	<b>QWYK</b>	169.8	178.7	178.5	191.9p	200.8p	7.5	4.6	-1.4	-4.7
<b>HOME PRODUCED MATERIALS</b>										
Home produced food materials	<b>YZYM</b>	125.8r	127.8r	129.1	128.9p	128.2p	-0.2	-0.5	5.2	4.3
Animals for slaughter	<b>PNDE</b>	135.0r	137.9r	131.5	135.5p	135.5p	3.0	-	-4.5	-1.4
Other home produced materials	<b>PVEV</b>	132.2	135.3	134.9	134.8p	134.9p	-0.1	0.1	5.6	5.6
<b>IMPORTED MATERIALS</b>										
Imported materials - total	<b>PVNN</b>	110.2	111.0	112.2	112.6p	112.3p	0.4	-0.3	3.6	1.5
Imported food materials	<b>PTUS</b>	114.7	114.3	115.2	114.7p	114.7p	-0.4	-	3.0	2.2
All meat and meat preparations	<b>PVNY</b>	115.2 B	116.1 B	117.8 B	117.0pB	118.2pB	-0.7	1.0	-1.6	-0.9
Cereals and cereal preparations	<b>PVOG</b>	113.4 B	113.7rB	113.6 B	117.3pB	119.4pB	3.3	1.8	16.1	17.2
Imported metals	<b>PVEW</b>	165.3	170.4r	172.8	170.1p	164.8p	-1.6	-3.1	14.2	7.9
Iron and steel	<b>PSTZ</b>	161.6 B	164.8 B	166.3 B	167.2pB	165.7pB	0.5	-0.9	21.4	16.8
Non-ferrous metals	<b>PSVH</b>	170.1rB	176.5 B	180.8 B	178.3pB	173.3pB	-1.4	-2.8	9.7	4.0
Imported chemicals	<b>PVEX</b>	116.9r	116.7	117.4	117.6p	117.7p	0.2	0.1	1.6	0.9
Organic chemicals	<b>PSIV</b>	114.8 B	113.9 B	114.5 B	114.8pB	114.1pB	0.3	-0.6	1.3	0.3
Medicinal and pharmaceutical products	<b>PSLX</b>	89.0 B	89.0 B	88.8 B	88.7pB	87.9pB	-0.1	-0.9	2.2	1.2
Plastics in primary forms	<b>PSNV</b>	113.4 B	113.5rB	114.3 B	114.9pB	115.3pB	0.5	0.3	0.4	0.1
Imported parts and equipment	<b>YZYU</b>	90.6	89.9	91.2	91.0p	90.5p	-0.2	-0.5	2.9	1.5
Office machinery and computer parts	<b>RDAI</b>	60.8	58.1	57.6	56.2p	54.5p	-2.4	-3.0	-15.1	-17.7
Electronic components	<b>RDAM</b>	61.8 B	60.7 B	60.9 B	60.7pB	59.7pB	-0.3	-1.6	-6.0	-7.6
Motor vehicles and parts	<b>RDBV</b>	109.9	109.6	114.4	113.9p	113.9p	-0.4	-	6.3	5.2
Other imported	<b>YZYT</b>	102.5	103.3	104.1	103.9p	103.7p	-0.2	-0.2	2.0	0.8
Rubber products	<b>RBIA</b>	115.2	115.1	115.2	105.1p	105.2p	-8.8	0.1	-6.1	-7.0
Wood and wood products	<b>RBHK</b>	119.9	121.1	124.0	124.4p	125.5p	0.3	0.9	11.8	11.3
Pulp, paper, and paperboard	<b>RBHL</b>	93.2	94.1	94.9	95.3p	95.1p	0.4	-0.2	2.7	1.7
Man-made fibres	<b>RBHZ</b>	105.0 B	104.7 B	104.8 B	105.3pB	105.0pB	0.5	-0.3	2.8	2.3
Preparation of spinning of textile fibres	<b>RBHC</b>	102.7	102.4	102.6	102.7p	102.4p	0.1	-0.3	-0.1	-0.3
Other textiles	<b>RBHG</b>	86.9 B	86.9 B	87.0 B	86.5pB	86.5pB	-0.6	-	-0.2	-0.6

<sup>1</sup> The Climate Change Levy was introduced in April 2001.

B The values with 'B' are considered less reliable than the remainder currently published mainly due to the lack of market coverage

p = provisional

r = revised



