

12 May 2008

Coverage
United Kingdom

Theme
The Economy



Producer prices

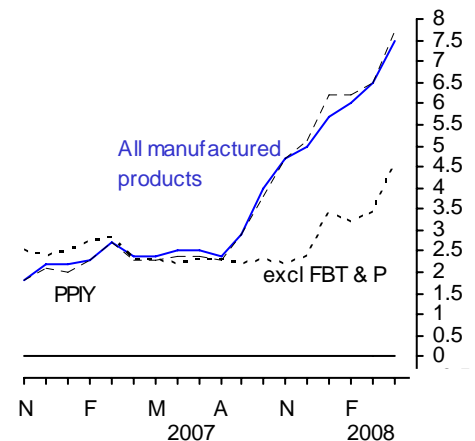
April 2008

The output price index for home sales of manufactured products rose 7.5 per cent in the year to April, compared with the rise of 6.5 per cent in the year to March. Unadjusted, the index rose 1.4 per cent between March and April, mainly reflecting rises in other manufactured product prices.

If passed on in full, the changes in excise duty on tobacco and alcohol announced in the Budget would have increased the index by 0.3 per cent in April.

The output price index excluding excise duties (PPIY) rose 7.7 per cent in the year to April. Seasonally adjusted, the index rose 1.0 per cent between March and April.

Output prices
12 months percentage change



Issued by
Office for National Statistics
Cardiff Road
Newport
NP10 8XG

Contact
Media Office
0845 6041858
Ian Richardson
01633 455 780
Email
ppi@ons.gov.uk

www.statistics.gov.uk

Next publication date
9 June 2008

Output prices (home sales)

NSA / SA not / seasonally adjusted

		All manufactured products		Excluding food, beverages, tobacco and petroleum		All manufactured products excluding duty	
		12 months (NSA)	1 month (NSA)	12 months (NSA)	1 month (SA)	12 months (NSA)	1 month (SA)
<i>Percentage change</i>							
2007	Nov	4.7	0.7	2.2	0.2	4.7	1.0
	Dec	5.0	0.4	2.4	0.4	5.1	0.7
2008	Jan	5.8	1.1	3.4	1.1	6.2	1.0
	Feb	6.0	0.5	3.2	0.3	6.2	0.5
	Mar	6.5	1.1	3.4	0.4	6.5	0.7
	Apr	7.5	1.4	4.6	1.0	7.7	1.0

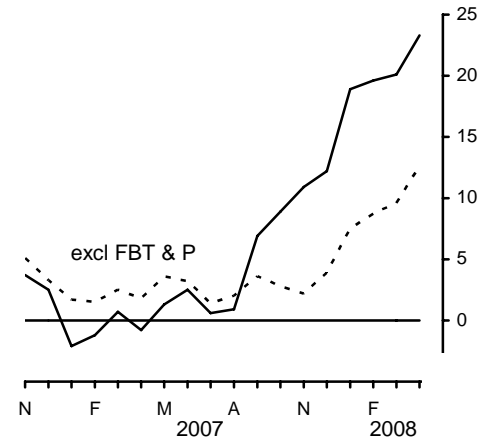
Input prices: summary

The input price index for materials and fuels purchased by manufacturing industry rose 23.3 per cent in the year to April and rose 2.6 per cent between March and April. The rise in the input index between March and April mainly reflected a rise in the price of crude oil. Prices of imported materials as a whole (including imported crude oil) rose 2.4 per cent between March and April.

Seasonally adjusted, the input price index rose 2.4 per cent between March and April.

The input price index for manufacturing industry excluding the food, beverages, tobacco and petroleum industries rose 12.6 per cent in the year to April. Seasonally adjusted, the index rose 2.2 per cent between March and April.

**Input prices (materials & fuel)
manufacturing industry**
12 months percentage change



Input prices^{1,2}

		Materials and fuels purchased			Excluding food, beverages, tobacco and petroleum industries		
		12 months (NSA)	1 month (NSA)	1 month (SA)	12 months (NSA)	1 month (NSA)	1 month (SA)
<i>Percentage change</i>							
2007	Nov	10.9	3.6	2.2	2.2	1.7	0.3
	Dec	12.2	1.8	1.6	3.9	1.5	1.2
2008	Jan	18.9	2.8	2.8	7.5	2.1	2.3
	Feb	19.6	1.4	2.0	8.7	1.3	1.5
	Mar	20.1	2.6	1.7	9.6	1.7	1.5
	Apr	23.3	2.6	2.4	12.6	1.5	2.2

NSA/SA not/seasonally adjusted

1 These indices include the Climate Change Levy which was introduced in April 2001

2 These indices include the Aggregates Levy which was introduced in April 2002

Revisions (Tables 9R and 10R)

For this release Tables 9R and 10R highlight revisions to price indices previously published in last month's First Release.

The revisions to headline price indices highlighted in Tables 9R and 10R were caused by changes to latest estimates as more price quotes are received and also revisions to seasonal adjustment factors which are re-estimated every month.

The gas market in April was subject to unusual market conditions. It is normal for the PPI prices to fall in April, following falls in the Spot gas price. In this case the Spot gas price for April has risen relative to March's price. In addition, April is the annual price round for many companies, so prices are particularly uncertain. This makes the input PPI for gas more susceptible to revision than normal.

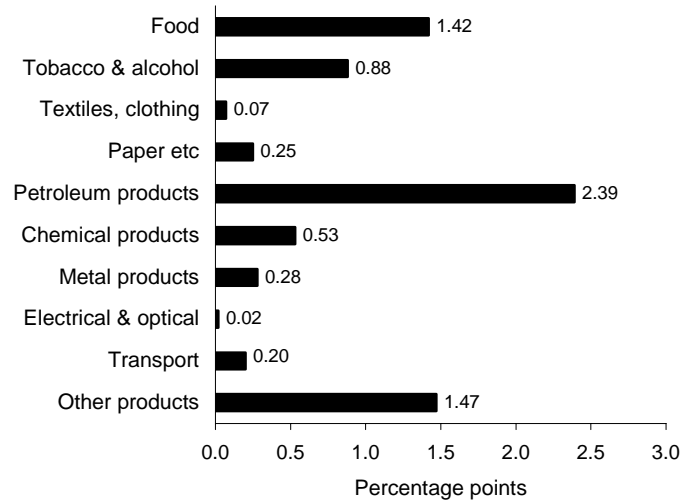
Output prices: detail

The contributions to movements in the total output index by the main product groups over the last year and month (not seasonally adjusted) are:

12 month change to April

Product group	Percentage change
Food	9.3
Tobacco & alcohol	6.4
Textiles, clothing	0.8
Paper etc	2.7
Petroleum products	25.4
Chemical products	8.9
Metal products	3.2
Electrical & optical	0.5
Transport	2.5
Other products	8.7
All manufacturing	7.5

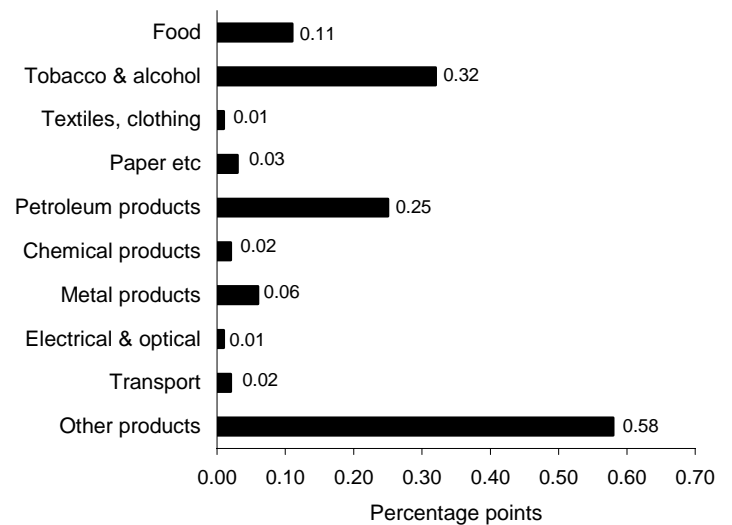
Contribution to 12 months percentage change in total (7.5%)



1 month change to April

Product group	Percentage change
Food	0.7
Tobacco & alcohol	2.4
Textiles, clothing	0.1
Paper etc	0.3
Petroleum products	2.3
Chemical products	0.4
Metal products	0.7
Electrical & optical	0.2
Transport	0.2
Other products	3.6
All manufacturing	1.4

Contribution to 1 month percentage change in total (1.4%)



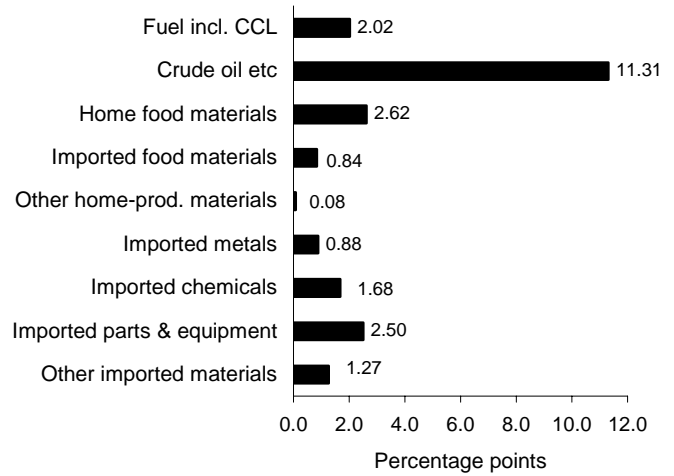
Input prices (materials and fuels): detail

The contributions to movements in the total input index by the main commodities over the year and month (not seasonally adjusted) are:

12 month change to April

Product group	Percentage change
Fuel incl. CCL	20.5
Crude oil etc	62.6
Home food materials	32.3
Imported food materials	20.4
Other home-prod. materials	4.6
Imported metals	9.0
Imported chemicals	13.5
Imported parts & equipment	10.0
Other imported materials	11.7
<hr/>	
All manufacturing	23.3

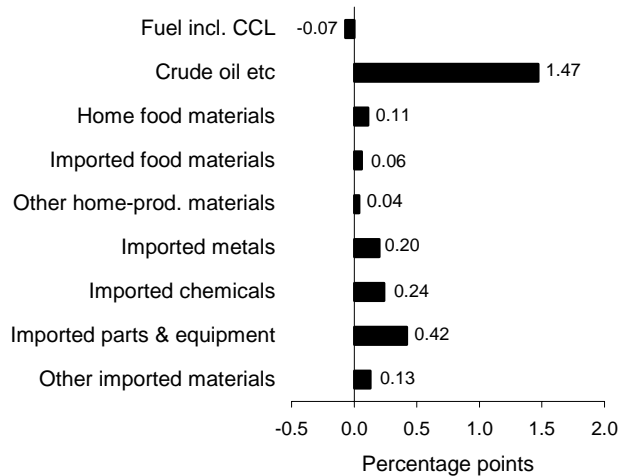
Contribution to 12 months percentage change in total (23.3%)



1 month change to April

Product group	Percentage change
Fuel incl. CCL	-0.7
Crude oil etc	6.4
Home food materials	1.3
Imported food materials	1.5
Other home-prod. materials	2.4
Imported metals	2.4
Imported chemicals	2.2
Imported parts & equipment	1.9
Other imported materials	1.3
<hr/>	
All manufacturing	2.6

Contribution to 1 month percentage change in total (2.6%)



BACKGROUND NOTES

BASIC QUALITY INFORMATION

1. **Key issues specific to this release** The output PPI was affected by Budget increases in taxation of tobacco (coming into effect from 12 March) and alcoholic drinks (coming into effect from 17 March). Rises in fuel duties do not come into effect until 1 October. If passed on in full, the Budget measures are estimated to add 0.3 per cent to the overall output index in March and a further 0.3 per cent in April.

2. **Link to Summary Quality Report** A Summary Quality Report for the PPI can be found at http://www.statistics.gov.uk/about/data/methodology/quality/information_business_statistics.asp. This report describes, in detail, the intended uses of the statistics presented in this publication, their general quality and the methods used to produce them.

Relevance to users

3. Index numbers shown in the main text of this First Release are on a net sector basis. The index for any sector relates only to transactions between that sector and other sectors: sales and purchases within sectors are excluded. However, the more detailed figures shown in Tables 5 and 7 are on a gross basis; that is, intra industry sales and purchases are included in each of these indices.

4. Indices relate to average prices for a month. The full effect of a price change occurring partway through any month will only be reflected in the following month's index.

5. All index numbers exclude VAT. Excise duties (on cigarettes, manufactured tobacco, alcoholic liquor and petroleum products) are included, except where labelled otherwise.

6. The detailed input indices of prices of materials and fuels purchased by industry (table 7) do not include the Climate Change Levy. This is because each industry can in practise pay its own rate for the various forms of energy, depending on the various negotiated discounts (and exemptions) that apply.

Common pitfalls in interpreting series

7. Expectations of accuracy and reliability in sample surveys are often too high. Revisions and sampling variability are inevitable consequences of the trade off between timeliness, accuracy and the burden on respondents. Details of sampling variability are included elsewhere in this release.

8. Very few statistical revisions arise as a result of 'errors' in the popular sense of the word. All estimates, by definition, are subject to statistical 'error' but, in this context, the word refers to the uncertainty in any process or calculation that uses sampling, estimation or modelling. Most revisions reflect either the adoption of new statistical techniques or the incorporation of new information which allows the statistical error of previous estimates to be reduced. Only rarely are there avoidable 'errors' such as human or system failures, and such mistakes are made quite clear when they are discovered and corrected.

Accuracy

9. Figures for the latest two months are provisional and the latest five months are subject to revisions in light of (a) late and revised respondent data and (b) revisions to seasonal adjustment factors which are re-estimated every month. A routine seasonal adjustment review is conducted in the autumn annually. There are no other planned methodological changes in the next 12 months.

Revisions

10. Revisions to data provide one indication of the reliability of key indicators. The tables below show summary information on the size and direction of the revisions which have been made to the data covering a five year period. A statistical test has been applied to the average revision to find out if it is statistically significantly different from zero. An asterisk (*) shows that the test is significant.

11. The table below presents a summary of the differences between the first estimates published between April 2002 and March 2007 and the estimates published 12 months later. These numbers include revisions as a result of methodological changes made when the series were rebased to 2000=100 in October 2003. For more information see http://www.statistics.gov.uk/articles/economic_trends/ETAugMorris.pdf

	Value in latest period	Revisions between first publication and estimates twelve months later	
		Average over the last 5 years	Average over the last 5 years without regard to sign (average absolute revision)
Total output (PLLU) 12 months %	7.5	0.00	0.07
Total output (PLLU) 1 months %	1.4	0.02	0.06
Total input (RNNK) 12 months %	23.3	-0.22	0.71
Total input (RNNK) 1 months %	2.6	0.09	0.37

12. S

preadsheets giving revisions triangles of estimates for all months from January 1998 through to March 2008, and the calculations behind the averages in the table is available on the National Statistics website at:

<http://www.statistics.gov.uk/StatBase/Product.asp?vInk=790>

PUBLICATION POLICY

13. The complete run of data in the tables of this First Release are also available to view and download in other electronic formats free of charge using the ONS Time Series Data website service. Users can download the complete release in a choice of zipped formats, or view and download their own selections of individual series. The Time Series Data service can be accessed at <http://www.statistics.gov.uk/timeseries>

14. Details of the policy governing the release of new data are available from the press office. Also available is a list of the names of those given pre-publication access to the contents of this release.

15. **National Statistics** are produced to high professional standards set out in the National Statistics Code of Practice. They undergo regular quality assurance reviews to ensure that they meet customer needs. They are produced free from any political interference. © Crown Copyright 2008.

1 Output prices: summary (not seasonally adjusted)

2000=100

	Manufactured products			Manufacturing other than food, beverages, tobacco and petroleum products			Food, beverages and tobacco products			Petroleum products		
	Index (2000 = 100)	percentage change over		Index (2000 = 100)	percentage change over		Index (2000 = 100)	percentage change over		Index (2000 = 100)	percentage change over	
		1 mth	12 mths		1 mth	12 mths		1 mth	12 mths		1 mth	12 mths
	PLLU			PLLV			RBGA			RPVU		
2007 Oct	114.0	0.7	4.0	110.3	0.3	2.3	118.1	1.0	5.4	130.1	3.1	12.7
Nov	114.8	0.7	4.7	110.3	–	2.2	118.8	0.6	5.7	136.6	5.0	20.0
Dec	115.3	0.4	5.0	110.5	0.2	2.4	119.6	0.7	6.0	139.1	1.8	20.7
2008 Jan	116.6r	1.1	5.8	112.1r	1.4	3.4	120.5	0.8	6.4	140.5	1.0	22.5
Feb	117.2	0.5	6.0	112.4	0.3	3.2	121.2	0.6	6.7	141.7	0.9	24.5
Mar	118.5p	1.1	6.5	113.0p	0.5	3.4	122.5p	1.1	7.1	147.2p	3.9	26.2
Apr	120.2p	1.4	7.5	114.4p	1.2	4.6	123.8p	1.1	7.8	150.6p	2.3	25.4

p = provisional
r = revised

2 Input prices: including Climate Change Levy summary (not seasonally adjusted)¹

2000=100

	All manufacturing industry								
	Materials and fuel purchased			Materials purchased			Fuel purchased		
	Index (2000 = 100)	percentage change over		Index (2000 = 100)	percentage change over		Index (2000 = 100)	percentage change over	
1 mth		12 mths	1 mth		12 mths	1 mth		12 mths	
	RNNK			PLKX			RNNL		
2007 Oct	130.4	2.4	8.9	126.1	2.0	10.6	188.2	5.9	–4.4
Nov	135.1	3.6	10.9	130.1	3.2	13.6	203.2	8.0	–7.4
Dec	137.5	1.8	12.2	132.1	1.5	14.8	210.9	3.8	–5.5
2008 Jan	141.4	2.8	18.9	135.9	2.9	21.2	215.8r	2.3	2.7
Feb	143.4	1.4	19.6	137.9	1.5	21.5	217.1	0.6	5.2
Mar	147.1p	2.6	20.1	142.3p	3.2	21.7	212.7p	–2.0	7.0
Apr	150.9p	2.6	23.3	146.5p	3.0	23.6	211.2p	–0.7	20.5

¹ The Climate Change Levy was introduced in April 2001.
See Background Notes for more details.

p = provisional
r = revised

3 Output prices

2000=100

	All manufactured products			Excluding food, beverages, tobacco and petroleum products					
	not seasonally adjusted			not seasonally adjusted			seasonally adjusted		
	Index (2000 = 100)	percent change over		Index (2000 = 100)	percent change over		Index (2000 = 100)	percent change over	
		1 month	12 months		1 month	12 months		1 month	12 months
	PLLU			PLLV			PLLW		
2004 Oct	105.2	0.7	3.5	103.7	0.5	2.9	103.7	0.6	2.9
Nov	105.3	0.1	3.5	103.9	0.2	3.0	104.0	0.3	3.0
Dec	104.9	-0.4	2.9	103.6	-0.3	2.4	103.7	-0.3	2.5
2005 Jan	104.8	-0.1	2.6	104.0	0.4	2.6	104.0	0.3	2.6
Feb	105.1	0.3	2.7	104.1	0.1	2.5	104.1	0.1	2.5
Mar	105.8	0.7	2.9	104.3	0.2	2.4	104.2	0.1	2.4
Apr	106.5	0.7	3.3	104.5	0.2	2.7	104.3	0.1	2.6
May	106.3	-0.2	2.7	104.4	-0.1	2.5	104.4	0.1	2.5
Jun	106.2	-0.1	2.5	104.0	-0.4	2.2	104.2	-0.2	2.2
Jul	107.0	0.8	3.1	104.6	0.6	2.2	104.7	0.5	2.2
Aug	107.3	0.3	3.0	104.9	0.3	1.9	104.9	0.2	1.9
Sep	108.0	0.7	3.3	105.4	0.5	2.1	105.3	0.4	2.1
Oct	107.9	-0.1	2.6	105.1	-0.3	1.4	105.1	-0.2	1.4
Nov	107.7	-0.2	2.3	105.3	0.2	1.3	105.4	0.3	1.3
Dec	107.4	-0.3	2.4	105.4	0.1	1.7	105.6	0.2	1.8
2006 Jan	107.8	0.4	2.9	105.8	0.4	1.7	105.8	0.2	1.7
Feb	108.1	0.3	2.9	106.0	0.2	1.8	105.9	0.1	1.7
Mar	108.4	0.3	2.5	106.3	0.3	1.9	106.2	0.3	1.9
Apr	109.2	0.7	2.5	106.9	0.6	2.3	106.6	0.4	2.2
May	109.6	0.4	3.1	106.9	-	2.4	106.9	0.3	2.4
Jun	109.8	0.2	3.4	107.1	0.2	3.0	107.2	0.3	2.9
Jul	110.1	0.3	2.9	107.2	0.1	2.5	107.3	0.1	2.5
Aug	110.2	0.1	2.7	107.3	0.1	2.3	107.3	-	2.3
Sep	110.0	-0.2	1.9	107.6	0.3	2.1	107.6	0.3	2.2
Oct	109.6	-0.4	1.6	107.8	0.2	2.6	107.8	0.2	2.6
Nov	109.6	-	1.8	107.9	0.1	2.5	108.0	0.2	2.5
Dec	109.8	0.2	2.2	107.9	-	2.4	108.1	0.1	2.4
2007 Jan	110.2	0.4	2.2	108.4	0.5	2.5	108.4	0.3	2.5
Feb	110.6	0.4	2.3	108.9	0.5	2.7	108.8	0.4	2.7
Mar	111.3	0.6	2.7	109.3	0.4	2.8	109.1	0.3	2.7
Apr	111.8	0.4	2.4	109.4	0.1	2.3	109.1r	-	2.3
May	112.2	0.4	2.4	109.4	-	2.3	109.3	0.2	2.2
Jun	112.5	0.3	2.5	109.5	0.1	2.2	109.5	0.2	2.1
Jul	112.8	0.3	2.5	109.7	0.2	2.3	109.7	0.2	2.2
Aug	112.8	-	2.4	109.8	0.1	2.3	109.9	0.2	2.4
Sep	113.2	0.4	2.9	110.0	0.2	2.2	110.1	0.2	2.3
Oct	114.0	0.7	4.0	110.3	0.3	2.3	110.4	0.3	2.4
Nov	114.8	0.7	4.7	110.3	-	2.2	110.6	0.2	2.4
Dec	115.3	0.4	5.0	110.5	0.2	2.4	111.0r	0.4	2.7
2008 Jan	116.6r	1.1	5.8	112.1r	1.4	3.4	112.2r	1.1	3.5
Feb	117.2	0.5	6.0	112.4	0.3	3.2	112.5	0.3	3.4
Mar	118.5p	1.1	6.5	113.0p	0.5	3.4	112.9p	0.4	3.5
Apr	120.2p	1.4	7.5	114.4p	1.2	4.6	114.0p	1.0	4.5

p provisional

r revised

4 Output prices excluding excise duties (PPIY)

2000=100

All manufactured products (excluding excise duties)

	Not seasonally adjusted			Seasonally adjusted		
	Index (2000 = 100)	Percentage change over		Index (2000 = 100)	Percentage change over	
		1 month	12 months		1 month	12 months
	PVNP			PVNQ		
2004 Oct	105.3	0.8	3.8	105.1	0.7	4.0
Nov	105.5	0.2	3.8	105.6	0.5	3.8
Dec	105.0	-0.5	3.1	105.4	-0.2	3.2
2005 Jan	104.8	-0.2	2.7	105.1	-0.3	2.8
Feb	105.2	0.4	2.9	105.6	0.5	3.0
Mar	105.8	0.6	3.1	105.9	0.3	3.2
Apr	106.6	0.8	3.6	106.5	0.6	3.6
May	106.3	-0.3	2.8	106.1	-0.4	2.7
Jun	106.2	-0.1	2.6	106.1	-	2.6
Jul	107.1	0.8	3.3	106.9	0.8	3.2
Aug	107.6	0.5	3.4	107.4	0.5	3.3
Sep	108.4	0.7	3.7	108.2	0.7	3.6
Oct	108.2	-0.2	2.8	108.0	-0.2	2.8
Nov	108.0	-0.2	2.4	108.1	0.1	2.4
Dec	107.6	-0.4	2.5	108.2	0.1	2.7
2006 Jan	108.2	0.6	3.2	108.5	0.3	3.2
Feb	108.4	0.2	3.0	108.7	0.2	2.9
Mar	108.8	0.4	2.8	108.8	0.1	2.7
Apr	109.5	0.6	2.7	109.4	0.6	2.7
May	110.0	0.5	3.5	109.8	0.4	3.5
Jun	110.2	0.2	3.8	110.0	0.2	3.7
Jul	110.5	0.3	3.2	110.2	0.2	3.1
Aug	110.6	0.1	2.8	110.4	0.2	2.8
Sep	110.3	-0.3	1.8	110.1	-0.3	1.8
Oct	109.9	-0.4	1.6	109.7	-0.4	1.6
Nov	109.9	-	1.8	110.0	0.3	1.8
Dec	109.9	-	2.1	110.4	0.4	2.0
2007 Jan	110.4	0.5	2.0	110.6	0.2	1.9
Feb	110.9	0.5	2.3	111.0	0.4	2.1
Mar	111.7	0.7	2.7	111.5	0.5	2.5
Apr	112.0	0.3	2.3	111.6r	0.1	2.0
May	112.5	0.4	2.3	112.2	0.5	2.2
Jun	112.8	0.3	2.4	112.5	0.3	2.3
Jul	113.1	0.3	2.4	112.7	0.2	2.3
Aug	113.1	-	2.3	113.1	0.4	2.4
Sep	113.5	0.4	2.9	113.6	0.4	3.2
Oct	114.1	0.5	3.8	114.4	0.7	4.3
Nov	115.1	0.9	4.7	115.5	1.0	5.0
Dec	115.5	0.3	5.1	116.3r	0.7	5.3
2008 Jan	117.2r	1.5	6.2	117.5r	1.0	6.2
Feb	117.8	0.5	6.2	118.1	0.5	6.4
Mar	119.0p	1.0	6.5	118.9p	0.7	6.6
Apr	120.6p	1.3	7.7	120.1p	1.0	7.6

This series excludes excise duties payable on tobacco products, alcoholic liquor and petroleum products.

5 Output prices: detailed by product (not seasonally adjusted) all manufactured and selected products

2000=100

		2007 Dec	2008 Jan	2008 Feb	2008 Mar	2008 Apr	% change 1 month		% change 12 months	
							2008 Mar	2008 Apr	2008 Mar	2008 Apr
Net sector										
Output of manufactured products	PLLU	115.3	116.6r	117.2	118.5p	120.2p	1.1	1.4	6.5	7.5
All manufacturing excl. duty	PVNP	115.5	117.2r	117.8	119.0p	120.6p	1.0	1.3	6.5	7.7
All manufacturing excl. duty - seasonally adjusted	PVNQ	116.3r	117.5r	118.1	118.9p	120.1p	0.7	1.0	6.6	7.6
Products of manufacturing industries other than food, beverages, petroleum and tobacco -unadjusted	PLLV	110.5	112.1r	112.4	113.0p	114.4p	0.5	1.2	3.4	4.6
All manufacturing excl. food, beverages, tobacco & petroleum - seasonally adjusted	PLLW	111.0r	112.2r	112.5	112.9p	114.0p	0.4	1.0	3.5	4.5
Gross Sector										
Food products, beverages & tobacco including duty	RBGA	119.6	120.5	121.2	122.5p	123.8p	1.1	1.1	7.1	7.8
Food products & beverages including duty	RPUN	117.6	118.5	119.2	120.4p	121.7p	1.0	1.1	7.6	8.7
Food products excluding beverages	RBGD	118.8	119.7r	120.5	121.3p	122.1p	0.7	0.7	8.6	9.3
Tobacco products including duty	RPUS	131.4	132.9	133.4	135.5p	136.9p	1.6	1.0	4.7	4.2
Textiles	POKZ	104.8	105.1	105.3	105.7p	105.8p	0.4	0.1	1.5	1.5
Wearing apparel	POLA	98.4	98.9	98.9	98.9p	98.9p	-	-	0.5	0.4
Leather & leather products	POKJ	107.2	106.8	107.0	107.4p	108.0p	0.4	0.6	0.1	0.4
Wood & wood products	POKK	126.6	127.1	127.5	127.5p	127.2p	-	-0.2	5.4	4.4
Pulp, paper & paper products	POLD	106.0	106.4	106.9	107.2p	107.3p	0.3	0.1	4.1	3.6
Printed matter & recorded media	POLE	117.1	117.5	118.1	118.3p	118.7p	0.2	0.3	2.2	2.5
Petroleum products including duty	RPVU	139.1	140.5	141.7	147.2p	150.6p	3.9	2.3	26.2	25.4
Chemicals, chemical, products & manmade fibres	POKN	121.9	124.4	124.1	127.3p	127.8p	2.6	0.4	9.3	8.9
Rubber & plastic products	POKO	112.1	112.4	112.8	113.3p	113.8p	0.4	0.4	2.4	2.8
Other non metallic mineral products	POKP	124.2	127.9	128.7	128.6p	128.8p	-0.1	0.2	4.3	3.5
Base metals	POLJ	155.3	154.8	155.8	157.1p	161.0p	0.8	2.5	4.9	4.8
Fabricated metal products, except machinery and equipment	POLK	123.2	123.7	123.8	124.5p	125.9p	0.6	1.1	1.5	3.4
Machinery and equipment n.e.c.	POKR	114.0	115.0	115.2	115.5p	115.9p	0.3	0.3	3.6	3.2
Office machinery and computers	POLM	41.2	41.1	41.4	41.5p	41.2p	0.2	-0.7	-1.4	-2.1
Electrical machinery and apparatus n.e.c.	POLN	116.4	117.3r	117.7	118.6p	119.2p	0.8	0.5	4.1	4.7
Radio, television and communication equipment and apparatus	POLO	75.4	75.7	75.6	75.5p	75.6p	-0.1	0.1	-3.5	-3.1
Medical precision and optical instruments, watches and clocks	POLP	104.7	106.2	106.3	106.3p	106.5p	-	0.2	1.0	1.3
Motor vehicles, trailers and semi-trailers	POLQ	100.3	100.7	100.8	101.0p	101.3p	0.2	0.3	0.9	2.4
Other transport	POLR	118.1	119.0	119.3	120.0p	120.2p	0.6	0.2	2.7	2.9
Furniture: other manufactured goods n.e.c.	POLS	109.4	110.1	110.3	110.7p	110.6p	0.4	-0.1	3.2	2.8
Recovered secondary raw materials	QTEB	251.4	303.3r	317.0	320.0p	404.6p	0.9	26.4	19.9	53.5

6 Input prices: including Climate Change Levy¹ materials and fuels purchased

2000=100

	All manufacturing industries						Excluding food, beverages, tobacco and petroleum industries					
	not seasonally adjusted			seasonally adjusted			not seasonally adjusted			seasonally adjusted		
	Index	percent change over		Index	percent change over		Index	percentage change over		Index	percentage change over	
	(2000 = 100)	1 month	12 months	(2000 = 100)	1 month	12 months	(2000 = 100)	1 month	12 months	(2000 = 100)	1 month	12 months
	RNNK			RNPE			RNNQ			RNPF		
2004 Oct	105.0	2.4	9.0	105.6	2.4	9.0	98.2	1.3	4.7	98.4	0.8	4.6
Nov	103.4	-1.5	6.8	103.0	-2.5	6.4	99.1	0.9	4.9	98.2	-0.2	4.5
Dec	101.3	-2.0	4.4	100.6	-2.3	4.0	98.5	-0.6	4.2	97.2	-1.0	4.0
2005 Jan	104.9	3.6	9.7	104.7	4.1	9.7	100.4	1.9	7.6	99.8	2.7	7.5
Feb	105.5	0.6	10.8	105.7	1.0	11.0	100.5	0.1	8.3	100.0	0.2	8.2
Mar	107.9	2.3	11.0	107.1	1.3	11.1	101.0	0.5	7.6	100.3	0.3	7.4
Apr	107.1	-0.7	10.1	107.0	-0.1	10.1	100.6	-0.4	7.0	100.5	0.2	7.0
May	107.0	-0.1	7.4	107.8	0.7	7.6	100.9	0.3	6.5	101.0	0.5	6.7
Jun	109.3	2.1	11.9	110.0	2.0	11.8	100.8	-0.1	7.2	101.8	0.8	7.4
Jul	112.7	3.1	14.2	112.6	2.4	14.1	102.5	1.7	8.6	103.6	1.8	8.7
Aug	113.9	1.1	13.0	113.3	0.6	13.0	102.3	-0.2	7.3	103.6	-	7.6
Sep	113.2	-0.6	10.4	114.0	0.6	10.6	102.2	-0.1	5.5	103.1	-0.5	5.6
Oct	114.4	1.1	9.0	114.9	0.8	8.8	105.1	2.8	7.0	105.3	2.1	7.0
Nov	117.5	2.7	13.6	116.9	1.7	13.5	108.8	3.5	9.8	107.6	2.2	9.6
Dec	119.6	1.8	18.1	118.6	1.5	17.9	110.5	1.6	12.2	108.9	1.2	12.0
2006 Jan	121.4	1.5	15.7	121.2	2.2	15.8	110.8	0.3	10.4	110.0	1.0	10.2
Feb	121.3	-0.1	15.0	121.6	0.3	15.0	111.2	0.4	10.6	110.6	0.5	10.6
Mar	121.7	0.3	12.8	121.0	-0.5	13.0	111.1	-0.1	10.0	110.3	-0.3	10.0
Apr	123.4	1.4	15.2	123.4	2.0	15.3	110.5	-0.5	9.8	110.6	0.3	10.0
May	121.5	-1.5	13.6	122.5	-0.7	13.6	109.5	-0.9	8.5	109.7	-0.8	8.6
Jun	121.4	-0.1	11.1	122.2	-0.2	11.1	109.5	-	8.6	110.7	0.9	8.7
Jul	124.7	2.7	10.6	124.5	1.9	10.6	111.0	1.4	8.3	112.2	1.4	8.3
Aug	123.0	-1.4	8.0	122.4	-1.7	8.0	110.2	-0.7	7.7	111.8	-0.4	7.9
Sep	119.1	-3.2	5.2	120.1	-1.9	5.4	109.6	-0.5	7.2	110.7	-1.0	7.4
Oct	119.7	0.5	4.6	120.2	0.1	4.6	111.7	1.9	6.3	111.9	1.1	6.3
Nov	121.8	1.8	3.7	120.9	0.6	3.4	114.3	2.3	5.1	112.9	0.9	4.9
Dec	122.6	0.7	2.5	121.1	0.2	2.1	114.1	-0.2	3.3	112.2	-0.6	3.0
2007 Jan	118.9	-3.0	-2.1	117.8	-2.7	-2.8	112.7	-1.2	1.7	111.7	-0.4	1.5
Feb	119.9	0.8	-1.2	119.5	1.4	-1.7	112.9	0.2	1.5	111.7	-	1.0
Mar	122.5	2.2	0.7	121.2	1.4	0.2	113.9	0.9	2.5	112.5	0.7	2.0
Apr	122.4	-0.1	-0.8	121.5r	0.2	-1.5	112.5	-1.2	1.8	112.2r	-0.3	1.4
May	123.1	0.6	1.3	124.0	2.1	1.2	113.4	0.8	3.6	113.7	1.3	3.6
Jun	124.4	1.1	2.5	125.1	0.9	2.4	113.0	-0.4	3.2	114.3	0.5	3.3
Jul	125.4	0.8	0.6	125.2	0.1	0.6	112.5	-0.4	1.4	113.9	-0.3	1.5
Aug	124.1	-1.0	0.9	123.8	-1.1	1.1	112.4	-0.1	2.0	114.1	0.2	2.1
Sep	127.3	2.6	6.9	129.1	4.3	7.5	113.5	1.0	3.6	114.8	0.6	3.7
Oct	130.4	2.4	8.9	131.9	2.2	9.7	114.8	1.1	2.8	115.5	0.6	3.2
Nov	135.1	3.6	10.9	134.8	2.2	11.5	116.8	1.7	2.2	115.9	0.3	2.7
Dec	137.5	1.8	12.2	136.9	1.6	13.0	118.6	1.5	3.9	117.3r	1.2	4.5
2008 Jan	141.4	2.8	18.9	140.8r	2.8	19.5	121.1	2.1	7.5	120.0r	2.3	7.4
Feb	143.4	1.4	19.6	143.6	2.0	20.2	122.7	1.3	8.7	121.8	1.5	9.0
Mar	147.1p	2.6	20.1	146.1p	1.7	20.5	124.8p	1.7	9.6	123.6p	1.5	9.9
Apr	150.9p	2.6	23.3	149.6p	2.4	23.1	126.7p	1.5	12.6	126.3p	2.2	12.6

¹ The Climate Change Levy was introduced in April 2001.

See Background Notes for more details.

p = provisional

r = revised

7 Input prices: excluding Climate Change Levy¹ materials and fuels purchased by selected industries (not seasonally adjusted)

2000=100

		2007 Dec	2008 Jan	2008 Feb	2008 Mar	2008 Apr	% change 1 month		% change 12 months	
							2008 Mar	2008 Apr	2008 Mar	2008 Apr
Gross sector										
Other mining & quarrying products	RABE	126.4	129.5r	131.8	135.1p	140.4p	2.5	3.9	20.4	23.6
Manufacture of food products	RBBQ	130.5	135.0r	134.4	135.5p	137.2p	0.8	1.3	16.7	18.3
Food products and beverages	RABF	130.8	135.4r	134.7	135.8p	137.5p	0.8	1.3	17.0	18.5
Tobacco products	RABG	113.7	116.2	120.9	121.5p	122.7p	0.5	1.0	7.8	8.9
Manufacture of textiles	RBBR	110.2	112.1r	112.5	113.5p	114.7p	0.9	1.1	5.5	7.7
Textiles	RABH	113.3	115.0	115.5	116.3p	117.1p	0.7	0.7	5.2	7.3
Wearing apparel	RABI	104.9	107.0r	107.4	108.5p	110.4p	1.0	1.8	5.9	8.2
Manufacture of leather	RBBS	115.0	116.3	117.5	119.0p	120.6p	1.3	1.3	6.9	8.7
Manufacture of wood and wood products	RBBT	124.1	124.8	125.3	125.6p	125.8p	0.2	0.2	9.2	5.9
Manufacture of pulp paper & paper products, publishing and printing	RBBU	112.6	113.7	114.3	114.9p	115.6p	0.5	0.6	4.7	5.7
Pulp and paper products	RABL	112.3	113.8	114.4	114.9p	115.6p	0.4	0.6	6.3	7.6
Printed matter and recording material	RABM	112.8	113.6	114.3	114.9p	115.5p	0.5	0.5	4.1	4.6
Manufacture of coke, refined petroleum products and nuclear fuel	RBBV	221.7	229.5	236.2	250.1p	265.2p	5.9	6.0	54.6	56.7
Manufacture of chemical products	RBBW	128.1	131.5	131.9	134.6p	136.5p	2.0	1.4	11.4	13.7
Manufacture of rubber and plastic products	RBBX	122.4	124.5	125.1	126.2p	127.4p	0.9	1.0	7.0	8.7
Manufacture of other non-metallic mineral products	RBBY	126.0	129.7r	130.7	131.1p	132.3p	0.3	0.9	7.5	10.5
Manufacture of basic metals and fabricated metal products	RBBZ	149.1	153.0r	155.9	158.1p	164.3p	1.4	3.9	7.7	11.2
Basic metals	RABV	158.9	165.6r	169.9	172.6p	182.3p	1.6	5.6	10.2	15.7
Fabricated metal products	RABW	140.6	142.1r	143.8	145.6p	148.7p	1.3	2.1	5.3	6.8
Manufacture of machinery and equipment n.e.c.	RBCA	124.3r	125.9	127.0	128.3p	130.3p	1.0	1.6	5.9	7.2
Manufacture of electrical and optical equipment	RBCB	96.4	97.5	98.2	98.7p	99.7p	0.5	1.0	3.4	5.1
Office machinery and computers	RABY	78.6	79.7	80.1	80.4p	81.2p	0.4	1.0	1.0	3.2
Electrical machinery and apparatus n.e.c.	RACB	114.0	115.2	116.4	117.5p	118.8p	0.9	1.1	5.8	7.0
Radio, television and communication equipment	RACC	108.5	109.7	110.9	111.7p	112.9p	0.7	1.1	4.8	6.0
Medical, precision, optical instruments and clocks	RACD	98.8	100.1	100.8	101.3p	102.1p	0.5	0.8	4.1	5.5
Manufacturing of transport equipment	RBCC	117.7	118.5	119.4	120.9p	122.3p	1.3	1.2	6.2	7.4
Motor vehicles, trailers and semi trailers	RACE	119.1	119.5	120.4	121.8p	123.2p	1.2	1.1	5.7	6.8
Other transport equipment	RACF	114.6	116.1	117.2	118.7p	120.1p	1.3	1.2	7.2	8.9
Manufacturing n.e.c.	RBCD	125.2	127.2r	128.3	129.6p	132.0p	1.0	1.9	6.8	8.3

¹ The Climate Change Levy cannot be included in this table.

See Background Notes for more details.

p = provisional

r = revised

8 Input prices: detailed by commodity (not seasonally adjusted)

2000=100

		2007 Dec	2008 Jan	2008 Feb	2008 Mar	2008 Apr	% change 1 month		% change 12 months	
							2008 Mar	2008 Apr	2008 Mar	2008 Apr
Fuel inc. CCL ¹	RNNL	210.9	215.8r	217.1	212.7p	211.2p	-2.0	-0.7	7.0	20.5
Electricity inc. CCL	RCVR	183.6	187.0r	191.4	184.5p	184.9p	-3.6	0.2	-0.8	8.9
Gas inc. CCL	RCVW	303.9	313.2	304.7	308.3p	300.1p	1.2	-2.7	24.9	54.1
Crude petroleum oils and crude oils obtained from bituminous minerals	QWYK	240.2	249.0	256.0	273.1p	290.6p	6.7	6.4	60.8	62.6
HOME PRODUCED MATERIALS										
Home produced food materials	YZYM	160.5	169.1r	165.3	166.6p	168.7p	0.8	1.3	32.4	32.3
Animals for slaughter	PNDE	138.0	148.1	154.1	157.8p	160.1p	2.4	1.5	16.9	16.1
Other home produced materials	PVEV	142.6	145.9	146.3	145.8p	149.3p	-0.3	2.4	10.3	4.6
IMPORTED MATERIALS										
Imported materials - total (Incl Crude Oil)	PVNN	117.9	120.7	122.5	126.2p	129.2p	3.0	2.4	14.5	16.4
Imported food materials	PTUS	124.7	128.9r	133.4	135.5p	137.5p	1.6	1.5	18.1	20.4
All meat and meat preparations	PVNY	122.2 B	122.8 B	123.9 B	128.7pB	132.9pB	3.9	3.3	11.7	14.5
Cereals and cereal preparations	PVOG	152.4 B	156.5rB	165.9 B	166.8pB	166.8pB	0.5	-	47.1	46.7
Imported metals	PVEW	160.9	166.8	174.1	181.5p	185.8p	4.3	2.4	9.8	9.0
Iron and steel	PSTZ	158.9 B	160.4rB	163.2 B	167.5pB	178.4pB	2.6	6.5	3.7	8.3
Non-ferrous metals	PSVH	165.5rB	172.0rB	184.2 B	193.3pB	192.9pB	4.9	-0.2	13.6	9.3
Imported chemicals	PVEX	121.3	125.6	126.5	129.6p	132.4p	2.5	2.2	10.9	13.5
Organic chemicals	PSIV	117.1 B	123.2 B	123.2 B	128.0pB	132.1pB	3.9	3.2	11.5	16.0
Medicinal and pharmaceutical products	PSLX	88.2 B	90.6 B	90.7 B	90.8pB	91.4pB	0.1	0.7	2.0	2.7
Plastics in primary forms	PSNV	119.0 B	123.9 B	124.2 B	127.0pB	128.7pB	2.3	1.3	12.0	13.4
Imported parts and equipment	YZYU	93.9	94.7	95.7	97.1p	98.9p	1.5	1.9	7.2	10.0
Office machinery and computer parts	RDAI	55.6	57.0	57.0	56.5p	57.0p	-0.9	0.9	-7.1	-1.9
Electronic components	RDAM	60.9 B	62.6rB	62.9 B	62.9pB	63.3pB	-	0.6	1.8	4.3
Motor vehicles and parts	RDBV	119.0	116.9	117.5	120.1p	121.9p	2.2	1.5	9.3	11.2
Other imported	YZYT	108.1	110.2	111.7	113.9p	115.4p	2.0	1.3	11.1	11.7
Rubber products	RBIA	108.9	109.1	109.9	111.8p	112.8p	1.7	0.9	-3.0	-2.0
Wood and wood products	RBHK	127.8	126.9r	127.3	127.7p	126.9p	0.3	-0.6	6.5	4.8
Pulp, paper, and paperboard	RBHL	96.1	97.2	97.7	98.1p	99.2p	0.4	1.1	5.3	5.4
Man-made fibres	RBHZ	107.2 B	110.0rB	110.6 B	111.5pB	112.6pB	0.8	1.0	6.2	7.5
Preparation of spinning of textile fibres	RBHC	106.3	108.7r	109.9	111.2p	112.3p	1.2	1.0	8.3	9.7
Other textiles	RBHG	90.7 B	93.7rB	94.2 B	96.3pB	97.8pB	2.2	1.6	10.8	12.5

¹ The Climate Change Levy was introduced in April 2001.

B The values with 'B' are considered less reliable than the remainder currently published mainly due to the lack of market coverage
p = provisional
r = revised

