

10 March 2008

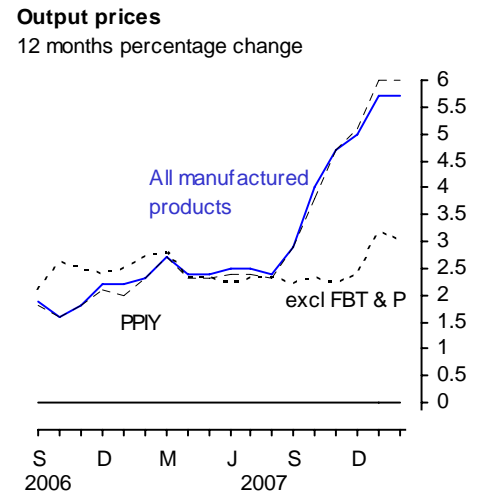
**Coverage**  
United Kingdom  
**Theme**  
The Economy

## Producer prices February 2008

The output price index for home sales of manufactured products rose 5.7 per cent in the year to February, unchanged from the rise in the year to January. Unadjusted, the index rose 0.3 per cent between January and February, mainly reflecting rises in other manufactured product prices.

The output price index excluding excise duties (PPIY) rose 6.0 per cent in the year to February. Seasonally adjusted, the index rose 0.3 per cent between January and February.

The output price index excluding food, beverages, tobacco and petroleum rose 3.0 per cent in the year to February. In seasonally adjusted terms, the index rose by 0.2 per cent between January and February.



### Output prices (home sales)

		All manufactured Products		Excluding food, beverages, tobacco and petroleum		All manufactured products excl. duty	
		12 months (NSA)	1 month (NSA)	12 months (NSA)	1 month (SA)	12 months (NSA)	1 month (SA)
<i>Percentage change</i>							
2007	Sep	2.9	0.4	2.2	0.2	2.9	0.4
	Oct	4.0	0.7	2.3	0.3	3.8	0.7
	Nov	4.7	0.7	2.2	0.2	4.7	0.9
	Dec	5.0	0.4	2.4	0.3	5.1	0.6
2008	Jan	5.7	1.0	3.2	0.9	6.0	0.9
	Feb	5.7	0.3	3.0	0.2	6.0	0.3

NSA/SA not/seasonally adjusted

Issued by  
National Statistics  
1 Drummond Gate  
London SW1V 2QQ

Telephone  
Press Office 020 7533 5725  
Public Enquiries 0845 601 3034

Statistician  
Ian Richardson 01633 455780  
ian.richardson@ons.gsi.gov.uk

Internet  
www.statistics.gov.uk

Next publication date  
14 April 2008

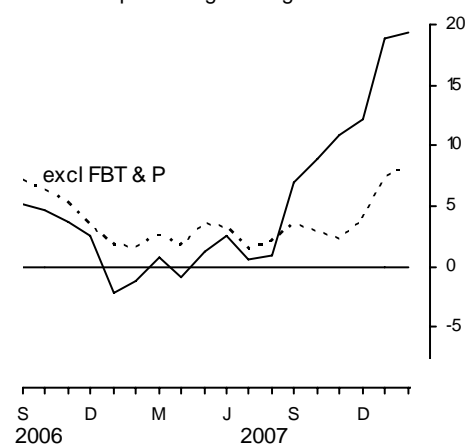
## Input prices: summary

The input price index for materials and fuels purchased by manufacturing industry rose 19.4 per cent in the year to February and rose 1.3 per cent between January and February. The rise in the input index between January and February mainly reflected a rise in the price of crude oil. Prices of imported materials as a whole (including imported crude oil) rose 1.7 per cent between January and February.

Seasonally adjusted, the input price index rose 1.7 per cent between January and February.

The input price index for manufacturing industry excluding the food, beverages, tobacco and petroleum industries rose 8.2 per cent in the year to February. Seasonally adjusted, the index rose 0.9 per cent between January and February.

**Input prices (materials & fuel)  
manufacturing industry**  
12 months percentage change



## Input prices<sup>1,2</sup>

		Materials and fuels purchased			Excluding food, beverages, tobacco and petroleum industries		
		12 months (NSA)	1 month (NSA)	1 month (SA)	12 months (NSA)	1 month (NSA)	1 month (SA)
<i>Percentage change</i>							
<b>2007</b>	Sep	6.9	2.6	4.3	3.6	1.0	0.6
	Oct	8.9	2.4	2.2	2.8	1.1	0.6
	Nov	10.9	3.6	2.0	2.2	1.7	0.2
	Dec	12.2	1.8	1.5	3.9	1.5	1.1
<b>2008</b>	Jan	18.9	2.8	2.6	7.4	2.0	2.3
	Feb	19.4	1.3	1.7	8.2	1.0	0.9

NSA/SA not/seasonally adjusted

1 These indices include the Climate Change Levy which was introduced in April 2001

2 These indices include the Aggregates Levy which was introduced in April 2002

### **Revisions (Tables 9R and 10R)**

For this release Tables 9R and 10R highlight revisions to price indices previously published in last month's First Release.

The revisions to headline price indices highlighted in Tables 9R and 10R were caused by changes to latest estimates as more price quotes are received and also revisions to seasonal adjustment factors which are re-estimated every month.

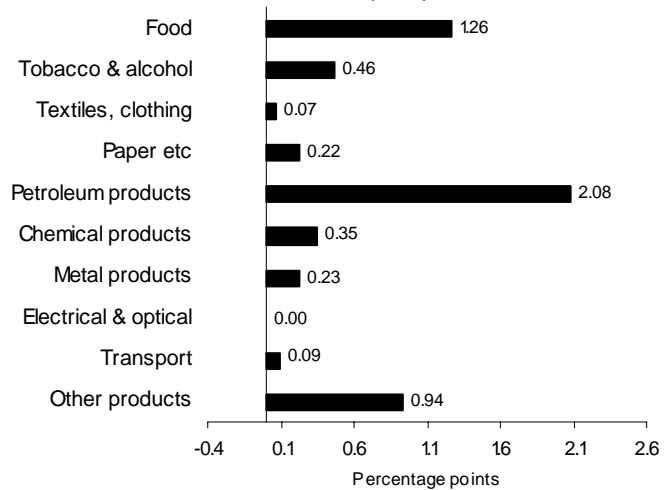
**Output prices: detail**

The contributions to movements in the total output index by the main product groups over the last year and month (not seasonally adjusted) are:

**12 month change to February**

Product group	Percentage change
Food	8.4
Tobacco & alcohol	3.4
Textiles, clothing	0.8
Paper etc	2.4
Petroleum products	23.4
Chemical products	5.9
Metal products	2.7
Electrical & optical	0.0
Transport	1.3
Other products	5.7
<hr/>	
All manufacturing	5.7

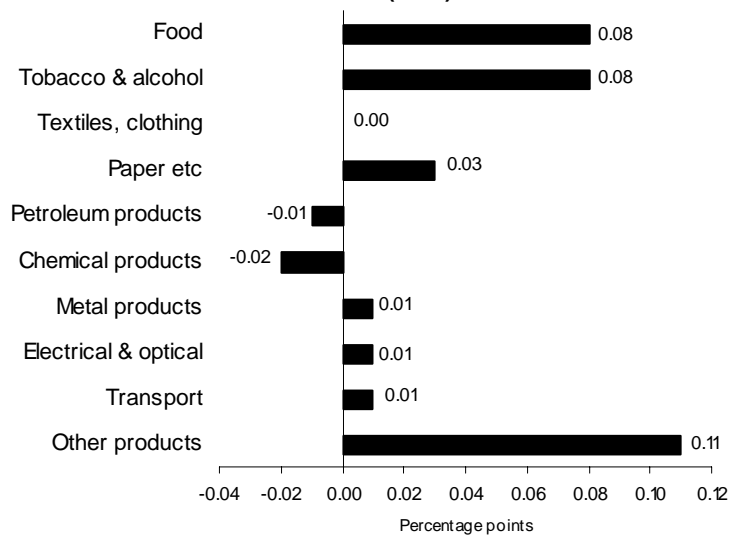
**Contribution to 12 months percentage change in total (5.7%)**



**1 month change to February**

Product group	Percentage change
Food	0.6
Tobacco & alcohol	0.7
Textiles, clothing	0.1
Paper etc	0.4
Petroleum products	-0.1
Chemical products	-0.4
Metal products	0.1
Electrical & optical	0.2
Transport	0.1
Other products	0.8
<hr/>	
All manufacturing	0.3

**Contribution to 1 month percentage change in total (0.3%)**



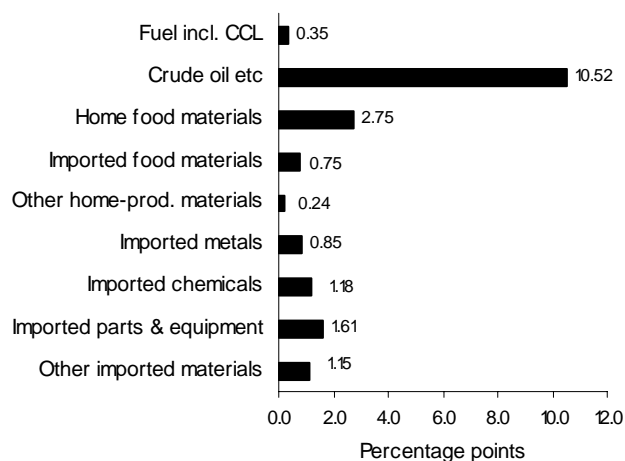
**Input prices (materials and fuels): detail**

The contributions to movements in the total input index by the main commodities over the year and month (not seasonally adjusted) are:

**12 month change to February<sup>1</sup>**

Commodity group	Percentage change
Fuel incl. CCL	3.0
Crude oil etc	65.7
Home food materials	33.9
Imported food materials	18.1
Other home-prod. materials	14.3
Imported metals	9.2
Imported chemicals	9.4
Imported parts & equipment	6.3
Other imported materials	10.7
<hr/>	<hr/>
All manufacturing	19.4

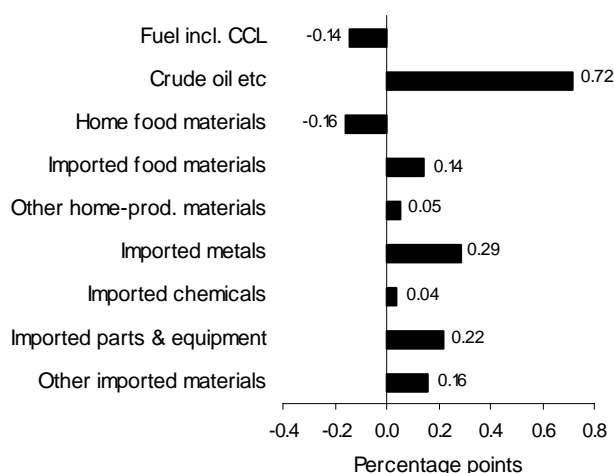
**Contribution to 12 months percentage change in total (19.4%)**



**1 month change to February<sup>1</sup>**

Commodity group	Percentage change
Fuel incl. CCL	-1.3
Crude oil etc	3.3
Home food materials	-1.7
Imported food materials	3.3
Other home-prod. materials	3.2
Imported metals	3.5
Imported chemicals	0.3
Imported parts & equipment	1.0
Other imported materials	1.5
<hr/>	<hr/>
All manufacturing	1.3

**Contribution to 1 month percentage change in total (1.3%)**



1. Including Aggregates Levy

## BACKGROUND NOTES

### BASIC QUALITY INFORMATION

1. **Link to Summary Quality Report** A Summary Quality Report for the PPI can be found at:  
[http://www.statistics.gov.uk/about/data/methodology/quality/information\\_business\\_statistics.asp](http://www.statistics.gov.uk/about/data/methodology/quality/information_business_statistics.asp) This report describes, in detail, the intended uses of the statistics presented in this publication, their general quality and the methods used to produce them.

### Relevance to users

2. Index numbers shown in the main text of this First Release are on a net sector basis. The index for any sector relates only to transactions between that sector and other sectors: sales and purchases within sectors are excluded. However, the more detailed figures shown in Tables 5 and 7 are on a gross basis; that is, intra industry sales and purchases are included in each of these indices.
3. Indices relate to average prices for a month. The full effect of a price change occurring partway through any month will only be reflected in the following month's index.
4. All index numbers exclude VAT. Excise duties (on cigarettes, manufactured tobacco, alcoholic liquor and petroleum products) are included, except where labelled otherwise.
5. The detailed input indices of prices of materials and fuels purchased by industry (table 7) do not include the Climate Change Levy. This is because each industry can in practise pay its own rate for the various forms of energy, depending on the various negotiated discounts (and exemptions) that apply.

### Common pitfalls in interpreting series

6. Expectations of accuracy and reliability in sample surveys are often too high. Revisions and sampling variability are inevitable consequences of the trade off between timeliness, accuracy and the burden on respondents. Details of sampling variability are included elsewhere in this release.
7. Very few statistical revisions arise as a result of 'errors' in the popular sense of the word. All estimates, by definition, are subject to statistical 'error' but, in this context, the word refers to the uncertainty in any process or calculation that uses sampling, estimation or modelling. Most revisions reflect either the adoption of new statistical techniques or the incorporation of new information which allows the statistical error of previous estimates to be reduced. Only rarely are there avoidable 'errors' such as human or system failures, and such mistakes are made quite clear when they are discovered and corrected.

**Accuracy**

- 8. Figures for the latest two months are provisional and the latest five months are subject to revisions in light of (a) late and revised respondent data and (b) revisions to seasonal adjustment factors which are re-estimated every month. A routine seasonal adjustment review is conducted in the autumn annually. There are no other planned methodological changes in the next 12 months.

**Revisions**

- 9. Revisions to data provide one indication of the reliability of key indicators. The tables below show summary information on the size and direction of the revisions which have been made to the data covering a five year period. A statistical test has been applied to the average revision to find out if it is statistically significantly different from zero. An asterisk (\*) shows that the test is significant.
- 10. The table below presents a summary of the differences between the first estimates published between February 2002 and January 2007 and the estimates published 12 months later. These numbers include revisions as a result of methodological changes made when the series were rebased to 2000=100 in October 2003. For more information see [http://www.statistics.gov.uk/articles/economic\\_trends/ETAugMorris.pdf](http://www.statistics.gov.uk/articles/economic_trends/ETAugMorris.pdf)

	Value in latest period	Revisions between first publication and estimates twelve months later	
		Average over the last 5 years	Average over the last 5 years without regard to sign (average absolute revision)
Total output (PLLU) 12 months %	5.7	0.00	0.07
Total output (PLLU) 1 months %	0.3	0.02	0.06
Total input (RNNK) 12 months %	19.4	-0.23	0.73
Total input (RNNK) 1 months %	1.3	0.08	0.38

- 11. Spreadsheets giving revisions triangles of estimates for all months from January 1998 through to January 2008, and the calculations behind the averages in the table is available on the National Statistics website at <http://www.statistics.gov.uk/StatBase/Product.asp?vlnk=790>

## PUBLICATION POLICY

12. The complete run of data in the tables of this First Release are also available to view and download in other electronic formats free of charge using the ONS Time Series Data website service. Users can download the complete release in a choice of zipped formats, or view and download their own selections of individual series. The Time Series Data service can be accessed at <http://www.statistics.gov.uk/timeseries>
13. Details of the policy governing the release of new data are available from the press office. Also available is a list of the names of those given pre-publication access to the contents of this release.
14. **National Statistics** are produced to high professional standards set out in the National Statistics Code of Practice. They undergo regular quality assurance reviews to ensure that they meet customer needs. They are produced free from any political interference. © Crown Copyright 2008.

# 1 Output prices: summary (not seasonally adjusted)

2000=100

	Manufactured products			Manufacturing other than food, beverages, tobacco and petroleum products			Food, beverages and tobacco products			Petroleum products		
	Index (2000 = 100)	percentage change over		Index (2000 = 100)	percentage change over		Index (2000 = 100)	percentage change over		Index (2000 = 100)	percentage change over	
		1 mth	12 mths		1 mth	12 mths		1 mth	12 mths		1 mth	12 mths
	PLLU			PLLV			RBGA			RPVU		
2007 Aug	112.8	–	2.4	109.8	0.1	2.3	116.1	0.2	3.8	125.2	–0.3	–1.5
Sep	113.2	0.4	2.9	110.0	0.2	2.2	116.9	0.7	4.5	126.2	0.8	4.0
Oct	114.0	0.7	4.0	110.3	0.3	2.3	118.1	1.0	5.4	130.1	3.1	12.7
Nov	114.8	0.7	4.7	110.3	–	2.2	118.8	0.6	5.7	136.6	5.0	20.0
Dec	115.3	0.4	5.0	110.5	0.2	2.4	119.6	0.7	6.0	139.1	1.8	20.7
2008 Jan	116.5p	1.0	5.7	111.9p	1.3	3.2	120.5p	0.8	6.4	140.5p	1.0	22.5
Feb	116.9p	0.3	5.7	112.2p	0.3	3.0	121.2p	0.6	6.7	140.4p	–0.1	23.4

p = provisional  
r = revised

# 2 Input prices: including Climate Change Levy summary (not seasonally adjusted)<sup>1</sup>

2000=100

	All manufacturing industry								
	Materials and fuel purchased			Materials purchased			Fuel purchased		
	Index (2000 = 100)	percentage change over		Index (2000 = 100)	percentage change over		Index (2000 = 100)	percentage change over	
1 mth		12 mths	1 mth		12 mths	1 mth		12 mths	
	RNNK			PLKX			RNNL		
2007 Aug	124.1	–1.0	0.9	120.4	–1.3	1.5	173.4	0.7	–4.6
Sep	127.3	2.6	6.9	123.6	2.7	7.7	177.7	2.5	0.7
Oct	130.4	2.4	8.9	126.1	2.0	10.6	188.2	5.9	–4.4
Nov	135.1	3.6	10.9	130.1	3.2	13.6	203.2	8.0	–7.4
Dec	137.5	1.8	12.2	132.1	1.5	14.8	210.9	3.8	–5.5
2008 Jan	141.4p	2.8	18.9	135.9p	2.9	21.2	215.4p	2.1	2.5
Feb	143.2p	1.3	19.4	138.1p	1.6	21.7	212.5p	–1.3	3.0

<sup>1</sup> The Climate Change Levy was introduced in April 2001. See Background Notes for more details.

p = provisional  
r = revised

# 3 Output prices

2000=100

	All manufactured products			Excluding food, beverages, tobacco and petroleum products					
	not seasonally adjusted			not seasonally adjusted			seasonally adjusted		
	Index (2000 = 100)	percent change over		Index (2000 = 100)	percent change over		Index (2000 = 100)	percent change over	
		1 month	12 months		1 month	12 months		1 month	12 months
	PLLU			PLLV			PLLW		
2004 Aug	104.2	0.4	2.8	102.9	0.6	2.2	102.9	0.5	2.2
Sep	104.5	0.3	3.1	103.2	0.3	2.3	103.1	0.2	2.3
Oct	105.2	0.7	3.5	103.7	0.5	2.9	103.7	0.6	2.9
Nov	105.3	0.1	3.5	103.9	0.2	3.0	104.0	0.3	3.0
Dec	104.9	-0.4	2.9	103.6	-0.3	2.4	103.7	-0.3	2.5
2005 Jan	104.8	-0.1	2.6	104.0	0.4	2.6	104.0	0.3	2.6
Feb	105.1	0.3	2.7	104.1	0.1	2.5	104.1	0.1	2.5
Mar	105.8	0.7	2.9	104.3	0.2	2.4	104.2	0.1	2.4
Apr	106.5	0.7	3.3	104.5	0.2	2.7	104.3	0.1	2.6
May	106.3	-0.2	2.7	104.4	-0.1	2.5	104.4	0.1	2.5
Jun	106.2	-0.1	2.5	104.0	-0.4	2.2	104.2	-0.2	2.2
Jul	107.0	0.8	3.1	104.6	0.6	2.2	104.7	0.5	2.2
Aug	107.3	0.3	3.0	104.9	0.3	1.9	104.9	0.2	1.9
Sep	108.0	0.7	3.3	105.4	0.5	2.1	105.3	0.4	2.1
Oct	107.9	-0.1	2.6	105.1	-0.3	1.4	105.1	-0.2	1.4
Nov	107.7	-0.2	2.3	105.3	0.2	1.3	105.4	0.3	1.3
Dec	107.4	-0.3	2.4	105.4	0.1	1.7	105.6	0.2	1.8
2006 Jan	107.8	0.4	2.9	105.8	0.4	1.7	105.8	0.2	1.7
Feb	108.1	0.3	2.9	106.0	0.2	1.8	105.9	0.1	1.7
Mar	108.4	0.3	2.5	106.3	0.3	1.9	106.2	0.3	1.9
Apr	109.2	0.7	2.5	106.9	0.6	2.3	106.6	0.4	2.2
May	109.6	0.4	3.1	106.9	-	2.4	106.9	0.3	2.4
Jun	109.8	0.2	3.4	107.1	0.2	3.0	107.2	0.3	2.9
Jul	110.1	0.3	2.9	107.2	0.1	2.5	107.3	0.1	2.5
Aug	110.2	0.1	2.7	107.3	0.1	2.3	107.3	-	2.3
Sep	110.0	-0.2	1.9	107.6	0.3	2.1	107.6	0.3	2.2
Oct	109.6	-0.4	1.6	107.8	0.2	2.6	107.8	0.2	2.6
Nov	109.6	-	1.8	107.9	0.1	2.5	108.0	0.2	2.5
Dec	109.8	0.2	2.2	107.9	-	2.4	108.1	0.1	2.4
2007 Jan	110.2	0.4	2.2	108.4	0.5	2.5	108.4	0.3	2.5
Feb	110.6	0.4	2.3	108.9	0.5	2.7	108.8	0.4	2.7
Mar	111.3	0.6	2.7	109.3	0.4	2.8	109.2	0.4	2.8
Apr	111.8	0.4	2.4	109.4	0.1	2.3	109.2	-	2.4
May	112.2	0.4	2.4	109.4	-	2.3	109.3	0.1	2.2
Jun	112.5	0.3	2.5	109.5	0.1	2.2	109.5	0.2	2.1
Jul	112.8	0.3	2.5	109.7	0.2	2.3	109.7	0.2	2.2
Aug	112.8	-	2.4	109.8	0.1	2.3	109.9	0.2	2.4
Sep	113.2	0.4	2.9	110.0	0.2	2.2	110.1	0.2	2.3
Oct	114.0	0.7	4.0	110.3	0.3	2.3	110.4	0.3	2.4
Nov	114.8	0.7	4.7	110.3	-	2.2	110.6	0.2	2.4
Dec	115.3	0.4	5.0	110.5	0.2	2.4	110.9	0.3	2.6
2008 Jan	116.5p	1.0	5.7	111.9p	1.3	3.2	111.9p	0.9	3.2
Feb	116.9p	0.3	5.7	112.2p	0.3	3.0	112.1p	0.2	3.0

p provisional  
r revised

# 4 Output prices excluding excise duties (PIY)

2000=100

All manufactured products (excluding excise duties)

	Not seasonally adjusted			Seasonally adjusted		
	Index (2000 = 100)	Percentage change over		Index (2000 = 100)	Percentage change over	
		1 month	12 months		1 month	12 months
	PVNP			PVNQ		
2004 Aug	104.1	0.4	2.8	104.0	0.4	2.8
Sep	104.5	0.4	3.1	104.4	0.4	3.1
Oct	105.3	0.8	3.8	105.1	0.7	4.0
Nov	105.5	0.2	3.8	105.6	0.5	3.8
Dec	105.0	-0.5	3.1	105.4	-0.2	3.2
2005 Jan	104.8	-0.2	2.7	105.1	-0.3	2.8
Feb	105.2	0.4	2.9	105.6	0.5	3.0
Mar	105.8	0.6	3.1	105.9	0.3	3.2
Apr	106.6	0.8	3.6	106.5	0.6	3.6
May	106.3	-0.3	2.8	106.1	-0.4	2.7
Jun	106.2	-0.1	2.6	106.1	-	2.6
Jul	107.1	0.8	3.3	106.9	0.8	3.2
Aug	107.6	0.5	3.4	107.4	0.5	3.3
Sep	108.4	0.7	3.7	108.2	0.7	3.6
Oct	108.2	-0.2	2.8	108.0	-0.2	2.8
Nov	108.0	-0.2	2.4	108.1	0.1	2.4
Dec	107.6	-0.4	2.5	108.2	0.1	2.7
2006 Jan	108.2	0.6	3.2	108.5	0.3	3.2
Feb	108.4	0.2	3.0	108.7	0.2	2.9
Mar	108.8	0.4	2.8	108.8	0.1	2.7
Apr	109.5	0.6	2.7	109.4	0.6	2.7
May	110.0	0.5	3.5	109.8	0.4	3.5
Jun	110.2	0.2	3.8	110.0	0.2	3.7
Jul	110.5	0.3	3.2	110.2	0.2	3.1
Aug	110.6	0.1	2.8	110.4	0.2	2.8
Sep	110.3	-0.3	1.8	110.1	-0.3	1.8
Oct	109.9	-0.4	1.6	109.7	-0.4	1.6
Nov	109.9	-	1.8	110.0	0.3	1.8
Dec	109.9	-	2.1	110.4	0.4	2.0
2007 Jan	110.4	0.5	2.0	110.6	0.2	1.9
Feb	110.9	0.5	2.3	111.0r	0.4	2.1
Mar	111.7	0.7	2.7	111.8	0.7	2.8
Apr	112.0	0.3	2.3	111.8	-	2.2
May	112.5	0.4	2.3	112.2	0.4	2.2
Jun	112.8	0.3	2.4	112.5	0.3	2.3
Jul	113.1	0.3	2.4	112.7	0.2	2.3
Aug	113.1	-	2.3	113.1	0.4	2.4
Sep	113.5	0.4	2.9	113.6	0.4	3.2
Oct	114.1	0.5	3.8	114.4	0.7	4.3
Nov	115.1	0.9	4.7	115.4	0.9	4.9
Dec	115.5	0.3	5.1	116.1	0.6	5.2
2008 Jan	117.0p	1.3	6.0	117.1p	0.9	5.9
Feb	117.5p	0.4	6.0	117.5p	0.3	5.9

This series excludes excise duties payable on tobacco products, alcoholic liquor and petroleum products.

# 5 Output prices: detailed by product (not seasonally adjusted) all manufactured and selected products

2000=100

		2007 Oct	2007 Nov	2007 Dec	2008 Jan	2008 Feb	% change 1 month		% change 12 months	
							2008 Jan	2008 Feb	2008 Jan	2008 Feb
<b>Net sector</b>										
Output of manufactured products	PLLU	114.0	114.8	115.3	116.5p	116.9p	1.0	0.3	5.7	5.7
All manufacturing excl. duty	PVNP	114.1	115.1	115.5	117.0p	117.5p	1.3	0.4	6.0	6.0
All manufacturing excl. duty - seasonally adjusted	PVNQ	114.4	115.4	116.1	117.1p	117.5p	0.9	0.3	5.9	5.9
Products of manufacturing industries other than food, beverages, petroleum and tobacco -unadjusted	PLLV	110.3	110.3	110.5	111.9p	112.2p	1.3	0.3	3.2	3.0
All manufacturing excl. food, beverages, tobacco & petroleum - seasonally adjusted	PLLW	110.4	110.6	110.9	111.9p	112.1p	0.9	0.2	3.2	3.0
<b>Gross Sector</b>										
Food products, beverages & tobacco including duty	RBGA	118.1	118.8	119.6	120.5p	121.2p	0.8	0.6	6.4	6.7
Food products & beverages including duty	RPUN	115.9	116.8	117.6	118.4p	119.2p	0.7	0.7	7.0	7.2
Food products excluding beverages	RBGD	116.8	117.8	118.8	119.7p	120.4p	0.8	0.6	8.3	8.4
Tobacco products including duty	RPUS	131.4	131.4	131.4	132.9p	133.4p	1.1	0.4	3.5	3.9
Textiles	POKZ	104.7r	104.8r	104.8	105.0p	105.1p	0.2	0.1	1.4	1.4
Wearing apparel	POLA	98.3	98.4	98.4	98.9p	98.9p	0.5	-	0.7	0.7
Leather & leather products	POKJ	106.6	107.3	107.2	106.8p	107.0p	-0.4	0.2	0.1	-0.2
Wood & wood products	POKK	127.0	126.9	126.6	127.1p	127.2p	0.4	0.1	8.2	6.3
Pulp, paper & paper products	POLD	105.8	105.9	106.0	106.4p	106.9p	0.4	0.5	4.0	4.2
Printed matter & recorded media	POLE	116.6	116.8r	117.1	117.4p	118.0p	0.3	0.5	1.8	2.1
Petroleum products including duty	RPVU	130.1	136.6	139.1	140.5p	140.4p	1.0	-0.1	22.5	23.4
Chemicals, chemical, products & manmade fibres	POKN	120.2	120.3	121.9	124.4p	123.9p	2.1	-0.4	6.4	5.9
Rubber & plastic products	POKO	111.7	112.0	112.1	112.3p	112.8p	0.2	0.4	1.7	2.3
Other non metallic mineral products	POKP	123.7	123.9	124.2	128.0p	128.9p	3.1	0.7	4.1	4.1
Base metals	POLJ	158.5	158.1	155.3	154.8p	153.8p	-0.3	-0.6	4.7	4.1
Fabricated metal products, except machinery and equipment	POLK	123.2	123.2	123.2	123.7p	123.8p	0.4	0.1	2.1	1.5
Machinery and equipment n.e.c.	POKR	113.6	113.8	114.0	115.0p	115.1p	0.9	0.1	3.8	3.7
Office machinery and computers	POLM	40.6	41.2	41.2	41.1p	41.6p	-0.2	1.2	-4.9	-2.1
Electrical machinery and apparatus n.e.c.	POLN	115.9	115.9	116.2	117.1p	117.6p	0.8	0.4	3.5	3.4
Radio, television and communication equipment and apparatus	POLO	75.3	75.6	75.4	75.7p	75.6p	0.4	-0.1	-2.8	-3.2
Medical precision and optical instruments, watches and clocks	POLP	105.2	105.1	104.7	106.2p	106.3p	1.4	0.1	1.1	1.2
Motor vehicles, trailers and semi-trailers	POLQ	99.9	100.2	100.3	100.6p	100.7p	0.3	0.1	0.8	0.7
Other transport	POLR	117.3	117.6	118.1	119.0p	119.4p	0.8	0.3	2.5	2.7
Furniture: other manufactured goods n.e.c.	POLS	109.0	109.4	109.4	110.1p	110.3p	0.6	0.2	3.3	3.2
Recovered secondary raw materials	QTBM	264.5	252.7	251.4	291.9p	305.0p	16.1	4.5	30.3	25.2

# 6 Input prices: including Climate Change Levy<sup>1</sup> materials and fuels purchased

2000=100

	All manufacturing industries						Excluding food, beverages, tobacco and petroleum industries					
	not seasonally adjusted			seasonally adjusted			not seasonally adjusted			seasonally adjusted		
	Index	percent change over		Index	percent change over		Index	percentage change over		Index	percentage change over	
	(2000 = 100)	1 month	12 months	(2000 = 100)	1 month	12 months	(2000 = 100)	1 month	12 months	(2000 = 100)	1 month	12 months
	RNNK			RNPE			RNNQ			RNPF		
2004 Aug	100.8	2.1	4.9	100.3	1.6	4.6	95.3	1.0	2.1	96.3	1.0	2.4
Sep	102.5	1.7	7.8	103.1	2.8	8.1	96.9	1.7	3.6	97.6	1.3	3.6
Oct	105.0	2.4	9.0	105.6	2.4	9.0	98.2	1.3	4.7	98.4	0.8	4.6
Nov	103.4	-1.5	6.8	103.0	-2.5	6.4	99.1	0.9	4.9	98.2	-0.2	4.5
Dec	101.3	-2.0	4.4	100.6	-2.3	4.0	98.5	-0.6	4.2	97.2	-1.0	4.0
2005 Jan	104.9	3.6	9.7	104.7	4.1	9.7	100.4	1.9	7.6	99.8	2.7	7.5
Feb	105.5	0.6	10.8	105.7	1.0	11.0	100.5	0.1	8.3	100.0	0.2	8.2
Mar	107.9	2.3	11.0	107.1	1.3	11.1	101.0	0.5	7.6	100.3	0.3	7.4
Apr	107.1	-0.7	10.1	107.0	-0.1	10.1	100.6	-0.4	7.0	100.5	0.2	7.0
May	107.0	-0.1	7.4	107.8	0.7	7.6	100.9	0.3	6.5	101.0	0.5	6.7
Jun	109.3	2.1	11.9	110.0	2.0	11.8	100.8	-0.1	7.2	101.8	0.8	7.4
Jul	112.7	3.1	14.2	112.6	2.4	14.1	102.5	1.7	8.6	103.6	1.8	8.7
Aug	113.9	1.1	13.0	113.3	0.6	13.0	102.3	-0.2	7.3	103.6	-	7.6
Sep	113.2	-0.6	10.4	114.0	0.6	10.6	102.2	-0.1	5.5	103.1	-0.5	5.6
Oct	114.4	1.1	9.0	114.9	0.8	8.8	105.1	2.8	7.0	105.3	2.1	7.0
Nov	117.5	2.7	13.6	116.9	1.7	13.5	108.8	3.5	9.8	107.6	2.2	9.6
Dec	119.6	1.8	18.1	118.6	1.5	17.9	110.5	1.6	12.2	108.9	1.2	12.0
2006 Jan	121.4	1.5	15.7	121.2	2.2	15.8	110.8	0.3	10.4	110.0	1.0	10.2
Feb	121.3	-0.1	15.0	121.6	0.3	15.0	111.2	0.4	10.6	110.6	0.5	10.6
Mar	121.7	0.3	12.8	121.0	-0.5	13.0	111.1	-0.1	10.0	110.3	-0.3	10.0
Apr	123.4	1.4	15.2	123.4	2.0	15.3	110.5	-0.5	9.8	110.6	0.3	10.0
May	121.5	-1.5	13.6	122.5	-0.7	13.6	109.5	-0.9	8.5	109.7	-0.8	8.6
Jun	121.4	-0.1	11.1	122.2	-0.2	11.1	109.5	-	8.6	110.7	0.9	8.7
Jul	124.7	2.7	10.6	124.5	1.9	10.6	111.0	1.4	8.3	112.2	1.4	8.3
Aug	123.0	-1.4	8.0	122.4	-1.7	8.0	110.2	-0.7	7.7	111.8	-0.4	7.9
Sep	119.1	-3.2	5.2	120.1	-1.9	5.4	109.6	-0.5	7.2	110.7	-1.0	7.4
Oct	119.7	0.5	4.6	120.2	0.1	4.6	111.7	1.9	6.3	111.9	1.1	6.3
Nov	121.8	1.8	3.7	120.9	0.6	3.4	114.3	2.3	5.1	112.9	0.9	4.9
Dec	122.6	0.7	2.5	121.1	0.2	2.1	114.1	-0.2	3.3	112.2	-0.6	3.0
2007 Jan	118.9	-3.0	-2.1	117.8	-2.7	-2.8	112.7	-1.2	1.7	111.7	-0.4	1.5
Feb	119.9	0.8	-1.2	119.5r	1.4	-1.7	112.9	0.2	1.5	111.7r	-	1.0
Mar	122.5	2.2	0.7	121.9	2.0	0.7	113.9	0.9	2.5	113.0	1.2	2.4
Apr	122.4	-0.1	-0.8	122.3	0.3	-0.9	112.5	-1.2	1.8	112.7	-0.3	1.9
May	123.1	0.6	1.3	124.0	1.4	1.2	113.4	0.8	3.6	113.7	0.9	3.6
Jun	124.4	1.1	2.5	125.1	0.9	2.4	113.0	-0.4	3.2	114.3	0.5	3.3
Jul	125.4	0.8	0.6	125.2	0.1	0.6	112.5	-0.4	1.4	113.9	-0.3	1.5
Aug	124.1	-1.0	0.9	123.8	-1.1	1.1	112.4	-0.1	2.0	114.1	0.2	2.1
Sep	127.3	2.6	6.9	129.1	4.3	7.5	113.5	1.0	3.6	114.8	0.6	3.7
Oct	130.4	2.4	8.9	131.9	2.2	9.7	114.8	1.1	2.8	115.5r	0.6	3.2
Nov	135.1	3.6	10.9	134.6	2.0	11.3	116.8	1.7	2.2	115.7	0.2	2.5
Dec	137.5	1.8	12.2	136.6	1.5	12.8	118.6	1.5	3.9	117.0	1.1	4.3
2008 Jan	141.4p	2.8	18.9	140.2p	2.6	19.0	121.0p	2.0	7.4	119.7p	2.3	7.2
Feb	143.2p	1.3	19.4	142.6p	1.7	19.3	122.2p	1.0	8.2	120.8p	0.9	8.1

<sup>1</sup> The Climate Change Levy was introduced in April 2001.

See Background Notes for more details.

p = provisional

r = revised

# 7 Input prices: excluding Climate Change Levy<sup>1</sup> materials and fuels purchased by selected industries (not seasonally adjusted)

2000=100

		2007 Oct	2007 Nov	2007 Dec	2008 Jan	2008 Feb	% change 1 month		% change 12 months	
							2008 Jan	2008 Feb	2008 Jan	2008 Feb
<b>Gross sector</b>										
Other mining & quarrying products	RABE	121.4	125.5	126.5	129.3p	131.5p	2.2	1.7	20.7	21.3
Manufacture of food products	RBBQ	124.9	128.2	130.5	135.0p	134.4p	3.4	-0.4	17.0	16.3
Food products and beverages	RABF	125.2	128.5	130.8	135.4p	134.6p	3.5	-0.6	17.3	16.4
Tobacco products	RABG	111.4	112.7r	113.9	116.3p	121.3p	2.1	4.3	4.5	8.4
Manufacture of textiles	RBBR	108.2	109.4	110.2	112.0p	112.3p	1.6	0.3	4.9	5.0
Textiles	RABH	110.9	112.3	113.3	114.9p	115.1p	1.4	0.2	4.4	4.5
Wearing apparel	RABI	103.4	104.2	104.9	106.9p	107.2p	1.9	0.3	5.7	5.6
Manufacture of leather	RBBS	113.1	113.9	115.0	116.4p	117.2p	1.2	0.7	5.4	5.9
Manufacture of wood and wood products	RBBT	123.1	123.7	124.1	124.8p	124.9p	0.6	0.1	9.7	9.0
Manufacture of pulp paper & paper products, publishing and printing	RBBU	111.3	112.0	112.6	113.7p	114.2p	1.0	0.4	4.1	4.3
Pulp and paper products	RABL	110.3	111.4	112.3	113.8p	114.2p	1.3	0.4	5.6	5.6
Printed matter and recording material	RABM	111.8	112.3	112.8	113.6p	114.2p	0.7	0.5	3.5	3.7
Manufacture of coke, refined petroleum products and nuclear fuel	RBBV	200.5	217.9	221.7	229.4p	236.6p	3.5	3.1	59.4	58.2
Manufacture of chemical products	RBBW	124.3	126.4	128.2	131.4p	131.4p	2.5	-	9.1	9.2
Manufacture of rubber and plastic products	RBBX	120.0	121.3	122.4	124.5p	124.8p	1.7	0.2	6.2	6.2
Manufacture of other non-metallic mineral products	RBBY	122.6	124.7	126.0	129.7p	130.8p	2.9	0.8	6.6	7.4
Manufacture of basic metals and fabricated metal products	RBBZ	149.4	149.5	149.1	152.5p	154.1p	2.3	1.0	6.9	7.2
Basic metals	RABV	159.7	159.8	158.9	164.6p	167.1p	3.6	1.5	9.7	9.9
Fabricated metal products	RABW	140.4	140.7	140.6	142.1p	142.8p	1.1	0.5	4.4	4.5
Manufacture of machinery and equipment n.e.c.	RBCA	123.1	123.8	124.2	125.9p	126.4p	1.4	0.4	5.4	5.4
Manufacture of electrical and optical equipment	RBCB	95.2	95.7	96.4	97.4p	98.0p	1.0	0.6	2.3	2.8
Office machinery and computers	RABY	77.3	77.3	78.6	79.7p	80.1p	1.4	0.5	-0.6	-0.1
Electrical machinery and apparatus n.e.c.	RACB	112.8	113.6	114.0	115.1p	115.8p	1.0	0.6	4.5	5.1
Radio, television and communication equipment	RACC	107.8	108.5	108.6	109.6p	110.3p	0.9	0.6	3.7	4.4
Medical, precision, optical instruments and clocks	RACD	97.5	98.2	98.8	100.1p	100.5p	1.3	0.4	3.4	3.8
Manufacturing of transport equipment	RBCC	116.2	117.1	117.7	118.5p	119.0p	0.7	0.4	5.4	5.5
Motor vehicles, trailers and semi trailers	RACE	117.8	118.6	119.1	119.5p	120.0p	0.3	0.4	5.0	5.1
Other transport equipment	RACF	112.6	113.6	114.6	116.0p	116.9p	1.2	0.8	6.2	6.7
Manufacturing n.e.c.	RBCD	124.6	125.1	125.2	127.0p	127.5p	1.4	0.4	6.5	6.2

<sup>1</sup> The Climate Change Levy cannot be included in this table.

See Background Notes for more details.

p = provisional

r = revised

## 8 Input prices: detailed by commodity (not seasonally adjusted)

2000=100

		2007 Oct	2007 Nov	2007 Dec	2008 Jan	2008 Feb	% change 1 month		% change 12 months	
							2008 Jan	2008 Feb	2008 Jan	2008 Feb
Fuel inc. CCL <sup>1</sup>	<b>RNNL</b>	188.2	203.2	210.9	215.4p	212.5p	2.1	-1.3	2.5	3.0
Electricity inc. CCL	<b>RCVR</b>	170.5	179.3	183.6	186.6p	186.0p	1.6	-0.3	-3.1	-3.4
Gas inc. CCL	<b>RCVW</b>	248.5	284.8	303.9	313.5p	302.5p	3.2	-3.5	14.2	17.2
Crude petroleum oils and crude oils obtained from bituminous minerals	<b>QWYK</b>	215.1	235.4	240.2	249.0p	257.2p	3.7	3.3	68.6	65.7
<b>HOME PRODUCED MATERIALS</b>										
Home produced food materials	<b>YZYM</b>	149.1	156.7	160.5	169.9p	167.0p	5.9	-1.7	35.9	33.9
Animals for slaughter	<b>PNDE</b>	132.4	132.2	138.0	148.1p	153.8p	7.3	3.8	11.6	14.8
Other home produced materials	<b>PVEV</b>	142.6	142.9	142.6	145.9p	150.5p	2.3	3.2	10.7	14.3
<b>IMPORTED MATERIALS</b>										
Imported materials - total (Incl Crude Oil)	<b>PVNN</b>	114.3	116.2	117.9	120.6p	122.6p	2.3	1.7	13.3	13.9
Imported food materials	<b>PTUS</b>	119.9	121.8	124.8	129.1p	133.4p	3.4	3.3	15.3	18.1
All meat and meat preparations	<b>PVNY</b>	122.7 B	122.0 B	122.2 B	122.8pB	123.8pB	0.5	0.8	8.9	7.7
Cereals and cereal preparations	<b>PVOG</b>	138.9 B	143.5 B	152.4 B	155.2pB	165.1pB	1.8	6.4	39.7	46.6
Imported metals	<b>PVEW</b>	161.7	161.5	160.9	166.7p	172.5p	3.6	3.5	6.9	9.2
Iron and steel	<b>PSTZ</b>	157.0 B	155.9 B	158.9 B	160.4pB	163.9pB	0.9	2.2	1.8	3.9
Non-ferrous metals	<b>PSVH</b>	170.5 B	169.1 B	165.4 B	172.3pB	180.8pB	4.2	4.9	7.5	12.0
Imported chemicals	<b>PVEX</b>	118.9	119.9	121.3	125.5p	125.9p	3.5	0.3	9.2	9.4
Organic chemicals	<b>PSIV</b>	114.1 B	115.2 B	117.1 B	123.2pB	123.1pB	5.2	-0.1	9.5	9.3
Medicinal and pharmaceutical products	<b>PSLX</b>	87.8 B	88.0 B	88.2 B	90.6pB	90.7pB	2.7	0.1	1.0	1.7
Plastics in primary forms	<b>PSNV</b>	116.3 B	117.4 B	119.0 B	123.7pB	123.8pB	3.9	0.1	10.4	9.9
Imported parts and equipment	<b>YZYU</b>	91.5	92.2	93.9	94.7p	95.6p	0.9	1.0	5.6	6.3
Office machinery and computer parts	<b>RDAI</b>	53.3	52.0	55.6	57.0p	57.1p	2.5	0.2	-10.7	-10.5
Electronic components	<b>RDAM</b>	59.8 B	59.7 B	61.0 B	62.5pB	62.8pB	2.5	0.5	1.6	2.4
Motor vehicles and parts	<b>RDBV</b>	115.9	117.5	119.0	116.8p	117.2p	-1.8	0.3	8.2	8.1
Other imported	<b>YZYT</b>	105.9	107.2	108.1	110.2p	111.9p	1.9	1.5	10.3	10.7
Rubber products	<b>RBIA</b>	108.0	108.5	108.9	109.0p	109.9p	0.1	0.8	-4.1	-4.5
Wood and wood products	<b>RBHK</b>	126.8	127.2	127.6	126.7p	127.1p	-0.7	0.3	5.9	5.1
Pulp, paper, and paperboard	<b>RBHL</b>	95.5	95.5	96.1	97.3p	98.4p	1.2	1.1	5.1	5.4
Man-made fibres	<b>RBHZ</b>	105.5 B	106.0 B	107.2 B	109.8pB	110.3pB	2.4	0.5	6.5	6.6
Preparation of spinning of textile fibres	<b>RBHC</b>	104.1	105.1	106.3	108.8p	110.2p	2.4	1.3	7.2	8.3
Other textiles	<b>RBHG</b>	88.0 B	89.5 B	90.7 B	93.7pB	94.3pB	3.3	0.6	10.0	10.0

<sup>1</sup> The Climate Change Levy was introduced in April 2001.

B The values with 'B' are considered less reliable than the remainder currently published mainly due to the lack of market coverage

p = provisional

r = revised



