

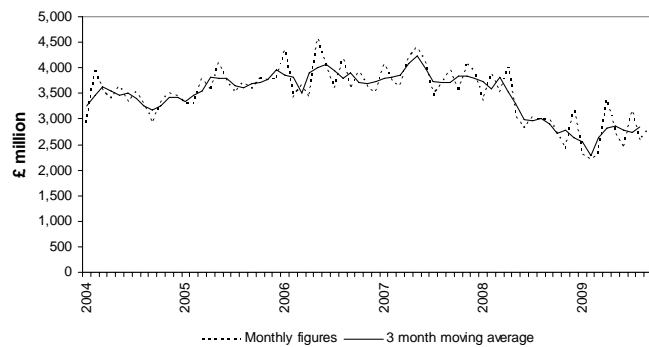
## New orders in the construction industry, September 2009



**Date:** 5 November 2009

**Coverage:** Great Britain **Theme:** Natural and Built Environment

All orders for new construction



Orders in the three months to September 2009 were unchanged compared with the previous three month period. Orders in the 12 months to September 2009 fell by 22 per cent compared with the previous 12 months and orders in the three months to September 2009 fell by 5 per cent compared with the same period a year

earlier. In the three months to September 2009, compared with the same period a year earlier, private housing orders fell by 14 per cent but public and housing association housing orders rose by 36 per cent. All orders figures quoted are seasonally adjusted and in constant (2005) prices.

### Orders for new construction

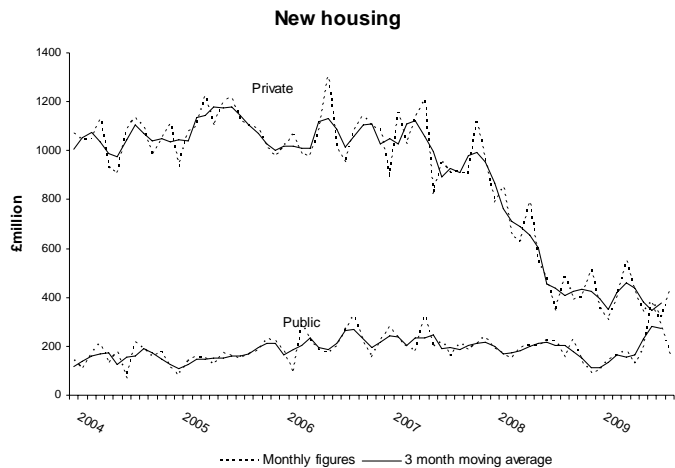
(constant (2005) prices, seasonally adjusted)

		Public housing	Private housing	Infra-structure	Public non-housing	Private industrial	Private commercial	All Orders
<i>£ million</i>								
2008	Q3	608	1,309	1,237	2,132	589	3,159	9,037
2008	Q4	462	1,306	1,528	2,020	512	2,484	8,313
2009	Q1 R	405	1,058	1,828	1,589	280	1,677	6,836
2009	Q2 R	497	1,317	1,986	2,621	380	1,761	8,561
2009	Q3 P	825	1,127	2,396	2,410	307	1,474	8,540
2009	Jan R	99	353	728	439	53	629	2,303
2009	Feb R	145	306	436	611	124	588	2,209
2009	Mar R	160	399	664	539	103	459	2,324
2009	April R	183	551	710	1,149	134	655	3,383
2009	May R	129	427	751	844	86	508	2,745
2009	June R	185	339	524	628	160	598	2,433
2009	July R	377	380	1,007	909	84	424	3,182
2009	Aug P	280	321	707	657	98	512	2,576
2009	Sep P	168	426	682	844	124	539	2,782

R = revised P = provisional

## Private and public housing

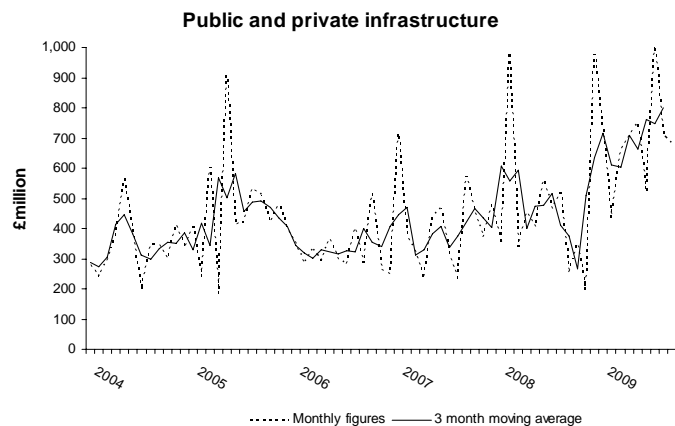
Private housing orders in the three months to September 2009 fell by 14 per cent compared with the previous three month period and fell by 14 per cent compared with the same three month period a year earlier. Private housing orders in the year to September 2009 fell by 44 per cent compared with those in the previous 12 months.



Public housing and housing association orders in the three months to September 2009 rose by 66 per cent compared with the previous three month period and rose by 36 per cent when compared with the same three month period a year earlier. Public housing and housing association orders fell by 7 per cent in the 12 months to September 2009 compared with the previous 12 months. All comparisons in this sector are affected by large variations due to its relatively small size.

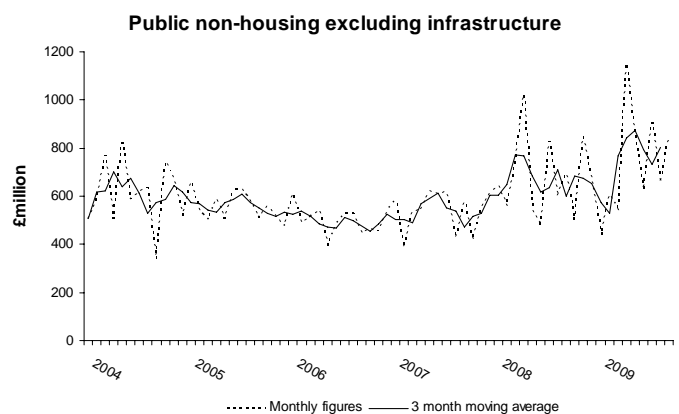
## Private and public infrastructure

Infrastructure orders in the three months to September 2009 rose by 21 per cent compared with the previous three month period and rose by 94 per cent when compared with the same three month period a year earlier. Infrastructure orders in the year to September 2009 rose by 37 per cent compared with the previous 12 months.



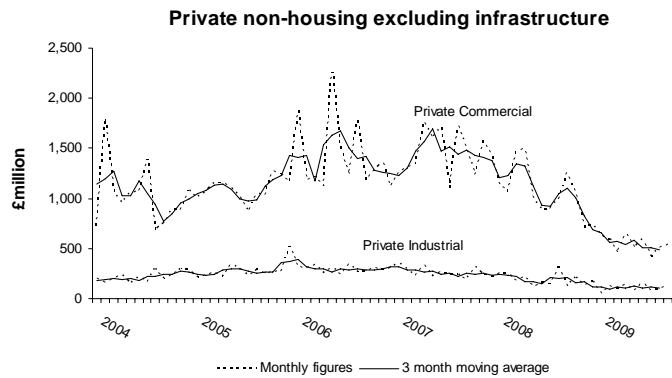
## Public non-housing

Public non-housing orders (excluding infrastructure) in the three months to September 2009 fell by 8 per cent compared with the previous three month period but rose by 13 per cent compared with the same three month period a year earlier. Public non-housing orders in the 12 months to September 2009 rose by 12 per cent compared with the previous 12 month period.



## Private non-housing

Private commercial orders in the three months to September 2009 fell by 16 per cent compared with the previous three month period and fell by 53 per cent compared with the same period a year earlier. Private commercial orders in the 12 months to September 2009 were 49 per cent lower than in the previous 12 months.



Private industrial orders in the three months to September 2009 fell by 19 per cent compared with the previous three month period and fell by 48 per cent compared with the same three month period a year earlier. Private industrial orders in the 12 months to September 2009 fell by 42 per cent compared with the previous 12 months.

## Revisions

Construction orders series may be revised following publication of the first monthly estimate.

Current price data are revised two months following publication of the provisional figures. Other revisions to the orders series have been caused by revisions to some of the price and cost indices used to deflate the current price data to constant (2005) prices.

### Revisions to three monthly growth rates (seasonally adjusted volume index)

		All new work published in this release	All new work published in previous release	All new work Revisions
2009	January	-9.2	-9.2	0.0
	February	-5.6	-5.6	0.0
	March	-17.8	-17.8	0.0
	April	0.3	0.2	0.0
	May	10.1	10.1	0.0
	June	25.2	25.2	0.0
	July	5.6	4.5	1.1
	August	-3.1	-4.2	1.1

## Background Notes

### Relevance to users

1. The Statistical Bulletin brings together information on orders for new construction in Great Britain. It draws on data compiled from monthly sample surveys of construction contractors. The construction industry, which accounted for 5.9 per cent of UK gross value added in 2006, covers Section F of the Standard Industrial Classification 2003.
2. Because monthly figures are variable, especially for individual sectors, attention is directed to the latest three month period. Even this comparison can be affected by exceptionally high or low results. Graphs are shown with a three month moving average trend. Figures for individual sectors can be affected by exceptionally large contracts.
3. Responsibility for construction output, employment and new orders statistics transferred from the Department for Business, Innovation and Skills (BIS) to the Office for National Statistics on 1 March 2009. The statistics published in this release continue to be based on the methodology developed by BIS. ONS is carrying out a review of the data collected and methodology in order to bring these in line with standard ONS procedures. A revised data collection and publication procedure is expected in 2010.

### Accuracy

4. Revisions to previous periods: figures for the recent months are provisional and subject to revision, mainly in the light of revisions to deflators. Current price figures are revised once, two months after provisional publication.
5. Figures marked R indicate that the data have been revised since the last edition.

### Deflation and seasonal adjustment

6. The headline data are given in constant 2005 prices, seasonally adjusted. Deflators adjust the value series to take out the effect of price changes to give the volume series. Deflation of output is carried out sectorally and a range of relevant tender price, materials price and labour price indices are used.
7. Seasonal adjustment aids interpretation by removing annually recurring fluctuations, for example, due to climate, hours of daylight, holidays or other regular seasonal patterns. Unadjusted data are also available.

## Further information

8. Spreadsheets containing the data published in this Statistical Bulletin, as well as further breakdowns and previous ONS releases can be found at:  
<http://www.statistics.gov.uk/STATBASE/Product.asp?vlnk=725>
9. Releases on construction output and employment prior to the transfer to ONS can be found on the BIS website at:  
<http://stats.bis.gov.uk/construction/output/>
10. Related releases on output and employment in the construction industry in Great Britain are published at:  
<http://www.statistics.gov.uk/STATBASE/Product.asp?vlnk=725>
11. The Construction Statistics Annual publication brings together a wide range of statistics that are currently available on the construction industry from a number of different sources. This is published at:  
<http://www.statistics.gov.uk/StatBase/Product.asp?vlnk=284>

## Publication policy

12. Details of the policy governing the release of new data are available from the press office. Also available is a list of the names of those given pre-publication access to the contents of this release.
13. National Statistics are produced to high professional standards set out in the Code of Practice for Official Statistics. They undergo regular quality assurance reviews to ensure that they meet customer needs. They are produced free from any political interference.  
© Crown copyright 2009.

**Next publication:** Thursday 10 December 2009

**Issued by:** Office for National Statistics, Government Buildings, Cardiff Road, Newport NP10 8XG

**Media contact:**

Tel **Media Relations Office 0845 6041858**

**Emergency on-call 07867 906553**

E-mail **press.office@ons.gsi.gov.uk**

**Statistical contact:**

Tel **Tony Crook 01633 456662**

E-mail **construction.statistics@ons.gsi.gov.uk**

**Website:**

[www.ons.gov.uk](http://www.ons.gov.uk)

**Table 1: Volume of orders for new construction in Great Britain**  
**Constant (2005) prices seasonally adjusted index numbers**

**2005 = 100**

		Public Housing <sup>1</sup>	Private Housing <sup>1</sup>	Infra-structure	Public (excl infrastructure)	Private Industrial	Private Commercial	All new Work	
2006		129.6	97.1	70.8	89.4	103.7	130.4	106.3	
2007		135.5	91.1	90.1	96.8	92.1	133.1	111.6	
2008		111.9	52.2	106.0	121.6	66.9	96.6	86.6	
2007	Q1	145.7	93.4	102.0	90.2	101.5	118.8	104.6	
	Q2	143.4	96.2	82.7	105.8	96.9	154.3	115.5	
	Q3	121.2	84.3	81.4	96.8	79.6	131.3	101.2	
	Q4	131.8	90.6	94.5	94.7	90.5	128.2	104.8	
2008	Q1	105.0	69.6	121.2	115.9	80.3	112.1	98.3	
	Q2	123.4	59.6	103.0	122.3	58.3	102.6	90.2	
	Q3	124.6	39.8	89.4	127.4	68.9	96.0	82.3	
	Q4	94.6	39.7	110.5	120.7	59.9	75.5	75.7	
2009	Q1	R	83.0	32.1	132.1	94.9	32.7	51.0	62.2
	Q2	R	101.8	40.0	143.6	156.6	44.4	53.5	77.9
	Q3	P	169.1	34.2	173.2	144.0	35.8	44.8	77.8
2006	Nov		92.6	99.8	56.9	81.4	98.9	123.7	98.3
	Dec		134.9	99.6	53.7	96.7	107.5	102.8	96.5
2007	Jan		173.0	81.1	154.9	104.2	125.3	115.6	111.8
	Feb		140.2	105.6	82.2	69.8	98.8	118.6	102.1
	Mar		123.9	93.6	68.9	96.5	80.3	122.2	99.8
	Apr		109.8	103.6	51.3	97.3	117.7	160.9	114.6
	May		199.1	110.2	95.4	111.3	79.0	145.9	120.7
	Jun		121.2	74.8	101.2	108.9	93.9	156.1	111.3
	Jul		135.1	87.0	69.3	110.5	85.4	101.6	94.7
	Aug		97.8	82.9	49.8	76.4	86.1	157.1	100.9
	Sep		130.7	83.2	125.2	103.4	67.3	135.1	108.0
	Oct		115.6	82.4	98.2	74.8	111.2	112.8	96.1
	Nov		131.9	101.7	80.7	99.0	82.6	143.6	111.1
	Dec		147.9	87.7	104.5	110.1	77.7	128.0	107.2
2008	Jan		118.1	71.7	76.4	115.4	88.2	104.1	92.0
	Feb		104.1	77.7	213.0	100.6	90.0	97.6	106.3
	Mar		92.8	59.3	73.8	131.8	62.8	134.7	96.5
	Apr		119.6	57.4	99.1	183.8	77.8	136.6	110.0
	May		124.7	72.1	88.1	97.3	40.0	90.6	83.3
	Jun		126.0	49.2	121.7	85.5	57.1	80.6	77.3
	Jul		139.4	43.6	101.1	149.1	53.6	82.3	83.5
	Aug		137.1	31.4	112.3	107.9	110.4	90.4	81.8
	Sep		97.2	44.4	54.8	125.3	42.8	115.3	81.5
	Oct		140.2	35.4	76.4	90.3	73.4	94.6	74.3
	Nov		86.5	36.5	42.8	151.9	47.4	64.5	66.3
	Dec		57.1	47.2	212.3	119.9	58.8	67.5	86.5
2009	Jan	R	61.0	32.2	157.9	78.7	18.8	57.4	62.9
	Feb	R	89.4	27.9	94.5	109.5	43.4	53.6	60.4
	Mar	R	98.5	36.3	144.0	96.7	36.0	41.9	63.5
	Apr	R	112.3	50.2	154.0	206.1	47.1	59.8	92.4
	May	R	79.4	38.9	163.0	151.2	30.2	46.3	75.0
	Jun	R	113.7	30.9	113.6	112.5	56.0	54.5	66.5
	Jul	R	231.9	34.6	218.5	163.0	29.4	38.6	86.9
	Aug	P	172.2	29.3	153.4	117.8	34.5	46.7	70.4
	Sep	P	103.1	38.8	147.9	151.4	43.5	49.1	76.0

1. Excludes orders for home improvement work

P Provisional

R Revised

These tables and additional breakdowns are available in Excel from  
<http://www.statistics.gov.uk/STATBASE/Product.asp?vlnk=720>

**Table 2: Volume of orders for new construction in Great Britain <sup>1</sup>**  
**Constant (2005) prices seasonally adjusted**

£ million

		Public Housing <sup>1</sup>	Private Housing <sup>1</sup>	Infra-structure	Public (excl infrastructure)	Private Industrial	Private Commercial	All new Work	
2006		2,528	12,794	3,916	5,986	3,546	17,163	45,933	
2007		2,644	12,004	4,987	6,483	3,151	17,525	46,794	
2008		2,183	6,869	5,864	8,138	2,287	12,709	38,050	
2007	Q1	710	3,076	1,411	1,509	868	3,909	11,483	
	Q2	699	3,168	1,143	1,771	828	5,079	12,689	
	Q3	591	2,777	1,126	1,619	681	4,320	11,113	
	Q4	643	2,984	1,307	1,584	774	4,217	11,509	
2008	Q1	512	2,291	1,675	1,940	687	3,689	10,792	
	Q2	602	1,962	1,424	2,045	499	3,376	9,908	
	Q3	608	1,309	1,237	2,132	589	3,159	9,037	
	Q4	462	1,306	1,528	2,020	512	2,484	8,313	
2009	Q1	R	405	1,058	1,828	1,589	280	1,677	6,836
	Q2	R	497	1,317	1,986	2,621	380	1,761	8,561
	Q3	P	825	1,127	2,396	2,410	307	1,474	8,540
2006	Nov		151	1,095	262	454	282	1,356	3,600
	Dec		219	1,093	248	540	306	1,128	3,534
2007	Jan		281	890	714	581	357	1,268	4,092
	Feb		228	1,159	379	389	282	1,301	3,738
	Mar		201	1,027	318	538	229	1,340	3,653
	Apr		179	1,137	237	543	335	1,765	4,195
	May		324	1,210	440	621	225	1,601	4,421
	Jun		197	821	467	607	268	1,713	4,073
	Jul		220	954	319	616	244	1,114	3,468
	Aug		159	909	229	426	245	1,724	3,693
	Sep		212	913	577	577	192	1,482	3,953
	Oct		188	905	453	417	317	1,237	3,517
	Nov		214	1,116	372	552	235	1,576	4,066
	Dec		240	963	482	614	221	1,405	3,926
2008	Jan		192	787	352	644	252	1,141	3,368
	Feb		169	853	982	561	257	1,070	3,891
	Mar		151	651	340	735	179	1,478	3,533
	Apr		194	630	457	1,025	222	1,498	4,027
	May		203	791	406	543	114	994	3,050
	Jun		205	540	561	477	163	884	2,831
	Jul		227	478	466	831	153	903	3,058
	Aug		223	344	518	602	315	991	2,994
	Sep		158	487	253	699	122	1,265	2,984
	Oct		228	388	352	504	209	1,037	2,720
	Nov		141	400	197	848	135	707	2,429
	Dec		93	518	979	669	168	740	3,165
2009	Jan	R	99	353	728	439	53	629	2,303
	Feb	R	145	306	436	611	124	588	2,209
	Mar	R	160	399	664	539	103	459	2,324
	Apr	R	183	551	710	1,149	134	655	3,383
	May	R	129	427	751	844	86	508	2,745
	Jun	R	185	339	524	628	160	598	2,433
	Jul	R	377	380	1,007	909	84	424	3,182
	Aug	P	280	321	707	657	98	512	2,576
	Sep	P	168	426	682	844	124	539	2,782

1. Excludes orders for home improvement work

P Provisional

R Revised

These tables and additional breakdowns are available in Excel from

<http://www.statistics.gov.uk/STATBASE/Product.asp?vlnk=720>

**Table 3: Volume of orders for new construction in Great Britain <sup>1</sup>**  
**Constant (2005) prices**

**£ million**

			Public Housing <sup>1</sup>	Private Housing <sup>1</sup>	Infra- structure	Public (excl infrastructure)	Private Industrial	Private Commercial	All new Work
2006			2,528	12,794	3,916	5,986	3,546	17,163	45,933
2007			2,644	12,004	4,987	6,483	3,151	17,525	46,794
2008			2,183	6,869	5,864	8,138	2,287	12,709	38,050
2007	Q1		953	3,217	1,449	1,525	840	4,036	12,019
	Q2		630	3,271	1,358	1,708	814	5,180	12,961
	Q3		504	2,857	1,097	1,737	719	4,386	11,300
	Q4		557	2,660	1,083	1,514	777	3,923	10,515
2008	Q1		693	2,387	1,641	1,965	665	3,824	11,175
	Q2		577	2,018	1,752	1,912	486	3,360	10,105
	Q3		509	1,329	1,275	2,314	625	3,232	9,283
	Q4		405	1,134	1,196	1,947	511	2,292	7,486
2009	Q1	R	574	1,111	1,841	1,594	276	1,711	7,108
	Q2	R	489	1,354	2,477	2,433	369	1,778	8,900
	Q3	P	696	1,149	2,304	2,570	317	1,503	8,538
2006	Nov		120	1,022	250	417	300	1,373	3,481
	Dec		180	828	176	440	280	933	2,837
2007	Jan		317	984	759	615	320	1,273	4,267
	Feb		251	1,155	341	403	253	1,294	3,698
	Mar		385	1,078	349	506	267	1,469	4,053
	Apr		234	1,116	369	462	304	1,531	4,016
	May		218	1,222	567	563	250	1,740	4,560
	Jun		177	933	422	682	261	1,909	4,385
	Jul		214	1,017	278	761	268	1,373	3,911
	Aug		109	989	277	454	262	1,606	3,696
	Sep		182	851	542	522	189	1,407	3,693
	Oct		171	903	363	505	314	1,139	3,396
	Nov		175	1,063	369	510	255	1,614	3,987
	Dec		212	694	350	498	207	1,171	3,132
2008	Jan		217	864	376	685	226	1,144	3,512
	Feb		187	845	889	585	231	1,063	3,799
	Mar		289	678	376	695	209	1,617	3,864
	Apr		256	615	715	877	201	1,297	3,962
	May		137	793	526	495	127	1,079	3,158
	Jun		184	610	510	539	159	984	2,986
	Jul		221	506	408	1,032	168	1,111	3,446
	Aug		153	372	629	645	337	922	3,056
	Sep		136	451	238	637	120	1,200	2,782
	Oct		208	385	284	613	208	953	2,651
	Nov		115	379	197	788	147	723	2,349
	Dec		82	371	716	546	157	616	2,487
2009	Jan	R	111	390	751	462	47	628	2,390
	Feb	R	159	304	381	629	110	582	2,165
	Mar	R	304	418	709	504	118	501	2,553
	Apr	R	238	540	1,075	972	120	565	3,511
	May	R	87	430	941	761	95	549	2,862
	Jun	R	165	384	460	701	154	663	2,527
	Jul	R	364	404	852	1,115	92	520	3,346
	Aug	P	190	349	829	695	104	474	2,641
	Sep	P	142	396	622	760	121	509	2,550

1. Excludes orders for home improvement work

P Provisional

R Revised

These tables and additional breakdowns are available in Excel from

<http://www.statistics.gov.uk/STATBASE/Product.asp?vlnk=720>

**Table 4: Value of orders for new construction in Great Britain <sup>1</sup>**  
**Current prices**

**£ million**

		Public Housing <sup>1</sup>	Private Housing <sup>1</sup>	Infra-structure	Public (excl infrastructure)	Private Industrial	Private Commercial	All new Work
2006		2,653	13,468	4,319	6,162	3,634	17,528	47,764
2007		2,964	13,109	5,633	7,324	3,306	18,288	50,624
2008		2,501	7,670	6,361	9,400	2,456	13,235	41,623
2007	Q1	1,056	3,473	1,677	1,651	876	4,189	12,922
	Q2	707	3,547	1,533	1,912	851	5,386	13,934
	Q3	568	3,150	1,225	1,992	756	4,588	12,279
	Q4	634	2,939	1,198	1,770	824	4,125	11,489
2008	Q1	797	2,658	1,780	2,283	711	3,982	12,211
	Q2	669	2,268	1,895	2,211	526	3,510	11,078
	Q3	582	1,502	1,389	2,681	669	3,360	10,183
	Q4	452	1,243	1,297	2,225	551	2,383	8,150
2009	Q1	623	1,191	1,909	1,710	299	1,789	7,521
	Q2	523	1,406	2,516	2,502	398	1,860	9,205
	Q3	745	1,232	2,350	2,626	341	1,572	8,866
2006	Nov	130	1,080	279	441	310	1,416	3,657
	Dec	197	886	199	469	291	964	3,006
2007	Jan	348	1,069	878	661	333	1,319	4,609
	Feb	278	1,241	397	436	264	1,344	3,962
	Mar	429	1,163	402	554	278	1,526	4,352
	Apr	261	1,194	421	511	317	1,590	4,294
	May	246	1,333	638	630	261	1,807	4,915
	Jun	199	1,020	474	770	273	1,988	4,725
	Jul	241	1,119	312	866	281	1,433	4,253
	Aug	122	1,096	309	521	276	1,680	4,004
	Sep	205	935	604	604	199	1,476	4,022
	Oct	193	992	403	588	333	1,197	3,707
	Nov	198	1,181	410	599	271	1,700	4,358
	Dec	242	766	385	583	220	1,228	3,424
2008	Jan	249	958	410	798	240	1,194	3,850
	Feb	215	952	962	679	247	1,104	4,160
	Mar	333	748	407	805	224	1,684	4,201
	Apr	297	681	773	1,015	217	1,354	4,337
	May	159	898	570	572	137	1,129	3,465
	Jun	214	688	553	624	171	1,027	3,277
	Jul	254	577	444	1,196	181	1,157	3,807
	Aug	174	416	685	748	360	957	3,341
	Sep	154	509	260	737	129	1,246	3,035
	Oct	234	436	311	707	223	990	2,901
	Nov	127	412	216	905	158	751	2,570
	Dec	90	395	771	613	169	641	2,679
2009	Jan	123	421	789	506	51	656	2,546
	Feb	172	325	394	673	120	609	2,293
	Mar	328	445	726	531	128	524	2,682
	Apr	255	556	1,101	1,009	130	591	3,642
	May	93	446	946	777	102	575	2,938
	Jun	176	405	469	716	166	694	2,625
	Jul	388	429	872	1,139	99	544	3,470
	Aug	204	378	848	710	112	496	2,748
	Sep	153	424	631	777	131	532	2,648

1. Excludes orders for home improvement work

P Provisional

R Revised

These tables and additional breakdowns are available in Excel from

<http://www.statistics.gov.uk/STATBASE/Product.asp?vlnk=720>

**Next publication:** Thursday 10 December 2009

**Issued by:** Office for National Statistics, Government Buildings, Cardiff Road, Newport NP10 8XG

**Media contact:**

Tel **Media Relations Office 0845 6041858**

**Emergency on-call 07867 906553**

E-mail **press.office@ons.gsi.gov.uk**

**Statistical contact:**

Tel **Tony Crook 01633 456662**

E-mail **construction.statistics@ons.gsi.gov.uk**

**Website:**

[www.ons.gov.uk](http://www.ons.gov.uk)