

23 February 2006

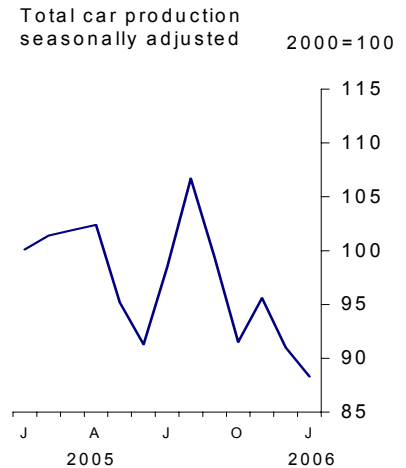
**Coverage**  
United Kingdom  
**Theme**  
Commerce, Energy and Industry

## Motor vehicle production January 2006

In the three months to January 2006, total car production, seasonally adjusted, fell by 7.6 per cent compared with the previous three months. Production for the home market decreased by 9.3 per cent, while production allocated for the export market fell by 7.1 per cent.

Compared with the same three months a year ago, total car production, seasonally adjusted, fell by 8.9 per cent. Production allocated for the home market decreased by 26.1 per cent, while production for the export market fell by 2.0 per cent.

Total commercial vehicle production, seasonally adjusted, for the three months ending January 2006 fell by 4.9 per cent compared with the previous three months and by 2.4 per cent compared with the same period a year ago.



### Index numbers

		Total car production	Home car production	Export car production	Commercial vehicle production
<i>Seasonally adjusted: 2000=100</i>					
<b>2005</b>	Aug	106.7	66.0	128.9	126.9
	Sep	99.4	73.4	113.6	122.0
	Oct	91.5	62.5	107.2	115.8
	Nov	95.6	63.9	112.8	119.6
	Dec	91.0	58.9	108.5	109.1
<b>2006</b>	Jan	88.3	60.3	103.4	118.2

### Percentage changes:

Latest three months on-					
previous three months		-7.6	-9.3	-7.1	-4.9
same three months a year ago		-8.9	-26.1	-2.0	-2.4

Issued by  
National Statistics  
1 Drummond Gate  
London SW1V 2QQ

Telephone  
Press Office 020 7533 5725  
Public Enquiries 0845 601 3034

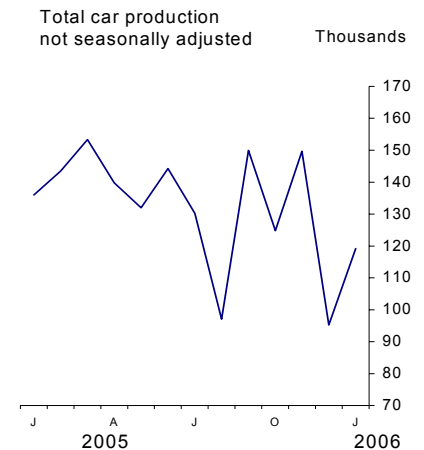
Statistician  
Denise Blackmore 01633 812394  
E-mail  
denise.blackmore@ons.gsi.gov.uk

Internet  
www.statistics.gov.uk

Next publication date  
23 March 2006

**Number of vehicles produced**

		<b>Total car production</b>	<b>Home car production</b>	<b>Export car production</b>	<b>Commercial vehicle production</b>
<i>Thousands: not seasonally adjusted</i>					
<b>2005</b>	Aug	97.1	25.3	71.8	10.8
	Sep	149.9	41.0	108.9	19.7
	Oct	124.8	25.4	99.4	18.4
	Nov	149.7	30.3	119.4	20.0
	Dec	95.3	17.4	77.9	13.6
<b>2006</b>	Jan	119.1	32.7	86.4	18.2



**Percentage changes:**

Latest three months on-

same three months a year ago	-7.8	-26.0	-0.9	-1.9
------------------------------	------	-------	------	------

Compared with the same period a year ago, total car production, not seasonally adjusted for the three months to January 2006 fell by 7.8 per cent. Production allocated for the home market decreased by 26.0 per cent, while export production fell by 0.9 per cent.

Total commercial vehicle production, not seasonally adjusted, for the three months to January 2006 fell by 1.9 per cent when compared with the same period a year ago. Production allocated for the home market fell by 21.2 per cent, while export production rose by 10.0 per cent.

**Revisions (Table R1)**

For this release Table R1 highlights revisions to data previously published in last month's First Release.

The revisions shown in Table R1 of this release are due to revisions to seasonal factors which are re-estimated every month.

## BACKGROUND NOTES

1. The figures shown represent the output of United Kingdom based manufacturers classified to Class 34.10 (motor vehicles) of the *Standard Industrial Classification (2003)*. They are derived from the motor vehicle production inquiry (MVPI).
2. Percentages are calculated using unrounded values.
3. Figures for production in this First Release are provided in both unadjusted and seasonally adjusted forms. Seasonal adjustment aids interpretation by removing annually recurring fluctuations, for example, due to holidays or other regular seasonal patterns.
4. These figures include vehicles produced in the form of kits for assembly. The value of the kit must be 50 per cent or more of the value of a corresponding complete vehicle.

### Status of figures and planned future revisions

5. Figures for the latest two months are regularly revised in the light of a) late and revised respondent data and b) revisions to seasonal adjustment factors which are re-estimated every month. There are no planned methodological changes in the next 12 months. A routine seasonal adjustment review is conducted annually in the spring.

### Revisions

6. Revisions to data provide one indication of the reliability of key indicators. The table below shows summary information on the size and direction of the revisions which have been made to the data covering three and four year periods. A statistical test has been applied to the average revision to find out if it is statistically significantly different from zero. An asterisk (\*) shows that the test is significant.

The table covers estimates of Motor Vehicle production first published from March 2000 to December 2004 for not seasonally adjusted values and from June 2001 to December 2004 for seasonally adjusted indices. This is due to the temporary withdrawal of seasonal adjustment following the change to biannual updating of vehicle registration identifiers in 1999.

Spreadsheets giving revisions triangles (real time database) of estimates from March 2000 to date and from June 2001 to date and the calculations behind the averages in the table are available on the National Statistics website at

<http://www.statistics.gov.uk/statbase/Product.asp?vlnk=627>

	Value in latest period	Revisions between first publication and estimates twelve months later	
		Average over the last 5 years	Average over the last 5 years without regard to sign (average absolute revision)
Total passenger cars (seasonally adjusted index) 3 months on previous 3 months	-7.6	-0.06	1.21
Total commercial vehicles (seasonally adjusted index) 3 months on previous 3 months	-4.9	-0.10	4.06
Total passenger cars (unadjusted volume) 3 months on same 3 months a year ago	-7.8	0.08	0.44
Total commercial vehicles (unadjusted volume) 3 months on same 3 months a year ago	-1.9	-0.80	1.85

7. A Press Release on motor vehicle production is also issued by the Society of Motor Manufacturers and Traders Limited.
8. Users can download time series, cross sectional data and metadata from across the Government Statistical Service (GSS) using the site search and index functions from the homepage. Many datasets can be downloaded in whole or in part, and directory information for all GSS statistical resources can be consulted including censuses, surveys, periodicals and enquiry services. Information is posted as PDF electronic documents or in XLS and CSV formats compatible with most spreadsheet packages.

The time series data facility on the web-site provides access to around 40,000 time series, of primarily macro-economic data, drawn from the main tables in a range of our major economic and labour market publications. Complete runs of the series in this release are available to download free of charge at <http://www.statistics.gov.uk/timeseries>. Alternatively, for low-cost tailored data call Online Services on 020 7533 5675 or email [tailored@statistics.gov.uk](mailto:tailored@statistics.gov.uk).

9. Details of the policy governing the release of new data are available from the Press Office. Also available is a list of the names of those given pre-publication access to the contents of this release.

10. **National Statistics** are produced to high professional standards set out in the National Statistics Code of Practice. They undergo regular quality assurance reviews to ensure that they meet customer needs. They are produced free from any political interference. © Crown Copyright 2006

# 1 CAR AND COMMERCIAL VEHICLE PRODUCTION INDEX NUMBERS<sup>1</sup>

Seasonally Adjusted

2000=100

	PASSENGER CARS			COMMERCIAL VEHICLES		
	TOTAL	For Home Market	For Export	TOTAL	For Home Market	For Export
2001	IKZX 90.9	ISDU 103.4	ISEP 84.1	ISEW 111.9	ISEZ 100.4	ISFC 126.3
2002	99.3	100.7	98.5	110.9	80.0	150.0
2003	101.0	88.8	107.6	109.5	89.3	135.1
2004	100.3	80.7	111.0	121.4	84.3	168.2
2005	97.9	71.2	112.5	120.8	81.1	170.9
2003 Q1	94.9	90.0	97.5	105.7	77.1	141.8
Q2	101.7	92.0	107.0	104.7	88.1	125.7
Q3	105.8	90.9	114.0	107.9	92.5	127.4
Q4	101.5	82.4	111.8	119.8	99.5	145.5
2004 Q1	100.0	83.9	108.7	124.5	97.1	159.2
Q2	100.5	86.1	108.4	114.8	72.1	168.9
Q3	100.8	77.1	113.7	125.1	85.7	174.9
Q4	100.0	75.9	113.1	121.0	82.5	169.6
2005 Q1	101.1	80.4	112.4	119.3	80.5	168.2
Q2	96.3	72.0	109.5	125.9	95.6	164.2
Q3	101.5	70.5	118.4	123.2	83.8	173.0
Q4	92.7	61.8	109.5	114.8	64.5	178.4
2003 Feb	95.1	87.9	98.9	105.9	82.4	135.7
Mar	99.1	93.5	102.2	107.2	77.1	145.3
Apr	111.0	96.1	119.2	104.3	89.7	122.7
May	92.3	84.4	96.6	99.7	86.0	117.1
Jun	101.8	95.4	105.3	110.2	88.6	137.4
Jul	105.3	94.9	111.0	115.6	101.9	132.8
Aug	106.0	92.7	113.3	103.6	91.1	119.4
Sep	106.2	85.0	117.8	104.5	84.4	130.0
Oct	101.4	86.9	109.2	107.1	85.2	134.9
Nov	98.6	73.7	112.1	119.7	95.5	150.3
Dec	104.5	86.7	114.1	132.5	117.7	151.3
2004 Jan	101.4	84.7	110.5	136.2	106.3	174.1
Feb	96.4	82.2	104.1	114.0	80.4	156.5
Mar	102.1	84.8	111.5	123.3	104.5	147.1
Apr	99.9	79.9	110.7	111.1	72.5	160.0
May	101.8	96.2	104.9	120.9	72.7	181.9
Jun	99.9	82.1	109.7	112.5	71.0	164.9
Jul	106.1	78.4	121.2	116.4	67.2	178.6
Aug	96.9	73.2	109.8	126.2	103.6	154.8
Sep	99.4	79.7	110.2	132.8	86.3	191.4
Oct	98.1	66.6	115.2	126.1	83.7	179.7
Nov	102.6	79.4	115.3	118.6	83.6	162.8
Dec	99.2	81.6	108.8	118.3	80.3	166.4
2005 Jan	100.1	86.9	107.3	118.4	74.8	173.5
Feb	101.4	79.0	113.6	119.7	83.4	165.5
Mar	101.9	75.3	116.3	119.8	83.4	165.7
Apr	102.4	82.6	113.2	139.7	102.4	187.0
May	95.2	74.6	106.4	124.4	97.4	158.4
Jun	91.3	58.8	109.0	113.5	86.9	147.1
Jul	98.5	72.2	112.8	120.7	86.5	164.0
Aug	106.7	66.0	128.9	126.9	87.8	176.2
Sep	99.4	73.4	113.6	122.0	77.1	178.7
Oct	91.5	62.5	107.2	115.8	75.5	166.8
Nov	95.6	63.9	112.8	119.6	66.5	186.7
Dec	91.0	58.9	108.5	109.1	51.6	181.8
2006 Jan	88.3	60.3	103.4	118.2	66.4	183.7
Percentage changes latest 3 months on:						
i. previous 3 months	-7.6	-9.3	-7.1	-4.9	-23.3	5.8
ii. same 3 months a year ago:	-8.9	-26.1	-2.0	-2.4	-22.7	9.8

1 Provisional

Source: National Statistics

# 2 CAR AND COMMERCIAL VEHICLE PRODUCTION<sup>1</sup>

Not Seasonally Adjusted

	PASSENGER CARS			COMMERCIAL VEHICLES		
	TOTAL	For Home Market	For Export	TOTAL	For Home Market	For Export
	JCYM	LNBU	JCYL	JCYG	LNBX	JCYF
2001	1 492 365	598 111	894 254	192 873	96 649	96 224
2002	1 629 744	582 460	1 047 284	191 267	77 033	114 234
2003	1 657 558	513 799	1 143 759	188 871	85 954	102 917
2004	1 646 750	466 994	1 179 756	209 293	81 186	128 107
2005	1 595 697	411 194	1 184 503	206 753	76 480	130 273
2003 Q1	424 325	150 027	274 298	49 367	21 349	28 018
Q2	433 280	129 296	303 984	46 635	21 611	25 024
Q3	391 213	133 799	257 414	40 127	19 463	20 664
Q4	408 740	100 677	308 063	52 742	23 531	29 211
2004 Q1	445 458	141 758	303 700	58 087	26 856	31 231
Q2	428 202	121 313	306 889	50 764	17 151	33 613
Q3	379 048	114 266	264 782	46 837	17 702	29 135
Q4	394 042	89 657	304 385	53 605	19 477	34 128
2005 Q1	432 796	135 380	297 416	55 377	21 397	33 980
Q2	415 997	100 104	315 893	54 711	22 570	32 141
Q3	377 176	102 669	274 507	44 708	17 037	27 671
Q4	369 728	73 041	296 687	51 957	15 476	36 481
2003 Feb	136 346	50 177	86 169	16 293	7 351	8 942
Mar	151 878	49 524	102 354	17 256	6 514	10 742
Apr	144 816	44 045	100 771	14 645	6 601	8 044
May	133 067	35 503	97 564	13 964	6 497	7 467
Jun	155 397	49 748	105 649	18 026	8 513	9 513
Jul	146 292	53 160	93 132	15 212	7 579	7 633
Aug	91 376	33 913	57 463	7 808	3 977	3 831
Sep	153 545	46 726	106 819	17 107	7 907	9 200
Oct	153 370	39 608	113 762	16 757	7 235	9 522
Nov	142 926	32 464	110 462	18 958	9 138	9 820
Dec	112 444	28 605	83 839	17 027	7 158	9 869
2004 Jan	141 320	44 931	96 389	20 506	10 925	9 581
Feb	141 095	48 073	93 022	17 332	7 345	9 987
Mar	163 043	48 754	114 289	20 249	8 586	11 663
Apr	129 616	33 929	95 687	15 694	5 629	10 065
May	143 135	40 852	102 283	16 907	5 002	11 905
Jun	155 451	46 532	108 919	18 163	6 520	11 643
Jul	140 497	39 976	100 521	14 908	4 779	10 129
Aug	83 239	26 575	56 664	10 207	4 539	5 668
Sep	155 312	47 715	107 597	21 722	8 384	13 338
Oct	135 105	27 943	107 162	18 646	6 492	12 154
Nov	149 280	34 871	114 409	20 102	7 829	12 273
Dec	109 657	26 843	82 814	14 857	5 156	9 701
2005 Jan	136 033	46 853	89 180	17 740	7 057	10 683
Feb	143 470	45 145	98 325	18 012	7 279	10 733
Mar	153 293	43 382	109 911	19 625	7 061	12 564
Apr	139 787	34 731	105 056	18 913	7 505	11 408
May	131 958	32 812	99 146	17 547	6 812	10 735
Jun	144 252	32 561	111 691	18 251	8 253	9 998
Jul	130 220	36 387	93 833	14 247	5 754	8 493
Aug	97 076	25 316	71 760	10 802	3 986	6 816
Sep	149 880	40 966	108 914	19 659	7 297	12 362
Oct	124 783	25 359	99 424	18 419	6 046	12 373
Nov	149 662	30 275	119 387	19 980	6 173	13 807
Dec	95 283	17 407	77 876	13 558	3 257	10 301
2006 Jan	119 092	32 655	86 437	18 160	6 355	11 805
Percentage change latest 3 months on:						
i. previous 3 months	-2.1	-12.3	1.3	5.8	-8.9	13.8
ii. same 3 months a year ago	-7.8	-26.0	-0.9	-1.9	-21.2	10.0

1 Provisional

Source: National Statistics

# R1 REVISIONS ANALYSIS

Revisions since previously published estimates

	CARS INDEX			C.V.s INDEX			CARS NUMBERS			C.V.s NUMBERS		
	Total	Home Market	Export Market	Total	Home Market	Export Market	Total	Home Market	Export Market	Total	Home Market	Export Market
2001	IKZX	ISDU	ISEP	ISEW	ISEZ	ISFC	JCYM	LNBU	JCYL	JCYG	LNBX	JCYF
2002	-	-	-	-	-	-	-	-	-	-	-	-
2003	-	-	-	-	-	-	-	-	-	-	-	-
2004	-	-	-	-	-	-	-	-	-	-	-	-
2005	-0.1	-	-0.1	0.1	-	0.2	-	-	-	-	-	-
2003 Q1	-	-	-	-	-	-	-	-	-	-	-	-
Q2	-	-	-	-	-	-	-	-	-	-	-	-
Q3	-	-	-	-	-	-	-	-	-	-	-	-
Q4	-	-	-	-	-	-	-	-	-	-	-	-
2004 Q1	-	-	-	-	-	-	-	-	-	-	-	-
Q2	-	-	-	-	-	-	-	-	-	-	-	-
Q3	-	-	-	-	-	-	-	-	-	-	-	-
Q4	-	-	-	-	-	-	-	-	-	-	-	-
2005 Q1	-	-	-	-	-	-	-	-	-	-	-	-
Q2	-	-	-	-	-	-	-	-	-	-	-	-
Q3	-	-	-	-	-	-	-	-	-	-	-	-
Q4	-0.5	-0.1	-0.7	0.4	-	0.8	-	-	-	-	-	-
2003 Jan	-	-	-	-	-	-	-	-	-	-	-	-
Feb	-	-	-	-	-	-	-	-	-	-	-	-
Mar	-	-	-	-	-	-	-	-	-	-	-	-
Apr	-	-	-	-	-	-	-	-	-	-	-	-
May	-	-	-	-	-	-	-	-	-	-	-	-
Jun	-	-	-	-	-	-	-	-	-	-	-	-
Jul	-	-	-	-	-	-	-	-	-	-	-	-
Aug	-	-	-	-	-	-	-	-	-	-	-	-
Sep	-	-	-	-	-	-	-	-	-	-	-	-
Oct	-	-	-	-	-	-	-	-	-	-	-	-
Nov	-	-	-	-	-	-	-	-	-	-	-	-
Dec	-	-	-	-	-	-	-	-	-	-	-	-
2004 Jan	-	-	-	-	-	-	-	-	-	-	-	-
Feb	-	-	-	-	-	-	-	-	-	-	-	-
Mar	-	-	-	-	-	-	-	-	-	-	-	-
Apr	-	-	-	-	-	-	-	-	-	-	-	-
May	-	-	-	-	-	-	-	-	-	-	-	-
Jun	-	-	-	-	-	-	-	-	-	-	-	-
Jul	-	-	-	-	-	-	-	-	-	-	-	-
Aug	-	-	-	-	-	-	-	-	-	-	-	-
Sep	-	-	-	-	-	-	-	-	-	-	-	-
Oct	-	-	-	-	-	-	-	-	-	-	-	-
Nov	-	-	-	-	-	-	-	-	-	-	-	-
Dec	-	-	-	-	-	-	-	-	-	-	-	-
2005 Jan	-	-	-	-	-	-	-	-	-	-	-	-
Feb	-	-	-	-	-	-	-	-	-	-	-	-
Mar	-	-	-	-	-	-	-	-	-	-	-	-
Apr	-	-	-	-	-	-	-	-	-	-	-	-
May	-	-	-	-	-	-	-	-	-	-	-	-
Jun	-	-	-	-	-	-	-	-	-	-	-	-
Jul	-	-	-	-	-	-	-	-	-	-	-	-
Aug	-	-	-	-	-	-	-	-	-	-	-	-
Sep	-	-	-	-	-	-	-	-	-	-	-	-
Oct	-	-	-	-	-	-	-	-	-	-	-	-
Nov	-0.7	-0.2	-1.0	0.6	0.2	1.1	-	-	-	-	-	-
Dec	-0.8	-0.2	-1.1	0.6	-0.1	1.4	-	-	-	-	-	-

Source: National Statistics