

Migration Statistics Quarterly Report

No 4: February 2010



Date: 25 February 2010

Coverage: UK

Theme: Migration

A summary of the quarterly releases of official migration data. This edition covers those quarterly datasets released on 25 February 2010 and provides links to migration data released on that date.

Contents

	Page
Introduction	3
Understanding International Passenger Survey (IPS) estimates	3
Summary statistics	3
1. Long-term international migration	5
2. Migrant applications to work in the UK	9
3. The control of immigration	10
4. Non-UK born and non-British national residents	13
5. Moves within the UK	15
6. Summary of other releases	17
7. Comparison of data sources	17
Glossary	19
List of products	21
Future quarterly releases	22
Background notes	23

List of tables and charts

No	Title	Latest data	National Statistics?	Page
1.1	IPS long-term international migration estimates, UK, 2000–2009	YE Jun 09	Yes	5
1.2	IPS long-term international migration estimates of British citizens, UK, 2000–2009	YE Jun 09	Yes	6
1.3	IPS long-term international migration estimates of non-British citizens, UK, 2000–2009	YE Jun 09	Yes	7
1.4	IPS long-term international migration estimates of A8 citizens, UK, 2004–2009	YE Jun 09	Yes	7
1.5	Comparison of IPS and total Long-Term International Migration (LTIM) estimates, 2007–2009	YE Jun 09 (IPS) YE Dec 08 (LTIM)	Yes	8
2.1	National Insurance number allocations to adult overseas nationals by world area of origin, UK, 2004–2009	YE Sep 09	Yes	9
2.2	Applicants to the Worker Registration Scheme, by rolling year of application, 2005–2009	YE Dec 09	No	10
3.1	Applications for asylum in the UK, excluding dependants, 2004–2009	Q4 09	Yes	11
3.2	Removals and voluntary departures from the UK, 2004–2009	Q4 09	Yes	11
3.3	Grants of settlement, excluding EEA and Swiss nationals, 2005–2009	Q4 09	Yes	12
4.1	UK residents by nationality and country of birth: estimates for year to June 2009	YE Jun 09	Yes	13
4.2	UK residents by non-UK country of birth and by non-British nationality: estimates for year to June 2009; top five	YE Jun 09	Yes	13
4.3	Non-UK born and non-British national residents of the UK, 2004–2009	YE Jun 09	Yes	14
5.1	Internal migration movements between UK countries and regions, year to June 2009	YE Jun 09	Yes	15
5.2	Internal migration movements between UK countries and regions, June 2006 to June 2009	YE Jun 09	Yes	16
7.1	Immigration measures, 2002–2009	Various	Mostly	17

(YE = Year Ending, Q = Quarter)

Introduction

The Migration Statistics Quarterly Report series summarises the regular quarterly migration and related data published by the Home Office, the Department for Work and Pensions (DWP), the Office for National Statistics (ONS) and the General Register Office for Scotland (GROS).

The quarterly reports provide key messages from the latest data. Web links are provided at the back of the reports for those who wish to access the underlying datasets.

We welcome feedback on this quarterly report. Please send your comments to migstatsunit@ons.gsi.gov.uk.

Understanding International Passenger Survey (IPS) estimates

These quarterly reports focus on the regular quarterly migration and related data, which include provisional figures from the International Passenger Survey (IPS). The IPS is the main component of total long-term international migration figures but does not take into account adjustments for:

- people whose length of stay changes from their original intentions
- additional information on international migration to and from Northern Ireland
- asylum seekers

The total Long-Term International Migration (LTIM) figures are calculated using all components (IPS and adjustments) but are only published twice a year and are not as timely as the provisional IPS figures. As the IPS figures are by far the largest component of international migration they provide a useful early indication of possible changes in the subsequent LTIM.

A table showing the scale of the difference between the IPS and LTIM estimates is included at the end of Section 1 – Long-term international migration.

Summary statistics

- The latest provisional IPS estimates suggest:
 - There was little change in long-term immigration to the UK in the year to June 2009 (518,000 in the year to June 2009 compared with 531,000 in the year to June 2008)
 - Long-term immigration of citizens of the A8 Accession countries (those countries of central and eastern Europe that joined the European Union in 2004) declined in the year to June 2009 (68,000 in the year to June 2009 compared with 100,000 in the year to June 2008, a fall of 32 per cent)
 - There was little change in long-term emigration from the UK in the year to June 2009 (371,000 in the year to June 2009 compared with 363,000 in the year to June 2008)

- Long-term emigration of A8 citizens increased in the year to June 2009 but the rise was not statistically significant (58,000 in the year to June 2009 compared with 43,000 in the year to June 2008)
- Net migration to the UK (the surplus of people immigrating over people emigrating) in the year to June 2009 was 147,000. This compares with 168,000 in the year to June 2008
- 628,000 National Insurance numbers (NINos) were allocated to non-UK nationals in the year to June 2009, a decline of 15 per cent on the year to June 2008. The latest figures show that 616,000 NINos were allocated to non-UK nationals in the year to September 2009, 14 per cent fewer than in the year to September 2008
- 186,000 NINos were allocated to A8 nationals in the year to June 2009, 36 per cent fewer than in the year to June 2008. This decline continued in the latest figures, which show that 175,000 NINos were allocated to A8 nationals in the year to September 2009, a fall of 34 per cent on the year to September 2008
- In the year to June 2009, the number of workers from A8 countries successfully applying to work as an employee in the UK via the Worker Registration Scheme (WRS) was 118,000. This compared with 199,000 in the year to June 2008, a fall of 40 per cent. The latest figures show this fall has continued: in the year to December 2009 the number of A8 nationals successfully applying via the WRS was 106,000, a fall of 33 per cent on the year to December 2008

1. Long-term international migration

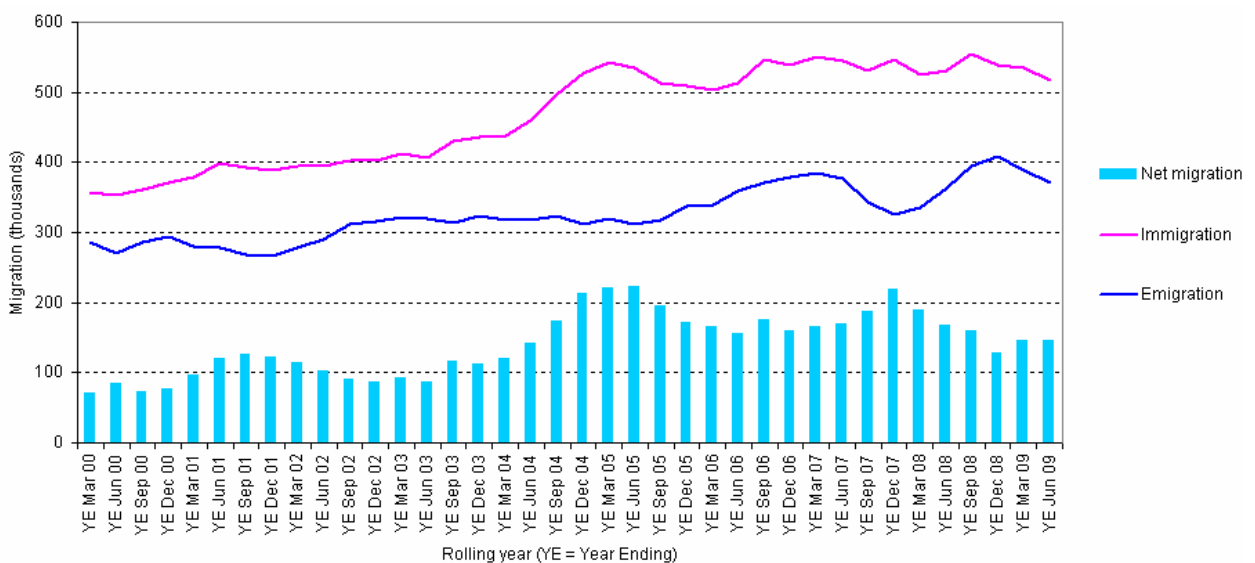
A long-term international migrant is defined, using the UN definition, as someone who moves from their country of previous residence for a period of at least a year. Provisional International Passenger Survey (IPS) estimates offer an early indication of changes in patterns of long-term international migration to and from the UK, although as discussed on page 3 they are not a complete measure of long-term international migration.

The provisional IPS estimate of total long-term immigration to the UK in the year to June 2009 is 518,000 people, similar to the 531,000 in the year to June 2008 and remaining at a similar level to that seen since the A8 Accession countries joined the EU in 2004 (Figure 1.1).

The provisional IPS estimate of long-term emigration from the UK in the year to June 2009 is 371,000, similar to the 363,000 in the year to June 2008 (Figure 1.1).

The provisional IPS net figure (the surplus of people immigrating over people emigrating) of long-term international migration to the UK in the year to June 2009 is 147,000. This compares with 168,000 in the year to June 2008 (Figure 1.1).

Figure 1.1: IPS long-term international migration estimates, UK, 2000–2009



Source: ONS, International Passenger Survey (IPS) estimates of long-term international migration

Notes:

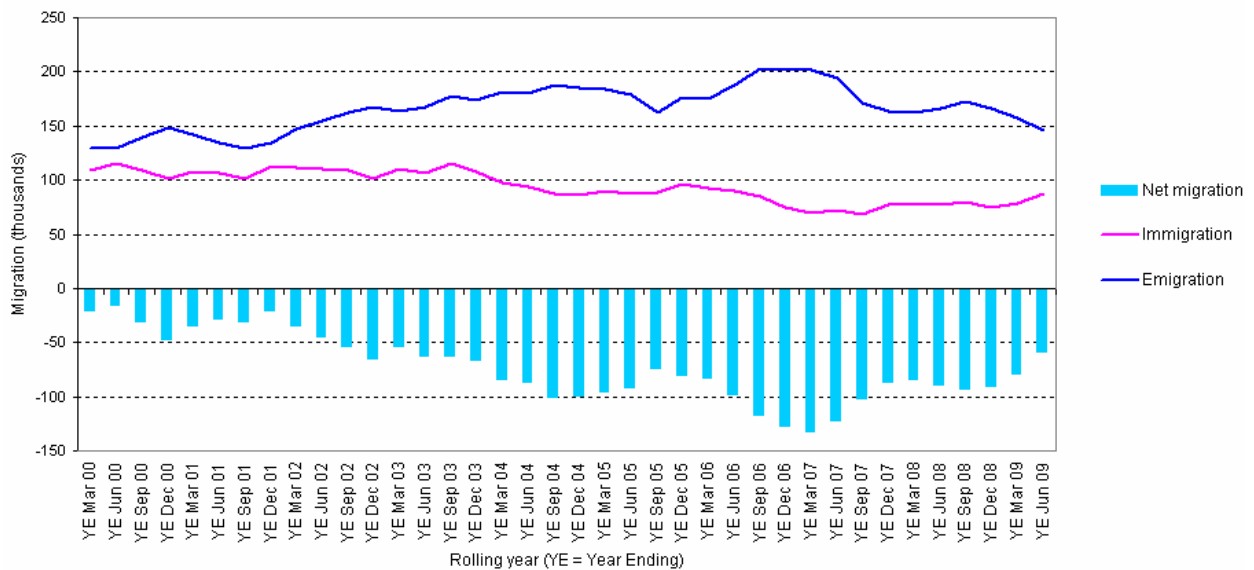
1. Data for YE Mar 09 and YE Jun 09 are provisional. There may be small differences when the final IPS estimates are published in November 2010
2. All estimates now include migration between the UK and the Republic of Ireland and may differ from estimates published before November 2009
3. The relative standard errors for the latest immigration and emigration values are 4 per cent (see Glossary for more information on standard errors)

The provisional IPS estimates by citizenship show that in the year to June 2009 the number of British citizens immigrating long term to the UK was 87,000, similar to 77,000 in the year to June 2008. The number of British citizens emigrating long term from the UK in the year to June 2009 was 146,000, similar to 166,000 in the year to June 2008 (Figure 1.2).

The number of non-British citizens immigrating long term to the UK in the year to June 2009 was 431,000, similar to 454,000 in the year to June 2008. The number of non-British citizens emigrating long term from the UK was 225,000, a rise of 14 per cent on the 197,000 in the year to June 2008, although this rise is not statistically significant (Figure 1.3).

The number of citizens of the A8 countries immigrating long term to the UK in the year to June 2009 was 68,000, a decline of 32 per cent on the 100,000 in the year to June 2008. The number of A8 citizens emigrating from the UK in the year to June 2009 was 58,000, compared with 43,000 in the year to June 2008. This rise is also not statistically significant (Figure 1.4).

Figure 1.2: IPS long-term international migration estimates of British citizens, UK, 2000–2009

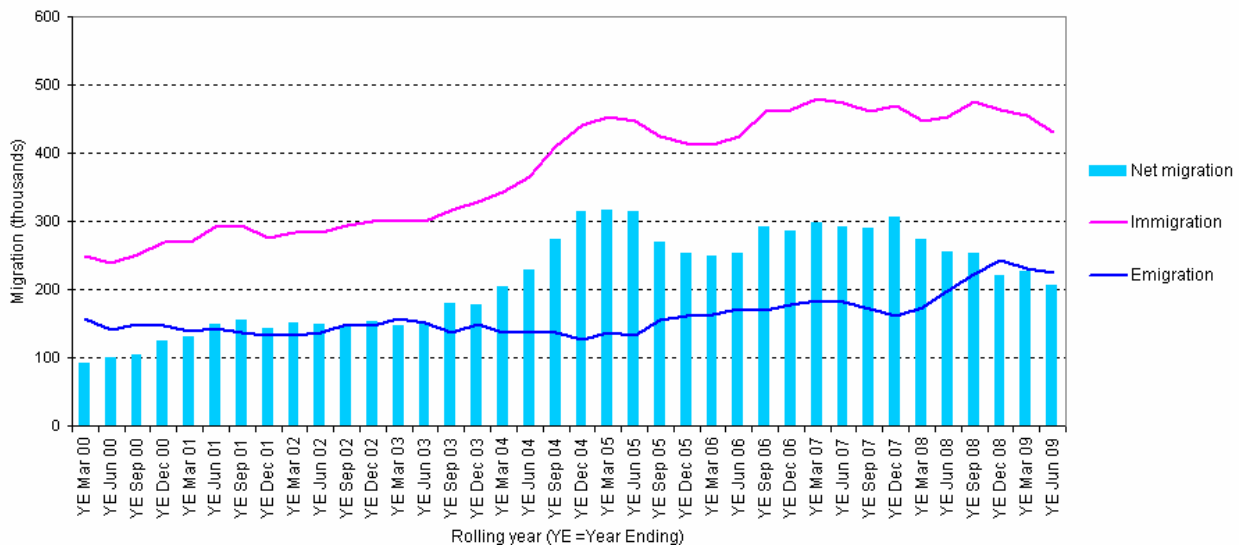


Source: ONS, International Passenger Survey (IPS) estimates of long-term international migration

Notes:

1. Data for YE Mar 09 and YE Jun 09 are provisional. There may be small differences when the final IPS estimates are published in November 2010
2. All estimates now include migration between the UK and the Republic of Ireland and may differ from estimates published before November 2009
3. The relative standard errors for the latest immigration and emigration values are 9 per cent and 5 per cent respectively (see Glossary for more information on standard errors)

Figure 1.3: IPS long-term international migration estimates of non-British citizens, UK, 2000–2009

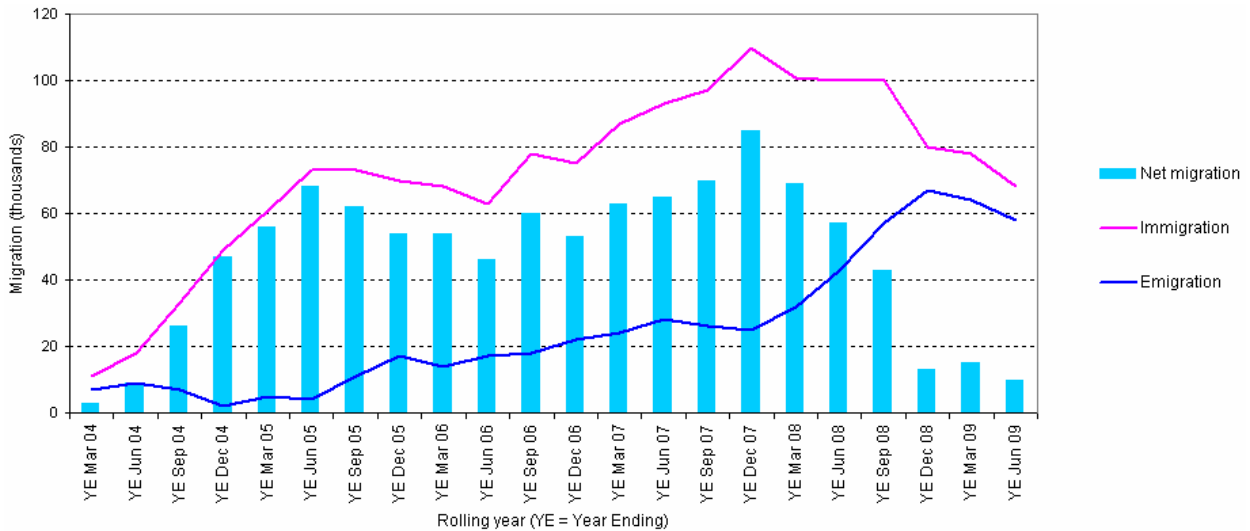


Source: ONS, International Passenger Survey (IPS) estimates of long-term international migration

Notes:

1. Data for YE Mar 09 and YE Jun 09 are provisional. There may be small differences when the final IPS estimates are published in November 2010
2. All estimates now include migration between the UK and the Republic of Ireland and may differ from estimates published before November 2009
3. The relative standard errors for the latest immigration and emigration values are 4 per cent and 5 per cent respectively (please see Glossary for more information on standard errors)

Figure 1.4: IPS long-term international migration estimates of A8 citizens, UK, 2004–2009



Source: ONS, International Passenger Survey (IPS) estimates of long-term international migration

Notes:

1. Data for YE Mar 09 and YE Jun 09 are provisional. There may be small differences when the final IPS estimates are published in November 2010
2. All estimates now include migration between the UK and the Republic of Ireland and may differ from previously published estimates.
3. The relative standard errors for the latest immigration and emigration values are 13 per cent and 15 per cent respectively (please see Glossary for more information on standard errors)

Figure 1.5 indicates how the latest available IPS and LTIM estimates compare.

Figure 1.5: Comparison of IPS and total Long-Term International Migration (LTIM) estimates, 2007–2009

Period	Inflow		Outflow		Net flow	
	IPS	LTIM	IPS	LTIM	IPS	LTIM
	<i>thousands</i>					
YE Dec 07	546	574	326	341	219	233
YE Mar 08	525		336		189	
YE Jun 08	531	571	363	375	168	196
YE Sep 08	555		395		160	
YE Dec 08	538	590	409	427	129	163
YE Mar 09	534		388		147	
YE Jun 09	518		371		147	

(YE = Year Ending)

Sources: ONS, *International Passenger Survey (IPS) estimates of long-term international migration*; ONS, *Long-Term International Migration*

Notes:

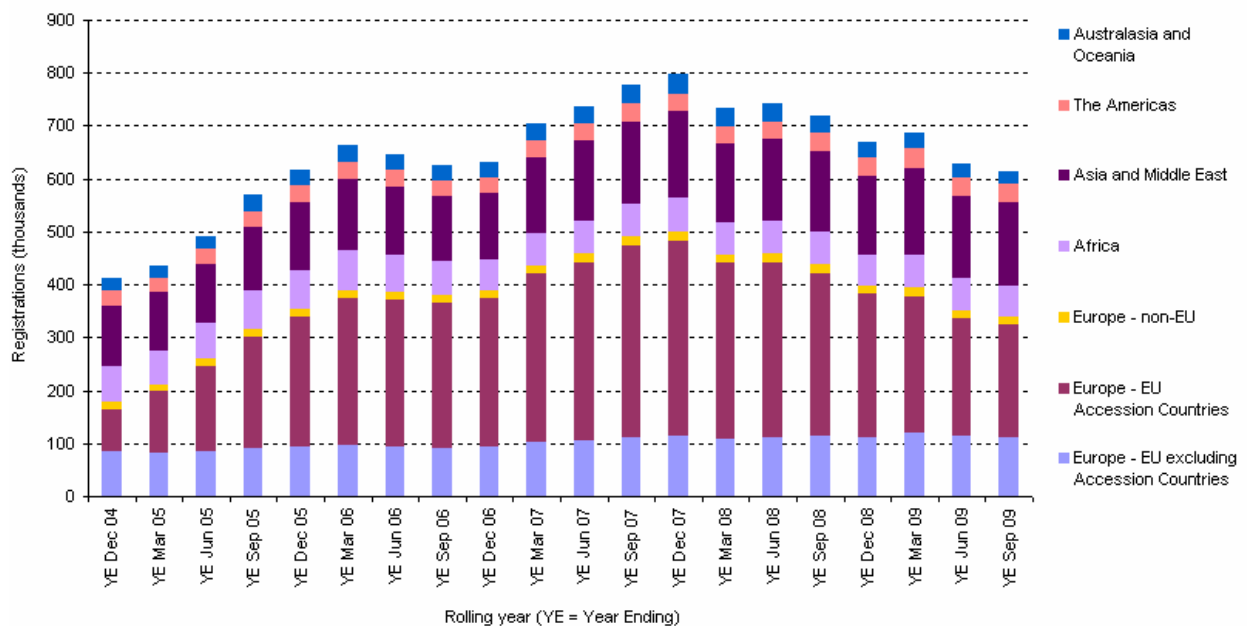
1. *IPS data for YE Mar 09 and YE Jun 09 are provisional. There may be small differences when the final IPS estimates are published in November 2010. The final IPS figures for earlier periods may differ from previously published provisional estimates*
2. *All IPS estimates now include migration between the UK and the Republic of Ireland and may differ from estimates published before November 2009*

For a longer time series, line graph Figure 7.1 (p17) shows how the two series compare since 2002.

2. Migrant applications to work in the UK

Data on National Insurance numbers (NINOs) allocated to adult overseas nationals show that 616,000 NINOs were allocated to adult overseas nationals entering the UK in the year to September 2009. This is 14 per cent lower than in the year to September 2008. NINO allocations have increased by 49 per cent since 2004 with Accession nationals (ie those of all 12 Accession countries – see Glossary) comprising 34 per cent of allocations in the year to September 2009, compared with 19 per cent in 2004 (Figure 2.1).

Figure 2.1: National Insurance number allocations to adult overseas nationals by world area of origin, UK, 2004–2009



Source: DWP, National Insurance number allocations to adult overseas nationals

Note: EU Accession countries here includes the A8, the A2, and Cyprus and Malta (see Glossary)

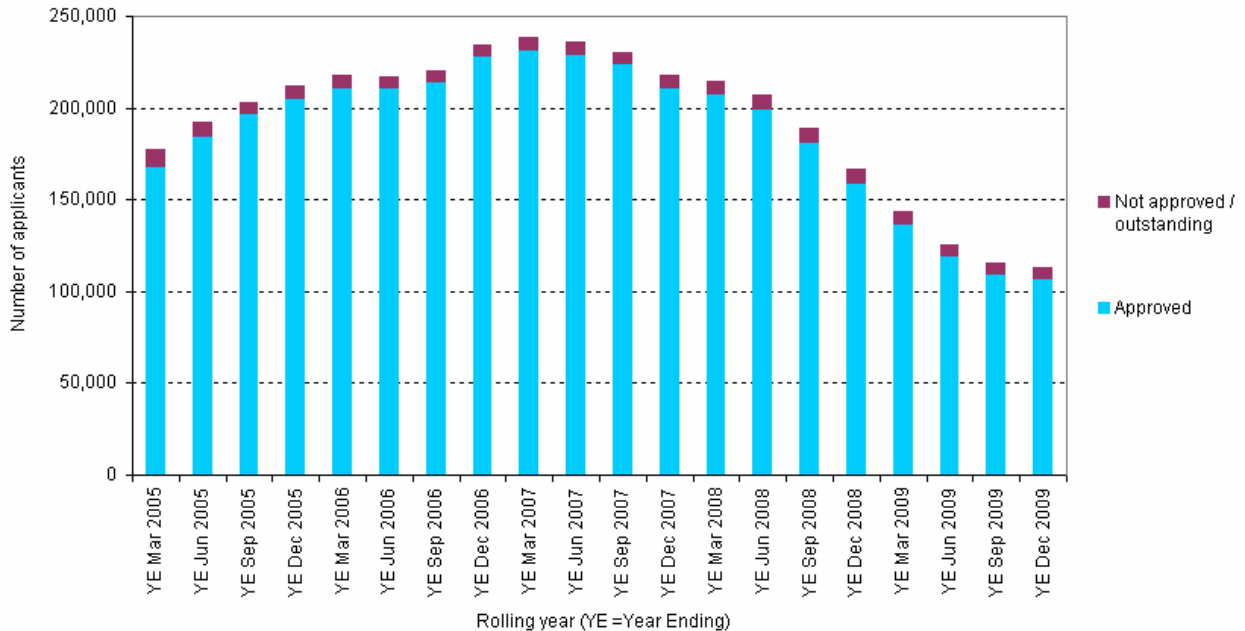
NINOs are compulsory for people wishing to work in the UK, whether short term or long term. NINO allocation statistics give an approximation of the uptake of work by non-UK nationals. They cannot provide an indication of the number of non-UK nationals working in the UK, as people who have been given NINOs may subsequently leave the UK, or remain in the UK but cease to be in employment. Additionally, people with NINOs can leave the UK and then return and take up employment without re-registering.

Nationals from the A8 countries should also register with the Worker Registration Scheme (WRS) if they wish to take up employment in the UK, whether short term or long term. There were 106,000 successful applications to the WRS in the year ending December 2009, a fall of 33 per cent on the figure of 159,000 in the year ending December 2008 and a fall of 50 per cent on the figure of 211,000 in the year ending December 2007 (Figure 2.2). Self-employed workers do not need to register with the WRS.

Of these, approved initial applicants from Poland fell to 54,715 in 2009 from 103,115 in 2008. However, applicants from Latvia more than doubled to a record high of 15,385 in 2009 from 6,980 in 2008, and applicants from Lithuania increased to 14,720 in 2009 from

11,560 in 2008. Overall, applicants from Poland, Latvia and Lithuania constituted 80 per cent of the total number of approved applicants in 2009.

Figure 2.2: Applicants to the Worker Registration Scheme, by rolling year of application, 2005–2009



Source: Home Office, Control of Immigration Quarterly Statistical Summary United Kingdom, 2009, Q4

Notes:

1. As accession took place on 1 May 2004, the data for YE March 2005 are only for the period May 2004 to March 2005, so care should be taken when comparing these with data for subsequent rolling years
2. This graph shows initial applicants only (not multiple initial applications, where an individual is doing more than one job simultaneously, or re-registrations, where an individual has changed employers)
3. The data for WRS applications are recorded by the date on the application form, the standard statistical approach. However, as applications continue to be received dated under previously published quarters and decisions continue to be made on applications dated in previous quarters, the published statistics for any quarter may increase in future reports
4. These figures are based on management information from the UK Border Agency and are not subject to the detailed checks that apply for National Statistics. They are provisional and may be subject to change

3. The control of immigration

The Home Office has released provisional quarterly figures up to December 2009 on control of immigration including applications for asylum, enforcement and grants of settlement. These figures relate only to those people who are subject to immigration control and do not cover, for example, moves by European Economic Area (EEA) (see Glossary) and Swiss nationals.

The figures in this chapter mainly relate to individual quarters rather than the rolling years used in other chapters of this report.

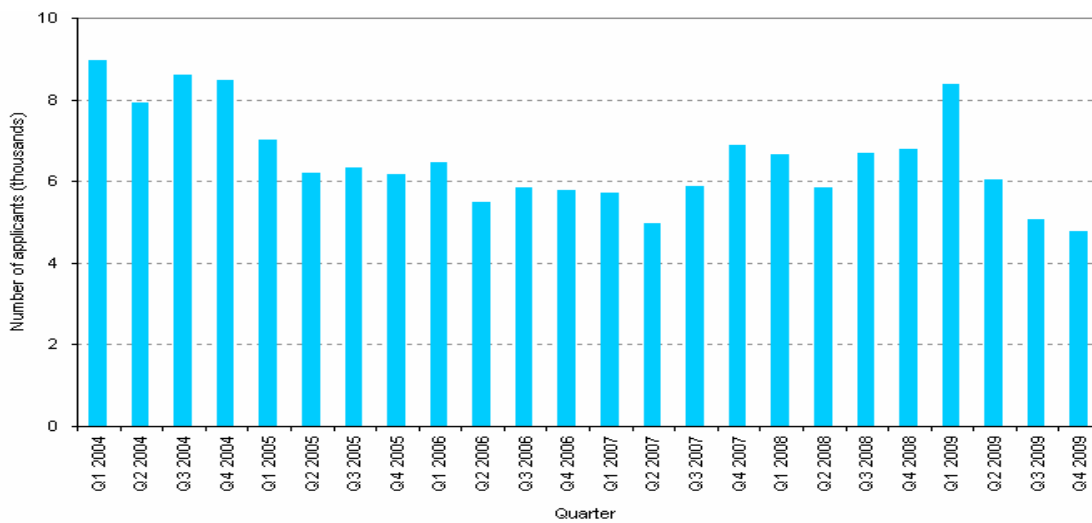
The number of applications for asylum, excluding dependants, was 30 per cent lower in the fourth quarter of 2009 (4,765) than in the fourth quarter of 2008 (6,775) (Figure 3.1).

The number of applications, excluding dependants, for asylum was 6 per cent lower in 2009 (24,250) than in 2008 (25,930) (Figure 3.1).

In the fourth quarter of 2009, a total of 16,340 persons were removed or departed voluntarily from the UK, 3 per cent lower than in Q4 2008 (16,820). There was a fall of 8 per cent to 2,605 for those leaving who had claimed asylum (including dependants) and a decrease of 2 per cent to 13,735 for non-asylum cases (Figure 3.2).

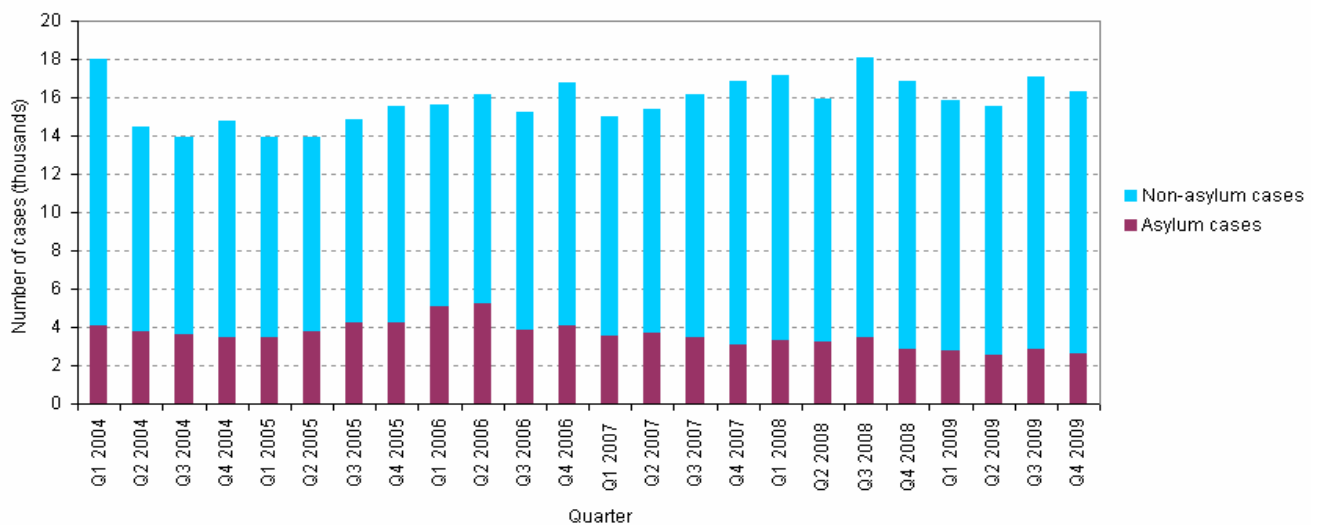
In 2009, a total of 64,750 persons were removed or departed voluntarily from the UK, 5 per cent lower than 2008 (67,980). There was a fall of 16 per cent to 10,815 for those leaving who had claimed asylum (including dependants), and a fall of 2 per cent to 53,930 for non-asylum cases (Figure 3.2).

Figure 3.1: Applications for asylum in the UK, excluding dependants, 2004–2009



Source: Home Office, Control of Immigration Quarterly Statistical Summary United Kingdom, 2009, Q4

Figure 3.2: Removals and voluntary departures from the UK, 2004–2009



Source: Home Office, Control of Immigration Quarterly Statistical Summary United Kingdom, 2009, Q4

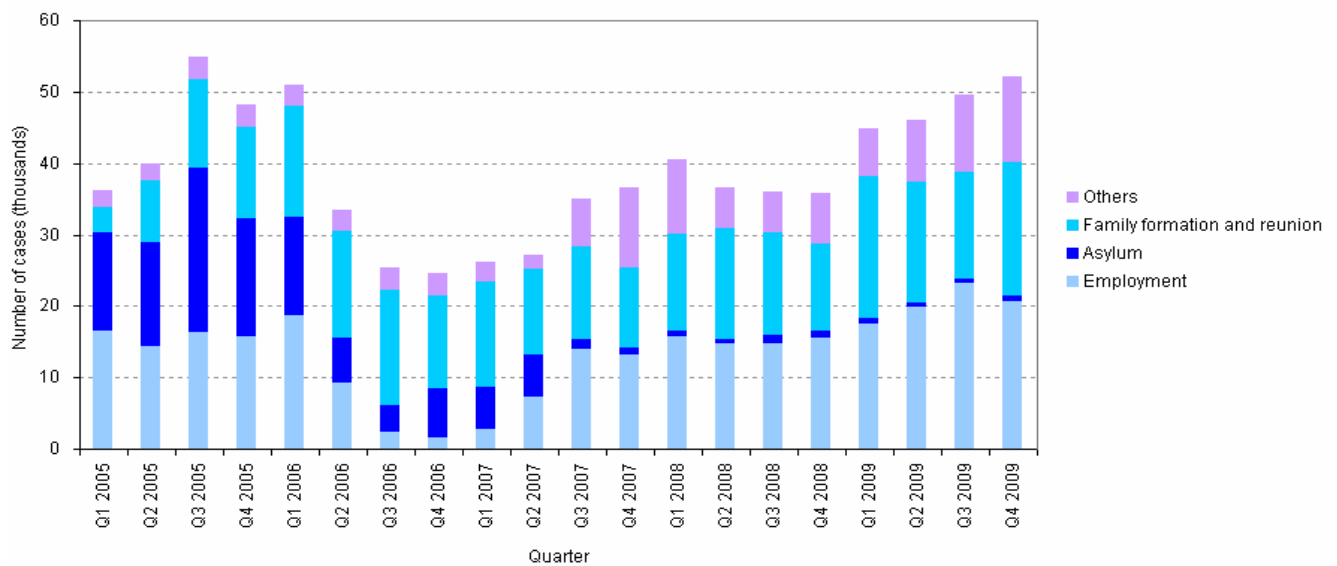
Notes:

1. Includes enforced removals, people refused entry at port and subsequently removed (including cases dealt with at juxtaposed controls), notified voluntary departures, people leaving under Assisted Voluntary Return Programmes and people who it has been established left the UK without informing the immigration authorities
2. Revisions are mainly due to data cleansing and data matching exercises that take place after the extracts are taken

The number of persons granted settlement in the UK rose by 46 per cent in the fourth quarter of 2009 (52,140) compared with the fourth quarter of 2008 (35,730). There were increases in employment-related grants (up 34 per cent to 20,715), family formation and reunion grants (up 55 per cent to 18,545) and other grants, including those on a discretionary basis and where the category of grant is unknown (up 70 per cent to 12,095). These were partly offset by a decrease in asylum-related grants (down 30 per cent to 780) (Figure 3.3).

Provisional total figures for 2009 compared with 2008 show that grants of settlement rose by 30 per cent from 148,740 in 2008 to 192,680 in 2009. There were increases in employment-related categories (up 34 per cent to 81,220), family formation and reunion grants (up 27 per cent to 70,155) and other grants, including those on a discretionary basis and where the category of grant is unknown (up 33 per cent to 38,345). There was a decrease in asylum-related grants (down 20 per cent to 2,965).

Figure 3.3: Grants of settlement, excluding EEA and Swiss nationals, 2005–2009



Source: Home Office, Control of Immigration Quarterly Statistical Summary United Kingdom, 2009, Q4

Notes:

1. Quarterly data on settlement are only available from Q1 2005
2. Romanians and Bulgarians are excluded from Q1 2007
3. Changes in policy affect settlement trends. For further detail see the Explanatory Notes section within the Home Office Statistical Bulletin, Issue 14/09 'Control of Immigration: Statistics United Kingdom 2008'. This is available on the same webpage as the Control of Immigration: Quarterly Statistical Summary United Kingdom (see list of products)

4. Non-UK born and non-British national residents

Estimates of the population by country of birth and nationality are derived from the Annual Population Survey (APS) and are available for the whole of the UK. The figures for the year to June 2009 show that 88.7 per cent of the UK population were UK born and 92.9 per cent were British nationals (Figure 4.1). This compares with figures of 89.3 per cent UK born and 93.3 per cent British nationals in the year to June 2008.

Figure 4.1: UK residents by nationality and country of birth: estimates for year to June 2009

	British national	Non-British national	percentages Total
UK born	88.4	0.4	88.7
Non-UK born	4.6	6.7	11.3
Total	92.9	7.1	100

Source: ONS, *Population by country of birth and nationality from the Annual Population Survey, July 2008 to June 2009*

Notes:

1. As these values are based on survey estimates they will be subject to sampling variability. Quality measures are published with the dataset
2. These estimates exclude survey respondents whose country of birth or nationality is not known

British nationals are people who have British citizenship, either because they were born with it or have been granted it since. Nationality is not necessarily determined by country of birth. In the year to June 2009 a total of 40.6 per cent of UK residents not born in the UK had British nationality. Of those UK residents who didn't have British nationality, 5.4 per cent had been born in the UK.

In the year to June 2009 India was the most common country of birth for UK household residents born outside the UK, whilst Polish was the most common non-British nationality (Figure 4.2).

Figure 4.2: UK residents by non-UK country of birth and by non-British nationality: estimates for year to June 2009; top five (including 95 per cent confidence intervals)

Non-UK country of birth	Estimate	thousands 95%CI (+/-)	Non-British country of nationality	Estimate	thousands 95%CI (+/-)
India	660	34	Poland	503	30
Poland	503	30	Republic of Ireland	344	25
Pakistan	433	28	India	310	23
Republic of Ireland	408	27	Pakistan	183	18
Germany	295	23	United States of America	136	15

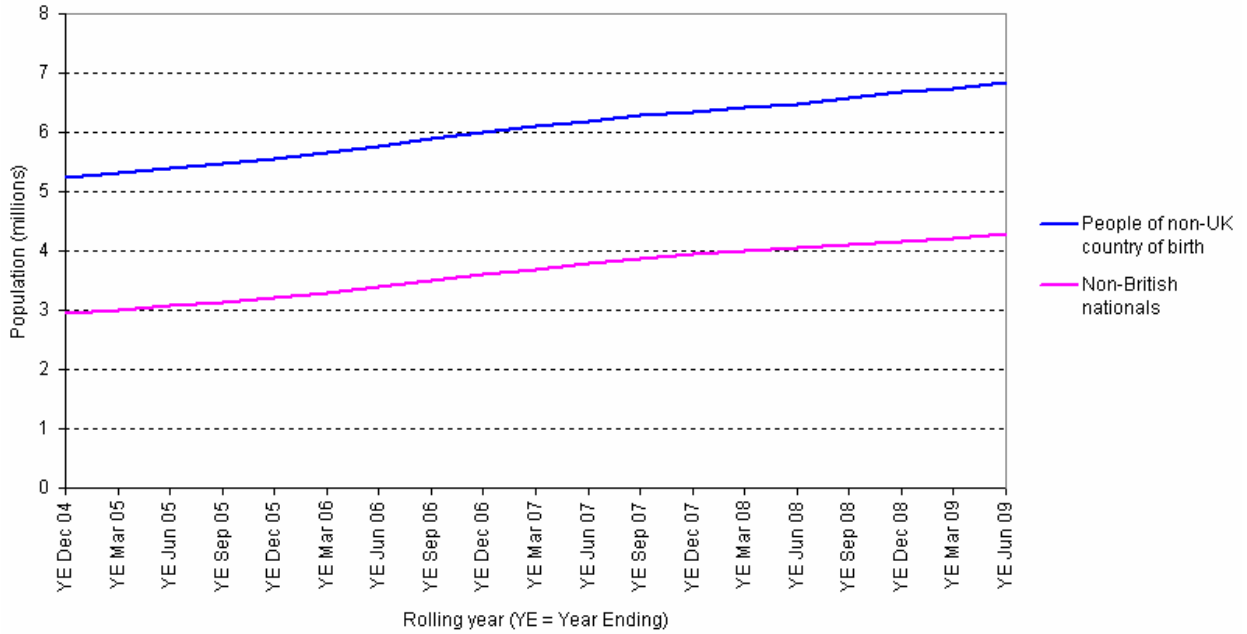
Source: ONS, *Population by country of birth and nationality from the Annual Population Survey, July 2008 to June 2009*

Notes:

1. As these values are survey estimates they will be subject to sampling variability. Quality measures are published with the dataset
2. CI = confidence intervals. A definition is provided in the Glossary

Figure 4.3 shows the populations of non-UK born and non-British national residents of the UK over the period 2004–2009.

Figure 4.3: Non-UK born and non-British national residents of the UK, 2004–2009



Source: ONS, *Population by country of birth and nationality from the Annual Population Survey*

Notes:

1. This graph is based on quarterly data from year ending December 2006 onwards. Up to December 2006 the data are annual data for YE December only; intervening quarterly values have been interpolated
2. As these values are based on survey estimates they are subject to sampling variability. Quality measures are published with the dataset

5. Moves within the UK

This section covers the numbers of people moving between the different countries of the UK (England, Wales, Scotland, Northern Ireland) and the nine English regions.

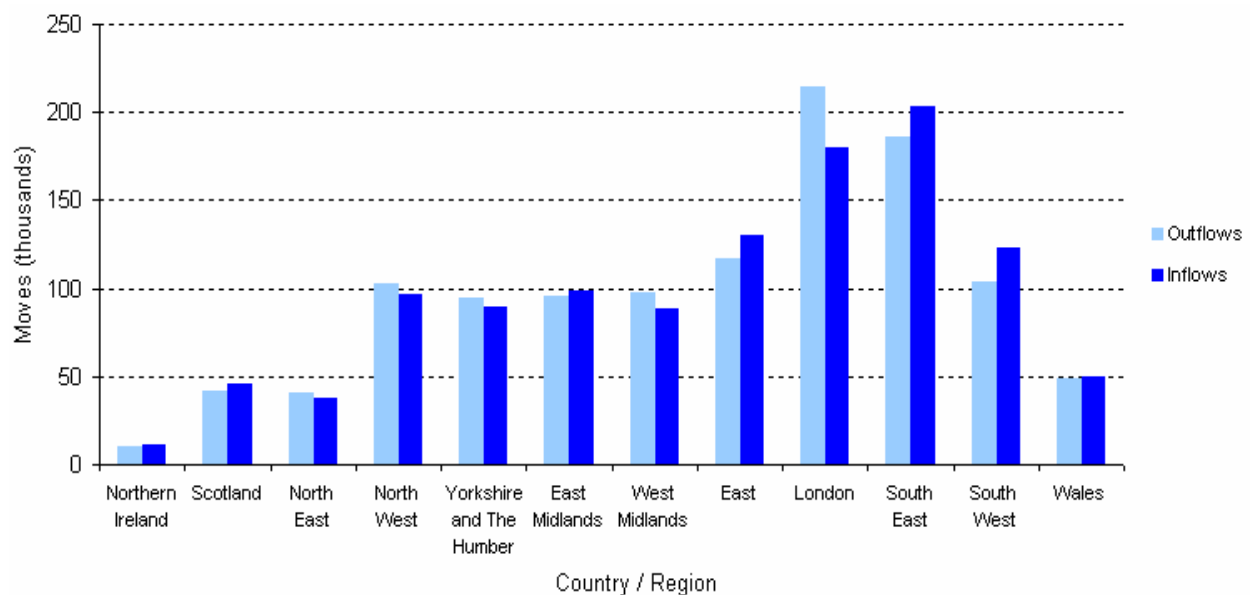
The statistics cover all recorded internal movements according to changes of residential address notified on patient lists of NHS doctors.

In the year to June 2009:

- The total number of people moving between countries and regions of the UK was 1.15 million, a fall of 3 per cent on the 1.19 million in the year to June 2008
- England had a net outflow of 5,300, Scotland a net inflow of 4,100, Wales a net inflow of 600 and Northern Ireland a net inflow of 700
- All countries and regions of the UK apart from the North West saw a decrease in turnover of population, due to moves within the UK, compared with the year to June 2008. The North West saw an increase of 500
- London had the largest net outflow to other parts of the UK (34,500). The next largest net outflow was from the West Midlands (8,900)
- The South West had the largest net inflow from the rest of the UK (19,300). The next largest net inflow was to the South East (17,300)

Figure 5.1 shows the outflows and inflows (to and from other parts of the UK) for the nine English regions, Wales, Scotland and Northern Ireland in the year to June 2009.

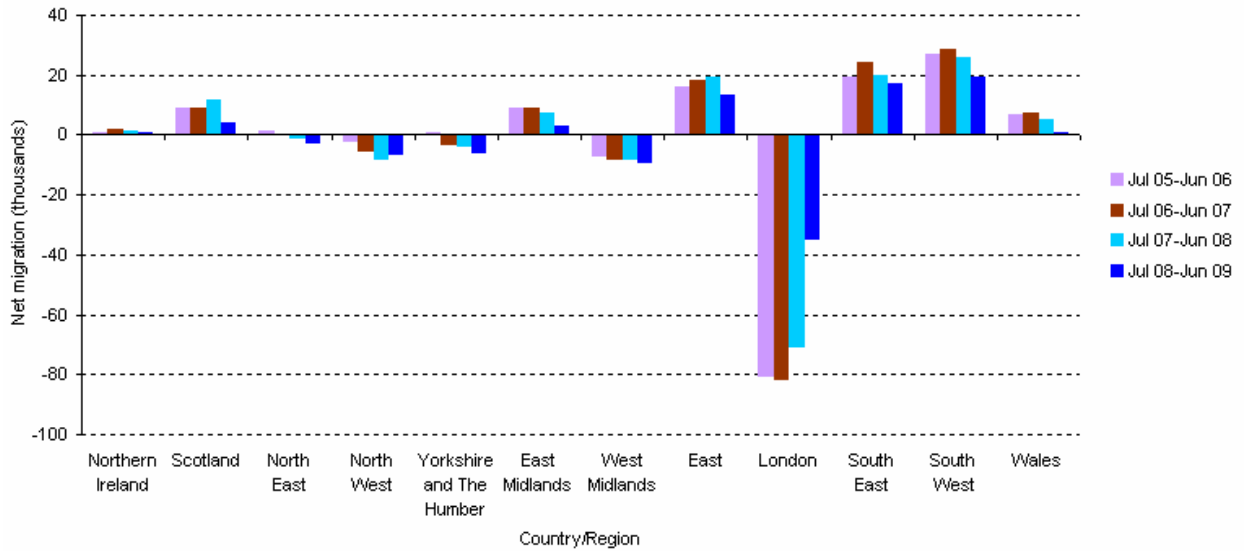
Figure 5.1: Internal migration movements between UK countries and regions, year to June 2009



Source: Internal migration by country/region for the UK, year to June 2009

Figure 5.2 shows the net flows for the nine English regions, Wales, Scotland and Northern Ireland in the years 2006 to 2009. In each of these years the South West had the largest net inflow and London had the largest net outflow.

Figure 5.2: Internal migration movements between UK countries and regions, June 2006–2009



Source: Internal migration by country/region for the UK, year to June 2009

The online internal migration dataset contains a full matrix of migration flows between each country/region, and is available for every quarter since the year ending June 2002. Data for previous years are available on request.

6. Summary of other releases

Other migration and population products published on 25 February 2010 include:

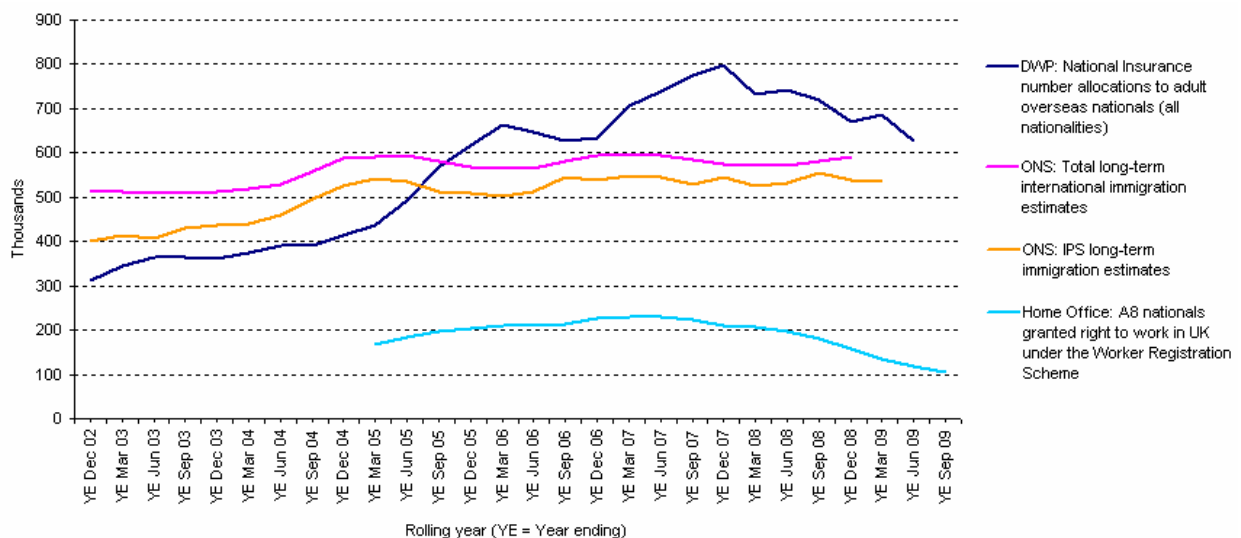
- Long-Term International Migration 2008 (ONS): Additional tables. These annual tables present total long-term international migration data for the calendar year and mid-year. Unlike the International Passenger Survey (IPS) estimates they have been adjusted to take account of asylum seekers, people whose length of stay changes from their original intentions and differences in the source data used for figures on the number of international migrants entering and leaving Northern Ireland. These adjustments may either increase or decrease the estimates
- Local area migration indicators (ONS). This is an update to the interactive product that brings together different sources to allow users to compare indicators of migration at local authority level. This update includes more recent data for those indicators already published
- A quarterly update on ONS's programme to improve migration and population statistics
- Short-Term Migration 2008 for England and Wales (experimental). IPS-based estimates referring to flows to and from England and Wales as well as the average stock of short-term migrants present in or absent from England and Wales. Statistics are provided for migration of periods between 3 and 12 months and 1 and 12 months

Links to these products are included in the product list at the end of this report.

7. Comparison of data sources

This report describes a range of data sources which reflect different aspects of migration. Figure 7.1 draws three key sources of quarterly immigration data together and also shows ONS's total long-term international migration estimates, which are released twice a year.

Figure 7.1: Immigration measures, 2002–2009



Source: ONS, Home Office, DWP

Notes:

1. *IPS long-term immigration estimates for YE Mar 09 and YE Jun 09 are provisional*
2. *The long-term international migration values for March and September for each year are interpolated; those for June and December are published figures*
3. *The statistics in this graph are all National Statistics except for the Worker Registration Scheme data*

ONS's total long-term international immigration figures are estimates of how many people have migrated into the UK for a period of at least 12 months. Unlike the International Passenger Survey (IPS) estimates they also include asylum seekers and have been adjusted as they use a different data source for figures on the number of international migrants entering and leaving Northern Ireland. They have also been adjusted to account for people whose length of stay changed from their original intention. These adjustments may either increase or decrease the estimates.

The IPS, National Insurance number (NINo) and Worker Registration Scheme (WRS) figures cover different groups of people. For example, short-term economic migrants (ie those coming to the UK for less than 12 months) will be included in the NINo and WRS figures, but not the IPS or total long-term international migration estimates. Conversely, those long-term international migrants not intending to work will be included in the IPS and total long-term international migration estimates, but not in the WRS or NINo figures. The WRS covers just A8 nationals, whereas the NINos and the long-term international migration data include all nationalities.

Until 2005 the total long-term immigration figures were higher than the NINo series since they are not restricted to arrivals allocated a NINo. For example, they include non-working students, family members and asylum seekers. In more recent years there has been increased short-term migration, which has led to NINo figures exceeding the total long-term migration estimates. WRS statistics indicate that during the fourth quarter of 2009, 64 per cent of applicants gave their intended length of stay as less than twelve months.

Further information on migration measures and the different datasets used in this report are available in the user information sheet. A link to this is provided in the list of products.

Glossary

A2

The A2 are the two countries that joined the EU on 1 January 2007: Bulgaria and Romania.

A8

The A8 are the eight central and eastern European countries that joined the EU on 1 May 2004: Czech Republic, Estonia, Hungary, Latvia, Lithuania, Poland, Slovakia and Slovenia. The A8 does not include the two other countries that joined on that date: Cyprus and Malta.

Annual Population Survey (APS)

A UK-wide survey of households including questions on housing, employment and education. It combines data from the Labour Force Survey (LFS) with the English, Welsh and Scottish LFS boosts. APS datasets are produced quarterly with each dataset containing 12 months of data. There are approximately 170,000 households and 360,000 persons per dataset. The APS is carried out by ONS.

Citizenship

This is the term used in the International Passenger Survey (IPS) to define the country for which a migrant is a passport holder. This refers specifically to the passport being used to enter / leave the UK at the time of interview. It does not refer to any other passport(s) which migrants of multiple citizenship may hold.

Confidence interval

This is the range within which the true value of a population parameter lies with known probability. For example the 95 per cent confidence interval represents the range in which there are 19 chances out of 20 that the true figure would fall (had all migrants been surveyed). The uppermost and lowermost values of the confidence interval are termed 'confidence limits'.

European Economic Area (EEA)

The EEA consists of the 27 countries of the EU (see below), plus Iceland, Liechtenstein and Norway.

European Union (EU)

The EU consists of 27 countries: Austria, Belgium, Bulgaria, Cyprus, Czech Republic, Denmark, Estonia, Finland, France, Germany, Greece, Hungary, Italy, Latvia, Lithuania, Luxembourg, Malta, Netherlands, Poland, Portugal, Republic of Ireland, Romania, Slovakia, Slovenia, Spain, Sweden and the United Kingdom.

European Union (EU) Accession countries

The Accession countries are those that joined the EU in either 2004 or 2007. 10 joined in 2004 (the A8, plus Cyprus and Malta), and 2 joined in 2007 (the A2).

International Passenger Survey (IPS)

The International Passenger Survey (IPS) is a survey of a random sample of passengers entering and leaving the UK by air, sea or the Channel Tunnel. Over a quarter of a million face-to-face interviews are carried out each year. The IPS estimates of long-term international migration provide an early indication of migration statistics, but the total long-term international migration estimates are not published until November of each year.

Unlike the IPS estimates, the total long-term international migration estimates are adjusted to account for asylum seekers and people whose length of stay changes from their original

intentions, and also use a different data source for figures on the number of international migrants entering and leaving Northern Ireland. The IPS is carried out by ONS.

Labour Force Survey (LFS)

The main source for information on the labour market in the UK. It is a random household survey of approximately 53,000 households every three months and is conducted by ONS.

Nationality

Nationality is often used interchangeably with citizenship, and some datasets refer to 'nationals' of a country rather than 'citizens'. Different datasets have different ways of establishing someone's nationality. The APS, which underlies the population estimates by nationality, simply asks people 'what is your nationality?' However, the IPS, WRS and NINo data are based on people's passports. For asylum statistics the nationality is as stated on the 'Case Information Database'. This will usually be based on documentary evidence, but sometimes asylum seekers arrive in the UK without any such documentation.

Standard error

Standard error is an estimate of the margin of error associated with a sample survey.

Worker Registration Scheme (WRS)

The WRS is a scheme with which A8 nationals should register if they wish to take up employment in the UK. Self-employed workers do not need to register with the WRS.

List of products

The following are URL links to the products underlying this report, or otherwise associated with the co-ordinated migration release of 25 February 2010. The department releasing each product is indicated.

Migration Statistics Quarterly Report homepage and user information sheet (ONS):
www.statistics.gov.uk/statbase/Product.asp?vlnk=15230

[The user information sheet includes guidance on comparing the data sources, and quality information]

Quarterly releases on 25 February 2010:

1. Control of Immigration: Quarterly Statistical Summary United Kingdom, 2009, Q4 (Home Office): www.homeoffice.gov.uk/rds/stats-release.html
2. National Insurance Number (NINo) Allocations to Adult Overseas Nationals to September 2009 (DWP): http://research.dwp.gov.uk/asd/asd1/niall/nino_allocation.asp
3. Provisional International Passenger Survey (IPS) estimates of long-term international migration, year ending Q2 2009 (ONS):
www.statistics.gov.uk/statbase/product.asp?vlnk=15240
4. Local area migration indicators (ONS):
www.statistics.gov.uk/statbase/product.asp?vlnk=15239
5. Population by country of birth and nationality from the Annual Population Survey: July 2008 to June 2009 (ONS): www.statistics.gov.uk/StatBase/Product.asp?vlnk=15147
6. Population by country of birth and nationality from the Annual Population Survey (for Scottish council areas): July 2008 to June 2009 (GROS): <http://www.gro-scotland.gov.uk/statistics/publications-and-data/population-estimates/special-populations/country-of-birth-nationality.html>
7. Internal migration by country/region for the UK: year to June 2009 (ONS):
www.statistics.gov.uk/StatBase/Product.asp?vlnk=10191
8. Improving Migration and Population Statistics: Quarterly Update (ONS):
<http://www.ons.gov.uk/about-statistics/methodology-and-quality/imps/updates-reports/current-updates-reports/index.html>

Other releases on 25 February 2010:

1. Long-Term International Migration 2008: Additional Tables (ONS):
www.statistics.gov.uk/statbase/Product.asp?vlnk=507
2. Short-Term Migration 2008: Estimates for England and Wales (ONS):
<http://www.statistics.gov.uk/StatBase/Product.asp?vlnk=15363>

Published on 17 February 2010:

1. Labour market statistics February 2010 (ONS). This includes estimates of the number of people in employment in the UK by country of birth and nationality.
<http://www.statistics.gov.uk/pdfdir/lmsuk0210.pdf>

Published on 26 November 2009:

1. Long-Term International Migration 2008 (ONS):
www.statistics.gov.uk/statbase/Product.asp?vlnk=507

Future quarterly releases

The remaining release dates in 2010 are:

Thursday 27 May
Thursday 26 August
Thursday 25 November

Background notes

1. Details of the policy governing the release of new data are available from the media office.
2. National Statistics are produced to high professional standards set out in the Code of Practice for Official Statistics. They undergo regular quality assurance reviews to ensure that they meet customer needs. They are produced free from any political interference.

© Crown copyright 2010

.....

Next publication: 27 May 2010

Issued by: Office for National Statistics, Government Buildings, Cardiff Road, Newport NP10 8XG

Media contact:

Tel **Media Relations Office 0845 6041858**

Emergency on-call 07867 906553

Email **press.office@ons.gsi.gov.uk**

Statistical contact:

Tel **Jennet Woolford 01329 444639**

Email **jennet.woolford@ons.gsi.gov.uk**

Website:

www.ons.gov.uk

.....

The Migration Statistics Quarterly Report is produced in partnership with the Home Office and the Department for Work and Pensions (DWP).


Home Office

DWP Department for
Work and Pensions

It also incorporates data supplied by the General Register Office for Scotland (GROS) and the Northern Ireland Statistics and Research Agency (NISRA).

