

11 April 2001

Coverage

United Kingdom
unless otherwise stated

Theme

Labour Market

Issued by

National Statistics
1 Drummond Gate
London SW1V 2QQ

Telephone

Press Office 020-7533 5714
Helpline 020-7533 6094
Public enquiries 020-7533 5888

Statisticians

Graham Winter 020-7533 6110
(Briefing & analysis)
Allan Smith 020-7533 6140
(Labour Force Survey)
Andrew Machin 020-7533 6162
(Claimant count & vacancies)
Margaret Lane 01633 812072
(Workforce jobs)
Derek Bird 01633 819005
(Earnings)
James Partington 01928 792545
(Labour disputes)
Chris Daffin 01633 813131
(Productivity & unit wage costs)
Recorded Headlines
020-7533 6176

Statfax - fax retrieval service

This release 0906 7360 206

Internet

www.statistics.gov.uk

Labour market statistics

April 2001

NOTE: There are revisions affecting many tables in this release – see page 6.

Employment has continued to grow and there were falls in both the ILO unemployment rate and the number of people claiming unemployment-related benefits. The whole economy headline average earnings growth rate has increased.

Labour Force Survey data for December 2000 to February 2001 show that the working age employment rate was 74.7 per cent, a rise of 0.2 percentage points over the preceding three months. Survey estimates indicate that employment rose by 113,000 over the quarter and by 304,000 over the year.

The ILO unemployment rate was 5.2 per cent, down 0.2 percentage points from the preceding three months and down 0.6 percentage points from a year earlier. The claimant count fell by 5,500 in March 2001. The average monthly fall in the claimant count has been 12,800 over the past three months and 8,000 over the past six months.

The headline rate of growth of average earnings in February was 5.0 per cent, up 0.5 percentage points from January 2001.



UK data, seasonally adjusted unless otherwise stated +

		Level (thousands)	Rate (%)	Change on period (level)	Sampling variability (thousands)	Change on period (rate)	Samplin- variability
Employment*	Dec-Feb	28,088	74.7	113	± 117	0.2	± 0.:
ILO unemployment**	Dec-Feb	1,535	5.2	-42	± 54	-0.2	± 0.:
Economically active*	Dec-Feb	29,623	78.9	71	± 115	0.1	± 0.:
Economically inactive*** of which	Dec-Feb	7,698	21.1	-24	± 96	-0.1	± 0.:
Not wanting a job	Dec-Feb	5,455		-6	± 43		
Wanting a job	Dec-Feb	2,243		-18	± 43		
Workforce jobs	Dec 2000	29,095		70	N/A		
Claimant count	Mar 2001	995.2	3.3	-5.5		0.0	
GB Average earnings #	Dec-Feb		5.0			0.5	
Vacancies notified	Mar 2001	233.1		-0.1			

* Levels are for those aged 16 and over, rates for those of working age (16-59/64).

** Levels & rates are for those aged 16 and over. Rate is as a proportion of economically active.

*** Levels and rates are for those of working age.

+ See background note 2 on sampling variability. # Percentage change 3 months on previous year.

New this month:

December 2000 to February 2001: latest LFS 3-month average results, earnings; March 2001: claimant count, vacancies and placings; February 2001: manufacturing productivity and unit wage costs, manufacturing jobs, labour disputes.



Employment (tables 2 to 8)

Working age employment rate was 74.7 per cent in December 2000 to February 2001, a rise of 0.2 percentage points from September to November 2000 and up 0.5 percentage points on a year earlier. Employment level was 28.09 million in December 2000 to February 2001, up 113,000 from September to November 2000 and up 304,000 on a year earlier.

The average monthly rise was 37,700 over the three months and 18,000 over the six months to December 2000 to February 2001.

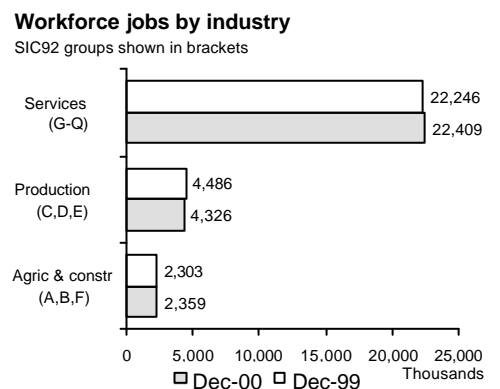
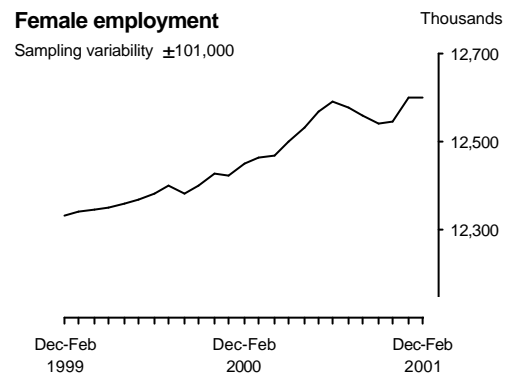
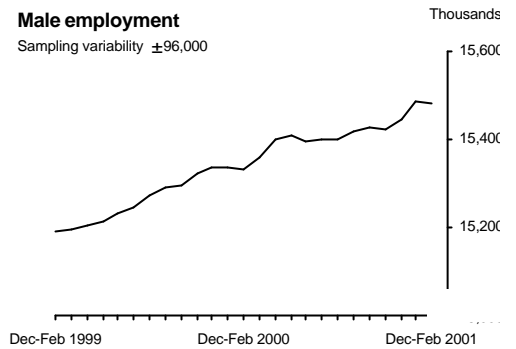
Number of men in full-time employment was 14.05 million in December 2000 to February 2001, up 30,000 from September to November 2000. Number of women in full-time employment was 7.00 million in December 2000 to February 2001, up 62,000 from September to November 2000.

Number of people in part-time employment was 7.04 million in December 2000 to February 2001, up 22,000 from September to November 2000. Of this total, 1.43 million were men and 5.61 million were women.

Workforce jobs up 70,000 over quarter to 29.09 million in December 2000, and up 60,000 on a year earlier. Over the quarter to December, production industries workforce jobs down 44,000, service sector jobs up 85,000 and other industries up 29,000.

Employee jobs up 62,000 over quarter to 25.38 million in December 2000.

Total actual hours worked per week were 923.6 million in December 2000 to February 2001, up 9.3 million from September to November 2000. Average actual weekly hours worked in December 2000 to February 2001 were 32.9.





Unemployment (table 9)

ILO unemployment rate was 5.2 per cent in December 2000 to February 2001, down 0.2 percentage points from September to November 2000 and down 0.6 percentage points from a year earlier.

ILO unemployment level was 1.54 million in December 2000 to February 2001, down 42,000 from September to November 2000 and down 174,000 on a year earlier.

Number of ILO unemployed men was 949,000 in December 2000 to February 2001, down 3,000 from September to November 2000. Number of ILO unemployed women was 586,000 in December 2000 to February 2001, down 39,000 from September to November 2000.

ILO unemployment for 18 to 24 year olds was 400,000 in December 2000 to February 2001, down 5,000 from September to November 2000.

ILO unemployment over 12 months was 400,000 in December 2000 to February 2001, down 12,000 from September to November 2000.

Claimant count (tables 10 and 11)

Claimant count rate in March 2001 was 3.3 per cent, unchanged from February 2001. The rate is down 0.5 percentage points on a year earlier.

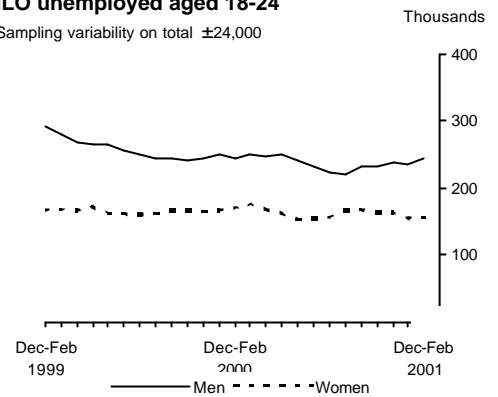
Claimant count level in March 2001 was 995,200, down 5,500 on the month and down 144,700 on a year earlier. It has shown an average fall of 12,800 over the last three months and 8,000 over the last six months.

Economically active (table 12)

Economically active people aged 16 and over up 71,000 over quarter to 29.62 million in December 2000 to February 2001. Of this total, 16.43 million were men and 13.19 million were women.

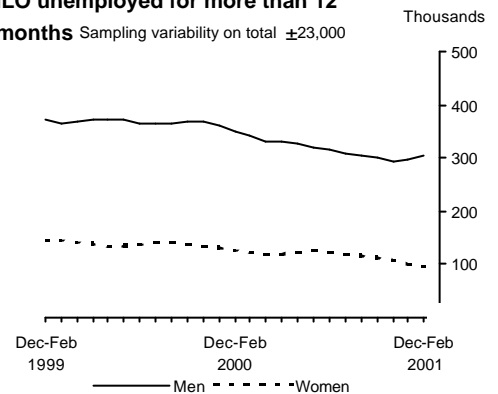
ILO unemployed aged 18-24

Sampling variability on total ±24,000



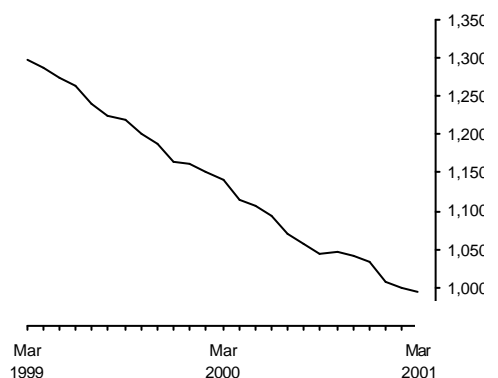
ILO unemployed for more than 12 months

Sampling variability on total ±23,000



Claimant count

Thousands



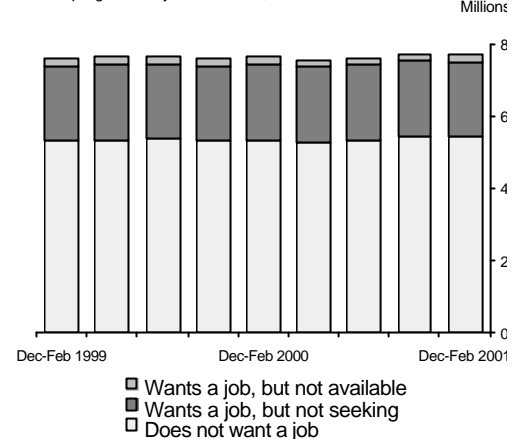


Economically inactive (tables 13 and 14)

Economically inactive people of working age down 24,000 over quarter to 7.70 million in December 2000 to February 2001. Of this total, 5.46 million people did not want a job and 2.02 million did want a job, but had not actively looked for one.

Economic inactivity (working age)

Sampling variability of total ±136,000

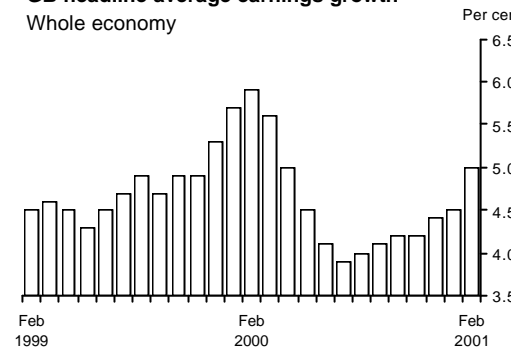


GB average earnings (table 15 and 16)

Whole economy headline (three month average) average earnings increased by 5.0 per cent in the year to February 2001, up 0.5 percentage points from the January rate.

GB headline average earnings growth

Whole economy



Manufacturing industries headline (three month average) average earnings were 4.5 per cent higher in February 2001 compared with a year earlier, unchanged from the January rate.

Service industries headline (three month average) average earnings were 5.2 per cent higher in February 2001 compared with a year earlier, up 0.6 percentage points from the January rate.

Public sector headline (three month average) average earnings were 3.5 per cent higher in February 2001 compared with a year earlier, down 0.3 percentage points from the January rate. Private sector headline (three month average) average earnings were 5.3 per cent higher in February 2001 than in the same period a year earlier, up 0.7 percentage points from the January figure.



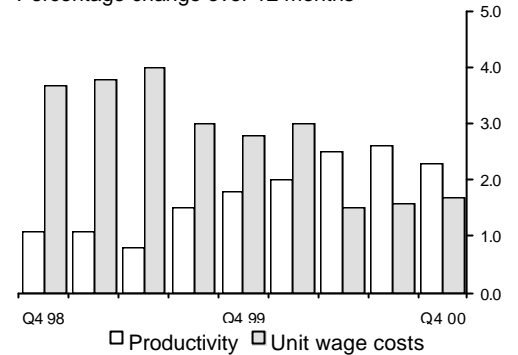
Productivity and Unit wage costs (table 17)

Whole economy productivity was 2.3 per cent higher in the fourth quarter of 2000 compared with a year earlier; whole economy unit wage costs were 1.7 per cent higher in the fourth quarter of 2000 compared with a year earlier.

Manufacturing productivity increased by 6.0 per cent in the three months ending February 2001 compared with a year earlier; manufacturing unit wage costs decreased by 1.4 per cent in the three months ending February 2001 compared with a year earlier.

Whole economy productivity & unit wage costs

Percentage change over 12 months



Production industry employee jobs (table 6)

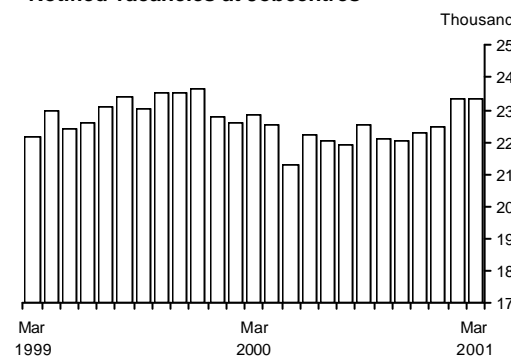
There were 3.883 million employee jobs in manufacturing industries in the three months to February 2001, down 105,000 on the same period a year earlier. Mining, energy and water supply industries jobs down 4,000 in the same period to 188,000.

Vacancies (table 20)

New vacancies notified to Jobcentres were down 100 in March 2001 to 233,100. This is 4,300 higher than the same month last year.

Stock of unfilled Jobcentre vacancies was up 7,600 in March 2001 to 399,200, up 54,600 on a year earlier.

Notified vacancies at Jobcentres



Placings by Jobcentres were down 300 in March 2001 to 108,300. This is 7,400 lower than last year.

REVISIONS

Seasonal Adjustment Reviews

Each year National Statistics undertakes reviews of seasonal adjustment for Labour Force Survey, Claimant Count and Jobcentre Vacancies data. These reviews provide an opportunity to assess the quality of seasonal adjustment and introduce methodological improvements.

LFS Review

From April, the past three years of LFS seasonally adjusted historic data (from December 1997 to February 1998 onwards) have been revised in all published sources. A few series, detailed below, have been revised back to the start of the time series in March to May 1992. All seasonally adjusted LFS data presented in the National and Regional First Releases have, therefore, been revised this month. A number of quality improvements have also been introduced based on the findings of the review. In summary, these are:

- The quality of the seasonal adjustment of the males self-employed and males, full-time self-employed series (Table 3) has been improved by the use of permanent prior adjustments. As part of this improvement, the following series have been revised back to Spring 1992, males and totals series for employees, self-employed, unpaid family workers, government supported trainees, full and part-time employees and full and part-time self-employed (16 series).
- The series for Northern Ireland in Table 18 are now presented on a seasonally adjusted basis.
- The series males and females aged 18-24 ILO unemployed for between 6 and 12 months have now been made fully additive within Table 9. To achieve this, the following series have been revised back to Spring 1992, males, females and totals series for the age groups 16-17, 18-24, 25-49 and 50+ and each of the durations up to 6 months, 6 to 12 months and all over 12 months (36 series).

An article describing more fully the findings of the review and the scale of revisions will appear in the May 2001 edition of Labour Market Trends.

Claimant Count and Jobcentre Vacancies Review

Also the seasonally adjusted claimant count and Jobcentre vacancies series have been revised back three years (to January 1998). A few improvements have been made to the models and adjustments as a result of the review. In summary, these are:

- Some modifications have been made to the basic model settings to improve the general quality of the seasonal adjustment.
- The Easter adjustments have been updated in light of recent data. It has also been recognised that male and female claimants behave differently around Easter, so Easter adjustments have been altered to take account of this.

- Estimates for the seasonally adjusted claimant count series and rates for the Government Office Regions back to 1974 are now available.

An article describing more fully the findings of the review and the scale of revisions will appear in the May 2001 edition of Labour Market Trends and is now available on request.

Revisions resulting from the introduction of the Annual Business Inquiry

From this month estimates of Workforce jobs have been revised. This is because the source of information on the major component, employee jobs has switched from the Annual Employment Survey (AES) to the Annual Business Inquiry (ABI). This change was first announced in an Operational Note released on 21st July 2000, and followed up by an article on the ONS website in August 2000 and in Labour Market Trends in September 2000. Reference to this change has been included in the "Special" section of the Labour Market Statistics First Release every month since August 2000.

The launch of the ABI employee jobs series has resulted in an upward revision at the UK level to the quarterly estimates of employee jobs and also affects other series. The latest figure for employee jobs for December 2000 has been revised upwards by 982,000. The number of employee jobs for previous periods has been revised upwards by between 820,000 (March 1983) and 1 million (September 1999) and by an average of 876,000 since September 1978. These higher levels of employee jobs are also more in line with Labour Force Survey estimates of jobs. These upward revisions also apply to Workforce jobs.

The series for Quarterly Workforce Jobs and Employee Jobs (UK) have been revised from 1959 (annual only until June 1978), whilst quarterly Civilian Workforce Jobs and Employee Jobs (Government Office Regions) have been revised from 1995.

The monthly Production Industry Employee Jobs (UK) series has been revised from 1978 (quarterly only until September 1984).

The claimant count rates from January 2000 to March 2001 are now based on new June 2000 denominators, including the revised employee job figures and updates to other components. These will be used for each month's calculations until summer 2002.

The claimant count rates have been revised from 1971 at UK and GB level, with rates for other areas revised back to the start of each current series. Northern Ireland rates are not affected by ABI changes, but are revised from 1996 as part of the annual update to the denominators.

Claimant count rates for Government Regions are now available from 1974 onwards.

The UK total Claimant Count rate for January 2001 has been revised downwards by 0.2 percentage points. The UK total Claimant Count rate has been revised downwards by between 0.1 and 0.5 percentage points over the period January 1971 to

February 2001 and by an average of 0.3 percentage points. There are larger changes in rates for some regions and smaller areas. Some local rates have increased as a result of the revisions.

Quarterly Whole Economy Output per filled Job and Unit Wage Costs (UK) have been revised from 1959 and Manufacturing Output per filled Job and Unit Wage Costs (UK) have been revised, quarterly from 1978 and monthly from 1984. As well as the impact of the ABI on the calculation of these series, improvements to the methodology for their calculation have also been introduced from this month. Further details are available from the ONS website (www.statistics.gov.uk)

The revisions for Workforce jobs and Claimant count rates over the last ten years at the national level are summarised in the following table :-

Revisions to Workforce Jobs and Claimant Count Rates : UK (seasonally adjusted)

Changes to levels in thousands, changes to rates in percentage points

SIZE OF REVISIONS			
Workforce Jobs		Claimant Count Total Rate	
December 1990	+894,000	January 1991	-0.2
December 1991	+866,000	January 1992	-0.4
December 1992	+847,000	January 1993	-0.5
December 1993	+850,000	January 1994	-0.4
December 1994	+858,000	January 1995	-0.4
December 1995	+866,000	January 1996	-0.2
December 1996	+878,000	January 1997	-0.2
December 1997	+891,000	January 1998	-0.2
December 1998	+861,000	January 1999	-0.1
December 1999	+971,000	January 2000	-0.1
December 2000	+982,000	January 2001	-0.2

Further details on the background to the ABI and the impact of revisions for earlier years and on other series are available from the ONS website (www.statistics.gov.uk)

Summary of revisions

The table overleaf summarises all the revisions to tables in this month's release :-

Table	Revisions applying
1 Summary LFS	Seasonal adjustment
1a Other headline indicators	ABI and seasonal adjustment
2 Employment by age	Seasonal adjustment
3 FT, PT and temporary workers	Seasonal adjustment
4 Workforce jobs	ABI
5 Workforce jobs by industry	ABI
6 Production industry employee jobs	ABI
7 Actual weekly hours of work	Seasonal adjustment
8 Usual weekly hours of work	Seasonal adjustment
9 ILO unemployment	Seasonal adjustment
10 Claimant count	Denominator revisions/update to June 2000 (including ABI) and seasonal adjustment
11 Claimant count	Not affected
12 Economic activity by age	Seasonal adjustment
13 Economic inactivity by age	Seasonal adjustment
14 Economic inactivity by reason	Seasonal adjustment
15 Average earnings – main industrial sectors	Revisions shown in the normal way
16 Average earnings	Revisions shown in the normal way
17 Productivity and unit wage costs	ABI
18(1) Regional labour market summary	Current data not affected Changes over quarter/year affected by seasonal adjustment
18(2) Regional labour market summary	Current data not affected Workforce jobs changes affected by ABI Claimant count changes in levels affected by seasonal adjustment Claimant count changes in rates affected by denominator revisions/update (including ABI) and seasonal adjustment Vacancy changes affected by seasonal adjustment
19 International comparisons	Not affected
20 Jobcentre vacancies	Seasonal adjustment
21 Labour disputes	Revisions shown in the normal way
22 Educational status etc of young people	Not affected

NEXT MONTH

Joint Claims for Jobseeker's Allowance were introduced on 19 March 2001 and this will have an upward impact on the claimant count with effect from the April figures which are published on 16 May. Both members of certain couples will be required to claim JSA jointly and both will be required to look for work. This will apply to couples without dependent children where at least one member was born after 19 March 1976 and is aged over 18. The claimant count will continue to include all individual claimants, so there will be extra claimants included as a result of this change. The impact is not known in advance but it will be monitored and initial estimates suggest it will be less than 10,000 overall for the UK to start with. It has also been announced that Joint Claims for Jobseeker's Allowance will be extended in 2002 to couples without dependent children where at least one member was born after 1957.

The extent to which the introduction of Joint Claims may be treated as a discontinuity in the count, following past precedent, is difficult to assess at this stage but we will continue to monitor and review the effects. For information about previous treatment of discontinuities in the claimant count see, for example, the article 'Changes to the coverage of the monthly count of claimant unemployment' in Labour Market Trends, November 1995 page 398.

SPECIAL

Claimant count flows

The sharp reduction in both inflows and outflows in March reflects a temporary administrative distortion affecting the data supplied to ONS. This has had no effect on the headline claimant count figures for March.

Labour Force Survey

Following the introduction of the Local Labour Force Survey, the survey design for the main Labour Force Survey has changed from June 2000. There will be more interview areas from which interviews will be selected. In the short term (i.e. from April to June 2000 until September to November 2001) it is predicted that there will be a very slight increase in standard errors across measures of employment, ILO unemployment and economic inactivity (expected to be no bigger than 4 per cent of the standard error). After that period there will be a decrease in those standard errors because of the increase in the number of interview areas, leading to improved stratification of the sampling. There will be no impact on the levels, rates or changes in LFS data, and will only impact on standard errors. For more information see article by Dave Elliot in the July edition of the ONS Survey Methodology Bulletin, or contact him direct, tel 020-7533 5323.

LFS Grossing

As identified in special notes in each Labour Market Statistics First Release since November 2000, new population data are now being taken into account in forming LFS estimates. Grossing totals are now being applied to the LFS which reflect the population growth shown by the recently published 1998-based national population projections and 1999 mid-year estimates. These new population data have a faster growth rate than those previously used in LFS grossing. The largest single influence on this faster growth is in the international migration component of the 1998-based projections, where net inward migration proved to be significantly larger than in previous projections.

Effect on rates

There has been negligible effect on published rates for employment, ILO unemployment and inactivity and on quarterly or annual changes to these.

Effect on quarterly changes

Introducing the 1998 projected population growth: the best current view of population growth for the United Kingdom, led to small over-estimates of quarterly change in the LFS data published in November, December and January. For reference purposes these effects are shown in the table below. These over-estimates reflected the difference between the known growth in 1998-based population projections and the growth in LFS grossing totals during the transitional period. This effect does not exist in LFS estimates published from February 2001 onwards.

Over-estimate of quarterly change shown in First Release - LFS data for 3 month periods

UK, 16+, thousands	Jul-Sep 2000 (Nov 2000 FR)	Aug-Oct 2000 (Dec 2000 FR)	Sep-Nov 2000 (Jan 2001 FR)
Activity	9	17	25
Inactivity	2	4	6
ILO Unemployment	0	1	1
Employment	8	16	24
Total 16+	11	21	31

Effect on annual changes

Because the population growth rate built into LFS estimates up to those for July to September 2000 was lower than the new 1998-based population projection growth rate - annual changes in LFS levels were under-estimated and will continue to be so for a few more months. After that, as LFS grossing totals are produced each month using the 1998 projection, there will be smaller impacts on annual changes. The effect will disappear entirely - from November 2001 onwards - when a full year's data will have been produced using the 1998 projection of population growth. The table below shows the estimated impact on the annual changes in the 16+ populations used in LFS grossing for the period affected.

Impact on annual changes to 16+ population shown in First Release - LFS data for 3 month periods, UK, thousands

Jul-Sep 2000 (Nov 2000 FR)	-64	Jan-Mar 2001 (May 2001 FR)	-7
Aug-Oct 2000 (Dec 2000 FR)	-55	Feb-Apr 2001 (Jun 2001 FR)	2
Sep-Nov 2000 (Jan 2001 FR)	-45	Mar-May 2001 (Jul 2001 FR)	9
Oct-Dec 2000 (Feb 2001 FR)	-34	Apr-Jun 2001 (Aug 2001 FR)	18
Nov-Jan 2001 (Mar 2001 FR)	-25	May-Jul 2001 (Sep 2001 FR)	26
Dec-Feb 2001 (Apr 2001 FR)	-15	Jun-Aug 2001 (Oct 2001 FR)	35

Regional effects

The regional distribution of the population data is reflected in the LFS. This means that almost all of the effects on LFS change estimates are concentrated in the South East and Greater London.

Regrossing of LFS data

ONS will be carrying out an assessment of the need to regress LFS data back to June to August 1998. The findings of the work and the plans for future grossing will be published during the first half of 2001 in an article seeking views of LFS users. No regrossing would take place until after the mid 2000 population estimates are assessed following publication in August 2001.

Vacancy data

The publication of the vacancy figures for Northern Ireland has been suspended since March 1999 as a result of a discontinuity identified during the introduction of a new computer system for processing vacancies to local offices of the Department of Higher and Further Education, Training and Employment (DHFETE). In the course of correcting for this difficulty, further problems of a procedural nature have come to light as contributory factors. These further issues have delayed the re-instatement of published vacancy figures for Northern Ireland. DHFETE have now introduced a new internet-based operational system for vacancies and are investigating how the statistics might be resumed using this. The series will be reinstated as soon as possible. For the purposes of the seasonally adjusted United Kingdom figures it has been assumed provisionally that the Northern Ireland figures have remained constant since February 1999 as follows: 8,900 for the stock of unfilled vacancies, 3,400 for inflows of vacancies notified, 3,400 for outflows, and 2,200 for placings. These are not estimates for Northern Ireland but assumptions for the purpose of continuity of the United Kingdom series.

There was minor discontinuity due to a change in the treatment of vacancies by the Employment Service between April and May 2000. As from 7 April both vacancies notified and placings are only counted in the statistics if the vacancy concerned is for 8 hours or more in a 7-day period. Previously vacancies of between 3 and 8 hours were included. The change is estimated to have reduced the recorded inflow of notified vacancies by some 4,000 to 5,000 per month since April.

BACKGROUND NOTES

1. More information on the statistics in this release can be found in the *Guide to Labour Market Statistics Releases*, available from the Labour Market Helpline 020-7533 6094. Information is also available on the National Statistics Website at www.statistics.gov.uk.
2. Some data in this release are based on statistical samples, and as such, are subject to sampling variability. If many samples were drawn, each would give a different result. The ranges shown for the LFS data in this release and in the table overleaf represent '95 per cent confidence intervals'. It is expected that in 95 per cent of samples the range would contain the true value. The ranges are approximated from non-seasonally adjusted data in line with research on the topic. For more information, see the *Guide to Labour Market Statistics Releases*.

Sampling variability of national Labour Force Survey figures December 2000 to February 2001

	Level	Sampling Variability	Change on quarter	Sampling variability	Change on year	Sampling variability
Employment (000s)	28,088	± 162	113	± 117	304	± 206
Employment Rate	74.7%	± 0.4%	0.2%	± 0.3%	0.5%	± 0.5%
ILO Unemployment (000s)	1,535	± 52	-42	± 54	-174	± 72
ILO Unemployment rate	5.2%	± 0.2%	-0.2%	± 0.2%	-0.6%	± 0.2%
Economically Active (000s)	29,623	± 160	71	± 115	130	± 203
Economic Activity rate	78.9%	± 0.3%	0.1%	± 0.2%	0.0%	± 0.4%
Economically Inactive (000s)	7,698	± 136	-24	± 96	55	± 172
Economic Inactivity rate	21.1%	± 0.3%	-0.1%	± 0.2%	0.0%	± 0.4%
Inactive, Not wanting job(000s)	5,455	± 61	-6	± 43	117	± 78
Inactive, Wanting a job (000s)	2,243	± 61	-18	± 43	-63	± 78

Sampling variability of regional Labour Force Survey figures December 2000 to February 2001

	Empl- oyment Level (000s)	ILO Unem- ployment Level (000s)	Econ- omically Active Level (000s)	Working age Economically Inactive Level (000s)	Employment Rate (%)	ILO Unem- ployment Rate (%)
North East	± 34	± 12	± 34	± 35	± 1.8%	± 1.0%
North West	± 58	± 18	± 57	± 57	± 1.1%	± 0.5%
Yorks & Humber	± 43	± 14	± 42	± 45	± 1.2%	± 0.6%
East Midlands	± 43	± 13	± 43	± 42	± 1.3%	± 0.6%
West Midlands	± 49	± 16	± 48	± 47	± 1.2%	± 0.6%
East	± 47	± 14	± 47	± 43	± 1.0%	± 0.5%
London	± 60	± 23	± 58	± 58	± 1.1%	± 0.6%
South East	± 58	± 16	± 57	± 52	± 0.9%	± 0.4%
South West	± 47	± 13	± 47	± 44	± 1.2%	± 0.5%
Wales	± 37	± 12	± 37	± 38	± 1.8%	± 0.9%
Scotland	± 47	± 16	± 45	± 45	± 1.2%	± 0.6%

- The LFS sample population covers those living in private households, student halls of residence and NHS accommodation.
- Trends shown in the graphs are estimated using the standard approach adopted by National Statistics, based on the results of its Short-Term Trend research project. In this case, the recommended method is to apply a 13-term Henderson moving average, augmented by two stages of outlier detection and ARIMA modelling, to the seasonally adjusted series. For more information, see *An Investigation of Trend Estimation Methods*, available from the Time Series Analysis Branch 020-7533 6235.



5. Estimates of the trends at the end of the series are subject to revision when new data become available. The graphs on this page give an indication of the likely extent of these revisions. They have been constructed by making statistical estimates of the range of values the next data point in the series is likely to fall within. The resultant extended series have been used to calculate the corresponding likely range of revised trend estimates. Note that this range does not take account of revisions which might arise from seasonal adjustment.

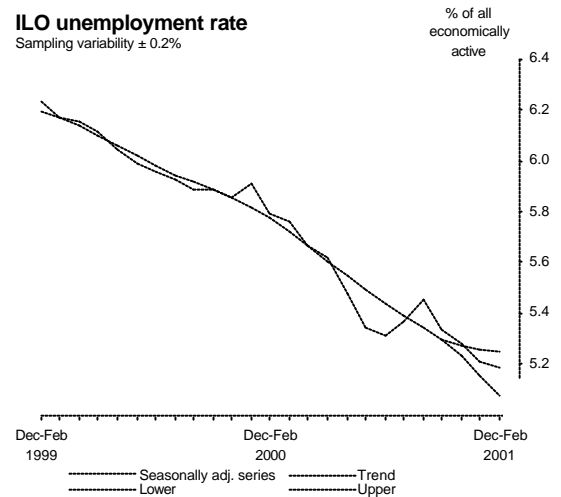
6. Unadjusted claimant count and vacancies data are gathered from administrative sources and constitute a complete count. However, seasonally adjusted totals are presented as rounded to the nearest hundred to avoid spurious precision. Any differences between the sum of the rounded seasonally adjusted figures and the UK totals are due to this rounding.

7. Claimant count flows are the number of people joining or leaving the count in the period between the count dates. They are therefore affected by the number of weeks between count dates. To enable comparisons from month to month, the flows figures are standardised to a 4 1/3 week month before seasonal adjustment.

8. A claimant count rate is defined as the number of claimants resident in an area as a percentage of the corresponding mid-year estimate (or the latest available mid-year estimate, currently for June 2000) of the sum of claimants and workforce jobs in the area. The number of workforce jobs is mainly collected through postal employer surveys and comprises employee jobs, self-employment jobs, HM armed forces and Government supported trainees.

9. The count of Jobseeker's Allowance claimants is mostly derived from the Benefits Agency computer records. However for various reasons, eg. when a claimant's National Insurance number is not known, a few claims have to be dealt with manually by local offices. These claims, which amount to about 1 per cent of the total, are thus counted separately and not analysed in as much detail as the computerised claims. In particular only the computerised claims are analysed by age and duration on a monthly basis (Table 11). An occasional supplementary analysis of the full 100 per cent count for October, including the 6,000 clerical claims which comprised 0.6 per cent of the total, has been produced for quality assurance purposes. It is available on request or via the website www.statistics.gov.uk.

10. The employee jobs series is based on data from employer surveys and is also subject to sampling variability. The nature of the survey means that the size of this sampling variability may not be consistent from year to year. The estimated sampling variability range is plus or minus 0.8 per cent of the estimate.



11. Labour market statistics are compiled from a wide range of sources. Claimant count data are provided from the Benefits Agency administrative system and Jobcentre vacancy data are provided by the Employment Service; Workforce jobs and earnings data are derived from ONS business surveys combined with industrial output data to produce the productivity and unit wage cost figures; other data come from the ONS Labour Force Survey.
12. The Social Survey Division of ONS carries out the questionnaire design, sample selection and interviewing for the LFS on behalf of the Socio-Economic Statistics & Analysis Group of ONS which analyses and publishes the results of the survey. In Northern Ireland, the Labour Force Survey is conducted by the Central Survey Unit.
13. In addition to the data in this release, ONS can provide a wide range of detailed labour market data in a number of formats. In particular, data are available from Nomis[®] at the same time as this Release is published. Further data are also published in *Labour Market Trends (LMT)* and the *Labour Force Survey Quarterly Supplement* to LMT.
14. Many of the series in the attached tables are also available from the National Statistics DataBank Service. Where this is so, the four letter identifier is shown at the top of the column. Although the identifiers are not shown, the series in tables 8 and 18 are now also available. For more information, call the DataBank Service on 020-7533 5675.
15. Details of the policy governing the release of new data are available from the press office. Also available is a list of the names of those given pre-publication access to the contents of this release.
16. **National Statistics** are produced to high professional standards set out in the National Statistics Code of Practice. They undergo regular quality assurance reviews to ensure that they meet customer needs. They are produced free from any political interference. © Crown Copyright 2001.

INDEX OF TABLES

All data are seasonally adjusted unless otherwise stated

SUMMARY

LFS Summary for the current quarter	1
Other headline indicators	1a

EMPLOYMENT

Employment by age	2
Full-time, part-time & temporary workers	3
Workforce jobs	4
Workforce jobs by industry	5
Production industry employee jobs	6
Actual weekly hours of work	7
Usual weekly hours of work.....	8

UNEMPLOYMENT

ILO unemployment by age & duration	9
Claimant count	10
Claimant count by age & duration – computerised claims only	11
(not seasonally adjusted)	

ECONOMIC ACTIVITY AND INACTIVITY

Economic activity by age	12
Economic inactivity by age	13
Economic inactivity: reasons	14

EARNINGS, PRODUCTIVITY & UNIT WAGE COSTS

Average earnings – main industrial sectors	15
Bonuses (not seasonally adjusted)	16
Productivity and unit wage costs	17

SUB-NATIONAL AND INTERNATIONAL SUMMARY

Regional labour market summary	18
International comparisons	19

OTHER LABOUR MARKET STATISTICS

Jobcentre vacancies	20
Labour disputes (not seasonally adjusted)	21
Educational status, economic activity & inactivity of young people	22
(not seasonally adjusted).	

The following symbols are used in the tables:

..	not available	-	nil or negligible
p	provisional	r	revised
*	grossed up total less than 10,000		

Totals may differ from the sum of components because of rounding or separate adjustment of components.

SUMMARY

1 LFS: December 2000 to February 2001

United Kingdom (thousands) seasonally adjusted

		All 16 & over								
		All aged 16 & over	Total economically active	Total in employment	ILO unemployed	Economically inactive	Economic Activity rate (%)	Employment rate (%)	ILO unemployment rate (%)	Economic inactivity rate (%)
		1	2	3	4	5	6	7	8	9
		MGSL	MGSF	MGRZ	MGSC	MGSI	MGWG	MGSR	MGSX	YBTC
People	Dec-Feb 1999	46,390	29,358	27,528	1,831	17,032	63.3	59.3	6.2	36.7
	Dec-Feb 2000	46,544	29,493	27,784	1,709	17,051	63.4	59.7	5.8	36.6
	Mar-May 2000	46,581	29,574	27,913	1,661	17,007	63.5	59.9	5.6	36.5
	Jun-Aug 2000	46,617	29,549	27,980	1,569	17,068	63.4	60.0	5.3	36.6
	Sep-Nov 2000	46,707	29,552	27,975	1,577	17,155	63.3	59.9	5.3	36.7
	Dec-Feb 2001	46,769	29,623	28,088	1,535	17,146	63.3	60.1	5.2	36.7
	<i>Change on qtr</i>	63	71	113	-42	-8	0.1	0.2	-0.2	-0.1
	<i>Change %</i>	0.1	0.2	0.4	-2.7	0.0				
	<i>Change on year</i>	225	130	304	-174	95	0.0	0.4	-0.6	0.0
	<i>Change %</i>	0.5	0.4	1.1	-10.2	0.6				
Men		MGSM	MGSG	MGSA	MGSD	MGSJ	MGWH	MGSS	MGSY	YBTD
	Dec-Feb 1999	22,632	16,326	15,190	1,136	6,306	72.1	67.1	7.0	27.9
	Dec-Feb 2000	22,730	16,353	15,327	1,026	6,377	71.9	67.4	6.3	28.1
	Mar-May 2000	22,754	16,411	15,409	1,002	6,343	72.1	67.7	6.1	27.9
	Jun-Aug 2000	22,778	16,344	15,399	945	6,434	71.8	67.6	5.8	28.2
	Sep-Nov 2000	22,837	16,378	15,426	952	6,459	71.7	67.5	5.8	28.3
	Dec-Feb 2001	22,877	16,433	15,484	949	6,444	71.8	67.7	5.8	28.2
	<i>Change on qtr</i>	40	55	58	-3	-15	0.1	0.1	0.0	-0.1
	<i>Change %</i>	0.2	0.3	0.4	-0.3	-0.2				
	<i>Change on year</i>	147	80	157	-77	67	-0.1	0.3	-0.5	0.1
<i>Change %</i>	0.6	0.5	1.0	-7.5	1.0					
Women		MGSN	MGSH	MGSB	MGSE	MGSK	MGWI	MGST	MGSZ	YBTE
	Dec-Feb 1999	23,759	13,032	12,338	694	10,726	54.9	51.9	5.3	45.1
	Dec-Feb 2000	23,814	13,140	12,457	682	10,674	55.2	52.3	5.2	44.8
	Mar-May 2000	23,826	13,163	12,504	659	10,663	55.2	52.5	5.0	44.8
	Jun-Aug 2000	23,839	13,205	12,581	624	10,634	55.4	52.8	4.7	44.6
	Sep-Nov 2000	23,870	13,174	12,548	626	10,696	55.2	52.6	4.7	44.8
	Dec-Feb 2001	23,892	13,190	12,604	586	10,702	55.2	52.8	4.4	44.8
	<i>Change on qtr</i>	22	16	55	-39	6	0.0	0.2	-0.3	0.0
	<i>Change %</i>	0.1	0.1	0.4	-6.3	0.1				
	<i>Change on year</i>	78	50	146	-96	28	0.0	0.4	-0.8	0.0
<i>Change %</i>	0.3	0.4	1.2	-14.1	0.3					
		All aged 16 to 59/64								
		All aged 16 to 59/64	Total economically active	Total in employment	ILO unemployed	Economically inactive	Economic Activity rate (%)	Employment rate (%)	ILO unemployment rate (%)	Economic inactivity rate(%)
		10	11	12	13	14	15	16	17	18
		YBTF	YBSK	YBSE	YBSH	YBSN	MGSO	MGSU	YBTI	YBTL
People	Dec-Feb 1999	36,142	28,547	26,732	1,815	7,595	79.0	74.0	6.4	21.0
	Dec-Feb 2000	36,279	28,635	26,947	1,688	7,643	78.9	74.3	5.9	21.1
	Mar-May 2000	36,312	28,736	27,092	1,644	7,577	79.1	74.6	5.7	20.9
	Jun-Aug 2000	36,346	28,709	27,157	1,552	7,637	79.0	74.7	5.4	21.0
	Sep-Nov 2000	36,433	28,711	27,151	1,560	7,722	78.8	74.5	5.4	21.2
	Dec-Feb 2001	36,493	28,795	27,278	1,517	7,698	78.9	74.7	5.3	21.1
	<i>Change on qtr</i>	61	84	128	-43	-24	0.1	0.2	-0.2	-0.1
	<i>Change %</i>	0.2	0.3	0.5	-2.8	-0.3				
	<i>Change on year</i>	214	160	331	-171	55	0.0	0.5	-0.6	0.0
	<i>Change %</i>	0.6	0.6	1.2	-10.2	0.7				
Men		YBTG	YBSL	YBSF	YBSI	YBSO	MGSP	MGSV	YBTJ	YBTM
	Dec-Feb 1999	18,921	16,041	14,913	1,128	2,881	84.8	78.8	7.0	15.2
	Dec-Feb 2000	19,001	16,060	15,040	1,020	2,941	84.5	79.2	6.4	15.5
	Mar-May 2000	19,020	16,121	15,126	995	2,899	84.8	79.5	6.2	15.2
	Jun-Aug 2000	19,039	16,063	15,125	938	2,975	84.4	79.4	5.8	15.6
	Sep-Nov 2000	19,089	16,092	15,149	943	2,997	84.3	79.4	5.9	15.7
	Dec-Feb 2001	19,122	16,155	15,215	940	2,967	84.5	79.6	5.8	15.5
	<i>Change on qtr</i>	33	63	66	-3	-30	0.2	0.2	0.0	-0.2
	<i>Change %</i>	0.2	0.4	0.4	-0.4	-1.0				
	<i>Change on year</i>	121	95	175	-80	26	0.0	0.4	-0.5	0.0
<i>Change %</i>	0.6	0.6	1.2	-7.9	0.9					
Women		YBTH	YBSM	YBSG	YBSJ	YBSP	MGSQ	MGSW	YBTK	YBTN
	Dec-Feb 1999	17,220	12,506	11,819	687	4,714	72.6	68.6	5.5	27.4
	Dec-Feb 2000	17,277	12,575	11,907	668	4,702	72.8	68.9	5.3	27.2
	Mar-May 2000	17,292	12,615	11,966	649	4,677	73.0	69.2	5.1	27.0
	Jun-Aug 2000	17,307	12,646	12,031	614	4,661	73.1	69.5	4.9	26.9
	Sep-Nov 2000	17,343	12,619	12,002	617	4,725	72.8	69.2	4.9	27.2
	Dec-Feb 2001	17,371	12,640	12,063	577	4,731	72.8	69.4	4.6	27.2
	<i>Change on qtr</i>	28	21	61	-40	7	0.0	0.2	-0.3	0.0
	<i>Change %</i>	0.2	0.2	0.5	-6.5	0.1				
	<i>Change on year</i>	93	65	156	-91	29	0.0	0.5	-0.7	0.0
<i>Change %</i>	0.5	0.5	1.3	-13.6	0.6					

Relationship between columns: 1 = 2 + 5; 2 = 3 + 4; 6 = 2/1; 7 = 3/1; 8 = 4/2;

9 = 5/1; 10 = 11 + 14; 11 = 12 + 13; 15 = 11/10; 16 = 12/10; 17 = 13/11; 18 = 14/10

Data source: Labour Force Survey

The Labour Force Survey is a survey of the population of private households, student halls of residence and NHS accommodati

Labour Market Statistics Helpline 020-7533 6094

SUMMARY

1a Other headline indicators

United Kingdom (thousands) seasonally adjusted

		Workforce jobs		
		Levels		
		Total	Males	Females
		DYDC	LOLA	LOLB
1998	December	28,662 (r)	15,387 (r)	13,275 (r)
1999	March	28,771 (r)	15,438 (r)	13,332 (r)
	June	28,903 (r)	15,503 (r)	13,400 (r)
	September	28,955 (r)	15,490 (r)	13,465 (r)
	December	29,034 (r)	15,527 (r)	13,508 (r)
2000	March	29,024 (r)	15,508 (r)	13,516 (r)
	June	29,068 (r)	15,543 (r)	13,524 (r)
	September	29,025 (r)	15,474 (r)	13,551 (r)
	December	29,095 (r)	15,521 (r)	13,574 (r)
	<i>Change on quarter</i>	70	47	23
	<i>Change %</i>	0.2	0.3	0.2
	<i>Change on year</i>	60	-6	66
	<i>Change %</i>	0.2	0.0	0.5

		Claimant count*					
		Levels			Rates (%)**		
		Total	Males	Females	Total	Males	Females
		BCJD	DPAE	DPAF	BCJE	DPAH	DPAI
2000	March	1,139.9	869.2	270.7	3.8	5.3	2.0
	April#	1,115.0	850.4	264.6	3.7	5.2	1.9
	May	1,106.2	843.5	262.7	3.7	5.1	1.9
	June	1,094.4	835.0	259.4	3.6	5.1	1.9
	July#	1,071.1	819.6	251.5	3.6	5.0	1.8
	August	1,057.3	810.4	246.9	3.5	4.9	1.8
	September#	1,043.3	798.9	244.4	3.5	4.9	1.8
	October	1,046.8	801.3	245.5	3.5	4.9	1.8
	November	1,039.9	795.4	244.5	3.4	4.9	1.8
	December#	1,033.6	790.4	243.2	3.4	4.8	1.8
2001	January	1,006.3	768.8	237.5	3.3	4.7	1.7
	February	1,000.7	764.1	236.6	3.3	4.7	1.7
	March (p)	995.2	760.2	235.0	3.3	4.6	1.7
	<i>Change on month</i>	-5.5	-3.9	-1.6	0.0	0.0	0.0
	<i>Change %</i>	-0.5	-0.5	-0.7			
	<i>Change on year</i>	-144.7	-109.0	-35.7	-0.5	-0.7	-0.3
	<i>Change %</i>	-12.7	-12.5	-13.2			

* Count of claimants of unemployment-related benefits, ie. Jobseeker's Allowance

** Denominator = Claimant count + Workforce jobs.

Months where there are 5 weeks between count dates. All the rest are 4 week periods.

		GB Whole economy earnings		Notified vacancies		
		Average earnings index	*Headline rate (3 month average)	Level		
				LNMQ	LNNC	DRYW
2000	February	123.0	5.9	2000	March	228.8
	March	123.2	5.6		April	225.3
	April	122.9	5.0		May	213.2
	May	123.1	4.5		June	222.3
	June	123.5	4.1		July	220.6
	July	123.9	3.9		August	219.0
	August	124.8	4.0		September	225.6
	September	125.2	4.1		October	221.3
	October	125.8	4.2		November	220.2
	November	126.4	4.2		December	222.8
	December	128.1	4.4		January	224.9
2001	January (r)	128.6	4.5	2001	February	233.2
	February (p)	130.2	5.0		March (p)	233.1
	<i>Change on month</i>	1.6	0.5			-0.1
	<i>Change on year</i>	7.2	-0.9			4.3

*The headline rate is the change in the average seasonally adjusted index values for over the last 3 months compared with the same period a year ago.

Labour Market Statistics Helpline 020-7533 6094

Data source: Employer surveys, DfEE Training Data System, Benefits Agency administrative system, Employment Service administrative system, monthly wages and salaries survey.

EMPLOYMENT

2 Employment by age

United Kingdom (thousands) seasonally adjusted

	All aged 16 & over	16 - 59/64	16 - 17	18 - 24	25 - 34	35 - 49	50 - 64 (m) & 50 - 59 (w)	65+ (m) & 60+ (w)
	1	2	3	4	5	6	7	8
	MGRZ	YBSE	YBTO	YBTR	YBTU	YBTX	MGUW	MGUZ
In Employment								
People								
Dec-Feb 1999	27,528	26,732	686	3,283	7,194	9,996	5,574	796
Dec-Feb 2000	27,784	26,947	664	3,338	7,048	10,220	5,678	837
Mar-May 2000	27,913	27,092	674	3,340	7,036	10,298	5,744	822
Jun-Aug 2000	27,980	27,157	664	3,339	6,982	10,371	5,800	823
Sep-Nov 2000	27,975	27,151	650	3,336	6,947	10,398	5,820	824
Dec-Feb 2001	28,088	27,278	659	3,330	6,923	10,482	5,884	809
Change on qtr	113	128	9	-5	-24	84	64	-15
Change %	0.4	0.5	1.4	-0.2	-0.3	0.8	1.1	-1.8
Change on year	304	331	-5	-8	-124	262	206	-27
Change %	1.1	1.2	-0.7	-0.2	-1.8	2.6	3.6	-3.3
Men								
Dec-Feb 1999	15,190	14,913	345	1,740	4,051	5,429	3,347	277
Dec-Feb 2000	15,327	15,040	330	1,793	3,965	5,573	3,380	287
Mar-May 2000	15,409	15,126	336	1,791	3,962	5,616	3,421	283
Jun-Aug 2000	15,399	15,125	330	1,794	3,914	5,638	3,449	274
Sep-Nov 2000	15,426	15,149	325	1,780	3,910	5,668	3,466	278
Dec-Feb 2001	15,484	15,215	325	1,790	3,889	5,703	3,509	269
Change on qtr	58	66	0	10	-21	35	42	-9
Change %	0.4	0.4	-0.1	0.6	-0.5	0.6	1.2	-3.1
Change on year	157	175	-5	-2	-76	130	129	-18
Change %	1.0	1.2	-1.6	-0.1	-1.9	2.3	3.8	-6.3
Women								
Dec-Feb 1999	12,338	11,819	342	1,542	3,143	4,566	2,226	519
Dec-Feb 2000	12,457	11,907	334	1,545	3,083	4,647	2,298	550
Mar-May 2000	12,504	11,966	338	1,549	3,074	4,682	2,323	538
Jun-Aug 2000	12,581	12,031	334	1,545	3,068	4,733	2,351	549
Sep-Nov 2000	12,548	12,002	325	1,556	3,037	4,730	2,354	546
Dec-Feb 2001	12,604	12,063	334	1,540	3,034	4,779	2,375	541
Change on qtr	55	61	10	-16	-3	49	21	-6
Change %	0.4	0.5	2.9	-1.0	-0.1	1.0	0.9	-1.1
Change on year	146	156	0	-5	-48	131	77	-9
Change %	1.2	1.3	0.1	-0.3	-1.6	2.8	3.4	-1.7
Employment rates (%)*								
People								
Dec-Feb 1999	59.3	74.0	47.4	66.9	79.6	80.9	66.4	7.8
Dec-Feb 2000	59.7	74.3	46.1	67.7	80.1	81.5	66.3	8.2
Mar-May 2000	59.9	74.6	46.8	67.7	80.5	81.8	66.8	8.0
Jun-Aug 2000	60.0	74.7	46.1	67.6	80.5	82.0	67.1	8.0
Sep-Nov 2000	59.9	74.5	44.9	67.3	80.4	81.8	67.0	8.0
Dec-Feb 2001	60.1	74.7	45.4	67.0	80.6	82.1	67.5	7.9
Change on qtr	0.2	0.2	0.4	-0.3	0.2	0.3	0.4	-0.1
Change on year	0.4	0.5	-0.7	-0.8	0.6	0.6	1.2	-0.3
Men								
Dec-Feb 1999	67.1	78.8	46.5	69.5	87.9	87.4	68.9	7.5
Dec-Feb 2000	67.4	79.2	44.7	71.4	88.4	88.3	68.2	7.7
Mar-May 2000	67.7	79.5	45.5	71.2	88.9	88.6	68.8	7.6
Jun-Aug 2000	67.6	79.4	44.8	71.3	88.5	88.5	69.1	7.3
Sep-Nov 2000	67.5	79.4	43.8	70.4	88.7	88.5	69.2	7.4
Dec-Feb 2001	67.7	79.6	43.6	70.6	88.8	88.7	69.8	7.2
Change on qtr	0.1	0.2	-0.2	0.2	0.0	0.1	0.6	-0.2
Change on year	0.3	0.4	-1.1	-0.8	0.4	0.4	1.5	-0.5
Women								
Dec-Feb 1999	51.9	68.6	48.4	64.2	70.9	74.4	62.9	7.9
Dec-Feb 2000	52.3	68.9	47.5	64.0	71.4	74.6	63.6	8.4
Mar-May 2000	52.5	69.2	48.1	64.0	71.7	74.9	63.9	8.2
Jun-Aug 2000	52.8	69.5	47.5	63.8	72.1	75.4	64.4	8.4
Sep-Nov 2000	52.6	69.2	46.0	64.0	71.7	75.0	64.1	8.4
Dec-Feb 2001	52.8	69.4	47.2	63.2	72.1	75.5	64.4	8.3
Change on qtr	0.2	0.2	1.1	-0.8	0.4	0.5	0.2	-0.1
Change on year	0.4	0.5	-0.4	-0.8	0.7	0.9	0.8	-0.1

Relationship between columns: 1 = 2+8; 2 = 3+4+5+6+7

Source: Labour Force Survey

* Denominator = all persons in the relevant age group

Labour Market Statistics Helpline 020-7533 6094

The Labour Force Survey is a survey of the population of private households, student halls of residence and NHS accommodation

EMPLOYMENT

3 Full-time, part-time and temporary workers

United Kingdom (thousands)
seasonally adjusted

	All in employment					Total in employment		Employees		Self-employed			Workers with second jobs
	Total	Employees	Self employed	Unpaid family workers	Government supported training & employment programmes	Full-time	Part-time	Full-time	Part-time	Full-time	Part-time		
	1	2	3	4	5	6	7	8	9	10	11	12	
People	MGRZ	MGRN	MGRQ	MGRT	MGRW	YCBE	YCBH	YCBK	YCBN	YCBQ	YCBT	YCBW	
Dec-Feb 1999	27,528	24,041	3,233	104	150	20,688	6,840	18,057	5,984	2,524	709	1,223	
Dec-Feb 2000	27,784	24,342	3,176	112	154	20,859	6,925	18,272	6,070	2,479	697	1,221	
Mar-May 2000	27,913	24,497	3,160	108	148	20,967	6,946	18,393	6,104	2,465	694	1,190	
Jun-Aug 2000	27,980	24,552	3,159	115	154	20,959	7,021	18,376	6,176	2,475	683	1,170	
Sep-Nov 2000	27,975	24,584	3,153	105	133	20,960	7,015	18,390	6,195	2,477	676	1,182	
Dec-Feb 2001	28,088	24,674	3,179	98	137	21,051	7,037	18,448	6,226	2,506	673	1,170	
Change on qtr	113	89	26	-6	4	91	22	58	31	29	-3	-12	
Change %	0.4	0.4	0.8	-6.2	2.9	0.4	-0.7	0.3	0.5	1.2	-0.4	-1.0	
Change on year	304	332	3	-14	-17	192	112	175	156	27	-24	-51	
Change %	1.1	1.4	0.1	-12.3	-11.2	0.9	1.6	1.0	2.6	1.1	-3.5	-4.1	
Men	MGSA	MGRO	MGRR	MGRU	MGRX	YCBF	YCBI	YCBL	YCBO	YCBR	YCBU	YCBX	
Dec-Feb 1999	15,190	12,677	2,384	34	95	13,821	1,369	11,633	1,044	2,120	264	528	
Dec-Feb 2000	15,327	12,873	2,319	37	98	13,937	1,389	11,824	1,049	2,049	270	521	
Mar-May 2000	15,409	12,972	2,310	38	90	14,012	1,397	11,909	1,063	2,039	271	506	
Jun-Aug 2000	15,399	12,954	2,312	35	98	14,002	1,397	11,883	1,071	2,050	262	495	
Sep-Nov 2000	15,426	12,990	2,317	35	85	14,025	1,402	11,904	1,086	2,062	255	497	
Dec-Feb 2001	15,484	12,999	2,359	38	89	14,054	1,430	11,886	1,113	2,103	256	485	
Change on qtr	58	9	42	3	4	30	28	-18	27	41	1	-12	
Change %	0.4	0.1	1.8	8.0	4.1	0.2	2.0	-0.1	2.5	2.0	0.4	-2.4	
Change on year	157	126	40	1	-9	117	40	62	64	54	-15	-36	
Change %	1.0	1.0	1.7	2.5	-9.4	0.8	2.9	0.5	6.1	2.6	-5.4	-6.8	
Women	MGSB	MGRP	MGRS	MGRV	MGRY	YCBG	YCBJ	YCBM	YCBP	YCBS	YCBV	YCBY	
Dec-Feb 1999	12,338	11,365	849	70	54	6,867	5,471	6,424	4,941	404	445	695	
Dec-Feb 2000	12,457	11,469	857	75	56	6,922	5,535	6,448	5,021	431	426	700	
Mar-May 2000	12,504	11,526	850	71	58	6,955	5,549	6,485	5,041	427	423	684	
Jun-Aug 2000	12,581	11,598	846	80	56	6,957	5,623	6,493	5,105	425	421	676	
Sep-Nov 2000	12,548	11,595	836	70	48	6,935	5,613	6,486	5,109	415	421	685	
Dec-Feb 2001	12,604	11,675	820	60	48	6,997	5,607	6,561	5,113	403	417	685	
Change on qtr	55	80	-16	-9	0	62	-6	76	4	-12	-4	0	
Change %	0.4	0.7	-1.9	-13.3	0.6	0.9	-0.1	1.2	0.1	-2.9	-0.9	0.0	
Change on year	146	206	-37	-15	-8	75	72	113	92	-27	-9	-15	
Change %	1.2	1.8	-4.3	-19.5	-14.2	1.1	1.3	1.8	1.8	-6.3	-2.2	-2.1	
	Temporary employees (reasons for temporary working)						Part-time workers (reasons for working part-time)*						
	Total	Could not find permanent job	% that could not find permanent job	Did not want permanent job	Had a contract with period of training	Some other reason	Total	Could not find full-time job	% that could not find full-time job	Did not want full-time job	Ill or disabled	Student or at school	
	13	14	15	16	17	18	19	20	21	22	23	24	25
People	YCBZ	YCCC	YCCF	YCCI	YCCL	YCCO	YCCR	YCCU	YCCX	YCDA	YCDD	YCDG	YCDJ
Dec-Feb 1999	1,749	7.3	608	34.8	586	101	453	6,693	735	11.0	4,832	120	1,006
Dec-Feb 2000	1,727	7.1	565	32.7	544	97	521	6,767	676	10.0	4,925	126	1,040
Mar-May 2000	1,729	7.1	532	30.8	558	102	537	6,798	673	9.9	4,942	124	1,059
Jun-Aug 2000	1,721	7.0	512	29.7	550	103	557	6,860	670	9.8	5,008	133	1,048
Sep-Nov 2000	1,689	6.9	476	28.2	542	101	571	6,870	660	9.6	5,012	131	1,067
Dec-Feb 2001	1,702	6.9	465	27.3	555	105	577	6,899	630	9.1	5,066	127	1,075
Change on qtr	13	0.0	-12	-0.9	13	5	7	28	-31	-0.5	54	-3	8
Change %	0.8		-2.4		2.5	4.6	1.2	0.4	-4.6		1.1	-2.6	0.8
Change on year	-25	-0.2	-101	-5.5	11	9	56	132	-46	-0.9	142	1	36
Change %	-1.4		-17.9		2.1	9.2	10.7	2.0	-6.8		2.9	0.7	3.5
Men	YCCA	YCCD	YCCG	YCCJ	YCCM	YCCP	YCCS	YCCV	YCCY	YCDB	YCDE	YCDH	YCDK
Dec-Feb 1999	822	6.5	334	40.6	224	59	206	1,308	290	22.2	526	48	443
Dec-Feb 2000	821	6.4	314	38.3	214	57	236	1,319	264	20.0	556	49	451
Mar-May 2000	805	6.2	292	36.3	219	57	236	1,334	267	20.0	558	47	462
Jun-Aug 2000	796	6.1	284	35.7	213	55	243	1,333	265	19.9	566	50	452
Sep-Nov 2000	776	6.0	260	33.5	209	56	251	1,341	260	19.4	578	46	456
Dec-Feb 2001	796	6.1	255	32.0	223	63	255	1,369	256	18.7	601	46	465
Change on qtr	20	0.2	-5	-1.4	14	6	5	28	-4	-0.7	24	0	9
Change %	2.6		-1.8		6.6	11.5	1.9	2.1	-1.6		4.1	-0.3	1.9
Change on year	-25	-0.3	-59	-6.2	9	6	19	49	-7	-1.3	46	-3	14
Change %	-3.1		-18.9		4.1	11.1	8.1	3.7	-2.8		8.2	-6.8	3.2
Women	YCCB	YCCE	YCCH	YCCK	YCCN	YCCQ	YCCT	YCCV	YCCZ	YCDC	YCDE	YCDI	YCDL
Dec-Feb 1999	927	8.2	274	29.6	362	42	248	5,385	445	8.3	4,306	72	562
Dec-Feb 2000	906	7.9	251	27.7	330	40	285	5,447	413	7.6	4,369	77	589
Mar-May 2000	924	8.0	240	26.0	339	44	301	5,464	406	7.4	4,384	76	597
Jun-Aug 2000	925	8.0	227	24.6	337	48	314	5,526	405	7.3	4,443	83	596
Sep-Nov 2000	914	7.9	216	23.7	333	44	320	5,529	400	7.2	4,434	84	611
Dec-Feb 2001	906	7.8	210	23.1	332	43	322	5,530	374	6.8	4,465	81	610
Change on qtr	-8	-0.1	-7	-0.6	-1	-2	2	1	-26	-0.5	31	-3	-1
Change %	-0.8		-3.2		-0.2	-4.2	0.5	0.0	-6.6		0.7	-3.9	-0.1
Change on year	0	-0.1	-42	-4.6	3	3	37	83	-39	-0.8	96	4	22
Change %	0.1		-16.5		0.8	6.5	12.9	1.5	-9.4		2.2	5.5	3.7

Relationship between columns: 1=2+3+4+5; 1=6+7; 2=8+9; 3=10+11; 13=15+17+18+19; 20=21+23+24+25; 20=9+11; 14=13/2; 16=15/13; 22=21/20

Source: Labour Force Survey

*Employees and self-employed

Labour Market Statistics Helpline 020-7533 6094

The Labour Force Survey is a survey of the population of private households, student halls of residence and NHS accommodation

EMPLOYMENT

4 Workforce jobs

United Kingdom (thousands) seasonally adjusted

		Workforce jobs		Employee jobs		Self-employment jobs		HM Forces		Government-supported trainees	
		1		2		3		4		5	
		DYDC		BCAJ		DYZN		LOJX		LOJU	
All jobs	Dec 98	28,662	(r)	24,837	(r)	3,495		210		121	
	Mar 99	28,771	(r)	24,968	(r)	3,473		208	(r)	121	
	Jun 99	28,903	(r)	25,048	(r)	3,516		209		131	
	Sep 99	28,955	(r)	25,208	(r)	3,412		208		127	
	Dec 99	29,034	(r)	25,268	(r)	3,434		208		124	
	Mar 00	29,024	(r)	25,276	(r)	3,420		208		121	
	Jun 00	29,068	(r)	25,318	(r)	3,424		207		119	
	Sep 00	29,025	(r)	25,318	(r)	3,387		206		115	
	Dec 00	29,095	(r)	25,380	(r)	3,397		206		112	
	<i>Change on qtr</i>	70		62		11		0		-3	
	<i>Change %</i>	0.2		0.2		0.3		-0.1		-2.7	
<i>Change on year</i>	60		111		-37		-2		-12		
<i>Change %</i>	0.2		0.4		-1.1		-1.1		-9.5		
Male		LOLA		BCHI		LOLC		LOMO		LOLG	
	Dec 98	15,387	(r)	12,594	(r)	2,529		193		70	
	Mar 99	15,438	(r)	12,648	(r)	2,528		192	(r)	71	
	Jun 99	15,503	(r)	12,677	(r)	2,556		192		77	
	Sep 99	15,490	(r)	12,753	(r)	2,471		192		74	
	Dec 99	15,527	(r)	12,797	(r)	2,467		191		72	
	Mar 00	15,508	(r)	12,796	(r)	2,450		191		71	
	Jun 00	15,543	(r)	12,805	(r)	2,478		190		70	
	Sep 00	15,474	(r)	12,781	(r)	2,436		189		68	
	Dec 00	15,521	(r)	12,797	(r)	2,469		189		66	
	<i>Change on qtr</i>	47		17		33		0		-2	
<i>Change %</i>	0.3		0.1		1.3		-0.1		-3.3		
<i>Change on year</i>	-6		1		2		-2		-6		
<i>Change %</i>	0.0		0.0		0.1		-1.2		-8.8		
Female		LOLB		BCHJ		LOLD		LOMP		LOLH	
	Dec 98	13,275	(r)	12,243	(r)	966		16		51	
	Mar 99	13,332	(r)	12,320	(r)	945		16		51	
	Jun 99	13,400	(r)	12,371	(r)	960		16		54	
	Sep 99	13,465	(r)	12,455	(r)	941		16		53	
	Dec 99	13,508	(r)	12,472	(r)	967		17		52	
	Mar 00	13,516	(r)	12,480	(r)	970		17		50	
	Jun 00	13,524	(r)	12,513	(r)	946		17		49	
	Sep 00	13,551	(r)	12,537	(r)	950		17		47	
	Dec 00	13,574	(r)	12,582	(r)	928		17		46	
	<i>Change on qtr</i>	23		46		-22		0		-1	
<i>Change %</i>	0.2		0.4		-2.3		0.2		-1.7		
<i>Change on year</i>	66		111		-39		0		-5		
<i>Change %</i>	0.5		0.9		-4.1		0.4		-10.4		

Relationship between columns: 1= 2+3+4+5

Workforce jobs enquiries 01633 812079

Workforce Jobs figures are a measure of jobs rather than people. For example, if a person holds two jobs, each job will be counted in the Workforce Jobs total.

For this reason, Self-employment Jobs (which come from LFS) will not equal the figures for Self-employed persons from the LFS.

Workforce Jobs figures come from a variety of sources, and where possible, from the employer rather than the individual. Employee Jobs (which is much the largest component of Workforce Jobs) come from quarterly surveys of employers carried out by Prices & Business Group (PBG) of ONS and Administrative Returns.

Other data sources are as follows:

Self-employment Jobs are provided by LFS

HM Forces figures are provided by the Ministry of Defence (MOD)

Government-supported trainees are provided by DfEE Training Data Systems.

EMPLOYMENT

5 Workforce jobs by industry

Standard Industrial Classification (1992)

United Kingdom (thousands) seasonally adjusted

SIC 92 sections	All jobs	Agriculture & fishing	Energy & water	Manu- facturing	Con- struction	Distribution, hotels & restaurants	Transport & comms.	Finance & Business Services	Public admin, education & health	Other services	Total services
	A-Q	A,B	C,E	D	F	G-H	I	J-K	L-N	O-Q	G-Q
	1	2	3	4	5	6	7	8	9	10	11
All jobs	DYDC	LOLI	LOLL	LOLO	LOLR	LOLU	LOLX	LOMA	LOMD	LOMG	LOMJ
Dec 98	28,662 (r)	529 (r)	222 (r)	4,445 (r)	1,825 (r)	6,655 (r)	1,675 (r)	5,208 (r)	6,493 (r)	1,610 (r)	21,641
Mar 99	28,771 (r)	525 (r)	215 (r)	4,397 (r)	1,822 (r)	6,664 (r)	1,685 (r)	5,283 (r)	6,557 (r)	1,622 (r)	21,811
Jun 99	28,903 (r)	518 (r)	211 (r)	4,357 (r)	1,830 (r)	6,685 (r)	1,702 (r)	5,334 (r)	6,577 (r)	1,688 (r)	21,987
Sep 99	28,955 (r)	506 (r)	207 (r)	4,306 (r)	1,833 (r)	6,659 (r)	1,721 (r)	5,377 (r)	6,647 (r)	1,699 (r)	22,103
Dec 99	29,034 (r)	498 (r)	205 (r)	4,281 (r)	1,805 (r)	6,711 (r)	1,755 (r)	5,410 (r)	6,650 (r)	1,721 (r)	22,246
Mar 00	29,024 (r)	518 (r)	202 (r)	4,266 (r)	1,809 (r)	6,708 (r)	1,752 (r)	5,374 (r)	6,645 (r)	1,750 (r)	22,228
Jun 00	29,068 (r)	514 (r)	199 (r)	4,228 (r)	1,873 (r)	6,714 (r)	1,761 (r)	5,398 (r)	6,658 (r)	1,723 (r)	22,254
Sep 00	29,025 (r)	492 (r)	197 (r)	4,173 (r)	1,838 (r)	6,738 (r)	1,780 (r)	5,409 (r)	6,698 (r)	1,701 (r)	22,325
Dec 00	29,095 (r)	514 (r)	195 (r)	4,131 (r)	1,845 (r)	6,784 (r)	1,808 (r)	5,419 (r)	6,677 (r)	1,721 (r)	22,409
Change on qtr	70	22	-2	-42	7	47	28	10	-21	20	85
Change %	0.2	4.5	-0.8	-1.0	0.4	0.7	1.6	0.2	-0.3	1.2	0.4
Change on year	60	16	-10	-150	40	73	54	9	27	0	163
Change %	0.2	3.1	-4.7	-3.5	2.2	1.1	3.1	0.2	0.4	0.0	0.7
Male jobs	LOLA	LOLJ	LOLM	LOLP	LOLS	LOLV	LOLY	LOMB	LOME	LOMH	LOMK
Dec 98	15,387 (r)	403 (r)	173 (r)	3,202 (r)	1,621 (r)	3,184 (r)	1,240 (r)	2,797 (r)	1,972 (r)	796 (r)	9,988
Mar 99	15,438 (r)	399 (r)	168 (r)	3,171 (r)	1,620 (r)	3,209 (r)	1,243 (r)	2,817 (r)	2,002 (r)	810 (r)	10,081
Jun 99	15,503 (r)	391 (r)	165 (r)	3,147 (r)	1,618 (r)	3,226 (r)	1,253 (r)	2,846 (r)	2,021 (r)	836 (r)	10,182
Sep 99	15,490 (r)	387 (r)	161 (r)	3,110 (r)	1,629 (r)	3,200 (r)	1,262 (r)	2,881 (r)	2,023 (r)	838 (r)	10,205
Dec 99	15,527 (r)	381 (r)	157 (r)	3,092 (r)	1,616 (r)	3,236 (r)	1,277 (r)	2,888 (r)	2,039 (r)	840 (r)	10,280
Mar 00	15,508 (r)	383 (r)	155 (r)	3,085 (r)	1,611 (r)	3,206 (r)	1,284 (r)	2,892 (r)	2,050 (r)	841 (r)	10,274
Jun 00	15,543 (r)	386 (r)	153 (r)	3,060 (r)	1,667 (r)	3,197 (r)	1,297 (r)	2,922 (r)	2,035 (r)	826 (r)	10,277
Sep 00	15,474 (r)	368 (r)	151 (r)	3,022 (r)	1,640 (r)	3,201 (r)	1,308 (r)	2,928 (r)	2,044 (r)	811 (r)	10,293
Dec 00	15,521 (r)	393 (r)	149 (r)	2,987 (r)	1,643 (r)	3,228 (r)	1,323 (r)	2,934 (r)	2,043 (r)	821 (r)	10,350
Change on qtr	47	25	-2	-36	2	27	15	6	-1	10	57
Change %	0.3	6.8	-1.1	-1.2	0.1	0.8	1	0.2	0.0	1.2	0.6
Change on year	-6	12	-8	-105	26	-8	46	47	4	-19	70
Change %	0.0	3.1	-5.0	-3.4	1.6	-0.2	4	1.6	0.2	-2.3	0.7
Female jobs	LOLB	LOLK	LOLN	LOLQ	LOLT	LOLW	LOLZ	LOMC	LOMF	LOMI	LOML
Dec 98	13,275 (r)	125 (r)	49 (r)	1,244 (r)	204 (r)	3,471 (r)	435 (r)	2,412 (r)	4,521 (r)	814 (r)	11,653
Mar 99	13,332 (r)	126 (r)	48 (r)	1,226 (r)	203 (r)	3,454 (r)	442 (r)	2,467 (r)	4,555 (r)	813 (r)	11,730
Jun 99	13,400 (r)	128 (r)	46 (r)	1,210 (r)	212 (r)	3,459 (r)	448 (r)	2,489 (r)	4,556 (r)	853 (r)	11,805
Sep 99	13,465 (r)	120 (r)	47 (r)	1,196 (r)	204 (r)	3,459 (r)	459 (r)	2,495 (r)	4,624 (r)	861 (r)	11,898
Dec 99	13,508 (r)	117 (r)	48 (r)	1,189 (r)	188 (r)	3,475 (r)	477 (r)	2,522 (r)	4,611 (r)	880 (r)	11,966
Mar 00	13,516 (r)	136 (r)	47 (r)	1,181 (r)	199 (r)	3,502 (r)	468 (r)	2,482 (r)	4,595 (r)	909 (r)	11,955
Jun 00	13,524 (r)	128 (r)	46 (r)	1,167 (r)	205 (r)	3,517 (r)	464 (r)	2,477 (r)	4,623 (r)	897 (r)	11,977
Sep 00	13,551 (r)	123 (r)	46 (r)	1,151 (r)	198 (r)	3,536 (r)	472 (r)	2,480 (r)	4,654 (r)	890 (r)	12,032
Dec 00	13,574 (r)	121 (r)	46 (r)	1,144 (r)	203 (r)	3,556 (r)	485 (r)	2,485 (r)	4,634 (r)	900 (r)	12,060
Change on qtr	23	-3	0	-7	5	20	13	5	-20	10	27
Change %	0.2	-2.4	0.3	-0.6	2.3	0.6	2.8	0.2	-0.4	1.1	0.2
Change on year	66	4	-2	-44	14	81	8	-37	23	20	94
Change %	0.5	3.2	-3.5	-3.7	7.6	2.3	1.6	-1.5	0.5	2.2	0.8

Relationship between columns: 1=2+3+4+5+11; 11=6+7+8+9+10

Workforce jobs enquiries 01633 812079

Workforce Jobs figures are a measure of jobs rather than people. For example, if a person holds two jobs, each job will be counted in the Workforce Jobs total.

For this reason, Self-employment Jobs (which come from LFS) will not equal the figures for Self-employed persons from the LFS.

Workforce Jobs figures come from a variety of sources, and where possible, from the employer rather than the individual. Employee Jobs (which is much the largest component of Workforce Jobs) come from quarterly surveys of employers carried out by Prices and Business Group (PBG) of ONS.

Other data sources are as follows:

Self-employment Jobs are provided by LFS

HM Forces figures are provided by the Ministry of Defence (MOD)

Government-supported trainees are provided by DfEE Training Data Systems.

6 Production industry employee jobs

United Kingdom (thousands) seasonally adjusted

	Mining, energy & water supply industries			Manufacturing industries		
	SIC 92 sections C&E			SIC 92 section D		
	Levels	Latest 3 mths averages		Levels	Latest 3 mths averages	
		YEJJ	LOMM		YEJL	LOMN
Feb 99	210 (r)	211 (r)	-5.6 (r)	4,119 (r)	4,128 (r)	-1.5 (r)
Feb 00	191 (r)	192 (r)	-8.9 (r)	3,987 (r)	3,988 (r)	-3.4 (r)
Mar 00	191 (r)	191 (r)	-8.9 (r)	3,976 (r)	3,984 (r)	-3.2 (r)
Apr 00	190 (r)	191 (r)	-8.3 (r)	3,970 (r)	3,978 (r)	-3.0 (r)
May 00	189 (r)	190 (r)	-7.8 (r)	3,962 (r)	3,969 (r)	-2.8 (r)
Jun 00	189 (r)	189 (r)	-7.6 (r)	3,950 (r)	3,961 (r)	-2.7 (r)
Jul 00	188 (r)	189 (r)	-7.3 (r)	3,940 (r)	3,951 (r)	-2.6 (r)
Aug 00	187 (r)	188 (r)	-6.8 (r)	3,930 (r)	3,940 (r)	-2.6 (r)
Sep 00	187 (r)	187 (r)	-6.2 (r)	3,907 (r)	3,926 (r)	-2.6 (r)
Oct 00	186 (r)	187 (r)	-5.6 (r)	3,904 (r)	3,914 (r)	-2.7 (r)
Nov 00	187 (r)	187 (r)	-5.0 (r)	3,895 (r)	3,902 (r)	-2.8 (r)
Dec 00	187 (r)	187 (r)	-4.3 (r)	3,880 (r)	3,893 (r)	-2.8 (r)
Jan 01	188 (r)	187 (r)	-3.2 (r)	3,888 (r)	3,888 (r)	-2.7
Feb 01	187	188	-2.5	3,882	3,883	-2.6

Data source: Employer surveys

Workforce jobs enquiries 01633 812079

EMPLOYMENT

7 Actual weekly hours of work

United Kingdom (hours) seasonally adjusted

	Total weekly hours (millions)*	Average actual weekly hours of work			
		All workers*	Full-time workers**	Part-time workers**	Second Jobs
People	YBUS	YBUV	YBUY	YBVB	YBVE
Dec-Feb 1999	908.9	33.1	38.4	15.4	9.1
Dec-Feb 2000	907.5	32.7	37.9	15.3	9.1
Mar-May 2000	912.6	32.8	38.0	15.4	9.0
Jun-Aug 2000	918.3	32.8	38.1	15.4	9.0
Sep-Nov 2000	914.3	32.7	37.9	15.6	9.1
Dec-Feb 2001	923.6	32.9	38.2	15.6	9.2
<i>Change on qtr</i>	9.3	0.2	0.3	0.0	0.1
<i>Change %</i>	1.0	0.7	0.7	0.0	1.5
<i>Change on year</i>	16.1	0.2	0.2	0.3	0.2
<i>Change %</i>	1.8	0.7	0.6	2.2	2.0
Men	YBUT	YBUW	YBUZ	YBVC	YBVF
Dec-Feb 1999	581.3	38.4	40.2	15.2	9.8
Dec-Feb 2000	581.1	38.0	39.9	14.8	9.6
Mar-May 2000	583.5	37.9	39.9	15.1	9.4
Jun-Aug 2000	586.8	38.2	40.0	15.3	10.1
Sep-Nov 2000	583.8	37.9	39.8	15.7	10.0
Dec-Feb 2001	589.8	38.2	40.1	15.8	10.1
<i>Change on qtr</i>	6.0	0.2	0.3	0.1	0.1
<i>Change %</i>	1.0	0.7	0.8	0.7	0.5
<i>Change on year</i>	8.6	0.2	0.1	1.0	0.5
<i>Change %</i>	1.5	0.4	0.3	7.0	4.9
Women	YBUU	YBUX	YBVA	YBVD	YBVG
Dec-Feb 1999	327.6	26.6	34.6	15.4	8.6
Dec-Feb 2000	326.3	26.2	34.0	15.4	8.7
Mar-May 2000	329.1	26.4	34.3	15.5	8.7
Jun-Aug 2000	331.5	26.4	34.4	15.5	8.3
Sep-Nov 2000	330.6	26.4	34.3	15.6	8.5
Dec-Feb 2001	333.8	26.5	34.5	15.6	8.6
<i>Change on qtr</i>	3.3	0.1	0.2	0.0	0.2
<i>Change %</i>	1.0	0.5	0.6	-0.1	2.3
<i>Change on year</i>	7.5	0.3	0.5	0.2	0.0
<i>Change %</i>	2.3	1.1	1.3	1.1	0.0

* Main and second job

Source: Labour Force Survey

**Main job only

Labour Market Statistics Helpline 020-7533 6094

The Labour Force Survey is a survey of the population of private households, student halls of residence and NHS accommodation

EMPLOYMENT

8 Usual weekly hours of work*

December 2000 to February 2001

United Kingdom (thousands) seasonally adjusted

		Less than 6 hours		6 up to 15 hours		16 up to 30 hours		31 up to 45 hours		Over 45 hours	
		Thousands	% of total	Thousands	% of total	Thousands	% of total	Thousands	% of total	Thousands	% of total
All in											
In Employment	People	443	1.6	2,073	7.4	4,537	16.2	14,182	50.5	6,852	24.4
	<i>Change on qtr</i>	-9		-24		22		74		50	
	Men	102	0.7	469	3.0	927	6.0	8,408	54.3	5,578	36.0
	<i>Change on qtr</i>	-3		10		19		2		30	
	Women	342	2.7	1,604	12.7	3,610	28.6	5,774	45.8	1,274	10.1
	<i>Change on qtr</i>	-6		-33		3		72		20	
Employees	People	328	1.3	1,825	7.4	4,037	16.4	12,962	52.5	5,521	22.4
	<i>Change on qtr</i>	-3		-10		35		67		-1	
	Men	68	0.5	389	3.0	682	5.2	7,437	57.2	4,423	34.0
	<i>Change on qtr</i>	-2		19		19		-7		-19	
	Women	260	2.2	1,436	12.3	3,356	28.7	5,525	47.3	1,098	9.4
	<i>Change on qtr</i>	-1		-28		16		74		19	
Self-employed	People	91	2.9	217	6.8	458	14.4	1,094	34.4	1,318	41.5
	<i>Change on qtr</i>	-6		-5		-7		-23		66	
	Men	27	1.1	70	3.0	226	9.6	892	37.8	1,143	48.5
	<i>Change on qtr</i>	-3		-3		-1		-13		63	
	Women	65	7.9	147	17.9	231	28.2	202	24.6	175	21.3
	<i>Change on qtr</i>	-2		-1		-5		-10		3	

* Main job only

Source: Labour Force Survey
Labour Market Statistics Helpline 020-7533 6094

The Labour Force Survey is a survey of the population of private households, student halls of residence and NHS accommodation

All the series in this table are available electronically through the ONS Databank service. See background note 14 for further details

UNEMPLOYMENT

9(1) ILO unemployment by age and duration

United Kingdom (thousands) seasonally adjusted

	All aged 16 & over							All aged 16 - 59/64						
	All	Rate(%) ⁺	Up to 6 months	Over 6 and up to 12 months	All over 12 months	% over 12 months	All over 24 months	All	Rate(%) ⁺	Up to 6 months	Over 6 and up to 12 months	All over 12 months	% over 12 months	All over 24 months
	1	2	3	4	5	6	7	8	9	10	11	12	13	14
People	MGSC	MGSX	YBWF	YBWG	YBWH	YBWI	YBWL	YBSH	YBTI	YBWO	YBWR	YBWU	YBWX	YBXA
Dec-Feb 1999	1,831	6.2	1,047	267	517	28.2	316	1,815	6.4	1,040	266	509	28.1	310
Dec-Feb 2000	1,709	5.8	975	261	473	27.7	271	1,688	5.9	965	258	465	27.5	267
Mar-May 2000	1,661	5.6	969	243	449	27.0	252	1,644	5.7	961	241	443	26.9	247
Jun-Aug 2000	1,569	5.3	894	238	437	27.9	238	1,552	5.4	888	234	431	27.8	234
Sep-Nov 2000	1,577	5.3	937	227	413	26.2	233	1,560	5.4	930	225	405	26.0	228
Dec-Feb 2001	1,535	5.2	909	225	400	26.1	224	1,517	5.3	901	222	393	25.9	221
Change on qtr	-42	-0.2	-28	-2	-12	-0.1	-9	-43	-0.2	-29	-3	-12	0.0	-8
Change %	-2.7		-3.0	-1.0	-3.0		-3.8	-2.8		-3.1	-1.2	-2.9		-3.4
Change on year	-174	-0.6	-65	-36	-73	-1.6	-47	-171	-0.6	-64	-36	-72	-1.6	-47
Change %	-10.2		-6.7	-13.7	-15.4		-17.3	-10.2		-6.7	-13.8	-15.4		-17.4
Men	MGSD	MGSY	MGYK	MGYM	MGYO	YBWJ	YBWM	YBSI	YBTJ	YBWP	YBWS	YBWW	YBWW	YBWB
Dec-Feb 1999	1,136	7.0	594	173	370	32.5	239	1,128	7.0	591	172	365	32.4	235
Dec-Feb 2000	1,026	6.3	531	150	345	33.6	211	1,020	6.4	529	149	343	33.6	210
Mar-May 2000	1,002	6.1	531	144	328	32.7	193	995	6.2	528	143	325	32.6	191
Jun-Aug 2000	945	5.8	482	147	316	33.4	184	938	5.8	480	145	313	33.3	181
Sep-Nov 2000	952	5.8	509	141	302	31.7	177	943	5.9	507	140	297	31.5	174
Dec-Feb 2001	949	5.8	507	137	305	32.2	174	940	5.8	504	135	301	32.0	172
Change on qtr	-3	0.0	-2	-3	3	0.4	-3	-3	0.0	-3	-4	4	0.5	-2
Change %	-0.3		-0.5	-2.5	1.1	-1.7	-0.4	-0.4		-0.6	-3.1	1.3		-1.1
Change on year	-77	-0.5	-25	-13	-40	-1.5	-37	-80	-0.5	-25	-13	-42	-1.6	-38
Change %	-7.5		-4.6	-8.5	-11.6		-17.4	-7.9		-4.8	-9.0	-12.2		-18.0
Women	MGSE	MGSZ	MGYL	MGYN	MGYP	YBWK	YBWN	YBSJ	YBTK	YBWO	YBWT	YBWW	YBWW	YBWC
Dec-Feb 1999	694	5.3	452	95	147	21.2	77	687	5.5	449	94	144	21.0	75
Dec-Feb 2000	682	5.2	444	111	128	18.7	60	668	5.3	436	109	122	18.3	57
Mar-May 2000	659	5.0	438	99	121	18.4	58	649	5.1	433	98	118	18.2	56
Jun-Aug 2000	624	4.7	412	91	121	19.5	54	614	4.9	407	89	118	19.2	52
Sep-Nov 2000	626	4.7	428	87	111	17.7	56	617	4.9	423	86	108	17.5	54
Dec-Feb 2001	586	4.4	403	88	95	16.3	50	577	4.6	397	87	93	16.0	48
Change on qtr	-39	-0.3	-25	1	-15	-1.4	-6	-40	-0.3	-26	1	-15	-1.5	-6
Change %	-6.3		-5.9	1.5	-13.9		-10.7	-6.5		-6.2	1.7	-14.3		-10.6
Change on year	-96	-0.8	-41	-23	-33	-2.5	-10	-91	-0.7	-39	-22	-30	-2.3	-9
Change %	-14.1		-9.2	-20.7	-25.5		-16.9	-13.6		-8.9	-20.3	-24.4		-15.6
	16-17							18-24						
	All	Rate(%) ⁺	Up to 6 months	Over 6 and up to 12 months	All over 12 months	% over 12 months	All over 24 months	All	Rate(%) ⁺	Up to 6 months	Over 6 and up to 12 months	All over 12 months	% over 12 months	All over 24 months
	15	16	17	18	19	20	21	22	23	24	25	26	27	28
People	YBVH	YBVK	YBXD	YBXG	YBXJ	YBXM	YBXP	YBVN	YBVQ	YBXS	YBXV	YBXY	YBYB	YBYE
Dec-Feb 1999	182	21.0	149	22	12	6.3	*	453	12.1	309	73	71	15.6	29
Dec-Feb 2000	174	20.7	140	23	11	6.1	*	410	10.9	285	64	61	14.8	22
Mar-May 2000	174	20.5	141	23	10	5.6	*	410	10.9	286	56	67	16.4	28
Jun-Aug 2000	162	19.6	126	25	12	7.2	*	381	10.2	259	61	62	16.1	23
Sep-Nov 2000	173	21.0	141	22	10	6.0	*	396	10.6	284	57	55	13.9	23
Dec-Feb 2001	160	19.6	129	21	10	6.5	*	400	10.7	283	61	56	14.1	22
Change on qtr	-13	-1.5	-12	-1	0	0.5	*	5	0.1	-1	4	1	0.2	0
Change %	-7.5		-8.6	-3.6	0.4	*	*	1.1		-0.4	7.8	2.4		-1.5
Change on year	-13	-1.2	-12	-2	0	0.5	*	-10	-0.2	-3	-3	-4	-0.7	1
Change %	-7.7		-8.3	-7.2	-0.6	*	*	-2.4		-1.0	-4.1	-6.9		2.7
Men	YBVI	YBVL	YBXE	YBXH	YBXK	YBXN	YBXQ	YBVO	YBVR	YBXT	YBXW	YBXZ	YBYC	YBYF
Dec-Feb 1999	102	22.9	82	13	*	*	*	289	14.2	185	53	50	17.5	21
Dec-Feb 2000	93	22.0	76	11	*	*	*	242	11.9	163	37	42	17.2	17
Mar-May 2000	94	22.0	77	12	*	*	*	247	12.1	164	34	50	20.1	21
Jun-Aug 2000	90	21.4	72	13	*	*	*	224	11.1	141	41	43	19.1	17
Sep-Nov 2000	97	23.0	77	13	*	*	*	234	11.6	161	35	37	16.1	16
Dec-Feb 2001	97	23.0	75	15	*	*	*	245	12.0	163	40	42	17.3	16
Change on qtr	0	0.0	-2	2	*	*	*	11	0.4	2	4	5	1.2	0
Change %	0.1		-2.8	14.6	*	*	*	4.8		1.3	12.3	12.8		-1.2
Change on year	4	1.1	-1	5	*	*	*	3	0.1	0	3	1	0.1	-1
Change %	4.6		-1.5	42.7	*	*	*	1.2		-0.2	6.9	1.7		-6.9
Women	YBVJ	YBVM	YBXF	YBXI	YBXL	YBXO	YBXR	YBVP	YBVS	YBXU	YBXX	YBYA	YBYD	YBYG
Dec-Feb 1999	80	19.0	67	*	*	*	*	164	9.6	124	20	20	12.4	*
Dec-Feb 2000	81	19.4	65	12	*	*	*	168	9.8	122	27	19	11.3	*
Mar-May 2000	79	19.0	64	11	*	*	*	162	9.5	122	22	18	10.8	*
Jun-Aug 2000	72	17.8	54	12	*	*	*	157	9.2	118	20	19	11.9	*
Sep-Nov 2000	76	19.0	64	*	*	*	*	162	9.4	123	22	18	10.8	*
Dec-Feb 2001	63	15.9	54	*	*	*	*	156	9.2	120	22	14	9.1	*
Change on qtr	-13	-3.1	-10	*	*	*	*	-7	-0.3	-3	0	-3	-1.8	*
Change %	-17.1		-15.6	*	*	*	*	-4.1		-2.7	0.5	-19.8		*
Change on year	-18	-3.6	-10	*	*	*	*	-13	-0.6	-2	-5	-5	-2.3	*
Change %	-21.7		-16.2	*	*	*	*	-7.5		-2.0	-19.3	-25.9		*

Relationship between columns: 1=3+4+5; 8=10+11+12; 15=17+18+19

⁺ Denominator = economically active for that age group

The Labour Force Survey is a survey of the population of private households, student halls of residence and NHS accommodation

Labour Market Statistics Helpline 020-7533 6094

UNEMPLOYMENT

9(2) ILO unemployment by age and duration

United Kingdom (thousands) seasonally adjusted

	25-49							50 and over						
	All	Rate(%) ⁺	Up to 6 months	Over 6 and up to 12 months	All over 12 months	% over 12 months	All over 24 months	All	Rate(%) ⁺	Up to 6 months	Over 6 and up to 12 months	All over 12 months	% over 12 months	All over 24 months
	1	2	3	4	5	6	7	8	9	10	11	12	13	14
People	MGVI	MGXB	YBYH	YBYK	YBYN	YBYQ	YBYT	YBVT	YBVW	YBYW	YBYZ	YBZC	YBZF	YBZI
Dec-Feb 1999	912	5.0	474	140	299	32.8	184	284	4.3	115	33	136	47.8	104
Dec-Feb 2000	845	4.7	423	134	287	34.0	172	280	4.1	126	40	115	41.0	78
Mar-May 2000	804	4.4	425	122	257	32.0	151	274	4.0	117	42	115	42.0	73
Jun-Aug 2000	765	4.2	402	112	251	32.8	142	261	3.8	107	40	113	43.6	73
Sep-Nov 2000	749	4.1	397	114	238	31.7	137	259	3.8	115	34	109	42.2	73
Dec-Feb 2001	732	4.0	397	107	228	31.2	135	243	3.5	101	36	105	43.4	67
Change on qtr	-18	-0.1	0	-8	-10	-0.5	-2	-16	-0.3	-14	2	-4	1.2	-7
Change %	-2.3		0.0	-6.8	-4.0		-1.3	-6.3		-12.3	5.7	-3.6		-9.0
Change on year	-113	-0.6	-27	-28	-59	-2.8	-37	-38	-0.6	-24	-4	-10	2.4	-12
Change %	-13.4		-6.3	-20.7	-20.5		-21.6	-13.4		-19.4	-9.0	-8.5		-14.9
Men	MGVJ	MGXC	YBYI	YBYL	YBYO	YBYR	YBYU	YBVU	YBVX	YBYX	YBZA	YBZD	YBZG	YBZJ
Dec-Feb 1999	549	5.5	255	85	209	38.1	138	197	5.2	73	22	102	52.0	80
Dec-Feb 2000	498	5.0	215	76	207	41.6	132	194	5.0	77	26	90	46.7	63
Mar-May 2000	469	4.7	216	69	184	39.3	115	191	4.9	74	29	88	46.3	58
Jun-Aug 2000	447	4.5	204	66	178	39.8	107	184	4.7	66	27	90	49.1	59
Sep-Nov 2000	440	4.4	202	69	169	38.4	101	181	4.6	69	23	89	49.1	60
Dec-Feb 2001	436	4.3	205	61	171	39.2	103	171	4.3	64	22	85	49.7	55
Change on qtr	-4	0.0	3	-9	2	0.8	2	-10	-0.3	-5	-1	-4	0.5	-5
Change %	-1.0		1.3	-12.8	1.1		2.2	-5.3		-7.0	-4.2	-4.3		-8.7
Change on year	-62	-0.6	-10	-15	-36	-2.4	-28	-23	-0.7	-13	-5	-5	3.0	-8
Change %	-12.4		-4.8	-20.1	-17.4		-21.4	-11.7		-16.4	-17.5	-6.0		-12.6
Women	MGVK	MGXD	YBYJ	YBYM	YBYP	YBYS	YBYV	YBVV	YBVY	YBYW	YBZB	YBZE	YBZH	YBZK
Dec-Feb 1999	364	4.5	219	55	90	24.7	46	87	3.1	42	11	33	38.3	24
Dec-Feb 2000	347	4.3	208	59	80	23.1	40	87	3.0	48	14	25	28.3	16
Mar-May 2000	335	4.1	209	53	72	21.6	36	83	2.8	43	13	27	32.1	15
Jun-Aug 2000	318	3.9	199	46	73	22.9	35	77	2.6	41	13	23	30.3	14
Sep-Nov 2000	309	3.8	195	45	69	22.3	35	78	2.6	46	12	20	26.1	13
Dec-Feb 2001	296	3.6	192	46	57	19.4	31	72	2.4	37	15	20	28.3	12
Change on qtr	-13	-0.2	-3	1	-11	-2.9	-4	-7	-0.2	-9	3	0	2.2	-1
Change %	-4.3		-1.4	2.4	-16.7		-11.2	-8.4		-20.3	24.4	-0.8		-10.5
Change on year	-51	-0.6	-16	-13	-23	-3.7	-9	-15	-0.6	-12	1	-4	0.0	-4
Change %	-14.8		-7.7	-21.5	-28.3		-22.1	-17.3		-24.1	7.1	-17.4		-23.9

Relationship between columns: 1=3+4+5; 8=10+11+12

⁺ Denominator = economically active for that age group

The Labour Force Survey is a survey of the population of private households, student halls of residence and NHS accommodation

Source: Labour Force Survey
Labour Market Statistics Helpline 020-7533 6094

UNEMPLOYMENT

10 Claimant count*

United Kingdom (thousands) seasonally adjusted

		Claimant count		Inflows (standardised ^{##})	Outflows (standardised ^{##})	Claimant Count (not seasonally adjusted)	
		Level	Rate (%)**	Level	Level	Level	Rate (%)**
		BCJD	BCJE	DPDR	DPRE	BCJA	BCJB
People	2000						
	March	1,139.9	3.8	246.7	258.4	1,194.3	4.0
	April#	1,115.0	3.7	237.8	261.4	1,142.1	3.8
	May	1,106.2	3.7	242.0	255.6	1,108.2	3.7
	June	1,094.4	3.6	238.0	252.0	1,077.2	3.6
	July#	1,071.1	3.6	230.4	253.8	1,088.8	3.6
	August	1,057.3	3.5	236.4	251.4	1,089.1	3.6
	September#	1,043.3	3.5	235.5	245.8	1,042.8	3.5
	October	1,046.8	3.5	236.3	239.4	1,009.2	3.3
	November	1,039.9	3.4	234.5	241.8	1,000.6	3.3
	December#	1,033.6	3.4	233.5	240.3	1,011.4	3.4
	2001						
	January	1,006.3	3.3	234.2	244.6	1,077.8	3.6
	February	1,000.7	3.3	230.5	237.7	1,073.4	3.6
	March (p)	995.2	3.3	208.5 \$	203.6 \$	1,055.3	3.5
	Change on mth	-5.5	0.0	-22.0	-34.1	-18.1	-0.1
	Change %	-0.5		-9.5	-14.3	-1.7	
	Change on year	-144.7	-0.5	-38.2	-54.8	-139.0	-0.5
	Change %	-12.7		-15.5	-21.2	-11.6	
		DPAE	DPAH	GDZX	GEYR	DPAA	DPAC
Men	2000						
	March	869.2	5.3	176.1	185.2	913.2	5.6
	April#	850.4	5.2	170.4	187.9	874.1	5.3
	May	843.5	5.1	173.5	183.5	849.9	5.2
	June	835.0	5.1	170.6	180.9	824.6	5.0
	July#	819.6	5.0	166.3	182.1	820.7	5.0
	August	810.4	4.9	170.4	181.4	814.3	5.0
	September#	798.9	4.9	169.4	178.4	785.4	4.8
	October	801.3	4.9	170.2	171.9	766.3	4.7
	November	795.4	4.9	168.1	173.9	763.9	4.7
	December#	790.4	4.8	166.9	172.9	779.4	4.8
	2001						
	January	768.8	4.7	167.5	176.6	826.7	5.0
	February	764.1	4.7	164.9	171.1	820.6	5.0
	March (p)	760.2	4.6	149.4 \$	145.3 \$	808.1	4.9
	Change on mth	-3.9	0.0	-15.5	-25.8	-12.5	-0.1
	Change %	-0.5		-9.4	-15.1	-1.5	
	Change on year	-109.0	-0.7	-26.7	-39.9	-105.0	-0.6
	Change %	-12.5		-15.2	-21.5	-11.5	
		DPAF	DPAI	GEYS	GEYT	DPAB	DPAD
Women	2000						
	March	270.7	2.0	70.6	73.2	281.1	2.0
	April#	264.6	1.9	67.4	73.5	268.0	1.9
	May	262.7	1.9	68.5	72.1	258.3	1.9
	June	259.4	1.9	67.4	71.1	252.6	1.8
	July#	251.5	1.8	64.1	71.7	268.1	1.9
	August	246.9	1.8	66.0	70.0	274.8	2.0
	September#	244.4	1.8	66.1	67.4	257.4	1.9
	October	245.5	1.8	66.1	67.5	243.0	1.8
	November	244.5	1.8	66.4	67.9	236.7	1.7
	December#	243.2	1.8	66.6	67.4	232.1	1.7
	2001						
	January	237.5	1.7	66.7	68.0	251.1	1.8
	February	236.6	1.7	65.6	66.6	252.7	1.8
	March (p)	235.0	1.7	59.1 \$	58.3 \$	247.2	1.8
	Change on mth	-1.6	0.0	-6.5	-8.3	-5.6	0.0
	Change %	-0.7		-9.9	-12.5	-2.2	
	Change on year	-35.7	-0.3	-11.5	-14.9	-34.0	-0.2
	Change %	-13.2		-16.3	-20.4	-12.1	

* Count of claimants of unemployment-related benefit, ie Jobseeker's Allowance.

Data source: Benefits Agency administrative system.

** Denominator = Claimant count + Workforce jobs.

Labour Market Statistics Helpline 020-7533 6094

The claimant count inflows, standardised to a 4¹/₃ week month but not seasonally adjusted, for March 2001 were 199,376 in total, 144,815 for men and 54,561 for women. The corresponding outflow figures were 215,190 in total, 155,566 men and 59,624 women. For non-seasonally adjusted claimant flows for earlier months, see table C.31 of Labour Market Trends.

Months where there are 5 weeks between count dates. All the rest are 4 week periods.

Flow figures are collected for 4 or 5 week periods between count dates; the figures are then converted to a standard 4¹/₃ week month.

UNEMPLOYMENT

11(1) Claimant count* by age and duration - computerised claims only

United Kingdom (thousands), not seasonally adjusted

	All ages							18-24					
	All claimants	computerised claims	Up to 6 months	Over 6 and up to 12 months	All over 12 months	% claiming over 12 months	All over 24 months	All	Up to 6 months	Over 6 and up to 12 months	All over 12 months	% claiming over 12 months	All over 24 months
	1	2	3	4	5	6	7	8	9	10	11	12	13
	BCJA	GEYV	GEYW	GEYX	GEYY		GEYZ	GEZA	GEZB	GEZC	GEZD		GEZE
People													
Mar-99	1,346.6	1,333.1	776.8	224.1	332.2	24.9	164.3	312.2	242.7	51.6	17.9	5.7	4.8
Mar-00	1,194.3	1,185.2	721.6	200.2	263.4	22.2	129.6	282.5	230.7	45.0	6.8	2.4	0.8
Apr-00#	1,142.1	1,134.1	675.0	203.4	255.7	22.5	126.8	263.1	210.2	46.6	6.3	2.4	0.7
May-00	1,108.2	1,100.4	644.5	204.5	251.5	22.9	125.4	251.6	198.5	46.9	6.2	2.5	0.7
Jun-00	1,077.2	1,069.7	622.3	200.7	246.7	23.1	123.4	245.0	192.8	46.1	6.1	2.5	0.6
Jul-00#	1,088.8	1,081.7	655.0	185.5	241.2	22.3	120.1	267.4	219.2	41.7	6.5	2.4	0.6
Aug-00	1,089.1	1,082.0	663.3	182.5	236.1	21.8	117.2	273.3	225.8	41.2	6.4	2.3	0.5
Sep-00#	1,042.8	1,036.0	636.7	169.4	229.9	22.2	113.9	258.7	216.7	35.7	6.3	2.4	0.6
Oct-00	1,009.2	1,003.2	620.6	160.0	222.6	22.2	110.9	241.7	205.1	31.0	5.5	2.3	0.5
Nov-00	1,000.6	994.7	624.6	153.4	216.7	21.8	108.2	235.7	201.9	28.7	5.1	2.2	0.5
Dec-00#	1,011.4	1,005.9	640.5	152.7	212.7	21.1	106.0	238.4	204.8	28.8	4.8	2.0	0.5
Jan-01	1,077.8	1,072.2	691.7	168.0	212.5	19.8	104.9	260.9	221.1	34.8	5.0	1.9	0.5
Feb-01	1,073.4	1,067.7	691.9	166.7	209.0	19.6	102.8	265.6	225.8	34.9	4.8	1.8	0.5
Mar-01	1,055.3	1,049.5	654.9	181.9	212.7	20.3	103.3	263.4	217.3	40.8	5.2	2.0	0.5
Change on year	-139.0	-135.7	-66.7	-18.3	-50.7	-2.0	-26.3	-19.1	-13.4	-4.2	-1.6	-0.4	-0.3
Change %	-11.6	-11.5	-9.2	-9.1	-19.2		-20.3	-6.8	-5.8	-9.3	-23.3		-35.5
	BCND	GEZG	GEZH	GEZI	GEZJ		GEZK	GEZL	GEZM	GEZN	GEZO		GEZP
Men													
Mar-99	1,033.8	1,023.9	575.3	173.0	275.6	26.9	139.5	221.3	171.5	36.6	13.1	5.9	3.6
Mar-00	913.2	906.5	533.4	154.3	218.8	24.1	110.0	198.7	162.3	31.6	4.8	2.4	0.6
Apr-00#	874.1	868.2	499.6	156.3	212.3	24.5	107.5	185.3	148.3	32.6	4.4	2.4	0.5
May-00	849.9	844.2	477.7	157.7	208.8	24.7	106.5	178.0	140.5	33.1	4.3	2.4	0.5
Jun-00	824.6	819.0	458.8	155.6	204.7	25.0	104.9	172.7	135.7	32.7	4.3	2.5	0.4
Jul-00#	820.7	815.5	471.7	144.1	199.8	24.5	101.9	182.3	148.2	29.6	4.5	2.5	0.4
Aug-00	814.3	809.1	472.2	141.4	195.5	24.2	99.4	184.9	151.4	29.1	4.4	2.4	0.4
Sep-00#	785.4	780.3	458.0	132.0	190.3	24.4	96.7	176.3	146.7	25.3	4.4	2.5	0.4
Oct-00	766.3	761.8	451.9	125.5	184.5	24.2	94.2	166.7	140.8	22.0	3.8	2.3	0.4
Nov-00	763.9	759.6	458.9	120.8	179.9	23.7	92.0	164.2	140.2	20.5	3.5	2.1	0.3
Dec-00#	779.4	775.3	478.4	119.7	177.1	22.8	90.1	169.6	145.7	20.5	3.4	2.0	0.3
Jan-01	826.7	822.4	514.6	130.9	176.9	21.5	89.2	184.6	156.6	24.5	3.6	1.9	0.3
Feb-01	820.6	816.4	512.4	130.0	174.0	21.3	87.4	187.6	159.5	24.7	3.4	1.8	0.3
Mar-01	808.1	803.8	485.9	141.0	176.9	22.0	87.7	186.6	154.1	28.8	3.7	2.0	0.4
Change on year	-105.0	-102.7	-47.5	-13.3	-41.9	-2.1	-22.3	-12.1	-8.2	-2.8	-1.2	-0.5	-0.2
Change %	-11.5	-11.3	-8.9	-8.6	-19.2		-20.3	-6.1	-5.0	-8.9	-24.0		-38.5
	BCNH	GEZR	GEZS	GEZT	GEZU		GEZV	GEZW	GEZX	GEZY	GEZZ		GEZU
Women													
Mar-99	312.7	309.2	201.5	51.1	56.6	18.3	24.8	91.0	71.2	15.1	4.7	5.2	1.2
Mar-00	281.1	278.7	188.2	45.9	44.6	16.0	19.6	83.8	68.4	13.4	2.0	2.4	0.2
Apr-00#	268.0	265.9	175.4	47.1	43.4	16.3	19.3	77.7	61.9	14.0	1.8	2.4	0.2
May-00	258.3	256.2	166.8	46.8	42.7	16.7	18.9	73.6	58.0	13.8	1.9	2.5	0.2
Jun-00	252.6	250.7	163.5	45.2	42.0	16.8	18.6	72.4	57.2	13.3	1.8	2.5	0.2
Jul-00#	268.1	266.2	183.3	41.4	41.5	15.6	18.2	85.1	71.0	12.1	2.0	2.4	0.2
Aug-00	274.8	272.9	191.2	41.1	40.7	14.9	17.8	88.4	74.4	12.1	2.0	2.2	0.2
Sep-00#	257.4	255.7	178.6	37.4	39.6	15.5	17.3	82.4	70.0	10.5	2.0	2.4	0.2
Oct-00	243.0	241.4	168.7	34.5	38.1	15.8	16.7	75.0	64.3	9.0	1.7	2.3	0.2
Nov-00	236.7	235.1	165.7	32.6	36.8	15.7	16.2	71.5	61.7	8.2	1.6	2.2	0.2
Dec-00#	232.1	230.7	162.1	33.0	35.5	15.4	15.8	68.8	59.1	8.3	1.4	2.1	0.1
Jan-01	251.1	249.7	177.1	37.1	35.5	14.2	15.7	76.3	64.6	10.3	1.5	1.9	0.1
Feb-01	252.7	251.3	179.5	36.7	35.0	13.9	15.4	78.0	66.4	10.2	1.4	1.9	0.2
Mar-01	247.2	245.7	169.0	40.9	35.8	14.6	15.6	76.7	63.2	12.0	1.5	2.0	0.2
Change on year	-34.0	-33.0	-19.2	-5.0	-8.8	-1.4	-4.0	-7.0	-5.2	-1.4	-0.4	-0.3	-0.1
Change %	-12.1	-11.8	-10.2	-10.8	-19.7		-20.5	-8.4	-7.6	-10.2	-21.8		-28.2

Relationship between columns: 2= 3+4+5; 6= 5/2; 8= 9+10+11; 12= 11/8; 14= 15+16+17; 18= 17/14; 20= 21+22+23; 24= 23/20.

Data source: Benefits Agency administrative system
Labour Market Statistics Helpline 020-7533 6094

* Count of claimants of unemployment-related benefits, ie. Jobseeker's Allowance.

Only computerised claims are analysed by age and duration on a monthly basis. These figures therefore differ in total from those given in table 10. The latter include clerically processed claims which currently amount to around 1 per cent of the total claimant count. A supplementary analysis by age and duration of the full claimant count including the 6,000 clerical claims, for October 2000, is available. See Background note 9.

Months where there are 5 weeks between count dates. All the rest are 4 week periods.

UNEMPLOYMENT

11(2) Claimant count* by age and duration - computerised claims only

	25-49						50 and over					
	All	Up to 6 months	Over 6 and up to 12 months	All over 12 months	% claiming over 12 months	All over 24 months	All	Up to 6 months	Over 6 and up to 12 months	All over 12 months	% claiming over 12 months	All over 24 months
	14	15	16	17	18	19	20	21	22	23	24	25
	GEZF	GEZQ	IACM	IACP		IACS	IACV	IACY	IADB	IADE		IADH
People												
Mar-99	778.4	411.7	136.8	229.9	29.5	109.1	225.3	106.0	35.0	84.3	37.4	50.4
Mar-00	685.6	376.5	122.5	186.6	27.2	87.5	200.8	98.9	32.0	69.9	34.8	41.3
Apr-00#	660.2	355.5	123.7	181.0	27.4	85.5	195.4	94.8	32.3	68.3	35.0	40.5
May-00	644.0	341.5	124.4	178.1	27.7	84.8	190.0	90.6	32.3	67.0	35.3	40.0
Jun-00	626.3	329.0	122.4	174.8	27.9	83.5	184.2	87.1	31.4	65.7	35.7	39.3
Jul-00#	620.6	335.9	113.8	170.8	27.5	81.2	180.3	87.3	29.1	63.9	35.4	38.3
Aug-00	617.1	338.2	111.7	167.3	27.1	79.2	178.3	87.2	28.6	62.5	35.0	37.5
Sep-00#	593.8	325.6	105.6	162.6	27.4	76.9	171.2	83.1	27.2	60.9	35.6	36.5
Oct-00	580.1	321.1	101.4	157.6	27.2	74.7	169.3	83.2	26.7	59.4	35.1	35.7
Nov-00	577.8	326.0	98.3	153.5	26.6	72.8	169.4	85.8	25.5	58.0	34.2	34.9
Dec-00#	586.1	337.2	98.0	150.9	25.7	71.3	169.6	87.6	25.2	56.9	33.5	34.1
Jan-01	618.8	362.8	105.4	150.6	24.3	70.7	179.3	95.5	27.1	56.7	31.6	33.8
Feb-01	611.1	358.3	104.5	148.3	24.3	69.1	175.7	93.2	26.7	55.8	31.8	33.2
Mar-01	599.0	336.0	112.0	151.0	25.2	69.6	171.7	87.0	28.3	56.4	32.8	33.2
<i>Change on year</i>	<i>-86.6</i>	<i>-40.5</i>	<i>-10.5</i>	<i>-35.6</i>	<i>-2.0</i>	<i>-17.9</i>	<i>-29.1</i>	<i>-11.9</i>	<i>-3.7</i>	<i>-13.5</i>	<i>-2.0</i>	<i>-8.1</i>
<i>Change %</i>	<i>-12.6</i>	<i>-10.8</i>	<i>-8.6</i>	<i>-19.1</i>		<i>-20.5</i>	<i>-14.5</i>	<i>-12.0</i>	<i>-11.5</i>	<i>-19.3</i>		<i>-19.6</i>
	IACI	IACK	IACN	IACQ		IACT	IACW	IACZ	IADC	IADF		IADI
Men												
Mar-99	624.1	317.5	110.7	195.9	31.4	94.8	168.6	76.7	25.3	66.5	39.5	41.1
Mar-00	548.9	291.0	99.1	158.8	28.9	75.8	149.6	71.2	23.3	55.1	36.9	33.6
Apr-00#	528.3	274.6	99.8	153.9	29.1	74.0	145.8	68.5	23.4	53.9	37.0	33.0
May-00	516.0	264.0	100.6	151.5	29.4	73.4	141.8	65.3	23.6	52.9	37.3	32.6
Jun-00	501.1	253.3	99.3	148.5	29.6	72.3	137.1	62.2	23.0	51.8	37.8	32.1
Jul-00#	492.2	254.7	92.6	144.9	29.4	70.3	133.3	61.6	21.4	50.4	37.8	31.3
Aug-00	485.9	253.3	90.8	141.8	29.2	68.5	130.8	60.6	20.9	49.3	37.7	30.6
Sep-00#	470.6	246.6	86.3	137.8	29.3	66.5	126.4	58.4	20.0	48.1	38.0	29.8
Oct-00	462.6	245.7	83.2	133.6	28.9	64.7	125.8	59.0	19.7	47.0	37.3	29.2
Nov-00	462.5	251.2	80.9	130.4	28.2	63.1	126.2	61.4	18.9	45.9	36.4	28.5
Dec-00#	472.1	263.3	80.3	128.5	27.2	61.9	126.9	63.2	18.5	45.2	35.6	27.9
Jan-01	496.6	282.2	86.1	128.3	25.8	61.2	133.8	68.8	19.9	45.0	33.7	27.7
Feb-01	489.4	277.9	85.3	126.3	25.8	59.9	130.7	66.8	19.6	44.3	33.9	27.2
Mar-01	480.5	261.0	91.0	128.5	26.7	60.2	127.9	62.5	20.7	44.7	34.9	27.2
<i>Change on year</i>	<i>-68.4</i>	<i>-30.0</i>	<i>-8.0</i>	<i>-30.3</i>	<i>-2.2</i>	<i>-15.6</i>	<i>-21.6</i>	<i>-8.6</i>	<i>-2.5</i>	<i>-10.4</i>	<i>-1.9</i>	<i>-6.5</i>
<i>Change %</i>	<i>-12.5</i>	<i>-10.3</i>	<i>-8.1</i>	<i>-19.1</i>		<i>-20.6</i>	<i>-14.5</i>	<i>-12.1</i>	<i>-10.9</i>	<i>-18.9</i>		<i>-19.2</i>
	IACJ	IACL	IACO	IACR		IACU	IACX	IADA	IADD	IADG		IADJ
Women												
Mar-99	154.3	94.1	26.1	34.0	22.0	14.3	56.6	29.3	9.6	17.8	31.4	9.3
Mar-00	136.7	85.4	23.5	27.8	20.3	11.7	51.2	27.7	8.8	14.7	28.8	7.6
Apr-00#	131.9	80.9	23.9	27.1	20.5	11.5	49.6	26.3	8.9	14.4	29.1	7.5
May-00	128.0	77.5	23.8	26.7	20.8	11.3	48.2	25.3	8.8	14.1	29.3	7.4
Jun-00	125.2	75.8	23.1	26.3	21.0	11.2	47.0	24.8	8.4	13.9	29.4	7.2
Jul-00#	128.3	81.2	21.2	25.9	20.2	11.0	46.9	25.7	7.7	13.5	28.8	7.0
Aug-00	131.3	84.9	20.9	25.5	19.4	10.7	47.4	26.6	7.6	13.2	27.8	6.9
Sep-00#	123.2	79.0	19.4	24.9	20.2	10.4	44.8	24.7	7.2	12.8	28.6	6.7
Oct-00	117.5	75.3	18.2	24.0	20.4	10.0	43.5	24.1	6.9	12.4	28.6	6.5
Nov-00	115.3	74.8	17.4	23.1	20.0	9.8	43.1	24.4	6.6	12.1	28.0	6.3
Dec-00#	114.0	73.9	17.7	22.4	19.7	9.5	42.7	24.4	6.7	11.7	27.3	6.2
Jan-01	122.2	80.5	19.3	22.4	18.3	9.4	45.6	26.7	7.2	11.7	25.6	6.1
Feb-01	121.7	80.4	19.2	22.1	18.1	9.3	45.0	26.4	7.1	11.5	25.5	6.0
Mar-01	118.5	74.9	21.0	22.6	19.0	9.4	43.7	24.5	7.6	11.7	26.7	6.0
<i>Change on year</i>	<i>-18.2</i>	<i>-10.5</i>	<i>-2.4</i>	<i>-5.2</i>	<i>-1.3</i>	<i>-2.3</i>	<i>-7.5</i>	<i>-3.2</i>	<i>-1.2</i>	<i>-3.1</i>	<i>-2.1</i>	<i>-1.6</i>
<i>Change %</i>	<i>-13.3</i>	<i>-12.3</i>	<i>-10.4</i>	<i>-18.9</i>		<i>-20.0</i>	<i>-14.6</i>	<i>-11.7</i>	<i>-13.2</i>	<i>-20.8</i>		<i>-21.1</i>

Relationship between columns: 2= 3+4+5; 6= 5/2; 8= 9+10+11; 12= 11/8; 14= 15+16+17; 18= 17/14; 20= 21+22+23; 24= 23/20.

Data source: Benefits Agency administrative system
Labour Market Statistics Helpline 020-7533 6094

* Count of claimants of unemployment-related benefits, ie. Jobseeker's Allowance.

Only computerised claims are analysed by age and duration on a monthly basis. These figures therefore differ in total from those given in table 10. The latter include clerically processed claims which currently amount to around 1 per cent of the total claimant count. A supplementary analysis by age and duration of the full claimant count including the 6,000 clerical claims, for October 2000, is available. See Background note 9.

Months where there are 5 weeks between count dates. All the rest are 4 week periods.

ECONOMIC ACTIVITY AND INACTIVITY

12 Economic activity by age

United Kingdom (thousands) seasonally adjusted

		All aged 16 & over	16 - 59/64	16 - 17	18 - 24	25 - 34	35 - 49	50 - 64 (m) & 50 - 59 (w)	65+ (m) & 60+ (w)
		1	2	3	4	5	6	7	8
		MGSF	YBSK	YBZL	YBZO	YBZR	YBZU	YBZX	YCAD
Economically active									
People	Dec-Feb 1999	29,358	28,547	868	3,735	7,628	10,474	5,841	812
	Dec-Feb 2000	29,493	28,635	837	3,748	7,459	10,653	5,938	857
	Mar-May 2000	29,574	28,736	848	3,750	7,414	10,724	6,000	839
	Jun-Aug 2000	29,549	28,709	826	3,721	7,336	10,782	6,045	840
	Sep-Nov 2000	29,552	28,711	823	3,731	7,293	10,801	6,062	841
	Dec-Feb 2001	29,623	28,795	819	3,731	7,261	10,876	6,108	828
	<i>Change on qtr</i>	71	84	-4	-1	-33	75	46	-13
	<i>Change %</i>	0.2	0.3	-0.4	0.0	-0.4	0.7	0.8	-1.6
	<i>Change on year</i>	130	160	-18	-17	-198	223	171	-30
	<i>Change %</i>	0.4	0.6	-2.2	-0.5	-2.7	2.1	2.9	-3.5
Men		MGSF	YBSK	YBZL	YBZO	YBZR	YBZU	YBZX	YCAD
	Dec-Feb 1999	16,326	16,041	447	2,029	4,310	5,720	3,536	286
	Dec-Feb 2000	16,353	16,060	423	2,034	4,209	5,827	3,568	293
	Mar-May 2000	16,411	16,121	430	2,038	4,185	5,862	3,605	290
	Jun-Aug 2000	16,344	16,063	420	2,018	4,127	5,872	3,626	281
	Sep-Nov 2000	16,378	16,092	422	2,013	4,120	5,898	3,639	286
	Dec-Feb 2001	16,433	16,155	422	2,035	4,096	5,932	3,671	278
	<i>Change on qtr</i>	55	63	0	21	-24	34	32	-8
	<i>Change %</i>	0.3	0.4	0.0	1.1	-0.6	0.6	0.9	-2.8
	<i>Change on year</i>	80	95	-1	0	-113	105	103	-15
<i>Change %</i>	0.5	0.6	-0.2	0.0	-2.7	1.8	2.9	-5.1	
Women		MGSF	YBSK	YBZL	YBZO	YBZR	YBZU	YBZX	YCAD
	Dec-Feb 1999	13,032	12,506	422	1,706	3,319	4,754	2,305	526
	Dec-Feb 2000	13,140	12,575	415	1,713	3,250	4,826	2,370	565
	Mar-May 2000	13,163	12,615	417	1,711	3,229	4,861	2,395	548
	Jun-Aug 2000	13,205	12,646	406	1,702	3,210	4,909	2,418	559
	Sep-Nov 2000	13,174	12,619	401	1,718	3,173	4,903	2,424	555
	Dec-Feb 2001	13,190	12,640	398	1,696	3,165	4,944	2,438	550
	<i>Change on qtr</i>	16	21	-3	-22	-8	41	14	-5
	<i>Change %</i>	0.1	0.2	-0.9	-1.3	-0.3	0.8	0.6	-1.0
	<i>Change on year</i>	50	65	-17	-18	-86	117	68	-15
<i>Change %</i>	0.4	0.5	-4.1	-1.0	-2.6	2.4	2.9	-2.6	
Economic activity rates (%)*									
		MGWG	MGSO	YCAC	YCAJ	YCAM	YCAP	MGWP	MGWS
People	Dec-Feb 1999	63.3	79.0	60.0	76.1	84.4	84.8	69.6	7.9
	Dec-Feb 2000	63.4	78.9	58.1	76.0	84.7	85.0	69.3	8.4
	Mar-May 2000	63.5	79.1	58.9	76.0	84.8	85.2	69.7	8.2
	Jun-Aug 2000	63.4	79.0	57.4	75.3	84.5	85.3	69.9	8.2
	Sep-Nov 2000	63.3	78.8	56.9	75.3	84.4	85.0	69.8	8.2
	Dec-Feb 2001	63.3	78.9	56.4	75.0	84.6	85.2	70.1	8.1
	<i>Change on qtr</i>	0.1	0.1	-0.5	-0.2	0.1	0.2	0.2	-0.1
	<i>Change on year</i>	0.0	0.0	-1.7	-1.0	-0.2	0.3	0.7	-0.3
		MGWH	MGSP	YCAH	YCAK	YCAN	YCAQ	MGWQ	MGWT
	Dec-Feb 1999	72.1	84.8	60.3	81.1	93.5	92.1	72.7	7.7
Dec-Feb 2000	71.9	84.5	57.3	81.0	93.8	92.3	72.0	7.8	
Mar-May 2000	72.1	84.8	58.4	81.0	93.9	92.5	72.5	7.8	
Jun-Aug 2000	71.8	84.4	57.0	80.2	93.3	92.2	72.6	7.5	
Sep-Nov 2000	71.7	84.3	56.9	79.6	93.5	92.1	72.6	7.6	
Dec-Feb 2001	71.8	84.5	56.7	80.2	93.5	92.2	73.0	7.4	
<i>Change on qtr</i>	0.1	0.2	-0.3	0.6	0.0	0.1	0.4	-0.2	
<i>Change on year</i>	-0.1	0.0	-0.6	-0.8	-0.3	-0.1	1.0	-0.5	
Women		MGWI	MGSQ	YCAI	YCAL	YCAO	YCAR	MGWR	MGWU
	Dec-Feb 1999	54.9	72.6	59.7	71.0	74.9	77.4	65.2	8.0
	Dec-Feb 2000	55.2	72.8	59.0	70.9	75.3	77.5	65.6	8.6
	Mar-May 2000	55.2	73.0	59.4	70.7	75.3	77.8	66.0	8.4
	Jun-Aug 2000	55.4	73.1	57.8	70.2	75.4	78.3	66.3	8.6
	Sep-Nov 2000	55.2	72.8	56.8	70.7	74.9	77.8	66.0	8.5
	Dec-Feb 2001	55.2	72.8	56.1	69.6	75.2	78.1	66.1	8.4
	<i>Change on qtr</i>	0.0	0.0	-0.7	-1.1	0.3	0.3	0.0	-0.1
	<i>Change on year</i>	0.0	0.0	-2.9	-1.3	0.0	0.6	0.5	-0.2

Relationship between columns: 1= 2+8; 2=3+4+5+6+7

Data source: Labour Force Survey

* Denominator = all persons in the relevant age group

Labour Market Statistics Helpline 020-7533 6094

The Labour Force Survey is a survey of the population of private households, student halls of residence and NHS accommodation

ECONOMIC ACTIVITY AND INACTIVITY

13 Economic inactivity by age

United Kingdom (thousands) seasonally adjusted

		All aged 16 & over	16 - 59/64	16 - 17	18 - 24	25 - 34	35 - 49	50 - 64 (m) & 50 - 59 (w)	65+ (m) & 60+ (w)
		1	2	3	4	5	6	7	8
		MGSI	YBSN	YCAS	YCAV	YCAZ	YCBB	MGWA	MGWD
Economically inactive									
People	Dec-Feb 1999	17,032	7,595	579	1,171	1,413	1,876	2,557	9,437
	Dec-Feb 2000	17,051	7,643	603	1,180	1,345	1,887	2,629	9,408
	Mar-May 2000	17,007	7,577	592	1,185	1,327	1,868	2,604	9,430
	Jun-Aug 2000	17,068	7,637	614	1,221	1,343	1,861	2,598	9,432
	Sep-Nov 2000	17,155	7,722	624	1,227	1,347	1,906	2,619	9,433
	Dec-Feb 2001	17,146	7,698	634	1,242	1,326	1,886	2,610	9,448
	<i>Change on qtr</i>	-8	-24	10	16	-21	-19	-9	15
	<i>Change %</i>	0.0	-0.3	1.6	1.3	-1.6	-1.0	-0.3	0.2
	<i>Change on year</i>	95	55	31	62	-19	-1	-18	40
	<i>Change %</i>	0.6	0.7	5.1	5.3	-1.4	0.0	-0.7	0.4
Men		MGSJ	YBSO	YCAT	YCAW	YCAZ	YCBC	MGWB	MGWE
	Dec-Feb 1999	6,306	2,881	294	474	298	489	1,325	3,425
	Dec-Feb 2000	6,377	2,941	315	477	278	486	1,385	3,436
	Mar-May 2000	6,343	2,899	307	477	270	479	1,367	3,444
	Jun-Aug 2000	6,434	2,975	317	500	296	497	1,366	3,458
	Sep-Nov 2000	6,459	2,997	319	515	286	506	1,372	3,462
	Dec-Feb 2001	6,444	2,967	322	501	284	502	1,358	3,477
	<i>Change on qtr</i>	-15	-30	3	-13	-2	-4	-14	15
	<i>Change %</i>	-0.2	-1.0	1.1	-2.6	-0.7	-0.8	-1.0	0.4
	<i>Change on year</i>	67	26	7	24	6	15	-27	41
<i>Change %</i>	1.0	0.9	2.4	5.0	2.3	3.1	-1.9	1.2	
Women		MGSK	YBSP	YCAU	YCAX	YCBA	YCBD	MGWC	MGWF
	Dec-Feb 1999	10,726	4,714	285	697	1,114	1,387	1,232	6,012
	Dec-Feb 2000	10,674	4,702	288	703	1,067	1,400	1,244	5,972
	Mar-May 2000	10,663	4,677	285	709	1,057	1,389	1,237	5,986
	Jun-Aug 2000	10,634	4,661	297	722	1,047	1,365	1,232	5,973
	Sep-Nov 2000	10,696	4,725	305	712	1,061	1,400	1,247	5,971
	Dec-Feb 2001	10,702	4,731	311	741	1,042	1,385	1,252	5,971
	<i>Change on qtr</i>	6	7	7	29	-19	-16	6	0
	<i>Change %</i>	0.1	0.1	2.2	4.1	-1.8	-1.1	0.4	0.0
	<i>Change on year</i>	28	29	23	38	-25	-16	8	-1
<i>Change %</i>	0.3	0.6	8.1	5.5	-2.4	-1.1	0.7	0.0	

Relationship between columns: 1 = 2+8; 2 = 3+4+5+6+7

Data source: Labour Force Survey

Labour Market Statistics Helpline 020-7533 6094

The Labour Force Survey is a survey of the population of private households, student halls of residence and NHS accommodation

14 Economic inactivity: reasons

United Kingdom (thousands) seasonally adjusted

Breakdown of total aged 16-59/64

	All aged 16 & over	Total aged 16-59/64	Does not want job	Wants a job	Wants a job but not seeking in last 4 weeks								Wants job and seeking work but not available to start		
					Total	Available to start work in next 2 weeks		Reasons for not seeking					All	Students	Other
						Available	Not available	Dis- courage workers	Long- term sick	Looking after family /home	Students	Other			
1	2	3	4	5	6	7	8	9	10	11	12	13	14	15	
	MGSI	YBSN	YBVZ	YBWC	YCFF	YCFI	YCFL	YCFO	YCFR	YCFU	YCFX	YCGA	YCGD	YCGG	YCGJ
People															
Dec-Feb 1999	17,032	7,595	5,313	2,282	2,075	695	1,380	69	746	671	225	364	207	79	128
Mar-May 1999	17,075	7,652	5,331	2,321	2,107	688	1,419	68	749	678	242	371	213	90	123
Jun-Aug 1999	17,077	7,646	5,369	2,277	2,071	685	1,386	63	737	660	241	370	206	85	120
Sep-Nov 1999	17,028	7,599	5,296	2,303	2,091	687	1,405	67	739	661	232	393	211	95	116
Dec-Feb 2000	17,051	7,643	5,338	2,305	2,116	662	1,454	69	741	654	236	415	189	83	106
Mar-May 2000	17,007	7,577	5,268	2,309	2,120	670	1,450	62	765	651	241	400	189	77	113
Jun-Aug 2000	17,068	7,637	5,336	2,300	2,102	658	1,444	61	750	637	257	397	198	86	113
Sep-Nov 2000	17,155	7,722	5,461	2,261	2,053	649	1,404	47	754	626	234	392	208	79	129
Dec-Feb 2001	17,146	7,698	5,455	2,243	2,018	627	1,390	40	732	617	248	381	225	98	127
Change on qtr	-8	-24	-6	-18	-35	-21	-14	-7	-22	-9	15	-12	17	19	-2
Change %	0.0	-0.3	-0.1	-0.8	-1.7	-3.3	-1.0	-15.3	-2.9	-1.4	6.2	-3.0	8.3	24.6	-1.6
Change on year	95	55	117	-63	-98	-35	-64	-29	-9	-38	12	-35	36	15	21
Change %	0.6	0.7	2.2	-2.7	-4.7	-5.3	-4.4	-42.2	-1.3	-5.7	5.1	-8.3	19.0	17.8	19.9
Men	MGSJ	YBSO	YBWA	YBWD	YCFG	YCFJ	YCFM	YCFP	YCFS	YCFV	YCFY	YCGB	YCGE	YCGH	YCGK
Dec-Feb 1999	6,306	2,881	1,938	943	850	274	577	40	459	71	120	161	93	42	51
Mar-May 1999	6,339	2,918	1,972	946	854	274	580	41	460	72	123	158	92	44	48
Jun-Aug 1999	6,339	2,917	1,978	938	846	271	575	37	442	69	123	176	92	48	44
Sep-Nov 1999	6,323	2,893	1,948	945	849	273	576	41	445	70	111	182	96	52	44
Dec-Feb 2000	6,377	2,941	2,002	939	854	266	588	45	447	65	118	180	84	45	39
Mar-May 2000	6,343	2,899	1,957	942	862	264	598	35	465	64	117	181	81	40	40
Jun-Aug 2000	6,434	2,975	2,005	970	885	268	617	37	462	65	134	186	85	41	44
Sep-Nov 2000	6,459	2,997	2,048	949	855	264	591	30	463	64	120	178	94	43	51
Dec-Feb 2001	6,444	2,967	2,024	943	842	251	590	22	455	67	128	169	101	52	49
Change on qtr	-15	-30	-24	-6	-13	-13	0	-8	-7	3	8	-9	7	9	-2
Change %	-0.2	-1.0	-1.2	-0.6	-1.5	-4.8	-0.1	-27.5	-1.6	4.8	6.9	-4.9	7.4	21.1	-4.1
Change on year	67	26	22	4	-13	-15	2	-23	9	2	10	-11	17	6	10
Change %	1.0	0.9	1.1	0.4	-1.5	-5.5	0.4	-51.3	2.0	3.8	8.2	-6.0	19.8	14.1	26.4
Women	MGSK	YBSP	YBWB	YBWE	YCFH	YCFK	YCFN	YCFQ	YCFR	YCFW	YCFZ	YCGC	YCGF	YCGI	YCGL
Dec-Feb 1999	10,726	4,714	3,376	1,338	1,224	421	804	29	288	600	105	202	114	37	77
Mar-May 1999	10,736	4,734	3,358	1,375	1,254	414	840	27	289	606	119	213	121	46	75
Jun-Aug 1999	10,739	4,730	3,391	1,339	1,225	414	811	27	294	591	118	195	114	37	76
Sep-Nov 1999	10,705	4,705	3,348	1,358	1,242	414	829	26	294	591	120	211	115	43	72
Dec-Feb 2000	10,674	4,702	3,336	1,367	1,262	396	866	24	295	590	118	235	105	38	67
Mar-May 2000	10,663	4,677	3,311	1,367	1,258	406	852	27	300	587	125	219	109	36	72
Jun-Aug 2000	10,634	4,661	3,331	1,330	1,217	390	827	24	287	572	122	211	113	45	68
Sep-Nov 2000	10,696	4,725	3,413	1,312	1,198	385	813	17	292	562	114	214	114	36	78
Dec-Feb 2001	10,702	4,731	3,431	1,300	1,176	376	800	18	277	550	120	211	124	46	78
Change on qtr	6	7	19	-12	-22	-9	-14	1	-15	-12	6	-3	10	10	0
Change %	0.1	0.1	0.5	-0.9	-1.9	-2.3	-1.7	6.0	-5.1	-2.1	5.5	-1.3	9.1	28.8	0.0
Change on year	28	29	95	-67	-86	-20	-66	-6	-18	-40	2	-24	19	8	11
Change %	0.3	0.6	2.9	-4.9	-6.8	-5.1	-7.6	-25.5	-6.2	-6.8	2.0	-10.1	18.3	22.3	16.1

Relationship between columns : 2=3+4; 4=5+13; 5=6+7; 5=8+9+10+11+12; 13=14+15

Data Source: Labour Force Survey

The Labour Force Survey is a survey of the population of private households, student halls of residence and NHS accommodation

Labour Market Statistics Helpline 020-7533 6094

EARNINGS, PRODUCTIVITY & UNIT WAGE COSTS

1995=100

15 Average Earnings - main industrial sectors

	Seasonally adjusted						Great Britain		
	Whole Economy			Private sector			Public sector		
	Average earnings index	% change on year	*Headline rate (3 month average)	Average earnings index	% change on year	*Headline rate (3 month average)	Average earnings index	% change on year	*Headline rate (3 month average)
	LNMQ	LNMU	LNNC	LNKY	LNKZ	LNND	LNNJ	LNKW	LNNE
Feb 99	116.7	4.8	4.5	118.1	5.0	4.6	111.5	4.1	3.8
Oct-99	120.9	5.1	4.9	122.5	5.4	5.2	114.5	3.9	3.8
Nov-99	121.1	4.9	4.9	122.6	5.2	5.1	114.8	3.7	3.8
Dec 99	122.2	5.9	5.3	124.0	6.4	5.7	115.0	3.8	3.8
Jan 00	123.3	6.3	5.7	125.0	6.7	6.1	116.0	4.4	4.0
Feb 00	123.0	5.4	5.9	124.7	5.6	6.3	116.4	4.4	4.2
Mar 00	123.2	5.1	5.6	124.9	5.5	5.9	116.1	3.7	4.1
Apr 00	122.9	4.5	5.0	124.4	4.6	5.2	117.3	4.3	4.1
May 00	123.1	4.0	4.5	124.6	4.2	4.8	116.9	3.3	3.7
Jun 00	123.5	3.8	4.1	125.0	3.9	4.2	117.6	3.5	3.7
Jul 00	123.9	3.9	3.9	125.5	3.9	4.0	117.5	3.5	3.4
Aug 00	124.8	4.2	4.0	126.6	4.4	4.1	117.7	3.4	3.5
Sep 00	125.2	4.2	4.1	127.1	4.5	4.3	117.8	3.2	3.4
Oct 00	125.8	4.1	4.2	127.7	4.2	4.4	118.5	3.5	3.4
Nov 00	126.4	4.4	4.2	128.2	4.5	4.4	119.2	3.9	3.5
Dec 00	128.1	4.8	4.4	130.1	4.9	4.5	119.9	4.3	3.9
Jan 01 (r)	128.6	4.3	4.5	130.6	4.5	4.6	119.8	3.3	3.8
Feb 01 (p)	130.2	5.9	5.0	132.9	6.5	5.3	119.8	3.0	3.5
<i>Latest 3 months on previous</i>									
<i>3 months (% change)</i>		2.5			2.8			1.1	
	Manufacturing			Services			of which Private sector services		
	Average earnings index	% change on year	*Headline rate (3 month average)	Average earnings index	% change on year	*Headline rate (3 month average)	Average earnings index	% change on year	*Headline rate (3 month average)
	LNMR	LNMV	LNNG	LNMT	LNMX	LNNH	JJGH	JJGI	JJGJ
Feb 99	116.1	3.4	3.5	117.0	5.2	4.6	119.1	5.6	4.9
Oct-99	120.1	4.4	4.3	121.1	5.3	5.2	123.5	5.8	5.6
Nov-99	120.4	4.6	4.4	121.5	5.2	5.2	123.9	5.6	5.5
Dec 99	121.2	5.6	4.9	122.4	6.0	5.5	125.2	6.8	6.1
Jan 00	122.0	5.5	5.3	123.4	6.5	5.9	126.1	7.3	6.6
Feb 00	121.5	4.7	5.3	123.4	5.5	6.0	126.1	5.9	6.7
Mar 00	121.9	4.5	4.9	123.5	5.2	5.7	126.1	5.7	6.3
Apr 00	122.3	4.5	4.5	122.9	4.7	5.1	125.2	4.8	5.5
May 00	123.1	5.1	4.7	123.0	3.5	4.5	125.3	3.6	4.7
Jun 00	123.0	4.4	4.7	123.5	3.5	3.9	125.7	3.4	4.0
Jul 00	123.6	4.4	4.6	124.0	3.7	3.6	126.4	3.7	3.6
Aug 00	124.0	4.1	4.3	125.2	4.3	3.8	127.9	4.7	3.9
Sep 00	124.8	4.5	4.3	125.4	4.1	4.0	128.2	4.5	4.3
Oct 00	125.2	4.2	4.3	126.2	4.1	4.2	128.9	4.4	4.5
Nov 00	126.1	4.7	4.5	126.8	4.3	4.2	129.5	4.5	4.4
Dec 00	127.1	4.9	4.6	128.4	4.9	4.5	131.5	5.0	4.6
Jan 01 (r)	126.6	3.8	4.5	128.9	4.5	4.6	132.2	4.9	4.8
Feb 01 (p)	127.5	5.0	4.5	131.3	6.4	5.2	135.4	7.4	5.8
<i>Latest 3 months on previous</i>									
<i>3 months (% change)</i>		1.4			2.7			3.2	

*The headline rate is the change in the average seasonally adjusted index values for the last 3 months compared with the same period a year ago.

Data source: Monthly Wages & Salaries Survey
Average Earnings Index enquiries: 01633 819 002

EARNINGS, PRODUCTIVITY & UNIT WAGE COSTS

1995=100

16 Average earnings¹

Great Britain - Not Seasonally Adjusted

	Whole Economy				Private sector				Public sector			
	Index including bonus	Change on year (%)			Index including bonus	Change on year (%)			Index including bonus	Change on year (%)		
		including bonus	excluding bonus	bonus effect		including bonus	excluding bonus	bonus effect		including bonus	excluding bonus	bonus effect
Feb-99	LNMM	LOUJ	LOJH	LOUP	LNKX	LOUN	LOJL	LOUQ	LNNI	LOUO	LOJM	LOUR
	118.7	5.1	3.8	1.3	120.6	5.3	3.7	1.6	111.1	4.3	3.8	0.5
Oct-99	118.1	5.1	3.6	1.5	119.2	5.4	3.6	1.8	113.9	3.9	3.5	0.4
Nov-99	119.1	4.9	3.4	1.5	120.3	5.1	3.3	1.8	114.4	4.2	3.8	0.4
Dec-99	124.9	6.3	3.6	2.7	127.3	6.8	3.6	3.2	115.1	3.9	3.5	0.4
Jan-00	123.2	6.5	4.6	1.9	125.2	7.0	4.8	2.2	115.1	4.3	3.9	0.4
Feb-00	125.3	5.6	4.9	0.7	127.6	5.8	4.9	0.9	116.3	4.7	4.6	0.1
Mar-00 ¹	129.3	5.6	4.5	1.1	132.9	6.0	4.6	1.4	115.1	4.1	4.1	0.0
Apr-00	122.5	4.3	4.2	0.1	123.9	4.3	4.2	0.1	116.7	4.3	4.3	0.0
May-00	122.4	3.9	4.6	-0.7	123.7	4.0	4.9	-0.9	117.0	3.3	3.5	-0.2
Jun-00	123.3	3.7	4.4	-0.7	124.7	3.8	4.7	-0.9	118.0	3.1	3.2	-0.1
Jul-00	123.6	3.6	4.2	-0.6	125.1	3.6	4.3	-0.7	117.4	3.5	3.7	-0.2
Aug-00	122.5	4.2	4.3	-0.1	123.6	4.3	4.4	-0.1	118.0	3.5	3.6	-0.1
Sep-00	122.2	4.0	4.2	-0.2	123.3	4.2	4.4	-0.2	117.7	3.3	3.4	-0.1
Oct-00	122.7	3.9	4.4	-0.5	124.0	4.0	4.6	-0.6	117.6	3.3	3.4	-0.1
Nov-00	124.0	4.1	4.6	-0.5	125.4	4.2	4.8	-0.6	118.5	3.6	3.8	-0.2
Dec-00	131.1	5.0	4.6	0.4	133.8	5.1	4.8	0.3	120.2	4.5	3.9	0.6
Jan-01 (r)	128.6	4.4	3.8	0.6	131.0	4.6	3.8	0.8	119.0	3.4	3.6	-0.2
Feb-01 (p)	132.8	6.0	4.1	1.9	136.1	6.7	4.4	2.3	119.4	2.7	2.9	-0.2
	Manufacturing				Services				of which Private sector services			
	Index including bonus	Change on year (%)			Index including bonus	Change on year (%)			Index including bonus	Change on year (%)		
	LNMM	LOUK	LOJI	LOUT	LNMP	LOUM	LOJK	LOUU	JJGF	JJGG	JJGK	JJGN
Feb-99	116.7	3.5	2.7	0.8	119.5	5.5	4.0	1.5	122.7	6.0
Oct-99	119.0	4.6	4.4	0.2	117.7	5.3	3.3	2.0	119.0	5.7
Nov-99	120.3	4.8	4.5	0.3	118.6	5.1	3.1	2.0	120.1	5.3
Dec-99	123.7	6.0	4.2	1.8	125.2	6.4	3.5	2.9	129.0	7.2
Jan-00	121.8	5.8	4.5	1.3	123.7	6.7	4.7	2.0	126.9	7.6
Feb-00	122.1	4.6	5.1	-0.5	126.5	5.8	4.8	1.0	130.3	6.2	5.0	1.2
Mar-00	126.1	4.5	5.1	-0.6	130.2	5.7	4.3	1.4	136.0	6.4	4.6	1.8
Apr-00	122.8	4.5	4.6	-0.1	122.4	4.4	4.0	0.4	124.6	4.4	4.1	0.3
May-00	122.7	5.2	4.7	0.5	122.3	3.4	4.5	-1.1	124.2	3.4	5.1	-1.7
Jun-00	122.4	4.5	4.7	-0.2	123.5	3.2	4.2	-1.0	125.5	3.2	4.8	-1.6
Jul-00	124.0	4.4	4.4	0.0	123.5	3.3	4.1	-0.8	125.7	3.3	4.2	-0.9
Aug-00	121.8	4.1	3.7	0.4	122.8	4.3	4.5	-0.2	124.5	4.6	4.9	-0.3
Sep-00	122.6	4.4	3.8	0.6	121.9	3.9	4.3	-0.4	123.5	4.1	4.6	-0.5
Oct-00	123.9	4.2	3.7	0.5	122.3	3.9	4.7	-0.8	124.0	4.2	5.2	-1.0
Nov-00	125.8	4.6	4.0	0.6	123.4	4.0	4.8	-0.8	125.1	4.2	5.2	-1.0
Dec-00	129.6	4.8	4.2	0.6	131.6	5.1	4.7	0.4	135.7	5.3	5.0	0.3
Jan-01 (r)	126.3	3.7	4.5	-0.8	129.4	4.6	3.5	1.1	133.2	5.0	3.4	1.6
Feb-01 (p)	128.0	4.9	4.5	0.4	134.6	6.4	3.9	2.5	140.2	7.6	4.3	3.3

¹As a result of a change in the survey questionnaire the series excluding bonuses, and thus the bonus effects series, are subject to a discontinuity between January and February 1999. See the article in the May 1999 edition of *Labour Market Trends* for further details.

Source: Monthly Wages and Salaries Survey
Average Earnings Index enquiries: 01633 819002

A more detailed level of industry breakdown can be obtained by contacting the NS DataBank service: 0207 533 5674

17 Output per filled job and unit wage costs

UK - seasonally adjusted

	Whole Economy				Manufacturing						
	Unit Wage Costs	Change on year (%)	Output per filled job	Change on year (%)	Unit Wage Costs	Change on year (%)	3 months on 3 months a year ago		Output per filled job	Change on year (%)	3 mths ending compared to a year ago
							LNKX	LNNQ			
1998 Q4	LNKX	LOJE	LNNN	LNNP	Feb-99	LNNQ	LOUW	LOJF	LNNX	LNNU	LOUV
	109.6	3.7	104.6	1.1	114.8	2.7	2.5		101.2	0.7	1.0
1999 Q3	111.5	3.0	106.1	1.5	Nov-99	112.4	-1.6	-1.4	107.1	6.3	5.9
					Dec-99	113.3	-0.4	-1.0	107.0	6.1	6.0
					Jan-00	114.3	0.1	-0.6	106.8	5.4	5.9
1999 Q4	112.7	2.8	106.6	1.8	Feb-00	113.5	-1.1	-0.5	107.1	5.8	5.8
					Mar-00	112.6	-1.2	-0.7	108.3	5.7	5.7
					Apr-00	113.2	-0.7	-1.0	108.0	5.2	5.6
2000 Q1	114.1	3.0	107.0	2.0	May-00	113.0	-0.3	-0.7	108.9	5.4	5.4
					Jun-00	112.4	-1.4	-0.8	109.5	6.0	5.5
					Jul-00	112.3	-0.3	-0.7	110.0	4.7	5.4
2000 Q2	113.0	1.5	107.9	2.5	Aug-00	111.2	-1.2	-1.0	111.5	5.4	5.4
					Sep-00	111.6	-0.6	-0.7	111.8	5.1	5.1
					Oct-00	111.5	-1.4	-1.1	112.3	5.7	5.4
2000 Q3	113.4	1.6	108.9	2.6	Nov-00	111.5	-0.8	-0.9	113.1	5.6	5.5
					Dec-00	111.7	-1.4	-1.2	113.8	6.3	5.9
					Jan-01	112.0	-2.0	-1.4	113.0	5.9	5.9
2000 Q4	114.6	1.7	109.0	2.3	Feb-01(p)	112.4	-1.0	-1.4	113.5	6.0	6.0

SUB-NATIONAL AND INTERNATIONAL SUMMARY

18(1) Regional labour market summary

Thousands, seasonally adjusted

Labour Force Survey (December 2000 to February 2001)

	Labour Force Survey (December 2000 to February 2001)																						
	Total aged 16 & over					Economically active						LFS Employment						ILO Unemployment					
	Total		Men		Women	Total		Men		Women	Total		Men		Women	Total		Men		Women			
	Level	Rate (%)*	Level	Rate (%)*	Level	Level	Rate (%)*	Level	Rate (%)*	Level	Rate (%)*	Level	Rate (%)**	Level	Rate (%)**	Level	Rate (%)**	Level	Rate (%)**				
1	2	3	4	5	6	7	8	9	10	11	12	13	14	15	16	17	18	19					
North East	2,032	1,194	74.5	666	528	1,099	68.5	602	72.7	497	63.8	95	8.0	64	9.7	31	5.9						
North West	5,365	3,298	76.9	1,819	1,479	3,125	72.8	1,714	76.8	1,411	68.4	173	5.2	106	5.8	68	4.6						
Yorkshire & the Humber	3,965	2,492	78.9	1,387	1,105	2,353	74.4	1,295	78.3	1,058	70.0	139	5.6	92	6.6	47	4.2						
East Midlands	3,323	2,110	79.7	1,182	928	2,012	76.0	1,124	81.4	888	70.0	97	4.6	58	4.9	40	4.3						
West Midlands	4,177	2,619	78.5	1,477	1,142	2,461	73.7	1,377	79.0	1,084	67.7	157	6.0	99	6.7	58	5.1						
East	4,290	2,852	83.1	1,574	1,278	2,757	80.2	1,519	85.5	1,238	74.3	96	3.4	55	3.5	41	3.2						
London	5,701	3,671	76.4	2,060	1,611	3,420	71.1	1,908	76.9	1,512	64.7	252	6.9	152	7.4	99	6.2						
South East	6,369	4,263	83.1	2,340	1,923	4,117	80.3	2,255	85.2	1,862	74.8	146	3.4	85	3.6	61	3.2						
South West	3,925	2,499	82.3	1,372	1,126	2,401	79.0	1,316	83.4	1,085	74.1	98	3.9	56	4.1	41	3.7						
England	39,146	24,998	79.5	13,878	11,120	23,745	75.4	13,109	80.3	10,635	70.1	1,253	5.0	769	5.5	485	4.4						
Wales	2,313	1,339	73.9	747	591	1,255	69.1	691	73.2	564	64.6	83	6.2	57	7.6	27	4.6						
Scotland	4,040	2,541	78.6	1,380	1,161	2,388	73.8	1,287	77.7	1,102	69.7	152	6.0	93	6.8	59	5.1						
Great Britain	45,500	28,878	79.1	16,005	12,872	27,388	75.0	15,087	79.7	12,302	69.8	1,489	5.2	919	5.7	571	4.4						
N Ireland +	1,269	745	70.9	428	317	699	66.4	397	73.7	302	58.7	46	6.1	30	7.1	15	4.9						
United Kingdom	46,769	29,623	78.9	16,433	13,190	28,088	74.7	15,484	79.6	12,604	69.4	1,535	5.2	949	5.8	586	4.4						

Change on quarter: **

	Labour Force Survey (December 2000 to February 2001)																						
	Total aged 16 & over					Economically active						LFS Employment						ILO Unemployment					
	Total		Men		Women	Total		Men		Women	Total		Men		Women	Total		Men		Women			
	Level	Rate (%)*	Level	Rate (%)*	Level	Level	Rate (%)*	Level	Rate (%)*	Level	Rate (%)*	Level	Rate (%)**	Level	Rate (%)**	Level	Rate (%)**	Level	Rate (%)**				
0	1	2	3	4	5	6	7	8	9	10	11	12	13	14	15	16	17	18	19				
North East	0	0	0.1	0	0	0	0.1	-3	-0.2	3	0.4	1	0.0	3	0.4	-2	-0.5						
North West	1	36	0.7	6	30	42	0.9	11	0.5	31	1.5	-6	-0.2	-5	-0.3	-1	-0.2						
Yorkshire & the Humber	2	-3	0.0	9	-11	12	0.5	10	0.6	2	0.3	-14	-0.6	-1	-0.1	-13	-1.1						
East Midlands	5	-4	-0.2	-2	-1	0	-0.1	0	-0.1	-1	-0.1	-3	-0.2	-3	-0.2	-1	-0.1						
West Midlands	2	14	0.4	12	1	16	0.4	15	0.9	1	-0.1	-3	-0.1	-3	-0.2	0	0.0						
East	8	24	0.5	12	12	30	0.7	19	0.9	11	0.4	-6	-0.2	-7	-0.5	1	0.1						
London	19	17	0.2	9	9	22	0.3	6	0.0	16	0.6	-5	-0.2	3	0.1	-8	-0.5						
South East	13	25	0.3	5	20	14	0.1	-6	-0.4	20	0.6	11	0.2	11	0.5	0	-0.1						
South West	7	-16	-0.6	-6	-10	-11	-0.4	-3	-0.3	-8	-0.5	-4	-0.1	-2	-0.2	-2	-0.1						
England	58	94	0.2	45	49	124	0.3	49	0.2	75	0.4	-30	-0.1	-4	-0.1	-26	-0.3						
Wales	2	-5	-0.3	0	-6	-2	-0.1	1	-0.1	-3	-0.1	-4	-0.2	0	-0.1	-3	-0.5						
Scotland	1	-17	-0.5	2	-20	-7	-0.2	3	0.3	-10	-0.7	-10	-0.4	-1	-0.1	-9	-0.7						
Great Britain	61	71	0.1	47	24	115	0.2	53	0.2	62	0.3	-44	-0.2	-6	-0.1	-38	-0.3						
N Ireland +	2	0	-0.4	8	-8	-2	-0.6	5	0.6	-7	-1.8	2	0.3	3	0.6	-1	-0.2						
United Kingdom	63	71	0.1	55	16	113	0.2	58	0.2	55	0.2	-42	-0.2	-3	0.0	-39	-0.3						

Change on year:

	Labour Force Survey (December 2000 to February 2001)																						
	Total aged 16 & over					Economically active						LFS Employment						ILO Unemployment					
	Total		Men		Women	Total		Men		Women	Total		Men		Women	Total		Men		Women			
	Level	Rate (%)*	Level	Rate (%)*	Level	Level	Rate (%)*	Level	Rate (%)*	Level	Rate (%)*	Level	Rate (%)**	Level	Rate (%)**	Level	Rate (%)**	Level	Rate (%)**				
-1	2	3	4	5	6	7	8	9	10	11	12	13	14	15	16	17	18	19					
North East	-1	5	0.5	13	-8	12	0.9	15	2.1	-3	-0.3	-7	-0.6	-2	-0.5	-5	-0.8						
North West	3	-6	-0.3	-37	31	29	0.6	-5	-0.4	34	1.7	-35	-1.1	-32	-1.6	-3	-0.3						
Yorkshire & the Humber	9	25	0.6	9	16	42	1.2	15	0.7	27	1.7	-18	-0.8	-6	-0.5	-11	-1.1						
East Midlands	19	-23	-1.2	-3	-20	-9	-0.7	4	-0.2	-13	-1.2	-13	-0.6	-6	-0.5	-7	-0.6						
West Midlands	7	-2	0.0	19	-20	4	0.1	14	0.6	-10	-0.4	-6	-0.2	5	0.3	-11	-0.8						
East	28	78	1.6	35	43	91	2.0	44	1.8	47	2.3	-13	-0.6	-9	-0.7	-4	-0.5						
London	66	7	-0.8	21	-14	25	-0.4	25	-0.4	-4	-0.4	-17	-0.5	-4	-0.3	-14	-0.8						
South East	50	16	-0.3	-5	21	22	-0.1	-10	-0.7	32	0.5	-7	-0.2	5	0.2	-11	-0.6						
South West	27	11	0.1	7	3	17	0.3	11	0.2	6	0.5	-7	-0.3	-4	-0.3	-3	-0.3						
England	207	111	0.0	59	51	234	0.4	113	0.2	121	0.6	-123	-0.5	-54	-0.4	-69	-0.6						
Wales	7	1	-0.7	6	-5	7	-0.3	5	0.0	2	-0.6	-6	-0.4	1	0.1	-7	-1.1						
Scotland	4	17	0.7	8	8	55	1.8	30	2.2	25	1.4	-39	-1.6	-22	-1.6	-17	-1.5						
Great Britain	218	129	0.0	74	55	296	0.5	148	0.4	148	0.6	-168	-0.6	-75	-0.5	-93	-0.7						
N Ireland +	7	1	-0.7	7	-5	7	-0.1	9	0.9	-2	-1.2	-6	-0.8	-2	-0.7	-3	-1.0						
United Kingdom	225	130	0.0	80	50	304	0.5	157	0.4	146	0.5	-174	-0.6	-77	-0.5	-96	-0.8						

Relationship between columns: 2= 4+5 = 6+12; 6= 8+10; 12= 14+16.

Data source: Labour Force Survey

* Denominator = all persons of working age.

Labour Market Statistics Helpline 020-7533 6094

** Denominator = Total economically active.

The Labour Force Survey is a survey of the population in private households, student halls of residence and NHS accommodation.

+ Estimates for Northern Ireland are presented not seasonally adjusted. The quarterly series starting in 1995 provides insufficient data to do this reliably. Quarterly changes are therefore not shown.

++ Quarter to quarter changes at regional level are particularly subject to sampling variability and should be interpreted in the context of changes over several quarters rather than in isolation.

SUB-NATIONAL AND INTERNATIONAL SUMMARY

18(2) Regional labour market summary

Thousands, seasonally adjusted

	Employer surveys			Benefits Agency administrative system						Employment Service Administrative System		
	Civilian workforce jobs (Dec 2000); not seasonally adjusted			Claimant count (March 2001)						Jobcentre vacancies* (March 2001)		
	Total	Men	Women	Total		Men		Women		Notified vacancies	Unfilled vacancies	Outflow of vacancies
	Level	Level	Level	Level	Rate (%) ⁺	Level	Rate (%) ⁺	Level	Rate (%) ⁺			
1	2	3	4	5	6	7	8	9	10	11	12	
North East	1,079	548	531	64.7	5.6	51.8	8.4	12.9	2.4	11.9	25.7	9.8
North West	3,171	1,651	1,520	127.0	3.8	99.6	5.6	27.4	1.8	28.1	46.5	26.4
Yorkshire & the Humber	2,324	1,222	1,103	98.8	4.1	76.5	5.8	22.3	2.0	21.1	39.4	20.3
East Midlands	1,928	1,022	906	65.1	3.2	48.6	4.5	16.5	1.8	14.6	25.5	13.6
West Midlands	2,555	1,367	1,188	103.2	3.9	78.9	5.4	24.3	2.0	22.5	40.2	21.5
East	2,527	1,369	1,159	55.7	2.1	41.2	2.9	14.5	1.2	17.2	25.2	16.5
London	4,558	2,447	2,111	156.7	3.4	115.8	4.6	40.9	1.9	24.8	36.7	24.6
South East	4,161	2,210	1,951	68.0	1.6	51.5	2.2	16.5	0.8	26.4	48.5	25.8
South West	2,354	1,251	1,103	52.7	2.1	39.3	2.9	13.4	1.2	22.6	36.8	23.1
England	24,658	13,085	11,572	792.0	3.1	603.3	4.3	188.7	1.6	189.1	324.5	181.6
Wales	1,236	634	602	54.7	4.2	42.1	6.1	12.6	2.1	13.6	20.2	12.8
Scotland	2,389	1,266	1,123	108.6	4.3	84.5	6.2	24.1	2.1	27.0	45.7	26.3
Great Britain	28,283	14,986	13,297	955.2	3.3	729.9	4.6	225.3	1.7	229.7	390.3	220.8
N Ireland	746	404	343	40.0	5.1	30.3	6.9	9.7	2.8	N/A	N/A	N/A
United Kingdom	29,030	15,389	13,640	995.2	3.3	760.2	4.6	235.0	1.7	233.1	399.2	224.2

Changes on period (period specified below):

	Employer surveys			Benefits Agency administrative system						Employment Service Administrative System		
	Civilian workforce jobs (Change on Sep 2000); not seasonally adjusted			Claimant count (Change on February 2001)						Jobcentre vacancies* (Change on February 2001)		
	Total	Men	Women	Total		Men		Women		Notified vacancies	Unfilled vacancies	Outflow of vacancies
	Level	Level	Level	Level	Rate (%) ⁺	Level	Rate (%) ⁺	Level	Rate (%) ⁺			
1	2	3	4	5	6	7	8	9	10	11	12	
North East	15	4	11	-0.6	-0.1	-0.5	-0.1	-0.1	0.0	0.6	1.9	-0.5
North West	1	-11	12	-0.1	0.0	-0.1	0.0	0.0	0.0	-0.3	1.6	-1.4
Yorkshire & the Humber	17	3	14	-0.4	0.0	-0.3	0.0	-0.1	0.0	0.4	0.6	-0.7
East Midlands	11	-1	12	-0.7	0.0	-0.5	0.0	-0.2	0.0	0.0	0.8	0.0
West Midlands	9	0	9	-0.6	0.0	-0.4	0.0	-0.2	0.0	0.2	1.2	-0.6
East	5	9	-3	-0.8	0.0	-0.5	0.0	-0.3	0.0	0.3	0.3	-0.1
London	62	42	21	-0.5	0.0	-0.3	0.0	-0.2	0.0	0.7	0.3	-2.4
South East	21	5	16	-0.4	0.0	-0.3	0.0	-0.1	0.0	-0.7	0.5	-0.4
South West	-8	4	-12	-0.6	0.0	-0.4	0.0	-0.2	0.0	0.4	-0.5	-0.9
England	133	54	79	-4.6	0.0	-3.3	0.0	-1.3	0.0	1.6	6.6	-6.8
Wales	-1	-6	5	-0.2	0.0	-0.2	0.0	0.0	0.0	-0.1	0.6	-1.1
Scotland	11	4	7	-0.3	0.0	-0.2	0.0	-0.1	0.0	-1.7	0.4	-5.6
Great Britain	143	52	91	-5.1	0.0	-3.6	0.0	-1.5	0.0	-0.1	7.6	-13.4
N Ireland	10	3	7	-0.4	-0.1	-0.3	-0.1	-0.1	0.0	N/A	N/A	N/A
United Kingdom	153	55	98	-5.5	0.0	-3.9	0.0	-1.6	0.0	-0.1	7.6	-13.4

Relationship between columns: 1= 2+3; 4= 6+8.

⁺ Denominator = Claimant count + Workforce jobs.

* The vacancy data for Northern Ireland have been suspended since March 1999. See special background notes.

Labour Market Statistics Helpline 020-7533 6094

SUB-NATIONAL AND INTERNATIONAL SUMMARY

19 International comparisons

	Latest period	Employment rate (%)	Change on year %		Latest Period	ILO unemployment rate (%)	Change on period %	Change on year %
Austria	2000	70.3	0.0	Austria	Feb-01	3.7	0.0	-0.3
Belgium	2000	63.2	2.0	Belgium	Feb-01	6.8	0.0	-0.6
Denmark	2000	78.3	0.2	Denmark	Feb-01	4.7	0.1	0.0
Finland	2000	70.2	0.8	Finland	Feb-01	9.2	-0.1	-1.0
France	2000	63.7	1.3	France	Feb-01	8.6	-0.1	-1.6
Germany	1999	67.7	1.2	Germany	Feb-01	7.8	0.0	-0.4
Greece	1999	57.3	-0.1	Greece	Jun-99	11.7	0.0	0.9
Ireland	1999	63.8	2.9	Ireland	Feb-01	3.8	0.0	-0.9
Italy	2000	55.5	0.9	Italy	Jan-01	9.9	-0.1	-1.2
Luxembourg	1999	63.3	1.1	Luxembourg	Feb-01	2.0	-0.1	-0.2
Netherlands	1999	73.0	1.6	Netherlands	Jan-01	2.6	-0.2	-0.2
Portugal	2000	69.5	0.6	Portugal	Feb-01	4.5	0.1	0.2
Spain	2000	56.4	2.4	Spain	Feb-01	13.7	0.0	-1.3
Sweden	2000	72.3	0.7	Sweden	Feb-01	5.3	-0.1	-1.3
United Kingdom	Dec-Feb 2001	74.7	0.5	United Kingdom	Dec-Feb 2001	5.2	-0.2	-0.6
EU11	1999	62.3	1.3	EU 11	Feb-01	8.7	0.0	-0.7
EU15	1999	64.2	1.1	EU 15	Feb-01	8.0	0.0	-0.7
United states	1999	73.9	0.1	United States	Feb-01	4.2	0.0	0.1
Japan	1999	68.9	-0.6	Japan	Feb-01	4.7	-0.1	-0.1

ILO unemployment rates for the latest month for countries other than UK, Finland and Sweden are extrapolated using administrative data.

Data source: UK LFS, Eurostat and OECD.

Labour Market Statistics Helpline 020-7533 6094

The UK employment rate is seasonally adjusted. All other employment rates are not seasonally adjusted. Finnish and Swedish ILO unemployment rates are trend estimates. All other unemployment rates are seasonally adjusted.

Employment rates for the **UK** are for those aged **16 to 59/64**, for **EU countries 15 to 59/64**, for **US 16 to 64**, and **Japan 15 to 64**.

OTHER LABOUR MARKET STATISTICS

20 Jobcentre vacancies*

United Kingdom (thousands) seasonally adjusted

	Vacancies notified		Stock of unfilled vacancies		Vacancy outflow		Of which: Placings	
	Level	Change on month	Level	Change on month	Level	Change on month	Level	Change on month
	DRYW		DPCB		DRZL		DTQR	
1999 Mar	221.8	-4.4	298.5	-11.2	220.9	-6.9	116.7	-5.8
2000 Mar	228.8	2.7	344.6	2.9	224.1	0.5	115.7	-0.7
Apr	225.3	-3.5	355.7	11.1	218.9	-5.2	111.4	-4.3
May	213.2	-12.1	354.3	-1.4	213.9	-5.0	108.1	-3.3
Jun	222.3	9.1	357.2	2.9	218.6	4.7	109.5	1.4
Jul	220.6	-1.7	362.9	5.7	214.6	-4.0	107.3	-2.2
Aug	219.0	-1.6	361.6	-1.3	219.2	4.6	109.9	2.6
Sep	225.6	6.6	365.6	4.0	221.8	2.6	111.3	1.4
Oct	221.3	-4.3	364.5	-1.1	217.1	-4.7	109.9	-1.4
Nov	220.2	-1.1	374.3	9.8	211.8	-5.3	107.1	-2.8
Dec	222.8	2.6	376.5	2.2	220.4	8.6	108.4	1.3
2001 Jan	224.9	2.1	395.7	19.2	212.1	-8.3	110.2	1.8
Feb	233.2	8.3	391.6	-4.1	237.6	25.5	108.6	-1.6
Mar (p)	233.1	-0.1	399.2	7.6	224.2	-13.4	108.3	-0.3

The vacancy data for Northern Ireland have been suspended since March 1999 and the figures between September and October 1999 for Great Britain have been affected by corrections by the Employment Service to the recorded stock of unfilled vacancies. There has also been a minor change in the definition of notified vacancies between April and May 2000. See special background notes.

Data source: Employment Service administrative system
Labour Market Statistics Helpline 020-7533 6094

OTHER LABOUR MARKET STATISTICS

21 Labour disputes

United Kingdom,
not seasonally
adjusted

	Working days lost (thousands)	Number of stoppages	Workers involved (thousands)
	BBFW		
1999 Jan	27	22	15
2000 Feb	6	13	7
Mar	18	23	7
Apr	11	20	5
May	14	24	9
Jun	7	10	3
Jul	36	28	18
Aug	115	26	111
Sep	93	19	89 (r)
Oct	14	29 (r)	8
Nov	115 (r)	30 (r)	88
Dec	59	26 (r)	20 (r)
(p) 2001 Jan	52 (r)	23 (r)	23 (r)
Feb	34	29	23
Cumulative totals 12 months to:			
Feb-01 (p)	567	222	194
Feb-00	223	202	133

Data source: Employers

OTHER LABOUR MARKET STATISTICS

22 Educational status, economic activity & inactivity of young people

December to February 2001

United Kingdom (thousands) not seasonally adjusted

	Economically active			Total in employment			ILO unemployed			Economically inactive		
	Total	Not in FTE*	In FTE*	Total	Not in FTE*	In FTE*	Total	Not in FTE*	In FTE*	Total	Not in FTE*	In FTE*
	1	2	3	4	5	6	7	8	9	10	11	12

Levels

People												
16-17	807	307	500	664	234	430	143	73	70	647	57	590
18-24	3,666	3,065	600	3,279	2,741	538	387	324	63	1,307	506	802
all under 25	4,472	3,372	1,100	3,943	2,975	968	529	397	133	1,954	563	1,391
Men												
16-17	414	183	231	328	138	190	86	45	42	330	28	301
18-24	1,990	1,719	271	1,752	1,512	240	239	207	32	546	129	417
all under 25	2,405	1,902	503	2,080	1,650	429	325	252	73	875	157	718
Women												
16-17	392	124	269	336	96	240	56	28	28	317	28	288
18-24	1,675	1,346	329	1,527	1,229	298	148	117	31	762	377	385
all under 25	2,068	1,470	598	1,863	1,325	538	204	144	60	1,079	405	673

Changes on year

People												
16-17	-18	-6	-11	-5	-9	5	-13	3	-16	30	-1	31
18-24	-15	-41	25	-7	-35	27	-8	-6	-2	60	12	49
all under 25	-33	-47	14	-12	-44	32	-21	-3	-18	90	11	80
Men												
16-17	-1	-2	1	-5	-8	3	4	6	-1	7	2	5
18-24	2	-3	5	-3	-6	3	4	3	2	22	11	11
all under 25	1	-5	6	-8	-13	6	9	8	0	30	13	17
Women												
16-17	-17	-5	-13	0	-2	2	-18	-3	-15	23	-3	26
18-24	-17	-38	21	-5	-29	24	-12	-8	-4	38	0	37
all under 25	-34	-42	8	-4	-31	27	-30	-11	-19	61	-2	63

Rates(%) **

People												
16-17	55.5	84.4	45.9	45.7	64.4	39.5	17.7	23.7	14.0	44.5	15.6	54.1
18-24	73.7	85.8	42.8	65.9	76.8	38.3	10.6	10.6	10.5	26.3	14.2	57.2
all under 25	69.6	85.7	44.2	61.4	75.6	38.8	11.8	11.8	12.1	30.4	14.3	55.8
Men												
16-17	55.7	86.6	43.4	44.1	65.3	35.6	20.9	24.5	18.0	44.3	13.4	56.6
18-24	78.5	93.0	39.4	69.1	81.8	34.8	12.0	12.1	11.7	21.5	7.0	60.6
all under 25	73.3	92.4	41.2	63.4	80.1	35.2	13.5	13.3	14.6	26.7	7.6	58.8
Women												
16-17	55.3	81.3	48.2	47.4	63.1	43.1	14.3	22.4	10.6	44.7	18.7	51.8
18-24	68.7	78.1	46.1	62.7	71.4	41.7	8.8	8.7	9.5	31.3	21.9	53.9
all under 25	65.7	78.4	47.0	59.2	70.7	42.3	9.9	9.8	10.0	34.3	21.6	53.0

Changes on year

People												
16-17	-1.7	-0.1	-1.9	-0.7	-1.3	-0.3	-1.2	1.5	-2.9	1.7	0.1	1.9
18-24	-1.0	-0.4	-0.5	-0.8	-0.3	-0.1	-0.2	0.0	-0.8	1.0	0.4	0.5
all under 25	-1.1	-0.4	-1.1	-0.7	-0.4	-0.2	-0.4	0.1	-1.8	1.1	0.4	1.1
Men												
16-17	-0.6	-0.9	-0.3	-1.1	-3.7	0.1	1.1	3.4	-0.7	0.6	0.9	0.3
18-24	-0.7	-0.6	-0.2	-0.8	-0.7	-0.4	0.2	0.2	0.5	0.7	0.6	0.2
all under 25	-0.7	-0.6	-0.3	-0.8	-1.0	-0.2	0.4	0.5	-0.1	0.7	0.6	0.3
Women												
16-17	-2.9	0.9	-3.5	-0.4	1.8	-0.7	-3.7	-1.4	-4.8	2.9	-0.9	3.5
18-24	-1.3	-0.5	-0.9	-0.7	-0.2	0.0	-0.6	-0.4	-1.9	1.3	0.5	0.9
all under 25	-1.7	-0.4	-2.1	-0.7	0.0	-0.3	-1.3	-0.5	-3.3	1.7	0.4	2.1

Relationship between columns: 1=2+3; 4=5+6; 7=8+9; 10=11+12

Source: Labour Force Survey

* Full Time Education

Labour Market Statistics Helpline 020-7533 6094

** Denominator=all persons in the relevant age group for economically active, total in employment and economically inactive; economically active for ILO unemployment.

This table is not seasonally adjusted because of the discontinuity between the December 1996 February 1997 and March - May 1997 quarters

The Labour Force Survey is a survey of the population of private households, student halls of residence and NHS accommodation