

17 May 2006

**Coverage**  
Scotland  
**Theme**  
Labour Market

## Labour market statistics May 2006: Scotland

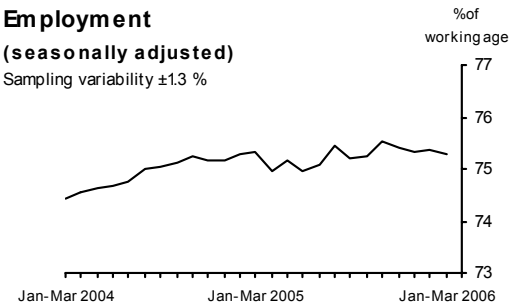
**All data are not seasonally adjusted unless otherwise specified**

Labour Force Survey data for Scotland indicate that the trend in the employment rate is close to flat, and the rate in the latest period is not significantly different from a year ago. The trend in the unemployment rate is decreasing, but the rate in the latest period is not significantly different from a year ago.

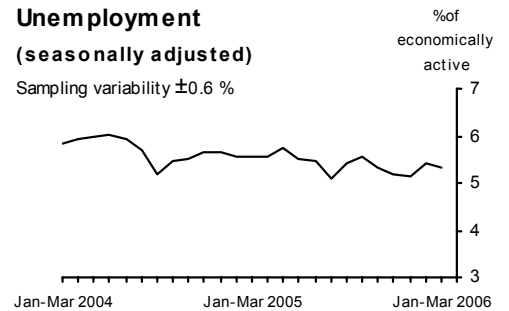
Data for the three months to March 2006 show the seasonally adjusted employment rate at 75.3 per cent, down 0.1 percentage point on a year earlier. The seasonally adjusted unemployment rate was 5.3 per cent, down 0.2 percentage points on a year earlier.

The claimant count was up in the year to April 2006.

**Employment**  
(seasonally adjusted)  
Sampling variability  $\pm 1.3$  %



**Unemployment**  
(seasonally adjusted)  
Sampling variability  $\pm 0.6$  %



**Data in this table are seasonally adjusted unless otherwise stated**

		Level (thousands)	Rate (%)	Change on year (level)	Sampling variability (thousands)	Change on year (rate)	Sampling variability (%)
Employment*	Jan-Mar 06	2,464	75.3	3	$\pm 64$	-0.1	$\pm 1.6$
Unemployment**	Jan-Mar 06	139	5.3	-6	$\pm 22$	-0.2	$\pm 0.9$
Economically active*	Jan-Mar 06	2,603	79.6	-4	$\pm 62$	-0.3	$\pm 1.5$
Economically inactive+ of which:	Jan-Mar 06	649	20.4	12	$\pm 60$	0.3	$\pm 1.5$
Not wanting a job+	Jan-Mar 06	444		-10	$\pm 52$		
Wanting a job+	Jan-Mar 06	204		22	$\pm 36$		
Civilian workforce jobs (not seasonally adjusted)	Dec 2005	2,615		29	..		
Claimant count	Apr 2006	88.0	3.3 <sup>++</sup>	1.9		0.1	

See note on page 9 on sampling variability.

\* Levels are for those aged 16 and over, rates are for those of working age (16-59/64).

\*\* Levels and rates are for those aged 16 and over. Rate is as a proportion of economically active.

+ Levels and rates are for those of working age.

++ Denominator = claimant count + workforce jobs. For regional claimant count proportions, using resident working age populations see Tables 16 and 17. See background note 5.

.. Not available.

### New this month:

January to March 2006 data: latest three-month average LFS results;

April 2006 data: claimant count.

Issued by  
National Statistics  
1 Drummond Gate  
London SW1V 2QQ

Telephone  
Press Office 020 7533 5714  
Helpline 020 7533 6094  
Public enquiries 0845 601 3034

#### Statisticians

Regional and  
local data Nick Maine  
020 7533 6130

Regional and  
national Labour  
Force Survey Peter Alstrup  
020 7533 6110

Claimant count  
and vacancies Mick McDonough  
020 7533 5236

Employee jobs Nick Barford  
01633 812072

Internet  
[www.statistics.gov.uk](http://www.statistics.gov.uk)

Email  
[labour.market@ons.gov.uk](mailto:labour.market@ons.gov.uk)

Next publication date  
14 June 2006

All data are not seasonally adjusted unless otherwise specified



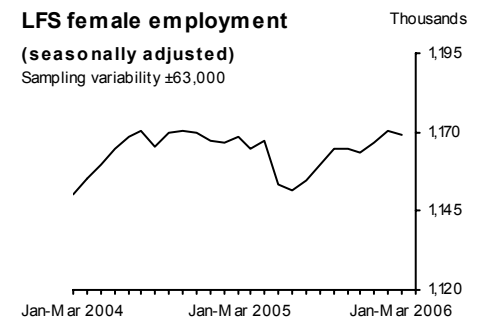
**Employment (tables 1 to 6)**

The seasonally adjusted LFS estimate of employment in Scotland was 75.3 per cent in the January to March 2006 period, down 0.1 percentage point on the same period a year earlier. The employment level was 2.46 million in the January to March 2006 period, up 3,000 on the same period a year earlier.



LFS estimates indicate a decrease in the number of employees and an increase in the number of self employed over the past year.

LFS estimates suggest an increase in the number of full-time workers and a decrease in the number of part-time workers over the past year.



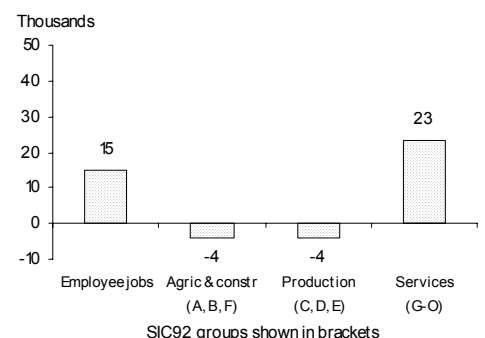
Seasonally adjusted employee jobs figures were down 6,000 in the quarter to December 2005.

Not seasonally adjusted employee jobs were up 15,000 in the year to December 2005. This was mainly due to a rise in service sector jobs.

**Unemployment (table 1)**

The seasonally adjusted unemployment rate in Scotland was 5.3 per cent in the January to March 2006 period, down 0.2 percentage points on the same period a year earlier. The rates for men and women in January to March 2006 were 5.8 per cent and 4.8 per cent respectively.

**Employee jobs by industry**  
Change on year from December 2004

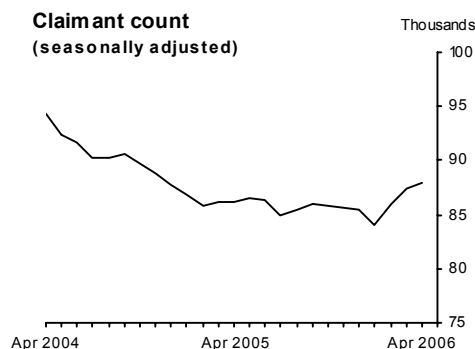


All data are not seasonally adjusted unless otherwise specified



**Claimant count (tables 7 and 8)**

The seasonally adjusted claimant count rate in April 2006 was 3.3 per cent, unchanged from March 2006, and up 0.1 percentage point since April 2005. The seasonally adjusted number of claimants in April 2006 was 88,000, up 500 on March 2006, and up 1,900 since April 2005.



**Economically active (tables 1 and 9)**

The seasonally adjusted LFS estimate of economically active people in Scotland was 2.60 million in the January to March 2006 period.

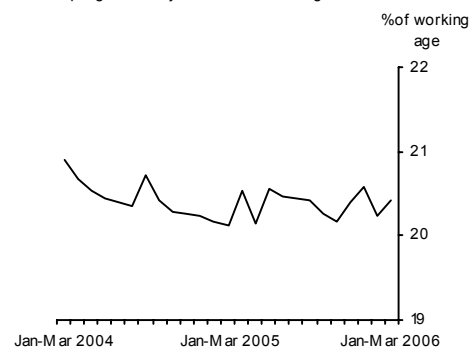
**Economically inactive (tables 1, 10 and 11)**

The seasonally adjusted working age economic inactivity rate in Scotland in January to March 2006 was 20.4 per cent, up 0.3 percentage point from a year earlier.

The level of economically inactive people in the January to March 2006 period was 1.51 million, with 649,000 of these of working age, up 12,000 on the same period a year earlier.

**Economic inactivity (working age) (seasonally adjusted)**

Sampling variability of total annual change  $\pm 1.2\%$

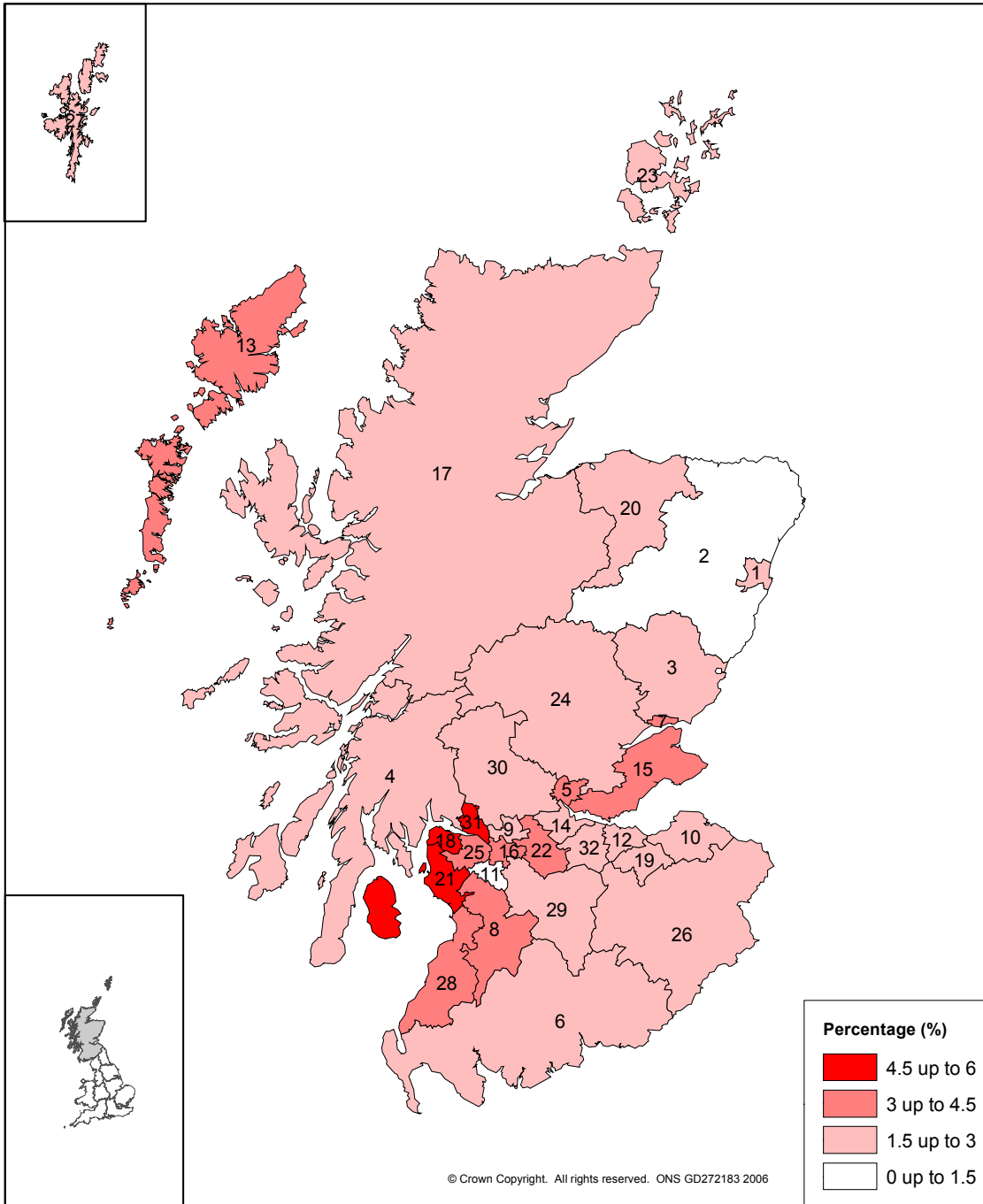


**Local area data (table 16)**

The claimant count as a proportion of the resident working age population was lowest in Aberdeenshire, at 1.1 per cent. It was highest in North Ayrshire, at 4.9 per cent.

All data are not seasonally adjusted unless otherwise specified

Claimant count as a proportion of the resident working age population, by UA  
April 2006 - Scotland



1 Aberdeen City	1.7%	12 Edinburgh, City of	2.4%	23 Orkney Islands	1.7%
2 Aberdeenshire	1.1%	13 Eilean Siar	3.2%	24 Perth & Kinross	1.9%
3 Angus	2.9%	14 Falkirk	2.8%	25 Renfrewshire	3.0%
4 Argyll & Bute	2.7%	15 Fife	3.7%	26 Scottish Borders	1.8%
5 Clackmannanshire	3.3%	16 Glasgow City	4.3%	27 Shetland Islands	2.0%
6 Dumfries & Galloway	2.7%	17 Highland	2.3%	28 South Ayrshire	3.3%
7 Dundee City	4.3%	18 Inverclyde	4.6%	29 South Lanarkshire	2.5%
8 East Ayrshire	4.1%	19 Midlothian	2.3%	30 Stirling	2.0%
9 East Dunbartonshire	1.8%	20 Moray	2.4%	31 West Dunbartonshire	4.6%
10 East Lothian	1.6%	21 North Ayrshire	4.9%	32 West Lothian	2.5%
11 East Renfrewshire	1.4%	22 North Lanarkshire	3.2%		

## **BASIC QUALITY INFORMATION**

### **Table 11 – Inactivity by Reason**

It has been identified that last month's data (December-February 2006) in table 11 contained minor errors. Specifically, the sum of the reasons for inactivity did not equal the working age inactivity total. The data in this release are correct. ONS apologises for any inconvenience caused.

### **REVISIONS**

There are no significant revisions this month to the data in this release.

### **KEY QUALITY ISSUES**

Detailed information about sampling variability and trends can be found in the following pages.

*Summary Quality Report:* A Summary Quality Report for this First Release can now be found on the website at:

<http://www.statistics.gov.uk/cci/article.asp?ID=1354>

*Common pitfalls in interpreting series:* Expectations of accuracy and reliability in sample surveys are often too high. Revisions and sampling variability are inevitable consequences of the trade off between timeliness, accuracy and the burden on respondents. Details of sampling variability are included elsewhere in this release.

Very few statistical revisions arise as a result of 'errors' in the popular sense of the word. All estimates, by definition, are subject to statistical 'error' but in this context the word refers to the uncertainty in any process or calculation that uses sampling, estimation or modelling. Most revisions reflect either the adoption of new statistical techniques or the incorporation of new information which allows the statistical error of previous estimates to be reduced. Only rarely are there avoidable 'errors' such as human or system failures, and such mistakes are made quite clear when they are discovered and corrected.

### **RELIABILITY**

One indication of the reliability of the key indicators in this release can be obtained by monitoring the size of revisions. The tables below record the size and pattern of revisions over the last five years. Please note that these indicators only report summary measures for revisions. The revised data itself may be subject to sampling or other sources of error. The ONS standard presentation is to show five years worth of revisions (i.e. 60 observations for a

All data are not seasonally adjusted unless otherwise specified



monthly series, 20 for a quarterly series). The first table covers Employment, Unemployment and Claimant Count data first published from May 2000 to April 2005. The second table covers Workforce Jobs data first published from January 2000 to April 2003. As more data are published a full five years worth of comparisons will be included for all series.

Spreadsheets giving these estimates and the calculations behind the averages in the table are available on the National Statistics website at:

<http://www.statistics.gov.uk/StatBase/Product.asp?vlnk=1944>

Key Indicator	Value in latest period	Number of observations (maximum 60)	Revisions between first publication and estimates one year later	
			Average over the last five years (mean revision)	Average over the last five years without regard to sign (average absolute revision)
Employment rate (%)	75.3	60	-0.04	0.14
Unemployment rate (%)	5.3	60	-0.01	0.07
Claimant count (000s)	88.0	60	0.02	0.47

Key Indicator	Value in latest period	Number of observations (maximum 20)	Revisions between first publication and estimates three years later	
			Average over the last five years (mean revision)	Average over the last five years without regard to sign (average absolute revision)
Workforce jobs (000s)	2,615	14	98.79*	98.79

A statistical test has been applied to the average revision to find out if the mean revision is significant. An asterisk (\*) indicates where the mean revision has been found to be statistically significantly different from zero. One major reason for the significant revisions to the workforce jobs estimates is the introduction of the Annual Business Inquiry, which replaced the old Annual Employment Survey in May 2001. This change was widely publicised beforehand.

Labour Market statistics are revised in line with our Revisions Policy which is published on the National Statistics website ([http://www.statistics.gov.uk/about/Methodology\\_by\\_theme/downloads/LM\\_revisionspolicy.pdf](http://www.statistics.gov.uk/about/Methodology_by_theme/downloads/LM_revisionspolicy.pdf)). More information about the revisions material in this release can also be found on the website (<http://www.statistics.gov.uk/cci/article.asp?ID=793>).

## THIS MONTH

### Labour Force Survey move to calendar quarters

An EU requirement exists whereby all member states must have a Labour Force Survey (LFS) based on calendar quarters. The UK LFS meets this from May 2006. The survey previously used seasonal quarters where, for example, the March-May months covered the spring quarter, June-August was summer and so forth. This has now changed to calendar quarters where micro data will be available for January-March (Q1), April-June (Q2), July-September (Q3) and October-December (Q4).

All data are not seasonally adjusted unless otherwise specified



Initially, a back series of calendar quarter micro datasets is available for the years 1997, 1999, 2001-2004, for Q2 and Q4, then for all quarters from 2005 onwards. ONS is planning to have all periods available when modernised systems are in place.

The affected tables in this release are tables 2, 3, 6(1), 6(2), 9, 10, and 11. The data for these tables are now entirely based on calendar quarter estimates.

We have retained the existing rolling monthly series based on seasonal quarter back data for each regional table 1 so as to preserve a longer time series for customers, but from January-March 2006, the rolling monthly estimates are based on calendar quarters. Retaining the seasonal quarters as the basis of the back series for the rolling monthly data has resulted in some minor discrepancies between these data and the calendar quarter back series.

An article on the impact and issues associated with the move to calendar quarters is available on the National Statistics website (<http://www.statistics.gov.uk/statbase/Product.asp?vlnk=14365>) and will appear in the June 2006 edition of *Labour Market Trends*.

## NEXT MONTH

There are no significant changes planned for next month's First Release.

## SPECIAL

### Population estimates in the LFS

On 20 October 2005 the Government Actuary's Department (GAD) published revised projections for 2005 and later years, based on the ONS population estimates published on 25 August 2005. These revised population estimates have this month been incorporated into LFS estimates back to July-September 2004.

The LFS estimates have been updated to include these new population estimates, using the interim reweighting adjustment methodology developed to take account of the 2001 Census results. Details of this methodology were published in the December 2002 edition of *Labour Market Trends*, which is available on the website:

[http://www.statistics.gov.uk/articles/labour\\_market\\_trends/Interim\\_ifs\\_estimates\\_Dec2002.pdf](http://www.statistics.gov.uk/articles/labour_market_trends/Interim_ifs_estimates_Dec2002.pdf)

It is planned that modernised LFS processing systems will be introduced that will enable future population data to be incorporated into revised LFS microdata to the same sort of timetable now achieved for the LFS time series by using the

All data are not seasonally adjusted unless otherwise specified



interim adjustment procedure. Further information about the timing of this innovation will be made available as soon as possible. Currently the aim is to complete this part of ONS's statistical modernisation work by mid 2007.

### **Labour Force Survey (Economic Inactivity)**

A review of LFS questions on reasons for inactivity has been carried out to assure interviewee responses are recorded effectively. Minor modifications in the questionnaire have led to changes in the way that people respond to inactivity, affecting mainly three series in Table 11 (Economic inactivity: reasons): 'Discouraged Workers', 'Retired' and 'Other.' We are seeing the effect of this in the data.

### **Tables 12 to 15: Local labour market indicators**

Tables 12 to 15 present a framework of labour market statistics for local areas. Data are presented as indicators of labour supply, labour demand and benefits. This structure adheres to the labour accounting system described in the Framework Review of Labour Market Statistics published on 5 August 2002 (see [http://www.statistics.gov.uk/methods\\_quality/quality\\_review/downloads/LMSFR\\_Final.doc](http://www.statistics.gov.uk/methods_quality/quality_review/downloads/LMSFR_Final.doc)).

These tables include data from the Annual Population Survey. These data are weighted to population estimates consistent with those released in February 2003, not the latest revised population estimates. Interim reweighting of monthly LFS estimates at national and regional level has been applied in order to take account of the revised population data. For the annual local area LFS data such an interim reweighting is not possible. (see background note 2).

### **Annual Population Survey data**

A technical problem arose in the compilation of the APS data for April 2004 to March 2005. Some records for respondents in Wales, Scotland and Northern Ireland, referring to January and February 2005, were omitted from the database.

For this reason the APS estimates of labour supply for local areas and country totals, in Tables 12 to 15, for the releases for Scotland and Wales refer to the period January to December 2004. (The claimant count data in these tables also refer to January to December 2004.) In addition, the United Kingdom labour supply totals, from the APS data, in Tables 12 to 15, for all regions in England, refer to January to December 2004.

ONS is working on correcting this APS database, and when it is reissued, the corrected estimates will be reinstated in the releases.

All data are not seasonally adjusted unless otherwise specified

### Sampling variability and trends

Some data in this release are based on statistical samples and, as such, are subject to sampling variability. If many samples were drawn, each would give a different result. The ranges shown for the LFS data in this release and in the following table represent '95 per cent confidence intervals'. It is expected that in 95 per cent of samples the range would contain the true value. For more information, see the *Guide to Labour Market Statistics Releases*.

#### January to March 2006

Thousands

	Levels			Quarterly changes			Annual changes		
	Lower limit	LFS estimate	Upper limit	Lower limit	LFS estimate	Upper limit	Lower limit	LFS estimate	Upper limit
Employment	2,414	2,464	2,514	-68	-4	61	-61	3	67
Employment rate	74.0%	75.3%	76.5%	-1.7%	-0.1%	1.5%	-1.7%	-0.1%	1.5%
Unemployment	123	139	155	-17	4	25	-28	-6	16
Unemployment rate	4.7%	5.3%	6.0%	-0.7%	0.1%	1.0%	-1.1%	-0.2%	0.6%
Economically active	2,554	2,603	2,652	-64	0	64	-66	-4	59
Economic activity rate	78.4%	79.6%	80.8%	-1.5%	0.0%	1.5%	-1.8%	-0.3%	1.2%
Economically inactive	601	649	696	-60	2	63	-48	12	72

### Sampling variability of regional Labour Force Survey figures

#### January to March 2006

	Empl-oyment	Unemplo-ymment	Econ-omically Active	Working age Economically Inactive	Employment	Unemplo-ymment
	Level (000s)	Level (000s)	Level (000s)	Level (000s)	Rate (%)	Rate (%)
North East	± 35	± 12	± 35	± 35	± 1.8	± 1.0
North West	± 61	± 18	± 61	± 61	± 1.2	± 0.6
Yorks & Humber	± 50	± 16	± 49	± 48	± 1.3	± 0.6
East Midlands	± 40	± 14	± 40	± 42	± 1.3	± 0.7
West Midlands	± 51	± 16	± 50	± 50	± 1.3	± 0.6
East	± 52	± 18	± 51	± 48	± 1.2	± 0.6
London	± 66	± 26	± 63	± 64	± 1.2	± 0.7
South East	± 61	± 19	± 59	± 55	± 0.9	± 0.4
South West	± 51	± 14	± 51	± 49	± 1.3	± 0.5
Wales	± 39	± 11	± 39	± 40	± 1.8	± 0.8
Scotland	± 50	± 16	± 49	± 48	± 1.3	± 0.6

## **BACKGROUND NOTES**

1. The LFS sample population covers those living in private households, student halls of residence and NHS accommodation.
2. Annual Population Survey (APS) data are included in Tables 12 to 15. The APS is a new survey which started in January 2004 and the first publication of APS data was on 28 July 2005. APS results will be published quarterly, but each publication will include data covering a 12-month period. The weighting of the APS is consistent with the weighting of the LFS micro-data, which were re-weighted to population estimates released in February 2003. However, during this reweighting exercise, revised population estimates were released, in September 2003. The quarterly, regional LFS data in this release have been interim reweighted to the latest population estimates, but for local area data such an interim reweighting is not possible. The APS data in Tables 12 to 15 are therefore not consistent with the quarterly LFS data published elsewhere in the release.

The APS database is similar to the annual LFS database in that it is compiled by taking data from four quarters of the LFS and combining them with additional samples of interviews. The first sample boost (included in the annual LFS) was introduced in 2000 for some areas of England, in 2001, for all areas in Wales and in 2003 for Scotland. From January 2004, an additional sample for areas in England was introduced, which is known as the APS boost.

These increases in sample sizes have improved the accuracy of annual estimates for local areas. For further information see Volume 6 of the *LFS User Guide*. This guide, along with additional data and further background information, are available on the National Statistics website at <http://www.statistics.gov.uk/lfs>.

A wide range of annual local area data from the APS is available free from the Nomis® website at <http://www.nomisweb.co.uk>.

3. Not seasonally adjusted claimant count data are gathered from an administrative source and constitute a complete count. However, seasonally adjusted totals are presented as rounded to the nearest hundred to avoid spurious precision.
4. Claimant count flows are the number of people joining or leaving the count in the period between the count dates. They are therefore affected by the number of weeks between count dates. To enable comparisons from month to month, the flows figures are standardised to a 4.33-week month before seasonal adjustment.

5. The number of Jobseeker's Allowance (JSA) claimants can be expressed as a proportion of either (a) the corresponding mid-year estimate (or the latest available mid-year estimate) of the workforce jobs in the area plus the number of claimants, or (b) the resident working age population. The number of workforce jobs is mainly collected through postal employer surveys and comprises employee jobs, self-employment jobs, HM armed forces and government-supported trainees and is used to calculate rates for regions and the countries of the UK. For smaller areas, proportions based on the resident working age populations are used.
6. The count of JSA claimants is mostly derived from the Jobcentre Plus computer records. However for various reasons, e.g. when a claimant's National Insurance number is not known, a few claims have to be dealt with manually by local offices. These claims, which amount to less than 1 per cent of the total, are thus counted separately and not analysed in as much detail as the computerised claims. In particular, only the computerised claims are analysed by age and duration on a monthly basis.
7. Travel-to-Work areas (Table 14) are approximations to self-contained labour markets, i.e. areas where people both live and work.
8. NUTS (Nomenclature des Unités Territoriales Statistiques) (Table 15) was established by the Statistical Office of the European Union (Eurostat) to provide a uniform breakdown of territorial units for the production of regional statistics. NUTS is a five-level hierarchical classification.
9. The employee jobs series is based on data from employer surveys and is subject to sampling variability. The nature of the survey means that the size of this sampling variability may not be consistent from year to year. Provisionally ONS would expect that the 95 per cent confidence interval would on average be within +/- 6 per cent of the estimate. However, this will vary from region to region.
10. Labour market statistics are compiled from a wide range of sources. Claimant count data are provided from the Jobcentre Plus administrative system, workforce jobs are derived from ONS business surveys, other data come from the ONS Labour Force Survey.
11. The Social and Vital Statistics Division of ONS carries out the questionnaire design, sample selection and interviewing for the LFS. Analysis and publication of the results of the survey is undertaken by Labour Market Division. In Northern Ireland, the Labour Force Survey is conducted by the Central Survey Unit.

All data are not seasonally adjusted unless otherwise specified

12. In addition to the data in this release, ONS can provide a wide range of detailed labour market data in a number of formats. In particular, data are available from Nomis<sup>®</sup> at the same time as this release is published. Further data are also published in *Labour Market Trends (LMT)* and the *Labour Force Survey Quarterly Supplement to LMT*.
13. Datasets of selected series can also be viewed by choosing topics within the Labour Market theme on our website (<http://www.statistics.gov.uk/labour>).
14. Details of the policy governing the release of new data are available from the press office. Also available is a list of the names of those given pre-publication access to the contents of this release.
15. **National Statistics** are produced to high professional standards set out in the National Statistics Code of Practice. They undergo regular quality assurance reviews to ensure that they meet customer needs. They are produced free from any political interference. © Crown Copyright 2006.

All data are not seasonally adjusted unless otherwise specified



**INDEX OF TABLES**

*All data are not seasonally adjusted unless otherwise specified*

**NATIONAL LABOUR MARKET SUMMARY, BY REGION**

Summary of Labour Force Survey (LFS) data (seasonally adjusted)

Summary of other headline indicators

**REGIONAL DATA**

Summary of LFS data for the current quarter (seasonally adjusted) ..... 1

Summary of other headline indicators (seasonally adjusted) ..... 1a

**EMPLOYMENT**

Employment by age..... 2

Full-time, part-time and temporary workers ..... 3

Civilian workforce jobs ..... 4

Employee jobs by industry ..... 5

Actual and usual weekly hours of work ..... 6

**CLAIMANT COUNT**

Claimant count levels and rates (seasonally adjusted)..... 7

Claimant count by age and duration - computerised claims only ..... 8

**ECONOMIC ACTIVITY AND INACTIVITY**

Economic activity by age..... 9

Economic inactivity by age..... 10

Economic inactivity: reasons ..... 11

**LOCAL AREA DATA**

Local labour market indicators by Unitary and Local Authority ..... 12

Local labour market indicators by Parliamentary Constituency ..... 13

Local labour market indicators by Travel-to-Work Area ..... 14

Local labour market indicators by NUTS 3 area ..... 15

Claimant count by Unitary and Local Authority ..... 16

Claimant count by Parliamentary Constituency ..... 17

The following symbols are used in the tables:

- .. not available                      - nil or negligible
- p provisional                        r revised
- \* grossed up total
- less than 9,500

Totals may differ from the sum of components because of rounding or separate adjustment of components.

# NATIONAL LABOUR MARKET SUMMARY, BY REGION

## Summary of Labour Force Survey data

Thousands, seasonally adjusted

Labour Force Survey <sup>1</sup> (January to March 2006)																	
	Total aged 16 & over		Economically active			Employment						Unemployment					
	Total		Men		Women	Total		Men		Women		Total		Men		Women	
	Level	Level	Rate (%) <sup>2</sup>	Level	Level	Level	Rate (%) <sup>2</sup>	Level	Rate (%) <sup>2</sup>	Level	Rate (%) <sup>2</sup>	Level	Rate (%) <sup>3</sup>	Level	Rate (%) <sup>3</sup>	Level	Rate (%) <sup>3</sup>
	1	2	3	4	5	6	7	8	9	10	11	12	13	14	15	16	17
North East	2,057	1,233	76.0	658	574	1,151	70.9	608	73.6	542	68.0	82	6.7	50	7.6	32	5.6
North West	5,458	3,362	77.2	1,787	1,576	3,199	73.4	1,693	76.2	1,505	70.4	163	4.9	93	5.2	70	4.4
Yorkshire & the Humber	4,038	2,526	78.6	1,363	1,163	2,392	74.3	1,284	78.1	1,108	70.2	134	5.3	79	5.8	55	4.7
East Midlands	3,444	2,239	81.1	1,213	1,025	2,128	77.0	1,145	80.7	983	73.1	111	4.9	68	5.6	43	4.2
West Midlands	4,259	2,658	78.0	1,460	1,198	2,521	73.8	1,381	78.7	1,140	68.4	137	5.1	79	5.4	58	4.8
East	4,401	2,860	81.4	1,552	1,307	2,722	77.4	1,477	82.2	1,245	72.2	138	4.8	75	4.9	62	4.8
London	6,023	3,935	75.8	2,185	1,750	3,634	69.9	2,010	76.0	1,625	63.3	301	7.6	175	8.0	126	7.2
South East	6,486	4,310	82.6	2,316	1,994	4,119	78.8	2,209	83.1	1,910	74.3	191	4.4	108	4.6	84	4.2
South West	4,067	2,556	81.1	1,372	1,184	2,464	78.1	1,320	81.5	1,144	74.4	92	3.6	52	3.8	40	3.4
<b>England</b>	<b>40,233</b>	<b>25,678</b>	<b>79.2</b>	<b>13,907</b>	<b>11,771</b>	<b>24,329</b>	<b>74.9</b>	<b>13,128</b>	<b>79.1</b>	<b>11,202</b>	<b>70.3</b>	<b>1,349</b>	<b>5.3</b>	<b>779</b>	<b>5.6</b>	<b>570</b>	<b>4.8</b>
Wales	2,374	1,392	75.1	745	648	1,327	71.6	702	74.4	625	68.6	65	4.7	43	5.7	23	3.5
Scotland	4,116	2,603	79.6	1,375	1,228	2,464	75.3	1,295	78.3	1,169	72.1	139	5.3	80	5.8	59	4.8
<b>Great Britain</b>	<b>46,723</b>	<b>29,673</b>	<b>79.0</b>	<b>16,027</b>	<b>13,647</b>	<b>28,120</b>	<b>74.8</b>	<b>15,125</b>	<b>78.8</b>	<b>12,995</b>	<b>70.4</b>	<b>1,553</b>	<b>5.2</b>	<b>902</b>	<b>5.6</b>	<b>651</b>	<b>4.8</b>
N Ireland	1,326	793	72.6	438	355	758	69.3	413	74.0	345	64.3	35	4.4	25	5.6	10	2.9
<b>United Kingdom</b>	<b>48,050</b>	<b>30,482</b>	<b>78.8</b>	<b>16,474</b>	<b>14,008</b>	<b>28,896</b>	<b>74.7</b>	<b>15,548</b>	<b>78.7</b>	<b>13,348</b>	<b>70.3</b>	<b>1,586</b>	<b>5.2</b>	<b>926</b>	<b>5.6</b>	<b>660</b>	<b>4.7</b>

### Change on quarter:<sup>4</sup>

	Total aged 16 & over		Economically active			Employment						Unemployment					
	Total		Men		Women	Total		Men		Women		Total		Men		Women	
	Level	Level	Rate (%) <sup>2</sup>	Level	Level	Level	Rate (%) <sup>2</sup>	Level	Rate (%) <sup>2</sup>	Level	Rate (%) <sup>2</sup>	Level	Rate (%) <sup>3</sup>	Level	Rate (%) <sup>3</sup>	Level	Rate (%) <sup>3</sup>
North East	4	25	1.2	11	14	21	0.9	12	1.0	9	0.9	4	0.2	-1	-0.3	5	0.7
North West	11	31	0.6	18	13	27	0.5	18	0.5	9	0.5	3	0.1	0	0.0	3	0.2
Yorkshire & the Humber	8	0	-0.2	-9	9	0	-0.2	-7	-0.7	7	0.3	-1	0.0	-3	-0.2	2	0.1
East Midlands	7	12	0.1	6	6	2	-0.2	-1	-0.4	3	0.0	10	0.4	7	0.5	3	0.3
West Midlands	9	16	0.4	2	14	19	0.4	5	0.1	14	0.8	-2	-0.1	-3	-0.2	1	0.0
East	9	10	0.1	-5	15	0	-0.2	-12	-0.8	12	0.5	10	0.3	7	0.5	3	0.2
London	11	54	0.9	28	27	37	0.6	20	0.7	17	0.4	17	0.3	8	0.2	10	0.4
South East	13	28	0.3	-2	30	15	0.1	-9	-0.4	24	0.6	13	0.3	7	0.3	6	0.2
South West	8	-1	-0.1	-2	1	8	0.2	3	0.1	5	0.4	-9	-0.4	-5	-0.4	-4	-0.4
<b>England</b>	<b>80</b>	<b>174</b>	<b>0.4</b>	<b>45</b>	<b>128</b>	<b>130</b>	<b>0.2</b>	<b>29</b>	<b>0.0</b>	<b>101</b>	<b>0.5</b>	<b>44</b>	<b>0.1</b>	<b>16</b>	<b>0.1</b>	<b>28</b>	<b>0.2</b>
Wales	4	-5	-0.5	-5	1	-2	-0.3	-3	-0.5	1	-0.1	-3	-0.2	-3	-0.3	0	0.0
Scotland	5	0	0.0	-8	8	-4	-0.1	-9	-0.5	5	0.3	4	0.1	1	0.1	3	0.2
<b>Great Britain</b>	<b>90</b>	<b>169</b>	<b>0.3</b>	<b>32</b>	<b>137</b>	<b>124</b>	<b>0.2</b>	<b>18</b>	<b>-0.1</b>	<b>107</b>	<b>0.4</b>	<b>45</b>	<b>0.1</b>	<b>14</b>	<b>0.1</b>	<b>30</b>	<b>0.2</b>
N Ireland	3	8	0.5	3	5	9	0.6	2	0.1	7	1.1	0	-0.1	1	0.3	-2	-0.6
<b>United Kingdom</b>	<b>93</b>	<b>172</b>	<b>0.3</b>	<b>33</b>	<b>139</b>	<b>127</b>	<b>0.2</b>	<b>17</b>	<b>-0.1</b>	<b>111</b>	<b>0.4</b>	<b>44</b>	<b>0.1</b>	<b>16</b>	<b>0.1</b>	<b>28</b>	<b>0.2</b>

### Change on year:

	Total aged 16 & over		Economically active			Employment						Unemployment					
	Total		Men		Women	Total		Men		Women		Total		Men		Women	
	Level	Level	Rate (%) <sup>2</sup>	Level	Level	Level	Rate (%) <sup>2</sup>	Level	Rate (%) <sup>2</sup>	Level	Rate (%) <sup>2</sup>	Level	Rate (%) <sup>3</sup>	Level	Rate (%) <sup>3</sup>	Level	Rate (%) <sup>3</sup>
North East	16	37	1.2	21	16	23	0.4	13	0.6	10	0.2	14	1.0	8	1.0	6	0.9
North West	43	21	0.2	5	16	16	0.1	3	-0.5	14	0.8	5	0.1	2	0.1	3	0.1
Yorkshire & the Humber	34	48	0.6	26	21	20	-0.2	14	-0.4	6	0.0	27	1.0	13	0.8	15	1.2
East Midlands	29	66	1.3	26	39	49	0.7	14	-0.1	35	1.6	17	0.6	13	0.9	4	0.3
West Midlands	36	19	-0.4	11	8	5	-0.9	6	-0.8	-1	-0.9	14	0.5	5	0.3	9	0.7
East	37	15	-0.5	-5	20	-13	-1.3	-17	-1.6	4	-1.0	27	0.9	12	0.8	16	1.1
London	60	100	0.7	54	46	57	0.0	33	0.1	24	-0.2	43	0.9	22	0.8	21	1.1
South East	54	79	0.6	18	61	44	0.0	-5	-1.0	48	1.0	35	0.7	23	1.0	12	0.5
South West	32	0	-0.7	-10	10	-1	-0.7	-10	-1.4	9	0.0	1	0.0	0	0.0	1	0.1
<b>England</b>	<b>341</b>	<b>384</b>	<b>0.3</b>	<b>147</b>	<b>237</b>	<b>200</b>	<b>-0.2</b>	<b>50</b>	<b>-0.6</b>	<b>150</b>	<b>0.2</b>	<b>183</b>	<b>0.6</b>	<b>96</b>	<b>0.6</b>	<b>87</b>	<b>0.7</b>
Wales	17	9	0.1	11	-2	5	0.0	5	0.0	0	-0.1	4	0.2	5	0.7	-2	-0.3
Scotland	22	-4	-0.3	-4	0	3	-0.1	2	-0.1	1	0.0	-6	-0.2	-5	-0.4	-1	-0.1
<b>Great Britain</b>	<b>380</b>	<b>389</b>	<b>0.2</b>	<b>154</b>	<b>235</b>	<b>208</b>	<b>-0.2</b>	<b>57</b>	<b>-0.5</b>	<b>151</b>	<b>0.1</b>	<b>181</b>	<b>0.5</b>	<b>96</b>	<b>0.6</b>	<b>84</b>	<b>0.5</b>
N Ireland	14	13	0.4	6	7	16	0.7	7	0.1	9	1.3	-3	-0.4	-1	-0.3	-2	-0.6
<b>United Kingdom</b>	<b>394</b>	<b>395</b>	<b>0.2</b>	<b>156</b>	<b>239</b>	<b>217</b>	<b>-0.2</b>	<b>60</b>	<b>-0.5</b>	<b>158</b>	<b>0.2</b>	<b>177</b>	<b>0.5</b>	<b>96</b>	<b>0.5</b>	<b>81</b>	<b>0.5</b>

Relationship between columns: 2= 4+5 = 6+12; 6= 8+10; 12= 14+16.

Source: Labour Force Survey

1. Labour Force Survey is tabulated by region of residence.

Labour Market Statistics Helpline 020 7533 6094

2. Denominator = all persons of working age.

3. Denominator = Total economically active.

4. Quarter to quarter changes at regional level are particularly subject to sampling variability and should be interpreted in the context of changes over several quarters rather than in isolation.

The Labour Force Survey is a survey of the population in private households, student halls of residence and NHS accommodation.

# NATIONAL LABOUR MARKET SUMMARY, BY REGION

## Summary of other headline indicators

Thousands

	Employer Surveys <sup>1</sup>			Jobcentre Plus administrative system <sup>1</sup>					
	Civilian workforce jobs (December 2005); not seasonally adjusted			Claimant count <sup>2</sup> (April 2006); seasonally adjusted					
	Total	Men	Women	Total		Men		Women	
	Level	Level	Level	Level	Rate (%) <sup>3</sup>	Level	Rate (%) <sup>3</sup>	Level	Rate (%) <sup>3</sup>
	1	2	3	4	5	6	7	8	9
North East	1,140	611	529	49.6	4.2	38.0	6.0	11.6	2.1
North West	3,451	1,857	1,594	114.9	3.3	87.5	4.6	27.4	1.7
Yorkshire & the Humber	2,554	1,351	1,202	86.7	3.3	65.4	4.6	21.3	1.7
East Midlands	2,099	1,122	977	62.1	2.9	45.4	3.9	16.7	1.7
West Midlands	2,644	1,424	1,219	109.0	4.0	82.2	5.5	26.8	2.2
East	2,709	1,456	1,253	65.5	2.4	47.7	3.2	17.8	1.4
London	4,622	2,517	2,105	167.0	3.5	118.5	4.6	48.5	2.3
South East	4,289	2,262	2,028	80.9	1.8	59.5	2.5	21.4	1.0
South West	2,552	1,321	1,232	48.0	1.8	35.1	2.5	12.9	1.0
<b>England</b>	<b>26,062</b>	<b>13,923</b>	<b>12,139</b>	<b>783.7</b>	<b>2.9</b>	<b>579.3</b>	<b>4.0</b>	<b>204.4</b>	<b>1.7</b>
Wales	1,355	697	658	45.5	3.3	34.5	4.7	11.0	1.7
Scotland	2,615	1,342	1,273	88.0	3.3	66.8	4.8	21.2	1.6
<b>Great Britain</b>	<b>30,032</b>	<b>15,962</b>	<b>14,070</b>	<b>917.2</b>	<b>3.0</b>	<b>680.6</b>	<b>4.1</b>	<b>236.6</b>	<b>1.7</b>
N Ireland	817	436	381	28.3	3.3	21.2	4.5	7.1	1.8
<b>United Kingdom</b>	<b>30,849</b>	<b>16,398</b>	<b>14,451</b>	<b>945.5</b>	<b>3.0</b>	<b>701.8</b>	<b>4.1</b>	<b>243.7</b>	<b>1.7</b>

### Changes on period (period specified below):

	Employer Surveys <sup>1</sup>			Jobcentre Plus administrative system <sup>1</sup>					
	Civilian workforce jobs (Change on December 2004); not seasonally adjusted			Claimant count <sup>2</sup> (Change on March 2006); seasonally adjusted					
	Total	Men	Women	Total		Men		Women	
	Level	Level	Level	Level	Rate (%) <sup>3</sup>	Level	Rate (%) <sup>3</sup>	Level	Rate (%) <sup>3</sup>
	1	2	3	4	5	6	7	8	9
North East	13	13	0	0.2	0.0	0.1	0.0	0.1	0.0
North West	6	31	-25	1.2	0.0	1.1	0.1	0.1	0.0
Yorkshire & the Humber	10	-1	11	0.4	0.0	0.4	0.0	0.0	0.0
East Midlands	11	3	8	1.2	0.1	1.0	0.1	0.2	0.0
West Midlands	-17	-12	-5	1.7	0.1	1.2	0.1	0.5	0.0
East	16	0	17	1.1	0.0	1.0	0.1	0.1	0.0
London	123	83	40	-0.3	0.0	-0.1	0.0	-0.2	0.0
South East	7	-12	19	-0.3	0.0	-0.1	0.0	-0.2	0.0
South West	-10	-20	10	1.6	0.1	1.2	0.1	0.4	0.0
<b>England</b>	<b>160</b>	<b>85</b>	<b>75</b>	<b>6.8</b>	<b>0.0</b>	<b>5.8</b>	<b>0.0</b>	<b>1.0</b>	<b>0.0</b>
Wales	5	-4	9	0.4	0.0	0.3	0.0	0.1	0.0
Scotland	29	19	10	0.5	0.0	0.5	0.0	0.0	0.0
<b>Great Britain</b>	<b>194</b>	<b>100</b>	<b>94</b>	<b>7.7</b>	<b>0.0</b>	<b>6.6</b>	<b>0.0</b>	<b>1.1</b>	<b>0.0</b>
N Ireland	6	4	2	0.0	0.0	0.0	0.0	0.0	0.0
<b>United Kingdom</b>	<b>200</b>	<b>104</b>	<b>96</b>	<b>7.7</b>	<b>0.0</b>	<b>6.6</b>	<b>0.0</b>	<b>1.1</b>	<b>0.0</b>

Relationship between columns: 1= 2+3; 4= 6+8.

Labour Market Statistics Helpline 020 7533 6094

1. Workforce jobs are tabulated by region of workplace. Claimant count is tabulated by region of claimant's residence.

2. Count of claimants of Jobseeker's Allowance.

3. Denominator = Claimant count + Workforce jobs.

# REGIONAL DATA

Scotland

(thousands),  
seasonally  
adjusted

## 1 Summary of LFS data

All aged 16 & over

		All aged 16 & over	Total economically active	Total in employment	Unemployed	Economically inactive	Economic activity rate (%)	Employment rate (%)	Unemployment rate (%)	Economic inactivity rate (%)
		1	2	3	4	5	6	7	8	9
<b>People</b>		YCHN	YCIA	YCKA	YCNA	HKMZ			YCNN	
	Jan-Mar 2004	4,068	2,565	2,416	149	1,502	63.1	59.4	5.8	36.9
	Jan-Mar 2005	4,094	2,606	2,461	145	1,488	63.7	60.1	5.6	36.3
	Apr-Jun 2005	4,100	2,591	2,448	143	1,509	63.2	59.7	5.5	36.8
	Jul-Sep 2005	4,106	2,598	2,458	140	1,508	63.3	59.9	5.4	36.7
	Oct-Dec 2005	4,111	2,603	2,468	135	1,508	63.3	60.0	5.2	36.7
	<b>Jan-Mar 2006</b>	<b>4,116</b>	<b>2,603</b>	<b>2,464</b>	<b>139</b>	<b>1,513</b>	<b>63.2</b>	<b>59.9</b>	<b>5.3</b>	<b>36.8</b>
	Change on quarter	5	0	-4	4	5	-0.1	-0.2	0.1	0.1
	Change %	0.1	0.0	-0.1	2.8	0.3				
	Change on year	22	-4	3	-6	25	-0.4	-0.3	-0.2	0.4
	Change %	0.5	-0.1	0.1	-4.3	1.7				
<b>Men</b>			YCJA	YCLA	YCOA	YCZL			YCON	
	Jan-Mar 2004	1,933	1,357	1,265	92	576	70.2	65.5	6.8	29.8
	Jan-Mar 2005	1,947	1,378	1,293	85	569	70.8	66.4	6.2	29.2
	Apr-Jun 2005	1,951	1,378	1,295	83	573	70.6	66.4	6.0	29.4
	Jul-Sep 2005	1,954	1,378	1,298	81	576	70.5	66.4	5.8	29.5
	Oct-Dec 2005	1,957	1,383	1,304	79	574	70.7	66.6	5.7	29.3
	<b>Jan-Mar 2006</b>	<b>1,960</b>	<b>1,375</b>	<b>1,295</b>	<b>80</b>	<b>585</b>	<b>70.2</b>	<b>66.1</b>	<b>5.8</b>	<b>29.8</b>
	Change on quarter	3	-8	-9	1	11	-0.5	-0.5	0.1	0.5
	Change %	0.1	-0.6	-0.7	1.3	1.9				
	Change on year	12	-4	2	-5	16	-0.6	-0.3	-0.4	0.6
	Change %	0.6	-0.3	0.1	-6.4	2.8				
<b>Women</b>			YCJN	YCPA	YCZJ				YCPN	
	Jan-Mar 2004	2,135	1,208	1,151	57	927	56.6	53.9	4.8	43.4
	Jan-Mar 2005	2,147	1,228	1,168	60	919	57.2	54.4	4.9	42.8
	Apr-Jun 2005	2,149	1,213	1,154	60	936	56.4	53.7	4.9	43.6
	Jul-Sep 2005	2,152	1,220	1,160	60	933	56.7	53.9	4.9	43.3
	Oct-Dec 2005	2,154	1,220	1,164	56	934	56.6	54.0	4.6	43.4
	<b>Jan-Mar 2006</b>	<b>2,156</b>	<b>1,228</b>	<b>1,169</b>	<b>59</b>	<b>928</b>	<b>57.0</b>	<b>54.2</b>	<b>4.8</b>	<b>43.0</b>
	Change on quarter	2	8	5	3	-6	0.3	0.2	0.2	-0.3
	Change %	0.1	0.7	0.5	4.8	-0.6				
	Change on year	10	0	1	-1	10	-0.3	-0.2	-0.1	0.3
	Change %	0.4	0.0	0.1	-1.2	1.0				

All aged 16 to 59/64

		All aged 16 to 59/64	Total economically active	Total in employment	Unemployed	Economically inactive	Economic activity rate (%)	Employment rate (%)	Unemployment rate (%)	Economic inactivity rate (%)
		10	11	12	13	14	15	16	17	18
<b>People</b>							YCIN	YCKN		LWDY
	Jan-Mar 2004	3,145	2,488	2,341	147	657	79.1	74.4	5.9	20.9
	Jan-Mar 2005	3,163	2,526	2,383	143	636	79.9	75.3	5.7	20.1
	Apr-Jun 2005	3,167	2,516	2,374	142	651	79.4	75.0	5.6	20.6
	Jul-Sep 2005	3,171	2,524	2,385	139	647	79.6	75.2	5.5	20.4
	Oct-Dec 2005	3,174	2,527	2,394	133	647	79.6	75.4	5.3	20.4
	<b>Jan-Mar 2006</b>	<b>3,177</b>	<b>2,528</b>	<b>2,392</b>	<b>137</b>	<b>649</b>	<b>79.6</b>	<b>75.3</b>	<b>5.4</b>	<b>20.4</b>
	Change on quarter	3	1	-2	3	2	0.0	-0.1	0.1	0.0
	Change %	0.1	0.1	-0.1	2.4	0.2				
	Change on year	14	2	9	-7	12	-0.3	-0.1	-0.3	0.3
	Change %	0.4	0.1	0.4	-4.8	1.9				
<b>Men</b>							HKMB	YCLN		LWEK
	Jan-Mar 2004	1,605	1,334	1,243	90	272	83.1	77.4	6.8	16.9
	Jan-Mar 2005	1,615	1,351	1,266	85	264	83.6	78.4	6.3	16.4
	Apr-Jun 2005	1,617	1,351	1,268	83	266	83.5	78.4	6.1	16.5
	Jul-Sep 2005	1,619	1,352	1,272	80	267	83.5	78.6	5.9	16.5
	Oct-Dec 2005	1,621	1,356	1,277	78	265	83.6	78.8	5.8	16.4
	<b>Jan-Mar 2006</b>	<b>1,623</b>	<b>1,350</b>	<b>1,271</b>	<b>79</b>	<b>273</b>	<b>83.2</b>	<b>78.3</b>	<b>5.9</b>	<b>16.8</b>
	Change on quarter	2	-6	-7	1	7	-0.4	-0.5	0.1	0.4
	Change %	0.1	-0.4	-0.5	1.3	2.8				
	Change on year	8	-1	4	-5	9	-0.5	-0.1	-0.4	0.5
	Change %	0.5	-0.1	0.3	-6.1	3.3				
<b>Women</b>							HKMN	YCMN		LWEW
	Jan-Mar 2004	1,539	1,154	1,097	57	386	75.0	71.3	4.9	25.0
	Jan-Mar 2005	1,548	1,176	1,117	59	372	75.9	72.1	5.0	24.1
	Apr-Jun 2005	1,550	1,165	1,106	59	385	75.2	71.4	5.1	24.8
	Jul-Sep 2005	1,552	1,172	1,113	59	380	75.5	71.7	5.0	24.5
	Oct-Dec 2005	1,553	1,171	1,116	55	382	75.4	71.9	4.7	24.6
	<b>Jan-Mar 2006</b>	<b>1,554</b>	<b>1,178</b>	<b>1,121</b>	<b>57</b>	<b>376</b>	<b>75.8</b>	<b>72.1</b>	<b>4.9</b>	<b>24.2</b>
	Change on quarter	1	7	5	2	-6	0.4	0.3	0.2	-0.4
	Change %	0.1	0.6	0.4	3.9	-1.5				
	Change on year	6	3	4	-2	4	-0.1	0.0	-0.2	0.1
	Change %	0.4	0.2	0.4	-2.9	1.0				

Relationship between columns: 1= 2+5; 2= 3+4; 6= 2/1; 7= 3/1; 8= 4/2

9= 5/1; 10= 11+14; 11= 12+13; 15= 11/10; 16= 12/10; 17= 13/11; 18= 14/10

The Labour Force Survey is a survey of the population of private households, student halls of residence and NHS accommodation.

Source: Labour Force Survey

Labour Market Statistics Helpline 020 7533 6094

## 1a Summary of other headline indicators

Civilian workforce jobs (not seasonally adjusted)			
Levels			
	Total	Males	Females
	YXYL	YXZA	A4FD
Dec 02	2,547	1,301	1,245
Dec 03	2,589	1,331	1,258
Dec 04	2,586	1,323	1,263
Mar 05	2,568	1,298	1,270
Jun 05	2,572	1,308	1,264
Sep 05	2,603	1,339	1,265
<b>Dec 05</b>	<b>2,615</b>	<b>1,342</b>	<b>1,273</b>
<i>Change on year</i>	29	19	10
<i>Change %</i>	1.1	1.4	0.8

Claimant count <sup>1</sup>						
Levels			Rates (%) <sup>2</sup>			
	Total	Males	Females	Total	Males	Females
	DPBF	ZMQG	ZMQI	DPBQ	ZMQH	ZMQJ
<b>2005</b>						
April #	86.1	65.5	20.6	3.2	4.7	1.6
May	86.6	65.9	20.7	3.2	4.7	1.6
June	86.3	65.6	20.7	3.2	4.7	1.6
July #	84.9	64.8	20.1	3.2	4.7	1.6
August	85.5	65.0	20.5	3.2	4.7	1.6
September	86.0	65.4	20.6	3.2	4.7	1.6
October #	85.8	65.2	20.6	3.2	4.7	1.6
November	85.7	65.1	20.6	3.2	4.7	1.6
December	85.4	64.8	20.6	3.2	4.7	1.6
<b>2006</b>						
January #	84.1	63.6	20.5	3.1	4.6	1.6
February	86.0	65.2	20.8	3.2	4.7	1.6
March (r)	87.5	66.3	21.2	3.3	4.8	1.6
<b>April # (p)</b>	<b>88.0</b>	<b>66.8</b>	<b>21.2</b>	<b>3.3</b>	<b>4.8</b>	<b>1.6</b>
<i>Change on period</i>	0.5	0.5	0.0	0.0	0.0	0.0
<i>Change %</i>	0.6	0.8	0.0			
<i>Change on year</i>	1.9	1.3	0.6	0.1	0.1	0.0
<i>Change %</i>	2.2	2.0	2.9			

1. Count of claimants of Jobseeker's Allowance.

2. Denominator = claimant count + workforce jobs. NB these are different from the proportions of the working age populations claiming Jobseeker's Allowance for local areas shown in Tables 16 and 17.

See background note 5.

# Months where there are 5 weeks between count dates. All the rest are 4 week periods.

Sources: Employer surveys, DfES Training Data System, Jobcentre Plus administrative system.  
Labour Market Statistics Helpline 020 7533 6094

# EMPLOYMENT

## 2 Employment by age

Scotland

(thousands), not seasonally adjusted

		All aged 16 & over	16 - 59/64	16 - 17	18 - 24	25 - 34	35 - 49	50 - 64 (m) 50 - 59 (w)	65+ (m) 60+ (w)	
		1	2	3	4	5	6	7	8	
<b>Employed</b>										
<b>People</b>	Jan - Mar 2003	..	..	..	..	..	..	..	..	
	Jan - Mar 2004	..	..	..	..	..	..	..	..	
	Jan - Mar 2005	2,452	2,373	58	309	512	948	546	79	
	Apr - Jun 2005	2,443	2,369	59	309	498	949	553	74	
	Jul - Sep 2005	2,474	2,402	60	322	502	966	553	72	
	Oct - Dec 2005	2,469	2,398	56	331	505	953	552	71	
	<b>Jan - Mar 2006</b>	<b>2,454</b>	<b>2,381</b>	<b>56</b>	<b>312</b>	<b>499</b>	<b>966</b>	<b>547</b>	<b>73</b>	
	<i>Change on year</i>	2	8	-2	3	-12	19	1	-6	
	<i>Change %</i>	0.1	0.3	-3.4	0.9	-2.4	2.0	0.2	-8.0	
	<b>Men</b>	Jan - Mar 2003	..	..	..	..	..	..	..	..
Jan - Mar 2004		..	..	..	..	..	..	..	..	
Jan - Mar 2005		1,286	1,260	30	160	266	480	324	27	
Apr - Jun 2005		1,291	1,264	28	160	260	488	327	28	
Jul - Sep 2005		1,306	1,282	27	170	264	495	325	25	
Oct - Dec 2005		1,306	1,281	28	175	262	491	325	25	
<b>Jan - Mar 2006</b>		<b>1,286</b>	<b>1,263</b>	<b>26</b>	<b>161</b>	<b>260</b>	<b>497</b>	<b>319</b>	<b>24</b>	
<i>Change on year</i>		0	3	-4	1	-6	17	-4	-3	
<i>Change %</i>		0.0	0.2	-14.5	0.5	-2.3	3.5	-1.3	-10.8	
<b>Women</b>		Jan - Mar 2003	..	..	..	..	..	..	..	..
	Jan - Mar 2004	..	..	..	..	..	..	..	..	
	Jan - Mar 2005	1,166	1,113	28	149	246	468	223	53	
	Apr - Jun 2005	1,152	1,105	31	149	237	462	226	47	
	Jul - Sep 2005	1,168	1,121	32	152	238	471	228	47	
	Oct - Dec 2005	1,163	1,117	29	155	243	462	227	46	
	<b>Jan - Mar 2006</b>	<b>1,167</b>	<b>1,118</b>	<b>30</b>	<b>151</b>	<b>240</b>	<b>469</b>	<b>228</b>	<b>49</b>	
	<i>Change on year</i>	2	5	2	2	-6	2	5	-4	
	<i>Change %</i>	0.1	0.5	8.8	1.3	-2.4	0.4	2.2	-6.6	
	<b>Employment rates (%)<sup>1</sup></b>									
<b>People</b>	Jan - Mar 2003	..	..	..	..	..	..	..	..	
	Jan - Mar 2004	..	..	..	..	..	..	..	..	
	Jan - Mar 2005	59.9	75.0	44.6	67.6	81.6	82.0	68.9	8.5	
	Apr - Jun 2005	59.6	74.8	45.9	67.3	79.6	82.0	69.5	7.9	
	Jul - Sep 2005	60.3	75.8	46.3	69.8	80.3	83.4	69.3	7.7	
	Oct - Dec 2005	60.1	75.5	43.9	71.6	81.1	82.2	68.9	7.6	
	<b>Jan - Mar 2006</b>	<b>59.6</b>	<b>74.9</b>	<b>43.7</b>	<b>67.4</b>	<b>80.4</b>	<b>83.3</b>	<b>68.0</b>	<b>7.8</b>	
	<i>Change on year</i>	-0.3	-0.1	-0.9	-0.2	-1.3	1.3	-0.9	-0.7	
	<b>Men</b>	Jan - Mar 2003	..	..	..	..	..	..	..	..
		Jan - Mar 2004	..	..	..	..	..	..	..	..
Jan - Mar 2005		66.1	78.0	45.4	69.6	87.1	86.1	71.0	8.0	
Apr - Jun 2005		66.2	78.1	42.1	69.5	85.5	87.4	71.6	8.2	
Jul - Sep 2005		66.9	79.1	41.1	73.3	86.8	88.7	70.9	7.4	
Oct - Dec 2005		66.7	79.0	41.9	75.6	86.2	87.9	70.6	7.5	
<b>Jan - Mar 2006</b>		<b>65.6</b>	<b>77.8</b>	<b>39.4</b>	<b>69.1</b>	<b>85.5</b>	<b>89.0</b>	<b>69.1</b>	<b>7.0</b>	
<i>Change on year</i>		-0.4	-0.2	-6.0	-0.5	-1.6	2.9	-1.9	-1.0	
<b>Women</b>		Jan - Mar 2003	..	..	..	..	..	..	..	..
		Jan - Mar 2004	..	..	..	..	..	..	..	..
	Jan - Mar 2005	54.3	71.9	43.8	65.5	76.4	78.2	66.0	8.8	
	Apr - Jun 2005	53.6	71.3	50.0	65.1	74.0	77.1	66.7	7.8	
	Jul - Sep 2005	54.3	72.2	51.7	66.2	74.2	78.5	67.1	7.8	
	Oct - Dec 2005	54.0	71.9	45.9	67.7	76.3	77.0	66.6	7.7	
	<b>Jan - Mar 2006</b>	<b>54.1</b>	<b>71.9</b>	<b>48.3</b>	<b>65.6</b>	<b>75.4</b>	<b>78.0</b>	<b>66.5</b>	<b>8.2</b>	
	<i>Change on year</i>	-0.2	0.0	4.5	0.1	-1.0	-0.1	0.5	-0.6	

Relationship between columns: 1=2+8; 2= 3+4+5+6+7

Source: Labour Force Survey

1. Denominator = all persons in the relevant age group

Labour Market Statistics Helpline 020 7533 6094

The Labour Force Survey is a survey of the population of private households, student halls of residence and NHS accommodation.

.. not available due to the move to calendar quarters. See note on page 6 for further information.

# EMPLOYMENT

Scotland

## 3 Full-time, part-time and temporary workers

(thousands), not seasonally adjusted

		All in employment								
		Total <sup>1</sup>	Employees <sup>1</sup>	Self employed <sup>1</sup>	Unpaid family workers	Government-supported training and employment programmes	Full-time workers	Part-time workers	Workers with second jobs	Temporary employees
		1	2	3	4	5	6	7	8	9
<b>People</b>	Jan - Mar 2003	..	..	..	..	..	..	..	..	..
	Jan - Mar 2004	..	..	..	..	..	..	..	..	..
	Jan - Mar 2005	2,452	2,201	234	*	11	1,840	612	98	135
	Apr - Jun 2005	2,443	2,201	230	*	*	1,837	607	104	132
	Jul - Sep 2005	2,474	2,219	239	*	*	1,870	604	74	141
	Oct - Dec 2005	2,469	2,204	250	*	11	1,863	604	87	133
	<b>Jan - Mar 2006</b>	<b>2,454</b>	<b>2,182</b>	<b>255</b>	<b>*</b>	<b>12</b>	<b>1,850</b>	<b>604</b>	<b>87</b>	<b>124</b>
	<i>Change on year</i>	2	-19	22	*	1	10	-8	-10	-11
	<i>Change %</i>	0.1	-0.9	9.2	*	9.5	0.5	-1.3	-10.7	-8.3
<b>Men</b>	Jan - Mar 2003	..	..	..	..	..	..	..	..	..
	Jan - Mar 2004	..	..	..	..	..	..	..	..	..
	Jan - Mar 2005	1,286	1,108	171	*	*	1,151	135	41	67
	Apr - Jun 2005	1,291	1,118	167	*	*	1,159	132	39	67
	Jul - Sep 2005	1,306	1,123	176	*	*	1,181	125	34	70
	Oct - Dec 2005	1,306	1,115	185	*	*	1,170	134	38	63
	<b>Jan - Mar 2006</b>	<b>1,286</b>	<b>1,094</b>	<b>183</b>	<b>*</b>	<b>*</b>	<b>1,160</b>	<b>126</b>	<b>38</b>	<b>54</b>
	<i>Change on year</i>	0	-13	12	*	*	9	-9	-3	-13
	<i>Change %</i>	0.0	-1.2	7.2	*	*	0.8	-6.5	-7.3	-18.7
<b>Women</b>	Jan - Mar 2003	..	..	..	..	..	..	..	..	..
	Jan - Mar 2004	..	..	..	..	..	..	..	..	..
	Jan - Mar 2005	1,166	1,094	63	*	*	689	477	56	69
	Apr - Jun 2005	1,152	1,083	63	*	*	677	475	65	65
	Jul - Sep 2005	1,168	1,097	63	*	*	689	479	40	71
	Oct - Dec 2005	1,163	1,089	65	*	*	693	470	49	70
	<b>Jan - Mar 2006</b>	<b>1,167</b>	<b>1,088</b>	<b>72</b>	<b>*</b>	<b>*</b>	<b>690</b>	<b>477</b>	<b>49</b>	<b>70</b>
	<i>Change on year</i>	2	-6	9	*	*	1	0	-7	1
	<i>Change %</i>	0.1	-0.5	14.6	*	*	0.2	0.1	-13.2	1.8

### Temporary workers (reasons for temporary working)

### Part-time workers (reasons for part-time working)<sup>3</sup>

		Temporary workers (reasons for temporary working)				Part-time workers (reasons for part-time working) <sup>3</sup>			
		Total <sup>2</sup>	Could not find permanent job	Did not want a permanent job	Other	Total <sup>2</sup>	Could not find full-time job	Did not want full-time job	Other
		10	11	12	13	14	15	16	17
<b>People</b>	Jan - Mar 2003	..	..	..	..	..	..	..	..
	Jan - Mar 2004	..	..	..	..	..	..	..	..
	Jan - Mar 2005	135	42	27	66	600	62	417	119
	Apr - Jun 2005	132	43	31	58	600	62	414	122
	Jul - Sep 2005	141	49	32	60	595	67	413	113
	Oct - Dec 2005	133	45	23	65	595	70	398	126
	<b>Jan - Mar 2006</b>	<b>124</b>	<b>42</b>	<b>24</b>	<b>58</b>	<b>596</b>	<b>62</b>	<b>403</b>	<b>126</b>
	<i>Change on year</i>	-11	0	-3	-8	-4	0	-14	7
	<i>Change %</i>	-8.3	0.7	-10.1	-12.4	-0.7	0.8	-3.4	6.1

Relationship between columns: 1=2+3+4+5

Source: Labour Force Survey

1. Includes people who did not state whether they worked part-time or full-time.

Labour Market Statistics Helpline 020 7533 6094

2. Includes people who did not state their reason for temporary/part-time working.

3. Employees and self-employed.

The Labour Force Survey is a survey of the population of private households, student halls of residence and NHS accommodation.

.. not available due to the move to calendar quarters. See note on page 6 for further information.

# EMPLOYMENT

Scotland

## 4 Civilian workforce jobs<sup>1</sup>

(thousands), not seasonally adjusted

		Civilian workforce jobs 1	Employee jobs 2	Self- employment jobs 3	Government- supported trainees 4
		YXYL			
<b>All jobs</b>	Dec 01	2,557	2,300	245	12
	Dec 02	2,547	2,283	254	10
	Dec 03	2,589	2,310	270	9
	Dec 04	2,586	2,327	252	7
	Mar 05	2,568	2,315	246	7
	Jun 05	2,572	2,320	244	7
	Sep 05	2,603	2,334	262	7
	<b>Dec 05</b>	<b>2,615</b>	<b>2,342</b>	<b>267</b>	<b>7</b>
<i>Change on year</i>		29	15	14	0
<i>Change %</i>		1.1	0.6	5.7	-3.5
		YXZA			
<b>Male jobs</b>	Dec 01	1,321	1,136	177	8
	Dec 02	1,301	1,112	183	7
	Dec 03	1,331	1,126	199	6
	Dec 04	1,323	1,135	183	5
	Mar 05	1,298	1,119	174	5
	Jun 05	1,308	1,129	174	4
	Sep 05	1,339	1,144	190	4
	<b>Dec 05</b>	<b>1,342</b>	<b>1,145</b>	<b>193</b>	<b>4</b>
<i>Change on year</i>		19	11	9	-1
<i>Change %</i>		1.5	0.9	5.1	-12.9
		A4FD			
<b>Female jobs</b>	Dec 01	1,236	1,164	68	4
	Dec 02	1,245	1,171	71	4
	Dec 03	1,258	1,183	71	3
	Dec 04	1,263	1,192	69	2
	Mar 05	1,270	1,196	72	3
	Jun 05	1,264	1,191	70	3
	Sep 05	1,265	1,190	72	3
	<b>Dec 05</b>	<b>1,273</b>	<b>1,196</b>	<b>74</b>	<b>3</b>
<i>Change on year</i>		10	4	5	0
<i>Change %</i>		0.8	0.4	7.3	17.2

Relationship between columns: 1=2+3+4

Workforce jobs enquiries 01633 812318

1. Civilian Workforce Jobs figures are a measure of jobs rather than people. For example, if a person holds two jobs, each job will be counted in the Civilian Workforce Jobs total. For this reason, Self-employment Jobs (which come from LFS) will not equal the figures for Self-employed persons from the LFS. Civilian Workforce Jobs figures come from a variety of sources, and where possible, from the employer rather than the individual. Employee Jobs (which is the largest component of Civilian Workforce Jobs) come from quarterly surveys of employers carried out by ONS, and administrative sources.

Other data sources are as follows:

Self-employment Jobs are provided by LFS

Government-supported trainees are provided by administrative sources

# EMPLOYMENT

Scotland

## 5 Employee jobs<sup>1</sup> by industry

(thousands), not seasonally adjusted

Standard Industrial Classification (1992)

SIC 1992 SECTION		All jobs (seasonally adjusted)	All jobs A-O	Agriculture Forestry & Fishing A,B	Mining Energy & Water Supplies Industries C,E	Manufacturing Industries D	Construction F	Distribution etc, transport etc, finance & business services G-K	Education, health, public admin & other services L-O
		1	2	3	4	5	6	7	8
<b>All jobs</b>	Dec 02	2,273	2,283	31	41	264	120	1,053	775
	Dec 03	2,298	2,310	29	37	243	120	1,077	803
	Dec 04	2,314	2,327	32	37	236	127	1,082	812
	Mar 05	2,324	2,315	32	37	233	126	1,069	818
	Jun 05	2,325	2,320	31	38	234	118	1,081	819
	Sep 05	2,335	2,334	30	39	233	129	1,083	821
	<b>Dec 05</b>	<b>2,328</b>	<b>2,342</b>	<b>30</b>	<b>39</b>	<b>230</b>	<b>125</b>	<b>1,089</b>	<b>828</b>
	<i>Change on quarter</i>	-6							
	<i>Change %</i>	-0.3							
	<i>Change on year</i>	14	15	-2	2	-6	-2	7	16
	<i>Change %</i>	0.6	0.6	-6.0	4.1	-2.5	-1.6	0.7	2.0
<b>Male jobs</b>	Dec 02	1,102	1,112	25	32	190	106	521	238
	Dec 03	1,116	1,126	27	31	175	106	535	253
	Dec 04	1,124	1,135	24	31	173	112	541	254
	Mar 05	1,126	1,119	23	30	170	111	531	254
	Jun 05	1,132	1,129	23	30	171	104	543	259
	Sep 05	1,146	1,144	22	31	171	114	545	262
	<b>Dec 05</b>	<b>1,135</b>	<b>1,145</b>	<b>23</b>	<b>31</b>	<b>169</b>	<b>110</b>	<b>548</b>	<b>264</b>
	<i>Change on quarter</i>	-11							
	<i>Change %</i>	-0.9							
	<i>Change on year</i>	11	11	-1	0	-3	-2	7	10
	<i>Change %</i>	1.0	0.9	-4.0	0.0	-1.8	-2.2	1.3	4.0
<b>Female jobs</b>	Dec 02	1,171	1,171	5	9	74	14	532	537
	Dec 03	1,183	1,183	2	7	68	14	543	549
	Dec 04	1,190	1,192	8	7	64	14	541	558
	Mar 05	1,198	1,196	8	8	63	15	538	563
	Jun 05	1,193	1,191	8	8	63	14	538	560
	Sep 05	1,189	1,190	8	8	62	15	538	559
	<b>Dec 05</b>	<b>1,193</b>	<b>1,196</b>	<b>7</b>	<b>8</b>	<b>61</b>	<b>15</b>	<b>541</b>	<b>565</b>
	<i>Change on quarter</i>	4							
	<i>Change %</i>	0.4							
	<i>Change on year</i>	3	4	-1	2	-3	0	0	6
	<i>Change %</i>	0.2	0.4	-12.0	22.8	-4.3	3.2	0.0	1.1

Relationship between columns: 2=3+4+5+6+7+8

Source: Employer surveys  
Workforce jobs enquiries 01633 812318

1. Employee jobs figures are of a measure of jobs rather than people. For example, if a person holds two jobs, each job will be counted in the employee jobs total. Employees jobs figures come from quarterly surveys of employers carried out by ONS and administrative sources.

The quarterly employer surveys used to compile employee jobs figures do not collect data by Government Office Regions (GOR). Instead, Annual Business Inquiry (ABI) data are used to pro-rate the totals obtained from the quarterly surveys to generate GOR data. This technique can lead to the sum of the industry figures not matching the "All jobs" total in column 2.

# EMPLOYMENT

Scotland

## 6(1) Actual weekly hours of work

(hours) not seasonally adjusted

		Total weekly hours (millions) <sup>1</sup>	Average actual weekly hours of work			
			All workers <sup>1</sup>	Full-time <sup>2</sup>	Part-time <sup>2</sup>	Workers with second jobs
<b>People</b>	Jan - Mar 2003	..	..	..	..	..
	Jan - Mar 2004	..	..	..	..	..
	Jan - Mar 2005	76	31.1	35.6	16.0	8.8
	Apr - Jun 2005	80	32.7	37.3	16.9	9.6
	Jul - Sep 2005	77	31.1	35.6	15.9	10.5
	Oct - Dec 2005	81	32.6	37.5	16.3	9.9
	<b>Jan - Mar 2006</b>	<b>77</b>	<b>31.5</b>	<b>36.1</b>	<b>15.9</b>	<b>10.6</b>
<i>Change on year</i>		<i>1</i>	<i>0.4</i>	<i>0.5</i>	<i>-0.1</i>	<i>1.8</i>
<i>Change %</i>		<i>1.4</i>	<i>1.3</i>	<i>1.4</i>	<i>-0.9</i>	<i>20.6</i>
<b>Men</b>	Jan - Mar 2003	..	..	..	..	..
	Jan - Mar 2004	..	..	..	..	..
	Jan - Mar 2005	46	35.7	37.6	16.1	9.6
	Apr - Jun 2005	48	37.5	39.5	16.4	10.7
	Jul - Sep 2005	47	36.3	38.0	17.2	10.5
	Oct - Dec 2005	49	37.2	39.4	14.6	10.4
	<b>Jan - Mar 2006</b>	<b>46</b>	<b>35.7</b>	<b>37.7</b>	<b>14.8</b>	<b>11.1</b>
<i>Change on year</i>		<i>0</i>	<i>0.1</i>	<i>0.1</i>	<i>-1.2</i>	<i>1.5</i>
<i>Change %</i>		<i>0.1</i>	<i>0.1</i>	<i>0.1</i>	<i>-7.7</i>	<i>16.1</i>
<b>Women</b>	Jan - Mar 2003	..	..	..	..	..
	Jan - Mar 2004	..	..	..	..	..
	Jan - Mar 2005	30	26.0	32.3	16.0	8.3
	Apr - Jun 2005	31	27.3	33.6	17.1	9.0
	Jul - Sep 2005	30	25.4	31.6	15.6	10.4
	Oct - Dec 2005	32	27.5	34.1	16.7	9.5
	<b>Jan - Mar 2006</b>	<b>31</b>	<b>26.9</b>	<b>33.5</b>	<b>16.2</b>	<b>10.3</b>
<i>Change on year</i>		<i>1</i>	<i>0.8</i>	<i>1.3</i>	<i>0.1</i>	<i>2.0</i>
<i>Change %</i>		<i>3.3</i>	<i>3.1</i>	<i>3.9</i>	<i>0.9</i>	<i>24.1</i>

1. Main and second jobs.

Source: Labour Force Survey

2. Main jobs only.

Labour Market Statistics Helpline 020 7533 6094

The Labour Force Survey is a survey of the population of private households, student halls of residence and NHS accommodation.

.. not available due to the move to calendar quarters. See note on page 6 for further information.

## 6(2) Usual weekly hours of work<sup>1</sup>

not seasonally adjusted

	All in Employment (%)			Employees (%)			Self-Employed (%)		
	People	Men	Women	People	Men	Women	People	Men	Women
<b>Jan - Mar 2005</b>									
Less than 6 Hours	1.2	0.8	1.7	1.0	0.6	1.5	2.8	1.7	5.7
6 up to 15 hours	6.7	3.3	10.5	6.7	3.3	10.1	7.0	3.1	17.3
16 up to 30 hours	17.7	7.0	29.7	18.0	6.4	29.7	14.8	9.8	27.7
31 up to 45 hours	55.0	58.9	50.7	56.9	61.5	52.1	37.1	41.6	25.5
Over 45 hours	19.3	30.0	7.5	17.4	28.1	6.6	38.3	43.8	23.7
Total (thousands)	2,452	1,286	1,166	2,201	1,108	1,094	234	171	63
<b>Oct - Dec 2005</b>									
Less than 6 Hours	1.2	0.9	1.6	1.0	0.7	1.2	3.0	1.8	6.3
6 up to 15 hours	6.2	3.4	9.3	6.1	3.4	9.0	6.5	3.7	14.2
16 up to 30 hours	18.0	7.0	30.4	18.2	6.2	30.5	16.6	11.8	29.9
31 up to 45 hours	55.0	59.0	50.5	57.0	62.0	51.9	37.1	40.5	27.5
Over 45 hours	19.6	29.7	8.2	17.7	27.8	7.4	36.8	42.1	22.1
Total (thousands)	2,469	1,306	1,163	2,204	1,115	1,089	250	185	65
<b>Jan - Mar 2006</b>									
Less than 6 Hours	1.0	0.5	1.6	0.9	0.5	1.4	1.3	0.5	3.6
6 up to 15 hours	6.4	3.6	9.4	6.3	3.5	9.2	6.4	4.1	12.6
16 up to 30 hours	18.1	7.0	30.4	18.5	6.5	30.5	15.0	9.4	30.0
31 up to 45 hours	55.1	59.3	50.3	57.0	62.3	51.6	38.4	40.1	33.7
Over 45 hours	19.4	29.6	8.2	17.3	27.1	7.4	39.0	45.9	20.1
Total (thousands)	2,454	1,286	1,167	2,182	1,094	1,088	255	183	72

1. Main job only.

Source: Labour Force Survey

Labour Market Statistics Helpline 020 7533 6094

The Labour Force Survey is a survey of the population of private households, student halls of residence and NHS accommodation.

# CLAIMANT COUNT

Scotland

## 7 Claimant count<sup>1</sup> levels and rates

(thousands), seasonally adjusted

		Claimant count		Inflows	Outflows	Claimant count	
		Level	Rate (%) <sup>2</sup>	(standardised <sup>3</sup> )	(standardised <sup>3</sup> )	(not seasonally adjusted)	
				Level	Level	Level	Rate (%) <sup>2</sup>
		1	2	3	4	5	6
People	<b>2005</b>	DPBF	DPBQ			BCKJ	DPAU
	April #	86.1	3.2	21.4	21.3	90.4	3.4
	May	86.6	3.2	21.2	21.5	88.5	3.3
	June	86.3	3.2	21.1	21.5	87.0	3.3
	July #	84.9	3.2	20.6	21.4	88.5	3.3
	August	85.5	3.2	21.5	21.3	89.4	3.3
	September	86.0	3.2	21.0	21.2	83.8	3.1
	October #	85.8	3.2	20.7	20.8	82.0	3.1
	November	85.7	3.2	20.8	20.9	82.8	3.1
	December	85.4	3.2	20.5	20.5	83.6	3.1
	<b>2006</b>						
	January #	84.1	3.1	19.9	20.2	92.6	3.5
	February	86.0	3.2	20.7	19.6	95.2	3.6
	March (r)	87.5	3.3	21.4	19.7	95.4	3.6
	<b>April # (p)</b>	<b>88.0</b>	<b>3.3</b>	<b>19.7</b>	<b>19.3</b>	<b>92.7</b>	<b>3.5</b>
	<i>Change on month</i>	<i>0.5</i>	<i>0.0</i>	<i>-1.7</i>	<i>-0.4</i>	<i>-2.7</i>	<i>-0.1</i>
	<i>Change %</i>	<i>0.6</i>		<i>-7.9</i>	<i>-2.0</i>	<i>-2.8</i>	
	<i>Change on year</i>	<i>1.9</i>	<i>0.1</i>	<i>-1.7</i>	<i>-2.0</i>	<i>2.3</i>	<i>0.1</i>
	<i>Change %</i>	<i>2.2</i>		<i>-7.9</i>	<i>-9.4</i>	<i>2.5</i>	
Men	<b>2005</b>	ZMQG	ZMQH				
	April #	65.5	4.7	15.6	15.7	68.7	4.9
	May	65.9	4.7	15.4	15.6	67.2	4.8
	June	65.6	4.7	15.4	15.7	65.7	4.7
	July #	64.8	4.7	15.1	15.7	65.7	4.7
	August	65.0	4.7	15.7	15.5	66.1	4.8
	September	65.4	4.7	15.2	15.4	62.6	4.5
	October #	65.2	4.7	15.0	15.1	61.7	4.4
	November	65.1	4.7	15.1	15.1	62.7	4.5
	December	64.8	4.7	14.8	14.8	63.8	4.6
	<b>2006</b>						
	January #	63.6	4.6	14.3	14.6	70.4	5.1
	February	65.2	4.7	14.9	14.1	72.0	5.2
	March (r)	66.3	4.8	15.4	14.2	72.0	5.2
	<b>April # (p)</b>	<b>66.8</b>	<b>4.8</b>	<b>14.1</b>	<b>13.8</b>	<b>70.0</b>	<b>5.0</b>
	<i>Change on month</i>	<i>0.5</i>	<i>0.0</i>	<i>-1.3</i>	<i>-0.4</i>	<i>-2.0</i>	<i>-0.1</i>
	<i>Change %</i>	<i>0.8</i>		<i>-8.4</i>	<i>-2.8</i>	<i>-2.8</i>	
	<i>Change on year</i>	<i>1.3</i>	<i>0.1</i>	<i>-1.5</i>	<i>-1.9</i>	<i>1.3</i>	<i>0.1</i>
	<i>Change %</i>	<i>2.0</i>		<i>-9.6</i>	<i>-12.1</i>	<i>2.0</i>	
Women	<b>2005</b>	ZMQI	ZMQJ				
	April #	20.6	1.6	5.8	5.6	21.7	1.7
	May	20.7	1.6	5.8	5.9	21.3	1.7
	June	20.7	1.6	5.7	5.8	21.4	1.7
	July #	20.1	1.6	5.5	5.7	22.8	1.8
	August	20.5	1.6	5.8	5.8	23.3	1.8
	September	20.6	1.6	5.8	5.8	21.2	1.6
	October #	20.6	1.6	5.7	5.7	20.3	1.6
	November	20.6	1.6	5.7	5.8	20.1	1.6
	December	20.6	1.6	5.7	5.7	19.9	1.5
	<b>2006</b>						
	January #	20.5	1.6	5.6	5.6	22.2	1.7
	February	20.8	1.6	5.8	5.5	23.2	1.8
	March (r)	21.2	1.6	6.0	5.5	23.3	1.8
	<b>April # (p)</b>	<b>21.2</b>	<b>1.6</b>	<b>5.6</b>	<b>5.5</b>	<b>22.6</b>	<b>1.8</b>
	<i>Change on month</i>	<i>0.0</i>	<i>0.0</i>	<i>-0.4</i>	<i>0.0</i>	<i>-0.7</i>	<i>-0.1</i>
	<i>Change %</i>	<i>0.0</i>		<i>-6.7</i>	<i>0.0</i>	<i>-3.0</i>	
	<i>Change on year</i>	<i>0.6</i>	<i>0.0</i>	<i>-0.2</i>	<i>-0.1</i>	<i>0.9</i>	<i>0.1</i>
	<i>Change %</i>	<i>2.9</i>		<i>-3.4</i>	<i>-1.8</i>	<i>4.1</i>	

1. Count of claimants of Jobseeker's Allowance.

Source: Jobcentre Plus administrative system

2. Denominator = claimant count + workforce jobs.

Labour Market Statistics Helpline 020 7533 6094

NB. These are different from the proportions of the working age populations claiming Jobseeker's Allowance for local areas shown in Tables 16 and 17. See background note 5.

3. Flow figures are collected for 4 or 5 week periods between count dates; the figures are then converted to a standard 4<sup>1</sup>/<sub>3</sub> week month. The claimant count inflows, standardised to a 4<sup>1</sup>/<sub>3</sub> week month but not seasonally adjusted, for April 2006 were 19,300 in total; 14,000 for men and 5,300 for women. The corresponding outflow figures were 21,400 in total; 15,600 for men and 5,800 for women.

# Months where there are 5 weeks between count dates. All the rest are 4 week periods.

## CLAIMANT COUNT

Scotland

8(1) Claimant count<sup>1</sup> by age  
and duration - computerised claims only<sup>2</sup>

(thousands), not seasonally adjusted

	All ages							18-24					
	All computerised claims <sup>2</sup>		Up to 6 months	Over 6 and up to 12 months	All over 12 months	% claiming for over 12 months	All over 24 months	All computerised claims <sup>2</sup>		Over 6 and up to 12 months	All over 12 months	% claiming for over 12 months	All over 24 months
	1	2						8	9				
<b>People</b>													
<b>2004</b>													
April	99.0	98.4	67.2	17.4	13.8	14.0	4.0	25.9	21.8	3.8	0.3	1.3	0.1
<b>2005</b>													
April #	90.4	89.6	61.5	15.2	12.9	14.4	4.2	24.6	20.7	3.4	0.5	1.9	0.1
May	88.5	87.7	59.7	15.3	12.8	14.5	4.2	24.1	20.1	3.5	0.5	1.9	0.1
June	87.0	86.3	58.5	15.0	12.8	14.8	4.2	24.0	20.0	3.4	0.5	2.0	0.1
July #	88.5	87.7	60.7	14.3	12.7	14.5	4.2	25.7	21.9	3.3	0.5	2.0	0.1
August	89.4	88.7	61.4	14.7	12.6	14.2	4.2	26.4	22.4	3.6	0.5	1.9	0.1
September	83.8	83.1	57.0	13.8	12.3	14.8	4.2	23.7	20.1	3.1	0.5	2.2	0.1
October #	82.0	81.4	56.1	13.2	12.1	14.9	4.2	22.7	19.4	2.8	0.5	2.3	0.1
November	82.8	82.2	57.2	13.0	12.0	14.7	4.1	22.7	19.5	2.7	0.5	2.3	0.1
December	83.6	83.0	58.0	13.1	12.0	14.5	4.1	22.6	19.4	2.7	0.5	2.2	0.1
<b>2006</b>													
January #	92.6	92.0	64.4	15.1	12.6	13.6	4.2	25.7	21.6	3.5	0.5	2.1	0.1
February	95.2	94.6	66.6	15.2	12.7	13.4	4.2	27.1	22.9	3.6	0.6	2.2	0.1
March	95.4	94.8	66.1	15.9	12.7	13.4	4.2	27.5	23.1	3.8	0.6	2.2	0.1
<b>April #</b>	<b>92.7</b>	<b>92.2</b>	<b>62.2</b>	<b>17.0</b>	<b>13.0</b>	<b>14.1</b>	<b>4.2</b>	<b>26.4</b>	<b>21.7</b>	<b>4.1</b>	<b>0.6</b>	<b>2.4</b>	<b>0.1</b>
Change on year	2.3	2.5	0.7	1.7	0.1	-0.3	0.0	1.8	1.0	0.7	0.2	0.4	0.0
Change %	2.5	2.8	1.1	11.4	0.9	-0.5	-0.5	7.3	4.6	20.2	31.7		45.3
<b>Men</b>													
<b>2004</b>													
April	76.0	75.5	50.2	13.8	11.5	15.2	3.4	18.6	15.7	2.7	0.2	1.1	0.0
<b>2005</b>													
April #	68.7	68.1	45.6	11.8	10.6	15.6	3.5	17.6	14.9	2.5	0.3	1.8	0.0
May	67.2	66.6	44.2	11.9	10.5	15.8	3.5	17.2	14.4	2.5	0.3	1.8	0.0
June	65.7	65.1	42.9	11.6	10.5	16.2	3.6	17.0	14.2	2.5	0.3	2.0	0.0
July #	65.7	65.1	43.6	11.1	10.4	16.0	3.5	17.7	15.0	2.4	0.4	2.0	0.0
August	66.1	65.5	43.8	11.4	10.3	15.7	3.5	18.2	15.3	2.6	0.4	1.9	0.0
September	62.6	62.1	41.3	10.7	10.1	16.3	3.5	16.6	13.9	2.3	0.4	2.2	0.0
October #	61.7	61.2	41.0	10.2	10.0	16.3	3.5	16.0	13.6	2.0	0.4	2.3	0.0
November	62.7	62.3	42.3	10.1	9.9	15.9	3.5	16.2	13.9	1.9	0.4	2.3	0.0
December	63.8	63.3	43.3	10.1	9.9	15.6	3.5	16.3	14.0	1.9	0.4	2.2	0.0
<b>2006</b>													
January #	70.4	69.9	48.0	11.6	10.3	14.7	3.5	18.5	15.6	2.5	0.4	2.1	0.1
February	72.0	71.5	49.3	11.8	10.4	14.6	3.5	19.4	16.4	2.6	0.4	2.2	0.1
March	72.0	71.6	48.8	12.4	10.4	14.6	3.5	19.6	16.5	2.8	0.4	2.2	0.1
<b>April #</b>	<b>70.0</b>	<b>69.6</b>	<b>45.8</b>	<b>13.2</b>	<b>10.6</b>	<b>15.3</b>	<b>3.5</b>	<b>18.9</b>	<b>15.4</b>	<b>3.0</b>	<b>0.4</b>	<b>2.4</b>	<b>0.0</b>
Change on year	1.3	1.5	0.2	1.4	0.0	-0.3	0.0	1.2	0.5	0.6	0.1	0.6	0.0
Change %	2.0	2.3	0.4	11.5	0.0	-1.0	-1.0	6.9	3.4	23.9	42.2		122.7
<b>Women</b>													
<b>2004</b>													
April	23.1	22.9	17.0	3.6	2.3	10.0	0.6	7.3	6.1	1.1	0.1	1.7	0.0
<b>2005</b>													
April #	21.7	21.5	15.9	3.4	2.3	10.5	0.7	7.0	5.8	1.0	0.2	2.4	0.0
May	21.3	21.1	15.5	3.4	2.2	10.5	0.7	6.9	5.7	1.0	0.2	2.2	0.0
June	21.4	21.2	15.6	3.3	2.2	10.6	0.7	6.9	5.8	0.9	0.2	2.3	0.0
July #	22.8	22.6	17.1	3.2	2.3	10.1	0.7	8.0	6.9	0.9	0.2	1.9	0.0
August	23.3	23.2	17.6	3.4	2.3	9.7	0.7	8.3	7.1	1.0	0.2	1.8	0.0
September	21.2	21.0	15.7	3.1	2.2	10.4	0.7	7.1	6.1	0.8	0.2	2.2	0.0
October #	20.3	20.1	15.0	2.9	2.2	10.8	0.7	6.7	5.8	0.8	0.1	2.2	0.0
November	20.1	20.0	14.9	2.9	2.2	10.9	0.7	6.5	5.6	0.8	0.2	2.3	0.0
December	19.9	19.7	14.7	2.9	2.1	10.8	0.6	6.3	5.4	0.8	0.1	2.1	0.0
<b>2006</b>													
January #	22.2	22.1	16.4	3.4	2.2	10.2	0.7	7.2	6.0	1.0	0.1	2.1	0.0
February	23.2	23.1	17.3	3.4	2.3	9.9	0.7	7.7	6.6	1.0	0.2	2.2	0.0
March	23.3	23.2	17.3	3.6	2.3	9.9	0.7	7.9	6.7	1.0	0.2	2.2	0.0
<b>April #</b>	<b>22.6</b>	<b>22.5</b>	<b>16.4</b>	<b>3.8</b>	<b>2.4</b>	<b>10.6</b>	<b>0.7</b>	<b>7.6</b>	<b>6.3</b>	<b>1.1</b>	<b>0.2</b>	<b>2.5</b>	<b>0.0</b>
Change on year	0.9	1.0	0.5	0.4	0.1	0.1	0.0	0.6	0.5	0.1	0.0	0.1	0.0
Change %	4.1	4.6	3.2	11.0	5.4	1.7	1.7	8.4	7.9	11.0	12.0		-9.7

Relationship between columns: 2= 3+4+5; 8= 9+10+11

Source: Jobcentre Plus administrative system

1. Count of claimants of Jobseeker's Allowance.

Labour Market Statistics Helpline 020 7533 6094

2. Only computerised claims are analysed by age and duration on a monthly basis. These figures therefore differ in total from those given in Table 7. The latter include clerically processed claims which currently amount to less than 1 per cent of the total claimant count. See background note 6.

# Months where there are 5 weeks between count dates. All the rest are 4 week periods.

## CLAIMANT COUNT

Scotland

8(2) Claimant count<sup>1</sup> by age  
and duration - computerised claims only<sup>2</sup>

(thousands), not seasonally adjusted

	25-49						50 and over					
	All computerised claims <sup>2</sup>	Up to 6 months	Over 6 and up to 12 months	All over 12 months	% claiming for over 12 months	All over 24 months	All computerised claims <sup>2</sup>	Up to 6 months	Over 6 and up to 12 months	All over 12 months	% claiming for over 12 months	All over 24 months
	14	15	16	17	18	19	20	21	22	23	24	25
<b>People</b>												
<b>2004</b>												
April	52.2	33.6	10.5	8.1	15.5	1.1	17.3	9.0	3.0	5.3	30.9	2.8
<b>2005</b>												
April #	46.6	30.2	9.0	7.4	15.8	1.4	15.6	8.0	2.6	5.0	32.0	2.8
May	45.6	29.3	9.0	7.3	16.0	1.4	15.3	7.7	2.6	5.0	32.6	2.8
June	44.7	28.6	8.8	7.3	16.3	1.4	14.9	7.4	2.5	5.0	33.4	2.8
July #	44.9	29.1	8.4	7.3	16.2	1.4	14.6	7.2	2.4	4.9	33.7	2.8
August	45.2	29.4	8.6	7.1	15.8	1.4	14.5	7.3	2.4	4.9	33.7	2.8
September	43.0	27.9	8.2	6.9	16.1	1.4	14.2	7.0	2.3	4.8	34.2	2.8
October #	42.4	27.6	7.9	6.8	16.1	1.4	14.1	7.1	2.3	4.8	33.9	2.7
November	42.9	28.3	7.8	6.7	15.7	1.3	14.6	7.5	2.3	4.8	32.8	2.7
December	43.7	29.0	7.9	6.7	15.4	1.3	14.6	7.6	2.2	4.8	32.7	2.7
<b>2006</b>												
January #	48.3	32.3	8.9	7.1	14.6	1.4	15.9	8.5	2.4	4.9	30.9	2.8
February	48.9	32.7	9.0	7.2	14.7	1.4	16.0	8.7	2.5	4.9	30.4	2.8
March	48.7	32.2	9.3	7.2	14.8	1.4	15.9	8.5	2.6	4.9	30.6	2.7
<b>April #</b>	<b>47.5</b>	<b>30.2</b>	<b>9.8</b>	<b>7.4</b>	<b>15.6</b>	<b>1.3</b>	<b>15.6</b>	<b>7.9</b>	<b>2.7</b>	<b>5.0</b>	<b>31.8</b>	<b>2.8</b>
<i>Change on year</i>	<i>0.9</i>	<i>0.0</i>	<i>0.9</i>	<i>0.0</i>	<i>-0.3</i>	<i>0.0</i>	<i>-0.1</i>	<i>-0.1</i>	<i>0.1</i>	<i>-0.1</i>	<i>-0.2</i>	<i>0.0</i>
<i>Change %</i>	<i>1.9</i>	<i>0.1</i>	<i>9.5</i>	<i>0.3</i>		<i>-1.4</i>	<i>-0.4</i>	<i>-1.8</i>	<i>5.4</i>	<i>-1.1</i>		<i>-1.0</i>
<b>Men</b>												
2004												
April	41.9	26.4	8.7	6.9	16.4	1.0	13.3	6.6	2.3	4.4	32.9	2.3
2005												
April #	37.2	23.6	7.3	6.2	16.8	1.2	11.8	5.8	1.9	4.1	34.6	2.3
May	36.3	22.8	7.4	6.1	16.9	1.2	11.5	5.6	1.9	4.1	35.3	2.3
June	35.5	22.1	7.2	6.1	17.3	1.2	11.1	5.2	1.8	4.0	36.6	2.3
July #	35.2	22.3	6.9	6.1	17.3	1.2	10.8	5.0	1.8	4.0	36.9	2.3
August	35.2	22.3	7.0	6.0	17.0	1.2	10.7	5.0	1.7	4.0	36.9	2.3
September	33.8	21.3	6.7	5.8	17.2	1.2	10.5	4.9	1.7	3.9	37.5	2.3
October #	33.5	21.3	6.5	5.7	17.1	1.2	10.5	5.0	1.6	3.9	37.0	2.3
November	34.1	22.0	6.4	5.6	16.5	1.2	10.8	5.3	1.7	3.9	35.8	2.3
December	34.9	22.8	6.5	5.6	16.1	1.1	10.9	5.4	1.6	3.9	35.6	2.3
<b>2006</b>												
January #	38.4	25.3	7.3	5.9	15.4	1.2	11.8	6.1	1.8	4.0	33.6	2.3
February	38.9	25.5	7.3	6.0	15.5	1.2	11.9	6.1	1.8	3.9	33.1	2.3
March	38.8	25.1	7.6	6.1	15.6	1.2	11.8	6.0	1.9	3.9	33.4	2.3
<b>April #</b>	<b>37.8</b>	<b>23.6</b>	<b>8.0</b>	<b>6.2</b>	<b>16.4</b>	<b>1.2</b>	<b>11.5</b>	<b>5.5</b>	<b>2.0</b>	<b>4.0</b>	<b>34.7</b>	<b>2.3</b>
<i>Change on year</i>	<i>0.7</i>	<i>0.0</i>	<i>0.7</i>	<i>-0.1</i>	<i>-0.4</i>	<i>0.0</i>	<i>-0.3</i>	<i>-0.3</i>	<i>0.1</i>	<i>-0.1</i>	<i>0.1</i>	<i>0.0</i>
<i>Change %</i>	<i>1.8</i>	<i>0.1</i>	<i>9.4</i>	<i>-0.9</i>		<i>-2.9</i>	<i>-2.2</i>	<i>-4.4</i>	<i>3.8</i>	<i>-1.9</i>		<i>-1.1</i>
<b>Women</b>												
2004												
April	10.2	7.2	1.8	1.2	11.6	0.1	4.0	2.4	0.6	1.0	24.3	0.5
2005												
April #	9.4	6.6	1.7	1.1	12.0	0.2	3.9	2.3	0.7	0.9	24.3	0.5
May	9.2	6.4	1.7	1.1	12.3	0.2	3.8	2.2	0.7	0.9	24.4	0.5
June	9.2	6.4	1.6	1.1	12.4	0.2	3.8	2.2	0.7	0.9	24.1	0.5
July #	9.7	6.9	1.6	1.2	12.3	0.2	3.8	2.2	0.6	0.9	24.6	0.5
August	9.9	7.2	1.6	1.2	11.6	0.2	3.8	2.2	0.6	0.9	24.8	0.5
September	9.2	6.6	1.5	1.1	12.0	0.2	3.7	2.1	0.6	0.9	24.7	0.4
October #	8.9	6.3	1.4	1.1	12.4	0.2	3.6	2.1	0.6	0.9	24.9	0.5
November	8.8	6.3	1.4	1.1	12.4	0.2	3.8	2.2	0.6	0.9	24.3	0.5
December	8.7	6.2	1.4	1.1	12.4	0.2	3.7	2.2	0.6	0.9	24.4	0.5
<b>2006</b>												
January #	9.8	7.0	1.6	1.1	11.6	0.2	4.1	2.5	0.7	0.9	23.2	0.5
February	10.0	7.2	1.7	1.2	11.5	0.2	4.1	2.5	0.7	0.9	22.6	0.5
March	10.0	7.1	1.7	1.2	11.7	0.2	4.1	2.5	0.7	0.9	22.9	0.5
<b>April #</b>	<b>9.7</b>	<b>6.6</b>	<b>1.8</b>	<b>1.2</b>	<b>12.6</b>	<b>0.2</b>	<b>4.1</b>	<b>2.4</b>	<b>0.7</b>	<b>1.0</b>	<b>23.6</b>	<b>0.5</b>
<i>Change on year</i>	<i>0.2</i>	<i>0.0</i>	<i>0.2</i>	<i>0.1</i>	<i>0.6</i>	<i>0.0</i>	<i>0.2</i>	<i>0.1</i>	<i>0.1</i>	<i>0.0</i>	<i>-0.6</i>	<i>0.0</i>
<i>Change %</i>	<i>2.6</i>	<i>-0.1</i>	<i>10.0</i>	<i>7.3</i>		<i>9.2</i>	<i>4.9</i>	<i>4.6</i>	<i>9.9</i>	<i>2.1</i>		<i>-0.4</i>

Relationship between columns: 14=15+16+17; 20=21+22=23

Source: Jobcentre Plus administrative system

1. Count of claimants of Jobseeker's Allowance.

Labour Market Statistics Helpline 020 7533 6094

2. Only computerised claims are analysed by age and duration on a monthly basis. These figures therefore differ in total from those given in Table 7. The latter include clerically processed claims which currently amount to less than 1 per cent of the total claimant count. See background note 6.

# Months where there are 5 weeks between count dates. All the rest are 4 week periods.

# ECONOMIC ACTIVITY AND INACTIVITY

Scotland

## 9 Economic activity by age

(thousands), not seasonally adjusted

		All aged 16 & over	16 - 59/64	16 - 17	18 - 24	25 - 34	35 - 49	50 - 64 (m) 50 - 59 (w)	65+ (m) 60+ (w)
		1	2	3	4	5	6	7	8
<b>Economically active</b>									
<b>People</b>	Jan - Mar 2003	..	..	..	..	..	..	..	..
	Jan - Mar 2004	..	..	..	..	..	..	..	..
	Jan - Mar 2005	2,596	2,516	72	349	538	990	567	81
	Apr - Jun 2005	2,589	2,514	75	356	524	986	572	75
	Jul - Sep 2005	2,620	2,547	78	368	529	1,001	570	74
	Oct - Dec 2005	2,597	2,524	73	364	530	988	570	73
	<b>Jan - Mar 2006</b>	<b>2,593</b>	<b>2,518</b>	<b>73</b>	<b>357</b>	<b>524</b>	<b>995</b>	<b>568</b>	<b>75</b>
	<i>Change on year</i>	-4	2	0	9	-14	5	1	-6
	<i>Change %</i>	-0.1	0.1	0.6	2.5	-2.5	0.5	0.2	-6.9
<b>Men</b>	Jan - Mar 2003	..	..	..	..	..	..	..	..
	Jan - Mar 2004	..	..	..	..	..	..	..	..
	Jan - Mar 2005	1,372	1,345	37	185	280	506	337	27
	Apr - Jun 2005	1,377	1,349	38	191	273	507	340	28
	Jul - Sep 2005	1,391	1,365	40	196	278	513	338	25
	Oct - Dec 2005	1,379	1,354	37	196	275	510	336	25
	<b>Jan - Mar 2006</b>	<b>1,367</b>	<b>1,343</b>	<b>37</b>	<b>187</b>	<b>273</b>	<b>512</b>	<b>334</b>	<b>24</b>
	<i>Change on year</i>	-6	-2	0	2	-7	6	-4	-3
	<i>Change %</i>	-0.4	-0.2	0.8	1.2	-2.5	1.2	-1.1	-11.9
<b>Women</b>	Jan - Mar 2003	..	..	..	..	..	..	..	..
	Jan - Mar 2004	..	..	..	..	..	..	..	..
	Jan - Mar 2005	1,224	1,171	36	163	258	484	230	53
	Apr - Jun 2005	1,212	1,164	38	165	251	479	231	48
	Jul - Sep 2005	1,230	1,181	38	172	251	488	232	48
	Oct - Dec 2005	1,218	1,171	36	168	254	478	234	48
	<b>Jan - Mar 2006</b>	<b>1,226</b>	<b>1,175</b>	<b>36</b>	<b>170</b>	<b>251</b>	<b>484</b>	<b>235</b>	<b>51</b>
	<i>Change on year</i>	2	4	0	6	-7	-1	5	-2
	<i>Change %</i>	0.2	0.4	0.4	3.9	-2.5	-0.1	2.1	-4.4
<b>Economic activity rates (%)<sup>1</sup></b>									
<b>People</b>	Jan - Mar 2003	..	..	..	..	..	..	..	..
	Jan - Mar 2004	..	..	..	..	..	..	..	..
	Jan - Mar 2005	63.4	79.5	55.8	76.3	85.8	85.7	71.5	8.6
	Apr - Jun 2005	63.1	79.4	58.1	77.6	83.8	85.2	71.9	8.1
	Jul - Sep 2005	63.8	80.3	60.6	80.0	84.8	86.4	71.4	7.9
	Oct - Dec 2005	63.2	79.5	57.0	78.7	85.0	85.2	71.1	7.8
	<b>Jan - Mar 2006</b>	<b>63.0</b>	<b>79.2</b>	<b>56.9</b>	<b>77.2</b>	<b>84.3</b>	<b>85.8</b>	<b>70.6</b>	<b>8.0</b>
	<i>Change on year</i>	-0.4	-0.3	1.1	0.9	-1.5	0.1	-0.8	-0.7
<b>Men</b>	Jan - Mar 2003	..	..	..	..	..	..	..	..
	Jan - Mar 2004	..	..	..	..	..	..	..	..
	Jan - Mar 2005	70.5	83.3	55.2	80.6	91.8	90.7	74.0	8.2
	Apr - Jun 2005	70.6	83.4	56.4	82.9	89.7	90.8	74.5	8.4
	Jul - Sep 2005	71.2	84.3	60.7	84.8	91.4	91.8	73.7	7.6
	Oct - Dec 2005	70.5	83.5	56.0	84.2	90.6	91.2	73.0	7.6
	<b>Jan - Mar 2006</b>	<b>69.8</b>	<b>82.7</b>	<b>56.4</b>	<b>80.6</b>	<b>89.9</b>	<b>91.6</b>	<b>72.2</b>	<b>7.1</b>
	<i>Change on year</i>	-0.7	-0.5	1.2	-0.1	-1.9	0.9	-1.8	-1.1
<b>Women</b>	Jan - Mar 2003	..	..	..	..	..	..	..	..
	Jan - Mar 2004	..	..	..	..	..	..	..	..
	Jan - Mar 2005	57.0	75.6	56.5	71.8	80.1	81.0	68.0	8.9
	Apr - Jun 2005	56.4	75.1	60.0	72.3	78.1	80.0	68.3	7.9
	Jul - Sep 2005	57.1	76.1	60.6	75.1	78.5	81.3	68.3	8.1
	Oct - Dec 2005	56.6	75.4	58.1	73.2	79.7	79.6	68.4	7.9
	<b>Jan - Mar 2006</b>	<b>56.8</b>	<b>75.6</b>	<b>57.5</b>	<b>73.8</b>	<b>79.0</b>	<b>80.4</b>	<b>68.5</b>	<b>8.5</b>
	<i>Change on year</i>	-0.2	0.0	1.0	1.9	-1.1	-0.6	0.4	-0.4

Relationship between columns: 1=2+8; 2=3+4+5+6+7

Source: Labour Force Survey

1. Denominator = all persons in the relevant age group.

Labour Market Statistics Helpline 020 7533 6094

The Labour Force Survey is a survey of the population of private households, student halls of residence and NHS accommodation.

.. not available due to the move to calendar quarters. See note on page 6 for further information.

# ECONOMIC ACTIVITY AND INACTIVITY

Scotland

## 10 Economic inactivity by age

(thousands), not seasonally adjusted

		All aged 16 & over	16 - 59/64	16 - 17	18 - 24	25 - 34	35 - 49	50 - 64 (m) 50 - 59 (w)	65+ (m) 60+ (w)
		1	2	3	4	5	6	7	8
<b>Economically inactive</b>									
<b>People</b>	Jan - Mar 2003	..	..	..	..	..	..	..	..
	Jan - Mar 2004	..	..	..	..	..	..	..	..
	Jan - Mar 2005	1,498	647	57	109	89	166	226	851
	Apr - Jun 2005	1,511	654	54	103	102	171	224	858
	Jul - Sep 2005	1,486	625	51	92	95	158	228	861
	Oct - Dec 2005	1,514	650	55	98	93	171	232	864
	<b>Jan - Mar 2006</b>	<b>1,523</b>	<b>659</b>	<b>55</b>	<b>106</b>	<b>97</b>	<b>165</b>	<b>236</b>	<b>864</b>
	<i>Change on year</i>	25	12	-2	-3	8	-1	10	13
	<i>Change %</i>	1.7	1.9	-3.8	-2.7	9.3	-0.6	4.4	1.5
<b>Men</b>	Jan - Mar 2003	..	..	..	..	..	..	..	..
	Jan - Mar 2004	..	..	..	..	..	..	..	..
	Jan - Mar 2005	575	270	30	45	25	52	118	305
	Apr - Jun 2005	574	268	29	40	31	51	117	306
	Jul - Sep 2005	563	254	26	35	26	46	121	309
	Oct - Dec 2005	578	268	29	37	29	49	124	310
	<b>Jan - Mar 2006</b>	<b>593</b>	<b>280</b>	<b>29</b>	<b>45</b>	<b>31</b>	<b>47</b>	<b>128</b>	<b>313</b>
	<i>Change on year</i>	18	10	-1	1	6	-5	10	8
	<i>Change %</i>	3.1	3.7	-4.1	1.5	22.6	-9.6	8.4	2.5
<b>Women</b>	Jan - Mar 2003	..	..	..	..	..	..	..	..
	Jan - Mar 2004	..	..	..	..	..	..	..	..
	Jan - Mar 2005	923	377	27	64	64	114	108	546
	Apr - Jun 2005	938	386	25	63	70	120	107	552
	Jul - Sep 2005	922	371	25	57	69	112	108	552
	Oct - Dec 2005	936	382	26	62	65	122	108	554
	<b>Jan - Mar 2006</b>	<b>931</b>	<b>379</b>	<b>26</b>	<b>60</b>	<b>67</b>	<b>118</b>	<b>108</b>	<b>551</b>
	<i>Change on year</i>	8	2	-1	-4	3	4	0	6
	<i>Change %</i>	0.8	0.6	-3.5	-5.7	4.2	3.5	0.0	1.0
<b>Economic inactivity rates (%)<sup>1</sup></b>									
<b>People</b>	Jan - Mar 2003	..	..	..	..	..	..	..	..
	Jan - Mar 2004	..	..	..	..	..	..	..	..
	Jan - Mar 2005	36.6	20.5	44.2	23.7	14.2	14.3	28.5	91.4
	Apr - Jun 2005	36.9	20.6	41.9	22.4	16.2	14.8	28.1	91.9
	Jul - Sep 2005	36.2	19.7	39.4	20.0	15.2	13.6	28.6	92.1
	Oct - Dec 2005	36.8	20.5	43.0	21.3	15.0	14.8	28.9	92.2
	<b>Jan - Mar 2006</b>	<b>37.0</b>	<b>20.8</b>	<b>43.1</b>	<b>22.8</b>	<b>15.7</b>	<b>14.2</b>	<b>29.4</b>	<b>92.0</b>
	<i>Change on year</i>	0.4	0.3	-1.1	-0.9	1.5	-0.1	0.8	0.7
<b>Men</b>	Jan - Mar 2003	..	..	..	..	..	..	..	..
	Jan - Mar 2004	..	..	..	..	..	..	..	..
	Jan - Mar 2005	29.5	16.7	44.8	19.4	8.2	9.3	26.0	91.8
	Apr - Jun 2005	29.4	16.6	43.6	17.1	10.3	9.2	25.5	91.6
	Jul - Sep 2005	28.8	15.7	39.3	15.2	8.6	8.2	26.3	92.4
	Oct - Dec 2005	29.5	16.5	44.0	15.8	9.4	8.8	27.0	92.4
	<b>Jan - Mar 2006</b>	<b>30.2</b>	<b>17.3</b>	<b>43.6</b>	<b>19.4</b>	<b>10.1</b>	<b>8.4</b>	<b>27.8</b>	<b>92.9</b>
	<i>Change on year</i>	0.7	0.5	-1.2	0.1	1.9	-0.9	1.8	1.1
<b>Women</b>	Jan - Mar 2003	..	..	..	..	..	..	..	..
	Jan - Mar 2004	..	..	..	..	..	..	..	..
	Jan - Mar 2005	43.0	24.4	43.5	28.2	19.9	19.0	32.0	91.1
	Apr - Jun 2005	43.6	24.9	40.0	27.7	21.9	20.0	31.7	92.1
	Jul - Sep 2005	42.9	23.9	39.4	24.9	21.5	18.7	31.7	91.9
	Oct - Dec 2005	43.4	24.6	41.9	26.8	20.3	20.4	31.6	92.1
	<b>Jan - Mar 2006</b>	<b>43.2</b>	<b>24.4</b>	<b>42.5</b>	<b>26.2</b>	<b>21.0</b>	<b>19.6</b>	<b>31.5</b>	<b>91.5</b>
	<i>Change on year</i>	0.2	0.0	-1.0	-1.9	1.1	0.6	-0.4	0.4

Relationship between columns: 1=2+8; 2=3+4+5+6+7

Source: Labour Force Survey

1. Denominator = all persons in the relevant age group.

Labour Market Statistics Helpline 020 7533 6094

The Labour Force Survey is a survey of the population of private households, student halls of residence and NHS accommodation.

.. not available due to the move to calendar quarters. See note on page 6 for further information.

# ECONOMIC ACTIVITY AND INACTIVITY

Scotland

## 11 Economic inactivity: reasons

(thousands), not seasonally adjusted

		Total aged 16-59/64									
		Economic inactivity by reason									
		Student	Looking after family / home	Temp sick	Long-term sick	Discouraged workers	Retired	Other	Does not want job	Wants a job	
		1	2	3	4	5	6	7	8	9	10
<b>People</b>	Jan - Mar 2003	..	..	..	..	..	..	..	..	..	..
	Jan - Mar 2004	..	..	..	..	..	..	..	..	..	..
	Jan - Mar 2005	647	145	151	14	226	*	46	60	463	184
	Apr - Jun 2005	654	140	148	19	236	*	48	61	432	221
	Jul - Sep 2005	625	119	161	19	216	*	54	53	426	199
	Oct - Dec 2005	650	135	166	19	224	*	47	54	454	196
	<b>Jan - Mar 2006</b>	<b>659</b>	<b>148</b>	<b>165</b>	<b>18</b>	<b>228</b>	<b>*</b>	<b>47</b>	<b>49</b>	<b>453</b>	<b>206</b>
	<i>Change on year</i>	12	2	14	4	2	*	1	-10	-9	21
	<i>Change %</i>	1.9	1.5	8.9	27.8	0.8	*	2.5	-17.0	-2.0	11.7
	<b>Men</b>	Jan - Mar 2003	..	..	..	..	..	..	..	..	..
Jan - Mar 2004		..	..	..	..	..	..	..	..	..	..
Jan - Mar 2005		270	75	15	*	117	*	31	26	195	75
Apr - Jun 2005		268	65	13	*	125	*	31	24	180	88
Jul - Sep 2005		254	58	17	*	111	*	36	23	170	84
Oct - Dec 2005		268	65	17	*	118	*	33	21	181	86
<b>Jan - Mar 2006</b>		<b>280</b>	<b>73</b>	<b>16</b>	<b>10</b>	<b>122</b>	<b>*</b>	<b>34</b>	<b>21</b>	<b>183</b>	<b>96</b>
<i>Change on year</i>		10	-2	1	*	6	*	3	-5	-12	22
<i>Change %</i>		3.7	-2.3	3.5	*	4.7	*	9.5	-19.3	-6.0	29.3
<b>Women</b>		Jan - Mar 2003	..	..	..	..	..	..	..	..	..
	Jan - Mar 2004	..	..	..	..	..	..	..	..	..	..
	Jan - Mar 2005	377	71	136	10	109	*	15	33	267	110
	Apr - Jun 2005	386	75	135	10	111	*	17	37	252	134
	Jul - Sep 2005	371	61	144	10	104	*	18	30	256	115
	Oct - Dec 2005	382	70	150	10	105	*	14	32	273	110
	<b>Jan - Mar 2006</b>	<b>379</b>	<b>75</b>	<b>149</b>	<b>*</b>	<b>106</b>	<b>*</b>	<b>14</b>	<b>28</b>	<b>270</b>	<b>110</b>
	<i>Change on year</i>	2	4	13	*	-4	*	-2	-5	3	0
	<i>Change %</i>	0.6	5.6	9.6	*	-3.3	*	-11.5	-15.1	0.9	-0.3

### Percentage of economically inactive (%)

<b>People</b>	Jan - Mar 2003	..	..	..	..	..	..	..	..	..	..	
	Jan - Mar 2004	..	..	..	..	..	..	..	..	..	..	
	Jan - Mar 2005	100.0	22.5	23.3	2.2	35.0	*	7.1	9.2	71.5	28.5	
	Apr - Jun 2005	100.0	21.5	22.6	2.9	36.1	*	7.4	9.3	66.1	33.9	
	Jul - Sep 2005	100.0	19.1	25.7	3.0	34.5	*	8.6	8.4	68.2	31.8	
	Oct - Dec 2005	100.0	20.8	25.6	3.0	34.4	*	7.2	8.3	69.9	30.1	
	<b>Jan - Mar 2006</b>	<b>100.0</b>	<b>22.4</b>	<b>25.0</b>	<b>2.8</b>	<b>34.6</b>	<b>*</b>	<b>7.2</b>	<b>7.5</b>	<b>68.8</b>	<b>31.2</b>	
	<b>Men</b>	Jan - Mar 2003	..	..	..	..	..	..	..	..	..	..
		Jan - Mar 2004	..	..	..	..	..	..	..	..	..	..
		Jan - Mar 2005	100.0	27.7	5.6	*	43.3	*	11.4	9.7	72.4	27.6
Apr - Jun 2005		100.0	24.4	4.7	*	46.6	*	11.6	9.0	67.3	32.7	
Jul - Sep 2005		100.0	23.0	6.5	*	43.8	*	14.0	8.9	66.9	33.1	
Oct - Dec 2005		100.0	24.5	6.3	*	44.2	*	12.5	8.0	67.8	32.2	
<b>Jan - Mar 2006</b>		<b>100.0</b>	<b>26.1</b>	<b>5.6</b>	<b>3.5</b>	<b>43.7</b>	<b>*</b>	<b>12.0</b>	<b>7.6</b>	<b>65.5</b>	<b>34.5</b>	
<b>Women</b>		Jan - Mar 2003	..	..	..	..	..	..	..	..	..	..
		Jan - Mar 2004	..	..	..	..	..	..	..	..	..	..
		Jan - Mar 2005	100.0	18.7	36.0	2.6	29.0	*	4.0	8.8	70.9	29.1
	Apr - Jun 2005	100.0	19.5	35.1	2.6	28.8	*	4.5	9.5	65.3	34.7	
	Jul - Sep 2005	100.0	16.4	38.9	2.8	28.2	*	5.0	8.1	69.1	30.9	
	Oct - Dec 2005	100.0	18.2	39.1	2.7	27.6	*	3.6	8.5	71.3	28.7	
	<b>Jan - Mar 2006</b>	<b>100.0</b>	<b>19.7</b>	<b>39.2</b>	<b>*</b>	<b>27.9</b>	<b>*</b>	<b>3.6</b>	<b>7.4</b>	<b>71.1</b>	<b>28.9</b>	

Relationship between columns: 2=3+4; 5=6+7; 8=9+10+11

Source: Labour Force Survey

Labour Market Statistics Helpline 020 7533 6094

The Labour Force Survey is a survey of the population of private households, student halls of residence and NHS accommodation.

.. not available due to the move to calendar quarters. See note on page 6 for further information.

## 12 Local labour market indicators by Unitary and Local Authority

not seasonally adjusted

	mid-2004		January 2004 to December 2004						2003		
	Population <sup>1</sup>		Labour supply			Working age benefits			Labour demand <sup>6</sup>		
			Employment <sup>2</sup>		Unemployment <sup>2</sup>		Economic inactivity <sup>2</sup>		Claimant count <sup>4</sup>		Jobs <sup>7</sup>
	16-59/64 (000s)	Total 16-59/64 (000s)	16-59/64 Rate (%)	Total 16+ (000s)	Rate <sup>3</sup> (%)	Total 16-59/64 (000s)	16-59/64 Rate (%)	Level	Proportion <sup>5</sup> (%)	Total (000s)	Jobs Density 16-59/64 (ratio)
1	2	3	4	5	6	7	8	9	10	11	
<b>United Kingdom total</b>	<b>37,064</b>	<b>26,951</b>	<b>74.2</b>	<b>1,394</b>	<b>4.7</b>	<b>7,988</b>	<b>22.0</b>	<b>866,144</b>	<b>2.3</b>	<b>30,567</b>	<b>0.83</b>
<b>Regional total</b>	<b>3,175</b>	<b>2,335</b>	<b>74.7</b>	<b>136</b>	<b>5.4</b>	<b>656</b>	<b>21.0</b>	<b>94,782</b>	<b>3.0</b>	<b>2,593</b>	<b>0.82</b>
Aberdeen City	134	100	76.2	6	5.9	25	19.0	2,662	2.0	173	1.27
Aberdeenshire	145	113	79.3	6	4.9	23	16.4	1,956	1.3	100	0.70
Angus	65	49	76.1	2	4.6	13	20.3	1,914	3.0	44	0.69
Argyll & Bute	54	40	77.6	2	4.2	10	18.9	1,479	2.7	49	0.91
Clackmannanshire	30	21	72.3	1	6.6	6	22.5	1,050	3.5	15	0.49
Dumfries & Galloway	87	66	78.8	3	3.8	15	18.0	2,268	2.6	65	0.76
Dundee City	88	58	68.3	6	9.0	21	24.6	3,795	4.3	79	0.89
East Ayrshire	74	51	71.6	4	6.4	17	23.4	3,156	4.3	46	0.63
East Dunbartonshire	65	54	81.3	1	2.4	11	16.8	1,134	1.8	29	0.45
East Lothian	54	43	76.3	2	5.1	11	19.5	938	1.7	30	0.56
East Renfrewshire	54	45	79.3	2	4.0	10	17.4	903	1.7	21	0.40
Edinburgh, City of	304	222	75.5	12	5.1	60	20.3	7,056	2.3	344	1.15
Eilean Siar	15	12	79.2	1	5.1	2	16.3	594	3.9	13	0.87
Falkirk	92	69	76.9	3	4.5	17	19.3	2,836	3.1	63	0.70
Fife	219	169	77.9	9	4.9	39	18.1	7,904	3.6	152	0.70
Glasgow City	378	241	64.9	21	7.8	110	29.6	16,413	4.3	415	1.11
Highland	128	102	82.8	4	3.7	17	13.9	3,366	2.6	115	0.90
Inverclyde	51	35	68.7	3	7.6	13	25.4	2,566	5.1	34	0.66
Midlothian	49	41	80.0	2	3.5	9	17.0	969	2.0	30	0.60
Moray	53	39	77.6	2	3.5	10	19.6	1,100	2.1	46	0.86
North Ayrshire	83	56	67.7	6	9.7	21	25.0	3,840	4.6	46	0.56
North Lanarkshire	204	141	70.6	10	6.3	49	24.5	6,729	3.3	127	0.62
Orkney Islands	12	10	85.1	~	1.6	2	13.5	210	1.8	11	0.93
Perth & Kinross	82	62	78.2	2	3.4	15	18.9	1,581	1.9	67	0.83
Renfrewshire	107	78	74.5	4	4.4	23	22.0	3,529	3.3	83	0.77
Scottish Borders	65	50	79.7	1	2.7	11	18.0	1,128	1.7	51	0.80
Shetland Islands	13	11	85.8	~	1.9	2	12.8	247	1.8	14	1.04
South Ayrshire	67	49	74.1	4	6.8	13	20.3	2,300	3.4	49	0.74
South Lanarkshire	191	143	75.5	7	4.6	39	20.7	5,016	2.6	120	0.64
Stirling	53	41	76.5	2	5.3	10	19.1	1,188	2.2	45	0.84
West Dunbartonshire	57	40	70.8	3	7.3	13	23.6	2,504	4.4	35	0.61
West Lothian	104	84	79.1	4	4.0	19	17.6	2,455	2.4	80	0.77

Relationship between columns: 9=8/1; 11=10/1.

Source: Annual Population Survey, Jobcentre Plus administrative system, Annual Business Inquiry  
Labour Market Statistics Helpline 020 7533 6094

1. Official estimate of the resident population.

2. Annual Population Survey (APS) data. The APS is a survey of the population of private households, student halls of residence and NHS accommodation. The APS data in this table are consistent with population estimates released in February 2003, not the latest revised population estimates - see note on page 8.

3. Unemployment rates calculated as percentage of 16+ economically active population

4. Count of claimants of Jobseeker's Allowance. Averaged over 12 month period.

5. Percentage of resident working age population of area. NB. These are different from the national and regional claimant rates shown in Tables 1a, 7 and the summary of other headline indicators. See background note 5.

6. Labour demand in this table includes jobs only. Suitable comprehensive estimates of job vacancies are not available at local level.

7. Jobs data are mainly employees from the Annual Business Inquiry which refers to December of each year; they also include self-employed, HM Forces and government-supported trainees. Jobs densities are calculated as the number of jobs per resident of working age (16-59/64).

# Sample size zero or disclosive (less than three).

~ less than 500.

# LOCAL AREA DATA

Scotland

## 13 (1) Local labour market indicators by UK Parliamentary Constituency

not seasonally adjusted

	mid-2004		January 2004 to December 2004						2003			
	Population <sup>1</sup>		Labour supply				Working age benefits		Labour demand <sup>8</sup>			
			Employment <sup>2</sup>		Unemployment <sup>2</sup>		Economic inactivity <sup>2</sup>		Claimant count <sup>4</sup>		Jobs <sup>7</sup>	
	16-59/64 (000s)	Total 16-59/64 Rate (%)	Total 16+ Rate <sup>3</sup> (%)	Total 16+ Rate <sup>3</sup> (%)	Total 16-59/64 Rate (%)	Total 16-59/64 Rate (%)	Level	Proportion <sup>5</sup> (%)	Total (000s)	Jobs Density 16-59/64 (ratio)		
1	2	3	4	5	6	7	8	9	10	11		
<b>United Kingdom total</b>	<b>37,064</b>	<b>26,951</b>	<b>74.2</b>	<b>1,394</b>	<b>4.7</b>	<b>7,988</b>	<b>22.0</b>	<b>866,144</b>	<b>2.3</b>	<b>30,567</b>	<b>0.83</b>	
<b>Regional total</b>	<b>3,175</b>	<b>2,335</b>	<b>74.7</b>	<b>136</b>	<b>5.4</b>	<b>656</b>	<b>21.0</b>	<b>94,782</b>	<b>3.0</b>	<b>2,593</b>	<b>0.82</b>	
Aberdeen North	..	39	70.5	3	7.8	13	23.5	..	..	..	..	
Aberdeen South	..	41	77.7	3	5.9	9	17.5	..	..	..	..	
Airdrie & Shotts	..	35	74.5	1	3.9	10	22.4	..	..	..	..	
Angus	..	36	74.8	2	5.2	10	21.1	..	..	..	..	
Argyll & Bute	..	40	77.6	2	4.2	10	18.9	..	..	..	..	
Ayr, Carrick & Cumnock	..	41	72.4	3	7.4	12	21.7	..	..	..	..	
Banff & Buchan	..	38	76.6	2	5.7	9	18.4	..	..	..	..	
Berwickshire, Roxburgh & Selkirk	..	42	78.8	1	2.9	10	18.8	..	..	..	..	
Caithness, Sutherland & Easter Ross	..	32	83.1	1	3.7	5	13.6	..	..	..	..	
Central Ayrshire	..	38	70.8	3	6.5	13	24.3	..	..	..	..	
Coatbridge, Chryston & Bellshill	..	38	67.1	4	8.4	15	26.6	..	..	..	..	
Cumbernauld, Kilsyth & Kirkintilloch East	..	41	76.4	2	3.5	11	20.7	..	..	..	..	
Dumfries & Galloway	..	44	77.5	2	4.5	11	18.7	..	..	..	..	
Dumfriesshire, Clydesdale & Tweeddale	..	38	80.7	1	1.9	8	17.7	..	..	..	..	
Dundee East	..	37	73.5	3	6.3	11	21.3	..	..	..	..	
Dundee West	..	33	66.7	4	9.7	13	25.8	..	..	..	..	
Dunfermline & West Fife	..	45	77.2	3	6.7	10	17.4	..	..	..	..	
East Dunbartonshire	..	41	82.8	1	1.9	8	15.6	..	..	..	..	
East Kilbride, Strathaven & Lesmahagow	..	52	77.3	2	4.4	13	19.0	..	..	..	..	
East Lothian	..	43	76.3	2	5.1	11	19.5	..	..	..	..	
East Renfrewshire	..	45	79.3	2	4.0	10	17.4	..	..	..	..	
Edinburgh East	..	39	72.0	1	2.6	14	26.0	..	..	..	..	
Edinburgh North & Leith	..	52	78.7	4	6.9	10	15.6	..	..	..	..	
Edinburgh South	..	41	72.0	3	6.1	13	23.2	..	..	..	..	
Edinburgh South West	..	43	72.4	2	5.2	14	23.5	..	..	..	..	
Edinburgh West	..	47	82.1	2	4.0	8	14.4	..	..	..	..	
Falkirk	..	46	76.7	2	5.0	11	19.2	..	..	..	..	
Glasgow Central	..	31	63.3	3	9.1	15	30.8	..	..	..	..	
Glasgow East	..	33	56.0	4	11.4	21	36.6	..	..	..	..	
Glasgow North	..	26	64.9	2	6.8	12	30.2	..	..	..	..	
Glasgow North East	..	28	59.1	4	12.7	15	32.1	..	..	..	..	
Glasgow North West	..	40	67.6	4	8.5	15	26.0	..	..	..	..	
Glasgow South	..	50	76.1	2	3.8	14	21.2	..	..	..	..	
Glasgow South West	..	33	64.4	2	4.6	17	32.3	..	..	..	..	
Glenrothes	..	40	74.2	2	4.9	12	21.9	..	..	..	..	
Gordon	..	51	83.5	2	3.3	8	13.5	..	..	..	..	
Inverclyde	..	35	68.7	3	7.6	13	25.4	..	..	..	..	
Inverness, Nairn, Badenoch & Strathspey	..	41	81.9	2	4.5	7	14.1	..	..	..	..	
Kilmarnock & Loudoun	..	39	72.3	3	6.2	12	22.9	..	..	..	..	
Kirkcaldy & Cowdenbeath	..	43	76.9	3	6.0	10	18.1	..	..	..	..	
Lanark & Hamilton East	..	44	78.4	2	4.9	10	17.5	..	..	..	..	
Linlithgow & East Falkirk	..	52	76.2	3	5.3	13	19.4	..	..	..	..	
Livingston	..	56	81.1	2	2.7	12	16.7	..	..	..	..	
Midlothian	..	41	80.0	2	3.5	9	17.0	..	..	..	..	
Moray	..	39	77.6	2	3.5	10	19.6	..	..	..	..	
Motherwell & Wishaw	..	40	67.2	4	8.2	16	26.4	..	..	..	..	
Na h-Eileanan an Iar	..	12	79.2	1	5.1	2	16.3	..	..	..	..	
North Ayrshire & Arran	..	39	68.2	5	10.8	13	23.3	..	..	..	..	
North East Fife	..	42	83.6	1	2.0	7	14.6	..	..	..	..	
Ochil & South Perthshire	..	41	75.2	2	4.3	12	21.4	..	..	..	..	
Orkney & Shetland	..	21	85.5	~	1.7	3	13.1	..	..	..	..	
Paisley & Renfrewshire North	..	40	75.0	2	5.2	11	20.8	..	..	..	..	
Paisley & Renfrewshire South	..	39	73.9	1	3.6	12	23.2	..	..	..	..	

## 13 (1) Local labour market indicators by UK Parliamentary Constituency

not seasonally adjusted

	mid-2004		January 2004 to December 2004						2003		
	Population <sup>1</sup>		Labour supply			Working age benefits			Labour demand <sup>8</sup>		
			Employment <sup>2</sup>		Unemployment <sup>2</sup>		Economic inactivity <sup>2</sup>		Claimant count <sup>4</sup>		Jobs <sup>7</sup>
	16-59/64 (000s)	Total 16-59/64 (000s)	16-59/64 Rate (%)	Total 16+ (000s)	Rate <sup>3</sup> (%)	Total 16-59/64 (000s)	16-59/64 Rate (%)	Level	Proportion <sup>5</sup> (%)	Total (000s)	Jobs Density 16-59/64 (ratio)
1	2	3	4	5	6	7	8	9	10	11	
Perth & North Perthshire	..	41	78.2	2	4.1	10	18.3	..	..	..	..
Ross, Skye & Lochaber	..	29	83.7	1	2.6	5	13.9	..	..	..	..
Rutherglen & Hamilton West	..	41	70.7	2	5.3	15	25.2	..	..	..	..
Stirling	..	41	76.5	2	5.3	10	19.1	..	..	..	..
West Aberdeenshire & Kincardine	..	43	80.0	2	4.7	9	15.8	..	..	..	..
West Dunbartonshire	..	40	70.8	3	7.3	13	23.6	..	..	..	..

Relationship between columns: 9=8/1; 11=10/1.

Source: Annual Population Survey, Jobcentre Plus administrative system, Annual Business Inquiry  
Labour Market Statistics Helpline 020 7533 6094

1. Official mid-2003 estimate of the resident population are not available for this geography. Denominators for claimant count and jobs density are based on 2001 Census data adjusted to be consistent with 2001 mid-year population estimates for local authorities.

2. Annual Population Survey (APS) data. The APS is a survey of the population of private households, student halls of residence and NHS accommodation. The APS data in this table are consistent with population estimates released in February 2003, not the latest revised population estimates - see note on page 8.

3. Unemployment rates calculated as percentage of 16+ economically active population.

4. Count of claimants of Jobseeker's Allowance. Averaged over 12 month period.

5. Percentage of resident working age population of area. NB. These are different from the national and regional claimant rates shown in Tables 1a, 7 and the summary of other headline indicators. See background note 5.

6. Labour demand in this table includes jobs only. Suitable comprehensive estimates of job vacancies are not available at local level.

7. Jobs data are mainly employees from the Annual Business Inquiry which refers to December of each year; they also include self-employed, HM Forces and government-supported trainees. Jobs densities are calculated as the number of jobs per resident of working age (16-59/64).

# Sample size zero or disclosive (less than three).

~ less than 500.

# LOCAL AREA DATA

Scotland

## 13(2) Local labour market indicators by constituencies of the Scottish Parliament

not seasonally adjusted

	mid-2004		January 2004 to December 2004						2003		
	Population <sup>1</sup>		Labour supply			Working age benefits			Labour demand <sup>6</sup>		
			Employment <sup>2</sup>		Unemployment <sup>2</sup>	Economic inactivity <sup>2</sup>		Claimant count <sup>4</sup>		Jobs <sup>7</sup>	
	16-59/64 (000s)	Total 16-59/64 Rate (%)	Total 16+ Rate <sup>3</sup> (%)	Total 16-59/64 Rate (%)	Total 16-59/64 Rate (%)	Level	Proportion <sup>5</sup> (%)	Total (000s)	Jobs Density 16-59/64 (ratio)		
1	2	3	4	5	6	7	8	9	10	11	
<b>United Kingdom total</b>	<b>37,064</b>	<b>26,951</b>	<b>74.2</b>	<b>1,394</b>	<b>4.7</b>	<b>7,988</b>	<b>22.0</b>	<b>866,144</b>	<b>2.3</b>	<b>30,567</b>	<b>0.83</b>
<b>Regional total</b>	<b>3,175</b>	<b>2,335</b>	<b>74.7</b>	<b>136</b>	<b>5.4</b>	<b>656</b>	<b>21.0</b>	<b>94,782</b>	<b>3.0</b>	<b>2,593</b>	<b>0.82</b>
<b>Central Scotland</b>											
Airdrie & Shotts	..	31	72.1	1	4.4	11	24.5	1,740	3.6	28	0.58
Coatbridge & Chryston	..	28	67.3	2	6.1	12	28.2	1,325	3.1	21	0.50
Cumbernauld & Kilsyth	..	29	76.8	1	3.2	8	20.5	1,044	2.5	24	0.58
East Kilbride	..	45	78.1	2	4.0	11	18.5	1,217	2.3	42	0.79
Falkirk East	..	39	77.2	1	3.6	10	19.8	1,402	3.0	27	0.57
Falkirk West	..	31	76.6	2	5.7	8	18.7	1,433	3.3	37	0.85
Hamilton North & Bellshill	..	35	70.5	3	8.1	12	23.1	1,513	3.4	43	0.98
Hamilton South	..	27	73.7	2	5.4	8	22.0	1,195	3.1	21	0.54
Kilmarnock & Loudoun	..	32	72.5	2	6.4	10	22.6	2,077	4.2	33	0.67
Motherwell & Wishaw	..	32	72.3	2	6.8	10	22.1	1,523	3.7	29	0.71
<b>Glasgow</b>											
Glasgow Anniesland	..	29	68.1	2	7.3	11	26.4	1,676	4.4	22	0.59
Glasgow Baillieston	..	25	56.8	3	11.6	16	35.6	1,669	4.3	16	0.41
Glasgow Cathcart	..	36	77.0	1	2.4	10	21.1	1,288	3.2	20	0.50
Glasgow Govan	..	31	72.1	3	7.5	10	22.4	1,859	4.7	47	1.19
Glasgow Kelvin	..	30	68.3	4	10.5	10	23.5	1,870	3.8	206	4.20
Glasgow Maryhill	..	17	55.0	3	13.2	12	36.6	2,313	5.7	26	0.64
Glasgow Pollok	..	24	62.5	#	#	14	35.7	1,564	4.2	17	0.45
Glasgow Rutherglen	..	27	69.9	2	5.1	10	26.3	1,153	2.9	21	0.52
Glasgow Shettleston	..	17	52.7	2	8.1	14	43.3	1,834	5.0	33	0.91
Glasgow Springburn	..	26	63.9	3	9.4	12	29.4	2,054	4.8	24	0.57
<b>Highlands &amp; Islands</b>											
Argyll & Bute	..	28	79.8	1	3.0	6	17.6	1,120	3.0	33	0.91
Caithness, Sutherland & Easter Ross	..	28	83.7	1	3.3	5	13.4	1,101	3.6	26	0.84
Inverness East, Nairn & Lochaber	..	43	82.0	2	4.8	7	13.7	1,075	2.0	60	1.14
Moray	..	37	78.2	1	3.2	9	19.2	985	2.0	43	0.88
Orkney & Shetland	..	21	85.5	~	1.7	3	13.1	457	1.8	25	0.99
Ross, Skye & Inverness West	..	31	83.1	1	2.6	5	14.6	1,189	2.7	29	0.67
Western Isles	..	12	79.2	1	5.1	2	16.3	594	3.8	13	0.86
<b>Lothians</b>											
Edinburgh Central	..	39	72.2	3	6.9	12	22.4	1,352	2.4	97	1.69
Edinburgh East & Musselburgh	..	34	76.9	1	2.6	9	21.0	1,219	2.6	34	0.73
Edinburgh North & Leith	..	42	78.3	3	6.3	9	16.7	1,684	3.2	97	1.86
Edinburgh Pentlands	..	34	74.9	1	3.9	10	21.9	1,002	2.1	37	0.77
Edinburgh South	..	37	68.7	3	6.8	14	26.0	936	1.8	33	0.62
Edinburgh West	..	42	83.1	2	3.7	7	13.6	1,003	2.1	52	1.10
Linlithgow	..	35	76.2	2	5.4	9	19.4	1,197	2.7	28	0.62
Livingston	..	49	81.3	2	3.1	10	16.3	1,258	2.2	52	0.91
Midlothian	..	32	80.1	1	3.1	7	17.2	815	2.1	25	0.63
<b>Mid Scotland &amp; Fife</b>											
Central Fife	..	34	74.8	2	4.5	10	21.7	2,110	4.6	38	0.82
Dunfermline East	..	29	72.3	2	6.2	9	23.3	1,630	3.9	21	0.51
Dunfermline West	..	35	79.8	2	5.9	7	15.1	1,302	3.0	38	0.88
Kirkcaldy	..	32	79.0	2	6.7	6	15.2	2,008	5.2	28	0.72
North East Fife	..	39	82.8	1	2.1	7	15.4	853	1.8	28	0.60

13(2) Local labour market indicators by constituencies of the Scottish Parliament

not seasonally adjusted

	mid-2004		January 2004 to December 2004						2003		
	Population <sup>1</sup>		Labour supply			Working age benefits			Labour demand <sup>6</sup>		
			Employment <sup>2</sup>		Unemployment <sup>2</sup>		Economic inactivity <sup>2</sup>		Claimant count <sup>4</sup>		Jobs <sup>7</sup>
	16-59/64 (000s)	Total 16-59/64 (000s)	16-59/64 Rate (%)	Total 16+ (000s)	Rate <sup>3</sup> (%)	Total 16-59/64 (000s)	16-59/64 Rate (%)	Level	Proportion <sup>5</sup> (%)	Total (000s)	Jobs Density 16-59/64 (ratio)
1	2	3	4	5	6	7	8	9	10	11	
North Tayside	..	34	77.5	2	5.4	8	18.1	970	2.1	33	0.72
Ochil	..	34	73.8	2	5.1	10	22.2	1,410	3.0	27	0.58
Perth	..	36	78.8	1	2.4	9	19.2	996	2.1	45	0.94
Stirling	..	35	76.3	2	5.9	9	18.7	963	2.2	37	0.85
<b>North East Scotland</b>											
Aberdeen Central	..	30	71.8	3	9.2	9	21.3	1,146	2.4	77	1.63
Aberdeen North	..	35	78.3	2	4.4	8	18.0	671	1.5	50	1.14
Aberdeen South	..	35	78.4	2	4.3	8	18.0	845	1.7	45	0.94
Angus	..	35	75.9	2	4.0	10	20.8	1,394	3.0	29	0.63
Banff & Buchan	..	33	76.1	2	5.7	8	19.0	889	1.9	34	0.74
Dundee East	..	31	69.1	4	10.3	10	22.7	2,111	4.8	26	0.60
Dundee West	..	26	67.2	2	7.7	10	27.0	1,684	3.7	53	1.15
Gordon	..	38	81.0	2	4.8	7	14.8	662	1.4	33	0.67
West Aberdeenshire & Kincardine	..	44	79.8	2	4.6	9	16.2	521	1.0	36	0.72
<b>South of Scotland</b>											
Ayr	..	30	72.5	3	7.7	9	21.4	1,511	3.6	37	0.89
Carrick, Cumnock & Doon Valley	..	38	73.4	2	6.0	11	21.8	1,868	3.7	26	0.51
Clydesdale	..	37	74.6	2	6.2	10	20.4	1,360	2.7	23	0.44
Cunninghame South	..	28	66.4	3	8.8	12	27.3	2,062	5.0	26	0.64
Dumfries	..	36	80.3	1	3.0	8	17.1	1,171	2.4	40	0.83
East Lothian	..	37	76.2	2	4.8	10	19.8	797	1.8	24	0.54
Galloway & Upper Nithsdale	..	30	77.1	2	4.7	7	18.9	1,097	2.9	25	0.64
Roxburgh & Berwickshire	..	28	78.0	1	3.1	7	19.4	632	1.8	27	0.78
Tweeddale, Ettrick & Lauderdale	..	32	81.3	1	3.0	6	16.2	650	1.6	30	0.75
<b>West of Scotland</b>											
Clydebank & Milngavie	..	32	76.0	2	6.1	8	19.2	1,353	3.3	26	0.65
Cunninghame North	..	28	69.1	3	10.5	9	22.6	1,778	4.3	20	0.48
Dumbarton	..	33	72.0	2	6.6	10	22.8	1,669	3.5	31	0.64
Eastwood	..	45	79.3	2	4.0	10	17.4	903	1.7	21	0.40
Greenock & Inverclyde	..	25	68.9	2	7.2	9	25.6	1,901	5.0	28	0.75
Paisley North	..	26	71.1	2	6.0	9	24.3	1,455	3.9	48	1.27
Paisley South	..	30	74.5	1	3.7	9	22.6	1,597	3.9	22	0.54
Strathkelvin & Bearsden	..	40	79.4	1	2.5	9	18.6	936	1.9	23	0.46
West Renfrewshire	..	32	75.4	2	5.2	9	20.4	1,142	2.7	19	0.43

Relationship between columns: 9=8/1; 11=10/1.

Source: Annual Population Survey, Jobcentre Plus administrative system, Annual Business Inquiry  
Labour Market Statistics Helpline 020 7533 6094

1. Official mid-2003 estimate of the resident population are not available for this geography. Denominators for claimant count and jobs density are based on 2001 Census data adjusted to be consistent with 2001 mid-year population estimates for local authorities.

2. Annual Population Survey (APS) data. The APS is a survey of the population of private households, student halls of residence and NHS accommodation. The APS data in this table are consistent with population estimates released in February 2003, not the latest revised population estimates - see note on page 8.

3. Unemployment rates calculated as percentage of 16+ economically active population

4. Count of claimants of Jobseeker's Allowance. Averaged over 12 month period.

5. Percentage of resident working age population of area. NB. These are different from the national and regional claimant rates shown in Tables 1a, 7 and the summary of other headline indicators. See background note 5.

6. Labour demand in this table includes jobs only. Suitable comprehensive estimates of job vacancies are not available at local level.

7. Jobs data are mainly employees from the Annual Business Inquiry which refers to December of each year; they also include self-employed, HM Forces and government-supported trainees. Jobs densities are calculated as the number of jobs per resident of working age (16-59/64).

# Sample size zero or disclosive (less than three).

~ less than 500.

14 Local labour market indicators by Travel-to-Work Area

not seasonally adjusted

	mid-2004		January 2004 to December 2004						2003		
	Population <sup>1</sup>	Labour supply				Working age benefits		Labour demand <sup>6</sup>			
		Employment <sup>2</sup>		Unemployment <sup>2</sup>		Economic inactivity <sup>2</sup>		Claimant count <sup>4</sup>		Jobs <sup>7</sup>	
	16-59/64 (000s)	Total 16-59/64 (000s)	16-59/64 Rate (%)	Total 16+ (000s)	Rate <sup>3</sup> (%)	Total 16-59/64 (000s)	16-59/64 Rate (%)	Level	Proportion <sup>5</sup> (%)	Total (000s)	Jobs Density 16-59/64 (ratio)
1	2	3	4	5	6	7	8	9	10	11	
<b>United Kingdom total</b>	<b>37,064</b>	<b>26,951</b>	<b>74.2</b>	<b>1,394</b>	<b>4.7</b>	<b>7,988</b>	<b>22.0</b>	<b>866,144</b>	<b>2.3</b>	<b>30,567</b>	<b>0.83</b>
<b>Regional total</b>	<b>3,175</b>	<b>2,335</b>	<b>74.7</b>	<b>136</b>	<b>5.4</b>	<b>656</b>	<b>21.0</b>	<b>94,782</b>	<b>3.0</b>	<b>2,593</b>	<b>0.82</b>
Aberdeen	..	165	78.4	10	5.4	36	17.1	3,398	1.6	227	1.05
Annan	..	11	77.4	~	3.5	3	19.7	274	1.8	10	0.68
Argyll Islands	..	4	80.8	#	#	1	17.0	112	2.5	4	0.88
Ayr	..	45	74.1	3	6.9	12	20.3	2,088	3.4	46	0.75
Badenoch	..	6	83.5	1	7.7	1	9.1	147	2.1	6	0.87
Banff	..	12	80.9	1	4.0	2	15.6	346	2.0	12	0.72
Berwickshire	..	8	71.5	~	5.3	3	24.3	193	1.7	8	0.69
Brechin and Montrose	..	19	74.8	1	5.1	5	21.1	773	3.3	15	0.64
Campbeltown	..	5	83.6	#	#	1	15.5	232	4.0	5	0.79
Crieff	..	8	78.0	#	#	2	20.5	148	1.3	8	0.73
Dingwall	..	16	82.3	1	4.7	3	13.5	641	3.1	15	0.74
Dufftown	..	3	73.1	#	#	1	24.1	74	1.7	5	1.13
Dumbarton	..	33	72.0	2	6.6	10	22.8	1,669	3.5	31	0.64
Dumfries	..	36	81.4	1	3.2	7	15.7	1,212	2.7	37	0.82
Dundee	..	89	71.1	7	7.1	29	23.3	4,846	3.8	102	0.79
Dunfermline	..	68	75.9	4	6.0	17	19.3	2,871	3.3	62	0.70
Dunoon and Rothesay	..	10	77.6	~	4.1	2	19.0	468	3.7	11	0.85
East Ayrshire	..	51	71.6	4	6.4	17	23.4	3,156	4.3	46	0.63
Edinburgh	..	391	76.8	20	4.7	98	19.3	11,428	2.3	484	0.96
Elgin and Forres	..	27	79.4	1	3.1	6	18.2	675	1.9	31	0.88
Falkirk	..	69	76.9	3	4.5	17	19.3	2,836	3.1	63	0.70
Forfar	..	20	75.6	1	5.3	5	20.3	600	2.2	19	0.73
Fraserburgh	..	11	72.0	1	10.3	3	19.4	229	1.6	12	0.84
Galashiels and Peebles	..	24	81.9	1	2.1	5	16.3	543	1.8	26	0.87
Girvan	..	4	75.0	~	5.6	1	20.4	212	3.4	4	0.59
Glasgow	..	584	70.7	37	5.8	206	24.9	28,862	3.5	693	0.84
Greenock	..	35	68.7	3	7.6	13	25.4	2,566	5.0	34	0.66
Hawick	..	9	80.7	~	2.2	2	17.4	252	2.2	9	0.76
Huntly	..	4	78.2	#	#	1	21.8	97	2.0	4	0.77
Inverness	..	40	80.7	2	4.1	8	15.7	1,210	2.2	53	0.97
Keith and Buckie	..	9	74.3	~	4.7	3	22.1	352	2.6	10	0.73
Kelso and Jedburgh	..	8	81.0	~	2.6	2	16.8	130	1.5	8	0.87
Kirkcaldy	..	78	78.7	4	4.7	17	17.3	4,519	4.6	74	0.75
Kirkcudbright	..	9	79.4	~	3.5	2	17.6	229	2.3	7	0.72
Lewis and Harris	..	10	79.2	1	5.0	2	16.5	464	3.9	10	0.87
Lochaber	..	11	81.7	#	#	2	16.3	242	2.1	12	1.02
Lochgilphead	..	3	83.5	#	#	1	15.5	114	2.4	5	1.04
Motherwell and Lanark	..	143	72.5	10	6.3	44	22.5	6,141	3.2	125	0.65
Newton Stewart	..	4	68.3	#	#	2	29.2	170	2.8	3	0.58
North Ayrshire	..	56	67.7	6	9.7	21	25.0	3,840	4.6	46	0.56
Oban	..	6	77.8	~	4.4	1	18.4	194	2.1	9	1.01
Orkney Islands	..	10	85.1	~	1.6	2	13.5	210	1.8	11	0.93
Perth	..	36	80.7	1	3.0	7	16.7	1,007	2.2	43	0.93
Peterhead	..	15	75.9	1	4.0	4	20.7	413	1.9	15	0.69
Pitlochry	..	2	64.9	#	#	1	28.0	67	1.3	4	0.73
Shetland Isles	..	11	85.8	~	1.9	2	12.8	247	1.8	14	1.04
Skye and Ullapool	..	6	90.0	#	#	1	10.0	320	3.0	8	0.78
St Andrews	..	24	79.4	1	3.4	5	17.6	498	1.7	19	0.64
Stirling	..	56	74.8	4	5.8	15	20.5	2,151	2.8	57	0.73
Stranraer	..	7	74.9	1	7.3	2	19.0	383	3.5	7	0.66

14 Local labour market indicators by Travel-to-Work Area

not seasonally adjusted

	mid-2004		January 2004 to December 2004						2003		
	Population <sup>1</sup>		Labour supply			Working age benefits			Labour demand <sup>6</sup>		
			Employment <sup>2</sup>		Unemployment <sup>2</sup>		Economic inactivity <sup>2</sup>		Claimant count <sup>4</sup>		Jobs <sup>7</sup>
	16-59/64 (000s)	Total 16-59/64 (000s)	16-59/64 Rate (%)	Total 16+ (000s)	Rate <sup>3</sup> (%)	Total 16-59/64 (000s)	16-59/64 Rate (%)	Level	Proportion <sup>5</sup> (%)	Total (000s)	Jobs Density 16-59/64 (ratio)
1	2	3	4	5	6	7	8	9	10	11	
Sutherland	..	6	82.3	#	#	1	14.5	279	3.9	6	0.84
Thurso	..	10	84.2	~	4.5	1	11.7	240	2.6	10	1.05
Uists and Barra	..	2	79.4	#	#	~	15.4	130	3.6	3	0.82
Wick	..	6	91.1	#	#	1	8.9	288	4.3	5	0.75

Relationship between columns: 9=8/1; 11=10/1.

Source: Annual Population Survey, Jobcentre Plus administrative system, Annual Business Inquiry  
Labour Market Statistics Helpline 020 7533 6094

- Official mid-2003 estimate of the resident population are not available for this geography. Denominators for claimant count and jobs density are based on 2001 Census data adjusted to be consistent with 2001 mid-year population estimates for local authorities.
  - Annual Population Survey (APS) data. The APS is a survey of the population of private households, student halls of residence and NHS accommodation. The APS data in this table are consistent with population estimates released in February 2003, not the latest revised population estimates - see note on page 8.
  - Unemployment rates calculated as percentage of 16+ economically active population
  - Count of claimants of Jobseeker's Allowance. Averaged over 12 month period.
  - Percentage of resident working age population of area. NB. These are different from the national and regional claimant rates shown in Tables 1a, 7 and the summary of other headline indicators. See background note 5.
  - Labour demand in this table includes jobs only. Suitable comprehensive estimates of job vacancies are not available at local level.
  - Jobs data are mainly employees from the Annual Business Inquiry which refers to December of each year; they also include self-employed, HM Forces and government-supported trainees. Jobs densities are calculated as the number of jobs per resident of working age (16-59/64).
- # Sample size zero or disclosive (less than three).  
~ less than 500.

# LOCAL AREA DATA

## 15 Local labour market indicators by NUTS 3 area

Scotland

not seasonally adjusted

	mid-2004		January 2004 to December 2004						2003			
	Population <sup>1</sup>		Labour supply			Working age benefits			Labour demand <sup>6</sup>			
			Employment <sup>2</sup>		Unemployment <sup>2</sup>		Economic inactivity <sup>2</sup>		Claimant count <sup>4</sup>		Jobs <sup>7</sup>	
	16-59/64 (000s)	Total 16-59/64 (000s)	16-59/64 Rate (%)	Total 16+ (000s)	Rate <sup>3</sup> (%)	Total 16-59/64 (000s)	16-59/64 Rate (%)	Level	Proportion <sup>5</sup> (%)	Total (000s)	Jobs Density 16-59/64 (ratio)	
1	2	3	4	5	6	7	8	9	10	11		
<b>United Kingdom total</b>	<b>37,064</b>	<b>26,951</b>	<b>74.2</b>	<b>1,394</b>	<b>4.7</b>	<b>7,988</b>	<b>22.0</b>	<b>866,144</b>	<b>2.3</b>	<b>30,567</b>	<b>0.83</b>	
<b>Regional total</b>	<b>3,175</b>	<b>2,335</b>	<b>74.7</b>	<b>136</b>	<b>5.4</b>	<b>656</b>	<b>21.0</b>	<b>94,782</b>	<b>3.0</b>	<b>2,593</b>	<b>0.82</b>	
North East Scotland												
Aberdeen City, Aberdeenshire & NE Moray	..	241	78.0	14	5.2	55	17.7	5,452	-	..	..	
Eastern Scotland												
Angus & Dundee City	153	107	71.7	8	7.0	34	22.7	5,709	3.7	123	0.80	
Clackmannanshire & Fife	249	190	77.2	11	5.1	46	18.6	8,953	3.6	167	0.68	
East Lothian & Midlothian	103	84	78.1	4	4.3	20	18.3	1,907	1.8	60	0.58	
Scottish Borders, The	65	50	79.7	1	2.7	11	18.0	1,128	1.7	51	0.80	
Edinburgh, City of	304	222	75.5	12	5.1	60	20.3	7,056	2.3	344	1.15	
Falkirk	92	69	76.9	3	4.5	17	19.3	2,836	3.1	63	0.70	
Perth, Kinross & Stirling	135	103	77.5	5	4.2	25	19.0	2,769	2.1	112	0.83	
West Lothian	104	84	79.1	4	4.1	19	17.6	2,455	2.4	80	0.77	
South Western Scotland												
E & W Dunbartonshire, Helensburgh & Lomond	..	107	76.0	6	4.8	28	20.1	3,997	-	..	..	
Dumfries & Galloway	87	66	78.8	3	3.8	15	18.0	2,268	2.6	65	0.76	
East Ayrshire & North Ayrshire Mainland	..	105	69.2	10	8.3	37	24.5	6,953	-	..	..	
Glasgow City	378	241	64.9	21	7.8	110	29.6	16,413	4.3	415	1.11	
Inverclyde, East Renfrewshire & Renfrewshire	211	157	74.4	9	5.0	46	21.6	6,997	3.3	138	0.65	
North Lanarkshire	204	141	70.6	10	6.3	49	24.5	6,729	3.3	127	0.62	
South Ayrshire	67	49	74.5	4	6.8	13	19.9	2,300	3.4	49	0.74	
South Lanarkshire	191	143	75.5	7	4.6	39	20.7	5,016	2.6	120	0.64	
Highlands and the Islands												
Caithness & Sutherland and Ross & Cromarty	..	44	83.4	2	3.6	7	13.3	1,666	-	..	..	
Inverness & Nairn & Moray, Badenoch and Strathspey	..	53	79.7	3	4.4	11	16.5	1,509	-	..	..	
Lochaber, Skye & Lochalsh & Argyll and the Islands	..	46	81.4	1	2.4	9	16.5	1,620	-	..	..	
Eilean Siar (Western Isles)	15	12	79.2	1	5.1	2	16.3	594	3.9	13	0.87	
Orkney Islands	12	10	85.1	~	1.6	2	13.5	210	1.8	11	0.93	
Shetland Islands	13	11	85.8	~	1.9	2	12.8	247	1.8	14	1.04	

Relationship between columns: 9=8/1; 11=10/1.

Source: Annual Population Survey, Jobcentre Plus administrative system, Annual Business Inquiry  
Labour Market Statistics Helpline 020 7533 6094

1. Official estimate of the resident population.

2. Annual Population Survey (APS) data. The APS is a survey of the population of private households, student halls of residence and NHS accommodation. The APS data in this table are consistent with population estimates released in February 2003, not the latest revised population estimates - see note on page 8.

3. Unemployment rates calculated as percentage of 16+ economically active population.

4. Count of claimants of Jobseeker's Allowance. Averaged over 12 month period.

5. Percentage of resident working age population of area. NB. These are different from the national and regional claimant rates shown in Tables 1a, 7 and the summary of other headline indicators. See background note 5.

6. Labour demand in this table includes jobs only. Suitable comprehensive estimates of job vacancies are not available at local level.

7. Jobs data are mainly employees from the Annual Business Inquiry which refers to December of each year; they also include self-employed, HM Forces and government-supported trainees. Jobs densities are calculated as the number of jobs per resident of working age (16-59/64).

# Sample size zero or disclosive (less than three).

~ less than 500.

# LOCAL AREA DATA

Scotland

## 16 Claimant count<sup>1</sup> by Unitary and Local Authority

not seasonally adjusted

	CLAIMANT COUNT ON 13 APRIL 2006						Change on year					
	Levels			Percentage of Pop <sup>2</sup>			Levels			Percentage <sup>2</sup>		
	Men	Women	People	Men	Women	People	Men	Women	People	Men	Women	People
	1	2	3	4	5	6	7	8	9	10	11	12
<b>United Kingdom total</b>	<b>727,318</b>	<b>253,880</b>	<b>981,198</b>	<b>3.8</b>	<b>1.4</b>	<b>2.6</b>	<b>80,071</b>	<b>29,349</b>	<b>109,420</b>	<b>0.4</b>	<b>0.2</b>	<b>0.3</b>
<b>Regional total</b>	<b>70,022</b>	<b>22,639</b>	<b>92,661</b>	<b>4.3</b>	<b>1.5</b>	<b>2.9</b>	<b>1,349</b>	<b>901</b>	<b>2,250</b>	<b>0.1</b>	<b>0.1</b>	<b>0.1</b>
Aberdeen City	1,721	494	2,215	2.4	0.8	1.7	-146	-82	-228	-0.2	-0.1	-0.2
Aberdeenshire	1,101	457	1,558	1.5	0.7	1.1	-115	-64	-179	-0.2	-0.1	-0.1
Angus	1,374	494	1,868	4.1	1.6	2.9	-22	-14	-36	-0.1	0.0	-0.1
Argyll & Bute	1,073	391	1,464	3.7	1.6	2.7	55	55	110	0.2	0.2	0.2
Clackmannanshire	763	237	1,000	4.9	1.6	3.3	-24	-48	-72	-0.2	-0.3	-0.2
Dumfries & Galloway	1,675	623	2,298	3.7	1.5	2.7	85	11	96	0.2	0.0	0.1
Dundee City	2,948	867	3,815	6.6	2.0	4.3	-104	41	-63	-0.2	0.1	-0.1
East Ayrshire	2,210	809	3,019	5.9	2.3	4.1	-82	-44	-126	-0.2	-0.1	-0.2
East Dunbartonshire	902	286	1,188	2.7	0.9	1.8	74	16	90	0.2	0.1	0.1
East Lothian	652	193	845	2.3	0.7	1.6	-65	-18	-83	-0.2	-0.1	-0.2
East Renfrewshire	557	205	762	2.1	0.8	1.4	-39	5	-34	-0.1	0.0	-0.1
Edinburgh, City of	5,434	1,730	7,164	3.5	1.2	2.4	44	48	92	0.0	0.0	0.0
Eilean Siar (Western Isles)	390	101	491	4.7	1.4	3.2	-31	4	-27	-0.4	0.1	-0.2
Falkirk	1,959	637	2,596	4.2	1.4	2.8	-94	-6	-100	-0.2	0.0	-0.1
Fife	6,086	2,018	8,104	5.4	1.9	3.7	223	59	282	0.2	0.1	0.1
Glasgow City	12,756	3,572	16,328	6.7	1.9	4.3	415	205	620	0.2	0.1	0.2
Highland	2,174	768	2,942	3.2	1.3	2.3	-99	10	-89	-0.1	0.0	-0.1
Inverclyde	1,873	440	2,313	7.2	1.8	4.6	-67	-36	-103	-0.3	-0.1	-0.2
Midlothian	851	296	1,147	3.5	1.2	2.3	60	53	113	0.2	0.2	0.2
Moray	884	401	1,285	3.1	1.6	2.4	130	98	228	0.5	0.4	0.4
North Ayrshire	3,049	1,033	4,082	7.4	2.5	4.9	324	69	393	0.8	0.2	0.5
North Lanarkshire	4,894	1,639	6,533	4.7	1.6	3.2	215	38	253	0.2	0.0	0.1
Orkney Islands	136	62	198	2.2	1.1	1.7	10	6	16	0.2	0.1	0.1
Perth & Kinross	1,151	409	1,560	2.7	1.0	1.9	33	15	48	0.1	0.0	0.1
Renfrewshire	2,415	768	3,183	4.5	1.5	3.0	4	133	137	0.0	0.3	0.1
Scottish Borders	872	312	1,184	2.6	1.0	1.8	64	59	123	0.2	0.2	0.2
Shetland Islands	185	81	266	2.5	1.3	2.0	-14	12	-2	-0.2	0.2	0.0
South Ayrshire	1,702	519	2,221	5.0	1.6	3.3	81	21	102	0.2	0.1	0.2
South Lanarkshire	3,519	1,179	4,698	3.6	1.3	2.5	169	57	226	0.2	0.1	0.1
Stirling	789	276	1,065	2.9	1.0	2.0	-35	20	-15	-0.1	0.1	0.0
West Dunbartonshire	1,965	658	2,623	6.8	2.3	4.6	109	97	206	0.4	0.3	0.4
West Lothian	1,962	684	2,646	3.7	1.3	2.5	191	81	272	0.4	0.2	0.3

Relationship between columns = 3=1+2; 9=7+8

Source: Jobcentre Plus administrative system

1. Count of claimants of Jobseeker's Allowance.

Labour Market Statistics Helpline 020 7533 6094

2. Percentages of resident working age population of area. NB. These are different from the national and regional claimant count rates shown in Tables 1a, 7 and the Summary of other headline indicators. See background note 5.

# LOCAL AREA DATA

Scotland

## 17(1) Claimant count<sup>1</sup> by UK Parliamentary Constituency

not seasonally adjusted

	CLAIMANT COUNT ON 13 APRIL 2006						Change on year					
	Levels			Percentage of Pop <sup>2</sup>			Levels			Percentage <sup>2</sup>		
	Men	Women	People	Men	Women	People	Men	Women	People	Men	Women	People
	1	2	3	4	5	6	7	8	9	10	11	12
<b>United Kingdom total</b>	<b>727,318</b>	<b>253,880</b>	<b>981,198</b>	<b>3.8</b>	<b>1.4</b>	<b>2.6</b>	<b>80,071</b>	<b>29,349</b>	<b>109,420</b>	<b>0.4</b>	<b>0.2</b>	<b>0.3</b>
<b>Regional total</b>	<b>70,022</b>	<b>22,639</b>	<b>92,661</b>	<b>4.3</b>	<b>1.5</b>	<b>2.9</b>	<b>1,349</b>	<b>901</b>	<b>2,250</b>	<b>0.1</b>	<b>0.1</b>	<b>0.1</b>
Aberdeen North	1,020	254	1,274	3.3	0.9	2.1	-79	-30	-109	-0.3	-0.1	-0.2
Aberdeen South	600	204	804	1.9	0.7	1.4	-58	-46	-104	-0.2	-0.2	-0.2
Airdrie & Shotts	1,297	489	1,786	4.8	1.9	3.4	110	-16	94	0.4	-0.1	0.2
Angus	1,195	438	1,633	4.7	1.9	3.3	1	-4	-3	0.0	0.0	0.0
Argyll & Bute	1,075	394	1,469	3.7	1.6	2.7	53	56	109	0.2	0.2	0.2
Ayr, Carrick & Cumnock	1,675	540	2,215	5.9	2.0	4.0	41	-8	33	0.1	0.0	0.1
Banff & Buchan	615	281	896	2.2	1.1	1.7	-33	-13	-46	-0.1	-0.1	-0.1
Berwickshire, Roxburgh & Selkirk	774	279	1,053	2.8	1.1	2.0	62	53	115	0.2	0.2	0.2
Caitness, Sutherland & Easter Ross	847	286	1,133	4.5	1.7	3.2	-19	20	1	-0.1	0.1	0.0
Central Ayrshire	1,590	575	2,165	5.8	2.1	4.0	158	28	186	0.6	0.1	0.3
Coatbridge, Chryston & Bellshill	1,323	411	1,734	4.8	1.5	3.1	98	3	101	0.4	0.0	0.2
Cumbernauld, Kilsyth & Kirkintilloch East	1,140	367	1,507	4.0	1.3	2.7	18	49	67	0.1	0.2	0.1
Dumfries & Galloway	1,186	446	1,632	4.1	1.6	2.9	45	53	98	0.2	0.2	0.2
Dumfriesshire, Clydesdale & Tweeddale	709	260	969	2.8	1.1	2.0	28	-31	-3	0.1	-0.1	0.0
Dundee East	1,325	396	1,721	5.2	1.6	3.4	-24	22	-2	-0.1	0.1	0.0
Dundee West	1,812	532	2,344	6.3	1.9	4.2	-100	10	-90	-0.3	0.0	-0.2
Dunfermline & West Fife	1,423	452	1,875	5.0	1.7	3.3	77	50	127	0.3	0.2	0.2
East Dunbartonshire	537	177	714	2.1	0.7	1.4	28	-13	15	0.1	-0.1	0.0
East Kilbride, Strathaven & Lesmahagow	903	317	1,220	2.9	1.1	2.0	-48	-7	-55	-0.2	0.0	-0.1
East Lothian	652	193	845	2.4	0.7	1.6	-65	-18	-83	-0.2	-0.1	-0.2
East Renfrewshire	574	208	782	2.1	0.8	1.5	-34	6	-28	-0.1	0.0	-0.1
Edinburgh East	1,345	396	1,741	4.3	1.3	2.8	19	-22	-3	0.1	-0.1	0.0
Edinburgh North & Leith	1,437	457	1,894	4.6	1.5	3.1	33	54	87	0.1	0.2	0.1
Edinburgh South	630	231	861	2.2	0.8	1.5	-77	-22	-99	-0.3	-0.1	-0.2
Edinburgh South West	1,190	377	1,567	3.6	1.2	2.5	52	5	57	0.2	0.0	0.1
Edinburgh West	828	267	1,095	3.1	1.0	2.1	14	31	45	0.1	0.1	0.1
Falkirk	1,285	427	1,712	4.0	1.4	2.7	-23	12	-11	-0.1	0.0	0.0
Glasgow Central	1,851	476	2,327	6.4	1.9	4.3	-103	-3	-106	-0.4	0.0	-0.2
Glasgow East	2,042	600	2,642	7.7	2.2	4.9	157	101	258	0.6	0.4	0.5
Glasgow North	1,294	386	1,680	5.3	1.5	3.4	-17	-39	-56	-0.1	-0.2	-0.1
Glasgow North East	2,451	679	3,130	9.1	2.5	5.8	163	54	217	0.6	0.2	0.4
Glasgow North West	1,742	459	2,201	7.1	1.9	4.5	105	13	118	0.4	0.1	0.2
Glasgow South	1,350	390	1,740	4.7	1.4	3.1	16	29	45	0.1	0.1	0.1
Glasgow South West	1,948	567	2,515	8.0	2.3	5.1	99	56	155	0.4	0.2	0.3
Glenrothes	1,996	631	2,627	7.3	2.4	4.8	71	-38	33	0.3	-0.1	0.1
Gordon	319	112	431	1.1	0.4	0.7	-40	-28	-68	-0.1	-0.1	-0.1
Inverclyde	1,873	440	2,313	7.1	1.7	4.5	-67	-36	-103	-0.3	-0.1	-0.2
Inverness, Nairn, Badenoch & Strathspey	759	276	1,035	2.7	1.1	1.9	-52	-17	-69	-0.2	-0.1	-0.1
Kilmarnock & Loudoun	1,707	609	2,316	5.8	2.2	4.0	-72	-32	-104	-0.2	-0.1	-0.2
Kirkcaldy & Cowdenbeath	2,069	706	2,775	7.2	2.6	4.9	99	48	147	0.3	0.2	0.3
Lanark & Hamilton East	1,082	374	1,456	3.5	1.3	2.4	81	23	104	0.3	0.1	0.2
Linlithgow & East Falkirk	1,357	456	1,813	4.2	1.5	2.9	-31	27	-4	-0.1	0.1	0.0
Livingston	1,279	438	1,717	3.9	1.3	2.6	151	36	187	0.5	0.1	0.3
Midlothian	855	298	1,153	3.4	1.2	2.3	63	55	118	0.3	0.2	0.2
Moray	884	401	1,285	3.1	1.6	2.4	130	98	228	0.5	0.4	0.4
Motherwell & Wishaw	1,497	480	1,977	5.6	1.8	3.7	33	32	65	0.1	0.1	0.1

# LOCAL AREA DATA

Scotland

## 17(1) Claimant count<sup>1</sup> by UK Parliamentary Constituency

not seasonally adjusted

	CLAIMANT COUNT ON 13 APRIL 2006						Change on year					
	Levels			Percentage of Pop <sup>2</sup>			Levels			Percentage <sup>2</sup>		
	Men	Women	People	Men	Women	People	Men	Women	People	Men	Women	People
Na h-Eileanan an Iar	390	101	491	4.6	1.4	3.2	-31	4	-27	-0.4	0.1	-0.2
North Ayrshire & Arran	1,989	637	2,626	7.0	2.3	4.7	196	58	254	0.7	0.2	0.5
North East Fife	598	229	827	2.4	1.0	1.7	-24	-1	-25	-0.1	0.0	-0.1
Ochil & South Perthshire	1,011	330	1,341	3.5	1.2	2.4	-33	-55	-88	-0.1	-0.2	-0.2
Orkney & Shetland	321	143	464	2.4	1.2	1.8	-4	18	14	0.0	0.2	0.1
Paisley & Renfrewshire North	1,018	347	1,365	3.6	1.3	2.5	24	72	96	0.1	0.3	0.2
Paisley & Renfrewshire South	1,394	421	1,815	5.2	1.6	3.5	-22	61	39	-0.1	0.2	0.1
Perth & North Perthshire	893	312	1,205	3.2	1.2	2.2	39	22	61	0.1	0.1	0.1
Ross, Skye & Lochaber	568	206	774	2.9	1.2	2.1	-28	7	-21	-0.1	0.0	-0.1
Rutherglen & Hamilton West	1,478	451	1,929	5.0	1.5	3.2	144	28	172	0.5	0.1	0.3
Stirling	789	276	1,065	2.9	1.0	2.0	-35	20	-15	-0.1	0.1	0.0
West Aberdeenshire & Kincardine	268	99	367	1.0	0.4	0.7	-51	-30	-81	-0.2	-0.1	-0.2
West Dunbartonshire	1,963	655	2,618	6.8	2.3	4.6	111	96	207	0.4	0.3	0.4

Relationship between columns = 3=1+2; 9=7+8

Source: Jobcentre Plus administrative system

1. Count of claimants of Jobseeker's Allowance.

Labour Market Statistics Helpline 020 7533 6094

2. Percentages of resident working age population of area. The population denominators are based on output area data from the 2001 Census. NB. These percentages are different from the national and regional claimant count rates shown in Tables 1a, 7 and the summary of other headline indicators. See background note 5.

# LOCAL AREA DATA

Scotland

## 17(2) Claimant count<sup>1</sup> by constituencies of the Scottish Parliament

not seasonally adjusted

	CLAIMANT COUNT ON 13 APRIL 2006						Change on year					
	Levels			Percentage of Pop <sup>2</sup>			Levels			Percentage <sup>2</sup>		
	Men	Women	People	Men	Women	People	Men	Women	People	Men	Women	People
	2	3	4	5	6	7	8	9	10	11	12	
<b>United Kingdom total</b>	<b>727,318</b>	<b>253,880</b>	<b>981,198</b>	<b>3.8</b>	<b>1.4</b>	<b>2.6</b>	<b>80,071</b>	<b>29,349</b>	<b>109,420</b>	<b>0.4</b>	<b>0.2</b>	<b>0.3</b>
<b>Regional total</b>	<b>70,022</b>	<b>22,639</b>	<b>92,661</b>	<b>4.3</b>	<b>1.5</b>	<b>2.9</b>	<b>1,349</b>	<b>901</b>	<b>2,250</b>	<b>0.1</b>	<b>0.1</b>	<b>0.1</b>
Central Scotland	10,280	3,436	13,716				107	35	142			
Airdrie & Shotts	1,203	467	1,670	4.9	2.0	3.5	99	-9	90	0.4	0.0	0.2
Coatbridge & Chryston	1,025	316	1,341	4.8	1.5	3.1	72	12	84	0.3	0.1	0.2
Cumbernauld & Kilsyth	783	265	1,048	3.7	1.3	2.5	-23	24	1	-0.1	0.1	0.0
East Kilbride	763	264	1,027	2.8	1.0	1.9	-65	-5	-70	-0.2	0.0	-0.1
Falkirk East	948	308	1,256	3.9	1.3	2.7	-79	-14	-93	-0.3	-0.1	-0.2
Falkirk West	1,011	329	1,340	4.6	1.6	3.1	-15	8	-7	-0.1	0.0	0.0
Hamilton North & Bellshill	1,143	369	1,512	5.1	1.7	3.4	87	30	117	0.4	0.1	0.3
Hamilton South	890	266	1,156	4.6	1.4	3.0	89	11	100	0.5	0.1	0.3
Kilmarnock & Loudoun	1,451	518	1,969	5.8	2.2	4.0	-84	-20	-104	-0.3	-0.1	-0.2
Motherwell & Wishaw	1,063	334	1,397	5.1	1.7	3.4	26	-2	24	0.1	0.0	0.1
Glasgow	13,429	3,796	17,225				485	238	723			
Glasgow Anniesland	1,321	361	1,682	7.1	1.9	4.5	100	28	128	0.5	0.1	0.3
Glasgow Baillieston	1,311	405	1,716	7.0	2.1	4.5	39	57	96	0.2	0.3	0.3
Glasgow Cathcart	952	267	1,219	4.8	1.3	3.1	10	11	21	0.1	0.1	0.1
Glasgow Govan	1,428	431	1,859	7.0	2.2	4.7	-17	36	19	-0.1	0.2	0.0
Glasgow Kelvin	1,283	350	1,633	5.1	1.5	3.3	-106	-5	-111	-0.4	0.0	-0.2
Glasgow Maryhill	1,785	478	2,263	8.9	2.3	5.5	88	-31	57	0.4	-0.1	0.1
Glasgow Pollok	1,363	389	1,752	7.5	2.0	4.7	94	47	141	0.5	0.2	0.4
Glasgow Rutherglen	886	286	1,172	4.5	1.4	2.9	53	29	82	0.3	0.1	0.2
Glasgow Shettleston	1,428	363	1,791	7.6	2.1	4.9	120	29	149	0.6	0.2	0.4
Glasgow Springburn	1,672	466	2,138	7.8	2.2	5.0	104	37	141	0.5	0.2	0.3
Highlands & Islands	4,511	1,674	6,185				31	175	206			
Argyll & Bute	815	302	1,117	4.2	1.7	3.0	24	54	78	0.1	0.3	0.2
Caithness, Sutherland & Easter Ross	720	256	976	4.4	1.8	3.2	-3	17	14	0.0	0.1	0.0
Inverness East, Nairn & Lochaber	673	237	910	2.5	0.9	1.7	-28	-24	-52	-0.1	-0.1	-0.1
Moray	811	360	1,171	3.1	1.6	2.4	141	89	230	0.5	0.4	0.5
Orkney & Shetland	321	143	464	2.4	1.2	1.8	-4	18	14	0.0	0.2	0.1
Ross, Skye & Inverness West	781	275	1,056	3.4	1.3	2.4	-68	17	-51	-0.3	0.1	-0.1
Western Isles	390	101	491	4.6	1.4	3.2	-31	4	-27	-0.4	0.1	-0.2
Lothians	8,198	2,694	10,892				285	172	457			
Edinburgh Central	1,037	312	1,349	3.5	1.1	2.4	23	0	23	0.1	0.0	0.0
Edinburgh East & Musselburgh	949	298	1,247	4.1	1.3	2.7	-23	-5	-28	-0.1	0.0	-0.1
Edinburgh North & Leith	1,408	451	1,859	5.3	1.7	3.5	49	57	106	0.2	0.2	0.2
Edinburgh Pentlands	727	240	967	2.9	1.0	2.0	52	-17	35	0.2	-0.1	0.1
Edinburgh South	619	224	843	2.3	0.8	1.6	-77	-9	-86	-0.3	0.0	-0.2
Edinburgh West	787	236	1,023	3.3	1.0	2.2	17	21	38	0.1	0.1	0.1
Linlithgow	935	326	1,261	4.1	1.5	2.8	75	49	124	0.3	0.2	0.3
Livingston	1,027	358	1,385	3.6	1.3	2.4	116	32	148	0.4	0.1	0.3
Midlothian	709	249	958	3.6	1.3	2.5	53	44	97	0.3	0.2	0.2
Mid Scotland & Fife	9,138	3,091	12,229				159	37	196			
Central Fife	1,569	505	2,074	6.7	2.2	4.5	30	-35	-5	0.1	-0.2	0.0
Dunfermline East	1,368	407	1,775	6.4	2.0	4.3	107	34	141	0.5	0.2	0.3
Dunfermline West	1,028	348	1,376	4.7	1.7	3.2	53	35	88	0.2	0.2	0.2

# LOCAL AREA DATA

## 17(2) Claimant count<sup>1</sup> by constituencies of the Scottish Parliament

Scotland

not seasonally adjusted

	CLAIMANT COUNT ON 13 APRIL 2006						Change on year					
	Levels			Percentage of Pop <sup>2</sup>			Levels			Percentage <sup>2</sup>		
	Men	Women	People	Men	Women	People	Men	Women	People	Men	Women	People
Kirkcaldy	1,603	558	2,161	8.1	3.0	5.6	69	31	100	0.4	0.2	0.3
North East Fife	518	200	718	2.2	0.9	1.6	-36	-6	-42	-0.2	0.0	-0.1
North Tayside	701	282	983	3.0	1.3	2.2	-2	3	1	0.0	0.0	0.0
Ochil	993	319	1,312	4.1	1.4	2.8	-53	-59	-112	-0.2	-0.3	-0.2
Perth	716	249	965	2.9	1.1	2.0	5	10	15	0.0	0.0	0.0
Stirling	642	223	865	2.9	1.0	2.0	-14	24	10	-0.1	0.1	0.0
<b>North East Scotland</b>	<b>6,868</b>	<b>2,202</b>	<b>9,070</b>				<b>-360</b>	<b>-101</b>	<b>-461</b>			
Aberdeen Central	766	180	946	3.1	0.8	2.0	-48	-37	-85	-0.2	-0.2	-0.2
Aberdeen North	440	124	564	1.9	0.6	1.3	-27	-20	-47	-0.1	-0.1	-0.1
Aberdeen South	515	190	705	2.0	0.8	1.5	-71	-25	-96	-0.3	-0.1	-0.2
Angus	1,025	343	1,368	4.2	1.5	2.9	16	-5	11	0.1	0.0	0.0
Banff & Buchan	567	249	816	2.3	1.1	1.8	-33	-19	-52	-0.1	-0.1	-0.1
Dundee East	1,642	474	2,116	7.4	2.2	4.8	-32	-2	-34	-0.1	0.0	-0.1
Dundee West	1,306	393	1,699	5.6	1.8	3.7	-72	43	-29	-0.3	0.2	-0.1
Gordon	334	148	482	1.3	0.6	1.0	-44	-9	-53	-0.2	0.0	-0.1
West Aberdeenshire & Kincardine	273	101	374	1.0	0.4	0.7	-49	-27	-76	-0.2	-0.1	-0.1
<b>South of Scotland</b>	<b>8,235</b>	<b>2,860</b>	<b>11,095</b>				<b>422</b>	<b>110</b>	<b>532</b>			
Ayr	1,167	347	1,514	5.5	1.7	3.7	101	32	133	0.5	0.2	0.3
Carrick, Cumnock & Doon Valley	1,294	463	1,757	5.0	1.9	3.5	-18	-35	-53	-0.1	-0.1	-0.1
Clydesdale	903	326	1,229	3.5	1.3	2.4	36	7	43	0.1	0.0	0.1
Cunninghame South	1,623	580	2,203	7.9	2.8	5.3	209	44	253	1.0	0.2	0.6
Dumfries	911	338	1,249	3.6	1.4	2.6	71	4	75	0.3	0.0	0.2
East Lothian	559	162	721	2.5	0.7	1.6	-62	-17	-79	-0.3	-0.1	-0.2
Galloway & Upper Nithsdale	764	285	1,049	3.8	1.6	2.7	14	7	21	0.1	0.0	0.1
Roxburgh & Berwickshire	494	195	689	2.8	1.2	2.0	52	51	103	0.3	0.3	0.3
Tweeddale, Ettrick & Lauderdale	520	164	684	2.6	0.8	1.7	19	17	36	0.1	0.1	0.1
<b>West of Scotland</b>	<b>9,363</b>	<b>2,886</b>	<b>12,249</b>				<b>220</b>	<b>235</b>	<b>455</b>			
Clydebank & Milngavie	1,056	311	1,367	5.2	1.5	3.4	39	20	59	0.2	0.1	0.1
Cunninghame North	1,426	453	1,879	6.8	2.2	4.5	115	25	140	0.5	0.1	0.3
Dumbarton	1,277	480	1,757	5.1	2.1	3.7	108	78	186	0.4	0.3	0.4
Eastwood	557	205	762	2.1	0.8	1.4	-39	5	-34	-0.1	0.0	-0.1
Greenock & Inverclyde	1,377	318	1,695	7.1	1.7	4.5	-52	-43	-95	-0.3	-0.2	-0.3
Paisley North	1,026	334	1,360	5.4	1.8	3.6	5	58	63	0.0	0.3	0.2
Paisley South	1,088	331	1,419	5.3	1.6	3.5	-23	54	31	-0.1	0.3	0.1
Strathkelvin & Bearsden	759	229	988	3.0	0.9	2.0	60	10	70	0.2	0.0	0.1
West Renfrewshire	797	225	1,022	3.6	1.1	2.4	7	28	35	0.0	0.1	0.1

Relationship between columns = 3=1+2; 9=7+8

Source: Jobcentre Plus administrative system

1. Count of claimants of Jobseeker's Allowance.

Labour Market Statistics Helpline 020 7533 6094

2. Percentages of resident working age population of area. The population denominators are based on output area data from the 2001 Census. NB. These percentages are different from the national and regional claimant count rates shown in Tables 1a, 7 and the summary of other headline indicators. See background note 5.