

16 January 2008

Coverage
Scotland
Theme
Labour Market

Labour market statistics January 2008: Scotland

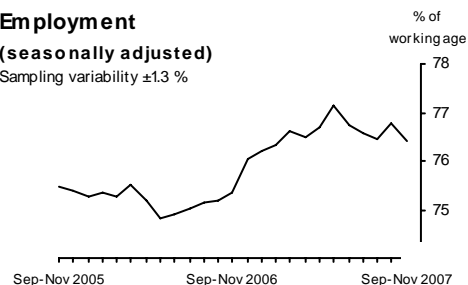
All data are not seasonally adjusted unless otherwise specified

Labour Force Survey data for Scotland indicate that the trend in the employment rate may have levelled off after increasing, and the rate in the latest period is not significantly different from a year ago. The trend in the unemployment rate may be levelling off after decreasing, and the rate in the latest period is not significantly different from a year ago.

Employment

(seasonally adjusted)

Sampling variability $\pm 1.3\%$

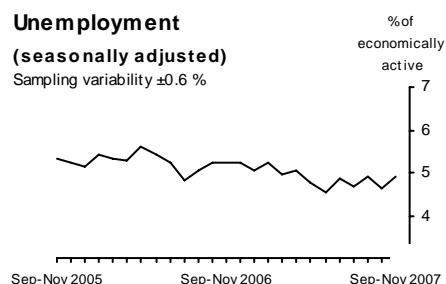


Data for the three months to November 2007 show the seasonally adjusted employment rate at 76.4 per cent, up 1.1 percentage points on a year earlier. The seasonally adjusted unemployment rate was 4.9 per cent, down 0.3 percentage points on a year earlier.

Unemployment

(seasonally adjusted)

Sampling variability $\pm 0.6\%$



The claimant count was down in the year to December 2007.

Data in this table are seasonally adjusted unless otherwise stated

		Level (thousands)	Rate (%)	Change on year (level)	Sampling variability (thousands)	Change on year (rate)	Sampling variability (%)
Employment*	Sep-Nov 07	2,541	76.4	54	± 67	1.1	± 1.6
Unemployment**	Sep-Nov 07	131	4.9	-6	± 22	-0.3	± 0.9
Economically active*	Sep-Nov 07	2,672	80.5	47	± 65	0.9	± 1.5
Economically inactive+	Sep-Nov 07	626	19.5	-26	± 63	-0.9	± 1.5
of which:							
Not wanting a job+	Sep-Nov 07	446		-21	± 55		
Wanting a job+	Sep-Nov 07	180		-5	± 36		
Civilian workforce jobs (not seasonally adjusted)	Sep 2007	2,689		44	..		
Claimant count	Dec 2007	71.6	2.6**	-13.2		-0.5	

See note on page 8 on sampling variability.

* Levels are for those aged 16 and over, rates are for those of working age (16-59/64).

** Levels and rates are for those aged 16 and over. Rate is as a proportion of economically active.

+ Levels and rates are for those of working age.

++ Denominator = claimant count + workforce jobs. For regional claimant count proportions, using resident working age populations see Tables 16 and 17. See Concepts and Definitions.

.. Not available.

New this month:

September to November 2007 data: latest three-month average LFS results;

December 2007 data: claimant count;

September 2007 data: civilian workforce jobs.

Issued by
National Statistics
1 Drummond Gate
London SW1V 2QQ

Telephone
Press Office 020 7533 5714
Helpline 01633 456901
Public enquiries 0845 601 3034

Statisticians

Regional and local data
Bob Watson
01633 455070

Regional and national Labour Force Survey
Nick Palmer
01633 455839

Claimant count and vacancies
Bob Watson
01633 455070

Employee jobs
Nick Barford
01633 812072

Internet
www.statistics.gov.uk

Email
labour.market@ons.gov.uk

Next publication date
13 February 2008

All data are not seasonally adjusted unless otherwise specified



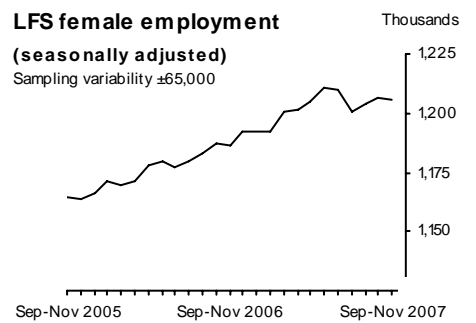
Employment and Jobs (tables 1 to 6)

The seasonally adjusted LFS estimate of employment in Scotland was 76.4 per cent in the September to November 2007 period, up 1.1 percentage points on the same period a year earlier. The employment level was 2.54 million in the September to November 2007 period, up 54,000 on the same period a year earlier.



LFS estimates indicate an increase in both the number of employees and in the number of self employed over the past year.

LFS estimates suggest a rise in the number of full-time workers and a fall in the number of part-time workers over the past year.



Seasonally adjusted employee jobs figures were up 2,000 in the quarter to September 2007.

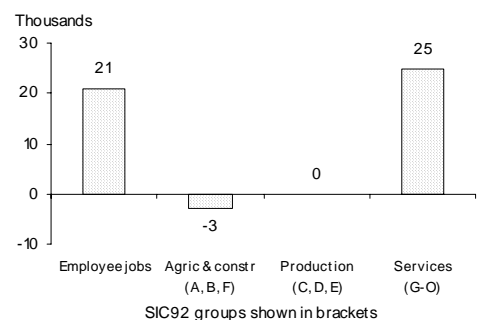
Not seasonally adjusted employee jobs were up 21,000 in the year to September 2007. This was due to a rise in service sector jobs.

Unemployment (table 1)

The seasonally adjusted unemployment rate in Scotland was 4.9 per cent in the September to November 2007 period, down 0.3 percentage points on the same period a year earlier. The rates for men and women in September to November 2007 were 4.9 per cent and 4.9 per cent respectively.

Employee jobs by industry

Change on year from June 2006

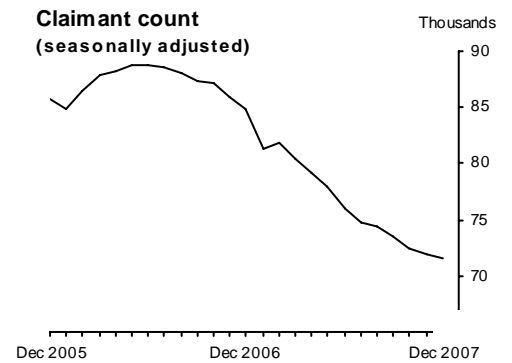


All data are not seasonally adjusted unless otherwise specified



Claimant count (tables 7 and 8)

The seasonally adjusted claimant count rate in December 2007 was 2.6 per cent, unchanged from November 2007, and down 0.5 percentage points since December 2006. The seasonally adjusted number of claimants in December 2007 was 71,600, down 400 on November 2007, and down 13,200 since December 2006.



Economically active (tables 1 and 9)

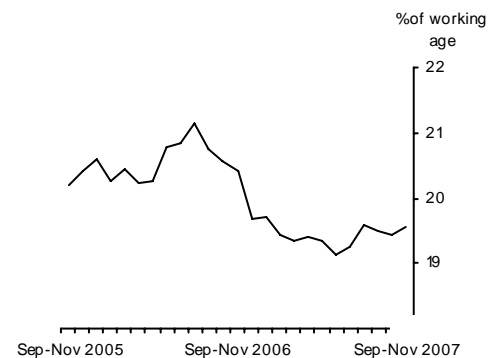
The seasonally adjusted LFS estimate of economically active people in Scotland was 2.67 million in the September to November 2007 period.

Economically inactive (tables 1, 10 and 11)

The seasonally adjusted working age economic inactivity rate in Scotland in September to November 2007 was 19.5 per cent, down 0.9 percentage points from a year earlier.

The level of economically inactive people in the September to November 2007 period was 1.49 million, with 626,000 of these of working age, down 26,000 on the same period a year earlier.

Economic inactivity (working age) (seasonally adjusted)
 Sampling variability ±1.2%

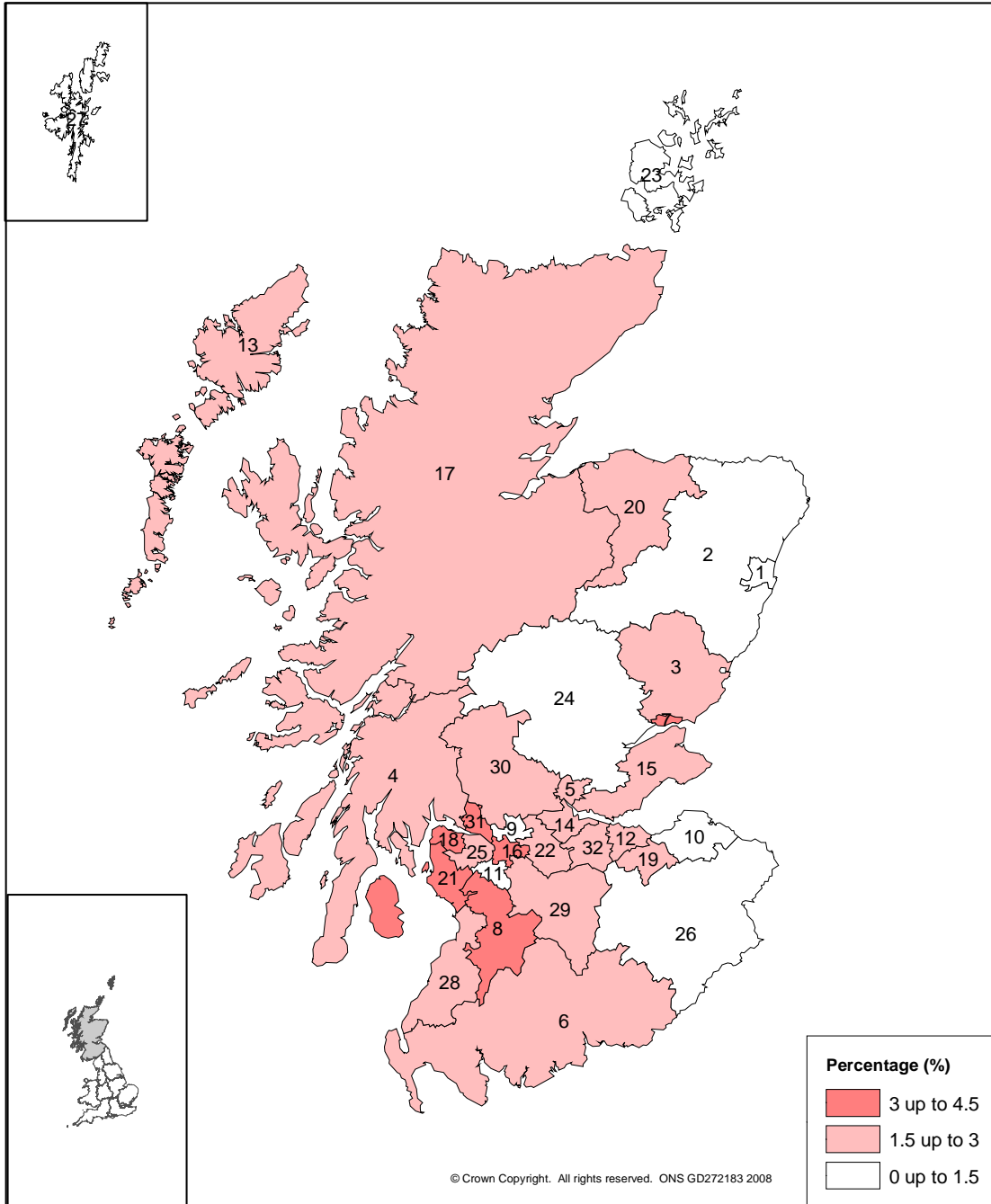


Local area data (table 16)

The claimant count as a proportion of the resident working age population was lowest in Aberdeenshire, at 0.7 per cent. It was highest in North Ayrshire and Dundee City, both at 3.6 per cent.

All data are not seasonally adjusted unless otherwise specified

Claimant count as a proportion of the resident working age population, by UA
December 2007 - Scotland



1 Aberdeen City	1.2%	12 Edinburgh, City of	1.6%	23 Orkney Islands	1.0%
2 Aberdeenshire	0.7%	13 Eilean Siar	2.5%	24 Perth & Kinross	1.2%
3 Angus	1.9%	14 Falkirk	2.0%	25 Renfrewshire	2.2%
4 Argyll & Bute	2.1%	15 Fife	2.6%	26 Scottish Borders	1.3%
5 Clackmannanshire	2.4%	16 Glasgow City	3.4%	27 Shetland Islands	0.9%
6 Dumfries & Galloway	2.3%	17 Highland	1.8%	28 South Ayrshire	2.6%
7 Dundee City	3.6%	18 Inverclyde	3.3%	29 South Lanarkshire	1.8%
8 East Ayrshire	3.2%	19 Midlothian	1.6%	30 Stirling	1.6%
9 East Dunbartonshire	1.2%	20 Moray	1.8%	31 West Dunbartonshire	3.4%
10 East Lothian	1.1%	21 North Ayrshire	3.6%	32 West Lothian	2.0%
11 East Renfrewshire	1.0%	22 North Lanarkshire	2.2%		

BASIC QUALITY INFORMATION

REVISIONS

There have been some revisions to Workforce Jobs data in this month's release. For further details, see under "This Month's Release" below.

KEY QUALITY ISSUES

Detailed information about sampling variability and trends can be found in the following pages.

Summary Quality Report: A Summary Quality Report for this First Release can now be found on the website at:

<http://www.statistics.gov.uk/cci/article.asp?ID=1354>

Common pitfalls in interpreting series: Expectations of accuracy and reliability in sample surveys are often too high. Revisions and sampling variability are inevitable consequences of the trade off between timeliness, accuracy and the burden on respondents. Details of sampling variability are included elsewhere in this release.

Very few statistical revisions arise as a result of 'errors' in the popular sense of the word. All estimates, by definition, are subject to statistical 'error' but in this context the word refers to the uncertainty in any process or calculation that uses sampling, estimation or modelling. Most revisions reflect either the adoption of new statistical techniques or the incorporation of new information which allows the statistical error of previous estimates to be reduced. Only rarely are there avoidable 'errors' such as human or system failures, and such mistakes are made quite clear when they are discovered and corrected.

RELIABILITY

One indication of the reliability of the key indicators in this release can be obtained by monitoring the size of revisions. The tables below record the size and pattern of revisions over the last five years. Please note that these indicators only report summary measures for revisions. The revised data itself may be subject to sampling or other sources of error. The ONS standard presentation is to show five years worth of revisions (i.e. 60 observations for a monthly series, 20 for a quarterly series). The first table covers Employment, Unemployment and Claimant Count data first published from January 2002 to December 2006. The second table covers Workforce Jobs data first published from January 2000 to October 2004.

All data are not seasonally adjusted unless otherwise specified

Spreadsheets giving these estimates and the calculations behind the averages in the table are available on the National Statistics website at:

<http://www.statistics.gov.uk/StatBase/Product.asp?vlnk=5838>

Key Indicator	Value in latest period	Number of observations (maximum 60)	Revisions between first publication and estimates one year later	
			Average over the last five years (mean revision)	Average over the last five years without regard to sign (average absolute revision)
Employment rate (%)	76.4	60	-0.07	0.11
Unemployment rate (%)	4.9	60	-0.01	0.05
Claimant count (000s)	71.6	60	0.01	0.36

Key Indicator	Value in latest period	Number of observations (maximum 20)	Revisions between first publication and estimates three years later	
			Average over the last five years (mean revision)	Average over the last five years without regard to sign (average absolute revision)
Workforce jobs (000s)	2,689	20	84.80*	84.80

A statistical test has been applied to the average revision to find out if the mean revision is significant. An asterisk (*) indicates where the mean revision has been found to be statistically significantly different from zero. One major reason for the significant revisions to the workforce jobs estimates is the introduction of the Annual Business Inquiry, which replaced the old Annual Employment Survey in May 2001. This change was widely publicised beforehand.

Labour Market statistics are revised in line with our Revisions Policy which is published on the National Statistics website (http://www.statistics.gov.uk/about/Methodology_by_theme/downloads/LM_revisionspolicy.pdf). More information about the revisions material in this release can also be found on the website (<http://www.statistics.gov.uk/cci/article.asp?ID=793>).

THIS MONTH'S RELEASE

Workforce Jobs (WFJ)

There are revisions to WFJ data (tables 4 and 5) in this release going back to the start of the series. These revisions are mainly due to benchmarking the GB Employee Jobs series to the latest estimates from the Annual Business Inquiry (ABI/1) for December 2005 and September 2006. These ABI/1 estimates were released on 12 December 2007 on *Nomis*® at: <http://www.nomisweb.co.uk>. They incorporate a number of improvements, moving towards the annual Business Register and Employment Survey (BRES), which has affected the continuity of WFJ between 2005 and 2006. Other WFJ sources have also been updated, including revisions to the public sector employment estimates and the self-employment estimates derived from the Labour Force Survey. Further details of the WFJ revisions at United Kingdom level are available in an article published on the website at: <http://www.statistics.gov.uk/StatBase/Product.asp?vlnk=9765>

All data are not seasonally adjusted unless otherwise specified



NEXT MONTH'S RELEASE

Following a review of the Labour Market Regional First Releases, the publication will be moving from monthly to quarterly. The change is due to take place next month, with February 2008 seeing the publication of the last Regional First Releases on a monthly basis. The next Regional First Releases will be published a quarter later, in May 2008. The tables that accompany the Regional First Releases will continue to be available on a monthly basis from the National Statistics website.

Local labour market indicators

Tables 12 to 15, the local labour market indicators tables, will be updated in next month's release with employment, unemployment and economic inactivity data from the July 2006 to June 2007 Annual Population Survey; model-based estimates of unemployment for local authorities; and claimant count levels and proportions for July 2006 to June 2007.

SPECIAL

Population estimates in the LFS (Scotland)

On 22 August 2007 ONS published the 2006-based mid-year population estimates for the UK, along with revisions to the mid-year estimates for 2002 to 2005. These population estimates have been incorporated into the LFS estimates (from July-September 2000) from the November 2007 First Release. On 23 October 2007 ONS published 2006-based national population projections for the UK and its constituent countries. These population estimates have been incorporated into the LFS estimates (from July-September 2006) from the December 2007 First Release.

The LFS estimates have been updated to include the new population estimates using the interim reweighting adjustment methodology developed to take account of the 2001 Census results. Details of this methodology were published in the December 2002 edition of *Labour Market Trends*, which is available on the website at:

http://www.statistics.gov.uk/articles/labour_market_trends/Interim_ifs_estimates_Dec2002.pdf.

Tables 12 to 15: Local labour market indicators

Tables 12 to 15 present a framework of labour market statistics for local areas. Data are presented as indicators of labour supply, labour demand and benefits. This structure adheres to the labour accounting system described in the Framework Review

All data are not seasonally adjusted unless otherwise specified



of Labour Market Statistics published on 5 August 2002
(see http://www.statistics.gov.uk/methods_quality/quality_review/downloads/LMSFR_Final.doc).

These tables include data from the Annual Population Survey. These data are weighted to population estimates consistent with those released in February 2003, not the latest revised population estimates. Interim reweighting of monthly LFS estimates at national and regional level has been applied in order to take account of the revised population data. For the annual local area LFS data such an interim reweighting is not possible. See Concepts and Definitions.

SAMPLING VARIABILITY AND TRENDS

Some data in this release are based on statistical samples and, as such, are subject to sampling variability. If many samples were drawn, each would give a different result. The ranges shown for the LFS data in this release and in the following table represent '95 per cent confidence intervals'. It is expected that in 95 per cent of samples the range would contain the true value. For more information, see the *Guide to Labour Market Statistics Releases*.

September to November 2007

Thousands

	Levels			Quarterly changes			Annual changes		
	Lower limit	LFS estimate	Upper limit	Lower limit	LFS estimate	Upper limit	Lower limit	LFS estimate	Upper limit
Employment	2,489	2,541	2,592	-64	3	70	-13	54	121
Employment rate	75.1%	76.4%	77.7%	-1.8%	-0.2%	1.4%	-0.6%	1.1%	2.7%
Unemployment	115	131	147	-14	7	29	-29	-6	16
Unemployment rate	4.3%	4.9%	5.5%	-0.6%	0.2%	1.1%	-1.2%	-0.3%	0.5%
Economically active	2,621	2,672	2,722	-56	10	76	-18	47	113
Economic activity rate	79.3%	80.5%	81.6%	-1.5%	0.0%	1.6%	-0.6%	0.9%	2.4%
Economically inactive	577	626	675	-64	-1	62	-89	-26	37

All data are not seasonally adjusted unless otherwise specified



Sampling variability of regional Labour Force Survey figures September to November 2007

	Empl- oyment Level (000s)	Unem- ployment Level (000s)	Econ- omically Active Level (000s)	Working age Economically Inactive Level (000s)	Working age Employment Rate (%)	Unem- ployment Rate (%)
North East	± 36	± 12	± 36	± 37	± 1.9	± 1.0
North West	± 61	± 20	± 60	± 60	± 1.2	± 0.6
Yorks & Humber	± 52	± 17	± 51	± 50	± 1.3	± 0.7
East Midlands	± 42	± 14	± 42	± 45	± 1.3	± 0.7
West Midlands	± 54	± 19	± 53	± 53	± 1.3	± 0.6
East	± 53	± 17	± 52	± 49	± 1.2	± 0.6
London	± 70	± 27	± 67	± 67	± 1.2	± 0.7
South East	± 62	± 20	± 61	± 56	± 0.9	± 0.5
South West	± 51	± 14	± 51	± 48	± 1.2	± 0.5
Wales	± 40	± 12	± 40	± 41	± 1.8	± 0.9
Scotland	± 52	± 16	± 51	± 49	± 1.3	± 0.6

BACKGROUND NOTES

1. In addition to the data in this release, ONS can provide a wide range of detailed labour market data in a number of formats. In particular, data are available from Nomis[®], at <http://www.nomisweb.co.uk>, at the same time as this release is published. Further Labour Force Survey data are also published in the *Labour Force Survey Historical Quarterly Supplement* (<http://www.statistics.gov.uk/onlineproducts/default.asp#labour>). Further Labour Market statistics data appears in *Economic and Labour Market Review* (<http://www.statistics.gov.uk/StatBase/Product.asp?vlnk=14692>) and in the local area labour market statistical indicators web-based publication (<http://www.statistics.gov.uk/statbase/Product.asp?vlnk=14160>).
2. Further information on the topics covered in this release is available by contacting the Labour Market Statistics Helpline (tel: 01633 456901 or email labour.market@ons.gov.uk) or from the National Statistics website at: <http://www.statistics.gov.uk/onlineproducts/default.asp#labour>
3. Details of the policy governing the release of new data are available from the press office. Also available is a list of the names of those given pre-publication access to the contents of this release.
4. **National Statistics** are produced to high professional standards set out in the National Statistics Code of Practice. They undergo regular quality assurance reviews to ensure that they meet customer needs. They are produced free from any political interference. © Crown Copyright 2008.

All data are not seasonally adjusted unless otherwise specified

CONCEPTS AND DEFINITIONS

Actual hours worked: See *hours worked*.

Annual Population Survey: Annual Population Survey (APS) data are included in Tables 12 to 15. The APS is a new survey which started in January 2004 and the first publication of APS data was on 28 July 2005. APS results will be published quarterly, but each publication will include data covering a 12-month period. The weighting of the APS is consistent with the weighting of the LFS micro-data, which were re-weighted to population estimates released in February 2003. However, during this reweighting exercise, revised population estimates were released, in September 2003. The quarterly, regional LFS data in this release have been interim reweighted to the latest population estimates, but for local area data such an interim reweighting is not possible. The APS data in Tables 12 to 15 are therefore not consistent with the quarterly LFS data published elsewhere in the release.

The APS database is similar to the annual LFS database in that it is compiled by taking data from four quarters of the LFS and combining them with additional samples of interviews. The first sample boost (included in the annual LFS) was introduced in 2000 for some areas of England, in 2001, for all areas in Wales and in 2003 for Scotland.

These increases in sample sizes have improved the accuracy of annual estimates for local areas. For further information see Volume 6 of the *LFS User Guide*, available from the National Statistics website at

<http://www.statistics.gov.uk/statbase/product.asp?vlnk=1537>.

A wide range of annual local area data from the APS is available free from the Nomis[®] website at <http://www.nomisweb.co.uk>.

Claimant count: The number of people claiming unemployment-related benefits - since October 1996 this has been the number of people claiming Jobseeker's Allowance. The seasonally adjusted claimant count series, which goes back to 1971 for the United Kingdom, is estimated on a basis consistent with the current benefits regime, i.e. it has been adjusted for discontinuities in coverage. The non-seasonally adjusted series include all claimants aged 16 and over while the seasonally adjusted series includes all claimants aged 18 and over. This difference in coverage exists because restricting the seasonally adjusted series to those aged 18 and over was the only realistic way of maintaining the consistent series back to 1971, following a rule change in 1988 which resulted in most 16-18 year olds becoming ineligible to claim unemployment-related benefits.

Claimant count rate at national or regional level: The number of claimants resident in an area as a percentage of the sum of claimants and workforce jobs in the country or region. The number of workforce jobs is mainly collected through postal

All data are not seasonally adjusted unless otherwise specified

employer surveys and comprises employee jobs, self-employment jobs, HM armed forces and government-supported trainees and is used to calculate rates for regions and the countries of the UK. For smaller areas, proportions are used.

Claimant count proportion: The number of claimants resident in an area as a percentage of the working-age population resident in that area.

Economically active: People aged 16 and over who are either in *employment* or *unemployed*.

Economically inactive: People who are neither in *employment* nor *unemployed*. This includes those who want a job but have not been seeking work in the last four weeks, those who want a job and are seeking work but not available to start work, and those who do not want a job.

Employment and jobs: There are two ways of looking at employment: the number of people with jobs, or the number of jobs. The two concepts are not the same as a person can have more than one job.

The number of people with jobs is measured by the *Labour Force Survey* (LFS) and includes people aged 16 or over who did paid work (as an employee or self-employed), those who had a job that they were temporarily away from, those on government-supported training and employment programmes, and those doing unpaid family work.

The number of jobs is measured by workforce jobs and is the sum of employee jobs (as measured by surveys of employers), self-employment jobs from the LFS, those in HM Forces, and government-supported trainees. Vacant jobs are not included.

The *Review of Employment and Jobs Statistics* highlighted differences between statistics on jobs produced from household and business surveys, and identified many of the reasons why these differences occur. Following that review, a comparison of estimates of jobs from the LFS and the WFJ series is available from the *Labour Market Statistics Overview* document at: <http://www.statistics.gov.uk/StatBase/Product.asp?vlnk=1944>

Full-time: In the *Labour Force Survey*, respondents are asked to self-classify their main job as either full-time or part-time. However, people on government supported employment and training programmes that are at college in the reference week are classified, by convention, as part-time. In employer surveys, jobs are generally classified as being part-time if the contracted hours of work are 30 hours or less per week.

Hours worked:

All data are not seasonally adjusted unless otherwise specified



Actual hours worked: Actual hours worked statistics, shown at Table 7, measure how many hours were actually worked. These statistics are directly affected by changes in the number of people in employment and in the number of hours that individuals work. The figures also reflect public holidays, sickness and other absences from work during the reference period.

Usual hours worked: Usual hours worked statistics, shown at Table 8, measure how many hours people usually work per week. Compared with actual hours worked, they are less affected by public holidays, sickness and other absences from work. In this respect they provide a better measure of working patterns.

Inflows and Outflows: The claimant count records are analysed to provide information about inflows onto the count and outflows from the count on a monthly basis. To make comparisons over time consistent, these figures are standardised to a $4\frac{1}{3}$ week month before seasonal adjustment. These figures for people starting to or ceasing to claim Jobseeker's Allowance can be helpful towards interpreting changes in the claimant count.

Jobs density: The number of filled jobs per resident of working age.

Labour Force Survey: The main source for information on the labour market in the UK. It is a random household survey of approximately 53,000 households every three months conducted by the Office for National Statistics. As well as private households, the survey includes people living in student residence halls and National Health Service accommodation.

Model-based estimates of unemployment: For estimates of unemployment for local areas, however, even the Annual Population Survey does not have a sufficiently large sample to provide precise estimates for all areas. For this reason a statistical model has been developed to improve the annual LFS/APS estimates of unemployment, for small areas, by using supplementary information, mainly the numbers of claimants of Jobseekers' Allowance (the claimant count). More information on the model-based estimates can be found at http://www.statistics.gov.uk/downloads/theme_labour/LALM_Brief_guide.pdf. A detailed user guide can be found at http://www.statistics.gov.uk/downloads/theme_labour/User_Guide.pdf

Rates: Generally the preferred measure of Labour Market statistics as they allow changes in the labour market to be interpreted in a wider context by allowing for changes in the overall population.

Sampling variability: Data based on statistical samples are subject to sampling variability. If many samples were drawn, each would give a different result. The ranges shown for the *Labour Force Survey* data in this release, for example, represent 95 per

All data are not seasonally adjusted unless otherwise specified

cent confidence intervals; in 95 per cent of samples the range would contain the true value.

Seasonal adjustment: A process of estimating regularly occurring seasonal effects and removing them from the raw data.

Unemployment: The number of unemployed people in the UK is measured through the *Labour Force Survey* following the internationally agreed definition recommended by the International Labour Organisation (ILO) – an agency of the United Nations. Unemployed people are:

- without a job, want a job, have actively sought work in the last four weeks and are available to start work in the next two weeks or;
- out of work, have found a job and are waiting to start it in the next two weeks.

Further Concepts and Definitions are available from the website at:

http://www.statistics.gov.uk/downloads/theme_labour/LMS_FR_HS_Concepts_Definitions.pdf

All data are not seasonally adjusted unless otherwise specified



INDEX OF TABLES

NATIONAL LABOUR MARKET SUMMARY, BY REGION

Summary of Labour Force Survey (LFS) data (seasonally adjusted)

Summary of other headline indicators

REGIONAL DATA

Summary of LFS data for the current quarter (seasonally adjusted) 1
 Summary of other headline indicators (seasonally adjusted) 1a

EMPLOYMENT AND JOBS

Employment by age..... 2
 Full-time, part-time and temporary workers 3
 Civilian workforce jobs 4
 Employee jobs by industry 5
 Actual and usual weekly hours of work 6

CLAIMANT COUNT

Claimant count levels and rates (seasonally adjusted)..... 7
 Claimant count by age and duration - computerised claims only 8

ECONOMIC ACTIVITY AND INACTIVITY

Economic activity by age..... 9
 Economic inactivity by age..... 10
 Economic inactivity: reasons..... 11

LOCAL AREA DATA

Local labour market indicators by Unitary and Local Authority..... 12
 Local labour market indicators by UK Parliamentary Constituency 13(1)
 Local labour market indicators by Constituencies of the Scottish
 Parliament 13(2)
 Local labour market indicators by Travel-to-Work Area..... 14
 Local labour market indicators by NUTS 3 area 15
 Claimant count by Unitary and Local Authority 16
 Claimant count by UK Parliamentary Constituency 17(1)
 Claimant count by Constituencies of the Scottish Parliament 17(2)

The following symbols are used in the tables:

- .. not available - nil or negligible
- p provisional r revised
- * grossed up total
 less than 9,500

Totals may differ from the sum of components because of rounding or separate adjustment of components.

NATIONAL LABOUR MARKET SUMMARY, BY REGION

Summary of Labour Force Survey data

Thousands, seasonally adjusted

Labour Force Survey¹ (September to November 2007)

	Total aged 16 & over		Economically active			Employment						Unemployment					
	Total		Men		Women	Total		Men		Women		Total		Men		Women	
	Level	Level	Rate (%) ²	Level	Level	Level	Rate (%) ²	Level	Rate (%) ²	Level	Rate (%) ²	Level	Rate (%) ³	Level	Rate (%) ³	Level	Rate (%) ³
	1	2	3	4	5	6	7	8	9	10	11	12	13	14	15	16	17
North East	2,066	1,239	76.1	664	575	1,166	71.5	617	73.7	548	69.1	73	5.9	46	7.0	27	4.7
North West	5,480	3,383	77.2	1,837	1,546	3,180	72.5	1,710	75.9	1,470	68.7	203	6.0	127	6.9	76	4.9
Yorkshire & the Humber	4,149	2,591	78.0	1,418	1,174	2,450	73.6	1,329	77.4	1,122	69.5	141	5.4	89	6.3	52	4.4
East Midlands	3,537	2,263	80.2	1,234	1,029	2,143	75.8	1,169	79.7	974	71.5	120	5.3	64	5.2	55	5.4
West Midlands	4,273	2,663	78.0	1,456	1,207	2,497	72.9	1,365	77.5	1,132	67.9	166	6.2	91	6.2	75	6.2
East	4,516	2,940	81.8	1,599	1,341	2,806	78.0	1,525	82.7	1,281	72.8	134	4.6	74	4.6	60	4.5
London	6,062	3,952	75.4	2,210	1,742	3,686	70.3	2,059	77.2	1,628	62.8	265	6.7	152	6.9	114	6.5
South East	6,603	4,398	82.8	2,351	2,047	4,191	78.7	2,238	83.2	1,953	74.0	207	4.7	113	4.8	94	4.6
South West	4,166	2,654	82.2	1,420	1,234	2,555	79.0	1,365	82.2	1,190	75.5	99	3.7	55	3.9	44	3.6
England	40,850	26,084	79.2	14,189	11,895	24,675	74.8	13,378	79.2	11,297	69.9	1,409	5.4	811	5.7	598	5.0
Wales	2,392	1,423	76.1	767	656	1,350	72.1	730	76.1	620	67.8	73	5.1	37	4.9	36	5.5
Scotland	4,164	2,672	80.5	1,403	1,268	2,541	76.4	1,335	79.1	1,206	73.5	131	4.9	69	4.9	63	4.9
Great Britain	47,406	30,178	79.1	16,359	13,819	28,565	74.8	15,442	79.0	13,123	70.2	1,613	5.3	917	5.6	697	5.0
N Ireland	1,361	814	72.9	445	369	779	69.7	424	74.2	356	64.8	35	4.3	21	4.8	14	3.7
United Kingdom	48,767	31,004	79.0	16,811	14,194	29,355	74.7	15,872	78.9	13,484	70.0	1,649	5.3	939	5.6	710	5.0

Change on quarter:⁴

	Total aged 16 & over		Economically active			Employment						Unemployment					
	Total		Men		Women	Total		Men		Women		Total		Men		Women	
	Level	Level	Rate (%) ²	Level	Level	Level	Rate (%) ²	Level	Rate (%) ²	Level	Rate (%) ²	Level	Rate (%) ³	Level	Rate (%) ³	Level	Rate (%) ³
North East	3	4	0.0	-4	8	6	0.1	2	-0.2	4	0.5	-2	-0.2	-6	-0.9	4	0.6
North West	8	0	0.0	5	-4	-3	-0.1	3	0.1	-6	-0.3	4	0.1	1	0.1	2	0.2
Yorkshire & the Humber	11	15	0.3	6	10	25	0.5	10	0.6	15	0.4	-10	-0.4	-4	-0.3	-6	-0.5
East Midlands	11	-4	-0.2	0	-3	-3	-0.2	1	-0.1	-3	-0.2	-1	0.0	-1	-0.1	0	0.0
West Midlands	6	-8	-0.2	-8	0	2	0.1	0	0.1	1	0.0	-10	-0.4	-8	-0.5	-2	-0.1
East	13	37	0.7	1	37	56	1.3	3	0.2	53	2.5	-19	-0.7	-3	-0.2	-16	-1.3
London	15	36	0.4	30	6	21	0.1	21	0.6	0	-0.4	15	0.3	9	0.3	6	0.3
South East	16	40	0.5	27	13	33	0.4	25	0.7	8	0.0	7	0.1	3	0.1	5	0.2
South West	11	16	0.2	19	-3	22	0.4	23	1.2	-1	-0.4	-6	-0.3	-4	-0.3	-3	-0.2
England	93	137	0.2	75	62	159	0.3	87	0.4	72	0.2	-22	-0.1	-13	-0.1	-9	-0.1
Wales	5	3	0.4	-2	5	6	0.6	3	0.2	4	0.9	-3	-0.2	-4	-0.5	1	0.1
Scotland	6	10	0.0	-2	12	3	-0.2	-2	-0.5	5	0.1	7	0.2	0	0.0	7	0.5
Great Britain	105	150	0.2	71	80	168	0.3	88	0.3	81	0.2	-18	-0.1	-17	-0.1	-1	0.0
N Ireland	3	12	0.7	2	10	6	0.1	-2	-0.5	9	0.8	6	0.7	5	1.0	2	0.3
United Kingdom	108	162	0.2	72	89	175	0.3	85	0.3	89	0.2	-13	-0.1	-13	-0.1	0	0.0

Change on year:

	Total aged 16 & over		Economically active			Employment						Unemployment					
	Total		Men		Women	Total		Men		Women		Total		Men		Women	
	Level	Level	Rate (%) ²	Level	Level	Level	Rate (%) ²	Level	Rate (%) ²	Level	Rate (%) ²	Level	Rate (%) ³	Level	Rate (%) ³	Level	Rate (%) ³
North East	11	5	-0.2	3	1	13	0.4	5	-0.3	7	1.0	-8	-0.7	-2	-0.3	-6	-1.1
North West	30	19	0.0	35	-16	-11	-0.6	15	0.1	-26	-1.4	30	0.9	20	1.0	10	0.7
Yorkshire & the Humber	43	6	-0.9	4	3	20	-0.5	13	-0.3	7	-0.7	-14	-0.5	-9	-0.7	-5	-0.4
East Midlands	40	-33	-1.5	-20	-13	-24	-1.2	-14	-1.5	-10	-0.8	-9	-0.3	-6	-0.4	-3	-0.3
West Midlands	21	-8	-0.5	-17	9	-3	-0.4	-12	-0.8	9	0.0	-5	-0.2	-5	-0.3	0	0.0
East	49	55	0.9	21	33	61	1.2	24	0.8	36	1.6	-6	-0.3	-3	-0.3	-3	-0.3
London	53	19	-0.6	28	-9	46	0.0	40	0.7	6	-0.7	-27	-0.7	-12	-0.6	-15	-0.8
South East	60	60	0.5	26	33	43	0.1	15	-0.1	28	0.3	16	0.3	11	0.4	5	0.2
South West	46	43	0.6	26	18	45	0.7	23	0.4	21	0.9	-1	-0.1	2	0.1	-4	-0.3
England	352	165	-0.1	106	59	189	0.0	110	0.0	79	-0.1	-24	-0.1	-4	-0.1	-20	-0.2
Wales	17	7	0.2	10	-4	8	0.3	12	0.7	-4	-0.1	-1	-0.1	-2	-0.3	1	0.1
Scotland	27	47	0.9	22	25	54	1.1	35	1.0	19	1.1	-6	-0.3	-13	-1.0	6	0.4
Great Britain	396	219	0.0	139	81	250	0.1	157	0.1	94	0.0	-31	-0.1	-18	-0.2	-13	-0.1
N Ireland	19	10	0.4	4	6	9	0.3	4	0.1	6	0.5	1	0.1	0	0.0	1	0.1
United Kingdom	415	234	0.0	144	90	263	0.1	162	0.1	101	0.1	-29	-0.1	-17	-0.2	-12	-0.1

Relationship between columns: 2= 4+5 = 6+12; 6= 8+10; 12= 14+16.

Source: Labour Force Survey

1. Labour Force Survey is tabulated by region of residence.

Labour Market Statistics Helpline 01633 456901

2. Denominator = all persons of working age.

3. Denominator = Total economically active.

4. Quarter to quarter changes at regional level are particularly subject to sampling variability and should be interpreted in the context of changes over several quarters rather than in isolation.

The Labour Force Survey is a survey of the population in private households, student halls of residence and NHS accommodation. See Concepts and Definitions.

NATIONAL LABOUR MARKET SUMMARY, BY REGION

Summary of other headline indicators

Thousands

	Employer Surveys ¹			Jobcentre Plus administrative system ¹					
	Civilian workforce jobs (September 2007); not seasonally adjusted			Claimant count ² (December 2007); seasonally adjusted					
	Total	Men	Women	Total		Men		Women	
	Level	Level	Level	Level	Rate (%) ³	Level	Rate (%) ³	Level	Rate (%) ³
	1	2	3	4	5	6	7	8	9
North East	1,184	617	568	47.5	3.8	35.8	5.4	11.7	2.0
North West	3,409	1,808	1,601	106.3	3.1	79.6	4.3	26.7	1.7
Yorkshire & the Humber	2,551	1,359	1,192	76.0	2.9	56.5	3.9	19.5	1.6
East Midlands	2,146	1,156	991	53.8	2.5	38.6	3.3	15.2	1.5
West Midlands	2,691	1,437	1,254	96.5	3.5	71.0	4.7	25.5	2.0
East	2,814	1,499	1,316	56.2	2.0	39.8	2.6	16.4	1.3
London	4,689	2,559	2,130	132.4	2.7	92.1	3.4	40.3	1.9
South East	4,350	2,282	2,068	66.0	1.5	47.2	2.0	18.8	0.9
South West	2,642	1,353	1,288	38.5	1.4	27.5	1.9	11.0	0.9
England	26,476	14,069	12,407	673.2	2.5	488.1	3.3	185.1	1.5
Wales	1,389	737	652	39.3	2.7	29.2	3.8	10.1	1.5
Scotland	2,689	1,398	1,291	71.6	2.6	53.7	3.7	17.9	1.3
Great Britain	30,555	16,205	14,350	784.1	2.5	571.0	3.4	213.1	1.5
N Ireland	842	450	392	23.6	2.7	17.9	3.8	5.7	1.4
United Kingdom	31,397	16,655	14,742	807.7	2.5	588.9	3.4	218.8	1.5

Changes on period (period specified below):

	Employer Surveys ¹			Jobcentre Plus administrative system ¹					
	Civilian workforce jobs (Change on September 2006); not seasonally adjusted			Claimant count ² (Change on November 2007); seasonally adjusted					
	Total	Men	Women	Total		Men		Women	
	Level	Level	Level	Level	Rate (%) ³	Level	Rate (%) ³	Level	Rate (%) ³
	1	2	3	4	5	6	7	8	9
North East	12	6	6	0.0	0.0	0.0	0.0	0.0	0.0
North West	29	9	20	-0.4	0.0	-0.4	0.0	0.0	0.0
Yorkshire & the Humber	18	9	9	-0.5	0.0	-0.3	0.0	-0.2	0.0
East Midlands	13	12	1	-0.9	0.0	-0.7	-0.1	-0.2	0.0
West Midlands	-19	-14	-6	-1.0	0.0	-0.8	-0.1	-0.2	0.0
East	0	-14	14	-0.4	0.0	-0.2	0.0	-0.2	0.0
London	80	38	42	-1.5	0.0	-1.1	0.0	-0.4	0.0
South East	62	15	47	-0.7	0.0	-0.5	0.0	-0.2	0.0
South West	48	23	25	-0.6	0.0	-0.5	0.0	-0.1	0.0
England	243	85	159	-6.0	0.0	-4.5	0.0	-1.5	0.0
Wales	9	18	-9	-0.2	0.0	-0.1	0.0	-0.1	0.0
Scotland	44	43	0	-0.4	0.0	-0.3	0.0	-0.1	0.0
Great Britain	295	146	150	-6.6	0.0	-4.9	0.0	-1.7	0.0
N Ireland	5	-1	5	0.2	0.0	0.2	0.0	0.0	0.0
United Kingdom	300	145	155	-6.4	0.0	-4.7	0.0	-1.7	0.0

Relationship between columns: 1= 2+3; 4= 6+8.

Labour Market Statistics Helpline 01633 456901

1. Workforce jobs are tabulated by region of workplace. Claimant count is tabulated by region of claimant's residence.

2. Count of claimants of Jobseeker's Allowance.

3. Denominator = Claimant count + Workforce jobs.

REGIONAL DATA

Scotland

(thousands),
seasonally
adjusted

1 Summary of LFS data

All aged 16 & over

		All aged 16 & over	Total economically active	Total in employment	Unemployed	Economically inactive	Economic activity rate (%)	Employment rate (%)	Unemployment rate (%)	Economic inactivity rate (%)	
		1	2	3	4	5	6	7	8	9	
People	Sep-Nov 2005	YCHN	YCIA	YCKA	YCNA	HKMZ			YCNN		
	Sep-Nov 2006	4,109	2,607	2,468	139	1,501	63.5	60.1	5.3	36.5	
	Dec-Feb 2007	4,144	2,660	2,521	139	1,484	64.2	60.8	5.2	35.8	
	Mar-May 2007	4,151	2,673	2,545	128	1,478	64.4	61.3	4.8	35.6	
	Jun-Aug 2007	4,157	2,662	2,538	124	1,496	64.0	61.0	4.7	36.0	
	Sep-Nov 2007	4,164	2,672	2,541	131	1,492	64.2	61.0	4.9	35.8	
	Change on quarter	6	10	3	7	-4	0.1	0.0	0.2	-0.1	
	Change %	0.2	0.4	0.1	5.7	-0.3					
	Change on year	27	47	54	-6	-20	0.7	0.9	-0.3	-0.7	
	Change %	0.7	1.8	2.2	-4.7	-1.3					
	Men	Sep-Nov 2005	YCJA	YCLA	YCOA	YCZL				YCON	
		Sep-Nov 2006	1,956	1,387	1,304	83	569	70.9	66.6	6.0	29.1
		Dec-Feb 2007	1,973	1,381	1,300	81	591	70.0	65.9	5.9	30.0
Mar-May 2007		1,976	1,405	1,328	76	572	71.1	67.2	5.4	28.9	
Jun-Aug 2007		1,980	1,409	1,339	69	572	71.1	67.6	4.9	28.9	
Sep-Nov 2007		1,988	1,403	1,335	69	584	70.6	67.2	4.9	29.4	
Change on quarter		3	-2	-2	0	6	-0.2	-0.2	0.0	0.2	
Change %		0.2	-0.2	-0.2	-0.4	1.0					
Change on year		15	22	35	-13	-7	0.6	1.2	-1.0	-0.6	
Change %		0.8	1.6	2.7	-15.6	-1.2					
Women		Sep-Nov 2005	YCJN	YCPA	YCZM					YCPN	
		Sep-Nov 2006	2,152	1,220	1,165	56	932	56.7	54.1	4.6	43.3
		Dec-Feb 2007	2,164	1,243	1,187	56	921	57.4	54.8	4.5	42.6
	Mar-May 2007	2,167	1,255	1,193	63	912	57.9	55.0	5.0	42.1	
	Jun-Aug 2007	2,170	1,264	1,205	59	906	58.2	55.5	4.7	41.8	
	Sep-Nov 2007	2,176	1,268	1,206	63	908	58.3	55.4	4.9	41.7	
	Change on quarter	3	12	5	7	-10	0.5	0.2	0.5	-0.5	
	Change %	0.1	1.0	0.4	13.4	-1.0					
	Change on year	12	25	19	6	-13	0.8	0.6	0.4	-0.8	
	Change %	0.6	2.0	1.6	11.2	-1.4					

All aged 16 to 59/64

		All aged 16 to 59/64	Total economically active	Total in employment	Unemployed	Economically inactive	Economic activity rate (%)	Employment rate (%)	Unemployment rate (%)	Economic inactivity rate (%)	
		10	11	12	13	14	15	16	17	18	
People	Sep-Nov 2005	YCHN	YCIA	YCKA	YCNA	HKMZ			YCNN		
	Sep-Nov 2006	3,174	2,533	2,396	137	641	79.8	75.5	5.4	20.2	
	Dec-Feb 2007	3,192	2,540	2,405	135	652	79.6	75.3	5.3	20.4	
	Mar-May 2007	3,195	2,574	2,438	136	621	80.6	76.3	5.3	19.4	
	Jun-Aug 2007	3,197	2,579	2,452	126	618	80.7	76.7	4.9	19.3	
	Sep-Nov 2007	3,202	2,576	2,446	130	626	80.5	76.4	5.0	19.5	
	Change on quarter	2	3	-4	7	-1	0.0	-0.2	0.3	0.0	
	Change %	0.1	0.1	-0.2	5.8	-0.2					
	Change on year	10	36	41	-5	-26	0.9	1.1	-0.3	-0.9	
	Change %	0.3	1.4	1.7	-3.8	-4.0					
	Men	Sep-Nov 2005	YCHN	YCIA	YCKA	YCNA	HKMZ			YCNN	
		Sep-Nov 2006	1,622	1,360	1,277	83	261	83.9	78.8	6.1	16.1
		Dec-Feb 2007	1,634	1,357	1,277	80	277	83.1	78.2	5.9	16.9
Mar-May 2007		1,637	1,382	1,306	76	255	84.4	79.8	5.5	15.6	
Jun-Aug 2007		1,639	1,378	1,309	69	261	84.1	79.9	5.0	15.9	
Sep-Nov 2007		1,642	1,376	1,307	69	266	83.8	79.6	5.0	16.2	
Change on quarter		2	-7	-6	0	8	-0.5	-0.5	0.0	0.5	
Change %		0.1	-0.5	-0.5	-0.4	3.1					
Change on year		10	12	23	-12	-2	0.2	1.0	-0.9	-0.2	
Change %		0.6	0.9	1.8	-14.4	-0.8					
Women		Sep-Nov 2005	YCHN	YCIA	YCKA	YCNA	HKMZ			YCNN	
		Sep-Nov 2006	1,552	1,173	1,118	54	379	75.6	72.1	4.6	24.4
		Dec-Feb 2007	1,558	1,183	1,128	55	375	75.9	72.4	4.6	24.1
	Mar-May 2007	1,558	1,192	1,132	60	366	76.5	72.7	5.0	23.5	
	Jun-Aug 2007	1,558	1,201	1,143	57	357	77.1	73.4	4.8	22.9	
	Sep-Nov 2007	1,558	1,197	1,143	54	361	76.8	73.4	4.5	23.2	
	Change on quarter	0	10	2	7	-9	0.6	0.1	0.6	-0.6	
	Change %	0.0	0.8	0.2	13.8	-2.6					
	Change on year	0	24	18	6	-24	1.5	1.1	0.4	-1.5	
	Change %	0.0	2.0	1.6	11.8	-6.4					

Relationship between columns: 1= 2+5; 2= 3+4; 6= 2/1; 7= 3/1; 8= 4/2

Source: Labour Force Survey

9= 5/1; 10= 11+14; 11= 12+13; 15= 11/10; 16= 12/10; 17= 13/11; 18= 14/10

Labour Market Statistics Helpline 01633 456901

The Labour Force Survey is a survey of the population of private households, student halls of residence and NHS accommodation. See Concepts and Definitions.

1a Summary of other headline indicators

Civilian workforce jobs (not seasonally adjusted)			
Levels			
	Total	Males	Females
	YXYL	YXZA	A4FD
Sep 04 (r)	2,571	1,313	1,258
Sep 05 (r)	2,640	1,348	1,291
Sep 06 (r)	2,646	1,355	1,290
Dec 06 (r)	2,662	1,375	1,288
Mar 07 (r)	2,653	1,379	1,274
Jun 07 (r)	2,668	1,384	1,284
Sep 07	2,689	1,398	1,291
<i>Change on year</i>	<i>44</i>	<i>43</i>	<i>0</i>
<i>Change %</i>	<i>1.6</i>	<i>3.2</i>	<i>0.0</i>

Claimant count ¹						
	Levels			Rates (%) ²		
	Total	Males	Females	Total	Males	Females
	DPBF	ZMQG	ZMQI	DPBQ	ZMQH	ZMQJ
2006						
December #	84.8	64.0	20.8	3.1	4.5	1.6
2007						
January	81.4	61.1	20.3	2.9	4.3	1.5
February	81.9	61.6	20.3	3.0	4.3	1.5
March	80.5	60.3	20.2	2.9	4.2	1.5
April #	79.2	59.2	20.0	2.9	4.1	1.5
May	77.9	58.2	19.7	2.8	4.1	1.5
June #	76.0	56.9	19.1	2.7	4.0	1.4
July	74.8	56.3	18.5	2.7	3.9	1.4
August	74.4	55.9	18.5	2.7	3.9	1.4
September #	73.5	55.2	18.3	2.7	3.9	1.4
October	72.4	54.3	18.1	2.6	3.8	1.4
November (r)	72.0	54.0	18.0	2.6	3.8	1.3
December # (p)	71.6	53.7	17.9	2.6	3.7	1.3
<i>Change on period</i>	<i>-0.4</i>	<i>-0.3</i>	<i>-0.1</i>	<i>0.0</i>	<i>0.0</i>	<i>0.0</i>
<i>Change %</i>	<i>-0.6</i>	<i>-0.6</i>	<i>-0.6</i>			
<i>Change on year</i>	<i>-13.2</i>	<i>-10.3</i>	<i>-2.9</i>	<i>-0.5</i>	<i>-0.7</i>	<i>-0.2</i>
<i>Change %</i>	<i>-15.6</i>	<i>-16.1</i>	<i>-13.9</i>			

1. Count of claimants of Jobseeker's Allowance.

2. Denominator = claimant count + workforce jobs. NB these are different from the proportions of the working age populations claiming Jobseeker's Allowance for local areas shown in Tables 16 and 17.

See Concepts and Definitions.

Months where there are 5 weeks between count dates. All the rest are 4 week periods.

Sources: Employer surveys, DfES Training Data System, Jobcentre Plus administrative system. Labour Market Statistics Helpline 01633 456901

EMPLOYMENT AND JOBS

2 Employment by age

Scotland

(thousands), not seasonally adjusted

		All aged 16 & over	16 - 59/64	16 - 17	18 - 24	25 - 34	35 - 49	50 - 64 (m) 50 - 59 (w)	65+ (m) 60+ (w)
		1	2	3	4	5	6	7	8
Employed									
People	Jul - Sep 2004
	Jul - Sep 2005	2,473	2,402	60	321	501	966	554	71
	Jul - Sep 2006	2,499	2,415	54	330	499	966	567	84
	Oct - Dec 2006	2,519	2,436	60	320	502	972	582	83
	Jan - Mar 2007	2,530	2,442	56	325	497	978	587	87
	Apr - Jun 2007	2,548	2,457	52	308	518	985	595	91
	Jul - Sep 2007	2,546	2,456	50	328	510	981	586	90
	<i>Change on year</i>	48	41	-4	-2	12	16	19	7
	<i>Change %</i>	1.9	1.7	-7.2	-0.5	2.3	1.6	3.4	7.8
Men	Jul - Sep 2004
	Jul - Sep 2005	1,306	1,281	27	170	264	495	325	25
	Jul - Sep 2006	1,309	1,285	26	171	263	497	327	24
	Oct - Dec 2006	1,326	1,303	30	165	266	498	345	23
	Jan - Mar 2007	1,331	1,305	30	166	265	500	344	26
	Apr - Jun 2007	1,338	1,308	27	157	274	502	348	30
	Jul - Sep 2007	1,339	1,308	26	172	269	498	344	30
	<i>Change on year</i>	30	24	0	0	6	1	17	6
	<i>Change %</i>	2.3	1.8	-0.5	0.1	2.2	0.1	5.2	25.5
Women	Jul - Sep 2004
	Jul - Sep 2005	1,167	1,120	32	151	237	471	228	47
	Jul - Sep 2006	1,190	1,130	27	158	236	469	240	60
	Oct - Dec 2006	1,193	1,133	31	156	236	474	237	61
	Jan - Mar 2007	1,199	1,137	27	158	232	478	243	62
	Apr - Jun 2007	1,210	1,149	25	151	243	482	247	61
	Jul - Sep 2007	1,208	1,148	24	157	241	483	243	60
	<i>Change on year</i>	18	18	-4	-2	6	15	3	0
	<i>Change %</i>	1.5	1.5	-13.5	-1.1	2.4	3.2	1.1	0.7
Employment rates (%)¹									
People	Jul - Sep 2004
	Jul - Sep 2005	60.3	75.8	46.3	69.8	80.4	83.4	69.3	7.7
	Jul - Sep 2006	60.5	75.7	42.1	70.4	80.2	83.1	69.9	8.9
	Oct - Dec 2006	60.9	76.3	47.0	68.2	80.7	83.7	71.6	8.8
	Jan - Mar 2007	61.0	76.4	43.7	68.9	79.9	84.3	72.2	9.2
	Apr - Jun 2007	61.4	76.8	40.1	65.2	83.3	84.9	73.1	9.5
	Jul - Sep 2007	61.2	76.8	38.5	69.2	82.2	84.6	71.9	9.4
	<i>Change on year</i>	0.7	1.0	-3.6	-1.2	1.9	1.5	2.0	0.5
Men	Jul - Sep 2004
	Jul - Sep 2005	66.9	79.1	41.1	73.3	86.8	88.7	70.9	7.4
	Jul - Sep 2006	66.4	78.7	40.2	72.7	86.1	89.0	70.0	7.1
	Oct - Dec 2006	67.2	79.7	45.1	69.6	87.0	89.2	73.6	6.7
	Jan - Mar 2007	67.3	79.7	44.9	70.0	86.5	89.7	73.3	7.5
	Apr - Jun 2007	67.5	79.8	40.0	65.7	89.5	90.1	73.9	8.9
	Jul - Sep 2007	67.4	79.7	39.4	71.7	87.8	89.5	72.6	8.8
	<i>Change on year</i>	1.0	0.9	-0.7	-1.0	1.7	0.5	2.5	1.7
Women	Jul - Sep 2004
	Jul - Sep 2005	54.3	72.2	51.7	66.2	74.2	78.5	67.1	7.8
	Jul - Sep 2006	55.0	72.5	44.1	68.1	74.6	77.7	69.8	9.9
	Oct - Dec 2006	55.1	72.7	49.1	66.8	74.6	78.6	68.9	10.0
	Jan - Mar 2007	55.3	73.0	42.3	67.8	73.5	79.2	70.7	10.1
	Apr - Jun 2007	55.7	73.8	40.2	64.7	77.3	80.0	71.9	9.9
	Jul - Sep 2007	55.5	73.7	37.5	66.7	76.7	80.2	70.9	9.7
	<i>Change on year</i>	0.5	1.1	-6.6	-1.5	2.2	2.5	1.2	-0.1

Relationship between columns: 1=2+8; 2= 3+4+5+6+7

Source: Labour Force Survey

1. Denominator = all persons in the relevant age group

Labour Market Statistics Helpline 01633 456901

The Labour Force Survey is a survey of the population of private households, student halls of residence and NHS accommodation. See Concepts and Definitions.

EMPLOYMENT AND JOBS

Scotland

3 Full-time, part-time and temporary workers

(thousands), not seasonally adjusted

		All in employment								
		Total ¹	Employees ¹	Self employed ¹	Unpaid family workers	Government-supported training and employment programmes	Full-time workers ²	Part-time workers ²	Workers with second jobs	Temporary employees
		1	2	3	4	5	6	7	8	9
People	Jul - Sep 2004
	Jul - Sep 2005	2,473	2,218	239	*	*	1,870	603	74	141
	Jul - Sep 2006	2,499	2,223	252	10	14	1,860	637	87	133
	Oct - Dec 2006	2,519	2,252	248	*	10	1,872	646	91	136
	Jan - Mar 2007	2,530	2,246	259	13	12	1,887	641	95	128
	Apr - Jun 2007	2,548	2,271	257	11	*	1,928	620	95	128
	Jul - Sep 2007	2,546	2,250	276	13	*	1,921	623	91	134
	<i>Change on year</i>	<i>48</i>	<i>27</i>	<i>24</i>	<i>3</i>	<i>*</i>	<i>62</i>	<i>-14</i>	<i>4</i>	<i>1</i>
	<i>Change %</i>	<i>1.9</i>	<i>1.2</i>	<i>9.7</i>	<i>35.8</i>	<i>*</i>	<i>3.3</i>	<i>-2.2</i>	<i>5.1</i>	<i>0.7</i>
Men	Jul - Sep 2004
	Jul - Sep 2005	1,306	1,123	176	*	*	1,181	125	34	70
	Jul - Sep 2006	1,309	1,120	177	*	*	1,175	132	35	61
	Oct - Dec 2006	1,326	1,139	176	*	*	1,188	138	41	55
	Jan - Mar 2007	1,331	1,132	185	*	*	1,185	146	39	57
	Apr - Jun 2007	1,338	1,142	185	*	*	1,193	145	33	59
	Jul - Sep 2007	1,339	1,131	198	*	*	1,189	149	38	61
	<i>Change on year</i>	<i>30</i>	<i>11</i>	<i>21</i>	<i>*</i>	<i>*</i>	<i>14</i>	<i>17</i>	<i>3</i>	<i>1</i>
	<i>Change %</i>	<i>2.3</i>	<i>1.0</i>	<i>11.8</i>	<i>*</i>	<i>*</i>	<i>1.2</i>	<i>13.1</i>	<i>8.9</i>	<i>0.9</i>
Women	Jul - Sep 2004
	Jul - Sep 2005	1,167	1,096	63	*	*	688	478	40	71
	Jul - Sep 2006	1,190	1,103	74	*	*	685	505	52	73
	Oct - Dec 2006	1,193	1,113	72	*	*	684	508	50	81
	Jan - Mar 2007	1,199	1,114	74	*	*	702	496	56	71
	Apr - Jun 2007	1,210	1,130	71	*	*	735	475	62	68
	Jul - Sep 2007	1,208	1,119	78	*	*	733	474	54	73
	<i>Change on year</i>	<i>18</i>	<i>16</i>	<i>4</i>	<i>*</i>	<i>*</i>	<i>48</i>	<i>-31</i>	<i>1</i>	<i>0</i>
	<i>Change %</i>	<i>1.5</i>	<i>1.5</i>	<i>4.8</i>	<i>*</i>	<i>*</i>	<i>7.0</i>	<i>-6.1</i>	<i>2.6</i>	<i>0.5</i>

Temporary workers (reasons for temporary working)

Part-time workers (reasons for part-time working)⁴

		Temporary workers (reasons for temporary working)				Part-time workers (reasons for part-time working) ⁴			
		Total ³	Could not find permanent job	Did not want a permanent job	Other	Total ³	Could not find full-time job	Did not want full-time job	Other
		10	11	12	13	14	15	16	17
People	Jul - Sep 2004
	Jul - Sep 2005	141	49	32	60	595	67	413	112
	Jul - Sep 2006	133	33	39	61	625	64	438	121
	Oct - Dec 2006	136	34	37	65	636	63	441	130
	Jan - Mar 2007	128	34	35	59	626	59	433	133
	Apr - Jun 2007	128	35	36	56	608	59	419	128
	Jul - Sep 2007	134	37	35	62	608	73	412	121
	<i>Change on year</i>	<i>1</i>	<i>4</i>	<i>-4</i>	<i>0</i>	<i>-16</i>	<i>9</i>	<i>-26</i>	<i>0</i>
	<i>Change %</i>	<i>0.7</i>	<i>12.6</i>	<i>-10.0</i>	<i>0.6</i>	<i>-2.6</i>	<i>13.5</i>	<i>-6.0</i>	<i>0.0</i>

Relationship between columns: 1=2+3+4+5

Source: Labour Force Survey

1. Includes people who did not state whether they worked part-time or full-time.

Labour Market Statistics Helpline 01633 456901

2. The split between full-time and part-time employment is based on respondents' self-classification.

3. Includes people who did not state their reason for temporary/part-time working.

4. Employees and self-employed.

The Labour Force Survey is a survey of the population of private households, student halls of residence and NHS accommodation. See Concepts and Definitions.

EMPLOYMENT AND JOBS

4 Civilian workforce jobs^{1 2}

Scotland

(thousands), not seasonally adjusted

		Civilian workforce jobs 1	Employee jobs 2	Self- employment jobs 3	Government- supported trainees 4
		YXYL			
All jobs	Sep 03 (r)	2,569	2,283	278	9
	Sep 04 (r)	2,571	2,301	263	7
	Sep 05 (r)	2,640	2,373	260	7
	Sep 06 (r)	2,646	2,359	282	5
	Dec 06 (r)	2,662	2,384	272	6
	Mar 07 (r)	2,653	2,362	284	6
	Jun 07 (r)	2,668	2,377	285	6
	Sep 07	2,689	2,380	303	6
	<i>Change on year</i>	<i>44</i>	<i>21</i>	<i>22</i>	<i>1</i>
<i>Change %</i>	<i>1.6</i>	<i>0.9</i>	<i>7.6</i>	<i>10.7</i>	
	YXZA				
Male jobs	Sep 03 (r)	1,319	1,110	204	6
	Sep 04 (r)	1,313	1,113	195	5
	Sep 05 (r)	1,348	1,156	188	4
	Sep 06 (r)	1,355	1,158	194	3
	Dec 06 (r)	1,375	1,180	191	4
	Mar 07 (r)	1,379	1,177	198	4
	Jun 07 (r)	1,384	1,183	197	4
	Sep 07	1,398	1,181	214	4
	<i>Change on year</i>	<i>43</i>	<i>23</i>	<i>20</i>	<i>0</i>
<i>Change %</i>	<i>3.2</i>	<i>2.0</i>	<i>10.2</i>	<i>11.5</i>	
	A4FD				
Female jobs	Sep 03 (r)	1,250	1,173	74	3
	Sep 04 (r)	1,258	1,188	68	2
	Sep 05 (r)	1,291	1,217	72	3
	Sep 06 (r)	1,290	1,201	87	2
	Dec 06 (r)	1,288	1,204	82	2
	Mar 07 (r)	1,274	1,185	86	2
	Jun 07 (r)	1,284	1,194	88	2
	Sep 07	1,291	1,199	89	2
	<i>Change on year</i>	<i>0</i>	<i>-1</i>	<i>2</i>	<i>0</i>
<i>Change %</i>	<i>0.0</i>	<i>-0.1</i>	<i>1.9</i>	<i>9.5</i>	

Relationship between columns: 1=2+3+4

Workforce jobs enquiries 01633 812318

1. Civilian Workforce Jobs figures are a measure of jobs rather than people. For example, if a person holds two jobs, each job will be counted in the Civilian Workforce Jobs total. For this reason, Self-employment Jobs (which come from LFS) will not equal the figures for Self-employed persons from the LFS. Civilian Workforce Jobs figures come from a variety of sources, and where possible, from the employer rather than the individual. Employee Jobs (which is the largest component of Civilian Workforce Jobs) come from quarterly surveys of employers carried out by ONS, and administrative sources. See Concepts and Definitions.

Other data sources are as follows:

Self-employment Jobs are provided by LFS

Government-supported trainees are provided by administrative sources

2. There is a discontinuity in the employee jobs series between December 2005 and September 2006 due to improvements to the annual benchmark. Further information can be found at <http://www.statistics.gov.uk/Statbase/Product.asp?vlnk=9765>

EMPLOYMENT AND JOBS

Scotland

5 Employee jobs¹ by industry

(thousands), not seasonally adjusted

Standard Industrial Classification (1992)

SIC 1992 SECTION		All jobs (seasonally adjusted)	All jobs A-O	Agriculture Forestry & Fishing A,B	Mining Energy & Water Supplies Industries C,E	Manufacturing Industries D	Construction F	Distribution etc, transport etc, finance & business services G-K	Education, health, public admin & other services L-O
		1	2	3	4	5	6	7	8
All jobs	Sep 04(r)	2,302	2,301	31	38	237	120	1,062	813
	Sep 05(r)	2,375	2,373	30	37	233	130	1,102	840
	Sep 06(r)	2,361	2,359	33	38	224	139	1,082	842
	Dec 06(r)	2,371	2,384	34	38	223	145	1,100	843
	Mar 07(r)	2,369	2,362	32	39	223	144	1,082	843
	Jun 07(r)	2,380	2,377	32	39	224	140	1,100	842
	Sep 07	2,382	2,380	32	40	223	136	1,106	843
	<i>Change on quarter</i>		2						
	<i>Change %</i>		0.1						
	<i>Change on year</i>	21	21	0	1	-1	-3	24	1
	<i>Change %</i>	0.9	0.9	-1.4	3.6	-0.4	-2.2	2.2	0.1
Male jobs	Sep 04(r)	1,114	1,113	25	31	171	107	528	253
	Sep 05(r)	1,157	1,156	22	30	168	113	555	267
	Sep 06(r)	1,159	1,158	26	31	165	121	554	261
	Dec 06(r)	1,172	1,180	27	31	164	127	566	265
	Mar 07(r)	1,182	1,177	25	31	165	127	562	268
	Jun 07(r)	1,185	1,183	25	31	166	123	570	268
	Sep 07	1,182	1,181	25	32	166	120	571	267
	<i>Change on quarter</i>		-3						
	<i>Change %</i>		-0.3						
	<i>Change on year</i>	23	23	-1	1	1	-1	17	6
	<i>Change %</i>	2.0	2.0	-3.8	2.8	0.8	-1.0	3.1	2.3
Female jobs	Sep 04(r)	1,188	1,188	7	7	66	14	534	560
	Sep 05(r)	1,217	1,217	8	7	65	16	547	573
	Sep 06(r)	1,202	1,201	7	8	60	17	528	581
	Dec 06(r)	1,199	1,204	7	8	58	18	534	578
	Mar 07(r)	1,188	1,185	7	8	58	17	520	576
	Jun 07(r)	1,195	1,194	7	8	57	17	529	574
	Sep 07	1,200	1,199	7	8	58	15	535	576
	<i>Change on quarter</i>		6						
	<i>Change %</i>		0.5						
	<i>Change on year</i>	-1	-1	1	1	-2	-2	7	-5
	<i>Change %</i>	-0.1	-0.1	7.9	7.2	-3.7	-10.6	1.3	-0.9

Relationship between columns: 2=3+4+5+6+7+8

Source: Employer surveys
Workforce jobs enquiries 01633 812318

1. Employee jobs figures are of a measure of jobs rather than people. For example, if a person holds two jobs, each job will be counted in the employee jobs total. Employees jobs figures come from quarterly surveys of employers carried out by ONS and administrative sources. See Concepts and Definitions.

There is a discontinuity in the employee jobs series. See Table 4, footnote 2 for further details.

The quarterly employer surveys used to compile employee jobs figures do not collect data by Government Office Regions (GOR). Instead, Annual Business Inquiry (ABI) data are used to pro-rate the totals obtained from the quarterly surveys to generate GOR data. This technique can lead to the sum of the industry figures not matching the "All jobs" total in column 2.

EMPLOYMENT AND JOBS

Scotland

6(1) Actual weekly hours of work

(hours) not seasonally adjusted

	Total weekly hours (millions) ¹²	Average (mean) actual weekly hours of work			
		All workers ¹	Full-time ³	Part-time ³	Workers with
					second jobs
	1	2	3	4	5
People					
Jul - Sep 2004
Jul - Sep 2005	77	31.1	35.6	15.9	10.5
Jul - Sep 2006	78	31.2	35.8	16.1	10.0
Oct - Dec 2006	83	33.0	38.0	17.0	10.2
Jan - Mar 2007	79	31.3	36.0	16.1	9.1
Apr - Jun 2007	84	32.9	37.6	17.0	10.3
Jul - Sep 2007	81	31.6	36.2	16.0	11.5
Change on year	3	0.4	0.3	-0.2	1.5
Change %	3.3	1.4	0.9	-1.2	15.0
Men					
Jul - Sep 2004
Jul - Sep 2005	47	36.3	38.0	17.2	10.5
Jul - Sep 2006	47	35.6	37.6	15.8	8.8
Oct - Dec 2006	50	37.7	39.9	16.0	11.0
Jan - Mar 2007	47	35.6	37.7	15.5	8.8
Apr - Jun 2007	50	37.6	39.9	16.0	11.3
Jul - Sep 2007	48	36.2	38.4	15.6	12.7
Change on year	2	0.6	0.8	-0.2	3.9
Change %	3.9	1.6	2.2	-1.3	44.1
Women					
Jul - Sep 2004
Jul - Sep 2005	30	25.4	31.6	15.6	10.4
Jul - Sep 2006	31	26.3	32.8	16.2	10.7
Oct - Dec 2006	33	27.7	34.8	17.3	9.5
Jan - Mar 2007	32	26.5	33.0	16.3	9.2
Apr - Jun 2007	34	27.8	33.8	17.2	9.7
Jul - Sep 2007	32	26.5	32.5	16.1	10.6
Change on year	1	0.2	-0.4	-0.2	-0.1
Change %	2.4	0.9	-1.1	-1.1	-1.3

1. Main and second job.

Source: Labour Force Survey

2. Total actual weekly hours worked including paid and unpaid overtime.

Labour Market Statistics Helpline 01633 456901

3. Main job only. The split between full-time and part-time employment is based on respondents' self-classification.

The Labour Force Survey is a survey of the population of private households, student halls of residence and NHS accommodation. See Concepts and Definitions.

6(2) Usual weekly hours of work¹

not seasonally adjusted

	All in Employment (%)			Employees (%)			Self-Employed (%)		
	People	Men	Women	People	Men	Women	People	Men	Women
Jul - Sep 2006									
Less than 6 Hours	0.9	0.4	1.3	0.6	0.3	1.0	1.6	0.7	3.8
6 up to 15 hours	6.0	3.1	9.2	5.9	2.8	9.0	6.2	4.1	11.2
16 up to 30 hours	18.8	7.2	31.5	18.8	6.6	31.2	20.1	11.4	40.6
31 up to 45 hours	55.7	60.4	50.5	57.9	63.7	51.9	36.1	38.6	30.2
Over 45 hours	18.6	28.9	7.4	16.8	26.5	6.9	36.0	45.2	14.2
Total (thousands)	2,499	1,309	1,190	2,223	1,120	1,103	252	177	74
Apr - Jun 2007									
Less than 6 Hours	0.9	0.6	1.1	0.6	0.5	0.8	1.2	0.5	3.1
6 up to 15 hours	6.4	3.7	9.3	6.3	3.8	8.8	6.6	2.9	16.1
16 up to 30 hours	17.7	6.8	29.8	18.1	6.4	29.9	14.9	9.0	30.1
31 up to 45 hours	55.5	58.5	52.2	57.7	61.8	53.6	36.8	38.8	31.7
Over 45 hours	19.6	30.4	7.6	17.3	27.5	7.0	40.6	48.9	19.1
Total (thousands)	2,548	1,338	1,210	2,271	1,142	1,130	257	185	71
Jul - Sep 2007									
Less than 6 Hours	0.8	0.7	0.9	0.5	0.6	0.4	1.6	0.7	3.9
6 up to 15 hours	5.7	3.5	8.3	5.4	3.2	7.7	7.4	3.8	16.8
16 up to 30 hours	18.4	7.4	30.6	18.6	6.6	30.6	16.6	11.3	30.1
31 up to 45 hours	56.0	59.5	52.2	58.5	62.9	53.9	37.9	41.3	29.2
Over 45 hours	19.0	28.9	8.1	17.0	26.7	7.3	36.4	42.8	20.0
Total (thousands)	2,546	1,339	1,208	2,250	1,131	1,119	276	198	78

1. Total usual weekly hours worked in main job including paid and unpaid overtime.

Source: Labour Force Survey

Labour Market Statistics Helpline 01633 456901

The Labour Force Survey is a survey of the population of private households, student halls of residence and NHS accommodation. See Concepts and Definitions.

CLAIMANT COUNT

7 Claimant count¹ levels and rates

Scotland

(thousands), seasonally adjusted

People		Claimant count (all aged 18+)		Inflows: all aged 18+ (standardised ³)	Outflows: all aged 18+ (standardised ³)	Claimant count (all aged 16+) (not seasonally adjusted)	
		Level	Rate (%) ²	Level	Level	Level	Rate (%) ²
		1	2	3	4	5	6
	2006	DPBF	DPBQ			BCKJ	DPAU
	December #	84.8	3.1	19.4	20.5	82.8	3.0
	2007						
	January	81.4	2.9	19.9	21.9	88.6	3.2
	February	81.9	3.0	20.4	21.0	89.8	3.2
	March	80.5	2.9	19.9	20.9	87.4	3.2
	April #	79.2	2.9	19.6	21.1	82.8	3.0
	May	77.9	2.8	20.0	21.1	79.5	2.9
	June #	76.0	2.7	19.7	21.1	76.4	2.8
	July	74.8	2.7	19.7	20.7	77.0	2.8
	August	74.4	2.7	19.5	20.1	77.3	2.8
	September #	73.5	2.7	19.0	19.4	71.5	2.6
	October	72.4	2.6	19.1	20.5	68.7	2.5
	November (r)	72.0	2.6	19.2	19.8	68.5	2.5
	December # (p)	71.6	2.6	18.9	19.2	69.2	2.5
	<i>Change on month</i>	-0.4	0.0	-0.3	-0.6	0.6	0.0
	<i>Change %</i>	-0.6		-1.6	-3.0	0.9	
	<i>Change on year</i>	-13.2	-0.5	-0.5	-1.3	-13.7	-0.5
	<i>Change %</i>	-15.6		-2.6	-6.3	-16.5	
Men	2006	ZMQG	ZMQH				
	December #	64.0	4.5	13.9	14.8	62.9	4.4
	2007						
	January	61.1	4.3	14.2	15.9	67.0	4.7
	February	61.6	4.3	14.7	15.2	67.4	4.7
	March	60.3	4.2	14.2	15.2	65.5	4.6
	April #	59.2	4.1	14.0	15.4	61.7	4.3
	May	58.2	4.1	14.3	15.0	59.4	4.1
	June #	56.9	4.0	14.1	15.1	56.7	4.0
	July	56.3	3.9	14.2	14.8	56.5	3.9
	August	55.9	3.9	13.9	14.4	56.3	3.9
	September #	55.2	3.9	13.6	14.0	52.8	3.7
	October	54.3	3.8	13.7	14.7	51.1	3.6
	November (r)	54.0	3.8	13.8	14.2	51.3	3.6
	December # (p)	53.7	3.7	13.5	13.8	52.4	3.7
	<i>Change on month</i>	-0.3	0.0	-0.3	-0.4	1.1	0.1
	<i>Change %</i>	-0.6		-2.2	-2.8	2.2	
	<i>Change on year</i>	-10.3	-0.7	-0.4	-1.0	-10.4	-0.7
	<i>Change %</i>	-16.1		-2.9	-6.8	-16.6	
Women	2006	ZMQI	ZMQJ				
	December #	20.8	1.6	5.5	5.7	19.9	1.5
	2007						
	January	20.3	1.5	5.7	6.0	21.6	1.6
	February	20.3	1.5	5.7	5.8	22.4	1.7
	March	20.2	1.5	5.7	5.7	21.9	1.6
	April #	20.0	1.5	5.6	5.7	21.1	1.6
	May	19.7	1.5	5.7	6.1	20.2	1.5
	June #	19.1	1.4	5.6	6.0	19.7	1.5
	July	18.5	1.4	5.5	5.9	20.5	1.5
	August	18.5	1.4	5.6	5.7	20.9	1.6
	September #	18.3	1.4	5.4	5.4	18.7	1.4
	October	18.1	1.4	5.4	5.8	17.6	1.3
	November (r)	18.0	1.3	5.4	5.6	17.2	1.3
	December # (p)	17.9	1.3	5.4	5.4	16.7	1.3
	<i>Change on month</i>	-0.1	0.0	0.0	-0.2	-0.5	0.0
	<i>Change %</i>	-0.6		0.0	-3.6	-2.9	
	<i>Change on year</i>	-2.9	-0.2	-0.1	-0.3	-3.2	-0.2
	<i>Change %</i>	-13.9		-1.8	-5.3	-16.1	

1. Count of claimants of Jobseeker's Allowance.

2. Denominator = claimant count + workforce jobs.

NB. These are different from the proportions of the working age populations claiming Jobseeker's Allowance for local areas shown in Tables 16 and 17. See Concepts and Definitions.

3. Flow figures are collected for 4 or 5 week periods between count dates; the figures are then converted to a standard 4¹/₃ week month.

The claimant count inflows, standardised to a 4¹/₃ week month but not seasonally adjusted, for December 2007 were 18,700 in total; 13,900 for men and 4,800 for women. The corresponding outflow figures were 17,900 in total; 12,800 for men and 5,100 for women.

Months where there are 5 weeks between count dates. All the rest are 4 week periods.

Source: Jobcentre Plus administrative system
Labour Market Statistics Helpline 01633 456901

CLAIMANT COUNT

Scotland

8(1) Claimant count¹ by age
and duration - computerised claims only²

(thousands), not seasonally adjusted

	All aged 16+							18-24					
	All	All computerised claims ²	Up to 6 months	Over 6 and up to 12 months	All over 12 months	% claiming for over 12 months	All over 24 months	All computerised claims ²	Up to 6 months	Over 6 and up to 12 months	All over 12 months	% claiming for over 12 months	All over 24 months
People													
2005													
December	83.6	83.0	58.0	13.1	12.0	14.5	4.1	22.6	19.4	2.7	0.5	2.2	0.1
2006													
December #	82.8	82.4	55.6	13.5	13.4	16.2	4.1	22.8	19.3	2.9	0.6	2.7	0.1
2007													
January	88.6	88.2	60.1	14.6	13.6	15.4	4.1	24.7	20.7	3.4	0.6	2.5	0.1
February	89.8	89.4	61.9	14.1	13.4	15.0	4.1	25.7	21.8	3.3	0.6	2.4	0.1
March	87.4	87.0	59.9	14.0	13.1	15.1	4.0	25.2	21.3	3.3	0.6	2.4	0.1
April #	82.8	82.3	55.5	13.9	12.9	15.7	3.9	23.5	19.6	3.3	0.6	2.4	0.1
May	79.5	79.1	52.9	13.7	12.5	15.8	3.9	22.6	18.9	3.2	0.5	2.3	0.1
June #	76.4	76.1	50.9	13.1	12.1	15.9	3.8	21.9	18.5	3.0	0.5	2.2	0.1
July	77.0	76.6	52.6	12.2	11.8	15.4	3.8	23.1	19.9	2.8	0.5	2.1	0.1
August	77.3	77.0	52.9	12.5	11.5	14.9	3.8	23.4	20.0	2.9	0.5	2.0	0.1
September #	71.5	71.4	49.0	11.6	10.8	15.2	3.6	20.9	17.9	2.5	0.4	2.1	0.1
October	68.7	68.6	47.8	10.5	10.2	14.9	3.4	19.4	16.9	2.1	0.4	2.1	0.1
November	68.5	68.2	48.6	9.9	9.7	14.3	3.2	18.9	16.6	2.0	0.4	2.2	0.1
December #	69.2	68.8	49.8	9.8	9.1	13.3	2.9	19.2	16.9	2.0	0.4	2.1	0.1
<i>Change on year</i>	-13.7	-13.6	-5.8	-3.6	-4.2	-2.9	-1.2	-3.6	-2.4	-0.9	-0.2	-0.7	0.0
<i>Change %</i>	-16.5	-16.5	-10.4	-26.9	-31.6		-28.8	-15.6	-12.5	-32.2	-36.4		-8.3
Men													
2005													
December	63.8	63.3	43.3	10.1	9.9	15.6	3.5	16.3	14.0	1.9	0.4	2.2	0.0
2006													
December #	62.9	62.6	41.2	10.4	11.0	17.5	3.4	16.2	13.7	2.0	0.5	2.8	0.1
2007													
January	67.0	66.7	44.4	11.2	11.1	16.6	3.4	17.5	14.7	2.4	0.5	2.6	0.1
February	67.4	67.1	45.3	10.8	11.0	16.4	3.4	18.1	15.3	2.3	0.4	2.5	0.1
March	65.5	65.2	43.7	10.7	10.8	16.5	3.3	17.7	14.9	2.4	0.4	2.4	0.1
April #	61.7	61.4	40.2	10.7	10.5	17.2	3.3	16.4	13.6	2.3	0.4	2.5	0.1
May	59.4	59.1	38.4	10.5	10.2	17.3	3.2	15.8	13.2	2.2	0.4	2.5	0.1
June #	56.7	56.4	36.6	10.0	9.8	17.4	3.2	15.1	12.6	2.1	0.3	2.3	0.1
July	56.5	56.2	37.3	9.4	9.6	17.1	3.1	15.6	13.3	1.9	0.3	2.2	0.1
August	56.3	56.1	37.2	9.6	9.3	16.6	3.1	15.6	13.3	2.0	0.3	2.0	0.1
September #	52.8	52.7	35.0	8.9	8.8	16.7	3.0	14.1	12.1	1.7	0.3	2.2	0.1
October	51.1	51.0	34.6	8.1	8.3	16.3	2.8	13.3	11.5	1.4	0.3	2.1	0.1
November	51.3	51.1	35.5	7.7	7.9	15.4	2.6	13.1	11.5	1.4	0.3	2.2	0.1
December #	52.4	52.1	37.0	7.7	7.4	14.2	2.4	13.7	12.0	1.4	0.3	2.0	0.1
<i>Change on year</i>	-10.4	-10.4	-4.2	-2.7	-3.6	-3.3	-1.0	-2.6	-1.8	-0.6	-0.2	-0.8	0.0
<i>Change %</i>	-16.6	-16.7	-10.1	-25.8	-32.6		-29.9	-15.8	-12.9	-30.1	-40.4		-8.8
Women													
2005													
December	19.9	19.7	14.7	2.9	2.1	10.8	0.6	6.3	5.4	0.8	0.1	2.1	0.0
2006													
December #	19.9	19.8	14.4	3.0	2.4	12.1	0.7	6.6	5.5	0.9	0.2	2.6	0.0
2007													
January	21.6	21.5	15.6	3.4	2.5	11.4	0.7	7.2	5.9	1.1	0.2	2.3	0.0
February	22.4	22.3	16.6	3.3	2.4	10.9	0.7	7.6	6.5	1.0	0.2	2.3	0.0
March	21.9	21.8	16.2	3.2	2.4	10.9	0.7	7.5	6.4	1.0	0.2	2.2	0.0
April #	21.1	20.9	15.3	3.2	2.4	11.3	0.7	7.1	6.0	1.0	0.2	2.1	0.0
May	20.2	20.0	14.5	3.2	2.3	11.5	0.7	6.8	5.7	0.9	0.1	2.1	0.0
June #	19.7	19.6	14.3	3.0	2.3	11.6	0.7	6.8	5.8	0.9	0.1	1.9	0.0
July	20.5	20.4	15.3	2.9	2.2	10.9	0.7	7.6	6.6	0.8	0.1	1.9	0.0
August	20.9	20.9	15.7	3.0	2.2	10.4	0.7	7.8	6.8	0.9	0.1	1.8	0.0
September #	18.7	18.7	13.9	2.7	2.1	11.0	0.7	6.7	5.8	0.8	0.1	1.9	0.0
October	17.6	17.6	13.3	2.4	1.9	11.0	0.6	6.1	5.3	0.7	0.1	2.0	0.0
November	17.2	17.1	13.1	2.2	1.9	10.9	0.6	5.8	5.1	0.6	0.1	2.2	0.0
December #	16.7	16.6	12.8	2.1	1.7	10.5	0.5	5.6	4.9	0.6	0.1	2.3	0.0
<i>Change on year</i>	-3.2	-3.2	-1.6	-0.9	-0.7	-1.6	-0.2	-1.0	-0.6	-0.3	0.0	-0.3	0.0
<i>Change %</i>	-16.1	-16.1	-11.2	-30.8	-27.4		-23.7	-15.2	-11.4	-37.2	-25.7		-7.1

Relationship between columns: 2= 3+4+5; 8= 9+10+11

Source: Jobcentre Plus administrative system

1. Count of claimants of Jobseeker's Allowance.

Labour Market Statistics Helpline 01633 456901

2. Only computerised claims are analysed by age and duration on a monthly basis. These figures therefore differ in total from those given in Table 7. The latter include clerically processed claims which currently amount to less than 1 per cent of the total claimant count.

Months where there are 5 weeks between count dates. All the rest are 4 week periods.

CLAIMANT COUNT

Scotland

8(2) Claimant count¹ by age
and duration - computerised claims only²

(thousands), not seasonally adjusted

	25-49						50 and over					
	All computerised claims ²	Up to 6 months	Over 6 and up to 12 months	All over 12 months	% claiming for over 12 months	All over 24 months	All computerised claims ²	Up to 6 months	Over 6 and up to 12 months	All over 12 months	% claiming for over 12 months	All over 24 months
	14	15	16	17	18	19	20	21	22	23	24	25
People												
2005												
December	43.7	29.0	7.9	6.7	15.4	1.3	14.6	7.6	2.2	4.8	32.7	2.7
2006												
December #	43.4	27.5	8.2	7.7	17.8	1.3	14.0	6.9	2.2	5.0	35.6	2.7
2007												
January	46.5	29.9	8.7	7.9	17.0	1.3	15.0	7.6	2.3	5.0	33.6	2.7
February	46.6	30.4	8.4	7.8	16.7	1.3	14.8	7.6	2.2	5.0	33.6	2.6
March	45.1	29.3	8.2	7.6	16.8	1.3	14.4	7.3	2.2	4.9	34.2	2.6
April #	42.9	27.3	8.2	7.4	17.3	1.2	13.8	6.6	2.2	4.9	35.5	2.6
May	41.3	26.0	8.1	7.2	17.4	1.2	13.3	6.3	2.2	4.8	35.9	2.6
June #	39.7	25.0	7.8	7.0	17.5	1.2	12.7	6.0	2.1	4.6	36.4	2.5
July	39.7	25.6	7.3	6.8	17.1	1.2	12.3	5.7	2.0	4.5	36.9	2.5
August	39.9	25.9	7.4	6.6	16.5	1.2	12.2	5.8	2.0	4.4	36.1	2.5
September #	37.6	24.4	7.1	6.2	16.6	1.2	11.5	5.5	1.8	4.2	36.2	2.4
October	36.6	24.0	6.6	5.9	16.2	1.1	11.2	5.6	1.7	3.9	34.5	2.2
November	36.8	24.8	6.2	5.8	15.7	1.1	11.1	5.9	1.6	3.5	32.0	2.0
December #	37.2	25.4	6.3	5.5	14.8	1.1	10.9	6.2	1.5	3.2	29.3	1.7
<i>Change on year</i>	-6.2	-2.1	-1.9	-2.2	-2.9	-0.2	-3.1	-0.7	-0.6	-1.8	-6.3	-0.9
<i>Change %</i>	-14.3	-7.5	-23.7	-28.3		-17.8	-22.4	-10.1	-29.7	-36.2		-35.0
Men												
2005												
December	34.9	22.8	6.5	5.6	16.1	1.1	10.9	5.4	1.6	3.9	35.6	2.3
2006												
December #	34.8	21.5	6.7	6.5	18.7	1.1	10.4	4.9	1.6	4.0	38.2	2.2
2007												
January	37.0	23.3	7.0	6.6	17.9	1.1	11.1	5.4	1.7	4.0	36.1	2.2
February	36.9	23.6	6.8	6.6	17.8	1.1	10.9	5.3	1.6	3.9	36.3	2.2
March	35.7	22.6	6.6	6.4	18.0	1.1	10.6	5.1	1.6	3.9	36.9	2.1
April #	33.8	21.0	6.6	6.2	18.4	1.0	10.1	4.6	1.6	3.9	38.5	2.1
May	32.5	20.0	6.5	6.0	18.5	1.0	9.7	4.3	1.6	3.8	38.9	2.1
June #	31.2	19.2	6.3	5.8	18.5	1.0	9.3	4.1	1.5	3.7	39.6	2.1
July	31.0	19.5	5.9	5.6	18.2	1.0	8.9	3.9	1.5	3.6	40.3	2.1
August	30.9	19.5	6.0	5.5	17.7	1.0	8.8	3.9	1.5	3.5	39.7	2.0
September #	29.4	18.5	5.7	5.2	17.5	1.0	8.4	3.8	1.3	3.3	39.4	1.9
October	28.8	18.5	5.4	4.9	17.0	1.0	8.2	3.9	1.2	3.1	37.8	1.8
November	29.2	19.3	5.1	4.7	16.3	0.9	8.1	4.1	1.2	2.8	35.0	1.6
December #	29.8	20.1	5.2	4.6	15.3	0.9	7.9	4.3	1.1	2.5	31.9	1.4
<i>Change on year</i>	-5.0	-1.5	-1.6	-1.9	-3.3	-0.2	-2.5	-0.6	-0.5	-1.5	-6.3	-0.8
<i>Change %</i>	-14.3	-6.9	-23.4	-29.6		-18.6	-23.9	-11.8	-29.5	-36.6		-36.3
Women												
2005												
December	8.7	6.2	1.4	1.1	12.4	0.2	3.7	2.2	0.6	0.9	24.4	0.5
2006												
December #	8.7	6.0	1.5	1.2	14.0	0.2	3.6	2.0	0.6	1.0	28.0	0.5
2007												
January	9.5	6.6	1.7	1.2	13.1	0.2	3.9	2.2	0.6	1.0	26.4	0.5
February	9.7	6.9	1.6	1.2	12.5	0.2	3.9	2.3	0.6	1.0	26.0	0.5
March	9.4	6.7	1.6	1.2	12.4	0.2	3.8	2.2	0.6	1.0	26.7	0.5
April #	9.1	6.4	1.6	1.2	13.2	0.2	3.7	2.1	0.6	1.0	27.3	0.5
May	8.8	6.0	1.6	1.2	13.4	0.2	3.5	2.0	0.6	1.0	27.4	0.5
June #	8.5	5.8	1.5	1.2	13.9	0.2	3.4	1.9	0.6	0.9	27.7	0.5
July	8.7	6.1	1.4	1.2	13.2	0.2	3.3	1.9	0.5	0.9	27.7	0.5
August	9.0	6.4	1.5	1.1	12.6	0.2	3.4	1.9	0.5	0.9	26.8	0.5
September #	8.2	5.8	1.3	1.1	13.1	0.2	3.1	1.7	0.5	0.8	27.5	0.4
October	7.8	5.5	1.2	1.0	13.3	0.2	3.0	1.8	0.4	0.8	25.6	0.4
November	7.7	5.5	1.1	1.0	13.4	0.2	3.0	1.8	0.4	0.7	23.8	0.4
December #	7.4	5.4	1.1	1.0	12.8	0.2	2.9	1.9	0.4	0.7	22.3	0.3
<i>Change on year</i>	-1.2	-0.6	-0.4	-0.3	-1.2	0.0	-0.6	-0.1	-0.2	-0.3	-5.7	-0.1
<i>Change %</i>	-14.0	-9.9	-25.1	-21.2		-13.1	-18.0	-6.1	-30.3	-34.6		-29.1

Relationship between columns: 14=15+16+17; 20=21+22=23

Source: Jobcentre Plus administrative system

1. Count of claimants of Jobseeker's Allowance.

Labour Market Statistics Helpline 01633 456901

2. Only computerised claims are analysed by age and duration on a monthly basis. These figures therefore differ in total from those given in Table 7. The latter include clerically processed claims which currently amount to less than 1 per cent of the total claimant count.

Months where there are 5 weeks between count dates. All the rest are 4 week periods.

ECONOMIC ACTIVITY AND INACTIVITY

Scotland

9 Economic activity by age

(thousands), not seasonally adjusted

		All aged 16 & over	16 - 59/64	16 - 17	18 - 24	25 - 34	35 - 49	50 - 64 (m) 50 - 59 (w)	65+ (m) 60+ (w)
		1	2	3	4	5	6	7	8
Economically active									
People	Jul - Sep 2004
	Jul - Sep 2005	2,619	2,546	78	368	529	1,000	570	74
	Jul - Sep 2006	2,634	2,548	71	373	526	995	585	86
	Oct - Dec 2006	2,650	2,564	74	356	530	1,006	598	87
	Jan - Mar 2007	2,662	2,572	71	361	529	1,014	597	90
	Apr - Jun 2007	2,674	2,582	70	351	544	1,014	602	92
	Jul - Sep 2007	2,680	2,589	71	367	537	1,014	599	91
	<i>Change on year</i>	46	40	0	-6	11	20	15	6
	<i>Change %</i>	1.7	1.6	0.7	-1.6	2.2	2.0	2.5	6.7
Men	Jul - Sep 2004
	Jul - Sep 2005	1,390	1,365	40	196	278	512	338	25
	Jul - Sep 2006	1,385	1,360	32	199	278	512	338	25
	Oct - Dec 2006	1,403	1,380	37	190	282	517	354	23
	Jan - Mar 2007	1,402	1,377	37	187	284	517	351	26
	Apr - Jun 2007	1,404	1,374	38	182	286	516	352	30
	Jul - Sep 2007	1,411	1,381	38	192	285	515	350	30
	<i>Change on year</i>	26	20	6	-7	6	3	12	5
	<i>Change %</i>	1.9	1.5	18.6	-3.5	2.2	0.6	3.5	21.2
Women	Jul - Sep 2004
	Jul - Sep 2005	1,229	1,180	38	172	251	488	232	48
	Jul - Sep 2006	1,249	1,188	38	174	247	483	246	61
	Oct - Dec 2006	1,247	1,184	37	166	249	488	244	63
	Jan - Mar 2007	1,260	1,195	34	174	245	497	245	65
	Apr - Jun 2007	1,270	1,208	32	169	258	498	250	62
	Jul - Sep 2007	1,269	1,208	33	175	252	499	249	61
	<i>Change on year</i>	20	20	-6	1	5	16	3	0
	<i>Change %</i>	1.6	1.7	-14.6	0.6	2.1	3.4	1.2	0.7
Economic activity rates (%)¹									
People	Jul - Sep 2004
	Jul - Sep 2005	63.8	80.3	60.6	80.0	84.8	86.4	71.4	7.9
	Jul - Sep 2006	63.7	79.9	55.2	79.6	84.5	85.6	72.1	9.1
	Oct - Dec 2006	64.0	80.3	57.6	75.8	85.3	86.6	73.6	9.2
	Jan - Mar 2007	64.2	80.5	55.2	76.6	85.2	87.3	73.4	9.5
	Apr - Jun 2007	64.4	80.7	54.5	74.4	87.5	87.4	73.9	9.6
	Jul - Sep 2007	64.4	80.9	54.8	77.4	86.5	87.5	73.5	9.5
	<i>Change on year</i>	0.7	1.0	-0.4	-2.2	1.9	1.8	1.4	0.4
Men	Jul - Sep 2004
	Jul - Sep 2005	71.2	84.3	60.7	84.8	91.4	91.8	73.7	7.6
	Jul - Sep 2006	70.3	83.3	49.3	84.4	91.1	91.7	72.6	7.4
	Oct - Dec 2006	71.1	84.4	55.8	80.2	92.1	92.7	75.6	6.9
	Jan - Mar 2007	70.9	84.1	56.1	78.7	92.9	92.6	74.8	7.5
	Apr - Jun 2007	70.9	83.8	57.6	76.5	93.2	92.6	74.6	8.9
	Jul - Sep 2007	71.1	84.1	57.8	80.2	92.8	92.6	74.0	8.8
	<i>Change on year</i>	0.8	0.7	8.5	-4.2	1.8	0.9	1.4	1.4
Women	Jul - Sep 2004
	Jul - Sep 2005	57.1	76.1	60.6	75.1	78.5	81.3	68.3	8.1
	Jul - Sep 2006	57.8	76.2	61.5	74.7	78.2	80.0	71.4	10.0
	Oct - Dec 2006	57.6	76.0	59.5	71.4	78.7	81.0	70.8	10.4
	Jan - Mar 2007	58.1	76.7	54.3	74.4	77.7	82.4	71.4	10.6
	Apr - Jun 2007	58.5	77.5	51.2	72.2	82.0	82.6	73.0	10.1
	Jul - Sep 2007	58.4	77.5	51.6	74.4	80.2	82.8	72.7	9.9
	<i>Change on year</i>	0.6	1.3	-9.9	-0.3	2.0	2.7	1.3	-0.1

Relationship between columns: 1=2+8; 2=3+4+5+6+7

Source: Labour Force Survey

1. Denominator = all persons in the relevant age group.

Labour Market Statistics Helpline 01633 456901

The Labour Force Survey is a survey of the population of private households, student halls of residence and NHS accommodation. See Concepts and Definitions.

ECONOMIC ACTIVITY AND INACTIVITY

Scotland

10 Economic inactivity by age

(thousands), not seasonally adjusted

		All aged 16 & over	16 - 59/64	16 - 17	18 - 24	25 - 34	35 - 49	50 - 64 (m) 50 - 59 (w)	65+ (m) 60+ (w)
		1	2	3	4	5	6	7	8
Economically inactive									
People	Jul - Sep 2004
	Jul - Sep 2005	1,485	625	51	92	95	158	229	860
	Jul - Sep 2006	1,498	642	57	96	96	167	226	856
	Oct - Dec 2006	1,489	629	54	114	91	156	215	859
	Jan - Mar 2007	1,484	624	58	110	92	147	216	860
	Apr - Jun 2007	1,479	616	59	121	77	146	212	863
	Jul - Sep 2007	1,480	612	59	107	84	145	216	868
	<i>Change on year</i>	-18	-30	1	12	-12	-22	-10	12
	<i>Change %</i>	-1.2	-4.7	2.5	12.3	-12.5	-13.0	-4.4	1.4
Men	Jul - Sep 2004
	Jul - Sep 2005	563	254	26	35	26	46	121	309
	Jul - Sep 2006	585	272	33	37	27	47	128	313
	Oct - Dec 2006	571	255	29	47	24	41	114	315
	Jan - Mar 2007	576	261	29	50	22	41	118	315
	Apr - Jun 2007	577	266	28	56	21	41	120	311
	Jul - Sep 2007	574	262	28	47	22	41	123	313
	<i>Change on year</i>	-10	-10	-5	10	-5	-5	-5	0
	<i>Change %</i>	-1.8	-3.8	-15.6	28.5	-19.7	-11.3	-3.9	0.0
Women	Jul - Sep 2004
	Jul - Sep 2005	922	370	25	57	68	112	108	551
	Jul - Sep 2006	913	370	24	59	69	120	98	543
	Oct - Dec 2006	918	374	25	67	67	115	100	544
	Jan - Mar 2007	908	363	29	60	70	106	98	546
	Apr - Jun 2007	901	350	31	65	57	105	92	552
	Jul - Sep 2007	905	350	31	60	62	104	93	555
	<i>Change on year</i>	-8	-20	7	1	-7	-16	-5	12
	<i>Change %</i>	-0.9	-5.4	27.8	2.2	-9.6	-13.7	-5.1	2.2
Economic inactivity rates (%)¹									
People	Jul - Sep 2004
	Jul - Sep 2005	36.2	19.7	39.4	20.0	15.2	13.6	28.6	92.1
	Jul - Sep 2006	36.3	20.1	44.8	20.4	15.5	14.4	27.9	90.9
	Oct - Dec 2006	36.0	19.7	42.4	24.2	14.7	13.4	26.4	90.8
	Jan - Mar 2007	35.8	19.5	44.8	23.4	14.8	12.7	26.6	90.5
	Apr - Jun 2007	35.6	19.3	45.5	25.6	12.5	12.6	26.1	90.4
	Jul - Sep 2007	35.6	19.1	45.2	22.6	13.5	12.5	26.5	90.5
	<i>Change on year</i>	-0.7	-1.0	0.4	2.2	-1.9	-1.8	-1.4	-0.4
Men	Jul - Sep 2004
	Jul - Sep 2005	28.8	15.7	39.3	15.2	8.6	8.2	26.3	92.4
	Jul - Sep 2006	29.7	16.7	50.7	15.6	8.9	8.3	27.4	92.6
	Oct - Dec 2006	28.9	15.6	44.2	19.8	7.9	7.3	24.4	93.1
	Jan - Mar 2007	29.1	15.9	43.9	21.3	7.1	7.4	25.2	92.5
	Apr - Jun 2007	29.1	16.2	42.4	23.5	6.8	7.4	25.4	91.1
	Jul - Sep 2007	28.9	15.9	42.2	19.8	7.2	7.4	26.0	91.2
	<i>Change on year</i>	-0.8	-0.7	-8.5	4.2	-1.8	-0.9	-1.4	-1.4
Women	Jul - Sep 2004
	Jul - Sep 2005	42.9	23.9	39.4	24.9	21.5	18.7	31.7	91.9
	Jul - Sep 2006	42.2	23.8	38.5	25.3	21.8	20.0	28.6	90.0
	Oct - Dec 2006	42.4	24.0	40.5	28.6	21.3	19.0	29.2	89.6
	Jan - Mar 2007	41.9	23.3	45.7	25.6	22.3	17.6	28.6	89.4
	Apr - Jun 2007	41.5	22.5	48.8	27.8	18.0	17.4	27.0	89.9
	Jul - Sep 2007	41.6	22.5	48.4	25.6	19.8	17.2	27.3	90.1
	<i>Change on year</i>	-0.6	-1.3	9.9	0.3	-2.0	-2.7	-1.3	0.1

Relationship between columns: 1=2+8; 2=3+4+5+6+7

Source: Labour Force Survey

1. Denominator = all persons in the relevant age group.

Labour Market Statistics Helpline 01633 456901

The Labour Force Survey is a survey of the population of private households, student halls of residence and NHS accommodation. See Concepts and Definitions.

ECONOMIC ACTIVITY AND INACTIVITY

Scotland

11 Economic inactivity: reasons

(thousands), not seasonally adjusted

		Economic Inactivity by reason									
		Total aged 16-59/64	Looking after family / home							Does not want job	Wants a job
		1	Student 2	Temp sick 3	Long-term sick 4	Discouraged workers 5	Retired 6	Other 7	8	9	10
People	Jul - Sep 2004
	Jul - Sep 2005	625	119	161	19	216	*	54	53	426	199
	Jul - Sep 2006	642	128	164	15	229	*	48	57	461	181
	Oct - Dec 2006	629	151	156	15	213	*	45	47	459	170
	Jan - Mar 2007	624	149	151	20	208	*	42	51	450	173
	Apr - Jun 2007	616	140	152	17	208	*	43	55	448	169
	Jul - Sep 2007	612	122	152	18	209	*	46	63	432	179
	<i>Change on year</i>	-30	-6	-12	2	-19	*	-2	5	-29	-1
	<i>Change %</i>	-4.7	-4.3	-7.6	14.2	-8.4	*	-3.3	9.1	-6.3	-0.7
Men	Jul - Sep 2004
	Jul - Sep 2005	254	58	17	*	111	*	36	23	170	84
	Jul - Sep 2006	272	63	17	*	124	*	34	29	194	78
	Oct - Dec 2006	255	72	16	*	107	*	34	22	182	73
	Jan - Mar 2007	261	74	17	11	102	*	32	23	183	78
	Apr - Jun 2007	266	72	21	*	111	*	34	22	192	74
	Jul - Sep 2007	262	63	18	*	113	*	33	25	185	77
	<i>Change on year</i>	-10	0	1	*	-11	*	-1	-4	-9	-1
	<i>Change %</i>	-3.8	0.1	4.4	*	-8.5	*	-4.0	-13.5	-4.8	-1.3
Women	Jul - Sep 2004
	Jul - Sep 2005	370	61	144	10	104	*	18	30	256	115
	Jul - Sep 2006	370	65	147	11	105	*	14	29	268	103
	Oct - Dec 2006	374	79	140	11	106	*	10	25	277	97
	Jan - Mar 2007	363	75	135	*	105	*	10	28	267	95
	Apr - Jun 2007	350	68	131	11	97	*	*	33	255	95
	Jul - Sep 2007	350	59	134	*	96	*	13	38	248	102
	<i>Change on year</i>	-20	-6	-13	*	-9	*	0	9	-20	0
	<i>Change %</i>	-5.4	-8.6	-9.0	*	-8.3	*	-1.5	31.9	-7.5	-0.2

Percentage of economically inactive (%)

People	Jul - Sep 2004
	Jul - Sep 2005	100.0	19.1	25.7	3.0	34.5	*	8.6	8.4	68.2	31.8
	Jul - Sep 2006	100.0	19.9	25.6	2.4	35.6	*	7.5	9.0	71.9	28.1
	Oct - Dec 2006	100.0	24.1	24.8	2.4	33.8	*	7.1	7.5	72.9	27.1
	Jan - Mar 2007	100.0	23.8	24.3	3.2	33.3	*	6.7	8.2	72.2	27.8
	Apr - Jun 2007	100.0	22.7	24.7	2.8	33.7	*	7.0	9.0	72.6	27.4
	Jul - Sep 2007	100.0	20.0	24.8	2.9	34.2	*	7.6	10.3	70.7	29.3
Men	Jul - Sep 2004
	Jul - Sep 2005	100.0	23.0	6.5	*	43.8	*	14.0	8.9	66.9	33.1
	Jul - Sep 2006	100.0	23.3	6.2	*	45.5	*	12.7	10.6	71.3	28.7
	Oct - Dec 2006	100.0	28.2	6.1	*	41.8	*	13.5	8.4	71.2	28.8
	Jan - Mar 2007	100.0	28.3	6.4	4.3	39.1	*	12.2	9.0	70.2	29.8
	Apr - Jun 2007	100.0	27.1	7.9	*	41.7	*	12.7	8.3	72.2	27.8
	Jul - Sep 2007	100.0	24.2	6.8	*	43.3	*	12.6	9.6	70.5	29.5
Women	Jul - Sep 2004
	Jul - Sep 2005	100.0	16.4	38.9	2.8	28.2	*	5.0	8.1	69.1	30.9
	Jul - Sep 2006	100.0	17.5	39.8	3.0	28.3	*	3.6	7.7	72.3	27.7
	Oct - Dec 2006	100.0	21.3	37.5	3.0	28.4	*	2.7	6.8	74.1	25.9
	Jan - Mar 2007	100.0	20.6	37.2	*	29.1	*	2.8	7.7	73.7	26.3
	Apr - Jun 2007	100.0	19.4	37.5	3.2	27.6	*	*	9.6	72.9	27.1
	Jul - Sep 2007	100.0	16.9	38.3	*	27.5	*	3.8	10.8	70.8	29.2

Relationship between columns: 1=2+3+4+5+6+7+8; 1=9+10

Source: Labour Force Survey

Labour Market Statistics Helpline 01633 456901

The Labour Force Survey is a survey of the population of private households, student halls of residence and NHS accommodation. See Concepts and Definitions.

12 Local labour market indicators by Unitary and Local Authority

not seasonally adjusted

	mid-2006		April 2006 to March 2007						2005			
	Population ¹		Labour supply			Working age benefits			Labour demand ⁷			
			Employment ²		Unemployment ³		Economic inactivity ²		Claimant count ⁵		Jobs ⁸	
	16-59/64 (000s)	Total 16+ (000s)	16-59/64 Rate (%)	Total 16+ (000s)	Rate ⁴ (%)	Total 16-59/64 (000s)	16-59/64 Rate (%)	Level	Proportion ⁶ (%)	Total (000s)	Jobs Density 16-59/64 (ratio)	
1	2	3	4	5	6	7	8	9	10	11		
United Kingdom total	37,707	28,317	74.1	1,583	5.3	7,933	21.7	953,970	2.5	31,377	0.84	
Regional total	3,213	2,449	75.7	135	5.2	624	20.0	88,313	2.7	2,680	0.84	
Aberdeen City	137	108	79.6	5	4.2	21	16.7	2,065	1.5	179	1.32	
Aberdeenshire	147	123	82.8	4	3.0	21	14.5	1,392	0.9	96	0.66	
Angus	65	52	79.0	3	5.2	10	15.8	1,745	2.7	44	0.68	
Argyll & Bute	54	43	80.1	2	4.2	9	16.9	1,357	2.5	47	0.88	
Clackmannanshire	31	21	73.3	1	5.5	6	22.2	963	3.2	16	0.51	
Dumfries & Galloway	86	69	78.3	3	4.6	15	18.1	2,252	2.6	69	0.80	
Dundee City	89	63	72.8	5	6.8	18	22.3	3,721	4.2	83	0.93	
East Ayrshire	74	53	70.9	4	6.4	17	24.2	2,934	4.0	44	0.59	
East Dunbartonshire	64	56	80.9	2	3.7	10	16.0	1,090	1.7	30	0.47	
East Lothian	55	47	77.7	2	3.7	11	19.4	786	1.4	31	0.57	
East Renfrewshire	53	46	77.8	2	3.6	11	19.4	742	1.4	22	0.41	
Edinburgh, City of	314	233	77.2	13	5.1	55	18.5	6,945	2.2	348	1.13	
Eilean Siar	15	12	79.9	1	4.7	2	17.1	509	3.3	13	0.84	
Falkirk	94	73	78.4	4	5.0	16	17.4	2,481	2.7	64	0.69	
Fife	223	171	75.3	11	6.1	41	19.0	7,527	3.4	158	0.71	
Glasgow City	386	249	64.8	21	7.7	110	29.4	15,849	4.1	441	1.16	
Highland	131	105	81.2	4	3.7	21	17.0	2,804	2.1	117	0.90	
Inverclyde	50	37	70.8	3	7.0	12	23.2	2,324	4.6	35	0.70	
Midlothian	49	42	80.7	2	4.7	7	14.5	1,008	2.1	31	0.63	
Moray	53	42	78.4	2	4.4	9	18.1	1,167	2.2	44	0.85	
North Ayrshire	82	60	71.4	5	7.4	18	22.1	3,807	4.6	47	0.57	
North Lanarkshire	204	151	74.2	9	5.6	42	21.3	6,129	3.0	135	0.66	
Orkney Islands	12	10	83.4	~	3.4	2	15.8	173	1.5	12	0.99	
Perth & Kinross	84	65	79.5	3	4.0	13	17.2	1,464	1.8	71	0.86	
Renfrewshire	106	82	76.0	4	4.9	21	20.6	3,011	2.8	81	0.76	
Scottish Borders	65	53	78.8	2	4.0	11	17.7	1,077	1.7	53	0.82	
Shetland Islands	13	12	86.8	~	3.6	1	9.3	206	1.5	16	1.17	
South Ayrshire	66	51	75.3	3	5.3	13	20.7	2,100	3.2	51	0.77	
South Lanarkshire	192	149	76.8	7	4.8	37	19.6	4,601	2.4	136	0.71	
Stirling	54	43	75.6	2	4.4	11	21.2	1,051	1.9	51	0.96	
West Dunbartonshire	57	43	74.3	3	6.6	12	20.5	2,491	4.3	34	0.60	
West Lothian	106	88	79.2	5	5.0	18	16.3	2,542	2.4	80	0.76	

Relationship between columns: 9=8/1; 11=10/1.

Source: Annual Population Survey, Jobcentre Plus administrative system, Annual Business Inquiry
Labour Market Statistics Helpline 01633 456901

1. Official estimate of the resident population.

2. Annual Population Survey (APS) data. The APS is a survey of the population of private households, student halls of residence and NHS accommodation. The APS data in this table are consistent with population estimates released in February 2003, not the latest revised population estimates - see note on page 7.

3. Model-based estimates of unemployment - see Concepts and Definitions.

4. Unemployment rates calculated as percentage of 16+ economically active population.

5. Count of claimants of Jobseeker's Allowance. Averaged over 12 month period.

6. Percentage of resident working age population of area. NB. These are different from the national and regional claimant rates shown in Tables 1a, 7 and the summary of other headline indicators. See Concepts and Definitions.

7. Labour demand in this table includes jobs only. Suitable comprehensive estimates of job vacancies are not available at local level.

8. Jobs data are mainly employees from the Annual Business Inquiry which refers to December of each year; they also include self-employed, HM Forces and government-supported trainees. Jobs densities are calculated as the number of jobs per resident of working age (16-59/64).

Sample size too small to provide estimates.

~ less than 500.

LOCAL AREA DATA

Scotland

13 (1) Local labour market indicators by UK Parliamentary Constituency

not seasonally adjusted

	mid-2006		April 2006 to March 2007						2005			
	Population ¹		Labour supply				Working age benefits		Labour demand ⁴			
			Employment ²		Unemployment ²		Economic inactivity ²		Claimant count ⁴		Jobs ⁷	
	16-59/64 (000s)	Total 16+ Rate (%)	Total 16+ Rate (%)	Total 16-59/64 Rate (%)	Total 16-59/64 Rate (%)	Total 16-59/64 Rate (%)	Level	Proportion ⁵ (%)	Total (000s)	Jobs Density 16-59/64 (ratio)		
1	2	3	4	5	6	7	8	9	10	11		
United Kingdom total	37,707	28,317	74.1	1,583	5.3	7,933	21.7	953,970	2.5	31,377	0.84	
Regional total	3,213	2,449	75.7	135	5.2	624	20.0	88,313	2.7	2,680	0.84	
Aberdeen North	..	46	77.1	2	4.3	11	19.2	1,241	2.1	72	1.19	
Aberdeen South	..	43	80.0	2	3.7	9	16.8	707	1.2	66	1.13	
Airdrie & Shotts	..	36	73.6	2	5.4	11	22.1	1,667	3.2	30	0.58	
Angus	..	37	76.4	3	6.8	8	17.9	1,525	3.1	36	0.74	
Argyll & Bute	..	43	80.1	2	3.5	9	16.9	1,363	2.5	47	0.87	
Ayr, Carrick & Cumnock	..	41	71.1	3	6.4	13	23.8	2,112	3.8	40	0.72	
Banff & Buchan	..	41	79.0	2	3.6	9	18.0	812	1.5	38	0.71	
Berwickshire, Roxburgh & Selkirk	..	43	78.5	2	4.2	9	17.9	949	1.8	46	0.87	
Caithness, Sutherland & Easter Ross	..	28	73.5	1	2.5	9	24.5	1,082	3.0	29	0.80	
Central Ayrshire	..	40	73.5	3	7.4	11	20.6	2,003	3.7	39	0.72	
Coatbridge, Chryston & Bellshill	..	43	72.1	2	5.3	14	23.7	1,636	3.0	45	0.82	
Cumbernauld, Kilsyth & Kirkintilloch East	..	45	79.8	2	3.9	9	16.9	1,336	2.4	32	0.58	
Dumfries & Galloway	..	42	74.6	2	5.1	11	21.2	1,594	2.8	44	0.79	
Dumfriesshire, Clydesdale & Tweeddale	..	42	82.5	2	3.6	7	14.3	953	2.0	36	0.74	
Dundee East	..	41	78.5	2	4.5	9	17.9	1,629	3.3	41	0.82	
Dundee West	..	36	71.4	3	7.2	11	22.8	2,331	4.2	50	0.89	
Dunfermline & West Fife	..	42	73.9	2	5.4	12	21.7	1,744	3.1	52	0.92	
East Dunbartonshire	..	44	81.7	2	3.6	8	15.2	668	1.3	24	0.48	
East Kilbride, Strathaven & Lesmahagow	..	49	82.7	2	4.0	8	13.8	1,209	2.0	47	0.77	
East Lothian	..	47	77.8	2	3.4	11	19.4	786	1.5	31	0.58	
East Renfrewshire	..	46	77.8	2	3.4	11	19.4	757	1.4	22	0.41	
Edinburgh East	..	36	74.0	3	7.4	10	20.0	1,711	2.8	82	1.33	
Edinburgh North & Leith	..	45	77.7	1	1.8	12	20.8	1,802	2.9	118	1.90	
Edinburgh South	..	54	82.3	1	2.6	10	15.5	844	1.5	31	0.56	
Edinburgh South West	..	50	75.5	5	9.9	11	16.1	1,552	2.4	65	1.03	
Edinburgh West	..	49	75.7	2	4.6	13	20.9	1,032	1.9	52	0.98	
Falkirk	..	54	78.7	3	4.9	11	17.3	1,620	2.6	43	0.68	
Glasgow Central	..	30	57.2	4	12.5	18	34.5	2,310	4.2	224	4.11	
Glasgow East	..	37	58.8	4	9.7	21	34.8	2,556	4.7	35	0.66	
Glasgow North	..	31	70.9	2	5.7	10	24.8	1,630	3.3	38	0.77	
Glasgow North East	..	29	56.3	3	10.4	19	37.1	3,000	5.6	37	0.68	
Glasgow North West	..	40	68.6	3	6.6	15	26.4	2,134	4.3	32	0.64	
Glasgow South	..	47	76.6	2	4.7	12	19.8	1,782	3.1	30	0.54	
Glasgow South West	..	36	65.2	3	8.4	15	28.5	2,339	4.7	45	0.91	
Glenrothes	..	47	74.4	5	9.9	11	17.1	2,397	4.4	38	0.70	
Gordon	..	54	85.8	2	4.4	6	10.4	386	0.7	64	1.11	
Inverclyde	..	37	70.8	3	7.5	12	23.2	2,324	4.5	35	0.69	
Inverness, Nairn, Badenoch & Strathspey	..	43	83.3	1	2.6	7	14.3	979	1.8	58	1.07	
Kilmarnock & Loudoun	..	40	71.9	2	5.6	13	23.6	2,268	3.9	36	0.63	
Kirkcaldy & Cowdenbeath	..	43	75.4	3	7.2	10	18.5	2,567	4.6	37	0.65	
Lanark & Hamilton East	..	46	75.0	2	4.4	13	21.5	1,454	2.4	47	0.78	
Linlithgow & East Falkirk	..	51	78.5	3	5.1	11	17.3	1,777	2.8	41	0.65	
Livingston	..	56	79.2	4	5.9	11	15.8	1,626	2.5	60	0.90	
Midlothian	..	42	80.7	2	5.5	7	14.5	1,011	2.0	31	0.62	
Moray	..	42	78.4	2	4.1	9	18.1	1,167	2.2	44	0.84	
Motherwell & Wishaw	..	39	72.2	3	7.3	12	21.9	1,909	3.6	33	0.63	
Na h-Eileanan an Iar	..	12	79.9	1	4.9	2	17.1	509	3.3	13	0.84	
North Ayrshire & Arran	..	43	73.1	3	7.0	12	21.5	2,459	4.4	27	0.49	
North East Fife	..	39	77.9	2	3.9	9	18.7	819	1.7	31	0.64	
Ochil & South Perthshire	..	45	77.1	2	4.6	11	19.1	1,282	2.3	35	0.62	
Orkney & Shetland	..	21	85.2	1	2.9	3	12.3	379	1.5	27	1.09	
Paisley & Renfrewshire North	..	42	75.0	2	5.4	11	20.5	1,266	2.3	46	0.84	
Paisley & Renfrewshire South	..	40	77.0	1	2.8	10	20.7	1,743	3.3	35	0.66	

13 (1) Local labour market indicators by UK Parliamentary Constituency

not seasonally adjusted

	mid-2006		April 2006 to March 2007						2005			
	Population ¹		Labour supply			Working age benefits			Labour demand ⁸			
			Employment ²		Unemployment ²		Economic inactivity ²		Claimant count ⁴		Jobs ⁷	
	16-59/64 (000s)	Total 16+ (000s)	16-59/64 Rate (%)	Total 16+ (000s)	Rate ³ (%)	Total 16-59/64 (000s)	16-59/64 Rate (%)	Level	Proportion ⁵ (%)	Total (000s)	Jobs Density 16-59/64 (ratio)	
1	2	3	4	5	6	7	8	9	10	11		
Perth & North Perthshire	..	42	78.7	2	3.9	9	17.9	1,128	2.1	52	0.96	
Ross, Skye & Lochaber	..	34	85.3	#	#	5	13.7	743	2.0	31	0.81	
Rutherglen & Hamilton West	..	48	73.4	2	4.4	15	23.2	1,860	3.1	39	0.65	
Stirling	..	43	75.6	2	4.1	11	21.2	1,051	2.0	51	0.95	
West Aberdeenshire & Kincardine	..	46	84.3	1	1.9	7	14.0	311	0.6	34	0.67	
West Dunbartonshire	..	44	74.3	3	6.4	12	20.5	2,486	4.3	34	0.60	

Relationship between columns: 9=8/1; 11=10/1.

Source: Annual Population Survey, Jobcentre Plus administrative system, Annual Business Inquiry
Labour Market Statistics Helpline 01633 456901

1. Official mid-year estimate of the resident population are not available for this geography. Denominators for claimant count and jobs density are based on 2001 Census data adjusted to be consistent with 2001 mid-year population estimates for local authorities.

2. Annual Population Survey (APS) data. The APS is a survey of the population of private households, student halls of residence and NHS accommodation. The APS data in this table are consistent with population estimates released in February 2003, not the latest revised population estimates - see note on page 7.

3. Unemployment rates calculated as percentage of 16+ economically active population.

4. Count of claimants of Jobseeker's Allowance. Averaged over 12 month period.

5. Percentage of resident working age population of area. NB. These are different from the national and regional claimant rates shown in Tables 1a, 7 and the summary of other headline indicators. See Concepts and Definitions.

6. Labour demand in this table includes jobs only. Suitable comprehensive estimates of job vacancies are not available at local level.

7. Jobs data are mainly employees from the Annual Business Inquiry which refers to December of each year; they also include self-employed, HM Forces and government-supported trainees. Jobs densities are calculated as the number of jobs per resident of working age (16-59/64).

Sample size too small to provide estimates.

~ less than 500.

LOCAL AREA DATA

Scotland

13(2) Local labour market indicators by constituencies of the Scottish Parliament

not seasonally adjusted

	mid-2006		April 2006 to March 2007						2005		
	Population ¹		Labour supply			Working age benefits			Labour demand ⁶		
			Employment ²		Unemployment ²	Economic inactivity ²		Claimant count ⁴	Jobs ⁷		
	16-59/64 (000s)	Total 16+ (000s)	16-59/64 Rate (%)	Total 16+ (000s)	Rate ³ (%)	Total 16-59/64 (000s)	16-59/64 Rate (%)	Level	Proportion ⁵ (%)	Total (000s)	Jobs Density 16-59/64 (ratio)
1	2	3	4	5	6	7	8	9	10	11	
United Kingdom total	37,707	28,317	74.1	1,583	5.3	7,933	21.7	953,970	2.5	31,377	0.84
Regional total	3,213	2,449	75.7	135	5.2	624	20.0	88,313	2.7	2,680	0.84
Central Scotland											
Airdrie & Shotts	..	33	74.1	2	5.0	10	21.9	1,564	3.2	25	0.51
Coatbridge & Chryston	..	32	72.0	1	2.4	11	26.1	1,244	2.9	21	0.49
Cumbernauld & Kilsyth	..	34	80.4	1	3.9	7	16.2	927	2.2	24	0.58
East Kilbride	..	41	84.7	1	3.3	6	12.3	1,032	1.9	42	0.79
Falkirk East	..	36	80.8	1	3.7	7	16.1	1,232	2.6	28	0.59
Falkirk West	..	37	76.1	2	6.3	9	18.6	1,250	2.9	37	0.86
Hamilton North & Bellshill	..	34	71.5	4	9.3	10	21.0	1,475	3.3	49	1.11
Hamilton South	..	32	76.4	1	4.1	8	20.2	1,099	2.9	18	0.47
Kilmarnock & Loudoun	..	34	73.8	2	5.6	10	21.6	1,916	3.9	32	0.65
Motherwell & Wishaw	..	32	74.7	2	6.1	8	20.3	1,351	3.3	28	0.70
Glasgow											
Glasgow Anniesland	..	32	65.3	3	7.4	14	29.4	1,622	4.3	22	0.58
Glasgow Baillieston	..	25	55.8	3	11.6	16	36.7	1,658	4.3	15	0.40
Glasgow Cathcart	..	34	76.7	2	5.1	8	19.0	1,263	3.2	19	0.48
Glasgow Govan	..	28	61.7	2	6.6	15	34.3	1,815	4.6	50	1.26
Glasgow Kelvin	..	29	69.2	3	8.8	10	23.9	1,594	3.2	210	4.29
Glasgow Maryhill	..	22	64.7	1	6.4	10	30.8	2,188	5.4	24	0.60
Glasgow Pollok	..	29	70.3	2	6.8	10	24.4	1,624	4.4	18	0.49
Glasgow Rutherglen	..	27	67.7	2	6.4	11	27.6	1,147	2.9	28	0.71
Glasgow Shettleston	..	23	64.3	2	8.5	10	29.6	1,768	4.9	34	0.93
Glasgow Springburn	..	24	57.2	3	11.7	14	35.0	2,043	4.8	25	0.59
Highlands & Islands											
Argyll & Bute	..	30	80.3	1	4.4	6	15.9	1,027	2.8	33	0.91
Caithness, Sutherland & Easter Ross	..	23	75.8	1	2.9	6	21.7	939	3.0	26	0.84
Inverness East, Nairn & Lochaber	..	42	82.8	1	2.6	7	14.8	883	1.7	60	1.15
Moray	..	38	78.6	2	3.9	8	18.0	1,062	2.2	42	0.88
Orkney & Shetland	..	21	85.2	1	2.9	3	12.3	379	1.5	26	1.05
Ross, Skye & Inverness West	..	39	82.8	~	#	7	16.4	982	2.2	29	0.66
Western Isles	..	12	79.9	1	4.9	2	17.1	509	3.3	13	0.86
Lothians											
Edinburgh Central	..	42	74.5	5	9.6	10	17.9	1,331	2.3	91	1.59
Edinburgh East & Musselburgh	..	36	80.6	2	4.2	7	15.9	1,205	2.6	35	0.76
Edinburgh North & Leith	..	37	76.4	1	2.2	10	21.8	1,782	3.4	90	1.72
Edinburgh Pentlands	..	38	75.4	3	7.4	9	18.5	973	2.0	44	0.91
Edinburgh South	..	48	81.8	2	3.4	9	15.3	830	1.6	39	0.73
Edinburgh West	..	39	75.8	2	3.8	11	21.2	951	2.0	52	1.08
Linlithgow	..	40	77.8	2	4.4	9	18.7	1,246	2.8	29	0.65
Livingston	..	48	80.3	3	6.5	8	14.2	1,296	2.3	50	0.87
Midlothian	..	33	79.5	2	5.9	6	15.4	838	2.2	26	0.66
Mid Scotland & Fife											
Central Fife	..	38	72.4	5	11.0	9	18.3	1,945	4.2	39	0.85
Dunfermline East	..	30	70.2	3	8.0	10	23.5	1,608	3.9	23	0.55
Dunfermline West	..	34	76.9	1	3.4	9	20.3	1,286	3.0	38	0.89
Kirkcaldy	..	30	78.7	3	8.0	5	14.3	1,973	5.1	28	0.74
North East Fife	..	38	78.9	1	3.4	8	18.2	716	1.5	28	0.61

LOCAL AREA DATA

Scotland

13(2) Local labour market indicators by constituencies of the Scottish Parliament

not seasonally adjusted

	mid-2006		April 2006 to March 2007						2005			
	Population ¹		Labour supply			Working age benefits			Labour demand ⁶			
			Employment ²		Unemployment ²		Economic inactivity ²		Claimant count ⁴		Jobs ⁷	
	16-59/64 (000s)	Total 16+ (000s)	16-59/64 Rate (%)	Total 16+ (000s)	Rate ³ (%)	Total 16-59/64 (000s)	16-59/64 Rate (%)	Level	Proportion ⁵ (%)	Total (000s)	Jobs Density 16-59/64 (ratio)	
1	2	3	4	5	6	7	8	9	10	11		
North Tayside	..	36	76.7	2	5.4	8	18.8	955	2.1	33	0.72	
Ochil	..	34	74.4	2	4.6	10	21.9	1,262	2.7	28	0.60	
Perth	..	36	80.5	1	3.7	7	16.3	899	1.9	46	0.96	
Stirling	..	37	75.9	2	4.6	10	20.3	851	2.0	41	0.95	
North East Scotland												
Aberdeen Central	..	31	75.9	2	4.8	8	20.1	932	2.0	83	1.76	
Aberdeen North	..	41	81.9	2	4.8	7	14.2	517	1.2	50	1.14	
Aberdeen South	..	36	80.5	1	3.5	7	16.4	616	1.3	45	0.93	
Angus	..	38	80.7	2	5.2	7	14.7	1,257	2.7	28	0.60	
Banff & Buchan	..	37	78.7	1	3.8	8	18.1	743	1.6	34	0.73	
Dundee East	..	34	74.4	2	5.4	9	21.4	2,021	4.6	36	0.83	
Dundee West	..	28	70.7	2	7.3	9	23.4	1,700	3.7	44	0.96	
Gordon	..	45	85.2	1	3.1	6	12.0	438	0.9	33	0.68	
West Aberdeenshire & Kincardine	..	45	83.3	1	2.5	8	14.5	315	0.6	36	0.71	
South of Scotland												
Ayr	..	32	75.9	2	5.2	8	19.8	1,395	3.4	38	0.92	
Carrick, Cumnock & Doon Valley	..	38	70.0	2	5.8	13	25.5	1,723	3.4	27	0.55	
Clydesdale	..	41	75.0	2	5.0	11	20.8	1,206	2.4	22	0.44	
Cunninghame South	..	28	68.4	4	11.1	9	23.3	2,069	5.0	26	0.63	
Dumfries	..	37	80.0	2	4.6	7	16.1	1,210	2.5	42	0.86	
East Lothian	..	39	76.7	1	3.4	10	20.5	660	1.5	25	0.56	
Galloway & Upper Nithsdale	..	31	76.4	1	3.9	8	20.3	1,043	2.7	26	0.69	
Roxburgh & Berwickshire	..	28	77.3	2	5.1	6	18.4	647	1.9	27	0.78	
Tweeddale, Ettrick & Lauderdale	..	33	81.9	1	3.2	6	15.3	601	1.5	28	0.71	
West of Scotland												
Clydebank & Milngavie	..	33	78.1	2	4.7	7	17.9	1,323	3.3	25	0.61	
Cunninghame North	..	32	74.5	2	5.8	9	21.1	1,738	4.2	21	0.50	
Dumbarton	..	36	75.4	2	5.2	9	20.4	1,654	3.5	29	0.61	
Eastwood	..	47	77.2	2	3.4	12	20.1	742	1.4	22	0.41	
Greenock & Inverclyde	..	27	72.0	2	7.1	8	22.2	1,718	4.5	29	0.77	
Paisley North	..	28	74.8	2	6.0	7	20.2	1,287	3.4	45	1.19	
Paisley South	..	30	77.2	1	3.1	8	20.3	1,356	3.3	24	0.58	
Strathkelvin & Bearsden	..	41	80.0	2	3.9	8	16.7	893	1.8	22	0.44	
West Renfrewshire	..	33	73.3	2	4.8	10	22.9	974	2.3	19	0.43	

Relationship between columns: 9=8/1; 11=10/1.

Source: Annual Population Survey, Jobcentre Plus administrative system, Annual Business Inquiry
Labour Market Statistics Helpline 01633 456901

1. Official mid-year estimate of the resident population are not available for this geography. Denominators for claimant count and jobs density are based on 2001 Census data adjusted to be consistent with 2001 mid-year population estimates for local authorities.

2. Annual Population Survey (APS) data. The APS is a survey of the population of private households, student halls of residence and NHS accommodation. The APS data in this table are consistent with population estimates released in February 2003, not the latest revised population estimates - see note on page 7.

3. Unemployment rates calculated as percentage of 16+ economically active population

4. Count of claimants of Jobseeker's Allowance. Averaged over 12 month period.

5. Percentage of resident working age population of area. NB. These are different from the national and regional claimant rates shown in Tables 1a, 7 and the summary of other headline indicators. See Concepts and Definitions.

6. Labour demand in this table includes jobs only. Suitable comprehensive estimates of job vacancies are not available at local level.

7. Jobs data are mainly employees from the Annual Business Inquiry which refers to December of each year; they also include self-employed, HM Forces and government-supported trainees. Jobs densities are calculated as the number of jobs per resident of working age (16-59/64).

Sample size too small to provide estimates.

~ less than 500.

14 Local labour market indicators by Travel-to-Work Area

not seasonally adjusted

	mid-2006		April 2006 to March 2007						2005			
	Population ¹		Labour supply			Working age benefits			Labour demand ⁶			
			Employment ²		Unemployment ²		Economic inactivity ²		Claimant count ⁴		Jobs ⁷	
	16-59/64 (000s)	Total 16+ (000s)	16-59/64 Rate (%)	Total 16+ (000s)	Rate ³ (%)	Total 16-59/64 (000s)	16-59/64 Rate (%)	Level	Proportion ⁵ (%)	Total (000s)	Jobs Density 16-59/64 (ratio)	
1	2	3	4	5	6	7	8	9	10	11		
United Kingdom total	37,707	28,317	74.1	1,583	5.3	7,933	21.7	953,970	2.5	31,377	0.84	
Regional total	3,213	2,449	75.7	135	5.2	624	20.0	88,313	2.7	2,680	0.84	
Aberdeen	..	192	81.8	7	3.6	34	15.1	2,670	
Ayr & Kilmarnock	..	101	73.0	6	5.5	30	22.6	4,980	
Badenoch	..	5	74.4	#	#	1	25.6	110	
Banff	..	13	81.9	#	#	3	16.5	245	
Campbeltown	..	4	85.0	~	3.8	~	11.3	168	
Dornoch & Lairg	..	4	75.6	#	#	1	20.9	154	
Dumbarton	..	36	75.4	2	5.2	9	20.4	1,651	
Dumfries & Annan	..	39	79.9	2	4.3	8	16.4	1,347	
Dundee	..	96	75.2	6	5.9	24	20.0	4,687	
Dunfermline	..	60	73.9	4	5.8	17	21.3	2,697	
Dunoon & Bute	..	9	73.9	1	7.0	2	20.6	455	
Edinburgh	..	317	77.8	17	5.1	72	18.0	8,659	
Eilean Siar	..	12	79.9	1	4.9	2	17.1	509	
Falkirk	..	81	78.8	4	4.7	17	17.3	2,576	
Forfar & Montrose	..	26	77.2	2	7.0	5	16.8	922	
Fraserburgh	..	10	73.5	1	7.0	3	20.6	206	
Galashiels & Peebles	..	26	81.2	1	3.2	5	15.9	477	
Glasgow	..	526	70.7	34	6.0	178	24.7	23,942	
Greenock	..	38	71.4	3	7.6	12	22.6	2,345	
Hawick	..	9	75.6	1	5.7	2	20.1	271	
Invergordon	..	10	68.8	#	#	4	29.8	368	
Inverness & Dingwall	..	52	85.1	1	2.5	7	12.6	1,106	
Irvine & Arran	..	60	71.1	5	8.3	18	22.4	3,831	
Kelso & Jedburgh	..	7	81.3	~	4.4	1	14.8	143	
Kirkcaldy & Glenrothes	..	83	76.1	7	8.2	18	16.9	4,273	
Kirkcudbright	..	12	78.7	~	2.4	3	19.3	266	
Lanarkshire	..	227	75.4	12	5.1	60	20.4	8,581	
Livingston & Bathgate	..	82	78.5	5	6.0	17	16.5	2,535	
Lochaber	..	10	83.2	#	#	2	15.3	218	
Lochgilphead	..	6	84.5	~	5.3	1	10.5	121	
Moray	..	42	78.4	2	4.1	9	18.1	1,167	
Mull & Islay	..	3	81.0	#	#	1	16.9	88	
Newton Stewart & Wigtown	..	4	60.9	~	8.6	2	33.0	168	
Oban	..	8	84.3	#	#	1	14.2	198	
Orkney Islands	..	10	83.4	#	#	2	15.8	173	
Perth & Blairgowrie	..	60	79.9	2	3.9	12	16.8	1,349	
Peterhead	..	15	80.5	1	3.3	3	16.6	337	
Pitlochry	..	5	81.7	#	#	1	17.0	108	
Shetland Islands	..	12	86.8	1	4.4	1	9.3	206	
Skye & Lochalsh	..	7	88.9	#	#	1	11.1	212	

14 Local labour market indicators by Travel-to-Work Area

not seasonally adjusted

	mid-2006		April 2006 to March 2007						2005		
	Population ¹		Labour supply			Working age benefits			Labour demand ⁶		
			Employment ²		Unemployment ²		Economic inactivity ²		Claimant count ⁴		Jobs ⁷
	16-59/64 (000s)	Total 16+ (000s)	16-59/64 Rate (%)	Total 16+ (000s)	Rate ³ (%)	Total 16-59/64 (000s)	16-59/64 Rate (%)	Level	Proportion ⁵ (%)	Total (000s)	Jobs Density 16-59/64 (ratio)
1	2	3	4	5	6	7	8	9	10	11	
St Andrews & Cupar	..	20	73.7	1	4.4	6	22.6	432
Stirling & Alloa	..	63	74.8	3	4.7	18	21.5	1,989
Stranraer	..	8	74.6	1	6.8	2	19.6	380
Thurso	..	7	77.2	#	#	2	19.0	229
Ullapool & Gairloch	..	6	84.4	#	#	1	15.6	126
Wick	..	5	71.5	#	#	2	28.5	281

Relationship between columns: 9=8/1; 11=10/1.

Source: Annual Population Survey, Jobcentre Plus administrative system, Annual Business Inquiry
Labour Market Statistics Helpline 01633 456901

- Official mid-year estimate of the resident population are not available for this geography.
 - Annual Population Survey (APS) data. The APS is a survey of the population of private households, student halls of residence and NHS accommodation. The APS data in this table are consistent with population estimates released in February 2003, not the latest revised population estimates - see note on page 7.
 - Unemployment rates calculated as percentage of 16+ economically active population
 - Count of claimants of Jobseeker's Allowance. Averaged over 12 month period.
 - Percentage of resident working age population of area. NB. These are different from the national and regional claimant rates shown in Tables 1a, 7 and the summary of other headline indicators. See Concepts and Definitions.
 - Labour demand in this table includes jobs only. Suitable comprehensive estimates of job vacancies are not available at local level.
 - Jobs data are mainly employees from the Annual Business Inquiry which refers to December of each year; they also include self-employed, HM Forces and government-supported trainees. Jobs densities are calculated as the number of jobs per resident of working age (16-59/64).
- # Sample size too small to provide estimates.
~ less than 500.

LOCAL AREA DATA

15 Local labour market indicators by NUTS 3 area

Scotland

not seasonally adjusted

	mid-2006		April 2006 to March 2007						2005			
	Population ¹		Labour supply			Working age benefits			Labour demand ⁶			
			Employment ²		Unemployment ²		Economic inactivity ²		Claimant count ⁴		Jobs ⁷	
	16-59/64 (000s)	Total 16+ (000s)	16-59/64 Rate (%)	Total 16+ (000s)	Rate ³ (%)	Total 16-59/64 (000s)	16-59/64 Rate (%)	Level	Proportion ⁵ (%)	Total (000s)	Jobs Density 16-59/64 (ratio)	
1	2	3	4	5	6	7	8	9	10	11		
United Kingdom total	37,707	28,317	74.1	1,583	5.3	7,933	21.7	953,970	2.5	31,377	0.84	
Regional total	3,213	2,449	75.7	135	5.2	624	20.0	88,313	2.7	2,680	0.84	
North East Scotland												
Aberdeen City, Aberdeenshire & NE Moray	..	262	80.8	10	3.6	49	16.0	4,311	-	
Eastern Scotland												
Angus & Dundee City	154	115	75.5	7	6.1	28	19.5	5,467	3.5	127	0.83	
Clackmannanshire & Fife	253	192	75.1	14	6.7	48	19.3	8,490	3.4	173	0.69	
East Lothian & Midlothian	104	89	79.1	4	4.4	18	17.1	1,794	1.7	62	0.60	
Scottish Borders, The	65	53	78.8	2	4.1	11	17.7	1,077	1.7	53	0.82	
Edinburgh, City of	314	233	77.2	13	5.2	55	18.5	6,945	2.2	348	1.13	
Falkirk	94	73	78.4	4	5.0	16	17.4	2,481	2.7	64	0.69	
Perth, Kinross & Stirling	138	108	77.9	4	3.9	25	18.8	2,515	1.8	122	0.90	
West Lothian	106	88	79.2	5	5.6	18	16.3	2,542	2.4	80	0.76	
South Western Scotland												
E & W Dunbartonshire, Helensburgh & Lomond	..	112	78.0	5	4.5	25	18.2	3,911	-	
Dumfries & Galloway	86	69	78.3	3	4.3	15	18.1	2,252	2.6	69	0.80	
East Ayrshire & North Ayrshire Mainland	..	111	71.1	9	7.4	35	23.2	6,720	-	
Glasgow City	386	249	64.8	22	8.1	110	29.4	15,849	4.1	441	1.16	
Inverclyde, East Renfrewshire & Renfrewshire	210	164	75.2	8	4.7	44	20.9	6,077	2.9	139	0.66	
North Lanarkshire	204	151	74.2	9	5.6	42	21.3	6,129	3.0	135	0.66	
South Ayrshire	66	51	75.2	3	4.9	13	20.8	2,100	3.2	51	0.77	
South Lanarkshire	192	149	76.8	7	4.4	37	19.6	4,601	2.4	136	0.71	
Highlands and the Islands												
Caithness & Sutherland and Ross & Cromarty	..	45	77.6	1	2.0	11	20.7	1,377	-	
Inverness & Nairn & Moray, Badenoch and Strathspey	..	54	82.9	2	3.1	9	14.3	1,312	-	
Lochaber, Skye & Lochalsh & Argyll and the Islands	..	48	82.3	2	3.1	8	15.0	1,476	-	
Eilean Siar (Western Isles)	15	12	79.9	1	4.9	2	17.1	509	3.3	13	0.84	
Orkney Islands	12	10	83.4	#	#	2	15.8	173	1.5	12	0.99	
Shetland Islands	13	12	86.8	1	4.4	1	9.3	206	1.5	16	1.17	

Relationship between columns: 9=8/1; 11=10/1.

Source: Annual Population Survey, Jobcentre Plus administrative system, Annual Business Inquiry
Labour Market Statistics Helpline 01633 456901

1. Official estimate of the resident population.

2. Annual Population Survey (APS) data. The APS is a survey of the population of private households, student halls of residence and NHS accommodation. The APS data in this table are consistent with population estimates released in February 2003, not the latest revised population estimates - see note on page 7.

3. Unemployment rates calculated as percentage of 16+ economically active population.

4. Count of claimants of Jobseeker's Allowance. Averaged over 12 month period.

5. Percentage of resident working age population of area. NB. These are different from the national and regional claimant rates shown in Tables 1a, 7 and the summary of other headline indicators. See Concepts and Definitions.

6. Labour demand in this table includes jobs only. Suitable comprehensive estimates of job vacancies are not available at local level.

7. Jobs data are mainly employees from the Annual Business Inquiry which refers to December of each year; they also include self-employed, HM Forces and government-supported trainees. Jobs densities are calculated as the number of jobs per resident of working age (16-59/64).

Sample size too small to provide estimates.

- less than 500.

LOCAL AREA DATA

Scotland

16 Claimant count¹ by Unitary and Local Authority

not seasonally adjusted

	CLAIMANT COUNT ON 13 DECEMBER 2007						Change on year					
	Levels			Percentage of Pop ²			Levels			Percentage ²		
	Men	Women	People	Men	Women	People	Men	Women	People	Men	Women	People
	1	2	3	4	5	6	7	8	9	10	11	12
United Kingdom total	580,359	210,011	790,370	3.0	1.2	2.1	-101,360	-31,730	-133,090	-0.5	-0.2	-0.4
Regional total	52,434	16,731	69,165	3.2	1.1	2.2	-10,442	-3,211	-13,653	-0.6	-0.2	-0.4
Aberdeen City	1,231	379	1,610	1.7	0.6	1.2	-242	-26	-268	-0.3	0.0	-0.2
Aberdeenshire	752	321	1,073	1.0	0.5	0.7	-176	-49	-225	-0.2	-0.1	-0.2
Angus	902	351	1,253	2.7	1.1	1.9	-293	-87	-380	-0.9	-0.3	-0.6
Argyll & Bute	848	319	1,167	2.9	1.3	2.1	-122	-67	-189	-0.4	-0.3	-0.3
Clackmannanshire	544	182	726	3.5	1.2	2.4	-119	-58	-177	-0.8	-0.4	-0.6
Dumfries & Galloway	1,420	551	1,971	3.2	1.3	2.3	-157	-41	-198	-0.3	-0.1	-0.2
Dundee City	2,502	710	3,212	5.6	1.6	3.6	-221	-24	-245	-0.5	-0.1	-0.3
East Ayrshire	1,693	663	2,356	4.5	1.9	3.2	-475	0	-475	-1.3	0.0	-0.6
East Dunbartonshire	606	190	796	1.9	0.6	1.2	-134	-37	-171	-0.4	-0.1	-0.3
East Lothian	477	151	628	1.7	0.6	1.1	-69	-52	-121	-0.2	-0.2	-0.2
East Renfrewshire	407	117	524	1.5	0.4	1.0	-135	-82	-217	-0.5	-0.3	-0.4
Edinburgh, City of	3,809	1,291	5,100	2.4	0.8	1.6	-1,138	-358	-1,496	-0.7	-0.2	-0.5
Eilean Siar (Western Isles)	305	87	392	3.6	1.2	2.5	-112	-19	-131	-1.3	-0.3	-0.8
Falkirk	1,420	470	1,890	3.0	1.0	2.0	-334	-101	-435	-0.7	-0.2	-0.5
Fife	4,339	1,390	5,729	3.8	1.3	2.6	-745	-242	-987	-0.7	-0.2	-0.4
Glasgow City	10,367	2,838	13,205	5.3	1.5	3.4	-1,299	-448	-1,747	-0.7	-0.2	-0.5
Highland	1,691	605	2,296	2.5	1.0	1.8	-337	-183	-520	-0.5	-0.3	-0.4
Inverclyde	1,328	308	1,636	5.2	1.3	3.3	-259	-98	-357	-1.0	-0.4	-0.7
Midlothian	562	200	762	2.3	0.8	1.6	-129	-45	-174	-0.5	-0.2	-0.4
Moray	647	283	930	2.2	1.2	1.8	-108	-70	-178	-0.4	-0.3	-0.3
North Ayrshire	2,178	812	2,990	5.3	2.0	3.6	-406	-93	-499	-1.0	-0.2	-0.6
North Lanarkshire	3,422	1,073	4,495	3.3	1.1	2.2	-841	-203	-1,044	-0.8	-0.2	-0.5
Orkney Islands	76	41	117	1.2	0.7	1.0	-47	-20	-67	-0.7	-0.4	-0.6
Perth & Kinross	770	255	1,025	1.8	0.6	1.2	-287	-103	-390	-0.7	-0.3	-0.5
Renfrewshire	1,834	523	2,357	3.4	1.0	2.2	-306	-79	-385	-0.6	-0.2	-0.4
Scottish Borders	604	211	815	1.8	0.7	1.3	-148	-39	-187	-0.4	-0.1	-0.3
Shetland Islands	91	31	122	1.3	0.5	0.9	-50	-19	-69	-0.7	-0.3	-0.5
South Ayrshire	1,301	412	1,713	3.8	1.3	2.6	-297	-57	-354	-0.9	-0.2	-0.5
South Lanarkshire	2,592	800	3,392	2.7	0.8	1.8	-726	-259	-985	-0.7	-0.3	-0.5
Stirling	641	215	856	2.3	0.8	1.6	-152	-19	-171	-0.6	-0.1	-0.3
West Dunbartonshire	1,505	433	1,938	5.2	1.5	3.4	-283	-140	-423	-1.0	-0.5	-0.7
West Lothian	1,570	519	2,089	2.9	1.0	2.0	-295	-93	-388	-0.5	-0.2	-0.4

Relationship between columns = 3=1+2; 9=7+8

Source: Jobcentre Plus administrative system

1. Count of claimants of Jobseeker's Allowance.

Labour Market Statistics Helpline 01633 456901

2. Percentages of resident working age population of area. NB. These are different from the national and regional claimant count rates shown in Tables 1a, 7 and the Summary of other headline indicators. See Concepts and Definitions.

LOCAL AREA DATA

Scotland

17(1) Claimant count¹ by UK Parliamentary Constituency

not seasonally adjusted

	CLAIMANT COUNT ON 13 DECEMBER 2007						Change on year					
	Levels			Percentage of Pop ²			Levels			Percentage ²		
	Men	Women	People	Men	Women	People	Men	Women	People	Men	Women	People
	1	2	3	4	5	6	7	8	9	10	11	12
United Kingdom total	580,359	210,011	790,370	3.0	1.2	2.1	-101,360	-31,730	-133,090	-0.5	-0.2	-0.4
Regional total	52,434	16,731	69,165	3.2	1.1	2.2	-10,442	-3,211	-13,653	-0.6	-0.2	-0.4
Aberdeen North	747	203	950	2.4	0.7	1.6	-187	-29	-216	-0.6	-0.1	-0.4
Aberdeen South	431	156	587	1.4	0.6	1.0	-41	12	-29	-0.1	0.0	0.0
Airdrie & Shotts	934	313	1,247	3.5	1.2	2.4	-218	-52	-270	-0.8	-0.2	-0.5
Angus	779	309	1,088	3.0	1.3	2.2	-278	-79	-357	-1.1	-0.3	-0.7
Argyll & Bute	852	321	1,173	2.9	1.3	2.2	-123	-67	-190	-0.4	-0.3	-0.3
Ayr, Carrick & Cumnock	1,297	411	1,708	4.6	1.5	3.1	-327	-62	-389	-1.1	-0.2	-0.7
Banff & Buchan	447	193	640	1.6	0.8	1.2	-94	-21	-115	-0.3	-0.1	-0.2
Berwickshire, Roxburgh & Selkirk	515	192	707	1.9	0.7	1.3	-132	-26	-158	-0.5	-0.1	-0.3
Caithness, Sutherland & Easter Ross	695	228	923	3.7	1.4	2.6	-111	-55	-166	-0.6	-0.3	-0.5
Central Ayrshire	1,084	400	1,484	4.0	1.5	2.7	-286	-92	-378	-1.0	-0.3	-0.7
Coatbridge, Chryston & Bellshill	910	297	1,207	3.3	1.1	2.2	-243	-37	-280	-0.9	-0.1	-0.5
Cumbernauld, Kilsyth & Kirkintilloch East	684	195	879	2.4	0.7	1.6	-203	-68	-271	-0.7	-0.2	-0.5
Dumfries & Galloway	1,034	375	1,409	3.6	1.4	2.5	-115	-25	-140	-0.4	-0.1	-0.2
Dumfriesshire, Clydesdale & Tweeddale	581	234	815	2.3	1.0	1.7	-69	-34	-103	-0.3	-0.1	-0.2
Dundee East	1,082	305	1,387	4.3	1.2	2.8	-77	-27	-104	-0.3	-0.1	-0.2
Dundee West	1,551	450	2,001	5.4	1.6	3.6	-166	-5	-171	-0.6	0.0	-0.3
Dunfermline & West Fife	977	341	1,318	3.4	1.2	2.4	-211	-55	-266	-0.7	-0.2	-0.5
East Dunbartonshire	352	129	481	1.3	0.5	0.9	-95	-18	-113	-0.4	-0.1	-0.2
East Kilbride, Strathaven & Lesmahagow	634	192	826	2.0	0.6	1.3	-221	-76	-297	-0.7	-0.3	-0.5
East Lothian	477	151	628	1.8	0.6	1.2	-69	-52	-121	-0.3	-0.2	-0.2
East Renfrewshire	417	120	537	1.5	0.5	1.0	-136	-80	-216	-0.5	-0.3	-0.4
Edinburgh East	973	329	1,302	3.1	1.1	2.1	-275	-35	-310	-0.9	-0.1	-0.5
Edinburgh North & Leith	986	341	1,327	3.1	1.1	2.1	-306	-111	-417	-1.0	-0.4	-0.7
Edinburgh South	441	159	600	1.6	0.6	1.1	-156	-63	-219	-0.6	-0.2	-0.4
Edinburgh South West	865	271	1,136	2.6	0.9	1.8	-191	-127	-318	-0.6	-0.4	-0.5
Edinburgh West	543	190	733	2.0	0.7	1.4	-207	-23	-230	-0.8	-0.1	-0.4
Falkirk	912	311	1,223	2.8	1.0	1.9	-221	-64	-285	-0.7	-0.2	-0.5
Glasgow Central	1,574	405	1,979	5.5	1.6	3.6	-171	-53	-224	-0.6	-0.2	-0.4
Glasgow East	1,656	472	2,128	6.2	1.7	3.9	-235	-38	-273	-0.9	-0.1	-0.5
Glasgow North	1,064	323	1,387	4.3	1.3	2.8	-108	-37	-145	-0.4	-0.1	-0.3
Glasgow North East	1,870	544	2,414	6.9	2.0	4.5	-310	-88	-398	-1.1	-0.3	-0.7
Glasgow North West	1,514	380	1,894	6.2	1.5	3.9	-94	-37	-131	-0.4	-0.1	-0.3
Glasgow South	1,115	328	1,443	3.9	1.2	2.5	-203	-100	-303	-0.7	-0.4	-0.5
Glasgow South West	1,519	367	1,886	6.2	1.5	3.8	-164	-96	-260	-0.7	-0.4	-0.5
Glenrothes	1,378	395	1,773	5.0	1.5	3.3	-210	-107	-317	-0.8	-0.4	-0.6
Gordon	206	78	284	0.7	0.3	0.5	-59	-32	-91	-0.2	-0.1	-0.2
Inverclyde	1,328	308	1,636	5.1	1.2	3.2	-259	-98	-357	-1.0	-0.4	-0.7
Inverness, Nairn, Badenoch & Strathspey	553	179	732	2.0	0.7	1.4	-126	-53	-179	-0.5	-0.2	-0.3
Kilmarnock & Loudoun	1,302	535	1,837	4.4	1.9	3.2	-359	30	-329	-1.2	0.1	-0.6
Kirkcaldy & Cowdenbeath	1,540	475	2,015	5.3	1.7	3.6	-187	-53	-240	-0.6	-0.2	-0.4
Lanark & Hamilton East	870	274	1,144	2.8	0.9	1.9	-186	-82	-268	-0.6	-0.3	-0.4
Linlithgow & East Falkirk	1,114	381	1,495	3.5	1.2	2.4	-195	-50	-245	-0.6	-0.2	-0.4
Livingston	964	297	1,261	2.9	0.9	1.9	-212	-80	-292	-0.6	-0.2	-0.4
Midlothian	563	201	764	2.3	0.8	1.5	-132	-44	-176	-0.5	-0.2	-0.4
Moray	647	283	930	2.3	1.2	1.8	-108	-70	-178	-0.4	-0.3	-0.3
Motherwell & Wishaw	1,148	329	1,477	4.3	1.2	2.8	-216	-63	-279	-0.8	-0.2	-0.5
Na h-Eileanan an Iar	305	87	392	3.6	1.2	2.5	-112	-19	-131	-1.3	-0.3	-0.9
North Ayrshire & Arran	1,489	541	2,030	5.3	2.0	3.6	-206	-26	-232	-0.7	-0.1	-0.4
North East Fife	444	179	623	1.8	0.8	1.3	-137	-27	-164	-0.6	-0.1	-0.3
Ochil & South Perthshire	687	243	930	2.3	0.9	1.6	-191	-83	-274	-0.7	-0.3	-0.5
Orkney & Shetland	167	72	239	1.2	0.6	0.9	-97	-39	-136	-0.7	-0.3	-0.5
Paisley & Renfrewshire North	741	206	947	2.7	0.8	1.7	-110	-47	-157	-0.4	-0.2	-0.3

LOCAL AREA DATA

Scotland

17(1) Claimant count¹ by UK Parliamentary Constituency

not seasonally adjusted

	CLAIMANT COUNT ON 13 DECEMBER 2007						Change on year					
	Levels			Percentage of Pop ²			Levels			Percentage ²		
	Men	Women	People	Men	Women	People	Men	Women	People	Men	Women	People
	Paisley & Renfrewshire South	1,089	317	1,406	4.1	1.2	2.7	-199	-32	-231	-0.7	-0.1
Perth & North Perthshire	619	191	810	2.2	0.7	1.5	-208	-78	-286	-0.7	-0.3	-0.5
Ross, Skye & Lochaber	443	198	641	2.2	1.1	1.7	-100	-75	-175	-0.5	-0.4	-0.5
Rutherglen & Hamilton West	1,031	311	1,342	3.5	1.0	2.2	-317	-99	-416	-1.1	-0.3	-0.7
Stirling	641	215	856	2.4	0.8	1.6	-152	-19	-171	-0.6	-0.1	-0.3
West Aberdeenshire & Kincardine	152	70	222	0.6	0.3	0.4	-37	-5	-42	-0.1	0.0	-0.1
West Dunbartonshire	1,501	431	1,932	5.2	1.5	3.4	-282	-140	-422	-1.0	-0.5	-0.7

Relationship between columns = 3=1+2; 9=7+8

Source: Jobcentre Plus administrative system

1. Count of claimants of Jobseeker's Allowance.

Labour Market Statistics Helpline 01633 456901

2. Percentages of resident working age population of area. The population denominators are based on output area data from the 2001 Census. NB. These percentages are different from the national and regional claimant count rates shown in Tables 1a, 7 and the summary of other headline indicators. See Concepts and Definitions.

LOCAL AREA DATA

17(2) Claimant count¹ by constituencies of the Scottish Parliament

Scotland

not seasonally adjusted

	CLAIMANT COUNT ON 13 DECEMBER 2007						Change on year					
	Levels			Percentage of Pop ²			Levels			Percentage ²		
	Men	Women	People	Men	Women	People	Men	Women	People	Men	Women	People
	2	3	4	5	6	7	8	9	10	11	12	
United Kingdom total	580,359	210,011	790,370	3.0	1.2	2.1	-101,360	-31,730	-133,090	-0.5	-0.2	-0.4
Regional total	52,434	16,731	69,165	3.2	1.1	2.2	-10,442	-3,211	-13,653	-0.6	-0.2	-0.4
Central Scotland	7,357	2,455	9,812				-1,872	-367	-2,239			
Airdrie & Shotts	871	309	1,180	3.5	1.3	2.4	-208	-42	-250	-0.8	-0.2	-0.5
Coatbridge & Chryston	693	214	907	3.2	1.0	2.1	-180	-38	-218	-0.8	-0.2	-0.5
Cumbernauld & Kilsyth	434	138	572	2.1	0.7	1.4	-164	-50	-214	-0.8	-0.2	-0.5
East Kilbride	515	157	672	1.9	0.6	1.3	-216	-60	-276	-0.8	-0.2	-0.5
Falkirk East	691	239	930	2.8	1.0	2.0	-180	-51	-231	-0.7	-0.2	-0.5
Falkirk West	729	231	960	3.3	1.1	2.2	-154	-50	-204	-0.7	-0.2	-0.5
Hamilton North & Bellshill	837	262	1,099	3.8	1.2	2.5	-193	-61	-254	-0.9	-0.3	-0.6
Hamilton South	646	197	843	3.4	1.0	2.2	-144	-23	-167	-0.8	-0.1	-0.4
Kilmarnock & Loudoun	1,101	466	1,567	4.4	1.9	3.2	-300	37	-263	-1.2	0.2	-0.5
Motherwell & Wishaw	840	242	1,082	4.1	1.2	2.7	-133	-29	-162	-0.6	-0.1	-0.4
Glasgow	10,836	2,966	13,802				-1,489	-525	-2,014			
Glasgow Anniesland	1,126	274	1,400	6.0	1.4	3.7	-107	-37	-144	-0.6	-0.2	-0.4
Glasgow Baillieston	1,043	312	1,355	5.5	1.6	3.5	-163	-21	-184	-0.9	-0.1	-0.5
Glasgow Cathcart	798	217	1,015	4.0	1.1	2.6	-135	-81	-216	-0.7	-0.4	-0.5
Glasgow Govan	1,174	315	1,489	5.7	1.6	3.7	-157	-91	-248	-0.8	-0.5	-0.6
Glasgow Kelvin	1,086	295	1,381	4.3	1.2	2.8	-98	-17	-115	-0.4	-0.1	-0.2
Glasgow Maryhill	1,435	433	1,868	7.2	2.1	4.6	-171	-30	-201	-0.9	-0.1	-0.5
Glasgow Pollok	1,069	261	1,330	5.9	1.4	3.6	-99	-62	-161	-0.5	-0.3	-0.4
Glasgow Rutherglen	649	183	832	3.3	0.9	2.1	-198	-84	-282	-1.0	-0.4	-0.7
Glasgow Shettleston	1,192	322	1,514	6.4	1.8	4.2	-143	-22	-165	-0.8	-0.1	-0.5
Glasgow Springburn	1,264	354	1,618	5.9	1.7	3.8	-218	-80	-298	-1.0	-0.4	-0.7
Highlands & Islands	3,396	1,275	4,671				-742	-336	-1,078			
Argyll & Bute	644	247	891	3.3	1.4	2.4	-94	-35	-129	-0.5	-0.2	-0.4
Caitness, Sutherland & Easter Ross	573	205	778	3.5	1.4	2.5	-104	-53	-157	-0.6	-0.4	-0.5
Inverness East, Nairn & Lochaber	517	177	694	1.9	0.7	1.3	-109	-83	-192	-0.4	-0.3	-0.4
Moray	589	264	853	2.3	1.2	1.8	-102	-60	-162	-0.4	-0.3	-0.3
Orkney & Shetland	167	72	239	1.2	0.6	0.9	-97	-39	-136	-0.7	-0.3	-0.5
Ross, Skye & Inverness West	601	223	824	2.6	1.1	1.9	-124	-47	-171	-0.5	-0.2	-0.4
Western Isles	305	87	392	3.6	1.2	2.5	-112	-19	-131	-1.3	-0.3	-0.9
Lothians	5,915	2,008	7,923				-1,554	-481	-2,035			
Edinburgh Central	743	230	973	2.5	0.8	1.7	-198	-70	-268	-0.7	-0.3	-0.5
Edinburgh East & Musselburgh	703	252	955	3.0	1.1	2.1	-145	-15	-160	-0.6	-0.1	-0.3
Edinburgh North & Leith	977	327	1,304	3.7	1.3	2.5	-329	-106	-435	-1.2	-0.4	-0.8
Edinburgh Pentlands	546	186	732	2.2	0.8	1.5	-107	-79	-186	-0.4	-0.3	-0.4
Edinburgh South	440	156	596	1.7	0.6	1.1	-159	-58	-217	-0.6	-0.2	-0.4
Edinburgh West	480	175	655	2.0	0.7	1.4	-192	-26	-218	-0.8	-0.1	-0.5
Linlithgow	802	298	1,100	3.5	1.4	2.5	-136	-20	-156	-0.6	-0.1	-0.3
Livingston	768	221	989	2.7	0.8	1.7	-159	-73	-232	-0.6	-0.3	-0.4
Midlothian	456	163	619	2.3	0.8	1.6	-129	-34	-163	-0.7	-0.2	-0.4
Mid Scotland & Fife	6,583	2,163	8,746				-1,346	-441	-1,787			
Central Fife	1,069	325	1,394	4.6	1.4	3.0	-215	-100	-315	-0.9	-0.4	-0.7
Dunfermline East	925	288	1,213	4.4	1.4	2.9	-143	-24	-167	-0.7	-0.1	-0.4
Dunfermline West	724	246	970	3.3	1.2	2.3	-173	-59	-232	-0.8	-0.3	-0.5
Kirkcaldy	1,234	376	1,610	6.3	2.0	4.2	-90	-34	-124	-0.5	-0.2	-0.3
North East Fife	387	155	542	1.6	0.7	1.2	-124	-25	-149	-0.5	-0.1	-0.3

LOCAL AREA DATA

17(2) Claimant count¹ by constituencies of the Scottish Parliament

Scotland

not seasonally adjusted

	CLAIMANT COUNT ON 13 DECEMBER 2007						Change on year					
	Levels			Percentage of Pop ²			Levels			Percentage ²		
	Men	Women	People	Men	Women	People	Men	Women	People	Men	Women	People
North Tayside	552	197	749	2.3	0.9	1.7	-131	-56	-187	-0.6	-0.3	-0.4
Ochil	719	248	967	3.0	1.1	2.1	-170	-53	-223	-0.7	-0.2	-0.5
Perth	466	162	628	1.9	0.7	1.3	-175	-62	-237	-0.7	-0.3	-0.5
Stirling	507	166	673	2.3	0.8	1.6	-125	-28	-153	-0.6	-0.1	-0.4
North East Scotland	5,156	1,659	6,815				-895	-177	-1,072			
Aberdeen Central	543	153	696	2.2	0.7	1.5	-153	-24	-177	-0.6	-0.1	-0.4
Aberdeen North	314	85	399	1.4	0.4	0.9	-46	-25	-71	-0.2	-0.1	-0.2
Aberdeen South	374	141	515	1.5	0.6	1.1	-43	23	-20	-0.2	0.1	0.0
Angus	613	230	843	2.5	1.0	1.8	-250	-68	-318	-1.0	-0.3	-0.7
Banff & Buchan	418	175	593	1.7	0.8	1.3	-85	-17	-102	-0.3	-0.1	-0.2
Dundee East	1,366	380	1,746	6.2	1.8	4.0	-110	-26	-136	-0.5	-0.1	-0.3
Dundee West	1,136	330	1,466	4.9	1.5	3.2	-111	2	-109	-0.5	0.0	-0.2
Gordon	235	94	329	0.9	0.4	0.7	-61	-35	-96	-0.2	-0.2	-0.2
West Aberdeenshire & Kincardine	157	71	228	0.6	0.3	0.4	-36	-7	-43	-0.1	0.0	-0.1
South of Scotland	6,287	2,199	8,486				-1,220	-368	-1,588			
Ayr	877	265	1,142	4.1	1.3	2.8	-165	-24	-189	-0.8	-0.1	-0.5
Carrick, Cumnock & Doon Valley	1,016	344	1,360	4.0	1.4	2.7	-307	-70	-377	-1.2	-0.3	-0.8
Clydesdale	730	234	964	2.8	0.9	1.9	-147	-86	-233	-0.6	-0.3	-0.5
Cunninghame South	1,137	441	1,578	5.6	2.1	3.8	-219	-41	-260	-1.1	-0.2	-0.6
Dumfries	788	295	1,083	3.2	1.3	2.2	-35	3	-32	-0.1	0.0	-0.1
East Lothian	397	116	513	1.8	0.5	1.2	-77	-56	-133	-0.3	-0.3	-0.3
Galloway & Upper Nithsdale	632	256	888	3.2	1.4	2.3	-122	-44	-166	-0.6	-0.2	-0.4
Roxburgh & Berwickshire	310	134	444	1.7	0.8	1.3	-134	-34	-168	-0.8	-0.2	-0.5
Tweeddale, Ettrick & Lauderdale	400	114	514	2.0	0.6	1.3	-14	-16	-30	-0.1	-0.1	-0.1
West of Scotland	6,904	2,006	8,910				-1,324	-516	-1,840			
Clydebank & Milngavie	817	233	1,050	4.0	1.1	2.6	-164	-35	-199	-0.8	-0.2	-0.5
Cunninghame North	1,041	371	1,412	4.9	1.8	3.4	-187	-52	-239	-0.9	-0.3	-0.6
Dumbarton	978	302	1,280	3.9	1.3	2.7	-167	-142	-309	-0.7	-0.6	-0.6
Eastwood	407	117	524	1.5	0.4	1.0	-135	-82	-217	-0.5	-0.3	-0.4
Greenock & Inverclyde	973	227	1,200	5.0	1.2	3.2	-167	-82	-249	-0.9	-0.4	-0.7
Paisley North	803	213	1,016	4.2	1.1	2.7	-107	-23	-130	-0.6	-0.1	-0.3
Paisley South	837	249	1,086	4.1	1.2	2.7	-154	-34	-188	-0.8	-0.2	-0.5
Strathkelvin & Bearsden	499	152	651	2.0	0.6	1.3	-106	-28	-134	-0.4	-0.1	-0.3
West Renfrewshire	549	142	691	2.5	0.7	1.6	-137	-38	-175	-0.6	-0.2	-0.4

Relationship between columns = 3=1+2; 9=7+8

Source: Jobcentre Plus administrative system

1. Count of claimants of Jobseeker's Allowance.

Labour Market Statistics Helpline 01633 456901

2. Percentages of resident working age population of area. The population denominators are based on output area data from the 2001 Census. NB. These percentages are different from the national and regional claimant count rates shown in Tables 1a, 7 and the summary of other headline indicators. See Concepts and Definition: