



15 April 2005

AMENDMENT

Labour market statistics April 2005 – North West

Errors occurred in some tables of this First Release originally published on 13 April. ONS apologises for this error.

A corrected version of the release is attached.

Issued by
National Statistics
1 Drummond Gate
London SW1V 2QQ

Telephone
Press office 020 7533 5714
Public enquiries 0845 601 3034

13 April 2005

Coverage
North West
Theme
Labour Market

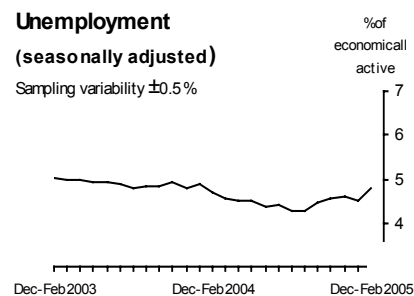
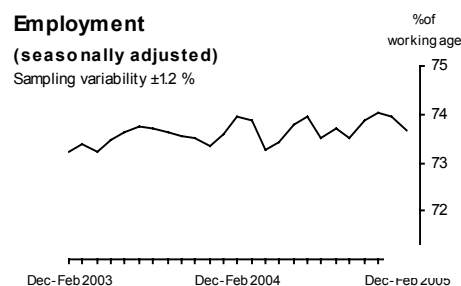
Labour market statistics April 2005: North West

All data are not seasonally adjusted unless otherwise specified

Labour Force Survey data for the North West indicate that the trend in the employment rate may be increasing, but the rate in the latest period is not significantly different from a year ago. The trend in the unemployment rate may be increasing slightly after recently falling, but the latest rate is not significantly different from a year ago.

Data for the three months to February 2005 show the seasonally adjusted employment rate at 73.6 per cent, down 0.3 percentage points on a year earlier. The seasonally adjusted unemployment rate was 4.8 per cent, up 0.1 percentage point on a year earlier.

The seasonally adjusted claimant count was down in the year to March 2005.



Data in this table are seasonally adjusted unless otherwise stated

		Level (thousands)	Rate (%)	Change on year (level)	Sampling variability (thousands)	Change on year (rate)	Sampling variability (%)
Employment*	Dec-Feb	3,191	73.6	23	± 78	-0.3	± 1.5
Unemployment**	Dec-Feb	160	4.8	3	± 23	0.1	± 0.7
Economically active*	Dec-Feb	3,351	77.4	26	± 77	-0.3	± 1.4
Economically inactive+	Dec-Feb	945	22.6	19	± 75	0.3	± 1.4
of which:							
Not wanting a job+	Dec-Feb	725		0	± 69		
Wanting a job+	Dec-Feb	220		19	± 39		
Civilian workforce jobs (not seasonally adjusted)	Dec 2004	3,434		79	..		
Claimant count	Mar 2005	95.3	2.7 ⁺⁺	-7.1		-0.2	

See note on page 8 on sampling variability.

* Levels are for those aged 16 and over, rates are for those of working age (16-59/64).

** Levels and rates are for those aged 16 and over. Rate is as a proportion of economically active.

+ Levels and rates are for those of working age.

++ Denominator = claimant count + workforce jobs. For regional claimant count proportions, using resident working age populations see Tables 17 and 18. See background note 5.

.. Not available.

From May 2001: vacancy series deferred (see note on page 7).

New this month:

December to February 2005 data: latest three-month average LFS results;

March 2005 data: claimant count.

Issued by
National Statistics
1 Drummond Gate
London SW1V 2QQ

Telephone
Press Office 020 7533 5714
Helpline 020 7533 6094
Public enquiries 0845 601 3034

Statisticians:

Regional and local data (Nick Maine)
020 7533 6130

Regional and national Labour Force Survey (Peter Alstrup)
020 7533 6110

Claimant count and vacancies (Andrew Machin)
020 7533 6162

Employee jobs (Jennifer Smith)
01633 812318

Internet
www.statistics.gov.uk

Email
labour.market@ons.gov.uk

Employment Information Unit
Martin Duggan
Jobcentre Plus
Ontario House
2 Furness Quay
Salford
Manchester
M5 2XZ

Telephone
0161 873 1338

Next publication date
18 May 2005

All data are not seasonally adjusted unless otherwise specified



Employment (tables 1 to 6)

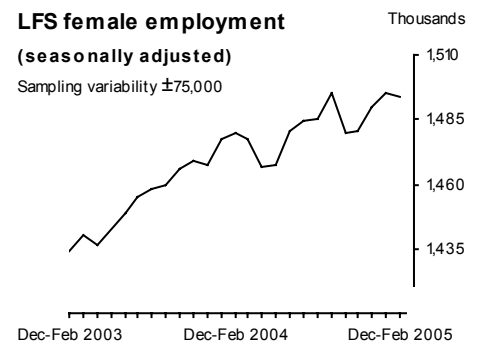
The seasonally adjusted LFS estimate of employment in the North West was 73.6 per cent in the December to February 2005 period, down 0.3 percentage points on the same period a year earlier. The employment level was 3.19 million in the December to February 2005 period, up 23,000 on the same period a year earlier.



LFS estimates indicate an increase in the number of employees and the number of self employed over the past year.

LFS estimates suggest an increase in the number of full-time workers and a decrease in the number of part-time workers over the past year.

Seasonally adjusted employee jobs figures were up 21,000 in the quarter to December 2004.

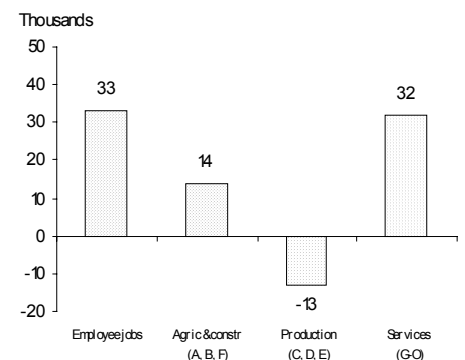


Not seasonally adjusted employee jobs were up 33,000 in the year to December 2004. This was mainly due to rises in the service, construction and 'other' industries, partly offset by a fall in manufacturing industries.

Unemployment (table 1)

The seasonally adjusted unemployment rate in the North West was 4.8 per cent in the December to February 2005 period, up 0.1 percentage point on the same period a year earlier. The rates for men and women in December to February 2005 were 5.1 per cent and 4.4 per cent respectively.

Employee jobs by industry
Change on year from December 2003



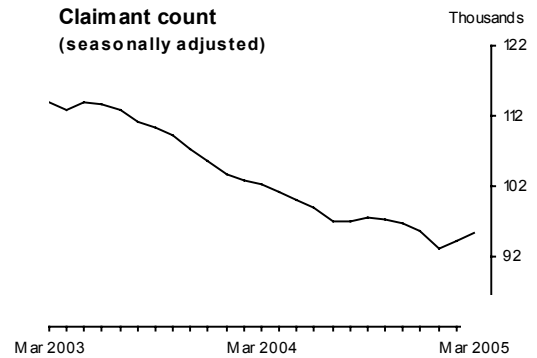
SIC92 groups shown in brackets

All data are not seasonally adjusted unless otherwise specified



Claimant count (tables 7 and 8)

The seasonally adjusted claimant count rate in March 2005 was 2.7 per cent, unchanged from February 2005, and down 0.2 percentage points since March 2004. The seasonally adjusted number of claimants in March 2005 was 95,300, up 1,200 on February 2005, and down 7,100 since March 2004. The not seasonally adjusted number of claimants was 102,500 in March 2005.



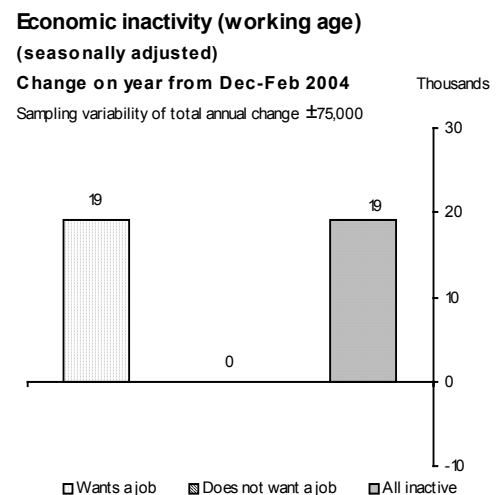
The not seasonally adjusted number of computerised claims of people aged 18 to 24 was 33,100 in March 2005, down 600 over the year. The number of computerised claims has fallen over the year for all age and duration groups.

Economically active (tables 1 and 9)

The seasonally adjusted LFS estimate of economically active people in the North West was 3.35 million in the December to February 2005 period.

Economically inactive (tables 1, 10 and 11)

The seasonally adjusted LFS estimate of economically inactive people in the North West in the December to February 2005 period was 2.06 million, with 945,000 of these of working age. Over the year the number of economically inactive people of working age was up 19,000.



Vacancies (table 12)

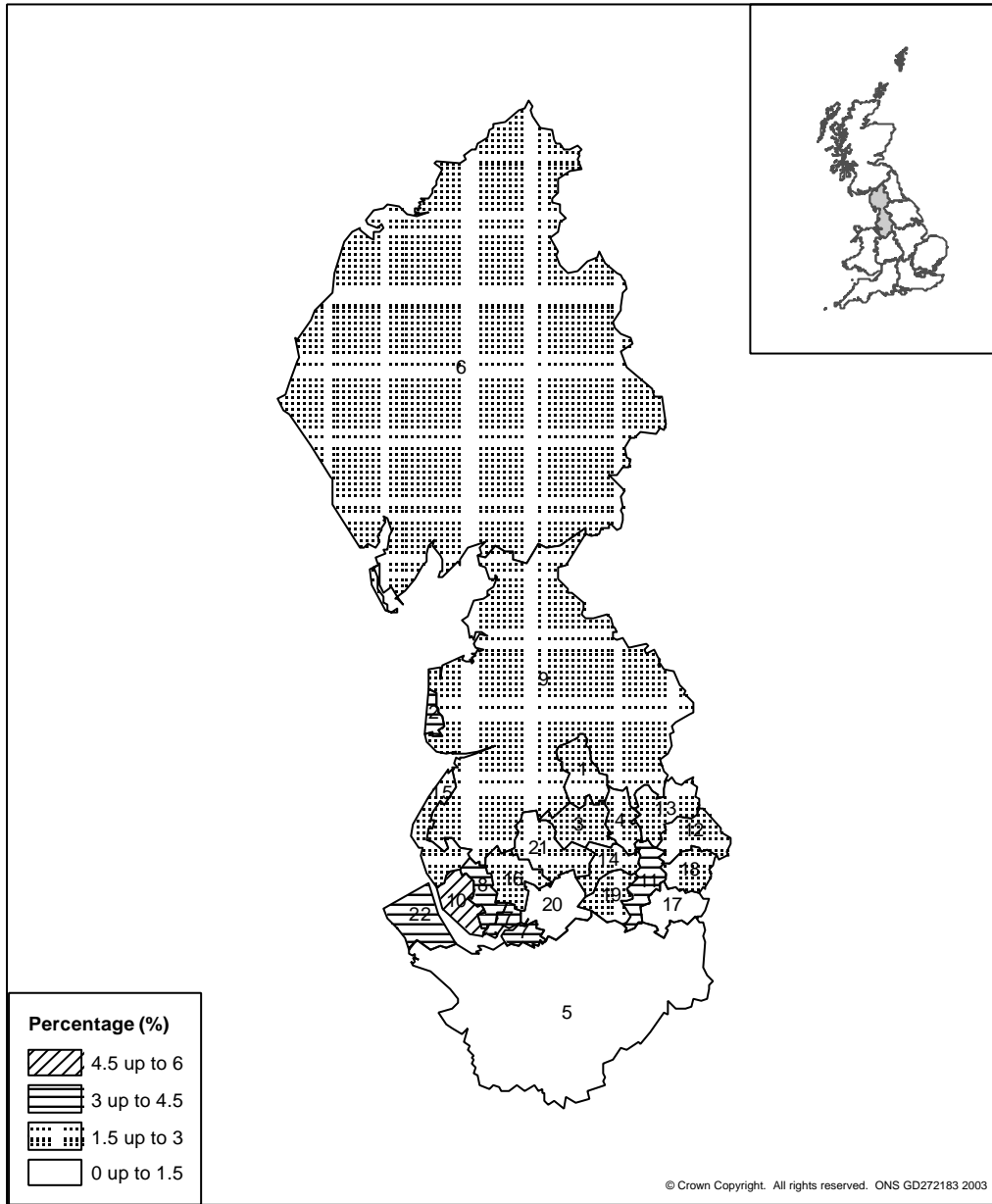
Publication of the seasonally adjusted Jobcentre vacancy series has been deferred. Figures from May 2001 are affected by the introduction of Employer Direct – see note on page 7.

Local area data (table 17)

The claimant count as a proportion of the resident working age population was lowest in both Eden and Ribble Valley, at 0.7 per cent. It was highest in Liverpool, at 5.3 per cent.

Claimant count as a proportion of the resident working age population, by County/UA

March 2005 - North West



1	Blackburn with Darwen UA	2.7%	12	Oldham	2.5%
2	Blackpool UA	3.3%	13	Rochdale	2.7%
3	Bolton	2.5%	14	Salford	2.6%
4	Bury	1.7%	15	Sefton	2.7%
5	Cheshire	1.3%	16	St. Helens	2.6%
6	Cumbria	1.9%	17	Stockport	1.4%
7	Halton UA	3.0%	18	Tameside	2.2%
8	Knowsley	4.0%	19	Trafford	1.7%
9	Lancashire	1.8%	20	Warrington UA	1.3%
10	Liverpool	5.3%	21	Wigan	2.3%
11	Manchester	3.7%	22	Wirral	3.2%

All data are not seasonally adjusted unless otherwise specified



REVISIONS

General

One indication of the reliability of the key indicators in this release can be obtained by monitoring the size of revisions. The tables below record the size and pattern of revisions which have occurred over the last five years. Please note that these indicators only report summary measures for revisions. The revised data may itself be subject to sampling or other sources of error. The ONS standard presentation is to show five years worth of revisions (ie 60 observations for a monthly series, 20 for a quarterly series). The first table covers Employment and Unemployment data first published from April 1999 to March 2004 and Claimant Count data first published from October 1999 to March 2004. The second table covers workforce jobs data first published from January 2000 to January 2002. As more data are published a full five years worth of comparisons will be included for all series. A spreadsheet giving these estimates and the calculations behind the averages in the table is available on the National Statistics website at

<http://www.statistics.gov.uk/StatBase/Product.asp?vlnk=1944>

Key Indicator	Value in latest period	Number of observations (maximum 60)	Revisions between first publication and estimates one year later	
			Average over the last five years (mean revision)	Average over the last five years without regard to sign (average absolute revision)
Employment rate (%)	73.5	60	-0.08	0.22
Unemployment rate (%)	4.8	60	0.03	0.10
Claimant count (000s)	95.3	53	0.08	0.39

Key Indicator	Value in latest period	Number of observations (maximum 20)	Revisions between first publication and estimates three years later	
			Average over the last five years (mean revision)	Average over the last five years without regard to sign (average absolute revision)
Workforce jobs (000s)	3,434	9	108.89	108.89

A statistical test has been applied to the average revision to find out if the mean revision is significant. An asterisk (*) indicates where the mean revision has been found to be statistically significant.

Labour Market statistics are revised in line with our Revisions Policy which is published on the National Statistics website (http://www.statistics.gov.uk/about/Methodology_by_theme/downloads/LM_revisionspolicy.pdf). More information about the revisions material in this release can also be found on the website (<http://www.statistics.gov.uk/cci/article.asp?ID=793>).

All data are not seasonally adjusted unless otherwise specified

Claimant Count : 2005 seasonal adjustment review

All the seasonally adjusted claimant count series have been revised back three years (to January 2002) following the latest annual review. The revisions are small. The non seasonally adjusted figures are unaffected. An article describing the review and the revisions can be found on the website (see <http://www.statistics.gov.uk/cci/article.asp?id=1115>).

Claimant count rates

The workplace-based denominators used to calculate regional and national claimant count rates have been routinely up-dated (with rates for January 2004 to March 2005 now being based on mid-2004 denominators) and revised back to 1996. The revisions have only a very small impact on the rates at UK level. The residence-based denominators used for calculating the claimant count figures as proportions of the resident working age population for sub-regional areas, are unaffected and will be revised later in the year.

THIS MONTH

Tables 13 to 16: Local labour market indicators

These tables have been updated to show data for 2003.

SPECIAL

Revisions to population estimates

On 9 September 2004, ONS published the mid-year population estimate (MYE) for 2003, along with revised mid-year estimates for 2001 & 2002. These estimates take into account the results of population studies announced by ONS in July 2004. The population studies were designed to improve population estimates in areas that had proved hardest to count in the 2001 census, leading to revisions in 15 local authority areas. GAD published revised projections for 2004 and later years, based on the revised population estimates, on 30 September 2004. Revised population estimates for 1992-2000 were published by ONS on 7 October 2004. Further information is available on the website.

Future LFS revisions

Future revised population estimates, when accompanied by consistent historical series, will be incorporated as swiftly as possible into revised LFS series using the interim LFS adjustment procedure.

By 2005, it is planned that modernised LFS processing systems will be ready which will enable the new MYE for 2004 to be

All data are not seasonally adjusted unless otherwise specified

incorporated into revised LFS microdata much more swiftly than is now possible. The revised LFS time series, taking account of the 2004 MYE, to be released in September 2005 should therefore be produced entirely consistently with the LFS microdata, without the need for any interim adjustment procedure.

Tables 13 to 16: Local labour market indicators

Tables 13 to 16 present a framework of labour market statistics for local areas. Data are presented as indicators of labour supply, labour demand and benefits. This structure adheres to the labour accounting system described in the Framework Review of Labour Market Statistics published on 5 August 2002 (see http://www.statistics.gov.uk/methods_quality/quality_review/downloads/LMSFR_Final.doc).

These tables include data from the annual local area Labour Force Survey. These data are weighted to population estimates which were released in February 2003, not the latest revised population estimates. Interim reweighting of monthly LFS estimates at national and regional level has been applied in order to take account of the revised population data. For the annual local area LFS data such an interim reweighting is not possible. (see background note 2).

Jobcentre vacancy data

Publication of the Jobcentre vacancy series has been deferred due to distortions to the data as a result of the introduction of Employer Direct by Jobcentre Plus.

A limited range of statistics on Jobcentre Plus vacancies, relating to the inflows of newly-notified vacancies, is now being made available on Nomis[®], though not at this stage as National Statistics. (For further details see the news and research item on page 455 of the September 2002 issue of *Labour Market Trends*.)

The introduction of Employer Direct, a major change which involved transferring the vacancy-taking process from local Jobcentres to regional Customer Service Centres, has substantially affected the vacancy data since May 2001.

In addition, the numbers of notified vacancies appear to be substantially affected by a drive (from April 2003) by Jobcentre Plus to market their services and increase notifications from many employers in chosen sectors. Recent changes in these figures would therefore not necessarily signify developments in the labour market.

ONS and the Department for Work and Pensions are continuing to monitor and review the data with a view to restoring series when it is appropriate to do so.

All data are not seasonally adjusted unless otherwise specified

Sampling variability and trends

More information on the statistics in this release can be found in the *Guide to Labour Market Statistics Releases*, available from the labour market helpline 020 7533 6094. Information is also available on the National Statistics website at <http://www.statistics.gov.uk/onlineproducts/default.asp>.

Some data in this release are based on statistical samples and, as such, are subject to sampling variability. If many samples were drawn, each would give a different result. The ranges shown for the LFS data in this release and in the following table represent '95 per cent confidence intervals'. It is expected that in 95 per cent of samples the range would contain the true value. For more information, see the *Guide to Labour Market Statistics Releases*.

December to February 2005

Thousands

	Levels			Quarterly changes			Annual changes		
	Lower limit	LFS estimate	Upper limit	Lower limit	LFS estimate	Upper limit	Lower limit	LFS estimate	Upper limit
Employment	3,131	3,191	3,251	-68	8	84	-55	23	101
Employment rate	72.5%	73.6%	74.8%	-1.7%	-0.2%	1.3%	-1.8%	-0.3%	1.2%
Unemployment	143	160	177	-14	9	32	-20	3	27
Unemployment rate	4.3%	4.8%	5.3%	-0.5%	0.2%	0.9%	-0.6%	0.1%	0.8%
Economically active	3,292	3,351	3,410	-59	17	93	-50	26	103
Economic activity rate	76.3%	77.4%	78.5%	-1.4%	0.0%	1.4%	-1.7%	-0.3%	1.1%
Economically inactive	886	945	1,003	-73	2	76	-57	19	94

Sampling variability of regional Labour Force Survey figures

December to February 2005

	Employment	Unemployment	Economically Active	Working age Economically Inactive	Employment Rate (%)	Unemployment Rate (%)
	Level (000s)	Level (000s)	Level (000s)	Level (000s)		
North East	± 34	± 10	± 34	± 35	± 1.8	± 0.9
North West	± 60	± 17	± 59	± 58	± 1.2	± 0.5
Yorks & Humber	± 48	± 13	± 47	± 46	± 1.2	± 0.6
East Midlands	± 39	± 12	± 39	± 45	± 1.4	± 0.7
West Midlands	± 50	± 15	± 50	± 49	± 1.2	± 0.5
East	± 49	± 16	± 49	± 46	± 1.1	± 0.5
London	± 65	± 24	± 62	± 63	± 1.2	± 0.7
South East	± 60	± 17	± 59	± 55	± 0.9	± 0.4
South West	± 49	± 13	± 49	± 46	± 1.2	± 0.5
Wales	± 39	± 11	± 38	± 39	± 1.8	± 0.8
Scotland	± 49	± 16	± 47	± 46	± 1.2	± 0.6

All data are not seasonally adjusted unless otherwise specified

BACKGROUND NOTES

1. The LFS sample population covers those living in private households, student halls of residence and NHS accommodation.
2. Annual local area data from the LFS are included in Tables 13 to 16. All LFS micro-data have been reweighted to be consistent with post census population estimates, which were published in February 2003. However, during this reweighting exercise, revised population estimates were released, in September 2003. The quarterly, regional LFS data in this release have been interim reweighted to the latest (September 2003) population estimates, but for local area data such an interim reweighting is not possible. The LFS data in Tables 13 to 16 are therefore not consistent with the quarterly LFS data published elsewhere in the release. The next reweighting of LFS micro-data will be in 2005, after which all LFS outputs will be consistent with the latest population estimates (see note on future LFS revisions on page 6).

The annual LFS database is compiled by taking data from waves one and five of four quarters of the LFS and combining them with an additional sample of interviews. This sample boost was introduced in 2000 and has improved the accuracy of the annual estimates for some local areas in England and all local areas in Wales (a boost was also introduced in Scotland for the 2003/04 survey, and the results of this survey were published on 24 November 2004). There are now different publication thresholds for annual LFS data, depending on the size of the sample boost in the area. The thresholds are six thousand, four thousand, two thousand and as low as one thousand for some areas in Wales. For further information see Volume 6 of the *LFS User Guide*. This guide, along with additional data and further background information, are available on the National Statistics website at <http://www.statistics.gov.uk/lfs>. A wide range of annual local area data from the LFS is available free from the Nomis[®] website at <http://www.nomisweb.co.uk>.

3. Not seasonally adjusted claimant count data are gathered from an administrative source and constitute a complete count. However, seasonally adjusted totals are presented as rounded to the nearest hundred to avoid spurious precision.
4. Claimant count flows are the number of people joining or leaving the count in the period between the count dates. They are therefore affected by the number of weeks between count dates. To enable comparisons from month to month, the flows figures are standardised to a 4.33-week month before seasonal adjustment.

All data are not seasonally adjusted unless otherwise specified

5. The number of Jobseeker's Allowance (JSA) claimants can be expressed as a proportion of either (a) the corresponding mid-year estimate (or the latest available mid-year estimate) of the workforce jobs in the area plus the number of claimants, or (b) the resident working age population. The number of workforce jobs is mainly collected through postal employer surveys and comprises employee jobs, self-employment jobs, HM armed forces and government-supported trainees and is used to calculate rates for regions and the countries of the UK. For smaller areas, proportions based on the resident working age populations are used.
6. The count of JSA claimants is mostly derived from the Jobcentre Plus computer records. However for various reasons, e.g. when a claimant's National Insurance number is not known, a few claims have to be dealt with manually by local offices. These claims, which amount to less than 1 per cent of the total, are thus counted separately and not analysed in as much detail as the computerised claims. In particular, only the computerised claims are analysed by age and duration on a monthly basis.
7. Travel-to-Work areas (Table 15) are approximations to self-contained labour markets, i.e. areas where people both live and work.
8. NUTS (Nomenclature des Unités Territoriales Statistiques) (Table 16) was established by the Statistical Office of the European Union (Eurostat) to provide a uniform breakdown of territorial units for the production of regional statistics. NUTS is a five-level hierarchical classification.
9. The employee jobs series is based on data from employer surveys and is subject to sampling variability. The nature of the survey means that the size of this sampling variability may not be consistent from year to year. Provisionally ONS would expect that the 95 per cent confidence interval would on average be within +/- 6 per cent of the estimate. However, this will vary from region to region.
10. Labour market statistics are compiled from a wide range of sources. Claimant count and Jobcentre vacancy data are provided from the Jobcentre Plus administrative system, workforce jobs are derived from ONS business surveys, other data come from the ONS Labour Force Survey.
11. The Social and Vital Statistics Division of ONS carries out the questionnaire design, sample selection and interviewing for the LFS. Analysis and publication of the results of the survey is undertaken by Labour Market Division. In Northern Ireland, the Labour Force Survey is conducted by the Central Survey Unit.

All data are not seasonally adjusted unless otherwise specified



12. In addition to the data in this release, ONS can provide a wide range of detailed labour market data in a number of formats. In particular, data are available from Nomis[®] at the same time as this release is published. Further data are also published in *Labour Market Trends (LMT)* and the *Labour Force Survey Quarterly Supplement to LMT*.
13. Datasets of selected series can also be viewed by choosing topics within the Labour Market theme on our website (<http://www.statistics.gov.uk/labour>).
14. Details of the policy governing the release of new data are available from the press office. Also available is a list of the names of those given pre-publication access to the contents of this release.
15. **National Statistics** are produced to high professional standards set out in the National Statistics Code of Practice. They undergo regular quality assurance reviews to ensure that they meet customer needs. They are produced free from any political interference. © Crown Copyright 2005.

INDEX OF TABLES

All data are not seasonally adjusted unless otherwise specified

NATIONAL LABOUR MARKET SUMMARY, BY REGION

Summary of Labour Force Survey (LFS) data (seasonally adjusted)

Summary of other headline indicators

REGIONAL DATA

Summary of LFS data for the current quarter (seasonally adjusted)	1
Summary of other headline indicators (seasonally adjusted)	1a

EMPLOYMENT

Employment by age	2
Full-time, part-time and temporary workers	3
Civilian workforce jobs	4
Employee jobs by industry	5
Actual and usual weekly hours of work	6

CLAIMANT COUNT

Claimant count levels and rates (seasonally adjusted)	7
Claimant count by age and duration - computerised claims only	8

ECONOMIC ACTIVITY AND INACTIVITY

Economic activity by age	9
Economic inactivity by age	10
Economic inactivity: reasons	11

VACANCIES

Jobcentre vacancies summary (seasonally adjusted)	12
---	----

LOCAL AREA DATA

2003 local labour market indicators by Unitary and Local Authority.....	13
2003 local labour market indicators by Parliamentary Constituency.....	14
2003 local labour market indicators by Travel-to-Work Area.....	15
2003 local labour market indicators by NUTS 3 area.....	16
Claimant count by Unitary and Local Authority.....	17
Claimant count by Parliamentary Constituency.....	18

The following symbols are used in the tables:

..	not available	-	nil or negligible
p	provisional	r	revised
*	grossed up total less than 9,500		

Totals may differ from the sum of components because of rounding or separate adjustment of components.

NATIONAL LABOUR MARKET SUMMARY, BY REGION

Summary of Labour Force Survey data

Thousands, seasonally adjusted

	Labour Force Survey [#] (December 2004 to February 2005)																	
	Total aged 16 & over		Economically active				Employment					Unemployment						
	Total		Men		Women		Total		Men		Women		Total		Men		Women	
	Level	Level	Rate (%)*	Level	Level	Level	Rate (%)*	Level	Rate (%)*	Level	Rate (%)*	Level	Rate (%)**	Level	Rate (%)**	Level	Rate (%)**	
1	2	3	4	5	6	7	8	9	10	11	12	13	14	15	16	17		
North East	2,031	1,190	74.8	636	554	1,126	70.8	596	73.6	529	67.9	64	5.4	39	6.2	25	4.4	
North West	5,411	3,351	77.4	1,788	1,563	3,191	73.6	1,697	77.2	1,494	69.9	160	4.8	91	5.1	69	4.4	
Yorkshire & the Humber	3,991	2,481	78.5	1,332	1,149	2,380	75.2	1,274	79.1	1,106	71.1	101	4.1	58	4.4	43	3.7	
East Midlands	3,410	2,180	80.2	1,192	988	2,082	76.5	1,135	81.2	947	71.3	98	4.5	57	4.8	41	4.1	
West Midlands	4,208	2,639	78.8	1,445	1,194	2,514	75.0	1,370	79.6	1,143	70.0	125	4.7	75	5.2	51	4.2	
East	4,357	2,850	82.1	1,559	1,291	2,734	78.7	1,494	83.8	1,241	73.3	116	4.1	65	4.2	51	3.9	
London	5,907	3,814	75.3	2,109	1,705	3,544	69.9	1,957	75.8	1,588	63.6	270	7.1	153	7.2	117	6.9	
South East	6,425	4,235	82.1	2,300	1,935	4,069	78.8	2,207	83.9	1,862	73.4	166	3.9	93	4.0	73	3.8	
South West	4,031	2,552	81.8	1,378	1,174	2,463	78.9	1,325	83.0	1,138	74.3	89	3.5	53	3.9	36	3.1	
England	39,771	25,292	79.1	13,739	11,553	24,103	75.3	13,056	79.9	11,047	70.4	1,189	4.7	683	5.0	506	4.4	
Wales	2,359	1,399	75.8	742	657	1,339	72.4	704	75.0	634	69.7	60	4.3	37	5.0	23	3.5	
Scotland	4,075	2,593	79.9	1,371	1,222	2,449	75.3	1,285	78.4	1,164	72.1	144	5.6	86	6.3	58	4.8	
Great Britain	46,205	29,284	79.0	15,852	13,433	27,891	75.2	15,045	79.5	12,846	70.5	1,394	4.8	807	5.1	587	4.4	
N Ireland	1,309	777	72.1	428	349	740	68.5	403	73.4	337	63.4	37	4.8	26	6.0	12	3.3	
United Kingdom	47,514	30,068	78.8	16,284	13,785	28,639	75.0	15,452	79.4	13,187	70.3	1,430	4.8	832	5.1	598	4.3	

Change on quarter: +

	Labour Force Survey [#] (December 2004 to February 2005)																	
	Total aged 16 & over		Economically active				Employment					Unemployment						
	Total		Men		Women		Total		Men		Women		Total		Men		Women	
	Level	Level	Rate (%)*	Level	Level	Level	Rate (%)*	Level	Rate (%)*	Level	Rate (%)*	Level	Rate (%)**	Level	Rate (%)**	Level	Rate (%)**	
1	2	3	4	5	6	7	8	9	10	11	12	13	14	15	16	17		
North East	1	9	0.4	5	4	19	1.1	10	1.2	9	1.0	-11	-0.9	-6	-1.0	-5	-0.9	
North West	9	17	0.0	-5	22	8	-0.2	-5	-0.6	13	0.2	9	0.2	0	0.0	9	0.5	
Yorkshire & the Humber	7	9	0.5	-6	15	24	0.9	3	0.4	21	1.5	-15	-0.6	-9	-0.7	-6	-0.6	
East Midlands	8	29	0.7	21	8	22	0.4	16	1.1	6	-0.3	7	0.3	5	0.3	3	0.2	
West Midlands	5	3	-0.3	6	-3	6	-0.2	9	0.2	-3	-0.5	-3	-0.1	-3	-0.2	0	0.0	
East	8	7	0.0	8	-1	-5	-0.4	0	-0.2	-5	-0.5	12	0.4	8	0.5	4	0.3	
London	6	48	0.7	13	36	41	0.6	10	0.2	31	1.0	7	0.1	3	0.1	5	0.1	
South East	9	11	0.0	-1	13	-2	-0.3	-6	-0.4	4	-0.2	13	0.3	5	0.2	9	0.4	
South West	9	32	0.8	8	23	22	0.5	4	0.1	18	0.8	9	0.3	4	0.3	6	0.4	
England	63	165	0.3	48	117	135	0.2	42	0.1	93	0.3	30	0.1	6	0.0	24	0.2	
Wales	5	3	-0.1	-3	6	4	-0.1	-4	-0.9	8	0.8	-1	-0.1	1	0.1	-2	-0.3	
Scotland	3	6	0.2	5	1	3	0.1	6	0.4	-3	-0.2	2	0.1	-2	-0.1	4	0.3	
Great Britain	70	174	0.2	50	124	142	0.2	44	0.1	98	0.3	31	0.1	6	0.0	26	0.2	
N Ireland	3	3	0.0	-3	6	5	0.2	1	0.0	5	0.4	-2	-0.3	-4	-0.8	1	0.3	
United Kingdom	73	177	0.2	46	131	148	0.2	45	0.1	103	0.3	29	0.1	1	0.0	28	0.2	

Change on year:

	Labour Force Survey [#] (December 2004 to February 2005)																	
	Total aged 16 & over		Economically active				Employment					Unemployment						
	Total		Men		Women		Total		Men		Women		Total		Men		Women	
	Level	Level	Rate (%)*	Level	Level	Level	Rate (%)*	Level	Rate (%)*	Level	Rate (%)*	Level	Rate (%)**	Level	Rate (%)**	Level	Rate (%)**	
1	2	3	4	5	6	7	8	9	10	11	12	13	14	15	16	17		
North East	7	11	0.7	2	9	16	1.0	5	0.4	10	1.7	-4	-0.4	-3	-0.5	-1	-0.3	
North West	37	26	-0.3	8	18	23	-0.3	9	-0.5	14	-0.1	3	0.1	-1	-0.1	4	0.2	
Yorkshire & the Humber	29	12	0.2	6	6	38	1.0	25	1.3	13	0.7	-26	-1.1	-19	-1.4	-7	-0.7	
East Midlands	31	22	0.1	16	6	22	0.1	16	0.6	6	-0.4	0	-0.1	-1	-0.1	0	0.0	
West Midlands	19	30	0.2	13	16	44	0.7	21	0.7	24	0.6	-15	-0.6	-7	-0.6	-7	-0.7	
East	30	14	-0.2	6	7	-8	-0.8	-5	-1.1	-3	-0.5	22	0.7	12	0.7	10	0.8	
London	23	20	-0.3	-5	25	10	-0.4	-5	-1.0	14	0.2	10	0.2	-1	0.0	11	0.5	
South East	37	27	0.0	8	19	25	0.0	6	-0.4	19	0.4	2	0.0	3	0.1	-1	-0.1	
South West	37	13	-0.3	14	-1	2	-0.7	5	-0.1	-4	-1.4	11	0.4	8	0.6	3	0.2	
England	249	175	0.0	69	106	171	0.0	77	-0.1	94	0.1	4	0.0	-8	-0.1	12	0.1	
Wales	20	10	0.0	-1	11	14	0.2	0	-0.7	14	1.2	-4	-0.3	-1	-0.2	-2	-0.4	
Scotland	15	38	1.1	19	19	36	1.0	21	1.1	14	0.9	2	0.0	-2	-0.3	4	0.3	
Great Britain	284	223	0.1	87	136	221	0.1	99	-0.1	123	0.2	2	0.0	-12	-0.1	13	0.1	
N Ireland	11	5	0.0	-4	10	8	0.4	0	-0.6	9	1.3	-3	-0.4	-4	-0.9	1	0.2	
United Kingdom	295	229	0.1	82	147	231	0.1	100	-0.1	132	0.2	-2	0.0	-17	-0.1	15	0.1	

Relationship between columns: 2= 4+5 = 6+12; 6= 8+10; 12= 14+16.

* Denominator = all persons of working age.

** Denominator = Total economically active.

Labour Force Survey is tabulated by region of residence.

Data source: Labour Force Survey

Labour Market Statistics Helpline 020 7533 6094

+ Quarter to quarter changes at regional level are particularly subject to sampling variability and should be interpreted in the context of changes over several quarters rather than in isolation.

The Labour Force Survey is a survey of the population in private households, student halls of residence and NHS accommodation.

Due to slight methodological differences between the way the national and regional LFS estimates have been interim adjusted for the 2001 Census, there may be small differences between the UK totals and the sum of the regional components.

NATIONAL LABOUR MARKET SUMMARY, BY REGION

Summary of other headline indicators

Thousands

	Employer surveys **			Jobcentre Plus administrative system **						Jobcentre Plus administrative system		
	(December 2004); not seasonally adjusted			(March 2005); seasonally adjusted						Jobcentre vacancies (March 2005); seasonally adjusted		
	Total	Men	Women	Total	Men		Women		Notified vacancies	Unfilled vacancies	Outflow of vacancies	
	Level	Level	Level	Level	Rate (%) ⁺	Level	Rate (%) ⁺	Level				Rate (%) ⁺
1	2	3	4	5	6	7	8	9	10	11	12	
North East	1,109	587	522	45.0	3.9	34.8	5.6	10.2	1.9			
North West	3,434	1,831	1,603	95.3	2.7	72.6	3.9	22.7	1.4			
Yorkshire & the Humber	2,465	1,337	1,128	72.0	2.8	54.1	3.8	17.9	1.6			
East Midlands	2,031	1,081	951	51.4	2.5	37.3	3.3	14.1	1.5			
West Midlands	2,671	1,452	1,219	84.9	3.1	63.8	4.3	21.1	1.7			
East	2,770	1,485	1,285	55.9	2.0	40.7	2.7	15.2	1.2			
London	4,489	2,477	2,012	161.1	3.4	114.9	4.4	46.2	2.2			
South East	4,277	2,284	1,994	68.6	1.6	50.4	2.1	18.2	0.9			
South West	2,570	1,353	1,217	40.6	1.5	29.5	2.1	11.1	0.9			
England	25,818	13,888	11,931	674.8	2.6	498.1	3.5	176.7	1.5			
Wales	1,284	676	608	38.9	2.9	29.5	4.2	9.4	1.5			
Scotland	2,544	1,334	1,210	85.9	3.3	65.3	4.7	20.6	1.7			
Great Britain	29,646	15,898	13,749	799.6	2.6	592.9	3.6	206.7	1.5			
N Ireland	812	431	380	29.1	3.4	22.1	4.8	7.0	1.8			
United Kingdom	30,458	16,329	14,129	828.7	2.7	615.0	3.6	213.7	1.5			

Publication of the jobcentre vacancy statistics has been deferred. Figures from May 2001 are affected by the introduction of Employer Direct - see note on page 7.

Changes on period (period specified below):

	Employer surveys			Jobcentre Plus administrative system						Jobcentre Plus administrative system		
	Civilian workforce jobs (Change on December 2003); not seasonally adjusted			Claimant count* (Change on February 2005); seasonally adjusted						Jobcentre vacancies (Change on February 2005); seasonally adjusted		
	Total	Men	Women	Total	Men		Women		Notified vacancies	Unfilled vacancies	Outflow of vacancies	
	Level	Level	Level	Level	Rate (%) ⁺	Level	Rate (%) ⁺	Level				Rate (%) ⁺
1	2	3	4	5	6	7	8	9	10	11	12	
North East	-7	-4	-3	0.9	0.1	0.8	0.1	0.1	0.0			
North West	79	46	33	1.2	0.0	1.1	0.1	0.1	0.0			
Yorkshire & the Humber	19	21	-2	2.0	0.1	1.4	0.1	0.6	0.1			
East Midlands	0	-12	13	1.3	0.1	1.0	0.1	0.3	0.0			
West Midlands	47	23	24	1.0	0.0	1.0	0.1	0.0	0.0			
East	-3	-12	9	1.0	0.0	0.8	0.1	0.2	0.0			
London	-45	-5	-40	1.7	0.0	1.1	0.0	0.6	0.0			
South East	35	19	17	1.2	0.0	1.0	0.0	0.2	0.0			
South West	39	26	13	0.4	0.0	0.4	0.0	0.0	0.0			
England	165	101	63	10.7	0.0	8.6	0.1	2.1	0.0			
Wales	-17	-5	-12	0.3	0.0	0.3	0.0	0.0	0.0			
Scotland	-3	16	-20	0.0	0.0	0.2	0.0	-0.2	0.0			
Great Britain	144	112	32	11.0	0.0	9.1	0.1	1.9	0.0			
N Ireland	11	5	6	0.0	0.0	0.0	0.0	0.0	0.0			
United Kingdom	155	117	38	11.0	0.0	9.1	0.1	1.9	0.0			

Publication of the jobcentre vacancy statistics has been deferred. Figures from May 2001 are affected by the introduction of Employer Direct - see note on page 7.

Relationship between columns: 1= 2+3; 4= 6+8.

Labour Market Statistics Helpline 020 7533 6094

* Count of claimants of Jobseeker's Allowance.

** Workforce jobs is tabulated by region of workplace. Claimant count is tabulated by region of claimant's residence.

+ Denominator = Claimant count + Workforce jobs.

(thousands),
seasonally
adjusted

1 Summary of LFS data

		All aged 16 & over								
		All aged 16 & over	Total economically active	Total in Employment	Unemployed	Economically Inactive	Economic activity rate(%)	Employment rate (%)	Unemployment rate (%)	Economic inactivity rate(%)
		1	2	3	4	5	6	7	8	9
		YCHD	YCHQ	YCJQ	YCMQ	HKMP			YCND	
People	Dec-Feb 2003	5,338	3,269	3,105	164	2,069	61.2	58.2	5.0	38.8
	Dec-Feb 2004	5,374	3,325	3,168	157	2,050	61.9	58.9	4.7	38.1
	Mar-May 2004	5,384	3,294	3,146	148	2,090	61.2	58.4	4.5	38.8
	Jun-Aug 2004	5,394	3,302	3,161	141	2,091	61.2	58.6	4.3	38.8
	Sep-Nov 2004	5,403	3,334	3,183	151	2,069	61.7	58.9	4.5	38.3
	Dec-Feb 2005	5,411	3,351	3,191	160	2,060	61.9	59.0	4.8	38.1
	<i>Change on quarter</i>	9	17	8	9	-8	0.2	0.1	0.2	-0.2
<i>Change %</i>	0.2	0.5	0.3	6.0	-0.4					
<i>Change on year</i>	37	26	23	3	11	0.1	0.0	0.1	-0.1	
<i>Change %</i>	0.7	0.8	0.7	2.2	0.5					
Men	Dec-Feb 2003	2,567	1,772	1,671	101	795	69.0	65.1	5.7	31.0
	Dec-Feb 2004	2,588	1,780	1,688	92	808	68.8	65.2	5.1	31.2
	Mar-May 2004	2,594	1,760	1,679	81	834	67.9	64.7	4.6	32.1
	Jun-Aug 2004	2,599	1,757	1,676	81	843	67.6	64.5	4.6	32.4
	Sep-Nov 2004	2,604	1,793	1,702	91	811	68.9	65.4	5.1	31.1
	Dec-Feb 2005	2,609	1,788	1,697	91	821	68.5	65.0	5.1	31.5
	<i>Change on quarter</i>	5	-5	-5	0	10	-0.3	-0.3	0.0	0.3
<i>Change %</i>	0.2	-0.3	-0.3	0.1	1.2					
<i>Change on year</i>	21	8	9	-1	13	-0.2	-0.2	-0.1	0.2	
<i>Change %</i>	0.8	0.5	0.5	-0.8	1.6					
Women	Dec-Feb 2003	2,771	1,497	1,434	63	1,274	54.0	51.8	4.2	46.0
	Dec-Feb 2004	2,786	1,545	1,480	65	1,241	55.4	53.1	4.2	44.6
	Mar-May 2004	2,791	1,534	1,467	67	1,257	55.0	52.6	4.4	45.0
	Jun-Aug 2004	2,795	1,546	1,485	61	1,249	55.3	53.1	3.9	44.7
	Sep-Nov 2004	2,799	1,541	1,481	60	1,258	55.1	52.9	3.9	44.9
	Dec-Feb 2005	2,802	1,563	1,494	69	1,239	55.8	53.3	4.4	44.2
	<i>Change on quarter</i>	4	22	13	9	-18	0.7	0.4	0.5	-0.7
<i>Change %</i>	0.1	1.4	0.9	14.9	-1.5					
<i>Change on year</i>	16	18	14	4	-2	0.3	0.2	0.2	-0.3	
<i>Change %</i>	0.6	1.2	0.9	6.4	-0.2					

		All aged 16 to 59/64									
		All aged 16 to 59/64	Total economically active	Total in employment	Unemployed	Economically inactive	Economic activity rate (%)	Employment rate (%)	Unemployment rate (%)	Economic inactivity rate(%)	
		10	11	12	13	14	15	16	17	18	
			YCID	YCKD	YCOQ	YCNQ	YKMP	YCLD	YCOD	YCZZ	
People	Dec-Feb 2003	4,127	3,185	3,023	163	942	77.2	73.2	5.1	22.8	
	Dec-Feb 2004	4,155	3,229	3,073	156	926	77.7	74.0	4.8	22.3	
	Mar-May 2004	4,162	3,203	3,056	147	959	77.0	73.4	4.6	23.0	
	Jun-Aug 2004	4,169	3,204	3,065	139	965	76.8	73.5	4.3	23.2	
	Sep-Nov 2004	4,175	3,232	3,084	148	943	77.4	73.9	4.6	22.6	
	Dec-Feb 2005	4,181	3,236	3,079	157	945	77.4	73.6	4.9	22.6	
	<i>Change on quarter</i>	6	4	-5	9	2	0.0	-0.2	0.3	0.0	
<i>Change %</i>	0.1	0.1	-0.2	6.4	0.2						
<i>Change on year</i>	26	7	6	1	19	-0.3	-0.3	0.0	0.3		
<i>Change %</i>	0.6	0.2	0.2	0.5	2.0						
Men	Dec-Feb 2003	2,124	1,746	1,646	100	377	82.2	77.5	5.7	17.8	
	Dec-Feb 2004	2,139	1,752	1,660	92	387	81.9	77.6	5.2	18.1	
	Mar-May 2004	2,143	1,736	1,655	81	407	81.0	77.2	4.7	19.0	
	Jun-Aug 2004	2,147	1,729	1,649	80	418	80.5	76.8	4.6	19.5	
	Sep-Nov 2004	2,151	1,763	1,673	89	388	82.0	77.8	5.1	18.0	
	Dec-Feb 2005	2,154	1,752	1,662	90	402	81.4	77.2	5.1	18.6	
	<i>Change on quarter</i>	3	-10	-11	1	14	-0.6	-0.6	0.1	0.6	
<i>Change %</i>	0.2	-0.6	-0.7	0.8	3.6						
<i>Change on year</i>	15	0	2	-2	15	-0.6	-0.5	-0.1	0.6		
<i>Change %</i>	0.7	0.0	0.1	-1.7	3.8						
Women	Dec-Feb 2003	2,003	1,439	1,376	62	565	71.8	68.7	4.3	28.2	
	Dec-Feb 2004	2,016	1,477	1,412	65	539	73.3	70.1	4.4	26.7	
	Mar-May 2004	2,019	1,467	1,401	66	552	72.6	69.4	4.5	27.4	
	Jun-Aug 2004	2,022	1,475	1,416	59	547	73.0	70.0	4.0	27.0	
	Sep-Nov 2004	2,025	1,469	1,411	58	555	72.6	69.7	4.0	27.4	
	Dec-Feb 2005	2,027	1,484	1,417	67	543	73.2	69.9	4.5	26.8	
	<i>Change on quarter</i>	2	15	6	9	-12	0.6	0.2	0.5	-0.6	
<i>Change %</i>	0.1	1.0	0.4	15.0	-2.2						
<i>Change on year</i>	11	7	5	2	4	-0.1	-0.1	0.1	0.1		
<i>Change %</i>	0.6	0.5	0.3	3.5	0.8						

Relationship between columns: 1 = 2 + 5; 2 = 3 + 4; 6 = 2/1; 7 = 3/1; 8 = 4/2; 9 = 5/1; 10 = 11 + 14; 11 = 12 + 13; 15 = 11/10; 16 = 12/10; 17 = 13/11; 18 = 14/10

Source: Labour Force Survey

The Labour Force Survey is a survey of the population of private households, student halls of residence and NHS accommodation.

Labour Market Statistics Helpline 020 7533 6094

REGIONAL DATA

North West

1a Summary of other headline indicators

(thousands),
seasonally
adjusted

		Civilian workforce jobs (not seasonally adjusted)			Claimant count*		
		Levels			Rates (%)**		
		Total	Males	Females	Total	Males	Females
		IBWA	ZMPU	ZMPW	IBWC	ZMPV	ZMPX
2004							
Dec 01		3,251	1,742	1,509			
Dec 02		3,331	1,776	1,555			
Dec 03		3,355	1,785	1,570			
Mar 04		3,344	1,791	1,554			
Jun 04		3,372	1,799	1,573			
Sep 04		3,374	1,796	1,578			
Dec 04		3,434	1,831	1,603			
<i>Change on year</i>		79	46	33			
<i>Change %</i>		2.4	2.6	2.1			
2004							
March	(r)	102.4	78.4	24.0	2.9	4.2	1.5
April	(r)	101.2	77.4	23.8	2.9	4.1	1.5
May #	(r)	100.1	76.4	23.7	2.9	4.1	1.5
June	(r)	98.9	75.5	23.4	2.8	4.0	1.5
July	(r)	97.0	74.3	22.7	2.8	4.0	1.4
August #	(r)	97.1	74.3	22.8	2.8	4.0	1.4
September	(r)	97.5	74.4	23.1	2.8	4.0	1.4
October #	(r)	97.4	74.5	22.9	2.8	4.0	1.4
November	(r)	96.8	73.9	22.9	2.8	3.9	1.4
December	(r)	95.7	73.0	22.7	2.8	3.9	1.4
2005							
January #	(r)	93.2	70.7	22.5	2.7	3.8	1.4
February	(r)	94.1	71.5	22.6	2.7	3.8	1.4
March	(p)	95.3	72.6	22.7	2.7	3.9	1.4
<i>Change on period</i>		1.2	1.1	0.1	0.0	0.1	0.0
<i>Change %</i>		1.3	1.5	0.4			
<i>Change on year</i>		-7.1	-5.8	-1.3	-0.2	-0.3	-0.1
<i>Change %</i>		-6.9	-7.4	-5.4			

	Notified vacancies	Unfilled vacancies
	Level	Level
	IBWG	IBWE
2004		
March		
April		
May		
June		
July		
August		
September		
October		
November		
December		
2005		
January		
February		
March		

Publication of these vacancy statistics has been deferred. Figures from May 2001 are affected by the introduction of Employer Direct - see note on page 7.

* Count of claimants of Jobseeker's Allowance

Labour Market Statistics Helpline 020 7533 6094

** Denominator = claimant count + workforce jobs. NB these are different from the proportions of the working age populations claiming Jobseeker's Allowance for local areas shown in Tables 17 and 18.

Data source: Employer surveys, DfES Training Data System, Jobcentre Plus administrative system.

See background note 5.

Months where there are 5 weeks between count dates. All the rest are 4 week periods.

EMPLOYMENT

2 Employment by age

North West

(thousands), not seasonally adjusted

		All aged 16 & over	16 - 59/64	16 - 17	18 - 24	25 - 34	35 - 49	50 - 64 (m) 50 - 59 (w)	65+ (m) & 60+ (w)
		1	2	3	4	5	6	7	8
Employed									
People	Dec - Feb 2002	3,046	2,962	72	377	708	1,159	646	84
	Dec - Feb 2003	3,102	3,020	69	407	682	1,171	692	81
	Dec - Feb 2004	3,170	3,074	71	416	682	1,201	703	95
	Mar - May 2004	3,139	3,048	67	405	681	1,195	700	91
	Jun - Aug 2004	3,156	3,062	74	419	687	1,193	689	94
	Sep - Nov 2004	3,194	3,092	75	421	678	1,213	705	103
	Dec - Feb 2005	3,196	3,082	76	425	686	1,211	684	114
	<i>Change on year</i>	26	7	4	9	3	10	-19	19
<i>Change %</i>	0.8	0.2	6.1	2.1	0.5	0.8	-2.7	19.4	
Men	Dec - Feb 2002	1,621	1,597	33	191	380	609	383	24
	Dec - Feb 2003	1,666	1,643	35	207	377	617	407	23
	Dec - Feb 2004	1,686	1,659	35	225	361	629	409	26
	Mar - May 2004	1,671	1,646	34	212	356	633	411	25
	Jun - Aug 2004	1,682	1,655	35	213	360	638	409	27
	Sep - Nov 2004	1,708	1,677	37	217	364	641	418	31
	Dec - Feb 2005	1,696	1,661	37	212	369	639	405	35
	<i>Change on year</i>	10	2	2	-13	8	10	-4	8
<i>Change %</i>	0.6	0.1	4.3	-5.7	2.1	1.6	-1.1	30.6	
Women	Dec - Feb 2002	1,425	1,365	39	186	328	550	263	60
	Dec - Feb 2003	1,436	1,378	34	200	305	554	285	59
	Dec - Feb 2004	1,484	1,415	36	191	321	573	294	69
	Mar - May 2004	1,468	1,402	33	194	325	562	289	66
	Jun - Aug 2004	1,474	1,407	39	206	326	556	280	67
	Sep - Nov 2004	1,487	1,415	37	205	314	573	286	72
	Dec - Feb 2005	1,500	1,421	39	213	317	573	279	79
	<i>Change on year</i>	16	6	3	22	-4	0	-15	10
<i>Change %</i>	1.1	0.4	7.9	11.4	-1.4	0.0	-5.0	15.1	
Employment rates (%)⁺									
People	Dec - Feb 2002	57.4	72.2	39.6	66.9	78.7	81.0	62.9	7.0
	Dec - Feb 2003	58.1	73.2	37.5	69.8	77.9	80.7	66.9	6.7
	Dec - Feb 2004	59.0	74.0	38.5	68.9	79.7	81.8	67.5	7.8
	Mar - May 2004	58.3	73.2	36.0	66.6	79.9	81.2	67.1	7.4
	Jun - Aug 2004	58.5	73.4	39.6	68.4	80.9	80.8	66.0	7.7
	Sep - Nov 2004	59.1	74.0	40.1	68.5	80.1	81.9	67.3	8.4
	Dec - Feb 2005	59.1	73.7	40.7	68.9	81.3	81.5	65.2	9.2
	<i>Change on year</i>	0.1	-0.3	2.2	0.0	1.5	-0.3	-2.3	1.4
Men	Dec - Feb 2002	63.6	75.6	35.7	68.9	86.3	86.4	64.4	5.4
	Dec - Feb 2003	64.9	77.4	37.3	71.7	87.9	86.4	68.0	5.2
	Dec - Feb 2004	65.1	77.6	37.3	74.8	86.2	87.1	67.9	5.9
	Mar - May 2004	64.4	76.8	35.5	69.9	85.4	87.4	68.0	5.6
	Jun - Aug 2004	64.7	77.1	36.9	69.8	86.7	87.8	67.6	5.9
	Sep - Nov 2004	65.6	78.0	39.5	70.8	87.8	88.0	69.0	6.7
	Dec - Feb 2005	65.0	77.1	38.8	68.9	89.3	87.4	66.6	7.6
	<i>Change on year</i>	-0.1	-0.5	1.5	-6.0	3.1	0.3	-1.3	1.7
Women	Dec - Feb 2002	51.7	68.5	43.7	65.0	71.4	75.7	60.8	7.8
	Dec - Feb 2003	51.8	68.8	37.6	68.0	68.3	75.2	65.3	7.6
	Dec - Feb 2004	53.2	70.2	39.6	63.0	73.5	76.8	67.0	8.9
	Mar - May 2004	52.6	69.5	36.4	63.3	74.7	75.1	65.8	8.5
	Jun - Aug 2004	52.7	69.6	42.4	67.0	75.4	74.0	63.7	8.7
	Sep - Nov 2004	53.1	69.9	40.6	66.2	72.7	76.1	65.1	9.3
	Dec - Feb 2005	53.5	70.1	42.6	68.9	73.5	75.9	63.4	10.2
	<i>Change on year</i>	0.3	-0.1	3.0	5.9	0.0	-0.9	-3.7	1.3

Relationship between columns: 1=2+8; 2= 3+4+5+6+7

Source: Labour Force Survey

⁺ Denominator = all persons in the relevant age group

Labour Market Statistics Helpline 020 7533 6094

The Labour Force Survey is a survey of the population of private households, student halls of residence and NHS accommodation.

EMPLOYMENT

North West

3 Full-time, part-time and temporary workers (thousands), not seasonally adjusted

		All in employment					All in employment			
		Total*	Employees [†]	Self employed [†]	Unpaid family workers	Government-supported training and employment programmes	Full-time workers	Part-time workers	Workers with second jobs	Temporary employees
People	Dec - Feb 2002	3,046	2,709	316	*	13	2,291	754	108	167
	Dec - Feb 2003	3,102	2,755	332	*	*	2,347	754	111	152
	Dec - Feb 2004	3,170	2,796	347	13	13	2,339	828	111	150
	Mar - May 2004	3,139	2,763	351	*	18	2,348	788	104	137
	Jun - Aug 2004	3,156	2,776	365	*	10	2,359	796	93	143
	Sep - Nov 2004	3,194	2,806	372	*	12	2,392	802	107	148
	Dec - Feb 2005	3,196	2,810	367	*	14	2,400	795	96	147
	<i>Change on year</i>	26	13	19	*	1	61	-32	-15	-3
	<i>Change %</i>	0.8	0.5	5.5	*	11.0	2.6	-3.9	-13.3	-1.9
Men	Dec - Feb 2002	1,621	1,368	242	*	*	1,472	148	40	84
	Dec - Feb 2003	1,666	1,408	252	*	*	1,522	143	50	60
	Dec - Feb 2004	1,686	1,407	265	*	*	1,512	172	45	67
	Mar - May 2004	1,671	1,405	251	*	12	1,506	163	45	64
	Jun - Aug 2004	1,682	1,412	263	*	*	1,519	163	39	72
	Sep - Nov 2004	1,708	1,430	269	*	*	1,540	168	43	75
	Dec - Feb 2005	1,696	1,421	265	*	*	1,536	159	37	66
	<i>Change on year</i>	10	14	0	*	*	25	-13	-8	-1
	<i>Change %</i>	0.6	1.0	0.0	*	*	1.6	-7.5	-18.3	-0.9
Women	Dec - Feb 2002	1,425	1,341	75	*	*	819	606	68	83
	Dec - Feb 2003	1,436	1,346	80	*	*	825	611	62	93
	Dec - Feb 2004	1,484	1,390	82	*	*	828	655	66	83
	Mar - May 2004	1,468	1,357	100	*	*	843	625	60	73
	Jun - Aug 2004	1,474	1,365	102	*	*	840	634	55	72
	Sep - Nov 2004	1,487	1,377	103	*	*	852	634	63	74
	Dec - Feb 2005	1,500	1,389	101	*	*	864	636	60	81
	<i>Change on year</i>	16	-1	19	*	*	36	-19	-7	-2
	<i>Change %</i>	1.1	-0.1	23.0	*	*	4.4	-2.9	-9.9	-2.7

		Temporary workers (reasons for temporary working)				Part-time workers (reasons for part-time working)			
		Total**	Could not find permanent job	Did not want a permanent job	Other	Total**	Could not find full-time job	Did not want full-time job	Other
People	Dec - Feb 2002	167	47	41	80	738	70	534	132
	Dec - Feb 2003	152	41	39	72	744	70	548	123
	Dec - Feb 2004	150	46	40	64	811	68	605	135
	Mar - May 2004	137	45	35	57	776	54	590	130
	Jun - Aug 2004	143	35	34	74	787	55	588	141
	Sep - Nov 2004	148	40	32	76	790	60	576	152
	Dec - Feb 2005	147	40	41	65	784	59	576	147
	<i>Change on year</i>	-3	-5	1	1	-27	-10	-29	12
	<i>Change %</i>	-1.9	-11.5	2.8	2.0	-3.3	-14.0	-4.8	8.8

Relationship between columns: 1=2+3+4+5

Source: Labour Force Survey

[†] Employees and self-employed

Labour Market Statistics Helpline 020 7533 6094

* Includes people who did not state whether they worked part-time or full-time

** Includes people who did not state their reason for temporary/part-time working

The Labour Force Survey is a survey of the population of private households, student halls of residence and NHS accommodation.

EMPLOYMENT

4 Civilian workforce jobs

North West

(thousands), not seasonally adjusted

		Civilian workforce jobs	Employee jobs	Self- employment jobs	Government- supported trainees
		1	2	3	4
All jobs	Dec 00	3,197	2,864	317	16
	Dec 01	3,251	2,905	336	10
	Dec 02	3,331	2,966	352	13
	Dec 03	3,355	2,984	356	14
	Mar 04	3,344	2,963	366	15
	Jun 04	3,372	2,973	385	14
	Sep 04	3,374	2,983	377	14
	Dec 04	3,434	3,017	402	14
<i>Change on year</i>		79	33	46	0
<i>Change %</i>		2.4	1.1	13.0	-2.6
Male jobs	Dec 00	1,686	1,444	232	9
	Dec 01	1,742	1,480	255	6
	Dec 02	1,776	1,506	262	8
	Dec 03	1,785	1,515	261	9
	Mar 04	1,791	1,512	269	9
	Jun 04	1,799	1,518	272	8
	Sep 04	1,796	1,522	265	8
	Dec 04	1,831	1,537	285	8
<i>Change on year</i>		46	22	24	0
<i>Change %</i>		2.6	1.5	9.3	-3.5
Female jobs	Dec 00	1,512	1,420	85	6
	Dec 01	1,509	1,425	80	4
	Dec 02	1,555	1,460	90	5
	Dec 03	1,570	1,469	95	6
	Mar 04	1,554	1,451	97	6
	Jun 04	1,573	1,455	113	6
	Sep 04	1,578	1,461	112	6
	Dec 04	1,603	1,480	117	6
<i>Change on year</i>		33	11	22	0
<i>Change %</i>		2.1	0.7	23.2	-1.2

Sources: Employer surveys, Labour Force Survey, DfES

Relationship between columns: 1=2+3+4

Workforce jobs enquiries 01633 812318

The Workforce Jobs series measures jobs rather than people, therefore, second self-employment jobs (where the main job is an employee) are now included in this series.

Civilian Workforce Jobs figures come from a variety of sources. Employee Jobs (which is much the largest component of Civilian Workforce Jobs) come from quarterly surveys of employers carried out by Prices & Business Group (PBG) of ONS and Administrative Returns.

Self-employment jobs figures are provided by the LFS and Government-supported trainees figures are provided from administrative sources.

EMPLOYMENT

North West

5 Employee jobs by industry

(thousands), not seasonally adjusted

Standard Industrial Classification (1992)

SIC 1992 SECTION		All jobs (seasonally adjusted)	Agriculture Forestry & Fishing		Mining Energy & Water Supplies Industries	Manufacturing Industries	Construction	Service Industries	Other Industries
			All jobs A-O	A,B	C,E				
		1	2	3	4	5	6	7	8
All jobs	Dec 01	2,895	2,905	13	19	470	135	1,371	896
	Dec 02	2,952	2,966	11	13	448	143	1,431	920
	Dec 03	2,970	2,984	15	10	433	137	1,458	932
	Mar 04	2,975	2,963	15	10	430	134	1,438	936
	Jun 04	2,980	2,973	15	10	427	132	1,449	940
	Sep 04	2,980	2,983	17	10	423	132	1,455	946
	Dec 04	3,001	3,017	17	10	420	149	1,471	951
<i>Change on quarter</i>		<i>21</i>							
<i>Change %</i>		<i>0.7</i>							
<i>Change on year</i>		<i>31</i>	<i>33</i>	<i>2</i>	<i>0</i>	<i>-13</i>	<i>12</i>	<i>13</i>	<i>19</i>
<i>Change %</i>		<i>1.0</i>	<i>1.1</i>	<i>16.2</i>	<i>0.7</i>	<i>-3.0</i>	<i>8.6</i>	<i>0.9</i>	<i>2.0</i>
Male jobs	Dec 01	1,467	1,480	9	14	346	117	711	283
	Dec 02	1,488	1,506	8	9	337	124	745	282
	Dec 03	1,503	1,515	10	8	329	118	758	291
	Mar 04	1,516	1,512	10	8	329	115	757	294
	Jun 04	1,526	1,518	10	8	327	114	764	295
	Sep 04	1,523	1,522	11	8	324	113	769	297
	Dec 04	1,527	1,537	11	8	321	128	773	297
<i>Change on quarter</i>		<i>4</i>							
<i>Change %</i>		<i>0.3</i>							
<i>Change on year</i>		<i>23</i>	<i>22</i>	<i>1</i>	<i>0</i>	<i>-8</i>	<i>10</i>	<i>14</i>	<i>6</i>
<i>Change %</i>		<i>1.6</i>	<i>1.5</i>	<i>5.6</i>	<i>1.6</i>	<i>-2.4</i>	<i>8.2</i>	<i>1.9</i>	<i>1.9</i>
Female jobs	Dec 01	1,428	1,425	5	5	124	18	660	613
	Dec 02	1,464	1,460	3	4	111	19	686	638
	Dec 03	1,467	1,469	5	2	104	19	700	641
	Mar 04	1,459	1,451	5	2	101	20	681	642
	Jun 04	1,454	1,455	6	2	100	19	684	645
	Sep 04	1,458	1,461	6	2	99	18	686	649
	Dec 04	1,474	1,480	6	2	99	21	699	654
<i>Change on quarter</i>		<i>17</i>							
<i>Change %</i>		<i>1.1</i>							
<i>Change on year</i>		<i>8</i>	<i>11</i>	<i>2</i>	<i>0</i>	<i>-5</i>	<i>2</i>	<i>-1</i>	<i>13</i>
<i>Change %</i>		<i>0.5</i>	<i>0.7</i>	<i>39.7</i>	<i>-2.8</i>	<i>-4.8</i>	<i>10.7</i>	<i>-0.1</i>	<i>2.1</i>

Relationship between columns: 2=3+4+5+6+7+8

Source: Employer surveys

Workforce jobs enquiries 01633 812318

Employee jobs figures are of a measure of jobs rather than people. For example, if a person holds two jobs, each job will be counted in the employee jobs total.

Employees jobs figures come from quarterly surveys of employers carried out by Prices & Business Group (PBG) of ONS and Administrative returns.

The quarterly employer surveys used to compile employee jobs figures do not collect data by Government Office Regions (GOR). Instead, Annual Business Inquiry (ABI) data are used to pro-rate the totals obtained from the quarterly surveys to generate GOR data. This technique can lead to the sum of the industry figures not matching the "All jobs" total in column 2.

EMPLOYMENT

North West

6(1) Actual weekly hours of work

(hours) not seasonally adjusted

		Total weekly hours (millions)	Average actual weekly hours of work				
			All workers*		Workers with second jobs		Part-time**
			Full-time**				
		1	2	3	4	5	
People	Dec - Feb 2002	95	31.1	35.8	15.6	9.3	
	Dec - Feb 2003	95	30.5	34.8	15.9	8.8	
	Dec - Feb 2004	97	30.5	35.2	15.8	9.0	
	Mar - May 2004	101	32.1	37.0	16.3	8.0	
	Jun - Aug 2004	98	31.2	36.0	15.6	10.2	
	Sep - Nov 2004	104	32.7	37.8	16.1	10.1	
	Dec - Feb 2005	99	31.0	35.9	15.3	8.7	
<i>Change on year</i>		3	0.6	0.7	-0.5	-0.3	
<i>Change %</i>		2.7	1.9	1.9	-3.3	-3.1	
Men	Dec - Feb 2002	57	35.4	37.3	13.6	8.9	
	Dec - Feb 2003	58	34.7	36.1	16.4	9.1	
	Dec - Feb 2004	59	34.8	36.8	14.6	10.9	
	Mar - May 2004	62	36.9	38.8	15.7	8.5	
	Jun - Aug 2004	61	36.0	37.9	15.8	12.8	
	Sep - Nov 2004	64	37.6	39.6	16.0	13.1	
	Dec - Feb 2005	60	35.7	37.6	14.6	10.4	
<i>Change on year</i>		2	0.9	0.8	0.0	-0.5	
<i>Change %</i>		3.1	2.5	2.2	-0.1	-4.2	
Women	Dec - Feb 2002	37	26.3	33.1	16.1	9.6	
	Dec - Feb 2003	37	25.8	32.5	15.8	8.7	
	Dec - Feb 2004	38	25.5	32.4	16.1	7.8	
	Mar - May 2004	39	26.6	33.6	16.5	7.6	
	Jun - Aug 2004	38	25.6	32.6	15.6	8.4	
	Sep - Nov 2004	40	27.1	34.6	16.1	8.0	
	Dec - Feb 2005	39	25.8	32.9	15.4	7.7	
<i>Change on year</i>		1	0.3	0.5	-0.7	-0.1	
<i>Change %</i>		2.1	1.0	1.5	-4.1	-0.7	

* main and second jobs

Source: Labour Force Survey

** main jobs only

Labour Market Statistics Helpline 020 7533 6094

The Labour Force Survey is a survey of the population of private households, student halls of residence and NHS accommodation.

6(2) Usual weekly hours of work*

not seasonally adjusted

	All in Employment (%)			Employees (%)			Self-Employed (%)		
	People	Men	Women	People	Men	Women	People	Men	Women
	Dec - Feb 2004								
Less than 6 Hours	1.3	0.6	2.1	1.0	0.5	1.6	2.6	0.7	8.5
6 up to 15 hours	7.3	3.6	11.5	7.2	3.4	11.1	6.9	4.2	15.7
16 up to 30 hours	18.4	7.0	31.3	18.5	5.8	31.5	16.9	13.0	29.6
31 up to 45 hours	54.0	60.3	46.7	56.0	63.8	48.2	38.6	42.5	26.4
Over 45 hours	19.0	28.5	8.3	17.2	26.6	7.7	34.9	39.6	19.9
Total (thousands)	3,170	1,686	1,484	2,796	1,407	1,390	347	265	82
Sep - Nov 2004									
Less than 6 Hours	1.5	0.8	2.3	1.3	0.6	2.0	2.5	1.6	4.9
6 up to 15 hours	6.6	2.6	11.3	6.7	2.6	10.9	5.8	2.2	15.2
16 up to 30 hours	18.0	7.7	29.7	17.7	6.6	29.2	19.9	13.4	37.1
31 up to 45 hours	54.1	59.3	48.1	56.2	62.2	49.9	38.6	43.8	24.8
Over 45 hours	19.8	29.6	8.6	18.1	28.0	7.9	33.3	39.1	18.1
Total (thousands)	3,194	1,708	1,487	2,806	1,430	1,377	372	269	103
Dec - Feb 2005									
Less than 6 Hours	1.5	0.7	2.5	1.3	0.4	2.1	3.3	1.9	6.7
6 up to 15 hours	6.5	2.6	10.9	6.6	2.6	10.6	5.8	2.4	14.7
16 up to 30 hours	17.8	7.2	29.7	17.7	6.2	29.5	18.4	12.2	34.7
31 up to 45 hours	55.4	62.2	47.8	57.2	64.9	49.3	41.7	47.5	26.6
Over 45 hours	18.7	27.4	9.0	17.3	25.9	8.5	30.8	35.9	17.3
Total (thousands)	3,196	1,696	1,500	2,810	1,421	1,389	367	265	101

* Main job only

Source: Labour Force Survey

Labour Market Statistics Helpline 020 7533 6094

The Labour Force Survey is a survey of the population of private households, student halls of residence and NHS accommodation.

CLAIMANT COUNT

North West

7 Claimant count* levels and rates

(thousands), seasonally adjusted

		Claimant count		Inflows (standardised**)	Outflows (standardised**)	Claimant count (not seasonally adjusted)	
		Level	Rate (%) ^{##}	Level	Level	Level	Rate (%) ^{##}
		1	2	3	4	5	6
People	2004	IBWA	IBWC			IBWB	IBWD
	March (r)	102.4	2.9	25.9	26.6	109.5	3.2
	April (r)	101.2	2.9	24.7	26.1	106.3	3.1
	May # (r)	100.1	2.9	25.1	26.5	101.6	2.9
	June (r)	98.9	2.8	25.0	27.1	98.0	2.8
	July (r)	97.0	2.8	24.0	25.4	97.8	2.8
	August # (r)	97.1	2.8	24.6	24.7	98.9	2.8
	September (r)	97.5	2.8	24.7	25.0	96.0	2.8
	October # (r)	97.4	2.8	24.8	24.8	92.5	2.7
	November (r)	96.8	2.8	24.3	24.9	91.6	2.6
	December (r)	95.7	2.8	24.7	25.1	93.4	2.7
	2005						
	January # (r)	93.2	2.7	24.3	27.6	101.0	2.9
	February (r)	94.1	2.7	25.2	24.8	103.0	3.0
	March (p)	95.3	2.7	25.6	24.3	102.5	3.0
	<i>Change on month</i>	<i>1.2</i>	<i>0.0</i>	<i>0.4</i>	<i>-0.5</i>	<i>-0.4</i>	<i>0.0</i>
	<i>Change %</i>	<i>1.3</i>		<i>1.6</i>	<i>-2.0</i>	<i>-0.4</i>	
	<i>Change on year</i>	<i>-7.1</i>	<i>-0.2</i>	<i>-0.3</i>	<i>-2.3</i>	<i>-6.9</i>	<i>-0.2</i>
	<i>Change %</i>	<i>-6.9</i>		<i>-1.2</i>	<i>-8.6</i>	<i>-6.3</i>	
Men	2004	ZMPU	ZMPV				
	March (r)	78.4	4.2	18.8	19.6	83.8	4.5
	April (r)	77.4	4.1	18.0	19.1	81.1	4.3
	May # (r)	76.4	4.1	18.3	19.6	77.6	4.1
	June (r)	75.5	4.0	18.3	19.8	74.8	4.0
	July (r)	74.3	4.0	17.6	18.6	73.8	3.9
	August # (r)	74.3	4.0	18.0	18.1	73.9	3.9
	September (r)	74.4	4.0	18.0	18.4	71.8	3.8
	October # (r)	74.5	4.0	18.1	18.1	69.8	3.7
	November (r)	73.9	3.9	17.8	18.2	69.7	3.7
	December (r)	73.0	3.9	18.0	18.4	71.7	3.8
	2005						
	January # (r)	70.7	3.8	17.7	20.4	77.3	4.1
	February (r)	71.5	3.8	18.4	18.1	78.5	4.2
	March (p)	72.6	3.9	18.8	17.8	78.1	4.2
	<i>Change on month</i>	<i>1.1</i>	<i>0.1</i>	<i>0.4</i>	<i>-0.3</i>	<i>-0.3</i>	<i>0.0</i>
	<i>Change %</i>	<i>1.5</i>		<i>2.2</i>	<i>-1.7</i>	<i>-0.4</i>	
	<i>Change on year</i>	<i>-5.8</i>	<i>-0.3</i>	<i>0.0</i>	<i>-1.8</i>	<i>-5.7</i>	<i>-0.3</i>
	<i>Change %</i>	<i>-7.4</i>		<i>0.0</i>	<i>-9.2</i>	<i>-6.8</i>	
Women	2004	ZMPW	ZMPX				
	March (r)	24.0	1.5	7.1	7.0	25.7	1.6
	April (r)	23.8	1.5	6.7	7.0	25.2	1.6
	May # (r)	23.7	1.5	6.8	6.9	24.0	1.5
	June (r)	23.4	1.5	6.7	7.3	23.2	1.5
	July (r)	22.7	1.4	6.4	6.8	24.0	1.5
	August # (r)	22.8	1.4	6.6	6.6	25.0	1.6
	September (r)	23.1	1.4	6.7	6.6	24.3	1.5
	October # (r)	22.9	1.4	6.7	6.7	22.7	1.4
	November (r)	22.9	1.4	6.5	6.7	21.9	1.4
	December (r)	22.7	1.4	6.7	6.7	21.7	1.4
	2005						
	January # (r)	22.5	1.4	6.6	7.2	23.7	1.5
	February (r)	22.6	1.4	6.8	6.7	24.5	1.5
	March (p)	22.7	1.4	6.8	6.5	24.4	1.5
	<i>Change on month</i>	<i>0.1</i>	<i>0.0</i>	<i>0.0</i>	<i>-0.2</i>	<i>-0.1</i>	<i>0.0</i>
	<i>Change %</i>	<i>0.4</i>		<i>0.0</i>	<i>-3.0</i>	<i>-0.5</i>	
	<i>Change on year</i>	<i>-1.3</i>	<i>-0.1</i>	<i>-0.3</i>	<i>-0.5</i>	<i>-1.3</i>	<i>-0.1</i>
	<i>Change %</i>	<i>-5.4</i>		<i>-4.2</i>	<i>-7.1</i>	<i>-5.0</i>	

* Count of claimants of Jobseeker's Allowance

Source: Jobcentre Plus administrative system

Labour Market Statistics Helpline 020 7533 6094

^{##} Denominator = claimant count + workforce jobs. NB these are different from the proportions of the working age populations claiming Jobseeker's Allowance for local areas shown in Tables 17 and 18. See background note 5.

The claimant count inflows, standardised to a 4.33 week month but not seasonally adjusted, for March 2005 were 26,257 in total, 19,378 for men and 6,879 for women. The corresponding outflow figures were 19,439 for men and 6,847 for women.

** Flow figures are collected for 4 or 5 week periods between count dates; the figures are then converted to a standard 4 1/3 week month

Months where there are 5 weeks between count dates. All the rest are 4 week periods.

CLAIMANT COUNT

North West

8(1) Claimant count* by age and duration - computerised claims only

(thousands), not seasonally adjusted

	All ages							18-24					
	All	All computerised claims	Over 6		% claiming for over 12 months	All over 24 months		All	Over 6		% claiming for over 12 months	All over 24 months	
			Up to 6 months	and up to 12 months					Up to 6 months	and up to 12 months			
	1	2	3	4	5	6	7	8	9	10	11	12	13
People													
Mar 03	121.1	120.0	82.5	20.0	17.5	14.6	6.2	36.3	30.2	5.2	0.9	2.4	0.1
Mar 04	109.5	108.6	75.2	17.6	15.8	14.5	4.9	33.6	28.1	4.7	0.8	2.5	0.1
Apr 04	106.3	105.5	72.2	17.9	15.4	14.6	4.8	32.3	26.6	4.9	0.8	2.5	0.1
May 04 #	101.6	100.8	67.7	18.1	15.0	14.9	4.8	30.5	24.8	4.9	0.8	2.6	0.1
Jun 04	98.0	97.1	64.6	17.7	14.7	15.2	4.7	29.0	23.5	4.8	0.8	2.6	0.1
Jul 04	97.8	97.0	66.0	16.6	14.3	14.8	4.7	30.2	25.0	4.4	0.8	2.5	0.1
Aug 04 #	98.9	98.0	67.5	16.7	13.9	14.2	4.6	31.5	26.2	4.6	0.7	2.3	0.1
Sep 04	96.0	95.2	65.7	15.9	13.6	14.3	4.5	30.4	25.5	4.2	0.8	2.5	0.1
Oct 04 #	92.5	91.6	64.0	14.5	13.1	14.3	4.4	28.5	24.3	3.5	0.7	2.5	0.1
Nov 04	91.6	90.6	63.7	14.0	12.8	14.1	4.3	27.8	23.8	3.4	0.7	2.5	0.1
Dec 04	93.4	92.3	65.6	13.9	12.8	13.8	4.3	28.7	24.6	3.4	0.7	2.4	0.1
Jan 05 #	101.0	100.1	72.2	15.0	12.8	12.8	4.3	31.4	26.8	3.9	0.7	2.4	0.1
Feb 05	103.0	101.9	74.4	14.9	12.7	12.4	4.2	32.8	28.1	4.0	0.7	2.2	0.1
Mar 05	102.5	101.5	73.9	15.2	12.4	12.2	4.2	33.1	28.3	4.1	0.7	2.1	0.1
Change on year	-6.9	-7.1	-1.2	-2.5	-3.4	-2.3	-0.8	-0.6	0.2	-0.6	-0.1	-0.4	0.0
Change %	-6.3	-6.5	-1.7	-14.0	-21.2			-1.7	0.8	-13.4	-17.8		-27.5
Men													
Mar 03	94.1	93.3	62.6	15.9	14.7	15.8	5.3	26.1	21.8	3.7	0.6	2.3	0.1
Mar 04	83.8	83.2	56.2	13.9	13.1	15.7	4.2	23.8	19.9	3.4	0.6	2.4	0.1
Apr 04	81.1	80.5	53.8	14.0	12.7	15.8	4.0	22.8	18.8	3.5	0.6	2.5	0.1
May 04 #	77.6	77.0	50.4	14.2	12.5	16.2	4.0	21.5	17.5	3.4	0.6	2.6	0.1
Jun 04	74.8	74.1	47.9	13.9	12.2	16.5	4.0	20.4	16.5	3.4	0.5	2.6	0.1
Jul 04	73.8	73.2	48.3	13.0	11.9	16.2	3.9	20.7	17.1	3.1	0.5	2.5	0.1
Aug 04 #	73.9	73.3	48.8	12.9	11.5	15.7	3.8	21.5	17.8	3.2	0.5	2.3	0.1
Sep 04	71.8	71.1	47.6	12.3	11.2	15.7	3.8	20.8	17.3	3.0	0.5	2.5	0.1
Oct 04 #	69.8	69.1	47.1	11.2	10.8	15.6	3.7	19.6	16.7	2.4	0.5	2.5	0.1
Nov 04	69.7	69.0	47.4	10.9	10.6	15.4	3.6	19.4	16.6	2.3	0.5	2.5	0.1
Dec 04	71.7	71.0	49.5	10.9	10.6	14.9	3.6	20.5	17.6	2.4	0.5	2.4	0.1
Jan 05 #	77.3	76.6	54.2	11.8	10.6	13.9	3.6	22.4	19.0	2.8	0.5	2.3	0.1
Feb 05	78.5	77.7	55.5	11.7	10.5	13.5	3.5	23.2	19.9	2.8	0.5	2.1	0.1
Mar 05	78.1	77.4	55.3	11.8	10.3	13.3	3.5	23.4	20.1	2.9	0.5	2.0	0.1
Change on year	-5.7	-5.8	-0.9	-2.0	-2.8	-2.5	-0.7	-0.4	0.2	-0.5	-0.1	-0.5	0.0
Change %	-6.8	-6.9	-1.6	-14.6	-21.6			-1.7	1.1	-14.8	-20.8		-22.2
Women													
Mar 03	27.0	26.7	19.9	4.1	2.7	10.2	0.9	10.2	8.4	1.5	0.3	2.8	0.0
Mar 04	25.7	25.4	19.0	3.8	2.7	10.6	0.8	9.8	8.2	1.3	0.2	2.5	0.1
Apr 04	25.2	24.9	18.4	3.9	2.6	10.6	0.8	9.5	7.8	1.4	0.2	2.5	0.1
May 04 #	24.0	23.8	17.3	3.9	2.6	10.8	0.7	9.0	7.3	1.4	0.2	2.7	0.0
Jun 04	23.2	23.0	16.7	3.8	2.5	10.8	0.7	8.6	7.0	1.4	0.2	2.6	0.0
Jul 04	24.0	23.8	17.7	3.6	2.5	10.3	0.7	9.4	7.9	1.3	0.2	2.5	0.0
Aug 04 #	25.0	24.8	18.6	3.7	2.4	9.7	0.7	10.0	8.4	1.4	0.2	2.3	0.0
Sep 04	24.3	24.0	18.1	3.6	2.4	9.9	0.7	9.7	8.2	1.3	0.2	2.6	0.0
Oct 04 #	22.7	22.4	16.9	3.2	2.3	10.2	0.7	8.9	7.6	1.1	0.2	2.7	0.0
Nov 04	21.9	21.6	16.3	3.1	2.2	10.2	0.7	8.4	7.2	1.0	0.2	2.5	0.0
Dec 04	21.7	21.3	16.1	3.0	2.2	10.2	0.7	8.2	7.0	1.0	0.2	2.6	0.0
Jan 05 #	23.7	23.5	18.0	3.3	2.2	9.5	0.7	9.1	7.7	1.1	0.2	2.6	0.0
Feb 05	24.5	24.2	18.8	3.2	2.2	9.0	0.7	9.6	8.2	1.2	0.2	2.4	0.0
Mar 05	24.4	24.1	18.6	3.3	2.2	9.0	0.7	9.6	8.2	1.2	0.2	2.3	0.0
Change on year	-1.3	-1.3	-0.3	-0.4	-0.5	-1.6	-0.1	-0.2	0.0	-0.1	0.0	-0.2	0.0
Change %	-5.0	-5.1	-1.8	-11.8	-19.3			-1.7	-0.1	-9.8	-10.6		-36.0

* Count of claimants of Jobseeker's Allowance

Source: Jobcentre Plus administrative system

Relationship between columns: 2= 3+4+5; 8= 9+10+11

Labour Market Statistics Helpline 020 7533 6094

Months where there are 5 weeks between count dates. All the rest are 4 week periods.

Only computerised claims are analysed by age and duration on a monthly basis. These figures therefore differ in total from those given in Table 7. The latter include clerically processed claims which currently amount to less than 1 per cent of the total claimant count. See background note 6.

CLAIMANT COUNT

North West

8(2) Claimant count* by age and duration - computerised claims only

(thousands), not seasonally adjusted

People	25-49						50 and over					
	All	Up to 6 months	Over 6	All over 12 months	% claiming	All over 24 months	All	Up to 6 months	Over 6	All over 12 months	% claiming	All over 24 months
			and up to 12 months		for over 12 months				and up to 12 months		for over 12 months	
	14	15	16	17	18	19	20	21	22	23	24	25
Mar 03	63.9	40.5	12.0	11.5	17.9	3.4	17.8	9.8	2.8	5.1	28.8	2.8
Mar 04	56.8	36.4	10.4	10.1	17.8	2.3	16.2	8.9	2.5	4.8	29.7	2.5
Apr 04	55.4	35.2	10.4	9.7	17.6	2.2	16.1	8.8	2.5	4.8	29.9	2.5
May 04 #	53.2	33.1	10.5	9.6	18.0	2.1	15.4	8.2	2.6	4.7	30.4	2.5
Jun 04	51.6	31.8	10.4	9.4	18.2	2.1	14.9	7.8	2.5	4.6	30.6	2.5
Jul 04	50.8	31.9	9.8	9.1	18.0	2.1	14.5	7.7	2.4	4.4	30.6	2.4
Aug 04 #	50.5	32.1	9.6	8.8	17.4	2.1	14.5	7.9	2.3	4.3	29.9	2.4
Sep 04	49.3	31.4	9.3	8.5	17.4	2.0	14.2	7.7	2.2	4.3	30.0	2.4
Oct 04 #	47.8	30.9	8.7	8.2	17.1	2.0	13.9	7.6	2.1	4.2	30.1	2.3
Nov 04	47.6	31.1	8.5	8.0	16.8	2.0	13.8	7.7	2.1	4.1	29.5	2.3
Dec 04	48.5	32.1	8.4	8.0	16.5	1.9	13.8	7.7	2.0	4.1	29.4	2.3
Jan 05 #	52.5	35.6	8.9	8.1	15.4	2.0	14.8	8.6	2.1	4.0	27.3	2.2
Feb 05	52.8	36.2	8.7	8.0	15.1	1.9	14.6	8.6	2.1	4.0	27.0	2.2
Mar 05	52.3	35.7	8.8	7.8	15.0	1.9	14.4	8.3	2.2	3.9	27.0	2.2
<i>Change on year</i>	-4.5	-0.7	-1.5	-2.3	-2.8	-0.4	-1.8	-0.6	-0.3	-0.9	-2.6	-0.3
<i>Change %</i>	-7.9	-1.8	-14.9	-22.5		-17.0	-11.3	-6.9	-11.7	-19.2		-13.8
Men												
Mar 03	52.4	32.4	10.1	9.9	18.9	2.9	13.7	7.3	2.1	4.2	30.9	2.4
Mar 04	46.0	28.8	8.6	8.6	18.7	1.9	12.4	6.6	1.9	3.9	31.5	2.1
Apr 04	44.6	27.7	8.6	8.3	18.5	1.8	12.2	6.4	1.9	3.9	31.9	2.1
May 04 #	42.9	26.1	8.7	8.1	18.9	1.8	11.7	5.9	2.0	3.8	32.6	2.1
Jun 04	41.6	25.0	8.6	8.0	19.2	1.8	11.3	5.6	1.9	3.7	32.9	2.1
Jul 04	40.8	25.0	8.0	7.8	19.0	1.8	10.9	5.5	1.8	3.6	33.0	2.0
Aug 04 #	40.2	24.8	7.9	7.5	18.6	1.8	10.8	5.6	1.7	3.5	32.4	2.0
Sep 04	39.2	24.3	7.6	7.2	18.5	1.7	10.5	5.4	1.7	3.5	32.7	2.0
Oct 04 #	38.3	24.3	7.1	6.9	18.0	1.7	10.4	5.4	1.6	3.4	32.6	1.9
Nov 04	38.4	24.7	7.0	6.8	17.6	1.7	10.4	5.5	1.5	3.3	32.1	1.9
Dec 04	39.3	25.6	6.9	6.8	17.2	1.7	10.5	5.6	1.5	3.3	31.8	1.9
Jan 05 #	42.3	28.2	7.3	6.8	16.1	1.7	11.2	6.3	1.6	3.3	29.6	1.9
Feb 05	42.5	28.6	7.2	6.8	15.9	1.6	11.1	6.2	1.6	3.2	29.3	1.8
Mar 05	42.2	28.3	7.2	6.6	15.7	1.6	10.9	6.0	1.7	3.2	29.3	1.8
<i>Change on year</i>	-3.8	-0.5	-1.3	-2.0	-3.0	-0.3	-1.5	-0.6	-0.2	-0.7	-2.3	-0.3
<i>Change %</i>	-8.2	-1.6	-15.4	-23.0		-17.0	-12.2	-8.6	-11.5	-18.6		-14.6
Women												
Mar 03	11.5	8.1	1.9	1.5	13.4	0.4	4.1	2.5	0.7	0.9	21.7	0.4
Mar 04	10.9	7.6	1.8	1.5	14.0	0.3	3.8	2.3	0.6	0.9	23.7	0.4
Apr 04	10.8	7.5	1.8	1.5	13.8	0.3	3.9	2.4	0.6	0.9	23.7	0.4
May 04 #	10.3	7.0	1.8	1.5	14.2	0.3	3.7	2.2	0.6	0.9	23.5	0.4
Jun 04	10.0	6.8	1.8	1.4	14.0	0.3	3.6	2.2	0.6	0.9	23.6	0.4
Jul 04	10.0	6.9	1.7	1.4	13.7	0.3	3.6	2.2	0.6	0.9	23.5	0.4
Aug 04 #	10.3	7.3	1.7	1.3	12.9	0.3	3.7	2.3	0.6	0.8	22.4	0.4
Sep 04	10.1	7.1	1.7	1.3	13.1	0.3	3.6	2.3	0.5	0.8	22.1	0.4
Oct 04 #	9.5	6.6	1.6	1.3	13.4	0.3	3.4	2.1	0.5	0.8	22.5	0.4
Nov 04	9.2	6.4	1.5	1.2	13.5	0.3	3.4	2.1	0.5	0.7	21.7	0.4
Dec 04	9.2	6.4	1.5	1.2	13.5	0.3	3.3	2.1	0.5	0.7	21.9	0.4
Jan 05 #	10.2	7.4	1.6	1.3	12.3	0.3	3.6	2.3	0.5	0.7	20.2	0.4
Feb 05	10.3	7.5	1.5	1.2	11.9	0.3	3.6	2.4	0.5	0.7	19.9	0.4
Mar 05	10.1	7.3	1.6	1.2	12.1	0.3	3.5	2.3	0.5	0.7	20.2	0.4
<i>Change on year</i>	-0.7	-0.2	-0.2	-0.3	-1.9	-0.1	-0.3	-0.1	-0.1	-0.2	-3.5	0.0
<i>Change %</i>	-6.8	-2.9	-12.8	-19.3		-16.8	-8.4	-2.1	-12.3	-22.0		-9.3

* Count of claimants of Jobseeker's Allowance

Source: Jobcentre Plus administrative system

Relationship between columns: 14=15+16+17; 20=21+22=23

Labour Market Statistics Helpline 020 7533 6094

Months where there are 5 weeks between count dates. All the rest are 4 week periods.

ECONOMIC ACTIVITY AND INACTIVITY

9 Economic activity by age

North West

(thousands), not seasonally adjusted

		All aged 16 & over	16 - 59/64	16 - 17	18 - 24	25 - 34	35 - 49	50 - 64 (m) 50 - 59 (w)	65+ (m) & 60+ (w)
		1	2	3	4	5	6	7	8
Economically active									
People	Dec - Feb 2002	3,204	3,119	88	417	743	1,200	670	85
	Dec - Feb 2003	3,259	3,176	91	447	719	1,206	713	83
	Dec - Feb 2004	3,318	3,223	92	454	715	1,240	723	95
	Mar - May 2004	3,279	3,187	86	444	707	1,233	716	92
	Jun - Aug 2004	3,308	3,211	101	464	711	1,229	705	97
	Sep - Nov 2004	3,349	3,243	100	469	705	1,247	721	106
	Dec - Feb 2005	3,352	3,235	93	476	713	1,247	707	116
	<i>Change on year</i>	34	12	1	22	-2	7	-16	21
<i>Change %</i>	1.0	0.4	1.1	4.8	-0.2	0.6	-2.2	22.2	
Men	Dec - Feb 2002	1,723	1,700	44	216	405	634	402	24
	Dec - Feb 2003	1,765	1,741	50	235	396	636	424	24
	Dec - Feb 2004	1,775	1,748	45	246	378	654	425	26
	Mar - May 2004	1,748	1,723	46	228	373	654	422	25
	Jun - Aug 2004	1,765	1,737	51	236	375	656	419	28
	Sep - Nov 2004	1,802	1,770	51	248	380	660	430	32
	Dec - Feb 2005	1,786	1,751	45	242	386	657	421	35
	<i>Change on year</i>	12	3	0	-4	8	3	-4	9
<i>Change %</i>	0.7	0.2	0.2	-1.6	2.1	0.4	-1.0	33.9	
Women	Dec - Feb 2002	1,480	1,419	45	202	338	566	268	61
	Dec - Feb 2003	1,494	1,435	41	212	323	570	289	59
	Dec - Feb 2004	1,543	1,475	47	208	337	586	297	69
	Mar - May 2004	1,531	1,465	40	216	335	580	294	67
	Jun - Aug 2004	1,543	1,473	50	228	336	573	286	69
	Sep - Nov 2004	1,547	1,473	48	221	325	587	291	74
	Dec - Feb 2005	1,565	1,484	48	234	327	590	286	81
	<i>Change on year</i>	22	10	1	26	-10	4	-12	12
<i>Change %</i>	1.4	0.6	1.9	12.4	-2.9	0.7	-3.9	17.7	
Economic activity rates (%)⁺									
People	Dec - Feb 2002	60.4	76.0	48.6	74.1	82.6	83.8	65.2	7.0
	Dec - Feb 2003	61.1	77.0	49.5	76.7	82.2	83.2	68.9	6.9
	Dec - Feb 2004	61.7	77.6	49.5	75.1	83.5	84.5	69.4	7.8
	Mar - May 2004	60.9	76.6	46.4	72.9	83.0	83.8	68.7	7.5
	Jun - Aug 2004	61.3	77.0	54.3	75.7	83.9	83.2	67.5	7.9
	Sep - Nov 2004	62.0	77.7	53.6	76.2	83.4	84.2	68.9	8.6
	Dec - Feb 2005	61.9	77.4	49.9	77.1	84.5	83.9	67.4	9.5
	<i>Change on year</i>	0.2	-0.2	0.4	2.0	1.0	-0.5	-2.0	1.7
Men	Dec - Feb 2002	67.6	80.5	47.2	77.7	91.7	89.9	67.5	5.4
	Dec - Feb 2003	68.8	82.0	52.9	81.5	92.4	89.1	70.7	5.5
	Dec - Feb 2004	68.6	81.7	47.5	82.0	90.2	90.5	70.5	5.9
	Mar - May 2004	67.4	80.4	48.5	75.4	89.3	90.3	69.9	5.6
	Jun - Aug 2004	67.9	80.9	53.9	77.3	90.3	90.3	69.3	6.2
	Sep - Nov 2004	69.2	82.3	54.2	81.0	91.7	90.6	70.9	7.1
	Dec - Feb 2005	68.5	81.3	47.5	78.8	93.5	89.9	69.3	7.8
	<i>Change on year</i>	-0.1	-0.4	-0.1	-3.2	3.3	-0.6	-1.3	1.9
Women	Dec - Feb 2002	53.7	71.2	50.1	70.6	73.8	78.0	62.1	8.0
	Dec - Feb 2003	53.9	71.6	45.9	71.9	72.4	77.4	66.3	7.6
	Dec - Feb 2004	55.4	73.2	51.6	68.4	77.1	78.6	67.8	8.9
	Mar - May 2004	54.9	72.5	44.2	70.5	77.0	77.5	67.0	8.6
	Jun - Aug 2004	55.2	72.9	54.7	74.1	77.7	76.4	65.0	8.9
	Sep - Nov 2004	55.3	72.8	53.0	71.4	75.4	78.0	66.2	9.5
	Dec - Feb 2005	55.9	73.2	52.4	75.5	76.0	78.2	64.8	10.4
	<i>Change on year</i>	0.5	0.1	0.8	7.1	-1.1	-0.4	-3.0	1.5

Relationship between columns: 1=2+8; 2=3+4+5+6+7

Source: Labour Force Survey

⁺ Denominator = all persons in relevant age group

Labour Market Statistics Helpline 020 7533 6094

The Labour Force Survey is a survey of the population of private households, student halls of residence and NHS accommodation.

ECONOMIC ACTIVITY AND INACTIVITY

North West

10 Economic inactivity by age

(thousands), not seasonally adjusted

		All aged 16 & over	16 - 59/64	16 - 17	18 - 24	25 - 34	35 - 49	50 - 64 (m) 50 - 59 (w)	65+ (m) & 60+ (w)
		1	2	3	4	5	6	7	8
Economically inactive									
People	Dec - Feb 2002	2,104	984	93	146	157	232	357	1,120
	Dec - Feb 2003	2,079	951	93	136	156	244	322	1,128
	Dec - Feb 2004	2,056	932	94	150	141	228	319	1,124
	Mar - May 2004	2,105	975	100	165	145	239	327	1,130
	Jun - Aug 2004	2,086	959	85	149	137	248	340	1,127
	Sep - Nov 2004	2,054	932	86	146	141	234	325	1,122
	Dec - Feb 2005	2,060	946	93	141	130	239	342	1,114
	<i>Change on year</i>	4	14	0	-9	-11	10	23	-10
<i>Change %</i>	0.2	1.5	-0.3	-5.9	-7.5	4.6	7.3	-0.9	
Men	Dec - Feb 2002	825	412	49	62	36	72	193	414
	Dec - Feb 2003	802	383	44	54	32	78	175	419
	Dec - Feb 2004	813	391	50	54	41	68	178	423
	Mar - May 2004	846	420	49	74	45	70	182	425
	Jun - Aug 2004	834	410	44	69	40	70	186	424
	Sep - Nov 2004	802	381	44	58	34	68	177	422
	Dec - Feb 2005	823	403	50	65	27	74	187	420
	<i>Change on year</i>	9	12	0	11	-14	6	9	-3
<i>Change %</i>	1.1	3.1	0.5	20.7	-34.4	8.1	5.2	-0.7	
Women	Dec - Feb 2002	1,279	573	44	84	120	160	164	706
	Dec - Feb 2003	1,277	568	49	83	123	167	147	709
	Dec - Feb 2004	1,243	541	44	96	100	160	141	702
	Mar - May 2004	1,259	554	51	90	100	169	145	705
	Jun - Aug 2004	1,252	549	41	80	96	177	154	703
	Sep - Nov 2004	1,251	551	43	88	106	165	149	700
	Dec - Feb 2005	1,237	543	43	76	104	165	155	694
	<i>Change on year</i>	-6	2	-1	-20	4	5	14	-7
<i>Change %</i>	-0.5	0.3	-1.3	-20.9	3.5	3.0	9.8	-1.0	

Relationship between columns: 1=2+8; 2=3+4+5+6+7

Source: Labour Force Survey

Labour Market Statistics Helpline 020 7533 6094

The Labour Force Survey is a survey of the population of private households, student halls of residence and NHS accommodation.

ECONOMIC ACTIVITY AND INACTIVITY

North West

11 Economic inactivity: reasons

(thousands), not seasonally adjusted

		Breakdown of total aged 16-59/64										
		Total aged 16 & over	Total aged 16-59/64	Does not want job	Wants a job	Wants job but not seeking in last 4 weeks						
						Total	Availability to start work in next 2 weeks		Reasons for not seeking			
									Looking			
						Available		Not available	Long-term sick	after family /home	Students	Other [#]
		1	2	3	4	5	6	7	8	9	10	11
People	Dec - Feb 2002	2,104	984	724	261	241	79	162	97	67	24	52
	Dec - Feb 2003	2,079	951	703	248	229	70	159	95	72	22	40
	Dec - Feb 2004	2,056	932	731	201	184	59	125	74	50	22	38
	Mar - May 2004	2,105	975	762	213	186	54	131	75	51	17	42
	Jun - Aug 2004	2,086	959	727	232	206	63	144	85	44	23	53
	Sep - Nov 2004	2,054	932	707	225	204	61	142	86	53	21	44
	Dec - Feb 2005	2,060	946	728	217	199	61	138	79	56	21	43
	<i>Change on year</i>	4	14	-3	17	15	3	13	5	6	0	5
<i>Change %</i>	0.2	1.5	-0.4	8.3	8.4	4.4	10.2	6.5	11.6	-1.3	13.1	
Men	Dec - Feb 2002	825	412	299	113	100	32	69	51	12	11	26
	Dec - Feb 2003	802	383	283	100	94	29	66	54	10	10	20
	Dec - Feb 2004	813	391	296	95	86	28	58	47	*	12	20
	Mar - May 2004	846	420	322	98	83	28	55	41	11	*	22
	Jun - Aug 2004	834	410	297	113	101	34	67	52	*	14	28
	Sep - Nov 2004	802	381	281	100	89	30	59	47	*	13	23
	Dec - Feb 2005	823	403	312	91	79	23	56	40	*	12	21
	<i>Change on year</i>	9	12	15	-3	-7	-5	-2	-7	*	0	1
<i>Change %</i>	1.1	3.1	5.2	-3.4	-7.9	-17.3	-3.3	-14.9	*	3.9	7.5	
Women	Dec - Feb 2002	1,279	573	425	148	140	47	93	46	55	13	26
	Dec - Feb 2003	1,277	568	420	148	134	41	93	41	61	12	19
	Dec - Feb 2004	1,243	541	435	106	98	30	68	27	42	10	19
	Mar - May 2004	1,259	554	440	114	102	26	76	34	40	*	20
	Jun - Aug 2004	1,252	549	430	119	106	29	77	33	38	10	25
	Sep - Nov 2004	1,251	551	426	125	114	31	83	38	47	*	20
	Dec - Feb 2005	1,237	543	417	126	120	38	82	39	50	*	22
	<i>Change on year</i>	-6	2	-18	20	22	7	15	12	8	*	4
<i>Change %</i>	-0.5	0.3	-4.2	18.8	22.6	24.7	21.7	43.9	17.9	*	18.9	

Relationship between columns: 2=3+4; 5=6+7; 5=8+9+10+11

Source: Labour Force Survey

[#] other includes discouraged workers

Labour Market Statistics Helpline 020 7533 6094

The Labour Force Survey is a survey of the population of private households, student halls of residence and NHS accommodation.

VACANCIES

North West

12 Jobcentre vacancies

(thousands), seasonally adjusted

	Vacancies Notified		Vacancies unfilled		Vacancy outflow		Of which: Vacancies filled by Jobcentres	
	Level	Change on month	Level	Change on month	Level	Change on month	Level	Change on month
	1	2	3	4	5	6	7	8
2003								
March	IBWG		IBWE		IBWH		IBWI	
2004								
March								
April								
May								
June								
July								
August								
September								
October								
November								
December								
2005								
January								
February								
March								

Publication of these vacancy statistics has been deferred.

Figures from May 2001 are affected by the introduction of Employer Direct - see note on page 7

Change on year
Change on year %

Source: Jobcentre Plus administrative system
Labour Market Statistics Helpline 020 7533 6094

LOCAL AREA DATA

North West

13 2003 local labour market indicators by Unitary and Local Authority

not seasonally adjusted

	Population+		Labour supply				Working age benefits			Labour demand###		
			Employment++		Unemployment++		Economic inactivity++		Claimant count#		Jobs**	
	16-59/64 (000s)	Total 16-59/64 (000s)	16-59/64 Rate (%)	Total 16+ (000s)	Rate+++ (%)	Total 16-59/64 (000s)	16-59/64 Rate (%)	Level	Proportion## (%)	Total (000s)	Jobs Density 16-59/64 (ratio)	
	1	2	3	4	5	6	7	8	9	10	11	
United Kingdom total	36,828	26,825	74.1	1,444	4.9	7,947	22.0	945,894	2.6	30,567	0.83	
Regional total	4,170	2,977	72.8	155	4.8	960	23.5	113,405	2.7	3,372	0.81	
Blackburn with Darwen UA	84	58	69.9	3	4.9	22	26.4	2,286	2.7	69	0.82	
Blackpool UA	84	58	70.0	5	7.1	20	24.4	2,741	3.3	63	0.75	
Halton UA	75	49	66.8	3	6.1	21	28.7	2,677	3.6	56	0.76	
Warrington UA	121	89	75.2	3	2.7	27	22.7	2,279	1.9	119	0.98	
Cheshire	413	322	78.6	9	2.7	78	19.1	6,087	1.5	355	0.86	
Chester	74	49	70.9	1	2.1	19	27.5	1,142	1.6	80	1.09	
Congleton	56	48	85.4	2	3.4	6	11.5	702	1.2	34	0.60	
Crewe and Nantwich	68	54	78.5	2	2.9	13	19.1	1,078	1.6	58	0.84	
Ellesmere Port and Neston	49	39	81.1	2	4.1	7	15.4	870	1.8	38	0.79	
Macclesfield	90	72	81.0	2	2.0	15	17.3	1,016	1.1	94	1.04	
Vale Royal	76	58	76.5	2	2.5	16	21.5	1,279	1.7	51	0.67	
Cumbria	293	222	76.5	11	4.7	57	19.8	6,294	2.1	254	0.87	
Allerdale	57	45	80.8	2	3.9	9	15.9	1,423	2.5	42	0.74	
Barrow-in-Furness	42	29	66.5	2	5.8	13	29.3	1,237	2.9	29	0.69	
Carlisle	62	44	72.9	2	3.9	15	24.3	1,397	2.3	60	0.98	
Copeland	42	30	71.6	3	8.2	9	21.7	1,394	3.3	36	0.84	
Eden	31	25	83.2	1	3.3	4	14.8	248	0.8	30	0.98	
South Lakeland	59	49	83.4	2	4.0	8	13.0	595	1.0	57	0.97	
Bolton	162	117	72.9	7	5.3	37	22.9	4,125	2.5	122	0.76	
Bury	112	86	76.2	4	4.6	23	20.0	2,076	1.9	73	0.65	
Manchester	286	150	59.9	13	7.7	88	35.0	13,340	4.7	333	1.16	
Oldham	132	97	73.4	6	5.3	30	22.5	3,592	2.7	90	0.68	
Rochdale	127	90	71.5	6	6.3	30	23.7	3,750	3.0	92	0.73	
Salford	134	88	67.3	5	4.9	38	29.2	3,715	2.8	122	0.91	
Stockport	172	138	80.0	5	3.4	29	17.0	2,960	1.7	134	0.78	
Tameside	132	100	75.6	4	4.2	28	21.0	3,176	2.4	81	0.62	
Trafford	130	96	75.1	4	4.2	28	21.6	2,529	1.9	140	1.08	
Wigan	190	140	74.1	7	4.7	42	22.1	4,544	2.4	113	0.59	
Lancashire	696	530	77.2	22	3.8	135	19.7	13,143	1.9	550	0.79	
Burnley	53	42	77.3	2	4.2	10	19.1	1,091	2.0	40	0.75	
Chorley	65	49	78.0	1	2.2	13	20.1	915	1.4	44	0.68	
Fylde	43	32	76.2	*	*	10	22.6	417	1.0	46	1.06	
Hyndburn	49	37	75.8	2	5.8	10	19.5	978	2.0	34	0.69	
Lancaster	83	59	71.6	3	5.1	20	24.5	2,145	2.6	61	0.73	
Pendle	54	43	79.2	*	*	10	19.4	1,129	2.1	38	0.70	
Preston	82	58	72.3	5	8.3	17	21.4	2,196	2.7	96	1.17	
Ribble Valley	34	26	80.4	1	2.7	6	17.2	203	0.6	31	0.92	
Rossendale	41	35	87.1	*	*	4	11.1	644	1.6	25	0.60	
South Ribble	65	52	81.2	2	2.8	11	16.5	753	1.2	49	0.76	
West Lancashire	66	49	74.7	2	4.6	14	21.6	1,786	2.7	46	0.69	
Wyre	61	48	80.5	1	2.1	11	17.7	886	1.5	41	0.67	
Knowsley	91	57	64.2	4	6.3	28	31.4	4,095	4.5	58	0.64	
Liverpool	282	164	60.6	15	8.0	92	34.0	14,982	5.3	239	0.85	

13 2003 local labour market indicators by Unitary and Local Authority

not seasonally adjusted

	Population+		Labour supply				Working age benefits		Labour demand###		
	Employment++		Unemployment++		Economic inactivity++		Claimant count#		Jobs**		
	Total 16-59/64 (000s)	16-59/64 Rate (%)	Total 16+ (000s)	Rate+++ (%)	Total 16-59/64 (000s)	16-59/64 Rate (%)	Level	Proportion## (%)	Total (000s)	Jobs Density 16-59/64 (ratio)	
	1	2	3	4	5	6	7	8	9	10	11
St. Helens	108	75	70.0	3	4.0	29	27.0	3,452	3.2	70	0.65
Sefton	164	117	72.4	8	5.9	37	23.0	5,239	3.2	120	0.73
Wirral	185	134	73.0	8	5.6	42	22.7	6,324	3.4	116	0.63

Relationship between columns: 9=8/1; 11=10/1.

Source: Labour Force Survey, Jobcentre Plus administrative system, Annual Business Inquiry

+ Official mid-2003 estimate of the resident population.

Labour Market Statistics Helpline 020 7533 6094

++ Labour Force Survey (LFS) data relate to the period March 2003 to February 2004. The LFS sample covers working age (16-59/64) and is a survey of the population of private households, student halls of residence and NHS accommodation. The LFS data in this table are consistent with population estimates released in February 2003, not the latest revise population estimates - see note on page 7.

+++ Unemployment rates calculated as percentage of 16+ economically active population.

Count of claimants of Jobseeker's Allowance. Average for January 2003 to December 2003.

Percentage of resident working age population of area. NB these are different from the national and regional claimant rates shown in Tables 1a, 7 and the summary of other headline indicators. See background note 5.

Labour demand includes jobs and vacancies - data on vacancies will be included here when they become available for local areas.

* Sample size too small for reliable estimate.

** Jobs data are for 2003, and are mainly employees from the Annual Business Inquiry which refers to December of each year; they also include self-employed, HM Forces and government-supported trainees. Jobs densities are calculated as the number of jobs per resident of working age (16-59/64).

LOCAL AREA DATA

North West

14 2003 local labour market indicators by Parliamentary Constituency

not seasonally adjusted

	Population+		Labour supply				Working age benefits			Labour demand###	
	16-59/64 (000s)	Employment++		Unemployment++		Economic inactivity++		Claimant count#		Jobs**	
		Total 16-59/64 (000s)	16-59/64 Rate (%)	Total 16+ (000s)	Rate+++ (%)	Total 16-59/64 (000s)	16-59/64 Rate (%)	Level	Proportion## (%)	Total (000s)	Jobs Density 16-59/64 (ratio)
		1	2	3	4	5	6				
United Kingdom total	36,828	26,825	74.1	1,444	4.9	7,947	22.0	945,894	2.6	30,567	0.83
Regional total	4,170	2,977	72.8	155	4.8	960	23.5	113,405	2.7	3,372	0.81
Altrincham & Sale West	..	44	75.7	1	3.0	13	21.8	741	1.4	49	0.89
Ashton under Lyne	..	39	71.2	2	5.3	14	24.7	1,589	2.7	40	0.67
Barrow & Furness	..	34	67.8	2	5.6	14	28.0	1,450	2.8	36	0.69
Birkenhead	..	31	69.9	2	7.0	11	24.8	2,540	5.5	38	0.83
Blackburn	..	40	66.9	2	5.3	18	29.2	1,845	3.1	56	0.94
Blackpool North & Fleetwood	..	45	74.6	2	4.1	13	22.1	1,365	2.6	39	0.73
Blackpool South	..	38	69.7	3	7.4	14	24.6	1,997	3.5	45	0.80
Bolton North East	..	39	75.2	2	4.2	11	21.4	1,570	3.0	40	0.75
Bolton South East	..	37	69.8	3	6.9	13	25.0	1,734	3.2	52	0.96
Bolton West	..	40	73.8	2	4.9	12	22.3	822	1.6	31	0.59
Bootle	..	25	60.4	3	9.6	14	32.8	2,543	5.6	41	0.92
Burnley	..	42	77.3	2	4.2	10	19.1	1,091	2.0	40	0.74
Bury North	..	47	79.8	2	3.8	10	16.9	1,082	1.9	45	0.80
Bury South	..	39	72.4	2	5.5	13	23.3	995	1.8	28	0.52
Carlisle	..	33	74.8	2	4.7	10	21.8	1,209	2.6	50	1.09
Cheadle	..	47	82.9	1	1.2	9	16.1	569	1.1	38	0.75
Chester, City of	..	34	66.6	*	*	17	32.4	985	1.8	70	1.27
Chorley	..	49	78.0	1	2.2	13	20.1	915	1.4	44	0.70
Congleton	..	48	85.4	2	3.4	6	11.5	702	1.2	34	0.60
Copeland	..	30	71.6	3	8.2	9	21.7	1,394	3.3	36	0.84
Crewe & Nantwich	..	43	76.6	2	3.7	11	20.4	1,012	1.8	49	0.86
Crosby	..	33	76.4	2	4.3	9	20.0	1,142	2.7	22	0.51
Denton & Reddish	..	44	76.0	2	5.0	12	19.9	1,215	2.2	33	0.60
Eccles	..	44	73.0	2	4.0	14	24.0	1,282	2.3	42	0.75
Eddisbury	..	49	82.4	1	1.7	10	16.1	735	1.3	34	0.62
Ellesmere Port & Neston	..	43	80.5	2	3.7	9	16.3	909	1.7	40	0.76
Fylde	..	39	76.7	*	*	11	22.4	643	1.2	49	0.91
Halton	..	31	65.1	2	6.7	15	30.1	1,743	3.5	33	0.66
Hazel Grove	..	37	81.3	1	2.0	8	17.0	632	1.3	29	0.60
Heywood & Middleton	..	44	75.3	2	4.3	13	21.4	1,462	2.5	39	0.65
Hyndburn	..	42	76.3	3	5.8	11	19.0	1,078	2.0	40	0.73
Knowsley North & Sefton East	..	35	63.2	3	7.3	18	31.9	2,053	3.6	40	0.70
Knowsley South	..	39	68.6	3	6.4	15	26.6	2,518	4.3	33	0.56
Lancaster & Wyre	..	42	76.4	2	4.8	11	19.6	822	1.3	50	0.81
Leigh	..	42	73.6	3	5.7	12	22.0	1,438	2.5	34	0.59
Liverpool, Garston	..	35	67.1	2	4.3	16	29.8	2,125	4.3	29	0.58
Liverpool, Riverside	..	29	51.9	5	13.5	22	39.7	4,035	6.4	123	1.96
Liverpool, Walton	..	29	59.6	3	10.3	16	33.5	3,077	5.9	37	0.70
Liverpool, Wavertree	..	37	62.1	3	7.3	20	32.8	2,817	4.9	34	0.59
Liverpool, West Derby	..	34	62.4	2	5.6	19	33.8	2,928	5.4	17	0.31
Macclesfield	..	45	82.3	1	1.8	9	16.2	589	1.1	50	0.90
Makerfield	..	43	71.8	2	5.2	14	24.2	1,193	2.1	27	0.49
Manchester, Blackley	..	25	56.2	2	8.6	17	38.4	2,634	5.3	36	0.73
Manchester, Central	..	30	59.7	2	6.0	18	36.4	4,101	6.9	186	3.15
Manchester, Gorton	..	23	52.7	4	13.8	17	38.7	3,137	5.4	27	0.47
Manchester, Withington	..	43	63.6	3	6.4	22	31.9	1,881	3.0	34	0.55
Morecambe & Lunesdale	..	39	72.7	2	3.8	13	24.4	1,573	3.1	30	0.58
Oldham East & Saddleworth	..	51	78.0	3	5.4	12	17.6	1,396	2.2	35	0.55
Oldham West & Royton	..	39	69.1	2	5.5	15	26.9	1,868	3.2	51	0.87
Pendle	..	43	79.2	*	*	10	19.4	1,129	2.1	38	0.71
Penrith & The Border	..	41	78.6	2	3.6	10	19.0	559	1.1	45	0.87
Preston	..	40	68.6	5	11.1	13	22.7	1,894	3.1	86	1.40
Ribble Valley	..	46	80.9	1	2.7	10	17.3	434	0.8	55	0.96
Rochdale	..	40	66.9	4	8.1	16	27.1	2,169	3.7	51	0.86
Rossendale & Darwen	..	47	84.4	1	2.3	8	13.7	986	1.7	31	0.54
Salford	..	22	56.6	2	7.8	15	38.5	1,722	3.8	65	1.43

14 2003 local labour market indicators by Parliamentary Constituency

not seasonally adjusted

	Population+		Labour supply				Working age benefits		Labour demand###		
	Employment++		Unemployment++		Economic inactivity++		Claimant count#		Jobs**		
	Total 16-59/64 (000s)	16-59/64 Rate (%)	Total 16+ (000s)	Rate+++ (%)	Total 16-59/64 (000s)	16-59/64 Rate (%)	Level	Proportion## (%)	Total (000s)	Jobs Density 16-59/64 (ratio)	
	1	2	3	4	5	6	7	8	9	10	11
South Ribble	..	53	81.0	1	2.7	11	16.7	740	1.3	38	0.65
Southport	..	42	78.1	2	3.6	10	18.8	1,079	2.1	42	0.82
St. Helens North	..	38	71.9	2	3.9	13	25.2	1,531	2.7	24	0.43
St. Helens South	..	37	68.2	2	4.1	16	28.7	1,921	3.7	46	0.90
Stalybridge & Hyde	..	42	77.3	2	3.9	11	19.5	1,309	2.4	29	0.54
Stockport	..	41	79.0	2	5.5	9	16.3	1,269	2.4	54	1.01
Stretford & Urmston	..	40	73.2	3	6.4	12	21.7	1,535	2.8	78	1.40
Tatton	..	39	79.6	*	*	9	19.0	589	1.2	54	1.14
Wallasey	..	33	68.4	3	7.7	13	26.0	1,953	3.9	28	0.56
Warrington North	..	42	74.9	1	2.0	13	23.5	1,278	2.1	88	1.48
Warrington South	..	47	75.4	2	3.4	14	21.9	1,001	1.7	30	0.51
Weaver Vale	..	37	70.6	2	5.2	13	25.4	1,501	2.7	47	0.86
West Lancashire	..	41	74.1	2	4.9	12	22.0	1,659	2.9	41	0.71
Westmorland & Lonsdale	..	43	84.5	2	3.9	6	11.9	382	0.8	50	1.00
Wigan	..	35	72.6	2	5.4	11	23.2	1,331	2.7	42	0.84
Wirral South	..	36	80.8	1	2.9	7	16.7	848	1.9	29	0.68
Wirral West	..	34	73.2	2	5.1	11	23.0	983	2.2	21	0.48
Workington	..	40	80.4	1	3.2	8	16.9	1,299	2.6	37	0.75
Worsley	..	43	76.3	1	2.3	12	21.9	1,293	2.3	25	0.44
Wythenshawe & Sale East	..	41	68.8	2	4.0	17	28.4	1,840	3.1	64	1.08

Relationship between columns: 9=8/1; 11=10/1.

Source: Labour Force Survey, Jobcentre Plus administrative system, Annual Business Inquiry

+ Official mid-2003 estimates of the resident population are not available for this geography.

Labour Market Statistics Helpline 020 7533 6094

Denominators for claimant count and jobs density are based on 2001 census data adjusted to be consistent with 2001 mid-year population estimates for local authorities.

++ Labour Force Survey (LFS) data relate to the period March 2003 to February 2004. The LFS sample covers working age (16-59/64) and is a survey of the population of private households, student halls of residence and NHS accommodation. The LFS data in this table are consistent with population estimates released in February 2003, not the latest revised population estimates - see note on page 7.

+++ Unemployment rates calculated as percentage of 16+ economically active population.

Count of claimants of Jobseeker's Allowance. Average for January 2003 to December 2003.

Percentage of resident working age population of area. NB these are different from the national and regional claimant rates shown in Tables 1a, 7 and the summary of other headline indicators. See background note 5.

Labour demand includes jobs and vacancies - data on vacancies will be included here when they become available for local areas.

* Sample size too small for reliable estimate.

** Jobs data are for 2003, and are mainly employees from the Annual Business Inquiry which refers to December of each year; they also include self-employed, HM Forces and government-supported trainees. Jobs densities are calculated as the number of jobs per resident of working age (16-59/64).

LOCAL AREA DATA

North West

15 2003 local labour market indicators by Travel-to-Work Area

not seasonally adjusted

	Population+		Labour supply				Working age benefits		Labour demand###		
	Employment++		Unemployment++		Economic inactivity++		Claimant count#		Jobs**		
	Total 16-59/64 (000s)	16-59/64 Rate (%)	Total 16+ (000s)	Rate+++ (%)	Total 16-59/64 (000s)	16-59/64 Rate (%)	Level	Proportion## (%)	Total (000s)	Jobs Density 16-59/64 (ratio)	
	1	2	3	4	5	6	7	8	9	10	11
United Kingdom total	36,828	26,825	74.1	1,444	4.9	7,947	22.0	945,894	2.6	30,567	0.83
Regional total	4,170	2,977	72.8	155	4.8	960	23.5	113,405	2.7	3,372	0.81
Appleby	..	7	81.4	*	*	2	18.6	55	0.7	7	0.84
Barrow-in-Furness	..	38	68.0	2	5.9	16	27.7	1,482	2.7	39	0.70
Blackburn	..	141	75.6	7	4.3	39	20.9	3,935	2.1	146	0.79
Blackpool	..	133	74.6	6	4.3	39	22.0	3,982	2.3	142	0.82
Bolton	..	127	71.9	7	5.5	42	23.9	4,612	2.7	131	0.76
Burnley	..	49	79.3	2	3.6	11	17.6	1,155	1.9	45	0.74
Carlisle	..	51	74.5	2	4.4	15	22.3	1,537	2.2	66	0.95
Crewe	..	129	78.5	4	2.9	31	19.1	2,542	1.6	119	0.76
Kendal	..	31	85.5	2	4.6	4	10.3	278	0.8	33	0.97
Keswick	..	5	89.9	*	*	*	*	30	0.5	5	0.91
Lancaster and Morecambe	..	64	72.3	3	4.7	21	24.0	2,196	2.4	67	0.75
Liverpool	..	388	65.9	29	6.7	172	29.2	26,096	4.4	455	0.77
Manchester	..	897	72.9	45	4.7	288	23.4	34,117	2.7	1,115	0.89
Nelson and Colne	..	38	77.6	*	*	10	20.9	1,083	2.2	36	0.73
Penrith	..	17	84.8	1	4.9	2	12.3	167	0.8	22	1.11
Preston	..	167	77.3	8	4.6	41	19.0	3,970	1.8	198	0.89
Rochdale	..	73	71.6	5	5.9	24	23.9	3,075	3.0	77	0.74
Warrington	..	144	72.3	6	3.8	49	24.8	5,081	2.5	182	0.89
Whitehaven	..	30	72.5	2	6.6	9	22.2	1,339	3.3	35	0.85
Wigan and St. Helens	..	189	71.5	10	4.9	65	24.7	7,144	2.7	175	0.66
Windermere	..	8	87.6	*	*	1	12.4	66	0.6	13	1.10
Wirral and Chester	..	222	73.8	11	4.6	68	22.6	8,336	2.7	234	0.77
Workington	..	33	77.3	2	5.4	8	18.1	1,310	3.0	32	0.72

Relationship between columns: 9=8/1; 11=10/1.

Source: Labour Force Survey, Jobcentre Plus administrative system, Annual Business Inquiry

+ Official mid-2003 estimates of the resident population are not available for this geography.

Labour Market Statistics Helpline 020 7533 6094

Denominators for claimant count and jobs density are based on 2001 census data adjusted to be consistent with 2001 mid-year population estimates for local authorities.

++ Labour Force Survey (LFS) data relate to the period March 2003 to February 2004. The LFS sample covers working age (16-59/64) and is a survey of the population of private households, student halls of residence and NHS accommodation. The LFS data in this table are consistent with population estimates released in February 2003, not the latest revise population estimates - see note on page 7.

+++ Unemployment rates calculated as percentage of 16+ economically active population.

Count of claimants of Jobseeker's Allowance. Average for January 2003 to December 2003.

Percentage of resident working age population of area. NB these are different from the national and regional claimant rates shown in Tables 1a, 7 and the summary of other headline indicators. See background note 5.

Labour demand includes jobs and vacancies - data on vacancies will be included here when they become available for local areas.

* Sample size too small for reliable estimate.

** Jobs data are for 2003, and are mainly employees from the Annual Business Inquiry which refers to December of each year; they also include self-employed, HM Forces and government-supported trainees. Jobs densities are calculated as the number of jobs per resident of working age (16-59/64).

LOCAL AREA DATA

North West

16 2003 local labour market indicators by NUTS 3 area

not seasonally adjusted

	Population+		Labour supply				Working age benefits		Labour demand###		
			Employment++		Unemployment++		Economic inactivity++		Claimant count#		Jobs
	16-59/64	Total 16-59/64	Rate (%) 16-59/64	Total 16+	Rate (%)+++	Total 16-59/64	Rate (%) 16-59/64	Level (number)	% 16- 59/64##	Total**	Jobs Density Ratio 16-59/64***
	1	2	3	4	5	6	7	8	9	10	11
United Kingdom total	36,828	26,825	74.1	1,444	4.9	7,947	22.0	945,894	2.6	30,567	0.83
Regional total	4,170	2,977	72.8	155	4.8	960	23.5	113,405	2.7	3,372	0.81
Cumbria											
West Cumbria	141	103	73.7	6	5.7	30	21.7	4,054	2.9	106	0.75
East Cumbria	152	118	79.1	5	3.8	27	17.9	2,240	1.5	148	0.97
Cheshire											
Halton & Warrington	195	138	72.0	6	3.9	48	25.0	4,956	2.5	175	0.90
Cheshire CC	413	322	78.6	9	2.7	78	19.1	6,087	1.5	355	0.86
Greater Manchester											
Greater Manchester South	853	572	70.3	31	5.1	211	25.9	25,719	3.0	810	0.95
Greater Manchester North	723	530	73.6	30	5.2	161	22.3	18,087	2.5	491	0.68
Lancashire											
Blackburn with Darwen	84	58	69.9	3	4.9	22	26.4	2,286	2.7	69	0.82
Blackpool	84	58	70.0	5	7.1	20	24.4	2,741	3.3	63	0.75
Lancashire CC	696	530	77.2	22	3.8	135	19.7	13,143	1.9	550	0.79
Merseyside											
East Merseyside	199	133	67.4	7	5.0	57	29.0	7,548	3.8	129	0.65
Liverpool	282	164	60.6	15	8.0	92	34.0	14,982	5.3	239	0.85
Sefton	164	117	72.4	8	5.9	37	23.0	5,239	3.2	120	0.73
Wirral	185	134	73.0	8	5.6	42	22.7	6,324	3.4	116	0.63

Relationship between columns: 9=8/1; 11=10/1.

Source: Labour Force Survey, Jobcentre Plus administrative system, Annual Business Inquiry

+ Official mid-2003 estimate of the resident population.

Labour Market Statistics Helpline 020 7533 6094

++ Labour Force Survey (LFS) data relate to the period March 2003 to February 2004. The LFS sample covers working age (16-59/64) and is a survey of the population of private households, student halls of residence and NHS accommodation. The LFS data in this table are consistent with population estimates released in February 2003, not the latest revise population estimates - see note on page 7.

+++ Unemployment rates calculated as percentage of 16+ economically active population.

Count of claimants of Jobseeker's Allowance. Average for January 2003 to December 2003.

Percentage of resident working age population of area. NB these are different from the national and regional claimant rates shown in Tables 1a, 7 and the summary of other headline indicators. See background note 5.

Labour demand includes jobs and vacancies - data on vacancies will be included here when they become available for local areas.

* Sample size too small for reliable estimate.

** Jobs data are for 2003, and are mainly employees from the Annual Business Inquiry which refers to December of each year; they also include self-employed, HM Forces and government-supported trainees. Jobs densities are calculated as the number of jobs per resident of working age (16-59/64).

LOCAL AREA DATA

North West

17 Claimant count* by Unitary and Local Authority

not seasonally adjusted

	CLAIMANT COUNT ON 10 MARCH 2005						Change on year					
	Levels			Percentage of Pop [#]			Levels			Percentage [#]		
	Men	Women	People	Men	Women	People	Men	Women	People	Men	Women	People
	1	2	3	4	5	6	7	8	9	10	11	12
United Kingdom total	656,194	226,104	882,298	3.4	1.3	2.4	-41,044	-8,686	-49,730	-0.2	0.0	-0.1
Regional total	78,134	24,398	102,532	3.6	1.2	2.5	-5,665	-1,283	-6,948	-0.3	-0.1	-0.2
Blackburn with Darwen UA	1,779	524	2,303	4.1	1.3	2.7	69	12	81	0.2	0.0	0.1
Blackpool UA	2,149	634	2,783	4.9	1.6	3.3	-19	6	-13	0.0	0.0	0.0
Halton UA	1,679	541	2,220	4.5	1.5	3.0	-125	-29	-154	-0.3	-0.1	-0.2
Warrington UA	1,233	391	1,624	2.0	0.7	1.3	-463	-127	-590	-0.7	-0.2	-0.5
Cheshire	3,856	1,314	5,170	1.8	0.7	1.3	-667	-196	-863	-0.3	-0.1	-0.2
Chester	728	237	965	1.9	0.7	1.3	-102	-60	-162	-0.3	-0.2	-0.2
Congleton	389	155	544	1.3	0.6	1.0	-76	-35	-111	-0.3	-0.1	-0.2
Crewe and Nantwich	691	251	942	1.9	0.8	1.4	-165	-29	-194	-0.5	-0.1	-0.3
Ellesmere Port and Neston	649	161	810	2.6	0.7	1.7	-22	-27	-49	-0.1	-0.1	-0.1
Macclesfield	660	227	887	1.4	0.5	1.0	-115	-7	-122	-0.2	0.0	-0.1
Vale Royal	739	283	1,022	1.9	0.8	1.3	-187	-38	-225	-0.5	-0.1	-0.3
Cumbria	4,256	1,301	5,557	2.8	0.9	1.9	-344	-186	-530	-0.2	-0.1	-0.2
Allerdale	857	293	1,150	2.9	1.1	2.0	-148	-30	-178	-0.5	-0.1	-0.3
Barrow-in-Furness	1,034	253	1,287	4.7	1.3	3.1	18	13	31	0.1	0.1	0.1
Carlisle	971	288	1,259	3.0	1.0	2.0	8	-70	-62	0.0	-0.2	-0.1
Copeland	881	272	1,153	3.9	1.4	2.7	-134	-47	-181	-0.6	-0.2	-0.4
Eden	163	59	222	1.0	0.4	0.7	-6	-15	-21	0.0	-0.1	-0.1
South Lakeland	350	136	486	1.1	0.5	0.8	-82	-37	-119	-0.3	-0.1	-0.2
Bolton	2,994	1,027	4,021	3.6	1.3	2.5	75	124	199	0.1	0.2	0.1
Bury	1,420	531	1,951	2.5	1.0	1.7	-55	-11	-66	-0.1	0.0	-0.1
Manchester	8,279	2,418	10,697	5.6	1.8	3.7	-1,243	-240	-1,483	-0.8	-0.2	-0.5
Oldham	2,526	784	3,310	3.7	1.2	2.5	-142	66	-76	-0.2	0.1	-0.1
Rochdale	2,603	810	3,413	4.0	1.3	2.7	-110	-18	-128	-0.2	0.0	-0.1
Salford	2,729	792	3,521	3.8	1.3	2.6	-210	-20	-230	-0.3	0.0	-0.2
Stockport	1,876	524	2,400	2.1	0.6	1.4	-223	-179	-402	-0.3	-0.2	-0.2
Tameside	2,140	714	2,854	3.1	1.1	2.2	-175	-96	-271	-0.3	-0.2	-0.2
Trafford	1,668	500	2,168	2.5	0.8	1.7	-108	-51	-159	-0.2	-0.1	-0.1
Wigan	3,231	1,119	4,350	3.2	1.2	2.3	-180	16	-164	-0.2	0.0	-0.1
Lancashire	9,508	3,016	12,524	2.6	0.9	1.8	-343	-205	-548	-0.1	-0.1	-0.1
Burnley	752	221	973	2.8	0.8	1.8	-41	-59	-100	-0.2	-0.2	-0.2
Chorley	664	223	887	1.9	0.7	1.4	34	-17	17	0.1	-0.1	0.0
Fylde	326	88	414	1.4	0.4	1.0	-40	-22	-62	-0.2	-0.1	-0.1
Hyndburn	808	246	1,054	3.2	1.0	2.2	52	12	64	0.2	0.1	0.1
Lancaster	1,275	396	1,671	3.0	1.0	2.0	-204	-84	-288	-0.5	-0.2	-0.3
Pendle	743	276	1,019	2.7	1.1	1.9	-24	-1	-25	-0.1	0.0	0.0
Preston	1,760	456	2,216	4.1	1.1	2.7	-37	-19	-56	-0.1	0.0	-0.1
Ribble Valley	172	52	224	1.0	0.3	0.7	12	-1	11	0.1	0.0	0.0
Rossendale	497	190	687	2.4	1.0	1.7	51	-1	50	0.2	0.0	0.1
South Ribble	568	201	769	1.7	0.6	1.2	-13	-3	-16	0.0	0.0	0.0
West Lancashire	1,261	467	1,728	3.7	1.4	2.6	-43	36	-7	-0.1	0.1	0.0
Wyre	682	200	882	2.2	0.7	1.5	-90	-46	-136	-0.3	-0.2	-0.2
Knowsley	2,747	862	3,609	6.1	1.9	4.0	-283	-45	-328	-0.6	-0.1	-0.4
Liverpool	11,428	3,458	14,886	8.0	2.5	5.3	-56	114	58	0.0	0.1	0.0
St. Helens	2,124	706	2,830	3.8	1.4	2.6	-328	-95	-423	-0.6	-0.2	-0.4
Sefton	3,384	1,007	4,391	4.1	1.2	2.7	-524	-128	-652	-0.6	-0.2	-0.4
Wirral	4,525	1,425	5,950	4.9	1.6	3.2	-211	5	-206	-0.2	0.0	-0.1

* Count of claimants of Jobseeker's Allowance

Source: Jobcentre Plus administrative system

Relationship between columns = 3=1+2; 9=7+8

Labour Market Statistics Helpline 020 7533 6094

Percentages of resident working age population of area. NB these are different from the national and regional claimant count rates shown in Tables 1a, 7 and the summary of other headline indicators. See background note 5.

LOCAL AREA DATA

North West

18 Claimant count* by Parliamentary Constituency

not seasonally adjusted

	CLAIMANT COUNT ON 10 MARCH 2005						Change on year					
	Levels			Percentage of Pop [#]			Levels			Percentage [#]		
	Men	Women	People	Men	Women	People	Men	Women	People	Men	Women	People
	1	2	3	4	5	6	7	8	9	10	11	12
United Kingdom total	656,194	226,104	882,298	3.4	1.3	2.4	-41,044	-8,686	-49,730	-0.2	0.0	-0.1
Regional total	78,134	24,398	102,532	3.6	1.2	2.5	-5,665	-1,283	-6,948	-0.3	-0.1	-0.2
Altrincham & Sale West	526	159	685	1.9	0.6	1.3	25	-33	-8	0.1	-0.1	0.0
Ashton under Lyne	1,034	322	1,356	3.4	1.1	2.3	-111	-40	-151	-0.4	-0.1	-0.3
Barrow & Furness	1,164	299	1,463	4.3	1.2	2.8	-26	2	-24	-0.1	0.0	0.0
Birkenhead	1,910	549	2,459	8.4	2.4	5.3	-69	-25	-94	-0.3	-0.1	-0.2
Blackburn	1,469	419	1,888	4.8	1.5	3.2	96	34	130	0.3	0.1	0.2
Blackpool North & Fleetwood	1,103	310	1,413	4.0	1.2	2.7	-57	-11	-68	-0.2	0.0	-0.1
Blackpool South	1,536	464	2,000	5.2	1.7	3.5	-7	-5	-12	0.0	0.0	0.0
Bolton North East	1,105	393	1,498	4.0	1.5	2.8	-15	67	52	-0.1	0.3	0.1
Bolton South East	1,348	450	1,798	4.8	1.7	3.3	94	76	170	0.3	0.3	0.3
Bolton West	541	184	725	2.0	0.7	1.4	-4	-19	-23	0.0	-0.1	0.0
Bootle	1,741	477	2,218	7.8	2.1	4.9	-199	-75	-274	-0.9	-0.3	-0.6
Burnley	752	221	973	2.8	0.8	1.8	-41	-59	-100	-0.2	-0.2	-0.2
Bury North	750	257	1,007	2.5	0.9	1.8	-58	-23	-81	-0.2	-0.1	-0.1
Bury South	670	274	944	2.4	1.0	1.8	3	12	15	0.0	0.0	0.0
Carlisle	850	254	1,104	3.6	1.1	2.4	15	-50	-35	0.1	-0.2	-0.1
Cheadle	321	88	409	1.2	0.4	0.8	-41	-36	-77	-0.2	-0.1	-0.2
Chester, City of	640	196	836	2.3	0.7	1.5	-95	-41	-136	-0.3	-0.2	-0.2
Chorley	664	223	887	2.0	0.7	1.4	34	-17	17	0.1	-0.1	0.0
Congleton	389	155	544	1.3	0.6	1.0	-76	-35	-111	-0.3	-0.1	-0.2
Copeland	881	272	1,153	3.9	1.4	2.7	-134	-47	-181	-0.6	-0.2	-0.4
Crewe & Nantwich	653	221	874	2.2	0.8	1.5	-155	-36	-191	-0.5	-0.1	-0.3
Crosby	706	239	945	3.2	1.1	2.2	-104	-21	-125	-0.5	-0.1	-0.3
Denton & Reddish	797	266	1,063	2.8	1.0	1.9	-76	-49	-125	-0.3	-0.2	-0.2
Eccles	991	265	1,256	3.3	1.0	2.2	-29	-56	-85	-0.1	-0.2	-0.2
Eddisbury	392	196	588	1.4	0.7	1.1	-107	-18	-125	-0.4	-0.1	-0.2
Ellesmere Port & Neston	687	173	860	2.5	0.7	1.6	-10	-31	-41	0.0	-0.1	-0.1
Fylde	474	127	601	1.7	0.5	1.1	-60	-36	-96	-0.2	-0.1	-0.2
Halton	1,090	332	1,422	4.3	1.3	2.8	-68	-33	-101	-0.3	-0.1	-0.2
Hazel Grove	424	110	534	1.7	0.5	1.1	-20	-52	-72	-0.1	-0.2	-0.1
Heywood & Middleton	903	311	1,214	3.0	1.1	2.0	-153	-34	-187	-0.5	-0.1	-0.3
Hyndburn	898	274	1,172	3.2	1.0	2.2	56	14	70	0.2	0.1	0.1
Knowsley North & Sefton East	1,395	458	1,853	4.9	1.6	3.3	-148	-29	-177	-0.5	-0.1	-0.3
Knowsley South	1,659	501	2,160	5.6	1.7	3.7	-168	-37	-205	-0.6	-0.1	-0.3
Lancaster & Wyre	497	155	652	1.6	0.5	1.1	-137	-46	-183	-0.4	-0.2	-0.3
Leigh	963	351	1,314	3.2	1.3	2.3	-97	19	-78	-0.3	0.1	-0.1
Liverpool, Garston	1,628	486	2,114	6.4	2.0	4.2	46	-19	27	0.2	-0.1	0.1
Liverpool, Riverside	3,161	960	4,121	10.0	3.1	6.6	-20	102	82	-0.1	0.3	0.1
Liverpool, Walton	2,376	690	3,066	8.8	2.7	5.8	83	0	83	0.3	0.0	0.2
Liverpool, Wavertree	2,133	654	2,787	7.5	2.3	4.9	-93	26	-67	-0.3	0.1	-0.1
Liverpool, West Derby	2,130	668	2,798	7.9	2.5	5.2	-72	5	-67	-0.3	0.0	-0.1
Macclesfield	393	127	520	1.4	0.5	0.9	-84	6	-78	-0.3	0.0	-0.1
Makerfield	848	304	1,152	2.9	1.1	2.1	-113	16	-97	-0.4	0.1	-0.2
Manchester, Blackley	1,639	476	2,115	6.3	2.1	4.3	-270	-39	-309	-1.0	-0.2	-0.6
Manchester, Central	2,627	723	3,350	8.3	2.6	5.6	-397	-67	-464	-1.2	-0.2	-0.8
Manchester, Gorton	1,709	550	2,259	5.6	2.0	3.9	-388	-91	-479	-1.3	-0.3	-0.8
Manchester, Withington	1,131	340	1,471	3.5	1.1	2.3	-135	-29	-164	-0.4	-0.1	-0.3
Morecambe & Lunesdale	959	298	1,257	3.7	1.2	2.5	-109	-61	-170	-0.4	-0.2	-0.3
Oldham East & Saddleworth	1,004	339	1,343	3.1	1.1	2.1	2	59	61	0.0	0.2	0.1
Oldham West & Royton	1,325	374	1,699	4.4	1.3	2.9	-96	14	-82	-0.3	0.0	-0.1
Pendle	743	276	1,019	2.7	1.1	1.9	-24	-1	-25	-0.1	0.0	0.0
Penrith & The Border	352	124	476	1.3	0.5	0.9	-15	-35	-50	-0.1	-0.1	-0.1
Preston	1,552	392	1,944	4.9	1.3	3.2	-13	-8	-21	0.0	0.0	0.0
Ribble Valley	342	119	461	1.1	0.4	0.8	12	3	15	0.0	0.0	0.0
Rochdale	1,606	474	2,080	5.3	1.7	3.5	29	15	44	0.1	0.1	0.1
Rossendale & Darwen	717	267	984	2.4	1.0	1.7	20	-25	-5	0.1	-0.1	0.0
Salford	1,262	361	1,623	5.2	1.7	3.6	-148	46	-102	-0.6	0.2	-0.2
South Ribble	548	182	730	1.8	0.6	1.3	-17	-4	-21	-0.1	0.0	0.0
Southport	630	194	824	2.4	0.8	1.6	-188	-11	-199	-0.7	0.0	-0.4

LOCAL AREA DATA

North West

18 Claimant count* by Parliamentary Constituency

not seasonally adjusted

	CLAIMANT COUNT ON 10 MARCH 2005						Change on year					
	Levels			Percentage of Pop [#]			Levels			Percentage [#]		
	Men	Women	People	Men	Women	People	Men	Women	People	Men	Women	People
	1	2	3	4	5	6	7	8	9	10	11	12
St. Helens North	938	333	1,271	3.2	1.2	2.3	-156	-45	-201	-0.5	-0.2	-0.4
St. Helens South	1,186	373	1,559	4.5	1.5	3.0	-172	-50	-222	-0.6	-0.2	-0.4
Stalybridge & Hyde	919	331	1,250	3.3	1.3	2.3	-51	-28	-79	-0.2	-0.1	-0.1
Stockport	812	217	1,029	2.9	0.8	1.9	-133	-76	-209	-0.5	-0.3	-0.4
Stretford & Urmston	979	285	1,264	3.4	1.1	2.3	-117	-13	-130	-0.4	0.0	-0.2
Tatton	375	135	510	1.5	0.6	1.1	-66	-21	-87	-0.3	-0.1	-0.2
Wallasey	1,388	466	1,854	5.5	1.9	3.7	-65	54	-11	-0.3	0.2	0.0
Warrington North	682	221	903	2.2	0.8	1.5	-289	-74	-363	-0.9	-0.3	-0.6
Warrington South	551	170	721	1.8	0.6	1.2	-174	-53	-227	-0.6	-0.2	-0.4
Weaver Vale	916	320	1,236	3.3	1.2	2.2	-131	-16	-147	-0.5	-0.1	-0.3
West Lancashire	1,182	447	1,629	4.1	1.6	2.9	-46	35	-11	-0.2	0.1	0.0
Westmorland & Lonsdale	220	90	310	0.8	0.4	0.6	-38	-26	-64	-0.1	-0.1	-0.1
Wigan	1,000	315	1,315	3.9	1.3	2.7	20	-1	19	0.1	0.0	0.0
Wirral South	535	191	726	2.4	0.9	1.7	-70	-1	-71	-0.3	0.0	-0.2
Wirral West	692	219	911	3.1	1.0	2.1	-7	-23	-30	0.0	-0.1	-0.1
Workington	789	262	1,051	3.1	1.1	2.1	-146	-30	-176	-0.6	-0.1	-0.4
Worsley	896	315	1,211	3.1	1.2	2.2	-23	-28	-51	-0.1	-0.1	-0.1
Wythenshawe & Sale East	1,336	385	1,721	4.4	1.3	2.9	-69	-19	-88	-0.2	-0.1	-0.1

* Count of claimants of Jobseeker's Allowance

Source: Jobcentre Plus administrative system

Relationship between columns = 3=1+2; 9=7+8

Labour Market Statistics Helpline 020 7533 6094

[#] Percentages of resident working age population of area. The population denominators are based on output area data from the 2001 Census. NB these percentages are different from the national and regional claimant count rates shown in Tables 1a, 7 and the summary of other headline indicators. See background note 5