

17 September 2003

**Coverage**  
East Midlands  
**Theme**  
Labour Market

**Issued by**  
National Statistics  
1 Drummond Gate  
London SW1V 2QQ

**Telephone**  
Press Office 020 7533 5714  
Helpline 020 7533 6094  
Public enquiries 0845 601 3034

**Statisticians:**

**Regional and local data** (Nick Maine)  
020 7533 6130

**Regional and national Labour Force Survey** (Peter Alstrup)  
020 7533 6110

**Claimant count and vacancies** (Andrew Machin)  
020 7533 6162

**Employee jobs** (Ian Richardson)  
01633 812072

**Internet**  
www.statistics.gov.uk

**Email**  
labour.market@ons.gov.uk

**Employment Information Unit**  
Stuart Swift  
Jobcentre Plus  
7th Floor, Newtown House  
Maid Marian Way  
Nottingham  
NG1 6GG

**Telephone**  
0115 989 5912

**Next publication date**  
15 October 2003

# Labour market statistics

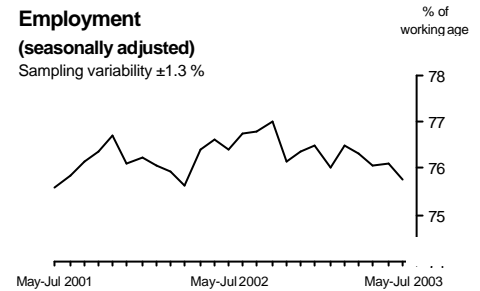
## September 2003: East Midlands

**All data are not seasonally adjusted unless otherwise specified**

Latest Labour Force Survey data over the year to July 2003 indicate employment and unemployment stable in the East Midlands.

Data for the three months to July 2003 show the seasonally adjusted employment rate at 75.7 per cent, down 0.7 percentage points on a year earlier. The seasonally adjusted unemployment rate was 4.7 per cent, up 0.1 percentage point on a year earlier.

The seasonally adjusted claimant count was up in the year to August 2003.



**Data in this table are seasonally adjusted unless otherwise stated**

		Level (thousands)	Rate (%)	Change on year (level)	Sampling variability (thousands)	Change on year (rate)	Sampling variability (%)
Employment*	May-Jul	2,016	75.7	7	$\pm 53$	-0.7	$\pm 1.7$
Unemployment**	May-Jul	99	4.7	4	$\pm 18$	0.1	$\pm 0.9$
Economically active*	May-Jul	2,115	79.6	10	$\pm 53$	-0.4	$\pm 1.6$
Economically inactive+ of which:	May-Jul	524	20.4	14	$\pm 54$	0.4	$\pm 1.6$
Not wanting a job+	May-Jul	386		9	$\pm 48$		
Wanting a job+	May-Jul	138		5	$\pm 30$		
Civilian workforce jobs (not seasonally adjusted)	Mar 2003	1,943		-23	..		
Claimant count	Aug 2003	59.5	2.9**	1.3		0.1	

See background note 2 on sampling variability.

\* Levels are for those aged 16 and over, rates are for those of working age (16-59/64).

\*\* Levels and rates are for those aged 16 and over. Rate is as a proportion of economically active.

+ Levels and rates are for those of working age.

++ Denominator = claimant count + workforce jobs. For regional claimant count proportions, using resident working age populations see Tables 17 and 18. See note on page 8 for further details.

.. Not available.

From May 2001: vacancy series deferred (see note on page 9).

**New this month:**

May to July 2003 data: latest three-month average LFS results;

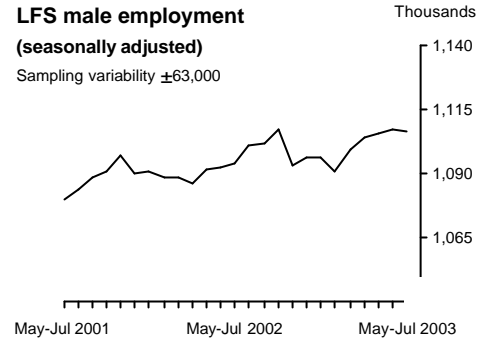
August 2003 data: claimant count.

All data are not seasonally adjusted unless otherwise specified



**Employment (tables 1 to 6)**

The seasonally adjusted LFS estimate of employment in the East Midlands was 75.7 per cent in the May to July 2003 period, down 0.7 percentage points on the same period a year earlier. The employment level was 2.02 million in the May to July 2003 period, up 7,000 on the same period a year earlier.



Seasonally adjusted employee jobs figures were down 14,000 in the quarter to March 2003.



Not seasonally adjusted employee jobs were down 35,000 in the year to March 2003. This was mainly due to falls in the manufacturing and service industries.

**Unemployment (table 1)**

The seasonally adjusted unemployment rate in the East Midlands was 4.7 per cent in the May to July 2003 period, up 0.1 percentage point on the same period a year earlier. The rates for men and women in May to July 2003 were 4.8 and 4.5 per cent respectively.

**Employee jobs by industry**

Change on year from March 2002

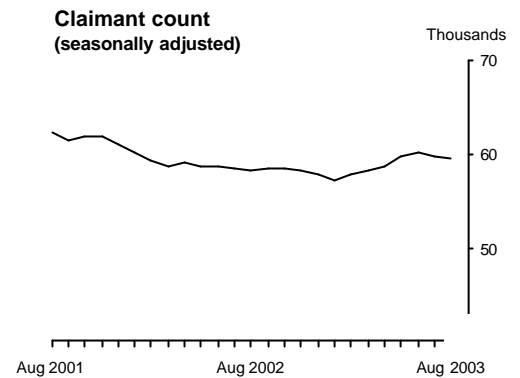


All data are not seasonally adjusted unless otherwise specified



**Claimant count (tables 7 and 8)**

The seasonally adjusted claimant count rate in August 2003 was 2.9 per cent, unchanged from July 2003, and up 0.1 percentage point since August 2002. The seasonally adjusted number of claimants in August 2003 was 59,500, down 200 on July 2003, and up 1,300 since August 2002. The not seasonally adjusted number of claimants was 60,300 in August 2003.



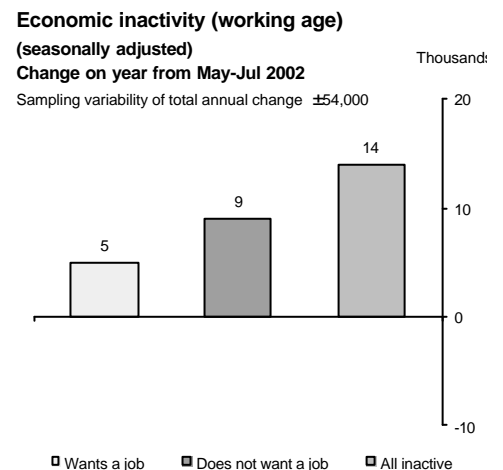
The not seasonally adjusted number of computerised claims of people aged 18 to 24 was 17,000 in August 2003, up 900 over the year. Changes in the number of computerised claims for all other age and duration groups over the year were mixed.

**Economically active (tables 1 and 9)**

The seasonally adjusted LFS estimate of economically active people in the East Midlands was 2.12 million in the May to July 2003 period.

**Economically inactive (tables 1, 10 and 11)**

The seasonally adjusted LFS estimate of economically inactive people in the East Midlands in the May to July 2003 period was 1.21 million, with 524,000 of these of working age. Over the year the number of economically inactive people of working age was up 14,000.



**Vacancies (table 12)**

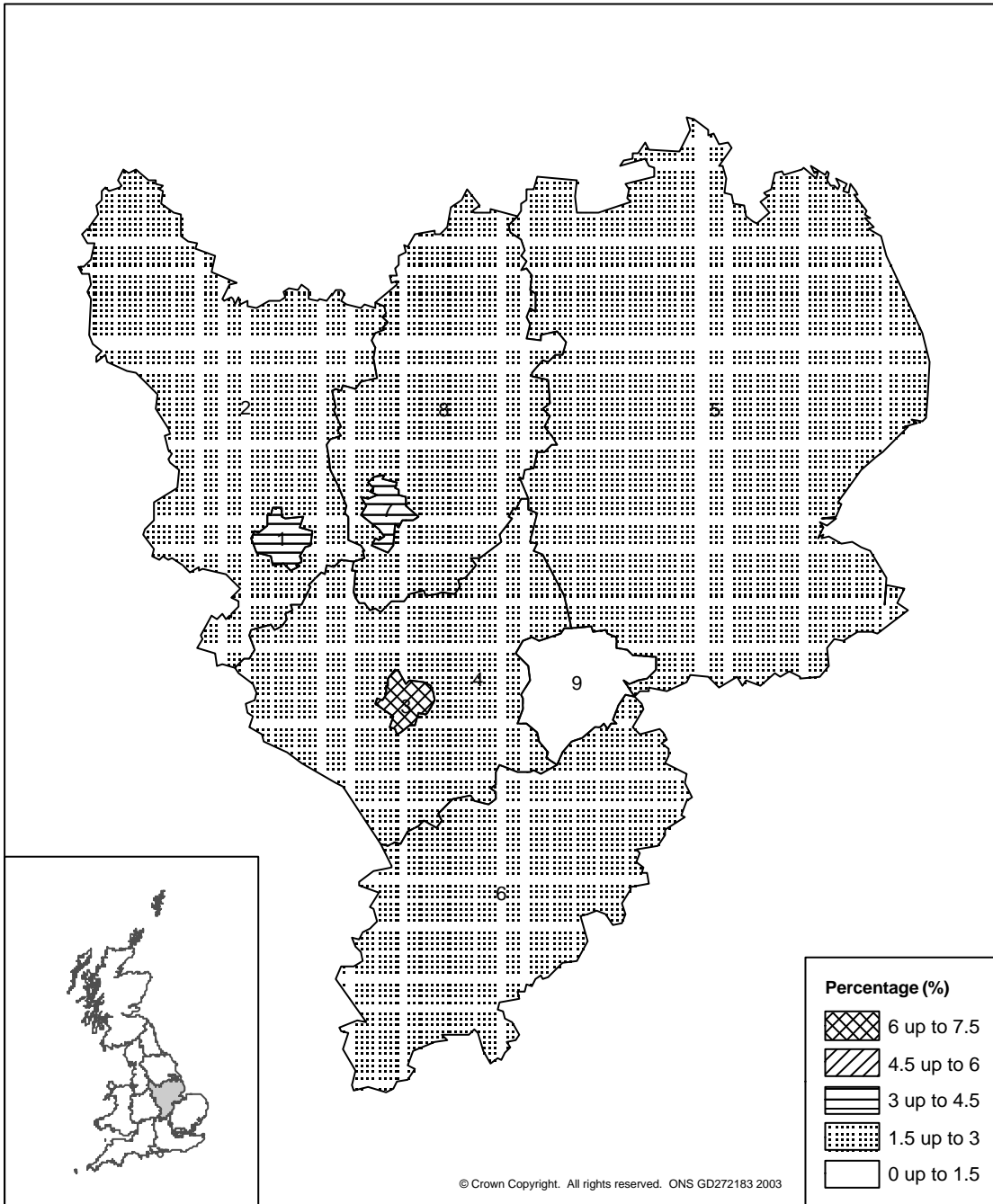
Publication of the seasonally adjusted Jobcentre vacancy series has been deferred. Figures from May 2001 are affected by the introduction of Employer Direct – see note on page 9.

**Local area data (table 17)**

The claimant count as a proportion of the resident working age population was lowest in Rutland UA, at 0.6 per cent. It was highest in Leicester UA, at 6.0 per cent.

All data are not seasonally adjusted unless otherwise specified

Claimant count as a proportion of the resident working age population, by County/UA  
 August 2003 - East Midlands



1	Derby UA	3.4%
2	Derbyshire	2.0%
3	Leicester UA	6.0%
4	Leicestershire	1.6%
5	Lincolnshire	1.6%
6	Northamptonshire	2.0%
7	Nottingham UA	4.2%
8	Nottinghamshire	1.9%
9	Rutland UA	0.6%

All data are not seasonally adjusted unless otherwise specified

## REVISIONS

There are no significant revisions this month to the data in this release.

## THIS MONTH

Following the publication, on 30 June, of population data, from the 2001 Census, for wards and output areas, Table 14 (parliamentary constituencies) and Table 15 (travel-to-work-areas) include jobs density and claimant count proportion data that were previously unavailable. Claimant count proportions, for the latest month, are published in Table 18 for parliamentary constituencies.

## SPECIAL

### **New tables presenting a labour market framework for local areas**

In July's release four new tables were introduced (one for each of the four local area geographies: local authorities, parliamentary constituencies, travel-to-work areas and NUTS 3 areas) which present a framework of labour market statistics in order to give a better overall picture of the labour market for the local area. The tables are structured to present indicators on labour supply, labour demand and claimants of the Jobseekers' Allowance (JSA) working age benefit. This structure adheres to the labour accounting system described in the Framework Review of Labour Market Statistics published on 5 August 2002 (see [http://www.statistics.gov.uk/methods\\_quality/quality\\_review/downloads/LMSFR\\_Final.doc](http://www.statistics.gov.uk/methods_quality/quality_review/downloads/LMSFR_Final.doc)). A new labour demand indicator, jobs density, is included in these tables. The jobs density is the total number of jobs in the area (including employees, self-employed, government-supported trainees and armed forces personnel) divided by the number of working age residents of the area. The data in the Framework tables are annual, and come from a number of different sources.

As the new Framework tables contain annual Labour Force Survey (LFS) data, the table containing an annual local area LFS summary has been discontinued. Also, the tables giving monthly JSA claimant data have been retained for local authorities and parliamentary constituencies, but have been discontinued for travel-to-work areas and NUTS 3 areas. JSA claimant data for travel-to-work areas and NUTS 3 areas will continue to be available electronically, via Nomis<sup>®</sup>.

## **Interim Labour Force Survey (LFS) estimates consistent with the 2001 Census**

### **Regional LFS estimates**

The publication, in February 2003, of Census 2001-consistent population estimates at local authority level has allowed the production of interim regional LFS estimates for the first time. Regional estimates consistent with the 2001 Census have been produced and were first published in the April 2003 release.

The population data published in February only covered periods up to mid-2001. Regional population totals for 2002-3 are derived from two separate sources. Totals for the countries of the UK are based on the 2001 Census-consistent interim projections published by the Government Actuary's Department (GAD) in November 2002. Totals for the English regions are calculated by applying the growth rates from the published 2000-based sub-national projections (consistent with 1991-based population totals) to the revised regional estimates for 2001. The totals calculated for 2002-3 were then constrained to the interim GAD projections for England referred to above.

Interim regional estimates have been produced for all periods back to the three-month period ending February 1997. Regional level LFS time series for earlier periods will be compiled and released as part of ONS's full LFS reweighting exercise. Estimates for geographies below regions have not been reweighted using the interim method, but these also will be released as part of the full LFS reweighting exercise.

The methodology used to produce the interim regional LFS estimates is broadly consistent with that used to produce the UK interim LFS estimates. In broad terms, the old and new population data by age and sex were used to produce a matrix of adjustment factors for each region. These were then applied to the pre-2001 Census regional LFS estimates by sex and age. Where no age breakdown was available (as for full-time/part-time workers) these were scaled to the new reweighted totals.

Users of the interim regional LFS estimates should note that the interim methodology used does not achieve full additivity between the regional estimates and the national LFS estimates (though the differences are small). Full additivity in the series will be restored by the full reweighting exercise.

Guidance notes and details of the methodology used for producing the interim LFS estimates are available in a paper on the website at [http://www.statistics.gov.uk/about/Methodology\\_by\\_theme/downloads/Interim\\_reweighting\\_methodology\\_article.pdf](http://www.statistics.gov.uk/about/Methodology_by_theme/downloads/Interim_reweighting_methodology_article.pdf).

All data are not seasonally adjusted unless otherwise specified

## Keeping LFS and population estimates consistent

During 2002, ONS introduced a new system in which interim, revised LFS time series, consistent with the 2001 Census, were published very soon after the publication of the necessary population data. Moving on from this innovation, ONS's aim is to ensure that its published LFS estimates continue to be kept closely in line with the latest published population data.

By 2005, re-engineered LFS systems will be in place that will enable the latest mid-year population estimate (MYE) to be incorporated into both revised LFS time series and revised microdata in September, following the release of each year's MYE in August.

In 2004, ONS will issue interim, revised LFS time series in September which incorporate the latest MYE published in August.

In 2004, also, the revised LFS microdata, and the final revised LFS time series based on this, will be published in November. This means that in September and October, the LFS microdata for the previous two years or so will not be consistent with the interim, revised LFS time series. It also means that the June to August LFS microdata will be released in November, consistent with the latest population MYE, rather than, as previously, in October. Moreover, ONS and the Government Actuary's Department will be working together to ensure that the population data used for revising LFS series and microdata are in line with the latest population projections.

While this had also been the intention for 2003, the announcement on 24 July that the publication of the mid-2002 population estimates for England and Wales was delayed from 7 August until 19 September has meant that alternative plans are now being considered. Revised plans for keeping the LFS and population estimates in line for the latest periods are now being considered and will be announced as soon as possible.

Further details are given on the National Statistics website at [http://www.statistics.gov.uk/about/Methodology\\_by\\_theme/downloads/Keeping\\_LFS\\_estimates\\_in\\_line.pdf](http://www.statistics.gov.uk/about/Methodology_by_theme/downloads/Keeping_LFS_estimates_in_line.pdf).

Each year's LFS seasonal adjustment review will be scheduled to coincide with the publication of the revised LFS microdata in order to avoid an additional occasion each year when revisions are made. Where the seasonal adjustment review has in the past taken place in the spring, it will now take place in the autumn. As a result, this year's review has been deferred until the autumn.

## Claimant count rates

Following the recommendations in the LMS Framework Review, the workplace-based claimant count rates for sub-regional areas have been withdrawn from National Statistics and have ceased to appear in ONS publications. Users wishing to calculate the rates themselves will be able to continue to do so, using information readily accessible via the Nomis® website (<http://www.nomisweb.co.uk>).

ONS is now publishing local area claimant count figures as a proportion of the resident working age population. Claimant count proportions for local authorities and for NUTS 3 areas are calculated using the mid-2001 population estimates published by ONS on 10 October 2002. Comparable figures for countries and regions of the United Kingdom are also published. Claimant count proportions for parliamentary constituencies are based on population data from the 2001 Census by output area, published on 30 June, adjusted to be consistent with the official mid-year population estimates.

## Tables 13 to 16: Local labour market indicators and Table 19: Comparison of pre-2001 and post-2001 Census population data

Tables 13 to 16 present a framework of labour market statistics for local areas. Data are presented as indicators of labour supply, labour demand and benefits. This structure adheres to the labour accounting system described in the Framework Review of Labour Market Statistics published on 5 August 2002 (see [http://www.statistics.gov.uk/methods\\_quality/quality\\_review/downloads/LMSFR\\_Final.doc](http://www.statistics.gov.uk/methods_quality/quality_review/downloads/LMSFR_Final.doc)).

These tables include data from the annual local area Labour Force Survey. Interim reweighting of monthly LFS estimates at national and regional level has been applied in order to take account of the 2001 Census results. For the annual local area LFS data such an interim reweighting is not possible. These annual tables will be brought into line with the 2001 Census using the same full reweighting method to be applied to the main LFS. The timetable for revising the annual tables is currently being reviewed following the delayed publication of the 2002 mid-year population estimates from 7 August to 19 September 2003 (see note on page 7). For more information on the annual local area Labour Force Survey, see background note 4.

Table 19 compares the 2001 working age population projections for local areas included in this release with the 2001 Census-based mid-year working age population estimates for 2001. The table is intended to give users an indication of the magnitude of possible changes to estimates of labour force survey variables when revised estimates are produced. It does not contain

All data are not seasonally adjusted unless otherwise specified

sufficient information to accurately predict what the revised estimates will be.

### **Vacancy data**

Publication of the Jobcentre vacancy series has been deferred due to distortions to the data as a result of the introduction of Employer Direct by Jobcentre Plus.

A limited range of statistics on Jobcentre Plus vacancies, relating to the inflows of newly-notified vacancies, is now being made available on Nomis<sup>®</sup>, though not at this stage as National Statistics. (For further details see the news and research item on page 455 of the September 2002 issue of *Labour Market Trends*.)

The introduction of Employer Direct, a major change which involves transferring the vacancy-taking process from local Jobcentres to regional Customer Service Centres, has affected the data since May 2001. Employer Direct has been gradually introduced across Great Britain as part of modernising the former Employment Service (now part of Jobcentre Plus) and has had the following effects:

- A temporary reduction in the recorded level of outflows and placings owing to some delays in following up vacancies with employers associated with the introduction of the new arrangements.
- An increase in the recorded level of newly-notified vacancies.
- Both the above effects have led to an increase in the recorded stock of unfilled vacancies.

Investigations have shown that these effects are substantial for all the vacancy series. While they cannot be quantified precisely, the effects are large enough to prevent meaningful comparisons with earlier data. Some of the distortions will also persist for a while after the full implementation of Employer Direct, which was completed in all regions at the end of January 2002. Publication of the Jobcentre vacancy series has therefore been deferred. ONS and the Department for Work and Pensions are continuing to monitor and review the data with the aim of reinstating the series as soon as possible.

The publication of the vacancy figures for Northern Ireland has been suspended since March 1999 as a result of a discontinuity identified during the introduction of a new computer system for processing vacancies to local offices of the Department for Employment and Learning (DEL). In the course of correcting for this difficulty, further problems of a procedural nature came to light as contributory factors. These further issues have delayed the reinstatement of published vacancy figures for Northern Ireland. DEL have now introduced a new internet-based operational system for vacancies and have resumed publication of some non-

All data are not seasonally adjusted unless otherwise specified

seasonally adjusted vacancy data for Northern Ireland on a provisional basis.

### **Claimant count**

The introduction of Joint Claims for Jobseeker's Allowance on 19 March 2001, and its extension on 28 October 2002, means that both members of certain couples are now required to claim JSA jointly and both are required to look for work. The claimant count continues to include all individual claimants, so there are some extra claimants included as a result of these changes.

Since 19 March 2001 Joint Claims for JSA has applied to couples without dependent children where at least one member was born after 19 March 1976 and is aged over 18. Joint Claims was extended on 28 October 2002 to couples without dependent children where at least one member was born after 28 October 1957.

ONS estimates that the introduction of Joint Claims had an initial upward effect on the claimant count, which accumulated between April and August 2001, of some 600 for the East Midlands region at the time (approximately 200 men and 400 women). For the UK overall the initial impact was some 6,500 (approximately 2,200 men and 4,300 women). The total effect of the extension on 28 October has been to add a further estimated 350 claimants (100 men and 250 women) to the count for the East Midlands region between October 2002 and February 2003 and 3,800 for the UK overall (approximately 900 men and 2,900 women).

The extent to which the introduction of Joint Claims may be treated as a discontinuity in the count, following past precedent, is difficult to assess but we will continue to monitor and review the effects. For information about previous treatment of discontinuities in the claimant count see, for example, the article 'Changes to the coverage of the monthly count of claimant unemployment' in *Labour Market Trends*, November 1995, page 398.

### **BACKGROUND NOTES**

1. More information on the statistics in this release can be found in the *Guide to Labour Market Statistics Releases*, available from the labour market helpline 020 7533 6094. Information is also available on the National Statistics website at <http://www.statistics.gov.uk/onlineproducts/default.asp>.

All data are not seasonally adjusted unless otherwise specified

2. Some data in this release are based on statistical samples and, as such, are subject to sampling variability. If many samples were drawn, each would give a different result. The ranges shown for the LFS data in this release and in the following table represent '95 per cent confidence intervals'. It is expected that in 95 per cent of samples the range would contain the true value. For more information, see the *Guide to Labour Market Statistics Releases*.

**May to July 2003**

Thousands

	Levels			Quarterly changes			Annual changes		
	Lower limit	LFS estimate	Upper limit	Lower limit	LFS estimate	Upper limit	Lower limit	LFS estimate	Upper limit
<b>Employment</b>	1,977	2,016	2,056	-60	-6	48	-46	7	60
<b>Employment rate</b>	74.4%	75.7%	77.1%	-2.3%	-0.6%	1.2%	-2.4%	-0.7%	1.0%
<b>Unemployment</b>	86	99	112	-4	13	30	-15	4	22
<b>Unemployment rate</b>	4.0%	4.7%	5.4%	-0.3%	0.6%	1.4%	-0.8%	0.1%	1.1%
<b>Economically active</b>	2,076	2,115	2,155	-47	7	61	-43	10	64
<b>Economic activity rate</b>	78.3%	79.6%	80.9%	-1.7%	0.0%	1.6%	-2.1%	-0.4%	1.2%
<b>Economically inactive</b>	481	524	567	-54	1	57	-40	14	68

**Sampling variability of regional Labour Force Survey figures**

**May to July 2003**

	Employment	Unemployment	Economically Active	Working age Economically Inactive	Employment Rate (%)	Unemployment Rate (%)
	Level (000s)	Level (000s)	Level (000s)	Level (000s)		
North East	± 35	± 12	± 35	± 36	± 1.8	± 1.0
North West	± 62	± 19	± 62	± 61	± 1.2	± 0.6
Yorks & Humber	± 48	± 15	± 47	± 45	± 1.2	± 0.6
East Midlands	± 39	± 13	± 39	± 43	± 1.3	± 0.7
West Midlands	± 49	± 16	± 49	± 47	± 1.2	± 0.6
East	± 50	± 15	± 50	± 46	± 1.1	± 0.5
London	± 64	± 25	± 62	± 61	± 1.1	± 0.7
South East	± 58	± 18	± 57	± 53	± 0.9	± 0.4
South West	± 48	± 13	± 48	± 45	± 1.2	± 0.5
Wales	± 38	± 11	± 38	± 38	± 1.7	± 0.8
Scotland	± 48	± 16	± 47	± 45	± 1.2	± 0.6

3. The LFS sample population covers those living in private households, student halls of residence and NHS accommodation.
4. Annual local area data from the LFS are included in Tables 13 to 16. These annual data are consistent with the best

All data are not seasonally adjusted unless otherwise specified

population estimates which were available before the results of the 2001 Census were published (and hence are not consistent with the regional data published in this release). Interim reweighting of monthly LFS estimates at national and regional level has been applied in order to take account of the 2001 Census results. For the annual local area LFS data such an interim reweighting is not possible. These annual tables will be brought into line with the 2001 Census using the same full reweighting method to be applied to the main LFS. The timetable for revising the annual tables is currently being reviewed following the delayed publication of the 2002 mid-year population estimates from 7 August to 19 September 2003 (see note on page 7).

The annual LFS database is compiled by taking data from waves one and five of four quarters of the LFS and combining them with an additional sample of interviews. This sample boost was introduced in 2000 and has improved the accuracy of the annual estimates for some local areas in England and all local areas in Wales (a boost was also introduced in Scotland for the 2003/04 survey, and the results of this survey will be published in autumn 2004). There are now different publication thresholds for annual LFS data, depending on the size of the sample boost in the area. The thresholds are six thousand, four thousand, two thousand and as low as one thousand for some areas in Wales. For further information see Volume 6 of the *LFS User Guide*. This guide, along with additional data and further background information, are available on the National Statistics website at <http://www.statistics.gov.uk/lfs>. A wide range of annual local area data from the LFS is available free from the Nomis<sup>®</sup> website at <http://www.nomisweb.co.uk>.

5. Not seasonally adjusted claimant count and vacancies data are gathered from administrative sources and constitute a complete count. However, seasonally adjusted totals are presented as rounded to the nearest hundred to avoid spurious precision. Any differences between the sum of the rounded seasonally adjusted figures and the UK totals are due to this rounding.
6. Claimant count flows are the number of people joining or leaving the count in the period between the count dates. They are therefore affected by the number of weeks between count dates. To enable comparisons from month to month, the flows figures are standardised to a 4.33-week month before seasonal adjustment.
7. The number of Jobseeker's Allowance (JSA) claimants can be expressed as a proportion of either (a) the corresponding mid-year estimate (or the latest available mid-year estimate, currently for June 2000) of the workforce jobs in the area plus the number of claimants, or (b) the resident working age population. The number of workforce jobs is mainly collected

All data are not seasonally adjusted unless otherwise specified

through postal employer surveys and comprises employee jobs, self-employment jobs, HM armed forces and government-supported trainees and is used to calculate rates for regions and the countries of the UK. For smaller areas, proportions based on the resident working age populations are used.

8. The count of JSA claimants is mostly derived from the Jobcentre Plus computer records. However for various reasons, e.g. when a claimant's National Insurance number is not known, a few claims have to be dealt with manually by local offices. These claims, which amount to less than 1 per cent of the total, are thus counted separately and not analysed in as much detail as the computerised claims. In particular, only the computerised claims are analysed by age and duration on a monthly basis.
9. Travel-to-Work areas (Table 15) are approximations to self-contained labour markets, i.e. areas where people both live and work.
10. NUTS (Nomenclature des Unités Territoriales Statistiques) (Table 16) was established by the Statistical Office of the European Union (Eurostat) to provide a uniform breakdown of territorial units for the production of regional statistics. NUTS is a five-level hierarchical classification.
11. The employee jobs series is based on data from employer surveys and is subject to sampling variability. The nature of the survey means that the size of this sampling variability may not be consistent from year to year. Provisionally ONS would expect that the 95 per cent confidence interval would on average be within +/- 6 per cent of the estimate. However, this will vary from region to region.
12. Labour market statistics are compiled from a wide range of sources. Claimant count and Jobcentre vacancy data are provided from the Jobcentre Plus administrative system, workforce jobs are derived from ONS business surveys, other data come from the ONS Labour Force Survey.
13. The Social and Vital Statistics Division of ONS carries out the questionnaire design, sample selection and interviewing for the LFS. Analysis and publication of the results of the survey is undertaken by Labour Market Division. In Northern Ireland, the Labour Force Survey is conducted by the Central Survey Unit.

All data are not seasonally adjusted unless otherwise specified

14. In addition to the data in this release, ONS can provide a wide range of detailed labour market data in a number of formats. In particular, data are available from Nomis<sup>®</sup> at the same time as this release is published. Further data are also published in *Labour Market Trends (LMT)* and the *Labour Force Survey Quarterly Supplement to LMT*.
  
15. Some of the series in the attached tables are also available on the National Statistics website. To access all the data from the Labour Market Statistics Integrated First Release (including series in this release where four-letter series identifiers are shown), click on the Time Series Data option and download the complete release, or view and download your own customised selection of series. You will also find other Labour Market releases within the Time Series Data service called Employment and Earnings and Claimant Count and Vacancies, which contain more data. Datasets of selected series can also be viewed by choosing topics within the Labour Market theme on our website (<http://www.statistics.gov.uk/labour>). For more information about the Time Series Data service or datasets, telephone 020 7533 5675 or email [statbase@statistics.gov.uk](mailto:statbase@statistics.gov.uk).
  
16. Details of the policy governing the release of new data are available from the press office. Also available is a list of the names of those given pre-publication access to the contents of this release.
  
17. **National Statistics** are produced to high professional standards set out in the National Statistics Code of Practice. They undergo regular quality assurance reviews to ensure that they meet customer needs. They are produced free from any political interference. © Crown Copyright 2003.

## INDEX OF TABLES

*All data are not seasonally adjusted unless otherwise specified*

### NATIONAL LABOUR MARKET SUMMARY, BY REGION

Summary of Labour Force Survey (LFS) data (seasonally adjusted)

Summary of other headline indicators

### REGIONAL DATA

Summary of LFS data for the current quarter (seasonally adjusted) ..... 1

Summary of other headline indicators (seasonally adjusted) ..... 1a

### EMPLOYMENT

Employment by age ..... 2

Full-time, part-time and temporary workers ..... 3

Civilian workforce jobs ..... 4

Employee jobs by industry ..... 5

Actual weekly hours of work ..... 6

### CLAIMANT COUNT

Claimant count levels and rates (seasonally adjusted) ..... 7

Claimant count by age and duration - computerised claims only ..... 8

### ECONOMIC ACTIVITY AND INACTIVITY

Economic activity by age ..... 9

Economic inactivity by age ..... 10

Economic inactivity: reasons ..... 11

### VACANCIES

Jobcentre vacancies summary (seasonally adjusted) ..... 12

### LOCAL AREA DATA

2001 local labour market indicators by Unitary and Local Authority..... 13

2001 local labour market indicators by Parliamentary Constituency..... 14

2001 local labour market indicators by Travel-to-Work Area..... 15

2001 local labour market indicators by NUTS 3 area..... 16

Claimant count by Unitary and Local Authority..... 17

Claimant count by Parliamentary Constituency..... 18

### POPULATION

Comparison of pre-2001 and post-2001 Census population data ..... 19

The following symbols are used in the tables:

..	not available	-	nil or negligible
p	provisional	r	revised
*	grossed up total less than 10,000		

Totals may differ from the sum of components because of rounding or separate adjustment of components.

# NATIONAL LABOUR MARKET SUMMARY, BY REGION

## Summary of Labour Force Survey data

Thousands, seasonally adjusted

	Labour Force Survey* (May to July 2003)																		
	Total aged 16 & over	Economically active				Employment						Unemployment							
		Total		Men		Women		Total		Men		Women		Total		Men		Women	
	Level	Level	Rate (%)*	Level	Level	Level	Rate (%)*	Level	Rate (%)*	Level	Rate (%)*	Level	Rate (%)**	Level	Rate (%)**	Level	Rate (%)**	Level	Rate (%)**
1	2	3	4	5	6	7	8	9	10	11	12	13	14	15	16	17	18	19	
North East	1,992	1,144	73.4	626	518	1,072	68.7	578	72.8	494	64.4	72	6.3	48	7.7	24	4.6		
North West	5,271	3,241	77.4	1,745	1,496	3,082	73.6	1,648	77.6	1,434	69.3	159	4.9	97	5.6	62	4.1		
Yorkshire & the Humber	3,914	2,433	78.4	1,324	1,110	2,313	74.5	1,246	78.9	1,066	69.8	121	5.0	77	5.8	43	3.9		
East Midlands	3,326	2,115	79.6	1,163	953	2,016	75.7	1,107	81.2	910	69.9	99	4.7	56	4.8	43	4.5		
West Midlands	4,136	2,578	78.7	1,415	1,163	2,432	74.1	1,327	78.9	1,105	68.8	146	5.7	88	6.2	58	5.0		
East	4,310	2,808	81.9	1,532	1,276	2,698	78.6	1,471	83.9	1,227	72.9	110	3.9	61	4.0	49	3.8		
London	5,737	3,684	75.5	2,023	1,661	3,409	69.7	1,858	76.4	1,551	62.9	275	7.5	165	8.2	110	6.6		
South East	6,380	4,226	82.5	2,290	1,935	4,050	79.0	2,194	84.0	1,856	73.7	175	4.1	96	4.2	79	4.1		
South West	3,960	2,508	81.7	1,347	1,161	2,420	78.7	1,300	82.4	1,119	74.8	89	3.5	47	3.5	42	3.6		
<b>England</b>	<b>39,025</b>	<b>24,738</b>	<b>79.1</b>	<b>13,465</b>	<b>11,273</b>	<b>23,492</b>	<b>75.0</b>	<b>12,728</b>	<b>80.0</b>	<b>10,764</b>	<b>69.7</b>	<b>1,245</b>	<b>5.0</b>	<b>736</b>	<b>5.5</b>	<b>509</b>	<b>4.5</b>		
Wales	2,303	1,371	76.4	726	645	1,308	72.8	685	75.1	623	70.2	63	4.6	41	5.6	22	3.4		
Scotland	4,032	2,541	79.0	1,349	1,192	2,399	74.5	1,262	77.9	1,138	71.1	141	5.6	87	6.5	54	4.6		
<b>Great Britain</b>	<b>45,361</b>	<b>28,649</b>	<b>78.9</b>	<b>15,540</b>	<b>13,109</b>	<b>27,199</b>	<b>74.8</b>	<b>14,675</b>	<b>79.5</b>	<b>12,524</b>	<b>69.9</b>	<b>1,450</b>	<b>5.1</b>	<b>865</b>	<b>5.6</b>	<b>585</b>	<b>4.5</b>		
N Ireland	1,288	773	72.7	436	338	732	68.8	409	75.8	324	61.3	41	5.3	27	6.2	14	4.2		
<b>United Kingdom</b>	<b>46,656</b>	<b>29,422</b>	<b>78.7</b>	<b>15,972</b>	<b>13,450</b>	<b>27,929</b>	<b>74.6</b>	<b>15,078</b>	<b>79.4</b>	<b>12,851</b>	<b>69.6</b>	<b>1,493</b>	<b>5.1</b>	<b>894</b>	<b>5.6</b>	<b>599</b>	<b>4.5</b>		

### Change on quarter: +

	Labour Force Survey* (May to July 2003)																		
	Total aged 16 & over	Economically active				Employment						Unemployment							
		Total		Men		Women		Total		Men		Women		Total		Men		Women	
	Level	Level	Rate (%)*	Level	Level	Level	Rate (%)*	Level	Rate (%)*	Level	Rate (%)*	Level	Rate (%)**	Level	Rate (%)**	Level	Rate (%)**	Level	Rate (%)**
0	1	2	3	4	5	6	7	8	9	10	11	12	13	14	15	16	17	18	19
North East	0	10	0.5	10	0	12	0.6	10	1.2	1	-0.1	-2	-0.2	0	-0.2	-1	-0.3		
North West	2	23	0.5	5	18	24	0.6	5	0.2	19	0.9	-1	-0.1	0	0.0	-1	-0.1		
Yorkshire & the Humber	3	7	0.2	-1	8	15	0.5	7	0.5	8	0.6	-9	-0.4	-9	-0.6	0	-0.1		
East Midlands	5	7	0.0	6	0	-6	-0.6	2	0.1	-8	-1.3	13	0.6	4	0.3	9	0.9		
West Midlands	3	-4	0.1	0	-4	5	0.3	8	0.6	-3	-0.1	-9	-0.3	-8	-0.6	-1	-0.1		
East	9	17	0.3	11	6	32	0.8	18	0.9	14	0.6	-15	-0.6	-7	-0.5	-8	-0.7		
London	10	7	0.0	16	-9	-9	-0.3	6	0.1	-14	-0.8	16	0.4	10	0.4	6	0.4		
South East	13	3	0.0	8	-5	-13	-0.3	6	0.0	-19	-0.6	16	0.4	1	0.1	15	0.8		
South West	7	5	0.0	4	1	7	0.2	9	0.3	-1	0.0	-2	-0.1	-5	-0.4	3	0.2		
<b>England</b>	<b>51</b>	<b>74</b>	<b>0.2</b>	<b>58</b>	<b>16</b>	<b>68</b>	<b>0.1</b>	<b>71</b>	<b>0.3</b>	<b>-3</b>	<b>-0.1</b>	<b>6</b>	<b>0.0</b>	<b>-13</b>	<b>-0.1</b>	<b>19</b>	<b>0.2</b>		
Wales	2	11	0.5	4	7	13	0.6	5	0.5	8	0.8	-2	-0.2	-1	-0.1	-1	-0.2		
Scotland	1	-8	-0.5	-3	-5	-2	-0.3	-5	-0.4	2	-0.1	-6	-0.2	1	0.1	-7	-0.6		
<b>Great Britain</b>	<b>55</b>	<b>77</b>	<b>0.1</b>	<b>58</b>	<b>19</b>	<b>79</b>	<b>0.1</b>	<b>71</b>	<b>0.3</b>	<b>8</b>	<b>-0.1</b>	<b>-2</b>	<b>0.0</b>	<b>-12</b>	<b>-0.1</b>	<b>10</b>	<b>0.1</b>		
N Ireland	2	-20	-1.9	-7	-13	-20	-1.9	-11	-1.7	-10	-2.1	0	0.2	4	0.9	-3	-0.8		
<b>United Kingdom</b>	<b>57</b>	<b>61</b>	<b>0.1</b>	<b>51</b>	<b>10</b>	<b>63</b>	<b>0.1</b>	<b>60</b>	<b>0.2</b>	<b>3</b>	<b>-0.1</b>	<b>-1</b>	<b>0.0</b>	<b>-9</b>	<b>-0.1</b>	<b>7</b>	<b>0.0</b>		

### Change on year:

	Labour Force Survey* (May to July 2003)																		
	Total aged 16 & over	Economically active				Employment						Unemployment							
		Total		Men		Women		Total		Men		Women		Total		Men		Women	
	Level	Level	Rate (%)*	Level	Level	Level	Rate (%)*	Level	Rate (%)*	Level	Rate (%)*	Level	Rate (%)**	Level	Rate (%)**	Level	Rate (%)**	Level	Rate (%)**
1	2	3	4	5	6	7	8	9	10	11	12	13	14	15	16	17	18	19	
North East	1	4	0.1	17	-13	6	0.2	18	2.0	-12	-1.7	-2	-0.2	-1	-0.4	-1	-0.1		
North West	8	61	1.3	54	8	77	1.7	63	2.8	14	0.6	-16	-0.6	-9	-0.7	-7	-0.5		
Yorkshire & the Humber	12	34	1.1	9	25	42	1.3	14	0.9	28	1.8	-8	-0.4	-5	-0.4	-3	-0.4		
East Midlands	19	10	-0.4	14	-3	7	-0.7	12	0.1	-6	-1.5	4	0.1	1	0.1	2	0.3		
West Midlands	10	-15	-0.2	-15	0	-15	-0.3	-17	-0.8	3	0.3	0	0.0	2	0.2	-3	-0.2		
East	34	14	-0.5	10	-4	10	-0.5	9	-0.7	1	-0.4	4	0.1	2	0.1	3	0.2		
London	41	11	-0.5	21	-10	-18	-1.1	-1	-0.8	-18	-1.4	29	0.8	21	1.0	8	0.5		
South East	53	7	-0.5	0	8	0	-0.6	-1	-0.8	1	-0.4	7	0.2	1	0.0	6	0.3		
South West	29	5	-0.7	9	-4	11	-0.4	21	-0.1	-10	-0.8	-6	-0.3	-12	-0.9	6	0.5		
<b>England</b>	<b>207</b>	<b>132</b>	<b>0.0</b>	<b>118</b>	<b>14</b>	<b>120</b>	<b>-0.1</b>	<b>118</b>	<b>0.2</b>	<b>2</b>	<b>-0.3</b>	<b>12</b>	<b>0.0</b>	<b>0</b>	<b>0.0</b>	<b>12</b>	<b>0.1</b>		
Wales	9	67	3.3	12	55	78	3.8	15	1.1	62	6.8	-10	-1.0	-3	-0.5	-7	-1.6		
Scotland	5	35	0.8	24	11	55	1.4	35	2.1	20	0.8	-20	-0.9	-11	-1.0	-9	-0.8		
<b>Great Britain</b>	<b>221</b>	<b>234</b>	<b>0.2</b>	<b>154</b>	<b>81</b>	<b>252</b>	<b>0.2</b>	<b>168</b>	<b>0.4</b>	<b>85</b>	<b>0.1</b>	<b>-18</b>	<b>-0.1</b>	<b>-14</b>	<b>-0.1</b>	<b>-4</b>	<b>-0.1</b>		
N Ireland	10	14	1.1	15	-1	17	1.4	16	2.9	1	-0.3	-2	-0.4	0	-0.3	-2	-0.6		
<b>United Kingdom</b>	<b>231</b>	<b>256</b>	<b>0.2</b>	<b>171</b>	<b>85</b>	<b>276</b>	<b>0.3</b>	<b>186</b>	<b>0.5</b>	<b>90</b>	<b>0.1</b>	<b>-20</b>	<b>-0.1</b>	<b>-15</b>	<b>-0.2</b>	<b>-6</b>	<b>-0.1</b>		

Relationship between columns: 2= 4+5 = 6+12; 6= 8+10; 12= 14+16.

\* Denominator = all persons of working age.

\*\* Denominator = Total economically active.

# Labour Force Survey is tabulated by region of residence.

+ Quarter to quarter changes at regional level are particularly subject to sampling variability and should be interpreted in the context of changes over several quarters rather than in isolation.

The Labour Force Survey is a survey of the population in private households, student halls of residence and NHS accommodation.

Some of the series in this table are available electronically through the ONS Time Series Data service. See background note 15 for further details.

Due to slight methodological differences between the way the national and regional LFS estimates have been interim adjusted for the 2001 Census, there may be small differences between the UK totals and the sum of the regional components.

Data source: Labour Force Survey  
Labour Market Statistics Helpline 020 7533 6094

# NATIONAL LABOUR MARKET SUMMARY, BY REGION

## Summary of other headline indicators

Thousands

	Employer surveys			Jobcentre Plus administrative system						Jobcentre Plus administrative system		
	Civilian workforce jobs** (Mar 2003); not seasonally adjusted			Claimant count* (August 2003); seasonally adjusted						Jobcentre vacancies (August 2003); seasonally adjusted		
	Total	Men	Women	Total	Men		Women		Notified vacancies	Unfilled vacancies	Outflow of vacancies	
	Level	Level	Level	Level	Rate (%)	Level	Rate (%)	Level				Rate (%)
1	2	3	4	5	6	7	8	9	10	11	12	
North East	1,064	564	500	52.0	4.7	40.7	6.8	11.3	2.2			
North West	3,205	1,705	1,500	110.9	3.3	85.7	4.8	25.2	1.7			
Yorkshire & the Humber	2,320	1,211	1,110	83.0	3.4	63.3	4.9	19.7	1.8			
East Midlands	1,943	995	949	59.5	2.9	43.9	4.1	15.6	1.6			
West Midlands	2,542	1,342	1,200	94.6	3.6	71.8	5.0	22.8	1.9			
East	2,587	1,379	1,208	58.1	2.2	42.3	2.9	15.8	1.3			
London	4,510	2,447	2,063	171.1	3.7	122.2	4.8	48.9	2.3			
South East	4,167	2,180	1,987	76.0	1.8	56.4	2.4	19.6	1.0			
South West	2,414	1,269	1,145	48.5	1.9	35.8	2.6	12.7	1.1			
<b>England</b>	<b>24,752</b>	<b>13,090</b>	<b>11,661</b>	<b>753.6</b>	<b>2.9</b>	<b>562.1</b>	<b>4.1</b>	<b>191.5</b>	<b>1.6</b>			
Wales	1,254	651	603	44.3	3.4	33.8	5.0	10.5	1.7			
Scotland	2,499	1,294	1,205	98.6	3.7	76.3	5.5	22.3	1.8			
<b>Great Britain</b>	<b>28,505</b>	<b>15,036</b>	<b>13,469</b>	<b>896.5</b>	<b>3.0</b>	<b>672.2</b>	<b>4.2</b>	<b>224.3</b>	<b>1.6</b>			
N Ireland	763	403	361	34.3	4.3	26.3	6.0	8.0	2.2			
<b>United Kingdom</b>	<b>29,269</b>	<b>15,439</b>	<b>13,830</b>	<b>930.8</b>	<b>3.1</b>	<b>698.5</b>	<b>4.3</b>	<b>232.3</b>	<b>1.7</b>			

Publication of these vacancy statistics has been deferred. Figures from May 2001 are affected by the introduction of Employer Direct - see note on page 9.

### Changes on period (period specified below):

	Employer surveys			Jobcentre Plus administrative system						Jobcentre Plus administrative system		
	Civilian workforce jobs (Change on Mar 2002); not seasonally adjusted			Claimant count* (Change on July 2003) seasonally adjusted						Jobcentre vacancies (Change on July 2003) seasonally adjusted		
	Total	Men	Women	Total	Men		Women		Notified vacancies	Unfilled vacancies	Outflow of vacancies	
	Level	Level	Level	Level	Rate (%)	Level	Rate (%)	Level				Rate (%)
26	22	4	-0.4	0.0	-0.4	-0.1	0.0	0.0	0.0			
North East	26	22	4	-0.4	0.0	-0.4	-0.1	0.0	0.0			
North West	24	10	15	-1.3	0.0	-1.2	-0.1	-0.1	0.0			
Yorkshire & the Humber	20	5	15	-1.0	0.0	-0.8	-0.1	-0.2	0.0			
East Midlands	-23	-28	4	-0.2	0.0	-0.2	0.0	0.0	0.0			
West Midlands	-13	-16	4	-0.3	0.0	-0.2	0.0	-0.1	0.0			
East	-11	-21	10	-0.6	0.0	-0.5	0.0	-0.1	0.0			
London	29	5	24	-0.7	0.0	-0.8	0.0	0.1	0.0			
South East	24	-9	33	-0.3	0.0	-0.2	0.0	-0.1	0.0			
South West	-15	7	-22	-0.7	0.0	-0.5	0.0	-0.2	0.0			
<b>England</b>	<b>62</b>	<b>-25</b>	<b>86</b>	<b>-5.6</b>	<b>-0.1</b>	<b>-4.8</b>	<b>-0.1</b>	<b>-0.8</b>	<b>0.0</b>			
Wales	32	28	5	-0.7	-0.1	-0.6	-0.1	-0.1	0.0			
Scotland	-5	6	-11	-1.0	0.0	-0.8	-0.1	-0.2	0.0			
<b>Great Britain</b>	<b>89</b>	<b>9</b>	<b>80</b>	<b>-7.3</b>	<b>0.0</b>	<b>-6.2</b>	<b>0.0</b>	<b>-1.1</b>	<b>0.0</b>			
N Ireland	0	-5	5	0.4	0.0	0.3	0.1	0.1	0.0			
<b>United Kingdom</b>	<b>89</b>	<b>4</b>	<b>85</b>	<b>-6.9</b>	<b>0.0</b>	<b>-5.8</b>	<b>0.0</b>	<b>-1.1</b>	<b>0.0</b>			

Publication of these vacancy statistics has been deferred. Figures from May 2001 are affected by the introduction of Employer Direct - see note on page 9.

Relationship between columns: 1= 2+3; 4= 6+8

Labour Market Statistics Helpline 020 7533 6094

\* Count of claimants of Jobseeker's Allowance

\*\* Workforce jobs is tabulated by region of workplace. Claimant count is tabulated by region of claimant's residence.

+ Denominator = claimant count + workforce jobs. NB: these are different from the proportions of the working age populations claiming Jobseeker's Allowance for local areas shown in Tables 17 and 18.

See note on page 8 for further details.

Some of the series in this table are available electronically through the ONS Time Series Data service. See background note 15 for further details.

The civilian workforce jobs data in this table have been adjusted to reflect the 2001 Census population data - see note on page 6.

(thousands),  
seasonally  
adjusted

## 1 Summary of LFS data for May to July 2003

All aged 16 &amp; over

		All aged 16 & over	Total economically active	Total in Employment	Unemployed	Economically Inactive	Economic activity rate(%)	Employment rate (%)	Unemployment rate (%)	Economic inactivity rate(%)
		1	2	3	4	5	6	7	8	9
		YCHF	YCHS	YCJS	YCMS	HKMR			YCNF	
<b>People</b>	May - Jul 2001	3,288	2,078	1,972	106	1,210	63.2	60.0	5.1	36.8
	May - Jul 2002	3,308	2,105	2,010	95	1,202	63.6	60.8	4.5	36.4
	Aug - Oct 2002	3,312	2,128	2,029	99	1,185	64.2	61.2	4.7	35.8
	Nov - Jan 2003	3,317	2,118	2,023	95	1,199	63.9	61.0	4.5	36.1
	Feb - Apr 2003	3,322	2,109	2,023	86	1,213	63.5	60.9	4.1	36.5
	<b>May - Jul 2003</b>	<b>3,326</b>	<b>2,115</b>	<b>2,016</b>	<b>99</b>	<b>1,211</b>	<b>63.6</b>	<b>60.6</b>	<b>4.7</b>	<b>36.4</b>
	<i>change on quarter</i>	5	7	-6	13	-2	0.1	-0.3	0.6	-0.1
	<i>change %</i>	0.1	0.3	-0.3	14.9	-0.2				
	<i>change on year</i>	19	10	7	4	8	0.0	-0.1	0.1	0.0
	<i>change %</i>	0.6	0.5	0.3	3.8	0.7				
<b>Men</b>	May - Jul 2001	1,599	1,139	1,080	59	460	71.2	67.5	5.2	28.8
	May - Jul 2002	1,610	1,149	1,094	55	461	71.4	68.0	4.8	28.6
	Aug - Oct 2002	1,612	1,160	1,108	53	452	72.0	68.7	4.5	28.0
	Nov - Jan 2003	1,615	1,150	1,097	53	464	71.2	67.9	4.6	28.8
	Feb - Apr 2003	1,617	1,156	1,104	52	461	71.5	68.3	4.5	28.5
	<b>May - Jul 2003</b>	<b>1,619</b>	<b>1,163</b>	<b>1,107</b>	<b>56</b>	<b>457</b>	<b>71.8</b>	<b>68.3</b>	<b>4.8</b>	<b>28.2</b>
	<i>change on quarter</i>	2	6	2	4	-4	0.3	0.0	0.3	-0.3
	<i>change %</i>	0.1	0.6	0.2	8.0	-0.9				
	<i>change on year</i>	9	14	12	1	-4	0.4	0.4	0.1	-0.4
	<i>change %</i>	0.6	1.2	1.1	2.5	-1.0				
<b>Women</b>	May - Jul 2001	1,688	939	892	47	749	55.6	52.9	5.0	44.4
	May - Jul 2002	1,698	956	915	41	741	56.3	53.9	4.2	43.7
	Aug - Oct 2002	1,700	967	921	47	732	56.9	54.2	4.8	43.1
	Nov - Jan 2003	1,702	968	926	42	735	56.8	54.4	4.3	43.2
	Feb - Apr 2003	1,705	953	918	34	752	55.9	53.9	3.6	44.1
	<b>May - Jul 2003</b>	<b>1,707</b>	<b>953</b>	<b>910</b>	<b>43</b>	<b>754</b>	<b>55.8</b>	<b>53.3</b>	<b>4.5</b>	<b>44.2</b>
	<i>change on quarter</i>	2	0	-8	9	2	-0.1	-0.6	0.9	0.1
	<i>change %</i>	0.1	0.0	-0.9	25.3	0.3				
	<i>change on year</i>	9	-3	-6	2	13	-0.5	-0.6	0.3	0.5
	<i>change %</i>	0.5	-0.3	-0.6	5.6	1.7				

All aged 16 to 59/64

		All aged 16 to 59/64	Total economically active	Total in Employment	Unemployed	Economically Inactive	Economic activity rate(%)	Employment rate (%)	Unemployment rate (%)	Economic inactivity rate(%)
		10	11	12	13	14	15	16	17	18
							YCIF	YCKF		YYAZ
<b>People</b>	May - Jul 2001	2,543	2,027	1,922	105	516	79.7	75.6	5.2	20.3
	May - Jul 2002	2,557	2,046	1,954	93	510	80.0	76.4	4.5	20.0
	Aug - Oct 2002	2,560	2,067	1,971	96	492	80.8	77.0	4.7	19.2
	Nov - Jan 2003	2,562	2,054	1,960	94	508	80.2	76.5	4.6	19.8
	Feb - Apr 2003	2,565	2,042	1,957	85	523	79.6	76.3	4.2	20.4
	<b>May - Jul 2003</b>	<b>2,567</b>	<b>2,043</b>	<b>1,945</b>	<b>99</b>	<b>524</b>	<b>79.6</b>	<b>75.7</b>	<b>4.8</b>	<b>20.4</b>
	<i>change on quarter</i>	3	1	-12	14	1	0.0	-0.6	0.7	0.0
	<i>change %</i>	0.1	0.1	-0.6	15.9	0.2				
	<i>change on year</i>	10	-3	-9	6	14	-0.4	-0.7	0.3	0.4
	<i>change %</i>	0.4	-0.2	-0.5	6.4	2.7				
<b>Men</b>	May - Jul 2001	1,319	1,119	1,061	59	199	84.9	80.4	5.2	15.1
	May - Jul 2002	1,326	1,129	1,075	54	196	85.2	81.1	4.8	14.8
	Aug - Oct 2002	1,327	1,137	1,085	52	190	85.7	81.8	4.6	14.3
	Nov - Jan 2003	1,328	1,129	1,076	53	199	85.0	81.0	4.7	15.0
	Feb - Apr 2003	1,330	1,130	1,078	51	200	85.0	81.1	4.6	15.0
	<b>May - Jul 2003</b>	<b>1,331</b>	<b>1,136</b>	<b>1,081</b>	<b>55</b>	<b>195</b>	<b>85.4</b>	<b>81.2</b>	<b>4.9</b>	<b>14.6</b>
	<i>change on quarter</i>	1	6	2	4	-5	0.4	0.1	0.3	-0.4
	<i>change %</i>	0.1	0.5	0.2	7.5	-2.4				
	<i>change on year</i>	5	7	5	1	-2	0.2	0.1	0.1	-0.2
	<i>change %</i>	0.4	0.6	0.5	2.4	-0.8				
<b>Women</b>	May - Jul 2001	1,224	908	862	46	316	74.2	70.4	5.1	25.8
	May - Jul 2002	1,231	917	879	39	314	74.5	71.4	4.2	25.5
	Aug - Oct 2002	1,233	930	886	44	303	75.5	71.9	4.8	24.5
	Nov - Jan 2003	1,234	925	884	41	309	74.9	71.6	4.4	25.1
	Feb - Apr 2003	1,235	912	878	34	323	73.9	71.1	3.7	26.1
	<b>May - Jul 2003</b>	<b>1,236</b>	<b>907</b>	<b>864</b>	<b>43</b>	<b>329</b>	<b>73.4</b>	<b>69.9</b>	<b>4.8</b>	<b>26.6</b>
	<i>change on quarter</i>	1	-5	-15	10	6	-0.5	-1.3	1.1	0.5
	<i>change %</i>	0.1	-0.5	-1.7	28.8	1.9				
	<i>change on year</i>	5	-10	-15	5	15	-1.1	-1.5	0.6	1.1
	<i>change %</i>	0.4	-1.1	-1.7	11.9	4.8				

Relationship between columns: 1= 2+5; 2= 3+4; 6= 2/1; 7= 3/1; 8= 4/2

9= 5/1; 10= 11+14; 11= 12+13; 15= 11/10; 16= 12/10; 17= 13/11; 18= 14/10

Source: Labour Force Survey

Labour Market Statistics Helpline 020 7533 6094

The Labour Force Survey is a survey of the population in private households, student halls of residence and NHS accommodation.

The data in this table have been adjusted to reflect the 2001 Census population data - see note on page 6.

# REGIONAL DATA

## 1a Summary of other headline indicators

East Midlands

(thousands),  
seasonally adjusted

		Civilian workforce jobs (not seasonally adjusted)		
		Levels		
		Total	Males	Females
	Mar 00	1,966	1,028	939
	Mar 01	1,956	1,005	951
	Mar 02	1,967	1,022	944
	Jun 02	1,970	1,019	951
	Sep 02	1,966	1,025	941
	Dec 02	1,979	1,030	949
	<b>Mar 03</b>	<b>1,943</b>	<b>995</b>	<b>949</b>
	<i>Change on year</i>	-23	-28	4
	<i>Change %</i>	-1.2	-2.7	0.5

		Claimant count*					
		Levels			Rates (%)**		
		Total	Males	Females	Total	Males	Females
		DPAY	ZMPA	ZMPC	DPBJ	ZMPB	ZMPD
<b>2002</b>							
	August	58.2	43.6	14.6	2.9	4.1	1.5
	September#	58.5	43.7	14.8	2.9	4.1	1.5
	October	58.4	43.6	14.8	2.9	4.1	1.5
	November#	58.2	43.4	14.8	2.9	4.1	1.5
	December	57.8	42.9	14.9	2.8	4.0	1.5
<b>2003</b>							
	January	57.2	42.3	14.9	2.8	4.0	1.5
	February#	57.9	42.8	15.1	2.8	4.0	1.6
	March	58.3	43.0	15.3	2.9	4.0	1.6
	April	58.8	43.4	15.4	2.9	4.1	1.6
	May	59.8	44.2	15.6	2.9	4.1	1.6
	June#	60.1	44.5	15.6	3.0	4.2	1.6
	July (r)	59.7	44.1	15.6	2.9	4.1	1.6
	<b>August# (p)</b>	<b>59.5</b>	<b>43.9</b>	<b>15.6</b>	<b>2.9</b>	<b>4.1</b>	<b>1.6</b>
	<i>Change on period</i>	-0.2	-0.2	0.0	0.0	0.0	0.0
	<i>Change %</i>	-0.3	-0.5	0.0			
	<i>Change on year</i>	1.3	0.3	1.0	0.1	0.0	0.1
	<i>Change %</i>	2.2	0.7	6.8			

	Notified vacancies	Unfilled vacancies
	Level	Level
	DRYM	BCQF
<b>2002</b>		
August		
September		
October		
November		
December		
	Publication of these vacancy statistics has been deferred.	
<b>2003</b>		
January		
February		
March		
April		
May		
June		
July		
August		

\* Count of claimants of Jobseeker's Allowance

Labour Market Statistics Helpline 020 7533 6094

\*\* Denominator = claimant count + workforce jobs. NB these are different from the proportions of the working age populations claiming Jobseeker's Allowance for local areas shown in Tables 17 and 18.

Data source: Employer surveys, DfES Training Data System, Jobcentre Plus administrative system.

See note on page 8 for further details.

# Months where there are 5 weeks between count dates. All the rest are 4 week periods.

The civilian workforce jobs data in this table have been adjusted to reflect the 2001 Census population data - see note on page 6.

# EMPLOYMENT

## 2 Employment by age

East Midlands

(thousands), not seasonally adjusted

		All aged 16 & over	16 - 59/64	16 - 17	18 - 24	25 - 34	35 - 49	50 - 64 (m) 50 - 59 (w)	65+ (m) & 60+ (w)
		1	2	3	4	5	6	7	8
<b>Employed</b>									
<b>People</b>	Mar - May 2000	1,991	1,935	49	218	482	738	448	56
	Mar - May 2001	1,964	1,915	47	224	447	740	457	49
	Mar - May 2002	2,002	1,946	48	232	437	769	460	55
	Jun - Aug 2002	2,033	1,970	50	252	426	766	476	63
	Sep - Nov 2002	2,019	1,956	54	234	427	764	478	62
	Dec - Feb 2003	2,003	1,942	57	230	425	759	470	61
	<b>Mar - May 2003</b>	<b>2,011</b>	<b>1,943</b>	<b>56</b>	<b>224</b>	<b>418</b>	<b>769</b>	<b>477</b>	<b>68</b>
	<i>Change on year</i>	9	-3	8	-8	-19	0	17	13
<i>Change %</i>	0.5	-0.2	16.1	-3.7	-4.4	0.0	3.7	23.4	
<b>Men</b>	Mar - May 2000	1,084	1,062	24	118	258	391	272	22
	Mar - May 2001	1,079	1,059	20	126	247	395	272	19
	Mar - May 2002	1,087	1,068	26	123	239	407	273	18
	Jun - Aug 2002	1,106	1,085	26	132	232	408	287	21
	Sep - Nov 2002	1,099	1,077	26	124	235	404	288	22
	Dec - Feb 2003	1,087	1,066	28	125	231	400	282	22
	<b>Mar - May 2003</b>	<b>1,102</b>	<b>1,075</b>	<b>29</b>	<b>123</b>	<b>229</b>	<b>406</b>	<b>289</b>	<b>26</b>
	<i>Change on year</i>	15	7	3	0	-10	-1	16	8
<i>Change %</i>	1.4	0.6	11.9	-0.2	-4.3	-0.3	5.7	43.9	
<b>Women</b>	Mar - May 2000	907	873	26	100	224	348	176	34
	Mar - May 2001	886	856	27	98	200	345	185	30
	Mar - May 2002	915	878	23	109	198	362	186	37
	Jun - Aug 2002	927	885	24	120	194	358	189	42
	Sep - Nov 2002	920	879	28	110	192	360	190	41
	Dec - Feb 2003	915	876	30	105	194	359	189	39
	<b>Mar - May 2003</b>	<b>910</b>	<b>868</b>	<b>27</b>	<b>101</b>	<b>189</b>	<b>363</b>	<b>188</b>	<b>42</b>
	<i>Change on year</i>	-5	-10	5	-8	-9	1	1	5
<i>Change %</i>	-0.6	-1.2	20.8	-7.6	-4.7	0.3	0.7	13.2	
<b>Employment rates (%)<sup>+</sup></b>									
<b>People</b>	Mar - May 2000	61.0	76.6	49.6	64.3	82.7	84.6	70.7	7.6
	Mar - May 2001	59.8	75.4	45.7	65.5	79.2	83.7	70.6	6.6
	Mar - May 2002	60.6	76.2	45.4	66.4	80.1	85.9	70.0	7.4
	Jun - Aug 2002	61.4	77.0	46.7	71.7	78.8	85.2	72.1	8.4
	Sep - Nov 2002	60.9	76.4	50.2	66.1	79.4	84.8	72.3	8.3
	Dec - Feb 2003	60.4	75.8	53.1	64.4	79.8	84.1	71.0	8.1
	<b>Mar - May 2003</b>	<b>60.5</b>	<b>75.7</b>	<b>51.9</b>	<b>62.3</b>	<b>79.0</b>	<b>84.9</b>	<b>71.8</b>	<b>9.0</b>
	<i>Change on year</i>	-0.1	-0.5	6.5	-4.1	-1.2	-1.0	1.9	1.6
<b>Men</b>	Mar - May 2000	68.3	81.0	46.4	68.5	89.9	90.0	73.9	7.9
	Mar - May 2001	67.5	80.4	37.4	72.3	89.3	89.8	72.6	6.8
	Mar - May 2002	67.6	80.7	46.7	69.4	89.3	91.5	72.1	6.5
	Jun - Aug 2002	68.6	81.8	46.6	74.0	87.5	91.4	75.3	7.5
	Sep - Nov 2002	68.1	81.1	46.9	68.9	89.2	90.4	75.5	7.6
	Dec - Feb 2003	67.3	80.2	49.9	68.9	88.6	89.3	73.6	7.6
	<b>Mar - May 2003</b>	<b>68.1</b>	<b>80.8</b>	<b>51.5</b>	<b>67.5</b>	<b>88.3</b>	<b>90.2</b>	<b>75.4</b>	<b>9.2</b>
	<i>Change on year</i>	0.5	0.2	4.8	-1.9	-1.0	-1.3	3.4	2.7
<b>Women</b>	Mar - May 2000	54.1	71.9	53.0	59.9	75.7	79.4	66.2	7.4
	Mar - May 2001	52.5	70.0	54.4	58.5	69.5	77.6	68.0	6.5
	Mar - May 2002	54.0	71.4	44.0	63.3	71.4	80.3	67.1	7.9
	Jun - Aug 2002	54.6	71.9	46.8	69.3	70.3	79.2	67.7	9.0
	Sep - Nov 2002	54.1	71.3	53.8	63.2	70.1	79.3	67.9	8.7
	Dec - Feb 2003	53.7	71.0	56.6	59.9	71.3	78.9	67.4	8.4
	<b>Mar - May 2003</b>	<b>53.3</b>	<b>70.2</b>	<b>52.3</b>	<b>57.0</b>	<b>70.0</b>	<b>79.6</b>	<b>66.9</b>	<b>8.9</b>
	<i>Change on year</i>	-0.6	-1.1	8.3	-6.3	-1.3	-0.7	-0.2	1.0

Relationship between columns: 1=2+8; 2= 3+4+5+6+7

Source: Labour Force Survey

<sup>+</sup> Denominator = all persons in the relevant age group

Labour Market Statistics Helpline 020 7533 6094

The LFS sample population covers those living in private households, student halls of residence and NHS accommodation.

The data in this table have been adjusted to reflect the 2001 Census population data - see note on page 6.

# EMPLOYMENT

East Midlands

## 3 Full-time, part-time and temporary workers

(thousands), not seasonally adjusted

		All in employment					All in employment			
		Total*	Employees*	Self employed*	Unpaid family workers	Government-supported training and employment programmes	Full-time workers	Part-time workers	Workers with second jobs	Temporary employees
		1	2	3	4	5	6	7	8	9
<b>People</b>	Mar - May 2000	1,991	1,763	210	*	10	1,473	518	82	103
	Mar - May 2001	1,964	1,739	213	*	*	1,461	503	72	110
	Mar - May 2002	2,002	1,773	214	*	*	1,472	529	83	93
	Jun - Aug 2002	2,033	1,811	206	*	*	1,496	537	80	100
	Sep - Nov 2002	2,019	1,803	202	*	*	1,488	531	89	91
	Dec - Feb 2003	2,003	1,775	217	*	*	1,471	529	79	96
	<b>Mar - May 2003</b>	<b>2,011</b>	<b>1,778</b>	<b>220</b>	*	*	<b>1,480</b>	<b>530</b>	<b>86</b>	<b>90</b>
	<i>Change on year</i>	9	5	6	*	*	7	1	3	-3
	<i>Change %</i>	0.5	0.3	2.6	*	*	0.5	0.2	3.5	-3.1
<b>Men</b>	Mar - May 2000	1,084	929	147	*	*	993	91	31	45
	Mar - May 2001	1,079	916	155	*	*	993	85	32	51
	Mar - May 2002	1,087	918	162	*	*	991	95	33	39
	Jun - Aug 2002	1,106	944	155	*	*	1,002	103	37	46
	Sep - Nov 2002	1,099	939	152	*	*	994	105	42	40
	Dec - Feb 2003	1,087	923	158	*	*	974	112	28	43
	<b>Mar - May 2003</b>	<b>1,102</b>	<b>936</b>	<b>159</b>	*	*	<b>988</b>	<b>113</b>	<b>30</b>	<b>42</b>
	<i>Change on year</i>	15	18	-3	*	*	-3	18	-3	3
	<i>Change %</i>	1.4	1.9	-1.7	*	*	-0.3	18.8	-9.2	7.4
<b>Women</b>	Mar - May 2000	907	835	63	*	*	480	427	52	58
	Mar - May 2001	886	823	58	*	*	468	418	40	58
	Mar - May 2002	915	855	52	*	*	481	434	50	54
	Jun - Aug 2002	927	867	51	*	*	494	433	43	54
	Sep - Nov 2002	920	864	50	*	*	494	426	47	51
	Dec - Feb 2003	915	851	59	*	*	497	418	51	54
	<b>Mar - May 2003</b>	<b>910</b>	<b>843</b>	<b>61</b>	*	*	<b>492</b>	<b>418</b>	<b>56</b>	<b>48</b>
	<i>Change on year</i>	-5	-12	8	*	*	11	-17	6	-6
	<i>Change %</i>	-0.6	-1.4	16.0	*	*	2.3	-3.9	11.9	-10.8

### Temporary employees (reasons for temporary working)

### Part-time workers (reasons for part-time working)<sup>#</sup>

		Total**	Could not find permanent job	Did not want a permanent job	Other	Total**	Could not find full-time job	Did not want full-time job	Other
		10	11	12	13	14	15	16	17
<b>People</b>	Mar - May 2000	103	34	32	37	507	44	380	80
	Mar - May 2001	110	31	31	48	497	38	376	81
	Mar - May 2002	93	26	21	46	519	37	398	82
	Jun - Aug 2002	100	19	29	51	528	42	407	78
	Sep - Nov 2002	91	22	23	46	525	41	398	84
	Dec - Feb 2003	96	24	27	46	525	35	405	83
	<b>Mar - May 2003</b>	<b>90</b>	<b>20</b>	<b>28</b>	<b>42</b>	<b>522</b>	<b>33</b>	<b>401</b>	<b>85</b>
	<i>Change on year</i>	-3	-6	7	-4	3	-4	3	3
	<i>Change %</i>	-3.1	-21.6	33.7	-9.7	0.5	-11.3	0.8	3.4

Relationship between columns: 1=2+3+4+5

Source: Labour Force Survey

<sup>#</sup> Employees and self-employed

Labour Market Statistics Helpline 020 7533 6094

\* Includes people who did not state whether they worked part-time or full-time

\*\* Includes people who did not state their reason for temporary/part-time working

The LFS sample population covers those living in private households, student halls of residence and NHS accommodation.

The data in this table have been adjusted to reflect the 2001 Census population data - see note on page 6.

# EMPLOYMENT

East Midlands

## 4 Civilian workforce jobs

(thousands), not seasonally adjusted

		Civilian workforce jobs	Employee jobs	Self- employment jobs	Government- supported trainees
		1	2	3	4
<b>All jobs</b>	Mar 99	1,979	1,742	230	6
	Mar 00	1,966	1,730	230	7
	Mar 01	1,956	1,730	220	6
	Mar 02	1,967	1,742	220	5
	Jun 02	1,970	1,739	226	5
	Sep 02	1,966	1,736	225	5
	Dec 02	1,979	1,740	234	5
	<b>Mar 03</b>	<b>1,943</b>	<b>1,707</b>	<b>230</b>	<b>6</b>
	<i>Change on year</i>	-23	-35	11	1
<i>Change %</i>	-1.2	-2.0	4.8	17.8	
<b>Male jobs</b>	Mar 99	1,043	876	163	3
	Mar 00	1,028	866	158	4
	Mar 01	1,005	845	156	3
	Mar 02	1,022	855	165	3
	Jun 02	1,019	847	169	3
	Sep 02	1,025	854	168	3
	Dec 02	1,030	855	172	3
	<b>Mar 03</b>	<b>995</b>	<b>829</b>	<b>163</b>	<b>3</b>
	<i>Change on year</i>	-28	-26	-	2
<i>Change %</i>	-2.7	-3.0	-	1.3	
<b>Female jobs</b>	Mar 99	936	866	67	3
	Mar 00	939	864	72	3
	Mar 01	951	885	63	2
	Mar 02	944	888	54	2
	Jun 02	951	892	57	2
	Sep 02	941	882	57	2
	Dec 02	949	884	62	2
	<b>Mar 03</b>	<b>949</b>	<b>879</b>	<b>67</b>	<b>3</b>
	<i>Change on year</i>	4	-9	13	0
<i>Change %</i>	0.5	-1.0	23.5	21.7	

Sources: Employer surveys, Labour Force Survey, DfES

Relationship between columns: 1=2+3+4

Workforce jobs enquiries 01633 812318

The Workforce Jobs series measures jobs rather than people, therefore, second self-employment jobs (where the main job is an employee) are now included in this series.

Civilian Workforce Jobs figures come from a variety of sources. Employee Jobs (which is much the largest component of Civilian Workforce Jobs) come from quarterly surveys of employers carried out by Prices & Business Group (PBG) of ONS and Administrative Returns.

Self-employment jobs figures are provided by the LFS and Government-supported trainees figures are provided by ES Training Data Systems.

The civilian workforce jobs data in this table have been adjusted to reflect the 2001 Census population data - see note on page 6.

# EMPLOYMENT

East Midlands

## 5 Employee jobs by industry

(thousands), not seasonally adjusted

Standard Industrial Classification (1992)

SIC 1992 SECTION		All jobs (seasonally adjusted)	All jobs A-Q	Agriculture Forestry & Fishing A,B	Mining Energy & Water Supplies Industries C,E	Manufacturing Industries D	Construction F	Service Industries G-K	Other Industries L-Q
		1	2	3	4	5	6	7	8
<b>All jobs</b>	Mar 00	1,737	1,730	28	16	391	82	711	503
	Mar 01	1,739	1,730	24	17	370	78	743	499
	Mar 02	1,751	1,742	23	17	349	84	753	516
	Jun 02	1,742	1,739	23	17	345	80	756	517
	Sep 02	1,733	1,736	22	17	343	87	753	514
	Dec 02	1,732	1,740	19	17	339	90	756	518
	<b>Mar 03</b>	<b>1,718</b>	<b>1,707</b>	<b>20</b>	<b>17</b>	<b>332</b>	<b>79</b>	<b>742</b>	<b>518</b>
	<i>Change on qtr</i>	-14							
<i>Change %</i>	-0.8								
<i>Change on year</i>	-32	-35	-3	-1	-18	-5	-10	2	
<i>Change %</i>	-1.8	-2.0	-13.4	-4.4	-5.0	-6.4	-1.4	0.4	
<b>Male jobs</b>	Mar 00	868	866	19	12	269	68	359	139
	Mar 01	848	845	16	13	257	64	359	137
	Mar 02	858	855	16	13	245	71	368	142
	Jun 02	853	847	16	12	241	68	368	141
	Sep 02	848	854	15	12	241	74	370	141
	Dec 02	851	855	14	12	239	77	370	143
	<b>Mar 03</b>	<b>835</b>	<b>829</b>	<b>14</b>	<b>12</b>	<b>233</b>	<b>67</b>	<b>362</b>	<b>140</b>
	<i>Change on qtr</i>	-16							
<i>Change %</i>	-1.9								
<i>Change on year</i>	-23	-26	-2	-1	-12	-5	-5	-1	
<i>Change %</i>	-2.7	-3.0	-10.0	-5.2	-5.0	-6.4	-1.5	-1.0	
<b>Female jobs</b>	Mar 00	869	864	9	4	122	13	352	364
	Mar 01	891	885	8	5	113	14	384	362
	Mar 02	893	888	7	5	104	13	385	374
	Jun 02	889	892	7	5	104	13	388	376
	Sep 02	884	882	7	5	102	13	384	372
	Dec 02	881	884	5	5	100	13	386	375
	<b>Mar 03</b>	<b>883</b>	<b>879</b>	<b>6</b>	<b>5</b>	<b>99</b>	<b>12</b>	<b>380</b>	<b>377</b>
	<i>Change on qtr</i>	2							
<i>Change %</i>	0.3								
<i>Change on year</i>	-9	-9	-2	0	-5	-1	-5	4	
<i>Change %</i>	-1.1	-1.0	-20.7	-2.4	-4.9	-6.3	-1.3	1.0	

Relationship between columns: 2=3+4+5+6+7+8

Source: Employer surveys

Workforce jobs enquiries 01633 812318

Employee jobs figures are of a measure of jobs rather than people. For example, if a person holds two jobs, each job will be counted in the employee jobs total. Employees jobs figures come from quarterly surveys of employers carried out by Prices & Business Group (PBG) of ONS and Administrative returns.

The quarterly employer surveys used to compile employee jobs figures do not collect data by Government Office Regions (GOR). Instead, Annual Business Inquiry (ABI) data are used to pro-rate the totals obtained from the quarterly surveys to generate GOR data. This technique can lead to the sum of the industry figures not matching the "All jobs" total in column 2.

# EMPLOYMENT

East Midlands

## 6 Actual weekly hours of work

not seasonally adjusted

		Total weekly hours (millions)	Average actual weekly hours of work			Workers with second jobs
			All workers*	Full-time**	Part-time**	
			1	2	3	
<b>People</b>	Mar - May 2000	66	33.2	38.9	15.4	8.8
	Mar - May 2001	66	33.5	39.3	15.4	8.7
	Mar - May 2002	67	33.4	39.2	16.1	8.3
	Jun - Aug 2002	65	31.9	37.3	15.6	10.4
	Sep - Nov 2002	68	33.4	38.8	16.5	10.2
	Dec - Feb 2003	62	31.0	36.2	15.3	8.5
	<b>Mar - May 2003</b>	<b>67</b>	<b>33.4</b>	<b>39.0</b>	<b>16.1</b>	<b>8.9</b>
	<i>Change on year</i>	<i>0</i>	<i>0.0</i>	<i>-0.2</i>	<i>0.0</i>	<i>0.5</i>
<i>Change %</i>	<i>0.4</i>	<i>-0.1</i>	<i>-0.4</i>	<i>0.0</i>	<i>6.4</i>	
<b>Men</b>	Mar - May 2000	42	38.9	40.9	14.1	7.8
	Mar - May 2001	42	39.3	41.2	13.8	9.3
	Mar - May 2002	42	38.9	40.9	13.9	9.7
	Jun - Aug 2002	41	37.3	39.0	16.6	12.7
	Sep - Nov 2002	43	38.8	40.8	15.1	11.3
	Dec - Feb 2003	39	35.6	37.9	13.9	10.4
	<b>Mar - May 2003</b>	<b>43</b>	<b>38.6</b>	<b>40.9</b>	<b>15.0</b>	<b>9.9</b>
	<i>Change on year</i>	<i>0</i>	<i>-0.3</i>	<i>0.0</i>	<i>1.2</i>	<i>0.2</i>
<i>Change %</i>	<i>0.7</i>	<i>-0.7</i>	<i>0.1</i>	<i>8.3</i>	<i>2.3</i>	
<b>Women</b>	Mar - May 2000	24	26.4	35.0	15.7	9.4
	Mar - May 2001	23	26.4	35.3	15.8	8.3
	Mar - May 2002	25	27.0	35.6	16.5	7.4
	Jun - Aug 2002	24	25.5	33.7	15.3	8.5
	Sep - Nov 2002	25	27.1	35.0	16.9	9.3
	Dec - Feb 2003	23	25.4	32.8	15.7	7.5
	<b>Mar - May 2003</b>	<b>25</b>	<b>27.1</b>	<b>35.2</b>	<b>16.4</b>	<b>8.3</b>
	<i>Change on year</i>	<i>0</i>	<i>0.1</i>	<i>-0.4</i>	<i>-0.2</i>	<i>0.9</i>
<i>Change %</i>	<i>-0.3</i>	<i>0.3</i>	<i>-1.2</i>	<i>90.7</i>	<i>11.7</i>	

\* main and second jobs

\*\* main jobs only

Source: Labour Force Survey

Labour Market Statistics Helpline 020 7533 6094

The LFS sample population covers those living in private households, student halls of residence and NHS accommodation.

The data in this table have been adjusted to reflect the 2001 Census population data - see note on page 6.

## CLAIMANT COUNT

East Midlands

## 7 Claimant count\* levels and rates

(thousands), seasonally adjusted

		Claimant count		Inflows (standardised**)	Outflows (standardised**)	Claimant count (not seasonally adjusted)	
		Level	Rate (%)##	Level	Level	Level	Rate (%)##
		1	2	3	4	5	6
<b>People</b>	<b>2002</b>	DPAY	DPBJ			BCKC	DPAN
	August	58.2	2.9	15.1	15.4	59.1	2.9
	September#	58.5	2.9	15.2	15.1	57.3	2.8
	October	58.4	2.9	14.7	14.9	55.0	2.7
	November#	58.2	2.9	14.8	14.8	54.5	2.7
	December	57.8	2.8	15.0	14.8	56.1	2.8
	<b>2003</b>						
	January	57.2	2.8	14.4	14.0	61.9	3.0
	February#	57.9	2.8	14.8	14.3	63.7	3.1
	March	58.3	2.9	14.9	14.5	62.6	3.1
	April	58.8	2.9	14.9	14.7	61.0	3.0
	May	59.8	2.9	14.9	14.2	60.8	3.0
	June#	60.1	3.0	14.7	14.4	59.6	2.9
	July (r)	59.7	2.9	14.2	14.5	59.9	2.9
	<b>August# (p)</b>	<b>59.5</b>	<b>2.9</b>	<b>14.1</b>	<b>14.3</b>	<b>60.3</b>	<b>3.0</b>
	Change on mth	-0.2	0.0	-0.1	-0.2	0.4	0.0
	Change %	-0.3		-0.7	-1.4	0.6	
	Change on year	1.3	0.1	-1.0	-1.1	1.2	0.1
	Change %	2.2		-6.6	-7.1	2.0	
<b>Men</b>	<b>2002</b>	ZMPA	ZMPB				
	August	43.6	4.1	10.7	11.0	43.4	4.1
	September#	43.7	4.1	10.8	10.8	42.1	3.9
	October	43.6	4.1	10.4	10.6	40.6	3.8
	November#	43.4	4.1	10.5	10.5	40.7	3.8
	December	42.9	4.0	10.5	10.5	41.9	3.9
	<b>2003</b>						
	January	42.3	4.0	10.1	9.8	46.0	4.3
	February#	42.8	4.0	10.4	10.1	47.2	4.4
	March	43.0	4.0	10.4	10.2	46.4	4.3
	April	43.4	4.1	10.5	10.4	45.1	4.2
	May	44.2	4.1	10.5	9.9	45.1	4.2
	June#	44.5	4.2	10.3	10.1	44.1	4.1
	July (r)	44.1	4.1	10.0	10.3	43.8	4.1
	<b>August# (p)</b>	<b>43.9</b>	<b>4.1</b>	<b>9.9</b>	<b>10.1</b>	<b>43.7</b>	<b>4.1</b>
	Change on mth	-0.2	0.0	-0.1	-0.2	-0.1	0.0
	Change %	-0.5		-1.0	-1.9	-0.2	
	Change on year	0.3	0.0	-0.8	-0.9	0.3	0.0
	Change %	0.7		-7.5	-8.2	0.8	
<b>Women</b>	<b>2002</b>	ZMPC	ZMPD				
	August	14.6	1.5	4.4	4.4	15.8	1.6
	September#	14.8	1.5	4.4	4.3	15.2	1.6
	October	14.8	1.5	4.3	4.3	14.4	1.5
	November#	14.8	1.5	4.3	4.3	13.9	1.4
	December	14.9	1.5	4.5	4.3	14.1	1.5
	<b>2003</b>						
	January	14.9	1.5	4.3	4.2	15.9	1.6
	February#	15.1	1.6	4.4	4.2	16.5	1.7
	March	15.3	1.6	4.5	4.3	16.2	1.7
	April	15.4	1.6	4.4	4.3	15.9	1.6
	May	15.6	1.6	4.4	4.3	15.8	1.6
	June#	15.6	1.6	4.4	4.3	15.5	1.6
	July (r)	15.6	1.6	4.2	4.2	16.2	1.7
	<b>August# (p)</b>	<b>15.6</b>	<b>1.6</b>	<b>4.2</b>	<b>4.2</b>	<b>16.6</b>	<b>1.7</b>
	Change on mth	0.0	0.0	0.0	0.0	0.4	0.0
	Change %	0.0		0.0	0.0	2.7	
	Change on year	1.0	0.1	-0.2	-0.2	0.8	0.1
	Change %	6.8		-4.5	-4.5	5.3	

\* Count of claimants of Jobseeker's Allowance

Source: Jobcentre Plus administrative system

Labour Market Statistics Helpline 020 7533 6094

## Denominator = claimant count + workforce jobs. NB these are different from the proportions of the working age populations claiming Jobseeker's Allowance for local areas shown in Tables 17 and 18. See note on page 8 for further details.

The claimant count inflows, standardised to a 4.33 week month but not seasonally adjusted, for August 2003 were 14,857 in total, 10,085 for men and 4,772 for women. The corresponding outflow figures were 9,952 men and 4,304 women.

\*\* Flow figures are collected for 4 or 5 week periods between count dates; the figures are then converted to a standard 4 1/3 week month.

# Months where there are 5 weeks between count dates. All the rest are 4 week periods.

# CLAIMANT COUNT

East Midlands

## 8(1) Claimant count\* by age and duration - computerised claims only

(thousands), not seasonally adjusted

	All ages							18-24						
	All	All computerised claims	Up to 6 months	Over 6 and up to 12 months	All over 12 months	% claiming for over 12 months	All over 24 months	All	Up to 6 months	Over 6 and up to 12 months	All over 12 months	% claiming for over 12 months	All over 24 months	
														1
<b>People</b>														
Aug 01	63.4	62.9	40.9	10.7	11.3	17.9	5.1	16.7	14.0	2.4	0.3	1.6	0.0	
Aug 02	59.1	58.2	39.8	9.5	8.9	15.2	3.3	16.1	13.6	2.2	0.3	1.9	0.0	
Sep 02#	57.3	56.3	38.5	9.1	8.7	15.4	3.2	15.4	13.1	2.0	0.3	2.0	0.0	
Oct 02	55.0	54.1	37.1	8.5	8.4	15.6	3.1	14.4	12.4	1.7	0.3	2.0	0.0	
Nov 02#	54.5	53.7	37.5	8.0	8.1	15.1	3.0	14.0	12.2	1.5	0.3	1.9	0.0	
Dec 02	56.1	55.2	39.1	8.1	8.0	14.5	2.9	14.3	12.5	1.5	0.3	1.9	0.0	
Jan 03	61.9	60.9	43.7	9.0	8.2	13.4	2.9	16.0	13.9	1.8	0.3	1.7	0.0	
Feb 03#	63.7	62.7	45.4	9.3	8.1	12.9	2.9	17.0	14.7	2.0	0.3	1.7	0.0	
Mar 03	62.6	61.5	44.0	9.5	8.0	13.1	2.8	16.7	14.3	2.1	0.3	1.8	0.0	
Apr 03	61.0	60.1	42.3	9.8	7.9	13.1	2.7	16.0	13.6	2.2	0.3	1.8	0.0	
May 03	60.8	59.9	41.6	10.3	7.9	13.2	2.7	15.9	13.3	2.3	0.3	1.9	0.0	
Jun 03#	59.6	58.5	39.7	10.8	8.0	13.6	2.6	15.6	12.9	2.5	0.3	1.9	0.0	
Jul 03	59.9	59.1	40.3	10.7	8.1	13.6	2.6	16.5	13.7	2.4	0.3	2.0	0.0	
<b>Aug 03#</b>	<b>60.3</b>	<b>59.6</b>	<b>40.2</b>	<b>11.2</b>	<b>8.2</b>	<b>13.8</b>	<b>2.6</b>	<b>17.0</b>	<b>14.0</b>	<b>2.7</b>	<b>0.4</b>	<b>2.2</b>	<b>0.0</b>	
Change on year	1.2	1.4	0.3	1.7	-0.6	-1.4	-0.7	0.9	0.4	0.4	0.1	0.3	0.0	
Change %	2.0	2.4	0.8	18.1	-7.0		-20.7	5.6	2.8	19.5	25.1		76.5	
<b>Men</b>														
Aug 01	46.3	46.0	28.5	8.2	9.2	20.1	4.3	11.2	9.3	1.7	0.2	1.7	0.0	
Aug 02	43.4	42.6	28.2	7.3	7.2	16.8	2.8	10.7	9.0	1.5	0.2	1.7	0.0	
Sep 02#	42.1	41.3	27.2	7.0	7.0	17.0	2.7	10.3	8.7	1.4	0.2	1.9	0.0	
Oct 02	40.6	39.9	26.5	6.6	6.8	17.0	2.6	9.6	8.3	1.2	0.2	1.8	0.0	
Nov 02#	40.7	40.0	27.1	6.3	6.6	16.4	2.5	9.6	8.4	1.1	0.2	1.7	0.0	
Dec 02	41.9	41.2	28.4	6.3	6.5	15.8	2.4	10.0	8.7	1.1	0.2	1.6	0.0	
Jan 03	46.0	45.1	31.6	6.9	6.6	14.7	2.4	11.1	9.7	1.2	0.2	1.6	0.0	
Feb 03#	47.2	46.4	32.8	7.1	6.6	14.2	2.4	11.8	10.3	1.4	0.2	1.6	0.0	
Mar 03	46.4	45.5	31.7	7.2	6.5	14.4	2.3	11.6	10.0	1.4	0.2	1.8	0.0	
Apr 03	45.1	44.4	30.5	7.5	6.4	14.4	2.2	11.1	9.4	1.5	0.2	1.8	0.0	
May 03	45.1	44.3	30.0	7.9	6.4	14.5	2.2	11.1	9.3	1.6	0.2	1.9	0.0	
Jun 03#	44.1	43.2	28.6	8.2	6.4	14.9	2.2	10.8	8.9	1.7	0.2	1.9	0.0	
Jul 03	43.8	43.1	28.5	8.1	6.5	15.0	2.1	11.1	9.2	1.7	0.2	2.1	0.0	
<b>Aug 03#</b>	<b>43.7</b>	<b>43.2</b>	<b>28.1</b>	<b>8.4</b>	<b>6.6</b>	<b>15.3</b>	<b>2.2</b>	<b>11.4</b>	<b>9.3</b>	<b>1.9</b>	<b>0.3</b>	<b>2.3</b>	<b>0.0</b>	
Change on year	0.3	0.5	-0.1	1.2	-0.5	-1.5	-0.6	0.7	0.3	0.4	0.1	0.5	0.0	
Change %	0.8	1.3	-0.3	16.2	-7.6		-22.4	6.5	3.0	23.2	39.0		50.0	
<b>Women</b>														
Aug 01	17.1	16.9	12.5	2.5	2.0	11.9	0.8	5.6	4.8	0.7	0.1	1.5	0.0	
Aug 02	15.8	15.6	11.7	2.2	1.7	10.9	0.6	5.3	4.5	0.7	0.1	2.2	0.0	
Sep 02#	15.2	15.0	11.3	2.1	1.7	11.1	0.6	5.1	4.4	0.6	0.1	2.3	0.0	
Oct 02	14.4	14.2	10.7	1.9	1.6	11.5	0.5	4.7	4.1	0.5	0.1	2.4	0.0	
Nov 02#	13.9	13.7	10.4	1.8	1.6	11.4	0.5	4.4	3.9	0.5	0.1	2.3	0.0	
Dec 02	14.1	14.0	10.6	1.8	1.5	10.9	0.5	4.3	3.8	0.4	0.1	2.3	0.0	
Jan 03	15.9	15.7	12.1	2.1	1.5	9.7	0.5	4.9	4.3	0.6	0.1	2.0	0.0	
Feb 03#	16.5	16.3	12.6	2.2	1.5	9.3	0.5	5.2	4.4	0.6	0.1	1.9	0.0	
Mar 03	16.2	16.0	12.3	2.3	1.5	9.3	0.5	5.1	4.3	0.7	0.1	1.8	0.0	
Apr 03	15.9	15.7	11.9	2.3	1.5	9.5	0.5	4.9	4.1	0.7	0.1	1.9	0.0	
May 03	15.8	15.5	11.6	2.4	1.5	9.7	0.5	4.8	4.1	0.7	0.1	2.1	0.0	
Jun 03#	15.5	15.3	11.2	2.6	1.5	10.1	0.5	4.8	4.0	0.7	0.1	2.0	0.0	
Jul 03	16.2	15.9	11.8	2.6	1.6	9.8	0.5	5.3	4.5	0.7	0.1	2.0	0.0	
<b>Aug 03#</b>	<b>16.6</b>	<b>16.4</b>	<b>12.1</b>	<b>2.8</b>	<b>1.6</b>	<b>9.9</b>	<b>0.5</b>	<b>5.5</b>	<b>4.6</b>	<b>0.8</b>	<b>0.1</b>	<b>2.1</b>	<b>0.0</b>	
Change on year	0.8	0.9	0.4	0.5	-0.1	-1.0	-0.1	0.2	0.1	0.1	0.0	0.0	0.0	
Change %	5.3	5.5	3.4	24.3	-4.5		-12.2	3.7	2.5	11.8	2.6		140.0	

\* Count of claimants of Jobseeker's Allowance

Source: Jobcentre Plus administrative system

Relationship between columns: 2= 3+4+5; 8= 9+10+11

Labour Market Statistics Helpline 020 7533 6094

# Months where there are 5 weeks between count dates. All the rest are 4 week periods.

Only computerised claims are analysed by age and duration on a monthly basis. These figures therefore differ in total from those given in Table 7. The latter include clerically processed claims which currently amount to less than 1 per cent of the total claimant count. See background note 8.

# CLAIMANT COUNT

East Midlands

## 8(2) Claimant count\* by age and duration - computerised claims only

(thousands), not seasonally adjusted

	25-49						50 and over					
	All	Up to 6 months	Over 6 and up to 12 months	All over 12 months	% claiming for over 12 months	All over 24 months	All	Up to 6 months	Over 6 and up to 12 months	All over 12 months	% claiming for over 12 months	All over 24 months
<b>People</b>												
Aug 01	34.4	20.3	6.4	7.7	22.4	3.3	11.2	6.1	1.8	3.3	29.2	1.8
Aug 02	30.9	19.7	5.6	5.5	18.0	1.7	10.6	6.0	1.6	3.0	28.5	1.6
Sep 02#	30.0	19.1	5.5	5.4	18.0	1.6	10.3	5.7	1.6	3.0	29.0	1.6
Oct 02	29.0	18.6	5.2	5.2	17.9	1.5	10.1	5.6	1.6	2.9	29.2	1.6
Nov 02#	29.1	19.0	5.0	5.0	17.2	1.4	10.0	5.7	1.4	2.9	28.8	1.6
Dec 02	29.9	19.9	5.1	4.9	16.4	1.4	10.4	6.1	1.5	2.8	27.3	1.5
Jan 03	32.8	22.3	5.5	5.0	15.3	1.4	11.4	6.9	1.6	2.9	25.1	1.5
Feb 03#	33.4	22.9	5.5	5.0	14.9	1.3	11.5	6.9	1.7	2.9	24.8	1.5
Mar 03	32.8	22.3	5.6	4.9	14.9	1.2	11.2	6.6	1.7	2.9	25.4	1.5
Apr 03	32.1	21.5	5.8	4.8	14.8	1.2	11.1	6.5	1.8	2.8	25.4	1.5
May 03	32.1	21.2	6.2	4.8	14.8	1.1	11.1	6.4	1.8	2.9	25.7	1.5
Jun 03#	31.3	20.1	6.4	4.8	15.4	1.1	10.7	6.0	1.8	2.9	26.7	1.5
Jul 03	31.2	20.0	6.4	4.9	15.6	1.1	10.7	6.0	1.8	2.9	26.7	1.5
<b>Aug 03#</b>	<b>31.3</b>	<b>19.7</b>	<b>6.6</b>	<b>5.0</b>	<b>15.9</b>	<b>1.1</b>	<b>10.7</b>	<b>5.9</b>	<b>1.9</b>	<b>2.9</b>	<b>27.1</b>	<b>1.5</b>
<i>Change on year</i>	<i>0.4</i>	<i>0.0</i>	<i>1.0</i>	<i>-0.6</i>	<i>-2.1</i>	<i>-0.6</i>	<i>0.1</i>	<i>-0.1</i>	<i>0.3</i>	<i>-0.1</i>	<i>-1.4</i>	<i>-0.1</i>
<i>Change %</i>	<i>1.3</i>	<i>0.0</i>	<i>17.3</i>	<i>-10.3</i>		<i>-37.1</i>	<i>1.0</i>	<i>-1.3</i>	<i>18.6</i>	<i>-4.0</i>		<i>-4.3</i>
<b>Men</b>												
Aug 01	26.6	14.8	5.2	6.5	24.5	2.8	7.9	4.1	1.3	2.5	31.9	1.5
Aug 02	23.9	14.7	4.5	4.7	19.5	1.5	7.6	4.1	1.2	2.3	30.6	1.3
Sep 02#	23.3	14.3	4.5	4.5	19.5	1.4	7.4	3.9	1.2	2.3	31.0	1.3
Oct 02	22.6	14.0	4.2	4.4	19.3	1.3	7.3	3.9	1.2	2.3	30.8	1.3
Nov 02#	22.8	14.5	4.1	4.2	18.4	1.3	7.2	4.0	1.1	2.2	30.5	1.2
Dec 02	23.4	15.1	4.1	4.1	17.7	1.2	7.5	4.2	1.1	2.2	29.3	1.2
Jan 03	25.5	16.9	4.4	4.2	16.6	1.2	8.2	4.8	1.2	2.2	27.2	1.2
Feb 03#	26.0	17.3	4.5	4.2	16.2	1.1	8.2	4.8	1.3	2.2	26.9	1.2
Mar 03	25.4	16.7	4.5	4.1	16.2	1.1	8.1	4.6	1.2	2.2	27.6	1.2
Apr 03	24.8	16.2	4.7	4.0	16.1	1.0	8.0	4.5	1.3	2.2	27.5	1.2
May 03	24.9	15.9	5.0	4.0	16.0	1.0	7.9	4.4	1.3	2.2	28.0	1.2
Jun 03#	24.3	15.1	5.2	4.0	16.5	1.0	7.7	4.2	1.3	2.2	28.7	1.2
Jul 03	24.0	14.8	5.1	4.1	16.9	0.9	7.6	4.1	1.3	2.2	29.0	1.2
<b>Aug 03#</b>	<b>23.9</b>	<b>14.5</b>	<b>5.2</b>	<b>4.1</b>	<b>17.4</b>	<b>0.9</b>	<b>7.5</b>	<b>3.9</b>	<b>1.3</b>	<b>2.2</b>	<b>29.6</b>	<b>1.2</b>
<i>Change on year</i>	<i>-0.1</i>	<i>-0.2</i>	<i>0.7</i>	<i>-0.5</i>	<i>-2.1</i>	<i>-0.5</i>	<i>-0.1</i>	<i>-0.1</i>	<i>0.1</i>	<i>-0.1</i>	<i>-1.0</i>	<i>-0.1</i>
<i>Change %</i>	<i>-0.3</i>	<i>-1.7</i>	<i>15.0</i>	<i>-11.0</i>		<i>-36.7</i>	<i>-1.3</i>	<i>-3.2</i>	<i>11.1</i>	<i>-4.5</i>		<i>-6.8</i>
<b>Women</b>												
Aug 01	7.9	5.5	1.2	1.2	15.3	0.5	3.2	2.0	0.5	0.7	22.8	0.4
Aug 02	7.0	5.0	1.1	0.9	12.8	0.2	3.0	1.9	0.4	0.7	23.2	0.3
Sep 02#	6.7	4.8	1.0	0.9	12.9	0.2	2.9	1.8	0.4	0.7	23.9	0.3
Oct 02	6.4	4.6	1.0	0.8	12.9	0.2	2.8	1.7	0.4	0.7	24.9	0.3
Nov 02#	6.3	4.5	0.9	0.8	12.7	0.2	2.7	1.7	0.4	0.7	24.1	0.3
Dec 02	6.5	4.8	1.0	0.8	11.9	0.2	2.9	1.9	0.4	0.6	22.1	0.3
Jan 03	7.3	5.4	1.1	0.8	10.9	0.2	3.2	2.1	0.5	0.6	19.7	0.3
Feb 03#	7.5	5.6	1.1	0.8	10.4	0.2	3.3	2.2	0.5	0.6	19.5	0.3
Mar 03	7.4	5.5	1.1	0.8	10.4	0.1	3.2	2.1	0.5	0.6	20.0	0.3
Apr 03	7.3	5.4	1.2	0.8	10.5	0.1	3.2	2.0	0.5	0.6	20.2	0.3
May 03	7.2	5.3	1.2	0.8	10.7	0.1	3.1	2.0	0.5	0.6	20.1	0.3
Jun 03#	7.1	5.0	1.3	0.8	11.4	0.1	3.0	1.8	0.5	0.6	21.5	0.3
Jul 03	7.2	5.1	1.3	0.8	11.2	0.1	3.0	1.9	0.5	0.6	21.0	0.3
<b>Aug 03#</b>	<b>7.4</b>	<b>5.2</b>	<b>1.4</b>	<b>0.8</b>	<b>11.2</b>	<b>0.1</b>	<b>3.2</b>	<b>1.9</b>	<b>0.6</b>	<b>0.7</b>	<b>21.1</b>	<b>0.3</b>
<i>Change on year</i>	<i>0.5</i>	<i>0.2</i>	<i>0.3</i>	<i>-0.1</i>	<i>-1.6</i>	<i>-0.1</i>	<i>0.2</i>	<i>0.1</i>	<i>0.2</i>	<i>0.0</i>	<i>-2.1</i>	<i>0.0</i>
<i>Change %</i>	<i>6.7</i>	<i>4.8</i>	<i>26.7</i>	<i>-6.8</i>		<i>-39.3</i>	<i>6.9</i>	<i>3.0</i>	<i>40.4</i>	<i>-2.6</i>		<i>5.6</i>

\* Count of claimants of Jobseeker's Allowance

Source: Jobcentre Plus administrative system

Relationship between columns: 14=15+16+17; 20=21+22=23

Labour Market Statistics Helpline 020 7533 6094

# Months where there are 5 weeks between count dates. All the rest are 4 week periods.

Only computerised claims are analysed by age and duration on a monthly basis. These figures therefore differ in total from those given in Table 7. The latter include clerically processed claims which currently amount to less than 1 per cent of the total claimant count. See background note 8.

# ECONOMIC ACTIVITY AND INACTIVITY

East Midlands

## 9 Economic activity by age

(thousands), not seasonally adjusted

		All aged 16 & over	16 - 59/64	16 - 17	18 - 24	25 - 34	35 - 49	50 - 64 (m) 50 - 59 (w)	65+ (m) & 60+ (w)
		1	2	3	4	5	6	7	8
<b>Economically active</b>									
<b>People</b>	Mar - May 2000	2,098	2,042	62	245	505	764	466	56
	Mar - May 2001	2,065	2,015	59	246	471	769	471	50
	Mar - May 2002	2,090	2,032	59	248	454	791	479	58
	Jun - Aug 2002	2,138	2,073	69	277	445	789	493	65
	Sep - Nov 2002	2,123	2,059	66	260	447	791	494	65
	Dec - Feb 2003	2,090	2,028	65	253	440	784	486	62
	<b>Mar - May 2003</b>	<b>2,096</b>	<b>2,026</b>	<b>61</b>	<b>248</b>	<b>437</b>	<b>788</b>	<b>492</b>	<b>70</b>
	<i>Change on year</i>	6	-6	2	-1	-18	-3	13	12
	<i>Change %</i>	0.3	-0.3	3.0	-0.3	-3.9	-0.4	2.8	21.0
<b>Men</b>	Mar - May 2000	1,149	1,127	31	135	272	404	284	22
	Mar - May 2001	1,136	1,117	27	138	259	412	281	19
	Mar - May 2002	1,139	1,121	31	133	248	421	288	19
	Jun - Aug 2002	1,164	1,142	37	146	241	420	298	22
	Sep - Nov 2002	1,156	1,134	33	140	244	419	298	22
	Dec - Feb 2003	1,142	1,119	33	139	241	414	293	22
	<b>Mar - May 2003</b>	<b>1,153</b>	<b>1,125</b>	<b>32</b>	<b>140</b>	<b>239</b>	<b>417</b>	<b>298</b>	<b>28</b>
	<i>Change on year</i>	13	4	1	7	-9	-4	10	9
	<i>Change %</i>	1.2	0.4	2.3	5.1	-3.5	-0.9	3.3	47.0
<b>Women</b>	Mar - May 2000	950	915	31	109	233	360	182	35
	Mar - May 2001	929	899	32	108	212	357	190	30
	Mar - May 2002	950	911	28	116	207	370	191	39
	Jun - Aug 2002	974	931	32	131	203	370	195	43
	Sep - Nov 2002	967	925	33	119	203	373	196	42
	Dec - Feb 2003	949	909	32	115	200	370	192	40
	<b>Mar - May 2003</b>	<b>943</b>	<b>901</b>	<b>29</b>	<b>108</b>	<b>198</b>	<b>371</b>	<b>195</b>	<b>42</b>
	<i>Change on year</i>	-7	-11	1	-7	-9	1	4	3
	<i>Change %</i>	-0.8	-1.2	3.9	-6.4	-4.3	0.2	2.0	8.5
<b>Economic activity rates (%)<sup>+</sup></b>									
<b>People</b>	Mar - May 2000	64.3	80.8	62.3	72.2	86.7	87.6	73.6	7.6
	Mar - May 2001	62.9	79.3	57.1	71.8	83.4	87.0	72.7	6.7
	Mar - May 2002	63.2	79.5	55.4	71.1	83.3	88.3	72.9	7.7
	Jun - Aug 2002	64.6	81.0	64.3	78.8	82.3	87.9	74.7	8.6
	Sep - Nov 2002	64.1	80.4	61.7	73.3	83.3	87.9	74.7	8.6
	Dec - Feb 2003	63.0	79.1	60.2	71.0	82.7	86.8	73.3	8.2
	<b>Mar - May 2003</b>	<b>63.1</b>	<b>79.0</b>	<b>56.2</b>	<b>69.0</b>	<b>82.6</b>	<b>87.0</b>	<b>74.2</b>	<b>9.2</b>
	<i>Change on year</i>	-0.2	-0.6	0.8	-2.0	-0.7	-1.3	1.3	1.5
<b>Men</b>	Mar - May 2000	72.3	85.9	60.5	78.9	94.9	93.1	77.3	7.9
	Mar - May 2001	71.1	84.7	51.1	79.3	93.5	93.7	75.0	7.0
	Mar - May 2002	70.8	84.6	56.4	74.7	92.6	94.6	75.9	6.6
	Jun - Aug 2002	72.3	86.1	67.2	81.6	91.0	94.1	78.2	7.7
	Sep - Nov 2002	71.7	85.4	59.6	78.0	92.6	93.6	78.1	7.8
	Dec - Feb 2003	70.7	84.2	58.8	76.5	92.2	92.3	76.7	7.7
	<b>Mar - May 2003</b>	<b>71.3</b>	<b>84.6</b>	<b>56.8</b>	<b>76.5</b>	<b>92.3</b>	<b>92.8</b>	<b>77.7</b>	<b>9.6</b>
	<i>Change on year</i>	0.4	0.0	0.4	1.7	-0.3	-1.8	1.7	3.0
<b>Women</b>	Mar - May 2000	56.7	75.3	64.3	65.4	78.7	82.2	68.5	7.5
	Mar - May 2001	55.1	73.5	63.6	64.2	73.7	80.3	69.7	6.6
	Mar - May 2002	56.0	74.1	54.4	67.3	74.3	82.1	68.7	8.4
	Jun - Aug 2002	57.3	75.6	61.2	75.9	73.8	81.7	69.8	9.2
	Sep - Nov 2002	56.9	75.0	64.0	68.5	74.4	82.2	70.1	9.0
	Dec - Feb 2003	55.7	73.6	61.7	65.3	73.5	81.3	68.7	8.5
	<b>Mar - May 2003</b>	<b>55.3</b>	<b>72.9</b>	<b>55.6</b>	<b>61.4</b>	<b>73.2</b>	<b>81.3</b>	<b>69.4</b>	<b>9.0</b>
	<i>Change on year</i>	-0.7	-1.2	1.2	-5.9	-1.1	-0.8	0.7	0.6

Relationship between columns: 1=2+8; 2=3+4+5+6+7

Source: Labour Force Survey

<sup>+</sup> Denominator = all persons in relevant age group

Labour Market Statistics Helpline 020 7533 6094

The LFS sample population covers those living in private households, student halls of residence and NHS accommodation.

The data in this table have been adjusted to reflect the 2001 Census population data - see note on page 6.

# ECONOMIC ACTIVITY AND INACTIVITY

East Midlands

## 10 Economic inactivity by age

(thousands), not seasonally adjusted

		All aged 16 & over	16 - 59/64	16 - 17	18 - 24	25 - 34	35 - 49	50 - 64 (m) 50 - 59 (w)	65+ (m) & 60+ (w)
		1	2	3	4	5	6	7	8
<b>Economically inactive</b>									
<b>People</b>	Mar - May 2000	1,166	485	38	94	78	108	167	681
	Mar - May 2001	1,219	525	44	96	94	115	176	694
	Mar - May 2002	1,215	523	47	101	91	104	178	692
	Jun - Aug 2002	1,171	485	38	75	96	109	167	687
	Sep - Nov 2002	1,191	502	41	95	90	109	167	689
	Dec - Feb 2003	1,228	535	43	103	92	119	177	694
	<b>Mar - May 2003</b>	<b>1,227</b>	<b>540</b>	<b>47</b>	<b>111</b>	<b>92</b>	<b>118</b>	<b>171</b>	<b>688</b>
	<i>Change on year</i>	13	17	0	10	1	13	-7	-4
	<i>Change %</i>	1.1	3.3	-0.2	9.8	1.1	12.7	-3.9	-0.6
<b>Men</b>	Mar - May 2000	439	185	20	36	15	30	84	254
	Mar - May 2001	462	201	26	36	18	28	94	260
	Mar - May 2002	469	204	24	45	20	24	91	265
	Jun - Aug 2002	447	184	18	33	24	26	83	263
	Sep - Nov 2002	457	194	22	40	19	28	84	264
	Dec - Feb 2003	474	209	23	43	20	34	89	265
	<b>Mar - May 2003</b>	<b>465</b>	<b>205</b>	<b>24</b>	<b>43</b>	<b>20</b>	<b>32</b>	<b>85</b>	<b>260</b>
	<i>Change on year</i>	-4	1	0	-2	0	9	-6	-5
	<i>Change %</i>	-0.8	0.5	0.6	-4.4	0.4	35.8	-6.3	-1.8
<b>Women</b>	Mar - May 2000	727	300	17	58	63	78	84	427
	Mar - May 2001	757	324	18	60	76	87	83	433
	Mar - May 2002	746	319	24	56	71	81	87	427
	Jun - Aug 2002	725	301	20	42	72	83	84	424
	Sep - Nov 2002	733	308	19	55	70	81	84	425
	Dec - Feb 2003	754	325	20	61	72	85	88	429
	<b>Mar - May 2003</b>	<b>762</b>	<b>335</b>	<b>23</b>	<b>68</b>	<b>72</b>	<b>85</b>	<b>86</b>	<b>428</b>
	<i>Change on year</i>	17	16	0	12	1	5	-1	1
	<i>Change %</i>	2.2	5.1	-1.0	21.2	1.3	5.9	-1.3	0.1

Relationship between columns: 1=2+8; 2=3+4+5+6+7

Source: Labour Force Survey

Labour Market Statistics Helpline 020 7533 6094

The LFS sample population covers those living in private households, student halls of residence and NHS accommodation.

The data in this table have been adjusted to reflect the 2001 Census population data - see note on page 6.

# ECONOMIC ACTIVITY AND INACTIVITY

East Midlands

## 11 Economic inactivity: reasons

(thousands), not seasonally adjusted

		Breakdown of total aged 16-59/64										
		Total aged 16 & over	Total aged 16-59/64	Does not want job	Wants a job	Wants job but not seeking in last 4 weeks						
						Total	Availability to start work in next 2 weeks		Reasons for not seeking			
							Available	Not available	Long-term sick	Looking after family /home	Students	Other <sup>#</sup>
		1	2	3	4	5	6	7	8	9	10	11
<b>People</b>	Mar - May 2000	1,166	485	349	136	123	33	90	47	32	15	29
	Mar - May 2001	1,219	525	392	133	116	33	82	41	35	18	22
	Mar - May 2002	1,215	523	382	141	124	38	86	45	35	23	22
	Jun - Aug 2002	1,171	485	365	120	107	35	71	44	30	11	21
	Sep - Nov 2002	1,191	502	361	140	129	38	91	48	39	15	28
	Dec - Feb 2003	1,228	535	396	138	129	43	87	53	34	15	27
	<b>Mar - May 2003</b>	<b>1,227</b>	<b>540</b>	<b>400</b>	<b>140</b>	<b>124</b>	<b>34</b>	<b>90</b>	<b>50</b>	<b>38</b>	<b>17</b>	<b>20</b>
	<i>Change on year</i>	13	17	18	-1	1	-4	5	5	3	-6	-2
<i>Change %</i>	1.1	3.3	4.8	-0.8	0.6	-10.6	5.6	12.0	8.7	-24.4	-9.8	
<b>Men</b>	Mar - May 2000	439	185	126	59	54	17	37	30	*	*	12
	Mar - May 2001	462	201	148	54	47	11	37	24	*	10	11
	Mar - May 2002	469	204	149	55	49	16	33	23	*	14	*
	Jun - Aug 2002	447	184	133	51	46	14	32	27	*	*	*
	Sep - Nov 2002	457	194	137	57	52	15	37	28	*	*	12
	Dec - Feb 2003	474	209	153	57	54	15	40	31	*	*	11
	<b>Mar - May 2003</b>	<b>465</b>	<b>205</b>	<b>140</b>	<b>65</b>	<b>56</b>	<b>12</b>	<b>43</b>	<b>32</b>	*	*	<b>10</b>
	<i>Change on year</i>	-4	1	-9	10	7	-4	10	8	*	*	*
<i>Change %</i>	-0.8	0.5	-5.8	17.5	13.6	-23.3	31.6	35.1	*	*	*	
<b>Women</b>	Mar - May 2000	727	300	223	77	69	16	53	17	29	*	17
	Mar - May 2001	757	324	245	79	68	23	46	17	33	*	10
	Mar - May 2002	746	319	233	86	75	22	53	21	32	*	13
	Jun - Aug 2002	725	301	232	69	61	21	40	17	25	*	12
	Sep - Nov 2002	733	308	225	83	77	23	54	20	34	*	16
	Dec - Feb 2003	754	325	244	82	75	28	47	22	29	*	15
	<b>Mar - May 2003</b>	<b>762</b>	<b>335</b>	<b>260</b>	<b>75</b>	<b>69</b>	<b>22</b>	<b>47</b>	<b>18</b>	<b>32</b>	*	<b>10</b>
	<i>Change on year</i>	17	16	27	-11	-6	0	-6	-3	0	*	-3
<i>Change %</i>	2.2	5.1	11.6	-12.6	-7.9	-1.3	-10.7	-13.5	-0.3	*	-25.2	

Relationship between columns: 2=3+4; 5=6+7; 5=8+9+10+11

Source: Labour Force Survey

<sup>#</sup> other includes discouraged workers

Labour Market Statistics Helpline 020 7533 6094

The LFS sample population covers those living in private households, student halls of residence and NHS accommodation.

The data in this table have been adjusted to reflect the 2001 Census population data - see note on page 6.

# VACANCIES

East Midlands

## 12 Jobcentre vacancies

(thousands), seasonally adjusted

	Vacancies Notified		Vacancies unfilled		Vacancy outflow		Of which: Vacancies filled by Jobcentres	
	Level	Change on month	Level	Change on month	Level	Change on month	Level	Change on month
	1	2	3	4	5	6	7	8
<b>2001</b>								
August	DRYM		BCQF		DRZB		DRZQ	
<b>2002</b>								
August								
September								
October								
November								
December								
<b>2003</b>								
January								
February								
March								
April								
May								
June								
July								
August								
<i>Change on year</i>								
<i>Change on year %</i>								

Publication of these vacancy statistics has been deferred.  
 Figures from May 2001 are affected by the introduction of Employer Direct - see note on page 9

Source: Jobcentre Plus administrative system  
 Labour Market Statistics Helpline 020 7533 6094

# LOCAL AREA DATA

East Midlands

## 13 2001 local labour market indicators by Unitary and Local Authority

not seasonally adjusted

	Population+		Labour supply				Working age benefits			Labour demand###	
	Employment++		Unemployment++		Economic inactivity++		Claimant count#			Jobs**	
	16-59/64 (000s)	Total 16-59/64 (000s)	16-59/64 Rate (%)	Total 16+ (000s)	Rate+++ (%)	Total 16-59/64 (000s)	16-59/64 Rate (%)	Level	Proportion## (%)	Total (000s)	Jobs Density 16-59/64 (ratio)
	1	2	3	4	5	6	7	8	9	10	11
<b>United Kingdom total</b>	<b>36,155</b>	<b>27,424</b>	<b>74.4</b>	<b>1,499</b>	<b>5.0</b>	<b>7,890</b>	<b>21.4</b>	<b>982,998</b>	<b>2.7</b>	<b>29,954</b>	<b>0.83</b>
<b>Regional total</b>	<b>2,561</b>	<b>1,974</b>	<b>75.9</b>	<b>98</b>	<b>4.6</b>	<b>529</b>	<b>20.4</b>	<b>64,375</b>	<b>2.5</b>	<b>1,998</b>	<b>0.78</b>
<b>Derby UA</b>	134	105	72.7	7	6.1	33	22.5	5,099	3.8	131	0.98
<b>Leicester UA</b>	174	116	66.7	8	6.3	50	28.8	7,874	4.5	172	0.99
<b>Nottingham UA</b>	170	112	64.7	10	7.7	51	29.7	7,755	4.6	196	1.15
<b>Rutland UA</b>	21	19	78.6	*	*	5	19.3	106	0.5	17	0.79
<b>Derbyshire</b>											
Amber Valley	71	55	73.1	*	*	18	23.2	1,571	2.2	59	0.82
Bolsover	43	31	70.5	*	*	11	25.5	1,459	3.4	22	0.51
Chesterfield	60	43	70.0	*	*	15	23.9	2,564	4.3	54	0.91
Derbyshire Dales	41	36	84.4	*	*	6	14.8	582	1.4	38	0.90
Erewash	67	53	80.5	*	*	11	16.1	1,583	2.3	43	0.63
High Peak	55	46	80.1	*	*	10	17.4	960	1.7	40	0.72
North East Derbyshire	59	45	73.5	*	*	13	22.2	1,773	3.0	31	0.53
South Derbyshire	51	44	82.8	*	*	8	15.4	750	1.5	26	0.49
<b>Leicestershire</b>											
Blaby	56	48	86.3	*	*	7	12.1	700	1.2	39	0.69
Charnwood	98	77	76.0	6	7.2	18	18.1	1,962	2.0	63	0.64
Harborough	47	41	83.2	*	*	7	14.7	468	1.0	38	0.78
Hinckley and Bosworth	62	51	82.5	*	*	8	13.8	984	1.6	45	0.71
Melton	30	26	85.2	*	*	*	*	365	1.2	21	0.70
North West Leicestershire	53	45	81.8	*	*	8	14.7	821	1.6	48	0.90
Oadby and Wigston	34	29	87.2	*	*	*	*	646	1.9	20	0.59
<b>Lincolnshire</b>											
Boston	33	23	73.4	*	*	7	21.2	554	1.7	27	0.79
East Lindsey	74	51	69.9	*	*	18	24.4	1,739	2.4	52	0.68
Lincoln	53	35	69.9	*	*	13	25.5	1,775	3.3	58	1.09
North Kesteven	56	45	78.5	*	*	10	18.0	738	1.3	40	0.69
South Holland	44	33	74.9	*	*	10	21.9	543	1.2	38	0.81
South Kesteven	76	63	84.9	*	*	9	12.6	1,105	1.5	55	0.72
West Lindsey	47	36	77.5	*	*	9	18.9	1,241	2.6	30	0.62
<b>Northamptonshire</b>											
Corby	32	21	69.4	*	*	8	25.0	864	2.7	30	0.94
Daventry	45	36	79.7	*	*	7	15.7	574	1.3	33	0.72
East Northamptonshire	47	41	81.3	*	*	7	13.9	678	1.4	27	0.57
Kettering	51	44	83.9	*	*	7	13.7	811	1.6	36	0.71
Northampton	123	97	79.3	*	*	22	17.7	2,984	2.4	133	1.08
South Northamptonshire	50	45	87.6	*	*	*	*	380	0.8	31	0.61
Wellingborough	45	36	83.4	*	*	7	16.6	918	2.1	38	0.85
<b>Nottinghamshire</b>											
Ashfield	69	47	70.8	*	*	17	25.1	2,292	3.3	47	0.68
Bassetlaw	66	47	70.2	*	*	17	25.0	2,196	3.3	48	0.73
Broxtowe	67	54	78.7	*	*	13	18.6	1,293	1.9	36	0.54
Gedling	69	55	81.9	*	*	10	15.5	1,428	2.1	36	0.52

# 13 2001 local labour market indicators by Unitary and Local Authority

not seasonally adjusted

	Population+		Labour supply				Working age benefits		Labour demand###		
	Employment++		Unemployment++		Economic inactivity++		Claimant count#		Jobs**		
	Total 16-59/64 (000s)	16-59/64 Rate (%)	Total 16+ (000s)	Rate+++ (%)	Total 16-59/64 (000s)	16-59/64 Rate (%)	Level	Proportion## (%)	Total (000s)	Jobs Density 16-59/64 (ratio)	
	1	2	3	4	5	6	7	8	9	10	11
Mansfield	59	44	71.6	*	*	15	25.0	2,035	3.4	39	0.65
Newark and Sherwood	64	48	73.3	*	*	16	23.6	1,361	2.1	42	0.65
Rushcliffe	65	49	72.9	*	*	17	25.0	845	1.3	38	0.57

Relationship between columns: 9=8/1; 11=10/1.

Source: Labour Force Survey, Jobcentre Plus administrative system, Annual Business Inquiry

+ Official mid-2001 estimate of the resident population.

Labour Market Statistics Helpline 020 7533 6094

++ LFS data relate to the period March 2001 to February 2002. LFS sample covers working age (16-59/64) population living in private households, student halls of residence and NHS accommodation. The LFS data in this table have not yet been adjusted to reflect the 2001 Census population data - see note on page 6.

+++ Unemployment rates calculated as percentage of 16+ economically active population.

# Count of claimants of Jobseeker's Allowance. Average for January 2001 to December 2001.

## Percentage of resident working age population of area. NB these are different from the national and regional claimant rates shown in Tables 1a, 7 and the summary of other headline indicators. See note on page 8 for further details.

### Labour demand includes jobs and vacancies - data on vacancies will be included here when they become available for local areas.

\* Sample size too small for reliable estimate.

\*\* Jobs data are for 2001, and are mainly employees from the Annual Business Inquiry which refers to December of each year; they also include self-employed, HM Forces and government-supported trainees. Jobs densities are calculated as the number of jobs per resident of working age (16-59/64).

14 2001 local labour market indicators by Parliamentary Constituency

not seasonally adjusted

	Population+		Labour supply				Working age benefits			Labour demand###	
	Employment++		Unemployment++		Economic inactivity++		Claimant count#			Jobs**	
	Total 16-59/64 (000s)	16-59/64 Rate (%)	Total 16+ (000s)	Rate+++ (%)	Total 16-59/64 (000s)	16-59/64 Rate (%)	Level	Proportion## (%)	Total (000s)	Jobs Density 16-59/64 (ratio)	
	1	2	3	4	5	6	7	8	9	10	11
<b>United Kingdom total</b>	<b>36,155</b>	<b>27,424</b>	<b>74.4</b>	<b>1,499</b>	<b>5.0</b>	<b>7,890</b>	<b>21.4</b>	<b>982,998</b>	<b>2.7</b>	<b>29,954</b>	<b>0.83</b>
<b>Regional total</b>	<b>2,561</b>	<b>1,974</b>	<b>75.9</b>	<b>98</b>	<b>4.6</b>	<b>529</b>	<b>20.4</b>	<b>64,375</b>	<b>2.5</b>	<b>1,998</b>	<b>0.78</b>
Amber Valley	..	..	72.0	..	*	..	23.4	1,335	2.4	44	0.78
Ashfield	..	..	71.7	..	*	..	23.9	1,977	3.4	44	0.75
Bassetlaw	..	..	68.4	..	*	..	25.6	1,854	3.4	37	0.67
Blaby	..	..	87.2	..	*	..	10.3	673	1.1	49	0.80
Bolsover	..	..	71.2	..	*	..	24.9	1,735	3.3	25	0.48
Boston & Skegness	..	..	72.2	..	*	..	21.4	1,081	2.1	41	0.80
Bosworth	..	..	82.6	..	*	..	13.4	913	1.6	42	0.75
Broxtowe	..	..	78.3	..	*	..	19.6	1,066	1.8	31	0.52
Charnwood	..	..	80.7	..	*	..	14.4	783	1.4	30	0.52
Chesterfield	..	..	71.2	..	*	..	23.3	2,340	4.2	52	0.93
Corby	..	..	74.2	..	*	..	20.3	1,154	1.9	46	0.77
Daventry	..	..	84.1	..	*	..	12.3	800	1.1	52	0.71
Derby North	..	..	78.3	..	*	..	17.0	1,781	3.0	41	0.70
Derby South	..	..	67.1	..	6.9	..	27.8	3,033	5.0	87	1.44
Erewash	..	..	79.9	..	*	..	16.8	1,530	2.4	41	0.64
Gainsborough	..	..	77.5	..	*	..	19.1	1,289	2.6	30	0.61
Gedling	..	..	80.6	..	*	..	17.4	1,172	2.1	30	0.54
Grantham & Stamford	..	..	85.4	..	*	..	12.0	922	1.6	47	0.79
Harborough	..	..	83.6	..	*	..	14.3	924	1.6	37	0.65
High Peak	..	..	79.8	..	*	..	17.8	1,016	1.7	42	0.72
Kettering	..	..	81.5	..	*	..	15.8	895	1.4	43	0.69
Leicester East	..	..	63.9	..	*	..	32.6	2,161	4.0	34	0.64
Leicester South	..	..	66.9	..	7.8	..	27.4	2,991	4.6	87	1.35
Leicester West	..	..	68.7	..	*	..	27.0	2,723	4.9	50	0.91
Lincoln	..	..	70.2	..	*	..	24.9	1,810	3.2	59	1.06
Loughborough	..	..	73.0	..	*	..	21.4	1,398	2.4	43	0.72
Louth & Horncastle	..	..	69.5	..	*	..	25.3	1,163	2.2	33	0.64
Mansfield	..	..	72.1	..	*	..	24.7	1,782	3.4	37	0.71
Newark	..	..	75.7	..	*	..	21.4	1,331	2.4	40	0.72
North East Derbyshire	..	..	71.8	..	*	..	22.8	1,721	3.2	31	0.57
North West Leicestershire	..	..	81.8	..	*	..	14.7	821	1.6	47	0.90
Northampton North	..	..	77.6	..	*	..	19.5	1,646	2.7	40	0.66
Northampton South	..	..	83.4	..	*	..	14.1	1,408	1.9	97	1.34
Nottingham East	..	..	66.5	..	*	..	27.2	3,136	5.6	48	0.85
Nottingham North	..	..	65.8	..	8.0	..	28.4	2,424	4.8	29	0.56
Nottingham South	..	..	62.4	..	*	..	32.5	2,196	3.5	119	1.88
Rushcliffe	..	..	72.9	..	*	..	25.0	845	1.3	38	0.57
Rutland & Melton	..	..	83.1	..	*	..	14.6	541	0.9	39	0.69
Sherwood	..	..	74.4	..	*	..	22.3	1,422	2.4	28	0.48
Sleaford & North Hykeham	..	..	79.2	..	*	..	17.8	782	1.3	41	0.69
South Derbyshire	..	..	81.4	..	*	..	16.4	1,035	1.6	28	0.42
South Holland & The Deepings	..	..	76.1	..	*	..	20.8	647	1.2	40	0.73
Wellingborough	..	..	84.4	..	*	..	14.7	1,306	2.0	49	0.76
West Derbyshire	..	..	83.5	..	*	..	15.5	814	1.5	51	0.91

Relationship between columns: 9=8/1; 11=10/1.

Source: Labour Force Survey, Jobcentre Plus administrative system, Annual Business Inquiry

+ Official mid-2001 estimate of the resident population.

Labour Market Statistics Helpline 020 7533 6094

++ LFS data relate to the period March 2001 to February 2002. LFS sample covers working age (16-59/64) population living in private households, student halls of residence and NHS accommodation. The LFS data in this table have not yet been adjusted to reflect the 2001 Census population data - see note on page 6.

+++ Unemployment rates calculated as percentage of 16+ economically active population.

# Count of claimants of Jobseeker's Allowance. Average for January 2001 to December 2001.

## Percentage of resident working age population of the area. The population denominators are based on output area data from the 2001 Census. NB these percentages are different from the national and regional claimant rates shown in Tables 1a, 7 and the summary of other headline indicators. See note on page 8 for further details.

### Labour demand includes jobs and vacancies - data on vacancies will be included here when they become available for local areas.

\* Sample size too small for reliable estimate.

\*\* Jobs data are for 2001, and are mainly employees from the Annual Business Inquiry which refers to December of each year; they also include self-employed, HM Forces and government-supported trainees. Jobs densities are calculated as the number of jobs per resident of working age (16-59/64).

# LOCAL AREA DATA

East Midlands

## 15 2001 local labour market indicators by Travel-to-Work Area

not seasonally adjusted

	Population+		Labour supply				Working age benefits		Labour demand###		
	Employment++		Unemployment++		Economic inactivity++		Claimant count#		Jobs**		
	Total 16-59/64 (000s)	16-59/64 Rate (%)	Total 16+ (000s)	Rate+++ (%)	Total 16-59/64 (000s)	16-59/64 Rate (%)	Level	Proportion## (%)	Total (000s)	Jobs Density 16-59/64 (ratio)	
	1	2	3	4	5	6	7	8	9	10	11
<b>United Kingdom total</b>	<b>36,155</b>	<b>27,424</b>	<b>74.4</b>	<b>1,499</b>	<b>5.0</b>	<b>7,890</b>	<b>21.4</b>	<b>982,998</b>	<b>2.7</b>	<b>29,954</b>	<b>0.83</b>
<b>Regional total</b>	<b>2,561</b>	<b>1,974</b>	<b>75.9</b>	<b>98</b>	<b>4.6</b>	<b>529</b>	<b>20.4</b>	<b>64,375</b>	<b>2.5</b>	<b>1,998</b>	<b>0.78</b>
Boston	..	..	73.4	..	*	..	21.6	586	1.6	27	0.76
Buxton	..	..	84.0	..	*	..	*	609	1.7	27	0.76
Chesterfield	..	..	70.5	..	6.6	..	24.5	4,347	4.0	74	0.69
Derby	..	..	74.7	..	4.7	..	21.6	6,218	3.0	178	0.86
Gainsborough	..	..	71.8	..	*	..	*	843	4.1	15	0.73
Grantham	..	..	86.4	..	*	..	*	714	1.9	30	0.81
Horncastle	..	..	78.0	..	*	..	*	168	1.2	10	0.67
Kettering and Corby	..	..	78.4	..	*	..	18.2	1,713	2.0	68	0.78
Leicester	..	..	75.8	..	5.1	..	20.0	10,741	2.8	317	0.82
Lincoln	..	..	74.2	..	*	..	21.7	2,497	2.3	90	0.84
Loughborough	..	..	73.9	..	*	..	21.4	1,701	2.1	57	0.71
Louth	..	..	72.9	..	*	..	*	554	2.9	14	0.71
Mansfield	..	..	70.1	..	5.2	..	26.0	5,604	3.2	123	0.70
Matlock	..	..	82.8	..	*	..	16.5	553	1.5	35	0.94
Melton Mowbray & Oakham	..	..	84.0	..	*	..	*	345	1.2	20	0.72
Newark	..	..	75.7	..	*	..	21.1	737	2.0	27	0.74
Northampton	..	..	81.5	..	*	..	15.7	3,700	2.0	173	0.94
Nottingham	..	..	73.2	..	5.0	..	22.9	13,650	3.0	360	0.79
Retford	..	..	73.7	..	*	..	24.4	737	3.0	17	0.68
Skegness and Mablethorpe	..	..	63.0	..	*	..	28.4	913	2.8	24	0.74
Sleaford	..	..	78.8	..	*	..	*	353	1.4	18	0.73
Spalding and Holbeach	..	..	72.7	..	*	..	24.4	507	1.3	34	0.85
Stamford	..	..	80.7	..	4.9	..	14.9	413	0.8	37	0.71
Wellingborough	..	..	85.2	..	*	..	13.4	1,546	1.8	59	0.71
Worksop	..	..	66.2	..	*	..	26.4	1,416	3.8	28	0.75

Relationship between columns: 9=8/1; 11=10/1.

Source: Labour Force Survey, Jobcentre Plus administrative system, Annual Business Inquiry

+ Official mid-2001 estimate of the resident population.

Labour Market Statistics Helpline 020 7533 6094

++ LFS data relate to the period March 2001 to February 2002. LFS sample covers working age (16-59/64) population living in private households, student halls of residence and NHS accommodation. The LFS data in this table have not yet been adjusted to reflect the 2001 Census population data - see note on page 6.

+++ Unemployment rates calculated as percentage of 16+ economically active population.

# Count of claimants of Jobseeker's Allowance. Average for January 2001 to December 2001.

## Percentage of resident working age population of the area. The population denominators are based on output area data from the 2001 Census. NB these percentages are different from the national and regional claimant rates shown in Tables 1a, 7 and the summary of other headline indicators. See note on page 8 for further details.

### Labour demand includes jobs and vacancies - data on vacancies will be included here when they become available for local areas.

\* Sample size too small for reliable estimate.

\*\* Jobs data are for 2001, and are mainly employees from the Annual Business Inquiry which refers to December of each year; they also include self-employed, HM Forces and government-supported trainees. Jobs densities are calculated as the number of jobs per resident of working age (16-59/64).

# LOCAL AREA DATA

East Midlands

## 16 2001 local labour market indicators by NUTS 3 area

not seasonally adjusted

	Population+		Labour supply				Working age benefits		Labour demand###		
	Employment++		Unemployment++		Economic inactivity++		Claimant count#		Jobs*		
	Total 16-59/64 (000s)	Total 16-59/64 (000s)	16-59/64 Rate (%)	Total 16+ (000s)	Rate+++ (%)	Total 16-59/64 (000s)	16-59/64 Rate (%)	Level	Proportion## (%)	Total (000s)	Jobs Density 16-59/64 (ratio)
	1	2	3	4	5	6	7	8	9	10	11
<b>United Kingdom total</b>	<b>36,155</b>	<b>27,424</b>	<b>74.4</b>	<b>1,499</b>	<b>5.0</b>	<b>7,890</b>	<b>21.4</b>	<b>982,998</b>	<b>2.7</b>	<b>29,954</b>	<b>0.83</b>
<b>Regional total</b>	<b>2,561</b>	<b>1,974</b>	<b>75.9</b>	<b>98</b>	<b>4.6</b>	<b>529</b>	<b>20.4</b>	<b>64,375</b>	<b>2.5</b>	<b>1,998</b>	<b>0.78</b>
Derbyshire and Nottinghamshire											
Derby	134	105	72.7	7	6.1	33	22.5	5,099	3.8	131	0.98
East Derbyshire	162	118	71.4	8	6.4	39	23.7	5,796	3.6	107	0.66
South & West Derbyshire	286	235	79.5	8	3.2	53	17.8	5,445	1.9	203	0.71
Nottingham	170	112	64.7	10	7.7	51	29.7	7,755	4.6	196	1.15
North Nottinghamshire	258	186	71.5	10	5.0	64	24.7	7,883	3.1	174	0.68
South Nottinghamshire	201	158	77.9	*	*	40	19.7	3,566	1.8	109	0.54
Leicestershire, Rutland and Northamptonshire											
Leicester	174	116	66.7	8	6.3	50	28.8	7,874	4.5	172	0.99
Leicestershire CC & Rutland	401	337	81.7	15	4.2	61	14.7	6,053	1.5	287	0.72
Northamptonshire	393	320	81.0	12	3.5	63	16.0	7,209	1.8	327	0.83
Lincolnshire											
Lincolnshire	382	287	75.9	15	4.9	76	20.0	7,695	2.0	292	0.76

Relationship between columns: 9=8/1; 11=10/1.

Source: Labour Force Survey, Jobcentre Plus administrative system, Annual Business Inquiry

+ Official mid-2001 estimate of the resident population.

Labour Market Statistics Helpline 020 7533 6094

++ LFS data relate to the period March 2001 to February 2002. LFS sample covers working age (16-59/64) population living in private households, student halls of residence and NHS accommodation. The LFS data in this table have not yet been adjusted to reflect the 2001 Census population data - see note on page 6.

+++ Unemployment rates calculated as percentage of 16+ economically active population.

# Count of claimants of Jobseeker's Allowance. Average for January 2001 to December 2001.

## Percentage of resident working age population of area. NB these are different from the national and regional claimant rates shown in Tables 1a, 7 and the summary of other headline indicators. See note on page 8 for further details.

### Labour demand includes jobs and vacancies - data on vacancies will be included here when they become available for local areas.

\* Sample size too small for reliable estimate.

\*\* Jobs data are for 2001, and are mainly employees from the Annual Business Inquiry which refers to December of each year; they also include self-employed, HM Forces and government-supported trainees. Jobs densities are calculated as the number of jobs per resident of working age (16-59/64).

## 17 Claimant count\* by Unitary and Local Authority

not seasonally adjusted

	CLAIMANT COUNT ON 14 AUGUST 2003						Change on year					
	Levels			Percentage of Pop <sup>#</sup>			Levels			Percentage <sup>#</sup>		
	Men	Women	People	Men	Women	People	Men	Women	People	Men	Women	People
	1	2	3	4	5	6	7	8	9	10	11	12
<b>United Kingdom total</b>	<b>696,925</b>	<b>251,628</b>	<b>948,553</b>	<b>3.7</b>	<b>1.4</b>	<b>2.6</b>	<b>-18,241</b>	<b>4,077</b>	<b>-14,164</b>	<b>-0.1</b>	<b>0.0</b>	<b>0.0</b>
<b>Regional total</b>	<b>43,703</b>	<b>16,606</b>	<b>60,309</b>	<b>3.3</b>	<b>1.3</b>	<b>2.4</b>	<b>330</b>	<b>832</b>	<b>1,162</b>	<b>0.0</b>	<b>0.1</b>	<b>0.0</b>
<b>Derby UA</b>	3,496	1,117	4,613	5.1	1.7	3.4	-215	-127	-342	-0.3	-0.2	-0.3
<b>Leicester UA</b>	7,672	2,788	10,460	8.8	3.2	6.0	1,514	699	2,213	1.7	0.8	1.3
<b>Nottingham UA</b>	5,637	1,593	7,230	6.3	2.0	4.2	-105	-68	-173	-0.1	-0.1	-0.1
<b>Rutland UA</b>	92	31	123	0.8	0.3	0.6	5	0	5	0.0	0.0	0.0
<b>Derbyshire</b>	6,517	2,630	9,147	2.8	1.2	2.0	-381	3	-378	-0.2	0.0	-0.1
Amber Valley	886	398	1,284	2.4	1.2	1.8	-54	33	-21	-0.1	0.1	0.0
Bolsover	785	309	1,094	3.5	1.5	2.5	-54	7	-47	-0.2	0.0	-0.1
Chesterfield	1,442	528	1,970	4.6	1.8	3.3	-90	-37	-127	-0.3	-0.1	-0.2
Derbyshire Dales	344	139	483	1.6	0.7	1.2	-9	-4	-13	0.0	0.0	0.0
Erewash	1,036	412	1,448	3.0	1.3	2.1	-35	24	-11	-0.1	0.1	0.0
High Peak	620	274	894	2.2	1.0	1.6	40	47	87	0.1	0.2	0.2
North East Derbyshire	940	374	1,314	3.0	1.3	2.2	-156	-8	-164	-0.5	0.0	-0.3
South Derbyshire	464	196	660	1.8	0.8	1.3	-23	-59	-82	-0.1	-0.2	-0.2
<b>Leicestershire</b>	4,244	1,929	6,173	2.1	1.1	1.6	215	183	398	0.1	0.1	0.1
Blaby	612	275	887	2.1	1.0	1.6	109	20	129	0.4	0.1	0.2
Charnwood	1,364	630	1,994	2.7	1.4	2.0	-2	90	88	0.0	0.2	0.1
Harborough	390	183	573	1.6	0.8	1.2	66	30	96	0.3	0.1	0.2
Hinckley and Bosworth	645	302	947	2.0	1.0	1.5	55	42	97	0.2	0.1	0.2
Melton	217	87	304	1.4	0.6	1.0	-6	-18	-24	0.0	-0.1	-0.1
North West Leicestershire	511	236	747	1.8	0.9	1.4	-23	-21	-44	-0.1	-0.1	-0.1
Oadby and Wigston	505	216	721	2.9	1.3	2.1	16	40	56	0.1	0.2	0.2
<b>Lincolnshire</b>	4,311	1,746	6,057	2.2	1.0	1.6	-377	-110	-487	-0.2	-0.1	-0.1
Boston	316	109	425	1.8	0.7	1.3	13	-24	-11	0.1	-0.2	0.0
East Lindsey	801	302	1,103	2.1	0.9	1.5	-52	-33	-85	-0.1	-0.1	-0.1
Lincoln	1,168	345	1,513	4.3	1.3	2.8	-91	0	-91	-0.3	0.0	-0.2
North Kesteven	405	202	607	1.4	0.8	1.1	-77	-25	-102	-0.3	-0.1	-0.2
South Holland	332	183	515	1.4	0.9	1.2	0	-10	-10	0.0	0.0	0.0
South Kesteven	600	302	902	1.5	0.8	1.2	-78	14	-64	-0.2	0.0	-0.1
West Lindsey	689	303	992	2.8	1.3	2.1	-92	-32	-124	-0.4	-0.1	-0.3
<b>Northamptonshire</b>	5,599	2,304	7,903	2.7	1.2	2.0	558	338	896	0.3	0.2	0.2
Corby	785	252	1,037	4.7	1.6	3.2	220	43	263	1.3	0.3	0.8
Daventry	461	201	662	1.9	0.9	1.5	110	11	121	0.5	0.1	0.3
East Northamptonshire	532	285	817	2.1	1.3	1.7	79	67	146	0.3	0.3	0.3
Kettering	628	294	922	2.4	1.2	1.8	92	61	153	0.4	0.3	0.3
Northampton	2,232	814	3,046	3.5	1.4	2.5	14	72	86	0.0	0.1	0.1
South Northamptonshire	291	129	420	1.1	0.5	0.8	6	13	19	0.0	0.1	0.0
Wellingborough	670	329	999	2.9	1.5	2.2	37	71	108	0.2	0.3	0.2
<b>Nottinghamshire</b>	6,135	2,468	8,603	2.6	1.1	1.9	-884	-86	-970	-0.4	0.0	-0.2
Ashfield	1,104	440	1,544	3.1	1.3	2.3	-212	-48	-260	-0.6	-0.1	-0.4
Bassetlaw	931	374	1,305	2.7	1.2	2.0	-258	-146	-404	-0.7	-0.5	-0.6
Broxtowe	809	339	1,148	2.3	1.1	1.7	-114	-16	-130	-0.3	-0.1	-0.2
Gedling	923	360	1,283	2.6	1.1	1.9	-76	5	-71	-0.2	0.0	-0.1
Mansfield	1,050	410	1,460	3.4	1.4	2.5	-165	35	-130	-0.5	0.1	-0.2
Newark and Sherwood	765	328	1,093	2.3	1.1	1.7	-15	82	67	0.0	0.3	0.1
Rushcliffe	553	217	770	1.6	0.7	1.2	-44	2	-42	-0.1	0.0	-0.1

\* Count of claimants of Jobseeker's Allowance

Relationship between columns = 3=1+2; 9=7+8

<sup>#</sup> Percentages of resident working age population of area. NB these are different from the national and regional claimant count rates shown in Tables 1a, 7 and the summary of other headline indicators. See note on page 8 for further details.

Source: Jobcentre Plus administrative system

Labour Market Statistics Helpline 020 7533 6094

# LOCAL AREA DATA

East Midlands

## 18 Claimant count\* by Parliamentary Constituency

not seasonally adjusted

	CLAIMANT COUNT ON 14 AUGUST 2003						Change on year					
	Levels			Percentage of Pop <sup>#</sup>			Levels			Percentage <sup>#</sup>		
	Men	Women	People	Men	Women	People	Men	Women	People	Men	Women	People
	1	2	3	4	5	6	7	8	9	10	11	12
<b>United Kingdom total</b>	<b>696,925</b>	<b>251,628</b>	<b>948,553</b>	<b>3.7</b>	<b>1.4</b>	<b>2.6</b>	<b>-18,241</b>	<b>4,077</b>	<b>-14,164</b>	<b>-0.1</b>	<b>0.0</b>	<b>0.0</b>
<b>Regional total</b>	<b>43,703</b>	<b>16,606</b>	<b>60,309</b>	<b>3.3</b>	<b>1.3</b>	<b>2.4</b>	<b>330</b>	<b>832</b>	<b>1,162</b>	<b>0.0</b>	<b>0.1</b>	<b>0.0</b>
Amber Valley	744	332	1,076	2.5	1.2	1.9	-34	33	-1	-0.1	0.1	0.0
Ashfield	921	376	1,297	3.1	1.3	2.2	-171	-38	-209	-0.6	-0.1	-0.4
Bassetlaw	823	304	1,127	2.9	1.2	2.0	-225	-126	-351	-0.8	-0.5	-0.6
Blaby	582	257	839	1.8	0.9	1.4	113	14	127	0.4	0.0	0.2
Bolsover	940	357	1,297	3.4	1.4	2.5	-62	9	-53	-0.2	0.0	-0.1
Boston & Skegness	518	176	694	1.9	0.7	1.3	16	-32	-16	0.1	-0.1	0.0
Bosworth	582	277	859	2.0	1.0	1.5	46	35	81	0.2	0.1	0.1
Broxtowe	697	285	982	2.3	1.0	1.7	-82	-21	-103	-0.3	-0.1	-0.2
Chamwood	702	340	1,042	2.3	1.2	1.8	90	97	187	0.3	0.3	0.3
Chesterfield	1,312	481	1,793	4.6	1.8	3.2	-82	-41	-123	-0.3	-0.2	-0.2
Corby	996	349	1,345	3.2	1.2	2.3	227	54	281	0.7	0.2	0.5
Daventry	640	284	924	1.7	0.8	1.3	89	34	123	0.2	0.1	0.2
Derby North	1,139	393	1,532	3.7	1.4	2.6	-205	-39	-244	-0.7	-0.1	-0.4
Derby South	2,188	668	2,856	7.0	2.3	4.7	34	-74	-40	0.1	-0.2	-0.1
Erewash	1,007	392	1,399	3.0	1.3	2.2	-31	16	-15	-0.1	0.1	0.0
Gainsborough	711	313	1,024	2.8	1.3	2.1	-99	-36	-135	-0.4	-0.2	-0.3
Gedling	773	289	1,062	2.8	1.1	1.9	-58	7	-51	-0.2	0.0	-0.1
Grantham & Stamford	493	241	734	1.6	0.9	1.2	-60	3	-57	-0.2	0.0	-0.1
Harborough	721	315	1,036	2.4	1.1	1.8	49	46	95	0.2	0.2	0.2
High Peak	656	288	944	2.1	1.0	1.6	47	46	93	0.2	0.2	0.2
Kettering	702	320	1,022	2.2	1.1	1.6	121	45	166	0.4	0.1	0.3
Leicester East	2,163	947	3,110	8.1	3.5	5.8	489	278	767	1.8	1.0	1.4
Leicester South	2,960	919	3,879	9.0	2.9	6.0	615	199	814	1.9	0.6	1.3
Leicester West	2,549	922	3,471	9.2	3.3	6.3	410	222	632	1.5	0.8	1.1
Lincoln	1,195	352	1,547	4.1	1.3	2.8	-88	-2	-90	-0.3	0.0	-0.2
Loughborough	869	386	1,255	2.7	1.4	2.1	-60	18	-42	-0.2	0.1	-0.1
Louth & Horncastle	577	225	802	2.1	0.9	1.5	-48	-21	-69	-0.2	-0.1	-0.1
Mansfield	906	367	1,273	3.4	1.4	2.4	-141	46	-95	-0.5	0.2	-0.2
Newark	712	327	1,039	2.5	1.2	1.9	-55	45	-10	-0.2	0.2	0.0
North East Derbyshire	915	373	1,288	3.2	1.4	2.4	-156	-6	-162	-0.5	0.0	-0.3
North West Leicestershire	511	236	747	1.8	0.9	1.4	-23	-21	-44	-0.1	-0.1	-0.1
Northampton North	1,198	448	1,646	3.9	1.5	2.7	-14	49	35	0.0	0.2	0.1
Northampton South	1,072	386	1,458	2.9	1.1	2.0	26	29	55	0.1	0.1	0.1
Nottingham East	2,195	573	2,768	7.5	2.1	4.9	-122	-23	-145	-0.4	-0.1	-0.3
Nottingham North	1,761	568	2,329	6.8	2.3	4.6	-43	-59	-102	-0.2	-0.2	-0.2
Nottingham South	1,681	452	2,133	4.9	1.5	3.4	60	14	74	0.2	0.0	0.1
Rushcliffe	553	217	770	1.6	0.7	1.2	-44	2	-42	-0.1	0.0	-0.1
Rutland & Melton	369	149	518	1.2	0.6	0.9	5	-6	-1	0.0	0.0	0.0
Sherwood	750	303	1,053	2.4	1.1	1.8	-108	-1	-109	-0.3	0.0	-0.2
Sleaford & North Hykeham	412	220	632	1.3	0.8	1.1	-99	-13	-112	-0.3	0.0	-0.2
South Derbyshire	633	252	885	1.9	0.8	1.4	-67	-73	-140	-0.2	-0.2	-0.2
South Holland & The Deepings	405	219	624	1.4	0.8	1.1	1	-9	-8	0.0	0.0	0.0
Wellingborough	991	517	1,508	2.9	1.7	2.3	109	127	236	0.3	0.4	0.4
West Derbyshire	479	211	690	1.6	0.8	1.2	-40	5	-35	-0.1	0.0	-0.1

\* Count of claimants of Jobseeker's Allowance

Source: Jobcentre Plus administrative system

Relationship between columns = 3=1+2; 9=7+8

Labour Market Statistics Helpline 020 7533 6094

<sup>#</sup> The population denominators are based on output area data from the 2001 Census. NB these percentages are different from the national and regional claimant count rates shown in Tables 1a, 7 and the summary of other headline indicators. See note on page 8 for further details.

# POPULATION

East Midlands

## 19 Comparison of pre-2001 and post-2001 Census population data

(thousands)

	Working-age population data for mid-2001			% difference
	Pre-2001 Census	Post-2001 Census		
	Projected data	Mid-year estimate		
<b>EAST MIDLANDS</b>	<b>2,610</b>	<b>2,561</b>	<b>-1.9</b>	
<b>Derby UA</b>	<b>146</b>	<b>134</b>	<b>-8.4</b>	
<b>Leicester UA</b>	<b>181</b>	<b>174</b>	<b>-3.9</b>	
<b>Nottingham UA</b>	<b>179</b>	<b>170</b>	<b>-4.8</b>	
<b>Rutland UA</b>	<b>25</b>	<b>21</b>	<b>-15.5</b>	
<b>Derbyshire</b>	<b>460</b>	<b>448</b>	<b>-2.5</b>	
Amber Valley	74	71	-4.0	
Bolsover	43	43	-0.2	
Chesterfield	62	60	-3.5	
Derbyshire Dales	43	42	-2.8	
Erewash	66	67	1.5	
High Peak	57	55	-3.5	
North East Derbyshire	61	59	-3.3	
South Derbyshire	53	51	-4.1	
<b>Leicestershire</b>	<b>385</b>	<b>380</b>	<b>-1.2</b>	
Blaby	55	56	1.4	
Charnwood	102	98	-3.9	
Harborough	48	47	-1.7	
Hinckley and Bosworth	62	62	1.0	
Melton	30	30	-2.0	
North West Leicestershire	54	53	-2.4	
Oadby and Wigston	33	34	1.8	
<b>Lincolnshire</b>	<b>378</b>	<b>382</b>	<b>1.1</b>	
Boston	32	33	1.6	
East Lindsey	72	74	2.1	
Lincoln	52	53	3.3	
North Kesteven	56	56	0.5	
South Holland	44	44	-0.7	
South Kesteven	76	76	-0.5	
West Lindsey	46	47	1.7	
<b>Northamptonshire</b>	<b>395</b>	<b>393</b>	<b>-0.4</b>	
Corby	31	32	3.8	
Daventry	45	45	1.3	
East Northamptonshire	48	47	-1.9	
Kettering	52	51	-3.6	
Northampton	125	123	-1.0	
South Northamptonshire	51	50	-2.4	
Wellingborough	43	45	4.2	
<b>Nottinghamshire</b>	<b>461</b>	<b>458</b>	<b>-0.6</b>	
Ashfield	67	69	2.2	
Bassetlaw	66	66	0.5	
Broxtowe	68	67	-1.9	
Gedling	67	69	2.1	
Mansfield	61	59	-2.6	
Newark and Sherwood	65	64	-1.1	
Rushcliffe	68	65	-3.4	

See note on page 8 for further details.

Source: ONS Population and Demography Division