

11 September 2002

Coverage
East Midlands
Theme
Labour Market

Issued by
National Statistics
1 Drummond Gate
London SW1V 2QQ

Telephone
Press Office 020 7533 5714
Helpline 020 7533 6094
Public enquiries 0845 601 3034

Statisticians:

Regional and local data (Nick Maine)
020 7533 6130

Regional and national Labour Force Survey (Alex Clifton-Fearnside)
020 7533 6140

Claimant count and vacancies (Andrew Machin)
020 7533 6162

Employee jobs (Ian Richardson)
01633 812072

Recorded Headlines
020 7533 6176

Internet
www.statistics.gov.uk

Email
labour.market@ons.gov.uk

Employment Information Unit
Bill Kramarenko
Jobcentre Plus
East Midlands & Eastern Regional Office
7th Floor, Newtown House
Maid Marian Way
Nottingham
NG1 6GG

Telephone
0115 989 5901

Next publication date
16 October 2002

Labour market statistics

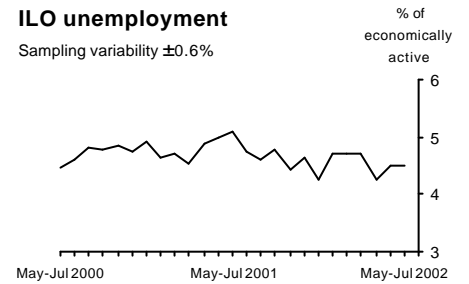
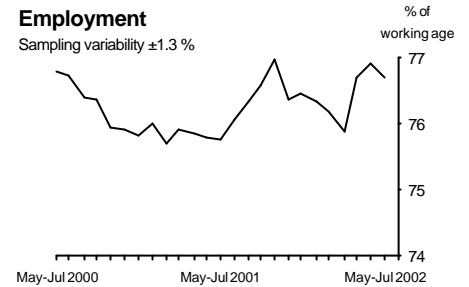
September 2002: East Midlands

All data are adjusted for seasonality unless otherwise specified

Latest Labour Force Survey data over the year to July 2002 indicate employment and unemployment stable in the East Midlands.

Data for the three months to July 2002 show the employment rate at 76.7 per cent, up 0.9 percentage points on a year earlier. The unemployment rate was 4.5 per cent, down 0.6 percentage points on a year earlier.

The claimant count was down in the year to August 2002.



		Level (thousands)	Rate (%)	Change on year (level)	Sampling variability (thousands)	Change on year (rate)	Sampling variability (%)
Employment*	May-Jul	2,059	76.7	43	± 52	0.9	± 1.7
ILO unemployment**	May-Jul	97	4.5	-11	± 18	-0.6	± 0.9
Economically active*	May-Jul	2,156	80.3	32	± 52	0.4	± 1.6
Economically inactive+ of which:	May-Jul	514	19.7	-7	± 53	-0.4	± 1.6
Not wanting a job+	May-Jul	380		-11	± 47		
Wanting a job+	May-Jul	134		4	± 29		
Civilian workforce jobs (not seasonally adjusted)	Mar 2002	1,971		20	..		
Claimant count	Aug 2002	58.1	2.9	-4.2		-0.2	

See background note 2 on sampling variability.

* Levels are for those aged 16 and over, rates are for those of working age (16-59/64).

** Levels and rates are for those aged 16 and over. Rate is as a proportion of economically active.

+ Levels and rates are for those of working age.

.. Not available.

From May 2001: vacancy series deferred (see special note on page 5).

New this month:

May to July 2002 data: latest three-month average LFS results;

August 2002 data: claimant count.

All data are adjusted for seasonality unless otherwise specified

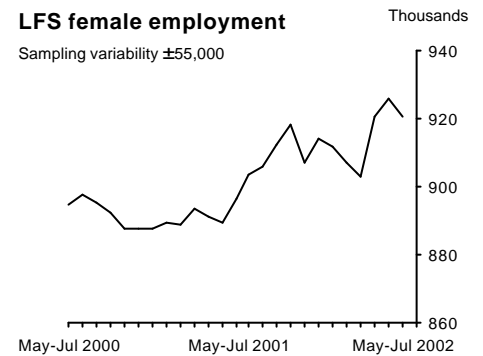


Employment (tables 1 to 6)

The LFS estimate of employment in the East Midlands was 76.7 per cent in the May to July 2002 period, up 0.9 percentage points on the same period a year earlier. The employment level was 2.06 million in the May to July 2002 period, up 43,000 on the same period a year earlier.



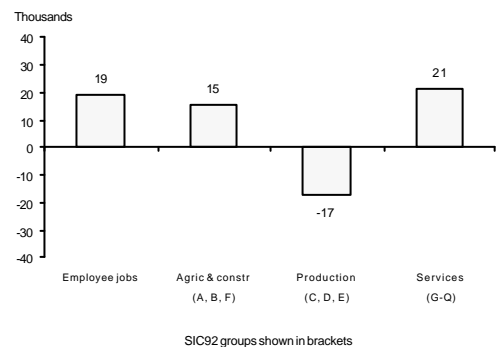
Seasonally adjusted employee jobs figures were down 3,000 in the quarter to March 2002.



Unadjusted employee jobs were up 19,000 in the year to March 2002. This was mainly due to rises in construction and other industries, offset by a fall in the manufacturing sector.

Employee jobs by industry

Change on year from March 2001



Unemployment (table 1)

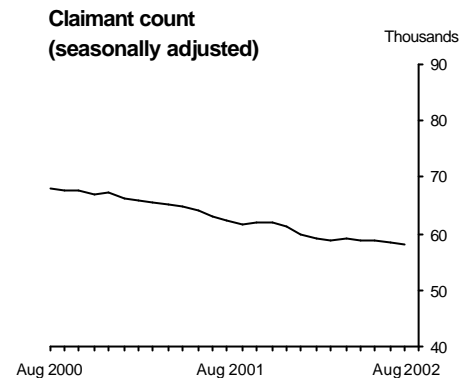
The ILO rate of unemployment in the East Midlands was 4.5 per cent in the May to July 2002 period, down 0.6 percentage points on the same period a year earlier. The rates for men and women in May to July 2002 were 4.7 and 4.2 per cent respectively.

All data are adjusted for seasonality unless otherwise specified



Claimant count (tables 7 and 8)

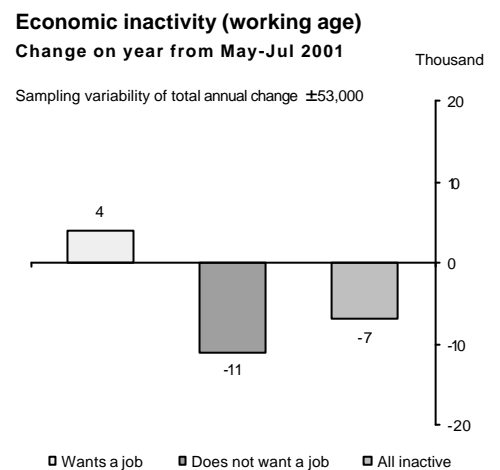
The claimant count rate in August 2002 was 2.9 per cent, unchanged from July 2002, and down 0.2 percentage points since August 2001. The seasonally adjusted number of claimants in August 2002 was 58,100, down 300 on July 2002, and down 4,200 since August 2001. The unadjusted number of claimants was 59,100 in August 2002.



The unadjusted number of computerised claims of people aged 18 to 24 was 16,100 in August 2002, down 600 over the year. The number of computerised claims has fallen over the year for most age and duration groups.

Economically active (tables 1 and 9)

There were 2.16 million economically active people in the East Midlands in the May to July 2002 period.

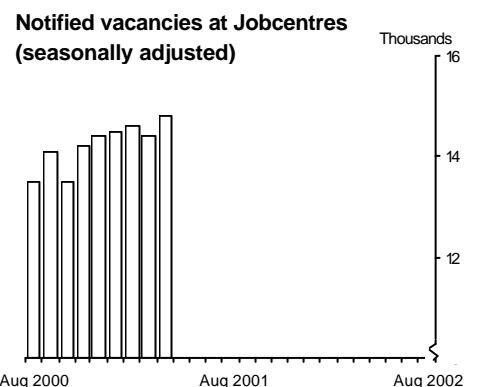


Economically inactive (tables 1, 10 and 11)

The LFS estimate of economically inactive people in the East Midlands in the May to July 2002 period was 1.20 million, with 514,000 of these of working age. Over the year the number of economically inactive people of working age was down 7,000.

Vacancies (table 12)

Publication of the Jobcentre vacancy series has been deferred. Figures from May 2001 are affected by the introduction of Employer Direct – see note on page 5.

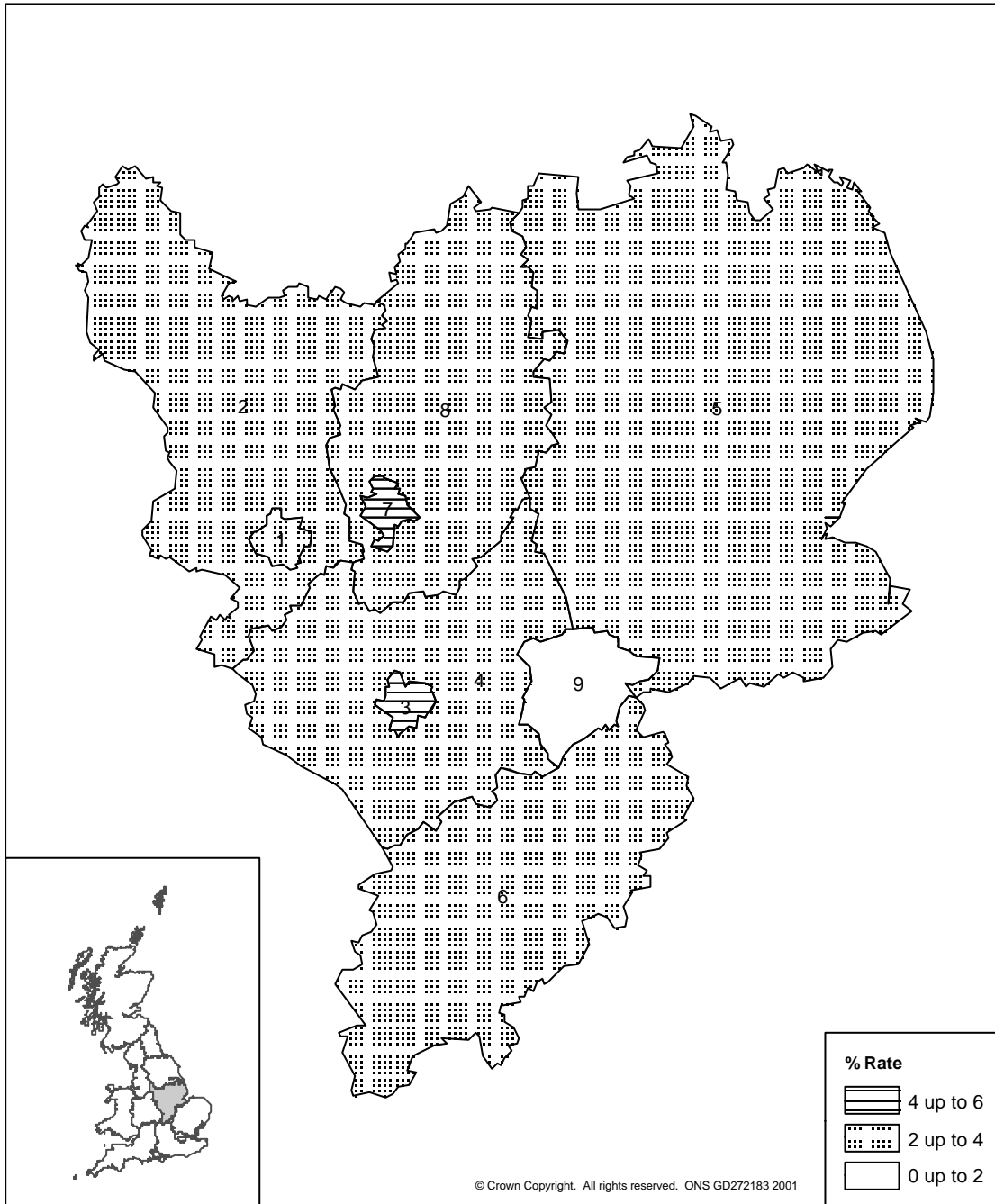


Local area data (tables 13 to 16)

The unadjusted claimant count rate was lowest in Rutland UA, at 0.7 per cent. It was highest in Bolsover, at 5.3 per cent.

All data are adjusted for seasonality unless otherwise specified

Unadjusted Claimant Count Rate by County/UA - August 2002 - East Midlands



1	Derby	3.7%
2	Derbyshire	2.9%
3	Leicester	4.9%
4	Leicestershire	2.2%
5	Lincolnshire	2.3%
6	Northamptonshire	2.1%
7	Nottingham	4.1%
8	Nottinghamshire	3.3%
9	Rutland	0.7%

All data are adjusted for seasonality unless otherwise specified

REVISIONS

There are no significant revisions this month to the data in this release.

NEXT MONTH

Workforce jobs

ONS has now completed the work needed to revise the Annual Business Inquiry results for December 1998 and December 1999. The workforce jobs series to be published next month will take on board these revisions. In addition, the opportunity has been taken to improve the linking between the latest data and the pre-1998 results, originally based on the old Annual Employment Survey. The methodology for interpolating the results between the annual benchmarks is also being changed. As a result, workforce jobs will be revised next month from as far back as 1959.

SPECIAL

Vacancy data

Publication of the Jobcentre vacancy series has been deferred due to distortions to the data as a result of the introduction of Employer Direct by Jobcentre Plus. This release contains vacancy data only up to April 2001.

A limited range of statistics on Jobcentre Plus vacancies, relating to the inflows of newly-notified vacancies, is now being made available on Nomis[®]. To begin with, summary information showing monthly notifications by Government Office Region and industrial/occupational sector back to Spring 2002 are now available, though not at this stage as National Statistics. (For further details see the news and research item on page 455 of the September 2002 issue of *Labour Market Trends*.)

The introduction of Employer Direct, a major change which involves transferring the vacancy-taking process from local Jobcentres to regional Customer Service Centres, has affected the data since May 2001. Employer Direct has been gradually introduced across Great Britain as part of modernising the former Employment Service (now part of Jobcentre Plus) and has had the following effects:

- A temporary reduction in the recorded level of outflows and placings owing to some delays in following up vacancies with employers associated with the introduction of the new arrangements.
- An increase in the recorded level of newly-notified vacancies.

All data are adjusted for seasonality unless otherwise specified

- Both the above effects have led to an increase in the recorded stock of unfilled vacancies.

Investigations have shown these effects are substantial for all the vacancy series. While they cannot be quantified precisely, the effects are large enough to prevent meaningful comparisons with earlier data. Some of the distortions will also persist for a while after the full implementation of Employer Direct, which was completed in all regions at the end of January 2002. Publication of the Jobcentre vacancy series has therefore been deferred. ONS and the Department for Work and Pensions are continuing to monitor and review the data with the aim of reinstating the series as soon as possible.

The publication of the vacancy figures for Northern Ireland has been suspended since March 1999 as a result of a discontinuity identified during the introduction of a new computer system for processing vacancies to local offices of the Department for Employment and Learning (DEL). In the course of correcting for this difficulty, further problems of a procedural nature came to light as contributory factors. These further issues have delayed the reinstatement of published vacancy figures for Northern Ireland. DEL have now introduced a new internet-based operational system for vacancies and have resumed publication of some non-seasonally adjusted vacancy data for Northern Ireland on a provisional basis. For the purposes of the seasonally adjusted United Kingdom figures it has been assumed provisionally that the Northern Ireland figures have remained constant since February 1999 as follows: 8,900 for the stock of unfilled vacancies, 3,400 for inflows of vacancies notified, 3,400 for outflows, and 2,200 for placings. These are not estimates for Northern Ireland but assumptions for the purpose of continuity of the United Kingdom series up to April 2001.

Claimant Count

The introduction of Joint Claims for Jobseeker's Allowance, on 19 March 2001, has had an upward effect on the claimant count. ONS estimates that the total impact on the count, which accumulated between April and August 2001, has been some 600 in the East Midlands region (approximately 200 men and 400 women) and 6,500 for the UK overall (approximately 2,200 men and 4,300 women).

The introduction of Joint Claims means that both members of certain couples are now required to claim JSA jointly and both are required to look for work. This applies to couples without dependent children where at least one member was born after 19 March 1976 and is aged over 18. The claimant count continues to include all individual claimants, so there are some extra claimants included as a result of this change.

All data are adjusted for seasonality unless otherwise specified

It has been announced that Joint Claims for JSA will be extended in October 2002 to couples without dependent children where at least one member was born after 1957. The extent to which the introduction of Joint Claims may be treated as a discontinuity in the count, following past precedent, is difficult to assess at this stage but we will continue to monitor and review the effects. For information about previous treatment of discontinuities in the claimant count see, for example, the article '*Changes to the coverage of the monthly count of claimant unemployment*' in *Labour Market Trends*, November 1995, page 398.

BACKGROUND NOTES

1. More information on the statistics in this release can be found in the *Guide to Labour Market Statistics Releases*, available from the labour market helpline 020-7533 6094. Information is also available on the National Statistics website at <http://www.statistics.gov.uk/themes/default.asp>
2. Some data in this release are based on statistical samples and, as such, are subject to sampling variability. If many samples were drawn, each would give a different result. The ranges shown for the LFS data in this release and in the following table represent '95 per cent confidence intervals'. It is expected that in 95 per cent of samples the range would contain the true value. For more information, see the *Guide to Labour Market Statistics Releases*.

Thousands

	Levels			Quarterly changes			Annual changes		
	Lower limit	LFS estimate	Upper limit	Lower limit	LFS estimate	Upper limit	Lower limit	LFS estimate	Upper limit
In employment	2,021	2,059	2,096	-27	26	78	-9	43	95
Employment rate	75.4%	76.7%	78.0%	-0.8%	0.8%	2.5%	-0.7%	0.9%	2.6%
ILO unemployment	85	97	109	-20	-3	14	-29	-11	7
ILO unemployment rate	3.9%	4.5%	5.1%	-1.0%	-0.2%	0.6%	-1.5%	-0.6%	0.3%
Economically active	2,118	2,156	2,193	-29	23	75	-20	32	84
Economic activity rate	79.1%	80.3%	81.5%	-0.9%	0.6%	2.2%	-1.2%	0.4%	2.0%
Economically inactive	473	514	555	-68	-15	37	-60	-7	46

All data are adjusted for seasonality unless otherwise specified

Sampling variability of regional Labour Force Survey figures

May to July 2002

	Empl- oyment Level (000s)	ILO Unem- ployment Level (000s)	Econ- omically Active Level (000s)	Working age Economically Inactive Level (000s)	Employment Rate (%)	ILO Unem- ployment Rate (%)
North East	± 35	± 12	± 35	± 36	± 1.8%	± 1.0%
North West	± 60	± 18	± 59	± 59	± 1.1%	± 0.6%
Yorks & Humber	± 47	± 15	± 46	± 45	± 1.2%	± 0.6%
East Midlands	± 38	± 12	± 38	± 41	± 1.3%	± 0.6%
West Midlands	± 48	± 16	± 47	± 46	± 1.2%	± 0.6%
East	± 48	± 14	± 48	± 44	± 1.1%	± 0.5%
London	± 62	± 23	± 59	± 59	± 1.1%	± 0.6%
South East	± 57	± 17	± 56	± 51	± 0.8%	± 0.4%
South West	± 47	± 13	± 47	± 44	± 1.1%	± 0.5%
Wales	± 37	± 12	± 37	± 38	± 1.7%	± 0.9%
Scotland	± 47	± 16	± 45	± 44	± 1.2%	± 0.7%

- The LFS sample population covers those living in private households, student halls of residence and NHS accommodation.
- Annual local area data from the LFS are shown in table 13. Data from waves one and five of four quarters of the LFS were combined with an additional sample of interviews, in England, which improves the accuracy of the annual estimates for some local areas in England. Estimates of sampling variability - '95 per cent confidence intervals' - for each region, county, unitary authority and local authority district are shown in the table. There are now three publication thresholds - two thousand and four thousand, in addition to six thousand. For further information see Volume 6 of the *LFS User Guide*. This guide, along with additional data and further background information, are available on the National Statistics website at <http://www.statistics.gov.uk/lfs> A wide range of annual local area data from the LFS is available free from the Nomis[®] website at <http://www.nomisweb.co.uk>
- Unadjusted claimant count and vacancies data are gathered from administrative sources and constitute a complete count. However, seasonally adjusted totals are presented as rounded to the nearest hundred to avoid spurious precision. Any differences between the sum of the rounded seasonally adjusted figures and the UK totals are due to this rounding.
- Claimant count flows are the number of people joining or leaving the count in the period between the count dates. They are therefore affected by the number of weeks between count dates. To enable comparisons from month to month, the flows figures are standardised to a 4.33-week month before seasonal adjustment.

All data are adjusted for seasonality unless otherwise specified

7. A claimant count rate is defined as the number of claimants resident in an area as a percentage of the corresponding mid-year estimate (or the latest available mid-year estimate, currently for June 2000) of the sum of claimants and workforce jobs in the area. The number of workforce jobs is mainly collected through postal employer surveys and comprises employee jobs, self-employment jobs, HM armed forces and government-supported trainees. Note that the technical basis of these rates has been reviewed as part of the National Statistics Quality Review of the Framework for Labour Market Statistics and ONS will publish, by 5 November 2002, an action plan relating to the recommendations of the Review. The full review report may be found at http://www.statistics.gov.uk/methods_quality/quality_review/labour.asp#nsqr.
8. The count of Jobseeker's Allowance claimants is mostly derived from the Jobcentre Plus computer records. However for various reasons, e.g. when a claimant's National Insurance number is not known, a few claims have to be dealt with manually by local offices. These claims, which amount to less than 1 per cent of the total, are thus counted separately and not analysed in as much detail as the computerised claims. In particular, only the computerised claims are analysed by age and duration on a monthly basis.
9. Travel-to-Work areas (table 15) are approximations to self-contained labour markets, i.e. areas where people both live and work.
10. NUTS (Nomenclature des Unités Territoriales Statistiques) (table 17) was established by the Statistical Office of the European Union (Eurostat) to provide a uniform breakdown of territorial units for the production of regional statistics. NUTS is a five-level hierarchical classification.
11. The employee jobs series is based on data from employer surveys and is subject to sampling variability. The nature of the survey means that the size of this sampling variability may not be consistent from year to year. Provisionally ONS would expect that the 95 per cent confidence interval would, on average, be within +/- 6 per cent of the estimate. However, this will vary from region to region.
12. Labour market statistics are compiled from a wide range of sources. Claimant count and Jobcentre vacancy data are provided from the Jobcentre Plus administrative system; workforce jobs are derived from ONS business surveys; other data come from the ONS Labour Force Survey.
13. The Social Survey Division of ONS carries out the questionnaire design, sample selection and interviewing for the LFS.

All data are adjusted for seasonality unless otherwise specified

Analysis and publication of the results of the survey is undertaken by Labour Market Division. In Northern Ireland, the Labour Force Survey is conducted by the Central Survey Unit.

14. In addition to the data in this release, ONS can provide a wide range of detailed labour market data in a number of formats. In particular, data are available from Nomis[®] at the same time as this release is published. Further data are also published in *Labour Market Trends (LMT)* and the *Labour Force Survey Quarterly Supplement to LMT*.
15. Some of the series in the attached tables are also available on the National Statistics website using the StatBase service – <http://www.statistics.gov.uk/statbase>. To access all the data from the Labour Market Statistics Integrated First Release (including series in this release where four-letter series identifiers are shown), click on the Time Series Data option and download the complete release, or view and download your own customised selection of series. You will also find other Labour Market releases within the Time Series Data service called Employment and Earnings and Claimant Count and Vacancies, which contain more data. Selected series can also be viewed in StatBase by choosing the Datasets option and selecting the Labour Market theme. For more information about the Time Series Data service or StatBase datasets, telephone +44 (0) 20 7533 5675 or email statbase@statistics.gov.uk.
16. Details of the policy governing the release of new data are available from the press office. Also available is a list of the names of those given pre-publication access to the contents of this release.
17. **National Statistics** are produced to high professional standards set out in the National Statistics Code of Practice. They undergo regular quality assurance reviews to ensure that they meet customer needs. They are produced free from any political interference.
© Crown Copyright 2002.

INDEX OF TABLES

All data are not adjusted for seasonality unless otherwise specified

SUMMARY

National labour market summary, by region, for the current quarter (seasonally adjusted)	
Summary for the current quarter (seasonally adjusted)	1
Other key indicators (seasonally adjusted)	1a

REGIONAL DATA

EMPLOYMENT

Employment by age	2
Full-time, part-time & temporary workers	3
Civilian workforce jobs	4
Employee jobs by industry	5
Actual weekly hours of work	6

UNEMPLOYMENT

Claimant count (seasonally adjusted)	7
Claimant count by age & duration - computerised claims only.....	8

ECONOMIC ACTIVITY AND INACTIVITY

Economic activity by age	9
Economic inactivity by age	10
Economic inactivity: reasons	11

OTHER LABOUR MARKET STATISTICS

Jobcentre vacancies summary (seasonally adjusted)	12
---	----

LOCAL AREA DATA

Local area labour market summary.....	13
---------------------------------------	----

UNEMPLOYMENT

Claimant count by local area	14
Claimant count by Travel-to-Work Area	15
Claimant count by Parliamentary Constituency Area.....	16
Claimant count by NUTS 3 area	17

The following symbols are used in the tables:

..	not available	-	nil or negligible
p	provisional	r	revised
*	grossed up total less than 10,000		

Totals may differ from the sum of components because of rounding or separate adjustment of components.

SUMMARY

Regional labour market summary 1

Thousands, seasonally adjusted

Labour Force Survey (May to July 2002)

	Labour Force Survey (May to July 2002)																
	Total aged 16 & over		Economically active				LFS Employment					ILO Unemployment					
	Total	Total	Men	Women	Total	Men	Women	Total	Men	Women	Total	Men	Women				
Level	Level	Rate (%)*	Level	Level	Level	Rate (%)*	Level	Rate (%)*	Level	Rate (%)*	Level	Rate (%)**	Level	Rate (%)**	Level	Rate (%)**	
1	2	3	4	5	6	7	8	9	10	11	12	13	14	15	16	17	
North East	2,030	1,179	73.6	643	537	1,102	68.8	591	71.2	512	66.1	77	6.5	52	8.1	25	4.7
North West	5,411	3,309	76.4	1,809	1,501	3,127	72.1	1,696	75.2	1,431	68.7	183	5.5	113	6.3	69	4.6
Yorkshire & the Humber	3,993	2,488	77.8	1,400	1,088	2,355	73.5	1,313	78.4	1,042	68.0	133	5.4	87	6.2	46	4.2
East Midlands	3,359	2,156	80.3	1,194	961	2,059	76.7	1,138	81.4	921	71.4	97	4.5	56	4.7	41	4.2
West Midlands	4,177	2,654	79.2	1,494	1,160	2,505	74.7	1,404	80.1	1,100	68.6	149	5.6	89	6.0	60	5.2
East	4,376	2,883	82.5	1,590	1,294	2,774	79.3	1,528	84.7	1,246	73.3	109	3.8	62	3.9	47	3.7
London	5,910	3,831	76.1	2,168	1,662	3,573	70.9	2,011	77.0	1,562	64.2	258	6.7	157	7.2	101	6.1
South East	6,452	4,338	83.3	2,391	1,947	4,165	79.9	2,292	85.1	1,874	74.2	172	4.0	99	4.1	73	3.8
South West	4,009	2,579	82.6	1,402	1,177	2,481	79.4	1,340	82.9	1,141	75.6	98	3.8	62	4.4	36	3.1
England	39,717	25,417	79.3	14,090	11,327	24,140	75.3	13,312	80.0	10,828	70.1	1,277	5.0	778	5.5	498	4.4
Wales	2,333	1,337	73.4	750	587	1,261	69.1	703	74.3	558	63.4	76	5.7	46	6.2	29	5.0
Scotland	4,053	2,548	78.4	1,369	1,179	2,384	73.3	1,268	76.1	1,117	70.4	164	6.4	101	7.4	63	5.3
Great Britain	46,102	29,302	79.0	16,209	13,093	27,785	74.8	15,283	79.4	12,503	69.8	1,516	5.2	926	5.7	590	4.5
N Ireland	1,288	768	71.8	429	339	724	67.6	401	73.2	323	61.7	44	5.7	28	6.5	16	4.8
United Kingdom	47,390	30,070	78.8	16,638	13,432	28,509	74.6	15,684	79.2	12,826	69.5	1,561	5.2	954	5.7	607	4.5

Change on quarter: +

	Labour Force Survey (May to July 2002)																
	Total aged 16 & over		Economically active				LFS Employment					ILO Unemployment					
	Total	Total	Men	Women	Total	Men	Women	Total	Men	Women	Total	Men	Women				
Level	Level	Rate (%)*	Level	Level	Level	Rate (%)*	Level	Rate (%)*	Level	Rate (%)*	Level	Rate (%)**	Level	Rate (%)**	Level	Rate (%)**	
1	2	3	4	5	6	7	8	9	10	11	12	13	14	15	16	17	
North East	0	-17	-1.1	-6	-11	-12	-0.8	-5	-0.6	-7	-0.9	-6	-0.4	-1	-0.1	-5	-0.7
North West	4	-11	-0.3	-17	6	-2	0.0	-4	-0.2	3	0.2	-9	-0.3	-13	-0.6	3	0.2
Yorkshire & the Humber	4	14	0.1	12	2	9	0.0	5	0.1	5	0.0	5	0.2	8	0.5	-3	-0.2
East Midlands	5	23	0.6	7	16	26	0.8	8	0.5	17	1.1	-3	-0.2	-1	-0.1	-2	-0.3
West Midlands	0	17	0.3	14	4	17	0.3	14	0.7	2	-0.1	1	0.0	-1	-0.1	1	0.1
East	10	-5	-0.3	-4	0	-10	-0.4	-5	-0.4	-4	-0.5	5	0.2	1	0.1	4	0.3
London	16	20	0.2	14	6	22	0.2	13	0.2	8	0.2	-2	-0.1	1	0.0	-2	-0.2
South East	12	-11	-0.3	-4	-7	-22	-0.6	-10	-0.6	-12	-0.6	12	0.3	6	0.3	6	0.3
South West	10	17	0.5	13	4	3	0.1	7	0.2	-4	0.0	14	0.5	6	0.4	8	0.6
England	60	47	0.0	28	19	31	0.0	23	0.0	8	-0.1	16	0.1	5	0.0	11	0.1
Wales	3	1	0.2	4	-3	2	0.3	4	0.5	-2	0.0	-2	-0.1	-1	-0.1	-1	-0.2
Scotland	2	-2	-0.1	4	-6	7	0.2	13	0.7	-7	-0.3	-8	-0.3	-9	-0.7	0	0.1
Great Britain	65	46	0.0	36	10	40	0.0	40	0.1	0	-0.1	6	0.0	-4	0.0	10	0.1
N Ireland	3	-2	-0.6	0	-1	-2	-0.6	0	-0.5	-2	-0.7	0	0.1	0	-0.1	1	0.3
United Kingdom	67	44	0.0	36	8	38	0.0	41	0.1	-3	-0.1	7	0.0	-4	0.0	11	0.1

Change on Year:

	Labour Force Survey (May to July 2002)																
	Total aged 16 & over		Economically active				LFS Employment					ILO Unemployment					
	Total	Total	Men	Women	Total	Men	Women	Total	Men	Women	Total	Men	Women				
Level	Level	Rate (%)*	Level	Level	Level	Rate (%)*	Level	Rate (%)*	Level	Rate (%)*	Level	Rate (%)**	Level	Rate (%)**	Level	Rate (%)**	
1	2	3	4	5	6	7	8	9	10	11	12	13	14	15	16	17	
North East	-1	0	0.0	-15	14	7	0.4	-12	-1.5	19	2.5	-7	-0.6	-3	-0.2	-5	-1.0
North West	16	-5	-0.4	-27	22	-9	-0.5	-28	-1.5	20	0.6	4	0.1	1	0.2	3	0.1
Yorkshire & the Humber	14	17	-0.1	27	-10	19	0.0	27	1.0	-8	-1.2	-2	-0.1	1	-0.1	-2	-0.2
East Midlands	21	32	0.4	14	18	43	0.9	19	0.8	24	1.0	-11	-0.6	-5	-0.5	-6	-0.7
West Midlands	2	43	0.9	16	27	36	0.8	23	1.0	13	0.5	7	0.2	-7	-0.5	14	1.1
East	41	30	0.2	21	9	23	0.0	12	0.1	11	-0.1	7	0.2	9	0.5	-1	-0.1
London	62	39	-0.3	19	20	19	-0.5	12	-0.6	6	-0.4	20	0.5	7	0.3	13	0.7
South East	47	49	0.3	27	22	11	-0.5	5	-0.7	6	-0.2	39	0.9	22	0.9	16	0.8
South West	41	44	0.4	21	24	43	0.4	12	-0.1	31	1.0	1	0.0	8	0.5	-7	-0.7
England	242	250	0.1	103	147	192	0.0	69	-0.2	123	0.2	58	0.2	34	0.2	24	0.2
Wales	10	6	0.5	14	-9	8	0.7	20	2.1	-12	-0.9	-3	-0.2	-6	-0.9	3	0.6
Scotland	7	-6	-0.3	-12	6	-4	-0.2	-11	-0.9	7	0.5	-2	-0.1	-1	0.0	-1	-0.1
Great Britain	259	249	0.1	106	144	196	0.0	78	-0.1	118	0.2	54	0.1	28	0.1	26	0.1
N Ireland	11	1	-1.0	-6	7	2	-0.8	-3	-1.8	5	0.2	-1	-0.2	-3	-0.6	2	0.4
United Kingdom	270	250	0.1	100	150	198	0.0	75	-0.2	123	0.2	52	0.1	25	0.1	27	0.2

Relationship between columns: 2= 4+5 = 6+12; 6= 8+10; 12= 14+16.

Data source: Labour Force Survey

* Denominator = all persons of working age.

Labour Market Statistics Helpline 020 7533 6094

** Denominator = Total economically active.

The Labour Force Survey is a survey of the population in private households, student halls of residence and NHS accommodation.

+ Quarter to quarter changes at regional level are particularly subject to sampling variability and should be interpreted in the context of changes over several quarters rather than in isolation.

Some of the series in this table are available electronically through the ONS Time Series Data service. See background note 14 for further details

SUMMARY

Regional labour market summary 2

Thousands, seasonally adjusted

	Employer surveys			Jobcentre Plus administrative system						Jobcentre Plus administrative system		
	Civilian workforce jobs (Mar 2002); not seasonally adjusted			Claimant count (August 2002)						Jobcentre vacancies (July 2002)		
	Total	Men	Women	Total		Men		Women		Notified vacancies	Unfilled vacancies	Outflow of vacancies
	Level	Level	Level	Level	Rate (%)+	Level	Rate (%)+	Level	Rate (%)+			
1	2	3	4	5	6	7	8	9	10	11	12	
North East	1,034	530	504	57.9	5.0	46.0	7.5	11.9	2.2			
North West	3,171	1,679	1,492	117.0	3.5	91.4	5.1	25.6	1.7			
Yorkshire & the Humber	2,313	1,191	1,122	87.6	3.6	67.6	5.1	20.0	1.8			
East Midlands	1,971	1,050	922	58.1	2.9	43.5	4.0	14.6	1.6			
West Midlands	2,547	1,338	1,208	92.5	3.5	70.7	4.8	21.8	1.8			
East	2,593	1,425	1,168	57.6	2.2	42.4	3.0	15.2	1.3			
London	4,571	2,476	2,096	167.5	3.6	121.2	4.8	46.3	2.2			
South East	4,153	2,229	1,923	72.2	1.7	54.1	2.3	18.1	0.9			
South West	2,411	1,272	1,139	50.0	2.0	36.8	2.7	13.2	1.2			
England	24,764	13,191	11,573	760.2	3.0	573.6	4.1	186.6	1.6			
Wales	1,223	620	603	46.6	3.6	36.2	5.3	10.4	1.7			
Scotland	2,433	1,208	1,224	101.1	4.0	78.7	5.8	22.4	2.0			
Great Britain	28,420	15,019	13,401	908.1	3.1	688.6	4.3	219.5	1.6			
N Ireland	753	404	349	35.3	4.5	27.2	6.2	8.1	2.3			
United Kingdom	29,173	15,423	13,750	943.3	3.1	715.8	4.4	227.5	1.7			

Publication of these vacancy statistics has been deferred. Figures from May 2001 are affected by the introduction of Employer Direct - see note on page 5

Changes on period (period specified below):

	Employer surveys			Jobcentre Plus administrative system						Jobcentre Plus administrative system		
	Civilian workforce jobs (Change on Dec 2001); not seasonally adjusted			Claimant count (Change on July 2002)						Jobcentre vacancies (Change on June 2002)		
	Total	Men	Women	Total		Men		Women		Notified vacancies	Unfilled vacancies	Outflow of vacancies
	Level	Level	Level	Level	Rate (%)+	Level	Rate (%)+	Level	Rate (%)+			
1	2	3	4	5	6	7	8	9	10	11	12	
North East	-14	-3	-12	-0.5	0.0	-0.4	-0.1	-0.1	0.0			
North West	-14	-3	-11	-1.1	0.0	-0.7	0.0	-0.4	0.0			
Yorkshire & the Humber	-26	-7	-19	-1.1	0.0	-0.8	-0.1	-0.3	0.0			
East Midlands	-26	-11	-15	-0.3	0.0	-0.2	0.0	-0.1	0.0			
West Midlands	-22	-20	-2	-0.6	0.0	-0.4	0.0	-0.2	0.0			
East	-11	-4	-7	0.0	0.0	0.0	0.0	0.0	0.0			
London	-40	-19	-21	-0.2	0.0	-0.1	0.0	-0.1	0.0			
South East	-24	-10	-14	-0.2	0.0	-0.1	0.0	-0.1	0.0			
South West	-12	-13	1	-0.3	0.0	-0.4	0.0	0.1	0.0			
England	-189	-90	-99	-4.7	0.0	-3.3	0.0	-1.4	0.0			
Wales	-14	-15	1	-0.4	0.0	-0.2	0.0	-0.2	0.0			
Scotland	-23	-24	1	-0.8	0.0	-0.6	0.0	-0.2	0.0			
Great Britain	-226	-128	-98	-5.5	0.0	-3.9	0.0	-1.6	0.0			
N Ireland	-7	-4	-3	-0.7	-0.1	-0.4	-0.1	-0.3	-0.1			
United Kingdom	-233	-132	-101	-6.4	0.0	-4.4	0.0	-2.0	0.0			

Publication of these vacancy statistics has been deferred. Figures from May 2001 are affected by the introduction of Employer Direct - see note on page 5

Relationship between columns: 1= 2+3; 4= 6+8

+ Denominator = Claimant count + Workforce jobs.

Labour Market Statistics Helpline 020 7533 6094

Some of the series in this table are available electronically through the ONS Time Series Data service. See background note 14 for further details.

SUMMARY

East Midlands

1 Summary May to July 2002

(thousands), seasonally adjusted

		All aged 16 & over								
		All aged 16 & over	Total economically active	Total in Employment	ILO unemployed	Economically Inactive	Economic activity rate(%)	Employment rate (%)	ILO unemployment rate (%)	Economic inactivity rate(%)
		1	2	3	4	5	6	7	8	9
		YCHF	YCHS	YCJS	YCMS	HKMR			YCNF	
People	May - Jul 2000	3,313	2,124	2,029	95	1,188	64.1	61.3	4.5	35.9
	May - Jul 2001	3,339	2,124	2,016	108	1,215	63.6	60.4	5.1	36.4
	Aug - Oct 2001	3,344	2,147	2,044	103	1,197	64.2	61.1	4.8	35.8
	Nov - Jan 2002	3,349	2,138	2,048	91	1,211	63.8	61.1	4.2	36.2
	Feb - Apr 2002	3,354	2,133	2,033	100	1,221	63.6	60.6	4.7	36.4
	May - Jul 2002	3,359	2,156	2,059	97	1,204	64.2	61.3	4.5	35.8
	change on quarter	5	23	26	-3	-18	0.6	0.7	-0.2	-0.6
	change %	0.1	1.1	1.3	-3.1	-1.4				
	change on year	21	32	43	-11	-11	0.6	0.9	-0.6	-0.6
	change %	0.6	1.5	2.1	-10.2	-0.9				
Men	May-Jul 2000	1,630	1,189	1,135	55	441	73.0	69.6	4.6	27.0
	May - Jul 2001	1,645	1,181	1,119	61	465	71.8	68.0	5.2	28.2
	Aug - Oct 2001	1,649	1,187	1,132	55	462	72.0	68.7	4.6	28.0
	Nov - Jan 2002	1,651	1,184	1,134	51	467	71.7	68.6	4.3	28.3
	Feb - Apr 2002	1,654	1,187	1,130	58	467	71.8	68.3	4.9	28.2
	May - Jul 2002	1,657	1,194	1,138	56	463	72.1	68.7	4.7	27.9
	change on quarter	3	7	8	-1	-4	0.3	0.4	-0.1	-0.3
	change %	0.2	0.6	0.7	-2.3	-0.9				
	change on year	12	14	19	-5	-2	0.3	0.6	-0.5	-0.3
	change %	0.7	1.2	1.7	-8.0	-0.3				
Women	May-Jul 2000	1,683	935	895	40	748	55.6	53.2	4.3	44.4
	May - Jul 2001	1,693	943	896	47	750	55.7	52.9	5.0	44.3
	Aug - Oct 2001	1,696	960	912	48	736	56.6	53.8	5.0	43.4
	Nov - Jan 2002	1,698	954	914	40	744	56.2	53.8	4.2	43.8
	Feb - Apr 2002	1,700	946	903	42	754	55.6	53.1	4.5	44.4
	May - Jul 2002	1,702	961	921	41	741	56.5	54.1	4.2	43.5
	change on quarter	2	16	17	-2	-13	0.8	1.0	-0.3	-0.8
	change %	0.1	1.6	1.9	-4.1	-1.8				
	change on year	9	18	24	-6	-9	0.8	1.2	-0.7	-0.8
	change %	0.5	1.9	2.7	-13.1	-1.3				

		All aged 16 to 59/64								
		All aged 16 to 59/64	Total economically active	Total in Employment	ILO unemployed	Economically Inactive	Economic activity rate(%)	Employment rate (%)	ILO unemployment rate (%)	Economic inactivity rate(%)
		10	11	12	13	14	15	16	17	18
							YCIF	YCKF		YYAZ
People	May - Jul 2000	2,572	2,069	1,975	94	503	80.4	76.8	4.6	19.6
	May - Jul 2001	2,595	2,073	1,966	107	522	79.9	75.8	5.2	20.1
	Aug - Oct 2001	2,600	2,093	1,990	102	507	80.5	76.6	4.9	19.5
	Nov - Jan 2002	2,604	2,082	1,991	91	522	80.0	76.5	4.4	20.0
	Feb - Apr 2002	2,608	2,078	1,979	99	530	79.7	75.9	4.8	20.3
	May - Jul 2002	2,612	2,097	2,003	94	514	80.3	76.7	4.5	19.7
	change on quarter	4	19	24	-5	-15	0.6	0.8	-0.3	-0.6
	change %	0.2	0.9	1.2	-4.7	-2.9				
	change on year	17	24	37	-13	-7	0.4	0.9	-0.7	-0.4
	change %	0.6	1.2	1.9	-11.9	-1.4				
Men	May-Jul 2000	1,353	1,169	1,115	54	184	86.4	82.4	4.6	13.6
	May - Jul 2001	1,365	1,161	1,100	61	204	85.1	80.6	5.2	14.9
	Aug - Oct 2001	1,368	1,166	1,112	54	201	85.3	81.3	4.7	14.7
	Nov - Jan 2002	1,370	1,160	1,109	51	209	84.7	81.0	4.4	15.3
	Feb - Apr 2002	1,372	1,167	1,110	57	205	85.1	80.9	4.9	14.9
	May - Jul 2002	1,374	1,175	1,119	56	199	85.5	81.4	4.7	14.5
	change on quarter	2	8	9	-1	-5	0.4	0.5	-0.1	-0.4
	change %	0.2	0.6	0.8	-2.4	-2.7				
	change on year	9	14	19	-5	-5	0.4	0.8	-0.5	-0.4
	change %	0.7	1.2	1.7	-8.3	-2.2				
Women	May-Jul 2000	1,219	900	860	40	319	73.8	70.5	4.4	26.2
	May - Jul 2001	1,230	912	866	47	318	74.2	70.4	5.1	25.8
	Aug - Oct 2001	1,232	926	878	48	305	75.2	71.3	5.2	24.8
	Nov - Jan 2002	1,234	921	881	40	313	74.7	71.4	4.3	25.3
	Feb - Apr 2002	1,236	911	869	42	325	73.7	70.3	4.6	26.3
	May - Jul 2002	1,237	922	884	39	315	74.5	71.4	4.2	25.5
	change on quarter	2	12	15	-3	-10	0.8	1.1	-0.4	-0.8
	change %	0.2	1.3	1.7	-7.8	-3.1				
	change on year	8	10	18	-8	-3	0.4	1.0	-0.9	-0.4
	change %	0.6	1.1	2.1	-16.7	-0.9				

Relationship between columns: 1= 2+5; 2= 3+4; 6= 2/1; 7= 3/1; 8= 4/2

Source: Labour Force Survey

9= 5/1; 10= 11+14; 11= 12+13; 15= 11/10; 16= 12/10; 17= 13/11; 18= 14/10

Labour Market Statistics Helpline 020 7533 6094

The Labour Force Survey is a survey of the population in private households, student halls of residence and NHS accommodation.

SUMMARY

1a Other headline indicators

East Midlands

Thousands, seasonally adjusted

Civilian workforce jobs (not seasonally adjusted)			
Levels			
	Total	Males	Females
Mar 99	1,983	1,058	925
Mar 00	1,962	1,044	918
Mar 01	1,951	1,044	907
Jun 01	1,972	1,056	917
Sep 01	1,974	1,064	910
Dec 01	1,997	1,061	937
Mar 02	1,971	1,050	922
<i>Change on year</i>	20	5	15
<i>Change %</i>	1.0	0.5	1.6

Claimant count*						
	Levels			Rates (%)**		
	Total	Males	Females	Total	Males	Females
	DPAY	ZMPA	ZMPC	DPBJ	ZMPB	ZMPD
2001						
August	62.3	46.7	15.6	3.1	4.3	1.7
September#	61.8	46.3	15.5	3.1	4.3	1.7
October	62.0	46.1	15.9	3.1	4.3	1.7
November	61.9	46.0	15.9	3.1	4.3	1.7
December#	61.1	45.3	15.8	3.0	4.2	1.7
2002						
January	59.9	44.6	15.3	3.0	4.1	1.7
February#	59.0	44.0	15.0	2.9	4.1	1.6
March	58.8	43.8	15.0	2.9	4.1	1.6
April	59.0	43.9	15.1	2.9	4.1	1.6
May	58.8	43.8	15.0	2.9	4.1	1.6
June#	58.7	43.8	14.9	2.9	4.1	1.6
July (r)	58.4	43.7	14.7	2.9	4.0	1.6
August (p)	58.1	43.5	14.6	2.9	4.0	1.6
<i>Change on period</i>	-0.3	-0.2	-0.1	0.0	0.0	0.0
<i>Change %</i>	-0.5	-0.5	-0.7			
<i>Change on year</i>	-4.2	-3.2	-1.0	-0.2	-0.3	-0.1
<i>Change %</i>	-6.7	-6.9	-6.4			

	Notified vacancies	Unfilled vacancies
	Level	Level
	DRYM	BCQF
2001		
August		
September		
October		
November		
December		
2002		
January		
February		
March		
April		
May		
June		
July		
August		

Publication of these vacancy statistics has been deferred. Figures from May 2001 are affected by the introduction of Employer Direct - see note on page 5.

* Count of claimants of unemployment-related benefits, ie. Jobseeker's Allowance

** Denominator = Claimant count + Workforce jobs. See Background Note 7.

EMPLOYMENT

2 Employment by age

East Midlands

(thousands), not seasonally adjusted

		All aged 16 & over	16 - 59/64	16 - 17	18 - 24	25 - 34	35 - 49	50 - 64 (m) 50 - 59 (w)	65+ (m) & 60+ (w)
		1	2	3	4	5	6	7	8
Employed									
People	Mar - May 1999	1,991	1,941	47	228	505	742	419	49
	Mar - May 2000	2,030	1,974	49	222	500	754	449	56
	Mar - May 2001	2,008	1,959	47	226	474	755	457	49
	Jun - Aug 2001	2,034	1,980	48	250	470	752	460	54
	Sep - Nov 2001	2,065	2,009	52	259	472	767	459	56
	Dec - Feb 2002	2,037	1,983	49	245	458	772	458	54
	Mar - May 2002	2,050	1,995	46	236	467	786	459	55
	<i>Change on year</i>	43	37	-1	10	-6	31	3	6
	<i>Change %</i>	2.1	1.9	-2.6	4.6	-1.3	4.1	0.6	12.0
Men	Mar - May 1999	1,098	1,081	26	120	280	398	258	17
	Mar - May 2000	1,120	1,098	20	126	276	404	273	22
	Mar - May 2001	1,118	1,099	20	128	270	409	272	19
	Jun - Aug 2001	1,128	1,107	23	133	267	409	274	21
	Sep - Nov 2001	1,145	1,122	26	141	267	414	274	22
	Dec - Feb 2002	1,129	1,108	24	132	261	418	273	21
	Mar - May 2002	1,130	1,112	24	128	263	423	274	18
	<i>Change on year</i>	12	13	4	0	-7	14	2	-1
	<i>Change %</i>	1.1	1.2	20.6	-0.4	-2.6	3.5	0.6	-4.4
Women	Mar - May 1999	892	860	21	109	225	345	161	32
	Mar - May 2000	910	876	29	96	225	350	176	34
	Mar - May 2001	890	860	27	98	204	347	184	30
	Jun - Aug 2001	906	873	25	117	203	343	186	33
	Sep - Nov 2001	920	887	25	118	205	354	185	34
	Dec - Feb 2002	908	875	25	113	196	354	185	34
	Mar - May 2002	920	883	22	109	205	363	185	37
	<i>Change on year</i>	31	24	-5	11	1	17	1	7
	<i>Change %</i>	3.4	2.8	-19.8	11.2	0.4	4.8	0.5	22.4
Employment rates (%)⁺									
People	Mar - May 1999	60.5	75.9	46.9	66.7	81.5	84.6	67.7	6.7
	Mar - May 2000	61.3	76.8	50.1	64.5	82.9	84.7	70.7	7.6
	Mar - May 2001	60.2	75.6	45.6	65.6	79.5	83.8	70.7	6.6
	Jun - Aug 2001	60.9	76.2	46.0	72.5	79.0	83.2	70.9	7.2
	Sep - Nov 2001	61.7	77.2	53.1	73.3	79.9	84.5	70.4	7.5
	Dec - Feb 2002	60.8	76.1	50.9	68.7	78.2	84.7	70.0	7.3
	Mar - May 2002	61.1	76.5	45.4	66.5	80.4	86.0	70.0	7.4
	<i>Change on year</i>	0.9	0.9	-0.2	0.8	0.9	2.2	-0.7	0.8
Men	Mar - May 1999	67.8	80.4	51.9	67.3	89.0	89.9	71.5	6.3
	Mar - May 2000	68.8	81.3	46.4	68.5	89.9	90.0	73.9	7.9
	Mar - May 2001	68.1	80.6	37.4	72.3	89.3	89.8	72.6	6.8
	Jun - Aug 2001	68.5	81.0	43.1	75.0	88.5	89.6	72.8	7.5
	Sep - Nov 2001	69.4	82.0	52.2	77.5	89.2	90.2	72.6	7.9
	Dec - Feb 2002	68.3	80.9	49.0	71.3	88.1	90.8	71.9	7.3
	Mar - May 2002	68.3	81.0	46.7	69.4	89.3	91.5	72.1	6.5
	<i>Change on year</i>	0.2	0.4	9.3	-2.9	0.0	1.7	-0.5	-0.4
Women	Mar - May 1999	53.3	71.0	42.1	66.1	73.9	79.3	62.3	7.0
	Mar - May 2000	54.1	71.9	53.0	59.9	75.7	79.4	66.2	7.4
	Mar - May 2001	52.6	70.0	54.4	58.5	69.5	77.6	68.0	6.5
	Jun - Aug 2001	53.5	71.0	49.1	69.9	69.3	76.6	68.2	7.1
	Sep - Nov 2001	54.3	72.0	54.1	68.8	70.5	78.7	67.5	7.2
	Dec - Feb 2002	53.5	70.9	52.8	65.9	68.0	78.6	67.4	7.3
	Mar - May 2002	54.1	71.5	44.0	63.3	71.4	80.3	67.1	7.9
	<i>Change on year</i>	1.5	1.5	-10.5	4.8	1.9	2.7	-0.9	1.4

Relationship between columns: 1=2+8; 2= 3+4+5+6+7

Source: Labour Force Survey

⁺ Denominator = all persons in the relevant age group

Labour Market Statistics Helpline 020 7533 6094

The LFS sample population covers those living in private households, student halls of residence and NHS accommodation.

EMPLOYMENT

East Midlands

3 Full-time, part-time and temporary workers

(thousands), not seasonally adjusted

		All in employment					All in employment			
		Total*	Employees*	Self employed*	Unpaid family workers	Government-supported training and employment programmes	Full-time workers	Part-time workers	Workers with second jobs	Temporary employees
		1	2	3	4	5	6	7	8	9
People	Mar - May 1999	1,991	1,753	227	*	*	1,472	519	93	100
	Mar - May 2000	2,030	1,797	215	*	11	1,508	522	84	105
	Mar - May 2001	2,008	1,776	219	*	*	1,500	508	74	112
	Jun - Aug 2001	2,034	1,801	221	*	*	1,517	517	70	104
	Sep - Nov 2001	2,065	1,826	222	*	11	1,545	519	80	103
	Dec - Feb 2002	2,037	1,801	222	*	*	1,516	521	80	93
	Mar - May 2002	2,050	1,815	221	*	*	1,515	535	85	95
	<i>Change on year</i>	<i>43</i>	<i>38</i>	<i>2</i>	<i>*</i>	<i>*</i>	<i>15</i>	<i>28</i>	<i>11</i>	<i>-17</i>
	<i>Change %</i>	<i>2.1</i>	<i>2.1</i>	<i>0.8</i>	<i>*</i>	<i>*</i>	<i>1.0</i>	<i>5.4</i>	<i>14.6</i>	<i>-15.2</i>
Men	Mar - May 1999	1,098	931	162	*	*	1,001	98	43	52
	Mar - May 2000	1,120	960	152	*	*	1,027	94	32	47
	Mar - May 2001	1,118	950	161	*	*	1,030	88	33	53
	Jun - Aug 2001	1,128	957	166	*	*	1,044	84	28	48
	Sep - Nov 2001	1,145	968	169	*	*	1,053	91	33	48
	Dec - Feb 2002	1,129	954	167	*	*	1,029	100	31	42
	Mar - May 2002	1,130	955	168	*	*	1,031	99	35	41
	<i>Change on year</i>	<i>12</i>	<i>5</i>	<i>7</i>	<i>*</i>	<i>*</i>	<i>1</i>	<i>10</i>	<i>1</i>	<i>-13</i>
	<i>Change %</i>	<i>1.1</i>	<i>0.6</i>	<i>4.6</i>	<i>*</i>	<i>*</i>	<i>0.1</i>	<i>11.7</i>	<i>3.2</i>	<i>-23.6</i>
Women	Mar - May 1999	892	822	65	*	*	471	421	50	49
	Mar - May 2000	910	837	63	*	*	481	428	52	58
	Mar - May 2001	890	827	58	*	*	470	419	40	59
	Jun - Aug 2001	906	844	55	*	*	474	433	43	56
	Sep - Nov 2001	920	858	54	*	*	492	428	47	55
	Dec - Feb 2002	908	847	55	*	*	487	421	49	51
	Mar - May 2002	920	860	52	*	*	483	437	50	54
	<i>Change on year</i>	<i>31</i>	<i>33</i>	<i>-6</i>	<i>*</i>	<i>*</i>	<i>14</i>	<i>17</i>	<i>10</i>	<i>-5</i>
	<i>Change %</i>	<i>3.4</i>	<i>4.0</i>	<i>-9.6</i>	<i>*</i>	<i>*</i>	<i>2.9</i>	<i>4.1</i>	<i>24.0</i>	<i>-7.7</i>

Temporary employees (reasons for temporary working)

Part-time workers (reasons for part-time working)[#]

		Total**	Could not find permanent job	Did not want a permanent job	Other	Total**	Could not find full-time job	Did not want full-time job	Other
		10	11	12	13	14	15	16	17
People	Mar - May 1999	100	40	26	34	514	50	390	73
	Mar - May 2000	105	35	33	37	511	44	383	81
	Mar - May 2001	112	32	31	49	502	38	380	82
	Jun - Aug 2001	104	26	26	51	512	33	399	78
	Sep - Nov 2001	103	26	25	52	511	36	398	75
	Dec - Feb 2002	93	26	22	45	512	36	398	77
	Mar - May 2002	95	26	21	47	525	38	402	83
	<i>Change on year</i>	<i>-17</i>	<i>-6</i>	<i>-10</i>	<i>-2</i>	<i>24</i>	<i>-1</i>	<i>22</i>	<i>1</i>
	<i>Change %</i>	<i>-15.2</i>	<i>-18.0</i>	<i>-31.0</i>	<i>-3.4</i>	<i>4.7</i>	<i>-2.2</i>	<i>5.8</i>	<i>0.9</i>

Relationship between columns: 1=2+3+4+5

[#] Employees and self-employed

* Includes people who did not state whether they worked part-time or full-time

** Includes people who did not state their reason for temporary/part-time working

The LFS sample population covers those living in private households, student halls of residence and NHS accommodation.

Source: Labour Force Survey

Labour Market Statistics Helpline 020 7533 6094

EMPLOYMENT

East Midlands

4 Civilian workforce jobs

(thousands), not seasonally adjusted

		Civilian workforce jobs	Employee jobs	Self employment jobs	Government- supported trainees
		1	2	3	4
All jobs	Mar 98	1,945	1,698	239	9
	Mar 99	1,983	1,742	235	6
	Mar 00	1,962	1,720	235	7
	Mar 01	1,951	1,720	225	6
	Jun 01	1,972	1,734	234	5
	Sep 01	1,974	1,741	229	4
	Dec 01	1,997	1,759	234	5
	Mar 02	1,971	1,740	226	5
<i>Change on year</i>		20	19	1	0
<i>Change %</i>		1.0	1.1	0.5	-8.6
Male jobs	Mar 98	1,047	873	169	4
	Mar 99	1,058	887	168	3
	Mar 00	1,044	877	163	4
	Mar 01	1,044	879	162	3
	Jun 01	1,056	883	170	3
	Sep 01	1,064	891	171	2
	Dec 01	1,061	883	175	3
	Mar 02	1,050	875	172	3
<i>Change on year</i>		5	-4	10	0
<i>Change %</i>		0.5	-0.5	6.2	-12.5
Female jobs	Mar 98	898	825	69	4
	Mar 99	925	855	67	3
	Mar 00	918	843	72	3
	Mar 01	907	841	64	2
	Jun 01	917	851	64	2
	Sep 01	910	850	58	2
	Dec 01	937	876	59	2
	Mar 02	922	865	55	2
<i>Change on year</i>		15	24	-9	0
<i>Change %</i>		1.6	2.8	-14.0	-3.5

Relationship between columns: 1=2+3+4

Sources: Employer surveys, Labour Force Survey, DfES

The Workforce Jobs series measures jobs rather than people, therefore, second self-employment jobs (where the main job is an employee) are now included in this series.

Workforce jobs enquiries 01633 812318

Civilian Workforce Jobs figures come from a variety of sources. Employee Jobs (which is much the largest component of Civilian Workforce Jobs) come from quarterly surveys of employers carried out by Prices & Business Group (PBG) of ONS and Administrative Returns.

Other data sources are Self-employment Jobs provided by the LFS and Government-supported trainees provided by ES Training Data Systems.

EMPLOYMENT

East Midlands

5 Employee jobs by industry

(thousands), not seasonally adjusted

Standard Industrial Classification (1992)

SIC 1992 SECTION		All jobs (seasonally adjusted)	All jobs A-Q	Agriculture Forestry & Fishing A,B	Mining Energy & Water Supplies Industries C,E	Manufacturing Industries D	Construction F	Service Industries G-K	Other Industries L-Q
		1	2	3	4	5	6	7	8
All jobs	Mar 99	1,748	1,742	27	17	411	96	715	476
	Mar 00	1,725	1,720	28	15	393	83	711	490
	Mar 01	1,726	1,720	24	16	377	81	732	490
	Jun 01	1,738	1,734	26	16	372	88	736	496
	Sep 01	1,742	1,741	25	17	369	92	740	498
	Dec 01	1,749	1,759	23	16	365	100	745	510
	Mar 02	1,746	1,740	23	17	359	97	733	510
	<i>Change on qtr</i>	-3							
	<i>Change %</i>	-0.2							
	<i>Change on year</i>	20	19	-1	1	-18	16	1	20
	<i>Change %</i>	1.2	1.1	-3.5	6.0	-4.8	19.9	0.1	4.1
Male jobs	Mar 99	890	887	19	13	282	80	356	136
	Mar 00	880	877	19	12	273	70	364	139
	Mar 01	883	879	16	13	269	67	374	141
	Jun 01	886	883	16	13	265	73	375	141
	Sep 01	890	891	17	13	263	77	379	143
	Dec 01	878	883	15	13	260	83	374	138
	Mar 02	879	875	16	14	257	81	370	138
	<i>Change on qtr</i>	1							
	<i>Change %</i>	0.1							
	<i>Change on year</i>	-4	-4	0	1	-12	14	-4	-2
	<i>Change %</i>	-0.4	-0.5	-2.3	5.7	-4.5	20.3	-1.0	-1.7
Female jobs	Mar 99	857	855	8	3	129	16	359	340
	Mar 00	845	843	9	3	120	13	347	351
	Mar 01	843	841	8	3	108	14	359	349
	Jun 01	852	851	9	3	107	15	362	354
	Sep 01	852	850	9	3	105	16	362	355
	Dec 01	870	876	8	3	105	17	371	372
	Mar 02	866	865	7	3	102	16	363	372
	<i>Change on qtr</i>	-4							
	<i>Change %</i>	-0.4							
	<i>Change on year</i>	24	24	0	0	-6	2	5	23
	<i>Change %</i>	2.8	2.8	-5.9	7.5	-5.4	17.9	1.3	6.5

Relationship between columns: 2=3+4+5+6+7+8

Source: Employer surveys

Workforce jobs enquiries 01633 812318

Employee jobs figures are of a measure of jobs rather than people. For example, if a person holds two jobs, each job will be counted in the employee jobs total. Employees jobs figures come from quarterly surveys of employers carried out by Prices & Business Group (PBG) of ONS and Administrative returns.

The quarterly employer surveys used to compile employee jobs figures do not collect data by Government Office Regions (GOR). Instead, Annual Business Inquiry (ABI) data are used to pro-rate the totals obtained from the quarterly surveys to generate GOR data. This technique can lead to the sum of the industry figures not matching the "All jobs" total in column 2.

EMPLOYMENT

East Midlands

6 Actual weekly hours of work

(hours)

		Total weekly hours (millions)	Average actual weekly hours of work			Workers with second jobs
			All workers*	Full-time**	Part-time**	
			1	2	3	
People	Mar - May 1999	67	33.4	39.2	15.6	8.8
	Mar - May 2000	68	33.3	39.0	15.4	8.8
	Mar - May 2001	67	33.6	39.4	15.4	8.7
	Jun - Aug 2001	68	33.3	38.7	15.9	10.1
	Sep - Nov 2001	70	34.0	39.3	16.6	10.5
	Dec - Feb 2002	65	31.8	36.9	15.7	8.6
	Mar - May 2002	69	33.5	39.2	16.1	8.3
<i>Change on year</i>		1	-0.1	-0.2	0.6	-0.4
<i>Change %</i>		1.8	-0.3	-0.4	4.1	-4.7
Men	Mar - May 1999	43	39.0	41.0	15.1	8.6
	Mar - May 2000	43	38.9	40.9	14.1	7.8
	Mar - May 2001	44	39.3	41.2	13.8	9.3
	Jun - Aug 2001	44	39.2	40.9	14.8	11.3
	Sep - Nov 2001	45	39.5	41.2	15.6	12.3
	Dec - Feb 2002	41	36.8	38.6	14.1	11.2
	Mar - May 2002	44	38.9	40.9	13.9	9.7
<i>Change on year</i>		0	-0.5	-0.3	0.1	0.3
<i>Change %</i>		-0.2	-1.2	-0.8	1.0	3.7
Women	Mar - May 1999	24	26.6	35.4	15.7	8.9
	Mar - May 2000	24	26.4	35.0	15.7	9.4
	Mar - May 2001	24	26.4	35.3	15.8	8.3
	Jun - Aug 2001	23	25.9	34.0	16.2	9.3
	Sep - Nov 2001	25	27.1	35.2	16.8	9.3
	Dec - Feb 2002	23	25.7	33.3	16.1	7.1
	Mar - May 2002	25	27.0	35.6	16.5	7.4
<i>Change on year</i>		1	0.5	0.4	0.8	-0.8
<i>Change %</i>		5.5	2.1	1.0	0.0	-10.1

* main and second jobs

** main jobs only

Source: Labour Force Survey

Labour Market Statistics Helpline 020 7533 6094

The LFS sample population covers those living in private households, student halls of residence and NHS accommodation.

UNEMPLOYMENT

7 Claimant count*

East Midlands

(thousands), seasonally adjusted

		Claimant Count		Inflows (standardised**)	Outflows (standardised**)	Claimant Count (unadjusted)	
		Level	Rate (%) ^{##}	Level	Level	Level	Rate (%) ^{##}
		1	2	3	4	5	6
People	2001	DPAY	DPBJ			BCKC	DPAN
	August	62.3	3.1	15.1	15.7	63.4	3.2
	September#	61.8	3.1	15.1	15.6	60.5	3.0
	October	62.0	3.1	15.3	15.4	58.3	2.9
	November	61.9	3.1	15.1	15.4	58.1	2.9
	December#	61.1	3.0	14.9	15.7	59.2	3.0
	2002						
	January	59.9	3.0	14.8	15.1	65.0	3.2
	February#	59.0	2.9	14.4	15.1	65.3	3.3
	March	58.8	2.9	14.7	15.2	63.0	3.1
	April	59.0	2.9	15.0	14.9	61.7	3.1
	May	58.8	2.9	15.0	15.9	59.8	3.0
	June#	58.7	2.9	15.1	15.1	57.8	2.9
	July (r)	58.4	2.9	15.2	15.3	58.5	2.9
	August (p)	58.1	2.9	15.2	15.4	59.1	3.0
	Change on mth	-0.3	0.0	0.0	0.1	0.6	0.0
	Change %	-0.5		0.0	0.7	1.1	
	Change on year	-4.2	-0.2	0.1	-0.3	-4.3	-0.2
	Change %	-6.7		0.7	-1.9	-6.7	
	Men	2001	ZMPA	ZMPB			
August		46.7	4.3	10.6	11.1	46.3	4.3
September#		46.3	4.3	10.6	11.0	44.5	4.1
October		46.1	4.3	10.7	10.9	43.0	4.0
November		46.0	4.3	10.6	10.9	43.1	4.0
December#		45.3	4.2	10.5	11.1	44.3	4.1
2002							
January		44.6	4.1	10.5	10.6	48.5	4.5
February#		44.0	4.1	10.3	10.7	48.8	4.5
March		43.8	4.1	10.4	10.8	47.2	4.4
April		43.9	4.1	10.6	10.6	46.1	4.3
May		43.8	4.1	10.6	11.4	44.7	4.1
June#		43.8	4.1	10.7	10.7	43.1	4.0
July (r)		43.7	4.0	10.8	10.8	43.2	4.0
August (p)		43.5	4.0	10.8	11.0	43.4	4.0
Change on mth		-0.2	0.0	0.0	0.2	0.2	0.0
Change %		-0.5		0.0	1.9	0.4	
Change on year		-3.2	-0.3	0.2	-0.1	-3.0	-0.3
Change %		-6.9		1.9	-0.9	-6.4	
Women		2001	ZMPC	ZMPD			
	August	15.6	1.7	4.5	4.6	17.1	1.8
	September#	15.5	1.7	4.5	4.6	16.0	1.7
	October	15.9	1.7	4.6	4.5	15.3	1.7
	November	15.9	1.7	4.5	4.5	15.0	1.6
	December#	15.8	1.7	4.4	4.6	14.9	1.6
	2002						
	January	15.3	1.7	4.3	4.5	16.5	1.8
	February#	15.0	1.6	4.1	4.4	16.5	1.8
	March	15.0	1.6	4.3	4.4	15.8	1.7
	April	15.1	1.6	4.4	4.3	15.6	1.7
	May	15.0	1.6	4.4	4.5	15.1	1.6
	June#	14.9	1.6	4.4	4.4	14.7	1.6
	July (r)	14.7	1.6	4.4	4.5	15.3	1.7
	August (p)	14.6	1.6	4.4	4.4	15.8	1.7
	Change on mth	-0.1	0.0	0.0	-0.1	0.5	0.1
	Change %	-0.7		0.0	-2.2	3.2	
	Change on year	-1.0	-0.1	-0.1	-0.2	-1.3	-0.1
	Change %	-6.4		-2.2	-4.3	-7.6	

* Count of claimants of unemployment-related benefit, ie. Jobseeker's Allowance

Source: Jobcentre Plus administrative system

^{##}Denominator = Claimant count + Workforce jobs. See background note 7.

Labour Market Statistics Helpline 020 7533 6094

The claimant count inflows, standardised to a 4.33 week month but not seasonally adjusted, for August 2002 were 16,214 in total,

11,102 for men and 5,112 for women. The corresponding outflow figures were 10,820 men and 4,509 women.

** Flow figures are collected for 4 or 5 week periods between count dates; the figures are then converted to a standard 4 1/3 week month.

Months where there are 5 weeks between count dates. All the rest are 4 week periods.

UNEMPLOYMENT

East Midlands

8(1) Claimant count* by age and duration - computerised claims only

Thousands, not seasonally adjusted

	All ages							18-24						
	All	All computerised claims	Up to 6 months	Over 6 and up to 12 months	All over 12 months	% claiming for over 12 months	All over 24 months	All	Up to 6 months	Over 6 and up to 12 months	All over 12 months	% claiming for over 12 months	All over 24 months	
														1
People														
Aug 00	69.6	69.2	44.2	11.6	13.5	19.5	6.5	18.2	15.2	2.7	0.3	1.6	0.0	
Aug 01	63.4	62.9	40.9	10.7	11.3	17.9	5.1	16.7	14.0	2.4	0.3	1.6	0.0	
Sep 01#	60.5	60.0	38.8	10.2	10.9	18.2	5.0	15.9	13.4	2.2	0.3	1.7	0.0	
Oct 01	58.3	57.6	37.3	9.8	10.5	18.2	4.8	14.7	12.5	1.9	0.3	1.7	0.0	
Nov 01	58.1	57.4	38.1	9.2	10.1	17.6	4.5	14.6	12.6	1.8	0.2	1.5	0.0	
Dec 01#	59.2	58.6	39.6	9.0	9.9	16.9	4.3	14.9	12.8	1.9	0.2	1.6	0.0	
Jan 02	65.0	64.3	44.5	9.8	10.0	15.6	4.2	16.6	14.2	2.1	0.3	1.5	0.0	
Feb 02#	65.3	64.5	44.9	9.8	9.9	15.3	4.1	17.1	14.7	2.2	0.3	1.6	0.0	
Mar 02	63.0	62.2	43.0	9.8	9.4	15.1	3.6	16.6	14.0	2.3	0.3	1.7	0.0	
Apr 02	61.7	60.8	41.2	10.1	9.6	15.8	3.8	15.7	13.0	2.4	0.3	1.8	0.0	
May 02	59.8	58.9	39.4	10.1	9.4	15.9	3.7	15.2	12.5	2.5	0.3	1.7	0.0	
Jun 02#	57.8	56.9	37.6	10.1	9.2	16.1	3.5	14.5	11.8	2.4	0.3	1.8	0.0	
Jul 02	58.5	57.5	38.8	9.7	9.0	15.7	3.4	15.6	13.0	2.3	0.3	1.9	0.0	
Aug 02	59.1	58.2	39.8	9.5	8.9	15.2	3.3	16.1	13.6	2.2	0.3	1.9	0.0	
Change on year	-4.3	-4.7	-1.1	-1.2	-2.4	-2.7	-1.8	-0.6	-0.5	-0.2	0.0	0.2	0.0	
Change %	-6.7	-7.4	-2.7	-11.2	-21.3		-35.0	-3.7	-3.3	-7.4	10.2		-5.6	
Men														
Aug 00	51.3	51.0	31.0	8.9	11.1	21.8	5.5	12.2	10.2	1.9	0.2	1.5	0.0	
Aug 01	46.3	46.0	28.5	8.2	9.2	20.1	4.3	11.2	9.3	1.7	0.2	1.7	0.0	
Sep 01#	44.5	44.1	27.2	7.9	9.0	20.4	4.2	10.6	8.9	1.5	0.2	1.7	0.0	
Oct 01	43.0	42.5	26.4	7.5	8.7	20.4	4.0	9.8	8.3	1.3	0.2	1.8	0.0	
Nov 01	43.1	42.6	27.2	7.1	8.3	19.6	3.8	9.9	8.5	1.2	0.2	1.5	0.0	
Dec 01#	44.3	43.8	28.8	6.9	8.1	18.6	3.6	10.3	8.9	1.3	0.2	1.6	0.0	
Jan 02	48.5	48.0	32.4	7.4	8.3	17.2	3.5	11.4	9.8	1.4	0.2	1.5	0.0	
Feb 02#	48.8	48.2	32.7	7.4	8.1	16.8	3.4	11.8	10.2	1.4	0.2	1.6	0.0	
Mar 02	47.2	46.5	31.5	7.4	7.7	16.5	3.0	11.4	9.7	1.5	0.2	1.6	0.0	
Apr 02	46.1	45.5	30.1	7.6	7.8	17.2	3.2	10.8	9.0	1.6	0.2	1.6	0.0	
May 02	44.7	44.0	28.7	7.6	7.6	17.4	3.0	10.4	8.6	1.7	0.2	1.5	0.0	
Jun 02#	43.1	42.4	27.2	7.8	7.4	17.5	2.9	9.9	8.1	1.7	0.2	1.6	0.0	
Jul 02	43.2	42.4	27.7	7.5	7.3	17.2	2.8	10.4	8.7	1.6	0.2	1.8	0.0	
Aug 02	43.4	42.6	28.2	7.3	7.2	16.8	2.8	10.7	9.0	1.5	0.2	1.7	0.0	
Change on year	-3.0	-3.3	-0.3	-1.0	-2.1	-3.3	-1.5	-0.4	-0.2	-0.2	0.0	0.0	0.0	
Change %	-6.4	-7.3	-1.0	-11.8	-22.4		-35.3	-3.7	-2.5	-10.0	-2.6		50.0	
Women														
Aug 00	18.3	18.2	13.2	2.7	2.4	13.1	1.0	5.9	5.0	0.8	0.1	1.8	0.0	
Aug 01	17.1	16.9	12.5	2.5	2.0	11.9	0.8	5.6	4.8	0.7	0.1	1.5	0.0	
Sep 01#	16.0	15.9	11.6	2.4	1.9	12.2	0.8	5.3	4.5	0.7	0.1	1.5	0.0	
Oct 01	15.3	15.1	11.0	2.3	1.8	12.1	0.8	4.8	4.1	0.6	0.1	1.6	0.0	
Nov 01	15.0	14.8	10.9	2.1	1.8	11.9	0.8	4.8	4.1	0.6	0.1	1.5	0.0	
Dec 01#	14.9	14.7	10.8	2.2	1.7	11.8	0.7	4.6	3.9	0.6	0.1	1.6	0.0	
Jan 02	16.5	16.3	12.2	2.4	1.8	10.9	0.7	5.2	4.4	0.7	0.1	1.5	0.0	
Feb 02#	16.5	16.3	12.1	2.4	1.8	10.9	0.7	5.3	4.5	0.7	0.1	1.7	0.0	
Mar 02	15.8	15.6	11.5	2.4	1.7	10.9	0.6	5.2	4.3	0.8	0.1	1.8	0.0	
Apr 02	15.6	15.4	11.1	2.5	1.8	11.5	0.6	4.9	4.0	0.8	0.1	2.1	0.0	
May 02	15.1	14.9	10.7	2.5	1.7	11.6	0.6	4.8	3.9	0.8	0.1	2.0	0.0	
Jun 02#	14.7	14.5	10.4	2.4	1.7	12.0	0.6	4.6	3.8	0.8	0.1	2.1	0.0	
Jul 02	15.3	15.1	11.1	2.3	1.7	11.5	0.6	5.2	4.3	0.7	0.1	2.1	0.0	
Aug 02	15.8	15.6	11.7	2.2	1.7	10.9	0.6	5.3	4.5	0.7	0.1	2.2	0.0	
Change on year	-1.3	-1.3	-0.8	-0.2	-0.3	-1.1	-0.3	-0.2	-0.2	0.0	0.0	0.7	0.0	
Change %	-7.6	-8.0	-6.4	-9.3	-16.1		-33.5	-3.6	-4.7	-1.3	39.8		-50.0	

* Count of claimants of unemployment-related benefits, ie. Jobseeker's Allowance

Source: Jobcentre Plus administrative system

Relationship between columns: 2= 3+4+5; 8= 9+10+11

Labour Market Statistics Helpline 020 7533 6094

Months where there are 5 weeks between count dates. All the rest are 4 week periods.

Only computerised claims are analysed by age and duration on a monthly basis. These figures therefore differ in total from those given in table 7. The latter include clerically processed claims which currently amount to less than 1 per cent of the total claimant count. See background note 8.

UNEMPLOYMENT

East Midlands

8(2) Claimant count* by age and duration - computerised claims only

Thousands, not seasonally adjusted

	25-49						50 and over					
	All	Up to 6 months	Over 6 and up to 12 months	All over 12 months	% claiming for over 12 months	All over 24 months	All	Up to 6 months	Over 6 and up to 12 months	All over 12 months	% claiming for over 12 months	All over 24 months
	14	15	16	17	18	19	20	21	22	23	24	25
People												
Aug 00	38.1	21.9	6.9	9.4	24.6	4.3	12.3	6.5	2.0	3.8	31.2	2.2
Aug 01	34.4	20.3	6.4	7.7	22.4	3.3	11.2	6.1	1.8	3.3	29.2	1.8
Sep 01#	33.0	19.3	6.2	7.5	22.6	3.2	10.6	5.6	1.8	3.2	30.3	1.8
Oct 01	31.9	18.7	6.0	7.1	22.3	3.0	10.5	5.6	1.8	3.1	29.6	1.7
Nov 01	31.7	19.2	5.7	6.9	21.6	2.8	10.5	5.8	1.7	3.0	28.8	1.7
Dec 01#	32.3	20.1	5.5	6.6	20.6	2.6	10.8	6.1	1.6	3.0	27.9	1.7
Jan 02	35.3	22.7	5.9	6.7	19.0	2.5	11.9	7.1	1.7	3.1	26.1	1.7
Feb 02#	35.0	22.6	5.8	6.5	18.7	2.4	11.6	6.8	1.8	3.1	26.4	1.7
Mar 02	33.5	21.6	5.8	6.1	18.3	2.0	11.3	6.5	1.7	3.0	26.5	1.6
Apr 02	33.2	21.2	5.8	6.2	18.7	2.1	11.2	6.2	1.8	3.1	27.8	1.7
May 02	32.0	20.1	5.8	6.0	18.8	2.0	10.9	6.0	1.8	3.1	28.4	1.7
Jun 02#	31.1	19.4	5.9	5.8	18.7	1.9	10.5	5.7	1.8	3.1	29.1	1.6
Jul 02	30.8	19.4	5.7	5.7	18.5	1.8	10.4	5.7	1.7	3.1	29.2	1.6
Aug 02	30.9	19.7	5.6	5.5	18.0	1.7	10.6	6.0	1.6	3.0	28.5	1.6
<i>Change on year</i>	-3.6	-0.6	-0.8	-2.2	-4.5	-1.6	-0.6	-0.1	-0.2	-0.2	-0.7	-0.2
<i>Change %</i>	-10.3	-2.7	-12.8	-28.2		-48.3	-5.1	-1.9	-11.6	-7.5		-11.0
Men												
Aug 00	29.6	16.1	5.6	7.9	26.7	3.7	8.9	4.4	1.4	3.0	34.0	1.8
Aug 01	26.6	14.8	5.2	6.5	24.5	2.8	7.9	4.1	1.3	2.5	31.9	1.5
Sep 01#	25.7	14.3	5.1	6.3	24.6	2.7	7.6	3.8	1.3	2.5	32.8	1.4
Oct 01	24.9	13.9	4.9	6.1	24.4	2.6	7.5	3.8	1.3	2.4	32.1	1.4
Nov 01	24.8	14.4	4.6	5.8	23.5	2.4	7.6	4.1	1.2	2.4	30.9	1.4
Dec 01#	25.4	15.3	4.4	5.7	22.2	2.2	7.8	4.3	1.2	2.3	29.8	1.3
Jan 02	27.7	17.3	4.7	5.7	20.5	2.2	8.7	5.0	1.3	2.4	27.8	1.4
Feb 02#	27.5	17.3	4.7	5.5	20.2	2.0	8.5	4.8	1.3	2.4	27.8	1.4
Mar 02	26.4	16.6	4.6	5.2	19.7	1.8	8.2	4.7	1.3	2.3	27.8	1.3
Apr 02	26.1	16.2	4.6	5.3	20.1	1.8	8.2	4.5	1.3	2.4	29.3	1.3
May 02	25.1	15.4	4.6	5.1	20.2	1.7	8.0	4.3	1.3	2.4	29.9	1.3
Jun 02#	24.4	14.7	4.8	4.9	20.0	1.6	7.7	4.1	1.3	2.4	30.7	1.3
Jul 02	24.0	14.6	4.6	4.8	19.8	1.5	7.6	4.0	1.3	2.3	30.9	1.3
Aug 02	23.9	14.7	4.5	4.7	19.5	1.5	7.6	4.1	1.2	2.3	30.6	1.3
<i>Change on year</i>	-2.6	-0.1	-0.7	-1.9	-5.1	-1.4	-0.3	0.0	-0.1	-0.2	-1.3	-0.2
<i>Change %</i>	-9.9	-0.4	-13.6	-28.6		-47.9	-4.0	-0.6	-7.0	-7.8		-11.5
Women												
Aug 00	8.5	5.8	1.3	1.5	17.0	0.6	3.4	2.1	0.6	0.8	24.0	0.4
Aug 01	7.9	5.5	1.2	1.2	15.3	0.5	3.2	2.0	0.5	0.7	22.8	0.4
Sep 01#	7.3	5.0	1.2	1.1	15.5	0.5	3.0	1.8	0.5	0.7	23.8	0.3
Oct 01	7.0	4.8	1.1	1.1	15.1	0.4	3.0	1.8	0.5	0.7	23.1	0.3
Nov 01	6.9	4.8	1.1	1.0	14.8	0.4	2.9	1.7	0.5	0.7	23.3	0.3
Dec 01#	6.9	4.8	1.1	1.0	14.3	0.4	2.9	1.8	0.5	0.7	22.8	0.3
Jan 02	7.6	5.4	1.2	1.0	13.3	0.4	3.2	2.1	0.5	0.7	21.5	0.3
Feb 02#	7.5	5.4	1.2	1.0	13.2	0.3	3.1	1.9	0.5	0.7	22.5	0.3
Mar 02	7.1	5.0	1.2	0.9	13.0	0.3	3.0	1.8	0.5	0.7	23.0	0.3
Apr 02	7.1	5.0	1.2	0.9	13.3	0.3	3.0	1.8	0.5	0.7	24.0	0.3
May 02	6.8	4.7	1.2	0.9	13.5	0.3	2.9	1.7	0.5	0.7	24.4	0.3
Jun 02#	6.7	4.6	1.1	0.9	14.0	0.3	2.8	1.6	0.5	0.7	24.7	0.3
Jul 02	6.8	4.8	1.1	0.9	13.6	0.3	2.8	1.7	0.4	0.7	24.6	0.3
Aug 02	7.0	5.0	1.1	0.9	12.8	0.2	3.0	1.9	0.4	0.7	23.2	0.3
<i>Change on year</i>	-0.9	-0.5	-0.1	-0.3	-2.5	-0.2	-0.3	-0.1	-0.1	0.0	0.4	0.0
<i>Change %</i>	-11.7	-9.1	-9.4	-25.9		-50.7	-7.9	-4.6	-22.7	-6.3		-9.3

* Count of claimants of unemployment-related benefits, ie. Jobseeker's Allowance

Source: Jobcentre Plus administrative system

Relationship between columns: 14=15+16+17; 20=21+22=23

Labour Market Statistics Helpline 020 7533 6094

Months where there are 5 weeks between count dates. All the rest are 4 week periods.

Only computerised claims are analysed by age and duration on a monthly basis. These figures therefore differ in total from those given in table 7. The latter include clerically processed claims which currently amount to less than 1 per cent of the total claimant count. See background note 8.

ECONOMIC ACTIVITY AND INACTIVITY

East Midlands

9 Economic activity by age

(thousands), not seasonally adjusted

		All aged 16 & over	16 - 59/64	16 - 17	18 - 24	25 - 34	35 - 49	50 - 64 (m) 50 - 59 (w)	65+ (m) & 60+ (w)
		1	2	3	4	5	6	7	8
Economically active									
People	Mar - May 1999	2,099	2,048	61	257	524	771	436	51
	Mar - May 2000	2,140	2,083	61	250	524	781	467	57
	Mar - May 2001	2,111	2,061	59	248	499	785	470	50
	Jun - Aug 2001	2,142	2,088	63	276	492	783	473	54
	Sep - Nov 2001	2,158	2,102	61	283	492	794	473	56
	Dec - Feb 2002	2,134	2,079	60	269	477	799	474	55
	Mar - May 2002	2,140	2,082	56	253	486	809	479	58
	<i>Change on year</i>	29	21	-3	5	-13	24	8	8
<i>Change %</i>	1.4	1.0	-5.0	2.1	-2.6	3.0	1.7	15.3	
Men	Mar - May 1999	1,166	1,147	34	138	292	415	269	18
	Mar - May 2000	1,187	1,165	26	145	291	418	285	22
	Mar - May 2001	1,178	1,158	27	140	283	427	281	19
	Jun - Aug 2001	1,191	1,170	32	149	281	424	283	21
	Sep - Nov 2001	1,192	1,169	32	152	276	427	283	22
	Dec - Feb 2002	1,184	1,163	29	148	270	433	282	21
	Mar - May 2002	1,184	1,166	29	137	273	438	289	19
	<i>Change on year</i>	7	8	2	-3	-10	11	8	-1
<i>Change %</i>	0.6	0.7	6.7	-2.2	-3.6	2.6	2.7	-3.6	
Women	Mar - May 1999	934	901	27	119	232	356	167	33
	Mar - May 2000	953	918	35	105	233	363	182	35
	Mar - May 2001	933	903	31	107	216	359	189	30
	Jun - Aug 2001	951	918	31	127	211	359	190	33
	Sep - Nov 2001	967	933	29	131	216	367	190	34
	Dec - Feb 2002	950	916	31	121	207	366	192	34
	Mar - May 2002	955	917	27	116	213	371	190	39
	<i>Change on year</i>	22	14	-5	8	-3	13	1	8
<i>Change %</i>	2.4	1.5	-15.1	7.7	-1.3	3.5	0.3	27.5	
Economic activity rates (%)⁺									
People	Mar - May 1999	63.8	80.1	61.3	75.1	84.6	87.9	70.4	6.9
	Mar - May 2000	64.6	81.1	62.6	72.6	86.9	87.7	73.6	7.6
	Mar - May 2001	63.3	79.5	57.1	71.9	83.8	87.1	72.8	6.7
	Jun - Aug 2001	64.1	80.4	60.7	80.1	82.8	86.6	72.9	7.3
	Sep - Nov 2001	64.5	80.8	62.6	79.9	83.3	87.4	72.6	7.6
	Dec - Feb 2002	63.7	79.8	61.9	75.4	81.5	87.7	72.4	7.4
	Mar - May 2002	63.8	79.8	55.4	71.1	83.6	88.5	72.9	7.7
	<i>Change on year</i>	0.5	0.3	-1.7	-0.8	-0.2	1.4	0.1	1.0
Men	Mar - May 1999	72.0	85.3	68.1	77.8	92.7	93.9	74.5	6.6
	Mar - May 2000	72.9	86.2	60.5	78.9	94.9	93.1	77.3	7.9
	Mar - May 2001	71.7	85.0	51.1	79.3	93.5	93.7	75.0	7.0
	Jun - Aug 2001	72.3	85.6	60.5	83.8	93.3	92.8	75.2	7.6
	Sep - Nov 2001	72.2	85.5	63.4	83.3	92.3	93.0	74.8	7.9
	Dec - Feb 2002	71.6	84.8	60.0	79.9	91.1	94.0	74.3	7.5
	Mar - May 2002	71.5	84.9	56.4	74.7	92.6	94.6	75.9	6.6
	<i>Change on year</i>	-0.1	-0.1	5.4	-4.5	-1.0	0.9	1.0	-0.3
Women	Mar - May 1999	55.8	74.3	54.6	72.3	76.1	81.8	64.7	7.1
	Mar - May 2000	56.7	75.4	64.3	65.4	78.7	82.2	68.5	7.5
	Mar - May 2001	55.2	73.5	63.6	64.2	73.7	80.3	69.7	6.6
	Jun - Aug 2001	56.1	74.6	61.0	76.2	72.0	80.2	69.7	7.1
	Sep - Nov 2001	57.0	75.7	61.9	76.3	74.1	81.7	69.4	7.3
	Dec - Feb 2002	56.0	74.2	63.9	70.5	71.6	81.1	69.7	7.4
	Mar - May 2002	56.2	74.1	54.4	67.3	74.3	82.1	68.7	8.4
	<i>Change on year</i>	1.0	0.6	-9.2	3.1	0.7	1.8	-1.0	1.8

Relationship between columns: 1=2+8; 2=3+4+5+6+7

Source: Labour Force Survey

⁺ Denominator = all persons in relevant age group

Labour Market Statistics Helpline 020 7533 6094

The LFS sample population covers those living in private households, student halls of residence and NHS accommodation.

ECONOMIC ACTIVITY AND INACTIVITY

East Midlands

10 Economic inactivity by age

(thousands), not seasonally adjusted

		All aged 16 & over	16 - 59/64	16 - 17	18 - 24	25 - 34	35 - 49	50 - 64 (m) 50 - 59 (w)	65+ (m) & 60+ (w)
		1	2	3	4	5	6	7	8
Economically inactive									
People	Mar - May 1999	1,193	509	38	85	96	106	183	684
	Mar - May 2000	1,170	487	36	94	79	110	167	683
	Mar - May 2001	1,223	530	44	97	97	116	176	693
	Jun - Aug 2001	1,199	509	41	69	102	122	176	690
	Sep - Nov 2001	1,187	499	36	71	98	114	179	689
	Dec - Feb 2002	1,217	526	37	88	108	112	181	691
	Mar - May 2002	1,216	527	45	103	95	106	178	689
	<i>Change on year</i>	-7	-3	1	6	-1	-11	2	-4
	<i>Change %</i>	-0.6	-0.7	1.7	6.3	-1.3	-9.4	1.0	-0.6
Men	Mar - May 1999	453	197	16	39	23	27	92	256
	Mar - May 2000	441	187	17	39	16	31	84	255
	Mar - May 2001	465	205	26	37	20	29	94	260
	Jun - Aug 2001	455	196	21	29	20	33	93	259
	Sep - Nov 2001	458	199	18	30	23	32	95	259
	Dec - Feb 2002	469	208	20	37	26	27	97	261
	Mar - May 2002	471	207	22	46	22	25	92	264
	<i>Change on year</i>	6	2	-4	10	2	-4	-2	4
	<i>Change %</i>	1.3	1.1	-14.0	26.5	12.1	-13.5	-2.6	1.4
Women	Mar - May 1999	740	311	23	46	73	79	91	428
	Mar - May 2000	729	300	19	56	63	79	84	429
	Mar - May 2001	758	325	18	60	77	88	82	433
	Jun - Aug 2001	744	313	20	40	82	89	83	431
	Sep - Nov 2001	730	300	18	41	75	82	84	430
	Dec - Feb 2002	748	318	17	51	82	85	83	430
	Mar - May 2002	745	320	22	56	74	81	86	425
	<i>Change on year</i>	-13	-6	4	-4	-4	-7	4	-8
	<i>Change %</i>	-1.8	-1.7	24.4	-6.1	-4.6	-8.0	5.1	-1.8

Relationship between columns: 1=2+8; 2=3+4+5+6+7

Source: Labour Force Survey

Labour Market Statistics Helpline 020 7533 6094

The LFS sample population covers those living in private households, student halls of residence and NHS accommodation.

ECONOMIC ACTIVITY AND INACTIVITY

East Midlands

11 Economic inactivity: reasons

(thousands), not seasonally adjusted

		Breakdown of total aged 16-59/64										
		Total aged 16 & over	Total aged 16-59/64	Does not want job	Wants a job	Wants job but not seeking in last 4 weeks						
						Total	Availability to start work in next 2 weeks		Reasons for not seeking			
							Available	Not available	Long-term sick	Looking after family /home	Students	Other [#]
		1	2	3	4	5	6	7	8	9	10	11
People	Mar - May 1999	1,193	509	364	145	129	40	89	47	43	12	27
	Mar - May 2000	1,170	487	350	136	124	33	90	47	32	15	29
	Mar - May 2001	1,223	530	396	134	117	34	83	41	35	18	22
	Jun - Aug 2001	1,199	509	382	127	113	37	76	41	43	13	17
	Sep - Nov 2001	1,187	499	375	124	115	31	84	40	41	15	19
	Dec - Feb 2002	1,217	526	386	140	130	38	92	45	44	19	22
	Mar - May 2002	1,216	527	385	142	125	38	86	45	35	23	22
	<i>Change on year</i>	-7	-3	-11	8	8	5	3	3	0	4	0
<i>Change %</i>	-0.6	-0.7	-2.8	5.7	6.8	14.2	3.7	8.4	-0.5	24.2	0.6	
Men	Mar - May 1999	453	197	139	59	53	14	39	30	*	*	11
	Mar - May 2000	441	187	127	60	55	17	38	30	*	*	12
	Mar - May 2001	465	205	150	55	48	11	37	25	*	10	11
	Jun - Aug 2001	455	196	149	48	44	13	31	24	*	*	7
	Sep - Nov 2001	458	199	150	49	45	12	34	23	*	*	8
	Dec - Feb 2002	469	208	150	58	52	14	38	29	*	12	*
	Mar - May 2002	471	207	151	56	50	16	33	24	*	14	*
	<i>Change on year</i>	6	2	1	1	1	5	-4	-1	*	4	*
<i>Change %</i>	1.3	1.1	0.6	2.2	3.0	49.4	-10.5	-3.1	*	39.2	*	
Women	Mar - May 1999	740	311	225	86	76	25	50	17	38	*	16
	Mar - May 2000	729	300	223	77	69	16	53	17	29	*	17
	Mar - May 2001	758	325	246	80	69	23	46	17	33	*	10
	Jun - Aug 2001	744	313	233	80	69	24	46	16	38	*	10
	Sep - Nov 2001	730	300	225	75	70	19	51	17	36	*	10
	Dec - Feb 2002	748	318	236	82	78	24	54	16	40	*	14
	Mar - May 2002	745	320	234	86	75	22	53	21	32	*	13
	<i>Change on year</i>	-13	-6	-12	6	6	-1	7	4	-1	*	3
<i>Change %</i>	-1.8	-1.7	-4.9	8.1	9.4	-2.7	15.4	24.9	-2.8	*	24.6	

Relationship between columns: 2=3+4; 5=6+7; 8=9+10+11

Source: Labour Force Survey

[#] other includes discouraged workers

Labour Market Statistics Helpline 020 7533 6094

The LFS sample population covers those living in private households, student halls of residence and NHS accommodation.

OTHER LABOUR MARKET STATISTICS

East Midlands

12 Jobcentre vacancies

(thousands), seasonally adjusted

	Vacancies Notified		Vacancies unfilled		Vacancy outflow		Of which: Vacancies filled by Jobcentres	
	Level	Change on month	Level	Change on month	Level	Change on month	Level	Change on month
	1	2	3	4	5	6	7	8
2000	DRYM		BCQF		DRZB		DRZQ	
August	13.5	-0.5	22.5	-0.4	13.9	-0.1	6.7	-0.1

2001

August

September

October

November

December

Publication of these vacancy statistics has been deferred.

Figures from May 2001 are affected by the introduction of Employer Direct - see note on page 5.

2002

January

February

March

April

May

June

July

August

Change on year

Change on year %

Source: Jobcentre Plus administrative system

Labour Market Statistics Helpline 020 7533 6094

SUMMARY

East Midlands

13 Local area labour market summary

(thousands), not seasonally adjusted

ANNUAL LOCAL AREA LABOUR FORCE SURVEY 2000 DATA+

	ANNUAL LOCAL AREA LABOUR FORCE SURVEY 2000 DATA+														
	Economic activity					Employment				ILO unemployment				Economic inactivity	
	Total aged 16 & over	Total	SV (+/-)	Rate (%) 16-59/64	SV (%) (+/-)	Total	SV (+/-)	Rate (%) (16-59/64)	SV (%) (+/-)	Total	SV (+/-)	Rate (%) 16+	SV (%) (+/-)	Total	SV (+/-)
1	2	3	4	5	6	7	8	9	10	11	12	13	14	15	
EAST MIDLANDS	3,318	2,107	22	79.5	0.8	2,012	23	75.8	0.9	95	10	4.5	0.5	1,211	22
Derby UA	184	113	5	76.2	3.1	107	5	72.5	3.3	6	2	5.1	1.7	71	5
Leicester UA	223	130	5	70.9	2.8	119	6	64.7	3.1	11	3	8.5	2.1	93	5
Nottingham UA	226	125	6	69.7	3.4	115	6	63.7	3.5	11	3	8.5	2.1	101	6
Rutland UA	30	20	1	82.8	3.7	20	1	80.6	4.0	*	*	*	*	10	1
Derbyshire	590	375	10	80.6	2.0	359	10	77.0	2.1	16	4	4.3	1.2	215	10
Amber Valley	98	61	4	80.2	4.9	57	4	75.1	5.3	*	*	*	*	37	4
Bolsover	57	33	3	75.0	7.0	31	3	70.0	7.8	*	*	*	*	24	3
Chesterfield	78	49	4	79.4	5.9	47	4	75.4	6.5	*	*	*	*	28	4
Derbyshire Dales	57	37	3	83.5	5.8	36	3	82.2	5.6	*	*	*	*	20	3
Erewash	82	53	4	80.5	5.9	51	4	77.1	6.2	*	*	*	*	29	4
High Peak	68	48	3	83.8	5.3	47	3	81.4	5.5	*	*	*	*	20	3
North East Derbyshire	84	50	3	79.7	5.3	47	4	75.3	5.9	*	*	*	*	34	3
South Derbyshire	66	43	3	82.3	5.5	42	3	80.5	5.8	*	*	*	*	23	3
Leicestershire	489	328	9	83.4	2.2	318	9	80.8	2.3	10	3	2.9	1.0	161	9
Blaby	70	47	3	83.5	5.7	45	4	79.9	6.1	*	*	*	*	23	3
Charnwood	126	85	5	82.6	4.9	83	5	80.0	5.1	*	*	*	*	41	5
Harborough	65	42	4	82.1	6.0	41	4	80.3	6.2	*	*	*	*	23	4
Hinckley and Bosworth	79	55	3	87.4	4.2	54	3	85.9	4.4	*	*	*	*	24	3
Melton	37	26	2	86.9	6.4	25	2	83.6	6.8	*	*	*	*	11	2
North West Leicestershire	68	44	3	80.8	5.5	43	3	77.5	6.0	*	*	*	*	24	3
Oadby and Wigston	43	28	2	80.9	6.7	27	3	79.1	7.1	*	*	*	*	16	2
Lincolnshire	505	309	9	79.5	2.1	296	9	76.1	2.3	13	4	4.3	1.2	196	9
Boston	47	27	3	78.2	7.9	26	3	75.8	8.4	*	*	*	*	20	3
East Lindsey	99	56	4	75.7	4.9	52	4	70.3	5.2	*	*	*	*	43	4
Lincoln	65	41	3	77.9	5.6	40	3	75.9	6.0	*	*	*	*	24	3
North Kesteven	73	46	4	82.8	5.9	45	4	79.9	6.3	*	*	*	*	27	4
South Holland	59	37	3	79.7	6.7	35	3	77.3	6.7	*	*	*	*	23	3
South Kesteven	100	64	4	82.0	4.7	61	4	77.3	5.4	*	*	*	*	35	4
West Lindsey	61	38	3	79.9	6.0	36	3	77.4	6.7	*	*	*	*	24	3
Northamptonshire	482	337	8	84.7	2.0	325	9	81.4	2.2	13	4	3.8	1.3	145	8
Corby	39	26	2	82.8	6.2	24	2	77.1	7.6	*	*	*	*	14	2
Daventry	52	38	3	83.7	6.3	37	3	81.1	6.7	*	*	*	*	14	3
East Northamptonshire	63	39	3	82.3	6.6	38	3	79.5	6.6	*	*	*	*	24	3
Kettering	68	46	3	87.8	6.0	44	3	83.9	6.3	*	*	*	*	22	3
Northampton	149	105	5	82.6	3.8	100	5	78.2	4.2	*	*	*	*	44	5
South Northamptonshire	61	46	3	89.3	5.3	45	3	87.5	5.8	*	*	*	*	15	3
Wellingborough	49	37	2	86.9	5.2	37	2	86.4	5.3	*	*	*	*	12	2
Nottinghamshire	589	370	10	78.7	2.1	355	11	75.4	2.2	15	4	4.1	1.1	220	10
Ashfield	82	55	4	80.9	5.3	52	3	76.7	5.4	*	*	*	*	27	4
Bassetlaw	86	49	4	73.7	5.9	46	4	70.3	6.5	*	*	*	*	37	4
Broxtowe	92	56	4	80.4	6.1	54	4	76.6	6.2	*	*	*	*	36	4
Gedling	89	60	3	85.6	4.7	58	4	83.0	5.2	*	*	*	*	30	3
Mansfield	76	43	4	71.1	5.8	42	4	68.4	6.3	*	*	*	*	33	4
Newark and Sherwood	81	51	4	76.6	5.4	48	4	73.2	5.7	*	*	*	*	31	4
Rushcliffe	83	56	3	81.4	5.0	54	4	79.0	5.4	*	*	*	*	27	3

Relationship between columns: 1= 2+14; 2= 6+10; 12=10/2.

Source: Labour Force Survey

SV - Sampling variability; see background note 4

+ Data relate to the period March 2000 to February 2001

* Sample size too small for reliable estimates

Labour Market Statistics Helpline 020 7533 6094

The LFS sample population covers those living in private households, student halls of residence and NHS accommodation.

UNEMPLOYMENT: LOCAL AREA DATA

East Midlands

14 Claimant count* by local area

not seasonally adjusted

	CLAIMANT COUNT ON 8 AUGUST 2002						Change on year					
	Levels			Rates(%) [#]			Levels			Rates		
	Men	Women	People	Men	Women	People	Men	Women	People	Men	Women	People
	1	2	3	4	5	6	7	8	9	10	11	12
Regional total	43,373	15,774	59,147	4.0	1.7	3.0	-2,973	-1,295	-4,268	-0.3	-0.1	-0.2
Derby UA	3,711	1,244	4,955	5.0	2.1	3.7	-257	22	-235	-0.3	0.0	-0.2
Leicester UA	6,158	2,089	8,247	7.1	2.5	4.9	245	-41	204	0.3	0.0	0.1
Nottingham UA	5,742	1,661	7,403	6.5	1.8	4.1	-231	-16	-247	-0.3	0.0	-0.1
Rutland UA	87	31	118	0.8	0.4	0.7	15	-9	6	0.1	-0.1	0.0
Derbyshire	6,898	2,627	9,525	3.8	1.8	2.9	-1,119	-393	-1,512	-0.6	-0.3	-0.5
Amber Valley	940	365	1,305	2.5	1.4	2.0	-156	-57	-213	-0.4	-0.2	-0.3
Bolsover	839	302	1,141	7.4	2.9	5.3	-177	-101	-278	-1.6	-1.0	-1.3
Chesterfield	1,532	565	2,097	5.4	2.2	3.9	-393	-61	-454	-1.4	-0.2	-0.8
Derbyshire Dales	353	143	496	1.6	0.7	1.2	-70	-10	-80	-0.3	-0.1	-0.2
Erewash	1,071	388	1,459	4.3	1.9	3.2	-15	-49	-64	-0.1	-0.2	-0.1
High Peak	580	227	807	2.6	1.2	1.9	-90	-77	-167	-0.4	-0.4	-0.4
North East Derbyshire	1,096	382	1,478	5.7	2.6	4.4	-199	-56	-255	-1.0	-0.4	-0.8
South Derbyshire	487	255	742	3.2	2.0	2.7	-19	18	-1	-0.1	0.1	0.0
Leicestershire	4,029	1,746	5,775	2.7	1.5	2.2	-83	-107	-190	-0.1	-0.1	-0.1
Blaby	503	255	758	2.4	1.5	2.0	12	35	47	0.1	0.2	0.1
Charnwood	1,366	540	1,906	3.9	1.9	3.0	-5	-70	-75	0.0	-0.2	-0.1
Harborough	324	153	477	1.7	1.1	1.5	-19	-13	-32	-0.1	-0.1	-0.1
Hinckley and Bosworth	590	260	850	2.2	1.3	1.8	-48	-64	-112	-0.2	-0.3	-0.2
Melton	223	105	328	1.9	1.0	1.5	-16	3	-13	-0.1	0.0	-0.1
North West Leicestershire	534	257	791	2.3	1.4	1.9	-25	1	-24	-0.1	0.0	-0.1
Oadby and Wigston	489	176	665	4.8	1.5	3.0	18	1	19	0.2	0.0	0.1
Lincolnshire	4,688	1,856	6,544	3.1	1.4	2.3	-317	-160	-477	-0.2	-0.1	-0.2
Boston	303	133	436	2.1	1.0	1.6	-6	-5	-11	0.0	0.0	0.0
East Lindsey	853	335	1,188	3.2	1.5	2.4	-60	-20	-80	-0.2	-0.1	-0.2
Lincoln	1,259	345	1,604	4.8	1.2	2.9	-94	-82	-176	-0.4	-0.3	-0.3
North Kesteven	482	227	709	2.3	1.5	2.0	-1	-2	-3	0.0	0.0	0.0
South Holland	332	193	525	1.6	1.3	1.5	-4	5	1	0.0	0.0	0.0
South Kesteven	678	288	966	2.3	1.1	1.7	-79	-31	-110	-0.3	-0.1	-0.2
West Lindsey	781	335	1,116	5.4	2.9	4.3	-73	-25	-98	-0.5	-0.2	-0.4
Northamptonshire	5,041	1,966	7,007	2.7	1.3	2.1	-246	-86	-332	-0.1	-0.1	-0.1
Corby	565	209	774	3.0	1.4	2.3	-80	-9	-89	-0.4	-0.1	-0.3
Daventry	351	190	541	1.7	1.2	1.5	-26	-32	-58	-0.1	-0.2	-0.2
East Northamptonshire	453	218	671	2.5	1.8	2.2	-35	17	-18	-0.2	0.1	-0.1
Kettering	536	233	769	2.6	1.2	1.9	-32	-5	-37	-0.2	0.0	-0.1
Northampton	2,218	742	2,960	3.3	1.2	2.3	-73	-42	-115	-0.1	-0.1	-0.1
South Northamptonshire	285	116	401	1.6	0.8	1.2	45	-10	35	0.3	-0.1	0.1
Wellingborough	633	258	891	2.9	1.6	2.4	-45	-5	-50	-0.2	0.0	-0.1
Nottinghamshire	7,019	2,554	9,573	4.5	2.0	3.3	-980	-505	-1,485	-0.6	-0.4	-0.5
Ashfield	1,316	488	1,804	5.0	2.4	3.9	-296	-112	-408	-1.1	-0.6	-0.9
Bassetlaw	1,189	520	1,709	4.2	2.6	3.5	-279	-102	-381	-1.0	-0.5	-0.8
Broxtowe	923	355	1,278	4.5	2.2	3.5	56	-26	30	0.3	-0.2	0.1
Gedling	999	355	1,354	4.9	2.0	3.6	-11	-27	-38	-0.1	-0.2	-0.1
Mansfield	1,215	375	1,590	6.1	2.2	4.3	-249	-110	-359	-1.3	-0.6	-1.0
Newark and Sherwood	780	246	1,026	3.7	1.5	2.7	-165	-117	-282	-0.8	-0.7	-0.8
Rushcliffe	597	215	812	2.9	1.0	1.9	-36	-11	-47	-0.2	0.0	-0.1

* Count of claimants of unemployment-related benefit, ie. Jobseeker's Allowance

Relationship between columns = 3=1+2; 9=7+8

Denominator = Claimant count + Workforce jobs. See background note 7.

Source: Jobcentre Plus administrative system
Labour Market Statistics Helpline 020 7533 6094

UNEMPLOYMENT: LOCAL AREA DATA

East Midlands

15 Claimant count* by Travel-to-Work Area

not seasonally adjusted

	CLAIMANT COUNT ON 8 AUGUST 2002						Change on year					
	Levels			Rates (%) [#]			Levels			Rates		
	Men	Women	People	Men	Women	People	Men	Women	People	Men	Women	People
	1	2	3	4	5	6	7	8	9	10	11	12
Regional total	43,373	15,774	59,147	4.0	1.7	3.0	-2,973	-1,295	-4,268	-0.3	-0.1	-0.2
Boston	321	143	464	2.1	1.1	1.6	2	-8	-6	0.0	-0.1	0.0
Buxton	375	144	519	2.4	1.2	1.8	-60	-53	-113	-0.4	-0.4	-0.4
Chesterfield	2,579	918	3,497	6.2	2.5	4.5	-610	-138	-748	-1.5	-0.4	-1.0
Derby	4,435	1,550	5,985	4.4	1.9	3.3	-308	-10	-318	-0.3	0.0	-0.2
Gainsborough	545	198	743	6.9	3.1	5.2	-34	-38	-72	-0.4	-0.6	-0.5
Grantham	398	168	566	2.4	1.0	1.7	-94	-36	-130	-0.6	-0.2	-0.4
Horncastle	80	54	134	1.6	1.3	1.5	-25	-15	-40	-0.5	-0.4	-0.4
Kettering and Corby	1,123	452	1,575	2.8	1.3	2.1	-117	-15	-132	-0.3	0.0	-0.2
Leicester	8,226	3,009	11,235	5.0	2.1	3.6	292	-27	265	0.2	0.0	0.1
Lincoln	1,707	574	2,281	4.1	1.4	2.8	-140	-73	-213	-0.3	-0.2	-0.3
Loughborough	1,142	467	1,609	3.6	1.8	2.8	-49	-52	-101	-0.2	-0.2	-0.2
Louth	329	133	462	4.1	2.3	3.3	-20	7	-13	-0.3	0.1	-0.1
Mansfield	3,135	1,103	4,238	4.6	2.1	3.5	-805	-352	-1,157	-1.2	-0.7	-1.0
Matlock	336	139	475	1.6	0.8	1.2	-40	-13	-53	-0.2	-0.1	-0.1
Melton Mowbray	210	99	309	1.9	1.0	1.5	-12	1	-11	-0.1	0.0	-0.1
Newark	467	135	602	3.4	1.2	2.4	-52	-46	-98	-0.4	-0.4	-0.4
Northampton	2,674	964	3,638	2.9	1.2	2.1	-70	-87	-157	-0.1	-0.1	-0.1
Nottingham	9,810	3,126	12,936	5.3	1.8	3.6	-300	-146	-446	-0.2	-0.1	-0.1
Retford	383	184	567	4.1	2.5	3.4	-81	-44	-125	-0.9	-0.6	-0.8
Skegness and Mablethorpe	377	123	500	3.1	1.1	2.1	-37	-4	-41	-0.3	0.0	-0.2
Sleaford	226	109	335	2.0	1.4	1.8	1	-2	-1	0.0	0.0	0.0
Spalding and Holbeach	311	182	493	1.6	1.3	1.4	-1	6	5	0.0	0.0	0.0
Stamford	308	128	436	1.5	0.8	1.2	55	-3	52	0.3	0.0	0.1
Wellingborough	1,050	464	1,514	2.9	1.8	2.4	-94	13	-81	-0.3	0.1	-0.1
Worksop	808	309	1,117	4.9	2.6	3.9	-185	-76	-261	-1.1	-0.6	-0.9

* Count of claimants of unemployment-related benefit, ie. Jobseeker's Allowance

Source: Jobcentre Plus administrative system

Relationship between columns = 3=1+2; 9=7+8

Labour Market Statistics Helpline 020 7533 6094

Denominator = Claimant count + Workforce jobs. See background note 7.

UNEMPLOYMENT: LOCAL AREA DATA

East Midlands

16 Claimant count* by Parliamentary Constituency

not seasonally adjusted

	CLAIMANT COUNT ON 8 AUGUST 2002						Change on year					
	Levels			Rates (%) [#] (PROVISIONAL)			Levels			Rates		
	Men	Women	People	Men	Women	People	Men	Women	People	Men	Women	People
	1	2	3	4	5	6	7	8	9	10	11	12
Regional total	43,373	15,774	59,147	4.0	1.7	3.0	-2,973	-1,295	-4,268	-0.3	-0.1	-0.2
Amber Valley	778	299	1,077	2.7	1.5	2.2	-165	-36	-201	-0.6	-0.2	-0.4
Ashfield	1,092	414	1,506	4.4	2.1	3.4	-252	-133	-385	-1.0	-0.7	-0.9
Bassetlaw	1,048	430	1,478	4.6	2.9	3.9	-223	-57	-280	-1.0	-0.4	-0.7
Blaby	469	243	712	1.7	1.2	1.5	0	8	8	0.0	0.0	0.0
Bolsover	1,002	348	1,350	7.8	3.0	5.6	-202	-127	-329	-1.6	-1.1	-1.4
Boston & Skegness	502	208	710	2.3	1.0	1.7	-31	-3	-34	-0.1	0.0	-0.1
Bosworth	536	242	778	2.1	1.3	1.8	-64	-65	-129	-0.3	-0.3	-0.3
Broxtowe	779	306	1,085	4.5	2.3	3.6	57	-4	53	0.3	0.0	0.2
Charnwood	612	243	855	3.8	1.9	3.0	77	9	86	0.5	0.1	0.3
Chesterfield	1,394	522	1,916	5.2	2.2	3.8	-350	-48	-398	-1.3	-0.2	-0.8
Corby	769	295	1,064	2.7	1.4	2.1	-73	-9	-82	-0.3	0.0	-0.2
Daventry	551	250	801	1.8	1.0	1.4	33	-49	-16	0.1	-0.2	0.0
Derby North	1,344	432	1,776	6.1	2.3	4.4	-29	7	-22	-0.1	0.0	-0.1
Derby South	2,154	742	2,896	4.2	1.9	3.2	-233	4	-229	-0.5	0.0	-0.3
Erewash	1,038	376	1,414	4.3	2.0	3.3	-5	-47	-52	0.0	-0.2	-0.1
Gainsborough	810	349	1,159	5.3	2.9	4.2	-82	-25	-107	-0.5	-0.2	-0.4
Gedling	831	282	1,113	4.9	2.0	3.5	-1	-36	-37	0.0	-0.3	-0.1
Grantham & Stamford	553	238	791	2.2	1.0	1.6	-69	-35	-104	-0.3	-0.1	-0.2
Harborough	672	269	941	3.5	1.4	2.5	6	2	8	0.0	0.0	0.0
High Peak	609	242	851	2.5	1.2	1.9	-115	-77	-192	-0.5	-0.4	-0.4
Kettering	581	275	856	2.3	1.2	1.8	-43	5	-38	-0.2	0.0	-0.1
Leicester East	1,674	669	2,343	8.5	4.2	6.6	91	-3	88	0.5	0.0	0.2
Leicester South	2,345	720	3,065	6.0	1.7	3.7	42	-28	14	0.1	-0.1	0.0
Leicester West	2,139	700	2,839	7.8	2.9	5.5	112	-10	102	0.4	0.0	0.2
Lincoln	1,283	354	1,637	4.8	1.2	2.9	-92	-84	-176	-0.3	-0.3	-0.3
Loughborough	929	368	1,297	4.0	1.8	3.0	-62	-60	-122	-0.3	-0.3	-0.3
Louth & Horncastle	625	246	871	3.5	1.7	2.7	-26	-22	-48	-0.1	-0.2	-0.1
Mansfield	1,047	321	1,368	5.6	2.0	3.9	-236	-110	-346	-1.3	-0.7	-1.0
Newark	767	282	1,049	3.8	1.7	2.8	-129	-91	-220	-0.6	-0.5	-0.6
North East Derbyshire	1,071	379	1,450	5.4	2.6	4.3	-217	-43	-260	-1.1	-0.3	-0.8
North West Leicestershire	534	257	791	2.3	1.4	1.9	-25	1	-24	-0.1	0.0	-0.1
Northampton North	1,212	399	1,611	5.1	2.2	3.9	-73	-31	-104	-0.3	-0.2	-0.3
Northampton South	1,046	357	1,403	2.3	0.8	1.5	-3	-14	-17	0.0	0.0	0.0
Nottingham East	2,317	596	2,913	10.1	2.5	6.2	-129	-51	-180	-0.6	-0.2	-0.4
Nottingham North	1,804	627	2,431	11.8	5.6	9.2	24	80	104	0.2	0.7	0.4
Nottingham South	1,621	438	2,059	3.3	0.8	1.9	-126	-45	-171	-0.3	-0.1	-0.2
Rushcliffe	597	215	812	2.9	1.0	1.9	-36	-11	-47	-0.2	0.0	-0.1
Rutland & Melton	364	155	519	1.6	0.9	1.3	0	-11	-11	0.0	-0.1	0.0
Sherwood	858	304	1,162	5.5	2.5	4.2	-160	-63	-223	-1.0	-0.5	-0.8
Sleaford & North Hykeham	511	233	744	2.3	1.5	2.0	2	-3	-1	0.0	0.0	0.0
South Derbyshire	700	325	1,025	4.2	2.3	3.3	-14	29	15	-0.1	0.2	0.0
South Holland & The Deepings	404	228	632	1.8	1.4	1.6	-19	12	-7	-0.1	0.1	0.0
Wellingborough	882	390	1,272	2.9	1.8	2.5	-87	12	-75	-0.3	0.1	-0.1
West Derbyshire	519	206	725	1.8	0.8	1.3	-46	-33	-79	-0.2	-0.1	-0.1

* Count of claimants of unemployment-related benefit, ie. Jobseeker's Allowance

Relationship between columns = 3=1+2; 9=7+8

Denominator = Claimant count + Workforce jobs. See background note 7.

Source: Jobcentre Plus administrative system

Labour Market Statistics Helpline 020 7533 6094

UNEMPLOYMENT: LOCAL AREA DATA

17 Claimant count* by NUTS 3 area

East Midlands

not seasonally adjusted

	CLAIMANT COUNT ON 8 AUGUST 2002						Change on year					
	Levels			Rates(%)#			Levels			Rates		
	Men	Women	People	Men	Women	People	Men	Women	People	Men	Women	People
	1	2	3	4	5	6	7	8	9	10	11	12
NUTS1 total	43,373	15,774	59,147	4.0	1.7	3.0	-2,973	-1,295	-4,268	-0.3	-0.1	-0.2
Derbyshire and Nottinghamshire												
Derby	3,711	1,244	4,955	5.0	2.1	3.7	-257	22	-235	-0.3	0.0	-0.2
East Derbyshire	3,467	1,249	4,716	5.9	2.5	4.3	-769	-218	-987	-1.3	-0.4	-0.9
South & West Derbyshire	3,431	1,378	4,809	2.8	1.4	2.2	-350	-175	-525	-0.3	-0.2	-0.2
Nottingham	5,742	1,661	7,403	6.5	1.8	4.1	-231	-16	-247	-0.3	0.0	-0.1
North Nottinghamshire	4,500	1,629	6,129	4.7	2.2	3.6	-989	-441	-1,430	-1.0	-0.6	-0.8
South Nottinghamshire	2,519	925	3,444	4.1	1.7	2.9	9	-64	-55	0.0	-0.1	0.0
Leicestershire, Rutland and Northamptonshire												
Leicester City	6,158	2,089	8,247	7.1	2.5	4.9	245	-41	204	0.3	0.0	0.1
Leicestershire CC & Rutland	4,116	1,777	5,893	2.6	1.4	2.1	-68	-116	-184	0.0	-0.1	-0.1
Northamptonshire	5,041	1,966	7,007	2.7	1.3	2.1	-246	-86	-332	-0.1	-0.1	-0.1
Lincolnshire												
Lincolnshire	4,688	1,856	6,544	3.1	1.4	2.3	-317	-160	-477	-0.2	-0.1	-0.2

* Count of claimants of unemployment-related benefits

Relationship between columns: 3=1+2

Denominator = claimants of unemployment-related benefits + workforce jobs. See background note number 7

Source: Jobcentre Plus administrative system

Labour Market Statistics Helpline 020 7533 6094