

17 March 2004

Coverage
East Midlands
Theme
Labour Market

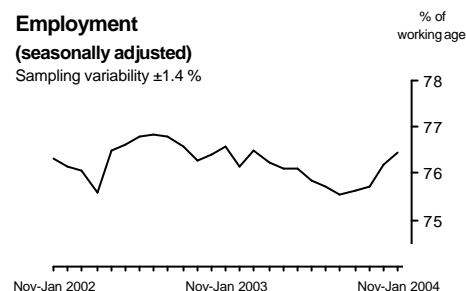
Labour market statistics

March 2004: East Midlands

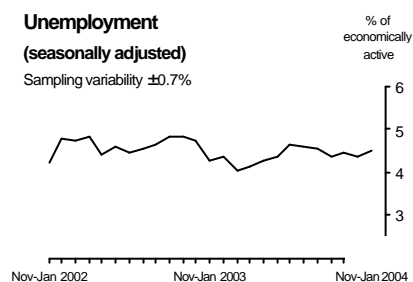
All data are not seasonally adjusted unless otherwise specified

Labour Force Survey data for the East Midlands indicate that the employment rate, which had been falling in late 2003, now appears to be rising, but the latest rate is not significantly different from a year ago. The unemployment rate is stable, and the latest rate is not significantly different from a year ago.

Data for the three months to January 2004 show the seasonally adjusted employment rate at 76.4 per cent, down 0.1 percentage point on a year earlier. The seasonally adjusted unemployment rate was 4.5 per cent, up 0.2 percentage points on a year earlier.



The seasonally adjusted claimant count was down in the year to February 2004.



Data in this table are seasonally adjusted unless otherwise stated

		Level (thousands)	Rate (%)	Change on year (level)	Sampling variability (thousands)	Change on year (rate)	Sampling variability (%)
Employment*	Nov-Jan	2,050	76.4	10	± 53	-0.1	± 1.7
Unemployment**	Nov-Jan	97	4.5	5	± 17	0.2	± 0.9
Economically active*	Nov-Jan	2,147	80.1	15	± 54	0.1	± 1.6
Economically inactive+ of which	Nov-Jan	516	19.9	1	± 55	-0.1	± 1.6
Not wanting a job+	Nov-Jan	391		17	± 49		
Wanting a job+	Nov-Jan	125		-16	± 30		
Civilian workforce jobs (not seasonally adjusted)	Sep 2003	1,974		8	..		
Claimant count	Feb 2004	54.7	2.7 ⁺⁺	-3.2		-0.2	

See background note 2 on sampling variability.

* Levels are for those aged 16 and over, rates are for those of working age (16-59/64).

** Levels and rates are for those aged 16 and over. Rate is as a proportion of economically active.

+ Levels and rates are for those of working age.

++ Denominator = claimant count + workforce jobs. For regional claimant count proportions, using resident working age populations see Tables 17 and 18. See note on page 8 for further details.

.. Not available.

From May 2001: vacancy series deferred (see note on page 9).

New this month:

November to January 2004 data: latest three-month average LFS results;

February 2004 data: claimant count.

Issued by
National Statistics
1 Drummond Gate
London SW1V 2QQ

Telephone
Press Office 020 7533 5714
Helpline 020 7533 6094
Public enquiries 0845 601 3034

Statisticians:

Regional and local data (Nick Maine)
020 7533 6130

Regional and national Labour Force Survey (Peter Alstrup)
020 7533 6110

Claimant count (Andrew Machin) and vacancies 020 7533 6162

Employee jobs (Ian Richardson)
01633 812072

Internet
www.statistics.gov.uk

Email
labour.market@ons.gov.uk

Employment Information Unit
Stuart Swift
Jobcentre Plus
7th Floor, Newtown House
Maid Marian Way
Nottingham
NG1 6GG

Telephone
0115 989 5912

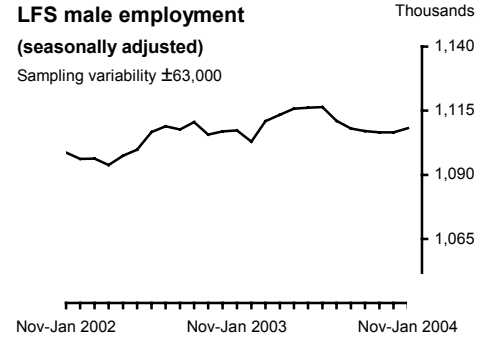
Next publication date
16 April 2004

All data are not seasonally adjusted unless otherwise specified

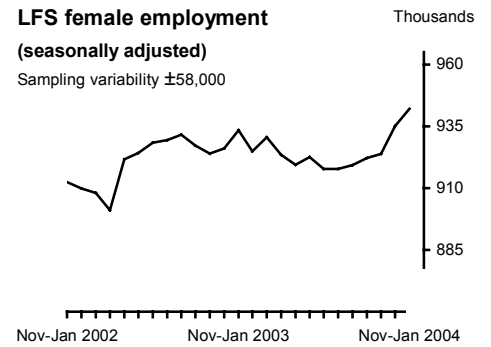


Employment (tables 1 to 6)

The seasonally adjusted LFS estimate of employment in the East Midlands was 76.4 per cent in the November to January 2004 period, down 0.1 percentage point on the same period a year earlier. The employment level was 2.05 million in the November to January 2004 period, up 10,000 on the same period a year earlier.



Seasonally adjusted employee jobs figures were up 2,000 in the quarter to September 2003.



Not seasonally adjusted employee jobs were down 7,000 in the year to September 2003. This was mainly due to falls in the manufacturing and service industries, partly offset by growth in 'other' industries.

Employee jobs by industry
Change on year from September 2002



Unemployment (table 1)

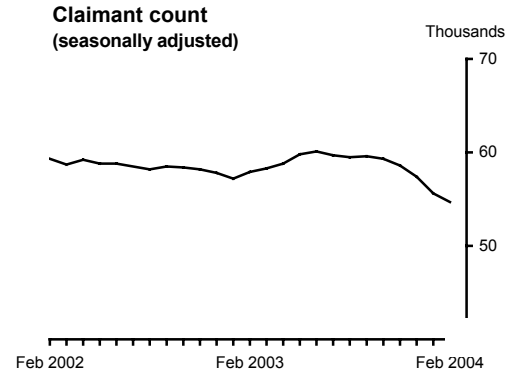
The seasonally adjusted unemployment rate in the East Midlands was 4.5 per cent in the November to January 2004 period, up 0.2 percentage points on the same period a year earlier. The rates for men and women in November to January 2004 were 5.0 per cent and 3.8 per cent respectively.

All data are not seasonally adjusted unless otherwise specified



Claimant count (tables 7 and 8)

The seasonally adjusted claimant count rate in February 2004 was 2.7 per cent, unchanged from January 2004, and down 0.2 percentage points since February 2003. The seasonally adjusted number of claimants in February 2004 was 54,700, down 900 on January 2004, and down 3,200 since February 2003. The not seasonally adjusted number of claimants was 59,900 in February 2004.



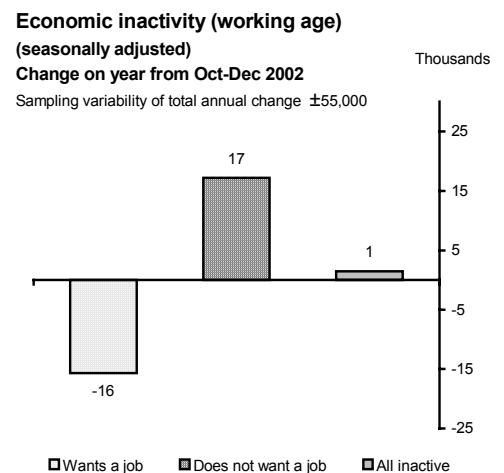
The not seasonally adjusted number of computerised claims of people aged 18 to 24 was 16,300 in February 2004, down 600 over the year. Changes in the number of computerised claims for all other age and duration groups over the year were mixed.

Economically active (tables 1 and 9)

The seasonally adjusted LFS estimate of economically active people in the East Midlands was 2.15 million in the November to January 2004 period.

Economically inactive (tables 1, 10 and 11)

The seasonally adjusted LFS estimate of economically inactive people in the East Midlands in the November to January 2004 period was 1.21 million, with 516,000 of these of working age. Over the year the number of economically inactive people of working age was up 1,000.



Vacancies (table 12)

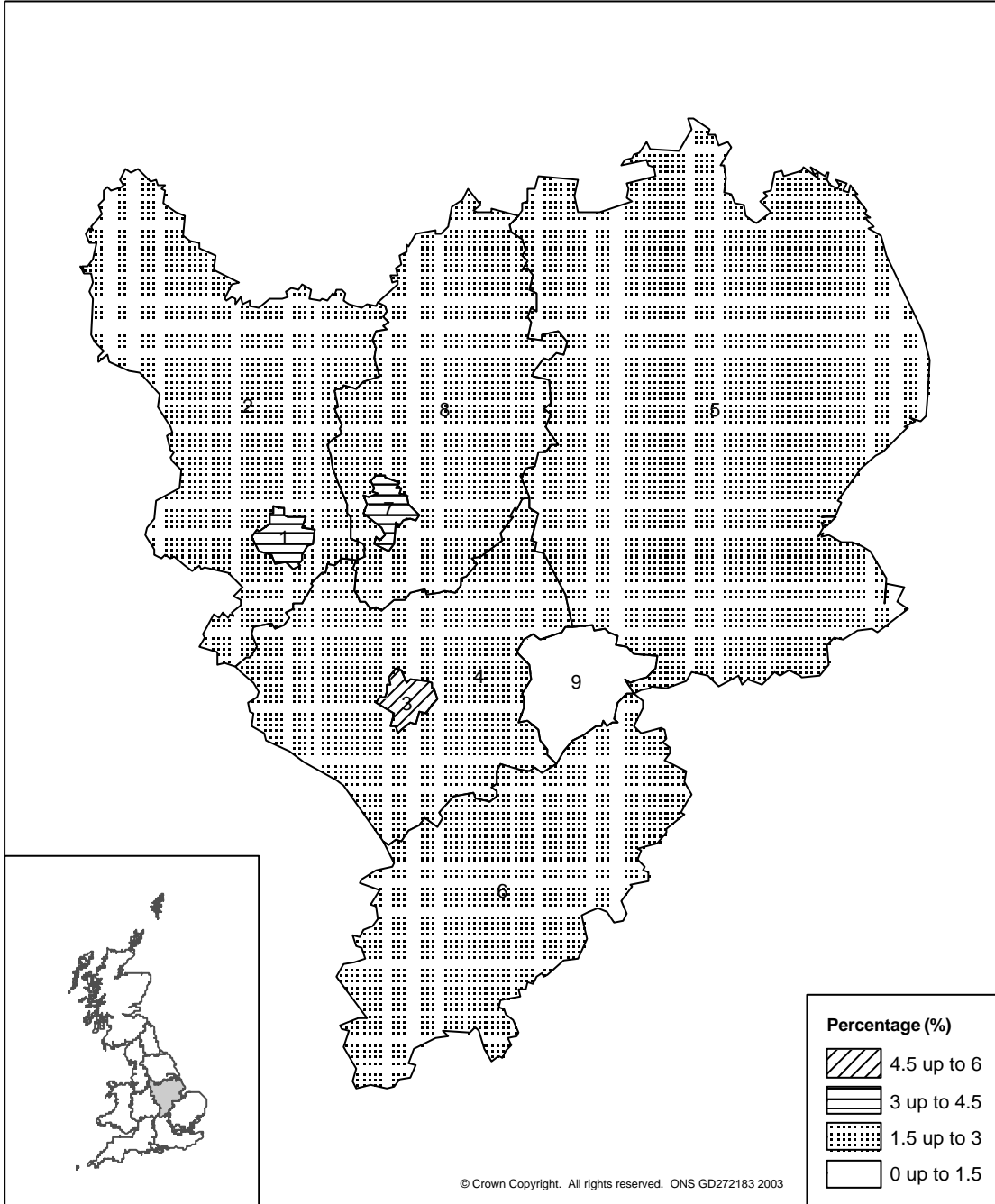
Publication of the seasonally adjusted Jobcentre vacancy series has been deferred. Figures from May 2001 are affected by the introduction of Employer Direct – see note on page 8.

Local area data (table 17)

The claimant count as a proportion of the resident working age population was lowest in Rutland UA, at 0.5 per cent. It was highest in Leicester UA, at 5.2 per cent.

All data are not seasonally adjusted unless otherwise specified

Claimant count as a proportion of the resident working age population, by County/UA
February 2004 - East Midlands



1	Derby UA	3.4%
2	Derbyshire	2.1%
3	Leicester UA	5.2%
4	Leicestershire	1.5%
5	Lincolnshire	1.9%
6	Northamptonshire	2.0%
7	Nottingham UA	4.1%
8	Nottinghamshire	1.9%
9	Rutland UA	0.5%

All data are not seasonally adjusted unless otherwise specified

REVISIONS

Revisions to Labour Force Survey (LFS) estimates

This release includes revisions for all UK and regional LFS estimates. These revisions are due to the introduction of LFS survey microdata, for 1992 onwards, that have been weighted to population estimates consistent with the 2001 census. There are also revisions this month to all series as a result of the latest seasonal adjustment review, and the removal of the 'employment edit matrix', which previously reclassified some respondents from self-employment to employees.

Since November 2002 all the LFS time series in the monthly LMS First Release have been interim adjusted to the latest post-2001 Census population estimates. This has met a strong need from key customers for the full set of LFS time series to be consistent with the latest population data.

Until now, the input to the interim LFS system has been LFS microdata weighted on the basis of pre-Census population estimates. For this month's release microdata for the years 1992 to date have been delivered for the first time re-weighted to post-Census population estimates. These are, however, the estimates published by ONS in February and March 2003 not the later revised estimates published in September and October 2003.

Application of LFS interim adjustment method for March 2004

The current LFS series are produced using the interim adjustment procedure applied to the new microdata in order to bring the LFS series into line with the latest September and October 2003 population estimates. The strength of the interim adjustment methodology has been demonstrated by the fact that, despite the very large change to the input microdata, the size of the revisions on the published interim estimates is very small.

Revision to LFS employee and self-employment estimates

Although the impact of the latest revisions on aggregate LFS employment is small, there are larger scale revisions to the component employee and self-employment series. These arise from improvements to the LFS editing procedures, based on the SOC 2000 Occupational Classification, which allow data edits to be removed which previously re-classified some self-employed as employees. The impact of these revisions is larger and the increase in estimates of self-employment is in the range of 180,000 with a compensating decrease for employees.

For further information relating to this change in the editing procedure please see the article published in the September

All data are not seasonally adjusted unless otherwise specified

2002 edition of Labour Market Trends

http://www.statistics.gov.uk/articles/Labour_market_trends/Introduction_SOC2000_sept2002.pdf

Seasonal Adjustment Review

This release also incorporates the results of the latest regular review of seasonal adjustment of the LFS series. All LFS series have been revised for all periods back to 1992, following evaluation of the seasonality of the LFS series and the methodology used to seasonally adjust them. The object of seasonal adjustment is to separate seasonal movements in each data series, and remove them. External factors, such as legislative or questionnaire changes can affect the ability to isolate the seasonal element of a series and the review takes account of such changes. The impact of the seasonal adjustment review on the data is very small.

Further information relating to these revisions is available on the website www.statistics.gov.uk/ci/article.asp?id=863.

NEXT MONTH

Claimant count

ONS will publish revisions to the seasonally adjusted claimant count series in the next release on 16 April, following the latest annual review. Revisions can be expected to the figures for the past three years. Not seasonally adjusted data are unaffected.

Workforce jobs

As part of the annual benchmarking exercise, employee jobs will be benchmarked next month on to the first results of the Annual Business Inquiry (ABI) for December 2002, together with revised December 2001 figures. Further revisions to earlier years are also included following work on regional accounts and public sector jobs last year.

The self-employed figures included in workforce jobs, which are derived from LFS data, will also be revised next month. This arises from two separate changes. First, the latest Census estimates will be taken on board to be consistent with LFS results being published this month. There is also a change in the editing applied to self-employed data on the LFS; this was described in an article in Labour Market Trends of September 2002.

http://www.statistics.gov.uk/articles/Labour_market_trends/Introduction_SOC2000_sept2002.pdf

SPECIAL

Impact of population revisions on LFS series

Revised national and regional mid-year population estimates for 2001 and 2002 were published by ONS on 26 September 2003, and revised estimates for 1992 to 2000 were published on 23 October 2003.

Then, on 4 November 2003, ONS published new provisional population estimates for Manchester for the years 2001 and 2002. Revised estimates for the North West Region and for England as a whole were also published taking the Manchester revision into account. No revised population estimates for 1992 to 2000 were published at that time, but it is anticipated that the revised series for 1992 to 2000 will be published by ONS during Spring 2004.

In order to maintain consistency in LFS time series, only population data for which consistent back series are available can be taken into account in the LFS estimation process. Therefore, while the population data released in September and October 2003 are used in the LFS interim estimates, the population data revised to allow for the new Manchester figures cannot be taken into account yet. However, when revised population figures for 1992 to 2000 are published, interim revised LFS series for these years will be published as soon as possible after this.

Allowing for the Manchester revision, the 2003 and 2004 estimates used for LFS interim estimation since November 2003 are very close to the new 2002-based projections for these years published by the Government Actuary's Department (GAD) on 18 December 2003.

Future LFS revisions

Future revised population estimates, when accompanied by consistent historical series, will be incorporated as swiftly as possible into revised LFS series using the interim LFS adjustment procedure.

By 2005, it is planned that modernised LFS processing systems will be ready which will enable the new MYE for 2004 to be incorporated into revised LFS microdata much more swiftly than is now possible. The revised LFS time series, taking account of the 2004 MYE, to be released in September 2005 should therefore be produced entirely consistently with the LFS microdata, without the need for any interim adjustment procedure.

New tables presenting a labour market framework for local areas

In July's release four new tables were introduced (one for each of the four local area geographies: local authorities, parliamentary constituencies, travel-to-work areas and NUTS 3 areas) which present a framework of labour market statistics in order to give a better overall picture of the labour market for the local area. The tables are structured to present indicators on labour supply, labour demand and claimants of the Jobseekers' Allowance (JSA) working age benefit. This structure adheres to the labour accounting system described in the Framework Review of Labour Market Statistics published on 5 August 2002 (see http://www.statistics.gov.uk/methods_quality/quality_review/downloads/LMSFR_Final.doc). A new labour demand indicator, jobs density, is included in these tables. The jobs density is the total number of jobs in the area (including employees, self-employed, government-supported trainees and armed forces personnel) divided by the number of working age residents of the area. The data in the Framework tables are annual, and come from a number of different sources.

As the new Framework tables contain annual Labour Force Survey (LFS) data, the table containing an annual local area LFS summary has been discontinued. Also, the tables giving monthly JSA claimant data have been retained for local authorities and parliamentary constituencies, but have been discontinued for travel-to-work areas and NUTS 3 areas. JSA claimant data for travel-to-work areas and NUTS 3 areas will continue to be available electronically, via Nomis[®].

Claimant count rates

Following the recommendations in the LMS Framework Review, the workplace-based claimant count rates for sub-regional areas have been withdrawn from National Statistics and have ceased to appear in ONS publications. Users wishing to calculate the rates themselves will be able to continue to do so, using information readily accessible via the Nomis[®] website (<http://www.nomisweb.co.uk>).

ONS is now publishing local area claimant count figures as a proportion of the resident working age population. Claimant count proportions for local authorities and for NUTS 3 areas are calculated using the revised mid-2001 population estimates published by ONS on 26 September 2003. Comparable figures for countries and regions of the United Kingdom are also published. Claimant count proportions for parliamentary constituencies are based on population data from the 2001 Census by output area, published on 30 June, adjusted to be consistent with the revised official mid-year population estimates.

All data are not seasonally adjusted unless otherwise specified

Tables 13 to 16: Local labour market indicators

Tables 13 to 16 present a framework of labour market statistics for local areas. Data are presented as indicators of labour supply, labour demand and benefits. This structure adheres to the labour accounting system described in the Framework Review of Labour Market Statistics published on 5 August 2002 (see http://www.statistics.gov.uk/methods_quality/quality_review/downloads/LMSFR_Final.doc).

These tables include data from the annual local area Labour Force Survey. These data are weighted to population estimates which were released in February 2003, not the latest population estimates which were published in September 2003. Interim reweighting of monthly LFS estimates at national and regional level has been applied in order to take account of the revised population data. For the annual local area LFS data such an interim reweighting is not possible. The next reweighting of LFS micro-data will be in 2005, after which all LFS outputs will be consistent with the latest population estimates (see background note 4).

Jobcentre vacancy data

Publication of the Jobcentre vacancy series has been deferred due to distortions to the data as a result of the introduction of Employer Direct by Jobcentre Plus.

A limited range of statistics on Jobcentre Plus vacancies, relating to the inflows of newly-notified vacancies, is now being made available on Nomis[®], though not at this stage as National Statistics. (For further details see the news and research item on page 455 of the September 2002 issue of *Labour Market Trends*.)

The introduction of Employer Direct, a major change which involved transferring the vacancy-taking process from local Jobcentres to regional Customer Service Centres, has substantially affected the vacancy data since May 2001.

In addition, the numbers of notified vacancies appear to be substantially affected by a drive (from April 2003) by Jobcentre Plus to market their services and increase notifications from many employers in chosen sectors. Recent changes in these figures would therefore not necessarily signify developments in the labour market.

ONS and the Department for Work and Pensions are continuing to monitor and review the data with a view to restoring series when it is appropriate to do so.

Claimant count

The introduction of Joint Claims for Jobseeker's Allowance on 19 March 2001, and its extension on 28 October 2002, means that both members of certain couples are now required to claim JSA jointly and both are required to look for work. The claimant count continues to include all individual claimants, so there are some extra claimants included as a result of these changes.

Since 19 March 2001 Joint Claims for JSA has applied to couples without dependent children where at least one member was born after 19 March 1976 and is aged over 18. Joint Claims was extended on 28 October 2002 to couples without dependent children where at least one member was born after 28 October 1957.

ONS estimates that the introduction of Joint Claims had an initial upward effect on the claimant count, which accumulated between April and August 2001, of some 600 for the East Midlands region at the time (approximately 200 men and 400 women). For the UK overall the initial impact was some 6,500 (approximately 2,200 men and 4,300 women). The total effect of the extension on 28 October has been to add a further estimated 350 claimants (100 men and 250 women) to the count for the East Midlands region between October 2002 and February 2003 and 3,800 for the UK overall (approximately 900 men and 2,900 women).

The extent to which the introduction of Joint Claims may be treated as a discontinuity in the count, following past precedent, is difficult to assess but we will continue to monitor and review the effects. For information about previous treatment of discontinuities in the claimant count see, for example, the article 'Changes to the coverage of the monthly count of claimant unemployment' in *Labour Market Trends*, November 1995, page 398.

All data are not seasonally adjusted unless otherwise specified

BACKGROUND NOTES

1. More information on the statistics in this release can be found in the *Guide to Labour Market Statistics Releases*, available from the labour market helpline 020 7533 6094. Information is also available on the National Statistics website at <http://www.statistics.gov.uk/onlineproducts/default.asp>.
2. Some data in this release are based on statistical samples and, as such, are subject to sampling variability. If many samples were drawn, each would give a different result. The ranges shown for the LFS data in this release and in the following table represent '95 per cent confidence intervals'. It is expected that in 95 per cent of samples the range would contain the true value. For more information, see the *Guide to Labour Market Statistics Releases*.

November to January 2004

Thousands

	Levels			Quarterly changes			Annual changes		
	Lower limit	LFS estimate	Upper limit	Lower limit	LFS estimate	Upper limit	Lower limit	LFS estimate	Upper limit
Employment	2,011	2,050	2,089	-33	21	76	-44	10	63
Employment rate	75.1%	76.4%	77.8%	-0.9%	0.8%	2.6%	-1.8%	-0.1%	1.6%
Unemployment	84	97	109	-13	4	21	-12	5	22
Unemployment rate	3.8%	4.5%	5.2%	-0.7%	0.1%	1.0%	-0.7%	0.2%	1.1%
Economically active	2,108	2,147	2,186	-29	25	79	-39	15	68
Economic activity rate	78.8%	80.1%	81.4%	-0.7%	1.0%	2.6%	-1.6%	0.1%	1.7%
Economically inactive	472	516	559	-80	-25	31	-53	1	56

Sampling variability of regional Labour Force Survey figures

November to January 2004

	Employment	Unemployment	Economically Active	Working age Economically Inactive	Employment Rate	Unemployment Rate
	Level (000s)	Level (000s)	Level (000s)	Level (000s)	(%)	(%)
North East	± 34	± 11	± 34	± 35	± 1.8	± 1.0
North West	± 61	± 17	± 60	± 59	± 1.2	± 0.5
Yorks & Humber	± 48	± 15	± 47	± 45	± 1.2	± 0.6
East Midlands	± 39	± 12	± 39	± 44	± 1.4	± 0.7
West Midlands	± 50	± 16	± 49	± 48	± 1.2	± 0.6
East	± 49	± 14	± 49	± 45	± 1.1	± 0.5
London	± 63	± 24	± 61	± 61	± 1.1	± 0.7
South East	± 58	± 16	± 57	± 53	± 0.9	± 0.4
South West	± 49	± 11	± 49	± 46	± 1.2	± 0.4
Wales	± 38	± 11	± 38	± 38	± 1.7	± 0.8
Scotland	± 48	± 16	± 47	± 46	± 1.2	± 0.6

All data are not seasonally adjusted unless otherwise specified

3. The LFS sample population covers those living in private households, student halls of residence and NHS accommodation.
4. Annual local area data from the LFS are included in Tables 13 to 16. All LFS micro-data have been reweighted to be consistent with post census population estimates, which were published in February 2003. However, during this reweighting exercise, revised population estimates were released, in September 2003. The quarterly, regional LFS data in this release have been interim reweighted to the latest (September 2003) population estimates, but for local area data such an interim reweighting is not possible. The LFS data in Tables 13 to 16 are therefore not consistent with the quarterly LFS data published elsewhere in the release. The next reweighting of LFS micro-data will be in 2005, after which all LFS outputs will be consistent with the latest population estimates (see note on page 7).

The annual LFS database is compiled by taking data from waves one and five of four quarters of the LFS and combining them with an additional sample of interviews. This sample boost was introduced in 2000 and has improved the accuracy of the annual estimates for some local areas in England and all local areas in Wales (a boost was also introduced in Scotland for the 2003/04 survey, and the results of this survey will be published in autumn 2004). There are now different publication thresholds for annual LFS data, depending on the size of the sample boost in the area. The thresholds are six thousand, four thousand, two thousand and as low as one thousand for some areas in Wales. For further information see Volume 6 of the *LFS User Guide*. This guide, along with additional data and further background information, are available on the National Statistics website at <http://www.statistics.gov.uk/lfs>. A wide range of annual local area data from the LFS is available free from the Nomis[®] website at <http://www.nomisweb.co.uk>.

5. Not seasonally adjusted claimant count and vacancies data are gathered from administrative sources and constitute a complete count. However, seasonally adjusted totals are presented as rounded to the nearest hundred to avoid spurious precision. Any differences between the sum of the rounded seasonally adjusted figures and the UK totals are due to this rounding.
6. Claimant count flows are the number of people joining or leaving the count in the period between the count dates. They are therefore affected by the number of weeks between count dates. To enable comparisons from month to month, the flows figures are standardised to a 4.33-week month before seasonal adjustment.
7. The number of Jobseeker's Allowance (JSA) claimants can be

All data are not seasonally adjusted unless otherwise specified

expressed as a proportion of either (a) the corresponding mid-year estimate (or the latest available mid-year estimate, currently for June 2000) of the workforce jobs in the area plus the number of claimants, or (b) the resident working age population. The number of workforce jobs is mainly collected through postal employer surveys and comprises employee jobs, self-employment jobs, HM armed forces and government-supported trainees and is used to calculate rates for regions and the countries of the UK. For smaller areas, proportions based on the resident working age populations are used.

8. The count of JSA claimants is mostly derived from the Jobcentre Plus computer records. However for various reasons, e.g. when a claimant's National Insurance number is not known, a few claims have to be dealt with manually by local offices. These claims, which amount to less than 1 per cent of the total, are thus counted separately and not analysed in as much detail as the computerised claims. In particular, only the computerised claims are analysed by age and duration on a monthly basis.
9. Travel-to-Work areas (Table 15) are approximations to self-contained labour markets, i.e. areas where people both live and work.
10. NUTS (Nomenclature des Unités Territoriales Statistiques) (Table 16) was established by the Statistical Office of the European Union (Eurostat) to provide a uniform breakdown of territorial units for the production of regional statistics. NUTS is a five-level hierarchical classification.
11. The employee jobs series is based on data from employer surveys and is subject to sampling variability. The nature of the survey means that the size of this sampling variability may not be consistent from year to year. Provisionally ONS would expect that the 95 per cent confidence interval would on average be within +/- 6 per cent of the estimate. However, this will vary from region to region.
12. Labour market statistics are compiled from a wide range of sources. Claimant count and Jobcentre vacancy data are provided from the Jobcentre Plus administrative system, workforce jobs are derived from ONS business surveys, other data come from the ONS Labour Force Survey.
13. The Social and Vital Statistics Division of ONS carries out the questionnaire design, sample selection and interviewing for the LFS. Analysis and publication of the results of the survey is undertaken by Labour Market Division. In Northern Ireland, the Labour Force Survey is conducted by the Central Survey Unit.

All data are not seasonally adjusted unless otherwise specified

14. In addition to the data in this release, ONS can provide a wide range of detailed labour market data in a number of formats. In particular, data are available from Nomis[®] at the same time as this release is published. Further data are also published in *Labour Market Trends (LMT)* and the *Labour Force Survey Quarterly Supplement to LMT*.
15. Datasets of selected series can also be viewed by choosing topics within the Labour Market theme on our website (<http://www.statistics.gov.uk/labour>).
16. Details of the policy governing the release of new data are available from the press office. Also available is a list of the names of those given pre-publication access to the contents of this release.
17. **National Statistics** are produced to high professional standards set out in the National Statistics Code of Practice. They undergo regular quality assurance reviews to ensure that they meet customer needs. They are produced free from any political interference. © Crown Copyright 2004.

INDEX OF TABLES

All data are not seasonally adjusted unless otherwise specified

NATIONAL LABOUR MARKET SUMMARY, BY REGION

Summary of Labour Force Survey (LFS) data (seasonally adjusted)

Summary of other headline indicators

REGIONAL DATA

Summary of LFS data for the current quarter (seasonally adjusted) 1

Summary of other headline indicators (seasonally adjusted) 1a

EMPLOYMENT

Employment by age 2

Full-time, part-time and temporary workers 3

Civilian workforce jobs 4

Employee jobs by industry 5

Actual weekly hours of work 6

CLAIMANT COUNT

Claimant count levels and rates (seasonally adjusted) 7

Claimant count by age and duration - computerised claims only 8

ECONOMIC ACTIVITY AND INACTIVITY

Economic activity by age 9

Economic inactivity by age 10

Economic inactivity: reasons 11

VACANCIES

Jobcentre vacancies summary (seasonally adjusted) 12

LOCAL AREA DATA

2001 local labour market indicators by Unitary and Local Authority..... 13

2001 local labour market indicators by Parliamentary Constituency..... 14

2001 local labour market indicators by Travel-to-Work Area..... 15

2001 local labour market indicators by NUTS 3 area..... 16

Claimant count by Unitary and Local Authority..... 17

Claimant count by Parliamentary Constituency..... 18

The following symbols are used in the tables:

..	not available	-	nil or negligible
p	provisional	r	revised
*	grossed up total		
	less than 10,000		

Totals may differ from the sum of components because of rounding or separate adjustment of components.

NATIONAL LABOUR MARKET SUMMARY, BY REGION

Summary of Labour Force Survey data

Thousands, seasonally adjusted

Labour Force Survey# (November 2003 to January 2004)

	Total aged 16 & over		Economically active			Employment						Unemployment					
	Total		Men		Women	Total		Men		Women		Total		Men		Women	
	Level	Rate (%)*	Level	Level	Level	Rate (%)*	Level	Rate (%)*	Level	Rate (%)*	Level	Rate (%)**	Level	Rate (%)**	Level	Rate (%)**	
	1	2	3	4	5	6	7	8	9	10	11	12	13	14	15	16	17
North East	1,998	1,162	74.4	623	539	1,089	69.6	578	73.1	511	66.0	73	6.3	45	7.2	28	5.2
North West	5,315	3,271	77.5	1,744	1,527	3,112	73.6	1,648	77.0	1,465	70.0	159	4.9	97	5.6	62	4.1
Yorkshire & the Humber	3,936	2,449	78.3	1,315	1,133	2,326	74.3	1,241	78.1	1,085	70.3	123	5.0	74	5.6	48	4.3
East Midlands	3,359	2,147	80.1	1,167	980	2,050	76.4	1,108	80.4	942	72.1	97	4.5	59	5.0	38	3.8
West Midlands	4,180	2,588	78.0	1,425	1,163	2,445	73.6	1,341	78.5	1,104	68.3	143	5.5	85	5.9	59	5.1
East	4,324	2,841	82.7	1,544	1,298	2,749	80.0	1,493	85.0	1,256	74.6	93	3.3	51	3.3	42	3.2
London	5,932	3,828	75.4	2,138	1,689	3,563	70.1	1,980	76.4	1,583	63.3	265	6.9	158	7.4	107	6.3
South East	6,406	4,224	82.4	2,289	1,934	4,064	79.1	2,202	84.3	1,862	73.6	160	3.8	87	3.8	73	3.8
South West	3,979	2,509	81.6	1,348	1,161	2,439	79.3	1,307	82.8	1,132	75.6	71	2.8	41	3.1	29	2.5
England	39,428	25,019	79.1	13,594	11,425	23,836	75.3	12,897	79.9	10,939	70.4	1,182	4.7	696	5.1	486	4.3
Wales	2,320	1,379	75.9	730	649	1,312	72.1	686	74.9	626	69.2	67	4.9	44	6.1	23	3.5
Scotland	4,045	2,539	78.6	1,344	1,194	2,394	74.1	1,256	77.3	1,138	70.8	145	5.7	88	6.6	57	4.7
Great Britain	45,792	28,936	78.9	15,669	13,268	27,542	75.0	14,839	79.4	12,703	70.3	1,394	4.8	829	5.3	565	4.3
N Ireland	1,298	767	71.5	433	334	724	67.4	401	73.7	323	60.8	43	5.6	32	7.4	11	3.2
United Kingdom	47,090	29,708	78.7	16,104	13,603	28,272	74.8	15,243	79.2	13,029	70.1	1,436	4.8	862	5.3	574	4.2

Change on quarter: +

	Total aged 16 & over		Economically active			Employment						Unemployment					
	Total		Men		Women	Total		Men		Women		Total		Men		Women	
	Level	Rate (%)*	Level	Level	Level	Rate (%)*	Level	Rate (%)*	Level	Rate (%)*	Level	Rate (%)**	Level	Rate (%)**	Level	Rate (%)**	
	1	2	3	4	5	6	7	8	9	10	11	12	13	14	15	16	17
North East	1	11	0.7	1	9	16	1.0	6	1.1	10	1.0	-5	-0.5	-5	-0.8	0	-0.2
North West	4	6	0.1	-2	9	5	0.0	-5	-0.2	10	0.3	1	0.0	3	0.2	-1	-0.1
Yorkshire & the Humber	4	16	0.3	0	15	15	0.3	1	-0.1	14	0.8	0	0.0	-1	-0.1	2	0.1
East Midlands	6	25	1.0	2	23	21	0.8	1	0.0	20	1.7	4	0.1	1	0.1	3	0.2
West Midlands	4	1	-0.1	-4	5	9	0.2	2	0.1	7	0.3	-9	-0.3	-6	-0.4	-2	-0.2
East	9	37	1.0	15	22	55	1.6	27	1.5	27	1.7	-18	-0.7	-12	-0.8	-6	-0.5
London	15	-21	-0.6	-10	-10	-22	-0.6	-17	-0.8	-5	-0.3	2	0.1	7	0.3	-5	-0.3
South East	14	18	0.2	13	5	18	0.2	15	0.4	3	-0.1	0	0.0	-2	-0.1	2	0.1
South West	7	10	0.3	4	6	18	0.7	10	0.5	8	0.8	-8	-0.3	-6	-0.4	-2	-0.2
England	63	103	0.2	21	82	136	0.3	42	0.2	93	0.5	-33	-0.2	-22	-0.2	-11	-0.1
Wales	3	-4	-0.3	5	-9	-10	-0.7	-2	-0.2	-8	-1.2	6	0.5	8	1.0	-1	-0.1
Scotland	1	-7	-0.3	-9	2	-4	-0.2	-4	-0.5	0	0.2	-3	-0.1	-5	-0.4	2	0.2
Great Britain	67	92	0.2	17	76	122	0.3	36	0.1	85	0.4	-29	-0.1	-20	-0.1	-10	-0.1
N Ireland	3	-3	-0.6	-4	1	0	-0.4	-3	-1.0	3	0.2	-2	-0.3	0	0.0	-2	-0.6
United Kingdom	70	88	0.1	11	77	121	0.2	32	0.1	88	0.4	-33	-0.1	-22	-0.1	-11	-0.1

Change on year:

	Total aged 16 & over		Economically active			Employment						Unemployment					
	Total		Men		Women	Total		Men		Women		Total		Men		Women	
	Level	Rate (%)*	Level	Level	Level	Rate (%)*	Level	Rate (%)*	Level	Rate (%)*	Level	Rate (%)**	Level	Rate (%)**	Level	Rate (%)**	
	1	2	3	4	5	6	7	8	9	10	11	12	13	14	15	16	17
North East	3	36	2.1	10	26	38	2.2	15	2.2	23	2.1	-2	-0.4	-4	-0.8	3	0.3
North West	16	40	0.5	-8	48	33	0.3	-10	-0.7	43	1.4	7	0.1	2	0.2	5	0.2
Yorkshire & the Humber	16	48	1.0	5	42	40	0.8	5	-0.1	36	1.8	7	0.2	0	0.0	7	0.4
East Midlands	22	15	0.1	8	7	10	-0.1	1	-0.7	9	0.4	5	0.2	7	0.6	-2	-0.2
West Midlands	15	-30	-1.0	-9	-20	-22	-0.7	-9	-0.7	-13	-0.8	-8	-0.2	-1	0.0	-7	-0.5
East	36	57	1.1	24	33	80	1.8	40	1.7	40	1.9	-23	-0.9	-16	-1.1	-7	-0.7
London	60	38	-0.3	11	27	25	-0.4	5	-0.7	20	-0.2	13	0.3	5	0.2	7	0.3
South East	55	4	-0.5	7	-3	10	-0.4	15	-0.1	-4	-0.7	-6	-0.2	-8	-0.4	2	0.1
South West	30	7	-0.5	10	-4	32	0.4	20	0.2	12	0.7	-25	-1.0	-9	-0.7	-16	-1.3
England	253	214	0.1	58	156	246	0.2	81	0.0	165	0.6	-32	-0.2	-23	-0.2	-9	-0.1
Wales	10	27	0.6	6	21	24	0.5	0	-0.2	24	1.3	3	0.1	6	0.8	-4	-0.7
Scotland	5	-1	-0.6	5	-6	3	-0.4	3	-0.2	-1	-0.5	-4	-0.2	1	0.1	-5	-0.4
Great Britain	268	240	0.1	69	171	273	0.2	85	-0.1	189	0.5	-33	-0.2	-15	-0.1	-18	-0.2
N Ireland	11	-14	-1.6	-8	-6	-14	-1.7	-14	-2.8	1	-0.4	0	0.0	7	1.7	-7	-2.1
United Kingdom	280	229	0.0	65	164	262	0.2	72	-0.1	190	0.5	-34	-0.2	-7	-0.1	-26	-0.2

Relationship between columns: 2= 4+5 = 6+12; 6= 8+10; 12= 14+16.

* Denominator = all persons of working age.

** Denominator = Total economically active.

Labour Force Survey is tabulated by region of residence.

+ Quarter to quarter changes at regional level are particularly subject to sampling variability and should be interpreted in the context of changes over several quarters rather than in isolation.

The Labour Force Survey is a survey of the population in private households, student halls of residence and NHS accommodation. See Concepts and Definitions.

Some of the series in this table are available electronically through the ONS Time Series Data service. See background note 1 for further details.

Due to slight methodological differences between the way the national and regional LFS estimates have been interim adjusted for the 2001 Census, there may be small differences between the UK totals and the sum of the regional components.

Data source: Labour Force Survey
Labour Market Statistics Helpline 020 7533 6094

NATIONAL LABOUR MARKET SUMMARY, BY REGION

Summary of other headline indicators

Thousands

	Employer surveys			Jobcentre Plus administrative system						Jobcentre Plus administrative system		
	Civilian workforce jobs** (Sep 2003); not seasonally adjusted			Claimant count* (February 2004); seasonally adjusted						Jobcentre vacancies (February 2004); seasonally adjusted		
	Total	Men	Women	Total	Men		Women		Notified vacancies	Unfilled vacancies	Outflow of vacancies	
	Level	Level	Level	Level	Rate (%) ⁺	Level	Rate (%) ⁺	Level				Rate (%) ⁺
1	2	3	4	5	6	7	8	9	10	11	12	
North East	1,090	579	511	48.1	4.3	37.3	6.3	10.8	2.1			
North West	3,237	1,723	1,515	103.0	3.1	78.9	4.4	24.1	1.6			
Yorkshire & the Humber	2,367	1,241	1,125	76.8	3.2	58.3	4.5	18.5	1.6			
East Midlands	1,974	1,012	962	54.7	2.7	40.0	3.7	14.7	1.5			
West Midlands	2,570	1,368	1,202	92.1	3.5	69.5	4.8	22.6	1.8			
East	2,640	1,421	1,218	56.4	2.1	40.7	2.8	15.7	1.3			
London	4,555	2,482	2,073	165.8	3.6	119.2	4.6	46.6	2.2			
South East	4,183	2,198	1,985	73.9	1.7	54.6	2.4	19.3	1.0			
South West	2,440	1,275	1,165	43.9	1.7	32.0	2.4	11.9	1.0			
England	25,054	13,300	11,755	714.7	2.8	530.5	3.8	184.2	1.6			
Wales	1,271	659	611	41.5	3.2	31.4	4.6	10.1	1.6			
Scotland	2,522	1,300	1,222	96.1	3.6	74.1	5.4	22.0	1.8			
Great Britain	28,847	15,259	13,588	852.3	2.9	636.0	4.0	216.3	1.6			
N Ireland	775	411	364	32.9	4.1	24.9	5.6	8.0	2.2			
United Kingdom	29,622	15,670	13,951	885.2	2.9	660.9	4.0	224.3	1.6			

Publication of the jobcentre vacancy statistics has been deferred. Figures from May 2001 are affected by the introduction of Employer Direct - see note on page 9

Changes on period (period specified below):

	Employer surveys			Jobcentre Plus administrative system						Jobcentre Plus administrative system		
	Civilian workforce jobs (Change on Sep 2002); not seasonally adjusted			Claimant count* (Change on January 2004) seasonally adjusted						Jobcentre vacancies (Change on January 2004) seasonally adjusted		
	Total	Men	Women	Total	Men		Women		Notified vacancies	Unfilled vacancies	Outflow of vacancies	
	Level	Level	Level	Level	Rate (%) ⁺	Level	Rate (%) ⁺	Level				Rate (%) ⁺
North East	30	21	9	-1.0	-0.1	-0.8	-0.1	-0.2	0.0			
North West	28	17	11	-0.3	0.0	-0.7	0.0	0.4	0.0			
Yorkshire & the Humber	34	24	10	-0.6	0.0	-0.4	0.0	-0.2	0.0			
East Midlands	8	-13	21	-0.9	0.0	-0.8	-0.1	-0.1	0.0			
West Midlands	6	14	-9	-0.5	0.0	-0.5	0.0	0.0	0.0			
East	26	27	-1	0.1	0.0	0.0	0.0	0.1	0.0			
London	77	53	24	-1.3	0.0	-0.7	0.0	-0.6	0.0			
South East	30	14	16	-0.5	0.0	-0.3	0.0	-0.2	0.0			
South West	-14	-15	1	-0.7	0.0	-0.7	-0.1	0.0	0.0			
England	222	140	82	-5.7	0.0	-4.9	0.0	-0.8	0.0			
Wales	25	17	9	-0.1	0.0	-0.2	0.0	0.1	0.0			
Scotland	7	7	0	-0.2	0.0	-0.2	0.0	0.0	0.0			
Great Britain	254	163	91	-6.0	0.0	-5.3	0.0	-0.7	0.0			
N Ireland	18	9	9	-0.6	-0.1	-0.5	-0.1	-0.1	0.0			
United Kingdom	271	172	99	-6.6	0.0	-5.8	0.0	-0.8	0.0			

Publication of the jobcentre vacancy statistics has been deferred. Figures from May 2001 are affected by the introduction of Employer Direct - see note on page 9

Relationship between columns: 1= 2+3; 4= 6+8.

Labour Market Statistics Helpline 020 7533 6094

* Count of claimants of Jobseeker's Allowance.

** Workforce jobs is tabulated by region of workplace. Claimant count is tabulated by region of claimant's residence.

+ Denominator = Claimant count + Workforce jobs. NB these are different from the proportions claiming Jobseeker's Allowance for local areas shown in Table 17 and 18.

See note on page 8 for further details.

Some of the series in this table are available electronically through the ONS Time Series Data service. See background note 1 for further details

The workforce jobs data in this table have not been rebenchmarked to the latest ABI results and do not include the latest LFS estimates - see note on page 6

(thousands),
seasonally
adjusted

1 Summary of LFS data for November to January 2004

All aged 16 & over

		All aged 16 & over	Total economically active	Total in Employment	Unemployed	Economically Inactive	Economic activity rate(%)	Employment rate (%)	Unemployment rate (%)	Economic inactivity rate(%)
		1	2	3	4	5	6	7	8	9
		YCHF	YCHS	YCJS	YCMS	HKMR			YCNF	
People	Nov-Jan 2002	3,307	2,099	2,011	88	1,208	63.5	60.8	4.2	36.5
	Nov-Jan 2003	3,337	2,132	2,041	91	1,205	63.9	61.2	4.3	36.1
	Feb-Apr 2003	3,342	2,125	2,037	88	1,218	63.6	60.9	4.1	36.4
	May-Jul 2003	3,348	2,134	2,034	99	1,214	63.7	60.8	4.7	36.3
	Aug-Oct 2003	3,354	2,122	2,029	93	1,232	63.3	60.5	4.4	36.7
	Nov-Jan 2004	3,359	2,147	2,050	97	1,212	63.9	61.0	4.5	36.1
	<i>Change on quarter</i>	6	25	21	4	-19	0.6	0.5	0.1	-0.6
<i>Change %</i>	0.2	1.2	1.0	4.2	-1.6					
<i>Change on year</i>	22	15	10	5	8	0.0	-0.1	0.2	0.0	
<i>Change %</i>	0.7	0.7	0.5	5.7	0.6					
Men	Nov-Jan 2002	1,611	1,148	1,099	49	464	71.2	68.2	4.3	28.8
	Nov-Jan 2003	1,626	1,159	1,107	52	467	71.3	68.1	4.5	28.7
	Feb-Apr 2003	1,629	1,166	1,113	53	463	71.6	68.4	4.5	28.4
	May-Jul 2003	1,632	1,173	1,116	56	459	71.9	68.4	4.8	28.1
	Aug-Oct 2003	1,634	1,165	1,107	58	470	71.3	67.7	4.9	28.7
	Nov-Jan 2004	1,637	1,167	1,108	59	470	71.3	67.7	5.0	28.7
	<i>Change on quarter</i>	3	2	1	1	0	0.0	0.0	0.1	0.0
<i>Change %</i>	0.2	0.2	0.1	2.2	0.1					
<i>Change on year</i>	11	8	1	7	3	0.0	-0.4	0.6	0.0	
<i>Change %</i>	0.7	0.7	0.1	13.9	0.6					
Women	Nov-Jan 2002	1,696	951	912	39	744	56.1	53.8	4.1	43.9
	Nov-Jan 2003	1,711	973	934	40	738	56.9	54.6	4.1	43.1
	Feb-Apr 2003	1,714	959	924	35	755	55.9	53.9	3.7	44.1
	May-Jul 2003	1,716	961	918	43	755	56.0	53.5	4.5	44.0
	Aug-Oct 2003	1,719	957	922	35	762	55.7	53.6	3.7	44.3
	Nov-Jan 2004	1,722	980	942	38	742	56.9	54.7	3.8	43.1
	<i>Change on quarter</i>	3	23	20	3	-20	1.2	1.1	0.2	-1.2
<i>Change %</i>	0.2	2.4	2.2	7.4	-2.6					
<i>Change on year</i>	11	7	9	-2	5	0.0	0.1	-0.2	0.0	
<i>Change %</i>	0.7	0.7	0.9	-5.1	0.6					

All aged 16 to 59/64

		All aged 16 to 59/64	Total economically active	Total in employment	Unemployed	Economically inactive	Economic Activity rate (%)	Employment rate (%)	Unemployment rate (%)	Economic inactivity rate(%)
		10	11	12	13	14	15	16	17	18
							YCIF	YCKF		YYAZ
People	Nov-Jan 2002	2,558	2,041	1,953	88	517	79.8	76.3	4.3	20.2
	Nov-Jan 2003	2,580	2,065	1,975	90	514	80.1	76.6	4.4	19.9
	Feb-Apr 2003	2,583	2,056	1,969	87	527	79.6	76.2	4.2	20.4
	May-Jul 2003	2,587	2,061	1,962	99	526	79.7	75.9	4.8	20.3
	Aug-Oct 2003	2,590	2,050	1,959	91	540	79.1	75.6	4.4	20.9
	Nov-Jan 2004	2,594	2,078	1,983	95	516	80.1	76.4	4.6	19.9
	<i>Change on quarter</i>	3	28	24	4	-25	1.0	0.8	0.1	-1.0
<i>Change %</i>	0.1	1.4	1.2	4.5	-4.5					
<i>Change on year</i>	14	13	8	5	1	0.1	-0.1	0.2	-0.1	
<i>Change %</i>	0.5	0.6	0.4	5.5	0.3					
Men	Nov-Jan 2002	1,328	1,124	1,075	49	204	84.7	81.0	4.4	15.3
	Nov-Jan 2003	1,339	1,137	1,086	52	201	85.0	81.1	4.5	15.0
	Feb-Apr 2003	1,340	1,139	1,087	52	202	85.0	81.1	4.6	15.0
	May-Jul 2003	1,342	1,146	1,091	56	196	85.4	81.2	4.8	14.6
	Aug-Oct 2003	1,344	1,138	1,081	56	206	84.6	80.4	5.0	15.4
	Nov-Jan 2004	1,346	1,141	1,083	58	205	84.7	80.4	5.1	15.3
	<i>Change on quarter</i>	2	3	2	1	-1	0.1	0.0	0.1	-0.1
<i>Change %</i>	0.2	0.3	0.2	2.3	-0.4					
<i>Change on year</i>	8	4	-3	6	4	-0.2	-0.7	0.5	0.2	
<i>Change %</i>	0.6	0.3	-0.2	11.9	2.0					
Women	Nov-Jan 2002	1,230	917	877	39	314	74.5	71.3	4.3	25.5
	Nov-Jan 2003	1,241	928	890	39	313	74.8	71.7	4.2	25.2
	Feb-Apr 2003	1,243	917	882	35	326	73.8	71.0	3.8	26.2
	May-Jul 2003	1,245	915	872	43	330	73.5	70.0	4.7	26.5
	Aug-Oct 2003	1,246	912	878	35	334	73.2	70.4	3.8	26.8
	Nov-Jan 2004	1,248	937	900	38	310	75.1	72.1	4.0	24.9
	<i>Change on quarter</i>	1	25	22	3	-24	1.9	1.7	0.2	-1.9
<i>Change %</i>	0.1	2.7	2.5	8.1	-7.1					
<i>Change on year</i>	7	9	10	-1	-3	0.3	0.4	-0.2	-0.3	
<i>Change %</i>	0.5	1.0	1.2	-3.0	-0.8					

Relationship between columns: 1 = 2 + 5; 2 = 3 + 4; 6 = 2/1; 7 = 3/1; 8 = 4/2;

9 = 5/1; 10 = 11 + 14; 11 = 12 + 13; 15 = 11/10; 16 = 12/10; 17 = 13/11; 18 = 14/10

Data source: Labour Force Survey

The LFS sample population covers those living in private households, student halls of residence and NHS accommodation.

Labour Market Statistics Helpline 020 7533 6094

REGIONAL DATA

1a Summary of other headline indicators

East Midlands

(thousands),
seasonally adjusted

	Civilian workforce jobs (not seasonally adjusted)		
	Levels		
	Total	Males	Females
Sep 00	1,982	1,036	946
Sep 01	1,982	1,037	945
Sep 02	1,966	1,025	941
Dec 02	1,979	1,030	949
Mar 03	1,943	994	949
Jun 03	1,959	1,006	954
Sep 03	1,974	1,012	962
<i>Change on year</i>	8	-13	21
<i>Change %</i>	0.4	-1.2	2.2

	Claimant count*					
	Levels			Rates (%)**		
	Total	Males	Females	Total	Males	Females
	DPAY	ZMPA	ZMPC	DPBJ	ZMPB	ZMPD
2003						
February#	57.9	42.8	15.1	2.8	4.0	1.6
March	58.3	43.0	15.3	2.9	4.0	1.6
April	58.8	43.4	15.4	2.9	4.1	1.6
May	59.8	44.2	15.6	2.9	4.1	1.6
June#	60.1	44.5	15.6	3.0	4.2	1.6
July	59.7	44.1	15.6	2.9	4.1	1.6
August#	59.5	43.9	15.6	2.9	4.1	1.6
September	59.6	44.0	15.6	2.9	4.1	1.6
October	59.3	43.7	15.6	2.9	4.1	1.6
November#	58.6	43.1	15.5	2.9	4.0	1.6
December	57.4	42.2	15.2	2.8	3.9	1.6
2004	(r)					
January	55.6	40.8	14.8	2.7	3.8	1.5
February#	(p) 54.7	40.0	14.7	2.7	3.7	1.5
<i>Change on period</i>	-0.9	-0.8	-0.1	0.0	-0.1	0.0
<i>Change %</i>	-1.6	-2.0	-0.7			
<i>Change on year</i>	-3.2	-2.8	-0.4	-0.2	-0.3	0.0
<i>Change %</i>	-5.5	-6.5	-2.6			

	Notified vacancies	Unfilled vacancies
	Level	Level
	DRYM	BCQF
2003		
February		
March		
April		
May		
June		
July		
August		
September		
October		
November		
December		
2004		
January		
February		

Publication of these vacancy statistics has been deferred. Figures from May 2001 are affected by the introduction of Employer Direct - see note on page 9.

* Count of claimants of Jobseeker's Allowance

Labour Market Statistics Helpline 020 7533 6094

** Denominator = claimant count + workforce jobs. NB these are different from the proportions of the working age populations claiming Jobseeker's Allowance for local areas shown in Tables 17 and 18.

Data source: Employer surveys, DfES Training Data System, Jobcentre Plus administrative system.

See note on page 8 for further details.

Months where there are 5 weeks between count dates. All the rest are 4 week periods.

The workforce jobs data in this table have not been rebenchmarked to the latest ABI results and do not include the latest LFS estimates - see note on page 6.

EMPLOYMENT

2 Employment by age

East Midlands

(thousands), not seasonally adjusted

		All aged 16 & over	16 - 59/64	16 - 17	18 - 24	25 - 34	35 - 49	50 - 64 (m) 50 - 59 (w)	65+ (m) & 60+ (w)
		1	2	3	4	5	6	7	8
Employed									
People	Sep - Nov 2000	1,980	1,929	48	225	469	736	451	51
	Sep - Nov 2001	2,024	1,967	56	252	446	753	460	56
	Sep - Nov 2002	2,035	1,972	54	235	433	770	480	63
	Dec - Feb 2003	2,020	1,958	57	231	431	766	473	61
	Mar - May 2003	2,030	1,961	56	226	424	775	480	69
	Jun - Aug 2003	2,038	1,965	53	245	421	762	484	73
	Sep - Nov 2003	2,035	1,968	52	253	428	759	476	68
	<i>Change on year</i>	<i>1</i>	<i>-4</i>	<i>-2</i>	<i>18</i>	<i>-5</i>	<i>-11</i>	<i>-4</i>	<i>5</i>
<i>Change %</i>	<i>0.0</i>	<i>-0.2</i>	<i>-3.0</i>	<i>7.5</i>	<i>-1.1</i>	<i>-1.5</i>	<i>-0.9</i>	<i>7.5</i>	
Men	Sep - Nov 2000	1,093	1,074	25	123	261	392	274	19
	Sep - Nov 2001	1,106	1,084	28	135	247	400	274	22
	Sep - Nov 2002	1,109	1,087	26	124	240	407	290	22
	Dec - Feb 2003	1,098	1,076	27	125	237	404	284	22
	Mar - May 2003	1,113	1,086	28	124	234	409	291	27
	Jun - Aug 2003	1,117	1,090	28	135	231	404	292	27
	Sep - Nov 2003	1,109	1,085	24	135	231	404	290	24
	<i>Change on year</i>	<i>1</i>	<i>-2</i>	<i>-2</i>	<i>11</i>	<i>-8</i>	<i>-3</i>	<i>1</i>	<i>2</i>
<i>Change %</i>	<i>0.1</i>	<i>-0.2</i>	<i>-6.0</i>	<i>8.8</i>	<i>-3.5</i>	<i>-0.9</i>	<i>0.2</i>	<i>10.9</i>	
Women	Sep - Nov 2000	887	855	23	103	208	343	178	32
	Sep - Nov 2001	917	883	27	117	199	353	186	34
	Sep - Nov 2002	926	885	28	111	193	362	190	41
	Dec - Feb 2003	921	882	29	106	195	362	190	40
	Mar - May 2003	917	875	27	102	191	366	188	42
	Jun - Aug 2003	921	875	26	109	190	358	192	45
	Sep - Nov 2003	926	883	28	118	197	355	186	44
	<i>Change on year</i>	<i>0</i>	<i>-2</i>	<i>0</i>	<i>7</i>	<i>4</i>	<i>-8</i>	<i>-5</i>	<i>2</i>
<i>Change %</i>	<i>0.0</i>	<i>-0.3</i>	<i>-0.3</i>	<i>6.0</i>	<i>1.9</i>	<i>-2.2</i>	<i>-2.5</i>	<i>5.7</i>	
Employment rates (%)*									
People	Sep - Nov 2000	60.4	76.1	47.4	66.8	81.2	83.7	70.4	6.8
	Sep - Nov 2001	61.3	77.0	53.3	73.4	79.7	84.4	70.4	7.5
	Sep - Nov 2002	61.0	76.5	50.3	66.4	79.4	84.8	72.3	8.3
	Dec - Feb 2003	60.5	75.9	53.1	64.8	79.8	84.1	71.1	8.1
	Mar - May 2003	60.7	75.9	51.9	62.7	79.1	84.9	71.9	9.0
	Jun - Aug 2003	60.8	75.9	49.6	67.4	79.0	83.2	72.4	9.5
	Sep - Nov 2003	60.7	75.9	48.0	69.4	80.8	82.5	71.1	8.9
	<i>Change on year</i>	<i>-0.4</i>	<i>-0.6</i>	<i>-2.3</i>	<i>3.0</i>	<i>1.4</i>	<i>-2.3</i>	<i>-1.2</i>	<i>0.5</i>
Men	Sep - Nov 2000	68.5	81.6	47.6	72.0	91.2	89.8	73.6	6.7
	Sep - Nov 2001	68.8	81.8	52.4	77.7	89.1	90.2	72.6	7.9
	Sep - Nov 2002	68.3	81.3	47.0	69.2	89.2	90.4	75.5	7.6
	Dec - Feb 2003	67.5	80.4	49.9	69.4	88.7	89.3	73.7	7.6
	Mar - May 2003	68.3	81.0	51.5	67.9	88.4	90.3	75.5	9.2
	Jun - Aug 2003	68.4	81.2	50.2	73.7	87.9	88.8	75.6	9.4
	Sep - Nov 2003	67.8	80.7	43.6	73.2	88.7	88.5	74.9	8.3
	<i>Change on year</i>	<i>-0.4</i>	<i>-0.6</i>	<i>-3.4</i>	<i>4.0</i>	<i>-0.4</i>	<i>-1.9</i>	<i>-0.6</i>	<i>0.7</i>
Women	Sep - Nov 2000	52.8	70.2	47.1	61.4	71.4	77.8	66.0	6.9
	Sep - Nov 2001	54.2	71.9	54.3	69.0	70.4	78.8	67.5	7.3
	Sep - Nov 2002	54.2	71.4	53.9	63.5	69.9	79.3	67.9	8.8
	Dec - Feb 2003	53.8	71.0	56.5	60.1	71.2	79.0	67.5	8.4
	Mar - May 2003	53.5	70.3	52.3	57.4	70.0	79.6	67.0	8.9
	Jun - Aug 2003	53.6	70.3	49.1	61.0	70.3	77.7	68.1	9.6
	Sep - Nov 2003	53.8	70.8	52.8	65.4	73.1	76.6	65.9	9.2
	<i>Change on year</i>	<i>-0.4</i>	<i>-0.6</i>	<i>-1.2</i>	<i>1.9</i>	<i>3.2</i>	<i>-2.8</i>	<i>-2.0</i>	<i>0.4</i>

Relationship between columns: 1=2+8; 2=3+4+5+6+7

Source: Labour Force Survey

* Denominator = all persons in the relevant age group

Labour Market Statistics Helpline 020 7533 6094

The LFS sample population covers those living in private households, student halls of residence and NHS accommodation.

EMPLOYMENT

East Midlands

3 Full-time, part-time and temporary workers

(thousands), not seasonally adjusted

		All in employment					All in employment			
		Total ¹	Employees ²	Self employed ³	Unpaid family workers ⁴	Government-supported training and employment programmes ⁵	Full-time workers ⁶	Part-time workers ⁷	Workers with second jobs ⁸	Temporary employees ⁹
		1	2	3	4	5	6	7	8	9
People	Sep - Nov 2000	1,980	1,745	218	10	*	1,478	501	82	110
	Sep - Nov 2001	2,024	1,779	228	*	11	1,505	518	79	101
	Sep - Nov 2002	2,035	1,804	216	*	*	1,496	539	90	92
	Dec - Feb 2003	2,020	1,776	233	*	*	1,481	537	80	98
	Mar - May 2003	2,030	1,780	236	*	*	1,491	537	87	92
	Jun - Aug 2003	2,038	1,780	243	*	*	1,497	540	75	97
	Sep - Nov 2003	2,035	1,784	239	*	*	1,502	532	71	90
	<i>Change on year</i>	<i>1</i>	<i>-20</i>	<i>22</i>	<i>*</i>	<i>*</i>	<i>7</i>	<i>-7</i>	<i>-19</i>	<i>-1</i>
	<i>Change %</i>	<i>0.0</i>	<i>-1.1</i>	<i>10.4</i>	<i>*</i>	<i>*</i>	<i>0.4</i>	<i>-1.3</i>	<i>-20.7</i>	<i>-1.5</i>
Men	Sep - Nov 2000	1,093	925	161	*	*	1,008	85	30	50
	Sep - Nov 2001	1,106	928	170	*	*	1,016	90	32	47
	Sep - Nov 2002	1,109	938	163	*	*	1,000	109	43	40
	Dec - Feb 2003	1,098	923	169	*	*	982	115	28	44
	Mar - May 2003	1,113	935	171	*	*	996	116	31	43
	Jun - Aug 2003	1,117	935	173	*	*	1,002	114	28	45
	Sep - Nov 2003	1,109	931	173	*	*	1,007	103	26	42
	<i>Change on year</i>	<i>1</i>	<i>-8</i>	<i>10</i>	<i>*</i>	<i>*</i>	<i>7</i>	<i>-6</i>	<i>-17</i>	<i>2</i>
	<i>Change %</i>	<i>0.1</i>	<i>-0.8</i>	<i>6.0</i>	<i>*</i>	<i>*</i>	<i>0.7</i>	<i>-5.6</i>	<i>-39.0</i>	<i>3.9</i>
Women	Sep - Nov 2000	887	820	57	*	*	470	416	52	60
	Sep - Nov 2001	917	851	58	*	*	489	428	47	55
	Sep - Nov 2002	926	866	54	*	*	496	430	47	52
	Dec - Feb 2003	921	853	63	*	*	500	421	52	54
	Mar - May 2003	917	845	65	*	*	495	421	56	48
	Jun - Aug 2003	921	845	70	*	*	495	425	46	52
	Sep - Nov 2003	926	854	66	*	*	496	430	45	49
	<i>Change on year</i>	<i>0</i>	<i>-12</i>	<i>13</i>	<i>*</i>	<i>*</i>	<i>0</i>	<i>-1</i>	<i>-2</i>	<i>-3</i>
	<i>Change %</i>	<i>0.0</i>	<i>-1.4</i>	<i>23.6</i>	<i>*</i>	<i>*</i>	<i>0.0</i>	<i>-0.2</i>	<i>-4.4</i>	<i>-5.6</i>

Temporary workers (reasons for temporary working)

Part-time workers (reasons for part-time working)#

		Total**	Could not find permanent job	Did not want a permanent job	Other	Total**	Could not find full-time job	Did not want full-time job	Other
		10	11	12	13	14	15	16	17
People	Sep - Nov 2000	110	35	31	44	491	41	377	71
	Sep - Nov 2001	101	25	25	51	510	36	398	75
	Sep - Nov 2002	92	22	23	46	532	41	404	85
	Dec - Feb 2003	98	24	28	46	532	35	411	84
	Mar - May 2003	92	20	29	42	529	32	408	86
	Jun - Aug 2003	97	19	37	41	529	34	410	83
	Sep - Nov 2003	90	16	26	48	524	34	400	89
	<i>Change on year</i>	<i>-1</i>	<i>-6</i>	<i>2</i>	<i>2</i>	<i>-9</i>	<i>-7</i>	<i>-5</i>	<i>3</i>
	<i>Change %</i>	<i>-1.5</i>	<i>-26.1</i>	<i>10.2</i>	<i>4.4</i>	<i>-1.6</i>	<i>-16.5</i>	<i>-1.1</i>	<i>4.0</i>

Relationship between columns: 1=2+3+4+5

Source: Labour Force Survey

employees and self-employed

Labour Market Statistics Helpline 020 7533 6094

* Includes people who did not state whether they worked part-time or full-time

** Includes people who did not state their reason for temporary/part-time working

The LFS sample population covers those living in private households, student halls of residence and NHS accommodation.

EMPLOYMENT

East Midlands

4 Civilian workforce jobs

(thousands), not seasonally adjusted

		Civilian workforce jobs	Employee jobs	Self- employment jobs	Government- supported trainees
		1	2	3	4
All jobs	Sep 99	1,983	1,744	232	7
	Sep 00	1,982	1,757	218	7
	Sep 01	1,982	1,755	223	4
	Sep 02	1,966	1,736	225	5
	Dec 02	1,979	1,740	234	5
	Mar 03	1,943	1,708	229	6
	Jun 03	1,959	1,721	233	5
	Sep 03	1,974	1,729	239	6
<i>Change on year</i>		8	-7	14	2
<i>Change %</i>		0.4	-0.4	6.2	30.6
Male jobs	Sep 99	1,027	859	164	4
	Sep 00	1,036	874	157	4
	Sep 01	1,037	869	165	2
	Sep 02	1,025	854	168	3
	Dec 02	1,030	855	172	3
	Mar 03	994	829	161	3
	Jun 03	1,006	837	166	3
	Sep 03	1,012	841	168	3
<i>Change on year</i>		-13	-13	0	1
<i>Change %</i>		-1.2	-1.5	-0.2	28.3
Female jobs	Sep 99	956	885	68	3
	Sep 00	946	883	61	3
	Sep 01	945	885	58	2
	Sep 02	941	882	57	2
	Dec 02	949	884	62	2
	Mar 03	949	879	68	3
	Jun 03	954	884	68	2
	Sep 03	962	888	71	3
<i>Change on year</i>		21	6	14	1
<i>Change %</i>		2.2	0.6	25.5	33.4

Sources: Employer surveys, Labour Force Survey, DfES

Relationship between columns: 1=2+3+4

Workforce jobs enquiries 01633 812318

The Workforce Jobs series measures jobs rather than people, therefore, second self-employment jobs (where the main job is an employee) are now included in this series.

Civilian Workforce Jobs figures come from a variety of sources. Employee Jobs (which is much the largest component of Civilian Workforce Jobs) come from quarterly surveys of employers carried out by Prices & Business Group (PBG) of ONS and Administrative Returns. Self-employment jobs figures are provided by the LFS and Government-supported trainees figures are provided by ES Training Data Systems.

The data in this table have not been rebenchmarked to the latest ABI results and do not include the latest LFS estimates - see note on page 6.

EMPLOYMENT

East Midlands

5 Employee jobs by industry

(thousands), not seasonally adjusted

Standard Industrial Classification (1992)

SIC 1992 SECTION		All jobs (seasonally adjusted)	Agriculture Forestry & Fishing	Mining Energy & Water Supplies Industries	Manufacturing Industries	Construction	Service Industries	Other Industries	
		All jobs A-O	A,B	C,E	D	F	G-K	L-O	
		1	2	3	4	5	6	7	8
All jobs	Sep 00	1,760	1,757	29	17	384	79	731	516
	Sep 01	1,753	1,755	25	18	361	88	756	508
	Sep 02	1,733	1,736	22	17	343	87	753	514
	Dec 02	1,732	1,740	19	17	339	90	756	518
	Mar 03	1,719	1,708	20	17	332	79	742	519
	Jun 03	1,722	1,721	20	16	329	84	744	527
	Sep 03	1,725	1,729	22	16	328	90	744	529
	<i>Change on qtr</i>		2						
	<i>Change %</i>		0.1						
	<i>Change on year</i>	-9	-7	0	-2	-15	3	-9	15
	<i>Change %</i>	-0.5	-0.4	1.9	-9.4	-4.4	3.2	-1.2	3.0
Male jobs	Sep 00	878	874	19	13	270	66	365	143
	Sep 01	865	869	16	13	253	73	374	140
	Sep 02	849	854	15	12	241	74	370	141
	Dec 02	850	855	14	12	239	77	370	143
	Mar 03	836	829	14	12	233	67	362	141
	Jun 03	841	837	14	12	231	70	365	144
	Sep 03	835	841	15	11	231	75	364	145
	<i>Change on qtr</i>		-6						
	<i>Change %</i>		-0.8						
	<i>Change on year</i>	-14	-13	0	-2	-11	1	-6	3
	<i>Change %</i>	-1.6	-1.5	1.1	-12.6	-4.4	1.9	-1.5	2.3
Female jobs	Sep 00	883	883	10	4	115	14	367	373
	Sep 01	887	885	9	5	107	15	382	368
	Sep 02	884	882	7	5	102	13	384	372
	Dec 02	881	884	5	5	100	13	386	375
	Mar 03	883	879	6	5	99	12	380	378
	Jun 03	881	884	6	5	98	13	379	382
	Sep 03	890	888	7	5	98	15	380	384
	<i>Change on qtr</i>		9						
	<i>Change %</i>		1.0						
	<i>Change on year</i>	5	6	0	0	-4	1	-4	12
	<i>Change %</i>	0.6	0.6	3.7	-0.9	-4.3	10.2	-0.9	3.3

Relationship between columns: 2=3+4+5+6+7+8

Source: Employer surveys
Workforce jobs enquiries 01633 812318

Employee jobs figures are of a measure of jobs rather than people. For example, if a person holds two jobs, each job will be counted in the employee jobs total.

Employees jobs figures come from quarterly surveys of employers carried out by Prices & Business Group (PBG) of ONS and Administrative returns.

The quarterly employer surveys used to compile employee jobs figures do not collect data by Government Office Regions (GOR). Instead, Annual Business Inquiry (ABI) data are used to pro-rate the totals obtained from the quarterly surveys to generate GOR data. This technique can lead to the sum of the industry figures not matching the "All jobs" total in column 2.

The data in this table have not been rebenchmarked to the latest ABI results and do not include the latest LFS estimates - see note on page 6.

EMPLOYMENT

East Midlands

6 Actual weekly hours of work

not seasonally adjusted

		Average actual weekly hours of work				
		Total weekly hours (millions)	All workers*	Full-time**	Part-time**	Workers with second jobs
		1	2	3	4	5
People	Sep - Nov 2000	68	34.1	39.7	16.0	9.5
	Sep - Nov 2001	69	33.9	39.3	16.6	10.6
	Sep - Nov 2002	68	33.4	38.8	16.5	10.2
	Dec - Feb 2003	62	30.9	36.2	15.3	8.5
	Mar - May 2003	68	33.3	39.0	16.0	8.8
	Jun - Aug 2003	65	32.1	37.7	15.1	9.2
	Sep - Nov 2003	67	33.1	38.7	16.2	8.2
	<i>Change on year</i>	<i>-1</i>	<i>-0.3</i>	<i>-0.2</i>	<i>-0.3</i>	<i>-2.0</i>
<i>Change %</i>	<i>-0.8</i>	<i>-0.8</i>	<i>-0.4</i>	<i>-1.7</i>	<i>-19.5</i>	
Men	Sep - Nov 2000	44	39.8	41.5	15.8	10.3
	Sep - Nov 2001	44	39.5	41.2	15.5	12.4
	Sep - Nov 2002	43	38.7	40.8	15.0	11.3
	Dec - Feb 2003	39	35.6	37.9	13.9	10.5
	Mar - May 2003	43	38.5	40.9	15.0	9.8
	Jun - Aug 2003	42	37.7	39.9	15.3	8.8
	Sep - Nov 2003	43	38.4	40.5	15.3	8.6
	<i>Change on year</i>	<i>0</i>	<i>-0.3</i>	<i>-0.3</i>	<i>0.3</i>	<i>-2.7</i>
<i>Change %</i>	<i>-0.7</i>	<i>-0.8</i>	<i>-0.7</i>	<i>1.8</i>	<i>-23.7</i>	
Women	Sep - Nov 2000	24	27.1	35.9	16.0	9.1
	Sep - Nov 2001	25	27.1	35.2	16.8	9.3
	Sep - Nov 2002	25	27.0	35.0	16.9	9.3
	Dec - Feb 2003	23	25.4	32.8	15.6	7.4
	Mar - May 2003	25	27.0	35.2	16.3	8.3
	Jun - Aug 2003	23	25.3	33.2	15.0	9.5
	Sep - Nov 2003	25	26.8	35.0	16.4	8.0
	<i>Change on year</i>	<i>0</i>	<i>-0.2</i>	<i>0.0</i>	<i>-0.4</i>	<i>-1.2</i>
<i>Change %</i>	<i>-0.9</i>	<i>-0.9</i>	<i>0.1</i>	<i>-2.5</i>	<i>-13.4</i>	

* main and second jobs

Source: Labour Force Survey

** main jobs only

Labour Market Statistics Helpline 020 7533 6094

The LFS sample population covers those living in private households, student halls of residence and NHS accommodation.

CLAIMANT COUNT

East Midlands

7 Claimant count* levels and rates

(thousands), seasonally adjusted

		Claimant count		Inflows (standardised**)	Outflows (standardised**)	Claimant count (not seasonally adjusted)	
		Level	Rate (%) ^{##}	Level	Level	Level	Rate (%) ^{##}
		1	2	3	4	5	6
People	2003	DPAY	DPBJ			BCKC	DPAN
	February#	57.9	2.8	14.8	14.3	63.7	3.1
	March	58.3	2.9	14.9	14.5	62.6	3.1
	April	58.8	2.9	14.9	14.7	61.0	3.0
	May	59.8	2.9	14.9	14.2	60.8	3.0
	June#	60.1	3.0	14.7	14.4	59.6	2.9
	July	59.7	2.9	14.2	14.5	59.9	2.9
	August#	59.5	2.9	14.1	14.3	60.3	3.0
	September	59.6	2.9	14.2	14.5	58.5	2.9
	October	59.3	2.9	13.9	14.2	56.2	2.8
	November#	58.6	2.9	13.9	14.3	55.1	2.7
	December	57.4	2.8	13.5	14.3	55.8	2.7
	2004						
	January (r)	55.6	2.7	13.0	14.1	59.7	2.9
	February# (p)	54.7	2.7	13.3	14.2	59.9	2.9
	<i>Change on mth</i>	-0.9	0.0	0.3	0.1	0.3	0.0
	<i>Change %</i>	-1.6		2.3	0.7	0.5	
<i>Change on year</i>	-3.2	-0.2	-1.5	-0.1	-3.8	-0.2	
<i>Change %</i>	-5.5		-10.1	-0.7	-5.9		
Men	2003	ZMPA	ZMPB				
	February#	42.8	4.0	10.4	10.1	47.2	4.4
	March	43.0	4.0	10.4	10.2	46.4	4.3
	April	43.4	4.1	10.5	10.4	45.1	4.2
	May	44.2	4.1	10.5	9.9	45.1	4.2
	June#	44.5	4.2	10.3	10.1	44.1	4.1
	July	44.1	4.1	10.0	10.3	43.8	4.1
	August#	43.9	4.1	9.9	10.1	43.7	4.1
	September	44.0	4.1	10.0	10.2	42.5	4.0
	October	43.7	4.1	9.8	10.0	41.0	3.8
	November#	43.1	4.0	9.7	10.1	40.4	3.8
	December	42.2	3.9	9.5	10.0	41.3	3.9
	2004						
	January (r)	40.8	3.8	9.1	9.9	44.0	4.1
	February# (p)	40.0	3.7	9.3	10.0	44.0	4.1
	<i>Change on mth</i>	-0.8	-0.1	0.2	0.1	0.0	0.0
	<i>Change %</i>	-2.0		2.2	1.0	-0.1	
<i>Change on year</i>	-2.8	-0.3	-1.1	-0.1	-3.2	-0.3	
<i>Change %</i>	-6.5		-10.6	-1.0	-6.8		
Women	2003	ZMPC	ZMPD				
	February#	15.1	1.6	4.4	4.2	16.5	1.7
	March	15.3	1.6	4.5	4.3	16.2	1.7
	April	15.4	1.6	4.4	4.3	15.9	1.6
	May	15.6	1.6	4.4	4.3	15.8	1.6
	June#	15.6	1.6	4.4	4.3	15.5	1.6
	July	15.6	1.6	4.2	4.2	16.2	1.7
	August#	15.6	1.6	4.2	4.2	16.6	1.7
	September	15.6	1.6	4.2	4.3	16.1	1.7
	October	15.6	1.6	4.1	4.2	15.2	1.6
	November#	15.5	1.6	4.2	4.2	14.7	1.5
	December	15.2	1.6	4.0	4.3	14.5	1.5
	2004						
	January (r)	14.8	1.5	3.9	4.2	15.6	1.6
	February# (p)	14.7	1.5	4.0	4.2	16.0	1.6
	<i>Change on mth</i>	-0.1	0.0	0.1	0.0	0.3	0.0
	<i>Change %</i>	-0.7		2.6	0.0	2.0	
<i>Change on year</i>	-0.4	0.0	-0.4	0.0	-0.6	-0.1	
<i>Change %</i>	-2.6		-9.1	0.0	-3.4		

* Count of claimants of Jobseeker's Allowance

Source: Jobcentre Plus administrative system

Labour Market Statistics Helpline 020 7533 6094

^{##} Denominator = claimant count + workforce jobs. NB these are different from the proportions of the working age populations claiming Jobseeker's Allowance for local areas shown in Tables 17 and 18. See note on page 8 for further details.

The claimant count inflows, standardised to a 4.33 week month but not seasonally adjusted, for February 2004 were 15,723 in total, 10,998 for men and 4,725 for women. The corresponding outflow figures were 10,810 men and 4,322 women.

** Flow figures are collected for 4 or 5 week periods between count dates; the figures are then converted to a standard 4 1/3 week month.

Months where there are 5 weeks between count dates. All the rest are 4 week periods.

CLAIMANT COUNT

East Midlands

8(1) Claimant count* by age and duration - computerised claims only

(thousands), not seasonally adjusted

	All ages							18-24						
	All	All computerised claims	Up to 6 months	Over 6 and up to 12 months	All over 12 months	% claiming for over 12 months	All over 24 months	All	Up to 6 months	Over 6 and up to 12 months	All over 12 months	% claiming for over 12 months	All over 24 months	
														1
People														
Feb 02#	65.3	64.5	44.9	9.8	9.9	15.3	4.1	17.1	14.7	2.2	0.3	1.6	0.0	
Feb 03#	63.7	62.7	45.4	9.3	8.1	12.9	2.9	17.0	14.7	2.0	0.3	1.7	0.0	
Mar 03	62.6	61.5	44.0	9.5	8.0	13.1	2.8	16.7	14.3	2.1	0.3	1.8	0.0	
Apr 03	61.0	60.1	42.3	9.8	7.9	13.1	2.7	16.0	13.6	2.2	0.3	1.8	0.0	
May 03	60.8	59.9	41.6	10.3	7.9	13.2	2.7	15.9	13.3	2.3	0.3	1.9	0.0	
Jun 03#	59.6	58.5	39.7	10.8	8.0	13.6	2.6	15.6	12.9	2.5	0.3	1.9	0.0	
Jul 03	59.9	59.1	40.3	10.7	8.1	13.6	2.6	16.5	13.7	2.4	0.3	2.0	0.0	
Aug 03#	60.3	59.6	40.2	11.2	8.2	13.8	2.6	17.0	14.0	2.7	0.4	2.2	0.0	
Sep 03	58.5	57.8	38.4	11.0	8.4	14.5	2.6	16.4	13.4	2.6	0.4	2.6	0.0	
Oct 03	56.2	55.5	36.5	10.7	8.3	15.0	2.6	15.3	12.5	2.4	0.4	2.9	0.0	
Nov 03#	55.1	54.5	36.2	9.9	8.4	15.4	2.5	14.5	12.0	2.1	0.4	3.1	0.0	
Dec 03	55.8	55.1	37.0	9.6	8.5	15.4	2.5	14.6	12.1	2.1	0.5	3.3	0.0	
Jan 04	59.7	59.0	39.8	10.4	8.9	15.0	2.6	15.7	12.8	2.4	0.5	3.4	0.0	
Feb 04#	59.9	59.4	40.7	9.9	8.9	14.9	2.5	16.3	13.5	2.3	0.5	3.3	0.0	
<i>Change on year</i>	-3.8	-3.3	-4.7	0.6	0.7	1.9	-0.3	-0.6	-1.2	0.3	0.2	1.6	0.0	
<i>Change %</i>	-5.9	-5.3	-10.3	6.9	9.0		-11.5	-3.6	-8.0	15.8	82.7		80.0	
Men														
Feb 02#	48.8	48.2	32.7	7.4	8.1	16.8	3.4	11.8	10.2	1.4	0.2	1.6	0.0	
Feb 03#	47.2	46.4	32.8	7.1	6.6	14.2	2.4	11.8	10.3	1.4	0.2	1.6	0.0	
Mar 03	46.4	45.5	31.7	7.2	6.5	14.4	2.3	11.6	10.0	1.4	0.2	1.8	0.0	
Apr 03	45.1	44.4	30.5	7.5	6.4	14.4	2.2	11.1	9.4	1.5	0.2	1.8	0.0	
May 03	45.1	44.3	30.0	7.9	6.4	14.5	2.2	11.1	9.3	1.6	0.2	1.9	0.0	
Jun 03#	44.1	43.2	28.6	8.2	6.4	14.9	2.2	10.8	8.9	1.7	0.2	1.9	0.0	
Jul 03	43.8	43.1	28.5	8.1	6.5	15.0	2.1	11.1	9.2	1.7	0.2	2.1	0.0	
Aug 03#	43.7	43.2	28.1	8.4	6.6	15.3	2.2	11.4	9.3	1.9	0.3	2.3	0.0	
Sep 03	42.5	41.9	27.0	8.3	6.7	15.9	2.1	11.1	8.9	1.8	0.3	2.6	0.0	
Oct 03	41.0	40.5	25.8	8.1	6.7	16.4	2.1	10.4	8.4	1.7	0.3	2.9	0.0	
Nov 03#	40.4	40.0	25.7	7.5	6.7	16.8	2.1	9.9	8.1	1.5	0.3	3.1	0.0	
Dec 03	41.3	40.8	26.7	7.3	6.8	16.7	2.1	10.1	8.3	1.5	0.3	3.2	0.0	
Jan 04	44.0	43.6	28.6	7.8	7.1	16.3	2.1	10.9	8.8	1.7	0.4	3.4	0.0	
Feb 04#	44.0	43.6	29.1	7.4	7.0	16.2	2.1	11.2	9.3	1.6	0.4	3.3	0.0	
<i>Change on year</i>	-3.2	-2.8	-3.6	0.4	0.4	1.9	-0.3	-0.6	-1.0	0.2	0.2	1.7	0.0	
<i>Change %</i>	-6.8	-6.0	-11.0	5.0	6.7		-12.4	-4.8	-9.5	16.9	92.3		64.3	
Women														
Feb 02#	16.5	16.3	12.1	2.4	1.8	10.9	0.7	5.3	4.5	0.7	0.1	1.7	0.0	
Feb 03#	16.5	16.3	12.6	2.2	1.5	9.3	0.5	5.2	4.4	0.6	0.1	1.9	0.0	
Mar 03	16.2	16.0	12.3	2.3	1.5	9.3	0.5	5.1	4.3	0.7	0.1	1.8	0.0	
Apr 03	15.9	15.7	11.9	2.3	1.5	9.5	0.5	4.9	4.1	0.7	0.1	1.9	0.0	
May 03	15.8	15.5	11.6	2.4	1.5	9.7	0.5	4.8	4.1	0.7	0.1	2.1	0.0	
Jun 03#	15.5	15.3	11.2	2.6	1.5	10.1	0.5	4.8	4.0	0.7	0.1	2.0	0.0	
Jul 03	16.2	15.9	11.8	2.6	1.6	9.8	0.5	5.3	4.5	0.7	0.1	2.0	0.0	
Aug 03#	16.6	16.4	12.1	2.8	1.6	9.9	0.5	5.5	4.6	0.8	0.1	2.1	0.0	
Sep 03	16.1	15.9	11.5	2.7	1.7	10.5	0.5	5.3	4.4	0.8	0.1	2.6	0.0	
Oct 03	15.2	15.0	10.8	2.6	1.7	11.0	0.5	5.0	4.1	0.7	0.1	2.8	0.0	
Nov 03#	14.7	14.5	10.4	2.4	1.6	11.2	0.5	4.7	3.9	0.6	0.1	2.9	0.0	
Dec 03	14.5	14.3	10.3	2.3	1.7	11.8	0.5	4.5	3.8	0.6	0.2	3.3	0.0	
Jan 04	15.6	15.4	11.1	2.5	1.8	11.5	0.5	4.8	4.0	0.7	0.2	3.4	0.0	
Feb 04#	16.0	15.8	11.5	2.5	1.8	11.4	0.5	5.1	4.2	0.7	0.2	3.2	0.0	
<i>Change on year</i>	-0.6	-0.5	-1.1	0.3	0.3	2.1	0.0	-0.1	-0.2	0.1	0.1	1.3	0.0	
<i>Change %</i>	-3.4	-3.0	-8.5	13.3	18.8		-7.1	-1.0	-4.6	13.7	64.0		116.7	

* Count of claimants of Jobseeker's Allowance

Source: Jobcentre Plus administrative system

Relationship between columns: 2= 3+4+5; 8= 9+10+11

Labour Market Statistics Helpline 020 7533 6094

Months where there are 5 weeks between count dates. All the rest are 4 week periods.

Only computerised claims are analysed by age and duration on a monthly basis. These figures therefore differ in total from those given in Table 7. The latter include clerically processed claims which currently amount to less than 1 per cent of the total claimant count. See background note 6.

ECONOMIC ACTIVITY AND INACTIVITY

East Midlands

9 Economic activity by age

(thousands), not seasonally adjusted

		All aged 16 & over	16 - 59/64	16 - 17	18 - 24	25 - 34	35 - 49	50 - 64 (m) 50 - 59 (w)	65+ (m) & 60+ (w)
		1	2	3	4	5	6	7	8
Economically active									
People	Sep - Nov 2000	2,078	2,026	59	249	484	764	470	52
	Sep - Nov 2001	2,116	2,059	66	275	465	779	474	57
	Sep - Nov 2002	2,139	2,074	66	261	454	797	496	65
	Dec - Feb 2003	2,107	2,045	64	255	447	790	489	62
	Mar - May 2003	2,114	2,044	60	250	444	795	495	70
	Jun - Aug 2003	2,143	2,070	66	277	444	786	498	73
	Sep - Nov 2003	2,132	2,062	65	277	448	782	490	70
	<i>Change on year</i>	-7	-12	-1	17	-6	-15	-7	5
<i>Change %</i>	-0.3	-0.6	-1.5	6.3	-1.3	-1.9	-1.3	7.2	
Men	Sep - Nov 2000	1,149	1,130	32	135	269	408	285	19
	Sep - Nov 2001	1,152	1,130	34	145	256	412	283	22
	Sep - Nov 2002	1,166	1,144	33	140	249	422	300	22
	Dec - Feb 2003	1,152	1,130	32	139	246	417	295	22
	Mar - May 2003	1,164	1,136	31	140	244	421	300	28
	Jun - Aug 2003	1,178	1,150	36	154	243	417	300	28
	Sep - Nov 2003	1,167	1,142	32	150	243	418	299	25
	<i>Change on year</i>	1	-2	-1	10	-6	-4	-1	3
<i>Change %</i>	0.1	-0.1	-2.5	7.1	-2.4	-1.0	-0.3	13.9	
Women	Sep - Nov 2000	929	896	27	114	215	355	185	33
	Sep - Nov 2001	963	929	31	130	210	367	191	34
	Sep - Nov 2002	973	931	33	121	205	376	197	43
	Dec - Feb 2003	955	915	32	116	201	373	193	40
	Mar - May 2003	950	908	29	110	199	374	195	42
	Jun - Aug 2003	966	920	30	123	201	369	197	45
	Sep - Nov 2003	965	920	33	127	205	365	191	45
	<i>Change on year</i>	-8	-10	0	7	0	-11	-6	2
<i>Change %</i>	-0.9	-1.1	-0.5	5.4	0.1	-2.9	-2.9	3.7	
Economic activity rates (%)*									
People	Sep - Nov 2000	63.4	79.9	58.1	73.9	83.9	86.9	73.3	7.0
	Sep - Nov 2001	64.1	80.6	62.8	80.0	83.1	87.3	72.5	7.6
	Sep - Nov 2002	64.2	80.5	61.8	73.6	83.3	87.9	74.7	8.6
	Dec - Feb 2003	63.1	79.2	60.1	71.3	82.7	86.8	73.4	8.2
	Mar - May 2003	63.2	79.1	56.2	69.5	82.7	87.0	74.2	9.2
	Jun - Aug 2003	64.0	80.0	61.1	76.4	83.3	85.8	74.4	9.6
	Sep - Nov 2003	63.5	79.6	59.9	76.1	84.6	85.1	73.1	9.1
	<i>Change on year</i>	-0.6	-0.9	-1.9	2.5	1.3	-2.8	-1.6	0.5
Men	Sep - Nov 2000	72.0	85.8	61.6	79.3	94.1	93.4	76.8	6.8
	Sep - Nov 2001	71.6	85.2	63.6	83.6	92.3	93.0	74.8	7.9
	Sep - Nov 2002	71.8	85.5	59.7	78.3	92.6	93.6	78.1	7.7
	Dec - Feb 2003	70.8	84.4	58.7	76.9	92.3	92.3	76.8	7.7
	Mar - May 2003	71.4	84.7	56.8	77.0	92.4	92.8	77.7	9.6
	Jun - Aug 2003	72.1	85.7	64.8	83.9	92.6	91.7	77.6	9.5
	Sep - Nov 2003	71.4	84.9	57.4	81.5	93.2	91.6	77.1	8.7
	<i>Change on year</i>	-0.4	-0.6	-2.3	3.2	0.6	-2.0	-1.1	1.0
Women	Sep - Nov 2000	55.3	73.6	54.5	68.4	73.8	80.6	68.6	7.1
	Sep - Nov 2001	56.9	75.6	62.0	76.4	74.1	81.8	69.4	7.4
	Sep - Nov 2002	57.0	75.0	63.9	68.8	74.2	82.2	70.1	9.2
	Dec - Feb 2003	55.8	73.7	61.7	65.5	73.4	81.4	68.8	8.5
	Mar - May 2003	55.4	73.0	55.7	61.7	73.2	81.3	69.4	9.0
	Jun - Aug 2003	56.2	73.9	57.3	68.7	74.3	79.9	70.1	9.6
	Sep - Nov 2003	56.1	73.8	62.4	70.5	76.2	78.8	67.8	9.4
	<i>Change on year</i>	-0.9	-1.2	-1.5	1.7	2.0	-3.5	-2.3	0.2

Relationship between columns: 1=2+8; 2=3+4+5+6+7

Source: Labour Force Survey

* Denominator = all persons in the relevant age group

Labour Market Statistics Helpline 020 7533 6094

The LFS sample population covers those living in private households, student halls of residence and NHS accommodation.

ECONOMIC ACTIVITY AND INACTIVITY

East Midlands

10 Economic inactivity by age

(thousands), not seasonally adjusted

		All aged 16 & over	16 - 59/64	16 - 17	18 - 24	25 - 34	35 - 49	50 - 64 (m) 50 - 59 (w)	65+ (m) & 60+ (w)
		1	2	3	4	5	6	7	8
Economically inactive									
People	Sep - Nov 2000	1,199	509	42	88	93	115	171	689
	Sep - Nov 2001	1,186	495	39	69	95	113	180	691
	Sep - Nov 2002	1,194	503	41	94	91	110	168	691
	Dec - Feb 2003	1,231	536	43	103	94	120	177	696
	Mar - May 2003	1,230	541	47	110	93	119	172	690
	Jun - Aug 2003	1,207	518	42	86	89	131	171	689
	Sep - Nov 2003	1,223	529	43	87	82	137	180	694
	<i>Change on year</i>	29	26	3	-6	-9	27	12	3
<i>Change %</i>	2.5	5.2	6.7	-6.7	-10.3	24.4	7.1	0.5	
Men	Sep - Nov 2000	447	187	20	35	17	29	86	259
	Sep - Nov 2001	456	196	20	29	21	31	95	260
	Sep - Nov 2002	459	194	22	39	20	29	84	265
	Dec - Feb 2003	475	209	23	42	21	35	89	266
	Mar - May 2003	466	205	24	42	20	33	86	261
	Jun - Aug 2003	455	193	19	29	20	38	87	262
	Sep - Nov 2003	468	203	24	34	18	39	89	265
	<i>Change on year</i>	10	9	2	-5	-2	10	5	1
<i>Change %</i>	2.1	4.7	7.1	-12.4	-11.1	33.3	5.9	0.2	
Women	Sep - Nov 2000	752	322	22	53	76	86	85	430
	Sep - Nov 2001	730	299	19	40	73	82	84	431
	Sep - Nov 2002	735	309	19	55	71	81	84	426
	Dec - Feb 2003	757	327	20	61	73	85	88	430
	Mar - May 2003	764	336	23	68	73	86	86	428
	Jun - Aug 2003	752	325	22	56	69	93	84	427
	Sep - Nov 2003	755	326	20	53	64	98	91	429
	<i>Change on year</i>	20	17	1	-1	-7	17	7	3
<i>Change %</i>	2.7	5.4	6.2	-2.6	-10.0	21.3	8.3	0.7	

Relationship between columns: 1=2+8; 2=3+4+5+6+7

Source: Labour Force Survey

Labour Market Statistics Helpline 020 7533 6094

The LFS sample population covers those living in private households, student halls of residence and NHS accommodation.

ECONOMIC ACTIVITY AND INACTIVITY

East Midlands

11 Economic inactivity: reasons

(thousands), not seasonally adjusted

		Breakdown of total aged 16-59/64											
		Total aged 16 & over	Total aged 16-59/64	Does not want job	Wants a job	Wants job but not seeking in last 4 weeks							
						Total	Availability to start work in next 2 weeks			Reasons for not seeking			
						Available		Not available	Long-term sick	Looking after family /home	Students	Other [#]	
		1	2	3	4	5	6	7	8	9	10	11	
People	Sep - Nov 2000	1,199	509	372	138	122	41	81	43	34	13	31	
	Sep - Nov 2001	1,186	495	371	123	114	30	84	39	41	15	19	
	Sep - Nov 2002	1,194	503	362	141	130	38	91	48	39	15	28	
	Dec - Feb 2003	1,231	536	397	139	130	43	87	53	34	16	26	
	Mar - May 2003	1,230	541	401	140	125	34	91	50	38	17	20	
	Jun - Aug 2003	1,207	518	387	131	119	38	81	47	39	12	22	
	Sep - Nov 2003	1,223	529	402	127	116	29	86	51	32	11	21	
	<i>Change on year</i>	29	26	39	-13	-14	-9	-5	3	-7	-4	-7	
<i>Change %</i>	2.5	5.2	10.9	-9.5	-10.8	-24.0	-5.2	7.0	-17.8	-25.2	-24.1		
Men	Sep - Nov 2000	447	187	132	55	48	15	33	24	*	*	15	
	Sep - Nov 2001	456	196	147	48	44	11	33	23	*	*	*	
	Sep - Nov 2002	459	194	137	57	52	15	37	28	*	*	11	
	Dec - Feb 2003	475	209	153	57	54	15	40	31	*	*	11	
	Mar - May 2003	466	205	140	64	55	12	43	31	*	*	10	
	Jun - Aug 2003	455	193	140	53	48	15	33	30	*	*	*	
	Sep - Nov 2003	468	203	149	54	51	13	38	31	*	*	*	
	<i>Change on year</i>	10	9	12	-3	-1	-2	1	3	*	*	*	
<i>Change %</i>	2.1	4.7	8.9	-5.3	-2.7	-15.6	2.7	11.5	*	*	*		
Women	Sep - Nov 2000	752	322	240	82	73	26	48	19	32	*	16	
	Sep - Nov 2001	730	299	224	75	70	19	51	17	37	*	10	
	Sep - Nov 2002	735	309	225	84	78	23	54	20	34	*	16	
	Dec - Feb 2003	757	327	245	82	76	28	48	23	29	*	15	
	Mar - May 2003	764	336	260	76	69	22	48	19	32	*	10	
	Jun - Aug 2003	752	325	247	78	71	23	48	17	34	*	13	
	Sep - Nov 2003	755	326	253	74	65	16	49	20	27	*	12	
	<i>Change on year</i>	20	17	27	-10	-13	-7	-6	0	-7	*	-4	
<i>Change %</i>	2.7	5.4	12.1	-12.4	-16.3	-29.6	-10.6	0.6	-20.9	*	-24.3		

Relationship between columns: 2=3+4; 5=6+7; 5=8+9+10+11

Source: Labour Force Survey

#: other includes discouraged workers

Labour Market Statistics Helpline 020 7533 6094

The LFS sample population covers those living in private households, student halls of residence and NHS accommodation.

LOCAL AREA DATA

East Midlands

13 2001 local labour market indicators by Unitary and Local Authority

not seasonally adjusted

	Population+		Labour supply				Working age benefits		Labour demand###		
	16-59/64 (000s)	Employment++		Unemployment++		Economic inactivity++		Claimant count#		Total (000s)	Jobs Density 16-59/64 (ratio)
		Total 16-59/64 (000s)	16-59/64 Rate (%)	Total 16+ (000s)	Rate+++ (%)	Total 16-59/64 (000s)	16-59/64 Rate (%)	Level	Proportion### (%)		
		1	2	3	4	5	6				
United Kingdom total	36,354	26,589	74.1	1,450	5.0	7,856	21.9	982,997	2.7	29,954	0.82
Regional total	2,569	1,926	75.6	95	4.6	525	20.6	64,375	2.5	1,998	0.78
Derby UA	135	96	72.2	6	6.1	31	23.1	5,099	3.8	131	0.97
Leicester UA	177	114	66.2	8	6.2	51	29.3	7,874	4.4	172	0.97
Nottingham UA	173	109	64.5	9	7.7	51	30.0	7,755	4.5	196	1.13
Rutland UA	21	15	78.9	*	*	4	19.0	106	0.5	17	0.79
Derbyshire	448	341	79.8	16	4.3	90	20.2	11,241	5.5	310	0.69
Amber Valley	71	52	72.8	*	*	17	23.5	1,571	2.2	59	0.82
Bolsover	43	30	70.0	*	*	11	26.2	1,459	3.4	22	0.51
Chesterfield	60	42	69.8	*	*	14	24.1	2,564	4.3	54	0.91
Derbyshire Dales	41	34	84.4	*	*	6	14.7	582	1.4	38	0.90
Erewash	67	54	80.0	*	*	11	16.5	1,583	2.3	43	0.63
High Peak	55	44	80.0	*	*	10	17.3	960	1.7	40	0.72
North East Derbyshire	59	43	73.0	*	*	13	22.7	1,773	3.0	31	0.53
South Derbyshire	51	42	82.6	*	*	8	15.6	750	1.5	26	0.49
Leicestershire	380	310	85.5	6	1.8	55	14.5	5,946	1.6	273	0.72
Blaby	56	48	86.0	*	*	7	12.3	700	1.2	39	0.69
Charnwood	98	74	76.0	6	7.1	18	18.1	1,962	2.0	63	0.64
Harborough	47	39	83.1	*	*	7	14.8	468	1.0	38	0.78
Hinckley and Bosworth	62	51	82.5	*	*	9	13.9	984	1.6	45	0.71
Melton	30	25	84.9	*	*	*	*	365	1.2	21	0.70
North West Leicestershire	53	43	81.7	*	*	8	14.8	821	1.6	48	0.90
Oadby and Wigston	34	29	87.1	*	*	*	*	646	1.9	20	0.59
Lincolnshire	382	287	79.8	15	4.9	77	20.2	7,695	2	292	0.76
Boston	33	24	73.3	*	*	7	21.2	554	1.7	27	0.79
East Lindsey	74	51	69.8	*	*	18	24.4	1,739	2.4	52	0.68
Lincoln	53	37	69.3	*	*	14	25.9	1,775	3.3	58	1.09
North Kesteven	56	43	78.4	*	*	10	18.2	738	1.3	40	0.69
South Holland	44	33	74.3	*	*	10	22.4	543	1.2	38	0.81
South Kesteven	76	64	84.9	*	*	10	12.6	1,105	1.5	55	0.72
West Lindsey	47	36	76.9	*	*	9	19.4	1,241	2.6	30	0.62
Northamptonshire	393	316	83.8	12	3.5	63	16.2	7,209	1.8	327	0.83
Corby	33	22	69.4	*	*	8	25.1	864	2.6	30	0.93
Daventry	45	35	79.6	*	*	7	15.9	574	1.3	33	0.72
East Northamptonshire	47	38	81.0	*	*	7	14.2	678	1.4	27	0.57
Kettering	51	42	83.7	*	*	7	13.8	811	1.6	36	0.71
Northampton	123	97	79.2	*	*	22	17.8	2,984	2.4	133	1.08
South Northamptonshire	50	44	87.6	*	*	*	*	380	0.8	31	0.61
Wellingborough	45	37	83.5	*	*	7	16.5	918	2.1	38	0.85
Nottinghamshire	458	337	77.2	15	4.1	104	22.8	11,449	4.9	284	0.62
Ashfield	69	48	70.0	*	*	18	25.8	2,292	3.3	47	0.68
Bassetlaw	66	45	69.7	*	*	16	25.4	2,196	3.3	48	0.73

13 2001 local labour market indicators by Unitary and Local Authority

not seasonally adjusted

	Population+		Labour supply				Working age benefits		Labour demand###		
	Employment++		Unemployment++		Economic inactivity++		Claimant count#		Jobs**		
	Total 16-59/64 (000s)	16-59/64 Rate (%)	Total 16+ (000s)	Rate+++ (%)	Total 16-59/64 (000s)	16-59/64 Rate (%)	Level	Proportion## (%)	Total (000s)	Jobs Density 16-59/64 (ratio)	
	1	2	3	4	5	6	7	8	9	10	11
Broxtowe	67	52	78.5	*	*	13	18.7	1,293	1.9	36	0.54
Gedling	69	56	81.9	*	*	11	15.6	1,428	2.1	36	0.52
Mansfield	59	42	71.3	*	*	15	25.2	2,035	3.4	39	0.65
Newark and Sherwood	64	46	73.0	*	*	15	23.9	1,361	2.1	42	0.65
Rushcliffe	65	47	72.7	*	*	16	25.3	845	1.3	38	0.57

Relationship between columns: 9=8/1; 11=10/1.

Source: Labour Force Survey, Jobcentre Plus administrative system, Annual Business Inquiry

+ Official mid-2001 estimate of the resident population.

Labour Market Statistics Helpline 020 7533 6094

++ LFS data relate to the period March 2001 to February 2002. LFS sample covers working age (16-59/64) population living in private households, student halls of residence and NHS accommodation. The LFS data in this table are consistent with population estimates released in February 2003, not the latest population estimates published in September 2003 - see note on page 9.

+++ Unemployment rates calculated as percentage of 16+ economically active population.

Count of claimants of Jobseeker's Allowance. Average for January 2001 to December 2001.

Percentage of resident working age population of area. NB these are different from the national and regional claimant rates shown in Tables 1a, 7 and the summary of other headline indicators. See note on page 8 for further details.

Labour demand includes jobs and vacancies - data on vacancies will be included here when they become available for local areas.

* Sample size too small for reliable estimate.

** Jobs data are for 2001, and are mainly employees from the Annual Business Inquiry which refers to December of each year; they also include self-employed, HM Forces and government-supported trainees. Jobs densities are calculated as the number of jobs per resident of working age (16-59/64).

14 2001 local labour market indicators by Parliamentary Constituency

not seasonally adjusted

	Population+		Labour supply				Working age benefits			Labour demand###	
	Employment++		Unemployment++		Economic inactivity++		Claimant count#			Jobs**	
	16-59/64 (000s)	Total 16-59/64 (000s)	16-59/64 Rate (%)	Total 16+ (000s)	Rate+++ (%)	Total 16-59/64 (000s)	16-59/64 Rate (%)	Level	Proportion## (%)	Total (000s)	Jobs Density 16-59/64 (ratio)
	1	2	3	4	5	6	7	8	9	10	11
United Kingdom total	36,354	26,589	74.1	1,450	5.0	7,856	21.9	982,997	2.7	29,954	0.82
Regional total	2,569	1,926	75.6	95	4.6	525	20.6	64,375	2.5	1,998	0.78
Amber Valley	..	42	71.9	*	*	14	23.6	1,335	2.4	44	0.78
Ashfield	..	40	70.7	*	*	14	24.7	1,977	3.4	44	0.75
Bassetlaw	..	33	67.9	*	*	13	26.0	1,854	3.4	37	0.67
Blaby	..	52	87.0	*	*	6	10.5	673	1.1	49	0.80
Bolsover	..	39	70.7	*	*	14	25.5	1,735	3.3	25	0.48
Boston & Skegness	..	36	72.1	*	*	11	21.3	1,081	2.1	41	0.80
Bosworth	..	48	82.6	*	*	8	13.5	913	1.6	42	0.75
Broxtowe	..	45	78.2	*	*	11	19.7	1,066	1.8	31	0.52
Charnwood	..	49	80.4	*	*	9	14.7	783	1.4	30	0.52
Chesterfield	..	39	71.0	*	*	13	23.4	2,340	4.2	52	0.93
Corby	..	48	73.8	*	*	13	20.7	1,154	1.9	46	0.77
Daventry	..	58	84.0	*	*	8	12.3	800	1.1	52	0.71
Derby North	..	41	77.9	*	*	9	17.5	1,781	3.0	41	0.69
Derby South	..	43	66.6	*	*	18	28.3	3,033	4.9	87	1.42
Erewash	..	50	79.4	*	*	11	17.2	1,530	2.4	41	0.64
Gainsborough	..	38	76.9	*	*	10	19.6	1,289	2.6	30	0.61
Gedling	..	41	80.6	*	*	9	17.4	1,172	2.1	30	0.54
Grantham & Stamford	..	52	85.4	*	*	7	11.9	922	1.6	47	0.79
Harborough	..	47	83.6	*	*	8	14.3	924	1.6	37	0.65
High Peak	..	46	79.7	*	*	10	17.7	1,016	1.7	42	0.72
Kettering	..	51	81.3	*	*	10	16.1	895	1.4	43	0.68
Leicester East	..	33	63.6	*	*	17	33.2	2,161	3.9	34	0.63
Leicester South	..	44	66.3	4	7.7	19	28.0	2,991	4.5	87	1.32
Leicester West	..	36	68.4	*	*	15	27.4	2,723	4.8	50	0.89
Lincoln	..	39	69.5	*	*	14	25.4	1,810	3.2	59	1.06
Loughborough	..	39	73.1	*	*	12	21.4	1,398	2.4	43	0.72
Louth & Horncastle	..	37	69.5	*	*	14	25.4	1,163	2.2	33	0.63
Mansfield	..	40	71.8	*	*	14	25.0	1,782	3.4	37	0.71
Newark	..	43	75.3	*	*	12	21.7	1,331	2.4	40	0.72
North East Derbyshire	..	36	71.3	*	*	12	23.4	1,721	3.2	31	0.57
North West Leicestershire	..	43	81.7	*	*	8	14.8	821	1.6	47	0.90
Northampton North	..	46	77.5	*	*	12	19.5	1,646	2.7	40	0.66
Northampton South	..	64	83.2	*	*	11	14.3	1,408	1.9	97	1.34
Nottingham East	..	33	66.3	*	*	14	27.4	3,136	5.5	48	0.84
Nottingham North	..	39	65.7	*	*	17	28.5	2,424	4.7	29	0.56
Nottingham South	..	38	62.1	*	*	20	32.8	2,196	3.4	119	1.85
Rushcliffe	..	47	72.7	*	*	16	25.3	845	1.3	38	0.57
Rutland & Melton	..	47	83.3	*	*	8	14.3	541	0.9	39	0.69
Sherwood	..	48	74.4	*	*	15	22.4	1,422	2.4	28	0.48
Sleaford & North Hykeham	..	45	79.2	*	*	10	17.9	782	1.3	41	0.69
South Derbyshire	..	54	81.1	*	*	11	16.6	1,035	1.6	28	0.42
South Holland & The Deepings	..	41	75.7	*	*	12	21.2	647	1.2	40	0.73
Wellingborough	..	50	84.3	*	*	9	14.8	1,306	2.0	49	0.76
West Derbyshire	..	47	83.4	*	*	9	15.6	814	1.5	51	0.91

Relationship between columns: 9=8/1; 11=10/1.

Source: Labour Force Survey, Jobcentre Plus administrative system, Annual Business Inquiry

+ Official mid-2001 estimate of the resident population.

Labour Market Statistics Helpline 020 7533 6094

++ LFS data relate to the period March 2001 to February 2002. LFS sample covers working age (16-59/64) population living in private households, student halls of residence and NHS accommodation. The LFS data in this table are consistent with population estimates released in February 2003, not the latest population estimates published in September 2003 - see note on page 9.

+++ Unemployment rates calculated as percentage of 16+ economically active population.

Count of claimants of Jobseeker's Allowance. Average for January 2001 to December 2001.

Percentage of resident working age population of the area. The population denominators are based on output area data from the 2001 Census. NB these percentages are different from the national and regional claimant rates shown in Tables 1a, 7 and the summary of other headline indicators. See note on page 8 for further details.

Labour demand includes jobs and vacancies - data on vacancies will be included here when they become available for local areas.

* Sample size too small for reliable estimate.

** Jobs data are for 2001, and are mainly employees from the Annual Business Inquiry which refers to December of each year; they also include self-employed, HM Forces and government-supported trainees. Jobs densities are calculated as the number of jobs per resident of working age (16-59/64).

LOCAL AREA DATA

East Midlands

15 2001 local labour market indicators by Travel-to-Work Area

not seasonally adjusted

	Population+		Labour supply				Working age benefits		Labour demand###		
	Employment++		Unemployment++		Economic inactivity++		Claimant count#		Jobs**		
	Total 16-59/64 (000s)	16-59/64 Rate (%)	Total 16+ (000s)	Rate+++ (%)	Total 16-59/64 (000s)	16-59/64 Rate (%)	Level	Proportion## (%)	Total (000s)	Jobs Density 16-59/64 (ratio)	
	1	2	3	4	5	6	7	8	9	10	11
United Kingdom total	36,354	26,589	74.1	1,450	5.0	7,856	21.9	982,997	2.7	29,954	0.82
Regional total	2,569	1,926	75.6	95	4.6	525	20.6	64,375	2.5	1,998	0.78
Boston	..	26	78.5	*	*	8	21.5	586	1.6	27	0.76
Buxton	..	29	85.0	*	*	*	*	609	1.7	27	0.76
Chesterfield	..	78	75.2	6	6.5	28	24.8	4,347	4.0	74	0.69
Derby	..	156	78.0	8	4.7	46	22.0	6,218	3.0	178	0.85
Gainsborough	..	15	81.0	*	*	*	*	843	4.1	15	0.73
Grantham	..	29	87.5	*	*	*	*	714	1.9	30	0.81
Horncastle	..	11	80.0	*	*	*	*	168	1.2	10	0.67
Kettering and Corby	..	68	81.4	*	*	16	18.6	1,713	2.0	68	0.78
Leicester	..	295	79.6	16	5.0	80	20.4	10,741	2.8	317	0.82
Lincoln	..	78	77.7	*	*	24	22.3	2,497	2.3	90	0.84
Loughborough	..	55	78.7	*	*	16	21.3	1,701	2.1	57	0.71
Louth	..	14	78.1	*	*	*	*	554	2.9	14	0.71
Mansfield	..	120	73.6	7	5.2	45	26.4	5,604	3.2	123	0.70
Matlock	..	35	83.5	*	*	7	16.5	553	1.5	35	0.93
Melton Mowbray & Oakham	..	24	87.0	*	*	*	*	345	1.2	20	0.72
Newark	..	28	78.5	*	*	8	21.5	737	2.0	27	0.74
Northampton	..	156	84.1	*	*	30	15.9	3,700	2.0	173	0.94
Nottingham	..	328	76.9	18	5.0	104	23.1	13,650	3.0	360	0.78
Retford	..	19	75.2	*	*	6	24.8	737	3.0	17	0.68
Skegness and Mablethorpe	..	20	71.9	*	*	9	28.1	913	2.8	24	0.74
Sleaford	..	21	80.7	*	*	*	*	353	1.4	18	0.73
Spalding and Holbeach	..	29	75.2	*	*	10	24.8	507	1.3	34	0.85
Stamford	..	48	85.4	3	4.9	9	14.6	413	0.8	37	0.71
Wellingborough	..	62	86.4	*	*	10	13.6	1,546	1.8	59	0.71
Worksop	..	23	73.0	*	*	10	27.0	1,416	3.8	28	0.75

Relationship between columns: 9=8/1; 11=10/1.

Source: Labour Force Survey, Jobcentre Plus administrative system, Annual Business Inquiry

+ Official mid-2001 estimate of the resident population.

Labour Market Statistics Helpline 020 7533 6094

++ LFS data relate to the period March 2001 to February 2002. LFS sample covers working age (16-59/64) population living in private households, student halls of residence and NHS accommodation. The LFS data in this table are consistent with population estimates released in February 2003, not the latest population estimates published in September 2003 - see note on page 9.

+++ Unemployment rates calculated as percentage of 16+ economically active population.

Count of claimants of Jobseeker's Allowance. Average for January 2001 to December 2001.

Percentage of resident working age population of the area. The population denominators are based on output area data from the 2001 Census. NB these percentages are different from the national and regional claimant rates shown in Tables 1a, 7 and the summary of other headline indicators. See note on page 8 for further details.

Labour demand includes jobs and vacancies - data on vacancies will be included here when they become available for local areas.

* Sample size too small for reliable estimate.

** Jobs data are for 2001, and are mainly employees from the Annual Business Inquiry which refers to December of each year; they also include self-employed, HM Forces and government-supported trainees. Jobs densities are calculated as the number of jobs per resident of working age (16-59/64).

LOCAL AREA DATA

East Midlands

16 2001 local labour market indicators by NUTS 3 area

not seasonally adjusted

	Population+		Labour supply				Working age benefits		Labour demand###		
	Employment++		Unemployment++		Economic inactivity++		Claimant count#		Jobs*		
	Total 16-59/64 (000s)	16-59/64 Rate (%)	Total 16+ (000s)	Rate+++ (%)	Total 16-59/64 (000s)	16-59/64 Rate (%)	Level	Proportion## (%)	Total (000s)	Jobs Density 16-59/64 (ratio)	
	1	2	3	4	5	6	7	8	9	10	11
United Kingdom total	36,354	26,589	74.1	1,450	5.0	7,856	21.9	982,997	2.7	29,954	0.82
Regional total	2,569	1,926	75.6	95	4.6	525	20.6	64,375	2.5	1,998	0.78
Derbyshire and Nottinghamshire											
Derby	135	96	72.2	6	6.1	31	23.1	5,099	3.8	131	0.97
East Derbyshire	162	115	71.0	8	6.3	39	24.1	5,796	3.6	107	0.66
South & West Derbyshire	286	226	79.3	8	3.2	51	18.0	5,445	1.9	203	0.71
Nottingham	173	109	64.5	9	7.7	51	30.0	7,755	4.5	196	1.13
North Nottinghamshire	258	182	71.0	10	5.1	64	25.1	7,883	3.1	174	0.68
South Nottinghamshire	201	156	77.8	*	*	40	19.8	3,566	1.8	109	0.54
Leicestershire, Rutland and Northamptonshire											
Leicester	177	114	66.2	8	6.2	51	29.3	7,874	4.4	172	0.97
Leicestershire CC & Rutland	401	325	81.7	14	4.1	59	14.7	6,053	1.5	287	0.72
Northamptonshire	394	316	80.8	12	3.5	63	16.2	7,209	1.8	327	0.83
Lincolnshire											
Lincolnshire	382	287	75.7	15	4.9	77	20.2	7,695	2.0	292	0.76

Relationship between columns: 9=8/1; 11=10/1.

Source: Labour Force Survey, Jobcentre Plus administrative system, Annual Business Inquiry

+ Official mid-2001 estimate of the resident population.

Labour Market Statistics Helpline 020 7533 6094

++ LFS data relate to the period March 2001 to February 2002. LFS sample covers working age (16-59/64) population living in private households, student halls of residence and NHS accommodation. The LFS data in this table are consistent with population estimates released in February 2003, not the latest population estimates published in September 2003 - see note on page 9.

+++ Unemployment rates calculated as percentage of 16+ economically active population.

Count of claimants of Jobseeker's Allowance. Average for January 2001 to December 2001.

Percentage of resident working age population of area. NB these are different from the national and regional claimant rates shown in Tables 1a, 7 and the summary of other headline indicators. See note on page 8 for further details.

Labour demand includes jobs and vacancies - data on vacancies will be included here when they become available for local areas.

* Sample size too small for reliable estimate.

** Jobs data are for 2001, and are mainly employees from the Annual Business Inquiry which refers to December of each year; they also include self-employed, HM Forces and government-supported trainees. Jobs densities are calculated as the number of jobs per resident of working age (16-59/64).

17 Claimant count* by Unitary and Local Authority

not seasonally adjusted

	CLAIMANT COUNT ON 12 FEBRUARY 2004						Change on year					
	Levels			Percentage of Pop [#]			Levels			Percentage [#]		
	Men	Women	People	Men	Women	People	Men	Women	People	Men	Women	People
	1	2	3	4	5	6	7	8	9	10	11	12
United Kingdom total	716,545	240,459	957,004	3.8	1.4	2.6	-47,367	-8,457	-55,824	-0.3	0.0	-0.2
Regional total	43,987	15,950	59,937	3.3	1.3	2.3	-3,204	-564	-3,768	-0.2	0.0	-0.1
Derby UA	3,538	1,088	4,626	5.0	1.7	3.4	-405	-102	-507	-0.6	-0.2	-0.4
Leicester UA	6,725	2,523	9,248	7.4	2.9	5.2	234	245	479	0.3	0.3	0.3
Nottingham UA	5,528	1,541	7,069	6.0	1.9	4.1	-737	-91	-828	-0.8	-0.1	-0.5
Rutland UA	81	29	110	0.7	0.3	0.5	-21	-9	-30	-0.2	-0.1	-0.1
Derbyshire	6,891	2,629	9,520	2.9	1.2	2.1	-483	-143	-626	-0.2	-0.1	-0.1
Amber Valley	930	400	1,330	2.5	1.2	1.9	-104	-72	-176	-0.3	-0.2	-0.2
Bolsover	845	312	1,157	3.7	1.5	2.7	-7	25	18	0.0	0.1	0.0
Chesterfield	1,582	550	2,132	5.1	1.9	3.6	37	-1	36	0.1	0.0	0.1
Derbyshire Dales	367	150	517	1.7	0.8	1.2	-11	5	-6	0.0	0.0	0.0
Erewash	1,046	408	1,454	3.0	1.3	2.2	-134	-88	-222	-0.4	-0.3	-0.3
High Peak	694	267	961	2.4	1.0	1.7	-29	53	24	-0.1	0.2	0.0
North East Derbyshire	982	345	1,327	3.2	1.2	2.3	-111	-28	-139	-0.4	-0.1	-0.2
South Derbyshire	445	197	642	1.7	0.8	1.3	-124	-37	-161	-0.5	-0.2	-0.3
Leicestershire	3,906	1,710	5,616	2.0	0.9	1.5	-424	-101	-525	-0.2	-0.1	-0.1
Blaby	499	230	729	1.7	0.9	1.3	-54	-20	-74	-0.2	-0.1	-0.1
Charnwood	1,252	552	1,804	2.4	1.2	1.8	-91	38	-53	-0.2	0.1	-0.1
Harborough	315	151	466	1.3	0.7	1.0	-76	-9	-85	-0.3	0.0	-0.2
Hinckley and Bosworth	672	280	952	2.1	0.9	1.5	-68	-92	-160	-0.2	-0.3	-0.3
Melton	204	90	294	1.3	0.6	1.0	-32	-2	-34	-0.2	0.0	-0.1
North West Leicestershire	520	239	759	1.9	0.9	1.4	-62	-17	-79	-0.2	-0.1	-0.1
Oadby and Wigston	444	168	612	2.6	1.0	1.8	-41	1	-40	-0.2	0.0	-0.1
Lincolnshire	5,185	1,965	7,150	2.6	1.1	1.9	-487	-129	-616	-0.2	-0.1	-0.2
Boston	370	114	484	2.1	0.7	1.5	-50	-24	-74	-0.3	-0.2	-0.2
East Lindsey	1,285	545	1,830	3.3	1.6	2.5	-184	-14	-198	-0.5	0.0	-0.3
Lincoln	1,245	363	1,608	4.5	1.4	3.0	-60	7	-53	-0.2	0.0	-0.1
North Kesteven	466	199	665	1.6	0.7	1.2	-40	-28	-68	-0.1	-0.1	-0.1
South Holland	411	174	585	1.8	0.8	1.3	14	10	24	0.1	0.0	0.1
South Kesteven	635	292	927	1.6	0.8	1.2	-123	-18	-141	-0.3	0.0	-0.2
West Lindsey	773	278	1,051	3.2	1.2	2.2	-44	-62	-106	-0.2	-0.3	-0.2
Northamptonshire	5,692	2,120	7,812	2.8	1.1	2.0	67	-34	33	0.0	0.0	0.0
Corby	908	296	1,204	5.4	1.9	3.7	159	63	222	0.9	0.4	0.7
Daventry	436	203	639	1.8	0.9	1.4	-25	-15	-40	-0.1	-0.1	-0.1
East Northamptonshire	526	235	761	2.1	1.0	1.6	24	-6	18	0.1	0.0	0.0
Kettering	691	257	948	2.6	1.1	1.9	77	-6	71	0.3	0.0	0.1
Northampton	2,180	742	2,922	3.4	1.2	2.4	-122	-36	-158	-0.2	-0.1	-0.1
South Northamptonshire	325	127	452	1.2	0.5	0.9	18	5	23	0.1	0.0	0.0
Wellingborough	626	260	886	2.7	1.2	2.0	-64	-39	-103	-0.3	-0.2	-0.2
Nottinghamshire	6,441	2,345	8,786	2.7	1.1	1.9	-948	-200	-1,148	-0.4	-0.1	-0.3
Ashfield	1,196	436	1,632	3.4	1.3	2.4	-175	-85	-260	-0.5	-0.3	-0.4
Bassetlaw	1,069	388	1,457	3.1	1.2	2.2	-170	-20	-190	-0.5	-0.1	-0.3
Broxtowe	857	279	1,136	2.5	0.9	1.7	-141	-63	-204	-0.4	-0.2	-0.3
Gedling	834	310	1,144	2.4	0.9	1.7	-230	-20	-250	-0.7	-0.1	-0.4
Mansfield	1,136	412	1,548	3.7	1.4	2.6	-92	-4	-96	-0.3	0.0	-0.2
Newark and Sherwood	831	313	1,144	2.5	1.0	1.8	-32	5	-27	-0.1	0.0	0.0
Rushcliffe	518	207	725	1.5	0.7	1.1	-108	-13	-121	-0.3	0.0	-0.2

* Count of claimants of Jobseeker's Allowance
Relationship between columns = 3=1+2; 9=7+8

Source: Jobcentre Plus administrative system
Labour Market Statistics Helpline 020 7533 6094

Percentages of resident working age population of area. NB these are different from the national and regional claimant count rates shown in Tables 1a, 7 and the summary of other headline indicators. See note on page 8 for further details.

LOCAL AREA DATA

East Midlands

18 Claimant count* by Parliamentary Constituency

not seasonally adjusted

	CLAIMANT COUNT ON 12 FEBRUARY 2004						Change on year					
	Levels			Percentage of Pop [#]			Levels			Percentage [#]		
	Men	Women	People	Men	Women	People	Men	Women	People	Men	Women	People
	1	2	3	4	5	6	7	8	9	10	11	12
United Kingdom total	716,545	240,459	957,004	3.8	1.4	2.6	-47,367	-8,457	-55,824	-0.3	0.0	-0.2
Regional total	43,987	15,950	59,937	3.3	1.3	2.3	-3,204	-564	-3,768	-0.2	0.0	-0.1
Amber Valley	780	330	1,110	2.6	1.2	2.0	-141	-76	-217	-0.5	-0.3	-0.4
Ashfield	997	366	1,363	3.3	1.3	2.3	-161	-81	-242	-0.5	-0.3	-0.4
Bassetlaw	891	304	1,195	3.1	1.2	2.2	-162	-38	-200	-0.6	-0.1	-0.4
Blaby	504	226	730	1.6	0.8	1.2	-58	-27	-85	-0.2	-0.1	-0.1
Bolsover	980	362	1,342	3.6	1.5	2.6	-59	17	-42	-0.2	0.1	-0.1
Boston & Skegness	809	303	1,112	3.0	1.2	2.1	-84	-29	-113	-0.3	-0.1	-0.2
Bosworth	618	256	874	2.1	1.0	1.6	-74	-94	-168	-0.3	-0.4	-0.3
Broxtowe	737	229	966	2.4	0.8	1.6	-107	-67	-174	-0.3	-0.2	-0.3
Charnwood	581	293	874	1.9	1.1	1.5	9	41	50	0.0	0.1	0.1
Chesterfield	1,437	503	1,940	5.0	1.9	3.5	34	-5	29	0.1	0.0	0.1
Corby	1,130	382	1,512	3.6	1.3	2.5	161	37	198	0.5	0.1	0.3
Daventry	622	279	901	1.6	0.8	1.2	-22	-4	-26	-0.1	0.0	0.0
Derby North	1,147	367	1,514	3.7	1.3	2.5	-247	-40	-287	-0.8	-0.1	-0.5
Derby South	2,188	647	2,835	6.9	2.2	4.6	-147	-64	-211	-0.5	-0.2	-0.3
Erewash	1,018	396	1,414	3.1	1.3	2.2	-127	-79	-206	-0.4	-0.3	-0.3
Gainsborough	792	294	1,086	3.1	1.2	2.2	-62	-58	-120	-0.2	-0.2	-0.2
Gedling	693	247	940	2.5	0.9	1.7	-188	-14	-202	-0.7	-0.1	-0.4
Grantham & Stamford	526	248	774	1.7	0.9	1.3	-95	-10	-105	-0.3	0.0	-0.2
Harborough	614	245	859	2.1	0.9	1.5	-93	-1	-94	-0.3	0.0	-0.2
High Peak	720	277	997	2.3	1.0	1.7	-36	48	12	-0.1	0.2	0.0
Kettering	766	283	1,049	2.4	0.9	1.7	80	-11	69	0.2	0.0	0.1
Leicester East	1,836	873	2,709	6.6	3.2	5.0	58	108	166	0.2	0.4	0.3
Leicester South	2,624	831	3,455	7.7	2.6	5.2	131	96	227	0.4	0.3	0.3
Leicester West	2,265	819	3,084	7.9	2.9	5.4	45	41	86	0.2	0.1	0.2
Lincoln	1,271	373	1,644	4.4	1.4	2.9	-62	6	-56	-0.2	0.0	-0.1
Loughborough	827	331	1,158	2.6	1.2	1.9	-103	-10	-113	-0.3	0.0	-0.2
Louth & Horncastle	827	340	1,167	3.0	1.4	2.2	-132	-13	-145	-0.5	-0.1	-0.3
Mansfield	1,005	368	1,373	3.8	1.5	2.6	-62	7	-55	-0.2	0.0	-0.1
Newark	826	328	1,154	2.9	1.3	2.1	-47	18	-29	-0.2	0.1	-0.1
North East Derbyshire	992	342	1,334	3.5	1.3	2.4	-56	-16	-72	-0.2	-0.1	-0.1
North West Leicestershire	520	239	759	1.9	0.9	1.4	-62	-17	-79	-0.2	-0.1	-0.1
Northampton North	1,191	399	1,590	3.9	1.3	2.6	-54	-24	-78	-0.2	-0.1	-0.1
Northampton South	1,053	368	1,421	2.8	1.1	2.0	-56	-13	-69	-0.1	0.0	-0.1
Nottingham East	2,043	552	2,595	6.8	2.1	4.6	-402	-19	-421	-1.3	-0.1	-0.7
Nottingham North	1,897	597	2,494	7.2	2.4	4.9	-127	-18	-145	-0.5	-0.1	-0.3
Nottingham South	1,588	392	1,980	4.5	1.3	3.1	-208	-54	-262	-0.6	-0.2	-0.4
Rushcliffe	518	207	725	1.5	0.7	1.1	-108	-13	-121	-0.3	0.0	-0.2
Rutland & Melton	323	149	472	1.1	0.6	0.8	-64	-2	-66	-0.2	0.0	-0.1
Sherwood	774	296	1,070	2.5	1.0	1.8	-113	-12	-125	-0.4	0.0	-0.2
Sleaford & North Hykeham	478	206	684	1.6	0.7	1.2	-56	-29	-85	-0.2	-0.1	-0.1
South Derbyshire	648	271	919	1.9	0.9	1.4	-135	-35	-170	-0.4	-0.1	-0.3
South Holland & The Deepings	482	201	683	1.7	0.8	1.2	4	4	8	0.0	0.0	0.0
Wellingborough	930	409	1,339	2.8	1.3	2.1	-42	-19	-61	-0.1	-0.1	-0.1
West Derbyshire	519	222	741	1.8	0.8	1.3	26	5	31	0.1	0.0	0.1

* Count of claimants of Jobseeker's Allowance

Source: Jobcentre Plus administrative system

Relationship between columns = 3=1+2; 9=7+8

Labour Market Statistics Helpline 020 7533 6094

Percentages of resident working age population of area. The population denominators are based on output area data from the 2001 Census. NB these percentages are different from the national and regional claimant count rates shown in Tables 1a, 7 and the summary of other headline indicators. See note on page 8 for further details.