

Index of Services August 2009



Date: 23 October 2009

Coverage: United Kingdom **Theme:** The Economy

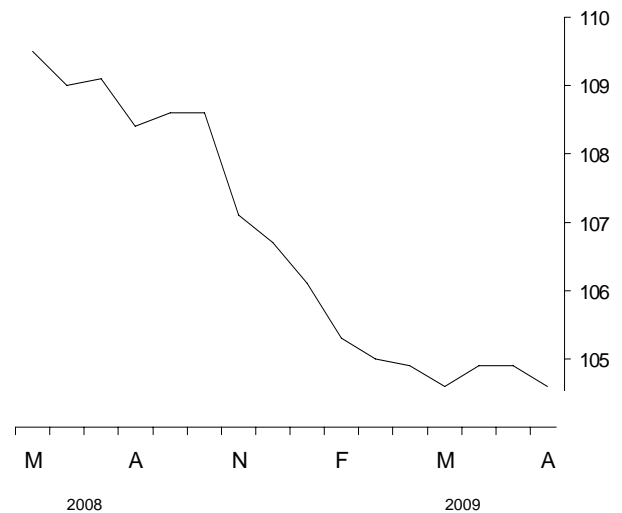
In the three months to August the seasonally adjusted chained volume index for the output of the Service sector decreased by 0.1 per cent compared with the previous three months.

In the latest three months, two of the five components of the service sector decreased. There were decreases in Hotels and restaurants and Business services and finance.

Between July and August, Service sector output decreased by 0.3 per cent. The most significant decrease was in Distribution. (Caution should be taken in interpreting the monthly movements in the Index of Services, see background notes 11, 15, 16, 23, 24 and 25)

Chained volume of services

seasonally adjusted (2005 = 100)



Service industries

Chained volume indices (seasonally adjusted, 2005=100)			Percentage change: latest three months on previous three months					
Total			¹ Total Services	Distrib.	Hotels & Rest.	Transp. & comm.	² Business serv. & finance	Gov't and other
2005 weights			1000	153	39	96	401	311
2009	Mar	105.0	-1.9	-0.7	-2.6	-3.2	-2.9	-0.4
	Apr	104.9	-1.5	-0.9	-0.7	-3.2	-2.1	-0.4
	May	104.6	-1.1	-1.3	-0.2	-2.8	-1.3	-0.4
	Jun	104.9	-0.6	-0.3	-1.2	-1.8	-0.7	-0.2
	July	104.9	-0.3	0.4	-2.2	-0.8	-0.4	0.0
	Aug	104.6	-0.1	0.9	-3.2	0.0	-0.3	0.2

¹ National Statistics are shown in bold throughout this release to distinguish them from experimental statistics. See background note 4.

² The monthly output of business services and finance is not shown in bold to denote that it is still classified as an experimental series.

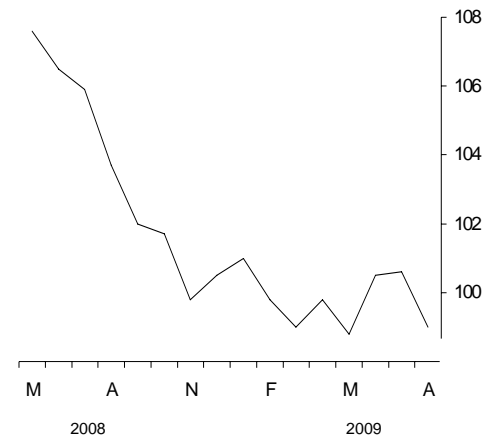
Distribution

Output from Distribution increased by 0.9 per cent in the three months to August compared with the previous three months. The most significant increase was in Retail.

Output from Distribution decreased by 1.6 per cent between July and August. The most significant decrease was in Wholesale

Chained volume of distribution

seasonally adjusted (2005=100)

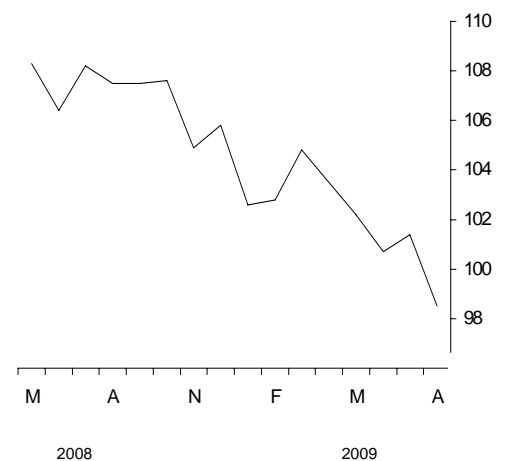


Hotels and restaurants

Output from Hotels and restaurants decreased by 3.2 per cent in the three months to August compared with the previous three months. The most significant decreases were in Canteens and catering and Public houses and bars.

Chained volume of hotels and restaurants

seasonally adjusted (2005=100)

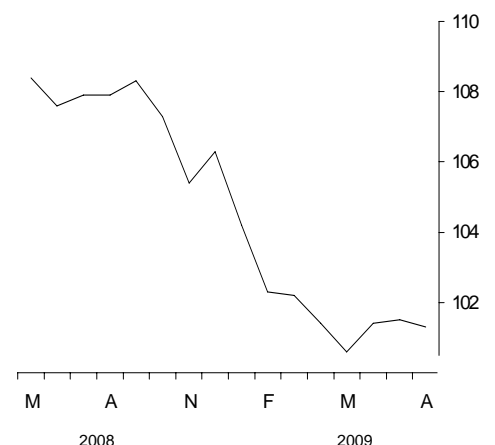


Transport, storage and communication

Output from Transport, storage and communication was unchanged in the three months to August compared with the previous three months. The most significant decrease was in Post and telecommunications. The most significant increase was in Other transport services.

Chained volume of transport, storage and communications

seasonally adjusted (2005=100)

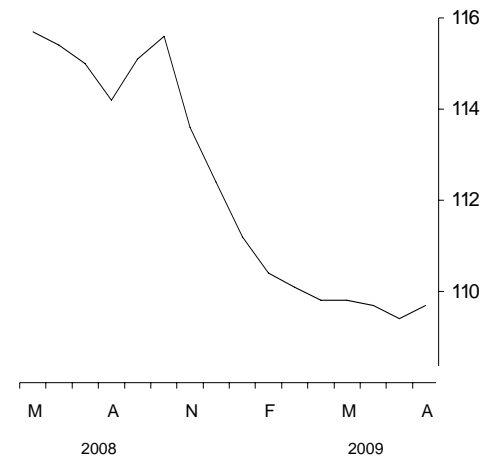


Business services and finance

Output from Business services and finance decreased by 0.3 per cent in the three months to August compared with the previous three months. The most significant decrease was in Other business services.

Experimental chained volume of business services and finance

seasonally adjusted (2005=100)

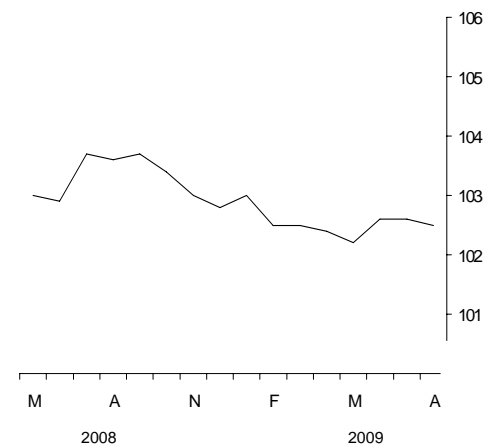


Government and other services

Output from Government and other services increased by 0.2 per cent in the three months to August compared with the previous three months. The most significant increase was in Health and social work.

Chained volume of government and other services

seasonally adjusted (2005=100)



Revisions

In this release the only period open for revision is July 2009.

Revisions are mainly due to:

- Revisions to seasonal adjustment factors, which are re-estimated every month.
- Updated survey and administrative data.
- Actual data replacing forecasts.

Table RIOS1 shows the revisions to the estimates previously published on 30th September 2009.

BACKGROUND NOTES

Purpose and methodology of the IoS

1. The Index of Services shows the monthly movements in the gross value added of the Service industries (2003 Standard Industrial Classification (SIC 2003) section G to P). These consist of the Distribution industries (SIC 2003 section G), Hotels and restaurants (section H), Transport storage and communication (section I), Business services and finance (sections J and K) and Government and other services (sections L to P). Together, they account for just over 76 per cent of gross domestic product (GDP) in 2005. The index is estimated using the same data sources and national accounts methodology as the quarterly estimate of service industries' gross value added within the output measure of GDP (GDP(O)). A detailed description of the methodology is available on the National Statistics website at:

<http://www.statistics.gov.uk/iosmethodology>

Reclassification of the IoS from an experimental to National Statistic

2. In the January 2007 release the IoS was reclassified to National Statistic status. This followed a robust and rigorous evaluation programme. Details of this programme can be found on the National Statistics website at:

<http://www.statistics.gov.uk/downloads/experimental/EvaluationReportForWeb.pdf>

3. Phase one of the evaluation programme of the IoS is now complete. The IoS will, though, continue to be developed and there will be further improvements made to the data sources and methods used. Those industries that are currently labelled experimental will then be re-evaluated to determine if it is appropriate for them to be classified as mainstream National Statistics.

Experimental statistics

4. Although the IoS is now classified as a mainstream National Statistic, a number of its components, accounting for just over 24 per cent of the total, remain as experimental statistics. Experimental statistics are official statistics that are in the testing phase and are not yet fully developed. However the exact boundary between experimental and mainstream National Statistics is largely a matter of statistical judgement. The main reason certain components of the IoS do not qualify as mainstream National Statistics is that it is still too early to fully test the performance of the recently improved methods for these components. Further information on experimental statistics can be found on the National Statistics website at:

<http://www.statistics.gov.uk/CCI/nugget.asp?ID=173>

National Statistics and experimental statistics in this First Release

5. Total Services, Distribution, Transport, storage and communication and Government and other services are classified as mainstream National Statistics; Business services and finance, though, is still classified as experimental. Currently 76 per cent of the IoS is classified as mainstream National Statistics; 24 per cent of its components, though, remain experimental. The following table shows those industries classified as mainstream National Statistics and those that remain experimental:

National Statistic	Weight in IoS
Motor trades	2.7
Wholesale trades	5.9
Retail trade	7.5
Hotels and restaurants	4.0
Land transport	2.8
Air transport	0.7
Supporting and auxiliary transport activities	2.3
Post and telecommunications	4.0
Other business activities	12.6
Letting of dwellings	9.1
Public administration and defence	6.7
Education	7.7
Health and social work: public sector	6.0
Sewage and refuse disposal	0.9
Recreational, cultural and sporting activities: excluding radio and TV, and betting and gaming	2.1
Other service activities	0.8
Total	75.8
Experimental	
Water Transport	0.3
Financial intermediation	5.7
Insurance and pension funding	2.2
Activities auxiliary to financial intermediation	1.3
Real estate activities	3.1
Renting of machinery and equipment	1.3
Computer and related activities	3.6
Research and development	0.5
Health and social work: private sector	3.2
Activities of membership organisations nec	0.8
Recreational, cultural and sporting activities: radio and TV, and betting and gaming	1.5
Private households with employed persons	0.6
Total	24.1

Series for real estate: publication

6. The series for real estate and letting of dwellings, previously shown in the IOSDIVS table have now been replaced by a single series for SIC2003 division 70, covering both categories. This reflects the recent update to the index of services compilation structure, which is now based on ONS's latest supply-use framework. The separate components will continue to be available on request.

Consistency with the estimates of quarterly GDP (O)

7. Data for the index of services shown in this Release are consistent with the quarterly Gross Domestic Product Preliminary Estimate published on the same day as this release.

Composition of the data

8. The index of services is based on a range of data collected monthly, quarterly and annually. Where monthly data are not available, monthly estimates are derived by forecasting the quarterly or annual data using the Holt-Winters method and interpolating a monthly path using a cubic spline.
9. A Holt-Winters forecast is also used where actual data are not available for the latest period (a lower proportion of actual data is available for the latest month). When the forecast is replaced by actual data, this may lead to revisions to the published data.
10. Some monthly data are volatile. When looking at growth rates, it is recommended that users focus on the percentage change between the latest three months and the previous three months.

Status of figures and planned future revisions

11. Figures for the most recent months are provisional and subject to revision in light of (a) late responses to surveys and administrative sources, (b) where forecasts are replaced by actual data (see background note 8) and (c) revisions to seasonal adjustment factors which are re-estimated every month and reviewed annually (changes from the latest review are included in this release).

Basic quality information for the IoS First Release

Summary quality report

12. A Summary Quality Report for this First Release can be found on the National Statistics website at:

<http://www.statistics.gov.uk/cci/article.asp?ID=1460>

Key quality issues

13. Common pitfalls in interpreting series: Expectations of accuracy and reliability in early estimates are often too high. Revisions are an inevitable consequence of the trade off between timelines and accuracy. Early estimates are based on incomplete data.
14. Very few statistical revisions arise as a result of 'errors' in the popular sense of the word. All estimates, by definition, are subject to statistical 'error' but in this context the word refers to the uncertainty inherent in any process or calculation that uses sampling, estimation or modelling. Most revisions reflect either the adoption of new statistical techniques, or the incorporation of new information, which allows the statistical error of previous statements to be reduced. Only rarely are there avoidable 'errors' such as human or system failures, and such mistakes are made quite clear when they do occur.

Reliability

15. Revisions to data provide one indication of the reliability of key indicators. The table which follows shows summary information on the size and direction of revisions which have been made to the data since August 2003.
16. The table presents a summary of the differences between the first estimates published between August 2003 and July 2008 and the estimates published 12 months later. A statistical test has been applied to the average revision to find out if it is statistically significantly different from zero.
The result of the test is that the average revision is not statistically significantly different from zero.
17. A spreadsheet giving a revisions triangle of estimates from August 2003 to July 2008 and the calculations behind the averages in the table is available on the National Statistics website at:

<http://www.statistics.gov.uk/StatBase/Product.asp?vlnk=9333>

	Value in latest period	Revisions between first publication and estimates twelve months later	
		Average over the last 60 months	Average over the last 60 months without regard to sign (average absolute revision)
Index of Services 3 month on 3 month growth rate	-0.1	0.10	0.20
Index of Services 1 month growth rate	-0.3	0.02	0.21

18. As noted, the table uses historical data from August 2003, comparing the estimates at first publication with the estimates as published 12 months later. The results of the revisions analysis over this period are fully expected. This is because the index of services development programme has reviewed 99 per cent of the service sector and implemented significant improvements to the methods and data sources used to measure the index of services. The implementation of these improved methods took place in six phases (in the April 2002, July 2003, April 2004, April 2005, April 2006, April 2007 and July 2008 releases). These improved methods led to a series of 'one-off' revisions that were larger than the routine revisions (for example later data, re-seasonal adjustment, actual data replacing forecasts etc.) that are made to the index of services.
19. This means that the results of the revisions analysis in the table on the previous page may not be a good indicator of the future revisions performance of the index of services.
20. Further information on the improvements made to the methods can be found on the National Statistics website at:
- http://www.statistics.gov.uk/iosmethodology/future_improvements.asp
21. More information about the revisions material in this Release can be found on the National Statistics website at:
- <http://www.statistics.gov.uk/cci/article.asp?ID=793>
22. In the September 2009 release the earliest period open for revision will be July 2009.

Seasonal adjustment

23. The index numbers in this release are all seasonally adjusted. This aids interpretation by removing annually recurring fluctuations, for example due to holidays and other regular seasonal patterns.
24. Particular caution should be exercised when interpreting recent monthly movements in the Index of Services.

March 2008:

- included the earliest Easter weekend since 1913, though some school holidays were delayed until April.
 - contained fewer working days than any March since 1997 due to the timing of the weekends.
25. The basic seasonally-adjusted data showed very weak March output and a strong rebound into April and this in part may be related to these timing effects.

Timing of releases

26. In the first and second months of each quarter the IoS First Release is published on the same days as the gross domestic product preliminary estimate First Release and the UK output, income and expenditure First Release.
27. In the third month of each quarter the IoS First Release is published on the first working day after the quarterly national accounts First Release.

Time series data service

28. Complete runs of series in this Release are available to download free of charge at <http://www.statistics.gov.uk/timeseries>. Alternatively, for low-cost tailored data call Online Services on 020 7533 5675 or email tailored@statistics.gov.uk.

Release policy

29. Details of the policy governing the release of new data are available from the media office.

Code of practice

30. **National Statistics** are produced to high professional standards set out in the Code of Practice for Official Statistics. They undergo regular quality assurance reviews to ensure that they meet customer needs. They are produced free from any political interference.
© Crown copyright 2009.

Next publication: 25 November 2009

Issued by: Office for National Statistics, Government Buildings, Cardiff Road, Newport NP10 8XG

Media contact:

Tel **Media Relations Office 0845 6041858**

Emergency on-call 07867 906553

E-mail **press.office@ons.gsi.gov.uk**

Statistical contact:

Tel **Harry Duff 01633 456771**

E-mail **ios.enquiries@ons.gov.uk**

Website:

www.ons.gov.uk

IOS¹ IOS: Index of Services

Chained volume indices of gross value added^{2,3,4}

Seasonally adjusted 2005 = 100

	Industry groups (SIC2003)					
	^{1,5} Total service industries	^{1,5} Distribution	^{1,5} Hotels and restaurants (Division 55)	^{1,5} Transport, storage and communication	⁵ Business services and finance	^{1,5} Government and other services
	Sections G - P	Section G	Section H	Section I	Sections J + K	Sections L - P
2005 weights	1000	153	39	96	401	311
	FVQQ	FVVR	FVXT	FVYD	FVPA	FVPI
2004	97.0	98.6	98.3	96.4	95.1	98.6
2005	100.0	100.0	100.0	100.0	100.0	100.0
2006	103.6	103.2	104.2	102.4	106.0	101.0
2007	107.2	106.4	107.5	106.0	111.9	102.0
2008	108.7	105.0	107.7	107.8	114.7	103.3
2007 Jul	107.4	106.8	106.7	105.9	112.5	101.6
Aug	107.7	106.7	108.8	105.3	113.3	101.7
Sep	108.0	107.6	107.9	104.9	113.7	101.8
Oct	108.0	107.9	108.4	105.9	113.1	102.3
Nov	108.4	107.9	107.5	105.9	114.0	102.2
Dec	108.1	106.8	106.7	106.9	113.4	102.5
2008 Jan	108.8	107.0	108.6	106.8	114.6	102.9
Feb	109.9	108.9	111.7	108.9	115.2	103.4
Mar	109.2	107.8	108.0	108.4	114.6	103.2
Apr	109.8	108.1	108.0	110.0	115.2	103.8
May	109.5	107.6	108.3	108.4	115.7	103.0
Jun	109.0	106.5	106.4	107.6	115.4	102.9
Jul	109.1	105.9	108.2	107.9	115.0	103.7
Aug	108.4	103.7	107.5	107.9	114.2	103.6
Sep	108.6	102.0	107.5	108.3	115.1	103.7
Oct	108.6	101.7	107.6	107.3	115.6	103.4
Nov	107.1	99.8	104.9	105.4	113.6	103.0
Dec	106.7	100.5	105.8	106.3	112.4	102.8
2009 Jan	106.1	101.0	102.6	104.2	111.2	103.0
Feb	105.3	99.8	102.8	102.3	110.4	102.5
Mar	105.0	99.0	104.8	102.2	110.1	102.5
Apr	104.9	99.8	103.5	101.4	109.8	102.4
May	104.6	98.8	102.2	100.6	109.8	102.2
Jun	104.9	100.5	100.7	101.4	109.7	102.6
Jul	104.9	100.6[†]	101.4[†]	101.5[†]	109.4 [†]	102.6[†]
Aug	104.6	99.0	98.5	101.3	109.7	102.5
Percentage change, latest year on previous year						
	D8ZW	D8ZT	D8ZU	D8ZV	D92P	D92Q
2004	3.5	6.3	1.8	4.7	4.3	0.8
2005	3.1	1.4	1.7	3.7	5.1	1.4
2006	3.6	3.2	4.2	2.4	6.0	1.0
2007	3.5	3.1	3.2	3.5	5.5	1.0
2008	1.4	-1.4	0.2	1.7	2.5	1.3
Percentage change, latest 3 months on previous 3 months						
	FVGD	FVVL	FVXB	FVYG	FVGG	FVGJ
2007 Jul	0.8	1.0	1.2	0.5	1.4	-0.1
Aug	0.7	0.9	1.1	-0.2	1.5	-0.2
Sep	0.8	1.1	-0.6	-1.0	1.7	-0.1
Oct	0.6	0.8	-	-1.0	1.4	0.1
Nov	0.6	0.9	-0.7	-0.4	1.0	0.4
Dec	0.4	0.5	-0.3	0.9	0.3	0.6
2008 Jan	0.5	-0.1	-0.7	1.1	0.6	0.6
Feb	0.7	-0.1	1.0	1.8	0.7	0.8
Mar	1.0	0.4	1.8	1.7	1.2	0.8
Apr	1.1	1.0	1.5	2.4	0.9	0.9
May	0.5	0.2	-0.8	1.3	0.7	0.4
Jun	0.1	-0.5	-1.7	0.6	0.5	-
Jul	-0.4	-1.5	-1.5	-1.0	0.3	-0.3
Aug	-0.6	-2.3	-0.7	-1.1	-0.3	-
Sep	-0.7	-3.3	0.2	-0.6	-0.6	0.4
Oct	-0.6	-3.9	-0.1	-0.1	-0.3	0.3
Nov	-0.7	-4.0	-0.6	-0.8	-0.1	-
Dec	-1.2	-3.1	-1.5	-1.5	-0.8	-0.6
2009 Jan	-1.8	-2.0	-2.9	-2.3	-2.2	-0.6
Feb	-1.9	-0.7	-2.8	-2.5	-3.0	-0.6
Mar	-1.9	-0.7	-2.6	-3.2	-2.9	-0.4
Apr	-1.5	-0.9	-0.7	-3.2	-2.1	-0.4
May	-1.1	-1.3	-0.2	-2.8	-1.3	-0.4
Jun	-0.6	-0.3	-1.2	-1.8	-0.7	-0.2
Jul	-0.3[†]	0.4[†]	-2.2	-0.8[†]	-0.4	-[†]
Aug	-0.1	0.9	-3.2	-	-0.3	0.2

1 The series printed in bold denote that they are mainstream national statistics rather than experimental statistics.

2 Indices reflect values measured at basic prices, which exclude "taxes less subsidies on products".

3 Estimates cannot be regarded as accurate to the last digit shown.

4 Any apparent inconsistencies between the index numbers and the percentage changes shown in these tables are due to rounding.

5 The equivalent quarterly index series are released electronically as part of the GDP(O) estimates. For further information about obtaining these quarterly series please telephone 020 7533 5675, fax 020 7533 5688 or email on-line.services.branch@ons.gov.uk

Sources: For further information on these data please telephone 01633 456771; fax 01633 455300 or e-mail ios.enquiries@ons.gov.uk

[†] Indicates that data have been revised since the last release. The period marked is the earliest in the table to have been revised.

RIOS1 IOS: Index of Services

Revisions since previously published estimates²

Seasonally adjusted 2005 = 100

	Industry groups (SIC2003)					
	¹ Total service industries	¹ Distribution	¹ Hotels and restaurants (Division 55)	¹ Transport, storage and communication	Business services and finance	¹ Government and other services
	Sections G - P	Section G	Section H	Section I	Sections J + K	Sections L - P
2005 weights	1000	153	39	96	401	311
	FVQQ	FVVR	FVXT	FVYD	FVPA	FVPI
2005	-	-	-	-	-	-
2006	-	-	-	-	-	-
2007	-	-	-	-	-	-
2008	-	-	-	-	-	-
2007 Apr	-	-	-	-	-	-
May	-	-	-	-	-	-
Jun	-	-	-	-	-	-
Jul	-	-	-	-	-	-
Aug	-	-	-	-	-	-
Sep	-	-	-	-	-	-
Oct	-	-	-	-	-	-
Nov	-	-	-	-	-	-
Dec	-	-	-	-	-	-
2008 Jan	-	-	-	-	-	-
Feb	-	-	-	-	-	-
Mar	-	-	-	-	-	-
Apr	-	-	-	-	-	-
May	-	-	-	-	-	-
Jun	-	-	-	-	-	-
Jul	-	-	-	-	-	-
Aug	-	-	-	-	-	-
Sep	-	-	-	-	-	-
Oct	-	-	-	-	-	-
Nov	-	-	-	-	-	-
Dec	-	-	-	-	-	-
2009 Jan	-	-	-	-	-	-
Feb	-	-	-	-	-	-
Mar	-	-	-	-	-	-
Apr	-	-	-	-	-	-
May	-	-	-	-	-	-
Jun	-	-	-	-	-	-
Jul	-	-0.2	0.1	-0.2	0.1	-0.2
Percentage change, latest year on previous year						
	D8ZW	D8ZT	D8ZU	D8ZV	D92P	D92Q
2005	-	-	-	-	-	-
2006	-	-	-	-	-	-
2007	-	-	-	-	-	-
2008	-	-	-	-	-	-
Percentage change, latest 3 months on previous 3 months						
	FVGD	FVVL	FVXB	FVYG	FVGG	FVGJ
2007 Apr	-	-	-	-	-	-
May	-	-	-	-	-	-
Jun	-	-	-	-	-	-
Jul	-	-	-	-	-	-
Aug	-	-	-	-	-	-
Sep	-	-	-	-	-	-
Oct	-	-	-	-	-	-
Nov	-	-	-	-	-	-
Dec	-	-	-	-	-	-
2008 Jan	-	-	-	-	-	-
Feb	-	-	-	-	-	-
Mar	-	-	-	-	-	-
Apr	-	-	-	-	-	-
May	-	-	-	-	-	-
Jun	-	-	-	-	-	-
Jul	-	-	-	-	-	-
Aug	-	-	-	-	-	-
Sep	-	-	-	-	-	-
Oct	-	-	-	-	-	-
Nov	-	-	-	-	-	-
Dec	-	-	-	-	-	-
2009 Jan	-	-	-	-	-	-
Feb	-	-	-	-	-	-
Mar	-	-	-	-	-	-
Apr	-	-	-	-	-	-
May	-	-	-	-	-	-
Jun	-	-	-	-	-	-
Jul	-0.1	-0.1	-	-0.1	-	-0.1

¹ The series printed in bold denote that they are mainstream national statistics rather than experimental statistics.

² In this release the only period open for revision is July 2009.

Sources: For further information on these data please telephone 01633 456771; fax 01633 455300 or e-mail ios.enquiries@ons.gov.uk

IOSDIVS

IOS: Index of Services

Chained volume indices of gross value added^{2,3,4}

Seasonally adjusted 2005 = 100

		Industry divisions (SIC2003)					
		^{1,5} Motor trades	^{1,5} Wholesale	^{1,5} Retail	^{1,5} Hotels and Restaurants	^{1,5} Land Transport	^{1,5} Air Transport
		Division 50	Division 51	Division 52	Division 55	Division 60	Division 62
Weights	IOS = 1000	29	53	71	39	26	7
2005							
		FVVO	FVVP	FVVQ	FVXT	FVXU	FVXW
2004		102.0	98.2	97.7	98.3	101.3	94.0
2005		100.0	100.0	100.0	100.0	100.0	100.0
2006		99.3	104.9	103.6	104.2	103.3	105.6
2007		101.6	107.4	107.7	107.5	105.9	112.2
2008		94.1	103.7	110.4	107.7	109.8	111.8
2007 Jul		101.6	107.1	108.7	106.7	103.9	112.3
Aug		102.6	106.2	108.8	108.8	105.6	114.3
Sep		103.5	108.1	108.8	107.9	105.5	113.5
Oct		102.6	110.0	108.4	108.4	108.5	113.5
Nov		102.2	109.3	109.1	107.5	108.9	114.1
Dec		100.8	108.4	108.1	106.7	110.6	114.1
2008 Jan		100.8	107.9	108.9	108.6	111.5	113.2
Feb		102.6	108.7	111.8	111.7	112.9	115.3
Mar		102.0	107.9	110.2	108.0	111.4	114.5
Apr		103.2	109.3	109.2	108.0	114.1	113.5
May		98.7	105.4	112.9	108.3	113.2	112.2
Jun		97.3	107.7	109.3	106.4	111.7	109.6
Jul		93.1	107.9	109.6	108.2	111.4	111.3
Aug		89.4	102.5	110.5	107.5	108.9	113.8
Sep		87.1	99.5	110.1	107.5	109.3	111.8
Oct		87.1	98.4	110.2	107.6	106.7	109.8
Nov		82.3	95.4	110.4	104.9	104.1	108.3
Dec		85.3	94.3	111.5	105.8	102.9	107.7
2009 Jan		84.9	94.9	112.2	102.6	103.6	106.3
Feb		86.9	93.6	109.9	102.8	101.5	104.6
Mar		84.4	90.7	111.3	104.8	100.7	106.7
Apr		82.9	91.9	112.7	103.5	99.2	107.1
May		80.5	91.6	111.7	102.2	97.2	107.2
Jun		83.2	93.5	112.8	100.7	99.4	107.0
Jul		84.7[†]	92.5[†]	113.3	101.4[†]	100.0[†]	107.9[†]
Aug		81.6	89.2	113.5	98.5	98.5	108.3
Percentage change, latest year on previous year							
		D8VG	D8VH	D8VI	D8VJ	D8VK	D8VM
2004		2.4	7.8	6.4	1.8	2.7	8.5
2005		-1.9	1.8	2.4	1.7	-1.3	6.4
2006		-0.7	4.9	3.6	4.2	3.3	5.6
2007		2.4	2.4	3.9	3.2	2.5	6.2
2008		-7.5	-3.5	2.5	0.2	3.7	-0.4
Percentage change, latest 3 months on previous 3 months							
		FVVC	FVVF	FVVI	FVXB	FVXP	FVXR
2007 Jul		0.8	1.3	0.9	1.2	-1.1	2.4
Aug		0.3	0.5	1.4	1.1	-1.0	1.4
Sep		1.6	0.5	1.4	-0.6	0.6	1.0
Oct		1.2	0.6	0.8	-	2.2	1.0
Nov		0.7	1.9	0.3	-0.7	3.2	0.4
Dec		-0.7	1.9	-0.2	-0.3	4.2	0.5
2008 Jan		-1.6	0.4	-	-0.7	3.6	0.1
Feb		-1.3	-0.7	0.8	1.0	3.7	0.5
Mar		-0.1	-0.9	1.6	1.8	2.3	0.4
Apr		1.3	0.1	1.5	1.5	2.2	0.5
May		-0.1	-0.7	1.0	-0.8	1.1	-0.7
Jun		-2.0	-0.7	0.2	-1.7	1.0	-2.3
Jul		-6.0	-1.5	0.2	-1.5	-0.6	-3.0
Aug		-7.9	-1.4	-0.9	-0.7	-2.0	-1.6
Sep		-9.8	-3.9	-0.4	0.2	-2.8	0.5
Oct		-8.8	-6.4	-0.3	-0.1	-3.4	0.8
Nov		-8.3	-7.8	0.4	-0.6	-3.6	-1.4
Dec		-5.5	-7.1	0.6	-1.5	-4.8	-3.3
2009 Jan		-4.3	-5.3	1.0	-2.9	-4.4	-3.9
Feb		0.2	-3.6	0.9	-2.8	-3.8	-3.5
Mar		0.6	-3.1	0.4	-2.6	-2.5	-2.5
Apr		0.7	-2.9	-0.1	-0.7	-3.0	-1.2
May		-3.7	-3.0	0.6	-0.2	-3.6	0.8
Jun		-3.8	-0.7	1.1	-1.2	-3.3	1.2
Jul		-2.3[†]	0.5[†]	1.2	-2.2	-1.6[†]	1.2[†]
Aug		0.7	0.4	1.2	-3.2	0.3	0.7

1 The divisional series printed in bold denote that they are mainstream national statistics rather than experimental statistics

2 Indices reflect values measured at basic prices, which exclude "taxes less subsidies on products".

3 Estimates cannot be regarded as accurate to the last digit shown.

4 Any apparent inconsistencies between the index numbers and the percentage changes shown in these tables are due to rounding.

[†] Indicates that data have been revised since the last release. The period marked is the earliest in the table to have been revised.

5 The equivalent quarterly index series are released electronically as part of the GDP(O) estimates. For further information about obtaining these quarterly series please telephone 020 7533 5675, fax 020 7533 5688 or email on-line.services.branch@ons.gov.uk

The 2005 divisional weights shown will not sum to the sectors on IOS1 due to experimental divisional series not being published in their own right.

Sources: For further information on these data please telephone 01633 456771; fax 01633 455300 or e-mail ios.enquiries@ons.gov.uk

IOSDIVS

IOS: Index of Services

Chained volume indices of gross value added^{2,3,4}

continued

Seasonally adjusted 2005 = 100

		Industry divisions (SIC2003)					
		^{1,5} Supporting & Auxiliary Transport Activities	^{1,5} Post & Telecom -munications	⁵ Financial Intermediation	^{5,6} Real estate & letting of dwellings	Renting of machinery and equipment	⁵ Computer and related activities
		Division 63	Division 64	Division 65	Division 70	Division 71	Division 72
Weights	IOS = 1000						
2005		22	36	63	122	14	40
		FVXX	FVXD	FVXZ	FVYL	FVYM	FVYN
2004		93.3	95.7	92.9	97.5	97.1	96.2
2005		100.0	100.0	100.0	100.0	100.0	100.0
2006		103.6	102.3	107.1	102.9	109.5	104.1
2007		106.3	107.6	116.3	103.6	114.9	111.5
2008		104.4	110.0	123.1	104.7	116.3	114.6
2007 Jul		106.8	108.7	116.9	103.6	115.3	113.5
Aug		105.5	106.1	117.6	103.7	116.9	114.3
Sep		105.5	105.5	118.2	103.7	119.4	117.7
Oct		106.4	105.6	118.6	103.7	117.9	112.8
Nov		105.7	105.4	119.0	104.0	118.0	114.0
Dec		105.5	106.6	119.6	103.7	115.3	113.0
2008 Jan		105.3	106.2	120.3	103.9	124.3	110.4
Feb		108.9	107.6	121.0	104.1	123.5	113.1
Mar		105.6	109.4	122.0	104.3	121.3	110.4
Apr		108.0	110.5	123.1	104.9	121.4	113.8
May		107.4	107.7	123.8	104.6	117.1	116.1
Jun		104.4	108.9	124.1	104.5	114.0	114.5
Jul		102.3	110.6	123.4	104.2	117.8	115.6
Aug		102.9	111.4	123.6	104.8	113.2	115.1
Sep		104.6	111.3	124.3	104.9	113.6	115.5
Oct		102.4	112.1	124.2	105.2	113.7	118.3
Nov		99.4	111.2	124.5	105.5	108.4	117.6
Dec		101.5	113.7	123.5	105.9	106.7	114.6
2009 Jan		95.8	111.5	122.8	106.4	106.5	110.1
Feb		93.0	110.3	120.9	106.2	101.6	110.2
Mar		93.5	110.1	120.0	106.3	100.9	108.7
Apr		93.0	109.3	120.0	106.8	101.8	104.1
May		92.3	108.8	121.4	106.6	102.8	104.9
Jun		92.6	109.2	122.5	106.9	103.8	103.7
Jul		93.5 [†]	108.1 [†]	120.8 [†]	107.3	100.9 [†]	104.9 [†]
Aug		95.8	107.4	121.5	107.2	99.7	105.9
Percentage change, latest year on previous year							
		D8VN	D8VO	D8VP	D8VT	D8VU	D8VV
2004		5.6	3.7	8.1	1.6	-1.2	9.8
2005		7.2	4.5	7.7	2.5	3.0	4.0
2006		3.6	2.3	7.1	2.9	9.5	4.1
2007		2.7	5.2	8.6	0.8	4.9	7.2
2008		-1.8	2.3	5.9	1.1	1.2	2.7
Percentage change, latest 3 months on previous 3 months							
		FVXS	FVXG	FVYC	FVYT	FVYW	FVYZ
2007 Jul		1.2	1.2	1.6	-0.2	3.7	2.7
Aug		-0.8	0.7	1.5	-	3.2	2.6
Sep		-1.4	-2.2	1.7	0.2	3.0	4.2
Oct		-1.8	-3.2	1.7	0.2	2.4	3.1
Nov		-0.9	-2.6	1.5	0.3	2.2	1.9
Dec		-	-0.8	1.3	0.1	-0.1	-1.7
2008 Jan		-0.3	0.3	1.2	0.2	1.0	-2.1
Feb		0.7	1.2	1.4	0.1	2.0	-2.3
Mar		0.7	1.8	1.7	0.3	5.1	-1.8
Apr		1.9	2.9	2.0	0.6	2.4	-0.1
May		0.4	2.3	2.2	0.7	-0.8	1.1
Jun		-	1.2	2.1	0.5	-4.5	3.2
Jul		-2.6	-0.1	1.4	-	-4.7	2.7
Aug		-3.6	1.0	0.6	-0.1	-4.1	1.5
Sep		-3.1	1.9	0.1	-	-2.2	0.6
Oct		-1.3	2.3	0.2	0.5	-2.4	0.8
Nov		-1.0	1.1	0.5	0.7	-2.7	1.8
Dec		-2.1	1.1	0.2	0.8	-4.6	1.3
2009 Jan		-4.3	0.5	-0.3	0.9	-5.6	-1.9
Feb		-5.2	0.3	-1.5	0.9	-6.2	-4.7
Mar		-6.9	-1.5	-2.3	0.7	-6.0	-6.1
Apr		-5.8	-1.9	-2.7	0.5	-5.4	-5.7
May		-4.0	-2.2	-1.6	0.4	-2.9	-5.2
Jun		-1.6	-1.4	-	0.5	-0.2	-5.0
Jul		-0.4	-1.2 [†]	1.0 [†]	0.5	1.1 [†]	-2.9 [†]
Aug		1.1	-1.1	1.0	0.5	-0.4	-1.0

For footnotes 1 to 5, see page 1 of this table

Sources: For further information on these data please telephone 01633 456771; fax 01633 455300 or e-mail ios.enquiries@ons.gov.uk

6 The series shown here covers the whole of SIC2003 division 70, which includes real estate activities and letting of dwellings. Separate series for these components are available on request.

IOSDIVS

IOS: Index of Services

Chained volume indices of gross value added^{2,3,4}

continued

Seasonally adjusted 2005 = 100

		Industry groups (SIC2003)					
		1,5 Other business activities	1,5 Public administration and defence; Compulsory Soc. Sec.	1,5 Education	5 Health and Social Work	1,5 Sewage and refuse disposal	5 Activities of membership org. n.e.c.
		Division 74	Division 75	Division 80	Division 85	Division 90	Division 91
Weights	IOS = 1000						
2005		126	71	78	94	9	8
		FVYP	FVVS	FVVZ	FVXY	FVVT	FVVU
2004		92.2	99.2	99.4	97.2	94.1	96.7
2005		100.0	100.0	100.0	100.0	100.0	100.0
2006		108.5	100.6	100.0	102.8	102.8	106.3
2007		117.6	100.4	99.5	105.5	107.4	100.2
2008		119.2	98.8	100.2	108.8	109.7	102.8
2007	Jul	119.2	100.3	99.5	104.9	106.8	99.2
	Aug	118.7	100.1	99.5	105.3	104.8	98.3
	Sep	119.6	100.1	99.8	105.7	105.5	97.9
	Oct	119.6	100.2	99.8	106.1	110.8	98.1
	Nov	120.6	100.2	99.9	106.5	104.7	98.9
	Dec	120.0	100.1	99.3	106.8	108.4	99.9
2008	Jan	120.6	99.6	99.7	106.9	111.9	101.5
	Feb	122.8	99.2	99.8	107.3	112.3	102.4
	Mar	121.6	98.9	99.9	107.7	110.6	102.6
	Apr	120.9	98.9	99.9	108.1	114.3	102.1
	May	122.1	98.8	99.9	108.1	110.1	101.9
	Jun	121.6	98.7	99.2	108.2	109.3	102.5
	Jul	119.8	98.5	100.0	109.0	111.6	103.7
	Aug	117.9	98.4	100.7	109.3	112.5	104.6
	Sep	117.9	98.5	101.2	109.7	112.6	104.6
	Oct	118.2	98.7	100.7	110.3	108.5	103.7
	Nov	114.3	98.9	100.7	110.4	98.9	102.5
	Dec	112.1	98.8	100.9	110.1	104.4	101.6
2009	Jan	109.2	98.9	101.3	110.4	97.9	101.2
	Feb	109.1	98.4	101.1	110.3	97.0	101.3
	Mar	108.1	98.1	101.2	110.5	101.6	101.5
	Apr	108.0	97.7	101.0	110.8	101.1	101.3
	May	107.3	97.6	100.5	111.4	100.1	101.5
	Jun	106.3	97.5	101.1	111.9	103.1	101.7
	Jul	106.6 [†]	97.4	100.5 [†]	112.0 [†]	103.0 [†]	101.6 [†]
	Aug	106.4	97.4 [†]	101.0	112.3	95.8	101.9
Percentage change, latest year on previous year							
		D8VX	D8VY	D8W2	D8W3	D8W4	D8W5
2004		5.3	1.1	-0.7	3.2	4.0	-2.9
2005		8.4	0.9	0.6	2.9	6.2	3.5
2006		8.5	0.6	-	2.8	2.8	6.3
2007		8.5	-0.2	-0.5	2.6	4.5	-5.7
2008		1.3	-1.6	0.7	3.1	2.2	2.6
Percentage change, latest 3 months on previous 3 months							
		FVZF	FVWB	FVWM	FVWN	FVWO	FVWP
2007	Jul	2.3	-0.1	-	-0.4	-1.7	-1.6
	Aug	2.2	-0.3	0.1	-0.3	-3.1	-1.9
	Sep	2.1	-0.5	0.3	0.1	-1.5	-2.2
	Oct	1.2	-0.3	0.3	0.7	0.1	-2.0
	Nov	1.2	-0.1	0.4	1.0	1.5	-0.9
	Dec	0.8	-	0.1	1.1	2.2	0.5
2008	Jan	0.9	-0.2	-0.1	0.9	1.2	2.0
	Feb	1.0	-0.6	-0.2	0.8	3.6	3.0
	Mar	1.3	-0.9	0.1	0.8	3.4	3.2
	Apr	1.1	-1.0	0.2	0.9	3.7	2.3
	May	0.3	-0.8	0.3	1.0	0.7	0.9
	Jun	-0.1	-0.4	-0.1	0.8	-0.3	-
	Jul	-0.5	-0.3	-0.1	0.7	-1.8	0.3
	Aug	-1.4	-0.3	0.1	0.8	-0.5	1.4
	Sep	-2.5	-0.3	1.0	1.1	0.9	2.1
	Oct	-2.6	-0.1	1.1	1.2	0.8	1.5
	Nov	-2.5	0.2	0.8	1.2	-4.0	-
	Dec	-3.1	0.3	0.1	0.9	-7.4	-1.6
2009	Jan	-5.2	0.3	0.1	0.5	-9.7	-2.4
	Feb	-5.7	-	0.2	0.1	-6.5	-2.1
	Mar	-5.3	-0.3	0.4	0.1	-4.9	-1.3
	Apr	-3.1	-0.8	0.1	0.2	-0.5	-0.5
	May	-2.1	-0.9	-0.2	0.6	1.2	-
	Jun	-1.5	-0.9	-0.3	0.8	2.6	0.2
	Jul	-1.5 [†]	-0.6	-0.4 [†]	1.1 [†]	2.2 [†]	0.3
	Aug	-1.2	-0.4	-	1.0	-0.3	0.3

For footnotes see page 1 of this table

Sources: For further information on these data please telephone 01633 456771; fax 01633 455300 or e-mail ios.enquiries@ons.gov.uk

IOSDIVS

IOS: Index of Services

Chained volume indices of gross value added^{2,3,4}

continued

Seasonally adjusted 2005 = 100

		Industry divisions (SIC2003)		
		⁵ Rec., cultural & sporting activities	^{1.5} Other service activities	⁵ Private households with employed persons
		Division 92	Division 93	Division 95
Weights	IOS = 1000			
2005		37	8	6
		FVVV	FVWV	FVVX
2004		101.1	100.9	96.3
2005		100.0	100.0	100.0
2006		98.5	101.3	94.3
2007		100.7	105.2	93.8
2008		102.7	108.9	96.2
2007	Jul	101.0	101.0	94.5
	Aug	101.2	104.8	94.0
	Sep	99.4	106.3	93.5
	Oct	100.7	107.8	93.1
	Nov	99.7	112.5	93.1
	Dec	101.6	111.3	93.5
2008	Jan	104.4	108.2	94.3
	Feb	107.0	110.5	95.1
	Mar	105.6	108.2	95.7
	Apr	107.9	111.9	96.0
	May	102.6	109.8	96.3
	Jun	102.7	110.7	96.6
	Jul	105.1	111.9	96.8
	Aug	102.3	109.8	97.0
	Sep	101.3	109.3	97.1
	Oct	98.5	109.2	97.0
	Nov	98.5	104.8	96.7
	Dec	96.6	102.3	96.2
2009	Jan	97.6	105.0	95.6
	Feb	95.1	107.7	95.4
	Mar	93.9	106.0	95.4
	Apr	93.7	105.6	96.2
	May	92.9	104.0	95.1
	Jun	93.5	100.0	95.5
	Jul	95.0 [†]	100.9[†]	94.0 [†]
	Aug	92.7	105.2	93.9
Percentage change, latest year on previous year				
		D8W6	D8W7	D8W8
2004		-2.3	-0.3	0.1
2005		-1.1	-0.9	3.8
2006		-1.5	1.3	-5.7
2007		2.2	3.8	-0.6
2008		2.0	3.5	2.6
Percentage change, latest 3 months on previous 3 months				
		FVWQ	FVWR	FVWS
2007	Jul	0.7	1.9	1.0
	Aug	0.2	2.6	-
	Sep	0.1	-0.1	-0.8
	Oct	-0.6	2.2	-1.3
	Nov	-1.0	3.8	-1.3
	Dec	0.1	6.3	-0.8
2008	Jan	1.4	4.1	0.1
	Feb	4.4	1.0	1.2
	Mar	5.0	-1.4	1.9
	Apr	4.9	-0.5	2.1
	May	1.0	-	1.8
	Jun	-1.2	1.7	1.3
	Jul	-3.1	0.6	1.0
	Aug	-1.9	0.7	0.8
	Sep	-1.4	-0.4	0.7
	Oct	-2.7	-1.3	0.5
	Nov	-3.8	-2.7	0.1
	Dec	-4.8	-4.4	-0.4
2009	Jan	-3.1	-4.9	-0.9
	Feb	-3.0	-2.6	-1.2
	Mar	-2.4	0.7	-1.2
	Apr	-3.4	2.3	-0.5
	May	-3.0	0.2	-0.2
	Jun	-2.3	-2.9	0.1
	Jul	-0.5 [†]	-4.5[†]	-0.8 [†]
	Aug	0.3	-3.0	-1.1

For footnotes see page 1 of this table

Sources: For further information on these data please telephone 01633 456771; fax 01633 455300 or e-mail ios.enquiries@ons.gov.uk

Next publication: 25 November 2009

Issued by: Office for National Statistics, Government Buildings, Cardiff Road, Newport NP10 8XG

Media contact:

Tel **Media Relations Office 0845 6041858**

Emergency on-call 07867 906553

E-mail **press.office@ons.gsi.gov.uk**

Statistical contact:

Tel **Harry Duff 01633 456771**

E-mail **ios.enquiries@ons.gov.uk**

Website:

www.ons.gov.uk