

20 July 2007

**Coverage**  
United Kingdom  
**Theme**  
The Economy

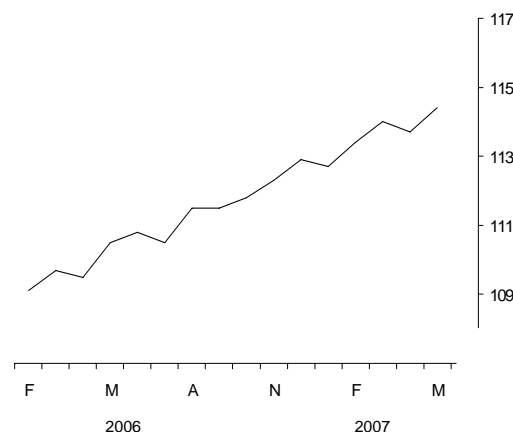
## Index of services May 2007

In the three months to May the seasonally adjusted chained volume index for the output of the service industries increased by 0.9 per cent compared with the previous three months.

All five components of the service sector increased in output. The most significant increase was in business services & finance.

Between April and May service sector output increased by 0.6 per cent. Four of the five components increased in output. The most significant increase was in business services and finance. (Note that monthly growth rates are volatile, see background note 8.)

Chained volume of services  
seasonally adjusted (2003 = 100)



National Statistics are shown in bold throughout this release to distinguish them from experimental statistics.

### Service industries

		Chained volume indices (seasonally adjusted, 2003=100)	Percentage change: latest three months on previous three months					
			Total	Distrib.	Hotels & Rest.	Transp. & comm.	<sup>1</sup> Business services & finance	Gov't and other
<b>2003 weights</b>		<b>1000</b>	<b>165</b>	<b>42</b>	<b>104</b>	<b>373</b>	<b>316</b>	
<b>2006</b>	Dec	<b>112.9</b>	<b>1.1</b>	<b>1.5</b>	<b>1.3</b>	<b>1.6</b>	<b>1.1</b>	<b>0.6</b>
<b>2007</b>	Jan	<b>112.7</b>	<b>0.9</b>	<b>0.6</b>	<b>1.1</b>	<b>0.9</b>	<b>1.4</b>	<b>0.4</b>
	Feb	<b>113.4</b>	<b>1.0</b>	<b>0.5</b>	<b>1.2</b>	<b>1.1</b>	<b>1.6</b>	<b>0.5</b>
	Mar	<b>114.0</b>	<b>0.9</b>	<b>0.8</b>	<b>1.7</b>	<b>1.6</b>	<b>1.0</b>	<b>0.5</b>
	Apr	<b>113.7</b>	<b>1.0</b>	<b>1.1</b>	<b>1.3</b>	<b>2.1</b>	<b>0.8</b>	<b>0.6</b>
	May	<b>114.4</b>	<b>0.9</b>	<b>1.2</b>	<b>0.7</b>	<b>1.7</b>	<b>1.0</b>	<b>0.4</b>

Issued by  
National Statistics  
1 Drummond Gate  
London SW1V 2QQ

Telephone  
Press Office 020 7533 5725  
Public Enquiries 0845 601 3034

Statistician  
Darren Morgan 01633 812484  
Email: ios.enquiries@ons.gov.uk

Internet  
www.statistics.gov.uk/release

Next publication date  
24 August 2007

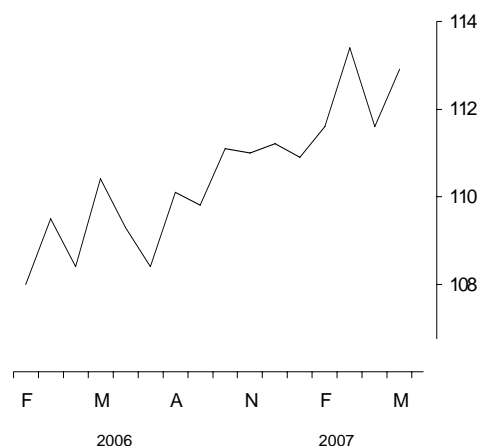
<sup>1</sup> The monthly output of business services and finance is not shown in bold to denote that it is still classified as an experimental series.



**Distribution**

In the three months to May, distribution rose by 1.2 per cent compared with the previous three months. All three components – motor trades, wholesaling and retail – increased in output. The most significant increase was in retail.

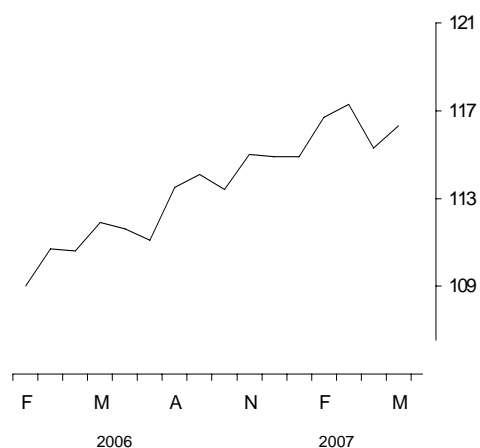
**Chained volume of distribution**  
seasonally adjusted (2003=100)



**Hotels and restaurants**

In the three months to May, the output of hotels and restaurants rose by 0.7 per cent compared with the previous three months. The most significant increase was in unlicensed restaurants and cafes; the next most significant increases were in take-away food shops and public houses and bars.

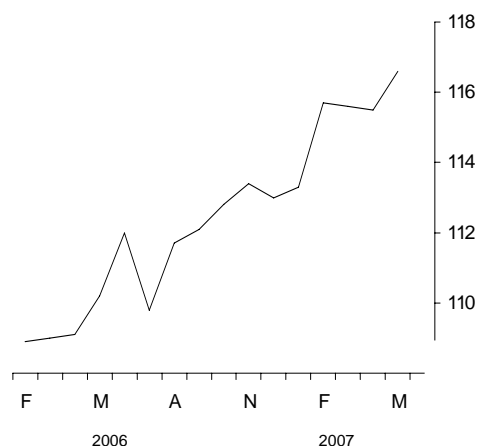
**Chained volume of hotels and restaurants**  
seasonally adjusted (2003=100)



**Transport, storage and communications**

In the three months to May, output from transport, storage and communications rose by 1.7 per cent compared with the previous three months. Growth in the latest three months was broad based with all five components – land transport, water transport, air transport, other transport services and post and telecommunications – increasing in output. The most significant increases were in other transport services and telecommunications.

**Chained volume of transport, storage and communications**  
seasonally adjusted (2003=100)



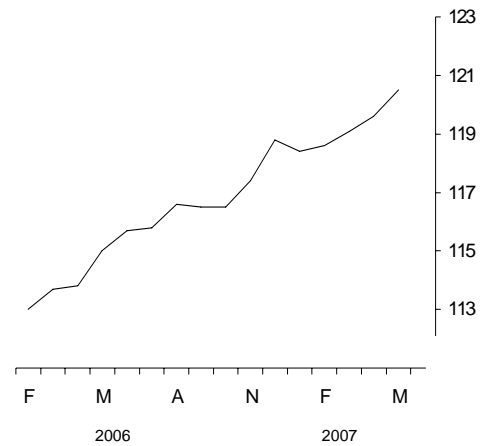


**Business Services and Finance**

In the three months to May, the output of business services and finance rose by 1.0 per cent compared with the previous three months. The increase was driven by other business services; the most significant increases here were in legal services, labour recruitment and architectural services.

Between April and May business services and finance increased by 0.8 per cent. The most significant increase was in other business services which includes investigation and security, management consultancy and architectural services.

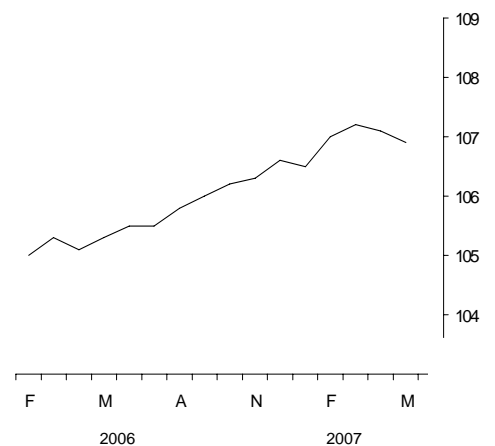
**Experimental chained volume of business services and finance**  
seasonally adjusted (2003=100)



**Government and other services**

In the three months to May, output from government and other services rose by 0.4 per cent compared with the previous three months. The most significant contributors to this increase were health and social work and sewage and refuse disposal.

**Chained volume of government and other services**  
seasonally adjusted (2003=100)



## Revisions

In this release, the only period open for revision is April 2007.

Revisions are mainly due to:

- Revisions to seasonal adjustment factors, which are re-estimated every month.
- Later survey and administrative data.
- Actual data replacing forecasts.

Table RIOS1 shows the revisions to the estimates previously published on 2<sup>nd</sup> July 2007.

## BACKGROUND NOTES

### Purpose and methodology of the IoS

1. The index of services shows the monthly movements in the gross value added of the service industries (2003 Standard Industrial Classification (SIC 2003) section G to P). These consist of the distribution industries (SIC 2003 section G), hotels and restaurants (section H), transport storage and communication (section I), business services and finance (sections J and K) and government and other services (sections L to P). Together, they account for over 74 per cent of gross domestic product (GDP) in 2003. The index is estimated using the same data sources and national accounts methodology as the quarterly estimate of service industries' gross value added within the output measure of GDP (GDP(O)). A detailed description of the methodology is available on the National Statistics website at:

<http://www.statistics.gov.uk/iosmethodology>

### Reclassification of the IoS from an experimental to National Statistic

2. In the January 2007 release the IoS was reclassified to National Statistic status. This followed a robust and rigorous evaluation programme. Details of this programme can be found on the National Statistics website at:

<http://www.statistics.gov.uk/downloads/experimental/EvaluationReportForWeb.pdf>

Phase one of the evaluation programme of the IoS is now complete. The IoS will, though, continue to be developed and there will be further improvements made to the data sources and methods used. Those industries that are currently classified as experimental will then be re-evaluated to determine if it is appropriate for them to be classified as mainstream National Statistics.

### Experimental Statistics

3. Although the IoS is now classified as a mainstream National Statistic, a number of its components, accounting for 19 per cent of the total, remain as experimental statistics. Experimental statistics are those which are in the testing phase and are not yet fully developed. However the exact boundary between experimental and mainstream National Statistics is largely a matter of statistical judgement. The main reason certain components of the IoS are still designated as experimental series is that it is still too early to fully test the performance of the recently improved methods for these components.

Further information on experimental statistics can be found on the National Statistics website at:

<http://www.statistics.gov.uk/CCI/hugget.asp?ID=173>

### National Statistics and Experimental Statistics in this First Release

4. Total Services, Distribution, Transport, Storage and Communication and Government and Other Services are classified as mainstream National Statistics; Business Services and Finance, though, is still classified as experimental. Currently 81 per cent of the IoS is classified as mainstream National Statistics; 19 per cent of its components, though, remain experimental. The table below shows those industries classified as mainstream National Statistics and those that remain experimental:

<b>National Statistic</b>	<b>Weight in IoS</b>
Motor trades	2.8
Wholesale trades	5.9
Retail trade	7.7
Hotels and restaurants	4.2
Land transport	2.9
Air transport	0.8
Supporting and auxiliary transport activities	2.4
Post and telecommunications	4.0
Other business activities	12.9
Letting of dwellings	10.6
Public administration and defence	7.0
Education	7.9
Health and social work: public sector	7.5
Sewage and refuse disposal	0.9
Recreational, cultural and sporting activities: excluding radio and TV, and betting and gaming	2.3
Other service activities	0.8
<b>Total</b>	<b>80.6</b>
<b>Experimental</b>	
Water Transport	0.4
Financial intermediation	7.0
Insurance and pension funding	2.2
Activities auxiliary to financial intermediation	1.4
Financial services adjustment	-6.2
Real estate activities	3.4
Renting of machinery and equipment	1.5
Computer and related activities	3.9
Research and development	0.6
Health and social work: private sector	2.1
Activities of membership organisations nec	0.8
Recreational, cultural and sporting activities: radio and TV, and betting and gaming	1.6
Private households with employed persons	0.7
<b>Total</b>	<b>19.4</b>

### **Consistency with the estimates of quarterly GDP(O)**

5. The monthly figures for the index of services and its component series shown in this release are consistent with the gross domestic product preliminary estimate First Release published on the same day as this release.

### **Composition of the data**

6. The index of services is based on a range of data collected monthly, quarterly and annually. Where monthly data are not available, monthly estimates are derived by forecasting the quarterly or annual data using the Holt-Winters method and interpolating a monthly path using a cubic spline.
7. A Holt-Winters forecast is also used where actual data are not available for the latest period (a lower proportion of actual data is available for the latest month). When the forecast is replaced by actual data, this may lead to revisions to the published data.
8. Some monthly data are volatile. When looking at growth rates, it is recommended that users focus on the percentage change between the latest three months and the previous three months.

### **Status of figures and planned future revisions**

9. Figures for the most recent months are provisional and subject to revision in light of (a) late responses to surveys and administrative sources, (b) where forecasts are replaced by actual data (see background note 7) and (c) revisions to seasonal adjustment factors which are re-estimated every month.

### **Basic quality information for the IoS First Release**

#### **Summary quality report**

10. A Summary Quality Report for this First Release can now be found on the National Statistics website at:

<http://www.statistics.gov.uk/cci/article.asp?ID=1460>

#### **Key quality issues**

11. Common pitfalls in interpreting series: Expectations of accuracy and reliability in early estimates are often too high. Revisions are an inevitable consequence of the trade off between timelines and accuracy. Early estimates are based on incomplete data.

Very few statistical revisions arise as a result of 'errors' in the popular sense of the word. All estimates, by definition, are subject to statistical 'error' but in this context the word refers to the uncertainty inherent in any process or calculation that uses sampling, estimation or modelling. Most revisions reflect either the adoption of new statistical techniques, or the



incorporation of new information, which allows the statistical error of previous statements to be reduced. Only rarely are there avoidable 'errors' such as human or system failures, and such mistakes are made quite clear when they do occur.

**Reliability**

- 12. Revisions to data provide one indication of the reliability of key indicators. The table below shows summary information on the size and direction of revisions which have been made to the data since May 2001.

The table presents a summary of the differences between the first estimates published between May 2001 and April 2006 and the estimates published 12 months later. A statistical test has been applied to the average revision to find out if it is statistically significantly different from zero.

The result of the test is that the average revision is not statistically significantly different from zero.

A spreadsheet giving a revisions triangle of estimates from May 2001 to April 2006 and the calculations behind the averages in the table is available on the National Statistics website at:

<http://www.statistics.gov.uk/StatBase/Product.asp?vlnk=9333>

	Value in latest period	Revisions between first publication and estimates twelve months later	
		Average over the last 60 months	Average over the last 60 months without regard to sign (average absolute revision )
Index of Services 3 month on 3 month growth rate	0.9	0.08	0.20
Index of Services 1 month growth rate	0.6	0.05	0.22

- 13. As noted, the table uses historical data from May 2001, comparing the estimates at first publication with the estimates as published 12 months later. The results of the revisions analysis over this period is fully expected. This is because the index of services development programme has reviewed 99 per cent of the service sector and implemented significant improvements to the methods and data sources used to measure the index of services. The implementation of these improved



methods took place in six phases (in the April 2002, July 2003, April 2004, April 2005, April 2006 and April 2007 releases). These improved methods led to a series of 'one-off' revisions that were larger than the routine revisions (for example later data, re-seasonal adjustment, actual data replacing forecasts etc.) that are made to the index of services. This means that the results of the revisions analysis in the table above may not be a good indicator of the future revisions performance of the index of services.

14. Further information on the improvements made to the methods can be found on the National Statistics website at:

[http://www.statistics.gov.uk/iosmethodology/future\\_improvements.asp](http://www.statistics.gov.uk/iosmethodology/future_improvements.asp)

15. More information about the revisions material in this Release can be found on the National Statistics website at:

<http://www.statistics.gov.uk/cci/article.asp?ID=793>

16. In the June 2007 release the earliest period open for revision will be April 2007.

### **Seasonal Adjustment**

17. The index numbers in this release are all seasonally adjusted. This aids interpretation by removing annually recurring fluctuations, for example due to holidays and other regular seasonal patterns.

### **Timing of releases**

18. In the first and second months of each quarter the IoS First Release is published on the same days as the gross domestic product preliminary estimate First Release and the UK output, income and expenditure First Release.

In the third month of each quarter the IoS First Release is published on the first working day after the Quarterly National Accounts First Release.

### **Time series data service**

19. Complete runs of series in this Release are available to download free of charge at <http://www.statistics.gov.uk/timeseries>. Alternatively, for low-cost tailored data call Online Services on 020 7533 5675 or email [tailored@statistics.gov.uk](mailto:tailored@statistics.gov.uk).

### **Release Policy**

20. Details of the policy governing the release of new data are available from the press office. Also available is a list of names of those given pre-publication access to the contents of this release.



21. **National Statistics** are produced to high professional standards set out in the National Statistics Code of Practice. They undergo regular quality assurance reviews to ensure that they meet customer needs. They are produced free from any political interference.  
© Crown Copyright 2007.

# IOS1

## IOS: Index of Services

Chained volume indices of gross value added<sup>2,3,4</sup>

Seasonally adjusted 2003 = 100

	Industry groups (SIC2003)					
	1, 5 Total service industries	1, 5 Distribution	1, 5 Hotels and restaurants (Division 55)	1, 5 Transport, storage and communication	5 Business services and finance	1, 5 Government and other services
	Sections G - P	Section G	Section H	Section I	Sections J + K	Sections L - P
<b>2003 weights</b>	<b>1000</b>	<b>165</b>	<b>42</b>	<b>104</b>	<b>373</b>	<b>316</b>
	FVQQ	FVVR	FVXT	FVYD	FVPA	FVPI
2002	<b>96.9</b>	<b>96.9</b>	<b>94.4</b>	<b>98.2</b>	96.3	<b>97.7</b>
2003	<b>100.0</b>	<b>100.0</b>	<b>100.0</b>	<b>100.0</b>	100.0	<b>100.0</b>
2004	<b>103.9</b>	<b>105.3</b>	<b>104.5</b>	<b>102.5</b>	105.0	<b>102.0</b>
2005	<b>106.9</b>	<b>106.7</b>	<b>105.6</b>	<b>106.9</b>	109.7	<b>103.8</b>
2006	<b>110.8</b>	<b>109.6</b>	<b>112.1</b>	<b>111.0</b>	115.4	<b>105.6</b>
2005 Mar	<b>105.7</b>	<b>105.7</b>	<b>104.4</b>	<b>107.1</b>	108.2	<b>102.6</b>
Apr	<b>105.9</b>	<b>106.1</b>	<b>105.5</b>	<b>106.3</b>	108.1	<b>103.2</b>
May	<b>106.0</b>	<b>105.0</b>	<b>104.6</b>	<b>105.4</b>	109.0	<b>103.4</b>
Jun	<b>106.9</b>	<b>106.5</b>	<b>105.6</b>	<b>106.2</b>	110.1	<b>103.8</b>
Jul	<b>106.8</b>	<b>106.0</b>	<b>105.3</b>	<b>106.2</b>	109.8	<b>104.1</b>
Aug	<b>107.2</b>	<b>107.1</b>	<b>105.0</b>	<b>106.3</b>	110.1	<b>104.4</b>
Sep	<b>107.7</b>	<b>107.3</b>	<b>104.8</b>	<b>108.0</b>	110.9	<b>104.5</b>
Oct	<b>107.9</b>	<b>106.8</b>	<b>105.9</b>	<b>108.2</b>	111.5	<b>104.3</b>
Nov	<b>108.3</b>	<b>107.9</b>	<b>107.2</b>	<b>108.8</b>	111.6	<b>104.6</b>
Dec	<b>109.1</b>	<b>109.1</b>	<b>108.3</b>	<b>109.8</b>	112.5	<b>104.8</b>
2006 Jan	<b>108.9</b>	<b>107.6</b>	<b>110.1</b>	<b>109.4</b>	112.5	<b>104.9</b>
Feb	<b>109.1</b>	<b>108.0</b>	<b>109.0</b>	<b>108.9</b>	113.0	<b>105.0</b>
Mar	<b>109.7</b>	<b>109.5</b>	<b>110.7</b>	<b>109.0</b>	113.7	<b>105.3</b>
Apr	<b>109.5</b>	<b>108.4</b>	<b>110.6</b>	<b>109.1</b>	113.8	<b>105.1</b>
May	<b>110.5</b>	<b>110.4</b>	<b>111.9</b>	<b>110.2</b>	115.0	<b>105.3</b>
Jun	<b>110.8</b>	<b>109.3</b>	<b>111.6</b>	<b>112.0</b>	115.7	<b>105.5</b>
Jul	<b>110.5</b>	<b>108.4</b>	<b>111.1</b>	<b>109.8</b>	115.8	<b>105.5</b>
Aug	<b>111.5</b>	<b>110.1</b>	<b>113.5</b>	<b>111.7</b>	116.6	<b>105.8</b>
Sep	<b>111.5</b>	<b>109.8</b>	<b>114.1</b>	<b>112.1</b>	116.5	<b>106.0</b>
Oct	<b>111.8</b>	<b>111.1</b>	<b>113.4</b>	<b>112.8</b>	116.5	<b>106.2</b>
Nov	<b>112.3</b>	<b>111.0</b>	<b>115.0</b>	<b>113.4</b>	117.4	<b>106.3</b>
Dec	<b>112.9</b>	<b>111.2</b>	<b>114.9</b>	<b>113.0</b>	118.8	<b>106.6</b>
2007 Jan	<b>112.7</b>	<b>110.9</b>	<b>114.9</b>	<b>113.3</b>	118.4	<b>106.5</b>
Feb	<b>113.4</b>	<b>111.6</b>	<b>116.7</b>	<b>115.7</b>	118.6	<b>107.0</b>
Mar	<b>114.0</b>	<b>113.4</b>	<b>117.3</b>	<b>115.6</b>	119.1	<b>107.2</b>
Apr	<b>113.7<sup>†</sup></b>	<b>111.6</b>	<b>115.3</b>	<b>115.5<sup>†</sup></b>	119.6 <sup>†</sup>	<b>107.1<sup>†</sup></b>
May	<b>114.4</b>	<b>112.9</b>	<b>116.3</b>	<b>116.6</b>	120.5	<b>106.9</b>
<b>Percentage change, latest year on previous year</b>						
	D8ZW	D8ZT	D8ZU	D8ZV	D92P	D92Q
2002	<b>2.6</b>	<b>4.9</b>	<b>3.3</b>	<b>1.2</b>	2.0	<b>2.5</b>
2003	<b>3.2</b>	<b>3.2</b>	<b>6.0</b>	<b>1.9</b>	3.9	<b>2.4</b>
2004	<b>3.9</b>	<b>5.3</b>	<b>4.5</b>	<b>2.5</b>	5.1	<b>2.0</b>
2005	<b>2.9</b>	<b>1.2</b>	<b>1.1</b>	<b>4.3</b>	4.4	<b>1.8</b>
2006	<b>3.6</b>	<b>2.7</b>	<b>6.2</b>	<b>3.8</b>	5.2	<b>1.8</b>
<b>Percentage change, latest 3 months on previous 3 months</b>						
	FVGD	FVVL	FVXB	FVYG	FVGG	FVGJ
2005 Mar	<b>0.5</b>	<b>0.1</b>	<b>-0.9</b>	<b>1.7</b>	0.8	<b>0.3</b>
Apr	<b>0.4</b>	<b>-0.2</b>	<b>-0.8</b>	<b>1.6</b>	0.6	<b>0.2</b>
May	<b>0.5</b>	<b>-0.3</b>	<b>-0.8</b>	<b>1.2</b>	1.0	<b>0.2</b>
Jun	<b>0.7</b>	<b>-0.2</b>	<b>0.4</b>	<b>-</b>	1.3	<b>0.6</b>
Jul	<b>0.8</b>	<b>-0.2</b>	<b>0.2</b>	<b>-0.3</b>	1.6	<b>0.8</b>
Aug	<b>1.0</b>	<b>0.8</b>	<b>0.5</b>	<b>-0.1</b>	1.5	<b>1.0</b>
Sep	<b>0.9</b>	<b>0.9</b>	<b>-0.2</b>	<b>0.8</b>	1.1	<b>0.8</b>
Oct	<b>1.0</b>	<b>1.2</b>	<b>0.1</b>	<b>1.4</b>	1.1	<b>0.6</b>
Nov	<b>0.9</b>	<b>0.8</b>	<b>0.6</b>	<b>2.0</b>	1.2	<b>0.4</b>
Dec	<b>1.1</b>	<b>1.0</b>	<b>2.0</b>	<b>2.0</b>	1.4	<b>0.2</b>
2006 Jan	<b>1.1</b>	<b>1.0</b>	<b>3.1</b>	<b>1.7</b>	1.2	<b>0.3</b>
Feb	<b>1.0</b>	<b>0.9</b>	<b>3.0</b>	<b>1.0</b>	1.2	<b>0.4</b>
Mar	<b>0.8</b>	<b>0.4</b>	<b>2.6</b>	<b>0.2</b>	1.1	<b>0.5</b>
Apr	<b>0.6</b>	<b>0.4</b>	<b>1.4</b>	<b>-0.3</b>	1.2	<b>0.3</b>
May	<b>0.9</b>	<b>1.1</b>	<b>1.8</b>	<b>-</b>	1.3	<b>0.3</b>
Jun	<b>1.0</b>	<b>0.9</b>	<b>1.3</b>	<b>1.2</b>	1.6	<b>0.2</b>
Jul	<b>1.1</b>	<b>0.7</b>	<b>1.3</b>	<b>1.5</b>	1.7	<b>0.3</b>
Aug	<b>0.9</b>	<b>-0.2</b>	<b>0.9</b>	<b>1.6</b>	1.6	<b>0.4</b>
Sep	<b>0.8</b>	<b>0.1</b>	<b>1.4</b>	<b>0.7</b>	1.3	<b>0.5</b>
Oct	<b>0.9</b>	<b>0.9</b>	<b>1.9</b>	<b>1.4</b>	0.9	<b>0.6</b>
Nov	<b>0.9</b>	<b>1.3</b>	<b>1.9</b>	<b>1.4</b>	0.7	<b>0.5</b>
Dec	<b>1.1</b>	<b>1.5</b>	<b>1.3</b>	<b>1.6</b>	1.1	<b>0.6</b>
2007 Jan	<b>0.9</b>	<b>0.6</b>	<b>1.1</b>	<b>0.9</b>	1.4	<b>0.4</b>
Feb	<b>1.0</b>	<b>0.5</b>	<b>1.2</b>	<b>1.1</b>	1.6	<b>0.5</b>
Mar	<b>0.9</b>	<b>0.8</b>	<b>1.7</b>	<b>1.6</b>	1.0	<b>0.5<sup>†</sup></b>
Apr	<b>1.0</b>	<b>1.1</b>	<b>1.3</b>	<b>2.1<sup>†</sup></b>	0.8	<b>0.6<sup>†</sup></b>
May	<b>0.9</b>	<b>1.2</b>	<b>0.7</b>	<b>1.7</b>	1.0	<b>0.4</b>

1 The series printed in bold denote that they are mainstream national statistics rather than experimental statistics.

2 Indices reflect values measured at basic prices, which exclude "taxes less subsidies on products".

3 Estimates cannot be regarded as accurate to the last digit shown.

4 Any apparent inconsistencies between the index numbers and the percentage changes shown in these tables are due to rounding.

<sup>†</sup> Indicates that data have been revised since the last release. The period marked is the earliest in the table to have been revised.

5 The equivalent quarterly index series are released electronically as part of the GDP(O) estimates. For further information about obtaining these quarterly series please telephone 020 7533 5675, fax 020 7533 5688 or email on-line.services.branch@ons.gov.uk

Sources: For further information on these data please telephone 01633 812484; fax 01633 819043 or e-mail ios.enquiries@ons.gov.uk

# RIOS1 IOS: Index of Services

Revisions since previously published estimates<sup>2</sup>

Seasonally adjusted 2003 = 100

	Industry groups (SIC2003)					
	<sup>1</sup> Total service industries	<sup>1</sup> Distribution	<sup>1</sup> Hotels and restaurants (Division 55)	<sup>1</sup> Transport, storage and communication	Business services and finance	<sup>1</sup> Government and other services
	Sections G - P	Section G	Section H	Section I	Sections J + K	Sections L - P
<b>2003 weights</b>	<b>1000</b>	<b>165</b>	<b>42</b>	<b>104</b>	<b>373</b>	<b>316</b>
	FVQQ	FVVR	FVXT	FVYD	FVPA	FVPI
2002	-	-	-	-	-	-
2003	-	-	-	-	-	-
2004	-	-	-	-	-	-
2005	-	-	-	-	-	-
2006	-	-	-	-	-	-
2005 Feb	-	-	-	-	-	-
Mar	-	-	-	-	-	-
Apr	-	-	-	-	-	-
May	-	-	-	-	-	-
Jun	-	-	-	-	-	-
Jul	-	-	-	-	-	-
Aug	-	-	-	-	-	-
Sep	-	-	-	-	-	-
Oct	-	-	-	-	-	-
Nov	-	-	-	-	-	-
Dec	-	-	-	-	-	-
2006 Jan	-	-	-	-	-	-
Feb	-	-	-	-	-	-
Mar	-	-	-	-	-	-
Apr	-	-	-	-	-	-
May	-	-	-	-	-	-
Jun	-	-	-	-	-	-
Jul	-	-	-	-	-	-
Aug	-	-	-	-	-	-
Sep	-	-	-	-	-	-
Oct	-	-	-	-	-	-
Nov	-	-	-	-	-	-
Dec	-	-	-	-	-	-
2007 Jan	-	-	-	-	-	-
Feb	-	-	-	-	-	-
Mar	-	-	-	-	-	-
Apr	<b>-0.2</b>	-	-	<b>-0.3</b>	-0.1	<b>-0.2</b>
<b>Percentage change, latest year on previous year</b>						
	D8ZW	D8ZT	D8ZU	D8ZV	D92P	D92Q
2002	-	-	-	-	-	-
2003	-	-	-	-	-	-
2004	-	-	-	-	-	-
2005	-	-	-	-	-	-
2006	-	-	-	-	-	-
<b>Percentage change, latest 3 months on previous 3 months</b>						
	FVGD	FVVL	FVXB	FVYG	FVGG	FVGJ
2005 Feb	-	-	-	-	-	-
Mar	-	-	-	-	-	-
Apr	-	-	-	-	-	-
May	-	-	-	-	-	-
Jun	-	-	-	-	-	-
Jul	-	-	-	-	-	-
Aug	-	-	-	-	-	-
Sep	-	-	-	-	-	-
Oct	-	-	-	-	-	-
Nov	-	-	-	-	-	-
Dec	-	-	-	-	-	-
2006 Jan	-	-	-	-	-	-
Feb	-	-	-	-	-	-
Mar	-	-	-	-	-	-
Apr	-	-	-	-	-	-
May	-	-	-	-	-	-
Jun	-	-	-	-	-	-
Jul	-	-	-	-	-	-
Aug	-	-	-	-	-	-
Sep	-	-	-	-	-	-
Oct	-	-	-	-	-	-
Nov	-	-	-	-	-	-
Dec	-	-	-	-	-	-
2007 Jan	-	-	-	-	-	-
Feb	-	-	-	-	-	-
Mar	-	-	-	-	-	-
Apr	-	-	-	<b>-0.1</b>	-	<b>-0.1</b>

1 The series printed in bold denote that they are mainstream national statistics rather than experimental statistics.

Sources: For further information on these data please telephone 01633 812484; fax 01633 819043 or e-mail ios.enquiries@ons.gov.uk

2 In this release the only period open for revision is April 2007.

# IOSDIVS

## IOS: Index of Services

Chained volume indices of gross value added<sup>2,3,4</sup>

Seasonally adjusted 2003 = 100

		Industry divisions (SIC2003)					
		1, 5 Motor trades	1, 5 Wholesale	1, 5 Retail	1, 5 Hotels and Restaurants	1, 5 Land Transport	1, 5 Air Transport
		Division 50	Division 51	Division 52	Division 55	Division 60	Division 62
Weights	IOS = 1000	28	59	77	42	29	8
2003							
		FVVO	FVVP	FVVQ	FVXT	FVXU	FVXW
2002		94.2	99.7	95.8	94.4	98.3	93.0
2003		100.0	100.0	100.0	100.0	100.0	100.0
2004		103.8	104.9	106.3	104.5	103.3	107.5
2005		100.8	106.6	108.9	105.6	105.7	114.6
2006		99.9	110.4	112.5	112.1	111.4	121.2
2005	Mar	101.5	105.3	107.6	104.4	104.4	110.8
	Apr	101.2	105.7	108.1	105.5	106.2	113.6
	May	99.8	104.2	107.6	104.6	104.1	113.8
	Jun	100.1	106.0	109.2	105.6	104.6	114.6
	Jul	99.5	105.7	108.5	105.3	103.9	115.6
	Aug	99.8	108.3	108.8	105.0	105.2	115.5
	Sep	100.7	107.4	109.7	104.8	108.2	115.7
	Oct	98.6	107.1	109.6	105.9	106.3	118.0
	Nov	99.3	108.1	110.8	107.2	107.9	115.9
	Dec	103.7	109.0	111.1	108.3	108.0	116.5
2006	Jan	98.6	109.2	109.8	110.1	108.7	118.1
	Feb	100.1	109.4	109.9	109.0	109.0	118.0
	Mar	100.9	112.0	110.7	110.7	108.7	118.4
	Apr	98.9	108.9	111.5	110.6	108.6	120.4
	May	101.1	112.2	112.4	111.9	110.9	120.5
	Jun	98.8	109.7	112.8	111.6	114.6	121.0
	Jul	98.2	107.5	112.8	111.1	111.5	121.1
	Aug	101.2	110.1	113.4	113.5	112.2	120.4
	Sep	100.8	110.7	112.5	114.1	112.6	123.2
	Oct	100.9	112.2	114.0	113.4	112.8	122.5
	Nov	99.5	112.4	114.2	115.0	113.3	124.8
	Dec	99.7	111.0	115.5	114.9	113.8	125.8
2007	Jan	99.3	113.3	113.4	114.9	112.5	125.4
	Feb	99.4	112.5	115.4	116.7	116.1	125.8
	Mar	105.0	114.0	116.1	117.3	114.7	128.4
	Apr	100.5	111.3 <sup>†</sup>	115.9	115.3	113.1 <sup>†</sup>	128.7 <sup>†</sup>
	May	101.8	113.8	116.2	116.3	114.7	130.5
<b>Percentage change, latest year on previous year</b>							
		D8VG	D8VH	D8VI	D8ZU	D8VK	D8VM
2002		7.0	3.8	5.1	3.3	0.8	0.1
2003		6.1	0.3	4.4	6.0	1.8	7.5
2004		3.8	4.9	6.3	4.5	3.3	7.5
2005		-2.9	1.6	2.5	1.1	2.4	6.6
2006		-0.9	3.6	3.3	6.2	5.4	5.7
<b>Percentage change, latest 3 months on previous 3 months</b>							
		FVVC	FVVF	FVVI	FVXB	FVXP	FVXR
2005	Mar	-1.8	-	0.8	-0.9	0.5	2.1
	Apr	-3.7	0.2	0.8	-0.8	0.3	1.1
	May	-2.8	-0.6	0.7	-0.8	-0.3	0.2
	Jun	-2.0	-0.4	0.6	0.4	0.1	1.8
	Jul	-1.6	-0.5	0.6	0.2	-0.9	2.2
	Aug	-1.1	1.5	1.0	0.5	-0.3	2.2
	Sep	-0.4	1.7	0.7	-0.2	0.8	1.4
	Oct	-0.1	2.1	0.9	0.1	2.3	1.5
	Nov	-0.3	0.8	1.1	0.6	2.8	1.2
	Dec	0.5	0.9	1.4	2.0	1.5	1.1
2006	Jan	0.8	1.1	1.1	3.1	1.5	0.4
	Feb	1.3	1.5	0.2	3.0	1.0	0.8
	Mar	-0.7	2.0	-0.3	2.6	1.3	1.1
	Apr	-0.6	1.2	0.1	1.4	0.5	1.8
	May	-0.5	1.7	1.1	1.8	0.8	1.9
	Jun	-0.3	0.1	1.9	1.3	2.3	2.1
	Jul	-0.6	-0.3	1.8	1.3	3.3	1.6
	Aug	-0.9	-1.8	1.3	0.9	3.1	0.9
	Sep	0.5	-0.8	0.6	1.4	0.7	0.8
	Oct	1.6	1.1	0.5	1.9	0.2	1.0
	Nov	1.0	2.4	0.5	1.9	0.1	2.2
	Dec	-	2.2	1.5	1.3	1.0	2.3
2007	Jan	-1.5	1.1	0.9	1.1	0.6	2.7
	Feb	-0.9	0.5	1.0	1.2	1.1	1.8
	Mar	1.2	1.3	0.3	1.7	1.0	1.8
	Apr	2.2	0.3	1.3	1.3	1.3 <sup>†</sup>	1.9 <sup>†</sup>
	May	3.0	0.7	1.1	0.7	-	2.8

1 The divisional series printed in bold denote that they are mainstream national statistics rather than experimental statistics

2 Indices reflect values measured at basic prices, which exclude "taxes less subsidies on products".

3 Estimates cannot be regarded as accurate to the last digit shown.

4 Any apparent inconsistencies between the index numbers and the percentage changes shown in these tables are due to rounding.

<sup>†</sup> Indicates that data have been revised since the last release. The period marked is the earliest in the table to have been revised.

5 The equivalent quarterly index series are released electronically as part of the GDP(O) estimates. For further information about obtaining these quarterly series please telephone 020 7533 5675, fax 020 7533 5688 or email [online.services.branch@ons.gov.uk](mailto:online.services.branch@ons.gov.uk)

Sources: For further information on these data please telephone 01633 812484; fax 01633 819043 or e-mail [ios.enquiries@ons.gov.uk](mailto:ios.enquiries@ons.gov.uk)

# IOSDIVS

## IOS: Index of Services

Chained volume indices of gross value added<sup>2,3,4</sup>

continued

Seasonally adjusted 2003 = 100

		Industry divisions (SIC2003)					
		1, 5 Supporting & Auxiliary Transport Activities	1, 5 Post & Telecom -munications	5 Financial Intermediation	5 Financial services adjustment	5 Real estate	Renting of machinery and equipment
		Division 63	Division 64	Division 65	Division 6x	Division 70	Division 71
Weights	IOS = 1000						
2003		24	40	70	-62	34	14
		FVXX	FVXD	FVXZ	FVYH	FVYL	FVYM
2002		104.8	96.5	92.0	89.2	96.3	94.9
2003		100.0	100.0	100.0	100.0	100.0	100.0
2004		99.5	101.2	111.9	113.0	105.9	101.6
2005		105.7	104.6	120.4	123.3	109.4	115.2
2006		111.7	106.8	132.8	138.3	113.7	127.2
2005	Mar	104.9	107.3	117.5	121.8	108.8	111.7
	Apr	103.1	104.1	118.9	122.6	109.0	109.4
	May	104.1	102.7	119.6	122.1	110.0	109.5
	Jun	105.3	103.6	120.6	122.4	109.3	116.1
	Jul	105.3	104.2	122.3	124.6	108.9	116.0
	Aug	104.7	104.2	121.9	124.0	109.1	115.4
	Sep	106.1	105.4	122.0	124.5	109.9	119.2
	Oct	106.8	106.0	121.4	124.0	111.1	118.8
	Nov	107.4	106.0	123.5	127.3	109.9	118.0
	Dec	110.9	106.2	122.2	124.5	111.3	124.3
2006	Jan	109.5	105.8	127.1	131.5	111.7	126.3
	Feb	110.4	104.3	129.3	134.2	110.3	127.0
	Mar	111.1	104.4	131.1	136.6	112.6	126.2
	Apr	112.0	103.3	131.8	137.6	113.0	124.1
	May	112.6	105.1	131.5	137.1	113.7	127.0
	Jun	112.8	106.6	130.0	134.4	113.9	125.1
	Jul	111.5	104.1	132.1	137.3	114.3	124.8
	Aug	112.1	108.4	134.3	140.1	115.6	130.5
	Sep	111.9	108.8	135.4	141.3	114.4	127.5
	Oct	112.8	110.2	137.5	143.8	113.8	128.3
	Nov	112.5	110.8	137.2	143.5	114.3	130.1
	Dec	111.6	109.6	136.2	141.8	116.0	129.6
2007	Jan	112.5	110.8	140.6	148.9	115.8	129.8
	Feb	113.5	113.8	145.2	155.7	116.7	128.2
	Mar	116.6 <sup>†</sup>	112.0	146.7 <sup>†</sup>	157.1 <sup>†</sup>	113.9 <sup>†</sup>	130.4 <sup>†</sup>
	Apr	115.5 <sup>†</sup>	113.3 <sup>†</sup>	151.2 <sup>†</sup>	162.8 <sup>†</sup>	115.5 <sup>†</sup>	128.3 <sup>†</sup>
	May	116.8	113.7	149.4	161.4	114.4	132.4
<b>Percentage change, latest year on previous year</b>							
		D8VN	D8VO	D8VP	D8VS	D8VT	D8VU
2002		2.6	0.6	4.8	3.3	4.0	1.9
2003		-4.6	3.6	8.7	12.1	3.8	5.4
2004		-0.5	1.2	11.9	13.0	5.9	1.6
2005		6.2	3.3	7.6	9.2	3.3	13.4
2006		5.7	2.1	10.3	12.1	3.9	10.4
<b>Percentage change, latest 3 months on previous 3 months</b>							
		FVXS	FVXG	FVYC	FVYK	FVYT	FVYW
2005	Mar	2.8	1.8	0.9	3.0	1.1	5.4
	Apr	1.3	2.3	1.1	2.7	1.6	2.2
	May	0.2	2.5	1.5	1.8	2.1	-0.7
	Jun	-0.6	-0.6	2.0	0.8	1.3	-0.2
	Jul	0.5	-1.2	2.3	0.6	0.9	2.4
	Aug	1.0	-0.6	2.4	1.2	-0.2	5.1
	Sep	1.2	1.1	2.0	1.7	-0.1	4.6
	Oct	0.9	1.6	0.8	0.9	0.6	3.5
	Nov	1.6	1.7	0.6	1.3	1.1	2.5
	Dec	2.8	1.4	0.2	0.7	1.4	3.0
2006	Jan	3.2	0.8	2.0	2.9	0.8	4.3
	Feb	3.3	-0.3	3.2	3.8	0.7	6.1
	Mar	1.8	-1.1	5.6	7.1	0.7	5.1
	Apr	1.7	-1.8	5.2	6.5	0.9	2.3
	May	1.5	-1.1	4.2	5.4	1.8	-0.1
	Jun	1.9	0.2	1.5	1.7	1.8	-0.9
	Jul	1.0	1.2	0.4	0.1	1.8	-0.1
	Aug	0.2	2.0	0.5	0.1	1.4	0.8
	Sep	-0.5	2.0	2.2	2.3	1.1	1.7
	Oct	-	3.6	3.5	4.0	0.6	2.5
	Nov	0.2	3.3	3.4	4.1	-0.4	1.5
	Dec	0.4	2.9	2.3	2.5	-0.1	1.4
2007	Jan	-0.1	1.2	1.7	2.1	0.7	0.8
	Feb	0.1	1.3	2.9	4.1	1.7	0.5
	Mar	1.7	1.8	5.2 <sup>†</sup>	7.6 <sup>†</sup>	0.6 <sup>†</sup>	0.1 <sup>†</sup>
	Apr	2.7 <sup>†</sup>	2.4	7.0 <sup>†</sup>	9.5 <sup>†</sup>	- <sup>†</sup>	-0.7 <sup>†</sup>
	May	3.4	1.4	6.0	7.8	-1.4	0.9

For footnotes see page 1 of this table

Sources: For further information on these data please telephone 01633 812484; fax 01633 819043 or e-mail ios.enquiries@ons.gov.uk

# IOSDIVS

## IOS: Index of Services

Chained volume indices of gross value added<sup>2,3,4</sup>

continued

Seasonally adjusted 2003 = 100

		Industry groups (SIC2003)					
		<sup>5</sup> Computer and related activities	<sup>1, 5</sup> Other business activities	<sup>1, 5</sup> Public administration and defence; Compulsory Soc. Sec.	<sup>1, 5</sup> Letting of Dwellings	<sup>1, 5</sup> Education	<sup>5</sup> Health and Social Work
		Division 72	Division 74	Division 75	Division 79	Division 80	Division 85
Weights	IOS = 1000						
2003	39		129	70	106	79	96
		FVYN	FVYP	FVVS	FVZR	FVVZ	FVXY
2002		92.3	95.3	95.3	97.7	99.3	96.3
2003		100.0	100.0	100.0	100.0	100.0	100.0
2004		110.6	107.5	101.9	101.5	100.4	103.9
2005		114.7	115.5	102.8	102.9	101.5	107.0
2006		118.6	125.1	103.3	105.3	101.8	110.2
2005 Mar		114.6	113.8	102.6	102.1	101.4	105.8
Apr		112.3	113.3	102.7	102.3	101.6	106.3
May		112.5	114.5	102.8	102.6	101.7	106.7
Jun		115.9	115.1	102.8	102.8	101.8	107.0
Jul		114.0	115.3	102.8	103.0	101.8	107.2
Aug		114.0	116.3	102.8	103.1	101.7	107.4
Sep		114.9	117.7	102.9	103.3	101.6	107.6
Oct		116.2	118.0	103.0	103.5	101.4	108.0
Nov		117.9	118.5	103.1	103.7	101.4	108.3
Dec		118.7	119.1	103.1	104.0	101.6	108.7
2006 Jan		117.8	119.6	103.1	104.3	101.8	109.1
Feb		116.2	121.3	103.0	104.7	102.1	109.4
Mar		118.1	122.0	103.0	105.0	102.1	109.5
Apr		115.2	122.6	103.1	105.2	102.0	109.5
May		118.0	123.5	103.2	105.4	101.9	109.6
Jun		120.7	124.9	103.3	105.5	101.7	109.8
Jul		119.6	125.3	103.4	105.7	101.7	110.2
Aug		119.3	126.5	103.5	105.7	101.7	110.5
Sep		119.3	127.2	103.5	105.7	101.7	110.6
Oct		118.4	127.7	103.5	105.6	101.7	110.9
Nov		118.9	129.6	103.5	105.6	101.6	111.1
Dec		121.3	131.6	103.5	105.6	101.6	111.8
2007 Jan		120.9	131.9	103.6	105.8	101.6	112.3
Feb		122.5	132.1	103.6	106.0	101.6	112.9
Mar		120.0	133.7	103.8	106.3	101.6	112.7
Apr		124.6 <sup>†</sup>	134.2 <sup>†</sup>	103.7 <sup>†</sup>	106.4	101.6	113.6 <sup>†</sup>
May		125.5	135.8	103.8	106.5	101.5	113.5
<b>Percentage change, latest year on previous year</b>							
		D8VV	D8VX	D8VY	D8VZ	D8W2	D8W3
2002		2.2	1.0	2.5	1.3	1.7	3.8
2003		8.4	4.9	4.9	2.3	0.8	3.8
2004		10.6	7.5	1.9	1.5	0.4	3.9
2005		3.7	7.5	0.8	1.3	1.1	2.9
2006		3.4	8.3	0.5	2.4	0.3	3.0
<b>Percentage change, latest 3 months on previous 3 months</b>							
		FVYZ	FVZF	FVWB	FVZU	FVWM	FVWN
2005 Mar		0.9	2.0	0.5	0.1	0.3	0.5
Apr		1.5	1.5	0.5	0.1	0.4	0.6
May		1.1	1.7	0.5	0.3	0.4	0.9
Jun		0.3	1.4	0.3	0.5	0.4	1.1
Jul		0.8	1.7	0.2	0.6	0.3	1.0
Aug		1.3	1.4	0.1	0.6	0.2	0.9
Sep		0.6	1.8	0.1	0.5	-	0.7
Oct		0.8	2.1	0.1	0.5	-0.2	0.7
Nov		1.5	2.2	0.2	0.5	-0.3	0.7
Dec		2.9	1.8	0.2	0.6	-0.2	0.9
2006 Jan		2.7	1.5	0.1	0.7	-	1.0
Feb		1.1	1.6	0.1	0.8	0.3	1.0
Mar		-0.2	2.0	-	0.9	0.6	0.9
Apr		-1.4	2.4	-	0.9	0.5	0.7
May		-0.4	2.2	-	0.8	0.2	0.4
Jun		0.6	2.2	0.1	0.7	-0.1	0.3
Jul		2.6	2.1	0.2	0.6	-0.3	0.3
Aug		2.4	2.4	0.3	0.4	-0.3	0.6
Sep		1.2	2.2	0.3	0.3	-0.2	0.7
Oct		-0.4	2.1	0.2	0.1	-0.1	0.7
Nov		-0.8	2.1	0.1	-	-	0.6
Dec		0.1	2.6	-	-0.1	-	0.7
2007 Jan		1.2	3.1	-	-	-	1.0
Feb		2.3	2.9	0.1	0.2	-	1.3
Mar		1.4	2.2	0.1	0.4	-	1.3
Apr		1.7 <sup>†</sup>	1.7	0.2	0.5	-	1.2 <sup>†</sup>
May		1.5	2.0	0.2	0.5	-0.1	0.9

For footnotes see page 1 of this table

Sources: For further information on these data please telephone 01633 812484; fax 01633 819043 or e-mail ios.enquiries@ons.gov.uk

# IOSDIVS

## IOS: Index of Services

Chained volume indices of gross value added<sup>2,3,4</sup>

continued

Seasonally adjusted 2003 = 100

Industry divisions (SIC2003)						
	1, 5 Sewage and refuse disposal	5 Activities of membership org. n.e.c.	5 Rec., cultural & sporting activities	1, 5 Other service activities	5 Private households with employed persons	
	Division 90	Division 91	Division 92	Division 93	Division 95	
Weights 2003	IOS = 1000					
	9	8	39	8	7	
	FVVT	FVVU	FVVV	FVWV	FVVX	
2002	102.4	102.2	99.3	100.9	98.9	
2003	100.0	100.0	100.0	100.0	100.0	
2004	102.1	98.1	102.4	99.7	99.6	
2005	104.9	99.4	105.3	95.5	101.1	
2006	107.9	103.2	108.9	95.9	101.8	
2005 Mar	103.5	96.8	99.8	95.9	98.9	
Apr	104.5	97.6	102.8	95.8	98.6	
May	104.2	98.6	103.8	94.2	98.9	
Jun	102.7	99.2	105.2	96.3	100.0	
Jul	104.5	99.4	106.6	93.9	101.6	
Aug	106.8	99.7	108.4	93.2	103.0	
Sep	104.7	100.3	108.6	94.8	103.9	
Oct	104.5	101.2	106.8	92.2	104.0	
Nov	105.5	102.2	106.9	95.0	103.6	
Dec	106.6	103.2	106.9	98.2	102.8	
2006 Jan	104.1	103.9	107.2	94.5	102.0	
Feb	104.4	103.9	106.7	95.4	101.9	
Mar	105.8	103.4	108.2	95.0	102.8	
Apr	104.5	102.4	106.7	95.0	104.2	
May	106.5	101.7	107.7	96.2	105.0	
Jun	111.5	101.4	107.7	97.3	104.4	
Jul	107.8	101.7	108.0	96.6	102.7	
Aug	110.0	102.5	108.7	98.5	100.9	
Sep	110.3	103.5	110.8	94.4	99.8	
Oct	110.1	104.6	111.9	94.5	99.7	
Nov	110.6	105.1	111.4	95.2	99.6	
Dec	109.6	105.0	112.1	98.5	99.0	
2007 Jan	111.0	104.3	110.3	96.3	98.1	
Feb	112.4	103.5	113.2	96.1	97.6	
Mar	113.2 <sup>†</sup>	102.9 <sup>†</sup>	114.7 <sup>†</sup>	96.7 <sup>†</sup>	97.9	
Apr	115.4 <sup>†</sup>	102.9 <sup>†</sup>	111.4 <sup>†</sup>	94.7 <sup>†</sup>	99.2	
May	116.1	103.4	109.2	97.2	101.1	
<b>Percentage change, latest year on previous year</b>						
	D8W4	D8W5	D8W6	D8W7	D8W8	
2002	2.6	6.2	2.2	-6.1	2.1	
2003	-2.3	-2.2	0.7	-0.9	1.1	
2004	2.1	-1.9	2.4	-0.3	-0.4	
2005	2.7	1.4	2.8	-4.2	1.4	
2006	2.9	3.9	3.5	0.5	0.7	
<b>Percentage change, latest 3 months on previous 3 months</b>						
	FVWO	FVWP	FVWQ	FVWR	FVWS	
2005 Mar	1.1	-1.6	0.6	-3.8	1.0	
Apr	-0.2	-1.5	-0.5	-2.8	0.6	
May	-1.3	-0.3	-1.1	-3.5	0.2	
Jun	-1.1	1.4	1.3	-2.0	0.4	
Jul	-0.7	2.0	2.8	-2.1	1.4	
Aug	0.6	1.8	4.5	-0.9	2.8	
Sep	1.5	1.4	3.8	-1.5	3.7	
Oct	1.5	1.4	2.6	-1.4	3.5	
Nov	0.2	1.8	0.7	-0.5	2.2	
Dec	0.2	2.4	-0.9	1.2	0.6	
2006 Jan	0.1	2.6	-0.9	2.7	-0.8	
Feb	0.1	2.4	-0.5	2.2	-1.5	
Mar	-0.7	1.5	0.5	-0.2	-1.2	
Apr	-0.5	0.1	0.2	-0.8	0.2	
May	0.5	-1.1	0.6	-0.7	1.7	
Jun	2.6	-1.8	-	1.3	2.3	
Jul	3.5	-1.6	0.6	1.6	1.0	
Aug	4.0	-0.6	0.6	2.1	-1.3	
Sep	1.7	0.7	1.7	0.3	-3.3	
Oct	1.4	1.9	2.5	-1.0	-3.7	
Nov	0.5	2.5	3.0	-2.8	-2.9	
Dec	0.7	2.3	2.4	-0.5	-1.7	
2007 Jan	0.3	1.2	0.7	0.9	-1.2	
Feb	0.6	-0.1	0.4	2.4	-1.5	
Mar	1.9	-1.2	0.8	0.3	-1.6	
Apr	2.9 <sup>†</sup>	-1.6	1.6 <sup>†</sup>	-0.9 <sup>†</sup>	-0.7	
May	3.5	-1.1	-0.1	-0.8	1.2	

For footnotes see page 1 of this table

Sources: For further information on these data please telephone 01633 812484; fax 01633 819043 or e-mail ios.enquiries@ons.gov.uk