

## Index of Services April 2009



**Date:** 01 July 2009

**Coverage:** United Kingdom **Theme:** The Economy

In the three months to April the seasonally adjusted chained volume index for the output of the Service sector decreased by 1.2 per cent compared with the previous three months, and follows a decrease of 1.6 per cent in the three months to March.

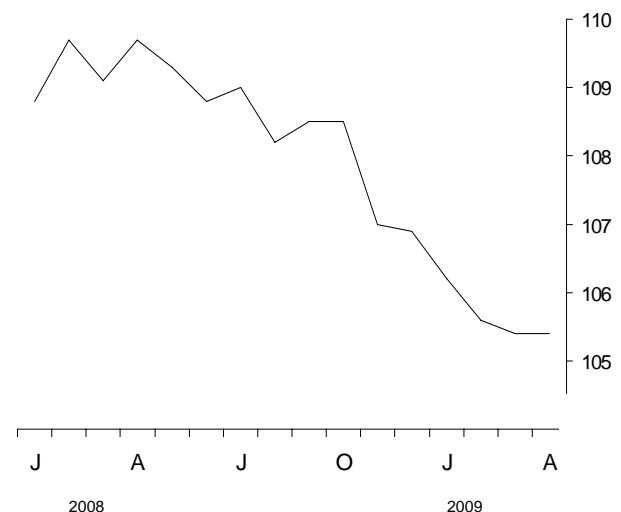
In the latest three months, four of the five components of the Service sector decreased in output. The most significant decrease was in Business services and finance.

Between March and April, Service sector output decreased by 0.1 per cent. The most significant decrease was in Transport, storage and communication. Output from Business services and finance also decreased. The most significant increase was in Distribution.

(Caution should be taken in interpreting the monthly movements in the Index of Services, see background notes 19 and 20)

Chained volume of services

seasonally adjusted (2005 = 100)



### Service industries

Chained volume indices (seasonally adjusted, 2005=100)			Percentage change: latest three months on previous three months					
Total			<sup>1</sup> Total Services	Distrib.	Hotels & Rest.	Transp. & comm.	<sup>2</sup> Business serv. & finance	Gov't and other
<b>2005 weights</b>			<b>1000</b>	<b>153</b>	<b>39</b>	<b>96</b>	<b>401</b>	<b>311</b>
<b>2008</b>	Nov	<b>107.0</b>	-0.6	-4.0	-0.6	-0.6	0.1	0.1
	Dec	<b>106.9</b>	-1.0	-3.2	-1.5	-1.4	-0.6	-0.3
<b>2009</b>	Jan	<b>106.2</b>	-1.6	-2.0	-3.5	-2.3	-2.0	-0.2
	Feb	<b>105.6</b>	-1.6	-0.7	-3.9	-2.5	-2.7	0.0
	Mar	<b>105.4</b>	-1.6	-0.7	-4.4	-3.0	-2.5	0.2
	Apr	<b>105.4</b>	-1.2	-0.9	-1.6	-2.8	-1.6	0.0

<sup>1</sup> National Statistics are shown in bold throughout this release to distinguish them from experimental statistics. See background note 3.

<sup>2</sup> The monthly output of business services and finance is not shown in bold to denote that it is still classified as an experimental series.

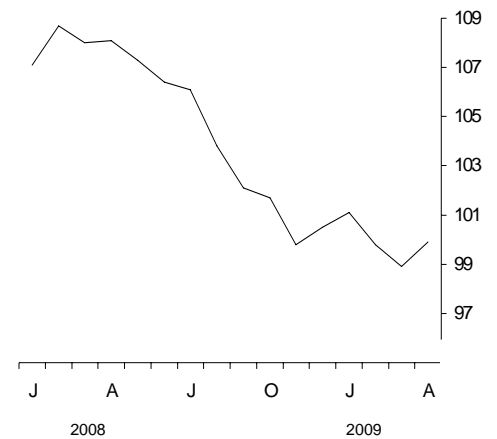
## Distribution

Output from Distribution decreased by 0.9 per cent in the three months to April compared with the previous three months. This is the eleventh consecutive three months on previous three months fall. In the latest period the decrease was driven by Wholesale. Retail also decreased while Motor trades increased in output.

Output from Distribution increased by 1.0 per cent between March and April. All three components increased in output. The most significant increase was in Retail.

### Chained volume of distribution

seasonally adjusted (2005=100)

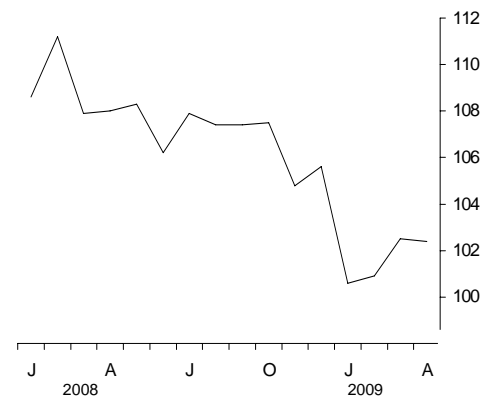


## Hotels and restaurants

Output from Hotels and restaurants decreased by 1.6 per cent in the three months to April compared with the previous three months. The most significant decrease was in Licensed and unlicensed restaurants. The next most significant decrease was in Hotels.

### Chained volume of hotels and restaurants

seasonally adjusted (2005=100)



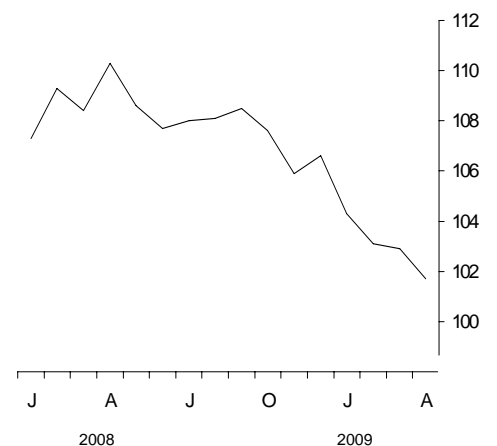
## Transport, storage and communication

Output from Transport, storage and communication decreased by 2.8 per cent in the in the three months to April compared with the previous three months. All five components decreased in output. The most significant decrease was in Other transport services. The next most significant decrease was in Land transport.

Output from Transport, storage and communication decreased by 1.2 per cent between March and April. The most significant month on month decrease was in Post and telecommunications.

### Chained volume of transport, storage and communications

seasonally adjusted (2005=100)

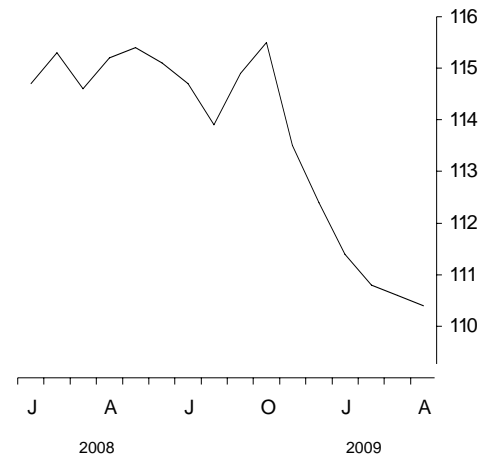


## Business services and finance

Output from Business services and finance decreased by 1.6 per cent in the three months to April compared with the previous three months. The most significant decrease was in Other business services. The next most significant decrease was in Computer services.

### Experimental chained volume of business services and finance

seasonally adjusted (2005=100)

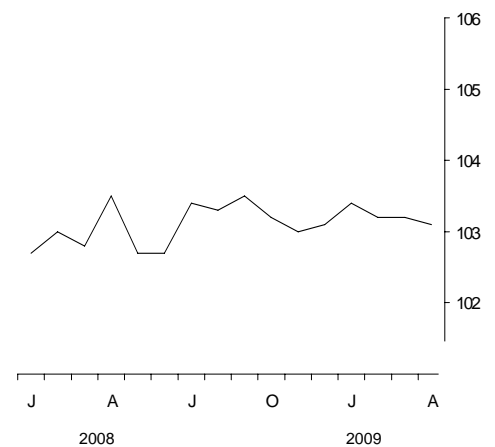


## Government and other services

Output from Government and other services was unchanged in the three months to April compared with the previous three months. The most significant increase was in Health and social work. The next most significant decrease was in Public administration and defence.

### Chained volume of government and other services

seasonally adjusted (2005=100)



## Revisions

In this release the earliest period open for revision is January 2004.

Revisions are mainly due to:

- The implementation of improved methods (see background note 11 for further details).
- The use of 2005 prices structures for the chained volume estimates instead of the 2003 price structures used previously. In addition, industry weights have been updated to those derived from the supply and use balancing process for 2005.
- Seasonal adjustment due to the usual annual review of seasonal adjustment factors as well as improvements and the addition of new data points.
- Updated survey and administrative data.
- Actual data replacing forecasts.

Table RIOS1 shows the revisions to the estimates previously published on 22 May 2009.

## BACKGROUND NOTES

### Purpose and methodology of the IoS

1. The Index of Services shows the monthly movements in the gross value added of the Service industries (2003 Standard Industrial Classification (SIC 2003) section G to P). These consist of the Distribution industries (SIC 2003 section G), Hotels and restaurants (section H), Transport storage and communication (section I), Business services and finance (sections J and K) and Government and other services (sections L to P). Together, they account for just over 76 per cent of gross domestic product (GDP) in 2005. The index is estimated using the same data sources and national accounts methodology as the quarterly estimate of service industries' gross value added within the output measure of GDP (GDP(O)). A detailed description of the methodology is available on the National Statistics website at:

<http://www.statistics.gov.uk/iosmethodology>

### Reclassification of the IoS from an experimental to National Statistic

2. In the January 2007 release the IoS was reclassified to National Statistic status. This followed a robust and rigorous evaluation programme. Details of this programme can be found on the National Statistics website at:

<http://www.statistics.gov.uk/downloads/experimental/EvaluationReportForWeb.pdf>

Phase one of the evaluation programme of the IoS is now complete. The IoS will, though, continue to be developed and there will be further improvements made to the data sources and methods used. Those industries that are currently labelled experimental will then be re-evaluated to determine if it is appropriate for them to be classified as mainstream National Statistics.

### **Experimental statistics**

3. Although the IoS is now classified as a mainstream National Statistic, a number of its components, accounting for just over 24 per cent of the total, remain as experimental statistics. Experimental statistics are official statistics that are in the testing phase and are not yet fully developed. However the exact boundary between experimental and mainstream National Statistics is largely a matter of statistical judgement. The main reason certain components of the IoS do not qualify as mainstream National Statistics is that it is still too early to fully test the performance of the recently improved methods for these components. Further information on experimental statistics can be found on the National Statistics website at:

<http://www.statistics.gov.uk/CCI/nugget.asp?ID=173>

### **National Statistics and experimental statistics in this First Release**

4. Total Services, Distribution, Transport, storage and communication and Government and other services are classified as mainstream National Statistics; Business services and finance, though, is still classified as experimental. Currently 76 per cent of the IoS is classified as mainstream National Statistics; 24 per cent of its components, though, remain experimental. The following table shows those industries classified as mainstream National Statistics and those that remain experimental:

<b>National Statistic</b>	<b>Weight in IoS</b>
Motor trades	2.7
Wholesale trades	5.9
Retail trade	7.5
Hotels and restaurants	4.0
Land transport	2.8
Air transport	0.7
Supporting and auxiliary transport activities	2.3
Post and telecommunications	4.0
Other business activities	12.6
Letting of dwellings	9.1
Public administration and defence	6.7
Education	7.7
Health and social work: public sector	6.0
Sewage and refuse disposal	0.9
Recreational, cultural and sporting activities: excluding radio and TV, and betting and gaming	2.1
Other service activities	0.8
<b>Total</b>	<b>75.8</b>
<b>Experimental</b>	
Water Transport	0.3
Financial intermediation	5.7
Insurance and pension funding	2.2
Activities auxiliary to financial intermediation	1.3
Real estate activities	3.1
Renting of machinery and equipment	1.3
Computer and related activities	3.6
Research and development	0.5
Health and social work: private sector	3.2
Activities of membership organisations nec	0.8
Recreational, cultural and sporting activities: radio and TV, and betting and gaming	1.5
Private households with employed persons	0.6
<b>Total</b>	<b>24.1</b>

#### **Series for real estate: publication**

5. The series for real estate and letting of dwellings, previously shown in the IOSDIVS table have now been replaced by a single series for SIC2003 division 70, covering both categories. This reflects the recent update to the index of services compilation structure, which is now based on ONS's latest supply-use framework. The separate components will continue to be available on request.

### **Consistency with the estimates of quarterly GDP (O)**

6. Data for the index of services shown in this Release are consistent with the quarterly National Accounts Statistical Bulletin published on 30<sup>th</sup> June 2009.

### **Composition of the data**

7. The index of services is based on a range of data collected monthly, quarterly and annually. Where monthly data are not available, monthly estimates are derived by forecasting the quarterly or annual data using the Holt-Winters method and interpolating a monthly path using a cubic spline.
8. A Holt-Winters forecast is also used where actual data are not available for the latest period (a lower proportion of actual data is available for the latest month). When the forecast is replaced by actual data, this may lead to revisions to the published data.
9. Some monthly data are volatile. When looking at growth rates, it is recommended that users focus on the percentage change between the latest three months and the previous three months.

### **Status of figures and planned future revisions**

10. Figures for the most recent months are provisional and subject to revision in light of (a) late responses to surveys and administrative sources, (b) where forecasts are replaced by actual data (see background note 8) and (c) revisions to seasonal adjustment factors which are re-estimated every month and reviewed annually (changes from the latest review are included in this release). Also the reference year for chained volume estimates has been moved forward i.e. updated from 2003 to 2005.

In addition to updating the reference year from 2003 to 2005, data in this release also includes figures based on improved methodology for some industries, see paragraph 11.

### **Methodological Improvements**

11. Data for this release reflects improved methodology for the following industries;
  - Motor trades (SIC2003 class 50.5)
  - Land transport (SIC2003 class 60.22)
  - Financial intermediation (SIC2003 class 65.11)
  - Real estate (SIC2003 division 70)
  - Recreation activities and sporting activities (SIC2003 Division 92)

For further information please contact the statistician responsible for this release (contact details can be found at the end of this release).

## Basic quality information for the IoS First Release

### Summary quality report

12. A Summary Quality Report for this First Release can be found on the National Statistics website at:

<http://www.statistics.gov.uk/cci/article.asp?ID=1460>

### Key quality issues

13. Common pitfalls in interpreting series: Expectations of accuracy and reliability in early estimates are often too high. Revisions are an inevitable consequence of the trade off between timelines and accuracy. Early estimates are based on incomplete data.

Very few statistical revisions arise as a result of 'errors' in the popular sense of the word. All estimates, by definition, are subject to statistical 'error' but in this context the word refers to the uncertainty inherent in any process or calculation that uses sampling, estimation or modelling. Most revisions reflect either the adoption of new statistical techniques, or the incorporation of new information, which allows the statistical error of previous statements to be reduced. Only rarely are there avoidable 'errors' such as human or system failures, and such mistakes are made quite clear when they do occur.

### Reliability

14. Revisions to data provide one indication of the reliability of key indicators. The table which follows shows summary information on the size and direction of revisions which have been made to the data since April 2003.

The table presents a summary of the differences between the first estimates published between April 2003 and March 2008 and the estimates published 12 months later. A statistical test has been applied to the average revision to find out if it is statistically significantly different from zero.

The result of the test is that the average revision is not statistically significantly different from zero.

A spreadsheet giving a revisions triangle of estimates from April 2003 to March 2008 and the calculations behind the averages in the table is available on the National Statistics website at:

<http://www.statistics.gov.uk/StatBase/Product.asp?vlnk=9333>

	Value in latest period	Revisions between first publication and estimates twelve months later	
			Average over the last 60 months without regard to sign (average absolute revision )
Index of Services 3 month on 3 month growth rate	-1.2	0.10	0.19
Index of Services 1 month growth rate	-0.1	0.04	0.20

15. As noted, the table uses historical data from April 2003, comparing the estimates at first publication with the estimates as published 12 months later. The results of the revisions analysis over this period are fully expected. This is because the index of services development programme has reviewed 99 per cent of the service sector and implemented significant improvements to the methods and data sources used to measure the index of services. The implementation of these improved methods took place in six phases (in the April 2002, July 2003, April 2004, April 2005, April 2006, April 2007 and July 2008 releases). These improved methods led to a series of 'one-off' revisions that were larger than the routine revisions (for example later data, re-seasonal adjustment, actual data replacing forecasts etc.) that are made to the index of services.

This means that the results of the revisions analysis in the table on the previous page may not be a good indicator of the future revisions performance of the index of services.

16. Further information on the improvements made to the methods can be found on the National Statistics website at:

[http://www.statistics.gov.uk/iosmethodology/future\\_improvements.asp](http://www.statistics.gov.uk/iosmethodology/future_improvements.asp)

17. More information about the revisions material in this Release can be found on the National Statistics website at:

<http://www.statistics.gov.uk/cci/article.asp?ID=793>

18. In the May 2009 release the only period open for revision will be April 2009.

### **Seasonal adjustment**

19. The index numbers in this release are all seasonally adjusted. This aids interpretation by removing annually recurring fluctuations, for example due to holidays and other regular seasonal patterns.
20. Particular caution should be exercised when interpreting recent monthly movements in the Index of Services.

March 2008:

- included the earliest Easter weekend since 1913, though some school holidays were delayed until April.
- contained fewer working days than any March since 1997 due to the timing of the weekends.

The basic seasonally-adjusted data showed very weak March output and a strong rebound into April and this in part may be related to these timing effects.

### **Timing of releases**

21. In the first and second months of each quarter the IoS First Release is published on the same days as the gross domestic product preliminary estimate First Release and the UK output, income and expenditure First Release.

In the third month of each quarter the IoS First Release is published on the first working day after the quarterly national accounts First Release.

### **Time series data service**

22. Complete runs of series in this Release are available to download free of charge at <http://www.statistics.gov.uk/timeseries>. Alternatively, for low-cost tailored data call Online Services on 020 7533 5675 or email [tailored@statistics.gov.uk](mailto:tailored@statistics.gov.uk).

**Release policy**

23. Details of the policy governing the release of new data are available from the media office.

**Code of practice**

24. **National Statistics** are produced to high professional standards set out in the Code of Practice for Official Statistics. They undergo regular quality assurance reviews to ensure that they meet customer needs. They are produced free from any political interference.  
© Crown copyright 2009.

# IOS<sup>1</sup> IOS: Index of Services

Chained volume indices of gross value added<sup>2,3,4</sup>

Seasonally adjusted 2005 = 100

	Industry groups (SIC2003)					
	<sup>1,5</sup> Total service industries	<sup>1,5</sup> Distribution	<sup>1,5</sup> Hotels and restaurants (Division 55)	<sup>1,5</sup> Transport, storage and communication	<sup>5</sup> Business services and finance	<sup>1,5</sup> Government and other services
	Sections G - P	Section G	Section H	Section I	Sections J + K	Sections L - P
<b>2005 weights</b>	<b>1000</b>	<b>153</b>	<b>39</b>	<b>96</b>	<b>401</b>	<b>311</b>
	FVQQ	FVVR	FVXT	FVYD	FVPA	FVPI
2004	<b>97.0<sup>†</sup></b>	<b>98.6<sup>†</sup></b>	<b>98.3<sup>†</sup></b>	<b>96.4<sup>†</sup></b>	<b>95.1<sup>†</sup></b>	<b>98.6<sup>†</sup></b>
2005	<b>100.0</b>	<b>100.0</b>	<b>100.0</b>	<b>100.0</b>	<b>100.0</b>	<b>100.0</b>
2006	<b>103.6</b>	<b>103.2</b>	<b>104.2</b>	<b>102.4</b>	<b>106.0</b>	<b>101.0</b>
2007	<b>107.2</b>	<b>106.4</b>	<b>107.5</b>	<b>106.0</b>	<b>111.9</b>	<b>102.0</b>
2008	<b>108.6</b>	<b>105.0</b>	<b>107.6</b>	<b>108.0</b>	<b>114.6</b>	<b>103.1</b>
2007 Feb	<b>106.0<sup>†</sup></b>	<b>104.7<sup>†</sup></b>	<b>106.2<sup>†</sup></b>	<b>106.2<sup>†</sup></b>	<b>109.7<sup>†</sup></b>	<b>101.9<sup>†</sup></b>
Mar	<b>106.8</b>	<b>107.0</b>	<b>108.0</b>	<b>106.0</b>	<b>110.4</b>	<b>102.2</b>
Apr	<b>106.4</b>	<b>104.6</b>	<b>106.9</b>	<b>105.6</b>	<b>110.8</b>	<b>101.6</b>
May	<b>107.0</b>	<b>105.9</b>	<b>107.6</b>	<b>106.7</b>	<b>111.3</b>	<b>102.0</b>
Jun	<b>107.4</b>	<b>106.8</b>	<b>110.7</b>	<b>106.7</b>	<b>111.7</b>	<b>101.9</b>
Jul	<b>107.4</b>	<b>106.8</b>	<b>106.7</b>	<b>105.9</b>	<b>112.5</b>	<b>101.6</b>
Aug	<b>107.7</b>	<b>106.7</b>	<b>108.8</b>	<b>105.3</b>	<b>113.3</b>	<b>101.7</b>
Sep	<b>108.0</b>	<b>107.6</b>	<b>107.9</b>	<b>104.9</b>	<b>113.7</b>	<b>101.8</b>
Oct	<b>108.0</b>	<b>107.9</b>	<b>108.4</b>	<b>105.9</b>	<b>113.1</b>	<b>102.3</b>
Nov	<b>108.4</b>	<b>107.9</b>	<b>107.5</b>	<b>105.9</b>	<b>114.0</b>	<b>102.2</b>
Dec	<b>108.1</b>	<b>106.8</b>	<b>106.7</b>	<b>106.9</b>	<b>113.4</b>	<b>102.5</b>
2008 Jan	<b>108.8</b>	<b>107.1</b>	<b>108.6</b>	<b>107.3</b>	<b>114.7</b>	<b>102.7</b>
Feb	<b>109.7</b>	<b>108.7</b>	<b>111.2</b>	<b>109.3</b>	<b>115.3</b>	<b>103.0</b>
Mar	<b>109.1</b>	<b>108.0</b>	<b>107.9</b>	<b>108.4</b>	<b>114.6</b>	<b>102.8</b>
Apr	<b>109.7</b>	<b>108.1</b>	<b>108.0</b>	<b>110.3</b>	<b>115.2</b>	<b>103.5</b>
May	<b>109.3</b>	<b>107.3</b>	<b>108.3</b>	<b>108.6</b>	<b>115.4</b>	<b>102.7</b>
Jun	<b>108.8</b>	<b>106.4</b>	<b>106.2</b>	<b>107.7</b>	<b>115.1</b>	<b>102.7</b>
Jul	<b>109.0</b>	<b>106.1</b>	<b>107.9</b>	<b>108.0</b>	<b>114.7</b>	<b>103.4</b>
Aug	<b>108.2</b>	<b>103.8</b>	<b>107.4</b>	<b>108.1</b>	<b>113.9</b>	<b>103.3</b>
Sep	<b>108.5</b>	<b>102.1</b>	<b>107.4</b>	<b>108.5</b>	<b>114.9</b>	<b>103.5</b>
Oct	<b>108.5</b>	<b>101.7</b>	<b>107.5</b>	<b>107.6</b>	<b>115.5</b>	<b>103.2</b>
Nov	<b>107.0</b>	<b>99.8</b>	<b>104.8</b>	<b>105.9</b>	<b>113.5</b>	<b>103.0</b>
Dec	<b>106.9</b>	<b>100.5</b>	<b>105.6</b>	<b>106.6</b>	<b>112.4</b>	<b>103.1</b>
2009 Jan	<b>106.2</b>	<b>101.1</b>	<b>100.6</b>	<b>104.3</b>	<b>111.4</b>	<b>103.4</b>
Feb	<b>105.6</b>	<b>99.8</b>	<b>100.9</b>	<b>103.1</b>	<b>110.8</b>	<b>103.2</b>
Mar	<b>105.4</b>	<b>98.9</b>	<b>102.5</b>	<b>102.9</b>	<b>110.6</b>	<b>103.2</b>
Apr	<b>105.4</b>	<b>99.9</b>	<b>102.4</b>	<b>101.7</b>	<b>110.4</b>	<b>103.1</b>
<b>Percentage change, latest year on previous year</b>						
	D8ZW	D8ZT	D8ZU	D8ZV	D92P	D92Q
2004	<b>3.5<sup>†</sup></b>	<b>6.3<sup>†</sup></b>	<b>1.8<sup>†</sup></b>	<b>4.7<sup>†</sup></b>	<b>4.3<sup>†</sup></b>	<b>0.8<sup>†</sup></b>
2005	<b>3.1</b>	<b>1.4</b>	<b>1.7</b>	<b>3.7</b>	<b>5.1</b>	<b>1.4</b>
2006	<b>3.6</b>	<b>3.2</b>	<b>4.2</b>	<b>2.4</b>	<b>6.0</b>	<b>1.0</b>
2007	<b>3.5</b>	<b>3.1</b>	<b>3.2</b>	<b>3.5</b>	<b>5.5</b>	<b>1.0</b>
2008	<b>1.3</b>	<b>-1.4</b>	<b>-</b>	<b>1.9</b>	<b>2.4</b>	<b>1.1</b>
<b>Percentage change, latest 3 months on previous 3 months</b>						
	FVGD	FVVL	FVXB	FVYG	FVGG	FVGJ
2007 Feb	<b>1.2<sup>†</sup></b>	<b>0.1<sup>†</sup></b>	<b>0.4<sup>†</sup></b>	<b>1.6<sup>†</sup></b>	<b>2.1</b>	<b>0.5<sup>†</sup></b>
Mar	<b>1.2</b>	<b>0.8</b>	<b>1.0</b>	<b>1.5</b>	<b>1.9<sup>†</sup></b>	<b>0.4</b>
Apr	<b>1.0</b>	<b>0.8</b>	<b>1.3</b>	<b>1.0</b>	<b>1.8</b>	<b>0.2</b>
May	<b>1.0</b>	<b>1.3</b>	<b>1.7</b>	<b>0.6</b>	<b>1.5</b>	<b>0.1</b>
Jun	<b>0.7</b>	<b>0.3</b>	<b>2.0</b>	<b>0.4</b>	<b>1.3</b>	<b>-0.2</b>
Jul	<b>0.8</b>	<b>1.0</b>	<b>1.2</b>	<b>0.5</b>	<b>1.4</b>	<b>-0.1</b>
Aug	<b>0.7</b>	<b>0.9</b>	<b>1.1</b>	<b>-0.2</b>	<b>1.5</b>	<b>-0.2</b>
Sep	<b>0.8</b>	<b>1.1</b>	<b>-0.6</b>	<b>-1.0</b>	<b>1.7</b>	<b>-0.1</b>
Oct	<b>0.6</b>	<b>0.8</b>	<b>-</b>	<b>-1.0</b>	<b>1.4</b>	<b>0.1</b>
Nov	<b>0.6</b>	<b>0.9</b>	<b>-0.7</b>	<b>-0.4</b>	<b>1.0</b>	<b>0.4</b>
Dec	<b>0.4</b>	<b>0.5</b>	<b>-0.3</b>	<b>0.9</b>	<b>0.3</b>	<b>0.6</b>
2008 Jan	<b>0.5</b>	<b>-0.1</b>	<b>-0.7</b>	<b>1.3</b>	<b>0.6</b>	<b>0.5</b>
Feb	<b>0.7</b>	<b>-0.2</b>	<b>0.8</b>	<b>2.1</b>	<b>0.8</b>	<b>0.6</b>
Mar	<b>0.9</b>	<b>0.4</b>	<b>1.6</b>	<b>2.0</b>	<b>1.2</b>	<b>0.5</b>
Apr	<b>1.0</b>	<b>0.9</b>	<b>1.3</b>	<b>2.5</b>	<b>0.9</b>	<b>0.6</b>
May	<b>0.4</b>	<b>0.3</b>	<b>-0.7</b>	<b>1.2</b>	<b>0.6</b>	<b>0.2</b>
Jun	<b>0.1</b>	<b>-0.6</b>	<b>-1.6</b>	<b>0.5</b>	<b>0.4</b>	<b>0.1</b>
Jul	<b>-0.4</b>	<b>-1.5</b>	<b>-1.4</b>	<b>-1.1</b>	<b>-</b>	<b>-0.2</b>
Aug	<b>-0.6</b>	<b>-2.2</b>	<b>-0.8</b>	<b>-1.0</b>	<b>-0.5</b>	<b>0.1</b>
Sep	<b>-0.7</b>	<b>-3.1</b>	<b>-</b>	<b>-0.6</b>	<b>-0.7</b>	<b>0.4</b>
Oct	<b>-0.6</b>	<b>-3.9</b>	<b>-</b>	<b>-0.1</b>	<b>-0.3</b>	<b>0.4</b>
Nov	<b>-0.6</b>	<b>-4.0</b>	<b>-0.6</b>	<b>-0.6</b>	<b>0.1</b>	<b>0.1</b>
Dec	<b>-1.0</b>	<b>-3.2</b>	<b>-1.5</b>	<b>-1.4</b>	<b>-0.6</b>	<b>-0.3</b>
2009 Jan	<b>-1.6</b>	<b>-2.0</b>	<b>-3.5</b>	<b>-2.3</b>	<b>-2.0</b>	<b>-0.2</b>
Feb	<b>-1.6</b>	<b>-0.7</b>	<b>-3.9</b>	<b>-2.5</b>	<b>-2.7</b>	<b>-</b>
Mar	<b>-1.6</b>	<b>-0.7</b>	<b>-4.4</b>	<b>-3.0</b>	<b>-2.5</b>	<b>0.2</b>
Apr	<b>-1.2</b>	<b>-0.9</b>	<b>-1.6</b>	<b>-2.8</b>	<b>-1.6</b>	<b>-</b>

1 The series printed in bold denote that they are mainstream national statistics rather than experimental statistics.

2 Indices reflect values measured at basic prices, which exclude "taxes less subsidies on products".

3 Estimates cannot be regarded as accurate to the last digit shown.

4 Any apparent inconsistencies between the index numbers and the percentage changes shown in these tables are due to rounding.

† Indicates that data have been revised since the last release. The period marked is the earliest in the table to have been revised.

5 The equivalent quarterly index series are released electronically as part of the GDP(O) estimates. For further information about obtaining these quarterly series please telephone 020 7533 5675, fax 020 7533 5688 or email on-line.services.branch@ons.gov.uk

Sources: For further information on these data please telephone 01633 456734; fax 01633 455300 or e-mail ios.enquiries@ons.gov.uk

# IOSDIVS **IOS: Index of Services**

Chained volume indices of gross value added<sup>2,3,4</sup>

Seasonally adjusted 2005 = 100

		Industry divisions (SIC2003)					
		<sup>1,5</sup> Motor trades	<sup>1,5</sup> Wholesale	<sup>1,5</sup> Retail	<sup>1,5</sup> Hotels and Restaurants	<sup>1,5</sup> Land Transport	<sup>1,5</sup> Air Transport
		Division 50	Division 51	Division 52	Division 55	Division 60	Division 62
Weights	IOS = 1000	29	53	71	39	26	7
2005		FVVO	FVVP	FVVQ	FVXT	FVXU	FVXW
2004		<b>102.0<sup>†</sup></b>	<b>98.2<sup>†</sup></b>	<b>97.7<sup>†</sup></b>	<b>98.3<sup>†</sup></b>	<b>101.3<sup>†</sup></b>	<b>94.0<sup>†</sup></b>
2005		<b>100.0</b>	<b>100.0</b>	<b>100.0</b>	<b>100.0</b>	<b>100.0</b>	<b>100.0</b>
2006		<b>99.3</b>	<b>104.9</b>	<b>103.6</b>	<b>104.2</b>	<b>103.3</b>	<b>105.6</b>
2007		<b>101.6</b>	<b>107.4</b>	<b>107.7</b>	<b>107.5</b>	<b>105.9</b>	<b>112.2</b>
2008		<b>94.0</b>	<b>103.8</b>	<b>110.4</b>	<b>107.6</b>	<b>109.8</b>	<b>111.5</b>
2007	Feb	<b>99.1<sup>†</sup></b>	<b>105.7<sup>†</sup></b>	<b>106.3<sup>†</sup></b>	<b>106.2<sup>†</sup></b>	<b>105.5<sup>†</sup></b>	<b>107.1<sup>†</sup></b>
	Mar	<b>104.2</b>	<b>108.1</b>	<b>107.3</b>	<b>108.0</b>	<b>106.7</b>	<b>111.6</b>
	Apr	<b>99.4</b>	<b>104.4</b>	<b>107.0</b>	<b>106.9</b>	<b>104.0</b>	<b>111.2</b>
	May	<b>101.5</b>	<b>107.2</b>	<b>106.8</b>	<b>107.6</b>	<b>105.4</b>	<b>112.3</b>
	Jun	<b>101.9</b>	<b>108.1</b>	<b>107.9</b>	<b>110.7</b>	<b>103.6</b>	<b>113.2</b>
	Jul	<b>101.6</b>	<b>107.1</b>	<b>108.7</b>	<b>106.7</b>	<b>103.9</b>	<b>112.3</b>
	Aug	<b>102.6</b>	<b>106.2</b>	<b>108.8</b>	<b>108.8</b>	<b>105.6</b>	<b>114.3</b>
	Sep	<b>103.5</b>	<b>108.1</b>	<b>108.8</b>	<b>107.9</b>	<b>105.5</b>	<b>113.5</b>
	Oct	<b>102.6</b>	<b>110.0</b>	<b>108.4</b>	<b>108.4</b>	<b>108.5</b>	<b>113.5</b>
	Nov	<b>102.2</b>	<b>109.3</b>	<b>109.1</b>	<b>107.5</b>	<b>108.9</b>	<b>114.1</b>
	Dec	<b>100.8</b>	<b>108.4</b>	<b>108.1</b>	<b>106.7</b>	<b>110.6</b>	<b>114.1</b>
2008	Jan	<b>100.5</b>	<b>107.7</b>	<b>109.3</b>	<b>108.6</b>	<b>111.5</b>	<b>112.6</b>
	Feb	<b>102.4</b>	<b>108.5</b>	<b>111.4</b>	<b>111.2</b>	<b>113.0</b>	<b>114.7</b>
	Mar	<b>102.3</b>	<b>108.2</b>	<b>110.2</b>	<b>107.9</b>	<b>111.6</b>	<b>113.3</b>
	Apr	<b>102.8</b>	<b>109.8</b>	<b>109.1</b>	<b>108.0</b>	<b>114.1</b>	<b>112.7</b>
	May	<b>97.8</b>	<b>105.1</b>	<b>113.0</b>	<b>108.3</b>	<b>112.6</b>	<b>112.0</b>
	Jun	<b>96.8</b>	<b>107.7</b>	<b>109.4</b>	<b>106.2</b>	<b>111.5</b>	<b>110.1</b>
	Jul	<b>93.2</b>	<b>108.3</b>	<b>109.8</b>	<b>107.9</b>	<b>111.6</b>	<b>111.6</b>
	Aug	<b>89.7</b>	<b>102.7</b>	<b>110.4</b>	<b>107.4</b>	<b>109.0</b>	<b>113.9</b>
	Sep	<b>87.3</b>	<b>99.5</b>	<b>110.1</b>	<b>107.4</b>	<b>109.3</b>	<b>111.6</b>
	Oct	<b>87.1</b>	<b>98.3</b>	<b>110.2</b>	<b>107.5</b>	<b>106.8</b>	<b>109.9</b>
	Nov	<b>82.2</b>	<b>95.4</b>	<b>110.3</b>	<b>104.8</b>	<b>104.2</b>	<b>108.4</b>
	Dec	<b>85.3</b>	<b>94.2</b>	<b>111.6</b>	<b>105.6</b>	<b>103.0</b>	<b>107.7</b>
2009	Jan	<b>84.7</b>	<b>95.0</b>	<b>112.4</b>	<b>100.6</b>	<b>103.4</b>	<b>106.8</b>
	Feb	<b>86.5</b>	<b>93.4</b>	<b>110.0</b>	<b>100.9</b>	<b>101.6</b>	<b>105.0</b>
	Mar	<b>83.9</b>	<b>90.7</b>	<b>111.3</b>	<b>102.5</b>	<b>100.3</b>	<b>107.8</b>
	Apr	<b>84.2</b>	<b>91.9</b>	<b>112.4</b>	<b>102.4</b>	<b>99.4</b>	<b>107.0</b>
<b>Percentage change, latest year on previous year</b>							
		D8VG	D8VH	D8VI	D8VJ	D8VK	D8VM
2004		<b>2.4<sup>†</sup></b>	<b>7.8<sup>†</sup></b>	<b>6.4<sup>†</sup></b>	<b>1.8<sup>†</sup></b>	<b>2.7<sup>†</sup></b>	<b>8.5<sup>†</sup></b>
2005		<b>-1.9</b>	<b>1.8</b>	<b>2.4</b>	<b>1.7</b>	<b>-1.3</b>	<b>6.4</b>
2006		<b>-0.7</b>	<b>4.9</b>	<b>3.6</b>	<b>4.2</b>	<b>3.3</b>	<b>5.6</b>
2007		<b>2.4</b>	<b>2.4</b>	<b>3.9</b>	<b>3.2</b>	<b>2.5</b>	<b>6.2</b>
2008		<b>-7.6</b>	<b>-3.4</b>	<b>2.5</b>	<b>-</b>	<b>3.7</b>	<b>-0.6</b>
<b>Percentage change, latest 3 months on previous 3 months</b>							
		FVVC	FVVE	FVVI	FVXB	FVXP	FVXR
2007	Feb	<b>-0.4<sup>†</sup></b>	<b>-0.3<sup>†</sup></b>	<b>0.7<sup>†</sup></b>	<b>0.4<sup>†</sup></b>	<b>0.8<sup>†</sup></b>	<b>1.1<sup>†</sup></b>
	Mar	<b>1.4</b>	<b>0.7</b>	<b>0.6</b>	<b>1.0</b>	<b>0.6</b>	<b>1.2</b>
	Apr	<b>1.1</b>	<b>-0.3</b>	<b>1.5</b>	<b>1.3</b>	<b>1.2</b>	<b>1.1</b>
	May	<b>2.1</b>	<b>0.7</b>	<b>1.3</b>	<b>1.7</b>	<b>0.8</b>	<b>3.0</b>
	Jun	<b>-0.3</b>	<b>-0.3</b>	<b>1.0</b>	<b>2.0</b>	<b>-0.5</b>	<b>2.7</b>
	Jul	<b>0.8</b>	<b>1.3</b>	<b>0.9</b>	<b>1.2</b>	<b>-1.1</b>	<b>2.4</b>
	Aug	<b>0.3</b>	<b>0.5</b>	<b>1.4</b>	<b>1.1</b>	<b>-1.0</b>	<b>1.4</b>
	Sep	<b>1.6</b>	<b>0.5</b>	<b>1.4</b>	<b>-0.6</b>	<b>0.6</b>	<b>1.0</b>
	Oct	<b>1.2</b>	<b>0.6</b>	<b>0.8</b>	<b>-</b>	<b>2.2</b>	<b>1.0</b>
	Nov	<b>0.7</b>	<b>1.9</b>	<b>0.3</b>	<b>-0.7</b>	<b>3.2</b>	<b>0.4</b>
	Dec	<b>-0.7</b>	<b>1.9</b>	<b>-0.2</b>	<b>-0.3</b>	<b>4.2</b>	<b>0.5</b>
2008	Jan	<b>-1.7</b>	<b>0.4</b>	<b>0.2</b>	<b>-0.7</b>	<b>3.6</b>	<b>-0.1</b>
	Feb	<b>-1.5</b>	<b>-0.8</b>	<b>0.8</b>	<b>0.8</b>	<b>3.8</b>	<b>0.1</b>
	Mar	<b>-0.1</b>	<b>-1.0</b>	<b>1.6</b>	<b>1.6</b>	<b>2.5</b>	<b>-0.3</b>
	Apr	<b>1.3</b>	<b>0.3</b>	<b>1.2</b>	<b>1.3</b>	<b>2.3</b>	<b>-</b>
	May	<b>-0.3</b>	<b>-0.5</b>	<b>1.0</b>	<b>-0.7</b>	<b>0.9</b>	<b>-1.0</b>
	Jun	<b>-2.5</b>	<b>-0.6</b>	<b>0.2</b>	<b>-1.6</b>	<b>0.6</b>	<b>-1.7</b>
	Jul	<b>-6.4</b>	<b>-1.6</b>	<b>0.4</b>	<b>-1.4</b>	<b>-0.9</b>	<b>-2.1</b>
	Aug	<b>-7.7</b>	<b>-1.3</b>	<b>-0.8</b>	<b>-0.8</b>	<b>-1.8</b>	<b>-0.7</b>
	Sep	<b>-9.2</b>	<b>-3.8</b>	<b>-0.3</b>	<b>-</b>	<b>-2.4</b>	<b>0.7</b>
	Oct	<b>-8.2</b>	<b>-6.4</b>	<b>-0.4</b>	<b>-</b>	<b>-3.1</b>	<b>0.5</b>
	Nov	<b>-8.2</b>	<b>-8.0</b>	<b>0.3</b>	<b>-0.6</b>	<b>-3.5</b>	<b>-1.7</b>
	Dec	<b>-5.8</b>	<b>-7.2</b>	<b>0.5</b>	<b>-1.5</b>	<b>-4.8</b>	<b>-3.3</b>
2009	Jan	<b>-4.5</b>	<b>-5.3</b>	<b>1.1</b>	<b>-3.5</b>	<b>-4.5</b>	<b>-3.7</b>
	Feb	<b>-</b>	<b>-3.6</b>	<b>1.0</b>	<b>-3.9</b>	<b>-3.9</b>	<b>-3.1</b>
	Mar	<b>0.2</b>	<b>-3.1</b>	<b>0.5</b>	<b>-4.4</b>	<b>-2.8</b>	<b>-2.0</b>
	Apr	<b>0.9</b>	<b>-3.0</b>	<b>-0.2</b>	<b>-1.6</b>	<b>-3.0</b>	<b>-1.0</b>

1 The divisional series printed in bold denote that they are mainstream national statistics rather than experimental statistics

2 Indices reflect values measured at basic prices, which exclude "taxes less subsidies on products".

3 Estimates cannot be regarded as accurate to the last digit shown.

4 Any apparent inconsistencies between the index numbers and the percentage changes shown in these tables are due to rounding.

<sup>†</sup> Indicates that data have been revised since the last release. The period marked is the earliest in the table to have been revised.

5 The equivalent quarterly index series are released electronically as part of the GDP(O) estimates. For further information about obtaining these quarterly series please telephone 020 7533 5675, fax 020 7533 5688 or email on-line.services.branch@ons.gov.uk

The 2005 divisional weights shown will not sum to the sectors on IOS1 due to experimental divisional series not being published in their own right.

Sources: For further information on these data please telephone 01633 456734; fax 01633 455300 or e-mail ios.enquiries@ons.gov.uk

# IOSDIVS

IOS: Index of Services

Chained volume indices of gross value added<sup>2,3,4</sup>

continued

Seasonally adjusted 2005 = 100

		Industry divisions (SIC2003)					
		<sup>1,5</sup> Supporting & Auxiliary Transport Activities	<sup>1,5</sup> Post & Telecom -munications	<sup>5</sup> Financial Intermediation	<sup>5,6</sup> Real estate & letting of dwellings	Renting of machinery and equipment	<sup>5</sup> Computer and related activities
		Division 63	Division 64	Division 65	Division 70	Division 71	Division 72
		IOS = 1000					
Weights		22	36	63	122	14	40
2005							
		FVXX <sub>t</sub>	FVXD	FVXZ	FVYL	FVYM <sub>t</sub>	FVYN
2004		93.3 <sup>†</sup>	95.7 <sup>†</sup>	92.9 <sup>†</sup>	97.5 <sup>†</sup>	97.1 <sup>†</sup>	96.2 <sup>†</sup>
2005		100.0	100.0	100.0	100.0	100.0	100.0
2006		103.6	102.3	107.1	102.9	109.5	104.1
2007		106.3	107.6	116.3	103.6	114.9	111.5
2008		105.3	110.2	123.4	104.5	116.3	114.3
2007	Feb	104.6 <sup>†</sup>	110.0 <sup>†</sup>	113.2 <sup>†</sup>	103.9 <sup>†</sup>	111.1 <sup>†</sup>	107.0 <sup>†</sup>
	Mar	108.7	105.5	114.7	103.4	111.8	107.8
	Apr	105.9	108.4	115.2	103.6	110.7	110.7
	May	108.2	108.9	115.5	103.4	114.8	110.7
	Jun	108.1	110.2	116.0	103.3	116.0	110.1
	Jul	106.8	108.7	116.9	103.6	115.3	113.5
	Aug	105.5	106.1	117.6	103.7	116.9	114.3
	Sep	105.5	105.5	118.2	103.7	119.4	117.7
	Oct	106.4	105.6	118.6	103.7	117.9	112.8
	Nov	105.7	105.4	119.0	104.0	118.3	114.0
	Dec	105.5	106.6	119.6	103.7	115.0	113.0
2008	Jan	106.5	106.6	120.6	103.7	124.2	110.8
	Feb	110.0	108.0	121.4	103.8	123.9	113.0
	Mar	106.6	108.7	122.2	104.0	120.9	110.7
	Apr	109.0	110.7	123.0	104.7	121.5	113.5
	May	108.3	108.2	123.6	104.4	117.4	115.3
	Jun	105.2	108.9	123.9	104.3	114.5	113.2
	Jul	103.4	110.2	123.5	104.1	117.9	114.9
	Aug	103.8	111.3	123.7	104.6	112.8	114.5
	Sep	105.3	111.4	124.7	104.7	113.4	115.0
	Oct	102.9	112.4	124.7	104.9	113.6	118.1
	Nov	99.8	112.1	125.2	105.2	108.4	117.3
	Dec	102.2	113.8	124.4	105.6	107.2	115.1
2009	Jan	96.8	111.1	124.0	106.1	107.7	110.8
	Feb	93.9	111.8	122.5	105.9	102.5	111.2
	Mar	94.5	111.5	122.1	106.1	101.8	108.9
	Apr	93.1	110.0	122.8	106.7	101.2	105.0
<b>Percentage change, latest year on previous year</b>							
		D8VN <sub>t</sub>	D8VO	D8VP	D8VT	D8VU	D8VV
2004		5.6 <sup>†</sup>	3.7 <sup>†</sup>	8.1 <sup>†</sup>	1.6 <sup>†</sup>	-1.2 <sup>†</sup>	9.8 <sup>†</sup>
2005		7.2	4.5	7.7	2.5	3.0	4.0
2006		3.6	2.3	7.1	2.9	9.5	4.1
2007		2.7	5.2	8.6	0.8	4.9	7.2
2008		-1.0	2.4	6.1	0.8	1.3	2.5
<b>Percentage change, latest 3 months on previous 3 months</b>							
		FVXS <sub>t</sub>	FVXG	FVYC	FVYT	FVYW	FVYZ
2007	Feb	0.4 <sup>†</sup>	3.1 <sup>†</sup>	2.9 <sup>†</sup>	0.7	0.2 <sup>†</sup>	2.0 <sup>†</sup>
	Mar	2.7	1.7	4.2	0.5 <sup>†</sup>	0.9	3.5
	Apr	2.6	-	4.4	0.2	0.5	4.0
	May	3.7	-1.4	3.5	-0.2	1.6	3.8
	Jun	1.3	0.7	2.2	-0.2	2.1	3.2
	Jul	1.2	1.2	1.6	-0.2	3.7	2.7
	Aug	-0.8	0.7	1.5	-	3.2	2.6
	Sep	-1.4	-2.2	1.7	0.2	3.0	4.2
	Oct	-1.8	-3.2	1.7	0.2	2.4	3.1
	Nov	-0.9	-2.6	1.5	0.3	2.2	1.9
	Dec	-	-0.8	1.3	0.1	-0.1	-1.7
2008	Jan	0.1	0.4	1.3	0.1	1.0	-2.0
	Feb	1.4	1.5	1.6	-	2.1	-2.2
	Mar	1.7	1.8	1.9	0.1	5.1	-1.5
	Apr	2.5	2.8	2.1	0.3	2.5	-0.2
	May	0.6	2.0	2.0	0.6	-0.9	0.8
	Jun	-0.2	1.4	1.8	0.6	-4.2	2.2
	Jul	-2.7	-	1.2	0.1	-4.5	1.8
	Aug	-3.5	0.8	0.6	-	-4.0	0.9
	Sep	-3.1	1.6	0.3	-	-2.6	0.7
	Oct	-1.5	2.4	0.5	0.5	-2.8	1.3
	Nov	-1.4	1.7	0.9	0.6	-2.9	2.3
	Dec	-2.5	1.7	0.7	0.8	-4.3	1.8
2009	Jan	-4.3	0.6	0.1	0.9	-4.9	-1.3
	Feb	-4.9	0.2	-1.0	0.9	-5.4	-3.8
	Mar	-6.5	-1.2	-1.5	0.8	-5.2	-5.6
	Apr	-5.8	-1.1	-1.7	0.6	-5.5	-5.3

For footnotes 1 to 5, see page 1 of this table

Sources: For further information on these data please telephone 01633 456734; fax 01633 455300 or e-mail ios.enquiries@ons.gov.uk

6 The series shown here covers the whole of SIC2003 division 70, which includes real estate activities and letting of dwellings. Separate series for these components are available on request.

# IOSDIVS

IOS: Index of Services

Chained volume indices of gross value added<sup>2,3,4</sup>

continued

Seasonally adjusted 2005 = 100

		Industry groups (SIC2003)					
		1.5 Other business activities	1.5 Public administration and defence; Compulsory Soc. Sec.	1.5 Education	5 Health and Social Work	1.5 Sewage and refuse disposal	5 Activities of membership org. n.e.c.
		Division 74	Division 75	Division 80	Division 85	Division 90	Division 91
Weights	IOS = 1000						
2005		126	71	78	94	9	8
		FVYP	FVVS	FVVZ	FVXY	FVVT	FVUU
2004		92.2 <sup>†</sup>	99.2 <sup>†</sup>	99.4	97.2 <sup>†</sup>	94.1 <sup>†</sup>	96.7 <sup>†</sup>
2005		100.0	100.0	100.0 <sup>†</sup>	100.0	100.0	100.0
2006		108.5	100.6	100.0	102.8	102.8	106.3
2007		117.6	100.4	99.5	105.5	107.4	100.2
2008		119.0	98.9	100.5	108.8	109.8	102.6
2007 Feb		114.3 <sup>†</sup>	100.7 <sup>†</sup>	99.7 <sup>†</sup>	105.3 <sup>†</sup>	109.0 <sup>†</sup>	102.5 <sup>†</sup>
Mar		115.4	100.6	99.5	105.6	109.2	101.4
Apr		115.7	100.7	99.0	105.4	108.0	101.0
May		116.7	100.7	99.4	105.1	109.3	100.8
Jun		117.7	100.6	99.4	105.0	104.7	100.1
Jul		119.2	100.3	99.5	104.9	106.8	99.2
Aug		118.7	100.1	99.5	105.3	104.8	98.3
Sep		119.6	100.1	99.8	105.7	105.5	97.9
Oct		119.6	100.2	99.8	106.1	110.8	98.1
Nov		120.6	100.2	99.9	106.5	104.7	98.9
Dec		120.0	100.1	99.3	106.8	108.4	99.9
2008 Jan		120.8	99.7	99.7	106.8	111.8	101.0
Feb		122.9	99.3	99.9	107.1	112.1	101.7
Mar		121.5	99.0	100.0	107.6	110.1	101.9
Apr		121.3	98.9	100.1	108.1	114.6	101.6
May		121.9	98.9	100.1	108.1	108.6	101.7
Jun		121.2	98.8	99.9	108.3	109.9	102.4
Jul		119.4	98.6	100.3	109.0	111.8	103.6
Aug		117.6	98.6	100.8	109.3	112.7	104.5
Sep		117.6	98.6	101.4	109.7	112.8	104.4
Oct		117.7	98.9	100.9	110.3	108.7	103.4
Nov		113.8	99.0	101.0	110.6	99.6	102.5
Dec		111.8	98.9	101.5	110.6	104.8	102.1
2009 Jan		109.2	99.0	101.4	111.1	98.6	102.4
Feb		109.4	98.5	101.5	111.3	97.6	102.9
Mar		108.3	98.0	101.2	111.4	101.6	103.4
Apr		108.1	97.8	101.2	111.7	99.4	103.2
<b>Percentage change, latest year on previous year</b>							
		D8VX	D8VY	D8W2	D8W3	D8W4	D8W5
2004		5.3 <sup>†</sup>	1.1	0.4 <sup>†</sup>	3.9 <sup>†</sup>	4.0 <sup>†</sup>	-2.9 <sup>†</sup>
2005		8.4	0.9 <sup>†</sup>	1.1	2.9	6.2	3.5
2006		8.5	0.6	0.1	3.0	2.8	6.3
2007		8.5	-0.2	0.1	3.2	4.5	-5.7
2008		1.1	-1.5	..	..	2.2	2.4
<b>Percentage change, latest 3 months on previous 3 months</b>							
		FVZF	FVWB	FVWM	FVWN	FVWO	FVWP
2007 Feb		3.6 <sup>†</sup>	-0.3 <sup>†</sup>	-0.2 <sup>†</sup>	1.3 <sup>†</sup>	2.3 <sup>†</sup>	-3.3 <sup>†</sup>
Mar		2.0	-0.3	-0.3	1.7	3.7	-4.5
Apr		1.5	-0.2	-0.5	1.5	2.9	-4.3
May		1.4	-0.1	-0.4	0.8	1.6	-3.2
Jun		1.8	-	-0.3	-	-1.2	-2.1
Jul		2.3	-0.1	-	-0.4	-1.7	-1.6
Aug		2.2	-0.3	0.1	-0.3	-3.1	-1.9
Sep		2.1	-0.5	0.3	0.1	-1.5	-2.2
Oct		1.2	-0.3	0.3	0.7	0.1	-2.0
Nov		1.2	-0.1	0.4	1.0	1.5	-0.9
Dec		0.8	-	0.1	1.1	2.2	0.5
2008 Jan		1.0	-0.2	-0.1	0.9	1.2	1.8
Feb		1.1	-0.5	-0.2	0.7	3.5	2.6
Mar		1.4	-0.9	0.2	0.7	3.1	2.6
Apr		1.2	-0.9	0.4	0.9	3.6	1.8
May		0.3	-0.7	0.4	1.0	0.3	0.9
Jun		-0.2	-0.4	0.2	0.9	-0.3	0.4
Jul		-0.9	-0.3	0.1	0.8	-1.9	0.8
Aug		-1.8	-0.3	0.3	0.9	0.4	1.7
Sep		-2.7	-0.3	0.8	1.1	1.3	2.2
Oct		-2.6	-0.1	0.9	1.2	1.2	1.5
Nov		-2.5	0.2	0.8	1.2	-4.0	-0.1
Dec		-3.1	0.3	0.3	1.0	-7.2	-1.4
2009 Jan		-5.1	0.3	0.2	0.9	-9.3	-1.7
Feb		-5.4	-	0.3	0.7	-6.3	-0.9
Mar		-4.8	-0.4	0.2	0.7	-4.9	0.2
Apr		-2.7	-0.8	-	0.7	-1.4	0.8

For footnotes see page 1 of this table

Sources: For further information on these data please telephone 01633 456734; fax 01633 455300 or e-mail ios.enquiries@ons.gov.uk

# IOSDIVS

IOS: Index of Services

Chained volume indices of gross value added<sup>2,3,4</sup>

continued

Seasonally adjusted 2005 = 100

		Industry divisions (SIC2003)		
		<sup>5</sup> Rec., cultural & sporting activities	<sup>1.5</sup> Other service activities	<sup>5</sup> Private households with employed persons
		Division 92	Division 93	Division 95
Weights	IOS = 1000			
2005		37	8	6
		FVVV	FVWV	FVVX
2004		101.1 <sup>†</sup>	100.9 <sup>†</sup>	96.3 <sup>†</sup>
2005		100.0	100.0	100.0
2006		98.5	101.3	94.3
2007		100.7	105.2	93.8
2008		99.9	109.0	97.0
2007	Feb	100.3 <sup>†</sup>	101.5 <sup>†</sup>	93.0 <sup>†</sup>
	Mar	101.7	103.2	93.9
	Apr	99.1	101.5	94.6
	May	101.5	102.0	94.9
	Jun	100.7	109.0	94.9
	Jul	101.0	101.0	94.5
	Aug	101.2	104.8	94.0
	Sep	99.4	106.3	93.5
	Oct	100.7	107.8	93.1
	Nov	99.7	112.5	93.1
	Dec	101.6	111.3	93.5
2008	Jan	102.5	108.2	94.3
	Feb	104.0	110.4	95.1
	Mar	101.8	108.5	95.6
	Apr	104.8	112.3	95.8
	May	99.6	109.9	96.1
	Jun	99.3	110.6	96.6
	Jul	101.5	112.1	97.3
	Aug	99.0	110.1	98.0
	Sep	98.4	109.6	98.5
	Oct	96.0	109.4	98.8
	Nov	96.6	104.7	98.9
	Dec	96.0	102.2	99.1
2009	Jan	98.1	105.3	99.2
	Feb	96.1	108.0	99.2
	Mar	96.1	106.9	99.0
	Apr	96.0	107.9	98.7
<b>Percentage change, latest year on previous year</b>				
		D8W6	D8W7	D8W8
2004		-2.3 <sup>†</sup>	-0.3 <sup>†</sup>	0.1 <sup>†</sup>
2005		-1.1	-0.9	3.8
2006		-1.5	1.3	-5.7
2007		2.2	3.8	-0.6
2008		-0.7	3.6	3.4
<b>Percentage change, latest 3 months on previous 3 months</b>				
		FVWQ	FVWR	FVWS
2007	Feb	1.9 <sup>†</sup>	0.1 <sup>†</sup>	-1.0 <sup>†</sup>
	Mar	0.2	1.2	0.3
	Apr	-1.3	1.0	1.6
	May	-0.3	1.2	2.1
	Jun	-0.6	2.1	1.8
	Jul	0.7	1.9	1.0
	Aug	0.2	2.6	-
	Sep	0.1	-0.1	-0.8
	Oct	-0.6	2.2	-1.3
	Nov	-1.0	3.8	-1.3
	Dec	0.1	6.3	-0.8
2008	Jan	0.8	4.1	0.1
	Feb	2.8	1.0	1.2
	Mar	2.1	-1.4	1.9
	Apr	2.2	-0.2	2.0
	May	-0.6	0.2	1.6
	Jun	-1.5	1.7	1.2
	Jul	-3.2	0.4	1.2
	Aug	-2.1	0.6	1.5
	Sep	-1.6	-0.3	1.8
	Oct	-2.3	-1.0	1.8
	Nov	-2.9	-2.7	1.5
	Dec	-3.4	-4.7	1.0
2009	Jan	-0.9	-5.1	0.7
	Feb	-0.3	-2.6	0.5
	Mar	0.6	1.2	0.2
	Apr	-0.8	3.3	-0.1

For footnotes see page 1 of this table

Sources: For further information on these data please telephone 01633 456734; fax 01633 455300 or e-mail ios.enquiries@ons.gov.uk

# RIOS1 IOS: Index of Services

Revisions since previously published estimates<sup>2</sup>

Seasonally adjusted 2005 = 100

	Industry groups (SIC2003)					
	<sup>1</sup> Total service industries	<sup>1</sup> Distribution	<sup>1</sup> Hotels and restaurants (Division 55)	<sup>1</sup> Transport, storage and communication	Business services and finance	<sup>1</sup> Government and other services
	Sections G - P	Section G	Section H	Section I	Sections J + K	Sections L - P
<b>2005 weights</b>	<b>1000</b>	<b>153</b>	<b>39</b>	<b>96</b>	<b>401</b>	<b>311</b>
	FVQQ	FVVR	FVXT	FVYD	FVPA	FVPI
2005	<b>-6.3</b>	<b>-5.2</b>	<b>-3.9</b>	<b>-8.3</b>	<b>-9.6</b>	<b>-2.3</b>
2006	<b>-6.6</b>	<b>-4.8</b>	<b>-5.2</b>	<b>-8.6</b>	<b>-10.1</b>	<b>-2.4</b>
2007	<b>-6.9</b>	<b>-4.8</b>	<b>-4.8</b>	<b>-8.6</b>	<b>-10.6</b>	<b>-2.6</b>
2008	<b>-7.2</b>	<b>-5.4</b>	<b>-5.0</b>	<b>-8.3</b>	<b>-10.8</b>	<b>-3.1</b>
2007 Jan	<b>-6.4</b>	<b>-4.5</b>	<b>-4.2</b>	<b>-8.5</b>	<b>-10.1</b>	<b>-2.3</b>
Feb	<b>-6.6</b>	<b>-4.9</b>	<b>-4.7</b>	<b>-8.5</b>	<b>-10.1</b>	<b>-2.4</b>
Mar	<b>-6.5</b>	<b>-4.6</b>	<b>-4.7</b>	<b>-8.6</b>	<b>-10.1</b>	<b>-2.3</b>
Apr	<b>-6.4</b>	<b>-4.7</b>	<b>-4.3</b>	<b>-8.2</b>	<b>-10.0</b>	<b>-2.5</b>
May	<b>-6.7</b>	<b>-4.7</b>	<b>-4.7</b>	<b>-8.4</b>	<b>-10.6</b>	<b>-2.2</b>
Jun	<b>-6.6</b>	<b>-4.4</b>	<b>-4.8</b>	<b>-8.2</b>	<b>-10.5</b>	<b>-2.3</b>
Jul	<b>-6.8</b>	<b>-4.8</b>	<b>-4.5</b>	<b>-8.4</b>	<b>-10.6</b>	<b>-2.5</b>
Aug	<b>-7.0</b>	<b>-5.2</b>	<b>-4.6</b>	<b>-8.8</b>	<b>-10.5</b>	<b>-3.0</b>
Sep	<b>-6.9</b>	<b>-4.6</b>	<b>-4.8</b>	<b>-8.5</b>	<b>-10.6</b>	<b>-2.9</b>
Oct	<b>-7.2</b>	<b>-5.1</b>	<b>-5.6</b>	<b>-9.4</b>	<b>-10.8</b>	<b>-2.9</b>
Nov	<b>-7.5</b>	<b>-5.4</b>	<b>-5.9</b>	<b>-10.0</b>	<b>-11.3</b>	<b>-3.2</b>
Dec	<b>-7.3</b>	<b>-4.3</b>	<b>-4.7</b>	<b>-8.0</b>	<b>-11.9</b>	<b>-2.7</b>
2008 Jan	<b>-7.4</b>	<b>-5.6</b>	<b>-6.2</b>	<b>-8.4</b>	<b>-11.2</b>	<b>-2.9</b>
Feb	<b>-6.7</b>	<b>-4.2</b>	<b>-6.1</b>	<b>-7.3</b>	<b>-10.4</b>	<b>-3.0</b>
Mar	<b>-6.5</b>	<b>-4.4</b>	<b>-3.1</b>	<b>-7.5</b>	<b>-10.1</b>	<b>-3.0</b>
Apr	<b>-7.3</b>	<b>-5.8</b>	<b>-4.9</b>	<b>-8.0</b>	<b>-11.0</b>	<b>-3.1</b>
May	<b>-7.1</b>	<b>-5.8</b>	<b>-4.7</b>	<b>-7.9</b>	<b>-10.9</b>	<b>-2.8</b>
Jun	<b>-6.9</b>	<b>-4.7</b>	<b>-4.1</b>	<b>-7.6</b>	<b>-10.7</b>	<b>-3.0</b>
Jul	<b>-7.3</b>	<b>-5.4</b>	<b>-4.9</b>	<b>-9.0</b>	<b>-11.1</b>	<b>-3.2</b>
Aug	<b>-7.3</b>	<b>-5.6</b>	<b>-4.9</b>	<b>-8.5</b>	<b>-10.9</b>	<b>-3.4</b>
Sep	<b>-7.1</b>	<b>-5.5</b>	<b>-4.6</b>	<b>-8.3</b>	<b>-10.6</b>	<b>-3.3</b>
Oct	<b>-7.6</b>	<b>-6.3</b>	<b>-6.0</b>	<b>-8.7</b>	<b>-11.3</b>	<b>-3.3</b>
Nov	<b>-7.4</b>	<b>-5.9</b>	<b>-5.5</b>	<b>-8.4</b>	<b>-11.0</b>	<b>-3.2</b>
Dec	<b>-7.3</b>	<b>-6.5</b>	<b>-5.7</b>	<b>-9.8</b>	<b>-10.5</b>	<b>-3.3</b>
2009 Jan	<b>-7.7</b>	<b>-7.0</b>	<b>-6.0</b>	<b>-10.0</b>	<b>-10.8</b>	<b>-3.4</b>
Feb	<b>-7.8</b>	<b>-6.2</b>	<b>-5.1</b>	<b>-9.6</b>	<b>-11.3</b>	<b>-3.8</b>
Mar	<b>-7.9</b>	<b>-7.0</b>	<b>-3.0</b>	<b>-9.2</b>	<b>-11.1</b>	<b>-4.3</b>
<b>Percentage change, latest year on previous year</b>						
	D8ZW	D8ZT	D8ZU	D8ZV	D92P	D92Q
2005	<b>0.1</b>	<b>0.4</b>	<b>-0.4</b>	<b>-0.7</b>	<b>0.3</b>	<b>0.2</b>
2006	-	<b>0.5</b>	<b>-1.1</b>	-	<b>0.1</b>	<b>-0.1</b>
2007	-	<b>0.1</b>	<b>0.5</b>	<b>0.2</b>	-	<b>-0.1</b>
2008	<b>-0.2</b>	<b>-0.7</b>	<b>-0.3</b>	<b>0.4</b>	-	<b>-0.5</b>
<b>Percentage change, latest 3 months on previous 3 months</b>						
	FVGD	FVVL	FVXB	FVYG	FVGG	FVGJ
2007 Jan	-	<b>-0.6</b>	<b>0.6</b>	<b>0.7</b>	<b>-0.2</b>	<b>0.4</b>
Feb	<b>0.1</b>	<b>-0.7</b>	<b>0.5</b>	<b>0.6</b>	-	<b>0.3</b>
Mar	<b>0.3</b>	<b>0.1</b>	<b>0.1</b>	<b>-0.3</b>	<b>0.5</b>	<b>0.3</b>
Apr	<b>0.1</b>	<b>0.1</b>	<b>-0.2</b>	<b>-0.2</b>	<b>0.5</b>	-
May	<b>0.2</b>	<b>0.4</b>	<b>-0.2</b>	<b>-0.2</b>	<b>0.3</b>	-
Jun	-	<b>0.1</b>	<b>0.1</b>	<b>0.3</b>	<b>-0.2</b>	<b>-0.1</b>
Jul	<b>-0.1</b>	<b>0.1</b>	<b>-0.1</b>	<b>0.1</b>	<b>-0.3</b>	-
Aug	<b>-0.2</b>	-	<b>-0.1</b>	<b>-0.2</b>	<b>-0.2</b>	<b>-0.2</b>
Sep	<b>-0.2</b>	<b>-0.3</b>	<b>-0.1</b>	<b>-0.4</b>	-	<b>-0.4</b>
Oct	<b>-0.3</b>	<b>-0.3</b>	<b>-0.3</b>	<b>-0.6</b>	<b>0.1</b>	<b>-0.6</b>
Nov	<b>-0.3</b>	<b>-0.3</b>	<b>-0.7</b>	<b>-0.7</b>	<b>-0.2</b>	<b>-0.3</b>
Dec	<b>-0.4</b>	-	<b>-0.7</b>	<b>-0.3</b>	<b>-0.6</b>	<b>-0.1</b>
2008 Jan	<b>-0.3</b>	<b>-0.1</b>	<b>-0.5</b>	<b>0.2</b>	<b>-0.6</b>	-
Feb	<b>0.1</b>	<b>0.4</b>	<b>-0.2</b>	<b>1.3</b>	<b>-0.1</b>	<b>0.1</b>
Mar	<b>0.4</b>	<b>0.3</b>	<b>0.3</b>	<b>1.4</b>	<b>0.7</b>	-
Apr	<b>0.6</b>	<b>0.3</b>	<b>0.8</b>	<b>1.2</b>	<b>0.9</b>	<b>-0.1</b>
May	<b>0.1</b>	<b>-0.5</b>	<b>1.2</b>	<b>0.2</b>	<b>0.5</b>	<b>-0.1</b>
Jun	<b>-0.1</b>	<b>-0.6</b>	<b>0.4</b>	-	<b>-0.1</b>	-
Jul	<b>-0.2</b>	<b>-0.5</b>	<b>0.1</b>	<b>-0.5</b>	<b>-0.3</b>	-
Aug	<b>-0.2</b>	-	<b>-0.4</b>	<b>-0.5</b>	<b>-0.3</b>	<b>-0.2</b>
Sep	<b>-0.2</b>	<b>-0.3</b>	<b>-0.3</b>	<b>-0.7</b>	<b>-0.1</b>	<b>-0.3</b>
Oct	<b>-0.3</b>	<b>-0.7</b>	<b>-0.5</b>	<b>-0.4</b>	<b>-0.1</b>	<b>-0.3</b>
Nov	<b>-0.2</b>	<b>-0.8</b>	<b>-0.7</b>	<b>-0.2</b>	-	-
Dec	<b>-0.2</b>	<b>-0.8</b>	<b>-0.9</b>	<b>-0.4</b>	<b>-0.1</b>	-
2009 Jan	<b>-0.3</b>	<b>-0.7</b>	<b>-0.6</b>	<b>-0.9</b>	-	-
Feb	<b>-0.3</b>	<b>-0.6</b>	<b>-0.3</b>	<b>-1.3</b>	<b>-0.1</b>	<b>-0.2</b>
Mar	<b>-0.4</b>	<b>-0.5</b>	<b>0.7</b>	<b>-0.7</b>	<b>-0.3</b>	<b>-0.5</b>

<sup>1</sup> The series printed in bold denote that they are mainstream national statistics rather than experimental statistics.

<sup>2</sup> In this release the earliest period open for revision is January 2004. In addition the reference year has been updated from 2003 to 2005 in this release.

Sources: For further information on these data please telephone 01633 456734; fax 01633 455300 or e-mail ios.enquiries@ons.gov.uk

**Next publication:** 24<sup>th</sup> July 2009

**Issued by:** Office for National Statistics, Government Buildings, Cardiff Road, Newport NP10 8XG

**Media contact:**

Tel **Media Relations Office 0845 6041858**

**Emergency on-call 07867 906553**

E-mail **press.office@ons.gsi.gov.uk**

**Statistical contact:**

Tel **Ainsley Smith 01633 456734**

E-mail **ios.enquiries@ons.gov.uk**

**Website:**

[www.ons.gov.uk](http://www.ons.gov.uk)