

10 June 2009

Coverage

United Kingdom

Theme

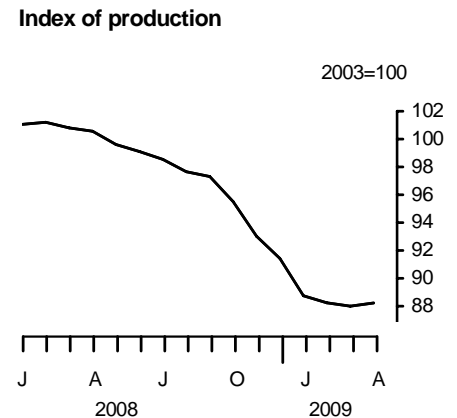
The Economy



Index of production April 2009

In the three months to April, the seasonally adjusted chained volume index for the output of the production industries decreased by 3.2 per cent compared with the previous three months and was 12.6 per cent lower than the same three month period a year earlier.

In the latest three months, manufacturing output decreased by 2.8 per cent, mining and quarrying output decreased by 4.0 per cent and output of the electricity, gas and water supply industries decreased by 5.5 per cent, compared with the previous three months.



Between March and April, output of the manufacturing industries rose by 0.2 per cent for the second month following revisions to March data (note that monthly growth rates are volatile, see background note 2). The most significant increases in output were 3.2 per cent in the transport equipment industries and 2.3 per cent in the chemicals and man-made fibres industries. The most significant decreases in output were 2.2 per cent in the basic metal and metal products industries and 3.8 per cent in the other manufacturing industries.

Issued by

Office for National Statistics
Government Buildings
Cardiff Road
Newport
NP10 8XG

Contact

Media Office
0845 604 1858
Media Office on-call 07867 906553

Statistician Phillip Davies
01633 456492

Email

indexofproduction@ons.gov.uk

www.statistics.gov.uk

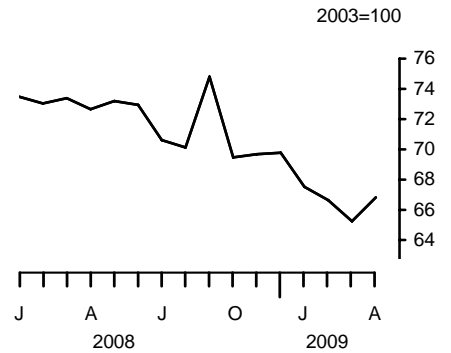
Next publication date
7 July 2009

		Production	Mining and quarrying	Manufacturing	Electricity gas and water	
2003 weights		1000.0	117.4	792.8	89.8	
		Production index level	Percentage change: latest three months on previous three months			
2008	Nov	93.0	-3.2	0.1	-3.6	-2.5
	Dec	91.4	-4.6	-3.1	-5.1	-2.0
2009	Jan	88.8	-5.9	-3.5	-6.7	-1.7
	Feb	88.2	-6.1	-4.7	-6.7	-2.0
	Mar	88.0	-5.3	-4.6	-5.6	-3.7
	Apr	88.2	-3.2	-4.0	-2.8	-5.5

Mining and quarrying

In the latest three months, mining and quarrying output fell by 4.0 per cent compared with the previous three months and was 9.3 per cent lower than the same period a year ago. Between March and April, mining and quarrying output increased by 2.4 per cent with a rise in oil and gas production.

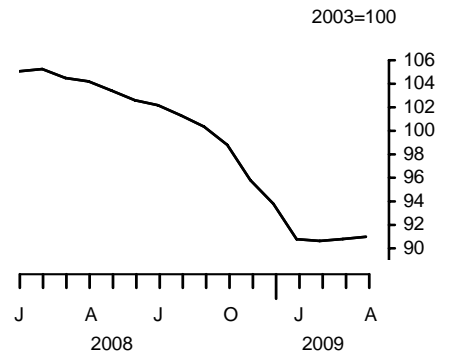
Mining & quarrying



Manufacturing

Manufacturing output in the latest three months fell by 2.8 per cent compared with the previous three months. The most significant rises were 3.2 per cent in the transport equipment industries, 2.3 per cent in the chemicals and man-made fibres industries and 1.6 per cent in the paper, printing and publishing industries. The most significant falls were 2.2 per cent in the basic metals and metal products industries and 3.8 per cent in the other manufacturing industries. Manufacturing output in the latest three months was 13.2 per cent lower than the same period a year ago.

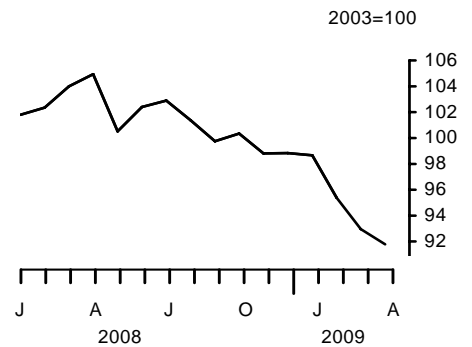
Manufacturing



Electricity, gas and water supply

Output of the electricity, gas and water supply industries in the latest three months fell by 5.5 per cent compared with the previous three months. Between March and April, the output of the energy supply industries fell by 1.3 per cent. In the latest three months, output in this sector was 10.0 per cent lower compared with the same period a year ago.

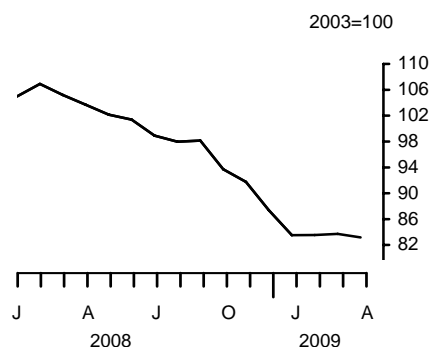
Electricity, gas & water



Market sectors

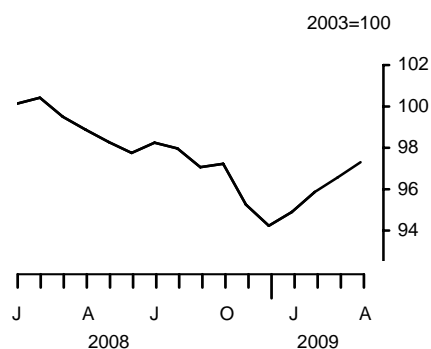
In the latest three months, output of the consumer durable goods industries fell by 4.7 per cent compared with the previous three months and was 20.7 per cent lower than the same period a year ago. During the latest month, output decreased by 0.7 per cent.

Consumer durables



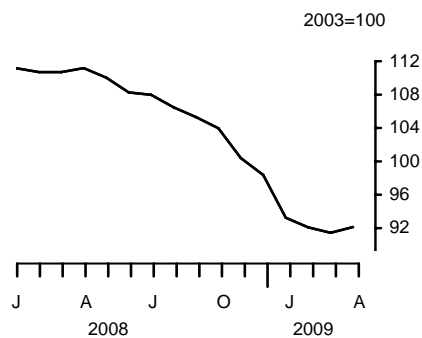
Output of the consumer non-durable goods industries rose by 1.9 per cent in the latest three months compared with the previous three months and was 3.0 per cent lower than the same period a year ago. During the latest month, output increased by 0.8 per cent.

Consumer non-durables



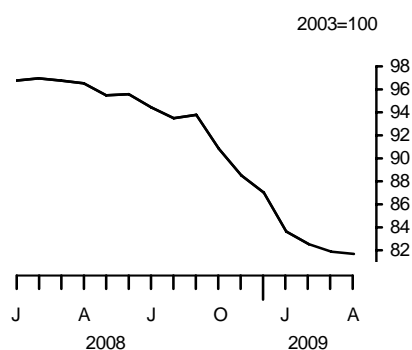
In the latest three months, output of the capital goods industries fell by 5.6 per cent compared with the previous three months and was 17.1 per cent lower than the same period a year ago. During the latest month, output increased by 0.8 per cent.

Capital goods



Output of the intermediate goods and energy industries fell by 5.0 per cent in the latest three months compared with the previous three months and was 15.2 per cent lower than the same period a year ago. During the latest month, output decreased by 0.2 per cent.

Intermediate goods and energy



Revisions

This bulletin conforms to the standard revisions policy for National Accounts. In this bulletin the earliest period open for revision is January 2008 only. Table IOP5R shows the revisions to the estimates previously published on 12 May 2009.

Since last month a number of late responses have been received to the Monthly Production Inquiry. The impact of these late data, when combined with revisions caused by seasonal adjustment factors being re-estimated, is to revise the growth rate for the Index of Production for March 2009 by + 0.3 per cent.

The table below sets out the revisions to monthly growth rates to the Index of Production and the Index of Manufacturing for the period open to revision.

Month on month	IoP April Statistical Bulletin Production growth rates %	Revised Production growth rates %	Total revision to growth rates %
Jan 2008	-0.2	0.0	0.2
Feb 2008	0.0	0.1	0.1
Mar 2008	-0.5	-0.4	0.1
Apr 2008	-0.1	-0.2	-0.1
May 2008	-0.9	-1.0	-0.1
Jun 2008	-0.4	-0.5	-0.1
Jul 2008	-0.5	-0.6	-0.1
Aug 2008	-0.8	-0.9	-0.1
Sep 2008	-0.3	-0.4	-0.1
Oct 2008	-1.9	-1.9	0.0
Nov 2008	-2.5	-2.6	-0.1
Dec 2008	-1.5	-1.7	-0.2
Jan 2009	-2.8	-2.9	-0.1
Feb 2009	-0.7	-0.6	0.1
Mar 2009	-0.6	-0.3	0.3

Month on month	IoP April Statistical Bulletin Manufacturing growth rates %	Revised Manufacturing growth rates %	Total revision to growth rates %
Jan 2008	0.4	0.7	0.3
Feb 2008	0.1	0.2	0.1
Mar 2008	-0.6	-0.7	-0.1
Apr 2008	-0.2	-0.3	-0.1
May 2008	-0.7	-0.8	-0.1
Jun 2008	-0.7	-0.8	-0.1
Jul 2008	-0.4	-0.4	0.0
Aug 2008	-0.8	-0.8	0.0
Sep 2008	-1.0	-0.9	0.1
Oct 2008	-1.5	-1.6	-0.1
Nov 2008	-3.0	-3.0	0.0
Dec 2008	-1.9	-2.1	-0.2
Jan 2009	-3.1	-3.2	-0.1
Feb 2009	-0.3	-0.2	0.1
Mar 2009	-0.1	0.2	0.3

BACKGROUND NOTES

1. This Statistical Bulletin gives details of the index of output of the production industries in the United Kingdom. Index numbers of output in this Statistical Bulletin are on the base 2003=100 and are classified to the 2003 revision to the Standard Industrial Classification (SIC). The production industries, which accounted for 18.0 per cent of gross domestic product in 2003, cover mining and quarrying (Section C), manufacturing (Section D) and electricity, gas and water supply (Section E).

Interpreting the data

2. The monthly IoP data can be volatile. When looking at growth rates, it is recommended that users focus on the percentage change between the latest three months and the previous three months.

Status of figures and planned future revisions

3. Figures for the most recent months are provisional and subject to revision in light of (a) late responses to the Monthly Production Inquiry and (b) revisions to seasonal adjustment factors which are re-estimated every period.

In the next bulletin, which will contain figures for May 2009 and will be published on 7 July 2009, the period open for revision according to the National Accounts policy will be from January 2004 only. The published data will be consistent with National Accounts BlueBook data, which will be published on 30 June 2009.

Revisions to BlueBook data will arise from:

- i) the annual update of the weights used to construct the chained volume measures of output. All aggregate series for periods from 2005 onwards will be based on new 2005 weights.
- ii) the annual update of seasonal adjustment models
- iii) the annual reconciliation of the Monthly Production Inquiry survey data (on which the manufacturing component of the IoP is largely based) with the Annual Business Inquiry.

The published indices will also be re-referenced so that 2005=100

Basic quality information for the IoP Statistical Bulletin

Summary quality report

4. A Summary Quality Report for this Statistical Bulletin can now be found on the National Statistics website at:

<http://www.statistics.gov.uk/CCI/article.asp?ID=1846>

5. The 2005 median annual growth of MPI turnover, their associated standard errors and quality bands can now be found on the National Statistics website at:

<http://www.statistics.gov.uk/statbase/Product.asp?vlnk=6230>

Key quality issues

6. Common pitfalls in interpreting series: Expectations of accuracy and reliability in early estimates are often too high. Revisions are an inevitable consequence of the trade off between timeliness and accuracy. Early estimates are based on incomplete data.

Very few statistical revisions arise as a result of 'errors' in the popular sense of the word. All estimates, by definition, are subject to statistical 'error' but in this context the word refers to the uncertainty inherent in any process or calculation that uses sampling, estimation or modelling. Most revisions reflect either the adoption of new statistical techniques, or the incorporation of new information which allows the statistical error of previous estimates to be reduced. Only rarely are there avoidable 'errors' such as human or system failures, and such mistakes are made quite clear when they do occur.

Reliability

7. One indication of the reliability of the key indicators in this bulletin can be obtained by monitoring the size of revisions. The table below is based on the revisions which have occurred over the last five years. Please note that these indicators only report summary measures for revisions. The revised data may, themselves, be subject to sampling or other sources of error.

The table below presents a summary of the differences between the first estimates published between May 2003 and April 2008 and the estimates published 12 months later.

	Value in latest period (per cent)	Revisions between first publication and estimates twelve months later (% points)	
		Average over the last five years	Average over the last five years without regard to sign (average absolute revision)
Production output – 3 month on 3 month growth rate	-3.2	0.10	0.27
Manufacturing output – 3 month on 3 month growth rate	-2.8	0.14	0.31
Production output – 1 month growth rate	0.3	-0.01	0.24
Manufacturing output – 1 month growth rate	0.2	0.03	0.26

Spreadsheets giving revisions triangles of estimates for all months from December 1997 through to the current month, and the calculations behind the averages in the above table, are available on the National Statistics website at:

<http://www.statistics.gov.uk/statbase/Product.asp?vlnk=6230>

8. A statistical test has been applied to the average revisions to find out if they are statistically significantly different from zero. No such differences have been found.
9. The table uses historical data for the most recent 60 months, comparing the estimate at first publication with the estimate as published 12 months later. The numbers which underpin these averages will include normal changes due to late data and re-seasonal adjustment, but also significant methodological changes, the most recent of which occurred in October 2003 (see article "Index of Production redevelopment" in *Economic Trends*, October 2002).

Deflation

10. All series, unless otherwise quoted, are measured at constant market prices. Deflators adjust the value series to take out the effect of price changes to give the volume series.

Seasonal adjustment

11. The index numbers in this Statistical Bulletin are all seasonally adjusted. This aids interpretation by removing annually recurring fluctuations, for example, due to holidays or other regular seasonal patterns. Unadjusted data are also available.

Further information

12. The complete run of data in the tables of this Statistical Bulletin is also available to view and download in electronic format free of charge using the ONS **Time Series Data service**. Users can download the complete release in a choice of zipped formats, or view and download their own selections of individual series. The Time Series Data service can be accessed at:
<http://www.statistics.gov.uk/timeseries>

ONS provides an analysis of past revisions in the IoP and other Statistical Bulletins which present time series. Details can be found at:

<http://www.statistics.gov.uk/cci/article.asp?ID=793>

ONS now publishes revisions triangles for all the main published key indicators on the National Statistics website. Details can be found at:

<http://www.statistics.gov.uk/cci/article.asp?ID=1026>

Advance access

13. Details of the policy governing the release of new data are available from the press office. Also available is a list of those given pre-publication access to the contents of this bulletin.

Code of Practice

14. **National Statistics** are produced to high professional standards set out in the Code of Practice for Official Statistics. They undergo regular quality assurance reviews to ensure that they meet customer needs. They are produced free from any political interference. © Crown copyright 2009.

IOP5 Output of the production industries

Chained volume indices of gross value added^{1,2}

Seasonally adjusted 2003 = 100

Section	Broad industry groups					Main industrial groupings			
	Production industries	Mining and Quarrying inc Oil and Gas Extraction	Manufacturing	Electricity, Gas and Water Supply	Oil and Gas Extraction	Consumer durables	Consumer non-durables	Capital goods	Intermediate goods and energy
	C+D+E	C	D	E	C_1	MG-DUR	MG-NDUR	MG-CAP	MG-INEN
Latest weight	1 000.0	117.4	792.8	89.8	106.5	36.2	272.3	214.3	477.2
	CKYW	CKYX	CKYY	CKYZ	CKZO	UFIU	UFJS	UFIL	JMOH
2004	100.9	92.1	102.2	101.0	91.5	105.0	100.5	103.6	99.6
2005	99.8	84.2	102.0	100.7	82.4	104.1	100.5	103.8	97.2
2006	100.5	78.0	103.8	100.1	75.1	106.5	101.4	107.8	96.2
2007	100.6	76.9	104.0	101.2	73.3	105.5	99.8	109.9	96.5
2008	98.0 [†]	71.9 [†]	101.4 [†]	101.5 [†]	70.0 [†]	99.3 [†]	97.9 [†]	107.0 [†]	93.8 [†]
2008 Q1	101.0 [†]	73.3 [†]	104.9 [†]	102.7 [†]	70.9 [†]	105.7	100.0 [†]	110.9 [†]	96.8 [†]
Q2	99.8	72.9	103.4	102.6	70.6	102.4 [†]	98.3	109.8	95.9
Q3	97.8	71.8	101.3	101.3	69.9	98.3	97.8	106.6	93.9
Q4	93.3	69.6	96.1	99.3	68.7	91.0	95.6	100.9	88.8
2009 Q1	88.3	66.5	90.7	95.7	67.0	83.6	95.8	92.3	82.7
2008 Feb	101.2 [†]	73.0 [†]	105.2 [†]	102.4 [†]	70.4 [†]	106.9 [†]	100.4 [†]	110.7 [†]	97.0 [†]
Mar	100.8	73.4	104.5	104.0	71.1	105.2	99.5	110.7	96.8
Apr	100.6	72.7	104.2	104.9	69.9	103.7	98.9	111.2	96.5
May	99.6	73.2	103.4	100.5	71.1	102.1	98.3	110.0	95.5
Jun	99.1	72.9	102.6	102.4	70.9	101.4	97.8	108.3	95.6
Jul	98.5	70.6	102.2	102.9	68.2	98.9	98.2	108.0	94.4
Aug	97.7	70.1	101.3	101.4	67.7	98.0	98.0	106.5	93.5
Sep	97.3	74.8	100.4	99.8	73.9	98.1	97.1	105.3	93.8
Oct	95.5	69.5	98.8	100.3	68.6	93.7	97.2	104.0	90.8
Nov	93.0	69.7	95.8	98.8	68.8	91.8	95.3	100.4	88.5
Dec	91.4	69.8	93.8	98.8	68.6	87.4	94.2	98.3	87.0
2009 Jan	88.8	67.5	90.8	98.7	67.9	83.5	94.9	93.2	83.6
Feb	88.2	66.6	90.6	95.4	67.5	83.5	95.9	92.1	82.5
Mar	88.0	65.2	90.8	93.0	65.7	83.7	96.6	91.4	81.9
Apr	88.2	66.8	91.0	91.8	67.4	83.2	97.3	92.1	81.7
Percentage change, latest year on previous year									
2004	0.9	-7.9	2.2	1.0	-8.5	5.0	0.5	3.6	-0.4
2005	-1.1	-8.5	-0.2	-0.3	-9.9	-0.8	0.1	0.2	-2.4
2006	0.7	-7.4	1.8	-0.5	-8.9	2.2	0.8	3.8	-1.0
2007	0.1	-1.4	0.2	1.0	-2.4	-0.9	-1.6	2.0	0.3
2008	-2.6 [†]	-6.4 [†]	-2.5 [†]	0.3 [†]	-4.5 [†]	-5.8 [†]	-1.9 [†]	-2.6 [†]	-2.7 [†]
Percentage change, latest 3 months on previous 3 months									
2007 Feb	-0.5	-1.4	-0.6	1.4	-2.3	-0.8	-1.3	-0.3	-0.1
Mar	-0.1	2.5	-0.6	1.8	1.9	-1.9	-2.0	0.2	1.1
Apr	-0.4	2.7	-0.6	-1.9	2.3	-1.9	-1.6	0.1	0.1
May	0.3	2.2	0.3	-1.0	1.9	-0.9	-0.5	1.5	0.3
Jun	0.6	0.8	0.6	-	0.5	0.1	0.5	1.5	0.2
Jul	0.8	0.6	0.5	4.0	0.3	0.5	0.3	0.9	1.2
Aug	0.1	-0.4	-0.1	2.6	-0.9	1.8	-0.6	-0.5	0.7
Sep	-0.5	-1.2	-0.6	1.6	-1.8	1.1	-0.8	-1.3	0.1
Oct	-0.4	-1.4	-0.4	0.7	-1.8	-	-0.2	-0.7	-0.3
Nov	0.1	-1.5	-	2.5	-1.1	-2.7	0.5	0.2	0.1
Dec	0.7	-0.5	0.6	2.7	0.5	-2.7	0.9	1.1	0.7
2008 Jan	0.6 [†]	-2.1	0.8 [†]	1.0 [†]	-0.8 [†]	-1.5 [†]	0.7	1.0 [†]	0.5 [†]
Feb	0.4	-2.3 [†]	0.8	-0.9	-1.2	1.5	0.4 [†]	0.8	0.1
Mar	-	-3.9	0.5	-1.2	-2.9	1.7	-0.1	0.3	-0.3
Apr	-0.2	-2.6	-	0.4	-2.2	0.9	-0.6	0.1	-0.2
May	-0.8	-1.6	-0.8	0.4	-1.2	-2.0	-1.3	-0.2	-0.6
Jun	-1.3	-0.5	-1.5	-0.1	-0.4	-3.1	-1.7	-0.9	-1.0
Jul	-1.8	-1.1	-1.8	-1.8	-0.6	-4.2	-1.5	-1.9	-1.6
Aug	-1.9	-2.5	-1.9	-0.9	-2.6	-4.1	-0.9	-2.8	-1.8
Sep	-1.9	-1.5	-2.1	-1.2	-1.0	-4.0	-0.6	-3.0	-2.0
Oct	-2.3	-1.1	-2.5	-1.4	-	-4.2	-0.7	-3.2	-2.6
Nov	-3.2	0.1	-3.6	-2.5	2.2	-4.9	-1.5	-4.0	-3.7
Dec	-4.6	-3.1	-5.1	-2.0	-1.8	-7.5	-2.2	-5.3	-5.4
2009 Jan	-5.9	-3.5	-6.7	-1.7	-2.3	-9.4	-2.7	-7.5	-6.8
Feb	-6.1	-4.7	-6.7	-2.0	-3.4	-10.3	-1.6	-8.4	-7.3
Mar	-5.3	-4.6	-5.6	-3.7	-2.4	-8.1	0.2	-8.6	-6.9
Apr	-3.2	-4.0	-2.8	-5.5	-2.3	-4.7	1.9	-5.6	-5.0

¹ Output index numbers include adjustments, as necessary, to compensate for the use of sales indicators.

[†] indicates that data are new or have been revised. The period marked is the earliest in the table to have been revised.

² Any apparent inconsistencies between the index numbers and the percentage changes shown in these tables are due to rounding.

IOP5 Output of the production industries

Chained volume indices of gross value added^{1,2}

continued

Seasonally adjusted 2003 = 100

Section	Coke, refined petrol & nuclear fuels	Chemicals and man-made fibres	Basic metals and metal products	Engineering and allied industries	Food, drink and tobacco	Textiles, leather and clothing	Other manufacturing
	DF	DG	DJ	DK_DM	DA	DB_DC	DD_DN
Latest weight	13.0	88.4	80.8	238.6	117.2	26.0	228.8
2004	CKZF 107.8	CKZG 103.6	CKZJ 102.7	AGXS 104.4	CKZA 102.0	AGVO 89.5	AGXQ 100.4
2005	111.0	106.5	103.6	103.8	103.6	87.8	98.1
2006	105.4	110.0	105.1	108.0	102.9	88.0	98.9
2007	109.6	108.6	105.9	109.5	101.8	85.8	98.9
2008	114.0 [†]	108.6 [†]	101.8 [†]	106.7 [†]	99.6 [†]	86.4 [†]	94.9
2008 Q1	114.7 [†]	110.5 [†]	105.6 [†]	110.8 [†]	101.5 [†]	87.2 [†]	99.7 [†]
Q2	114.8	109.6	105.3	109.6	99.5	87.3	97.0
Q3	111.3	109.8	103.1	106.0	99.4	86.9	94.5
Q4	115.1	104.4	93.3	100.5	98.2	84.3	88.7
2009 Q1	116.2	103.3	84.8	89.7	98.5	80.9	84.8
2008 Feb	114.7 [†]	111.3 [†]	106.3 [†]	110.5 [†]	101.7 [†]	87.4 [†]	100.3 [†]
Mar	115.7	109.8	105.5	110.6	101.1	87.6	98.8
Apr	116.6	108.6	106.0	111.0	100.0	87.7	98.0
May	112.6	109.8	104.9	109.8	99.8	87.1	97.0
Jun	115.1	110.4	105.1	108.1	98.8	87.0	96.0
Jul	111.2	110.9	104.0	107.3	98.9	88.1	95.5
Aug	110.0	110.6	103.1	105.8	99.6	87.0	94.4
Sep	112.6	107.8	102.2	104.8	99.7	85.7	93.5
Oct	113.0	109.5	97.6	103.6	99.5	84.1	90.6
Nov	113.9	102.9	93.2	99.7	98.6	85.1	88.7
Dec	118.5	100.9	89.3	98.1	96.3	83.7	86.6
2009 Jan	116.8	102.2	85.6	90.3	97.4	81.6	84.9
Feb	118.8	103.9	84.8	89.3	98.8	81.4	84.2
Mar	112.9	103.7	83.8	89.4	99.4	79.8	85.3
Apr	108.1	106.1	82.0	90.3	98.9	78.6	85.5
Percentage change, latest year on previous year							
2004	7.8	3.6	2.7	4.4	2.0	-10.5	0.4
2005	2.9	2.8	0.9	-0.6	1.6	-1.9	-2.3
2006	-5.1	3.2	1.5	4.1	-0.7	0.2	0.8
2007	4.0	-1.2	0.7	1.4	-1.0	-2.5	-
2008	4.0 [†]	-0.1 [†]	-3.8 [†]	-2.5 [†]	-2.1	0.8 [†]	-4.0
Percentage change, latest 3 months on previous 3 months							
2007 Feb	7.3	-1.2	0.5	-0.4	-0.7	-1.4	-1.2
Mar	2.9	-1.1	0.8	0.1	-1.8	-4.8	-0.8
Apr	-2.5	-1.3	0.3	-0.3	-1.5	-3.4	-0.1
May	-3.0	-0.9	-0.2	0.8	-0.5	-0.3	0.9
Jun	-1.1	-0.9	0.1	0.9	0.2	2.5	1.3
Jul	-	-1.1	0.3	1.0	-0.2	2.9	1.0
Aug	0.8	-1.5	0.1	0.1	-0.7	1.9	0.2
Sep	2.9	-1.3	-0.7	-1.0	-0.6	1.1	-0.2
Oct	5.4	-0.3	-1.0	-1.1	-0.5	0.5	0.2
Nov	4.9	0.7	-0.8	-0.5	-0.2	-0.8	0.6
Dec	2.0	1.7	-0.2	0.6	-0.3	-1.3	1.1
2008 Jan	-0.3	2.2	0.1	1.3 [†]	0.2 [†]	-1.5 [†]	0.6 [†]
Feb	- [†]	2.1 [†]	0.1 [†]	1.4	0.1	0.2	0.3
Mar	1.9	1.4	0.2	1.0	0.2	1.5	-0.2
Apr	3.0	-	0.6	0.3	-0.6	2.0	-0.8
May	1.6	-1.0	0.1	-0.2	-1.3	1.1	-1.9
Jun	0.1	-0.8	-0.3	-1.0	-2.0	-	-2.7
Jul	-2.3	0.4	-1.2	-2.1	-1.8	-0.2	-2.9
Aug	-2.5	1.1	-1.3	-3.0	-1.2	-0.1	-2.7
Sep	-3.1	0.1	-2.1	-3.3	-0.1	-0.4	-2.6
Oct	-1.0	-1.0	-3.5	-3.4	0.5	-2.1	-3.4
Nov	0.9	-3.6	-6.1	-4.1	0.2	-2.8	-4.5
Dec	3.5	-4.9	-9.5	-5.2	-1.3	-3.0	-6.1
2009 Jan	4.1	-6.7	-11.5	-8.3	-2.2	-2.5	-6.6
Feb	4.3	-4.1	-11.4	-9.9	-1.8	-3.2	-6.3
Mar	0.9	-1.1	-9.2	-10.7	0.4	-4.0	-4.4
Apr	-2.7	2.5	-6.5	-6.6	1.6	-4.3	-2.0

[†] indicates that data are new or have been revised. The period marked is the earliest in the table to have been revised.

IOP5R Revisions to previously published output of production industries¹

Seasonally adjusted 2003 = 100

Section	Broad industry groups					Main industrial groupings			
	Production industries	Mining and Quarrying inc Oil and Gas Extraction	Manufacturing	Electricity, Gas and Water Supply	Oil and Gas Extraction	Consumer durables	Consumer non-durables	Capital goods	Intermediate goods and energy
	C+D+E	C	D	E	C_1	MG-DUR	MG-NDUR	MG-CAP	MG-INEN
Latest weight	1 000.0	117.4	792.8	89.8	106.5	36.2	272.3	214.3	477.2
	CKYW	CKYX	CKYY	CKYZ	CKYO	UFIU	UFJS	UFIL	JMOH
2004	-	-	-	-	-	-	-	-	-
2005	-	-	-	-	-	-	-	-	-
2006	-	-	-	-	-	-	-	-	-
2007	-	-	-	-	-	-	-	-	-
2008	0.2	0.1	0.1	0.5	0.1	-0.4	-0.2	0.5	0.2
2008 Q1	0.3	0.2	0.3	0.6	0.2	-	-0.1	0.8	0.4
Q2	0.3	0.1	0.2	1.0	0.1	-0.5	-0.3	0.7	0.4
Q3	-	-0.1	0.1	0.6	-	-0.4	-0.1	0.3	0.2
Q4	-0.1	-	-0.1	-0.1	0.2	-0.7	-0.2	0.2	-0.1
2009 Q1	-0.2	0.1	-0.2	-0.2	0.1	-0.8	-0.3	0.6	-0.3
2008 Feb	0.4	0.2	0.3	0.6	0.1	-0.1	-0.1	0.8	0.6
Mar	0.4	0.6	0.3	1.6	0.5	0.3	-0.4	0.9	0.7
Apr	0.3	0.1	0.2	1.0	-	-0.5	-0.4	1.0	0.4
May	0.3	0.3	0.2	1.1	0.2	-0.4	-0.3	0.7	0.5
Jun	0.2	0.1	0.1	0.9	0.2	-0.5	-0.3	0.5	0.4
Jul	0.1	-	0.1	0.7	-	-0.4	-0.2	0.6	0.2
Aug	0.1	-0.1	-	0.7	-	-0.3	-0.2	0.3	0.2
Sep	-	-0.1	0.1	0.5	-0.1	-0.5	-0.1	0.2	0.1
Oct	0.1	0.5	-	0.1	0.5	-0.5	-0.1	0.1	0.1
Nov	-0.1	-0.3	-	-	-0.1	-0.3	-	0.2	-0.2
Dec	-0.3	-	-0.2	-0.4	-	-1.4	-0.6	0.2	-0.2
2009 Jan	-0.3	-	-0.3	-0.3	-	-1.0	-0.4	0.1	-0.4
Feb	-0.2	-	-0.2	-0.3	-	-0.5	-0.2	0.3	-0.4
Mar	-	0.2	-	-	0.3	-0.9	-0.3	1.0	-0.1
Percentage change, latest year on previous year									
2004	-	-	-	-	-	-	-	-	-
2005	-	-	-	-	-	-	-	-	-
2006	-	-	-	-	-	-	-	-	-
2007	-	-	-	-	-	-	-	-	-
2008	0.1	0.2	0.1	0.5	0.1	-0.4	-0.2	0.5	0.3
Percentage change, latest 3 months on previous 3 months									
2007 Feb	-	-	-	-	-	-	-	-	-
Mar	-	-	-	-	-	-	-	-	-
Apr	-	-	-	-	-	-	-	-	-
May	-	-	-	-	-	-	-	-	-
Jun	-	-	-	-	-	-	-	-	-
Jul	-	-	-	-	-	-	-	-	-
Aug	-	-	-	-	-	-	-	-	-
Sep	-	-	-	-	-	-	-	-	-
Oct	-	-	-	-	-	-	-	-	-
Nov	-	-	-	-	-	-	-	-	-
Dec	-	-	-	-	-	-	-	-	-
2008 Jan	0.1	-	0.1	-0.1	0.1	-0.1	-	0.1	0.1
Feb	0.2	0.1	0.2	0.1	-	-0.1	0.1	0.5	0.3
Mar	0.4	0.3	0.3	0.7	0.3	-	-0.1	0.7	0.4
Apr	0.3	0.4	0.2	1.1	0.3	-	-0.3	0.6	0.6
May	0.1	0.3	-	1.1	0.4	-	-0.3	0.4	0.4
Jun	-0.2	-0.1	-0.2	0.4	-0.2	-0.4	-0.2	-	-
Jul	-0.2	-0.2	-0.1	-0.2	-0.1	-0.3	-	-0.3	-0.2
Aug	-0.2	-0.3	-0.1	-0.4	-0.4	-0.2	0.1	-0.4	-0.3
Sep	-0.1	-0.3	-0.2	-0.3	-0.2	-	0.1	-0.4	-0.2
Oct	-0.2	-0.1	-0.1	-0.5	-	-0.1	0.1	-0.3	-0.2
Nov	-0.1	-0.1	-	-0.6	0.1	-	0.2	-0.2	-0.3
Dec	-0.1	0.1	-0.2	-0.7	0.2	-0.4	-	-0.1	-0.2
2009 Jan	-0.2	-0.3	-0.2	-0.6	-0.2	-0.6	-0.2	0.1	-0.4
Feb	-0.3	-	-0.3	-0.5	-0.1	-0.6	-0.4	0.1	-0.4
Mar	-	-	-0.1	-0.2	-0.1	-0.1	-0.1	0.3	-0.3

¹ Revisions are calculated using one decimal place data.

IOP5R Revisions to previously published output of production industries¹

continued

Seasonally adjusted 2003 = 100

Section	Coke, refined petrol & nuclear fuels DF	Chemicals and man-made fibres DG	Basic metals and metal products DJ	Engineering and allied industries DK_DM	Food, drink and tobacco DA	Textiles, leather and clothing DB_DC	Other manufacturing DD_DN
Latest weight	13.0	88.4	80.8	238.6	117.2	26.0	228.8
	CKZF	CKZG	CKZJ	AGXS	CKZA	AGVO	AGXQ
2004	-	-	-	-	-	-	-
2005	-	-	-	-	-	-	-
2006	-	-	-	-	-	-	-
2007	-	-	-	-	-	-	-
2008	0.1	-0.4	0.3	0.4	-0.1	0.3	-
2008 Q1	-0.2	-0.3	0.4	0.8	-0.2	0.7	0.4
Q2	0.4	-0.6	0.6	0.5	-0.3	0.7	-
Q3	0.2	-0.5	0.2	0.2	-	0.2	-
Q4	-	-0.2	0.1	-	0.2	-0.3	-0.3
2009 Q1	-0.4	0.3	0.1	0.2	0.3	0.3	-1.1
2008 Feb	-0.5	-0.5	0.7	0.7	-0.3	0.8	0.6
Mar	-0.3	-0.3	0.4	0.9	-0.5	0.9	0.3
Apr	0.2	-0.8	1.0	0.7	-0.4	0.8	-
May	0.8	-0.5	0.5	0.6	-0.2	0.7	-
Jun	0.3	-0.5	0.5	0.3	-0.1	0.5	0.1
Jul	0.2	-0.6	0.2	0.3	-0.1	0.4	0.1
Aug	0.2	-0.4	0.2	0.1	-0.1	0.3	-0.1
Sep	0.1	-0.4	0.1	0.1	0.1	0.2	-0.1
Oct	-0.1	-0.2	0.1	-	0.2	0.1	-0.1
Nov	-0.2	0.1	0.1	-	0.2	-0.6	-0.2
Dec	0.3	-0.3	0.3	-0.1	-	-0.2	-0.8
2009 Jan	-0.2	-0.1	-0.3	-0.1	0.3	0.2	-1.1
Feb	0.6	0.1	-	-0.1	0.4	0.3	-0.9
Mar	-1.8	0.9	0.3	0.8	0.3	0.6	-1.3
Percentage change, latest year on previous year							
2004	-	-	-	-	-	-	-
2005	-	-	-	-	-	-	-
2006	-	-	-	-	-	-	-
2007	-	-	-	-	-	-	-
2008	0.1	-0.4	0.3	0.3	-	0.4	-
Percentage change, latest 3 months on previous 3 months							
2007 Feb	-	-	-	-	-	-	-
Mar	-	-	-	-	-	-	-
Apr	-	-	-	-	-	-	-
May	-	-	-	-	-	-	-
Jun	-	-	-	-	-	-	-
Jul	-	-	-	-	-	-	-
Aug	-	-	-	-	-	-	-
Sep	-	-	-	-	-	-	-
Oct	-	-	-	-	-	-	-
Nov	-	-	-	-	-	-	-
Dec	-	-	-	-	-	-	-
2008 Jan	-	-	-	0.2	0.1	0.2	0.1
Feb	-0.1	-0.2	0.3	0.4	-0.1	0.5	0.3
Mar	-0.2	-0.2	0.4	0.7	-0.2	0.9	0.4
Apr	-0.2	-0.5	0.6	0.5	-0.4	0.8	0.2
May	0.3	-0.3	0.4	0.2	-0.4	0.4	-0.2
Jun	0.6	-0.2	0.2	-0.1	-0.1	-0.1	-0.4
Jul	0.6	-	-0.2	-0.3	0.2	-0.4	-0.3
Aug	-	-	-0.2	-0.3	0.2	-0.5	-0.1
Sep	-0.3	-	-0.4	-0.3	0.3	-0.5	-
Oct	-0.4	0.1	-0.2	-0.3	0.3	-0.4	-
Nov	-0.3	0.2	-0.1	-0.2	0.3	-0.6	-0.1
Dec	-0.1	0.3	-0.1	-0.2	0.1	-0.6	-0.3
2009 Jan	-	0.2	-0.1	-0.1	0.1	-0.5	-0.7
Feb	0.3	0.1	-0.1	-0.2	-	0.2	-0.9
Mar	-0.4	0.4	-0.1	0.3	0.2	0.7	-0.9