

7 April 2009

Coverage
United Kingdom

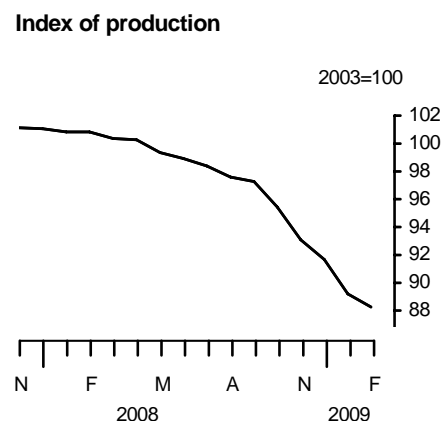
Theme
The Economy



Index of production February 2009

In the three months to February, the seasonally adjusted chained volume index for the output of the production industries decreased by 5.8 per cent compared with the previous three months and was 11.1 per cent lower than the same three month period a year earlier.

In the latest three months, manufacturing output decreased by 6.5 per cent, mining and quarrying output decreased by 4.3 per cent and output of the electricity, gas and water supply industries decreased by 1.0 per cent, compared with the previous three months.



Between January and February, output of the manufacturing industries fell by 0.9 per cent, its lowest rate of decline during the last six months (note that monthly growth rates are volatile, see background note 2). The most significant decreases in output were 3.7 per cent in the transport equipment industries, 1.6 per cent in the basic metal and metal products industries and 3.7 per cent in the other non-metallic mineral products industries. There were no significant increases on the month.

Issued by

Office for National Statistics
Government Buildings
Cardiff Road
Newport
NP10 8XG

Contact
Media Office
0845 604 1858
Media Office on-call
07867 906553

Statistician Phillip Davies
01633 456492

Email
indexofproduction@ons.gov.uk

www.statistics.gov.uk

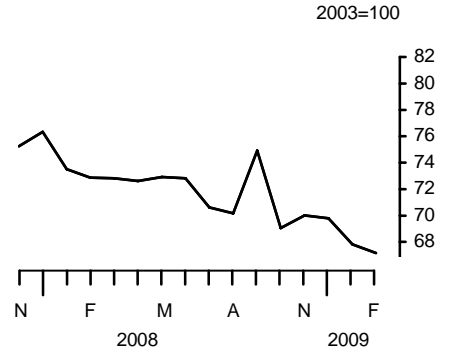
Next publication date
12 May 2009

		Production	Mining and quarrying	Manufacturing	Electricity gas and water	
2003 weights		1000.0	117.4	792.8	89.8	
		Production index level	Percentage change: latest three months on previous three months			
2008	Sep	97.3	-1.8	-1.2	-1.9	-0.9
	Oct	95.4	-2.1	-1.0	-2.4	-0.9
	Nov	93.1	-3.1	0.2	-3.6	-1.9
	Dec	91.7	-4.5	-3.2	-4.9	-1.3
2009	Jan	89.2	-5.6	-3.1	-6.4	-1.0
	Feb	88.3	-5.8	-4.3	-6.5	-1.0

Mining and quarrying

In the latest three months, mining and quarrying output fell by 4.3 per cent compared with the previous three months and was 8.0 per cent lower than the same period a year ago. Between January and February, mining and quarrying output decreased by 0.9 per cent with a fall in oil and gas production.

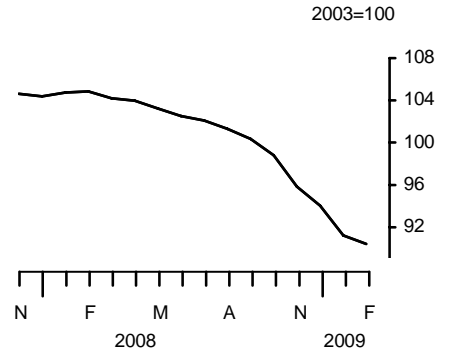
Mining & quarrying



Manufacturing

Manufacturing output in the latest three months fell by 6.5 per cent compared with the previous three months. There were widespread decreases in output. The most significant falls were 13.1 per cent in the transport equipment industries, 11.2 per cent in the basic metal and metal products industries and 11.7 per cent in the machinery and equipment products industries. There were no significant increases. Manufacturing output in the latest three months was 12.2 per cent lower than the same period a year ago.

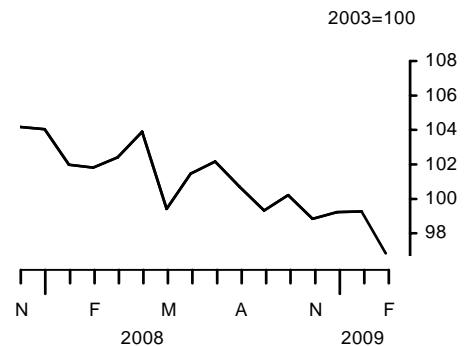
Manufacturing



Electricity, gas and water supply

Output of the electricity, gas and water supply industries in the latest three months fell by 1.0 per cent compared with the previous three months. Between January and February, the output of the energy supply industries fell by 2.4 per cent. In the latest three months, output in this sector was 4.1 per cent lower compared with the same period a year ago.

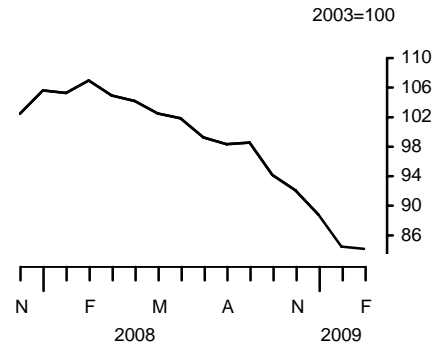
Electricity, gas & water



Market sectors

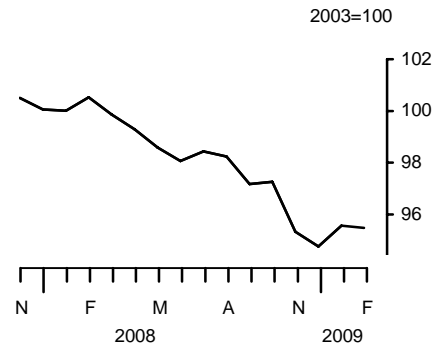
In the latest three months, output of the consumer durable goods industries fell by 9.6 per cent compared with the previous three months and was 19.0 per cent lower than the same period a year ago.

Consumer durables



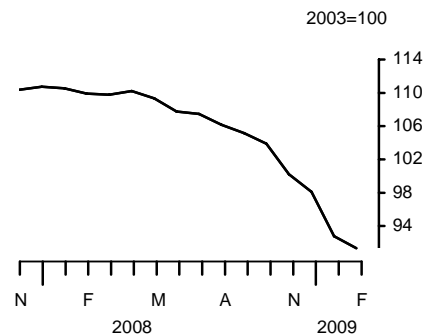
Output in the consumer non-durable goods industries fell by 1.4 per cent in the latest three months compared with the previous three months and was 4.9 per cent lower than the same period a year ago.

Consumer non-durables



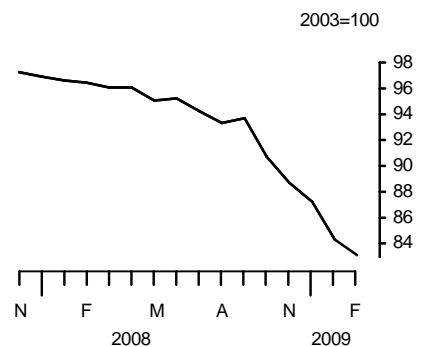
In the latest three months, output of the capital goods industries fell by 8.7 per cent compared with the previous three months and was 14.8 per cent lower than the same period a year ago.

Capital goods



Output in the intermediate goods and energy industries fell by 6.8 per cent in the latest three months compared with the previous three months and was 12.2 per cent lower than the same period a year ago.

Intermediate goods and energy



Revisions

This release conforms to the standard revisions policy for National Accounts. In this release, the earliest period open for revision is January 2009. Table IOP5R shows the revisions to the estimates previously published on 10 March 2009.

Since last month a number of late responses have been received to the Monthly Production Inquiry. The impact of these late data, when combined with revisions caused by seasonal adjustment factors being re-estimated, is to revise the growth rate for the Index of Production for January 2009 by -0.1 per cent.

Revisions to estimates in this release include some very small changes arising from an improved approach to rounding.

BACKGROUND NOTES

1. This First Release gives details of the index of output of the production industries in the United Kingdom. Index numbers of output in this First Release are on the base 2003=100 and are classified to the 2003 revision to the Standard Industrial Classification (SIC). The production industries, which accounted for 18.0 per cent of gross domestic product in 2003, cover mining and quarrying (Section C), manufacturing (Section D) and electricity, gas and water supply (Section E).

Interpreting the data

2. The monthly IoP data can be volatile. When looking at growth rates, it is recommended that users focus on the percentage change between the latest three months and the previous three months.

Status of figures and planned future revisions

3. Figures for the most recent months are provisional and subject to revision in light of (a) late responses to the Monthly Production Inquiry and (b) revisions to seasonal adjustment factors which are re-estimated every period.

In the next release, which will contain figures for March 2009 and will be published on 12 May 2009, the period open for revision according to the National Accounts policy will be January 2009 only.

Basic quality information for the IoP First Release

Summary quality report

4. A Summary Quality Report for this First Release can now be found on the National Statistics website at:

<http://www.statistics.gov.uk/CCI/article.asp?ID=1846>

5. The 2005 median annual growth of MPI turnover, their associated standard errors and quality bands can now be found on the National Statistics website at:

<http://www.statistics.gov.uk/statbase/Product.asp?vlnk=6230>

Key quality issues

6. Common pitfalls in interpreting series: Expectations of accuracy and reliability in early estimates are often too high. Revisions are an inevitable consequence of the trade off between timeliness and accuracy. Early estimates are based on incomplete data.

Very few statistical revisions arise as a result of 'errors' in the popular sense of the word. All estimates, by definition, are subject to statistical 'error' but in this context the word refers to the uncertainty inherent in any process or calculation that uses sampling, estimation or modelling. Most revisions reflect either the adoption of new statistical techniques, or the incorporation of new information which allows the statistical error of previous estimates to be reduced. Only rarely are there avoidable 'errors' such as human or system failures, and such mistakes are made quite clear when they do occur.

Reliability

7. One indication of the reliability of the key indicators in this release can be obtained by monitoring the size of revisions. The table below is based on the revisions which have occurred over the last five years. Please note that these indicators only report summary measures for revisions. The revised data may, themselves, be subject to sampling or other sources of error.

The table below presents a summary of the differences between the first estimates published between March 2003 and February 2008 and the estimates published 12 months later.

	Value in latest period (per cent)	Revisions between first publication and estimates twelve months later (% points)	
		Average over the last five years	Average over the last five years without regard to sign (average absolute revision)
Production output – 3 month on 3 month growth rate	-5.8	0.12	0.27
Manufacturing output – 3 month on 3 month growth rate	-6.5	0.15	0.31
Production output – 1 month growth rate	-1.0	0.00	0.24
Manufacturing output – 1 month growth rate	-0.9	0.05	0.26

Spreadsheets giving revisions triangles of estimates for all months from December 1997 through to the current month, and the calculations behind the averages in the above table, are available on the National Statistics website at:

<http://www.statistics.gov.uk/statbase/Product.asp?vlnk=6230>

8. A statistical test has been applied to the average revisions to find out if they are statistically significantly different from zero. No such differences have been found.
9. The table uses historical data for the most recent 60 months, comparing the estimate at first publication with the estimate as published 12 months later. The numbers which underpin these averages will include normal changes due to late data and re-seasonal adjustment, but also significant methodological changes, the most recent of which occurred in October 2003 (see article "Index of Production redevelopment" in *Economic Trends*, October 2002).

Deflation

10. All series, unless otherwise quoted, are measured at constant market prices. Deflators adjust the value series to take out the effect of price changes to give the volume series.

Seasonal adjustment

11. The index numbers in this First Release are all seasonally adjusted. This aids interpretation by removing annually recurring fluctuations, for example, due to holidays or other regular seasonal patterns. Unadjusted data are also available.

Further information

12. The complete run of data in the tables of this First Release is also available to view and download in electronic format free of charge using the ONS **Time Series Data service**. Users can download the complete release in a choice of zipped formats, or view and download their own selections of individual series. The Time Series Data service can be accessed at:

<http://www.statistics.gov.uk/timeseries>

ONS provides an analysis of past revisions in the IoP and other First Releases which present time series. Details can be found at:

<http://www.statistics.gov.uk/cci/article.asp?ID=793>

ONS now publishes revisions triangles for all the main published key indicators on the National Statistics website. Details can be found at:

<http://www.statistics.gov.uk/cci/article.asp?ID=1026>

Advance access

13. Details of the policy governing the release of new data are available from the press office. Also available is a list of those given pre-publication access to the contents of this release.

Code of Practice

14. **National Statistics** are produced to high professional standards set out in the Code of Practice for Official Statistics. They undergo regular quality assurance reviews to ensure that they meet customer needs. They are produced free from any political interference. © Crown copyright 2009.

IOP5 Output of the production industries

Chained volume indices of gross value added^{1,2}

Seasonally adjusted 2003 = 100

Section	Broad industry groups					Main industrial groupings			
	Production industries	Mining and Quarrying inc Oil and Gas Extraction	Manufacturing	Electricity, Gas and Water Supply	Oil and Gas Extraction	Consumer durables	Consumer non-durables	Capital goods	Intermediate goods and energy
	C+D+E	C	D	E	C_1	MG-DUR	MG-NDUR	MG-CAP	MG-INEN
Latest weight	1 000.0	117.4	792.8	89.8	106.5	36.2	272.3	214.3	477.2
	CKYW	CKYX	CKYY	CKYZ	CKZO	UFIU	UFJS	UFIL	JMOH
2004	100.9	92.1	102.2	101.0	91.5	105.0	100.5	103.6	99.6
2005	99.8	84.2	102.0	100.7	82.4	104.1	100.5	103.8	97.2
2006	100.5	78.0	103.8	100.1	75.1	106.5	101.4	107.8	96.2
2007	100.6	76.9	104.0	101.2	73.3	105.5	99.8	109.9	96.5
2008	97.8	71.8	101.3	101.0	69.9	99.7	98.1	106.5	93.6
2007 Q4	101.0	76.3	104.4	104.0	73.0	104.0	100.1	110.5	97.1
2008 Q1	100.7	73.1	104.6	102.1	70.7	105.7	100.1	110.1	96.4
Q2	99.5	72.8	103.2	101.6	70.5	102.9	98.6	109.1	95.5
Q3	97.8	71.9	101.2	100.7	69.9	98.7	97.9	106.3	93.7
Q4	93.4	69.6	96.2	99.4	68.5	91.7	95.8	100.7	88.9
2007 Dec	101.1	76.3	104.4	104.0	73.2	105.6	100.1	110.7	96.9
2008 Jan	100.8	73.5	104.8	102.0	71.1	105.3	100.0	110.6	96.6
Feb	100.8	72.8	104.9	101.8	70.3	107.0	100.5	109.9	96.4
Mar	100.4	72.8	104.2	102.4	70.6	104.9	99.9	109.8	96.1
Apr	100.3	72.6	104.0	103.9	69.9	104.2	99.3	110.2	96.1
May	99.3	72.9	103.2	99.4	70.9	102.5	98.6	109.3	95.0
Jun	98.9	72.8	102.5	101.5	70.7	101.9	98.1	107.8	95.2
Jul	98.4	70.6	102.1	102.2	68.2	99.3	98.4	107.4	94.2
Aug	97.6	70.2	101.3	100.7	67.7	98.3	98.2	106.2	93.3
Sep	97.3	74.9	100.3	99.3	74.0	98.6	97.2	105.1	93.7
Oct	95.4	69.0	98.8	100.2	68.1	94.2	97.3	103.9	90.7
Nov	93.1	70.0	95.8	98.8	68.9	92.1	95.3	100.2	88.7
Dec	91.7	69.8	94.0	99.2	68.6	88.8	94.8	98.1	87.2
2009 Jan	89.2 [†]	67.8 [†]	91.2 [†]	99.3	68.2 [†]	84.5 [†]	95.6 [†]	92.8 [†]	84.3 [†]
Feb	88.3	67.2	90.4	96.8	67.8	84.2	95.5	91.3	83.1
Percentage change, latest year on previous year									
2004	0.9	-7.9	2.2	1.0	-8.5	5.0	0.5	3.6	-0.4
2005	-1.1	-8.5	-0.2	-0.3	-9.9	-0.8	0.1	0.2	-2.4
2006	0.7	-7.4	1.8	-0.5	-8.9	2.2	0.8	3.8	-1.0
2007	0.1	-1.4	0.2	1.0	-2.4	-0.9	-1.6	2.0	0.3
2008	-2.7	-6.6	-2.6	-0.2	-4.6	-5.4	-1.7	-3.1	-3.0
Percentage change, latest 3 months on previous 3 months									
2006 Dec	-0.3	-2.6	-	-1.4	-3.1	1.4	-	0.7	-1.2
2007 Jan	-0.2	-2.5	-0.1	1.1	-3.2	0.9	-0.7	0.8	-0.6
Feb	-0.5	-1.4	-0.6	1.4	-2.3	-0.8	-1.3	-0.3	-0.1
Mar	-0.1	2.5	-0.6	1.8	1.9	-1.9	-2.0	0.2	1.1
Apr	-0.4	2.7	-0.6	-1.9	2.3	-1.9	-1.6	0.1	0.1
May	0.3	2.2	0.3	-1.0	1.9	-0.9	-0.5	1.5	0.3
Jun	0.6	0.8	0.6	-	0.5	0.1	0.5	1.5	0.2
Jul	0.8	0.6	0.5	4.0	0.3	0.5	0.3	0.9	1.2
Aug	0.1	-0.4	-0.1	2.6	-0.9	1.8	-0.6	-0.5	0.7
Sep	-0.5	-1.2	-0.6	1.6	-1.8	1.1	-0.8	-1.3	0.1
Oct	-0.4	-1.4	-0.4	0.7	-1.8	-	-0.2	-0.7	-0.3
Nov	0.1	-1.5	-	2.5	-1.1	-2.7	0.5	0.2	0.1
Dec	0.7	-0.5	0.6	2.7	0.5	-2.7	0.9	1.1	0.7
2008 Jan	0.5	-2.1	0.7	1.1	-0.9	-1.4	0.7	0.9	0.4
Feb	0.2	-2.4	0.6	-1.0	-1.2	1.6	0.3	0.3	-0.2
Mar	-0.4	-4.2	0.2	-1.9	-3.2	1.7	-	-0.4	-0.7
Apr	-0.5	-3.0	-0.2	-0.7	-2.5	0.9	-0.3	-0.5	-0.8
May	-0.9	-1.9	-0.8	-0.7	-1.6	-2.0	-1.0	-0.6	-1.0
Jun	-1.1	-0.4	-1.3	-0.5	-0.2	-2.7	-1.5	-0.9	-1.0
Jul	-1.6	-0.9	-1.7	-1.6	-0.5	-3.9	-1.5	-1.6	-1.4
Aug	-1.7	-2.2	-1.8	-0.5	-2.2	-3.9	-1.0	-2.4	-1.5
Sep	-1.8	-1.2	-1.9	-0.9	-0.8	-4.0	-0.7	-2.6	-1.8
Oct	-2.1	-1.0	-2.4	-0.9	-	-4.1	-0.8	-2.9	-2.4
Nov	-3.1	0.2	-3.6	-1.9	2.1	-4.9	-1.7	-3.8	-3.4
Dec	-4.5	-3.2	-4.9	-1.3	-2.0	-7.1	-2.2	-5.2	-5.2
2009 Jan	-5.6	-3.1	-6.4	-1.0	-1.9	-8.8 [†]	-2.4 [†]	-7.7 [†]	-6.3
Feb	-5.8	-4.3	-6.5	-1.0	-3.0	-9.6	-1.4	-8.7	-6.8

¹ Output index numbers include adjustments, as necessary, to compensate for the use of sales indicators.

[†] indicates that data are new or have been revised. The period marked is the earliest in the table to have been revised.

² Any apparent inconsistencies between the index numbers and the percentage changes shown in these tables are due to rounding.

IOP5 Output of the production industries

Chained volume indices of gross value added^{1,2}

continued

Seasonally adjusted 2003 = 100

Section	Coke, refined petrol & nuclear fuels	Chemicals and man-made fibres	Basic metals and metal products	Engineering and allied industries	Food, drink and tobacco	Textiles, leather and clothing	Other manufacturing
	DF	DG	DJ	DK_DM	DA	DB_DC	DD_DN
Latest weight	13.0	88.4	80.8	238.6	117.2	26.0	228.8
	CKZF	CKZG	CKZJ	AGXS	CKZA	AGVO	AGXQ
2004	107.8	103.6	102.7	104.4	102.0	89.5	100.4
2005	111.0	106.5	103.6	103.8	103.6	87.8	98.1
2006	105.4	110.0	105.1	108.0	102.9	88.0	98.9
2007	109.6	108.6	105.9	109.5	101.8	85.8	98.9
2008	113.9	109.0	101.5	106.3	99.7	86.1	94.9
2007 Q4	112.5	109.0	105.4	109.7	101.3	85.9	99.9
2008 Q1	114.9	110.8	105.2	110.0	101.7	86.5	99.3
Q2	114.4	110.2	104.7	109.1	99.8	86.6	97.0
Q3	111.1	110.3	102.9	105.8	99.4	86.7	94.5
Q4	115.1	104.6	93.2	100.5	98.0	84.6	89.0
2007 Dec	111.0	109.8	105.0	110.2	101.2	85.5	99.3
2008 Jan	113.6	110.6	104.8	110.6	101.7	86.1	99.6
Feb	115.2	111.8	105.6	109.8	102.0	86.6	99.7
Mar	116.0	110.1	105.1	109.7	101.6	86.7	98.5
Apr	116.4	109.4	105.0	110.3	100.4	86.9	98.0
May	111.8	110.3	104.4	109.2	100.0	86.4	97.0
Jun	114.8	110.9	104.6	107.8	98.9	86.5	95.9
Jul	111.0	111.5	103.8	107.0	99.0	87.7	95.4
Aug	109.8	111.0	102.9	105.7	99.7	86.7	94.5
Sep	112.5	108.2	102.1	104.7	99.6	85.5	93.6
Oct	113.1	109.7	97.5	103.6	99.3	84.0	90.7
Nov	114.1	102.8	93.1	99.7	98.4	85.7	88.9
Dec	118.2	101.2	89.0	98.2	96.3	83.9	87.4
2009 Jan	116.5 [†]	102.4 [†]	86.1 [†]	90.1 [†]	97.8 [†]	82.6 [†]	86.0 [†]
Feb	116.6	102.6	84.7	88.9	98.0	81.9	84.9
Percentage change, latest year on previous year							
2004	7.8	3.6	2.7	4.4	2.0	-10.5	0.4
2005	2.9	2.8	0.9	-0.6	1.6	-1.9	-2.3
2006	-5.1	3.2	1.5	4.1	-0.7	0.2	0.8
2007	4.0	-1.2	0.7	1.4	-1.0	-2.5	-
2008	3.9	0.3	-4.1	-2.8	-2.1	0.4	-4.0
Percentage change, latest 3 months on previous 3 months							
2006 Dec	1.0	-0.5	-0.4	0.5	1.0	1.9	-0.8
2007 Jan	6.9	-0.9	-0.5	0.6	0.4	0.6	-1.2
Feb	7.3	-1.2	0.5	-0.4	-0.7	-1.4	-1.2
Mar	2.9	-1.1	0.8	0.1	-1.8	-4.8	-0.8
Apr	-2.5	-1.3	0.3	-0.3	-1.5	-3.4	-0.1
May	-3.0	-0.9	-0.2	0.8	-0.5	-0.3	0.9
Jun	-1.1	-0.9	0.1	0.9	0.2	2.5	1.3
Jul	-	-1.1	0.3	1.0	-0.2	2.9	1.0
Aug	0.8	-1.5	0.1	0.1	-0.7	1.9	0.2
Sep	2.9	-1.3	-0.7	-1.0	-0.6	1.1	-0.2
Oct	5.4	-0.3	-1.0	-1.1	-0.5	0.5	0.2
Nov	4.9	0.7	-0.8	-0.5	-0.2	-0.8	0.6
Dec	2.0	1.7	-0.2	0.6	-0.3	-1.3	1.1
2008 Jan	-0.3	2.2	0.1	1.1	0.1	-1.7	0.5
Feb	0.1	2.3	-0.2	1.0	0.2	-0.3	-
Mar	2.1	1.6	-0.2	0.3	0.4	0.6	-0.6
Apr	3.2	0.5	-	-0.2	-0.2	1.2	-1.0
May	1.3	-0.7	-0.3	-0.4	-0.9	0.7	-1.7
Jun	-0.5	-0.6	-0.5	-0.9	-1.9	0.1	-2.3
Jul	-2.9	0.4	-1.0	-1.8	-2.0	0.2	-2.6
Aug	-2.5	1.1	-1.1	-2.7	-1.4	0.4	-2.6
Sep	-2.8	0.1	-1.7	-3.0	-0.4	0.1	-2.6
Oct	-0.6	-1.1	-3.3	-3.1	0.2	-1.7	-3.4
Nov	1.2	-3.8	-6.0	-3.9	-0.1	-2.2	-4.4
Dec	3.6	-5.2	-9.4	-5.0	-1.4	-2.4	-5.8
2009 Jan	4.0 [†]	-6.9 [†]	-11.3 [†]	-8.3 [†]	-2.0 [†]	-1.5 [†]	-5.9 [†]
Feb	3.4	-4.5	-11.2	-10.0	-1.7	-2.7	-5.4

[†] indicates that data are new or have been revised. The period marked is the earliest in the table to have been revised.

IOP5R Revisions to previously published output of production industries¹

Seasonally adjusted 2003 = 100

Section	Broad industry groups					Main industrial groupings			
	Production industries	Mining and Quarrying inc Oil and Gas Extraction	Manufacturing	Electricity, Gas and Water Supply	Oil and Gas Extraction	Consumer durables	Consumer non-durables	Capital goods	Intermediate goods and energy
	C+D+E	C	D	E	C_1	MG-DUR	MG-NDUR	MG-CAP	MG-INEN
Latest weight	1 000.0	117.4	792.8	89.8	106.5	36.2	272.3	214.3	477.2
	CKYW	CKYX	CKYY	CKYZ	CKYO	UFIU	UFJS	UFIL	JMOH
2004	-	-	-	-	-	-	-	-	-
2005	-	-	-	-	-	-	-	-	-
2006	-	-	-	-	-	-	-	-	-
2007	-	-	-	-	-	-	-	-	-
2008	-	-	-	-	-	-	-	-	-
2007 Q4	-	-	-	-	-	-	-	-	-
2008 Q1	-	-	-	-	-	-	-	-	-
Q2	-	-	-	-	-	-	-	-	-
Q3	-	-	-	-	-	-	-	-	-
Q4	-	-	-	-	-	-	-	-	-
2007 Dec	-	-	-	-	-	-	-	-	-
2008 Jan	-	-	-	-	-	-	-	-	-
Feb	-	-	-	-	-	-	-	-	-
Mar	-	-	-	-	-	-	-	-	-
Apr	-	-	-	-	-	-	-	-	-
May	-	-	-	-	-	-	-	-	-
Jun	-	-	-	-	-	-	-	-	-
Jul	-	-	-	-	-	-	-	-	-
Aug	-	-	-	-	-	-	-	-	-
Sep	-	-	-	-	-	-	-	-	-
Oct	-	-	-	-	-	-	-	-	-
Nov	-	-	-	-	-	-	-	-	-
Dec	-	-	-	-	-	-	-	-	-
2009 Jan	-0.1	0.1	-0.2	-	0.1	0.1	0.3	-0.7	-0.1
Percentage change, latest year on previous year									
2004	-	-	-	-	-	-	-	-	-
2005	-	-	-	-	-	-	-	-	-
2006	-	-	-	-	-	-	-	-	-
2007	-	-	-	-	-	-	-	-	-
2008	-	-	-	-	-	-	-	-	-
Percentage change, latest 3 months on previous 3 months									
2006 Dec	-	-	-	-	-	-	-	-	-
2007 Jan	-	-	-	-	-	-	-	-	-
Feb	-	-	-	-	-	-	-	-	-
Mar	-	-	-	-	-	-	-	-	-
Apr	-	-	-	-	-	-	-	-	-
May	-	-	-	-	-	-	-	-	-
Jun	-	-	-	-	-	-	-	-	-
Jul	-	-	-	-	-	-	-	-	-
Aug	-	-	-	-	-	-	-	-	-
Sep	-	-	-	-	-	-	-	-	-
Oct	-	-	-	-	-	-	-	-	-
Nov	-	-	-	-	-	-	-	-	-
Dec	-	-	-	-	-	-	-	-	-
2008 Jan	-	-	-	-	-	-	-	-	-
Feb	-	-	-	-	-	-	-	-	-
Mar	-	-	-	-	-	-	-	-	-
Apr	-	-	-	-	-	-	-	-	-
May	-	-	-	-	-	-	-	-	-
Jun	-	-	-	-	-	-	-	-	-
Jul	-	-	-	-	-	-	-	-	-
Aug	-	-	-	-	-	-	-	-	-
Sep	-	-	-	-	-	-	-	-	-
Oct	-	-	-	-	-	-	-	-	-
Nov	-	-	-	-	-	-	-	-	-
Dec	-	-	-	-	-	-	-	-	-
2009 Jan	-	-	-	-	-	0.1	0.1	-0.3	-

1 Revisions are calculated using one decimal place data.

IOP5R Revisions to previously published output of production industries¹

continued

Seasonally adjusted 2003 = 100

Section	Coke, refined petrol & nuclear fuels	Chemicals and man-made fibres	Basic metals and metal products	Engineering and allied industries	Food, drink and tobacco	Textiles, leather and clothing	Other manufacturing
	DF	DG	DJ	DK_DM	DA	DB_DC	DD_DN
Latest weight	13.0	88.4	80.8	238.6	117.2	26.0	228.8
2004	CKZF	CKZG	CKZJ	AGXS	CKZA	AGVO	AGXQ
2005	-	-	-	-	-	-	-
2006	-	-	-	-	-	-	-
2007	-	-	-	-	-	-	-
2008	-	-	-	-	-	-	-
2007 Q4	-	-	-	-	-	-	-
2008 Q1	-	-	-	-	-	-	-
Q2	-	-	-	-	-	-	-
Q3	-	-	-	-	-	-	-
Q4	-	-	-	-	-	-	-
2007 Dec	-	-	-	-	-	-	-
2008 Jan	-	-	-	-	-	-	-
Feb	-	-	-	-	-	-	-
Mar	-	-	-	-	-	-	-
Apr	-	-	-	-	-	-	-
May	-	-	-	-	-	-	-
Jun	-	-	-	-	-	-	-
Jul	-	-	-	-	-	-	-
Aug	-	-	-	-	-	-	-
Sep	-	-	-	-	-	-	-
Oct	-	-	-	-	-	-	-
Nov	-	-	-	-	-	-	-
Dec	-	-	-	-	-	-	-
2009 Jan	-0.9	0.9	0.2	-0.5	0.7	-0.5	-0.7
Percentage change, latest year on previous year							
2004	-	-	-	-	-	-	-
2005	-	-	-	-	-	-	-
2006	-	-	-	-	-	-	-
2007	-	-	-	-	-	-	-
2008	-	-	-	-	-	-	-
Percentage change, latest 3 months on previous 3 months							
2006 Dec	-	-	-	-	-	-	-
2007 Jan	-	-	-	-	-	-	-
Feb	-	-	-	-	-	-	-
Mar	-	-	-	-	-	-	-
Apr	-	-	-	-	-	-	-
May	-	-	-	-	-	-	-
Jun	-	-	-	-	-	-	-
Jul	-	-	-	-	-	-	-
Aug	-	-	-	-	-	-	-
Sep	-	-	-	-	-	-	-
Oct	-	-	-	-	-	-	-
Nov	-	-	-	-	-	-	-
Dec	-	-	-	-	-	-	-
2008 Jan	-	-	-	-	-	-	-
Feb	-	-	-	-	-	-	-
Mar	-	-	-	-	-	-	-
Apr	-	-	-	-	-	-	-
May	-	-	-	-	-	-	-
Jun	-	-	-	-	-	-	-
Jul	-	-	-	-	-	-	-
Aug	-	-	-	-	-	-	-
Sep	-	-	-	-	-	-	-
Oct	-	-	-	-	-	-	-
Nov	-	-	-	-	-	-	-
Dec	-	-	-	-	-	-	-
2009 Jan	-0.2	0.2	0.1	-0.2	0.3	-0.1	-0.3