

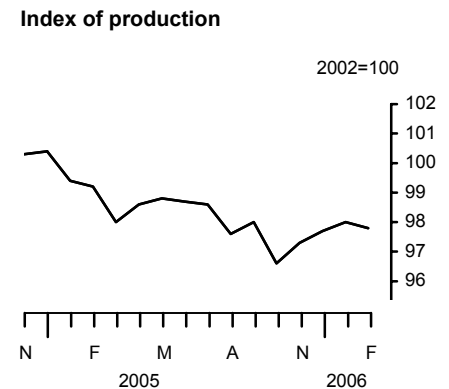
5 April 2006

Coverage
United Kingdom
Theme
The Economy

Index of production February 2006

In the three months to February, the seasonally adjusted chained volume index for the output of the production industries was 0.5 per cent higher than in the previous three months.

Between January and February output of the manufacturing industries fell by 0.2 per cent (note that monthly growth rates are volatile, see background note 2). There was a significant decrease in output of 1.8 per cent in the chemicals and man-made fibres industries. There was a significant increase in output of 1.9 per cent in the transport equipment industries.



In the latest three months, manufacturing output increased by 0.4 per cent, while mining and quarrying output increased by 1.5 per cent and output of the electricity, gas and water supply industries increased by 1.1 per cent, compared with the previous three months.

		Production	Mining and quarrying	Manufacturing	Electricity gas and water	
2002 weights		1000.0	121.4	790.5	88.1	
		Production index level	Percentage change: latest three months on previous three months			
2005	Sep	98.0	-0.7	-8.1	0.3	-0.8
	Oct	96.6	-1.3	-7.0	-0.6	-1.2
	Nov	97.3	-1.0	0.2	-1.2	0.0
	Dec	97.7	-0.9	0.8	-1.1	0.1
2006	Jan	98.0	0.3	2.8	-0.2	2.3
	Feb	97.8	0.5	1.5	0.4	1.1

Issued by
National Statistics
1 Drummond Gate
London SW1V 2QQ

Telephone
Press Office 020 7533 5725
Public Enquiries 0845 601 3034

Statistician
Andrew Walton 01633 812319
indexofproduction@ons.gov.uk

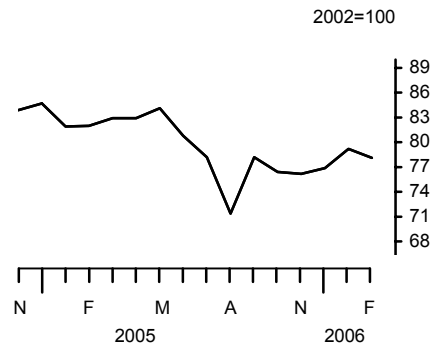
Internet
www.statistics.gov.uk

Next publication date
11 May 2006

Mining and quarrying

In the latest three months, mining and quarrying output rose by 1.5 per cent compared with the previous three months but was 5.8 per cent lower than the same period a year ago. Between January and February, mining and quarrying output decreased by 1.3 per cent due to falls in both oil and gas production.

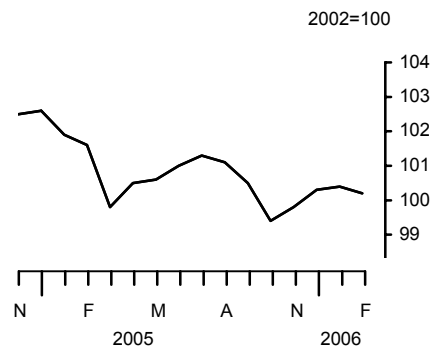
Mining & quarrying



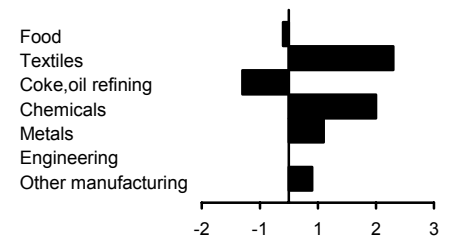
Manufacturing

Manufacturing output in the latest three months rose by 0.4 per cent compared with the previous three months. There was a significant increase in output of 1.5 per cent in the chemicals and man-made fibres industries. There was a significant decrease in output of 1.4 per cent in the electrical and optical equipment industries. Manufacturing output in the latest three months was 1.7 per cent lower than the same period a year ago.

Manufacturing



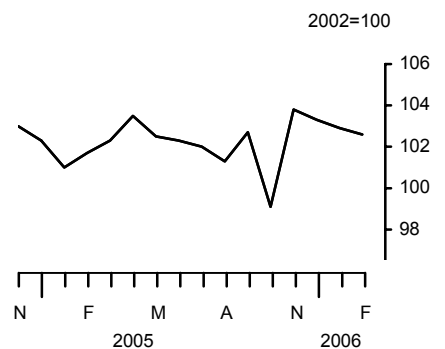
Percentage change on previous three months



Electricity, gas and water supply

Output of the electricity, gas and water supply industries in the latest three months rose by 1.1 per cent compared with the previous three months. Between January and February, output decreased by 0.3 per cent. In the latest three months, output in this sector was 1.3 per cent higher compared to the same period a year ago.

Electricity, gas & water

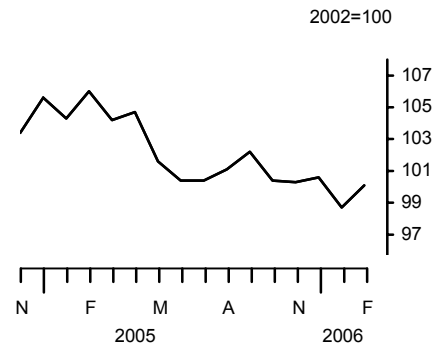




Market sectors

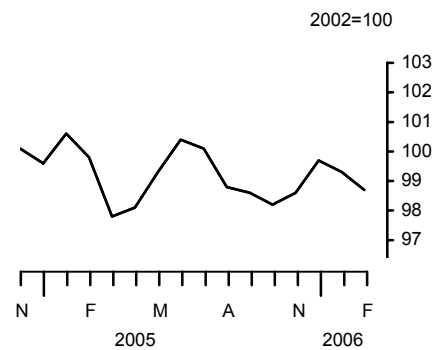
In the latest three months, output of the consumer durable goods industries fell by 1.2 per cent compared with the previous three months and was 5.3 per cent lower than the same period a year ago.

Consumer durables



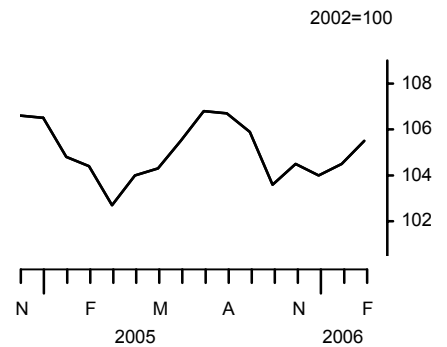
Output in the consumer non-durable goods industries rose by 0.8 per cent in the latest three months compared with the previous three months but was 0.7 per cent lower than the same period a year ago.

Consumer non-durables



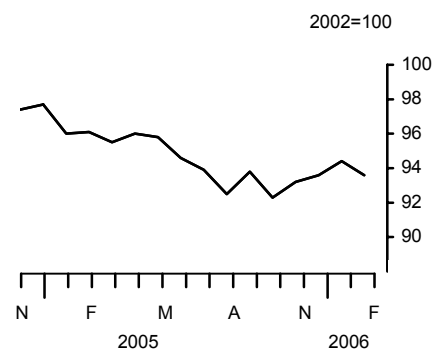
In the latest three months, output of the capital goods industries was flat compared with the previous three months and was 0.5 per cent lower than the same period a year ago.

Capital goods



Output in the intermediate goods and energy industries rose by 0.8 per cent in the latest three months compared with the previous three months but was 2.9 per cent lower than the same period a year ago.

Intermediate goods and energy



Revisions

This release conforms to the standard revisions policy for National Accounts. In this release the period open for revision is January 2006 only. Table IOP5AR shows the revisions to the estimates previously published on 9 March 2006.

Since last month a number of late responses have been received to the Monthly Production Inquiry. The impact of these late data, when combined with revisions caused by seasonal adjustment factors being re-estimated, is to revise the growth rate for the Index of Production for January by -0.1 per cent.

BACKGROUND NOTES

1. This First Release gives details of the index of output of the production industries in the United Kingdom. Index numbers of output in this First Release are on the base 2002=100 and are classified to the 2003 revision to the Standard Industrial Classification (SIC). The production industries, which accounted for 20.1 per cent of gross domestic product in 2002, cover mining and quarrying (Section C), manufacturing (Section D) and electricity, gas and water supply (Section E).

Interpreting the data

2. The monthly IoP data can be volatile. When looking at growth rates, it is recommended that users focus on the percentage change between the latest three months and the previous three months.

Status of figures and planned future revisions

3. Figures for the most recent months are provisional and subject to revision in light of (a) late responses to the Monthly Production Inquiry and (b) revisions to seasonal adjustment factors which are re-estimated every period and subject to annual review in the spring.

In the next release, which will contain figures for March 2006 and will be published on 11 May 2006, the periods open for revision according to the National Accounts policy will be January and February 2006 only.

Key quality issues

4. Common pitfalls in interpreting series: Expectations of accuracy and reliability in early estimates are often too high. Revisions are an inevitable consequence of the trade off between timeliness and accuracy. Early estimates are based on incomplete data.

Very few statistical revisions arise as a result of 'errors' in the popular sense of the word. All estimates, by definition, are subject to statistical 'error' but in this context the word refers to the uncertainty inherent in any process or calculation that uses sampling, estimation or modelling. Most revisions reflect either the adoption of new statistical techniques, or the incorporation of new information which allows the statistical error of previous estimates to be reduced. Only rarely are there avoidable 'errors' such as human or system failures, and such mistakes are made quite clear when they do occur.

Reliability

5. One indication of the reliability of the key indicators in this release can be obtained by monitoring the size of revisions. The table below is based on the revisions which have occurred over the last five years. Please note that these indicators only report summary measures for revisions. The revised data may, themselves, be subject to sampling or other sources of error.

The table below presents a summary of the differences between the first estimates published between March 2000 and February 2005 and the estimates published 12 months later.

	Value in latest period (per cent)	Revisions between first publication and estimates twelve months later (% points)	
		Average over the last five years	Average over the last five years without regard to sign (average absolute revision)
Production output – 3 month on 3 month growth rate	0.5	0.05	0.25
Manufacturing output – 3 month on 3 month growth rate	0.4	0.08	0.27
Production output – 1 month growth rate	-0.3	0.03	0.26
Manufacturing output – 1 month growth rate	-0.2	0.02	0.33

Spreadsheets giving revisions triangles of estimates for all months from December 1997 through to the current month, and the calculations behind the averages in the above table, are available on the National Statistics website at:

<http://www.statistics.gov.uk/statbase/Product.asp?vlnk=6230>

6. A statistical test has been applied to the average revisions to find out if they are statistically significantly different from zero. No such differences have been found.
7. The table uses historical data for the most recent 60 months, comparing the estimate at first publication with the estimate as published 12 months later. The numbers which underpin these averages will include normal changes due to late data and re-seasonal adjustment, but also significant methodological changes, the most recent of which occurred in October 2003 (see article "Index of Production redevelopment" in *Economic Trends*, October 2002).

Deflation

8. All series, unless otherwise quoted, are measured at constant market prices. Deflators adjust the value series to take out the effect of price changes to give the volume series.

Seasonal adjustment

9. The index numbers in this First Release are all seasonally adjusted. This aids interpretation by removing annually recurring fluctuations, for example, due to holidays or other regular seasonal patterns. Unadjusted data are also available.

Further information

10. The complete run of data in the tables of this First Release are also available to view and download in electronic format free of charge using the ONS **Time Series Data service**. Users can download the complete release in a choice of zipped formats, or view and download their own selections of individual series. The Time Series Data service can be accessed at:
<http://www.statistics.gov.uk/timeseries>

ONS provides an analysis of past revisions in the IoP and other First Releases which present time series. Details can be found at:

<http://www.statistics.gov.uk/cci/article.asp?ID=793>

ONS now publishes revisions triangles for all the main published key indicators on the National Statistics website. Details can be found at:

<http://www.statistics.gov.uk/cci/article.asp?ID=1026>

In addition, the methodology for the Index of Production is now available on the National Statistics website. Details can be found at:

<http://www.statistics.gov.uk/cci/article.asp?ID=1111>

A consultation document regarding Releases for Metalworking Machine Tools and Engineering Turnover and Orders is now available on the National Statistics website. Details can be found at:

http://www.statistics.gov.uk/about/Consultations/stop_metal.asp

Advance access

11. Details of the policy governing the release of new data are available from the press office. Also available is a list of those given pre-publication access to the contents of this release.

Code of Practice

12. **National Statistics** are produced to high professional standards set out in the National Statistics Code of Practice. They undergo regular quality assurance reviews to ensure that they meet customer needs. They are produced free from any political interference. © Crown copyright 2006.

IOP5A Output of the production industries

Chained volume indices of gross value added^{1,2}

Seasonally adjusted 2002 = 100

Section	Broad industry groups					Main industrial groupings			
	Production industries	Mining and Quarrying inc Oil and Gas Extraction	Manufacturing (Revised Definition)	Electricity, Gas and Water Supply	Oil and Gas Extraction	Consumer durables	Consumer non-durables	Capital goods	Intermediate goods and energy
	C+D+E	C	D	E	C_1	MG-DUR	MG-NDUR	MG-CAP	MG-INEN
Latest weight	1 000.0	121.4	790.5	88.1	110.7	36.9	268.7	213.4	481.0
2001	CKYW 102.6	CKYX 100.3	CKYY 103.2	CKYZ 100.5	CKZO 101.3	UFIU 98.7	UFJS 100.0	UFIL 108.4	JMOH 102.0
2002	100.0	100.0	100.0	100.0	100.0	100.0	100.0	100.0	100.0
2003	99.5	94.9	100.1	101.2	94.4	99.2	100.0	101.4	98.4
2004	100.1	86.8	101.8	103.5	85.9	104.9	99.8	104.7	97.9
2005	98.2	79.3	100.7	102.1	77.6	102.2	99.2	104.8	94.4
2004 Q4	100.0	83.5	102.1	103.1	81.8	104.8	99.7	106.1	97.0
2005 Q1	98.9	82.3	101.1	101.7	80.8	104.9	99.4	103.9	95.8
Q2	98.7	82.6	100.7	102.8	81.2	102.2	99.3	104.6	95.5
Q3	98.0	75.9	101.0	102.0	74.0	101.2	99.2	106.5	93.4
Q4	97.2	76.5	99.8	102.1	74.3	100.4	98.8	104.0	93.0
2004 Dec	100.4	84.7	102.6	102.3	82.8	105.6	99.6	106.5	97.7
2005 Jan	99.4	81.9	101.9	101.0	80.6	104.3	100.6	104.8	96.0
Feb	99.2	82.0	101.6	101.7	80.5	106.0	99.8	104.4	96.1
Mar	98.0	82.9	99.8	102.3	81.3	104.2	97.8	102.7	95.5
Apr	98.6	82.9	100.5	103.5	81.5	104.7	98.1	104.0	96.0
May	98.8	84.1	100.6	102.5	82.9	101.6	99.3	104.3	95.8
Jun	98.7	80.8	101.0	102.3	79.2	100.4	100.4	105.5	94.6
Jul	98.6	78.2	101.3	102.0	76.7	100.4	100.1	106.8	93.9
Aug	97.6	71.4	101.1	101.3	69.0	101.1	98.8	106.7	92.5
Sep	98.0	78.2	100.5	102.7	76.2	102.2	98.6	105.9	93.8
Oct	96.6	76.4	99.4	99.1	74.4	100.4	98.2	103.6	92.3
Nov	97.3	76.2	99.8	103.8	73.8	100.3	98.6	104.5	93.2
Dec	97.7	76.9	100.3	103.3	74.6	100.6	99.7	104.0	93.6
2006 Jan	98.0 [†]	79.2 [†]	100.4 [†]	102.9 [†]	77.2 [†]	98.7	99.3 [†]	104.5	94.4 [†]
Feb	97.8	78.1	100.2	102.6	76.6	100.1	98.7	105.5	93.6
Percentage change, latest year on previous year									
2001	-1.6	-5.5	-1.3	2.4	-5.8	2.5	1.2	-1.6	-3.4
2002	-2.5	-0.3	-3.1	-0.5	-1.2	1.3	-	-7.8	-1.9
2003	-0.5	-5.1	0.1	1.2	-5.6	-0.8	-	1.4	-1.6
2004	0.6	-8.4	1.7	2.3	-9.0	5.8	-0.2	3.2	-0.6
2005	-1.9	-8.7	-1.1	-1.4	-9.7	-2.6	-0.7	0.1	-3.5
Percentage change, latest 3 months on previous 3 months									
2003 Dec	0.6	-2.6	0.9	1.9	-2.9	1.1	0.4	1.8	0.1
2004 Jan	-	-3.4	0.5	-0.1	-3.7	1.9	-0.3	1.3	-0.6
Feb	-	-3.5	0.3	0.8	-3.4	1.1	-0.4	0.4	-0.1
Mar	-	-2.3	0.3	0.7	-1.9	2.4	-0.6	-0.3	0.4
Apr	0.6	-1.1	0.7	1.3	-0.8	3.0	0.2	-	0.9
May	0.8	0.1	1.1	-0.5	0.1	3.5	0.2	1.1	0.8
Jun	0.6	0.4	0.8	-1.1	-	2.6	-	1.4	0.3
Jul	-	1.1	0.1	-1.3	0.5	2.4	-1.6	1.5	0.1
Aug	-0.6	-	-0.8	-	-0.6	2.1	-1.6	-	-0.6
Sep	-1.0	-4.2	-0.8	0.8	-4.7	1.4	-1.4	0.3	-1.7
Oct	-1.0	-7.9	-0.4	1.2	-8.6	-0.4	0.4	0.2	-2.5
Nov	-0.5	-7.8	0.5	-	-8.6	-1.9	0.6	1.5	-1.9
Dec	0.3	-2.5	0.7	-0.7	-3.2	-1.9	0.7	1.2	-0.2
2005 Jan	0.6	0.9	0.9	-1.9	0.6	-1.4	0.6	0.9	0.7
Feb	-	1.0	0.1	-1.8	1.0	0.4	0.3	-0.7	0.2
Mar	-1.1	-1.5	-1.0	-1.4	-1.2	-	-0.3	-2.1	-1.2
Apr	-1.4	-1.0	-1.7	0.4	-0.9	0.5	-1.5	-2.2	-1.2
May	-1.2	0.6	-1.7	1.1	0.7	-1.7	-1.6	-1.5	-0.9
Jun	-0.2	0.4	-0.4	1.1	0.5	-2.5	-0.2	0.6	-0.4
Jul	0.1	-1.9	0.4	-0.2	-1.8	-4.0	1.3	1.8	-1.1
Aug	-0.2	-7.8	0.9	-0.9	-8.4	-2.8	1.4	2.6	-2.2
Sep	-0.7	-8.1	0.3	-0.8	-8.9	-1.0	-0.1	1.8	-2.2
Oct	-1.3	-7.0	-0.6	-1.2	-8.1	0.4	-1.4	-0.1	-2.0
Nov	-1.0	0.2	-1.2	-	-0.3	0.3	-1.3	-1.6	-0.6
Dec	-0.9	0.8	-1.1	0.1	0.4	-0.8	-0.4	-2.3	-0.4
2006 Jan	0.3	2.8 [†]	-0.2	2.3 [†]	2.8 [†]	-1.3 [†]	0.7	-1.1 [†]	0.9
Feb	0.5	1.5	0.4	1.1	1.8	-1.2	0.8	-	0.8

1 Output index numbers include adjustments, as necessary, to compensate for the use of sales indicators.

[†] indicates that data are new or have been revised. The period marked is the earliest in the table to have been revised.

2 Any apparent inconsistencies between the index numbers and the percentage changes shown in these tables are due to rounding.

IOP5A Output of the production industries

Chained volume indices of gross value added^{1,2}

continued

Seasonally adjusted 2002 = 100

Section	Coke, refined petrol & nuclear fuels	Chemicals and man-made fibres	Basic metals and metal products	Engineering and allied industries	Food, drink and tobacco	Textiles, leather and clothing	Other manufacturing
	DF	DG	DJ	DK_DM	DA	DB_DC	DD_DN
Latest weight	13.1	86.5	79.9	240.0	112.5	30.4	228.0
2001	CKZF 97.8	CKZG 100.0	CKZJ 104.2	AGXS 108.3	CKZA 99.0	AGVO 108.1	AGXQ 100.9
2002	100.0	100.0	100.0	100.0	100.0	100.0	100.0
2003	92.4	100.9	97.7	101.1	99.9	98.1	100.3
2004	97.4	104.2	100.9	105.0	101.5	87.5	100.0
2005	98.2	105.2	100.9	104.0	102.1	85.6	96.8
2004 Q4	97.6	103.7	101.7	106.2	102.2	85.2	99.9
2005 Q1	106.2	104.6	101.1	103.6	102.0	83.4	98.8
Q2	98.1	103.9	100.9	104.0	103.0	86.4	96.8
Q3	97.1	105.9	100.8	105.5	102.0	86.3	96.2
Q4	91.3	106.3	100.8	103.0	101.3	86.2	95.2
2004 Dec	99.7	103.7	101.8	106.6	102.4	85.4	100.8
2005 Jan	104.1	106.2	100.9	104.6	102.2	83.3	100.0
Feb	106.3	104.6	102.1	104.0	102.6	83.8	99.5
Mar	108.0	102.9	100.2	102.2	101.2	83.1	97.0
Apr	101.7	103.0	101.5	103.8	101.3	85.3	97.1
May	96.8	103.3	101.3	103.8	103.5	85.9	96.7
Jun	95.8	105.4	99.8	104.4	104.3	88.0	96.6
Jul	96.9	105.6	101.2	105.5	103.2	87.3	96.5
Aug	96.6	106.8	100.7	105.9	101.6	85.7	96.2
Sep	97.9	105.4	100.5	105.0	101.1	85.8	95.8
Oct	93.7	105.8	100.3	102.7	101.2	84.9	94.6
Nov	89.2	105.0	100.5	103.4	101.3	85.5	95.5
Dec	91.0	108.1	101.5	103.0	101.5	88.1	95.5
2006 Jan	93.9 [†]	107.4	101.2 [†]	103.6 [†]	100.9 [†]	86.6 [†]	96.0 [†]
Feb	93.7	105.4	100.5	104.4	101.0	86.3	95.6
Percentage change, latest year on previous year							
2001	-5.8	6.1	-2.1	-3.4	0.8	-10.8	-0.5
2002	2.3	-	-4.0	-7.7	1.0	-7.5	-0.9
2003	-7.6	0.9	-2.3	1.1	-0.1	-1.9	0.3
2004	5.4	3.2	3.3	3.9	1.7	-10.8	-0.2
2005	0.7	1.0	-	-1.0	0.5	-2.2	-3.3
Percentage change, latest 3 months on previous 3 months							
2003 Dec	-1.2	2.5	0.8	1.6	0.4	-2.4	0.4
2004 Jan	1.5	3.2	0.2	1.2	-0.4	-3.4	-0.2
Feb	6.3	2.6	0.6	0.6	-0.6	-5.1	-0.1
Mar	9.4	2.1	0.4	0.6	-0.3	-6.7	-0.1
Apr	8.5	1.2	1.3	1.2	0.7	-6.8	0.4
May	4.5	0.5	2.6	2.0	2.4	-5.0	-0.3
Jun	-0.6	-0.7	2.8	1.9	2.6	-3.8	-0.8
Jul	-3.8	-2.6	2.5	1.7	1.5	-2.5	-1.7
Aug	-3.6	-2.6	0.8	0.1	-0.3	-2.8	-1.4
Sep	-2.0	-1.6	0.6	-	-1.3	-0.9	-1.5
Oct	-0.1	1.5	-	-0.5	-0.8	-1.0	-0.9
Nov	-	1.8	0.5	1.0	-0.2	-0.4	-0.2
Dec	1.8	0.6	-0.2	0.9	0.8	-1.6	1.1
2005 Jan	3.7	-	0.1	0.8	0.8	-1.6	1.7
Feb	7.7	0.5	-0.5	-1.0	0.7	-1.9	0.9
Mar	8.7	0.9	-0.6	-2.5	-0.2	-2.1	-1.1
Apr	5.5	-0.8	-0.6	-2.6	-0.6	-0.7	-2.5
May	-1.2	-1.6	-0.6	-1.7	-0.4	0.7	-3.2
Jun	-7.6	-0.6	-0.2	0.4	1.0	3.6	-2.0
Jul	-8.4	1.2	-0.5	1.2	1.9	3.6	-1.3
Aug	-5.6	2.7	-0.5	1.9	1.0	2.6	-0.5
Sep	-1.0	1.9	-0.1	1.4	-1.0	-0.1	-0.7
Oct	-0.5	1.2	-0.3	-	-2.3	-1.8	-1.1
Nov	-3.0	-0.5	-0.1	-1.5	-1.8	-1.8	-1.2
Dec	-6.0	0.4	-	-2.3	-0.6	-0.1	-1.0
2006 Jan	-4.9 [†]	0.8	0.6 [†]	-1.1	-	1.5 [†]	0.1 [†]
Feb	-0.8	1.5	0.6	-	-0.1	1.8	0.4

[†] indicates that data are new or have been revised. The period marked is the earliest in the table to have been revised.

IOP5AR Revisions to previously published output of production industries¹

Seasonally adjusted 2002 = 100

Section	Broad industry groups					Main industrial groupings				
	Production industries C+D+E	Mining and Quarrying inc Oil and Gas Extraction C	Manufacturing (Revised Definition) D	Electricity, Gas and Water Supply E	Oil and Gas Extraction C_1	Consumer durables MG-DUR	Consumer non-durables MG-NDUR	Capital goods MG-CAP	Intermediate goods and energy MG-INEN	
Latest weight	1 000.0	121.4	790.5	88.1	110.7	36.9	268.7	213.4	481.0	
	CKYW	CKYX	CKYY	CKYZ	CKYO	UFIU	UFJS	UFIL	JMOH	
2001	-	-	-	-	-	-	-	-	-	
2002	-	-	-	-	-	-	-	-	-	
2003	-	-	-	-	-	-	-	-	-	
2004	-	-	-	-	-	-	-	-	-	
2005	-	-	-	-	-	-	-	-	-	
2004 Q4	-	-	-	-	-	-	-	-	-	
2005 Q1	-	-	-	-	-	-	-	-	-	
Q2	-	-	-	-	-	-	-	-	-	
Q3	-	-	-	-	-	-	-	-	-	
Q4	-	-	-	-	-	-	-	-	-	
2004 Nov	-	-	-	-	-	-	-	-	-	
Dec	-	-	-	-	-	-	-	-	-	
2005 Jan	-	-	-	-	-	-	-	-	-	
Feb	-	-	-	-	-	-	-	-	-	
Mar	-	-	-	-	-	-	-	-	-	
Apr	-	-	-	-	-	-	-	-	-	
May	-	-	-	-	-	-	-	-	-	
Jun	-	-	-	-	-	-	-	-	-	
Jul	-	-	-	-	-	-	-	-	-	
Aug	-	-	-	-	-	-	-	-	-	
Sep	-	-	-	-	-	-	-	-	-	
Oct	-	-	-	-	-	-	-	-	-	
Nov	-	-	-	-	-	-	-	-	-	
Dec	-	-	-	-	-	-	-	-	-	
2006 Jan	-0.1	0.4	-0.1	-0.1	0.5	-	-0.1	-	-0.1	
Percentage change, latest year on previous year										
2001	-	-	-	-	-	-	-	-	-	
2002	-	-	-	-	-	-	-	-	-	
2003	-	-	-	-	-	-	-	-	-	
2004	-	-	-	-	-	-	-	-	-	
2005	-	-	-	-	-	-	-	-	-	
Percentage change, latest 3 months on previous 3 months										
2003 Nov	-	-	-	-	-	-	-	-	-	
Dec	-	-	-	-	-	-	-	-	-	
2004 Jan	-	-	-	-	-	-	-	-	-	
Feb	-	-	-	-	-	-	-	-	-	
Mar	-	-	-	-	-	-	-	-	-	
Apr	-	-	-	-	-	-	-	-	-	
May	-	-	-	-	-	-	-	-	-	
Jun	-	-	-	-	-	-	-	-	-	
Jul	-	-	-	-	-	-	-	-	-	
Aug	-	-	-	-	-	-	-	-	-	
Sep	-	-	-	-	-	-	-	-	-	
Oct	-	-	-	-	-	-	-	-	-	
Nov	-	-	-	-	-	-	-	-	-	
Dec	-	-	-	-	-	-	-	-	-	
2005 Jan	-	-	-	-	-	-	-	-	-	
Feb	-	-	-	-	-	-	-	-	-	
Mar	-	-	-	-	-	-	-	-	-	
Apr	-	-	-	-	-	-	-	-	-	
May	-	-	-	-	-	-	-	-	-	
Jun	-	-	-	-	-	-	-	-	-	
Jul	-	-	-	-	-	-	-	-	-	
Aug	-	-	-	-	-	-	-	-	-	
Sep	-	-	-	-	-	-	-	-	-	
Oct	-	-	-	-	-	-	-	-	-	
Nov	-	-	-	-	-	-	-	-	-	
Dec	-	-	-	-	-	-	-	-	-	
2006 Jan	-	0.2	-	-0.1	0.2	0.1	-	-0.1	-	

¹ Revisions are calculated using one decimal place data.

IOP5AR Revisions to previously published output of production industries¹

continued

Seasonally adjusted 2002 = 100

Section	Coke, refined petrol & nuclear fuels DF	Chemicals and man-made fibres DG	Basic metals and metal products DJ	Engineering and allied industries DK_DM	Food, drink and tobacco DA	Textiles, leather and clothing DB_DC	Other manufacturing DD_DN
Latest weight	13.1	86.5	79.9	240.0	112.5	30.4	228.0
	CKZF	CKZG	CKZJ	AGXS	CKZA	AGVO	AGXQ
2001	-	-	-	-	-	-	-
2002	-	-	-	-	-	-	-
2003	-	-	-	-	-	-	-
2004	-	-	-	-	-	-	-
2005	-	-	-	-	-	-	-
2004 Q4	-	-	-	-	-	-	-
2005 Q1	-	-	-	-	-	-	-
Q2	-	-	-	-	-	-	-
Q3	-	-	-	-	-	-	-
Q4	-	-	-	-	-	-	-
2004 Nov	-	-	-	-	-	-	-
Dec	-	-	-	-	-	-	-
2005 Jan	-	-	-	-	-	-	-
Feb	-	-	-	-	-	-	-
Mar	-	-	-	-	-	-	-
Apr	-	-	-	-	-	-	-
May	-	-	-	-	-	-	-
Jun	-	-	-	-	-	-	-
Jul	-	-	-	-	-	-	-
Aug	-	-	-	-	-	-	-
Sep	-	-	-	-	-	-	-
Oct	-	-	-	-	-	-	-
Nov	-	-	-	-	-	-	-
Dec	-	-	-	-	-	-	-
2006 Jan	0.9	-	0.3	-0.2	-0.3	-0.4	-0.2
Percentage change, latest year on previous year							
2001	-	-	-	-	-	-	-
2002	-	-	-	-	-	-	-
2003	-	-	-	-	-	-	-
2004	-	-	-	-	-	-	-
2005	-	-	-	-	-	-	-
Percentage change, latest 3 months on previous 3 months							
2003 Nov	-	-	-	-	-	-	-
Dec	-	-	-	-	-	-	-
2004 Jan	-	-	-	-	-	-	-
Feb	-	-	-	-	-	-	-
Mar	-	-	-	-	-	-	-
Apr	-	-	-	-	-	-	-
May	-	-	-	-	-	-	-
Jun	-	-	-	-	-	-	-
Jul	-	-	-	-	-	-	-
Aug	-	-	-	-	-	-	-
Sep	-	-	-	-	-	-	-
Oct	-	-	-	-	-	-	-
Nov	-	-	-	-	-	-	-
Dec	-	-	-	-	-	-	-
2005 Jan	-	-	-	-	-	-	-
Feb	-	-	-	-	-	-	-
Mar	-	-	-	-	-	-	-
Apr	-	-	-	-	-	-	-
May	-	-	-	-	-	-	-
Jun	-	-	-	-	-	-	-
Jul	-	-	-	-	-	-	-
Aug	-	-	-	-	-	-	-
Sep	-	-	-	-	-	-	-
Oct	-	-	-	-	-	-	-
Nov	-	-	-	-	-	-	-
Dec	-	-	-	-	-	-	-
2006 Jan	0.3	-	0.1	-	-	-0.1	-0.1