

6 February 2009

**Coverage**  
United Kingdom

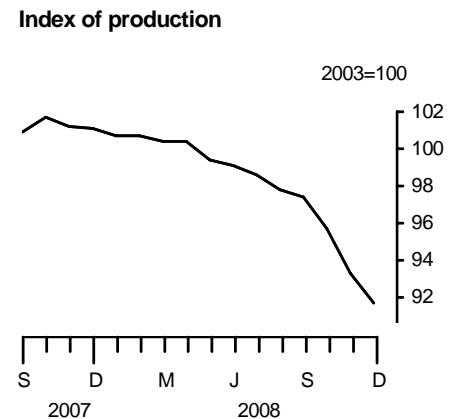
**Theme**  
The Economy



## Index of production December 2008

In the fourth quarter of 2008, the seasonally adjusted chained volume index for the output of the production industries decreased by 4.5 per cent compared with the previous quarter.

Between November and December output of the manufacturing industries fell by 2.2 per cent (note that monthly growth rates are volatile, see background note 2). There were widespread falls in manufacturing. The most significant decreases in output were 4.3 per cent in the basic metals and metal products industries, 5.0 per cent in the machinery and equipment industries and 2.3 per cent in the food, drink and tobacco industries. There were no significant increases.



In the latest quarter, manufacturing output decreased by 5.1 per cent, mining and quarrying output decreased by 3.2 per cent and output of the electricity, gas and water supply industries decreased by 0.1 per cent compared with the previous quarter.

For 2008 as a whole, production industries' output was 2.9 per cent lower than in 2007. Within this, manufacturing output fell by 2.9 per cent, mining and quarrying output (including oil and gas extraction) decreased by 6.7 per cent, but output of the electricity, gas and water supply industries increased by 0.4 per cent.

**Issued by**

Office for National Statistics  
Government Buildings  
Cardiff Road  
Newport  
NP10 8XG

**Contact**  
Media Office  
0845 604 1858  
Media Office on-call  
07867 906553

Statistician Phillip Davies  
01633 456492

**Email**  
indexofproduction@ons.gov.uk

**www.statistics.gov.uk**

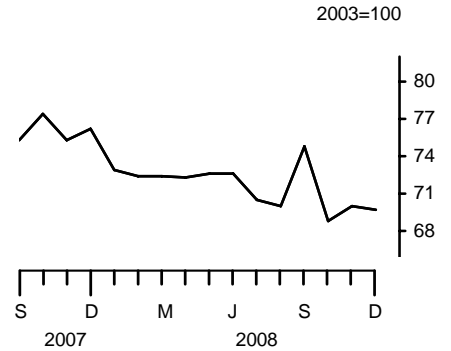
**Next publication date**  
10 March 2009

		Production	Mining and quarrying	Manufacturing	Electricity gas and water	
<b>2003 weights</b>		1000.0	117.4	792.8	89.8	
		Production index level	Percentage change: latest three months on previous three months			
2008	Jul	98.6	-1.4	-0.7	-1.5	-1.6
	Aug	97.8	-1.6	-2.0	-1.7	-0.3
	Sep	97.4	-1.7	-1.0	-1.9	-0.6
	Oct	95.7	-2.1	-1.0	-2.4	-0.2
	Nov	93.3	-3.1	0.2	-3.6	-1.1
	Dec	91.7	-4.5	-3.2	-5.1	-0.1

**Mining and quarrying**

In the latest quarter, mining and quarrying output fell by 3.2 per cent compared with the previous quarter and was 8.9 per cent lower than the same period a year ago. Between November and December, mining and quarrying output decreased by 0.4 per cent with a fall in oil and gas production.

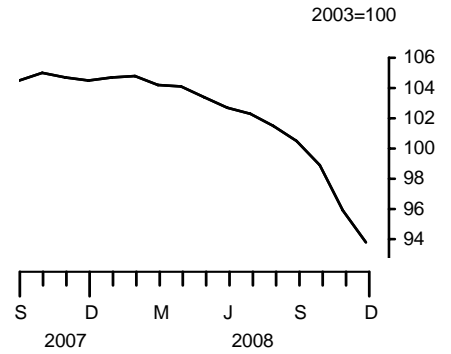
**Mining & quarrying**



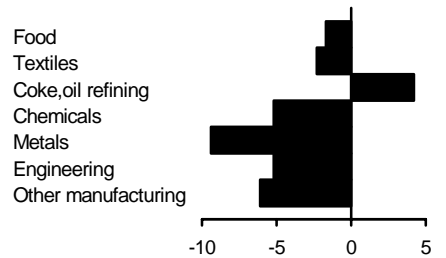
**Manufacturing**

Manufacturing output in the latest quarter fell by 5.1 per cent compared with the previous quarter. There were widespread decreases in output. The most significant falls were 9.4 per cent in the basic metals & metal products industries, 7.7 per cent in the transport equipment industries paper and 5.8 per cent in the paper, printing and publishing industries. There were no significant increases. Manufacturing output in the latest quarter was 8.1 per cent lower than the same period a year ago.

**Manufacturing**



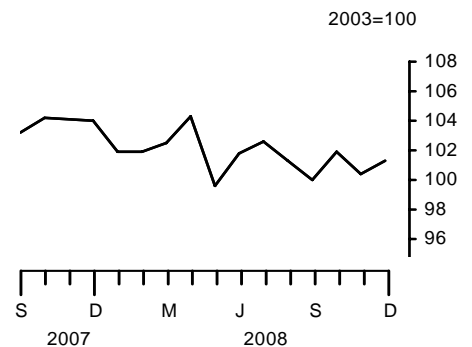
**Percentage change on previous three months**



**Electricity, gas and water supply**

Output of the electricity, gas and water supply industries in the latest quarter fell by 0.1 per cent compared with the previous quarter. Between November and December, energy supply output increased by 0.9 per cent. In the latest quarter, output in this sector was 2.8 per cent lower compared with the same period a year ago.

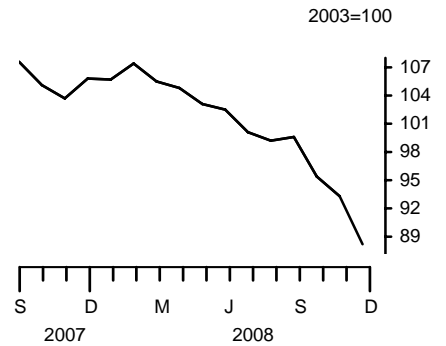
**Electricity, gas & water**



**Market sectors**

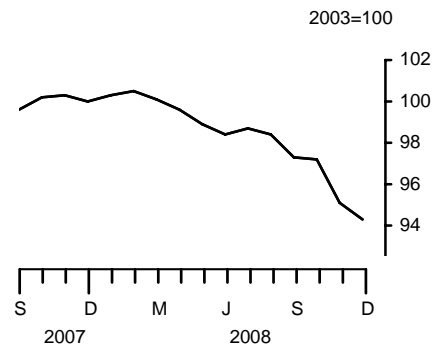
In the latest quarter, output of the consumer durable goods industries fell by 7.4 per cent compared with the previous quarter and was 12.0 per cent lower than the same period a year ago.

**Consumer durables**



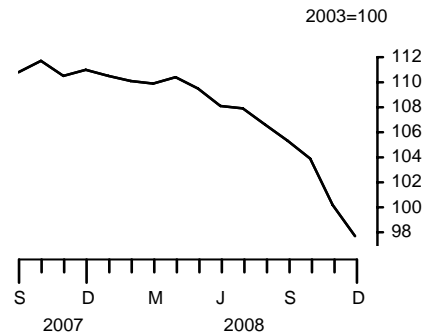
Output in the consumer non-durable goods industries fell by 2.6 per cent in the latest quarter compared with the previous quarter and was 4.6 per cent lower than the same period a year ago.

**Consumer non-durables**



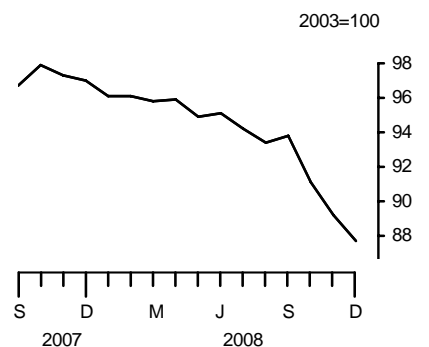
In the latest quarter, output of the capital goods industries fell by 5.6 per cent compared with the previous quarter and was 9.4 per cent lower than the same period a year ago.

**Capital goods**



Output in the intermediate goods and energy industries fell by 4.8 per cent in the latest quarter compared with the previous quarter and was 8.2 per cent lower than the same period a year ago.

**Intermediate goods and energy**



## Revisions

This release conforms to the standard revisions policy for National Accounts. In this release the earliest period open for revision is January 2008. Table IOP5R shows the revisions to the estimates previously published on 9 January 2009.

Since last month a number of late responses have been received to the Monthly Production Inquiry. In addition, the seasonal adjustment factors have been re-estimated throughout the open period.

The tables below set out the revisions to monthly growth rates to the Index of Production and the Index of Manufacturing for the period open to revision.

### Revisions to the Index of Production

Month on month	IoP November First Release Production growth rates %	Revised Production growth rates %	Total revision to growth rates %
Jan 2008	-0.3	-0.4	-0.1
Feb 2008	0.1	0.0	-0.1
Mar 2008	-0.4	-0.4	0.0
Apr 2008	0.0	0.0	0.0
May 2008	-0.8	-0.9	-0.1
Jun 2008	-0.3	-0.4	-0.1
Jul 2008	-0.4	-0.5	-0.1
Aug 2008	-0.7	-0.8	-0.1
Sep 2008	-0.3	-0.4	-0.1
Oct 2008	-1.6	-1.8	-0.2
Nov 2008	-2.3	-2.5	-0.2

Revisions to the Index of Manufacturing

Month on month	IoP November First Release Manufacturing growth rates %	Revised Manufacturing growth rates %	Total revision to growth rates %
Jan 2008	0.3	0.2	-0.1
Feb 2008	0.2	0.1	-0.1
Mar 2008	-0.5	-0.5	0.0
Apr 2008	-0.2	-0.2	0.0
May 2008	-0.6	-0.7	-0.1
Jun 2008	-0.6	-0.7	-0.1
Jul 2008	-0.3	-0.4	-0.1
Aug 2008	-0.6	-0.7	-0.1
Sep 2008	-0.9	-1.0	-0.1
Oct 2008	-1.4	-1.5	-0.1
Nov 2008	-2.9	-3.0	-0.1

## BACKGROUND NOTES

1. This First Release gives details of the index of output of the production industries in the United Kingdom. Index numbers of output in this First Release are on the base 2003=100 and are classified to the 2003 revision to the Standard Industrial Classification (SIC). The production industries, which accounted for 18.0 per cent of gross domestic product in 2003, cover mining and quarrying (Section C), manufacturing (Section D) and electricity, gas and water supply (Section E).

### Interpreting the data

2. The monthly IoP data can be volatile. When looking at growth rates, it is recommended that users focus on the percentage change between the latest three months and the previous three months.

### Status of figures and planned future revisions

3. Figures for the most recent months are provisional and subject to revision in light of (a) late responses to the Monthly Production Inquiry and (b) revisions to seasonal adjustment factors which are re-estimated every period.

In the next release, which will contain figures for January 2009 and will be published on 10 March 2009, the period open for revision according to the National Accounts policy will be January 2007.

## Basic quality information for the IoP First Release

### Summary quality report

4. A Summary Quality Report for this First Release can now be found on the National Statistics website at:

<http://www.statistics.gov.uk/CCI/article.asp?ID=1846>

5. The 2005 median annual growth of MPI turnover, their associated standard errors and quality bands can now be found on the National Statistics website at:

<http://www.statistics.gov.uk/statbase/Product.asp?vlnk=6230>

### Key quality issues

6. Common pitfalls in interpreting series: Expectations of accuracy and reliability in early estimates are often too high. Revisions are an inevitable consequence of the trade off between timeliness and accuracy. Early estimates are based on incomplete data.

Very few statistical revisions arise as a result of 'errors' in the popular sense of the word. All estimates, by definition, are subject to statistical 'error' but in this context the word refers to the uncertainty inherent in any process or calculation that uses sampling, estimation or modelling. Most revisions reflect either the adoption of new statistical techniques, or the incorporation of new information which allows the statistical error of previous estimates to be reduced. Only rarely are there avoidable 'errors' such as human or system failures, and such mistakes are made quite clear when they do occur.

### Reliability

7. One indication of the reliability of the key indicators in this release can be obtained by monitoring the size of revisions. The table below is based on the revisions which have occurred over the last five years. Please note that these indicators only report summary measures for revisions. The revised data may, themselves, be subject to sampling or other sources of error.

The table below presents a summary of the differences between the first estimates published between January 2003 and December 2007 and the estimates published 12 months later.

	Value in latest period (per cent)	Revisions between first publication and estimates twelve months later (% points)	
		Average over the last five years	Average over the last five years without regard to sign (average absolute revision)
Production output – 3 month on 3 month growth rate	-4.5	0.11	0.27
Manufacturing output – 3 month on 3 month growth rate	-5.1	0.14	0.29
Production output – 1 month growth rate	-1.7	0.00	0.24
Manufacturing output – 1 month growth rate	-2.2	0.04	0.27

Spreadsheets giving revisions triangles of estimates for all months from December 1997 through to the current month, and the calculations behind the averages in the above table, are available on the National Statistics website at:

<http://www.statistics.gov.uk/statbase/Product.asp?vlnk=6230>

8. A statistical test has been applied to the average revisions to find out if they are statistically significantly different from zero. No such differences have been found.
9. The table uses historical data for the most recent 60 months, comparing the estimate at first publication with the estimate as published 12 months later. The numbers which underpin these averages will include normal changes due to late data and re-seasonal adjustment, but also significant methodological changes, the most recent of which occurred in October 2003 (see article "Index of Production redevelopment" in *Economic Trends*, October 2002).

#### **Deflation**

10. All series, unless otherwise quoted, are measured at constant market prices. Deflators adjust the value series to take out the effect of price changes to give the volume series.

#### **Seasonal adjustment**

11. The index numbers in this First Release are all seasonally adjusted. This aids interpretation by removing annually recurring fluctuations, for example, due to holidays or other regular seasonal patterns. Unadjusted data are also available.

#### **Further information**

12. The complete run of data in the tables of this First Release is also available to view and download in electronic format free of charge using the ONS **Time Series Data service**. Users can download the complete release in a choice of zipped formats, or view and download their own selections of individual series. The Time Series Data service can be accessed at:  
<http://www.statistics.gov.uk/timeseries>

ONS provides an analysis of past revisions in the IoP and other First Releases which present time series. Details can be found at:

<http://www.statistics.gov.uk/cci/article.asp?ID=793>

ONS now publishes revisions triangles for all the main published key indicators on the National Statistics website. Details can be found at:

<http://www.statistics.gov.uk/cci/article.asp?ID=1026>

#### **Advance access**

13. Details of the policy governing the release of new data are available from the press office. Also available is a list of those given pre-publication access to the contents of this release. Additionally, in the light of the timing of the Bank of England's Monetary Policy Committee, the Index of Production was provided to the Bank of England at 8am on Thursday 5 February 2009 in line with release protocols.

**Code of Practice**

14. **National Statistics** are produced to high professional standards set out in the United Kingdom Statistics Authority's Code of Practice. They undergo regular quality assurance reviews to ensure that they meet customer needs. They are produced free from any political interference. © Crown copyright 2009.

# IOP5 Output of the production industries

Chained volume indices of gross value added<sup>1,2</sup>

Seasonally adjusted 2003 = 100

Section	Broad industry groups					Main industrial groupings			
	Production industries	Mining and Quarrying inc Oil and Gas Extraction	Manufacturing	Electricity, Gas and Water Supply	Oil and Gas Extraction	Consumer durables	Consumer non-durables	Capital goods	Intermediate goods and energy
	C+D+E	C	D	E	C_1	MG-DUR	MG-NDUR	MG-CAP	MG-INEN
Latest weight	1 000.0	117.4	792.8	89.8	106.5	36.2	272.3	214.3	477.2
	CKYW	CKYX	CKYY	CKYZ	CKZO	UFIU	UFJS	UFIL	JMOH
2004	100.9	92.1	102.2	101.0	91.5	105.0	100.5	103.6	99.6
2005	99.8	84.2	102.0	100.7	82.4	104.1	100.5	103.8	97.2
2006	100.5	78.0	103.8	100.1	75.1	106.5	101.4	107.8	96.2
2007	100.9	76.7	104.4	101.2	73.3	106.3	100.0	110.5	96.7
2008	97.9	71.6	101.4	101.6	69.8	100.4	98.2	106.7	93.6
2007 Q4	101.3	76.3	104.7	104.1	73.0	104.8	100.2	111.1	97.4
2008 Q1	100.6 <sup>†</sup>	72.6 <sup>†</sup>	104.6 <sup>†</sup>	102.1 <sup>†</sup>	70.5 <sup>†</sup>	106.2 <sup>†</sup>	100.3 <sup>†</sup>	110.2 <sup>†</sup>	96.0 <sup>†</sup>
Q2	99.6	72.5	103.4	101.9	70.4 <sup>†</sup>	103.5	99.0	109.4	95.3
Q3	97.9	71.8	101.3	101.3	69.9	99.6	98.1	106.6	93.8
Q4	93.5	69.5	96.2	101.2	68.4	92.3	95.6	100.6	89.3
2007 Oct	101.7	77.4	105.0	104.2	74.1	105.1	100.2	111.7	97.9
Nov	101.2	75.3	104.7	104.1	71.9	103.7	100.3	110.5	97.3
Dec	101.1	76.2	104.5	104.0	73.0	105.8	100.0	111.0	97.0
2008 Jan	100.7 <sup>†</sup>	72.9 <sup>†</sup>	104.7 <sup>†</sup>	101.9 <sup>†</sup>	70.8 <sup>†</sup>	105.7 <sup>†</sup>	100.3	110.5 <sup>†</sup>	96.1 <sup>†</sup>
Feb	100.7	72.4	104.8	101.9	70.1	107.4	100.5 <sup>†</sup>	110.1	96.1
Mar	100.4	72.4	104.2	102.5	70.4	105.5	100.1	109.9	95.8
Apr	100.4	72.3	104.1	104.3	69.8	104.8	99.6	110.4	95.9
May	99.4	72.6	103.4	99.6	70.7	103.1	98.9	109.5	94.9
Jun	99.1	72.6	102.7	101.8	70.6	102.5	98.4	108.1	95.1
Jul	98.6	70.5	102.3	102.6	68.2	100.1	98.7	107.9	94.2
Aug	97.8	70.0	101.5	101.3	67.6	99.2	98.4	106.6	93.4
Sep	97.4	74.8	100.5	100.0	73.8	99.6	97.3	105.3	93.8
Oct	95.7	68.8	98.9	101.9	67.9	95.4	97.2	103.9	91.1
Nov	93.3	70.0	95.9	100.4	68.8	93.3	95.1	100.2	89.2
Dec	91.7	69.7	93.8	101.3	68.6	88.2	94.3	97.7	87.7
<b>Percentage change, latest year on previous year</b>									
2004	0.9	-7.9	2.2	1.0	-8.5	5.0	0.5	3.6	-0.4
2005	-1.1	-8.5	-0.2	-0.3	-9.9	-0.8	0.1	0.2	-2.4
2006	0.7	-7.4	1.8	-0.5	-8.9	2.2	0.8	3.8	-1.0
2007	0.4	-1.6	0.6	1.1	-2.4	-0.2	-1.3	2.5	0.4
2008	-2.9	-6.7	-2.9	0.4	-4.8	-5.5	-1.8	-3.4	-3.1
<b>Percentage change, latest 3 months on previous 3 months</b>									
2006 Oct	0.4	1.7	0.3	-0.9	2.5	-0.2	0.6	-0.1	0.5
Nov	0.2	1.4	0.2	-1.0	1.7	0.5	0.5	0.4	-
Dec	-0.3	-2.6	-	-1.4	-3.1	1.4	-	0.7	-1.2
2007 Jan	-0.3	-2.7	-0.2	1.0	-3.4	0.9	-0.7	0.7	-0.7
Feb	-0.5	-1.8	-0.6	1.3	-2.5	-0.7	-1.0	-0.3	-0.3
Mar	-0.1	2.0	-0.6	1.7	1.7	-1.6	-1.7	0.2	0.8
Apr	-0.3	2.5	-0.4	-1.9	2.3	-1.4	-1.4	0.4	0.2
May	0.5	2.3	0.5	-1.0	1.9	-0.4	-0.5	1.9	0.5
Jun	0.8	1.1	0.9	0.1	0.6	0.4	0.4	1.9	0.6
Jul	1.1	0.8	0.8	4.1	0.5	0.8	0.2	1.3	1.5
Aug	0.4	0.1	0.2	2.7	-0.6	2.3	-0.6	-	1.1
Sep	-0.1	-0.9	-0.2	1.7	-1.7	1.7	-0.7	-0.7	0.5
Oct	-	-1.3	-	0.8	-1.8	0.5	-0.1	-0.2	0.1
Nov	0.2	-1.6	0.1	2.5	-1.4	-2.6	0.4	0.2	0.2
Dec	0.4	-0.5	0.2	2.6	0.4	-3.0	0.6	0.5	0.5
2008 Jan	-0.2	-2.4	-0.1	0.8	-1.2	-2.1	0.3	-0.2	-0.4
Feb	-0.4 <sup>†</sup>	-2.8 <sup>†</sup>	-0.1 <sup>†</sup>	-1.2 <sup>†</sup>	-1.5 <sup>†</sup>	0.8 <sup>†</sup>	0.2 <sup>†</sup>	-0.4 <sup>†</sup>	-0.9 <sup>†</sup>
Mar	-0.7	-4.9 <sup>†</sup>	-0.2	-1.9	-3.5 <sup>†</sup>	1.3	0.1	-0.8	-1.4
Apr	-0.5	-3.2	-0.2	-0.4	-2.5	0.8	-0.1	-0.5	-0.9
May	-0.8	-1.9	-0.7	-0.5	-1.4	-1.7	-0.7	-0.5	-0.9
Jun	-1.0	-0.1	-1.1	-0.2	-0.1	-2.6	-1.3	-0.7	-0.7
Jul	-1.4	-0.7	-1.5	-1.6	-0.4	-3.8	-1.4	-1.5	-1.3
Aug	-1.6	-2.0	-1.7	-0.3	-2.2	-3.7	-1.1	-2.2	-1.4
Sep	-1.7	-1.0	-1.9	-0.6	-0.7	-3.7	-0.9	-2.5	-1.6
Oct	-2.1	-1.0	-2.4	-0.2	-0.1	-3.8	-1.1	-3.0	-2.1
Nov	-3.1	0.2	-3.6	-1.1	2.0	-4.5	-2.0	-4.1	-3.1
Dec	-4.5	-3.2	-5.1	-0.1	-2.0	-7.4	-2.6	-5.6	-4.8

1 Output index numbers include adjustments, as necessary, to compensate for the use of sales indicators.

<sup>†</sup> indicates that data are new or have been revised. The period marked is the earliest in the table to have been revised.

2 Any apparent inconsistencies between the index numbers and the percentage changes shown in these tables are due to rounding.

# IOP5 Output of the production industries

Chained volume indices of gross value added<sup>1,2</sup>

continued

Seasonally adjusted 2003 = 100

Section	Coke, refined petrol & nuclear fuels	Chemicals and man-made fibres	Basic metals and metal products	Engineering and allied industries	Food, drink and tobacco	Textiles, leather and clothing	Other manufacturing
	DF	DG	DJ	DK_DM	DA	DB_DC	DD_DN
Latest weight	13.0	88.4	80.8	238.6	117.2	26.0	228.8
	CKZF	CKZG	CKZJ	AGXS	CKZA	AGVO	AGXQ
2004	107.8	103.6	102.7	104.4	102.0	89.5	100.4
2005	111.0	106.5	103.6	103.8	103.6	87.8	98.1
2006	105.4	110.0	105.1	108.0	102.9	88.0	98.9
2007	109.3	108.8	106.4	109.7	102.3	86.4	99.3
2008	114.9	109.1	101.2	106.2	100.1	86.7	95.0
2007 Q4	112.2	109.0	105.9	110.1	101.7	86.5	100.2
2008 Q1	115.9 <sup>†</sup>	111.0 <sup>†</sup>	104.5 <sup>†</sup>	109.7 <sup>†</sup>	102.3	87.0 <sup>†</sup>	99.2 <sup>†</sup>
Q2	115.2	110.3	104.3	109.0	100.2 <sup>†</sup>	87.2	97.3
Q3	111.8	110.5	102.7	105.9	99.8 <sup>†</sup>	87.3	94.7
Q4	116.6	104.7	93.1	100.3	98.1	85.3	88.9
2007 Oct	114.0	108.6	106.7	110.3	101.5	87.4	100.9
Nov	111.5	109.0	105.9	109.6	102.1	85.9	100.5
Dec	111.0	109.5	105.0	110.4	101.6	86.2	99.4
2008 Jan	114.6 <sup>†</sup>	110.7 <sup>†</sup>	103.8 <sup>†</sup>	110.1 <sup>†</sup>	102.3	86.5	99.7 <sup>†</sup>
Feb	116.2	112.1	105.1	109.5	102.5	87.1 <sup>†</sup>	99.4
Mar	116.9	110.3	104.6	109.4	102.1	87.3	98.6
Apr	117.3	109.5	104.5	110.2	101.0 <sup>†</sup>	87.5	98.2
May	112.6	110.4	103.9	109.1	100.4	87.2	97.4
Jun	115.7	111.0	104.3	107.8	99.3	87.1	96.3
Jul	111.7	111.6	103.6	107.1	99.3	88.2	95.7
Aug	110.5	111.3	102.8	105.8	100.1	87.4	94.6
Sep	113.2	108.4	101.8	104.7	100.0	86.3	93.6
Oct	113.9	109.9	97.2	103.6	99.6	85.1	90.8
Nov	115.6	103.0	93.0	99.6	98.5	86.4	89.0
Dec	120.2	101.2	89.0	97.7	96.2	84.5	86.9
<b>Percentage change, latest year on previous year</b>							
2004	7.8	3.6	2.7	4.4	2.0	-10.5	0.4
2005	2.9	2.8	0.9	-0.6	1.6	-1.9	-2.3
2006	-5.1	3.2	1.5	4.1	-0.7	0.2	0.8
2007	3.7	-1.1	1.2	1.6	-0.5	-1.9	0.5
2008	5.1	0.3	-4.9	-3.2	-2.1	0.4	-4.3
<b>Percentage change, latest 3 months on previous 3 months</b>							
2006 Oct	-4.1	1.1	0.8	0.1	0.4	0.1	0.4
Nov	-2.9	0.7	-0.3	0.5	0.6	-0.1	-0.1
Dec	1.0	-0.5	-0.4	0.5	1.0	1.9	-0.8
2007 Jan	6.9	-1.0	-0.6	0.4	0.6	0.8	-1.2
Feb	7.1	-1.3	0.3	-0.8	-0.3	-1.0	-1.0
Mar	2.6	-1.2	0.7	-0.3	-1.3	-4.1	-0.5
Apr	-2.8	-1.3	0.6	-0.2	-1.2	-2.8	0.3
May	-3.2	-0.7	0.3	1.1	-0.4	0.1	1.2
Jun	-1.1	-0.5	0.7	1.4	0.1	2.6	1.4
Jul	0.2	-0.8	0.7	1.5	-0.2	2.9	1.1
Aug	0.9	-1.1	0.5	0.7	-0.6	1.7	0.4
Sep	2.9	-0.8	-0.1	-0.3	-0.6	1.0	0.1
Oct	5.3	0.1	-0.2	-0.4	-0.5	0.4	0.6
Nov	4.8	0.6	-0.4	-0.4	-0.3	-0.8	0.6
Dec	2.1	1.0	-0.8	0.2	-0.4	-1.3	0.6
2008 Jan	- <sup>†</sup>	1.3 <sup>†</sup>	-1.6 <sup>†</sup>	0.1 <sup>†</sup>	0.1 <sup>†</sup>	-1.8 <sup>†</sup>	-0.3 <sup>†</sup>
Feb	1.1	2.0	-1.7	0.3 <sup>†</sup>	0.3 <sup>†</sup>	-0.4 <sup>†</sup>	-0.8
Mar	3.3	1.8	-1.3	-0.4	0.6	0.5	-1.0
Apr	3.9	0.8	-0.2	-0.3	-0.1	1.3	-1.1
May	1.5	-0.6	-0.3	-0.4	-0.9	0.8	-1.4
Jun	-0.6	-0.6	-0.2	-0.6	-2.0	0.3	-1.9
Jul	-3.0	0.4	-0.7	-1.6	-2.1	0.3	-2.3
Aug	-2.6	1.1	-0.8	-2.4	-1.6	0.3	-2.6
Sep	-2.9	0.1	-1.5	-2.9	-0.4	0.1	-2.7
Oct	-0.7	-1.1	-3.2	-3.0	0.2	-1.4	-3.6
Nov	1.4	-3.8	-6.0	-4.0	-0.2	-1.9	-4.6
Dec	4.2	-5.2	-9.4	-5.2	-1.7	-2.3	-6.1

<sup>†</sup> indicates that data are new or have been revised. The period marked is the earliest in the table to have been revised.

# IOP5R Revisions to previously published output of production industries<sup>1</sup>

Seasonally adjusted 2003 = 100

Section	Broad industry groups					Main industrial groupings			
	Production industries	Mining and Quarrying inc Oil and Gas Extraction	Manufacturing	Electricity, Gas and Water Supply	Oil and Gas Extraction	Consumer durables	Consumer non-durables	Capital goods	Intermediate goods and energy
	C+D+E	C	D	E	C_1	MG-DUR	MG-NDUR	MG-CAP	MG-INEN
Latest weight	1 000.0	117.4	792.8	89.8	106.5	36.2	272.3	214.3	477.2
	CKYW	CKYX	CKYY	CKYZ	CKYO	UFIU	UFJS	UFIL	JMOH
2003	-	-	-	-	-	-	-	-	-
2004	-	-	-	-	-	-	-	-	-
2005	-	-	-	-	-	-	-	-	-
2006	-	-	-	-	-	-	-	-	-
2007	-	-	-	-	-	-	-	-	-
2007 Q3	-	-	-	-	-	-	-	-	-
Q4	-	-	-	-	-	-	-	-	-
2008 Q1	-0.2	-0.1	-0.2	0.1	-	0.1	-0.1	-0.2	-0.2
Q2	-0.3	-0.2	-0.3	0.3	-0.1	-0.1	-0.1	-0.2	-0.3
Q3	-0.5	-0.1	-0.7	0.3	-0.1	-0.4	-0.3	-0.8	-0.5
2007 Oct	-	-	-	-	-	-	-	-	-
Nov	-	-	-	-	-	-	-	-	-
Dec	-	-	-	-	-	-	-	-	-
2008 Jan	-0.1	-0.1	-0.1	0.2	-0.1	0.2	-	-0.2	-0.2
Feb	-0.2	-0.1	-0.3	0.1	-0.1	-	-0.2	-0.3	-0.2
Mar	-0.2	-0.1	-0.3	0.1	-0.1	0.2	-0.2	-0.3	-0.2
Apr	-0.1	-0.1	-0.2	0.4	-	0.1	-0.1	-0.1	-0.2
May	-0.3	-0.3	-0.3	0.2	-0.3	-0.2	-0.2	-0.3	-0.3
Jun	-0.3	-0.2	-0.4	0.2	-0.2	-0.5	-0.2	-0.4	-0.4
Jul	-0.4	-0.1	-0.5	0.3	-	-0.2	-0.2	-0.7	-0.4
Aug	-0.5	-0.2	-0.7	0.3	-0.2	-0.6	-0.3	-0.7	-0.6
Sep	-0.6	-0.2	-0.7	0.2	-0.2	-0.3	-0.4	-1.0	-0.6
Oct	-0.7	-1.0	-0.9	0.2	-1.0	-0.6	-0.7	-1.1	-0.7
Nov	-0.9	-1.3	-1.0	0.3	-1.5	-0.5	-1.0	-1.2	-0.6
<b>Percentage change, latest year on previous year</b>									
2003	-	-	-	-	-	-	-	-	-
2004	-	-	-	-	-	-	-	-	-
2005	-	-	-	-	-	-	-	-	-
2006	-	-	-	-	-	-	-	-	-
2007	-	-	-	-	-	-	-	-	-
<b>Percentage change, latest 3 months on previous 3 months</b>									
2006 Oct	-	-	-	-	-	-	-	-	-
Nov	-	-	-	-	-	-	-	-	-
Dec	-	-	-	-	-	-	-	-	-
2007 Jan	-	-	-	-	-	-	-	-	-
Feb	-	-	-	-	-	-	-	-	-
Mar	-	-	-	-	-	-	-	-	-
Apr	-	-	-	-	-	-	-	-	-
May	-	-	-	-	-	-	-	-	-
Jun	-	-	-	-	-	-	-	-	-
Jul	-	-	-	-	-	-	-	-	-
Aug	-	-	-	-	-	-	-	-	-
Sep	-	-	-	-	-	-	-	-	-
Oct	-	-	-	-	-	-	-	-	-
Nov	-	-	-	-	-	-	-	-	-
Dec	-	-	-	-	-	-	-	-	-
2008 Jan	-	-	-	-	-	-	-	-	-
Feb	-0.1	-	-0.2	0.1	-	0.1	-0.1	-0.2	-0.1
Mar	-0.1	-0.1	-0.3	0.2	-0.1	0.1	-0.1	-0.2	-0.2
Apr	-0.1	-0.1	-0.2	0.2	-0.1	-	-0.1	-0.2	-0.2
May	-0.1	-0.2	-0.1	0.1	-0.1	-	-0.1	-	-0.2
Jun	-0.1	-0.1	-0.1	0.1	-0.1	-0.3	-	-	-0.1
Jul	-0.1	-0.2	-0.2	-	-0.2	-0.4	-	-0.2	-0.2
Aug	-0.3	-	-0.3	-0.1	-0.1	-0.5	-0.1	-0.3	-0.3
Sep	-0.3	0.1	-0.3	-	-	-0.2	-0.2	-0.4	-0.2
Oct	-0.3	-0.4	-0.3	0.1	-0.4	-0.2	-0.3	-0.4	-0.3
Nov	-0.4	-1.0	-0.3	-	-1.1	-	-0.5	-0.5	-0.2

<sup>1</sup> Revisions are calculated using one decimal place data.

# IOP5R Revisions to previously published output of production industries<sup>1</sup>

continued

Seasonally adjusted 2003 = 100

Section	Coke, refined petrol & nuclear fuels	Chemicals and man-made fibres	Basic metals and metal products	Engineering and allied industries	Food, drink and tobacco	Textiles, leather and clothing	Other manufacturing
	DF	DG	DJ	DK_DM	DA	DB_DC	DD_DN
Latest weight	13.0	88.4	80.8	238.6	117.2	26.0	228.8
	CKZF	CKZG	CKZJ	AGXS	CKZA	AGVO	AGXQ
2003	-	-	-	-	-	-	-
2004	-	-	-	-	-	-	-
2005	-	-	-	-	-	-	-
2006	-	-	-	-	-	-	-
2007	-	-	-	-	-	-	-
2007 Q3	-	-	-	-	-	-	-
Q4	-	-	-	-	-	-	-
2008 Q1	1.3	-0.2	-0.5	-0.2	-	-0.1	-0.4
Q2	1.1	-0.3	-0.7	-0.3	-	-0.1	-0.5
Q3	1.0	-0.7	-1.3	-0.7	-0.2	-0.1	-0.7
2007 Oct	-	-	-	-	-	-	-
Nov	-	-	-	-	-	-	-
Dec	-	-	-	-	-	-	-
2008 Jan	1.1	-0.1	-0.4	-0.2	-	-	-0.2
Feb	1.4	-0.2	-0.5	-0.3	-	-0.2	-0.5
Mar	1.5	-0.3	-0.5	-0.3	-	-0.1	-0.5
Apr	1.2	-0.2	-0.7	-0.1	0.1	-	-0.4
May	1.2	-0.4	-0.8	-0.3	-	0.1	-0.5
Jun	0.9	-0.3	-0.9	-0.5	-	-0.1	-0.6
Jul	0.5	-0.7	-1.0	-0.5	-0.1	-0.1	-0.7
Aug	0.5	-0.6	-1.4	-0.7	-0.2	-0.1	-0.8
Sep	1.9	-1.0	-1.4	-0.9	-0.2	-	-0.8
Oct	5.6	-1.1	-1.6	-1.0	-0.7	-0.6	-0.8
Nov	10.3	-1.1	-1.2	-1.2	-1.1	-0.8	-1.1
<b>Percentage change, latest year on previous year</b>							
2003	-	-	-	-	-	-	-
2004	-	-	-	-	-	-	-
2005	-	-	-	-	-	-	-
2006	-	-	-	-	-	-	-
2007	-	-	-	-	-	-	-
<b>Percentage change, latest 3 months on previous 3 months</b>							
2006 Oct	-	-	-	-	-	-	-
Nov	-	-	-	-	-	-	-
Dec	-	-	-	-	-	-	-
2007 Jan	-	-	-	-	-	-	-
Feb	-	-	-	-	-	-	-
Mar	-	-	-	-	-	-	-
Apr	-	-	-	-	-	-	-
May	-	-	-	-	-	-	-
Jun	-	-	-	-	-	-	-
Jul	-	-	-	-	-	-	-
Aug	-	-	-	-	-	-	-
Sep	-	-	-	-	-	-	-
Oct	-	-	-	-	-	-	-
Nov	-	-	-	-	-	-	-
Dec	-	-	-	-	-	-	-
2008 Jan	0.3	-0.1	-0.1	-	-	-	-0.1
Feb	0.7	-0.1	-0.3	-0.1	0.1	-0.1	-0.3
Mar	1.2	-0.2	-0.5	-0.2	0.1	-0.2	-0.4
Apr	0.8	-0.2	-0.5	-0.1	-	-0.1	-0.4
May	0.5	-0.1	-0.4	-	-	-	-0.2
Jun	-0.2	-	-0.3	-	-	0.1	-0.1
Jul	-0.4	-0.2	-0.3	-0.2	-	0.2	-0.1
Aug	-0.6	-0.2	-0.5	-0.3	-0.2	-0.1	-0.3
Sep	-	-0.4	-0.5	-0.4	-0.2	-	-0.2
Oct	1.6	-0.5	-0.5	-0.4	-0.4	-0.3	-0.3
Nov	4.7	-0.5	-0.3	-0.5	-0.6	-0.5	-0.2