



Index of Production

November 2009

Date: 13 January 2010

Coverage: United Kingdom **Theme:** The Economy

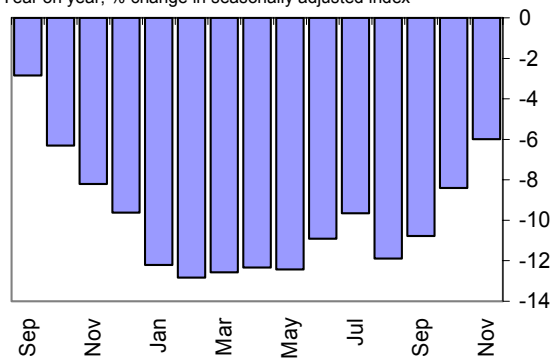
The seasonally adjusted **index of production** in November 2009 fell by 6.0 per cent compared with November 2008.

The seasonally adjusted **index of manufacturing** in November 2009 fell by 5.4 per cent compared with November 2008.

	Index number	(Percentage change)			
		Most recent month on a year earlier	Most recent 3 months on a year earlier	Most recent month on previous month	Most recent 3 months on previous 3 months
Index of Production	86.8	-6.0	-8.4	0.4	-0.3
Index of Manufacturing	88.5	-5.4	-7.7	0.0	0.3

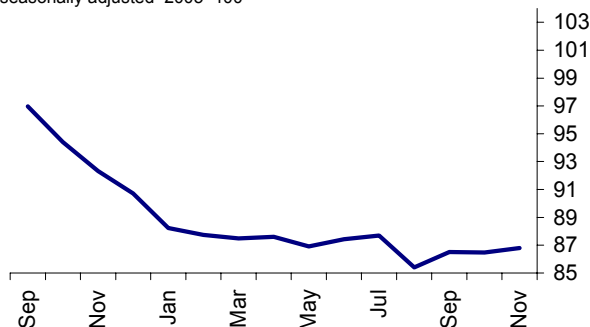
Index of production

Year on year, % change in seasonally adjusted index



Index of production

seasonally adjusted 2005=100



Industry analysis

Manufacturing

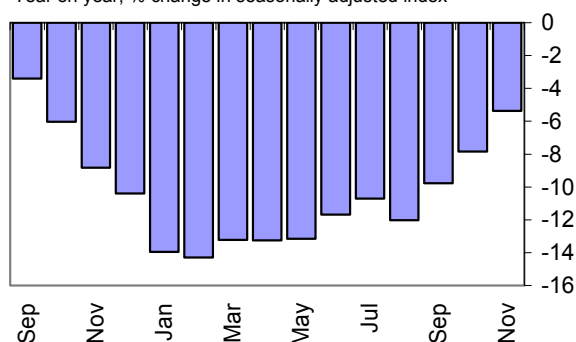
Most recent month on a year earlier

The seasonally adjusted index of manufacturing in November 2009 fell by 5.4 per cent compared with November 2008. In detail:

- i) Output decreased in 10 of the 13 manufacturing sub-sectors and rose in three sub sectors;
- ii) the largest decreases in output were in the machinery and equipment industries which fell by 17.4 per cent and the basic metals and metal products industries which fell by 12.1 per cent;
- iii) within the machinery and equipment industries, the main falls were in the:
 - mfr of machinery for the production of mechanical power -29.2 per cent
 - mfr of other general machinery -8.8 per cent
- iv) within the basic metals and metal product industries, the main falls were in the:
 - processing/treatment of metals; mechanical engineering -20.5 per cent
 - mfr of basic metals -12.4 per cent
- v) the largest contributors to the 5.4 per cent year on year fall in overall manufacturing were approximately 1.4 percentage points from the machinery and equipment industries and approximately 1.3 percentage points from the basic metals and metal product industries.

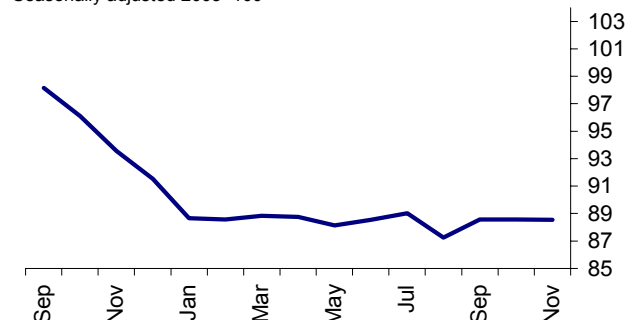
Index of manufacturing

Year on year, % change in seasonally adjusted index



Index of manufacturing

Seasonally adjusted 2005=100



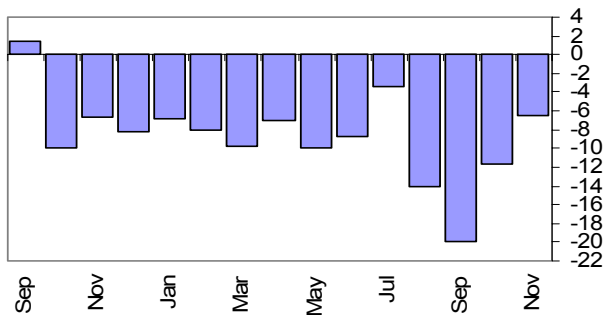
Mining and quarrying

The seasonally adjusted index of mining and quarrying in November 2009 fell by 6.5 per cent compared with November 2008. In particular:

- i) oil and gas extraction decreased by 4.1 per cent;
- ii) coal extraction decreased by 16.0 per cent;
- iii) the largest contributor to the 6.5 per cent year on year fall in overall mining and quarrying was approximately 3.7 percentage points from oil and gas extraction.

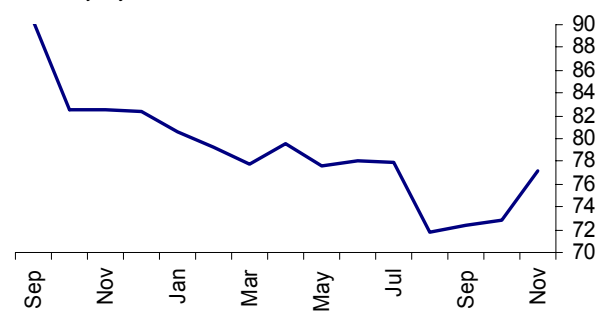
Mining and quarrying

Year on year, % change in seasonally adjusted index



Mining and quarrying

Seasonally adjusted 2005=100



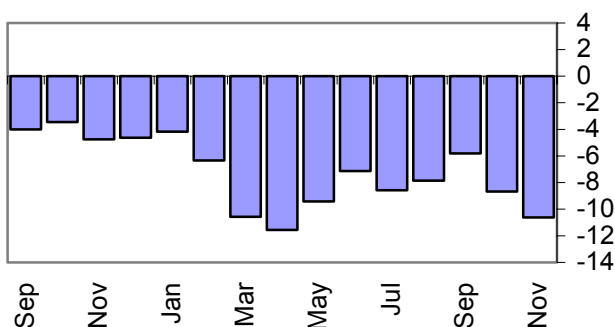
Electricity, gas and water supply

The seasonally adjusted index of the electricity, gas and water supply industries in November 2009 fell by 10.6 per cent compared with November 2008. In particular:

- i) electricity supply output decreased by 16.9 per cent;
- ii) gas supply output decreased by 5.5 per cent;
- iii) the largest contributor to the 10.6 per cent year on year fall in the electricity, gas and water supply output was approximately 10.2 percentage points from the electricity supply output.

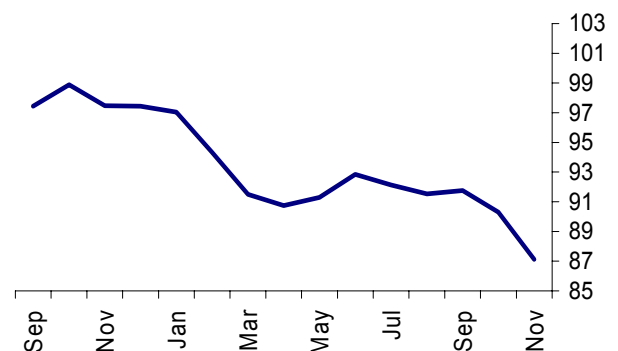
Electricity, gas and water supply

Year on year, % change in seasonally adjusted index



Electricity, gas and water supply

Seasonally adjusted 2005=100



Revisions

This release conforms to the standard revisions policy for National Accounts. In this release, the periods open for revision are from October 2009. Table IOP5R shows the revisions to the estimates previously published on 8 December 2009.

Since last month, a number of late responses have been received to the Monthly Production Inquiry. The combined impact of these late data and seasonal adjustment factors being re-estimated is to revise the growth rate for the Index of Production for October 2009 by -0.1 per cent.

Summary Statistics for November 2009: Seasonally Adjusted

Indicator and Publication Category	Latest Period %	Record Since	Previous Growth Record %	No of consecutive movements
Most recent month on a year earlier				
Index of Production	-6.0	Highest since October 2009	-8.4	19 falls May 2008 - Nov 2009
Index of Manufacturing	-5.4	Highest since October 2009	-7.8	19 falls May 2008 - Nov 2009
Most recent 3 months on a year earlier				
Index of Production	-8.4	Highest since October 2009	-10.4	19 falls May 2008 - Nov 2009
Index of Manufacturing	-7.7	Highest since October 2009	-9.9	19 falls May 2008 - Nov 2009
Most recent month on previous month				
Index of Production	0.4	Highest since September 2009	1.3	1 rise Oct 2009 - Nov 2009
Index of Manufacturing	0.0	No record	N/A	2 flat - Oct 2009 - Nov 2009
Most recent 3 months on previous 3 months				
Index of Production	-0.3	Highest since October 2009	-1.4	21 falls Mar 2008 - Nov 2009
Index of Manufacturing	0.3	Highest since March 2008	0.6	1 rise Oct 2009 - Nov 2009

Background notes

Index

1. This Statistical Bulletin gives details of the index of output of the production industries in the United Kingdom. Index numbers of output in this Statistical Bulletin are on the base 2005=100 and are classified to the 2003 revision to the Standard Industrial Classification (SIC). The production industries, which accounted for 17.2 per cent of gross domestic product in 2005, cover mining and quarrying (Section C), manufacturing (Section D) and electricity, gas and water supply (Section E).

Interpreting the data

2. The monthly IoP data can be volatile. When looking at growth rates, it is recommended that users focus on the percentage change between the latest three months and the previous three months. The seasonally adjusted series contain elements relating to the impact of the standard reporting period, moving seasonality and trading day activity. When making comparisons it is recommended that users focus on seasonally adjusted estimates as these have the systematic calendar related component removed.

Status of figures and planned future revisions

3. Figures for the most recent months are provisional and subject to revision in light of (a) late responses to the Monthly Production Inquiry and (b) revisions to seasonal adjustment factors which are re-estimated every period.

In the next bulletin, which will contain figures for December 2009 and will be published on 10 February 2010, the period open for revision according to the National Accounts policy will be from January 2009 only.

Basic quality information for the IoP Statistical Bulletin

Summary quality report

4. A Summary Quality Report for this Statistical Bulletin can now be found on the National Statistics website at:

<http://www.statistics.gov.uk/CCI/article.asp?ID=1846>

5. The 2005 median annual growth of MPI turnover, their associated standard errors and quality bands can now be found on the National Statistics website at:

<http://www.statistics.gov.uk/statbase/Product.asp?vlnk=6230>

Key quality issues

6. Common pitfalls in interpreting series: Expectations of accuracy and reliability in early estimates are often too high. Revisions are an inevitable consequence of the trade off between timeliness and accuracy. Early estimates are based on incomplete data.

Very few statistical revisions arise as a result of 'errors' in the popular sense of the word. All estimates, by definition, are subject to statistical 'error' but in this context the word refers to the uncertainty inherent in any process or calculation that uses sampling, estimation or modelling. Most revisions reflect either the adoption of new statistical techniques, or the incorporation of new information which allows the statistical error of previous estimates to be reduced. Only rarely are there avoidable 'errors' such as human or system failures, and such mistakes are made quite clear when they do occur.

Quality reporting

7. One indication of the reliability of the key indicators in this bulletin can be obtained by monitoring the size of revisions. The table below is based on the revisions which have occurred over the last five years. Please note that these indicators only report summary measures for revisions. The revised data may, themselves, be subject to sampling or other sources of error.

The table below presents a summary of the differences between the first estimates published between December 2003 and November 2008 and the estimates published 12 months later.

	Value in latest period (per cent)	Revisions between first publication and estimates produced twelve months later (% points)	
		Average over the last five years	Average over the last five years without regard to sign (average absolute revision)
Production output – 3 month on 3 month growth rate	-0.3	0.00	0.30
Manufacturing output – 3 month on 3 month growth rate	0.3	0.00	0.36
Production output – 1 month growth rate	0.4	-0.04	0.27
Manufacturing output – 1 month growth rate	0.0	-0.02	0.28

Spreadsheets giving revisions triangles of estimates for all months from December 1997 through to the current month, and the calculations behind the averages in the above table, are available on the National Statistics website at:

<http://www.statistics.gov.uk/statbase/Product.asp?vlnk=6230>

8. A statistical test has been applied to the average revisions to find out if they are statistically significantly different from zero. No such differences have been found.
9. The table uses historical data for the most recent 60 months, comparing the estimate at first publication with the estimate as published 12 months later. The numbers which underpin these averages will include normal changes due to late data and re-seasonal adjustment, but also significant methodological changes, the most recent of which occurred in October 2003 (see article "Index of Production redevelopment" in *Economic Trends*, October 2002).

Deflation

10. All series, unless otherwise quoted, are measured at constant market prices. Deflators adjust the value series to take out the effect of price changes to give the volume series.

Seasonal adjustment

11. The index numbers in this Statistical Bulletin are all seasonally adjusted. This aids interpretation by removing annually recurring fluctuations, for example, due to holidays or other regular seasonal patterns. Unadjusted data are also available.

Relevant links

12. The complete run of data in the tables of this Statistical Bulletin is also available to view and download in electronic format free of charge using the ONS **Time Series Data service**. Users can download the complete bulletin in a choice of zipped formats, or view and download their own selections of individual series. The Time Series Data service can be accessed at: <http://www.statistics.gov.uk/timeseries>

ONS provides an analysis of past revisions in the IoP and other Statistical Bulletin's (previously known as First Release) which present time series. Details can be found at:

<http://www.statistics.gov.uk/cci/article.asp?ID=793>

ONS now publishes revisions triangles for all the main published key indicators on the National Statistics website. Details can be found at:

<http://www.statistics.gov.uk/cci/article.asp?ID=1026>

Publication Policy

13. Details of the policy governing the release of new data are available from the press office. Also available is a list of those given pre-publication access to the contents of this release.
14. A complete set of series in the Statistical Bulletin are available to download free of charge at: <http://www.statistics.gov.uk/timeseries>. Alternatively, for low-cost tailored data call Online Services on 02075335675 or email tailored@statistics.gov.uk.
15. **National Statistics** are produced to high professional standards set out in the Code of Practice for Official Statistics. They undergo regular quality assurance reviews to ensure that they meet customer needs. They are produced free from any political interference. © Crown copyright 2010.

Next Publication: Wednesday 10 February 2010

Issued By: Office for National Statistics, Government Buildings, Cardiff Road, Newport NP10 8XG.

Media contact:

Tel **Media Relations Office 0845 6041858**

Emergency on-call 07867 906553

E-mail **press.office@ons.gsi.gov.uk**

Statistic Contact:

Tel **Phillip Davies 01633 456492**

E-mail **Philip.davies@ons.gsi.gov.uk**

Website:

www.ons.gov.uk

IOP5 Output of the production industries

Chained volume indices of gross value added¹

Seasonally adjusted 2005 = 100

Section	Broad industry groups					Main industrial groupings			
	Production industries	Mining and Quarrying inc Oil and Gas Extraction	Manufacturing	Electricity, Gas and Water Supply	Oil and Gas Extraction	Consumer durables	Consumer non-durables	Capital goods	Intermediate goods and energy
	C+D+E	C	D	E	C_1	MG-DUR	MG-NDUR	MG-CAP	MG-INEN
Latest weight	1 000.0	142.8	770.4	86.8	130.0	33.8	260.2	214.9	491.1
	CKYW	CKYX	CKYY	CKYZ	CKZO	UFIU	UFJS	UFIL	JMOH
2004	101.3	109.7	100.2	100.3	111.4	100.7	99.6	99.9	102.9
2005	100.0	100.0	100.0	100.0	100.0	100.0	100.0	100.0	100.0
2006	100.0	92.1	101.6	99.5	90.9	101.9	101.0	102.9	98.1
2007	100.3	90.7	102.2	99.7	88.9	102.3	100.2	104.9	98.3
2008	97.2	84.8	99.2	99.9	84.6	96.4	98.6	101.1	94.9
2008 Q3	97.0	84.8	99.0	99.2	84.6	96.0	98.4	100.4	94.8
Q4	92.5	82.5	93.7	97.9	83.0	87.5	96.1	94.5	90.0
2009 Q1	87.8	79.2	88.7	94.3	81.2	81.6	95.9	87.0	84.3
Q2	87.3	78.4	88.5	91.6	80.4	81.7	96.1	86.5	83.4
Q3	86.5	74.0	88.3	91.8	75.4	81.6	94.9	86.5	82.4
2008 Sep	97.0	90.4	98.2	97.4	91.2	95.4	98.2	99.0	95.6
Oct	94.4	82.5	96.1	98.9	83.0	90.5	97.4	97.1	91.9
Nov	92.3	82.5	93.6	97.5	83.2	88.0	96.2	94.0	89.8
Dec	90.7	82.4	91.5	97.4	82.8	84.0	94.7	92.4	88.3
2009 Jan	88.2	80.6	88.7	97.0	82.5	81.8	95.0	87.8	85.3
Feb	87.7	79.3	88.6	94.3	81.6	81.5	95.9	86.7	84.3
Mar	87.5	77.7	88.8	91.5	79.6	81.3	96.8	86.6	83.4
Apr	87.6	79.5	88.8	90.7	81.3	80.3	97.0	86.9	83.4
May	86.9	77.6	88.1	91.3	79.6	84.5	96.2	85.5	82.7
Jun	87.4	78.1	88.5	92.8	80.3	80.5	95.1	86.9	84.1
Jul	87.7	77.9	89.0	92.1	79.7	80.8	95.8	87.2	84.1
Aug	85.4	71.7	87.2	91.5	73.0	79.8	94.1	85.3	81.2
Sep	86.5	72.3	88.6	91.8	73.6	84.2	94.8	87.1	82.0
Oct	86.5	72.8	88.6	90.3 [†]	74.5 [†]	83.5 [†]	93.7 [†]	88.9 [†]	81.8 [†]
Nov	86.8	77.1	88.5	87.1	79.8	81.8	93.5	89.5	82.4
Percentage change, latest year on previous year									
2004	1.1	-7.6	2.2	1.0	-8.1	4.9	0.1	3.7	0.1
2005	-1.3	-8.9	-0.2	-0.3	-10.3	-0.7	0.4	0.1	-2.8
2006	-	-7.9	1.6	-0.5	-9.1	1.9	1.0	2.9	-1.9
2007	0.3	-1.5	0.6	0.2	-2.1	0.5	-0.8	1.9	0.1
2008	-3.1	-6.5	-2.9	0.3	-4.9	-5.8	-1.6	-3.6	-3.4
Percentage change, latest month on same month a year ago									
2007 Sep	-0.3	-2.8	-0.2	2.5	-4.4	2.2	-2.2	2.0	-0.5
Oct	1.2	2.4	0.4	6.7	1.9	-1.3	-1.3	1.8	2.5
Nov	0.4	-1.7	0.3	4.5	-2.5	-4.0	-0.3	0.3	1.1
Dec	0.8	4.4	-0.2	5.0	4.6	-2.1	-1.8	2.0	2.0
2008 Jan	-	-3.8	0.4	1.8	-2.8	-1.1	0.2	-	-
Feb	0.8	-6.7	1.9	2.7	-6.3	2.9	2.2	1.4	-0.3
Mar	0.1	-4.8	0.4	4.6	-3.7	-0.9	0.5	0.4	-0.2
Apr	-	-6.1	-	9.5	-5.2	-1.7	-0.6	-	0.4
May	-1.6	-7.0	-1.0	0.9	-5.8	-2.1	-1.5	-0.9	-2.0
Jun	-2.6	-6.1	-2.2	-0.9	-4.6	-5.6	-1.8	-2.8	-2.7
Jul	-3.3	-11.8	-2.4	1.4	-10.9	-6.3	-1.4	-2.9	-4.2
Aug	-3.2	-8.0	-2.9	0.9	-5.7	-8.0	-1.2	-3.8	-3.6
Sep	-2.8	1.4	-3.4	-4.0	4.9	-7.7	-1.6	-5.1	-2.1
Oct	-6.3	-9.9	-6.0	-3.4	-7.8	-10.1	-3.2	-7.6	-7.1
Nov	-8.2	-6.7	-8.8	-4.8	-4.1	-11.8	-4.8	-10.3	-8.8
Dec	-9.6	-8.3	-10.4	-4.6	-6.3	-17.4	-5.8	-12.0	-10.0
2009 Jan	-12.2	-6.8	-13.9	-4.2	-3.8	-19.2	-5.8	-16.7	-13.0
Feb	-12.8	-8.1	-14.3	-6.3	-4.4	-21.3	-5.2	-17.7	-14.1
Mar	-12.6	-9.8	-13.2	-10.6	-6.8	-20.5	-3.1	-17.7	-14.7
Apr	-12.3	-6.9	-13.3	-11.6	-3.7	-20.6	-2.7	-17.5	-14.5
May	-12.4	-10.0	-13.1	-9.4	-7.0	-14.5	-3.0	-18.1	-14.7
Jun	-10.9	-8.7	-11.7	-7.1	-5.6	-18.7	-3.2	-15.2	-12.5
Jul	-9.6	-3.4	-10.7	-8.6	0.1	-16.4	-2.6	-14.3	-10.9
Aug	-11.9	-14.1	-12.0	-7.8	-12.0	-16.9	-4.6	-15.0	-14.1
Sep	-10.8	-20.0	-9.8	-5.8	-19.3	-11.8	-3.4	-12.0	-14.2
Oct	-8.4	-11.7 [†]	-7.8	-8.7 [†]	-10.3 [†]	-7.7 [†]	-3.8 [†]	-8.5 [†]	-11.0 [†]
Nov	-6.0	-6.5	-5.4	-10.6	-4.1	-7.1	-2.9	-4.9	-8.2

¹ Any apparent inconsistencies between the index numbers and the percentage changes shown in these tables are due to rounding.

[†] indicates that data are new or have been revised. The period marked is the earliest in the table to have been revised.

IOP5 Output of the production industries

Chained volume indices of gross value added¹

continued

Seasonally adjusted 2005 = 100

Section	Broad industry groups					Main industrial groupings			
	Production industries	Mining and Quarrying inc Oil and Gas Extraction	Manufacturing	Electricity, Gas and Water Supply	Oil and Gas Extraction	Consumer durables	Consumer non-durables	Capital goods	Intermediate goods and energy
	C+D+E	C	D	E	C_1	MG-DUR	MG-NDUR	MG-CAP	MG-INEN
Latest weight	1 000.0	142.8	770.4	86.8	130.0	33.8	260.2	214.9	491.1
Percentage change, latest month on previous month									
2007 Sep	-0.3	-1.7	-0.5	3.1	-1.3	-1.0	-0.2	-	-0.5
Oct	1.0	2.8	0.7	0.9	3.7	-2.7	0.9	0.8	1.4
Nov	-0.2	-3.5	0.3	-0.1	-3.7	-0.9	0.5	-0.3	-0.5
Dec	-0.2	1.5	-0.5	-0.2	1.9	2.0	-0.5	0.1	-0.3
2008 Jan	0.1	-3.8	0.9	-0.9	-3.0	-0.4	0.3	0.5	-0.1
Feb	0.2	-0.1	0.3	-0.5	-0.5	2.3	0.3	-	-
Mar	-0.6	-0.2	-0.9	1.6	0.1	-1.3	-1.3	-0.3	-0.3
Apr	-0.1	-0.8	-0.1	0.3	-1.1	-1.2	-0.1	0.2	-0.2
May	-0.7	0.9	-0.8	-1.7	1.4	-2.1	-0.6	-0.8	-0.6
Jun	-1.1	-0.7	-1.2	-0.8	-0.7	0.2	-0.9	-2.0	-0.9
Jul	-1.1	-5.9	-0.5	0.8	-6.4	-2.4	0.1	-0.6	-1.8
Aug	-0.1	3.6	-0.5	-1.4	4.3	-0.6	0.4	-1.4	0.2
Sep	-	8.3	-1.0	-1.9	9.8	-0.6	-0.6	-1.3	1.1
Oct	-2.6	-8.7	-2.1	1.5	-8.9	-5.1	-0.8	-1.9	-3.8
Nov	-2.2	-	-2.6	-1.4	0.2	-2.8	-1.2	-3.2	-2.3
Dec	-1.7	-0.2	-2.2	-	-0.5	-4.5	-1.6	-1.8	-1.6
2009 Jan	-2.7	-2.2	-3.1	-0.4	-0.4	-2.6	0.3	-5.0	-3.4
Feb	-0.6	-1.6	-0.1	-2.8	-1.1	-0.4	1.0	-1.2	-1.2
Mar	-0.3	-2.0	0.3	-3.0	-2.4	-0.3	0.9	-0.2	-1.1
Apr	0.1	2.3	-0.1	-0.8	2.1	-1.3	0.2	0.4	-
May	-0.8	-2.4	-0.7	0.6	-2.0	5.3	-0.8	-1.6	-0.8
Jun	0.6	0.7	0.5	1.7	0.8	-4.8	-1.1	1.6	1.6
Jul	0.3	-0.4	0.5	-0.8	-0.7	0.4	0.7	0.3	0.1
Aug	-2.6	-7.9	-2.0	-0.6	-8.4	-1.2	-1.7	-2.1	-3.5
Sep	1.3	0.8	1.5	0.2	0.7	5.4	0.7	2.1	1.0
Oct	-0.1 [†]	0.7 [†]	-	-1.6 [†]	1.2 [†]	-0.8 [†]	-1.2 [†]	2.1 [†]	-0.3 [†]
Nov	0.4	5.9	-	-3.5	7.2	-2.1	-0.2	0.6	0.8
Percentage change, latest 3 months on same 3 months a year ago									
2007 Sep	0.3	-0.5	0.4	1.3	-2.1	2.2	-1.1	1.9	0.3
Oct	0.4	-0.2	0.2	3.1	-1.6	1.0	-1.3	1.9	0.7
Nov	0.4	-0.7	0.2	4.5	-1.7	-1.1	-1.3	1.4	1.0
Dec	0.8	1.7	0.2	5.4	1.3	-2.5	-1.1	1.4	1.9
2008 Jan	0.4	-0.4	0.2	3.7	-0.3	-2.4	-0.7	0.8	1.0
Feb	0.6	-2.2	0.7	3.2	-1.6	-0.1	0.2	1.1	0.6
Mar	0.3	-5.1	0.9	3.1	-4.3	0.3	0.9	0.6	-0.2
Apr	0.3	-5.9	0.8	5.6	-5.1	0.1	0.7	0.6	-
May	-0.5	-6.0	-0.2	4.9	-4.9	-1.5	-0.5	-0.2	-0.6
Jun	-1.4	-6.4	-1.1	3.0	-5.2	-3.1	-1.3	-1.2	-1.5
Jul	-2.5	-8.3	-1.9	0.5	-7.1	-4.7	-1.6	-2.2	-3.0
Aug	-3.0	-8.6	-2.5	0.5	-7.1	-6.6	-1.5	-3.2	-3.5
Sep	-3.1	-6.2	-2.9	-0.6	-4.0	-7.4	-1.4	-4.0	-3.3
Oct	-4.1	-5.6	-4.1	-2.2	-2.9	-8.6	-2.0	-5.5	-4.3
Nov	-5.8	-5.1	-6.1	-4.1	-2.4	-9.8	-3.2	-7.7	-6.0
Dec	-8.0	-8.3	-8.4	-4.3	-6.1	-13.1	-4.6	-10.0	-8.7
2009 Jan	-10.0	-7.3	-11.1	-4.5	-4.8	-16.1	-5.5	-13.0	-10.6
Feb	-11.6	-7.7	-12.9	-5.0	-4.9	-19.3	-5.6	-15.5	-12.4
Mar	-12.5	-8.2	-13.8	-7.0	-5.0	-20.3	-4.7	-17.4	-14.0
Apr	-12.6	-8.3	-13.6	-9.5	-5.0	-20.8	-3.7	-17.6	-14.4
May	-12.4	-8.9	-13.2	-10.5	-5.9	-18.6	-2.9	-17.8	-14.7
Jun	-11.9	-8.6	-12.7	-9.4	-5.5	-18.0	-3.0	-16.9	-13.9
Jul	-11.0	-7.4	-11.9	-8.4	-4.3	-16.6	-2.9	-15.9	-12.7
Aug	-10.8	-8.8	-11.5	-7.9	-6.0	-17.3	-3.5	-14.8	-12.5
Sep	-10.8	-12.8	-10.8	-7.4	-10.8	-15.0	-3.6	-13.8	-13.1
Oct	-10.4	-15.4	-9.9	-7.5 [†]	-14.1	-12.2 [†]	-4.0 [†]	-11.9 [†]	-13.1
Nov	-8.4	-13.0	-7.7	-8.4	-11.5	-8.9	-3.4	-8.5	-11.2

¹ Any apparent inconsistencies between the index numbers on table IOP5 and the percentage changes shown in this table are due to rounding.

[†] indicates that data are new or have been revised. The period marked is the earliest in the table to have been revised.

IOP5 Output of the production industries

Chained volume indices of gross value added¹

continued

Seasonally adjusted 2005 = 100

Section	Broad industry groups					Main industrial groupings			
	Production industries	Mining and Quarrying inc Oil and Gas Extraction	Manufacturing	Electricity, Gas and Water Supply	Oil and Gas Extraction	Consumer durables	Consumer non-durables	Capital goods	Intermediate goods and energy
	C+D+E	C	D	E	C_1	MG-DUR	MG-NDUR	MG-CAP	MG-INEN
Latest weight	1 000.0	142.8	770.4	86.8	130.0	33.8	260.2	214.9	491.1

Percentage change, latest 3 months on previous 3 months

2007 Sep	-0.4	-1.4	-0.5	1.6	-1.8	0.8	-0.5	-0.8	-0.3
Oct	-0.4	-1.4	-0.4	0.7	-1.7	-0.2	-	-0.6	-0.6
Nov	-	-1.4	-0.1	2.5	-1.1	-2.8	0.6	-0.1	-0.1
Dec	0.5	-0.5	0.4	2.6	0.3	-2.9	1.0	0.5	0.5
2008 Jan	0.3	-2.5	0.6	1.1	-1.6	-1.9	0.8	0.4	-
Feb	0.1	-2.5	0.7	-0.7	-1.6	0.9	0.4	0.5	-0.2
Mar	-0.2	-4.1	0.6	-0.9	-3.3	1.7	-0.1	0.3	-0.6
Apr	-0.3	-2.6	0.1	-	-2.2	1.4	-0.6	0.2	-0.4
May	-0.8	-1.8	-0.8	0.5	-1.5	-1.5	-1.3	-0.3	-0.7
Jun	-1.3	-0.6	-1.5	-0.3	-0.5	-2.7	-1.6	-1.2	-1.1
Jul	-2.1	-2.1	-2.1	-1.3	-1.9	-4.0	-1.7	-2.3	-2.0
Aug	-2.4	-3.2	-2.3	-1.8	-3.1	-3.5	-1.2	-3.3	-2.5
Sep	-2.1	-1.1	-2.3	-1.9	-0.5	-3.6	-0.7	-3.6	-2.2
Oct	-2.1	1.6	-2.7	-2.0	2.7	-4.2	-0.5	-3.9	-1.9
Nov	-2.9	2.3	-3.8	-2.1	3.9	-6.1	-1.2	-4.7	-2.7
Dec	-4.6	-2.7	-5.3	-1.3	-1.9	-8.9	-2.3	-5.8	-5.1
2009 Jan	-5.9	-4.3	-6.7	-1.3	-3.4	-10.0	-2.8	-7.5	-6.6
Feb	-6.0	-5.2	-6.6	-1.7	-4.1	-9.7	-2.1	-8.0	-7.0
Mar	-5.0	-4.0	-5.4	-3.7	-2.2	-6.8	-0.2	-7.9	-6.3
Apr	-3.1	-3.6	-2.8	-5.3	-2.4	-4.2	1.3	-5.1	-4.7
May	-1.8	-3.0	-1.1	-5.3	-2.6	-0.5	1.5	-3.0	-3.2
Jun	-0.6	-1.0	-0.2	-2.8	-1.0	0.2	0.2	-0.7	-1.1
Jul	-0.3	-1.2	-0.2	-0.1	-1.2	1.1	-0.9	-0.3	-0.1
Aug	-0.6	-3.0	-0.3	1.1	-3.1	-2.0	-1.7	0.1	-0.1
Sep	-0.9	-5.7	-0.2	0.2	-6.2	-0.2	-1.3	0.1	-1.2
Oct	-1.4	-7.2	-0.5	-1.0 [†]	-7.7 [†]	0.7 [†]	-1.6 [†]	0.7 [†]	-2.4
Nov	-0.3	-2.4	0.3	-2.6	-2.2	3.5	-1.1	2.4	-1.3

¹ Any apparent inconsistencies between the index numbers on table IOP5 and the percentage changes shown in this table are due to rounding.

[†] indicates that data are new or have been revised. The period marked is the earliest in the table to have been revised.

IOP5 Output of the production industries

Chained volume indices of gross value added¹

continued

Seasonally adjusted 2005 = 100

Section	Coke, refined petrol & nuclear fuels	Chemicals and man-made fibres	Basic metals and metal products	Engineering and allied industries	Food, drink and tobacco	Textiles, leather and clothing	Other manufacturing
	DF	DG	DJ	DK_DM	DA	DB_DC	DD_DN
Latest weight	13.0	87.2	83.7	233.8	114.5	22.3	215.9
	CKZF	CKZG	CKZJ	AGXS	CKZA	AGVO	AGXQ
2004	101.3	97.4	99.1	100.6	98.0	102.2	102.1
2005	100.0	100.0	100.0	100.0	100.0	100.0	100.0
2006	94.5	103.1	101.5	103.3	99.3	99.9	100.9
2007	95.7	101.8	103.1	104.6	99.4	98.2	101.6
2008	97.8	101.4	99.1	101.1	97.7	98.6	97.5
2008 Q3	96.5	102.4	100.0	100.3	97.3	99.1	96.9
Q4	97.9	97.8	90.5	94.3	96.0	95.6	91.0
2009 Q1	99.5	96.7	82.3	84.9	96.5	92.0	86.9
Q2	90.8	97.2	79.9	84.9	96.4	90.0	87.7
Q3	91.7	96.4	80.1	84.8	96.2	91.8	87.2
2008 Sep	97.7	101.5	98.9	98.9	97.4	98.0	96.2
Oct	97.9	101.6	94.7	97.0	97.3	94.9	92.8
Nov	95.9	96.9	90.5	93.6	96.4	97.1	91.3
Dec	99.9	95.0	86.4	92.4	94.1	94.7	88.9
2009 Jan	97.8	96.2	83.1	85.4	95.7	92.5	86.6
Feb	103.1	97.2	82.4	84.5	96.5	91.9	86.5
Mar	97.6	96.8	81.3	84.9	97.3	91.7	87.5
Apr	89.8	98.6	79.7	85.3	96.3	89.8	87.8
May	91.9	98.4	79.7	83.7	96.5	89.4	87.3
Jun	90.7	94.6	80.3	85.7	96.4	90.8	87.9
Jul	94.3	97.8	80.3	85.3	97.1	91.5	88.0
Aug	91.3	95.9	80.1	83.0	95.7	89.7	86.1
Sep	89.6	95.5 [†]	80.0	86.0	95.8	94.1	87.4
Oct	87.5	96.6 [†]	80.3 [†]	87.5 [†]	95.1	91.3 [†]	86.0 [†]
Nov	90.4	97.0	79.6	88.2	94.2	87.4	86.0
Percentage change, latest year on previous year							
2004	12.4	3.8	2.7	4.4	1.6	-10.3	0.1
2005	-1.3	2.6	0.9	-0.6	2.1	-2.2	-2.0
2006	-5.5	3.1	1.5	3.3	-0.7	-0.1	0.9
2007	1.3	-1.3	1.6	1.2	0.1	-1.7	0.8
2008	2.2	-0.5	-3.9	-3.3	-1.8	0.4	-4.1
Percentage change, latest month on same month a year ago							
2007 Sep	4.1	-4.8	0.4	0.7	-	1.6	-0.1
Oct	12.6	-2.2	0.6	0.8	-1.9	0.6	1.6
Nov	0.9	-2.2	2.2	-0.5	-0.8	-1.7	2.3
Dec	-4.7	-2.0	-0.1	1.6	-2.9	-5.6	0.9
2008 Jan	-2.6	-0.7	-1.2	0.4	-0.4	2.9	1.9
Feb	5.4	1.9	-0.1	1.4	1.2	5.2	3.1
Mar	8.8	-0.5	0.2	0.5	0.3	0.7	0.3
Apr	4.2	-1.1	0.2	1.1	-1.9	5.6	-0.6
May	-2.3	1.4	-1.5	-0.2	-1.7	0.1	-2.4
Jun	6.1	1.0	-1.8	-2.9	-2.6	-0.4	-3.4
Jul	2.7	1.2	-2.2	-3.0	-2.7	1.0	-3.6
Aug	-1.6	2.9	-2.8	-3.7	-1.6	-1.3	-5.2
Sep	0.6	0.7	-2.9	-4.7	-2.0	-1.7	-4.8
Oct	-0.5	-0.1	-7.3	-6.9	-1.7	-4.1	-9.7
Nov	-0.3	-5.0	-12.3	-10.3	-3.4	-0.2	-11.5
Dec	6.6	-7.2	-15.5	-11.8	-4.8	-2.9	-12.8
2009 Jan	2.1	-6.7	-19.3	-19.2	-4.1	-6.7	-15.6
Feb	5.7	-6.5	-20.6	-19.8	-3.4	-8.3	-16.2
Mar	-1.2	-5.3	-21.3	-19.3	-2.1	-7.5	-13.5
Apr	-10.7	-2.9	-23.1	-19.2	-2.1	-11.8	-12.9
May	-5.0	-4.0	-21.9	-20.0	-1.7	-10.2	-12.5
Jun	-9.8	-7.7	-21.0	-16.5	-0.5	-8.3	-10.5
Jul	-2.6	-4.2	-20.5	-16.1	0.3	-8.7	-10.0
Aug	-3.9	-7.4	-19.9	-17.2	-2.0	-9.5	-11.1
Sep	-8.3	-5.9 [†]	-19.0	-13.1 [†]	-1.7	-3.9	-9.1
Oct	-10.6	-5.0 [†]	-15.2 [†]	-9.7 [†]	-2.3	-3.8 [†]	-7.4 [†]
Nov	-5.7	0.1	-12.1	-5.8	-2.3	-10.0	-5.8

[†] indicates that data are new or have been revised. The period marked is the earliest in the table to have been revised.

IOP5 Output of the production industries

Chained volume indices of gross value added¹

continued

Seasonally adjusted 2005 = 100

Section	Coke, refined petrol & nuclear fuels	Chemicals and man-made fibres	Basic metals and metal products	Engineering and allied industries	Food, drink and tobacco	Textiles, leather and clothing	Other manufacturing
	DF	DG	DJ	DK_DM	DA	DB_DC	DD_DN
Latest weight	13.0	87.2	83.7	233.8	114.5	22.3	215.9
Percentage change, latest month on previous month							
2007 Sep	0.6	0.2	-0.9	-0.4	0.2	-0.8	-1.1
Oct	1.2	0.9	0.3	0.3	-0.4	-0.6	1.7
Nov	-2.2	0.3	1.1	0.2	0.8	-1.7	0.4
Dec	-2.7	0.3	-1.0	0.4	-1.0	0.2	-1.2
2008 Jan	2.3	0.8	0.7	0.9	1.0	1.7	0.7
Feb	1.8	0.8	0.8	-0.4	-	1.1	0.6
Mar	1.2	-1.7	-0.4	-0.1	-0.5	-1.1	-2.0
Apr	1.8	-0.7	0.3	0.3	-1.0	2.8	-0.3
May	-3.9	0.9	-1.6	-0.9	-0.2	-2.2	-1.1
Jun	4.0	0.1	-0.4	-1.9	-1.4	-0.6	-1.5
Jul	-3.7	-0.5	-0.5	-0.8	-	1.2	-0.5
Aug	-1.8	1.5	-1.1	-1.4	0.8	-1.0	-0.9
Sep	2.8	-2.0	-1.1	-1.4	-0.2	-1.2	-0.7
Oct	0.2	0.1	-4.2	-2.0	-0.1	-3.1	-3.5
Nov	-2.1	-4.6	-4.4	-3.5	-0.9	2.3	-1.7
Dec	4.2	-2.0	-4.6	-1.3	-2.4	-2.5	-2.6
2009 Jan	-2.0	1.3	-3.8	-7.6	1.7	-2.3	-2.6
Feb	5.4	1.0	-0.8	-1.1	0.8	-0.6	-0.2
Mar	-5.4	-0.4	-1.4	0.5	0.8	-0.2	1.2
Apr	-8.0	1.8	-1.9	0.5	-1.0	-2.0	0.3
May	2.3	-0.2	-0.1	-1.9	0.2	-0.4	-0.6
Jun	-1.3	-3.8	0.8	2.4	-0.2	1.5	0.7
Jul	4.0	3.3	0.1	-0.4	0.8	0.8	0.1
Aug	-3.1	-1.9	-0.3	-2.7	-1.5	-2.0	-2.1
Sep	-1.8	-0.5	-0.1	3.5	0.1	4.9	1.5
Oct	-2.4	1.2 [†]	0.4 [†]	1.8 [†]	-0.7	-3.0 [†]	-1.7 [†]
Nov	3.3	0.4	-0.9	0.8	-1.0	-4.3	-
Percentage change, latest 3 months on same 3 months a year ago							
2007 Sep	1.7	-3.2	1.2	1.2	0.2	2.0	0.6
Oct	5.6	-3.3	0.7	0.8	-0.5	1.6	0.9
Nov	5.7	-3.1	1.1	0.3	-0.9	0.2	1.3
Dec	2.6	-2.1	0.9	0.6	-1.9	-2.3	1.6
2008 Jan	-2.2	-1.6	0.3	0.5	-1.4	-1.6	1.7
Feb	-0.7	-0.3	-0.5	1.1	-0.7	0.7	1.9
Mar	3.7	0.2	-0.4	0.8	0.4	2.9	1.8
Apr	6.1	0.1	0.1	1.0	-0.1	3.8	0.9
May	3.4	-0.1	-0.3	0.5	-1.1	2.1	-0.9
Jun	2.6	0.4	-1.0	-0.7	-2.1	1.8	-2.1
Jul	2.1	1.2	-1.8	-2.0	-2.3	0.3	-3.1
Aug	2.4	1.7	-2.3	-3.2	-2.3	-0.2	-4.1
Sep	0.5	1.6	-2.6	-3.8	-2.1	-0.6	-4.5
Oct	-0.5	1.2	-4.3	-5.1	-1.8	-2.3	-6.6
Nov	-0.1	-1.5	-7.5	-7.3	-2.4	-2.0	-8.7
Dec	1.9	-4.1	-11.7	-9.6	-3.3	-2.4	-11.3
2009 Jan	2.8	-6.3	-15.7	-13.8	-4.1	-3.3	-13.3
Feb	4.8	-6.8	-18.5	-16.9	-4.1	-6.0	-14.9
Mar	2.2	-6.2	-20.4	-19.4	-3.2	-7.5	-15.1
Apr	-2.2	-4.9	-21.7	-19.4	-2.5	-9.2	-14.2
May	-5.7	-4.0	-22.1	-19.5	-2.0	-9.8	-13.0
Jun	-8.5	-4.9	-22.0	-18.6	-1.4	-10.1	-12.0
Jul	-5.9	-5.3	-21.2	-17.5	-0.6	-9.1	-11.0
Aug	-5.5	-6.5	-20.5	-16.6	-0.7	-8.8	-10.5
Sep	-5.0	-5.9	-19.8	-15.5	-1.1	-7.4	-10.1
Oct	-7.6	-6.1 [†]	-18.1 [†]	-13.4 [†]	-2.0	-5.8 [†]	-9.2 [†]
Nov	-8.2	-3.6	-15.6	-9.6	-2.1	-6.0	-7.5

[†] indicates that data are new or have been revised. The period marked is the earliest in the table to have been revised.

IOP5 Output of the production industries

Chained volume indices of gross value added¹

continued

Seasonally adjusted 2005 = 100

	Coke, refined petrol & nuclear fuels	Chemicals and man-made fibres	Basic metals and metal products	Engineering and allied industries	Food, drink and tobacco	Textiles, leather and clothing	Other manufacturing
Section	DF	DG	DJ	DK_DM	DA	DB_DC	DD_DN
Latest weight	13.0	87.2	83.7	233.8	114.5	22.3	215.9
Percentage change, latest 3 months on previous 3 months							
2007 Sep	-0.8	-0.9	-0.8	-0.6	-0.5	1.3	-0.2
Oct	1.4	-0.1	-1.2	-1.0	-0.4	0.3	0.3
Nov	2.2	0.5	-0.8	-0.7	0.1	-1.0	0.6
Dec	0.1	1.2	-0.1	0.1	-0.1	-1.8	1.1
2008 Jan	-2.2	1.4	0.5	0.8	0.3	-1.7	0.6
Feb	-1.6	1.6	0.6	1.1	0.1	0.3	0.3
Mar	1.4	1.1	0.8	1.0	0.5	1.6	-0.3
Apr	3.9	0.1	0.8	0.4	-0.3	2.4	-0.8
May	3.1	-1.0	-	-0.1	-0.9	1.3	-2.0
Jun	1.9	-0.9	-0.9	-1.1	-1.9	0.7	-2.7
Jul	-1.0	-0.2	-2.0	-2.3	-2.0	-0.8	-3.2
Aug	-1.2	0.7	-2.1	-3.4	-1.6	-0.7	-3.0
Sep	-2.7	0.2	-2.4	-3.8	-0.5	-1.1	-2.7
Oct	-1.1	-0.1	-3.7	-4.1	0.2	-2.3	-3.3
Nov	-0.3	-2.7	-6.1	-4.9	-	-2.8	-4.3
Dec	1.4	-4.4	-9.4	-5.9	-1.3	-3.6	-6.1
2009 Jan	1.0	-6.1	-11.4	-8.3	-2.1	-2.7	-6.6
Feb	3.2	-3.9	-11.3	-9.4	-1.7	-3.8	-6.5
Mar	1.7	-1.1	-9.1	-10.0	0.5	-3.7	-4.6
Apr	-1.1	1.5	-6.4	-6.2	1.3	-3.8	-1.9
May	-7.2	1.9	-4.5	-3.2	1.3	-2.9	0.2
Jun	-8.8	0.5	-2.9	-	-0.1	-2.2	0.9
Jul	-4.7	-0.6	-1.3	-	-	-0.6	0.5
Aug	-1.1	-1.8	-	-	-0.3	0.4	-0.2
Sep	1.1	-0.8	0.3	-0.1	-0.2	2.0	-0.6
Oct	-3.0	-0.9 [†]	0.1 [†]	0.7 [†]	-1.2	1.2 [†]	-1.4 [†]
Nov	-3.1	0.3	-0.3	3.0	-1.4	0.3	-1.0

[†] indicates that data are new or have been revised. The period marked is the earliest in the table to have been revised.

IOP5R Output of the production industries

Chained volume indices of gross value added¹

Seasonally adjusted 2005 = 100

Section	Broad industry groups					Main industrial groupings			
	Production industries C+D+E	Mining and Quarrying inc Oil and Gas Extraction C	Manufacturing D	Electricity, Gas and Water Supply E	Oil and Gas Extraction C_1	Consumer durables MG-DUR	Consumer non-durables MG-NDUR	Capital goods MG-CAP	Intermediate goods and energy MG-INEN
Latest weight	1 000.0	142.8	770.4	86.8	130.0	33.8	260.2	214.9	491.1
2004	-	-	-	-	-	-	-	-	-
2005	-	-	-	-	-	-	-	-	-
2006	-	-	-	-	-	-	-	-	-
2007	-	-	-	-	-	-	-	-	-
2008	-	-	-	-	-	-	-	-	-
2008 Q3	-	-	-	-	-	-	-	-	-
Q4	-	-	-	-	-	-	-	-	-
2009 Q1	-	-	-	-	-	-	-	-	-
Q2	-	-	-	-	-	-	-	-	-
Q3	-	-	-	-	-	-	-	-	-
2008 Sep	-	-	-	-	-	-	-	-	-
Oct	-	-	-	-	-	-	-	-	-
Nov	-	-	-	-	-	-	-	-	-
Dec	-	-	-	-	-	-	-	-	-
2009 Jan	-	-	-	-	-	-	-	-	-
Feb	-	-	-	-	-	-	-	-	-
Mar	-	-	-	-	-	-	-	-	-
Apr	-	-	-	-	-	-	-	-	-
May	-	-	-	-	-	-	-	-	-
Jun	-	-	-	-	-	-	-	-	-
Jul	-	-	-	-	-	-	-	-	-
Aug	-	-	-	-	-	-	-	-	-
Sep	-	-	-	-	-	-	-	-	-
Oct	-	-	-	-0.1	0.2	-0.3	-0.7	0.7	0.1
Percentage change, latest year on previous year									
2004	-	-	-	-	-	-	-	-	-
2005	-	-	-	-	-	-	-	-	-
2006	-	-	-	-	-	-	-	-	-
2007	-	-	-	-	-	-	-	-	-
2008	-	-	-	-	-	-	-	-	-
Percentage change, latest month on same month a year ago									
2007 Aug	-	-	-	-	-	-	-	-	-
Sep	-	-	-	-	-	-	-	-	-
Oct	-	-	-	-	-	-	-	-	-
Nov	-	-	-	-	-	-	-	-	-
Dec	-	-	-	-	-	-	-	-	-
2008 Jan	-	-	-	-	-	-	-	-	-
Feb	-	-	-	-	-	-	-	-	-
Mar	-	-	-	-	-	-	-	-	-
Apr	-	-	-	-	-	-	-	-	-
May	-	-	-	-	-	-	-	-	-
Jun	-	-	-	-	-	-	-	-	-
Jul	-	-	-	-	-	-	-	-	-
Aug	-	-	-	-	-	-	-	-	-
Sep	-	-	-	-	-	-	-	-	-
Oct	-	-	-	-	-	-	-	-	-
Nov	-	-	-	-	-	-	-	-	-
Dec	-	-	-	-	-	-	-	-	-
2009 Jan	-	-	-	-	-	-	-	-	-
Feb	-	-	-	-	-	-	-	-	-
Mar	-	-	-	-	-	-	-	-	-
Apr	-	-	-	-	-	-	-	-	-
May	-	-	-	-	-	-	-	-	-
Jun	-	-	-	-	-	-	-	-	-
Jul	-	-	-	-	-	-	-	-	-
Aug	-	-	-	-	-	-	-	-	-
Sep	-	-	-	-	-	-	-	-	-
Oct	-	0.1	-	-0.1	0.2	-0.2	-0.8	0.7	0.1

¹ Any apparent inconsistencies between the index numbers and the percentage changes shown in these tables are due to rounding.

[†] indicates that data are new or have been revised. The period marked is the earliest in the table to have been revised.

IOP5R Output of the production industries

Chained volume indices of gross value added¹

continued

Seasonally adjusted 2005 = 100

Section	Broad industry groups					Main industrial groupings			
	Production industries	Mining and Quarrying inc Oil and Gas Extraction	Manufacturing	Electricity, Gas and Water Supply	Oil and Gas Extraction	Consumer durables	Consumer non-durables	Capital goods	Intermediate goods and energy
	C+D+E	C	D	E	C_1	MG-DUR	MG-NDUR	MG-CAP	MG-INEN
Latest weight	1 000.0	142.8	770.4	86.8	130.0	33.8	260.2	214.9	491.1

Percentage change, latest month on previous month

2007 Aug	-	-	-	-	-	-	-	-	-
Sep	-	-	-	-	-	-	-	-	-
Oct	-	-	-	-	-	-	-	-	-
Nov	-	-	-	-	-	-	-	-	-
Dec	-	-	-	-	-	-	-	-	-
2008 Jan	-	-	-	-	-	-	-	-	-
Feb	-	-	-	-	-	-	-	-	-
Mar	-	-	-	-	-	-	-	-	-
Apr	-	-	-	-	-	-	-	-	-
May	-	-	-	-	-	-	-	-	-
Jun	-	-	-	-	-	-	-	-	-
Jul	-	-	-	-	-	-	-	-	-
Aug	-	-	-	-	-	-	-	-	-
Sep	-	-	-	-	-	-	-	-	-
Oct	-	-	-	-	-	-	-	-	-
Nov	-	-	-	-	-	-	-	-	-
Dec	-	-	-	-	-	-	-	-	-
2009 Jan	-	-	-	-	-	-	-	-	-
Feb	-	-	-	-	-	-	-	-	-
Mar	-	-	-	-	-	-	-	-	-
Apr	-	-	-	-	-	-	-	-	-
May	-	-	-	-	-	-	-	-	-
Jun	-	-	-	-	-	-	-	-	-
Jul	-	-	-	-	-	-	-	-	-
Aug	-	-	-	-	-	-	-	-	-
Sep	-	-	-	-	-	-	-	-	-
Oct	-0.1	0.1	-	-0.1	0.2	-0.3	-0.8	0.9	0.1

Percentage change, latest 3 months on same 3 months a year ago

2007 Aug	-	-	-	-	-	-	-	-	-
Sep	-	-	-	-	-	-	-	-	-
Oct	-	-	-	-	-	-	-	-	-
Nov	-	-	-	-	-	-	-	-	-
Dec	-	-	-	-	-	-	-	-	-
2008 Jan	-	-	-	-	-	-	-	-	-
Feb	-	-	-	-	-	-	-	-	-
Mar	-	-	-	-	-	-	-	-	-
Apr	-	-	-	-	-	-	-	-	-
May	-	-	-	-	-	-	-	-	-
Jun	-	-	-	-	-	-	-	-	-
Jul	-	-	-	-	-	-	-	-	-
Aug	-	-	-	-	-	-	-	-	-
Sep	-	-	-	-	-	-	-	-	-
Oct	-	-	-	-	-	-	-	-	-
Nov	-	-	-	-	-	-	-	-	-
Dec	-	-	-	-	-	-	-	-	-
2009 Jan	-	-	-	-	-	-	-	-	-
Feb	-	-	-	-	-	-	-	-	-
Mar	-	-	-	-	-	-	-	-	-
Apr	-	-	-	-	-	-	-	-	-
May	-	-	-	-	-	-	-	-	-
Jun	-	-	-	-	-	-	-	-	-
Jul	-	-	-	-	-	-	-	-	-
Aug	-	-	-	-	-	-	-	-	-
Sep	-	-	-	-	-	-	-	-	-
Oct	-	-	-	-0.1	-	-0.1	-0.3	0.2	-

¹ Any apparent inconsistencies between the index numbers on table IOP5 and the percentage changes shown in this table are due to rounding.

† indicates that data are new or have been revised. The period marked is the earliest in the table to have been revised.

IOP5R Output of the production industries

Chained volume indices of gross value added¹

continued

Seasonally adjusted 2005 = 100

Section	Broad industry groups					Main industrial groupings			
	Production industries	Mining and Quarrying inc Oil and Gas Extraction	Manufacturing	Electricity, Gas and Water Supply	Oil and Gas Extraction	Consumer durables	Consumer non-durables	Capital goods	Intermediate goods and energy
	C+D+E	C	D	E	C_1	MG-DUR	MG-NDUR	MG-CAP	MG-INEN
Latest weight	1 000.0	142.8	770.4	86.8	130.0	33.8	260.2	214.9	491.1

Percentage change, latest 3 months on previous 3 months

2007 Aug	-	-	-	-	-	-	-	-	-
Sep	-	-	-	-	-	-	-	-	-
Oct	-	-	-	-	-	-	-	-	-
Nov	-	-	-	-	-	-	-	-	-
Dec	-	-	-	-	-	-	-	-	-
2008 Jan	-	-	-	-	-	-	-	-	-
Feb	-	-	-	-	-	-	-	-	-
Mar	-	-	-	-	-	-	-	-	-
Apr	-	-	-	-	-	-	-	-	-
May	-	-	-	-	-	-	-	-	-
Jun	-	-	-	-	-	-	-	-	-
Jul	-	-	-	-	-	-	-	-	-
Aug	-	-	-	-	-	-	-	-	-
Sep	-	-	-	-	-	-	-	-	-
Oct	-	-	-	-	-	-	-	-	-
Nov	-	-	-	-	-	-	-	-	-
Dec	-	-	-	-	-	-	-	-	-
2009 Jan	-	-	-	-	-	-	-	-	-
Feb	-	-	-	-	-	-	-	-	-
Mar	-	-	-	-	-	-	-	-	-
Apr	-	-	-	-	-	-	-	-	-
May	-	-	-	-	-	-	-	-	-
Jun	-	-	-	-	-	-	-	-	-
Jul	-	-	-	-	-	-	-	-	-
Aug	-	-	-	-	-	-	-	-	-
Sep	-	-	-	-	-	-	-	-	-
Oct	-	-	-	-0.1	0.1	-0.1	-0.3	0.3	-

¹ Any apparent inconsistencies between the index numbers on table IOP5 and the percentage changes shown in this table are due to rounding.

[†] indicates that data are new or have been revised. The period marked is the earliest in the table to have been revised.

IOP5R Output of the production industries

Chained volume indices of gross value added¹

continued

Seasonally adjusted 2005 = 100

Section	Coke, refined petrol & nuclear fuels	Chemicals and man-made fibres	Basic metals and metal products	Engineering and allied industries	Food, drink and tobacco	Textiles, leather and clothing	Other manufacturing
	DF	DG	DJ	DK_DM	DA	DB_DC	DD_DN
Latest weight	13.0	87.2	83.7	233.8	114.5	22.3	215.9
2004	-	-	-	-	-	-	-
2005	-	-	-	-	-	-	-
2006	-	-	-	-	-	-	-
2007	-	-	-	-	-	-	-
2008	-	-	-	-	-	-	-
2008 Q3	-	-	-	-	-	-	-
Q4	-	-	-	-	-	-	-
2009 Q1	-	-	-	-	-	-	-
Q2	-	-	-	-	-	-	-
Q3	-	-	-	-	-	-	-
2008 Aug	-	-	-	-	-	-	-
Sep	-	-	-	-	-	-	-
Oct	-	-	-	-	-	-	-
Nov	-	-	-	-	-	-	-
Dec	-	-	-	-	-	-	-
2009 Jan	-	-	-	-	-	-	-
Feb	-	-	-	-	-	-	-
Mar	-	-	-	-	-	-	-
Apr	-	-	-	-	-	-	-
May	-	-	-	-	-	-	-
Jun	-	-	-	-	-	-	-
Jul	-	-	-	-	-	-	-
Aug	-	-	-	-	-	-	-
Sep	-	-	-	-	-	-	-
Oct	-	-1.4	0.4	0.7	-	-0.6	-0.4
Percentage change, latest year on previous year							
2004	-	-	-	-	-	-	-
2005	-	-	-	-	-	-	-
2006	-	-	-	-	-	-	-
2007	-	-	-	-	-	-	-
2008	-	-	-	-	-	-	-
Percentage change, latest month on same month a year ago							
2007 Aug	-	-	-	-	-	-	-
Sep	-	-	-	-	-	-	-
Oct	-	-	-	-	-	-	-
Nov	-	-	-	-	-	-	-
Dec	-	-	-	-	-	-	-
2008 Jan	-	-	-	-	-	-	-
Feb	-	-	-	-	-	-	-
Mar	-	-	-	-	-	-	-
Apr	-	-	-	-	-	-	-
May	-	-	-	-	-	-	-
Jun	-	-	-	-	-	-	-
Jul	-	-	-	-	-	-	-
Aug	-	-	-	-	-	-	-
Sep	-	-	-	-	-	-	-
Oct	-	-	-	-	-	-	-
Nov	-	-	-	-	-	-	-
Dec	-	-	-	-	-	-	-
2009 Jan	-	-	-	-	-	-	-
Feb	-	-	-	-	-	-	-
Mar	-	-	-	-	-	-	-
Apr	-	-	-	-	-	-	-
May	-	-	-	-	-	-	-
Jun	-	-	-	-	-	-	-
Jul	-	-	-	-	-	-	-
Aug	-	-	-	-	-	-	-
Sep	-	-	-	-	-	-	-
Oct	-	-1.4	0.5	0.8	-	-0.6	-0.4

[†] indicates that data are new or have been revised. The period marked is the earliest in the table to have been revised.

IOP5R Output of the production industries

Chained volume indices of gross value added¹

continued

Seasonally adjusted 2005 = 100

	Coke, refined petrol & nuclear fuels	Chemicals and man-made fibres	Basic metals and metal products	Engineering and allied industries	Food, drink and tobacco	Textiles, leather and clothing	Other manufacturing
Section	DF	DG	DJ	DK_DM	DA	DB_DC	DD_DN
Latest weight	13.0	87.2	83.7	233.8	114.5	22.3	215.9
Percentage change, latest month on previous month							
2007 Aug	-	-	-	-	-	-	-
Sep	-	-	-	-	-	-	-
Oct	-	-	-	-	-	-	-
Nov	-	-	-	-	-	-	-
Dec	-	-	-	-	-	-	-
2008 Jan	-	-	-	-	-	-	-
Feb	-	-	-	-	-	-	-
Mar	-	-	-	-	-	-	-
Apr	-	-	-	-	-	-	-
May	-	-	-	-	-	-	-
Jun	-	-	-	-	-	-	-
Jul	-	-	-	-	-	-	-
Aug	-	-	-	-	-	-	-
Sep	-	-	-	-	-	-	-
Oct	-	-	-	-	-	-	-
Nov	-	-	-	-	-	-	-
Dec	-	-	-	-	-	-	-
2009 Jan	-	-	-	-	-	-	-
Feb	-	-	-	-	-	-	-
Mar	-	-	-	-	-	-	-
Apr	-	-	-	-	-	-	-
May	-	-	-	-	-	-	-
Jun	-	-	-	-	-	-	-
Jul	-	-	-	-	-	-	-
Aug	-	-	-	-	-	-	-
Sep	-	-	-	-	-	-	-
Oct	-	-1.4	0.6	0.8	-	-0.7	-0.5
Percentage change, latest 3 months on same 3 months a year ago							
2007 Aug	-	-	-	-	-	-	-
Sep	-	-	-	-	-	-	-
Oct	-	-	-	-	-	-	-
Nov	-	-	-	-	-	-	-
Dec	-	-	-	-	-	-	-
2008 Jan	-	-	-	-	-	-	-
Feb	-	-	-	-	-	-	-
Mar	-	-	-	-	-	-	-
Apr	-	-	-	-	-	-	-
May	-	-	-	-	-	-	-
Jun	-	-	-	-	-	-	-
Jul	-	-	-	-	-	-	-
Aug	-	-	-	-	-	-	-
Sep	-	-	-	-	-	-	-
Oct	-	-	-	-	-	-	-
Nov	-	-	-	-	-	-	-
Dec	-	-	-	-	-	-	-
2009 Jan	-	-	-	-	-	-	-
Feb	-	-	-	-	-	-	-
Mar	-	-	-	-	-	-	-
Apr	-	-	-	-	-	-	-
May	-	-	-	-	-	-	-
Jun	-	-	-	-	-	-	-
Jul	-	-	-	-	-	-	-
Aug	-	-	-	-	-	-	-
Sep	-	-	-	-	-	-	-
Oct	-	-0.4	0.1	0.2	-	-0.2	-0.1

[†] indicates that data are new or have been revised. The period marked is the earliest in the table to have been revised.

IOP5R Output of the production industries

Chained volume indices of gross value added¹

continued

Seasonally adjusted 2005 = 100

	Coke, refined petrol & nuclear fuels	Chemicals and man-made fibres	Basic metals and metal products	Engineering and allied industries	Food, drink and tobacco	Textiles, leather and clothing	Other manufacturing
Section	DF	DG	DJ	DK_DM	DA	DB_DC	DD_DN
Latest weight	13.0	87.2	83.7	233.8	114.5	22.3	215.9
Percentage change, latest 3 months on previous 3 months							
2007 Aug	-	-	-	-	-	-	-
Sep	-	-	-	-	-	-	-
Oct	-	-	-	-	-	-	-
Nov	-	-	-	-	-	-	-
Dec	-	-	-	-	-	-	-
2008 Jan	-	-	-	-	-	-	-
Feb	-	-	-	-	-	-	-
Mar	-	-	-	-	-	-	-
Apr	-	-	-	-	-	-	-
May	-	-	-	-	-	-	-
Jun	-	-	-	-	-	-	-
Jul	-	-	-	-	-	-	-
Aug	-	-	-	-	-	-	-
Sep	-	-	-	-	-	-	-
Oct	-	-	-	-	-	-	-
Nov	-	-	-	-	-	-	-
Dec	-	-	-	-	-	-	-
2009 Jan	-	-	-	-	-	-	-
Feb	-	-	-	-	-	-	-
Mar	-	-	-	-	-	-	-
Apr	-	-	-	-	-	-	-
May	-	-	-	-	-	-	-
Jun	-	-	-	-	-	-	-
Jul	-	-	-	-	-	-	-
Aug	-	-	-	-	-	-	-
Sep	-	-	-	-	-	-	-
Oct	-	-0.4	0.2	0.3	-	-0.3	-0.2

[†] indicates that data are new or have been revised. The period marked is the earliest in the table to have been revised.

Next publication: Wednesday 10 February 2010

Issued by: Office for National Statistics, Government Buildings, Cardiff Road, Newport NP10 8XG

Media contact:

Tel **Media Relations Office 0845 6041858**

Emergency on-call 07867 906553

E-mail **press.office@ons.gsi.gov.uk**

Statistical contact:

Tel **Phillip Davies 01633 456492**

E-mail **philip.davies@ons.gsi.gov.uk**

Website:

www.ons.gov.uk