

11 January 2008

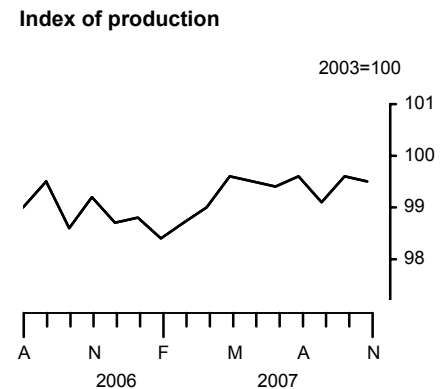
**Coverage**  
United Kingdom  
**Theme**  
The Economy

## Index of production November 2007

In the three months to November, the seasonally adjusted chained volume index for the output of the production industries was 0.1 per cent lower than in the previous three months.

Between October and November output of the manufacturing industries fell by 0.1 per cent (note that monthly growth rates are volatile, see background note 2).

There was a significant decrease in output of 1.9 per cent in the electrical and optical equipment industries. There was a significant increase in output of 2.4 per cent in the transport equipment industries.



In the latest three months, manufacturing output decreased by 0.2 per cent, mining and quarrying output remained unchanged but output of the electricity, gas and water supply industries increased by 1.3 per cent, compared with the previous three months.

	Production			Mining and quarrying	Manufacturing	Electricity gas and water
	2003 weights	1000.0	117.8	792.1	90.1	
		Production index level	Percentage change: latest three months on previous three months			
2007	Jun	99.5	0.7	1.1	0.8	-0.1
	Jul	99.4	0.8	1.0	0.7	1.3
	Aug	99.6	0.4	0.0	0.4	0.7
	Sep	99.1	0.0	-1.1	0.0	0.8
	Oct	99.6	-0.1	-1.7	0.1	0.3
	Nov	99.5	-0.1	0.0	-0.2	1.3

Issued by  
National Statistics  
1 Drummond Gate  
London SW1V 2QQ

Telephone  
Press Office 020 7533 5725  
Public Enquiries 0845 601 3034

Statistician  
Andrew Walton 01633 812319  
indexofproduction@ons.gov.uk

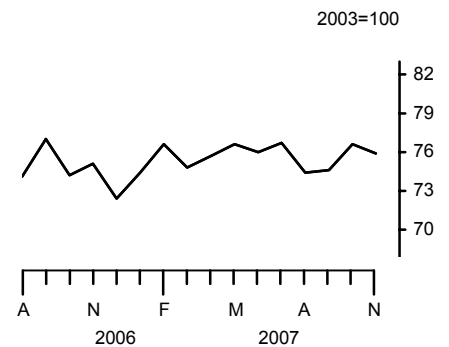
Internet  
www.statistics.gov.uk

Next publication date  
7 February 2008

### Mining and quarrying

In the latest three months, mining and quarrying output remained unchanged compared with the previous three months but was 0.4 per cent higher than the same period a year ago. Between October and November, mining and quarrying output decreased by 0.9 per cent with falls in oil and gas production.

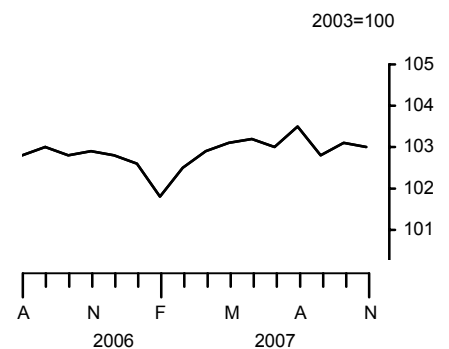
### Mining & quarrying



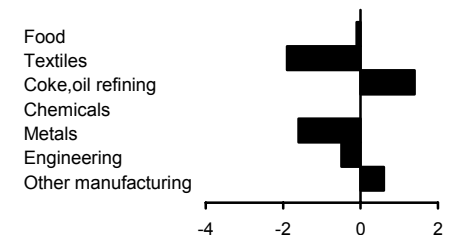
### Manufacturing

Manufacturing output in the latest three months fell by 0.2 per cent compared with the previous three months. There were significant decreases in output of 1.6 per cent in the basic metals and metal products industries and 1.4 per cent in the electrical and optical equipment industries. There were no significant increases. Manufacturing output in the latest three months was 0.1 per cent higher than the same period a year ago.

### Manufacturing



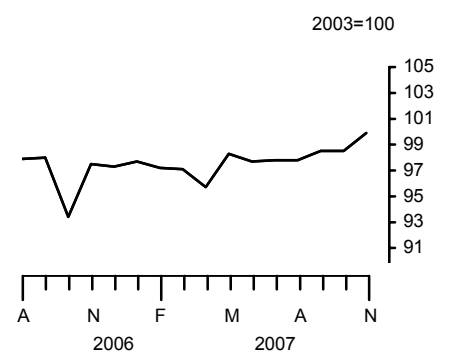
### Percentage change on previous three months



### Electricity, gas and water supply

Output of the electricity, gas and water supply industries in the latest three months rose by 1.3 per cent compared with the previous three months. Between October and November, energy supply output increased by 1.4 per cent. In the latest three months, output in this sector was 2.8 per cent higher compared with the same period a year ago.

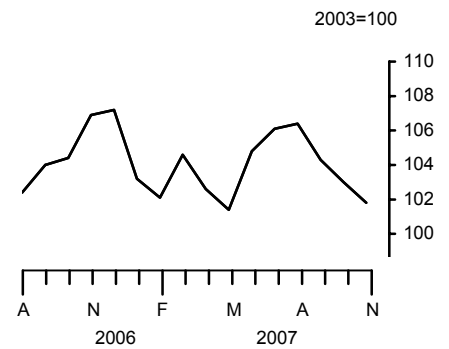
### Electricity, gas & water



**Market sectors**

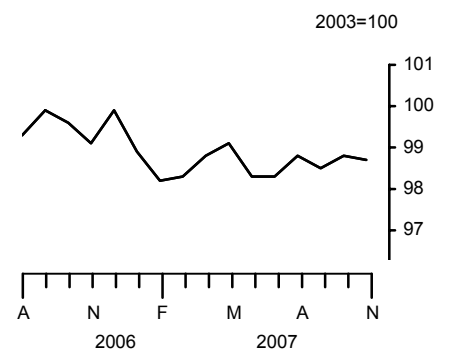
In the latest three months, output of the consumer durable goods industries fell by 2.5 per cent compared with the previous three months and was 1.9 per cent lower than the same period a year ago.

**Consumer durables**



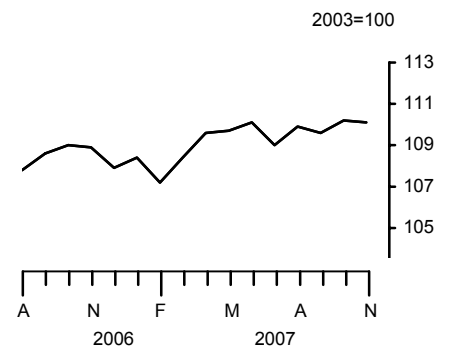
Output in the consumer non-durable goods industries rose by 0.2 per cent in the latest three months compared with the previous three months but was 0.9 per cent lower than the same period a year ago.

**Consumer non-durables**



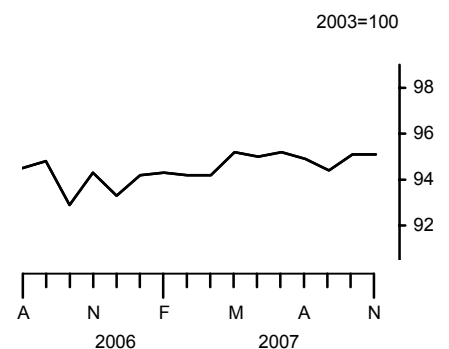
In the latest three months, output of the capital goods industries rose by 0.3 per cent compared with the previous three months and was 1.0 per cent higher than the same period a year ago.

**Capital goods**



Output in the intermediate goods and energy industries fell by 0.2 per cent in the latest three months compared with the previous three months but was 0.9 per cent higher than the same period a year ago.

**Intermediate goods and energy**



## Revisions

This release conforms to the standard revisions policy for National Accounts. In this release the period open for revision is October 2007 only. Table IOP5AR shows the revisions to the estimates previously published on 6 December 2007.

Since last month a number of late responses have been received to the Monthly Production Inquiry. The impact of these late data, when combined with revisions caused by seasonal adjustment factors being re-estimated, is to revise the growth rate for the Index of Production for October by +0.1 per cent.

## **BACKGROUND NOTES**

1. This First Release gives details of the index of output of the production industries in the United Kingdom. Index numbers of output in this First Release are on the base 2003=100 and are classified to the 2003 revision to the Standard Industrial Classification (SIC). The production industries, which accounted for 18.6 per cent of gross domestic product in 2003, cover mining and quarrying (Section C), manufacturing (Section D) and electricity, gas and water supply (Section E).

### **Interpreting the data**

2. The monthly IoP data can be volatile. When looking at growth rates, it is recommended that users focus on the percentage change between the latest three months and the previous three months.

### **Status of figures and planned future revisions**

3. Figures for the most recent months are provisional and subject to revision in light of (a) late responses to the Monthly Production Inquiry and (b) revisions to seasonal adjustment factors which are re-estimated every period.

In the next release, which will contain figures for December 2007 and will be published on 7 February 2008, the earliest period open for revisions according to the National Accounts policy will be January 2007.

4. In March 2008 when the IoP estimates for January 2008 are published, a number of methodological changes will be introduced to the construction of the IoP. At the same time the current level of detail that is published as part of the IoP dataset will also change. Details of these planned changes can now be found on the National Statistics website at:

<http://www.statistics.gov.uk/statbase/Product.asp?vlnk=6230>

### **Basic quality information for the IoP First Release**

#### **Summary quality report**

5. A Summary Quality Report for this First Release can now be found on the National Statistics website at:

<http://www.statistics.gov.uk/CCI/article.asp?ID=1846>

6. The 2005 median annual growth of MPI turnover, their associated standard errors and quality bands can now be found on the National Statistics website at:

<http://www.statistics.gov.uk/statbase/Product.asp?vlnk=6230>

**Key quality issues**

- 7. Common pitfalls in interpreting series: Expectations of accuracy and reliability in early estimates are often too high. Revisions are an inevitable consequence of the trade off between timeliness and accuracy. Early estimates are based on incomplete data.

Very few statistical revisions arise as a result of ‘errors’ in the popular sense of the word. All estimates, by definition, are subject to statistical ‘error’ but in this context the word refers to the uncertainty inherent in any process or calculation that uses sampling, estimation or modelling. Most revisions reflect either the adoption of new statistical techniques, or the incorporation of new information which allows the statistical error of previous estimates to be reduced. Only rarely are there avoidable ‘errors’ such as human or system failures, and such mistakes are made quite clear when they do occur.

**Reliability**

- 8. One indication of the reliability of the key indicators in this release can be obtained by monitoring the size of revisions. The table below is based on the revisions which have occurred over the last five years. Please note that these indicators only report summary measures for revisions. The revised data may, themselves, be subject to sampling or other sources of error.

The table below presents a summary of the differences between the first estimates published between December 2001 and November 2006 and the estimates published 12 months later.

	Value in latest period (per cent)	Revisions between first publication and estimates twelve months later (% points)	
		Average over the last five years	Average over the last five years without regard to sign (average absolute revision)
Production output – 3 month on 3 month growth rate	-0.1	0.07	0.26
Manufacturing output – 3 month on 3 month growth rate	-0.2	0.11	0.29
Production output – 1 month growth rate	-0.1	0.04	0.26
Manufacturing output – 1 month growth rate	-0.1	0.06	0.30

Spreadsheets giving revisions triangles of estimates for all months from December 1997 through to the current month, and the calculations behind the averages in the above table, are available on the National Statistics website at:

<http://www.statistics.gov.uk/statbase/Product.asp?vlnk=6230>

9. A statistical test has been applied to the average revisions to find out if they are statistically significantly different from zero. No such differences have been found.
10. The table uses historical data for the most recent 60 months, comparing the estimate at first publication with the estimate as published 12 months later. The numbers which underpin these averages will include normal changes due to late data and re-seasonal adjustment, but also significant methodological changes, the most recent of which occurred in October 2003 (see article "Index of Production redevelopment" in *Economic Trends*, October 2002).

### **Deflation**

11. All series, unless otherwise quoted, are measured at constant market prices. Deflators adjust the value series to take out the effect of price changes to give the volume series.

### **Seasonal adjustment**

12. The index numbers in this First Release are all seasonally adjusted. This aids interpretation by removing annually recurring fluctuations, for example, due to holidays or other regular seasonal patterns. Unadjusted data are also available.

### **Further information**

13. The complete run of data in the tables of this First Release are also available to view and download in electronic format free of charge using the ONS **Time Series Data service**. Users can download the complete release in a choice of zipped formats, or view and download their own selections of individual series. The Time Series Data service can be accessed at:  
<http://www.statistics.gov.uk/timeseries>

ONS provides an analysis of past revisions in the IoP and other First Releases which present time series. Details can be found at:

<http://www.statistics.gov.uk/cci/article.asp?ID=793>

ONS now publishes revisions triangles for all the main published key indicators on the National Statistics website. Details can be found at:

<http://www.statistics.gov.uk/cci/article.asp?ID=1026>

In addition, the methodology for the Index of Production is now available on the National Statistics website. Details can be found at:

<http://www.statistics.gov.uk/cci/article.asp?ID=1111>

**Advance access**

14. Details of the policy governing the release of new data are available from the press office. Also available is a list of those given pre-publication access to the contents of this release. Additionally, in light of the timing of this month's meeting of the Bank of England's Monetary Policy Committee, members of the committee have had pre-publication access.

**Code of Practice**

15. **National Statistics** are produced to high professional standards set out in the National Statistics Code of Practice. They undergo regular quality assurance reviews to ensure that they meet customer needs. They are produced free from any political interference. © Crown copyright 2008.

# IOP5A Output of the production industries

Chained volume indices of gross value added<sup>1,2</sup>

Seasonally adjusted 2003 = 100

Section	Broad industry groups					Main industrial groupings			
	Production industries	Mining and Quarrying inc Oil and Gas Extraction	Manufacturing	Electricity, Gas and Water Supply	Oil and Gas Extraction	Consumer durables	Consumer non-durables	Capital goods	Intermediate goods and energy
	C+D+E	C	D	E	C_1	MG-DUR	MG-NDUR	MG-CAP	MG-INEN
Latest weight	1 000.0	117.8	792.1	90.1	106.9	36.1	272.2	213.3	478.4
	CKYW	CKYX	CKYY	CKYZ	CKZO	UFIU	UFJS	UFIL	JMOH
2002	100.3	105.4	99.8	98.4	105.9	101.7	99.9	98.2	101.5
2003	100.0	100.0	100.0	100.0	100.0	100.0	100.0	100.0	100.0
2004	100.8	92.1	102.0	101.1	91.6	104.6	100.0	103.7	99.7
2005	98.8	83.7	100.8	100.7	82.0	102.9	99.2	103.2	96.3
2006	98.9	76.7	102.3	98.2	74.4	104.5	99.3	107.2	94.5
2006 Q3	99.0	75.3	102.7	97.9	73.1	103.1	99.4	108.0	94.5
Q4	98.8	73.9	102.9	96.0	71.4	106.2	99.5	108.6	93.5
2007 Q1	98.7	75.3	102.3	97.3	72.5	103.3	98.5	108.0	94.2
Q2	99.4	76.1	103.1	97.2	73.1	102.9	98.7	109.8	94.8
Q3	99.4	75.3	103.1	98.0	71.7	105.6	98.6	109.5	94.8
2006 Sep	99.5	77.0	103.0	98.0	75.1	104.0	99.9	108.6	94.8
Oct	98.6	74.2	102.8	93.4	71.9	104.4	99.6	109.0	92.9
Nov	99.2	75.1	102.9	97.5	72.8	106.9	99.1	108.9	94.3
Dec	98.7	72.4	102.8	97.3	69.6	107.2	99.9	107.9	93.3
2007 Jan	98.8	74.4	102.6	97.7	71.7	103.2	98.9	108.4	94.2
Feb	98.4	76.6	101.8	97.2	73.9	102.1	98.2	107.2	94.3
Mar	98.7	74.8	102.5	97.1	71.9	104.6	98.3	108.4	94.2
Apr	99.0	75.7	102.9	95.7	72.7	102.6	98.8	109.6	94.2
May	99.6	76.6	103.1	98.3	73.8	101.4	99.1	109.7	95.2
Jun	99.5	76.0	103.2	97.7	72.9	104.8	98.3	110.1	95.0
Jul	99.4	76.7	103.0	97.8	73.5	106.1	98.3	109.0	95.2
Aug	99.6	74.4	103.5	97.8	70.4	106.4	98.8	109.9	94.9
Sep	99.1	74.6 <sup>†</sup>	102.8	98.5 <sup>†</sup>	71.0 <sup>†</sup>	104.3 <sup>†</sup>	98.5 <sup>†</sup>	109.6 <sup>†</sup>	94.4 <sup>†</sup>
Oct	99.6	76.6 <sup>†</sup>	103.1	98.5 <sup>†</sup>	73.5 <sup>†</sup>	103.0 <sup>†</sup>	98.8 <sup>†</sup>	110.2 <sup>†</sup>	95.1 <sup>†</sup>
Nov	99.5	75.9	103.0	99.9	72.8	101.8	98.7	110.1	95.1
<b>Percentage change, latest year on previous year</b>									
2002	-1.9	0.4	-2.6	0.4	-1.2	0.5	0.4	-8.0	-0.7
2003	-0.3	-5.1	0.2	1.6	-5.6	-1.7	0.1	1.8	-1.5
2004	0.8	-7.9	2.0	1.1	-8.4	4.6	-	3.7	-0.3
2005	-2.0	-9.2	-1.2	-0.4	-10.4	-1.7	-0.7	-0.4	-3.4
2006	0.1	-8.3	1.4	-2.5	-9.3	1.6	0.1	3.9	-1.8
<b>Percentage change, latest 3 months on previous 3 months</b>									
2005 Sep	-0.7	-7.2	0.1	-0.5	-8.1	-1.0	-0.2	1.6	-2.1
Oct	-1.3	-6.5	-0.6	-1.7	-7.7	0.4	-1.5	0.1	-2.0
Nov	-1.0	-1.3	-1.0	-1.3	-2.0	0.5	-1.2	-1.4	-0.9
Dec	-0.7	-	-0.7	-0.7	-0.3	0.3	0.1	-2.0	-0.5
2006 Jan	0.4	1.2	0.2	1.7	1.3	0.1	1.1	-0.7	0.6
Feb	0.8	0.5	0.9	0.2	0.7	0.6	1.0	0.9	0.6
Mar	1.0	0.1	1.2	0.3	0.4	1.3	0.2	2.7	0.7
Apr	0.6	-1.9	1.1	-1.2	-1.9	2.8	-0.3	3.1	-0.2
May	0.4	-3.8	1.0	-1.1	-4.5	3.3	-0.4	2.5	-0.5
Jun	-	-4.4	0.8	-2.6	-5.4	2.4	-0.3	1.4	-0.8
Jul	-0.1	-4.5	0.7	-2.4	-5.4	-0.3	-0.2	1.0	-0.6
Aug	-0.1	-4.4	0.5	-1.4	-4.6	-2.3	-0.1	0.9	-0.4
Sep	0.2	-2.3	0.5	-0.2	-1.8	-2.3	0.3	1.1	-0.1
Oct	0.2	-1.0	0.5	-1.4	-0.2	-0.7	0.5	1.0	-0.4
Nov	0.2	0.9	0.4	-1.7	1.3	1.8	0.5	1.1	-0.5
Dec	-0.2	-1.9	0.1	-1.9	-2.3	3.0	0.1	0.5	-1.1
2007 Jan	-0.1	-1.5	-0.1	1.1	-2.2	2.1	-0.3	-0.1	-0.2
Feb	-0.4	-1.3	-0.5	1.1	-2.1	-0.9	-0.5	-0.9	-0.1
Mar	-0.2	1.9	-0.5	1.4	1.5	-2.7	-1.0	-0.6	0.8
Apr	-0.2	2.3	-0.4	-0.8	2.0	-2.5	-0.9	-	0.3
May	0.5	1.7	0.4	-0.4	1.5	-1.3	-0.3	1.3	0.6
Jun	0.7	1.1	0.8	-0.1	0.8	-0.4	0.3	1.7	0.6
Jul	0.8	1.0	0.7	1.3	0.8	1.0	0.2	1.1	1.0
Aug	0.4	-	0.4	0.7	-0.7	2.8	-0.3	0.4	0.5
Sep	-	-1.1	-	0.8	-2.0	2.6	-0.2	-0.2	-
Oct	-0.1	-1.7	0.1	0.3	-2.4	0.5 <sup>†</sup>	0.1	0.3 <sup>†</sup>	-0.4
Nov	-0.1	-	-0.2	1.3	0.2	-2.5	0.2	0.3	-0.2

1 Output index numbers include adjustments, as necessary, to compensate for the use of sales indicators.

<sup>†</sup> indicates that data are new or have been revised. The period marked is the earliest in the table to have been revised.

2 Any apparent inconsistencies between the index numbers and the percentage changes shown in these tables are due to rounding.

# IOP5A Output of the production industries

Chained volume indices of gross value added<sup>1,2</sup>

continued

Seasonally adjusted 2003 = 100

Section	Coke, refined petrol & nuclear fuels	Chemicals and man-made fibres	Basic metals and metal products	Engineering and allied industries	Food, drink and tobacco	Textiles, leather and clothing	Other manufacturing
	DF	DG	DJ	DK_DM	DA	DB_DC	DD_DN
Latest weight	12.9	87.4	81.0	237.4	118.4	26.1	228.9
	CKZF	CKZG	CKZJ	AGXS	CKZA	AGVO	AGXQ
2002	108.3	99.1	102.4	98.5	100.0	101.8	99.8
2003	100.0	100.0	100.0	100.0	100.0	100.0	100.0
2004	105.8	103.4	103.1	104.3	101.6	90.1	100.1
2005	110.1	103.5	102.4	103.2	102.5	88.2	96.9
2006	104.9	106.7	103.6	107.3	102.4	86.8	96.4
2006 Q3	104.4	108.7	103.7	108.0	102.3	86.2	96.5
Q4	105.1	107.6	104.4	108.2	103.0	86.7	96.6
2007 Q1	109.5	106.7	103.7	107.7	101.8	86.4	96.2
Q2	107.5	105.7	104.5	109.2	101.8	87.3	97.4
Q3	110.3	105.2	104.1	108.9	102.1	87.4	97.8
2006 Sep	103.4	109.3	103.5	108.7	102.8	86.9	96.5
Oct	99.7	107.5	104.5	108.3	103.4	85.7	96.5
Nov	105.7	107.4	104.8	108.7	102.4	86.7	96.6
Dec	110.0	107.8	103.8	107.7	103.2	87.7	96.6
2007 Jan	111.9	107.9	103.5	108.0	102.2	86.9	96.1
Feb	110.0	106.4	103.4	106.9	101.6	85.5	95.6
Mar	106.4	105.8	104.2	108.2	101.6	86.9	96.7
Apr	108.3	106.3	104.0	108.8	101.7	87.1	97.1
May	106.1	105.9	104.4	109.1	101.9	86.7	97.8
Jun	108.0	104.9	105.1	109.7	101.7	88.0	97.3
Jul	107.6	104.4	104.7	108.8	102.1	88.2	97.6
Aug	111.0	106.1	104.1	109.5	102.2	87.6	98.1
Sep	112.5 <sup>†</sup>	105.2 <sup>†</sup>	103.5 <sup>†</sup>	108.5 <sup>†</sup>	102.1 <sup>†</sup>	86.4 <sup>†</sup>	97.6 <sup>†</sup>
Oct	111.5 <sup>†</sup>	105.0 <sup>†</sup>	103.0 <sup>†</sup>	109.0 <sup>†</sup>	101.8 <sup>†</sup>	86.5 <sup>†</sup>	98.6 <sup>†</sup>
Nov	107.2	105.1	102.3	109.1	101.8	86.0	98.6
<b>Percentage change, latest year on previous year</b>							
2002	1.3	-0.2	1.0	-8.0	2.1	-7.5	-0.6
2003	-7.7	0.9	-2.3	1.5	-	-1.8	0.2
2004	5.8	3.4	3.1	4.3	1.6	-9.9	0.1
2005	4.0	0.1	-0.7	-1.1	0.9	-2.1	-3.2
2006	-4.7	3.1	1.1	3.9	-	-1.6	-0.4
<b>Percentage change, latest 3 months on previous 3 months</b>							
2005 Sep	-3.7	1.2	-0.4	1.2	-0.8	-1.2	-0.5
Oct	-1.8	0.9	-0.3	0.1	-2.1	-2.2	-0.9
Nov	-3.2	-0.1	0.1	-1.2	-1.7	-1.8	-0.8
Dec	-5.7	1.3	-0.1	-1.7	-0.4	0.1	-0.7
2006 Jan	-3.5	1.2	0.2	-0.4	0.5	1.3	0.4
Feb	1.5	1.3	0.4	1.3	0.5	1.2	0.6
Mar	4.6	-0.9	0.8	3.0	0.2	-0.7	0.9
Apr	3.0	-0.6	1.0	3.3	0.1	-2.1	0.3
May	0.1	0.6	0.8	2.8	-	-2.4	0.3
Jun	0.4	2.2	0.5	1.5	0.2	-1.4	-
Jul	1.2	3.0	0.2	0.8	-	-0.8	0.3
Aug	0.8	2.1	0.6	0.5	0.1	-0.7	0.1
Sep	-0.9	2.0	0.3	0.7	-	-0.5	0.2
Oct	-2.7	0.7	0.6	0.8	0.6	-0.1	0.1
Nov	-2.1	0.1	0.4	0.8	0.6	0.4	-
Dec	0.7	-1.0	0.6	0.2	0.7	0.6	0.1
2007 Jan	6.2	-0.7	-	-0.2	-0.2	1.0	-0.2
Feb	7.5	-0.7	-0.7	-0.9	-0.5	0.3	-0.4
Mar	4.1	-0.8	-0.7	-0.5	-1.2	-0.3	-0.4
Apr	-0.9	-1.4	-0.2	-0.2	-1.0	-0.7	0.1
May	-3.4	-1.2	0.6	1.1	-0.6	0.2	1.1
Jun	-1.8	-0.9	0.8	1.4	-	1.0	1.3
Jul	-0.9	-1.1	0.8	1.2	0.3	1.3	1.1
Aug	1.8	-0.8	0.4	0.6	0.3	1.2	0.5
Sep	2.7	-0.5	-0.4	-0.2	0.4	0.1	0.4
Oct	4.1 <sup>†</sup>	0.4 <sup>†</sup>	-1.2	-0.2 <sup>†</sup>	0.1	-0.9 <sup>†</sup>	0.5 <sup>†</sup>
Nov	1.4	-	-1.6	-0.5	-0.1	-1.9	0.6

<sup>†</sup> indicates that data are new or have been revised. The period marked is the earliest in the table to have been revised.

# IOP5AR Revisions to previously published output of production industries<sup>1</sup>

Seasonally adjusted 2003 = 100

Section	Broad industry groups					Main industrial groupings			
	Production industries	Mining and Quarrying inc Oil and Gas Extraction	Manufacturing	Electricity, Gas and Water Supply	Oil and Gas Extraction	Consumer durables	Consumer non-durables	Capital goods	Intermediate goods and energy
	C+D+E	C	D	E	C_1	MG-DUR	MG-NDUR	MG-CAP	MG-INEN
Latest weight	1 000.0	117.8	792.1	90.1	106.9	36.1	272.2	213.3	478.4
	CKYW	CKYX	CKYY	CKYZ	CKYO	UFIU	UFJS	UFIL	JMOH
2002	-	-	-	-	-	-	-	-	-
2003	-	-	-	-	-	-	-	-	-
2004	-	-	-	-	-	-	-	-	-
2005	-	-	-	-	-	-	-	-	-
2006	-	-	-	-	-	-	-	-	-
2006 Q3	-	-	-	-	-	-	-	-	-
Q4	-	-	-	-	-	-	-	-	-
2007 Q1	-	-	-	-	-	-	-	-	-
Q2	-	-	-	-	-	-	-	-	-
Q3	-	-	-	-	-	-	-	-	-
2006 Sep	-	-	-	-	-	-	-	-	-
Oct	-	-	-	-	-	-	-	-	-
Nov	-	-	-	-	-	-	-	-	-
Dec	-	-	-	-	-	-	-	-	-
2007 Jan	-	-	-	-	-	-	-	-	-
Feb	-	-	-	-	-	-	-	-	-
Mar	-	-	-	-	-	-	-	-	-
Apr	-	-	-	-	-	-	-	-	-
May	-	-	-	-	-	-	-	-	-
Jun	-	-	-	-	-	-	-	-	-
Jul	-	-	-	-	-	-	-	-	-
Aug	-	-	-	-	-	-	-	-	-
Sep	-	-	-	-	-	-	-	-	-
Oct	-	0.1	-	0.1	0.1	0.5	0.1	-0.3	0.1
<b>Percentage change, latest year on previous year</b>									
2002	-	-	-	-	-	-	-	-	-
2003	-	-	-	-	-	-	-	-	-
2004	-	-	-	-	-	-	-	-	-
2005	-	-	-	-	-	-	-	-	-
2006	-	-	-	-	-	-	-	-	-
<b>Percentage change, latest 3 months on previous 3 months</b>									
2005 Sep	-	-	-	-	-	-	-	-	-
Oct	-	-	-	-	-	-	-	-	-
Nov	-	-	-	-	-	-	-	-	-
Dec	-	-	-	-	-	-	-	-	-
2006 Jan	-	-	-	-	-	-	-	-	-
Feb	-	-	-	-	-	-	-	-	-
Mar	-	-	-	-	-	-	-	-	-
Apr	-	-	-	-	-	-	-	-	-
May	-	-	-	-	-	-	-	-	-
Jun	-	-	-	-	-	-	-	-	-
Jul	-	-	-	-	-	-	-	-	-
Aug	-	-	-	-	-	-	-	-	-
Sep	-	-	-	-	-	-	-	-	-
Oct	-	-	-	-	-	-	-	-	-
Nov	-	-	-	-	-	-	-	-	-
Dec	-	-	-	-	-	-	-	-	-
2007 Jan	-	-	-	-	-	-	-	-	-
Feb	-	-	-	-	-	-	-	-	-
Mar	-	-	-	-	-	-	-	-	-
Apr	-	-	-	-	-	-	-	-	-
May	-	-	-	-	-	-	-	-	-
Jun	-	-	-	-	-	-	-	-	-
Jul	-	-	-	-	-	-	-	-	-
Aug	-	-	-	-	-	-	-	-	-
Sep	-	-	-	-	-	-	-	-	-
Oct	-	-	-	-	-	0.2	-	-0.1	-

<sup>1</sup> Revisions are calculated using one decimal place data.

# IOP5AR Revisions to previously published output of production industries<sup>1</sup>

continued

Seasonally adjusted 2003 = 100

Section	Coke, refined petrol & nuclear fuels DF	Chemicals and man-made fibres DG	Basic metals and metal products DJ	Engineering and allied industries DK_DM	Food, drink and tobacco DA	Textiles, leather and clothing DB_DC	Other manufacturing DD_DN
Latest weight	12.9	87.4	81.0	237.4	118.4	26.1	228.9
	CKZF	CKZG	CKZJ	AGXS	CKZA	AGVO	AGXQ
2002	-	-	-	-	-	-	-
2003	-	-	-	-	-	-	-
2004	-	-	-	-	-	-	-
2005	-	-	-	-	-	-	-
2006	-	-	-	-	-	-	-
2006 Q3	-	-	-	-	-	-	-
Q4	-	-	-	-	-	-	-
2007 Q1	-	-	-	-	-	-	-
Q2	-	-	-	-	-	-	-
Q3	-	-	-	-	-	-	-
2006 Sep	-	-	-	-	-	-	-
Oct	-	-	-	-	-	-	-
Nov	-	-	-	-	-	-	-
Dec	-	-	-	-	-	-	-
2007 Jan	-	-	-	-	-	-	-
Feb	-	-	-	-	-	-	-
Mar	-	-	-	-	-	-	-
Apr	-	-	-	-	-	-	-
May	-	-	-	-	-	-	-
Jun	-	-	-	-	-	-	-
Jul	-	-	-	-	-	-	-
Aug	-	-	-	-	-	-	-
Sep	-	-	-	-	-	-	-
Oct	0.6	-0.3	0.2	-0.3	0.3	0.2	0.2
<b>Percentage change, latest year on previous year</b>							
2002	-	-	-	-	-	-	-
2003	-	-	-	-	-	-	-
2004	-	-	-	-	-	-	-
2005	-	-	-	-	-	-	-
2006	-	-	-	-	-	-	-
<b>Percentage change, latest 3 months on previous 3 months</b>							
2005 Sep	-	-	-	-	-	-	-
Oct	-	-	-	-	-	-	-
Nov	-	-	-	-	-	-	-
Dec	-	-	-	-	-	-	-
2006 Jan	-	-	-	-	-	-	-
Feb	-	-	-	-	-	-	-
Mar	-	-	-	-	-	-	-
Apr	-	-	-	-	-	-	-
May	-	-	-	-	-	-	-
Jun	-	-	-	-	-	-	-
Jul	-	-	-	-	-	-	-
Aug	-	-	-	-	-	-	-
Sep	-	-	-	-	-	-	-
Oct	-	-	-	-	-	-	-
Nov	-	-	-	-	-	-	-
Dec	-	-	-	-	-	-	-
2007 Jan	-	-	-	-	-	-	-
Feb	-	-	-	-	-	-	-
Mar	-	-	-	-	-	-	-
Apr	-	-	-	-	-	-	-
May	-	-	-	-	-	-	-
Jun	-	-	-	-	-	-	-
Jul	-	-	-	-	-	-	-
Aug	-	-	-	-	-	-	-
Sep	-	-	-	-	-	-	-
Oct	0.2	-0.1	-	-0.1	-	0.1	0.1