

2 November 2006

Coverage

United Kingdom

Theme

Population and Migration

Over 500 a day gained through migration to the UK

In 2005, 185,000 more people entered than left the United Kingdom for at least a year, according to new Total International Migration (TIM) estimates published today by the Office for National Statistics (ONS).

This is equivalent, on average, to adding 500 people a day to the UK population. This net inflow was lower than the estimate in 2004, but was still higher than all other years since the method to estimate TIM began in 1991.

The estimated 380,000 people leaving the UK in 2005 sustained the level of high out-migration seen in recent years. This is equivalent, on average, to over 1,000 people a day leaving the UK to live abroad, over half of whom were British citizens.

The estimated number of people arriving to live in the UK for at least a year was 565,000 in 2005, an average of over 1,500 a day. While lower than the estimate in 2004, allowing for margins of error, this still continued the overall trend of high in-migration into the UK that began in the late 1990s.

The total inflows, outflows and resulting net flows for the last 10 years are shown in **Figure 1**. Further details for 1996 to 2005 by broad groupings of citizenship are shown in **Table 1**.

Issued by
National Statistics
1 Drummond Gate
London SW1V 2QQ

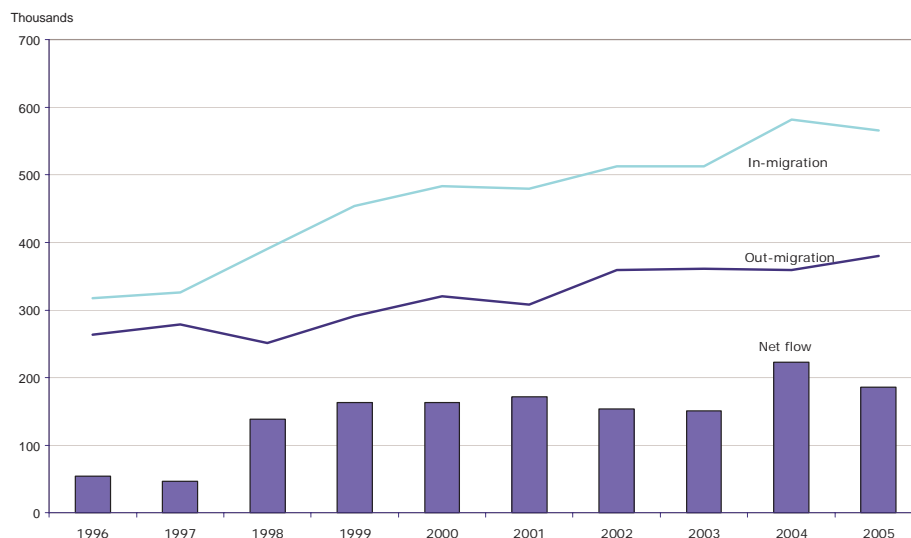
Telephone
Press Office 020 7533 5702
Public Enquiries 0845 601 3034

Migration Statistics Unit:
Phone 01329 813184
Email
migstatsunit@ons.gsi.gov.uk

Internet
www.statistics.gov.uk

Next publication date
Spring 2007

Figure 1: Total International Migration to/from the UK, 1996-2005



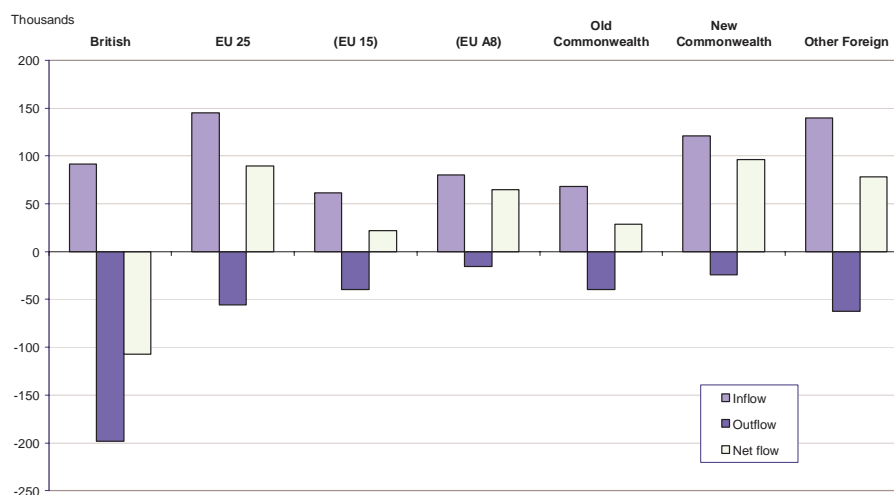
Some main features of TIM estimates in 2005 were:

- The pattern of net inflows of foreign citizens and net outflows of British citizens continued (**Table 1**).
- The net inflow of New Commonwealth citizens was the highest of all the foreign citizenship groups (**Figure 2**).
- Net in-migration of A8 citizens coming into the UK for a period of at least a year increased by just over 30 percent from 49,000 in 2004 to 64,000 in 2005. (**Table 1**).
- The allowance for asylum seekers and their dependants contributed a net inflow of 11,000 to TIM, the lowest since 1991 (**Table 2**).

Further details are as follows:

There was continued high out-migration of 198,000 British citizens in 2005 (**Figure 2**). The International Passenger Survey estimates (IPS see background note 3), which are the main component of TIM and allow a more detailed breakdown of the estimates, showed that Australia was once again the most preferred destination for about 20 per cent of British citizens migrating abroad, followed by Spain and France.

Figure 2: Total International Migration estimates by major citizenship groupings, 2005



Net in-migration of New Commonwealth citizens was 97,000 in 2005, which was the highest estimate of all the foreign citizenship groups. This was due to high in-migration and low out-migration. Based on IPS estimates, over two-thirds of net in-migration in this group was by citizens of India, Pakistan, Bangladesh and Sri Lanka.

In 2005 there were 121,000 New Commonwealth citizens migrating long-term for over a year into the UK compared with 143,000 in 2004. While this was a decrease of 15 per cent, the 2005 inflow estimate was still the second highest since the method to estimate TIM began in 1991.

The overall adjustment made for asylum seekers and their dependants continued the decline from the peak net inflow of 81,000 in 2000 to 11,000 in 2005 (**Table 2**). As most asylum seekers are in the Other Foreign group, this contributed to a reduction in the total estimate of net in-migrants in this group.

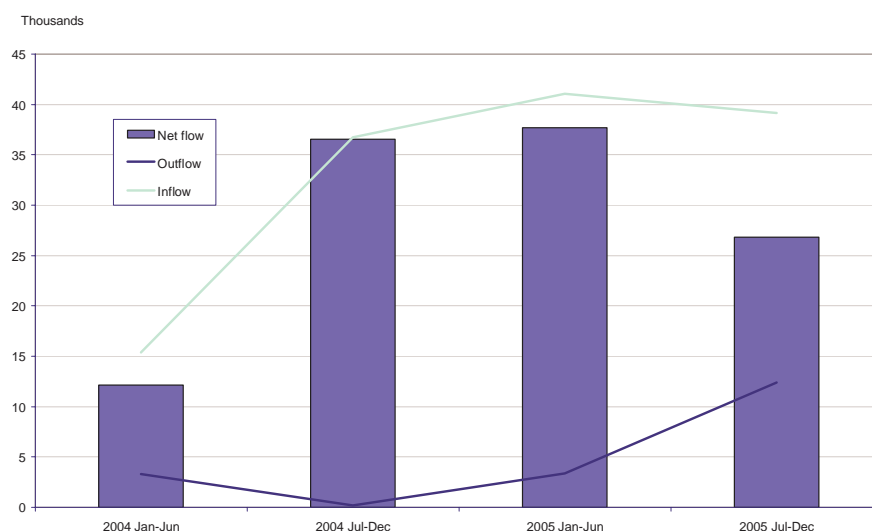
Comparing 2005 with 2004, there was a clear increase of annual in-, out- and net flows of citizens from the A8.

There were 64,000 more A8 citizens who migrated long-term into the UK than left in 2005. This compares with a net in-flow estimate of 49,000 A8 citizens in 2004.

The estimate of A8 citizens migrating into the UK for a period of at least a year increased by over 50 per cent from 52,000 in 2004 to 80,000 in 2005. This increase can be explained by 2005 being the first full calendar year following the date of accession in May 2004 for which migration by A8 citizens could be estimated. Analysis of long-term in-migration of A8 citizens since the second half of 2004 shows fairly consistent inflows of about 40,000 every six months (**Figure 3** and **Table 3**).

Estimated outflows of A8 citizens migrating long-term also increased notably for the first time in 2005, with almost 80 per cent of this outflow in the second half of the year. Any trends in A8 out-migration, however, will not become clear until future years (see background note 13). These higher outflows in the second half of 2005 resulted in lower net flows during this time compared with the equivalent period in 2004.

Figure 3: TIM flows of A8 citizens by half-year 2004-2005



In 2005, based on IPS estimates, A8 citizens who migrated for a period of at least a year were more likely to come to the UK for work reasons compared with other migrant groups. About 60 per cent of A8 migrants coming to the UK for at least 12 months came for work related reasons (e.g. a definite job to go to or business reasons) compared with about 25 per cent of all other migrants (see background note 12)



Further IPS analysis shows that more long-term migrants of Polish citizenship came into the UK in 2005 than citizens of any other foreign country. An estimated 49,000 Polish citizens migrated into the UK in 2005, almost three times the estimate of 17,000 in 2004. Consequently, the proportion of Polish citizens within the A8 group migrating into the UK for at least a year increased from about 35 per cent in 2004 to over 70 per cent in 2005.

Estimates of long-term international migration by other variables, such as age, sex and country of last or next residence, will be published in an annual reference volume in spring 2007. Previous editions of this volume can be found on the National Statistics website at the following link:

<http://www.statistics.gov.uk/STATBASE/Product.asp?vlnk=507>.

This press release should be read in conjunction with the Background Notes.

BACKGROUND NOTES

1. A long-term international migrant is defined as someone who changes his or her country of usual residence for a period of at least a year, so that the country of destination becomes the country of usual residence.
2. There is no single, all-inclusive system in place to measure movements of population into or out of the UK. Therefore it is necessary to use a combination of data from different sources in order to produce estimates of Total International Migration (TIM). None of the data sources used, while offering the best data currently available, are specifically designed to capture information solely on international migration. TIM is the most comprehensive estimate of migration. However, some detailed analyses, such as those for individual countries, can only be done using the International Passenger Survey (IPS) (see background note 3).
3. Estimates of TIM are derived from several data sources:
 - The International Passenger Survey (IPS). This is the principal source of data on the number of migrants entering and leaving the country. It is a continuous voluntary sample survey conducted by ONS that covers the principal air, sea and Channel Tunnel routes between the UK and the rest of the world. It is based on respondents' intended length of stay and includes questions on age, sex, marital status, citizenship and country of last/next residence. It is subject to margins of error since the data are derived from a sample survey. The IPS alone enables detailed analysis of the characteristics of people entering and leaving the UK to be produced that can not be produced for TIM. Further adjustments are made to produce TIM using IPS data for visitor and migrant switchers (people who change their intentions and, therefore, their migratory status).



- Irish Quarterly National Household Survey and the National Health Service Central Register. These are used to estimate migration of all citizens between the UK and the Irish Republic.
 - Home Office data. This is used for making adjustments to TIM for asylum seekers and their dependants that are not captured by the IPS (see background note 8).
4. All data are estimates and are rounded to the nearest 1000.
 5. The difference between the inflow and the outflow is the net flow. If there are more people entering the UK to live for at least 12 months than are leaving then there is a net inflow of migrants. Conversely, if there are more people leaving the UK for at least 12 months than there are arriving then there is a net outflow. These flows do not indicate whether someone stays or leaves permanently.
 6. The method used to produce 2005 international migration estimates can be found at the following link:
http://www.statistics.gov.uk/downloads/theme_population/Methodology_for_Revised_International_Migration_Estimates.doc
 7. Total International Migration estimates for 2005 are only directly comparable with estimates for 1991 onwards as a consistent methodology has been used for the period 1991 to 2005.
 8. The Home Office supplies data on asylum seekers and their dependants covering applications, refusals, removals, appeals and withdrawals. These data are used to make an adjustment for asylum seekers and their dependants who enter or leave the country for a year or more and who, it is assumed, are not counted in the IPS migrant or visitor switcher estimates. Further detail on Home Office asylum seeker statistics can be found at: www.homeoffice.gov.uk/rds/immigration.html
 9. A National Statistics Quality Review (NSQR) of International Migration Statistics was conducted jointly by the ONS and the Home Office, and reported in September 2003. An implementation plan for taking forward the recommendations of the review was subsequently published in January 2004. A link to each of these documents and progress reports can be found at:
www.statistics.gov.uk/about/data/methodology/quality/reviews/population.asp
Research arising from the NSQR is being taken forward as part of the Improving Migration and Population Statistics (IMPS). Further details are available from:
www.statistics.gov.uk/about/data/methodology/specific/population/future/imps/default.asp. In the context of the IMPS project, ONS has set up an interdepartmental Task Force on Migration Statistics. This aims to identify improvements that can be made over the next two years in producing estimates of long and short-term international migrants, by extending the range of sources and methods used in making estimates. ONS expects to report to Ministers on this work in November.

10. ONS recognises the need for additional statistics on short-term migrants, that is, certain people entering or leaving the UK for periods of 3 to 12 months. Of particular interest is short term migration into the UK of A8 nationals. Some statistics, based on IPS data, are already available on visits to the UK from the enlarged EU:
www.statistics.gov.uk/statbase/Product.asp?vlnk=12222 There are however, a number of definitional issues involved in producing estimates of short-term migration. Part of the remit of the IMPS project is to investigate the feasibility of producing these estimates. ONS expects to report on this work by the end of 2006. Further detail about this work is available here: [www.statistics.gov.uk/about/data/methodology/specific/population/future/imps/updates/downloads/Progress report August 06 short term migration v3.pdf](http://www.statistics.gov.uk/about/data/methodology/specific/population/future/imps/updates/downloads/Progress_report_August_06_short_term_migration_v3.pdf).
11. The citizenship groupings in this first release are defined as:
 - Up to and including 2003, European Union estimates are only shown for the EU15 (Austria, Belgium, Denmark, Finland, France, Germany, Greece, the Irish Republic, Italy, Luxembourg, Netherlands, Portugal, Spain and Sweden). For 2004 and 2005, European Union estimates are also shown for the EU25 which includes the above countries plus the A8 group (Czech Republic, Estonia, Hungary, Latvia, Lithuania, Poland, Slovakia and Slovenia) and Cyprus and Malta. British citizens are excluded from all EU groupings and are shown separately.
 - The Old Commonwealth includes Australia, Canada, New Zealand and South Africa.
 - The New Commonwealth includes all other Commonwealth countries. From 2004 the New Commonwealth excludes Malta and Cyprus.
 - Other Foreign includes all countries not covered by the other groupings. From 2004, this excludes citizens of the eight central and eastern European member states that joined the EU in May 2004.
12. Work related reasons for migration include those with a definite job to go to, business reasons (excluding diplomats, military personnel, and merchant seaman), and au pairs. It excludes those looking for work and working holiday-makers.
13. Estimated out-migration of citizens from accession countries up to April 2005 only relate to those who were resident in the UK prior to enlargement of the EU in May 2004. Estimates of out-migration of citizens of the accession countries from May 2005 can include those who entered the UK after accession. Therefore, any longer term assessment of the impact of EU enlargement on UK migration will need to take into account that any trends in migration outflows will not feed through until future years. Fuller consideration of accession migration beyond 2004 is given as part of the National Population Projections, released 20 October 2005:
<http://www.gad.gov.uk/Population/2004/methodology/migrassa8.htm>
14. Details of the policy governing the release of new data are available from the press office.
15. **National Statistics** are produced to high professional standards set out in the National Statistics Code of Practice. They undergo regular quality assurance reviews to ensure that they meet customer needs. They are produced free from any political interference. Crown copyright 2006.

Basic Quality Information

16. A Summary Quality Report for this release can be found at:
<http://www.statistics.gov.uk/about/data/methodology/quality/Qualitysocialstats.asp>
17. **Key Issues specific to this release:** There are no issues to report in this release.
18. **Common pitfalls in interpreting Total International Migration**
Estimates: TIM estimates are based mainly on International Passenger Survey data and expectations of accuracy and reliability of sample surveys are often too high. The statistics contained in this release are estimates that are subject to margins of error due to sampling variability inherent in all sample surveys. TIM also incorporates assumptions to estimate aspects of long-term international migration that are difficult to measure directly, for example, visitors to the UK who intend to stay for less than a year, but in fact, stay longer (that is, visitor switchers). Such assumptions are based on statistical judgements and provide a more comprehensive set of estimates. However, there is inevitably some level of uncertainty associated with these assumptions. Therefore, care should be taken when interpreting an estimate and especially when comparing year on year changes. Notable differences where the estimates are made up of a large number of observations can often be said to be statistically significant. However, differences based on a smaller number of observations changes may be within a margin of error where such definite statements can not be made. Trends or patterns occurring over a number of years often provide a better picture than changes occurring in any one particular year.
19. **Coherence:** TIM estimates may vary from other migration related statistics such as those on Home Office Control of Immigration, A8 migrants from the Worker Registration Scheme (WRS), and National Insurance Numbers (NINO) issued to foreign nationals. These differences can largely be explained in terms of different definitions and coverage. TIM covers all migrants regardless of their reason for visit while these administrative sources may exclude certain types of migrants such as dependants (in the case of WRS and NINO). Unlike TIM, these other data sources do not capture outflows. Most importantly, TIM excludes all those who stay in the UK for less than a year while these other sources do not capture data on length of stay.
20. **Accuracy:** The data in this release are based on statistical samples, and as such, are subject to sampling variability. As a guide, the standard error for an estimate of 1,000 migrants is usually around 40 per cent, whilst that for an estimate of 40,000 migrants reduces to around 10 per cent. However, the structure of the sample is such that estimates based on the sampling of passengers on certain routes have much larger standard errors associated with them. Currently, standard errors are only available for IPS estimates.

Key IPS estimate	Estimate (thousands)	Standard error
2005 Inflow	496	3.7%
2005 Outflow	328	4.8%

Table 1 Total International Migration¹: citizenship 1996 to 2005
United Kingdom
thousands

Year	All citizenships	British	Non-British	European Union 15 ²	European Union A8 ²	European Union 25 ²	Commonwealth		Other foreign ⁵
							Old ³	New ⁴	
Inflow to UK									
1996	318	94	224	72	:	:	29	49	73
1997	326	89	237	72	:	:	31	59	76
1998	390	103	287	82	:	:	54	51	100
1999	454	116	337	67	:	:	54	66	150
2000	483	104	379	63	:	:	57	91	168
2001	480	106	373	60	:	:	67	84	162
2002	513	95	418	63	:	:	66	93	197
2003	513	106	407	64	:	:	63	103	177
2004	582	88	494	65	52	117	76	143	158
2005	565	91	474	61	80	145	68	121	140
Outflow from UK									
1996	264	156	108	44	:	:	17	14	32
1997	279	149	131	53	:	:	20	20	38
1998	251	126	126	49	:	:	20	13	44
1999	291	139	152	59	:	:	29	12	52
2000	321	161	160	57	:	:	32	15	55
2001	308	159	149	49	:	:	32	19	49
2002	359	186	174	52	:	:	42	16	64
2003	362	191	171	50	:	:	42	17	62
2004	359	208	152	39	4	43	35	20	54
2005	380	198	181	39	16	56	39	24	62
Net flow									
1996	+ 54	- 62	+ 116	+ 28	:	:	+ 12	+ 35	+ 41
1997	+ 47	- 60	+ 107	+ 18	:	:	+ 11	+ 39	+ 38
1998	+ 139	- 23	+ 162	+ 33	:	:	+ 34	+ 38	+ 57
1999	+ 163	- 23	+ 186	+ 8	:	:	+ 26	+ 54	+ 98
2000	+ 163	- 57	+ 220	+ 6	:	:	+ 25	+ 76	+ 113
2001	+ 172	- 53	+ 225	+ 11	:	:	+ 35	+ 65	+ 113
2002	+ 153	- 91	+ 245	+ 11	:	:	+ 23	+ 77	+ 133
2003	+ 151	- 85	+ 236	+ 14	:	:	+ 21	+ 86	+ 115
2004	+ 223	- 120	+ 342	+ 26	+ 49	+ 74	+ 41	+ 123	+ 104
2005	+ 185	- 107	+ 292	+ 22	+ 64	+ 89	+ 29	+ 97	+ 78

1 Based mainly on data from the International Passenger Survey. Includes adjustments for (1) those whose intended length of stay changes so that their migrant status changes; (2) asylum seekers and their dependants not identified by the IPS; and (3) flows between the UK and the Republic of Ireland.

2 Up to and including 2003, estimates are shown only for the EU15 (Austria, Belgium, Denmark, Finland, France, Germany, Greece, the Irish Republic, Italy, Luxembourg, Netherlands, Portugal, Spain and Sweden). From 2004, the estimates are also shown for A8 (the Czech Republic, Estonia, Hungary, Latvia, Lithuania, Poland, Slovakia and Slovenia) and the EU25 (i.e. the EU15 and A8 groups, plus Malta and Cyprus). British citizens are excluded from all EU groupings and are shown separately.

3 Includes estimates of South African citizenship for all years.

4 From 2004, the New Commonwealth excludes Malta and Cyprus

5

Figures for all years include Hong Kong. From 2004 onwards, other foreign excludes the A8 member states.

+ Denotes a net inflow figure

- Denotes a net outflow figure

:

Not applicable

Figures have been rounded independently and may not add to totals

**Table 2 Total International Migration (TIM) methodology:
time series 1996 to 2005
Components and adjustments used to estimate TIM¹**

United Kingdom
thousands

Year	Total International Migration (TIM)	Components		Adjustments ⁴			Visitor Switchers adjustment ⁶	Migrant Switchers adjustment ⁷
		International Passenger Survey (IPS) ²	Irish Republic ³	Asylum Seekers adjustment ⁵				
				All Applicants	Principal	Dependants		
Inflow to UK								
1996	318	261	15	31	26	5	25	-14
1997	326	273	11	34	28	6	23	-14
1998	390	318	9	51	43	9	28	-17
1999	454	354	8	80	66	14	29	-18
2000	483	364	6	92	79	13	40	-18
2001	480	372	5	84	70	14	36	-19
2002	513	386	5	96	83	13	45	-19
2003	513	431	5	54	45	8	44	-22
2004	582	518	4	36	31	6	49	-26
2005	565	496	4	26	22	4	63	-25
Outflow from UK								
1996	264	223	19	7	6	1	17	-2
1997	279	232	21	10	8	2	18	-2
1998	251	206	21	10	8	2	16	-2
1999	291	245	19	8	6	2	21	-2
2000	321	278	16	10	9	2	19	-3
2001	308	251	14	18	15	4	26	-3
2002	359	306	13	21	16	5	22	-3
2003	362	314	13	17	13	4	21	-3
2004	359	310	13	16	13	3	23	-3
2005	380	328	15	16	13	2	25	-3
Net Flow								
1996	+ 54	+ 37	- 3	+ 24	+ 20	+ 4	+ 8	- 11
1997	+ 47	+ 40	- 10	+ 24	+ 20	+ 4	+ 5	- 12
1998	+ 139	+ 113	- 12	+ 41	+ 34	+ 6	+ 12	- 15
1999	+ 163	+ 109	- 11	+ 72	+ 60	+ 12	+ 8	- 15
2000	+ 163	+ 87	- 10	+ 81	+ 70	+ 11	+ 20	- 15
2001	+ 172	+ 121	- 9	+ 66	+ 55	+ 11	+ 10	- 16
2002	+ 153	+ 80	- 8	+ 75	+ 66	+ 9	+ 23	- 16
2003	+ 151	+ 118	- 8	+ 37	+ 33	+ 4	+ 23	- 18
2004	+ 223	+ 208	- 9	+ 21	+ 18	+ 3	+ 26	- 23
2005	+ 185	+ 168	- 10	+ 11	+ 9	+ 2	+ 38	- 22

1 Based mainly on data from the International Passenger Survey. Includes adjustments for (1) those whose intended length of stay changes so that their migrant status changes; (2) asylum seekers and their dependants not identified by the IPS; and (3) flows between the UK and the Republic of Ireland. For further information on the components and adjustments in this table, please see Background note 3 on News Release

2 IPS data for 1996-1998 has been adjusted for the IPS weighting adjustments introduced in 1999

3 Based on data supplied by the Irish Central Statistics Office

4 Adjustments are made to allow for migration flows that are not captured by the IPS or Irish components

5 Based on Home Office data on asylum seekers and their dependants

6 Based on IPS visitor data. Visitor switchers are those who enter or leave the UK intending to stay in the destination country for less than a year but who actually stay for a year or longer.

7 Based on IPS migrant data. Migrant switchers are those who states the intention in the IPS to stay in the destination country for more than a year but who actually left sooner.

+ Denotes a net inflow figure

- Denotes a net outflow figure

Figures have been rounded independently and may not add to totals

Table 3 Total International Migration¹:
time series 2002 to 2005 in half years
Citizenship

United Kingdom
thousands

Half year	All citizenships	British	Non-British	European Union 15 ²	EU A8 ²	European Union 25 ²	Commonwealth		Other foreign ⁵
							Old ³	New ⁴	
Inflow to UK									
2002 Jan-June	221	42	180	23	:	:	34	39	83
July-Dec	291	53	238	39	:	:	32	54	114
2003 Jan-June	213	48	166	27	:	:	31	38	70
July-Dec	299	58	241	37	:	:	32	66	107
2004 Jan-June	233	40	194	27	15	43	40	59	52
July-Dec	349	48	300	37	37	74	36	84	106
2005 Jan-June	239	39	200	17	41	60	39	50	51
July-Dec	326	52	274	44	39	85	29	71	89
Outflow from UK									
2002 Jan-June	155	84	72	22	:	:	15	6	29
July-Dec	204	102	102	30	:	:	27	10	35
2003 Jan-June	154	80	74	31	:	:	15	5	24
July-Dec	208	111	97	20	:	:	27	12	38
2004 Jan-June	153	90	63	18	3	21	13	6	23
July-Dec	206	117	89	21	0	22	22	14	31
2005 Jan-June	146	83	63	17	3	21	15	10	18
July-Dec	234	116	118	23	12	35	25	14	44
Net flow									
2002 Jan-June	+ 66	- 42	+ 108	+ 2	:	:	+ 19	+ 33	+ 54
July-Dec	+ 87	- 49	+ 136	+ 10	:	:	+ 5	+ 44	+ 78
2003 Jan-June	+ 60	- 32	+ 92	- 4	:	:	+ 16	+ 33	+ 46
July-Dec	+ 91	- 53	+ 144	+ 17	:	:	+ 5	+ 53	+ 69
2004 Jan-June	+ 80	- 51	+ 131	+ 10	+ 12	+ 22	+ 27	+ 53	+ 29
July-Dec	+ 142	- 68	+ 211	+ 16	+ 37	+ 52	+ 14	+ 70	+ 75
2005 Jan-June	+ 93	- 44	+ 137	+ 1	+ 38	+ 39	+ 25	+ 40	+ 33
July-Dec	+ 92	- 63	+ 155	+ 21	+ 27	+ 50	+ 4	+ 56	+ 45

1 Based mainly on data from the International Passenger Survey. Includes adjustments for (1) those whose intended length of stay changes so that their migrant status changes; (2) asylum seekers and their dependants not identified by the IPS; and (3) flows between the UK and the Republic of Ireland

2 Up to and including 2003, estimates are shown only for the EU15 (Austria, Belgium, Denmark, Finland, France, Germany, Greece, the Irish Republic, Italy, Luxembourg, Netherlands, Portugal, Spain and Sweden). From 2004, the estimates are also shown for A8 (the Czech Republic, Estonia, Hungary, Latvia, Lithuania, Poland, Slovakia and Slovenia) and the EU25 (i.e. the EU15 and A8 groups, plus Malta and Cyprus). British citizens are excluded from all EU groupings and are shown separately.

3 Includes estimates of South African citizenship for all years.

4 From 2004, the New Commonwealth excludes Malta and Cyprus

5 Figures for all years include Hong Kong. From 2004 onwards, other foreign excludes the A8 member states.

+ Denotes a net inflow figure

- Denotes a net outflow figure

:

Figures have been rounded independently and may not add to totals