

20 November 2007

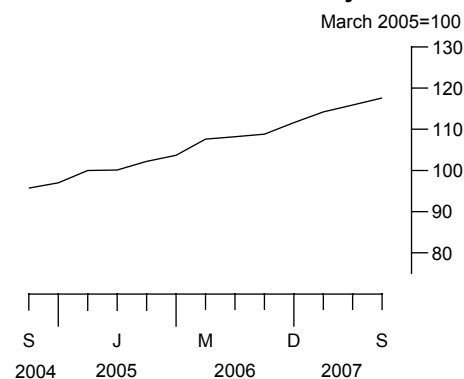
**Coverage**  
United Kingdom  
**Theme**  
The Economy

## Internet connectivity September 2007

Nearly nine out of ten connections to the Internet are now via broadband.

In September 2007, broadband connections accounted for 88.4 per cent of all Internet connections, up from 86.2 per cent in June 2007. This is according to the latest update from the survey of Internet Service Providers (ISPs).

Index of Internet connectivity



The index of all connections rose to 117.6 in September 2007, compared with the base month of 100 in March 2005. The index increased by 1.5 per cent between June 2007 and September 2007.

Dial-up connections continued to decline and accounted for 11.6 per cent of all Internet connections in September 2007.

### Index of Internet connectivity, not seasonally adjusted

|                         | All subscriptions | Percentage change on previous quarter | Percentage change on previous year |     |
|-------------------------|-------------------|---------------------------------------|------------------------------------|-----|
| <i>March 2005 = 100</i> |                   |                                       |                                    |     |
| 2004                    | September         | 95.7                                  | 1.1                                | 7.5 |
|                         | December          | 97.0                                  | 1.4                                | 5.7 |
| 2005                    | March             | 100.0                                 | 3.1                                | 4.4 |
|                         | June              | 100.1                                 | 0.1                                | 5.7 |
|                         | September         | 102.2                                 | 2.1                                | 6.8 |
|                         | December          | 103.7                                 | 1.5                                | 6.9 |
| 2006                    | March             | 107.6                                 | 3.8                                | 7.6 |
|                         | June              | 108.2                                 | 0.6                                | 8.1 |
|                         | September         | 108.8                                 | 0.6                                | 6.5 |
|                         | December          | 111.6r                                | 2.6                                | 7.6 |
| 2007                    | March             | 114.2                                 | 2.3                                | 6.1 |
|                         | June              | 115.9r                                | 1.5                                | 7.1 |
|                         | September         | 117.6                                 | 1.5                                | 8.1 |

*r = revised*

Issued by  
National Statistics  
1 Drummond Gate  
London SW1V 2QQ

Telephone  
Press Office 020 7533 5725  
Public Inquiries 0845 601 3034

Statistician  
Mark Pollard 01633 819098  
Email mark.pollard@ons.gov.uk

Internet  
www.statistics.gov.uk

Next publication date  
19 February 2008

### Broadband and dial-up Internet connections

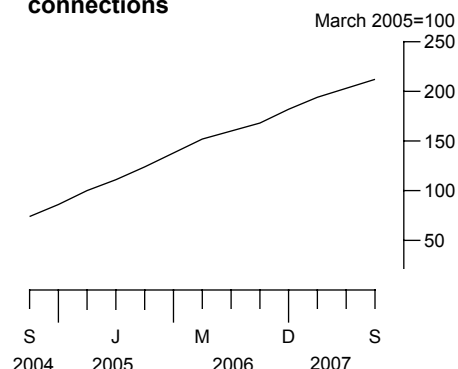
The market share of broadband connections has been increasing since the index began in 2001, reflecting its continuing popularity, widespread availability and competitive connection packages offered by ISPs.

In September 2007, the indices of active subscriptions for dial-up and broadband connections were 26.8 and 211.6 respectively, when compared to their base of 100 in March 2005.

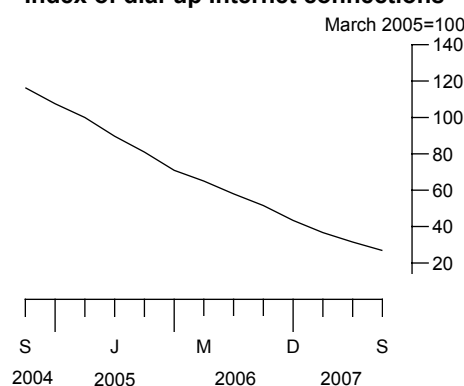
Broadband connections rose to 88.4 per cent of all connections in September 2007, up from 86.2 per cent in June 2007. There was a year on year increase in the index of broadband connections of 26 per cent, with a quarterly increase of 4.1 per cent.

Dial-up connections continued to decrease, with a year on year fall in the index of 48.1 per cent to September 2007. The quarterly decrease, from June 2007 to September 2007, was 14.9 per cent.

Index of broadband Internet connections



Index of dial-up Internet connections



### Subscriptions for dial-up and broadband Internet connections not seasonally adjusted

|                         |           | Dial-up |                                 | Broadband |                                 |
|-------------------------|-----------|---------|---------------------------------|-----------|---------------------------------|
|                         |           | Index   | Percentage of all subscriptions | Index     | Percentage of all subscriptions |
| <i>March 2005 = 100</i> |           |         |                                 |           |                                 |
| 2004                    | September | 116.3   | 61.8                            | 74.4      | 38.2                            |
|                         | December  | 107.5   | 56.3                            | 86.2      | 43.7                            |
| 2005                    | March     | 100.0   | 50.9                            | 100.0     | 49.1                            |
|                         | June      | 89.7    | 45.6                            | 110.9     | 54.4                            |
|                         | September | 81.0    | 40.3                            | 124.2     | 59.7                            |
|                         | December  | 70.9    | 34.8                            | 137.6     | 65.2                            |
| 2006                    | March     | 65.0    | 30.7                            | 151.8     | 69.3                            |
|                         | June      | 58.0    | 27.3                            | 160.2     | 72.7                            |
|                         | September | 51.6    | 24.2                            | 167.9     | 75.8                            |
|                         | December  | 43.4r   | 19.8r                           | 182.2r    | 80.2r                           |
| 2007                    | March     | 36.7r   | 16.3r                           | 194.4r    | 83.7r                           |
|                         | June      | 31.5r   | 13.8r                           | 203.2r    | 86.2r                           |
|                         | September | 26.8    | 11.6                            | 211.6     | 88.4                            |

r = revised

### Broadband connection speed

As dial-up subscriptions decrease, there is less interest in measuring the different types of dial-up, and more in broadband. Therefore, estimates on metered and unmetered dial-up subscriptions were discontinued from the December 2006 release. These have been replaced by estimates on broadband connection speed categories, as shown in the table below. In this table, broadband speed is the advertised maximum speed for each subscription.

The speed advertised for each subscription may not be the speed attained by the end user, as attained speed of connection is affected by issues such as distance from the local exchange and line quality.

As the proportion of slower speed connections has decreased, the proportion of higher speed connections has increased. In September 2007, 49.2 per cent of connections had a speed greater than 2 Mbps, which is an increase from 47.2 per cent in June 2007 and 37.5 per cent in December 2006. Over the same period, the percentage of connections with a speed of less than or equal to 2 Mbps decreased to 50.8 per cent in September 2007, down from 52.8 per cent in June 2007 and 62 per cent in December 2006.

Some ISPs did not report the connection speeds that they provided in December 2006 and these have been categorised as "speed unknown" in the table.

### Percentage of broadband connections by speed, not seasonally adjusted

|               | Broadband speed |                    |        | Speed unknown |
|---------------|-----------------|--------------------|--------|---------------|
|               | <=2Mbps         | >2Mbps and <8 Mbps | >8Mbps |               |
| 2006 December | 62.0r           | 35.1r              | 2.4    | 0.5           |
| 2007 March    | 56.8            | 39.9r              | 3.3    | 0.0r          |
| June          | 52.8            | 43.3r              | 3.9r   | 0.0           |
| September     | 50.8            | 45.2               | 4.0    | 0.0           |

r = revised

## Revisions

Revisions to the estimates in this release have been caused by company misreporting and late responses.

### Summary of revisions

|             |                   | Dial-up |                                 |       | Broadband                       |     |
|-------------|-------------------|---------|---------------------------------|-------|---------------------------------|-----|
|             |                   | Index   | Percentage of all subscriptions | Index | Percentage of all subscriptions |     |
|             | All subscriptions |         |                                 |       |                                 |     |
| <b>2006</b> | December          | 0.1     | -0.2                            | -0.1  | 0.3                             | 0.1 |
| <b>2007</b> | March             | -       | -0.2                            | -0.1  | 0.1                             | 0.1 |
|             | June              | 0.2     | -0.2                            | -0.1  | 0.5                             | 0.1 |

## BACKGROUND NOTES

1. A review of the monthly survey to Internet Service Providers recommended a change to the frequency of the survey. As a result, the index of Internet connectivity has been converted from a monthly to a quarterly publication. The first of such quarterly publications related to March 2006. Data are collected for the final month in each quarter i.e. March, June, September and December.
2. The review of the survey was published on the National Statistics website in September 2005 and is available at:  
**[http://www.statistics.gov.uk/downloads/theme\\_commerce/internetconnectivityreport.pdf](http://www.statistics.gov.uk/downloads/theme_commerce/internetconnectivityreport.pdf)**
3. The Index of Internet connectivity has been rebased to March 2005 = 100. The rebased series replaced the previous series, based on January 2001 = 100. The index prior to March 2005 was adjusted to be consistent with the new base month, but will not be revised further. The original series was frozen as at December 2005, and is available on the National Statistics website.
4. The response to the survey stands at 80 per cent for the current month. Estimates are made for non-responding businesses. The index is not seasonally adjusted.
5. Subscriptions for dial-up connections are those that access the Internet via Integrated Services Digital Network (ISDN) or an analogue modem. Broadband connections are measured in Mbps (megabits per second). This relates to data transfer speed. Percentages may not sum to 100 due to independently rounded components.
6. The Internet Service Providers survey is carried out in line with the rigorous standards of all National Statistics. However, it is important to note that there is currently no definitive population of ISPs from which to sample and therefore the index should be treated with some caution.
7. This survey, established in January 2001, surveys a panel of ISPs, collecting data on the number of active Internet subscriptions. To be regarded as an active subscriber, a subscriber must have accessed the Internet in the month to which the survey refers. Publication of the index commenced in December 2001, in respect of January to October 2001.

8. Information about the e-commerce survey of business and about Internet access by households and individuals is available at:  
**[http://www.statistics.gov.uk/about/Methodology\\_by\\_theme/e-commerce\\_related\\_activities/default.asp](http://www.statistics.gov.uk/about/Methodology_by_theme/e-commerce_related_activities/default.asp)**

#### **Revisions**

9. In this and future publications, any revisions to estimates that occur back to June 2005 will be reflected in the publication. Estimates prior to June 2005 will not be revised, as March 2005 is now the base month for the index. Detailed revisions analyses will not be published for the rebased index until there are sufficient time periods to produce a meaningful measure of statistical significance. The spreadsheets giving information on revisions that related to the index prior to rebasing will still be available on the National Statistics website at:  
**<http://www.statistics.gov.uk/statbase/Product.asp?vInk=8251>**

#### **General**

10. Details on National Statistics' policy governing the release of new estimates are available from the ONS Press Office.
11. **National Statistics** are produced to high professional standards set out in the National Statistics Code of Practice. They undergo regular quality assurance reviews to ensure that they meet customer needs. They are produced free from any political interference. © Crown Copyright 2007.