

23 May 2007

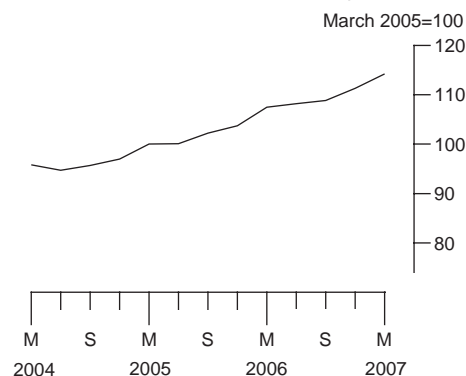
**Coverage**  
United Kingdom  
**Theme**  
The Economy

## Internet connectivity March 2007

More than four out of five connections to the Internet are now via broadband.

In March 2007, broadband connections accounted for 82.8 per cent of all Internet connections, up from 79.5 per cent in December 2006. This is according to the latest update from the survey of Internet Service Providers (ISPs).

**Index of Internet connectivity**



The index of all connections rose to 114.2 in March 2007, compared to the base month of 100 in March 2005.

The index increased by 2.6 per cent between December 2006 and March 2007. This was the largest increase in the index of all connections since March 2006.

Dial-up connections continued to decline and accounted for less than one in five of all Internet connections in March 2007.

### Index of Internet connectivity

Not seasonally adjusted

		All subscriptions	Percentage change on previous quarter
<i>March 2005 = 100</i>			
<b>2004</b>	March	95.8	4.4
	June	94.7	-1.1
	September	95.7	1.1
	December	97.0	1.4
<b>2005</b>	March	100.0	3.1
	June	100.1	0.1
	September	102.2	2.1
	December	103.7	1.5
<b>2006</b>	March	107.5	3.7
	June	108.2	0.7
	September	108.8r	0.6
	December	111.3r	2.3
<b>2007</b>	March	114.2	2.6

*r = revised*

Issued by  
National Statistics  
1 Drummond Gate  
London SW1V 2QQ

Telephone  
Press Office 020 7533 5725  
Public Inquiries 0845 601 3034

Statistician  
Mark Pollard 01633 819098  
Email mark.pollard@ons.gov.uk

Internet  
www.statistics.gov.uk

Next publication date  
23 August 2007



### Broadband and dial-up Internet connections

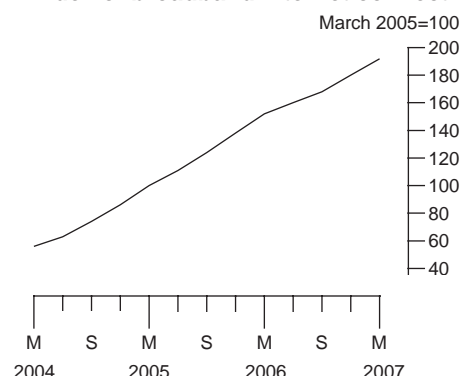
The market share of broadband connections has been increasing since the index began in 2001, reflecting its growing popularity, widespread availability and competitive connection packages offered by ISPs.

In March 2007, the indices of active subscriptions for dial-up and broadband connections were 38.7 and 192.3 respectively, when compared to their base of 100 in March 2005.

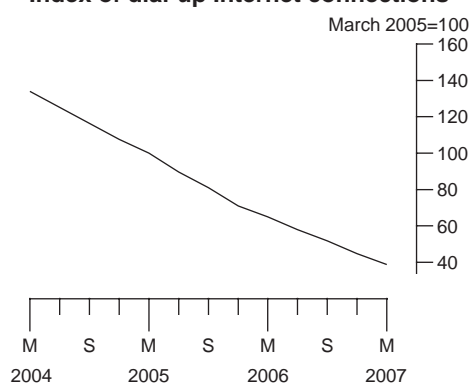
Broadband connections rose to 82.8 per cent of all connections in March 2007, up from 79.5 per cent in December. There was a year on year increase in the broadband index of 26.8 per cent, with a quarterly increase of 6.8 per cent.

Dial-up connections continued to decrease, with a year on year fall in the index of 40.4 per cent to March 2007. The quarterly decrease, from December 2006 to March 2007, was 13.6 per cent.

Index of broadband Internet connections



Index of dial-up Internet connections



### Subscriptions for dial-up and broadband Internet connections

Not seasonally adjusted

		Dial-up		Broadband	
		Index	Percentage of all subscriptions	Index	Percentage of all subscriptions
<i>March 2005 = 100</i>					
<b>2004</b>	March	133.9	71.1	56.4	28.9
	June	125.2	67.3	63.1	32.7
	September	116.3	61.8	74.4	38.2
	December	107.5	56.3	86.2	43.7
<b>2005</b>	March	100.0	50.9	100.0	49.1
	June	89.7	45.6	110.9	54.4
	September	81.0	40.3	124.2	59.7
	December	70.9	34.8	137.6	65.2
<b>2006</b>	March	64.9	30.7	151.6	69.3
	June	58.0	27.3	160.2	72.7
	September	51.7r	24.1r	168.0r	75.9r
	December	44.8r	20.5r	180.1r	79.5r
<b>2007</b>	March	38.7	17.2	192.3	82.8

r = revised

### Connection speed

As dial-up subscriptions decrease, there is less interest in measuring the different types of dial-up, and more in broadband. Therefore, data on metered and unmetered dial-up subscriptions were discontinued from the December 2006 release. These have been replaced by data on broadband connection speed categories, as shown in the table below. In this table, broadband speed is the advertised maximum speed for each subscription.

The speed advertised for each subscription may not be the speed attained by the end user, as attained speed of connection is affected by issues such as distance from the local exchange and line quality.

Some ISPs did not report the connection speeds that they provide and these have been categorised as 'speed unknown' in the table.

As the collection of these data is new, they are provisional and liable to be revised in subsequent releases.

### Percentage of broadband connections by speed

Not seasonally adjusted

		Broadband speed			
		<=2Mbps	>2Mbps and <=8Mbps	>8Mbps	speed unknown
<b>2006</b>	December	60.9r	33.3r	1.9r	3.9r
<b>2007</b>	March	55.3	37.2	2.2	5.4

r=revised

### Revisions

Revisions to the data in this release have been caused by company misreporting and late responses.

### Summary of revisions

		All subscriptions	Dial-up		Broadband	
			Index	Percentage of all subscriptions	Index	Percentage of all subscriptions
<b>2005</b>	June	-	-	-	-	-
	September	-	-	-	-	-
	December	-	-	-	-	-
<b>2006</b>	September	-0.4	-0.2	-0.1	-0.4	0.1
	December	-0.6	0.5	-0.3	1.7	0.3

## BACKGROUND NOTES

1. A review of the monthly survey to Internet Service Providers recommended a change to the frequency of the survey. As a result, the index of Internet connectivity has been converted from a monthly to a quarterly publication. The first of such quarterly publications related to March 2006. Data are collected for the final month in each quarter i.e. March, June, September and December.
2. The review of the survey was published on the National Statistics website in September 2005 and is available at:  
**[www.statistics.gov.uk/downloads/theme\\_commerce/internetconnectivityreport.pdf](http://www.statistics.gov.uk/downloads/theme_commerce/internetconnectivityreport.pdf)**
3. The Index of Internet connectivity has been rebased to March 2005 = 100. The rebased series replaced the previous series, based on January 2001 = 100. The index prior to March 2005 was adjusted to be consistent with the new base month, but will not be revised further. The original series was frozen as at December 2005, and is available on the National Statistics website.
4. The response to the survey stands at 67 per cent for the current month. Estimates are made for non-responding businesses. The index is not seasonally adjusted.
5. Subscriptions for dial-up connections are those that access the Internet via Integrated Services Digital Network (ISDN) or an analogue modem. Broadband connections are measured in Mbps (megabits per second). This relates to data transfer speed. Percentages may not sum to 100 due to independently rounded components.
6. The Internet Service Providers survey is carried out in line with the rigorous standards of all National Statistics. However, it is important to note that there is currently no definitive population of ISPs from which to sample and therefore the index should be treated with some caution.
7. This survey, established in January 2001, surveys a panel of ISPs, collecting data on the number of active Internet subscriptions. To be regarded as an active subscriber, a subscriber must have accessed the Internet in the month to which the survey refers. Publication of the index commenced in December 2001, in respect of January to October 2001.
8. Information about the e-commerce survey of business and about Internet access by households and individuals is available at:  
**[www.statistics.gov.uk/about/Methodology\\_by\\_theme/e-commerce\\_related\\_activities/default.asp](http://www.statistics.gov.uk/about/Methodology_by_theme/e-commerce_related_activities/default.asp)**

### Revisions

9. In this and future publications, any revisions to data that occur back to June 2005 will be reflected in the publication. Data prior to June 2005 will not be revised, as March 2005 is now the base month for the index. Detailed revisions analyses will not be published for the rebased index until there are sufficient time periods to produce a meaningful measure of statistical significance. The spreadsheets giving information on revisions that related to the index prior to rebasing will still be available on the National Statistics website at: [www.statistics.gov.uk/statbase/Product.asp?vlnk=8251](http://www.statistics.gov.uk/statbase/Product.asp?vlnk=8251)

### General

10. Details on National Statistics' policy governing the release of new data are available from the ONS Press Office.
11. **National Statistics** are produced to high professional standards set out in the National Statistics Code of Practice. They undergo regular quality assurance reviews to ensure that they meet customer needs. They are produced free from any political interference. © Crown Copyright 2007.