

17 June 2005

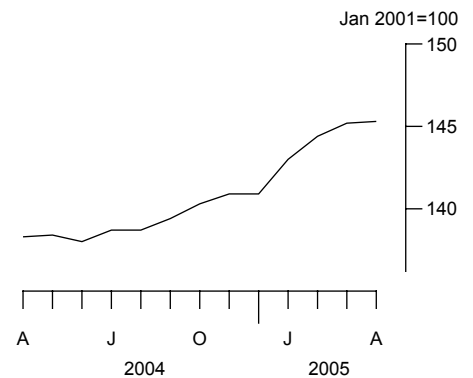
Coverage
United Kingdom
Theme
The Economy

Internet connectivity April 2005

The latest monthly update to the survey of Internet Service Providers (ISPs) shows that between April 2004 and April 2005 there was a 5.1 per cent increase in the number of active subscriptions to the Internet. The index increased by 0.1 per cent, to 145.3, between March and April 2005.

The market share for permanent connections continued to increase in April and now accounts for 49.2 per cent of all connections. This compares with a market share of 28.5 per cent a year earlier.

Index of Internet connectivity



Index of Internet connectivity

		All subscriptions	Percentage change on previous month
<i>January 2001=100</i>			
2004	April	138.3	0.1
	May	138.4	0.1
	June	138.0	-0.3
	July	138.7	0.5
	August	138.7	0.0
	September	139.4	0.5
	October	140.3	0.6
	November	140.9	0.4
	December	140.9	0.0
2005	January	143.0	1.5
	February	144.4	1.0
	March	145.2 ^r	0.6
	April	145.3	0.1

^r = revised

Issued by
National Statistics
1 Drummond Gate
London SW1V 2QQ

Telephone
Press Office 020 7533 5725
Public Inquiries 0845 601 3034

Statistician
Mark Pollard 01633 819098
Email mark.pollard@ons.gov.uk

Internet
www.statistics.gov.uk

Next publication date
19 July 2005



Dial-up versus permanent Internet subscriptions

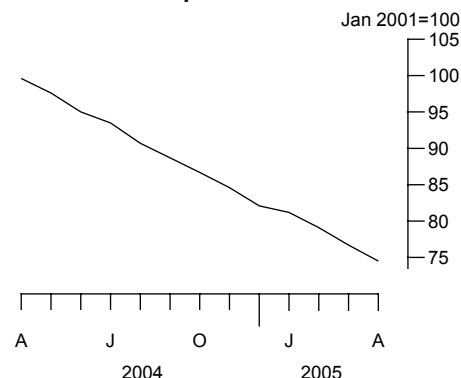
In April 2005, the indexes of active subscriptions for dial-up and permanent connections were 74.5 and 9245 respectively, when compared to their base of 100 in January 2001.

Dial-up Internet connections continued to decrease, with a year on year fall to April 2005 of 25.2 per cent. The latest monthly decrease, from March to April 2005, was 2.9 per cent.

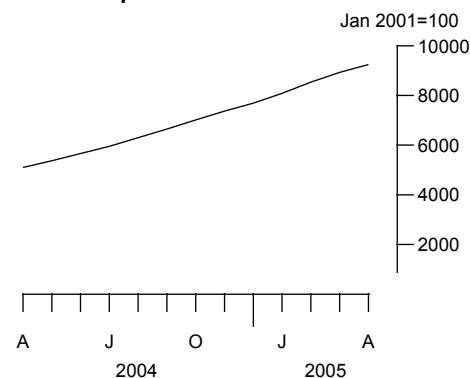
Permanent Internet connections continued to increase their market share and made up 49.2 per cent of all subscriptions in April 2005, up from 47.5 per cent in March 2005. There was a year on year increase of 81.1 per cent, with a monthly increase of 3.5 per cent in April 2005.

The increase in the market share for permanent connections reflected the continuing move from slower dial-up connections to quicker broadband, cable and leased line technologies. The share of dial-up connections dropped to 50.8 per cent of all connections in April 2005.

Index of dial-up Internet connections



Index of permanent Internet connections



Subscriptions for dial-up and permanent Internet connections

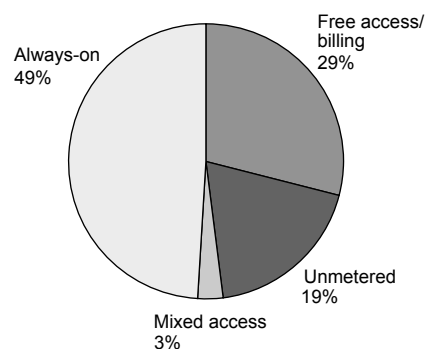
		Dial-up		Permanent	
		Index	Percentage of all subscriptions	Index	Percentage of all subscriptions
<i>January 2001=100</i>					
2004	April	99.6	71.5	5104	28.5
	May	97.6	70.0	5374	30.0
	June	95.0	68.3	5664	31.7
	July	93.5	66.8	5954	33.2
	August	90.7	64.9	6301	35.1
	September	88.7	63.1	6649	36.9
	October	86.7	61.4	7012	38.6
	November	84.6	59.6	7368	40.4
	December	82.1	57.8	7691	42.2
2005	January	81.2	56.3	8087	43.7
	February	79.1	54.3	8539	45.7
	March	76.7r	52.5r	8932	47.5r
	April	74.5	50.8	9245	49.2

r = revised

Type of subscription

In April 2005, the percentage of active subscriptions using free access or billed access was 29 per cent, compared with 35 per cent a year before. The percentage of those paying a fixed rate for unmetered dial-up access decreased to 19 per cent compared with 31 per cent a year before. The percentage of active subscriptions using a mixed subscription type (fixed rate plus calls) remained at 3 per cent, while always-on subscriptions rose to 49 per cent compared with 29 per cent in April 2004.

Subscriptions by type



Percentage of subscriptions by type

		Free access/ billing	Unmetered	Mixed access	Always- on
2004	April	35	31	5	29
	May	35	30	5	30
	June	34	29	5	32
	July	34	28	5	33
	August	33	27	5	35
	September	33	26	4	37
	October	32	25	4	39
	November	32	24	4	40
	December	31	23	4	42
	2005	January	30	22	4
February		30	20	4	46
March		29	20	3	48
April		29	19	3	49

Table 1R summarises the revisions to the figures published on 19 May 2005. The entire index is under continual review to ensure that ONS publishes its best estimates. The revisions in March 2005 have been made due to late returns.

1R Summary of revisions

	All subscriptions	Dial-up		Permanent	
		Index	Percentage of all subscriptions	Index	Percentage of all subscriptions
2004 April	-	-	-	-	-
May	-	-	-	-	-
June	-	-	-	-	-
July	-	-	-	-	-
August	-	-	-	-	-
September	-	-	-	-	-
October	-	-	-	-	-
November	-	-	-	-	-
December	-	-	-	-	-
2005 January	-	-	-	-	-
February	-	-	-	-	-
March	0.2	0.1	0.1	-	-0.1

BACKGROUND NOTES

1. This survey, established in January 2001, surveys a panel of ISPs, collecting data on the number of active Internet subscriptions, types of connections and types of subscriptions. Publication of the index commenced in December 2001, in respect of January to October 2001.
2. The index of connectivity is constructed for active Internet subscriptions, with January 2001 being used as the base month. The index expresses the current month as a percentage of the base month. The response to the survey stands at 82 per cent for the current month. Estimates are made for non-responding businesses. The index is not seasonally adjusted.
3. The Internet Service Providers survey is carried out in line with the rigorous standards of all National Statistics. However, it is important to note that there is currently no definitive population of ISPs from which to sample, and therefore the index should be treated with some caution. A full review of the survey commenced in October 2004 and the report is due to be published on the website by August 2005.
4. The Office for National Statistics publishes an updated First Release each month. Comments are welcomed.
5. Subscriptions for dial-up connections are those that access the Internet via Integrated Services Digital Network (ISDN) or an analogue modem. Subscriptions for permanent connections are those with a dedicated continuous Internet connection.
6. Free access/billing subscriptions are for dial-up connections where call charges are either paid to the telecommunications supplier or direct to the ISP. Unmetered subscriptions are for dial-up connections where a fixed price is paid per month, quarter or year. Mixed access subscriptions are for dial-up connections where a fixed price covers access within defined hours and access at other times is billed. Always-on subscriptions are for permanent, broadband and leased line connections.

Revisions

7. One indication of the quality of key indicators in this release can be obtained by monitoring the size of revisions. The table below records the size and pattern of revisions that have occurred since this survey began. Please note that these indicators only report summary measures for revisions. The revised data may itself be subject to sampling or other sources of error. The table covers estimates of the index of Internet connectivity first published in December 2001 in respect of January 2001. A spreadsheet giving a revisions triangle (real time database) of estimates from January 2001 to February 2005 and the calculations behind the averages in the table is available on the National Statistics website at: <http://www.statistics.gov.uk/statbase/Product.asp?vlnk=8251>

	Value in latest period	Revisions between first publication and estimates 12 months later	
		Average over the last 39 months	Average over the last 39 months without regard to sign (average absolute revision)
All subscriptions	145.3	0.11	1.24
Dial-up subscriptions	74.5	-0.54	0.89
Permanent subscriptions	9245	39.50	43.05

A statistical test has been applied to find out if the average revisions are significant. No statistically significant revision was identified.

More information about the revisions material in the release can be found on the National Statistics website at: http://www.statistics.gov.uk/about/Methodology_by_theme/revisions_policies/default.asp

General

8. Details on National Statistics policy governing the release of new data are available from the ONS Press Office.
9. **National Statistics** are produced to high professional standards set out in the National Statistics Code of Practice. They undergo regular quality assurance reviews to ensure that they meet customer needs. They are produced free from any political interference. © Crown Copyright 2005.