

21 December 2006

Coverage
United Kingdom
Theme
The Economy

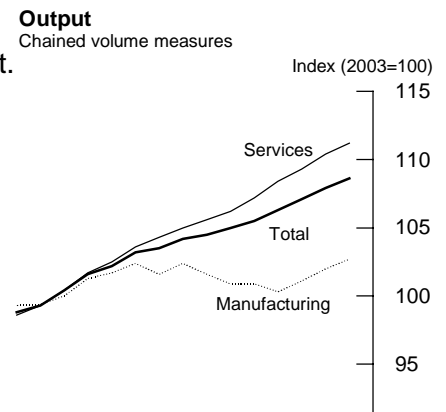
Quarterly national accounts 3rd quarter 2006

The UK gross domestic product (GDP) in volume terms rose by 0.7 per cent in the third quarter of 2006. This is unrevised from the previous estimate. The level of GDP is 2.9 per cent higher than the third quarter of 2005.

Between quarter two and quarter three of 2006:

The total volume of output in the production industries rose by 0.2 per cent, within this manufacturing output rose by 0.6 per cent.

Construction output rose by 0.7 per cent over the quarter and the output of the service industries increased by 0.8 per cent (Table B1).



In the sector accounts:

The household saving ratio was 5.1 per cent in the latest quarter compared with 5.4 per cent in the previous quarter (Table J3).

Private non-financial corporations showed net lending of £6.6 billion in the latest quarter, the same as the previous quarter (Table K2).

Issued by
National Statistics
1 Drummond Gate
London SW1V 2QQ

Telephone
Press Office 020 7533 5725
Public Enquiries 0845 601 3034

Statistician
Simon Humphries
020 7533 6019
Email: gdp@ons.gov.uk

Internet
www.statistics.gov.uk

Next publication date
24 January 2007

		Household saving ratio	Net lending/ borrowing (-) of private non-financial corporations	Gross domestic product		
				current market prices	chained volume measure	chained volume measure
		per cent	£bn	2003=100	2003=100	per cent change
<i>Seasonally adjusted</i>						
2005	Q1	4.0	5.8	108.7	104.5	0.3
	Q2	5.1	8.6	109.7	104.9	0.5
	Q3	5.6	4.2	110.5	105.5	0.5
	Q4	6.2	2.4	112.6	106.2	0.7
2006	Q1	5.8	3.7	113.1	107.0	0.7
	Q2	5.4	6.6	115.0	107.7	0.7
	Q3	5.1	6.6	117.1	108.5	0.7



**GDP analysed by output categories, chained volume measures
(Tables B1 and B2)**

Gross value added (GVA) rose by 0.7 per cent (unrevised) in the third quarter of 2006. The level of GVA is 3.0 per cent higher than the third quarter of 2005 (revised up from 2.7 per cent published last month).

The output of the agriculture, forestry and fisheries sector fell by 0.1 per cent compared with the previous quarter.

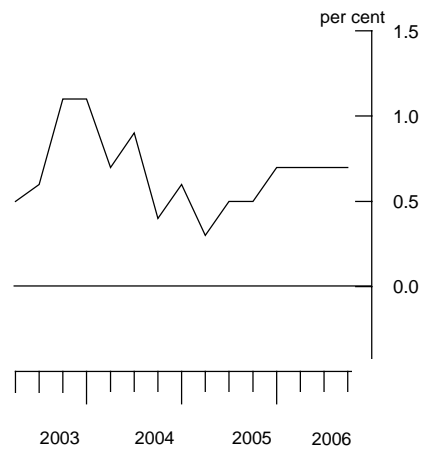
The output of the production industries increased by 0.2 per cent in the third quarter, with output of the manufacturing industries up by 0.6 per cent. Within manufacturing the largest rises were in the chemicals & man made fibres, machinery & equipment and transport equipment industries. The output of the mining and quarrying sector declined by 3.8 per cent in the latest quarter with falls in the oil and coal extraction industries. Electricity, gas and water supply fell by 0.2 per cent; a decrease in gas supply was partly offset by increases in electricity and water supply.

Construction output is estimated to have risen by 0.7 per cent in the latest quarter.

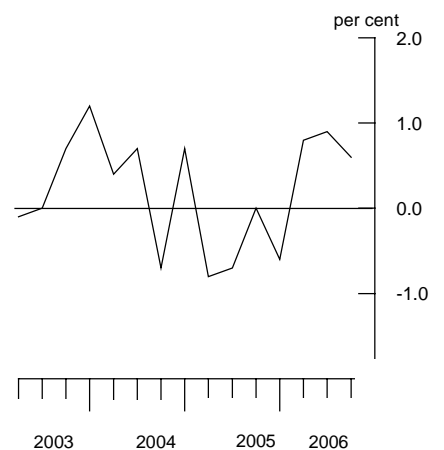
Services output increased by 0.8 per cent in the latest quarter compared with 1.0 per cent in the previous quarter. Growth is strongest in the business services and finance sector, at 1.4 per cent. The distribution, hotels and catering sector rose by 0.2 per cent compared with a rise of 0.9 per cent in the previous quarter. The weakening of growth is mainly due to retail. The transport and communication sector rose by 0.3 per cent. Increased output in post and telecommunication and water transport was partly offset by a fall in transport support, which includes cargo handling and travel agents. Government and other services rose by 0.4 per cent over the quarter.

The output of services is 3.7 per cent higher than the third quarter of 2005.

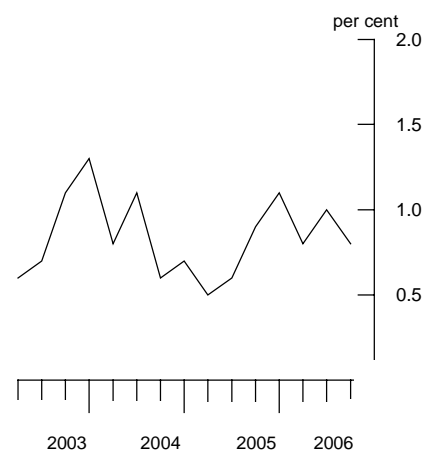
Gross domestic product
quarter on quarter growth



Manufacturing
quarter on quarter growth



Services
quarter on quarter growth



GDP analysed by expenditure categories, chained volume measures (Tables C2, E3, E4, F, G, and H2)

Gross domestic expenditure rose by 0.7 per cent in the third quarter of 2006.

Household expenditure grew by 0.4 per cent in the latest quarter compared to growth of 0.9 per cent in the previous quarter. The decrease in growth in expenditure is the result of weakness in spending on housing (mainly expenditure on electricity and gas) and a slowdown in spending on recreation and culture.

Government expenditure rose by 0.8 per cent in the latest quarter. The volume of spending remains at 2.1 per cent above the level in 2005 quarter three.

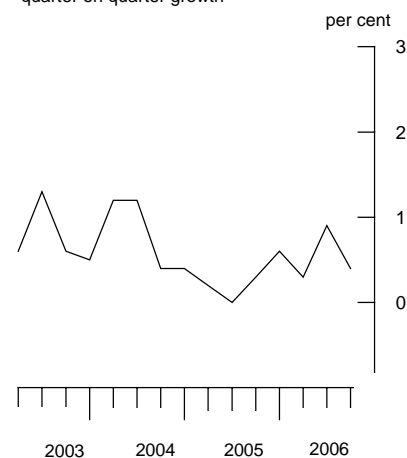
Gross fixed capital formation is estimated to have risen by 1.8 per cent, compared with 0.5 per cent in the previous quarter. Business investment grew by 3.1 per cent in the latest quarter and is now 8.2 per cent above the same quarter of last year. General government investment was up 3.0 per cent on the previous quarter although showed a decrease of 0.2 per cent on the same quarter in 2005.

The level of inventories including the alignment adjustment rose by £1.5 billion in the latest quarter, reflecting a rise in stockholdings by retailers, wholesalers and energy suppliers.

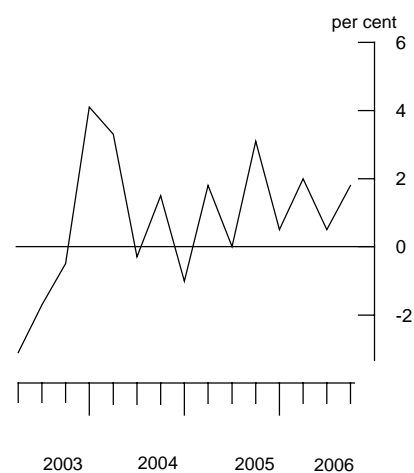
The deficit in net exports in the third quarter of 2006 widened to £10.3 billion from £10.1 billion in the previous quarter. Net imports of goods rose whilst net exports of services increased to a lesser extent. There were positive contributors to trade in goods data from capital and intermediate goods more than offset by negative effects from aircraft, cars, fuels, and precious stones.

Published data show exports of goods fell by 17.7 per cent and imports of goods fell by 13.8 per cent. These data are severely affected by trade associated with VAT Missing Trader Intra Community (MTIC) fraud. Excluding trading associated with VAT MTIC fraud, exports fell by 1.5 per cent and imports fell by 0.9 per cent.

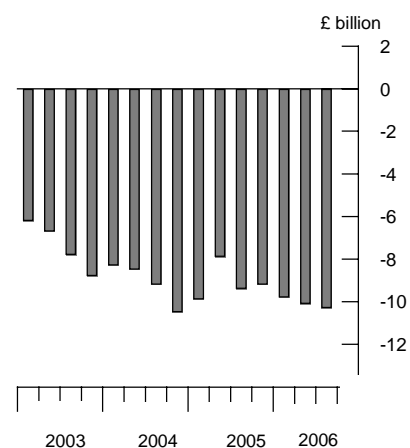
Household final expenditure
quarter on quarter growth



Gross fixed capital formation
quarter on quarter growth



Net trade
chained volume measures





In the third quarter of 2006 exports of services grew by 0.3 per cent while imports of services fell by 0.2 per cent.

GDP deflator

The gross domestic product deflator based upon expenditure at market prices grew by 1.1 per cent in the third quarter of 2006 and is now 3.0 per cent above the same quarter in 2005.

GDP analysed by income categories at current prices (Table D)

GDP at current market prices rose by 1.8 per cent over the quarter.

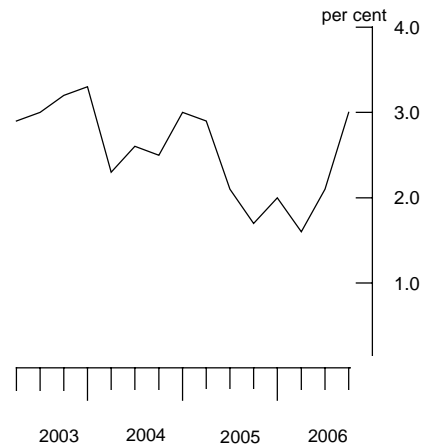
Compensation of employees grew by 1.1 per cent in the latest quarter, following growth of 0.3 per cent in the second quarter. Within this, wages and salaries grew by 1.0 per cent reflecting higher levels of employment and continued growth in average earnings. Employers' social contributions recovered from a weak second quarter following high employers' pension contributions in 2006 quarter one.

The gross operating surplus of corporations, including the alignment adjustment, grew by 5.5 per cent, reflecting underlying increases in company profits.

Taxes on production less subsidies on production rose by 1.1 per cent over the quarter.

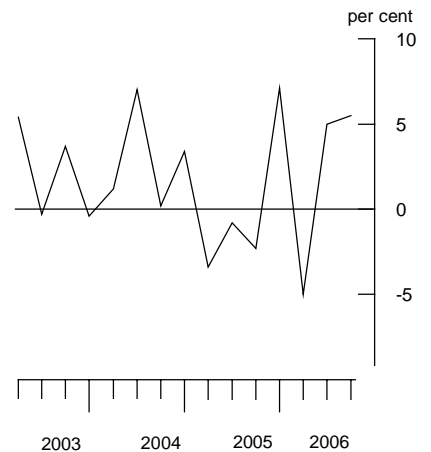
GDP deflator

quarter on year growth



Gross operating surplus of corporations

quarter on quarter growth





SECTOR ACCOUNTS

Sector Accounts (Tables I, J1, J2, J3, K1, K2)

Net lending/borrowing by sector (Table I)

In 2006 quarter three, the central government and household sectors were net borrowers. Local government, public corporations, financial corporations, private non-financial corporations and the rest of the world sectors reported net lending.

Central government reported net borrowing of £7.8 billion in 2006 quarter three. This is the twentieth consecutive quarter of net borrowing.

The household and non-profit institutions serving households sector borrowed £7.5 billion. This is the nineteenth consecutive quarter of net borrowing. More detail can be found in Tables J1, J2 and J3.

Local government sector reported net lending of £0.4 billion.

Public corporations sector reported net lending of £0.2 billion.

Financial corporations sector reported net lending of £0.2 billion.

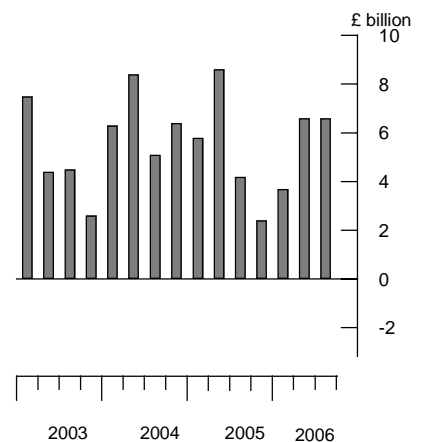
Private non-financial corporations sector reported net lending of £6.6 billion, the same as the previous quarter. This is the nineteenth consecutive quarter of net lending. More detail can be found in Tables K1 and K2.

The rest of the world sector reported net lending of £9.0 billion. This implies a UK current account deficit. More detail on this can be found in the Balance of Payments First Release.

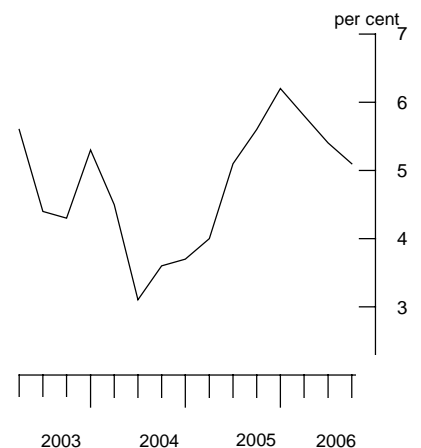
The household and non profit institutions serving households (NPISH) sector (Tables J1, J2 and J3)

The saving ratio in 2006 quarter three was 5.1 per cent compared to 5.4 per cent in the previous quarter. This slight fall was due to growth in

Net lending/borrowing of private non-financial corporations



Household saving ratio
seasonally adjusted





wages and salaries of 1.0 per cent and growth in social benefits of 1.8 per cent being more than offset by growth in household and NPISH final consumption expenditure of 1.2 per cent and growth in taxes on income of 3.1 per cent.

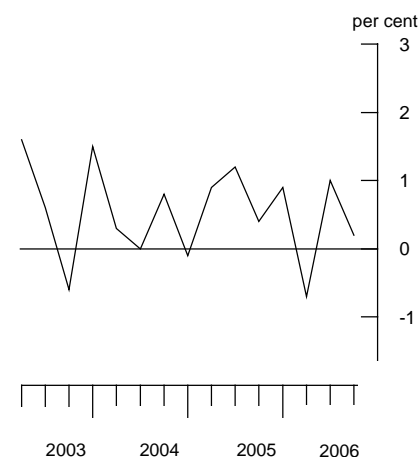
Real household disposable income grew by 0.2 per cent in the latest quarter following 1.0 per cent growth in 2006 quarter two. The fall reflects growth in wages and salaries and social benefits being more than offset by the growth in taxes on income and household and NPISH final consumption expenditure. The household and NPISH expenditure deflator also showed robust growth in the latest quarter.

Private non-financial corporations sector (Tables K1 and K2)

Net lending of private non-financial corporations was £6.6 billion in the latest quarter, the same as the previous quarter.

Within the primary income account, the gross operating surplus of private non-financial corporations rose by 4.7 per cent. Property income receipts rose by 2.4 per cent, while property income payments rose by 6.4 per cent (driven by higher dividend payments). The balance of gross primary income grew by 1.7 per cent. With taxes on income rising by 9.4 per cent, gross disposable income fell by 0.2 per cent over the quarter. With gross capital formation growing by 1.2 per cent in the latest quarter, the net lending of private non-financial corporations remained at £6.6 billion.

Real household disposable income
quarter on quarter growth



REVISIONS

(Table R)

Revisions have been taken back to 2005 quarter one in this release.

GDP and components (previously published on 24 November 2006)

2005

The 2005 annual growth rate for real GDP is unrevised at 1.9 per cent.

Output in chained volume measures (Tables B1 and B2)

From the output side, GVA is unrevised at 2.0 per cent. The output of both production and services industries are also unrevised but there have been minor offsetting revisions to some of the components.

Expenditure (tables C1, C2) in chained volume terms

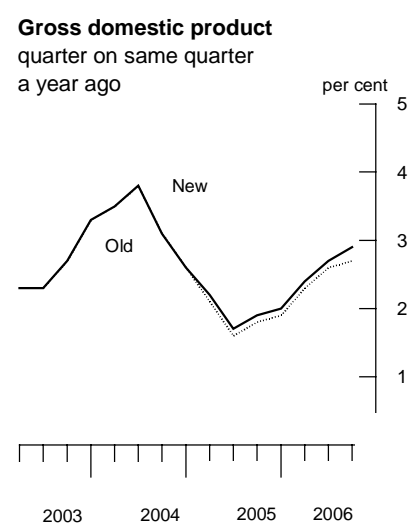
Within the expenditure measure of GDP, there have been upward revisions to government final consumption and gross fixed capital formation. In addition, there have been upward revisions to exports and imports of services.

Government final consumption expenditure is now estimated to have risen by 3.1 per cent compared to 2.8 per cent previously published, largely due to later data on military procurement.

Gross fixed capital formation is growing at 3.4 per cent compared with 2.7 per cent previously published due to later information.

Exports and imports of services have been revised up by £2.3bn and £1.8bn respectively, largely due to the incorporation of final annual survey results for trade in services.

On the income side, the current price measure of GDP growth is unrevised at 4.1 per cent. However there have been downward revisions to compensation of employees and private non-financial corporations offset



by upward revisions to private financial corporations and public corporations.

2006

Output in chained volume measures (Tables B1 and B2)

Total GVA in the third quarter of 2006 is unchanged at 0.7 per cent. Within production there is a small upward revision to mining and quarrying and a downward revision to energy supply. Total production has been revised upwards by 0.1 per cent. Construction output is revised up by 0.1 to 0.7 per cent due to quarterly survey data replacing a model based estimate.

Total services is unrevised. Government and other services is revised down by 0.1 per cent to 0.4 per cent, mainly due to data replacing a forecast for public health output. This is offset by an upward revision to other business services (which includes labour recruitment).

GVA in the first quarter of 2006 is revised up to 0.8 per cent from 0.7 per cent. The revision is mainly due to later data for other business services (which includes labour recruitment) within business services and finance.

GVA in the second quarter of 2006 is also revised up from 0.7 per cent to 0.8 per cent. The revision is mainly due to new data for auxiliary financial activities, within business services and finance and later data for telecommunications within transport and communication.

Expenditure in chained volume measures (Tables C1, C2)

Quarter on quarter growth in household final consumption expenditure in the third quarter of 2006 is unrevised.

Government expenditure in 2006 quarter three has been revised down by 0.2 per cent. This is driven mainly by a downward revision to health expenditure with actual data replacing a forecast and lower central government expenditure, partly offset by an upward revision to military defence.



Gross fixed capital formation in the third quarter has been revised down from growth of 2.2 per cent previously published to 1.8 per cent, due largely to lower estimates of government investment.

The third quarter level of inventories has been revised up from the previously published estimate. Lower stock building by manufacturing industries were offset by a rise in other industries and retail.

Net exports in the third quarter of 2006 were little changed from those previously published. Net exports in the second quarter were revised down from a deficit of £9.9bn to a deficit of £10.3bn.

Revisions to GDP deflator

In the third quarter of 2006, growth in the GDP deflator stands at 1.1 per cent, compared with 1.0 per cent previously published.

Revisions to income in current market prices (Table D)

GDP at current market prices in the latest quarter has been revised up from 1.7 per cent to 1.8 per cent.

The gross operating surplus of corporations has been revised up from 3.0 per cent to 5.5 per cent caused by upward revisions to the gross operating surplus of private non-financial corporations and private financial corporations.

Compensation of employees growth in the third quarter has been revised down 0.1 per cent from 1.2 per cent to 1.1 per cent. Growth in the second quarter has been revised down by 0.5 per cent from 0.8 per cent to 0.3 per cent. This reflects a reassessment of the effects of employers' pension contributions over the last four quarters. Wages and salaries growth in the second quarter of 2006 remains stable at 1.1 per cent.

Sector accounts (previously published on 27 September 2006)

Household and non-profit institutions serving households (NPISH) sector

The household saving ratio was revised up in 2006 quarter two from 5.2 per cent to 5.4 per cent, but was revised down in 2006 quarter one from 6.4 per cent to 5.8 per cent. In 2005 the saving ratio was revised up from 4.9 per cent to 5.3 per cent.

The main source of upward revisions to the saving ratio was the inclusion of annual inquiry information for insurance companies. Sources of downward revisions to the savings ratio included latest administrative data on taxes on income, a reassessment of the employers' pension contributions series, and latest data on benefits, grants and public sector pensions from government administrative sources.

Private non-financial corporations sector

In 2005 net lending was revised down to £20.9 billion from £23.9 billion previously published. This was driven by downward revisions to net property income reflecting the inclusion of latest annual ONS inquiry results for foreign direct investment and gross capital formation.

BACKGROUND NOTES

Release policy

1. This release includes data available up to 11 December 2006.
2. The preliminary estimate of GDP for the fourth quarter of 2006 will be published on 24 January 2007, followed by provisional estimates of output, income and expenditure on 23 February 2007. The next full set of quarterly national accounts will be published on 28 March 2007.

Basic quality information for GDP First Release

Summary quality report

3. A Summary Quality Report for this First Release can now be found on the National Statistics website at:

<http://www.statistics.gov.uk/cci/article.asp?ID=1180>

Key quality issues

4. *Common pitfalls in interpreting series:* Expectations of accuracy and reliability in early estimates are often too high. Revisions are an inevitable consequence of the trade off between timeliness and accuracy. Early estimates are based on incomplete data.

Very few statistical revisions arise as a result of 'errors' in the popular sense of the word. All estimates, by definition, are subject to statistical 'error' but in this context the word refers to the uncertainty inherent in any process or calculation that uses sampling, estimation or modelling. Most revisions reflect either the adoption of new statistical techniques, or the incorporation of new information which allows the statistical error of previous estimates to be reduced. Only rarely are there avoidable 'errors' such as human or system failures, and such mistakes are made quite clear when they do occur.

Reliability

5. Estimates for the most recent quarters are provisional and, as usual, are subject to revision in light of updated source information. ONS currently provides an analysis of past revisions in the GDP and other First Releases which present time series. Details can be found at:

<http://www.statistics.gov.uk/cci/article.asp?ID=793>

ONS has a webpage dedicated to revisions to economic statistics which brings together ONS work on revisions analysis, linking to articles, analysis and key documentation from the Statistics Commission's report on revisions. The webpage can be found at:

http://www.statistics.gov.uk/about_ns/economic_revisions.asp

6. Revisions to data provide one indication of the reliability of key indicators. Tables 1 and 2 show summary information on the size and direction of the revisions which have been made to data covering a five year period. A statistical test has been applied to the average revision to find out if it is statistically significantly different from zero. An asterisk (*) shows that the test is significant. The data used are consistent with that used in more detailed analysis published in *Economic Trends*. The most recent article was published on the National Statistics website on 11 December 2006 at:

<http://www.statistics.gov.uk/cci/article.asp?ID=1694>

7. Table 1 below shows the revisions between the early estimates of GDP. The analysis of revisions between month 1 and month 2 uses month 2 estimates published from February 2002 (2001q4) to November 2006 (2006q3). The analysis of revisions between month 2 and month 3 uses month 3 estimates published from December 2001 (2001q3) to September 2006 (2006q2).

Table 1: Revisions to early estimates of GDP growth

Revisions to GDP growth	GDP Growth in latest period (per cent)	Revisions between early estimates of GDP growth (quarterly, CVM)	
		Average over the last five years	Average over the last five years without regard to sign (average absolute revision)
Between M1 and M2	0.7	-0.02	0.05
Between M2 and M3	0.7	0.03	0.06

Table 2 shows revisions to GDP growth and the household saving ratio between the estimate published three months after the end of the quarter and the equivalent estimate three years later. For GDP and Household saving ratio, the analysis uses month 3 estimates first published from December 1998 (1998q3) to September 2003 (2003q2).

Table 2: Revisions to month 3 estimates of GDP growth and the household saving ratio

	Value in latest period (per cent)	Revisions between first publication and estimates three years later	
		Average over the last five years ¹	Average over the last five years ¹ without regard to sign (average absolute revision)
GDP growth (quarterly, CVM)	0.7	0.11	0.19
Household saving ratio	5.1	0.37	1.24

Spreadsheets giving revisions triangles (real time databases) of estimates from 1992 to date, and the calculations behind the averages in both tables are available on the National Statistics website at:

<http://www.statistics.gov.uk/statbase/Product.asp?vlnk=818>

Revisions triangles for the main components of GDP from expenditure, output and income approaches are also available at the link above.

An article by E George and D Obuwa 'National Accounts' Revisions Analyses: A summary to April 2005' is available on the National Statistics website at:

<http://www.statistics.gov.uk/ci/article.asp?ID=1140>

This article presents a summary of revisions analyses published to date in ONS First Releases, including some more detailed analysis of revisions to GDP.

Missing Trader Intra-Community Fraud

- Erratic and large movements in the level of trade associated with VAT Missing Trader Intra Community (MTIC) fraud have made it especially difficult to interpret movements in imports and exports of goods in recent quarters, and to incorporate the trade data into the National Accounts.

Central government data quality

9. HM Treasury is introducing a new financial information system: the Combined On-line Information System (COINS). The migration of all central government departments' and devolved administrations' data to COINS is a major undertaking which started mid-2005. During the transition period, it is possible that the quality of the data for recent periods will be affected, which may lead to larger than usual revisions to National Accounts and Public Sector Finances statistics.

Further information

10. Latest copies of this and other ONS releases as well as additional briefing are available under *Press Releases* on the National Statistics website:

http://www.statistics.gov.uk/press_Release/CurrentReleases.asp

More information on household expenditure can be found at:

<http://www.statistics.gov.uk/statbase/product.asp?vlnk=242>

More information underlying the National Accounts can be found at:

<http://www.statistics.gov.uk/CCI/nscl.asp?ID=5871>

More detailed information on revisions analysis is available at:

<http://www.statistics.gov.uk/cci/article.asp?ID=793>

11. Details of the policy governing the release of new data are available from the press office. Also available is a list of the names of those given pre-publication access to the contents of this release.
12. **National Statistics** are produced to high professional standards set out in the National Statistics Code of Practice. They undergo regular quality assurance reviews to ensure that they meet customer needs. They are produced free from any political interference. © Crown copyright 2006.

INDEX TO TABLES

Gross domestic product tables

National accounts aggregates (index numbers)	A1
National accounts aggregates	A2
Gross value added chained volume measures at basic prices, by category of output	B1
Gross value added chained volume measures at basic prices, by category of output: service industries	B2
Gross domestic product: expenditure	
Current market prices	C1
Gross domestic product: expenditure	
Chained volume measures	C2
Gross domestic product: by category of income	
Current market prices	D
Household final consumption expenditure by purpose	
Current market prices	E1
Household final consumption expenditure (goods and services)	
Current market prices	E2
Household final consumption expenditure by purpose	
Chained volume measures	E3
Household final consumption expenditure (goods and services)	
Chained volume measures	E4
Gross fixed capital formation by sector and type of asset	
Chained volume measures	F
Changes in inventories	
Chained volume measures	G
Exports and imports of goods and services	
Current market prices	H1
Exports and imports of goods and services	
Chained volume measures	H2

Sector accounts tables

Net lending/borrowing by sector	I
Households sector: allocation of primary income account	J1
Households sector: secondary distribution of income account	J2

Households sector: use of disposable income account	J3
Private non-financial corporations sector: allocation of primary income account	K1
Private non-financial corporations sector: secondary distribution of income account and capital account	K2

Other analysis

Gross value added at basic prices: individual measures	L
Alignment adjustments	M

Revisions tables

Revisions analysis: revisions against previously published estimates	R
--	---

A1 National accounts aggregates¹

2003 = 100

	Value indices at current prices		Chained volume indices			Implied deflators ²		
	Gross domestic product at market prices	Gross value added at basic prices	Gross domestic product at market prices	Gross value added at basic prices	Gross national disposable income at market prices	Gross domestic expenditure	Gross domestic product at market prices	Gross value added at basic prices
2003	YBEU	YBEX	YBEZ	CGCE	YBFP	YBFV	YBGB	CGBV
2004	100.0	100.0	100.0	100.0	100.0	100.0	100.0	100.0
2005	106.0	105.9	103.3	103.3	103.4	102.4	102.6	102.6
2005	110.4	110.4	105.3	105.3	104.5	105.4	104.8	104.8
Seasonally adjusted								
2004 Q2	105.6	105.6	103.1	103.2	103.2	102.3	102.4	102.4
Q3	106.6	106.7	103.5	103.5	103.0	102.8	103.0	103.0
Q4	108.2	108.4	104.1	104.2	105.4	103.4	103.9	104.0
2005 Q1	108.7	108.7	104.5	104.5	104.3	104.0	104.1	104.0
Q2	109.7	109.7	104.9	105.0	105.5	104.8	104.5	104.5
Q3	110.5	110.3	105.5	105.5	103.9	106.0	104.7	104.6
Q4	112.6	112.8	106.2	106.3	104.3	106.7	106.0	106.2
2006 Q1	113.1	113.1	107.0	107.1	105.5	106.9	105.8	105.6
Q2	115.0	114.9	107.7	107.9	107.0	107.9	106.7	106.5
Q3	117.1	117.1	108.5	108.6	107.4	108.7	107.9	107.8
Percentage change, latest year on previous year								
2005	4.1	4.2	1.9	2.0	1.1	2.9	2.2	2.2
Percentage change, latest quarter on previous quarter								
2006 Q3	1.8	1.9	0.7	0.7	0.4	0.7	1.1	1.2
Percentage change, latest quarter on corresponding quarter of previous year								
2006 Q3	6.0	6.1	2.9	3.0	3.4	2.5	3.0	3.1

1 Estimates cannot be regarded as accurate to the last digit shown.

2 Based on the sum of expenditure components of GDP at current prices and in chained volume terms.

A2 National accounts aggregates¹

£ million

	Current prices				Chained Volume Measures (Reference year 2003)				
	Gross national income at market prices	Net income from abroad ²	Gross domestic product at market prices	less Basic price adjustment ³	Gross value added at basic prices	Gross domestic product at market prices	less Basic price adjustment ³	Gross value added at basic prices	Gross value added at factor cost
2003	ABMZ	CAES	YBHA	NTAP	ABML	ABMI	NTAO	ABMM	YBHH
2004	1 132 938	22 642	1 110 296	124 738	985 558	1 110 296	124 738	985 558	969 067
2005	1 202 075	25 548	1 176 527	132 362	1 044 165	1 146 523	128 660	1 017 863	1 000 888
2005	1 251 567	26 228	1 225 339	137 471	1 087 868	1 168 713	130 613	1 038 100	1 020 466
Seasonally adjusted									
2004 Q2	299 293	6 173	293 120	32 972	260 148	286 307	32 148	254 159	249 919
Q3	300 666	4 668	295 998	33 209	262 789	287 400	32 311	255 089	250 813
Q4	309 569	9 134	300 434	33 375	267 059	289 091	32 369	256 722	252 429
2005 Q1	308 503	6 760	301 743	33 960	267 783	289 943	32 375	257 568	253 215
Q2	313 734	9 327	304 407	34 121	270 286	291 280	32 531	258 749	254 350
Q3	313 053	6 403	306 650	34 839	271 811	292 753	32 824	259 929	255 506
Q4	316 277	3 738	312 539	34 551	277 988	294 737	32 883	261 854	257 395
2006 Q1	320 431	6 403	314 028	35 325	278 703	296 869	32 968	263 901	259 399
Q2	327 888	8 656	319 232	36 119	283 113	299 084	33 168	265 916	261 351
Q3	331 344	6 310	325 034	36 545	288 489	301 126	33 478	267 648	263 035
Percentage change, latest year on previous year									
2005	4.1		4.1		4.2	1.9		2.0	2.0
Percentage change, latest quarter on previous quarter									
2006 Q3	1.1		1.8		1.9	0.7		0.7	0.6
Percentage change, latest quarter on corresponding quarter of previous year									
2006 Q3	5.8		6.0		6.1	2.9		3.0	2.9

1 Estimates are given to the nearest £ million but cannot be regarded as accurate to this degree.

2 Includes employment, entrepreneurial and property income.

3 Taxes on products less subsidies.

B1 Gross value added chained volume measures at basic prices, by category of output^{1,2}

2003 = 100

	Production					Service industries							Gross value added at basic prices	Gross value added excluding oil & gas
	Agriculture, forestry, and fishing	Mining & quarrying inc oil & gas extraction	Manufacturing (revised definition)	Electricity gas and water supply	Total	Construction	Distribution hotels and catering; repairs	Transport storage and communication	Business services and finance	Government and other services	Total			
2003 Weights³	10	22	147	17	186	61	153	78	277	235	744	1000	980	
	GDQA	CKYX	CKYY	CKYZ	CKYW	GDQB	GDQE	GDQH	GDQN	GDQU	GDQS	CGCE	JUNT	
2003	100.0	100.0	100.0	100.0	100.0	100.0	100.0	100.0	100.0	100.0	100.0	100.0	100.0	
2004	99.0	92.1	102.0	101.1	100.8	104.0	105.2	102.5	105.1	102.0	103.9	103.3	103.5	
2005	101.3	84.1	100.9	100.8	98.9	105.6	106.3	106.7	109.6	104.1	106.9	105.3	105.8	
Seasonally adjusted														
2004 Q2	98.3	94.8	102.4	100.7	101.3	103.4	105.2	102.2	104.3	102.2	103.6	103.2	103.3	
Q3	99.3	90.9	101.6	101.0	100.3	104.4	106.0	103.1	105.6	102.0	104.3	103.5	103.8	
Q4	99.2	88.6	102.4	100.6	100.6	105.4	105.9	104.1	106.9	102.5	105.0	104.2	104.5	
2005 Q1	100.8	86.9	101.6	100.0	99.7	106.0	105.7	105.8	107.6	103.1	105.6	104.5	104.9	
Q2	102.3	87.5	100.9	101.8	99.4	106.4	105.7	105.9	108.8	103.6	106.2	105.0	105.4	
Q3	101.3	80.8	100.9	101.1	98.6	105.1	106.3	106.7	110.1	104.6	107.2	105.5	106.0	
Q4	100.9	81.3	100.3	100.4	98.1	104.8	107.6	108.3	111.9	104.9	108.4	106.3	106.8	
2006 Q1	100.5	81.2	101.1	100.3	98.7	105.8	108.5	108.7	113.1	105.6	109.3	107.1	107.7	
Q2	99.5	78.1	102.0	97.6	98.8	106.3	109.4	109.4	114.8	106.0	110.4	107.9	108.6	
Q3	99.4	75.2	102.7	97.4	99.0	107.0	109.6	109.7	116.5	106.5	111.2	108.6	109.3	
Percentage change, latest year on previous year														
2005	2.4	-8.7	-1.1	-0.3	-1.8	1.5	1.1	4.0	4.3	2.0	2.9	2.0	2.2	
Percentage change, latest quarter on previous quarter														
2006 Q3	-0.1	-3.8	0.6	-0.2	0.2	0.7	0.2	0.3	1.4	0.4	0.8	0.7	0.7	
Percentage change, latest quarter on corresponding quarter of previous year														
2006 Q3	-1.9	-6.9	1.7	-3.7	0.4	1.8	3.1	2.9	5.8	1.8	3.7	3.0	3.1	

B2 Gross value added chained volume measures at basic prices, by category of output: Service industries^{1,2}

2003 = 100

	Service industries												
	Wholesale and retail trade; repairs	Hotels and restaurants	Transport and storage	Post and telecommunication	Financial intermediation	Real estate, renting and business activities	Ownership of dwellings	Public administration, national defence, social security	Education	Health and social work	Other services ⁴	Adjustment for financial services	Total services
2003 Weights³	122	31	48	30	79	165	79	52	59	72	53	-46	744
	GDQC	GDQD	GDQF	GDQG	GDQI	GDQK	GDQL	GDQO	GDQP	GDQQ	GDQR	GDQJ	GDQS
2003	100.0	100.0	100.0	100.0	100.0	100.0	100.0	100.0	100.0	100.0	100.0	100.0	100.0
2004	105.3	104.5	103.4	101.2	107.6	107.7	101.5	101.9	100.4	103.9	101.3	113.0	103.9
2005	106.4	106.0	107.9	104.8	113.5	114.4	102.9	102.9	102.0	107.3	103.2	122.1	106.9
Seasonally adjusted													
2004 Q2	105.4	104.3	103.5	100.2	106.3	106.6	101.4	101.7	100.1	103.2	103.5	110.8	103.6
Q3	106.1	105.4	103.5	102.5	107.4	108.7	101.5	101.9	100.5	104.1	100.7	112.8	104.3
Q4	106.0	105.8	105.3	102.3	110.7	110.4	102.0	101.9	100.9	105.0	101.3	117.8	105.0
2005 Q1	105.9	105.0	107.2	103.6	111.1	112.3	102.0	102.5	101.5	105.8	101.9	121.2	105.6
Q2	105.8	105.6	107.1	104.0	113.0	113.3	102.5	102.8	102.1	106.8	102.0	121.1	106.2
Q3	106.5	105.7	107.6	105.1	114.5	114.7	103.1	103.0	102.2	107.7	104.6	122.5	107.2
Q4	107.5	107.8	109.6	106.4	115.5	117.2	104.0	103.3	102.2	108.8	104.3	123.6	108.4
2006 Q1	107.9	110.8	110.8	105.2	120.1	118.9	104.7	103.5	102.9	110.1	104.6	131.5	109.3
Q2	108.8	111.9	112.2	104.8	122.4	121.4	104.9	103.4	103.1	110.4	105.9	134.3	110.4
Q3	108.7	113.3	112.1	106.0	124.2	123.8	105.1	103.5	103.1	111.1	107.0	136.3	111.2
Percentage change, latest year on previous year													
2005	1.0	1.5	4.4	3.6	5.5	6.2	1.3	1.0	1.6	3.2	1.9	8.1	2.9
Percentage change, latest quarter on previous quarter													
2006 Q3	-0.1	1.2	-0.2	1.1	1.5	2.0	0.2	0.0	0.0	0.6	1.1	1.5	0.8
Percentage change, latest quarter on corresponding quarter of the previous year													
2006 Q3	2.1	7.1	4.1	0.8	8.5	7.9	1.9	0.4	0.8	3.2	2.3	11.3	3.7

1 Estimates cannot be regarded as accurate to the last digit shown.

3 Weights may not sum to the totals due to rounding.

2 Components of output are valued at basic prices, which excludes taxes less subsidies on products.

4 Comprising sections O, P and Q of the SIC(92).

C1 Gross domestic product: expenditure at current market prices¹

£ million

Domestic expenditure on goods and services at market prices												
Final consumption expenditure						Gross capital formation					Statistical discrepancy (expenditure)	Gross domestic product at market prices
Households	Non-profit institutions ²	General government	Gross fixed capital formation	Changes in inventories ³	Acquisitions less disposals of valuables	Total	Total exports	Gross final expenditure	less Total imports			
2003	ABPB	ABNV	NMRK	NPQX	ABMP	NPJO	YBIJ	KTMW	ABMD	KTMX	GIXM	YBHA
	697 160	27 185	232 699	178 751	3 983	-37	1 139 741	285 397	1 425 138	314 842	-	1 110 296
2004	732 531	28 953	250 708	194 491	4 856	-37	1 211 502	298 694	1 510 196	333 669	-	1 176 527
2005	759 714	31 588	269 017	206 636	4 071	-377	1 270 649	325 871	1 596 520	370 464	-717	1 225 339
Seasonally adjusted												
2004 Q2	ABJQ	HAYE	NMRP	NPQS	CAEX	NPJQ	YBIL	IKBH	ABMF	IKBI	-	293 120
	182 611	7 193	62 189	48 619	995	-80	301 527	74 030	375 557	82 437	-	295 998
Q3	184 131	7 279	63 183	49 363	1 182	-104	305 034	75 188	380 222	84 224	-	300 434
Q4	185 732	7 380	64 512	49 397	2 838	40	309 899	77 570	387 469	87 035	-	
2005 Q1	187 533	7 746	65 063	50 001	1 898	-171	312 070	77 039	389 109	87 139	-227	301 743
Q2	188 498	7 848	66 587	50 560	164	101	313 758	80 644	394 402	89 768	-227	304 407
Q3	190 617	7 950	68 285	52 758	1 029	-224	320 415	81 563	401 978	95 149	-179	306 650
Q4	193 066	8 044	69 082	53 317	980	-83	324 406	86 625	411 031	98 408	-84	312 539
2006 Q1	194 134	8 228	69 871	54 158	1 331	-155	327 567	94 827	422 394	108 644	278	314 028
Q2	196 882	8 323	70 966	55 486	1 253	254	333 164	97 774	430 938	112 101	395	319 232
Q3	199 321	8 400	71 784	56 747	1 679	-47	337 885	87 090	424 975	100 420	479	325 034
Percentage change, latest year on previous year												
2005	3.7	9.1	7.3	6.2			4.9	9.1	5.7	11.0		4.1
Percentage change, latest quarter on previous quarter												
2006 Q3	1.2	0.9	1.2	2.3			1.4	-10.9	-1.4	-10.4		1.8
Percentage change, latest quarter on corresponding quarter of previous year												
2006 Q3	4.6	5.7	5.1	7.6			5.5	6.8	5.7	5.5		6.0

C2 Gross domestic product by category of expenditure: chained volume measures¹

Reference year 2003, £ million

Domestic expenditure on goods and services at market prices												
Final consumption expenditure						Gross capital formation					Statistical discrepancy (expenditure)	Gross domestic product at market prices
Households	Non-profit institutions ²	General government	Gross fixed capital formation	Changes in inventories ³	Acquisitions less disposals of valuables	Total	Total exports	Gross final expenditure	less Total imports			
2003	ABPF	ABNU	NMRU	NPQR	ABMQ	NPJP	YBIK	KTMZ	ABME	KTNB	GIXS	ABMI
	697 160	27 185	232 699	178 751	3 982	-37	1 139 741	285 397	1 425 138	314 842	-	1 110 296
2004	721 434	27 327	240 129	189 492	4 597	-42	1 182 937	299 289	1 482 225	335 703	-	1 146 523
2005	730 994	28 132	247 489	195 913	3 611	-354	1 205 785	322 792	1 528 577	359 179	-685	1 168 713
Seasonally adjusted												
2004 Q2	ABJR	HAYO	NMRY	NPQT	CAFU	NPJR	YBIM	IKBK	ABMG	IKBL	-	286 307
	180 362	6 805	59 530	47 102	1 050	-90	294 759	74 861	369 620	83 313	-	287 400
Q3	181 032	6 826	60 002	47 813	1 025	-96	296 603	75 097	371 700	84 300	-	289 091
Q4	181 843	6 866	60 628	47 321	2 903	32	299 592	75 942	375 532	86 442	-	
2005 Q1	182 294	7 040	60 974	48 171	1 754	-158	300 076	75 931	376 007	85 846	-218	289 943
Q2	182 222	7 013	61 737	48 162	177	86	299 397	80 048	379 445	87 949	-217	291 280
Q3	182 723	7 028	62 232	49 663	835	-201	302 280	82 027	384 307	91 383	-171	292 753
Q4	183 755	7 051	62 546	49 917	845	-81	304 032	84 786	388 818	94 001	-79	294 737
2006 Q1	184 218	7 194	62 657	50 919	1 585	-128	306 446	92 701	399 147	102 540	263	296 869
Q2	185 902	7 191	63 027	51 173	1 332	233	308 858	95 847	404 705	105 991	370	299 084
Q3	186 632	7 205	63 510	52 116	1 512	-29	310 946	84 149	395 096	94 413	444	301 126
Percentage change, latest year on previous year												
2005	1.3	2.9	3.1	3.4			1.9	7.9	3.1	7.0		1.9
Percentage change, latest quarter on previous quarter												
2006 Q3	0.4	0.2	0.8	1.8			0.7	-12.2	-2.4	-10.9		0.7
Percentage change, latest quarter on corresponding quarter of previous year												
2006 Q3	2.1	2.5	2.1	4.9			2.9	2.6	2.8	3.3		2.9

1 Estimates are given to the nearest £ million but cannot be regarded as accurate to this degree.

2 Non-profit making institutions serving households.

3 Quarterly alignment adjustment included in this series.

D Gross domestic product: by category of income¹

£ million

	Gross operating surplus of corporations						Gross value added at factor cost	Taxes on products & production /less subsidies	Statistical discrepancy (income)	Gross domestic product at market prices
	Compen- sation of employees	Private non-financial corporations ²	Private financial corporations	Public corporations	Total	Other income ³				
	HAEA	NRJK	NQNV	NRJT	CGBY	CGBW	CGCA	GCSC	GIXQ	YBHA
2003	616 893	202 479	39 936	7 265	249 680	102 494	969 067	141 229	–	1 110 296
2004	648 717	219 738	46 020	6 653	272 411	106 183	1 027 311	149 216	–	1 176 527
2005	684 825	228 030	38 408	7 853	274 291	113 374	1 072 490	152 463	386	1 225 399
Seasonally adjusted										
	DTWM	CAER	NHCZ	CAEQ	CGBZ	CGBX	CGCB	CMVL		
2004 Q2	160 899	55 385	11 667	1 524	68 576	26 509	255 984	37 136	–	293 120
Q3	162 653	55 940	11 163	1 593	68 696	27 199	258 548	37 450	–	295 998
Q4	165 926	55 757	13 566	1 723	71 046	25 763	262 735	37 699	–	300 434
2005 Q1	167 514	57 107	9 605	1 887	68 599	27 765	263 878	37 702	163	301 743
Q2	169 925	56 165	10 049	1 836	68 050	28 471	266 446	37 814	147	304 407
Q3	172 452	56 822	7 641	2 011	66 474	29 008	267 934	38 627	89	306 650
Q4	174 934	57 936	11 113	2 119	71 168	28 130	274 232	38 320	–13	312 539
2006 Q1	178 266	56 995	8 524	2 075	67 594	29 402	275 262	39 122	–356	314 028
Q2	178 815	58 980	9 892	2 111	70 983	29 828	279 626	40 079	–473	319 232
Q3	180 790	61 773	11 037	2 093	74 903	29 362	285 055	40 537	–558	325 034
Percentage change, latest year on previous year										
2005	5.6	3.8	–16.5	18.0	0.7	6.8	4.4	2.2		4.1
Percentage change, latest quarter on previous quarter										
2006 Q3	1.1	4.7	11.6	–0.9	5.5	–1.6	1.9	1.1		1.8
Percentage change, latest quarter on corresponding quarter of previous year										
2006 Q3	4.8	8.7	44.4	4.1	12.7	1.2	6.4	4.9		6.0

1 Estimates are given to the nearest £ million but cannot be regarded as accurate to this degree.

2 Quarterly alignment adjustment included in this series.

3 Includes mixed income and the operating surplus of the non-corporate sector less the adjustment for financial intermediation services indirectly measured (FISIM).

E1 Household final consumption expenditure by purpose

Current prices

£ million

UK NATIONAL ²																	
UK DOMESTIC ³																	
COICOP ¹	Net tourism		Food & drink		Alcohol & tobacco		Clothing & footwear		Household goods & services		Health	Transport	Communication	Recreation & culture	Education	Restaurants & hotels	Miscellaneous
	Total		Total	01	02	03	04	05	06	07	08	09	10	11	12		
2003	697 160	12 158	685 002	63 174	27 297	41 155	129 051	42 466	11 335	104 569	15 654	84 386	9 610	78 902	77 403		
2004	732 531	12 041	720 490	65 521	27 713	42 792	138 040	44 029	11 932	109 213	16 448	91 057	9 990	83 595	80 160		
2005	759 714	12 049	747 665	67 101	27 997	43 764	146 935	43 662	12 025	113 001	16 746	94 258	10 409	88 860	82 907		
Seasonally adjusted																	
2004 Q2	182 611	2 905	179 706	16 211	6 925	10 736	34 287	11 083	3 030	26 991	4 083	23 052	2 487	20 827	19 994		
Q3	184 131	3 121	181 010	16 285	6 918	10 734	34 668	11 294	2 995	27 407	4 166	22 936	2 501	20 999	20 107		
Q4	185 732	3 040	182 692	16 644	6 944	10 705	35 215	10 981	2 982	28 009	4 098	22 919	2 532	21 242	20 421		
2005 Q1	187 533	3 071	184 462	16 686	6 957	10 924	35 657	11 050	2 956	28 072	4 159	23 306	2 558	21 956	20 181		
Q2	188 498	2 880	185 618	16 799	6 975	10 921	36 423	10 777	2 952	28 251	4 193	23 144	2 592	22 180	20 411		
Q3	190 617	3 196	187 421	16 694	6 990	10 902	37 009	10 766	3 035	28 175	4 168	23 678	2 617	22 254	21 133		
Q4	193 066	2 902	190 164	16 922	7 075	11 017	37 846	11 069	3 082	28 503	4 226	24 130	2 642	22 470	21 182		
2006 Q1	194 134	3 085	191 049	17 134	7 132	11 024	38 293	11 039	3 150	28 844	4 241	23 913	2 672	22 634	20 973		
Q2	196 882	3 000	193 882	17 331	7 221	11 356	39 167	11 339	3 185	29 047	4 229	24 403	2 711	22 909	20 984		
Q3	199 321	2 869	196 452	17 892	7 304	11 515	39 606	11 419	3 177	29 331	4 231	24 751	2 751	23 134	21 341		
Percentage change, latest year on previous year																	
2005	3.7		3.8	2.4	1.0	2.3	6.4	-0.8	0.8	3.5	1.8	3.5	4.2	6.3	3.4		
Percentage change, quarter on previous quarter																	
2006 Q3	1.2		1.3	3.2	1.1	1.4	1.1	0.7	-0.3	1.0	0.0	1.4	1.5	1.0	1.7		
Percentage change, quarter on corresponding quarter of previous year																	
2006 Q3	4.6		4.8	7.2	4.5	5.6	7.0	6.1	4.7	4.1	1.5	4.5	5.1	4.0	1.0		

1 ESA 95 Classification of Individual Consumption by Purpose.
2 Final Consumption by UK Households in the UK & abroad.

3 Final consumption expenditure in the UK by UK & foreign households.

E2 Household final consumption expenditure (goods and services)

Current prices

£ million

UK NATIONAL ²									
UK DOMESTIC ³									
Goods									
COICOP ¹	Total	Net tourism	Total	Total	Durable goods	Semi-durable goods	Non-durable goods	Services	
					D	SD	ND	S	
2003	697 160	12 158	685 002	340 339	85 061	87 109	168 169	344 663	
2004	732 531	12 041	720 490	357 152	88 653	91 831	176 668	363 338	
2005	759 714	12 049	747 665	362 716	88 307	92 278	182 131	384 949	
Seasonally adjusted									
2004 Q2	182 611	2 905	179 706	89 161	22 077	23 128	43 956	90 545	
Q3	184 131	3 121	181 010	89 746	22 383	23 161	44 202	91 264	
Q4	185 732	3 040	182 692	90 263	22 117	23 015	45 131	92 429	
2005 Q1	187 533	3 071	184 462	90 142	22 050	23 057	45 035	94 320	
Q2	188 498	2 880	185 618	90 168	21 943	22 855	45 370	95 450	
Q3	190 617	3 196	187 421	90 578	22 090	23 131	45 357	96 843	
Q4	193 066	2 902	190 164	91 828	22 224	23 235	46 369	98 336	
2006 Q1	194 134	3 085	191 049	92 184	22 349	23 261	46 574	98 865	
Q2	196 882	3 000	193 882	93 995	22 667	23 824	47 504	99 887	
Q3	199 321	2 869	196 452	95 262	22 616	24 162	48 484	101 190	
Percentage change, latest year on previous year									
2005	3.7		3.8	1.6	-0.4	0.5	3.1	5.9	
Percentage change, quarter on previous quarter									
2006 Q3	1.2		1.3	1.3	-0.2	1.4	2.1	1.3	
Percentage change, quarter on corresponding quarter of previous year									
2006 Q3	4.6		4.8	5.2	2.4	4.5	6.9	4.5	

1 ESA 95 Classification of Individual Consumption by Purpose.
2 Final Consumption by UK Households in the UK & abroad

3 Final consumption expenditure in the UK by UK & foreign households

E3 Household final consumption expenditure by purpose

Chained volume measures

Reference year 2003, £ million

UK NATIONAL ²															
UK DOMESTIC ³															
COICOP ¹	Total	Net tourism	Food & drink	Alcohol & tobacco	Clothing & footwear	Housing	Household goods & services	Health	Transport	Communication	Recreation & culture	Education	Restaurants & hotels	Miscellaneous	
	01	02	03	04	05	06	07	08	09	10	11	12			
2003	697 160	12 158	685 002	63 174	27 297	41 155	129 051	42 466	11 335	104 569	15 654	84 386	9 610	78 902	77 403
2004	721 434	12 770	708 664	65 181	27 444	44 087	131 490	43 577	11 609	106 610	16 361	92 889	9 541	81 796	78 079
2005	730 994	11 593	719 401	65 806	27 245	46 145	131 952	42 946	11 552	107 365	17 093	98 707	9 474	83 815	77 301
Seasonally adjusted															
2004 Q2	180 362	3 165	177 197	16 153	6 877	11 047	32 902	10 950	2 950	26 391	4 008	23 490	2 389	20 460	19 580
Q3	181 032	3 310	177 722	16 239	6 837	11 108	32 881	11 207	2 908	26 738	4 162	23 396	2 380	20 464	19 402
Q4	181 843	3 154	178 689	16 527	6 861	11 163	32 957	10 833	2 881	27 157	4 126	23 503	2 371	20 551	19 759
2005 Q1	182 294	3 079	179 215	16 389	6 814	11 420	32 786	10 952	2 845	26 961	4 224	24 129	2 372	21 039	19 284
Q2	182 222	2 817	179 405	16 462	6 808	11 501	32 968	10 632	2 840	27 092	4 269	24 113	2 371	21 004	19 345
Q3	182 723	2 968	179 755	16 426	6 800	11 526	32 980	10 557	2 914	26 571	4 270	24 946	2 367	20 868	19 530
Q4	183 755	2 729	181 026	16 529	6 823	11 698	33 218	10 805	2 953	26 741	4 330	25 519	2 364	20 904	19 142
2006 Q1	184 218	2 797	181 421	16 738	6 844	11 746	33 108	10 812	2 995	26 810	4 315	25 270	2 367	20 890	19 526
Q2	185 902	2 740	183 162	16 825	6 849	12 066	33 246	11 088	3 023	26 777	4 339	26 100	2 377	20 958	19 514
Q3	186 632	2 766	183 866	17 065	6 886	12 275	33 086	11 107	2 999	26 877	4 376	26 464	2 378	20 965	19 388
Percentage change, latest year on previous year															
2005	1.3	1.5	1.0	-0.7	4.7	0.4	-1.4	-0.5	0.7	4.5	6.3	-0.7	2.5	-1.0	
Percentage change, quarter on previous quarter															
2006 Q3	0.4	0.4	1.4	0.5	1.7	-0.5	0.2	-0.8	0.4	0.9	1.4	0.0	0.0	-0.6	
Percentage change, quarter on corresponding quarter of previous year															
2006 Q3	2.1	2.3	3.9	1.3	6.5	0.3	5.2	2.9	1.2	2.5	6.1	0.5	0.5	-0.7	

1 ESA 95 Classification of Individual Consumption by Purpose:

2 Final consumption expenditure by UK households in the UK & abroad.

3 Final consumption expenditure in the UK by UK & foreign households.

E4 Household final consumption expenditure (goods and services)

Chained volume measures

Reference year 2003, £ million

UK NATIONAL ²									
UK DOMESTIC ³									
Goods									
COICOP ¹	Total	Net tourism	Total	Total	Durable goods	Semi-durable goods	Non-durable goods	Services	
					D	SD	ND	S	
2003	697 160	12 158	685 002	340 339	85 061	87 109	168 169	344 663	
2004	721 434	12 770	708 664	358 145	90 458	93 952	173 735	350 519	
2005	730 994	11 593	719 401	363 867	94 078	96 193	173 596	355 534	
Seasonally adjusted									
2004 Q2	180 362	3 165	177 197	89 383	22 341	23 643	43 399	87 814	
Q3	181 032	3 310	177 722	90 169	22 928	23 758	43 483	87 553	
Q4	181 843	3 154	178 689	90 642	22 999	23 704	43 939	88 047	
2005 Q1	182 294	3 079	179 215	90 361	23 040	23 896	43 425	88 854	
Q2	182 222	2 817	179 405	90 561	23 253	23 771	43 537	88 844	
Q3	182 723	2 968	179 755	90 914	23 717	24 161	43 036	88 841	
Q4	183 755	2 729	181 026	92 031	24 068	24 365	43 598	88 995	
2006 Q1	184 218	2 797	181 421	92 142	24 284	24 405	43 453	89 279	
Q2	185 902	2 740	183 162	93 795	25 047	25 054	43 694	89 367	
Q3	186 632	2 766	183 866	94 260	24 981	25 494	43 785	89 606	
Percentage change, year on previous year									
2005	1.3	1.5	1.6	4.0	2.4	-0.1	1.4		
Percentage change, quarter on previous quarter									
2006 Q3	0.4	0.4	0.5	-0.3	1.8	0.2	0.3		
Percentage change, quarter on corresponding quarter of previous year									
2006 Q3	2.1	2.3	3.7	5.3	5.5	1.7	0.9		

1 ESA 95 Classification of Individual Consumption by Purpose:

2 Final consumption expenditure by UK households in the UK & abroad

3 Final consumption expenditure in the UK by UK & foreign households

F Gross fixed capital formation by sector and type of asset

Chained volume measures

Reference year 2003, £ million

	Analysis by sector								Analysis by asset					Total
	Business investment ¹	General government	Public corporations ²		Private sector				Transport equipment	Other machinery and equipment	Dwellings ³	Other buildings and structures ⁴	Intangible fixed assets	
			Dwellings ³	Existing buildings and dwellings ⁴	Dwellings ³	Existing buildings and dwellings ⁴	Total	NPQR						
2003	NPEN	EQDN	DEEW	EQDF	DFDP	EQCY	NPQR	DLWJ	DLWM	DFDV	DLWQ	EQDT	NPQR	
2004	109 218	20 509	3 509	-5 674	34 804	16 385	178 751	15 592	54 441	38 462	64 355	5 901	178 751	
2005	111 765	22 266	3 161	-5 561	38 245	19 616	189 492	14 706	58 817	41 541	68 135	6 294	189 492	
2005	130 960	7 029	3 423	-2 891	39 102	18 290	195 913	14 906	59 626	42 701	72 108	6 573	195 913	
Seasonally adjusted														
2004 Q2	NPEL	DLWF	DKQH	DLWH	DFEA	DLWI	NPQT	DLWL	DLWO	DFEG	DLWT	EQDO	NPQT	
2004 Q3	27 757	5 360	824	-1 174	9 578	4 757	47 102	3 760	14 627	10 430	16 722	1 563	47 102	
2004 Q4	28 634	5 311	797	-1 186	9 524	4 733	47 813	3 635	15 299	10 370	16 922	1 587	47 813	
2005 Q1	28 208	5 625	794	-1 603	9 722	4 575	47 321	3 540	14 808	10 548	16 816	1 610	47 321	
2005 Q2	28 653	5 613	758	-116	9 573	3 690	48 171	3 644	14 686	10 385	17 835	1 622	48 171	
2005 Q3	44 137	-10 232	835	-899	9 610	4 711	48 162	3 685	14 919	10 484	17 436	1 637	48 162	
2005 Q4	28 983	5 784	949	-965	9 950	4 962	49 663	3 828	14 821	10 941	18 424	1 649	49 663	
2006 Q1	29 187	5 864	881	-911	9 969	4 927	49 917	3 749	15 200	10 891	18 413	1 665	49 917	
2006 Q2	29 807	5 682	994	-88	10 103	4 421	50 919	3 477	15 729	11 135	18 892	1 687	50 919	
2006 Q3	30 404	5 604	918	-649	10 674	4 222	51 173	3 854	15 578	11 644	18 386	1 711	51 173	
2006 Q3	31 359	5 772	984	-740	10 724	4 017	52 116	3 803	16 140	11 758	18 664	1 751	52 116	
Percentage change, latest year on previous year														
2005	17.2	-68.4	8.3	-48.0	2.2	-6.8	3.4	1.4	1.4	2.8	5.8	4.4	3.4	
Percentage change, latest quarter on previous quarter														
2006 Q3	3.1	3.0	7.2	14.0	0.5	-4.9	1.8	-1.3	3.6	1.0	1.5	2.3	1.8	
Percentage change, latest quarter on corresponding quarter of previous year														
2006 Q3	8.2	-0.2	3.7	-23.3	7.8	-19.0	4.9	-0.7	8.9	7.5	1.3	6.2	4.9	

1 Not including expenditure on dwellings, land and existing buildings and costs associated with the transfer of ownership of non-produced assets.

2 Remaining investment by public non-financial corporations included within business investment.

3 Includes new dwellings and improvements to dwellings.

4 Including costs associated with the transfer of ownership of buildings, dwellings and non-produced assets.

G Changes in inventories Chained volume measures¹

Reference year 2003, £ million

	Mining and quarrying	Manufacturing industries				Electricity, gas and water supply	Distributive trades			Changes in inventories
		Materials and fuel	Work in progress	Finished goods	Total		Wholesale ²	Retail ²	Other industries	
Level of inventories held at end-December 2005	984	16 220	16 052	19 787	52 059	1 833	28 486	24 786	54 056	162 204
2003	FADO -66	FBID -198	FBIE -650	FBIF -138	DHBH -986	FADP -13	FAJM 407	FBYH 1 241	DLWV 3 399	ABMQ 3 982
2004	-46	7	-614	-296	-903	8	304	1 000	4 234	4 597
2005	-47	-179	863	56	740	586	978	-412	1 766	3 611
Seasonally adjusted										
2004 Q2	FAEA 12	FBNF -76	FBNG -547	FBNH 580	DHBM -43	FAEB -145	FAJX 436	FBYN -128	DLWX 918	CAFU 1 050
Q3	-35	355	-199	283	439	39	-582	-362	1 526	1 025
Q4	4	163	-288	18	-107	-45	180	563	2 308	2 903
2005 Q1	4	246	197	57	500	-106	110	-352	1 598	1 754
Q2	-28	-186	151	-125	-160	188	496	-631	312	177
Q3	-19	-219	103	7	-109	133	157	712	-39	835
Q4	-4	-20	412	117	509	371	215	-141	-105	845
2006 Q1	-69	-73	428	55	410	-250	-651	270	1 875	1 585
Q2	15	8	135	-91	52	180	338	-127	874	1 332
Q3	-22	-22	-1	-326	-349	188	313	453	929	1 512

1 Estimates are given to the nearest £ million but cannot be regarded as accurate to this degree.

2 Wholesaling and retailing estimates exclude the motor trades.

H1 Exports and imports of goods and services

Current market prices

£ million

	Exports			Imports			Balance		
	Goods	Services	Total	Goods	Services	Total	Goods	Services	Total
	LQAD	KTMQ	KTMW	LQBL	KTMR	KTMX	LQCT	KTMS	KTMY
2003	188 320	97 077	285 397	236 927	77 915	314 842	-48 607	19 162	-29 445
2004	190 877	107 817	298 694	251 770	81 899	333 669	-60 893	25 918	-34 975
2005	211 616	114 255	325 871	280 399	90 065	370 464	-68 783	24 190	-44 593
Seasonally adjusted									
	BOKG	IKBB	IKBH	BOKH	IKBC	IKBI	BOKI	IKBD	IKBJ
2004 Q2	47 137	26 893	74 030	62 384	20 053	82 437	-15 247	6 840	-8 407
Q3	48 218	26 970	75 188	63 747	20 477	84 224	-15 529	6 493	-9 036
Q4	49 443	28 127	77 570	65 613	21 422	87 035	-16 170	6 705	-9 465
2005 Q1	48 861	28 178	77 039	65 004	22 135	87 139	-16 143	6 043	-10 100
Q2	51 723	28 921	80 644	67 530	22 238	89 768	-15 807	6 683	-9 124
Q3	54 398	27 165	81 563	72 453	22 696	95 149	-18 055	4 469	-13 586
Q4	56 634	29 991	86 625	75 412	22 996	98 408	-18 778	6 995	-11 783
2006 Q1	63 470	31 357	94 827	84 945	23 699	108 644	-21 475	7 658	-13 817
Q2	67 006	30 768	97 774	87 935	24 166	112 101	-20 929	6 602	-14 327
Q3	56 071	31 019	87 090	76 570	23 850	100 420	-20 499	7 169	-13 330
Percentage change, latest year on previous year									
2005	10.9	6.0	9.1	11.4	10.0	11.0			
Percentage change, latest quarter on previous quarter									
2006 Q3	-16.3	0.8	-10.9	-12.9	-1.3	-10.4			
Percentage change, latest quarter on corresponding quarter of previous year									
2006 Q3	3.1	14.2	6.8	5.7	5.1	5.5			

H2 Exports and imports of goods and services

Chained volume measures

Reference year 2003, £ million

	Exports			Imports			Balance
	Goods	Services	Total	Goods	Services	Total	Total
	BQKP	KTMT	KTMZ	BQKN	KTMU	KTNB	KTNC
2003	188 320	97 077	285 397	236 927	77 915	314 842	-29 445
2004	191 191	108 098	299 289	253 262	82 441	335 703	-36 414
2005	208 892	113 900	322 792	271 953	87 226	359 179	-36 387
Seasonally adjusted							
	BQKQ	IKBE	IKBK	BQKO	IKBF	IKBL	IKBM
2004 Q2	47 741	27 120	74 861	63 018	20 295	83 313	-8 452
Q3	47 921	27 176	75 097	63 659	20 641	84 300	-9 203
Q4	48 377	27 565	75 942	65 197	21 245	86 442	-10 500
2005 Q1	48 203	27 728	75 931	64 162	21 684	85 846	-9 915
Q2	51 415	28 633	80 048	66 304	21 645	87 949	-7 901
Q3	53 572	28 455	82 027	69 556	21 827	91 383	-9 356
Q4	55 702	29 084	84 786	71 931	22 070	94 001	-9 215
2006 Q1	62 745	29 956	92 701	80 156	22 384	102 540	-9 839
Q2	66 425	29 422	95 847	83 512	22 479	105 991	-10 144
Q3	54 641	29 508	84 149	71 988	22 425	94 413	-10 264
Percentage change, latest year on previous year							
2005	9.3	5.4	7.9	7.4	5.8	7.0	
Percentage change, latest quarter on previous quarter							
2006 Q3	-17.7	0.3	-12.2	-13.8	-0.2	-10.9	
Percentage change, latest quarter on corresponding quarter of previous year							
2006 Q3	2.0	3.7	2.6	3.5	2.7	3.3	

Net Lending by Sector

£ million

	Net lending (+)/Net borrowing (-) by sector ¹						
	Government		Corporations			Household & NPISH	Rest of the World
	Central	Local	Public	Financial	Private non-financial		
	NMFJ	NMOE	CPCM	NHCQ	DTAL	NSSZ	NHRB
2003	-39 351	3 067	-793	19 335	18 974	-14 687	13 455
2004	-37 232	-526	21	26 479	26 234	-32 241	17 265
2005	-36 068	-2 032	-2 724	9 621	20 853	-17 636	26 883
Seasonally adjusted							
	RPYH	RQAJ	RQBN	RPYN	RQBV	RPZT	RQCH
1999 Q1	259	514	146	-5 541	1 218	-3 172	6 576
Q2	2 089	-835	165	-2 942	-6 354	3 334	4 543
Q3	4 654	-482	36	-1 732	-4 499	-2 069	4 092
Q4	3 744	541	379	-3 970	-4 248	-2 205	5 759
2000 Q1	4 201	-555	468	-2 483	-3 398	-2 961	4 728
Q2	5 316	-117	82	-5 995	-1 385	-2 917	5 016
Q3	3 306	785	215	-8 612	-999	41	5 264
Q4	3 904	-767	151	-10 367	-2 675	1 632	8 122
2001 Q1	5 375	465	-119	-8 345	-3 248	1 849	4 021
Q2	2 319	484	-123	-5 520	-3 691	955	5 577
Q3	3 139	-622	137	-5 014	-2 954	-32	5 346
Q4	-1 525	170	-56	-3 921	-455	166	5 622
2002 Q1	-4 024	133	-186	1 394	937	-2 553	4 297
Q2	-3 709	314	-49	237	890	-3 181	5 499
Q3	-4 806	1 019	94	466	3 518	-1 962	1 671
Q4	-6 614	400	-925	4 921	2 250	-4 145	4 114
2003 Q1	-11 334	1 031	-543	4 098	7 499	-1 077	326
Q2	-9 527	1 070	-267	4 325	4 366	-4 173	4 206
Q3	-8 605	218	-54	4 476	4 498	-5 590	5 057
Q4	-9 885	748	71	6 436	2 611	-3 847	3 866
2004 Q1	-9 674	-123	-75	5 283	6 297	-5 900	4 191
Q2	-9 543	477	-196	6 670	8 424	-9 705	3 873
Q3	-9 623	-298	87	6 488	5 144	-8 414	6 616
Q4	-8 392	-582	205	8 038	6 369	-8 222	2 585
2005 Q1	-9 879	-278	-226	5 978	5 753	-7 354	5 617
Q2	-4 110	-74	-3 840	1 782	8 579	-4 259	1 548
Q3	-9 254	-1 029	519	-315	4 160	-4 037	9 687
Q4	-12 825	-651	823	2 176	2 361	-1 986	10 031
2006 Q1	-6 455	-847	869	-2 494	3 703	-3 831	9 689
Q2	-12 510	2 975	-2 199	2 169	6 619	-6 354	10 168
Q3	-7 765	369	204	165	6 611	-7 509	8 963

¹ The sum of net lending by sector is equal (but opposite sign) to the residual error between the expenditure and income based estimates of GDP

J1 Households Sector¹: Allocation of Primary Income Account

£ million

	RESOURCES					USES				Households' share of gross national income (per cent)
	Gross operating surplus including gross mixed income	Wages and salaries	Employers' social contributions	Property income received	Total resources	Property income paid	Balance of primary incomes, gross	Total uses		
	NRJN	ROYJ	ROYK	ROYL	ROYR	ROYT	ROYS	ROYR	NRJH	
2003	137 057	527 689	89 263	120 914	874 923	53 796	821 127	874 923	72.5	
2004	144 667	550 654	98 134	127 180	920 635	62 901	857 734	920 635	71.4	
2005	153 737	576 866	108 024	146 636	985 263	71 200	914 063	985 263	73.0	
Seasonally adjusted										
2004 Q2	35 901	136 807	24 124	30 570	227 402	15 200	212 202	227 402	70.9	
Q3	36 353	138 323	24 347	32 422	231 445	16 289	215 156	231 445	71.6	
Q4	36 857	140 544	25 389	33 667	236 457	17 093	219 364	236 457	70.9	
2005 Q1	37 534	142 185	25 335	35 878	240 932	17 527	223 405	240 932	72.4	
Q2	38 206	143 431	26 524	36 588	244 749	17 789	226 960	244 749	72.3	
Q3	38 742	144 857	27 613	37 405	248 617	17 917	230 700	248 617	73.7	
Q4	39 255	146 393	28 552	36 765	250 965	17 967	232 998	250 965	73.7	
2006 Q1	39 621	148 360	29 907	38 158	256 046	18 187	237 859	256 046	74.2	
Q2	40 019	150 003	28 835	37 995	256 852	18 423	238 429	256 852	72.7	
Q3	40 502	151 554	29 242	38 507	259 805	19 040	240 765	259 805	72.7	
Percentage change, latest year on previous year										
2005	6.3	4.8	10.1	15.3	7.0	13.2	6.6	7.0		
Percentage change, latest quarter on previous quarter										
2006 Q3	1.2	1.0	1.4	1.3	1.1	3.3	1.0	1.1		
Percentage change, latest quarter on corresponding quarter of previous year										
2006 Q3	4.5	4.6	5.9	2.9	4.5	6.3	4.4	4.5		

1 This sector includes households and non-profit institutions serving households.

J2 Households Sector¹: Secondary Distribution of Income Account

£ million

	RESOURCES					USES					Real households disposable income: at chained volume measures	
	Gross balance of primary incomes	Social contributions	Social benefits other than social transfers in kind	Other current transfers	Total resources	Current taxes on incomes etc.	Social contributions	Social benefits other than social transfers in kind	Other current transfers	Households' gross disposable income		Total uses
	ROYS	RVFH	RPHL	RPHM	RPHP	RPHR	RPHU	RPIA	RPIB	RPHQ	RPHP	NRJR
2003	821 127	505	193 596	49 511	1 064 739	138 261	158 348	987	26 754	740 389	1 064 739	740 389
2004	857 734	495	202 074	51 778	1 112 081	147 134	170 437	984	27 843	765 683	1 112 081	752 890
2005	914 063	500	214 114	56 222	1 184 899	159 423	187 832	994	31 894	804 756	1 184 899	772 033
Seasonally adjusted												
2004 Q2	212 202	124	50 428	12 794	275 548	36 312	41 825	246	7 049	190 116	275 548	187 472
Q3	215 156	124	50 578	13 399	279 257	37 285	42 176	246	6 935	192 615	279 257	189 038
Q4	219 364	124	51 020	13 020	283 528	38 558	44 301	247	7 125	193 297	283 528	188 887
2005 Q1	223 405	125	51 664	14 047	289 241	39 376	44 983	248	8 058	196 576	289 241	190 600
Q2	226 960	125	53 345	14 409	294 839	39 912	46 369	248	8 276	200 034	294 839	192 798
Q3	230 700	125	54 479	13 927	299 231	40 551	47 886	249	8 072	202 473	299 231	193 492
Q4	232 998	125	54 626	13 839	301 588	39 584	48 594	249	7 488	205 673	301 588	195 143
2006 Q1	237 859	127	54 655	12 955	305 596	42 119	50 689	251	7 765	204 772	305 596	193 692
Q2	238 429	127	55 784	14 399	308 739	41 956	50 228	251	8 404	207 900	308 739	195 629
Q3	240 765	127	56 768	14 546	312 206	43 253	50 606	251	8 069	210 027	312 206	195 990
Percentage change, latest year on previous year												
2005	6.6		6.0	8.6	6.5	8.4	10.2		14.5	5.1	6.5	2.5
Percentage change, latest quarter on previous quarter												
2006 Q3	1.0		1.8	1.0	1.1	3.1	0.8		-4.0	1.0	1.1	0.2
Percentage change, latest quarter on corresponding quarter of previous year												
2006 Q3	4.4		4.2	4.4	4.3	6.7	5.7		0.0	3.7	4.3	1.3

1 This sector includes households and non-profit institutions serving households.

J3 Households Sector¹: Use of Disposable Income Account

£ million

	RESOURCES			USES			Households ² saving ratio (per cent)
	Gross households' disposable income	Adjustment for the change in net equity of households in pension funds	Total available households' resources	Final consumption expenditure	Gross saving	Total uses	
	RPHQ	RPQJ	RPQK	RPQM	RPQL	RPQK	NRJS
2003	740 389	21 377	761 766	724 345	37 421	761 766	4.9
2004	765 683	25 108	790 791	761 484	29 307	790 791	3.7
2005	804 756	30 510	835 266	791 302	43 964	835 266	5.3
Seasonally adjusted							
2004 Q2	190 116	5 788	195 904	189 804	6 100	195 904	3.1
Q3	192 615	5 892	198 507	191 410	7 097	198 507	3.6
Q4	193 297	7 155	200 452	193 112	7 340	200 452	3.7
2005 Q1	196 576	6 941	203 517	195 279	8 238	203 517	4.0
Q2	200 034	6 913	206 947	196 346	10 601	206 947	5.1
Q3	202 473	7 977	210 450	198 567	11 883	210 450	5.6
Q4	205 673	8 679	214 352	201 110	13 242	214 352	6.2
2006 Q1	204 772	10 144	214 916	202 362	12 554	214 916	5.8
Q2	207 900	9 027	216 927	205 205	11 722	216 927	5.4
Q3	210 027	8 928	218 955	207 721	11 234	218 955	5.1
Percentage change, latest year on previous year							
2005	5.1		5.6	3.9		5.6	
Percentage change, latest quarter on previous quarter							
2006 Q3	1.0		0.9	1.2		0.9	
Percentage change, latest quarter on corresponding quarter of previous year							
2006 Q3	3.7		4.0	4.6		4.0	

1 This sector includes households and non-profit institutions serving households.

2 Households' saving as a percentage of total available households' resources

K1 Private Non-Financial Corporations Sector: Allocation of Primary Income Account

£ million

	Gross operating surplus						Property income payments						Share of gross national income ¹ (%)
	Gross trading profits			less Inventory holding gains	Gross operating surplus ¹	Property income receipts	Total resources ^{1,2}	Total payments	of which Dividends	of which Interest	Gross balance of primary incomes ¹		
	Continental shelf companies	Others ¹	Rental of buildings										
	CAGD	CAED	DTWR	-DLRA	CAER	RPBM	RPBN	RPBP	RVFT	ROCG	RPBO	NRJL	
2003	17 981	174 873	13 891	-4 266	202 479	71 442	273 921	133 510	71 096	35 663	140 411	12.4	
2004	18 225	192 807	14 864	-6 158	219 738	78 885	298 623	142 694	72 509	41 352	155 929	13.0	
2005	22 645	196 600	15 404	-6 619	228 030	93 470	321 500	161 172	82 965	48 613	160 328	12.8	
Seasonally adjusted													
2004 Q2	4 572	48 560	3 694	-1 441	55 385	17 313	72 698	32 770	16 113	10 105	39 928	13.3	
Q3	4 646	49 200	3 747	-1 653	55 940	20 167	76 107	38 177	19 977	10 717	37 930	12.6	
Q4	4 436	49 294	3 783	-1 756	55 757	22 485	78 242	37 673	18 831	11 079	40 569	13.1	
2005 Q1	4 870	50 074	3 822	-1 659	57 107	21 852	78 959	39 717	22 092	11 591	39 242	12.7	
Q2	5 449	48 437	3 834	-1 555	56 165	24 156	80 321	38 415	18 086	11 921	41 906	13.4	
Q3	6 010	48 565	3 855	-1 608	56 822	24 182	81 004	40 680	21 020	12 203	40 324	12.9	
Q4	6 316	49 524	3 893	-1 797	57 936	23 280	81 216	42 360	21 767	12 898	38 856	12.3	
2006 Q1	6 910	47 484	3 928	-1 327	56 995	23 064	80 059	40 747	17 056	13 860	39 312	12.3	
Q2	7 273	49 044	3 974	-1 311	58 980	26 960	85 940	42 216	17 535	14 880	43 724	13.3	
Q3	6 699	52 266	4 024	-1 216	61 773	27 606	89 379	44 903	18 898	15 682	44 476	13.4	
Percentage change, latest year on previous year													
2005	24.3	2.0			3.8	18.5	7.7	12.9	14.4	17.6	2.8		
Percentage change, latest quarter on previous quarter													
2006 Q3	-7.9	6.6			4.7	2.4	4.0	6.4	7.8	5.4	1.7		
Percentage change, latest quarter on corresponding quarter of previous year													
2006 Q3	11.5	7.6			8.7	14.2	10.3	10.4	-10.1	28.5	10.3		

1 Quarterly alignment adjustment included in this series.

2 Total resources equals total uses.

K2 Private Non-financial Corporations Sector: Secondary Distribution of Income Account and Capital Account

£ million

	Secondary Distribution of Income Account						Capital Account					
	Resources			Uses			Changes in liabilities & net worth		Changes in assets			
	Gross balance of primary incomes ¹	Other resources ²	Total ^{1,3}	Taxes on income	Other uses ⁴	Gross disposable income ^{1,5}	Net capital transfer receipts	Total ¹	Gross fixed capital formation	Changes in inventories ¹	Other changes in assets ⁶	Net lending or borrowing (-) ^{1,7}
	RPBO	NROQ	RPKY	RPLA	NROO	RPKZ	NROP	RPXH	ROAW	DLQY	NRON	RQBV
2003	140 411	10 569	150 980	23 608	11 003	116 369	4 590	120 959	97 389	3 734	862	18 974
2004	155 929	10 327	166 256	27 287	10 773	128 196	4 615	132 811	100 784	4 566	1 227	26 234
2005	160 328	11 329	171 657	33 662	11 817	126 178	5 018	131 196	104 865	4 277	1 201	20 853

Seasonally adjusted

2004 Q2	39 928	2 613	42 541	6 729	2 724	33 088	1 278	34 366	24 776	868	298	8 424
Q3	37 930	2 570	40 500	6 710	2 682	31 108	1 069	32 177	25 571	1 144	318	5 144
Q4	40 569	2 566	43 135	7 331	2 679	33 125	1 026	34 151	24 841	2 618	323	6 369
2005 Q1	39 242	2 803	42 045	7 449	2 946	31 650	2 197	33 847	26 174	1 636	284	5 753
Q2	41 906	2 983	44 889	8 507	3 097	33 285	926	34 211	25 074	160	398	8 579
Q3	40 324	2 899	43 223	8 793	3 014	31 416	770	32 186	26 464	1 275	287	4 160
Q4	38 856	2 644	41 500	8 913	2 760	29 827	1 125	30 952	27 153	1 206	232	2 361
2006 Q1	39 312	2 781	42 093	9 138	2 898	30 057	2 169	32 226	27 523	823	177	3 703
Q2	43 724	2 979	46 703	8 688	3 098	34 917	918	35 835	27 363	1 646	207	6 619
Q3	44 476	2 856	47 332	9 505	2 975	34 852	1 166	36 018	27 705	1 385	317	6 611

Percentage change, latest year on previous year

2005	2.8	9.7	3.2	23.4	9.7	-1.6	8.7	-1.2	4.0
------	-----	-----	-----	------	-----	------	-----	------	-----

Percentage change, latest quarter on previous quarter

2006 Q3	1.7	-4.1	1.3	9.4	-4.0	-0.2	27.0	0.5	1.2
---------	-----	------	-----	-----	------	------	------	-----	-----

Percentage change, latest quarter on corresponding quarter of previous year

2006 Q3	10.3	-1.5	9.5	8.1	-1.3	10.9	51.4	11.9	4.7
---------	------	------	-----	-----	------	------	------	------	-----

1 Quarterly alignment adjustment included in this series.

2 Social contributions and other current transfers.

3 Total resources equals total uses.

4 Social benefits and other current transfers.

5 Also known as gross saving.

6 Acquisitions less disposals of valuables and non-produced non-financial assets.

7 Gross of fixed capital consumption.

Gross value added at basic prices: individual measures

	£ million				Index numbers (2003 = 100)				
	Expenditure-based estimate at chained volume measures	At current prices		Residual error ¹	Value indices at current prices		Chained volume indices		
		Expenditure-based estimate	Income-based estimate		Expenditure-based estimate	Income-based estimate	Expenditure-based estimate	Income-based estimate ²	Output-based estimate
	CAGR	CAGQ	CAGS	DJDS	IHYA	IHYB	IHYC	IHYD	YBFR
2003	985 558	985 558	985 558	–	100.0	100.0	100.0	100.0	100.0
2004	1 017 863	1 044 165	1 044 165	–	105.9	105.9	103.3	103.3	103.2
2005	1 038 785	1 088 585	1 087 482	1 103	110.5	110.3	105.4	105.3	105.3
Seasonally adjusted									
2004 Q2	254 159	260 148	260 148	–	105.6	105.6	103.1	103.1	103.1
Q3	255 089	262 789	262 789	–	106.7	106.7	103.5	103.5	103.5
Q4	256 722	267 059	267 059	–	108.4	108.4	104.2	104.2	104.2
2005 Q1	257 786	268 010	267 620	390	108.8	108.6	104.6	104.5	104.5
Q2	258 966	270 513	270 139	374	109.8	109.6	105.1	105.0	104.9
Q3	260 100	271 990	271 722	268	110.4	110.3	105.6	105.5	105.4
Q4	261 933	278 072	278 001	71	112.9	112.8	106.3	106.3	106.2
2006 Q1	263 638	278 425	279 059	–634	113.0	113.3	107.0	107.2	107.0
Q2	265 546	282 718	283 586	–868	114.7	115.1	107.8	108.1	107.9
Q3	267 204	288 010	289 047	–1 037	116.9	117.3	108.4	108.8	108.6
Percentage change, latest year on previous year									
2005	2.1	4.3	4.1		4.3	4.1	2.1	2.0	2.0
Percentage change, latest quarter on previous quarter									
2006 Q3	0.6	1.9	1.9		1.9	1.9	0.6	0.7	0.7
Percentage change, latest quarter on corresponding quarter of previous year									
2006 Q3	2.7	5.9	6.4		5.9	6.4	2.7	3.2	3.0

1 The residual error is, by convention, the amount by which the expenditure-based approach to measuring GDP exceeds the income-based estimate. It is also the sum of two components: the statistical discrepancy (expenditure) with sign reversed, and the statistical discrepancy (income) with natural sign.

2 Income data deflated by the implied GDP deflator, based on expenditure data.

M Alignment adjustments

£ million

	Changes in inventories		Gross operating surplus of non-financial corporations at current prices
	At current prices	Chained volume measures (Reference year 2003)	
Seasonally adjusted			
	DMUN	DMUM	DMUQ
1999 Q1	802	888	-723
Q2	-458	-506	723
Q3	25	25	287
Q4	-369	-407	-287
2000 Q1	-1 053	-1 148	-210
Q2	275	301	419
Q3	495	538	-615
Q4	283	309	406
2001 Q1	199	210	48
Q2	484	512	655
Q3	270	284	-1 174
Q4	-953	-1 006	471
2002 Q1	-220	-228	1 048
Q2	-272	-279	-95
Q3	158	164	-809
Q4	334	343	-144
2003 Q1	-1 031	-1 036	-142
Q2	-1 052	-1 047	305
Q3	642	647	438
Q4	1 441	1 436	-601
2004 Q1	-1 313	-1 290	-1 135
Q2	-33	-24	847
Q3	236	237	443
Q4	1 110	1 077	-155
2005 Q1	440	423	818
Q2	-400	-383	-402
Q3	-206	-197	-726
Q4	166	157	310
2006 Q1	471	445	-763
Q2	42	39	-799
Q3	-243	-225	772

R Revisions Analysis

Revisions since previously published estimates

£ million

	2000	2001	2002	2003	2004	2005
Latest less previously published levels of GDP at current market prices						
<i>Previous estimates published on 24 November 2006</i>						
National accounts aggregates at current prices (Table A2)						
Gross domestic product at market prices	–	–	–	–	–	878
less Basic price adjustment	–	–	–	–	–	145
Gross value added at basic prices	–	–	–	–	–	733
Gross domestic product: expenditure at current prices (Table C1)						
Domestic expenditure on goods and services at market prices						
Households	–	–	–	–	–	–198
Non-profit institutions serving households	–	–	–	–	–	2
General government	–	–	–	–	–	738
Gross fixed capital formation	–	–	–	–	–	1 211
Changes in inventories	–	–	–	–	–	–
Acquisitions less disposals of valuables	–	–	–	–	–	–
Total	–	–	–	–	–	1 753
Total exports	–	–	–	–	–	2 510
Total imports	–	–	–	–	–	1 804
Statistical discrepancy (expenditure)	–	–	–	–	–	–1 581
Gross domestic product: income at current prices (Table D)						
Compensation of employees	–	–	–	–	–	–434
Gross operating surplus of corporations	–	–	–	–	–	–237
Other income	–	–	–	–	–	–128
Gross value added at factor cost	–	–	–	–	–	–799
Taxes on products & production less Subsidies	–	–	–	–	–	93
Statistical discrepancy (income)	–	–	–	–	–	1 584
	2000	2001	2002	2003	2004	2005
Latest less previously published growth rates for GDP in chained volume terms						
<i>Previous estimates published on 24 November 2006</i>						
Percentage changes in volume of GDP (Table A2)						
Gross domestic product chained volume measures						
Year on year growth	–	–	–	–	–	–
Percentage changes in volume of GVA output components (Table B1)						
GVA at basic prices						
Agriculture, forestry and fishing	–	–	–	–	–	0.1
Manufacturing	–	–	–	–	–	–0.1
Total Production	–	–	–	–	–	–
Construction	–	–	–	–	–	–
Distribution, hotels and catering; repairs	–	–	–	–	–	0.1
Transport, storage and communication	–	–	–	–	–	–0.1
Business services and finance	–	–	–	–	–	–
Government and other services	–	–	–	–	–	–0.2
Total Services	–	–	–	–	–	–
Total GVA	–	–	–	–	–	–
Total GVA excluding Oil	–	–	–	–	–	–
Percentage changes in volume of GDP expenditure components (Table C2)						
Domestic expenditure on goods and services at market prices						
Households	–	–	–	–	–	–0.1
Non-profit institutions serving households	–	–	–	–	–	0.1
General government	–	–	–	–	–	0.3
Gross fixed capital formation	–	–	–	–	–	0.7
Total	–	–	–	–	–	0.1
Total exports	–	–	–	–	–	0.8
Total imports	–	–	–	–	–	0.5
	2000	2001	2002	2003	2004	2005
Latest less previously published household saving ratio						
<i>Previous estimates published on 27 September 2006</i>						
Households' sector: Use of Disposable Income Account (TABLE J3)						
Saving ratio (per cent)	–	–	–	–	–	0.4

1 Estimates are given to one decimal place but cannot be regarded as accurate to this degree.

R Revisions Analysis

Revisions since previously published estimates

continued

£ million

	2005 Q1	2005 Q2	2005 Q3	2005 Q4	2006 Q1	2006 Q2	2006 Q3
Latest less previously published levels of GDP at current market prices							
<i>Previous estimates published on 24 November 2006</i>							
National accounts aggregates at current prices (Table A2)							
Gross domestic product at market prices	207	41	293	337	120	150	605
less Basic price adjustment	29	79	-4	41	89	60	110
Gross value added at basic prices	178	-38	297	296	31	90	495
Gross domestic product: expenditure at current prices (Table C1)							
Domestic expenditure on goods and services at market prices							
Households	76	-63	-67	-144	-279	-227	-251
Non-profit institutions serving households	-	1	1	-	-	-	-2
General government	52	204	323	159	159	98	-357
Gross fixed capital formation	79	208	436	488	351	267	9
Changes in inventories	160	68	-390	162	-660	785	800
Acquisitions less disposals of valuables	-	-	-	-	-	-	-1
Total	367	418	303	665	-429	923	199
Total exports	208	203	1 034	1 065	1 888	770	-322
Total imports	-25	146	629	1 054	1 396	1 713	-476
Statistical discrepancy (expenditure)	-393	-434	-415	-339	57	170	252
Gross domestic product: income at current prices (Table D)							
Compensation of employees	10	-214	18	-248	-212	-1 047	-1 175
Gross operating surplus of corporations	-97	-415	-87	362	671	1 472	3 292
Other income	-131	175	-30	-142	-366	-173	-1 399
Gross value added at factor cost	-218	-454	-99	-28	93	252	718
Taxes on products & production less Subsidies	32	60	-24	25	76	59	129
Statistical discrepancy (income)	393	435	416	340	-49	-161	-242
	2005 Q1	2005 Q2	2005 Q3	2005 Q4	2006 Q1	2006 Q2	2006 Q3
Latest less previously published growth rates for GDP in chained volume terms							
<i>Previous estimates published on 24 November 2006</i>							
Percentage changes in volume of GDP (Table A2)							
Gross domestic product chained volume measures							
Quarter on quarter growth	0.1	-	-	-	-	-	-
Quarter on same quarter a year earlier	0.1	0.1	0.1	0.1	0.1	0.1	0.2
Percentage changes in volume of GVA output components (Table B1)							
GVA at basic prices quarter on quarter growth							
Agriculture, forestry and fishing	0.2	-	-0.1	-0.1	-0.8	-	-0.1
Manufacturing	-	-0.1	-0.2	0.2	-0.1	0.2	-
Total Production	-	-	-0.1	0.2	-0.1	0.1	0.1
Construction	-	-	-	-0.1	0.2	-0.1	0.1
Distribution, hotels and catering; repairs	0.1	-	0.1	-0.1	0.1	-	-
Transport, storage and communication	0.1	-0.1	-0.2	0.3	0.1	0.2	-
Business services and finance	-	0.1	-0.2	0.2	0.1	0.2	-
Government and other services	-0.1	-	-0.1	-	0.1	-	-0.1
Total Services	-0.1	-	-0.1	0.1	0.1	0.1	-
Total GVA	-0.1	-	-	-	0.1	0.1	-
Total GVA excluding Oil	-	-	-0.1	-	0.1	-	-
Percentage changes in volume of GDP expenditure components (Table C2)							
Domestic expenditure on goods and services at market prices quarter on quarter growth							
Households	0.1	-	-0.1	-0.1	-	-	-
Non-profit institutions serving households	-	-	-	-	-0.1	-	-0.1
General government	0.2	0.1	0.2	0.1	-0.1	-0.2	-0.2
Gross fixed capital formation	0.2	0.4	0.6	-0.3	-	-0.1	-0.5
Total	0.2	-	-	0.1	-0.2	0.4	-0.2
Total exports	0.1	0.3	0.8	0.1	0.8	-1.1	-1.3
Total imports	-	0.1	0.5	0.5	0.2	-	-1.7
	2005 Q1	2005 Q2	2005 Q3	2005 Q4	2006 Q1	2006 Q2	2006 Q3
Latest less previously published household saving ratio							
<i>Previous estimates published on 27 September 2006</i>							
Households' sector: Use of Disposable Income Account (TABLE J3)							
Saving ratio (per cent)	0.4	0.3	0.4	0.3	-0.6	0.2	..

1 Estimates are given to one decimal place but cannot be regarded as accurate to this degree.