

4 September 2008

**Coverage**

England

**Theme**

Health and Care



## Cancer survival lower in deprived areas

People living in the most deprived areas of England are less likely to survive common cancers, according to new figures published today by ONS.

Analysis of patients diagnosed with cancers during 1998-2003 found that one-year and five-year survival rates were significantly lower for people living in the most deprived Primary Care Trust (PCT) areas.

These 'Spearhead' PCT areas score low on established measures of inequality and were identified by the Government in 2004 for particular interventions to improve health and life expectancy.

Overall, one-year and five-year survival rates among men were lower in the 'Spearhead' PCTs for each of the seven cancers examined. For women, the same was true for seven of the nine cancers examined. For cancers of the cervix and ovary, five-year survival was similar to the rest of England.

The ONS figures show that the largest differences in five-year survival between the 'Spearhead' PCTs and others were for cancers of the bladder and rectum.

**Issued by**

Office for National Statistics  
Government Buildings  
Cardiff Road  
Newport  
NP10 8XG

**Contact**

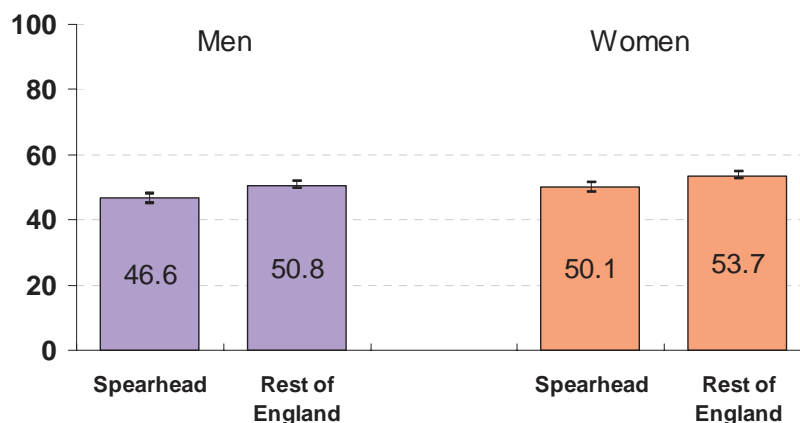
Media Office 0845 604 1858  
Public Enquires 0845 601 3034  
Nicola Cooper 0207 014 2294

**Email:**

cancer.london@ons.gsi.gov.uk

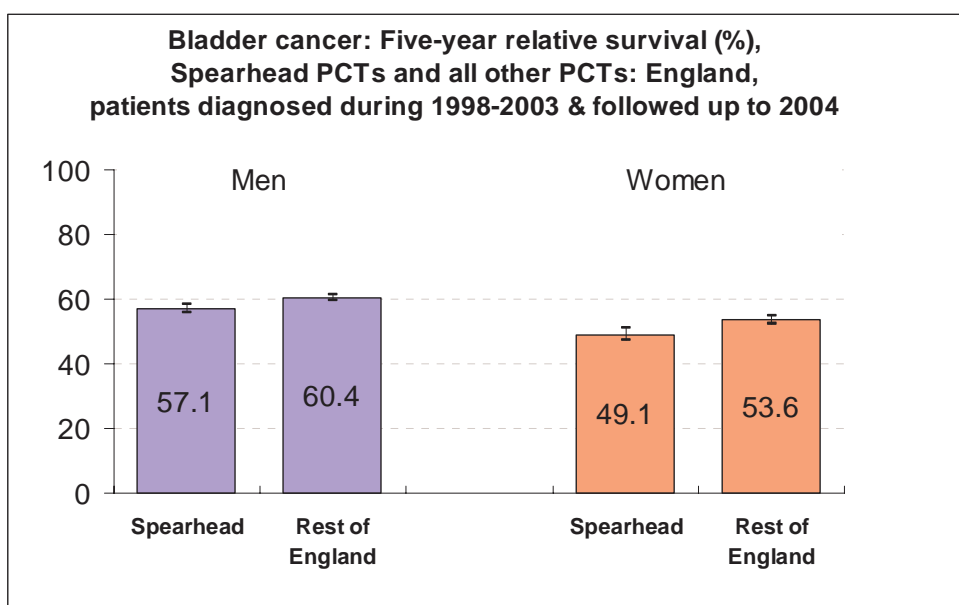
[www.statistics.gov.uk](http://www.statistics.gov.uk)

**Rectal cancer: Five-year relative survival (%)  
Spearhead PCTs and all other PCTs: England,  
patients diagnosed during 1998-2003 & followed up to 2004**



The five-year survival rate for cancer of the rectum was 4.2 percentage points lower for men in 'Spearhead' PCTs (46.6 per cent compared with 50.8 per cent). The five-year survival rate for women with cancer of the rectum was 3.6 percentage points lower in 'Spearhead' PCTs (50.1 per cent compared with 53.7 per cent).

Five-year survival for bladder cancer was 3.3 and 4.5 percentage points lower for men and women, respectively, in 'Spearhead' PCTs; for men 57.1 per cent compared with 60.4; and for women 49.1 per cent compared with 53.6.



Breast cancer survival after five years was 78.2 per cent in the 'Spearhead' PCTs compared with 79.8 per cent in the rest of England.

Prostate cancer survival after five years was 69.2 per cent in the 'Spearhead' PCTs compared with 71.1 per cent in the rest of England.

For lung cancer, five-year survival for men was 5.9 per cent in 'Spearhead' PCTs compared with 6.6 per cent in the rest of England. For women the equivalent figures were 7.5 per cent and 7.6 per cent respectively.

The article is published today on the Office for National Statistics website. Click on

<http://www.statistics.gov.uk/statbase/Product.asp?vlnk=14821> and follow the appropriate links.

## BACKGROUND NOTES

1. The "Spearhead Group" of Local Authorities and Primary Care Trusts (PCTs) was selected by the Government in 2004 to be the focus of interventions to reduce inequalities in life expectancy, cardiovascular disease and cancer. The 70 Local Authorities, and 88 Trusts which mapped to them (now 62 PCTs following NHS reconfiguration in 2006) were chosen because they were in the lowest fifth in England for at least three of five key measures of health inequality - deprivation, male and female life expectancy, and mortality from cancer and cardiovascular disease.
2. For further details on the location of the 'Spearhead PCTs' please go to: [http://www.dh.gov.uk/en/Publicationsandstatistics/Lettersandcirculars/Dea/colleagueletters/DH\\_4138963](http://www.dh.gov.uk/en/Publicationsandstatistics/Lettersandcirculars/Dea/colleagueletters/DH_4138963)
3. The cancers for which survival is reported, for patients diagnosed during 1998-2003 and followed up to 31 December 2004, are those of bladder, breast, cervix, colon, lung, oesophagus, ovary, prostate, rectum and stomach.
4. The survival figures published here were produced in collaboration between ONS and a team at the London School of Hygiene and Tropical Medicine (LSHTM) which was funded in part by a grant from Cancer Research UK.
5. Corresponding figures for patients diagnosed during 1996-2001 and followed up to 31 December 2003 were published on the National Statistics website on 4 April 2007.
6. Work is in progress to examine time trends in survival for adults resident in the 'Spearhead Group', compared with those resident in the rest of England. This will analyse three 5-year incidence cohorts for ten common cancers, covering the period 1998 to 2004 inclusive with follow-up to 31 December 2005.
7. The National Cancer Intelligence Centre at ONS, and the LSHTM, wishes to acknowledge the work of the regional cancer registries in England over the years that the national cancer registration scheme has been in operation.
8. Details of the policy governing the release of new data are available from the press office.
9. **National Statistics** are produced to high professional standards set out in the National Statistics Code of Practice. They undergo regular quality assurance reviews to ensure that they meet customer needs. They are produced free from any political interference. © Crown copyright 2008.

**Table 1: One- and five-year age-standardised<sup>1</sup> relative survival (%) for adult<sup>2</sup> patients diagnosed during 1998-2003, 10 common cancers, by sex: 'Spearhead' Primary Care Trusts (PCTs)<sup>3</sup> and Rest of England<sup>4</sup>**

Cancer <sup>5</sup>		Patients diagnosed 1998-2003 <sup>6</sup>													
		Spearhead PCTs					Rest of England					Difference <sup>8</sup>		Significance (p-value) of difference	
		Number of patients <sup>7</sup>	One-year relative survival		Five-year relative survival		Number of patients <sup>7</sup>	One-year relative survival		Five-year relative survival					
			%	95% CI <sup>9</sup>	%	95% CI <sup>9</sup>		%	95% CI <sup>9</sup>	%	95% CI <sup>9</sup>	One year	Five year	One year	Five year
Bladder	Men	10,789	<b>77.3</b>	(76.5 - 78.2)	<b>57.1</b>	(55.6 - 58.5)	24,778	<b>78.8</b>	(78.3 - 79.4)	<b>60.4</b>	(59.5 - 61.3)	-1.5	<b>-3.3</b>	<0.01	<0.01
	Women	4,513	<b>66.3</b>	(64.9 - 67.8)	<b>49.1</b>	(47.2 - 51.0)	9,337	<b>70.4</b>	(69.4 - 71.4)	<b>53.6</b>	(52.3 - 55.0)	-4.1	<b>-4.5</b>	<0.01	<0.01
	Persons	15,302	<b>73.9</b>	(73.2 - 74.6)	<b>55.0</b>	(53.8 - 56.1)	34,115	<b>76.4</b>	(75.9 - 76.9)	<b>58.6</b>	(57.8 - 59.3)	-2.5	<b>-3.6</b>	<0.01	<0.01
Breast	Women	54,019	<b>93.5</b>	(92.3 - 93.7)	<b>78.2</b>	(77.6 - 78.7)	136,340	<b>94.2</b>	(94.0 - 94.3)	<b>79.8</b>	(79.4 - 80.1)	-0.7	<b>-1.6</b>	<0.01	<0.01
Cervix	Women	5,049	<b>81.4</b>	(80.3 - 82.5)	<b>63.3</b>	(61.8 - 64.9)	8,639	<b>82.2</b>	(81.3 - 83.3)	<b>62.7</b>	(61.4 - 63.9)	-0.8	<b>+0.6</b>	0.281	0.509
Colon	Men	13,828	<b>66.1</b>	(65.2 - 66.9)	<b>47.1</b>	(45.8 - 48.5)	32,813	<b>69.3</b>	(68.8 - 69.8)	<b>48.3</b>	(47.5 - 49.1)	-3.2	<b>-1.2</b>	<0.01	<0.01
	Women	13,062	<b>65.9</b>	(65.0 - 66.7)	<b>47.9</b>	(46.7 - 49.1)	32,585	<b>68.9</b>	(68.4 - 69.5)	<b>49.6</b>	(48.9 - 50.4)	-3.0	<b>-1.7</b>	<0.01	<0.01
	Persons	26,890	<b>65.9</b>	(65.3 - 66.5)	<b>47.4</b>	(46.5 - 48.3)	65,398	<b>69.0</b>	(68.6 - 69.4)	<b>48.9</b>	(48.4 - 49.5)	-3.1	<b>-1.5</b>	<0.01	<0.01
Lung	Men	34,545	<b>24.3</b>	(23.9 - 24.8)	<b>5.9</b>	(5.6 - 6.3)	59,478	<b>25.6</b>	(25.2 - 25.9)	<b>6.6</b>	(6.3 - 6.8)	-1.3	<b>-0.7</b>	<0.01	<0.01
	Women	23,234	<b>26.9</b>	(26.3 - 27.5)	<b>7.5</b>	(7.1 - 8.0)	36,750	<b>27.4</b>	(26.9 - 27.9)	<b>7.6</b>	(7.3 - 8.0)	-0.5	<b>-0.1</b>	<0.01	<0.01
	Persons	57,779	<b>25.3</b>	(25.0 - 25.7)	<b>6.6</b>	(6.3 - 6.8)	96,228	<b>26.3</b>	(26.0 - 26.6)	<b>6.9</b>	(6.7 - 7.1)	-1.0	<b>-0.3</b>	<0.01	<0.01
Oesophagus	Men	6,108	<b>29.4</b>	(28.2 - 30.6)	<b>7.4</b>	(6.5 - 8.3)	13,909	<b>34.1</b>	(33.3 - 34.9)	<b>8.8</b>	(8.1 - 9.4)	-4.7	<b>-1.4</b>	<0.01	<0.01
	Women	3,802	<b>32.0</b>	(30.4 - 33.6)	<b>8.9</b>	(7.4 - 10.5)	8,213	<b>34.7</b>	(33.6 - 35.8)	<b>11.6</b>	(10.6 - 12.6)	-2.7	<b>-2.7</b>	<0.01	<0.01
	Persons	9,910	<b>30.1</b>	(29.2 - 31.0)	<b>8.0</b>	(7.3 - 8.8)	22,122	<b>34.1</b>	(33.4 - 34.7)	<b>9.7</b>	(9.2 - 10.3)	-4.0	<b>-1.7</b>	<0.01	<0.01
Ovary	Women	8,655	<b>66.0</b>	(65.0 - 66.9)	<b>39.2</b>	(38.8 - 40.5)	20,851	<b>68.0</b>	(67.4 - 68.6)	<b>37.9</b>	(37.1 - 38.7)	-2.0	<b>+1.3</b>	<0.01	0.082
Prostate	Men	37,335	<b>90.0</b>	(89.6 - 90.4)	<b>69.2</b>	(68.2 - 70.2)	96,451	<b>90.6</b>	(90.4 - 90.9)	<b>71.1</b>	(70.5 - 71.6)	-0.6	<b>-1.9</b>	<0.01	<0.01
Rectum	Men	11,925	<b>72.3</b>	(71.4 - 73.2)	<b>46.6</b>	(45.2 - 48.1)	24,111	<b>76.0</b>	(75.4 - 76.6)	<b>50.8</b>	(49.8 - 51.7)	-3.7	<b>-4.2</b>	<0.01	<0.01
	Women	7,715	<b>75.0</b>	(74.0 - 76.0)	<b>50.1</b>	(48.5 - 51.7)	16,863	<b>77.2</b>	(76.5 - 77.8)	<b>53.7</b>	(52.6 - 54.7)	-2.2	<b>-3.6</b>	<0.01	<0.01
	Persons	19,640	<b>73.2</b>	(72.6 - 73.9)	<b>47.7</b>	(46.7 - 48.8)	40,974	<b>76.4</b>	(76.0 - 76.8)	<b>52.1</b>	(51.4 - 52.8)	-3.2	<b>-4.4</b>	<0.01	<0.01
Stomach	Men	9,525	<b>33.8</b>	(32.8 - 34.8)	<b>12.6</b>	(11.6 - 13.5)	16,217	<b>36.6</b>	(35.9 - 37.4)	<b>13.0</b>	(12.3 - 13.7)	-2.8	<b>-0.4</b>	<0.01	0.021
	Women	5,241	<b>35.2</b>	(33.8 - 36.6)	<b>14.8</b>	(13.5 - 16.2)	8,534	<b>37.7</b>	(36.6 - 38.8)	<b>16.3</b>	(15.3 - 17.4)	-2.5	<b>-1.5</b>	<0.01	0.021
	Persons	14,766	<b>34.4</b>	(33.6 - 35.1)	<b>13.3</b>	(12.5 - 14.0)	24,751	<b>36.9</b>	(36.3 - 37.5)	<b>14.2</b>	(13.6 - 14.7)	-2.5	<b>-0.9</b>	<0.01	0.021

<sup>1</sup> Cancer survival varies with age at diagnosis, so the survival rates for all ages (15-99 years) have been age-standardised to control for differences in the age profile of cancer patients between geographical areas (see text).

<sup>2</sup> Aged 15-99 years at diagnosis.

<sup>3</sup> On 19 November 2004, the Department of Health named the 88 most health-deprived Primary Care Trusts (PCTs) in England included in the 'Spearhead' Group.

<sup>4</sup> All other Primary Care Trusts (PCTs) in England not included in the 'Spearhead' Group.

<sup>5</sup> See table in the worksheet 'ICD site codes' for the International Classification of Diseases, Tenth Revision (ICD-10) codes used for cancers diagnosed from 1998 to 2003.

<sup>6</sup> Adult patients diagnosed with one of 10 common cancers during 1998-2003 in 'Spearhead' PCTs and the rest of England and followed up to the end of 2004.

<sup>7</sup> Eligible patients included in the survival analysis; for exclusion criteria see Coleman MP et al (1999) Cancer Survival Trends in England and Wales 1971-1995: deprivation and NHS Region. Studies on Medical and Population Subjects No.61. London: The Stationery Office.

<sup>8</sup> The difference (in percentage points) between the relative survival for patients resident in 'Spearhead' PCTs and in the rest of England.

<sup>9</sup> 95% confidence interval.