

18 December 2007

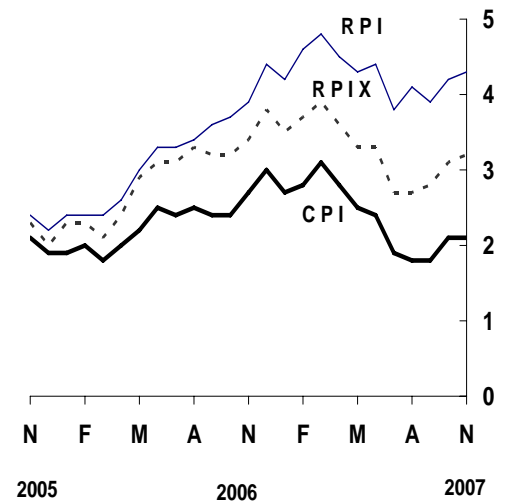
Coverage
United Kingdom
Theme
The Economy

Consumer price indices November 2007

In the year to November, the consumer prices index (CPI) rose by 2.1 per cent, unchanged from October.

In the year to November, the all items retail prices index (RPI) rose by 4.3 per cent, up from 4.2 per cent in October.

Over the same period, the all items RPI excluding mortgage interest payments index (RPIX) rose by 3.2 per cent, up from 3.1 per cent in October.



Issued by
National Statistics
1 Drummond Gate
London SW1V 2QQ

Telephone
Press Office 020 7533 5725
Public Enquiries 0845 601 3034
CPI/RPI Enquiries 01633 456900
CPI/RPI recorded
message 01633 456961
E-mail cpi@ons.gov.uk

Statistician
Philip Gooding 01633 455896
philip.gooding@ons.gov.uk

Internet
www.statistics.gov.uk

Next publication date
15 January 2008

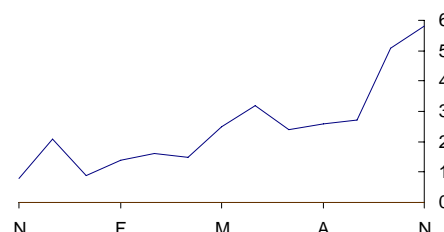
| | Consumer prices index (CPI) | | All items retail prices index (RPI) | | All items RPI excluding mortgage interest payments (RPIX) | |
|-----------|-----------------------------|--------------------------------|-------------------------------------|--------------------------------|---|--------------------------------|
| | Index (2005 =100) | Per cent change over 12 months | Index (Jan 1987 =100) | Per cent change over 12 months | Index (Jan 1987 =100) | Per cent change over 12 months |
| 2007 June | 105.0 | 2.4 | 207.3 | 4.4 | 200.7 | 3.3 |
| July | 104.4 | 1.9 | 206.1 | 3.8 | 199.4 | 2.7 |
| Aug | 104.7 | 1.8 | 207.3 | 4.1 | 200.1 | 2.7 |
| Sept | 104.8 | 1.8 | 208.0 | 3.9 | 200.8 | 2.8 |
| Oct | 105.3 | 2.1 | 208.9 | 4.2 | 201.6 | 3.1 |
| Nov | 105.6 | 2.1 | 209.7 | 4.3 | 202.4 | 3.2 |

Main contributions to the change in the 12-month rate¹

CPI

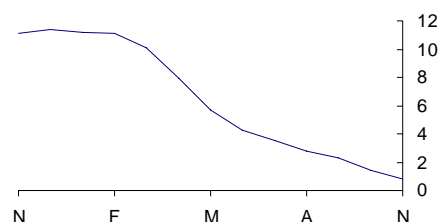
The largest upward contribution to change in the CPI annual rate came from changes in transport costs, in particular fuels and lubricants. Average petrol prices recorded across the month rose by 3.5 pence per litre between October and November to stand at over £1 per litre. This movement compares with a fall of 0.4 pence per litre last year. Diesel prices also rose, by 5.0 pence per litre compared with a fall of 0.4 pence last November. A partially offsetting downward effect came from air travel, with fares on European routes falling by more this November than a year ago. There was also a small downward effect from vehicle maintenance and repairs where overall prices rose by less than a year ago.

Transport
CPI percentage changes over 12 months



A small upward effect came from miscellaneous goods and services, mainly due to financial services, where the cost of exchanging foreign currency fell a year ago.

Housing and household services
CPI percentage changes over 12 months

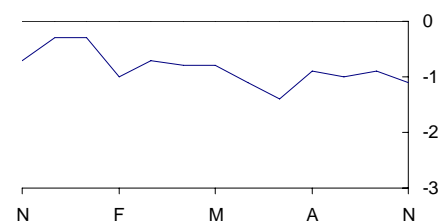


The largest downward contribution to change in the CPI annual rate came from housing and household services due to gas and, to a lesser extent, electricity bills. These were little changed this year compared with price rises a year ago when there was continued phasing in of tariff increases. A partially offsetting upward effect came from heating oil which rose in price this year, reflecting movements in crude oil prices, but fell a year ago.

Small downward effects came from:

- Recreation and culture, mainly due to audio-visual equipment in particular digital cameras, personal computers and laptops, and books where there were price falls this year compared with price rises a year ago; and
- Restaurants and hotels, mainly due to prices in staff canteens rising by less than a year ago.

Recreation and culture
CPI percentage changes over 12 months



¹ The CPI and RPI use different classification systems. Background Note 11 shows how, for each of the two indices, the main categories contributing to changes in the 12-month rate relate to each other

RPI

The largest upward contribution to change in the RPI annual rate came from motoring expenditure. As in the CPI, petrol pump prices increased in November, compared with a fall a year ago. There was also a large upward effect from motor vehicle purchase costs where prices rose this November compared with a fall last year. These movements were partially offset by a large downward effect from vehicle insurance premiums which were little changed this year but rose a year ago.

Small upward contributions came from:

- Food, where overall prices rose by more than a year ago due to the change in the price of a wide range of non-seasonal items. This was partially offset by small downward effects from other fresh vegetables, notably cauliflowers, and fresh fruit, particularly grapefruits; and
- Household services with fees and subscriptions rising this November compared with falls a year ago.

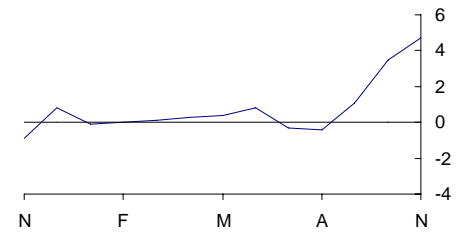
There was a large downward contribution to the change in the RPI annual rate from fuel and light. As in the CPI, gas and electricity bills were little changed this year compared with rises in price a year ago resulting from the continued phasing in of tariff increases. These movements were partially offset by a large upward effect from oil and other fuels, in particular heating oil.

A further large downward effect came from fares and other travel costs, mainly due to changes in the cost of air travel, with fares on European routes falling by more this November than a year ago.

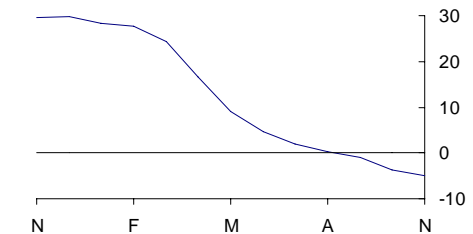
Small downward effects came from:

- Leisure goods, where prices overall fell this year but rose a year ago; and
- Household goods, mainly due to furniture and furnishings, in particular changes in the prices of carpets and kitchen furniture, with prices falling this year compared with rises a year ago.

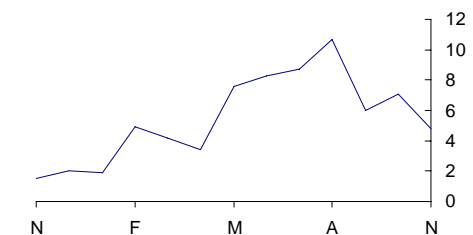
Motoring expenditure
RPI percentage changes over 12 months



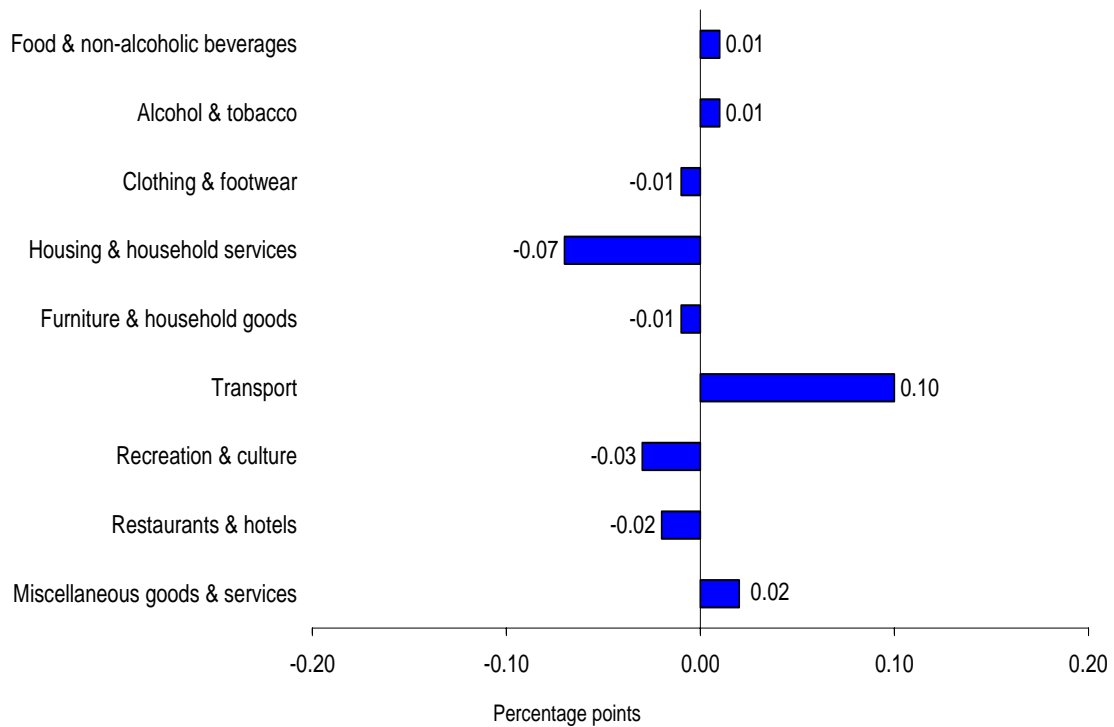
Fuel and light
RPI percentage changes over 12 months



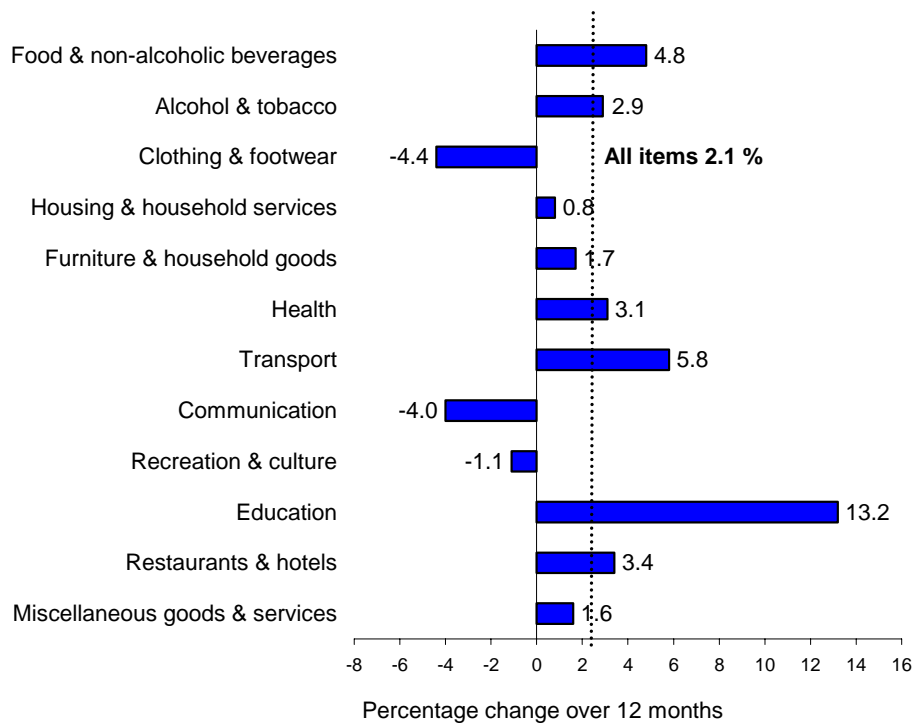
Fares and other travel costs
RPI percentage changes over 12 months



CPI main contributions¹ to the change in the all items 12-month rate between October 2007 and November 2007 (unchanged)

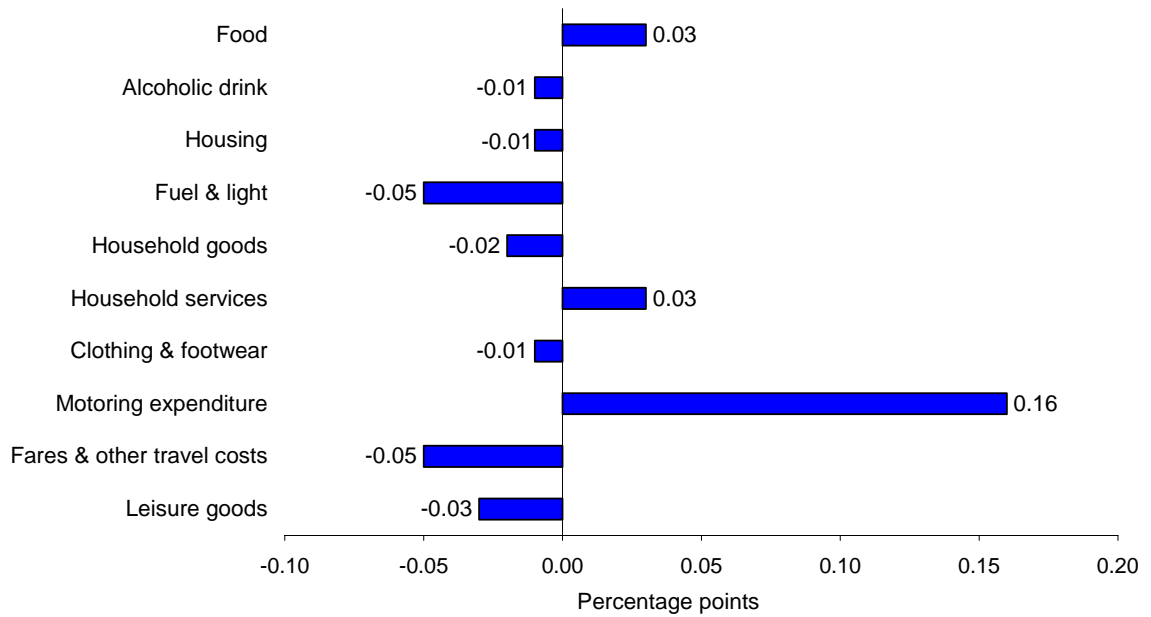


CPI comparison of the 12-month percentage changes

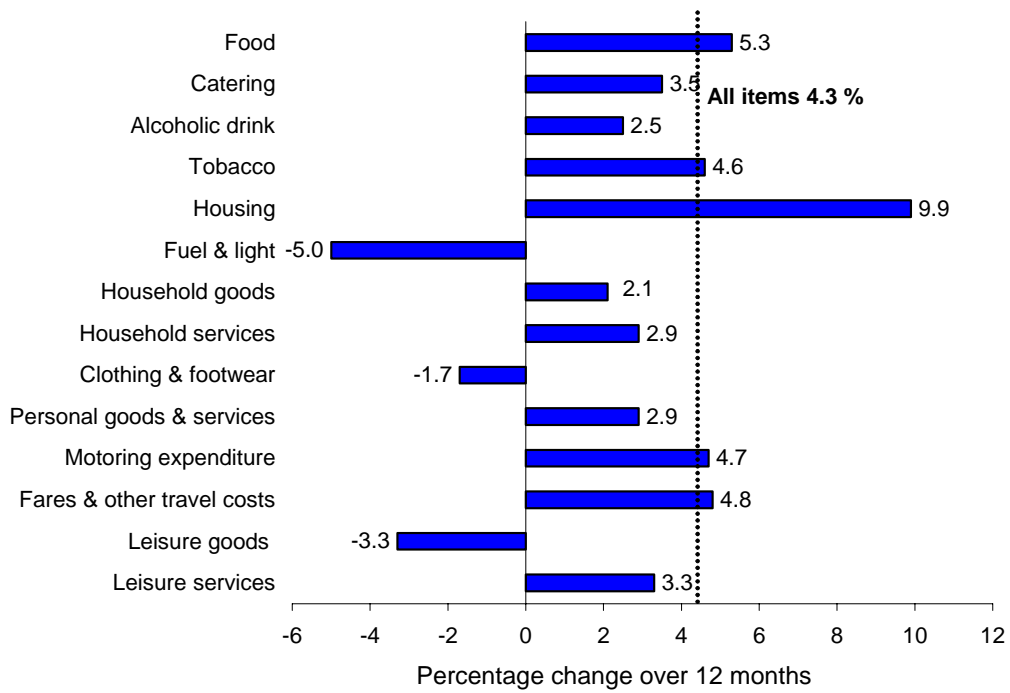


¹ Individual contributions to the change in the 12-month rate may not sum to the total due to rounding

RPI main contributions¹ to the change in the all items 12-month rate between October 2007 and November 2007 (0.1 percentage points)



RPI comparison of 12-month percentage changes



¹ Individual contributions to the change in the 12-month rate may not sum to the total due to rounding.

BACKGROUND NOTES

Relevance

- 1 The consumer prices index (CPI) is the main United Kingdom domestic measure of consumer price inflation for macroeconomic purposes. It forms the basis for the Government's inflation target that the Bank of England's Monetary Policy Committee (MPC) is required to achieve.
- 2 Internationally, the CPI is known as the Harmonised Index of Consumer Prices (HICP). HICPs are calculated in each Member State of the European Union, according to rules specified in a series of European Regulations developed by Eurostat in conjunction with the EU Member States. HICPs are used to compare inflation rates across the European Union. Since January 1999 it has also been used by the European Central Bank (ECB) as the measure of price stability across the euro area.
- 3 The retail prices index (RPI) is the most long-standing general purpose measure of inflation in the United Kingdom and is available from June 1947. It is used for a variety of purposes by both government and external users including the indexation of various incomes and prices and the uprating of pensions, benefits and index-linked gilts.

Methodology

- 4 The CPI and the RPI are compiled using the same underlying price data, based on a large and representative selection of around 650 individual goods and services for which price movements are measured in around 150 randomly selected areas throughout the UK. Around 120,000 separate price quotations are used every month to compile the indices. The outlets in which the prices are collected are selected randomly. Expenditure weights are held constant for one year at a time.
- 5 The selection of goods and services that are priced to compile the CPI and RPI is reviewed annually. The contents of the 2007 basket are described in an article published on the National Statistics website at:
<http://www.statistics.gov.uk/cci/article.asp?ID=1746>
The expenditure weights used to compile the indices are also updated each year. Additional details of the updated CPI and RPI weights for 2007 are available from the National Statistics website in an article entitled Consumer Prices Index and Retail Prices Index: Updating Weights for 2007
<http://www.statistics.gov.uk/cci/article.asp?id=1779>
- 6 Rates of change for the CPI are calculated from unrounded index levels, rather than on the published indices, which are rounded to one decimal place. The use of unrounded indices increases the accuracy of the calculation. The unrounded index levels are available on request. By contrast, rates of change for the RPI are calculated from the published rounded indices.

- The CPI is categorised according to the international classification system, COICOP (Classification Of Individual CONsumption by Purpose). The way in which this maps to the RPI groupings is shown in the following table:

| COICOP Divisions | RPI Groups |
|-----------------------------------|--|
| 01 Food & non-alcoholic beverages | Food |
| 02 Alcohol & tobacco | Alcoholic drink (off sales) Tobacco |
| 03 Clothing & footwear | Clothing & footwear |
| 04 Housing & household services | Housing (exc. Mortgage interest payments, depreciation, council tax & building insurance) Fuel & light |
| 05 Furniture & household goods | Household goods Domestic services |
| 06 Health | Personal goods & services (health-related items) |
| 07 Transport | Motoring expenditure Fares & other travel costs |
| 08 Communication | Household services (exc. domestic services & fees and subscriptions) |
| 09 Recreation & culture | Leisure goods Leisure services |
| 10 Education | Fees & subscriptions (education-related items) |
| 11 Restaurants & hotels | Catering Alcoholic drink (on sales) |
| 12 Miscellaneous goods & services | Personal goods & services (non health-related items) Fees & subscriptions (non education-related items) |

- The index for the purchase of new cars in the CPI is quality adjusted and based on actual published prices for new cars. New car prices in the RPI are imputed from movements in second hand car prices.
- The CPI weights are based on expenditure by all private households, foreign visitors to the UK and residents of institutional households. In the RPI, weights are based on expenditure by private households only, excluding the highest income households and pensioner households mainly dependent on state benefits.
- In the construction of the CPI weights, amounts paid out in insurance claims are distributed among the COICOP headings according to the nature of the claims' expenditure, with the residual (the service charge) being allocated to the relevant insurance heading. For the RPI weights, total expenditure (that is, gross of claims paid out) is assigned to the relevant insurance heading.

1 CPI, RPI and other selected indices: the latest three years

| | Consumer prices index (CPI) ¹ | | Consumer prices index excluding indirect taxes (CPIY) ³ | | Consumer prices index at constant tax rates (CPI-CT) | | All items retail prices index (RPI) | | All items RPI excluding | | | |
|----------|--|----------------------------------|--|----------------------------------|--|----------------------------------|-------------------------------------|----------------------------------|-----------------------------------|----------------------------------|---|----------------------------------|
| | Index (2005=100) | Percentage change over 12 months | Index (2005=100) | Percentage change over 12 months | Index (2005=100) | Percentage change over 12 months | Index (Jan 13, 1987=100) | Percentage change over 12 months | mortgage interest payments (RPIX) | | mortgage interest payments and indirect taxes (RPIY) ² | |
| | | | | | | | | | Index (Jan 13, 1987=100) | Percentage change over 12 months | Index (Jan 13, 1987=100) | Percentage change over 12 months |
| | D7BT | D7G7 | EL2Q | EL2S | EAC7 | EAD6 | CHAW | CZBH | CHMK | CDKQ | CBZW | CBZX |
| 2004 Nov | 98.6 | 1.5 | 98.5 | 1.4 | 98.7 | 1.4 | 189.0 | 3.4 | 185.4 | 2.2 | 176.9 | 2.2 |
| Dec | 99.1 | 1.7 | 99.1 | 1.7 | 99.2 | 1.6 | 189.9 | 3.5 | 186.4 | 2.5 | 177.9 | 2.5 |
| 2005 Jan | 98.6 | 1.6 | 98.5 | 1.7 | 98.6 | 1.5 | 188.9 | 3.2 | 185.2 | 2.1 | 176.7 | 2.0 |
| Feb | 98.8 | 1.7 | 98.8 | 1.7 | 98.9 | 1.6 | 189.6 | 3.2 | 185.9 | 2.1 | 177.4 | 2.0 |
| Mar | 99.3 | 1.9 | 99.3 | 2.0 | 99.3 | 1.8 | 190.5 | 3.2 | 186.8 | 2.4 | 178.3 | 2.3 |
| Apr | 99.7 | 1.9 | 99.6 | 2.0 | 99.6 | 1.9 | 191.6 | 3.2 | 187.8 | 2.3 | 179.0 | 2.3 |
| May | 100.0 | 1.9 | 100.0 | 2.0 | 100.0 | 1.8 | 192.0 | 2.9 | 188.2 | 2.1 | 179.4 | 2.2 |
| Jun | 100.0 | 2.0 | 100.0 | 2.2 | 100.0 | 1.9 | 192.2 | 2.9 | 188.3 | 2.2 | 179.5 | 2.2 |
| Jul | 100.1 | 2.3 | 100.1 | 2.5 | 100.1 | 2.3 | 192.2 | 2.9 | 188.3 | 2.4 | 179.5 | 2.5 |
| Aug | 100.4 | 2.4 | 100.5 | 2.6 | 100.4 | 2.3 | 192.6 | 2.8 | 188.6 | 2.3 | 179.8 | 2.3 |
| Sep | 100.6 | 2.5 | 100.6 | 2.6 | 100.6 | 2.4 | 193.1 | 2.7 | 189.3 | 2.5 | 180.5 | 2.5 |
| Oct | 100.7 | 2.3 | 100.8 | 2.5 | 100.7 | 2.3 | 193.3 | 2.5 | 189.5 | 2.4 | 180.7 | 2.3 |
| Nov | 100.7 | 2.1 | 100.8 | 2.3 | 100.7 | 2.1 | 193.6 | 2.4 | 189.7 | 2.3 | 180.9 | 2.3 |
| Dec | 101.0 | 1.9 | 101.1 | 2.1 | 101.0 | 1.8 | 194.1 | 2.2 | 190.2 | 2.0 | 181.5 | 2.0 |
| 2006 Jan | 100.5 | 1.9 | 100.6 | 2.1 | 100.5 | 1.9 | 193.4 | 2.4 | 189.4 | 2.3 | 180.7 | 2.3 |
| Feb | 100.9 | 2.0 | 100.9 | 2.1 | 100.8 | 2.0 | 194.2 | 2.4 | 190.1 | 2.3 | 181.4 | 2.3 |
| Mar | 101.1 | 1.8 | 101.1 | 1.9 | 101.1 | 1.7 | 195.0 | 2.4 | 190.8 | 2.1 | 182.2 | 2.2 |
| Apr | 101.7 | 2.0 | 101.7 | 2.1 | 101.6 | 2.0 | 196.5 | 2.6 | 192.3 | 2.4 | 183.2 | 2.3 |
| May | 102.2 | 2.2 | 102.3 | 2.3 | 102.1 | 2.2 | 197.7 | 3.0 | 193.6 | 2.9 | 184.5 | 2.8 |
| Jun | 102.5 | 2.5 | 102.6 | 2.6 | 102.4 | 2.4 | 198.5 | 3.3 | 194.2 | 3.1 | 185.2 | 3.2 |
| Jul | 102.5 | 2.4 | 102.6 | 2.4 | 102.4 | 2.3 | 198.5 | 3.3 | 194.2 | 3.1 | 185.2 | 3.2 |
| Aug | 102.9 | 2.5 | 103.0 | 2.6 | 102.8 | 2.4 | 199.2 | 3.4 | 194.9 | 3.3 | 186.0 | 3.4 |
| Sep | 103.0 | 2.4 | 103.2 | 2.6 | 102.9 | 2.3 | 200.1 | 3.6 | 195.3 | 3.2 | 186.4 | 3.3 |
| Oct | 103.2 | 2.4 | 103.5 | 2.7 | 103.1 | 2.3 | 200.4 | 3.7 | 195.5 | 3.2 | 186.7 | 3.3 |
| Nov | 103.4 | 2.7 | 103.8 | 3.0 | 103.4 | 2.6 | 201.1 | 3.9 | 196.2 | 3.4 | 187.5 | 3.6 |
| Dec | 104.0 | 3.0 | 104.3 | 3.2 | 103.9 | 2.9 | 202.7 | 4.4 | 197.4 | 3.8 | 188.6 | 3.9 |
| 2007 Jan | 103.2 | 2.7 | 103.5 | 2.9 | 103.1 | 2.6 | 201.6 | 4.2 | 196.1 | 3.5 | 187.3 | 3.7 |
| Feb | 103.7 | 2.8 | 103.9 | 2.9 | 103.5 | 2.6 | 203.1 | 4.6 | 197.1 | 3.7 | 188.4 | 3.9 |
| Mar | 104.2 | 3.1 | 104.3 | 3.1 | 103.9 | 2.9 | 204.4 | 4.8 | 198.3 | 3.9 | 189.5 | 4.0 |
| Apr | 104.5 | 2.8 | 104.6 | 2.9 | 104.2 | 2.6 | 205.4 | 4.5 | 199.3 | 3.6 | 190.0 | 3.7 |
| May | 104.8 | 2.5 | 105.0 | 2.6 | 104.5 | 2.3 | 206.2 | 4.3 | 200.0 | 3.3 | 190.7 | 3.4 |
| Jun | 105.0 | 2.4 | 105.2 | 2.5 | 104.7 | 2.2 | 207.3 | 4.4 | 200.7 | 3.3 | 191.4 | 3.3 |
| Jul | 104.4 | 1.9 | 104.6 | 2.0 | 104.1 | 1.7 | 206.1 | 3.8 | 199.4 | 2.7 | 190.1 | 2.6 |
| Aug | 104.7 | 1.8 | 105.0 | 1.9 | 104.5 | 1.6 | 207.3 | 4.1 | 200.1 | 2.7 | 190.9 | 2.6 |
| Sep | 104.8 | 1.8 | 105.0 | 1.7 | 104.5 | 1.6 | 208.0 | 3.9 | 200.8 | 2.8 | 191.6 | 2.8 |
| Oct | 105.3 | 2.1 | 105.5 | 1.9 | 104.9 | 1.8 | 208.9 | 4.2 | 201.6 | 3.1 | 192.3 | 3.0 |
| Nov | 105.6 | 2.1 | 105.8 | 1.9 | 105.2 | 1.8 | 209.7 | 4.3 | 202.4 | 3.2 | 193.2 | 3.0 |

1 Inflation rates prior to 1997 and index levels prior to 1996 are estimated. Further details are given in *Economic Trends No. 541 December 1998*. These details are also available on the National Statistics website: www.statistics.gov.uk/cci/article.asp?ID=31

2 The taxes excluded are council tax, VAT, duties, vehicle excise duty, insurance tax and air passenger duty.

3 The taxes excluded are VAT, duties, insurance premium tax, air passenger duty, stamp duty on share transactions.

Source: National Statistics

2 CPI: Detailed figures for 13 November 2007

| | Percentage change over | | | | Percentage change over | | |
|--|------------------------|-------|---------|--|------------------------|-------|---------|
| | Index (2005=100) | 1 mth | 12 mths | | Index (2005=100) | 1 mth | 12 mths |
| CPI (overall index) | 105.6 | 0.3 | 2.1 | | | | |
| 01 Food and non-alcoholic beverages | 110.1 | 0.9 | 4.8 | 06.2 Out-patient services | 109.5 | -0.1 | 3.3 |
| 02 Alcoholic beverages and tobacco | 106.4 | -0.4 | 2.9 | 06.2.1/3 Medical services & paramedical services | 106.7 | -0.3 | 2.2 |
| 03 Clothing and footwear | 92.9 | 0.5 | -4.4 | 06.2.2 Dental services | 112.8 | 0.2 | 4.8 |
| 04 Housing, water, electricity, gas and other fuels | 114.6 | 0.3 | 0.8 | 06.3 Hospital services | 115.0 | - | 5.4 |
| 05 Furniture, household equipment and maintenance | 101.6 | 0.8 | 1.7 | 07.1 Purchase of vehicles | 99.0 | 0.1 | -0.4 |
| 06 Health | 107.3 | -0.2 | 3.1 | 07.1.1A New cars | 102.9 | - | 1.4 |
| 07 Transport | 107.0 | 0.3 | 5.8 | 07.1.1B Second-hand cars | 92.9 | 0.3 | -3.0 |
| 08 Communication | 96.3 | - | -4.0 | 07.1.2/3 Motorcycles and bicycles | 98.1 | -0.5 | -0.9 |
| 09 Recreation and culture | 97.6 | -0.1 | -1.1 | 07.2 Operation of personal transport equipment | 113.9 | 2.1 | 10.3 |
| 10 Education | 133.2 | - | 13.2 | 07.2.1 Spare parts and accessories | 103.8 | 0.1 | 0.4 |
| 11 Restaurants and hotels | 108.0 | 0.1 | 3.4 | 07.2.2 Fuels and lubricants | 116.1 | 3.9 | 17.0 |
| 12 Miscellaneous goods and services | 106.6 | 0.2 | 1.6 | 07.2.3 Maintenance and repairs | 112.9 | 0.2 | 3.9 |
| All goods | 103.5 | 0.6 | 1.1 | 07.2.4 Other services | 111.0 | 0.3 | 5.7 |
| All services | 108.2 | -0.2 | 3.2 | 07.3 Transport services | 104.2 | -3.7 | 5.1 |
| 01.1 Food | 110.4 | 1.1 | 5.1 | 07.3.1 Passenger transport by railway | 109.6 | - | 4.8 |
| 01.1.1 Bread and cereals | 109.6 | 2.2 | 6.1 | 07.3.2 Passenger transport by road | 108.4 | 0.2 | 4.7 |
| 01.1.2 Meat | 105.0 | 0.1 | 1.3 | 07.3.3 Passenger transport by air | 84.0 | -13.3 | 0.8 |
| 01.1.3 Fish | 119.7 | 0.1 | 6.0 | 07.3.4 Passenger transport by sea and inland waterway | 111.6 | -6.2 | 13.3 |
| 01.1.4 Milk, cheese and eggs | 117.4 | 2.6 | 13.9 | 08.1 Postal services | 121.5 | - | 6.3 |
| 01.1.5 Oils and fats | 123.9 | 3.6 | 14.3 | 08.2/3 Telephone and telefax equipment and services | 95.2 | - | -4.5 |
| 01.1.6 Fruit | 109.3 | 0.8 | 1.3 | 09.1 Audio-visual equipment and related products | 75.4 | -0.6 | -13.5 |
| 01.1.7 Vegetables including potatoes and tubers | 111.6 | 0.5 | 4.2 | 09.1.1 Reception and reproduction of sound and pictures | 72.5 | -0.1 | -14.2 |
| 01.1.8 Sugar, jam, syrups, chocolate and confectionery | 109.2 | 1.0 | 4.4 | 09.1.2 Photographic, cinematographic and optical equipment | 50.9 | -6.0 | -30.4 |
| 01.1.9 Food products (nec) | 101.5 | 0.3 | 1.8 | 09.1.3 Data processing equipment | 62.9 | -2.0 | -23.9 |
| 01.2 Non-alcoholic beverages | 108.2 | -0.4 | 2.4 | 09.1.4 Recording media | 95.3 | 1.5 | -1.0 |
| 01.2.1 Coffee, tea and cocoa | 109.4 | 0.8 | 0.9 | 09.1.5 Repair of audio-visual equipment & related products | 108.8 | - | 3.8 |
| 01.2.2 Mineral waters, soft drinks and juices | 107.7 | -0.8 | 2.8 | 09.2 Oth. major durables for recreation & culture | 101.7 | 0.6 | 0.9 |
| 02.1 Alcoholic beverages | 100.5 | -0.8 | 0.4 | 09.2.1/2 Major durables for in/outdoor recreation | 101.7 | 0.6 | 0.9 |
| 02.1.1 Spirits | 99.5 | -1.7 | 1.2 | 09.3 Other recreational items, gardens and pets | 97.6 | 0.1 | 0.6 |
| 02.1.2 Wine | 101.8 | -0.7 | 0.5 | 09.3.1 Games, toys and hobbies | 93.3 | -0.5 | -0.6 |
| 02.1.3 Beer | 98.3 | 0.3 | -0.8 | 09.3.2 Equipment for sport and open-air recreation | 99.1 | 0.6 | 0.9 |
| 02.2 Tobacco | 110.7 | -0.1 | 4.6 | 09.3.3 Gardens, plants and flowers | 100.4 | 0.1 | 0.7 |
| 03.1 Clothing | 92.7 | 0.6 | -4.8 | 09.3.4/5 Pets, related products and services | 108.5 | 1.7 | 3.9 |
| 03.1.2 Garments | 92.0 | 0.6 | -5.1 | 09.4 Recreational and cultural services | 110.7 | - | 4.0 |
| 03.1.3 Other clothing and clothing accessories | 100.2 | 1.0 | -2.2 | 09.4.1 Recreational and sporting services | 113.3 | - | 5.6 |
| 03.1.4 Cleaning, repair and hire of clothing | 109.5 | 0.3 | 3.4 | 09.4.2 Cultural services | 109.6 | - | 3.2 |
| 03.2 Footwear including repairs | 94.6 | -0.2 | -2.1 | 09.5 Books, newspapers and stationery | 106.4 | -0.6 | 1.7 |
| 04.1 Actual rentals for housing | 107.6 | 0.1 | 3.3 | 09.5.1 Books | 106.2 | -2.6 | 2.3 |
| 04.3 Regular maintenance and repair of the dwelling | 107.5 | 0.2 | 4.6 | 09.5.2 Newspapers and periodicals | 111.9 | 0.4 | 3.0 |
| 04.3.1 Materials for maintenance and repair | 105.2 | 0.2 | 4.6 | 09.5.3/4 Misc. printed matter, stationery, drawing materials | 98.7 | 0.4 | -1.5 |
| 04.3.2 Services for maintenance and repair | 110.8 | 0.3 | 4.7 | 09.6 Package holidays | 100.8 | 0.1 | 1.1 |
| 04.4 Water supply and misc. services for the dwelling | 115.3 | - | 6.5 | 10.0 Education | 133.2 | - | 13.2 |
| 04.4.1 Water supply | 115.7 | - | 6.2 | 11.1 Catering services | 107.9 | 0.2 | 3.4 |
| 04.4.3 Sewerage collection | 114.9 | - | 6.9 | 11.1.1 Restaurants & cafes | 107.7 | 0.2 | 3.3 |
| 04.5 Electricity, gas and other fuels | 129.9 | 0.5 | -5.6 | 11.1.2 Canteens | 109.2 | 0.2 | 4.1 |
| 04.5.1 Electricity | 128.5 | - | -3.3 | 11.2 Accommodation services | 109.1 | -0.2 | 3.4 |
| 04.5.2 Gas | 133.2 | 0.1 | -11.3 | 12.1 Personal care | 105.5 | 0.2 | 2.8 |
| 04.5.3 Liquid fuels | 137.3 | 13.5 | 37.6 | 12.1.1 Hairdressing and personal grooming establishments | 108.9 | 0.5 | 3.9 |
| 04.5.4 Solid fuels | 119.9 | 1.9 | 5.5 | 12.1.2/3 Appliances and products for personal care | 104.3 | - | 2.4 |
| 05.1 Furniture, furnishings and carpets | 102.5 | 1.0 | 1.8 | 12.3 Personal effects (nec) | 106.7 | 0.7 | 2.3 |
| 05.1.1 Furniture and furnishings | 103.4 | 2.0 | 2.4 | 12.3.1 Jewellery, clocks and watches | 109.6 | 0.7 | 2.6 |
| 05.1.2 Carpets and other floor coverings | 99.1 | -2.6 | -0.8 | 12.3.2 Other personal effects | 101.8 | 0.9 | 1.6 |
| 05.2 Household textiles | 92.7 | 1.3 | -3.1 | 12.4 Social protection | 113.5 | 0.4 | 5.4 |
| 05.3 Household appliances, fitting and repairs | 98.7 | 1.9 | 3.8 | 12.5 Insurance | 106.8 | 0.4 | 3.2 |
| 05.3.1/2 Major appliances and small electric goods | 98.0 | 2.1 | 4.0 | 12.5.2 House contents insurance | 103.7 | 1.6 | 0.8 |
| 05.3.3 Repair of household appliances | 104.0 | 0.3 | 2.3 | 12.5.3 Health insurance | 117.5 | - | 6.8 |
| 05.4 Glassware, tableware and household utensils | 100.5 | - | 0.7 | 12.5.4 Transport insurance | 104.1 | -0.1 | 2.7 |
| 05.5 Tools and equipment for house and garden | 101.0 | -0.7 | -0.7 | 12.6 Financial services (nec) | 101.8 | -0.2 | -3.0 |
| 05.6 Goods and services for routine maintenance | 108.4 | 0.4 | 2.9 | 12.6.2 Other financial services (nec) | 101.8 | -0.2 | -3.0 |
| 05.6.1 Non-durable household goods | 105.1 | 0.5 | 0.6 | 12.7 Other services (nec) | 112.4 | 0.3 | 3.8 |
| 05.6.2 Domestic services and household services | 111.1 | 0.3 | 4.9 | | | | |
| 06.1 Medical products, appliances and equipment | 100.6 | -0.5 | 0.9 | | | | |
| 06.1.1 Pharmaceutical products | 101.1 | -0.9 | 0.4 | | | | |
| 06.1.2/3 Other medical and therapeutic equipment | 100.3 | - | 1.4 | | | | |

Key: - zero or negligible .. not available (nec) not elsewhere covered

Source: National Statistics

3 CPI: Detailed figures by divisions, groups and classes

| | Weights | Index (2005=100) | | | | | | Percentage change over 12 months | | | | | |
|--|---------|------------------|-------------|-------------|-------------|-------------|-------------|----------------------------------|-------------|-------------|-------------|-------------|-------------|
| | | 2007 | 2007 Jun | 2007 Jul | 2007 Aug | 2007 Sep | 2007 Oct | 2007 Nov | 2007 Jun | 2007 Jul | 2007 Aug | 2007 Sep | 2007 Oct |
| CPI (overall index) | 1 000 | 105.0 | 104.4 | 104.7 | 104.8 | 105.3 | 105.6 | 2.4 | 1.9 | 1.8 | 1.8 | 2.1 | 2.1 |
| 01 Food and non-alcoholic beverages | 103 | 107.3 | 105.5 | 106.1 | 107.4 | 109.1 | 110.1 | 4.8 | 2.8 | 3.0 | 3.7 | 4.7 | 4.8 |
| 02 Alcoholic beverages and tobacco | 43 | 107.1 | 106.9 | 107.0 | 107.1 | 106.8 | 106.4 | 3.4 | 3.4 | 3.1 | 3.2 | 2.7 | 2.9 |
| 03 Clothing and footwear | 62 | 93.6 | 89.8 | 91.1 | 92.5 | 92.5 | 92.9 | -3.2 | -2.6 | -3.5 | -4.0 | -4.3 | -4.4 |
| 04 Housing, water, electricity, gas and other fuels | 115 | 114.5 | 114.3 | 114.0 | 114.0 | 114.3 | 114.6 | 4.3 | 3.5 | 2.8 | 2.3 | 1.4 | 0.8 |
| 05 Furniture, household equipment and maintenance | 68 | 104.0 | 99.7 | 100.3 | 102.1 | 100.8 | 101.6 | 3.8 | 1.6 | 1.2 | 1.5 | 1.8 | 1.7 |
| 06 Health | 24 | 106.1 | 106.6 | 106.8 | 107.1 | 107.5 | 107.3 | 3.4 | 3.4 | 3.3 | 3.4 | 3.2 | 3.1 |
| 07 Transport | 152 | 106.8 | 108.0 | 108.6 | 105.7 | 106.6 | 107.0 | 3.2 | 2.4 | 2.6 | 2.7 | 5.1 | 5.8 |
| 08 Communication | 24 | 96.1 | 94.8 | 97.2 | 96.6 | 96.2 | 96.3 | -3.9 | -5.0 | -2.0 | -3.0 | -4.2 | -4.0 |
| 09 Recreation and culture | 153 | 97.6 | 97.0 | 97.5 | 97.6 | 97.7 | 97.6 | -1.1 | -1.4 | -0.9 | -1.0 | -0.9 | -1.1 |
| 10 Education | 18 | 117.8 | 117.8 | 117.8 | 122.9 | 133.2 | 133.2 | 14.0 | 14.0 | 14.0 | 13.9 | 13.2 | 13.2 |
| 11 Restaurants and hotels | 138 | 106.9 | 107.2 | 107.4 | 107.6 | 107.9 | 108.0 | 3.7 | 3.6 | 3.6 | 3.7 | 3.5 | 3.4 |
| 12 Miscellaneous goods and services | 100 | 105.8 | 106.1 | 105.6 | 105.8 | 106.4 | 106.6 | 1.8 | 2.0 | 1.1 | 1.0 | 1.3 | 1.6 |
| All goods | 547 | 103.3 | 101.6 | 101.9 | 102.5 | 102.8 | 103.5 | 1.4 | 0.5 | 0.1 | 0.4 | 1.0 | 1.1 |
| All services | 453 | 107.1 | 107.8 | 108.3 | 107.7 | 108.4 | 108.2 | 3.7 | 3.5 | 3.8 | 3.4 | 3.4 | 3.2 |
| 01.1 Food | 90 | 107.1 | 105.0 | 105.7 | 107.2 | 109.2 | 110.4 | 4.8 | 2.5 | 2.8 | 3.8 | 5.1 | 5.1 |
| 01.1.1 Bread and cereals | 15 | 106.6 | 104.6 | 104.7 | 106.1 | 107.2 | 109.6 | 5.2 | 3.0 | 2.7 | 3.6 | 4.6 | 6.1 |
| 01.1.2 Meat | 21 | 104.3 | 102.6 | 102.9 | 102.0 | 104.8 | 105.0 | 2.6 | -0.2 | -0.3 | -0.7 | 1.3 | 1.3 |
| 01.1.3 Fish | 4 | 117.9 | 115.8 | 116.7 | 117.2 | 119.6 | 119.7 | 11.1 | 6.3 | 5.2 | 5.2 | 5.2 | 6.0 |
| 01.1.4 Milk, cheese and eggs | 12 | 105.2 | 105.5 | 106.2 | 112.9 | 114.4 | 117.4 | 5.6 | 3.2 | 3.3 | 10.0 | 11.3 | 13.9 |
| 01.1.5 Oils and fats | 2 | 107.1 | 106.0 | 105.1 | 118.1 | 119.7 | 123.9 | -0.1 | -1.3 | -3.0 | 10.4 | 11.2 | 14.3 |
| 01.1.6 Fruit | 9 | 103.2 | 96.5 | 98.6 | 102.3 | 108.5 | 109.3 | 2.0 | -1.0 | -1.2 | -0.3 | 4.0 | 1.3 |
| 01.1.7 Vegetables including potatoes and tubers | 14 | 113.5 | 110.1 | 111.3 | 110.4 | 111.0 | 111.6 | 9.5 | 7.4 | 10.4 | 7.8 | 7.6 | 4.2 |
| 01.1.8 Sugar, jam, syrups, chocolate and confectionery | 11 | 107.3 | 106.8 | 107.7 | 107.9 | 108.1 | 109.2 | 2.7 | 2.8 | 2.6 | 3.0 | 3.4 | 4.4 |
| 01.1.9 Food products (nec) | 2 | 101.4 | 100.4 | 100.0 | 101.1 | 101.1 | 101.5 | 2.4 | 1.9 | 0.8 | 1.9 | 0.6 | 1.8 |
| 01.2 Non-alcoholic beverages | 13 | 109.0 | 109.1 | 109.0 | 108.9 | 108.7 | 108.2 | 4.8 | 5.1 | 4.5 | 2.9 | 2.3 | 2.4 |
| 01.2.1 Coffee, tea and cocoa | 3 | 108.9 | 109.5 | 108.9 | 110.0 | 108.5 | 109.4 | 4.5 | 5.5 | 0.5 | 0.1 | -1.4 | 0.9 |
| 01.2.2 Mineral waters, soft drinks and juices | 10 | 108.8 | 108.8 | 108.9 | 108.4 | 108.6 | 107.7 | 4.7 | 4.8 | 5.7 | 3.7 | 3.4 | 2.8 |
| 02.1 Alcoholic beverages | 18 | 102.2 | 101.7 | 102.1 | 102.1 | 101.3 | 100.5 | 1.3 | 1.4 | 0.9 | 1.1 | -0.1 | 0.4 |
| 02.1.1 Spirits | 5 | 101.8 | 100.5 | 102.1 | 103.2 | 101.3 | 99.5 | 2.5 | 1.4 | 2.2 | 2.9 | 0.2 | 1.2 |
| 02.1.2 Wine | 9 | 103.2 | 102.7 | 102.1 | 102.1 | 102.5 | 101.8 | 0.9 | 1.5 | -0.4 | 0.2 | 0.7 | 0.5 |
| 02.1.3 Beer | 4 | 100.3 | 100.7 | 101.5 | 100.4 | 98.1 | 98.3 | 0.8 | 1.0 | 2.2 | 1.0 | -2.2 | -0.8 |
| 02.2 Tobacco | 25 | 110.6 | 110.7 | 110.7 | 110.8 | 110.8 | 110.7 | 4.8 | 4.8 | 4.7 | 4.7 | 4.7 | 4.6 |
| 03.1 Clothing | 54 | 93.3 | 89.3 | 90.6 | 92.2 | 92.1 | 92.7 | -3.6 | -2.9 | -3.9 | -4.3 | -4.7 | -4.8 |
| 03.1.2 Garments | 50 | 92.6 | 88.4 | 89.9 | 91.5 | 91.4 | 92.0 | -4.0 | -3.2 | -4.2 | -4.6 | -5.0 | -5.1 |
| 03.1.3 Other clothing and clothing accessories | 3 | 99.7 | 98.1 | 97.9 | 99.2 | 99.3 | 100.2 | -0.4 | 0.9 | -1.3 | -1.8 | -2.1 | -2.2 |
| 03.1.4 Cleaning, repair and hire of clothing | 1 | 108.2 | 108.7 | 108.8 | 109.0 | 109.1 | 109.5 | 3.9 | 3.9 | 3.6 | 3.4 | 3.2 | 3.4 |
| 03.2 Footwear including repairs | 8 | 95.7 | 93.5 | 94.2 | 94.5 | 94.8 | 94.6 | -0.5 | -0.7 | -0.6 | -2.1 | -1.8 | -2.1 |
| 04.1 Actual rentals for housing | 49 | 106.3 | 107.0 | 107.0 | 107.0 | 107.5 | 107.6 | 3.2 | 3.1 | 2.9 | 3.0 | 3.3 | 3.3 |
| 04.3 Regular maintenance and repair of the dwelling | 17 | 106.0 | 106.5 | 106.6 | 106.9 | 107.2 | 107.5 | 4.6 | 5.0 | 4.5 | 4.3 | 4.7 | 4.6 |
| 04.3.1 Materials for maintenance and repair | 10 | 103.8 | 104.5 | 104.6 | 104.9 | 105.0 | 105.2 | 4.5 | 5.3 | 4.4 | 4.3 | 4.7 | 4.6 |
| 04.3.2 Services for maintenance and repair | 7 | 109.2 | 109.3 | 109.6 | 109.8 | 110.5 | 110.8 | 4.8 | 4.5 | 4.5 | 4.4 | 4.6 | 4.7 |
| 04.4 Water supply and misc. services for the dwelling | 10 | 115.3 | 115.3 | 115.3 | 115.3 | 115.3 | 115.3 | 6.5 | 6.5 | 6.5 | 6.5 | 6.5 | 6.5 |
| 04.4.1 Water supply | 5 | 115.7 | 115.7 | 115.7 | 115.7 | 115.7 | 115.7 | 6.2 | 6.2 | 6.2 | 6.2 | 6.2 | 6.2 |
| 04.4.3 Sewerage collection | 5 | 114.9 | 114.9 | 114.9 | 114.9 | 114.9 | 114.9 | 6.9 | 6.9 | 6.9 | 6.9 | 6.9 | 6.9 |
| 04.5 Electricity, gas and other fuels | 39 | 132.6 | 130.6 | 129.4 | 129.2 | 129.2 | 129.9 | 4.9 | 2.2 | 0.5 | -1.0 | -4.0 | -5.6 |
| 04.5.1 Electricity | 19 | 131.1 | 129.4 | 128.8 | 128.6 | 128.5 | 128.5 | 6.2 | 3.9 | 2.5 | 1.2 | -1.5 | -3.3 |
| 04.5.2 Gas | 18 | 139.5 | 136.5 | 134.6 | 133.6 | 133.1 | 133.2 | 5.2 | 1.9 | -0.7 | -3.7 | -8.5 | -11.3 |
| 04.5.3 Liquid fuels | 1 | 109.4 | 112.3 | 110.0 | 116.7 | 121.0 | 137.3 | -8.1 | -8.7 | -8.5 | 2.5 | 15.8 | 37.6 |
| 04.5.4 Solid fuels | 1 | 113.2 | 113.0 | 113.1 | 114.4 | 117.7 | 119.9 | 7.9 | 7.8 | 7.0 | 7.0 | 4.7 | 5.5 |
| 05.1 Furniture, furnishings and carpets | 28 | 108.3 | 99.3 | 100.3 | 103.7 | 101.4 | 102.5 | 6.3 | 0.9 | 1.0 | 2.1 | 2.1 | 1.8 |
| 05.1.1 Furniture and furnishings | 22 | 110.6 | 99.0 | 100.0 | 104.1 | 101.3 | 103.4 | 8.2 | 0.8 | 1.1 | 2.1 | 2.5 | 2.4 |
| 05.1.2 Carpets and other floor coverings | 6 | 100.0 | 100.1 | 101.4 | 102.2 | 101.7 | 99.1 | -1.0 | 0.6 | 0.1 | 2.0 | 0.7 | -0.8 |
| 05.2 Household textiles | 8 | 93.7 | 91.0 | 92.7 | 93.7 | 91.6 | 92.7 | -3.0 | -2.5 | -2.2 | -1.5 | -2.4 | -3.1 |
| 05.3 Household appliances, fitting and repairs | 8 | 95.9 | 96.1 | 95.4 | 97.4 | 96.8 | 98.7 | 1.6 | 0.7 | -1.4 | -2.2 | 1.8 | 3.8 |
| 05.3.1/2 Major appliances and small electric goods | 7 | 95.1 | 95.2 | 94.4 | 96.7 | 96.0 | 98.0 | 1.6 | 0.5 | -1.9 | -2.7 | 1.8 | 4.0 |
| 05.3.3 Repair of household appliances | 1 | 102.8 | 103.1 | 103.2 | 103.6 | 103.7 | 104.0 | 1.3 | 2.1 | 2.2 | 2.3 | 2.3 | 2.3 |
| 05.4 Glassware, tableware and household utensils | 7 | 101.0 | 99.2 | 99.3 | 99.9 | 100.5 | 100.5 | 1.6 | 3.1 | 1.7 | 1.1 | 1.7 | 0.7 |
| 05.5 Tools and equipment for house and garden | 6 | 102.4 | 102.2 | 102.2 | 101.9 | 101.7 | 101.0 | 1.9 | 1.9 | 1.5 | 0.4 | -0.2 | -0.7 |
| 05.6 Goods and services for routine maintenance | 11 | 108.5 | 108.2 | 108.0 | 108.1 | 108.0 | 108.4 | 4.0 | 3.9 | 3.4 | 3.5 | 2.6 | 2.9 |
| 05.6.1 Non-durable household goods | 5 | 106.6 | 105.9 | 105.3 | 105.2 | 104.6 | 105.1 | 2.3 | 2.5 | 1.5 | 1.6 | 0.6 | 0.6 |
| 05.6.2 Domestic services and household services | 6 | 110.0 | 110.1 | 110.3 | 110.6 | 110.9 | 111.1 | 5.4 | 5.1 | 5.0 | 5.1 | 4.4 | 4.9 |
| 06.1 Medical products, appliances and equipment | 10 | 100.7 | 100.2 | 100.5 | 100.8 | 101.0 | 100.6 | 1.6 | 1.3 | 1.0 | 1.0 | 1.0 | 0.9 |
| 06.1.1 Pharmaceutical products | 5 | 101.2 | 100.5 | 101.1 | 101.6 | 102.0 | 101.1 | 2.0 | 1.4 | 0.6 | 0.5 | 0.9 | 0.4 |
| 06.1.2/3 Other medical and therapeutic equipment | 5 | 100.5 | 100.2 | 100.2 | 100.3 | 100.4 | 100.3 | 1.4 | 1.4 | 1.5 | 1.5 | 1.2 | 1.4 |

Key: - zero or negligible .. not available (nec) not elsewhere covered

Source: National Statistics

3 CPI: Detailed figures by divisions, groups and classes

continued

| | Weights | Index (2005=100) | | | | | | Percentage change over 12 months | | | | | |
|---|---------|------------------|-------------|-------------|-------------|-------------|-------------|----------------------------------|-------------|-------------|-------------|-------------|-------------|
| | | 2007 | 2007 Jun | 2007 Jul | 2007 Aug | 2007 Sep | 2007 Oct | 2007 Nov | 2007 Jun | 2007 Jul | 2007 Aug | 2007 Sep | 2007 Oct |
| 06.2 Out-patient services | 5 | 108.6 | 108.7 | 109.0 | 109.4 | 109.6 | 109.5 | 3.9 | 3.7 | 3.5 | 3.8 | 3.7 | 3.3 |
| 06.2.1/3 Medical services & paramedical services | 3 | 105.8 | 105.9 | 106.3 | 106.6 | 107.0 | 106.7 | 2.9 | 2.5 | 2.6 | 2.7 | 2.7 | 2.2 |
| 06.2.2 Dental services | 2 | 111.9 | 112.0 | 112.2 | 112.6 | 112.5 | 112.8 | 5.4 | 5.2 | 4.8 | 5.2 | 5.0 | 4.8 |
| 06.3 Hospital services | 9 | 111.8 | 113.8 | 114.0 | 114.2 | 115.0 | 115.0 | 5.3 | 5.7 | 5.7 | 5.9 | 5.5 | 5.4 |
| 07.1 Purchase of vehicles | 49 | 99.8 | 99.4 | 99.1 | 98.9 | 98.9 | 99.0 | 0.1 | -0.1 | -0.3 | -0.5 | -0.5 | -0.4 |
| 07.1.1A New cars | 27 | 102.5 | 102.6 | 102.6 | 102.6 | 102.8 | 102.9 | 1.5 | 1.6 | 1.5 | 1.5 | 1.6 | 1.4 |
| 07.1.1B Second-hand cars | 19 | 95.2 | 94.0 | 93.3 | 92.9 | 92.6 | 92.9 | -2.2 | -3.0 | -3.4 | -3.6 | -3.7 | -3.0 |
| 07.1.2/3 Motorcycles and bicycles | 3 | 99.5 | 99.6 | 100.0 | 98.6 | 98.5 | 98.1 | 0.9 | 0.9 | 1.0 | -0.8 | -0.8 | -0.9 |
| 07.2 Operation of personal transport equipment | 72 | 110.5 | 110.4 | 110.3 | 109.9 | 111.6 | 113.9 | 2.9 | 1.7 | 1.2 | 3.9 | 8.1 | 10.3 |
| 07.2.1 Spare parts and accessories | 6 | 102.8 | 103.1 | 103.8 | 104.1 | 103.7 | 103.8 | 0.3 | -0.2 | 0.7 | 0.8 | 0.5 | 0.4 |
| 07.2.2 Fuels and lubricants | 36 | 110.6 | 110.2 | 109.6 | 108.8 | 111.8 | 116.1 | 0.9 | -1.3 | -2.3 | 3.3 | 12.1 | 17.0 |
| 07.2.3 Maintenance and repairs | 24 | 111.7 | 111.8 | 112.3 | 112.3 | 112.7 | 112.9 | 5.7 | 5.4 | 5.4 | 5.0 | 4.6 | 3.9 |
| 07.2.4 Other services | 6 | 109.5 | 109.8 | 110.0 | 110.1 | 110.7 | 111.0 | 4.9 | 5.1 | 5.2 | 5.2 | 5.7 | 5.7 |
| 07.3 Transport services | 31 | 109.9 | 116.7 | 120.3 | 107.4 | 108.2 | 104.2 | 8.5 | 7.6 | 9.9 | 4.9 | 7.0 | 5.1 |
| 07.3.1 Passenger transport by railway | 8 | 109.4 | 109.7 | 110.1 | 110.0 | 109.6 | 109.6 | 4.8 | 4.6 | 4.3 | 6.1 | 5.8 | 4.8 |
| 07.3.2 Passenger transport by road | 14 | 107.7 | 108.0 | 108.3 | 108.4 | 108.2 | 108.4 | 6.6 | 6.5 | 6.4 | 5.8 | 5.0 | 4.7 |
| 07.3.3 Passenger transport by air | 7 | 102.9 | 120.2 | 129.1 | 92.8 | 96.9 | 84.0 | 6.5 | 3.4 | 9.1 | 0.5 | 7.0 | 0.8 |
| 07.3.4 Passenger transport by sea and inland waterway | 2 | 123.7 | 149.7 | 162.6 | 121.5 | 118.9 | 111.6 | 24.8 | 17.8 | 25.9 | -2.0 | 10.3 | 13.3 |
| 08.1 Postal services | 1 | 121.5 | 121.5 | 121.5 | 121.5 | 121.5 | 121.5 | 12.6 | 12.6 | 12.6 | 6.3 | 6.3 | 6.3 |
| 08.2/3 Telephone and telefax equipment and services | 23 | 95.1 | 93.6 | 96.1 | 95.6 | 95.1 | 95.2 | -4.6 | -5.8 | -2.6 | -3.4 | -4.6 | -4.5 |
| 09.1 Audio-visual equipment and related products | 29 | 80.0 | 77.8 | 77.7 | 76.8 | 75.8 | 75.4 | -9.8 | -12.1 | -10.6 | -12.3 | -12.5 | -13.5 |
| 09.1.1 Reception and reproduction of sound and pictures | 6 | 74.9 | 73.6 | 74.5 | 73.5 | 72.6 | 72.5 | -12.3 | -13.3 | -11.1 | -13.3 | -13.7 | -14.2 |
| 09.1.2 Photographic, cinematographic and optical equipment | 4 | 57.1 | 55.0 | 54.9 | 53.7 | 54.2 | 50.9 | -22.1 | -26.7 | -24.7 | -28.2 | -27.4 | -30.4 |
| 09.1.3 Data processing equipment | 7 | 70.8 | 68.4 | 67.3 | 64.7 | 64.1 | 62.9 | -17.5 | -20.1 | -22.8 | -24.7 | -21.7 | -23.9 |
| 09.1.4 Recording media | 11 | 98.2 | 95.6 | 95.6 | 96.1 | 93.9 | 95.3 | 0.1 | -1.8 | 1.8 | 1.5 | -0.8 | -1.0 |
| 09.1.5 Repair of audio-visual equipment & related products | 1 | 107.2 | 107.9 | 108.3 | 108.5 | 108.8 | 108.8 | 3.2 | 3.4 | 3.4 | 3.7 | 3.8 | 3.8 |
| 09.2 Other major durables for recreation & culture | 9 | 100.8 | 100.7 | 100.7 | 100.8 | 101.1 | 101.7 | 0.5 | -0.1 | -0.1 | -0.1 | 0.1 | 0.9 |
| 09.2.1/2 Major durables for in/outdoor recreation | 9 | 100.8 | 100.7 | 100.7 | 100.8 | 101.1 | 101.7 | 0.5 | -0.1 | -0.1 | -0.1 | 0.1 | 0.9 |
| 09.3 Other recreational items, gardens and pets | 37 | 96.3 | 95.7 | 96.6 | 97.3 | 97.5 | 97.6 | -1.8 | -0.8 | -1.3 | 0.3 | 0.2 | 0.6 |
| 09.3.1 Games, toys and hobbies | 21 | 92.0 | 91.0 | 92.9 | 93.6 | 93.7 | 93.3 | -4.0 | -2.6 | -2.8 | -0.4 | -0.8 | -0.6 |
| 09.3.2 Equipment for sport and open-air recreation | 4 | 99.3 | 98.1 | 98.4 | 98.6 | 98.5 | 99.1 | 0.8 | 1.0 | -0.6 | -0.1 | 0.0 | 0.9 |
| 09.3.3 Gardens, plants and flowers | 5 | 99.5 | 99.7 | 99.7 | 100.1 | 100.3 | 100.4 | -0.3 | 0.8 | 1.1 | 1.2 | 2.0 | 0.7 |
| 09.3.4/5 Pets, related products and services | 7 | 106.0 | 106.5 | 105.1 | 106.4 | 106.7 | 108.5 | 2.5 | 2.5 | 1.7 | 2.1 | 2.2 | 3.9 |
| 09.4 Recreational and cultural services | 32 | 109.4 | 108.5 | 109.4 | 110.0 | 110.7 | 110.7 | 4.5 | 3.5 | 4.8 | 3.9 | 3.8 | 4.0 |
| 09.4.1 Recreational and sporting services | 10 | 108.7 | 109.0 | 109.2 | 112.6 | 113.3 | 113.3 | 3.9 | 4.3 | 4.2 | 5.0 | 5.7 | 5.6 |
| 09.4.2 Cultural services | 22 | 109.8 | 108.4 | 109.5 | 108.8 | 109.5 | 109.6 | 4.7 | 3.1 | 5.0 | 3.3 | 3.0 | 3.2 |
| 09.5 Books, newspapers and stationery | 17 | 104.7 | 105.8 | 106.1 | 106.8 | 107.0 | 106.4 | 1.3 | 1.8 | 2.5 | 2.1 | 2.8 | 1.7 |
| 09.5.1 Books | 5 | 103.5 | 106.6 | 108.3 | 109.7 | 109.1 | 106.2 | 1.2 | 2.7 | 5.1 | 5.7 | 6.3 | 2.3 |
| 09.5.2 Newspapers and periodicals | 7 | 109.5 | 110.0 | 110.0 | 110.6 | 111.5 | 111.9 | 3.4 | 3.5 | 3.2 | 2.0 | 3.1 | 3.0 |
| 09.5.3/4 Misc. printed matter, stationery, drawing materials | 5 | 98.9 | 98.7 | 98.1 | 98.0 | 98.3 | 98.7 | -2.0 | -2.1 | -1.9 | -2.1 | -1.8 | -1.5 |
| 09.6 Package holidays | 29 | 99.5 | 100.1 | 100.4 | 100.4 | 100.7 | 100.8 | 0.4 | 0.8 | 0.9 | 1.3 | 1.4 | 1.1 |
| 10.0 Education | 18 | 117.8 | 117.8 | 117.8 | 122.9 | 133.2 | 133.2 | 14.0 | 14.0 | 14.0 | 13.9 | 13.2 | 13.2 |
| 11.1 Catering services | 119 | 106.7 | 107.0 | 107.2 | 107.4 | 107.7 | 107.9 | 3.6 | 3.7 | 3.7 | 3.7 | 3.6 | 3.4 |
| 11.1.1 Restaurants & cafes | 106 | 106.6 | 106.9 | 107.0 | 107.2 | 107.5 | 107.7 | 3.5 | 3.5 | 3.4 | 3.5 | 3.4 | 3.3 |
| 11.1.2 Canteens | 13 | 107.7 | 107.8 | 108.3 | 108.8 | 109.0 | 109.2 | 5.1 | 5.1 | 5.5 | 5.7 | 5.4 | 4.1 |
| 11.2 Accommodation services | 19 | 108.3 | 108.5 | 108.5 | 109.0 | 109.4 | 109.1 | 3.8 | 3.2 | 3.2 | 3.3 | 3.0 | 3.4 |
| 12.1 Personal care | 31 | 104.6 | 104.6 | 104.1 | 103.9 | 105.4 | 105.5 | 2.2 | 2.9 | 1.5 | 1.2 | 2.5 | 2.8 |
| 12.1.1 Hairdressing and personal grooming establishments | 8 | 107.3 | 107.7 | 107.7 | 108.1 | 108.4 | 108.9 | 3.6 | 3.7 | 3.5 | 3.8 | 3.7 | 3.9 |
| 12.1.2/3 Appliances and products for personal care | 23 | 103.6 | 103.5 | 102.8 | 102.5 | 104.3 | 104.3 | 1.7 | 2.7 | 0.9 | 0.3 | 2.1 | 2.4 |
| 12.3 Personal effects (nec) | 10 | 105.5 | 104.4 | 105.4 | 106.2 | 106.0 | 106.7 | 2.6 | 2.6 | 1.5 | 1.7 | 1.6 | 2.3 |
| 12.3.1 Jewellery, clocks and watches | 7 | 107.7 | 107.1 | 108.1 | 108.8 | 108.9 | 109.6 | 3.3 | 2.4 | 1.9 | 2.0 | 2.0 | 2.6 |
| 12.3.2 Other personal effects | 3 | 101.9 | 99.8 | 100.8 | 102.0 | 100.9 | 101.8 | 1.3 | 2.8 | 0.7 | 1.2 | 0.5 | 1.6 |
| 12.4 Social protection | 12 | 111.1 | 111.8 | 112.1 | 112.6 | 113.0 | 113.5 | 5.5 | 5.6 | 5.7 | 5.4 | 5.4 | 5.4 |
| 12.5 Insurance | 8 | 104.8 | 105.7 | 105.9 | 106.1 | 106.5 | 106.8 | 2.9 | 2.3 | 3.2 | 3.6 | 3.9 | 3.2 |
| 12.5.2 House contents insurance | 2 | 102.4 | 102.3 | 102.8 | 103.0 | 102.1 | 103.7 | 0.3 | 0.0 | 0.2 | 0.5 | -1.2 | 0.8 |
| 12.5.3 Health insurance | 2 | 113.3 | 116.3 | 116.3 | 116.3 | 117.5 | 117.5 | 6.7 | 6.9 | 6.9 | 6.9 | 6.8 | 6.8 |
| 12.5.4 Transport insurance | 4 | 102.6 | 103.1 | 103.3 | 103.5 | 104.2 | 104.1 | 2.5 | 1.3 | 2.9 | 3.5 | 5.0 | 2.7 |
| 12.6 Financial services (nec) | 28 | 102.9 | 103.7 | 101.9 | 102.1 | 102.0 | 101.8 | -1.6 | -1.4 | -3.0 | -3.0 | -3.5 | -3.0 |
| 12.6.2 Other financial services (nec) | 28 | 102.9 | 103.7 | 101.9 | 102.1 | 102.0 | 101.8 | -1.6 | -1.4 | -3.0 | -3.0 | -3.5 | -3.0 |
| 12.7 Other services (nec) | 11 | 109.3 | 109.6 | 110.1 | 110.4 | 112.0 | 112.4 | 3.3 | 2.9 | 3.1 | 3.0 | 3.7 | 3.8 |

Key: - zero or negligible .. not available (nec) not elsewhere covered

Source: National Statistics

4 CPI: Detailed figures by division¹

| | Food and non-alcoholic beverages | Alcoholic beverages and tobacco | Clothing and footwear | Housing, water, electricity, gas & other fuels | Furniture, household equipment & routine maintenance | Health ² | Transport | Communication | Recreation and culture | Education ² | Restaurants and hotels | Miscellaneous goods and services ² | CPI (overall index) |
|--|----------------------------------|---------------------------------|-----------------------|--|--|---------------------|-------------|---------------|------------------------|------------------------|------------------------|---|---------------------|
| COICOP Division | 01 | 02 | 03 | 04 | 05 | 06 | 07 | 08 | 09 | 10 | 11 | 12 | |
| Weights | | | | | | | | | | | | | |
| 2007 | CHZR 103 | CHZS 43 | CHZT 62 | CHZU 115 | CHZV 68 | CHZW 24 | CHZX 152 | CHZY 24 | CHZZ 153 | CJUU 18 | CJUV 138 | CJUW 100 | CHZQ 1 000 |
| Monthly indices (2005=100) | | | | | | | | | | | | | |
| | D7BU | D7BV | D7BW | D7BX | D7BY | D7BZ | D7C2 | D7C3 | D7C4 | D7C5 | D7C6 | D7C7 | D7BT |
| 2005 Nov | 100.1 | 100.7 | 100.5 | 102.3 | 100.5 | 101.0 | 100.4 | 99.6 | 99.5 | 103.3 | 101.2 | 101.4 | 100.7 |
| Dec | 100.7 | 100.2 | 100.1 | 102.8 | 102.8 | 100.3 | 100.7 | 99.4 | 99.5 | 103.3 | 101.4 | 101.5 | 101.0 |
| 2006 Jan | 100.4 | 101.0 | 96.0 | 103.3 | 97.8 | 101.0 | 101.2 | 100.9 | 98.6 | 103.3 | 101.5 | 102.0 | 100.5 |
| Feb | 101.0 | 100.8 | 95.9 | 103.6 | 98.5 | 101.1 | 101.4 | 101.0 | 99.4 | 103.3 | 101.9 | 102.1 | 100.9 |
| Mar | 100.4 | 101.1 | 96.5 | 104.5 | 100.3 | 101.0 | 101.4 | 100.9 | 98.9 | 103.3 | 102.2 | 102.4 | 101.1 |
| Apr | 100.2 | 102.3 | 96.5 | 107.3 | 98.5 | 102.2 | 102.9 | 100.9 | 99.1 | 103.3 | 102.5 | 103.3 | 101.7 |
| May | 101.7 | 102.5 | 97.2 | 108.8 | 99.3 | 102.6 | 103.5 | 99.7 | 98.9 | 103.3 | 103.0 | 103.4 | 102.2 |
| Jun | 102.4 | 103.6 | 96.7 | 109.7 | 100.2 | 102.5 | 103.5 | 100.0 | 98.7 | 103.3 | 103.1 | 103.9 | 102.5 |
| Jul | 102.6 | 103.4 | 92.2 | 110.5 | 98.1 | 103.0 | 105.5 | 99.8 | 98.4 | 103.3 | 103.5 | 104.0 | 102.5 |
| Aug | 103.0 | 103.8 | 94.4 | 110.9 | 99.1 | 103.4 | 105.8 | 99.2 | 98.4 | 103.3 | 103.6 | 104.5 | 102.9 |
| Sep | 103.6 | 103.7 | 96.4 | 111.5 | 100.6 | 103.6 | 102.9 | 99.6 | 98.6 | 107.9 | 103.8 | 104.7 | 103.0 |
| Oct | 104.2 | 103.9 | 96.6 | 112.7 | 99.0 | 104.2 | 101.5 | 100.4 | 98.6 | 117.8 | 104.2 | 105.0 | 103.2 |
| Nov | 105.1 | 103.4 | 97.2 | 113.7 | 100.0 | 104.1 | 101.1 | 100.3 | 98.7 | 117.8 | 104.5 | 105.0 | 103.4 |
| Dec | 105.4 | 103.0 | 96.0 | 114.5 | 103.3 | 104.2 | 102.8 | 99.9 | 99.2 | 117.8 | 104.7 | 104.9 | 104.0 |
| 2007 Jan | 104.4 | 104.5 | 92.0 | 114.9 | 98.3 | 104.8 | 102.1 | 99.0 | 98.3 | 117.8 | 104.9 | 105.1 | 103.2 |
| Feb | 105.4 | 105.1 | 91.9 | 115.1 | 99.6 | 104.9 | 102.8 | 98.1 | 98.4 | 117.8 | 105.2 | 105.8 | 103.7 |
| Mar | 106.0 | 105.6 | 92.8 | 115.0 | 102.9 | 104.8 | 103.1 | 98.1 | 98.2 | 117.8 | 105.7 | 106.2 | 104.2 |
| Apr | 106.2 | 107.0 | 93.7 | 115.7 | 100.7 | 105.5 | 104.5 | 97.2 | 98.3 | 117.8 | 106.3 | 105.8 | 104.5 |
| May | 106.7 | 106.8 | 93.7 | 115.0 | 101.8 | 105.8 | 106.1 | 96.6 | 98.0 | 117.8 | 106.6 | 105.7 | 104.8 |
| Jun | 107.3 | 107.1 | 93.6 | 114.5 | 104.0 | 106.1 | 106.8 | 96.1 | 97.6 | 117.8 | 106.9 | 105.8 | 105.0 |
| Jul | 105.5 | 106.9 | 89.8 | 114.3 | 99.7 | 106.6 | 108.0 | 94.8 | 97.0 | 117.8 | 107.2 | 106.1 | 104.4 |
| Aug | 106.1 | 107.0 | 91.1 | 114.0 | 100.3 | 106.8 | 108.6 | 97.2 | 97.5 | 117.8 | 107.4 | 105.6 | 104.7 |
| Sep | 107.4 | 107.1 | 92.5 | 114.0 | 102.1 | 107.1 | 105.7 | 96.6 | 97.6 | 122.9 | 107.6 | 105.8 | 104.8 |
| Oct | 109.1 | 106.8 | 92.5 | 114.3 | 100.8 | 107.5 | 106.6 | 96.2 | 97.7 | 133.2 | 107.9 | 106.4 | 105.3 |
| Nov | 110.1 | 106.4 | 92.9 | 114.6 | 101.6 | 107.3 | 107.0 | 96.3 | 97.6 | 133.2 | 108.0 | 106.6 | 105.6 |
| Percentage change on a year earlier | | | | | | | | | | | | | |
| | D7G8 | D7G9 | D7GA | D7GB | D7GC | D7GD | D7GE | D7GF | D7GG | D7GH | D7GI | D7GJ | D7G7 |
| 2005 Nov | 1.7 | 2.5 | -5.1 | 6.5 | 0.1 | 2.9 | 4.1 | -1.2 | -1.5 | 4.7 | 3.5 | 4.3 | 2.1 |
| Dec | 1.7 | 2.5 | -4.2 | 6.4 | - | 2.4 | 2.8 | -1.0 | -1.7 | 4.7 | 3.5 | 4.2 | 1.9 |
| 2006 Jan | 1.2 | 2.3 | -4.7 | 6.3 | -0.8 | 2.3 | 5.1 | 0.5 | -2.1 | 4.7 | 3.4 | 3.5 | 1.9 |
| Feb | 1.1 | 1.6 | -4.7 | 6.4 | -0.5 | 2.3 | 4.2 | 0.4 | -0.8 | 4.7 | 3.5 | 3.6 | 2.0 |
| Mar | -0.4 | 2.5 | -4.7 | 7.0 | -0.4 | 2.1 | 3.5 | 0.5 | -1.4 | 4.7 | 3.6 | 3.7 | 1.8 |
| Apr | 0.3 | 2.5 | -4.4 | 7.7 | -0.8 | 2.7 | 4.4 | 0.3 | -1.6 | 4.7 | 3.0 | 4.0 | 2.0 |
| May | 1.1 | 2.2 | -3.7 | 9.0 | -0.8 | 2.9 | 4.0 | -0.4 | -1.6 | 4.7 | 3.2 | 4.1 | 2.2 |
| Jun | 1.8 | 3.3 | -3.9 | 9.8 | -0.1 | 2.7 | 3.9 | -0.3 | -1.6 | 4.7 | 3.2 | 4.4 | 2.5 |
| Jul | 3.2 | 2.8 | -4.5 | 10.0 | -1.3 | 2.4 | 3.3 | 0.3 | -1.4 | 4.7 | 3.2 | 3.6 | 2.4 |
| Aug | 3.4 | 3.3 | -3.9 | 10.5 | -0.5 | 2.6 | 2.4 | -0.7 | -0.9 | 4.7 | 3.0 | 3.9 | 2.5 |
| Sep | 4.0 | 3.4 | -3.5 | 10.7 | 0.3 | 2.8 | 0.6 | -0.2 | -1.0 | 7.1 | 2.9 | 3.9 | 2.4 |
| Oct | 4.7 | 3.2 | -3.3 | 10.8 | -0.4 | 3.1 | -0.5 | 0.9 | -1.1 | 14.0 | 3.0 | 3.8 | 2.4 |
| Nov | 5.0 | 2.7 | -3.2 | 11.1 | -0.5 | 3.1 | 0.8 | 0.7 | -0.7 | 14.0 | 3.2 | 3.5 | 2.7 |
| Dec | 4.6 | 2.7 | -4.1 | 11.4 | 0.6 | 3.9 | 2.1 | 0.5 | -0.3 | 14.0 | 3.2 | 3.3 | 3.0 |
| 2007 Jan | 3.9 | 3.5 | -4.1 | 11.2 | 0.5 | 3.8 | 0.9 | -1.8 | -0.3 | 14.0 | 3.3 | 3.1 | 2.7 |
| Feb | 4.4 | 4.2 | -4.2 | 11.1 | 1.2 | 3.7 | 1.4 | -2.8 | -1.0 | 14.0 | 3.3 | 3.6 | 2.8 |
| Mar | 5.6 | 4.4 | -3.9 | 10.1 | 2.7 | 3.7 | 1.6 | -2.8 | -0.7 | 14.0 | 3.4 | 3.7 | 3.1 |
| Apr | 6.0 | 4.5 | -2.8 | 7.9 | 2.2 | 3.2 | 1.5 | -3.7 | -0.8 | 14.0 | 3.8 | 2.4 | 2.8 |
| May | 5.0 | 4.2 | -3.6 | 5.7 | 2.5 | 3.1 | 2.5 | -3.2 | -0.8 | 14.0 | 3.5 | 2.2 | 2.5 |
| Jun | 4.8 | 3.4 | -3.2 | 4.3 | 3.8 | 3.4 | 3.2 | -3.9 | -1.1 | 14.0 | 3.7 | 1.8 | 2.4 |
| Jul | 2.8 | 3.4 | -2.6 | 3.5 | 1.6 | 3.4 | 2.4 | -5.0 | -1.4 | 14.0 | 3.6 | 2.0 | 1.9 |
| Aug | 3.0 | 3.1 | -3.5 | 2.8 | 1.2 | 3.3 | 2.6 | -2.0 | -0.9 | 14.0 | 3.6 | 1.1 | 1.8 |
| Sep | 3.7 | 3.2 | -4.0 | 2.3 | 1.5 | 3.4 | 2.7 | -3.0 | -1.0 | 13.9 | 3.7 | 1.0 | 1.8 |
| Oct | 4.7 | 2.7 | -4.3 | 1.4 | 1.8 | 3.2 | 5.1 | -4.2 | -0.9 | 13.2 | 3.5 | 1.3 | 2.1 |
| Nov | 4.8 | 2.9 | -4.4 | 0.8 | 1.7 | 3.1 | 5.8 | -4.0 | -1.1 | 13.2 | 3.4 | 1.6 | 2.1 |

Key: - zero or negligible

¹ Inflation rates prior to 1997 and index levels prior to 1996 are estimated. Further details are given in *Economic Trends No. 541 December 1998*. These details are also available on the National Statistics website: www.statistics.gov.uk/cpi/article.asp?ID=31

² The coverage of these categories was extended in January 2000; further extensions to coverage came into effect in January 2001 for health and miscellaneous goods and services; the coverage of miscellaneous goods and services was further extended with effect from January 2002 (details are given in a series of Economic Trends articles available on the National Statistics website: www.statistics.gov.uk/cpi)

Source: National Statistics

5 CPI: Detailed goods and services breakdown¹

| | Weights | Index (2005=100) | | | | | | Percentage change over 12 months | | | | | | Percentage change over 1 month |
|--|---------|------------------|-------|-------|-------|-------|-------|----------------------------------|-------|-------|-------|-------|-------|--------------------------------|
| | | 2007 | 2007 | 2007 | 2007 | 2007 | 2007 | 2007 | 2007 | 2007 | 2007 | 2007 | 2007 | 2007 |
| | | Jun | Jul | Aug | Sep | Oct | Nov | Jun | Jul | Aug | Sep | Oct | Nov | Nov |
| CPI (overall index) | 1 000 | 105.0 | 104.4 | 104.7 | 104.8 | 105.3 | 105.6 | 2.4 | 1.9 | 1.8 | 1.8 | 2.1 | 2.1 | 0.3 |
| All goods | 547 | 103.3 | 101.6 | 101.9 | 102.5 | 102.8 | 103.5 | 1.4 | 0.5 | 0.1 | 0.4 | 1.0 | 1.1 | 0.6 |
| Food, alcoholic beverages & tobacco | 146 | 107.2 | 105.9 | 106.4 | 107.3 | 108.4 | 109.0 | 4.4 | 3.0 | 3.0 | 3.6 | 4.1 | 4.2 | 0.6 |
| Processed food & non-alcoholic beverages | 55 | 106.8 | 106.2 | 106.5 | 108.8 | 109.5 | 111.1 | 4.4 | 3.3 | 3.0 | 4.9 | 5.4 | 6.7 | 1.4 |
| Non-processed food | 48 | 107.9 | 104.7 | 105.7 | 105.8 | 108.6 | 109.0 | 5.2 | 2.3 | 3.0 | 2.3 | 4.0 | 2.6 | 0.4 |
| Seasonal food | 27 | 110.8 | 106.4 | 107.9 | 108.8 | 111.6 | 112.2 | 7.2 | 4.3 | 5.7 | 4.7 | 6.1 | 3.6 | 0.5 |
| Meat | 21 | 104.3 | 102.6 | 102.9 | 102.0 | 104.8 | 105.0 | 2.6 | -0.2 | -0.3 | -0.7 | 1.3 | 1.3 | 0.1 |
| Alcoholic beverages & tobacco | 43 | 107.1 | 106.9 | 107.0 | 107.1 | 106.8 | 106.4 | 3.4 | 3.4 | 3.1 | 3.2 | 2.7 | 2.9 | -0.4 |
| Industrial goods | 401 | 101.9 | 100.1 | 100.3 | 100.8 | 100.9 | 101.5 | 0.3 | -0.4 | -1.0 | -0.7 | -0.2 | 0.0 | 0.6 |
| Energy | 75 | 121.5 | 120.4 | 119.5 | 119.0 | 120.7 | 123.5 | 3.3 | 0.9 | -0.5 | 1.5 | 3.9 | 5.3 | 2.3 |
| Electricity, gas & miscellaneous energy | 38 | 134.4 | 132.2 | 131.0 | 130.6 | 130.4 | 130.5 | 5.9 | 3.2 | 1.3 | -0.8 | -4.6 | -6.8 | 0.1 |
| Liquid fuels, vehicle fuels & lubricants | 37 | 110.5 | 110.3 | 109.6 | 109.0 | 112.1 | 116.7 | 0.5 | -1.6 | -2.6 | 3.2 | 12.2 | 17.6 | 4.2 |
| Non-energy industrial goods | 326 | 98.3 | 96.3 | 96.8 | 97.4 | 97.2 | 97.5 | -0.4 | -0.8 | -1.1 | -1.2 | -1.1 | -1.2 | 0.3 |
| Clothing & footwear goods | 61 | 93.3 | 89.5 | 90.8 | 92.2 | 92.2 | 92.7 | -3.3 | -2.7 | -3.6 | -4.2 | -4.4 | -4.5 | 0.5 |
| Housing goods | 76 | 104.2 | 100.4 | 100.9 | 102.6 | 101.4 | 102.2 | 3.9 | 2.1 | 1.6 | 1.9 | 2.3 | 2.1 | 0.7 |
| Household goods | 61 | 103.4 | 98.7 | 99.2 | 101.2 | 99.8 | 100.7 | 3.6 | 1.2 | 0.8 | 1.1 | 1.5 | 1.3 | 0.9 |
| Water supply; materials for maintenance & repair | 15 | 107.6 | 108.0 | 108.1 | 108.3 | 108.3 | 108.5 | 5.1 | 5.7 | 5.0 | 4.9 | 5.2 | 5.2 | 0.2 |
| Medical products, appliances & equipment | 10 | 100.7 | 100.2 | 100.5 | 100.8 | 101.0 | 100.6 | 1.6 | 1.3 | 1.0 | 1.0 | 1.0 | 0.9 | -0.5 |
| Vehicles, spare parts & accessories | 55 | 100.1 | 99.8 | 99.6 | 99.4 | 99.4 | 99.5 | 0.2 | -0.1 | -0.2 | -0.4 | -0.4 | -0.3 | 0.1 |
| Recreational goods | 91 | 93.0 | 92.2 | 92.6 | 92.6 | 92.4 | 92.3 | -3.6 | -3.9 | -3.5 | -3.5 | -3.4 | -3.7 | -0.2 |
| Audio-visual goods | 28 | 79.0 | 76.8 | 76.7 | 75.7 | 74.7 | 74.3 | -10.2 | -12.7 | -11.1 | -12.9 | -13.1 | -14.1 | -0.6 |
| Other recreational goods | 63 | 99.1 | 99.0 | 99.7 | 100.3 | 100.5 | 100.5 | -0.6 | 0.0 | -0.1 | 0.8 | 0.9 | 0.9 | - |
| Miscellaneous goods | 33 | 104.3 | 103.9 | 103.7 | 103.7 | 104.9 | 105.2 | 2.0 | 2.7 | 1.1 | 0.8 | 2.0 | 2.4 | 0.2 |
| All services | 453 | 107.1 | 107.8 | 108.3 | 107.7 | 108.4 | 108.2 | 3.7 | 3.5 | 3.8 | 3.4 | 3.4 | 3.2 | -0.2 |
| Housing services | 70 | 107.4 | 107.9 | 108.0 | 108.0 | 108.4 | 108.6 | 3.7 | 3.6 | 3.5 | 3.5 | 3.7 | 3.7 | 0.2 |
| Actual rentals for housing | 49 | 106.3 | 107.0 | 107.0 | 107.0 | 107.5 | 107.6 | 3.2 | 3.1 | 2.9 | 3.0 | 3.3 | 3.3 | 0.1 |
| Primary housing services | 14 | 110.3 | 110.4 | 110.6 | 110.7 | 111.0 | 111.3 | 5.0 | 4.8 | 4.8 | 4.8 | 4.6 | 5.0 | 0.4 |
| Other housing services | 7 | 109.0 | 109.0 | 109.3 | 109.6 | 109.8 | 110.1 | 4.8 | 4.7 | 4.6 | 4.7 | 4.1 | 4.5 | 0.3 |
| Travel & transport services | 65 | 110.1 | 113.5 | 115.5 | 109.2 | 109.7 | 107.9 | 6.8 | 6.3 | 7.6 | 4.9 | 5.9 | 4.6 | -1.7 |
| Services for personal transport equipment | 30 | 111.3 | 111.4 | 111.9 | 111.9 | 112.3 | 112.5 | 5.5 | 5.3 | 5.4 | 5.0 | 4.8 | 4.3 | 0.2 |
| Transport services | 31 | 109.9 | 116.7 | 120.3 | 107.4 | 108.2 | 104.2 | 8.5 | 7.6 | 9.9 | 4.9 | 7.0 | 5.1 | -3.7 |
| Transport insurance | 4 | 102.6 | 103.1 | 103.3 | 103.5 | 104.2 | 104.1 | 2.5 | 1.3 | 2.9 | 3.5 | 5.0 | 2.7 | -0.1 |
| Communication | 24 | 96.1 | 94.8 | 97.2 | 96.6 | 96.2 | 96.3 | -3.9 | -5.0 | -2.0 | -3.0 | -4.2 | -4.0 | - |
| Recreational & personal services | 209 | 106.3 | 106.4 | 106.7 | 107.0 | 107.4 | 107.5 | 3.3 | 3.2 | 3.4 | 3.4 | 3.3 | 3.2 | 0.1 |
| Package holidays & accommodation | 48 | 102.9 | 103.4 | 103.5 | 103.8 | 104.1 | 104.0 | 1.8 | 1.8 | 1.8 | 2.1 | 2.0 | 2.0 | - |
| Other recreational & personal services | 161 | 107.3 | 107.3 | 107.7 | 107.9 | 108.3 | 108.5 | 3.8 | 3.6 | 3.8 | 3.8 | 3.7 | 3.5 | 0.2 |
| Catering services | 119 | 106.7 | 107.0 | 107.2 | 107.4 | 107.7 | 107.9 | 3.6 | 3.7 | 3.7 | 3.7 | 3.6 | 3.4 | 0.2 |
| Non-catering recreational & personal services | 42 | 109.0 | 108.4 | 109.1 | 109.5 | 110.2 | 110.3 | 4.2 | 3.5 | 4.4 | 3.8 | 3.8 | 3.9 | 0.1 |
| Miscellaneous & other services | 85 | 109.4 | 110.1 | 109.6 | 110.9 | 113.3 | 113.3 | 4.4 | 4.4 | 3.9 | 4.0 | 3.8 | 4.0 | - |
| Miscellaneous services | 53 | 106.5 | 107.3 | 106.5 | 106.7 | 107.2 | 107.2 | 1.3 | 1.4 | 0.6 | 0.5 | 0.4 | 0.7 | 0.1 |
| Medical services | 14 | 110.8 | 112.2 | 112.3 | 112.6 | 113.2 | 113.2 | 4.9 | 5.0 | 5.0 | 5.1 | 4.9 | 4.7 | - |
| Education | 18 | 117.8 | 117.8 | 117.8 | 122.9 | 133.2 | 133.2 | 14.0 | 14.0 | 14.0 | 13.9 | 13.2 | 13.2 | - |
| Special aggregates | | | | | | | | | | | | | | |
| Durables | 117 | 97.6 | 94.9 | 95.0 | 95.6 | 94.9 | 95.2 | -0.2 | -2.2 | -2.3 | -2.6 | -2.1 | -2.2 | 0.3 |
| Semi-durables | 132 | 95.5 | 93.1 | 94.3 | 95.3 | 94.9 | 95.2 | -2.1 | -1.5 | -1.8 | -1.6 | -2.1 | -2.3 | 0.3 |
| Non-durables | 77 | 104.3 | 104.4 | 104.0 | 104.1 | 104.9 | 105.1 | 2.2 | 2.7 | 1.8 | 1.6 | 2.3 | 2.4 | 0.2 |
| Seasonal food | 27 | 110.8 | 106.4 | 107.9 | 108.8 | 111.6 | 112.2 | 7.2 | 4.3 | 5.7 | 4.7 | 6.1 | 3.6 | 0.5 |
| Non-seasonal food | 63 | 105.5 | 104.4 | 104.8 | 106.6 | 108.1 | 109.7 | 3.7 | 1.8 | 1.6 | 3.4 | 4.6 | 5.8 | 1.4 |
| Energy, food, alcoholic beverages & tobacco | 221 | 111.5 | 110.2 | 110.3 | 110.8 | 112.0 | 113.3 | 4.0 | 2.3 | 1.8 | 2.8 | 4.0 | 4.6 | 1.1 |
| Energy & unprocessed food | 123 | 115.6 | 113.7 | 113.5 | 113.3 | 115.4 | 117.2 | 4.0 | 1.5 | 0.8 | 1.8 | 3.9 | 4.2 | 1.5 |
| Energy & seasonal food | 102 | 118.3 | 116.3 | 116.1 | 116.0 | 118.0 | 120.1 | 4.3 | 1.8 | 1.1 | 2.3 | 4.5 | 4.8 | 1.8 |
| Tobacco | 25 | 110.6 | 110.7 | 110.7 | 110.8 | 110.8 | 110.7 | 4.8 | 4.8 | 4.7 | 4.7 | 4.7 | 4.6 | -0.1 |
| Housing, water, electricity, gas & other fuels | 115 | 114.5 | 114.3 | 114.0 | 114.0 | 114.3 | 114.6 | 4.3 | 3.5 | 2.8 | 2.3 | 1.4 | 0.8 | 0.3 |
| Education, health & social protection ² | 54 | 111.0 | 111.3 | 111.5 | 113.3 | 116.9 | 116.9 | 7.3 | 7.3 | 7.2 | 7.2 | 7.0 | 7.0 | - |
| <i>All items excluding</i> | | | | | | | | | | | | | | |
| Energy | 925 | 103.9 | 103.3 | 103.8 | 103.9 | 104.3 | 104.4 | 2.3 | 1.9 | 2.0 | 1.8 | 2.0 | 1.8 | 0.1 |
| Energy, food, alcoholic beverages & tobacco | 779 | 103.3 | 102.8 | 103.3 | 103.2 | 103.5 | 103.6 | 2.0 | 1.7 | 1.8 | 1.5 | 1.5 | 1.4 | - |
| Energy & unprocessed food | 877 | 103.7 | 103.2 | 103.7 | 103.8 | 104.1 | 104.2 | 2.2 | 1.9 | 1.9 | 1.8 | 1.8 | 1.8 | 0.1 |
| Seasonal food | 973 | 104.9 | 104.3 | 104.7 | 104.7 | 105.2 | 105.4 | 2.3 | 1.8 | 1.7 | 1.7 | 2.0 | 2.1 | 0.3 |
| Energy & seasonal food | 898 | 103.7 | 103.2 | 103.6 | 103.7 | 104.1 | 104.2 | 2.2 | 1.9 | 1.8 | 1.7 | 1.8 | 1.8 | 0.1 |
| Tobacco | 975 | 104.9 | 104.2 | 104.6 | 104.7 | 105.2 | 105.5 | 2.4 | 1.8 | 1.7 | 1.7 | 2.0 | 2.0 | 0.3 |
| Alcoholic beverages & tobacco | 957 | 104.9 | 104.3 | 104.6 | 104.7 | 105.3 | 105.6 | 2.4 | 1.8 | 1.7 | 1.7 | 2.1 | 2.1 | 0.3 |
| Liquid fuels, vehicle fuels & lubricants | 963 | 104.8 | 104.1 | 104.5 | 104.6 | 105.1 | 105.2 | 2.5 | 2.0 | 1.9 | 1.7 | 1.7 | 1.5 | 0.1 |
| Housing, water, electricity, gas & other fuels | 885 | 103.9 | 103.2 | 103.6 | 103.7 | 104.3 | 104.5 | 2.2 | 1.6 | 1.6 | 1.7 | 2.2 | 2.3 | 0.3 |
| Education, health & social protection | 946 | 104.7 | 104.0 | 104.4 | 104.4 | 104.7 | 105.0 | 2.1 | 1.6 | 1.5 | 1.5 | 1.8 | 1.8 | 0.3 |

Key: - zero or negligible

² The coverage of this special aggregate has changed extensively since January 2000, when Social protection was first included and extensions to the Education and Health divisions also took effect. Health was further extended with effect from January 2001. Details are given in a series of Economic Trends articles available on the National Statistics website: www.statistics.gov.uk/cpi

¹ For further information on the composition of the indices shown, see 'The Consumer Prices Index: Goods and Services Indices and Special Aggregates', which can be downloaded from: www.statistics.gov.uk/cpi/article.asp?id=1060

6 CPI goods and services: the latest three years

Percentage change over 12 months

| | Goods components | | | | | Services components | | | | | |
|----------------|--------------------------------|-------------------------------|---------------------|--|-----------|-------------------------------|--|---|---------------|---|--------------|
| | Food & non-alcoholic beverages | Alcoholic beverages & tobacco | Energy ¹ | Non-energy industrial goods ² | All goods | Housing services ³ | Travel & transport services ³ | Recreational & personal services ³ | Communication | Miscellaneous & other services ³ | All services |
| Weights | CHZR | CHZS | A9F3 | A9ER | ICVH | A9FG | A9FJ | A9FL | CHZY | A9FQ | ICVI |
| 2007 | 103 | 43 | 75 | 326 | 547 | 70 | 65 | 209 | 24 | 85 | 453 |
| Monthly | D7G8 | D7G9 | DKL5 | DKK3 | D7NM | DKN2 | DKN5 | DKN7 | D7GF | DKO4 | D7NN |
| 2004 Nov | -0.5 | 2.2 | 10.9 | -2.4 | -0.3 | 3.5 | 5.7 | 2.9 | -1.9 | 5.0 | 3.5 |
| Dec | -0.1 | 2.1 | 10.6 | -2.0 | -0.1 | 3.5 | 6.3 | 3.0 | -2.2 | 5.0 | 3.7 |
| 2005 Jan | 0.4 | 2.5 | 9.0 | -2.2 | -0.2 | 3.5 | 5.3 | 3.2 | -2.3 | 5.5 | 3.7 |
| Feb | 0.8 | 2.9 | 9.6 | -2.6 | -0.2 | 3.5 | 5.8 | 3.3 | -2.7 | 5.6 | 3.8 |
| Mar | 1.7 | 2.2 | 10.1 | -2.2 | 0.2 | 3.6 | 6.8 | 3.2 | -2.9 | 5.5 | 3.9 |
| Apr | 1.0 | 2.0 | 11.5 | -2.2 | 0.1 | 4.3 | 4.9 | 3.4 | -3.2 | 6.5 | 4.0 |
| May | 1.4 | 2.3 | 8.3 | -2.2 | -0.1 | 4.3 | 6.3 | 3.4 | -3.6 | 6.6 | 4.2 |
| Jun | 2.2 | 2.3 | 8.7 | -2.1 | 0.2 | 4.2 | 6.0 | 3.1 | -2.9 | 6.8 | 4.1 |
| Jul | 1.7 | 2.2 | 11.2 | -1.9 | 0.5 | 4.4 | 6.9 | 3.2 | -2.5 | 7.7 | 4.5 |
| Aug | 2.2 | 1.8 | 12.4 | -2.1 | 0.6 | 4.4 | 7.5 | 3.1 | -2.1 | 7.7 | 4.6 |
| Sep | 2.0 | 1.4 | 15.4 | -2.2 | 0.7 | 4.4 | 6.3 | 3.2 | -1.2 | 7.5 | 4.5 |
| Oct | 1.5 | 1.9 | 13.9 | -2.1 | 0.6 | 4.0 | 7.2 | 3.3 | -1.6 | 6.6 | 4.4 |
| Nov | 1.7 | 2.5 | 11.1 | -2.0 | 0.4 | 3.9 | 5.8 | 3.1 | -1.2 | 6.6 | 4.1 |
| Dec | 1.7 | 2.5 | 10.2 | -2.1 | 0.3 | 4.0 | 3.4 | 3.1 | -1.0 | 6.6 | 3.8 |
| 2006 Jan | 1.2 | 2.3 | 12.8 | -2.3 | 0.3 | 3.9 | 6.1 | 2.9 | 0.5 | 5.6 | 3.9 |
| Feb | 1.1 | 1.6 | 12.5 | -1.7 | 0.6 | 3.9 | 4.8 | 2.9 | 0.4 | 5.6 | 3.7 |
| Mar | -0.4 | 2.5 | 12.2 | -1.9 | 0.2 | 3.9 | 4.4 | 2.9 | 0.5 | 5.7 | 3.7 |
| Apr | 0.3 | 2.5 | 14.4 | -2.2 | 0.5 | 3.3 | 6.5 | 2.7 | 0.3 | 5.7 | 3.8 |
| May | 1.1 | 2.2 | 19.3 | -1.9 | 1.3 | 3.3 | 2.8 | 2.9 | -0.4 | 5.6 | 3.3 |
| Jun | 1.8 | 3.3 | 19.8 | -1.7 | 1.7 | 3.4 | 3.2 | 2.9 | -0.3 | 5.6 | 3.4 |
| Jul | 3.2 | 2.8 | 19.4 | -2.0 | 1.8 | 3.4 | 2.4 | 2.9 | 0.3 | 4.9 | 3.2 |
| Aug | 3.4 | 3.3 | 17.9 | -1.3 | 2.2 | 3.4 | 1.6 | 2.8 | -0.7 | 4.7 | 2.9 |
| Sep | 4.0 | 3.4 | 11.6 | -1.0 | 1.8 | 3.3 | 3.0 | 2.8 | -0.2 | 5.3 | 3.2 |
| Oct | 4.7 | 3.2 | 9.8 | -1.3 | 1.5 | 3.4 | 2.5 | 3.0 | 0.9 | 6.7 | 3.6 |
| Nov | 5.0 | 2.7 | 11.7 | -1.1 | 1.8 | 3.5 | 3.7 | 3.1 | 0.7 | 6.4 | 3.7 |
| Dec | 4.6 | 2.7 | 14.9 | -0.8 | 2.3 | 3.5 | 4.1 | 3.1 | 0.5 | 6.4 | 3.8 |
| 2007 Jan | 3.9 | 3.5 | 12.8 | -0.9 | 2.0 | 3.8 | 3.1 | 3.2 | -1.8 | 6.1 | 3.6 |
| Feb | 4.4 | 4.2 | 11.8 | -1.0 | 2.0 | 3.7 | 5.0 | 3.2 | -2.8 | 6.1 | 3.8 |
| Mar | 5.6 | 4.4 | 11.6 | -0.5 | 2.5 | 3.7 | 4.2 | 3.3 | -2.8 | 6.1 | 3.7 |
| Apr | 6.0 | 4.5 | 7.9 | -0.3 | 2.3 | 3.8 | 3.8 | 3.3 | -3.7 | 4.5 | 3.3 |
| May | 5.0 | 4.2 | 4.4 | -0.4 | 1.6 | 3.8 | 6.4 | 3.1 | -3.2 | 4.4 | 3.6 |
| Jun | 4.8 | 3.4 | 3.3 | -0.4 | 1.4 | 3.7 | 6.8 | 3.3 | -3.9 | 4.4 | 3.7 |
| Jul | 2.8 | 3.4 | 0.9 | -0.8 | 0.5 | 3.6 | 6.3 | 3.2 | -5.0 | 4.4 | 3.5 |
| Aug | 3.0 | 3.1 | -0.5 | -1.1 | 0.1 | 3.5 | 7.6 | 3.4 | -2.0 | 3.9 | 3.8 |
| Sep | 3.7 | 3.2 | 1.5 | -1.2 | 0.4 | 3.5 | 4.9 | 3.4 | -3.0 | 4.0 | 3.4 |
| Oct | 4.7 | 2.7 | 3.9 | -1.1 | 1.0 | 3.7 | 5.9 | 3.3 | -4.2 | 3.8 | 3.4 |
| Nov | 4.8 | 2.9 | 5.3 | -1.2 | 1.1 | 3.7 | 4.6 | 3.2 | -4.0 | 4.0 | 3.2 |

Key: - zero or negligible

3 For further information on all of these services components, see 'The Consumer Prices Index: Goods and Services Indices and Special Aggregates', which can be downloaded from: www.statistics.gov.uk/cci/article.asp?id=1060

1 Comprises 'Electricity, gas and other fuels' (group 04.5) and 'Fuels and lubricants' (class 07.2.2).

2 Comprises all other goods elements of the CPI. For further information, see 'The Consumer Prices Index: Goods and Services Indices and Special Aggregates', which can be downloaded from: www.statistics.gov.uk/cci/article.asp?id=1060

Source: National Statistics

7 HICP¹ - International comparisons: EU countries

Percentage change over 12 months

| | Austria | Belgium | Bulgaria | Cyprus | Czech Republic | Denmark | Estonia | Finland | France | Germany | Greece | Hungary | Ireland | Italy | Latvia |
|----------|---------|---------|----------|--------|----------------|---------|---------|---------|--------|---------|--------|---------|---------|-------|--------|
| | D7SK | D7SL | GHY8 | D7RO | D7RP | D7SM | D7RQ | D7SN | D7SO | D7SP | D7SQ | D7RR | D7SS | D7ST | D7RS |
| 2004 | 2.0 | 1.9 | 6.1 | 1.9 | 2.6 | 0.9 | 3.0 | 0.1 | 2.3 | 1.8 | 3.0 | 6.8 | 2.3 | 2.3 | 6.2 |
| 2005 | 2.1 | 2.5 | 6.0 | 2.0 | 1.6 | 1.7 | 4.1 | 0.8 | 1.9 | 1.9 | 3.5 | 3.5 | 2.2 | 2.2 | 6.9 |
| 2006 | 1.7 | 2.3 | 7.4 | 2.2 | 2.1 | 1.9 | 4.4 | 1.3 | 1.9 | 1.8 | 3.3 | 4.0 | 2.7 | 2.2 | 6.6 |
| 2005 Nov | 1.7 | 2.3 | 8.0 | 2.0 | 2.2 | 1.8 | 4.0 | 1.0 | 1.8 | 2.2 | 3.4 | 3.3 | 2.2 | 2.4 | 7.6 |
| 2005 Dec | 1.6 | 2.8 | 7.4 | 1.4 | 1.9 | 2.2 | 3.6 | 1.1 | 1.8 | 2.1 | 3.5 | 3.3 | 1.9 | 2.1 | 7.1 |
| 2006 Jan | 1.5 | 2.8 | 7.6 | 2.0 | 2.4 | 2.0 | 4.7 | 1.2 | 2.3 | 2.1 | 3.0 | 2.5 | 2.5 | 2.2 | 7.6 |
| 2006 Feb | 1.5 | 2.8 | 9.4 | 2.3 | 2.4 | 2.1 | 4.5 | 1.3 | 2.0 | 2.1 | 3.1 | 2.3 | 2.7 | 2.2 | 7.0 |
| 2006 Mar | 1.3 | 2.2 | 9.1 | 2.6 | 2.4 | 1.8 | 4.0 | 1.2 | 1.7 | 1.9 | 3.3 | 2.4 | 2.8 | 2.2 | 6.6 |
| 2006 Apr | 2.1 | 2.6 | 8.5 | 2.5 | 2.3 | 1.8 | 4.3 | 1.5 | 2.0 | 2.3 | 3.5 | 2.4 | 2.7 | 2.3 | 6.1 |
| 2006 May | 2.1 | 2.8 | 9.0 | 2.5 | 2.8 | 2.1 | 4.6 | 1.7 | 2.4 | 2.1 | 3.3 | 2.9 | 3.0 | 2.3 | 7.1 |
| 2006 Jun | 1.9 | 2.5 | 8.4 | 2.6 | 2.3 | 2.1 | 4.4 | 1.5 | 2.2 | 2.0 | 3.4 | 2.9 | 2.9 | 2.4 | 6.3 |
| 2006 Jul | 2.0 | 2.4 | 7.8 | 2.8 | 2.4 | 2.0 | 4.5 | 1.4 | 2.2 | 2.1 | 3.9 | 3.2 | 2.9 | 2.3 | 6.9 |
| 2006 Aug | 2.1 | 2.3 | 7.0 | 2.7 | 2.6 | 1.9 | 5.0 | 1.3 | 2.1 | 1.8 | 3.4 | 4.7 | 3.2 | 2.3 | 6.8 |
| 2006 Sep | 1.3 | 1.9 | 5.4 | 2.2 | 2.2 | 1.5 | 3.8 | 0.8 | 1.5 | 1.0 | 3.1 | 5.9 | 2.2 | 2.4 | 5.9 |
| 2006 Oct | 1.3 | 1.7 | 5.2 | 1.7 | 0.8 | 1.4 | 3.8 | 0.9 | 1.2 | 1.1 | 3.1 | 6.3 | 2.2 | 1.9 | 5.6 |
| 2006 Nov | 1.6 | 2.0 | 5.9 | 1.3 | 1.0 | 1.8 | 4.7 | 1.3 | 1.6 | 1.5 | 3.2 | 6.4 | 2.4 | 2.0 | 6.3 |
| 2006 Dec | 1.6 | 2.1 | 6.1 | 1.5 | 1.5 | 1.7 | 5.1 | 1.2 | 1.7 | 1.4 | 3.2 | 6.6 | 3.0 | 2.1 | 6.8 |
| 2007 Jan | 1.7 | 1.7 | 6.8 | 1.4 | 1.4 | 1.8 | 5.0 | 1.3 | 1.4 | 1.8 | 3.0 | 8.4 | 2.9 | 1.9 | 7.1 |
| 2007 Feb | 1.7 | 1.8 | 4.6 | 1.2 | 1.7 | 1.9 | 4.6 | 1.2 | 1.2 | 1.9 | 3.0 | 9.0 | 2.6 | 2.1 | 7.2 |
| 2007 Mar | 1.9 | 1.8 | 4.4 | 1.4 | 2.1 | 1.9 | 5.6 | 1.6 | 1.2 | 2.0 | 2.8 | 9.0 | 2.9 | 2.1 | 8.5 |
| 2007 Apr | 1.8 | 1.8 | 4.4 | 1.6 | 2.7 | 1.7 | 5.6 | 1.5 | 1.3 | 2.0 | 2.6 | 8.7 | 2.9 | 1.8 | 8.8 |
| 2007 May | 1.9 | 1.3 | 4.5 | 1.9 | 2.4 | 1.7 | 5.9 | 1.3 | 1.2 | 2.0 | 2.6 | 8.4 | 2.7 | 1.9 | 7.8 |
| 2007 Jun | 1.9 | 1.3 | 5.3 | 1.7 | 2.6 | 1.3 | 6.0 | 1.4 | 1.3 | 2.0 | 2.6 | 8.5 | 2.8 | 1.9 | 8.9 |
| 2007 Jul | 2.0 | 1.3 | 6.8 | 2.3 | 2.5 | 1.1 | 6.5 | 1.6 | 1.2 | 2.0 | 2.7 | 8.3 | 2.7 | 1.7 | 9.5 |
| 2007 Aug | 1.7 | 1.2 | 9.3 | 2.2 | 2.6 | 0.9 | 6.1 | 1.3 | 1.3 | 2.0 | 2.7 | 7.1 | 2.3 | 1.7 | 10.2 |
| 2007 Sep | 2.1 | 1.4 | 11.0 | 2.3 | 2.8 | 1.2 | 7.5 | 1.7 | 1.6 | 2.7 | 2.9 | 6.4 | 2.9 | 1.7 | 11.5 |
| 2007 Oct | 2.9* | 2.2 | 10.6 | 2.7 | 4.0 | 1.0 | 8.7 | 1.8 | 2.1 | 2.7 | 3.0 | 6.9 | 3.0 | 2.3 | 13.2 |
| 2007 Nov | .. | .. | .. | .. | .. | .. | .. | .. | .. | .. | .. | .. | .. | .. | .. |

| | Lithuania | Luxembourg | Malta | Netherlands | Poland | Portugal | Romania | Slovakia | Slovenia | Spain | Sweden | United Kingdom ¹ | EICP ² EU 25 average ³ | EICP ² EU 27 average ³ | Monetary Union Area average ⁴ |
|----------|-----------|------------|-------|-------------|--------|----------|---------|----------|----------|-------|--------|-----------------------------|--|--|--|
| | D7RT | D7SU | D7RU | D7SV | D7RV | D7SX | GHY7 | D7RW | D7RX | D7SY | D7SZ | D7G7 | D7RY | GJ2E | D7SR |
| 2004 | 1.2 | 3.2 | 2.7 | 1.4 | 3.6 | 2.5 | 11.9 | 7.5 | 3.7 | 3.1 | 1.0 | 1.3 | 2.0 | .. | 2.1 |
| 2005 | 2.7 | 3.8 | 2.5 | 1.5 | 2.2 | 2.1 | 9.1 | 2.8 | 2.5 | 3.4 | 0.8 | 2.1 | 2.2 | .. | 2.2 |
| 2006 | 3.8 | 3.0 | 2.6 | 1.7 | 1.3 | 3.0 | 6.6 | 4.3 | 2.5 | 3.6 | 1.5 | 2.3 | 2.2 | .. | 2.2 |
| 2005 Nov | 2.9 | 3.6 | 4.3 | 1.6 | 1.1 | 2.5 | 8.7 | 3.6 | 2.1 | 3.4 | 1.2 | 2.1 | 2.3 | .. | 2.3 |
| 2005 Dec | 3.0 | 3.4 | 3.4 | 2.0 | 0.8 | 2.5 | 8.7 | 3.9 | 2.4 | 3.7 | 1.3 | 1.9 | 2.1 | .. | 2.2 |
| 2006 Jan | 3.5 | 4.1 | 2.4 | 1.8 | 0.9 | 2.7 | 9.0 | 4.1 | 2.6 | 4.2 | 1.1 | 1.9 | 2.3 | .. | 2.4 |
| 2006 Feb | 3.4 | 3.9 | 2.3 | 1.4 | 0.9 | 3.0 | 8.6 | 4.3 | 2.3 | 4.1 | 1.1 | 2.0 | 2.2 | .. | 2.3 |
| 2006 Mar | 3.1 | 3.7 | 2.9 | 1.4 | 0.9 | 3.8 | 8.5 | 4.3 | 2.0 | 3.9 | 1.5 | 1.8 | 2.1 | .. | 2.2 |
| 2006 Apr | 3.4 | 3.5 | 3.5 | 1.8 | 1.2 | 3.7 | 7.0 | 4.4 | 2.8 | 3.9 | 1.8 | 2.0 | 2.3 | .. | 2.5 |
| 2006 May | 3.6 | 3.6 | 3.5 | 1.8 | 1.5 | 3.7 | 7.3 | 4.8 | 3.4 | 4.1 | 1.9 | 2.2 | 2.4 | .. | 2.5 |
| 2006 Jun | 3.7 | 3.9 | 3.3 | 1.8 | 1.5 | 3.5 | 7.2 | 4.5 | 3.0 | 4.0 | 1.9 | 2.5 | 2.4 | .. | 2.5 |
| 2006 Jul | 4.4 | 3.4 | 3.6 | 1.7 | 1.4 | 3.0 | 6.2 | 5.0 | 1.9 | 4.0 | 1.8 | 2.4 | 2.4 | .. | 2.4 |
| 2006 Aug | 4.3 | 3.1 | 3.0 | 1.9 | 1.7 | 2.7 | 6.1 | 5.0 | 3.1 | 3.8 | 1.6 | 2.5 | 2.3 | .. | 2.3 |
| 2006 Sep | 3.3 | 2.0 | 3.1 | 1.5 | 1.4 | 3.0 | 5.5 | 4.5 | 2.5 | 2.9 | 1.2 | 2.4 | 1.9 | .. | 1.7 |
| 2006 Oct | 3.7 | 0.6 | 1.7 | 1.3 | 1.1 | 2.6 | 4.8 | 3.1 | 1.5 | 2.6 | 1.2 | 2.4 | 1.8 | .. | 1.6 |
| 2006 Nov | 4.4 | 1.8 | 0.9 | 1.6 | 1.3 | 2.4 | 4.7 | 3.7 | 2.4 | 2.7 | 1.5 | 2.7 | 2.1 | .. | 1.9 |
| 2006 Dec | 4.5 | 2.3 | 0.8 | 1.7 | 1.4 | 2.5 | 4.9 | 3.7 | 3.0 | 2.7 | 1.4 | 3.0 | 2.1 | .. | 1.9 |
| 2007 Jan | 4.0 | 2.3 | 1.2 | 1.2 | 1.6 | 2.6 | 4.1 | 2.2 | 2.8 | 2.4 | 1.6 | 2.7 | .. | 2.1 | 1.8 |
| 2007 Feb | 4.4 | 1.8 | 0.8 | 1.4 | 1.9 | 2.3 | 3.9 | 2.0 | 2.3 | 2.5 | 1.7 | 2.8 | .. | 2.1 | 1.8 |
| 2007 Mar | 4.8 | 2.4 | 0.5 | 1.9 | 2.4 | 2.4 | 3.7 | 2.1 | 2.6 | 2.5 | 1.6 | 3.1 | .. | 2.3 | 1.9 |
| 2007 Apr | 4.9 | 2.5 | -1.1 | 1.9 | 2.2 | 2.8 | 3.8 | 2.0 | 2.9 | 2.5 | 1.6 | 2.8 | .. | 2.2 | 1.9 |
| 2007 May | 5.0 | 2.3 | -1.0 | 2.0 | 2.3 | 2.4 | 3.9 | 1.5 | 3.1 | 2.4 | 1.2 | 2.5 | .. | 2.1 | 1.9 |
| 2007 Jun | 5.0 | 2.3 | -0.6 | 1.8 | 2.6 | 2.4 | 3.9 | 1.5 | 3.8 | 2.5 | 1.3 | 2.4 | .. | 2.1 | 1.9 |
| 2007 Jul | 5.1 | 2.0 | -0.2 | 1.4 | 2.5 | 2.3 | 4.1 | 1.2 | 4.0 | 2.3 | 1.4 | 1.9 | .. | 2.0 | 1.8 |
| 2007 Aug | 5.6 | 1.9 | 0.6 | 1.1 | 2.1 | 1.9 | 5.0 | 1.2 | 3.4 | 2.2 | 1.2 | 1.8 | .. | 1.9 | 1.7 |
| 2007 Sep | 7.1 | 2.5 | 0.9 | 1.3 | 2.7 | 2.0 | 6.1 | 1.7 | 3.6 | 2.7 | 1.6 | 1.8 | .. | 2.2 | 2.1 |
| 2007 Oct | 7.6 | 3.6 | 1.6 | 1.6* | 3.1 | 2.5 | 6.9 | 2.4 | 5.1 | 3.6 | 1.9 | 2.1 | .. | 2.7* | 2.6* |
| 2007 Nov | .. | .. | .. | .. | .. | .. | .. | .. | .. | .. | .. | 2.1 | .. | .. | .. |

Key: - zero or negligible .. Not available * Provisional

† Date of earliest revision † Estimated

1 Published as the CPI in the UK.

2 The EICP (European Index of Consumer Prices) is the official EU aggregate. It covers 15 member states until April 2004, 25 member states from May 2004, and 27 members from Jan 2007, the new member states being integrated using a chain index formula.

The EU 25 annual average for 2004 is calculated from the EU 15 average from January to April and the EU 25 average from May to December.

3 The coverage of the European Union was extended to include Cyprus, Czech Republic, Estonia, Hungary, Latvia, Lithuania, Malta, Poland, Slovakia and Slovenia from 1 May 2004 and Bulgaria and Romania from 1 Jan 2007.

4 The coverage of the Monetary Union Area index was extended to include Greece with effect from Jan 2001.

Sources: National Statistics; Eurostat

| | Weights | Index (January 1987=100) | | | | | | Percentage change over 12 months | | | | | | Percentage change over 1 month |
|---|---------|--------------------------|-------|-------|-------|-------|-------|----------------------------------|------|------|------|------|------|--------------------------------|
| | | 2007 | 2007 | 2007 | 2007 | 2007 | 2007 | 2007 | 2007 | 2007 | 2007 | 2007 | 2007 | 2007 |
| | | Jun | Jul | Aug | Sep | Oct | Nov | Jun | Jul | Aug | Sep | Oct | Nov | Nov |
| ALL ITEMS | 1 000 | 207.3 | 206.1 | 207.3 | 208.0 | 208.9 | 209.7 | 4.4 | 3.8 | 4.1 | 3.9 | 4.2 | 4.3 | 0.4 |
| Food and catering | 152 | 184.5 | 182.7 | 183.5 | 185.2 | 187.3 | 188.8 | 4.4 | 3.2 | 3.3 | 4.0 | 4.6 | 4.8 | 0.8 |
| Alcohol and tobacco | 95 | 257.5 | 257.6 | 257.9 | 258.2 | 257.7 | 257.3 | 3.7 | 3.7 | 3.5 | 3.6 | 3.2 | 3.1 | -0.2 |
| Housing and household expenditure | 408 | 248.9 | 247.2 | 249.4 | 251.3 | 251.9 | 253.0 | 7.5 | 6.8 | 7.2 | 6.5 | 6.2 | 6.0 | 0.4 |
| Personal expenditure | 83 | 133.9 | 131.2 | 132.2 | 133.7 | 134.1 | 134.3 | 1.0 | 1.4 | 0.7 | 0.5 | 0.5 | 0.4 | 0.1 |
| Travel and leisure | 262 | 184.5 | 184.7 | 185.2 | 183.7 | 184.7 | 185.4 | 1.4 | 0.8 | 1.0 | 1.4 | 2.8 | 3.1 | 0.4 |
| Consumer durables ¹ | 109 | 95.8 | 91.0 | 91.9 | 93.7 | 92.8 | 93.2 | 1.2 | -0.9 | -1.2 | -1.2 | -1.0 | -1.4 | 0.4 |
| Seasonal food | 19 | 157.3 | 149.1 | 152.5 | 153.2 | 158.0 | 159.0 | 8.1 | 4.5 | 7.3 | 5.9 | 8.0 | 4.8 | 0.6 |
| Food excluding seasonal | 86 | 165.5 | 164.5 | 164.7 | 167.0 | 168.7 | 170.6 | 4.0 | 2.9 | 2.6 | 3.9 | 4.4 | 5.4 | 1.1 |
| All items excluding seasonal food | 981 | 208.6 | 207.6 | 208.7 | 209.4 | 210.2 | 211.0 | 4.4 | 3.9 | 4.0 | 3.9 | 4.2 | 4.2 | 0.4 |
| All items excluding food | 895 | 214.7 | 213.7 | 215.0 | 215.5 | 216.2 | 216.9 | 4.4 | 3.9 | 4.2 | 3.9 | 4.2 | 4.2 | 0.3 |
| All goods | 478 | 158.8 | 156.2 | 156.6 | 157.7 | 158.1 | 159.3 | 2.2 | 1.2 | 0.9 | 1.5 | 2.4 | 2.8 | 0.8 |
| All services | 377 | 257.0 | 257.8 | 258.8 | 258.4 | 259.9 | 259.9 | 4.1 | 3.7 | 4.0 | 3.6 | 3.2 | 2.7 | - |
| Other indices | | | | | | | | | | | | | | |
| All items excluding: | | | | | | | | | | | | | | |
| mortgage interest payments (RPIX) | 945 | 200.7 | 199.4 | 200.1 | 200.8 | 201.6 | 202.4 | 3.3 | 2.7 | 2.7 | 2.8 | 3.1 | 3.2 | 0.4 |
| housing | 762 | 184.0 | 182.2 | 182.9 | 183.5 | 184.3 | 185.1 | 2.9 | 2.0 | 2.0 | 2.2 | 2.6 | 2.6 | 0.4 |
| mortgage interest payments and indirect taxes (RPIY) ² | | 191.4 | 190.1 | 190.9 | 191.6 | 192.3 | 193.2 | 3.3 | 2.6 | 2.6 | 2.8 | 3.0 | 3.0 | 0.5 |
| mortgage interest payments and council tax | 905 | 197.6 | 196.2 | 197.0 | 197.7 | 198.5 | 199.3 | 3.3 | 2.6 | 2.6 | 2.8 | 3.1 | 3.1 | 0.4 |
| mortgage interest payments and depreciation ³ | 895 | 194.1 | 192.7 | 193.3 | 193.8 | 194.6 | 195.4 | 3.0 | 2.3 | 2.3 | 2.4 | 2.8 | 2.8 | 0.4 |
| Food | 105 | 164.6 | 162.2 | 163.0 | 165.0 | 167.4 | 169.1 | 4.8 | 3.1 | 3.4 | 4.2 | 5.1 | 5.3 | 1.0 |
| Bread | 4 | 176.1 | 174.3 | 174.4 | 180.3 | 181.7 | 189.1 | 8.1 | 6.5 | 5.6 | 8.1 | 8.9 | 11.6 | 4.1 |
| Cereals | 3 | 150.8 | 146.0 | 147.1 | 149.1 | 149.0 | 152.7 | 4.9 | 1.2 | 2.2 | 2.9 | 3.7 | 5.5 | 2.5 |
| Biscuits and cakes | 6 | 174.4 | 172.9 | 172.8 | 172.2 | 179.4 | 180.6 | 3.2 | 2.4 | 1.9 | 1.9 | 6.2 | 6.0 | 0.7 |
| Beef | 4 | 142.4 | 141.4 | 141.2 | 139.8 | 139.6 | 140.1 | 3.7 | -0.5 | 0.8 | -1.3 | -2.6 | -1.6 | 0.4 |
| Lamb | 2 | 191.5 | 191.0 | 191.6 | 186.0 | 183.3 | 183.1 | 0.8 | 0.5 | 0.9 | -1.9 | -3.0 | -2.8 | -0.1 |
| of which home-killed lamb | 1 | 199.0 | 195.9 | 195.1 | 189.9 | 185.8 | 182.6 | 1.2 | 1.2 | -0.1 | -1.0 | -2.0 | -4.5 | -1.7 |
| imported lamb | 1 | 180.3 | 182.2 | 184.2 | 178.4 | 177.0 | 179.7 | 0.4 | -0.2 | 1.9 | -2.8 | -4.0 | -1.0 | 1.5 |
| Pork | 1 | 158.5 | 153.3 | 153.2 | 160.6 | 160.2 | 159.3 | 0.5 | -4.1 | -3.6 | 3.2 | 0.3 | 2.0 | -0.6 |
| Bacon | 2 | 185.4 | 181.9 | 182.1 | 176.7 | 190.0 | 188.9 | 2.8 | -0.7 | -1.6 | -4.3 | 1.5 | -0.5 | -0.6 |
| Poultry | 3 | 114.0 | 111.0 | 112.6 | 110.4 | 116.9 | 118.9 | 3.7 | -0.4 | 1.9 | 3.4 | 6.7 | 9.6 | 1.7 |
| Other meat | 6 | 150.0 | 148.5 | 148.5 | 148.6 | 150.4 | 150.6 | 2.8 | 1.4 | 0.3 | 0.4 | 1.7 | 1.5 | 0.1 |
| Fish | 4 | 175.9 | 173.7 | 173.7 | 174.8 | 178.4 | 179.0 | 8.3 | 5.4 | 4.1 | 4.3 | 5.5 | 6.0 | 0.3 |
| of which fresh fish | 2 | 190.6 | 187.0 | 191.5 | 188.9 | 194.6 | 193.2 | 10.5 | 5.8 | 7.2 | 4.6 | 6.3 | 6.1 | -0.7 |
| processed fish | 2 | 162.0 | 161.1 | 157.1 | 161.4 | 163.2 | 165.6 | 6.1 | 5.2 | 1.0 | 4.0 | 4.7 | 6.0 | 1.5 |
| Butter | 1 | 172.7 | 171.2 | 169.8 | 199.8 | 203.5 | 230.4 | 2.2 | 0.9 | -2.3 | 15.2 | 17.2 | 32.6 | 13.2 |
| Oils and fats | 1 | 143.9 | 142.5 | 141.4 | 154.5 | 156.2 | 154.1 | -0.7 | -1.7 | -2.9 | 7.8 | 7.9 | 5.7 | -1.3 |
| Cheese | 3 | 176.7 | 176.6 | 177.2 | 182.0 | 185.2 | 191.5 | 0.4 | 0.9 | 0.5 | 3.5 | 5.4 | 8.8 | 3.4 |
| Eggs | 1 | 181.9 | 181.6 | 190.8 | 197.0 | 214.0 | 231.3 | 12.3 | 11.9 | 14.4 | 17.2 | 26.2 | 35.7 | 8.1 |
| Milk, fresh | 5 | 194.2 | 193.7 | 194.0 | 217.8 | 219.2 | 220.7 | 9.0 | 3.1 | 3.0 | 15.7 | 16.0 | 16.9 | 0.7 |
| Milk products | 4 | 151.0 | 152.8 | 153.8 | 156.0 | 156.5 | 161.5 | 3.8 | 3.8 | 4.3 | 5.5 | 6.4 | 9.3 | 3.2 |
| Tea | 1 | 158.5 | 161.8 | 157.5 | 160.4 | 161.6 | 160.1 | -0.1 | 2.5 | -2.2 | -1.2 | -0.6 | -0.8 | -0.9 |
| Coffee and other hot drinks | 1 | 125.3 | 124.5 | 125.8 | 126.1 | 122.6 | 125.3 | 8.0 | 7.2 | 2.0 | 0.9 | -2.1 | 1.4 | 2.2 |
| Soft drinks | 11 | 201.0 | 201.2 | 201.1 | 200.3 | 200.7 | 199.5 | 4.5 | 4.7 | 5.3 | 3.5 | 3.5 | 3.0 | -0.6 |
| Sugar and preserves | 1 | 165.4 | 163.1 | 162.0 | 163.6 | 164.5 | 166.8 | 5.8 | 4.3 | 3.3 | 3.3 | 3.8 | 4.3 | 1.4 |
| Sweets and chocolates | 10 | 199.6 | 198.9 | 200.9 | 201.6 | 201.3 | 203.3 | 3.6 | 3.5 | 3.7 | 4.0 | 4.1 | 5.3 | 1.0 |
| Potatoes | 5 | 172.1 | 162.7 | 163.3 | 162.5 | 162.5 | 166.5 | 9.7 | 5.9 | 8.1 | 7.1 | 5.0 | 3.4 | 2.5 |
| of which unprocessed potatoes | 2 | 169.4 | 152.7 | 151.3 | 153.9 | 154.0 | 155.7 | 12.2 | 2.2 | 9.1 | 8.8 | 6.7 | 3.3 | 1.1 |
| potato products | 3 | 166.1 | 162.1 | 164.2 | 161.0 | 161.0 | 166.4 | 7.5 | 7.4 | 8.6 | 6.6 | 4.5 | 3.8 | 3.4 |
| Vegetables other than potatoes | 9 | 154.8 | 149.9 | 153.1 | 151.0 | 152.5 | 152.7 | 11.5 | 9.0 | 13.4 | 10.8 | 9.9 | 6.0 | 0.1 |
| of which fresh vegetables | 7 | 141.3 | 135.9 | 139.8 | 137.1 | 137.6 | 136.9 | 11.3 | 8.4 | 14.7 | 12.0 | 10.9 | 5.5 | -0.5 |
| processed vegetables | 2 | 190.8 | 189.8 | 188.7 | 189.8 | 195.9 | 200.6 | 11.3 | 10.9 | 9.1 | 6.7 | 7.0 | 7.9 | 2.4 |
| Fruit | 7 | 152.1 | 141.9 | 144.7 | 149.7 | 158.9 | 160.6 | 2.4 | -0.3 | 0.0 | -0.3 | 4.5 | 1.5 | 1.1 |
| of which fresh fruit | 6 | 149.3 | 137.8 | 141.4 | 146.7 | 157.5 | 159.3 | 2.6 | -0.6 | -0.1 | -0.5 | 5.8 | 1.7 | 1.1 |
| processed fruit | 1 | 153.5 | 152.7 | 150.1 | 153.0 | 150.7 | 151.6 | 1.5 | 1.3 | 0.1 | 1.2 | -3.1 | 0.6 | 0.6 |
| Other foods | 10 | 152.9 | 152.8 | 152.4 | 153.8 | 154.7 | 154.5 | 1.7 | 1.9 | 0.7 | 2.1 | 1.4 | 1.8 | -0.1 |
| Catering | 47 | 253.2 | 253.9 | 254.4 | 255.1 | 256.3 | 257.2 | 3.2 | 3.3 | 3.2 | 3.4 | 3.4 | 3.5 | 0.4 |
| Restaurant meals | 25 | 247.3 | 247.9 | 248.2 | 248.8 | 250.4 | 250.8 | 3.0 | 3.0 | 2.9 | 3.3 | 3.4 | 3.3 | 0.2 |
| Canteen meals | 4 | 312.7 | 312.9 | 314.0 | 318.2 | 318.0 | 319.0 | 4.9 | 4.8 | 5.3 | 5.5 | 5.1 | 4.6 | 0.3 |
| Take-aways and snacks | 18 | 242.7 | 243.6 | 244.1 | 244.5 | 245.4 | 247.0 | 3.3 | 3.3 | 3.2 | 3.2 | 3.2 | 3.7 | 0.7 |
| Alcoholic drink | 66 | 220.1 | 220.2 | 220.5 | 220.8 | 220.2 | 219.8 | 3.2 | 3.3 | 3.0 | 3.1 | 2.6 | 2.5 | -0.2 |
| Beer | 34 | 240.9 | 241.8 | 242.0 | 242.0 | 241.1 | 241.1 | 3.7 | 3.9 | 3.8 | 3.7 | 3.0 | 2.8 | - |
| on sales | 29 | 261.9 | 262.9 | 262.9 | 263.4 | 263.2 | 263.1 | 4.1 | 4.3 | 4.1 | 4.2 | 3.8 | 3.5 | - |
| off sales | 5 | 150.1 | 150.4 | 151.4 | 149.6 | 146.2 | 146.8 | 1.6 | 1.8 | 2.4 | 1.0 | -1.9 | -1.1 | 0.4 |
| Wines and spirits | 32 | 193.2 | 192.6 | 193.1 | 193.5 | 193.2 | 192.5 | 2.7 | 2.6 | 2.2 | 2.4 | 2.0 | 2.2 | -0.4 |
| on sales | 18 | 244.1 | 244.3 | 244.7 | 245.2 | 245.2 | 245.2 | 3.7 | 3.6 | 3.4 | 3.4 | 3.2 | 2.9 | - |
| off sales | 14 | 159.9 | 158.6 | 159.2 | 159.6 | 158.9 | 157.5 | 1.5 | 1.4 | 0.6 | 1.1 | 0.6 | 1.1 | -0.9 |

Key: - zero or negligible

Index date for November: 13 November 2007

1 Consumer durables: Furniture, furnishings, electrical appliances and other household equipment, men's, women's and children's outerwear, footwear, audio-visual equipment, CDs and tapes, toys, photographic and sports goods.

2 The taxes excluded are council tax, VAT, duties, vehicle excise duty, insurance tax and air passenger duty. There are no weights available for RPIY.

3 This series has been constructed using the index for all items excluding mortgage interest payments prior to February 1995.

continued

| | Weights | Index (January 1987=100) | | | | | | Percentage change over 12 months | | | | | | Percentage change over 1 month |
|-------------------------------------|---------|--------------------------|-------|-------|-------|-------|-------|----------------------------------|-------|-------|-------|-------|-------|--------------------------------|
| | | 2007 | 2007 | | 2007 | | 2007 | 2007 | 2007 | 2007 | 2007 | 2007 | 2007 | 2007 |
| | | | Jun | Jul | Aug | Sep | | | | | | | | |
| Tobacco | 29 | 363.6 | 363.8 | 363.9 | 364.2 | 364.3 | 364.1 | 4.8 | 4.8 | 4.7 | 4.7 | 4.7 | 4.6 | -0.1 |
| Cigarettes | 26 | 371.8 | 371.9 | 372.0 | 372.4 | 372.5 | 372.3 | 4.9 | 4.8 | 4.7 | 4.8 | 4.8 | 4.7 | -0.1 |
| Other tobacco | 3 | 288.3 | 288.5 | 288.5 | 288.6 | 288.8 | 288.9 | 4.3 | 4.3 | 4.3 | 4.3 | 4.3 | 4.4 | - |
| Housing | 238 | 330.8 | 332.7 | 337.0 | 338.4 | 339.6 | 340.6 | 10.0 | 10.1 | 11.0 | 9.9 | 9.9 | 9.9 | 0.3 |
| Rent | 53 | 287.6 | 289.8 | 289.6 | 289.9 | 291.2 | 291.7 | 3.3 | 3.3 | 3.2 | 3.3 | 3.7 | 3.7 | 0.2 |
| Mortgage interest payments | 55 | 388.3 | 391.3 | 406.8 | 409.5 | 411.3 | 413.9 | 26.0 | 26.2 | 30.2 | 24.9 | 24.5 | 24.4 | 0.6 |
| Depreciation (Jan 1995 = 100) | 50 | 293.6 | 296.8 | 300.3 | 302.9 | 304.3 | 305.5 | 9.6 | 10.0 | 10.0 | 9.7 | 9.3 | 9.3 | 0.4 |
| Council tax and rates | 40 | 292.0 | 292.0 | 292.0 | 292.0 | 292.0 | 292.0 | 4.0 | 4.0 | 4.0 | 4.0 | 4.0 | 4.0 | - |
| Water and other charges | 12 | 377.2 | 377.2 | 377.2 | 377.2 | 377.2 | 377.2 | 6.5 | 6.5 | 6.5 | 6.5 | 6.5 | 6.5 | - |
| Repairs and maintenance charges | 12 | 329.2 | 329.6 | 330.4 | 331.1 | 333.5 | 334.6 | 5.5 | 5.2 | 5.1 | 5.0 | 5.2 | 5.4 | 0.3 |
| Do-it-yourself materials | 9 | 165.5 | 166.5 | 166.6 | 167.3 | 167.3 | 167.1 | 4.6 | 5.1 | 4.3 | 3.9 | 4.1 | 3.7 | -0.1 |
| Dwelling insurance and ground rent | 7 | 282.2 | 282.7 | 289.2 | 292.4 | 291.7 | 292.1 | 1.3 | 1.5 | 3.3 | 4.2 | 4.5 | 4.3 | 0.1 |
| Fuel and light | 39 | 211.2 | 208.2 | 206.2 | 206.1 | 206.3 | 208.1 | 4.7 | 2.0 | 0.3 | -1.0 | -3.8 | -5.0 | 0.9 |
| Coal and solid fuels | 1 | 198.5 | 198.2 | 198.4 | 200.8 | 206.5 | 210.5 | 7.9 | 7.9 | 7.1 | 7.0 | 4.7 | 5.5 | 1.9 |
| Electricity | 18 | 199.7 | 197.2 | 196.2 | 195.9 | 195.8 | 195.8 | 6.3 | 3.8 | 2.6 | 1.1 | -1.5 | -3.4 | - |
| Gas | 18 | 221.5 | 216.5 | 213.4 | 211.8 | 211.0 | 211.1 | 5.3 | 1.8 | -0.8 | -3.9 | -8.7 | -11.6 | - |
| Oil and other fuels | 2 | 260.4 | 267.1 | 262.4 | 276.3 | 285.3 | 319.1 | -5.9 | -6.4 | -6.3 | 3.4 | 14.4 | 33.0 | 11.8 |
| Household goods | 66 | 156.0 | 147.7 | 148.3 | 151.7 | 149.6 | 151.0 | 5.1 | 1.7 | 1.4 | 1.9 | 2.4 | 2.1 | 0.9 |
| Furniture | 23 | 191.2 | 166.8 | 168.5 | 177.0 | 171.1 | 175.7 | 12.5 | 2.7 | 3.0 | 4.5 | 4.3 | 4.3 | 2.7 |
| Furnishings | 11 | 160.6 | 159.0 | 161.7 | 163.8 | 161.9 | 159.0 | 0.6 | 2.0 | 1.6 | 3.5 | 2.4 | 0.4 | -1.8 |
| Electrical appliances | 8 | 73.5 | 72.7 | 72.3 | 73.6 | 73.1 | 73.4 | -1.2 | -3.8 | -5.0 | -6.8 | -2.1 | -1.1 | 0.4 |
| Other household equipment | 4 | 147.1 | 143.9 | 145.6 | 145.2 | 145.8 | 145.2 | 3.2 | 4.7 | 4.0 | 2.6 | 3.9 | 1.9 | -0.4 |
| Household consumables | 13 | 162.9 | 162.1 | 160.7 | 161.1 | 161.4 | 162.0 | 1.3 | 1.4 | 0.7 | 0.6 | 0.8 | 0.7 | 0.4 |
| Pet care | 7 | 174.6 | 175.2 | 173.7 | 175.4 | 175.8 | 178.9 | 2.7 | 2.8 | 2.4 | 2.5 | 2.6 | 4.4 | 1.8 |
| Household services | 65 | 194.8 | 194.4 | 196.2 | 198.0 | 201.3 | 201.8 | 2.9 | 2.6 | 3.5 | 3.4 | 2.4 | 2.9 | 0.2 |
| Postage | 1 | 212.7 | 212.7 | 212.7 | 212.7 | 212.7 | 212.7 | 12.6 | 12.6 | 12.6 | 6.2 | 6.2 | 6.2 | - |
| Telephones, telemessages, etc | 22 | 84.9 | 83.8 | 85.8 | 85.5 | 85.1 | 85.2 | -4.2 | -5.3 | -2.4 | -2.6 | -4.0 | -3.6 | 0.1 |
| Domestic services | 14 | 302.8 | 303.8 | 304.8 | 305.9 | 307.9 | 309.3 | 4.7 | 4.4 | 4.4 | 4.2 | 4.4 | 4.6 | 0.5 |
| Fees and subscriptions | 28 | 290.9 | 292.2 | 292.7 | 298.9 | 310.4 | 311.1 | 7.4 | 7.7 | 7.5 | 7.6 | 6.4 | 7.0 | 0.2 |
| Clothing and footwear | 44 | 95.0 | 91.6 | 92.8 | 94.5 | 94.5 | 94.7 | -0.3 | 0.1 | -0.9 | -1.0 | -1.5 | -1.7 | 0.2 |
| Men's outerwear | 9 | 97.3 | 93.8 | 94.9 | 96.1 | 96.4 | 96.9 | 0.7 | 0.3 | 0.1 | -1.7 | -1.1 | -1.3 | 0.5 |
| Women's outerwear | 15 | 68.6 | 64.1 | 65.7 | 67.9 | 67.3 | 67.6 | -2.6 | -1.7 | -3.1 | -2.7 | -4.7 | -4.2 | 0.4 |
| Childrens' outerwear | 5 | 87.5 | 87.9 | 87.8 | 89.9 | 91.5 | 91.7 | -2.1 | -0.1 | -1.8 | 1.0 | 2.0 | 1.3 | 0.2 |
| Other clothing | 6 | 150.7 | 148.2 | 149.6 | 150.9 | 150.1 | 150.7 | 1.6 | 1.4 | 0.5 | 0.3 | 0.3 | -0.3 | 0.4 |
| Footwear | 9 | 111.7 | 109.4 | 110.3 | 110.7 | 111.1 | 110.8 | 2.2 | 1.8 | 1.8 | 0.4 | 0.7 | 0.4 | -0.3 |
| Personal goods and services | 39 | 215.4 | 214.8 | 215.2 | 216.1 | 217.3 | 217.4 | 2.6 | 3.0 | 2.5 | 2.5 | 2.9 | 2.9 | - |
| Personal articles | 11 | 140.2 | 138.6 | 139.4 | 140.7 | 140.2 | 140.8 | 3.2 | 3.4 | 2.7 | 2.6 | 2.4 | 2.8 | 0.4 |
| Chemists goods | 15 | 193.2 | 192.2 | 192.1 | 192.4 | 194.2 | 193.4 | 1.4 | 1.5 | 1.0 | 0.9 | 1.5 | 1.2 | -0.4 |
| Personal services | 13 | 369.4 | 372.1 | 372.4 | 373.2 | 376.8 | 377.8 | 3.6 | 4.3 | 4.2 | 4.4 | 4.9 | 4.9 | 0.3 |
| Motoring expenditure | 133 | 190.8 | 189.9 | 189.4 | 188.6 | 190.0 | 192.5 | 0.8 | -0.3 | -0.4 | 1.1 | 3.5 | 4.7 | 1.3 |
| Purchase of motor vehicles | 53 | 104.1 | 102.9 | 102.1 | 101.8 | 101.4 | 101.8 | -2.2 | -3.0 | -3.3 | -3.5 | -3.6 | -3.0 | 0.4 |
| Maintenance of motor vehicles | 20 | 309.4 | 309.8 | 311.4 | 311.8 | 312.4 | 313.3 | 5.6 | 5.2 | 5.5 | 5.2 | 4.8 | 4.3 | 0.3 |
| Petrol and oil | 36 | 281.7 | 280.6 | 280.0 | 276.7 | 284.2 | 295.1 | 0.8 | -1.4 | -2.2 | 3.0 | 11.7 | 16.5 | 3.8 |
| Vehicle tax and insurance | 24 | 296.0 | 297.5 | 297.9 | 298.5 | 299.6 | 299.4 | 4.4 | 3.7 | 5.0 | 5.4 | 6.1 | 4.4 | -0.1 |
| Fares and other travel costs | 20 | 247.9 | 259.2 | 265.8 | 242.7 | 244.3 | 237.0 | 8.3 | 8.7 | 10.7 | 6.0 | 7.1 | 4.8 | -3.0 |
| Rail fares | 5 | 262.7 | 263.6 | 265.0 | 264.8 | 263.3 | 263.3 | 4.9 | 4.7 | 4.3 | 6.8 | 6.3 | 4.9 | - |
| Bus and coach fares | 4 | 276.2 | 276.3 | 277.4 | 277.0 | 274.5 | 275.3 | 8.9 | 8.8 | 8.9 | 7.7 | 5.9 | 5.3 | 0.3 |
| Other travel costs | 11 | 219.7 | 236.9 | 246.2 | 210.7 | 214.5 | 203.0 | 9.1 | 9.6 | 12.9 | 4.7 | 7.6 | 4.5 | -5.4 |
| Leisure goods | 41 | 89.3 | 88.7 | 89.2 | 89.1 | 88.9 | 88.6 | -2.8 | -3.1 | -2.6 | -3.0 | -2.5 | -3.3 | -0.3 |
| Audio-visual equipment | 8 | 14.9 | 14.5 | 14.5 | 14.2 | 14.1 | 13.9 | -13.4 | -15.2 | -15.7 | -17.4 | -16.1 | -17.8 | -1.4 |
| CDs and tapes | 5 | 102.7 | 100.3 | 100.5 | 100.7 | 98.4 | 100.4 | 2.6 | 1.0 | 4.3 | 3.5 | 1.0 | 1.2 | 2.0 |
| Toys, photographic and sports goods | 12 | 86.7 | 85.7 | 86.8 | 87.1 | 87.3 | 86.7 | -3.7 | -3.8 | -3.7 | -2.9 | -2.6 | -2.7 | -0.7 |
| Books and newspapers | 10 | 256.0 | 259.0 | 260.8 | 262.5 | 263.1 | 261.5 | 3.5 | 3.8 | 4.7 | 3.9 | 4.4 | 3.3 | -0.6 |
| Gardening products | 6 | 144.6 | 144.8 | 144.8 | 144.9 | 145.1 | 145.1 | -0.6 | 0.5 | 0.6 | 0.9 | 1.7 | 0.6 | - |
| Leisure services | 68 | 274.5 | 274.9 | 276.1 | 278.1 | 279.4 | 279.7 | 3.3 | 2.8 | 3.3 | 3.3 | 3.3 | 3.3 | 0.1 |
| Television licences and rentals | 11 | 168.0 | 167.7 | 167.7 | 167.7 | 169.7 | 169.7 | 2.4 | 1.8 | 1.8 | 1.8 | 2.2 | 2.2 | - |
| Entertainment and other recreation | 16 | 370.1 | 367.2 | 371.0 | 379.8 | 379.5 | 379.6 | 6.1 | 4.5 | 6.5 | 5.9 | 5.0 | 5.4 | - |
| Foreign holidays (Jan 1993 = 100) | 34 | 171.3 | 172.6 | 173.1 | 173.5 | 174.5 | 174.8 | 2.0 | 2.3 | 2.2 | 2.6 | 2.9 | 2.6 | 0.2 |
| UK holidays (Jan 1994 = 100) | 7 | 170.0 | 170.5 | 171.4 | 171.8 | 171.9 | 172.0 | 3.9 | 3.4 | 3.4 | 3.8 | 3.4 | 3.4 | 0.1 |

Key: - zero or negligible

Source: National Statistics

9 RPI goods and services¹: the latest three years

Percentage change over 12 months

| | Goods components | | | | All goods | Services components | | | | All services |
|----------------|------------------|-------------------|---------------------------|--------------------------|--------------|---------------------|------------------------|------------------------------|----------------------------------|--------------|
| | Food | Alcohol & tobacco | Petrol & oil ² | Other goods ³ | | Rent | Utilities ⁴ | "Shop" services ⁵ | "Non-shop" services ⁶ | |
| Weights | | | | | | | | | | |
| 2007 | CZGZ 105 | CBVW 95 | DOHB 38 | DOHC 240 | DOHD 478 | CZXD 53 | DOHE 76 | DOHF 133 | DOHG 115 | DOHH 377 |
| Monthly | | | | | | | | | | |
| 2004 Nov | CCYY -0.4 | CZBK 2.4 | DOGQ 11.9 | DOGI -2.6 | DOGD -0.1 | CZCQ 2.8 | DOGF 4.8 | DOGG 4.0 | DOGH 3.1 | DOGE 3.7 |
| Dec | -0.1 | 2.4 | 9.1 | -2.0 | 0.1 | 2.8 | 5.8 | 4.1 | 3.7 | 4.1 |
| 2005 Jan | 0.3 | 2.7 | 5.2 | -2.8 | -0.5 | 3.0 | 6.4 | 4.2 | 2.7 | 4.0 |
| Feb | 0.8 | 3.0 | 6.4 | -2.9 | -0.4 | 3.1 | 5.9 | 4.3 | 2.3 | 3.8 |
| Mar | 1.4 | 2.4 | 8.1 | -2.2 | 0.2 | 3.1 | 5.4 | 4.3 | 2.6 | 3.8 |
| Apr | 0.8 | 2.6 | 11.4 | -2.5 | 0.1 | 3.6 | 5.8 | 4.3 | 2.7 | 4.0 |
| May | 1.3 | 2.7 | 5.5 | -2.5 | -0.1 | 3.6 | 5.7 | 4.3 | 3.0 | 4.1 |
| Jun | 2.0 | 2.7 | 6.6 | -2.3 | 0.2 | 3.5 | 5.8 | 4.3 | 2.7 | 4.0 |
| Jul | 1.4 | 2.7 | 11.3 | -1.7 | 0.7 | 3.8 | 5.8 | 4.3 | 2.7 | 4.0 |
| Aug | 1.7 | 2.5 | 13.7 | -2.0 | 0.8 | 3.8 | 5.9 | 4.1 | 2.0 | 3.7 |
| Sep | 1.5 | 2.5 | 18.4 | -1.9 | 1.1 | 3.8 | 6.5 | 4.4 | 2.0 | 3.9 |
| Oct | 1.0 | 2.7 | 14.0 | -1.7 | 0.9 | 3.2 | 7.4 | 4.5 | 2.1 | 4.1 |
| Nov | 1.3 | 2.9 | 8.6 | -1.4 | 0.7 | 3.2 | 7.7 | 4.6 | 1.8 | 4.1 |
| Dec | 1.1 | 2.9 | 8.0 | -1.3 | 0.7 | 3.2 | 7.3 | 4.6 | 0.6 | 3.7 |
| 2006 Jan | 0.8 | 2.8 | 13.6 | -1.4 | 1.0 | 3.0 | 7.2 | 4.3 | 1.3 | 3.8 |
| Feb | 0.8 | 2.5 | 12.9 | -1.1 | 1.1 | 3.0 | 7.4 | 4.2 | 1.2 | 3.8 |
| Mar | -0.5 | 3.0 | 10.1 | -1.2 | 0.6 | 3.0 | 8.6 | 4.1 | 1.7 | 4.1 |
| Apr | 0.2 | 2.7 | 9.6 | -1.3 | 0.7 | 2.8 | 9.9 | 4.2 | 2.3 | 4.6 |
| May | 0.9 | 2.7 | 13.8 | -0.8 | 1.4 | 2.8 | 11.7 | 4.1 | 1.5 | 4.6 |
| Jun | 1.5 | 3.2 | 12.4 | -0.5 | 1.6 | 2.9 | 12.9 | 4.1 | 1.8 | 5.0 |
| Jul | 2.7 | 3.0 | 10.7 | -0.9 | 1.5 | 3.0 | 13.8 | 4.1 | 1.5 | 5.0 |
| Aug | 2.9 | 3.4 | 7.6 | -0.2 | 1.8 | 3.0 | 13.9 | 4.0 | 1.7 | 5.1 |
| Sep | 3.5 | 3.4 | -3.4 | 0.4 | 1.2 | 2.9 | 14.2 | 4.0 | 2.3 | 5.3 |
| Oct | 4.2 | 3.3 | -7.6 | - | 0.8 | 2.9 | 15.1 | 4.2 | 3.3 | 5.8 |
| Nov | 4.5 | 3.2 | -4.6 | 0.1 | 1.2 | 3.0 | 15.0 | 4.1 | 3.9 | 6.0 |
| Dec | 4.1 | 3.2 | 0.6 | 0.4 | 1.8 | 3.0 | 15.0 | 4.1 | 4.0 | 6.1 |
| 2007 Jan | 3.7 | 3.6 | -2.6 | -0.3 | 1.1 | 3.3 | 14.2 | 4.2 | 4.6 | 6.1 |
| Feb | 4.0 | 4.0 | -4.3 | - | 1.2 | 3.2 | 13.7 | 4.3 | 5.4 | 6.3 |
| Mar | 5.1 | 4.1 | -1.7 | 0.5 | 2.0 | 3.2 | 12.2 | 4.4 | 4.8 | 5.9 |
| Apr | 5.6 | 4.5 | -1.7 | 0.6 | 2.1 | 3.1 | 8.5 | 4.1 | 4.2 | 4.9 |
| May | 4.8 | 4.1 | -2.0 | 0.6 | 1.9 | 3.2 | 5.3 | 4.1 | 5.1 | 4.6 |
| Jun | 4.8 | 3.7 | 0.3 | 0.8 | 2.2 | 3.3 | 3.0 | 4.2 | 5.0 | 4.1 |
| Jul | 3.1 | 3.7 | -1.8 | -0.2 | 1.2 | 3.3 | 1.3 | 3.9 | 5.1 | 3.7 |
| Aug | 3.4 | 3.5 | -2.4 | -0.5 | 0.9 | 3.2 | 1.3 | 4.2 | 5.8 | 4.0 |
| Sep | 4.2 | 3.6 | 2.9 | -0.6 | 1.5 | 3.3 | 0.3 | 4.1 | 5.0 | 3.6 |
| Oct | 5.1 | 3.2 | 11.7 | -0.5 | 2.4 | 3.7 | -2.0 | 4.1 | 5.1 | 3.2 |
| Nov | 5.3 | 3.1 | 17.4 | -0.6 | 2.8 | 3.7 | -3.1 | 4.2 | 4.5 | 2.7 |

Key: - zero or negligible

1 All components of the RPI are included in the above breakdown with the exception of mortgage interest payments, council tax and depreciation.

2 Including fuel oil.

3 The 'other goods' category comprises DIY materials, coal & solid fuels, household goods, clothing & footwear, personal articles, chemists goods, purchase of motor vehicles and leisure goods.

4 The 'utilities' category comprises water, electricity, gas, postage, telephone charges and rail fares.

5 The 'shop services' category comprises catering, repairs & maintenance charges, domestic services, personal services, maintenance of motor vehicles, TV licence & rentals and entertainment & recreation charges.

6 The 'non-shop services' category comprises dwelling insurance & ground rent, fees and subscriptions, vehicle tax and insurance, bus & coach fares, other travel costs, foreign holidays and UK holidays.

Source: National Statistics

10 A breakdown of the differences between CPI and RPI

| | Difference between annual rates CPI - RPI | | Breakdown of differences (unrounded figures) ¹ | | | | | | |
|----------|--|-------------------|---|----------------------------|-------|--------------------------|---|-----------------------------|--|
| | rounded figures | unrounded figures | housing components excluded from CPI | | | other housing components | other differences in coverage of goods and services | formula effect ² | other differences including weights ³ |
| | | | total | mortgage interest payments | | | | | |
| | D7G2 | D7G3 | D7G4 | D7G5 | D7FU | D7FV | D7FW | D7FX | |
| 2002 Nov | -1.1 | -1.10 | -0.94 | 0.13 | -1.06 | 0.10 | -0.43 | 0.17 | |
| Dec | -1.2 | -1.27 | -1.33 | -0.18 | -1.15 | 0.40 | -0.47 | 0.12 | |
| 2003 Jan | -1.6 | -1.61 | -1.41 | -0.19 | -1.22 | 0.24 | -0.42 | -0.01 | |
| Feb | -1.6 | -1.60 | -1.41 | -0.20 | -1.21 | 0.24 | -0.43 | - | |
| Mar | -1.6 | -1.59 | -1.28 | -0.11 | -1.17 | 0.18 | -0.43 | -0.07 | |
| Apr | -1.7 | -1.67 | -1.44 | -0.11 | -1.32 | 0.12 | -0.44 | 0.08 | |
| May | -1.7 | -1.73 | -1.39 | -0.12 | -1.26 | 0.05 | -0.44 | 0.05 | |
| Jun | -1.8 | -1.82 | -1.32 | -0.12 | -1.20 | -0.06 | -0.46 | 0.01 | |
| Jul | -1.8 | -1.73 | -1.24 | -0.12 | -1.13 | -0.24 | -0.43 | 0.19 | |
| Aug | -1.5 | -1.56 | -1.08 | 0.01 | -1.09 | -0.31 | -0.41 | 0.24 | |
| Sep | -1.4 | -1.35 | -1.06 | 0.01 | -1.07 | 0.01 | -0.44 | 0.14 | |
| Oct | -1.2 | -1.29 | -0.99 | 0.01 | -0.99 | 0.04 | -0.44 | 0.10 | |
| Nov | -1.2 | -1.17 | -0.99 | -0.02 | -0.97 | 0.19 | -0.43 | 0.07 | |
| Dec | -1.5 | -1.51 | -1.11 | -0.20 | -0.91 | -0.22 | -0.42 | 0.23 | |
| 2004 Jan | -1.2 | -1.19 | -1.07 | -0.21 | -0.86 | 0.02 | -0.42 | 0.28 | |
| Feb | -1.2 | -1.23 | -1.10 | -0.21 | -0.89 | 0.05 | -0.43 | 0.26 | |
| Mar | -1.5 | -1.47 | -1.47 | -0.48 | -0.99 | 0.07 | -0.41 | 0.34 | |
| Apr | -1.4 | -1.36 | -1.32 | -0.50 | -0.82 | 0.08 | -0.43 | 0.30 | |
| May | -1.3 | -1.30 | -1.36 | -0.50 | -0.86 | 0.13 | -0.44 | 0.38 | |
| Jun | -1.4 | -1.46 | -1.59 | -0.69 | -0.90 | 0.14 | -0.43 | 0.42 | |
| Jul | -1.6 | -1.66 | -1.82 | -0.88 | -0.94 | 0.15 | -0.42 | 0.43 | |
| Aug | -1.9 | -1.89 | -1.96 | -1.03 | -0.93 | 0.18 | -0.47 | 0.36 | |
| Sep | -2.0 | -1.97 | -2.13 | -1.18 | -0.95 | 0.20 | -0.45 | 0.42 | |
| Oct | -2.1 | -2.07 | -2.17 | -1.19 | -0.99 | 0.22 | -0.46 | 0.34 | |
| Nov | -1.9 | -1.98 | -2.11 | -1.19 | -0.92 | 0.24 | -0.47 | 0.36 | |
| Dec | -1.8 | -1.84 | -1.91 | -1.00 | -0.91 | 0.24 | -0.49 | 0.32 | |
| 2005 Jan | -1.6 | -1.55 | -1.94 | -1.03 | -0.92 | 0.23 | -0.48 | 0.65 | |
| Feb | -1.5 | -1.50 | -1.92 | -1.03 | -0.89 | 0.23 | -0.51 | 0.69 | |
| Mar | -1.3 | -1.32 | -1.64 | -0.86 | -0.79 | 0.22 | -0.53 | 0.62 | |
| Apr | -1.3 | -1.22 | -1.54 | -0.86 | -0.68 | 0.25 | -0.52 | 0.59 | |
| May | -1.0 | -1.07 | -1.43 | -0.85 | -0.58 | 0.27 | -0.50 | 0.60 | |
| Jun | -0.9 | -0.87 | -1.18 | -0.67 | -0.51 | 0.29 | -0.52 | 0.54 | |
| Jul | -0.6 | -0.57 | -0.89 | -0.48 | -0.40 | 0.31 | -0.53 | 0.55 | |
| Aug | -0.4 | -0.37 | -0.84 | -0.48 | -0.36 | 0.33 | -0.49 | 0.64 | |
| Sep | -0.2 | -0.20 | -0.43 | -0.17 | -0.27 | 0.30 | -0.52 | 0.45 | |
| Oct | -0.2 | -0.17 | -0.37 | -0.17 | -0.20 | 0.30 | -0.52 | 0.42 | |
| Nov | -0.3 | -0.29 | -0.36 | -0.16 | -0.21 | 0.27 | -0.52 | 0.32 | |
| Dec | -0.3 | -0.30 | -0.35 | -0.16 | -0.19 | 0.28 | -0.51 | 0.29 | |
| 2006 Jan | -0.5 | -0.45 | -0.29 | -0.15 | -0.14 | 0.30 | -0.48 | 0.02 | |
| Feb | -0.4 | -0.39 | -0.32 | -0.15 | -0.17 | 0.30 | -0.51 | 0.14 | |
| Mar | -0.6 | -0.51 | -0.36 | -0.16 | -0.20 | 0.32 | -0.55 | 0.08 | |
| Apr | -0.6 | -0.52 | -0.33 | -0.14 | -0.19 | 0.32 | -0.51 | -0.01 | |
| May | -0.8 | -0.72 | -0.32 | -0.11 | -0.20 | 0.32 | -0.54 | -0.19 | |
| Jun | -0.8 | -0.75 | -0.26 | -0.09 | -0.17 | 0.31 | -0.52 | -0.27 | |
| Jul | -0.9 | -0.86 | -0.25 | -0.09 | -0.16 | 0.28 | -0.54 | -0.35 | |
| Aug | -0.9 | -0.95 | -0.25 | -0.08 | -0.17 | 0.24 | -0.54 | -0.39 | |
| Sep | -1.2 | -1.22 | -0.71 | -0.48 | -0.23 | 0.22 | -0.56 | -0.17 | |
| Oct | -1.3 | -1.23 | -0.74 | -0.49 | -0.25 | 0.24 | -0.55 | -0.17 | |
| Nov | -1.2 | -1.20 | -0.73 | -0.48 | -0.24 | 0.24 | -0.55 | -0.16 | |
| Dec | -1.4 | -1.46 | -0.91 | -0.68 | -0.24 | 0.23 | -0.56 | -0.22 | |
| 2007 Jan | -1.5 | -1.53 | -1.01 | -0.72 | -0.29 | 0.23 | -0.59 | -0.16 | |
| Feb | -1.8 | -1.78 | -1.21 | -0.91 | -0.30 | 0.19 | -0.55 | -0.21 | |
| Mar | -1.7 | -1.75 | -1.21 | -0.90 | -0.31 | 0.26 | -0.57 | -0.24 | |
| Apr | -1.7 | -1.77 | -1.21 | -0.91 | -0.30 | 0.21 | -0.60 | -0.17 | |
| May | -1.8 | -1.79 | -1.28 | -0.94 | -0.33 | 0.19 | -0.59 | -0.11 | |
| Jun | -2.0 | -2.04 | -1.49 | -1.13 | -0.36 | 0.21 | -0.64 | -0.12 | |
| Jul | -1.9 | -2.00 | -1.65 | -1.17 | -0.47 | 0.23 | -0.54 | -0.05 | |
| Aug | -2.3 | -2.29 | -1.87 | -1.38 | -0.49 | 0.24 | -0.57 | -0.10 | |
| Sep | -2.1 | -2.21 | -1.62 | -1.15 | -0.46 | 0.28 | -0.60 | -0.27 | |
| Oct | -2.1 | -2.15 | -1.54 | -1.12 | -0.41 | 0.28 | -0.60 | -0.30 | |
| Nov | -2.2 | -2.20 | -1.52 | -1.12 | -0.40 | 0.29 | -0.59 | -0.38 | |

1 The differences due to housing, coverage and formula effect are all calculated independently and are not additive.

Source: National Statistics

2 Difference due to use of different formulae to aggregate prices at the most basic level.

3 This difference is derived as a residual.

Chart for Table 1 – November 2007
CPI, RPI and Other Related Indices

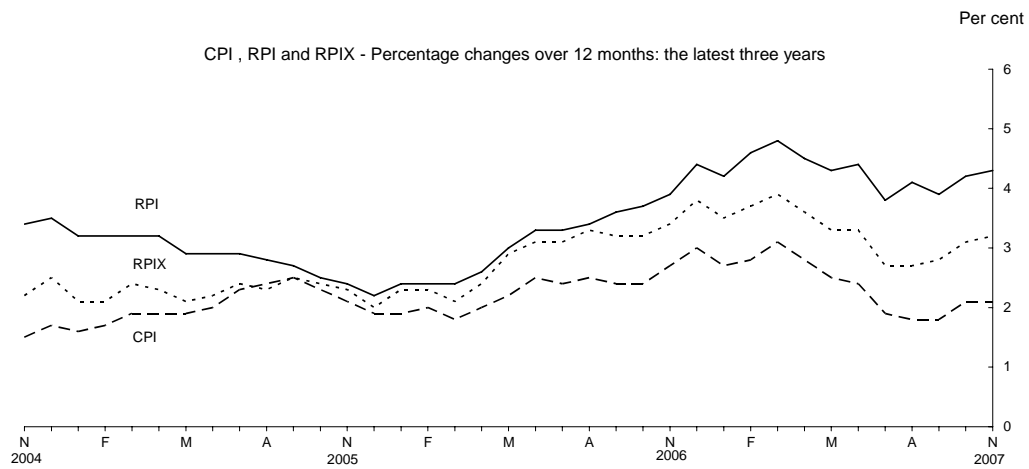


Chart for Table 6 – November 2007
CPI Goods and Services

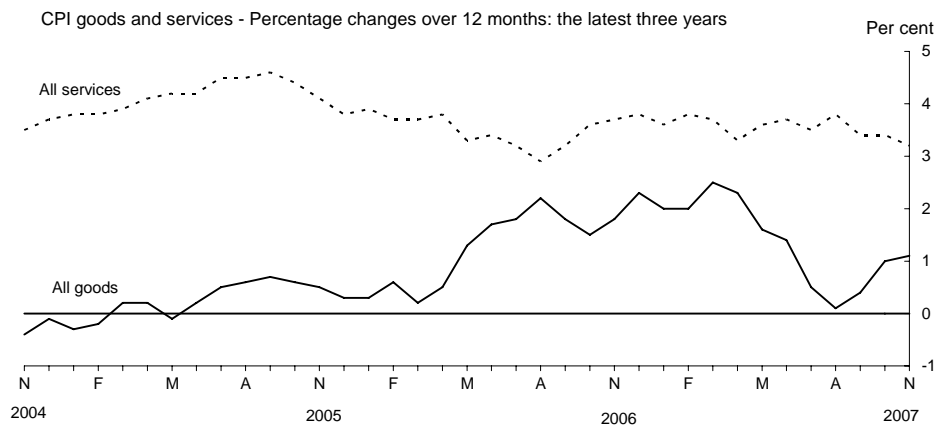


Chart for Table 9 – November 2007
RPI Goods and Services

