

Consumer price indices

September 2009



Date: 13 October 2009

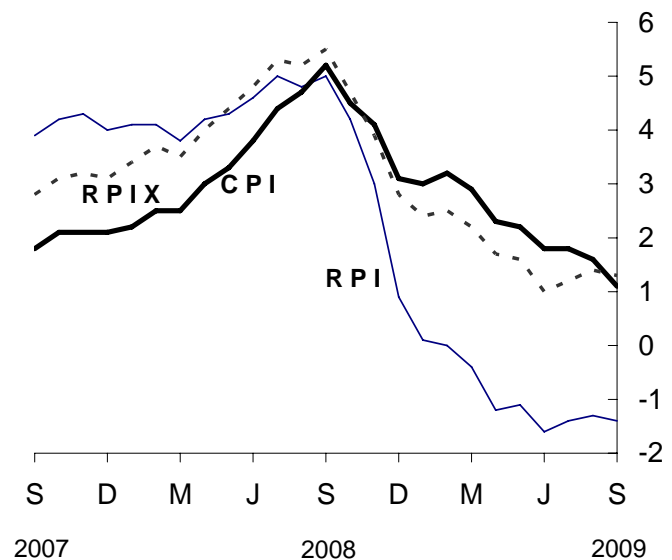
Coverage: United Kingdom Theme: The Economy

In the year to September, the consumer prices index (CPI) rose by 1.1 per cent, down from 1.6 per cent in August.

In the year to September, the all items retail prices index (RPI) fell by 1.4 per cent, compared with a fall of 1.3 per cent in August.

Over the same period, the all items RPI excluding mortgage interest payments index (RPIX) rose by 1.3 per cent, down from 1.4 per cent in August.

Percentage changes over 12 months



		CPI		RPI		RPIX	
		Index (2005 = 100)	Per cent change over 12 months	Index (Jan 1987 =100)	Per cent change over 12 months	Index (Jan 1987 = 100)	Per cent change over 12 months
2009	Apr	110.1	2.3	211.5	-1.2	210.7	1.7
	May	110.7	2.2	212.8	-1.1	212.0	1.6
	Jun	111.0	1.8	213.4	-1.6	212.6	1.0
	Jul	110.9	1.8	213.4	-1.4	212.6	1.2
	Aug	111.4	1.6	214.4	-1.3	213.6	1.4
	Sep	111.5	1.1	215.3	-1.4	214.5	1.3

Further information on CPI is available at www.statistics.gov.uk/cpi

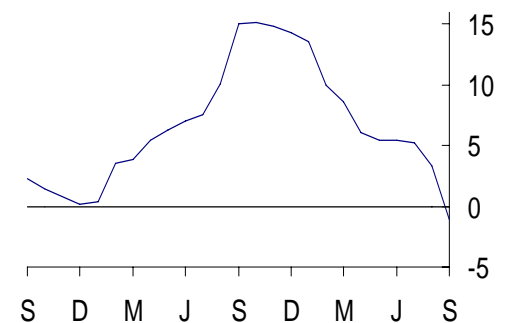
Main contributions to change in the CPI 12-month rate¹

The largest downward contribution to the change in the CPI annual rate came from housing and household services. This was due to gas and electricity, where prices were unchanged between August and September this year but rose a year ago when some of the major suppliers increased their tariffs. Within this division there was also a downward effect from regular maintenance and repair of dwellings with prices rising by less than a year ago.

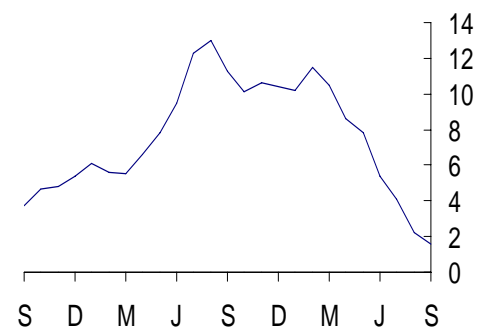
There were also large downward contributions from:

- Food and non-alcoholic beverages with prices overall falling by 0.9 per cent between August and September this year compared with 0.3 per cent a year ago. The largest effect came from meat with prices falling this year but rising a year ago across a range of products. There was a small downward effect from fruit, with the largest individual contribution coming from bananas, and a small upward effect from mineral waters, soft drinks and juices
- Restaurants and hotels where prices were little changed this year but rose a year ago. The downward effects came from restaurants and cafes, and from accommodation services where the price of hotel accommodation fell this year but rose a year ago
- Recreation and culture with the effect coming mainly from recording media (particularly pre-recorded DVDs) and, to a lesser extent, from games, toys and hobbies. Partially offsetting these effects were small upward contributions from photographic, cinematographic and optical equipment where prices of digital cameras rose this year but fell a year ago, and from books where prices of non-fiction hardback books rose this year but were little changed a year ago

Housing and household services
CPI percentage changes over 12 months

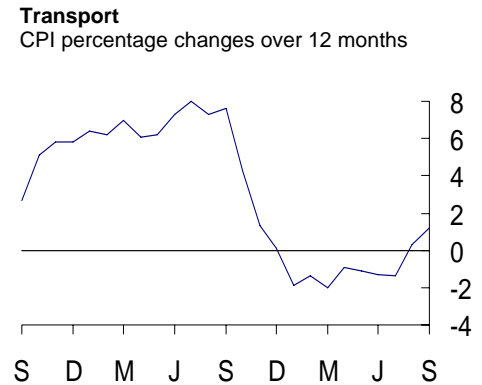


Food and non-alcoholic beverages
CPI percentage changes over 12 months



¹ The CPI and RPI use different classification systems. Background Note 11 shows how, for each of the two indices, the main categories contributing to changes in the 12-month rate relate to each other.

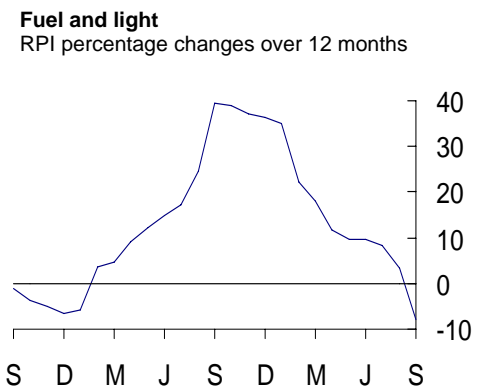
The largest upward contribution to the change in the CPI annual rate came from transport. The largest effect came from fuels and lubricants where prices rose between August and September this year but fell a year ago. The average price of petrol rose by 2.4 pence per litre this year to stand at 106.2 pence, compared with a fall of 1.7 pence a year ago. Diesel prices rose by 2.5 pence per litre this year compared with a fall of 2.3 pence a year ago. Within transport there was also a large upward contribution from the purchase of second-hand cars where prices rose this year but fell a year ago. Partially offsetting these upward effects were downward contributions from sea and air transport where seasonal price reductions were larger than a year ago.



There was also a large upward contribution from clothing and footwear where prices rose by more than a year ago across a range of items.

Main contributions to the change in the RPI 12-month rate

The largest downward contribution to the change in the RPI annual rate came from fuel and light where, as in the CPI, gas and electricity prices were unchanged between August and September this year but rose a year ago.



There was also a large downward contribution from food where prices fell between August and September this year by more than a year ago. The effect came principally from a range of non-seasonal food products.

There were small downward contributions from:

- Catering with prices rising by less than a year ago
- Fares and other travel due to other travel costs where the seasonal fall in the price of air fares was larger than a year ago

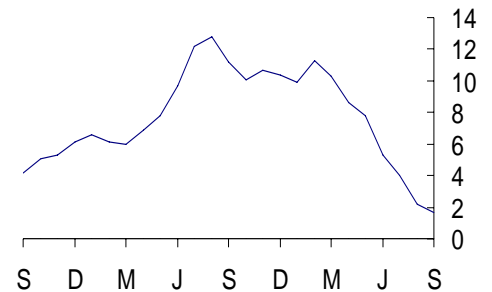
- Leisure goods where the price of CDs and tapes fell this year but rose slightly a year ago
- Leisure services where the cost of entertainment and other recreation, particularly leisure classes, rose by less than a year ago

The largest upward contribution to the change in the RPI annual rate came from motoring expenditure. Large effects came from the purchase of motor vehicles and petrol and oil with car prices and the average price of petrol and diesel each rising between August and September this year but falling a year ago.

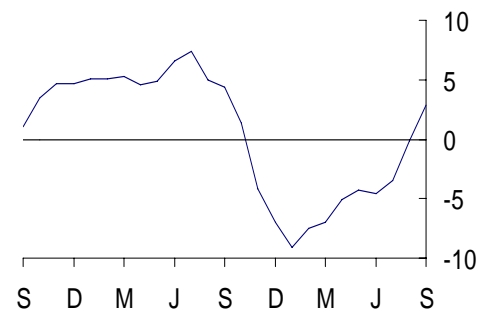
There was a further large upward contribution from clothing and footwear, particularly from footwear and women's outerwear, where prices rose by more than a year ago.

There was a small upward contribution from household goods where a large upward effect from furniture was partially offset by a small downward effect from furnishings. Prices of furniture, particularly kitchen furniture, rose by more than a year ago while furnishings prices fell this year but rose a year ago, particularly for carpets.

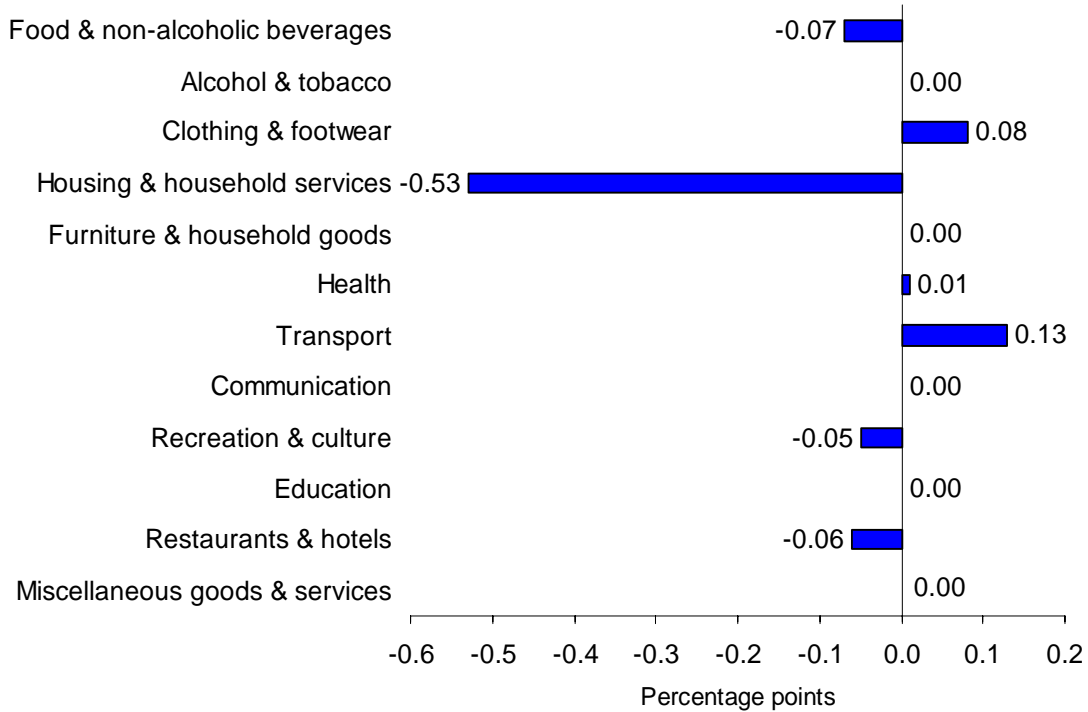
Food
RPI percentage changes over 12 months



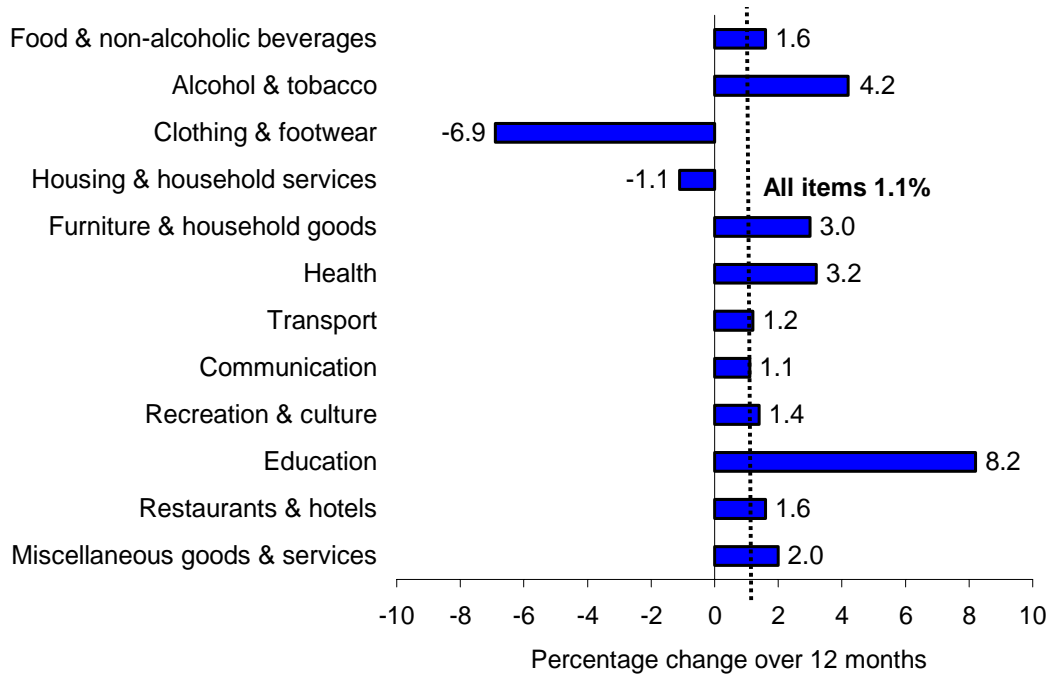
Motoring expenditure
RPI percentage changes over 12 months



CPI main contributions¹ to the change in the all-items 12-month rate between August 2009 and September 2009 (-0.5 percentage points)

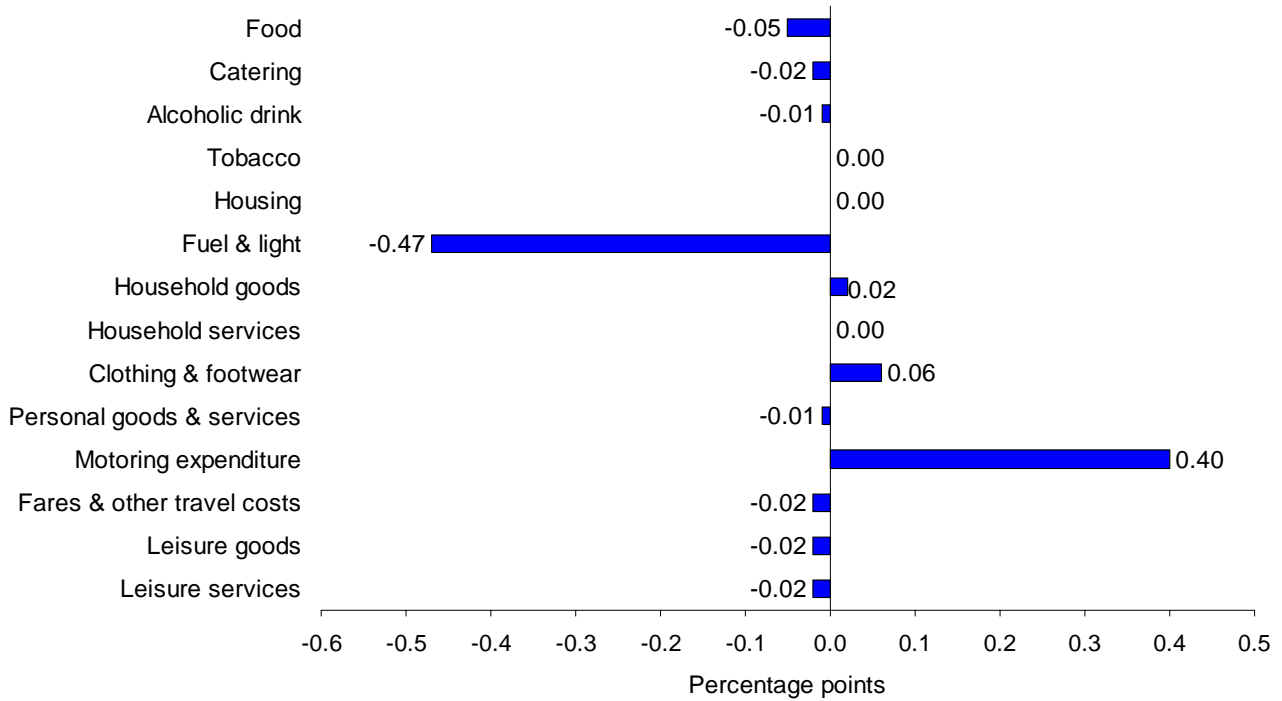


CPI comparison of the 12-month percentage changes

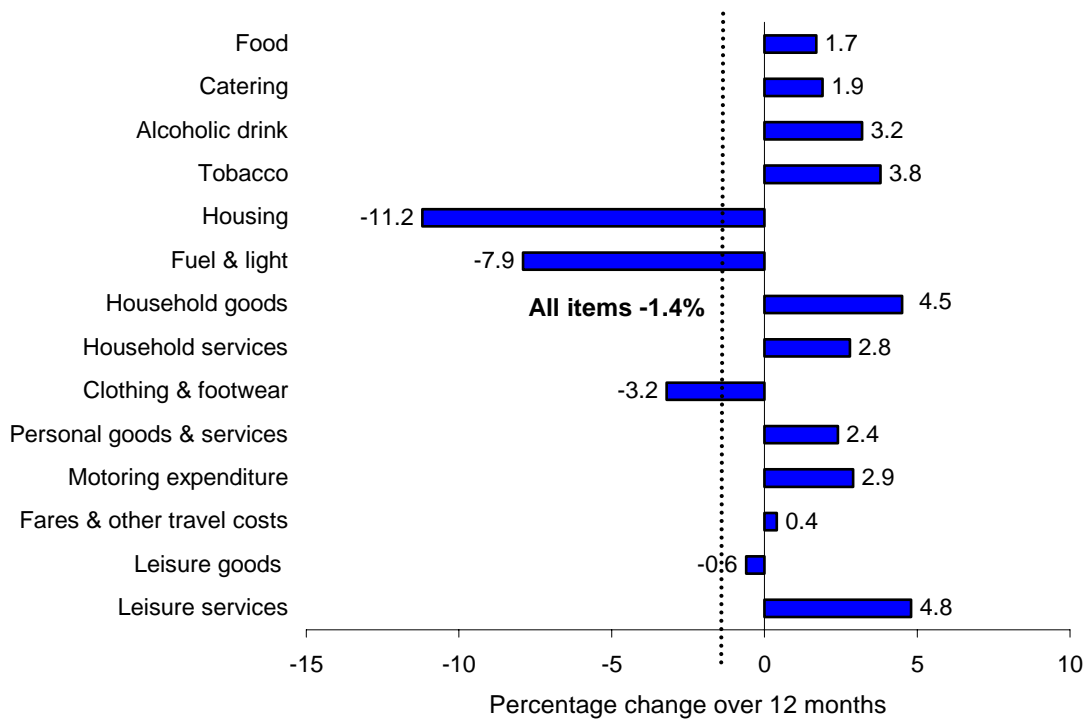


1. Individual contributions may not sum to the total due to rounding.

RPI main contributions¹ to the change in the all-items 12-month rate between August 2009 and September 2009 (-0.1 percentage points)

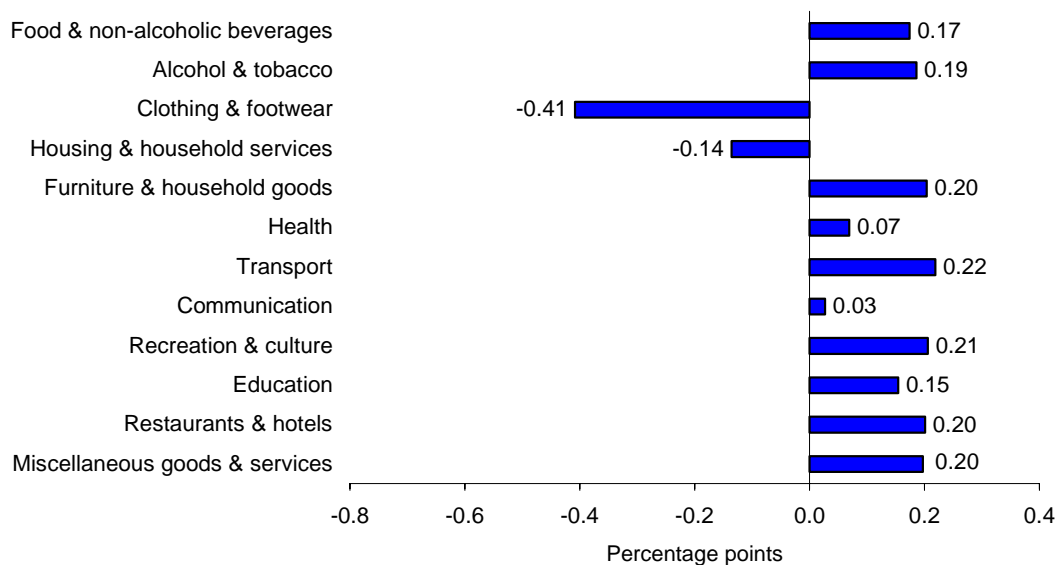


RPI comparison of the 12-month percentage changes



1. Individual contributions may not sum to the total due to rounding.

CPI main contributions¹ to the all-items 12-month rate (1.1 per cent)



Main contributions to the all-items 12-month rate (1.1 per cent)

A large contribution to the 1.1 per cent 12-month rate came from transport which contributed 0.2 percentage points. The effect came principally from purchase of vehicles, particularly second-hand cars which rose in price by 9.6 per cent over the year. The upward effect on transport was offset by a downward pull from the price of fuels and lubricants which fell by 6.6 per cent.

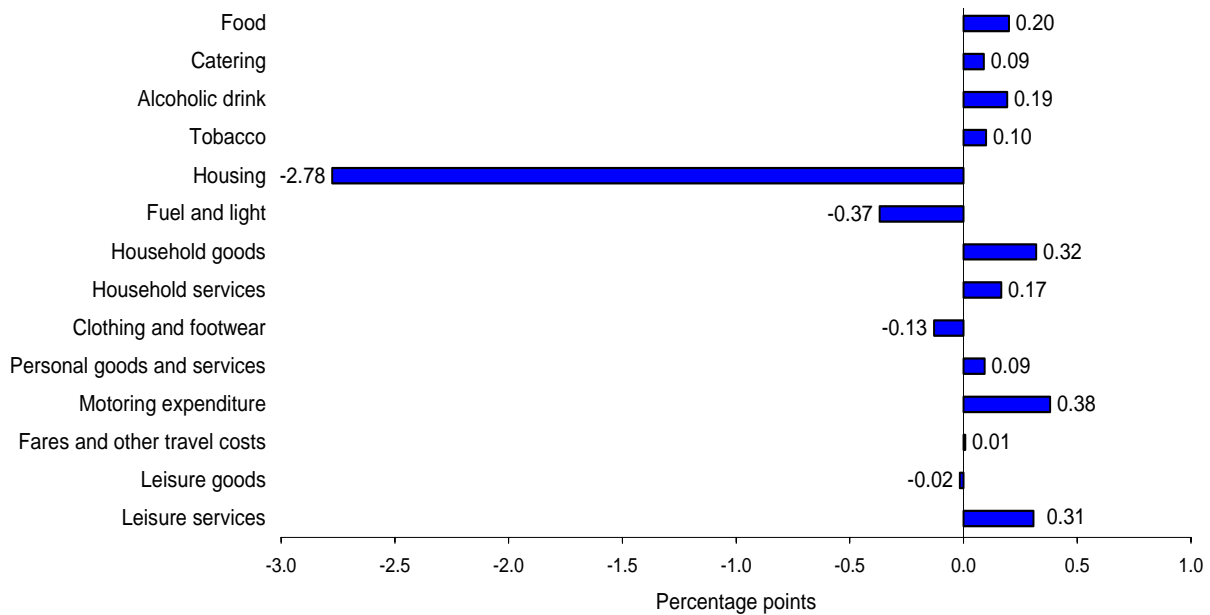
A number of other divisions also contributed 0.2 percentage points:

- Recreation and culture with the largest effects coming from package holidays and cultural services
- Furniture and household goods where overall prices rose by 3.0 per cent with the largest rises recorded against furniture and furnishings, major appliances and small electrical goods, and non-durable household goods
- Restaurants and hotels where, overall, prices rose by 1.6 per cent with the largest rise of 2.2 per cent recorded against restaurants and cafes
- Miscellaneous goods and services with the largest effect coming from insurance

In contrast, the price of clothing and footwear fell by 6.9 per cent over the 12 months to September and this had a downward pull of 0.4 percentage points on the 12-month rate.

1. Individual contributions may not sum to the total due to rounding.

RPI main contributions¹ to the all-items 12-month rate (-1.4 per cent)



Main contributions to the all-items 12-month rate (-1.4 per cent)

The largest downward contribution to the 12-month rate came from housing which had a downward pull of 2.8 percentage points. Overall, prices fell by 11.2 per cent on the year with the main contributions coming from mortgage interest payments and house depreciation.

Fuel and light had a downward pull of 0.4 percentage points on the 12-month rate. Overall prices fell by 7.9 per cent on the year with the main effects coming from gas and electricity.

The largest upward contribution to the 12-month rate came from motoring which contributed 0.4 percentage points. Overall, prices rose by 2.9 per cent over the year principally due to a rise in the price of motor vehicles partly offset by a fall in the price of petrol and oil.

Household goods contributed 0.3 percentage points with the largest effect coming from furniture.

Leisure services also contributed 0.3 percentage points to the 12-month rate. Overall, prices rose by 4.8 per cent over the year mainly due to rises in the price of foreign holidays.

1. Individual contributions may not sum to the total due to rounding.

Background Notes

Relevance

1. The consumer prices index (CPI) is the main United Kingdom domestic measure of consumer price inflation for macroeconomic purposes. It forms the basis for the Government's inflation target that the Bank of England's Monetary Policy Committee (MPC) is required to achieve.
2. Internationally, the CPI is known as the Harmonised Index of Consumer Prices (HICP). HICPs are calculated in each Member State of the European Union, according to rules specified in a series of European Regulations developed by Eurostat in conjunction with the EU Member States. HICPs are used to compare inflation rates across the European Union. Since January 1999 it has also been used by the European Central Bank (ECB) as the measure of price stability across the euro area.
3. The retail prices index (RPI) is the most long-standing general purpose measure of inflation in the United Kingdom and is available from June 1947. It is used for a variety of purposes by both government and external users including the indexation of various incomes and prices and the uprating of pensions, benefits and index-linked gilts.

Methodology

4. The CPI and the RPI are compiled using the same underlying price data, based on a large and representative selection of around 650 individual goods and services for which price movements are measured in around 150 randomly selected areas throughout the UK. Around 180,000 separate price quotations are used every month to compile the indices. The outlets in which the prices are collected are selected randomly. Expenditure weights are held constant for one year at a time.
5. The selection of goods and services that are priced to compile the CPI and RPI is reviewed annually. The contents of the 2009 basket are described in an article published on the National Statistics website at: <http://www.statistics.gov.uk/cci/article.asp?ID=2156>
The expenditure weights used to compile the indices are also updated each year. Additional details of the updated CPI and RPI weights for 2009 are available from the National Statistics website in an article entitled Consumer Prices Index and Retail Prices Index: Updating Weights for 2009: <http://www.statistics.gov.uk/cci/article.asp?ID=2172>
6. Rates of change for the CPI are calculated from unrounded index levels, rather than from the published indices, which are rounded to one decimal place. The use of unrounded indices increases the accuracy of the calculation. The unrounded index levels are available on request. By contrast, rates of change for the RPI are calculated from the published rounded indices.

Reliability

7. Once the RPI indices are published they are never revised. CPI indices are revisable although past revisions have been minimal with the exception of those arising from re-referencing of the CPI to 2005=100, which took place with the publication of the January 2006 indices.

Comparability

8. The CPI's coverage of goods and services was extended in stages in the areas of health, education, childcare and insurance, with effect from the January 2000, 2001, and 2002 indices. In 2000, there was also a change to the population basis for the weights which was broadened from private households to include expenditure by foreign visitors and residents of institutional households. Further details can be found in a series of articles:
http://www.statistics.gov.uk/about/methodology_by_theme/cpi
9. The official CPI series starts in 1996 but estimates for earlier periods are available back to 1988. These estimates are broadly consistent with data from 1996 but should be treated with some caution. The following article provides more detail:
<http://www.statistics.gov.uk/cci/article.asp?ID=31>
10. RPI data are available back to 1947 but have been re-referenced on several occasions since then, generally accompanied by changes to the coverage and/or structure of the detailed sub-components. Details of these changes are given in Appendices 1 and 2 of the CPI Technical Manual: <http://www.statistics.gov.uk/statbase/Product.asp?vlnk=2328>

Coherence

11. The CPI and RPI both measure the average change from month to month in the prices of consumer goods and services purchased in the UK. However, they differ in both coverage and methodology. A detailed description of these differences is given in an article entitled "The New Inflation Target: the Statistical Perspective":
www.statistics.gov.uk/StatBase/Product.asp?vlnk=10913. The differences are summarised below:
 - In the CPI, the geometric mean is used to combine the individual prices into elementary indices at the most basic level whereas the RPI uses arithmetic means
 - The CPI excludes a number of RPI series mainly relating to housing costs (for example, council tax), and in particular to owner occupiers' housing costs (including mortgage interest payments, house depreciation and buildings insurance). In addition, the CPI excludes the annual road fund licence and, from 2006, TV licences which are classified as taxes in the UK National Accounts, and Trades Union subscriptions which by convention are not part of household expenditure
 - The CPI includes series for university accommodation fees, foreign students' university tuition fees, and unit trust and stockbrokers' charges, none of which are included in the RPI
 - The CPI is categorised according to the international classification system, COICOP (Classification Of Individual Consumption by Purpose). The way in which this maps to the RPI groupings is shown in the following table:

COICOP Divisions	RPI Groups
01 Food & non-alcoholic beverages	Food
02 Alcohol & tobacco	Alcoholic drink (off sales) Tobacco
03 Clothing & footwear	Clothing & footwear
04 Housing & household services	Housing (exc. mortgage interest payments, depreciation, council tax & building insurance) Fuel & light
05 Furniture & household goods	Household goods Domestic services
06 Health	Personal goods & services (health-related items)
07 Transport	Motoring expenditure Fares & other travel costs
08 Communication	Household services (exc. domestic services & fees and subscriptions)
09 Recreation & culture	Leisure goods Leisure services
10 Education	Fees & subscriptions (education-related items)
11 Restaurants & hotels	Catering Alcoholic drink (on sales)
12 Miscellaneous goods & services	Personal goods & services (non health-related items) Fees & subscriptions (non education-related items)

- The index for the purchase of new cars in the CPI is quality adjusted and based on actual published prices for new cars. New car prices in the RPI are imputed from movements in second hand car prices
- The CPI weights are based on expenditure by all private households, foreign visitors to the UK and residents of institutional households. In the RPI, weights are based on expenditure by private households only, excluding the highest income households and pensioner households mainly dependent on state benefits
- In the construction of the CPI weights, amounts paid out in insurance claims are distributed among the COICOP headings according to the nature of the claims'

expenditure, with the residual (the service charge) being allocated to the relevant insurance heading. For the RPI weights, total expenditure (that is, gross of claims paid out) is assigned to the relevant insurance heading

12. A breakdown of the difference between the CPI and RPI annual rates of inflation is shown in Table 10 of the CPI Statistical Bulletin.

Accessibility

13. This Bulletin includes the September 2009 data, collected on 15 September 2009. Future publication dates are 17 November, 15 December, 19 January, 16 February, 23 March and 20 April. The European Commission (Eurostat) will release figures for the harmonised index of consumer prices (HICP) for the month of September 2009 for EU member states, together with an EU average, on 15 October 2009. Further information on HICP for the European Union, Eurozone and other EU Member States is available from Eurostat's HICP web page: <http://epp.eurostat.ec.europa.eu/portal/page/portal/hicp/introduction>

Further information

14. A more detailed quality report for this Statistical Bulletin is available at: <http://www.statistics.gov.uk/CCI/article.asp?ID=1585>
15. A full description of how the CPI and RPI are compiled is given in the Consumer Price Indices Technical Manual 2007 edition: <http://www.statistics.gov.uk/statbase/Product.asp?vlnk=2328>

General

16. Details of the policy governing the release of new data are available from the press office. Also available is a list of the names of those given pre-publication access to contents of this release.
17. In line with Consumer Price Indices Pre-Release arrangements, an advanced estimate of the CPI was provided to the Governor of the Bank of England and the Chancellor of the Exchequer 3½ working days ahead of publication. The Governor shared this information with the MPC, and officials present at the MPC policy meeting, on Thursday 8 October.
18. Complete runs of series in this release are available to download free of charge at: <http://www.statistics.gov.uk/timeseries>
19. **National Statistics** are produced to high professional standards set out in the Code of Practice for Official Statistics. They undergo regular quality assurance reviews to ensure that they meet customer needs. They are produced free from any political interference. © Crown Copyright 2009

.....
Next publication: 17 November 2009

Issued by: Office for National Statistics, Government Buildings, Cardiff Road, Newport NP10 8XG

Media contact:

Tel **Media Relations Office 0845 6041858**

Emergency on-call 07867 906553

Email **press.office@ons.gsi.gov.uk**

Statistical contact:

Tel **Philip Gooding 01633 455896**

Email **philip.gooding@ons.gsi.gov.uk**

Website:

www.ons.gov.uk

Email cpi@ons.gov.uk

CPI/RPI recorded message:

Tel **01633 456961**

1 CPI, RPI and other selected indices: the latest three years

	Consumer prices index (CPI) ¹		Consumer prices index excluding indirect taxes (CPIY) ³		Consumer prices index at constant tax rates (CPI-CT)		All items retail prices index (RPI)		All items RPI excluding mortgage interest payments and indirect taxes (RPIY) ²			
	Index (2005=100)	Percentage change over 12 months	Index (2005=100)	Percentage change over 12 months	Index (2005=100)	Percentage change over 12 months	Index (Jan 13, 1987=100)	Percentage change over 12 months	mortgage interest payments (RPIX)		mortgage interest payments and indirect taxes (RPIY) ²	
									Index (Jan 13, 1987=100)	Percentage change over 12 months	Index (Jan 13, 1987=100)	Percentage change over 12 months
	D7BT	D7G7	EL2Q	EL2S	EAC7	EAD6	CHAW	CZBH	CHMK	CDKQ	CBZW	CBZX
2006 Sep	103.0	2.4	103.2	2.6	102.9	2.3	200.1	3.6	195.3	3.2	186.4	3.3
Oct	103.2	2.4	103.5	2.7	103.1	2.3	200.4	3.7	195.5	3.2	186.7	3.3
Nov	103.4	2.7	103.8	3.0	103.4	2.6	201.1	3.9	196.2	3.4	187.5	3.6
Dec	104.0	3.0	104.3	3.2	103.9	2.9	202.7	4.4	197.4	3.8	188.6	3.9
2007 Jan	103.2	2.7	103.5	2.9	103.1	2.6	201.6	4.2	196.1	3.5	187.3	3.7
Feb	103.7	2.8	103.9	2.9	103.5	2.6	203.1	4.6	197.1	3.7	188.4	3.9
Mar	104.2	3.1	104.3	3.1	103.9	2.9	204.4	4.8	198.3	3.9	189.5	4.0
Apr	104.5	2.8	104.6	2.9	104.2	2.6	205.4	4.5	199.3	3.6	190.0	3.7
May	104.8	2.5	105.0	2.6	104.5	2.3	206.2	4.3	200.0	3.3	190.7	3.4
Jun	105.0	2.4	105.2	2.5	104.7	2.2	207.3	4.4	200.7	3.3	191.4	3.3
Jul	104.4	1.9	104.6	2.0	104.1	1.7	206.1	3.8	199.4	2.7	190.1	2.6
Aug	104.7	1.8	105.0	1.9	104.5	1.6	207.3	4.1	200.1	2.7	190.9	2.6
Sep	104.8	1.8	105.0	1.7	104.5	1.6	208.0	3.9	200.8	2.8	191.6	2.8
Oct	105.3	2.1	105.5	1.9	104.9	1.8	208.9	4.2	201.6	3.1	192.3	3.0
Nov	105.6	2.1	105.8	1.9	105.2	1.8	209.7	4.3	202.4	3.2	193.2	3.0
Dec	106.2	2.1	106.4	2.0	105.8	1.9	210.9	4.0	203.5	3.1	194.4	3.1
2008 Jan	105.5	2.2	105.7	2.1	105.1	2.0	209.8	4.1	202.7	3.4	193.5	3.3
Feb	106.3	2.5	106.5	2.5	105.9	2.3	211.4	4.1	204.3	3.7	195.2	3.6
Mar	106.7	2.5	107.0	2.6	106.3	2.3	212.1	3.8	205.3	3.5	196.3	3.6
Apr	107.6	3.0	107.7	3.0	107.0	2.7	214.0	4.2	207.2	4.0	197.5	3.9
May	108.3	3.3	108.5	3.3	107.7	3.1	215.1	4.3	208.7	4.4	199.0	4.4
Jun	109.0	3.8	109.3	3.9	108.5	3.6	216.8	4.6	210.4	4.8	200.8	4.9
Jul	109.0	4.4	109.3	4.5	108.4	4.2	216.5	5.0	210.0	5.3	200.4	5.4
Aug	109.7	4.7	110.1	4.9	109.1	4.5	217.2	4.8	210.6	5.2	201.2	5.4
Sep	110.3	5.2	110.7	5.4	109.7	5.0	218.4	5.0	211.8	5.5	202.4	5.6
Oct	110.0	4.5	110.4	4.7	109.5	4.3	217.7	4.2	211.1	4.7	201.7	4.9
Nov	109.9	4.1	110.3	4.3	109.3	3.9	216.0	3.0	210.2	3.9	200.8	3.9
Dec	109.5	3.1	111.3	4.6	110.2	4.1	212.9	0.9	209.2	2.8	201.9	3.9
2009 Jan	108.7	3.0	110.4	4.5	109.4	4.1	210.1	0.1	207.5	2.4	200.0	3.4
Feb	109.6	3.2	111.4	4.6	110.3	4.2	211.4	-	209.5	2.5	202.1	3.5
Mar	109.8	2.9	111.6	4.3	110.5	3.9	211.3	-0.4	209.9	2.2	202.5	3.2
Apr	110.1	2.3	111.8	3.8	110.7	3.4	211.5	-1.2	210.7	1.7	202.9	2.7
May	110.7	2.2	112.4	3.6	111.2	3.3	212.8	-1.1	212.0	1.6	204.1	2.6
Jun	111.0	1.8	112.7	3.1	111.6	2.9	213.4	-1.6	212.6	1.0	204.7	1.9
Jul	110.9	1.8	112.7	3.1	111.5	2.8	213.4	-1.4	212.6	1.2	204.7	2.1
Aug	111.4	1.6	113.2	2.9	112.0	2.7	214.4	-1.3	213.6	1.4	205.8	2.3
Sep	111.5	1.1	113.1	2.2	112.0	2.1	215.3	-1.4	214.5	1.3	206.5	2.0

Key: - zero or negligible

2 The taxes excluded are council tax, VAT, duties, vehicle excise duty, insurance tax and air passenger duty.

1 Inflation rates prior to 1997 and index levels prior to 1996 are estimated. Further details are given in Economic Trends No.541 December 1998. These details are also available on the National Statistics website: www.statistics.gov.uk/cci/article/asp?ID=31

3 The taxes excluded are VAT, duties, insurance premium tax, air passenger duty, stamp duty on share transactions.

Source: National Statistics

2 CPI: Detailed figures for 15 September 2009

	Percentage change over				Percentage change over		
	Index (2005 =100)	1 mth	12 mths		Index (2005 =100)	1 mth	12 mths
CPI (overall index)	111.5	-	1.1				
01 Food and non-alcoholic beverages	121.4	-0.9	1.6	06.2 Out-patient services	114.7	0.1	1.9
02 Alcoholic beverages and tobacco	116.4	-	4.2	06.2.1/3 Medical services & paramedical services	111.1	0.2	1.2
03 Clothing and footwear	80.7	3.6	-6.9	06.2.2 Dental services	118.8	-	2.5
04 Housing, water, electricity, gas and other fuels	129.6	-	-1.1				
05 Furniture, household equipment and maintenance	108.2	1.6	3.0	06.3 Hospital services	126.7	-	5.1
06 Health	113.7	0.2	3.2				
07 Transport	115.1	-1.5	1.2	07.1 Purchase of vehicles	102.1	1.0	5.4
08 Communication	95.1	-0.3	1.1	07.1.1A New cars	106.0	-	1.5
09 Recreation and culture	99.2	0.2	1.4	07.1.1B Second-hand cars	92.8	2.1	9.6
10 Education	147.3	1.8	8.2	07.1.2/3 Motorcycles and bicycles	116.5	1.4	9.7
11 Restaurants and hotels	114.0	-	1.6				
12 Miscellaneous goods and services	111.6	0.2	2.0	07.2 Operation of personal transport equipment	120.8	1.3	-2.1
All goods	108.3	0.6	-	07.2.1 Spare parts and accessories	110.1	0.1	3.5
All services	115.4	-0.6	2.5	07.2.2 Fuels and lubricants	121.6	2.3	-6.6
01.1 Food	122.2	-0.9	1.1	07.2.3 Maintenance and repairs	121.9	0.1	2.6
01.1.1 Bread and cereals	123.4	0.1	0.5	07.2.4 Other services	115.1	0.2	2.2
01.1.2 Meat	121.3	-1.2	-0.2	07.3 Transport services	122.2	-9.9	1.8
01.1.3 Fish	127.6	-1.2	1.2	07.3.1 Passenger transport by railway	120.2	-0.9	5.6
01.1.4 Milk, cheese and eggs	128.8	-1.0	2.1	07.3.2 Passenger transport by road	117.1	-0.1	3.3
01.1.5 Oils and fats	128.4	0.3	-5.8	07.3.3 Passenger transport by air	101.8	-23.8	-13.3
01.1.6 Fruit	105.3	-4.2	-3.1	07.3.4 Passenger transport by sea and inland waterway	139.6	-23.3	-1.9
01.1.7 Vegetables including potatoes and tubers	122.9	-1.2	0.5				
01.1.8 Sugar, jam, syrups, chocolate and confectionery	124.6	0.7	6.8	08.1 Postal services	142.3	-	9.8
01.1.9 Food products (nec)	115.3	0.5	6.0	08.2/3 Telephone and telefax equipment and services	93.3	-0.4	0.7
01.2 Non-alcoholic beverages	116.2	-0.8	4.9	09.1 Audio-visual equipment and related products	60.4	-2.1	-10.3
01.2.1 Coffee, tea and cocoa	126.8	-2.7	8.2	09.1.1 Reception and reproduction of sound and pictures	60.9	-0.5	-5.4
01.2.2 Mineral waters, soft drinks and juices	113.1	-0.1	3.9	09.1.2 Photographic, cinematographic and optical equipment	34.6	3.0	-17.3
02.1 Alcoholic beverages	110.7	-	4.3	09.1.3 Data processing equipment	46.3	-3.0	-10.4
02.1.1 Spirits	112.3	1.8	2.6	09.1.4 Recording media	76.6	-5.7	-14.6
02.1.2 Wine	113.0	0.1	5.9	09.1.5 Repair of audio-visual equipment & related products	111.9	-0.3	-0.3
02.1.3 Beer	103.7	-2.2	3.0	09.2 Oth. major durables for recreation & culture	107.4	-	4.2
02.2 Tobacco	120.1	0.1	3.8	09.2.1/2 Major durables for in/outdoor recreation	107.4	-	4.2
03.1 Clothing	79.3	3.8	-7.8	09.3 Other recreational items, gardens and pets	99.5	0.4	1.8
03.1.2 Garments	77.7	4.0	-8.4	09.3.1 Games, toys and hobbies	92.1	0.3	0.6
03.1.3 Other clothing and clothing accessories	96.8	1.8	-1.8	09.3.2 Equipment for sport and open-air recreation	102.6	0.4	2.7
03.1.4 Cleaning, repair and hire of clothing	115.1	0.2	1.7	09.3.3 Gardens, plants and flowers	105.2	0.3	2.9
03.2 Footwear including repairs	90.0	2.5	-2.2	09.3.4/5 Pets, related products and services	118.1	0.5	3.8
04.1 Actual rentals for housing	112.4	-	1.8	09.4 Recreational and cultural services	117.5	0.7	3.5
04.3 Regular maintenance and repair of the dwelling	117.2	0.2	3.3	09.4.1 Recreational and sporting services	121.2	1.6	2.3
04.3.1 Materials for maintenance and repair	119.2	0.3	6.3	09.4.2 Cultural services	115.8	0.2	4.1
04.3.2 Services for maintenance and repair	115.0	-	-0.5	09.5 Books, newspapers and stationery	115.7	1.3	4.4
04.4 Water supply and misc. services for the dwelling	128.7	-	4.7	09.5.1 Books	116.3	3.4	3.6
04.4.1 Water supply	127.7	-	4.5	09.5.2 Newspapers and periodicals	121.5	-	4.5
04.4.3 Sewerage collection	129.4	-	4.9	09.5.3/4 Misc. printed matter, stationery, drawing materials	106.2	0.7	4.5
04.5 Electricity, gas and other fuels	167.0	-0.1	-7.3	09.6 Package holidays	112.9	0.6	6.2
04.5.1 Electricity	155.6	-	-7.2				
04.5.2 Gas	189.1	-	-5.6	10.0 Education	147.3	1.8	8.2
04.5.3 Liquid fuels	119.3	-2.3	-33.1	11.1 Catering services	114.7	0.1	2.1
04.5.4 Solid fuels	159.2	0.3	9.7	11.1.1 Restaurants & cafes	114.8	-	2.2
05.1 Furniture, furnishings and carpets	110.9	3.1	2.4	11.1.2 Canteens	113.7	0.3	1.2
05.1.1 Furniture and furnishings	112.3	4.8	3.9	11.2 Accommodation services	109.4	-0.3	-1.7
05.1.2 Carpets and other floor coverings	106.0	-2.2	-2.7				
05.2 Household textiles	91.6	0.3	0.7	12.1 Personal care	108.9	-0.5	1.4
05.3 Household appliances, fitting and repairs	104.7	1.3	7.1	12.1.1 Hairdressing and personal grooming establishments	113.5	0.2	1.0
05.3.1/2 Major appliances and small electric goods	104.0	1.4	7.8	12.1.2/3 Appliances and products for personal care	107.2	-0.7	1.5
05.3.3 Repair of household appliances	109.5	0.1	0.7	12.3 Personal effects (nec)	116.4	1.6	4.2
05.4 Glassware, tableware and household utensils	105.2	2.1	2.9	12.3.1 Jewellery, clocks and watches	122.5	1.3	5.8
05.5 Tools and equipment for house and garden	104.9	-0.2	1.3	12.3.2 Other personal effects	104.4	2.6	-
05.6 Goods and services for routine maintenance	118.5	-0.4	3.2	12.4 Social protection	123.0	0.3	4.4
05.6.1 Non-durable household goods	118.6	-0.9	4.7				
05.6.2 Domestic services and household services	117.0	0.2	1.1	12.5 Insurance	117.3	0.9	9.1
06.1 Medical products, appliances and equipment	103.7	0.5	2.1	12.5.2 House contents insurance	105.5	-0.1	9.0
06.1.1 Pharmaceutical products	105.7	0.7	4.0	12.5.3 Health insurance	130.9	-	5.8
06.1.2/3 Other medical and therapeutic equipment	101.5	0.2	-0.3	12.5.4 Transport insurance	118.2	2.2	11.5
				12.6 Financial services (nec)	104.3	0.1	-
				12.6.2 Other financial services (nec)	104.3	0.1	-
				12.7 Other services (nec)	115.6	0.3	-0.6

Key: - zero or negligible .. not available (nec) not elsewhere covered

Source: National Statistics

3 CPI: Detailed figures by divisions, groups and classes

	Weights	Index (2005=100)						Percentage change over 12 months					
		2009	2009	2009	2009	2009	2009	2009	2009	2009	2009	2009	2009
			Apr	May	Jun	Jul	Aug	Sep	Apr	May	Jun	Jul	Aug
CPI (overall index)	1 000	110.1	110.7	111.0	110.9	111.4	111.5	2.3	2.2	1.8	1.8	1.6	1.1
01 Food and non-alcoholic beverages	118	122.9	124.1	123.8	123.3	122.6	121.4	8.6	7.8	5.4	4.1	2.2	1.6
02 Alcoholic beverages and tobacco	44	114.6	116.4	115.6	116.0	116.4	116.4	2.8	3.9	3.3	4.1	4.1	4.2
03 Clothing and footwear	57	80.4	80.7	79.5	77.0	77.9	80.7	-8.4	-8.1	-8.1	-8.1	-8.2	-6.9
04 Housing, water, electricity, gas and other fuels	126	129.5	129.0	129.2	129.4	129.6	129.6	6.1	5.5	5.5	5.2	3.3	-1.1
05 Furniture, household equipment and maintenance	66	105.7	106.8	107.9	105.0	106.5	108.2	3.5	3.2	1.9	2.4	3.0	3.0
06 Health	22	111.8	111.9	112.1	112.9	113.4	113.7	2.7	2.6	2.6	2.5	2.9	3.2
07 Transport	151	109.8	111.5	113.1	115.0	116.8	115.1	-0.9	-1.1	-1.3	-1.4	0.3	1.2
08 Communication	23	95.5	95.5	95.5	95.5	95.5	95.1	1.2	1.3	0.7	1.5	1.2	1.1
09 Recreation and culture	145	97.8	98.1	98.7	98.9	99.0	99.2	0.5	0.8	1.2	2.0	1.8	1.4
10 Education	21	144.6	144.6	144.6	144.6	144.6	147.3	8.6	8.6	8.6	8.6	8.6	8.2
11 Restaurants and hotels	128	113.2	113.6	113.8	113.9	114.0	114.0	2.5	2.5	2.4	2.0	2.0	1.6
12 Miscellaneous goods and services	99	110.8	110.9	110.9	111.3	111.4	111.6	2.4	2.3	2.1	2.1	2.0	2.0
All goods	554	106.6	107.4	107.9	107.2	107.7	108.3	1.2	1.1	0.6	0.7	0.6	-0.0
All services	446	114.3	114.7	114.8	115.7	116.1	115.4	3.6	3.5	3.2	3.1	2.9	2.5
01.1 Food	104	124.1	125.4	125.0	124.3	123.4	122.2	9.2	8.4	5.5	4.1	1.9	1.1
01.1.1 Bread and cereals	17	124.4	124.7	124.2	124.6	123.3	123.4	8.8	7.7	4.2	2.8	0.3	0.5
01.1.2 Meat	23	121.8	123.6	123.9	123.4	122.9	121.3	12.3	10.0	6.8	3.4	1.9	-0.2
01.1.3 Fish	5	127.6	128.1	126.4	128.4	129.1	127.6	5.0	3.5	5.6	5.5	3.0	1.2
01.1.4 Milk, cheese and eggs	15	130.4	130.4	129.7	130.0	130.1	128.8	7.6	6.4	3.5	3.6	2.9	2.1
01.1.5 Oils and fats	2	132.2	132.9	132.8	132.2	128.0	128.4	6.6	3.3	-3.3	-3.7	-6.4	-5.8
01.1.6 Fruit	10	110.9	116.4	117.1	111.0	109.9	105.3	6.2	10.7	4.9	3.9	-1.3	-3.1
01.1.7 Vegetables including potatoes and tubers	16	130.6	131.3	130.2	127.5	124.4	122.9	11.3	9.3	6.8	4.2	1.4	0.5
01.1.8 Sugar, jam, syrups, chocolate and confectionery	13	121.8	122.7	121.6	123.2	123.7	124.6	7.0	7.6	6.2	7.2	5.9	6.8
01.1.9 Food products (nec)	3	114.1	114.6	116.0	115.9	114.7	115.3	11.5	11.3	10.7	8.5	5.9	6.0
01.2 Non-alcoholic beverages	14	115.1	115.2	116.2	116.9	117.2	116.2	4.3	3.8	4.6	4.3	4.0	4.9
01.2.1 Coffee, tea and cocoa	4	123.8	122.0	125.2	127.0	130.2	126.8	12.6	8.4	11.0	9.9	10.1	8.2
01.2.2 Mineral waters, soft drinks and juices	10	112.6	113.3	113.5	113.8	113.2	113.1	2.1	2.6	2.8	2.7	1.9	3.9
02.1 Alcoholic beverages	21	108.8	110.9	109.1	109.8	110.7	110.7	2.8	3.5	2.3	3.9	4.0	4.3
02.1.1 Spirits	6	108.9	112.2	108.8	111.7	110.3	112.3	0.8	1.6	-0.2	3.0	0.1	2.6
02.1.2 Wine	10	110.6	112.7	111.0	111.4	112.9	113.0	4.6	5.6	3.5	4.5	5.7	5.9
02.1.3 Beer	5	104.4	104.9	105.0	103.8	106.0	103.7	1.3	1.5	2.5	3.6	5.1	3.0
02.2 Tobacco	23	118.4	120.0	120.0	120.1	120.0	120.1	2.5	3.9	3.9	3.9	3.9	3.8
03.1 Clothing	48	79.3	79.6	78.2	75.4	76.4	79.3	-9.1	-8.7	-8.8	-8.8	-9.0	-7.8
03.1.2 Garments	44	77.8	78.0	76.5	73.7	74.7	77.7	-9.8	-9.4	-9.7	-9.5	-9.7	-8.4
03.1.3 Other clothing and clothing accessories	3	96.7	97.8	98.6	96.0	95.0	96.8	-1.0	-1.4	0.5	-1.0	-1.5	-1.8
03.1.4 Cleaning, repair and hire of clothing	1	114.1	114.2	114.7	115.0	114.9	115.1	3.1	3.1	3.5	2.2	1.8	1.7
03.2 Footwear including repairs	9	87.4	87.9	87.7	86.5	87.8	90.0	-4.7	-4.7	-4.4	-5.1	-4.3	-2.2
04.1 Actual rentals for housing	51	111.8	111.6	111.5	112.4	112.4	112.4	1.8	1.5	1.4	2.1	1.9	1.8
04.3 Regular maintenance and repair of the dwelling	18	115.6	116.0	116.4	116.7	117.0	117.2	4.9	5.4	5.5	4.6	4.1	3.3
04.3.1 Materials for maintenance and repair	10	116.3	117.0	117.9	118.4	118.9	119.2	7.3	8.4	8.9	8.5	7.8	6.3
04.3.2 Services for maintenance and repair	8	115.0	115.1	114.9	114.9	114.9	115.0	1.9	1.8	1.4	-0.1	-0.4	-0.5
04.4 Water supply and misc. services for the dwelling	11	128.7	128.7	128.7	128.7	128.7	128.7	4.7	4.7	4.7	4.7	4.7	4.7
04.4.1 Water supply	5	127.7	127.7	127.7	127.7	127.7	127.7	4.5	4.5	4.5	4.5	4.5	4.5
04.4.3 Sewerage collection	6	129.4	129.4	129.4	129.4	129.4	129.4	4.9	4.9	4.9	4.9	4.9	4.9
04.5 Electricity, gas and other fuels	46	168.5	166.9	167.6	166.4	167.2	167.0	12.8	11.0	11.1	9.8	4.2	-7.3
04.5.1 Electricity	20	159.0	155.6	155.6	155.6	155.6	155.6	9.1	6.8	6.8	6.8	2.4	-7.2
04.5.2 Gas	23	190.0	190.0	190.0	189.1	189.1	189.1	23.5	23.5	23.5	22.7	10.0	-5.6
04.5.3 Liquid fuels	2	110.6	110.8	122.5	109.6	122.1	119.3	-39.0	-43.7	-40.4	-49.2	-33.3	-33.1
04.5.4 Solid fuels	1	163.1	160.5	159.1	157.9	158.7	159.2	30.3	25.6	22.0	19.9	19.2	9.7
05.1 Furniture, furnishings and carpets	28	107.3	109.3	111.3	105.9	107.6	110.9	3.7	2.7	-0.8	1.2	2.3	2.4
05.1.1 Furniture and furnishings	21	107.1	108.6	111.3	105.9	107.2	112.3	3.5	2.7	-1.8	2.0	2.5	3.9
05.1.2 Carpets and other floor coverings	7	107.2	110.8	110.5	105.0	108.4	106.0	3.6	2.1	2.6	-2.2	0.8	-2.7
05.2 Household textiles	7	90.9	92.4	91.5	89.8	91.4	91.6	-0.5	0.7	1.3	0.4	1.2	0.7
05.3 Household appliances, fitting and repairs	9	101.5	100.7	101.7	100.6	103.4	104.7	5.1	4.5	4.8	4.7	6.0	7.1
05.3.1/2 Major appliances and small electric goods	8	100.4	99.6	100.6	99.5	102.5	104.0	5.4	4.7	5.1	5.1	6.6	7.8
05.3.3 Repair of household appliances	1	109.8	109.9	109.9	109.3	109.5	109.5	2.6	2.3	1.8	0.8	0.9	0.7
05.4 Glassware, tableware and household utensils	5	101.9	103.5	104.4	101.9	103.1	105.2	0.1	2.0	3.7	1.7	2.0	2.9
05.5 Tools and equipment for house and garden	6	105.3	105.5	105.5	105.2	105.1	104.9	2.2	2.8	2.4	2.6	1.9	1.3
05.6 Goods and services for routine maintenance	11	117.3	117.5	118.6	118.1	119.0	118.5	7.1	5.7	6.0	4.6	4.3	3.2
05.6.1 Non-durable household goods	6	116.8	117.1	118.9	118.1	119.7	118.6	10.6	8.2	9.4	7.3	6.3	4.7
05.6.2 Domestic services and household services	5	116.6	116.7	116.8	116.6	116.8	117.0	3.2	2.6	1.8	1.3	1.5	1.1
06.1 Medical products, appliances and equipment	10	102.8	102.5	102.8	102.4	103.2	103.7	1.3	1.3	1.5	0.8	1.4	2.1
06.1.1 Pharmaceutical products	6	104.1	103.8	104.1	103.5	105.0	105.7	1.9	2.1	2.6	1.5	2.6	4.0
06.1.2/3 Other medical and therapeutic equipment	4	101.6	101.4	101.5	101.3	101.3	101.5	0.5	0.4	0.2	-0.2	-0.2	-0.3

Key: - zero or negligible .. not available (nec) not elsewhere covered

Source: National Statistics

3 CPI: Detailed figures by divisions, groups and classes

continued

	Weights	Index (2005=100)						Percentage change over 12 months					
		2009	2009 Apr	2009 May	2009 Jun	2009 Jul	2009 Aug	2009 Sep	2009 Apr	2009 May	2009 Jun	2009 Jul	2009 Aug
06.2 Out-patient services	4	114.0	114.1	114.3	114.4	114.6	114.7	2.6	2.0	1.9	1.9	2.0	1.9
06.2.1/3 Medical services & paramedical services	2	110.4	110.5	110.7	110.8	110.9	111.1	1.4	1.5	1.5	1.4	1.3	1.2
06.2.2 Dental services	2	117.9	118.1	118.3	118.5	118.8	118.8	3.9	2.5	2.4	2.4	2.7	2.5
06.3 Hospital services	8	122.8	123.2	123.5	126.5	126.6	126.7	4.4	4.4	4.2	5.0	5.1	5.1
07.1 Purchase of vehicles	47	96.3	97.6	98.4	99.8	101.1	102.1	-2.3	-0.9	0.3	2.0	3.8	5.4
07.1.1A New cars	26	104.2	104.9	105.0	105.4	106.0	106.0	0.8	1.3	1.4	1.6	1.9	1.5
07.1.1B Second-hand cars	18	82.5	84.7	86.3	88.8	90.8	92.8	-9.7	-6.9	-3.9	0.1	4.4	9.6
07.1.2/3 Motorcycles and bicycles	3	112.5	113.1	113.6	113.7	114.9	116.5	16.6	15.7	14.4	12.8	11.7	9.7
07.2 Operation of personal transport equipment	69	113.9	115.5	117.9	118.5	119.3	120.8	-5.0	-5.9	-6.6	-6.9	-3.9	-2.1
07.2.1 Spare parts and accessories	5	108.6	109.0	109.2	109.6	110.0	110.1	3.1	3.5	3.4	4.1	4.1	3.5
07.2.2 Fuels and lubricants	34	109.9	112.5	116.9	117.7	118.9	121.6	-12.5	-13.9	-14.8	-15.1	-10.0	-6.6
07.2.3 Maintenance and repairs	23	120.4	120.8	121.2	121.4	121.8	121.9	4.0	3.7	3.5	3.3	3.1	2.6
07.2.4 Other services	7	114.3	114.4	114.6	114.7	114.9	115.1	2.0	2.0	2.2	2.3	2.3	2.2
07.3 Transport services	35	121.3	123.6	124.8	130.5	135.7	122.2	9.6	9.1	8.0	5.5	4.0	1.8
07.3.1 Passenger transport by railway	9	120.8	120.6	119.5	121.8	121.3	120.2	5.2	5.3	4.7	6.3	5.8	5.6
07.3.2 Passenger transport by road	14	116.3	117.0	116.8	117.1	117.3	117.1	4.1	4.4	4.5	3.8	3.4	3.3
07.3.3 Passenger transport by air	9	99.8	106.6	109.9	123.3	133.5	101.8	6.6	4.1	1.3	-5.9	-8.2	-13.3
07.3.4 Passenger transport by sea and inland waterway	3	138.8	139.0	145.5	157.0	182.0	139.6	17.8	20.8	17.2	16.2	8.9	-1.9
08.1 Postal services	1	142.3	142.3	142.3	142.3	142.3	142.3	9.8	9.8	9.8	9.8	9.8	9.8
08.2/3 Telephone and telefax equipment and services	22	93.7	93.7	93.7	93.7	93.6	93.3	0.8	0.9	0.3	1.1	0.8	0.7
09.1 Audio-visual equipment and related products	23	61.4	62.2	62.5	61.6	61.7	60.4	-13.2	-11.5	-11.0	-10.2	-9.1	-10.3
09.1.1 Reception and reproduction of sound and pictures	6	61.2	63.0	63.1	61.2	61.2	60.9	-8.8	-5.6	-3.5	-5.5	-5.8	-5.4
09.1.2 Photographic, cinematographic and optical equipment	4	35.4	35.5	34.7	32.9	33.6	34.6	-24.0	-22.9	-22.5	-26.2	-20.9	-17.3
09.1.3 Data processing equipment	5	47.3	47.2	46.8	47.0	47.8	46.3	-14.0	-13.2	-13.9	-13.3	-8.3	-10.4
09.1.4 Recording media	7	78.0	79.4	82.1	82.4	81.2	76.6	-15.8	-13.9	-12.5	-7.9	-9.9	-14.6
09.1.5 Repair of audio-visual equipment & related products	1	111.8	111.9	111.9	112.1	112.3	111.9	1.2	1.0	0.7	0.8	0.8	-0.3
09.2 Other major durables for recreation & culture	9	105.4	106.7	106.7	107.3	107.4	107.4	2.6	3.9	3.8	4.6	4.3	4.2
09.2.1/2 Major durables for in/outdoor recreation	9	105.4	106.7	106.7	107.3	107.4	107.4	2.6	3.9	3.8	4.6	4.3	4.2
09.3 Other recreational items, gardens and pets	37	97.3	96.9	99.0	99.0	99.1	99.5	0.3	0.3	1.3	3.8	2.5	1.8
09.3.1 Games, toys and hobbies	20	89.6	88.7	92.2	92.2	91.8	92.1	-2.4	-2.3	0.4	4.7	2.2	0.6
09.3.2 Equipment for sport and open-air recreation	4	99.1	99.9	100.2	101.1	102.2	102.6	1.5	1.8	1.4	2.1	1.9	2.7
09.3.3 Gardens, plants and flowers	5	103.7	103.4	104.5	103.6	104.9	105.2	0.4	0.3	0.4	0.6	1.8	2.9
09.3.4/5 Pets, related products and services	8	117.8	117.7	117.4	117.6	117.5	118.1	7.7	6.9	5.1	4.6	4.3	3.8
09.4 Recreational and cultural services	32	116.3	116.3	116.5	116.9	116.7	117.5	4.1	4.3	4.5	4.4	4.0	3.5
09.4.1 Recreational and sporting services	11	118.7	118.7	118.9	119.2	119.3	121.2	4.0	3.8	3.8	3.7	3.6	2.3
09.4.2 Cultural services	21	115.2	115.2	115.4	115.8	115.5	115.8	4.1	4.5	4.8	4.8	4.1	4.1
09.5 Books, newspapers and stationery	17	113.7	113.4	112.6	113.8	114.3	115.7	3.3	1.5	1.6	2.2	3.5	4.4
09.5.1 Books	5	111.6	109.5	107.2	110.6	112.4	116.3	-1.7	-7.1	-5.8	-4.0	-0.6	3.6
09.5.2 Newspapers and periodicals	6	120.7	120.7	120.8	121.4	121.4	121.5	5.4	4.3	3.8	4.5	5.5	4.5
09.5.3/4 Misc. printed matter, stationery, drawing materials	6	105.4	106.2	105.9	105.9	105.5	106.2	4.9	6.4	5.6	5.0	4.5	4.5
09.6 Package holidays	27	109.4	110.3	110.7	111.4	112.2	112.9	6.9	7.2	6.9	6.7	6.1	6.2
10.0 Education	21	144.6	144.6	144.6	144.6	144.6	147.3	8.6	8.6	8.6	8.6	8.6	8.2
11.1 Catering services	111	113.7	114.2	114.4	114.5	114.6	114.7	2.9	2.9	2.8	2.5	2.4	2.1
11.1.1 Restaurants & cafes	100	113.8	114.4	114.5	114.6	114.8	114.8	3.0	3.1	2.9	2.6	2.6	2.2
11.1.2 Canteens	11	112.8	112.9	112.9	113.4	113.4	113.7	1.8	1.5	1.6	1.7	1.3	1.2
11.2 Accommodation services	17	109.7	110.0	110.0	110.1	109.8	109.4	0.1	-0.1	-0.0	-1.1	-0.4	-1.7
12.1 Personal care	31	109.3	108.8	109.8	109.8	109.4	108.9	2.7	2.0	2.8	2.5	1.6	1.4
12.1.1 Hairdressing and personal grooming establishments	8	112.8	112.8	112.8	112.8	113.3	113.5	2.0	1.6	1.1	0.8	1.0	1.0
12.1.2/3 Appliances and products for personal care	23	108.0	107.3	108.6	108.7	108.0	107.2	2.9	2.1	3.4	3.1	1.7	1.5
12.3 Personal effects (nec)	11	113.8	114.0	114.3	112.5	114.6	116.4	3.4	3.2	3.7	3.2	3.9	4.2
12.3.1 Jewellery, clocks and watches	8	119.3	119.6	120.0	118.7	121.0	122.5	5.0	4.8	4.6	4.5	5.2	5.8
12.3.2 Other personal effects	3	103.0	103.1	103.2	100.1	101.8	104.4	-0.6	-0.8	1.3	-0.3	0.6	-0.0
12.4 Social protection	11	121.0	121.5	122.1	122.5	122.6	123.0	4.9	4.8	4.8	4.6	4.5	4.4
12.5 Insurance	7	116.1	117.7	112.7	116.0	116.3	117.3	6.8	7.7	4.0	6.7	7.8	9.1
12.5.2 House contents insurance	2	110.6	114.4	100.9	105.6	105.6	105.5	1.0	5.0	-3.0	3.9	4.2	9.0
12.5.3 Health insurance	2	126.7	126.7	126.7	130.9	130.9	130.9	4.5	4.5	4.5	5.8	5.8	5.8
12.5.4 Transport insurance	3	114.1	115.1	113.4	115.1	115.7	118.2	10.5	9.9	7.6	8.7	10.9	11.5
12.6 Financial services (nec)	28	103.5	103.6	103.3	104.3	104.2	104.3	0.3	0.7	0.0	-0.0	0.2	0.0
12.6.2 Other financial services (nec)	28	103.5	103.6	103.3	104.3	104.2	104.3	0.3	0.7	0.0	-0.0	0.2	0.0
12.7 Other services (nec)	11	115.1	115.1	115.2	115.4	115.3	115.6	0.1	-0.3	-0.5	-0.4	-0.6	-0.6

Key: - zero or negligible .. not available (nec) not elsewhere covered

Source: National Statistics

4 CPI: Detailed figures by division¹

	Food and non-alcoholic beverages	Alcoholic beverages and tobacco	Clothing and footwear	Housing, water, electricity, gas & other fuels	Furniture, household equipment & routine maintenance	Health ²	Transport	Communication	Recreation and culture	Education ²	Restaurants and hotels	Miscellaneous goods and services ²	CPI (overall index)
COICOP Division	01	02	03	04	05	06	07	08	09	10	11	12	
Weights													
	CHZR	CHZS	CHZT	CHZU	CHZV	CHZW	CHZX	CHZY	CHZZ	CJUJ	CJUV	CJUW	CHZQ
2009	118	44	57	126	66	22	151	23	145	21	128	99	1 000
Monthly indices (2005=100)													
	D7BU	D7BV	D7BW	D7BX	D7BY	D7BZ	D7C2	D7C3	D7C4	D7C5	D7C6	D7C7	D7BT
2007 Sep	107.4	107.1	92.5	114.0	102.1	107.1	105.7	96.6	97.6	122.9	107.6	105.8	104.8
Oct	109.1	106.8	92.5	114.3	100.8	107.5	106.6	96.2	97.7	133.2	107.9	106.4	105.3
Nov	110.1	106.4	92.9	114.6	101.6	107.3	107.0	96.3	97.6	133.2	108.0	106.6	105.6
Dec	111.1	105.7	92.2	114.7	104.2	107.6	108.7	96.2	98.0	133.2	108.3	106.8	106.2
2008 Jan	110.8	106.9	87.5	115.4	100.0	108.1	108.6	95.8	97.0	133.2	108.3	106.8	105.5
Feb	111.3	108.1	87.6	119.1	101.3	108.2	109.1	94.3	97.2	133.2	108.7	107.1	106.3
Mar	111.8	108.2	87.9	119.5	103.5	108.4	110.3	94.2	96.8	133.2	109.2	107.5	106.7
Apr	113.2	111.5	87.8	122.0	102.1	108.9	110.8	94.4	97.3	133.2	110.4	108.3	107.6
May	115.1	112.0	87.8	122.3	103.5	109.0	112.7	94.3	97.3	133.2	110.8	108.5	108.3
Jun	117.5	111.9	86.5	122.5	105.9	109.3	114.6	94.9	97.6	133.2	111.1	108.6	109.0
Jul	118.4	111.4	83.8	123.0	102.6	110.1	116.6	94.1	96.9	133.2	111.6	109.0	109.0
Aug	120.0	111.8	84.9	125.6	103.4	110.3	116.5	94.3	97.3	133.2	111.7	109.2	109.7
Sep	119.6	111.7	86.8	131.1	105.1	110.2	113.8	94.1	97.8	136.2	112.2	109.4	110.3
Oct	120.1	111.4	86.3	131.6	104.0	110.4	111.3	94.1	97.4	144.6	112.5	109.6	110.0
Nov	121.8	110.6	86.3	131.5	104.7	111.0	108.4	94.8	97.6	144.6	112.5	110.1	109.9
Dec	122.7	110.4	82.7	131.1	105.0	109.9	108.9	92.9	96.8	144.6	112.2	109.6	109.5
2009 Jan	122.0	112.5	78.8	131.1	102.1	110.5	106.5	93.8	96.5	144.6	112.2	110.0	108.7
Feb	124.0	114.2	79.4	131.1	104.6	110.8	107.6	93.7	97.5	144.6	112.6	110.5	109.6
Mar	123.5	114.6	80.3	129.8	106.9	111.0	108.1	93.4	97.6	144.6	112.9	110.8	109.8
Apr	122.9	114.6	80.4	129.5	105.7	111.8	109.8	95.5	97.8	144.6	113.2	110.8	110.1
May	124.1	116.4	80.7	129.0	106.8	111.9	111.5	95.5	98.1	144.6	113.6	110.9	110.7
Jun	123.8	115.6	79.5	129.2	107.9	112.1	113.1	95.5	98.7	144.6	113.8	110.9	111.0
Jul	123.3	116.0	77.0	129.4	105.0	112.9	115.0	95.5	98.9	144.6	113.9	111.3	110.9
Aug	122.6	116.4	77.9	129.6	106.5	113.4	116.8	95.5	99.0	144.6	114.0	111.4	111.4
Sep	121.4	116.4	80.7	129.6	108.2	113.7	115.1	95.1	99.2	147.3	114.0	111.6	111.5
Percentage change on a year earlier													
	D7G8	D7G9	D7GA	D7GB	D7GC	D7GD	D7GE	D7GF	D7GG	D7GH	D7GI	D7GJ	D7G7
2007 Sep	3.7	3.2	-4.0	2.3	1.5	3.4	2.7	-3.0	-1.0	13.9	3.7	1.0	1.8
Oct	4.7	2.7	-4.3	1.4	1.8	3.2	5.1	-4.2	-0.9	13.2	3.5	1.3	2.1
Nov	4.8	2.9	-4.4	0.8	1.7	3.1	5.8	-4.0	-1.1	13.2	3.4	1.6	2.1
Dec	5.4	2.7	-3.9	0.2	0.9	3.3	5.8	-3.8	-1.3	13.2	3.4	1.9	2.1
2008 Jan	6.1	2.2	-4.9	0.4	1.7	3.1	6.4	-3.2	-1.4	13.2	3.3	1.5	2.2
Feb	5.6	2.9	-4.7	3.5	1.7	3.1	6.2	-3.9	-1.2	13.2	3.3	1.2	2.5
Mar	5.5	2.5	-5.3	3.9	0.5	3.5	7.0	-4.0	-1.5	13.2	3.3	1.2	2.5
Apr	6.6	4.2	-6.3	5.4	1.4	3.3	6.1	-2.9	-1.0	13.2	3.8	2.3	3.0
May	7.8	4.9	-6.3	6.3	1.7	3.0	6.2	-2.4	-0.8	13.2	3.9	2.6	3.3
Jun	9.5	4.5	-7.5	7.0	1.8	3.0	7.3	-1.3	-	13.2	3.9	2.7	3.8
Jul	12.3	4.3	-6.7	7.6	2.8	3.3	8.0	-0.7	-0.1	13.2	4.1	2.8	4.4
Aug	13.0	4.4	-6.7	10.1	3.2	3.2	7.3	-3.0	-0.2	13.2	4.0	3.4	4.7
Sep	11.3	4.3	-6.2	15.0	2.9	2.9	7.6	-2.7	0.2	10.8	4.3	3.4	5.2
Oct	10.1	4.4	-6.7	15.2	3.1	2.6	4.3	-2.2	-0.2	8.6	4.2	3.0	4.5
Nov	10.6	4.0	-7.1	14.8	3.0	3.5	1.3	-1.5	-	8.6	4.1	3.3	4.1
Dec	10.4	4.4	-10.3	14.3	0.8	2.1	0.1	-3.4	-1.2	8.6	3.6	2.6	3.1
2009 Jan	10.2	5.3	-10.0	13.6	2.2	2.2	-1.9	-2.0	-0.5	8.6	3.6	3.0	3.0
Feb	11.5	5.7	-9.3	10.0	3.2	2.4	-1.4	-0.7	0.3	8.6	3.6	3.2	3.2
Mar	10.5	5.9	-8.7	8.6	3.3	2.3	-2.0	-0.8	0.8	8.6	3.4	3.1	2.9
Apr	8.6	2.8	-8.4	6.1	3.5	2.7	-0.9	1.2	0.5	8.6	2.5	2.4	2.3
May	7.8	3.9	-8.1	5.5	3.2	2.6	-1.1	1.3	0.8	8.6	2.5	2.3	2.2
Jun	5.4	3.3	-8.1	5.5	1.9	2.6	-1.3	0.7	1.2	8.6	2.4	2.1	1.8
Jul	4.1	4.1	-8.1	5.2	2.4	2.5	-1.4	1.5	2.0	8.6	2.0	2.1	1.8
Aug	2.2	4.1	-8.2	3.3	3.0	2.9	0.3	1.2	1.8	8.6	2.0	2.0	1.6
Sep	1.6	4.2	-6.9	-1.1	3.0	3.2	1.2	1.1	1.4	8.2	1.6	2.0	1.1

Key: - zero or negligible

¹ Inflation rates prior to 1997 and index levels prior to 1996 are estimated. Further details are given in *Economic Trends No. 541 December 1998*. These details are also available on the National Statistics website: www.statistics.gov.uk/cpi/article.asp?ID=31

² The coverage of these categories was extended in January 2000; further extensions to coverage came into effect in January 2001 for health and miscellaneous goods and services; the coverage of miscellaneous goods and services was further extended with effect from January 2002 (details are given in a series of Economic Trends articles available on the National Statistics website: www.statistics.gov.uk/cpi)

Source: National Statistics

5 CPI: Detailed goods and services breakdown¹

	Weights	Index (2005=100)						Percentage change over 12 months						Percentage change over 1 month
		2009	2009	2009	2009	2009	2009	2009	2009	2009	2009	2009	2009	2009
		Apr	May	Jun	Jul	Aug	Sep	Apr	May	Jun	Jul	Aug	Sep	Sep
CPI (overall index)	1 000	110.1	110.7	111.0	110.9	111.4	111.5	2.3	2.2	1.8	1.8	1.6	1.1	-
All goods	554	106.6	107.4	107.9	107.2	107.7	108.3	1.2	1.1	0.6	0.7	0.6	-0.0	0.6
Food, alcoholic beverages & tobacco	162	120.5	121.9	121.5	121.2	120.8	120.0	7.0	6.7	4.8	4.1	2.7	2.3	-0.6
Processed food & non-alcoholic beverages	64	122.9	123.2	123.0	123.7	123.4	123.1	7.2	6.5	4.5	4.2	2.8	3.1	-0.2
Non-processed food	54	122.8	124.9	124.7	122.7	121.5	119.3	10.2	9.3	6.4	3.9	1.3	-0.4	-1.8
Seasonal food	31	123.6	126.0	125.4	122.3	120.5	117.9	8.6	8.7	6.1	4.3	0.8	-0.5	-2.2
Meat	23	121.8	123.6	123.9	123.4	122.9	121.3	12.3	10.0	6.8	3.4	1.9	-0.2	-1.2
Alcoholic beverages & tobacco	44	114.6	116.4	115.6	116.0	116.4	116.4	2.8	3.9	3.3	4.1	4.1	4.2	-
Industrial goods	392	101.7	102.3	103.1	102.2	103.1	104.2	-1.0	-1.1	-1.0	-0.6	-0.3	-1.0	1.1
Energy	80	138.3	139.1	141.9	141.8	142.8	144.3	0.4	-1.3	-1.9	-2.7	-2.4	-6.5	1.0
Electricity, gas & miscellaneous energy	44	173.1	171.4	171.3	170.9	170.9	170.9	16.3	15.1	15.0	14.5	6.5	-5.9	-
Liquid fuels, vehicle fuels & lubricants	36	109.6	112.1	116.7	116.9	118.6	121.1	-14.2	-15.8	-16.4	-17.4	-11.4	-8.2	2.0
Non-energy industrial goods	312	95.1	95.7	96.1	95.1	95.9	97.0	-1.3	-1.1	-0.8	-0.1	0.3	0.6	1.1
Clothing & footwear goods	56	79.9	80.2	79.0	76.4	77.4	80.3	-8.6	-8.3	-8.3	-8.3	-8.4	-7.1	3.6
Housing goods	75	107.5	108.6	109.6	107.1	108.5	110.1	4.1	4.0	2.9	3.4	3.9	3.7	1.4
Household goods	60	104.7	105.8	107.0	103.8	105.5	107.3	3.6	3.2	1.9	2.5	3.2	3.2	1.7
Water supply; materials for maintenance & repair	15	119.9	120.3	121.0	121.3	121.6	121.9	6.3	7.0	7.4	7.1	6.7	5.7	0.2
Medical products, appliances & equipment	10	102.8	102.5	102.8	102.4	103.2	103.7	1.3	1.3	1.5	0.8	1.4	2.1	0.5
Vehicles, spare parts & accessories	52	97.4	98.7	99.5	100.8	102.0	102.9	-1.8	-0.5	0.6	2.2	3.8	5.3	0.9
Recreational goods	85	88.4	88.6	89.5	89.4	89.5	89.4	-2.8	-2.5	-1.9	-0.4	-0.4	-0.8	-0.1
Audio-visual goods	22	59.9	60.7	61.0	60.1	60.2	58.9	-13.8	-12.0	-11.4	-10.6	-9.5	-10.8	-2.2
Other recreational goods	63	102.7	102.5	103.6	104.0	104.2	104.7	1.4	1.1	1.8	3.4	3.0	2.8	0.6
Miscellaneous goods	34	109.9	109.5	110.5	110.0	110.2	110.2	3.1	2.5	3.5	3.1	2.5	2.4	0.1
All services	446	114.3	114.7	114.8	115.7	116.1	115.4	3.6	3.5	3.2	3.1	2.9	2.5	-0.6
Housing services	73	113.8	113.8	113.3	114.1	114.1	114.1	2.2	2.1	1.6	2.1	1.9	1.9	-
Actual rentals for housing	51	111.8	111.6	111.5	112.4	112.4	112.4	1.8	1.5	1.4	2.1	1.9	1.8	-
Primary housing services	16	119.8	120.4	118.3	119.0	119.0	119.0	3.1	3.5	2.2	2.3	2.2	2.7	-
Other housing services	6	115.6	115.7	115.8	115.5	115.7	115.9	3.1	2.6	1.8	1.3	1.4	1.0	0.2
Travel & transport services	68	120.0	121.3	122.0	125.1	127.9	121.2	7.0	6.6	5.9	4.6	3.9	2.6	-5.2
Services for personal transport equipment	30	119.2	119.4	119.8	120.0	120.4	120.5	3.6	3.3	3.2	3.1	2.9	2.5	0.1
Transport services	35	121.3	123.6	124.8	130.5	135.7	122.2	9.6	9.1	8.0	5.5	4.0	1.8	-9.9
Transport insurance	3	114.1	115.1	113.4	115.1	115.7	118.2	10.5	9.9	7.6	8.7	10.9	11.5	2.2
Communication	23	95.5	95.5	95.5	95.5	95.5	95.1	1.2	1.3	0.7	1.5	1.2	1.1	-0.3
Recreational & personal services	197	113.2	113.6	113.7	114.0	114.1	114.4	3.3	3.4	3.3	3.0	2.8	2.5	0.2
Package holidays & accommodation	44	109.6	110.2	110.5	111.0	111.4	111.7	4.2	4.3	4.2	3.6	3.5	3.1	0.3
Other recreational & personal services	153	114.2	114.5	114.7	114.8	115.0	115.2	3.1	3.1	3.0	2.8	2.6	2.3	0.2
Catering services	111	113.7	114.2	114.4	114.5	114.6	114.7	2.9	2.9	2.8	2.5	2.4	2.1	0.1
Non-catering recreational & personal services	42	115.5	115.5	115.6	115.9	115.9	116.5	3.6	3.6	3.7	3.6	3.3	2.9	0.6
Miscellaneous & other services	85	118.7	118.8	118.8	119.7	119.7	120.4	3.4	3.4	3.1	3.2	3.2	3.1	0.6
Miscellaneous services	52	110.6	110.7	110.7	111.5	111.5	111.7	1.4	1.5	1.1	1.1	1.2	1.0	0.2
Medical services	12	119.8	120.1	120.4	122.4	122.5	122.6	3.8	3.6	3.5	4.0	4.1	4.0	0.1
Education	21	144.6	144.6	144.6	144.6	144.6	147.3	8.6	8.6	8.6	8.6	8.6	8.2	1.8
Special aggregates														
Durables	115	93.5	94.7	95.4	94.4	95.7	97.0	-0.9	-0.2	-0.6	0.5	2.1	2.9	1.3
Semi-durables	118	87.6	87.9	87.9	86.5	87.1	88.6	-5.3	-5.0	-4.4	-3.3	-3.7	-3.5	1.7
Non-durables	79	111.7	111.6	112.3	112.3	112.4	112.4	4.6	4.2	4.5	4.1	3.8	3.5	-0.1
Seasonal food	31	123.6	126.0	125.4	122.3	120.5	117.9	8.6	8.7	6.1	4.3	0.8	-0.5	-2.2
Non-seasonal food	73	124.3	125.1	124.8	125.1	124.6	124.0	9.5	8.2	5.2	3.9	2.3	1.7	-0.4
Energy, food, alcoholic beverages & tobacco	242	125.8	127.0	127.5	127.3	127.3	127.2	4.7	4.0	2.5	1.8	1.0	-0.8	-0.1
Energy & unprocessed food	134	131.6	133.0	134.5	133.6	133.6	133.5	4.2	2.8	1.3	-0.1	-0.9	-4.1	-0.1
Energy & seasonal food	111	133.9	135.2	137.0	136.0	136.2	136.5	2.6	1.4	0.2	-0.8	-1.5	-4.9	0.2
Tobacco	23	118.4	120.0	120.0	120.1	120.0	120.1	2.5	3.9	3.9	3.9	3.9	3.8	0.1
Housing, water, electricity, gas & other fuels	126	129.5	129.0	129.2	129.4	129.6	129.6	6.1	5.5	5.5	5.2	3.3	-1.1	-
Education, health & social protection ²	54	124.2	124.4	124.6	125.0	125.3	126.4	5.3	5.2	5.2	5.1	5.2	5.2	0.9
All items excluding														
Energy	920	108.2	108.8	108.9	108.9	109.3	109.3	2.4	2.5	2.1	2.2	2.0	1.8	-
Energy, food, alcoholic beverages & tobacco	758	105.9	106.4	106.6	106.6	107.3	107.3	1.5	1.6	1.6	1.8	1.8	1.7	0.1
Energy & unprocessed food	866	107.4	107.9	108.1	108.1	108.7	108.8	2.0	2.1	1.9	2.1	2.0	1.9	0.1
Seasonal food	969	109.7	110.2	110.6	110.6	111.2	111.3	2.1	2.0	1.7	1.7	1.6	1.1	0.1
Energy & seasonal food	889	107.7	108.3	108.4	108.5	109.0	109.0	2.2	2.3	2.0	2.1	2.0	1.9	-
Tobacco	977	109.8	110.4	110.8	110.7	111.2	111.3	2.3	2.2	1.7	1.7	1.6	1.0	-
Alcoholic beverages & tobacco	956	109.8	110.4	110.8	110.7	111.2	111.3	2.3	2.1	1.7	1.7	1.5	0.9	-
Liquid fuels, vehicle fuels & lubricants	964	110.0	110.5	110.7	110.6	111.1	111.0	3.0	3.0	2.6	2.7	2.1	1.5	-
Housing, water, electricity, gas & other fuels	874	107.7	108.5	108.8	108.8	109.3	109.3	1.8	1.7	1.3	1.3	1.4	1.4	-
Education, health & social protection	946	109.3	109.9	110.2	110.2	110.7	110.7	2.1	2.0	1.6	1.6	1.4	0.9	-

Key: - zero or negligible

¹ For further information on the composition of the indices shown, see 'The Consumer Prices Index: Goods and Services Indices and Special Aggregates', which can be downloaded from: www.statistics.gov.uk/cpi/article.asp?id=1060

² The coverage of this special aggregate has changed extensively since January 2000, when Social protection was first included and extensions to the Education and Health divisions also took effect. Health was further extended with effect from January 2001. Details are given in a series of Economic Trends articles available on the National Statistics website: www.statistics.gov.uk/cpi

6 CPI goods and services: the latest three years

Percentage change over 12 months

	Goods components					Services components					
	Food & non-alcoholic beverages	Alcoholic beverages & tobacco	Energy ¹	Non-energy industrial goods ²	All goods	Housing services ³	Travel & transport services ³	Recreational & personal services ³	Communication	Miscellaneous & other services ³	All services
Weights											
2009	CHZR 118	CHZS 44	A9F3 80	A9ER 312	ICVH 554	A9FG 73	A9FJ 68	A9FL 197	CHZY 23	A9FQ 85	ICVI 446
Monthly											
2006 Sep	D7G8 4.0	D7G9 3.4	DKL5 11.6	DKK3 -1.0	D7NM 1.8	DKN2 3.3	DKN5 3.0	DKN7 2.8	D7GF -0.2	DKO4 5.3	D7NN 3.2
Oct	4.7	3.2	9.8	-1.3	1.5	3.4	2.5	3.0	0.9	6.7	3.6
Nov	5.0	2.7	11.7	-1.1	1.8	3.5	3.7	3.1	0.7	6.4	3.7
Dec	4.6	2.7	14.9	-0.8	2.3	3.5	4.1	3.1	0.5	6.4	3.8
2007 Jan	3.9	3.5	12.8	-0.9	2.0	3.8	3.1	3.2	-1.8	6.1	3.6
Feb	4.4	4.2	11.8	-1.0	2.0	3.7	5.0	3.2	-2.8	6.1	3.8
Mar	5.6	4.4	11.6	-0.5	2.5	3.7	4.2	3.3	-2.8	6.1	3.7
Apr	6.0	4.5	7.9	-0.3	2.3	3.8	3.8	3.3	-3.7	4.5	3.3
May	5.0	4.2	4.4	-0.4	1.6	3.8	6.4	3.1	-3.2	4.4	3.6
Jun	4.8	3.4	3.3	-0.4	1.4	3.7	6.8	3.3	-3.9	4.4	3.7
Jul	2.8	3.4	0.9	-0.8	0.5	3.6	6.3	3.2	-5.0	4.4	3.5
Aug	3.0	3.1	-0.5	-1.1	0.1	3.5	7.6	3.4	-2.0	3.9	3.8
Sep	3.7	3.2	1.5	-1.2	0.4	3.5	4.9	3.4	-3.0	4.0	3.4
Oct	4.7	2.7	3.9	-1.1	1.0	3.7	5.9	3.3	-4.2	3.8	3.4
Nov	4.8	2.9	5.3	-1.2	1.1	3.7	4.6	3.2	-4.0	4.0	3.2
Dec	5.4	2.7	4.4	-1.3	1.1	3.6	5.0	3.2	-3.8	4.1	3.3
2008 Jan	6.1	2.2	5.8	-1.4	1.3	3.7	5.1	3.0	-3.2	4.0	3.3
Feb	5.6	2.9	11.4	-1.4	1.9	3.7	4.2	3.1	-3.9	4.0	3.1
Mar	5.5	2.5	12.0	-1.8	1.7	3.8	5.9	3.1	-4.0	4.0	3.4
Apr	6.6	4.2	13.6	-1.7	2.3	3.9	4.7	3.4	-2.9	5.3	3.7
May	7.8	4.9	15.6	-1.5	3.0	3.9	4.5	3.6	-2.4	5.3	3.8
Jun	9.5	4.5	19.0	-1.4	3.8	3.8	4.7	3.6	-1.3	5.3	3.9
Jul	12.3	4.3	21.1	-1.2	4.7	3.6	5.3	4.0	-0.7	5.3	4.1
Aug	13.0	4.4	22.4	-1.1	5.1	3.7	6.6	4.0	-3.0	5.7	4.3
Sep	11.3	4.3	29.7	-1.0	5.7	3.6	8.3	4.3	-2.7	5.3	4.6
Oct	10.1	4.4	24.2	-1.4	4.6	4.0	6.6	4.2	-2.2	4.5	4.3
Nov	10.6	4.0	16.7	-1.5	3.7	3.8	7.5	4.3	-1.5	4.9	4.5
Dec	10.4	4.4	12.2	-3.7	1.8	3.8	10.3	3.8	-3.4	4.8	4.6
2009 Jan	10.2	5.3	9.4	-2.9	2.0	3.0	8.2	4.0	-2.0	4.6	4.2
Feb	11.5	5.7	5.4	-2.1	2.2	3.0	7.7	4.0	-0.7	4.4	4.2
Mar	10.5	5.9	2.4	-1.5	2.0	3.0	6.5	3.9	-0.8	4.1	3.9
Apr	8.6	2.8	0.4	-1.3	1.2	2.2	7.0	3.3	1.2	3.4	3.6
May	7.8	3.9	-1.3	-1.1	1.1	2.1	6.6	3.4	1.3	3.4	3.5
Jun	5.4	3.3	-1.9	-0.8	0.6	1.6	5.9	3.3	0.7	3.1	3.2
Jul	4.1	4.1	-2.7	-0.1	0.7	2.1	4.6	3.0	1.5	3.2	3.1
Aug	2.2	4.1	-2.4	0.3	0.6	1.9	3.9	2.8	1.2	3.2	2.9
Sep	1.6	4.2	-6.5	0.6	-	1.9	2.6	2.5	1.1	3.1	2.5

Key: - zero or negligible

1 Comprises 'Electricity, gas and other fuels' (group 04.5) and 'Fuels and lubricants' (class 07.2.2).

2 Comprises all other goods elements of the CPI. For further information, see 'The Consumer Prices Index: Goods and Services Indices and Special Aggregates', which can be downloaded from: www.statistics.gov.uk/cci/article.asp?id=1060

3 For further information on all of these services components, see 'The Consumer Prices Index: Goods and Services Indices and Special Aggregates', which can be downloaded from: www.statistics.gov.uk/cci/article.asp?id=1060

Source: National Statistics

7 HICP¹ - International comparisons: EU countries

Percentage change over 12 months

	Austria	Belgium	Bulgaria	Cyprus	Czech Republic	Denmark	Estonia	Finland	France	Germany	Greece	Hungary	Ireland	Italy	Latvia
	D7SK	D7SL	GHY8	D7RO	D7RP	D7SM	D7RQ	D7SN	D7SO	D7SP	D7SQ	D7RR	D7SS	D7ST	D7RS
2006	1.7	2.3	7.4	2.2	2.1	1.9	4.4	1.3	1.9	1.8	3.3	4.0	2.7	2.2	6.6
2007	2.2	1.8	7.6	2.2	3.0	1.7	6.7	1.6	1.6	2.3	3.0	7.9	2.9	2.0	10.1
2008	3.2	4.5	12.0	4.4	6.3	3.6	10.6	3.9	3.2	2.8	4.2	6.0	3.1	3.5	15.3
2007 Sep	2.1	1.4	11.0	2.3	2.8	1.2	7.5	1.7	1.6	2.7	2.9	6.4	2.9	1.7	11.5
Oct	2.9	2.2	10.6	2.7	4.0	1.8	8.7	1.8	2.1	2.7	3.0	6.9	3.0	2.3	13.2
Nov	3.2	2.9	11.4	3.2	5.1	2.5	9.3	2.2	2.6	3.3	3.9	7.2	3.5	2.6	13.7
Dec	3.5	3.1	11.6	3.7	5.5	2.4	9.7	1.9	2.8	3.1	3.9	7.4	3.2	2.8	14.0
2008 Jan	3.1	3.5	11.7	4.1	7.9	3.0	11.3	3.5	3.2	2.9	3.9	7.4	3.1	3.1	15.6
Feb	3.1	3.6	12.2	4.7	7.6	3.3	11.5	3.3	3.2	3.0	4.5	6.7	3.5	3.1	16.5
Mar	3.5	4.4	13.2	4.4	7.1	3.3	11.2	3.6	3.5	3.3	4.4	6.7	3.7	3.6	16.6
Apr	3.4	4.1	13.4	4.3	6.7	3.4	11.6	3.3	3.4	2.6	4.4	6.8	3.3	3.6	17.4
May	3.7	5.1	14.0	4.6	6.8	3.6	11.4	4.1	3.7	3.1	4.9	6.9	3.7	3.7	17.7
Jun	4.0	5.8	14.7	5.2	6.6	4.2	11.5	4.3	4.0	3.4	4.9	6.6	3.9	4.0	17.5
Jul	3.8	5.9	14.4	5.3	6.8	4.4	11.2	4.3	4.0	3.5	4.9	7.0	3.6	4.0	16.5
Aug	3.6	5.4	11.8	5.1	6.2	4.8	11.1	4.6	3.5	3.3	4.8	6.4	3.2	4.2	15.6
Sep	3.7	5.5	11.4	5.0	6.4	4.5	10.8	4.7	3.4	3.0	4.7	5.6	3.2	3.9	14.7
Oct	3.0	4.8	11.2	4.8	5.7	3.8	10.1	4.4	3.0	2.5	4.0	5.1	2.7	3.6	13.7
Nov	2.3	3.2	8.8	3.1	4.1	2.8	8.5	3.5	1.9	1.4	3.0	4.1	2.1	2.7	11.6
Dec	1.5	2.7	7.2	1.8	3.3	2.4	7.5	3.4	1.2	1.1	2.2	3.4	1.3	2.4	10.4
2009 Jan	1.2	2.1	6.0	0.9	1.4	1.7	4.7	2.5	0.8	0.9	2.0	2.4	1.1	1.4	9.7
Feb	1.4	1.9	5.4	0.6	1.3	1.7	3.9	2.7	1.0	1.0	1.8	2.9	0.1	1.5	9.4
Mar	0.6	0.6	4.0	0.9	1.7	1.6	2.5	2.0	0.4	0.4	1.5	2.8	-0.7	1.1	7.9
Apr	0.5	0.7	3.8	0.6	1.3	1.1	0.9	2.1	0.1	0.8	1.1	3.2	-0.7	1.2	5.9
May	0.1	-0.2	3.0	0.5	0.9	1.1	0.3	1.5	-0.3	-	0.7	3.8	-1.7	0.8	4.4
Jun	-0.3	-1.0	2.6	0.1	0.8	0.9	-0.5	1.6	-0.6	-	0.7	3.7	-2.2	0.6	3.1
Jul	-0.4	-1.7	1.0	-0.8	-0.1	0.7	-0.4	1.2	-0.8	-0.7	0.7	4.9	-2.6	-0.1	2.1
Aug	0.1*	-0.7	1.3	-0.9	-	0.7	-0.7	1.3	-0.2	-0.1	1.0	5.0	-2.4	0.1	1.5
Sep

	Lithuania	Luxembourg	Malta	Netherlands	Poland	Portugal	Romania	Slovakia	Slovenia	Spain	Sweden	United Kingdom ¹	EICP ² EU 25 average ³	EICP ² EU 27 average ³	Monetary Union Area average ⁴
	D7RT	D7SU	D7RU	D7SV	D7RV	D7SX	GHY7	D7RW	D7RX	D7SY	D7SZ	D7G7	D7RY	GJ2E	D7SR
2006	3.8	3.0	2.6	1.7	1.3	3.0	6.6	4.3	2.5	3.6	1.5	2.3	2.2	..	2.2
2007	5.8	2.7	0.7	1.6	2.6	2.4	4.9	1.9	3.8	2.8	1.7	2.3	..	2.4	2.1
2008	11.1	4.1	4.7	2.2	4.2	2.7	7.9	3.9	5.5	4.1	3.3	3.6	..	3.7	3.3
2007 Sep	7.1	2.5	0.9	1.3	2.7	2.0	6.1	1.7	3.6	2.7	1.6	1.8	..	2.3	2.1
Oct	7.6	3.6	1.6	1.6	3.1	2.5	6.9	2.4	5.1	3.6	1.9	2.1	..	2.7	2.6
Nov	7.9	4.0	2.9	1.8	3.7	2.8	6.8	2.3	5.7	4.1	2.4	2.1	..	3.1	3.1
Dec	8.2	4.3	3.1	1.6	4.2	2.7	6.7	2.5	5.7	4.3	2.5	2.1	..	3.2	3.1
2008 Jan	10.0	4.2	3.8	1.8	4.4	2.9	7.3	3.2	6.4	4.4	3.0	2.2	..	3.4	3.2
Feb	10.9	4.2	4.0	2.0	4.6	2.9	8.0	3.4	6.4	4.4	2.9	2.5	..	3.5	3.3
Mar	11.4	4.4	4.3	1.9	4.4	3.1	8.7	3.6	6.6	4.6	3.3	2.5	..	3.7	3.6
Apr	11.9	4.3	4.1	1.7	4.3	2.5	8.7	3.7	6.2	4.2	3.2	3.0	..	3.6	3.3
May	12.3	4.8	4.1	2.1	4.3	2.8	8.5	4.0	6.2	4.7	3.7	3.3	..	4.0	3.7
Jun	12.7	5.3	4.4	2.3	4.3	3.4	8.7	4.3	6.8	5.1	4.0	3.8	..	4.2	4.0
Jul	12.4	5.8	5.6	3.0	4.5	3.1	9.1	4.4	6.9	5.3	3.8	4.4	..	4.4	4.0
Aug	12.2	4.8	5.4	3.0	4.4	3.1	8.1	4.4	6.0	4.9	4.1	4.7	..	4.3	3.8
Sep	11.3	4.8	4.9	2.8	4.1	3.2	7.3	4.5	5.6	4.6	4.2	5.2	..	4.2	3.6
Oct	10.7	3.9	5.7	2.5	4.0	2.5	7.4	4.2	4.8	3.6	3.4	4.5	..	3.7	3.2
Nov	9.2	2.0	4.9	1.9	3.6	1.4	6.8	3.9	2.9	2.4	2.4	4.1	..	2.8	2.1
Dec	8.5	0.7	5.0	1.7	3.3	0.8	6.4	3.5	1.8	1.5	2.1	3.1	..	2.2	1.6
2009 Jan	9.5	-	3.1	1.7	3.2	0.1	6.8	2.7	1.4	0.8	2.0	3.0	..	1.7	1.1
Feb	8.5	0.7	3.5	1.9	3.6	0.1	6.9	2.4	2.1	0.7	2.2	3.2	..	1.8	1.2
Mar	7.4	-0.3	3.9	1.8	4.0	-0.6	6.7	1.8	1.6	-0.1	1.9	2.9	..	1.4	0.6
Apr	5.9	-0.3	4.0	1.8	4.3	-0.6	6.5	1.4	1.1	-0.2	1.8	2.3	..	1.3	0.6
May	4.9	-0.9	3.4	1.5	4.2	-1.2	5.9	1.1	0.5	-0.9	1.7	2.2	..	0.8	-
Jun	3.9	-1.0	2.8	1.4	4.2	-1.6	5.9	0.7	0.2	-1.0	1.6	1.8	..	0.6	-0.1
Jul	2.6	-1.5	0.8	-0.1	4.5	-1.4	5.0	0.6	-0.6	-1.4	1.8	1.8	..	0.2	-0.7
Aug	2.2	-0.2	1.0	-0.1*	4.3	-1.2	4.9	0.5	0.1	-0.8	1.9	1.6	..	0.6*	-0.2*
Sep	1.1	-0.3*

Key: - zero or negligible .. Not available * Provisional

† Date of earliest revision ° Estimated

1 Published as the CPI in the UK.

2 The EICP (European Index of Consumer Prices) is the official EU aggregate. It covers 15 member states until April 2004, 25 member states from May 2004, and 27 members from Jan 2007, the new member states being integrated using a chain index formula.

The EU 25 annual average for 2004 is calculated from the EU 15 average from January to April and the EU 25 average from May to December.

3 The coverage of the European Union was extended to include Cyprus, Czech Republic, Estonia, Hungary, Latvia, Lithuania, Malta, Poland, Slovakia and Slovenia from 1 May 2004 and Bulgaria and Romania from 1 Jan 2007.

4 The coverage of the Monetary Union Area index was extended to include Greece with effect from Jan 2001 and Slovakia from January 2009.

Sources: National Statistics; Eurostat

8 RPI: Detailed figures for various groups, sub-groups and sections

	Weights	Index (January 1987=100)						Percentage change over 12 months						Percentage change over 1 month
		2009	2009		2009		2009		2009		2009		2009	
			Apr	May	Jun	Jul	Aug	Sep	Apr	May	Jun	Jul	Aug	Sep
ALL ITEMS	1 000	211.5	212.8	213.4	213.4	214.4	215.3	-1.2	-1.1	-1.6	-1.4	-1.3	-1.4	0.4
Food and catering	168	207.2	208.4	208.2	207.7	206.9	206.0	7.0	6.3	4.5	3.5	2.2	1.8	-0.4
Alcohol and tobacco	90	274.8	278.2	277.7	278.1	278.8	278.7	2.6	3.5	3.2	3.5	3.6	3.4	-
Housing and household expenditure	416	245.2	245.6	245.9	245.1	246.4	247.6	-5.0	-4.9	-5.5	-5.1	-5.3	-6.3	0.5
Personal expenditure	80	131.7	132.0	131.4	129.6	130.8	133.1	-1.3	-1.1	-1.1	-1.0	-1.0	-0.4	1.8
Travel and leisure	246	186.8	189.3	191.3	193.5	195.2	196.2	-1.1	-0.7	-0.8	-0.3	1.3	2.7	0.5
Consumer durables ¹	106	90.3	91.1	91.7	88.9	90.2	92.4	-1.5	-1.7	-2.9	-1.4	-0.7	-0.2	2.4
Seasonal food	21	175.9	180.1	179.4	172.5	169.3	165.0	8.7	8.0	4.8	3.0	-0.8	-1.7	-2.5
Food excluding seasonal	97	191.0	191.7	191.5	192.1	191.3	190.8	8.5	7.7	5.4	4.1	2.8	2.4	-0.3
All items excluding seasonal food	979	212.4	213.6	214.2	214.4	215.5	216.5	-1.3	-1.2	-1.7	-1.5	-1.3	-1.5	0.5
All items excluding food	882	215.8	217.1	217.8	218.0	219.3	220.5	-2.4	-2.2	-2.5	-2.1	-1.7	-1.9	0.5
All goods	472	163.7	165.5	166.5	165.7	166.6	168.1	0.7	0.7	-0.1	0.1	0.9	1.7	0.9
All services	397	281.1	282.0	281.5	283.2	284.1	283.8	4.9	4.8	4.4	4.5	3.6	2.1	-0.1
Other indices														
All items excluding:														
mortgage interest payments (RPIX)	959	210.7	212.0	212.6	212.6	213.6	214.5	1.7	1.6	1.0	1.2	1.4	1.3	0.4
housing	764	194.4	195.9	196.6	196.4	197.3	198.3	2.5	2.5	1.8	1.9	2.0	1.8	0.5
mortgage interest payments and indirect taxes (RPIY) ²		202.9	204.1	204.7	204.7	205.8	206.5	2.7	2.6	1.9	2.1	2.3	2.0	0.3
mortgage interest payments and council tax	919	207.3	208.7	209.2	209.3	210.3	211.2	1.6	1.6	1.0	1.2	1.3	1.2	0.4
mortgage interest payments and depreciation ³	909	205.5	207.0	207.5	207.5	208.3	209.2	2.5	2.5	1.9	2.1	2.1	1.9	0.4
Food	118	188.9	190.3	190.0	189.2	188.0	186.7	8.6	7.8	5.3	4.0	2.2	1.7	-0.7
Bread	5	214.2	211.4	212.8	211.2	211.0	211.7	7.4	4.4	3.5	1.0	-0.5	-0.5	0.3
Cereals	4	178.5	181.7	180.4	181.4	180.5	179.6	11.4	10.1	6.1	5.7	3.5	3.0	-0.5
Biscuits and cakes	7	204.5	202.8	202.0	201.0	198.7	200.5	10.1	9.4	4.3	-0.3	-1.8	-1.8	0.9
Beef	5	176.6	175.8	177.5	176.1	175.9	174.0	14.3	12.3	6.0	4.0	2.9	1.1	-1.1
Lamb	2	226.7	235.5	231.4	235.2	229.1	231.0	15.5	14.6	9.7	10.4	8.4	7.8	0.8
of which home-killed lamb	1	235.0	250.1	245.2	250.4	237.5	240.4	15.1	13.5	7.5	8.1	3.1	6.1	1.2
imported lamb	1	213.1	216.2	213.0	215.5	215.5	216.4	15.6	16.0	12.3	13.3	14.6	9.6	0.4
Pork	1	199.1	201.1	200.5	198.5	197.6	193.7	13.8	13.8	11.4	3.9	2.0	-2.3	-2.0
Bacon	2	211.4	216.3	213.5	209.8	213.0	210.0	11.6	7.1	4.7	-0.5	0.8	-2.0	-1.4
Poultry	4	132.8	131.1	129.7	130.2	132.3	128.9	8.5	4.5	-2.6	-5.2	-0.1	-3.4	-2.6
Other meat	7	167.7	171.1	172.7	173.0	169.9	169.4	9.8	8.5	7.6	4.8	0.9	0.2	-0.3
Fish	3	197.2	197.6	195.9	199.0	199.7	197.4	7.7	5.5	8.4	8.3	3.8	2.3	-1.2
of which fresh fish	2	190.7	186.7	186.3	191.2	190.7	189.7	0.7	-4.9	-0.9	2.2	-1.9	-0.9	-0.5
processed fish	1	202.8	212.4	208.0	207.2	210.4	205.5	15.0	19.3	20.0	15.4	11.3	6.7	-2.3
Butter	1	225.5	231.1	228.6	229.0	218.1	226.6	-1.7	0.9	0.7	-2.0	-7.8	-4.0	3.9
Oils and fats	2	169.4	168.3	169.0	167.6	163.8	163.1	9.9	4.0	-4.9	-5.1	-6.5	-6.2	-0.4
Cheese	4	218.2	217.7	213.3	212.7	214.7	216.7	6.9	5.5	1.7	2.1	1.3	2.3	0.9
Eggs	1	254.3	259.2	258.4	256.4	256.9	256.0	5.4	3.3	3.6	3.9	3.2	1.7	-0.4
Milk, fresh	5	245.1	245.8	245.3	245.7	245.8	243.9	11.8	11.3	5.8	6.3	6.4	5.6	-0.8
Milk products	4	170.8	169.7	171.6	172.8	171.1	166.4	1.6	0.8	2.2	1.2	-0.3	-2.7	-2.7
Tea	1	181.7	174.5	186.8	193.5	198.5	197.1	12.9	5.1	10.3	10.4	15.0	13.0	-0.7
Coffee and other hot drinks	1	141.6	142.7	139.7	138.7	142.4	136.5	13.0	13.2	10.7	8.3	5.9	3.9	-4.1
Soft drinks	12	209.4	210.1	210.4	210.8	210.1	209.8	2.5	2.6	2.8	2.7	2.2	3.5	-0.1
Sugar and preserves	1	196.2	200.2	195.6	197.0	194.6	196.3	15.3	17.2	12.0	13.5	12.0	13.2	0.9
Sweets and chocolates	12	227.1	227.8	226.4	229.0	230.3	231.9	7.5	7.6	6.8	7.9	6.4	6.8	0.7
Potatoes	5	191.9	197.9	198.8	195.5	190.1	189.0	9.7	12.1	5.2	3.1	-1.2	-1.4	-0.6
of which unprocessed potatoes	2	192.8	204.6	212.7	198.8	193.9	186.6	10.3	14.0	7.4	1.8	-3.6	-4.6	-3.8
potato products	3	182.6	184.7	181.0	184.5	179.0	181.7	9.3	10.9	3.8	4.1	0.5	0.7	1.5
Vegetables other than potatoes	10	179.8	178.9	176.1	171.2	167.1	164.7	12.4	8.4	7.1	3.9	2.3	1.0	-1.4
of which fresh vegetables	8	161.6	160.0	157.3	151.3	146.5	144.9	13.2	7.7	6.3	2.6	0.5	0.3	-1.1
processed vegetables	2	234.4	237.3	234.8	238.3	238.8	232.4	9.4	10.7	9.8	9.6	9.1	4.3	-2.7
Fruit	8	163.2	171.8	171.9	162.7	161.9	154.8	6.4	10.8	5.2	4.0	-0.7	-2.6	-4.4
of which fresh fruit	7	159.9	169.5	169.4	158.9	158.0	149.8	5.3	10.5	4.4	3.5	-1.7	-4.3	-5.2
processed fruit	1	167.1	168.1	169.8	170.5	170.5	171.6	14.5	12.7	11.1	7.9	7.0	9.8	0.6
Other foods	11	170.8	172.8	173.7	175.0	173.1	172.5	8.4	8.9	7.8	7.0	4.1	4.7	-0.3
Catering	50	270.5	271.0	271.1	271.6	272.0	272.4	3.2	3.0	2.7	2.4	2.2	1.9	0.1
Restaurant meals	27	263.0	263.4	263.3	264.0	264.2	264.5	2.9	2.6	2.2	2.2	2.0	1.7	0.1
Canteen meals	4	330.3	331.2	330.9	332.3	332.3	335.1	2.3	2.0	1.9	2.2	1.8	1.4	0.8
Take-aways and snacks	19	261.6	262.2	262.6	262.6	263.3	263.4	3.9	3.8	3.5	2.9	2.6	2.3	-
Alcoholic drink	63	234.6	237.3	236.7	237.2	238.0	237.9	2.6	3.3	2.9	3.4	3.4	3.2	-
Beer	32	255.7	257.9	258.4	257.7	259.0	258.2	2.2	2.8	2.9	2.9	3.3	2.7	-0.3
on sales	26	279.4	282.1	282.7	282.7	283.2	283.1	2.4	3.1	3.1	3.0	3.1	2.8	-
off sales	6	154.0	155.1	155.1	153.0	155.8	153.6	1.0	1.0	1.9	2.8	4.2	2.6	-1.4
Wines and spirits	31	207.0	209.9	208.5	209.8	210.2	210.7	3.1	3.8	3.0	3.8	3.5	3.7	0.2
on sales	17	260.4	262.2	263.2	263.1	263.4	263.3	3.1	3.4	3.4	3.3	3.2	2.9	-
off sales	14	172.0	175.9	172.5	175.0	175.5	176.4	3.2	4.3	2.4	4.4	4.0	4.7	0.5

Key: - zero or negligible

Index date for September: 15 September 2009

1 Consumer durables: Furniture, furnishings, electrical appliances and other household equipment, men's, women's and children's outerwear, footwear, audio-visual equipment, CDs and tapes, toys, photographic and sports goods.

2 The taxes excluded are council tax, VAT, duties, vehicle excise duty, insurance tax and air passenger duty. There are no weights available for RPIY.

3 This series has been constructed using the index for all items excluding mortgage interest payments prior to February 1995.



RPI: Detailed figures for various groups, sub-groups and sections

continued

	Weights	Index (January 1987=100)						Percentage change over 12 months						Percentage change over 1 month
		2009	2009		2009		2009		2009		2009		2009	
			Apr	May	Jun	Jul	Aug	Sep	Apr	May	Jun	Jul	Aug	Sep
Tobacco	27	389.2	394.5	394.7	394.7	394.7	394.9	2.5	3.9	3.9	3.9	3.9	3.8	0.1
Cigarettes	24	398.3	403.9	404.0	404.0	404.3	404.3	2.5	3.9	3.9	3.9	4.0	3.9	-
Other tobacco	3	305.9	309.4	309.7	309.9	308.4	309.8	2.4	3.5	3.5	3.6	3.0	3.6	0.5
Housing	236	302.1	302.4	302.2	303.4	304.6	305.0	-12.1	-11.5	-11.6	-11.3	-11.2	-11.2	0.1
Rent	62	303.6	303.1	302.9	305.7	305.5	305.5	1.9	1.6	1.5	2.2	2.1	2.0	-
Mortgage interest payments	41	212.6	213.4	214.2	214.6	215.6	216.3	-46.9	-45.2	-45.3	-45.5	-45.5	-45.6	0.3
Depreciation (Jan 1995 = 100)	50	265.2	264.1	263.8	265.2	269.0	269.5	-12.7	-13.2	-13.3	-12.2	-10.7	-9.6	0.2
Council tax and rates	40	310.9	310.9	310.9	310.9	310.9	310.9	2.7	2.7	2.7	2.7	2.7	2.7	-
Water and other charges	14	420.6	420.6	420.6	420.6	420.6	420.6	4.7	4.7	4.7	4.7	4.7	4.7	-
Repairs and maintenance charges	12	349.4	349.7	349.4	349.4	349.6	349.8	2.4	2.2	1.9	0.3	0.0	-0.1	0.1
Do-it-yourself materials	9	183.5	184.5	185.7	186.6	187.7	188.3	6.3	7.1	7.5	7.6	7.3	6.0	0.3
Dwelling insurance and ground rent	8	326.2	339.7	330.3	329.9	333.2	333.6	2.8	6.7	5.7	6.4	3.8	-1.8	0.1
Fuel and light	49	267.9	265.1	266.0	264.4	265.4	265.1	11.7	9.7	9.6	8.3	3.3	-7.9	-0.1
Coal and solid fuels	1	286.0	281.4	279.0	276.9	278.3	279.1	30.2	25.5	21.9	19.7	19.1	9.2	0.3
Electricity	23	242.3	237.0	237.0	237.0	237.0	237.0	9.1	6.8	6.8	6.8	2.4	-7.2	-
Gas	23	303.1	303.1	303.1	301.9	301.8	301.8	24.0	24.0	24.0	23.5	10.3	-5.8	-
Oil and other fuels	2	279.5	280.0	305.1	277.0	303.6	297.3	-31.5	-36.0	-32.8	-42.0	-27.0	-26.9	-2.1
Household goods	70	161.1	162.8	165.1	160.1	162.4	165.8	5.6	4.6	2.1	3.6	4.4	4.5	2.1
Furniture	26	187.5	189.8	196.5	185.4	188.3	198.8	5.9	4.3	-2.8	3.3	4.5	6.2	5.6
Furnishings	12	172.7	177.7	177.1	170.4	174.9	173.0	4.0	2.4	3.9	0.4	2.6	0.2	-1.1
Electrical appliances	7	71.2	70.5	70.8	70.2	72.4	72.4	2.0	1.1	1.9	2.8	4.2	4.6	-
Other household equipment	4	153.1	155.2	156.2	152.7	154.3	157.6	2.3	3.7	5.3	3.5	3.6	3.9	2.1
Household consumables	13	177.1	178.1	179.0	178.4	178.9	179.1	7.7	7.2	7.1	6.1	5.4	5.1	0.1
Pet care	8	195.6	195.9	195.5	195.9	195.8	197.3	8.7	7.9	6.0	5.4	5.2	4.8	0.8
Household services	61	208.4	209.2	207.4	208.1	208.5	209.0	2.5	2.7	1.9	2.8	2.8	2.8	0.2
Postage	1	249.2	249.2	249.2	249.2	249.2	249.2	9.8	9.8	9.8	9.8	9.8	9.8	-
Telephones, telemessages, etc	23	84.9	84.9	84.9	84.9	84.7	84.5	1.1	1.1	0.4	1.4	1.1	1.0	-0.2
Domestic services	12	324.9	325.5	326.1	326.3	326.9	327.9	3.5	3.1	2.7	2.6	2.6	2.3	0.3
Fees and subscriptions	25	325.8	328.2	321.3	324.0	325.8	328.1	2.9	3.3	2.2	3.5	4.0	4.3	0.7
Clothing and footwear	39	87.2	87.5	86.3	84.0	85.2	88.3	-5.2	-4.8	-5.0	-4.8	-4.7	-3.2	3.6
Men's outerwear	9	90.9	90.9	90.0	87.9	88.8	92.4	-4.8	-4.1	-4.6	-3.6	-2.8	-1.8	4.1
Women's outerwear	13	56.5	56.8	55.0	52.4	53.4	56.1	-10.9	-10.3	-11.1	-10.9	-11.6	-9.8	5.1
Children's outerwear	4	86.0	86.0	85.3	84.6	86.1	89.9	-3.8	-3.0	-2.5	-1.7	-1.1	1.5	4.4
Other clothing	5	150.3	151.0	151.5	149.1	149.2	150.9	0.6	0.7	1.2	0.5	0.1	0.2	1.1
Footwear	8	109.4	110.0	109.5	108.5	110.2	112.8	-0.9	-1.0	-1.0	-1.3	-0.3	1.6	2.4
Personal goods and services	41	227.8	227.9	229.0	228.6	229.5	229.7	2.8	2.5	3.0	2.7	2.6	2.4	0.1
Personal articles	12	148.4	149.3	149.7	147.2	149.4	151.1	2.3	2.7	3.2	2.5	3.3	3.0	1.1
Chemists goods	15	201.5	200.6	202.7	202.8	202.1	200.5	2.8	2.1	3.2	3.1	2.0	1.5	-0.8
Personal services	14	395.8	396.0	396.4	399.9	400.7	401.1	3.0	2.6	2.4	2.4	2.5	2.5	0.1
Motoring expenditure	121	187.2	191.0	194.0	196.7	198.6	202.7	-5.1	-4.3	-4.6	-3.5	-0.2	2.9	2.1
Purchase of motor vehicles	42	91.1	93.5	95.1	97.8	99.9	101.9	-9.1	-6.3	-3.5	0.4	4.5	9.3	2.0
Maintenance of motor vehicles	20	338.4	339.6	340.8	341.7	342.9	343.6	4.9	4.7	4.5	4.3	4.1	3.7	0.2
Petrol and oil	36	280.4	287.6	298.5	300.0	300.4	310.3	-11.8	-12.5	-14.6	-15.4	-11.2	-7.1	3.3
Vehicle tax and insurance	23	329.4	333.9	329.9	333.8	335.4	341.2	9.1	9.4	7.5	8.3	10.2	10.6	1.7
Fares and other travel costs	20	265.7	270.7	272.5	282.9	290.4	268.4	6.8	6.4	5.5	3.3	2.0	0.4	-7.6
Rail fares	4	289.0	288.6	285.8	291.4	290.3	287.6	4.9	5.0	4.4	6.0	5.5	5.4	-0.9
Bus and coach fares	3	305.9	309.3	308.5	309.6	310.1	309.4	6.5	7.1	7.3	6.1	5.3	5.3	-0.2
Other travel costs	13	230.5	236.7	239.9	252.2	262.5	233.9	7.9	6.5	4.8	0.2	-2.0	-3.1	-10.9
Leisure goods	38	85.4	85.6	86.3	86.2	86.6	86.2	-2.8	-2.8	-2.0	-1.0	-0.1	-0.6	-0.5
Audio-visual equipment	8	11.2	11.4	11.3	11.2	11.2	11.0	-10.4	-8.1	-8.1	-8.2	-6.7	-7.6	-1.8
CDs and tapes	4	89.2	90.5	92.9	93.2	92.9	88.6	-11.2	-10.0	-9.4	-4.9	-5.8	-10.2	-4.6
Toys, photographic and sports goods	11	83.7	83.5	85.1	85.1	85.0	85.6	-2.1	-2.0	-0.1	1.6	1.0	0.7	0.7
Books and newspapers	9	282.9	280.9	278.8	283.5	285.2	287.9	3.3	0.6	0.9	2.3	4.0	4.6	0.9
Gardening products	6	150.7	150.4	152.0	150.7	152.7	152.6	1.8	1.4	1.1	1.3	2.5	3.3	-0.1
Leisure services	67	299.0	300.5	301.5	303.1	304.3	306.3	5.3	5.6	5.5	5.6	5.1	4.8	0.7
Television licences and rentals	11	172.5	172.5	172.5	172.5	172.5	172.5	1.3	1.3	1.3	1.4	1.4	1.4	-
Entertainment and other recreation	13	405.8	406.1	407.3	409.4	408.4	413.9	4.8	5.0	5.3	5.9	5.2	4.0	1.3
Foreign holidays (Jan 1993 = 100)	36	191.7	193.5	194.4	196.0	197.6	199.0	7.7	8.2	7.8	7.8	7.0	7.2	0.7
UK holidays (Jan 1994 = 100)	7	176.7	176.9	176.9	177.0	177.0	176.8	2.0	1.8	1.7	1.0	0.9	0.2	-0.1

Key: - zero or negligible

Source: National Statistics

9 RPI goods and services¹: the latest three years

Percentage change over 12 months

	Goods components				All goods	Services components				All services
	Food	Alcohol & tobacco	Petrol & oil ²	Other goods ³		Rent	Utilities ⁴	"Shop" services ⁵	"Non-shop" services ⁶	
Weights										
2009	CZGZ 118	CBVW 90	DOHB 38	DOHC 226	DOHD 472	CZXD 62	DOHE 88	DOHF 132	DOHG 115	DOHH 397
Monthly										
	CCYY	CZBK	DOGQ	DOGI	DOGD	CZCQ	DOGF	DOGG	DOGH	DOGE
2006 Sep	3.5	3.4	-3.4	0.4	1.2	2.9	14.2	4.0	2.3	5.3
Oct	4.2	3.3	-7.6	-	0.8	2.9	15.1	4.2	3.3	5.8
Nov	4.5	3.2	-4.6	0.1	1.2	3.0	15.0	4.1	3.9	6.0
Dec	4.1	3.2	0.6	0.4	1.8	3.0	15.0	4.1	4.0	6.1
2007 Jan	3.7	3.6	-2.6	-0.3	1.1	3.3	14.2	4.2	4.6	6.1
Feb	4.0	4.0	-4.3	-	1.2	3.2	13.7	4.3	5.4	6.3
Mar	5.1	4.1	-1.7	0.5	2.0	3.2	12.2	4.4	4.8	5.9
Apr	5.6	4.5	-1.7	0.6	2.1	3.1	8.5	4.1	4.2	4.9
May	4.8	4.1	-2.0	0.6	1.9	3.2	5.3	4.1	5.1	4.6
Jun	4.8	3.7	0.3	0.8	2.2	3.3	3.0	4.2	5.0	4.1
Jul	3.1	3.7	-1.8	-0.2	1.2	3.3	1.3	3.9	5.1	3.7
Aug	3.4	3.5	-2.4	-0.5	0.9	3.2	1.3	4.2	5.8	4.0
Sep	4.2	3.6	2.9	-0.6	1.5	3.3	0.3	4.1	5.0	3.6
Oct	5.1	3.2	11.7	-0.5	2.4	3.7	-2.0	4.1	5.1	3.2
Nov	5.3	3.1	17.4	-0.6	2.8	3.7	-3.1	4.2	4.5	2.7
Dec	6.1	3.0	17.0	-0.9	2.8	3.6	-3.7	4.1	5.3	2.8
2008 Jan	6.6	2.7	20.2	-0.6	3.3	3.8	-3.6	4.2	5.0	2.8
Feb	6.1	3.1	21.4	-0.6	3.3	3.7	0.9	4.2	4.7	3.6
Mar	6.0	2.9	22.3	-1.2	3.1	3.8	1.0	4.1	5.3	3.8
Apr	6.9	4.3	20.3	-0.9	3.6	3.9	3.3	4.4	5.2	4.3
May	7.8	4.6	21.3	-0.8	4.1	3.8	4.6	4.4	5.5	4.7
Jun	9.7	4.5	26.8	-0.6	5.0	3.8	6.0	4.3	5.6	4.9
Jul	12.2	4.3	29.3	-0.3	6.0	3.2	6.9	4.7	5.6	5.1
Aug	12.8	4.4	22.8	-0.4	5.4	3.3	10.4	4.7	6.1	6.0
Sep	11.2	4.4	22.2	-0.8	4.8	3.3	17.7	4.9	6.9	7.6
Oct	10.1	4.7	13.0	-1.3	3.7	3.8	18.3	4.7	5.8	7.4
Nov	10.7	4.5	-3.1	-1.7	2.1	3.7	18.6	4.6	6.1	7.5
Dec	10.4	4.6	-11.0	-3.6	0.4	3.7	18.1	4.2	6.5	7.4
2009 Jan	9.9	5.0	-14.9	-3.5	0.1	3.1	18.2	3.7	5.7	6.9
Feb	11.3	5.1	-11.7	-2.6	1.2	3.1	13.0	3.8	6.0	6.0
Mar	10.3	5.0	-15.1	-1.7	1.0	3.0	11.5	3.6	6.0	5.7
Apr	8.6	2.6	-13.0	-1.0	0.7	1.9	8.7	3.4	6.0	4.9
May	7.8	3.5	-14.1	-0.7	0.7	1.6	8.2	3.2	6.5	4.8
Jun	5.3	3.2	-15.8	-0.6	-0.1	1.5	7.9	3.0	5.6	4.4
Jul	4.0	3.5	-17.2	0.8	0.1	2.2	8.1	2.8	5.6	4.5
Aug	2.2	3.6	-12.1	2.0	0.9	2.1	4.3	2.6	5.4	3.6
Sep	1.7	3.4	-8.2	3.0	1.7	2.0	-2.0	2.2	5.0	2.1

Key: - zero or negligible

1 All components of the RPI are included in the above breakdown with the exception of mortgage interest payments, council tax and depreciation.

2 Including fuel oil.

3 The 'other goods' category comprises DIY materials, coal & solid fuels, household goods, clothing & footwear, personal articles, chemists goods, purchase of motor vehicles and leisure goods.

4 The 'utilities' category comprises water, electricity, gas, postage, telephone charges and rail fares.

5 The 'shop services' category comprises catering, repairs & maintenance charges, domestic services, personal services, maintenance of motor vehicles, TV licence & rentals and entertainment & recreation charges.

6 The 'non-shop services' category comprises dwelling insurance & ground rent, fees and subscriptions, vehicle tax and insurance, bus & coach fares, other travel costs, foreign holidays and UK holidays.

Source: National Statistics

10 A breakdown of the differences between CPI and RPI

Difference between annual rates CPI - RPI		Breakdown of differences (unrounded figures) ¹						
		housing components excluded from CPI				other differences in coverage of goods and services		other differences including weights ³
	rounded figures	unrounded figures	total	mortgage interest payments	other housing components	formula effect ²		
	D7G2	D7G3	D7G4	D7G5	D7FU	D7FV	D7FW	D7FX
2004 Sep	-2.0	-1.97	-2.13	-1.18	-0.95	0.20	-0.45	0.42
Oct	-2.1	-2.07	-2.17	-1.19	-0.99	0.22	-0.46	0.34
Nov	-1.9	-1.98	-2.11	-1.19	-0.92	0.24	-0.47	0.36
Dec	-1.8	-1.84	-1.91	-1.00	-0.91	0.24	-0.49	0.32
2005 Jan	-1.6	-1.55	-1.94	-1.03	-0.92	0.23	-0.48	0.65
Feb	-1.5	-1.50	-1.92	-1.03	-0.89	0.23	-0.51	0.69
Mar	-1.3	-1.32	-1.64	-0.86	-0.79	0.22	-0.53	0.62
Apr	-1.3	-1.22	-1.54	-0.86	-0.68	0.25	-0.52	0.59
May	-1.0	-1.07	-1.43	-0.85	-0.58	0.27	-0.50	0.60
Jun	-0.9	-0.87	-1.18	-0.67	-0.51	0.29	-0.52	0.54
Jul	-0.6	-0.57	-0.89	-0.48	-0.40	0.31	-0.53	0.55
Aug	-0.4	-0.37	-0.84	-0.48	-0.36	0.33	-0.49	0.64
Sep	-0.2	-0.20	-0.43	-0.17	-0.27	0.30	-0.52	0.45
Oct	-0.2	-0.17	-0.37	-0.17	-0.20	0.30	-0.52	0.42
Nov	-0.3	-0.29	-0.36	-0.16	-0.21	0.27	-0.52	0.32
Dec	-0.3	-0.30	-0.35	-0.16	-0.19	0.28	-0.51	0.29
2006 Jan	-0.5	-0.45	-0.29	-0.15	-0.14	0.30	-0.48	0.02
Feb	-0.4	-0.39	-0.32	-0.15	-0.17	0.30	-0.51	0.14
Mar	-0.6	-0.51	-0.36	-0.16	-0.20	0.32	-0.55	0.08
Apr	-0.6	-0.52	-0.33	-0.14	-0.19	0.32	-0.51	-0.01
May	-0.8	-0.72	-0.32	-0.11	-0.20	0.32	-0.54	-0.19
Jun	-0.8	-0.75	-0.26	-0.09	-0.17	0.31	-0.52	-0.27
Jul	-0.9	-0.86	-0.25	-0.09	-0.16	0.28	-0.54	-0.35
Aug	-0.9	-0.95	-0.25	-0.08	-0.17	0.24	-0.54	-0.39
Sep	-1.2	-1.22	-0.71	-0.48	-0.23	0.22	-0.56	-0.17
Oct	-1.3	-1.23	-0.74	-0.49	-0.25	0.24	-0.55	-0.17
Nov	-1.2	-1.20	-0.73	-0.48	-0.24	0.24	-0.55	-0.16
Dec	-1.4	-1.46	-0.91	-0.68	-0.24	0.23	-0.56	-0.22
2007 Jan	-1.5	-1.53	-1.01	-0.72	-0.29	0.23	-0.59	-0.16
Feb	-1.8	-1.78	-1.21	-0.91	-0.30	0.19	-0.55	-0.21
Mar	-1.7	-1.75	-1.21	-0.90	-0.31	0.26	-0.57	-0.24
Apr	-1.7	-1.77	-1.21	-0.91	-0.30	0.21	-0.60	-0.17
May	-1.8	-1.79	-1.28	-0.94	-0.33	0.19	-0.59	-0.11
Jun	-2.0	-2.04	-1.49	-1.13	-0.36	0.21	-0.64	-0.12
Jul	-1.9	-2.00	-1.65	-1.17	-0.47	0.23	-0.54	-0.05
Aug	-2.3	-2.29	-1.87	-1.38	-0.49	0.24	-0.57	-0.10
Sep	-2.1	-2.21	-1.62	-1.15	-0.46	0.28	-0.60	-0.27
Oct	-2.1	-2.15	-1.54	-1.12	-0.41	0.28	-0.60	-0.30
Nov	-2.2	-2.20	-1.52	-1.12	-0.40	0.29	-0.59	-0.38
Dec	-1.9	-1.95	-1.30	-0.91	-0.39	0.31	-0.55	-0.41
2008 Jan	-1.9	-1.87	-1.07	-0.67	-0.39	0.36	-0.59	-0.58
Feb	-1.6	-1.61	-0.73	-0.47	-0.27	0.36	-0.59	-0.65
Mar	-1.3	-1.34	-0.49	-0.26	-0.23	0.30	-0.55	-0.60
Apr	-1.2	-1.21	-0.34	-0.23	-0.11	0.32	-0.52	-0.67
May	-1.0	-0.95	-0.02	0.01	-0.03	0.32	-0.52	-0.73
Jun	-0.8	-0.78	0.35	0.23	0.12	0.31	-0.54	-0.90
Jul	-0.6	-0.60	0.60	0.27	0.32	0.31	-0.53	-0.97
Aug	-0.1	-0.07	0.89	0.49	0.40	0.32	-0.49	-0.79
Sep	0.2	0.22	1.02	0.51	0.51	0.36	-0.46	-0.70
Oct	0.3	0.21	1.01	0.46	0.55	0.39	-0.47	-0.71
Nov	1.1	1.05	1.43	0.85	0.58	0.41	-0.46	-0.33
Dec	2.2	2.12	2.50	1.86	0.65	0.37	-0.49	-0.26
2009 Jan	2.9	2.86	2.95	2.23	0.73	0.36	-0.46	0.01
Feb	3.2	3.14	3.30	2.56	0.75	0.35	-0.49	-0.02
Mar	3.3	3.26	3.46	2.61	0.85	0.30	-0.48	-0.02
Apr	3.5	3.44	3.79	2.86	0.94	0.29	-0.54	-0.10
May	3.3	3.23	3.59	2.66	0.93	0.22	-0.50	-0.08
Jun	3.4	3.39	3.47	2.63	0.84	0.14	-0.43	0.21
Jul	3.2	3.20	3.46	2.67	0.79	0.07	-0.50	0.16
Aug	2.9	2.89	3.41	2.69	0.72	-	-0.55	0.04
Sep	2.5	2.52	3.36	2.68	0.68	-0.10	-0.55	-0.19

1 The differences due to housing, coverage and formula effect are all calculated independently and are not additive.

Source: National Statistics

2 Difference due to use of different formulae to aggregate prices at the most basic level.

3 This difference is derived as a residual.

.....
Next publication: 17 November 2009

Issued by: Office for National Statistics, Government Buildings, Cardiff Road, Newport NP10 8XG

Media contact:

Tel **Media Relations Office 0845 6041858**

Emergency on-call 07867 906553

Email **press.office@ons.gsi.gov.uk**

Statistical contact:

Tel **Philip Gooding 01633 455896**

Email **philip.gooding@ons.gsi.gov.uk**

Website:

www.ons.gov.uk

Email cpi@ons.gov.uk

CPI/RPI recorded message:

Tel **01633 456961**