

14 October 2008

Coverage
United Kingdom

Theme
The Economy

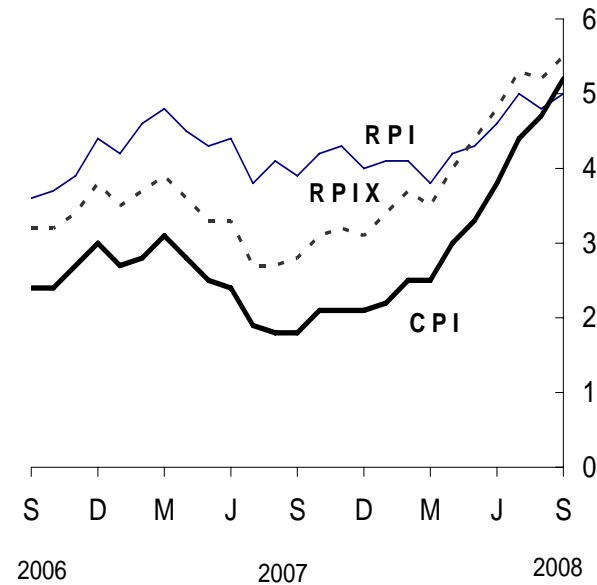


Consumer price indices September 2008

In the year to September, the consumer prices index (CPI) rose by 5.2 per cent, up from 4.7 per cent in August.

In the year to September, the all items retail prices index (RPI) rose by 5.0 per cent, up from 4.8 per cent in August.

Over the same period, the all items RPI excluding mortgage interest payments index (RPIX) rose by 5.5 per cent, up from 5.2 per cent in August.



Issued by
Office for National Statistics
Cardiff Road
Newport
NP10 8XG

Contact
Media Office
0845 6041858
Public Enquiries
0845 6013034
CPI/RPI Enquiries
01633 456900
CPI/RPI Recorded
Message
01633 456961
Email
cpi@ons.gov.uk

Statistician
Philip Gooding
01633 455896
philip.gooding@ons.gov.uk

www.statistics.gov.uk

Next publication date
18 November 2008

	Consumer prices index (CPI)		All items retail prices index (RPI)		All items RPI excluding mortgage interest payments (RPIX)	
	Index (2005 =100)	Per cent change over 12 months	Index (Jan 1987 =100)	Per cent change over 12 months	Index (Jan 1987 =100)	Per cent change over 12 months
2008 Apr	107.6	3.0	214.0	4.2	207.2	4.0
May	108.3	3.3	215.1	4.3	208.7	4.4
Jun	109.0	3.8	216.8	4.6	210.4	4.8
Jul	109.0	4.4	216.5	5.0	210.0	5.3
Aug	109.7	4.7	217.2	4.8	210.6	5.2
Sep	110.3	5.2	218.4	5.0	211.8	5.5

Main contributions to the change in the 12-month rate¹

CPI

The largest upward contribution to the change in the CPI annual rate came from housing and household services. This was due to rises in average gas and electricity bills this year, with some of the major energy suppliers increasing their tariffs, compared with falls last year. Within this division, there was also a small upward effect from materials for maintenance and repair with the main contribution coming from paint.

There were further large upward contributions from:

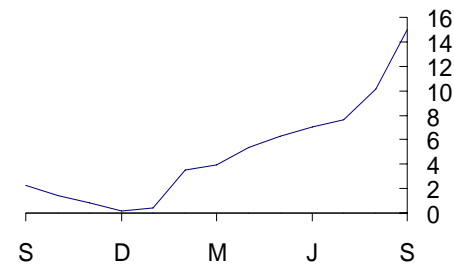
- recreation and culture where, overall, prices rose by more than a year ago. The contributions came mainly from games, toys and hobbies (particularly computer games), data processing equipment, cultural services (particularly admission to live music events) and foreign holidays
- clothing and footwear where prices rose by more than a year ago, particularly for men's outerwear
- transport costs, due to air and sea transport where seasonal price reductions were smaller than a year ago. With air fares, the upward effect came from long-haul routes partially offset by a downward contribution from European flights. The effect on sea fares came from international routes. Within this division, there were partially offsetting downward effects from second-hand cars and fuels and lubricants where prices fell by more than a year ago. The average price of petrol fell by 1.7 pence per litre between August and September this year, to stand at 111.6 pence, compared with a fall of 0.9 pence last year. Diesel prices fell by 2.3 pence per litre this year compared with a fall of 0.1 pence last year

A small upward contribution came from restaurants and hotels where, overall, prices rose by more than a year ago.

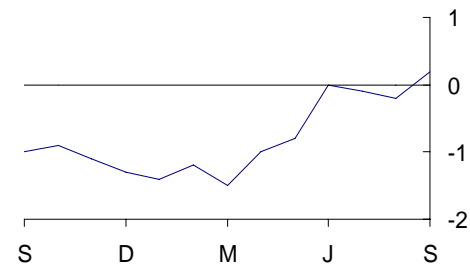
The largest downward contribution to the change in the CPI annual rate came from food and non-alcoholic beverages with the largest single effect coming from milk, cheese and eggs where prices fell this year but rose a year ago. This effect was largely due to shop bought milk which increased in price by 4 pence a pint between August and September 2007. There was also a large downward effect from fruit and smaller effects from bread and cereals, oils and fats, and mineral waters, soft drinks and juices. These were partially offset by a large upward effect from meat, particularly bacon.

A further large downward contribution came from education where private school fees rose by less than a year ago.

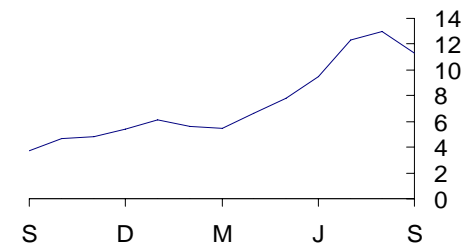
Housing and household services
CPI percentage changes over 12 months



Recreation and culture
CPI percentage changes over 12 months



Food and non-alcoholic beverages
CPI percentage changes over 12 months



¹ The CPI and RPI use different classification systems. Background Note 11 shows how, for each of the two indices, the main categories contributing to changes in the 12-month rate relate to each other

RPI

The largest upward contribution to the change in the RPI annual rate came from fuel and light where gas and electricity bills rose this year but fell a year ago. There was a small, partially offsetting downward effect from the price of heating oil which fell this year but rose a year ago partly reflecting the movements in the price of crude oil.

There was also a large upward contribution from fares and other travel costs. As in the CPI, the seasonal fall in passenger air and sea fares was smaller than last September, with the main upward effects coming from fares on long-haul and international routes respectively.

A small upward contribution came from leisure services where, overall, prices rose by more than a year ago.

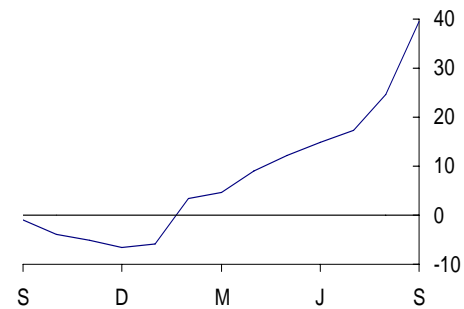
The largest downward contribution to the change in the RPI annual rate came from food. Within this group, there were large downward effects from milk, principally caused by rises in the price of shop bought milk last year, and fresh fruit, principally from bananas and grapes partially offset by peaches. Small downward effects came from butter, again due to price rises in 2007, and other foods including items such as chilled ready meals and frozen pizza.

Further large downward contributions came from:

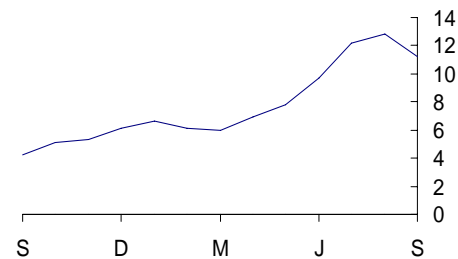
- motoring expenditure principally due to car prices falling by more than a year ago and, to a lesser extent, petrol and oil. These effects were partially offset by vehicle insurance premiums which rose by more than a year ago
- housing, mainly from house depreciation which fell this year but rose a year ago reflecting movements in the smoothed house price index used to calculate this component. A partial offset came from buildings insurance which had a large upward effect. Depreciation and buildings insurance are excluded from the CPI
- household services due to fees and subscriptions which rose by less than a year ago. The main effects came from house contents insurance premiums and private school fees

A small downward contribution came from household goods where, overall, prices rose by less than a year ago. Small downward effects came from furniture, in particular bedroom furniture, and electrical appliances.

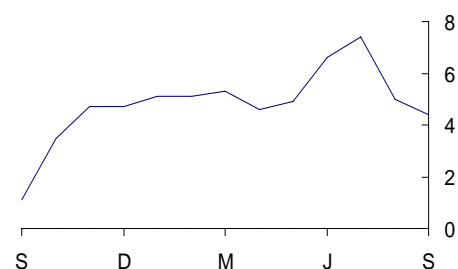
Fuel and light
RPI percentage changes over 12 months



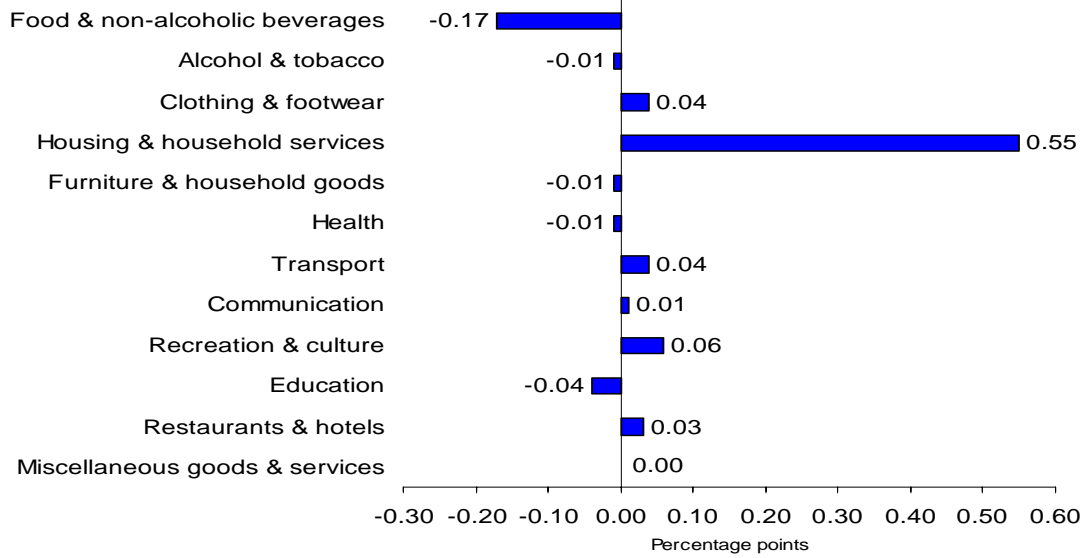
Food
RPI percentage changes over 12 months



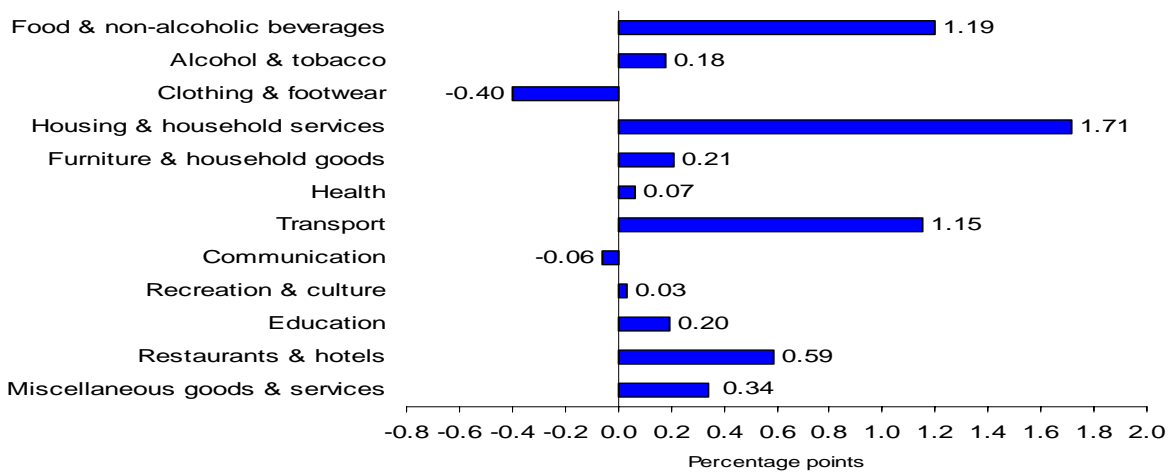
Motoring expenditure
RPI percentage changes over 12 months



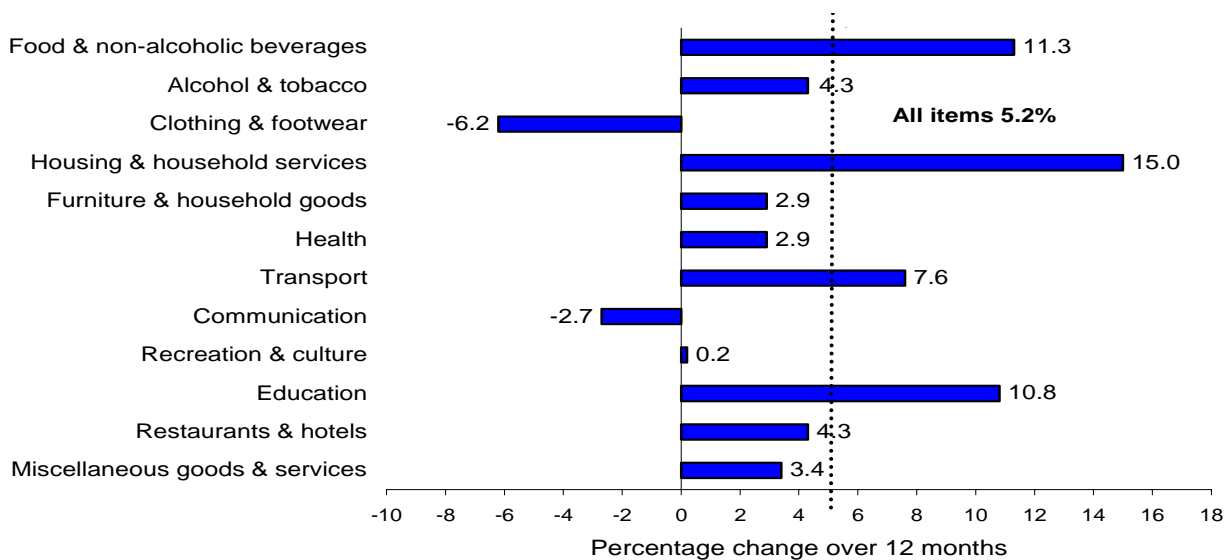
CPI main contributions¹ to the change in the all items 12 - month rate between August 2008 and September 2008 (0.5 percentage points)



CPI main contributions¹ to the all items 12- month rate (5.2 percentage points)

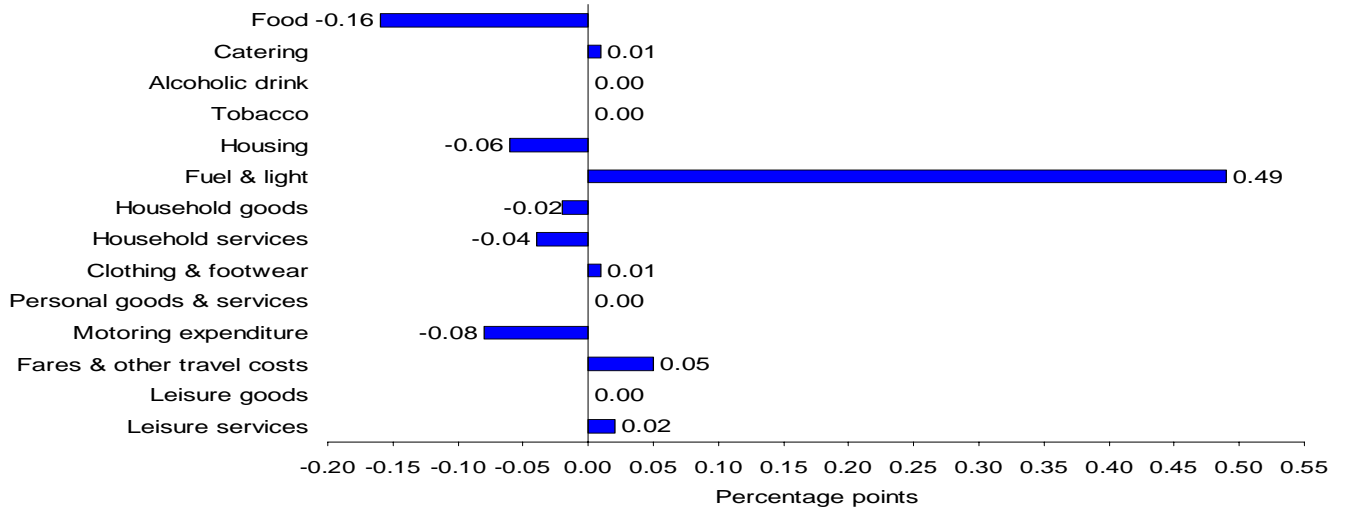


CPI comparison of the 12-month percentage changes

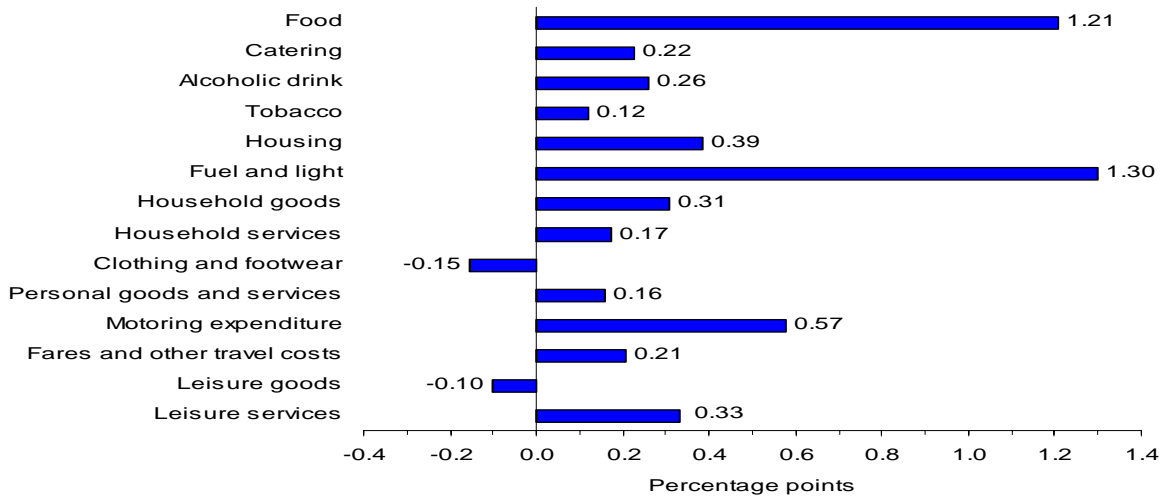


1. Individual contributions may not sum to the total due to rounding.

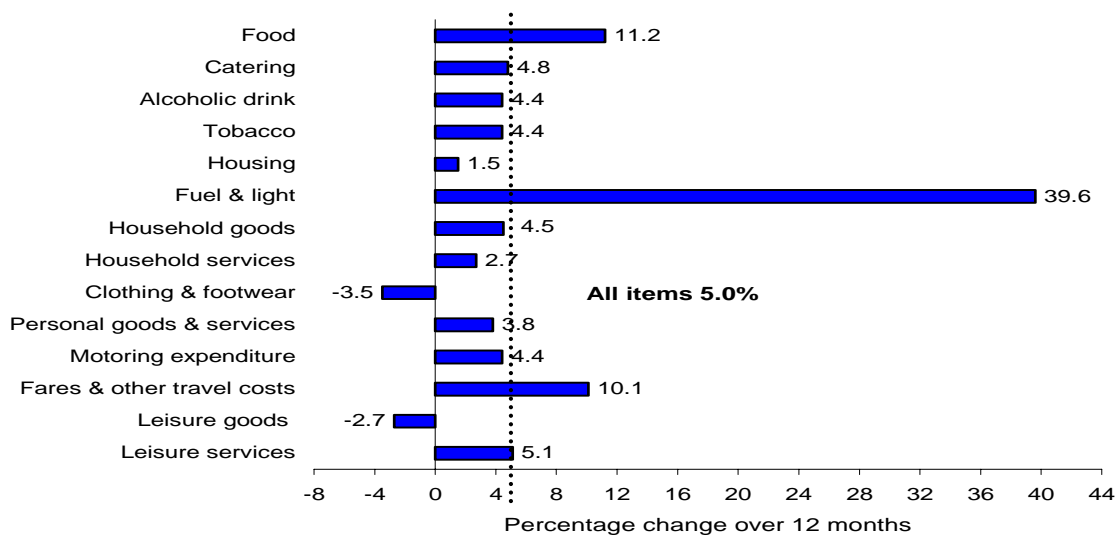
RPI main contributions¹ to the change in the all items 12-month rate between August 2008 and September 2008 (0.2 percentage points)



RPI main contributions¹ to the all items 12-month rate (5.0 percentage points)



RPI comparison of the 12-month percentage changes



1. Individual contributions may not sum to the total due to rounding.

BACKGROUND NOTES

Relevance

1. The consumer prices index (CPI) is the main United Kingdom domestic measure of consumer price inflation for macroeconomic purposes. It forms the basis for the Government's inflation target that the Bank of England's Monetary Policy Committee (MPC) is required to achieve.
2. Internationally, the CPI is known as the Harmonised Index of Consumer Prices (HICP). HICPs are calculated in each Member State of the European Union, according to rules specified in a series of European Regulations developed by Eurostat in conjunction with the EU Member States. HICPs are used to compare inflation rates across the European Union. Since January 1999 it has also been used by the European Central Bank (ECB) as the measure of price stability across the euro area.
3. The retail prices index (RPI) is the most long-standing general purpose measure of inflation in the United Kingdom and is available from June 1947. It is used for a variety of purposes by both government and external users including the indexation of various incomes and prices and the uprating of pensions, benefits and index-linked gilts.

Methodology

4. The CPI and the RPI are compiled using the same underlying price data, based on a large and representative selection of around 650 individual goods and services for which price movements are measured in around 150 randomly selected areas throughout the UK. Around 120,000 separate price quotations are used every month to compile the indices. The outlets in which the prices are collected are selected randomly. Expenditure weights are held constant for one year at a time.
5. The selection of goods and services that are priced to compile the CPI and RPI is reviewed annually. The contents of the 2008 basket are described in an article published on the National Statistics website at:
<http://www.statistics.gov.uk/cci/article.asp?ID=1951>
The expenditure weights used to compile the indices are also updated each year. Additional details of the updated CPI and RPI weights for 2008 are available from the National Statistics website in an article entitled Consumer Prices Index and Retail Prices Index: Updating Weights for 2008:
<http://www.statistics.gov.uk/cci/article.asp?id=1991>
6. Rates of change for the CPI are calculated from unrounded index levels, rather than on the published indices, which are rounded to one decimal place. The use of unrounded indices increases the accuracy of the calculation. The unrounded index levels are available on request. By contrast, rates of change for the RPI are calculated from the published rounded indices.

Reliability

7. Once the RPI indices are published they are never revised. CPI indices are revisable although past revisions have been minimal with the exception of those arising from re-referencing of the CPI to 2005=100, which took place with the publication of the January 2006 indices.

Comparability

8. The CPI's coverage of goods and services was extended in stages in the areas of health, education, childcare and insurance, with effect from the January 2000, 2001, and 2002 indices. In 2000, there was also a change to the population basis for the weights which was broadened from private households to include expenditure by foreign visitors and residents of institutional households. Further details can be found in a series of articles: http://www.statistics.gov.uk/about/methodology_by_theme/cpi
9. The official CPI series starts in 1996 but estimates for earlier periods are available back to 1988. These estimates are broadly consistent with data from 1996 but should be treated with some caution. The following article provides more detail: <http://www.statistics.gov.uk/cci/article.asp?ID=31>
10. RPI data are available back to 1947 but have been re-referenced on several occasions since then, generally accompanied by changes to the coverage and/or structure of the detailed sub-components. Details of these changes are given in Appendices 1 and 2 of the CPI Technical Manual: <http://www.statistics.gov.uk/statbase/Product.asp?vlnk=2328>

Coherence

11. The CPI and RPI both measure the average change from month to month in the prices of consumer goods and services purchased in the UK. However, they differ in both coverage and methodology. A detailed description of these differences is given in an article entitled "The New Inflation Target: the Statistical Perspective": www.statistics.gov.uk/StatBase/Product.asp?vlnk=10913. The differences are summarised below:
 - In the CPI, the geometric mean is used to combine the individual prices into elementary indices at the most basic level whereas the RPI uses arithmetic means
 - The CPI excludes a number of RPI series mainly relating to housing costs (for example, council tax), and in particular to owner occupiers' housing costs (including mortgage interest payments, house depreciation and buildings insurance). In addition, the CPI excludes the annual road fund licence and, from 2006, TV licences which are classified as taxes in the UK National Accounts, and Trades Union subscriptions which by convention are not part of household expenditure
 - The CPI includes series for university accommodation fees, foreign students' university tuition fees, and unit trust and stockbrokers' charges, none of which are included in the RPI

- The CPI is categorised according to the international classification system, COICOP (Classification Of Individual Consumption by Purpose). The way in which this maps to the RPI groupings is shown in the following table:

COICOP Divisions	RPI Groups
01 Food & non-alcoholic beverages	Food
02 Alcohol & tobacco	Alcoholic drink (off sales) Tobacco
03 Clothing & footwear	Clothing & footwear
04 Housing & household services	Housing (exc. Mortgage interest payments, depreciation, council tax & building insurance) Fuel & light
05 Furniture & household goods	Household goods Domestic services
06 Health	Personal goods & services (health-related items)
07 Transport	Motoring expenditure Fares & other travel costs
08 Communication	Household services (exc. domestic services & fees and subscriptions)
09 Recreation & culture	Leisure goods Leisure services
10 Education	Fees & subscriptions (education-related items)
11 Restaurants & hotels	Catering Alcoholic drink (on sales)
12 Miscellaneous goods & services	Personal goods & services (non health-related items) Fees & subscriptions (non education-related items)

- The index for the purchase of new cars in the CPI is quality adjusted and based on actual published prices for new cars. New car prices in the RPI are imputed from movements in second hand car prices
- The CPI weights are based on expenditure by all private households, foreign visitors to the UK and residents of institutional households. In the RPI, weights are based on expenditure by private households only, excluding the highest income households and pensioner households mainly dependent on state benefits

- In the construction of the CPI weights, amounts paid out in insurance claims are distributed among the COICOP headings according to the nature of the claims' expenditure, with the residual (the service charge) being allocated to the relevant insurance heading. For the RPI weights, total expenditure (that is, gross of claims paid out) is assigned to the relevant insurance heading

12. A breakdown of the difference between the CPI and RPI annual rates of inflation is shown in Table 10 of the CPI First Release.

Accessibility

13. This release includes the September 2008 data, collected on 16 September 2008. Future publication dates are 18 November, 16 December, 20 January, 17 February, 24 March and 21 April. The European Commission (Eurostat) will release figures for the harmonised index of consumer prices (HICP) for the month of September 2008 for EU member states excluding the UK, together with an EU average, on 15 October 2008. Further information on HICP for the European Union, Eurozone and other EU Member States is available from Eurostat's HICP web page:

http://epp.eurostat.ec.europa.eu/pls/portal/url/page/PGP_DS_HICP

Further information

14. A more detailed quality report for this First Release is available at:
<http://www.statistics.gov.uk/CCI/article.asp?ID=1585>

15. A full description of how the CPI and RPI are compiled is given in the Consumer Price Indices Technical Manual 2007 edition:
<http://www.statistics.gov.uk/statbase/Product.asp?vlnk=2328>

General

16. Details of the policy governing the release of new data are available from the press office. Also available is a list of the names of those given pre-publication access to contents of this release.

17. In line with Consumer Price Indices Pre-Release arrangements, an advance estimate of the CPI was provided to the Governor of the Bank of England 3½ working days ahead of publication. This was after the special meeting of the MPC had made its decision on interest rates.

18. Complete runs of series in this release are available to download free of charge at: <http://www.statistics.gov.uk/timeseries> .

19. **National Statistics** are produced to high professional standards set out in the National Statistics Code of Practice. They undergo regular quality assurance reviews to ensure that they meet customer needs. They are produced free from any political interference. © Crown Copyright 2008

1 CPI, RPI and other selected indices: the latest three years

	Consumer prices index (CPI) ¹		Consumer prices index excluding indirect taxes (CPIY) ³		Consumer prices index at constant tax rates (CPI-CT)		All items retail prices index (RPI)		All items RPI excluding			
	Index (2005=100)	Percentage change over 12 months	Index (2005=100)	Percentage change over 12 months	Index (2005=100)	Percentage change over 12 months	Index (Jan 13, 1987=100)	Percentage change over 12 months	mortgage interest payments (RPIX)		mortgage interest payments and indirect taxes (RPIY) ²	
									Index (Jan 13, 1987=100)	Percentage change over 12 months	Index (Jan 13, 1987=100)	Percentage change over 12 months
	D7BT	D7G7	EL2Q	EL2S	EAC7	EAD6	CHAW	CZBH	CHMK	CDKQ	CBZW	CBZX
2005 Sep	100.6	2.5	100.6	2.6	100.6	2.4	193.1	2.7	189.3	2.5	180.5	2.5
Oct	100.7	2.3	100.8	2.5	100.7	2.3	193.3	2.5	189.5	2.4	180.7	2.3
Nov	100.7	2.1	100.8	2.3	100.7	2.1	193.6	2.4	189.7	2.3	180.9	2.3
Dec	101.0	1.9	101.1	2.1	101.0	1.8	194.1	2.2	190.2	2.0	181.5	2.0
2006 Jan	100.5	1.9	100.6	2.1	100.5	1.9	193.4	2.4	189.4	2.3	180.7	2.3
Feb	100.9	2.0	100.9	2.1	100.8	2.0	194.2	2.4	190.1	2.3	181.4	2.3
Mar	101.1	1.8	101.1	1.9	101.1	1.7	195.0	2.4	190.8	2.1	182.2	2.2
Apr	101.7	2.0	101.7	2.1	101.6	2.0	196.5	2.6	192.3	2.4	183.2	2.3
May	102.2	2.2	102.3	2.3	102.1	2.2	197.7	3.0	193.6	2.9	184.5	2.8
Jun	102.5	2.5	102.6	2.6	102.4	2.4	198.5	3.3	194.2	3.1	185.2	3.2
Jul	102.5	2.4	102.6	2.4	102.4	2.3	198.5	3.3	194.2	3.1	185.2	3.2
Aug	102.9	2.5	103.0	2.6	102.8	2.4	199.2	3.4	194.9	3.3	186.0	3.4
Sep	103.0	2.4	103.2	2.6	102.9	2.3	200.1	3.6	195.3	3.2	186.4	3.3
Oct	103.2	2.4	103.5	2.7	103.1	2.3	200.4	3.7	195.5	3.2	186.7	3.3
Nov	103.4	2.7	103.8	3.0	103.4	2.6	201.1	3.9	196.2	3.4	187.5	3.6
Dec	104.0	3.0	104.3	3.2	103.9	2.9	202.7	4.4	197.4	3.8	188.6	3.9
2007 Jan	103.2	2.7	103.5	2.9	103.1	2.6	201.6	4.2	196.1	3.5	187.3	3.7
Feb	103.7	2.8	103.9	2.9	103.5	2.6	203.1	4.6	197.1	3.7	188.4	3.9
Mar	104.2	3.1	104.3	3.1	103.9	2.9	204.4	4.8	198.3	3.9	189.5	4.0
Apr	104.5	2.8	104.6	2.9	104.2	2.6	205.4	4.5	199.3	3.6	190.0	3.7
May	104.8	2.5	105.0	2.6	104.5	2.3	206.2	4.3	200.0	3.3	190.7	3.4
Jun	105.0	2.4	105.2	2.5	104.7	2.2	207.3	4.4	200.7	3.3	191.4	3.3
Jul	104.4	1.9	104.6	2.0	104.1	1.7	206.1	3.8	199.4	2.7	190.1	2.6
Aug	104.7	1.8	105.0	1.9	104.5	1.6	207.3	4.1	200.1	2.7	190.9	2.6
Sep	104.8	1.8	105.0	1.7	104.5	1.6	208.0	3.9	200.8	2.8	191.6	2.8
Oct	105.3	2.1	105.5	1.9	104.9	1.8	208.9	4.2	201.6	3.1	192.3	3.0
Nov	105.6	2.1	105.8	1.9	105.2	1.8	209.7	4.3	202.4	3.2	193.2	3.0
Dec	106.2	2.1	106.4	2.0	105.8	1.9	210.9	4.0	203.5	3.1	194.4	3.1
2008 Jan	105.5	2.2	105.7	2.1	105.1	2.0	209.8	4.1	202.7	3.4	193.5	3.3
Feb	106.3	2.5	106.5	2.5	105.9	2.3	211.4	4.1	204.3	3.7	195.2	3.6
Mar	106.7	2.5	107.0	2.6	106.3	2.3	212.1	3.8	205.3	3.5	196.3	3.6
Apr	107.6	3.0	107.7	3.0	107.0	2.7	214.0	4.2	207.2	4.0	197.5	3.9
May	108.3	3.3	108.5	3.3	107.7	3.1	215.1	4.3	208.7	4.4	199.0	4.4
Jun	109.0	3.8	109.3	3.9	108.5	3.6	216.8	4.6	210.4	4.8	200.8	4.9
Jul	109.0	4.4	109.3	4.5	108.4	4.2	216.5	5.0	210.0	5.3	200.4	5.4
Aug	109.7	4.7	110.1	4.9	109.1	4.5	217.2	4.8	210.6	5.2	201.2	5.4
Sep	110.3	5.2	110.7	5.4	109.7	5.0	218.4	5.0	211.8	5.5	202.4	5.6

1 Inflation rates prior to 1997 and index levels prior to 1996 are estimated. Further details are given in *Economic Trends No. 541 December 1998*. These details are also available on the National Statistics website: www.statistics.gov.uk/cci/article.asp?ID=31

2 The taxes excluded are council tax, VAT, duties, vehicle excise duty, insurance tax and air passenger duty.

3 The taxes excluded are VAT, duties, insurance premium tax, air passenger duty, stamp duty on share transactions.

Source: National Statistics

2 CPI: Detailed figures for 16 September 2008

	Percentage change over				Percentage change over		
	Index (2005 =100)	1 mth	12 mths		Index (2005 =100)	1 mth	12 mths
CPI (overall index)	110.3	0.5	5.2				
01 Food and non-alcoholic beverages	119.6	-0.3	11.3	06.2 Out-patient services	112.7	0.3	3.0
02 Alcoholic beverages and tobacco	111.7	-0.1	4.3	06.2.1/3 Medical services & paramedical services	109.8	0.3	3.0
03 Clothing and footwear	86.8	2.2	-6.2	06.2.2 Dental services	115.9	0.2	3.0
04 Housing, water, electricity, gas and other fuels	131.1	4.4	15.0	06.3 Hospital services	120.5	-	5.5
05 Furniture, household equipment and maintenance	105.1	1.6	2.9	07.1 Purchase of vehicles	96.8	-0.6	-2.1
06 Health	110.2	-	2.9	07.1.1A New cars	104.4	0.3	1.7
07 Transport	113.8	-2.4	7.6	07.1.1B Second-hand cars	84.6	-2.7	-8.9
08 Communication	94.1	-0.2	-2.7	07.1.2/3 Motorcycles and bicycles	106.2	3.3	7.7
09 Recreation and culture	97.8	0.6	0.2	07.2 Operation of personal transport equipment	123.4	-0.6	12.3
10 Education	136.2	2.2	10.8	07.2.1 Spare parts and accessories	106.4	0.7	2.2
11 Restaurants and hotels	112.2	0.5	4.3	07.2.2 Fuels and lubricants	130.1	-1.5	19.6
12 Miscellaneous goods and services	109.4	0.2	3.4	07.2.3 Maintenance and repairs	118.9	0.6	5.8
All goods	108.4	1.2	5.7	07.2.4 Other services	112.6	0.3	2.3
All services	112.6	-0.2	4.6	07.3 Transport services	120.0	-8.0	11.7
01.1 Food	120.9	-0.1	12.7	07.3.1 Passenger transport by railway	113.9	-0.7	3.5
01.1.1 Bread and cereals	122.8	-0.1	15.7	07.3.2 Passenger transport by road	113.3	-0.1	4.5
01.1.2 Meat	121.5	0.8	19.1	07.3.3 Passenger transport by air	117.5	-19.3	26.5
01.1.3 Fish	126.0	0.5	7.5	07.3.4 Passenger transport by sea and inland waterway	142.4	-14.8	17.2
01.1.4 Milk, cheese and eggs	126.1	-0.3	11.7	08.1 Postal services	129.5	-	6.7
01.1.5 Oils and fats	136.3	-0.3	15.5	08.2/3 Telephone and telefax equipment and services	92.7	-0.2	-3.1
01.1.6 Fruit	108.6	-2.5	6.1	09.1 Audio-visual equipment and related products	67.4	-0.7	-12.2
01.1.7 Vegetables including potatoes and tubers	122.3	-0.2	10.8	09.1.1 Reception and reproduction of sound and pictures	64.3	-1.0	-12.5
01.1.8 Sugar, jam, syrups, chocolate and confectionery	116.7	-0.2	8.1	09.1.2 Photographic, cinematographic and optical equipment	41.8	-1.5	-22.1
01.1.9 Food products (nec)	108.8	0.4	7.6	09.1.3 Data processing equipment	51.7	-0.8	-20.2
01.2 Non-alcoholic beverages	110.8	-1.7	1.7	09.1.4 Recording media	89.7	-0.4	-6.6
01.2.1 Coffee, tea and cocoa	117.2	-1.0	6.5	09.1.5 Repair of audio-visual equipment & related products	112.2	0.7	3.4
01.2.2 Mineral waters, soft drinks and juices	108.8	-2.0	0.4	09.2 Oth. major durables for recreation & culture	103.1	0.1	2.3
02.1 Alcoholic beverages	106.2	-0.3	3.9	09.2.1/2 Major durables for in/outdoor recreation	103.1	0.1	2.3
02.1.1 Spirits	109.4	-0.7	6.1	09.3 Other recreational items, gardens and pets	97.7	1.1	0.4
02.1.2 Wine	106.7	-0.1	4.5	09.3.1 Games, toys and hobbies	91.5	1.9	-2.2
02.1.3 Beer	100.6	-0.2	0.2	09.3.2 Equipment for sport and open-air recreation	99.9	-0.4	1.4
02.2 Tobacco	115.7	0.1	4.5	09.3.3 Gardens, plants and flowers	102.2	-0.8	2.1
03.1 Clothing	86.0	2.5	-6.7	09.3.4/5 Pets, related products and services	113.8	1.0	7.0
03.1.2 Garments	84.9	2.5	-7.2	09.4 Recreational and cultural services	113.5	1.2	3.3
03.1.3 Other clothing and clothing accessories	98.6	2.2	-0.6	09.4.1 Recreational and sporting services	118.5	2.9	5.3
03.1.4 Cleaning, repair and hire of clothing	113.2	0.3	3.8	09.4.2 Cultural services	111.2	0.3	2.2
03.2 Footwear including repairs	92.0	0.2	-2.7	09.5 Books, newspapers and stationery	110.8	0.4	3.8
04.1 Actual rentals for housing	110.4	-	3.1	09.5.1 Books	112.2	-0.7	2.3
04.3 Regular maintenance and repair of the dwelling	113.5	1.0	6.2	09.5.2 Newspapers and periodicals	116.2	1.0	5.1
04.3.1 Materials for maintenance and repair	112.1	1.7	6.9	09.5.3/4 Misc. printed matter, stationery, drawing materials	101.6	0.6	3.8
04.3.2 Services for maintenance and repair	115.6	0.1	5.3	09.6 Package holidays	106.4	0.5	5.9
04.4 Water supply and misc. services for the dwelling	122.9	-	6.5	10.0 Education	136.2	2.2	10.8
04.4.1 Water supply	122.2	-	5.7	11.1 Catering services	112.3	0.4	4.6
04.4.3 Sewerage collection	123.3	-	7.3	11.1.1 Restaurants & cafes	112.3	0.4	4.8
04.5 Electricity, gas and other fuels	180.2	12.3	39.5	11.1.2 Canteens	112.4	0.4	3.3
04.5.1 Electricity	167.6	10.3	30.3	11.2 Accommodation services	111.3	1.0	2.1
04.5.2 Gas	200.3	16.6	49.9	12.1 Personal care	107.4	-0.3	3.3
04.5.3 Liquid fuels	178.3	-2.6	52.8	12.1.1 Hairdressing and personal grooming establishments	112.4	0.2	4.0
04.5.4 Solid fuels	145.1	9.0	26.8	12.1.2/3 Appliances and products for personal care	105.6	-0.5	3.0
05.1 Furniture, furnishings and carpets	108.3	2.9	4.4	12.3 Personal effects (nec)	111.8	1.4	5.2
05.1.1 Furniture and furnishings	108.0	3.3	3.8	12.3.1 Jewellery, clocks and watches	115.8	0.6	6.5
05.1.2 Carpets and other floor coverings	109.0	1.4	6.6	12.3.2 Other personal effects	104.4	3.2	2.3
05.2 Household textiles	90.9	0.7	-2.9	12.4 Social protection	117.8	0.5	4.7
05.3 Household appliances, fitting and repairs	97.8	0.3	0.3	12.5 Insurance	107.5	-0.3	1.3
05.3.1/2 Major appliances and small electric goods	96.4	0.3	-0.2	12.5.2 House contents insurance	96.8	-4.5	-6.0
05.3.3 Repair of household appliances	108.8	0.3	5.0	12.5.3 Health insurance	123.8	-	6.4
05.4 Glassware, tableware and household utensils	102.2	1.2	2.4	12.5.4 Transport insurance	106.0	1.6	2.4
05.5 Tools and equipment for house and garden	103.5	0.4	1.5	12.6 Financial services (nec)	104.3	0.2	2.1
05.6 Goods and services for routine maintenance	114.9	0.6	6.2	12.6.2 Other financial services (nec)	104.3	0.2	2.1
05.6.1 Non-durable household goods	113.3	0.7	7.7	12.7 Other services (nec)	116.3	0.3	5.3
05.6.2 Domestic services and household services	115.8	0.5	4.7				
06.1 Medical products, appliances and equipment	101.6	-0.2	0.8				
06.1.1 Pharmaceutical products	101.6	-0.7	0.1				
06.1.2/3 Other medical and therapeutic equipment	101.8	0.3	1.5				

Key: - zero or negligible .. not available (nec) not elsewhere covered

Source: National Statistics

3 CPI: Detailed figures by divisions, groups and classes

	Weights	Index (2005=100)						Percentage change over 12 months					
		2008	2008 Apr	2008 May	2008 Jun	2008 Jul	2008 Aug	2008 Sep	2008 Apr	2008 May	2008 Jun	2008 Jul	2008 Aug
CPI (overall index)	1 000	107.6	108.3	109.0	109.0	109.7	110.3	3.0	3.3	3.8	4.4	4.7	5.2
01 Food and non-alcoholic beverages	109	113.2	115.1	117.5	118.4	120.0	119.6	6.6	7.8	9.5	12.3	13.0	11.3
02 Alcoholic beverages and tobacco	42	111.5	112.0	111.9	111.4	111.8	111.7	4.2	4.9	4.5	4.3	4.4	4.3
03 Clothing and footwear	63	87.8	87.8	86.5	83.8	84.9	86.8	-6.3	-6.3	-7.5	-6.7	-6.7	-6.2
04 Housing, water, electricity, gas and other fuels	115	122.0	122.3	122.5	123.0	125.6	131.1	5.4	6.3	7.0	7.6	10.1	15.0
05 Furniture, household equipment and maintenance	67	102.1	103.5	105.9	102.6	103.4	105.1	1.4	1.7	1.8	2.8	3.2	2.9
06 Health	22	108.9	109.0	109.3	110.1	110.3	110.2	3.3	3.0	3.0	3.3	3.2	2.9
07 Transport	152	110.8	112.7	114.6	116.6	116.5	113.8	6.1	6.2	7.3	8.0	7.3	7.6
08 Communication	23	94.4	94.3	94.9	94.1	94.3	94.1	-2.9	-2.4	-1.3	-0.7	-3.0	-2.7
09 Recreation and culture	152	97.3	97.3	97.6	96.9	97.3	97.8	-1.0	-0.8	0.0	-0.1	-0.2	0.2
10 Education	19	133.2	133.2	133.2	133.2	133.2	136.2	13.2	13.2	13.2	13.2	13.2	10.8
11 Restaurants and hotels	137	110.4	110.8	111.1	111.6	111.7	112.2	3.8	3.9	3.9	4.1	4.0	4.3
12 Miscellaneous goods and services	99	108.3	108.5	108.6	109.0	109.2	109.4	2.3	2.6	2.7	2.8	3.4	3.4
All goods	547	105.3	106.2	107.2	106.4	107.1	108.4	2.3	3.0	3.8	4.7	5.1	5.7
All services	453	110.4	110.8	111.2	112.2	112.9	112.6	3.7	3.8	3.9	4.1	4.3	4.6
01.1 Food	95	113.6	115.7	118.5	119.4	121.0	120.9	7.2	8.7	10.6	13.7	14.5	12.7
01.1.1 Bread and cereals	16	114.4	115.8	119.2	121.2	123.0	122.8	8.5	9.1	11.9	15.9	17.4	15.7
01.1.2 Meat	21	108.5	112.4	116.0	119.3	120.5	121.5	4.1	8.8	11.2	16.3	17.1	19.1
01.1.3 Fish	5	121.5	123.8	119.6	121.7	125.4	126.0	4.6	6.7	1.5	5.1	7.5	7.5
01.1.4 Milk, cheese and eggs	14	121.2	122.5	125.3	125.5	126.4	126.1	15.7	16.6	19.1	19.0	19.0	11.7
01.1.5 Oils and fats	2	124.1	128.7	137.3	137.2	136.7	136.3	15.8	20.1	28.2	29.5	30.1	15.5
01.1.6 Fruit	9	104.4	105.2	111.6	106.8	111.4	108.6	7.4	2.4	8.2	10.7	13.0	6.1
01.1.7 Vegetables including potatoes and tubers	15	117.3	120.1	121.9	122.4	122.6	122.3	3.8	7.2	7.4	11.1	10.2	10.8
01.1.8 Sugar, jam, syrups, chocolate and confectionery	11	113.8	114.0	114.4	114.9	116.9	116.7	6.2	6.3	6.7	7.6	8.5	8.1
01.1.9 Food products (nec)	2	102.3	103.0	104.8	106.9	108.3	108.8	2.3	2.6	3.4	6.4	8.3	7.6
01.2 Non-alcoholic beverages	14	110.4	111.0	111.0	112.0	112.7	110.8	2.2	1.7	1.9	2.7	3.4	1.7
01.2.1 Coffee, tea and cocoa	3	110.0	112.5	112.8	115.6	118.3	117.2	1.4	2.3	3.5	5.6	8.7	6.5
01.2.2 Mineral waters, soft drinks and juices	11	110.3	110.4	110.4	110.8	111.0	108.8	2.5	1.5	1.5	1.9	1.9	0.4
02.1 Alcoholic beverages	18	105.9	107.1	106.7	105.7	106.5	106.2	3.7	5.4	4.4	4.0	4.3	3.9
02.1.1 Spirits	5	108.0	110.5	109.0	108.4	110.3	109.4	6.3	9.2	7.1	7.9	7.9	6.1
02.1.2 Wine	9	105.8	106.7	107.2	106.6	106.8	106.7	3.5	4.7	3.9	3.8	4.6	4.5
02.1.3 Beer	4	103.0	103.4	102.5	100.1	100.8	100.6	1.0	2.3	2.1	-0.5	-0.7	0.2
02.2 Tobacco	24	115.5	115.5	115.6	115.6	115.6	115.7	4.5	4.5	4.5	4.4	4.4	4.5
03.1 Clothing	55	87.3	87.2	85.8	82.7	84.0	86.0	-6.7	-6.7	-8.0	-7.3	-7.4	-6.7
03.1.2 Garments	51	86.3	86.1	84.7	81.4	82.8	84.9	-7.2	-7.3	-8.6	-7.9	-7.9	-7.2
03.1.3 Other clothing and clothing accessories	3	97.7	99.2	98.1	96.9	96.5	98.6	-2.9	0.0	-1.6	-1.2	-1.5	-0.6
03.1.4 Cleaning, repair and hire of clothing	1	110.7	110.7	110.9	112.4	112.8	113.2	3.5	3.2	2.5	3.5	3.7	3.8
03.2 Footwear including repairs	8	91.7	92.3	91.8	91.1	91.8	92.0	-3.4	-3.7	-4.2	-2.5	-2.6	-2.7
04.1 Actual rentals for housing	51	109.8	109.9	110.0	110.2	110.3	110.4	3.5	3.4	3.4	2.9	3.1	3.1
04.3 Regular maintenance and repair of the dwelling	18	110.2	110.0	110.3	111.6	112.4	113.5	4.9	4.5	4.0	4.8	5.4	6.2
04.3.1 Materials for maintenance and repair	10	108.4	107.9	108.2	109.2	110.2	112.1	5.7	5.0	4.2	4.4	5.4	6.9
04.3.2 Services for maintenance and repair	8	112.8	113.1	113.4	115.1	115.4	115.6	3.8	3.8	3.8	5.2	5.3	5.3
04.4 Water supply and misc. services for the dwelling	11	122.9	122.9	122.9	122.9	122.9	122.9	6.5	6.5	6.5	6.5	6.5	6.5
04.4.1 Water supply	5	122.2	122.2	122.2	122.2	122.2	122.2	5.7	5.7	5.7	5.7	5.7	5.7
04.4.3 Sewerage collection	6	123.3	123.3	123.3	123.3	123.3	123.3	7.3	7.3	7.3	7.3	7.3	7.3
04.5 Electricity, gas and other fuels	35	149.4	150.3	150.9	151.6	160.4	180.2	8.3	11.2	13.8	16.1	24.0	39.5
04.5.1 Electricity	17	145.7	145.7	145.7	145.7	151.9	167.6	8.3	9.6	11.2	12.6	18.0	30.3
04.5.2 Gas	15	153.8	153.8	153.8	154.1	171.8	200.3	3.7	7.1	10.2	12.9	27.7	49.9
04.5.3 Liquid fuels	2	181.3	196.8	205.4	215.8	183.0	178.3	69.1	84.4	87.8	92.2	66.4	52.8
04.5.4 Solid fuels	1	125.2	127.7	130.4	131.7	133.2	145.1	9.6	12.4	15.2	16.6	17.7	26.8
05.1 Furniture, furnishings and carpets	28	103.5	106.4	112.2	104.7	105.3	108.3	2.8	3.1	3.6	5.4	5.0	4.4
05.1.1 Furniture and furnishings	22	103.5	105.7	113.3	103.8	104.6	108.0	2.3	2.5	2.5	4.9	4.6	3.8
05.1.2 Carpets and other floor coverings	6	103.5	108.5	107.7	107.3	107.5	109.0	4.5	5.3	7.7	7.2	6.0	6.6
05.2 Household textiles	8	91.4	91.8	90.3	89.4	90.3	90.9	-1.7	-1.7	-3.6	-1.7	-2.6	-2.9
05.3 Household appliances, fitting and repairs	9	96.6	96.4	97.1	96.1	97.5	97.8	-0.2	-0.3	1.2	0.0	2.2	0.3
05.3.1/2 Major appliances and small electric goods	8	95.3	95.1	95.8	94.7	96.1	96.4	-0.7	-0.9	0.7	-0.6	1.8	-0.2
05.3.3 Repair of household appliances	1	107.1	107.5	107.9	108.4	108.5	108.8	4.2	4.6	5.0	5.1	5.1	5.0
05.4 Glassware, tableware and household utensils	7	101.7	101.5	100.6	100.3	101.0	102.2	1.9	1.1	-0.4	1.0	1.7	2.4
05.5 Tools and equipment for house and garden	5	103.0	102.6	103.1	102.5	103.1	103.5	0.3	0.2	0.7	0.3	0.9	1.5
05.6 Goods and services for routine maintenance	10	109.5	111.2	112.0	112.8	114.2	114.9	1.4	3.0	3.2	4.3	5.7	6.2
05.6.1 Non-durable household goods	5	105.6	108.2	108.7	110.1	112.5	113.3	-0.8	1.8	2.0	3.9	6.9	7.7
05.6.2 Domestic services and household services	5	113.0	113.7	114.7	115.1	115.2	115.8	3.5	4.0	4.3	4.6	4.4	4.7
06.1 Medical products, appliances and equipment	10	101.4	101.2	101.2	101.6	101.8	101.6	0.8	0.5	0.5	1.4	1.3	0.8
06.1.1 Pharmaceutical products	5	102.1	101.7	101.5	102.0	102.4	101.6	0.8	0.1	0.3	1.5	1.2	0.1
06.1.2/3 Other medical and therapeutic equipment	5	101.1	101.0	101.3	101.5	101.5	101.8	0.9	0.8	0.7	1.3	1.3	1.5

Key: - zero or negligible .. not available (nec) not elsewhere covered

Source: National Statistics

3 CPI: Detailed figures by divisions, groups and classes

continued

	Weights	Index (2005=100)						Percentage change over 12 months					
		2008	2008	2008	2008	2008	2008	2008	2008	2008	2008	2008	
		Apr	May	Jun	Jul	Aug	Sep	Apr	May	Jun	Jul	Aug	Sep
06.2 Out-patient services	4	111.0	111.9	112.1	112.3	112.4	112.7	3.7	3.2	3.2	3.3	3.0	3.0
06.2.1/3 Medical services & paramedical services	2	108.9	108.9	109.1	109.3	109.4	109.8	3.8	3.3	3.0	3.2	2.9	3.0
06.2.2 Dental services	2	113.6	115.2	115.5	115.7	115.7	115.9	3.7	3.1	3.2	3.3	3.1	3.0
06.3 Hospital services	8	117.7	118.0	118.4	120.4	120.5	120.5	5.9	5.9	5.9	5.8	5.7	5.5
07.1 Purchase of vehicles	48	98.5	98.6	98.1	97.9	97.4	96.8	-1.4	-1.5	-1.7	-1.5	-1.7	-2.1
07.1.1A New cars	26	103.3	103.5	103.5	103.8	104.0	104.4	1.1	1.2	1.0	1.2	1.4	1.7
07.1.1B Second-hand cars	19	91.4	91.0	89.8	88.7	87.0	84.6	-4.7	-5.1	-5.7	-5.7	-6.8	-8.9
07.1.2/3 Motorcycles and bicycles	3	96.5	97.7	99.3	100.8	102.8	106.2	-3.5	-2.8	-0.2	1.1	2.9	7.7
07.2 Operation of personal transport equipment	72	120.0	122.8	126.3	127.2	124.1	123.4	11.5	12.1	14.3	15.2	12.5	12.3
07.2.1 Spare parts and accessories	5	105.3	105.3	105.6	105.3	105.7	106.4	3.1	3.0	2.7	2.2	1.8	2.2
07.2.2 Fuels and lubricants	38	125.6	130.7	137.1	138.6	132.1	130.1	18.7	19.5	24.0	25.7	20.6	19.6
07.2.3 Maintenance and repairs	23	115.8	116.5	117.1	117.6	118.1	118.9	4.7	5.0	4.8	5.1	5.2	5.8
07.2.4 Other services	6	112.0	112.1	112.1	112.2	112.2	112.6	2.8	2.5	2.4	2.2	2.0	2.3
07.3 Transport services	32	110.6	113.3	115.5	123.7	130.4	120.0	5.5	4.7	5.1	6.0	8.4	11.7
07.3.1 Passenger transport by railway	8	114.8	114.6	114.1	114.6	114.7	113.9	4.9	4.8	4.3	4.5	4.1	3.5
07.3.2 Passenger transport by road	14	111.7	112.0	111.8	112.8	113.4	113.3	4.5	4.7	3.8	4.4	4.7	4.5
07.3.3 Passenger transport by air	8	93.6	102.4	108.5	131.0	145.5	117.5	6.6	3.4	5.4	8.9	12.6	26.5
07.3.4 Passenger transport by sea and inland waterway	2	117.8	115.0	124.2	135.2	167.1	142.4	1.6	-3.7	0.4	-9.7	2.7	17.2
08.1 Postal services	1	129.5	129.5	129.5	129.5	129.5	129.5	6.7	6.7	6.7	6.7	6.7	6.7
08.2/3 Telephone and telefax equipment and services	22	92.9	92.8	93.4	92.7	92.9	92.7	-3.3	-2.8	-1.7	-1.0	-3.4	-3.1
09.1 Audio-visual equipment and related products	27	70.7	70.3	70.2	68.6	67.9	67.4	-13.8	-14.0	-12.2	-11.9	-12.7	-12.2
09.1.1 Reception and reproduction of sound and pictures	6	67.1	66.7	65.4	64.8	64.9	64.3	-14.3	-13.3	-12.7	-12.0	-12.8	-12.5
09.1.2 Photographic, cinematographic and optical equipment	4	46.6	46.1	44.7	44.5	42.4	41.8	-28.0	-25.2	-21.7	-19.2	-22.7	-22.1
09.1.3 Data processing equipment	5	54.9	54.4	54.3	54.2	52.1	51.7	-25.1	-23.8	-23.3	-20.7	-22.6	-20.2
09.1.4 Recording media	11	92.6	92.2	93.8	89.5	90.1	89.7	-4.0	-7.1	-4.4	-6.3	-5.8	-6.6
09.1.5 Repair of audio-visual equipment & related products	1	110.4	110.8	111.1	111.2	111.5	112.2	3.5	3.4	3.6	3.1	2.9	3.4
09.2 Other major durables for recreation & culture	9	102.7	102.7	102.8	102.6	103.0	103.1	1.8	2.0	2.1	1.9	2.3	2.3
09.2.1/2 Major durables for in/outdoor recreation	9	102.7	102.7	102.8	102.6	103.0	103.1	1.8	2.0	2.1	1.9	2.3	2.3
09.3 Other recreational items, gardens and pets	38	97.0	96.6	97.7	95.4	96.6	97.7	-0.5	-0.1	1.5	-0.3	0.0	0.4
09.3.1 Games, toys and hobbies	22	91.8	90.9	91.8	88.1	89.8	91.5	-2.3	-2.0	-0.1	-3.2	-3.4	-2.2
09.3.2 Equipment for sport and open-air recreation	4	97.7	98.1	98.8	99.1	100.3	99.9	-0.7	-0.7	-0.4	1.0	2.0	1.4
09.3.3 Gardens, plants and flowers	5	103.2	103.0	104.1	103.0	103.0	102.2	2.6	2.6	4.7	3.3	3.4	2.1
09.3.4/5 Pets, related products and services	7	109.4	110.1	111.7	112.5	112.7	113.8	3.0	4.0	5.3	5.7	7.2	7.0
09.4 Recreational and cultural services	32	111.7	111.6	111.5	111.9	112.2	113.5	2.6	2.5	1.9	3.1	2.6	3.3
09.4.1 Recreational and sporting services	11	114.1	114.4	114.5	115.0	115.2	118.5	5.5	5.4	5.3	5.5	5.5	5.3
09.4.2 Cultural services	21	110.6	110.3	110.2	110.6	110.9	111.2	1.4	1.2	0.3	2.0	1.3	2.2
09.5 Books, newspapers and stationery	17	110.1	111.7	110.9	111.4	110.4	110.8	5.2	6.4	5.9	5.3	4.0	3.8
09.5.1 Books	5	113.6	117.8	113.7	115.2	113.1	112.2	10.0	12.8	9.9	8.1	4.4	2.3
09.5.2 Newspapers and periodicals	7	114.4	115.7	116.4	116.2	115.1	116.2	4.5	5.8	6.3	5.7	4.7	5.1
09.5.3/4 Misc. printed matter, stationery, drawing materials	5	100.5	99.8	100.2	100.8	101.0	101.6	1.3	0.7	1.3	2.1	3.0	3.8
09.6 Package holidays	29	102.4	102.8	103.6	104.3	105.8	106.4	2.4	3.0	4.0	4.2	5.4	5.9
10.0 Education	19	133.2	133.2	133.2	133.2	133.2	136.2	13.2	13.2	13.2	13.2	13.2	10.8
11.1 Catering services	118	110.6	111.0	111.3	111.6	111.9	112.3	4.2	4.2	4.3	4.3	4.4	4.6
11.1.1 Restaurants & cafes	106	110.5	110.9	111.3	111.6	111.9	112.3	4.2	4.3	4.4	4.4	4.6	4.8
11.1.2 Canteens	12	110.8	111.2	111.1	111.5	111.9	112.4	3.7	3.6	3.2	3.4	3.3	3.3
11.2 Accommodation services	19	109.6	110.1	110.1	111.3	110.3	111.3	2.0	2.1	1.6	2.7	1.6	2.1
12.1 Personal care	30	106.4	106.7	106.7	107.1	107.7	107.4	1.1	1.6	2.0	2.4	3.5	3.3
12.1.1 Hairdressing and personal grooming establishments	8	110.6	111.1	111.5	111.9	112.2	112.4	3.6	3.6	3.9	3.9	4.1	4.0
12.1.2/3 Appliances and products for personal care	22	104.9	105.1	105.0	105.4	106.2	105.6	0.2	0.9	1.4	1.9	3.3	3.0
12.3 Personal effects (nec)	10	110.1	110.5	110.3	109.0	110.3	111.8	4.4	4.6	4.5	4.4	4.6	5.2
12.3.1 Jewellery, clocks and watches	7	113.6	114.1	114.7	113.6	115.0	115.8	5.5	5.7	6.5	6.0	6.4	6.5
12.3.2 Other personal effects	3	103.6	104.0	101.9	100.4	101.2	104.4	1.8	1.9	0.0	0.5	0.4	2.3
12.4 Social protection	12	115.3	116.0	116.5	117.1	117.3	117.8	4.9	4.9	4.8	4.8	4.6	4.7
12.5 Insurance	8	108.7	109.3	108.4	108.7	107.8	107.5	3.6	4.2	3.4	2.8	1.8	1.3
12.5.2 House contents insurance	2	109.5	109.0	103.9	101.7	101.4	96.8	6.4	4.7	1.5	-0.6	-1.4	-6.0
12.5.3 Health insurance	2	121.2	121.2	121.2	123.8	123.8	123.8	7.0	7.0	7.0	6.4	6.4	6.4
12.5.4 Transport insurance	4	103.2	104.7	105.3	105.8	104.3	106.0	0.5	2.6	2.6	2.7	1.0	2.4
12.6 Financial services (nec)	28	103.1	102.8	103.2	104.3	104.0	104.3	0.0	0.0	0.3	0.6	2.1	2.1
12.6.2 Other financial services (nec)	28	103.1	102.8	103.2	104.3	104.0	104.3	0.0	0.0	0.3	0.6	2.1	2.1
12.7 Other services (nec)	11	115.0	115.4	115.8	115.9	116.0	116.3	6.3	6.4	6.0	5.7	5.3	5.3

Key: - zero or negligible .. not available (nec) not elsewhere covered

Source: National Statistics

4 CPI: Detailed figures by division¹

	Food and non-alcoholic beverages	Alcoholic beverages and tobacco	Clothing and footwear	Housing, water, electricity, gas & other fuels	Furniture, household equipment & routine maintenance	Health ²	Transport	Communication	Recreation and culture	Education ²	Restaurants and hotels	Miscellaneous goods and services ²	CPI (overall index)
COICOP Division	01	02	03	04	05	06	07	08	09	10	11	12	
Weights													
2008	CHZR 109	CHZS 42	CHZT 63	CHZU 115	CHZV 67	CHZW 22	CHZX 152	CHZY 23	CHZZ 152	CJUU 19	CJUV 137	CJUW 99	CHZQ 1 000
Monthly indices (2005=100)													
	D7BU	D7BV	D7BW	D7BX	D7BY	D7BZ	D7C2	D7C3	D7C4	D7C5	D7C6	D7C7	D7BT
2006 Sep	103.6	103.7	96.4	111.5	100.6	103.6	102.9	99.6	98.6	107.9	103.8	104.7	103.0
Oct	104.2	103.9	96.6	112.7	99.0	104.2	101.5	100.4	98.6	117.8	104.2	105.0	103.2
Nov	105.1	103.4	97.2	113.7	100.0	104.1	101.1	100.3	98.7	117.8	104.5	105.0	103.4
Dec	105.4	103.0	96.0	114.5	103.3	104.2	102.8	99.9	99.2	117.8	104.7	104.9	104.0
2007 Jan	104.4	104.5	92.0	114.9	98.3	104.8	102.1	99.0	98.3	117.8	104.9	105.1	103.2
Feb	105.4	105.1	91.9	115.1	99.6	104.9	102.8	98.1	98.4	117.8	105.2	105.8	103.7
Mar	106.0	105.6	92.8	115.0	102.9	104.8	103.1	98.1	98.2	117.8	105.7	106.2	104.2
Apr	106.2	107.0	93.7	115.7	100.7	105.5	104.5	97.2	98.3	117.8	106.3	105.8	104.5
May	106.7	106.8	93.7	115.0	101.8	105.8	106.1	96.6	98.0	117.8	106.6	105.7	104.8
Jun	107.3	107.1	93.6	114.5	104.0	106.1	106.8	96.1	97.6	117.8	106.9	105.8	105.0
Jul	105.5	106.9	89.8	114.3	99.7	106.6	108.0	94.8	97.0	117.8	107.2	106.1	104.4
Aug	106.1	107.0	91.1	114.0	100.3	106.8	108.6	97.2	97.5	117.8	107.4	105.6	104.7
Sep	107.4	107.1	92.5	114.0	102.1	107.1	105.7	96.6	97.6	122.9	107.6	105.8	104.8
Oct	109.1	106.8	92.5	114.3	100.8	107.5	106.6	96.2	97.7	133.2	107.9	106.4	105.3
Nov	110.1	106.4	92.9	114.6	101.6	107.3	107.0	96.3	97.6	133.2	108.0	106.6	105.6
Dec	111.1	105.7	92.2	114.7	104.2	107.6	108.7	96.2	98.0	133.2	108.3	106.8	106.2
2008 Jan	110.8	106.9	87.5	115.4	100.0	108.1	108.6	95.8	97.0	133.2	108.3	106.8	105.5
Feb	111.3	108.1	87.6	119.1	101.3	108.2	109.1	94.3	97.2	133.2	108.7	107.1	106.3
Mar	111.8	108.2	87.9	119.5	103.5	108.4	110.3	94.2	96.8	133.2	109.2	107.5	106.7
Apr	113.2	111.5	87.8	122.0	102.1	108.9	110.8	94.4	97.3	133.2	110.4	108.3	107.6
May	115.1	112.0	87.8	122.3	103.5	109.0	112.7	94.3	97.3	133.2	110.8	108.5	108.3
Jun	117.5	111.9	86.5	122.5	105.9	109.3	114.6	94.9	97.6	133.2	111.1	108.6	109.0
Jul	118.4	111.4	83.8	123.0	102.6	110.1	116.6	94.1	96.9	133.2	111.6	109.0	109.0
Aug	120.0	111.8	84.9	125.6	103.4	110.3	116.5	94.3	97.3	133.2	111.7	109.2	109.7
Sep	119.6	111.7	86.8	131.1	105.1	110.2	113.8	94.1	97.8	136.2	112.2	109.4	110.3
Percentage change on a year earlier													
	D7G8	D7G9	D7GA	D7GB	D7GC	D7GD	D7GE	D7GF	D7GG	D7GH	D7GI	D7GJ	D7G7
2006 Sep	4.0	3.4	-3.5	10.7	0.3	2.8	0.6	-0.2	-1.0	7.1	2.9	3.9	2.4
Oct	4.7	3.2	-3.3	10.8	-0.4	3.1	-0.5	0.9	-1.1	14.0	3.0	3.8	2.4
Nov	5.0	2.7	-3.2	11.1	-0.5	3.1	0.8	0.7	-0.7	14.0	3.2	3.5	2.7
Dec	4.6	2.7	-4.1	11.4	0.6	3.9	2.1	0.5	-0.3	14.0	3.2	3.3	3.0
2007 Jan	3.9	3.5	-4.1	11.2	0.5	3.8	0.9	-1.8	-0.3	14.0	3.3	3.1	2.7
Feb	4.4	4.2	-4.2	11.1	1.2	3.7	1.4	-2.8	-1.0	14.0	3.3	3.6	2.8
Mar	5.6	4.4	-3.9	10.1	2.7	3.7	1.6	-2.8	-0.7	14.0	3.4	3.7	3.1
Apr	6.0	4.5	-2.8	7.9	2.2	3.2	1.5	-3.7	-0.8	14.0	3.8	2.4	2.8
May	5.0	4.2	-3.6	5.7	2.5	3.1	2.5	-3.2	-0.8	14.0	3.5	2.2	2.5
Jun	4.8	3.4	-3.2	4.3	3.8	3.4	3.2	-3.9	-1.1	14.0	3.7	1.8	2.4
Jul	2.8	3.4	-2.6	3.5	1.6	3.4	2.4	-5.0	-1.4	14.0	3.6	2.0	1.9
Aug	3.0	3.1	-3.5	2.8	1.2	3.3	2.6	-2.0	-0.9	14.0	3.6	1.1	1.8
Sep	3.7	3.2	-4.0	2.3	1.5	3.4	2.7	-3.0	-1.0	13.9	3.7	1.0	1.8
Oct	4.7	2.7	-4.3	1.4	1.8	3.2	5.1	-4.2	-0.9	13.2	3.5	1.3	2.1
Nov	4.8	2.9	-4.4	0.8	1.7	3.1	5.8	-4.0	-1.1	13.2	3.4	1.6	2.1
Dec	5.4	2.7	-3.9	0.2	0.9	3.3	5.8	-3.8	-1.3	13.2	3.4	1.9	2.1
2008 Jan	6.1	2.2	-4.9	0.4	1.7	3.1	6.4	-3.2	-1.4	13.2	3.3	1.5	2.2
Feb	5.6	2.9	-4.7	3.5	1.7	3.1	6.2	-3.9	-1.2	13.2	3.3	1.2	2.5
Mar	5.5	2.5	-5.3	3.9	0.5	3.5	7.0	-4.0	-1.5	13.2	3.3	1.2	2.5
Apr	6.6	4.2	-6.3	5.4	1.4	3.3	6.1	-2.9	-1.0	13.2	3.8	2.3	3.0
May	7.8	4.9	-6.3	6.3	1.7	3.0	6.2	-2.4	-0.8	13.2	3.9	2.6	3.3
Jun	9.5	4.5	-7.5	7.0	1.8	3.0	7.3	-1.3	-	13.2	3.9	2.7	3.8
Jul	12.3	4.3	-6.7	7.6	2.8	3.3	8.0	-0.7	-0.1	13.2	4.1	2.8	4.4
Aug	13.0	4.4	-6.7	10.1	3.2	3.2	7.3	-3.0	-0.2	13.2	4.0	3.4	4.7
Sep	11.3	4.3	-6.2	15.0	2.9	2.9	7.6	-2.7	0.2	10.8	4.3	3.4	5.2

Key: - zero or negligible

¹ Inflation rates prior to 1997 and index levels prior to 1996 are estimated. Further details are given in *Economic Trends No. 541 December 1998*. These details are also available on the National Statistics website: www.statistics.gov.uk/cpi/article.asp?ID=31

² The coverage of these categories was extended in January 2000; further extensions to coverage came into effect in January 2001 for health and miscellaneous goods and services; the coverage of miscellaneous goods and services was further extended with effect from January 2002 (details are given in a series of Economic Trends articles available on the National Statistics website: www.statistics.gov.uk/cpi)

Source: National Statistics

5 CPI: Detailed goods and services breakdown¹

	Weights	Index (2005=100)						Percentage change over 12 months						Percentage change over 1 month
		2008	2008	2008	2008	2008	2008	2008	2008	2008	2008	2008	2008	2008
		Apr	May	Jun	Jul	Aug	Sep	Apr	May	Jun	Jul	Aug	Sep	Sep
CPI (overall index)	1 000	107.6	108.3	109.0	109.0	109.7	110.3	3.0	3.3	3.8	4.4	4.7	5.2	0.5
All goods	547	105.3	106.2	107.2	106.4	107.1	108.4	2.3	3.0	3.8	4.7	5.1	5.7	1.2
Food, alcoholic beverages & tobacco	151	112.7	114.2	115.9	116.4	117.6	117.3	5.8	7.0	8.0	9.9	10.5	9.3	-0.3
Processed food & non-alcoholic beverages	59	114.7	115.7	117.7	118.7	120.0	119.4	8.1	8.5	10.3	11.8	12.7	9.7	-0.5
Non-processed food	50	111.5	114.3	117.2	118.1	119.9	119.8	4.7	7.0	8.6	12.7	13.4	13.2	-0.1
Seasonal food	29	113.8	115.9	118.3	117.2	119.5	118.5	5.2	5.7	6.7	10.2	10.8	8.9	-0.8
Meat	21	108.5	112.4	116.0	119.3	120.5	121.5	4.1	8.8	11.2	16.3	17.1	19.1	0.8
Alcoholic beverages & tobacco	42	111.5	112.0	111.9	111.4	111.8	111.7	4.2	4.9	4.5	4.3	4.4	4.3	-0.1
Industrial goods	396	102.7	103.4	104.1	102.9	103.4	105.2	1.1	1.5	2.2	2.8	3.0	4.4	1.8
Energy	73	137.7	140.9	144.7	145.8	146.4	154.4	13.6	15.6	19.0	21.1	22.4	29.7	5.5
Electricity, gas & miscellaneous energy	33	148.8	148.9	149.0	149.2	160.4	181.7	6.2	8.6	10.9	12.9	22.4	39.2	13.3
Liquid fuels, vehicle fuels & lubricants	40	127.6	133.1	139.6	141.5	134.0	131.8	20.5	21.8	26.3	28.3	22.2	20.9	-1.6
Non-energy industrial goods	323	96.4	96.7	96.9	95.2	95.7	96.4	-1.7	-1.5	-1.4	-1.2	-1.1	-1.0	0.8
Clothing & footwear goods	62	87.5	87.5	86.2	83.3	84.5	86.4	-6.5	-6.5	-7.7	-6.9	-6.9	-6.3	2.2
Housing goods	76	103.3	104.4	106.5	103.6	104.5	106.2	2.1	2.2	2.2	3.1	3.6	3.5	1.6
Household goods	61	101.0	102.5	105.0	101.3	102.3	104.0	1.2	1.5	1.5	2.7	3.1	2.7	1.7
Water supply; materials for maintenance & repair	15	112.8	112.4	112.6	113.3	114.0	115.3	5.7	5.2	4.7	4.8	5.5	6.5	1.1
Medical products, appliances & equipment	10	101.4	101.2	101.2	101.6	101.8	101.6	0.8	0.5	0.5	1.4	1.3	0.8	-0.2
Vehicles, spare parts & accessories	53	99.2	99.2	98.9	98.6	98.2	97.7	-1.0	-1.1	-1.2	-1.1	-1.4	-1.7	-0.5
Recreational goods	90	91.0	90.9	91.2	89.8	89.8	90.2	-3.5	-3.1	-1.9	-2.6	-3.0	-2.7	0.3
Audio-visual goods	26	69.5	69.0	68.9	67.3	66.5	66.0	-14.5	-14.6	-12.8	-12.4	-13.2	-12.8	-0.8
Other recreational goods	64	101.2	101.4	101.8	100.5	101.1	101.9	1.3	1.9	2.7	1.5	1.4	1.6	0.8
Miscellaneous goods	32	106.6	106.9	106.8	106.6	107.5	107.6	1.5	2.0	2.3	2.6	3.7	3.7	0.1
All services	453	110.4	110.8	111.2	112.2	112.9	112.6	3.7	3.8	3.9	4.1	4.3	4.6	-0.2
Housing services	73	111.3	111.5	111.5	111.8	111.9	111.9	3.9	3.9	3.8	3.6	3.7	3.6	-
Actual rentals for housing	51	109.8	109.9	110.0	110.2	110.3	110.4	3.5	3.4	3.4	2.9	3.1	3.1	-
Primary housing services	16	116.2	116.2	115.7	116.3	116.4	115.9	5.5	5.2	4.9	5.3	5.3	4.7	-0.4
Other housing services	6	112.1	112.8	113.7	114.1	114.2	114.8	3.6	4.1	4.4	4.7	4.5	4.7	0.5
Travel & transport services	65	112.2	113.8	115.2	119.6	123.1	118.2	4.7	4.5	4.7	5.3	6.6	8.3	-4.0
Services for personal transport equipment	29	115.0	115.6	116.1	116.5	116.9	117.6	4.3	4.5	4.3	4.5	4.5	5.1	0.5
Transport services	32	110.6	113.3	115.5	123.7	130.4	120.0	5.5	4.7	5.1	6.0	8.4	11.7	-8.0
Transport insurance	4	103.2	104.7	105.3	105.8	104.3	106.0	0.5	2.6	2.6	2.7	1.0	2.4	1.6
Communication	23	94.4	94.3	94.9	94.1	94.3	94.1	-2.9	-2.4	-1.3	-0.7	-3.0	-2.7	-0.2
Recreational & personal services	208	109.5	109.8	110.1	110.7	111.0	111.6	3.4	3.6	3.6	4.0	4.0	4.3	0.6
Package holidays & accommodation	48	105.2	105.7	106.1	107.1	107.6	108.3	2.2	2.6	3.1	3.6	3.9	4.4	0.7
Other recreational & personal services	160	110.8	111.1	111.3	111.7	112.0	112.6	3.8	3.8	3.8	4.1	4.0	4.3	0.5
Catering services	118	110.6	111.0	111.3	111.6	111.9	112.3	4.2	4.2	4.3	4.3	4.4	4.6	0.4
Non-catering recreational & personal services	42	111.4	111.4	111.5	111.9	112.2	113.3	2.9	2.7	2.3	3.3	2.9	3.4	1.0
Miscellaneous & other services	84	114.8	114.9	115.3	116.0	115.9	116.7	5.3	5.3	5.3	5.3	5.7	5.3	0.7
Miscellaneous services	53	109.0	109.1	109.5	110.3	110.2	110.5	2.7	2.7	2.8	2.8	3.5	3.5	0.3
Medical services	12	115.5	115.9	116.3	117.7	117.7	117.8	5.1	5.0	5.0	4.9	4.8	4.7	0.1
Education	19	133.2	133.2	133.2	133.2	133.2	136.2	13.2	13.2	13.2	13.2	13.2	10.8	2.2
Special aggregates														
Durables	115	94.3	94.9	96.0	93.9	93.8	94.2	-2.4	-2.1	-1.6	-1.0	-1.2	-1.4	0.4
Semi-durables	132	92.5	92.5	91.9	89.4	90.5	91.8	-3.2	-3.4	-3.8	-4.0	-4.1	-3.7	1.5
Non-durables	76	106.8	107.1	107.4	107.8	108.3	108.6	2.2	2.6	3.0	3.3	4.2	4.3	0.3
Seasonal food	29	113.8	115.9	118.3	117.2	119.5	118.5	5.2	5.7	6.7	10.2	10.8	8.9	-0.8
Non-seasonal food	66	113.5	115.6	118.6	120.4	121.7	121.9	8.0	10.1	12.4	15.3	16.2	14.4	0.2
Energy, food, alcoholic beverages & tobacco	224	120.1	122.1	124.4	125.1	126.1	128.3	8.4	9.7	11.6	13.5	14.4	15.8	1.7
Energy & unprocessed food	123	126.3	129.3	132.7	133.7	134.8	139.2	10.0	12.1	14.8	17.7	18.8	22.9	3.3
Energy & seasonal food	102	130.5	133.3	136.7	137.2	138.2	143.5	11.2	12.7	15.5	17.9	19.1	23.7	3.8
Tobacco	24	115.5	115.5	115.6	115.6	115.6	115.7	4.5	4.5	4.5	4.4	4.4	4.5	0.1
Housing, water, electricity, gas & other fuels	115	122.0	122.3	122.5	123.0	125.6	131.1	5.4	6.3	7.0	7.6	10.1	15.0	4.4
Education, health & social protection ²	53	118.0	118.2	118.5	119.0	119.1	120.1	6.9	6.8	6.8	6.9	6.8	6.0	0.9
<i>All items excluding</i>														
Energy	927	105.6	106.1	106.7	106.6	107.2	107.4	2.1	2.4	2.7	3.2	3.4	3.4	0.1
Energy, food, alcoholic beverages & tobacco	776	104.3	104.6	105.0	104.8	105.4	105.5	1.4	1.5	1.6	1.9	2.0	2.2	0.2
Energy & unprocessed food	877	105.3	105.7	106.1	105.9	106.6	106.7	2.0	2.1	2.3	2.6	2.8	2.8	0.1
Seasonal food	971	107.4	108.1	108.8	108.8	109.4	110.1	2.9	3.3	3.7	4.3	4.5	5.1	0.6
Energy & seasonal food	898	105.3	105.8	106.3	106.2	106.9	107.0	2.1	2.3	2.5	2.9	3.1	3.2	0.1
Tobacco	976	107.4	108.1	108.9	108.8	109.5	110.1	2.9	3.3	3.8	4.4	4.7	5.2	0.6
Alcoholic beverages & tobacco	958	107.4	108.1	108.9	108.9	109.6	110.2	2.9	3.3	3.8	4.4	4.7	5.3	0.6
Liquid fuels, vehicle fuels & lubricants	960	106.8	107.3	107.9	107.8	108.7	109.4	2.3	2.6	2.9	3.5	4.0	4.6	0.6
Housing, water, electricity, gas & other fuels	885	105.9	106.6	107.4	107.3	107.8	107.8	2.6	3.0	3.4	4.0	4.0	3.9	-
Education, health & social protection	947	107.0	107.7	108.5	108.5	109.2	109.7	2.7	3.1	3.6	4.3	4.6	5.2	0.5

Key: - zero or negligible

2 The coverage of this special aggregate has changed extensively since January 2000, when Social protection was first included and extensions to the Education and Health divisions also took effect. Health was further extended with effect from January 2001. Details are given in a series of Economic Trends articles available on the National Statistics website: www.statistics.gov.uk/cpi

1 For further information on the composition of the indices shown, see 'The Consumer Prices Index: Goods and Services Indices and Special Aggregates', which can be downloaded from: www.statistics.gov.uk/cci/article.asp?id=1060

6 CPI goods and services: the latest three years

Percentage change over 12 months

	Goods components					Services components					
	Food & non-alcoholic beverages	Alcoholic beverages & tobacco	Energy ¹	Non-energy industrial goods ²	All goods	Housing services ³	Travel & transport services ³	Recreational & personal services ³	Communication	Miscellaneous & other services ³	All services
Weights											
2008	CHZR 109	CHZS 42	A9F3 73	A9ER 323	ICVH 547	A9FG 73	A9FJ 65	A9FL 208	CHZY 23	A9FQ 84	ICVI 453
Monthly											
2005 Sep	D7G8 2.0	D7G9 1.4	DKL5 15.4	DKK3 -2.2	D7NM 0.7	DKN2 4.4	DKN5 6.3	DKN7 3.2	D7GF -1.2	DKO4 7.5	D7NN 4.5
Oct	1.5	1.9	13.9	-2.1	0.6	4.0	7.2	3.3	-1.6	6.6	4.4
Nov	1.7	2.5	11.1	-2.0	0.4	3.9	5.8	3.1	-1.2	6.6	4.1
Dec	1.7	2.5	10.2	-2.1	0.3	4.0	3.4	3.1	-1.0	6.6	3.8
2006 Jan	1.2	2.3	12.8	-2.3	0.3	3.9	6.1	2.9	0.5	5.6	3.9
Feb	1.1	1.6	12.5	-1.7	0.6	3.9	4.8	2.9	0.4	5.6	3.7
Mar	-0.4	2.5	12.2	-1.9	0.2	3.9	4.4	2.9	0.5	5.7	3.7
Apr	0.3	2.5	14.4	-2.2	0.5	3.3	6.5	2.7	0.3	5.7	3.8
May	1.1	2.2	19.3	-1.9	1.3	3.3	2.8	2.9	-0.4	5.6	3.3
Jun	1.8	3.3	19.8	-1.7	1.7	3.4	3.2	2.9	-0.3	5.6	3.4
Jul	3.2	2.8	19.4	-2.0	1.8	3.4	2.4	2.9	0.3	4.9	3.2
Aug	3.4	3.3	17.9	-1.3	2.2	3.4	1.6	2.8	-0.7	4.7	2.9
Sep	4.0	3.4	11.6	-1.0	1.8	3.3	3.0	2.8	-0.2	5.3	3.2
Oct	4.7	3.2	9.8	-1.3	1.5	3.4	2.5	3.0	0.9	6.7	3.6
Nov	5.0	2.7	11.7	-1.1	1.8	3.5	3.7	3.1	0.7	6.4	3.7
Dec	4.6	2.7	14.9	-0.8	2.3	3.5	4.1	3.1	0.5	6.4	3.8
2007 Jan	3.9	3.5	12.8	-0.9	2.0	3.8	3.1	3.2	-1.8	6.1	3.6
Feb	4.4	4.2	11.8	-1.0	2.0	3.7	5.0	3.2	-2.8	6.1	3.8
Mar	5.6	4.4	11.6	-0.5	2.5	3.7	4.2	3.3	-2.8	6.1	3.7
Apr	6.0	4.5	7.9	-0.3	2.3	3.8	3.8	3.3	-3.7	4.5	3.3
May	5.0	4.2	4.4	-0.4	1.6	3.8	6.4	3.1	-3.2	4.4	3.6
Jun	4.8	3.4	3.3	-0.4	1.4	3.7	6.8	3.3	-3.9	4.4	3.7
Jul	2.8	3.4	0.9	-0.8	0.5	3.6	6.3	3.2	-5.0	4.4	3.5
Aug	3.0	3.1	-0.5	-1.1	0.1	3.5	7.6	3.4	-2.0	3.9	3.8
Sep	3.7	3.2	1.5	-1.2	0.4	3.5	4.9	3.4	-3.0	4.0	3.4
Oct	4.7	2.7	3.9	-1.1	1.0	3.7	5.9	3.3	-4.2	3.8	3.4
Nov	4.8	2.9	5.3	-1.2	1.1	3.7	4.6	3.2	-4.0	4.0	3.2
Dec	5.4	2.7	4.4	-1.3	1.1	3.6	5.0	3.2	-3.8	4.1	3.3
2008 Jan	6.1	2.2	5.8	-1.4	1.3	3.7	5.1	3.0	-3.2	4.0	3.3
Feb	5.6	2.9	11.4	-1.4	1.9	3.7	4.2	3.1	-3.9	4.0	3.1
Mar	5.5	2.5	12.0	-1.8	1.7	3.8	5.9	3.1	-4.0	4.0	3.4
Apr	6.6	4.2	13.6	-1.7	2.3	3.9	4.7	3.4	-2.9	5.3	3.7
May	7.8	4.9	15.6	-1.5	3.0	3.9	4.5	3.6	-2.4	5.3	3.8
Jun	9.5	4.5	19.0	-1.4	3.8	3.8	4.7	3.6	-1.3	5.3	3.9
Jul	12.3	4.3	21.1	-1.2	4.7	3.6	5.3	4.0	-0.7	5.3	4.1
Aug	13.0	4.4	22.4	-1.1	5.1	3.7	6.6	4.0	-3.0	5.7	4.3
Sep	11.3	4.3	29.7	-1.0	5.7	3.6	8.3	4.3	-2.7	5.3	4.6

Key: - zero or negligible

³ For further information on all of these services components, see 'The Consumer Prices Index: Goods and Services Indices and Special Aggregates', which can be downloaded from: www.statistics.gov.uk/cci/article.asp?id=1060

¹ Comprises 'Electricity, gas and other fuels' (group 04.5) and 'Fuels and lubricants' (class 07.2.2).

² Comprises all other goods elements of the CPI. For further information, see 'The Consumer Prices Index: Goods and Services Indices and Special Aggregates', which can be downloaded from: www.statistics.gov.uk/cci/article.asp?id=1060

Source: National Statistics

7 HICP¹ - International comparisons: EU countries

Percentage change over 12 months

	Austria	Belgium	Bulgaria	Cyprus	Czech Republic	Denmark	Estonia	Finland	France	Germany	Greece	Hungary	Ireland	Italy	Latvia
	D7SK	D7SL	GHY8	D7RO	D7RP	D7SM	D7RQ	D7SN	D7SO	D7SP	D7SQ	D7RR	D7SS	D7ST	D7RS
2005	2.1	2.5	6.0	2.0	1.6	1.7	4.1	0.8	1.9	1.9	3.5	3.5	2.2	2.2	6.9
2006	1.7	2.3	7.4	2.2	2.1	1.9	4.4	1.3	1.9	1.8	3.3	4.0	2.7	2.2	6.6
2007	2.2	1.8	7.6	2.2	3.0	1.7	6.7	1.6	1.6	2.3	3.0	7.9	2.9	2.0	10.1
2006 Sep	1.3	1.9	5.4	2.2	2.2	1.5	3.8	0.8	1.5	1.0	3.1	5.9	2.2	2.4	5.9
Oct	1.3	1.7	5.2	1.7	0.8	1.4	3.8	0.9	1.2	1.1	3.1	6.3	2.2	1.9	5.6
Nov	1.6	2.0	5.9	1.3	1.0	1.8	4.7	1.3	1.6	1.5	3.2	6.4	2.4	2.0	6.3
Dec	1.6	2.1	6.1	1.5	1.5	1.7	5.1	1.2	1.7	1.4	3.2	6.6	3.0	2.1	6.8
2007 Jan	1.7	1.7	6.8	1.4	1.4	1.8	5.0	1.3	1.4	1.8	3.0	8.4	2.9	1.9	7.1
Feb	1.7	1.8	4.6	1.2	1.7	1.9	4.6	1.2	1.2	1.9	3.0	9.0	2.6	2.1	7.2
Mar	1.9	1.8	4.4	1.4	2.1	1.9	5.6	1.6	1.2	2.0	2.8	9.0	2.9	2.1	8.5
Apr	1.8	1.8	4.4	1.6	2.7	1.7	5.6	1.5	1.3	2.0	2.6	8.7	2.9	1.8	8.8
May	1.9	1.3	4.5	1.9	2.4	1.7	5.9	1.3	1.2	2.0	2.6	8.4	2.7	1.9	7.8
Jun	1.9	1.3	5.3	1.7	2.6	1.3	6.0	1.4	1.3	2.0	2.6	8.5	2.8	1.9	8.9
Jul	2.0	1.3	6.8	2.3	2.5	1.1	6.5	1.6	1.2	2.0	2.7	8.3	2.7	1.7	9.5
Aug	1.7	1.2	9.3	2.2	2.6	0.9	6.1	1.3	1.3	2.0	2.7	7.1	2.3	1.7	10.2
Sep	2.1	1.4	11.0	2.3	2.8	1.2	7.5	1.7	1.6	2.7	2.9	6.4	2.9	1.7	11.5
Oct	2.9	2.2	10.6	2.7	4.0	1.8	8.7	1.8	2.1	2.7	3.0	6.9	3.0	2.3	13.2
Nov	3.2	2.9	11.4	3.2	5.1	2.5	9.3	2.2	2.6	3.3	3.9	7.2	3.5	2.6	13.7
Dec	3.5	3.1	11.6	3.7	5.5	2.4	9.7	1.9	2.8	3.1	3.9	7.4	3.2	2.8	14.0
2008 Jan	3.1	3.5	11.7	4.1	7.9	3.0	11.3	3.5	3.2	2.9	3.9	7.4	3.1	3.1	15.6
Feb	3.1	3.6	12.2	4.7	7.6	3.3	11.5	3.3	3.2	3.0	4.5	6.7	3.5	3.1	16.5
Mar	3.5	4.4	13.2	4.4	7.1	3.3	11.2	3.6	3.5	3.3	4.4	6.7	3.7	3.6	16.6
Apr	3.4	4.1	13.4	4.3	6.7	3.4	11.6	3.3	3.4	2.6	4.4	6.8	3.3	3.6	17.4
May	3.7	5.1	14.0	4.6	6.8	3.6	11.4	4.1	3.7	3.1	4.9	6.9	3.7	3.7	17.7
Jun	4.0	5.8	14.7	5.2	6.6	4.2	11.5	4.3	4.0	3.4	4.9	6.6	3.9	4.0	17.5
Jul	3.8	5.9	14.4	5.3	6.8	4.4	11.2	4.3	4.0	3.5	4.9	7.0	3.6	4.0	16.5
Aug	3.6*	5.4	11.8	5.1	6.2	4.8	11.1	4.6	3.5	3.3	4.8	6.4	3.2	4.2	15.6
Sep

	Lithuania	Luxembourg	Malta	Netherlands	Poland	Portugal	Romania	Slovakia	Slovenia	Spain	Sweden	United Kingdom ¹	EICP ² EU 25 average ³	EICP ² EU 27 average ³	Monetary Union Area average ⁴
	D7RT	D7SU	D7RU	D7SV	D7RV	D7SX	GHY7	D7RW	D7RX	D7SY	D7SZ	D7G7	D7RY	GJ2E	D7SR
2005	2.7	3.8	2.5	1.5	2.2	2.1	9.1	2.8	2.5	3.4	0.8	2.1	2.2	..	2.2
2006	3.8	3.0	2.6	1.7	1.3	3.0	6.6	4.3	2.5	3.6	1.5	2.3	2.2	..	2.2
2007	5.8	2.7	0.7	1.6	2.6	2.4	4.9	1.9	3.8	2.8	1.7	2.3	..	2.4	2.1
2006 Sep	3.3	2.0	3.1	1.5	1.4	3.0	5.5	4.5	2.5	2.9	1.2	2.4	1.9	..	1.8
Oct	3.7	0.6	1.7	1.3	1.1	2.6	4.8	3.1	1.5	2.6	1.2	2.4	1.8	..	1.6
Nov	4.4	1.8	0.9	1.6	1.3	2.4	4.7	3.7	2.4	2.7	1.5	2.7	2.1	..	1.9
Dec	4.5	2.3	0.8	1.7	1.4	2.5	4.9	3.7	3.0	2.7	1.4	3.0	2.2	..	1.9
2007 Jan	4.0	2.3	1.2	1.2	1.6	2.6	4.1	2.2	2.8	2.4	1.6	2.7	..	2.1	1.8
Feb	4.4	1.8	0.8	1.4	1.9	2.3	3.9	2.0	2.3	2.5	1.7	2.8	..	2.2	1.9
Mar	4.8	2.4	0.5	1.9	2.4	2.4	3.7	2.1	2.6	2.5	1.6	3.1	..	2.3	1.9
Apr	4.9	2.5	-1.1	1.9	2.2	2.8	3.8	2.0	2.9	2.5	1.6	2.8	..	2.2	1.9
May	5.0	2.3	-1.0	2.0	2.3	2.4	3.9	1.5	3.1	2.4	1.2	2.5	..	2.1	1.9
Jun	5.0	2.3	-0.6	1.8	2.6	2.4	3.9	1.5	3.8	2.5	1.3	2.4	..	2.2	1.9
Jul	5.1	2.0	-0.2	1.4	2.5	2.3	4.1	1.2	4.0	2.3	1.4	1.9	..	2.0	1.8
Aug	5.6	1.9	0.6	1.1	2.1	1.9	5.0	1.2	3.4	2.2	1.2	1.8	..	1.9	1.7
Sep	7.1	2.5	0.9	1.3	2.7	2.0	6.1	1.7	3.6	2.7	1.6	1.8	..	2.3	2.1
Oct	7.6	3.6	1.6	1.6	3.1	2.5	6.9	2.4	5.1	3.6	1.9	2.1	..	2.7	2.6
Nov	7.9	4.0	2.9	1.8	3.7	2.8	6.8	2.3	5.7	4.1	2.4	2.1	..	3.1	3.1
Dec	8.2	4.3	3.1	1.6	4.2	2.7	6.7	2.5	5.7	4.3	2.5	2.1	..	3.2	3.1
2008 Jan	10.0	4.2	3.8	1.8	4.4	2.9	7.3	3.2	6.4	4.4	3.0	2.2	..	3.4	3.2
Feb	10.9	4.2	4.0	2.0	4.6	2.9	8.0	3.4	6.4	4.4	2.9	2.5	..	3.5	3.3
Mar	11.4	4.4	4.3	1.9	4.4	3.1	8.7	3.6	6.6	4.6	3.3†	2.5	..	3.7	3.6
Apr	11.9	4.3	4.1	1.7	4.3	2.5	8.7	3.7	6.2	4.2	3.2	3.0	..	3.6	3.3
May	12.3	4.8	4.1	2.1	4.3	2.8	8.5	4.0	6.2	4.7	3.7	3.3	..	4.0	3.7
Jun	12.7	5.3	4.4	2.3	4.3	3.4	8.7	4.3	6.8	5.1	4.0	3.8	..	4.2†	4.0
Jul	12.4	5.8	5.6	3.0	4.5	3.1	9.1	4.4	6.9	5.3	3.8	4.4	..	4.4	4.0
Aug	12.2	4.8	5.4	3.0*	4.4	3.1	8.1	4.4	6.0	4.9	4.1	4.7	..	4.2*	3.8*
Sep	5.2	3.6*

Key: - zero or negligible .. Not available * Provisional

† Date of earliest revision † Estimated

1 Published as the CPI in the UK.

2 The EICP (European Index of Consumer Prices) is the official EU aggregate. It covers 15 member states until April 2004, 25 member states from May 2004, and 27 members from Jan 2007, the new member states being integrated using a chain index formula.

The EU 25 annual average for 2004 is calculated from the EU 15 average from January to April and the EU 25 average from May to December.

3 The coverage of the European Union was extended to include Cyprus, Czech Republic, Estonia, Hungary, Latvia, Lithuania, Malta, Poland, Slovakia and Slovenia from 1 May 2004 and Bulgaria and Romania from 1 Jan 2007.

4 The coverage of the Monetary Union Area index was extended to include Greece with effect from Jan 2001.

Sources: National Statistics; Eurostat

	Weights	Index (January 1987=100)						Percentage change over 12 months						Percentage change over 1 month
		2008											2008 Sep	
			2008 Apr	2008 May	2008 Jun	2008 Jul	2008 Aug	2008 Sep	2008 Apr	2008 May	2008 Jun	2008 Jul		2008 Aug
ALL ITEMS	1 000	214.0	215.1	216.8	216.5	217.2	218.4	4.2	4.3	4.6	5.0	4.8	5.0	0.6
Food and catering	158	193.7	196.0	199.2	200.6	202.4	202.3	6.0	6.8	8.0	9.8	10.3	9.2	-
Alcohol and tobacco	86	267.9	268.9	269.1	268.7	269.2	269.6	4.3	4.6	4.5	4.3	4.4	4.4	0.1
Housing and household expenditure	417	258.0	258.3	260.2	258.3	260.2	264.3	5.0	4.8	4.5	4.5	4.3	5.2	1.6
Personal expenditure	83	133.4	133.5	132.8	130.9	132.1	133.7	-0.3	-0.4	-0.8	-0.2	-0.1	0.0	1.2
Travel and leisure	256	188.9	190.7	192.9	194.1	192.6	191.0	3.2	3.5	4.6	5.1	4.0	4.0	-0.8
Consumer durables ¹	104	91.7	92.7	94.4	90.2	90.8	92.6	-1.9	-1.8	-1.5	-0.9	-1.2	-1.2	2.0
Seasonal food	20	161.8	166.7	171.2	167.5	170.7	167.8	6.1	7.6	8.8	12.3	11.9	9.5	-1.7
Food excluding seasonal	91	176.0	178.0	181.7	184.5	186.1	186.3	7.1	7.8	9.8	12.2	13.0	11.6	0.1
All items excluding seasonal food	980	215.3	216.3	218.0	217.7	218.4	219.7	4.1	4.2	4.5	4.9	4.6	4.9	0.6
All items excluding food	889	221.1	221.9	223.3	222.7	223.2	224.7	3.9	3.9	4.0	4.2	3.8	4.3	0.7
All goods	474	162.6	164.3	166.7	165.5	165.1	165.3	3.6	4.1	5.0	6.0	5.4	4.8	0.1
All services	372	267.9	269.0	269.6	271.0	274.2	278.0	4.3	4.7	4.9	5.1	6.0	7.6	1.4
Other indices														
All items excluding:														
mortgage interest payments (RPIX) housing	940	207.2	208.7	210.4	210.0	210.6	211.8	4.0	4.4	4.8	5.3	5.2	5.5	0.6
mortgage interest payments and indirect taxes (RPIY) ²	746	189.6	191.2	193.2	192.8	193.5	194.8	3.8	4.3	5.0	5.8	5.8	6.2	0.7
mortgage interest payments and council tax		197.5	199.0	200.8	200.4	201.2	202.4	3.9	4.4	4.9	5.4	5.4	5.6	0.6
mortgage interest payments and depreciation ³	901	204.0	205.5	207.2	206.8	207.5	208.7	4.0	4.4	4.9	5.4	5.3	5.6	0.6
885	200.4	201.9	203.7	203.3	204.0	205.4	3.9	4.3	4.9	5.5	5.5	6.0	0.7	
Food	111	174.0	176.6	180.5	182.0	183.9	183.5	6.9	7.8	9.7	12.2	12.8	11.2	-0.2
Bread	5	199.4	202.5	205.6	209.1	212.1	212.7	13.0	14.7	16.8	20.0	21.6	18.0	0.3
Cereals	4	160.2	165.0	170.0	171.6	174.4	174.3	9.1	11.1	12.7	17.5	18.6	16.9	-0.1
Biscuits and cakes	6	185.7	185.3	193.6	201.6	202.3	204.1	6.9	6.1	11.0	16.6	17.1	18.5	0.9
Beef	4	154.5	156.5	167.5	169.4	171.0	172.1	9.0	10.9	17.6	19.8	21.1	23.1	0.6
Lamb	2	196.2	205.5	211.0	213.1	211.3	214.2	5.1	6.7	10.2	11.6	10.3	15.2	1.4
of which home-killed lamb	1	204.1	220.4	228.1	231.7	230.4	226.6	6.6	11.8	14.6	18.3	18.1	19.3	-1.6
imported lamb	1	184.3	186.4	189.6	190.2	188.0	197.4	3.5	1.2	5.2	4.4	2.1	10.7	5.0
Pork	1	174.9	176.7	180.0	191.1	193.8	198.3	11.2	10.9	13.6	24.7	26.5	23.5	2.3
Bacon	2	189.4	202.0	203.9	210.8	211.4	214.3	0.5	10.9	10.0	15.9	16.1	21.3	1.4
Poultry	4	122.4	125.4	133.1	137.3	132.4	133.5	7.4	12.7	16.8	23.7	17.6	20.9	0.8
Other meat	7	152.7	157.7	160.5	165.0	168.4	169.1	2.6	5.6	7.0	11.1	13.4	13.8	0.4
Fish	4	183.1	187.3	180.8	183.8	192.3	192.9	5.5	7.9	2.8	5.8	10.7	10.4	0.3
of which fresh fish	2	189.3	196.3	188.0	187.0	194.3	191.4	0.2	4.4	-1.4	0.0	1.5	1.3	-1.5
processed fish	2	176.4	178.1	173.3	179.6	189.1	192.6	10.9	11.3	7.0	11.5	20.4	19.3	1.9
Butter	1	229.3	229.0	227.1	233.7	236.5	236.1	32.2	31.9	31.5	36.5	39.3	18.2	-0.2
Oils and fats	1	154.1	161.8	177.8	176.6	175.2	173.8	7.8	12.9	23.6	23.9	23.9	12.5	-0.8
Cheese	3	204.2	206.3	209.8	208.3	212.0	211.9	15.8	16.3	18.7	18.0	19.6	16.4	-
Eggs	1	241.2	250.8	249.4	246.8	249.0	251.6	33.3	38.8	37.1	35.9	30.5	27.7	1.0
Milk, fresh	5	219.2	220.8	231.8	231.2	231.0	231.0	13.5	14.2	19.4	19.4	19.1	6.1	-
Milk products	4	168.1	168.3	167.9	170.8	171.7	171.1	13.4	11.6	11.2	11.8	11.6	9.7	-0.3
Tea	1	161.0	166.1	169.3	175.2	172.6	174.4	2.4	2.5	6.8	8.3	9.6	8.7	1.0
Coffee and other hot drinks	1	125.3	126.1	126.2	128.1	134.5	131.4	-0.6	0.6	0.7	2.9	6.9	4.2	-2.3
Soft drinks	12	204.2	204.7	204.7	205.3	205.6	202.7	2.5	2.0	1.8	2.0	2.2	1.2	-1.4
Sugar and preserves	1	170.1	170.8	174.6	173.6	173.7	173.4	4.7	4.2	5.6	6.4	7.2	6.0	-0.2
Sweets and chocolates	10	211.2	211.8	211.9	212.2	216.4	217.1	6.1	6.1	6.2	6.7	7.7	7.7	0.3
Potatoes	5	175.0	176.5	188.9	189.6	192.5	191.7	5.1	3.5	9.8	16.5	17.9	18.0	-0.4
of which unprocessed potatoes	2	174.8	179.4	198.1	195.3	201.2	195.5	7.8	7.6	16.9	27.9	33.0	27.0	-2.8
potato products	3	167.1	166.5	174.3	177.2	178.1	180.4	3.1	0.8	4.9	9.3	8.5	12.0	1.3
Vegetables other than potatoes	9	160.0	165.1	164.5	164.7	163.4	163.1	3.6	8.8	6.3	9.9	6.7	8.0	-0.2
of which fresh vegetables	7	142.7	148.5	148.0	147.4	145.7	144.5	1.1	7.6	4.7	8.5	4.2	5.4	-0.8
processed vegetables	2	214.3	214.4	213.8	217.5	218.8	222.9	12.7	13.2	12.1	14.6	16.0	17.4	1.9
Fruit	8	153.4	155.1	163.4	156.4	163.0	158.9	7.3	2.7	7.4	10.2	12.6	6.1	-2.5
of which fresh fruit	7	151.9	153.4	162.2	153.5	160.8	156.6	9.4	3.6	8.6	11.4	13.7	6.7	-2.6
processed fruit	1	146.0	149.1	152.9	158.0	159.3	156.3	-4.9	-2.8	-0.4	3.5	6.1	2.2	-1.9
Other foods	10	157.6	158.7	161.2	163.5	166.3	164.7	3.5	3.9	5.4	7.0	9.1	7.1	-1.0
Catering	47	262.0	263.2	264.0	265.2	266.1	267.3	4.1	4.2	4.3	4.5	4.6	4.8	0.5
Restaurant meals	26	255.6	256.7	257.6	258.4	259.0	260.1	3.9	4.0	4.2	4.2	4.4	4.5	0.4
Canteen meals	4	322.9	324.7	324.7	325.3	326.3	330.4	4.1	4.1	3.8	4.0	3.9	3.8	1.3
Take-aways and snacks	17	251.7	252.7	253.7	255.3	256.6	257.5	4.2	4.5	4.5	4.8	5.1	5.3	0.4
Alcoholic drink	59	228.6	229.8	230.0	229.5	230.1	230.5	4.3	4.7	4.5	4.2	4.4	4.4	0.2
Beer	31	250.2	250.9	251.1	250.4	250.8	251.4	4.1	4.2	4.2	3.6	3.6	3.9	0.2
on sales	26	272.9	273.5	274.1	274.5	274.7	275.5	4.7	4.5	4.7	4.4	4.5	4.6	0.3
off sales	5	152.5	153.5	152.2	148.8	149.5	149.7	0.4	1.9	1.4	-1.1	-1.3	0.1	0.1
Wines and spirits	28	200.7	202.3	202.5	202.2	203.1	203.2	4.5	5.3	4.8	5.0	5.2	5.0	-
on sales	15	252.6	253.7	254.5	254.8	255.3	256.0	4.1	4.2	4.3	4.3	4.3	4.4	0.3
off sales	13	166.6	168.6	168.4	167.6	168.8	168.5	4.9	6.5	5.3	5.7	6.0	5.6	-0.2

Key: - zero or negligible

Index date for September: 16 September 2008

1 Consumer durables: Furniture, furnishings, electrical appliances and other household equipment, men's, women's and children's outerwear, footwear, audio-visual equipment, CDs and tapes, toys, photographic and sports goods.

2 The taxes excluded are council tax, VAT, duties, vehicle excise duty, insurance tax and air passenger duty. There are no weights available for RPIY.

3 This series has been constructed using the index for all items excluding mortgage interest payments prior to February 1995.

continued

	Weights	Index (January 1987=100)						Percentage change over 12 months						Percentage change over 1 month
		2008						2008						2008
			2008	2008	2008	2008	2008		2008	2008	2008	2008	2008	
		Apr	May	Jun	Jul	Aug	Sep	Apr	May	Jun	Jul	Aug	Sep	Sep
Tobacco	27	379.8	379.8	380.0	379.9	379.9	380.4	4.5	4.5	4.5	4.4	4.4	4.4	0.1
Cigarettes	24	388.7	388.7	388.9	388.8	388.7	389.3	4.6	4.6	4.6	4.5	4.5	4.5	0.2
Other tobacco	3	298.8	298.9	299.1	299.0	299.3	299.1	3.7	3.7	3.7	3.6	3.7	3.6	-0.1
Housing	254	343.5	341.6	342.0	342.2	343.1	343.6	5.5	4.5	3.4	2.9	1.8	1.5	0.1
Rent	59	297.8	298.2	298.5	299.0	299.3	299.4	3.9	3.8	3.8	3.2	3.3	3.3	-
Mortgage interest payments	60	400.4	389.2	391.4	393.5	395.8	397.8	8.0	4.0	0.8	0.6	-2.7	-2.9	0.5
Depreciation (Jan 1995 = 100)	55	303.7	304.1	304.2	301.9	301.1	298.1	5.2	4.5	3.6	1.7	0.3	-1.6	-1.0
Council tax and rates	39	302.6	302.6	302.6	302.6	302.6	302.6	3.6	3.6	3.6	3.6	3.6	3.6	-
Water and other charges	12	401.7	401.7	401.7	401.7	401.7	401.7	6.5	6.5	6.5	6.5	6.5	6.5	-
Repairs and maintenance charges	12	341.2	342.1	343.0	348.4	349.6	350.1	4.2	4.2	4.2	5.7	5.8	5.7	0.1
Do-it-yourself materials	9	172.7	172.3	172.7	173.4	174.9	177.7	5.2	4.8	4.4	4.1	5.0	6.2	1.6
Dwelling insurance and ground rent	8	317.4	318.5	312.5	310.2	321.0	339.6	13.0	12.5	10.7	9.7	11.0	16.1	5.8
Fuel and light	33	239.8	241.6	242.6	244.1	256.9	287.7	9.1	12.3	14.9	17.2	24.6	39.6	12.0
Coal and solid fuels	1	219.7	224.2	228.8	231.3	233.7	255.6	9.6	12.4	15.3	16.7	17.8	27.3	9.4
Electricity	16	222.0	222.0	222.0	222.0	231.5	255.3	8.3	9.6	11.2	12.6	18.0	30.3	10.3
Gas	13	244.4	244.4	244.4	244.4	273.5	320.5	3.6	7.2	10.3	12.9	28.2	51.3	17.2
Oil and other fuels	3	408.1	437.6	453.7	477.8	415.7	406.6	59.4	71.5	74.2	78.9	58.4	47.2	-2.2
Household goods	66	152.5	155.7	161.7	154.6	155.6	158.6	2.2	2.8	3.7	4.7	4.9	4.5	1.9
Furniture	23	177.0	181.9	202.2	179.4	180.2	187.2	4.2	4.5	5.8	7.6	6.9	5.8	3.9
Furnishings	12	166.1	173.6	170.5	169.8	170.5	172.7	5.3	5.5	6.2	6.8	5.4	5.4	1.3
Electrical appliances	7	69.8	69.7	69.5	68.3	69.5	69.2	-6.7	-6.1	-5.4	-6.1	-3.9	-6.0	-0.4
Other household equipment	4	149.6	149.7	148.4	147.6	148.9	151.7	3.4	2.6	0.9	2.6	2.3	4.5	1.9
Household consumables	13	164.4	166.1	167.1	168.1	169.7	170.4	0.6	1.8	2.6	3.7	5.6	5.8	0.4
Pet care	7	179.9	181.6	184.4	185.9	186.1	188.3	3.1	4.5	5.6	6.1	7.1	7.4	1.2
Household services	64	203.3	203.7	203.6	202.5	202.8	203.3	4.3	4.5	4.5	4.2	3.4	2.7	0.2
Postage	1	226.9	226.9	226.9	226.9	226.9	226.9	6.7	6.7	6.7	6.7	6.7	6.7	-
Telephones, telemessages, etc	21	84.0	84.0	84.6	83.7	83.8	83.7	-2.3	-1.5	-0.4	-0.1	-2.3	-2.1	-0.1
Domestic services	13	314.0	315.6	317.4	318.1	318.7	320.6	4.6	4.9	4.8	4.7	4.6	4.8	0.6
Fees and subscriptions	29	316.7	317.6	314.5	313.0	313.3	314.7	9.0	8.9	8.1	7.1	7.0	5.3	0.4
Clothing and footwear	42	92.0	91.9	90.8	88.2	89.4	91.2	-3.3	-3.5	-4.4	-3.7	-3.7	-3.5	2.0
Men's outerwear	8	95.5	94.8	94.3	91.2	91.4	94.1	-2.1	-3.0	-3.1	-2.8	-3.7	-2.1	3.0
Women's outerwear	15	63.4	63.3	61.9	58.8	60.4	62.2	-8.1	-7.9	-9.8	-8.3	-8.1	-8.4	3.0
Children's outerwear	5	89.4	88.7	87.5	86.1	87.1	88.6	2.1	1.0	0.0	-2.0	-0.8	-1.4	1.7
Other clothing	6	149.4	150.0	149.7	148.4	149.1	150.6	-1.4	-0.3	-0.7	0.1	-0.3	-0.2	1.0
Footwear	8	110.4	111.1	110.6	109.9	110.5	111.0	-0.1	-0.6	-1.0	0.5	0.2	0.3	0.5
Personal goods and services	41	221.5	222.3	222.3	222.5	223.7	224.4	3.2	3.3	3.2	3.6	3.9	3.8	0.3
Personal articles	11	145.0	145.4	145.1	143.6	144.6	146.7	3.9	3.9	3.5	3.6	3.7	4.3	1.5
Chemists goods	15	196.1	196.5	196.4	196.7	198.2	197.6	1.4	1.8	1.7	2.3	3.2	2.7	-0.3
Personal services	15	384.2	386.1	387.2	390.5	390.9	391.5	4.8	4.7	4.8	4.9	5.0	4.9	0.2
Motoring expenditure	133	197.2	199.6	203.3	203.9	198.9	196.9	4.6	4.9	6.6	7.4	5.0	4.4	-1.0
Purchase of motor vehicles	49	100.2	99.8	98.6	97.4	95.6	93.2	-4.5	-4.9	-5.3	-5.3	-6.4	-8.4	-2.5
Maintenance of motor vehicles	19	322.7	324.5	326.2	327.6	329.3	331.5	5.4	5.6	5.4	5.7	5.7	6.3	0.7
Petrol and oil	43	317.9	328.7	349.4	354.7	338.2	333.9	18.0	18.4	24.0	26.4	20.8	20.7	-1.3
Vehicle tax and insurance	22	301.9	305.2	306.8	308.1	304.3	308.6	2.0	3.6	3.6	3.6	2.1	3.4	1.4
Fares and other travel costs	20	248.7	254.4	258.3	273.9	284.8	267.3	4.5	3.9	4.2	5.7	7.1	10.1	-6.1
Rail fares	5	275.5	274.9	273.7	275.0	275.1	272.9	4.9	4.9	4.2	4.3	3.8	3.1	-0.8
Bus and coach fares	4	287.2	288.9	287.6	291.9	294.4	293.9	5.0	5.7	4.1	5.6	6.1	6.1	-0.2
Other travel costs	11	213.7	222.2	229.0	251.6	267.8	241.5	4.0	2.9	4.2	6.2	8.8	14.6	-9.8
Leisure goods	38	87.9	88.1	88.1	87.1	86.7	86.7	-2.9	-2.3	-1.3	-1.8	-2.8	-2.7	-
Audio-visual equipment	8	12.5	12.4	12.3	12.2	12.0	11.9	-18.8	-17.9	-17.4	-15.9	-17.2	-16.2	-0.8
CDs and tapes	4	100.5	100.5	102.5	98.0	98.6	98.7	-0.6	-3.1	-0.2	-2.3	-1.9	-2.0	0.1
Toys, photographic and sports goods	10	85.5	85.2	85.2	83.8	84.2	85.0	-3.6	-3.1	-1.7	-2.2	-3.0	-2.4	1.0
Books and newspapers	10	273.8	279.1	276.2	277.0	274.2	275.2	7.0	8.9	7.9	6.9	5.1	4.8	0.4
Gardening products	6	148.1	148.3	150.4	148.7	149.0	147.7	1.4	1.6	4.0	2.7	2.9	1.9	-0.9
Leisure services	65	283.9	284.6	285.7	287.1	289.4	292.3	3.7	3.9	4.1	4.4	4.8	5.1	1.0
Television licences and rentals	11	170.3	170.3	170.3	170.2	170.2	170.2	1.3	1.3	1.4	1.5	1.5	1.5	-
Entertainment and other recreation	16	387.3	386.9	386.7	386.7	388.2	398.0	5.6	5.4	4.5	5.3	4.6	4.8	2.5
Foreign holidays (Jan 1993 = 100)	31	178.0	178.9	180.4	181.9	184.6	185.7	3.9	4.3	5.3	5.4	6.6	7.0	0.6
UK holidays (Jan 1994 = 100)	7	173.2	173.7	173.9	175.3	175.4	176.5	2.5	2.4	2.3	2.8	2.3	2.7	0.6

Key: - zero or negligible

Source: National Statistics

9 RPI goods and services¹: the latest three years

Percentage change over 12 months

	Goods components					Services components				
	Food	Alcohol & tobacco	Petrol & oil ²	Other goods ³	All goods	Rent	Utilities ⁴	"Shop" services ⁵	"Non-shop" services ⁶	All services
Weights										
2008	CZGZ 111	CBVW 86	DOHB 46	DOHC 231	DOHD 474	CZXD 59	DOHE 68	DOHF 133	DOHG 112	DOHH 372
Monthly										
2005 Sep	CCYY 1.5	CZBK 2.5	DOGQ 18.4	DOGI -1.9	DOGD 1.1	CZCQ 3.8	DOGF 6.5	DOGG 4.4	DOGH 2.0	DOGE 3.9
Oct	1.0	2.7	14.0	-1.7	0.9	3.2	7.4	4.5	2.1	4.1
Nov	1.3	2.9	8.6	-1.4	0.7	3.2	7.7	4.6	1.8	4.1
Dec	1.1	2.9	8.0	-1.3	0.7	3.2	7.3	4.6	0.6	3.7
2006 Jan	0.8	2.8	13.6	-1.4	1.0	3.0	7.2	4.3	1.3	3.8
Feb	0.8	2.5	12.9	-1.1	1.1	3.0	7.4	4.2	1.2	3.8
Mar	-0.5	3.0	10.1	-1.2	0.6	3.0	8.6	4.1	1.7	4.1
Apr	0.2	2.7	9.6	-1.3	0.7	2.8	9.9	4.2	2.3	4.6
May	0.9	2.7	13.8	-0.8	1.4	2.8	11.7	4.1	1.5	4.6
Jun	1.5	3.2	12.4	-0.5	1.6	2.9	12.9	4.1	1.8	5.0
Jul	2.7	3.0	10.7	-0.9	1.5	3.0	13.8	4.1	1.5	5.0
Aug	2.9	3.4	7.6	-0.2	1.8	3.0	13.9	4.0	1.7	5.1
Sep	3.5	3.4	-3.4	0.4	1.2	2.9	14.2	4.0	2.3	5.3
Oct	4.2	3.3	-7.6	-	0.8	2.9	15.1	4.2	3.3	5.8
Nov	4.5	3.2	-4.6	0.1	1.2	3.0	15.0	4.1	3.9	6.0
Dec	4.1	3.2	0.6	0.4	1.8	3.0	15.0	4.1	4.0	6.1
2007 Jan	3.7	3.6	-2.6	-0.3	1.1	3.3	14.2	4.2	4.6	6.1
Feb	4.0	4.0	-4.3	-	1.2	3.2	13.7	4.3	5.4	6.3
Mar	5.1	4.1	-1.7	0.5	2.0	3.2	12.2	4.4	4.8	5.9
Apr	5.6	4.5	-1.7	0.6	2.1	3.1	8.5	4.1	4.2	4.9
May	4.8	4.1	-2.0	0.6	1.9	3.2	5.3	4.1	5.1	4.6
Jun	4.8	3.7	0.3	0.8	2.2	3.3	3.0	4.2	5.0	4.1
Jul	3.1	3.7	-1.8	-0.2	1.2	3.3	1.3	3.9	5.1	3.7
Aug	3.4	3.5	-2.4	-0.5	0.9	3.2	1.3	4.2	5.8	4.0
Sep	4.2	3.6	2.9	-0.6	1.5	3.3	0.3	4.1	5.0	3.6
Oct	5.1	3.2	11.7	-0.5	2.4	3.7	-2.0	4.1	5.1	3.2
Nov	5.3	3.1	17.4	-0.6	2.8	3.7	-3.1	4.2	4.5	2.7
Dec	6.1	3.0	17.0	-0.9	2.8	3.6	-3.7	4.1	5.3	2.8
2008 Jan	6.6	2.7	20.2	-0.6	3.3	3.8	-3.6	4.2	5.0	2.8
Feb	6.1	3.1	21.4	-0.6	3.3	3.7	0.9	4.2	4.7	3.6
Mar	6.0	2.9	22.3	-1.2	3.1	3.8	1.0	4.1	5.3	3.8
Apr	6.9	4.3	20.3	-0.9	3.6	3.9	3.3	4.4	5.2	4.3
May	7.8	4.6	21.3	-0.8	4.1	3.8	4.6	4.4	5.5	4.7
Jun	9.7	4.5	26.8	-0.6	5.0	3.8	6.0	4.3	5.6	4.9
Jul	12.2	4.3	29.3	-0.3	6.0	3.2	6.9	4.7	5.6	5.1
Aug	12.8	4.4	22.8	-0.4	5.4	3.3	10.4	4.7	6.1	6.0
Sep	11.2	4.4	22.2	-0.8	4.8	3.3	17.7	4.9	6.9	7.6

Key: - zero or negligible

1 All components of the RPI are included in the above breakdown with the exception of mortgage interest payments, council tax and depreciation.

2 Including fuel oil.

3 The 'other goods' category comprises DIY materials, coal & solid fuels, household goods, clothing & footwear, personal articles, chemists goods, purchase of motor vehicles and leisure goods.

4 The 'utilities' category comprises water, electricity, gas, postage, telephone charges and rail fares.

5 The 'shop services' category comprises catering, repairs & maintenance charges, domestic services, personal services, maintenance of motor vehicles, TV licence & rentals and entertainment & recreation charges.

6 The 'non-shop services' category comprises dwelling insurance & ground rent, fees and subscriptions, vehicle tax and insurance, bus & coach fares, other travel costs, foreign holidays and UK holidays.

Source: National Statistics

10 A breakdown of the differences between CPI and RPI

	Difference between annual rates CPI - RPI		Breakdown of differences (unrounded figures) ¹						
	rounded figures	unrounded figures	housing components excluded from CPI			other housing components	other differences in coverage of goods and services	formula effect ²	other differences including weights ³
			total	mortgage interest payments					
	D7G2	D7G3	D7G4	D7G5	D7FU	D7FV	D7FW	D7FX	
2003 Sep	-1.4	-1.35	-1.06	0.01	-1.07	0.01	-0.44	0.14	
Oct	-1.2	-1.29	-0.99	0.01	-0.99	0.04	-0.44	0.10	
Nov	-1.2	-1.17	-0.99	-0.02	-0.97	0.19	-0.43	0.07	
Dec	-1.5	-1.51	-1.11	-0.20	-0.91	-0.22	-0.42	0.23	
2004 Jan	-1.2	-1.19	-1.07	-0.21	-0.86	0.02	-0.42	0.28	
Feb	-1.2	-1.23	-1.10	-0.21	-0.89	0.05	-0.43	0.26	
Mar	-1.5	-1.47	-1.47	-0.48	-0.99	0.07	-0.41	0.34	
Apr	-1.4	-1.36	-1.32	-0.50	-0.82	0.08	-0.43	0.30	
May	-1.3	-1.30	-1.36	-0.50	-0.86	0.13	-0.44	0.38	
Jun	-1.4	-1.46	-1.59	-0.69	-0.90	0.14	-0.43	0.42	
Jul	-1.6	-1.66	-1.82	-0.88	-0.94	0.15	-0.42	0.43	
Aug	-1.9	-1.89	-1.96	-1.03	-0.93	0.18	-0.47	0.36	
Sep	-2.0	-1.97	-2.13	-1.18	-0.95	0.20	-0.45	0.42	
Oct	-2.1	-2.07	-2.17	-1.19	-0.99	0.22	-0.46	0.34	
Nov	-1.9	-1.98	-2.11	-1.19	-0.92	0.24	-0.47	0.36	
Dec	-1.8	-1.84	-1.91	-1.00	-0.91	0.24	-0.49	0.32	
2005 Jan	-1.6	-1.55	-1.94	-1.03	-0.92	0.23	-0.48	0.65	
Feb	-1.5	-1.50	-1.92	-1.03	-0.89	0.23	-0.51	0.69	
Mar	-1.3	-1.32	-1.64	-0.86	-0.79	0.22	-0.53	0.62	
Apr	-1.3	-1.22	-1.54	-0.86	-0.68	0.25	-0.52	0.59	
May	-1.0	-1.07	-1.43	-0.85	-0.58	0.27	-0.50	0.60	
Jun	-0.9	-0.87	-1.18	-0.67	-0.51	0.29	-0.52	0.54	
Jul	-0.6	-0.57	-0.89	-0.48	-0.40	0.31	-0.53	0.55	
Aug	-0.4	-0.37	-0.84	-0.48	-0.36	0.33	-0.49	0.64	
Sep	-0.2	-0.20	-0.43	-0.17	-0.27	0.30	-0.52	0.45	
Oct	-0.2	-0.17	-0.37	-0.17	-0.20	0.30	-0.52	0.42	
Nov	-0.3	-0.29	-0.36	-0.16	-0.21	0.27	-0.52	0.32	
Dec	-0.3	-0.30	-0.35	-0.16	-0.19	0.28	-0.51	0.29	
2006 Jan	-0.5	-0.45	-0.29	-0.15	-0.14	0.30	-0.48	0.02	
Feb	-0.4	-0.39	-0.32	-0.15	-0.17	0.30	-0.51	0.14	
Mar	-0.6	-0.51	-0.36	-0.16	-0.20	0.32	-0.55	0.08	
Apr	-0.6	-0.52	-0.33	-0.14	-0.19	0.32	-0.51	-0.01	
May	-0.8	-0.72	-0.32	-0.11	-0.20	0.32	-0.54	-0.19	
Jun	-0.8	-0.75	-0.26	-0.09	-0.17	0.31	-0.52	-0.27	
Jul	-0.9	-0.86	-0.25	-0.09	-0.16	0.28	-0.54	-0.35	
Aug	-0.9	-0.95	-0.25	-0.08	-0.17	0.24	-0.54	-0.39	
Sep	-1.2	-1.22	-0.71	-0.48	-0.23	0.22	-0.56	-0.17	
Oct	-1.3	-1.23	-0.74	-0.49	-0.25	0.24	-0.55	-0.17	
Nov	-1.2	-1.20	-0.73	-0.48	-0.24	0.24	-0.55	-0.16	
Dec	-1.4	-1.46	-0.91	-0.68	-0.24	0.23	-0.56	-0.22	
2007 Jan	-1.5	-1.53	-1.01	-0.72	-0.29	0.23	-0.59	-0.16	
Feb	-1.8	-1.78	-1.21	-0.91	-0.30	0.19	-0.55	-0.21	
Mar	-1.7	-1.75	-1.21	-0.90	-0.31	0.26	-0.57	-0.24	
Apr	-1.7	-1.77	-1.21	-0.91	-0.30	0.21	-0.60	-0.17	
May	-1.8	-1.79	-1.28	-0.94	-0.33	0.19	-0.59	-0.11	
Jun	-2.0	-2.04	-1.49	-1.13	-0.36	0.21	-0.64	-0.12	
Jul	-1.9	-2.00	-1.65	-1.17	-0.47	0.23	-0.54	-0.05	
Aug	-2.3	-2.29	-1.87	-1.38	-0.49	0.24	-0.57	-0.10	
Sep	-2.1	-2.21	-1.62	-1.15	-0.46	0.28	-0.60	-0.27	
Oct	-2.1	-2.15	-1.54	-1.12	-0.41	0.28	-0.60	-0.30	
Nov	-2.2	-2.20	-1.52	-1.12	-0.40	0.29	-0.59	-0.38	
Dec	-1.9	-1.95	-1.30	-0.91	-0.39	0.31	-0.55	-0.41	
2008 Jan	-1.9	-1.87	-1.07	-0.67	-0.39	0.36	-0.59	-0.58	
Feb	-1.6	-1.61	-0.73	-0.47	-0.27	0.36	-0.59	-0.65	
Mar	-1.3	-1.34	-0.49	-0.26	-0.23	0.30	-0.55	-0.60	
Apr	-1.2	-1.21	-0.34	-0.23	-0.11	0.32	-0.52	-0.67	
May	-1.0	-0.95	-0.02	0.01	-0.03	0.32	-0.52	-0.73	
Jun	-0.8	-0.78	0.35	0.23	0.12	0.31	-0.54	-0.90	
Jul	-0.6	-0.60	0.60	0.27	0.32	0.31	-0.53	-0.97	
Aug	-0.1	-0.07	0.89	0.49	0.40	0.32	-0.49	-0.79	
Sep	0.2	0.22	1.02	0.51	0.51	0.36	-0.46	-0.70	

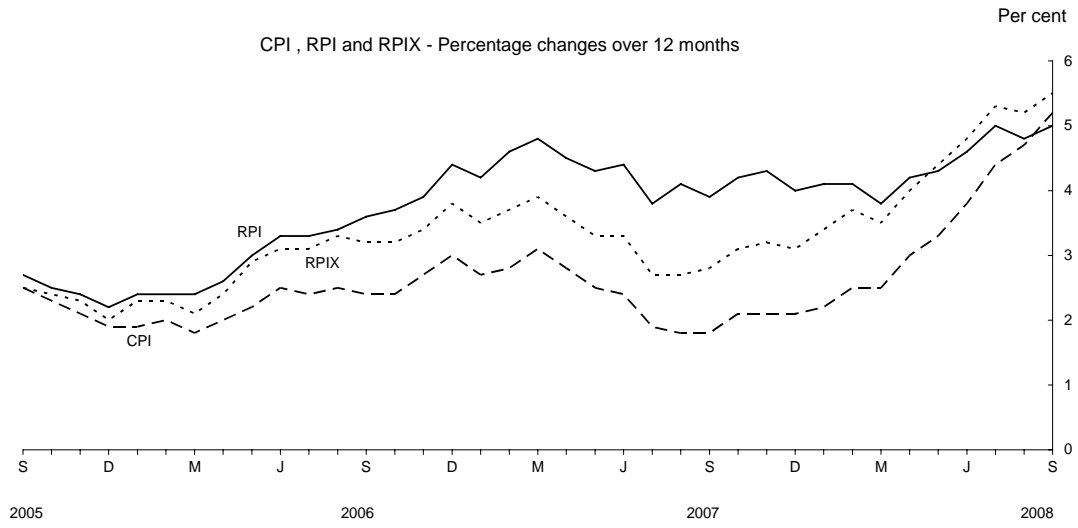
1 The differences due to housing, coverage and formula effect are all calculated independently and are not additive.

Source: National Statistics

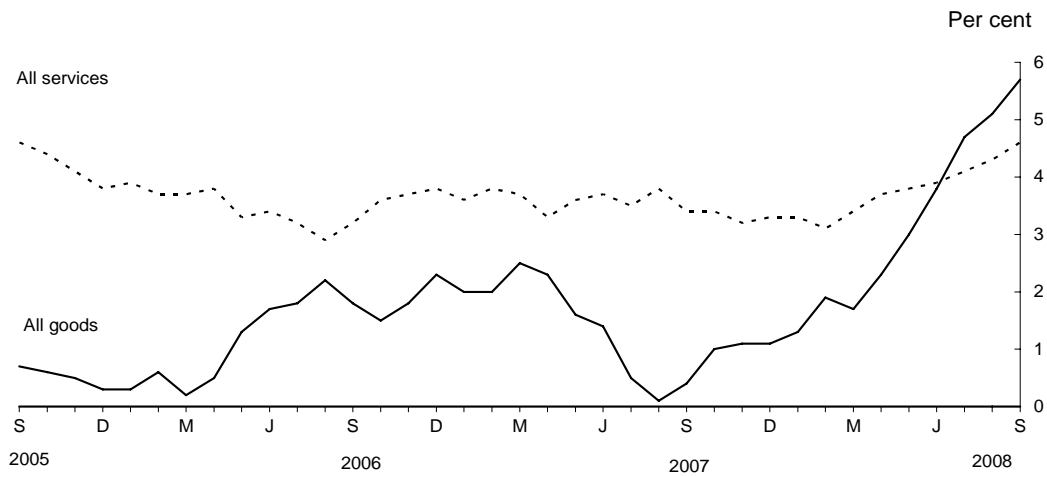
2 Difference due to use of different formulae to aggregate prices at the most basic level.

3 This difference is derived as a residual.

CPI,RPI and Other Related Indices



CPI goods and services - Percentage changes over 12 months: the latest three years



RPI goods and services - Percentage changes over 12 months: the latest three years

