

12 August 2008

Coverage
United Kingdom

Theme
The Economy



Issued by
Office for National Statistics
Cardiff Road
Newport
NP10 8XG

Contact
Media Office
0845 6041858
Public Enquiries
0845 6013034
CPI/RPI Enquiries
01633 456900
CPI/RPI Recorded
Message
01633 456961
Email
cpi@ons.gov.uk

Statistician
Philip Gooding
01633 455896
philip.gooding@ons.gov.uk

www.statistics.gov.uk

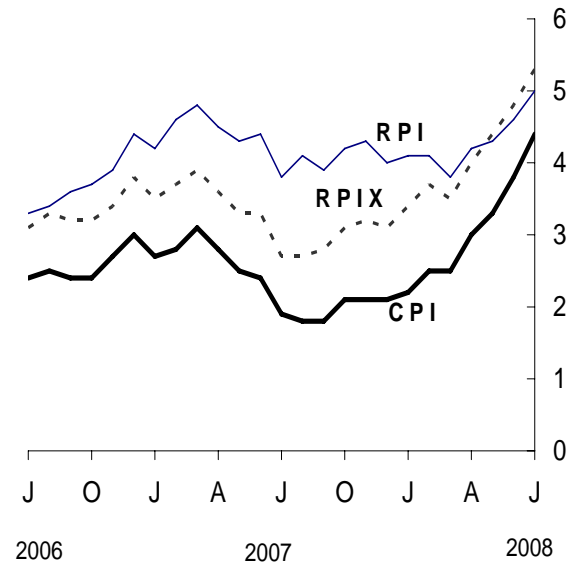
Next publication date
16 September 2008

Consumer price indices July 2008

In the year to July, the consumer prices index (CPI) rose by 4.4 per cent, up from 3.8 per cent in June.

In the year to July, the all items retail prices index (RPI) rose by 5.0 per cent, up from 4.6 per cent in June.

Over the same period, the all items RPI excluding mortgage interest payments index (RPIX) rose by 5.3 per cent, up from 4.8 per cent in June.



	Consumer prices index (CPI)		All items retail prices index (RPI)		All items RPI excluding mortgage interest payments (RPIX)	
	Index (2005 =100)	Per cent change over 12 months	Index (Jan 1987 =100)	Per cent change over 12 months	Index (Jan 1987 =100)	Per cent change over 12 months
2008 Feb	106.3	2.5	211.4	4.1	204.3	3.7
Mar	106.7	2.5	212.1	3.8	205.3	3.5
Apr	107.6	3.0	214.0	4.2	207.2	4.0
May	108.3	3.3	215.1	4.3	208.7	4.4
Jun	109.0	3.8	216.8	4.6	210.4	4.8
Jul	109.0	4.4	216.5	5.0	210.0	5.3

Main contributions to the change in the 12-month rate¹

CPI

The largest upward contribution to the change in the CPI annual rate came from food and non-alcoholic beverages with the largest single effect coming from meat where prices rose this year but fell a year ago, particularly for bacon, ham and poultry. Within this division, there were also large upward effects from bread and cereals, and vegetables including potatoes. There were smaller upward effects from fish and fruit, particularly bananas whose prices rose this year but fell a year ago.

There were further large upward contributions from:

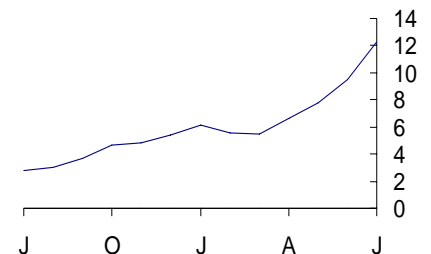
- transport costs, mainly due to the price of fuels and lubricants and air transport. The average price of petrol increased by 1.2 pence per litre between June and July this year, to stand at 118.8 pence, compared with a fall of 0.4 pence last year. Diesel prices rose by 1.8 pence per litre this year compared with a fall of 0.4 pence last year. The other large upward effect came from passenger air transport where fares overall rose by more than last year, particularly on European routes. These effects were partially offset by a small downward effect from sea travel
- housing and household services due to gas and electricity. Gas and electricity bills were unchanged this year but fell a year ago. Within this division, there was a small downward effect from actual rentals for housing with rents rising by less than a year ago
- furniture, household equipment and maintenance where overall price discounting was not as great as last year. A large effect came from furniture and furnishings, particularly kitchen furniture, with a smaller contribution from household textiles
- clothing and footwear where falls in price due to sales were not as large as last year, particularly for women's outerwear

Small upward contributions came from:

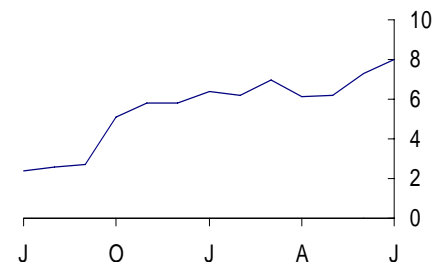
- restaurants and hotels where prices rose by more than a year ago, particularly for hotel accommodation
- communication where the overall price of telephone equipment and services fell by less than a year ago

A small downward contribution to the change in the CPI annual rate came from recreation and culture. This was mainly from games, toys and hobbies where the price of computer games fell this year but rose a year ago and, to a lesser extent, from recording media where the price of pre-recorded DVDs fell by more than a year ago. This was partially offset by a large upward effect from cultural services, particularly live events, and a small upward effect from data processing equipment where prices fell by less than a year ago.

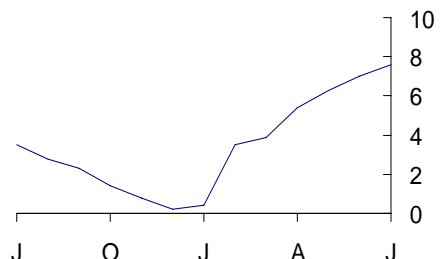
Food and non-alcoholic beverages
CPI percentage changes over 12 months



Transport
CPI percentage changes over 12 months



Housing and household services
CPI percentage changes over 12 months



¹ The CPI and RPI use different classification systems. Background Note 11 shows how, for each of the two indices, the main categories contributing to changes in the 12-month rate relate to each other

RPI

The largest upward contribution to the change in the RPI annual rate came from food where overall prices rose this year but fell a year ago. Within the group, there were small upward effects from a range of products including biscuits and cakes, poultry, other meat, unprocessed potatoes, other fresh vegetables and other foods such as canned soups.

Further large upward contributions came from:

- motoring expenditure where there was a large effect from petrol and oil. As in the CPI, the price of petrol and diesel rose this year but fell a year ago
- fuel and light where the effect came from gas, electricity and oil and other fuels. As in the CPI, gas and electricity bills were unchanged this year compared with falls in price a year ago, while the price of oil and other fuels rose by more than a year ago
- household goods where, overall, prices fell by less than a year ago when price discounting was greater. Small upward effects came from furniture, in particular kitchen furniture, and household consumables
- clothing and footwear due to prices falling by less than a year ago, particularly for women's outerwear
- fares and other travel principally caused by an upward effect from other travel costs where passenger air transport fares rose by more than last year, particularly on European routes

Small upward contributions came from:

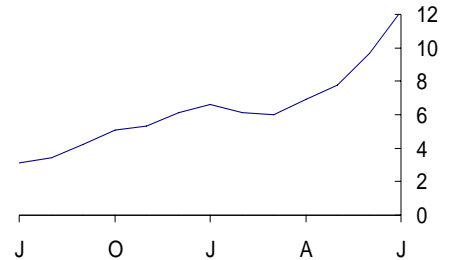
- personal goods and services where overall prices rose this year but fell a year ago
- leisure services where prices rose by more than a year ago

The only large downward contribution to the change in the RPI annual rate came from housing. The effect came mainly from house depreciation which fell this year but rose a year ago reflecting movements in the smoothed house price index used to calculate this component. Depreciation is excluded from the CPI. There was also a small downward effect from rent which rose by less than a year ago. Partially offsetting these effects was a small upward effect from repairs and maintenance charges which rose by more than a year ago.

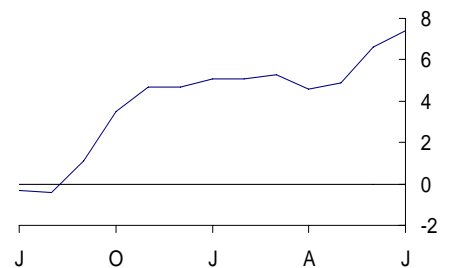
Small downward contributions came from:

- household services due to fees and subscriptions which fell this year but rose a year ago
- leisure goods principally due to computer games whose prices fell this year but rose a year ago

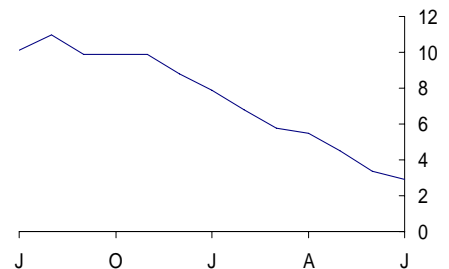
Food
RPI percentage changes over 12 months



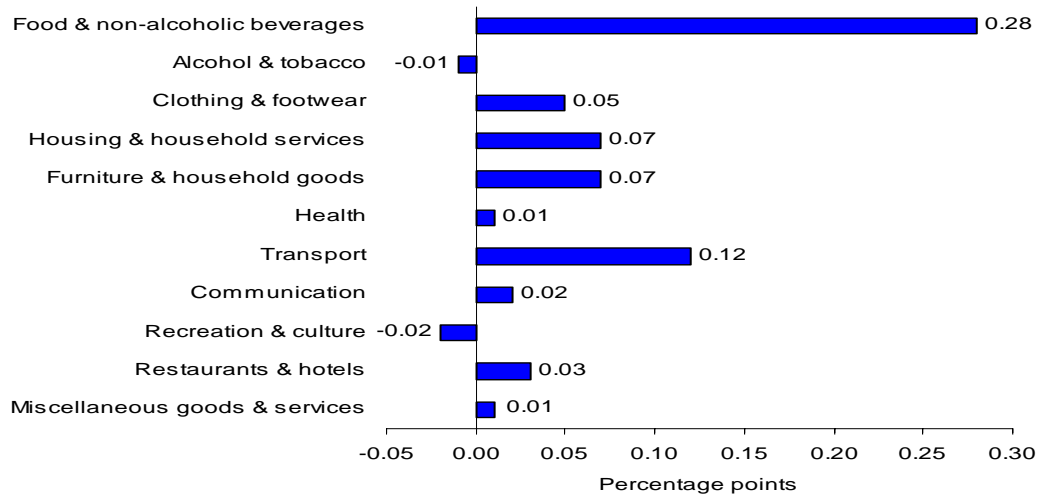
Motoring expenditure
RPI percentage changes over 12 months



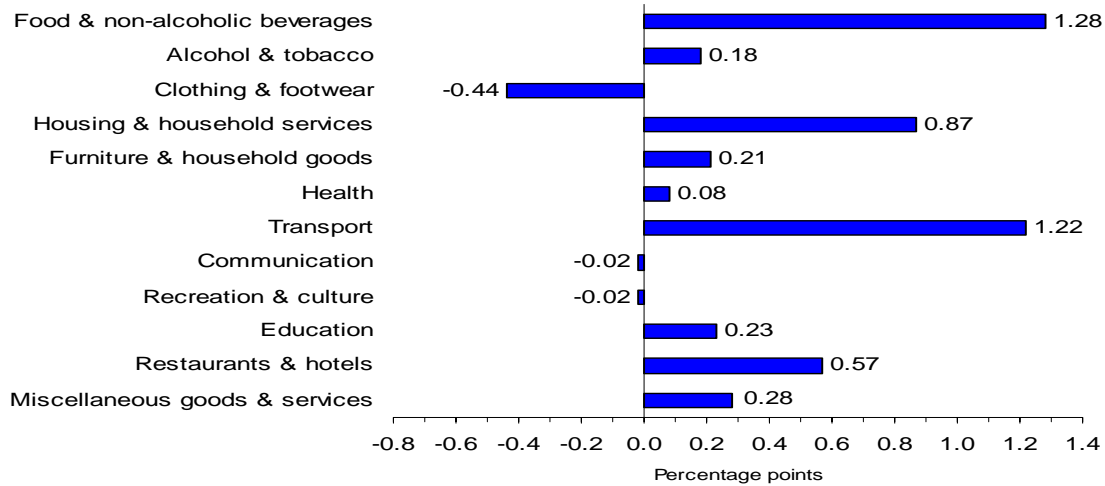
Housing
RPI percentage changes over 12 months



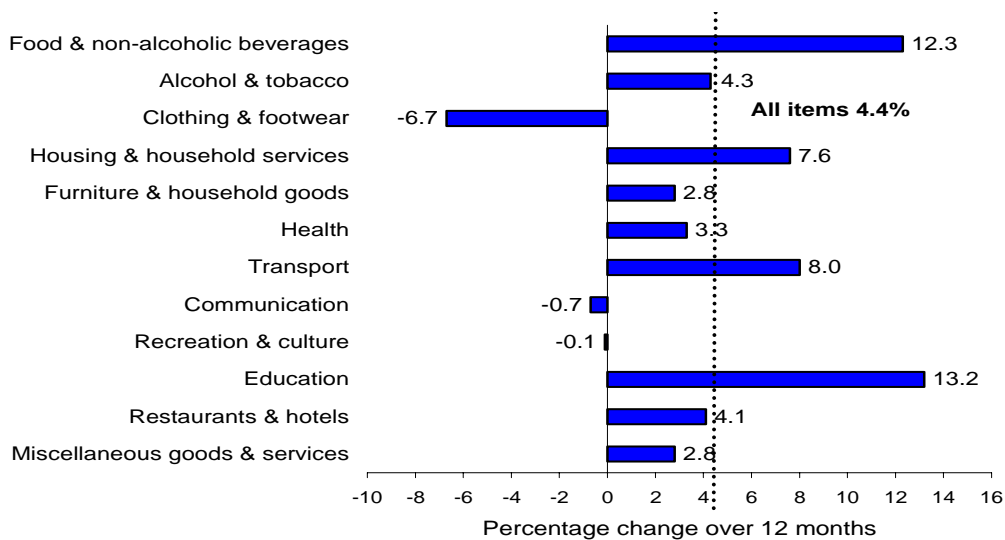
CPI main contributions¹ to the change in the all items 12 - month rate between June 2008 and July 2008 (0.6 percentage points)



CPI main contributions¹ to the all items 12- month rate (4.4 percentage points)

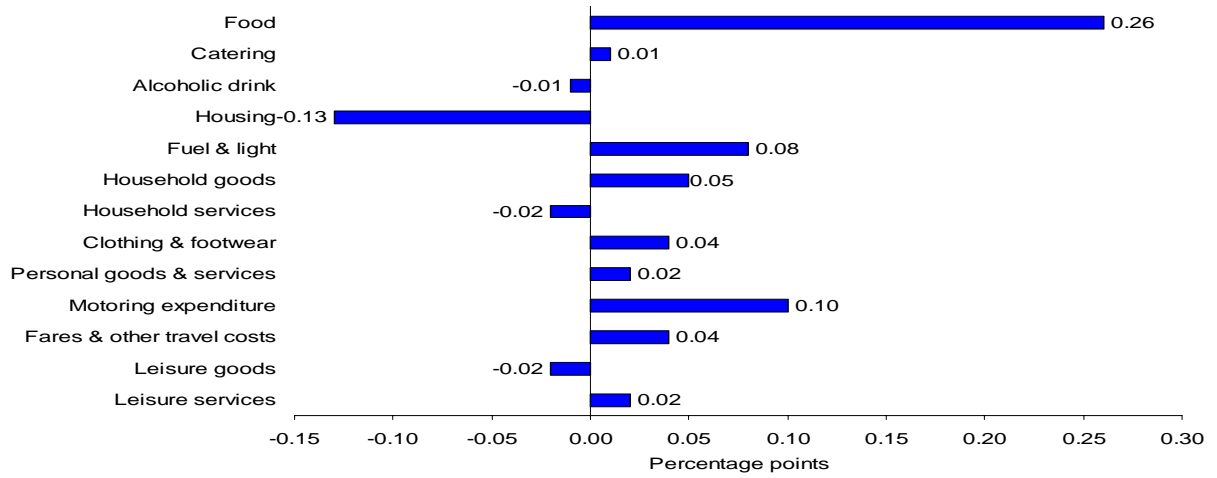


CPI comparison of the 12-month percentage changes

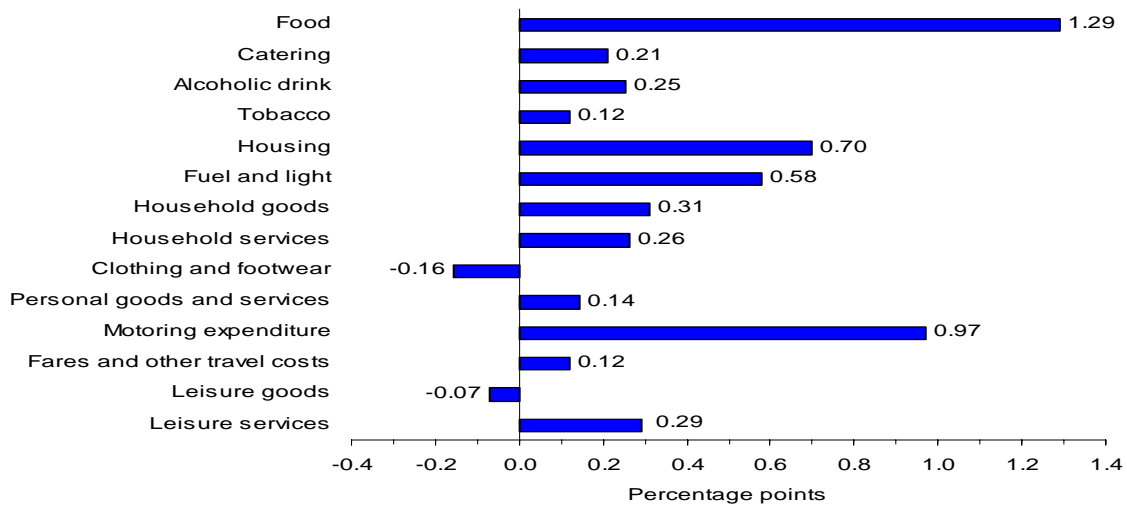


1. Individual contributions to the change in the 12-month rate may not sum to the total due to rounding.

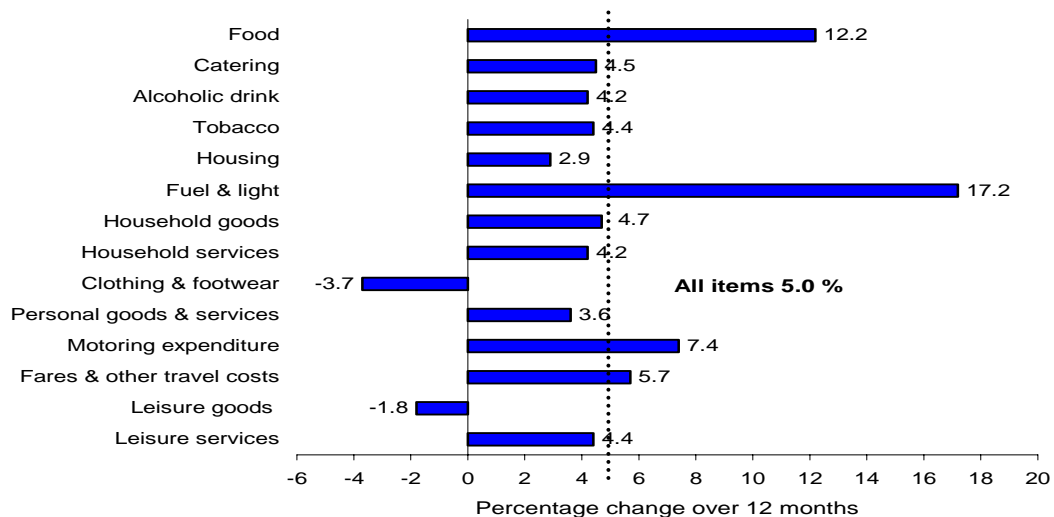
RPI main contributions¹ to the change in the all items 12-month rate between June 2008 and July 2008 (0.4 percentage points)



RPI main contributions¹ to the all items 12-month rate (5.0 percentage points)



RPI comparison of the 12-month percentage changes



1. Individual contributions to the change in the 12-month rate may not sum to the total due to rounding.

BACKGROUND NOTES

Relevance

1. The consumer prices index (CPI) is the main United Kingdom domestic measure of consumer price inflation for macroeconomic purposes. It forms the basis for the Government's inflation target that the Bank of England's Monetary Policy Committee (MPC) is required to achieve.
2. Internationally, the CPI is known as the Harmonised Index of Consumer Prices (HICP). HICPs are calculated in each Member State of the European Union, according to rules specified in a series of European Regulations developed by Eurostat in conjunction with the EU Member States. HICPs are used to compare inflation rates across the European Union. Since January 1999 it has also been used by the European Central Bank (ECB) as the measure of price stability across the euro area.
3. The retail prices index (RPI) is the most long-standing general purpose measure of inflation in the United Kingdom and is available from June 1947. It is used for a variety of purposes by both government and external users including the indexation of various incomes and prices and the uprating of pensions, benefits and index-linked gilts.

Methodology

4. The CPI and the RPI are compiled using the same underlying price data, based on a large and representative selection of around 650 individual goods and services for which price movements are measured in around 150 randomly selected areas throughout the UK. Around 120,000 separate price quotations are used every month to compile the indices. The outlets in which the prices are collected are selected randomly. Expenditure weights are held constant for one year at a time.
5. The selection of goods and services that are priced to compile the CPI and RPI is reviewed annually. The contents of the 2008 basket are described in an article published on the National Statistics website at:
<http://www.statistics.gov.uk/cci/article.asp?ID=1951>
The expenditure weights used to compile the indices are also updated each year. Additional details of the updated CPI and RPI weights for 2008 are available from the National Statistics website in an article entitled Consumer Prices Index and Retail Prices Index: Updating Weights for 2008:
<http://www.statistics.gov.uk/cci/article.asp?id=1991>
6. Rates of change for the CPI are calculated from unrounded index levels, rather than on the published indices, which are rounded to one decimal place. The use of unrounded indices increases the accuracy of the calculation. The unrounded index levels are available on request. By contrast, rates of change for the RPI are calculated from the published rounded indices.

Reliability

7. Once the RPI indices are published they are never revised. CPI indices are revisable although past revisions have been minimal with the exception of those arising from re-referencing of the CPI to 2005=100, which took place with the publication of the January 2006 indices.

Comparability

8. The CPI's coverage of goods and services was extended in stages in the areas of health, education, childcare and insurance, with effect from the January 2000, 2001, and 2002 indices. In 2000, there was also a change to the population basis for the weights which was broadened from private households to include expenditure by foreign visitors and residents of institutional households. Further details can be found in a series of articles:
http://www.statistics.gov.uk/about/methodology_by_theme/cpi
9. The official CPI series starts in 1996 but estimates for earlier periods are available back to 1988. These estimates are broadly consistent with data from 1996 but should be treated with some caution. The following article provides more detail: <http://www.statistics.gov.uk/cci/article.asp?ID=31>
10. RPI data are available back to 1947 but have been re-referenced on several occasions since then, generally accompanied by changes to the coverage and/or structure of the detailed sub-components. Details of these changes are given in Appendices 1 and 2 of the CPI Technical Manual:
<http://www.statistics.gov.uk/statbase/Product.asp?vlnk=2328>

Coherence

11. The CPI and RPI both measure the average change from month to month in the prices of consumer goods and services purchased in the UK. However, they differ in both coverage and methodology. A detailed description of these differences is given in an article entitled "The New Inflation Target: the Statistical Perspective":
www.statistics.gov.uk/StatBase/Product.asp?vlnk=10913. The differences are summarised below:
 - In the CPI, the geometric mean is used to combine the individual prices into elementary indices at the most basic level whereas the RPI uses arithmetic means
 - The CPI excludes a number of RPI series mainly relating to housing costs (for example, council tax), and in particular to owner occupiers' housing costs (including mortgage interest payments, house depreciation and buildings insurance). In addition, the CPI excludes the annual road fund licence and, from 2006, TV licences which are classified as taxes in the UK National Accounts, and Trades Union subscriptions which by convention are not part of household expenditure
 - The CPI includes series for university accommodation fees, foreign students' university tuition fees, and unit trust and stockbrokers' charges, none of which are included in the RPI

- The CPI is categorised according to the international classification system, COICOP (Classification Of Individual Consumption by Purpose). The way in which this maps to the RPI groupings is shown in the following table:

COICOP Divisions	RPI Groups
01 Food & non-alcoholic beverages	Food
02 Alcohol & tobacco	Alcoholic drink (off sales) Tobacco
03 Clothing & footwear	Clothing & footwear
04 Housing & household services	Housing (exc. Mortgage interest payments, depreciation, council tax & building insurance) Fuel & light
05 Furniture & household goods	Household goods Domestic services
06 Health	Personal goods & services (health-related items)
07 Transport	Motoring expenditure Fares & other travel costs
08 Communication	Household services (exc. domestic services & fees and subscriptions)
09 Recreation & culture	Leisure goods Leisure services
10 Education	Fees & subscriptions (education-related items)
11 Restaurants & hotels	Catering Alcoholic drink (on sales)
12 Miscellaneous goods & services	Personal goods & services (non health-related items) Fees & subscriptions (non education-related items)

- The index for the purchase of new cars in the CPI is quality adjusted and based on actual published prices for new cars. New car prices in the RPI are imputed from movements in second hand car prices
- The CPI weights are based on expenditure by all private households, foreign visitors to the UK and residents of institutional households. In the RPI, weights are based on expenditure by private households only, excluding the highest income households and pensioner households mainly dependent on state benefits

- In the construction of the CPI weights, amounts paid out in insurance claims are distributed among the COICOP headings according to the nature of the claims' expenditure, with the residual (the service charge) being allocated to the relevant insurance heading. For the RPI weights, total expenditure (that is, gross of claims paid out) is assigned to the relevant insurance heading

12. A breakdown of the difference between the CPI and RPI annual rates of inflation is shown in Table 10 of the CPI First Release.

Accessibility

13. This release includes the July 2008 data, collected on 15 July 2008. Future publication dates are 16 September, 14 October, 18 November, 16 December, 20 January and 17 February. The European Commission (Eurostat) will release figures for the harmonised index of consumer prices (HICP) for the month of July 2008 for EU member states, together with an EU average, on 14 August 2008. Further information on HICP for the European Union, Eurozone and other EU Member States is available from Eurostat's HICP web page:
http://epp.eurostat.ec.europa.eu/pls/portal/url/page/PGP_DS_HICP

Further information

14. A more detailed quality report for this First Release is available at:
<http://www.statistics.gov.uk/CCI/article.asp?ID=1585>
15. A full description of how the CPI and RPI are compiled is given in the Consumer Price Indices Technical Manual 2007 edition:
<http://www.statistics.gov.uk/statbase/Product.asp?vlnk=2328>

General

16. Details of the policy governing the release of new data are available from the press office. Also available is a list of the names of those given pre-publication access to contents of this release.
17. In line with Consumer Price Indices Pre-Release arrangements, an advance estimate of the CPI was provided to the Governor of the Bank of England 3½ working days ahead of publication. The Governor shared this information with the MPC, and officials present at the MPC policy meeting, on Thursday 7th August.
18. Complete runs of series in this release are available to download free of charge at: <http://www.statistics.gov.uk/timeseries>.
19. **National Statistics** are produced to high professional standards set out in the National Statistics Code of Practice. They undergo regular quality assurance reviews to ensure that they meet customer needs. They are produced free from any political interference. © Crown Copyright 2008

1 CPI, RPI and other selected indices: the latest three years

	Consumer prices index (CPI) ¹		Consumer prices index excluding indirect taxes (CPIY) ³		Consumer prices index at constant tax rates (CPI-CT)		All items retail prices index (RPI)		All items RPI excluding			
	Index (2005=100)	Percentage change over 12 months	Index (2005=100)	Percentage change over 12 months	Index (2005=100)	Percentage change over 12 months	Index (Jan 13, 1987=100)	Percentage change over 12 months	mortgage interest payments (RPIX)		mortgage interest payments and indirect taxes (RPIY) ²	
		Index (Jan 13, 1987=100)		Percentage change over 12 months		Index (Jan 13, 1987=100)		Percentage change over 12 months	Index (Jan 13, 1987=100)	Percentage change over 12 months		
	D7BT	D7G7	EL2Q	EL2S	EAC7	EAD6	CHAW	CZBH	CHMK	CDKQ	CBZW	CBZX
2005 Jul	100.1	2.3	100.1	2.5	100.1	2.3	192.2	2.9	188.3	2.4	179.5	2.5
Aug	100.4	2.4	100.5	2.6	100.4	2.3	192.6	2.8	188.6	2.3	179.8	2.3
Sep	100.6	2.5	100.6	2.6	100.6	2.4	193.1	2.7	189.3	2.5	180.5	2.5
Oct	100.7	2.3	100.8	2.5	100.7	2.3	193.3	2.5	189.5	2.4	180.7	2.3
Nov	100.7	2.1	100.8	2.3	100.7	2.1	193.6	2.4	189.7	2.3	180.9	2.3
Dec	101.0	1.9	101.1	2.1	101.0	1.8	194.1	2.2	190.2	2.0	181.5	2.0
2006 Jan	100.5	1.9	100.6	2.1	100.5	1.9	193.4	2.4	189.4	2.3	180.7	2.3
Feb	100.9	2.0	100.9	2.1	100.8	2.0	194.2	2.4	190.1	2.3	181.4	2.3
Mar	101.1	1.8	101.1	1.9	101.1	1.7	195.0	2.4	190.8	2.1	182.2	2.2
Apr	101.7	2.0	101.7	2.1	101.6	2.0	196.5	2.6	192.3	2.4	183.2	2.3
May	102.2	2.2	102.3	2.3	102.1	2.2	197.7	3.0	193.6	2.9	184.5	2.8
Jun	102.5	2.5	102.6	2.6	102.4	2.4	198.5	3.3	194.2	3.1	185.2	3.2
Jul	102.5	2.4	102.6	2.4	102.4	2.3	198.5	3.3	194.2	3.1	185.2	3.2
Aug	102.9	2.5	103.0	2.6	102.8	2.4	199.2	3.4	194.9	3.3	186.0	3.4
Sep	103.0	2.4	103.2	2.6	102.9	2.3	200.1	3.6	195.3	3.2	186.4	3.3
Oct	103.2	2.4	103.5	2.7	103.1	2.3	200.4	3.7	195.5	3.2	186.7	3.3
Nov	103.4	2.7	103.8	3.0	103.4	2.6	201.1	3.9	196.2	3.4	187.5	3.6
Dec	104.0	3.0	104.3	3.2	103.9	2.9	202.7	4.4	197.4	3.8	188.6	3.9
2007 Jan	103.2	2.7	103.5	2.9	103.1	2.6	201.6	4.2	196.1	3.5	187.3	3.7
Feb	103.7	2.8	103.9	2.9	103.5	2.6	203.1	4.6	197.1	3.7	188.4	3.9
Mar	104.2	3.1	104.3	3.1	103.9	2.9	204.4	4.8	198.3	3.9	189.5	4.0
Apr	104.5	2.8	104.6	2.9	104.2	2.6	205.4	4.5	199.3	3.6	190.0	3.7
May	104.8	2.5	105.0	2.6	104.5	2.3	206.2	4.3	200.0	3.3	190.7	3.4
Jun	105.0	2.4	105.2	2.5	104.7	2.2	207.3	4.4	200.7	3.3	191.4	3.3
Jul	104.4	1.9	104.6	2.0	104.1	1.7	206.1	3.8	199.4	2.7	190.1	2.6
Aug	104.7	1.8	105.0	1.9	104.5	1.6	207.3	4.1	200.1	2.7	190.9	2.6
Sep	104.8	1.8	105.0	1.7	104.5	1.6	208.0	3.9	200.8	2.8	191.6	2.8
Oct	105.3	2.1	105.5	1.9	104.9	1.8	208.9	4.2	201.6	3.1	192.3	3.0
Nov	105.6	2.1	105.8	1.9	105.2	1.8	209.7	4.3	202.4	3.2	193.2	3.0
Dec	106.2	2.1	106.4	2.0	105.8	1.9	210.9	4.0	203.5	3.1	194.4	3.1
2008 Jan	105.5	2.2	105.7	2.1	105.1	2.0	209.8	4.1	202.7	3.4	193.5	3.3
Feb	106.3	2.5	106.5	2.5	105.9	2.3	211.4	4.1	204.3	3.7	195.2	3.6
Mar	106.7	2.5	107.0	2.6	106.3	2.3	212.1	3.8	205.3	3.5	196.3	3.6
Apr	107.6	3.0	107.7	3.0	107.0	2.7	214.0	4.2	207.2	4.0	197.5	3.9
May	108.3	3.3	108.5	3.3	107.7	3.1	215.1	4.3	208.7	4.4	199.0	4.4
Jun	109.0	3.8	109.3	3.9	108.5	3.6	216.8	4.6	210.4	4.8	200.8	4.9
Jul	109.0	4.4	109.3	4.5	108.4	4.2	216.5	5.0	210.0	5.3	200.4	5.4

1 Inflation rates prior to 1997 and index levels prior to 1996 are estimated. Further details are given in *Economic Trends No. 541 December 1998*. These details are also available on the National Statistics website: www.statistics.gov.uk/cci/article.asp?ID=31

2 The taxes excluded are council tax, VAT, duties, vehicle excise duty, insurance tax and air passenger duty.

3 The taxes excluded are VAT, duties, insurance premium tax, air passenger duty, stamp duty on share transactions.

Source: National Statistics

2 CPI: Detailed figures for 15 July 2008

	Percentage change over				Percentage change over		
	Index (2005 =100)	1 mth	12 mths		Index (2005 =100)	1 mth	12 mths
CPI (overall index)	109.0	-	4.4				
01 Food and non-alcoholic beverages	118.4	0.8	12.3	06.2 Out-patient services	112.3	0.2	3.3
02 Alcoholic beverages and tobacco	111.4	-0.4	4.3	06.2.1/3 Medical services & paramedical services	109.3	0.2	3.2
03 Clothing and footwear	83.8	-3.2	-6.7	06.2.2 Dental services	115.7	0.1	3.3
04 Housing, water, electricity, gas and other fuels	123.0	0.4	7.6	06.3 Hospital services	120.4	1.7	5.8
05 Furniture, household equipment and maintenance	102.6	-3.2	2.8	07.1 Purchase of vehicles	97.9	-0.2	-1.5
06 Health	110.1	0.8	3.3	07.1.1A New cars	103.8	0.3	1.2
07 Transport	116.6	1.8	8.0	07.1.1B Second-hand cars	88.7	-1.2	-5.7
08 Communication	94.1	-0.7	-0.7	07.1.2/3 Motorcycles and bicycles	100.8	1.5	1.1
09 Recreation and culture	96.9	-0.7	-0.1	07.2 Operation of personal transport equipment	127.2	0.7	15.2
10 Education	133.2	-	13.2	07.2.1 Spare parts and accessories	105.3	-0.2	2.2
11 Restaurants and hotels	111.6	0.4	4.1	07.2.2 Fuels and lubricants	138.6	1.1	25.7
12 Miscellaneous goods and services	109.0	0.4	2.8	07.2.3 Maintenance and repairs	117.6	0.4	5.1
All goods	106.4	-0.8	4.7	07.2.4 Other services	112.2	-	2.2
All services	112.2	0.9	4.1	07.3 Transport services	123.7	7.1	6.0
01.1 Food	119.4	0.8	13.7	07.3.1 Passenger transport by railway	114.6	0.4	4.5
01.1.1 Bread and cereals	121.2	1.7	15.9	07.3.2 Passenger transport by road	112.8	0.9	4.4
01.1.2 Meat	119.3	2.9	16.3	07.3.3 Passenger transport by air	131.0	20.7	8.9
01.1.3 Fish	121.7	1.7	5.1	07.3.4 Passenger transport by sea and inland waterway	135.2	8.8	-9.7
01.1.4 Milk, cheese and eggs	125.5	0.1	19.0	08.1 Postal services	129.5	-	6.7
01.1.5 Oils and fats	137.2	-0.1	29.5	08.2/3 Telephone and telefax equipment and services	92.7	-0.8	-1.0
01.1.6 Fruit	106.8	-4.3	10.7	09.1 Audio-visual equipment and related products	68.6	-2.3	-11.9
01.1.7 Vegetables including potatoes and tubers	122.4	0.3	11.1	09.1.1 Reception and reproduction of sound and pictures	64.8	-1.0	-12.0
01.1.8 Sugar, jam, syrups, chocolate and confectionery	114.9	0.4	7.6	09.1.2 Photographic, cinematographic and optical equipment	44.5	-0.5	-19.2
01.1.9 Food products (nec)	106.9	2.0	6.4	09.1.3 Data processing equipment	54.2	-0.2	-20.7
01.2 Non-alcoholic beverages	112.0	0.8	2.7	09.1.4 Recording media	89.5	-4.6	-6.3
01.2.1 Coffee, tea and cocoa	115.6	2.5	5.6	09.1.5 Repair of audio-visual equipment & related products	111.2	0.1	3.1
01.2.2 Mineral waters, soft drinks and juices	110.8	0.4	1.9	09.2 Oth. major durables for recreation & culture	102.6	-0.2	1.9
02.1 Alcoholic beverages	105.7	-0.9	4.0	09.2.1/2 Major durables for in/outdoor recreation	102.6	-0.2	1.9
02.1.1 Spirits	108.4	-0.5	7.9	09.3 Other recreational items, gardens and pets	95.4	-2.3	-0.3
02.1.2 Wine	106.6	-0.5	3.8	09.3.1 Games, toys and hobbies	88.1	-4.1	-3.2
02.1.3 Beer	100.1	-2.3	-0.5	09.3.2 Equipment for sport and open-air recreation	99.1	0.3	1.0
02.2 Tobacco	115.6	-	4.4	09.3.3 Gardens, plants and flowers	103.0	-1.1	3.3
03.1 Clothing	82.7	-3.6	-7.3	09.3.4/5 Pets, related products and services	112.5	0.7	5.7
03.1.2 Garments	81.4	-3.9	-7.9	09.4 Recreational and cultural services	111.9	0.4	3.1
03.1.3 Other clothing and clothing accessories	96.9	-1.2	-1.2	09.4.1 Recreational and sporting services	115.0	0.4	5.5
03.1.4 Cleaning, repair and hire of clothing	112.4	1.4	3.5	09.4.2 Cultural services	110.6	0.4	2.0
03.2 Footwear including repairs	91.1	-0.7	-2.5	09.5 Books, newspapers and stationery	111.4	0.5	5.3
04.1 Actual rentals for housing	110.2	0.2	2.9	09.5.1 Books	115.2	1.3	8.1
04.3 Regular maintenance and repair of the dwelling	111.6	1.1	4.8	09.5.2 Newspapers and periodicals	116.2	-0.2	5.7
04.3.1 Materials for maintenance and repair	109.2	0.9	4.4	09.5.3/4 Misc. printed matter, stationery, drawing materials	100.8	0.6	2.1
04.3.2 Services for maintenance and repair	115.1	1.5	5.2	09.6 Package holidays	104.3	0.8	4.2
04.4 Water supply and misc. services for the dwelling	122.9	-	6.5	10.0 Education	133.2	-	13.2
04.4.1 Water supply	122.2	-	5.7	11.1 Catering services	111.6	0.3	4.3
04.4.3 Sewerage collection	123.3	-	7.3	11.1.1 Restaurants & cafes	111.6	0.3	4.4
04.5 Electricity, gas and other fuels	151.6	0.5	16.1	11.1.2 Canteens	111.5	0.3	3.4
04.5.1 Electricity	145.7	-	12.6	11.2 Accommodation services	111.3	1.2	2.7
04.5.2 Gas	154.1	0.2	12.9	12.1 Personal care	107.1	0.4	2.4
04.5.3 Liquid fuels	215.8	5.1	92.2	12.1.1 Hairdressing and personal grooming establishments	111.9	0.4	3.9
04.5.4 Solid fuels	131.7	1.0	16.6	12.1.2/3 Appliances and products for personal care	105.4	0.4	1.9
05.1 Furniture, furnishings and carpets	104.7	-6.7	5.4	12.3 Personal effects (nec)	109.0	-1.2	4.4
05.1.1 Furniture and furnishings	103.8	-8.4	4.9	12.3.1 Jewellery, clocks and watches	113.6	-1.0	6.0
05.1.2 Carpets and other floor coverings	107.3	-0.4	7.2	12.3.2 Other personal effects	100.4	-1.5	0.5
05.2 Household textiles	89.4	-1.0	-1.7	12.4 Social protection	117.1	0.5	4.8
05.3 Household appliances, fitting and repairs	96.1	-1.0	-	12.5 Insurance	108.7	0.2	2.8
05.3.1/2 Major appliances and small electric goods	94.7	-1.2	-0.6	12.5.2 House contents insurance	101.7	-2.2	-0.6
05.3.3 Repair of household appliances	108.4	0.4	5.1	12.5.3 Health insurance	123.8	2.1	6.4
05.4 Glassware, tableware and household utensils	100.3	-0.3	1.0	12.5.4 Transport insurance	105.8	0.5	2.7
05.5 Tools and equipment for house and garden	102.5	-0.6	0.3	12.6 Financial services (nec)	104.3	1.0	0.6
05.6 Goods and services for routine maintenance	112.8	0.8	4.3	12.6.2 Other financial services (nec)	104.3	1.0	0.6
05.6.1 Non-durable household goods	110.1	1.3	3.9	12.7 Other services (nec)	115.9	0.1	5.7
05.6.2 Domestic services and household services	115.1	0.3	4.6				
06.1 Medical products, appliances and equipment	101.6	0.3	1.4				
06.1.1 Pharmaceutical products	102.0	0.5	1.5				
06.1.2/3 Other medical and therapeutic equipment	101.5	0.2	1.3				

Key: - zero or negligible .. not available (nec) not elsewhere covered

Source: National Statistics

3 CPI: Detailed figures by divisions, groups and classes

	Weights	Index (2005=100)						Percentage change over 12 months					
		2008	2008 Feb	2008 Mar	2008 Apr	2008 May	2008 Jun	2008 Jul	2008 Feb	2008 Mar	2008 Apr	2008 May	2008 Jun
CPI (overall index)	1 000	106.3	106.7	107.6	108.3	109.0	109.0	2.5	2.5	3.0	3.3	3.8	4.4
01 Food and non-alcoholic beverages	109	111.3	111.8	113.2	115.1	117.5	118.4	5.6	5.5	6.6	7.8	9.5	12.3
02 Alcoholic beverages and tobacco	42	108.1	108.2	111.5	112.0	111.9	111.4	2.9	2.5	4.2	4.9	4.5	4.3
03 Clothing and footwear	63	87.6	87.9	87.8	87.8	86.5	83.8	-4.7	-5.3	-6.3	-6.3	-7.5	-6.7
04 Housing, water, electricity, gas and other fuels	115	119.1	119.5	122.0	122.3	122.5	123.0	3.5	3.9	5.4	6.3	7.0	7.6
05 Furniture, household equipment and maintenance	67	101.3	103.5	102.1	103.5	105.9	102.6	1.7	0.5	1.4	1.7	1.8	2.8
06 Health	22	108.2	108.4	108.9	109.0	109.3	110.1	3.1	3.5	3.3	3.0	3.0	3.3
07 Transport	152	109.1	110.3	110.8	112.7	114.6	116.6	6.2	7.0	6.1	6.2	7.3	8.0
08 Communication	23	94.3	94.2	94.4	94.3	94.9	94.1	-3.9	-4.0	-2.9	-2.4	-1.3	-0.7
09 Recreation and culture	152	97.2	96.8	97.3	97.3	97.6	96.9	-1.2	-1.5	-1.0	-0.8	0.0	-0.1
10 Education	19	133.2	133.2	133.2	133.2	133.2	133.2	13.2	13.2	13.2	13.2	13.2	13.2
11 Restaurants and hotels	137	108.7	109.2	110.4	110.8	111.1	111.6	3.3	3.3	3.8	3.9	3.9	4.1
12 Miscellaneous goods and services	99	107.1	107.5	108.3	108.5	108.6	109.0	1.2	1.2	2.3	2.6	2.7	2.8
All goods	547	104.0	104.6	105.3	106.2	107.2	106.4	1.9	1.7	2.3	3.0	3.8	4.7
All services	453	109.0	109.4	110.4	110.8	111.2	112.2	3.1	3.4	3.7	3.8	3.9	4.1
01.1 Food	95	111.5	112.0	113.6	115.7	118.5	119.4	6.0	5.9	7.2	8.7	10.6	13.7
01.1.1 Bread and cereals	16	112.0	113.2	114.4	115.8	119.2	121.2	7.9	7.3	8.5	9.1	11.9	15.9
01.1.2 Meat	21	106.4	106.8	108.5	112.4	116.0	119.3	2.1	2.2	4.1	8.8	11.2	16.3
01.1.3 Fish	5	118.8	116.6	121.5	123.8	119.6	121.7	2.0	0.5	4.6	6.7	1.5	5.1
01.1.4 Milk, cheese and eggs	14	120.1	121.4	121.2	122.5	125.3	125.5	17.6	16.0	15.7	16.6	19.1	19.0
01.1.5 Oils and fats	2	124.9	124.7	124.1	128.7	137.3	137.2	15.9	15.5	15.8	20.1	28.2	29.5
01.1.6 Fruit	9	101.3	101.2	104.4	105.2	111.6	106.8	0.2	2.2	7.4	2.4	8.2	10.7
01.1.7 Vegetables including potatoes and tubers	15	114.9	114.6	117.3	120.1	121.9	122.4	4.4	3.4	3.8	7.2	7.4	11.1
01.1.8 Sugar, jam, syrups, chocolate and confectionery	11	111.4	112.8	113.8	114.0	114.4	114.9	5.5	6.6	6.2	6.3	6.7	7.6
01.1.9 Food products (nec)	2	102.6	102.5	102.3	103.0	104.8	106.9	2.3	1.6	2.3	2.6	3.4	6.4
01.2 Non-alcoholic beverages	14	109.7	110.2	110.4	111.0	111.0	112.0	2.6	2.7	2.2	1.7	1.9	2.7
01.2.1 Coffee, tea and cocoa	3	111.6	110.8	110.0	112.5	112.8	115.6	2.5	1.1	1.4	2.3	3.5	5.6
01.2.2 Mineral waters, soft drinks and juices	11	109.1	109.9	110.3	110.4	110.4	110.8	2.6	3.2	2.5	1.5	1.5	1.9
02.1 Alcoholic beverages	18	101.9	101.6	105.9	107.1	106.7	105.7	1.0	-0.3	3.7	5.4	4.4	4.0
02.1.1 Spirits	5	102.7	102.6	108.0	110.5	109.0	108.4	2.7	0.9	6.3	9.2	7.1	7.9
02.1.2 Wine	9	102.4	102.5	105.8	106.7	107.2	106.6	0.4	-0.2	3.5	4.7	3.9	3.8
02.1.3 Beer	4	99.3	98.0	103.0	103.4	102.5	100.1	0.0	-2.0	1.0	2.3	2.1	-0.5
02.2 Tobacco	24	112.7	113.1	115.5	115.5	115.6	115.6	4.2	4.5	4.5	4.5	4.5	4.4
03.1 Clothing	55	87.1	87.4	87.3	87.2	85.8	82.7	-4.9	-5.6	-6.7	-6.7	-8.0	-7.3
03.1.2 Garments	51	86.3	86.5	86.3	86.1	84.7	81.4	-5.1	-5.9	-7.2	-7.3	-8.6	-7.9
03.1.3 Other clothing and clothing accessories	3	95.9	97.6	97.7	99.2	98.1	96.9	-3.0	-2.2	-2.9	0.0	-1.6	-1.2
03.1.4 Cleaning, repair and hire of clothing	1	107.1	110.3	110.7	110.7	110.9	112.4	0.5	3.4	3.5	3.2	2.5	3.5
03.2 Footwear including repairs	8	90.8	91.2	91.7	92.3	91.8	91.1	-3.2	-3.1	-3.4	-3.7	-4.2	-2.5
04.1 Actual rentals for housing	51	108.1	108.1	109.8	109.9	110.0	110.2	3.3	3.3	3.5	3.4	3.4	2.9
04.3 Regular maintenance and repair of the dwelling	18	109.8	110.0	110.2	110.0	110.3	111.6	4.6	4.9	4.9	4.5	4.0	4.8
04.3.1 Materials for maintenance and repair	10	108.0	108.4	108.4	107.9	108.2	109.2	5.0	5.6	5.7	5.0	4.2	4.4
04.3.2 Services for maintenance and repair	8	112.4	112.5	112.8	113.1	113.4	115.1	4.2	4.0	3.8	3.8	3.8	5.2
04.4 Water supply and misc. services for the dwelling	11	115.3	115.3	122.9	122.9	122.9	122.9	6.5	6.5	6.5	6.5	6.5	6.5
04.4.1 Water supply	5	115.7	115.7	122.2	122.2	122.2	122.2	6.2	6.2	5.7	5.7	5.7	5.7
04.4.3 Sewerage collection	6	114.9	114.9	123.3	123.3	123.3	123.3	6.9	6.9	7.3	7.3	7.3	7.3
04.5 Electricity, gas and other fuels	35	144.7	145.8	149.4	150.3	150.9	151.6	2.9	3.9	8.3	11.2	13.8	16.1
04.5.1 Electricity	17	142.7	142.7	145.7	145.7	145.7	145.7	5.2	5.2	8.3	9.6	11.2	12.6
04.5.2 Gas	15	150.7	150.7	153.8	153.8	153.8	154.1	-2.0	-1.3	3.7	7.1	10.2	12.9
04.5.3 Liquid fuels	2	143.6	164.0	181.3	196.8	205.4	215.8	44.4	59.4	69.1	84.4	87.8	92.2
04.5.4 Solid fuels	1	124.4	124.8	125.2	127.7	130.4	131.7	8.9	9.2	9.6	12.4	15.2	16.6
05.1 Furniture, furnishings and carpets	28	101.6	106.2	103.5	106.4	112.2	104.7	2.3	-0.4	2.8	3.1	3.6	5.4
05.1.1 Furniture and furnishings	22	100.9	107.3	103.5	105.7	113.3	103.8	2.0	-1.2	2.3	2.5	2.5	4.9
05.1.2 Carpets and other floor coverings	6	103.8	101.8	103.5	108.5	107.7	107.3	3.4	2.4	4.5	5.3	7.7	7.2
05.2 Household textiles	8	92.7	92.6	91.4	91.8	90.3	89.4	-1.1	-0.6	-1.7	-1.7	-3.6	-1.7
05.3 Household appliances, fitting and repairs	9	96.3	96.6	96.6	96.4	97.1	96.1	2.1	0.2	-0.2	-0.3	1.2	0.0
05.3.1/2 Major appliances and small electric goods	8	95.1	95.4	95.3	95.1	95.8	94.7	1.8	-0.3	-0.7	-0.9	0.7	-0.6
05.3.3 Repair of household appliances	1	106.9	106.9	107.1	107.5	107.9	108.4	4.2	4.2	4.2	4.6	5.0	5.1
05.4 Glassware, tableware and household utensils	7	100.6	101.8	101.7	101.5	100.6	100.3	1.9	2.7	1.9	1.1	-0.4	1.0
05.5 Tools and equipment for house and garden	5	103.1	103.2	103.0	102.6	103.1	102.5	0.7	1.2	0.3	0.2	0.7	0.3
05.6 Goods and services for routine maintenance	10	109.4	109.7	109.5	111.2	112.0	112.8	2.5	2.0	1.4	3.0	3.2	4.3
05.6.1 Non-durable household goods	5	106.1	106.3	105.6	108.2	108.7	110.1	1.0	0.1	-0.8	1.8	2.0	3.9
05.6.2 Domestic services and household services	5	112.3	112.6	113.0	113.7	114.7	115.1	3.8	3.7	3.5	4.0	4.3	4.6
06.1 Medical products, appliances and equipment	10	101.0	101.4	101.4	101.2	101.2	101.6	0.7	1.3	0.8	0.5	0.5	1.4
06.1.1 Pharmaceutical products	5	101.8	102.2	102.1	101.7	101.5	102.0	0.3	1.4	0.8	0.1	0.3	1.5
06.1.2/3 Other medical and therapeutic equipment	5	100.6	100.8	101.1	101.0	101.3	101.5	1.1	1.2	0.9	0.8	0.7	1.3

Key: - zero or negligible .. not available (nec) not elsewhere covered

Source: National Statistics

3 CPI: Detailed figures by divisions, groups and classes

continued

	Weights	Index (2005=100)						Percentage change over 12 months					
		2008	2008 Feb	2008 Mar	2008 Apr	2008 May	2008 Jun	2008 Jul	2008 Feb	2008 Mar	2008 Apr	2008 May	2008 Jun
06.2 Out-patient services	4	110.4	110.8	111.0	111.9	112.1	112.3	3.2	3.5	3.7	3.2	3.2	3.3
06.2.1/3 Medical services & paramedical services	2	107.9	108.5	108.9	108.9	109.1	109.3	3.0	3.5	3.8	3.3	3.0	3.2
06.2.2 Dental services	2	113.2	113.4	113.6	115.2	115.5	115.7	3.5	3.7	3.7	3.1	3.2	3.3
06.3 Hospital services	8	116.5	116.6	117.7	118.0	118.4	120.4	5.9	5.9	5.9	5.9	5.9	5.8
07.1 Purchase of vehicles	48	98.8	98.6	98.5	98.6	98.1	97.9	-1.3	-1.3	-1.4	-1.5	-1.7	-1.5
07.1.1A New cars	26	103.2	103.3	103.3	103.5	103.5	103.8	1.4	1.2	1.1	1.2	1.0	1.2
07.1.1B Second-hand cars	19	91.9	91.4	91.4	91.0	89.8	88.7	-5.0	-4.7	-4.7	-5.1	-5.7	-5.7
07.1.2/3 Motorcycles and bicycles	3	98.1	97.8	96.5	97.7	99.3	100.8	-2.0	-2.0	-3.5	-2.8	-0.2	1.1
07.2 Operation of personal transport equipment	72	116.7	118.4	120.0	122.8	126.3	127.2	12.3	12.2	11.5	12.1	14.3	15.2
07.2.1 Spare parts and accessories	5	104.7	104.4	105.3	105.3	105.6	105.3	2.1	2.2	3.1	3.0	2.7	2.2
07.2.2 Fuels and lubricants	38	120.0	122.9	125.6	130.7	137.1	138.6	20.4	20.3	18.7	19.5	24.0	25.7
07.2.3 Maintenance and repairs	23	115.2	115.7	115.8	116.5	117.1	117.6	5.0	5.1	4.7	5.0	4.8	5.1
07.2.4 Other services	6	111.0	111.2	112.0	112.1	112.1	112.2	3.5	1.5	2.8	2.5	2.4	2.2
07.3 Transport services	32	108.8	111.3	110.6	113.3	115.5	123.7	4.0	8.1	5.5	4.7	5.1	6.0
07.3.1 Passenger transport by railway	8	114.1	113.9	114.8	114.6	114.1	114.6	4.4	4.7	4.9	4.8	4.3	4.5
07.3.2 Passenger transport by road	14	110.6	111.1	111.7	112.0	111.8	112.8	4.3	4.5	4.5	4.7	3.8	4.4
07.3.3 Passenger transport by air	8	90.5	98.2	93.6	102.4	108.5	131.0	1.6	15.7	6.6	3.4	5.4	8.9
07.3.4 Passenger transport by sea and inland waterway	2	114.2	111.2	117.8	115.0	124.2	135.2	1.2	6.1	1.6	-3.7	0.4	-9.7
08.1 Postal services	1	121.5	121.6	129.5	129.5	129.5	129.5	6.3	6.4	6.7	6.7	6.7	6.7
08.2/3 Telephone and telefax equipment and services	22	93.1	93.0	92.9	92.8	93.4	92.7	-4.4	-4.5	-3.3	-2.8	-1.7	-1.0
09.1 Audio-visual equipment and related products	27	72.8	71.5	70.7	70.3	70.2	68.6	-14.0	-14.2	-13.8	-14.0	-12.2	-11.9
09.1.1 Reception and reproduction of sound and pictures	6	68.6	68.3	67.1	66.7	65.4	64.8	-16.4	-14.6	-14.3	-13.3	-12.7	-12.0
09.1.2 Photographic, cinematographic and optical equipment	4	48.2	48.0	46.6	46.1	44.7	44.5	-25.5	-27.3	-28.0	-25.2	-21.7	-19.2
09.1.3 Data processing equipment	5	60.0	56.3	54.9	54.4	54.3	54.2	-25.6	-26.7	-25.1	-23.8	-23.3	-20.7
09.1.4 Recording media	11	93.4	92.2	92.6	92.2	93.8	89.5	-3.0	-3.7	-4.0	-7.1	-4.4	-6.3
09.1.5 Repair of audio-visual equipment & related products	1	109.8	109.9	110.4	110.8	111.1	111.2	3.2	3.3	3.5	3.4	3.6	3.1
09.2 Other major durables for recreation & culture	9	102.0	102.1	102.7	102.7	102.8	102.6	1.5	1.6	1.8	2.0	2.1	1.9
09.2.1/2 Major durables for in/outdoor recreation	9	102.0	102.1	102.7	102.7	102.8	102.6	1.5	1.6	1.8	2.0	2.1	1.9
09.3 Other recreational items, gardens and pets	38	96.7	95.8	97.0	96.6	97.7	95.4	-0.6	-2.1	-0.5	-0.1	1.5	-0.3
09.3.1 Games, toys and hobbies	22	91.1	89.7	91.8	90.9	91.8	88.1	-2.8	-5.2	-2.3	-2.0	-0.1	-3.2
09.3.2 Equipment for sport and open-air recreation	4	96.4	97.2	97.7	98.1	98.8	99.1	-0.8	-0.4	-0.7	-0.7	-0.4	1.0
09.3.3 Gardens, plants and flowers	5	104.6	103.3	103.2	103.0	104.1	103.0	2.0	1.3	2.6	2.6	4.7	3.3
09.3.4/5 Pets, related products and services	7	109.8	109.8	109.4	110.1	111.7	112.5	4.2	4.3	3.0	4.0	5.3	5.7
09.4 Recreational and cultural services	32	110.1	110.2	111.7	111.6	111.5	111.9	3.5	3.2	2.6	2.5	1.9	3.1
09.4.1 Recreational and sporting services	11	113.1	113.1	114.1	114.4	114.5	115.0	5.2	5.2	5.5	5.4	5.3	5.5
09.4.2 Cultural services	21	108.7	108.9	110.6	110.3	110.2	110.6	2.7	2.3	1.4	1.2	0.3	2.0
09.5 Books, newspapers and stationery	17	110.4	111.0	110.1	111.7	110.9	111.4	4.9	5.9	5.2	6.4	5.9	5.3
09.5.1 Books	5	116.5	116.6	113.6	117.8	113.7	115.2	10.4	11.7	10.0	12.8	9.9	8.1
09.5.2 Newspapers and periodicals	7	113.6	114.3	114.4	115.7	116.4	116.2	4.4	4.8	4.5	5.8	6.3	5.7
09.5.3/4 Misc. printed matter, stationery, drawing materials	5	99.6	100.4	100.5	99.8	100.2	100.8	0.1	1.5	1.3	0.7	1.3	2.1
09.6 Package holidays	29	101.3	101.6	102.4	102.8	103.6	104.3	1.3	1.6	2.4	3.0	4.0	4.2
10.0 Education	19	133.2	133.2	133.2	133.2	133.2	133.2	13.2	13.2	13.2	13.2	13.2	13.2
11.1 Catering services	118	108.7	109.2	110.6	111.0	111.3	111.6	3.5	3.5	4.2	4.2	4.3	4.3
11.1.1 Restaurants & cafes	106	108.5	109.0	110.5	110.9	111.3	111.6	3.5	3.5	4.2	4.3	4.4	4.4
11.1.2 Canteens	12	110.2	110.5	110.8	111.2	111.1	111.5	3.8	3.7	3.7	3.6	3.2	3.4
11.2 Accommodation services	19	108.5	109.0	109.6	110.1	110.1	111.3	2.1	2.1	2.0	2.1	1.6	2.7
12.1 Personal care	30	105.5	105.9	106.4	106.7	106.7	107.1	1.4	0.9	1.1	1.6	2.0	2.4
12.1.1 Hairdressing and personal grooming establishments	8	109.4	110.0	110.6	111.1	111.5	111.9	3.4	3.7	3.6	3.6	3.9	3.9
12.1.2/3 Appliances and products for personal care	22	104.1	104.4	104.9	105.1	105.0	105.4	0.7	0.0	0.2	0.9	1.4	1.9
12.3 Personal effects (nec)	10	107.3	109.5	110.1	110.5	110.3	109.0	2.8	4.6	4.4	4.6	4.5	4.4
12.3.1 Jewellery, clocks and watches	7	110.7	112.9	113.6	114.1	114.7	113.6	3.7	5.5	5.5	5.7	6.5	6.0
12.3.2 Other personal effects	3	101.1	103.3	103.6	104.0	101.9	100.4	0.5	2.5	1.8	1.9	0.0	0.5
12.4 Social protection	12	114.6	114.7	115.3	116.0	116.5	117.1	4.9	4.8	4.9	4.9	4.8	4.8
12.5 Insurance	8	108.7	108.6	108.7	109.3	108.4	108.7	3.7	3.5	3.6	4.2	3.4	2.8
12.5.2 House contents insurance	2	108.8	111.1	109.5	109.0	103.9	101.7	4.7	7.3	6.4	4.7	1.5	-0.6
12.5.3 Health insurance	2	118.9	118.9	121.2	121.2	121.2	123.8	6.2	6.2	7.0	7.0	7.0	6.4
12.5.4 Transport insurance	4	104.5	103.1	103.2	104.7	105.3	105.8	1.9	0.3	0.5	2.6	2.6	2.7
12.6 Financial services (nec)	28	101.5	101.7	103.1	102.8	103.2	104.3	-3.2	-3.3	0.0	0.0	0.3	0.6
12.6.2 Other financial services (nec)	28	101.5	101.7	103.1	102.8	103.2	104.3	-3.2	-3.3	0.0	0.0	0.3	0.6
12.7 Other services (nec)	11	114.4	114.6	115.0	115.4	115.8	115.9	4.7	4.9	6.3	6.4	6.0	5.7

Key: - zero or negligible .. not available (nec) not elsewhere covered

Source: National Statistics

4 CPI: Detailed figures by division¹

	Food and non-alcoholic beverages	Alcoholic beverages and tobacco	Clothing and footwear	Housing, water, electricity, gas & other fuels	Furniture, household equipment & routine maintenance	Health ²	Transport	Communication	Recreation and culture	Education ²	Restaurants and hotels	Miscellaneous goods and services ²	CPI (overall index)
COICOP Division	01	02	03	04	05	06	07	08	09	10	11	12	
Weights													
2008	CHZR 109	CHZS 42	CHZT 63	CHZU 115	CHZV 67	CHZW 22	CHZX 152	CHZY 23	CHZZ 152	CJUU 19	CJUV 137	CJUW 99	CHZQ 1 000
Monthly indices (2005=100)													
2006 Jul	D7BU 102.6	D7BV 103.4	D7BW 92.2	D7BX 110.5	D7BY 98.1	D7BZ 103.0	D7C2 105.5	D7C3 99.8	D7C4 98.4	D7C5 103.3	D7C6 103.5	D7C7 104.0	D7BT 102.5
Aug	103.0	103.8	94.4	110.9	99.1	103.4	105.8	99.2	98.4	103.3	103.6	104.5	102.9
Sep	103.6	103.7	96.4	111.5	100.6	103.6	102.9	99.6	98.6	107.9	103.8	104.7	103.0
Oct	104.2	103.9	96.6	112.7	99.0	104.2	101.5	100.4	98.6	117.8	104.2	105.0	103.2
Nov	105.1	103.4	97.2	113.7	100.0	104.1	101.1	100.3	98.7	117.8	104.5	105.0	103.4
Dec	105.4	103.0	96.0	114.5	103.3	104.2	102.8	99.9	99.2	117.8	104.7	104.9	104.0
2007 Jan	104.4	104.5	92.0	114.9	98.3	104.8	102.1	99.0	98.3	117.8	104.9	105.1	103.2
Feb	105.4	105.1	91.9	115.1	99.6	104.9	102.8	98.1	98.4	117.8	105.2	105.8	103.7
Mar	106.0	105.6	92.8	115.0	102.9	104.8	103.1	98.1	98.2	117.8	105.7	106.2	104.2
Apr	106.2	107.0	93.7	115.7	100.7	105.5	104.5	97.2	98.3	117.8	106.3	105.8	104.5
May	106.7	106.8	93.7	115.0	101.8	105.8	106.1	96.6	98.0	117.8	106.6	105.7	104.8
Jun	107.3	107.1	93.6	114.5	104.0	106.1	106.8	96.1	97.6	117.8	106.9	105.8	105.0
Jul	105.5	106.9	89.8	114.3	99.7	106.6	108.0	94.8	97.0	117.8	107.2	106.1	104.4
Aug	106.1	107.0	91.1	114.0	100.3	106.8	108.6	97.2	97.5	117.8	107.4	105.6	104.7
Sep	107.4	107.1	92.5	114.0	102.1	107.1	105.7	96.6	97.6	122.9	107.6	105.8	104.8
Oct	109.1	106.8	92.5	114.3	100.8	107.5	106.6	96.2	97.7	133.2	107.9	106.4	105.3
Nov	110.1	106.4	92.9	114.6	101.6	107.3	107.0	96.3	97.6	133.2	108.0	106.6	105.6
Dec	111.1	105.7	92.2	114.7	104.2	107.6	108.7	96.2	98.0	133.2	108.3	106.8	106.2
2008 Jan	110.8	106.9	87.5	115.4	100.0	108.1	108.6	95.8	97.0	133.2	108.3	106.8	105.5
Feb	111.3	108.1	87.6	119.1	101.3	108.2	109.1	94.3	97.2	133.2	108.7	107.1	106.3
Mar	111.8	108.2	87.9	119.5	103.5	108.4	110.3	94.2	96.8	133.2	109.2	107.5	106.7
Apr	113.2	111.5	87.8	122.0	102.1	108.9	110.8	94.4	97.3	133.2	110.4	108.3	107.6
May	115.1	112.0	87.8	122.3	103.5	109.0	112.7	94.3	97.3	133.2	110.8	108.5	108.3
Jun	117.5	111.9	86.5	122.5	105.9	109.3	114.6	94.9	97.6	133.2	111.1	108.6	109.0
Jul	118.4	111.4	83.8	123.0	102.6	110.1	116.6	94.1	96.9	133.2	111.6	109.0	109.0
Percentage change on a year earlier													
2006 Jul	D7G8 3.2	D7G9 2.8	D7GA -4.5	D7GB 10.0	D7GC -1.3	D7GD 2.4	D7GE 3.3	D7GF 0.3	D7GG -1.4	D7GH 4.7	D7GI 3.2	D7GJ 3.6	D7G7 2.4
Aug	3.4	3.3	-3.9	10.5	-0.5	2.6	2.4	-0.7	-0.9	4.7	3.0	3.9	2.5
Sep	4.0	3.4	-3.5	10.7	0.3	2.8	0.6	-0.2	-1.0	7.1	2.9	3.9	2.4
Oct	4.7	3.2	-3.3	10.8	-0.4	3.1	-0.5	0.9	-1.1	14.0	3.0	3.8	2.4
Nov	5.0	2.7	-3.2	11.1	-0.5	3.1	0.8	0.7	-0.7	14.0	3.2	3.5	2.7
Dec	4.6	2.7	-4.1	11.4	0.6	3.9	2.1	0.5	-0.3	14.0	3.2	3.3	3.0
2007 Jan	3.9	3.5	-4.1	11.2	0.5	3.8	0.9	-1.8	-0.3	14.0	3.3	3.1	2.7
Feb	4.4	4.2	-4.2	11.1	1.2	3.7	1.4	-2.8	-1.0	14.0	3.3	3.6	2.8
Mar	5.6	4.4	-3.9	10.1	2.7	3.7	1.6	-2.8	-0.7	14.0	3.4	3.7	3.1
Apr	6.0	4.5	-2.8	7.9	2.2	3.2	1.5	-3.7	-0.8	14.0	3.8	2.4	2.8
May	5.0	4.2	-3.6	5.7	2.5	3.1	2.5	-3.2	-0.8	14.0	3.5	2.2	2.5
Jun	4.8	3.4	-3.2	4.3	3.8	3.4	3.2	-3.9	-1.1	14.0	3.7	1.8	2.4
Jul	2.8	3.4	-2.6	3.5	1.6	3.4	2.4	-5.0	-1.4	14.0	3.6	2.0	1.9
Aug	3.0	3.1	-3.5	2.8	1.2	3.3	2.6	-2.0	-0.9	14.0	3.6	1.1	1.8
Sep	3.7	3.2	-4.0	2.3	1.5	3.4	2.7	-3.0	-1.0	13.9	3.7	1.0	1.8
Oct	4.7	2.7	-4.3	1.4	1.8	3.2	5.1	-4.2	-0.9	13.2	3.5	1.3	2.1
Nov	4.8	2.9	-4.4	0.8	1.7	3.1	5.8	-4.0	-1.1	13.2	3.4	1.6	2.1
Dec	5.4	2.7	-3.9	0.2	0.9	3.3	5.8	-3.8	-1.3	13.2	3.4	1.9	2.1
2008 Jan	6.1	2.2	-4.9	0.4	1.7	3.1	6.4	-3.2	-1.4	13.2	3.3	1.5	2.2
Feb	5.6	2.9	-4.7	3.5	1.7	3.1	6.2	-3.9	-1.2	13.2	3.3	1.2	2.5
Mar	5.5	2.5	-5.3	3.9	0.5	3.5	7.0	-4.0	-1.5	13.2	3.3	1.2	2.5
Apr	6.6	4.2	-6.3	5.4	1.4	3.3	6.1	-2.9	-1.0	13.2	3.8	2.3	3.0
May	7.8	4.9	-6.3	6.3	1.7	3.0	6.2	-2.4	-0.8	13.2	3.9	2.6	3.3
Jun	9.5	4.5	-7.5	7.0	1.8	3.0	7.3	-1.3	-	13.2	3.9	2.7	3.8
Jul	12.3	4.3	-6.7	7.6	2.8	3.3	8.0	-0.7	-0.1	13.2	4.1	2.8	4.4

Key: - zero or negligible

¹ Inflation rates prior to 1997 and index levels prior to 1996 are estimated. Further details are given in *Economic Trends No. 541 December 1998*. These details are also available on the National Statistics website: www.statistics.gov.uk/cpi/article.asp?ID=31

² The coverage of these categories was extended in January 2000; further extensions to coverage came into effect in January 2001 for health and miscellaneous goods and services; the coverage of miscellaneous goods and services was further extended with effect from January 2002 (details are given in a series of Economic Trends articles available on the National Statistics website: www.statistics.gov.uk/cpi)

Source: National Statistics

5 CPI: Detailed goods and services breakdown¹

	Weights		Index (2005=100)						Percentage change over 12 months						Percentage change over 1 month
	2008	2008	2008	2008	2008	2008	2008	2008	2008	2008	2008	2008	2008	2008	2008
CPI (overall index)	1 000	106.3	106.7	107.6	108.3	109.0	109.0	2.5	2.5	3.0	3.3	3.8	4.4	–	
All goods	547	104.0	104.6	105.3	106.2	107.2	106.4	1.9	1.7	2.3	3.0	3.8	4.7	–0.8	
Food, alcoholic beverages & tobacco	151	110.4	110.7	112.7	114.2	115.9	116.4	4.8	4.6	5.8	7.0	8.0	9.9	0.4	
Processed food & non-alcoholic beverages	59	113.2	114.2	114.7	115.7	117.7	118.7	8.3	8.1	8.1	8.5	10.3	11.8	0.8	
Non-processed food	50	109.0	108.9	111.5	114.3	117.2	118.1	2.5	2.5	4.7	7.0	8.6	12.7	0.7	
Seasonal food	29	111.1	110.6	113.8	115.9	118.3	117.2	2.8	2.7	5.2	5.7	6.7	10.2	–0.9	
Meat	21	106.4	106.8	108.5	112.4	116.0	119.3	2.1	2.2	4.1	8.8	11.2	16.3	2.9	
Alcoholic beverages & tobacco	42	108.1	108.2	111.5	112.0	111.9	111.4	2.9	2.5	4.2	4.9	4.5	4.3	–0.4	
Industrial goods	396	101.8	102.4	102.7	103.4	104.1	102.9	0.9	0.6	1.1	1.5	2.2	2.8	–1.2	
Energy	73	132.5	134.6	137.7	140.9	144.7	145.8	11.4	12.0	13.6	15.6	19.0	21.1	0.8	
Electricity, gas & miscellaneous energy	33	145.9	145.9	148.8	148.9	149.0	149.2	1.9	2.3	6.2	8.6	10.9	12.9	0.1	
Liquid fuels, vehicle fuels & lubricants	40	120.7	124.4	127.6	133.1	139.6	141.5	21.1	21.7	20.5	21.8	26.3	28.3	1.3	
Non-energy industrial goods	323	96.2	96.5	96.4	96.7	96.9	95.2	–1.4	–1.8	–1.7	–1.5	–1.4	–1.2	–1.8	
Clothing & footwear goods	62	87.3	87.6	87.5	87.5	86.2	83.3	–4.8	–5.4	–6.5	–6.5	–7.7	–6.9	–3.3	
Housing goods	76	102.2	104.1	103.3	104.4	106.5	103.6	2.3	1.3	2.1	2.2	2.2	3.1	–2.7	
Household goods	61	100.2	102.5	101.0	102.5	105.0	101.3	1.5	0.2	1.2	1.5	1.5	2.7	–3.5	
Water supply; materials for maintenance & repair	15	110.4	110.7	112.8	112.4	112.6	113.3	5.4	5.8	5.7	5.2	4.7	4.8	0.6	
Medical products, appliances & equipment	10	101.0	101.4	101.4	101.2	101.2	101.6	0.7	1.3	0.8	0.5	0.5	1.4	0.3	
Vehicles, spare parts & accessories	53	99.4	99.2	99.2	99.2	98.9	98.6	–1.0	–0.9	–1.0	–1.1	–1.2	–1.1	–0.2	
Recreational goods	90	91.7	90.9	91.0	90.9	91.2	89.8	–3.7	–4.1	–3.5	–3.1	–1.9	–2.6	–1.6	
Audio-visual goods	26	71.6	70.2	69.5	69.0	68.9	67.3	–14.6	–14.8	–14.5	–14.6	–12.8	–12.4	–2.4	
Other recreational goods	64	101.0	100.6	101.2	101.4	101.8	100.5	1.1	0.5	1.3	1.9	2.7	1.5	–1.3	
Miscellaneous goods	32	105.2	106.1	106.6	106.9	106.8	106.6	1.3	1.4	1.5	2.0	2.3	2.6	–0.1	
All services	453	109.0	109.4	110.4	110.8	111.2	112.2	3.1	3.4	3.7	3.8	3.9	4.1	0.9	
Housing services	73	109.4	109.5	111.3	111.5	111.5	111.8	3.7	3.8	3.9	3.9	3.8	3.6	0.3	
Actual rentals for housing	51	108.1	108.1	109.8	109.9	110.0	110.2	3.3	3.3	3.5	3.4	3.4	2.9	0.2	
Primary housing services	16	112.8	113.2	116.2	116.2	115.7	116.3	5.2	5.4	5.5	5.2	4.9	5.3	0.5	
Other housing services	6	111.5	111.8	112.1	112.8	113.7	114.1	3.9	3.8	3.6	4.1	4.4	4.7	0.3	
Travel & transport services	65	111.0	112.4	112.2	113.8	115.2	119.6	4.2	5.9	4.7	4.5	4.7	5.3	3.8	
Services for personal transport equipment	29	114.3	114.8	115.0	115.6	116.1	116.5	4.7	4.3	4.3	4.5	4.3	4.5	0.3	
Transport services	32	108.8	111.3	110.6	113.3	115.5	123.7	4.0	8.1	5.5	4.7	5.1	6.0	7.1	
Transport insurance	4	104.5	103.1	103.2	104.7	105.3	105.8	1.9	0.3	0.5	2.6	2.6	2.7	0.5	
Communication	23	94.3	94.2	94.4	94.3	94.9	94.1	–3.9	–4.0	–2.9	–2.4	–1.3	–0.7	–0.7	
Recreational & personal services	208	107.9	108.3	109.5	109.8	110.1	110.7	3.1	3.1	3.4	3.6	3.6	4.0	0.5	
Package holidays & accommodation	48	104.2	104.5	105.2	105.7	106.1	107.1	1.6	1.8	2.2	2.6	3.1	3.6	0.9	
Other recreational & personal services	160	109.0	109.4	110.8	111.1	111.3	111.7	3.5	3.4	3.8	3.8	3.8	4.1	0.4	
Catering services	118	108.7	109.2	110.6	111.0	111.3	111.6	3.5	3.5	4.2	4.2	4.3	4.3	0.3	
Non-catering recreational & personal services	42	109.9	110.1	111.4	111.4	111.5	111.9	3.4	3.3	2.9	2.7	2.3	3.3	0.4	
Miscellaneous & other services	84	113.8	114.0	114.8	114.9	115.3	116.0	4.0	4.0	5.3	5.3	5.3	5.3	0.6	
Miscellaneous services	53	107.8	107.9	109.0	109.1	109.5	110.3	0.6	0.6	2.7	2.7	2.8	2.8	0.7	
Medical services	12	114.4	114.6	115.5	115.9	116.3	117.7	4.9	5.0	5.1	5.0	5.0	4.9	1.2	
Education	19	133.2	133.2	133.2	133.2	133.2	133.2	13.2	13.2	13.2	13.2	13.2	13.2	–	
Special aggregates															
Durables	115	94.3	95.1	94.3	94.9	96.0	93.9	–2.6	–3.2	–2.4	–2.1	–1.6	–1.0	–2.1	
Semi-durables	132	92.4	92.4	92.5	92.5	91.9	89.4	–2.4	–3.0	–3.2	–3.4	–3.8	–4.0	–2.7	
Non-durables	76	106.1	106.4	106.8	107.1	107.4	107.8	2.3	2.3	2.2	2.6	3.0	3.3	0.4	
Seasonal food	29	111.1	110.6	113.8	115.9	118.3	117.2	2.8	2.7	5.2	5.7	6.7	10.2	–0.9	
Non-seasonal food	66	111.7	112.6	113.5	115.6	118.6	120.4	7.4	7.2	8.0	10.1	12.4	15.3	1.5	
Energy, food, alcoholic beverages & tobacco	224	116.9	117.8	120.1	122.1	124.4	125.1	6.9	7.0	8.4	9.7	11.6	13.5	0.6	
Energy & unprocessed food	123	122.3	123.4	126.3	129.3	132.7	133.7	7.8	8.1	10.0	12.1	14.8	17.7	0.8	
Energy & seasonal food	102	126.0	127.3	130.5	133.3	136.7	137.2	9.0	9.3	11.2	12.7	15.5	17.9	0.3	
Tobacco	24	112.7	113.1	115.5	115.5	115.6	115.6	4.2	4.5	4.5	4.5	4.5	4.4	–	
Housing, water, electricity, gas & other fuels	115	119.1	119.5	122.0	122.3	122.5	123.0	3.5	3.9	5.4	6.3	7.0	7.6	0.4	
Education, health & social protection ²	53	117.5	117.7	118.0	118.2	118.5	119.0	6.9	7.0	6.9	6.8	6.8	6.9	0.4	
<i>All items excluding</i>															
Energy	927	104.5	104.9	105.6	106.1	106.7	106.6	1.8	1.7	2.1	2.4	2.7	3.2	–0.1	
Energy, food, alcoholic beverages & tobacco	776	103.4	103.8	104.3	104.6	105.0	104.8	1.2	1.2	1.4	1.5	1.6	1.9	–0.2	
Energy & unprocessed food	877	104.3	104.7	105.3	105.7	106.1	105.9	1.8	1.7	2.0	2.1	2.3	2.6	–0.1	
Seasonal food	971	106.1	106.6	107.4	108.1	108.8	108.8	2.5	2.5	2.9	3.3	3.7	4.3	–	
Energy & seasonal food	898	104.3	104.7	105.3	105.8	106.3	106.2	1.8	1.7	2.1	2.3	2.5	2.9	–0.1	
Tobacco	976	106.1	106.6	107.4	108.1	108.9	108.8	2.4	2.4	2.9	3.3	3.8	4.4	–	
Alcoholic beverages & tobacco	958	106.2	106.7	107.4	108.1	108.9	108.9	2.5	2.5	2.9	3.3	3.8	4.4	–	
Liquid fuels, vehicle fuels & lubricants	960	105.7	106.0	106.8	107.3	107.9	107.8	1.8	1.7	2.3	2.6	2.9	3.5	–0.1	
Housing, water, electricity, gas & other fuels	885	104.7	105.2	105.9	106.6	107.4	107.3	2.3	2.3	2.6	3.0	3.4	4.0	–0.1	
Education, health & social protection	947	105.6	106.1	107.0	107.7	108.5	108.5	2.2	2.2	2.7	3.1	3.6	4.3	–	

Key: – zero or negligible

² The coverage of this special aggregate has changed extensively since January 2000, when Social protection was first included and extensions to the Education and Health divisions also took effect. Health was further extended with effect from January 2001. Details are given in a series of Economic Trends articles available on the National Statistics website: www.statistics.gov.uk/cpi

¹ For further information on the composition of the indices shown, see 'The Consumer Prices Index: Goods and Services Indices and Special Aggregates', which can be downloaded from: www.statistics.gov.uk/cci/article.asp?id=1060

6 CPI goods and services: the latest three years

Percentage change over 12 months

	Goods components					Services components					All services
	Food & non-alcoholic beverages	Alcoholic beverages & tobacco	Energy ¹	Non-energy industrial goods ²	All goods	Housing services ³	Travel & transport services ³	Recreational & personal services ³	Communication	Miscellaneous & other services ³	
Weights											
2008	CHZR 109	CHZS 42	A9F3 73	A9ER 323	ICVH 547	A9FG 73	A9FJ 65	A9FL 208	CHZY 23	A9FQ 84	ICVI 453
Monthly											
2005 Jul	D7G8 1.7	D7G9 2.2	DKL5 11.2	DKK3 -1.9	D7NM 0.5	DKN2 4.4	DKN5 6.9	DKN7 3.2	D7GF -2.5	DKO4 7.7	D7NN 4.5
Aug	2.2	1.8	12.4	-2.1	0.6	4.4	7.5	3.1	-2.1	7.7	4.6
Sep	2.0	1.4	15.4	-2.2	0.7	4.4	6.3	3.2	-1.2	7.5	4.5
Oct	1.5	1.9	13.9	-2.1	0.6	4.0	7.2	3.3	-1.6	6.6	4.4
Nov	1.7	2.5	11.1	-2.0	0.4	3.9	5.8	3.1	-1.2	6.6	4.1
Dec	1.7	2.5	10.2	-2.1	0.3	4.0	3.4	3.1	-1.0	6.6	3.8
2006 Jan	1.2	2.3	12.8	-2.3	0.3	3.9	6.1	2.9	0.5	5.6	3.9
Feb	1.1	1.6	12.5	-1.7	0.6	3.9	4.8	2.9	0.4	5.6	3.7
Mar	-0.4	2.5	12.2	-1.9	0.2	3.9	4.4	2.9	0.5	5.7	3.7
Apr	0.3	2.5	14.4	-2.2	0.5	3.3	6.5	2.7	0.3	5.7	3.8
May	1.1	2.2	19.3	-1.9	1.3	3.3	2.8	2.9	-0.4	5.6	3.3
Jun	1.8	3.3	19.8	-1.7	1.7	3.4	3.2	2.9	-0.3	5.6	3.4
Jul	3.2	2.8	19.4	-2.0	1.8	3.4	2.4	2.9	0.3	4.9	3.2
Aug	3.4	3.3	17.9	-1.3	2.2	3.4	1.6	2.8	-0.7	4.7	2.9
Sep	4.0	3.4	11.6	-1.0	1.8	3.3	3.0	2.8	-0.2	5.3	3.2
Oct	4.7	3.2	9.8	-1.3	1.5	3.4	2.5	3.0	0.9	6.7	3.6
Nov	5.0	2.7	11.7	-1.1	1.8	3.5	3.7	3.1	0.7	6.4	3.7
Dec	4.6	2.7	14.9	-0.8	2.3	3.5	4.1	3.1	0.5	6.4	3.8
2007 Jan	3.9	3.5	12.8	-0.9	2.0	3.8	3.1	3.2	-1.8	6.1	3.6
Feb	4.4	4.2	11.8	-1.0	2.0	3.7	5.0	3.2	-2.8	6.1	3.8
Mar	5.6	4.4	11.6	-0.5	2.5	3.7	4.2	3.3	-2.8	6.1	3.7
Apr	6.0	4.5	7.9	-0.3	2.3	3.8	3.8	3.3	-3.7	4.5	3.3
May	5.0	4.2	4.4	-0.4	1.6	3.8	6.4	3.1	-3.2	4.4	3.6
Jun	4.8	3.4	3.3	-0.4	1.4	3.7	6.8	3.3	-3.9	4.4	3.7
Jul	2.8	3.4	0.9	-0.8	0.5	3.6	6.3	3.2	-5.0	4.4	3.5
Aug	3.0	3.1	-0.5	-1.1	0.1	3.5	7.6	3.4	-2.0	3.9	3.8
Sep	3.7	3.2	1.5	-1.2	0.4	3.5	4.9	3.4	-3.0	4.0	3.4
Oct	4.7	2.7	3.9	-1.1	1.0	3.7	5.9	3.3	-4.2	3.8	3.4
Nov	4.8	2.9	5.3	-1.2	1.1	3.7	4.6	3.2	-4.0	4.0	3.2
Dec	5.4	2.7	4.4	-1.3	1.1	3.6	5.0	3.2	-3.8	4.1	3.3
2008 Jan	6.1	2.2	5.8	-1.4	1.3	3.7	5.1	3.0	-3.2	4.0	3.3
Feb	5.6	2.9	11.4	-1.4	1.9	3.7	4.2	3.1	-3.9	4.0	3.1
Mar	5.5	2.5	12.0	-1.8	1.7	3.8	5.9	3.1	-4.0	4.0	3.4
Apr	6.6	4.2	13.6	-1.7	2.3	3.9	4.7	3.4	-2.9	5.3	3.7
May	7.8	4.9	15.6	-1.5	3.0	3.9	4.5	3.6	-2.4	5.3	3.8
Jun	9.5	4.5	19.0	-1.4	3.8	3.8	4.7	3.6	-1.3	5.3	3.9
Jul	12.3	4.3	21.1	-1.2	4.7	3.6	5.3	4.0	-0.7	5.3	4.1

Key: - zero or negligible

³ For further information on all of these services components, see 'The Consumer Prices Index: Goods and Services Indices and Special Aggregates', which can be downloaded from: www.statistics.gov.uk/cci/article.asp?id=1060

¹ Comprises 'Electricity, gas and other fuels' (group 04.5) and 'Fuels and lubricants' (class 07.2.2).

² Comprises all other goods elements of the CPI. For further information, see 'The Consumer Prices Index: Goods and Services Indices and Special Aggregates', which can be downloaded from: www.statistics.gov.uk/cci/article.asp?id=1060

Source: National Statistics

7 HICP¹ - International comparisons: EU countries

Percentage change over 12 months

	Austria	Belgium	Bulgaria	Cyprus	Czech Republic	Denmark	Estonia	Finland	France	Germany	Greece	Hungary	Ireland	Italy	Latvia
	D7SK	D7SL	GHY8	D7RO	D7RP	D7SM	D7RQ	D7SN	D7SO	D7SP	D7SQ	D7RR	D7SS	D7ST	D7RS
2005	2.1	2.5	6.0	2.0	1.6	1.7	4.1	0.8	1.9	1.9	3.5	3.5	2.2	2.2	6.9
2006	1.7	2.3	7.4	2.2	2.1	1.9	4.4	1.3	1.9	1.8	3.3	4.0	2.7	2.2	6.6
2007	2.2	1.8	7.6	2.2	3.0	1.7	6.7	1.6	1.6	2.3	3.0	7.9	2.9	2.0	10.1
2006 Jul	2.0	2.4	7.8	2.8	2.4	2.0	4.5	1.4	2.2	2.1	3.9	3.2	2.9	2.3	6.9
Aug	2.1	2.3	7.0	2.7	2.6	1.9	5.0	1.3	2.1	1.8	3.4	4.7	3.2	2.3	6.8
Sep	1.3	1.9	5.4	2.2	2.2	1.5	3.8	0.8	1.5	1.0	3.1	5.9	2.2	2.4	5.9
Oct	1.3	1.7	5.2	1.7	0.8	1.4	3.8	0.9	1.2	1.1	3.1	6.3	2.2	1.9	5.6
Nov	1.6	2.0	5.9	1.3	1.0	1.8	4.7	1.3	1.6	1.5	3.2	6.4	2.4	2.0	6.3
Dec	1.6	2.1	6.1	1.5	1.5	1.7	5.1	1.2	1.7	1.4	3.2	6.6	3.0	2.1	6.8
2007 Jan	1.7	1.7	6.8	1.4	1.4	1.8	5.0	1.3	1.4	1.8	3.0	8.4	2.9	1.9	7.1
Feb	1.7	1.8	4.6	1.2	1.7	1.9	4.6	1.2	1.2	1.9	3.0	9.0	2.6	2.1	7.2
Mar	1.9	1.8	4.4	1.4	2.1	1.9	5.6	1.6	1.2	2.0	2.8	9.0	2.9	2.1	8.5
Apr	1.8	1.8	4.4	1.6	2.7	1.7	5.6	1.5	1.3	2.0	2.6	8.7	2.9	1.8	8.8
May	1.9	1.3	4.5	1.9	2.4	1.7	5.9	1.3	1.2	2.0	2.6	8.4	2.7	1.9	7.8
Jun	1.9	1.3	5.3	1.7	2.6	1.3	6.0	1.4	1.3	2.0	2.6	8.5	2.8	1.9	8.9
Jul	2.0	1.3	6.8	2.3	2.5	1.1	6.5	1.6	1.2	2.0	2.7	8.3	2.7	1.7	9.5
Aug	1.7	1.2	9.3	2.2	2.6	0.9	6.1	1.3	1.3	2.0	2.7	7.1	2.3	1.7	10.2
Sep	2.1	1.4	11.0	2.3	2.8	1.2	7.5	1.7	1.6	2.7	2.9	6.4	2.9	1.7	11.5
Oct	2.9	2.2	10.6	2.7	4.0	1.8	8.7	1.8	2.1	2.7	3.0	6.9	3.0	2.3	13.2
Nov	3.2	2.9	11.4	3.2	5.1	2.5	9.3	2.2	2.6	3.3	3.9	7.2	3.5	2.6	13.7
Dec	3.5	3.1	11.6	3.7	5.5	2.4	9.7	1.9	2.8	3.1	3.9	7.4	3.2	2.8	14.0
2008 Jan	3.1	3.5	11.7	4.1	7.9	3.0	11.3	3.5	3.2	2.9	3.9	7.4	3.1	3.1	15.6
Feb	3.1	3.6	12.2	4.7	7.6	3.3	11.5	3.3	3.2	3.0	4.5	6.7	3.5	3.1	16.5
Mar	3.5	4.4	13.2	4.4	7.1	3.3	11.2	3.6	3.5	3.3	4.4	6.7	3.7	3.6	16.6
Apr	3.4	4.1	13.4	4.3	6.7	3.4	11.6	3.3	3.4	2.6	4.4	6.8	3.3	3.6	17.4
May	3.7†	5.1	14.0	4.6	6.8	3.6	11.4	4.1	3.7	3.1	4.9	6.9	3.7	3.7	17.7
Jun	4.0*	5.8	14.7	5.2	6.6	4.2	11.5	4.3	..	3.4	4.9	6.6	3.9	4.0	17.5
Jul

	Lithuania	Luxembourg	Malta	Netherlands	Poland	Portugal	Romania	Slovakia	Slovenia	Spain	Sweden	United Kingdom ¹	EICP ² EU 25 average ³	EICP ² EU 27 average ³	Monetary Union Area average ⁴
	D7RT	D7SU	D7RU	D7SV	D7RV	D7SX	GHY7	D7RW	D7RX	D7SY	D7SZ	D7G7	D7RY	GJ2E	D7SR
2005	2.7	3.8	2.5	1.5	2.2	2.1	9.1	2.8	2.5	3.4	0.8	2.1	2.2	..	2.2
2006	3.8	3.0	2.6	1.7	1.3	3.0	6.6	4.3	2.5	3.6	1.5	2.3	2.2	..	2.2
2007	5.8	2.7	0.7	1.6	2.6	2.4	4.9	1.9	3.8	2.8	1.7	2.3	..	2.4	2.1
2006 Jul	4.4	3.4	3.6	1.7	1.4	3.0	6.2	5.0	1.9	4.0	1.8	2.4	2.4	..	2.4
Aug	4.3	3.1	3.0	1.9	1.7	2.7	6.1	5.0	3.1	3.8	1.6	2.5	2.3	..	2.3
Sep	3.3	2.0	3.1	1.5	1.4	3.0	5.5	4.5	2.5	2.9	1.2	2.4	1.9	..	1.8
Oct	3.7	0.6	1.7	1.3	1.1	2.6	4.8	3.1	1.5	2.6	1.2	2.4	1.8	..	1.6
Nov	4.4	1.8	0.9	1.6	1.3	2.4	4.7	3.7	2.4	2.7	1.5	2.7	2.1	..	1.9
Dec	4.5	2.3	0.8	1.7	1.4	2.5	4.9	3.7	3.0	2.7	1.4	3.0	2.2	..	1.9
2007 Jan	4.0	2.3	1.2	1.2	1.6	2.6	4.1	2.2	2.8	2.4	1.6	2.7	..	2.1	1.8
Feb	4.4	1.8	0.8	1.4	1.9	2.3	3.9	2.0	2.3	2.5	1.7	2.8	..	2.2	1.9
Mar	4.8	2.4	0.5	1.9	2.4	2.4	3.7	2.1	2.6	2.5	1.6	3.1	..	2.3	1.9
Apr	4.9	2.5	-1.1	1.9	2.2	2.8	3.8	2.0	2.9	2.5	1.6	2.8	..	2.2	1.9
May	5.0	2.3	-1.0	2.0	2.3	2.4	3.9	1.5	3.1	2.4	1.2	2.5	..	2.1	1.9
Jun	5.0	2.3	-0.6	1.8	2.6	2.4	3.9	1.5	3.8	2.5	1.3	2.4	..	2.2	1.9
Jul	5.1	2.0	-0.2	1.4	2.5	2.3	4.1	1.2	4.0	2.3	1.4	1.9	..	2.0	1.8
Aug	5.6	1.9	0.6	1.1	2.1	1.9	5.0	1.2	3.4	2.2	1.2	1.8	..	1.9	1.7
Sep	7.1	2.5	0.9	1.3	2.7	2.0	6.1	1.7	3.6	2.7	1.6	1.8	..	2.3	2.1
Oct	7.6	3.6	1.6	1.6	3.1	2.5	6.9	2.4	5.1	3.6	1.9	2.1	..	2.7	2.6
Nov	7.9	4.0	2.9	1.8	3.7	2.8	6.8	2.3	5.7	4.1	2.4	2.1	..	3.1	3.1
Dec	8.2	4.3	3.1	1.6	4.2	2.7	6.7	2.5	5.7	4.3	2.5	2.1	..	3.2	3.1
2008 Jan	10.0	4.2	3.8	1.8	4.4	2.9	7.3	3.2	6.4	4.4	3.0	2.2	..	3.4	3.2
Feb	10.9	4.2	4.0	2.0	4.6	2.9	8.0	3.4	6.4	4.4	2.9	2.5	..	3.5	3.3
Mar	11.4	4.4	4.3	1.9	4.4	3.1	8.7	3.6	6.6	4.6	3.2	2.5	..	3.7	3.6
Apr	11.9	4.3	4.1	1.7	4.3	2.5	8.7	3.7	6.2	4.2	3.2	3.0	..	3.6	3.3
May	12.3	4.8	4.1	2.1	4.3	2.8	8.5	4.0	6.2	4.7	3.9	3.3	..	4.0	3.7
Jun	12.7	5.3	4.4	2.3*	4.3	3.4	8.7	4.3	6.8	5.1	4.1	3.8	..	4.3*	4.0*
Jul	4.4	4.1*

Key: - zero or negligible .. Not available * Provisional

† Date of earliest revision † Estimated

1 Published as the CPI in the UK.

2 The EICP (European Index of Consumer Prices) is the official EU aggregate. It covers 15 member states until April 2004, 25 member states from May 2004, and 27 members from Jan 2007, the new member states being integrated using a chain index formula.

The EU 25 annual average for 2004 is calculated from the EU 15 average from January to April and the EU 25 average from May to December.

3 The coverage of the European Union was extended to include Cyprus, Czech Republic, Estonia, Hungary, Latvia, Lithuania, Malta, Poland, Slovakia and Slovenia from 1 May 2004 and Bulgaria and Romania from 1 Jan 2007.

4 The coverage of the Monetary Union Area index was extended to include Greece with effect from Jan 2001.

Sources: National Statistics; Eurostat

	Weights	Index (January 1987=100)						Percentage change over 12 months						Percentage change over 1 month
		2008						2008	2008	2008	2008	2008	2008	2008
			2008	2008	2008	2008	2008							
ALL ITEMS	1 000	211.4	212.1	214.0	215.1	216.8	216.5	4.1	3.8	4.2	4.3	4.6	5.0	-0.1
Food and catering	158	191.0	191.7	193.7	196.0	199.2	200.6	5.4	5.3	6.0	6.8	8.0	9.8	0.7
Alcohol and tobacco	86	260.2	261.2	267.9	268.9	269.1	268.7	3.1	2.9	4.3	4.6	4.5	4.3	-0.1
Housing and household expenditure	417	255.5	256.0	258.0	258.3	260.2	258.3	5.1	4.4	5.0	4.8	4.5	4.5	-0.7
Personal expenditure	83	132.0	133.0	133.4	133.5	132.8	130.9	0.5	0.4	-0.3	-0.4	-0.8	-0.2	-1.4
Travel and leisure	256	187.2	188.0	188.9	190.7	192.9	194.1	3.2	3.5	3.2	3.5	4.6	5.1	0.6
Consumer durables ¹	104	91.2	92.6	91.7	92.7	94.4	90.2	-1.0	-2.6	-1.9	-1.8	-1.5	-0.9	-4.4
Seasonal food	20	157.0	156.8	161.8	166.7	171.2	167.5	4.3	4.3	6.1	7.6	8.8	12.3	-2.2
Food excluding seasonal	91	173.8	174.8	176.0	178.0	181.7	184.5	6.6	6.4	7.1	7.8	9.8	12.2	1.5
All items excluding seasonal food	980	212.8	213.5	215.3	216.3	218.0	217.7	4.1	3.8	4.1	4.2	4.5	4.9	-0.1
All items excluding food	889	218.5	219.2	221.1	221.9	223.3	222.7	3.8	3.5	3.9	3.9	4.0	4.2	-0.3
All goods	474	160.0	161.4	162.6	164.3	166.7	165.5	3.3	3.1	3.6	4.1	5.0	6.0	-0.7
All services	372	264.6	265.2	267.9	269.0	269.6	271.0	3.6	3.8	4.3	4.7	4.9	5.1	0.5
Other indices														
All items excluding:														
mortgage interest payments (RPIX)	940	204.3	205.3	207.2	208.7	210.4	210.0	3.7	3.5	4.0	4.4	4.8	5.3	-0.2
housing	746	187.0	188.2	189.6	191.2	193.2	192.8	3.3	3.2	3.8	4.3	5.0	5.8	-0.2
mortgage interest payments and indirect taxes (RPIY) ²		195.2	196.3	197.5	199.0	200.8	200.4	3.6	3.6	3.9	4.4	4.9	5.4	-0.2
mortgage interest payments and council tax	901	201.3	202.4	204.0	205.5	207.2	206.8	3.7	3.5	4.0	4.4	4.9	5.4	-0.2
mortgage interest payments and depreciation ³	885	197.3	198.5	200.4	201.9	203.7	203.3	3.5	3.4	3.9	4.3	4.9	5.5	-0.2
Food	111	171.3	172.0	174.0	176.6	180.5	182.0	6.1	6.0	6.9	7.8	9.7	12.2	0.8
Bread	5	196.9	195.8	199.4	202.5	205.6	209.1	15.1	11.9	13.0	14.7	16.8	20.0	1.7
Cereals	4	154.8	158.3	160.2	165.0	170.0	171.6	6.5	7.9	9.1	11.1	12.7	17.5	0.9
Biscuits and cakes	6	186.1	185.1	185.7	185.3	193.6	201.6	8.3	6.1	6.9	6.1	11.0	16.6	4.1
Beef	4	145.9	148.3	154.5	156.5	167.5	169.4	3.0	3.6	9.0	10.9	17.6	19.8	1.1
Lamb	2	187.3	188.9	196.2	205.5	211.0	213.1	-0.7	-0.6	5.1	6.7	10.2	11.6	1.0
of which home-killed lamb	1	186.9	194.4	204.1	220.4	228.1	231.7	-0.9	2.2	6.6	11.8	14.6	18.3	1.6
imported lamb	1	183.8	179.5	184.3	186.4	189.6	190.2	-0.5	-3.3	3.5	1.2	5.2	4.4	0.3
Pork	1	164.1	162.8	174.9	176.7	180.0	191.1	4.2	3.4	11.2	10.9	13.6	24.7	6.2
Bacon	2	190.9	188.7	189.4	202.0	203.9	210.8	0.5	0.1	0.5	10.9	10.0	15.9	3.4
Poultry	4	119.2	121.0	122.4	125.4	133.1	137.3	6.0	9.1	7.4	12.7	16.8	23.7	3.2
Other meat	7	151.5	152.4	152.7	157.7	160.5	165.0	1.7	1.5	2.6	5.6	7.0	11.1	2.8
Fish	4	179.0	179.1	183.1	187.3	180.8	183.8	3.1	3.2	5.5	7.9	2.8	5.8	1.7
of which fresh fish	2	187.6	183.1	189.3	196.3	188.0	187.0	0.8	-1.6	0.2	4.4	-1.4	0.0	-0.5
processed fish	2	170.2	174.2	176.4	178.1	173.3	179.6	5.3	7.9	10.9	11.3	7.0	11.5	3.6
Butter	1	236.9	234.6	229.3	229.0	227.1	233.7	36.3	34.9	32.2	31.9	31.5	36.5	2.9
Oils and fats	1	153.4	154.4	154.1	161.8	177.8	176.6	6.2	6.6	7.8	12.9	23.6	23.9	-0.7
Cheese	3	201.1	205.4	204.2	206.3	209.8	208.3	15.6	16.2	15.8	16.3	18.7	18.0	-0.7
Eggs	1	234.2	238.4	241.2	250.8	249.4	246.8	30.8	31.6	33.3	38.8	37.1	35.9	-1.0
Milk, fresh	5	219.8	219.4	219.2	220.8	231.8	231.2	16.7	14.3	13.5	14.2	19.4	19.4	-0.3
Milk products	4	166.5	167.8	168.1	168.3	167.9	170.8	14.7	12.8	13.4	11.6	11.2	11.8	1.7
Tea	1	164.2	163.2	161.0	166.1	169.3	175.2	2.2	1.2	2.4	2.5	6.8	8.3	3.5
Coffee and other hot drinks	1	126.0	125.3	125.3	126.1	126.2	128.1	1.0	-0.3	-0.6	0.6	0.7	2.9	1.5
Soft drinks	12	202.7	203.7	204.2	204.7	204.7	205.3	3.0	3.2	2.5	2.0	1.8	2.0	0.3
Sugar and preserves	1	168.4	167.2	170.1	170.8	174.6	173.6	3.3	3.1	4.7	4.2	5.6	6.4	-0.6
Sweets and chocolates	10	207.0	209.7	211.2	211.8	211.9	212.2	5.8	6.8	6.1	6.1	6.2	6.7	0.1
Potatoes	5	172.9	171.1	175.0	176.5	188.9	189.6	4.1	2.0	5.1	3.5	9.8	16.5	0.4
of which unprocessed potatoes	2	167.1	168.5	174.8	179.4	198.1	195.3	7.0	5.4	7.8	7.6	16.9	27.9	-1.4
potato products	3	168.8	164.9	167.1	166.5	174.3	177.2	2.1	-0.4	3.1	0.8	4.9	9.3	1.7
Vegetables other than potatoes	9	156.5	156.4	160.0	165.1	164.5	164.7	5.4	4.7	3.6	8.8	6.3	9.9	0.1
of which fresh vegetables	7	139.8	139.1	142.7	148.5	148.0	147.4	4.0	2.8	1.1	7.6	4.7	8.5	-0.4
processed vegetables	2	208.3	211.5	214.3	214.4	213.8	217.5	10.3	11.6	12.7	13.2	12.1	14.6	1.7
Fruit	8	148.9	148.9	153.4	155.1	163.4	156.4	0.7	2.8	7.3	2.7	7.4	10.2	-4.3
of which fresh fruit	7	146.8	146.4	151.9	153.4	162.2	153.5	1.7	3.9	9.4	3.6	8.6	11.4	-5.4
processed fruit	1	145.8	148.8	146.0	149.1	152.9	158.0	-4.9	-3.3	-4.9	-2.8	-0.4	3.5	3.3
Other foods	10	155.9	157.0	157.6	158.7	161.2	163.5	2.7	2.7	3.5	3.9	5.4	7.0	1.4
Catering	47	259.3	260.0	262.0	263.2	264.0	265.2	3.7	3.6	4.1	4.2	4.3	4.5	0.5
Restaurant meals	26	252.1	253.1	255.6	256.7	257.6	258.4	3.2	3.2	3.9	4.0	4.2	4.2	0.3
Canteen meals	4	321.4	322.2	322.9	324.7	324.7	325.3	4.3	4.3	4.1	4.1	3.8	4.0	0.2
Take-aways and snacks	17	249.9	250.2	251.7	252.7	253.7	255.3	4.2	4.1	4.2	4.5	4.5	4.8	0.6
Alcoholic drink	59	221.6	222.4	228.6	229.8	230.0	229.5	2.6	2.2	4.3	4.7	4.5	4.2	-0.2
Beer	31	242.9	243.9	250.2	250.9	251.1	250.4	3.1	2.7	4.1	4.2	4.2	3.6	-0.3
on sales	26	264.9	267.0	272.9	273.5	274.1	274.5	3.5	3.5	4.7	4.5	4.7	4.4	0.1
off sales	5	148.2	146.1	152.5	153.5	152.2	148.8	0.2	-1.9	0.4	1.9	1.4	-1.1	-2.2
Wines and spirits	28	194.2	194.8	200.7	202.3	202.5	202.2	2.1	1.7	4.5	5.3	4.8	5.0	-0.1
on sales	15	246.2	247.4	252.6	253.7	254.5	254.8	2.7	2.8	4.1	4.2	4.3	4.3	0.1
off sales	13	159.9	160.2	166.6	168.6	168.4	167.6	1.3	0.3	4.9	6.5	5.3	5.7	-0.5

Key: - zero or negligible

Index date for June: 15 July 2008

1 Consumer durables: Furniture, furnishings, electrical appliances and other household equipment, men's, women's and children's outerwear, footwear, audio-visual equipment, CDs and tapes, toys, photographic and sports goods.

2 The taxes excluded are council tax, VAT, duties, vehicle excise duty, insurance tax and air passenger duty. There are no weights available for RPIY.

3 This series has been constructed using the index for all items excluding mortgage interest payments prior to February 1995.

continued

	Weights	Index (January 1987=100)						Percentage change over 12 months						Percentage change over 1 month
		2008	2008	2008	2008	2008	2008	2008	2008	2008	2008	2008	2008	2008
			Feb	Mar	Apr	May	Jun	Jul	Feb	Mar	Apr	May	Jun	Jul
Tobacco	27	370.6	371.7	379.8	379.8	380.0	379.9	4.2	4.5	4.5	4.5	4.5	4.4	-
Cigarettes	24	378.9	380.1	388.7	388.7	388.9	388.8	4.3	4.6	4.6	4.6	4.6	4.5	-
Other tobacco	3	293.8	294.4	298.8	298.9	299.1	299.0	3.6	3.8	3.7	3.7	3.7	3.6	-
Housing	254	341.2	339.0	343.5	341.6	342.0	342.2	6.8	5.8	5.5	4.5	3.4	2.9	0.1
Rent	59	293.1	293.1	297.8	298.2	298.5	299.0	3.7	3.8	3.9	3.8	3.8	3.2	0.2
Mortgage interest payments	60	408.9	398.2	400.4	389.2	391.4	393.5	11.8	8.0	8.0	4.0	0.8	0.6	0.5
Depreciation (Jan 1995 = 100)	55	305.3	304.4	303.7	304.1	304.2	301.9	6.9	6.0	5.2	4.5	3.6	1.7	-0.8
Council tax and rates	39	292.0	292.0	302.6	302.6	302.6	302.6	4.0	4.0	3.6	3.6	3.6	3.6	-
Water and other charges	12	377.2	377.2	401.7	401.7	401.7	401.7	6.5	6.5	6.5	6.5	6.5	6.5	-
Repairs and maintenance charges	12	339.7	340.0	341.2	342.1	343.0	348.4	4.6	4.4	4.2	4.2	4.2	5.7	1.6
Do-it-yourself materials	9	171.9	172.7	172.7	172.3	172.7	173.4	4.8	5.2	5.2	4.8	4.4	4.1	0.4
Dwelling insurance and ground rent	8	314.7	316.9	317.4	318.5	312.5	310.2	11.2	12.7	13.0	12.5	10.7	9.7	-0.7
Fuel and light	33	231.4	233.6	239.8	241.6	242.6	244.1	3.5	4.7	9.1	12.3	14.9	17.2	0.6
Coal and solid fuels	1	218.3	219.0	219.7	224.2	228.8	231.3	9.0	9.2	9.6	12.4	15.3	16.7	1.1
Electricity	16	217.4	217.4	222.0	222.0	222.0	222.0	5.2	5.2	8.3	9.6	11.2	12.6	-
Gas	13	239.4	239.4	244.4	244.4	244.4	244.4	-2.2	-1.4	3.6	7.2	10.3	12.9	-
Oil and other fuels	3	336.1	374.8	408.1	437.6	453.7	477.8	40.0	51.7	59.4	71.5	74.2	78.9	5.3
Household goods	66	150.8	154.9	152.5	155.7	161.7	154.6	2.5	0.7	2.2	2.8	3.7	4.7	-4.4
Furniture	23	171.9	186.0	177.0	181.9	202.2	179.4	4.2	0.1	4.2	4.5	5.8	7.6	-11.3
Furnishings	12	166.9	164.2	166.1	173.6	170.5	169.8	4.2	3.6	5.3	5.5	6.2	6.8	-0.4
Electrical appliances	7	69.8	69.8	69.8	69.7	69.5	68.3	-3.9	-5.9	-6.7	-6.1	-5.4	-6.1	-1.7
Other household equipment	4	148.6	149.8	149.6	149.7	148.4	147.6	4.2	4.7	3.4	2.6	0.9	2.6	-0.5
Household consumables	13	162.8	163.8	164.4	166.1	167.1	168.1	0.2	0.4	0.6	1.8	2.6	3.7	0.6
Pet care	7	180.7	180.6	179.9	181.6	184.4	185.9	4.6	4.5	3.1	4.5	5.6	6.1	0.8
Household services	64	202.0	202.9	203.3	203.7	203.6	202.5	3.1	3.3	4.3	4.5	4.5	4.2	-0.5
Postage	1	212.7	213.0	226.9	226.9	226.9	226.9	6.2	6.4	6.7	6.7	6.7	6.7	-
Telephones, telemessages, etc	21	84.0	84.0	84.0	84.0	84.6	83.7	-3.2	-3.3	-2.3	-1.5	-0.4	-0.1	-1.1
Domestic services	13	311.9	312.9	314.0	315.6	317.4	318.1	3.9	3.9	4.6	4.9	4.8	4.7	0.2
Fees and subscriptions	29	314.1	316.6	316.7	317.6	314.5	313.0	7.5	8.0	9.0	8.9	8.1	7.1	-0.5
Clothing and footwear	42	91.0	91.6	92.0	91.9	90.8	88.2	-1.5	-2.3	-3.3	-3.5	-4.4	-3.7	-2.9
Men's outerwear	8	93.4	94.9	95.5	94.8	94.3	91.2	-0.6	-0.4	-2.1	-3.0	-3.1	-2.8	-3.3
Women's outerwear	15	63.2	63.4	63.4	63.3	61.9	58.8	-4.4	-6.8	-8.1	-7.9	-9.8	-8.3	-5.0
Children's outerwear	5	88.9	89.4	89.4	88.7	87.5	86.1	1.9	2.4	2.1	1.0	0.0	-2.0	-1.6
Other clothing	6	148.0	148.8	149.4	150.0	149.7	148.4	-0.8	-0.6	-1.4	-0.3	-0.7	0.1	-0.9
Footwear	8	108.5	109.4	110.4	111.1	110.6	109.9	0.2	0.2	-0.1	-0.6	-1.0	0.5	-0.6
Personal goods and services	41	219.1	221.1	221.5	222.3	222.3	222.5	2.8	3.4	3.2	3.3	3.2	3.6	0.1
Personal articles	11	141.8	144.6	145.0	145.4	145.1	143.6	2.8	3.7	3.9	3.9	3.5	3.6	-1.0
Chemists goods	15	194.9	196.4	196.1	196.5	196.4	196.7	1.4	2.1	1.4	1.8	1.7	2.3	0.2
Personal services	15	381.1	382.2	384.2	386.1	387.2	390.5	4.6	4.8	4.8	4.7	4.8	4.9	0.9
Motoring expenditure	133	194.5	195.8	197.2	199.6	203.3	203.9	5.1	5.3	4.6	4.9	6.6	7.4	0.3
Purchase of motor vehicles	49	100.8	100.3	100.2	99.8	98.6	97.4	-4.7	-4.5	-4.5	-4.9	-5.3	-5.3	-1.2
Maintenance of motor vehicles	19	320.4	321.7	322.7	324.5	326.2	327.6	5.4	5.5	5.4	5.6	5.4	5.7	0.4
Petrol and oil	43	304.5	313.2	317.9	328.7	349.4	354.7	20.3	20.6	18.0	18.4	24.0	26.4	1.5
Vehicle tax and insurance	22	301.0	298.8	301.9	305.2	306.8	308.1	3.8	2.9	2.0	3.6	3.6	3.6	0.4
Fares and other travel costs	20	245.3	250.2	248.7	254.4	258.3	273.9	3.8	6.6	4.5	3.9	4.2	5.7	6.0
Rail fares	5	273.5	273.1	275.5	274.9	273.7	275.0	4.4	4.8	4.9	4.9	4.2	4.3	0.5
Bus and coach fares	4	284.0	286.3	287.2	288.9	287.6	291.9	4.8	5.2	5.0	5.7	4.1	5.6	1.5
Other travel costs	11	209.9	217.1	213.7	222.2	229.0	251.6	3.1	7.8	4.0	2.9	4.2	6.2	9.9
Leisure goods	38	89.1	88.1	87.9	88.1	88.1	87.1	-2.7	-3.3	-2.9	-2.3	-1.3	-1.8	-1.1
Audio-visual equipment	8	13.2	12.8	12.5	12.4	12.3	12.2	-20.0	-19.5	-18.8	-17.9	-17.4	-15.9	-0.8
CDs and tapes	4	100.7	99.5	100.5	100.5	102.5	98.0	0.8	-0.3	-0.6	-3.1	-0.2	-2.3	-4.4
Toys, photographic and sports goods	10	85.4	84.8	85.5	85.2	85.2	83.8	-3.2	-4.8	-3.6	-3.1	-1.7	-2.2	-1.6
Books and newspapers	10	274.7	275.8	273.8	279.1	276.2	277.0	6.9	7.5	7.0	8.9	7.9	6.9	0.3
Gardening products	6	150.0	148.2	148.1	148.3	150.4	148.7	1.1	1.0	1.4	1.6	4.0	2.7	-1.1
Leisure services	65	280.8	281.4	283.9	284.6	285.7	287.1	3.1	3.2	3.7	3.9	4.1	4.4	0.5
Television licences and rentals	11	169.0	169.0	170.3	170.3	170.3	170.2	1.7	1.7	1.3	1.3	1.4	1.5	-0.1
Entertainment and other recreation	16	381.8	382.1	387.3	386.9	386.7	386.7	5.1	4.8	5.6	5.4	4.5	5.3	-
Foreign holidays (Jan 1993 = 100)	31	175.9	176.5	178.0	178.9	180.4	181.9	2.6	3.0	3.9	4.3	5.3	5.4	0.8
UK holidays (Jan 1994 = 100)	7	172.2	172.5	173.2	173.7	173.9	175.3	2.8	2.7	2.5	2.4	2.3	2.8	0.8

Key: - zero or negligible

Source: National Statistics

9 RPI goods and services¹: the latest three years

Percentage change over 12 months

	Goods components					Services components				
	Food	Alcohol & tobacco	Petrol & oil ²	Other goods ³	All goods	Rent	Utilities ⁴	"Shop" services ⁵	"Non-shop" services ⁶	All services
Weights										
2008	CZGZ 111	CBVW 86	DOHB 46	DOHC 231	DOHD 474	CZXD 59	DOHE 68	DOHF 133	DOHG 112	DOHH 372
Monthly										
2005 Jul	CCYY 1.4	CZBK 2.7	DOGQ 11.3	DOGI -1.7	DOGD 0.7	CZCQ 3.8	DOGF 5.8	DOGG 4.3	DOGH 2.7	DOGE 4.0
Aug	1.7	2.5	13.7	-2.0	0.8	3.8	5.9	4.1	2.0	3.7
Sep	1.5	2.5	18.4	-1.9	1.1	3.8	6.5	4.4	2.0	3.9
Oct	1.0	2.7	14.0	-1.7	0.9	3.2	7.4	4.5	2.1	4.1
Nov	1.3	2.9	8.6	-1.4	0.7	3.2	7.7	4.6	1.8	4.1
Dec	1.1	2.9	8.0	-1.3	0.7	3.2	7.3	4.6	0.6	3.7
2006 Jan	0.8	2.8	13.6	-1.4	1.0	3.0	7.2	4.3	1.3	3.8
Feb	0.8	2.5	12.9	-1.1	1.1	3.0	7.4	4.2	1.2	3.8
Mar	-0.5	3.0	10.1	-1.2	0.6	3.0	8.6	4.1	1.7	4.1
Apr	0.2	2.7	9.6	-1.3	0.7	2.8	9.9	4.2	2.3	4.6
May	0.9	2.7	13.8	-0.8	1.4	2.8	11.7	4.1	1.5	4.6
Jun	1.5	3.2	12.4	-0.5	1.6	2.9	12.9	4.1	1.8	5.0
Jul	2.7	3.0	10.7	-0.9	1.5	3.0	13.8	4.1	1.5	5.0
Aug	2.9	3.4	7.6	-0.2	1.8	3.0	13.9	4.0	1.7	5.1
Sep	3.5	3.4	-3.4	0.4	1.2	2.9	14.2	4.0	2.3	5.3
Oct	4.2	3.3	-7.6	-	0.8	2.9	15.1	4.2	3.3	5.8
Nov	4.5	3.2	-4.6	0.1	1.2	3.0	15.0	4.1	3.9	6.0
Dec	4.1	3.2	0.6	0.4	1.8	3.0	15.0	4.1	4.0	6.1
2007 Jan	3.7	3.6	-2.6	-0.3	1.1	3.3	14.2	4.2	4.6	6.1
Feb	4.0	4.0	-4.3	-	1.2	3.2	13.7	4.3	5.4	6.3
Mar	5.1	4.1	-1.7	0.5	2.0	3.2	12.2	4.4	4.8	5.9
Apr	5.6	4.5	-1.7	0.6	2.1	3.1	8.5	4.1	4.2	4.9
May	4.8	4.1	-2.0	0.6	1.9	3.2	5.3	4.1	5.1	4.6
Jun	4.8	3.7	0.3	0.8	2.2	3.3	3.0	4.2	5.0	4.1
Jul	3.1	3.7	-1.8	-0.2	1.2	3.3	1.3	3.9	5.1	3.7
Aug	3.4	3.5	-2.4	-0.5	0.9	3.2	1.3	4.2	5.8	4.0
Sep	4.2	3.6	2.9	-0.6	1.5	3.3	0.3	4.1	5.0	3.6
Oct	5.1	3.2	11.7	-0.5	2.4	3.7	-2.0	4.1	5.1	3.2
Nov	5.3	3.1	17.4	-0.6	2.8	3.7	-3.1	4.2	4.5	2.7
Dec	6.1	3.0	17.0	-0.9	2.8	3.6	-3.7	4.1	5.3	2.8
2008 Jan	6.6	2.7	20.2	-0.6	3.3	3.8	-3.6	4.2	5.0	2.8
Feb	6.1	3.1	21.4	-0.6	3.3	3.7	0.9	4.2	4.7	3.6
Mar	6.0	2.9	22.3	-1.2	3.1	3.8	1.0	4.1	5.3	3.8
Apr	6.9	4.3	20.3	-0.9	3.6	3.9	3.3	4.4	5.2	4.3
May	7.8	4.6	21.3	-0.8	4.1	3.8	4.6	4.4	5.5	4.7
Jun	9.7	4.5	26.8	-0.6	5.0	3.8	6.0	4.3	5.6	4.9
Jul	12.2	4.3	29.3	-0.3	6.0	3.2	6.9	4.7	5.6	5.1

Key: - zero or negligible

1 All components of the RPI are included in the above breakdown with the exception of mortgage interest payments, council tax and depreciation.

2 Including fuel oil.

3 The 'other goods' category comprises DIY materials, coal & solid fuels, household goods, clothing & footwear, personal articles, chemists goods, purchase of motor vehicles and leisure goods.

4 The 'utilities' category comprises water, electricity, gas, postage, telephone charges and rail fares.

5 The 'shop services' category comprises catering, repairs & maintenance charges, domestic services, personal services, maintenance of motor vehicles, TV licence & rentals and entertainment & recreation charges.

6 The 'non-shop services' category comprises dwelling insurance & ground rent, fees and subscriptions, vehicle tax and insurance, bus & coach fares, other travel costs, foreign holidays and UK holidays.

Source: National Statistics

10 A breakdown of the differences between CPI and RPI

	Difference between annual rates CPI - RPI		Breakdown of differences (unrounded figures) ¹						
	rounded figures	unrounded figures	housing components excluded from CPI			other housing components	other differences in coverage of goods and services	formula effect ²	other differences including weights ³
			total	mortgage interest payments					
	D7G2	D7G3	D7G4	D7G5	D7FU	D7FV	D7FW	D7FX	
2003 Jul	-1.8	-1.73	-1.24	-0.12	-1.13	-0.24	-0.43	0.19	
Aug	-1.5	-1.56	-1.08	0.01	-1.09	-0.31	-0.41	0.24	
Sep	-1.4	-1.35	-1.06	0.01	-1.07	0.01	-0.44	0.14	
Oct	-1.2	-1.29	-0.99	0.01	-0.99	0.04	-0.44	0.10	
Nov	-1.2	-1.17	-0.99	-0.02	-0.97	0.19	-0.43	0.07	
Dec	-1.5	-1.51	-1.11	-0.20	-0.91	-0.22	-0.42	0.23	
2004 Jan	-1.2	-1.19	-1.07	-0.21	-0.86	0.02	-0.42	0.28	
Feb	-1.2	-1.23	-1.10	-0.21	-0.89	0.05	-0.43	0.26	
Mar	-1.5	-1.47	-1.47	-0.48	-0.99	0.07	-0.41	0.34	
Apr	-1.4	-1.36	-1.32	-0.50	-0.82	0.08	-0.43	0.30	
May	-1.3	-1.30	-1.36	-0.50	-0.86	0.13	-0.44	0.38	
Jun	-1.4	-1.46	-1.59	-0.69	-0.90	0.14	-0.43	0.42	
Jul	-1.6	-1.66	-1.82	-0.88	-0.94	0.15	-0.42	0.43	
Aug	-1.9	-1.89	-1.96	-1.03	-0.93	0.18	-0.47	0.36	
Sep	-2.0	-1.97	-2.13	-1.18	-0.95	0.20	-0.45	0.42	
Oct	-2.1	-2.07	-2.17	-1.19	-0.99	0.22	-0.46	0.34	
Nov	-1.9	-1.98	-2.11	-1.19	-0.92	0.24	-0.47	0.36	
Dec	-1.8	-1.84	-1.91	-1.00	-0.91	0.24	-0.49	0.32	
2005 Jan	-1.6	-1.55	-1.94	-1.03	-0.92	0.23	-0.48	0.65	
Feb	-1.5	-1.50	-1.92	-1.03	-0.89	0.23	-0.51	0.69	
Mar	-1.3	-1.32	-1.64	-0.86	-0.79	0.22	-0.53	0.62	
Apr	-1.3	-1.22	-1.54	-0.86	-0.68	0.25	-0.52	0.59	
May	-1.0	-1.07	-1.43	-0.85	-0.58	0.27	-0.50	0.60	
Jun	-0.9	-0.87	-1.18	-0.67	-0.51	0.29	-0.52	0.54	
Jul	-0.6	-0.57	-0.89	-0.48	-0.40	0.31	-0.53	0.55	
Aug	-0.4	-0.37	-0.84	-0.48	-0.36	0.33	-0.49	0.64	
Sep	-0.2	-0.20	-0.43	-0.17	-0.27	0.30	-0.52	0.45	
Oct	-0.2	-0.17	-0.37	-0.17	-0.20	0.30	-0.52	0.42	
Nov	-0.3	-0.29	-0.36	-0.16	-0.21	0.27	-0.52	0.32	
Dec	-0.3	-0.30	-0.35	-0.16	-0.19	0.28	-0.51	0.29	
2006 Jan	-0.5	-0.45	-0.29	-0.15	-0.14	0.30	-0.48	0.02	
Feb	-0.4	-0.39	-0.32	-0.15	-0.17	0.30	-0.51	0.14	
Mar	-0.6	-0.51	-0.36	-0.16	-0.20	0.32	-0.55	0.08	
Apr	-0.6	-0.52	-0.33	-0.14	-0.19	0.32	-0.51	-0.01	
May	-0.8	-0.72	-0.32	-0.11	-0.20	0.32	-0.54	-0.19	
Jun	-0.8	-0.75	-0.26	-0.09	-0.17	0.31	-0.52	-0.27	
Jul	-0.9	-0.86	-0.25	-0.09	-0.16	0.28	-0.54	-0.35	
Aug	-0.9	-0.95	-0.25	-0.08	-0.17	0.24	-0.54	-0.39	
Sep	-1.2	-1.22	-0.71	-0.48	-0.23	0.22	-0.56	-0.17	
Oct	-1.3	-1.23	-0.74	-0.49	-0.25	0.24	-0.55	-0.17	
Nov	-1.2	-1.20	-0.73	-0.48	-0.24	0.24	-0.55	-0.16	
Dec	-1.4	-1.46	-0.91	-0.68	-0.24	0.23	-0.56	-0.22	
2007 Jan	-1.5	-1.53	-1.01	-0.72	-0.29	0.23	-0.59	-0.16	
Feb	-1.8	-1.78	-1.21	-0.91	-0.30	0.19	-0.55	-0.21	
Mar	-1.7	-1.75	-1.21	-0.90	-0.31	0.26	-0.57	-0.24	
Apr	-1.7	-1.77	-1.21	-0.91	-0.30	0.21	-0.60	-0.17	
May	-1.8	-1.79	-1.28	-0.94	-0.33	0.19	-0.59	-0.11	
Jun	-2.0	-2.04	-1.49	-1.13	-0.36	0.21	-0.64	-0.12	
Jul	-1.9	-2.00	-1.65	-1.17	-0.47	0.23	-0.54	-0.05	
Aug	-2.3	-2.29	-1.87	-1.38	-0.49	0.24	-0.57	-0.10	
Sep	-2.1	-2.21	-1.62	-1.15	-0.46	0.28	-0.60	-0.27	
Oct	-2.1	-2.15	-1.54	-1.12	-0.41	0.28	-0.60	-0.30	
Nov	-2.2	-2.20	-1.52	-1.12	-0.40	0.29	-0.59	-0.38	
Dec	-1.9	-1.95	-1.30	-0.91	-0.39	0.31	-0.55	-0.41	
2008 Jan	-1.9	-1.87	-1.07	-0.67	-0.39	0.36	-0.59	-0.58	
Feb	-1.6	-1.61	-0.73	-0.47	-0.27	0.36	-0.59	-0.65	
Mar	-1.3	-1.34	-0.49	-0.26	-0.23	0.30	-0.55	-0.60	
Apr	-1.2	-1.21	-0.34	-0.23	-0.11	0.32	-0.52	-0.67	
May	-1.0	-0.95	-0.02	0.01	-0.03	0.32	-0.52	-0.73	
Jun	-0.8	-0.78	0.35	0.23	0.12	0.31	-0.54	-0.90	
Jul	-0.6	-0.60	0.60	0.27	0.32	0.31	-0.53	-0.97	

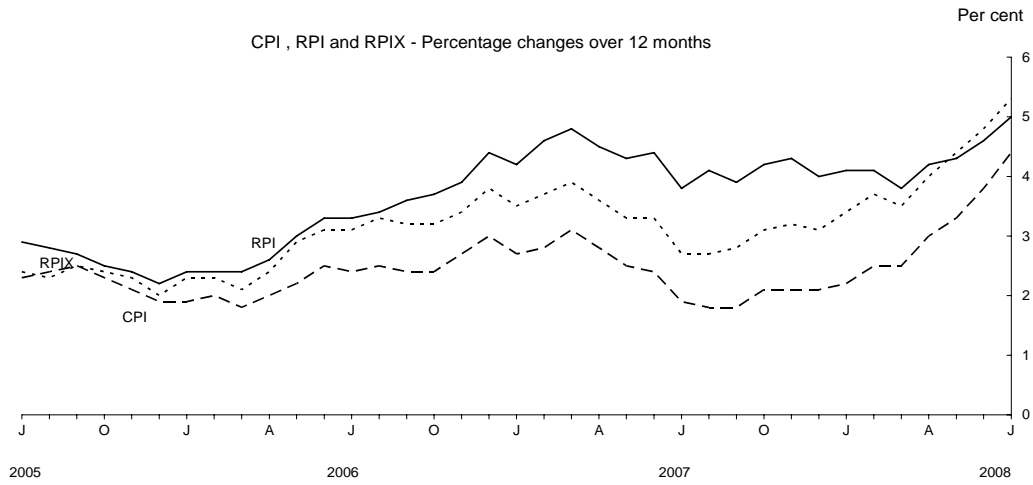
1 The differences due to housing, coverage and formula effect are all calculated independently and are not additive.

Source: National Statistics

2 Difference due to use of different formulae to aggregate prices at the most basic level.

3 This difference is derived as a residual.

CPI, RPI and Other Related Indices



CPI goods and services - Percentage changes over 12 months



RPI goods and services - Percentage changes over 12 months

