

14 August 2007

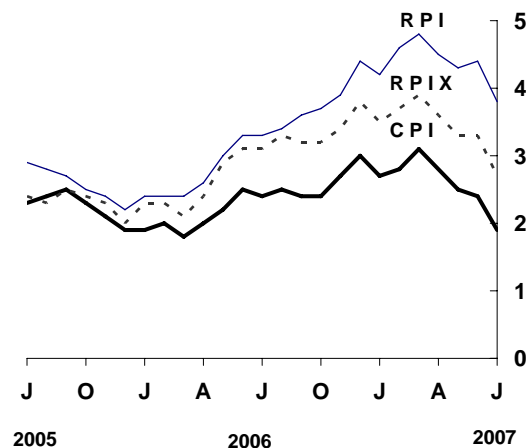
Coverage
United Kingdom
Theme
The Economy

Consumer price indices July 2007

In the year to July, the consumer prices index (CPI) rose by 1.9 per cent, down from 2.4 per cent in June.

In the year to July, the all items retail prices index (RPI) rose by 3.8 per cent, down from 4.4 per cent in June.

Over the same period, the all items RPI excluding mortgage interest payments index (RPIX) rose by 2.7 per cent, down from 3.3 per cent in June.



Issued by
National Statistics
1 Drummond Gate
London SW1V 2QQ

Telephone
Press Office 020 7533 5725
Public Enquiries 0845 601 3034
CPI/RPI Enquiries 020 7533 5874
CPI/RPI recorded
message 020 7533 5866
E-mail cpi@ons.gov.uk

Statistician
Damon Wingfield 020 7533 5840
Damon.wingfield@ons.gov.uk

Internet
www.statistics.gov.uk

Next publication date
18 September 2007

	Consumer prices index (CPI)		All items retail prices index (RPI)		All items RPI excluding mortgage interest payments (RPIX)	
	Index (2005 =100)	Per cent change over 12 months	Index (Jan 1987 =100)	Per cent change over 12 months	Index (Jan 1987 =100)	Per cent change over 12 months
2007 Feb	103.7	2.8	203.1	4.6	197.1	3.7
Mar	104.2	3.1	204.4	4.8	198.3	3.9
Apr	104.5	2.8	205.4	4.5	199.3	3.6
May	104.8	2.5	206.2	4.3	200.0	3.3
June	105.0	2.4	207.3	4.4	200.7	3.3
July	104.4	1.9	206.1	3.8	199.4	2.7

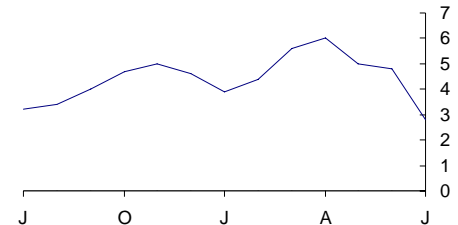
Main contributions to the change in the 12-month rate¹

CPI

The largest downward contribution to the change in the CPI annual rate came from food and non-alcoholic beverages, mainly due to supermarket led price reductions. Meat prices fell this year for both bacon and chicken, while beef prices saw little change this July compared with price rises last year, following the lifting of the ten year export ban. There were also downward contributions within food from:

- Bread and cereals, with reductions on some breakfast cereals; fish, where salmon prices decreased this July but rose a year ago; fresh fruit and vegetables, where prices fell for bananas, onions, lettuces and tomatoes; and milk, cheese and eggs, where there was little change in the price of shop bought milk this year compared with an increase last July.

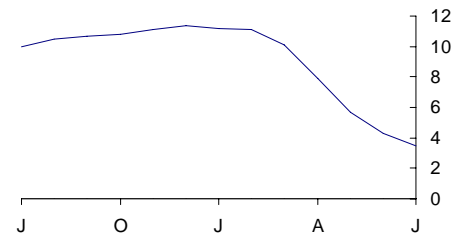
Food and non-alcoholic beverages
CPI percentage changes over 12 months



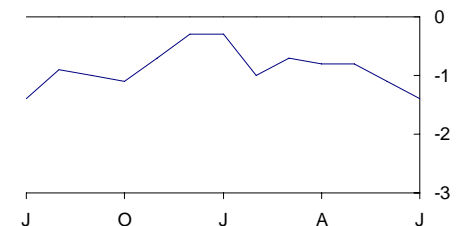
There were also large downward effects from:

- Furniture and household goods, where widespread reductions were available on many items, especially kitchen, bedroom and lounge furniture. Sales led to a record monthly decrease in average furniture prices for July of over 10 per cent following a record monthly increase for June;
- Transport, mainly due to fuels and lubricants, where the average price for petrol recorded across July fell by 0.3 pence per litre, compared with a rise of nearly 2 pence per litre a year ago. There was also a small downward contribution from second-hand car prices, which fell by more than a year ago;
- Housing and household services, with gas and electricity bills both continuing to fall as a result of the phasing in of recent tariff reductions, alongside some new reductions recorded in July. Over the same period last year, average gas and electricity bills rose; and
- Recreation and culture, mainly due to audio visual equipment and related products where there were price decreases for digital cameras and camcorders, personal computers and recording media. A further small downward contribution came from cultural services, mainly from theatre admission prices. A partially offsetting upward effect came from changes in the prices of computer games.

Housing and household services
CPI percentage changes over 12 months



Recreation and culture
CPI percentage changes over 12 months



A small downward effect came from communication, mainly due to reductions in mobile phone tariffs and handsets in July.

The largest upward effect on the CPI annual rate came from clothing and footwear, mainly due to women's outerwear, where prices for trousers, blouses and jeans fell by less than a year ago in the summer sales, and children's outerwear, where prices rose slightly compared with sales a year ago.

There was also a small upward effect from miscellaneous goods and services, where the average price of personal care appliances and products showed little change in July, compared with a fall last year.

¹ The CPI and RPI use different classification systems. Background Note 11 shows how, for each of the two indices, the main categories contributing to changes in the 12-month rate relate to each other

RPI

The largest downward contribution to the change in the RPI annual rate came from household goods, where, as in the CPI, summer sales on furniture led to a record price decrease for July, following price rises in June. A further small downward effect came from electrical appliances, where prices fell this year but rose a year ago.

Other large downward effects came from:

- Food, with a similar story to the CPI, with main contributions coming from meat, fresh milk, unprocessed potatoes, fresh vegetables and fresh fruit;
- Motoring expenditure, as petrol prices fell this year but rose a year ago, and to a lesser extent, motor vehicle purchase costs, which fell by more than last year, and vehicle tax and insurance, with smaller increases in insurance premiums recorded in July compared with a year ago; and
- Fuel and light, where, as in the CPI, average gas and electricity bills fell this year but rose a year ago.

Small downward effects came from:

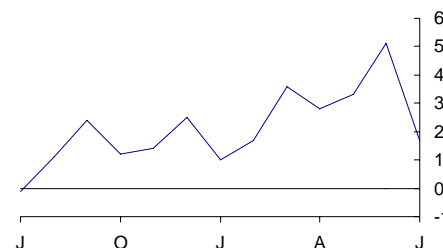
- Leisure services, due to decreases in the cost of theatre admissions, partially offset by some price increases to late booked foreign holidays; and
- Household services, mainly due to mobile phone tariffs decreasing by more in July than last year.

The largest upward contribution to the change in the RPI annual rate came from housing. This was mainly due to depreciation costs, which rose by more than a year ago, reflecting movements in the smoothed house price index used to calculate this component. Depreciation costs are excluded from the CPI.

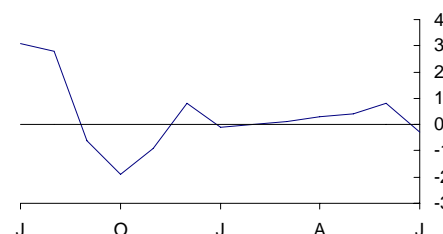
Small upward contributions came from:

- Clothing and footwear, with prices falling by less than in July 2006, particularly for women’s outerwear;
- Personal goods and services, where prices fell by less than last year; and
- Fares and other travel costs where average prices increased in July by more than a year ago.

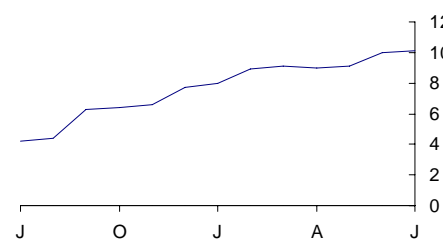
Household goods
RPI percentage changes over 12 months



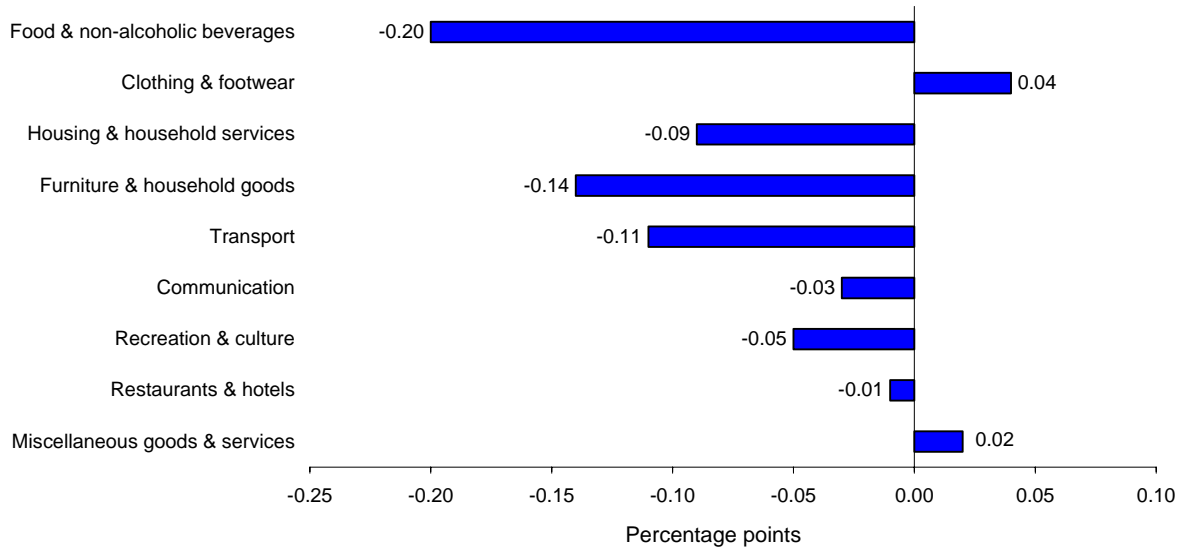
Motoring expenditure
RPI percentage changes over 12 months



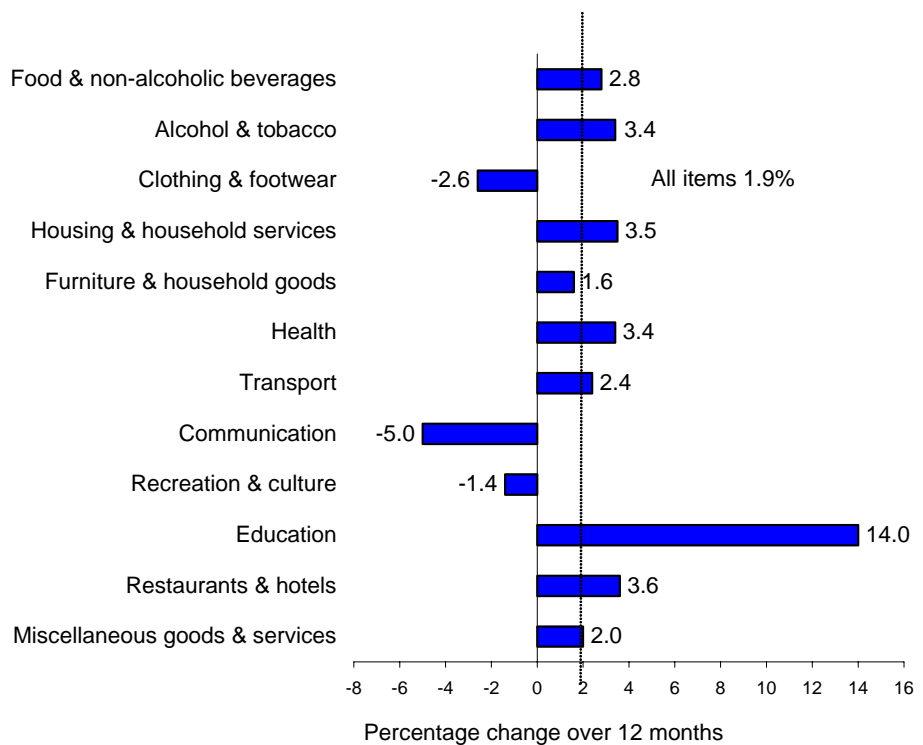
Housing
RPI percentage changes over 12 months



CPI main contributions¹ to the change in the all items 12-month rate between June 2007 and July 2007 (-0.5 percentage points).

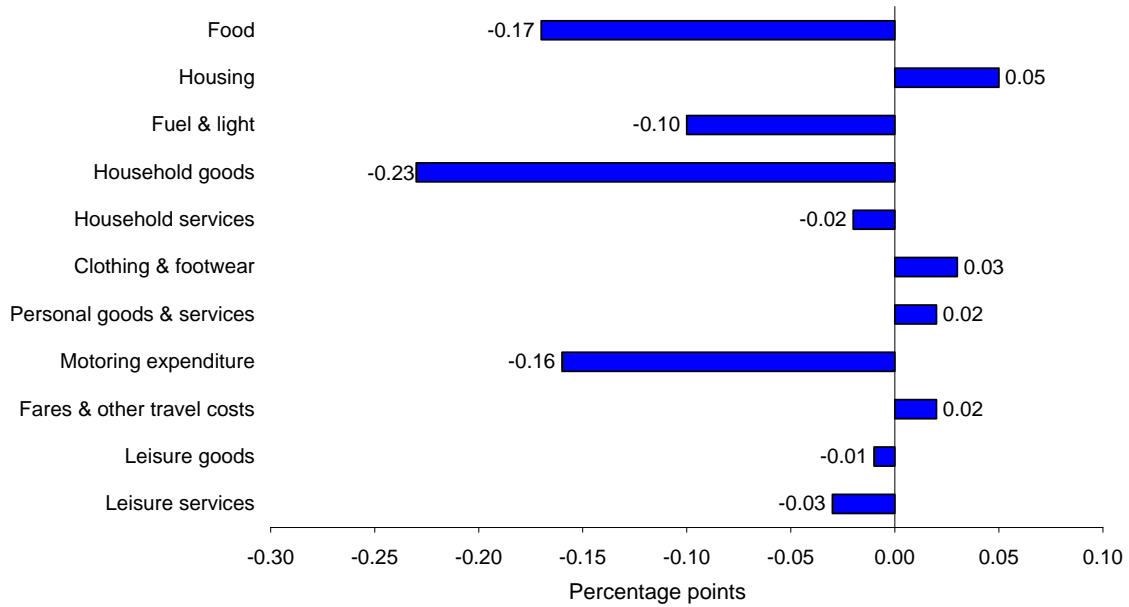


CPI comparison of the 12-month percentage changes

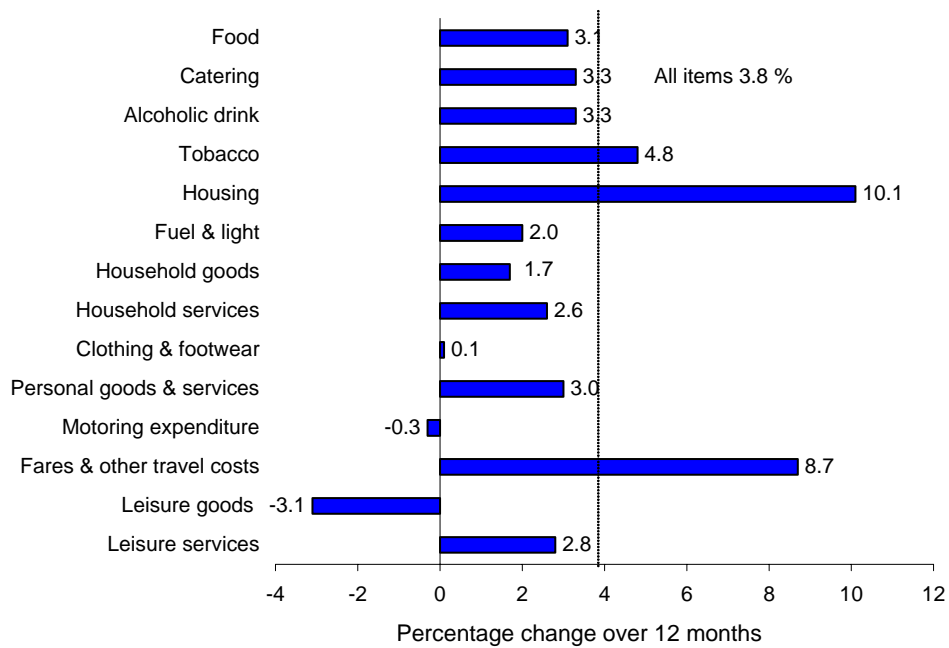


¹ Individual contributions to the change in the 12-month rate may not sum to the total due to rounding

RPI main contributions¹ to the change in the all items 12-month rate between June 2007 and July 2007 (-0.6 percentage points).



RPI comparison of 12-month percentage changes



¹ Individual contributions to the change in the 12-month rate may not sum to the total due to rounding.

BACKGROUND NOTES

Relevance

- 1 The consumer prices index (CPI) is the main United Kingdom domestic measure of consumer price inflation for macroeconomic purposes. It forms the basis for the Government's inflation target that the Bank of England's Monetary Policy Committee (MPC) is required to achieve.
- 2 Internationally, the CPI is known as the Harmonised Index of Consumer Prices (HICP). HICPs are calculated in each Member State of the European Union, according to rules specified in a series of European Regulations developed by Eurostat in conjunction with the EU Member States. HICPs are used to compare inflation rates across the European Union. Since January 1999 it has also been used by the European Central Bank (ECB) as the measure of price stability across the euro area.
- 3 The retail prices index (RPI) is the most long-standing general purpose measure of inflation in the United Kingdom and is available from June 1947. It is used for a variety of purposes by both government and external users including the indexation of various incomes and prices and the uprating of pensions, benefits and index-linked gilts.

Methodology

- 4 The CPI and the RPI are compiled using the same underlying price data, based on a large and representative selection of around 650 individual goods and services for which price movements are measured in around 150 randomly selected areas throughout the UK. Around 120,000 separate price quotations are used every month to compile the indices. The outlets in which the prices are collected are selected randomly. Expenditure weights are held constant for one year at a time.
- 5 The selection of goods and services that are priced to compile the CPI and RPI is reviewed annually. The contents of the 2007 basket are described in an article published on the National Statistics website at:
<http://www.statistics.gov.uk/cci/article.asp?ID=1746>
The expenditure weights used to compile the indices are also updated each year. Additional details of the updated CPI and RPI weights for 2007 are available from the National Statistics website in an article entitled Consumer Prices Index and Retail Prices Index: Updating Weights for 2007
<http://www.statistics.gov.uk/cci/article.asp?id=1779>
- 6 Rates of change for the CPI are calculated from unrounded index levels, rather than on the published indices, which are rounded to one decimal place. The use of unrounded indices increases the accuracy of the calculation. The unrounded index levels are available on request. By contrast, rates of change for the RPI are calculated from the published rounded indices.

Reliability

- 7 Once the RPI indices are published they are never revised. CPI indices are revisable although past revisions have been minimal with the exception of those arising from re-referencing of the CPI to 2005=100, which took place with the publication of the January 2006 indices.

Comparability

- 8 The CPI's coverage of goods and services was extended in stages in the areas of health, education, childcare and insurance, with effect from the January 2000, 2001, and 2002 indices. In 2000, there was also a change to the population basis for the weights which was broadened from private households to include expenditure by foreign visitors and residents of institutional households. Further details can be found in a series of articles:
http://www.statistics.gov.uk/about/methodology_by_theme/cpi
- 9 The official CPI series starts in 1996 but estimates for earlier periods are available back to 1988. These estimates are broadly consistent with data from 1996 but should be treated with some caution. The following article provides more detail:
<http://www.statistics.gov.uk/cci/article.asp?ID=31&Pos=4&ColRank=1&Rank=1>
- 10 RPI data are available back to 1947 but have been re-referenced on several occasions since then, generally accompanied by changes to the coverage and/or structure of the detailed sub-components. Details of these changes are given in Appendices 1 and 2 of the CPI Technical Manual:
<http://www.statistics.gov.uk/statbase/Product.asp?vlnk=2328&More=N>

Coherence

- 11 The CPI and RPI both measure the average change from month to month in the prices of consumer goods and services purchased in the UK. However, they differ in both coverage and methodology. A detailed description of these differences is given in an article entitled "The New Inflation Target: the Statistical Perspective":
www.statistics.gov.uk/StatBase/Product.asp?vlnk=10913. The differences are summarised below:
- In the CPI, the geometric mean is used to combine the individual prices into elementary indices at the most basic level whereas the RPI uses arithmetic means.
 - The CPI excludes a number of RPI series mainly relating to housing costs (for example, council tax), and in particular to owner occupiers' housing costs (including mortgage interest payments, house depreciation and buildings insurance). In addition, the CPI excludes the annual road fund licence and, from 2006, TV licences which are classified as taxes in the UK National Accounts, and Trades Union subscriptions which by convention are not part of household expenditure.
 - The CPI includes series for university accommodation fees, foreign students' university tuition fees, and unit trust and stockbrokers' charges, none of which are included in the RPI.

- The CPI is categorised according to the international classification system, COICOP (Classification Of Individual CONsumption by Purpose). The way in which this maps to the RPI groupings is shown in the following table:

COICOP Divisions	RPI Groups
01 Food & non-alcoholic beverages	Food
02 Alcohol & tobacco	Alcoholic drink (off sales) Tobacco
03 Clothing & footwear	Clothing & footwear
04 Housing & household services	Housing (exc. Mortgage interest payments, depreciation, council tax & building insurance) Fuel & light
05 Furniture & household goods	Household goods Domestic services
06 Health	Personal goods & services (health-related items)
07 Transport	Motoring expenditure Fares & other travel costs
08 Communication	Household services (exc. domestic services & fees and subscriptions)
09 Recreation & culture	Leisure goods Leisure services
10 Education	Fees & subscriptions (education-related items)
11 Restaurants & hotels	Catering Alcoholic drink (on sales)
12 Miscellaneous goods & services	Personal goods & services (non health-related items) Fees & subscriptions (non education-related items)

- The index for the purchase of new cars in the CPI is quality adjusted and based on actual published prices for new cars. New car prices in the RPI are imputed from movements in second hand car prices.
- The CPI weights are based on expenditure by all private households, foreign visitors to the UK and residents of institutional households. In the RPI, weights are based on expenditure by private households only, excluding the highest income households and pensioner households mainly dependent on state benefits.
- In the construction of the CPI weights, amounts paid out in insurance claims are distributed among the COICOP headings according to the nature of the claims' expenditure, with the residual (the service charge) being allocated to the relevant insurance heading. For the RPI weights, total expenditure (that is, gross of claims paid out) is assigned to the relevant insurance heading.

- 12 A breakdown of the difference between the CPI and RPI annual rates of inflation is shown in Table 10 of the CPI First Release.

Accessibility

- 13 This release includes the July 2007 data, collected on 17 July. Future publication dates are 18 September, 16 October, 13 November, 18 December, 15 January, 2008 and 12 February. The European Commission (Eurostat) will release figures for the harmonised index of consumer prices (HICP) for the month of July 2007 for EU member states, together with an EU average, on 16 August 2007. Further information on HICP for the European Union, Eurozone and other EU Member States is available from Eurostat's HICP web page: http://epp.eurostat.ec.europa.eu/pls/portal/url/page/PGP_DS_HICP

Further information

- 14 A more detailed quality report for this First Release is available at: <http://www.statistics.gov.uk/CCI/article.asp?ID=1585>
- 15 A full description of how the CPI and RPI are compiled is given in the Consumer Price Indices Technical Manual 2007 edition: <http://www.statistics.gov.uk/statbase/Product.asp?vlnk=2328>

General

- 16 Details of the policy governing the release of new data are available from the press office. Also available is a list of the names of those given pre-publication access to contents of this release.
- 17 Complete runs of series in this release are available to download free of charge at: <http://www.statistics.gov.uk/timeseries> . Alternatively, for low-cost tailored data call Online Services on 020 7533 5675 or email: tailored@statistics.gov.uk
- 18 **National Statistics** are produced to high professional standards set out in the National Statistics Code of Practice. They undergo regular quality assurance reviews to ensure that they meet customer needs. They are produced free from any political interference. © Crown Copyright 2007

	Consumer prices index (CPI) ¹		Consumer prices index excluding indirect taxes (CPIY) ³		Consumer prices index at constant tax rates (CPI-CT)		All items retail prices index (RPI)		All items RPI excluding			
	Index (2005=100)	Percentage change over 12 months	Index (2005=100)	Percentage change over 12 months	Index (2005=100)	Percentage change over 12 months	Index (Jan 13, 1987=100)	Percentage change over 12 months	mortgage interest payments (RPIX)		mortgage interest payments and indirect taxes (RPIY) ²	
		Index (Jan 13, 1987=100)		Percentage change over 12 months		Index (Jan 13, 1987=100)		Percentage change over 12 months	Index (Jan 13, 1987=100)	Percentage change over 12 months		
	D7BT	D7G7	EL2Q	EL2S	EAC7	EAD6	CHAW	CZBH	CHMK	CDKQ	CBZW	CBZX
2004 Jul	97.8	1.4	97.7	1.4	97.9	1.2	186.8	3.0	183.8	2.2	175.1	2.0
Aug	98.1	1.3	97.9	1.3	98.1	1.1	187.4	3.2	184.3	2.2	175.7	2.0
Sep	98.2	1.1	98.0	1.0	98.2	0.9	188.1	3.1	184.7	1.9	176.1	1.7
Oct	98.4	1.2	98.3	1.2	98.5	1.1	188.6	3.3	185.1	2.1	176.6	2.0
Nov	98.6	1.5	98.5	1.4	98.7	1.4	189.0	3.4	185.4	2.2	176.9	2.2
Dec	99.1	1.7	99.1	1.7	99.2	1.6	189.9	3.5	186.4	2.5	177.9	2.5
2005 Jan	98.6	1.6	98.5	1.7	98.6	1.5	188.9	3.2	185.2	2.1	176.7	2.0
Feb	98.8	1.7	98.8	1.7	98.9	1.6	189.6	3.2	185.9	2.1	177.4	2.0
Mar	99.3	1.9	99.3	2.0	99.3	1.8	190.5	3.2	186.8	2.4	178.3	2.3
Apr	99.7	1.9	99.6	2.0	99.6	1.9	191.6	3.2	187.8	2.3	179.0	2.3
May	100.0	1.9	100.0	2.0	100.0	1.8	192.0	2.9	188.2	2.1	179.4	2.2
Jun	100.0	2.0	100.0	2.2	100.0	1.9	192.2	2.9	188.3	2.2	179.5	2.2
Jul	100.1	2.3	100.1	2.5	100.1	2.3	192.2	2.9	188.3	2.4	179.5	2.5
Aug	100.4	2.4	100.5	2.6	100.4	2.3	192.6	2.8	188.6	2.3	179.8	2.3
Sep	100.6	2.5	100.6	2.6	100.6	2.4	193.1	2.7	189.3	2.5	180.5	2.5
Oct	100.7	2.3	100.8	2.5	100.7	2.3	193.3	2.5	189.5	2.4	180.7	2.3
Nov	100.7	2.1	100.8	2.3	100.7	2.1	193.6	2.4	189.7	2.3	180.9	2.3
Dec	101.0	1.9	101.1	2.1	101.0	1.8	194.1	2.2	190.2	2.0	181.5	2.0
2006 Jan	100.5	1.9	100.6	2.1	100.5	1.9	193.4	2.4	189.4	2.3	180.7	2.3
Feb	100.9	2.0	100.9	2.1	100.8	2.0	194.2	2.4	190.1	2.3	181.4	2.3
Mar	101.1	1.8	101.1	1.9	101.1	1.7	195.0	2.4	190.8	2.1	182.2	2.2
Apr	101.7	2.0	101.7	2.1	101.6	2.0	196.5	2.6	192.3	2.4	183.2	2.3
May	102.2	2.2	102.3	2.3	102.1	2.2	197.7	3.0	193.6	2.9	184.5	2.8
Jun	102.5	2.5	102.6	2.6	102.4	2.4	198.5	3.3	194.2	3.1	185.2	3.2
Jul	102.5	2.4	102.6	2.4	102.4	2.3	198.5	3.3	194.2	3.1	185.2	3.2
Aug	102.9	2.5	103.0	2.6	102.8	2.4	199.2	3.4	194.9	3.3	186.0	3.4
Sep	103.0	2.4	103.2	2.6	102.9	2.3	200.1	3.6	195.3	3.2	186.4	3.3
Oct	103.2	2.4	103.5	2.7	103.1	2.3	200.4	3.7	195.5	3.2	186.7	3.3
Nov	103.4	2.7	103.8	3.0	103.4	2.6	201.1	3.9	196.2	3.4	187.5	3.6
Dec	104.0	3.0	104.3	3.2	103.9	2.9	202.7	4.4	197.4	3.8	188.6	3.9
2007 Jan	103.2	2.7	103.5	2.9	103.1	2.6	201.6	4.2	196.1	3.5	187.3	3.7
Feb	103.7	2.8	103.9	2.9	103.5	2.6	203.1	4.6	197.1	3.7	188.4	3.9
Mar	104.2	3.1	104.3	3.1	103.9	2.9	204.4	4.8	198.3	3.9	189.5	4.0
Apr	104.5	2.8	104.6	2.9	104.2	2.6	205.4	4.5	199.3	3.6	190.0	3.7
May	104.8	2.5	105.0	2.6	104.5	2.3	206.2	4.3	200.0	3.3	190.7	3.4
Jun	105.0	2.4	105.2	2.5	104.7	2.2	207.3	4.4	200.7	3.3	191.4	3.3
Jul	104.4	1.9	104.6	2.0	104.1	1.7	206.1	3.8	199.4	2.7	190.1	2.6

1 Inflation rates prior to 1997 and index levels prior to 1996 are estimated. Further details are given in *Economic Trends No. 541 December 1998*. These details are also available on the National Statistics website: www.statistics.gov.uk/cci/article.asp?ID=31

2 The taxes excluded are council tax, VAT, duties, vehicle excise duty, insurance tax and air passenger duty.

3 The taxes excluded are VAT, duties, insurance premium tax, air passenger duty, stamp duty on share transactions.

Source: National Statistics

2 CPI: Detailed figures for 17 July 2007

	Index (2005 =100)	Percentage change over			Index (2005 =100)	Percentage change over	
		1 mth	12 mths			1 mth	12 mths
CPI (overall index)	104.4	-0.6	1.9				
01 Food and non-alcoholic beverages	105.5	-1.7	2.8	06.2 Out-patient services	108.7	0.1	3.7
02 Alcoholic beverages and tobacco	106.9	-0.2	3.4	06.2.1/3 Medical services & paramedical services	105.9	0.1	2.5
03 Clothing and footwear	89.8	-4.0	-2.6	06.2.2 Dental services	112.0	0.1	5.2
04 Housing, water, electricity, gas and other fuels	114.3	-0.1	3.5	06.3 Hospital services	113.8	1.8	5.7
05 Furniture, household equipment and maintenance	99.7	-4.2	1.6	07.1 Purchase of vehicles	99.4	-0.4	-0.1
06 Health	106.6	0.5	3.4	07.1.1A New cars	102.6	0.1	1.6
07 Transport	108.0	1.1	2.4	07.1.1B Second-hand cars	94.0	-1.2	-3.0
08 Communication	94.8	-1.4	-5.0	07.1.2/3 Motorcycles and bicycles	99.6	0.2	0.9
09 Recreation and culture	97.0	-0.6	-1.4	07.2 Operation of personal transport equipment	110.4	-0.1	1.7
10 Education	117.8	-	14.0	07.2.1 Spare parts and accessories	103.1	0.2	-0.2
11 Restaurants and hotels	107.2	0.2	3.6	07.2.2 Fuels and lubricants	110.2	-0.3	-1.3
12 Miscellaneous goods and services	106.1	0.3	2.0	07.2.3 Maintenance and repairs	111.8	0.1	5.4
All goods	101.6	-1.6	0.5	07.2.4 Other services	109.8	0.2	5.1
All services	107.8	0.6	3.5	07.3 Transport services	116.7	6.2	7.6
01.1 Food	105.0	-2.0	2.5	07.3.1 Passenger transport by railway	109.7	0.2	4.6
01.1.1 Bread and cereals	104.6	-1.8	3.0	07.3.2 Passenger transport by road	108.0	0.3	6.5
01.1.2 Meat	102.6	-1.6	-0.2	07.3.3 Passenger transport by air	120.2	16.9	3.4
01.1.3 Fish	115.8	-1.7	6.3	07.3.4 Passenger transport by sea and inland waterway	149.7	21.0	17.8
01.1.4 Milk, cheese and eggs	105.5	0.2	3.2	08.1 Postal services	121.5	-	12.6
01.1.5 Oils and fats	106.0	-1.1	-1.3	08.2/3 Telephone and telefax equipment and services	93.6	-1.5	-5.8
01.1.6 Fruit	96.5	-6.5	-1.0	09.1 Audio-visual equipment and related products	77.8	-2.7	-12.1
01.1.7 Vegetables including potatoes and tubers	110.1	-3.0	7.4	09.1.1 Reception and reproduction of sound and pictures	73.6	-1.8	-13.3
01.1.8 Sugar, jam, syrups, chocolate and confectionery	106.8	-0.4	2.8	09.1.2 Photographic, cinematographic and optical equipment	55.0	-3.7	-26.7
01.1.9 Food products (nec)	100.4	-0.9	1.9	09.1.3 Data processing equipment	68.4	-3.4	-20.1
01.2 Non-alcoholic beverages	109.1	0.1	5.1	09.1.4 Recording media	95.6	-2.7	-1.8
01.2.1 Coffee, tea and cocoa	109.5	0.5	5.5	09.1.5 Repair of audio-visual equipment & related products	107.9	0.6	3.4
01.2.2 Mineral waters, soft drinks and juices	108.8	-	4.8	09.2 Oth. major durables for recreation & culture	100.7	-0.1	-0.1
02.1 Alcoholic beverages	101.7	-0.5	1.4	09.2.1/2 Major durables for in/outdoor recreation	100.7	-0.1	-0.1
02.1.1 Spirits	100.5	-1.2	1.4	09.3 Other recreational items, gardens and pets	95.7	-0.6	-0.8
02.1.2 Wine	102.7	-0.5	1.5	09.3.1 Games, toys and hobbies	91.0	-1.1	-2.6
02.1.3 Beer	100.7	0.3	1.0	09.3.2 Equipment for sport and open-air recreation	98.1	-1.1	1.0
02.2 Tobacco	110.7	-	4.8	09.3.3 Gardens, plants and flowers	99.7	0.2	0.8
03.1 Clothing	89.3	-4.3	-2.9	09.3.4/5 Pets, related products and services	106.5	0.4	2.5
03.1.2 Garments	88.4	-4.5	-3.2	09.4 Recreational and cultural services	108.5	-0.8	3.5
03.1.3 Other clothing and clothing accessories	98.1	-1.6	0.9	09.4.1 Recreational and sporting services	109.0	0.2	4.3
03.1.4 Cleaning, repair and hire of clothing	108.7	0.4	3.9	09.4.2 Cultural services	108.4	-1.3	3.1
03.2 Footwear including repairs	93.5	-2.3	-0.7	09.5 Books, newspapers and stationery	105.8	1.0	1.8
04.1 Actual rentals for housing	107.0	0.7	3.1	09.5.1 Books	106.6	3.0	2.7
04.3 Regular maintenance and repair of the dwelling	106.5	0.4	5.0	09.5.2 Newspapers and periodicals	110.0	0.4	3.5
04.3.1 Materials for maintenance and repair	104.5	0.7	5.3	09.5.3/4 Misc. printed matter, stationery, drawing materials	98.7	-0.2	-2.1
04.3.2 Services for maintenance and repair	109.3	0.1	4.5	09.6 Package holidays	100.1	0.6	0.8
04.4 Water supply and misc. services for the dwelling	115.3	-	6.5	10.0 Education	117.8	-	14.0
04.4.1 Water supply	115.7	-	6.2	11.1 Catering services	107.0	0.3	3.7
04.4.3 Sewerage collection	114.9	-	6.9	11.1.1 Restaurants & cafes	106.9	0.3	3.5
04.5 Electricity, gas and other fuels	130.6	-1.5	2.2	11.1.2 Canteens	107.8	0.1	5.1
04.5.1 Electricity	129.4	-1.2	3.9	11.2 Accommodation services	108.5	0.1	3.2
04.5.2 Gas	136.5	-2.2	1.9	12.1 Personal care	104.6	-	2.9
04.5.3 Liquid fuels	112.3	2.7	-8.7	12.1.1 Hairdressing and personal grooming establishments	107.7	0.4	3.7
04.5.4 Solid fuels	113.0	-0.2	7.8	12.1.2/3 Appliances and products for personal care	103.5	-0.1	2.7
05.1 Furniture, furnishings and carpets	99.3	-8.3	0.9	12.3 Personal effects (nec)	104.4	-1.0	2.6
05.1.1 Furniture and furnishings	99.0	-10.4	0.8	12.3.1 Jewellery, clocks and watches	107.1	-0.6	2.4
05.1.2 Carpets and other floor coverings	100.1	0.2	0.6	12.3.2 Other personal effects	99.8	-2.0	2.8
05.2 Household textiles	91.0	-3.0	-2.5	12.4 Social protection	111.8	0.6	5.6
05.3 Household appliances, fitting and repairs	96.1	0.2	0.7	12.5 Insurance	105.7	0.9	2.3
05.3.1/2 Major appliances and small electric goods	95.2	0.1	0.5	12.5.2 House contents insurance	102.3	-0.1	-
05.3.3 Repair of household appliances	103.1	0.3	2.1	12.5.3 Health insurance	116.3	2.7	6.9
05.4 Glassware, tableware and household utensils	99.2	-1.7	3.1	12.5.4 Transport insurance	103.1	0.5	1.3
05.5 Tools and equipment for house and garden	102.2	-0.2	1.9	12.6 Financial services (nec)	103.7	0.8	-1.4
05.6 Goods and services for routine maintenance	108.2	-0.3	3.9	12.6.2 Other financial services (nec)	103.7	0.8	-1.4
05.6.1 Non-durable household goods	105.9	-0.6	2.5	12.7 Other services (nec)	109.6	0.3	2.9
05.6.2 Domestic services and household services	110.1	-	5.1				
06.1 Medical products, appliances and equipment	100.2	-0.5	1.3				
06.1.1 Pharmaceutical products	100.5	-0.7	1.4				
06.1.2/3 Other medical and therapeutic equipment	100.2	-0.4	1.4				

Key: - zero or negligible .. not available (nec) not elsewhere covered

Source: National Statistics

3 CPI: Detailed figures by divisions, groups and classes

	Weights	Index (2005=100)						Percentage change over 12 months					
		2007	2007 Feb	2007 Mar	2007 Apr	2007 May	2007 Jun	2007 Jul	2007 Feb	2007 Mar	2007 Apr	2007 May	2007 Jun
CPI (overall index)	1 000	103.7	104.2	104.5	104.8	105.0	104.4	2.8	3.1	2.8	2.5	2.4	1.9
01 Food and non-alcoholic beverages	103	105.4	106.0	106.2	106.7	107.3	105.5	4.4	5.6	6.0	5.0	4.8	2.8
02 Alcoholic beverages and tobacco	43	105.1	105.6	107.0	106.8	107.1	106.9	4.2	4.4	4.5	4.2	3.4	3.4
03 Clothing and footwear	62	91.9	92.8	93.7	93.7	93.6	89.8	-4.2	-3.9	-2.8	-3.6	-3.2	-2.6
04 Housing, water, electricity, gas and other fuels	115	115.1	115.0	115.7	115.0	114.5	114.3	11.1	10.1	7.9	5.7	4.3	3.5
05 Furniture, household equipment and maintenance	68	99.6	102.9	100.7	101.8	104.0	99.7	1.2	2.7	2.2	2.5	3.8	1.6
06 Health	24	104.9	104.8	105.5	105.8	106.1	106.6	3.7	3.7	3.2	3.1	3.4	3.4
07 Transport	152	102.8	103.1	104.5	106.1	106.8	108.0	1.4	1.6	1.5	2.5	3.2	2.4
08 Communication	24	98.1	98.1	97.2	96.6	96.1	94.8	-2.8	-2.8	-3.7	-3.2	-3.9	-5.0
09 Recreation and culture	153	98.4	98.2	98.3	98.0	97.6	97.0	-1.0	-0.7	-0.8	-0.8	-1.1	-1.4
10 Education	18	117.8	117.8	117.8	117.8	117.8	117.8	14.0	14.0	14.0	14.0	14.0	14.0
11 Restaurants and hotels	138	105.2	105.7	106.3	106.6	106.9	107.2	3.3	3.4	3.8	3.5	3.7	3.6
12 Miscellaneous goods and services	100	105.8	106.2	105.8	105.7	105.8	106.1	3.6	3.7	2.4	2.2	1.8	2.0
All goods	547	102.0	102.8	102.9	103.2	103.3	101.6	2.0	2.5	2.3	1.6	1.4	0.5
All services	453	105.7	105.8	106.4	106.8	107.1	107.8	3.8	3.7	3.3	3.6	3.7	3.5
01.1 Food	90	105.2	105.8	106.0	106.4	107.1	105.0	4.3	5.5	6.0	4.9	4.8	2.5
01.1.1 Bread and cereals	15	103.9	105.5	105.4	106.1	106.6	104.6	2.6	4.4	4.1	5.1	5.2	3.0
01.1.2 Meat	21	104.2	104.5	104.2	103.3	104.3	102.6	3.5	5.0	4.4	2.2	2.6	-0.2
01.1.3 Fish	4	116.5	116.0	116.2	116.0	117.9	115.8	12.8	12.6	11.7	12.7	11.1	6.3
01.1.4 Milk, cheese and eggs	12	102.2	104.6	104.8	105.1	105.2	105.5	0.0	5.3	6.5	6.8	5.6	3.2
01.1.5 Oils and fats	2	107.7	108.0	107.2	107.2	107.1	106.0	9.9	6.6	3.6	0.8	-0.1	-1.3
01.1.6 Fruit	9	101.1	99.0	97.2	102.7	103.2	96.5	3.6	1.9	1.3	1.7	2.0	-1.0
01.1.7 Vegetables including potatoes and tubers	14	110.1	110.8	113.0	112.1	113.5	110.1	9.6	10.2	15.2	9.6	9.5	7.4
01.1.8 Sugar, jam, syrups, chocolate and confectionery	11	105.6	105.8	107.2	107.3	107.3	106.8	3.6	3.6	3.6	3.0	2.7	2.8
01.1.9 Food products (nec)	2	100.3	100.9	100.0	100.4	101.4	100.4	1.4	1.9	1.6	1.2	2.4	1.9
01.2 Non-alcoholic beverages	13	107.0	107.4	108.0	109.2	109.0	109.1	4.9	6.0	5.8	5.4	4.8	5.1
01.2.1 Coffee, tea and cocoa	3	108.8	109.6	108.5	109.9	108.9	109.5	6.8	10.2	8.2	6.9	4.5	5.5
01.2.2 Mineral waters, soft drinks and juices	10	106.3	106.5	107.7	108.8	108.8	108.8	4.1	4.5	4.8	4.8	4.7	4.8
02.1 Alcoholic beverages	18	100.9	101.9	102.1	101.6	102.2	101.7	1.3	1.7	1.6	1.3	1.3	1.4
02.1.1 Spirits	5	100.0	101.7	101.6	101.1	101.8	100.5	-0.2	1.1	2.6	2.1	2.5	1.4
02.1.2 Wine	9	102.0	102.7	102.2	101.9	103.2	102.7	2.2	2.2	0.8	1.1	0.9	1.5
02.1.3 Beer	4	99.3	99.9	102.0	101.0	100.3	100.7	1.3	1.2	2.1	0.8	0.8	1.0
02.2 Tobacco	25	108.1	108.2	110.6	110.6	110.6	110.7	6.2	6.2	6.6	6.2	4.8	4.8
03.1 Clothing	54	91.6	92.6	93.6	93.4	93.3	89.3	-4.4	-4.1	-3.1	-3.9	-3.6	-2.9
03.1.2 Garments	50	90.9	91.9	92.9	92.9	92.6	88.4	-4.9	-4.6	-3.4	-4.3	-4.0	-3.2
03.1.3 Other clothing and clothing accessories	3	98.8	99.8	100.6	99.1	99.7	98.1	0.6	0.9	0.9	-0.9	-0.4	0.9
03.1.4 Cleaning, repair and hire of clothing	1	106.6	106.7	107.0	107.2	108.2	108.7	4.1	4.0	4.0	3.5	3.9	3.9
03.2 Footwear including repairs	8	93.8	94.1	94.9	95.8	95.7	93.5	-2.2	-2.0	-1.1	-0.9	-0.5	-0.7
04.1 Actual rentals for housing	49	104.6	104.6	106.1	106.3	106.3	107.0	3.2	3.1	3.1	3.2	3.2	3.1
04.3 Regular maintenance and repair of the dwelling	17	104.9	104.9	105.1	105.3	106.0	106.5	4.1	3.9	3.7	4.3	4.6	5.0
04.3.1 Materials for maintenance and repair	10	102.9	102.7	102.6	102.8	103.8	104.5	3.7	3.3	2.9	3.9	4.5	5.3
04.3.2 Services for maintenance and repair	7	107.9	108.2	108.7	108.9	109.2	109.3	4.6	4.7	4.8	4.7	4.8	4.5
04.4 Water supply and misc. services for the dwelling	10	108.2	108.2	115.3	115.3	115.3	115.3	5.5	5.5	6.5	6.5	6.5	6.5
04.4.1 Water supply	5	109.0	109.0	115.7	115.7	115.7	115.7	5.7	5.7	6.2	6.2	6.2	6.2
04.4.3 Sewerage collection	5	107.5	107.5	114.9	114.9	114.9	114.9	5.2	5.2	6.9	6.9	6.9	6.9
04.5 Electricity, gas and other fuels	39	140.7	140.3	138.0	135.2	132.6	130.6	28.6	24.9	17.1	9.5	4.9	2.2
04.5.1 Electricity	19	135.7	135.7	134.5	132.9	131.1	129.4	25.7	22.5	16.4	10.3	6.2	3.9
04.5.2 Gas	18	153.8	152.6	148.3	143.5	139.5	136.5	38.8	33.5	22.0	11.4	5.2	1.9
04.5.3 Liquid fuels	1	99.5	102.9	107.2	106.7	109.4	112.3	-12.7	-10.6	-9.4	-10.5	-8.1	-8.7
04.5.4 Solid fuels	1	114.2	114.3	114.2	113.7	113.2	113.0	8.2	8.3	7.9	6.3	7.9	7.8
05.1 Furniture, furnishings and carpets	28	99.3	106.6	100.7	103.2	108.3	99.3	1.2	3.9	1.8	3.1	6.3	0.9
05.1.1 Furniture and furnishings	22	99.0	108.5	101.1	103.2	110.6	99.0	1.5	5.1	2.6	3.4	8.2	0.8
05.1.2 Carpets and other floor coverings	6	100.4	99.4	99.1	103.0	100.0	100.1	-0.2	-0.6	-1.5	1.5	-1.0	0.6
05.2 Household textiles	8	93.8	93.1	92.9	93.4	93.7	91.0	-2.8	-3.6	-2.4	-3.3	-3.0	-2.5
05.3 Household appliances, fitting and repairs	8	94.4	96.4	96.7	96.7	95.9	96.1	-2.7	2.3	2.7	1.8	1.6	0.7
05.3.1/2 Major appliances and small electric goods	7	93.4	95.7	96.0	96.0	95.1	95.2	-3.2	2.5	2.9	1.8	1.6	0.5
05.3.3 Repair of household appliances	1	102.6	102.6	102.7	102.7	102.8	103.1	1.2	1.2	1.4	1.4	1.3	2.1
05.4 Glassware, tableware and household utensils	7	98.7	99.1	99.8	100.4	101.0	99.2	1.1	0.9	1.4	1.6	1.6	3.1
05.5 Tools and equipment for house and garden	6	102.4	102.0	102.6	102.4	102.4	102.2	1.7	1.0	2.2	2.4	1.9	1.9
05.6 Goods and services for routine maintenance	11	106.8	107.5	107.9	107.9	108.5	108.2	4.0	4.2	4.4	4.1	4.0	3.9
05.6.1 Non-durable household goods	5	105.1	106.2	106.4	106.3	106.6	105.9	2.7	3.3	3.2	2.8	2.3	2.5
05.6.2 Domestic services and household services	6	108.2	108.6	109.2	109.3	110.0	110.1	5.0	5.0	5.3	5.1	5.4	5.1
06.1 Medical products, appliances and equipment	10	100.3	100.0	100.6	100.7	100.7	100.2	0.9	0.9	1.2	1.2	1.6	1.3
06.1.1 Pharmaceutical products	5	101.5	100.8	101.3	101.5	101.2	100.5	1.6	1.5	1.3	1.5	2.0	1.4
06.1.2/3 Other medical and therapeutic equipment	5	99.5	99.6	100.2	100.2	100.5	100.2	0.4	0.6	1.2	1.0	1.4	1.4

Key: - zero or negligible .. not available (nec) not elsewhere covered

Source: National Statistics

3 CPI: Detailed figures by divisions, groups and classes

continued

	Weights	Index (2005=100)						Percentage change over 12 months					
		2007	2007 Feb	2007 Mar	2007 Apr	2007 May	2007 Jun	2007 Jul	2007 Feb	2007 Mar	2007 Apr	2007 May	2007 Jun
06.2 Out-patient services	5	107.0	107.0	107.1	108.3	108.6	108.7	4.1	4.0	3.7	3.3	3.9	3.7
06.2.1/3 Medical services & paramedical services	3	104.8	104.8	104.8	105.4	105.8	105.9	1.6	1.5	1.2	1.5	2.9	2.5
06.2.2 Dental services	2	109.3	109.4	109.5	111.8	111.9	112.0	6.7	6.6	6.4	5.6	5.4	5.2
06.3 Hospital services	9	110.0	110.1	111.2	111.4	111.8	113.8	6.9	7.0	5.3	5.3	5.3	5.7
07.1 Purchase of vehicles	49	100.1	99.9	100.0	100.1	99.8	99.4	0.5	0.3	0.3	0.4	0.1	-0.1
07.1.1A New cars	27	101.9	102.0	102.2	102.3	102.5	102.6	1.4	1.5	1.5	1.5	1.5	1.6
07.1.1B Second-hand cars	19	96.7	96.0	95.9	95.9	95.2	94.0	-1.5	-2.1	-1.9	-1.7	-2.2	-3.0
07.1.2/3 Motorcycles and bicycles	3	100.2	99.8	100.0	100.6	99.5	99.6	1.4	1.3	1.6	2.2	0.9	0.9
07.2 Operation of personal transport equipment	72	103.9	105.5	107.6	109.5	110.5	110.4	0.4	1.8	1.7	1.7	2.9	1.7
07.2.1 Spare parts and accessories	6	102.5	102.1	102.1	102.2	102.8	103.1	0.7	0.0	-0.1	-0.3	0.3	-0.2
07.2.2 Fuels and lubricants	36	99.7	102.2	105.9	109.3	110.6	110.2	-3.4	-0.9	-1.1	-1.2	0.9	-1.3
07.2.3 Maintenance and repairs	24	109.7	110.1	110.6	111.0	111.7	111.8	5.1	5.3	5.5	5.5	5.7	5.4
07.2.4 Other services	6	107.2	109.5	109.0	109.4	109.5	109.8	3.6	5.6	5.2	5.1	4.9	5.1
07.3 Transport services	31	104.6	102.9	104.9	108.2	109.9	116.7	5.1	3.3	2.5	7.6	8.5	7.6
07.3.1 Passenger transport by railway	8	109.2	108.8	109.4	109.3	109.4	109.7	5.4	5.1	4.3	4.4	4.8	4.6
07.3.2 Passenger transport by road	14	106.1	106.4	106.9	107.0	107.7	108.0	1.9	1.8	5.3	6.1	6.6	6.5
07.3.3 Passenger transport by air	7	89.1	84.9	87.8	99.1	102.9	120.2	4.4	1.4	-10.5	6.6	6.5	3.4
07.3.4 Passenger transport by sea and inland waterway	2	112.8	104.9	116.0	119.4	123.7	149.7	16.6	3.9	12.3	17.0	24.8	17.8
08.1 Postal services	1	114.3	114.3	121.5	121.5	121.5	121.5	13.1	13.1	12.6	12.6	12.6	12.6
08.2/3 Telephone and telefax equipment and services	23	97.4	97.3	96.1	95.5	95.1	93.6	-3.4	-3.4	-4.4	-3.8	-4.6	-5.8
09.1 Audio-visual equipment and related products	29	84.7	83.3	82.1	81.7	80.0	77.8	-9.2	-8.8	-9.0	-8.6	-9.8	-12.1
09.1.1 Reception and reproduction of sound and pictures	6	82.0	80.0	78.3	77.0	74.9	73.6	-10.6	-11.3	-10.8	-10.7	-12.3	-13.3
09.1.2 Photographic, cinematographic and optical equipment	4	64.7	66.0	64.7	61.7	57.1	55.0	-22.2	-15.0	-16.7	-17.9	-22.1	-26.7
09.1.3 Data processing equipment	7	80.6	76.8	73.3	71.4	70.8	68.4	-14.0	-14.8	-17.8	-17.5	-17.5	-20.1
09.1.4 Recording media	11	96.3	95.7	96.5	99.3	98.2	95.6	-1.0	-2.4	-0.5	0.8	0.1	-1.8
09.1.5 Repair of audio-visual equipment & related products	1	106.3	106.5	106.7	107.1	107.2	107.9	4.2	4.5	4.4	3.7	3.2	3.4
09.2 Other major durables for recreation & culture	9	100.4	100.4	100.8	100.8	100.8	100.7	1.6	1.6	0.7	0.5	0.5	-0.1
09.2.1/2 Major durables for in/outdoor recreation	9	100.4	100.4	100.8	100.8	100.8	100.7	1.6	1.6	0.7	0.5	0.5	-0.1
09.3 Other recreational items, gardens and pets	37	97.4	97.8	97.5	96.8	96.3	95.7	-3.0	-2.1	-0.9	-1.4	-1.8	-0.8
09.3.1 Games, toys and hobbies	21	93.8	94.6	94.0	92.7	92.0	91.0	-6.4	-4.7	-3.2	-3.7	-4.0	-2.6
09.3.2 Equipment for sport and open-air recreation	4	97.1	97.6	98.4	98.8	99.3	98.1	0.3	0.1	0.8	1.2	0.8	1.0
09.3.3 Gardens, plants and flowers	5	102.5	102.0	100.6	100.4	99.5	99.7	1.0	1.6	2.4	1.1	-0.3	0.8
09.3.4/5 Pets, related products and services	7	105.4	105.3	106.2	105.9	106.0	106.5	3.5	3.2	3.4	2.5	2.5	2.5
09.4 Recreational and cultural services	32	106.3	106.8	108.8	108.9	109.4	108.5	4.7	5.1	3.6	3.9	4.5	3.5
09.4.1 Recreational and sporting services	10	107.4	107.5	108.2	108.5	108.7	109.0	4.5	4.4	3.7	3.8	3.9	4.3
09.4.2 Cultural services	22	105.8	106.5	109.1	109.0	109.8	108.4	4.7	5.3	3.6	4.0	4.7	3.1
09.5 Books, newspapers and stationery	17	105.3	104.8	104.7	105.0	104.7	105.8	2.4	2.3	2.2	2.3	1.3	1.8
09.5.1 Books	5	105.6	104.4	103.3	104.4	103.5	106.6	1.4	1.6	2.6	3.2	1.2	2.7
09.5.2 Newspapers and periodicals	7	108.8	109.1	109.6	109.4	109.5	110.0	4.9	4.7	3.8	3.4	3.4	3.5
09.5.3/4 Misc. printed matter, stationery, drawing materials	5	99.5	98.9	99.1	99.1	98.9	98.7	-0.4	-0.8	-0.9	-0.5	-2.0	-2.1
09.6 Package holidays	29	100.1	100.0	100.0	99.9	99.5	100.1	1.3	1.3	0.6	0.3	0.4	0.8
10.0 Education	18	117.8	117.8	117.8	117.8	117.8	117.8	14.0	14.0	14.0	14.0	14.0	14.0
11.1 Catering services	119	105.1	105.5	106.2	106.5	106.7	107.0	3.4	3.5	3.8	3.6	3.6	3.7
11.1.1 Restaurants & cafes	106	104.9	105.4	106.1	106.4	106.6	106.9	3.2	3.3	3.7	3.4	3.5	3.5
11.1.2 Canteens	13	106.2	106.6	106.9	107.3	107.7	107.8	4.6	4.6	4.6	4.8	5.1	5.1
11.2 Accommodation services	19	106.3	106.7	107.5	107.9	108.3	108.5	2.5	2.8	3.5	3.1	3.8	3.2
12.1 Personal care	31	104.1	104.9	105.3	105.0	104.6	104.6	2.8	3.6	3.1	2.8	2.2	2.9
12.1.1 Hairdressing and personal grooming establishments	8	105.8	106.1	106.8	107.1	107.3	107.7	3.6	3.7	3.9	3.7	3.6	3.7
12.1.2/3 Appliances and products for personal care	23	103.4	104.5	104.7	104.1	103.6	103.5	2.6	3.6	2.8	2.5	1.7	2.7
12.3 Personal effects (nec)	10	104.4	104.7	105.4	105.7	105.5	104.4	4.0	3.9	4.5	3.5	2.6	2.6
12.3.1 Jewellery, clocks and watches	7	106.8	107.1	107.7	108.0	107.7	107.1	5.0	4.9	5.3	3.8	3.3	2.4
12.3.2 Other personal effects	3	100.5	100.8	101.8	102.0	101.9	99.8	2.2	2.1	3.1	2.9	1.3	2.8
12.4 Social protection	12	109.2	109.4	109.9	110.5	111.1	111.8	5.7	5.8	5.8	5.8	5.5	5.6
12.5 Insurance	8	104.8	104.9	105.0	104.9	104.8	105.7	6.5	4.7	3.6	4.7	2.9	2.3
12.5.2 House contents insurance	2	103.9	103.6	102.9	104.1	102.4	102.3	7.4	7.1	5.0	6.2	0.3	0.0
12.5.3 Health insurance	2	112.0	112.0	113.3	113.3	113.3	116.3	8.6	8.6	6.7	6.7	6.7	6.9
12.5.4 Transport insurance	4	102.6	102.8	102.8	102.1	102.6	103.1	5.4	2.4	1.9	3.2	2.5	1.3
12.6 Financial services (nec)	28	104.9	105.1	103.1	102.8	102.9	103.7	1.9	2.1	-1.2	-1.6	-1.6	-1.4
12.6.2 Other financial services (nec)	28	104.9	105.2	103.1	102.8	102.9	103.7	1.9	2.1	-1.2	-1.6	-1.6	-1.4
12.7 Other services (nec)	11	109.2	109.2	108.2	108.5	109.3	109.6	4.9	4.8	3.2	3.0	3.3	2.9

Key: - zero or negligible .. not available (nec) not elsewhere covered

Source: National Statistics

4 CPI: Detailed figures by division¹

	Food and non-alcoholic beverages	Alcoholic beverages and tobacco	Clothing and footwear	Housing, water, electricity, gas & other fuels	Furniture, household equipment & routine maintenance	Health ²	Transport	Communication	Recreation and culture	Education ²	Restaurants and hotels	Miscellaneous goods and services ²	CPI (overall index)
COICOP Division	01	02	03	04	05	06	07	08	09	10	11	12	
Weights													
2007	CHZR 103	CHZS 43	CHZT 62	CHZU 115	CHZV 68	CHZW 24	CHZX 152	CHZY 24	CHZZ 153	CJUU 18	CJUV 138	CJUW 100	CHZQ 1 000
Monthly indices (2005=100)													
2005 Jul	D7BU 99.4	D7BV 100.6	D7BW 96.5	D7BX 100.4	D7BY 99.4	D7BZ 100.6	D7C2 102.1	D7C3 99.5	D7C4 99.8	D7C5 98.7	D7C6 100.3	D7C7 100.4	D7BT 100.1
Aug	99.6	100.5	98.2	100.4	99.6	100.8	103.3	99.9	99.3	98.7	100.6	100.6	100.4
Sep	99.7	100.3	99.9	100.7	100.2	100.7	102.2	99.8	99.6	100.8	100.8	100.8	100.6
Oct	99.5	100.7	99.9	101.7	99.4	101.0	102.0	99.5	99.7	103.3	101.2	101.2	100.7
Nov	100.1	100.7	100.5	102.3	100.5	101.0	100.4	99.6	99.5	103.3	101.2	101.4	100.7
Dec	100.7	100.2	100.1	102.8	102.8	100.3	100.7	99.4	99.5	103.3	101.4	101.5	101.0
2006 Jan	100.4	101.0	96.0	103.3	97.8	101.0	101.2	100.9	98.6	103.3	101.5	102.0	100.5
Feb	101.0	100.8	95.9	103.6	98.5	101.1	101.4	101.0	99.4	103.3	101.9	102.1	100.9
Mar	100.4	101.1	96.5	104.5	100.3	101.0	101.4	100.9	98.9	103.3	102.2	102.4	101.1
Apr	100.2	102.3	96.5	107.3	98.5	102.2	102.9	100.9	99.1	103.3	102.5	103.3	101.7
May	101.7	102.5	97.2	108.8	99.3	102.6	103.5	99.7	98.9	103.3	103.0	103.4	102.2
Jun	102.4	103.6	96.7	109.7	100.2	102.5	103.5	100.0	98.7	103.3	103.1	103.9	102.5
Jul	102.6	103.4	92.2	110.5	98.1	103.0	105.5	99.8	98.4	103.3	103.5	104.0	102.5
Aug	103.0	103.8	94.4	110.9	99.1	103.4	105.8	99.2	98.4	103.3	103.6	104.5	102.9
Sep	103.6	103.7	96.4	111.5	100.6	103.6	102.9	99.6	98.6	107.9	103.8	104.7	103.0
Oct	104.2	103.9	96.6	112.7	99.0	104.2	101.5	100.4	98.6	117.8	104.2	105.0	103.2
Nov	105.1	103.4	97.2	113.7	100.0	104.1	101.1	100.3	98.7	117.8	104.5	105.0	103.4
Dec	105.4	103.0	96.0	114.5	103.3	104.2	102.8	99.9	99.2	117.8	104.7	104.9	104.0
2007 Jan	104.4	104.5	92.0	114.9	98.3	104.8	102.1	99.0	98.3	117.8	104.9	105.1	103.2
Feb	105.4	105.1	91.9	115.1	99.6	104.9	102.8	98.1	98.4	117.8	105.2	105.8	103.7
Mar	106.0	105.6	92.8	115.0	102.9	104.8	103.1	98.1	98.2	117.8	105.7	106.2	104.2
Apr	106.2	107.0	93.7	115.7	100.7	105.5	104.5	97.2	98.3	117.8	106.3	105.8	104.5
May	106.7	106.8	93.7	115.0	101.8	105.8	106.1	96.6	98.0	117.8	106.6	105.7	104.8
Jun	107.3	107.1	93.6	114.5	104.0	106.1	106.8	96.1	97.6	117.8	106.9	105.8	105.0
Jul	105.5	106.9	89.8	114.3	99.7	106.6	108.0	94.8	97.0	117.8	107.2	106.1	104.4
Percentage change on a year earlier													
2005 Jul	D7G8 1.7	D7G9 2.2	D7GA -4.8	D7GB 6.7	D7GC 0.6	D7GD 3.4	D7GE 4.6	D7GF -2.5	D7GG -1.5	D7GH 5.0	D7GI 3.4	D7GJ 5.2	D7G7 2.3
Aug	2.2	1.8	-4.4	6.3	0.2	3.7	5.4	-2.1	-2.0	5.0	3.5	5.1	2.4
Sep	2.0	1.4	-5.3	6.5	-0.2	3.1	6.0	-1.2	-1.6	4.7	3.7	5.1	2.5
Oct	1.5	1.9	-5.3	6.5	-0.2	3.0	5.8	-1.6	-1.5	4.7	3.7	4.2	2.3
Nov	1.7	2.5	-5.1	6.5	0.1	2.9	4.1	-1.2	-1.5	4.7	3.5	4.3	2.1
Dec	1.7	2.5	-4.2	6.4	-	2.4	2.8	-1.0	-1.7	4.7	3.5	4.2	1.9
2006 Jan	1.2	2.3	-4.7	6.3	-0.8	2.3	5.1	0.5	-2.1	4.7	3.4	3.5	1.9
Feb	1.1	1.6	-4.7	6.4	-0.5	2.3	4.2	0.4	-0.8	4.7	3.5	3.6	2.0
Mar	-0.4	2.5	-4.7	7.0	-0.4	2.1	3.5	0.5	-1.4	4.7	3.6	3.7	1.8
Apr	0.3	2.5	-4.4	7.7	-0.8	2.7	4.4	0.3	-1.6	4.7	3.0	4.0	2.0
May	1.1	2.2	-3.7	9.0	-0.8	2.9	4.0	-0.4	-1.6	4.7	3.2	4.1	2.2
Jun	1.8	3.3	-3.9	9.8	-0.1	2.7	3.9	-0.3	-1.6	4.7	3.2	4.4	2.5
Jul	3.2	2.8	-4.5	10.0	-1.3	2.4	3.3	0.3	-1.4	4.7	3.2	3.6	2.4
Aug	3.4	3.3	-3.9	10.5	-0.5	2.6	2.4	-0.7	-0.9	4.7	3.0	3.9	2.5
Sep	4.0	3.4	-3.5	10.7	0.3	2.8	0.6	-0.2	-1.0	7.1	2.9	3.9	2.4
Oct	4.7	3.2	-3.3	10.8	-0.4	3.1	-0.5	0.9	-1.1	14.0	3.0	3.8	2.4
Nov	5.0	2.7	-3.2	11.1	-0.5	3.1	0.8	0.7	-0.7	14.0	3.2	3.5	2.7
Dec	4.6	2.7	-4.1	11.4	0.6	3.9	2.1	0.5	-0.3	14.0	3.2	3.3	3.0
2007 Jan	3.9	3.5	-4.1	11.2	0.5	3.8	0.9	-1.8	-0.3	14.0	3.3	3.1	2.7
Feb	4.4	4.2	-4.2	11.1	1.2	3.7	1.4	-2.8	-1.0	14.0	3.3	3.6	2.8
Mar	5.6	4.4	-3.9	10.1	2.7	3.7	1.6	-2.8	-0.7	14.0	3.4	3.7	3.1
Apr	6.0	4.5	-2.8	7.9	2.2	3.2	1.5	-3.7	-0.8	14.0	3.8	2.4	2.8
May	5.0	4.2	-3.6	5.7	2.5	3.1	2.5	-3.2	-0.8	14.0	3.5	2.2	2.5
Jun	4.8	3.4	-3.2	4.3	3.8	3.4	3.2	-3.9	-1.1	14.0	3.7	1.8	2.4
Jul	2.8	3.4	-2.6	3.5	1.6	3.4	2.4	-5.0	-1.4	14.0	3.6	2.0	1.9

Key: - zero or negligible

¹ Inflation rates prior to 1997 and index levels prior to 1996 are estimated. Further details are given in *Economic Trends No. 541 December 1998*. These details are also available on the National Statistics website: www.statistics.gov.uk/cpi/article.asp?ID=31

² The coverage of these categories was extended in January 2000; further extensions to coverage came into effect in January 2001 for health and miscellaneous goods and services; the coverage of miscellaneous goods and services was further extended with effect from January 2002 (details are given in a series of Economic Trends articles available on the National Statistics website: www.statistics.gov.uk/cpi)

Source: National Statistics

5 CPI: Detailed goods and services breakdown¹

	Weights	Index (2005=100)						Percentage change over 12 months						Percentage change over 1 month
		2007	2007	2007	2007	2007	2007	2007	2007	2007	2007	2007	2007	2007
		Feb	Mar	Apr	May	Jun	Jul	Feb	Mar	Apr	May	Jun	Jul	Jul
CPI (overall index)	1 000	103.7	104.2	104.5	104.8	105.0	104.4	2.8	3.1	2.8	2.5	2.4	1.9	-0.6
All goods	547	102.0	102.8	102.9	103.2	103.3	101.6	2.0	2.5	2.3	1.6	1.4	0.5	-1.6
Food, alcoholic beverages & tobacco	146	105.3	105.9	106.5	106.7	107.2	105.9	4.3	5.2	5.6	4.7	4.4	3.0	-1.3
Processed food & non-alcoholic beverages	55	104.6	105.7	106.1	106.6	106.8	106.2	2.9	4.8	4.8	4.8	4.4	3.3	-0.6
Non-processed food	48	106.4	106.3	106.4	106.8	107.9	104.7	6.0	6.5	7.4	5.1	5.2	2.3	-3.0
Seasonal food	27	108.1	107.7	108.2	109.6	110.8	106.4	8.0	7.7	9.9	7.4	7.2	4.3	-4.0
Meat	21	104.2	104.5	104.2	103.3	104.3	102.6	3.5	5.0	4.4	2.2	2.6	-0.2	-1.6
Alcoholic beverages & tobacco	43	105.1	105.6	107.0	106.8	107.1	106.9	4.2	4.4	4.5	4.2	3.4	3.4	-0.2
Industrial goods	401	100.9	101.7	101.7	101.9	101.9	100.1	1.2	1.6	1.1	0.5	0.3	-0.4	-1.8
Energy	75	118.9	120.1	121.2	121.9	121.5	120.4	11.8	11.6	7.9	4.4	3.3	0.9	-0.9
Electricity, gas & miscellaneous energy	38	143.2	142.7	140.1	137.2	134.4	132.2	31.2	27.2	18.8	10.8	5.9	3.2	-1.6
Liquid fuels, vehicle fuels & lubricants	37	99.7	102.2	105.9	109.3	110.5	110.3	-3.8	-1.4	-1.5	-1.6	0.5	-1.6	-0.2
Non-energy industrial goods	326	97.6	98.4	98.1	98.2	98.3	96.3	-1.0	-0.5	-0.3	-0.4	-0.4	-0.8	-2.0
Clothing & footwear goods	61	91.6	92.6	93.5	93.5	93.3	89.5	-4.3	-4.0	-2.9	-3.7	-3.3	-2.7	-4.1
Housing goods	76	99.9	102.8	101.1	102.2	104.2	100.4	1.5	2.8	2.3	2.8	3.9	2.1	-3.6
Household goods	61	98.7	102.4	99.8	101.0	103.4	98.7	0.7	2.4	1.9	2.2	3.6	1.2	-4.6
Water supply; materials for maintenance & repair	15	104.8	104.6	106.7	106.9	107.6	108.0	4.3	4.0	4.0	4.7	5.1	5.7	0.5
Medical products, appliances & equipment	10	100.3	100.0	100.6	100.7	100.7	100.2	0.9	0.9	1.2	1.2	1.6	1.3	-0.5
Vehicles, spare parts & accessories	55	100.4	100.1	100.2	100.3	100.1	99.8	0.5	0.2	0.3	0.3	0.2	-0.1	-0.3
Recreational goods	91	95.2	94.8	94.3	93.9	93.0	92.2	-3.5	-3.1	-2.8	-2.8	-3.6	-3.9	-0.9
Audio-visual goods	28	83.9	82.5	81.2	80.8	79.0	76.8	-9.7	-9.3	-9.5	-9.0	-10.2	-12.7	-2.8
Other recreational goods	63	99.9	100.0	99.9	99.5	99.1	99.0	-1.0	-0.4	0.2	-0.1	-0.6	0.0	-0.1
Miscellaneous goods	33	103.8	104.7	105.1	104.7	104.3	103.9	3.1	3.7	3.4	2.8	2.0	2.7	-0.4
All services	453	105.7	105.8	106.4	106.8	107.1	107.8	3.8	3.7	3.3	3.6	3.7	3.5	0.6
Housing services	70	105.5	105.5	107.1	107.3	107.4	107.9	3.7	3.7	3.8	3.8	3.7	3.6	0.5
Actual rentals for housing	49	104.6	104.6	106.1	106.3	106.3	107.0	3.2	3.1	3.1	3.2	3.2	3.1	0.7
Primary housing services	14	107.3	107.4	110.2	110.5	110.3	110.4	5.1	5.2	5.6	5.7	5.0	4.8	-
Other housing services	7	107.4	107.7	108.2	108.3	109.0	109.0	4.5	4.5	4.8	4.6	4.8	4.7	0.1
Travel & transport services	65	106.5	106.1	107.1	108.9	110.1	113.5	5.0	4.2	3.8	6.4	6.8	6.3	3.1
Services for personal transport equipment	30	109.2	110.0	110.3	110.7	111.3	111.4	4.8	5.4	5.4	5.4	5.5	5.3	0.1
Transport services	31	104.6	102.9	104.9	108.2	109.9	116.7	5.1	3.3	2.5	7.6	8.5	7.6	6.2
Transport insurance	4	102.6	102.8	102.8	102.1	102.6	103.1	5.4	2.4	1.9	3.2	2.5	1.3	0.5
Communication	24	98.1	98.1	97.2	96.6	96.1	94.8	-2.8	-2.8	-3.7	-3.2	-3.9	-5.0	-1.4
Recreational & personal services	209	104.7	105.1	105.9	106.1	106.3	106.4	3.2	3.3	3.3	3.1	3.3	3.2	0.1
Package holidays & accommodation	48	102.5	102.6	102.9	103.0	102.9	103.4	1.8	1.9	1.8	1.4	1.8	1.8	0.4
Other recreational & personal services	161	105.4	105.8	106.7	107.0	107.3	107.3	3.6	3.8	3.8	3.6	3.8	3.6	0.1
Catering services	119	105.1	105.5	106.2	106.5	106.7	107.0	3.4	3.5	3.8	3.6	3.6	3.7	0.3
Non-catering recreational & personal services	42	106.2	106.6	108.3	108.4	109.0	108.4	4.4	4.7	3.7	3.9	4.2	3.5	-0.5
Miscellaneous & other services	85	109.5	109.6	109.0	109.1	109.4	110.1	6.1	6.1	4.5	4.4	4.4	4.4	0.6
Miscellaneous services	53	107.1	107.3	106.2	106.2	106.5	107.3	3.7	3.7	1.6	1.4	1.3	1.4	0.7
Medical services	14	109.1	109.1	109.9	110.4	110.8	112.2	6.1	6.1	4.8	4.7	4.9	5.0	1.2
Education	18	117.8	117.8	117.8	117.8	117.8	117.8	14.0	14.0	14.0	14.0	14.0	14.0	-
Special aggregates														
Durables	117	96.9	98.3	96.6	96.9	97.6	94.9	-1.0	0.0	-0.7	-0.6	-0.2	-2.2	-2.7
Semi-durables	132	94.7	95.2	95.7	95.8	95.5	93.1	-3.0	-2.8	-1.7	-2.0	-2.1	-1.5	-2.5
Non-durables	77	103.7	104.0	104.6	104.4	104.3	104.4	2.7	2.9	2.7	2.6	2.2	2.7	-
Seasonal food	27	108.1	107.7	108.2	109.6	110.8	106.4	8.0	7.7	9.9	7.4	7.2	4.3	-4.0
Non-seasonal food	63	104.0	105.0	105.1	105.0	105.5	104.4	2.7	4.6	4.5	3.8	3.7	1.8	-1.1
Energy, food, alcoholic beverages & tobacco	221	109.3	110.1	110.8	111.3	111.5	110.2	6.7	7.3	6.3	4.6	4.0	2.3	-1.1
Energy & unprocessed food	123	113.4	114.1	114.8	115.4	115.6	113.7	9.4	9.6	7.7	4.7	4.0	1.5	-1.7
Energy & seasonal food	102	115.7	116.4	117.4	118.3	118.3	116.3	10.8	10.5	8.5	5.2	4.3	1.8	-1.7
Tobacco	25	108.1	108.2	110.6	110.6	110.6	110.7	6.2	6.2	6.6	6.2	4.8	4.8	-
Housing, water, electricity, gas & other fuels	115	115.1	115.0	115.7	115.0	114.5	114.3	11.1	10.1	7.9	5.7	4.3	3.5	-0.1
Education, health & social protection ²	54	110.0	110.0	110.4	110.7	111.0	111.3	7.5	7.5	7.2	7.2	7.3	7.3	0.3
<i>All items excluding</i>														
Energy	925	102.7	103.1	103.4	103.6	103.9	103.3	2.1	2.4	2.4	2.4	2.3	1.9	-0.6
Energy, food, alcoholic beverages & tobacco	779	102.2	102.6	102.8	103.1	103.3	102.8	1.7	1.9	1.8	1.9	2.0	1.7	-0.5
Energy & unprocessed food	877	102.5	102.9	103.2	103.5	103.7	103.2	1.9	2.2	2.1	2.2	2.2	1.9	-0.5
Seasonal food	973	103.6	104.1	104.4	104.7	104.9	104.3	2.7	2.9	2.6	2.4	2.3	1.8	-0.5
Energy & seasonal food	898	102.5	103.0	103.2	103.5	103.7	103.2	2.0	2.3	2.2	2.2	2.2	1.9	-0.5
Tobacco	975	103.6	104.1	104.3	104.6	104.9	104.2	2.7	3.0	2.7	2.4	2.4	1.8	-0.6
Alcoholic beverages & tobacco	957	103.6	104.1	104.4	104.7	104.9	104.3	2.7	3.0	2.7	2.4	2.4	1.8	-0.6
Liquid fuels, vehicle fuels & lubricants	963	103.8	104.2	104.4	104.6	104.8	104.1	3.1	3.2	2.9	2.6	2.5	2.0	-0.6
Housing, water, electricity, gas & other fuels	885	102.3	102.9	103.2	103.6	103.9	103.2	1.8	2.2	2.1	2.1	2.2	1.6	-0.7
Education, health & social protection	946	103.3	103.8	104.2	104.5	104.7	104.0	2.5	2.8	2.5	2.2	2.1	1.6	-0.7

Key: - zero or negligible

2 The coverage of this special aggregate has changed extensively since January 2000, when Social protection was first included and extensions to the Education and Health divisions also took effect. Health was further extended with effect from January 2001. Details are given in a series of Economic Trends articles available on the National Statistics website: www.statistics.gov.uk/cpi

1 For further information on the composition of the indices shown, see 'The Consumer Prices Index: Goods and Services Indices and Special Aggregates', which can be downloaded from: www.statistics.gov.uk/cci/article.asp?id=1060

6 CPI goods and services: the latest three years

Percentage change over 12 months

	Goods components					Services components					All services
	Food & non-alcoholic beverages	Alcoholic beverages & tobacco	Energy ¹	Non-energy industrial goods ²	All goods	Housing services ³	Travel & transport services ³	Recreational & personal services ³	Communication	Miscellaneous & other services ³	
Weights	CHZR	CHZS	A9F3	A9ER	ICVH	A9FG	A9FJ	A9FL	CHZY	A9FQ	ICVI
2007	103	43	75	326	547	70	65	209	24	85	453
Monthly	D7G8	D7G9	DKL5	DKK3	D7NM	DKN2	DKN5	DKN7	D7GF	DKO4	D7NN
2004 Jul	0.1	2.1	7.1	-1.9	-0.3	3.2	5.3	2.5	-1.1	5.0	3.4
Aug	-0.2	1.9	7.1	-2.3	-0.6	3.2	5.7	2.7	-1.1	5.0	3.5
Sep	-0.7	2.2	7.1	-2.5	-0.8	3.2	4.8	2.6	-2.6	5.0	3.2
Oct	-0.6	2.0	9.3	-2.4	-0.6	3.4	4.2	2.8	-2.1	4.9	3.2
Nov	-0.5	2.2	10.9	-2.4	-0.3	3.5	5.7	2.9	-1.9	5.0	3.5
Dec	-0.1	2.1	10.6	-2.0	-0.1	3.5	6.3	3.0	-2.2	5.0	3.7
2005 Jan	0.4	2.5	9.0	-2.2	-0.2	3.5	5.3	3.2	-2.3	5.5	3.7
Feb	0.8	2.9	9.6	-2.6	-0.2	3.5	5.8	3.3	-2.7	5.6	3.8
Mar	1.7	2.2	10.1	-2.2	0.2	3.6	6.8	3.2	-2.9	5.5	3.9
Apr	1.0	2.0	11.5	-2.2	0.1	4.3	4.9	3.4	-3.2	6.5	4.0
May	1.4	2.3	8.3	-2.2	-0.1	4.3	6.3	3.4	-3.6	6.6	4.2
Jun	2.2	2.3	8.7	-2.1	0.2	4.2	6.0	3.1	-2.9	6.8	4.1
Jul	1.7	2.2	11.2	-1.9	0.5	4.4	6.9	3.2	-2.5	7.7	4.5
Aug	2.2	1.8	12.4	-2.1	0.6	4.4	7.5	3.1	-2.1	7.7	4.6
Sep	2.0	1.4	15.4	-2.2	0.7	4.4	6.3	3.2	-1.2	7.5	4.5
Oct	1.5	1.9	13.9	-2.1	0.6	4.0	7.2	3.3	-1.6	6.6	4.4
Nov	1.7	2.5	11.1	-2.0	0.4	3.9	5.8	3.1	-1.2	6.6	4.1
Dec	1.7	2.5	10.2	-2.1	0.3	4.0	3.4	3.1	-1.0	6.6	3.8
2006 Jan	1.2	2.3	12.8	-2.3	0.3	3.9	6.1	2.9	0.5	5.6	3.9
Feb	1.1	1.6	12.5	-1.7	0.6	3.9	4.8	2.9	0.4	5.6	3.7
Mar	-0.4	2.5	12.2	-1.9	0.2	3.9	4.4	2.9	0.5	5.7	3.7
Apr	0.3	2.5	14.4	-2.2	0.5	3.3	6.5	2.7	0.3	5.7	3.8
May	1.1	2.2	19.3	-1.9	1.3	3.3	2.8	2.9	-0.4	5.6	3.3
Jun	1.8	3.3	19.8	-1.7	1.7	3.4	3.2	2.9	-0.3	5.6	3.4
Jul	3.2	2.8	19.4	-2.0	1.8	3.4	2.4	2.9	0.3	4.9	3.2
Aug	3.4	3.3	17.9	-1.3	2.2	3.4	1.6	2.8	-0.7	4.7	2.9
Sep	4.0	3.4	11.6	-1.0	1.8	3.3	3.0	2.8	-0.2	5.3	3.2
Oct	4.7	3.2	9.8	-1.3	1.5	3.4	2.5	3.0	0.9	6.7	3.6
Nov	5.0	2.7	11.7	-1.1	1.8	3.5	3.7	3.1	0.7	6.4	3.7
Dec	4.6	2.7	14.9	-0.8	2.3	3.5	4.1	3.1	0.5	6.4	3.8
2007 Jan	3.9	3.5	12.8	-0.9	2.0	3.8	3.1	3.2	-1.8	6.1	3.6
Feb	4.4	4.2	11.8	-1.0	2.0	3.7	5.0	3.2	-2.8	6.1	3.8
Mar	5.6	4.4	11.6	-0.5	2.5	3.7	4.2	3.3	-2.8	6.1	3.7
Apr	6.0	4.5	7.9	-0.3	2.3	3.8	3.8	3.3	-3.7	4.5	3.3
May	5.0	4.2	4.4	-0.4	1.6	3.8	6.4	3.1	-3.2	4.4	3.6
Jun	4.8	3.4	3.3	-0.4	1.4	3.7	6.8	3.3	-3.9	4.4	3.7
Jul	2.8	3.4	0.9	-0.8	0.5	3.6	6.3	3.2	-5.0	4.4	3.5

Key: - zero or negligible

3 For further information on all of these services components, see 'The Consumer Prices Index: Goods and Services Indices and Special Aggregates', which can be downloaded from: www.statistics.gov.uk/cci/article.asp?id=1060

1 Comprises 'Electricity, gas and other fuels' (group 04.5) and 'Fuels and lubricants' (class 07.2.2).

2 Comprises all other goods elements of the CPI. For further information, see 'The Consumer Prices Index: Goods and Services Indices and Special Aggregates', which can be downloaded from: www.statistics.gov.uk/cci/article.asp?id=1060

Source: National Statistics

7 HICP¹ - International comparisons: EU countries

Percentage change over 12 months

	Austria	Belgium	Bulgaria	Cyprus	Czech Republic	Denmark	Estonia	Finland	France	Germany	Greece	Hungary	Ireland	Italy	Latvia
	D7SK	D7SL	GHY8	D7RO	D7RP	D7SM	D7RQ	D7SN	D7SO	D7SP	D7SQ	D7RR	D7SS	D7ST	D7RS
2004	2.0	1.9	6.1	1.9	2.6	0.9	3.0	0.1	2.3	1.8	3.0	6.8	2.3	2.3	6.2
2005	2.1	2.5	6.0	2.0	1.6	1.7	4.1	0.8	1.9	1.9	3.5	3.5	2.2	2.2	6.9
2006	1.7	2.3	7.4	2.2	2.1	1.9	4.4	1.3	1.9	1.8	3.3	4.0	2.7	2.2	6.6
2005 Jul	2.1	2.7	6.0	1.3	1.4	1.8	3.9	0.9	1.8	1.8	3.9	3.6	2.2	2.1	6.3
Aug	1.9	2.9	7.2	1.5	1.4	2.4	4.2	1.0	2.0	1.9	3.6	3.5	2.1	2.1	6.3
Sep	2.6	3.0	7.5	2.1	2.0	2.3	4.9	1.1	2.4	2.5	3.8	3.6	2.7	2.2	7.4
Oct	2.0	2.2	8.2	2.2	2.4	1.9	4.5	0.8	2.0	2.3	3.7	3.1	2.6	2.6	7.7
Nov	1.7	2.3	8.0	2.0	2.2	1.8	4.0	1.0	1.8	2.2	3.4	3.3	2.2	2.4	7.6
Dec	1.6	2.8	7.4	1.4	1.9	2.2	3.6	1.1	1.8	2.1	3.5	3.3	1.9	2.1	7.1
2006 Jan	1.5	2.8	7.6	2.0	2.4	2.0	4.7	1.2	2.3	2.1	3.0	2.5	2.5	2.2	7.6
Feb	1.5	2.8	9.4	2.3	2.4	2.1	4.5	1.3	2.0	2.1	3.1	2.3	2.7	2.2	7.0
Mar	1.3	2.2	9.1	2.6	2.4	1.8	4.0	1.2	1.7	1.9	3.3	2.4	2.8	2.2	6.6
Apr	2.1	2.6	8.5	2.5	2.3	1.8	4.3	1.5	2.0	2.3	3.5	2.4	2.7	2.3	6.1
May	2.1	2.8	9.0	2.5	2.8	2.1	4.6	1.7	2.4	2.1	3.3	2.9	3.0	2.3	7.1
Jun	1.9	2.5	8.4	2.6	2.3	2.1	4.4	1.5	2.2	2.0	3.4	2.9	2.9	2.4	6.3
Jul	2.0	2.4	7.8	2.8	2.4	2.0	4.5	1.4	2.2	2.1	3.9	3.2	2.9	2.3	6.9
Aug	2.1	2.3	7.0	2.7	2.6	1.9	5.0	1.3	2.1	1.8	3.4	4.7	3.2	2.3	6.8
Sep	1.3	1.9	5.4	2.2	2.2	1.5	3.8	0.8	1.5	1.0	3.1	5.9	2.2	2.4	5.9
Oct	1.3	1.7	5.2	1.7	0.8	1.4	3.8	0.9	1.2	1.1	3.1	6.3	2.2	1.9	5.6
Nov	1.6	2.0	5.9	1.3	1.0	1.8	4.7	1.3	1.6	1.5	3.2	6.4	2.4	2.0	6.3
Dec	1.6	2.1	6.1	1.5	1.5	1.7	5.1	1.2	1.7	1.4	3.2	6.6	3.0	2.1	6.8
2007 Jan	1.7	1.7	6.8	1.4	1.4	1.8	5.0	1.3	1.4	1.8	3.0	8.4	2.9	1.9	7.1
Feb	1.7	1.8	4.6	1.2	1.7	1.9	4.6	1.2	1.2	1.9	3.0	9.0	2.6	2.1	7.2
Mar	1.9	1.8	4.4	1.4	2.1	1.9	5.6	1.6	1.2	2.0	2.8	9.0	2.9	2.1	8.5
Apr	1.8	1.8	4.4	1.6	2.7	1.7	5.6	1.5	1.3	2.0	2.6	8.7	2.9	1.8	8.8
May	1.9	1.3	4.5	1.9	2.4	1.7	5.9	1.3	1.2	2.0	2.6	8.4	2.7	1.9	7.8
Jun	1.9*	1.3	5.3	1.7	2.6	1.3	6.0	1.4	1.3	2.0	2.6	8.5	2.8	1.9	8.9
Jul

	Lithuania	Luxembourg	Malta	Netherlands	Poland	Portugal	Romania	Slovakia	Slovenia	Spain	Sweden	United Kingdom ¹	EICP ² EU 25 average ³	EICP ² EU 27 average ³	Monetary Union Area average ⁴
	D7RT	D7SU	D7RU	D7SV	D7RV	D7SX	GHY7	D7RW	D7RX	D7SY	D7SZ	D7G7	D7RY	GJ2E	D7SR
2004	1.2	3.2	2.7	1.4	3.6	2.5	11.9	7.5	3.7	3.1	1.0	1.3	2.0	..	2.1
2005	2.7	3.8	2.5	1.5	2.2	2.1	9.1	2.8	2.5	3.4	0.8	2.1	2.2	..	2.2
2006	3.8	3.0	2.6	1.7	1.3	3.0	6.6	4.3	2.5	3.6	1.5	2.3	2.2	..	2.2
2005 Jul	1.9	4.0	1.7	1.5	1.5	1.9	9.4	2.1	2.0	3.3	0.7	2.3	2.1	..	2.2
Aug	2.3	4.3	2.5	1.6	1.8	2.5	8.9	2.1	1.8	3.3	1.1	2.4	2.2	..	2.2
Sep	2.5	4.7	2.0	1.7	1.9	2.7	8.5	2.3	3.2	3.8	1.1	2.5	2.5	..	2.6
Oct	3.0	5.0	3.0	1.5	1.6	2.6	8.2	3.5	3.2	3.5	0.9	2.3	2.4	..	2.5
Nov	2.9	3.6	4.3	1.6	1.1	2.5	8.7	3.6	2.1	3.4	1.2	2.1	2.3	..	2.3
Dec	3.0	3.4	3.4	2.0	0.8	2.5	8.7	3.9	2.4	3.7	1.3	1.9	2.1	..	2.2
2006 Jan	3.5	4.1	2.4	1.8	0.9	2.7	9.0	4.1	2.6	4.2	1.1	1.9	2.3	..	2.4
Feb	3.4	3.9	2.3	1.4	0.9	3.0	8.6	4.3	2.3	4.1	1.1	2.0	2.2	..	2.3
Mar	3.1	3.7	2.9	1.4	0.9	3.8	8.5	4.3	2.0	3.9	1.5	1.8	2.1	..	2.2
Apr	3.4	3.5	3.5	1.8	1.2	3.7	7.0	4.4	2.8	3.9	1.8	2.0	2.3	..	2.5
May	3.6	3.6	3.5	1.8	1.5	3.7	7.3	4.8	3.4	4.1	1.9	2.2	2.4	..	2.5
Jun	3.7	3.9	3.3	1.8	1.5	3.5	7.2	4.5	3.0	4.0	1.9	2.5	2.4	..	2.5
Jul	4.4	3.4	3.6	1.7	1.4	3.0	6.2	5.0	1.9	4.0	1.8	2.4	2.4	..	2.4
Aug	4.3	3.1	3.0	1.9	1.7	2.7	6.1	5.0	3.1	3.8	1.6	2.5	2.3	..	2.3
Sep	3.3	2.0	3.1	1.5	1.4	3.0	5.5	4.5	2.5	2.9	1.2	2.4	1.9	..	1.7
Oct	3.7	0.6	1.7	1.3	1.1	2.6	4.8	3.1	1.5	2.6	1.2	2.4	1.8	..	1.6
Nov	4.4	1.8	0.9	1.6	1.3	2.4	4.7	3.7	2.4	2.7	1.5	2.7	2.1	..	1.9
Dec	4.5	2.3	0.8	1.7	1.4	2.5	4.9	3.7	3.0	2.7	1.4	3.0	2.1	..	1.9
2007 Jan	4.0	2.3	1.2	1.2	1.6	2.6	4.1	2.2	2.8	2.4	1.6	2.7	..	2.1	1.8
Feb	4.4	1.8	0.8	1.4	1.9	2.3	3.9	2.0	2.3	2.5	1.7	2.8	..	2.1	1.8
Mar	4.8	2.4	0.5	1.9	2.4	2.4	3.7	2.1	2.6	2.5	1.6	3.1	..	2.3	1.9
Apr	4.9	2.5	-1.1	1.9	2.2	2.8	3.8	2.0	2.9	2.5	1.6	2.8	..	2.2	1.9
May	5.0	2.3	-1.0	2.0	2.3	2.4	3.9	1.5	3.1	2.4	1.2	2.5	..	2.1	1.9
Jun	5.0	2.3	-0.6	1.8*	2.6	2.4	3.9	1.5	3.8	2.5	1.3	2.4	..	2.1*	1.9*
Jul	1.9

Key: - zero or negligible .. Not available * Provisional

† Date of earliest revision † Estimated

1 Published as the CPI in the UK.

2 The EICP (European Index of Consumer Prices) is the official EU aggregate. It covers 15 member states until April 2004, 25 member states from May 2004, and 27 members from Jan 2007, the new member states being integrated using a chain index formula.

The EU 25 annual average for 2004 is calculated from the EU 15 average from January to April and the EU 25 average from May to December.

3 The coverage of the European Union was extended to include Cyprus, Czech Republic, Estonia, Hungary, Latvia, Lithuania, Malta, Poland, Slovakia and Slovenia from 1 May 2004 and Bulgaria and Romania from 1 Jan 2007.

4 The coverage of the Monetary Union Area index was extended to include Greece with effect from Jan 2001.

Sources: National Statistics; Eurostat

	Weights	Index (January 1987=100)						Percentage change over 12 months						Percentage change over 1 month
		2007											2007 Jul	
			2007 Feb	2007 Mar	2007 Apr	2007 May	2007 Jun	2007 Jul	2007 Feb	2007 Mar	2007 Apr	2007 May		2007 Jun
ALL ITEMS	1 000	203.1	204.4	205.4	206.2	207.3	206.1	4.6	4.8	4.5	4.3	4.4	3.8	-0.6
Food and catering	152	181.2	182.1	182.7	183.6	184.5	182.7	3.6	4.5	4.9	4.3	4.4	3.2	-1.0
Alcohol and tobacco	95	252.4	253.8	256.8	257.0	257.5	257.6	4.0	4.1	4.5	4.1	3.7	3.7	-
Housing and household expenditure	408	243.0	245.3	245.7	246.5	248.9	247.2	8.5	8.6	7.6	7.2	7.5	6.8	-0.7
Personal expenditure	83	131.3	132.5	133.8	134.0	133.9	131.2	1.0	1.1	1.6	1.0	1.0	1.4	-2.0
Travel and leisure	262	181.4	181.6	183.1	184.3	184.5	184.7	0.8	0.9	0.8	1.2	1.4	0.8	0.1
Consumer durables ¹	109	92.1	95.1	93.5	94.4	95.8	91.0	-1.5	0.0	-0.1	0.1	1.2	-0.9	-5.0
Seasonal food	19	150.5	150.3	152.5	154.9	157.3	149.1	7.9	8.0	12.0	7.5	8.1	4.5	-5.2
Food excluding seasonal	86	163.1	164.3	164.4	165.1	165.5	164.5	3.2	4.6	4.4	4.2	4.0	2.9	-0.6
All items excluding seasonal food	981	204.4	205.7	206.8	207.5	208.6	207.6	4.5	4.7	4.4	4.2	4.4	3.9	-0.5
All items excluding food	895	210.4	211.7	212.8	213.6	214.7	213.7	4.7	4.8	4.4	4.2	4.4	3.9	-0.5
All goods	478	154.9	156.6	157.0	157.9	158.8	156.2	1.2	2.0	2.1	1.9	2.2	1.2	-1.6
All services	377	255.4	255.6	256.8	256.9	257.0	257.8	6.3	5.9	4.9	4.6	4.1	3.7	0.3
Other indices														
All items excluding:														
mortgage interest payments (RPIX) housing	945	197.1	198.3	199.3	200.0	200.7	199.4	3.7	3.9	3.6	3.3	3.3	2.7	-0.6
mortgage interest payments and indirect taxes (RPIY) ²	762	181.1	182.4	182.7	183.4	184.0	182.2	3.4	3.6	3.2	2.9	2.9	2.0	-1.0
mortgage interest payments and council tax		188.4	189.5	190.0	190.7	191.4	190.1	3.9	4.0	3.7	3.4	3.3	2.6	-0.7
mortgage interest payments and depreciation ³	905	194.2	195.5	196.2	196.9	197.6	196.2	3.6	3.9	3.6	3.3	3.3	2.6	-0.7
	895	190.7	191.9	192.9	193.6	194.1	192.7	3.4	3.6	3.3	3.1	3.0	2.3	-0.7
Food	105	161.4	162.3	162.8	163.8	164.6	162.2	4.0	5.1	5.6	4.8	4.8	3.1	-1.5
Bread	4	171.0	174.9	176.4	176.5	176.1	174.3	5.0	7.8	7.8	8.1	8.1	6.5	-1.0
Cereals	3	145.4	146.7	146.9	148.5	150.8	146.0	0.6	1.8	2.4	4.2	4.9	1.2	-3.2
Biscuits and cakes	6	171.8	174.5	173.7	174.6	174.4	172.9	3.1	4.0	3.8	3.4	3.2	2.4	-0.9
Beef	4	141.7	143.1	141.7	141.1	142.4	141.4	5.6	8.4	5.5	2.9	3.7	-0.5	-0.7
Lamb	2	188.7	190.1	186.6	192.6	191.5	191.0	3.3	5.2	1.5	2.0	0.8	0.5	-0.3
of which home-killed lamb	1	188.6	190.3	191.5	197.2	199.0	195.9	2.6	5.2	3.5	1.8	1.2	1.2	-1.6
imported lamb	1	184.7	185.7	178.0	184.2	180.3	182.2	4.1	5.0	-0.6	2.2	0.4	-0.2	1.1
Pork	1	157.5	157.4	157.3	159.3	158.5	153.3	-0.9	1.0	1.4	1.4	0.5	-4.1	-3.3
Bacon	2	190.0	188.5	188.5	182.2	185.4	181.9	8.4	7.4	7.9	2.8	2.8	-0.7	-1.9
Poultry	3	112.4	110.9	114.0	111.3	114.0	111.0	1.9	2.5	5.1	2.4	3.7	-0.4	-2.6
Other meat	6	149.0	150.1	148.8	149.4	150.0	148.5	1.8	3.7	2.9	2.3	2.8	1.4	-1.0
Fish	4	173.6	173.5	173.6	173.6	175.9	173.7	9.1	9.1	8.2	9.0	8.3	5.4	-1.3
of which fresh fish	2	186.2	186.1	189.0	188.1	190.6	187.0	11.1	11.8	12.8	12.5	10.5	5.8	-1.9
processed fish	2	161.6	161.5	159.1	160.0	162.0	161.1	7.2	6.5	3.6	5.7	6.1	5.2	-0.6
Butter	1	173.8	173.9	173.5	173.6	172.7	171.2	1.6	2.4	3.2	3.0	2.2	0.9	-0.9
Oils and fats	1	144.5	144.8	143.0	143.3	143.9	142.5	10.6	6.9	3.2	-0.3	-0.7	-1.7	-1.0
Cheese	3	174.0	176.8	176.4	177.4	176.7	176.6	-0.6	1.0	0.4	0.8	0.4	0.9	-0.1
Eggs	1	179.0	181.1	181.0	180.7	181.9	181.6	13.4	11.5	14.4	13.7	12.3	11.9	-0.2
Milk, fresh	5	188.3	192.0	193.1	193.4	194.2	193.7	-1.5	7.9	10.4	11.7	9.0	3.1	-0.3
Milk products	4	145.1	148.7	148.3	150.8	151.0	152.8	0.6	3.0	2.9	3.3	3.8	3.8	1.2
Tea	1	160.6	161.2	157.2	162.1	158.5	161.8	7.1	10.7	7.0	4.9	-0.1	2.5	2.1
Coffee and other hot drinks	1	124.7	125.7	126.1	125.4	125.3	124.5	6.6	8.7	8.3	7.6	8.0	7.2	-0.6
Soft drinks	11	196.8	197.3	199.3	200.7	201.0	201.2	3.5	3.7	4.2	4.5	4.5	4.7	0.1
Sugar and preserves	1	163.0	162.1	162.4	163.9	165.4	163.1	4.3	4.4	4.9	5.0	5.8	4.3	-1.4
Sweets and chocolates	10	195.7	196.3	199.1	199.7	199.6	198.9	4.4	4.2	4.4	3.8	3.6	3.5	-0.4
Potatoes	5	166.1	167.8	166.5	170.5	172.1	162.7	9.2	10.2	9.9	11.3	9.7	5.9	-5.5
of which unprocessed potatoes	2	156.2	159.9	162.1	166.8	169.4	152.7	13.8	15.4	16.5	13.4	12.2	2.2	-9.9
potato products	3	165.4	165.5	162.0	165.2	166.1	162.1	8.0	8.2	6.9	9.5	7.5	7.4	-2.4
Vegetables other than potatoes	9	148.5	149.4	154.5	151.7	154.8	149.9	9.8	10.7	19.0	10.3	11.5	9.0	-3.2
of which fresh vegetables	7	134.4	135.3	141.1	138.0	141.3	135.9	9.4	10.4	21.2	10.0	11.3	8.4	-3.8
processed vegetables	2	188.8	189.6	190.1	189.4	190.8	189.8	10.7	11.3	11.9	11.0	11.3	10.9	-0.5
Fruit	7	147.8	144.8	142.9	151.0	152.1	141.9	3.6	1.9	1.7	1.3	2.4	-0.3	-6.7
of which fresh fruit	6	144.4	140.9	138.8	148.1	149.3	137.8	3.9	2.0	1.8	1.4	2.6	-0.6	-7.7
processed fruit	1	153.3	153.8	153.6	153.4	153.5	152.7	1.6	1.7	0.9	1.3	1.5	1.3	-0.5
Other foods	10	151.8	152.8	152.2	152.7	152.9	152.8	1.4	2.2	1.9	1.5	1.7	1.9	-0.1
Catering	47	250.1	250.9	251.8	252.5	253.2	253.9	2.9	3.1	3.3	3.2	3.2	3.3	0.3
Restaurant meals	25	244.3	245.2	245.9	246.8	247.3	247.9	2.6	2.8	3.0	3.0	3.0	3.0	0.2
Canteen meals	4	308.2	309.0	310.2	311.9	312.7	312.9	4.0	4.0	4.2	4.6	4.9	4.8	0.1
Take-aways and snacks	18	239.9	240.3	241.5	241.8	242.7	243.6	3.2	3.3	3.6	3.2	3.3	3.3	0.4
Alcoholic drink	66	216.0	217.6	219.2	219.4	220.1	220.2	3.0	3.2	3.5	3.2	3.2	3.3	-
Beer	34	235.7	237.6	240.4	240.9	240.9	241.8	3.4	3.7	4.3	3.8	3.7	3.9	0.4
on sales	29	255.9	257.9	260.7	261.7	261.9	262.9	3.7	3.9	4.5	4.2	4.1	4.3	0.4
off sales	5	147.9	149.0	151.9	150.7	150.1	150.4	1.4	1.8	2.6	1.3	1.6	1.8	0.2
Wines and spirits	32	190.2	191.5	192.0	192.1	193.2	192.6	2.5	2.6	2.7	2.6	2.7	2.6	-0.3
on sales	18	239.8	240.6	242.7	243.4	244.1	244.3	3.4	3.3	3.8	3.5	3.7	3.6	0.1
off sales	14	157.8	159.7	158.8	158.3	159.9	158.6	1.4	1.8	1.5	1.5	1.5	1.4	-0.8

Key: - zero or negligible

Index date for July: 17 July 2007

1 Consumer durables: Furniture, furnishings, electrical appliances and other household equipment, men's, women's and children's outerwear, footwear, audio-visual equipment, CDs and tapes, toys, photographic and sports goods.

2 The taxes excluded are council tax, VAT, duties, vehicle excise duty, insurance tax and air passenger duty. There are no weights available for RPIY.

3 This series has been constructed using the index for all items excluding mortgage interest payments prior to February 1995.

continued

	Weights	Index (January 1987=100)						Percentage change over 12 months						Percentage change over 1 month
		2007	2007	2007	2007	2007	2007	2007	2007	2007	2007	2007	2007	2007
		Feb	Mar	Apr	May	Jun	Jul	Feb	Mar	Apr	May	Jun	Jul	Jul
Tobacco	29	355.5	355.7	363.5	363.6	363.6	363.8	6.2	6.2	6.6	6.3	4.8	4.8	0.1
Cigarettes	26	363.2	363.4	371.6	371.7	371.8	371.9	6.2	6.2	6.6	6.3	4.9	4.8	-
Other tobacco	3	283.7	283.6	288.0	288.3	288.3	288.5	6.3	6.2	6.2	6.0	4.3	4.3	0.1
Housing	238	319.4	320.4	325.5	327.0	330.8	332.7	8.9	9.1	9.0	9.1	10.0	10.1	0.6
Rent	53	282.6	282.5	286.7	287.2	287.6	289.8	3.2	3.2	3.1	3.2	3.3	3.3	0.8
Mortgage interest payments	55	365.7	368.6	370.9	374.4	388.3	391.3	21.9	21.9	21.9	22.2	26.0	26.2	0.8
Depreciation (Jan 1995 = 100)	50	285.6	287.2	288.6	290.9	293.6	296.8	8.8	9.7	9.6	9.4	9.6	10.0	1.1
Council tax and rates	40	280.7	280.7	292.0	292.0	292.0	292.0	4.7	4.7	4.1	4.0	4.0	4.0	-
Water and other charges	12	354.1	354.1	377.2	377.2	377.2	377.2	5.5	5.5	6.5	6.5	6.5	6.5	-
Repairs and maintenance charges	12	324.8	325.6	327.4	328.2	329.2	329.6	5.4	5.5	5.4	5.4	5.5	5.2	0.1
Do-it-yourself materials	9	164.1	164.1	164.1	164.4	165.5	166.5	3.9	3.6	3.5	4.1	4.6	5.1	0.6
Dwelling insurance and ground rent	7	283.0	281.2	280.9	283.1	282.2	282.7	1.0	0.3	0.1	0.6	1.3	1.5	0.2
Fuel and light	39	223.6	223.1	219.7	215.1	211.2	208.2	27.8	24.3	16.6	9.1	4.7	2.0	-1.4
Coal and solid fuels	1	200.2	200.5	200.4	199.4	198.5	198.2	8.1	8.3	7.9	6.3	7.9	7.9	-0.2
Electricity	18	206.7	206.7	204.9	202.5	199.7	197.2	25.7	22.5	16.4	10.4	6.3	3.8	-1.3
Gas	18	244.8	242.8	235.8	228.0	221.5	216.5	39.8	34.3	22.5	11.5	5.3	1.8	-2.3
Oil and other fuels	2	240.1	247.1	256.1	255.1	260.4	267.1	-9.8	-8.0	-7.0	-7.9	-5.9	-6.4	2.6
Household goods	66	147.1	153.8	149.2	151.4	156.0	147.7	1.7	3.6	2.8	3.3	5.1	1.7	-5.3
Furniture	23	165.0	185.8	169.8	174.1	191.2	166.8	3.3	8.3	4.8	5.8	12.5	2.7	-12.8
Furnishings	11	160.1	158.5	157.7	164.6	160.6	159.0	1.3	0.1	-0.1	2.6	0.6	2.0	-1.0
Electrical appliances	8	72.6	74.2	74.8	74.2	73.5	72.7	-6.4	-1.5	0.9	-0.4	-1.2	-3.8	-1.1
Other household equipment	4	142.6	143.1	144.7	145.9	147.1	143.9	2.1	2.0	2.8	3.0	3.2	4.7	-2.2
Household consumables	13	162.4	163.2	163.4	163.2	162.9	162.1	2.4	2.4	2.3	2.1	1.3	1.4	-0.5
Pet care	7	172.7	172.8	174.5	173.8	174.6	175.2	3.2	3.1	3.3	2.3	2.7	2.8	0.3
Household services	65	196.0	196.5	195.0	195.0	194.8	194.4	4.5	4.6	3.2	3.5	2.9	2.6	-0.2
Postage	1	200.2	200.2	212.7	212.7	212.7	212.7	13.1	13.1	12.6	12.6	12.6	12.6	-
Telephones, telemessages, etc	22	86.8	86.9	86.0	85.3	84.9	83.8	-3.2	-3.1	-4.1	-3.5	-4.2	-5.3	-1.3
Domestic services	14	300.3	301.1	300.1	301.0	302.8	303.8	5.7	5.8	4.9	4.8	4.7	4.4	0.3
Fees and subscriptions	28	292.1	293.1	290.5	291.6	290.9	292.2	10.2	10.1	8.2	8.4	7.4	7.7	0.4
Clothing and footwear	44	92.4	93.8	95.1	95.2	95.0	91.6	-1.0	-0.8	0.3	-0.5	-0.3	0.1	-3.6
Men's outerwear	9	94.0	95.3	97.5	97.7	97.3	93.8	-1.5	-1.2	0.8	0.2	0.7	0.3	-3.6
Women's outerwear	15	66.1	68.0	69.0	68.7	68.6	64.1	-3.4	-2.9	-1.6	-3.0	-2.6	-1.7	-6.6
Childrens' outerwear	5	87.2	87.3	87.6	87.8	87.5	87.9	1.6	0.9	0.0	-1.7	-2.1	-0.1	0.5
Other clothing	6	149.2	149.7	151.5	150.4	150.7	148.2	1.4	1.4	2.7	1.3	1.6	1.4	-1.7
Footwear	9	108.3	109.2	110.5	111.8	111.7	109.4	0.2	0.5	1.6	1.9	2.2	1.8	-2.1
Personal goods and services	39	213.1	213.8	214.7	215.2	215.4	214.8	3.4	3.5	3.1	2.8	2.6	3.0	-0.3
Personal articles	11	138.0	139.5	139.6	140.0	140.2	138.6	4.3	4.7	4.6	4.0	3.2	3.4	-1.1
Chemists goods	15	192.3	192.3	193.3	193.0	193.2	192.2	1.5	1.6	1.3	1.2	1.4	1.5	-0.5
Personal services	13	364.4	364.8	366.7	368.9	369.4	372.1	4.9	4.9	3.8	3.6	3.6	4.3	0.7
Motoring expenditure	133	185.1	186.0	188.6	190.2	190.8	189.9	0.0	0.1	0.3	0.4	0.8	-0.3	-0.5
Purchase of motor vehicles	53	105.8	105.0	104.9	104.9	104.1	102.9	-1.5	-2.0	-1.9	-1.8	-2.2	-3.0	-1.2
Maintenance of motor vehicles	20	303.9	304.8	306.2	307.3	309.4	309.8	5.3	5.2	5.4	5.4	5.6	5.2	0.1
Petrol and oil	36	253.1	259.8	269.5	277.7	281.7	280.6	-3.8	-1.2	-1.3	-1.6	0.8	-1.4	-0.4
Vehicle tax and insurance	24	289.9	290.4	295.9	294.7	296.0	297.5	5.3	3.0	3.8	5.0	4.4	3.7	0.5
Fares and other travel costs	20	236.4	234.8	238.1	244.8	247.9	259.2	4.9	4.2	3.4	7.6	8.3	8.7	4.6
Rail fares	5	261.9	260.6	262.6	262.1	262.7	263.6	5.6	5.1	4.2	4.3	4.9	4.7	0.3
Bus and coach fares	4	271.1	272.2	273.5	273.2	276.2	276.3	1.4	1.3	6.5	7.8	8.9	8.8	-
Other travel costs	11	203.5	201.3	205.4	216.0	219.7	236.9	5.7	4.8	1.8	8.6	9.1	9.6	7.8
Leisure goods	41	91.6	91.1	90.5	90.2	89.3	88.7	-2.8	-2.5	-2.1	-1.8	-2.8	-3.1	-0.7
Audio-visual equipment	8	16.5	15.9	15.4	15.1	14.9	14.5	-11.3	-11.7	-13.0	-12.7	-13.4	-15.2	-2.7
CDs and tapes	5	99.9	99.8	101.1	103.7	102.7	100.3	0.7	-1.1	1.3	2.8	2.6	1.0	-2.3
Toys, photographic and sports goods	12	88.2	89.1	88.7	87.9	86.7	85.7	-5.2	-3.0	-2.3	-2.7	-3.7	-3.8	-1.2
Books and newspapers	10	256.9	256.5	256.0	256.4	256.0	259.0	4.0	4.0	4.1	4.1	3.5	3.8	1.2
Gardening products	6	148.3	146.8	146.0	145.9	144.6	144.8	1.3	0.4	1.5	1.4	-0.6	0.5	0.1
Leisure services	68	272.4	272.7	273.8	274.0	274.5	274.9	3.7	3.8	3.0	2.9	3.3	2.8	0.1
Television licences and rentals	11	166.1	166.1	168.1	168.1	168.0	167.7	2.7	2.7	2.5	2.5	2.4	1.8	-0.2
Entertainment and other recreation	16	363.2	364.7	366.7	367.0	370.1	367.2	5.9	6.5	4.8	5.3	6.1	4.5	-0.8
Foreign holidays (Jan 1993 = 100)	34	171.5	171.4	171.4	171.5	171.3	172.6	2.9	2.8	2.0	1.8	2.0	2.3	0.8
UK holidays (Jan 1994 = 100)	7	167.5	168.0	169.0	169.7	170.0	170.5	3.8	3.8	4.1	3.9	3.9	3.4	0.3

Key: - zero or negligible

Source: National Statistics

9 RPI goods and services¹: the latest three years

Percentage change over 12 months

	Goods components				All goods	Services components				All services
	Food	Alcohol & tobacco	Petrol & oil ²	Other goods ³		Rent	Utilities ⁴	"Shop" services ⁵	"Non-shop" services ⁶	
Weights										
	CZGZ	CBVW	DOHB	DOHC	DOHD	CZXD	DOHE	DOHF	DOHG	DOHH
2007	105	95	38	240	478	53	76	133	115	377
Monthly										
	CCYY	CZBK	DOGQ	DOGI	DOGD	CZCQ	DOGF	DOGG	DOGH	DOGE
2004 Jul	-0.1	2.5	8.1	-1.9	0.1	2.2	3.7	4.2	2.5	3.3
Aug	-0.2	2.4	8.1	-2.1	-0.1	2.3	3.6	4.3	2.9	3.4
Sep	-0.7	2.4	8.0	-2.5	-0.4	2.2	3.1	4.1	2.5	3.2
Oct	-0.5	2.4	11.1	-2.4	-0.2	2.6	3.6	4.0	2.6	3.3
Nov	-0.4	2.4	11.9	-2.6	-0.1	2.8	4.8	4.0	3.1	3.7
Dec	-0.1	2.4	9.1	-2.0	0.1	2.8	5.8	4.1	3.7	4.1
2005 Jan	0.3	2.7	5.2	-2.8	-0.5	3.0	6.4	4.2	2.7	4.0
Feb	0.8	3.0	6.4	-2.9	-0.4	3.1	5.9	4.3	2.3	3.8
Mar	1.4	2.4	8.1	-2.2	0.2	3.1	5.4	4.3	2.6	3.8
Apr	0.8	2.6	11.4	-2.5	0.1	3.6	5.8	4.3	2.7	4.0
May	1.3	2.7	5.5	-2.5	-0.1	3.6	5.7	4.3	3.0	4.1
Jun	2.0	2.7	6.6	-2.3	0.2	3.5	5.8	4.3	2.7	4.0
Jul	1.4	2.7	11.3	-1.7	0.7	3.8	5.8	4.3	2.7	4.0
Aug	1.7	2.5	13.7	-2.0	0.8	3.8	5.9	4.1	2.0	3.7
Sep	1.5	2.5	18.4	-1.9	1.1	3.8	6.5	4.4	2.0	3.9
Oct	1.0	2.7	14.0	-1.7	0.9	3.2	7.4	4.5	2.1	4.1
Nov	1.3	2.9	8.6	-1.4	0.7	3.2	7.7	4.6	1.8	4.1
Dec	1.1	2.9	8.0	-1.3	0.7	3.2	7.3	4.6	0.6	3.7
2006 Jan	0.8	2.8	13.6	-1.4	1.0	3.0	7.2	4.3	1.3	3.8
Feb	0.8	2.5	12.9	-1.1	1.1	3.0	7.4	4.2	1.2	3.8
Mar	-0.5	3.0	10.1	-1.2	0.6	3.0	8.6	4.1	1.7	4.1
Apr	0.2	2.7	9.6	-1.3	0.7	2.8	9.9	4.2	2.3	4.6
May	0.9	2.7	13.8	-0.8	1.4	2.8	11.7	4.1	1.5	4.6
Jun	1.5	3.2	12.4	-0.5	1.6	2.9	12.9	4.1	1.8	5.0
Jul	2.7	3.0	10.7	-0.9	1.5	3.0	13.8	4.1	1.5	5.0
Aug	2.9	3.4	7.6	-0.2	1.8	3.0	13.9	4.0	1.7	5.1
Sep	3.5	3.4	-3.4	0.4	1.2	2.9	14.2	4.0	2.3	5.3
Oct	4.2	3.3	-7.6	-	0.8	2.9	15.1	4.2	3.3	5.8
Nov	4.5	3.2	-4.6	0.1	1.2	3.0	15.0	4.1	3.9	6.0
Dec	4.1	3.2	0.6	0.4	1.8	3.0	15.0	4.1	4.0	6.1
2007 Jan	3.7	3.6	-2.6	-0.3	1.1	3.3	14.2	4.2	4.6	6.1
Feb	4.0	4.0	-4.3	-	1.2	3.2	13.7	4.3	5.4	6.3
Mar	5.1	4.1	-1.7	0.5	2.0	3.2	12.2	4.4	4.8	5.9
Apr	5.6	4.5	-1.7	0.6	2.1	3.1	8.5	4.1	4.2	4.9
May	4.8	4.1	-2.0	0.6	1.9	3.2	5.3	4.1	5.1	4.6
Jun	4.8	3.7	0.3	0.8	2.2	3.3	3.0	4.2	5.0	4.1
Jul	3.1	3.7	-1.8	-0.2	1.2	3.3	1.3	3.9	5.1	3.7

Key: - zero or negligible

1 All components of the RPI are included in the above breakdown with the exception of mortgage interest payments, council tax and depreciation.

2 Including fuel oil.

3 The 'other goods' category comprises DIY materials, coal & solid fuels, household goods, clothing & footwear, personal articles, chemists goods, purchase of motor vehicles and leisure goods.

4 The 'utilities' category comprises water, electricity, gas, postage, telephone charges and rail fares.

5 The 'shop services' category comprises catering, repairs & maintenance charges, domestic services, personal services, maintenance of motor vehicles, TV licence & rentals and entertainment & recreation charges.

6 The 'non-shop services' category comprises dwelling insurance & ground rent, fees and subscriptions, vehicle tax and insurance, bus & coach fares, other travel costs, foreign holidays and UK holidays.

Source: National Statistics

10 A breakdown of the differences between CPI and RPI

	Difference between annual rates CPI - RPI		Breakdown of differences (unrounded figures) ¹						
	rounded figures	unrounded figures	housing components excluded from CPI			other housing components	other differences in coverage of goods and services	formula effect ²	other differences including weights ³
			total	mortgage interest payments					
	D7G2	D7G3	D7G4	D7G5	D7FU	D7FV	D7FW	D7FX	
2002 Jul	-0.4	-0.38	-0.28	0.48	-0.76	0.17	-0.41	0.15	
Aug	-0.4	-0.41	-0.33	0.47	-0.80	0.20	-0.43	0.15	
Sep	-0.7	-0.70	-0.47	0.38	-0.85	0.12	-0.43	0.07	
Oct	-0.7	-0.71	-0.72	0.25	-0.97	0.15	-0.41	0.27	
Nov	-1.1	-1.10	-0.94	0.13	-1.06	0.10	-0.43	0.17	
Dec	-1.2	-1.27	-1.33	-0.18	-1.15	0.40	-0.47	0.12	
2003 Jan	-1.6	-1.61	-1.41	-0.19	-1.22	0.24	-0.42	-0.01	
Feb	-1.6	-1.60	-1.41	-0.20	-1.21	0.24	-0.43	-	
Mar	-1.6	-1.59	-1.28	-0.11	-1.17	0.18	-0.43	-0.07	
Apr	-1.7	-1.67	-1.44	-0.11	-1.32	0.12	-0.44	0.08	
May	-1.7	-1.73	-1.39	-0.12	-1.26	0.05	-0.44	0.05	
Jun	-1.8	-1.82	-1.32	-0.12	-1.20	-0.06	-0.46	0.01	
Jul	-1.8	-1.73	-1.24	-0.12	-1.13	-0.24	-0.43	0.19	
Aug	-1.5	-1.56	-1.08	0.01	-1.09	-0.31	-0.41	0.24	
Sep	-1.4	-1.35	-1.06	0.01	-1.07	0.01	-0.44	0.14	
Oct	-1.2	-1.29	-0.99	0.01	-0.99	0.04	-0.44	0.10	
Nov	-1.2	-1.17	-0.99	-0.02	-0.97	0.19	-0.43	0.07	
Dec	-1.5	-1.51	-1.11	-0.20	-0.91	-0.22	-0.42	0.23	
2004 Jan	-1.2	-1.19	-1.07	-0.21	-0.86	0.02	-0.42	0.28	
Feb	-1.2	-1.23	-1.10	-0.21	-0.89	0.05	-0.43	0.26	
Mar	-1.5	-1.47	-1.47	-0.48	-0.99	0.07	-0.41	0.34	
Apr	-1.4	-1.36	-1.32	-0.50	-0.82	0.08	-0.43	0.30	
May	-1.3	-1.30	-1.36	-0.50	-0.86	0.13	-0.44	0.38	
Jun	-1.4	-1.46	-1.59	-0.69	-0.90	0.14	-0.43	0.42	
Jul	-1.6	-1.66	-1.82	-0.88	-0.94	0.15	-0.42	0.43	
Aug	-1.9	-1.89	-1.96	-1.03	-0.93	0.18	-0.47	0.36	
Sep	-2.0	-1.97	-2.13	-1.18	-0.95	0.20	-0.45	0.42	
Oct	-2.1	-2.07	-2.17	-1.19	-0.99	0.22	-0.46	0.34	
Nov	-1.9	-1.98	-2.11	-1.19	-0.92	0.24	-0.47	0.36	
Dec	-1.8	-1.84	-1.91	-1.00	-0.91	0.24	-0.49	0.32	
2005 Jan	-1.6	-1.55	-1.94	-1.03	-0.92	0.23	-0.48	0.65	
Feb	-1.5	-1.50	-1.92	-1.03	-0.89	0.23	-0.51	0.69	
Mar	-1.3	-1.32	-1.64	-0.86	-0.79	0.22	-0.53	0.62	
Apr	-1.3	-1.22	-1.54	-0.86	-0.68	0.25	-0.52	0.59	
May	-1.0	-1.07	-1.43	-0.85	-0.58	0.27	-0.50	0.60	
Jun	-0.9	-0.87	-1.18	-0.67	-0.51	0.29	-0.52	0.54	
Jul	-0.6	-0.57	-0.89	-0.48	-0.40	0.31	-0.53	0.55	
Aug	-0.4	-0.37	-0.84	-0.48	-0.36	0.33	-0.49	0.64	
Sep	-0.2	-0.20	-0.43	-0.17	-0.27	0.30	-0.52	0.45	
Oct	-0.2	-0.17	-0.37	-0.17	-0.20	0.30	-0.52	0.42	
Nov	-0.3	-0.29	-0.36	-0.16	-0.21	0.27	-0.52	0.32	
Dec	-0.3	-0.30	-0.35	-0.16	-0.19	0.28	-0.51	0.29	
2006 Jan	-0.5	-0.45	-0.29	-0.15	-0.14	0.30	-0.48	0.02	
Feb	-0.4	-0.39	-0.32	-0.15	-0.17	0.30	-0.51	0.14	
Mar	-0.6	-0.51	-0.36	-0.16	-0.20	0.32	-0.55	0.08	
Apr	-0.6	-0.52	-0.33	-0.14	-0.19	0.32	-0.51	-0.01	
May	-0.8	-0.72	-0.32	-0.11	-0.20	0.32	-0.54	-0.19	
Jun	-0.8	-0.75	-0.26	-0.09	-0.17	0.31	-0.52	-0.27	
Jul	-0.9	-0.86	-0.25	-0.09	-0.16	0.28	-0.54	-0.35	
Aug	-0.9	-0.95	-0.25	-0.08	-0.17	0.24	-0.54	-0.39	
Sep	-1.2	-1.22	-0.71	-0.48	-0.23	0.22	-0.56	-0.17	
Oct	-1.3	-1.23	-0.74	-0.49	-0.25	0.24	-0.55	-0.17	
Nov	-1.2	-1.20	-0.73	-0.48	-0.24	0.24	-0.55	-0.16	
Dec	-1.4	-1.46	-0.91	-0.68	-0.24	0.23	-0.56	-0.22	
2007 Jan	-1.5	-1.53	-1.01	-0.72	-0.29	0.23	-0.59	-0.16	
Feb	-1.8	-1.78	-1.21	-0.91	-0.30	0.19	-0.55	-0.21	
Mar	-1.7	-1.75	-1.21	-0.90	-0.31	0.26	-0.57	-0.24	
Apr	-1.7	-1.77	-1.21	-0.91	-0.30	0.21	-0.60	-0.17	
May	-1.8	-1.79	-1.28	-0.94	-0.33	0.19	-0.59	-0.11	
Jun	-2.0	-2.04	-1.49	-1.13	-0.36	0.21	-0.64	-0.12	
Jul	-1.9	-2.00	-1.65	-1.17	-0.47	0.23	-0.54	-0.05	

1 The differences due to housing, coverage and formula effect are all calculated independently and are not additive.

Source: National Statistics

2 Difference due to use of different formulae to aggregate prices at the most basic level.

3 This difference is derived as a residual.

Chart for Table 1 – July 2007
CPI RPI and Other Related Indices

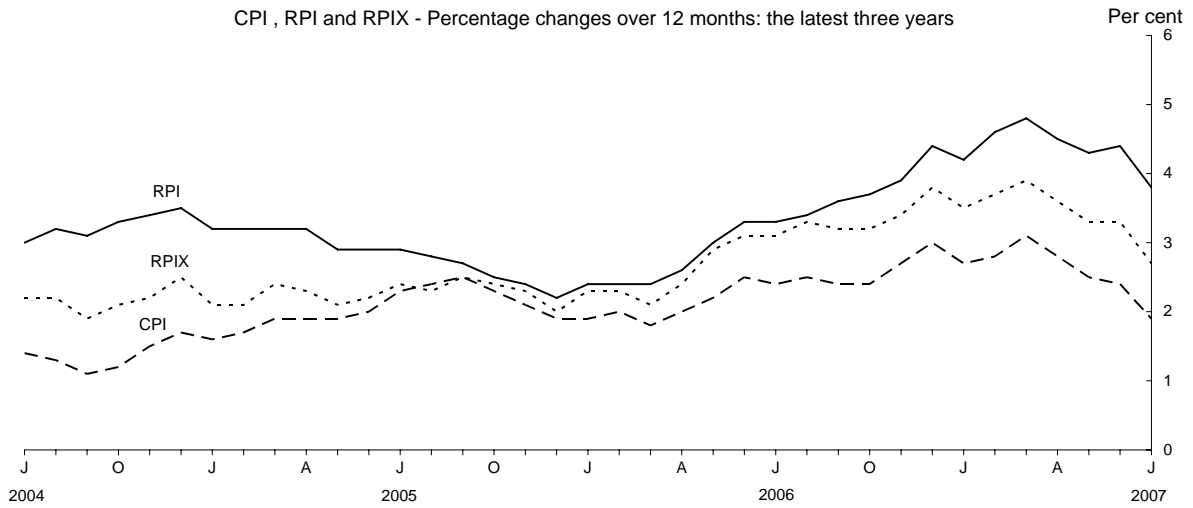


Chart for Table 6 – July 2007
CPI Goods and Services

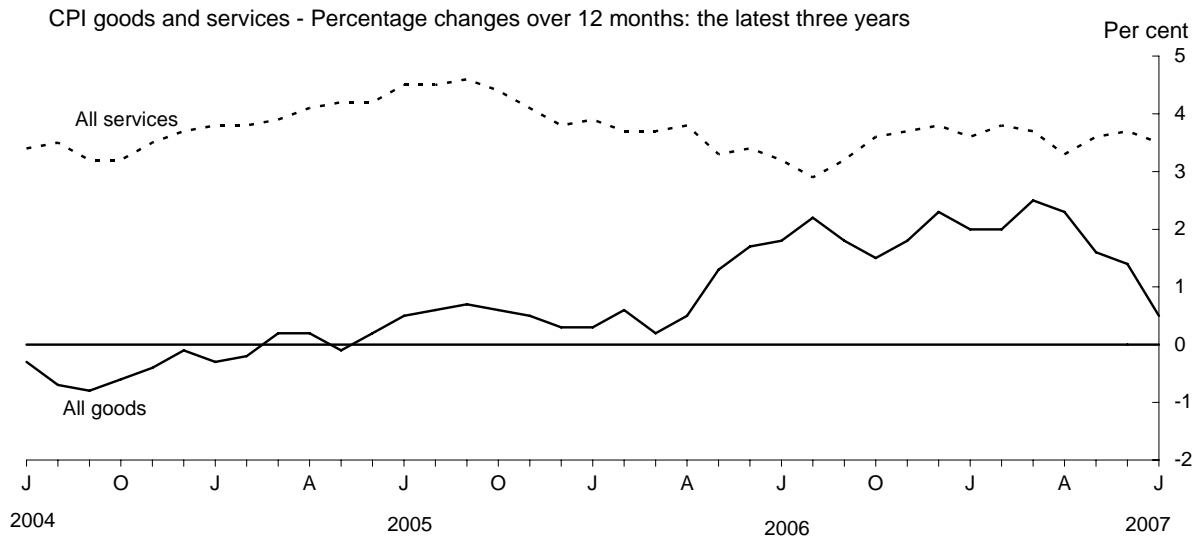


Chart for Table 9 – July 2007
RPI Goods and Services

