

15 August 2006

Coverage
United Kingdom
Theme
The Economy

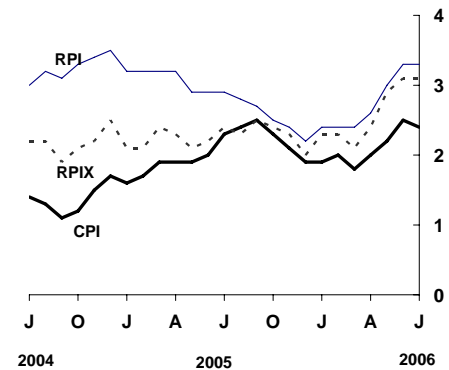
Consumer price indices July 2006

In the year to July, the consumer prices index (CPI) rose by 2.4 per cent, down from 2.5 per cent in June.

In the year to July, the all items retail prices index (RPI) rose by 3.3 per cent, unchanged from June.

Over the same period, the all items RPI excluding mortgage interest payments (RPIX) rose by 3.1 per cent, the same as in June.

CPI, RPI and RPIX 12-month percentage changes



Issued by
National Statistics
1 Drummond Gate
London SW1V 2QQ

Telephone
Press Office 020 7533 5725
Public Enquiries 0845 601 3034
CPI/RPI Enquiries 020 7533 5874
CPI/RPI recorded
message 020 7533 5866
E-mail cpi@ons.gov.uk

Statistician
Damon Wingfield 020 7533 5840
damon.wingfield@ons.gov.uk

Internet
www.statistics.gov.uk

Next publication date
12 September 2006

	Consumer prices index (CPI)		All items retail prices index (RPI)		All items RPI excluding mortgage interest payments (RPIX)	
	Index (2005 =100)	Per cent change over 12 months	Index (Jan 1987 =100)	Per cent change over 12 months	Index (Jan 1987 =100)	Per cent change over 12 months
2006 Feb	100.9	2.0	194.2	2.4	190.1	2.3
Mar	101.1	1.8	195.0	2.4	190.8	2.1
Apr	101.7	2.0	196.5	2.6	192.3	2.4
May	102.2	2.2	197.7	3.0	193.6	2.9
June	102.5	2.5	198.5	3.3	194.2	3.1
July	102.5	2.4	198.5	3.3	194.2	3.1

Main contributions to the change in the 12-month rate¹

CPI

The largest downward effect on the CPI annual rate came from furniture, household equipment and routine maintenance, due to price changes for furniture and furnishings. Following price increases this June, sales in July were greater than a year ago for a wide range of items, particularly bedroom and lounge furniture.

Another large downward contribution came from miscellaneous goods and services. This was largely due to financial services, where bank charges showed little change this July, compared with increases a year ago. There were also small downward effects from personal care and other services.

Further large downward contributions came from:

- Transport, where there was a large downward contribution from air fares. There was also a downward effect from operation of personal transport equipment, where average petrol prices increased by 1.9p per litre in July, compared to 2.8p per litre a year ago, and other transport services, due to road tolls, where increases in the London congestion charge last year were not repeated this July; and
- Clothing and footwear; as the effect of seasonal sales in July was greater than a year ago across a wide range of items, especially for women's outerwear.

A small downward effect came from alcoholic beverages and tobacco as wine prices fell in July due to special offers, compared with price increases a year ago.

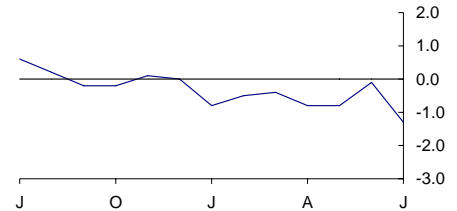
The only large upward contribution to the change in the CPI annual rate came from food and non-alcoholic beverages, due to a number of upward effects within the division:

- Fruit, where prices for some items fell by less than a year ago, especially grapes, strawberries and peaches;
- Milk, cheese and eggs, where shop bought milk prices rose in July after price cuts earlier this year; and
- Meat, where prices rose in July, especially for beef.

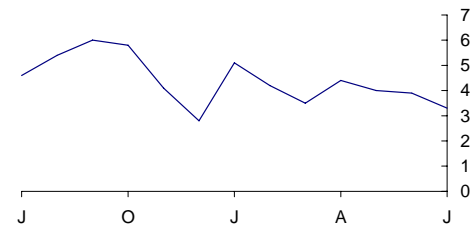
Small upward effects on the change in the CPI annual rate came from:

- Housing and household services, due to gas and electricity, reflecting both the phasing in of recent tariff increases and some new tariff increases for July; and
- Recreation and culture, where upward contributions from photographic equipment and package holidays were partially offset by a downward contribution from cultural services.

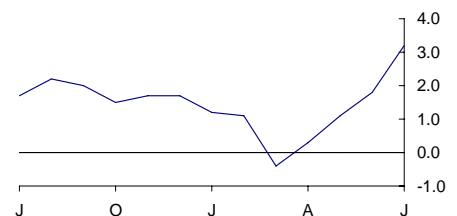
Furniture, household equipment and maintenance
CPI percentage changes over 12 months



Transport
CPI percentage changes over 12 months



Food and non-alcoholic beverages
CPI percentage changes over 12 months



¹ The CPI and RPI use different classification systems. Background Note 11 shows how, for each of the two indices, the main categories contributing to changes in the 12-month rate relate to each other

RPI

The largest downward effect on the RPI annual rate came from household goods, mainly due to furniture prices. As in the CPI, special offers on many furniture items were greater than a year ago.

There were small downward contributions from several groups:

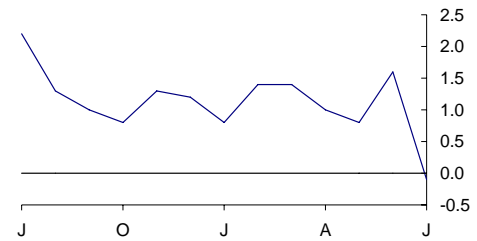
- Clothing and footwear, also due to increased special offers in July 2006, particularly for women’s outerwear;
- Personal goods and services, where prices overall fell by more than a year ago;
- Alcoholic drink, due to reduced prices for wine in July;
- Motoring expenditure, where there was a large downward contribution from petrol prices, which increased in July by less than a year ago. This was partially offset by an upward contribution from purchase of motor vehicles, as prices of second hand cars fell by less than a year ago; and
- Fares and other travel costs, where, as in the CPI, there were downward effects from air fares and road tolls.

The only large upward effect on the change in the RPI annual rate came from food, due to a large upward contribution from fresh fruit, and small contributions from fresh milk and beef, for similar reasons as in the CPI, and potatoes, where prices fell by less than a year ago.

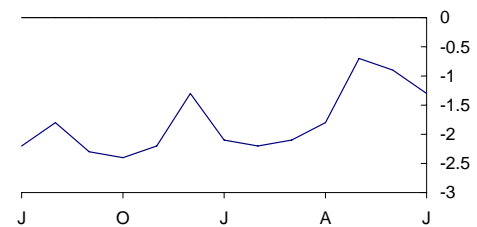
Small upward contributions came from:

- Fuel and light, reflecting both the phasing in of recent tariff increases, and some new tariff increases for gas and electricity in July;
- Leisure goods, due to small contributions from audio-visual equipment, toys, photographic and sports goods, and books and newspapers; and
- Leisure services, where foreign holiday prices increased this year in contrast to some reductions in July 2005.

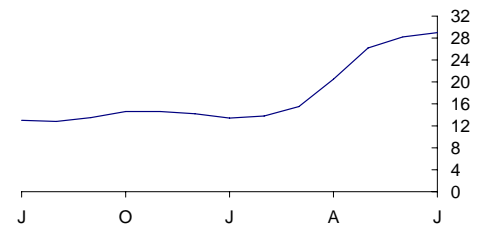
Household goods
RPI percentage changes over 12 months



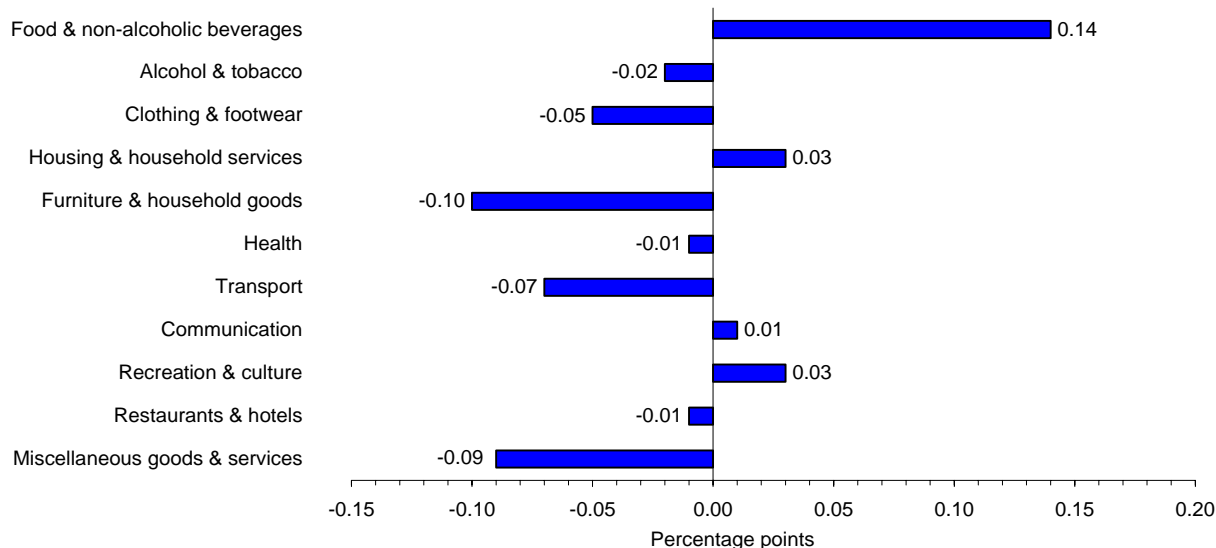
Clothing and footwear
RPI percentage changes over 12 months



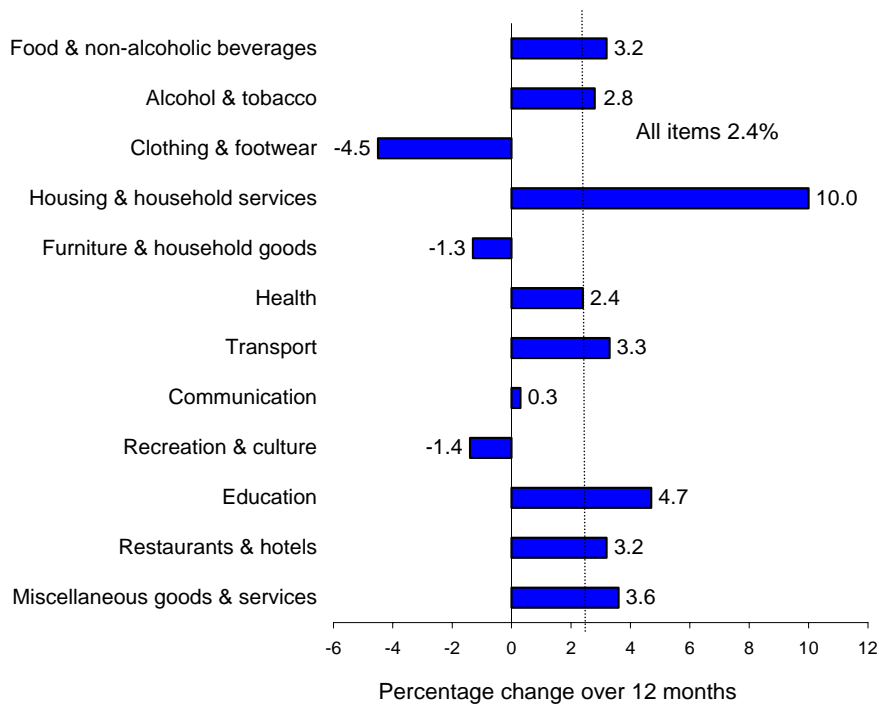
Fuel and light
RPI percentage changes over 12 months



CPI main contributions¹ to the change in the all items 12-month rate between June 2006 and July 2006 (-0.1 percentage points).

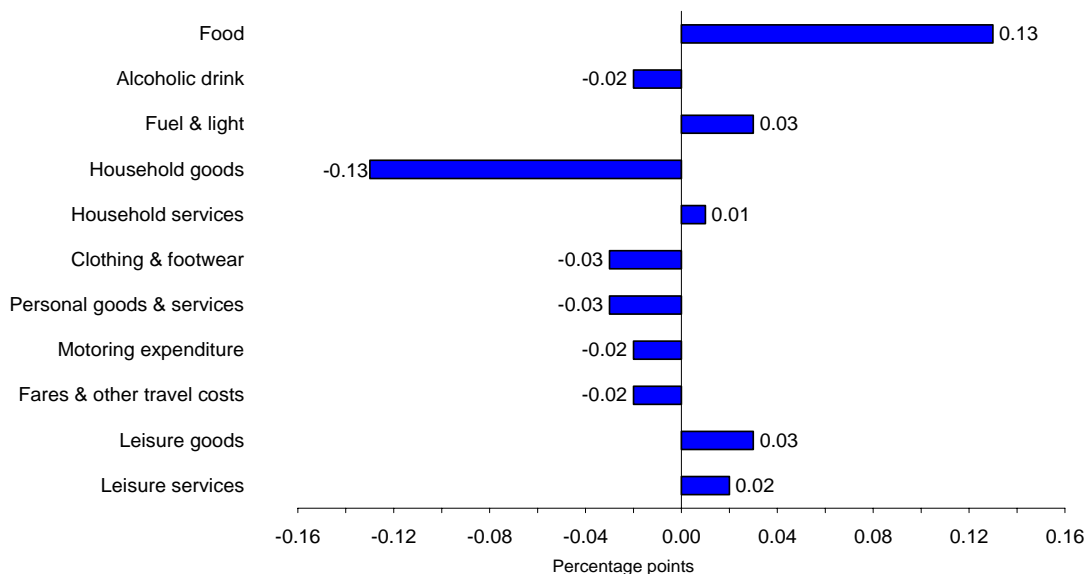


CPI comparison of the 12-month percentage changes

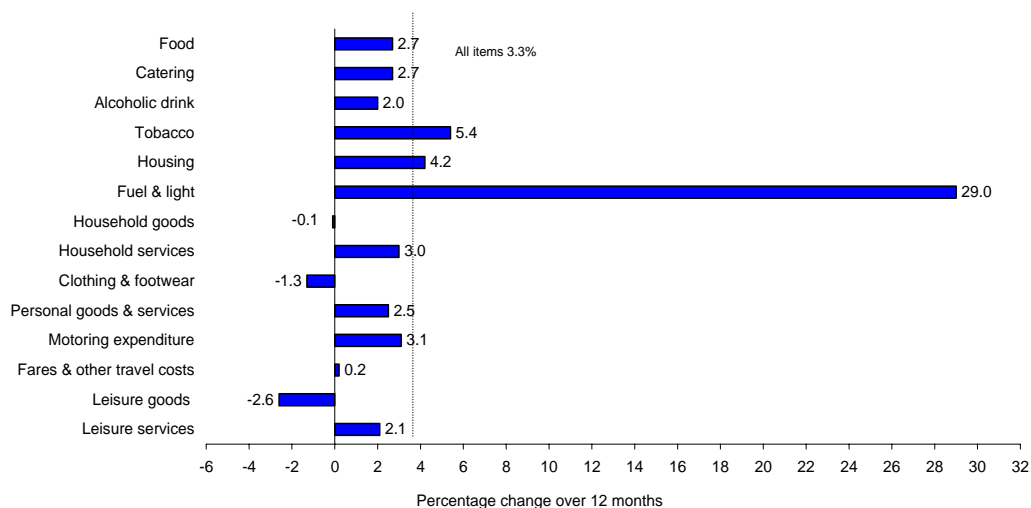


¹ Individual contributions to the change in the 12-month rate may not sum to the total due to rounding.

RPI main contributions¹ to the change in the all items 12-month rate between June 2006 and July 2006 (unchanged from the previous month).



RPI comparison of 12-month percentage changes



¹ Individual contributions to the change in the 12-month rate may not sum to the total due to rounding.

BACKGROUND NOTES

Relevance

1. The consumer prices index (CPI) is the main United Kingdom domestic measure of consumer price inflation for macroeconomic purposes. It forms the basis for the Government's inflation target that the Bank of England's Monetary Policy Committee (MPC) is required to achieve.
2. Internationally, the CPI is known as the Harmonised Index of Consumer Prices (HICP). HICPs are calculated in each Member State of the European Union, according to rules specified in a series of European Regulations developed by Eurostat in conjunction with the EU Member States. HICPs are used to compare inflation rates across the European Union. Since January 1999 it has also been used by the European Central Bank (ECB) as the measure of price stability across the euro area.
3. The retail prices index (RPI) is the most long-standing general purpose measure of inflation in the United Kingdom and is available from June 1947. It is used for a variety of purposes by both government and external users including the indexation of various incomes and prices and the uprating of pensions, benefits and index-linked gilts.

Methodology

4. The CPI and the RPI are compiled using the same underlying price data, based on a large and representative selection of around 650 individual goods and services for which price movements are measured in around 150 randomly selected areas throughout the UK. Around 120,000 separate price quotations are used every month to compile the indices. The outlets in which the prices are collected are selected randomly. Expenditure weights are held constant for one year at a time.
5. The selection of goods and services that are priced to compile the CPI and RPI is reviewed annually. The contents of the 2006 basket are described in an article published on the National Statistics website at:
<http://www.statistics.gov.uk/cci/article.asp?ID=1455>

Accuracy

6. Rates of change for the CPI are calculated from unrounded index levels, rather than on the published indices, which are rounded to one decimal place. The use of unrounded indices increases the accuracy of the calculation. The unrounded index levels are available on request. By contrast, rates of change for the RPI are calculated from the published rounded indices.

Reliability

7. Once the RPI indices are published they are never revised. CPI indices are revisable although past revisions have been minimal with the exception of those arising from re-referencing of the CPI to 2005=100, which took place with the publication of the January 2006 indices.

Comparability

8. The CPI's coverage of goods and services was extended in stages in the areas of health, education, childcare and insurance, with effect from the January 2000, 2001, and 2002 indices. In 2000, there was also a change to the population basis for the weights which was broadened from private households to include expenditure by foreign visitors and residents of institutional households. Further details can be found in a series of Economic Trends articles: http://www.statistics.gov.uk/about/methodology_by_theme/cpi
9. The official CPI series starts in 1996 but estimates for earlier periods are available back to 1988. These estimates are broadly consistent with data from 1996 but should be treated with some caution. The following article provides more detail:
<http://www.statistics.gov.uk/cpi/article.asp?ID=31&Pos=4&ColRank=1&Rank=1>
10. RPI data are available back to 1947 but have been re-referenced on several occasions since then, generally accompanied by changes to the coverage and/or structure of the detailed sub-components. Details of these changes are given in Appendices 1 and 2 of the CPI Technical Manual:
<http://www.statistics.gov.uk/statbase/Product.asp?vlnk=2328&More=N>

Coherence

11. The CPI and RPI both measure the average change from month to month in the prices of consumer goods and services purchased in the UK. However, they differ in both coverage and methodology. A detailed description of these differences is given in an article entitled "The New Inflation Target: the Statistical Perspective":
www.statistics.gov.uk/StatBase/Product.asp?vlnk=10913. The differences are summarised below:
 - In the CPI, the geometric mean is used to combine the individual prices into elementary indices at the most basic level whereas the RPI uses arithmetic means.
 - The CPI excludes a number of RPI series mainly relating to housing costs (for example, council tax), and in particular to owner occupiers' housing costs (including mortgage interest payments, house depreciation and buildings insurance). In addition, the CPI excludes the annual road fund licence and, from 2006, TV licences which are classified as taxes in the UK National Accounts, and Trades Union subscriptions which by convention are not part of household expenditure.
 - The CPI includes series for university accommodation fees, foreign students' university tuition fees, and unit trust and stockbrokers' charges, none of which are included in the RPI.
 - The CPI is categorised according to the international classification system, COICOP (Classification Of Individual Consumption by Purpose). The way in which this maps to the RPI groupings is shown in the following table:

COICOP Divisions	RPI Groups
01 Food & non-alcoholic beverages	Food
02 Alcohol & tobacco	Alcoholic drink (off sales) Tobacco
03 Clothing & footwear	Clothing & footwear
04 Housing & household services	Housing (exc. Mortgage interest payments, depreciation, council tax & building insurance) Fuel & light
05 Furniture & household goods	Household goods Domestic services
06 Health	Personal goods & services (health-related items)
07 Transport	Motoring expenditure Fares & other travel costs
08 Communication	Household services (exc. domestic services & fees and subscriptions)
09 Recreation & culture	Leisure goods Leisure services
10 Education	Fees & subscriptions (education-related items)
11 Restaurants & hotels	Catering Alcoholic drink (on sales)
12 Miscellaneous goods & services	Personal goods & services (non health-related items) Fees & subscriptions (non education-related items)

- The index for the purchase of new cars in the CPI is quality adjusted and based on actual published prices for new cars. New car prices in the RPI are imputed from movements in second hand car prices.
 - The CPI weights are based on expenditure by all private households, foreign visitors to the UK and residents of institutional households. In the RPI, weights are based on expenditure by private households only, excluding the highest income households and pensioner households mainly dependent on state benefits.
 - In the construction of the CPI weights, amounts paid out in insurance claims are distributed among the COICOP headings according to the nature of the claims' expenditure, with the residual (the service charge) being allocated to the relevant insurance heading. For the RPI weights, total expenditure (that is, gross of claims paid out) is assigned to the relevant insurance heading.
12. A breakdown of the difference between the CPI and RPI annual rates of inflation is shown in Table 10 of the CPI First Release.

Accessibility

13. This release includes the July 2006 data, collected on 18 July. Future publication dates are 12 September, 17 October, 14 November, 12 December, 16 January, 2007 and 13 February. The European Commission (Eurostat) will release figures for the harmonised index of consumer prices (HICP) for the month of July 2006 for EU member states, together with an EU average, on 17 August.

Further information

14. A more detailed quality report for this First Release is available at: <http://www.statistics.gov.uk/CCI/article.asp?ID=1585>
15. A full description of how the CPI and RPI are compiled is given in the Consumer Price Indices Technical Manual 2005 edition: <http://www.statistics.gov.uk/statbase/Product.asp?vlnk=2328>

General

16. Details of the policy governing the release of new data are available from the press office. Also available is a list of the names of those given pre-publication access to contents of this release.
17. Complete runs of series in this release are available to download free of charge at: <http://www.statistics.gov.uk/timeseries> Alternatively, for low-cost tailored data call Online Services on 020 7533 5675 or email: tailored@statistics.gov.uk
18. **National Statistics** are produced to high professional standards set out in the National Statistics Code of Practice. They undergo regular quality assurance reviews to ensure that they meet customer needs. They are produced free from any political interference. © Crown Copyright 2006

1 CPI, RPI and other selected indices: the latest three years

	Consumer prices index (CPI) ¹		Consumer prices index excluding indirect taxes (CPIY) ³		Consumer prices index at constant tax rates (CPI-CT)		All items retail prices index (RPI)		All items RPI excluding			
	Index (2005=100)	Percentage change over 12 months	Index (2005=100)	Percentage change over 12 months	Index (2005=100)	Percentage change over 12 months	Index (Jan 13, 1987=100)	Percentage change over 12 months	mortgage interest payments (RPIX)		mortgage interest payments and indirect taxes (RPIY) ²	
									Index (Jan 13, 1987=100)	Percentage change over 12 months	Index (Jan 13, 1987=100)	Percentage change over 12 months
	D7BT	D7G7	EL2Q	EL2S	EAC7	EAD6	CHAW	CZBH	CHMK	CDKQ	CBZW	CBZX
2003 Jul	96.5	1.3	96.3	..	96.7	..	181.3	3.1	179.9	2.9	171.6	2.8
Aug	96.8	1.4	96.7	..	97.0	..	181.6	2.9	180.4	2.9	172.2	2.7
Sep	97.1	1.4	97.0	..	97.3	..	182.5	2.8	181.3	2.8	173.2	2.7
Oct	97.2	1.4	97.1	..	97.4	..	182.6	2.6	181.3	2.7	173.1	2.4
Nov	97.2	1.3	97.1	..	97.3	..	182.7	2.5	181.4	2.5	173.1	2.1
Dec	97.5	1.3	97.4	1.1	97.6	1.1	183.5	2.8	181.8	2.6	173.5	2.2
2004 Jan	97.0	1.4	96.9	1.5	97.2	1.3	183.1	2.6	181.4	2.4	173.2	2.0
Feb	97.2	1.3	97.2	1.3	97.4	1.1	183.8	2.5	182.0	2.3	173.9	1.9
Mar	97.4	1.1	97.3	1.1	97.5	1.0	184.6	2.6	182.5	2.1	174.3	1.7
Apr	97.8	1.1	97.6	1.1	97.8	1.0	185.7	2.5	183.6	2.0	174.9	1.8
May	98.1	1.5	98.0	1.4	98.2	1.3	186.5	2.8	184.3	2.3	175.6	2.2
Jun	98.1	1.6	97.9	1.5	98.1	1.4	186.8	3.0	184.2	2.3	175.6	2.3
Jul	97.8	1.4	97.7	1.4	97.9	1.2	186.8	3.0	183.8	2.2	175.1	2.0
Aug	98.1	1.3	97.9	1.3	98.1	1.1	187.4	3.2	184.3	2.2	175.7	2.0
Sep	98.2	1.1	98.0	1.0	98.2	0.9	188.1	3.1	184.7	1.9	176.1	1.7
Oct	98.4	1.2	98.3	1.2	98.5	1.1	188.6	3.3	185.1	2.1	176.6	2.0
Nov	98.6	1.5	98.5	1.4	98.7	1.4	189.0	3.4	185.4	2.2	176.9	2.2
Dec	99.1	1.7	99.1	1.7	99.2	1.6	189.9	3.5	186.4	2.5	177.9	2.5
2005 Jan	98.6	1.6	98.5	1.7	98.6	1.5	188.9	3.2	185.2	2.1	176.7	2.0
Feb	98.8	1.7	98.8	1.7	98.9	1.6	189.6	3.2	185.9	2.1	177.4	2.0
Mar	99.3	1.9	99.3	2.0	99.3	1.8	190.5	3.2	186.8	2.4	178.3	2.3
Apr	99.7	1.9	99.6	2.0	99.6	1.9	191.6	3.2	187.8	2.3	179.0	2.3
May	100.0	1.9	100.0	2.0	100.0	1.8	192.0	2.9	188.2	2.1	179.4	2.2
Jun	100.0	2.0	100.0	2.2	100.0	1.9	192.2	2.9	188.3	2.2	179.5	2.2
Jul	100.1	2.3	100.1	2.5	100.1	2.3	192.2	2.9	188.3	2.4	179.5	2.5
Aug	100.4	2.4	100.5	2.6	100.4	2.3	192.6	2.8	188.6	2.3	179.8	2.3
Sep	100.6	2.5	100.6	2.6	100.6	2.4	193.1	2.7	189.3	2.5	180.5	2.5
Oct	100.7	2.3	100.8	2.5	100.7	2.3	193.3	2.5	189.5	2.4	180.7	2.3
Nov	100.7	2.1	100.8	2.3	100.7	2.1	193.6	2.4	189.7	2.3	180.9	2.3
Dec	101.0	1.9	101.1	2.1	101.0	1.8	194.1	2.2	190.2	2.0	181.5	2.0
2006 Jan	100.5	1.9	100.6	2.1	100.5	1.9	193.4	2.4	189.4	2.3	180.7	2.3
Feb	100.9	2.0	100.9	2.1	100.8	2.0	194.2	2.4	190.1	2.3	181.4	2.3
Mar	101.1	1.8	101.1	1.9	101.1	1.7	195.0	2.4	190.8	2.1	182.2	2.2
Apr	101.7	2.0	101.7	2.1	101.6	2.0	196.5	2.6	192.3	2.4	183.2	2.3
May	102.2	2.2	102.3	2.3	102.1	2.2	197.7	3.0	193.6	2.9	184.5	2.8
Jun	102.5	2.5	102.6	2.6	102.4	2.4	198.5	3.3	194.2	3.1	185.2	3.2
Jul	102.5	2.4	102.6	2.4	102.4	2.3	198.5	3.3	194.2	3.1	185.2	3.2

1 Inflation rates prior to 1997 and index levels prior to 1996 are estimated. Further details are given in *Economic Trends No. 541 December 1998*. These details are also available on the National Statistics website: www.statistics.gov.uk/cci/article.asp?ID=31

2 The taxes excluded are council tax, VAT, duties, vehicle excise duty, insurance tax and air passenger duty.

3 The taxes excluded are VAT, duties, insurance premium tax, air passenger duty, stamp duty on share transactions.

Source: National Statistics

2 CPI: Detailed figures for 18 July 2006

	Percentage change over				Percentage change over		
	Index (2005 =100)	1 mth	12 mths		Index (2005 =100)	1 mth	12 mths
CPI (overall index)	102.5	-0.1	2.4				
01 Food and non-alcoholic beverages	102.6	0.2	3.2	06.2 Out-patient services	104.9	0.3	4.3
02 Alcoholic beverages and tobacco	103.4	-0.2	2.8	06.2.1/3 Medical services & paramedical services	103.3	0.4	2.9
03 Clothing and footwear	92.2	-4.6	-4.5	06.2.2 Dental services	106.5	0.3	5.6
04 Housing, water, electricity, gas and other fuels	110.5	0.7	10.0	06.3 Hospital services	107.7	1.4	6.1
05 Furniture, household equipment and maintenance	98.1	-2.1	-1.3	07.1 Purchase of vehicles	99.5	-0.1	-0.4
06 Health	103.0	0.5	2.4	07.1.1A New cars	101.0	-	0.7
07 Transport	105.5	1.9	3.3	07.1.1B Second-hand cars	96.9	-0.4	-2.5
08 Communication	99.8	-0.2	0.3	07.1.2/3 Motorcycles and bicycles	98.7	0.1	-1.6
09 Recreation and culture	98.4	-0.3	-1.4	07.2 Operation of personal transport equipment	108.6	1.1	7.9
10 Education	103.3	-	4.7	07.2.1 Spare parts and accessories	103.2	0.7	3.7
11 Restaurants and hotels	103.5	0.3	3.2	07.2.2 Fuels and lubricants	111.6	1.8	10.4
12 Miscellaneous goods and services	104.0	0.1	3.6	07.2.3 Maintenance and repairs	106.1	0.4	6.1
All goods	101.1	-0.8	1.8	07.2.4 Other services	104.4	-	2.8
All services	104.1	0.8	3.2	07.3 Transport services	108.4	7.0	0.3
01.1 Food	102.4	0.2	3.2	07.3.1 Passenger transport by railway	104.8	0.4	4.7
01.1.1 Bread and cereals	101.5	0.3	1.8	07.3.2 Passenger transport by road	101.4	0.4	1.1
01.1.2 Meat	102.8	1.1	3.1	07.3.3 Passenger transport by air	116.2	20.3	-5.2
01.1.3 Fish	108.9	2.7	9.1	07.3.4 Passenger transport by sea and inland waterway	127.0	28.1	3.8
01.1.4 Milk, cheese and eggs	102.2	2.6	2.3	08.1 Postal services	107.9	-	6.9
01.1.5 Oils and fats	107.4	0.2	8.1	08.2/3 Telephone and telefax equipment and services	99.4	-0.2	-
01.1.6 Fruit	97.5	-3.7	1.1	09.1 Audio-visual equipment and related products	88.6	-0.1	-10.6
01.1.7 Vegetables including potatoes and tubers	102.5	-1.1	4.7	09.1.1 Reception and reproduction of sound and pictures	84.8	-0.7	-15.1
01.1.8 Sugar, jam, syrups, chocolate and confectionery	103.9	-0.6	3.5	09.1.2 Photographic, cinematographic and optical equipment	75.0	2.3	-23.2
01.1.9 Food products (nec)	98.6	-0.4	-1.1	09.1.3 Data processing equipment	85.7	-0.3	-10.6
01.2 Non-alcoholic beverages	103.8	-0.1	3.1	09.1.4 Recording media	97.3	-0.7	-3.2
01.2.1 Coffee, tea and cocoa	103.7	-0.4	2.1	09.1.5 Repair of audio-visual equipment & related products	104.3	0.5	3.9
01.2.2 Mineral waters, soft drinks and juices	103.9	-	3.5	09.2 Oth. major durables for recreation & culture	100.8	0.6	0.8
02.1 Alcoholic beverages	100.3	-0.6	-0.7	09.2.1/2 Major durables for in/outdoor recreation	100.8	0.6	0.8
02.1.1 Spirits	99.1	-0.2	-1.7	09.3 Other recreational items, gardens and pets	96.4	-1.6	-2.5
02.1.2 Wine	101.2	-1.1	-0.6	09.3.1 Games, toys and hobbies	93.4	-2.4	-4.9
02.1.3 Beer	99.6	0.1	-0.2	09.3.2 Equipment for sport and open-air recreation	97.2	-1.3	-2.9
02.2 Tobacco	105.6	-	5.4	09.3.3 Gardens, plants and flowers	98.8	-0.9	0.1
03.1 Clothing	91.9	-5.0	-4.6	09.3.4/5 Pets, related products and services	103.8	0.4	3.6
03.1.2 Garments	91.4	-5.2	-5.0	09.4 Recreational and cultural services	104.9	0.1	4.2
03.1.3 Other clothing and clothing accessories	97.2	-2.9	-1.6	09.4.1 Recreational and sporting services	104.5	-0.1	5.2
03.1.4 Cleaning, repair and hire of clothing	104.6	0.4	4.7	09.4.2 Cultural services	105.1	0.3	3.9
03.2 Footwear including repairs	94.2	-2.1	-3.8	09.5 Books, newspapers and stationery	103.9	0.6	3.4
04.1 Actual rentals for housing	103.8	0.7	3.1	09.5.1 Books	103.7	1.4	1.5
04.3 Regular maintenance and repair of the dwelling	101.4	0.1	0.5	09.5.2 Newspapers and periodicals	106.3	0.3	7.0
04.3.1 Materials for maintenance and repair	99.3	-0.1	-2.0	09.5.3/4 Misc. printed matter, stationery, drawing materials	100.9	-0.1	0.4
04.3.2 Services for maintenance and repair	104.6	0.4	4.2	09.6 Package holidays	99.3	0.2	-0.7
04.4 Water supply and misc. services for the dwelling	108.2	-	5.5	10.0 Education	103.3	-	4.7
04.4.1 Water supply	109.0	-	5.7	11.1 Catering services	103.2	0.2	3.0
04.4.3 Sewerage collection	107.5	-	5.2	11.1.1 Restaurants & cafes	103.3	0.3	3.0
04.5 Electricity, gas and other fuels	127.8	1.1	29.2	11.1.2 Canteens	102.6	0.2	3.0
04.5.1 Electricity	124.6	1.0	25.9	11.2 Accommodation services	105.1	0.7	4.4
04.5.2 Gas	134.0	1.0	36.3	12.1 Personal care	101.6	-0.8	2.0
04.5.3 Liquid fuels	122.9	3.3	16.7	12.1.1 Hairdressing and personal grooming establishments	103.9	0.3	3.6
04.5.4 Solid fuels	104.8	-0.1	7.6	12.1.2/3 Appliances and products for personal care	100.8	-1.1	1.3
05.1 Furniture, furnishings and carpets	98.5	-3.4	-1.8	12.3 Personal effects (nec)	101.8	-1.0	3.6
05.1.1 Furniture and furnishings	98.2	-3.9	-2.4	12.3.1 Jewellery, clocks and watches	104.6	0.3	6.2
05.1.2 Carpets and other floor coverings	99.5	-1.4	0.2	12.3.2 Other personal effects	97.1	-3.4	-0.3
05.2 Household textiles	93.3	-3.4	-3.4	12.4 Social protection	105.9	0.5	5.6
05.3 Household appliances, fitting and repairs	95.5	1.1	-4.5	12.5 Insurance	103.4	1.5	1.9
05.3.1/2 Major appliances and small electric goods	94.8	1.3	-5.2	12.5.2 House contents insurance	102.3	0.2	1.8
05.3.3 Repair of household appliances	100.9	-0.5	0.9	12.5.3 Health insurance	108.9	2.5	7.6
05.4 Glassware, tableware and household utensils	96.2	-3.2	-1.4	12.5.4 Transport insurance	101.7	1.6	-
05.5 Tools and equipment for house and garden	100.2	-0.2	0.2	12.6 Financial services (nec)	105.2	0.6	3.5
05.6 Goods and services for routine maintenance	104.1	-0.2	4.0	12.6.2 Other financial services (nec)	105.2	0.6	3.5
05.6.1 Non-durable household goods	103.3	-0.9	3.3	12.7 Other services (nec)	106.6	0.7	5.9
05.6.2 Domestic services and household services	104.7	0.3	4.6				
06.1 Medical products, appliances and equipment	98.9	-0.2	-1.2				
06.1.1 Pharmaceutical products	99.1	-0.1	-1.1				
06.1.2/3 Other medical and therapeutic equipment	98.8	-0.4	-1.1				

Key: - zero or negligible .. not available (nec) not elsewhere covered

Source: National Statistics

3 CPI: Detailed figures by divisions, groups and classes

	Weights	Index (2005=100)						Percentage change over 12 months					
		2006	2006 Feb	2006 Mar	2006 Apr	2006 May	2006 Jun	2006 Jul	2006 Feb	2006 Mar	2006 Apr	2006 May	2006 Jun
CPI (overall index)	1 000	100.9	101.1	101.7	102.2	102.5	102.5	2.0	1.8	2.0	2.2	2.5	2.4
01 Food and non-alcoholic beverages	102	101.0	100.4	100.2	101.7	102.4	102.6	1.1	-0.4	0.3	1.1	1.8	3.2
02 Alcoholic beverages and tobacco	44	100.8	101.1	102.3	102.5	103.6	103.4	1.6	2.5	2.5	2.2	3.3	2.8
03 Clothing and footwear	65	95.9	96.5	96.5	97.2	96.7	92.2	-4.7	-4.7	-4.4	-3.7	-3.9	-4.5
04 Housing, water, electricity, gas and other fuels	108	103.6	104.5	107.3	108.8	109.7	110.5	6.4	7.0	7.7	9.0	9.8	10.0
05 Furniture, household equipment and maintenance	73	98.5	100.3	98.5	99.3	100.2	98.1	-0.5	-0.4	-0.8	-0.8	-0.1	-1.3
06 Health	24	101.1	101.0	102.2	102.6	102.5	103.0	2.3	2.1	2.7	2.9	2.7	2.4
07 Transport	155	101.4	101.4	102.9	103.5	103.5	105.5	4.2	3.5	4.4	4.0	3.9	3.3
08 Communication	25	101.0	100.9	100.9	99.7	100.0	99.8	0.4	0.5	0.3	-0.4	-0.3	0.3
09 Recreation and culture	147	99.4	98.9	99.1	98.9	98.7	98.4	-0.8	-1.4	-1.6	-1.6	-1.6	-1.4
10 Education	17	103.3	103.3	103.3	103.3	103.3	103.3	4.7	4.7	4.7	4.7	4.7	4.7
11 Restaurants and hotels	134	101.9	102.2	102.5	103.0	103.1	103.5	3.5	3.6	3.0	3.2	3.2	3.2
12 Miscellaneous goods and services	106	102.1	102.4	103.3	103.4	103.9	104.0	3.6	3.7	4.0	4.1	4.4	3.6
All goods	554	100.0	100.3	100.6	101.5	101.9	101.1	0.6	0.2	0.5	1.3	1.7	1.8
All services	446	101.8	102.0	103.0	103.0	103.3	104.1	3.7	3.7	3.8	3.3	3.4	3.2
01.1 Food	90	100.9	100.2	100.0	101.4	102.2	102.4	0.9	-0.7	0.0	0.8	1.4	3.2
01.1.1 Bread and cereals	15	101.3	101.1	101.3	101.0	101.3	101.5	1.1	1.2	1.8	1.5	1.3	1.8
01.1.2 Meat	21	100.7	99.5	99.8	101.1	101.7	102.8	0.7	-0.5	0.4	1.0	1.6	3.1
01.1.3 Fish	4	103.3	103.1	104.0	102.9	106.0	108.9	5.7	3.9	4.6	2.7	6.6	9.1
01.1.4 Milk, cheese and eggs	13	102.1	99.3	98.4	98.4	99.6	102.2	4.7	-0.6	-1.3	-1.3	-0.5	2.3
01.1.5 Oils and fats	2	98.0	101.3	103.5	106.3	107.2	107.4	-5.1	-0.4	2.6	7.0	9.4	8.1
01.1.6 Fruit	8	97.6	97.1	96.0	101.0	101.2	97.5	0.7	-0.2	-1.1	-3.4	-6.7	1.1
01.1.7 Vegetables including potatoes and tubers	14	100.5	100.6	98.1	102.2	103.7	102.5	-4.6	-7.7	-5.3	0.1	3.3	4.7
01.1.8 Sugar, jam, syrups, chocolate and confectionery	11	102.0	102.1	103.4	104.1	104.5	103.9	3.7	3.4	4.1	3.9	4.3	3.5
01.1.9 Food products (nec)	2	98.9	99.0	98.5	99.2	99.0	98.6	-1.9	-1.8	-1.8	-1.4	-1.3	-1.1
01.2 Non-alcoholic beverages	12	102.0	101.3	102.1	103.5	104.0	103.8	2.2	1.5	2.6	3.6	4.7	3.1
01.2.1 Coffee, tea and cocoa	3	101.9	99.5	100.3	102.8	104.2	103.7	4.0	1.5	2.7	2.4	5.3	2.1
01.2.2 Mineral waters, soft drinks and juices	9	102.1	101.9	102.7	103.8	103.9	103.9	1.6	1.6	2.6	4.0	4.5	3.5
02.1 Alcoholic beverages	18	99.6	100.2	100.5	100.3	100.9	100.3	-0.7	1.1	1.0	-0.2	0.4	-0.7
02.1.1 Spirits	5	100.2	100.6	99.1	99.1	99.3	99.1	-0.6	0.3	-1.2	-2.6	-1.7	-1.7
02.1.2 Wine	9	99.8	100.5	101.4	100.8	102.3	101.2	0.1	2.9	2.7	0.8	1.8	-0.6
02.1.3 Beer	4	98.1	98.7	99.8	100.2	99.5	99.6	-2.9	-1.8	-0.6	0.1	-0.5	-0.2
02.2 Tobacco	26	101.8	101.9	103.7	104.1	105.5	105.6	3.5	3.5	3.6	4.0	5.4	5.4
03.1 Clothing	56	95.9	96.6	96.5	97.3	96.8	91.9	-4.5	-4.6	-4.3	-3.8	-3.9	-4.6
03.1.2 Garments	52	95.6	96.4	96.3	97.0	96.4	91.4	-4.8	-4.9	-4.7	-4.1	-4.3	-5.0
03.1.3 Other clothing and clothing accessories	3	98.2	99.0	99.7	100.0	100.1	97.2	-0.4	-1.0	-0.5	0.1	0.2	-1.6
03.1.4 Cleaning, repair and hire of clothing	1	102.4	102.6	102.8	103.6	104.2	104.6	3.7	3.6	3.7	3.9	4.3	4.7
03.2 Footwear including repairs	9	95.9	96.1	96.0	96.7	96.2	94.2	-5.7	-5.6	-5.0	-3.5	-3.9	-3.8
04.1 Actual rentals for housing	47	101.4	101.4	102.9	103.0	103.1	103.8	3.3	3.3	2.9	3.0	3.0	3.1
04.3 Regular maintenance and repair of the dwelling	19	100.8	101.0	101.4	101.0	101.4	101.4	1.4	1.2	1.5	0.4	0.8	0.5
04.3.1 Materials for maintenance and repair	11	99.2	99.4	99.7	98.9	99.4	99.3	-1.1	-1.2	-0.7	-2.5	-1.6	-2.0
04.3.2 Services for maintenance and repair	8	103.2	103.3	103.8	104.0	104.2	104.6	5.2	4.8	4.8	4.5	4.3	4.2
04.4 Water supply and misc. services for the dwelling	10	102.6	102.6	108.2	108.2	108.2	108.2	11.4	11.4	5.5	5.5	5.5	5.5
04.4.1 Water supply	5	103.1	103.1	109.0	109.0	109.0	109.0	13.6	13.6	5.7	5.7	5.7	5.7
04.4.3 Sewerage collection	5	102.2	102.2	107.5	107.5	107.5	107.5	9.2	9.2	5.2	5.2	5.2	5.2
04.5 Electricity, gas and other fuels	32	109.4	112.3	117.9	123.5	126.4	127.8	13.3	15.3	20.5	26.1	28.3	29.2
04.5.1 Electricity	15	107.9	110.8	115.6	120.4	123.3	124.6	10.7	13.0	17.3	21.9	24.7	25.9
04.5.2 Gas	14	110.8	114.3	121.6	128.9	132.6	134.0	14.5	17.8	24.8	31.8	35.1	36.3
04.5.3 Liquid fuels	2	114.0	115.1	118.4	119.2	119.0	122.9	42.1	25.8	24.9	33.2	20.9	16.7
04.5.4 Solid fuels	1	105.5	105.6	105.9	106.9	104.9	104.8	7.0	6.7	7.1	9.2	7.6	7.6
05.1 Furniture, furnishings and carpets	32	98.1	102.6	98.9	100.1	101.9	98.5	1.3	1.1	0.4	0.2	1.3	-1.8
05.1.1 Furniture and furnishings	25	97.5	103.3	98.5	99.7	102.2	98.2	1.1	0.8	0.3	0.2	1.5	-2.4
05.1.2 Carpets and other floor coverings	7	100.5	100.1	100.5	101.5	101.0	99.5	2.3	1.8	1.0	0.3	0.5	0.2
05.2 Household textiles	8	96.5	96.6	95.2	96.6	96.6	93.3	-4.5	-5.5	-5.4	-5.0	-4.4	-3.4
05.3 Household appliances, fitting and repairs	9	97.1	94.2	94.1	95.1	94.4	95.5	-4.1	-5.0	-5.8	-4.5	-5.3	-4.5
05.3.1/2 Major appliances and small electric goods	8	96.5	93.3	93.3	94.3	93.6	94.8	-4.9	-5.8	-6.7	-5.2	-6.1	-5.2
05.3.3 Repair of household appliances	1	101.4	101.4	101.4	101.4	101.4	100.9	1.9	1.8	1.7	1.5	1.6	0.9
05.4 Glassware, tableware and household utensils	7	97.6	98.2	98.4	98.8	99.4	96.2	-3.3	-2.6	-0.9	-1.1	-0.4	-1.4
05.5 Tools and equipment for house and garden	6	100.6	101.0	100.4	100.0	100.4	100.2	-0.2	0.7	-0.1	-0.1	0.3	0.2
05.6 Goods and services for routine maintenance	11	102.7	103.1	103.4	103.7	104.3	104.1	4.2	4.7	4.5	3.6	4.0	4.0
05.6.1 Non-durable household goods	5	102.3	102.8	103.1	103.3	104.2	103.3	3.7	4.7	4.3	2.6	3.4	3.3
05.6.2 Domestic services and household services	6	103.0	103.4	103.7	104.0	104.4	104.7	4.7	4.6	4.6	4.6	4.6	4.6
06.1 Medical products, appliances and equipment	11	99.4	99.1	99.5	99.5	99.1	98.9	-0.6	-1.1	-1.0	-0.5	-0.7	-1.2
06.1.1 Pharmaceutical products	5	99.8	99.3	100.0	100.0	99.2	99.1	-0.2	-0.8	-0.8	0.1	-0.6	-1.1
06.1.2/3 Other medical and therapeutic equipment	6	99.1	99.0	99.0	99.2	99.2	98.8	-0.9	-1.2	-1.1	-0.9	-0.8	-1.1

Key: - zero or negligible .. not available (nec) not elsewhere covered

Source: National Statistics

3 CPI: Detailed figures by divisions, groups and classes

continued

	Weights	Index (2005=100)						Percentage change over 12 months					
		2006	2006 Feb	2006 Mar	2006 Apr	2006 May	2006 Jun	2006 Jul	2006 Feb	2006 Mar	2006 Apr	2006 May	2006 Jun
06.2 Out-patient services	4	102.8	102.9	103.3	104.9	104.5	104.9	4.5	4.8	4.9	5.0	4.2	4.3
06.2.1/3 Medical services & paramedical services	2	103.1	103.2	103.6	103.9	102.9	103.3	4.0	4.5	4.6	4.6	2.7	2.9
06.2.2 Dental services	2	102.4	102.6	103.0	105.9	106.1	106.5	4.9	5.0	5.2	5.5	5.6	5.6
06.3 Hospital services	9	102.8	102.9	105.6	105.8	106.2	107.7	5.7	5.6	7.1	6.6	6.7	6.1
07.1 Purchase of vehicles	52	99.7	99.6	99.6	99.7	99.6	99.5	-1.0	-1.1	-1.0	-0.6	-0.5	-0.4
07.1.1A New cars	31	100.4	100.5	100.7	100.9	100.9	101.0	0.8	0.8	0.8	1.0	1.0	0.7
07.1.1B Second-hand cars	18	98.2	98.0	97.8	97.6	97.3	96.9	-4.5	-4.6	-4.5	-3.4	-3.1	-2.5
07.1.2/3 Motorcycles and bicycles	3	98.8	98.5	98.4	98.4	98.6	98.7	-0.6	-1.9	-2.1	-1.8	-2.2	-1.6
07.2 Operation of personal transport equipment	71	103.6	103.6	105.7	107.7	107.4	108.6	8.3	7.4	7.3	9.3	8.6	7.9
07.2.1 Spare parts and accessories	6	101.8	102.1	102.2	102.5	102.6	103.2	2.2	2.8	2.8	3.3	3.1	3.7
07.2.2 Fuels and lubricants	35	103.2	103.1	107.1	110.6	109.7	111.6	11.6	9.2	8.8	13.0	12.0	10.4
07.2.3 Maintenance and repairs	24	104.3	104.6	104.8	105.2	105.7	106.1	6.3	6.6	6.3	6.2	5.8	6.1
07.2.4 Other services	6	103.5	103.8	103.6	104.0	104.4	104.4	6.2	6.6	6.3	6.4	5.8	2.8
07.3 Transport services	32	99.6	99.6	102.3	100.6	101.3	108.4	4.5	3.0	7.3	0.2	1.1	0.3
07.3.1 Passenger transport by railway	8	103.6	103.6	104.9	104.6	104.4	104.8	4.3	4.4	4.9	5.1	4.0	4.7
07.3.2 Passenger transport by road	15	104.2	104.5	101.5	100.9	101.0	101.4	6.4	6.0	2.3	1.5	1.2	1.1
07.3.3 Passenger transport by air	7	85.3	83.8	98.1	93.0	96.6	116.2	-3.8	-10.2	13.1	-9.5	-4.8	-5.2
07.3.4 Passenger transport by sea and inland waterway	2	96.8	100.9	103.3	102.1	99.2	127.0	3.9	10.9	12.1	2.8	2.4	3.8
08.1 Postal services	1	101.0	101.0	107.9	107.9	107.9	107.9	4.1	4.1	6.9	6.9	6.9	6.9
08.2/3 Telephone and telefax equipment and services	24	100.9	100.8	100.5	99.3	99.6	99.4	0.0	0.1	0.0	-0.7	-0.6	0.0
09.1 Audio-visual equipment and related products	27	93.3	91.3	90.3	89.4	88.6	88.6	-10.7	-11.8	-12.8	-13.2	-12.0	-10.6
09.1.1 Reception and reproduction of sound and pictures	6	91.8	90.2	87.8	86.2	85.4	84.8	-14.0	-14.3	-14.7	-16.4	-16.4	-15.1
09.1.2 Photographic, cinematographic and optical equipment	5	83.2	77.7	77.7	75.1	73.4	75.0	-23.6	-27.6	-28.9	-30.3	-28.9	-23.2
09.1.3 Data processing equipment	5	93.7	90.1	89.2	86.5	85.9	85.7	-14.2	-15.9	-13.6	-13.6	-10.7	-10.6
09.1.4 Recording media	10	97.2	98.0	96.9	98.4	98.1	97.3	-2.4	-1.6	-4.9	-4.2	-3.0	-3.2
09.1.5 Repair of audio-visual equipment & related products	1	102.1	101.9	102.2	103.3	103.8	104.3	4.5	3.5	3.1	3.8	4.1	3.9
09.2 Other major durables for recreation & culture	9	98.8	98.8	100.1	100.2	100.2	100.8	-1.0	-1.0	0.5	0.3	0.3	0.8
09.2.1/2 Major durables for in/outdoor recreation	9	98.8	98.8	100.1	100.2	100.2	100.8	-1.0	-1.0	0.5	0.3	0.3	0.8
09.3 Other recreational items, gardens and pets	39	100.4	99.9	98.4	98.2	98.0	96.4	0.3	-0.7	-2.1	-1.5	-2.5	-2.5
09.3.1 Games, toys and hobbies	23	100.2	99.3	97.1	96.3	95.8	93.4	0.3	-1.2	-3.7	-3.0	-4.7	-4.9
09.3.2 Equipment for sport and open-air recreation	4	96.8	97.5	97.6	97.7	98.5	97.2	-4.1	-4.0	-4.1	-3.3	-2.6	-2.9
09.3.3 Gardens, plants and flowers	5	101.5	100.4	98.3	99.3	99.8	98.8	-0.9	-1.8	-1.2	0.0	-0.5	0.1
09.3.4/5 Pets, related products and services	7	101.8	102.0	102.7	103.3	103.4	103.8	3.3	3.3	2.7	3.2	3.2	3.6
09.4 Recreational and cultural services	28	101.6	101.6	105.1	104.7	104.8	104.9	4.1	3.8	5.4	4.9	5.0	4.2
09.4.1 Recreational and sporting services	8	102.8	103.0	104.3	104.6	104.6	104.5	4.8	4.9	5.8	5.6	5.6	5.2
09.4.2 Cultural services	20	101.1	101.1	105.4	104.8	104.8	105.1	3.8	3.3	5.3	4.6	4.7	3.9
09.5 Books, newspapers and stationery	17	102.8	102.5	102.4	102.6	103.4	103.9	3.4	3.3	3.3	2.9	3.2	3.4
09.5.1 Books	5	104.1	102.8	100.7	101.2	102.3	103.7	2.3	2.7	2.2	3.7	3.1	1.5
09.5.2 Newspapers and periodicals	7	103.8	104.3	105.5	105.8	105.9	106.3	5.6	5.9	6.2	5.9	5.8	7.0
09.5.3/4 Misc. printed matter, stationery, drawing materials	5	99.9	99.7	100.0	99.6	100.9	100.9	1.2	0.2	0.5	-1.5	0.0	0.4
09.6 Package holidays	27	98.8	98.8	99.4	99.6	99.1	99.3	-1.7	-1.9	-1.7	-1.1	-1.3	-0.7
10.0 Education	17	103.3	103.3	103.3	103.3	103.3	103.3	4.7	4.7	4.7	4.7	4.7	4.7
11.1 Catering services	116	101.6	102.0	102.3	102.8	103.0	103.2	3.1	3.2	2.7	2.9	2.9	3.0
11.1.1 Restaurants & cafes	103	101.6	102.0	102.3	102.8	103.0	103.3	3.1	3.1	2.7	2.9	3.0	3.0
11.1.2 Canteens	13	101.5	101.9	102.1	102.4	102.4	102.6	3.0	3.2	2.8	2.7	2.8	3.0
11.2 Accommodation services	18	103.6	103.8	103.9	104.6	104.4	105.1	6.2	6.4	4.9	5.6	5.1	4.4
12.1 Personal care	32	101.2	101.3	102.1	102.1	102.4	101.6	0.9	0.6	2.1	1.8	2.5	2.0
12.1.1 Hairdressing and personal grooming establishments	8	102.1	102.3	102.8	103.3	103.6	103.9	3.8	3.4	3.2	3.4	3.6	3.6
12.1.2/3 Appliances and products for personal care	24	100.8	100.9	101.8	101.6	101.9	100.8	-0.2	-0.5	1.6	1.2	2.0	1.3
12.3 Personal effects (nec)	11	100.4	100.7	100.9	102.2	102.9	101.8	0.7	0.3	0.5	3.0	2.9	3.6
12.3.1 Jewellery, clocks and watches	7	101.7	102.0	102.3	104.0	104.3	104.6	1.7	1.5	2.1	5.5	4.4	6.2
12.3.2 Other personal effects	4	98.4	98.7	98.8	99.1	100.6	97.1	-0.6	-1.5	-2.2	-1.7	0.6	-0.3
12.4 Social protection	12	103.3	103.5	104.0	104.5	105.3	105.9	5.5	5.6	5.5	5.5	5.7	5.6
12.5 Insurance	9	98.4	100.1	101.3	100.2	101.8	103.4	-1.1	1.0	2.0	0.8	2.5	1.9
12.5.2 House contents insurance	2	96.8	96.7	98.0	98.0	102.0	102.3	-2.2	-2.6	-1.1	-1.1	2.1	1.8
12.5.3 Health insurance	2	103.1	103.1	106.2	106.2	108.9	108.9	5.2	5.2	7.1	7.1	7.1	7.6
12.5.4 Transport insurance	5	97.3	100.4	100.9	98.9	100.2	101.7	-2.8	0.8	1.4	-0.8	0.8	0.0
12.6 Financial services (nec)	29	102.9	103.0	104.4	104.4	104.6	105.2	6.1	6.2	5.6	5.4	5.5	3.5
12.6.2 Other financial services (nec)	29	102.9	103.0	104.4	104.4	104.6	105.2	6.1	6.2	5.6	5.4	5.5	3.5
12.7 Other services (nec)	13	104.1	104.2	104.8	105.4	105.9	106.6	6.4	6.4	6.4	6.5	6.5	5.9

Key: - zero or negligible .. not available (nec) not elsewhere covered

Source: National Statistics

4 CPI: Detailed figures by division¹

	Food and non-alcoholic beverages	Alcoholic beverages and tobacco	Clothing and footwear	Housing, water, electricity, gas & other fuels	Furniture, household equipment & routine maintenance	Health ²	Transport	Communication	Recreation and culture	Education ²	Restaurants and hotels	Miscellaneous goods and services ²	CPI (overall index)
COICOP Division	01	02	03	04	05	06	07	08	09	10	11	12	
Weights													
2006	CHZR 102	CHZS 44	CHZT 65	CHZU 108	CHZV 73	CHZW 24	CHZX 155	CHZY 25	CHZZ 147	CJUU 17	CJUV 134	CJUW 106	CHZQ 1 000
Monthly indices (2005=100)													
	D7BU	D7BV	D7BW	D7BX	D7BY	D7BZ	D7C2	D7C3	D7C4	D7C5	D7C6	D7C7	D7BT
2004 Jul	97.8	98.4	101.4	94.2	98.9	97.3	97.6	102.1	101.3	94.0	96.9	95.4	97.8
Aug	97.5	98.7	102.7	94.4	99.4	97.3	98.0	102.1	101.3	94.0	97.1	95.7	98.1
Sep	97.8	98.9	105.4	94.6	100.5	97.7	96.5	101.0	101.2	96.2	97.2	95.9	98.2
Oct	98.0	98.8	105.4	95.5	99.6	98.1	96.4	101.2	101.2	98.7	97.5	97.1	98.4
Nov	98.4	98.2	105.9	96.0	100.4	98.2	96.4	100.8	101.0	98.7	97.8	97.3	98.6
Dec	99.0	97.8	104.5	96.6	102.7	98.0	98.0	100.5	101.2	98.7	98.0	97.4	99.1
2005 Jan	99.2	98.8	100.7	97.2	98.6	98.7	96.4	100.3	100.7	98.7	98.2	98.5	98.6
Feb	99.9	99.2	100.5	97.4	99.0	98.8	97.3	100.5	100.2	98.7	98.4	98.6	98.8
Mar	100.8	98.7	101.3	97.7	100.7	98.9	98.0	100.4	100.2	98.7	98.7	98.8	99.3
Apr	99.9	99.8	100.9	99.6	99.3	99.5	98.5	100.5	100.7	98.7	99.5	99.3	99.7
May	100.6	100.2	101.0	99.8	100.1	99.7	99.5	100.1	100.4	98.7	99.8	99.4	100.0
Jun	100.6	100.3	100.6	100.0	100.4	99.8	99.6	100.3	100.3	98.7	99.9	99.6	100.0
Jul	99.4	100.6	96.5	100.4	99.4	100.6	102.1	99.5	99.8	98.7	100.3	100.4	100.1
Aug	99.6	100.5	98.2	100.4	99.6	100.8	103.3	99.9	99.3	98.7	100.6	100.6	100.4
Sep	99.7	100.3	99.9	100.7	100.2	100.7	102.2	99.8	99.6	100.8	100.8	100.8	100.6
Oct	99.5	100.7	99.9	101.7	99.4	101.0	102.0	99.5	99.7	103.3	101.2	101.2	100.7
Nov	100.1	100.7	100.5	102.3	100.5	101.0	100.4	99.6	99.5	103.3	101.2	101.4	100.7
Dec	100.7	100.2	100.1	102.8	102.8	100.3	100.7	99.4	99.5	103.3	101.4	101.5	101.0
2006 Jan	100.4	101.0	96.0	103.3	97.8	101.0	101.2	100.9	98.6	103.3	101.5	102.0	100.5
Feb	101.0	100.8	95.9	103.6	98.5	101.1	101.4	101.0	99.4	103.3	101.9	102.1	100.9
Mar	100.4	101.1	96.5	104.5	100.3	101.0	101.4	100.9	98.9	103.3	102.2	102.4	101.1
Apr	100.2	102.3	96.5	107.3	98.5	102.2	102.9	100.9	99.1	103.3	102.5	103.3	101.7
May	101.7	102.5	97.2	108.8	99.3	102.6	103.5	99.7	98.9	103.3	103.0	103.4	102.2
Jun	102.4	103.6	96.7	109.7	100.2	102.5	103.5	100.0	98.7	103.3	103.1	103.9	102.5
Jul	102.6	103.4	92.2	110.5	98.1	103.0	105.5	99.8	98.4	103.3	103.5	104.0	102.5
Percentage change on a year earlier													
	D7G8	D7G9	D7GA	D7GB	D7GC	D7GD	D7GE	D7GF	D7GG	D7GH	D7GI	D7GJ	D7G7
2004 Jul	0.1	2.1	-4.9	3.6	-0.7	1.2	3.9	-1.1	-0.8	4.7	2.8	3.3	1.4
Aug	-0.2	1.9	-5.7	3.7	-0.4	1.1	3.9	-1.1	-0.9	4.7	2.9	3.1	1.3
Sep	-0.7	2.2	-5.8	3.8	-0.5	1.4	3.3	-2.6	-1.0	4.5	2.7	3.1	1.1
Oct	-0.6	2.0	-5.3	4.4	-0.4	1.5	3.4	-2.1	-1.0	5.0	2.8	3.1	1.2
Nov	-0.5	2.2	-5.3	4.9	-0.4	1.5	4.1	-1.9	-0.9	5.0	2.9	3.3	1.5
Dec	-0.1	2.1	-5.4	5.4	0.7	1.9	4.0	-2.2	-0.6	5.0	2.9	3.2	1.7
2005 Jan	0.4	2.5	-5.9	5.8	-0.5	2.4	2.7	-2.3	-0.4	5.0	2.9	3.6	1.6
Feb	0.8	2.9	-5.8	5.9	-1.2	2.7	3.2	-2.7	-0.7	5.0	3.1	3.4	1.7
Mar	1.7	2.2	-5.1	5.8	-	2.6	4.0	-2.9	-0.7	5.0	2.8	3.6	1.9
Apr	1.0	2.0	-5.3	6.5	-1.0	2.7	3.8	-3.2	-0.6	5.0	3.3	4.3	1.9
May	1.4	2.3	-5.5	6.4	-1.0	2.8	3.3	-3.6	-0.5	5.0	3.3	4.3	1.9
Jun	2.2	2.3	-4.8	6.4	-0.6	2.7	3.4	-2.9	-1.2	5.0	3.2	4.6	2.0
Jul	1.7	2.2	-4.8	6.7	0.6	3.4	4.6	-2.5	-1.5	5.0	3.4	5.2	2.3
Aug	2.2	1.8	-4.4	6.3	0.2	3.7	5.4	-2.1	-2.0	5.0	3.5	5.1	2.4
Sep	2.0	1.4	-5.3	6.5	-0.2	3.1	6.0	-1.2	-1.6	4.7	3.7	5.1	2.5
Oct	1.5	1.9	-5.3	6.5	-0.2	3.0	5.8	-1.6	-1.5	4.7	3.7	4.2	2.3
Nov	1.7	2.5	-5.1	6.5	0.1	2.9	4.1	-1.2	-1.5	4.7	3.5	4.3	2.1
Dec	1.7	2.5	-4.2	6.4	-	2.4	2.8	-1.0	-1.7	4.7	3.5	4.2	1.9
2006 Jan	1.2	2.3	-4.7	6.3	-0.8	2.3	5.1	0.5	-2.1	4.7	3.4	3.5	1.9
Feb	1.1	1.6	-4.7	6.4	-0.5	2.3	4.2	0.4	-0.8	4.7	3.5	3.6	2.0
Mar	-0.4	2.5	-4.7	7.0	-0.4	2.1	3.5	0.5	-1.4	4.7	3.6	3.7	1.8
Apr	0.3	2.5	-4.4	7.7	-0.8	2.7	4.4	0.3	-1.6	4.7	3.0	4.0	2.0
May	1.1	2.2	-3.7	9.0	-0.8	2.9	4.0	-0.4	-1.6	4.7	3.2	4.1	2.2
Jun	1.8	3.3	-3.9	9.8	-0.1	2.7	3.9	-0.3	-1.6	4.7	3.2	4.4	2.5
Jul	3.2	2.8	-4.5	10.0	-1.3	2.4	3.3	0.3	-1.4	4.7	3.2	3.6	2.4

Key: - zero or negligible

¹ Inflation rates prior to 1997 and index levels prior to 1996 are estimated. Further details are given in *Economic Trends No. 541 December 1998*. These details are also available on the National Statistics website: www.statistics.gov.uk/cpi/article.asp?ID=31

² The coverage of these categories was extended in January 2000; further extensions to coverage came into effect in January 2001 for health and miscellaneous goods and services; the coverage of miscellaneous goods and services was further extended with effect from January 2002 (details are given in a series of Economic Trends articles available on the National Statistics website: www.statistics.gov.uk/cpi)

Source: National Statistics

5 CPI: Detailed goods and services breakdown¹

	Weights		Index (2005=100)					Percentage change over 12 months						Percentage change over 1 month
	2006	2006	2006	2006	2006	2006	2006	2006	2006	2006	2006	2006	2006	2006
CPI (overall index)	1 000	100.9	101.1	101.7	102.2	102.5	102.5	2.0	1.8	2.0	2.2	2.5	2.4	-0.1
All goods	554	100.0	100.3	100.6	101.5	101.9	101.1	0.6	0.2	0.5	1.3	1.7	1.8	-0.8
Food, alcoholic beverages & tobacco	146	101.0	100.6	100.8	101.9	102.8	102.8	1.3	0.5	1.0	1.4	2.3	3.1	-
Processed food & non-alcoholic beverages	55	101.6	100.9	101.2	101.7	102.3	102.8	2.4	1.2	1.6	1.9	2.4	2.7	0.5
Non-processed food	47	100.4	99.8	99.1	101.6	102.6	102.3	-0.4	-2.2	-1.1	0.2	1.1	3.8	-0.3
Seasonal food	26	100.1	100.0	98.4	102.0	103.3	102.0	-1.3	-3.7	-2.5	-0.6	0.6	4.4	-1.3
Meat	21	100.7	99.5	99.8	101.1	101.7	102.8	0.7	-0.5	0.4	1.0	1.6	3.1	1.1
Alcoholic beverages & tobacco	44	100.8	101.1	102.3	102.5	103.6	103.4	1.6	2.5	2.5	2.2	3.3	2.8	-0.2
Industrial goods	408	99.7	100.2	100.5	101.4	101.6	100.5	0.4	0.1	0.4	1.3	1.5	1.3	-1.1
Energy	67	106.3	107.6	112.3	116.8	117.7	119.4	12.5	12.2	14.4	19.3	19.8	19.4	1.5
Electricity, gas & miscellaneous energy	30	109.1	112.2	117.9	123.8	126.9	128.2	12.2	14.9	20.3	25.9	28.8	30.0	1.0
Liquid fuels, vehicle fuels & lubricants	37	103.6	103.6	107.5	111.0	110.0	112.1	12.7	9.9	9.4	13.7	12.3	10.7	1.9
Non-energy industrial goods	341	98.5	98.8	98.3	98.6	98.7	97.1	-1.7	-1.9	-2.2	-1.9	-1.7	-2.0	-1.6
Clothing & footwear goods	64	95.8	96.4	96.4	97.1	96.6	92.0	-4.8	-4.8	-4.6	-3.9	-4.1	-4.6	-4.7
Housing goods	82	98.5	100.0	98.8	99.4	100.3	98.3	-0.2	-0.1	-0.9	-1.1	-0.4	-1.6	-1.9
Household goods	66	98.0	99.9	98.0	98.9	99.8	97.5	-1.0	-0.9	-1.3	-1.3	-0.6	-1.9	-2.4
Water supply; materials for maintenance & repair	16	100.5	100.6	102.6	102.0	102.4	102.3	3.2	3.1	1.3	0.1	0.7	0.4	-0.1
Medical products, appliances & equipment	11	99.4	99.1	99.5	99.5	99.1	98.9	-0.6	-1.1	-1.0	-0.5	-0.7	-1.2	-0.2
Vehicles, spare parts & accessories	58	99.9	99.9	99.9	100.0	99.9	99.9	-0.6	-0.7	-0.6	-0.2	-0.1	0.0	-
Recreational goods	91	98.7	97.8	96.9	96.6	96.5	95.9	-2.5	-3.2	-4.0	-3.9	-3.9	-3.5	-0.6
Audio-visual goods	26	92.9	90.9	89.8	88.8	88.0	87.9	-11.4	-12.4	-13.4	-13.9	-12.6	-11.2	-0.1
Other recreational goods	65	100.9	100.5	99.7	99.6	99.7	99.0	1.0	0.4	-0.3	0.0	-0.6	-0.5	-0.7
Miscellaneous goods	35	100.7	100.9	101.6	101.9	102.3	101.1	0.2	-0.1	1.3	1.8	2.4	2.2	-1.1
All services	446	101.8	102.0	103.0	103.0	103.3	104.1	3.7	3.7	3.8	3.3	3.4	3.2	0.8
Housing services	69	101.7	101.7	103.2	103.4	103.6	104.1	3.9	3.9	3.3	3.3	3.4	3.4	0.5
Actual rentals for housing	47	101.4	101.4	102.9	103.0	103.1	103.8	3.3	3.3	2.9	3.0	3.0	3.1	0.7
Primary housing services	15	102.0	102.1	104.3	104.5	105.1	105.3	5.8	5.5	4.2	4.0	4.3	4.2	0.2
Other housing services	7	102.8	103.1	103.3	103.6	103.9	104.1	4.2	4.2	4.1	4.1	4.1	4.1	0.2
Travel & transport services	67	101.5	101.8	103.2	102.4	103.1	106.8	4.8	4.4	6.5	2.8	3.2	2.4	3.6
Services for personal transport equipment	30	104.2	104.4	104.6	105.0	105.5	105.8	6.3	6.6	6.3	6.2	5.8	5.5	0.3
Transport services	32	99.6	99.6	102.3	100.6	101.3	108.4	4.5	3.0	7.3	0.2	1.1	0.3	7.0
Transport insurance	5	97.3	100.4	100.9	98.9	100.2	101.7	-2.8	0.8	1.4	-0.8	0.8	0.0	1.6
Communication	25	101.0	100.9	100.9	99.7	100.0	99.8	0.4	0.5	0.3	-0.4	-0.3	0.3	-0.2
Recreational & personal services	199	101.4	101.7	102.4	102.8	102.9	103.1	2.9	2.9	2.7	2.9	2.9	2.9	0.3
Package holidays & accommodation	45	100.7	100.8	101.1	101.5	101.2	101.6	1.3	1.3	0.9	1.5	1.2	1.3	0.4
Other recreational & personal services	154	101.7	101.9	102.8	103.2	103.4	103.6	3.4	3.3	3.3	3.3	3.4	3.3	0.2
Catering services	116	101.6	102.0	102.3	102.8	103.0	103.2	3.1	3.2	2.7	2.9	2.9	3.0	0.2
Non-catering recreational & personal services	38	101.7	101.8	104.5	104.4	104.5	104.7	4.1	3.7	4.9	4.5	4.7	4.1	0.2
Miscellaneous & other services	86	103.2	103.3	104.3	104.6	104.9	105.5	5.6	5.7	5.7	5.6	5.6	4.9	0.6
Miscellaneous services	56	103.3	103.4	104.5	104.8	105.1	105.8	6.0	6.0	5.9	5.8	5.8	4.8	0.7
Medical services	13	102.8	102.9	104.9	105.5	105.7	106.8	5.3	5.3	6.4	6.1	5.9	5.6	1.1
Education	17	103.3	103.3	103.3	103.3	103.3	103.3	4.7	4.7	4.7	4.7	4.7	4.7	-
Special aggregates														
Durables	124	97.8	98.3	97.3	97.5	97.7	97.0	-2.8	-3.1	-3.2	-2.9	-2.5	-2.8	-0.8
Semi-durables	137	97.7	98.0	97.3	97.8	97.6	94.5	-2.7	-2.9	-3.4	-2.8	-2.9	-3.3	-3.1
Non-durables	80	101.0	101.0	101.8	101.8	102.1	101.6	1.6	1.4	1.6	1.2	1.6	1.4	-0.4
Seasonal food	26	100.1	100.0	98.4	102.0	103.3	102.0	-1.3	-3.7	-2.5	-0.6	0.6	4.4	-1.3
Non-seasonal food	64	101.2	100.3	100.6	101.2	101.7	102.6	1.8	0.5	1.0	1.3	1.7	2.7	0.8
Energy, food, alcoholic beverages & tobacco	213	102.5	102.6	104.2	106.4	107.2	107.8	4.3	3.7	4.9	6.6	7.3	7.9	0.5
Energy & unprocessed food	114	103.7	104.2	106.6	110.2	111.1	112.0	6.5	5.6	7.6	10.8	11.5	12.7	0.8
Energy & seasonal food	93	104.4	105.3	108.2	112.5	113.4	114.3	8.1	7.2	9.3	13.2	13.9	15.0	0.7
Tobacco	26	101.8	101.9	103.7	104.1	105.5	105.6	3.5	3.5	3.6	4.0	5.4	5.4	-
Housing, water, electricity, gas & other fuels	108	103.6	104.5	107.3	108.8	109.7	110.5	6.4	7.0	7.7	9.0	9.8	10.0	0.7
Education, health & social protection ²	53	102.3	102.3	103.0	103.3	103.4	103.8	3.8	3.8	4.0	4.1	4.0	3.9	0.3
<i>All items excluding</i>														
Energy	933	100.5	100.6	101.0	101.3	101.5	101.3	1.4	1.2	1.2	1.1	1.4	1.2	-0.2
Energy, food, alcoholic beverages & tobacco	787	100.4	100.6	101.0	101.1	101.3	101.1	1.4	1.3	1.3	1.1	1.2	0.9	-0.2
Energy & unprocessed food	886	100.5	100.7	101.1	101.2	101.5	101.3	1.5	1.4	1.4	1.2	1.4	1.1	-0.2
Seasonal food	974	100.9	101.1	101.8	102.2	102.5	102.5	2.1	2.0	2.2	2.3	2.5	2.3	-
Energy & seasonal food	907	100.5	100.7	101.0	101.2	101.5	101.3	1.5	1.3	1.3	1.2	1.4	1.1	-0.1
Tobacco	974	100.8	101.0	101.6	102.2	102.5	102.4	2.0	1.8	2.0	2.2	2.4	2.3	-0.1
Alcoholic beverages & tobacco	956	100.9	101.1	101.7	102.2	102.5	102.4	2.1	1.8	2.0	2.2	2.5	2.4	-
Liquid fuels, vehicle fuels & lubricants	963	100.7	101.0	101.5	101.9	102.3	102.1	1.7	1.6	1.8	1.8	2.1	2.0	-0.1
Housing, water, electricity, gas & other fuels	892	100.5	100.7	101.0	101.5	101.7	101.5	1.5	1.2	1.4	1.4	1.6	1.5	-0.1
Education, health & social protection	947	100.8	101.0	101.6	102.2	102.5	102.4	1.9	1.7	1.9	2.1	2.4	2.3	-0.1

Key: - zero or negligible

2 The coverage of this special aggregate has changed extensively since January 2000, when Social protection was first included and extensions to the Education and Health divisions also took effect. Health was further extended with effect from January 2001. Details are given in a series of Economic Trends articles available on the National Statistics website: www.statistics.gov.uk/cpi

1 For further information on the composition of the indices shown, see 'The Consumer Prices Index: Goods and Services Indices and Special Aggregates', which can be downloaded from: www.statistics.gov.uk/cci/article.asp?id=1060

6 CPI goods and services: the latest three years

Percentage change over 12 months

	Goods components					Services components					All services
	Food & non-alcoholic beverages	Alcoholic beverages & tobacco	Energy ¹	Non-energy industrial goods ²	All goods	Housing services ³	Travel & transport services ³	Recreational & personal services ³	Communication	Miscellaneous & other services ³	
Weights	CHZR	CHZS	A9F3	A9ER	ICVH	A9FG	A9FJ	A9FL	CHZY	A9FQ	ICVI
2006	102	44	67	341	554	69	67	199	25	86	446
Monthly	D7G8	D7G9	DKL5	DKK3	D7NM	DKN2	DKN5	DKN7	D7GF	DKO4	D7NN
2003 Jul	1.5	1.6	1.6	-1.9	-0.6	2.5	5.0	3.2	1.0	4.7	3.5
Aug	1.6	2.5	2.3	-1.5	-0.1	2.5	4.5	2.7	0.7	4.6	3.1
Sep	2.2	1.8	2.0	-1.8	-0.3	2.5	6.5	2.5	1.1	4.8	3.4
Oct	2.2	2.1	1.9	-1.7	-0.2	2.6	6.4	2.3	0.4	4.2	3.2
Nov	2.6	1.7	2.4	-1.9	-0.3	2.5	7.0	2.1	-0.4	4.3	3.2
Dec	2.9	1.8	2.8	-1.8	-0.1	2.5	5.1	2.0	-0.3	4.2	2.8
2004 Jan	2.6	1.7	2.2	-1.6	-0.1	2.6	5.8	1.7	-0.3	6.0	3.1
Feb	2.2	1.7	1.7	-1.9	-0.4	2.7	5.8	1.7	0.2	6.0	3.2
Mar	1.9	1.9	0.9	-2.1	-0.6	2.7	4.8	1.8	0.2	6.1	3.1
Apr	1.3	2.0	2.8	-1.9	-0.5	3.0	2.4	2.2	0.8	5.9	3.0
May	1.0	2.0	7.5	-2.0	-0.1	3.0	4.4	2.3	0.6	5.8	3.3
Jun	0.8	1.9	7.9	-1.7	0.1	3.1	4.6	2.3	0.9	5.5	3.3
Jul	0.1	2.1	7.1	-1.9	-0.3	3.2	5.3	2.5	-1.1	5.0	3.4
Aug	-0.2	1.9	7.1	-2.3	-0.6	3.2	5.7	2.7	-1.1	5.0	3.5
Sep	-0.7	2.2	7.1	-2.5	-0.8	3.2	4.8	2.6	-2.6	5.0	3.2
Oct	-0.6	2.0	9.3	-2.4	-0.6	3.4	4.2	2.8	-2.1	4.9	3.2
Nov	-0.5	2.2	10.9	-2.4	-0.3	3.5	5.7	2.9	-1.9	5.0	3.5
Dec	-0.1	2.1	10.6	-2.0	-0.1	3.5	6.3	3.0	-2.2	5.0	3.7
2005 Jan	0.4	2.5	9.0	-2.2	-0.2	3.5	5.3	3.2	-2.3	5.5	3.7
Feb	0.8	2.9	9.6	-2.6	-0.2	3.5	5.8	3.3	-2.7	5.6	3.8
Mar	1.7	2.2	10.1	-2.2	0.2	3.6	6.8	3.2	-2.9	5.5	3.9
Apr	1.0	2.0	11.5	-2.2	0.1	4.3	4.9	3.4	-3.2	6.5	4.0
May	1.4	2.3	8.3	-2.2	-0.1	4.3	6.3	3.4	-3.6	6.6	4.2
Jun	2.2	2.3	8.7	-2.1	0.2	4.2	6.0	3.1	-2.9	6.8	4.1
Jul	1.7	2.2	11.2	-1.9	0.5	4.4	6.9	3.2	-2.5	7.7	4.5
Aug	2.2	1.8	12.4	-2.1	0.6	4.4	7.5	3.1	-2.1	7.7	4.6
Sep	2.0	1.4	15.4	-2.2	0.7	4.4	6.3	3.2	-1.2	7.5	4.5
Oct	1.5	1.9	13.9	-2.1	0.6	4.0	7.2	3.3	-1.6	6.6	4.4
Nov	1.7	2.5	11.1	-2.0	0.4	3.9	5.8	3.1	-1.2	6.6	4.1
Dec	1.7	2.5	10.2	-2.1	0.3	4.0	3.4	3.1	-1.0	6.6	3.8
2006 Jan	1.2	2.3	12.8	-2.3	0.3	3.9	6.1	2.9	0.5	5.6	3.9
Feb	1.1	1.6	12.5	-1.7	0.6	3.9	4.8	2.9	0.4	5.6	3.7
Mar	-0.4	2.5	12.2	-1.9	0.2	3.9	4.4	2.9	0.5	5.7	3.7
Apr	0.3	2.5	14.4	-2.2	0.5	3.3	6.5	2.7	0.3	5.7	3.8
May	1.1	2.2	19.3	-1.9	1.3	3.3	2.8	2.9	-0.4	5.6	3.3
Jun	1.8	3.3	19.8	-1.7	1.7	3.4	3.2	2.9	-0.3	5.6	3.4
Jul	3.2	2.8	19.4	-2.0	1.8	3.4	2.4	2.9	0.3	4.9	3.2

Key: - zero or negligible

3 For further information on all of these services components, see 'The Consumer Prices Index: Goods and Services Indices and Special Aggregates', which can be downloaded from: www.statistics.gov.uk/cci/article.asp?id=1060

1 Comprises 'Electricity, gas and other fuels' (group 04.5) and 'Fuels and lubricants' (class 07.2.2).

2 Comprises all other goods elements of the CPI. For further information, see 'The Consumer Prices Index: Goods and Services Indices and Special Aggregates', which can be downloaded from: www.statistics.gov.uk/cci/article.asp?id=1060

Source: National Statistics

7 HICP¹ - International comparisons: EU countries

Percentage change over 12 months

	Austria	Belgium	Cyprus	Czech Republic	Denmark	Estonia	Finland	France	Germany	Greece	Hungary	Irish Republic	Italy	Latvia
	D7SK	D7SL	D7RO	D7RP	D7SM	D7RQ	D7SN	D7SO	D7SP	D7SQ [†]	D7RR	D7SS	D7ST	D7RS
2003	1.3	1.5	4.0	-0.1	2.0	1.4	1.3	2.2	1.0	3.5 [†]	4.7	4.0	2.8	2.9
2004	2.0	1.9	1.9	2.6	0.9	3.0	0.1	2.3	1.8	3.0	6.8	2.3	2.3	6.2
2005	2.1	2.5	2.0	1.6	1.7	4.1	0.8	1.9	1.9	3.5	3.5	2.2	2.2	6.9
2004 Jul	2.1	2.1	2.9	3.0	1.1	4.0	0.2	2.6	2.1	3.1	7.2	2.5	2.3	6.7
Aug	2.2	2.0	2.8	3.1	0.8	3.9	0.3	2.5	2.1	2.8	7.2	2.5	2.4	7.8
Sep	1.8	1.8	1.8	2.8	0.9	3.8	0.2	2.2	2.0	2.9	6.7	2.4	2.2	7.7
Oct	2.4	2.7	2.0	3.1	1.5	4.0	0.6	2.3	2.3	3.3	6.4	2.5	2.1	7.2
Nov	2.3	2.3	2.6	2.6	1.0	4.4	0.2	2.2	2.0	3.2	5.8	2.7	2.1	7.2
Dec	2.5	1.9	3.9	2.5	0.9	4.8	0.1	2.3	2.3	3.1	5.5	2.4	2.4	7.4
2005 Jan	2.4	2.0	2.8	1.5	0.8	4.2	-0.2	1.6	1.6	4.2	4.0	2.1	2.0	6.7
Feb	2.3	2.3	2.4	1.4	1.0	4.6	-	1.9	1.9	3.2	3.4	2.1	2.0	7.0
Mar	2.4	2.8	2.4	1.1	1.3	4.8	0.9	2.1	1.6	2.9	3.3	1.9	2.2	6.6
Apr	2.3	2.4	2.7	1.4	1.7	4.7	1.2	2.0	1.4	3.3	3.8	2.2	2.1	7.1
May	2.0	2.3	2.1	0.9	1.2	2.9	0.6	1.7	1.6	3.2	3.5	2.1	2.3	6.5
Jun	2.0	2.7	1.5	1.3	1.7	3.2	1.0	1.8	1.8	3.2	3.7	1.9	2.1	6.6
Jul	2.1	2.7	1.3	1.4	1.8	3.9	0.9	1.8	1.8	3.9	3.6	2.2	2.1	6.3
Aug	1.9	2.9	1.5	1.4	2.4	4.2	1.0	2.0	1.9	3.6	3.5	2.1	2.1	6.3
Sep	2.6	3.0	2.1	2.0	2.3	4.9	1.1	2.4	2.5	3.8	3.6	2.7	2.2	7.4
Oct	2.0	2.2	2.2	2.4	1.9	4.5	0.8	2.0	2.3	3.7	3.1	2.6	2.6	7.7
Nov	1.7	2.3	2.0	2.2	1.8	4.0	1.0	1.8	2.2	3.4	3.3	2.2	2.4	7.6
Dec	1.6	2.8	1.4	1.9	2.2	3.6	1.1	1.8	2.1	3.5	3.3	1.9	2.1	7.1
2006 Jan	1.5	2.8	2.0	2.4	2.0	4.7	1.2	2.3	2.1	3.0	2.5	2.5	2.2	7.6
Feb	1.5	2.8	2.3	2.4	2.1	4.5	1.3	2.0	2.1	3.1	2.3	2.7	2.2	7.0
Mar	1.3	2.2	2.6	2.4	1.8	4.0	1.2	1.7	1.9	3.3	2.4	2.8	2.2	6.6
Apr	2.1	2.6	2.5	2.3	1.8	4.3	1.5	2.0	2.3	3.5	2.4	2.7	2.3	6.1
May	2.1	2.8	2.5	2.8	2.1	4.6	1.7	2.4	2.1	3.3	2.9	3.0	2.3	7.1
Jun	1.8*	2.5	2.6	2.3	2.1	4.4	1.5	2.2	2.0	3.4	2.9	2.9	2.4	6.3
Jul

	Lithuania	Luxembourg	Malta	Netherlands	Poland	Portugal	Slovakia	Slovenia	Spain	Sweden	United Kingdom ¹	EICP ² EU 25 average ³	Monetary Union Area average ⁴
	D7RT	D7SU	D7RU	D7SV	D7RV	D7SX	D7RW	D7RX	D7SY	D7SZ	D7G7	D7RY	D7SR
2003	-1.1	2.5	1.9	2.2	0.7	3.3	8.4	5.7	3.1	2.3	1.4	2.0	2.1
2004	1.2	3.2	2.7	1.4	3.6	2.5	7.5	3.7	3.1	1.0	1.3	2.0	2.1
2005	2.7	3.8	2.5	1.5	2.2	2.1	2.8	2.5	3.4	0.8	2.1	2.2	2.2
2004 Jul	1.7	3.8	3.1	1.2	4.7	2.9	8.4	3.7	3.3	1.2	1.4	2.2	2.3
Aug	2.2	3.6	2.5	1.2	4.8	2.4	7.1	3.7	3.3	1.1	1.3	2.1	2.3
Sep	3.1	3.1	3.2	1.2	4.6	2.1	6.6	3.4	3.2	1.1	1.1	2.0	2.1
Oct	3.1	4.1	2.7	1.5	4.6	2.4	6.6	3.4	3.6	1.5	1.2	2.2	2.4
Nov	2.9	4.0	1.9	1.5	4.5	2.6	6.3	3.8	3.5	1.1	1.5	2.1	2.2
Dec	2.8	3.5	1.9	1.2	4.4	2.6	5.8	3.3	3.3	0.9	1.7	2.2	2.4
2005 Jan	2.8	2.9	1.9	1.2	3.8	2.0	3.2	2.3	3.1	0.5	1.6	2.0	1.9
Feb	3.2	3.2	2.5	1.5	3.6	2.1	2.7	2.8	3.3	1.2	1.7	2.1	2.1
Mar	3.2	3.5	2.6	1.5	3.4	2.3	2.4	3.3	3.4	0.5	1.9	2.1	2.1
Apr	3.2	3.7	2.0	1.3	3.1	2.0	2.7	2.7	3.5	0.4	1.9	2.1	2.1
May	1.9	3.7	2.4	1.0	2.1	1.8	2.4	2.1	3.0	0.2	1.9	2.0	2.0
Jun	2.0	3.2	2.1	1.5	1.4	0.6	2.6	1.7	3.2	0.8	2.0	2.0	2.1
Jul	1.9	4.0	1.7	1.5	1.5	1.9	2.1	2.0	3.3	0.7	2.3	2.1	2.2
Aug	2.3	4.3	2.5	1.6	1.8	2.5	2.1	1.8	3.3	1.1	2.4	2.2	2.2
Sep	2.5	4.7	2.0	1.7	1.9	2.7	2.3	3.2	3.8	1.1	2.5	2.5	2.6
Oct	3.0	5.0	3.0	1.5	1.6	2.6	3.5	3.2	3.5	0.9	2.3	2.4	2.5
Nov	2.9	3.6	4.3	1.6	1.1	2.5	3.6	2.1	3.4	1.2	2.1	2.3	2.3
Dec	3.0	3.4	3.4	2.0	0.8	2.5	3.9	2.4	3.7	1.3	1.9	2.1	2.2
2006 Jan	3.5	4.1	2.4	1.8	0.9	2.6	4.1	2.6	4.2	1.1	1.9	2.3	2.4
Feb	3.4	3.9	2.3	1.4	0.9	2.9	4.3	2.3	4.1	1.1	2.0	2.2	2.3
Mar	3.1	3.7	2.9	1.4	0.9	3.0	4.3	2.0	3.9	1.5	1.8	2.1	2.2
Apr	3.4	3.5	3.5	1.8	1.2	2.9	4.4	2.8	3.9	1.8	2.0	2.3	2.4
May	3.6	3.6	3.5	1.8	1.5	2.9	4.8	3.4	4.1	1.9	2.2	2.4	2.5
Jun	3.7	3.9	3.3	1.8*	1.5	2.8	4.5	3.0	4.0	1.9	2.5	2.4*	2.5*
Jul	2.4

Key: - zero or negligible .. Not available * Provisional

[†] Date of earliest revision [⊖] Estimated

1 Published as the CPI in the UK.

2 The EICP (European Index of Consumer Prices) is the official EU aggregate. It covers 15 member states until April 2004 and 25 member states from May 2004, the new member states being integrated using a chain index formula.

The EU 25 annual average for 2004 is calculated from the EU 15 average from January to April and the EU 25 average from May to December.

3 The coverage of the European Union was extended to include Cyprus, Czech Republic, Estonia, Hungary, Latvia, Lithuania, Malta, Poland, Slovakia and Slovenia with effect from 1 May 2004.

4 The coverage of the Monetary Union Area index was extended to include Greece with effect from Jan 2001.

Sources: National Statistics; Eurostat

	Weights	Index (January 1987=100)						Percentage change over 12 months						Percentage change over 1 month
		2006	2006		2006		2006	2006	2006	2006	2006	2006	2006	2006
			Feb	Mar	Apr	May								
ALL ITEMS	1 000	194.2	195.0	196.5	197.7	198.5	198.5	2.4	2.4	2.6	3.0	3.3	3.3	-
Food and catering	155	174.9	174.3	174.2	176.1	176.8	177.1	1.5	0.5	0.9	1.4	1.8	2.7	0.2
Alcohol and tobacco	96	242.8	243.8	245.8	246.8	248.3	248.3	2.5	3.0	2.7	2.7	3.2	3.0	-
Housing and household expenditure	392	224.0	225.8	228.3	230.0	231.6	231.5	4.2	4.4	4.6	5.0	5.4	5.1	-
Personal expenditure	90	130.0	131.1	131.7	132.7	132.6	129.4	-0.2	-0.2	0.2	1.0	0.9	0.5	-2.4
Travel and leisure	267	179.9	180.0	181.6	182.1	181.9	183.3	1.3	1.1	1.3	1.7	1.7	1.7	0.8
Consumer durables ¹	117	93.5	95.1	93.6	94.3	94.7	91.8	-1.6	-1.7	-2.1	-1.7	-1.1	-2.3	-3.1
Seasonal food	17	139.5	139.2	136.1	144.1	145.5	142.7	-2.9	-5.5	-4.4	-0.7	0.1	4.6	-1.9
Food excluding seasonal	88	158.1	157.1	157.5	158.4	159.1	159.9	1.6	0.6	1.1	1.3	1.9	2.4	0.5
All items excluding seasonal food	983	195.6	196.4	198.0	199.1	199.8	199.9	2.5	2.5	2.6	3.1	3.3	3.2	0.1
All items excluding food	895	201.0	202.0	203.8	204.9	205.7	205.6	2.6	2.6	2.8	3.2	3.5	3.3	-
All goods	503	153.0	153.6	153.7	155.0	155.4	154.4	1.1	0.6	0.7	1.4	1.6	1.5	-0.6
All services	364	240.2	241.3	244.8	245.7	246.8	248.5	3.8	4.1	4.6	4.6	5.0	5.0	0.7
Other indices														
All items excluding:														
mortgage interest payments (RPIX)	950	190.1	190.8	192.3	193.6	194.2	194.2	2.3	2.1	2.4	2.9	3.1	3.1	-
housing	778	175.2	176.0	177.0	178.2	178.9	178.7	1.9	1.7	2.1	2.6	2.9	3.0	-0.1
mortgage interest payments and indirect taxes (RPIY) ²		181.4	182.2	183.2	184.5	185.2	185.2	2.3	2.2	2.3	2.8	3.2	3.2	-
mortgage interest payments and council tax	911	187.4	188.2	189.3	190.6	191.3	191.2	2.2	2.1	2.3	2.7	3.1	3.1	-0.1
mortgage interest payments and depreciation ³	906	184.4	185.2	186.7	187.8	188.4	188.3	2.2	2.1	2.4	2.8	3.1	3.1	-0.1
Food	105	155.2	154.4	154.1	156.3	157.1	157.3	0.8	-0.5	0.2	0.9	1.5	2.7	0.1
Bread	4	162.9	162.2	163.7	163.3	162.9	163.6	6.1	6.1	7.7	7.0	5.9	6.2	0.4
Cereals	3	144.5	144.1	143.5	142.5	143.7	144.3	-0.3	-0.3	-0.9	-1.5	-0.9	-0.3	0.4
Biscuits and cakes	6	166.7	167.8	167.4	168.9	169.0	168.8	0.7	1.6	1.8	2.6	2.4	2.7	-0.1
Beef	4	134.2	132.0	134.3	137.1	137.3	142.1	1.1	-0.5	2.2	2.4	1.2	5.3	3.5
Lamb	2	182.6	180.7	183.9	188.9	190.0	190.0	-2.9	-4.5	-2.9	-0.8	-1.5	-0.7	-
of which home-killed lamb	1	183.9	180.9	185.0	193.7	196.7	193.5	-0.5	-2.3	-0.8	1.8	0.8	0.4	-1.6
imported lamb	1	177.5	176.8	179.0	180.3	179.5	182.6	-5.3	-6.6	-4.9	-3.3	-3.9	-1.8	1.7
Pork	1	159.0	155.8	155.2	157.1	157.7	159.9	0.7	-2.3	-1.6	-2.2	-0.8	0.1	1.4
Bacon	2	175.2	175.5	174.7	177.2	180.4	183.2	2.3	0.6	0.8	2.0	3.9	7.6	1.6
Poultry	4	110.3	108.2	108.5	108.7	109.9	111.4	-3.2	-5.8	-2.9	-6.9	-1.4	-1.8	1.4
Other meat	7	146.4	144.8	144.6	146.1	145.9	146.4	1.0	0.3	0.2	1.4	1.1	1.7	0.3
Fish	4	159.1	159.0	160.5	159.2	162.4	164.8	3.4	2.6	4.0	2.7	5.8	8.2	1.5
of which fresh fish	2	167.6	166.5	167.5	167.2	172.5	176.8	4.2	2.6	4.0	2.9	6.5	7.7	2.5
processed fish	2	150.8	151.6	153.6	151.4	152.7	153.2	2.6	2.6	3.9	2.4	5.1	8.5	0.3
Butter	1	171.0	169.9	168.1	168.6	169.0	169.6	-1.6	-1.8	-2.9	-2.6	-2.4	-1.9	0.4
Oils and fats	1	130.6	135.4	138.6	143.7	144.9	144.9	-6.2	-0.7	2.0	7.9	11.4	8.9	-
Cheese	3	175.1	175.0	175.7	176.0	176.0	175.1	3.0	2.0	2.8	3.0	2.3	1.9	-0.5
Eggs	1	157.8	162.4	158.2	158.9	162.0	162.3	-1.0	1.9	-1.2	-0.4	1.0	1.7	0.2
Milk, fresh	5	191.1	178.0	174.9	173.2	178.2	187.9	9.4	-3.1	-5.0	-6.1	-3.5	1.7	5.4
Milk products	4	144.2	144.4	144.1	146.0	145.5	147.2	1.2	1.0	1.8	3.3	2.2	4.0	1.2
Tea	1	149.9	145.6	146.9	154.6	158.7	157.9	3.5	0.8	1.5	5.1	13.6	7.5	-0.5
Coffee and other hot drinks	1	117.0	115.6	116.4	116.5	116.0	116.1	4.4	3.0	3.7	1.0	-1.1	-1.6	0.1
Soft drinks	10	190.1	190.2	191.2	192.1	192.3	192.2	1.9	2.0	2.7	3.5	3.6	2.8	-0.1
Sugar and preserves	1	156.3	155.3	154.8	156.1	156.3	156.4	1.7	0.8	1.4	2.5	0.9	1.1	0.1
Sweets and chocolates	10	187.4	188.3	190.7	192.3	192.7	192.1	4.4	4.6	4.8	4.5	4.9	4.2	-0.3
Potatoes	4	152.1	152.3	151.5	153.2	156.9	153.7	-1.2	-1.2	-1.8	-0.5	2.8	4.2	-2.0
of which unprocessed potatoes	1	137.3	138.6	139.2	147.1	151.0	149.4	-4.6	-3.3	-3.9	0.5	4.1	12.8	-1.1
potato products	3	153.2	153.0	151.6	150.9	154.5	150.9	0.8	0.2	-0.1	0.6	3.8	1.0	-2.3
Vegetables other than potatoes	8	135.3	135.0	129.8	137.5	138.8	137.5	-6.0	-10.8	-7.9	0.1	3.2	4.8	-0.9
of which fresh vegetables	6	122.9	122.6	116.4	125.5	126.9	125.4	-8.1	-13.8	-10.3	-0.1	3.9	6.1	-1.2
processed vegetables	2	170.6	170.3	169.9	170.6	171.4	171.2	1.7	0.7	0.4	0.6	0.9	0.9	-0.1
Fruit	7	142.7	142.1	140.5	149.0	148.5	142.3	1.0	0.2	-0.8	-2.5	-5.7	1.1	-4.2
of which fresh fruit	6	139.0	138.2	136.3	146.1	145.5	138.6	1.3	0.3	-0.9	-2.8	-6.4	1.5	-4.7
processed fruit	1	150.9	151.2	152.2	151.5	151.3	150.7	-1.0	-0.7	0.3	-0.5	-0.8	-1.2	-0.4
Other foods	11	149.7	149.5	149.3	150.4	150.4	150.0	-2.2	-2.2	-1.8	-1.3	-1.3	-0.8	-0.3
Catering	50	243.0	243.4	243.7	244.7	245.3	245.9	2.8	2.7	2.4	2.4	2.7	2.7	0.2
Restaurant meals	27	238.0	238.5	238.7	239.7	240.2	240.7	2.9	2.8	2.2	2.3	2.5	2.5	0.2
Canteen meals	4	296.4	297.2	297.8	298.2	298.2	298.5	3.1	3.4	3.1	2.7	2.7	2.8	0.1
Take-aways and snacks	19	232.5	232.7	233.2	234.3	234.9	235.8	2.6	2.4	2.4	2.6	2.8	2.9	0.4
Alcoholic drink	67	209.7	210.9	211.7	212.6	213.2	213.2	2.1	2.7	2.2	2.2	2.3	2.0	-
Beer	36	228.0	229.2	230.5	232.1	232.2	232.7	2.6	2.8	2.4	2.9	2.7	2.7	0.2
on sales	31	246.8	248.2	249.4	251.1	251.5	252.1	3.6	3.7	3.0	3.3	3.2	3.3	0.2
off sales	5	145.8	146.4	148.1	148.8	147.7	147.8	-2.5	-1.9	-0.5	0.5	-0.6	-0.4	0.1
Wines and spirits	31	185.5	186.6	186.9	187.2	188.2	187.7	1.4	2.6	2.0	1.4	1.9	1.2	-0.3
on sales	17	231.9	232.9	233.9	235.2	235.5	235.8	2.9	3.0	2.7	3.0	3.0	2.9	0.1
off sales	14	155.6	156.8	156.5	155.9	157.6	156.4	-0.3	2.1	1.2	-0.6	0.6	-0.9	-0.8

Key: - zero or negligible

Index date for JULY: 18 July 2006

1 Consumer durables: Furniture, furnishings, electrical appliances and other household equipment, men's, women's and children's outerwear, footwear, audio-visual equipment, CDs and tapes, toys, photographic and sports goods.

2 The taxes excluded are council tax, VAT, duties, vehicle excise duty, insurance tax and air passenger duty. There are no weights available for RPIY.

3 This series has been constructed using the index for all items excluding mortgage interest payments prior to February 1995.

continued

	Weights	Index (January 1987=100)						Percentage change over 12 months						Percentage change over 1 month
		2006						2006	2006	2006	2006	2006	2006	2006
			2006	2006	2006	2006	2006							
Feb	Mar	Apr	May	Jun	Jul	Feb	Mar	Apr	May	Jun	Jul	Jul		
Tobacco	29	334.6	334.8	340.9	342.2	346.9	347.1	3.5	3.5	3.6	4.0	5.4	5.4	0.1
Cigarettes	26	341.9	342.1	348.5	349.7	354.5	354.7	3.5	3.5	3.7	4.0	5.4	5.4	0.1
Other tobacco	3	266.9	267.0	271.1	272.1	276.5	276.5	3.2	3.3	3.6	4.0	5.7	5.7	-
Housing	222	293.2	293.7	298.7	299.8	300.7	302.1	4.2	4.2	4.0	4.1	4.2	4.2	0.5
Rent	45	273.8	273.8	278.0	278.3	278.5	280.5	3.0	3.0	2.8	2.8	2.9	3.0	0.7
Mortgage interest payments	50	300.1	302.4	304.3	306.3	308.1	310.1	5.3	5.3	5.1	5.1	5.0	4.9	0.6
Depreciation (Jan 1995 = 100)	44	262.5	261.9	263.4	265.8	267.9	269.8	3.4	3.4	3.3	4.2	4.6	4.8	0.7
Council tax and rates	39	268.1	268.1	280.6	280.7	280.7	280.7	4.0	4.0	4.7	4.7	4.7	4.7	-
Water and other charges	12	335.7	335.7	354.1	354.1	354.1	354.1	11.3	11.3	5.5	5.5	5.5	5.5	-
Repairs and maintenance charges	12	308.3	308.7	310.5	311.3	311.9	313.4	5.6	5.2	5.4	5.1	4.9	4.7	0.5
Do-it-yourself materials	13	158.0	158.4	158.5	157.9	158.2	158.4	1.1	1.1	1.3	0.3	0.6	0.5	0.1
Dwelling insurance and ground rent	7	280.3	280.3	280.7	281.4	278.6	278.5	4.6	4.5	4.5	4.8	3.2	2.8	-
Fuel and light	33	174.9	179.5	188.4	197.2	201.8	204.1	13.8	15.5	20.5	26.2	28.2	29.0	1.1
Coal and solid fuels	1	185.2	185.2	185.7	187.6	183.9	183.7	7.0	6.7	7.0	9.1	7.4	7.4	-0.1
Electricity	15	164.5	168.8	176.1	183.5	187.9	189.9	10.7	13.0	17.3	21.9	24.7	25.9	1.1
Gas	14	175.1	180.8	192.5	204.4	210.4	212.6	14.7	18.1	25.2	32.5	35.8	37.1	1.0
Oil and other fuels	3	266.2	268.5	275.4	277.0	276.6	285.4	35.1	22.8	22.3	28.9	19.2	16.3	3.2
Household goods	71	144.7	148.4	145.1	146.5	148.4	145.2	1.4	1.4	1.0	0.8	1.6	-0.1	-2.2
Furniture	26	159.7	171.6	162.1	164.5	169.9	162.4	3.0	2.6	2.3	2.0	3.5	-1.8	-4.4
Furnishings	11	158.0	158.4	157.8	160.4	159.6	155.9	2.1	1.5	0.8	0.7	0.9	0.9	-2.3
Electrical appliances	8	77.6	75.3	74.1	74.5	74.4	75.6	-6.1	-5.6	-6.9	-5.6	-5.2	-3.1	1.6
Other household equipment	5	139.7	140.3	140.8	141.6	142.5	137.4	0.1	-0.3	0.9	1.3	2.2	0.4	-3.6
Household consumables	14	158.6	159.4	159.8	187.3	160.8	159.8	2.3	2.6	2.8	1.5	1.9	1.8	-0.6
Pet care	7	167.3	167.6	168.9	169.9	170.0	170.5	3.2	3.2	2.7	3.5	3.3	3.6	0.3
Household services	66	187.5	187.9	189.0	188.4	189.3	189.5	2.8	2.8	3.0	2.7	2.9	3.0	0.1
Postage	1	177.0	177.0	188.9	188.9	188.9	188.9	4.2	4.2	6.8	6.8	6.8	6.8	-
Telephones, telemessages, etc	24	89.7	89.7	89.7	88.4	88.6	88.5	0.4	0.3	0.3	-0.9	-0.9	0.0	-0.1
Domestic services	12	284.2	284.7	286.1	287.3	289.1	290.9	4.6	4.6	4.7	4.8	5.0	5.2	0.6
Fees and subscriptions	29	265.0	266.2	268.6	269.1	270.9	271.2	4.0	4.4	4.5	4.8	5.1	4.5	0.1
Clothing and footwear	49	93.3	94.6	94.8	95.7	95.3	91.5	-2.2	-2.1	-1.8	-0.7	-0.9	-1.3	-4.0
Men's outerwear	10	95.4	96.5	96.7	97.5	96.6	93.5	-0.2	-1.0	-0.9	-0.3	-1.0	-1.2	-3.2
Women's outerwear	17	68.4	70.0	70.1	70.8	70.4	65.2	-1.9	-1.1	-1.1	-0.7	-0.8	-2.1	-7.4
Childrens' outerwear	6	85.8	86.5	87.6	89.3	89.4	88.0	-4.7	-4.9	-3.6	-0.4	0.3	0.5	-1.6
Other clothing	7	147.2	147.7	147.5	148.4	148.3	146.1	-1.5	-2.1	-1.9	-0.7	-1.0	-1.0	-1.5
Footwear	9	108.1	108.7	108.8	109.7	109.3	107.5	-3.3	-3.1	-2.6	-1.1	-1.4	-1.1	-1.6
Personal goods and services	41	206.1	206.6	208.3	209.3	210.0	208.6	2.2	1.8	2.6	2.9	3.1	2.5	-0.7
Personal articles	12	132.3	133.2	133.4	134.6	135.9	134.0	0.7	0.8	1.1	2.4	3.0	2.8	-1.4
Chemists goods	16	189.4	189.3	190.8	190.7	190.6	189.4	1.5	0.7	1.7	1.1	1.4	0.6	-0.6
Personal services	13	347.4	347.9	353.3	356.0	356.6	356.6	4.3	4.2	5.1	5.4	5.3	4.5	-
Motoring expenditure	140	185.1	185.8	188.1	189.5	189.2	190.5	1.9	1.9	2.0	3.2	3.3	3.1	0.7
Purchase of motor vehicles	56	107.4	107.1	106.9	106.8	106.4	106.1	-4.0	-4.2	-4.0	-3.2	-2.9	-2.3	-0.3
Maintenance of motor vehicles	20	288.6	289.6	290.4	291.5	292.9	294.4	6.1	6.5	6.3	6.2	5.9	6.4	0.5
Petrol and oil	40	263.1	262.9	273.1	282.1	279.6	284.7	11.6	9.2	8.8	13.0	12.0	10.4	1.8
Vehicle tax and insurance	24	275.3	282.0	285.0	280.8	283.5	286.9	-1.1	1.7	2.4	0.7	1.9	1.2	1.2
Fares and other travel costs	19	225.4	225.3	230.2	227.6	228.9	238.4	3.3	2.5	5.6	1.0	1.3	0.2	4.2
Rail fares ¹	5	248.0	247.9	252.0	251.3	250.5	251.8	2.5	4.5	5.1	5.6	4.0	4.9	0.5
Bus and coach fares	4	267.3	268.8	256.8	253.4	253.6	254.0	6.7	6.0	0.7	-0.7	-1.1	-1.4	0.2
Other travel costs	10	192.6	192.0	201.8	198.9	201.3	216.2	2.4	0.2	7.7	-0.4	1.0	-1.1	7.4
Leisure goods	41	94.2	93.4	92.4	91.9	91.9	91.5	-2.0	-2.5	-3.2	-3.3	-3.1	-2.6	-0.4
Audio-visual equipment	9	18.6	18.0	17.7	17.3	17.2	17.1	-13.1	-14.3	-13.7	-14.4	-13.1	-12.8	-0.6
CDs and tapes	4	99.2	100.9	99.8	100.9	100.1	99.3	-0.5	1.2	-2.4	-1.8	-1.2	-1.4	-0.8
Toys, photographic and sports goods	12	93.0	91.9	90.8	90.3	90.0	89.1	-1.8	-3.5	-5.0	-4.6	-5.3	-4.6	-1.0
Books and newspapers	10	247.0	246.6	245.9	246.4	247.4	249.4	5.8	6.1	5.6	5.8	5.4	5.9	0.8
Gardening products	6	146.4	146.2	143.8	143.9	145.4	144.1	-0.3	0.1	-0.1	0.1	0.3	0.7	-0.9
Leisure services	67	262.7	262.8	265.8	266.2	265.8	267.3	1.6	1.3	1.7	1.8	1.8	2.1	0.6
Television licences and rentals	12	161.7	161.7	164.0	164.0	164.1	164.7	3.0	3.0	3.2	3.2	3.2	3.2	0.4
Entertainment and other recreation	17	343.1	342.6	349.9	348.6	348.7	351.4	5.8	5.0	6.2	5.2	5.2	4.8	0.8
Foreign holidays (Jan 1993 = 100)	30	166.7	166.8	168.0	168.5	167.9	168.7	-2.3	-2.4	-2.0	-1.4	-1.4	-0.5	0.5
UK holidays (Jan 1994 = 100)	8	161.3	161.8	162.4	163.3	163.6	164.9	6.5	6.5	5.2	5.5	5.3	5.3	0.8

Key: - zero or negligible

Source: National Statistics

1 As announced in the March First Release (www.statistics.gov.uk/pdfdir/cpi0405.pdf), an error exists in the Rail Fares Component of the RPI for January and February 2005.

9 RPI goods and services¹: the latest three years

Percentage change over 12 months

	Goods components				All goods	Services components				All services
	Food	Alcohol & tobacco	Petrol & oil ²	Other goods ³		Rent	Utilities ⁴	"Shop" services ⁵	"Non-shop" services ⁶	
Weights										
2006	CZGZ 105	CBVW 96	DOHB 43	DOHC 259	DOHD 503	CZXD 45	DOHE 71	DOHF 136	DOHG 112	DOHH 364
Monthly										
2003 Jul	CCYY 1.9	CZBK 2.4	DOGQ 1.9	DOGI -1.4	DOGD 0.3	CZCQ 1.5	DOGF 2.0	DOGG 4.3	DOGH 6.6	DOGE 4.2
Aug	1.8	2.7	3.1	-1.0	0.6	1.4	2.0	4.0	6.1	4.0
Sep	2.4	2.5	2.1	-1.0	0.5	1.5	2.2	4.0	4.7	3.6
Oct	2.4	2.6	1.8	-1.0	0.6	1.6	2.0	4.3	3.7	3.4
Nov	2.6	2.4	2.7	-1.1	0.6	1.5	1.8	4.3	2.9	3.0
Dec	2.9	2.4	3.1	-1.1	0.7	1.5	1.9	4.1	3.8	3.3
2004 Jan	2.6	2.3	1.3	-0.6	0.8	1.7	2.3	3.8	2.7	2.9
Feb	2.2	2.3	-0.4	-0.8	0.5	1.8	3.0	3.8	2.7	3.0
Mar	1.9	2.5	-2.8	-1.3	-0.1	1.9	3.6	3.8	2.3	3.1
Apr	1.3	2.6	-	-1.3	0.1	2.0	4.4	4.1	1.5	3.1
May	0.8	2.4	8.9	-1.5	0.5	2.1	4.3	4.2	1.6	3.1
Jun	0.5	2.4	9.5	-1.5	0.5	2.2	4.5	4.0	1.9	3.2
Jul	-0.1	2.5	8.1	-1.9	0.1	2.2	3.7	4.2	2.5	3.3
Aug	-0.2	2.4	8.1	-2.1	-0.1	2.3	3.6	4.3	2.9	3.4
Sep	-0.7	2.4	8.0	-2.5	-0.4	2.2	3.1	4.1	2.5	3.2
Oct	-0.5	2.4	11.1	-2.4	-0.2	2.6	3.6	4.0	2.6	3.3
Nov	-0.4	2.4	11.9	-2.6	-0.1	2.8	4.8	4.0	3.1	3.7
Dec	-0.1	2.4	9.1	-2.0	0.1	2.8	5.8	4.1	3.7	4.1
2005 Jan	0.3	2.7	5.2	-2.8	-0.5	3.0	6.4	4.2	2.7	4.0
Feb	0.8	3.0	6.4	-2.9	-0.4	3.1	5.9	4.3	2.3	3.8
Mar	1.4	2.4	8.1	-2.2	0.2	3.1	5.4	4.3	2.6	3.8
Apr	0.8	2.6	11.4	-2.5	0.1	3.6	5.8	4.3	2.7	4.0
May	1.3	2.7	5.5	-2.5	-0.1	3.6	5.7	4.3	3.0	4.1
Jun	2.0	2.7	6.6	-2.3	0.2	3.5	5.8	4.3	2.7	4.0
Jul	1.4	2.7	11.3	-1.7	0.7	3.8	5.8	4.3	2.7	4.0
Aug	1.7	2.5	13.7	-2.0	0.8	3.8	5.9	4.1	2.0	3.7
Sep	1.5	2.5	18.4	-1.9	1.1	3.8	6.5	4.4	2.0	3.9
Oct	1.0	2.7	14.0	-1.7	0.9	3.2	7.4	4.5	2.1	4.1
Nov	1.3	2.9	8.6	-1.4	0.7	3.2	7.7	4.6	1.8	4.1
Dec	1.1	2.9	8.0	-1.3	0.7	3.2	7.3	4.6	0.6	3.7
2006 Jan	0.8	2.8	13.6	-1.4	1.0	3.0	7.2	4.3	1.3	3.8
Feb	0.8	2.5	12.9	-1.1	1.1	3.0	7.4	4.2	1.2	3.8
Mar	-0.5	3.0	10.1	-1.2	0.6	3.0	8.6	4.1	1.7	4.1
Apr	0.2	2.7	9.6	-1.3	0.7	2.8	9.9	4.2	2.3	4.6
May	0.9	2.7	13.8	-0.8	1.4	2.8	11.7	4.1	1.5	4.6
Jun	1.5	3.2	12.4	-0.5	1.6	2.9	12.9	4.1	1.8	5.0
Jul	2.7	3.0	10.7	-0.9	1.5	3.0	13.8	4.1	1.5	5.0

Key: - zero or negligible

1 All components of the RPI are included in the above breakdown with the exception of mortgage interest payments, council tax and depreciation.

2 Including fuel oil.

3 The 'other goods' category comprises DIY materials, coal & solid fuels, household goods, clothing & footwear, personal articles, chemists goods, purchase of motor vehicles and leisure goods.

4 The 'utilities' category comprises water, electricity, gas, postage, telephone charges and rail fares.

5 The 'shop services' category comprises catering, repairs & maintenance charges, domestic services, personal services, maintenance of motor vehicles, TV licence & rentals and entertainment & recreation charges.

6 The 'non-shop services' category comprises dwelling insurance & ground rent, fees and subscriptions, vehicle tax and insurance, bus & coach fares, other travel costs, foreign holidays and UK holidays.

Source: National Statistics

10 A breakdown of the differences between CPI and RPI

Difference between annual rates CPI - RPI		Breakdown of differences (unrounded figures) ¹						
		housing components excluded from CPI			other differences in coverage of goods and services		formula effect ²	other differences including weights ³
	rounded figures	unrounded figures	total	mortgage interest payments	other housing components			
	D7G2	D7G3	D7G4	D7G5	D7FU	D7FV	D7FW	D7FX
2001 Jul	-0.2	-0.21	0.03	0.53	-0.51	0.18	-0.51	0.09
Aug	-0.3	-0.24	0.03	0.56	-0.52	0.20	-0.49	0.02
Sep	-0.4	-0.38	0.07	0.61	-0.55	-	-0.45	-
Oct	-0.4	-0.36	0.22	0.76	-0.54	-0.04	-0.48	-0.05
Nov	-0.1	-0.11	0.33	0.89	-0.56	-0.08	-0.44	0.09
Dec	0.4	0.33	0.67	1.17	-0.50	0.02	-0.48	0.11
2002 Jan	0.3	0.32	0.75	1.22	-0.47	-0.04	-0.50	0.10
Feb	0.5	0.44	0.79	1.20	-0.41	0.02	-0.42	0.05
Mar	0.2	0.23	0.55	0.95	-0.40	0.09	-0.42	0.01
Apr	-0.1	-0.12	0.32	0.84	-0.52	-0.02	-0.42	0.01
May	-0.3	-0.30	0.04	0.66	-0.62	0.01	-0.42	0.07
Jun	-0.4	-0.40	-0.27	0.46	-0.74	0.13	-0.42	0.15
Jul	-0.4	-0.38	-0.28	0.48	-0.76	0.17	-0.41	0.15
Aug	-0.4	-0.41	-0.33	0.47	-0.80	0.20	-0.43	0.15
Sep	-0.7	-0.70	-0.47	0.38	-0.85	0.12	-0.43	0.07
Oct	-0.7	-0.71	-0.72	0.25	-0.97	0.15	-0.41	0.27
Nov	-1.1	-1.10	-0.94	0.13	-1.06	0.10	-0.43	0.17
Dec	-1.2	-1.27	-1.33	-0.18	-1.15	0.40	-0.47	0.12
2003 Jan	-1.6	-1.61	-1.41	-0.19	-1.22	0.24	-0.42	-0.01
Feb	-1.6	-1.60	-1.41	-0.20	-1.21	0.24	-0.43	-
Mar	-1.6	-1.59	-1.28	-0.11	-1.17	0.18	-0.43	-0.07
Apr	-1.7	-1.67	-1.44	-0.11	-1.32	0.12	-0.44	0.08
May	-1.7	-1.73	-1.39	-0.12	-1.26	0.05	-0.44	0.05
Jun	-1.8	-1.82	-1.32	-0.12	-1.20	-0.06	-0.46	0.01
Jul	-1.8	-1.73	-1.24	-0.12	-1.13	-0.24	-0.43	0.19
Aug	-1.5	-1.56	-1.08	0.01	-1.09	-0.31	-0.41	0.24
Sep	-1.4	-1.35	-1.06	0.01	-1.07	0.01	-0.44	0.14
Oct	-1.2	-1.29	-0.99	0.01	-0.99	0.04	-0.44	0.10
Nov	-1.2	-1.17	-0.99	-0.02	-0.97	0.19	-0.43	0.07
Dec	-1.5	-1.51	-1.11	-0.20	-0.91	-0.22	-0.42	0.23
2004 Jan	-1.2	-1.19	-1.07	-0.21	-0.86	0.02	-0.42	0.28
Feb	-1.2	-1.23	-1.10	-0.21	-0.89	0.05	-0.43	0.26
Mar	-1.5	-1.47	-1.47	-0.48	-0.99	0.07	-0.41	0.34
Apr	-1.4	-1.36	-1.32	-0.50	-0.82	0.08	-0.43	0.30
May	-1.3	-1.30	-1.36	-0.50	-0.86	0.13	-0.44	0.38
Jun	-1.4	-1.46	-1.59	-0.69	-0.90	0.14	-0.43	0.42
Jul	-1.6	-1.66	-1.82	-0.88	-0.94	0.15	-0.42	0.43
Aug	-1.9	-1.89	-1.96	-1.03	-0.93	0.18	-0.47	0.36
Sep	-2.0	-1.97	-2.13	-1.18	-0.95	0.20	-0.45	0.42
Oct	-2.1	-2.07	-2.17	-1.19	-0.99	0.22	-0.46	0.34
Nov	-1.9	-1.98	-2.11	-1.19	-0.92	0.24	-0.47	0.36
Dec	-1.8	-1.84	-1.91	-1.00	-0.91	0.24	-0.49	0.32
2005 Jan	-1.6	-1.55	-1.94	-1.03	-0.92	0.23	-0.48	0.65
Feb	-1.5	-1.50	-1.92	-1.03	-0.89	0.23	-0.51	0.69
Mar	-1.3	-1.32	-1.64	-0.86	-0.79	0.22	-0.53	0.62
Apr	-1.3	-1.22	-1.54	-0.86	-0.68	0.25	-0.52	0.59
May	-1.0	-1.07	-1.43	-0.85	-0.58	0.27	-0.50	0.60
Jun	-0.9	-0.87	-1.18	-0.67	-0.51	0.29	-0.52	0.54
Jul	-0.6	-0.57	-0.89	-0.48	-0.40	0.31	-0.53	0.55
Aug	-0.4	-0.37	-0.84	-0.48	-0.36	0.33	-0.49	0.64
Sep	-0.2	-0.20	-0.43	-0.17	-0.27	0.30	-0.52	0.45
Oct	-0.2	-0.17	-0.37	-0.17	-0.20	0.30	-0.52	0.42
Nov	-0.3	-0.29	-0.36	-0.16	-0.21	0.27	-0.52	0.32
Dec	-0.3	-0.30	-0.35	-0.16	-0.19	0.28	-0.51	0.29
2006 Jan	-0.5	-0.45	-0.29	-0.15	-0.14	0.30	-0.48	0.02
Feb	-0.4	-0.39	-0.32	-0.15	-0.17	0.30	-0.51	0.14
Mar	-0.6	-0.51	-0.36	-0.16	-0.20	0.32	-0.55	0.08
Apr	-0.6	-0.52	-0.33	-0.14	-0.19	0.32	-0.51	-0.01
May	-0.8	-0.72	-0.32	-0.11	-0.20	0.32	-0.54	-0.19
Jun	-0.8	-0.75	-0.26	-0.09	-0.17	0.31	-0.52	-0.27
Jul	-0.9	-0.86	-0.25	-0.09	-0.16	0.28	-0.54	-0.35

1 The differences due to housing, coverage and formula effect are all calculated independently and are not additive.

Source: National Statistics

2 Difference due to use of different formulae to aggregate prices at the most basic level.

3 This difference is derived as a residual.

Chart for Table 1 – July 2006
CPI RPI and Other Related Indices

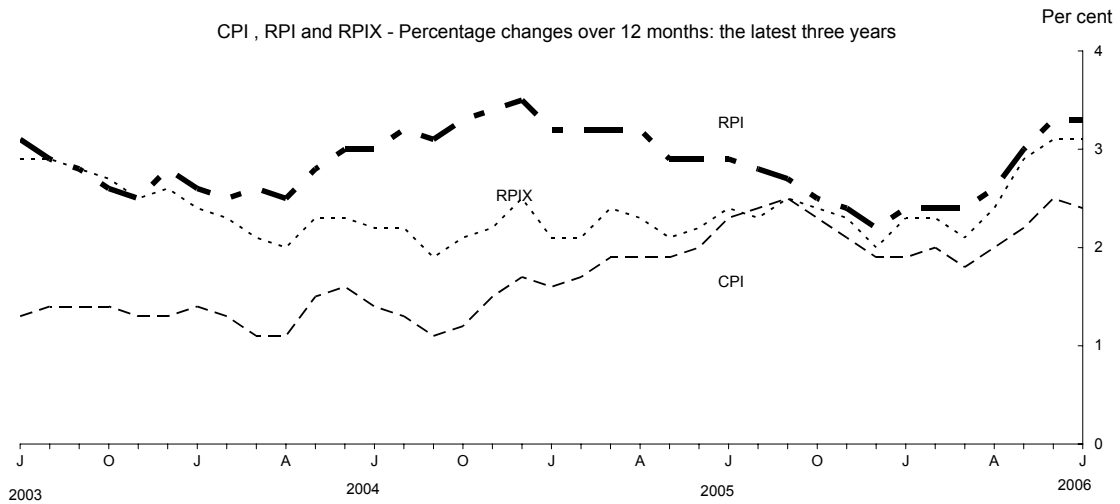


Chart for Table 6 – July 2006
CPI Goods and Services

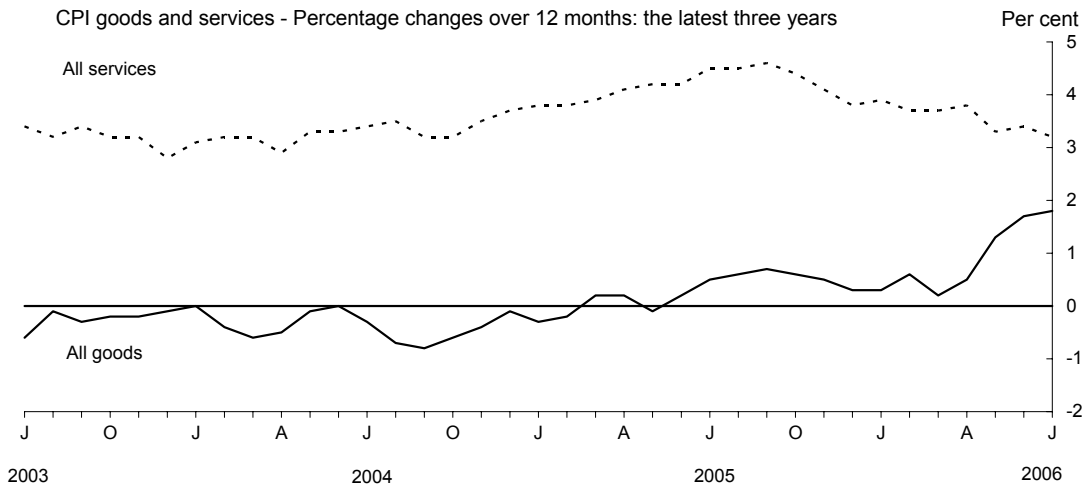


Chart for Table 9 – July 2006
RPI Goods and Services

