

15 July 2008

Coverage
United Kingdom

Theme
The Economy

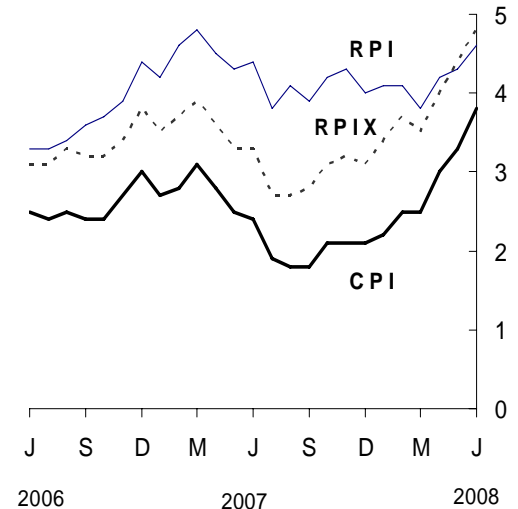


Consumer price indices June 2008

In the year to June, the consumer prices index (CPI) rose by 3.8 per cent, up from 3.3 per cent in May.

In the year to June, the all items retail prices index (RPI) rose by 4.6 per cent, up from 4.3 per cent in May.

Over the same period, the all items RPI excluding mortgage interest payments index (RPIX) rose by 4.8 per cent, up from 4.4 per cent in May.



Issued by
Office for National Statistics
Cardiff Road
Newport
NP10 8XG

Contact
Media Office
0845 6041858
Public Enquiries
0845 6013034
CPI/RPI Enquiries
01633 456900
CPI/RPI Recorded
Message
01633 456961
Email
cpi@ons.gov.uk

Statistician
Rob Pike
01633 455375
rob.pike@ons.gov.uk

www.statistics.gov.uk

Next publication date
12 August 2008

	Consumer prices index (CPI)		All items retail prices index (RPI)		All items RPI excluding mortgage interest payments (RPIX)	
	Index (2005 =100)	Per cent change over 12 months	Index (Jan 1987 =100)	Per cent change over 12 months	Index (Jan 1987 =100)	Per cent change over 12 months
2008 Jan	105.5	2.2	209.8	4.1	202.7	3.4
Feb	106.3	2.5	211.4	4.1	204.3	3.7
Mar	106.7	2.5	212.1	3.8	205.3	3.5
Apr	107.6	3.0	214.0	4.2	207.2	4.0
May	108.3	3.3	215.1	4.3	208.7	4.4
Jun	109.0	3.8	216.8	4.6	210.4	4.8

Main contributions to the change in the 12-month rate¹

CPI

The largest upward contribution to the change in the CPI annual rate came from food and non-alcoholic beverages. Meat prices rose by more than last year, particularly for beef. There were also large upward effects from fruit and bread and cereals. There was a smaller effect from milk, cheese and eggs. There was a small partially offsetting downward effect from fish where prices fell this year compared with a rise last year.

There were further large upward contributions from:

- transport costs, mainly due to the price of fuels and lubricants which rose by more than a year ago. The average price of petrol increased by 5.3 pence per litre between May and June this year, to stand at 117.6 pence, compared with a rise of 1.3 pence last year. Diesel prices rose by 7.1 pence per litre this year compared with a rise of 0.6 pence last year. There was a small effect from air transport where prices rose by more than last year
- recreation and culture where the main upward effects came from photographic equipment, where the price of digital cameras fell by less than last year; recording media, due to an increase in the price of pre-recorded DVDs; games and toys, where the price of computer games rose this year but fell last year, and package holidays, where the price of foreign holidays rose this year but fell last year. There were small partially offsetting effects from cultural services, where the price of live music events fell this year but rose last year and books, where the price of paperbacks fell this year but rose last year
- housing and household services where gas and electricity bills were unchanged this year but fell a year ago

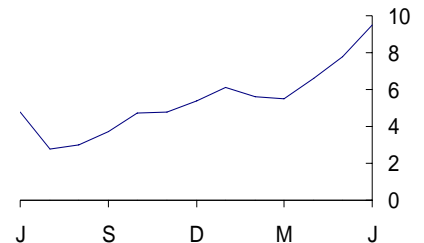
There was a small upward contribution from communication, where prices rose this year but fell last year. The effect came mainly from mobile phone charges and cable telephone charges.

There was a large downward contribution from clothing and footwear where overall price discounting was greater than last year.

There was a small downward contribution from alcohol where the price of spirits decreased this year but rose last year and the price of wine increased by less than last year.

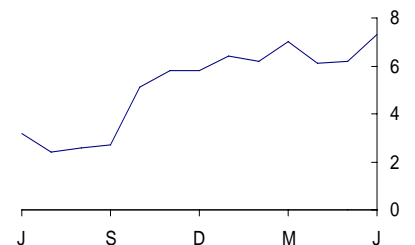
Food and non-alcoholic beverages

CPI percentage changes over 12 months



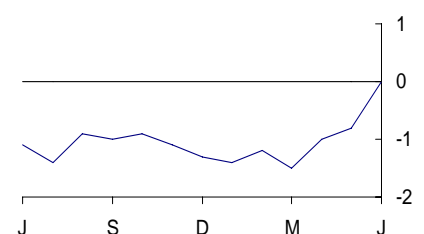
Transport

CPI percentage changes over 12 months



Recreation and culture

CPI percentage changes over 12 months



¹ The CPI and RPI use different classification systems. Background Note 11 shows how, for each of the two indices, the main categories contributing to changes in the 12-month rate relate to each other

RPI

The largest upward contribution to the change in the RPI annual rate came from motoring expenditure. As in the CPI there was a large upward contribution from petrol and oil, where prices rose by more than last year. There was a small, partially offsetting, downward effect from the purchase of motor vehicles with prices falling by more than last year.

There were further large upward contributions from:

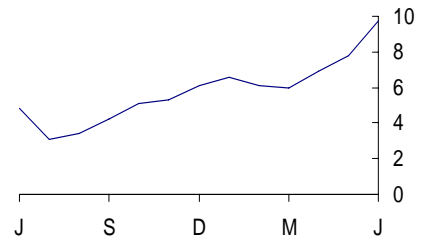
- food where overall prices rose by more than last year. The effect came mainly from fresh fruit, beef, poultry, biscuits and cakes, potatoes and milk. There was a small offsetting effect from fresh vegetables
- fuel and light where the effect came from gas and electricity. As in the CPI, gas and electricity bills were unchanged this year but fell a year ago
- household goods where furniture prices rose by more than last year
- leisure goods where the effect came mainly from pre-recorded DVDs, computer games and digital cameras

The largest downward contribution to the change in the RPI annual rate came from housing. The effect came mainly from mortgage interest payments where there was a smaller increase this year than last year. There was also a downward effect from house depreciation.

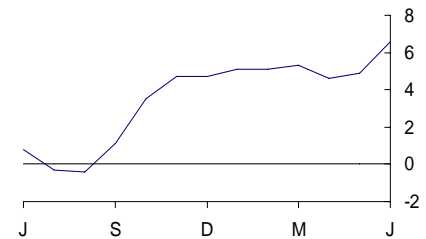
There was a further large downward contribution from clothing and footwear. The largest effect came from women's outerwear where price reductions were greater than last year.

There was a small downward contribution from alcoholic drinks where the price of wine and spirits off-sales fell this year but rose a year ago.

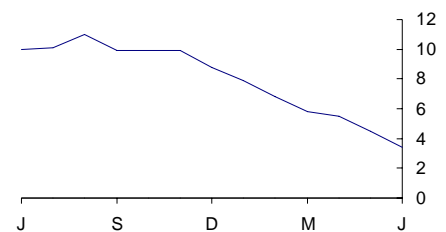
Food
RPI percentage changes over 12 months



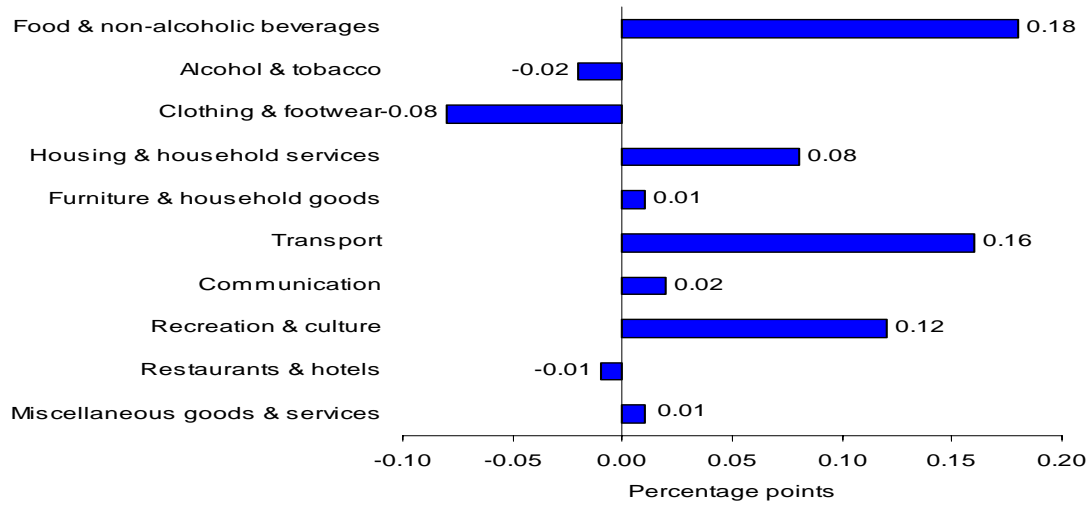
Motoring expenditure
RPI percentage changes over 12 months



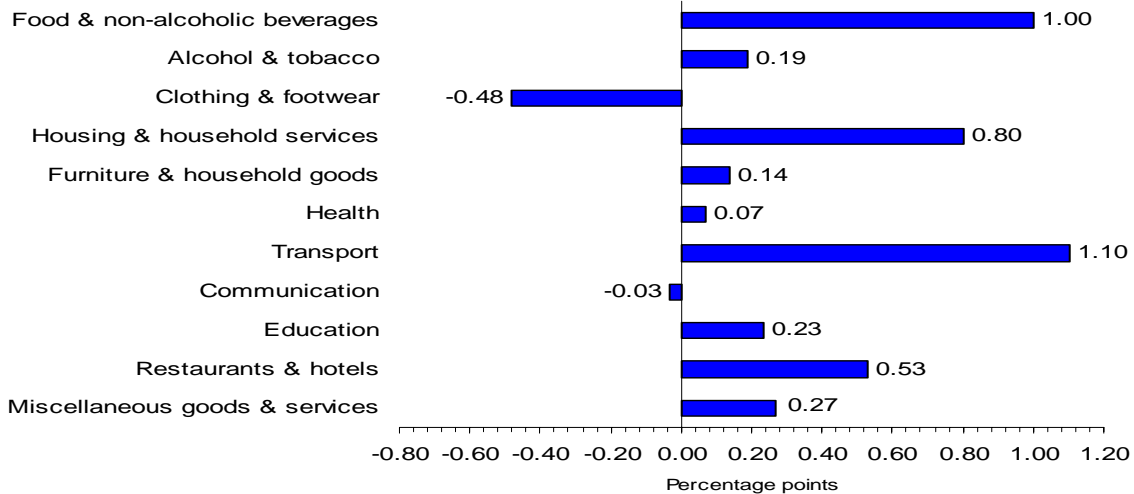
Housing
RPI percentage changes over 12 months



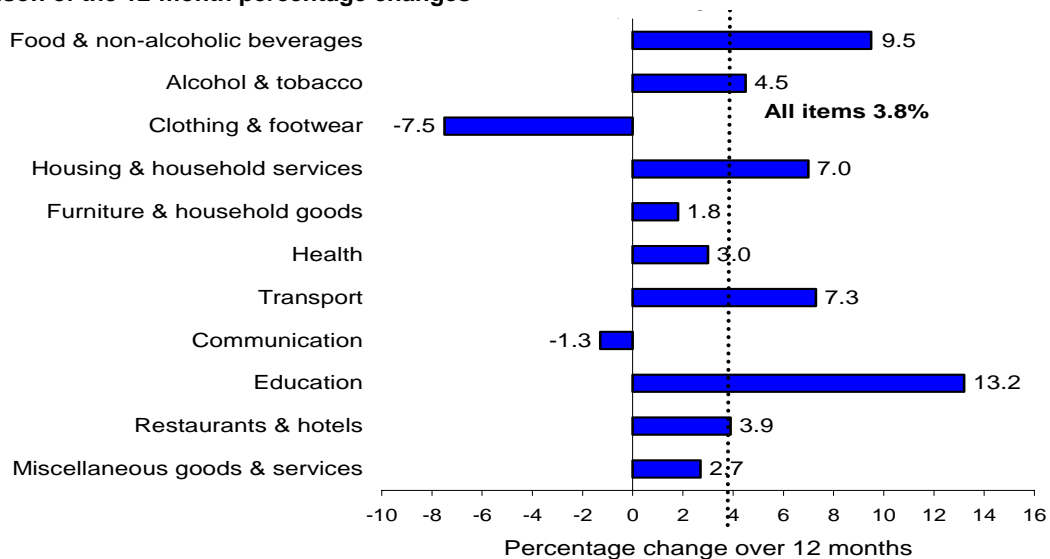
CPI main contributions¹ to the change in the all items 12 - month rate between May 2008 and June 2008 (0.5 percentage points)



CPI main contributions¹ to the all items 12- month rate (3.8 percentage points)

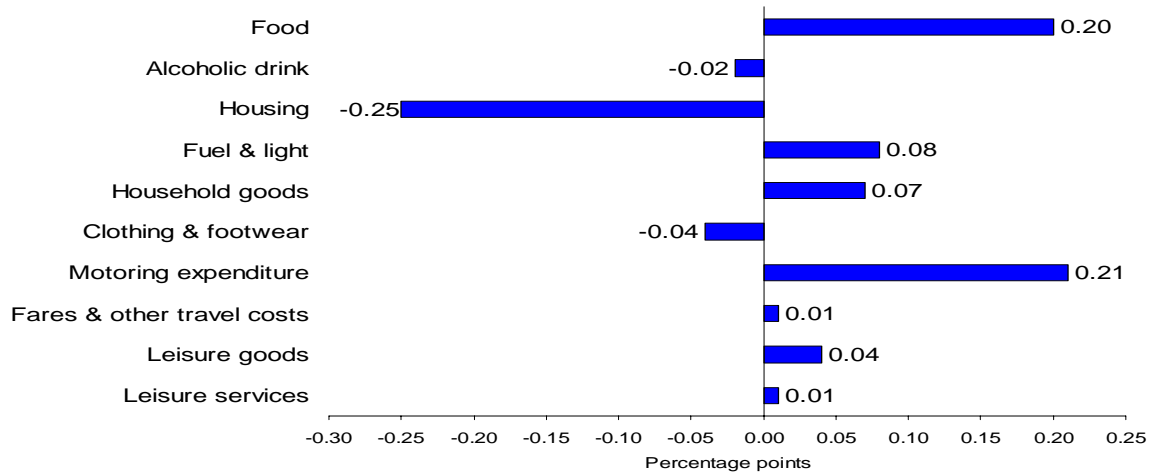


CPI comparison of the 12-month percentage changes

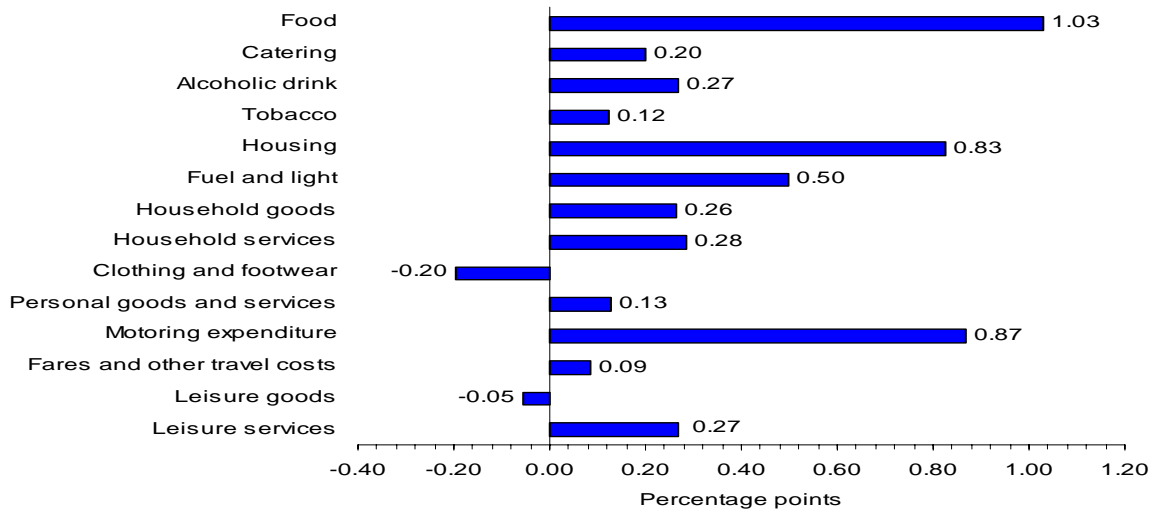


1. Individual contributions to the change in the 12-month rate may not sum to the total due to rounding.

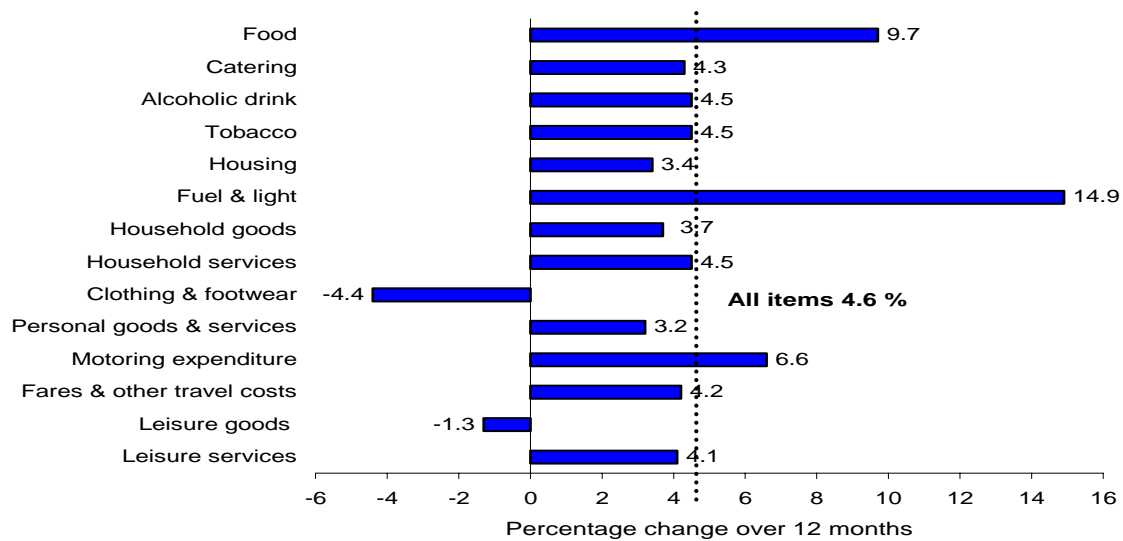
RPI main contributions¹ to the change in the all items 12-month rate between May 2008 and June 2008 (0.3 percentage points)



RPI main contributions¹ to the all items 12-month rate (4.6 percentage points)



RPI comparison of the 12-month percentage changes



1. Individual contributions to the change in the 12-month rate may not sum to the total due to rounding.

BACKGROUND NOTES

Relevance

1. The consumer prices index (CPI) is the main United Kingdom domestic measure of consumer price inflation for macroeconomic purposes. It forms the basis for the Government's inflation target that the Bank of England's Monetary Policy Committee (MPC) is required to achieve.
2. Internationally, the CPI is known as the Harmonised Index of Consumer Prices (HICP). HICPs are calculated in each Member State of the European Union, according to rules specified in a series of European Regulations developed by Eurostat in conjunction with the EU Member States. HICPs are used to compare inflation rates across the European Union. Since January 1999 it has also been used by the European Central Bank (ECB) as the measure of price stability across the euro area.
3. The retail prices index (RPI) is the most long-standing general purpose measure of inflation in the United Kingdom and is available from June 1947. It is used for a variety of purposes by both government and external users including the indexation of various incomes and prices and the uprating of pensions, benefits and index-linked gilts.

Methodology

4. The CPI and the RPI are compiled using the same underlying price data, based on a large and representative selection of around 650 individual goods and services for which price movements are measured in around 150 randomly selected areas throughout the UK. Around 120,000 separate price quotations are used every month to compile the indices. The outlets in which the prices are collected are selected randomly. Expenditure weights are held constant for one year at a time.
5. The selection of goods and services that are priced to compile the CPI and RPI is reviewed annually. The contents of the 2008 basket are described in an article published on the National Statistics website at:
<http://www.statistics.gov.uk/cci/article.asp?ID=1951>
The expenditure weights used to compile the indices are also updated each year. Additional details of the updated CPI and RPI weights for 2008 are available from the National Statistics website in an article entitled Consumer Prices Index and Retail Prices Index: Updating Weights for 2008:
<http://www.statistics.gov.uk/cci/article.asp?id=1991>
6. Rates of change for the CPI are calculated from unrounded index levels, rather than on the published indices, which are rounded to one decimal place. The use of unrounded indices increases the accuracy of the calculation. The unrounded index levels are available on request. By contrast, rates of change for the RPI are calculated from the published rounded indices.

Reliability

7. Once the RPI indices are published they are never revised. CPI indices are revisable although past revisions have been minimal with the exception of those arising from re-referencing of the CPI to 2005=100, which took place with the publication of the January 2006 indices.

Comparability

8. The CPI's coverage of goods and services was extended in stages in the areas of health, education, childcare and insurance, with effect from the January 2000, 2001, and 2002 indices. In 2000, there was also a change to the population basis for the weights which was broadened from private households to include expenditure by foreign visitors and residents of institutional households. Further details can be found in a series of articles: http://www.statistics.gov.uk/about/methodology_by_theme/cpi
9. The official CPI series starts in 1996 but estimates for earlier periods are available back to 1988. These estimates are broadly consistent with data from 1996 but should be treated with some caution. The following article provides more detail: <http://www.statistics.gov.uk/cci/article.asp?ID=31>
10. RPI data are available back to 1947 but have been re-referenced on several occasions since then, generally accompanied by changes to the coverage and/or structure of the detailed sub-components. Details of these changes are given in Appendices 1 and 2 of the CPI Technical Manual: <http://www.statistics.gov.uk/statbase/Product.asp?vlnk=2328&More=N>

Coherence

11. The CPI and RPI both measure the average change from month to month in the prices of consumer goods and services purchased in the UK. However, they differ in both coverage and methodology. A detailed description of these differences is given in an article entitled "The New Inflation Target: the Statistical Perspective": www.statistics.gov.uk/StatBase/Product.asp?vlnk=10913. The differences are summarised below:
 - In the CPI, the geometric mean is used to combine the individual prices into elementary indices at the most basic level whereas the RPI uses arithmetic means
 - The CPI excludes a number of RPI series mainly relating to housing costs (for example, council tax), and in particular to owner occupiers' housing costs (including mortgage interest payments, house depreciation and buildings insurance). In addition, the CPI excludes the annual road fund licence and, from 2006, TV licences which are classified as taxes in the UK National Accounts, and Trades Union subscriptions which by convention are not part of household expenditure
 - The CPI includes series for university accommodation fees, foreign students' university tuition fees, and unit trust and stockbrokers' charges, none of which are included in the RPI

- The CPI is categorised according to the international classification system, COICOP (Classification Of Individual Consumption by Purpose). The way in which this maps to the RPI groupings is shown in the following table:

COICOP Divisions	RPI Groups
01 Food & non-alcoholic beverages	Food
02 Alcohol & tobacco	Alcoholic drink (off sales) Tobacco
03 Clothing & footwear	Clothing & footwear
04 Housing & household services	Housing (exc. Mortgage interest payments, depreciation, council tax & building insurance) Fuel & light
05 Furniture & household goods	Household goods Domestic services
06 Health	Personal goods & services (health-related items)
07 Transport	Motoring expenditure Fares & other travel costs
08 Communication	Household services (exc. domestic services & fees and subscriptions)
09 Recreation & culture	Leisure goods Leisure services
10 Education	Fees & subscriptions (education-related items)
11 Restaurants & hotels	Catering Alcoholic drink (on sales)
12 Miscellaneous goods & services	Personal goods & services (non health-related items) Fees & subscriptions (non education-related items)

- The index for the purchase of new cars in the CPI is quality adjusted and based on actual published prices for new cars. New car prices in the RPI are imputed from movements in second hand car prices
- The CPI weights are based on expenditure by all private households, foreign visitors to the UK and residents of institutional households. In the RPI, weights are based on expenditure by private households only, excluding the highest income households and pensioner households mainly dependent on state benefits

- In the construction of the CPI weights, amounts paid out in insurance claims are distributed among the COICOP headings according to the nature of the claims' expenditure, with the residual (the service charge) being allocated to the relevant insurance heading. For the RPI weights, total expenditure (that is, gross of claims paid out) is assigned to the relevant insurance heading

12. A breakdown of the difference between the CPI and RPI annual rates of inflation is shown in Table 10 of the CPI First Release.

Accessibility

13. This release includes the June 2008 data, collected on 17 June 2008. Future publication dates are 12 August, 16 September, 14 October, 18 November, 16 December and 20 January. The European Commission (Eurostat) will release figures for the harmonised index of consumer prices (HICP) for the month of June 2008 for EU member states excluding the UK, together with an EU average, on 16 July 2008. Further information on HICP for the European Union, Eurozone and other EU Member States is available from Eurostat's HICP web page:

http://epp.eurostat.ec.europa.eu/pls/portal/url/page/PGP_DS_HICP

Further information

14. A more detailed quality report for this First Release is available at:

<http://www.statistics.gov.uk/CCI/article.asp?ID=1585>

15. A full description of how the CPI and RPI are compiled is given in the Consumer Price Indices Technical Manual 2007 edition:

<http://www.statistics.gov.uk/statbase/Product.asp?vlnk=2328>

General

16. Details of the policy governing the release of new data are available from the press office. Also available is a list of the names of those given pre-publication access to contents of this release.

17. In line with Consumer Price Indices Pre-Release arrangements, an advance estimate of the CPI was provided to the Governor of the Bank of England 3½ working days ahead of publication. The Governor shared this information with the MPC, and officials present at the MPC policy meeting, on Thursday 10th July.

18. Complete runs of series in this release are available to download free of charge at: <http://www.statistics.gov.uk/timeseries> .

19. **National Statistics** are produced to high professional standards set out in the National Statistics Code of Practice. They undergo regular quality assurance reviews to ensure that they meet customer needs. They are produced free from any political interference. © Crown Copyright 2008

1 CPI, RPI and other selected indices: the latest three years

	Consumer prices index (CPI) ¹		Consumer prices index excluding indirect taxes (CPIY) ³		Consumer prices index at constant tax rates (CPI-CT)		All items retail prices index (RPI)		All items RPI excluding			
	Index (2005=100)	Percentage change over 12 months	Index (2005=100)	Percentage change over 12 months	Index (2005=100)	Percentage change over 12 months	Index (Jan 13, 1987=100)	Percentage change over 12 months	mortgage interest payments (RPIX)		mortgage interest payments and indirect taxes (RPIY) ²	
		Index (Jan 13, 1987=100)		Percentage change over 12 months		Index (Jan 13, 1987=100)		Percentage change over 12 months	Index (Jan 13, 1987=100)	Percentage change over 12 months		
	D7BT	D7G7	EL2Q	EL2S	EAC7	EAD6	CHAW	CZBH	CHMK	CDKQ	CBZW	CBZX
2005 Jun	100.0	2.0	100.0	2.2	100.0	1.9	192.2	2.9	188.3	2.2	179.5	2.2
Jul	100.1	2.3	100.1	2.5	100.1	2.3	192.2	2.9	188.3	2.4	179.5	2.5
Aug	100.4	2.4	100.5	2.6	100.4	2.3	192.6	2.8	188.6	2.3	179.8	2.3
Sep	100.6	2.5	100.6	2.6	100.6	2.4	193.1	2.7	189.3	2.5	180.5	2.5
Oct	100.7	2.3	100.8	2.5	100.7	2.3	193.3	2.5	189.5	2.4	180.7	2.3
Nov	100.7	2.1	100.8	2.3	100.7	2.1	193.6	2.4	189.7	2.3	180.9	2.3
Dec	101.0	1.9	101.1	2.1	101.0	1.8	194.1	2.2	190.2	2.0	181.5	2.0
2006 Jan	100.5	1.9	100.6	2.1	100.5	1.9	193.4	2.4	189.4	2.3	180.7	2.3
Feb	100.9	2.0	100.9	2.1	100.8	2.0	194.2	2.4	190.1	2.3	181.4	2.3
Mar	101.1	1.8	101.1	1.9	101.1	1.7	195.0	2.4	190.8	2.1	182.2	2.2
Apr	101.7	2.0	101.7	2.1	101.6	2.0	196.5	2.6	192.3	2.4	183.2	2.3
May	102.2	2.2	102.3	2.3	102.1	2.2	197.7	3.0	193.6	2.9	184.5	2.8
Jun	102.5	2.5	102.6	2.6	102.4	2.4	198.5	3.3	194.2	3.1	185.2	3.2
Jul	102.5	2.4	102.6	2.4	102.4	2.3	198.5	3.3	194.2	3.1	185.2	3.2
Aug	102.9	2.5	103.0	2.6	102.8	2.4	199.2	3.4	194.9	3.3	186.0	3.4
Sep	103.0	2.4	103.2	2.6	102.9	2.3	200.1	3.6	195.3	3.2	186.4	3.3
Oct	103.2	2.4	103.5	2.7	103.1	2.3	200.4	3.7	195.5	3.2	186.7	3.3
Nov	103.4	2.7	103.8	3.0	103.4	2.6	201.1	3.9	196.2	3.4	187.5	3.6
Dec	104.0	3.0	104.3	3.2	103.9	2.9	202.7	4.4	197.4	3.8	188.6	3.9
2007 Jan	103.2	2.7	103.5	2.9	103.1	2.6	201.6	4.2	196.1	3.5	187.3	3.7
Feb	103.7	2.8	103.9	2.9	103.5	2.6	203.1	4.6	197.1	3.7	188.4	3.9
Mar	104.2	3.1	104.3	3.1	103.9	2.9	204.4	4.8	198.3	3.9	189.5	4.0
Apr	104.5	2.8	104.6	2.9	104.2	2.6	205.4	4.5	199.3	3.6	190.0	3.7
May	104.8	2.5	105.0	2.6	104.5	2.3	206.2	4.3	200.0	3.3	190.7	3.4
Jun	105.0	2.4	105.2	2.5	104.7	2.2	207.3	4.4	200.7	3.3	191.4	3.3
Jul	104.4	1.9	104.6	2.0	104.1	1.7	206.1	3.8	199.4	2.7	190.1	2.6
Aug	104.7	1.8	105.0	1.9	104.5	1.6	207.3	4.1	200.1	2.7	190.9	2.6
Sep	104.8	1.8	105.0	1.7	104.5	1.6	208.0	3.9	200.8	2.8	191.6	2.8
Oct	105.3	2.1	105.5	1.9	104.9	1.8	208.9	4.2	201.6	3.1	192.3	3.0
Nov	105.6	2.1	105.8	1.9	105.2	1.8	209.7	4.3	202.4	3.2	193.2	3.0
Dec	106.2	2.1	106.4	2.0	105.8	1.9	210.9	4.0	203.5	3.1	194.4	3.1
2008 Jan	105.5	2.2	105.7	2.1	105.1	2.0	209.8	4.1	202.7	3.4	193.5	3.3
Feb	106.3	2.5	106.5	2.5	105.9	2.3	211.4	4.1	204.3	3.7	195.2	3.6
Mar	106.7	2.5	107.0	2.6	106.3	2.3	212.1	3.8	205.3	3.5	196.3	3.6
Apr	107.6	3.0	107.7	3.0	107.0	2.7	214.0	4.2	207.2	4.0	197.5	3.9
May	108.3	3.3	108.5	3.3	107.7	3.1	215.1	4.3	208.7	4.4	199.0	4.4
Jun	109.0	3.8	109.3	3.9	108.5	3.6	216.8	4.6	210.4	4.8	200.8	4.9

1 Inflation rates prior to 1997 and index levels prior to 1996 are estimated. Further details are given in *Economic Trends No. 541 December 1998*. These details are also available on the National Statistics website: www.statistics.gov.uk/cci/article.asp?ID=31

2 The taxes excluded are council tax, VAT, duties, vehicle excise duty, insurance tax and air passenger duty.

3 The taxes excluded are VAT, duties, insurance premium tax, air passenger duty, stamp duty on share transactions.

Source: National Statistics

2 CPI: Detailed figures for 17 June 2008

	Percentage change over				Percentage change over		
	Index (2005 =100)	1 mth	12 mths		Index (2005 =100)	1 mth	12 mths
CPI (overall index)	109.0	0.7	3.8				
01 Food and non-alcoholic beverages	117.5	2.1	9.5	06.2 Out-patient services	112.1	0.2	3.2
02 Alcoholic beverages and tobacco	111.9	-0.1	4.5	06.2.1/3 Medical services & paramedical services	109.1	0.2	3.0
03 Clothing and footwear	86.5	-1.4	-7.5	06.2.2 Dental services	115.5	0.3	3.2
04 Housing, water, electricity, gas and other fuels	122.5	0.2	7.0	06.3 Hospital services	118.4	0.4	5.9
05 Furniture, household equipment and maintenance	105.9	2.3	1.8	07.1 Purchase of vehicles	98.1	-0.4	-1.7
06 Health	109.3	0.2	3.0	07.1.1A New cars	103.5	-	1.0
07 Transport	114.6	1.7	7.3	07.1.1B Second-hand cars	89.8	-1.3	-5.7
08 Communication	94.9	0.6	-1.3	07.1.2/3 Motorcycles and bicycles	99.3	1.5	-0.2
09 Recreation and culture	97.6	0.3	-	07.2 Operation of personal transport equipment	126.3	2.9	14.3
10 Education	133.2	-	13.2	07.2.1 Spare parts and accessories	105.6	0.2	2.7
11 Restaurants and hotels	111.1	0.2	3.9	07.2.2 Fuels and lubricants	137.1	4.9	24.0
12 Miscellaneous goods and services	108.6	0.1	2.7	07.2.3 Maintenance and repairs	117.1	0.5	4.8
All goods	107.2	0.9	3.8	07.2.4 Other services	112.1	-	2.4
All services	111.2	0.4	3.9	07.3 Transport services	115.5	2.0	5.1
01.1 Food	118.5	2.4	10.6	07.3.1 Passenger transport by railway	114.1	-0.4	4.3
01.1.1 Bread and cereals	119.2	3.0	11.9	07.3.2 Passenger transport by road	111.8	-0.2	3.8
01.1.2 Meat	116.0	3.2	11.2	07.3.3 Passenger transport by air	108.5	5.9	5.4
01.1.3 Fish	119.6	-3.3	1.5	07.3.4 Passenger transport by sea and inland waterway	124.2	8.0	0.4
01.1.4 Milk, cheese and eggs	125.3	2.3	19.1	08.1 Postal services	129.5	-	6.7
01.1.5 Oils and fats	137.3	6.7	28.2	08.2/3 Telephone and telefax equipment and services	93.4	0.6	-1.7
01.1.6 Fruit	111.6	6.1	8.2	09.1 Audio-visual equipment and related products	70.2	-0.1	-12.2
01.1.7 Vegetables including potatoes and tubers	121.9	1.5	7.4	09.1.1 Reception and reproduction of sound and pictures	65.4	-1.9	-12.7
01.1.8 Sugar, jam, syrups, chocolate and confectionery	114.4	0.3	6.7	09.1.2 Photographic, cinematographic and optical equipment	44.7	-3.0	-21.7
01.1.9 Food products (nec)	104.8	1.8	3.4	09.1.3 Data processing equipment	54.3	-0.1	-23.3
01.2 Non-alcoholic beverages	111.0	0.1	1.9	09.1.4 Recording media	93.8	1.8	-4.4
01.2.1 Coffee, tea and cocoa	112.8	0.2	3.5	09.1.5 Repair of audio-visual equipment & related products	111.1	0.3	3.6
01.2.2 Mineral waters, soft drinks and juices	110.4	-	1.5	09.2 Oth. major durables for recreation & culture	102.8	0.1	2.1
02.1 Alcoholic beverages	106.7	-0.3	4.4	09.2.1/2 Major durables for in/outdoor recreation	102.8	0.1	2.1
02.1.1 Spirits	109.0	-1.3	7.1	09.3 Other recreational items, gardens and pets	97.7	1.1	1.5
02.1.2 Wine	107.2	0.5	3.9	09.3.1 Games, toys and hobbies	91.8	1.1	-0.1
02.1.3 Beer	102.5	-0.9	2.1	09.3.2 Equipment for sport and open-air recreation	98.8	0.7	-0.4
02.2 Tobacco	115.6	0.1	4.5	09.3.3 Gardens, plants and flowers	104.1	1.0	4.7
03.1 Clothing	85.8	-1.6	-8.0	09.3.4/5 Pets, related products and services	111.7	1.4	5.3
03.1.2 Garments	84.7	-1.6	-8.6	09.4 Recreational and cultural services	111.5	-	1.9
03.1.3 Other clothing and clothing accessories	98.1	-1.1	-1.6	09.4.1 Recreational and sporting services	114.5	0.1	5.3
03.1.4 Cleaning, repair and hire of clothing	110.9	0.1	2.5	09.4.2 Cultural services	110.2	-0.1	0.3
03.2 Footwear including repairs	91.8	-0.5	-4.2	09.5 Books, newspapers and stationery	110.9	-0.7	5.9
04.1 Actual rentals for housing	110.0	0.1	3.4	09.5.1 Books	113.7	-3.4	9.9
04.3 Regular maintenance and repair of the dwelling	110.3	0.3	4.0	09.5.2 Newspapers and periodicals	116.4	0.6	6.3
04.3.1 Materials for maintenance and repair	108.2	0.3	4.2	09.5.3/4 Misc. printed matter, stationery, drawing materials	100.2	0.4	1.3
04.3.2 Services for maintenance and repair	113.4	0.2	3.8	09.6 Package holidays	103.6	0.7	4.0
04.4 Water supply and misc. services for the dwelling	122.9	-	6.5	10.0 Education	133.2	-	13.2
04.4.1 Water supply	122.2	-	5.7	11.1 Catering services	111.3	0.3	4.3
04.4.3 Sewerage collection	123.3	-	7.3	11.1.1 Restaurants & cafes	111.3	0.3	4.4
04.5 Electricity, gas and other fuels	150.9	0.4	13.8	11.1.2 Canteens	111.1	-	3.2
04.5.1 Electricity	145.7	-	11.2	11.2 Accommodation services	110.1	-	1.6
04.5.2 Gas	153.8	-	10.2	12.1 Personal care	106.7	0.1	2.0
04.5.3 Liquid fuels	205.4	4.4	87.8	12.1.1 Hairdressing and personal grooming establishments	111.5	0.4	3.9
04.5.4 Solid fuels	130.4	2.1	15.2	12.1.2/3 Appliances and products for personal care	105.0	-0.1	1.4
05.1 Furniture, furnishings and carpets	112.2	5.5	3.6	12.3 Personal effects (nec)	110.3	-0.2	4.5
05.1.1 Furniture and furnishings	113.3	7.2	2.5	12.3.1 Jewellery, clocks and watches	114.7	0.5	6.5
05.1.2 Carpets and other floor coverings	107.7	-0.7	7.7	12.3.2 Other personal effects	101.9	-2.0	-
05.2 Household textiles	90.3	-1.6	-3.6	12.4 Social protection	116.5	0.4	4.8
05.3 Household appliances, fitting and repairs	97.1	0.7	1.2	12.5 Insurance	108.4	-0.9	3.4
05.3.1/2 Major appliances and small electric goods	95.8	0.7	0.7	12.5.2 House contents insurance	103.9	-4.6	1.5
05.3.3 Repair of household appliances	107.9	0.4	5.0	12.5.3 Health insurance	121.2	-	7.0
05.4 Glassware, tableware and household utensils	100.6	-0.9	-0.4	12.5.4 Transport insurance	105.3	0.6	2.6
05.5 Tools and equipment for house and garden	103.1	0.5	0.7	12.6 Financial services (nec)	103.2	0.4	0.3
05.6 Goods and services for routine maintenance	112.0	0.7	3.2	12.6.2 Other financial services (nec)	103.2	0.4	0.3
05.6.1 Non-durable household goods	108.7	0.5	2.0	12.7 Other services (nec)	115.8	0.3	6.0
05.6.2 Domestic services and household services	114.7	0.9	4.3				
06.1 Medical products, appliances and equipment	101.2	0.1	0.5				
06.1.1 Pharmaceutical products	101.5	-0.1	0.3				
06.1.2/3 Other medical and therapeutic equipment	101.3	0.2	0.7				

Key: - zero or negligible .. not available (nec) not elsewhere covered

Source: National Statistics

3 CPI: Detailed figures by divisions, groups and classes

	Weights 2008	Index (2005=100)						Percentage change over 12 months					
		2008 Jan	2008 Feb	2008 Mar	2008 Apr	2008 May	2008 Jun	2008 Jan	2008 Feb	2008 Mar	2008 Apr	2008 May	2008 Jun
CPI (overall index)	1 000	105.5	106.3	106.7	107.6	108.3	109.0	2.2	2.5	2.5	3.0	3.3	3.8
01 Food and non-alcoholic beverages	109	110.8	111.3	111.8	113.2	115.1	117.5	6.1	5.6	5.5	6.6	7.8	9.5
02 Alcoholic beverages and tobacco	42	106.9	108.1	108.2	111.5	112.0	111.9	2.2	2.9	2.5	4.2	4.9	4.5
03 Clothing and footwear	63	87.5	87.6	87.9	87.8	87.8	86.5	-4.9	-4.7	-5.3	-6.3	-6.3	-7.5
04 Housing, water, electricity, gas and other fuels	115	115.4	119.1	119.5	122.0	122.3	122.5	0.4	3.5	3.9	5.4	6.3	7.0
05 Furniture, household equipment and maintenance	67	100.0	101.3	103.5	102.1	103.5	105.9	1.7	1.7	0.5	1.4	1.7	1.8
06 Health	22	108.1	108.2	108.4	108.9	109.0	109.3	3.1	3.1	3.5	3.3	3.0	3.0
07 Transport	152	108.6	109.1	110.3	110.8	112.7	114.6	6.4	6.2	7.0	6.1	6.2	7.3
08 Communication	23	95.8	94.3	94.2	94.4	94.3	94.9	-3.2	-3.9	-4.0	-2.9	-2.4	-1.3
09 Recreation and culture	152	97.0	97.2	96.8	97.3	97.3	97.6	-1.4	-1.2	-1.5	-1.0	-0.8	0.0
10 Education	19	133.2	133.2	133.2	133.2	133.2	133.2	13.2	13.2	13.2	13.2	13.2	13.2
11 Restaurants and hotels	137	108.3	108.7	109.2	110.4	110.8	111.1	3.3	3.3	3.3	3.8	3.9	3.9
12 Miscellaneous goods and services	99	106.8	107.1	107.5	108.3	108.5	108.6	1.5	1.2	1.2	2.3	2.6	2.7
All goods	547	102.8	104.0	104.6	105.3	106.2	107.2	1.3	1.9	1.7	2.3	3.0	3.8
All services	453	108.8	109.0	109.4	110.4	110.8	111.2	3.3	3.1	3.4	3.7	3.8	3.9
01.1 Food	95	111.2	111.5	112.0	113.6	115.7	118.5	6.6	6.0	5.9	7.2	8.7	10.6
01.1.1 Bread and cereals	16	111.2	112.0	113.2	114.4	115.8	119.2	7.8	7.9	7.3	8.5	9.1	11.9
01.1.2 Meat	21	105.4	106.4	106.8	108.5	112.4	116.0	1.9	2.1	2.2	4.1	8.8	11.2
01.1.3 Fish	5	119.8	118.8	116.6	121.5	123.8	119.6	5.3	2.0	0.5	4.6	6.7	1.5
01.1.4 Milk, cheese and eggs	14	118.6	120.1	121.4	121.2	122.5	125.3	15.4	17.6	16.0	15.7	16.6	19.1
01.1.5 Oils and fats	2	125.3	124.9	124.7	124.1	128.7	137.3	15.6	15.9	15.5	15.8	20.1	28.2
01.1.6 Fruit	9	104.2	101.3	101.2	104.4	105.2	111.6	3.8	0.2	2.2	7.4	2.4	8.2
01.1.7 Vegetables including potatoes and tubers	15	114.1	114.9	114.6	117.3	120.1	121.9	6.4	4.4	3.4	3.8	7.2	7.4
01.1.8 Sugar, jam, syrups, chocolate and confectionery	11	111.6	111.4	112.8	113.8	114.0	114.4	6.3	5.5	6.6	6.2	6.3	6.7
01.1.9 Food products (nec)	2	102.0	102.6	102.5	102.3	103.0	104.8	2.7	2.3	1.6	2.3	2.6	3.4
01.2 Non-alcoholic beverages	14	107.8	109.7	110.2	110.4	111.0	111.0	2.7	2.6	2.7	2.2	1.7	1.9
01.2.1 Coffee, tea and cocoa	3	106.6	111.6	110.8	110.0	112.5	112.8	0.1	2.5	1.1	1.4	2.3	3.5
01.2.2 Mineral waters, soft drinks and juices	11	108.0	109.1	109.9	110.3	110.4	110.4	3.5	2.6	3.2	2.5	1.5	1.5
02.1 Alcoholic beverages	18	100.8	101.9	101.6	105.9	107.1	106.7	0.6	1.0	-0.3	3.7	5.4	4.4
02.1.1 Spirits	5	101.3	102.7	102.6	108.0	110.5	109.0	2.6	2.7	0.9	6.3	9.2	7.1
02.1.2 Wine	9	102.1	102.4	102.5	105.8	106.7	107.2	0.6	0.4	-0.2	3.5	4.7	3.9
02.1.3 Beer	4	96.9	99.3	98.0	103.0	103.4	102.5	-2.1	0.0	-2.0	1.0	2.3	2.1
02.2 Tobacco	24	111.3	112.7	113.1	115.5	115.5	115.6	3.4	4.2	4.5	4.5	4.5	4.5
03.1 Clothing	55	87.2	87.1	87.4	87.3	87.2	85.8	-5.0	-4.9	-5.6	-6.7	-6.7	-8.0
03.1.2 Garments	51	86.3	86.3	86.5	86.3	86.1	84.7	-5.3	-5.1	-5.9	-7.2	-7.3	-8.6
03.1.3 Other clothing and clothing accessories	3	97.0	95.9	97.6	97.7	99.2	98.1	-2.8	-3.0	-2.2	-2.9	0.0	-1.6
03.1.4 Cleaning, repair and hire of clothing	1	109.7	107.1	110.3	110.7	110.7	110.9	3.1	0.5	3.4	3.5	3.2	2.5
03.2 Footwear including repairs	8	89.6	90.8	91.2	91.7	92.3	91.8	-3.8	-3.2	-3.1	-3.4	-3.7	-4.2
04.1 Actual rentals for housing	51	108.1	108.1	108.1	109.8	109.9	110.0	3.3	3.3	3.3	3.5	3.4	3.4
04.3 Regular maintenance and repair of the dwelling	18	109.4	109.8	110.0	110.2	110.0	110.3	4.8	4.6	4.9	4.9	4.5	4.0
04.3.1 Materials for maintenance and repair	10	107.3	108.0	108.4	108.4	107.9	108.2	5.2	5.0	5.6	5.7	5.0	4.2
04.3.2 Services for maintenance and repair	8	112.4	112.4	112.5	112.8	113.1	113.4	4.3	4.2	4.0	3.8	3.8	3.8
04.4 Water supply and misc. services for the dwelling	11	115.3	115.3	115.3	122.9	122.9	122.9	6.5	6.5	6.5	6.5	6.5	6.5
04.4.1 Water supply	5	115.7	115.7	115.7	122.2	122.2	122.2	6.2	6.2	6.2	5.7	5.7	5.7
04.4.3 Sewerage collection	6	114.9	114.9	114.9	123.3	123.3	123.3	6.9	6.9	6.9	7.3	7.3	7.3
04.5 Electricity, gas and other fuels	35	130.9	144.7	145.8	149.4	150.3	150.9	-6.6	2.9	3.9	8.3	11.2	13.8
04.5.1 Electricity	17	129.0	142.7	142.7	145.7	145.7	145.7	-4.6	5.2	5.2	8.3	9.6	11.2
04.5.2 Gas	15	133.9	150.7	150.7	153.8	153.8	153.8	-12.7	-2.0	-1.3	3.7	7.1	10.2
04.5.3 Liquid fuels	2	143.4	143.6	164.0	181.3	196.8	205.4	47.5	44.4	59.4	69.1	84.4	87.8
04.5.4 Solid fuels	1	123.8	124.4	124.8	125.2	127.7	130.4	8.7	8.9	9.2	9.6	12.4	15.2
05.1 Furniture, furnishings and carpets	28	99.7	101.6	106.2	103.5	106.4	112.2	2.0	2.3	-0.4	2.8	3.1	3.6
05.1.1 Furniture and furnishings	22	99.3	100.9	107.3	103.5	105.7	113.3	1.6	2.0	-1.2	2.3	2.5	2.5
05.1.2 Carpets and other floor coverings	6	100.6	103.8	101.8	103.5	108.5	107.7	3.2	3.4	2.4	4.5	5.3	7.7
05.2 Household textiles	8	90.0	92.7	92.6	91.4	91.8	90.3	-1.6	-1.1	-0.6	-1.7	-1.7	-3.6
05.3 Household appliances, fitting and repairs	9	96.7	96.3	96.6	96.6	96.4	97.1	3.5	2.1	0.2	-0.2	-0.3	1.2
05.3.1/2 Major appliances and small electric goods	8	95.5	95.1	95.4	95.3	95.1	95.8	3.4	1.8	-0.3	-0.7	-0.9	0.7
05.3.3 Repair of household appliances	1	106.8	106.9	106.9	107.1	107.5	107.9	4.3	4.2	4.2	4.2	4.6	5.0
05.4 Glassware, tableware and household utensils	7	99.3	100.6	101.8	101.7	101.5	100.6	2.1	1.9	2.7	1.9	1.1	-0.4
05.5 Tools and equipment for house and garden	5	102.6	103.1	103.2	103.0	102.6	103.1	0.6	0.7	1.2	0.3	0.2	0.7
05.6 Goods and services for routine maintenance	10	108.9	109.4	109.7	109.5	111.2	112.0	2.2	2.5	2.0	1.4	3.0	3.2
05.6.1 Non-durable household goods	5	105.0	106.1	106.3	105.6	108.2	108.7	0.4	1.0	0.1	-0.8	1.8	2.0
05.6.2 Domestic services and household services	5	112.4	112.3	112.6	113.0	113.7	114.7	3.8	3.8	3.7	3.5	4.0	4.3
06.1 Medical products, appliances and equipment	10	101.1	101.0	101.4	101.4	101.2	101.2	0.9	0.7	1.3	0.8	0.5	0.5
06.1.1 Pharmaceutical products	5	101.7	101.8	102.2	102.1	101.7	101.5	0.3	0.3	1.4	0.8	0.1	0.3
06.1.2/3 Other medical and therapeutic equipment	5	100.8	100.6	100.8	101.1	101.0	101.3	1.5	1.1	1.2	0.9	0.8	0.7

Key: - zero or negligible .. not available (nec) not elsewhere covered

Source: National Statistics

3 CPI: Detailed figures by divisions, groups and classes

continued

	Weights	Index (2005=100)						Percentage change over 12 months					
		2008	2008 Jan	2008 Feb	2008 Mar	2008 Apr	2008 May	2008 Jun	2008 Jan	2008 Feb	2008 Mar	2008 Apr	2008 May
06.2 Out-patient services	4	110.2	110.4	110.8	111.0	111.9	112.1	3.1	3.2	3.5	3.7	3.2	3.2
06.2.1/3 Medical services & paramedical services	2	107.7	107.9	108.5	108.9	108.9	109.1	2.8	3.0	3.5	3.8	3.3	3.0
06.2.2 Dental services	2	113.1	113.2	113.4	113.6	115.2	115.5	3.6	3.5	3.7	3.7	3.1	3.2
06.3 Hospital services	8	116.3	116.5	116.6	117.7	118.0	118.4	5.7	5.9	5.9	5.9	5.9	5.9
07.1 Purchase of vehicles	48	98.6	98.8	98.6	98.5	98.6	98.1	-1.1	-1.3	-1.3	-1.4	-1.5	-1.7
07.1.1A New cars	26	102.7	103.2	103.3	103.3	103.5	103.5	1.2	1.4	1.2	1.1	1.2	1.0
07.1.1B Second-hand cars	19	92.2	91.9	91.4	91.4	91.0	89.8	-4.3	-5.0	-4.7	-4.7	-5.1	-5.7
07.1.2/3 Motorcycles and bicycles	3	97.7	98.1	97.8	96.5	97.7	99.3	-0.9	-2.0	-2.0	-3.5	-2.8	-0.2
07.2 Operation of personal transport equipment	72	116.6	116.7	118.4	120.0	122.8	126.3	11.7	12.3	12.2	11.5	12.1	14.3
07.2.1 Spare parts and accessories	5	105.1	104.7	104.4	105.3	105.3	105.6	1.8	2.1	2.2	3.1	3.0	2.7
07.2.2 Fuels and lubricants	38	119.8	120.0	122.9	125.6	130.7	137.1	19.3	20.4	20.3	18.7	19.5	24.0
07.2.3 Maintenance and repairs	23	114.9	115.2	115.7	115.8	116.5	117.1	4.9	5.0	5.1	4.7	5.0	4.8
07.2.4 Other services	6	111.6	111.0	111.2	112.0	112.1	112.1	3.9	3.5	1.5	2.8	2.5	2.4
07.3 Transport services	32	107.0	108.8	111.3	110.6	113.3	115.5	5.9	4.0	8.1	5.5	4.7	5.1
07.3.1 Passenger transport by railway	8	113.5	114.1	113.9	114.8	114.6	114.1	5.2	4.4	4.7	4.9	4.8	4.3
07.3.2 Passenger transport by road	14	110.3	110.6	111.1	111.7	112.0	111.8	4.2	4.3	4.5	4.5	4.7	3.8
07.3.3 Passenger transport by air	8	85.7	90.5	98.2	93.6	102.4	108.5	5.1	1.6	15.7	6.6	3.4	5.4
07.3.4 Passenger transport by sea and inland waterway	2	113.2	114.2	111.2	117.8	115.0	124.2	15.1	1.2	6.1	1.6	-3.7	0.4
08.1 Postal services	1	121.5	121.5	121.6	129.5	129.5	129.5	6.3	6.3	6.4	6.7	6.7	6.7
08.2/3 Telephone and telefax equipment and services	22	94.7	93.1	93.0	92.9	92.8	93.4	-3.7	-4.4	-4.5	-3.3	-2.8	-1.7
09.1 Audio-visual equipment and related products	27	72.8	72.8	71.5	70.7	70.3	70.2	-15.5	-14.0	-14.2	-13.8	-14.0	-12.2
09.1.1 Reception and reproduction of sound and pictures	6	69.0	68.6	68.3	67.1	66.7	65.4	-17.0	-16.4	-14.6	-14.3	-13.3	-12.7
09.1.2 Photographic, cinematographic and optical equipment	4	49.0	48.2	48.0	46.6	46.1	44.7	-26.0	-25.5	-27.3	-28.0	-25.2	-21.7
09.1.3 Data processing equipment	5	60.6	60.0	56.3	54.9	54.4	54.3	-26.2	-25.6	-26.7	-25.1	-23.8	-23.3
09.1.4 Recording media	11	92.2	93.4	92.2	92.6	92.2	93.8	-6.0	-3.0	-3.7	-4.0	-7.1	-4.4
09.1.5 Repair of audio-visual equipment & related products	1	109.7	109.8	109.9	110.4	110.8	111.1	3.2	3.2	3.3	3.5	3.4	3.6
09.2 Other major durables for recreation & culture	9	101.9	102.0	102.1	102.7	102.7	102.8	1.4	1.5	1.6	1.8	2.0	2.1
09.2.1/2 Major durables for in/outdoor recreation	9	101.9	102.0	102.1	102.7	102.7	102.8	1.4	1.5	1.6	1.8	2.0	2.1
09.3 Other recreational items, gardens and pets	38	97.5	96.7	95.8	97.0	96.6	97.7	0.1	-0.6	-2.1	-0.5	-0.1	1.5
09.3.1 Games, toys and hobbies	22	93.4	91.1	89.7	91.8	90.9	91.8	-1.6	-2.8	-5.2	-2.3	-2.0	-0.1
09.3.2 Equipment for sport and open-air recreation	4	94.6	96.4	97.2	97.7	98.1	98.8	-3.4	-0.8	-0.4	-0.7	-0.7	-0.4
09.3.3 Gardens, plants and flowers	5	102.3	104.6	103.3	103.2	103.0	104.1	2.1	2.0	1.3	2.6	2.6	4.7
09.3.4/5 Pets, related products and services	7	109.4	109.8	109.8	109.4	110.1	111.7	5.6	4.2	4.3	3.0	4.0	5.3
09.4 Recreational and cultural services	32	110.0	110.1	110.2	111.7	111.6	111.5	4.0	3.5	3.2	2.6	2.5	1.9
09.4.1 Recreational and sporting services	11	113.0	113.1	113.1	114.1	114.4	114.5	5.2	5.2	5.2	5.5	5.4	5.3
09.4.2 Cultural services	21	108.7	108.7	108.9	110.6	110.3	110.2	3.4	2.7	2.3	1.4	1.2	0.3
09.5 Books, newspapers and stationery	17	107.2	110.4	111.0	110.1	111.7	110.9	4.8	4.9	5.9	5.2	6.4	5.9
09.5.1 Books	5	106.2	116.5	116.6	113.6	117.8	113.7	10.1	10.4	11.7	10.0	12.8	9.9
09.5.2 Newspapers and periodicals	7	113.6	113.6	114.3	114.4	115.7	116.4	4.6	4.4	4.8	4.5	5.8	6.3
09.5.3/4 Misc. printed matter, stationery, drawing materials	5	99.2	99.6	100.4	100.5	99.8	100.2	-0.3	0.1	1.5	1.3	0.7	1.3
09.6 Package holidays	29	101.0	101.3	101.6	102.4	102.8	103.6	0.9	1.3	1.6	2.4	3.0	4.0
10.0 Education	19	133.2	133.2	133.2	133.2	133.2	133.2	13.2	13.2	13.2	13.2	13.2	13.2
11.1 Catering services	118	108.2	108.7	109.2	110.6	111.0	111.3	3.3	3.5	3.5	4.2	4.2	4.3
11.1.1 Restaurants & cafes	106	108.1	108.5	109.0	110.5	110.9	111.3	3.3	3.5	3.5	4.2	4.3	4.4
11.1.2 Canteens	12	109.6	110.2	110.5	110.8	111.2	111.1	3.7	3.8	3.7	3.7	3.6	3.2
11.2 Accommodation services	19	109.0	108.5	109.0	109.6	110.1	110.1	3.0	2.1	2.1	2.0	2.1	1.6
12.1 Personal care	30	104.9	105.5	105.9	106.4	106.7	106.7	2.5	1.4	0.9	1.1	1.6	2.0
12.1.1 Hairdressing and personal grooming establishments	8	109.2	109.4	110.0	110.6	111.1	111.5	3.4	3.4	3.7	3.6	3.6	3.9
12.1.2/3 Appliances and products for personal care	22	103.4	104.1	104.4	104.9	105.1	105.0	2.2	0.7	0.0	0.2	0.9	1.4
12.3 Personal effects (nec)	10	105.9	107.3	109.5	110.1	110.5	110.3	2.3	2.8	4.6	4.4	4.6	4.5
12.3.1 Jewellery, clocks and watches	7	109.1	110.7	112.9	113.6	114.1	114.7	3.1	3.7	5.5	5.5	5.7	6.5
12.3.2 Other personal effects	3	100.0	101.1	103.3	103.6	104.0	101.9	0.4	0.5	2.5	1.8	1.9	0.0
12.4 Social protection	12	114.5	114.6	114.7	115.3	116.0	116.5	4.9	4.9	4.8	4.9	4.9	4.8
12.5 Insurance	8	108.6	108.7	108.6	108.7	109.3	108.4	3.9	3.7	3.5	3.6	4.2	3.4
12.5.2 House contents insurance	2	106.8	108.8	111.1	109.5	109.0	103.9	3.5	4.7	7.3	6.4	4.7	1.5
12.5.3 Health insurance	2	118.9	118.9	118.9	121.2	121.2	121.2	6.2	6.2	6.2	7.0	7.0	7.0
12.5.4 Transport insurance	4	105.3	104.5	103.1	103.2	104.7	105.3	3.0	1.9	0.3	0.5	2.6	2.6
12.6 Financial services (nec)	28	101.7	101.5	101.7	103.1	102.8	103.2	-3.2	-3.2	-3.3	0.0	0.0	0.3
12.6.2 Other financial services (nec)	28	101.7	101.5	101.7	103.1	102.8	103.2	-3.2	-3.2	-3.3	0.0	0.0	0.3
12.7 Other services (nec)	11	114.3	114.4	114.6	115.0	115.4	115.8	4.7	4.7	4.9	6.3	6.4	6.0

Key: - zero or negligible .. not available (nec) not elsewhere covered

Source: National Statistics

4 CPI: Detailed figures by division¹

	Food and non-alcoholic beverages	Alcoholic beverages and tobacco	Clothing and footwear	Housing, water, electricity, gas & other fuels	Furniture, household equipment & routine maintenance	Health ²	Transport	Communication	Recreation and culture	Education ²	Restaurants and hotels	Miscellaneous goods and services ²	CPI (overall index)
COICOP Division	01	02	03	04	05	06	07	08	09	10	11	12	
Weights													
2008	CHZR 109	CHZS 42	CHZT 63	CHZU 115	CHZV 67	CHZW 22	CHZX 152	CHZY 23	CHZZ 152	CJUU 19	CJUV 137	CJUW 99	CHZQ 1 000
Monthly indices (2005=100)													
2006 Jun	D7BU 102.4	D7BV 103.6	D7BW 96.7	D7BX 109.7	D7BY 100.2	D7BZ 102.5	D7C2 103.5	D7C3 100.0	D7C4 98.7	D7C5 103.3	D7C6 103.1	D7C7 103.9	D7BT 102.5
Jul	102.6	103.4	92.2	110.5	98.1	103.0	105.5	99.8	98.4	103.3	103.5	104.0	102.5
Aug	103.0	103.8	94.4	110.9	99.1	103.4	105.8	99.2	98.4	103.3	103.6	104.5	102.9
Sep	103.6	103.7	96.4	111.5	100.6	103.6	102.9	99.6	98.6	107.9	103.8	104.7	103.0
Oct	104.2	103.9	96.6	112.7	99.0	104.2	101.5	100.4	98.6	117.8	104.2	105.0	103.2
Nov	105.1	103.4	97.2	113.7	100.0	104.1	101.1	100.3	98.7	117.8	104.5	105.0	103.4
Dec	105.4	103.0	96.0	114.5	103.3	104.2	102.8	99.9	99.2	117.8	104.7	104.9	104.0
2007 Jan	104.4	104.5	92.0	114.9	98.3	104.8	102.1	99.0	98.3	117.8	104.9	105.1	103.2
Feb	105.4	105.1	91.9	115.1	99.6	104.9	102.8	98.1	98.4	117.8	105.2	105.8	103.7
Mar	106.0	105.6	92.8	115.0	102.9	104.8	103.1	98.1	98.2	117.8	105.7	106.2	104.2
Apr	106.2	107.0	93.7	115.7	100.7	105.5	104.5	97.2	98.3	117.8	106.3	105.8	104.5
May	106.7	106.8	93.7	115.0	101.8	105.8	106.1	96.6	98.0	117.8	106.6	105.7	104.8
Jun	107.3	107.1	93.6	114.5	104.0	106.1	106.8	96.1	97.6	117.8	106.9	105.8	105.0
Jul	105.5	106.9	89.8	114.3	99.7	106.6	108.0	94.8	97.0	117.8	107.2	106.1	104.4
Aug	106.1	107.0	91.1	114.0	100.3	106.8	108.6	97.2	97.5	117.8	107.4	105.6	104.7
Sep	107.4	107.1	92.5	114.0	102.1	107.1	105.7	96.6	97.6	122.9	107.6	105.8	104.8
Oct	109.1	106.8	92.5	114.3	100.8	107.5	106.6	96.2	97.7	133.2	107.9	106.4	105.3
Nov	110.1	106.4	92.9	114.6	101.6	107.3	107.0	96.3	97.6	133.2	108.0	106.6	105.6
Dec	111.1	105.7	92.2	114.7	104.2	107.6	108.7	96.2	98.0	133.2	108.3	106.8	106.2
2008 Jan	110.8	106.9	87.5	115.4	100.0	108.1	108.6	95.8	97.0	133.2	108.3	106.8	105.5
Feb	111.3	108.1	87.6	119.1	101.3	108.2	109.1	94.3	97.2	133.2	108.7	107.1	106.3
Mar	111.8	108.2	87.9	119.5	103.5	108.4	110.3	94.2	96.8	133.2	109.2	107.5	106.7
Apr	113.2	111.5	87.8	122.0	102.1	108.9	110.8	94.4	97.3	133.2	110.4	108.3	107.6
May	115.1	112.0	87.8	122.3	103.5	109.0	112.7	94.3	97.3	133.2	110.8	108.5	108.3
Jun	117.5	111.9	86.5	122.5	105.9	109.3	114.6	94.9	97.6	133.2	111.1	108.6	109.0
Percentage change on a year earlier													
2006 Jun	D7G8 1.8	D7G9 3.3	D7GA -3.9	D7GB 9.8	D7GC -0.1	D7GD 2.7	D7GE 3.9	D7GF -0.3	D7GG -1.6	D7GH 4.7	D7GI 3.2	D7GJ 4.4	D7G7 2.5
Jul	3.2	2.8	-4.5	10.0	-1.3	2.4	3.3	0.3	-1.4	4.7	3.2	3.6	2.4
Aug	3.4	3.3	-3.9	10.5	-0.5	2.6	2.4	-0.7	-0.9	4.7	3.0	3.9	2.5
Sep	4.0	3.4	-3.5	10.7	0.3	2.8	0.6	-0.2	-1.0	7.1	2.9	3.9	2.4
Oct	4.7	3.2	-3.3	10.8	-0.4	3.1	-0.5	0.9	-1.1	14.0	3.0	3.8	2.4
Nov	5.0	2.7	-3.2	11.1	-0.5	3.1	0.8	0.7	-0.7	14.0	3.2	3.5	2.7
Dec	4.6	2.7	-4.1	11.4	0.6	3.9	2.1	0.5	-0.3	14.0	3.2	3.3	3.0
2007 Jan	3.9	3.5	-4.1	11.2	0.5	3.8	0.9	-1.8	-0.3	14.0	3.3	3.1	2.7
Feb	4.4	4.2	-4.2	11.1	1.2	3.7	1.4	-2.8	-1.0	14.0	3.3	3.6	2.8
Mar	5.6	4.4	-3.9	10.1	2.7	3.7	1.6	-2.8	-0.7	14.0	3.4	3.7	3.1
Apr	6.0	4.5	-2.8	7.9	2.2	3.2	1.5	-3.7	-0.8	14.0	3.8	2.4	2.8
May	5.0	4.2	-3.6	5.7	2.5	3.1	2.5	-3.2	-0.8	14.0	3.5	2.2	2.5
Jun	4.8	3.4	-3.2	4.3	3.8	3.4	3.2	-3.9	-1.1	14.0	3.7	1.8	2.4
Jul	2.8	3.4	-2.6	3.5	1.6	3.4	2.4	-5.0	-1.4	14.0	3.6	2.0	1.9
Aug	3.0	3.1	-3.5	2.8	1.2	3.3	2.6	-2.0	-0.9	14.0	3.6	1.1	1.8
Sep	3.7	3.2	-4.0	2.3	1.5	3.4	2.7	-3.0	-1.0	13.9	3.7	1.0	1.8
Oct	4.7	2.7	-4.3	1.4	1.8	3.2	5.1	-4.2	-0.9	13.2	3.5	1.3	2.1
Nov	4.8	2.9	-4.4	0.8	1.7	3.1	5.8	-4.0	-1.1	13.2	3.4	1.6	2.1
Dec	5.4	2.7	-3.9	0.2	0.9	3.3	5.8	-3.8	-1.3	13.2	3.4	1.9	2.1
2008 Jan	6.1	2.2	-4.9	0.4	1.7	3.1	6.4	-3.2	-1.4	13.2	3.3	1.5	2.2
Feb	5.6	2.9	-4.7	3.5	1.7	3.1	6.2	-3.9	-1.2	13.2	3.3	1.2	2.5
Mar	5.5	2.5	-5.3	3.9	0.5	3.5	7.0	-4.0	-1.5	13.2	3.3	1.2	2.5
Apr	6.6	4.2	-6.3	5.4	1.4	3.3	6.1	-2.9	-1.0	13.2	3.8	2.3	3.0
May	7.8	4.9	-6.3	6.3	1.7	3.0	6.2	-2.4	-0.8	13.2	3.9	2.6	3.3
Jun	9.5	4.5	-7.5	7.0	1.8	3.0	7.3	-1.3	-	13.2	3.9	2.7	3.8

Key: - zero or negligible

¹ Inflation rates prior to 1997 and index levels prior to 1996 are estimated. Further details are given in *Economic Trends No. 541 December 1998*. These details are also available on the National Statistics website: www.statistics.gov.uk/cpi/article.asp?ID=31

² The coverage of these categories was extended in January 2000; further extensions to coverage came into effect in January 2001 for health and miscellaneous goods and services; the coverage of miscellaneous goods and services was further extended with effect from January 2002 (details are given in a series of Economic Trends articles available on the National Statistics website: www.statistics.gov.uk/cpi)

Source: National Statistics

5 CPI: Detailed goods and services breakdown¹

	Weights	Index (2005=100)						Percentage change over 12 months						Percentage change over 1 month
		2008	2008	2008	2008	2008	2008	2008	2008	2008	2008	2008	2008	2008
		Jan	Feb	Mar	Apr	May	Jun	Jan	Feb	Mar	Apr	May	Jun	Jun
CPI (overall index)	1 000	105.5	106.3	106.7	107.6	108.3	109.0	2.2	2.5	2.5	3.0	3.3	3.8	0.7
All goods	547	102.8	104.0	104.6	105.3	106.2	107.2	1.3	1.9	1.7	2.3	3.0	3.8	0.9
Food, alcoholic beverages & tobacco	151	109.6	110.4	110.7	112.7	114.2	115.9	5.0	4.8	4.6	5.8	7.0	8.0	1.5
Processed food & non-alcoholic beverages	59	112.2	113.2	114.2	114.7	115.7	117.7	8.0	8.3	8.1	8.1	8.5	10.3	1.7
Non-processed food	50	109.0	109.0	108.9	111.5	114.3	117.2	3.9	2.5	2.5	4.7	7.0	8.6	2.5
Seasonal food	29	111.9	111.1	110.6	113.8	115.9	118.3	5.5	2.8	2.7	5.2	5.7	6.7	2.1
Meat	21	105.4	106.4	106.8	108.5	112.4	116.0	1.9	2.1	2.2	4.1	8.8	11.2	3.2
Alcoholic beverages & tobacco	42	106.9	108.1	108.2	111.5	112.0	111.9	2.2	2.9	2.5	4.2	4.9	4.5	-0.1
Industrial goods	396	100.4	101.8	102.4	102.7	103.4	104.1	-0.1	0.9	0.6	1.1	1.5	2.2	0.7
Energy	73	126.0	132.5	134.6	137.7	140.9	144.7	5.8	11.4	12.0	13.6	15.6	19.0	2.7
Electricity, gas & miscellaneous energy	33	131.2	145.9	145.9	148.8	148.9	149.0	-8.1	1.9	2.3	6.2	8.6	10.9	0.1
Liquid fuels, vehicle fuels & lubricants	40	120.5	120.7	124.4	127.6	133.1	139.6	20.1	21.1	21.7	20.5	21.8	26.3	4.9
Non-energy industrial goods	323	95.7	96.2	96.5	96.4	96.7	96.9	-1.4	-1.4	-1.8	-1.7	-1.5	-1.4	0.2
Clothing & footwear goods	62	87.2	87.3	87.6	87.5	87.5	86.2	-5.0	-4.8	-5.4	-6.5	-6.5	-7.7	-1.4
Housing goods	76	100.9	102.2	104.1	103.3	104.4	106.5	2.3	2.3	1.3	2.1	2.2	2.2	2.0
Household goods	61	98.8	100.2	102.5	101.0	102.5	105.0	1.5	1.5	0.2	1.2	1.5	1.5	2.4
Water supply; materials for maintenance & repair	15	109.9	110.4	110.7	112.8	112.4	112.6	5.5	5.4	5.8	5.7	5.2	4.7	0.2
Medical products, appliances & equipment	10	101.1	101.0	101.4	101.4	101.2	101.2	0.9	0.7	1.3	0.8	0.5	0.5	0.1
Vehicles, spare parts & accessories	53	99.3	99.4	99.2	99.2	99.2	98.9	-0.8	-1.0	-0.9	-1.0	-1.1	-1.2	-0.4
Recreational goods	90	91.5	91.7	90.9	91.0	90.9	91.2	-4.0	-3.7	-4.1	-3.5	-3.1	-1.9	0.3
Audio-visual goods	26	71.6	71.6	70.2	69.5	69.0	68.9	-16.2	-14.6	-14.8	-14.5	-14.6	-12.8	-0.1
Other recreational goods	64	100.7	101.0	100.6	101.2	101.4	101.8	1.5	1.1	0.5	1.3	1.9	2.7	0.4
Miscellaneous goods	32	104.3	105.2	106.1	106.6	106.9	106.8	2.3	1.3	1.4	1.5	2.0	2.3	-0.1
All services	453	108.8	109.0	109.4	110.4	110.8	111.2	3.3	3.1	3.4	3.7	3.8	3.9	0.4
Housing services	73	109.3	109.4	109.5	111.3	111.5	111.5	3.7	3.7	3.8	3.9	3.9	3.8	-
Actual rentals for housing	51	108.1	108.1	108.1	109.8	109.9	110.0	3.3	3.3	3.3	3.5	3.4	3.4	0.1
Primary housing services	16	112.5	112.8	113.2	116.2	116.2	115.7	5.1	5.2	5.4	5.5	5.2	4.9	-0.5
Other housing services	6	111.6	111.5	111.8	112.1	112.8	113.7	3.9	3.9	3.8	3.6	4.1	4.4	0.8
Travel & transport services	65	110.1	111.0	112.4	112.2	113.8	115.2	5.1	4.2	5.9	4.7	4.5	4.7	1.2
Services for personal transport equipment	29	114.2	114.3	114.8	115.0	115.6	116.1	4.7	4.7	4.3	4.3	4.5	4.3	0.4
Transport services	32	107.0	108.8	111.3	110.6	113.3	115.5	5.9	4.0	8.1	5.5	4.7	5.1	2.0
Transport insurance	4	105.3	104.5	103.1	103.2	104.7	105.3	3.0	1.9	0.3	0.5	2.6	2.6	0.6
Communication	23	95.8	94.3	94.2	94.4	94.3	94.9	-3.2	-3.9	-4.0	-2.9	-2.4	-1.3	0.6
Recreational & personal services	208	107.6	107.9	108.3	109.5	109.8	110.1	3.0	3.1	3.1	3.4	3.6	3.6	0.3
Package holidays & accommodation	48	104.1	104.2	104.5	105.2	105.7	106.1	1.7	1.6	1.8	2.2	2.6	3.1	0.4
Other recreational & personal services	160	108.7	109.0	109.4	110.8	111.1	111.3	3.4	3.5	3.4	3.8	3.8	3.8	0.2
Catering services	118	108.2	108.7	109.2	110.6	111.0	111.3	3.3	3.5	3.5	4.2	4.2	4.3	0.3
Non-catering recreational & personal services	42	109.9	109.9	110.1	111.4	111.4	111.5	3.8	3.4	3.3	2.9	2.7	2.3	0.1
Miscellaneous & other services	84	113.8	113.8	114.0	114.8	114.9	115.3	4.0	4.0	4.0	5.3	5.3	5.3	0.3
Miscellaneous services	53	107.8	107.8	107.9	109.0	109.1	109.5	0.6	0.6	0.6	2.7	2.7	2.8	0.4
Medical services	12	114.3	114.4	114.6	115.5	115.9	116.3	4.8	4.9	5.0	5.1	5.0	5.0	0.3
Education	19	133.2	133.2	133.2	133.2	133.2	133.2	13.2	13.2	13.2	13.2	13.2	13.2	-
Special aggregates														
Durables	115	93.9	94.3	95.1	94.3	94.9	96.0	-2.7	-2.6	-3.2	-2.4	-2.1	-1.6	1.1
Semi-durables	132	92.0	92.4	92.4	92.5	92.5	91.9	-2.7	-2.4	-3.0	-3.2	-3.4	-3.8	-0.6
Non-durables	76	105.6	106.1	106.4	106.8	107.1	107.4	2.9	2.3	2.3	2.2	2.6	3.0	0.3
Seasonal food	29	111.9	111.1	110.6	113.8	115.9	118.3	5.5	2.8	2.7	5.2	5.7	6.7	2.1
Non-seasonal food	66	110.9	111.7	112.6	113.5	115.6	118.6	7.1	7.4	7.2	8.0	10.1	12.4	2.6
Energy, food, alcoholic beverages & tobacco	224	114.5	116.9	117.8	120.1	122.1	124.4	5.2	6.9	7.0	8.4	9.7	11.6	1.9
Energy & unprocessed food	123	118.6	122.3	123.4	126.3	129.3	132.7	5.0	7.8	8.1	10.0	12.1	14.8	2.6
Energy & seasonal food	102	121.8	126.0	127.3	130.5	133.3	136.7	5.7	9.0	9.3	11.2	12.7	15.5	2.5
Tobacco	24	111.3	112.7	113.1	115.5	115.5	115.6	3.4	4.2	4.5	4.5	4.5	4.5	0.1
Housing, water, electricity, gas & other fuels	115	115.4	119.1	119.5	122.0	122.3	122.5	0.4	3.5	3.9	5.4	6.3	7.0	0.2
Education, health & social protection ²	53	117.5	117.5	117.7	118.0	118.2	118.5	6.9	6.9	7.0	6.9	6.8	6.8	0.2
<i>All items excluding</i>														
Energy	927	104.1	104.5	104.9	105.6	106.1	106.7	1.9	1.8	1.7	2.1	2.4	2.7	0.5
Energy, food, alcoholic beverages & tobacco	776	103.1	103.4	103.8	104.3	104.6	105.0	1.3	1.2	1.2	1.4	1.5	1.6	0.3
Energy & unprocessed food	877	103.9	104.3	104.7	105.3	105.7	106.1	1.8	1.8	1.7	2.0	2.1	2.3	0.4
Seasonal food	971	105.3	106.1	106.6	107.4	108.1	108.8	2.1	2.5	2.5	2.9	3.3	3.7	0.6
Energy & seasonal food	898	103.9	104.3	104.7	105.3	105.8	106.3	1.8	1.8	1.7	2.1	2.3	2.5	0.5
Tobacco	976	105.4	106.1	106.6	107.4	108.1	108.9	2.2	2.4	2.4	2.9	3.3	3.8	0.7
Alcoholic beverages & tobacco	958	105.4	106.2	106.7	107.4	108.1	108.9	2.2	2.5	2.5	2.9	3.3	3.8	0.7
Liquid fuels, vehicle fuels & lubricants	960	104.9	105.7	106.0	106.8	107.3	107.9	1.5	1.8	1.7	2.3	2.6	2.9	0.5
Housing, water, electricity, gas & other fuels	885	104.3	104.7	105.2	105.9	106.6	107.4	2.4	2.3	2.3	2.6	3.0	3.4	0.7
Education, health & social protection	947	104.9	105.6	106.1	107.0	107.7	108.5	1.9	2.2	2.2	2.7	3.1	3.6	0.7

Key: - zero or negligible

² The coverage of this special aggregate has changed extensively since January 2000, when Social protection was first included and extensions to the Education and Health divisions also took effect. Health was further extended with effect from January 2001. Details are given in a series of Economic Trends articles available on the National Statistics website: www.statistics.gov.uk/cpi

¹ For further information on the composition of the indices shown, see 'The Consumer Prices Index: Goods and Services Indices and Special Aggregates', which can be downloaded from: www.statistics.gov.uk/cpi/article.asp?id=1060

6 CPI goods and services: the latest three years

Percentage change over 12 months

	Goods components					Services components					All services
	Food & non-alcoholic beverages	Alcoholic beverages & tobacco	Energy ¹	Non-energy industrial goods ²	All goods	Housing services ³	Travel & transport services ³	Recreational & personal services ³	Communication	Miscellaneous & other services ³	
Weights	CHZR	CHZS	A9F3	A9ER	ICVH	A9FG	A9FJ	A9FL	CHZY	A9FQ	ICVI
2008	109	42	73	323	547	73	65	208	23	84	453
Monthly	D7G8	D7G9	DKL5	DKK3	D7NM	DKN2	DKN5	DKN7	D7GF	DKO4	D7NN
2005 Jun	2.2	2.3	8.7	-2.1	0.2	4.2	6.0	3.1	-2.9	6.8	4.1
Jul	1.7	2.2	11.2	-1.9	0.5	4.4	6.9	3.2	-2.5	7.7	4.5
Aug	2.2	1.8	12.4	-2.1	0.6	4.4	7.5	3.1	-2.1	7.7	4.6
Sep	2.0	1.4	15.4	-2.2	0.7	4.4	6.3	3.2	-1.2	7.5	4.5
Oct	1.5	1.9	13.9	-2.1	0.6	4.0	7.2	3.3	-1.6	6.6	4.4
Nov	1.7	2.5	11.1	-2.0	0.4	3.9	5.8	3.1	-1.2	6.6	4.1
Dec	1.7	2.5	10.2	-2.1	0.3	4.0	3.4	3.1	-1.0	6.6	3.8
2006 Jan	1.2	2.3	12.8	-2.3	0.3	3.9	6.1	2.9	0.5	5.6	3.9
Feb	1.1	1.6	12.5	-1.7	0.6	3.9	4.8	2.9	0.4	5.6	3.7
Mar	-0.4	2.5	12.2	-1.9	0.2	3.9	4.4	2.9	0.5	5.7	3.7
Apr	0.3	2.5	14.4	-2.2	0.5	3.3	6.5	2.7	0.3	5.7	3.8
May	1.1	2.2	19.3	-1.9	1.3	3.3	2.8	2.9	-0.4	5.6	3.3
Jun	1.8	3.3	19.8	-1.7	1.7	3.4	3.2	2.9	-0.3	5.6	3.4
Jul	3.2	2.8	19.4	-2.0	1.8	3.4	2.4	2.9	0.3	4.9	3.2
Aug	3.4	3.3	17.9	-1.3	2.2	3.4	1.6	2.8	-0.7	4.7	2.9
Sep	4.0	3.4	11.6	-1.0	1.8	3.3	3.0	2.8	-0.2	5.3	3.2
Oct	4.7	3.2	9.8	-1.3	1.5	3.4	2.5	3.0	0.9	6.7	3.6
Nov	5.0	2.7	11.7	-1.1	1.8	3.5	3.7	3.1	0.7	6.4	3.7
Dec	4.6	2.7	14.9	-0.8	2.3	3.5	4.1	3.1	0.5	6.4	3.8
2007 Jan	3.9	3.5	12.8	-0.9	2.0	3.8	3.1	3.2	-1.8	6.1	3.6
Feb	4.4	4.2	11.8	-1.0	2.0	3.7	5.0	3.2	-2.8	6.1	3.8
Mar	5.6	4.4	11.6	-0.5	2.5	3.7	4.2	3.3	-2.8	6.1	3.7
Apr	6.0	4.5	7.9	-0.3	2.3	3.8	3.8	3.3	-3.7	4.5	3.3
May	5.0	4.2	4.4	-0.4	1.6	3.8	6.4	3.1	-3.2	4.4	3.6
Jun	4.8	3.4	3.3	-0.4	1.4	3.7	6.8	3.3	-3.9	4.4	3.7
Jul	2.8	3.4	0.9	-0.8	0.5	3.6	6.3	3.2	-5.0	4.4	3.5
Aug	3.0	3.1	-0.5	-1.1	0.1	3.5	7.6	3.4	-2.0	3.9	3.8
Sep	3.7	3.2	1.5	-1.2	0.4	3.5	4.9	3.4	-3.0	4.0	3.4
Oct	4.7	2.7	3.9	-1.1	1.0	3.7	5.9	3.3	-4.2	3.8	3.4
Nov	4.8	2.9	5.3	-1.2	1.1	3.7	4.6	3.2	-4.0	4.0	3.2
Dec	5.4	2.7	4.4	-1.3	1.1	3.6	5.0	3.2	-3.8	4.1	3.3
2008 Jan	6.1	2.2	5.8	-1.4	1.3	3.7	5.1	3.0	-3.2	4.0	3.3
Feb	5.6	2.9	11.4	-1.4	1.9	3.7	4.2	3.1	-3.9	4.0	3.1
Mar	5.5	2.5	12.0	-1.8	1.7	3.8	5.9	3.1	-4.0	4.0	3.4
Apr	6.6	4.2	13.6	-1.7	2.3	3.9	4.7	3.4	-2.9	5.3	3.7
May	7.8	4.9	15.6	-1.5	3.0	3.9	4.5	3.6	-2.4	5.3	3.8
Jun	9.5	4.5	19.0	-1.4	3.8	3.8	4.7	3.6	-1.3	5.3	3.9

Key: - zero or negligible

³ For further information on all of these services components, see 'The Consumer Prices Index: Goods and Services Indices and Special Aggregates', which can be downloaded from: www.statistics.gov.uk/cpi/article.asp?id=1060

¹ Comprises 'Electricity, gas and other fuels' (group 04.5) and 'Fuels and lubricants' (class 07.2.2).

² Comprises all other goods elements of the CPI. For further information, see 'The Consumer Prices Index: Goods and Services Indices and Special Aggregates', which can be downloaded from: www.statistics.gov.uk/cpi/article.asp?id=1060

Source: National Statistics

7 HICP¹ - International comparisons: EU countries

Percentage change over 12 months

	Austria	Belgium	Bulgaria	Cyprus	Czech Republic	Denmark	Estonia	Finland	France	Germany	Greece	Hungary	Ireland	Italy	Latvia
	D7SK	D7SL	GHY8	D7RO	D7RP	D7SM	D7RQ	D7SN	D7SO	D7SP	D7SQ	D7RR	D7SS	D7ST	D7RS
2005	2.1	2.5	6.0	2.0	1.6	1.7	4.1	0.8	1.9	1.9	3.5	3.5	2.2	2.2	6.9
2006	1.7	2.3	7.4	2.2	2.1	1.9	4.4	1.3	1.9	1.8	3.3	4.0	2.7	2.2	6.6
2007	2.2	1.8	7.6	2.2	3.0	1.7	6.7	1.6	1.6	2.3	3.0	7.9	2.9	2.0	10.1
2006 Jun	1.9	2.5	8.4	2.6	2.3	2.1	4.4	1.5	2.2	2.0	3.4	2.9	2.9	2.4	6.3
Jul	2.0	2.4	7.8	2.8	2.4	2.0	4.5	1.4	2.2	2.1	3.9	3.2	2.9	2.3	6.9
Aug	2.1	2.3	7.0	2.7	2.6	1.9	5.0	1.3	2.1	1.8	3.4	4.7	3.2	2.3	6.8
Sep	1.3	1.9	5.4	2.2	2.2	1.5	3.8	0.8	1.5	1.0	3.1	5.9	2.2	2.4	5.9
Oct	1.3	1.7	5.2	1.7	0.8	1.4	3.8	0.9	1.2	1.1	3.1	6.3	2.2	1.9	5.6
Nov	1.6	2.0	5.9	1.3	1.0	1.8	4.7	1.3	1.6	1.5	3.2	6.4	2.4	2.0	6.3
Dec	1.6	2.1	6.1	1.5	1.5	1.7	5.1	1.2	1.7	1.4	3.2	6.6	3.0	2.1	6.8
2007 Jan	1.7	1.7	6.8	1.4	1.4	1.8	5.0	1.3	1.4	1.8	3.0	8.4	2.9	1.9	7.1
Feb	1.7	1.8	4.6	1.2	1.7	1.9	4.6	1.2	1.2	1.9	3.0	9.0	2.6	2.1	7.2
Mar	1.9	1.8	4.4	1.4	2.1	1.9	5.6	1.6	1.2	2.0	2.8	9.0	2.9	2.1	8.5
Apr	1.8	1.8	4.4	1.6	2.7	1.7	5.6	1.5	1.3	2.0	2.6	8.7	2.9	1.8	8.8
May	1.9	1.3	4.5	1.9	2.4	1.7	5.9	1.3	1.2	2.0	2.6	8.4	2.7	1.9	7.8
Jun	1.9	1.3	5.3	1.7	2.6	1.3	6.0	1.4	1.3	2.0	2.6	8.5	2.8	1.9	8.9
Jul	2.0	1.3	6.8	2.3	2.5	1.1	6.5	1.6	1.2	2.0	2.7	8.3	2.7	1.7	9.5
Aug	1.7	1.2	9.3	2.2	2.6	0.9	6.1	1.3	1.3	2.0	2.7	7.1	2.3	1.7	10.2
Sep	2.1	1.4	11.0	2.3	2.8	1.2	7.5	1.7	1.6	2.7	2.9	6.4	2.9	1.7	11.5
Oct	2.9	2.2	10.6	2.7	4.0	1.8	8.7	1.8	2.1	2.7	3.0	6.9	3.0	2.3	13.2
Nov	3.2	2.9	11.4	3.2	5.1	2.5	9.3	2.2	2.6	3.3	3.9	7.2	3.5	2.6	13.7
Dec	3.5	3.1	11.6	3.7	5.5	2.4	9.7	1.9	2.8	3.1	3.9	7.4	3.2	2.8	14.0
2008 Jan	3.1	3.5	11.7	4.1	7.9	3.0	11.3	3.5	3.2	2.9	3.9	7.4	3.1	3.1	15.6
Feb	3.1	3.6	12.2	4.7	7.6	3.3	11.5	3.3	3.2	3.0	4.5	6.7	3.5	3.1	16.5
Mar	3.5	4.4	13.2	4.4	7.1	3.3	11.2	3.6	3.5	3.3	4.4	6.7	3.7	3.6	16.6
Apr	3.4	4.1	13.4	4.3	6.7	3.4	11.6	3.3	3.4	2.6	4.4	6.8	3.3	3.6	17.4
May	3.8*	5.1	14.0	4.6	6.8	3.6	11.4	4.1	3.7	3.1	4.9	6.9	3.7	3.7	17.7
Jun

	Lithuania	Luxembourg	Malta	Netherlands	Poland	Portugal	Romania	Slovakia	Slovenia	Spain	Sweden	United Kingdom ¹	EICP ² EU 25 average ³	EICP ² EU 27 average ³	Monetary Union Area average ⁴
	D7RT	D7SU	D7RU	D7SV	D7RV	D7SX	GHY7	D7RW	D7RX	D7SY	D7SZ	D7G7	D7RY	GJ2E	D7SR
2005	2.7	3.8	2.5	1.5	2.2	2.1	9.1	2.8	2.5	3.4	0.8	2.1	2.2	..	2.2
2006	3.8	3.0	2.6	1.7	1.3	3.0	6.6	4.3	2.5	3.6	1.5	2.3	2.2	..	2.2
2007	5.8	2.7	0.7	1.6	2.6	2.4	4.9	1.9	3.8	2.8	1.7	2.3	..	2.4	2.1
2006 Jun	3.7	3.9	3.3	1.8	1.5	3.5	7.2	4.5	3.0	4.0	1.9	2.5	2.4	..	2.5
Jul	4.4	3.4	3.6	1.7	1.4	3.0	6.2	5.0	1.9	4.0	1.8	2.4	2.4	..	2.4
Aug	4.3	3.1	3.0	1.9	1.7	2.7	6.1	5.0	3.1	3.8	1.6	2.5	2.3	..	2.3
Sep	3.3	2.0	3.1	1.5	1.4	3.0	5.5	4.5	2.5	2.9	1.2	2.4	1.9	..	1.8
Oct	3.7	0.6	1.7	1.3	1.1	2.6	4.8	3.1	1.5	2.6	1.2	2.4	1.8	..	1.6
Nov	4.4	1.8	0.9	1.6	1.3	2.4	4.7	3.7	2.4	2.7	1.5	2.7	2.1	..	1.9
Dec	4.5	2.3	0.8	1.7	1.4	2.5	4.9	3.7	3.0	2.7	1.4	3.0	2.2	..	1.9
2007 Jan	4.0	2.3	1.2	1.2	1.6	2.6	4.1	2.2	2.8	2.4	1.6	2.7	..	2.1	1.8
Feb	4.4	1.8	0.8	1.4	1.9	2.3	3.9	2.0	2.3	2.5	1.7	2.8	..	2.2	1.9
Mar	4.8	2.4	0.5	1.9	2.4	2.4	3.7	2.1	2.6	2.5	1.6	3.1	..	2.3	1.9
Apr	4.9	2.5	-1.1	1.9	2.2	2.8	3.8	2.0	2.9	2.5	1.6	2.8	..	2.2	1.9
May	5.0	2.3	-1.0	2.0	2.3	2.4	3.9	1.5	3.1	2.4	1.2	2.5	..	2.1	1.9
Jun	5.0	2.3	-0.6	1.8	2.6	2.4	3.9	1.5	3.8	2.5	1.3	2.4	..	2.2	1.9
Jul	5.1	2.0	-0.2	1.4	2.5	2.3	4.1	1.2	4.0	2.3	1.4	1.9	..	2.0	1.8
Aug	5.6	1.9	0.6	1.1	2.1	1.9	5.0	1.2	3.4	2.2	1.2	1.8	..	1.9	1.7
Sep	7.1	2.5	0.9	1.3	2.7	2.0	6.1	1.7	3.6	2.7	1.6	1.8	..	2.3	2.1
Oct	7.6	3.6	1.6	1.6	3.1	2.5	6.9	2.4	5.1	3.6	1.9	2.1	..	2.7	2.6
Nov	7.9	4.0	2.9	1.8	3.7	2.8	6.8	2.3	5.7	4.1	2.4	2.1	..	3.1	3.1
Dec	8.2	4.3	3.1	1.6	4.2	2.7	6.7	2.5	5.7	4.3	2.5	2.1	..	3.2	3.1
2008 Jan	10.0	4.2	3.8	1.8	4.4	2.9	7.3	3.2	6.4	4.4	3.0	2.2	..	3.4	3.2
Feb	10.9	4.2	4.0	2.0	4.6	2.9	8.0	3.4	6.4	4.4	2.9	2.5	..	3.5	3.3
Mar	11.4	4.4	4.3	1.9	4.4	3.1	8.7	3.6	6.6	4.6	3.2	2.5	..	3.7	3.6
Apr	11.9	4.3	4.1	1.7	4.3	2.5	8.7	3.7	6.2	4.2	3.2	3.0	..	3.6	3.3
May	12.3	4.8	4.1	2.1*	4.3	2.8	8.5	4.0	6.2	4.7	3.9	3.3	..	4.0*	3.7*
Jun	3.8	4.0*

Key: - zero or negligible .. Not available * Provisional

† Date of earliest revision † Estimated

1 Published as the CPI in the UK.

2 The EICP (European Index of Consumer Prices) is the official EU aggregate. It covers 15 member states until April 2004, 25 member states from May 2004, and 27 members from Jan 2007, the new member states being integrated using a chain index formula.

The EU 25 annual average for 2004 is calculated from the EU 15 average from January to April and the EU 25 average from May to December.

3 The coverage of the European Union was extended to include Cyprus, Czech Republic, Estonia, Hungary, Latvia, Lithuania, Malta, Poland, Slovakia and Slovenia from 1 May 2004 and Bulgaria and Romania from 1 Jan 2007.

4 The coverage of the Monetary Union Area index was extended to include Greece with effect from Jan 2001.

Sources: National Statistics; Eurostat

	Weights	Index (January 1987=100)						Percentage change over 12 months						Percentage change over 1 month
		2008											2008 Jun	
			2008 Jan	2008 Feb	2008 Mar	2008 Apr	2008 May	2008 Jun	2008 Jan	2008 Feb	2008 Mar	2008 Apr		2008 May
ALL ITEMS	1 000	209.8	211.4	212.1	214.0	215.1	216.8	4.1	4.1	3.8	4.2	4.3	4.6	0.8
Food and catering	158	190.2	191.0	191.7	193.7	196.0	199.2	5.7	5.4	5.3	6.0	6.8	8.0	1.6
Alcohol and tobacco	86	258.0	260.2	261.2	267.9	268.9	269.1	2.7	3.1	2.9	4.3	4.6	4.5	0.1
Housing and household expenditure	417	252.6	255.5	256.0	258.0	258.3	260.2	5.0	5.1	4.4	5.0	4.8	4.5	0.7
Personal expenditure	83	130.7	132.0	133.0	133.4	133.5	132.8	0.5	0.5	0.4	-0.3	-0.4	-0.8	-0.5
Travel and leisure	256	186.7	187.2	188.0	188.9	190.7	192.9	3.3	3.2	3.5	3.2	3.5	4.6	1.2
Consumer durables ¹	104	89.8	91.2	92.6	91.7	92.7	94.4	-1.4	-1.0	-2.6	-1.9	-1.8	-1.5	1.8
Seasonal food	20	159.9	157.0	156.8	161.8	166.7	171.2	7.8	4.3	4.3	6.1	7.6	8.8	2.7
Food excluding seasonal	91	172.2	173.8	174.8	176.0	178.0	181.7	6.4	6.6	6.4	7.1	7.8	9.8	2.1
All items excluding seasonal food	980	211.1	212.8	213.5	215.3	216.3	218.0	4.0	4.1	3.8	4.1	4.2	4.5	0.8
All items excluding food	889	216.8	218.5	219.2	221.1	221.9	223.3	3.8	3.8	3.5	3.9	3.9	4.0	0.6
All goods	474	158.8	160.0	161.4	162.6	164.3	166.7	3.3	3.3	3.1	3.6	4.1	5.0	1.5
All services	372	261.9	264.6	265.2	267.9	269.0	269.6	2.8	3.6	3.8	4.3	4.7	4.9	0.2
Other indices														
All items excluding:														
mortgage interest payments (RPIX)	940	202.7	204.3	205.3	207.2	208.7	210.4	3.4	3.7	3.5	4.0	4.4	4.8	0.8
housing	746	185.2	187.0	188.2	189.6	191.2	193.2	2.9	3.3	3.2	3.8	4.3	5.0	1.0
mortgage interest payments and indirect taxes (RPIY) ²		193.5	195.2	196.3	197.5	199.0	200.8	3.3	3.6	3.6	3.9	4.4	4.9	0.9
mortgage interest payments and council tax	901	199.7	201.3	202.4	204.0	205.5	207.2	3.4	3.7	3.5	4.0	4.4	4.9	0.8
mortgage interest payments and depreciation ³	885	195.7	197.3	198.5	200.4	201.9	203.7	3.1	3.5	3.4	3.9	4.3	4.9	0.9
Food	111	170.5	171.3	172.0	174.0	176.6	180.5	6.6	6.1	6.0	6.9	7.8	9.7	2.2
Bread	5	194.5	196.9	195.8	199.4	202.5	205.6	14.3	15.1	11.9	13.0	14.7	16.8	1.5
Cereals	4	153.2	154.8	158.3	160.2	165.0	170.0	6.9	6.5	7.9	9.1	11.1	12.7	3.0
Biscuits and cakes	6	183.4	186.1	185.1	185.7	185.3	193.6	7.0	8.3	6.1	6.9	6.1	11.0	4.5
Beef	4	141.2	145.9	148.3	154.5	156.5	167.5	-1.5	3.0	3.6	9.0	10.9	17.6	7.0
Lamb	2	187.3	187.3	188.9	196.2	205.5	211.0	-1.1	-0.7	-0.6	5.1	6.7	10.2	2.7
of which home-killed lamb	1	187.0	186.9	194.4	204.1	220.4	228.1	-3.3	-0.9	2.2	6.6	11.8	14.6	3.5
imported lamb	1	183.5	183.8	179.5	184.3	186.4	189.6	1.1	-0.5	-3.3	3.5	1.2	5.2	1.7
Pork	1	164.2	164.1	162.8	174.9	176.7	180.0	3.1	4.2	3.4	11.2	10.9	13.6	1.9
Bacon	2	190.7	190.9	188.7	189.4	202.0	203.9	0.5	0.5	0.1	0.5	10.9	10.0	0.9
Poultry	4	117.6	119.2	121.0	122.4	125.4	133.1	9.9	6.0	9.1	7.4	12.7	16.8	6.1
Other meat	7	151.3	151.5	152.4	152.7	157.7	160.5	2.0	1.7	1.5	2.6	5.6	7.0	1.8
Fish	4	180.9	179.0	179.1	183.1	187.3	180.8	6.3	3.1	3.2	5.5	7.9	2.8	-3.5
of which fresh fish	2	196.3	187.6	183.1	189.3	196.3	188.0	9.8	0.8	-1.6	0.2	4.4	-1.4	-4.2
processed fish	2	166.4	170.2	174.2	176.4	178.1	173.3	2.7	5.3	7.9	10.9	11.3	7.0	-2.7
Butter	1	236.8	236.9	234.6	229.3	229.0	227.1	36.2	36.3	34.9	32.2	31.9	31.5	-0.8
Oils and fats	1	154.1	153.4	154.4	154.1	161.8	177.8	5.5	6.2	6.6	7.8	12.9	23.6	9.9
Cheese	3	193.6	201.1	205.4	204.2	206.3	209.8	9.7	15.6	16.2	15.8	16.3	18.7	1.7
Eggs	1	232.8	234.2	238.4	241.2	250.8	249.4	30.3	30.8	31.6	33.3	38.8	37.1	-0.6
Milk, fresh	5	220.3	219.8	219.4	219.2	220.8	231.8	16.6	16.7	14.3	13.5	14.2	19.4	5.0
Milk products	4	165.2	166.5	167.8	168.1	168.3	167.9	13.9	14.7	12.8	13.4	11.6	11.2	-0.2
Tea	1	155.4	164.2	163.2	161.0	166.1	169.3	-1.2	2.2	1.2	2.4	2.5	6.8	1.9
Coffee and other hot drinks	1	124.0	126.0	125.3	125.3	126.1	126.2	1.3	1.0	-0.3	-0.6	0.6	0.7	0.1
Soft drinks	12	200.2	202.7	203.7	204.2	204.7	204.7	3.7	3.0	3.2	2.5	2.0	1.8	-
Sugar and preserves	1	167.9	168.4	167.2	170.1	170.8	174.6	4.1	3.3	3.1	4.7	4.2	5.6	2.2
Sweets and chocolates	10	207.2	207.0	209.7	211.2	211.8	211.9	6.7	5.8	6.8	6.1	6.1	6.2	-
Potatoes	5	168.7	172.9	171.1	175.0	176.5	188.9	6.1	4.1	2.0	5.1	3.5	9.8	7.0
of which unprocessed potatoes	2	167.7	167.1	168.5	174.8	179.4	198.1	11.3	7.0	5.4	7.8	7.6	16.9	10.4
potato products	3	161.6	168.8	164.9	167.1	166.5	174.3	2.7	2.1	-0.4	3.1	0.8	4.9	4.7
Vegetables other than potatoes	9	157.5	156.5	156.4	160.0	165.1	164.5	7.7	5.4	4.7	3.6	8.8	6.3	-0.4
of which fresh vegetables	7	141.1	139.8	139.1	142.7	148.5	148.0	7.0	4.0	2.8	1.1	7.6	4.7	-0.3
processed vegetables	2	207.2	208.3	211.5	214.3	214.4	213.8	10.2	10.3	11.6	12.7	13.2	12.1	-0.3
Fruit	8	153.3	148.9	148.9	153.4	155.1	163.4	4.0	0.7	2.8	7.3	2.7	7.4	5.4
of which fresh fruit	7	151.4	146.8	146.4	151.9	153.4	162.2	5.1	1.7	3.9	9.4	3.6	8.6	5.7
processed fruit	1	148.9	145.8	148.8	146.0	149.1	152.9	-2.7	-4.9	-3.3	-4.9	-2.8	-0.4	2.5
Other foods	10	156.7	155.9	157.0	157.6	158.7	161.2	3.9	2.7	2.7	3.5	3.9	5.4	1.6
Catering	47	258.6	259.3	260.0	262.0	263.2	264.0	3.6	3.7	3.6	4.1	4.2	4.3	0.3
Restaurant meals	26	251.3	252.1	253.1	255.6	256.7	257.6	2.9	3.2	3.2	3.9	4.0	4.2	0.4
Canteen meals	4	319.8	321.4	322.2	322.9	324.7	324.7	4.1	4.3	4.3	4.1	4.1	3.8	-
Take-aways and snacks	17	249.3	249.9	250.2	251.7	252.7	253.7	4.2	4.2	4.1	4.2	4.5	4.5	0.4
Alcoholic drink	59	220.1	221.6	222.4	228.6	229.8	230.0	2.3	2.6	2.2	4.3	4.7	4.5	0.1
Beer	31	240.6	242.9	243.9	250.2	250.9	251.1	2.5	3.1	2.7	4.1	4.2	4.2	0.1
on sales	26	263.0	264.9	267.0	272.9	273.5	274.1	3.2	3.5	3.5	4.7	4.5	4.7	0.2
off sales	5	145.1	148.2	146.1	152.5	153.5	152.2	-1.6	0.2	-1.9	0.4	1.9	1.4	-0.8
Wines and spirits	28	193.4	194.2	194.8	200.7	202.3	202.5	2.2	2.1	1.7	4.5	5.3	4.8	0.1
on sales	15	245.6	246.2	247.4	252.6	253.7	254.5	2.7	2.7	2.8	4.1	4.2	4.3	0.3
off sales	13	159.0	159.9	160.2	166.6	168.6	168.4	1.5	1.3	0.3	4.9	6.5	5.3	-0.1

Key: - zero or negligible

Index date for June: 17 June 2008

1 Consumer durables: Furniture, furnishings, electrical appliances and other household equipment, men's, women's and children's outerwear, footwear, audio-visual equipment, CDs and tapes, toys, photographic and sports goods.

2 The taxes excluded are council tax, VAT, duties, vehicle excise duty, insurance tax and air passenger duty. There are no weights available for RPIY.

3 This series has been constructed using the index for all items excluding mortgage interest payments prior to February 1995.

continued

	Weights	Index (January 1987=100)						Percentage change over 12 months						Percentage change over 1 month
		2008	Index (January 1987=100)					Percentage change over 12 months						2008 Jun
			2008 Jan	2008 Feb	2008 Mar	2008 Apr	2008 May	2008 Jun	2008 Jan	2008 Feb	2008 Mar	2008 Apr	2008 May	
Tobacco	27	366.1	370.6	371.7	379.8	379.8	380.0	3.4	4.2	4.5	4.5	4.5	4.5	0.1
Cigarettes	24	374.3	378.9	380.1	388.7	388.7	388.9	3.5	4.3	4.6	4.6	4.6	4.6	0.1
Other tobacco	3	289.9	293.8	294.4	298.8	298.9	299.1	2.8	3.6	3.8	3.7	3.7	3.7	0.1
Housing	254	340.6	341.2	339.0	343.5	341.6	342.0	7.9	6.8	5.8	5.5	4.5	3.4	0.1
Rent	59	293.1	293.1	293.1	297.8	298.2	298.5	3.8	3.7	3.8	3.9	3.8	3.8	0.1
Mortgage interest payments	60	406.5	408.9	398.2	400.4	389.2	391.4	15.6	11.8	8.0	8.0	4.0	0.8	0.6
Depreciation (Jan 1995 = 100)	55	306.3	305.3	304.4	303.7	304.1	304.2	8.3	6.9	6.0	5.2	4.5	3.6	-
Council tax and rates	39	292.0	292.0	292.0	302.6	302.6	302.6	4.0	4.0	4.0	3.6	3.6	3.6	-
Water and other charges	12	377.2	377.2	377.2	401.7	401.7	401.7	6.5	6.5	6.5	6.5	6.5	6.5	-
Repairs and maintenance charges	12	339.5	339.7	340.0	341.2	342.1	343.0	4.8	4.6	4.4	4.2	4.2	4.2	0.3
Do-it-yourself materials	9	170.8	171.9	172.7	172.7	172.3	172.7	4.9	4.8	5.2	5.2	4.8	4.4	0.2
Dwelling insurance and ground rent	8	309.5	314.7	316.9	317.4	318.5	312.5	9.9	11.2	12.7	13.0	12.5	10.7	-1.9
Fuel and light	33	209.7	231.4	233.6	239.8	241.6	242.6	-5.8	3.5	4.7	9.1	12.3	14.9	0.4
Coal and solid fuels	1	217.3	218.3	219.0	219.7	224.2	228.8	8.8	9.0	9.2	9.6	12.4	15.3	2.1
Electricity	16	196.6	217.4	217.4	222.0	222.0	222.0	-4.6	5.2	5.2	8.3	9.6	11.2	-
Gas	13	211.7	239.4	239.4	244.4	244.4	244.4	-13.2	-2.2	-1.4	3.6	7.2	10.3	-
Oil and other fuels	3	335.4	336.1	374.8	408.1	437.6	453.7	42.6	40.0	51.7	59.4	71.5	74.2	3.7
Household goods	66	148.1	150.8	154.9	152.5	155.7	161.7	2.6	2.5	0.7	2.2	2.8	3.7	3.9
Furniture	23	168.0	171.9	186.0	177.0	181.9	202.2	3.4	4.2	0.1	4.2	4.5	5.8	11.2
Furnishings	12	159.7	166.9	164.2	166.1	173.6	170.5	3.7	4.2	3.6	5.3	5.5	6.2	-1.8
Electrical appliances	7	70.6	69.8	69.8	69.8	69.7	69.5	-0.8	-3.9	-5.9	-6.7	-6.1	-5.4	-0.3
Other household equipment	4	144.4	148.6	149.8	149.6	149.7	148.4	3.9	4.2	4.7	3.4	2.6	0.9	-0.9
Household consumables	13	162.2	162.8	163.8	164.4	166.1	167.1	0.4	0.2	0.4	0.6	1.8	2.6	0.6
Pet care	7	179.9	180.7	180.6	179.9	181.6	184.4	5.6	4.6	4.5	3.1	4.5	5.6	1.5
Household services	64	202.8	202.0	202.9	203.3	203.7	203.6	3.3	3.1	3.3	4.3	4.5	4.5	-
Postage	1	212.7	212.7	213.0	226.9	226.9	226.9	6.2	6.2	6.4	6.7	6.7	6.7	-
Telephones, telemessages, etc	21	84.9	84.0	84.0	84.0	84.0	84.6	-3.2	-3.2	-3.3	-2.3	-1.5	-0.4	0.7
Domestic services	13	311.9	311.9	312.9	314.0	315.6	317.4	3.9	3.9	3.9	4.6	4.9	4.8	0.6
Fees and subscriptions	29	314.3	314.1	316.6	316.7	317.6	314.5	8.0	7.5	8.0	9.0	8.9	8.1	-1.0
Clothing and footwear	42	89.8	91.0	91.6	92.0	91.9	90.8	-1.6	-1.5	-2.3	-3.3	-3.5	-4.4	-1.2
Men's outerwear	8	92.1	93.4	94.9	95.5	94.8	94.3	-0.4	-0.6	-0.4	-2.1	-3.0	-3.1	-0.5
Women's outerwear	15	62.3	63.2	63.4	63.4	63.3	61.9	-4.4	-4.4	-6.8	-8.1	-7.9	-9.8	-2.2
Children's outerwear	5	88.6	88.9	89.4	89.4	88.7	87.5	1.4	1.9	2.4	2.1	1.0	0.0	-1.4
Other clothing	6	148.0	148.0	148.8	149.4	150.0	149.7	-0.1	-0.8	-0.6	-1.4	-0.3	-0.7	-0.2
Footwear	8	105.9	108.5	109.4	110.4	111.1	110.6	-0.8	0.2	0.2	-0.1	-0.6	-1.0	-0.5
Personal goods and services	41	217.8	219.1	221.1	221.5	222.3	222.3	2.8	2.8	3.4	3.2	3.3	3.2	-
Personal articles	11	140.4	141.8	144.6	145.0	145.4	145.1	2.9	2.8	3.7	3.9	3.9	3.5	-0.2
Chemists goods	15	193.4	194.9	196.4	196.1	196.5	196.4	1.3	1.4	2.1	1.4	1.8	1.7	-0.1
Personal services	15	380.6	381.1	382.2	384.2	386.1	387.2	4.6	4.6	4.8	4.8	4.7	4.8	0.3
Motoring expenditure	133	194.9	194.5	195.8	197.2	199.6	203.3	5.1	5.1	5.3	4.6	4.9	6.6	1.9
Purchase of motor vehicles	49	101.1	100.8	100.3	100.2	99.8	98.6	-4.2	-4.7	-4.5	-4.5	-4.9	-5.3	-1.2
Maintenance of motor vehicles	19	319.6	320.4	321.7	322.7	324.5	326.2	5.2	5.4	5.5	5.4	5.6	5.4	0.5
Petrol and oil	43	304.8	304.5	313.2	317.9	328.7	349.4	19.0	20.3	20.6	18.0	18.4	24.0	6.3
Vehicle tax and insurance	22	302.4	301.0	298.8	301.9	305.2	306.8	4.6	3.8	2.9	2.0	3.6	3.6	0.5
Fares and other travel costs	20	242.0	245.3	250.2	248.7	254.4	258.3	5.4	3.8	6.6	4.5	3.9	4.2	1.5
Rail fares	5	272.0	273.5	273.1	275.5	274.9	273.7	5.7	4.4	4.8	4.9	4.9	4.2	-0.4
Bus and coach fares	4	282.7	284.0	286.3	287.2	288.9	287.6	4.7	4.8	5.2	5.0	5.7	4.1	-0.4
Other travel costs	11	205.7	209.9	217.1	213.7	222.2	229.0	5.5	3.1	7.8	4.0	2.9	4.2	3.1
Leisure goods	38	87.9	89.1	88.1	87.9	88.1	88.1	-3.4	-2.7	-3.3	-2.9	-2.3	-1.3	-
Audio-visual equipment	8	13.3	13.2	12.8	12.5	12.4	12.3	-20.4	-20.0	-19.5	-18.8	-17.9	-17.4	-0.8
CDs and tapes	4	98.1	100.7	99.5	100.5	100.5	102.5	-3.2	0.8	-0.3	-0.6	-3.1	-0.2	2.0
Toys, photographic and sports goods	10	86.0	85.4	84.8	85.5	85.2	85.2	-3.3	-3.2	-4.8	-3.6	-3.1	-1.7	-
Books and newspapers	10	264.2	274.7	275.8	273.8	279.1	276.2	6.9	6.9	7.5	7.0	8.9	7.9	-1.0
Gardening products	6	147.0	150.0	148.2	148.1	148.3	150.4	1.4	1.1	1.0	1.4	1.6	4.0	1.4
Leisure services	65	280.1	280.8	281.4	283.9	284.6	285.7	3.1	3.1	3.2	3.7	3.9	4.1	0.4
Television licences and rentals	11	169.0	169.0	169.0	170.3	170.3	170.3	1.7	1.7	1.7	1.3	1.3	1.4	-
Entertainment and other recreation	16	381.1	381.8	382.1	387.3	386.9	386.7	6.0	5.1	4.8	5.6	5.4	4.5	-0.1
Foreign holidays (Jan 1993 = 100)	31	175.2	175.9	176.5	178.0	178.9	180.4	2.2	2.6	3.0	3.9	4.3	5.3	0.8
UK holidays (Jan 1994 = 100)	7	172.2	172.2	172.5	173.2	173.7	173.9	2.8	2.8	2.7	2.5	2.4	2.3	0.1

Key: - zero or negligible

Source: National Statistics

9 RPI goods and services¹: the latest three years

Percentage change over 12 months

	Goods components				All goods	Services components				All services
	Food	Alcohol & tobacco	Petrol & oil ²	Other goods ³		Rent	Utilities ⁴	"Shop" services ⁵	"Non-shop" services ⁶	
Weights										
2008	CZGZ 111	CBVW 86	DOHB 46	DOHC 231	DOHD 474	CZXD 59	DOHE 68	DOHF 133	DOHG 112	DOHH 372
Monthly										
2005 Jun	CCYY 2.0	CZBK 2.7	DOGQ 6.6	DOGI -2.3	DOGD 0.2	CZCQ 3.5	DOGF 5.8	DOGG 4.3	DOGH 2.7	DOGE 4.0
Jul	1.4	2.7	11.3	-1.7	0.7	3.8	5.8	4.3	2.7	4.0
Aug	1.7	2.5	13.7	-2.0	0.8	3.8	5.9	4.1	2.0	3.7
Sep	1.5	2.5	18.4	-1.9	1.1	3.8	6.5	4.4	2.0	3.9
Oct	1.0	2.7	14.0	-1.7	0.9	3.2	7.4	4.5	2.1	4.1
Nov	1.3	2.9	8.6	-1.4	0.7	3.2	7.7	4.6	1.8	4.1
Dec	1.1	2.9	8.0	-1.3	0.7	3.2	7.3	4.6	0.6	3.7
2006 Jan	0.8	2.8	13.6	-1.4	1.0	3.0	7.2	4.3	1.3	3.8
Feb	0.8	2.5	12.9	-1.1	1.1	3.0	7.4	4.2	1.2	3.8
Mar	-0.5	3.0	10.1	-1.2	0.6	3.0	8.6	4.1	1.7	4.1
Apr	0.2	2.7	9.6	-1.3	0.7	2.8	9.9	4.2	2.3	4.6
May	0.9	2.7	13.8	-0.8	1.4	2.8	11.7	4.1	1.5	4.6
Jun	1.5	3.2	12.4	-0.5	1.6	2.9	12.9	4.1	1.8	5.0
Jul	2.7	3.0	10.7	-0.9	1.5	3.0	13.8	4.1	1.5	5.0
Aug	2.9	3.4	7.6	-0.2	1.8	3.0	13.9	4.0	1.7	5.1
Sep	3.5	3.4	-3.4	0.4	1.2	2.9	14.2	4.0	2.3	5.3
Oct	4.2	3.3	-7.6	-	0.8	2.9	15.1	4.2	3.3	5.8
Nov	4.5	3.2	-4.6	0.1	1.2	3.0	15.0	4.1	3.9	6.0
Dec	4.1	3.2	0.6	0.4	1.8	3.0	15.0	4.1	4.0	6.1
2007 Jan	3.7	3.6	-2.6	-0.3	1.1	3.3	14.2	4.2	4.6	6.1
Feb	4.0	4.0	-4.3	-	1.2	3.2	13.7	4.3	5.4	6.3
Mar	5.1	4.1	-1.7	0.5	2.0	3.2	12.2	4.4	4.8	5.9
Apr	5.6	4.5	-1.7	0.6	2.1	3.1	8.5	4.1	4.2	4.9
May	4.8	4.1	-2.0	0.6	1.9	3.2	5.3	4.1	5.1	4.6
Jun	4.8	3.7	0.3	0.8	2.2	3.3	3.0	4.2	5.0	4.1
Jul	3.1	3.7	-1.8	-0.2	1.2	3.3	1.3	3.9	5.1	3.7
Aug	3.4	3.5	-2.4	-0.5	0.9	3.2	1.3	4.2	5.8	4.0
Sep	4.2	3.6	2.9	-0.6	1.5	3.3	0.3	4.1	5.0	3.6
Oct	5.1	3.2	11.7	-0.5	2.4	3.7	-2.0	4.1	5.1	3.2
Nov	5.3	3.1	17.4	-0.6	2.8	3.7	-3.1	4.2	4.5	2.7
Dec	6.1	3.0	17.0	-0.9	2.8	3.6	-3.7	4.1	5.3	2.8
2008 Jan	6.6	2.7	20.2	-0.6	3.3	3.8	-3.6	4.2	5.0	2.8
Feb	6.1	3.1	21.4	-0.6	3.3	3.7	0.9	4.2	4.7	3.6
Mar	6.0	2.9	22.3	-1.2	3.1	3.8	1.0	4.1	5.3	3.8
Apr	6.9	4.3	20.3	-0.9	3.6	3.9	3.3	4.4	5.2	4.3
May	7.8	4.6	21.3	-0.8	4.1	3.8	4.6	4.4	5.5	4.7
Jun	9.7	4.5	26.8	-0.6	5.0	3.8	6.0	4.3	5.6	4.9

Key: - zero or negligible

1 All components of the RPI are included in the above breakdown with the exception of mortgage interest payments, council tax and depreciation.

2 Including fuel oil.

3 The 'other goods' category comprises DIY materials, coal & solid fuels, household goods, clothing & footwear, personal articles, chemists goods, purchase of motor vehicles and leisure goods.

4 The 'utilities' category comprises water, electricity, gas, postage, telephone charges and rail fares.

5 The 'shop services' category comprises catering, repairs & maintenance charges, domestic services, personal services, maintenance of motor vehicles, TV licence & rentals and entertainment & recreation charges.

6 The 'non-shop services' category comprises dwelling insurance & ground rent, fees and subscriptions, vehicle tax and insurance, bus & coach fares, other travel costs, foreign holidays and UK holidays.

Source: National Statistics

10 A breakdown of the differences between CPI and RPI

	Difference between annual rates CPI - RPI		Breakdown of differences (unrounded figures) ¹						
	rounded figures	unrounded figures	housing components excluded from CPI			other housing components	other differences in coverage of goods and services	formula effect ²	other differences including weights ³
			total	mortgage interest payments					
	D7G2	D7G3	D7G4	D7G5	D7FU	D7FV	D7FW	D7FX	
2003 Jun	-1.8	-1.82	-1.32	-0.12	-1.20	-0.06	-0.46	0.01	
Jul	-1.8	-1.73	-1.24	-0.12	-1.13	-0.24	-0.43	0.19	
Aug	-1.5	-1.56	-1.08	0.01	-1.09	-0.31	-0.41	0.24	
Sep	-1.4	-1.35	-1.06	0.01	-1.07	0.01	-0.44	0.14	
Oct	-1.2	-1.29	-0.99	0.01	-0.99	0.04	-0.44	0.10	
Nov	-1.2	-1.17	-0.99	-0.02	-0.97	0.19	-0.43	0.07	
Dec	-1.5	-1.51	-1.11	-0.20	-0.91	-0.22	-0.42	0.23	
2004 Jan	-1.2	-1.19	-1.07	-0.21	-0.86	0.02	-0.42	0.28	
Feb	-1.2	-1.23	-1.10	-0.21	-0.89	0.05	-0.43	0.26	
Mar	-1.5	-1.47	-1.47	-0.48	-0.99	0.07	-0.41	0.34	
Apr	-1.4	-1.36	-1.32	-0.50	-0.82	0.08	-0.43	0.30	
May	-1.3	-1.30	-1.36	-0.50	-0.86	0.13	-0.44	0.38	
Jun	-1.4	-1.46	-1.59	-0.69	-0.90	0.14	-0.43	0.42	
Jul	-1.6	-1.66	-1.82	-0.88	-0.94	0.15	-0.42	0.43	
Aug	-1.9	-1.89	-1.96	-1.03	-0.93	0.18	-0.47	0.36	
Sep	-2.0	-1.97	-2.13	-1.18	-0.95	0.20	-0.45	0.42	
Oct	-2.1	-2.07	-2.17	-1.19	-0.99	0.22	-0.46	0.34	
Nov	-1.9	-1.98	-2.11	-1.19	-0.92	0.24	-0.47	0.36	
Dec	-1.8	-1.84	-1.91	-1.00	-0.91	0.24	-0.49	0.32	
2005 Jan	-1.6	-1.55	-1.94	-1.03	-0.92	0.23	-0.48	0.65	
Feb	-1.5	-1.50	-1.92	-1.03	-0.89	0.23	-0.51	0.69	
Mar	-1.3	-1.32	-1.64	-0.86	-0.79	0.22	-0.53	0.62	
Apr	-1.3	-1.22	-1.54	-0.86	-0.68	0.25	-0.52	0.59	
May	-1.0	-1.07	-1.43	-0.85	-0.58	0.27	-0.50	0.60	
Jun	-0.9	-0.87	-1.18	-0.67	-0.51	0.29	-0.52	0.54	
Jul	-0.6	-0.57	-0.89	-0.48	-0.40	0.31	-0.53	0.55	
Aug	-0.4	-0.37	-0.84	-0.48	-0.36	0.33	-0.49	0.64	
Sep	-0.2	-0.20	-0.43	-0.17	-0.27	0.30	-0.52	0.45	
Oct	-0.2	-0.17	-0.37	-0.17	-0.20	0.30	-0.52	0.42	
Nov	-0.3	-0.29	-0.36	-0.16	-0.21	0.27	-0.52	0.32	
Dec	-0.3	-0.30	-0.35	-0.16	-0.19	0.28	-0.51	0.29	
2006 Jan	-0.5	-0.45	-0.29	-0.15	-0.14	0.30	-0.48	0.02	
Feb	-0.4	-0.39	-0.32	-0.15	-0.17	0.30	-0.51	0.14	
Mar	-0.6	-0.51	-0.36	-0.16	-0.20	0.32	-0.55	0.08	
Apr	-0.6	-0.52	-0.33	-0.14	-0.19	0.32	-0.51	-0.01	
May	-0.8	-0.72	-0.32	-0.11	-0.20	0.32	-0.54	-0.19	
Jun	-0.8	-0.75	-0.26	-0.09	-0.17	0.31	-0.52	-0.27	
Jul	-0.9	-0.86	-0.25	-0.09	-0.16	0.28	-0.54	-0.35	
Aug	-0.9	-0.95	-0.25	-0.08	-0.17	0.24	-0.54	-0.39	
Sep	-1.2	-1.22	-0.71	-0.48	-0.23	0.22	-0.56	-0.17	
Oct	-1.3	-1.23	-0.74	-0.49	-0.25	0.24	-0.55	-0.17	
Nov	-1.2	-1.20	-0.73	-0.48	-0.24	0.24	-0.55	-0.16	
Dec	-1.4	-1.46	-0.91	-0.68	-0.24	0.23	-0.56	-0.22	
2007 Jan	-1.5	-1.53	-1.01	-0.72	-0.29	0.23	-0.59	-0.16	
Feb	-1.8	-1.78	-1.21	-0.91	-0.30	0.19	-0.55	-0.21	
Mar	-1.7	-1.75	-1.21	-0.90	-0.31	0.26	-0.57	-0.24	
Apr	-1.7	-1.77	-1.21	-0.91	-0.30	0.21	-0.60	-0.17	
May	-1.8	-1.79	-1.28	-0.94	-0.33	0.19	-0.59	-0.11	
Jun	-2.0	-2.04	-1.49	-1.13	-0.36	0.21	-0.64	-0.12	
Jul	-1.9	-2.00	-1.65	-1.17	-0.47	0.23	-0.54	-0.05	
Aug	-2.3	-2.29	-1.87	-1.38	-0.49	0.24	-0.57	-0.10	
Sep	-2.1	-2.21	-1.62	-1.15	-0.46	0.28	-0.60	-0.27	
Oct	-2.1	-2.15	-1.54	-1.12	-0.41	0.28	-0.60	-0.30	
Nov	-2.2	-2.20	-1.52	-1.12	-0.40	0.29	-0.59	-0.38	
Dec	-1.9	-1.95	-1.30	-0.91	-0.39	0.31	-0.55	-0.41	
2008 Jan	-1.9	-1.87	-1.07	-0.67	-0.39	0.36	-0.59	-0.58	
Feb	-1.6	-1.61	-0.73	-0.47	-0.27	0.36	-0.59	-0.65	
Mar	-1.3	-1.34	-0.49	-0.26	-0.23	0.30	-0.55	-0.60	
Apr	-1.2	-1.21	-0.34	-0.23	-0.11	0.32	-0.52	-0.67	
May	-1.0	-0.95	-0.02	0.01	-0.03	0.32	-0.52	-0.73	
Jun	-0.8	-0.78	0.35	0.23	0.12	0.31	-0.54	-0.90	

1 The differences due to housing, coverage and formula effect are all calculated independently and are not additive.

Source: National Statistics

2 Difference due to use of different formulae to aggregate prices at the most basic level.

3 This difference is derived as a residual.

Chart for Table 1 - June 2008

CPI, RPI and Other Related Indices

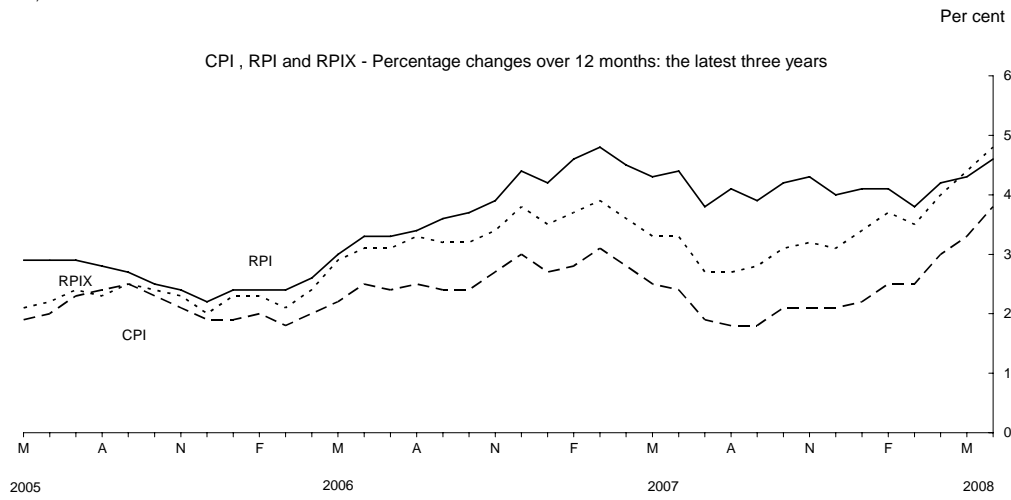


Chart for Table 6 - June 2008

CPI goods and services - Percentage changes over 12 months: the latest three years

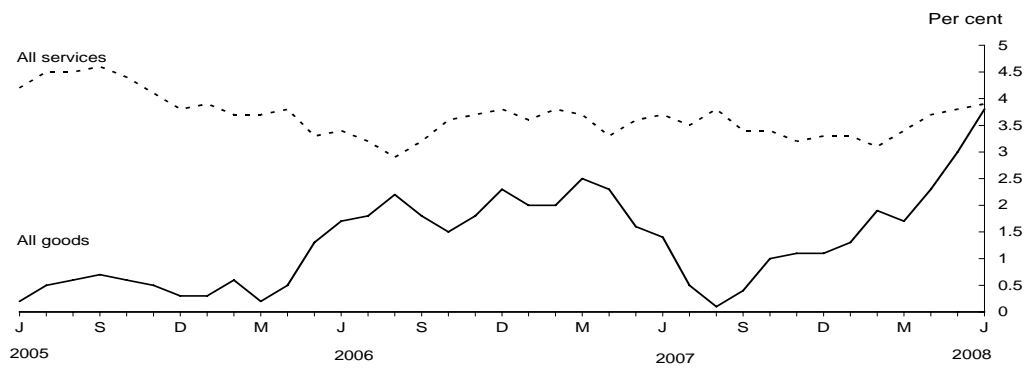


Chart for Table 9 - June 2008

RPI goods and services - Percentage changes over 12 months: the latest three years

