

24 March 2009

Coverage
United Kingdom

Theme
The Economy



Issued by
Office for National Statistics
Cardiff Road
Newport
NP10 8XG

Contact
Media Office
0845 6041858
Public Enquiries
0845 6013034
CPI/RPI Enquiries
01633 456900
CPI/RPI Recorded
Message
01633 456961

Email
cpi@ons.gov.uk

Statistician
Philip Gooding
01633 455896
philip.gooding@ons.gov.uk

www.statistics.gov.uk

Next publication date
21 April 2009

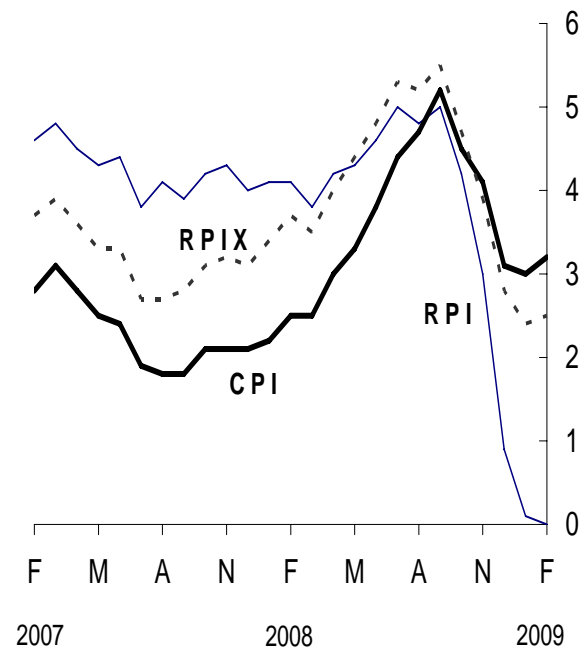
Consumer price indices

February 2009

In the year to February, the consumer prices index (CPI) rose by 3.2 per cent, up from 3.0 per cent in January.

In the year to February, the all items retail prices index (RPI) was unchanged, that is, an annual rate of 0.0 per cent, down from 0.1 per cent in January.

Over the same period, the all items RPI excluding mortgage interest payments index (RPIX) rose by 2.5 per cent, up from 2.4 per cent in January.



| | Consumer prices index (CPI) | | All items retail prices index (RPI) | | All items RPI excluding mortgage interest payments (RPIX) | |
|----------|-----------------------------|--------------------------------|-------------------------------------|--------------------------------|---|--------------------------------|
| | Index (2005 =100) | Per cent change over 12 months | Index (Jan 1987 =100) | Per cent change over 12 months | Index (Jan 1987 =100) | Per cent change over 12 months |
| 2008 Sep | 110.3 | 5.2 | 218.4 | 5.0 | 211.8 | 5.5 |
| Oct | 110.0 | 4.5 | 217.7 | 4.2 | 211.1 | 4.7 |
| Nov | 109.9 | 4.1 | 216.0 | 3.0 | 210.2 | 3.9 |
| Dec | 109.5 | 3.1 | 212.9 | 0.9 | 209.2 | 2.8 |
| 2009 Jan | 108.7 | 3.0 | 210.1 | 0.1 | 207.5 | 2.4 |
| Feb | 109.6 | 3.2 | 211.4 | 0.0 | 209.5 | 2.5 |

Main contributions to the change in the CPI 12-month rate¹

The largest upward contribution to the change in the CPI annual rate came from food and non-alcoholic beverages. The effect was widespread but the largest individual contribution came from vegetables where prices rose by more than a year ago. There were small upward contributions from fruit, mineral waters, soft drinks and juices, bread and cereals, and meat. These effects were partially offset by coffee, tea and cocoa where, overall, prices fell this year but rose a year ago.

There were further large upward contributions from:

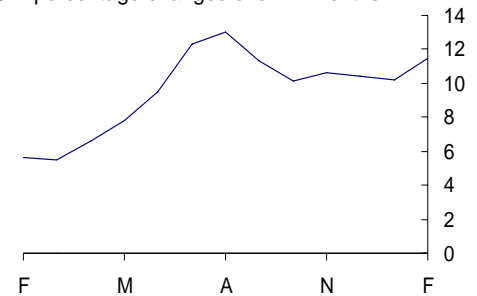
- recreation and culture where, overall, prices rose by more than a year ago. The effect came mainly from games, toys and hobbies where prices rose this year but fell a year ago with upward contributions from computer games and preschool activity toys in particular. A small upward effect came from books, newspapers and stationery and a partially offsetting small downward effect from recording media where the price of pre-recorded DVDs fell this year but rose a year ago
- transport costs, mainly due to the price of fuels and lubricants which rose by more than a year ago. The average price of petrol rose by 3.2 pence per litre between January and February this year, to stand at 89.5 pence, compared with a rise of 0.1 pence last year. Diesel prices rose by 2.1 pence per litre this year compared with a rise of 0.5 pence last year. Within this division, there was an additional small upward effect from passenger transport by sea and inland waterways. Partially offsetting these effects was a large downward contribution from air fares, principally from European and long-haul routes, and a small effect from passenger road transport where prices fell this year but rose a year ago
- furniture, household equipment and maintenance with upward effects from major appliances and non-durable household goods
- clothing and footwear where prices rose by more than a year ago

There were small upward contributions from:

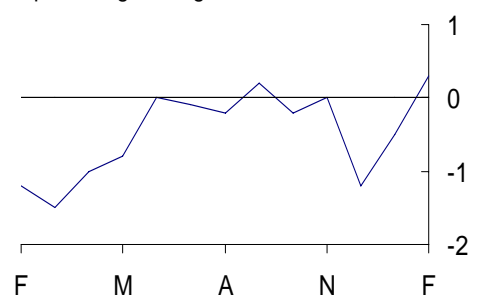
- communication with landline telephone charges falling by less than a year ago
- miscellaneous goods and services where prices rose by more than a year ago particularly for personal effects such as jewellery
- alcoholic beverages and tobacco where an upward contribution from wine was partially offset by a downward contribution from spirits

The only downward contribution to the change in the CPI annual rate came from housing and household services. This was due to gas and electricity bills which were unchanged this year but rose a year ago when many suppliers increased their rates.

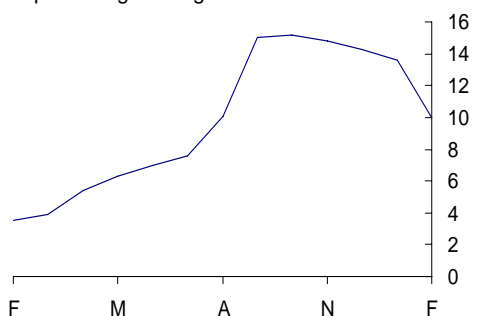
Food and non-alcoholic beverages
CPI percentage changes over 12 months



Recreation and culture
CPI percentage changes over 12 months



Housing and household services
CPI percentage changes over 12 months



¹ The CPI and RPI use different classification systems. Background Note 13 shows how, for each of the two indices, the main categories contributing to changes in the 12-month rate relate to each other

Main contributions to the change in the RPI 12-month rate

The largest downward contribution to the change in the RPI annual rate came from fuel and light. As in the CPI, the effect came from electricity and gas where prices were unchanged this year but rose a year ago.

A further large downward contribution came from housing, principally from mortgage interest payments following January's half point decrease in the Bank rate from 2.0 per cent to 1.5 per cent. There was also a small downward effect from house depreciation with the smoothed DCLG house price index used to calculate this component falling by more than a year ago. Both mortgage interest payments and depreciation are excluded from the CPI.

There was a small downward contribution from fares and other travel costs due to air fares which fell this year but rose a year ago.

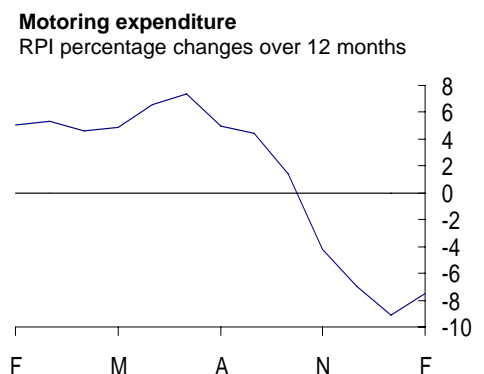
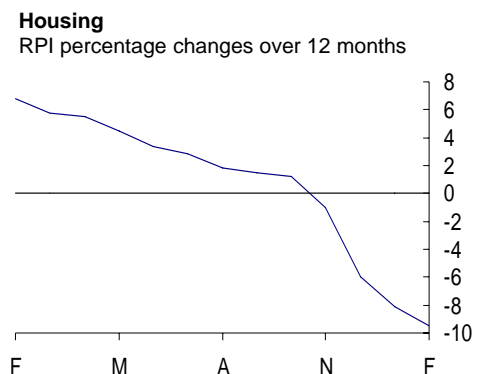
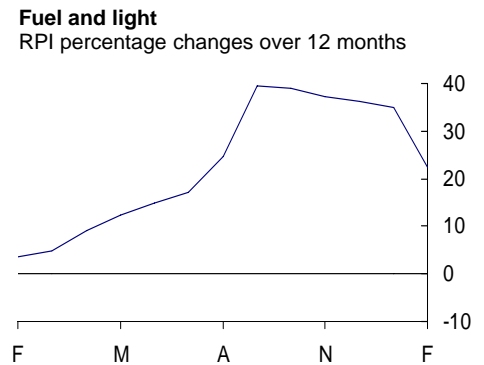
The largest upward contribution to the change in the RPI annual rate came from motoring expenditure principally due to petrol and oil where prices rose this year but fell a year ago. There was also a large upward effect from vehicle tax and insurance due to car insurance premiums rising this year but falling a year ago. Purchase of motor vehicles created a small upward effect principally due to prices falling a year ago.

There were also large upward contributions from:

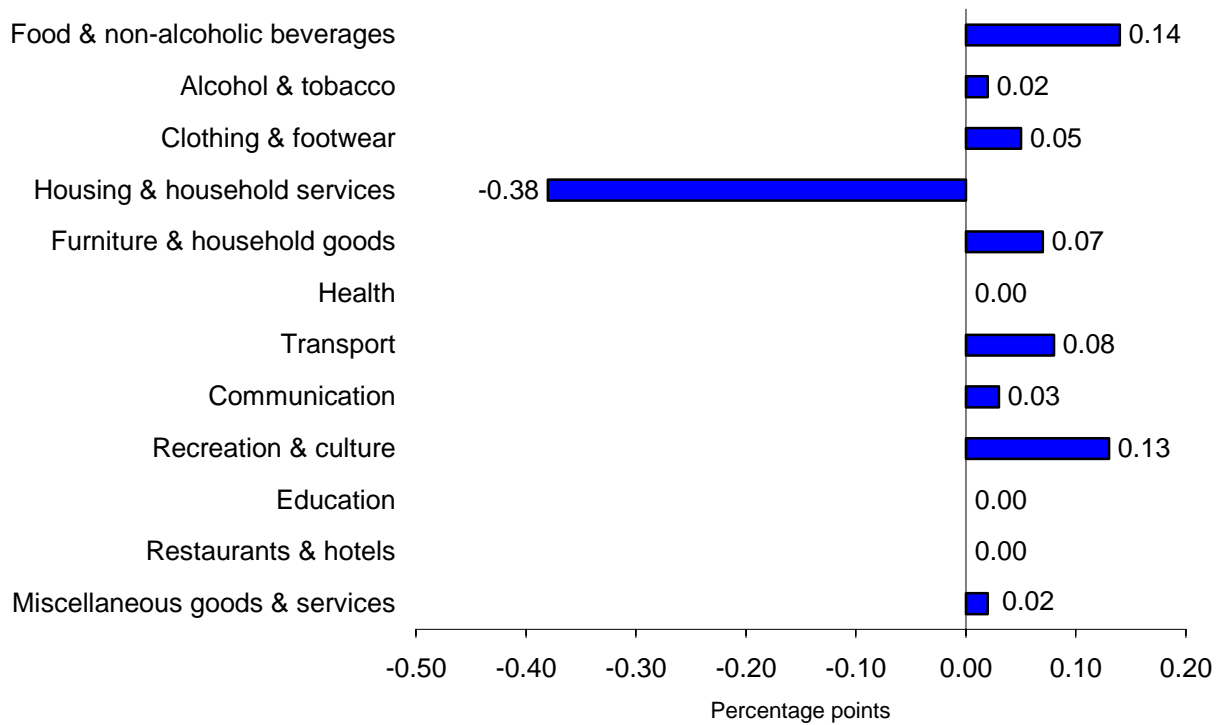
- food where prices rose by more than a year ago. The effect came from a range of products including fresh vegetables other than potatoes, fresh fruit, soft drinks and other foods which includes products such as pizza and mayonnaise
- household goods where prices of electrical appliances rose this year but fell a year ago and prices of household consumables, particularly cleaning products, rose by more than a year ago
- leisure goods due principally to toys, photographic and sports goods where overall prices rose this year but fell a year ago

There were small upward contributions from:

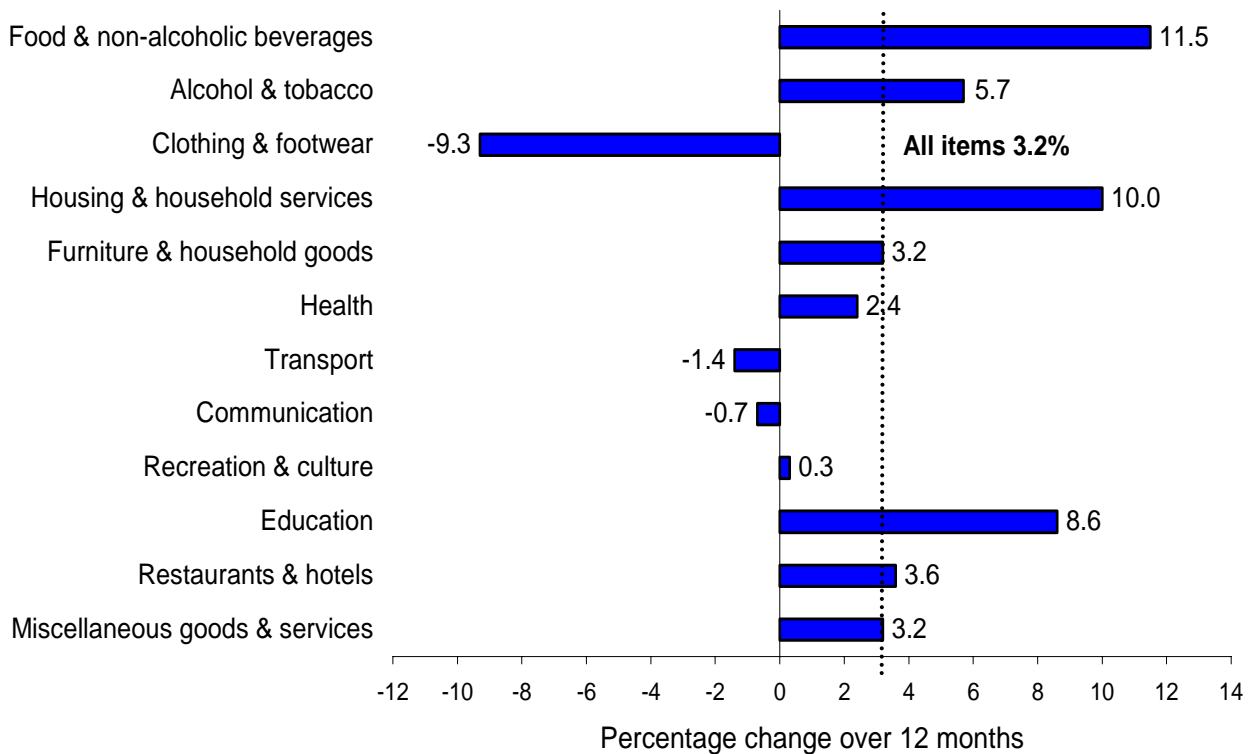
- household services due to landline telephone charges falling by less than a year ago
- clothing and footwear where prices overall rose by more than a year ago
- personal goods and services where prices of personal articles such as jewellery and luggage rose by more than a year ago
- alcoholic drink where prices overall rose by more than a year ago



CPI main contributions¹ to the change in the all items 12-month rate between January 2009 and February 2009 (0.2 percentage points)

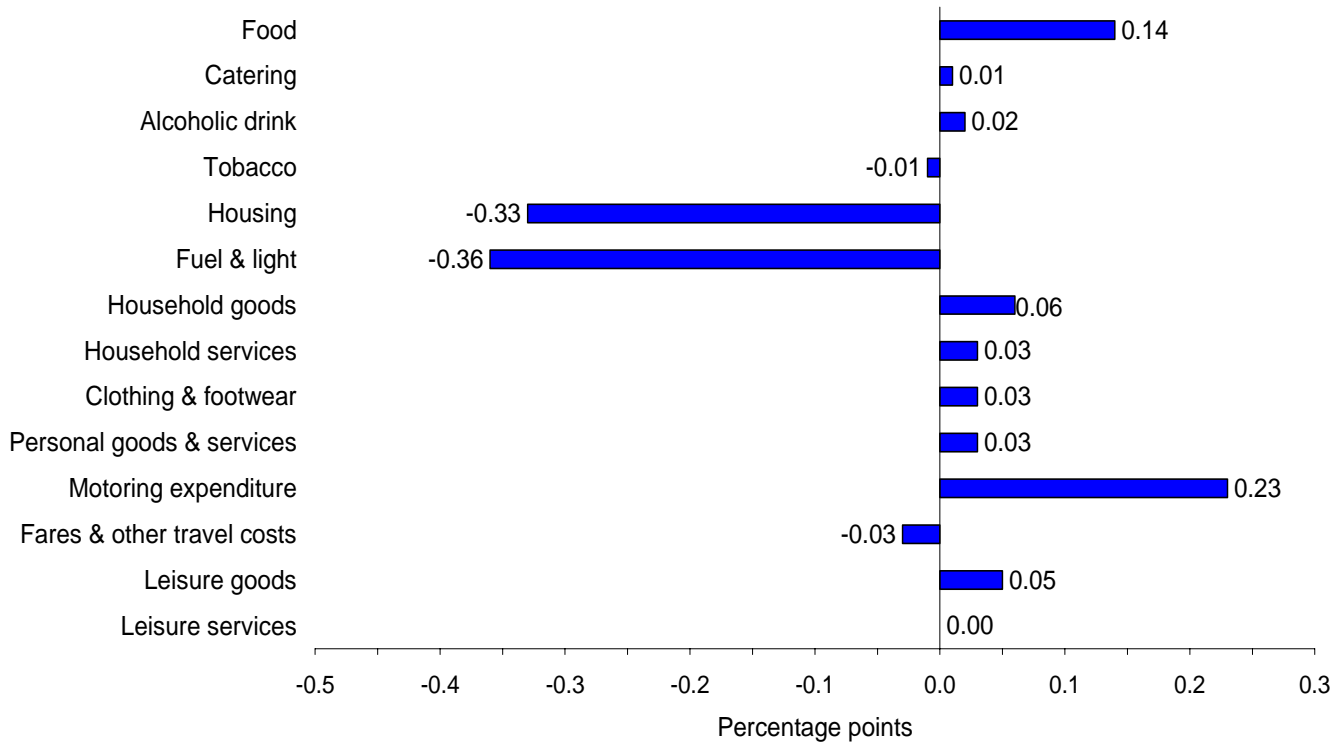


CPI comparison of the 12-month percentage changes

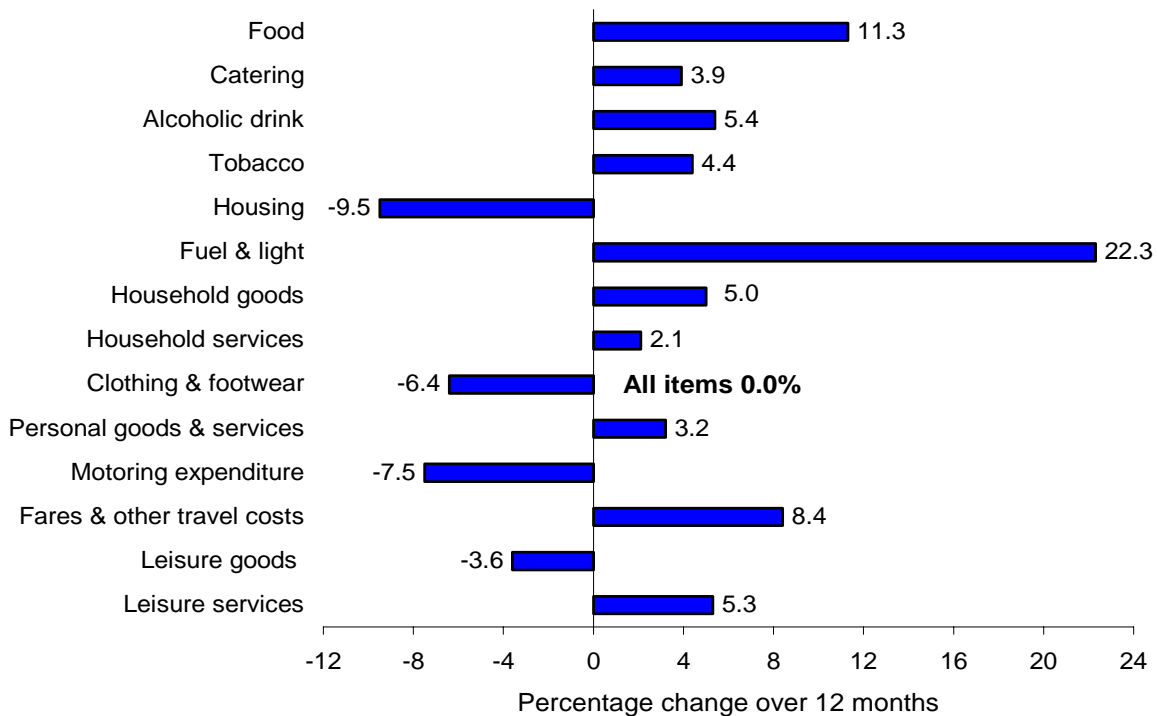


1. Individual contributions may not sum to the total due to rounding.

RPI main contributions¹ to change in the all items 12-month rate between January 2009 and February 2009 (-0.1 percentage points)

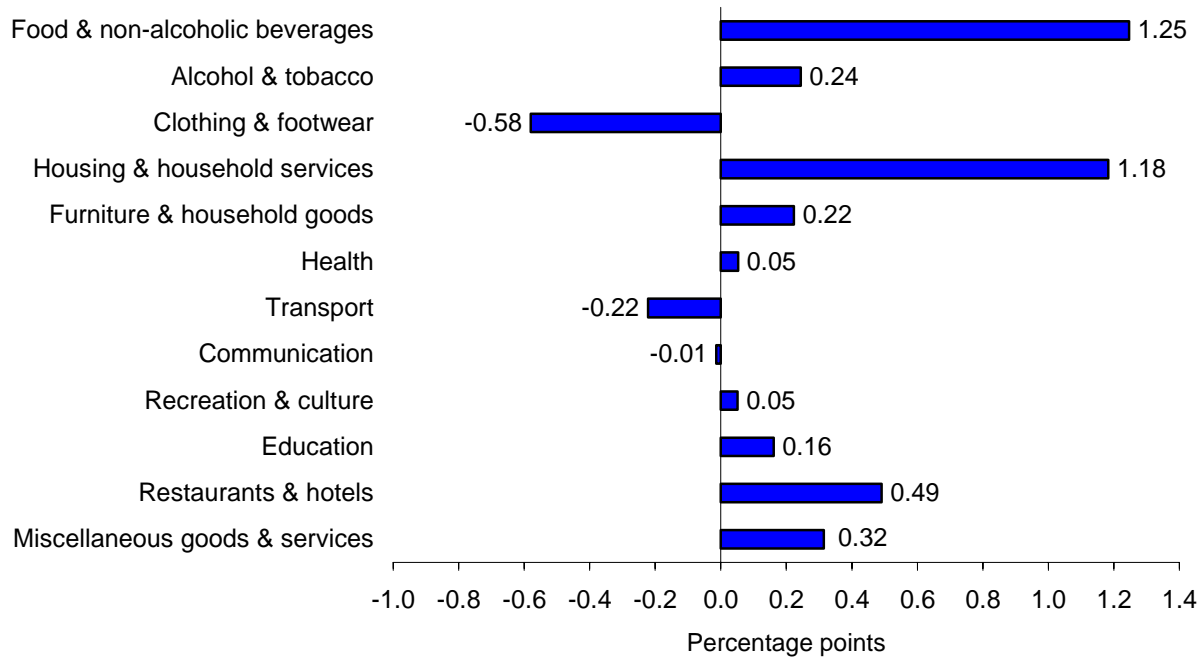


RPI comparison of the 12-month percentage changes



1. Individual contributions may not sum to the total due to rounding.

CPI main contributions¹ to the all items 12-month rate (3.2 percentage points)



Main contributions to the all items 12-month rate (3.2 percentage points)

The largest contribution to the 3.2 per cent 12-month rate came from food and non-alcoholic beverages (1.2 percentage points). Overall prices rose by 11.5 per cent with the largest rises recorded against meat and vegetables.

Housing and household services also contributed 1.2 percentage points. Within this division, gas prices have risen by 33.1 per cent over the year and electricity prices have risen by 18.0 per cent.

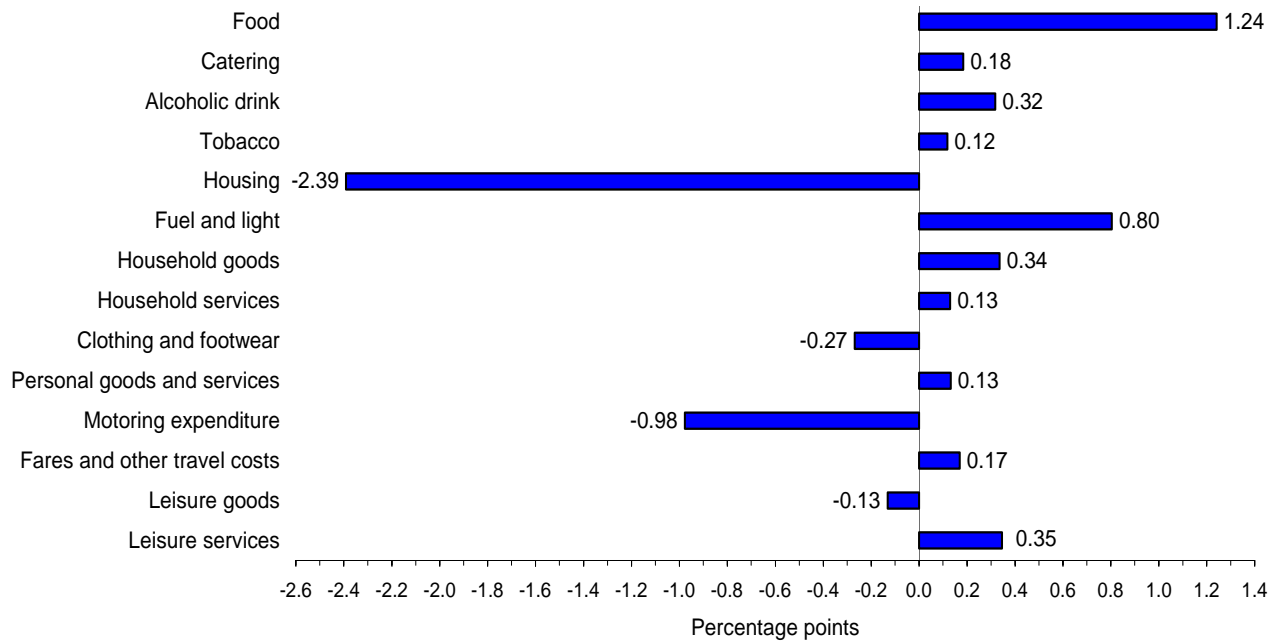
Restaurants and hotels contributed 0.5 percentage points to the 12-month rate. Overall, prices rose by 3.6 per cent with the largest rise of 4.3 per cent recorded against restaurants and cafes.

In contrast, prices of clothing and footwear fell by 9.3 per cent over the 12 months to February and this had a downward pull of 0.6 percentage points on the rate.

Transport costs fell by 1.4 per cent over the twelve months to February. Within this division, the price of fuels and lubricants fell by 12.6 per cent, having a downward pull of 0.5 percentage points on the 12-month rate.

1. Individual contributions may not sum to the total due to rounding.

RPI main contributions¹ to the all items 12-month rate (0.0 percentage points)



Main contributions to the all items 12-month rate (0.0 percentage points)

The largest upward contribution to the 12-month rate came from food which contributed 1.2 percentage points. Overall prices rose by 11.3 per cent with the higher price rises recorded against cereals, beef, lamb, pork, sugar and preserves, unprocessed potatoes and vegetables.

Fuel and light contributed 0.8 percentage points with the largest effects coming from increases in gas and electricity tariffs, where prices rose by 33.8 per cent and 18.0 per cent respectively.

There were offsetting effects from:

- housing which had a downward pull of 2.4 percentage points on the 12-month rate. Prices fell by 9.5 per cent with the main contributions coming from mortgage interest payments and house depreciation
- motoring which had a downward pull of 1.0 percentage points on the 12-month rate. Overall, prices fell by 7.5 per cent over the year due to falls in the price of motor vehicles and petrol

1. Individual contributions may not sum to the total due to rounding.

BACKGROUND NOTES

New this month

1. In line with usual practice, the February 2009 indices include updates to the published RPI weights, and updates to the unpublished CPI and RPI item weights.
2. The basket of goods and services that are priced to compile the CPI and RPI is reviewed annually. Changes to the basket this year, effective from the February indices, were described in an article published on the National Statistics website on Monday 23rd March at <http://www.statistics.gov.uk/cci/article.asp?ID=2156>

Relevance

3. The consumer prices index (CPI) is the main United Kingdom domestic measure of consumer price inflation for macroeconomic purposes. It forms the basis for the Government's inflation target that the Bank of England's Monetary Policy Committee (MPC) is required to achieve.
4. Internationally, the CPI is known as the Harmonised Index of Consumer Prices (HICP). HICPs are calculated in each Member State of the European Union, according to rules specified in a series of European Regulations developed by Eurostat in conjunction with the EU Member States. HICPs are used to compare inflation rates across the European Union. Since January 1999 it has also been used by the European Central Bank (ECB) as the measure of price stability across the euro area.
5. The retail prices index (RPI) is the most long-standing general purpose measure of inflation in the United Kingdom and is available from June 1947. It is used for a variety of purposes by both government and external users including the indexation of various incomes and prices and the uprating of pensions, benefits and index-linked gilts.

Methodology

6. The CPI and the RPI are compiled using the same underlying price data, based on a large and representative selection of around 650 individual goods and services for which price movements are measured in around 150 randomly selected areas throughout the UK. Around 120,000 separate price quotations are used every month to compile the indices. The outlets in which the prices are collected are selected randomly. Expenditure weights are held constant for one year at a time.
7. The selection of goods and services that are priced to compile the CPI and RPI is reviewed annually. The contents of the 2009 basket are described in an article published on the National Statistics website at: <http://www.statistics.gov.uk/cci/article.asp?ID=2156>

The expenditure weights used to compile the indices are also updated each year. Additional details of the updated CPI and RPI weights for 2008 are available from the National Statistics website in an article entitled Consumer Prices Index and Retail Prices Index: Updating Weights for 2008: <http://www.statistics.gov.uk/cci/article.asp?id=1991>

8. Rates of change for the CPI are calculated from unrounded index levels, rather than on the published indices, which are rounded to one decimal place. The use of unrounded indices increases the accuracy of the calculation. The unrounded index levels are available on request. By contrast, rates of change for the RPI are calculated from the published rounded indices.

Reliability

9. Once the RPI indices are published they are never revised. CPI indices are revisable although past revisions have been minimal with the exception of those arising from re-referencing of the CPI to 2005=100, which took place with the publication of the January 2006 indices.

Comparability

10. The CPI's coverage of goods and services was extended in stages in the areas of health, education, childcare and insurance, with effect from the January 2000, 2001, and 2002 indices. In 2000, there was also a change to the population basis for the weights which was broadened from private households to include expenditure by foreign visitors and residents of institutional households. Further details can be found in a series of articles: http://www.statistics.gov.uk/about/methodology_by_theme/cpi
11. The official CPI series starts in 1996 but estimates for earlier periods are available back to 1988. These estimates are broadly consistent with data from 1996 but should be treated with some caution. The following article provides more detail: <http://www.statistics.gov.uk/cci/article.asp?ID=31>
12. RPI data are available back to 1947 but have been re-referenced on several occasions since then, generally accompanied by changes to the coverage and/or structure of the detailed sub-components. Details of these changes are given in Appendices 1 and 2 of the CPI Technical Manual: <http://www.statistics.gov.uk/statbase/Product.asp?vlnk=2328>

Coherence

13. The CPI and RPI both measure the average change from month to month in the prices of consumer goods and services purchased in the UK. However, they differ in both coverage and methodology. A detailed description of these differences is given in an article entitled "The New Inflation Target: the Statistical Perspective":

www.statistics.gov.uk/StatBase/Product.asp?vlnk=10913. The differences are summarised below:

- In the CPI, the geometric mean is used to combine the individual prices into elementary indices at the most basic level whereas the RPI uses arithmetic means
- The CPI excludes a number of RPI series mainly relating to housing costs (for example, council tax), and in particular to owner occupiers' housing costs (including mortgage interest payments, house depreciation and buildings insurance). In addition, the CPI excludes the annual road fund licence and, from 2006, TV licences which are classified as taxes in the UK National Accounts, and Trades Union subscriptions which by convention are not part of household expenditure
- The CPI includes series for university accommodation fees, foreign students' university tuition fees, and unit trust and stockbrokers' charges, none of which are included in the RPI
- The CPI is categorised according to the international classification system, COICOP (Classification Of Individual Consumption by Purpose). The way in which this maps to the RPI groupings is shown in the following table:

| COICOP Divisions | RPI Groups |
|-----------------------------------|---|
| 01 Food & non-alcoholic beverages | Food |
| 02 Alcohol & tobacco | Alcoholic drink (off sales) Tobacco |
| 03 Clothing & footwear | Clothing & footwear |
| 04 Housing & household services | Housing (exc. Mortgage interest payments, depreciation, council tax & building insurance) Fuel & light |
| 05 Furniture & household goods | Household goods Domestic services |
| 06 Health | Personal goods & services (health-related items) |
| 07 Transport | Motoring expenditure Fares & other travel costs |
| 08 Communication | Household services (exc. domestic services & fees and subscriptions) |
| 09 Recreation & culture | Leisure goods Leisure services |
| 10 Education | Fees & subscriptions (education-related items) |

| | |
|-----------------------------------|--|
| 11 Restaurants & hotels | Catering Alcoholic drink (on sales) |
| 12 Miscellaneous goods & services | Personal goods & services (non health-related items) Fees & subscriptions (non education-related items) |

- The index for the purchase of new cars in the CPI is quality adjusted and based on actual published prices for new cars. New car prices in the RPI are imputed from movements in second hand car prices
- The CPI weights are based on expenditure by all private households, foreign visitors to the UK and residents of institutional households. In the RPI, weights are based on expenditure by private households only, excluding the highest income households and pensioner households mainly dependent on state benefits
- In the construction of the CPI weights, amounts paid out in insurance claims are distributed among the COICOP headings according to the nature of the claims' expenditure, with the residual (the service charge) being allocated to the relevant insurance heading. For the RPI weights, total expenditure (that is, gross of claims paid out) is assigned to the relevant insurance heading

14. A breakdown of the difference between the CPI and RPI annual rates of inflation is shown in Table 10 of the CPI First Release.

Accessibility

15. This release includes the February 2009 data, collected on 17 February 2009. Future publication dates are 21 April, 19 May, 16 June, 14 July, 18 August, 15 September, 13 October, 17 November and 15 December. The European Commission (Eurostat) released figures for the harmonised index of consumer prices (HICP) for the month of February 2009 for EU member states excluding the UK, together with an EU average, on 16 March 2009. Further information on HICP for the European Union, Eurozone and other EU Member States is available from Eurostat's HICP web page:
http://epp.eurostat.ec.europa.eu/pls/portal/url/page/PGP_DS_HICP

Further information

16. A more detailed quality report for this First Release is available at:
<http://www.statistics.gov.uk/CCI/article.asp?ID=1585>
17. A full description of how the CPI and RPI are compiled is given in the Consumer Price Indices Technical Manual 2007 edition:
<http://www.statistics.gov.uk/statbase/Product.asp?vlnk=2328>

General

18. Details of the policy governing the release of new data are available from the press office. Also available is a list of the names of those given pre-publication access to contents of this release.
19. Complete runs of series in this release are available to download free of charge at: <http://www.statistics.gov.uk/timeseries> .
20. **National Statistics** are produced to high professional standards set out in the National Statistics Code of Practice. They undergo regular quality assurance reviews to ensure that they meet customer needs. They are produced free from any political interference. © Crown Copyright 2009

| | Consumer prices index (CPI) ¹ | | Consumer prices index excluding indirect taxes (CPIY) ³ | | Consumer prices index at constant tax rates (CPI-CT) | | All items retail prices index (RPI) | | All items RPI excluding mortgage interest payments and indirect taxes (RPIY) ² | | | |
|----------|--|----------------------------------|--|----------------------------------|--|----------------------------------|-------------------------------------|----------------------------------|---|----------------------------------|---|----------------------------------|
| | Index (2005=100) | Percentage change over 12 months | Index (2005=100) | Percentage change over 12 months | Index (2005=100) | Percentage change over 12 months | Index (Jan 13, 1987=100) | Percentage change over 12 months | mortgage interest payments (RPIX) | | mortgage interest payments and indirect taxes (RPIY) ² | |
| | | | | | | | | | Index (Jan 13, 1987=100) | Percentage change over 12 months | Index (Jan 13, 1987=100) | Percentage change over 12 months |
| | D7BT | D7G7 | EL2Q | EL2S | EAC7 | EAD6 | CHAW | CZBH | CHMK | CDKQ | CBZW | CBZX |
| 2006 Feb | 100.9 | 2.0 | 100.9 | 2.1 | 100.8 | 2.0 | 194.2 | 2.4 | 190.1 | 2.3 | 181.4 | 2.3 |
| Mar | 101.1 | 1.8 | 101.1 | 1.9 | 101.1 | 1.7 | 195.0 | 2.4 | 190.8 | 2.1 | 182.2 | 2.2 |
| Apr | 101.7 | 2.0 | 101.7 | 2.1 | 101.6 | 2.0 | 196.5 | 2.6 | 192.3 | 2.4 | 183.2 | 2.3 |
| May | 102.2 | 2.2 | 102.3 | 2.3 | 102.1 | 2.2 | 197.7 | 3.0 | 193.6 | 2.9 | 184.5 | 2.8 |
| Jun | 102.5 | 2.5 | 102.6 | 2.6 | 102.4 | 2.4 | 198.5 | 3.3 | 194.2 | 3.1 | 185.2 | 3.2 |
| Jul | 102.5 | 2.4 | 102.6 | 2.4 | 102.4 | 2.3 | 198.5 | 3.3 | 194.2 | 3.1 | 185.2 | 3.2 |
| Aug | 102.9 | 2.5 | 103.0 | 2.6 | 102.8 | 2.4 | 199.2 | 3.4 | 194.9 | 3.3 | 186.0 | 3.4 |
| Sep | 103.0 | 2.4 | 103.2 | 2.6 | 102.9 | 2.3 | 200.1 | 3.6 | 195.3 | 3.2 | 186.4 | 3.3 |
| Oct | 103.2 | 2.4 | 103.5 | 2.7 | 103.1 | 2.3 | 200.4 | 3.7 | 195.5 | 3.2 | 186.7 | 3.3 |
| Nov | 103.4 | 2.7 | 103.8 | 3.0 | 103.4 | 2.6 | 201.1 | 3.9 | 196.2 | 3.4 | 187.5 | 3.6 |
| Dec | 104.0 | 3.0 | 104.3 | 3.2 | 103.9 | 2.9 | 202.7 | 4.4 | 197.4 | 3.8 | 188.6 | 3.9 |
| 2007 Jan | 103.2 | 2.7 | 103.5 | 2.9 | 103.1 | 2.6 | 201.6 | 4.2 | 196.1 | 3.5 | 187.3 | 3.7 |
| Feb | 103.7 | 2.8 | 103.9 | 2.9 | 103.5 | 2.6 | 203.1 | 4.6 | 197.1 | 3.7 | 188.4 | 3.9 |
| Mar | 104.2 | 3.1 | 104.3 | 3.1 | 103.9 | 2.9 | 204.4 | 4.8 | 198.3 | 3.9 | 189.5 | 4.0 |
| Apr | 104.5 | 2.8 | 104.6 | 2.9 | 104.2 | 2.6 | 205.4 | 4.5 | 199.3 | 3.6 | 190.0 | 3.7 |
| May | 104.8 | 2.5 | 105.0 | 2.6 | 104.5 | 2.3 | 206.2 | 4.3 | 200.0 | 3.3 | 190.7 | 3.4 |
| Jun | 105.0 | 2.4 | 105.2 | 2.5 | 104.7 | 2.2 | 207.3 | 4.4 | 200.7 | 3.3 | 191.4 | 3.3 |
| Jul | 104.4 | 1.9 | 104.6 | 2.0 | 104.1 | 1.7 | 206.1 | 3.8 | 199.4 | 2.7 | 190.1 | 2.6 |
| Aug | 104.7 | 1.8 | 105.0 | 1.9 | 104.5 | 1.6 | 207.3 | 4.1 | 200.1 | 2.7 | 190.9 | 2.6 |
| Sep | 104.8 | 1.8 | 105.0 | 1.7 | 104.5 | 1.6 | 208.0 | 3.9 | 200.8 | 2.8 | 191.6 | 2.8 |
| Oct | 105.3 | 2.1 | 105.5 | 1.9 | 104.9 | 1.8 | 208.9 | 4.2 | 201.6 | 3.1 | 192.3 | 3.0 |
| Nov | 105.6 | 2.1 | 105.8 | 1.9 | 105.2 | 1.8 | 209.7 | 4.3 | 202.4 | 3.2 | 193.2 | 3.0 |
| Dec | 106.2 | 2.1 | 106.4 | 2.0 | 105.8 | 1.9 | 210.9 | 4.0 | 203.5 | 3.1 | 194.4 | 3.1 |
| 2008 Jan | 105.5 | 2.2 | 105.7 | 2.1 | 105.1 | 2.0 | 209.8 | 4.1 | 202.7 | 3.4 | 193.5 | 3.3 |
| Feb | 106.3 | 2.5 | 106.5 | 2.5 | 105.9 | 2.3 | 211.4 | 4.1 | 204.3 | 3.7 | 195.2 | 3.6 |
| Mar | 106.7 | 2.5 | 107.0 | 2.6 | 106.3 | 2.3 | 212.1 | 3.8 | 205.3 | 3.5 | 196.3 | 3.6 |
| Apr | 107.6 | 3.0 | 107.7 | 3.0 | 107.0 | 2.7 | 214.0 | 4.2 | 207.2 | 4.0 | 197.5 | 3.9 |
| May | 108.3 | 3.3 | 108.5 | 3.3 | 107.7 | 3.1 | 215.1 | 4.3 | 208.7 | 4.4 | 199.0 | 4.4 |
| Jun | 109.0 | 3.8 | 109.3 | 3.9 | 108.5 | 3.6 | 216.8 | 4.6 | 210.4 | 4.8 | 200.8 | 4.9 |
| Jul | 109.0 | 4.4 | 109.3 | 4.5 | 108.4 | 4.2 | 216.5 | 5.0 | 210.0 | 5.3 | 200.4 | 5.4 |
| Aug | 109.7 | 4.7 | 110.1 | 4.9 | 109.1 | 4.5 | 217.2 | 4.8 | 210.6 | 5.2 | 201.2 | 5.4 |
| Sep | 110.3 | 5.2 | 110.7 | 5.4 | 109.7 | 5.0 | 218.4 | 5.0 | 211.8 | 5.5 | 202.4 | 5.6 |
| Oct | 110.0 | 4.5 | 110.4 | 4.7 | 109.5 | 4.3 | 217.7 | 4.2 | 211.1 | 4.7 | 201.7 | 4.9 |
| Nov | 109.9 | 4.1 | 110.3 | 4.3 | 109.3 | 3.9 | 216.0 | 3.0 | 210.2 | 3.9 | 200.8 | 3.9 |
| Dec | 109.5 | 3.1 | 111.3 | 4.6 | 110.2 | 4.1 | 212.9 | 0.9 | 209.2 | 2.8 | 201.9 | 3.9 |
| 2009 Jan | 108.7 | 3.0 | 110.4 | 4.5 | 109.4 | 4.1 | 210.1 | 0.1 | 207.5 | 2.4 | 200.0 | 3.4 |
| Feb | 109.6 | 3.2 | 111.4 | 4.6 | 110.3 | 4.2 | 211.4 | - | 209.5 | 2.5 | 202.1 | 3.5 |

Key: - zero or negligible

2 The taxes excluded are council tax, VAT, duties, vehicle excise duty, insurance tax and air passenger duty.

1 Inflation rates prior to 1997 and index levels prior to 1996 are estimated. Further details are given in Economic Trends No.541 December 1998. These details are also available on the National Statistics website: www.statistics.gov.uk/cci/article/asp?ID=31

3 The taxes excluded are VAT, duties, insurance premium tax, air passenger duty, stamp duty on share transactions.

Source: National Statistics

2 CPI: Detailed figures for 17 February 2009

| | Percentage change over | | | | Percentage change over | | |
|--|------------------------|-------|---------|--|------------------------|-------|---------|
| | Index (2005 =100) | 1 mth | 12 mths | | Index (2005 =100) | 1 mth | 12 mths |
| CPI (overall index) | 109.6 | 0.9 | 3.2 | | | | |
| 01 Food and non-alcoholic beverages | 124.0 | 1.7 | 11.5 | 06.2 Out-patient services | 113.2 | - | 2.6 |
| 02 Alcoholic beverages and tobacco | 114.2 | 1.5 | 5.7 | 06.2.1/3 Medical services & paramedical services | 110.3 | - | 2.2 |
| 03 Clothing and footwear | 79.4 | 0.8 | -9.3 | 06.2.2 Dental services | 116.5 | 0.1 | 3.0 |
| 04 Housing, water, electricity, gas and other fuels | 131.1 | - | 10.0 | 06.3 Hospital services | 121.2 | 0.2 | 4.1 |
| 05 Furniture, household equipment and maintenance | 104.6 | 2.4 | 3.2 | 07.1 Purchase of vehicles | 93.6 | 0.4 | -5.3 |
| 06 Health | 110.8 | 0.3 | 2.4 | 07.1.1A New cars | 103.0 | 0.5 | -0.2 |
| 07 Transport | 107.6 | 1.0 | -1.4 | 07.1.1B Second-hand cars | 78.0 | - | -15.1 |
| 08 Communication | 93.7 | -0.2 | -0.7 | 07.1.2/3 Motorcycles and bicycles | 111.7 | 1.2 | 13.9 |
| 09 Recreation and culture | 97.5 | 1.1 | 0.3 | 07.2 Operation of personal transport equipment | 111.0 | 1.7 | -4.9 |
| 10 Education | 144.6 | - | 8.6 | 07.2.1 Spare parts and accessories | 107.2 | -0.9 | 2.4 |
| 11 Restaurants and hotels | 112.6 | 0.3 | 3.6 | 07.2.2 Fuels and lubricants | 104.9 | 3.3 | -12.6 |
| 12 Miscellaneous goods and services | 110.5 | 0.5 | 3.2 | 07.2.3 Maintenance and repairs | 120.1 | 0.4 | 4.2 |
| All goods | 106.4 | 1.4 | 2.2 | 07.2.4 Other services | 113.8 | 0.1 | 2.6 |
| All services | 113.6 | 0.2 | 4.2 | 07.3 Transport services | 121.3 | 0.3 | 11.4 |
| 01.1 Food | 125.5 | 1.5 | 12.5 | 07.3.1 Passenger transport by railway | 120.8 | 0.7 | 5.9 |
| 01.1.1 Bread and cereals | 124.6 | 2.0 | 11.2 | 07.3.2 Passenger transport by road | 115.8 | -0.8 | 4.7 |
| 01.1.2 Meat | 122.6 | 1.7 | 15.2 | 07.3.3 Passenger transport by air | 101.6 | -2.1 | 12.3 |
| 01.1.3 Fish | 126.5 | 0.4 | 6.4 | 07.3.4 Passenger transport by sea and inland waterway | 134.0 | 10.8 | 17.4 |
| 01.1.4 Milk, cheese and eggs | 129.8 | 0.8 | 8.1 | 08.1 Postal services | 129.8 | - | 6.9 |
| 01.1.5 Oils and fats | 134.8 | 0.2 | 8.0 | 08.2/3 Telephone and telefax equipment and services | 92.2 | -0.2 | -1.0 |
| 01.1.6 Fruit | 114.4 | 0.5 | 13.0 | 09.1 Audio-visual equipment and related products | 62.3 | 0.2 | -14.4 |
| 01.1.7 Vegetables including potatoes and tubers | 136.3 | 3.0 | 18.6 | 09.1.1 Reception and reproduction of sound and pictures | 61.0 | 0.4 | -11.0 |
| 01.1.8 Sugar, jam, syrups, chocolate and confectionery | 122.1 | 0.9 | 9.6 | 09.1.2 Photographic, cinematographic and optical equipment | 37.3 | 0.9 | -22.7 |
| 01.1.9 Food products (nec) | 115.9 | 2.6 | 13.0 | 09.1.3 Data processing equipment | 47.8 | 1.0 | -20.4 |
| 01.2 Non-alcoholic beverages | 114.5 | 2.5 | 4.4 | 09.1.4 Recording media | 79.3 | -1.0 | -15.1 |
| 01.2.1 Coffee, tea and cocoa | 123.5 | -0.2 | 10.7 | 09.1.5 Repair of audio-visual equipment & related products | 112.0 | 0.3 | 2.0 |
| 01.2.2 Mineral waters, soft drinks and juices | 111.9 | 3.5 | 2.6 | 09.2 Oth. major durables for recreation & culture | 104.3 | 0.2 | 2.3 |
| 02.1 Alcoholic beverages | 108.8 | 2.2 | 6.8 | 09.2.1/2 Major durables for in/outdoor recreation | 104.3 | 0.2 | 2.3 |
| 02.1.1 Spirits | 107.1 | -1.3 | 4.2 | 09.3 Other recreational items, gardens and pets | 97.5 | 1.8 | 0.8 |
| 02.1.2 Wine | 110.4 | 3.0 | 7.8 | 09.3.1 Games, toys and hobbies | 91.0 | 2.5 | -0.1 |
| 02.1.3 Beer | 107.0 | 4.8 | 7.7 | 09.3.2 Equipment for sport and open-air recreation | 95.4 | 0.7 | -1.1 |
| 02.2 Tobacco | 117.7 | 0.9 | 4.4 | 09.3.3 Gardens, plants and flowers | 104.0 | 1.8 | -0.6 |
| 03.1 Clothing | 78.4 | 0.5 | -10.0 | 09.3.4/5 Pets, related products and services | 116.1 | 0.4 | 5.7 |
| 03.1.2 Garments | 76.8 | 0.4 | -11.0 | 09.4 Recreational and cultural services | 114.0 | 0.2 | 3.6 |
| 03.1.3 Other clothing and clothing accessories | 96.2 | 1.8 | 0.3 | 09.4.1 Recreational and sporting services | 118.1 | - | 4.4 |
| 03.1.4 Cleaning, repair and hire of clothing | 113.6 | - | 6.1 | 09.4.2 Cultural services | 112.1 | 0.3 | 3.1 |
| 03.2 Footwear including repairs | 86.2 | 2.3 | -5.1 | 09.5 Books, newspapers and stationery | 115.1 | 4.2 | 4.3 |
| 04.1 Actual rentals for housing | 111.3 | - | 2.9 | 09.5.1 Books | 119.1 | 10.3 | 2.2 |
| 04.3 Regular maintenance and repair of the dwelling | 114.8 | 0.7 | 4.5 | 09.5.2 Newspapers and periodicals | 120.4 | 1.4 | 6.0 |
| 04.3.1 Materials for maintenance and repair | 114.8 | 1.2 | 6.3 | 09.5.3/4 Misc. printed matter, stationery, drawing materials | 103.3 | 1.8 | 3.8 |
| 04.3.2 Services for maintenance and repair | 115.1 | - | 2.4 | 09.6 Package holidays | 108.3 | 0.5 | 6.8 |
| 04.4 Water supply and misc. services for the dwelling | 122.9 | - | 6.5 | 10.0 Education | 144.6 | - | 8.6 |
| 04.4.1 Water supply | 122.2 | - | 5.7 | 11.1 Catering services | 113.1 | 0.5 | 4.0 |
| 04.4.3 Sewerage collection | 123.3 | - | 7.3 | 11.1.1 Restaurants & cafes | 113.2 | 0.4 | 4.3 |
| 04.5 Electricity, gas and other fuels | 177.9 | -0.2 | 22.9 | 11.1.2 Canteens | 112.4 | 0.7 | 2.0 |
| 04.5.1 Electricity | 168.4 | - | 18.0 | 11.2 Accommodation services | 109.6 | -0.4 | 1.0 |
| 04.5.2 Gas | 200.6 | - | 33.1 | 12.1 Personal care | 109.3 | 0.8 | 3.6 |
| 04.5.3 Liquid fuels | 115.8 | -5.6 | -19.4 | 12.1.1 Hairdressing and personal grooming establishments | 112.6 | 0.1 | 2.8 |
| 04.5.4 Solid fuels | 163.3 | 0.1 | 31.3 | 12.1.2/3 Appliances and products for personal care | 108.1 | 1.0 | 3.8 |
| 05.1 Furniture, furnishings and carpets | 105.9 | 1.9 | 4.2 | 12.3 Personal effects (nec) | 111.7 | 2.7 | 4.1 |
| 05.1.1 Furniture and furnishings | 104.7 | 1.8 | 3.7 | 12.3.1 Jewellery, clocks and watches | 116.4 | 2.4 | 5.1 |
| 05.1.2 Carpets and other floor coverings | 108.7 | 2.4 | 4.8 | 12.3.2 Other personal effects | 102.8 | 3.5 | 1.7 |
| 05.2 Household textiles | 90.1 | 4.0 | -2.9 | 12.4 Social protection | 120.4 | 0.1 | 5.0 |
| 05.3 Household appliances, fitting and repairs | 99.5 | 3.6 | 3.3 | 12.5 Insurance | 109.9 | 1.1 | 1.1 |
| 05.3.1/2 Major appliances and small electric goods | 98.2 | 4.1 | 3.3 | 12.5.2 House contents insurance | 99.0 | 1.0 | -9.0 |
| 05.3.3 Repair of household appliances | 109.5 | - | 2.4 | 12.5.3 Health insurance | 124.7 | - | 4.9 |
| 05.4 Glassware, tableware and household utensils | 101.7 | 3.0 | 1.2 | 12.5.4 Transport insurance | 109.3 | 1.9 | 4.6 |
| 05.5 Tools and equipment for house and garden | 104.1 | 0.4 | 1.0 | 12.6 Financial services (nec) | 104.4 | -0.6 | 2.9 |
| 05.6 Goods and services for routine maintenance | 117.4 | 2.6 | 7.3 | 12.6.2 Other financial services (nec) | 104.4 | -0.6 | 2.9 |
| 05.6.1 Non-durable household goods | 116.6 | 4.8 | 9.9 | 12.7 Other services (nec) | 116.3 | - | 1.7 |
| 05.6.2 Domestic services and household services | 116.9 | -0.1 | 4.1 | | | | |
| 06.1 Medical products, appliances and equipment | 102.0 | 0.4 | 1.0 | | | | |
| 06.1.1 Pharmaceutical products | 103.1 | 0.5 | 1.3 | | | | |
| 06.1.2/3 Other medical and therapeutic equipment | 101.1 | 0.3 | 0.5 | | | | |

Key: - zero or negligible .. not available (nec) not elsewhere covered

Source: National Statistics

3 CPI: Detailed figures by divisions, groups and classes

| | Weights | Index (2005=100) | | | | | | Percentage change over 12 months | | | | | |
|--|---------|------------------|-------------|-------------|-------------|-------------|-------------|----------------------------------|-------------|-------------|-------------|-------------|-------------|
| | | 2009 | 2008 Sep | 2008 Oct | 2008 Nov | 2008 Dec | 2009 Jan | 2009 Feb | 2008 Sep | 2008 Oct | 2008 Nov | 2008 Dec | 2009 Jan |
| CPI (overall index) | 1 000 | 110.3 | 110.0 | 109.9 | 109.5 | 108.7 | 109.6 | 5.2 | 4.5 | 4.1 | 3.1 | 3.0 | 3.2 |
| 01 Food and non-alcoholic beverages | 118 | 119.6 | 120.1 | 121.8 | 122.7 | 122.0 | 124.0 | 11.3 | 10.1 | 10.6 | 10.4 | 10.2 | 11.5 |
| 02 Alcoholic beverages and tobacco | 44 | 111.7 | 111.4 | 110.6 | 110.4 | 112.5 | 114.2 | 4.3 | 4.4 | 4.0 | 4.4 | 5.3 | 5.7 |
| 03 Clothing and footwear | 57 | 86.8 | 86.3 | 86.3 | 82.7 | 78.8 | 79.4 | -6.2 | -6.7 | -7.1 | -10.3 | -10.0 | -9.3 |
| 04 Housing, water, electricity, gas and other fuels | 126 | 131.1 | 131.6 | 131.5 | 131.1 | 131.1 | 131.1 | 15.0 | 15.2 | 14.8 | 14.3 | 13.6 | 10.0 |
| 05 Furniture, household equipment and maintenance | 66 | 105.1 | 104.0 | 104.7 | 105.0 | 102.1 | 104.6 | 2.9 | 3.1 | 3.0 | 0.8 | 2.2 | 3.2 |
| 06 Health | 22 | 110.2 | 110.4 | 111.0 | 109.9 | 110.5 | 110.8 | 2.9 | 2.6 | 3.5 | 2.1 | 2.2 | 2.4 |
| 07 Transport | 151 | 113.8 | 111.3 | 108.4 | 108.9 | 106.5 | 107.6 | 7.6 | 4.3 | 1.3 | 0.1 | -1.9 | -1.4 |
| 08 Communication | 23 | 94.1 | 94.1 | 94.8 | 92.9 | 93.8 | 93.7 | -2.7 | -2.2 | -1.5 | -3.4 | -2.0 | -0.7 |
| 09 Recreation and culture | 145 | 97.8 | 97.4 | 97.6 | 96.8 | 96.5 | 97.5 | 0.2 | -0.2 | 0.0 | -1.2 | -0.5 | 0.3 |
| 10 Education | 21 | 136.2 | 144.6 | 144.6 | 144.6 | 144.6 | 144.6 | 10.8 | 8.6 | 8.6 | 8.6 | 8.6 | 8.6 |
| 11 Restaurants and hotels | 128 | 112.2 | 112.5 | 112.5 | 112.2 | 112.2 | 112.6 | 4.3 | 4.2 | 4.1 | 3.6 | 3.6 | 3.6 |
| 12 Miscellaneous goods and services | 99 | 109.4 | 109.6 | 110.1 | 109.6 | 110.0 | 110.5 | 3.4 | 3.0 | 3.3 | 2.6 | 3.0 | 3.2 |
| All goods | 554 | 108.4 | 107.6 | 107.3 | 105.9 | 104.9 | 106.4 | 5.7 | 4.6 | 3.7 | 1.8 | 2.0 | 2.2 |
| All services | 446 | 112.6 | 113.0 | 113.1 | 113.8 | 113.4 | 113.6 | 4.6 | 4.3 | 4.5 | 4.6 | 4.2 | 4.2 |
| 01.1 Food | 104 | 120.9 | 121.4 | 123.3 | 124.3 | 123.6 | 125.5 | 12.7 | 11.2 | 11.7 | 11.5 | 11.1 | 12.5 |
| 01.1.1 Bread and cereals | 17 | 122.8 | 122.1 | 122.9 | 124.2 | 122.2 | 124.6 | 15.7 | 14.0 | 12.1 | 11.1 | 9.8 | 11.2 |
| 01.1.2 Meat | 23 | 121.5 | 119.8 | 119.9 | 121.8 | 120.6 | 122.6 | 19.1 | 14.3 | 14.2 | 15.1 | 14.4 | 15.2 |
| 01.1.3 Fish | 5 | 126.0 | 126.9 | 127.7 | 125.5 | 126.0 | 126.5 | 7.5 | 6.1 | 6.6 | 6.3 | 5.2 | 6.4 |
| 01.1.4 Milk, cheese and eggs | 15 | 126.1 | 129.1 | 129.5 | 130.7 | 128.7 | 129.8 | 11.7 | 12.8 | 10.3 | 9.9 | 8.5 | 8.1 |
| 01.1.5 Oils and fats | 2 | 136.3 | 133.2 | 131.9 | 133.4 | 134.6 | 134.8 | 15.5 | 11.3 | 6.5 | 7.0 | 7.4 | 8.0 |
| 01.1.6 Fruit | 10 | 108.6 | 114.3 | 121.2 | 118.2 | 113.8 | 114.4 | 6.1 | 5.4 | 10.8 | 9.8 | 9.2 | 13.0 |
| 01.1.7 Vegetables including potatoes and tubers | 16 | 122.3 | 122.0 | 127.1 | 130.7 | 132.3 | 136.3 | 10.8 | 9.9 | 13.9 | 15.0 | 16.0 | 18.6 |
| 01.1.8 Sugar, jam, syrups, chocolate and confectionery | 13 | 116.7 | 117.7 | 118.8 | 118.5 | 121.0 | 122.1 | 8.1 | 8.9 | 8.8 | 6.9 | 8.4 | 9.6 |
| 01.1.9 Food products (nec) | 3 | 108.8 | 108.2 | 112.7 | 114.1 | 113.0 | 115.9 | 7.6 | 7.0 | 11.1 | 12.1 | 10.8 | 13.0 |
| 01.2 Non-alcoholic beverages | 14 | 110.8 | 111.4 | 111.9 | 111.5 | 111.8 | 114.5 | 1.7 | 2.5 | 3.4 | 3.0 | 3.7 | 4.4 |
| 01.2.1 Coffee, tea and cocoa | 4 | 117.2 | 119.1 | 121.1 | 121.0 | 123.8 | 123.5 | 6.5 | 9.8 | 10.7 | 12.2 | 16.1 | 10.7 |
| 01.2.2 Mineral waters, soft drinks and juices | 10 | 108.8 | 109.1 | 109.2 | 108.7 | 108.1 | 111.9 | 0.4 | 0.5 | 1.4 | 0.5 | 0.1 | 2.6 |
| 02.1 Alcoholic beverages | 21 | 106.2 | 105.5 | 103.7 | 102.9 | 106.5 | 108.8 | 3.9 | 4.2 | 3.2 | 3.7 | 5.6 | 6.8 |
| 02.1.1 Spirits | 6 | 109.4 | 105.8 | 103.1 | 103.7 | 108.5 | 107.1 | 6.1 | 4.4 | 3.5 | 6.0 | 7.1 | 4.2 |
| 02.1.2 Wine | 10 | 106.7 | 107.1 | 106.6 | 104.4 | 107.2 | 110.4 | 4.5 | 4.4 | 4.7 | 3.6 | 4.9 | 7.8 |
| 02.1.3 Beer | 5 | 100.6 | 101.5 | 97.7 | 98.3 | 102.1 | 107.0 | 0.2 | 3.5 | -0.6 | 1.3 | 5.3 | 7.7 |
| 02.2 Tobacco | 23 | 115.7 | 115.7 | 115.8 | 116.0 | 116.6 | 117.7 | 4.5 | 4.4 | 4.5 | 4.9 | 4.8 | 4.4 |
| 03.1 Clothing | 48 | 86.0 | 85.5 | 85.6 | 82.1 | 77.9 | 78.4 | -6.7 | -7.2 | -7.7 | -10.8 | -10.6 | -10.0 |
| 03.1.2 Garments | 44 | 84.9 | 84.3 | 84.4 | 80.7 | 76.5 | 76.8 | -7.2 | -7.8 | -8.3 | -11.6 | -11.4 | -11.0 |
| 03.1.3 Other clothing and clothing accessories | 3 | 98.6 | 98.8 | 99.0 | 97.4 | 94.5 | 96.2 | -0.6 | -0.5 | -1.2 | -2.9 | -2.6 | 0.3 |
| 03.1.4 Cleaning, repair and hire of clothing | 1 | 113.2 | 113.5 | 113.6 | 113.2 | 113.6 | 113.6 | 3.8 | 4.0 | 3.8 | 4.3 | 3.5 | 6.1 |
| 03.2 Footwear including repairs | 9 | 92.0 | 91.8 | 91.5 | 87.0 | 84.2 | 86.2 | -2.7 | -3.2 | -3.3 | -7.1 | -6.0 | -5.1 |
| 04.1 Actual rentals for housing | 51 | 110.4 | 111.4 | 111.4 | 111.4 | 111.3 | 111.3 | 3.1 | 3.6 | 3.5 | 3.5 | 3.0 | 2.9 |
| 04.3 Regular maintenance and repair of the dwelling | 18 | 113.5 | 113.9 | 114.7 | 113.5 | 114.0 | 114.8 | 6.2 | 6.3 | 6.7 | 5.0 | 4.2 | 4.5 |
| 04.3.1 Materials for maintenance and repair | 10 | 112.1 | 112.7 | 113.9 | 112.2 | 113.4 | 114.8 | 6.9 | 7.4 | 8.3 | 5.8 | 5.6 | 6.3 |
| 04.3.2 Services for maintenance and repair | 8 | 115.6 | 115.9 | 116.0 | 115.4 | 115.1 | 115.1 | 5.3 | 4.8 | 4.6 | 3.9 | 2.5 | 2.4 |
| 04.4 Water supply and misc. services for the dwelling | 11 | 122.9 | 122.9 | 122.9 | 122.9 | 122.9 | 122.9 | 6.5 | 6.5 | 6.5 | 6.5 | 6.5 | 6.5 |
| 04.4.1 Water supply | 5 | 122.2 | 122.2 | 122.2 | 122.2 | 122.2 | 122.2 | 5.7 | 5.7 | 5.7 | 5.7 | 5.7 | 5.7 |
| 04.4.3 Sewerage collection | 6 | 123.3 | 123.3 | 123.3 | 123.3 | 123.3 | 123.3 | 7.3 | 7.3 | 7.3 | 7.3 | 7.3 | 7.3 |
| 04.5 Electricity, gas and other fuels | 46 | 180.2 | 180.0 | 179.3 | 178.6 | 178.3 | 177.9 | 39.5 | 39.3 | 38.1 | 37.3 | 36.2 | 22.9 |
| 04.5.1 Electricity | 20 | 167.6 | 168.8 | 168.8 | 168.8 | 168.4 | 168.4 | 30.3 | 31.3 | 31.3 | 31.3 | 30.5 | 18.0 |
| 04.5.2 Gas | 23 | 200.3 | 200.7 | 200.6 | 200.6 | 200.6 | 200.6 | 49.9 | 50.8 | 50.6 | 50.5 | 49.8 | 33.1 |
| 04.5.3 Liquid fuels | 2 | 178.3 | 152.4 | 139.9 | 124.5 | 122.6 | 115.8 | 52.8 | 26.0 | 1.9 | -9.8 | -14.5 | -19.4 |
| 04.5.4 Solid fuels | 1 | 145.1 | 158.6 | 160.0 | 161.3 | 163.2 | 163.3 | 26.8 | 34.8 | 33.4 | 31.8 | 31.9 | 31.3 |
| 05.1 Furniture, furnishings and carpets | 28 | 108.3 | 106.3 | 107.8 | 110.7 | 103.8 | 105.9 | 4.4 | 4.8 | 5.1 | 2.4 | 4.2 | 4.2 |
| 05.1.1 Furniture and furnishings | 21 | 108.0 | 106.2 | 108.2 | 111.0 | 102.8 | 104.7 | 3.8 | 4.8 | 4.7 | 2.0 | 3.5 | 3.7 |
| 05.1.2 Carpets and other floor coverings | 7 | 109.0 | 106.4 | 105.6 | 109.0 | 106.2 | 108.7 | 6.6 | 4.6 | 6.6 | 4.0 | 5.6 | 4.8 |
| 05.2 Household textiles | 7 | 90.9 | 89.9 | 91.2 | 89.6 | 86.7 | 90.1 | -2.9 | -1.8 | -1.6 | -4.0 | -3.7 | -2.9 |
| 05.3 Household appliances, fitting and repairs | 9 | 97.8 | 97.3 | 97.2 | 95.7 | 96.0 | 99.5 | 0.3 | 0.5 | -1.5 | -3.5 | -0.7 | 3.3 |
| 05.3.1/2 Major appliances and small electric goods | 8 | 96.4 | 95.8 | 95.7 | 93.9 | 94.4 | 98.2 | -0.2 | -0.2 | -2.4 | -4.6 | -1.1 | 3.3 |
| 05.3.3 Repair of household appliances | 1 | 108.8 | 110.4 | 110.5 | 110.6 | 109.4 | 109.5 | 5.0 | 6.5 | 6.3 | 6.2 | 2.5 | 2.4 |
| 05.4 Glassware, tableware and household utensils | 5 | 102.2 | 101.7 | 102.7 | 98.5 | 98.7 | 101.7 | 2.4 | 1.2 | 2.2 | -2.8 | -0.5 | 1.2 |
| 05.5 Tools and equipment for house and garden | 6 | 103.5 | 103.8 | 103.9 | 101.6 | 103.6 | 104.1 | 1.5 | 2.1 | 2.9 | -0.1 | 1.0 | 1.0 |
| 05.6 Goods and services for routine maintenance | 11 | 114.9 | 114.6 | 113.6 | 114.6 | 114.4 | 117.4 | 6.2 | 6.2 | 4.8 | 5.6 | 5.1 | 7.3 |
| 05.6.1 Non-durable household goods | 6 | 113.3 | 112.6 | 110.0 | 111.4 | 111.3 | 116.6 | 7.7 | 7.6 | 4.6 | 5.8 | 6.0 | 9.9 |
| 05.6.2 Domestic services and household services | 5 | 115.8 | 116.2 | 116.7 | 117.3 | 117.0 | 116.9 | 4.7 | 4.8 | 5.0 | 5.5 | 4.1 | 4.1 |
| 06.1 Medical products, appliances and equipment | 10 | 101.6 | 101.5 | 102.8 | 100.5 | 101.6 | 102.0 | 0.8 | 0.4 | 2.2 | -0.6 | 0.5 | 1.0 |
| 06.1.1 Pharmaceutical products | 6 | 101.6 | 101.4 | 104.0 | 101.2 | 102.6 | 103.1 | 0.1 | -0.6 | 2.8 | -0.6 | 0.9 | 1.3 |
| 06.1.2/3 Other medical and therapeutic equipment | 4 | 101.8 | 101.8 | 101.9 | 100.0 | 100.7 | 101.1 | 1.5 | 1.4 | 1.6 | -0.6 | -0.1 | 0.5 |

Key: - zero or negligible .. not available (nec) not elsewhere covered

Source: National Statistics

continued

| | Weights | Index (2005=100) | | | | | | Percentage change over 12 months | | | | | |
|---|---------|------------------|-------------|-------------|-------------|-------------|-------------|----------------------------------|-------------|-------------|-------------|-------------|-------------|
| | | 2009 | 2008 Sep | 2008 Oct | 2008 Nov | 2008 Dec | 2009 Jan | 2009 Feb | 2008 Sep | 2008 Oct | 2008 Nov | 2008 Dec | 2009 Jan |
| 06.2 Out-patient services | 4 | 112.7 | 112.6 | 112.4 | 112.6 | 113.2 | 113.2 | 3.0 | 2.8 | 2.6 | 2.7 | 2.7 | 2.6 |
| 06.2.1/3 Medical services & paramedical services | 2 | 109.8 | 109.8 | 109.4 | 109.6 | 110.3 | 110.3 | 3.0 | 2.6 | 2.5 | 2.3 | 2.5 | 2.2 |
| 06.2.2 Dental services | 2 | 115.9 | 115.8 | 115.8 | 116.0 | 116.4 | 116.5 | 3.0 | 2.9 | 2.7 | 3.0 | 2.9 | 3.0 |
| 06.3 Hospital services | 8 | 120.5 | 121.2 | 121.3 | 121.3 | 121.0 | 121.2 | 5.5 | 5.4 | 5.5 | 5.4 | 4.1 | 4.1 |
| 07.1 Purchase of vehicles | 47 | 96.8 | 96.2 | 95.7 | 93.7 | 93.2 | 93.6 | -2.1 | -2.7 | -3.4 | -5.0 | -5.5 | -5.3 |
| 07.1.1A New cars | 26 | 104.4 | 104.6 | 104.7 | 102.6 | 102.4 | 103.0 | 1.7 | 1.7 | 1.8 | -0.2 | -0.3 | -0.2 |
| 07.1.1B Second-hand cars | 18 | 84.6 | 82.8 | 81.2 | 79.5 | 78.0 | 78.0 | -8.9 | -10.5 | -12.5 | -13.5 | -15.4 | -15.1 |
| 07.1.2/3 Motorcycles and bicycles | 3 | 106.2 | 106.8 | 107.2 | 105.8 | 110.4 | 111.7 | 7.7 | 8.4 | 9.4 | 8.1 | 13.0 | 13.9 |
| 07.2 Operation of personal transport equipment | 69 | 123.4 | 119.6 | 114.6 | 111.0 | 109.2 | 111.0 | 12.3 | 7.2 | 0.6 | -3.6 | -6.4 | -4.9 |
| 07.2.1 Spare parts and accessories | 5 | 106.4 | 106.9 | 106.6 | 105.1 | 108.2 | 107.2 | 2.2 | 3.1 | 2.6 | 1.4 | 2.9 | 2.4 |
| 07.2.2 Fuels and lubricants | 34 | 130.1 | 122.1 | 112.0 | 105.1 | 101.6 | 104.9 | 19.6 | 9.2 | -3.6 | -11.2 | -15.2 | -12.6 |
| 07.2.3 Maintenance and repairs | 23 | 118.9 | 119.6 | 120.2 | 120.1 | 119.6 | 120.1 | 5.8 | 6.1 | 6.5 | 6.1 | 4.1 | 4.2 |
| 07.2.4 Other services | 7 | 112.6 | 113.0 | 112.9 | 113.9 | 113.7 | 113.8 | 2.3 | 2.1 | 1.7 | 2.6 | 1.8 | 2.6 |
| 07.3 Transport services | 35 | 120.0 | 117.1 | 114.8 | 127.8 | 120.9 | 121.3 | 11.7 | 8.2 | 10.2 | 15.4 | 13.0 | 11.4 |
| 07.3.1 Passenger transport by railway | 9 | 113.9 | 114.1 | 114.0 | 114.3 | 120.0 | 120.8 | 3.5 | 4.1 | 4.0 | 4.3 | 5.6 | 5.9 |
| 07.3.2 Passenger transport by road | 14 | 113.3 | 114.0 | 114.6 | 116.2 | 116.7 | 115.8 | 4.5 | 5.4 | 5.7 | 6.8 | 5.8 | 4.7 |
| 07.3.3 Passenger transport by air | 9 | 117.5 | 110.2 | 104.8 | 142.8 | 103.8 | 101.6 | 26.5 | 13.8 | 24.8 | 34.3 | 21.1 | 12.3 |
| 07.3.4 Passenger transport by sea and inland waterway | 3 | 142.4 | 125.2 | 111.3 | 118.4 | 120.9 | 134.0 | 17.2 | 5.3 | -0.2 | 4.6 | 6.8 | 17.4 |
| 08.1 Postal services | 1 | 129.5 | 129.8 | 129.8 | 129.8 | 129.8 | 129.8 | 6.7 | 6.9 | 6.9 | 6.9 | 6.9 | 6.9 |
| 08.2/3 Telephone and telefax equipment and services | 22 | 92.7 | 92.7 | 93.4 | 91.4 | 92.4 | 92.2 | -3.1 | -2.6 | -1.9 | -3.9 | -2.4 | -1.0 |
| 09.1 Audio-visual equipment and related products | 23 | 67.4 | 65.3 | 65.2 | 65.1 | 62.2 | 62.3 | -12.2 | -13.8 | -13.5 | -14.0 | -14.5 | -14.4 |
| 09.1.1 Reception and reproduction of sound and pictures | 6 | 64.3 | 63.1 | 62.3 | 61.4 | 60.8 | 61.0 | -12.5 | -13.1 | -14.1 | -15.0 | -11.8 | -11.0 |
| 09.1.2 Photographic, cinematographic and optical equipment | 4 | 41.8 | 41.4 | 39.1 | 37.8 | 37.0 | 37.3 | -22.1 | -23.6 | -23.2 | -22.7 | -24.5 | -22.7 |
| 09.1.3 Data processing equipment | 5 | 51.7 | 50.4 | 50.4 | 48.4 | 47.3 | 47.8 | -20.2 | -21.4 | -19.8 | -22.7 | -22.0 | -20.4 |
| 09.1.4 Recording media | 7 | 89.7 | 85.3 | 87.0 | 89.6 | 80.1 | 79.3 | -6.6 | -9.1 | -8.8 | -8.2 | -13.1 | -15.1 |
| 09.1.5 Repair of audio-visual equipment & related products | 1 | 112.2 | 112.2 | 112.9 | 112.7 | 111.6 | 112.0 | 3.4 | 3.1 | 3.8 | 3.3 | 1.8 | 2.0 |
| 09.2 Other major durables for recreation & culture | 9 | 103.1 | 103.7 | 104.8 | 103.3 | 104.1 | 104.3 | 2.3 | 2.6 | 3.0 | 1.5 | 2.2 | 2.3 |
| 09.2.1/2 Major durables for in/outdoor recreation | 9 | 103.1 | 103.7 | 104.8 | 103.3 | 104.1 | 104.3 | 2.3 | 2.6 | 3.0 | 1.5 | 2.2 | 2.3 |
| 09.3 Other recreational items, gardens and pets | 37 | 97.7 | 97.6 | 97.7 | 95.3 | 95.8 | 97.5 | 0.4 | 0.1 | 0.1 | -3.0 | -1.8 | 0.8 |
| 09.3.1 Games, toys and hobbies | 20 | 91.5 | 90.9 | 90.4 | 88.0 | 88.8 | 91.0 | -2.2 | -3.1 | -3.1 | -6.4 | -4.9 | -0.1 |
| 09.3.2 Equipment for sport and open-air recreation | 4 | 99.9 | 101.4 | 101.5 | 97.8 | 94.7 | 95.4 | 1.4 | 2.9 | 2.4 | -0.4 | 0.1 | -1.1 |
| 09.3.3 Gardens, plants and flowers | 5 | 102.2 | 103.1 | 104.6 | 101.3 | 102.1 | 104.0 | 2.1 | 2.8 | 4.1 | -0.4 | -0.2 | -0.6 |
| 09.3.4/5 Pets, related products and services | 8 | 113.8 | 113.8 | 114.7 | 114.0 | 115.6 | 116.1 | 7.0 | 6.6 | 5.7 | 4.4 | 5.6 | 5.7 |
| 09.4 Recreational and cultural services | 32 | 113.5 | 114.0 | 114.4 | 113.9 | 113.8 | 114.0 | 3.3 | 3.0 | 3.3 | 2.8 | 3.4 | 3.6 |
| 09.4.1 Recreational and sporting services | 11 | 118.5 | 118.3 | 118.6 | 118.5 | 118.1 | 118.1 | 5.3 | 4.5 | 4.7 | 4.6 | 4.6 | 4.4 |
| 09.4.2 Cultural services | 21 | 111.2 | 112.0 | 112.4 | 111.8 | 111.8 | 112.1 | 2.2 | 2.3 | 2.6 | 1.9 | 2.8 | 3.1 |
| 09.5 Books, newspapers and stationery | 17 | 110.8 | 110.4 | 110.2 | 108.9 | 110.5 | 115.1 | 3.8 | 3.2 | 3.5 | 1.9 | 3.1 | 4.3 |
| 09.5.1 Books | 5 | 112.2 | 109.7 | 107.9 | 106.5 | 108.0 | 119.1 | 2.3 | 0.5 | 1.6 | 0.2 | 1.7 | 2.2 |
| 09.5.2 Newspapers and periodicals | 6 | 116.2 | 116.6 | 117.1 | 117.1 | 118.8 | 120.4 | 5.1 | 4.6 | 4.6 | 3.8 | 4.6 | 6.0 |
| 09.5.3/4 Misc. printed matter, stationery, drawing materials | 6 | 101.6 | 102.4 | 102.5 | 99.9 | 101.5 | 103.3 | 3.8 | 4.2 | 3.9 | 1.0 | 2.3 | 3.8 |
| 09.6 Package holidays | 27 | 106.4 | 106.6 | 107.0 | 107.3 | 107.8 | 108.3 | 5.9 | 5.8 | 6.1 | 6.2 | 6.8 | 6.8 |
| 10.0 Education | 21 | 136.2 | 144.6 | 144.6 | 144.6 | 144.6 | 144.6 | 10.8 | 8.6 | 8.6 | 8.6 | 8.6 | 8.6 |
| 11.1 Catering services | 111 | 112.3 | 112.6 | 112.8 | 112.6 | 112.6 | 113.1 | 4.6 | 4.6 | 4.5 | 4.0 | 4.0 | 4.0 |
| 11.1.1 Restaurants & cafes | 100 | 112.3 | 112.6 | 112.8 | 112.7 | 112.7 | 113.2 | 4.8 | 4.7 | 4.7 | 4.2 | 4.3 | 4.3 |
| 11.1.2 Canteens | 11 | 112.4 | 112.8 | 112.8 | 111.2 | 111.6 | 112.4 | 3.3 | 3.5 | 3.3 | 1.9 | 1.8 | 2.0 |
| 11.2 Accommodation services | 17 | 111.3 | 111.6 | 110.9 | 110.2 | 110.0 | 109.6 | 2.1 | 2.1 | 1.6 | 1.2 | 1.0 | 1.0 |
| 12.1 Personal care | 31 | 107.4 | 108.4 | 108.8 | 107.1 | 108.4 | 109.3 | 3.3 | 2.9 | 3.1 | 1.7 | 3.3 | 3.6 |
| 12.1.1 Hairdressing and personal grooming establishments | 8 | 112.4 | 112.7 | 113.0 | 112.7 | 112.4 | 112.6 | 4.0 | 3.9 | 3.7 | 3.3 | 3.0 | 2.8 |
| 12.1.2/3 Appliances and products for personal care | 23 | 105.6 | 106.9 | 107.3 | 105.2 | 106.9 | 108.1 | 3.0 | 2.5 | 2.9 | 1.1 | 3.4 | 3.8 |
| 12.3 Personal effects (nec) | 11 | 111.8 | 111.2 | 112.2 | 110.1 | 108.8 | 111.7 | 5.2 | 4.9 | 5.1 | 3.2 | 2.7 | 4.1 |
| 12.3.1 Jewellery, clocks and watches | 8 | 115.8 | 116.2 | 116.8 | 114.5 | 113.7 | 116.4 | 6.5 | 6.8 | 6.6 | 4.5 | 4.2 | 5.1 |
| 12.3.2 Other personal effects | 3 | 104.4 | 101.6 | 103.5 | 101.9 | 99.3 | 102.8 | 2.3 | 0.7 | 1.6 | 0.1 | -0.7 | 1.7 |
| 12.4 Social protection | 11 | 117.8 | 118.3 | 118.7 | 119.1 | 120.3 | 120.4 | 4.7 | 4.7 | 4.6 | 4.7 | 5.1 | 5.0 |
| 12.5 Insurance | 7 | 107.5 | 107.5 | 107.3 | 108.0 | 108.6 | 109.9 | 1.3 | 0.9 | 0.4 | 0.5 | 0.1 | 1.1 |
| 12.5.2 House contents insurance | 2 | 96.8 | 96.9 | 97.0 | 97.7 | 98.0 | 99.0 | -6.0 | -5.0 | -6.5 | -6.8 | -8.3 | -9.0 |
| 12.5.3 Health insurance | 2 | 123.8 | 123.8 | 123.8 | 123.8 | 124.7 | 124.7 | 6.4 | 5.4 | 5.4 | 5.4 | 4.9 | 4.9 |
| 12.5.4 Transport insurance | 3 | 106.0 | 105.8 | 105.5 | 106.4 | 107.3 | 109.3 | 2.4 | 1.6 | 1.3 | 1.7 | 1.9 | 4.6 |
| 12.6 Financial services (nec) | 28 | 104.3 | 104.0 | 104.9 | 105.1 | 105.0 | 104.4 | 2.1 | 2.0 | 3.0 | 2.6 | 3.3 | 2.9 |
| 12.6.2 Other financial services (nec) | 28 | 104.3 | 104.0 | 104.9 | 105.1 | 105.0 | 104.4 | 2.1 | 2.0 | 3.0 | 2.6 | 3.3 | 2.9 |
| 12.7 Other services (nec) | 11 | 116.3 | 116.5 | 116.5 | 117.0 | 116.2 | 116.3 | 5.3 | 4.0 | 3.7 | 3.8 | 1.7 | 1.7 |

Key: - zero or negligible .. not available (nec) not elsewhere covered

Source: National Statistics

4 CPI: Detailed figures by division¹

| COICOP Division | Food and non-alcoholic beverages | Alcoholic beverages and tobacco | Clothing and footwear | Housing, water, electricity, gas & other fuels | Furniture, household equipment & routine maintenance | Health ² | Transport | Communication | Recreation and culture | Education ² | Restaurants and hotels | Miscellaneous goods and services ² | CPI (overall index) |
|--|----------------------------------|---------------------------------|-----------------------|--|--|---------------------|-----------|---------------|------------------------|------------------------|------------------------|---|---------------------|
| | 01 | 02 | 03 | 04 | 05 | 06 | 07 | 08 | 09 | 10 | 11 | 12 | |
| Weights | | | | | | | | | | | | | |
| | CHZR | CHZS | CHZT | CHZU | CHZV | CHZW | CHZX | CHZY | CHZZ | CJUJ | CJUV | CJUW | CHZQ |
| 2009 | 118 | 44 | 57 | 126 | 66 | 22 | 151 | 23 | 145 | 21 | 128 | 99 | 1 000 |
| Monthly indices (2005=100) | | | | | | | | | | | | | |
| | D7BU | D7BV | D7BW | D7BX | D7BY | D7BZ | D7C2 | D7C3 | D7C4 | D7C5 | D7C6 | D7C7 | D7BT |
| 2007 Feb | 105.4 | 105.1 | 91.9 | 115.1 | 99.6 | 104.9 | 102.8 | 98.1 | 98.4 | 117.8 | 105.2 | 105.8 | 103.7 |
| Mar | 106.0 | 105.6 | 92.8 | 115.0 | 102.9 | 104.8 | 103.1 | 98.1 | 98.2 | 117.8 | 105.7 | 106.2 | 104.2 |
| Apr | 106.2 | 107.0 | 93.7 | 115.7 | 100.7 | 105.5 | 104.5 | 97.2 | 98.3 | 117.8 | 106.3 | 105.8 | 104.5 |
| May | 106.7 | 106.8 | 93.7 | 115.0 | 101.8 | 105.8 | 106.1 | 96.6 | 98.0 | 117.8 | 106.6 | 105.7 | 104.8 |
| Jun | 107.3 | 107.1 | 93.6 | 114.5 | 104.0 | 106.1 | 106.8 | 96.1 | 97.6 | 117.8 | 106.9 | 105.8 | 105.0 |
| Jul | 105.5 | 106.9 | 89.8 | 114.3 | 99.7 | 106.6 | 108.0 | 94.8 | 97.0 | 117.8 | 107.2 | 106.1 | 104.4 |
| Aug | 106.1 | 107.0 | 91.1 | 114.0 | 100.3 | 106.8 | 108.6 | 97.2 | 97.5 | 117.8 | 107.4 | 105.6 | 104.7 |
| Sep | 107.4 | 107.1 | 92.5 | 114.0 | 102.1 | 107.1 | 105.7 | 96.6 | 97.6 | 122.9 | 107.6 | 105.8 | 104.8 |
| Oct | 109.1 | 106.8 | 92.5 | 114.3 | 100.8 | 107.5 | 106.6 | 96.2 | 97.7 | 133.2 | 107.9 | 106.4 | 105.3 |
| Nov | 110.1 | 106.4 | 92.9 | 114.6 | 101.6 | 107.3 | 107.0 | 96.3 | 97.6 | 133.2 | 108.0 | 106.6 | 105.6 |
| Dec | 111.1 | 105.7 | 92.2 | 114.7 | 104.2 | 107.6 | 108.7 | 96.2 | 98.0 | 133.2 | 108.3 | 106.8 | 106.2 |
| 2008 Jan | 110.8 | 106.9 | 87.5 | 115.4 | 100.0 | 108.1 | 108.6 | 95.8 | 97.0 | 133.2 | 108.3 | 106.8 | 105.5 |
| Feb | 111.3 | 108.1 | 87.6 | 119.1 | 101.3 | 108.2 | 109.1 | 94.3 | 97.2 | 133.2 | 108.7 | 107.1 | 106.3 |
| Mar | 111.8 | 108.2 | 87.9 | 119.5 | 103.5 | 108.4 | 110.3 | 94.2 | 96.8 | 133.2 | 109.2 | 107.5 | 106.7 |
| Apr | 113.2 | 111.5 | 87.8 | 122.0 | 102.1 | 108.9 | 110.8 | 94.4 | 97.3 | 133.2 | 110.4 | 108.3 | 107.6 |
| May | 115.1 | 112.0 | 87.8 | 122.3 | 103.5 | 109.0 | 112.7 | 94.3 | 97.3 | 133.2 | 110.8 | 108.5 | 108.3 |
| Jun | 117.5 | 111.9 | 86.5 | 122.5 | 105.9 | 109.3 | 114.6 | 94.9 | 97.6 | 133.2 | 111.1 | 108.6 | 109.0 |
| Jul | 118.4 | 111.4 | 83.8 | 123.0 | 102.6 | 110.1 | 116.6 | 94.1 | 96.9 | 133.2 | 111.6 | 109.0 | 109.0 |
| Aug | 120.0 | 111.8 | 84.9 | 125.6 | 103.4 | 110.3 | 116.5 | 94.3 | 97.3 | 133.2 | 111.7 | 109.2 | 109.7 |
| Sep | 119.6 | 111.7 | 86.8 | 131.1 | 105.1 | 110.2 | 113.8 | 94.1 | 97.8 | 136.2 | 112.2 | 109.4 | 110.3 |
| Oct | 120.1 | 111.4 | 86.3 | 131.6 | 104.0 | 110.4 | 111.3 | 94.1 | 97.4 | 144.6 | 112.5 | 109.6 | 110.0 |
| Nov | 121.8 | 110.6 | 86.3 | 131.5 | 104.7 | 111.0 | 108.4 | 94.8 | 97.6 | 144.6 | 112.5 | 110.1 | 109.9 |
| Dec | 122.7 | 110.4 | 82.7 | 131.1 | 105.0 | 109.9 | 108.9 | 92.9 | 96.8 | 144.6 | 112.2 | 109.6 | 109.5 |
| 2009 Jan | 122.0 | 112.5 | 78.8 | 131.1 | 102.1 | 110.5 | 106.5 | 93.8 | 96.5 | 144.6 | 112.2 | 110.0 | 108.7 |
| Feb | 124.0 | 114.2 | 79.4 | 131.1 | 104.6 | 110.8 | 107.6 | 93.7 | 97.5 | 144.6 | 112.6 | 110.5 | 109.6 |
| Percentage change on a year earlier | | | | | | | | | | | | | |
| | D7G8 | D7G9 | D7GA | D7GB | D7GC | D7GD | D7GE | D7GF | D7GG | D7GH | D7GI | D7GJ | D7GT |
| 2007 Feb | 4.4 | 4.2 | -4.2 | 11.1 | 1.2 | 3.7 | 1.4 | -2.8 | -1.0 | 14.0 | 3.3 | 3.6 | 2.8 |
| Mar | 5.6 | 4.4 | -3.9 | 10.1 | 2.7 | 3.7 | 1.6 | -2.8 | -0.7 | 14.0 | 3.4 | 3.7 | 3.1 |
| Apr | 6.0 | 4.5 | -2.8 | 7.9 | 2.2 | 3.2 | 1.5 | -3.7 | -0.8 | 14.0 | 3.8 | 2.4 | 2.8 |
| May | 5.0 | 4.2 | -3.6 | 5.7 | 2.5 | 3.1 | 2.5 | -3.2 | -0.8 | 14.0 | 3.5 | 2.2 | 2.5 |
| Jun | 4.8 | 3.4 | -3.2 | 4.3 | 3.8 | 3.4 | 3.2 | -3.9 | -1.1 | 14.0 | 3.7 | 1.8 | 2.4 |
| Jul | 2.8 | 3.4 | -2.6 | 3.5 | 1.6 | 3.4 | 2.4 | -5.0 | -1.4 | 14.0 | 3.6 | 2.0 | 1.9 |
| Aug | 3.0 | 3.1 | -3.5 | 2.8 | 1.2 | 3.3 | 2.6 | -2.0 | -0.9 | 14.0 | 3.6 | 1.1 | 1.8 |
| Sep | 3.7 | 3.2 | -4.0 | 2.3 | 1.5 | 3.4 | 2.7 | -3.0 | -1.0 | 13.9 | 3.7 | 1.0 | 1.8 |
| Oct | 4.7 | 2.7 | -4.3 | 1.4 | 1.8 | 3.2 | 5.1 | -4.2 | -0.9 | 13.2 | 3.5 | 1.3 | 2.1 |
| Nov | 4.8 | 2.9 | -4.4 | 0.8 | 1.7 | 3.1 | 5.8 | -4.0 | -1.1 | 13.2 | 3.4 | 1.6 | 2.1 |
| Dec | 5.4 | 2.7 | -3.9 | 0.2 | 0.9 | 3.3 | 5.8 | -3.8 | -1.3 | 13.2 | 3.4 | 1.9 | 2.1 |
| 2008 Jan | 6.1 | 2.2 | -4.9 | 0.4 | 1.7 | 3.1 | 6.4 | -3.2 | -1.4 | 13.2 | 3.3 | 1.5 | 2.2 |
| Feb | 5.6 | 2.9 | -4.7 | 3.5 | 1.7 | 3.1 | 6.2 | -3.9 | -1.2 | 13.2 | 3.3 | 1.2 | 2.5 |
| Mar | 5.5 | 2.5 | -5.3 | 3.9 | 0.5 | 3.5 | 7.0 | -4.0 | -1.5 | 13.2 | 3.3 | 1.2 | 2.5 |
| Apr | 6.6 | 4.2 | -6.3 | 5.4 | 1.4 | 3.3 | 6.1 | -2.9 | -1.0 | 13.2 | 3.8 | 2.3 | 3.0 |
| May | 7.8 | 4.9 | -6.3 | 6.3 | 1.7 | 3.0 | 6.2 | -2.4 | -0.8 | 13.2 | 3.9 | 2.6 | 3.3 |
| Jun | 9.5 | 4.5 | -7.5 | 7.0 | 1.8 | 3.0 | 7.3 | -1.3 | - | 13.2 | 3.9 | 2.7 | 3.8 |
| Jul | 12.3 | 4.3 | -6.7 | 7.6 | 2.8 | 3.3 | 8.0 | -0.7 | -0.1 | 13.2 | 4.1 | 2.8 | 4.4 |
| Aug | 13.0 | 4.4 | -6.7 | 10.1 | 3.2 | 3.2 | 7.3 | -3.0 | -0.2 | 13.2 | 4.0 | 3.4 | 4.7 |
| Sep | 11.3 | 4.3 | -6.2 | 15.0 | 2.9 | 2.9 | 7.6 | -2.7 | 0.2 | 10.8 | 4.3 | 3.4 | 5.2 |
| Oct | 10.1 | 4.4 | -6.7 | 15.2 | 3.1 | 2.6 | 4.3 | -2.2 | -0.2 | 8.6 | 4.2 | 3.0 | 4.5 |
| Nov | 10.6 | 4.0 | -7.1 | 14.8 | 3.0 | 3.5 | 1.3 | -1.5 | - | 8.6 | 4.1 | 3.3 | 4.1 |
| Dec | 10.4 | 4.4 | -10.3 | 14.3 | 0.8 | 2.1 | 0.1 | -3.4 | -1.2 | 8.6 | 3.6 | 2.6 | 3.1 |
| 2009 Jan | 10.2 | 5.3 | -10.0 | 13.6 | 2.2 | 2.2 | -1.9 | -2.0 | -0.5 | 8.6 | 3.6 | 3.0 | 3.0 |
| Feb | 11.5 | 5.7 | -9.3 | 10.0 | 3.2 | 2.4 | -1.4 | -0.7 | 0.3 | 8.6 | 3.6 | 3.2 | 3.2 |

Key: - zero or negligible

¹ Inflation rates prior to 1997 and index levels prior to 1996 are estimated. Further details are given in *Economic Trends No. 541 December 1998*. These details are also available on the National Statistics website: www.statistics.gov.uk/cpi/article.asp?ID=31

² The coverage of these categories was extended in January 2000; further extensions to coverage came into effect in January 2001 for health and miscellaneous goods and services; the coverage of miscellaneous goods and services was further extended with effect from January 2002 (details are given in a series of *Economic Trends* articles available on the National Statistics website: www.statistics.gov.uk/cpi)

Source: National Statistics

5 CPI: Detailed goods and services breakdown¹

| | Weights | Index (2005=100) | | | | | | Percentage change over 12 months | | | | | | Percentage change over 1 month |
|--|---------|------------------|-------|-------|-------|-------|-------|----------------------------------|-------|-------|-------|-------|-------|--------------------------------|
| | | | | | | | | 2008 | | 2009 | | 2008 | | 2009 |
| | | 2009 | Sep | Oct | Nov | Dec | Jan | Feb | Sep | Oct | Nov | Dec | Jan | Feb |
| CPI (overall index) | 1 000 | 110.3 | 110.0 | 109.9 | 109.5 | 108.7 | 109.6 | 5.2 | 4.5 | 4.1 | 3.1 | 3.0 | 3.2 | 0.9 |
| All goods | 554 | 108.4 | 107.6 | 107.3 | 105.9 | 104.9 | 106.4 | 5.7 | 4.6 | 3.7 | 1.8 | 2.0 | 2.2 | 1.4 |
| Food, alcoholic beverages & tobacco | 162 | 117.3 | 117.6 | 118.6 | 119.1 | 119.3 | 121.2 | 9.3 | 8.5 | 8.8 | 8.8 | 8.8 | 9.8 | 1.6 |
| Processed food & non-alcoholic beverages | 64 | 119.4 | 120.1 | 120.8 | 121.4 | 121.0 | 122.9 | 9.7 | 9.7 | 8.8 | 8.0 | 7.8 | 8.5 | 1.6 |
| Non-processed food | 54 | 119.8 | 120.1 | 122.9 | 124.1 | 123.2 | 125.3 | 13.2 | 10.5 | 12.8 | 13.3 | 13.0 | 14.9 | 1.7 |
| Seasonal food | 31 | 118.5 | 120.4 | 125.4 | 125.9 | 125.2 | 127.5 | 8.9 | 7.8 | 11.7 | 11.9 | 12.0 | 14.7 | 1.8 |
| Meat | 23 | 121.5 | 119.8 | 119.9 | 121.8 | 120.6 | 122.6 | 19.1 | 14.3 | 14.2 | 15.1 | 14.4 | 15.2 | 1.7 |
| Alcoholic beverages & tobacco | 44 | 111.7 | 111.4 | 110.6 | 110.4 | 112.5 | 114.2 | 4.3 | 4.4 | 4.0 | 4.4 | 5.3 | 5.7 | 1.5 |
| Industrial goods | 392 | 105.2 | 104.1 | 103.4 | 101.3 | 99.8 | 101.1 | 4.4 | 3.1 | 1.8 | -0.8 | -0.6 | -0.6 | 1.4 |
| Energy | 80 | 154.4 | 149.9 | 144.1 | 139.9 | 137.8 | 139.6 | 29.7 | 24.2 | 16.7 | 12.2 | 9.4 | 5.4 | 1.3 |
| Electricity, gas & miscellaneous energy | 44 | 181.7 | 182.9 | 182.9 | 183.0 | 182.8 | 182.8 | 39.2 | 40.3 | 40.2 | 40.1 | 39.3 | 25.3 | - |
| Liquid fuels, vehicle fuels & lubricants | 36 | 131.8 | 123.1 | 112.9 | 105.7 | 102.2 | 105.1 | 20.9 | 9.8 | -3.3 | -11.1 | -15.2 | -12.9 | 2.8 |
| Non-energy industrial goods | 312 | 96.4 | 95.9 | 96.1 | 94.4 | 93.0 | 94.2 | -1.0 | -1.4 | -1.5 | -3.7 | -2.9 | -2.1 | 1.4 |
| Clothing & footwear goods | 56 | 86.4 | 85.9 | 85.9 | 82.2 | 78.3 | 78.9 | -6.3 | -6.9 | -7.3 | -10.6 | -10.2 | -9.6 | 0.8 |
| Housing goods | 75 | 106.2 | 105.2 | 106.0 | 106.0 | 103.6 | 106.0 | 3.5 | 3.7 | 3.7 | 1.4 | 2.7 | 3.8 | 2.3 |
| Household goods | 60 | 104.0 | 102.8 | 103.5 | 103.8 | 100.7 | 103.4 | 2.7 | 3.0 | 2.8 | 0.3 | 2.0 | 3.2 | 2.7 |
| Water supply; materials for maintenance & repair | 15 | 115.3 | 115.7 | 116.5 | 115.3 | 116.2 | 117.1 | 6.5 | 6.8 | 7.4 | 5.8 | 5.6 | 6.1 | 0.8 |
| Medical products, appliances & equipment | 10 | 101.6 | 101.5 | 102.8 | 100.5 | 101.6 | 102.0 | 0.8 | 0.4 | 2.2 | -0.6 | 0.5 | 1.0 | 0.4 |
| Vehicles, spare parts & accessories | 52 | 97.7 | 97.2 | 96.7 | 94.8 | 94.6 | 94.8 | -1.7 | -2.2 | -2.8 | -4.4 | -4.7 | -4.6 | 0.3 |
| Recreational goods | 85 | 90.2 | 89.3 | 89.3 | 88.0 | 87.5 | 89.0 | -2.7 | -3.4 | -3.2 | -5.1 | -4.3 | -2.9 | 1.7 |
| Audio-visual goods | 22 | 66.0 | 63.9 | 63.7 | 63.7 | 60.8 | 60.8 | -12.8 | -14.5 | -14.2 | -14.7 | -15.2 | -15.0 | 0.2 |
| Other recreational goods | 63 | 101.9 | 101.8 | 101.9 | 99.9 | 100.7 | 102.9 | 1.6 | 1.3 | 1.4 | -1.1 | 0.1 | 1.9 | 2.2 |
| Miscellaneous goods | 34 | 107.6 | 108.3 | 108.9 | 106.8 | 107.6 | 109.3 | 3.7 | 3.2 | 3.6 | 1.7 | 3.2 | 3.9 | 1.6 |
| All services | 446 | 112.6 | 113.0 | 113.1 | 113.8 | 113.4 | 113.6 | 4.6 | 4.3 | 4.5 | 4.6 | 4.2 | 4.2 | 0.2 |
| Housing services | 73 | 111.9 | 112.7 | 112.8 | 112.8 | 112.6 | 112.6 | 3.6 | 4.0 | 3.8 | 3.8 | 3.0 | 3.0 | - |
| Actual rentals for housing | 51 | 110.4 | 111.4 | 111.4 | 111.4 | 111.3 | 111.3 | 3.1 | 3.6 | 3.5 | 3.5 | 3.0 | 2.9 | - |
| Primary housing services | 16 | 115.9 | 116.1 | 116.1 | 115.9 | 115.8 | 116.0 | 4.7 | 4.6 | 4.3 | 3.9 | 2.9 | 2.8 | 0.1 |
| Other housing services | 6 | 114.8 | 115.3 | 115.8 | 116.3 | 115.9 | 115.8 | 4.7 | 5.1 | 5.2 | 5.6 | 3.8 | 3.8 | -0.1 |
| Travel & transport services | 68 | 118.2 | 116.9 | 116.0 | 122.7 | 119.1 | 119.6 | 8.3 | 6.6 | 7.5 | 10.3 | 8.2 | 7.7 | 0.4 |
| Services for personal transport equipment | 30 | 117.6 | 118.2 | 118.7 | 118.8 | 118.4 | 118.8 | 5.1 | 5.3 | 5.5 | 5.4 | 3.7 | 3.9 | 0.3 |
| Transport services | 35 | 120.0 | 117.1 | 114.8 | 127.8 | 120.9 | 121.3 | 11.7 | 8.2 | 10.2 | 15.4 | 13.0 | 11.4 | 0.3 |
| Transport insurance | 3 | 106.0 | 105.8 | 105.5 | 106.4 | 107.3 | 109.3 | 2.4 | 1.6 | 1.3 | 1.7 | 1.9 | 4.6 | 1.9 |
| Communication | 23 | 94.1 | 94.1 | 94.8 | 92.9 | 93.8 | 93.7 | -2.7 | -2.2 | -1.5 | -3.4 | -2.0 | -0.7 | -0.2 |
| Recreational & personal services | 197 | 111.6 | 111.9 | 112.1 | 111.9 | 111.9 | 112.3 | 4.3 | 4.2 | 4.3 | 3.8 | 4.0 | 4.0 | 0.3 |
| Package holidays & accommodation | 44 | 108.3 | 108.6 | 108.5 | 108.5 | 108.7 | 108.9 | 4.4 | 4.3 | 4.3 | 4.2 | 4.5 | 4.5 | 0.1 |
| Other recreational & personal services | 153 | 112.6 | 112.9 | 113.1 | 112.8 | 112.8 | 113.3 | 4.3 | 4.2 | 4.2 | 3.7 | 3.8 | 3.9 | 0.4 |
| Catering services | 111 | 112.3 | 112.6 | 112.8 | 112.6 | 112.6 | 113.1 | 4.6 | 4.6 | 4.5 | 4.0 | 4.0 | 4.0 | 0.5 |
| Non-catering recreational & personal services | 42 | 113.3 | 113.7 | 114.1 | 113.6 | 113.5 | 113.7 | 3.4 | 3.2 | 3.4 | 3.0 | 3.3 | 3.5 | 0.2 |
| Miscellaneous & other services | 85 | 116.7 | 118.4 | 118.8 | 119.0 | 119.1 | 118.9 | 5.3 | 4.5 | 4.9 | 4.8 | 4.6 | 4.4 | -0.2 |
| Miscellaneous services | 52 | 110.5 | 110.5 | 111.1 | 111.4 | 111.5 | 111.2 | 3.5 | 3.1 | 3.6 | 3.5 | 3.4 | 3.1 | -0.3 |
| Medical services | 12 | 117.8 | 118.3 | 118.3 | 118.4 | 118.4 | 118.5 | 4.7 | 4.5 | 4.5 | 4.5 | 3.6 | 3.6 | 0.1 |
| Education | 21 | 136.2 | 144.6 | 144.6 | 144.6 | 144.6 | 144.6 | 10.8 | 8.6 | 8.6 | 8.6 | 8.6 | 8.6 | - |
| Special aggregates | | | | | | | | | | | | | | |
| Durables | 115 | 94.2 | 93.3 | 93.3 | 92.6 | 90.8 | 91.9 | -1.4 | -1.7 | -2.0 | -3.8 | -3.2 | -2.5 | 1.2 |
| Semi-durables | 118 | 91.8 | 90.9 | 91.1 | 88.5 | 86.0 | 87.4 | -3.7 | -4.2 | -4.3 | -7.1 | -6.5 | -5.4 | 1.6 |
| Non-durables | 79 | 108.6 | 109.1 | 109.7 | 108.1 | 109.4 | 110.8 | 4.3 | 4.1 | 4.3 | 2.6 | 3.6 | 4.4 | 1.3 |
| Seasonal food | 31 | 118.5 | 120.4 | 125.4 | 125.9 | 125.2 | 127.5 | 8.9 | 7.8 | 11.7 | 11.9 | 12.0 | 14.7 | 1.8 |
| Non-seasonal food | 73 | 121.9 | 121.9 | 122.4 | 123.7 | 122.9 | 124.6 | 14.4 | 12.7 | 11.7 | 11.3 | 10.8 | 11.6 | 1.4 |
| Energy, food, alcoholic beverages & tobacco | 242 | 128.3 | 127.2 | 126.2 | 125.3 | 124.8 | 126.7 | 15.8 | 13.5 | 11.3 | 9.9 | 9.0 | 8.3 | 1.5 |
| Energy & unprocessed food | 134 | 139.2 | 136.9 | 134.9 | 133.1 | 131.5 | 133.4 | 22.9 | 18.6 | 15.1 | 12.6 | 10.8 | 9.1 | 1.5 |
| Energy & seasonal food | 111 | 143.5 | 141.0 | 138.5 | 135.8 | 134.1 | 136.0 | 23.7 | 19.5 | 15.3 | 12.1 | 10.1 | 7.9 | 1.4 |
| Tobacco | 23 | 115.7 | 115.7 | 115.8 | 116.0 | 116.6 | 117.7 | 4.5 | 4.4 | 4.5 | 4.9 | 4.8 | 4.4 | 0.9 |
| Housing, water, electricity, gas & other fuels | 126 | 131.1 | 131.6 | 131.5 | 131.1 | 131.1 | 131.1 | 15.0 | 15.2 | 14.8 | 14.3 | 13.6 | 10.0 | - |
| Education, health & social protection ² | 54 | 120.1 | 123.0 | 123.4 | 123.0 | 123.5 | 123.6 | 6.0 | 5.2 | 5.6 | 5.0 | 5.1 | 5.2 | 0.1 |
| All items excluding | | | | | | | | | | | | | | |
| Energy | 920 | 107.4 | 107.4 | 107.6 | 107.4 | 106.7 | 107.6 | 3.4 | 2.9 | 3.1 | 2.3 | 2.5 | 3.0 | 0.8 |
| Energy, food, alcoholic beverages & tobacco | 758 | 105.5 | 105.5 | 105.6 | 105.3 | 104.4 | 105.1 | 2.2 | 1.9 | 2.0 | 1.1 | 1.3 | 1.6 | 0.7 |
| Energy & unprocessed food | 866 | 106.7 | 106.7 | 106.8 | 106.5 | 105.8 | 106.7 | 2.8 | 2.5 | 2.5 | 1.7 | 1.9 | 2.3 | 0.8 |
| Seasonal food | 969 | 110.1 | 109.7 | 109.5 | 109.0 | 108.2 | 109.1 | 5.1 | 4.3 | 3.8 | 2.8 | 2.7 | 2.8 | 0.8 |
| Energy & seasonal food | 889 | 107.0 | 107.0 | 107.1 | 106.9 | 106.2 | 107.0 | 3.2 | 2.8 | 2.8 | 2.0 | 2.2 | 2.6 | 0.8 |
| Tobacco | 977 | 110.1 | 109.9 | 109.7 | 109.3 | 108.5 | 109.4 | 5.2 | 4.5 | 4.0 | 3.0 | 3.0 | 3.1 | 0.9 |
| Alcoholic beverages & tobacco | 956 | 110.2 | 110.0 | 109.9 | 109.4 | 108.5 | 109.4 | 5.3 | 4.5 | 4.1 | 3.0 | 2.9 | 3.0 | 0.8 |
| Liquid fuels, vehicle fuels & lubricants | 964 | 109.4 | 109.5 | 109.7 | 109.5 | 108.9 | 109.7 | 4.6 | 4.2 | 4.3 | 3.6 | 3.8 | 3.8 | 0.8 |
| Housing, water, electricity, gas & other fuels | 874 | 107.8 | 107.5 | 107.3 | 106.9 | 106.0 | 107.1 | 3.9 | 3.1 | 2.7 | 1.6 | 1.6 | 2.2 | 1.0 |
| Education, health & social protection | 946 | 109.7 | 109.3 | 109.2 | 108.7 | 107.9 | 108.9 | 5.2 | 4.4 | 4.0 | 2.9 | 2.9 | 3.0 | 0.9 |

Key: - zero or negligible

¹ For further information on the composition of the indices shown, see 'The Consumer Prices Index: Goods and Services Indices and Special Aggregates', which can be downloaded from: www.statistics.gov.uk/cpi/article.asp?id=1060

² The coverage of this special aggregate has changed extensively since January 2000, when Social protection was first included and extensions to the Education and Health divisions also took effect. Health was further extended with effect from January 2001. Details are given in a series of Economic Trends articles available on the National Statistics website: www.statistics.gov.uk/cpi

6

CPI goods and services: the latest three years

Percentage change over 12 months

| | Goods components | | | | | Services components | | | | | |
|----------------|--------------------------------|-------------------------------|---------------------|--|-------------|-------------------------------|--|---|---------------|---|--------------|
| | Food & non-alcoholic beverages | Alcoholic beverages & tobacco | Energy ¹ | Non-energy industrial goods ² | All goods | Housing services ³ | Travel & transport services ³ | Recreational & personal services ³ | Communication | Miscellaneous & other services ³ | All services |
| Weights | | | | | | | | | | | |
| 2009 | CHZR 118 | CHZS 44 | A9F3 80 | A9ER 312 | ICVH 554 | A9FG 73 | A9FJ 68 | A9FL 197 | CHZY 23 | A9FQ 85 | ICVI 446 |
| Monthly | | | | | | | | | | | |
| 2006 Feb | D7G8 1.1 | D7G9 1.6 | DKL5 12.5 | DKK3 -1.7 | D7NM 0.6 | DKN2 3.9 | DKN5 4.8 | DKN7 2.9 | D7GF 0.4 | DKO4 5.6 | D7NN 3.7 |
| Mar | -0.4 | 2.5 | 12.2 | -1.9 | 0.2 | 3.9 | 4.4 | 2.9 | 0.5 | 5.7 | 3.7 |
| Apr | 0.3 | 2.5 | 14.4 | -2.2 | 0.5 | 3.3 | 6.5 | 2.7 | 0.3 | 5.7 | 3.8 |
| May | 1.1 | 2.2 | 19.3 | -1.9 | 1.3 | 3.3 | 2.8 | 2.9 | -0.4 | 5.6 | 3.3 |
| Jun | 1.8 | 3.3 | 19.8 | -1.7 | 1.7 | 3.4 | 3.2 | 2.9 | -0.3 | 5.6 | 3.4 |
| Jul | 3.2 | 2.8 | 19.4 | -2.0 | 1.8 | 3.4 | 2.4 | 2.9 | 0.3 | 4.9 | 3.2 |
| Aug | 3.4 | 3.3 | 17.9 | -1.3 | 2.2 | 3.4 | 1.6 | 2.8 | -0.7 | 4.7 | 2.9 |
| Sep | 4.0 | 3.4 | 11.6 | -1.0 | 1.8 | 3.3 | 3.0 | 2.8 | -0.2 | 5.3 | 3.2 |
| Oct | 4.7 | 3.2 | 9.8 | -1.3 | 1.5 | 3.4 | 2.5 | 3.0 | 0.9 | 6.7 | 3.6 |
| Nov | 5.0 | 2.7 | 11.7 | -1.1 | 1.8 | 3.5 | 3.7 | 3.1 | 0.7 | 6.4 | 3.7 |
| Dec | 4.6 | 2.7 | 14.9 | -0.8 | 2.3 | 3.5 | 4.1 | 3.1 | 0.5 | 6.4 | 3.8 |
| 2007 Jan | 3.9 | 3.5 | 12.8 | -0.9 | 2.0 | 3.8 | 3.1 | 3.2 | -1.8 | 6.1 | 3.6 |
| Feb | 4.4 | 4.2 | 11.8 | -1.0 | 2.0 | 3.7 | 5.0 | 3.2 | -2.8 | 6.1 | 3.8 |
| Mar | 5.6 | 4.4 | 11.6 | -0.5 | 2.5 | 3.7 | 4.2 | 3.3 | -2.8 | 6.1 | 3.7 |
| Apr | 6.0 | 4.5 | 7.9 | -0.3 | 2.3 | 3.8 | 3.8 | 3.3 | -3.7 | 4.5 | 3.3 |
| May | 5.0 | 4.2 | 4.4 | -0.4 | 1.6 | 3.8 | 6.4 | 3.1 | -3.2 | 4.4 | 3.6 |
| Jun | 4.8 | 3.4 | 3.3 | -0.4 | 1.4 | 3.7 | 6.8 | 3.3 | -3.9 | 4.4 | 3.7 |
| Jul | 2.8 | 3.4 | 0.9 | -0.8 | 0.5 | 3.6 | 6.3 | 3.2 | -5.0 | 4.4 | 3.5 |
| Aug | 3.0 | 3.1 | -0.5 | -1.1 | 0.1 | 3.5 | 7.6 | 3.4 | -2.0 | 3.9 | 3.8 |
| Sep | 3.7 | 3.2 | 1.5 | -1.2 | 0.4 | 3.5 | 4.9 | 3.4 | -3.0 | 4.0 | 3.4 |
| Oct | 4.7 | 2.7 | 3.9 | -1.1 | 1.0 | 3.7 | 5.9 | 3.3 | -4.2 | 3.8 | 3.4 |
| Nov | 4.8 | 2.9 | 5.3 | -1.2 | 1.1 | 3.7 | 4.6 | 3.2 | -4.0 | 4.0 | 3.2 |
| Dec | 5.4 | 2.7 | 4.4 | -1.3 | 1.1 | 3.6 | 5.0 | 3.2 | -3.8 | 4.1 | 3.3 |
| 2008 Jan | 6.1 | 2.2 | 5.8 | -1.4 | 1.3 | 3.7 | 5.1 | 3.0 | -3.2 | 4.0 | 3.3 |
| Feb | 5.6 | 2.9 | 11.4 | -1.4 | 1.9 | 3.7 | 4.2 | 3.1 | -3.9 | 4.0 | 3.1 |
| Mar | 5.5 | 2.5 | 12.0 | -1.8 | 1.7 | 3.8 | 5.9 | 3.1 | -4.0 | 4.0 | 3.4 |
| Apr | 6.6 | 4.2 | 13.6 | -1.7 | 2.3 | 3.9 | 4.7 | 3.4 | -2.9 | 5.3 | 3.7 |
| May | 7.8 | 4.9 | 15.6 | -1.5 | 3.0 | 3.9 | 4.5 | 3.6 | -2.4 | 5.3 | 3.8 |
| Jun | 9.5 | 4.5 | 19.0 | -1.4 | 3.8 | 3.8 | 4.7 | 3.6 | -1.3 | 5.3 | 3.9 |
| Jul | 12.3 | 4.3 | 21.1 | -1.2 | 4.7 | 3.6 | 5.3 | 4.0 | -0.7 | 5.3 | 4.1 |
| Aug | 13.0 | 4.4 | 22.4 | -1.1 | 5.1 | 3.7 | 6.6 | 4.0 | -3.0 | 5.7 | 4.3 |
| Sep | 11.3 | 4.3 | 29.7 | -1.0 | 5.7 | 3.6 | 8.3 | 4.3 | -2.7 | 5.3 | 4.6 |
| Oct | 10.1 | 4.4 | 24.2 | -1.4 | 4.6 | 4.0 | 6.6 | 4.2 | -2.2 | 4.5 | 4.3 |
| Nov | 10.6 | 4.0 | 16.7 | -1.5 | 3.7 | 3.8 | 7.5 | 4.3 | -1.5 | 4.9 | 4.5 |
| Dec | 10.4 | 4.4 | 12.2 | -3.7 | 1.8 | 3.8 | 10.3 | 3.8 | -3.4 | 4.8 | 4.6 |
| 2009 Jan | 10.2 | 5.3 | 9.4 | -2.9 | 2.0 | 3.0 | 8.2 | 4.0 | -2.0 | 4.6 | 4.2 |
| Feb | 11.5 | 5.7 | 5.4 | -2.1 | 2.2 | 3.0 | 7.7 | 4.0 | -0.7 | 4.4 | 4.2 |

Key: - zero or negligible

1 Comprises 'Electricity, gas and other fuels' (group 04.5) and 'Fuels and lubricants' (class 07.2.2).

2 Comprises all other goods elements of the CPI. For further information, see 'The Consumer Prices Index: Goods and Services Indices and Special Aggregates', which can be downloaded from: www.statistics.gov.uk/cci/article.asp?id=1060

3 For further information on all of these services components, see 'The Consumer Prices Index: Goods and Services Indices and Special Aggregates', which can be downloaded from: www.statistics.gov.uk/cci/article.asp?id=1060

Source: National Statistics

7 HICP¹ - International comparisons: EU countries

Percentage change over 12 months

| | Austria | Belgium | Bulgaria | Cyprus | Czech Republic | Denmark | Estonia | Finland | France | Germany | Greece | Hungary | Ireland | Italy | Latvia |
|----------|---------|---------|----------|--------|----------------|---------|---------|---------|------------------|---------|--------|---------|---------|-------|--------|
| | D7SK | D7SL | GHY8 | D7RO | D7RP | D7SM | D7RQ | D7SN | D7SO | D7SP | D7SQ | D7RR | D7SS | D7ST | D7RS |
| 2006 | 1.7 | 2.3 | 7.4 | 2.2 | 2.1 | 1.9 | 4.4 | 1.3 | 1.9 | 1.8 | 3.3 | 4.0 | 2.7 | 2.2 | 6.6 |
| 2007 | 2.2 | 1.8 | 7.6 | 2.2 | 3.0 | 1.7 | 6.7 | 1.6 | 1.6 | 2.3 | 3.0 | 7.9 | 2.9 | 2.0 | 10.1 |
| 2008 | 3.2 | 4.5 | 12.0 | 4.4 | 6.3 | 3.6 | 10.6 | 3.9 | 3.2 | 2.8 | 4.2 | 6.0 | 3.1 | 3.5 | 15.3 |
| 2007 Feb | 1.7 | 1.8 | 4.6 | 1.2 | 1.7 | 1.9 | 4.6 | 1.2 | 1.2 | 1.9 | 3.0 | 9.0 | 2.6 | 2.1 | 7.2 |
| Mar | 1.9 | 1.8 | 4.4 | 1.4 | 2.1 | 1.9 | 5.6 | 1.6 | 1.2 | 2.0 | 2.8 | 9.0 | 2.9 | 2.1 | 8.5 |
| Apr | 1.8 | 1.8 | 4.4 | 1.6 | 2.7 | 1.7 | 5.6 | 1.5 | 1.3 | 2.0 | 2.6 | 8.7 | 2.9 | 1.8 | 8.8 |
| May | 1.9 | 1.3 | 4.5 | 1.9 | 2.4 | 1.7 | 5.9 | 1.3 | 1.2 | 2.0 | 2.6 | 8.4 | 2.7 | 1.9 | 7.8 |
| Jun | 1.9 | 1.3 | 5.3 | 1.7 | 2.6 | 1.3 | 6.0 | 1.4 | 1.3 | 2.0 | 2.6 | 8.5 | 2.8 | 1.9 | 8.9 |
| Jul | 2.0 | 1.3 | 6.8 | 2.3 | 2.5 | 1.1 | 6.5 | 1.6 | 1.2 | 2.0 | 2.7 | 8.3 | 2.7 | 1.7 | 9.5 |
| Aug | 1.7 | 1.2 | 9.3 | 2.2 | 2.6 | 0.9 | 6.1 | 1.3 | 1.3 | 2.0 | 2.7 | 7.1 | 2.3 | 1.7 | 10.2 |
| Sep | 2.1 | 1.4 | 11.0 | 2.3 | 2.8 | 1.2 | 7.5 | 1.7 | 1.6 | 2.7 | 2.9 | 6.4 | 2.9 | 1.7 | 11.5 |
| Oct | 2.9 | 2.2 | 10.6 | 2.7 | 4.0 | 1.8 | 8.7 | 1.8 | 2.1 | 2.7 | 3.0 | 6.9 | 3.0 | 2.3 | 13.2 |
| Nov | 3.2 | 2.9 | 11.4 | 3.2 | 5.1 | 2.5 | 9.3 | 2.2 | 2.6 | 3.3 | 3.9 | 7.2 | 3.5 | 2.6 | 13.7 |
| Dec | 3.5 | 3.1 | 11.6 | 3.7 | 5.5 | 2.4 | 9.7 | 1.9 | 2.8 | 3.1 | 3.9 | 7.4 | 3.2 | 2.8 | 14.0 |
| 2008 Jan | 3.1 | 3.5 | 11.7 | 4.1 | 7.9 | 3.0 | 11.3 | 3.5 | 3.2 | 2.9 | 3.9 | 7.4 | 3.1 | 3.1 | 15.6 |
| Feb | 3.1 | 3.6 | 12.2 | 4.7 | 7.6 | 3.3 | 11.5 | 3.3 | 3.2 | 3.0 | 4.5 | 6.7 | 3.5 | 3.1 | 16.5 |
| Mar | 3.5 | 4.4 | 13.2 | 4.4 | 7.1 | 3.3 | 11.2 | 3.6 | 3.5 | 3.3 | 4.4 | 6.7 | 3.7 | 3.6 | 16.6 |
| Apr | 3.4 | 4.1 | 13.4 | 4.3 | 6.7 | 3.4 | 11.6 | 3.3 | 3.4 | 2.6 | 4.4 | 6.8 | 3.3 | 3.6 | 17.4 |
| May | 3.7 | 5.1 | 14.0 | 4.6 | 6.8 | 3.6 | 11.4 | 4.1 | 3.7 | 3.1 | 4.9 | 6.9 | 3.7 | 3.7 | 17.7 |
| Jun | 4.0 | 5.8 | 14.7 | 5.2 | 6.6 | 4.2 | 11.5 | 4.3 | 4.0 | 3.4 | 4.9 | 6.6 | 3.9 | 4.0 | 17.5 |
| Jul | 3.8 | 5.9 | 14.4 | 5.3 | 6.8 | 4.4 | 11.2 | 4.3 | 4.0 | 3.5 | 4.9 | 7.0 | 3.6 | 4.0 | 16.5 |
| Aug | 3.6 | 5.4 | 11.8 | 5.1 | 6.2 | 4.8 | 11.1 | 4.6 | 3.5 | 3.3 | 4.8 | 6.4 | 3.2 | 4.2 | 15.6 |
| Sep | 3.7 | 5.5 | 11.4 | 5.0 | 6.4 | 4.5 | 10.8 | 4.7 | 3.4 [†] | 3.0 | 4.7 | 5.6 | 3.2 | 3.9 | 14.7 |
| Oct | 3.0 | 4.8 | 11.2 | 4.8 | 5.7 | 3.8 | 10.1 | 4.4 | 3.0 | 2.5 | 4.0 | 5.1 | 2.7 | 3.6 | 13.7 |
| Nov | 2.3 | 3.2 | 8.8 | 3.1 | 4.1 | 2.8 | 8.5 | 3.5 | 1.9 | 1.4 | 3.0 | 4.1 | 2.1 | 2.7 | 11.6 |
| Dec | 1.5 | 2.7 | 7.2 | 1.8 | 3.3 | 2.4 | 7.5 | 3.4 | 1.2 | 1.1 | 2.2 | 3.4 | 1.3 | 2.4 | 10.4 |
| 2009 Jan | 1.2* | 2.1 | 6.0* | 0.9 | 1.4 | 1.7 | 4.7 | 2.5 | 0.8 | 0.9 | 2.0 | 2.4 | 1.1 | 1.4 | 9.7 |
| Feb | .. | .. | .. | .. | .. | .. | .. | .. | .. | .. | .. | .. | .. | .. | .. |

| | Lithuania | Luxembourg | Malta | Netherlands | Poland | Portugal | Romania | Slovakia | Slovenia | Spain | Sweden | United Kingdom ¹ | EICP ² EU 25 average ³ | EICP ² EU 27 average ³ | Monetary Union Area average ⁴ |
|----------|-----------|------------|-------|-------------|--------|----------|---------|----------|----------|-------|--------|-----------------------------|--|--|--|
| | D7RT | D7SU | D7RU | D7SV | D7RV | D7SX | GHY7 | D7RW | D7RX | D7SY | D7SZ | D7G7 | D7RY | GJ2E | D7SR |
| 2006 | 3.8 | 3.0 | 2.6 | 1.7 | 1.3 | 3.0 | 6.6 | 4.3 | 2.5 | 3.6 | 1.5 | 2.3 | 2.2 | .. | 2.2 |
| 2007 | 5.8 | 2.7 | 0.7 | 1.6 | 2.6 | 2.4 | 4.9 | 1.9 | 3.8 | 2.8 | 1.7 | 2.3 | .. | 2.4 | 2.1 |
| 2008 | 11.1 | 4.1 | 4.7 | 2.2 | 4.2 | 2.7 | 7.9 | 3.9 | 5.5 | 4.1 | 3.3 | 3.6 | .. | 3.7 | 3.3 |
| 2007 Feb | 4.4 | 1.8 | 0.8 | 1.4 | 1.9 | 2.3 | 3.9 | 2.0 | 2.3 | 2.5 | 1.7 | 2.8 | .. | 2.2 | 1.9 |
| Mar | 4.8 | 2.4 | 0.5 | 1.9 | 2.4 | 2.4 | 3.7 | 2.1 | 2.6 | 2.5 | 1.6 | 3.1 | .. | 2.3 | 1.9 |
| Apr | 4.9 | 2.5 | -1.1 | 1.9 | 2.2 | 2.8 | 3.8 | 2.0 | 2.9 | 2.5 | 1.6 | 2.8 | .. | 2.2 | 1.9 |
| May | 5.0 | 2.3 | -1.0 | 2.0 | 2.3 | 2.4 | 3.9 | 1.5 | 3.1 | 2.4 | 1.2 | 2.5 | .. | 2.1 | 1.9 |
| Jun | 5.0 | 2.3 | -0.6 | 1.8 | 2.6 | 2.4 | 3.9 | 1.5 | 3.8 | 2.5 | 1.3 | 2.4 | .. | 2.2 | 1.9 |
| Jul | 5.1 | 2.0 | -0.2 | 1.4 | 2.5 | 2.3 | 4.1 | 1.2 | 4.0 | 2.3 | 1.4 | 1.9 | .. | 2.0 | 1.8 |
| Aug | 5.6 | 1.9 | 0.6 | 1.1 | 2.1 | 1.9 | 5.0 | 1.2 | 3.4 | 2.2 | 1.2 | 1.8 | .. | 1.9 | 1.7 |
| Sep | 7.1 | 2.5 | 0.9 | 1.3 | 2.7 | 2.0 | 6.1 | 1.7 | 3.6 | 2.7 | 1.6 | 1.8 | .. | 2.3 | 2.1 |
| Oct | 7.6 | 3.6 | 1.6 | 1.6 | 3.1 | 2.5 | 6.9 | 2.4 | 5.1 | 3.6 | 1.9 | 2.1 | .. | 2.7 | 2.6 |
| Nov | 7.9 | 4.0 | 2.9 | 1.8 | 3.7 | 2.8 | 6.8 | 2.3 | 5.7 | 4.1 | 2.4 | 2.1 | .. | 3.1 | 3.1 |
| Dec | 8.2 | 4.3 | 3.1 | 1.6 | 4.2 | 2.7 | 6.7 | 2.5 | 5.7 | 4.3 | 2.5 | 2.1 | .. | 3.2 | 3.1 |
| 2008 Jan | 10.0 | 4.2 | 3.8 | 1.8 | 4.4 | 2.9 | 7.3 | 3.2 | 6.4 | 4.4 | 3.0 | 2.2 | .. | 3.4 | 3.2 |
| Feb | 10.9 | 4.2 | 4.0 | 2.0 | 4.6 | 2.9 | 8.0 | 3.4 | 6.4 | 4.4 | 2.9 | 2.5 | .. | 3.5 | 3.3 |
| Mar | 11.4 | 4.4 | 4.3 | 1.9 | 4.4 | 3.1 | 8.7 | 3.6 | 6.6 | 4.6 | 3.3 | 2.5 | .. | 3.7 | 3.6 |
| Apr | 11.9 | 4.3 | 4.1 | 1.7 | 4.3 | 2.5 | 8.7 | 3.7 | 6.2 | 4.2 | 3.2 | 3.0 | .. | 3.6 | 3.3 |
| May | 12.3 | 4.8 | 4.1 | 2.1 | 4.3 | 2.8 | 8.5 | 4.0 | 6.2 | 4.7 | 3.7 | 3.3 | .. | 4.0 | 3.7 |
| Jun | 12.7 | 5.3 | 4.4 | 2.3 | 4.3 | 3.4 | 8.7 | 4.3 | 6.8 | 5.1 | 4.0 | 3.8 | .. | 4.2 | 4.0 |
| Jul | 12.4 | 5.8 | 5.6 | 3.0 | 4.5 | 3.1 | 9.1 | 4.4 | 6.9 | 5.3 | 3.8 | 4.4 | .. | 4.4 | 4.0 |
| Aug | 12.2 | 4.8 | 5.4 | 3.0 | 4.4 | 3.1 | 8.1 | 4.4 | 6.0 | 4.9 | 4.1 | 4.7 | .. | 4.3 | 3.8 |
| Sep | 11.3 | 4.8 | 4.9 | 2.8 | 4.1 | 3.2 | 7.3 | 4.5 | 5.6 | 4.6 | 4.2 | 5.2 | .. | 4.2 | 3.6 |
| Oct | 10.7 | 3.9 | 5.7 | 2.5 | 4.0 | 2.5 | 7.4 | 4.2 | 4.8 | 3.6 | 3.4 | 4.5 | .. | 3.7 | 3.2 |
| Nov | 9.2 | 2.0 | 4.9 | 1.9 | 3.6 | 1.4 | 6.8 | 3.9 | 2.9 | 2.4 | 2.4 | 4.1 | .. | 2.8 | 2.1 |
| Dec | 8.5 | 0.7 | 5.0 | 1.7 | 3.3 | 0.8 | 6.4 | 3.5 | 1.8 | 1.5 | 2.1 | 3.1 | .. | 2.2 | 1.6 |
| 2009 Jan | 9.5 | .. | 3.1 | 1.7* | 3.1 | 0.1 | 6.8 | 2.7* | 1.4 | 0.8 | 2.0 | 3.0 | .. | 1.7* | 1.1* |
| Feb | .. | .. | .. | .. | .. | .. | .. | .. | .. | .. | .. | 3.2 | .. | .. | 1.2* |

Key: - zero or negligible .. Not available * Provisional

† Date of earliest revision † Estimated

1 Published as the CPI in the UK.

2 The EICP (European Index of Consumer Prices) is the official EU aggregate. It covers 15 member states until April 2004, 25 member states from May 2004, and 27 members from Jan 2007, the new member states being integrated using a chain index formula.

The EU 25 annual average for 2004 is calculated from the EU 15 average from January to April and the EU 25 average from May to December.

3 The coverage of the European Union was extended to include Cyprus, Czech Republic, Estonia, Hungary, Latvia, Lithuania, Malta, Poland, Slovakia and Slovenia from 1 May 2004 and Bulgaria and Romania from 1 Jan 2007.

4 The coverage of the Monetary Union Area index was extended to include Greece with effect from Jan 2001 and Slovakia from January 2009.

Sources: National Statistics; Eurostat

| | Weights | Index (January 1987=100) | | | | | | Percentage change over 12 months | | | | | | Percentage change over 1 month | |
|---|---------|--------------------------|-------|-------|-------|-------|-------|----------------------------------|------|------|------|------|------|--------------------------------|------|
| | | 2009 | 2008 | 2008 | 2008 | 2008 | 2009 | 2009 | 2008 | 2008 | 2008 | 2008 | 2009 | 2009 | 2009 |
| | | | Sep | Oct | Nov | Dec | Jan | Feb | Sep | Oct | Nov | Dec | Jan | Feb | Feb |
| ALL ITEMS | 1 000 | 218.4 | 217.7 | 216.0 | 212.9 | 210.1 | 211.4 | 5.0 | 4.2 | 3.0 | 0.9 | 0.1 | 0.0 | 0.6 | |
| Food and catering | 168 | 202.3 | 203.1 | 205.5 | 206.2 | 205.5 | 208.3 | 9.2 | 8.4 | 8.8 | 8.4 | 8.0 | 9.1 | 1.4 | |
| Alcohol and tobacco | 90 | 269.6 | 269.7 | 268.8 | 268.7 | 270.9 | 273.4 | 4.4 | 4.7 | 4.5 | 4.6 | 5.0 | 5.1 | 0.9 | |
| Housing and household expenditure | 416 | 264.3 | 264.2 | 261.6 | 254.5 | 249.4 | 248.6 | 5.2 | 4.9 | 3.4 | -0.1 | -1.3 | -2.7 | -0.3 | |
| Personal expenditure | 80 | 133.7 | 133.3 | 133.6 | 130.1 | 127.6 | 129.8 | 0.0 | -0.6 | -0.5 | -2.9 | -2.4 | -1.7 | 1.7 | |
| Travel and leisure | 246 | 191.0 | 188.5 | 184.3 | 183.1 | 180.6 | 182.9 | 4.0 | 2.1 | -0.6 | -2.0 | -3.3 | -2.3 | 1.3 | |
| Consumer durables ¹ | 106 | 92.6 | 91.3 | 91.6 | 90.8 | 86.7 | 88.8 | -1.2 | -1.6 | -1.7 | -4.2 | -3.5 | -2.6 | 2.4 | |
| Seasonal food | 21 | 167.8 | 171.9 | 178.1 | 180.2 | 178.8 | 183.3 | 9.5 | 8.8 | 12.0 | 12.3 | 11.8 | 16.8 | 2.5 | |
| Food excluding seasonal | 97 | 186.3 | 186.2 | 188.4 | 189.3 | 188.4 | 191.4 | 11.6 | 10.4 | 10.4 | 10.0 | 9.4 | 10.1 | 1.6 | |
| All items excluding seasonal food | 979 | 219.7 | 218.9 | 217.0 | 213.7 | 210.9 | 212.1 | 4.9 | 4.1 | 2.8 | 0.7 | -0.1 | -0.3 | 0.6 | |
| All items excluding food | 882 | 224.7 | 223.8 | 221.3 | 217.5 | 214.4 | 215.5 | 4.3 | 3.5 | 2.0 | -0.2 | -1.1 | -1.4 | 0.5 | |
| All goods | 472 | 165.3 | 163.9 | 162.7 | 161.1 | 159.0 | 161.9 | 4.8 | 3.7 | 2.1 | 0.4 | 0.1 | 1.2 | 1.8 | |
| All services | 397 | 278.0 | 279.1 | 279.4 | 280.4 | 279.9 | 280.6 | 7.6 | 7.4 | 7.5 | 7.4 | 6.9 | 6.0 | 0.3 | |
| Other indices | | | | | | | | | | | | | | | |
| All items excluding: | | | | | | | | | | | | | | | |
| mortgage interest payments (RPIX) | 959 | 211.8 | 211.1 | 210.2 | 209.2 | 207.5 | 209.5 | 5.5 | 4.7 | 3.9 | 2.8 | 2.4 | 2.5 | 1.0 | |
| housing | 764 | 194.8 | 194.0 | 193.2 | 192.4 | 190.6 | 193.0 | 6.2 | 5.3 | 4.4 | 3.3 | 2.9 | 3.2 | 1.3 | |
| mortgage interest payments and indirect taxes (RPIY) ² | | 202.4 | 201.7 | 200.8 | 201.9 | 200.0 | 202.1 | 5.6 | 4.9 | 3.9 | 3.9 | 3.4 | 3.5 | 1.1 | |
| mortgage interest payments and council tax | 919 | 208.7 | 207.9 | 207.0 | 206.0 | 204.3 | 206.3 | 5.6 | 4.7 | 3.9 | 2.7 | 2.3 | 2.5 | 1.0 | |
| mortgage interest payments and depreciation ³ | 909 | 205.4 | 204.8 | 204.1 | 203.3 | 201.8 | 203.9 | 6.0 | 5.2 | 4.5 | 3.4 | 3.1 | 3.3 | 1.0 | |
| Food | 118 | 183.5 | 184.3 | 187.2 | 188.4 | 187.4 | 190.6 | 11.2 | 10.1 | 10.7 | 10.4 | 9.9 | 11.3 | 1.7 | |
| Bread | 5 | 212.7 | 211.6 | 214.6 | 216.0 | 211.3 | 214.2 | 18.0 | 16.5 | 13.5 | 10.3 | 8.6 | 8.8 | 1.4 | |
| Cereals | 4 | 174.3 | 172.6 | 175.3 | 177.0 | 171.3 | 179.7 | 16.9 | 15.8 | 14.8 | 15.5 | 11.8 | 16.1 | 4.9 | |
| Biscuits and cakes | 7 | 204.1 | 202.6 | 202.9 | 204.8 | 203.5 | 203.7 | 18.5 | 12.9 | 12.3 | 11.5 | 11.0 | 9.5 | 0.1 | |
| Beef | 5 | 172.1 | 169.1 | 173.5 | 173.6 | 173.5 | 175.9 | 23.1 | 21.1 | 23.8 | 23.9 | 22.9 | 20.6 | 1.4 | |
| Lamb | 2 | 214.2 | 214.0 | 213.0 | 219.3 | 216.8 | 227.2 | 15.2 | 16.7 | 16.3 | 17.5 | 15.8 | 21.3 | 4.8 | |
| of which home-killed lamb | 1 | 226.6 | 223.7 | 222.8 | 230.9 | 228.8 | 236.8 | 19.3 | 20.4 | 22.0 | 22.8 | 22.4 | 26.7 | 3.5 | |
| imported lamb | 1 | 197.4 | 200.0 | 198.7 | 203.2 | 200.3 | 212.4 | 10.7 | 13.0 | 10.6 | 12.0 | 9.2 | 15.6 | 6.0 | |
| Pork | 1 | 198.3 | 197.0 | 186.5 | 196.3 | 188.3 | 196.0 | 23.5 | 23.0 | 17.1 | 20.9 | 14.7 | 19.4 | 4.1 | |
| Bacon | 2 | 214.3 | 211.1 | 214.3 | 215.4 | 215.0 | 216.8 | 21.3 | 11.1 | 13.4 | 12.7 | 12.7 | 13.6 | 0.8 | |
| Poultry | 4 | 133.5 | 134.5 | 130.9 | 131.7 | 131.2 | 132.8 | 20.9 | 15.1 | 10.1 | 10.3 | 11.6 | 11.4 | 1.2 | |
| Other meat | 7 | 169.1 | 167.3 | 167.1 | 169.5 | 168.3 | 168.5 | 13.8 | 11.2 | 11.0 | 11.5 | 11.2 | 11.2 | 0.1 | |
| Fish | 3 | 192.9 | 193.6 | 198.3 | 195.2 | 194.7 | 194.4 | 10.4 | 8.5 | 10.8 | 10.5 | 7.6 | 8.6 | -0.2 | |
| of which fresh fish | 2 | 191.4 | 193.4 | 193.4 | 188.9 | 189.6 | 191.3 | 1.3 | -0.6 | 0.1 | -0.8 | -3.4 | 2.0 | 0.9 | |
| processed fish | 1 | 192.6 | 192.2 | 200.9 | 198.9 | 197.5 | 193.0 | 19.3 | 17.8 | 21.3 | 21.6 | 18.7 | 13.4 | -2.3 | |
| Butter | 1 | 236.1 | 229.4 | 223.9 | 224.8 | 233.2 | 232.0 | 18.2 | 12.7 | -2.8 | -4.4 | -1.5 | -2.1 | -0.5 | |
| Oils and fats | 2 | 173.8 | 170.2 | 170.4 | 171.7 | 170.4 | 172.1 | 12.5 | 9.0 | 10.6 | 11.7 | 10.6 | 12.2 | 1.0 | |
| Cheese | 4 | 211.9 | 212.0 | 214.0 | 216.4 | 213.0 | 217.5 | 16.4 | 14.5 | 11.7 | 10.4 | 10.0 | 8.2 | 2.1 | |
| Eggs | 1 | 251.6 | 250.7 | 253.0 | 252.8 | 251.2 | 245.1 | 27.7 | 17.1 | 9.4 | 8.5 | 7.9 | 4.7 | -2.4 | |
| Milk, fresh | 5 | 231.0 | 243.9 | 245.3 | 244.7 | 245.2 | 245.1 | 6.1 | 11.3 | 11.1 | 11.2 | 11.3 | 11.5 | - | |
| Milk products | 4 | 171.1 | 171.1 | 170.5 | 173.7 | 168.0 | 170.9 | 9.7 | 9.3 | 5.6 | 5.5 | 1.7 | 2.6 | 1.7 | |
| Tea | 1 | 174.4 | 175.3 | 178.0 | 174.0 | 178.3 | 182.7 | 8.7 | 8.5 | 11.2 | 11.5 | 14.7 | 11.3 | 2.5 | |
| Coffee and other hot drinks | 1 | 131.4 | 134.1 | 137.0 | 139.4 | 143.2 | 138.4 | 4.2 | 9.4 | 9.3 | 11.2 | 15.5 | 9.8 | -3.4 | |
| Soft drinks | 12 | 202.7 | 202.8 | 203.3 | 202.1 | 200.6 | 208.3 | 1.2 | 1.0 | 1.9 | 1.1 | 0.2 | 2.8 | 3.8 | |
| Sugar and preserves | 1 | 173.4 | 172.2 | 178.1 | 183.5 | 188.6 | 195.8 | 6.0 | 4.7 | 6.8 | 10.2 | 12.3 | 16.3 | 3.8 | |
| Sweets and chocolates | 12 | 217.1 | 217.7 | 220.3 | 220.2 | 225.1 | 227.0 | 7.7 | 8.1 | 8.4 | 6.8 | 8.6 | 9.7 | 0.8 | |
| Potatoes | 5 | 191.7 | 186.1 | 191.7 | 193.0 | 189.5 | 194.4 | 18.0 | 14.5 | 15.1 | 15.3 | 12.3 | 12.4 | 2.6 | |
| of which unprocessed potatoes | 2 | 195.5 | 188.9 | 186.6 | 195.8 | 193.0 | 195.6 | 27.0 | 22.7 | 19.8 | 20.1 | 15.1 | 17.1 | 1.3 | |
| potato products | 3 | 180.4 | 175.9 | 186.3 | 182.4 | 178.6 | 184.7 | 12.0 | 9.3 | 12.0 | 12.0 | 10.5 | 9.4 | 3.4 | |
| Vegetables other than potatoes | 10 | 163.1 | 164.9 | 172.4 | 180.0 | 184.1 | 190.4 | 8.0 | 8.1 | 12.9 | 15.2 | 16.9 | 21.7 | 3.4 | |
| of which fresh vegetables | 8 | 144.5 | 147.5 | 153.5 | 160.8 | 165.4 | 173.1 | 5.4 | 7.2 | 12.1 | 14.7 | 17.2 | 23.8 | 4.7 | |
| processed vegetables | 2 | 222.9 | 218.5 | 232.1 | 239.7 | 239.9 | 236.5 | 17.4 | 11.5 | 15.7 | 17.0 | 15.8 | 13.5 | -1.4 | |
| Fruit | 8 | 158.9 | 167.6 | 177.9 | 174.0 | 167.6 | 169.4 | 6.1 | 5.5 | 10.8 | 9.7 | 9.3 | 13.8 | 1.1 | |
| of which fresh fruit | 7 | 156.6 | 166.2 | 177.0 | 172.6 | 164.9 | 167.1 | 6.7 | 5.5 | 11.1 | 9.7 | 8.9 | 13.8 | 1.3 | |
| processed fruit | 1 | 156.3 | 158.0 | 164.1 | 164.0 | 166.6 | 166.1 | 2.2 | 4.8 | 8.2 | 9.6 | 11.9 | 13.9 | -0.3 | |
| Other foods | 11 | 164.7 | 165.7 | 170.7 | 171.5 | 171.1 | 173.9 | 7.1 | 7.1 | 10.5 | 9.7 | 9.2 | 11.5 | 1.6 | |
| Catering | 50 | 267.3 | 268.0 | 268.5 | 267.7 | 268.0 | 269.5 | 4.8 | 4.6 | 4.4 | 3.7 | 3.6 | 3.9 | 0.6 | |
| Restaurant meals | 27 | 260.1 | 260.7 | 261.0 | 259.7 | 260.1 | 262.0 | 4.5 | 4.1 | 4.1 | 3.3 | 3.5 | 3.9 | 0.7 | |
| Canteen meals | 4 | 330.4 | 331.4 | 331.4 | 327.3 | 327.8 | 329.8 | 3.8 | 4.2 | 3.9 | 2.8 | 2.5 | 2.6 | 0.6 | |
| Take-aways and snacks | 19 | 257.5 | 258.2 | 259.0 | 259.7 | 259.9 | 260.5 | 5.3 | 5.2 | 4.9 | 4.5 | 4.3 | 4.2 | 0.2 | |
| Alcoholic drink | 63 | 230.5 | 230.6 | 229.5 | 229.2 | 231.4 | 233.5 | 4.4 | 4.7 | 4.4 | 4.5 | 5.1 | 5.4 | 0.9 | |
| Beer | 32 | 251.4 | 252.1 | 251.0 | 251.4 | 252.6 | 255.1 | 3.9 | 4.6 | 4.1 | 4.2 | 5.0 | 5.0 | 1.0 | |
| on sales | 26 | 275.5 | 276.0 | 276.3 | 276.8 | 276.4 | 277.1 | 4.6 | 4.9 | 5.0 | 4.9 | 5.1 | 4.6 | 0.3 | |
| off sales | 6 | 149.7 | 150.8 | 145.8 | 145.9 | 151.6 | 158.0 | 0.1 | 3.1 | -0.7 | 0.6 | 4.5 | 6.6 | 4.2 | |
| Wines and spirits | 31 | 203.2 | 202.6 | 201.6 | 200.7 | 203.7 | 205.4 | 5.0 | 4.9 | 4.7 | 4.8 | 5.3 | 5.8 | 0.8 | |
| on sales | 17 | 256.0 | 256.7 | 257.2 | 257.4 | 257.6 | 258.6 | 4.4 | 4.7 | 4.9 | 4.9 | 4.9 | 5.0 | 0.4 | |
| off sales | 14 | 168.5 | 167.0 | 164.8 | 163.1 | 168.1 | 170.5 | 5.6 | 5.1 | 4.6 | 4.9 | 5.7 | 6.6 | 1.4 | |

Key: - zero or negligible

Index date for February : 17 February 2009

1 Consumer durables: Furniture, furnishings, electrical appliances and other household equipment, men's, women's and children's outerwear, footwear, audio-visual equipment, CDs and tapes, toys, photographic and sports goods.

2 The taxes excluded are council tax, VAT, duties, vehicle excise duty, insurance tax and air passenger duty. There are no weights available for RPIY.

3 This series has been constructed using the index for all items excluding mortgage interest payments prior to February 1995.

9 RPI goods and services¹: the latest three years

Percentage change over 12 months

| | Goods components | | | | All goods | Services components | | | | All services |
|----------------|------------------|-------------------|---------------------------|--------------------------|-------------|---------------------|------------------------|------------------------------|----------------------------------|--------------|
| | Food | Alcohol & tobacco | Petrol & oil ² | Other goods ³ | | Rent | Utilities ⁴ | "Shop" services ⁵ | "Non-shop" services ⁶ | |
| Weights | | | | | | | | | | |
| 2009 | CZGZ 118 | CBVW 90 | DOHB 38 | DOHC 226 | DOHD 472 | CZXD 62 | DOHE 88 | DOHF 132 | DOHG 115 | DOHH 397 |
| Monthly | | | | | | | | | | |
| 2006 Feb | CCYY 0.8 | CZBK 2.5 | DOGQ 12.9 | DOGI -1.1 | DOGD 1.1 | CZCQ 3.0 | DOGF 7.4 | DOGG 4.2 | DOGH 1.2 | DOGE 3.8 |
| Mar | -0.5 | 3.0 | 10.1 | -1.2 | 0.6 | 3.0 | 8.6 | 4.1 | 1.7 | 4.1 |
| Apr | 0.2 | 2.7 | 9.6 | -1.3 | 0.7 | 2.8 | 9.9 | 4.2 | 2.3 | 4.6 |
| May | 0.9 | 2.7 | 13.8 | -0.8 | 1.4 | 2.8 | 11.7 | 4.1 | 1.5 | 4.6 |
| Jun | 1.5 | 3.2 | 12.4 | -0.5 | 1.6 | 2.9 | 12.9 | 4.1 | 1.8 | 5.0 |
| Jul | 2.7 | 3.0 | 10.7 | -0.9 | 1.5 | 3.0 | 13.8 | 4.1 | 1.5 | 5.0 |
| Aug | 2.9 | 3.4 | 7.6 | -0.2 | 1.8 | 3.0 | 13.9 | 4.0 | 1.7 | 5.1 |
| Sep | 3.5 | 3.4 | -3.4 | 0.4 | 1.2 | 2.9 | 14.2 | 4.0 | 2.3 | 5.3 |
| Oct | 4.2 | 3.3 | -7.6 | - | 0.8 | 2.9 | 15.1 | 4.2 | 3.3 | 5.8 |
| Nov | 4.5 | 3.2 | -4.6 | 0.1 | 1.2 | 3.0 | 15.0 | 4.1 | 3.9 | 6.0 |
| Dec | 4.1 | 3.2 | 0.6 | 0.4 | 1.8 | 3.0 | 15.0 | 4.1 | 4.0 | 6.1 |
| 2007 Jan | 3.7 | 3.6 | -2.6 | -0.3 | 1.1 | 3.3 | 14.2 | 4.2 | 4.6 | 6.1 |
| Feb | 4.0 | 4.0 | -4.3 | - | 1.2 | 3.2 | 13.7 | 4.3 | 5.4 | 6.3 |
| Mar | 5.1 | 4.1 | -1.7 | 0.5 | 2.0 | 3.2 | 12.2 | 4.4 | 4.8 | 5.9 |
| Apr | 5.6 | 4.5 | -1.7 | 0.6 | 2.1 | 3.1 | 8.5 | 4.1 | 4.2 | 4.9 |
| May | 4.8 | 4.1 | -2.0 | 0.6 | 1.9 | 3.2 | 5.3 | 4.1 | 5.1 | 4.6 |
| Jun | 4.8 | 3.7 | 0.3 | 0.8 | 2.2 | 3.3 | 3.0 | 4.2 | 5.0 | 4.1 |
| Jul | 3.1 | 3.7 | -1.8 | -0.2 | 1.2 | 3.3 | 1.3 | 3.9 | 5.1 | 3.7 |
| Aug | 3.4 | 3.5 | -2.4 | -0.5 | 0.9 | 3.2 | 1.3 | 4.2 | 5.8 | 4.0 |
| Sep | 4.2 | 3.6 | 2.9 | -0.6 | 1.5 | 3.3 | 0.3 | 4.1 | 5.0 | 3.6 |
| Oct | 5.1 | 3.2 | 11.7 | -0.5 | 2.4 | 3.7 | -2.0 | 4.1 | 5.1 | 3.2 |
| Nov | 5.3 | 3.1 | 17.4 | -0.6 | 2.8 | 3.7 | -3.1 | 4.2 | 4.5 | 2.7 |
| Dec | 6.1 | 3.0 | 17.0 | -0.9 | 2.8 | 3.6 | -3.7 | 4.1 | 5.3 | 2.8 |
| 2008 Jan | 6.6 | 2.7 | 20.2 | -0.6 | 3.3 | 3.8 | -3.6 | 4.2 | 5.0 | 2.8 |
| Feb | 6.1 | 3.1 | 21.4 | -0.6 | 3.3 | 3.7 | 0.9 | 4.2 | 4.7 | 3.6 |
| Mar | 6.0 | 2.9 | 22.3 | -1.2 | 3.1 | 3.8 | 1.0 | 4.1 | 5.3 | 3.8 |
| Apr | 6.9 | 4.3 | 20.3 | -0.9 | 3.6 | 3.9 | 3.3 | 4.4 | 5.2 | 4.3 |
| May | 7.8 | 4.6 | 21.3 | -0.8 | 4.1 | 3.8 | 4.6 | 4.4 | 5.5 | 4.7 |
| Jun | 9.7 | 4.5 | 26.8 | -0.6 | 5.0 | 3.8 | 6.0 | 4.3 | 5.6 | 4.9 |
| Jul | 12.2 | 4.3 | 29.3 | -0.3 | 6.0 | 3.2 | 6.9 | 4.7 | 5.6 | 5.1 |
| Aug | 12.8 | 4.4 | 22.8 | -0.4 | 5.4 | 3.3 | 10.4 | 4.7 | 6.1 | 6.0 |
| Sep | 11.2 | 4.4 | 22.2 | -0.8 | 4.8 | 3.3 | 17.7 | 4.9 | 6.9 | 7.6 |
| Oct | 10.1 | 4.7 | 13.0 | -1.3 | 3.7 | 3.8 | 18.3 | 4.7 | 5.8 | 7.4 |
| Nov | 10.7 | 4.5 | -3.1 | -1.7 | 2.1 | 3.7 | 18.6 | 4.6 | 6.1 | 7.5 |
| Dec | 10.4 | 4.6 | -11.0 | -3.6 | 0.4 | 3.7 | 18.1 | 4.2 | 6.5 | 7.4 |
| 2009 Jan | 9.9 | 5.0 | -14.9 | -3.5 | 0.1 | 3.1 | 18.2 | 3.7 | 5.7 | 6.9 |
| Feb | 11.3 | 5.1 | -11.7 | -2.6 | 1.2 | 3.1 | 13.0 | 3.8 | 6.0 | 6.0 |

Key: - zero or negligible

1 All components of the RPI are included in the above breakdown with the exception of mortgage interest payments, council tax and depreciation.

2 Including fuel oil.

3 The 'other goods' category comprises DIY materials, coal & solid fuels, household goods, clothing & footwear, personal articles, chemists goods, purchase of motor vehicles and leisure goods.

4 The 'utilities' category comprises water, electricity, gas, postage, telephone charges and rail fares.

5 The 'shop services' category comprises catering, repairs & maintenance charges, domestic services, personal services, maintenance of motor vehicles, TV licence & rentals and entertainment & recreation charges.

6 The 'non-shop services' category comprises dwelling insurance & ground rent, fees and subscriptions, vehicle tax and insurance, bus & coach fares, other travel costs, foreign holidays and UK holidays.

Source: National Statistics

| Difference between annual rates CPI - RPI | | Breakdown of differences (unrounded figures) ¹ | | | | | | |
|--|-------------------|---|----------------------------|--------------------------|---|------|--|-------|
| | | housing components excluded from CPI | | | other differences in coverage of goods and services | | other differences including weights ³ | |
| rounded figures | unrounded figures | total | mortgage interest payments | other housing components | formula effect ² | | | |
| D7G2 | D7G3 | D7G4 | D7G5 | D7FU | D7FV | D7FW | D7FX | |
| 2004 Feb | -1.2 | -1.23 | -1.10 | -0.21 | -0.89 | 0.05 | -0.43 | 0.26 |
| Mar | -1.5 | -1.47 | -1.47 | -0.48 | -0.99 | 0.07 | -0.41 | 0.34 |
| Apr | -1.4 | -1.36 | -1.32 | -0.50 | -0.82 | 0.08 | -0.43 | 0.30 |
| May | -1.3 | -1.30 | -1.36 | -0.50 | -0.86 | 0.13 | -0.44 | 0.38 |
| Jun | -1.4 | -1.46 | -1.59 | -0.69 | -0.90 | 0.14 | -0.43 | 0.42 |
| Jul | -1.6 | -1.66 | -1.82 | -0.88 | -0.94 | 0.15 | -0.42 | 0.43 |
| Aug | -1.9 | -1.89 | -1.96 | -1.03 | -0.93 | 0.18 | -0.47 | 0.36 |
| Sep | -2.0 | -1.97 | -2.13 | -1.18 | -0.95 | 0.20 | -0.45 | 0.42 |
| Oct | -2.1 | -2.07 | -2.17 | -1.19 | -0.99 | 0.22 | -0.46 | 0.34 |
| Nov | -1.9 | -1.98 | -2.11 | -1.19 | -0.92 | 0.24 | -0.47 | 0.36 |
| Dec | -1.8 | -1.84 | -1.91 | -1.00 | -0.91 | 0.24 | -0.49 | 0.32 |
| 2005 Jan | -1.6 | -1.55 | -1.94 | -1.03 | -0.92 | 0.23 | -0.48 | 0.65 |
| Feb | -1.5 | -1.50 | -1.92 | -1.03 | -0.89 | 0.23 | -0.51 | 0.69 |
| Mar | -1.3 | -1.32 | -1.64 | -0.86 | -0.79 | 0.22 | -0.53 | 0.62 |
| Apr | -1.3 | -1.22 | -1.54 | -0.86 | -0.68 | 0.25 | -0.52 | 0.59 |
| May | -1.0 | -1.07 | -1.43 | -0.85 | -0.58 | 0.27 | -0.50 | 0.60 |
| Jun | -0.9 | -0.87 | -1.18 | -0.67 | -0.51 | 0.29 | -0.52 | 0.54 |
| Jul | -0.6 | -0.57 | -0.89 | -0.48 | -0.40 | 0.31 | -0.53 | 0.55 |
| Aug | -0.4 | -0.37 | -0.84 | -0.48 | -0.36 | 0.33 | -0.49 | 0.64 |
| Sep | -0.2 | -0.20 | -0.43 | -0.17 | -0.27 | 0.30 | -0.52 | 0.45 |
| Oct | -0.2 | -0.17 | -0.37 | -0.17 | -0.20 | 0.30 | -0.52 | 0.42 |
| Nov | -0.3 | -0.29 | -0.36 | -0.16 | -0.21 | 0.27 | -0.52 | 0.32 |
| Dec | -0.3 | -0.30 | -0.35 | -0.16 | -0.19 | 0.28 | -0.51 | 0.29 |
| 2006 Jan | -0.5 | -0.45 | -0.29 | -0.15 | -0.14 | 0.30 | -0.48 | 0.02 |
| Feb | -0.4 | -0.39 | -0.32 | -0.15 | -0.17 | 0.30 | -0.51 | 0.14 |
| Mar | -0.6 | -0.51 | -0.36 | -0.16 | -0.20 | 0.32 | -0.55 | 0.08 |
| Apr | -0.6 | -0.52 | -0.33 | -0.14 | -0.19 | 0.32 | -0.51 | -0.01 |
| May | -0.8 | -0.72 | -0.32 | -0.11 | -0.20 | 0.32 | -0.54 | -0.19 |
| Jun | -0.8 | -0.75 | -0.26 | -0.09 | -0.17 | 0.31 | -0.52 | -0.27 |
| Jul | -0.9 | -0.86 | -0.25 | -0.09 | -0.16 | 0.28 | -0.54 | -0.35 |
| Aug | -0.9 | -0.95 | -0.25 | -0.08 | -0.17 | 0.24 | -0.54 | -0.39 |
| Sep | -1.2 | -1.22 | -0.71 | -0.48 | -0.23 | 0.22 | -0.56 | -0.17 |
| Oct | -1.3 | -1.23 | -0.74 | -0.49 | -0.25 | 0.24 | -0.55 | -0.17 |
| Nov | -1.2 | -1.20 | -0.73 | -0.48 | -0.24 | 0.24 | -0.55 | -0.16 |
| Dec | -1.4 | -1.46 | -0.91 | -0.68 | -0.24 | 0.23 | -0.56 | -0.22 |
| 2007 Jan | -1.5 | -1.53 | -1.01 | -0.72 | -0.29 | 0.23 | -0.59 | -0.16 |
| Feb | -1.8 | -1.78 | -1.21 | -0.91 | -0.30 | 0.19 | -0.55 | -0.21 |
| Mar | -1.7 | -1.75 | -1.21 | -0.90 | -0.31 | 0.26 | -0.57 | -0.24 |
| Apr | -1.7 | -1.77 | -1.21 | -0.91 | -0.30 | 0.21 | -0.60 | -0.17 |
| May | -1.8 | -1.79 | -1.28 | -0.94 | -0.33 | 0.19 | -0.59 | -0.11 |
| Jun | -2.0 | -2.04 | -1.49 | -1.13 | -0.36 | 0.21 | -0.64 | -0.12 |
| Jul | -1.9 | -2.00 | -1.65 | -1.17 | -0.47 | 0.23 | -0.54 | -0.05 |
| Aug | -2.3 | -2.29 | -1.87 | -1.38 | -0.49 | 0.24 | -0.57 | -0.10 |
| Sep | -2.1 | -2.21 | -1.62 | -1.15 | -0.46 | 0.28 | -0.60 | -0.27 |
| Oct | -2.1 | -2.15 | -1.54 | -1.12 | -0.41 | 0.28 | -0.60 | -0.30 |
| Nov | -2.2 | -2.20 | -1.52 | -1.12 | -0.40 | 0.29 | -0.59 | -0.38 |
| Dec | -1.9 | -1.95 | -1.30 | -0.91 | -0.39 | 0.31 | -0.55 | -0.41 |
| 2008 Jan | -1.9 | -1.87 | -1.07 | -0.67 | -0.39 | 0.36 | -0.59 | -0.58 |
| Feb | -1.6 | -1.61 | -0.73 | -0.47 | -0.27 | 0.36 | -0.59 | -0.65 |
| Mar | -1.3 | -1.34 | -0.49 | -0.26 | -0.23 | 0.30 | -0.55 | -0.60 |
| Apr | -1.2 | -1.21 | -0.34 | -0.23 | -0.11 | 0.32 | -0.52 | -0.67 |
| May | -1.0 | -0.95 | -0.02 | 0.01 | -0.03 | 0.32 | -0.52 | -0.73 |
| Jun | -0.8 | -0.78 | 0.35 | 0.23 | 0.12 | 0.31 | -0.54 | -0.90 |
| Jul | -0.6 | -0.60 | 0.60 | 0.27 | 0.32 | 0.31 | -0.53 | -0.97 |
| Aug | -0.1 | -0.07 | 0.89 | 0.49 | 0.40 | 0.32 | -0.49 | -0.79 |
| Sep | 0.2 | 0.22 | 1.02 | 0.51 | 0.51 | 0.36 | -0.46 | -0.70 |
| Oct | 0.3 | 0.21 | 1.01 | 0.46 | 0.55 | 0.39 | -0.47 | -0.71 |
| Nov | 1.1 | 1.05 | 1.43 | 0.85 | 0.58 | 0.41 | -0.46 | -0.33 |
| Dec | 2.2 | 2.12 | 2.50 | 1.86 | 0.65 | 0.37 | -0.49 | -0.26 |
| 2009 Jan | 2.9 | 2.86 | 2.95 | 2.23 | 0.73 | 0.36 | -0.46 | 0.01 |
| Feb | 3.2 | 3.14 | 3.30 | 2.56 | 0.75 | 0.35 | -0.49 | -0.02 |

1 The differences due to housing, coverage and formula effect are all calculated independently and are not additive.

Source: National Statistics

2 Difference due to use of different formulae to aggregate prices at the most basic level.

3 This difference is derived as a residual.